

Harbury & Ladbroke News



DECEMBER 2023

ADVERTISING RATES FOR THE HARBURY & LADBROKE NEWS

ADVERT SIZE	¼ PAGE	½ PAGE	FULL PAGE
1 MONTH	£12.50	£23.00	£40.50
3 MONTHS	£33.50	£59.50	£108.00
6 MONTHS	£61.00	£109.00	£198.00
12 MONTHS	£113.00	£198.00	£369.00

Adverts with payment to:

Sue Dronfield, 36 Manor Orchard, Harbury by the 20th day of the month

Cheques payable to 'Harbury & Ladbroke News' or BACS details upon request

Email: advertising@hlnews.co.uk

Tel: 01926 612687



Reliable
Comfortable
Discrete

Events
Meetings
Days Out
Airport / Seaport



bchauffeurdriven.net

warwick@bchauffeurdriven.net

Chauffeur Service

Ensure that you reach your destination on time and relaxed.

07817897813

Fully qualified and licenced chauffeur



B CHAUFFEUR DRIVEN

Harbury

HARBURY & LADBROKE News

Published monthly to reflect all aspects of local life

December 2023

No. 597

EDITORIAL	4
HARBURY DIARY & REFUSE ROTA	4
FROM THE RECTOR AND CHURCH NEWS.....	7
LADBROKE NEWS	12
HARBURY PARISH COUNCIL.....	25
CLUBS & SOCIETIES	27
SPORTING ACTIVITIES	35
EARLY YEARS & SCHOOL	44
LIBRARY & CLUB	49
GARDENING & NATURE	50
GENERAL SECTION	53

Editorial Office

31 Binswood End

☎ 612155

✉ articles@hlnews.co.uk

Article drop off point:
Harbury Pharmacy,
High Street

Advertising Office

36 Manor Orchard

☎ 612687

✉ advertising@hlnews.co.uk

Distribution Manager

49 Mill Street

☎ 07900 852236

✉ distribution@hlnews.co.uk

Inserts by prior arrangement with
the Distribution Manager

Editorial Team

Andy Goss – Paulette Kavanagh – Peter McDonald
Daralyn Warren – Jackie West

*The views of contributors are not necessarily those of the Editorial Team.
The Editors reserve the right to amend articles as they see fit.*

Cover Photo: Tyre Snowman, Chesterton House Farm by Gill Holden



EDITORIAL

A round up of local news

The Remembrance Service in November was well supported by our uniformed groups as well as villagers who gathered at the War Memorial. We would like to thank Adrian Giblin for sending in his photos taken during the laying of the wreaths.



Well done too to the Guides & Scouts Support (GASS) for hosting another fabulous bonfire and fireworks evening; the event was enjoyed by all. GASS will also be organising their usual Christmas postal service for sending your Harbury village Christmas cards. Drop your cards in at the village library with a generous donation and they will do the rest! More details in their article.

Both churches will be holding their usual Christmas services during the festive period. You should receive a card through your door with a schedule of these events.

In the run up to Christmas, you will receive a warm welcome at Harbury Village Library. You can sit and read the newspaper or select a few library books for reading over the holiday period. The library will be open up until the 21st December and reopen on 3rd January.

The magazine committee would still like to recruit another editor (or two) to join the editorial team. Please do contact us if you are interested.

Ladbroke have some Heritage mugs and booklets on various topics which you can purchase if you are looking for stocking fillers. Sue Wright received a fabulous amount of filled Christmas Shoe boxes for her appeal, which have now been sent off to the charity. In this edition you can read all about the history of Ladbroke church's organ written by Jackie West.

Please note there are changes affecting both villages to the recycling and refuse collection days in the week following Christmas.

Due to the Christmas and New Year holidays, the articles and advertising deadline for the January 2024 edition of the magazine will be on Tuesday 19th December. Copies will not be available from the printers until Monday 8th January and these will be distributed as soon as possible after this date.

We extend our condolences to the families of Pamela Anne Hearth and William (Bill) Keith Taylor.

Finally, we wish all our readers a Merry Christmas and a Happy New Year.



HARBURY DIARY

For local events

DECEMBER

- Fri 1 Meeting Point, 12.30pm, The Crown Inn
- Sat 2 Coffee Morning, 10.00am - 12 noon, Tom Hauley Room in aid of Zoe's Place
Christmas Fair, 2.00pm, Village Hall

Sun 3 ADVENT 1

Said Communion, 9.00am, Church
Little Saints, 10.30am, Church
Zumba, 9.00 - 10.00am, Village Hall

Mon 4 Badminton, 10.00am - 12 noon, Village Hall
Martial Arts, Juniors 5.45pm, Seniors 6.45pm, Village Hall
Southam Lions Club & Santa visit Harbury from 5.30pm

Tue 5 Free Chair-based Activity Class, 10.00 - 11.00am, Village Hall
Bumps & Bundles, 10.30am - 12 noon, Tom Hauley Room
Southam Lions Club & Santa visit Harbury from 5.30pm
Harbury Heritage Centre open, 7.00 - 9.00pm, Harbury School (Park Lane entrance)
Harbury Theatre Group, 7.00 for 7.30pm, Village Club

Wed 6 Wednesday Walk, meet 9.40am, Village Hall Car park - Kenilworth to Warwick
(4 miles, flat)
Mothers' Union Service 2.00pm, meeting starts 2.30pm, Tom Hauley Room
Spellbound Dance Classes, 5.00 - 5.30 & 5.30 - 6.15pm, Village Hall
Ballroom Dancing Christmas Social, 7.30 - 10.00pm, Village Hall
Hereburgh Morris Practice session, 8.00 - 10.00pm, School Hall

Thurs 7 Said Holy Communion, 10.00am, Tom Hauley Room
Folk Club, 8.00pm, Village Club

Sat 9 Coffee Morning, 10.00am - 12 noon, Tom Hauley Room in aid of Multiple Sclerosis
Senior Citizens Christmas Party, 5.30 for 6.00pm, Village Hall

Sun 10 ADVENT 2

Holy Communion with activity for children, 10.30am, Church
Messy Church, 3.00 - 5.00pm, Church
Zumba, 9.00am - 10.00am, Village Hall

Mon 11 Badminton, 10.00am - 12 noon, Village Hall
Martial Arts, Juniors 5.45pm, Seniors 6.45pm, Village Hall

Tue 12 Free Chair-based Activity Class, 10.00 - 11.00am, Village Hall
Bumps and Bundles, 10.30am - 12.00 noon, Tom Hauley Room

Wed 13 Wednesday Walk, meet 9.40am, Village Hall Car park - Frankton (4 miles) with
optional meal - see article
Quiet Space, 10.00am, Tom Hauley Room
Knitwits and Pleasant Pastimes, 2.00 - 4.00pm, Tom Hauley Room
Spellbound Dance Classes, 5.00 - 5.30 & 5.30 - 6.15pm, Village Hall
Hereburgh Morris Practice session, 8.00 - 10.00pm, School Hall

Thurs 14 Said Holy Communion, 10.00am, Tom Hauley Room
Harbury WI, 7.30 for 7.45pm, Willow Weaving, Tom Hauley Room

Fri 15 Last posting date for GASS postal service
Ben & Soph's Jazz Night, Tickets - Tel: 07989 017427, 7.00pm, Village Hall

Sat 16 Coffee Morning, 10.00am - 12 noon, Tom Hauley Room in aid of Open the Book

Sun 17 ADVENT 3

All Age Service, 10.30am, Church
Zumba, 9.00am - 10.00am, Village Hall
Harbury Heritage Centre open, 2.00 - 4.00pm, Harbury School (Park Lane entrance)

- Mon 18 Badminton, 10.00am - 12 noon, Village Hall
 Martial Arts, Juniors 5.45pm, Seniors 6.45pm, Village Hall
- Tue 19 Free Chair-based Activity Class, 10.00 - 11.00am, Village Hall
 Bumps & Bundles Christmas Party, 10.30am - 12 noon, Tom Hauley Room
 ARTICLES FOR NEXT ISSUE TO: HARBURY PHARMACY,
 HIGH ST OR EMAIL TO ARTICLES@HLNEWS.CO.UK BY 5.30PM
 ADVERTS FOR THE NEXT ISSUE TO 36 MANOR ORCHARD,
 HARBURY OR EMAIL ADVERTISING@HLNEWS.CO.UK
- Wed 20 No Wednesday Walk
 Connections (Dementia) Café, 2.00 - 4.00pm, Tom Hauley Room
 Spellbound Dance Classes, 5.00 - 5.30 & 5.30 - 6.15pm, Village Hall
 Hereburgh Morris Practice session, 8.00 - 10.00pm, School Hall
- Thurs 21 Carol Singing in the village pubs, starting 6.30pm at the Crown Inn, 7.15pm at the
 Shakespeare and 8.00pm ish at the Gamecock
- Sat 23 FREE Coffee Morning held by All Saints' Harbury, 10.00am - 12 noon, Tom Hauley Room
- Sun 24 CHRISTMAS EVE**
 Nativity, 3.00pm, Church
 Village Carol Service, 6.00pm, Church
 Midnight Mass, 11.15pm
- Mon 25 CHRISTMAS DAY**
 Family Communion Service, 10.30am, Church
- Wed 27 No Wednesday Walk
- Sun 31 NEW YEAR'S EVE**
 Holy Communion, 10.30am

JANUARY 2024

- Mon 1 Hereburgh Morris' Annual Hangover Tour, starting 12.00 noon at the Crown Inn
- Tue 2 Harbury Heritage Centre open, 7.00 - 9.00pm, Harbury School (Park Lane entrance)
- Wed 3 Wednesday Walk, meet 9.40am, Village Hall Car park - Napton
 Mothers' Union Service 2.00pm, meeting starts 2.30pm, Tom Hauley Room
 Hereburgh Morris Practice session, 8.00 - 10.00pm, School Hall
- Thurs 4 Said Holy Communion, 10.00am, Tom Hauley Room
 Folk Club, 8.00pm, Village Club
- Fri 5 Meeting Point, 12.30pm, The Crown Inn
- Sat 6 Coffee Morning, 10.00am - 12 noon, Tom Hauley Room in aid of Godstuff
- Sun 7 EPIPHANY SUNDAY**
 Said Communion, 9.00am, Church
 Little Saints, 10.30am, Church

January Edition - Harbury Ladbroke News

Adverts to: 36 Manor Orchard, Harbury or
 e-mail to advertising@hlnews.co.uk by 19th December

Articles to:
 Harbury Pharmacy, High Street or e-mail to
articles@hlnews.co.uk by 5.30pm, Tuesday 19th December

Refuse Collection Rota

Week Commencing Monday	Thursday Collection - Harbury	Wednesday & Friday Collections - Ladbroke Friday Collection - Deppers Bridge and Bull Ring Farm Rd, Harbury
4 December	F	F - R - G
11 December	F - R - W - G	F - W
18 December	F	F - R - G
25 December	<u>Friday 29 Dec</u> F - R not garden	<u>Thursday 28 Dec</u> F <u>Saturday 30 Dec</u> F
1 January	<u>Friday 5 Jan</u> F -- W	<u>Thursday 4 Jan</u> F - R - W not garden <u>Saturday 6 Jan</u> F - R - W not garden
8 January	F - R - G	F

F = Food caddy - R = Recycling (blue bin) W = Waste (black bin) G = Garden (green bin)
 Wednesday Collection - Parts of Ladbroke - Thursday Collection - Harbury
 Friday Collection - Deppers Bridge and Parts of Ladbroke



**All Saints
HARBURY**

FROM THE RECTOR

Rev. Andy Batchelor

The Rectory, Vicarage Lane, Harbury ☎ 01926 714295 ✉ rev.andyb@gmail.com

Very soon the Church will be moving into the advent season, as we prepare for, and anticipate the celebrations of Christmas once again. I wonder what you are feeling as we approach another Christmas? Of course many will look forward to the family reunions, the extended holiday over the New Year, the Christmas lights and familiar songs and carols. But there will be others who may even be dreading facing their first Christmas without a loved one, or who don't have people to celebrate with them. There will also be those who fear the cost and the expectations that are placed upon them. This year will be a strange one for me, as I have been waiting for a date for knee replacement surgery, which has now come through as the 15th December, more or less ensuring that I will be out of action over Christmas! Fortunately I am blessed with a supportive team who are rallying round to cover for me. Nevertheless I know I will feel guilty that I am unable to play my usual part in the wonderful Christmas services in our churches. On the other hand, it will be refreshing to have the time and space to appreciate anew the wonder and joy of God's unique intervention in our world through his son Jesus. The one who came to identify with us, to walk with us, share with us, to experience what we experience and, ultimately to die for us and reconcile us to God. That message can surely resonate with all of us, no matter what our situation and how we feel about Christmas. Whatever place we find ourselves in we can know Jesus as Emmanuel - 'God with us'.

REMEMBRANCE - 12TH NOVEMBER 2023

PHOTOS BY ADRIAN GIBLIN



SEAL

ROOFING SOLUTIONS

Our services include?

- Pitched roof repairs & replacements
- Traditional & modern finishes
- Flat roof replacements
- Rain fittings and fascia replacements

Checkatrade.com
Where reputation matters

Contact Terry

07506535419

sealroofing@outlook.com

WE'RE YOUR NEW NEIGHBOURS!

RECTORY FARM COTTAGE, HARBURY ROAD, LADBROKE, CV47 2DF

Auction Sales & Valuations

Valuation, collection and auction service of individual items through to complete property and commercial clearances.

Call for a free no obligation quote or email info@leauktion.co.uk

SALE ENTRIES NOW INVITED

www.leauktion.co.uk



LOCKE & ENGLAND
AUCTIONEERS & VALUERS

**01926
889100**

18 Guy Street,
Leamington Spa,
CV32 4RT



LOVE TO DANCE?
SOUTHAM CLASSES

FREE TRIAL CLASS

Ballet	Commercial
Tap	Contemporary
Modern	Mini Movers
Gymnastics	Funky Dance
Musical Theatre	Cheerleading
Street Dance	Adult Classes

★ confidence ★ fun ★ friendships

Professional Purpose Built Dance Studios in

Southam

www.loveballet.co.uk



07921 853773



Frank
Mann
Farmers



- Commercial & domestic mowing
- Fencing ■ Landscaping & more

"Attention to detail"

Michael Mann or Emma Mann

Tel: **07759863269 / 07931491417**

michael.mann1@btinternet.com

www.frankmannfarmers.co.uk



FROM THE CHURCHWARDENS

Liz & Andy

The church Christmas Fair will have been and gone when you read this and we hope you had a merry time. Thanks to all who came, donated, cooked, ran stalls and were so generous with their time and talents. And a special thank you to Father Christmas for allowing his deputy to stand in for him.

Funds raised at the fair are starting off the "Stone" appeal as, having more or less completed the heating and lighting of both the church and the Tom Hauley Room, we have cleared out all the funds. We have raised an astonishing £284,368 since the appeal was launched in 2020. However rising material costs and delays have meant this just about covers the heating and lighting. We think the stonework repairs will be costly, but essential, but more on this in 2024.

However, we have a warm, glowing church this Christmas so would be delighted if you and your visitors would join us for one or more of our services. On Christmas Eve there will be a nativity service at 3pm which will include the opportunity for children (and adults if they wish) to dress up and sing some carols. Come dressed up - the more angels, shepherds, Mary and Josephs, oxen etc etc there are the better. There will also be some costumes in church we can dress you up in.

Following this at 6pm will be the candlelit Village Carol service and at 11.15pm the candlelit Midnight Mass. On Christmas morning the service will be at 10.30am and we may even light the candles then too (we like to get full use of them even though we have good lighting!)

Before the big day, not a theologically correct phrase, we are carol singing in the pubs on 21st December beginning in the Crown at 6.30pm, the Shakespeare at 7.15pm and ending at the Gamecock at about 8pm.

But before all this comes Advent. A time of waiting and reflection. Working with the school, Lesley and team are setting up Advent prayer stations in the church for classes from school to visit but these are there for all. The church is open every day from morning prayers at 8.30am to about 4.45 to 5pm. Do drop in.

If you have any questions, we can be emailed on warden@harburychurch.org or phone us - Liz McBride 01926 612421 or Andy Dean 07753 497967.

From the Registers:

Funerals

- 24th October Pamela Anne Hearth (87 years)
- 30th October William (Bill) Keith Taylor (80 years)



MOTHERS' UNION

Gillian Hare

November's meeting saw us all happily singing along to some very old children's hymns. They brought back memories of woolly stockings and shabby halls heated by coke fired stoves; a time when children knew their place - but also a time of security and caring. We talked a bit about the philosophy behind those rather outdated words and tunes, but mostly with

fondness. All this followed a brief AGM, when Chris reminded us of the year's activities and the projects we had supported. We are all so glad that she is willing to continue to lead our branch.

On 2nd December we will be running the toiletries stall at the Christmas Fair.

On 6th December, following the communion service at 2pm, we will be sharing more memories; this time of Christmas presents. The best we've had or wish we had had.

We start the New Year on 3rd January at 2.30pm, in party mood. There will almost certainly be a light hearted "Pass the Parcel", maybe a quiz, then definitely tea. Friends are really welcome to join us.

Your committee wish all members a peaceful Christmas and a happy New Year.



LADBROKE NEWS & DIARY

DECEMBER

Sun 3 ADVENT 1

Family Communion followed by refreshments, 10.30am

Tues 5 Photography Club, 7.30pm, Village Hall

Wed 6 Heritage & Friendship Group, 10.30am - 12 noon, Village Hall

Thurs 7 WI Party, 7.30pm, Village Hall

Sat 9 Festive Afternoon Tea in aid of Cancer Research, 2.30 - 5pm, Village Hall
(book on 07736 000551)

Sun 10 ADVENT 2

Holy Communion, 9.00am

Tues 12 Table Tennis 7.30pm, Village Hall

Sun 17 ADVENT 3

Holy Communion (BCP), 9.00am

Tues 19 Table Tennis 7.30pm, Village Hall

ARTICLES FOR NEXT ISSUE TO: HARBURY PHARMACY,
HIGH ST OR EMAIL TO ARTICLES@HLNEWS.CO.UK BY 5.30PM

ADVERTS FOR THE NEXT ISSUE TO 36 MANOR ORCHARD,
HARBURY OR EMAIL ADVERTISING@HLNEWS.CO.UK

Wed 20 Village Carol Service, followed by mince pies, 7.00pm

Thurs 21 Carol Singing around Ladbroke, starting at 7.00pm at Ladbroke Hall
Mince pies and mulled wine 8.00pm (ish), Village Hall

Sun 24 CHRISTMAS EVE

Crib Service 3.00pm (no morning service)

Mon 25 CHRISTMAS DAY

Christmas Family Communion, 10.30am

Sun 31 NEW YEAR'S EVE

Holy Communion, 9.00am (said service)

JANUARY 2024

Tues 2 Table Tennis 7.30pm, Village Hall

Thurs 4 WI, 7.30pm, Village Hall

Sun 7 EPIPHANY SUNDAY

Family Communion followed by refreshments, 10.30am

Tues 9 Photography Club Meal

Wed 10 Parish Council, 7.45pm, Village Hall



LADBROKE CHURCH NEWS

Peter Rigby

www.ladbrokechurch.org.uk



We again celebrated All Souls' Day (technically a day late) by holding a "Night of our Light" on Friday 3rd November. The light inside the church shone out through the stained glass windows and the churchyard was lit by 350 tea lights around it, making a beautiful sight. Rev. Barry Coleman read a welcome prayer and the Churchwardens read out 180 names of those we have loved but see no more. It was a night of quiet reflection, a time to remember those we have loved and lost no matter where they are buried or scattered. Our thanks go to Rev. Barry and all those willing helpers who made this possible.

Our Act of Remembrance on Sunday 12th November led by Rev. Ann was a meaningful and poignant service. Our thanks to Bill Bosworth and the choir and of course our wonderful organist Kate Picken. Grateful thanks also go to Margaret Clarke, who preached a short sermon, and to Allan Peachey who played the bugle beautifully. Our retiring collection of £150 has been donated to Galanos House Amenities Fund.

Christmas is now fast approaching and the Ladbroke Carol Service will be on Wednesday 20th December 6.30pm followed by Christmas refreshments. The following evening, Thursday 21st December, we shall again be Carol Singing around the village, starting from Ladbroke Hall at 7.00pm. We plan to sing carols at the Hall, School Lane and Hedges Close en route to the Village Hall where mulled wine and mince pies will be enjoyed from around 8.00pm. All are welcome to join us for singing and/or Christmas refreshments, please listen out for the hand bell to be rung at the various locations.

On Sunday 24th December (Christmas Eve) there will be no morning service. Instead we shall be holding our annual Crib Service at 3pm, as always all ages are welcome to hear the Christmas story. Our Christmas Day service will be at 10.30am.

Upcoming services and events:

Sunday 3rd December	10.30am	Family Communion
Sunday 10th December	9.00am	Holy Communion
Sunday 17th December	9.00am	Holy Communion (BCP)
Wednesday 20th December	6.30pm	Village Carol Service
Thursday 21st December	7.00pm	Carol Singing around the village
Sunday 24th December	9.00am	NO SERVICE
	3.00pm	Crib Service
Monday 25th December	10.30am	Christmas Day Family Communion
Sunday 31st December	9.00am	Holy Communion (said)

www.ladbrokechurch.org.uk

ladbrokechurch@gmail.com



LADBROKE PARISH COUNCIL

Jackie West - H&L News Correspondent

Official minutes can be viewed on the noticeboard by The Bell Inn and the parish council's website - www.ladbroke-pc.gov.uk

All our councillors were present at the meeting on 8th November, plus one young dog who was very well behaved!

SDC

The police are (re)starting quarterly meetings with local councillors, starting in January. There are annual grants from the Police and Crime Commissioner to assist projects to reduce crime, help victims and make communities safer. As in previous years there is only a short time between the announcement and deadline so if you have an idea, start preparing now so you can apply next year.

There may be a shakeup of planning to address the volume of applications and dissatisfaction from local people; procedures around planning for custom and self-build homes should be tightened and finance for another planning enforcement officer for two years has been found. South Warwickshire (SDC and WDC) climate champions have a webpage to share stories of what they are doing, large or small, - *it's on www.warwickdc.gov.uk/climatechampions if you want to take a look.*

HS2

There was a reminder the A423 was closing for a weekend in November but of more concern was what would happen in about a year's time while they are connecting the new road to the existing one. One thought by local people was to create a temporary road on some of the land cleared and flattened to the east of the A423 for archeology works but there is lot of financial pressure on the HS2 project to take the cheapest option. That would be to just close the road for the full time it takes, so we need to keep the pressure on HS2 to find a solution with less impact on local communities and road users.

Planning

The council had/would make no representation about tree works at Elgin nor the relocation of the drive and entrance gates at Dovecote, including replacing three trees with many more

new trees in other locations on the property. The council also agreed to give their support to Dovecote submitting an application to convert a derelict outbuilding into a home for close family (local support being requested for this now that we are an uncategorised village).

Regarding the application for the triangular land at the end of Windmill Lane, the Parish Council supported by our ward councillor delivered successful speeches on behalf of our community at the SDC Planning Committee meeting in October.

The speeches focused on the works that had continued during the planning process including unapproved engineering works and that the site was no longer suitable for equestrian use. It was clear from both the question and debate sections that all the Councillors saw the application for what it is, with one calling it a "trojan horse". Another Councillor had "50 years' experience keeping horses" and explained to the room that the site is wholly unsuitable for equestrian use, from the fencing to the state of the ground, and that "no animal could live on it". Councillors also agreed that the stable block was much larger than necessary and requested that the expert assessment also provide guidance on this.

After initially proposing to refuse the application, the Councillors unanimously agreed to defer the application, on the basis that an assessment of the site for equestrian use be undertaken by an expert body, like (if not) the British Horse Society, to provide indisputable evidence of the unsuitability of the site in its current state. Once obtained, the application will be re-assessed at Committee. A great result for the Parish and a great team effort. However the councillors stressed the need to remain vigilant and both the Ward councillor and Parish Council are writing to Stratford District to keep track on the brief itself and process following.

It was also agreed to chase up what was happening with Enforcement and the Rural Police around the hedgerow grubbing and unapproved engineering operations. If anyone has any concerns around future activity on site, please notify the Parish Council immediately.

Housing Needs Survey

Sarah Brooke-Taylor, the Rural Housing Officer for WCC, explained that these surveys were used by Rural Housing Enablers across England to ensure a consistent approach. The survey isn't just about social housing but asks every household in the parish. However, people only reply (on-line or by returning the form) if there is a need... and that's a need, not an aspiration. The results are analysed, anonymised and reported to the relevant parish and district councils. What happens next is up to the parish council, if there is a housing need they would ideally do something to satisfy it. For example, identify potential sites and talk to land owners and housing associations, leading to building of properties for mixed tenure: rented or shared ownership.

Some, but not all of these new homes, could be owned outright with sales restricted to the local market. If the survey showed there was no significant housing need, this could be used against larger development proposals. As Ladbroke's last survey was in 2008, it was agreed to conduct one.

Councillors also discussed if we should also have a Neighbourhood Plan, which considers numerous aspects and identifies areas where future development should happen, but not how many new homes. Creating a Neighbourhood Plan is a major undertaking and would need a village team to take it forward; three years ago villagers did not want to do one. There had been two responses from landowners in Ladbroke in response to a call for sites for development. Significant development is unlikely while we remain an uncategorised village and people need a car to get to any services.



Members arrived at the meeting on Thursday, 2nd November clutching cups and saucers. No, it wasn't a tea party but flower arranging. Member Jean Clews brought buckets of flowers and foliage which were distributed as we sat at tables round the room. Jean had 'made one earlier' then showed us step by step how to follow her example. You can see from the attached picture that we were all pleased with what we had made.

Seven of us enjoyed the Food and Friendship lunch at Hilltop Farm and we discussed having the next one on "Blue Monday" in January, apparently a day when people feel rather down after Christmas. At the business meeting, Dianne informed us that she and Joan had been to the last Group Meeting and Sue Gill is stepping down from her role as Group Leader, now to be taken by Louise Bonsor, president of Napton WI. The Group Carol Service is to be held on Monday 4th December at Harbury starting at 7.30. Next year's Group Meeting is to be held on 11th June in Harbury Village Hall.

Topics for this year's resolutions include dental health matters, poor housing, say no to gambling advertisements and women in the criminal justice system. Warwickshire Federation of Women's Institutes has a list of talks and demonstrations on a huge range of topics for next year, all available on the website. Dianne had researched places to go for our Christmas meal this year but, after discussion, we voted to all bring a plate of goodies and meet in the village hall for a party on 7th December. Our coffee morning at the Tom Hauley Room was very successful so we are very grateful to all those who came along to support us as well as all our members who helped to make it an enjoyable and productive event. Jenny was thanked for her work on the village hall flower tubs for many years and Sue Lord and Carol Lane offered to continue. We now have a WI WhatsApp group so please let Dianne know your mobile number and she will put your name on the list. As ever, new members are very welcome.

TONY'S ROOFING

Roof repairs - Tiles/Slates,
Re-pointing, Ridges,
Leadwork, Chimney repairs,
Flat roofs (torch on felt),
Velux windows fitted,
UPVC Soffits, Fascias & Guttering,
Gutters cleaned

We won't be beaten on price.

All work guaranteed

Tel: 07881 411265



FENCES & TREES



All types of fencing and gates

Tree felling and reduction

Hedge laying and trimming

Patios

Seasoned logs available

Call Adrian Dollar on

01926 817077 or

07914 623989

Qualified and Insured

Domestic Gas Services



**Are your radiators cold
at the bottom?**

**If so they need
POWERFLUSHING!**

- **POWERFLUSHING** removes the build up of sludge and sediment in your radiators which is making them less effective therefore *costing you money!*

- **POWERFLUSHING** will maximise the efficiency of your radiators ensuring you get the very best from your heating system therefore *saving you money!*

**POWERFLUSHING....the next best thing to a
new heating system!**



For a free quote call Martin on **07980 740720**



Modern Homes

for everything inside your home



**Pop in for a chat or call to book
a free consultation on 01926 883 338**



As a family business in our 50th year of trading we are proud of our exceptional levels of customer care and quality of service.

Let our award winning team manage the planning, design and installation of your new kitchen, bathroom and bedroom.

We will guide you at every stage from concept to completion, ensuring a stress free experience that delivers the room of your dreams.

We have a fantastic team of quality tradesmen from bathroom and kitchen fitters to plasterers, plumbers, carpenters and many more.

Whatever your project involves we can provide the help you need.

With a wide range of products from market leading British suppliers, quality and value for money is guaranteed.

No matter what your style and taste we can come up with a design perfect for you.



Find us on Facebook, Twitter, Pinterest, Houzz and YouTube.

**www.modernhomesleamington.co.uk
info@modernhomesleamington.co.uk**

37 Longfield Road, Leamington Spa CV31 1XB



LADBROKE MATTERS

David Wright

The Ladbroke Matters team looks after the Village Hall and the Millennium Green. To help with this we organise regular fundraising events so that we can continue to offer both facilities for the benefit of our community.



We hope to hold our next supper and film night early in the New Year. If you are on our email list you will receive more details as soon as they are available.



Our boules tournament proved to be a great success in September. We therefore hope to make it an annual event and plans are afoot to hold another tournament next year in the summer.



The children's play area on the Millennium Green is getting past its best. Although still quite safe and useable, it is in need of a significant overhaul. This will require substantial funding and we are actively seeking grants. We hope to make improvements soon to the areas which need the most urgent attention. In the meantime proceeds of our fundraising events including film nights will go to support this project.



To book your special celebration in our village hall, or if you wish to hold regular classes or meetings, contact Debs (07779 225105 or email debs.dptv@gmail.com). Despite rising costs we have been able to keep our hourly booking rates at £15 per hour, or £12 for Ladbroke residents.



We wish all our friends and supporters a very happy Christmas and a prosperous New Year. We hope to see you all again next year.

If you would like to join the Ladbroke Matters team, have any suggestions for future events, or any other comments please contact the trustees (details on the Ladbroke website).

Ladbroke Village Hall Millennium Draw for October 2023

£50	Marlene Schaefer	£50	Kate Liverton	£25	Jim and Pauline Laidler
£25	Nicky Lewis	£25	Alan Lord	£10	Colin and Kay Constable
£10	Steve Morten	£10	Jill Norgate		

Margaret Bosworth



LADBROKE PHOTOGRAPHY

Kip Warr

We were transported over the Andes by David and Maria Hannan at our November meeting. Their long trip started on the Pacific coast in Lima and took them up to some five thousand metres in the mountains. In Lima they saw the stunning beauty and rich embellishment of the Spanish colonial churches. In the south they visited Lake Titicaca, with its boats and floating



Machu Picchu



A reed boat and floating island on Lake Titicaca

islands all made from reeds. Moving on to Cusco we saw the extraordinary drystone walls made from huge rocks cut to a perfect shape and polished, all with stone tools. From there we were taken to Machu Picchu, one of the few Incan settlements not discovered and destroyed by the Spanish. Set among mountains at an altitude of 2,400m it is a photographer's dream. Among the many pictures taken along the way we saw colourful exotic birds, a meal of roast guinea pig and a market set up on an active railway line.

Our meeting in December will be all about smoke and colour and on 9th January we shall have our annual pub meal.

Visitors, guests and new members are all welcome to our meetings which are usually in Ladbroke Village Hall on the first Tuesday of the month. For more information please contact ladbroke.photoclub@btinternet.com



LADBROKE GENERAL NEWS



LADBROKE HERITAGE

Jackie West

The Organ

To celebrate the removal of the plastic cover from the organ in church I thought readers might be interested to learn a little about this grand musical instrument and how it works.

The current organ replaced a smaller one as part of renovations in 1876 led by Sir George Gilbert Scott. The previous organ was sold for £40 and, I understand, went to the Congregational Chapel in Wood Street, Southam. Its replacement cost £529 9s 6d, and was built by William Hill and Son, one of the main organ builders in the 19th century.

This company had many commissions around that time and not just for the UK; they made organs for Adelaide, Melbourne and Sydney Town Halls to name a few. Unlike many organs of a similar age, ours has only had two minor changes since it arrived. We now have an electrical air blower but until the 1940s it was pumped by hand bellows. Some of the lads who did this

are recorded for posterity on the organ case, their names include:

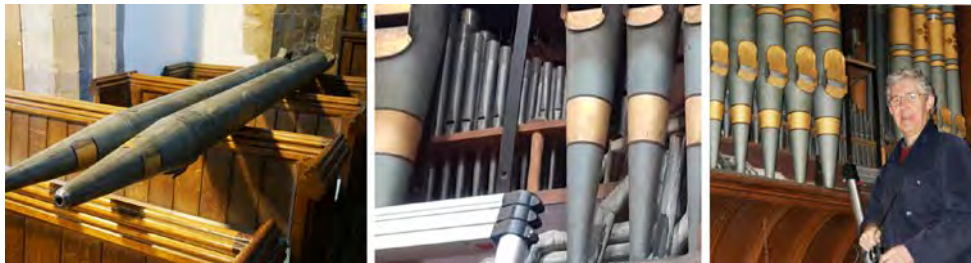
F. Alcock, Harry Askew, Ronald Askew, B. Faulkener, Frank Field, E. Gilks,

G. Howe, E. Leeson, B. Orland, F. Payne, B. Terry, J. Terry, M. White,

A Wilmer, Pte F. White No: 5382194 43 Lt Infty

L. Townsend aged 18 9/12 (16/6/40)

The only other change was its position within the church, originally it was in the chancel but, to create more space there, in the 1970s it was moved to the back of the north aisle. Our retiring organ tuner, Michael Latham, remembers working on it then as an apprentice!



Organ tuning in progress, two pipes removed to access the ones behind

Although many pipe organs, where each note is produced by air being pushed into a different pipe, are located in churches, they are actually older than Christianity, dating back to at least 300 BC. The first church organ in the West belonged to Charlemagne in 812, before that they were not allowed in churches! Down the centuries the number of pipes increased and the mechanism to pass air into the correct one became more complicated, so that for 200 years pipe organs were the most complex man-made devices in existence. They were overtaken by the telephone system in the late 19th century.

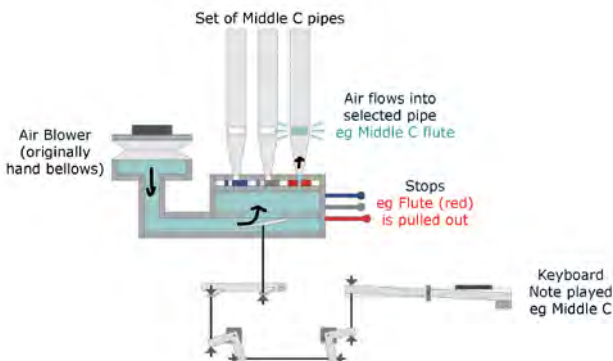
Ladbroke's is a relatively small pipe organ with only 500 or so pipes, packed close together in the organ case. The large front pipes are painted a bluish grey with a simple gold and red pattern; the pipes behind are unpainted.

Sound is produced by air going through the pipes, with each pipe giving a slightly different sound. The pitch (note) depends on the length of the pipe, a longer pipes give a lower note. The timbre (sound quality) depends on what the pipe is made of and its exact shape.

It works as follows.

Air is pumped into a large chamber by an electric rotor. Which pipe(s) it then flows into depends on **both** the

- Key pressed – this allows it to go into a set pipes giving the same pitch or note (eg middle C)
- Stop pulled out – this allows the air to go below a set of pipes giving the same timbre (or sound quality, eg flute)



We are very fortunate at Ladbroke not just to have such a fine instrument but to hear it played

almost every Sunday by Kate. However, as she freely admits, she is really a pianist so just takes it for a gentle stroll rather giving it a full workout. There should be one of those at our Carol Service on Wednesday 17th December. The organ sounds amazing when it's in full flow, do come and hear it. And, if there are any organists out there, living locally or just visiting, who would like to play the organ in Ladbroke Church please get in touch (tel 810331).

The **Heritage and Friendship Group** had a great time last month telling tales of famous people they had encountered, ranging from going to the shop to get cigarettes for The Beatles to employing local gangsters when they came out of prison. We meet again on Wednesday 6th December, in Ladbroke Village Hall. All are welcome to drop in between 10.30am and noon to chat over a cuppa and share Christmas memories.

Are you looking for Stocking Fillers? We have a few Ladbroke Heritage Mugs available to buy, £6 each. Alternatively if you have a relative or friend interested in church stained glass or in rocks and fossils we have booklets on these topics, plus the short historical novel about Alice and the Adventurer, as serialised in this magazine a couple of years ago. All of these items will be available at the Festive Afternoon Tea on 9th December in aid of Cancer Research, from church after services or phone 810331.

T4U TEAMS4U - LOVE IN A BOX CHRISTMAS SHOEBOX APPEAL ——— *Sue Wright*

We had a fantastic response to this year's appeal, and thanks to everyone's valuable contributions I was able to take a record breaking 55 completed boxes plus funds for their transportation (which we were able to Gift Aid) to our area collection point in Stretton on Dunsmore. We have picked up some more tips for next year and I can only encourage everyone to keep your eyes peeled for items in the sales or charity shops over the coming months - I'm always happy to receive and store early donations including of course empty shoeboxes!!

Our boxes have already been sent to the regional centre in Evesham. From Evesham the boxes will be loaded onto lorries and taken direct to children in Bosnia, Belarus, Ukraine, Georgia, Romania and Moldova using local contacts in those areas.

Thank you so much to everyone who was part of this initiative and it was lovely to have some new people taking part this year. As always a special thanks to the Harbury Knitwits whose knitted items were once again a wonderful addition.

Each box is such a blessing to the children and families who receive them. I hope we can do it all again next year.

Many thanks.



Packed and ready to go!





HOMEBUYER SURVEYS, BUILDING SURVEYS & VALUATIONS

If you need **honest and pragmatic** advice, but also appreciate a friendly face and heaps of enthusiasm, then **Karena** is the lady to go to for all your surveying solutions.

- RICS Chartered Surveyor
- RICS Registered Valuer
- RICS Level 2 & 3 Property Surveys
- Short Property Reports
- Party Wall Awards
- Valuations for Help to Buy, Shared Ownership & Probate
- Over 33 years' experience



Please contact **Karena** for more information.
01926 612121 / 07752 134874

admin@greenchameleon.net
www.greenchameleon.net

MB Plastering PLASTERING AND HOME IMPROVEMENTS

For all your plastering needs from ceilings, coving and walls to artex removal, plaster boarding and partitions



07494471217

plasteringmb@gmail.com
www.mb-plastering.co.uk



Generations of Care

R.Locke & Son

Independent Family Funeral Directors - Est 1853

Caution Corner

BRAILES

OX15 5AZ

t: (01608) 685274

Southam Street

KINETON

CV35 0JN

t: (01926) 640386

No. 6 The Precinct

WELLESBOURNE

CV35 9NL

t: (01789) 840744

As a family owned business serving our local area, we take great pride in offering a dedicated and compassionate service.

For more information about our services, to view our funeral announcements and online donations, please visit

www.rlockeandson.co.uk

Traditional / Simple services - Direct Cremation
Natural burial - Pre-paid funeral plans

Golden Charter
Funeral Plans





D F J HEWER BUILDERS LTD DESIGN AND BUILD COMPANY



Established over 60 years working for the community for all your building requirements

We build today with an eye to the future

**MAINTENANCE – REPAIRS – EXTENSIONS – ALTERATIONS
LISTED BUILDING CONSENTS – SPECIALISTS IN LISTED BUILDING
WORKS – PLANNING AND BUILDING REGULATION APPROVALS**

Telephone: 01926 813070 or 813627

admin@hewerbuilders.co.uk www.hewerbuilders.co.uk



Registered house builders



BUILDERS

KITCHENS - BATHROOMS - WINDOWS & CONSERVATORIES

EXTENSIONS - ALTERATIONS - RENOVATIONS

GREY GABLES, 46 BANBURY ROAD, SOUTHAM CV47 1HJ

☎ Southam 01926 817744 Mobile: 07885 495384

Email: tmgrey@tiscali.co.uk

HARBURY PARISH COUNCIL

Unit 2, Bull Ring Business Centre
Church Terrace, Harbury CV33 9HL

Tel: 614646

Website: www.harbury-pc.gov.uk

Open: Monday - Thursday
10.00am - 12.00pm

CHAIRMAN:

Tim Lockley

Email: chair@harbury-pc.gov.uk

CLERK:

Alison Biddle

Email: clerk@harbury-pc.gov.uk

Parish Council meetings are
open to the Public.

To speak on any issue, please
contact the Parish Clerk

Harbury Village Library & Biblio's Café

Harbury Village Library

Browsing & Borrowing, Click and Collect, Home Delivery and Takeaway Shelves for Children's and Adults' Books, Audio Books, Jigsaws, and Board Games. Public Access Computers, WiFi access and Printing Facilities, Events & Activities, Food Bank Collections, Recycling Boxes, Art Gallery, Books & Greetings Cards by local artists for sale.

Biblio's Café

Offering a selection of hot and cold drinks, cakes and baked goods either served at your table inside the cafe or as takeaway items

Please check the Harbury & Ladbroke News, on Social Media, www.HarburyVillageLibrary.org.uk and village notice boards for information about current opening times



Harbury Village Library, The Wight School,
High Street, Harbury CV33 9HW
01926 258776

- library@harburyvillagelibrary.org.uk



HARBURY PARISH COUNCIL

John Holden – H&L News Correspondent

Official minutes can be viewed on the Parish Council website www.harbury-pc.gov.uk or obtained from the Parish Clerk, Tel: 01926 614646

Meeting - Thursday 26th October 2023

Although quite a lengthy agenda, the main business was completed by 9pm. The only member of the public to speak was Paul Quinney and his item will be covered lower down.

Other Organisations

The chairman reported that the boiler at the Library had broken down. Whilst there was a project to renew the heating system in the building, attempts were being made to see if the boiler could be repaired, which has since been sorted! Councillors were able to see the recently re-surfaced floor in the Village Hall.

County Councillor

Chris Kettle gave an update on the ongoing saga of the Fosse Way/Harbury Lane traffic lights installation. When the junction was improved some 30/40 years ago, the house on the corner had suffered some movement.

During the progress of the current works, concern had been raised by the present owner of the house as to further potential movement. This had resulted in further investigations including soil and rock cores being taken. New designs for the steel piling required was now being prepared and then the steel was on four weeks delivery, so not expected until December. The impact on the remaining programme and completion was still being assessed.

Whilst Cllr Kettle would not be drawn on a completion date, the Chairman was putting his money on next March/April time!!!

Other items

Cllr Kettle raised - due to problems with Broadband installation in Bishops Itchington, the Contractor was facing a final warning over continuing work in South Warwickshire. The WCC schools transport budget was under pressure, mainly due to a rise in the number of children being excluded from school. When this occurs the County then has to pay to transport the child to an alternative school place.

Planning

The Council agreed to No Representation for applications at: Fable House Farm, Chesterton Rd; the proposed house at Northfields; Field House on the Pound and CCTV at Bishops Bowl Lakes. They did object to an application for the removal of two Oaks at Harbury House. On the basis that no reason had been given for the need for their removal. Councillors asked the DC representative to request that future planning applications for the removal of trees should require the reasoning behind the request.

With the outline application for six self-build houses off Bull Ring Farm Road, it was agreed to repeat the objection the Council had made on the previous similar application for this site. However they would emphasise concerns over the width of the road and vision splays.

Regarding the Stratford Gateway Masterplan (proposing regeneration of the area between the railway station and town centre), the Chairman, who had conscientiously read the

document, thought it was a positive scheme but he was concerned as to the significant loss of car parking provision. The developer behind the Middle Road Solar Farm is being very elusive as regards a meeting with the PC.

Future Energy Project and Car park Extension

The grant application had been successful and Paul Quinney had given Councillors a plan of the proposed extension. This provides for six additional parking spaces being created at the top of the Village Hall Car Park where currently the drop posts are preventing vehicles entering the playing fields. This coming about due to provision of 9 electric charging points at existing parking spaces. The extension would also incorporate bollards to stop vehicles entering the grassed area. It was noted the grant money had to be spent by the end of March.

Properties

The first item here was an update on the current Council's consultation on an extension to same Village Hall Car Park. However this extension would be parallel to the hedge at the rear of the Village Hall, leading towards but not up to the exercise equipment, where the small goal is. So in effect straight ahead as you turn into car park from Constance Drive. The majority of response so far have been favourable to this.

The Council agreed to fund the provision of a bench in memory of Pat Summers to go in the cemetery, in recognition of all the hard work she organised in maintaining the area there.

Environment

A resident had contacted the PC suggesting a number of measures to reduce traffic congestion in the centre of the Village. These included making Church Street one way, banning lorries from some of the narrow streets and having a residents parking scheme. The Chairman noted that these had been considered in the past and ruled out for various reasons. The main one being who would enforce such measures? When was a traffic warden last seen in the Village?? Also WCC policy was that any measures like this introduced, had to be paid for by the Parish Council. Cllr Kettle also pointed out that any necessary legal work was very expensive.

The family of Mary Shelley who had passed away earlier in the year, wished to donate a tree in memory of their mother. The extension of the car park was suggested as a suitable area.

Seasonal Lights

The Council will spend up to £1000 on additional lights for the village this year. New areas to have festoon lights and spheres include by the Surgery, the Old New Inn green and the Shakespeare Inn.

Next Meeting - Thursday 23rd November, 7.30pm in the Tom Hauley Room.

Current Parish Council members contactable via the Parish Office are:

Tim Lockley (Chairman), Julie Balch (Vice-Chair), Samantha Allen, Jess Dominick,
Kate Gard, Alan Knowles, Alex Potter, Keith Thompson.

Would you like to become a Parish Councillor? Call 614646 or email clerk@harbury-pc.gov.uk for details.





HARBURY SOCIETY

Sue Turner

Dates for your diary in 2024

Tuesday 16th January

Annual Meal at The Crown, Harbury. Details will be sent to members nearer the time.

Tuesday 20th February

Talk by Tricia Scott about the work of the Bat Conservation Trust.

Meeting in the Tom Hauley Room. Doors open 7.30pm. All welcome - free to Harbury Society members - guests £2.

Tuesday 19th March

Annual AGM followed by a presentation given by Bill Timson, Chair Harbury Heritage Group, entitled 'Harbury Windmill - Past, Present and Future'. Meeting in the Tom Hauley Room. Doors open 7.30pm. All welcome - free to Harbury Society members - guests £2.

Tuesday 16th April

Presentation by Mark Newbold entitled 'An Insider's View of the NHS'. Meeting in the Tom Hauley Room. Doors open 7.30pm. All welcome - free to Harbury Society members - guests £2.

As the Harbury Society doesn't meet in December, the committee would like to take this opportunity of wishing everyone a very Merry Christmas and a Happy and Healthy New Year.

If you would like further information about the Harbury Society or would like to become a member, please contact Sue Turner, Secretary, on 07917 055920 or email sue@turners.co.uk.



HARBURY WI

Mary Thompson

On 26th October 16 members enjoyed a lovely lunch at The Crown where we were made very welcome.

The AGM was held on 9th November where treasurer Gill reported on a very successful year both for our own finances and the fact that we had been able to donate £3036.23 to six village organisations from our Community Fund, mainly built up from running the village cinema since Covid. Members agreed to give a grant of £500 to the Village Hall towards the purchase of an upgraded projector.

Secretary Pam and President Ann both reported on a very busy and successful year where members have enjoyed interesting speakers and taken part in activities, lunches, afternoon tea and outings in between meetings. Ann thanked Committee members, and others for their support. Special mention was made of Rosemary and Sheila who always run the raffle at meetings and the Cinema. Ann thanked Julia for arranging interesting speakers. We wished Julia and her husband Rich well as they relocate to Shropshire.

Gill and Pam agreed to continue as Secretary and Treasurer and Sue, Lin, Pat and Mary agreed to continue as committee members. We were pleased to welcome Sue Grinstead and

Alison Lewis as new committee members. Sally Ratcliffe offered to serve as the new Speaker secretary.

Ann Mayer announced that it was time for her to stand down as President after four years and Lin gave thanks to Ann for her exemplary leadership. Lin Hayes was elected as President with enthusiastic applause.

On 4th December we look forward to welcoming other WI members as we host the Group Carol Service in Harbury Church. At our Christmas meeting on 14th December we shall welcome Rachel Harwood who is going to talk about Willow Sculptures. We aren't running a cinema in December - the next one is on 20th January - look out for posters announcing the film.

During the AGM Peggy shared two poems written by Chris Gore who sadly passed away a couple of years ago. This is the one that she wrote about WI:

*Think WI is not for you
You'd be surprised at what we do
Meeting monthly for a friendly chat
Discussing this and discussing that
But we don't do gossip
Well just a bit
In case a member needs
A helping hand to fit
After a natter
We take our seats ready for our speaker to appear and speak
They amuse, entertain and inform us too
Exciting our brain cells
Like a peel of bells
It's a goodnight with pals
No guys only gals
A laugh and a chat
Nothing wrong with that
Nothing at all.*



HARBURY THEATRE GROUP

Brittany Bain

We hope everyone who came to our November performance of Jack and the Beanstalk enjoyed watching it as much as we enjoyed performing and rehearsing it! This month's article is written by one of our brand new members.

Being a person who loves to sing and perform, I have wanted to join an amateur dramatics group since I moved to Warwickshire two years ago. With my affiliations with





Harbury RFC, as a member of the Harbury Hurricanes Women's Touch team, I had grown quite involved in the comings and goings within the little village of Harbury. With a stroke of luck and joy I stumbled across an advertisement for this very pantomime and I have not looked back since. I have always loved performing but always wanted to just keep it as something I did for fun, and fun is what this thespian group have in oodles!

I have loved every minute of getting to know the cast as we rehearse for Jack and the Beanstalk. Not only is everyone warm and kind but clearly people who have come together for the love of entertainment and Christmas frivolity! What could be a more perfect way to get into the Christmas spirit?

If you would like to be involved in our next production, please come to one of our monthly meetings. We meet the fourth Tuesday of each month 7 for 7.30 at the Village Club. Our next meeting will be 23rd January.



FOLK CLUB

Peter Bones

If ever there was a competition for the least appropriate folk club theme, the meeting of 2nd November must be a strong contender. I chose the theme of 'The Great Outdoors' while thinking of the wonderful holidays of this year which included walking, cycling and sailing, all in glorious sunshine.

As we gathered for the Folk Club of 2nd Nov, the weather was rather different, as Storm Ciaran battered the area with strong winds and driving rain

In view of the weather, I expected that the numbers attending would be rather depleted, so I was pleasantly surprised to find that at the start, there was an audience of about 40.

Liz and I started the evening with singing "Isle of Eigg" which is a well-known song set on the West Coast of Scotland. It has a refrain and the audience were in fine voice and joined in with enthusiasm. This gave rise to a warm and friendly atmosphere which continued throughout the evening.

The session included a total of 13 different acts and most of the items performed had some association with the Great Outdoors, but with varying degrees of connectivity.

On the whole, I think the standard of performance was okay. I particularly enjoyed the items

presented by The Harvesters, Peter McDonald, Michael Luntley and the very funny, self-penned monologue by Hugh. A somewhat depleted Harbury Folk Club Choir also performed and, judging by the reaction of the audience, was well received.

Liz and I finished the evening at about 10.20pm, with "Parting Song", as written by Dave Webber. The members of the audience were still in fine voice and joined in the choruses with gusto. It was a fitting end to what had been another fine evening.

For a list of who sang what, please visit the Folk Club's website at tinyurl.com/harbury-folk-club

The raffle raised £48.00 which was donated to the British Legion Poppy Appeal. Thanks to all those who bought tickets.

The next meeting of the club will be on 7th December, and is to be hosted by Ian Hartland. There will be no set theme.



HARBURY TWINNING ASSOCIATION

Ron Temple

In the middle of October we held our annual game of Pétanque. During a week of persistent rain we were fortunate that the afternoon of the game, although cold, was bright and sunny. A glass of prosecco helped the game along and afterwards we enjoyed a buffet and a chat amongst friends.



The Game Underway



The Winning Team, Premier Cru!

This month we held our Annual General Meeting followed by cheese and wine and a French film 'Paris'. During the meeting we explored ways of making the Association more visible to the village which will include more use of Facebook, a new website and posters on the village notice boards which will advise of forthcoming events. As ever, everyone is welcome to join in with us.

Following our fantastic visit to Samoï earlier this year our friends from there will visit our village in May of next year. We are looking forward to welcoming them here in Harbury.

YOUR LOCAL MAZDA DEALER **LEAMINGTON MAZDA**

Trusted since 1996!



New and Used car sales, servicing and genuine parts and accessories.

Over 25 years experience as a Mazda dealer in the Midlands.



Passionate and friendly team who have a relentless focus on excellent levels of customer service.



Tachbrook Park Drive, Leamington Spa, CV34 6RH
01926 337447 www.green4motorcompany.co.uk



2 COURSES £26.95 // 3 COURSES £34.95

STARTERS

Roasted Butternut Squash, Coconut & Chilli Soup, Artisan Bread
(VGA/GFA)

Cured "Freespirit Gin" Gravlox, Celeriac Remoulade, Melba Toast (GFA)
Beetroot, Goats Cheese & Walnut Salad (V/GF)

Pork Belly, Parsnip Puree, Pearl Barley, Poached Apple, Tapioca

MAIN COURSES

Roast Turkey, Stuffing, Pigs in Blankets & All the Festive Trimmings (GFA)
Mushroom Bourguignon Pithivier, Roast Potatoes, Winter Kale, Roasted
Carrot, Red Wine Gravy (VG)

Pan Fried Cod, Potato Gnocchi, Buttered Spinach, Herb Dressing (GF)
Slow Cooked Blade of Beef, Creamed Mash, Braised Red Cabbage, Crispy
Kale, Jus (GF)

FESTIVE PUDDINGS

Winter Fruit Crumble, Crème Anglaise

Christmas Pudding, Brandy Butter, Cream

Chocolate, Baileys & Ginger Cheesecake, Ginger Ice Cream

Scan to find your
local Freespirit



T & CS

Menu Available For Parties
Of 10 Or More. We Will Require
A £10 Per Head Deposit
And A Pre Order 5 Days Before,
With Names Of Guests And Any
Dietaries If We Can Assist With
Anything, Please Give Us A Call



www.freespiritpubs.co.uk



HARBURY HERITAGE CENTRE

Bill Timson

December marks my thirtieth year as a Harbury resident but more importantly it is the time of year we celebrate Christmas. In the Heritage Collection we have a variety of documents etc on the subject of Christmas including a book on loan from the library 'A Warwickshire Christmas' (BK - 0071). It is a delightful anthology of stories, tales and jottings from around the county, with recollections of past and present events from the festive season. There are stories from Warwick and Leamington as well as Napton and other nearby villages, although nothing specifically about Harbury.

The Victorians introduced some lovely traditions that still hold true today – the decorating of the tree, including putting a star or an angel on top. Holly and ivy were brought into the house to add decoration, although presents were shared on Christmas Eve rather than Christmas Day. A roast goose tended to be cooked and eaten by most families in preference to turkey.

Document HM - 0069 in our collection, is an article written by John Moore, who at the time was on the Harbury and Ladbroke News Committee. He had interviewed Bob Thornicroft, a local baker whose family ran the bakery in Chapel Street. The transcript is shown below and evokes some memories of the village at Christmas time, dating back to the 1920's.

Christmas Past in Harbury

...we talked to Bob Thornicroft. In the days before convenience foods, freezers and easy transport, communities had to be largely self-sufficient, and Harbury was no exception, having four bakers and three butchers. Bob, and his father and grandfather before him, kept the bakery in Chapel Street, which is now Mugleston's greengrocery.

Other bakeries were in Farm Street, the Co-op and what is now the 'Top Shop'. For them, Christmas Eve would start at 3 a.m., baking until there was sufficient for one of them to take their horse drawn van, not only around Harbury but out to Chesterton, Ufton, the Fosse etc. In addition to baking bread, pies and cakes, the bakery would provide a service to villagers wanting their own pies and cakes baked, and their joints and birds cooked.

Bob remembers the huge joints of specially seasoned beef, weighing 40lbs or more, being brought from the Manor in a wheelbarrow to be cooked in their 14 foot oven. So, the busy hard day would end, late into the evening. When Mr. Dampre was Vicar, a Boxing Day Dance and Whist Drive would be held in the Wight School, and also there would be the Parish Tea and Social to which many shopkeepers would contribute - the Thornicrofts would bake special long square section sandwich loaves for the occasion. During the last war, when food was rationed and luxuries like cakes only a memory, Bob recalls Mrs. Kitchener, who taught at Bishops Itchington, asking him to bake a Christmas cake for the school.

Dozens and dozens of tiny pieces of fat and little portions of fruit were collected from the children, and went into the cake - so big that a dartboard was used as its base. A wondrous sight for the children!

John concluded the article thus: *'these snippets of memories make us realise how quickly life has developed, and whilst we all have reservations about some of these 'developments' we can be grateful that even in these difficult times Christmas will be enjoyed by most folk considerably more comfortably than was the case in years gone by.'*



Bob Thornicroft

Another Harbury resident, Ethel Sollis who was a village post lady for many years, left us with her childhood, 'Memories of Christmas' from the 1930s ... 'we always had pork with the usual trimmings and Christmas pudding. We always had a school concert held in the Wight School, the partition was taken down in what is now the library, a stage was erected at the far end with the small room being used as a dressing room.

I left school in 1934 at the age of 14. There was always a Children's Corner guild held in church on Wednesday evenings and in 1932 we did the Nativity play, filling the church completely for 2 nights. We used to go round the village carol singing for about a fortnight before Christmas in 4's and 5's, the proceeds not to charity but to ourselves. The British Legion always gave us a party at Christmas. Christmas mornings we always had a post delivery.

We never saw our Christmas tree decorated till Christmas morning and being a family of five with a widowed mother we didn't have many presents, just a stocking with nuts, apple and orange and some sweets in. Mostly for Christmas we had such games as tiddly winks, draughts, ludo and snakes and ladders. After Christmas dinner the lamp would be lit and we would play our games. Christmas shopping was rarely done till about a week before Christmas. The majority of people had to wait till the sick and divi paid out. Most pubs ran one of these and most people paid 1s.1d a week. When it was drawn out the odd 1d. had to be spent in the pub. This meant we always had a bottle of port for Christmas (couldn't afford it otherwise).

There were no Christmas things on show till about a fortnight before Christmas, Alcock's the butchers (now Phoenix House) always had a pig's head in the window all decorated up and rabbits and game, hanging up outside. 'Messers Shop' in the Bull Ring, next to the bank, (now the nail bar), was always decorated. Most people killed their own pig and had homemade pork pie for breakfast Christmas morning. We lived near a woman who used to pluck poultry for people at Christmas time, and my mother used to have the feathers, clean them, and sterilize them (putting them in bags and baking them in the oven).

After Christmas we were always taken to see the pantomime at the Theatre Royal in Regent Grove, a great treat. (HM - 0215)

However, you are planning to celebrate Christmas in 2023, may it be happy and peaceful.

Best wishes from us all in the Harbury Heritage Group.

We look forward to you paying us a visit in the New Year.

Open Days in January are Tuesday 2nd 7 - 9pm and Sunday 21st 2 - 4pm.

Open Days in February are Tuesday 6th 7 - 9pm and Sunday 18th 2 - 4pm.

FINALLY - Please support our Coffee Morning, 10.00am - 12 noon on Saturday 13th January 2024 in the Tom Hauley Room. Donations for Raffle Prizes and Cake welcomed.



Ethel Sollis
(photo kindly donated
by Les Sollis).





HARBURY JUNIORS NETBALL CLUB

Abi Watson



Although it's getting darker and colder, the girls are persevering which is definitely shown in their recent matches. Our under 16 Team won, with a score of 10-7, and an outstanding effort from our Under 16 A team. They scored 23-38, putting up an amazing fight and showing some amazing netball, but unfortunately not succeeding the win. Our under 13s, had a great win of 18-13, and holding a great position in the league table at second. The under 15s also had a cracking match with an amazing score of 34-17, all playing excellently. Our under 14s had a superb match, with a fantastic lead throughout, resulting in a score of 26-18. They showed, excellent defence as well as amazing work in the attacking end. A big well done to Bella, Jenna, Freya, Evie, and Yas who received players player from their matches, as well as our players who played up in some matches.

Although training is getting harder, with the weather getting bitter, the girls are holding a great spirit and are bringing massive amounts of enthusiasm to the sessions, bringing both great netball and a fun atmosphere. Us coaches are immensely proud of how hard they are working, and our so happy to see that their efforts are paying off.

Recently, we have started our under 12s coaching, with girls from the age of 10, which is going fantastically, and we are definitely seeing some future budding netball players. The sessions are 45 minutes long, and start at 5.30pm at Harbury netball club. If you want to find out any information about sessions etc, please don't hesitate to message Becky McDaid at 07969 071544.

From our coaches and players, we are wishing you all a Merry Christmas and a Happy New Year!



HARBURY RUGBY FOOTBALL CLUB

Steven Kittendorf

Harbury 1st XV Harbury's run of wins continued through November in the Counties 3 Midlands West (South) League recording eight wins out of eight. As last month, to give a short report for each match would not do them justice or the space here allow so I have put together the following summary:

Harbury 57 - 0 Old Leamingtonians II	4 points Win + Try Bonus point
Harbury 36 - 7 Kings Norton	4 points Win + Try Bonus point
Old Yardleians 12 - 20 Harbury	4 points Win + Try Bonus point



Wishing all residents and businesses a **Merry Christmas**

We wish all our friends in Harbury a Peaceful Christmas and Good Health in 2024. In lieu of Christmas cards we have sent a donation to Great Ormond Street Hospital.

Philip & Ann Mayer

We would like to wish all our Harbury friends a Peaceful and Happy Christmas and New Year.

Andrew and Jenny Patrick

We wish our friends and neighbours in Harbury a Happy and Healthy Christmas and peaceful New Year. In place of cards, we have made an extra donation to the Save the Children Gaza Appeal.

Ann and Michael Vincent

Merry Christmas and a Happy New Year to all our friends in Harbury.

Kath, Rog & Deb Ellis xXx

(A donation will be sent to the Mental Health Motorbike)

We wish all of our friends in Ladbroke and Harbury a very happy festive season, and a peaceful New Year.

Nicky and Gray Lewis

*Merry Christmas and a Happy New Year
From **Harbury Milk Shed***

*Karen Ellis wishes all friends in Harbury and Ladbroke a peaceful, joyful and blessed Christmas and good health in 2024. I have made a donation to Air Ambulance in memory of my lovely husband, Martin Ellis, affectionately known as 'Mellis'.
Nora Ellis also sends Christmas greetings to all who know her.*

Happy Christmas to all our friends and neighbours and best wishes for 2024. (We are making charity donations in place of sending cards)

Joe and Anne Greenwell

Barbara and David Thistlethwaite
would like to wish all their friends in Harbury a very Happy Christmas and a peaceful and healthy New Year.

I wish all my friends and neighbours a very happy Christmas and a new year filled with good health and happiness.

Anne Megeny



*We would like to wish all our friends in Harbury a joyful and peaceful Christmas and a healthy and loving 2024. Let's all hope for World Peace and freedom too. With very best wishes, **Moira Rollason and family xxx***

***Mike and Alison Abbott** would like to wish all their friends and neighbours a very Happy Christmas and New Year. We have made a donation to The Red Cross in lieu of sending Christmas cards.*

*Wishing all my friends in Harbury a Happy Christmas and best wishes for 2024.
Pauline Baldwin*

*Greetings to all our friends and neighbours this Christmas. We have donated to Myton Hospice instead of cards
Alan and Pauline Hayes*

*“Seasons Greetings” to all our friends and neighbours from **Gerry & Sheila Parker***

***Gillian Hare** wishes all her friends here a happy Christmas and peaceful New Year.*

***Gordon and Ros Baldwin** wish all our Village friends and neighbours a Peaceful and Happy Christmas.*

***Geoff and Gill Thorpe** wish all their friends a Happy Christmas and New Year.*

*Our very best wishes for a Merry Christmas and a Happy 2024.
Jackie & Simon West*

*A big thank you to all my kind Harbury friends for their help and support during the last twelve months, following my house flood and health issues. May you have a wonderful Christmas and a Very Happy New Year. Wish best wishes from
Pam Parton*

***Stan, Chris and family** wish everyone in Harbury a very happy Christmas and healthy New Year. We have made a donation to the Air Ambulance Service.*

*To Friends, Family and Clients
Happy Festive Time and ALL the very best for 2024!
Love Karena, Girls & Green Chameleon*

Harbury 2nd XV

The second team compete in the Warwickshire 2A League and have recorded the following results.

Harbury II 17 - Stratford II 43

Harbury II - Home Win - Shottery unable to raise a team.

Harbury II 40 - 19 Alcester II

4 points Win + Try Bonus point

The Club's first VPs pre match lunch of the season on 4th November was sold out.

Andy Hunt stepped into the MCs roll and did a great job with an excellent three course roast lunch being served up before being entertained by after dinner speaker Ollie Spencer.

The Colts kicked off on the second team pitch at 12:30 against Brackley to win a closely fought game 19-6.

The first team ran out through a guard of honour lined by the M&Js at 2:15 to take on Kings Norton and winning 36-7. An absolutely great day was had by all.

England Rugby announced that Harbury RFC were "Team of the Month" for mens levels 9-12 in September - National fame at last!

Colts

The colts travelled over to Newbold and secured their first league win of the season 26 -45. More recently, the Colts travelled over to Stratford and after a close fought game which resulted in a 15 - 15 draw. Lots more fixtures before Christmas, so keep an eye on our social media and get down and support if you can.

Minis and Juniors

We have had some muddy fixtures and training sessions for the M and Js over the last month with visits from Old Laurentians, Broadstreet and Old Wheats. All resulting in some fantastic rugby, a load of fun and some amazing sausage baps (thanks Carpenters!) and coffee to keep the parents happy.

If you have kids that are interested in getting involved we run age groups from U5 (Reception school year) to Colts (U18s) including a junior girls touch team, give our Chair, Chris, a call on 07834 972999 or drop us an email on harburyrfc.enquiries@gmail.com.



Recent action with 1st team game in the foreground and 2nd team game in the background.



HARBURY TENNIS CLUB

Colin Mercer

<https://clubspark.lta.org.uk/HarburyTC>

2023 has been a very busy and productive year for maintenance. The courts and the floodlight columns have been repainted, essential to keep everything in a good and safe condition, and to prolong the life of these valuable assets. This work has been funded through the maintenance fund, a longstanding and successful arrangement the Tennis and Netball clubs have with the Parish Council. We ended the year with Hannah Drabble (AKA Garden Angel) revamping the clubhouse garden for us by pruning, digging out 20 year old brambles and planting some lavender bushes. She was supported by her daughter Lola Lewis and Harry Tonge, and between them did a great job and left us with low maintenance for members.



As well as the usual junior and adult coaching groups Ian Shorrocks has been running a 10 week "Walking Tennis" course, funded through a grant the club obtained from the LTA. This format is open to anyone - lifelong tennis players, complete beginners or anyone needing a bit more time to get into the swing of things. You can play tennis at any age and Walking Tennis offers an easy way for older people to keep their body and mind active - while also enjoying the social side of being part of a tennis community. Feedback has been good, and the club hopes to make it a regular part of its coaching programme. If you're interested, please contact Lianne at Lianne@coolsportz.co.uk or 07919 104093.

Turning to inter-club tennis it's been a good start for the 4 teams playing in the Banbury Winter floodlit and weekend leagues. Floodlit "A" are playing in Division 1 for the first time in the club's history and are currently top after winning two of the three matches played. The most recent was a trip to Byfield "B" and a fine 7-1 win for the team, Eira Owen, Emma Brangwin, Josh Marshall and Ben Fish. The highlight was Eira and Josh's recovery in the mixed doubles. After being 1-5 down in the second set they turned it round to take the set in a tiebreak!

The "B" Team also recorded a win in their latest Division 3 match against Banbury at home. Jeunine Crabtree, Lucy Ewen, Joe Robson and James Edge were on good form to get a 5-3 win that took them into 2nd place. The "C" team lost its opening fixture against Banbury West End but Mikaela Hurtubise, Katharine Giblin, Joe Robson and Andy Smith bounced back with an excellent hard fought 4-4 draw against 2nd placed Deddington "C". The weekend team has also made an excellent start in Division 3. Eira Owen, Jane Minchin, Nigel Eaton and Josh Marshall went to Tysoe and recorded a fine 8-0 to go to the top of the league.

The club has also entered teams in two Warwickshire LTA competitions, the Helen Coles Ladies Doubles league and the Ann Morgan mixed challenge knock-out cup. These are new ventures for the club and we look forward to some welcoming some of the large Birmingham teams to our homely and very smart courts!

Finally, Happy Christmas to all Harbury News readers!



50TH BIRTHDAY OF HARBURY TENNIS COURTS

Mary Thompson

Harbury used to have a Recreation Ground Committee and on January 23rd 1973 it was decided that a Tennis Sub-Committee should be formed to organise the building of two tennis courts on the recreation ground and its first meeting took place on 19th February.

The sub committee consisted of Frank Bunting, Jessica Crawford, Sally Gascoyne, Shirley Guest, Peter Holt, Lynn Roberts, Sheila Scott, Barbara Taylor, Keith Thompson, Christine and Geoff Wright. Valentine Dubuisson and Gerry Parker are mentioned at later committee meetings.

At this first meeting, it was reported that the courts would cost in excess of £3,000. The funds stood at £300 so there was a lot of fund raising to be done. Two dances were organised for April and June (Carnival Day) and it was agreed that volunteers would prepare the foundations themselves. A Bond scheme was set up with residents invited to purchase Bonds for £10 each with Bond draws planned for December, March, June and September.

The excavation of the courts by volunteers took place during the weekend of 3rd/5th August. John King had arranged to loan machinery from Massey Ferguson. Fund raising continued with jumble sales, fashion shows and a painting exhibition by Mrs Farley.

By October 1973 the courts were about ready and villagers were informed that fund raising had raised £718. Donations £428 and Tennis Bonds £900. A bank loan was arranged at 14% for the shortfall. Rules and regulations were set up for court bookings at 20 pence an hour - courts to be booked at Howard's the Newsagents in the High street. Villagers were reminded that "plimsolls must be worn".

The official opening of the courts took place on **Sunday 4th November 1973** at 11.30am by Councillor John Drinkwater. This was followed by a short tennis match between Leamington Tennis Club and Warwick Boat Club followed by coffee in the Village Hall.

A further committee meeting was held on November 7th 1973 where it was agreed that committee members would take court bookings when the paper shop was closed. The Parish Council agreed to plant trees near the courts. A further £90 had been donated by local companies and more tennis bonds sold. During the 1970s concern was expressed about the fact that the courts were being used without players paying booking fees.

Of course the story didn't end with the building of the courts 50 years ago. By the late 1970s it was obvious that a more formal arrangement was needed for the care of the courts and



representatives from the County Council inspected the courts and recommended that they should be re surfaced immediately. At a meeting of the Recreation Ground Committee on 12th February 1980 it was agreed that a Tennis Club should be formed. On 12th March 1980 a meeting was held at The Crown Inn and it was agreed that Harbury Lawn Tennis Club would be formed with a committee consisting of Sid Newman, Di Parkin, Andy Parkin, Philippa Dufresne, Rosemary Ottewill, Ray Hoare and Keith Thompson. It was agreed that a family membership of £11 should be introduced. It was agreed that the club members would have exclusive use of the courts for four three hour sessions per week. In return the club would pay a fee of £100 for a season for 26 weeks.

A more formal arrangement for the funding of maintenance was set up by Councillor Mike Ellis in July 1980 with a Sinking Fund with contributions from the Tennis Club, and Parish Council. A Millenium Project masterminded by Chairman Colin Mercer and an enthusiastic committee saw a further round of fund raising with grant applications, discos, quizzes, wine tasting and jumble sales. As a result the club house and floodlights on one court were installed in 2002. By 2005 enough funding had been raised for lights on the second court and 2009 for the netball court.

This means that the courts can now be used up to 10pm.

There is of course a netball court now attached to the Tennis Courts. In June 1976 the Netball Club had been formed and were using the school courts and by February 1981 the tennis courts were also being used for netball. In October 1985 the Parish Council agreed to give financial aid towards the construction of a netball court and the netball court was added to the Sinking Fund. In January 1987 the Sports Council gave a loan of £2,000 and a loan of £700 was agreed from Stratford District Council. Stratford also gave a grant of £250 as did Harbury Parish Council. In May 1987 the netball court was ready to be tarmacked. In the Harbury and Ladbroke News of October 1987 Pat Summers acknowledged all the hard work which went into the construction of the court. This court can also be used as a third tennis court.

The condition of the courts has continued to be improved and villagers walking past the courts recently will see the improvement of the garden thanks to the work of Hannah Drabble and two helpers. As a result of all these efforts, Harbury has thriving tennis and netball clubs which cater for Juniors, Adults and even walking tennis and netball.

Copies of committee minutes, photographs of the building of the courts and tennis events can be seen at the Heritage Centre.

EXPLORERS HARBURY EXPLORERS

1st Harbury

Katharine Giblin - Explorer Section Leader

We are delighted to introduce the new Explorer Leadership team of Katharine Giblin, Rob Goode, Ali Kemp and David Ellis. Explorers is the oldest aged scouting section in Harbury and has boys and girls between 14-18 years. We currently have 18 Explorers and meet on a Wednesday evening.

Explorers first started in Harbury in November 2018 with Explorer Leaders Mark Harris and Steve Gowland, supported by Paul and Jacqui Quinney. The group has



gone from strength to strength, and we would like to thank everyone who was instrumental in starting the section and guiding our young people over the last few years. We are looking forward to celebrating our fifth birthday this month with the Explorers and the new leadership team.

This term, as well as meeting weekly, Explorers has been busy helping the community with setting up the Village Show, bonfire building and attending the Remembrance Parade. We will also be helping serve at the Senior Citizens meal and sorting the Christmas post for GASS next month.

If you have a young person interested in joining, then email harburyscoutgroup@hotmail.co.uk.



HARBURY SCOUT GROUP

Katharine Giblin - Harbury Group Administrator

In Harbury we have a vibrant scouting and guiding community, and weekly sessions are run during term time from our Scout Hut which is behind the library. Scouting takes both boys and girls with Beavers (aged 6-8), Cubs (aged 8-10½), Scouts (aged 10½-14) and Explorers (aged 14-18).

For more information about joining any of our scouting sections, please contact Katharine Giblin (Group Administrator) who looks after the waiting lists on harburyscoutgroup@hotmail.co.uk.

At the moment we are particularly keen to invite anyone who might be interested in Scouts who meet on a Thursday from 7.00 - 8.30pm, as we don't have a waiting list at the moment and there is space for more to join. Our younger sections especially Beavers are full until next academic year, but it is never too early to register your young person if you think they may be interested in scouting. We are also always delighted to welcome adults into our volunteering community, and it is a very rewarding vocation helping shape the lives of our young people. All our adults are DBS checked.





GUIDES AND SCOUTS SUPPORT

Paul Quinney

It took months of planning then all went up in smoke and ended with a bang - quite literally! The Harbury Bonfire and Fireworks Display is the biggest venture for G.A.S.S. (Guides and Scouts Support) and we are pleased to report that we raised over £4,000 towards the upkeep of the scout hut and new equipment for the uniformed youth groups of Harbury.



This community event could not happen without helpers giving us their time and energy. These people are too numerous to mention all by name but we must pay particular thanks to:

- Mike McBride and his team of volunteers for such a wonderful display of fireworks (I'm sure it gets bigger every year!)
- Joe & Paul Quinney and the team of Scout leaders and helpers who managed the magnificent bonfire.
- All of the children from our uniformed groups, their parents and other volunteers who turned out with 4x4's and trailers on a slightly soggy Saturday morning to collect material for the bonfire.
- Jacqui & Naomi who served up hot food and drinks to our helpers.
- Our stewards who manned the gates and kept everyone safe.
- Everyone who gave time in the week after the event to litter pick, rake ashes and remove bonfire debris from the field.
- Harbury Library who sold tickets and local people who provided straw and lent us a tractor.
- The Parish Council for allowing us to use the playing field.

We also need to say a big "Thank You" to everyone who supported us by coming along to the event and to the 50 households who made a cash donation in return for having firewood collected from their garden. This community support is what makes for a successful event and we are pleased to be part of it.

So with the bonfire finished the G.A.S.S. committee are already working on our next fundraising opportunity

Christmas Post 2023

Our next fundraising event of 2023 will be our Christmas post, beginning on **Monday 27th November** and running until **Friday 15th December**. Just in case there is anyone who is not aware of this great service provided by GASS, each year we run a village postal service that, for a



generous donation, allows you to get all your Harbury village Christmas cards delivered in the busy run up to Christmas.

All funds raised help to support Harbury uniformed groups and our hut running costs, so please support us!

Harbury Village Library has been kind enough to host our special post box again this year. This will be accessible during normal opening hours Monday to Saturday.

Our popular 24hr accessible service will also be installed on the outside of the library door. You just need to post your cards through the letterbox and make your donation either online (preferred) or with cash in an envelope (please do not post loose cash through the door). Online donations can be made via GASS Sort Code **40-42-15** account Number **01159917** Ref: **XMASPOST** please give generously!

The Scouts, Guides and Explorers will be sorting the post and our network of volunteers will be making three delivery rounds in December with the final cards arriving at their destinations in time for Christmas.

Don't forget to put the **house name/number** and the **road name** on your envelopes as we cannot deliver your cards without this information. We are able to deliver anywhere in Harbury village but unfortunately, we do not have the capacity to deliver any further afield.

That just leaves us to wish you all a very Happy Christmas and prosperous New Year from everyone at GASS.



HARBURY TODDLER GROUP

Lynne Barton

Hello from everyone at Harbury Toddlers. This is our last toddler news as we bid an emotional farewell. We have had an amazing ten years and will miss meeting new families and our busy joyous Monday mornings.

We look forward to reading about the success and exciting activities yet to come.

Thank you for your support over the years. There are truly too many wonderful people to mention but your individual contributions, enriching the lives of the children in the village have been appreciated.

Here are some of our memories





New Roofs • Roof Repairs
Flat Roofs • All repointing
Dry Ridge and verge systems
Guttering
Fascia & Soffit fitted

CALL STEVE
07974918098



🌟 Be a Beacon of Hope 🌟

Are you ready to make a real difference in the lives of Rwandan children?

Join us in our heartfelt mission to support Rwandan children. Your generosity can bring light to the darkest corners.

💖 When Good People Struggle 💖

In a close-knit Rwandan community, we saw families who could not even afford one dollar to send their children to school. These are good people facing tough times, and they need our support.

👷 Carrying the Weight of Desperation 👷

Imagine having to carry heavy rocks, toiling tirelessly, just to earn a few pennies. This back-breaking work is the reality for many, and it's a burden they carry every day.

👦 Little Hands, Big Responsibilities 👦

Even their children are stepping up to contribute. They work on farms to help their families make ends meet. These little heroes are sacrificing their education to lend a hand.

🌟 Your Pound, Their Brighter Future 🌟

You can make a profound impact with just one pound. Your donation can send these deserving children to school, providing them with the education they deserve and the chance for a brighter future.

👤 Be an international Hero 👤

In those desperate community, you have the power to change lives. By donating just one pound, you become an International hero, a source of inspiration, and a lifeline for those in need.

📖 Education: The Key to a Better Tomorrow 📖

Education is the key that unlocks doors to opportunity, growth, and success. Your donation will pave the way for a better future for these children.

💝 Join Our Cause, Transform Lives 💝

We invite you to be part of our fundraising campaign to uplift their community. Your generosity will have a ripple effect, creating lasting change for those who need it most.

✉ How to Donate ✉

Making a difference is as simple by visiting our go fund me page with your generous donation
<https://gofund.me/39a8d07c>

Please see my contact details Charmaine. My mobile 07887868275

Mv email: eforbes748@gmail.com

🌈 Together, We Shine Brighter 🌈

Thank you for being the light in their community's darkest hours. Your support will help rewrite the stories of these families, ensuring a brighter and more promising tomorrow.

👑 Your Donation Makes Dreams Come True 👑

Join us in our mission to build a stronger, more compassionate world.



2024 and beyond

We are delighted to let you know that local resident Becky Sparkes has agreed to take over as Toddler Lead from January 2024 and this was unanimously agreed at our recent Annual General Meeting. She is very experienced in the early years and is really looking forward to running the sessions. Judi and Gill will remain as Volunteers so there will be some continuity for the children.



Special Treats

In November we have Zoo Lab coming to visit and bringing lots of different small insects and animals for us to handle and learn all about their habitat, including snakes, giant snails and lizards to name but a few.

Love Ballet Dance Company and Rhythm Time will be taking us through our musical moves bringing 2023 to a close.

Our Christmas Party will be held in the Tom Hauley Room with a special visit from Santa directly from the North Pole - we are so very excited.

And Finally

With much affection, wishing you all the very best and au revoir. We have had a blast.

Love from Lynne, Selina, Debbie, Suzi and Jess x x



HARBURY PRE-SCHOOL

Staff and Committee

Bonfire Night

The term started with a bang as we returned the morning after Bonfire Night. It was so lovely to hear about what the children had been up to over half term and share their experiences of bonfire night. Outdoor play during the week included some red and yellow large bricks, cones and high vis jackets so the children could recreate the fire and pretend to watch the fireworks. They also used different resources, paint and glitter to make some stunning firework pictures which are on display in the Pre-School room.

Pumpkins

Since Halloween happened during half term, we brought a pumpkin into the Pre-school for the children to look at. First, we left it whole and encouraged the children to paint some pumpkin pictures of their own and then we cut it open to explore the insides. The children loved using scoops and spoons to take out the flesh and the seeds.

As this activity was so popular, we kept the seeds in the tray and the children helped pick some lavender out of our garden with a few other seeds and herbs. We explored the lovely aromas and the children used pestles and mortars to mix them up and grind them down.



Diwali

We have been learning about Diwali, the Indian Festival of Light. We have had dressing up clothes and resources in the role play to create an Indian home for the children to look at and play with.

The children have learnt all about Diya lamps and have made their very own out of clay. Once dry, they will be decorating them using bright-coloured paints.

The children have also been making their own rangoli patterns using stencils, paint and glitter.

For snack, the children have tried a selection of different vegetables with Naan Bread and Poppadoms.



Sound games

We have been using our listening centre to listen to animal sounds on a CD and match the sounds to their corresponding picture in small groups. The children have loved this and I have been impressed by their ability to name the sounds of different animals, instruments and household items.

Looking forward

Christmas is almost upon us and by the time you read this, we will be busy rehearsing for our Christmas Songime. We will also be looking forward to our Christmas Party and eagerly awaiting a visit from the big man himself!



If you would like further information, or to register a child for Harbury Pre-School, please e-mail enquiries@harburypre-school.org.uk text 07907 598461 or look at the web site www.harburypre-school.org You can also find us on Facebook.





HARBURY PRIMARY SCHOOL

Lucy Bosley - Headteacher

To love, learn and grow together.

"Let us not love with words and speech but with action and in truth" 1 John 3:18

Anti-Bullying Week

Children and adults all wore odd socks on Monday 13th November to show solidarity and recognition that bullying is never okay! Odd socks to show we're ALL unique and different, and let's be kind to each other and respect each other's individuality. All the children have learnt about this important message that bullying is NOT welcome here.

Daily Mile

We have all been embracing our new running track and trying to complete eight laps a day to improve our wellbeing.

Mayan Day

Year 5 enjoyed a fabulous WOW day linked to their topic. Here is a photograph of the Red Queen who led the day. They discussed artefacts and what life would have been like for the Maya people.

Lights Camel, Action

KS1 and reception classes have started getting ready for Christmas and learning songs and words for their nativity this year, which is Lights, Camel, Action.

We wish you all a wonderful Christmas and a very happy 2024. Thank you for all your support in 2023.



HARBURY LIBRARY & BIBLIO'S CAFE

Janice Montague

The Library and Biblio's Café are gearing up for Christmas with decorations and displays of seasonal books. Come and enjoy a warm welcome at any time - even when Biblio's is not open, there are hot drinks and biscuits available and craft activities for the little ones. We also have a selection of seasonal cards for sale.

We are open until the Thursday before Christmas (21st), so make sure you're in time to pick up your Christmas reading. You may even find a book on our Takeaway shelves that could be re-gifted, if you are looking for an economical and eco-friendly present! We have a large selection of donated books on our overflow shelves in the lobby, including some new or nearly new books for children, which you are welcome to take.

Throughout the year, the library is open five and a half days a week, 10 - 4.30 Mondays and Tuesdays, 9.15 - 4.30 Wednesday - Friday and 10 - 12 Saturdays. Biblio's, our café, is open Wednesdays - Fridays 9.15 - 12 and 10 - 12 on Saturdays, serving freshly brewed coffee, tea or hot chocolate plus children's drinks and home baked cakes and biscuits. When the café is not open, you can help yourself to a drink and a biscuit, while you read the daily or local newspaper, do a jigsaw, admire the artwork on the walls or even read a book. We also have two public computers which are free to use and colour printing, copying and laminating facilities available for a small charge.



GARDEN JOTTINGS

Christine Dakin from Bridge Nursery

Rather than suggesting you should get outside and do things in the garden I thought I'd offer a seasonal mini quiz for you to do in the comfort and warmth of your home. Just match the common names with the Latin names. Some are easier than others.

Holly	<i>Corylus 'Contorta'</i>
Witch hazel	<i>Hedera</i>
Christmas rose	<i>Viscum Album</i>
Dogwood	<i>Euphorbia pulcherrima</i>
Snowdrops	<i>Ilex</i>
Christmas box	<i>Pyracantha</i>
Mistletoe	<i>Picea abies</i>
Ivy	<i>Helleborus</i>
Poinsettia	<i>Sarcococca</i>
Twisted hazel	<i>Galanthus</i>
Firethorn	<i>Hamamelis</i>
Christmas tree	<i>Cornus</i>

Seasons greetings to all.

Bridge Nursery, Tomlow Road, Napton | www.bridge-nursery.co.uk



NATURE NOTES

Martin & Amanda Randall

*"Heigh-ho! sing, heigh-ho! unto the green holly"
William Shakespeare - As You Like It.*

We thought that something seasonal should be included in Nature Notes the month so we looked to three plants that have a special place around Christmas.

Holly is one of our most familiar trees, and in pre-Victorian times, before fir trees became popular as festive decorations, holly bushes with their bright red berries were called 'Christmas trees'. Holly is one of Britain's few native hardwood evergreen trees. Slow



Holly berries

growing, mature trees can reach up to 15m and live for 300 years. Holly has small white flowers that bloom in the early spring. However, male and female flowers occur on different trees so only the female holly bushes bear the berries that we are familiar with this time of year. After the first frost of the season, holly berries become soft and serve as important food for winter birds when resources are scarce. Younger holly plants have spiky leaves, but the leaves in the upper parts of older trees are smooth because the spines are not needed as protection against grazing animals. Hence, the previous practice of coppicing branches from the holly some distance up the stem, where the leaves bore few prickles, to provide nutritious winter fodder for livestock.

Holly wood is white, heavy and close-grained. It can be stained and polished and was used to make many household objects such as tool handles, walking sticks and chess pieces. It was also one of the traditional woods for Great Highland bagpipes. During the eighteenth century 150,000 holly trees were taken from Needwood Forest in Staffordshire, to make bobbins for the cotton mills of Lancashire. There are folklore traditions that suggest that the wood had an affinity for controlling horses, consequently holly was used to make whips used by ploughmen and drivers of horse-drawn carriages. In heraldry, holly signifies truth. Was that the reason why Harry Potter's wand was made from holly?

Holly flowers provide nectar and pollen for bees and other pollinating insects. They are also one of the main foodplants of larvae of the Holly Blue butterfly. In early spring the female lays her eggs at the base of young flower buds on which the caterpillar feeds, and later on the young, tender leaves. The Holly Blue is found in more southerly parts of the British Isles, and is a frequent visitor to our garden. It tends to fly high around bushes and trees, whereas other blue butterflies fly low to the ground. It is also distinguished from the other 'blues' by the black spots on its silvery-blue underside, whilst other 'blues' sport orange spots. Adults emerge at the end of July and early August - the second generation of the year. Males of the spring and summer generations are similar in appearance, but females of the summer brood have a dark band on the upperside of the forewings. One of the favoured food plants for caterpillars of this summer generation is ivy, again with the female laying her eggs on the developing flower buds. The hatched caterpillar goes through several moults before it leaves the foodplant to overwinter as a pupa, close to the ground, emerging in the spring as the first butterfly generation of the following year.

Ivy flowers are yellowish green and appear in small, dome-shaped clusters in the autumn but only on parts of mature plants that are in bright light. These flowering shoots have leaves that are oval or elliptical, very different from the typical three lobed ivy leaf shape. The ivy flowers are also a great source of nectar for insects in



autumn, such as various types of bee and red admiral butterflies. The berries become black in colour when mature and have a high fat content. They are an essential food source for birds, including thrushes, blackcaps and blackbirds, especially during winter. Ivy creeping up walls and tree trunks also provides roosting sites for bats and birds, and a home for hibernating insects.

The young climbing stems of ivy have specialised hairs which form small, aerial roots helping it to stick to suitable surfaces that it comes into contact with. However, it is not a parasite as it does not take food from the tree that it grows on. That is in contrast to mistletoe which, although it can produce some of its own food via photosynthesis, also takes minerals and water from the host tree because it is 'hemiparasitic'. Mistletoe is evergreen with pairs of symmetrical leathery leaves and forms large spherical balls of growth up to 1m wide in the tops of trees. It is commonly found on broadleaf trees like lime and poplar but generally not in woodlands; it prefers hosts in open situations with plenty of light, especially trees in old orchards.



Mistletoe in Old Orchard
(Martin Randall)



Mistletoe Berries
(Hans Pixaby)

In winter, mistletoe produces clusters of white pearlescent berries that are poisonous to many animals, although favoured by birds such as thrushes. The mistletoe's range has begun to expand in recent years, into eastern areas of England. This may be due in part to an influx of continental blackcap warblers that have started overwintering in Britain. Blackcaps are becoming regular winter visitors and berries, including those of mistletoe, are an essential part of their diet. Mistletoe seeds are coated in a substance which sticks to the beaks of birds feeding on the fruit. The birds then wipe their bills on

twigs and branches, leaving behind the seed. If the seed manages to take hold, a mistletoe plant might germinate on the branch. It seems that blackcaps are more efficient at spreading mistletoe seeds than other birds, such as the mistle thrush, which are named after their particular love of mistletoe berries. Mistle thrushes are fiercely territorial and guard food sources from other berry-eating birds. Its population has undergone nearly a sixty percent decline in the UK since the late 1960s, and the species has been on the UK Red List since 2015. If you are lucky you might see one guarding a berry-bedecked holly bush this winter.



Mistle Thrush



HARBURY DISTRICT COUNCILLOR UPDATE

Susan Ostrander (Cllr Harbury Ward)

Since getting involved in local government I have come to really appreciate how confusing the different levels of government are. I imagine that I am not alone in this and so I thought it could be useful for the residents to have this table below which broadly outlines the different roles that District and County cover. As your District Councillor I can primarily assist you with the types of queries in the right column of the table and your County Councillor, Chris Kettle, with the types of queries on the left-hand side. However, I can also assist you with County related issues such as something to do with the roads (highways), for example, by contacting people at the County Council on your behalf.

Of course, your **Parish Council** is also involved in managing many things for the local community:

- parks, playing fields and public open spaces such as village greens
- car parks
- footpaths
- community centres
- cemeteries
- other local amenities

They also have statutory consultation rights on planning matters.

County Council Responsibilities (Strategic Issues)	District Council Responsibilities (Local Issues)
Education	Housing services & homelessness
Fire & Rescue & Public Safety	Leisure & sports services
Highways and Transport	Parks, open spaces & allotments
Trading Standards	Local planning and building control
Social Care	Waste <i>collection</i> & street cleaning
Waste <i>Management</i>	Council tax and & housing benefits
	Elections & electoral registration

Planning Update

Stratford District Council has been undergoing a review of its planning processes with the purpose being to improve this important aspect of the District Council's work. The District Council receives a relatively high number of planning applications, and it is recognised that some residents are not always happy with aspects of this service. This review will highlight areas that could be improved and make recommendations which can then be implemented.

Linked to the point above, and planning more generally, is the question of Enforcement. Over the next two years an additional £50,000 will be spent on this specific aspect which

will provide an additional enforcement officer for the District thus allowing a more robust approach to meet the concerns raised by residents and Parish Councils.

Finally, I have found the planning issues that I have been involved in very interesting and have been doing additional planning training to develop my knowledge of this area. I have now accumulated enough training hours to join the planning committee team at Stratford District Council. I hope this will allow me, over time, to develop some expertise in this area so that I can support the Parish Council and residents more effectively.

And last of all.....I would like to wish all of you a peaceful and enjoyable holiday season. It has been a pleasure and a privilege to be able to work with all of you this year. Like many of you, I will be looking forward to a little rest over the holiday to recharge my battery, ready to continue with renewed enthusiasm in 2024.



ROYAL BRITISH LEGION POPPY COLLECTION 2023

Gill Holden & Nicola Thompson

On behalf of the Royal British Legion, we would like to thank everyone who contributed to the collection in Harbury, Ufton and Chesterton this year. The following businesses and organisations were kind enough to allow us to use their premises as collection points: The Crown Inn, The Gamecock, The Shakespeare, The Salon, the Co-op, Harbury Supermarket, Fosse Garage, Bull Ring Garage, Harbury Village Library, Harbury Village Club, Chandlers Agricultural, The White Hart and Banana Moon. We would also like to thank Harbury Primary School, All Saints' Church, Harbury Parish Council, and the door to door collectors in Ufton, Chesterton and Thwaites Estate.

Thank you also to Bill Timson and Phil Thompson for help with counting and banking.

The final amount raised within the Harbury District is being double checked but we will give an update on this in the next edition of the H & L News.

Many thanks to all who contributed to such a marvellous effort.

Thank you cards showing the amount raised at each outlet will be delivered.



HARBURY BALLROOM & LATIN AMERICAN DANCING

Amanda Randall

Wednesdays at Harbury Village Hall

Our Christmas social will be on 6th December from 7.30pm - 10pm and all beginners and improvers will be very welcome. It's always a pleasant opportunity for the two groups to mix and socialise and dance together. Anni will arrange a festive activity for us, as well as leading us through our steps.

Please bring a plate of food to share and something to drink.

Dates for your diaries 2024

Terms are usually in blocks of six weeks.

Beginners 7.30 - 8.30pm

Improvers 8.30 - 9.30pm

10th, 17th, 24th, 31st January
3rd, 10th April
19th, 26th June (Revision)

7th, 14th February
1st, 8th, 15th, 22nd, 29th May (5 weeks)
3rd July (Summer social)

6th, 13th, 20th, 27th March

Want to join us but have never tried ballroom dancing before?

Make it your New Year resolution to come and give ballroom dancing a try! We are a friendly social group and are always pleased to welcome new people to join us. The atmosphere is relaxed and not competitive!

The fee is £15 per couple, per session, 'pay as you go' and you will need to bring a partner to dance with.

Contact: Email: harbury.ballroom.dancing@gmail.com – Phone: 01926 613871

Follow us on Facebook (Harbury Ballroom Dancing Group) or Instagram @harburyballroomdancing for further updates.

“KEEEEP Dancing”!!

The next event will be upon us in no time at all and that is the annual Christmas Party on



SENIOR CITIZENS COMMITTEE UPDATE

Mike McBride

Saturday 9th December 2023 at 5.30 for a 6.00pm start in Harbury Village Hall.

Invitations were delivered and returned in November so we can confirm that everyone who requested places can come along to the party.

As you know, we do not charge or ask for a donation for the party, but we do run a raffle. If you wish to donate raffle prizes, they can be delivered to either 1, Park Lane or 32, South Parade.

Planning for the party continues but we would ask that if you are not feeling well or can no longer attend, please let us know as soon as possible to assist our final preparations. Please contact Mike McBride on 612421 or Julie Clarke on 612066 or talk to a committee member.

The committee members and helpers look forward to seeing you at the party and we hope that you will enjoy yourselves.

Finally, we wish you all a Merry Christmas and a Happy New Year.



WEDNESDAY WALKERS

Gillian Hare

Well, I was right about the mud this month. But yet again we have escaped any really wet outings and are seeing some glowing colours in the sunshine. A reminder that our December meal, on 13th, will be at The Friendly Inn at Frankton. As numbers are needed in advance, please let me know asap if you want to come on 614809.

We have a two week break around Christmas, so this is an invitation to anyone who feels they need a detox, or a change of company, to join us on 3rd January when we will walk from Napton Reservoir to Napton village. No need to prearrange, just be in the village hall car park at 9.35.



QUIET SPACE

Jill Winter & Gill Guildford

For the past year All Saints' in Harbury has been running a monthly group involving twenty minutes silence, on the second Wednesday of the month in the Tom Hauley Room, at the rear of the church. Those who come have found it very valuable, as our lives can often be full of noise and busyness. We would now like to open this more widely to the village community. Anyone of any faith or none is very welcome to join us if you feel you might find it helpful in your life. You would be very welcome.

At 10am there will be tea/coffee available for anyone who would like to meet other people coming for the 'quiet space' that will begin at 10.30am.

The refreshments will be offered first, but if you prefer to come just for the 'quiet space' at 10.30am, that is fine.

At 10.30am prompt, as we gather in a circle, a candle will be lit followed by a short time to settle down and relax. We will hear a brief reading from the leader followed by twenty minutes of silence.

Everyone will spend that silence differently. Some may meditate on a part of the reading they have heard, or a text or a line of a poem that comes to mind; others may have a special word they like to repeat inwardly and some may just want to look at the candle.

Everyone is different and there is no one right way. The main aim is that everyone is comfortable. No verbal prayers are expected from anyone, just simply a time to have a 'quiet space' to yourself in the company of others.

At 10.55am a bell will signify the end of the silence and bring us back together again.

At 11am we finish and make our way out.

Our next gathering will be **Wednesday 13th December** in the Tom Hauley Room, times as above - there is no need to let us know if you are coming, just turn up and give it a try.

(Throughout 2024 we will continue to meet every second Wednesday morning, Tom Hauley Room starting 10th January.)

More information - Jill Winter 612585, 07941 872383 or Gill Guilford 07856 764814.



HARBURY MILK SHED

The Milk Shed Team

Complimentary Glass of Mulled Wine and Mince Pie

Sunday 17th December 2023

Pop long for a complimentary glass of Mulled Wine and a Mince Pie between 2pm and 4pm or if you prefer a glass of Milkshake.

The Guineapigs will be available for you to hold and there will be some calves for you to see.

Christmas Greetings.





BUMPS AND BUNDLES CHRISTMAS PARTY

Sally Stringer

Hope to see you all, and your little ones at the Bumps party on Tuesday 19th December at the usual time -10.30am. Please let one of us know if you think you'll be coming- and if possible bring a small amount of nibbles or finger food to share. There will be a list you can sign at the next few Bumps sessions.

We do hope you (or most of you) will be able to join us



CONNECTIONS DEMENTIA CAFÉ

Janice Montague

Please join us in our dementia friendly café in the Tom Hauley Room (behind the Church) for a Christmas sing-along of seasonal favourites accompanied by the Harbury ukulele group, on Wednesday 20th December from 2-4pm. There will be jigsaws, games, hot drinks and mince pies and you and those you care for will be very welcome.



FRENCH CONVERSATION GROUP

Kay Garvey

A small group of us meet every two weeks or so, at 4.30pm on a Monday or Wednesday, for an hour of French conversation at Harbury library. It is informal and none of us are fluent, so we all do our best and help each other out. We only have to pay the cost of the library hire (£5 per session), so costs are minimal.

If you would be interested in finding out more, email me at kaymilverton@gmail.com.

No worries if your French is a bit rusty, just come along and listen.

A bientôt



HARBURY LOCAL MARKET

Steve Ekíns

There isn't a Market this Month.

This year the Harbury Local Market has raised, £4,670 for local community groups in the Harbury area. Thanks to all our supporters in the Harbury and surrounding villages and please tell your friends about the Market.

Thanks to our Sponsors:



2024

The first Market for the year, will be Saturday 27th January, 10.00 - 12.30 in the Village Hall.

Councillors Corner will be there 10.00 - 11.00am to answer any questions you may have.

If you would like to contact us, you can email us harburylocalmarket@gmail.com and also on Facebook @Harbury Local Market, please join our group for regular updates.



HARBURY CRAFT FAIR 2023

Fiona Crossan

At this year's Craft Fair we managed to raise £1,722.00 which, as always, will be donated to Myton Hospice.

A big thank you to everyone that came along to support us and help us raise these much needed funds for Myton. Another massive thank you obviously goes to our regular team of volunteers who came along to help, your time and effort has been crucial to the Craft Fair being the success it has been over the last 14 years.

And last but by no means least a massive thank you to my mum, Shirley Crossan. Her commitment and dedication throughout the year to the finer details of organising such an event is essential to the smooth running of the craft fair. On the day itself, we are often complimented on how well organised our fair is and that, without doubt, is down to Mum.

As most of you will know Harbury Myton Hospice Support Group have announced they are disbanding after more than 40 amazing years of fundraising and we had also advised in last month's edition of the Harbury News that this would be our final Craft Fair. However, after much debate and a bit of arm twisting from some of our longstanding and new stallholders we have decided to continue! We are currently working out the finer details as there will be some re-formatting of the event. Booking forms will be available shortly so please get in touch with ficrossan@outlook.com with details of your craft, if you would like to receive one.

Thanks again everyone, until next year!



HARBURY WINDMILL GUESS THE BRICKS COMPETITION

Jeremy Atkins

Last month's 'guess the number of bricks replaced on The Windmill' competition resulted in a vast array of answers, ranging from 800 to 17,531! Fortunately for my bank balance it wasn't nearly as high as the top one because the bricks alone would have cost over £50,000!

The lowest guess (800) was actually the builder's estimate at the start of the job, but the final count was over three times higher at 2,779.

Amazingly one person got within seven of the total number: congratulations to Clive Taylor who guessed 2,772. He will get a tour of The Windmill!





SOUTHAM & DISTRICT LIONS CLUB SANTA VISITS 2023

Tony Lorimer

This year Father Christmas plans to visit Southam and some of our surrounding villages starting on Friday 1st December. He will be accompanied on his journeys by members of Southam and District Lions Club. Santa will set out at 5.00 or 5.30pm each evening and the sleigh will be stopping at five or six places during every visit. The schedule below shows which roads he will be stopping in when visiting Harbury. For details of the time he plans to be there look out for notices placed at each stop and online. You can follow our progress on Facebook each evening, with up to the minute details of where we are. Facebook: Southam & District Lions News Page



This year all money collected during the visits will be donated to the Children's Cancer and Leukaemia Group

We will be visiting Harbury on:

Monday 4th December, 5.30pm start - Harbury 1

Stopping at: Hereburgh Way, Manor Road, South Parade, Frances Road

Tuesday 5th December, 5.30pm start - Harbury 2

Stopping at: Brooks Drive, Manor Orchard, Mill Street, Dickens Road

Note: All visits are subject to change or cancellation due to weather conditions or other foreseen circumstances.



SOUTHAM INDOOR MARKET

Southam First / Indoor Market team

The market is on the third Saturday of the month at the Grange Hall, Coventry Road from 10am to 12.30pm. Forthcoming dates are: 16th December, 20th January, 17th February. A wide variety of local food, crafts and gifts. Refreshments, Free parking and no admission fee.



SOUTHAM RAMBLERS IN YOUR AREA

Ann Forgan

We are a friendly group of ramblers who organise walks on alternate Wednesday mornings throughout the year. Distances are usually 4-5 miles with a stop for coffee and a snack, although there are also some longer and shorter walks. We have a wide choice of routes in Warwickshire, Northamptonshire or Oxfordshire, but welcome ideas for new ones.

All are welcome to join us, meeting either at 9.30 in Wood St car park, Southam, or at the start of the walk (Sorry, no dogs). The first couple of walks are treated as 'tasters', but we do require walkers who intend to continue regularly to join the Ramblers.

Please see www.southamramblers.org.uk for details of all our walks, maps of previous walks, photo gallery and much more, or call Richard on 07969 960968.



SOUTHAM SUMMER STROLLERS

Ann Forgan

RAMBLERS

Southam Ramblers invite you to join us for our guided Summer Strolls, which take place on alternate Thursday evenings from 16th May to 8th August. The walks start at the entrance to Wood St car park, Southam CV47 1PP at 7pm, with the exception of our Midsummer walk on 27th June, which starts at 6.30.

All walks are 3-5 miles long apart from the Midsummer walk, which is six miles and includes a short stop for a drink at the Blue Lias, near Stockton. Walks are free, you don't have to be a member of Ramblers, but unfortunately we can't include dogs.

Please see www.southamramblers.org.uk for full details, maps of previous walks and a photo gallery, or call Richard on 07969 960968.



READERS' LETTERS

Dear Editors

A little late, but I want to say a huge thank you to the many people in Harbury, who supported Steve and me during my recent illness with their many kindnesses - messages, cards, gifts of flowers and food, along with their thoughts and prayers. It makes us very thankful that we live in such a caring community.

I'm also really grateful for the treatment I received at Warwick Hospital, especially Willoughby Ward. From consultants to cleaners, the care given was first class.

Once again, thank you everyone!

Maureen Darby



VOLUNTEER AND JOIN OUR TEAM

There is currently a team of five editors who give their time each month to edit the magazine. We would like to recruit additional editors so that we have a larger pool to cover for holidays and other absences.

Editing is currently done in your own home and involves proof reading a section of the magazine making necessary changes. This can be done on either a printed copy or using your own computer by MS Word/PDF. Editing sessions are mostly on Tuesday evenings and takes no more than 1.5 hours. The final proof editing is undertaken by one of the team, Thursday evenings or Friday morning and takes around 3 hours. To fit in with the magazine's production, editing sessions are usually towards the end of the month.

If you are interested in becoming an editor, do please contact John or Gill Holden on 612155 or email articles@hlnews.co.uk to find out more and see how you can become part of this successful team.



LOCAL FOODBANK donations of non-perishable items as listed below which supplies the surrounding area, including Harbury, can be left at:

Harbury Village Library Foyer
(Wight School when open)

e-Wheels driver
Wight School car-park on Mondays
between 11.30am - 12.30pm

Harbury Co-op
Tall basket by door

- Potatoes - tins and packets of instant mash
- Tins of meat
- Jars of pasta sauce
- Tins of spaghetti in sauce
- Tins of fruit
- Sponge puddings
- Custard
- Small bags of sugar
- UHT milk
- Toiletries such as: shampoo, shower gel, soap, toilet rolls and household cleaning products.

**A VERY HAPPY CHRISTMAS TO YOU ALL
FROM EVERYONE AT HARBURY PHARMACY**

High Street, Harbury

Tel: 01926 612858



**Wide range of
toiletries &
perfumes**

**Black & White
Photocopier
available**

**Lots of gifts for Men,
Women and Children**

**We are agents for TOP dry cleaners.
10% discount for 3 or more items in
Nov & Dec**



FREE ANTIQUES VALUATION DAY

St Francis of Assisi Church Hall,
110 Warwick Road, Kenilworth CV8 1HL

Thursday 11th January 2024 | 10am - 2pm

**Bring along your Antiques, Books,
Prints, Jewellery, Silver, Gold, Watches,
and Collectables**

Items may be consigned into Auction on the day

Free Home Visits for large/multiple items.

House clearance and downsizing advice Probate and Insurance Valuations

For further information please contact

Hansons Warwickshire 07470 459309

www.hansonsauctioneers.co.uk

Hansons Auction Centre, Heage Lane, Etwell, Derby, DE65 6LS

Refreshments in aid of the NSPC

Ed's Music Tuition

- Do you want to learn keyboards, guitar or ukulele with a qualified teacher with a passion for music?
- Lessons available for all ages.
- Learning an instrument is rewarding and great fun, and I can help you on your way.
- Fully DBS checked.
- Competitive rates and flexible timetable with lessons tailored to your own individual learning style and needs.
- Tuition in playing, reading music, performance and theory.
- Give me a call to discuss your musical future!



Ed Hudson, Harbury.
Mob: 07801 430029
email: eddhudson@me.com



Bromson Hill Nursing Home



An independent nursing home established for over 20 years and located in the tranquil countryside village of Ashome, Warwick.

Bromson Hill Nursing Home

Ashome | Warwick | CV359AD

t: 01926 651166

www.bromsonhill.co.uk

info@bromsonhill.co.uk

BM Care Homes

Bromson Hill

miles of tiles

(midlands) Ltd

ceramic . porcelain . natural stone . sanitary ware . bathroom furniture



Leamington Spa

Unit 1-3 St Mary's Road, Sydenham
Industrial Estate, Leamington Spa,
CV31 1PR

Email: sales@milessoftiles.co.uk

Tel: 01926 312777

www.milessoftiles.co.uk



Coventry

96-100 Foleshill Road,
Coventry, Warwickshire
CV1 4JJ

Email: coventry@milessoftiles.co.uk

Tel: 02476 228800



Rugby

103-107 Albert Street
Rugby, Warwickshire
CV21 2SW

Email: rugby@milessoftiles.co.uk

Tel: 01788 546622

Monday to Friday 8am - 5.30pm & Saturday 9am - 5pm



We won't be beaten on price...

Stocked items only and not subject to any other discounts or offers.

20% OFF
Only with
this
advert
H&L News



Simons Systems



Available for all your computer requirements including:
PC's & Laptops, New & used systems, Repairs & upgrades
Virus/Malware Removal, Data back & Windows re-
installation

Upgrading memory/Hard drives/Rom drives/Graphics, etc
Internet - modems fitted, wireless.

Any repairs or computer problems. **No call out charge**

T: 01926 316 119

E: sales@simons-systems.co.uk

M: 07751 811 097

W: www.simons-systems.co.uk

Nifty Needle

Curtains and Soft Furnishing

Nifty Needle specialise in creating stylish custom curtains, blinds and soft furnishings, individually designed to create beautiful solutions.

Free measuring service.

At our shop in Kineton we now stock a range of home wares, including lamps, cushions, footstools and other items to accessorise your home.

We're open Tuesday to Friday 9:00am to 5:00pm
and Saturday 9:00am to 2:00pm.

Nifty Needle Curtain Workroom, 1 Banbury Street, Kineton, Warwickshire, CV35 0JS
Tel: 01926 641741 E-mail: info@niftyneedle.co.uk Website: www.niftyneedle.co.uk



Thinking about writing a Will?

For peace of mind and to ensure your loved ones are taken care of, contact our friendly team of experts to update or create the right Will for you and your family.

- Specialist advice on Wills and Powers of Attorney
- Experienced Trusts and Tax solicitors
- Video appointments available
- Personalised service
- Straightforward advice

kind. helpful. excellent

Corrine Seabourne, Associate Chartered Legal Executive

01926 359355 corrine.seabourne@alsterskelley.com



1B Daventry Street, Southam CV47 1PH

www.alsterskelley.com





Sun Rising

Natural Burial Ground
and Nature Reserve

Lower Tysoe

A place of deep peace where loved ones can be laid to rest in growing woodland and wildflower meadows.

All are welcome at this beautifully managed site.



01295 688488 sunrising.co.uk

TOM RODGERS Tree Services

- Fully Qualified & Insured
- Professional Tree Care
- All aspects of tree work
- Stump Grinding
- Hedge Trimming

Est. 2003 | Member Arboricultural Association

07958 794180

01926 710383

tom@tomrogers.co.uk

www.tomrogers.co.uk

Free
No Obligation
Quote



Ever thought of extending your
home?

Does it have the potential to
change?

Do you need more space?

Are you looking for a local design practice that
can prepare proposals for your ideal home?

Contact Chris Hill M.C.I.A.T

Call: 01926 613780 (evenings)

0777 218 9266 (mobile)

Email: chris.hill100@btinternet.com

A Member of the Alliance of Private Sector Practitioners

Jackie Biddle
Healthy Feet are Happy Feet

Foot Health Practitioner



Dip CHP MPS Pract
CRB Checked

• Nail Trimming

• Corn Removal

• Verruca Treatment

• Ingrown Toenails

• Calluses Reduced

• Footcare for Diabetes

Home Visits Telephone

T: 01926 612503

M: 07872 907429

WIPE-OUT WASPS

Family-run business since 2005

Fast response
Competitive rates
Full pest control service

For a local friendly service call

Alan or Dawn Whyte

07867 768533

01926 889711

enquire@wipeoutpestcontrol.co.uk
www.wipeoutpestcontrol.co.uk



Services

- 1-1 / 2-1 Personal Training.
- Online Coaching.
- Summer Bootcamps.
- Online Transformation Challenges.
- Tailored Training & Nutrition Plans.

- Wellesbourne and Southam locations.

Competitive Rates. Free Consultation. Guaranteed Results.

✉ thwfitnesscoaching@gmail.com ☎ 07884414820

📘 @thwfitnesscoaching

📷 @thw_coaching



fitrite

wardrobes of leamington spa
est 1983

1983-2023

40 years fitting
your bespoke
bedroom and
office furniture

www.fitrite.co.uk



Call us today 01926 312654 and book your
free no obligation design appointment.



Childcare from 3 months to 5 years of age

at Banana Moon Day Nursery Harbury.



Providing a safe, caring environment for children from 3 months to 5 years of age.

- Open 7.30am – 6.30pm
- All major childcare vouchers accepted
- Full-day and half-day sessions available
- Highly experienced, friendly staff
- Sibling discount
- Outdoor learning environment.



Outdoor learning environment



Home-cooked food

To find out more or to book a visit, call **01926 612374** or email info@bananamoon-harbury.co.uk



Banana Moon Day Nursery Harbury
Ivy Lane, Harbury, Warwickshire CV33 9HN
Call us on 01926 612374
or visit bananamoon-harbury.co.uk

*Subject to terms and conditions. †Government funding available.

WE PROTECT MORE THAN YOUR HOUSE

Our services include Insurance for House & Contents | Landlords | Motor | Tradesman | Shop & Office | Travel and Business



If there's one thing you need to know about Reynolds Insurance, it's the on-going commitment to developing lasting relationships with our clients.

Our two long serving members of staff—Deb Allsop (Office Manager) and Sue MacLennan (Insurance Consultant) have worked for Reynolds Insurance for over 30 years and have devoted great energy and passion in building the business. They will always go that extra mile to find the most competitive price with a company you can rely on.

As independent insurance brokers, we work for you . . . Not the Insurance Companies and you will receive a fast friendly and reliable service. Our staff are always ready to listen and provide advice and guidance every step of the way, from the initial quote stage, right through to when the unexpected happens and you need to make a claim.

T:01926 812574

W:reynoldsinsurance.co.uk

E:info@reynoldsinsurance.co.uk

5 High Street Southam Warwickshire CV47 0HA

reynolds insurance
SERVICES LTD

Independent Insurance Advisers



FRIENDLY · RELIABLE · PROFESSIONAL
LOCAL ELECTRICIAN



Fully Insured **Free Estimates**

- Fault finding
- Outdoor lights & sockets
- Fuse board replacements
- Power to outbuildings: sheds, workshops & home offices
- Extra sockets & switches

“ Steve's work is excellent. I would definitely recommend him to anyone. ”

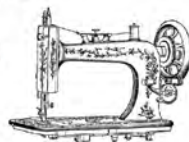
“ Very polite & efficient. The job was done on time and to a high standard ”



ROOLIVE

Call Steve on: 07792 971018
Email: steve@roolive.co.uk
www.roolive.co.uk

Drop Dead Gorgeous Curtains.



Beautiful Bespoke Curtains, Cushions and Roman Blinds all made to measure.

Curtain alterations and restorations also undertaken. All items are handmade by myself, a fully qualified soft furnisher.

From fabrics to poles, all your needs are catered for. I'm also happy to work with customers own fabric. Free measuring service, no obligation quotes and free curtain fitting and dressing.

Call Sharron for friendly and helpful advice, or to make an appointment on 07760395805 or 01926 718220
Email: dropdeadgorgeouscurtains@gmail.com
Website: www.dropdeadgorgeouscurtains.com
Find me on Facebook and Instagram.

YOUR LOCAL LOG SUPPLIER



THE LOG DOG

Order your seasoned logs from us and you may even get to meet The Log Dog.
Delivering to local villages throughout Oxfordshire, Warwickshire and Northamptonshire.

Contact Joe Attfield on 01295 256436

www.thelogdog.co.uk

Est. 1956



www.stratfordlandscapes.com

(We live in Harbury)

Small garden experts | Garden Design | Porcelain & other types of Paving
Real & artificial lawns | Stunning plant collections | Decorative Pergolas & Fences
Privacy Solutions | Low Maintenance Gardens

"Let Dave & the boys work their magic & you won't be disappointed"

Contact David Lewis on 07990975158 or visit our website



Emily Jayne's

Hair & Beauty Unisex Salon

All types of Hairdressing Services

Brazilian blow dry,

Luxury facials & pedicures

Hot stone massages

All types of waxing

Individual lash extensions

Acrylic nail extensions

Sunbed



*Bella U Aesthetics are
holding clinics in the salon
every Wednesday evening*

Opening hours:

Tuesday - Thursday 9am til 7pm

Friday 9 am til 6 pm

Saturday 8.30 am til 3 pm

Poplar Road, Bishops Itchington CV47 2RQ - Tel: 01926 611944



W. Goodwin & Sons Funeral Directors

38 Coventry Street, Southam
CV47 0EP

Telephone: 01926 812445

**Private Chapels of Rest
Monument Service provided**



SUNILMEHRA PAINTING & DECORATING

PAINTING IS AN ART. YOUR SPACE IS OUR CANVAS.

T: 01926 613158 M: 07976 241949 E: s.mehra@btinternet.com



Your Local Professional Chimney Sweeping Service

Full Range of Chimney Sweeping
Open Fires, Stoves, Rayburn and Aga's Cows
& Bird Guards Fitted. Bird Nest Removal



Please contact Martin Jakeman
07816 337962 or 01926 614695
Email: theshiresweep@gmail.com

www.theshiresweep.co.uk



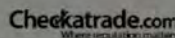
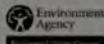
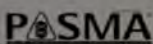
CLEANING | RESTORATION | PROTECTION | MAINTENANCE

MOSSGONE.COM

07788 574 586

Tom@MossGone.com

- Roof Moss Removal and Treatment
- Gutter Clearing - Repairs - Install
- Driveway Cleaning
- Patio Cleaning
- Soft washing
- Render Cleaning
- Operated Access Hire-
6m Tracked Spider Cherry Picker



DOOR & KITCHEN STORE

Making your space a better place

Quality Fitted Kitchens – Internal & External Doors - Supply & Fit.

T. 01926 888806 or E. doorandkitchenstore@gmail.com

Alveston Place Oxford Street Leamington Spa CV32 4SN

More! Service - Expertise - Quality - Range - Value

Southam Carpets



Visit our shop to see a large range of Carpets,
Vinyl Flooring, Karndean, Curtains and Blinds.

Free expert advice.
Professional installation.
Call now for a free Quote.



☎ 01926 814944 - www.southamcarpets.co.uk

THE SALON

LADIES & GENTS HAIRDRESSERS

TO BOOK AN APPOINTMENT CALL 612400 & 07778 454528

CHAPEL STREET HARBURY



10% DISCOUNT
WITH THIS ADVERT

DOMESTIC AND COMMERCIAL HIGH QUALITY
CLEANING FOR CLIENTS WHO DEMAND THE BEST

BEFORE

AFTER



Tel: 01926 889 691

Email info@steamingsam.co.uk

www.steamingsam.co.uk

WHAT WE DO:

- deep 'van mounted' carpet cleaning
- stain removal
- fabric protection
- specialist oriental rug cleaning
- hard floor, tile and grout cleaning
- upholstery cleaning
- leather restoration
- end of tenancy cleaning

...AND MORE!

STEAMING SAM specialise in professional cleaning, work is carried out by fully trained, trustworthy technicians and we are insured for your peace of mind.

Call us or check out our website for further information