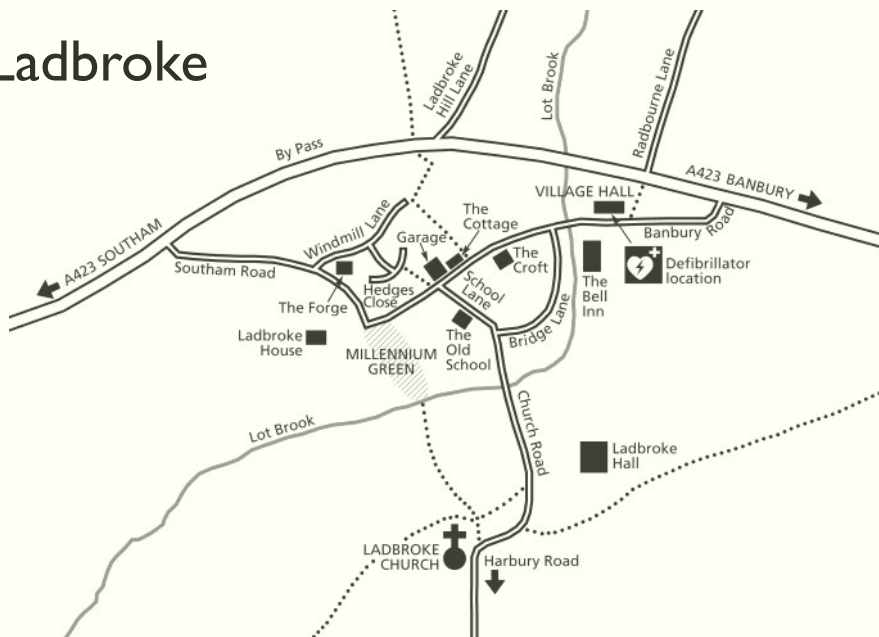
DEPPERS BRIDGE & LADBROKE (B4452)

UFTON & SOUTHAM (A425) ➔

Ladbroke



Chauffeur Service based in Harbury

Top of the range Chrysler Grand Voyager.

Trained and qualified chauffeur with 18 years' experience.

Service, discretion and health and safety requirements always ensured.

I will deliver this complete chauffeur service to you.

If you prefer, I will drive your private vehicle.

Ensure you reach your destination on time and relaxed ready for your meeting, shopping trip, flight, or day out.

Email: warwick@bchauffeurdriven.net

Call Derek on 078 178 978 13

Search on Google, website bchauffeurdriven.net and/or Facebook for more information and T&Cs

Registered at Stratford upon Avon District Council. Operator's no. 105, PHV no. 456, Badge no. 855

B Chauffeur Driven Warwickshire is a trading company of SD Nykamp. Chauffeuring in England since 2003

This magazine is available by subscription and delivered within Harbury, Deppers Bridge and Ladbroke. Telephone 01926 612009 for details.

Harbury & Ladbroke News

Is published monthly and reflects all aspects of local life.

January 2022

No.574

Editorial Office

31 Binswood End

☎ 612155

✉ articles@hlnews.co.uk

Article drop off point:
Harbury Pharmacy,
High Street

Advertising Office

36 Manor Orchard

☎ 612687

✉ advertising@hlnews.co.uk

Distribution Manager

49 Mill Street

☎ 612009

✉ distribution@hlnews.co.uk

Inserts by prior arrangement
with the Distribution Manager

IN THIS ISSUE

Page

| | |
|-------------------------------------|-------|
| EDITORIAL | 2 |
| HARBURY DIARY & REFUSE ROTA | 2 - 4 |
| FROM THE RECTOR & CHURCH NEWS | 5 |
| LADBROKE NEWS | 9 |
| CLUBS & SOCIETIES | 16 |
| SPORTING ACTIVITIES | 25 |
| EARLY YEARS & SCHOOL | 26 |
| VILLAGE HALL, LIBRARY & CLUB | 34 |
| GARDENING & NATURE | 38 |
| GENERAL SECTION | 40 |
| LETTERS TO THE EDITORS | 45 |

Editorial Team

Chris Barber - Paulette Kavanagh - Peter McDonald
Daralyn Warren - Jackie West - Katy Wiltshire

*The views of contributors are not necessarily those of the Editorial Team.
The Editors reserve the right to amend articles as they see fit.*



Editorial

We hope that you have all had a virus free and happy Christmas and were able to celebrate the festivities with family and friends. Whilst we did not see a white Christmas again this year, the snowman made out of tyres at Chesterton House Farm brought a smile to our faces.

Our thanks go to Ian Hartland, Gill Holden, Moira Rollason and Bill Timson for submitting a selection of photos showing the Harbury Advent Trail, Senior Citizens' party and the village seasonal lights which feature on pages 29 - 32.



If you are looking to start a new hobby in the New Year, the Southam College Community Education Spring term programme starts on Monday 10th January. Continuing at Harbury Village Hall will be the Ballroom and Latin American dance classes with new members encouraged to give it a go. The beginners' class commences at 7.30pm, with the improvers at 8.30pm on Wednesday 12th January.

In Ladbroke for 2022, the Heritage group will be holding more events and extending their church visits to include schools, those suffering from dementia and their carers as well as more family sessions so they would welcome more volunteers. The Ladbroke Photography Club's AGM will be on 1st February; if you would like to join the group you will be made very welcome.

Finally, we extend our condolences to the families of Keith Dormer and Anthony Nockalls.

Harbury Diary

JANUARY 2022


- | | | |
|-----|----|-------------------------------------------------------------------------------------------------------------------------------------------------------------------------------------------------------|
| Sat | 8 | Coffee Morning, 10.00am - 12 noon, Tom Hauley Room in aid of Church Flowers |
| Sun | 9 | EPIPHANY 1 Holy Communion, 10.30am Messy Church, 3.00 - 5.00pm Zumba, 9.00am - 10.00am, Village Hall Ben and Soph's Jazz, Contact for tickets - 07515 275655, 3.00pm, Village Hall |
| Mon | 10 | Badminton, 10.00am - 12 noon, Village Hall |

- Mon 10 Martial Arts, Juniors 5.45pm, Seniors 6.45pm, Village Hall
Yoga, 8.00 - 9.00pm, Village Hall
- Wed 12 Wednesday Walk, meet 9.40am, Village Hall Car park -
Lapworth (3.5 miles flat)
Pleasant Pastimes, 2.00 - 4.00pm, Tom Hauley Room
Ballroom Dancing, beginners 7.30pm, more experienced 8.30pm,
Village Hall
- Thurs 13 Table Tennis, 9.30 - 10.30am, Village Hall
Holy Communion, 10.00am, Tom Hauley Room
Harbury WI, 7.30 for 7.45pm, Tom Hauley Room - decorating eggs
Ukrainian style by Kath Ching
- Sat 15 Coffee Morning, 10.00am - 12 noon, Tom Hauley Room in aid
of Children's Air Ambulance
Harbury Village Cinema presents, 'The Courier' doors open 6.15pm,
film starts 7.00pm, Village Hall
- Sun 16 EPIPHANY 2**
All Age Communion, 10.30am
Zumba, 9.00am - 10.00am, Village Hall
Harbury Heritage Centre open, 2.00 - 4.00pm, Harbury School (Park
Lane entrance)
- Mon 17 Badminton, 10.00am - 12 noon, Village Hall
Martial Arts, Juniors 5.45pm, Seniors 6.45pm, Village Hall
Yoga, 8.00 - 9.00pm, Village Hall
- Tue 18 Harbury Society Social, 7.00pm, The Crown Inn
- Wed 19 Wednesday Walk, meet 9.40am, Village Hall Car park -
Grandborough (3 miles flat, no stiles)
Connections (Dementia) Café, 2.00 - 4.00pm, Tom Hauley Room
Ballroom Dancing, beginners 7.30pm, experienced 8.30pm, Village Hall
- Thurs 20 Table Tennis, 9.30 - 10.30am, Village Hall
Holy Communion, 10.00am, Tom Hauley Room
Harbury Village Hall Committee Meeting, 7.00 - 9.00pm, Village Hall
ADVERTS FOR THE NEXT ISSUE TO 36 MANOR ORCHARD,
HARBURY OR EMAIL ADVERTISING@HLNEWS.CO.UK
- Sat 22 Coffee Morning, 10.00am - 12 noon, Tom Hauley Room in aid
of Southam Mothers' Union
Repair Café, 2.00 - 4.00pm, Harbury Village Library
- Sun 23 EPIPHANY 3**
Holy Communion, 10.30am
Zumba, 9.00am - 10.00am, Village Hall
- Mon 24 Badminton, 10.00am - 12 noon, Village Hall
Martial Arts, Juniors 5.45pm, Seniors 6.45pm, Village Hall
Yoga, 8.00 - 9.00pm, Village Hall
- Wed 26 Wednesday Walk, meet 9.40am, Village Hall Car park -
Hornton (3.5 miles)
Pleasant Pastimes, 2.00 - 4.00pm, Tom Hauley Room
Ballroom Dancing, beginners, 7.30pm, more experienced, 8.30pm,
Village Hall
- Thurs 27 Table Tennis, 9.30 - 10.30am, Village Hall
Holy Communion, 10.00am, Tom Hauley Room
ARTICLES FOR NEXT ISSUE TO: HARBURY PHARMACY,
HIGH ST OR EMAIL TO ARTICLES@HLNEWS.CO.UK BY 5.30PM
Parish Council Meeting, 7.30pm, Village Hall
- Fri 28 Harbury WI, New Year's Party, 7.00 for 7.30pm, Village Hall

- Sat 29 Coffee Morning, 10.00am - 12 noon, Tom Hauley Room in aid of Harbury Heritage Centre
Bingo, 8.00pm, Harbury Village Club
- Sun 30 **EPIPHANY 4**
Holy Communion, 10.30am
Zumba, 9.00am - 10.00am, Village Hall
- Mon 31 Badminton, 10.00am - 12 noon, Village Hall
Martial Arts, Juniors 5.45pm, Seniors 6.45pm, Village Hall
Yoga, 8.00 - 9.00pm, Village Hall

FEBRUARY

- Tue 1 Meeting Point, 12.30pm, The Crown Inn (bookings by 28th January)
Harbury Heritage Centre open, 7.00 - 9.00pm, Harbury School (Park Lane entrance)
- Wed 2 Wednesday Walk, meet 9.40am, Village Hall Car park - Broadwell - Leamington Hastings (3.5 miles, flat)
Mothers' Union, service 2.00pm, meeting 2.30pm, - Jackie West talking about Ladbroke Church, Tom Hauley Room
- Thurs 3 Holy Communion, 10.00am, Tom Hauley Room
- Sat 5 Coffee Morning, 10.00am - 12 noon, Tom Hauley Room in aid of RABI (Royal Agricultural Benevolent Institution)
- Sun 6 **CANDLEMAS**
Holy Communion, 9.00am
- Mon 7 Badminton, 10.00am - 12 noon, Village Hall
Martial Arts, Juniors 5.45pm, Seniors 6.45pm, Village Hall
Yoga, 8.00 - 9.00pm, Village Hall
- Wed 9 Wednesday Walk, meet 9.40am, Village Hall Car park - Stoneleigh (3 miles flat, one stile)
- Sat 12 Coffee Morning, 10.00am - 12 noon, Tom Hauley Room in aid of Harbury Society

| Refuse Collection Rota | | | |
|------------------------------------------------------------------------------------|----------------|--------------------------------------------------------|-----------------------|
|  | Deppers Bridge | Harbury, Ladbroke & Deppers Bridge outlying properties | Collection Week |
| January | Wednesday | Friday | |
| | 12 | 14 | Grey Bin |
| | 19 | 21 | Green & Blue Lid Bins |
| | 26 | 28 | Grey Bin |
| Feb | 2 | 4 | Green & Blue Lid Bins |
| | 9 | 11 | Grey Bin |
| | 16 | 18 | Green & Blue Lid Bins |



Dates for inclusion in the Harbury Diary please to:
The Editorial Office, 31 Binswood End, Tel: 612155 or email articles@hlnews.co.uk



**All Saints
HARBURY**

From the Rector

Rev Andy Batchelor

The Rectory, Vicarage Lane, Harbury ☎ 01926 714295 ✉ rev.andyb@gmail.com

In 1519 the Spanish explorer Cortes led an expedition to explore and conquer Mexico; however, he faced determined opposition by the local tribes who managed to board and sink all of his ships except one. Realising that the remaining ship could cause his men to panic and fight over who could return, he had that last ship scuttled. There was now no way to turn back – they had to go forward, and they had to succeed.

That's a bit like us today at the end of 2021. Whatever that year may have held for us, it's now over, and there is no way back. We can't undo any action, we can't unsay any word. Before us is a New Year, and it can be full of hope and promise if we so wish.

Because God offers us plenty to look forward to, but so often we have a fear of facing the unknown. Back in Cortes' time, mariners had limited maps available to them. Each of these maps had a line drawn mid ocean which marked the extent of the known world, beyond which was simply written the words 'here there be dragons'. Maybe for us Covid has been that dragon which came out of the unknown.

There will be challenges ahead, and there will be surprises, and we have seen much of that in the past few years. There will be change, because that is an unavoidable part of human life, and there may be loss and sadness, but there will also be joy, and laughter and excitement and growth. The important thing to remember at the beginning of a New Year, is that if we have put our trust in God, given him the reins of our life, then he knows our destination, what will be involved, and how long it will take. And he will be right there alongside us, as we move into 2022.



From the Churchwardens

Liz & Michael

Thankfully most of our events and all our Christmas services went ahead as planned. The Christingle service, held on Christmas Eve for the first time at Harbury, was attended by lots of families with both adults and young children coming together to light the Christingle candles and celebrate the message of Christmas. Midnight Mass and Christmas morning were both candle-lit services and were a joy to be at.

We are very grateful that the weather was relatively warm for the time of year, so the temperature inside the church was ok as long as folk were well wrapped up. We look forward to having a warm church again in time for next winter! In the meantime, we are continuing to keep a close eye on the Covid situation and on the temperature and will decide in January where best to

hold Sunday services for the next couple of months. We will publish this on the church website, Facebook and in the weekly pew sheet.

A big thank you to Rev Andy and Julie Batchelor and all the family for their hard work and enthusiasm both over Christmas and the past year.



Our Christmas Fair raised £1,400 for the Heat, Light & Stone Appeal, which was an excellent result and thank you to all those who came, who donated and who ran stalls.

The Winter Woollies concert went ahead on 18th December and raised a further £880 for the Appeal. Our thanks particularly to Ruth and Alan Guy for their organisation as well as to the Harbury Folk Group and the Warwickshire Singers for giving us a wonderful carol concert.

The raffle at the coffee morning on 18th December raised £90. With further money raised at the Christingle we will be sending £200 to the Children's Society.

Our thanks to all those who decorated the church for Christmas with greenery, flowers, the tree, candles and a manger. (The wise men are currently making their way around church).



Gemma and Peter Took have served our churches as Readers faithfully for some years. They have now retired from these roles. We thank them for their service, their interesting sermons and all the encouragement they have given us. We hope to celebrate with them more fully next month.

We wish all a happy and healthy new year and do contact either of us should you have any queries relating to church life.

Liz McBride (tel: 612421) and Michael Vincent (tel: 614806)

From the Registers

Funerals:

| | |
|--------------------------------|-----------------------------|
| 17 th December 2021 | Anthony Nockalls (60 years) |
| 23 rd December 2021 | Keith Dormer (72 years) |



Heat, Light and Stone – More Progress

It's probably true that if we had chosen to replace the present heating in the church with a traditional system - pipes and iron radiators, for example - we should be close to completing that part of the work by now. But we have always been determined to 'future-proof' the developments - to ensure that not just the present congregation and villagers would benefit, but that generations to come would gain as well.

The Diocesan Advisory Committee has accepted our plans. In ten years' time, it may well be that our choice of heating system, powered in the future with environmentally-friendly hydrogen, will be the norm. It is effective and proven.

The DAC has asked that we divide our proposal into four - the new heating, lighting, sound system and stonework. We expect each to gain their approval. This means yet more editing by John Guilford, who is writing our applications.

Prospective donors, however, want to see our plans as a whole. Funding agencies look at the full picture; and at the money we have raised so far in our bank account. We are seeking matched funding, which should enable us to start work at last. It's been a long road; but an end, if not THE end, is in sight.

John Stringer

The Third Sister

Every home in Harbury and in Ladbroke will have received a Christmas card from our churches. If you are observant, you will have noticed that a third church has joined our two sister churches. The Church of St Michael and All Angels in Ufton has become the third sister.



You cannot have missed Ufton parish church if you have climbed the hill into the village on your way, perhaps, from the Fosse Way roundabout to Southam. St Michael's stands at the top of the hill, close to the White Hart, with its glorious views over the county. A church has stood there since at least 1042. This was a Saxon church, followed by a Norman church in the 1200s, of which only one door remains.

The church as it is today was built in the 1300s. It has been added to and partly rebuilt, especially in Victorian times. The building is similar in size to Ladbroke. It has the advantage of a prominent position; and the disadvantage of having been built on damp ground, possibly on a spring. The water rises

between the tiles to this day. The church was once heated, and the floor dried, by wood and coal pushed under the floor through ports in the floor tiles, and lit to smoulder beneath the centre aisle. Now modern radiant heaters replace this primitive underfloor system.

St Michael's congregation is small but loyal. There are plans to install a toilet and kitchen, making the church more convenient for worshippers and visitors. At present, the church is locked except for its monthly morning services; but with improved facilities, it could become a village centre and resource once again.

Learn more at: www.achurchnearyou.com/church/13129/

Find out more about the Patented Mitchell Heating System in St Michael's at: http://www.hevac-heritage.org/items_of_interest/heating/churches_&_chapels/ufton_church/ufton_church.htm

John Stringer

| | | |
|-----------------------------------------------------------------------------------|--------------------------------------------|----------------------------|
|  | <h2 style="margin: 0;">Mothers' Union</h2> | <p>Gillian Hare</p> |
|-----------------------------------------------------------------------------------|--------------------------------------------|----------------------------|

We hope you have all enjoyed celebrating our Saviour's birth, in whatever way you could. As I write this (just before Christmas), our New Year party is in the future. If it happened, I'm sure we have had a happy time. Even if it didn't, we hope to meet on 2nd February, when Jackie West is coming from Ladbroke to fill in the gaps in our knowledge of the church there. We look forward to an interesting afternoon; as ever visitors are most welcome.

Our December meeting was a relaxed time together. The AGM was brief as, to our relief, Chris is willing to continue as branch leader. Then we took some time thinking about the Queen who, each Christmas, refers to her faith and the strength she draws from it. Although grieving for her husband of so many years, she is such a role model as she puts the wellbeing of others above her own preferences. A light-hearted quiz revealed our poor memories of the events of her life, and members shared personal stories of having seen her.

Your committee wish you all a happy and healthy New Year.



FOODBANK - the local Foodbank supplies the surrounding area, including Harbury. Please bring donations of non-perishable food to the Wight School (library) car park on Mondays between 11.30am and 12.30pm, where one of the e-Wheels drivers will be there to receive your items. Alternatively, donations may be dropped off in the library foyer during its normal opening hours.

Thank you.

Ladbroke News & Diary

<http://www.ladbroke-pc.org.uk>

JANUARY 2022

Sun 9 EPIPHANY 1

Holy Communion (sung), 9.00am

Tue 11 WI, 7.30pm, Village Hall

Wed 12 Parish Council, 7.45pm, Village Hall

Sun 16 EPIPHANY 2

Holy Communion (BCP), 9.00am

Wed 19 Table Tennis, 7.30pm, Village Hall

Thurs 20 ADVERTS FOR THE NEXT ISSUE TO 36 MANOR ORCHARD,
HARBURY OR EMAIL ADVERTISING@HLNEWS.CO.UK

Sun 23 EPIPHANY 3

Holy Communion (sung), 9.00am

Wed 26 Table Tennis, 7.30pm, Village Hall

Thurs 27 ARTICLES FOR NEXT ISSUE TO: HARBURY PHARMACY,
HIGH ST OR EMAIL TO ARTICLES@HLNEWS.CO.UK BY 5.30PM

Sun 30 EPIPHANY 4

Holy Communion, 9.00am

FEBRUARY

Tue 1 Photography Club, 7.30pm, Village Hall

Wed 2 Table Tennis, 7.30pm, Village Hall

Sun 6 CANDLEMAS

Family Communion, 10.30am, followed by refreshments

Tue 8 WI, 7.30pm, Village Hall



Ladbroke Church News

Peter Rigby

www.ladbrokechurch.org.uk

The outbreak of the Omicron variant meant that we had to give some serious thought as to whether our Advent and Christmas services could go ahead. We decided to continue but with our "alternative pews" policy and this is continuing for the time being. We recognise that some still prefer to join us online and we are continuing to record our services where possible. If you would like to receive the links to these but are not currently doing so, please contact us via the email address below.

We were pleased to be able to welcome the Bishop of Coventry and some of the congregations from Harbury and Upton to a united service on 19th December (still available on line).

Our Christmas activities kicked off with carol singing around the village - thank you to those who came out of your homes as we passed and especially to Carol and Geoff for the mulled wine and minced pies afterwards. Our Carol Service also went ahead just before Christmas - the service was slightly different with some poems included instead of the more traditional readings.

A special thanks to Bill for organising the service and to the choir who sang magnificently at both this and the bishop's service. Also, to the Collins family for once again donating a Christmas tree to aid the seasonal decorations. On Christmas Eve, our crib service led by Rev Ann had more carols (thank you Kate for playing at this and all the other services) and the nativity story from the perspective of a very grumpy innkeeper.



During the pandemic we have adopted the Methodist practice of using separate cups for communion. The members of the Fenny Compton Methodist Church have kindly donated their communion glasses to us and we were able to use these for the first time on Christmas Day.

We wish you a happy and healthy New Year.

www.ladbrokechurch.org.uk ladbrokechurch@gmail.com

From the Registers:

Baptism

18th December

William Afford



Ladbroke & Deppers Bridge Women's Institute

Carol Lane

There was no December meeting but instead 17 members enjoyed an excellent meal at The Bell.





STIHL COUNTAX



MURLEY
GARDEN
MACHINERY

**YOUR GARDEN
MACHINERY
SPECIALISTS**

01926 494336

www.murley.co.uk

Nelson Lane, Warwick CV34 5JB



HAYTER  **Husqvarna**



CHRIS BERRY & SONS

Mobile Locksmith

A FAMILY COMPANY WITH HIGH STANDARDS

Emergency Home - Garage Door Repairs
Lock Upgrading To BS 3621 - Lock Replacement
Lock Sales - UPVC Multi-lock Systems

All Work Fully Guaranteed
No Fix, No Fee - No Call Out Fees
OAP Discounts
City & Guilds Certificated C R B Checked



01926 733257 or 07944 243 566

WE OFFER A FRIENDLY SERVICE WHEN YOU NEED IT MOST



W. Goodwin & Sons Funeral Directors

38 Coventry Street, Southam

CV47 0EP

Telephone: 01926 812445

**Private Chapels of Rest
Monument Service provided**

T.M. & J.M. GREY BUILDERS



KITCHENS - BATHROOMS - WINDOWS & CONSERVATORIES

EXTENSIONS - ALTERATIONS - RENOVATIONS

GREY GABLES, 46 BANBURY ROAD, SOUTHAM CV47 1HJ

☎ Southam 01926 817744 Mobile: 07885 495384

Email: tmgrey@tiscali.co.uk



WIGLESWORTH & CO

With over thirty years experience in the local property industry, Chris Thomas is on hand for valuations and expert advice at times to suit you.

Harbury's Local Property Expert

01926 888998

leamington@wiglesworth.com

Sold

Subject To Contract

01926 888998

www.wiglesworth.com

WIGLESWORTH & CO

After the meal, Sue Moore led the thanks to Dianne for keeping the WI going by agreeing to be president for another year, to Joan who has kept us laughing all year with her witty comments accompanying the Denman-at-Home courses and to Maggie for stepping in to the thankless task of treasurer.

We are hoping to meet again in 2022 on Tuesday 11th January in Ladbroke Village Hall at 7.30pm to hear a talk by local award-winning writer for TV, Steve Attridge.

All are welcome and we wish everyone a happy and healthy 2022.



Ladbroke Matters

David Wright

The Ladbroke Matters team looks after the Village Hall and the Millennium Green. To help with this we organise regular fundraising events so that we can continue to offer both facilities for the benefit of our community.

We welcomed around 40 people to our supper and film night last month, our first since before Covid, and all agreed it was a great success. Our thanks go to all who helped on the day, especially our 'Masterchefs' who always manage to provide a tasty selection of hot food and great desserts.



Our hall bookings diary is filling up very quickly, so if you need to book your special occasion contact Debs (tel 07779 225105 or email debs.dptv@gmail.com). The rates are still £15 per hour with a great 20% discount for Ladbroke residents.

We hope you all had a great Christmas, and we wish all our friends and supporters a happy and prosperous New Year. At the time of writing, we don't know how the Covid restrictions will affect us, but we hope to be able to invite you to more events this year.

If you would like to join the Ladbroke Matters team, have any suggestions for future events, or any other comments please contact the Trustees (details on the Ladbroke website).

Ladbroke Village Hall Millennium Draw for November 2021

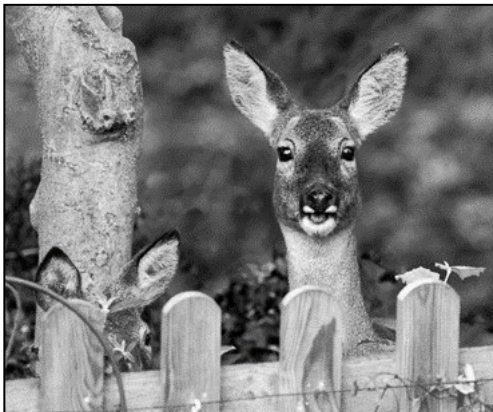
| | | | |
|-----|----------------------------|-----|-----------------------|
| £50 | John and Jan Lowman | £50 | Tony and Maggie Watts |
| £25 | Derek and Collette Batty | £25 | Rob Kendall |
| £25 | Mike Cannon | £10 | Angela Coleman |
| £10 | Scott and Siobahn Roberson | £10 | Richard Walker |

Thank you to all who support the Draw. A happy and healthy 2022 to you all.

Margaret Bosworth



We gathered in the warm village hall to review two sets of photographs while storm Barra blew outside. The first activity was selecting our favourites from the Heritage Photo Competition. These had been on display in the church previously and formed one of the many village heritage activities and the entries can be seen at ourladbrokeheritage.org.uk. We then moved on to the photographs depicting Autumn, our theme for the evening. First, we selected favourites from the prints that had been submitted (worthy winners Mike Todman and Steve Gale) and then held our 'Photopic' session. This is a time when we all submit images on memory sticks to be displayed on the projection screen for admiration and discussion. The pictures came from all corners of the country and, while most depicted gorgeous reds, yellows and greens of the vegetation, there were less obvious interpretations of Autumn such as a muddy rugby match and deer peering over the back fence. We talked about where and when the pictures were taken and also discussed technical issues such as the difference between RAW and JPG files and how to render all details of a close-up photo in focus.



Deer at the back fence by Steve Gale



Autumn in New Hampshire by Mike Todman

Our next event will be on 1st February which will include our brief AGM - everyone is invited and new faces will receive a warm welcome (no meeting in January). We shall have a social meal in March. If you would like more information about this very friendly club, please contact Jackie West: ladbrokephotoclub@btinternet.com
Photos we took during lockdown are still on display at kwarr.co.uk/ photography.



Selecting favourite Heritage photos by
Kip Warr



Ladbroke General Section



Ladbroke Heritage

The turn of the year is a time to review what has happened and look forward to the future. Looking back to last month, it started with a visit from the evaluation consultants who are providing an independent view on how well we have done against our targets. They left pleased with what has been achieved so far and impressed with the enthusiasm of the volunteers they met.

As soon as the consultants had seen it, we packed away the mini photo exhibition in church and counted up the votes. The public's favourite was this lovely shot of Ladbroke Church across the lake on Manor Farm. Congratulations to Serena who captured this tranquil winter image. Photos were a bit of a theme last month as, following the excellent suggestion from a villager (or was it from his daughter?), we produced an online Advent Calendar. It didn't go viral but did get over 3,700 views across the 25 days. If you missed them, the pictures are still on

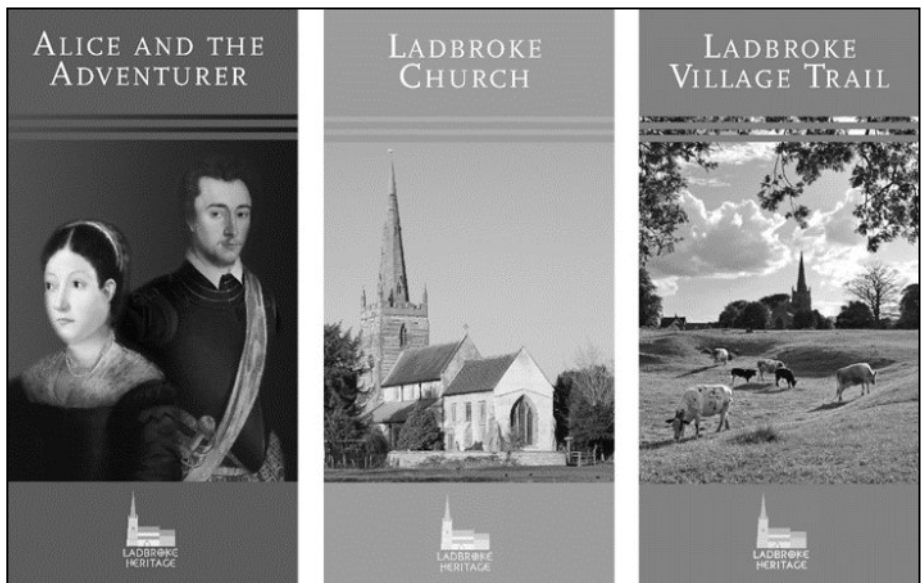


www.ladbrokeheritage.org.uk and also on Ladbroke Heritage's Facebook and Instagram pages.

So, what will be happening in 2022? Well, thanks to Lottery players and The National Lottery Heritage Fund we will be able to repair the lychgate and, with the support of our brilliant volunteers, there will be lots more on the activity side too. We will be

- throwing open the doors for **curriculum-linked schools visits** - so far we have developed two topics (RE and Rocks) with more to come, take a look at the schools page on www.ladbrokeheritage.org.uk
- welcoming people with **health needs including dementia and their carers** to a cuppa, chat and gentle exploration in company
- having more fun-filled **family sessions** and one-off **events**.

Word is getting around about our talks and tours and we have a number of bookings for the coming months, which is great as we love telling others about this special place. Some people prefer to look around by themselves with a little guidance from our leaflets. Although it is only printed in English, the Village Trail one will be available online in various languages - so far we have Romanian and Italian with a Polish translation underway. If you are (or know) a native speaker of another language who would like to translate it into that, please have a word with Jackie (details on next page).



Volunteers really are the life-blood of Ladbroke Heritage and we thank each one of you for your time, skills, ideas and enthusiasm. The more volunteers we have, the more we can achieve. If you have made a New Year's resolution

to do something for the local community in 2022 why not join the Ladbroke Heritage team or help at something specific or inspire us with new ideas. We would love to hear from you. You can reach Jackie on ladbrokechurch89@btinternet.com or 01926 810331 and Nicky on nicolalewis1958@gmail.com or 01926 815196.

Finally, we wish everyone a Happy New Year and hope to see you enjoying Ladbroke's heritage in the coming weeks and months.

Jackie West and Nicky Lewis



Report from your District Councillor for Ladbroke

Covid

Covid continues to dominate the news and our lives. Case numbers change from week to week and by local area, but infection rates are higher here than they have ever been. The government has implemented some extra controls at the time of writing such as mask wearing and are recommending working from home. Hopefully such measures with appropriate social distancing will help everyone. I thank all the volunteers and professionals that have been assisting the vaccination programme.

Business Grants - Covid Recovery

A small amount of money is still available in the 'pot' for this scheme which has been running for some time to assist business damaged by Covid to recover. Businesses should contact the Growth Hub at www.cwgrowthhub.co.uk/get-support.

Merger

On 13th December Warwick and Stratford District Councils decided to trigger a merger process. This followed a public consultation which included responses from a statistically representative sample of residents. That gave a headline result of 60% / 31% in favour from Stratford District and 55% / 32% in favour from Warwick District. The consideration was quite complex with various pros and cons. I voted in favour of the plan because, all things considered, I believe it is in the best interests of residents. Among the reservations expressed by residents, the potential loss of connection with a District councillor and dilution of service were one concern. I will be working to minimise the potential drawbacks and maximise the advantages in coming months.

Even so, the only power available to the Councils is to ask the Secretary of State to decide to start the merger process.

HS2

HS2 contractors have announced that they are to close the Kineton Road just south of Southam for about two weeks in January. This is to build a reinforced crossing for construction vehicles. The reason given for the closure is that the

gas and water mains at the side of the road are shallower than originally thought. I, and other councillors, have had difficult meetings with the contractors about this, in an attempt to explore alternatives to a full road closure. We consider we have not had a full explanation of what other ideas were considered. The details are still the subject of negotiations with the county council about the diversion routes, particularly for HGVs. My main concern is to avoid traffic using Ladbroke as a 'rat run'.


Green bins

The Council have made some rather confused announcements for green bin collections. In the latest Council's winter 'View' magazine recently sent out, they say the bin collections are to be unchanged over the Christmas period, but then in mid-December they put out a press release saying there will be no green bin collections on 5th - 7th January 2022. Green bin collections will resume as normal after that. I am not happy about the decision and we have challenged this at the Council, receiving no satisfactory explanation, but confirming that this collection will be missed.

Real Christmas trees for disposal will be collected whether you have a green bin or not, but only on the next recycling day, which for us is 19th - 21st January. They can be cut up and placed in or beside your green bin for collection (if you subscribe to the garden waste service), but if you don't subscribe, it can be put out beside your blue-lidded recycling bin.

Despite Covid and what has been a difficult year for many, I wish residents a happy 2022.

Cllr Nigel Rock
nigel.rock@stratford-dc.gov.uk

| | |
|------------------------------------------------------------------------------------|--------------------------------------------------------|
|  | <p>Harbury Society</p> <p>Sue Turner</p> |
|------------------------------------------------------------------------------------|--------------------------------------------------------|

A Happy New Year to you all and let's hope it turns out to be a lot better than the last two! The committee are optimistically looking forward to being able to deliver a varied and interesting programme for everyone in 2022. Please find details of a few events below:

Tuesday 18th January - the Harbury Society Annual Social which will be at The Crown, Harbury at 7pm. Full details will be circulated to members asap.

Saturday 12th February - Coffee Morning in the Tom Hauley Room – 10am - 12pm. There will be cakes for sale and raffle tickets to buy.

Tuesday 15th February - The Tom Hauley Room. Jackie West will give a presentation entitled 'Alice and The Adventurer' which is the forgotten story of Alice Leigh and Robert Dudley. Doors open at 7.30pm with the talk starting at 8pm. Refreshments will be available. Harbury Society members FOC, guests £1.

Tuesday 15th March - The Tom Hauley Room. A presentation by Harbury Society member, John Smith, entitled 'A Jungle Adventure' which will give an interesting insight into his life and time spent in Borneo. Doors open at 7.30pm with the talk starting at 8pm. Refreshments will be available. Harbury Society members FOC, guests £1.

Friday 20th May - A guided tour of Ladbroke by Nicky Lewis starting at 2pm. Further details will be circulated nearer the time.

Of course, all of the above will be subject to whatever Covid guidelines are in place at the time. Looking forward to welcoming as many of you as possible during the year but, in the meantime, please stay safe.



Harbury Women's Institute

Mary Thompson



At our Christmas meeting on 9th December, we welcomed Harbury resident Katy Constance. She moved from America six years ago and decided she wanted to do something for herself. She trained as a florist at Moreton Morrell; two years ago, she joined with a friend to launch a business called House Party Flowers doing event floristry and workshops in south Warwickshire and the Cotswolds. She demonstrated making a Christmas wreath showing the different stages in "Blue Peter" style. You will no doubt have seen examples of her wreaths as you walked round the village over Christmas. Katy also demonstrated ideas for garlands and flower arrangements for inside the house. She told us that florists are trying to use more biodegradable materials. She used moss instead of oasis for the base of her wreath and chicken wire or florist tape as a base for flower arrangements. The main problem with moss is that it is usually imported from Holland as it is illegal to harvest it in quantities in the UK. Although she uses imported flowers, Katy tries to purchase flowers from local flower farms whenever possible.

We celebrated Christmas with wine and mince pies and singing carols - finally we chose gifts from our bran tub.

Katy declined to take a fee for her enjoyable demonstration and donated it to our community fund. Now we have been able to start the rural cinema again our Community fund is slowly growing - hopefully we can support some village organisations again during 2022.

We look forward to a busy January but of course all these dates will be subject to any new Covid regulations. Please keep an eye on e-mails and village notice boards for any updates.

One of our members, Kath Ching is going to demonstrate her hobby of decorating eggs Ukrainian style at our monthly meeting in the Tom Hauley Room on 13th January. Visitors are most welcome.

We hope to run the cinema on 15th January. The film is The Courier, a thriller starring Olga Kurylenko who discovers the parcel she is about to deliver contains a bomb. We plan to use containers which are climate friendly, and the price of the fish and chips has gone up. This means we have had to increase the price of our tickets for the first time. £11 for a ticket to include fish and chips and raffle tickets and £6 for tickets without food. Tickets can be purchased at the chemist.

Our New Year Party will be held in the Village Hall on 28th January. Members are invited to bring food to share - please make sure you have let Ann, or another committee member know what you are going to bring. We look forward to being entertained by Ian and Sue Hartland in the style of an Old Time Music Hall.



Harbury Theatre Group

Geoff Allen

Well, the Pantomime show was a real success despite all the trials and tribulations and as we are nothing if not gluttons for punishment, we are already thinking ahead for the Spring production.

The team are sifting through piles of scripts searching for just the right offering for the village! We will be looking for something to provide a little drama mixed with a good few laughs where the good guys /girls win.

If anyone wishes to join us for our Spring venture please contact Geoff Allen 07793 767761.



Harbury Twinning Association

Tony Thomas

Our new season started on Friday 19th November where, at the AGM, Ron Temple was elected as Chairman. Richard Marshal-Hardy continues as Treasurer and Sally Stringer as Secretary. On this occasion the AGM was followed with an enjoyable French film.

The committee met on the 2nd December and set out our plans for the coming year starting with the Christmas party on the 10th December. Early this year but these are strange times.

As is our usual practise we will celebrate Fete des Rois (Festival of the Three Kings) on Friday 7th January which this year will be hosted by the generosity of Andrew and Jenny Patrick at their



home in Mill Street. Members will be making Galettes des Rois, the traditional cake which will be served during the evening.

Later in 2022 we hope to have a Skittles and Supper Evening, Petanque Tournament and a barbecue.

Virus permitting, we intend to make the trip to Samois to unite with our many friends on 3rd June.

One sad note to report is the death of one of our founder members, Heather Turner, a former resident of Harbury, who with her husband James retired to London in 2007.



Harbury Heritage Centre

Bill Timson

A new year and not **one** but **two** new features from Harbury Heritage. The first in a series of articles where we step back in time 40 years and see what was going on in Harbury in 1982.

How many of you reading this actually lived in Harbury at the start of the 1980's? Not me for a start. I moved to the village, actually just outside the village on Chesterton Road, in 1993. So I am still a 'newbie' relatively speaking.

The source of this article is our village magazine, 'The Harbury and Ladbroke News'. The January 1982 edition looks similar to the 2022 version, although the cover has been updated a few times as the village has grown.

The first edition of the magazine was published in May 1974, previously residents were kept informed of local news and events by the 'Harbury Diary' a four sided document produced by the PCC (Parochial Church Council). We have a few original copies of these in the Heritage Centre, the first one dating back to July/August 1966. It was part directory and part diary. An advert on the back had a vacancy to clean the church floor for 10 shillings a week.

By the start of 1982, 16 years later, the four pages had grown to 28. It included a colour cover, adverts and some black and white photographs, as well as many articles from various village

Editor's copy

THE HARBURY DIARY

JULY/AUGUST 1966

CHURCH SERVICES

| | | |
|------------------------------------------------|--|------------|
| ALL SAINTS' HARBURY | | |
| Vicar: Rev'd. P.R. Mackley, Harbury 377 | | |
| Holy Communion | | 8.00 a.m. |
| Sung Eucharist | | 10.00 a.m. |
| Sung Matins (2nd. in month) | | 10.00 a.m. |
| Sunday School | | 11.00 a.m. |
| Evensong | | 6.30 p.m. |
| METHODIST <i>St. Chyngol</i> | | |
| Minister: Rev'd. A.S. Baxter, Leamington 26787 | | |
| Sunday School | | 2.15 p.m. |
| Sunday Worship | | 3.30 p.m. |
| ROMAN CATHOLIC | | |
| Parish Priest: Fr. K. Kearny, Southam 351 | | |
| Sunday Mass | | 8.00 a.m. |
| Evening Mass | | 10.00 a.m. |
| | | 6.00 p.m. |
| CONGREGATIONAL | | |
| Minister: Rev'd. G.C. Mele, Leamington 24233 | | |
| Sunday Worship | | 11.00 a.m. |
| | | 9.15 p.m. |
| FOR OTHER SERVICES SEE CHURCH NOTICES | | |

organisations and groups and of course All Saints Church. Below is page one of January's edition.

So, what was happening in the village 40 years ago? Well, it was a very cold Winter with temperatures as low as -20 degrees C. Bringing burst pipes, glass-like roads, huge snow drifts and stranded cars.

It was still business as usual though, several seasonal village events were reported on including the candlelit carol service, the senior citizens' Christmas party, PTA carol singing which raised £41 for the disabled and of course the Theatre Group pantomime which was 'Cinderella'.


There was a visit to watch 'Tiswas' at the ATV studios in Birmingham. Meanwhile back in Harbury, Ralph Gurden was praised for clearing Treen's Hill of snow.

JANUARY 1982

No. 94

Happy New Year-1982

The bitter weather of the last 3 weeks of 1981 - the worst weather for at least 18 years - brought out the usual British Cheer in the face of adversity. Harburians remained resolutely jolly in the face of temperatures as low as -20°C, burst pipes, glass-like roads, huge snow drifts and immovable motor cars. Happiest of all were the children as all manner of toboggans and even skis appeared, as Mike Bloxham's photo shows.



Happily the severe weather didn't keep people away from the Candlelit Carol Service which was a splendid start to the Christmas season in Church. And the Harbury Handbell ringers, and several groups of carol singers, brought pleasure to many in the days before Christmas.

And Christmas is by no means over - the Theatre Group's Christmas pantomime, "Cinderella", is in the



In the adverts the Harbury WI had organised a Valentines dance for February. 'The Likely Lads' were playing at The Village Hall - tickets were £1.80 to include a Ploughman's Supper.

New feature number two is called **'WHO KNOWS?'** (Thanks to Tony Thomas for this idea).

We ask the question and hopefully you, the reader provide the answer(s).

So this month's question is **'Who knows who /why Harbury Hall was originally built for and when?'**

OW

PAINTING & DECORATING

M: 07980 588351

E: OLLY@OWPAINTING.CO.UK

WWW.OWPAINTING.CO.UK

- Interior Painter & Decorator •
- City & Guilds qualified •
- Domestic properties •
 - Fully insured •
- Located in Harbury •

Contact Olly for a free quote

OW - taking the pain out of decorating!

FENCES : TREES



All types of fencing and gates

Tree felling and reduction

Hedge laying and trimming

Patios

Seasoned logs available

**Call Adrian Dollar on
01926 817077 or
07914 623989**

Qualified and Insured

Domestic Gas Services



**CENTRAL HEATING, INSTALLATION, SERVICE, REPAIR AND
POWERFLUSHING....the next best thing to a new heating
system!**



Are your radiators cold at the
bottom?
If so they need
POWERFLUSHING!

POWERFLUSHING removes the build
up of sludge and sediment in your
radiators which is making them less
effective therefore *costing you
money!*

POWERFLUSHING will maximise the
efficiency of your radiators ensuring
you get the very best from your
heating system therefore saving you
money!



**For all your heating requirements please call
Martin Evans on 07980 740720**



Bull Ring Garage
Church Terrace, Harbury
Leamington Spa CV33 9HL

Telephone: 01926 612275 Mobile: 07968 146534

Email: steve@bullringgarage.co.uk

**We are Harbury's only official M.O.T. station
for the following classes:**

Class 1 & 2 Motor Cycles.
Class 4 Car and Commercials up to 3000kg.

Servicing and Mechanical repairs.

Air conditioning service.

Full Diagnostic facilities.

**Full tyre fitting bay for Cars, 4 x 4, Vans,
Motor Cycles and Scooters.**

OPENING HOURS:

Monday to Friday 8.00am - 6.00pm

Most Saturdays 8.30am - 12.30pm



Answers or any information to 'group@harburyheritage.org.uk' or better still come to one of our open days and tell us what you know about this Harbury landmark.

Finally - An update on the sale of Harbury Heritage Calendars.

At the time of writing we have sold 234 calendars and early in the new year we will be making a sizeable donation to Myton Hospice. **A MASSIVE THANKYOU TO ALL** who supported our fund raising calendar. A very happy new year from all of us at Harbury Heritage.

Next Open days - Sunday 16th January 2 - 4pm and Tuesday 1st February 7 - 9pm.

Do come along, we have a warm welcoming environment and can offer hot drinks too!



Harbury Energy Initiative

Bob Sherman

☎612277 ✉info@harburyenergy.co.uk

At this time of year I usually give you a resume of HEI's year, even though it seems to pass too quickly for anything much to have happened. But things did happen. With lots of material from David Bristow here's a little resumé.

There really is a climate crisis

Many members have joined HEI because they were concerned about the climate issue but did not feel that the group should acknowledge it formally. Instead, energy saving, renewable energy generation and moves to sustainable lifestyles have been promoted in terms of saving energy as well as money. The situation is now very different from when the group first started in 2010 - the science is now beyond dispute, and environmental

concerns are mainstream rather than fringe. HEI's acknowledgment of the climate emergency was officially noted at our meeting in June. HEI then approached the Parish Council to do the same. Importantly, the small group making the case to the Council included teenager member Joe Quinney, making the point that the issue is of greatest concern to younger generations.

We said that our national, county and district government representatives had all declared a climate emergency, and residents need to know that our village representatives are also aware of the issues and will do everything in their power to act on them. As we expected, the Council were very sympathetic to this approach and resolved unanimously to make the acknowledgement. They then set up a Councillors' working party to report on what action they should take. We were delighted to hear that this is to be led by our HEI representative, Councillor Julie Balch. Work will begin in earnest this month.

Some other initiatives

Hoping that it might prove possible to apply for a grant, HEI is assisting the Rugby Club to get quotes for installing solar PV on its roof. There have also been some discussions with the Village Club on the same topic but these are much more preliminary as at least part of the Club roof needs replacing.

We also enlisted the help of Ineco Energy, the installers of the school's solar panels a few years ago, to check the system over and ensure that the school was getting the full benefit of the power generated and exported. One of their technical team recently took a look at the various boxes of wizardry monitoring the installation and declared that all seemed in order.

Throughout the year HEI has continued to support the church retrofit, battling against a Diocesan permission system that seemed constantly to block progress. We now know finally that they will not object to the heating system but still require further detail (and I mean detail) of our plans for the audio visual system and repairs to the stone work. Given the urgent need to move to renewable sources of space heating, it is disappointing that the heating system will have to be gas fired - as is the case for nearly all replacement household boilers. Let us hope 'green' hydrogen (generated from renewables) will eventually come to the rescue.

The Scouts have secured a Warwickshire Green Shoots grant to enhance the insulation on the Scout Hut and the library is hoping to carry out some major developments which will include upgrading its ceiling insulation and heating.

Socially connected, even if distanced

In order to enhance our presence on social media, we have been delighted to welcome Eleanor Skidmore as HEI's Social Media Champion. You will already have seen many posts from here since she joined the team.

Charged up - but not quite yet

Harbury Future Energy (HFE) was delighted to gain unanimous Parish Council support for its plans for a charging station in the Village Hall car park including a vertical axis wind turbine, solar panels and battery storage. The

wind turbine is no longer part of the immediate plans for the project as our data gathering showed that there just isn't enough wind to justify it. The HFE project team has, since it was awarded a £98,000 Stage 2 grant from the Rural Community Energy Fund in 2020, been working on the full business development of the scheme. A planning application has now been submitted. Next step is raising the finance, we have started some interesting discussions with third parties - more news in February.

More connections

Beyond the village HEI initiated the Low Carbon Warwickshire Network (LCWN) in 2019. Its aim is to connect low carbon groups across the county, sharing ideas and stimulating and supporting new activity. Following an in-person meeting in Church Lawford, the fourth local meeting since it started, LCWN now has 19 group members and over 70 individual members. With the help of Emma Powell, an Octopus Energy employee and community energy apprentice working part-time with HFE as well as LCWN, it is now developing a Facebook Group to link people more effectively.

A little word about membership

Membership of HEI does not involve any payments and makes no demands of anyone. We do, however, want to represent the aspirations and ideas of the whole village in surviving the climate emergency. That does not require attending regular extended meetings or commitment to deliver complex projects. Now that a few of us will be joining the Parish Council Working Group, it is even more important that we engage across all generations and as many households as possible. Collectively we face some tough challenges and we can do that much better together.

And now for something different...

Member Ted Dowdeswell is very good at sniffing out intriguing new technologies. His keen nose picked up the scent of compost and a secondary potential for generating a different energy. He writes:

With the price of gas increasing so much, it is possible we could generate some of our own gas at home from our food waste and manure. A few years ago, two young Israeli men with a company called Homebiogas made a unit to do just that, they are now selling them worldwide in three different sizes. The smallest can produce enough methane to power a single gas ring for around two hours a day, the largest will keep two gas rings burning for six to eight hours a day!

To be producing at their best the digestive process needs to be above 20 degrees C. As the process produces its own heat it should be possible to insulate the unit and keep the warmth in during our colder weather and maintain output.

The units are made entirely of durable plastic and they claim should last for around 15 years. They come as a flat pack for DIY assembly in your garden.

Price? We are awaiting a reply but on their web site they talk of around £700 for the smallest and £1,600 for the largest. Watch this column for more information. They are now making a flushing toilet to connect with it. Now that's intriguing: power from poop!



Guides and Scouts Support

Laura Harris
G.A.S.S. Committee

At the end of last year, our 2021 wish list was as follows

We are proud to say that we have managed to achieve most of these due to our creative leaders and hardworking volunteers.

- **Updating the Scout hut with all the new Covid-safe requirements**

We are happy with the progress made on our improvements this year which enabled indoor sessions to go ahead as soon as Government restrictions made it possible and without disrupting the groups more than necessary. The one-way system is already implemented and working well and the cleared space at the back of the hut has been enjoyed by the toddlers on Mondays in warmer weather. The Green shoots grant secured earlier this year means that we will be able to move forward with the next stages in 2022.

- **Getting back to some face-to-face sessions with all the young people – preferably indoors as well as outdoors!**

All our sections ran face to face sessions in the spring and summer with several Scouts taking part in an expedition and achieving their gold awards in December. The Explorers enjoyed a hammock camp in September and with the new improvements to the hut, most sessions this autumn could take place indoors.

- **A new leader for the Cubs so that the colony can continue all its activities with 8–10-year-olds.**

We have been advertising this autumn but as yet there are no leaders in place. We hope that the positions will soon be filled.

- **Organising some successful events to raise much needed funds.**

After a year without any extra funds, we went all out to make up for lost time and took advantage of as many events as possible including a coffee morning, serving refreshments at the Saturday market, running the bar at the Bonfire Radicals concert, and hosting the biggest Bonfire and fireworks event ever seen in Harbury!

We'd like to thank every single person involved in those important events and to everyone who supported them.

- **Much more opportunity to help in the local community (restrictions permitting).**

Where possible, our volunteers and young people have helped out in Harbury. As well as the usual litter picks, there was work to do in the school grounds and help needed at the village show with the marquee. We are grateful to the committee for their kind donation of £50.

Harbury Christmas Post

We are thrilled to have received record donations of over £500 for the 2021 Christmas post. Thanks to everyone who used the service.

That just leaves us to wish you a very **happy, healthy and safe New Year!**



Shottery 5 Harbury 40

Harbury started the day intending to travel to Chaddesley Corbett in the league, but the planned fixture was thwarted by the weather. Snow was adjudged to have sufficiently covered the 1st team pitch meaning the match could not be played. Shottery found themselves in a similar boat having already organised two fixtures only for both to fall through. Third time proved to be the charm as newly available Harbury agreed to travel to Stratford. With a bitter wind blowing at Harbury's back, the game started with 14-a-side as Shottery sportingly dropped a player whilst the visitors pulled themselves together. Whilst Harbury dominated field position and possession, Shottery found a purple patch of their own and made the most of some broken defensive lines, to go over for an unconverted try.

Harbury 17 Claverdon 49

A pre-match lunch was organised by Stevie Alford for a number of "old" Harbury players that either no longer can commit to playing or could be enticed into playing again. Claverdon travelled to local rivals Harbury knowing a win would take them top of Midlands 4 West South and stretch their unbeaten run to eight games. It is always a difficult away trip but a team high of confidence expected a performance. Harbury were not firing on all cylinders and turned round 7-15 down at half time. With the wind behind them, Claverdon pinned the home side in their half and despite some resolute defence the match started to slip away from Harbury. Going into the final quarter of the game Harbury were behind 12-25 and Claverdon continued piling on the pressure to run out comfortable winners.

Coventrians 25 Harbury 9

It always seems to be wet and windy when Harbury travel to Coventrians and this Saturday was no exception. Three penalties in the first 15 minutes Harbury established a nine point lead. Thereafter, Harbury dominated

possession, attacking Coventrians line at every opportunity but failed to convert the pressure into points. Coventrians, gradually dragged themselves into the match and whenever they got into the opposition half managed to make it count, running out worthy winners against a Harbury side that was lacking confidence.

On 18th December Harbury were due to host Upton on Severn but the game was postponed due to concerns around Covid.



What a fantastic first half of the season for the Harbury M and Js! Started off with some intense training sessions to get back into the swing of things, followed by a series of competitive fixtures including some cup success. A number of junior players have been selected for either the Wasps or Worcester Developing Player Programme. It was all finished off with a Christmas

party including some egg rugby (yes, a lot of egg on the head!), rugby gauntlet and a classic, tug of war.

Really looking forward to getting back to it in the new year on the 9th January and as always, welcoming new players. Get in touch with Phil (sheepy226@virginmedia.com) or

Chris (chris.woodhams@argentaconsult.com) if there are any queries.



Harbury Toddler Group

Lynne Barton

Hello from everyone at Toddlers

We are looking forward to the beginning of a New Year and hope that it will be a healthy, happy and positive 2022.

It has certainly been a 'roller coaster' this year so, with Toddlers' doors closed for some time, we held a number of online sessions to keep us connected and then tentatively re-opened our doors in September, staying safe by keeping our good habits of using hand sanitisers, mask wearing and retaining good ventilation by having both doors open, despite weather conditions.

It is a tribute to the parent's and children's resilience and stoicism that together we all managed to make it through to Christmas - thank you to everyone who supported us to keep going!

We hope that you all have had a great festive break whatever you were doing and look forward to catching up when we return, restrictions permitting, on Monday 10th January 2022 at 9.30am with a goodbye song at 11.15am.

Everyone welcome no need to book in advance.

Christmas Party

We all had a lovely Christmas Party at the **Tom Hauley Room** at All Saints Church, it is always so easy to book and a great space for our families and their little ones.

Reena from **SoftPlayTake Away** in Harbury provided great sit and ride ons, a bouncy castle and sensory ball pool, a very village affair.



Our volunteer Father Christmas is also very well known in Harbury - can you guess? The disguise was so authentic that even his little Granddaughter wasn't sure.

Two Santa Elves were on hand to help with presents and work their magic with Christmas glitter tattoos.

Pass the Parcel was entertaining trying to discreetly ensure every child had a treat. Here are some of the highlights.

- There was jelly
- There was ice cream
- There were sandwiches
- There was cake - ah yes plus some cucumber and carrot sticks for balance!

Summary

Please do spread the word that we are back on a regular basis at the Scout Hut at the back of the Library; there is always plenty to do, a warm welcome, a nice cuppa and the opportunity to make new friends - all this for just £1.50 per session. With much affection, stay safe and we look forward to seeing you all very soon. Love from Lynne, Selina, Reg, Debbie, Suzi and Judi xx



Visiting the Library: We were excited to be able to resume our regular visits to the Library which have been on hold since March 2020.



The children were very excited to go through the 'magic door' between the Pre-School main room and the Library to hear a story read by Sue and look at some books of their own choosing. Many thanks to Sue and the rest of the staff for welcoming us back. We are looking forward to many more visits.



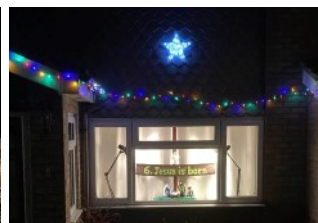
Christmas Crafts: The children have been busy with a wide variety of Christmas-related activities.

We have made some lovely Christmas cards to take home to our families, using handprints, paint and pen and some decorated CDs to hang on our Pre-School Christmas tree.

The children have also made some fabulous Rudolph hats which they wore with pride for our Christmas Songtime.

Harbury Pre-School continues on page 33

Harbury's Advent Trail



Senior Citizens Chr



Christmas Party 2021



Harbury's Seasonal Lights



Harbury Pre-School continued from page 28.....

As well as our upright tree, the children also had a lot of fun decorating a tree on the tuff tray. We added some masking tape on the tray in the shape of a tree and provided lots of pom poms, buttons, mini baubles and tinsel for the children to add carefully to the tree with tweezers. We had some lovely creative designs.



Christmas Songtime: It was especially lovely to be able to welcome back our Pre-School families into the Pre-School garden for our traditional Christmas and Nativity Songtime. The weather was kind to us and the children sang beautifully. They also sang the Makaton version of Silent Night and invited their parents to join in at the end. We are extremely proud of all of them!



Fundraising Update: A very successful Speed Quiz was held in November by the Committee raising approximately £415. Many thanks to Quiz Master Stoo, Dean for the Sponsorship and the Co-op for their kind donations of condiments. A big thank you also to the Committee for all their time and effort in organising the event.



Snow: We were very excited to wake up to a covering of snow at Pre-School this month!

The children had a fabulous time making snow castles and sweeping up the snow together. It was a lovely treat for a Monday morning!

Thank you: The staff would like to say thank you for the Christmas gifts and cards that we have received from parents.

We would also like to say a huge thank you to all the parents and children for their support this term. We are very excited about welcoming back the existing children and meeting some new faces in January.

If you would like further information, or to register a child for Harbury Pre-School, please contact e-mail enquiries@harburypre-school.org.uk text 07907 598461 or look at the web site www.harburypre-school.org You can also find us on Facebook.



Village Hall Update

Andy Rutherford

We wish everybody a safe and happy Christmas this year, but there is a need to try and clarify the latest set of guidance from the Government.

From 10th December 2021 face coverings became mandatory in village and community halls (subject to exemptions, below) as well as in shops and post offices, libraries, members' clubs, social clubs, places of worship, cinemas, theatres, indoor play areas. They must therefore be worn for these kinds of activities hosted at a hall. They are not required by people taking part in exercise, dancing or, in some cases, singing.

The responsibility to comply with face coverings is the individual's, not the building's owner or the organiser of an activity.

Face coverings are required when entering and moving around in common areas of the Village Hall (e.g. corridors and toilets) and at public or club events. They are not required by those involved in activities involving exercise or dancing (e.g. keep fit, Pilates, dance classes or wedding receptions) or taking photos of people. They are also not required whilst eating or drinking, as this is simply not practical.

Production of a Vaccine Status Certificate is not generally required, as the Village Hall falls well below the capacity (400 people inside) where this becomes necessary.

Where private events are held (for instance wedding receptions, or Christenings), face coverings are not required within the room used for the event, but the guidance applies to any part of the building open to the public.

The Village Hall Committee would encourage all users of the Hall to be cautious, wear masks where necessary, use hand sanitisers provided, and maintain ventilation in the Hall. It is sensible to take a Rapid Covid Test before attending big events, and organisers could consider using a non-contact temperature sensor to check the condition of attendees.

We will have to wait and see if January brings any major changes!





Harbury Village Library & Biblio's Café

Rich Fowler

Happy New Year from all of us at Harbury Village Library & Biblio's Café. Covid permitting, our opening times in 2022 will be:

Library - Monday and Tuesday - 10am to 4pm; Wednesday, Thursday and Friday - 9.15am to 4pm; Saturday - 10 am to 12 noon.

Biblio's Café - Wednesday to Friday - 9.15am to 12 noon, Saturday - 10am to 12 noon

Please note that it will be table service only in the café, apart from takeaway items.



Tunes & Tales - can you help? We hope to restart our Thursday morning Tunes & Tales sessions in the new year, but we need someone to lead the sessions. If you, or someone you know, would be interested in doing this, please email us at library@harburyvillagelibrary.org.uk, message us on Facebook @hvlbc, or leave us a message at 01926 258776.



Spanish Classes will resume on Monday 10th January. We have some space in both the Beginners' and Conversation classes, so if you're interested in joining, email us at Spanish@harburyvillagelibrary.org.uk



Classic Book Group We've selected our books for the first half of 2022, so if you'd like to join us for our lively discussions, email us at BookGroup@harburyvillagelibrary.org.uk We meet on the third Tuesday of the month and you can read more about our selections on our Classic Book Group blog <https://harburyvillagelibrary.wordpress.com/category/classic-book-group/>

Home Delivery Can't get to the library? Library closed by the time you get home? Don't panic! You can browse our online catalogue, select the books you'd like, and click on the Home Delivery option. Then, just like Ocado, we'll deliver the books to your door. Not sure what books you'd like? Just tell us the authors you like and the types of books you prefer and we'll make the choice for you.

Live at the Village Hall Some dates for your 2022 diary of events we're presenting "Live at the Village Hall" this year:

Saturday 26th February, 2022 - Tears of Laughter

Simon Mayor's mandolin, guitar and fiddling wizardry (and inimitable brand of humour) meets Hilary James' honey-dripping vocals.

Saturday 26th March, 2022 - A Ghost of a Smile

Two ghost stories from Charles Dickens (spooky but with a comic twist).

Friday 15th April, 2022 - Ma Bessie's Prohibition Party

The very best of 20s/30s blues and jazz to the present day, focusing on the life and musical canon of the "Empress of Blues", Bessie Smith. The performance is set around the prohibition era, and every member of the group sounds and looks the part, and audience members are more than welcome to join in by dressing up.

Friday 20th May, 2022 - Same Same ... but Different

A family show, mixing Kathak and contemporary dance, live music and physical storytelling, to create a playful and colourful world where we celebrate our individuality, diversity and the bonds which connect us all.



Harbury Village Club & Institute

Judy Morrall

The last article of 2021 - where did the last 12 months go? Winter has been very strange so far, frosts, mists, some sun and damp conditions so it doesn't look as if we will have a white Christmas.

We have had a successful December so far, starting with the family bingo which was very well attended and all ages enjoyed it. Then there was a children's party. The Christmas quiz was not so well attended but that could have been due to a variety of circumstances as it is a busy time. However, from the raffles and bingo ticket sales and quiz night I was able to bank £325 which will be allocated towards our roof fund. There was also a family disco on 17th December and a further £130 from raffle and entrance payments plus a donation of £20 has been paid into the bank. Therefore, with an expected £25 from the auction of the Christmas tree we will have raised £500 which is excellent and a huge thank you to everyone who came and supported these events. Also, we have raised £725 via Just Giving -amazing, thank you to all who have donated.



As we are now closing the club on Wednesday evenings, we have made a decision to hold the adult bingo on alternate Saturdays and hopefully if there are no further restrictions we will have the first one on Saturday 29th January. The bingo will start at 8.00pm with an interval. We have a new caller so please come along for a fun evening and a chance to win cash prizes and a bumper raffle. We will hold another table top sale in February and I will host another General Knowledge quiz. The committee has come up with more excellent ideas for future events so, as they say, "watch this space". We are all working together as we are passionate about our village club and the need to attract more members and visitors. The quality of the beer and ales is very high. Plus, we will have more incentives for our loyal members, as well as the

loyalty cards, which can be used on all the days that we are open. See our Facebook page for more details. If you have any suggestions to attract more footfall please speak to the committee members or officers of the club.

Some of the bar staff and officers of the club enjoyed a festive meal at the Crown on 22nd December and everyone enjoyed it so this will now be an annual event as our bar staff have worked extremely hard again this year.



I have already received some members' subscriptions for 2022 due from 1st January and those members on email have been notified of amounts due, ie under 60, £12.50 and over 60 is £5. We have mentioned that if you are able, any donation towards our roof fund will be very gratefully received. We have already received extra funds - a big thank you for all your support. I will be at the club, if no restrictions, on Sundays starting 2nd

January for a couple of hours or so from 1.00pm to collect cash or cheque payments - don't forget your membership card. As mentioned last month you can pop your card and payment through my letter box at 55 Mill Street or pay by BACS HSBC bank sort code 40-42-15, account number 21135228. Thank you to all our very loyal members for your continued support through the pandemic.

The pots at the club are looking really colourful and thankfully no watering yet. Have a walk past and enjoy the heathers in all their finery. I am so pleased with the rockery too. The winter hellebores are really showing off! The violas and primroses are beginning to flower and all the other herbs and evergreens look as if they have been there for ages. A colourful display which will brighten the Winter months. I am already planning late Spring and Summer planting.

I have been unable to do any more Winter digging at my allotments but it will get done once the weather improves. I have usually completed all by now but I have ordered my seeds from Dobbies and it is always exciting when they arrive and then planning what to plant and where. Still have fond memories of my late Father who always planted and grew too many parsnips and swedes.

My last stint of the year at Upton was on Wednesday 22nd December. The heating had broken down and was not repaired until half an hour before we finished. It was so cold and I ended up in the picture room where the theme was Winter - very appropriate! Everyone who has visited us has said how much they have enjoyed the Christmas decorations this year. We are closed next week and the plan is to reopen on 8th January so, if we are still able to open, I will be there with my thermals!! Next year will be my 24th year of volunteering and when I started and was still working in Oxford I didn't think I would still be doing it but I am so proud to represent the wonderful family who gave it to the Trust in 1948.

Thank you to the team at Harbury and Ladbroke News for ensuring that we receive the magazine each month. Once again, a huge thank you to everyone during 2021 for your support. I wish you all a peaceful, happy and kinder 2022.



Garden Jottings from Bridge Nursery

Christine Dakin

Many trees have been cut down to make way for HS2 which, in turn, means the loss of many insects, birds, mammals, mosses, lichens and all sorts of creepy crawlies.

There is one way to help to offset this destruction and to make a significant impact on the countryside for the benefit of future generations and that is to plant a tree. Bare-root plants are inexpensive to buy, in fact there are many available for free from Warwickshire Wildlife Trust and the Woodland Trust. If you have just a small garden you could still plant a small tree such as a crab apple or maybe get involved in one of the many community tree planting events which are happening locally and nationally. Many people like to plant a tree to commemorate a birth or a death.



When buying any plants it is best to get those that have been grown in this country. Imported plants can carry pests and diseases, at the moment ash trees are dying and we all know about the loss of most elm trees.

The best time to plant a tree was 20 years ago. The next best time is now - Chinese proverb.

A society grows great when old people plant trees whose shade they know they shall never sit in - Greek proverb.

Bridge Nursery, Tomlow Road, Napton
www.bridge-nursery.co.uk



Nature Notes

John Hancock

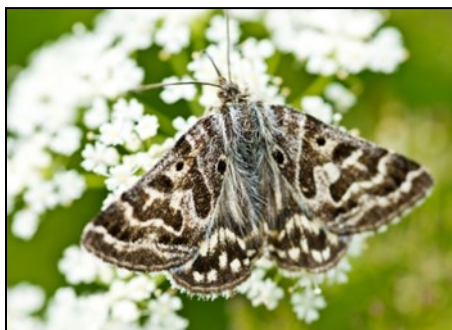
Today, 22nd December, we have passed the shortest day and, as if to celebrate, the sun is breaking out at 3pm and reflecting from the cluster of Silver Birch viewed from our living room window. Whilst taking my morning walk, I headed along Mill Street towards The Beeches and the field path to Chesterton Road. Opposite the junction with Farm Street my eye caught sight of the flower known as Winter Heliotrope. It's a



member of the Daisy family, a Compositae, which was introduced to Britain in the 19th century as an ornamental plant. Like so many introductions it can be invasive, shading out its competitors. The flowers are pinkish-purple in colour and, rather like Coltsfoot, erupt before the leaves. In February, look out for Butterbur in moist places. A near relative of Winter Heliotrope, it is known as Winter Rhubarb on account of its parasol-like leaves. As its name suggests it was used for wrapping butter by country folk.

I am enjoying Rebecca Solnit's latest book, 'Orwell's Roses', especially after listening to the talk about his father George Orwell given by Richard Blair to an appreciative audience in the Village Hall on 19th November. 'The Road to Wigan Pier', 'Homage to Catalonia', 'Animal Farm,'a catalogue of Orwell's writing that placed the first half of the 20th century under the lens of a towering intellect whose words have become more prescient as time moves on. '*Outside my work the thing I care most about is gardening*' wrote Orwell in 1940. 'Inspired by her encounter with the surviving roses that Orwell is said to have planted at his cottage in Hertfordshire, Rebecca Solnit explores how his involvement with plants illuminates his other commitments as a writer and antifascist, and the intertwined politics of nature and power.'

The Noctuidae is the largest family of macro-moths with approximately 400 species on the British list of which (according to David Brown's book, 'The Larger Moths of Warwickshire'), 200 are currently known to occur in the county. Most are nocturnal but a few such as Mother Shipton and Burnet Companion are common and day-flying. It is a diverse family, medium sized with a stout body and forewings which at rest cover the hindwings and body. David told me of a most unusual species caught in his garden at Charlecote in his light trap. It was a Tunbridge Wells Gem, a rare immigrant which can be confused with a Golden Twin-spot. Since 1870 there have been only 20 or so recorded in Britain, mostly on the south coast. Perhaps with global warming we will see more of these moths.



A favourite walk for me and I guess many others is to head down Mill Lane. Small bitter apples litter the ground and sloats await a decent spell of freezing weather to make them a good choice for hedgerow birds. Arriving at the railway cutting I usually manage to sight a passing train. The Great Western Railway Company boundary marker is dated 1892, the year when the line was moved from broad to standard gauge. Then it's steeply up Bull Ring Farm Road and into the village. I generally then take the path round the playing fields and have a choice of new seats to use - will it be Bill's or Ted's?

There are more memories stirred on entering Ridgley Way named after John Ridgley who helped me run the scouts for many years. The attractive domed central green has a knot of young trees which include an oak and an alder. The former is holding onto its brown leaves into the New Year. In one

corner, where shrubs have been planted, the earth is being colonised by an understorey of flowering plants. I identified Shepherd's Purse which is a common plant of the Brassica family. Its tiny seed cases resemble the pouches used by medieval peasants. I then noticed the insignificant flowers of Common Groundsel some of which are already seeding. Later some Red Valerian which, although a species from the Mediterranean, is happily colonising our limestone walls and spreading north.



With the New Year and increasing daylight, try to visit a wood and see what is sheltering there beneath the leaf litter. Even better for plants would be a protective layer of snow though perhaps not so good for those trying to get about. We shall see.



General Section



Royal British Legion Poppy Appeal 2021

This year's Poppy Appeal in Harbury, Ufton and Chesterton was once again very successful and we are pleased to say that, together, we raised the fantastic amount of **£2909.33**.

We would like to thank everyone who bought a poppy and donated generously to the appeal, to those who made house to house collections in Ufton, Chesterton and on Thwaites Estate and to John Holden for help with setting up the boxes. A thank you also to the following businesses and organisations who were kind enough to host collecting tins this year:

- Bull Ring Garage
- Harbury Village Club
- Harbury Supermarket
- The Fosse Garage
- The Salon
- The White Hart
- Harbury Primary School
- Harbury Co-op
- Harbury Village Library
- The Crown Inn
- The Gamecock
- The Shakespeare Inn
- Chandlers Agricultural
- Harbury Church

Thank you all for your support.

Gill Holden & Nicola Thompson



Braeside Bed & Breakfast



Comfortable accommodation

approx. £33.00 per person per night, including wide choice of breakfast.
One double, en suite and one twin, with 2 foot 6 inches beds that can be zipped together, plus private bathroom opposite.

Contact: Rosemary Harley, 26 Temple End, Harbury

Tel: 613402 or 07747 772 497

Email: rosemary@braesidebb.co.uk

Website: www.braesidebb.co.uk

SURVEY, VALUATION & MEDIATION

THE GREEN ROOM

31 MANOR ROAD, HARBURY CV33 9HY

green

chameleon



Locally based RICS Chartered Surveyor Registered Valuer & Accredited Mediator

Homebuyer & Building Surveys

Mediation - Family & Commercial

Help 2 Buy/Shared Ownership/Probate Valuations

Party Walls Awards

Offering a friendly, professional & honest service

T: 01926 612121 M: 07796 575716 E: info@greenchameleon.net W: www.grechameleon.net



D F J HEWER BUILDERS LTD



DESIGN AND BUILD COMPANY

*Established over 56 years working for the community
for all your building requirements*

We build today with an eye to the future

MAINTENANCE – REPAIRS

EXTENSIONS – ALTERATIONS

LISTED BUILDING CONSENTS

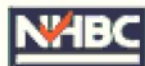
SPECIALISTS IN LISTED BUILDING WORKS

PLANNING AND BUILDING REGULATION APPROVALS

Telephone: 01926 813070 or 813627

Email: admin@hewerbuilders.co.uk

Web: www.hewerbuilders.co.uk



Registered house builders

Auction Sales & Valuations

Valuation, collection and auction service of individual items through to complete property and commercial clearances.

Call for a free no obligation quote or email **info@leauction.co.uk**

SALE ENTRIES NOW INVITED

www.leauction.co.uk



LOCKE & ENGLAND

AUCTIONEERS & VALUERS

**01926
889100**

**18 Guy Street,
Leamington Spa,
CV32 4RT**

HARBURY PARISH COUNCIL

Unit 2, Bull Ring Business Centre
Church Terrace Harbury CV33 9HL
Tel: 614646

Website: www.harbury-pc.gov.uk

Open: Monday - Thursday
10.00am - 12.00pm

CHAIRMAN:

Tim Lockley

Email: chair@harbury-pc.gov.uk

CLERK:

Alison Biddle

Email: clerk@harbury-pc.gov.uk

Parish Council meetings are
open to the Public.

To speak on any issue, please
contact the Parish Clerk.

Rollason

Fencing and Sheds
EST 1964



You've seen the rest now see
the BEST!

Professional erection service available
(01926) 612066 or 613009.

Mobile: 07748946142.

**GOOD FENCING
MAKES
GOOD NEIGHBOURS!**

**FREE
QUOTE**

Harbury Village Library & Biblio's Café

Harbury Village Library

Browsing & Borrowing, Click and Collect, Home Delivery
and Takeaway Shelves for Children's and Adults' Books,
Audio Books, Jigsaws, and Board Games. Public Access
Computers, WiFi access and Printing Facilities

Biblio's Café

A selection of hot and cold drinks, cakes and baked
goods either as takeaway items, which can be
consumed in an area of the car park, or served at your
table inside the cafe, depending on current
Government regulations.

Please check in the Harbury Ladbroke News, on Social
Media, www.HarburyVillageLibrary.org.uk and village
notice boards for information about current opening times



Harbury Village Library, The Wight School, High Street,
Harbury CV33 9HW 01926 258776
01926 258776 - library@harburyvillagelibrary.org.uk



Harbury Senior Citizens Committee Update

We ended up with 76 guests this year which is not surprising given everything that has been happening the last couple of years. We did have some new people this year who having reached 80 years old, thought it about time to come along to our party and they enjoyed themselves! It would appear that everyone else enjoyed it too, given the thank you cards, letters and their thanks on the night. The



entertainment was provided by Ken and Phil who played music and songs from their back catalogue of 50s, 60s and 70s. We obviously had some Strictly fans who wanted to strut their stuff as well. Great fun for all. Thank you both for coming along to entertain us again.

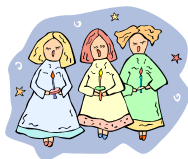
We must also thank everyone who donated raffle prizes. They were all much appreciated. Also to Paul at The Door Store.



As a committee, we could not run this event without the help of all the volunteers to help us set up the hall and serve the meals and clear up afterwards. In addition to the Harbury Scouts, we also had Mark and Heather, Trish, Peter and the partners of the committee members. Thank you to everyone who came along to help and we hope to see you again next year. Please.

As we roll into 2022, there is still uncertainty about what we will be able to do next year. However, the committee would like to wish you all a Happy and Healthy New Year and we look forward to seeing you at our events during the year and for giving us your support. As usual, look out for our schedule of activities in the Harbury and Ladbroke news and occasionally on Facebook!!!

Mike McBride,
On behalf of the Harbury Senior Citizens Benefit Association



Winter Woollies Christmas Concert

The Winter Woollies Christmas Concert went ahead safely and happily on Saturday 18th December and was much enjoyed by the audience who braved the rather chilly church, wrapped in the much vaunted winter woollies, and peering over their masks (apologies if we didn't recognise some of you on the day!). The audience was both welcoming, and excited by the rare chance to hear live singing.

Both choirs enjoyed performing in church for the first time in two years and the two different genres of Christmas music and carols were a beautiful contrast.

A huge thank you to Warwickshire Singers and Harbury Folk Club Choir, and their respective musical directors (David King and Peter McDonald). Our thanks go, of course, to all those who planned, prepared and helped out, including the serving of mulled wine and mince pies.

Our wonderful and enthusiastic audience has helped us to raise a further £880 for the Heat Light Stone Appeal, an excellent result.

A video of the concert will be available soon on the Church website. A Happy New Year to all!

The Concert Team



Ballroom for Beginners at Harbury Village Hall

Looking for some together time as a couple? Why not try something different and come and give Ballroom and Latin American dance a go?

Classes run on Wednesday evenings at Harbury Village Hall. As well as an opportunity to learn a new skill together, it's a great social night.

The next course starts on 12th January 2022 and lasts for six weeks. The 60 minutes Beginners' class starts at 7.30pm, and is a friendly class which runs at a steady pace to enable everyone to feel comfortable whilst learning.

If you've danced before, why not brush off those shoes and get back on the dance floor as we have an improvers' class which runs from 8.30pm?

Interested? Contact Jaqui at harbury.ballroom.dancing@gmail.com

Gordon Robbins



Wednesday walks

In December the meal at the Friendly Inn, Frankton, was enjoyed by 14 members; we will try to go there again later in the year. The January walks will be on the easy side, so we can enjoy some fresh air even if the weather is dreary. Then we hope to see some snowdrops in February, if we are right with the timing. So, if you've read these articles and felt tempted to join us, why not now? You will be very welcome. Not sure? Ring Gillian (614809) and I will tell you more.

Gillian Hare

Make a Difference - Make an Ecobrick!

Ecobricks enable anyone, anywhere to put the potentially problematic properties of plastic to good use.

And making one is easy!



Most supermarkets will now take many types of recyclable plastic, but our bins are still full of the non-recyclable kind.

An Ecobrick is a PET bottle (a one litre bottle, such as a cola or tonic bottle) that you pack solid with clean and dry non-recyclable plastic. These Ecobricks can then be used to build structures (such as planters in school grounds), whilst locking away the plastic and preventing it from polluting the environment.

Plastic pollutes because it does not biodegrade. It breaks down into tiny pieces, known as microplastics. Microplastics which enter rivers can be ingested by animals and cause their intestines to become blocked. Or trick them into thinking they don't need to eat, leading to starvation.

Many toxic chemicals can also stick to the surface of plastic and, if ingested, these contaminated microplastics could expose animals to high concentrations of toxins. By packing the plastic into Ecobricks, it is effectively secured from degrading into toxins and microplastics.

Making an Ecobrick is easy.

Save your non-recyclable plastic, make sure it is clean and dry, then cut it up into 2cm squares and fill your clean and dry 1 litre plastic bottle. Use the end of a wooden spoon to ram down the contents because your bottle needs to be packed solid – it must weigh at least 360 grams.

Look out for more information from the Harbury Environmental Group about where to bring your completed Ecobricks in the New Year!

Make an Ecobrick and make a difference to reduce plastic pollution!

1. <https://www.ecobricks.org/what/>
2. <https://www.nottingham.ac.uk/connectonline/research/2018/the-big-problem-of-microplastics.aspx>
3. <https://www.ecobricks.org/how/>
4. <https://gobrik.com>
5. <https://www.youtube.com/watch?v=7JDDJQ-50hA>

Amanda Randall



Harbury District Councillor Update

Happy New Year!

As we look forward to new beginnings, we do reflect on the past. There have been difficult times for many in so many ways this past year, especially for those who have lost loved ones.

I attended the celebration for Keith Dormer. It was good to see so many people in attendance, including our last Reverend! The love and support for the family was immense. I wish them well for the future.

Council business has eased over Christmas, but I am sure will be back to full throttle soon. There are many changes to come and by working together we will manage these I am sure. I am very engaged with local personal matters (my case load) and I do feel the frustration of some residents over certain behaviours of folk in our community. I can say I am involved and the necessary authorities are on board to progress matters and I will ensure all that can be done, will be.

Harbury is a wonderful village well led by your Parish Council and I look forward to another year working with you all.

Harbury & Ladbroke News, thank you for your support and letting us have a voice.

I am working in our community as a District Nurse so please say hello if you see me. I will take this opportunity to thank all my colleagues in Health and Social Care, without them we would be lost!

I am proud to work with them and support them as a local Councillor. I am so proud and thank the Queen for recognition of their work, especially on receiving The George Cross - NHS

I was front line from the start of the pandemic and clearly remember the fear seen in the eyes of colleagues as we did not know what to expect, yet they still came to work every day. They are now exhausted so please support wherever you can. It has been a tough time for all.

(On 5th July 2021, on the 73rd anniversary of the NHS, and during the global Covid19 pandemic, the Queen awarded the George Cross to the National Health Service staff of the United Kingdom. The Queen wrote in a personal message: *"It is with great pleasure, on behalf of a grateful nation, that I award the George Cross to the National Health Services of the United Kingdom. This award recognises all NHS staff, past and present, across all disciplines and all four nations. Over more than seven decades, and especially in recent times, you have supported the people of our country with courage, compassion and dedication, demonstrating the highest standards of public service. You have our enduring thanks and heartfelt appreciation. Elizabeth R."* I wish the Queen well and hope she finds some solace through her own difficult times. Thank you!

Let's all look to the future together, be kind, be supportive and most of all - Happy New Year!

Jacqui Harris - District Councillor Harbury Ward
jacqui.harris@stratford-dc.gov.uk



Repair Cafe

Our next Repair Cafe is on Saturday 22nd January from 2pm to 4pm at Harbury Village Library. Bicycles, household, mechanical and electrical items, wooden furniture and picture frames, clothes, textiles and soft toys, leather, canvas, and webbing. And, of course, sharpening for knives, scissors, shears and garden tools.

In 2022 we plan to hold a Repair Cafe on the fourth Saturday of each month. If you've got any questions, or would like to volunteer as a repairer, please send an email to repaircafeharbury@gmail.com

Rich Fowler



**Southam
College**

Southam College Community Education

Southam College Community Education Centre offers a varied programme of daytime and evening courses in Southam and the surrounding villages. Subject areas include Creative Arts and Crafts, Fitness and Wellbeing, General Interest and Personal Development.

The Spring term starts from Monday 10th January 2022.

For further information about Spring term courses, venues and fees, visit our web page www.southamcollege.com/about/community-education

For enquiries and to check availability/book, contact Sue Hawthorn on 01926 810942 or email commmed.s@welearn365.com

The office is closed during the school holidays and re-opens on Wednesday, 5th January.

Sue Hawthorn Tel: (01926) 810942
Southam College Community Education Centre



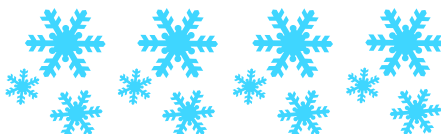
Letters to the Editors

Dear Editors

Many thanks for all the Christmas cards I have received. I hope you all had a lovely time and may the New Year be happy and healthy.

Love

Brenda T



Harbury & Bishops Itchington Surgeries

 **01926 612232**

www.harburysurgery.org.uk

harbury.surgery2@nhs.net

HARBURY SURGERY

| | Monday | Tuesday | Wednesday | Thursday | Friday |
|-----------|--------------------------------|--------------------------------|--------------------------|------------------------------------|------------------------------------|
| AM | | Dr H Parkinson | Dr D Lewis | Dr K Panting | Dr D Lewis |
| | Dr R Collins | Dr M Wood | Dr S Chard | Dr S Chard | Dr M Wood |
| | Alice Woodward (Phlebotomy) | Rachael Pearson (HCA) | Rachael Pearson (HCA) | Rachael Pearson (HCA) | Janette Robson (Practice Nurse) |
| | Dawn Gibbs (Practice Nurse) | Dr D Lewis | | | Rachael Pearson (HCA) |
| PM | Dr D Lewis | Dr D Lewis | Dr M Wood | Dr S Chard | Dr M Wood |
| | Dr R Collins | Dr H Parkinson | Dr S Chard | Dr H Parkinson | Dr H Parkinson |
| | Rachael Pearson (HCA) | Dawn Gibbs (Practice Nurse) | Rachael Pearson (HCA) | Janette Robson (Practice Nurse) | Janette Robson (Practice Nurse) |
| | Dawn Gibbs (Practice Nurse) | Rachael Pearson (HCA) | | Rachael Pearson (HCA) | |

For Harbury ring 01926 612232 during their opening hours

(doors open Monday - Friday 8.30am to 12.00pm and 1.30pm to 6.00pm)
(Telephone lines open Monday - Friday 8.00am to 12.15pm and 1.30pm to 6.15pm)

For the practice dispensary please email harburydisp@harburysurgery.nhs.uk
or call 01926 612232 and select dispensary (Lines open Monday - Friday 2.00pm to 5.00pm)

Prescription collection hours from Harbury Surgery dispensary are
Monday - Friday 9.00am - 12.00pm and 3.30pm - 6.00pm

BISHOPS ITCHINGTON BRANCH SURGERY

| | Monday | Tuesday | Wednesday | Thursday | Friday |
|-----------|--------------------------------|--------------------------------|--------------------------------|------------------------------------|------------|
| AM | Dr D Lewis | Dr K Panting | Dr M Wood | Dr H Parkinson | Dr S Chard |
| | Rachael Pearson (HCA) | Dawn Gibbs (Practice Nurse) | Alice Woodward (Phlebotomy) | Janette Robson (Practice Nurse) | |
| PM | Dr K Panting | CLOSED | Dr D Lewis | CLOSED | CLOSED |
| | Dawn Gibbs (Practice Nurse) | | Rachael Pearson (HCA) | | |

For Bishops Itchington ring 01926 612232 during their opening hours

(doors open Monday - Friday 8.45am to 12.00pm and on
Monday and Wednesday afternoons 3.45pm to 6.00pm)
(Telephone lines open Monday - Friday 9.15am to 11.45am and on
Monday and Wednesday afternoons 4.00pm - 6.00pm)

CONGRATULATIONS, THANKS AND ACKNOWLEDGEMENTS

If you would like to include:



- A Birthday message
- Congratulations to anyone for their achievement
- Wedding or special occasion wishes
- Thanks to someone



We will be more than happy to include it in the magazine.

There is no charge for this service, just email your message to articles@hlnews.co.uk or drop it into Harbury Pharmacy by the advertised deadline date.

February Edition - Harbury & Ladbroke News

Adverts to: 36 Manor Orchard, Harbury or e-mail to advertising@hlnews.co.uk by 20th January

Articles to: Harbury Pharmacy, High Street or e-mail to articles@hlnews.co.uk by 5.30pm, Thursday 27th January

Dentist

Optometrist

Podiatrist



**FOOT
& GAIT
CLINIC**
01926 811272

*We fix
the feet
others
can't fix*

www.healthfirstsoutham.co.uk

ADVERTISING IN THE HARBURY & LADBROKE NEWS

EMAIL: ADVERTISING@HLNEWS.CO.UK

TEL: 01926 612687

| | ¼ PAGE | ½ PAGE | FULL PAGE |
|----------------------|-------------------|---------------|----------------------|
| 1 MONTH | £10.50 | £19.00 | £33.50 |
| 3 MONTHS | £28.00 | £49.00 | £89.00 |
| 6 MONTHS | £51.00 | £90.00 | £165.00 |
| 12 MONTHS | £94.00 | £168.00 | £315.00 |

Adverts with payment to:
Sue Dronfield,
36 Manor Orchard, Harbury
by the 20th day of the month

*Cheques payable to 'Harbury & Ladbroke News'
or BACS details upon request*



Leamington Mazda



Tachbrook Park Drive, Leamington Spa, CV34 6RH

www.green4motorcompany.co.uk

01926 337447

With over 20 years of experience, Leamington Mazda is the top choice for test driving and purchasing the latest Mazda models and a range of used cars, with our passionate and friendly team on hand to provide you with the best advice and service.



Whether you're interested in the stylish MX-5, the practical Mazda3 or the all-new electric MX-30, we have the car to suit you and your individual needs.

We also offer aftersales services in order to maintain vehicle performance. With the knowledge and expertise of our aftersales team, you can increase the lifespan of your vehicle, and receive genuine parts and accessories specifically designed for each model in the Mazda range.

But don't just take our word for it...

"Sales staff very helpful and not hard sell but factual"

- David

"Honest and reliable. I have had cars from this garage for the last 20 years and have always been impressed by their excellent service."

-Mark

"Just bought a car online from this dealership and everything was fast and efficient, even down to delivery which was next day. Both the salesman and delivery driver were very friendly. I would recommend this dealership without hesitation."


-Terry

"Very helpful parts and service department"

- Joanna

"Due to the pandemic, I bought at distance over phone and email. Steve kept us fully informed at all times. I definitely recommend this dealership and would purchase from them again."




- Sally




Slimming World taste the freedom

Contact your local Slimming World Consultant
and join a warm and friendly group today!

| | | |
|------------------------------|------------------------------------------|-----------------------------|
| WEDNESDAY EVENING | TUESDAY MORNING & EVENING | THURSDAY EVENING |
| Harbury RFC | Southam Sports & Social club | Kineton Scout Hut |
| 5.30 & 7pm | | Elaine 07763200836 |
| Jodie 07771 930568 | Elaine 07763200836 | |

   [slimmingworld.co.uk](https://www.slimmingworld.co.uk)





Meeting Point

We meet on the **First Tuesday** of every month at

The Crown Inn, Crown St., Harbury

Lunches start at 12.30pm - cost £6.00

Dates for this year

1st Feb- bookings please by 28th Jan

1st Mar - bookings please by 25th Feb

5th Apr – bookings please by 1st Apr

3rd May – bookings please by 29th Apr

7th June – bookings please by 3rd June

More details from Fliss Harris 612395

or Gemma Took 614193

~~ www.vhs2dvd.info ~~



**Have your treasured VHS videos transferred to
DVD or converted to MP4 files**

***Also most camcorder/memory card formats
converted to DVD or MP4***

Makes a great birthday gift!

Locally based - visit website

Or call 07733 368245 after 6pm



TONY'S ROOFING

Roof repairs - Tiles/Slates, Re-pointing, Ridges, Leadwork, Chimney repairs,
Flat roofs (torch on felt), Velux windows fitted, UPVC Soffits, Fascias & Guttering,
Gutters cleaned

We won't be beaten on price. All work guaranteed Tel: 07881 411265



YOUR LOCAL LOG SUPPLIER



THE LOG DOG

Order your seasoned logs from us and you may even get to meet The Log Dog. Delivering to local villages throughout Oxfordshire, Warwickshire and Northamptonshire.

Contact Joe Attfield on 07866 282992.

www.amlogs.uk

Est. 1956



GROSVENOR

Independent Financial Planning



specialists in

- Retirement Planning
- Investment Advice
- Mortgages
- Life Assurance
- Income Protection

EQUITY RELEASE ADVICE SERVICE

Have you considered accessing the equity in your home?

You may be able to release cash to pay off an existing mortgage, provide you with a regular income, carry out some home improvements or treat yourselves to that holiday you have always wanted.

We will spend time understanding your financial circumstances in detail so that we can recommend the most appropriate product for you. The first consultation is totally free of charge and without obligation.

For more information call **Alan McMahon** DipPFS, Certs CII (MP & ER).

Tel: 01926 814049 or 07973 889730

or email: alan.mcmahon@grosvenorifp.co.uk

Grosvenor Independent Financial Planning is authorised and regulated by the Financial Conduct Authority (Registration No 624572). A lifetime mortgage is secured against your home. Typically, there are no monthly repayments. To understand the features and risks, ask for a personalised illustration. Lifetime mortgages will reduce the value of your estate and may affect your entitlement to means tested benefits. Our typical fee is £895 which can be paid from the advance.



Modern Homes

for everything inside your home



**Pop in for a chat or call to book
a free consultation on 01926 883 338**



As a family business in our 52nd year of trading we are proud of our exceptional levels of customer care and quality of service.

Let our award winning team manage the planning, design and installation of your new kitchen, bathroom and bedroom.

We will guide you at every stage from concept to completion, ensuring a stress free experience that delivers the room of your dreams.

We have a fantastic team of quality tradesmen from bathroom and kitchen fitters to plasterers, plumbers, carpenters and many more.

Whatever your project involves we can provide the help you need.

With a wide range of products from market leading British suppliers, quality and value for money is guaranteed.

No matter what your style and taste we can come up with a design perfect for you.



*Find us on Facebook, Twitter, Pinterest,
Houuzz and YouTube.*

**www.modernhomesleamington.co.uk
info@modernhomesleamington.co.uk**

37 Longfield Road, Leamington Spa CV31 1XB

WIPE-OUT WASPS



7-day service
Competitive rates
Full pest control service



For a local, friendly service tel
Alan or Dawn 07867 768 533 / 01926 889711
www.wipe-out-pest-control.co.uk

HANSONS
Auctioneers and Valuers

FREE ANTIQUES VALUATION DAY

St Francis of Assisi Church Hall,
110 Warwick Road, Kenilworth CV8 1HL

Thursday 13th January 10am - 4pm

Kate Bliss - Jewellery and Silver

**William Hayward - Coins, Medals and
General Collectables**

Consigning for Jewellery and Fine Art Auctions and Specialist Auctions

Free Home Visits for large/multiple items,

House clearance and downsizing advice

Probate and Insurance Valuations

For further information please contact Carol Jones

Hansons Regional Manager on 07802 839915

cjones@hansonsauctioneers.co.uk www.hansonsauctioneers.co.uk

Hansons Auction Centre, Heage Lane, Etwell, Derby, DE65 6LS

Refreshments in aid of the NSPCC

TIRED OF SEARCHING THE INTERNET FOR A COMPETITIVE INSURANCE QUOTE?

LET YOUR LOCAL EXPERIENCED BROKER DO THE LEG WORK
FOR YOU?



Please contact Deb, Sue or Hannah on
01926 812574

Reynolds Insurance Services Ltd **Independent Insurance Advisors**

5 High Street, Southam, Warwickshire, CV47 0HA

enquiries@reynoldsinsurance.co.uk | www.reynoldsinsurance.co.uk

Regulated by the Financial Conduct Authority

Ed's Music Tuition

- Do you want to learn keyboards, guitar or ukulele with a qualified teacher with a passion for music?
- Lessons available for all ages.
- Learning an instrument is rewarding and great fun, and I can help you on your way.
- Fully CRB checked.
- Competitive rates and flexible timetable with lessons tailored to your own individual learning style and needs.
- Tuition in playing, reading music, performance and theory.
- Give me a call to discuss your musical future!



Ed Hudson, Harbury. Mob: 07801 430029
email: eddhudson@me.com



FOR ALL YOUR FENCING NEEDS

New Fences | Replacements
Supply and Fix - Repairs

ALL WORK GUARANTEED

FREE QUOTATIONS



A.J. FENCING

t: 01926 499751

m: 07974 918098



Simons Systems



Available for all your computer requirements including:
 PC's & Laptops, New & used systems, Repairs & upgrades
 Virus/Malware Removal, Data back & Windows re-installation
 Upgrading memory/Hard drives/Rom drives/Graphics, etc
 Internet - modems fitted, wireless, networking.
 Any repairs or computer problems. **No call out charge**

T: 01926 316 119

E: sales@simons-systems.co.uk

M: 07751 811 097

W: www.simons-systems.co.uk

miles of tiles

(midlands) ltd

ceramic . porcelain . natural stone . sanitary ware . bathroom furniture



Leamington Spa

Unit 1-3 St Mary's Road, Sydenham
 Industrial Estate, Leamington Spa,
 CV31 1PR

Email: sales@milessoftiles.co.uk

Tel: 01926 312777

www.milessoftiles.co.uk



Coventry

96-100 Foleshill Road,
 Coventry, Warwickshire
 CV1 4JJ

Email: coventry@milessoftiles.co.uk

Tel: 02476 228800



Rugby

103-107 Albert Street
 Rugby, Warwickshire
 CV21 2SW

Email: rugby@milessoftiles.co.uk

Tel: 01788 546622

Monday to Friday 8am - 5.30pm & Saturday 9am - 5pm



We won't be beaten on price...

Stocked items only and not subject to any other discounts or offers.

20% OFF
 Only with
 this
 advert
H&L News

Nifty Needle

Curtains and Soft Furnishing

Nifty Needle specialise in creating stylish custom curtains, blinds and soft furnishings, individually designed to create beautiful solutions.

Free measuring service.

At our shop in Kineton we now stock a range of home wares, including lamps, cushions, footstools and other items to accessorise your home.

We're open Tuesday to Friday 9:00am to 5:00pm
and Saturday 9:00am to 2:00pm.

Nifty Needle Curtain Workroom, 1 Banbury Street, Kineton, Warwickshire, CV35 0JS
Tel: 01926 641741 E-mail: info@niftyneedle.co.uk Website: www.niftyneedle.co.uk



Family breakdown? We are here to help

It can be hard to imagine a positive future when you are going through a family or relationship breakdown.

Our friendly and expert team at Alsters Kelley can guide you through a range of issues to find practical solutions for a brighter outcome.

kind, helpful, excellent

- Free initial 30 minute appointment
- Family mediation available
- Straightforward and practical advice
- Legal Aid available, subject to eligibility
- Personalised service
- Video calls available

To book an initial free appointment, please contact **01926 356048**
or email simone.bartha@alsterskelley.com
chloe.mcauliffe@alsterskelley.com

1B Daventry Street, Southam CV47 1PH
www.alsterskelley.com





TOM RODGERS Tree Services

All aspects of
tree and hedge work

Stump
Grinding

Free
Estimates

Competitive
Prices

Local Trader
20 Years

Member
of
Arboricultural
Association

Tree
Reductions

24 hour
call out

Professional and Friendly Tree Care Service

www.tomrodgers.co.uk Tel: 07958 794180 or 01926 710383

4 Nelsons Way, Stockton, CV47 8PL

Ever thought of extending your
home?

Does it have the potential to
change?

Do you need more space?

Are you looking for a local design practice that
can prepare proposals for your ideal home?

Contact Chris Hill M.C.I.A.T

Call: 01926 613780 (evenings)

0777 218 9266 (mobile)

Email: chris.hill100@btinternet.com

A Member of the Alliance of Private Sector Practitioners

Jackie Biddle Healthy Feet are Happy Feet

Foot Health Practitioner



Dip CHIP MPS Pract
CRB Checked

• Nail Trimming

• Corn Removal

• Verruca Treatment

• Ingrown Toenails

• Calluses Reduced

• Footcare for Diabetes

Home Visits Telephone

T: 01926 612503

M: 07872 907429

LOCKMEDICS

Mobile Locksmiths

Upvc - Multipoint locks
All B.S. locks supplied and fitted
Domestic and Commercial
Security Upgrades and Advice
Key Cutting

Tel: 01926 885560

Mob: 07971 818892

www.lockmedics.co.uk



Looking for a room?

Long or short stay
accommodation
Harbury village location
Secure parking



To book, call Chris or
visit our website:
07775 643 673

www.just-rooms.co.uk



APRICUS PEST CONTROL



RODENTS – MICE, RATS & SQUIRRELS



MOLE TRAPPING



RABBIT CONTROL



WASPS NESTS



PROPRIETOR – GILES BRADLEY

FRIENDLY LADBROKE BASED SERVICE AVAILABLE MOST DAYS

COMPETITIVE RATES

FULLY INSURED

NATIONAL PEST TECHNICIANS ASSOCIATION (NPTA) MEMBER

Mob – 07930 351375

email – apricuspestcontrol@gmail.com

www.apricuspestcontrol.com

Childcare from 3 months to 5 years of age

at Banana Moon Day Nursery Harbury.

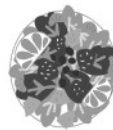


Providing a safe, caring environment for children from 3 months to 5 years of age.

- Open 7.30am – 6.30pm
- All major childcare vouchers accepted
- Full-day and half-day sessions available
- Highly experienced, friendly staff
- Sibling discount
- Outdoor learning environment.



Outdoor learning environment



Home-cooked food

To find out more or to book a visit, call **01926 612374** or email info@bananamoon-harbury.co.uk



Banana Moon Day Nursery Harbury
Ivy Lane, Harbury, Warwickshire CV33 9HN
Call us on **01926 612374**
or visit bananamoon-harbury.co.uk

*Subject to terms and conditions. *Government funding available.

Need an Electrician? Try our 24 hour Emergency Response Service

ELECTRICAL

- Loss of Power
- Fuse boards
- Rewiring
- Smoke detectors
- Fault finding
- Security Lighting
- Lights/Sockets/Cookers/Showers



Tel. 01926 293 515/07856 250 619
www.lightworksservices.co.uk

Card payments accepted. Full T&Cs on website.

FRIENDLY · RELIABLE · PROFESSIONAL

LOCAL ELECTRICIAN**Fully Insured Free Estimates**

- Fault finding
- Outdoor lights & sockets
- Fuse board replacements
- Power to outbuildings: sheds, workshops & home offices
- Extra sockets & switches

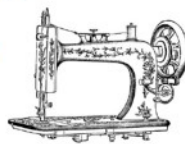
“Steve's work is excellent. I would definitely recommend him to anyone.”

“Very polite & efficient. The job was done on time and to a high standard.”

**ROOLIVE**

Call Steve: 07792 971018
Email: steve@roolive.co.uk
www.roolive.co.uk

Drop Dead Gorgeous Curtains.



Beautiful Bespoke Curtains, Cushions and Roman Blinds all made to measure.

Curtain alterations and restorations also undertaken. All items are handmade by myself, a fully qualified soft furnisher.

From fabrics to poles, all your needs are catered for.

I'm also happy to work with customers own fabric.

Free measuring service, no obligation quotes and free curtain fitting and dressing.

Call Sharron for friendly and helpful advice, or to make an appointment on 07760395805 or 01926 718220
Email: dropdeadgorgeouscurtains@gmail.com
Website: www.dropdeadgorgeouscurtains.com
Find me on Facebook and Instagram.

LOVE TO DANCE? SOUTHAM CLASSES

FREE TRIAL CLASS**Ballet****Tap****Modern****Gymnastics****Musical Theatre****Street Dance****Commercial****Contemporary****Mini Movers****Funky Dance****Cheerleading****Adult Classes**

★ confidence ★ fun ★ friendships

Professional Purpose Built Dance Studios in

Southamwww.loveballet.co.uk

☎ 07921 853773



FOR ALL
YOUR ROOFING
NEEDS

AJ ROOFING

- NEW ROOFS
- REPOINTING
- FLAT ROOFS
- REPAIRS
- GUTTERING

FREE
ESTIMATES
ALL WORK
GUARANTEED
INSURANCE
WORK

ESTABLISHED
16 YEARS

NO JOB TOO
SMALL

TEL: 01926 499751

M: 07974 918098

www.ajroofing.org.uk



www.stratfordlandscapes.com

(We live in Harbury)

Small garden experts • Garden Design • Porcelain & other types of Paving
Real & artificial lawns • Stunning plant collections • Decorative Pergolas & Fences
Privacy Solutions • Low Maintenance Gardens

"Let Dave & the boys work their magic & you won't be disappointed"

Contact David Lewis on 01789 721851 or 07990975158 or visit our website



Emily Jayne's

Hair & Beauty Salon

Poplar Road, Bishops Itchington CV47 2RQ - Tel: 01926 611944

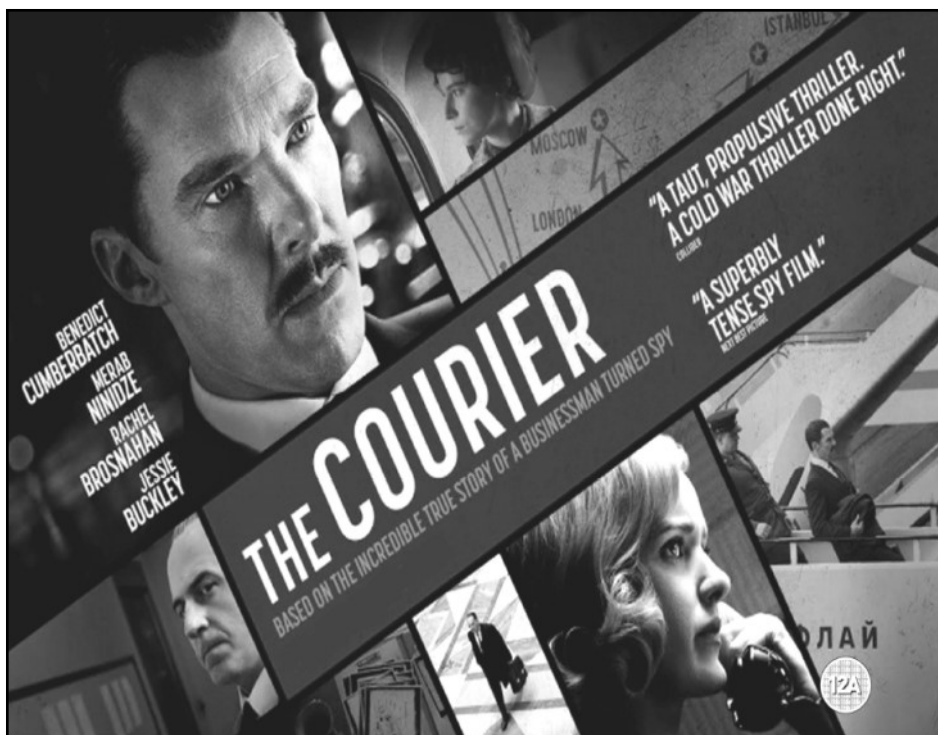
- * All types of hairdressing services
- * Brazilian blow dry * Weekly Bella U Aesthetics clinics
- * Luxury facials & Pedicures, Hot stone massages,
- * All types of waxing. * Individual lash extensions
- * Acrylic & Poly Gel nail extensions

*** SUNBED ***

Why not treat someone this Christmas? Gift vouchers available.
Unisex Salon

Opening hours: Tuesday to Thursday 9am till 7pm
Friday 9am till 6pm Saturday 8.30am till 3pm.

L'ORÉAL
PROFESSIONNEL



Sat. January 15th 2022

Doors open 6.15pm Film begins 7pm

**Tickets: £11 to include fish'n'chips & 2 raffle tickets
OR £6 to include 1 raffle ticket only**

All tickets available in advance from
Harbury Chemist High St.
CV33 9HW 01926 612 858

Spare £6 tickets sold on the door
subject to availability.

Bar.

Any inquiries to: Chris Rutherford 613757

Moving Pictures

**LIVE
& LOCAL**

DARBY WOODWORK

Bespoke & Handmade

Christopher Darby
Cabinetmaker

Tel: 07835 379133



- Bespoke Storage - Built in wardrobes, under stair drawers, alcove shelving etc
- Handmade furniture - solid wood, quality joinery and built to last

Email: darbywoodwork@gmail.com

Web: www.darbywoodwork.co.uk



SUNILMEHRA

PAINTING & DECORATING

PAINTING IS AN ART. YOUR SPACE IS OUR CANVAS.

T: 01926 613158 M: 07976 241949 E: s.mehra@btinternet.com



Your Local Professional Chimney Sweeping Service

Counted as essential work

Open Fires, Stoves, Rayburn and Aga's Cows
& Bird Guards Fitted. Bird Nest Removal



Please contact Martin Jakeman
07816 337962 or 01926 614695

Email: theshiresweep@gmail.com
www.theshiresweep.co.uk



ROOFS | PATIOS | DRIVEWAYS | GUTTERS | WINDOWS | & MORE

WWW.MOSS-GONE.COM

07788 574 586 | TOM@MOSS-GONE.COM



Proud members of
checkatrade.com
Where reputation matters



DOOR & KITCHEN STORE

Making your space a better place

Quality Fitted Kitchens - Internal & External Doors - Supply & Fit

www.doorandkitchenstore.co.uk 01926 888806

Southam Carpets



Visit our shop to see a large range of Carpets,
Vinyl Flooring, Karndean, Curtains and Blinds.

Free expert advice.
Professional installation.
Call now for a free Quote.



01926 814944 - www.southamcarpets.co.uk

THE SALON

LADIES & GENTS HAIRDRESSERS

TO BOOK AN APPOINTMENT CALL 612400 & 07778 454528

CHAPEL STREET HARBURY



10% DISCOUNT
WITH THIS ADVERT

DOMESTIC AND COMMERCIAL HIGH QUALITY
CLEANING FOR CLIENTS WHO DEMAND THE BEST

BEFORE



AFTER



Tel: 01926 889 691

Email info@steamingsam.co.uk
www.steamingsam.co.uk

WHAT WE DO:

- deep 'van mounted' carpet cleaning
- stain removal
- fabric protection
- specialist oriental rug cleaning
- hard floor, tile and grout cleaning
- upholstery cleaning
- leather restoration
- end of tenancy cleaning

...AND MORE!

STEAMING SAM specialise in **professional** cleaning, work is carried out by **fully trained, trustworthy** technicians and we are insured for your peace of mind.

Call us or check out our website for further information