

Harbury & Ladbroke News



APRIL 2022



If you would like to advertise in this space please email
advertising@hlnews.co.uk or call Sue on 01926 612687



Reliable
Comfortable
Discrete

Events
 Meetings
 Days Out
 Airport / Seaport



bchauffeurdriven.net

warwick@bchauffeurdriven.net

Chauffeur Service

Ensure that you reach your
 destination on time and relaxed.

07817897813

Fully qualified and licenced chauffeur

BCD

 B CHAUFFEUR DRIVEN
 Harbury

This magazine is available by subscription and delivered within Harbury,
 Deppers Bridge and Ladbroke. Telephone 01926 612009 for details.

HARBURY & LADBROKE News

Published monthly to reflect all aspects of local life

April 2022

No. 577

EDITORIAL	2
HARBURY DIARY & REFUSE ROTA	3
FROM THE RECTOR & CHURCH NEWS	5
LADBROKE NEWS	8
HARBURY PARISH COUNCIL	21
CLUBS & SOCIETIES	22
SPORTING ACTIVITIES	32
EARLY YEARS & SCHOOL	35
LIBRARY & CLUB	39
GARDENING & NATURE	43
GENERAL SECTION	45
LETTERS TO THE EDITORS	48

Editorial Office

31 Binswood End

☎ 612155

✉ articles@hlnews.co.uk

Article drop off point:
Harbury Pharmacy,
High Street

Advertising Office

36 Manor Orchard

☎ 612687

✉ advertising@hlnews.co.uk

Distribution Manager

49 Mill Street

☎ 07900 852236

✉ distribution@hlnews.co.uk

Inserts by prior arrangement
with the Distribution Manager

Editorial Team

Chris Barber - Paulette Kavanagh - Peter McDonald
Daralyn Warren - Jackie West - Katy Wiltshire

*The views of contributors are not necessarily those of the Editorial Team.
The Editors reserve the right to amend articles as they see fit.*



EDITORIAL

A round up of local news

Welcome to your new look Harbury & Ladbroke News! With our recent change of printers, we have taken the opportunity to move to lithographic printing of the magazine. This enables us to print in full colour for a similar cost to our previous printing process. We do hope you will agree that being able to publish all photographs in colour as well as using colour elsewhere in the magazine, improves the quality and attractiveness of the News. "But where is the map on the front cover" we hear you cry, "it goes hand in hand with the publication?!" Well, it will not be the last you see of it. Although we plan to use photographs on the front cover, some editions will still see the map printed. In today's increasingly digital society, it was felt that the map was slightly redundant but none the less an important sentimental feature.

Unfortunately, Covid has been rampaging through the village over the last month and, as a number of villagers have caught it, some events have had to be cancelled or postponed. We do hope that with the spring and summer months to look forward to there will hopefully be less virus around!

The past week has been lovely and sunny with unseasonal temperatures and this has brought a number of villagers outdoors tending their gardens. The newly formed Harbury Garden Group are having their first get together before this publication is distributed, but if you are interested in joining the group, please contact the organisers, see page 45. On the garden theme, if you think that your garden is up to being open for the 'Garden Walkabout' to be held in July, do let the organisers know, or, alternatively, make a note on your calendar and enjoy discovering the lovely gardens during the open weekend.

One other thing, don't forget if you would like to use the garden waste service and have your green bin collected, the annual service charge for 2022/23 is £42 from 1st April, see <https://www.stratford.gov.uk/waste-recycling/garden-waste-service> for details.

As well as running a children's Art Workshop and organising a school visit in April, Ladbroke Heritage Group is asking for photographs to be sent in exhibiting aspects of Ladbroke's heritage for their online "*Picture a Day in the Month of May*". Entries should be submitted by 30th April. A coffee morning organised by the Ladbroke Matters Team will be held on Saturday 9th April from 10am in the village hall raising funds for the Ukranian people.

Finally, we extend our condolences to the families of Colin Ingram, Tony Watts and Matthew Wilcox.





HARBURY DIARY

For local events

APRIL

- Sat 2 Coffee Morning, 10.00am - 12 noon, Tom Hauley Room in aid of Harbury WI
10th Annual Folk Club Concert, 7.00 for 7.30pm, Village Hall
- Sun 3 **PASSION SUNDAY**
Holy Communion, 9.00am
Zumba, 9.00am - 10.00am, Village Hall
- Mon 4 Badminton, 10.00am - 12 noon, Village Hall
Martial Arts, Juniors 5.45pm, Seniors 6.45pm, Village Hall
- Tue 5 Bumps and Bundles, 10.30 - 12.00 noon, Tom Hauley Room
Meeting Point, 12.30pm, The Crown Inn (bookings by 1st April)
Harbury Heritage Centre open, 7.00 - 9.00pm, Harbury School - (Park Lane entrance)
- Wed 6 Wednesday Walk, meet 9.40am, Village Hall Car park - Bishops Itchington to Ladbroke (5 miles)
Mothers' Union, 2.00pm, Tom Hauley Room - Gian Clare - Christian view on climate change
Ballroom Dancing, beginners 7.30pm, experienced 8.30pm, Village Hall
- Thurs 7 Holy Communion, 10.00am, Tom Hauley Room
- Sat 9 Coffee Morning, 10.00am - 12 noon, Tom Hauley Room in aid of Harbury Twinning Association
- Sun 10 **PALM SUNDAY**
Holy Communion and Children's Church 10.30am followed by APCM and vestry meeting
Zumba, 9.00am - 10.00am, Village Hall
Messy Church, 3.00pm, Tom Hauley Room
- Mon 11 Badminton, 10.00am - 12 noon, Village Hall
Martial Arts, Juniors 5.45pm, Seniors 6.45pm, Village Hall
- Wed 13 No Wednesday Walk
Pleasant Pastimes, 2.00 - 4.00pm, Tom Hauley Room
- Thurs 14 Holy Communion, 10.00am, Tom Hauley Room
Harbury WI, 7.30 for 7.45pm, Tom Hauley Room - Willow Weaving with Penny Vigers
- Fri 15 **GOOD FRIDAY**
Hour at the Cross, a reflective service, 2.00pm
Ma Bessie's Prohibition Party - The very best of 20s/30s blues and jazz, 7.30pm, Village Hall
- Sat 16 Coffee Morning, 10.00am - 12 noon, Tom Hauley Room in aid of Save the Children
Garden Furniture Sale, 9.00 - 4.00pm, Village Hall
- Sun 17 **EASTER DAY**
Holy Communion, 8.00am
All Age Holy Communion, 10.30am with Easter egg hunt
Zumba, 9.00am - 10.00am, Village Hall
- Mon 18 **EASTER MONDAY**
- Wed 20 No Wednesday Walk
Connections (Dementia) Café, 2.00 - 4.00pm, Tom Hauley Room

- Wed 20 ADVERTS FOR THE NEXT ISSUE TO 36 MANOR ORCHARD,
HARBURY OR EMAIL ADVERTISING@HLNEWS.CO.UK
- Thurs 21 Holy Communion, 10.00am, Tom Hauley Room
ARTICLES FOR NEXT ISSUE TO: HARBURY PHARMACY,
HIGH ST OR EMAIL TO ARTICLES@HLNEWS.CO.UK BY 5.30PM
Meet Bella Osborne, a Warwickshire author, 7.30pm, Harbury Village Library
- Sat 23 Coffee Morning, 10.00am - 12 noon, Tom Hauley Room in aid
of Myton Hospice
Repair Café, 2.00 - 4.00pm, Harbury Village Library
Bingo and Buffett, 7.30 for 8.00pm, Village Club
- Sun 24 FIRST SUNDAY OF EASTER**
Holy Communion and Children's Church, 10.30am
Zumba, 9.00am - 10.00am, Village Hall
Icon Youth Club, 7.00 - 8.30pm, Tom Hauley Room
- Mon 25 Badminton, 10.00am - 12 noon, Village Hall
Martial Arts, Juniors 5.45pm, Seniors 6.45pm, Village Hall
- Tue 26 Bumps and Bundles, 10.30 - 12.00 noon, Tom Hauley Room
- Wed 27 Wednesday Walk, meet 9.40am, Village Hall car park - Lowsonford with
optional pub lunch (4 miles)
Pleasant Pastimes, 2.00 - 4.00pm, Tom Hauley Room
Ballroom Dancing, beginners 7.30pm, experienced 8.30pm, Village Hall
Hereburgh Morris Taster Session, 8.00pm, School Hall
- Thurs 28 Holy Communion, 10.00am, Tom Hauley Room
Harbury Parish Council meeting, 7.30pm, Village Hall
- Fri 29 Harbury WI Spring Party, 7.00 for 7.30pm, Village Hall
- Sat 30 Coffee Morning, 10.00am - 12 noon, Tom Hauley Room in aid
of Meeting Point
Harbury Local Market, 10.00am - 12.30pm, Village Hall


MAY

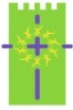
- Sun 1 SECOND SUNDAY OF EASTER**
Holy Communion, 9.00am
Zumba, 9.00am - 10.00am, Village Hall

Dates for inclusion in the Harbury Diary please to:

The Editorial Office, 31 Binswood End, Tel: 612155 or email articles@hlnews.co.uk

Refuse Collection Rota

	Deppers Bridge	Harbury, Ladbroke & Deppers Bridge outlying properties	Collection Week
April	Wednesday	Friday	
	6	8	Grey Bin
	13	15	Green & Blue Lid Bins
	20	22	Grey Bin
	27	29	Green & Blue Lid Bins
May	4	6	Grey Bin
	11	13	Green & Blue Lid Bins
	18	20	Grey Bin



**All Saints
HARBURY**

FROM THE RECTOR

Rev Andy Batchelor

The Rectory, Vicarage Lane, Harbury ☎ 01926 714295 ✉ rev.andyb@gmail.com

I came across a story about a vicar who went into the local infant school to teach the children about Easter. He asked the children what Jesus' first words were after his resurrection. The children, pondered this very seriously, and eventually one little girl was brave enough to put her hand up, and said with a great flourish – "Ta.....da.....!". Well although those words are unlikely, that feeling of surprise and joy are certainly central to the Easter story. It's not an exaggeration to say that Jesus rising from the dead is the key moment in human history, because that was the point at which every human being's destiny changed forever. But this Easter arrives at a particularly dark time as we see the tragedy unfolding in Ukraine, the destruction, the casualties, the death of so many due to the actions of one man. It reminds us that evil is still at work in our world, and that it will always be so until Jesus returns, and everything is restored and remade as the Kingdom of God on Earth. But just as one man has caused so much suffering and death, one man has also brought new life and hope to all of us. Jesus is referred to by the Apostle Paul as 'the second Adam'. We all share the same characteristics of the first Adam, a physical body that eventually wears out, a divided nature that can be seen in acts of heroism and care, but also expresses itself in dark and evil ways as we see at the moment. But through Jesus, the 'second Adam', those who believe in him will share in his resurrection, a new life that continues into eternity, and a transformed nature that reflects God's priorities to serve and care for others. So, while these days are dark, on Easter Sunday the dawn of new light assures us that Jesus has defeated death and evil, and that through him, our lives can be changed forever.



FROM THE CHURCHWARDENS

Liz & Michael

This last month has been a mixed time of joy and sadness as we have welcomed baby Matilda into our family and said our farewells, in this life, to both Beryl and Colin. It may seem an odd thing to say but the baptism and both funerals were all services of joy when the church was full of people celebrating a new life and remembering two lives well spent. Colin served the church for many years as a member of the PCC, a server, a sacristan along with Jenny, as well as other roles. We will miss both Beryl and Colin and the contributions they made to church life.

The church annual meeting will be held after the 10.30am service on Palm Sunday 10th April. We will review the church's activities, elect the PCC and churchwardens for the coming year. All are welcome. That will be a busy day for some of us as Messy Church is in the afternoon where, no doubt, palms will feature. Our last Messy Church was looking at transformations with interesting experiments which featured red cabbage, lava lamps, planting seeds and making play dough. After an interactive story, action songs and prayers in church, all ran back to the THR for a pasta supper and cakes.

We are grateful to Gill Guilford for leading us in a Lenten reflection course "Living Generously" and to the Shakespeare Inn for allowing the space for the group to

meet. The reflections are around the story of Mary anointing Jesus' feet and how she shows us how to live a generous life.

The joint Maundy Thursday communion service will be in Ladbroke Church at 7pm. The Good Friday service on 15th April at Harbury will be at 2pm with an Hour at the Cross. Easter Sunday will be celebrated at 8am and at 10.30am. Both services are with communion and the 10.30am all age service will include an Easter egg hunt.

If you have any questions or want to join in and find out more about what goes on then please contact either of us. Liz McBride (612421) or Michael Vincent (614806).

FROM THE REGISTERS

Baptism:

20th March Matilda Kate Browne

Funeral:

2nd March Beryl Checkley (93 years)

11th March Colin Ingram (82 years)



HEAT, LIGHT & STONE

John Stringer

A Greener Church

"The Archbishop of Canterbury has urged the public not to despair over the climate crisis as he said there are "real reasons to hope" in 2022. Justin Welby used his new year message on BBC One to address the issue, following a year in which the UK hosted the UN's climate summit in Glasgow.

"When it comes to climate change, it is tempting to despair," Welby said in quotes aired on BBC Radio Five. "But there are real reasons to hope. People of every background are campaigning and working for justice".

The Guardian, 1st January, 2022

It is two years since the Archbishop, once Vicar of Southam, launched 'Livelent' on 2nd February, 2020, urging the church to take action to help tackle Climate Change.

We in Harbury are close to receiving permission - in the Church of England's words, a 'Faculty' - to replace the broken heating system in Harbury's village Church, All Saints, with an efficient green system, using radiant panels heated by modern gas boilers convertible in future to hydrogen.

It was in January 2020 that the church boiler finally failed, and it quickly became clear that it could not be revived; nor could the clogged Victorian heating pipes under the church floor be used for heating the building in future.

Since then, representatives of the Parochial Church Council, led by Philip Mayer, who has a successful record in fund-raising and commissioning building improvements - to the village hall for example - have been seeking essential

YOUR LOCAL MAZDA DEALER **LEAMINGTON MAZDA**

Trusted since 1996!



New and Used car
sales, servicing
and genuine parts
and accessories.

Over 25 years
experience as a
Mazda dealer in
the Midlands.



Passionate and friendly
team who have a
relentless focus on
excellent levels of
customer service.



Tachbrook Park Drive, Leamington Spa, CV34 6RH
01926 337447 www.green4motorcompany.co.uk

ADVERTISING IN THE HARBURY & LADBROKE NEWS

EMAIL: ADVERTISING@HLNEWS.CO.UK TEL: 01926 612687

ADVERT SIZE	¼ PAGE	½ PAGE	FULL PAGE
1 MONTH	£11.50	£21.00	£37.00
3 MONTHS	£30.50	£54.00	£98.00
6 MONTHS	£56.00	£99.00	£180.00
12 MONTHS	£103.00	£180.00	£345.00

Adverts with payment to:

Sue Dronfield, 36 Manor Orchard, Harbury by the 20th day of the month

Cheques payable to 'Harbury & Ladbroke News' or BACS details upon request

T.M. & J.M. GREY

BUILDERS



KITCHENS - BATHROOMS - WINDOWS & CONSERVATORIES

EXTENSIONS - ALTERATIONS - RENOVATIONS

GREY GABLES, 46 BANBURY ROAD, SOUTHAM CV47 1HJ

☎ Southam 01926 817744 Mobile: 07885 495384

Email: tmgrey@tiscali.co.uk

Harbury's local property expert.

With over thirty years experience in the local property market, Chris Thomas is on hand for valuations and expert advice at times to suit you.

wiglesworth

01926 888998

leamington@wiglesworth.com

wiglesworth.com



approval for the urgent repair and restoration of our village church. This approval is granted, or refused, by the Diocesan Advisory Committee (DAC). It is understandable that they must proceed with caution. The churches in the Diocese of Coventry are among the oldest and most precious buildings we have, with Harbury's church having stood for around eight hundred years. But without their approval, we cannot approach grant sources to match the village's remarkable donations, currently totalling about £130,000.

They confirm that we do not need to go back to a full DAC meeting and all outstanding issues are being dealt with by delegation to the various DAC advisors relating to heating, lighting and rewiring, audio visual and external stonework. On 7th December 2021 our faculty application was passed to numerous amenities bodies for comment. They included Historic England, The Church Building Council, The Society for the Protection of Ancient Buildings, The Georgian Group, The 20th Century Society, The Ancient Monument Society, and Historic Buildings and Places, all of whom have no objections.

We have submitted further documentation to various DAC Advisors. The lighting advisor is asking for a diagram of all new cable routes and questions the number of lights we are installing. Similarly, we are asked for computer generated images showing the locations of the additional speakers in the north and south aisles. Approval for the stonework is taking longer.

However, subject to securing appropriate grants, we are planning to install the heating and lighting during the twelve-week period of August to October this year. The church will be out of action during this period but at least we should have heating before next winter.

We need to match your gifts with grants. The Diocesan Grants Advisor has confirmed our target list of Grant Funding Bodies is entirely appropriate. But we still cannot apply to grant awarding bodies until we receive full faculty approval on all counts.

The restoration team are determined that Harbury Church will not only remain a beautiful heritage building for our village, but a model for other churches of the Church of England's green policies, as we move towards becoming a truly environmentally friendly twenty-first century building.



MOTHERS' UNION

Gillian Hare

Our coffee morning raised the splendid sum of £195 - thank you to everyone who supported us. The next one will be on 18th June.

Our next meeting will be on 6th April, when we are pleased to say that Gian Clare has kindly rescheduled his talk from last month. Anyone who is interested in the Christian response to climate change is welcome to join us. We meet at 2pm, with a simple communion service before the talk.

And on 4th May we shall meet Karen Morris, the newly appointed diocesan president. She is full of ideas and plans and we expect an inspiring talk.

On Mothering Sunday we will have prepared the daffodils for distribution to all the ladies in church, remembering the mother figures in our lives as well as the role of mother church in our faith journey.



LADBROKE NEWS & DIARY

<http://www.ladbroke-pc.org.uk>

APRIL

- Sun 3 LENT 5**
Family Communion, 10.30am, followed by refreshments and annual church meeting
- Tues 5 Photography Club, Meal at The White Hart, Ufton
- Thurs 7 Lent Lunch, 12.30pm, The Old School
- Sat 9 Coffee morning, from 10.00am, Village Hall, in aid of Ukraine
- Sun 10 PALM SUNDAY**
Holy Communion (sung), 9.00am
- Tues 12 WI, 7.30pm, Village Hall
- Wed 13 Children's Art Workshops, various times, Village Hall
(must book on Eventbrite, search for Ladbroke Heritage)
- Thurs 14 Maundy Thursday Service, 7.00pm
- Fri 15 The Cross of Christ - a devotional service for choir and congregation, 6.30pm
- Sun 17 EASTER DAY**
Family Communion **10.30am**, followed by Easter Egg Hunt
- Wed 20 ADVERTS FOR THE NEXT ISSUE TO 36 MANOR ORCHARD, HARBURY OR EMAIL ADVERTISING@HLNEWS.CO.UK
- Thurs 21 ARTICLES FOR NEXT ISSUE TO: HARBURY PHARMACY, HIGH ST OR EMAIL TO ARTICLES@HLNEWS.CO.UK BY 5.30PM
- Sun 24 EASTER 1**
Holy Communion (sung), 9.00am

MAY

- Sun 1 EASTER 2**
Family Communion, 10.30am, followed by refreshments
- Tues 3 Photography Club, Outing to Radway Meadows
- Wed 4 Parish Council, 7.45pm



LADBROKE CHURCH NEWS

Peter Rigby

www.ladbrokechurch.org.uk

We are now halfway through the season of Lent and it has been a delight to be able to restart our Lent lunches again after two years. Two have already been held, but there is still time to join the third and final offering of home-made soup, bread and cheese and good company at Carol and Geoff Lane's at The Old School on Thursday 7th April at 12.30. All welcome.

Holy Week begins with Palm Sunday on 10th April and we shall be holding a number of special services culminating on Easter Day a week later. On Maundy Thursday we shall be remembering how Jesus washed his disciples' feet just before he was arrested and on Good Friday, Bill and the choir will lead a devotional service "The Cross of Christ" at 6.30pm. On Easter Sunday we shall be having a Family Service at 10.30am instead of our normal 9.00am service.

Services and events this month:

Sunday 3 rd April	10.30am	Family Communion (followed by APCM)
Thursday 7 th April	12.30pm	Lent Lunch at The Old School, School Lane
Sunday 10 th April	9.00am	Palm Sunday Holy Communion
Thursday 14 th April	7.00pm	Maundy Thursday service
Friday 15 th April	6.30pm	"The Cross of Christ" devotion for choir and congregation
Sunday 17 th April	10.30am	Easter Day Family Communion, followed by Easter Egg Hunt
Sunday 24 th April	9.00am	Holy Communion
Sunday 1 st May	10.30am	Family Communion

www.ladbrokechurch.org.uk

ladbrokechurch@gmail.com



FROM THE REGISTERS

Funeral

3rd March

Betty Winkfield (90 years)



LADBROKE PARISH COUNCIL

Jackie West

Official minutes can be viewed on the noticeboard by The Bell Inn

At the meeting on 9th March I was the only member of the public present, so the public participation slot was limited to me ensuring councillors knew about two recent deaths in the village - Tony Watts and Matthew Wilcox, an update about the Heritage Project, which you can read about in the Ladbroke Heritage article, and enquiring about the new Parish Council website, as the ladbroke-pc.org.uk website is frozen and cannot be updated (*though most links, such as that to the SDC planning website still work*).

Website: The new parish council website is just about finished on the HugoFox system and will be publicly accessible soon. It will only have Parish Council information. The Cllrs intend to check back what they decided previously about other information on the old website although, as it cannot be updated, the decision may need revisiting. I pointed out that the Church and Photography Club have their own websites. The Ladbroke Heritage website already has a short entries for the Millennium Green and Village Hall which could be expanded by Ladbroke Matters, also one for the WI added. However, as Ladbroke Heritage may not be the obvious place to look for information about these organisations, they might prefer to pay for their own web address and set up their own HugoFox site, which is free and very easy to update.

Speeding: There's still no progress from WCC on vehicle activated speed signs, though Cllr Kettle said that they are not planning to maintain those already in place, which did not sound very positive. A few interesting points during the discussion: the average speed on Harbury Road is 46mph, there is over £4 million of HS2 money for road safety projects, none of which has been spent yet and if you have dashcam footage of speeding/poor driving you can send it to the police.

SDC: If you want your green bin collected from April you need to renew (reminders are only sent to those who ticked the box last year). The online system needs a mobile number or email but you can order by phone without.

SDC has not yet received details of how to administer the £150 energy rebate scheme for Band A-D properties but it will be a refund and not a deduction on payments.

Waste collection is changing to a 1,2,3 system in the summer - new, small food waste container weekly, recycling blue bin (and garden waste if you choose to pay for this) every two weeks, black bin every three weeks.

"Self Build" Homes - were the subject of two Acts of Parliament (2015 and 2017). These allow custom and self-building outside of the normal Local Authority framework and existing built up areas. They also avoid the Community Infrastructure Levy (CIL). SDC are receiving applications under these Acts from developers and small scale builders. The Acts were ill-defined and Cllr Rock is chairing a working group on this to define SDC's interpretation of them. Langstrom, a company proposing a small "self build" development at the end of Windmill Lane, have asked for Parish Council support and have been told they will not receive a response until after the review completes. Langstrom can apply without council support, especially if the future homeowners have a "local" connection. At present there are 127 people in Stratford District looking for "self build" sites.

WCC: There are budget increases for adult social care, children's education, special needs and support. Free lateral flow tests are being phased out. The council has been gearing up for Ukrainian refugees and expect to some to come to Warwickshire.

HS2: The tunnel boring machine (TBM) is progressing at 10m/day. Designs for overbridges have been shared and slides from a recent meeting will be distributed by e-news. There will be a mobile information centre but we await details of where it will be and when.

Street Lighting: The cost per month for electricity has tripled! The supply is unmetered.

Village Booklet: Kip has updated this and it was agreed to have it printed in colour with a copy to each household and some for newcomers. There would not be extra copies printed for sell, as this was not considered an appropriate use of council funds.

Village Meeting: 15th June at 7.45pm, each village organisation will be asked to give a short report.

Next meeting: 4th May at 7.45pm

Our last WI meeting was held in the village hall on Tuesday, 8th March.

Ollie Watts, grandson of member Maggie, had put together a wonderful selection of classical guitar music. Aged 18, and about to take A levels from Warwick School, Ollie has been learning guitar for the last 10 years, having passed Grade 8 in 2019. He is now working towards his Diploma and treated us to a full recital.

Ollie explained that for the Diploma, he had been able to select pieces he wanted to study and had then gained approval from the examination board.

The recital began with a prelude by Portuguese composer Villa Lobos and continued with music by Tarrega and Gary Ryan.

Between pieces, Ollie answered many questions from the floor, explaining that he was using two guitars to avoid having to retune between pieces. Mums and Grandmas in the audience were also keen to know how much the guitars cost. He explained that, even though you could spend £10,000, the ones he was using were more modestly valued and compared to many instruments, guitars were at the cheaper end.

There was such a good and relaxed atmosphere with Ollie confident and apparently happy to mix his wonderful playing with all our comments and questions.

His penultimate piece was called Rondo Rodeo and had a real Wild West feel about it.



As it was International Woman's Day we grouped ourselves behind him in front of the splendid new village hall stage curtains for the photograph.

We wish Ollie the best for his A levels and his hoped for university place reading Mechanical Engineering - and, of course, for his guitar diploma.

The business meeting followed a coffee break. WI subs (£44) are due in April so could members bring cheque books or cheques made out to Ladbroke & Deppers Bridge WI in a named envelope.

Betty's name has been given to the Federation for inclusion in the remembrance book.

The resolution chosen this year is 'Women and girls with ASD (Autism Spectrum Disorder) and ADHD (attention-deficit/hyperactivity disorder) - under-identified, under-diagnosed, misdiagnosed and undersupported' and this will be discussed at our meeting in May.

Dianne is putting together a booklet to give to new members so anyone with ideas for what might be included should contact Dianne.

Since the meeting a small group of members attended the Anton Du Beke event and thoroughly enjoyed a wonderfully entertaining afternoon.

Dates for the diary:

Tuesday 12th April - Jubilee Pudding evening. Ten members are baking puddings for others to enjoy.

Thursday 21st April - Invitation from Willoughby WI. 'Evening with funny turns'!

Tuesday 10th May - AGM

Tuesday 17th May - Guided visit to Warwick Arts Centre.

Tuesday 9th August - Visit to National Arboretum.



LADBROKE MATTERS

David Wright

The Ladbroke Matters team looks after the Village Hall and the Millennium Green. To help with this we organise regular fundraising events so that we can continue to offer both facilities for the benefit of our community.

Save the Date - Sunday 5th June 2022



As I mentioned last month, to celebrate Her Majesty The Queen's Platinum Jubilee we are planning an event for the village on Sunday 5th June. It is planned to **commence at 3pm** and end in the evening.

The Bell's new owners want to be involved and so the main venue will now be the Bell's front car park. They will provide snacks from their food truck, and an ice cream stall. A bouncy castle has also been booked. More is being planned and details will be available soon, but put the date in your diary now as this promises to be a fun event for all ages.



The play area in the Millennium Green is becoming a little worn and tired and we would like to give it a makeover rather than replace the existing items. This will still cost a sizeable sum but we feel it will be worth it. Therefore, we are planning events to raise funds for this project. More details soon.



There will be a coffee morning in the Village Hall on **Saturday 9th April from 10am**. This was originally intended to raise funds for the play area (see above); but with the urgent needs of the Ukrainian people, we have now decided to raise funds for them. So come along, enjoy a drink, read the paper, or just have a chat. All are welcome including children and dogs.

After its refurbishment our Village Hall is looking welcoming and fresh. If you would like to book your special celebration in our hall contact Debs (tel 07779 225105 or email debs.dptv@gmail.com). The rates are still £15 per hour with a generous 20% discount for Ladbroke residents.



If you would like to join the Ladbroke Matters team, have any suggestions for future events, or any other comments please contact the Trustees (details on the Ladbroke website).

Ladbroke Village Hall Millennium Draw for February 2022

£50	Sophie Kendall	£50	Scott and Siobhan Roberson
£25	Jill Norgate	£25	John Liverton
£25	Richard Hall/Hampson	£10	Brian Whitehouse
£10	Geoff Lane	£10	Mike Todman

Margaret Bosworth



LADBROKE PHOTOGRAPHY

Kip Warr

We finally got together again in Ladbroke Village Hall in March for our postponed AGM. The main topic was how to manage the club now that Jackie, our Secretary and organiser, had decided to step down and join the back benches. After considering a number of alternatives we decided to split the organisational role between our membership, so each of us would organise a meeting or event. The other committee members were re-elected: Sally Simmons, Mike Todman and Kip Warr. We shall not be charging subscriptions again this year as we have had very little expenditure over the past two years. Richard Bedwell volunteered to be our communications hub and has set up our new email address: ladbroke.photoclub@btinternet.com (members please note the change). Richard also brought along some of his late father's equipment and materials for members to take; he raised £74 for the Alzheimers Society.

Our programme for 2022: (meetings starting at 7.30pm)

5th April - Meal

3rd May - Outing to Radway Meadows

7th June - Outing - wildlife photography

5th July - Buffet meal and taking photos of bubbles

Sept - Painting with light

Oct - Competition and phototopic - pictures taken during the outings

Nov - Talk - photographs from the Red Sea

With the darkness of winter receding, our seasonally appropriate competition theme was 'Colours'. The three shown here are amongst the pick of the flamboyant bunch.



Bird of Paradise Flower - Graham Gee

This very friendly club usually meets on the first Tuesday of the month at 7.30pm in Ladbroke Village Hall and visitors are welcome. If you would like more information, please contact us: ladbroke.photoclub@btinternet.com

Photos we took during lockdown are still on display at kwarr.co.uk/photography.



Left: Maltese Fruit and Vegetable Stall - Graham Gee

Right: Pumpkins in ByWard Market in Ottawa - Tony Mancell



OW

PAINTING & DECORATING

M: 07980 588351

E: OLLY@OWPAINTING.CO.UK

WWW.OWPAINTING.CO.UK

- Interior Painter & Decorator •
- City & Guilds qualified •
- Domestic properties •
- Fully insured •
- Located in Harbury •

Contact Olly for a free quote

OW – taking the pain out of decorating!

FENCES & TREES



All types of fencing and gates

Tree felling and reduction

Hedge laying and trimming

Patios

Seasoned logs available

**Call Adrian Dollar on
01926 817077 or
07914 623989**

Qualified and Insured

Domestic Gas Services



**Are your radiators cold
at the bottom?
If so they need
POWERFLUSHING!**

• **POWERFLUSHING** removes the build up of sludge and sediment in your radiators which is making them less effective therefore *costing you money!*

• **POWERFLUSHING** will maximise the efficiency of your radiators ensuring you get the very best from your heating system therefore *saving you money!*

**POWERFLUSHING....the next best thing to a
new heating system!**



For a free quote call Martin on **07980 740720**

NEW SOUTHAM TAEKWONDO & MARTIAL ARTS



Graham Adams Centre
St James Road,
Southam CV47 0LY

Thursdays

- 4.30-5PM NINJA KIDS 4-6YRS - SPECIFIC MARTIAL ART CLASSES FOR CHILDREN IN THEIR EARLY YEARS
- 5-5.50PM JUNIOR TAEKWONDO - SELF DEFENCE, SPORT & FITNESS

joestkd@gmail.com | Joe Schembri T: 07711234500



NEW Taekwondo & Martial Art classes in the area

We teach In & around Warwick & Leamington, with our new Classes in Southam for all local areas.

Master Joe Schembri 5th degree Black Belt & Miss Cassie Oury 4th degree Black Belt are both former world & international champions.

With years of experience they are both qualified by Sport UK & CRB certified to work with children. Taekwondo builds confidence, improves skills such as flexibility, balance & self control.

With Martial arts you can channel your child's energy in a positive way, helping them improve in school & all aspects of their life.

This is exercise in a fun friendly environment, where they can meet new people & build a positive mind set. We offer classes for specific ages 3-6 years Ninja Kids & Junior Taekwondo 7 years up, with our family TKD classes opening towards the end of this year.

Class spaces are limited so contact us on the info provided and come along for a FREE Introduction to this exciting Martial art.



LADBROKE GENERAL NEWS



LADBROKE DISTRICT COUNCILLOR UPDATE

Nigel Rock

Nazanin Zaghari-Ratcliffe

I thought I would start this report with some really good news. The release and return to the UK of Nazanin is something that has touched me personally. Although this is both a national and international story, it is a local one too. As you may have read elsewhere, Nazanin and Richard Ratcliffe have relatives living in our own council ward and I have been in close contact with the family doing what small things I could (which to be honest was not much), over the past few years. Constituents' case work rarely has such a high profile, but it is not unique in that sometimes there is little councillors can do to help, however I and my colleagues try if we can. I have brought the matter up at successive meetings of the District Council in recent months gaining the full support of the Council with an approach to Foreign office. I would not claim this has had any significant weight in influencing affairs in Westminster but one can only try.

We all wish the family a return to normal life and a chance to rebuild their lives after all these difficulties. As the Radcliffe family have pointed out, there are others still suffering who should not be forgotten.

Ukraine

Staying on the international theme and its local effects, the dreadful situation in Ukraine is of deep concern.

The Home Office is working on visa and entry schemes for Ukrainian refugees although at the time of writing the response has been slow and unsatisfactory. Communities in Warwickshire have responded with customary generosity and offers to help. From experience with recent refugee arrivals, local Council officials know that there could be a sudden acceleration in numbers of refugees at short notice. Depending on numbers, there may be pressures in terms of housing supply and additional educational needs such as English as an additional language.

Councils continue to monitor cyber security controls given the increased risk of attack from Russia. Private citizens and businesses should bear this in mind and keep their computer security measures up to date. The National Cyber Security Centre www.ncsc.gov.uk/cyberaware/home shares messages and reminders about good cyber security practices.

The WCC Pension Fund has 0.18% (£5m) of its assets invested in Russia. The fund is committed to ceasing further investments in Russia and is looking at a divestment strategy.

Waste Collections

Those residents who wish to have (or continue to have) green waste collections will need to pay the new fee of £42 per year per bin. There is no discount for paying early as there was last year. If you ticked a box last year you, should get a reminder, but

you can subscribe for the service on line at <https://www.stratford.gov.uk/online-forms/subscribe-for-garden-waste-service.cfm> or call 01789 267575.

The new waste collection system is to operate from August. An outline of the scheme's operation can be found at www.stratford.gov.uk/waste-recycling/123-waste-collections.cfm but more information for residents should be coming out in coming months. *Some has just come out, see the centre pages of the booklet accompanying your recent council tax bill.*

Covid

Covid infection rates are now back to being about the same as rates during the months before the peak at the new year. Local hot spots still flare up and there has been a week on week increase generally and in the over 60s at the time of writing.

Ambulance waiting times continue to be a concern. At Coventry University Hospital Walsgrave just under half of patients have been waiting more than 30 minutes to get into A&E. I repeat the many thanks to our health and care workers, and personally I shall continue to be cautious to protect them and others as much as I can in my behaviour despite the lifting of government restrictions.

Tony Watts

I was saddened to hear of the death of Ladbroke Hall resident Tony Watts. Tony was a fellow Lib Dem member and a friend who helped me in various ways. He had an international outlook as well as a strong interest in local affairs and practical aspects to help the environment. I send condolences to his widow Maggie.

nigel.rock@stratford-dc.gov.uk

Stained Glass of Ladbroke Church - St James the Greater and St John

This window shows two of Jesus' disciples in the main panels and has a text passage in a smaller window below. It was made in 1912 by the company Kempe and Tower and a brass plaque nearby tells us the window was given in memory of Charles and Frederick Palmer-Morewood by their sister Lucy. It must have been one of the last things she organised as she died in 1910, having outlived her brothers by many decades.

St James the Greater and St John were brothers, the sons of Zebedee, who Jesus called to be his disciples. St James the Greater's hat is decorated with his symbol, the scallop shell, and he carries a pot on his staff indicating pilgrimage. St John holds a book with the Latin words *"In principio erat verbo"* which translates as "In the beginning was the Word", the opening phrase of



the Gospel of John. His symbol is the eagle which can be seen to the right. The lectern at Ladbroke Church is a brass eagle to a similar design.



The text in the glass panel below the saints forms part of the design. It is surrounded by the same border as the main window above and has the Kempe and Tower mark of a tower in a wheatsheaf. The words are Jesus' reply to the other disciples when

they heard that James' and John's mother had asked for them to be given a special place in his kingdom, see Matthew 20 v20-28.

Don't miss the angels above the main figures.

Jackie West



LADBROKE HERITAGE

Jackie West & Nicky Lewis

Repairs

Not much to report on the repairs front except to let everyone know that, all being well, the lychgate repairs are starting in a few weeks. There will be permanent scaffolding at the sides and while the contractors are actually working on it, a scaffold tower inside the structure. So, as that is the main access route to the church, during the repairs, all being well 25th April - end May:

- Ladbroke church will be closed Monday-Friday. It will be open on Saturdays and Sundays as usual (10am - 4pm) and Sunday services will not be affected.
- To enter or leave the churchyard during the working day you will need to use the field gate and footpath through Farmyard Field.
- You will be able to walk through the lychgate before the contractors arrive, in the evening and at weekends.

Sorry for any inconvenience but it should only last five weeks and, as they say, you can't make an omelette without breaking eggs.

Book Your Talk and/or Guided Tour

We have seven trained guides ready to take you on a **tour** of all Ladbroke has to offer; church history, village history, stained glass, geology, nature, and of course the story of Alice and Robert Dudley. These tours have been very well received with excellent feedback. So, if you would like to bring friends, relatives or even a group to Ladbroke to see for yourself what we have to offer, please contact Nicky on 01926 815196 or email to nicolalewis1958@gmail.com

Two groups have already booked their tour for 2022, including the Harbury Society on 20th May.

We have new management at The Bell Inn who would welcome you for lunch or an evening meal.

Jackie has now given many **talks** to local organisations and has bookings in the diary but there is still space for more. She has a range of talks on offer: Stained Glass, Church Repairs, and Alice and the Adventurer always receives excellent feedback; her presentation on Ladbroke Village still awaits its first audience. If you would like to book one of Jackie's talks, please call her on 01926 810331.

Village Trail Leaflets Go Online and Multilingual!

Our Village Trail leaflets are now available online at ladbrokeheritage.org.uk on the discover... village page. And we have translations in French, Italian, Romanian and

Spanish. Visitors (or armchair tourists) can now read all about our lovely village in their native tongue thanks to our translators.



Photo Exhibition on Tour

During March, our Heritage Photo Exhibition was enjoyed by residents and staff at Anya Court Care Home in Rugby.

Events in Progress

As I write, we are looking forward to our Stained Glass Tours and a visit from Year 3 from St James School in Southam, so we'll let you know how these went in the May edition of the Harbury & Ladbroke News. We plan more school visits and dementia-friendly sessions over the summer. If you would like to help us with any of these or other events, please contact Nicky on nicolalewis1958@gmail.com

Children's Art Workshop - Wednesday 13th April

We are looking forward to the Children's Art Workshop by Jessica Hill on Wednesday 13th April. Jessica is an experienced illustrator and provider of children's workshops. This workshop will give children who attend the chance to design illustrations which will be published in our Village Treasure Trail leaflet to be published soon.

This will be a free, fun and creative activity for children aged 7 - 14 and will be held in Ladbroke Village Hall. Each session is 1 hour long. Refreshments will be available for accompanying adults. We have a few places left, so book your place on Eventbrite, search for Ladbroke Heritage.

Inside Geology - Sunday 15th May

As a follow up to our fascinating workshop last year, we welcome back Philip Powell and Nina Morgan, who this time will be explaining the geology inside Ladbroke Church. Book on Eventbrite or have a word with Jackie.

We Want Your Pictures and Other Creations

A photo day for the month of May. Following the success of our much viewed online Advent calendar, we are doing it again, during May. I say "we" but it will only be possible with your help. Please send us your pictures showing some aspect of Ladbroke's heritage. It's a very broad remit; they could be of the church or other buildings, views, animals, trees and plants, people, past events - anything linked to our local heritage. Don't forget our strong association via Alice and Robert Dudley with Kenilworth Castle, Stoneleigh Abbey and several other churches



makes these suitable subjects too. Please send your photos to **ladbrokechurch89@btinternet.com** by 30th April.

Exhibition in the Phone Box

A big thank you to Jasmine, one of our Duke of Edinburgh volunteers who will be co-ordinating an exhibition in the phonebox in Ladbroke. Watch out for the flyer though your door inviting everyone of any age to take part by lending us your artwork, photos or even writing a poem. Artwork can use any media and we will return the original once we have made a copy for the exhibition (unless agreed otherwise).

Coming up a visit to the foundry in Loughborough where our church bells were cast. We have enough interest in this so will be booking the trip and confirming dates. We'll keep you posted.



READERS' LETTERS

Dear Editors

Doug Winkfield, Trish Teverson and all the family wish to thank everyone for the cards and lovely messages received after mum passed away.

Mum was loved by all who met her which was apparent, not only at her 90th Birthday party last year but also on the 3rd March at her funeral.

Thank you to everyone involved for all your help and support. We celebrated her life. She will be greatly missed.

Thank you.

Best Wishes

Trish Teverson

Dear Editors

Tom Hauley Room Coffee Morning



On Saturday 5th March All Saints Church Ladbroke held a coffee morning in the Tom Hauley Room and we decided that the people of the Ukraine needed help more than we did. As usual my helpers and the generous people of Harbury came up trumps and we raised a fantastic £670.

So thank you once again for your generous and unfailing support, and the wonderful facility that is the Tom Hauley Room, where would we be without you!

Susan Moore

Churchwarden at All Saints Ladbroke



HARBURY PARISH COUNCIL

Linda Ridgley

Official minutes can be viewed in the Library, on the Parish Council website www.harbury-pc.gov.uk or obtained from the Parish Clerk, Tel: 01926 614646

March 2022 Meeting Report

We celebrated the Queen's 1975 Jubilee by planting a substantial Plane tree on the Old New Inn Green; watered it for several years and watched it grow into something beautiful.

For this Jubilee the Parish Council has been offered a large number of whips - small trees to be planted all around the village. There were long discussions about where exactly these new trees - 10 Birches, 15 Cherries, Grey Willows etc, provided for free by "Oblong Trees", should be planted. This will be a mammoth task, not just to plant them, but because they will all have to be watched and watered for several years, and as they are only whips they could easily be damaged.

Newcomers within the last thirty or so years to the village will not have seen what this village looked like before Dutch Elm Disease killed off all of these towering elm trees. Elms were thought of as the "Cathedrals of the Feldon" - yet in two years they were all gone. So it has since been important that we plant more trees and look after them.

The rest of the meeting passed quite quickly, with short reports on the Library, School, Village Hall, and Energy Initiative. Our County Councillor, Chris Kettle, when quizzed about the delay in putting traffic lights at the Bendigo-Mitchell crossroads, explained that the tendering process had been "delayed". He was also made aware that there was still work on-going on the railway bank and that their HGVs were still going through our village as well as the HS2 ones.

There were quick discussions and decisions on the three planning applications - Cherry Tree Cottage, Ivy Lane where no representation was made, Churchlands Business Park which was supported as it provides employment, and another application for Linden Farm Cottage in Deppers Bridge for a separate dwelling where the Council's previous objection was re-enforced.

Great surprise was expressed at the refusal of the application, by the new owners, for an entrance to be made into the Church Paddock to provide a domestic garden.

Councillors supported WCC's 20-20 traffic campaign to reduce speeds through our villages.

They were half-way through inspecting the Burial Grounds Memorials - some of which needed to be laid down for safety. They approved a sum of £2,800 for raised beds for the allotments "Wellbeing Project". Julie Balch was in charge of their Carnival efforts and a pitch had been approved.

There were long discussions - on the use of the playing fields for the Queen's Jubilee celebrations. The Councillors approved the use of village greens for Jubilee celebrations but stressed that the PC's insurance would only cover certain things, which would be explained to organisers. There seems to be more than sufficient bunting as both the Parish Council and Twinning have plenty to offer.

And on help for Ukrainian refugees where already there have been offers of homes, the Cllrs wondered if they should ask the community who had offered to take in these refugees, as WCC would want to avoid having isolated refugee households in villages. The County is likely to be organising everything and Cllr Kettle suggested that donors could send money to Oxfam. The Chairman said that the Parish Council would support those who wanted to raise money for the refugees. District Councillor Jacqui Harris said an alternative to fundraising would be crafting clothes, knitting garments etc.

Cllrs approved - £10,000 for the Cemetery Reserve Fund, a “deed of gift” of £50,000 from the Eastfields Solar Farm to be used for environmental projects, the Clerk’s national pay award and the adoption of the LGA Code of Conduct.

Next Meeting Thursday 28th April 7.30pm in the Village Hall.

Current Parish Council members contactable via the Parish Office are:

Tim Lockley (Chairman), Keith Thompson (Vice-Chair), Samantha Allen, Julie Balch, Jess Dominick, Steve Ekins, Alan Knowles, Alex Potter, Andrew Rutherford, Janet Thornley



HARBURY SOCIETY

Sue Turner

Visit to HS2

The Harbury Society spring event took us to the HS2 tunnel at Bascote. Whether or not you are for or against HS2 there is no doubt that it is an impressive engineering project. The sheer size of the site is hidden from view from the nearest roads. Most people would not be aware that it is there when they drive by.

The site establishment has offices, slurry treatment, storage facilities, the tunnel workings and the railway earthworks disappearing into the distance northwards towards the Fosse.



Photo courtesy of HS2 Ltd

There is an excellent viewing platform that looks down onto the tunnel entrance from which small service vehicles come and go to supply the tunnel boring machine.

This machine is called Dorothy after the first British woman to be awarded the Nobel prize for chemistry who lived in Warwickshire.

Dorothy, the machine, is 125 metres long and on average travels 12 metres per day. It has excavated around 300 metres of a total 1600 metres of its mile-long journey. At completion it will be dismantled and brought back to the start for the second tunnel.

The site has little noise at present. We saw a kestrel hovering over the new embankments. It has 20 people operating the tunnel machine 24 hours a day and there are 100 staff on the entire site.

Having looked down on the tunnel works we stepped into the visitor's centre for coffee and the viewing of a detailed model of the boring machine with display boards showing explanatory photographs and detail.

The sun was shining as we left with the trees of Long Itchington and Ufton Woods crowning the land above the tunnel. It is perhaps bitter sweet that we will be sharing our lovely Warwickshire views with the fast-moving train passengers within the next decade.

A Jungle Adventure

A Harbury Society member, John Smith, gave a very interesting and informative presentation entitled 'A Jungle Adventure' which gave an insight into his time spent in Borneo.

Borneo is the third largest island in the world. It is politically divided among three countries: Malaysia and Brunei in the north, and Indonesia to the south. North Borneo was once a British protectorate but when it joined the Malaysian Federation in 1963 it was renamed Sabah. John informed us that many local people were sad when the British Administration left as they had little in common with Malaysia.

The Japanese invaded Borneo during the second world war and a war memorial at Kundasang is dedicated to the 2,000 Australian and British prisoners of war who died while being forced to march to Ranau in order to build an airfield - there were only six survivors of this ordeal. When Borneo was liberated by the allies many Japanese soldiers, rather than surrender, retreated to the jungle. So isolated was it, that it was many years before some realised that the war was over.

During the 1980s John and Pat Smith lived in Sabah, Malaysia, where John worked for four years as a civil engineer on a road construction project that was financed by the World Bank. This enabled them to undertake an active lifestyle exploring the country and experiencing adventures along the way.

One of these was a trip to Mount Kinabalu, which stands at 13,455 feet within the Kinabalu National Park. The mountain is a massive pluton (a body of igneous rock) that was pushed up from the earth's crust in molten form millions of years ago. It is the highest mountain in Borneo and was first recorded more than 200 years ago by the geographer Captain Alexander Dalrymple.

The Kinabalu Park itself is a World Heritage Site of 275 square miles, much of it being dense jungle and mangrove swamps. It contains thousands of species of plants, insects, birds, mammals and reptiles. Among the plant species which can be seen at the park is the red hibiscus, which is the national flower of Malaysia. One of

the plants found in the park is *Rafflesia*, which has the reputation of being the world's stinkiest, smelling of rotting flesh, although you are unlikely to see one in bloom as this happens only every four years or so. John said there are insects everywhere and he showed photos of pitcher plants which enterprisingly avail themselves of the abundance of insects by catching them. Additionally, many thousands of butterflies are constantly present. The jungle is so dense that daylight can only be seen through the canopy, seldom penetrating to the floor. Indeed, it is so dark that photography requires flash lighting to facilitate adequate exposure. The park is home to orangutans, although visitors are unlikely to see them, being very reserved creatures. John showed images of a sanctuary where orphans are cared for and released back into the wild.



Hot sulphur springs are located within the park at Poring. These were first developed during the war by the Japanese for their officers. Hot water is piped from the spring, to pools of varying levels of temperature, in which visitors can relax.

Their trek to the summit of Mount Kinabalu took two days and required an overnight stop at a very small corrugated aluminium hut. Everyone has to be accompanied by a guide as there are many cases of people getting lost and never found. At 7000 feet altitude there is Mossy Forest where, as the name suggests, the trees are all covered in moss. Sayat-Sayat Hut is reached at 12500 feet and is the last checkpoint before the summit. John and Pat were amazed to be greeted by a tabby cat which seemed to survive on being fed by a constant succession of climbers.

There is a sheer drop from the north face of the summit which a British Army expedition decided to abseil down and were then lost for two weeks in dense jungle. Several were lucky to survive and were rescued by the Malaysian Army.

John was thanked for an excellent talk by Chairman Ed Wilson following a lively question and answer session.



HARBURY WI

Mary Thompson

Sadly, Peggy King had to cancel her visit at the last minute because she was having to isolate due to unexpected surgery on a broken wrist.

Lin asked members to tell us about things they had done because they had unexpected spare time during lockdown We heard about:

- Sewing activities for the NHS
- Reading diaries which a member had written in the late 1950s and early 1960s
- Clapping the NHS which meant you got to know the community around you.
- Walking round the block which meant you noticed things like trees which you normally wouldn't

- Meeting people when we were out walking
- Family history
- Home schooling of grandchildren
- Knitting teddies so children could go on a bear hunt
- Making lace Christmas decorations
- Using a sewing machine that had been put away in a cupboard
- Jigsaws
- Knitting dishcloths
- Making friends in a new community
- Contributing to the "Harbury in Lockdown" book



Lin reminded us that we belong to the largest female organisation in the country and asked for our ideas to move the WI forward in Harbury over the next few years. This created a lot of discussion and we look forward to Lin reporting back to members.

We shall be running a coffee morning in the Tom Hauley Room on 2nd April.

Our postponed New Year party will now be held as a Spring party on Friday 29th April - 7 for 7.30pm in the Village Hall. We shall be entertained by Ian and Sue Hartland.

Members were encouraged to be involved with local tea parties to celebrate the Queen's Platinum Jubilee on Sunday 5th June.

We were pleased to hear that the Carnival will happen on 11th June and look forward to running our traditional cake stall and taking part in the procession.

Members will be attending the memorial service for long standing member Dorothy Groves on Friday 8th April at 2.30pm in All Saints Church and helping with refreshments afterwards.

Our speaker at the meeting on 14th April is again someone who has had to postpone because of Covid. Penny Vigers will be demonstrating willow weaving.



HARBURY THEATRE GROUP

Natalie Tayler

Thank you to all who came and supported our open event in February. We had a fantastic turn out with many new faces and people signing up to get involved with all aspects of theatre life.

We are now focusing on our up-coming production in May. Rehearsals are well under-way for our evening of comedy sketches, songs and one-act plays. We're excited for you all to come and watch what we perform on 12th-14th May in Harbury Village Hall. We're all in fits of giggles while rehearsing, so suspect you all might enjoy it too!

Tickets will be on sale starting 11th April from the Chemist, Library and our website www.harburytheatregroup.com

Following on from our May performances we are planning to take some sketches to the Amateur Community Theatre Festival in June and will be putting on a show at Harbury Carnival.

We are always looking for new members to come and join our team of thespians, artists and stage production managers. If you would like to come along to see what we get up to please do get in touch via our email harburytheatregroup@gmail.com or have a look for us on Facebook/Instagram.

We appreciate the continued support of villagers with our productions and look forward to opening the doors to you all in May.



HEREBURGH MORRIS

Jane Chatterton

Hereburgh Morris will have its 35th birthday in April!

Are you interested in traditional dancing and folk music and keeping it alive?

Want to join a group with a great and varied social life?

Would you like to keep fit in a light hearted atmosphere? (Much cheaper than the gym!)

Can you play (or would like to learn) an accordion, concern or fiddle?

Hereburgh Morris would welcome you. Dancing makes us happy!



Jephson Gardens December 2021

Hereburgh started practising in the Wight School in April 35 years ago and has enjoyed keeping English traditional dancing alive as well as having our own Harbury dances. We have visited very many different places in this country and also danced in Germany, Holland and France over the years. We are looking for new members

and would welcome you to a taster session on Wednesday 27th April at 8.00pm in the school hall. If you cannot make it then do get in touch via the website and arrange for another date.

<http://www.hereburghmorris.org.uk> info@hereburghmorris.org.uk



HARBURY TWINNING ASSOCIATION

Ron Temple

The Association had a great coffee morning at the Tom Hauley Room in March. We managed to raise over £150 for the Association and everyone seemed to have a good time. Many people that I spoke to said that they really enjoyed the regular Saturday morning coffee events which allowed them to socialise with their friends.

Next month we have skittles, always a good do!



HARBURY HERITAGE CENTRE

Bill Timson

Once again looking back at the news in the Harbury and Ladbroke News magazine the following items caught my eye:

40 years ago (April 1982, 30 pages)

- 'The Church Spring Fair' took place on a 'perfect spring day' raising £600 to £700 for church funds.
- The death of local jockey John Thorne was reported, aged 54, killed in a riding accident. John ran a local stud at Chesterton and rode Spartan Missile into second place in the 1980 Grand National, much to the delight of local punters!

30 years ago (April 1992, 44 pages)

- Villagers Ann Brunt, Paul Hyde and Andy Latham ran in the London Marathon.
- A whole page advert in the magazine would have cost you £20.

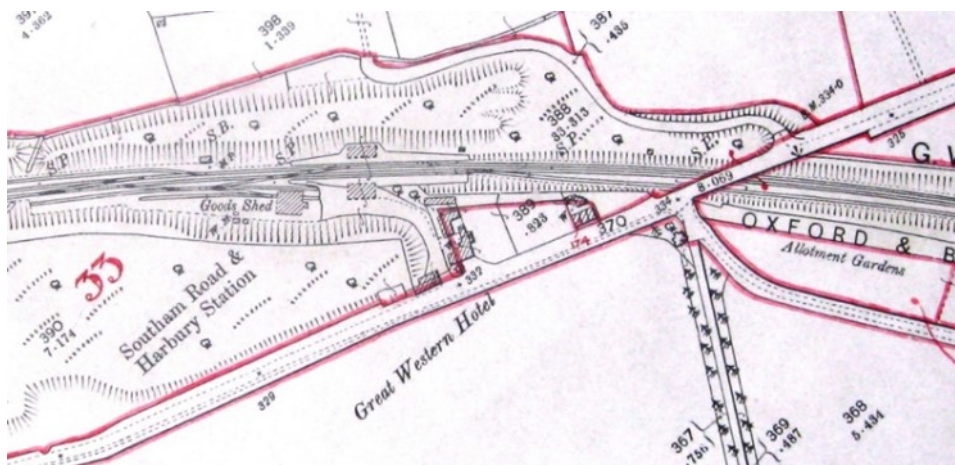
20 years ago (April 2002, 52 pages)

- There were various articles advertising the Carnival and the Queen's Golden Jubilee both taking place at the start of June.
- The Local Council election candidates 'set out their stalls': namely Eric Dally, James Turner and Andrew Patrick all hoping to be elected on 2nd May.

Last month we asked 'who knows about **Harbury Railway Station?**'

A lot of the information we have in the Centre about the railway was donated by Alf Butler, a former heritage committee member, who worked on the railway as a fireman for much of his life. The Southam Road & Harbury Station, to give it its correct title, was opened on the Birmingham and Oxford Junction Railway's Banbury

to Birmingham section on **1st October 1852**. Prior to the opening of the line, the B&OJR was taken over by the Great Western Railway. One of nine intermediate stations built at the time of the opening of the line, the station was brick-built and had a goods shed and goods siding. The station was so named because it was sited close to the main road between Harbury and nearby Southam close to Deppers Bridge. The entrance was to the side of the Great Western Hotel. (Public House).



The 1861 Census lists Richard Edwards as the stationmaster aged just 21. He was from High Erroll, a small village in Shropshire. He was living at East End, possibly in 'Ashton House'. George Tibbs and George Townsend were the porters and Charles Warner who lived in Church Terrace was a policeman on the Great Western Railway. There were several 'railway labourers' listed also.

In 1891 towards the end of the Victorian era, Alfred John Jones aged 29, was the stationmaster. He came from Devizes in Wiltshire and was lodging in Pound Street. Over the 60 years of Queen Victoria's reign the railways enjoyed a 'boom' time, with cars and lorries not yet a major form of transport and horse-drawn carriages considered too slow, the 'iron horses' (steam trains) became the new form of transport as the rail network expanded throughout the UK. In addition, the Industrial Revolution had led to an increase in exports consequently transporting goods to ports could be done quicker and more effectively than ever before by rail.



The photograph above shows the main entrance to the station and goods yard located on the 'down platform' in 1952.

In our archives I found this insight into what life was like working at Harbury Station by signalman Douglas Tanner.

'I started in 1946 as a porter, after about six months I became a signaller progressing from Knightcote to Claydon Crossing and eventually to the Harbury Box. I worked there for seven years before moving onto Leamington South signal box. There were three shifts, 6am to 2pm, 2pm to 10pm and 10pm to 6am. I worked a week of each. Working at Harbury at that time was the porter, the station master, the clerk, the lorry driver and me the signaller'.

He went on to say that *'people used the station to catch trains to Banbury for shopping, usually on a Thursday; some people went to work on the train to Leamington and a lot of people used the train to go on holiday'.* The early train 6.55am dropped off the daily papers for the village.



Left: Looking south towards London from the Birmingham end of Southam Road and Harbury station. The platform structure on the up platform accommodated both waiting rooms and toilets for passengers.

The signal box (below) was opened in 1912 and closed on 2nd April 1967.

In March 1963 Dr Beeching, working as an advisor for the government, recommended that seven local stations

should be closed because they were not economically viable. Southam Road and Harbury was one of these. British Railways closed the station to goods traffic on **11th November 1963**, and to **passengers on 2nd November 1964**. The buildings were demolished soon afterwards and today there is little or no sign of the station.

Footnote: On looking through the Harbury News magazines, I noticed a write up about a talk given to Harbury Society by Cecil Bloxham about the railways and in summing up he said the following, *'It was the railway that was the*



real saviour of the village. It brought employment in its construction and then later work at the quarries. It brought the post and the weekly papers; farmers brought their milk, people travelled to Malvern and Cheltenham and to the Grand National. Thirty people would go to Banbury by train on a Thursday to the market.' Read more of this fascinating insight and many other articles in our complete collection of The Harbury and Ladbroke News at the Heritage Centre.



Despite the cold dark evenings and winter weather we have had an increase in visitors to the Heritage Centre on Open Days.

Our next Open Days are **Tuesday 3rd May 7-9pm and Sunday 15th May 2-4pm.**

We will **NOT** be open on Easter Sunday.

Next month we ask **'who knows about the Jubilee celebrations in the village?'**

If you have any information or recollections then please get in touch - email 'group@harburyheritage.org.uk'



HARBURY ENERGY INITIATIVE

David Bristow

Tel: 07511 679312

Energy Costs

You will know how your own bills have gone up from the beginning of April, but Ofgem says that average users on dual fuel default tariffs paying by direct debit will see an increase in April of £693 from £1,277 to £1,971 per year. And that is before taking into account the effect of the dreadful Ukrainian crisis on fuel costs. Some analysts are talking of average bills of £3000 a year from October 2022.

If you will have serious trouble paying your bills, there are a number of organisations such as the Citizens Advice Bureau, or Act On Energy 0800 988 2881, that will give advice.

Otherwise, what can we do? Is this the time to check where our money for gas goes? It may give us hot water and heat our homes. But then what? Unfortunately, the hot water all goes down our drains, and the warm air goes out through our roofs, walls, floors and windows, or disappears up chimneys and in other draughts.

Water-saving shower heads

The ideal trick for hot water is to use as little of it as possible, which obviously could mean shorter showers or smaller baths, but might also be achieved by a water-saving shower head. There are apparently two sorts - aerated ones that mix air with the water to give a full bodied but softer shower, and non-aerated ones that work by restricting the water flow and squeezing it through very small holes. This means the water comes out under more pressure, so it gives a harder, more massaging showering experience. I am not sure whether they are suitable for use with power showers, but HEI would be keen to hear from anyone who has used either type.

Smartphone apps

Obviously, the aim for heating is to have it only where and when it is needed, and to keep warmth in the room rather than letting it escape. The answer to the first might seem to be obvious - wear warmer clothes, and just put heating on in rooms you are using, and only when you are in them. However, depending on your lifestyle and your wallet, and how much you like your sweaters or thermal underwear, this may at best be tedious. If so, have you checked how up to date your heating controls are? Thermostatic radiator valves are important because they can easily be adjusted, and each room can be set at a different temperature. However - if you have deep pockets

- they can easily be swapped for internet-enabled ones that allow individual rooms to be turned up and down from a smartphone app. Yes, everyone likes a warm bathroom, but if it is only used in the early morning and late evening, the app could be set to turn the radiator on in time to get the bathroom ready, and turn off at other times. And some apps work with geolocation - if your smartphone leaves the house, all the heating can be programmed to switch off! If you can't be doing with the faff of fiddling with times and temperatures on the app, there is at least one smart thermostat that says it will learn your routine and adjust itself! HEI would like to hear from anyone who has experience of these apps - particularly to know whether they might pay for themselves by reducing fuel consumption.

The other fix is to trap the warmth you have paid for in the house for as long as possible. This means stopping draughts and improving insulation - more on this next month.

Clean Air for Harbury

HEI hopes to work with the school to redo the Air Quality Survey carried out in the village in 2018 to see what, if any, changes have occurred.

Library Green Label Collection

HEI in collaboration with Harbury Village Library will establish a collection of books about the Environment and Climate Change. These books will be held and managed by the library, and identified by a Green Label on the spine.

Ted's Tech Trawl

(Continuing Ted's occasional series of interesting technology advances)

Renewable energy from solar or wind is not available all of the time, so how can we store it?

We have all heard of batteries. These are very useful in homes for storing solar electricity generated during the day so that it can be used at night. For storing renewable electricity at grid scale, where large amounts of power need to be stored for days or weeks, batteries aren't so good. More efficient ways are needed. One way is to pump water uphill into a reservoir, then let it down through a turbine when power is required. Problem - not everywhere is there a hill!

Just outside Manchester, a British company called Highview Power has developed a system that can be sited on any flat area of ground. They compress air at very low temperatures to create liquid air, which can be stored for long periods. When released, this expands by 700 times, re-creating the energy to drive a turbine and make electricity again. The company is presently developing 2GWh of storage in Spain.

An Italian company called Energydome is using carbon dioxide instead of air for long duration storage. The CO₂ is held in a flexible dome, and surplus renewable energy is used to compress it into liquid form. It can then be stored at normal temperatures in high pressure tanks until power is required, when it is released again to drive a turbine and re-create electricity. The CO₂ is piped back into the dome until the next time it is required. It is used over and over again, and none is released into the atmosphere.

Both of these clever ideas use regular industrial machinery which is available off the shelf. To learn more, just search the company names on the web.



HARBURY RUGBY FOOTBALL CLUB

Steven Kittendorf

Without a match for two weeks after the game against Bedworth, the 1st XV ran out through a guard of honour formed by the U6s to u10s on Vice President's day - 12th March. Travelling over from Worcestershire, Chaddesley Corbett provided the opposition for this vital League Match. Harbury rose to the occasion, entertaining the pitch side supporters with a complete performance, winning 52 - 0.

A 2nd XV was also mustered on Vice President's day to play against Leamington - Warwickshire 2nd XV Shield winners on the back pitch. Whilst Harbury had not been able to put together a second team since much earlier in the season, they put together a sterling performance that narrowly missed out on a win.

The Minis and Juniors had a brilliant month in March with fixtures against Old Laurentians, Berkswell & Balsall, Old Leamingtonians, Birmingham and Solihull Bees and Banbury. Some highlights from the U14s with an 82 - 5 win over Earlsdon and a 57 - 7 win over Bees.

We are heading into festival season with trips to Hinckley and Stratford and the highlight of the season, tour! The Minis are heading to Shrewsbury and the juniors are heading to various locations across the UK, including a trip to HQ!

We have been blessed with the weather over the last few weeks making it a beautiful sight on a Sunday morning up at Waterloo Fields. If you are keen to give it a try, get in touch with Phil (sheepy226@virginmedia.com) or Chris (chris.woodhams@argentaconsult.com).

Warwickshire 2nd XV Shield final was played at Waterloo Fields on Sunday 6th March with Leamington taking the honours over Shipston. Warwickshire were well impressed with our set up and thanked us for making the event a great success. The car park was rammed and the bar staff (Elle, Neil and Linno) were rushed off their feet throughout the afternoon.

A charity disco held at the Club on Friday 11th March raised over £1,200 in aid of Cancer Research UK; hosted and organised by Keiron, in celebration of Eva's life.

Vice President's Lunch

The second pre-match lunch of the season, arranged by Paul Winch, was held on Saturday 12th March. Hosted by Club President Ian Holroyd, we were served up with a first-class roast dinner followed by cheese, biscuits and port. We then settled down to be entertained by an excellent after dinner speaker - comedian Bob Webb. Covid reappeared in the week leading up to the event resulting in several members having to cancel late on which somehow or other didn't affect the bar take!

Comedy Night

Over seventy folk attended a "Comedy Night" at the Club on Friday 18th March organised by Neil Stevens. Five comedians each had a half hour slot, having to deal with a few good humoured "hecklers" from the audience. A great social event was enjoyed by one and all. Unfortunately for some, a few struggled to cope against Shipston 2^{nds} the following afternoon which eventually took its toll, leaving them on the wrong side of the final scoreline.



HARBURY TENNIS CLUB

Colin Mercer

<https://clubspark.lta.org.uk/HarburyTC>

I'm delighted to report that at the Warwickshire LTA's annual awards evening we won the Club of the Year 2021! Other clubs nominated were Warwick Boat Club, Kings Heath and Boldmere (Sutton Coldfield). The award was presented to us by Sandi Proctor (LTA Deputy President). As category winners we go forward to the LTA's Midlands Regional awards, so fingers crossed for more success!

Did you know that tennis is played by 70% men and only 30% women. In cooperation with **She Rallies** - Harbury Tennis Club is putting on a great free event for women and girls to encourage more even participation in this wonderful sport.



The taster session, run by trained volunteer She Rallies club ladies, will focus on fun and ball skills, using a variety of circuits, relays, and races suitable for any age! You'll also be able to meet club members and see what this award-winning tennis club has to offer!!

Sunday 3rd April 9.30-11.30am

Harbury Tennis Club

Under 11s must be supervised by an adult.

Wear clothing comfortable for moving around in, and trainers.

Places are limited so make sure you book your space; <https://bit.ly/sheralliesharbury>

The Spring coaching programme for children delivered by Coolsportz coaches Lianne, Steve, and Scott on Mondays and Fridays is going well. It caters for all ages - Mini Reds (8 yrs and under), Orange/Green (9-12 yrs) and teenagers. There are also sessions for adults with Steve running the Rusty/Beginners on Monday evenings, Scott's Improvers/Advanced and Cardio on Friday evenings and Lianne's Ladies' group on Friday mornings. If you're interested, please contact Lianne on 07919 104093 or lianne@coolsportz.co.uk Our link with Harbury School started again this term, with Scott running sessions for year 4 pupils, and we hope to run this through the spring and summer terms.

We had several postponements in the leagues and March/April will be very busy as we try to catch up. In the floodlit league Division 2, the A team of Helen Cooper, Eira Owen, Ben Fish and Adam Crossling suffered a heavy 1-7 defeat against a strong Banbury West End B. Ben and Adam played well to win our only point. The next match, against Brackley B also finished 7-1 but this time Harbury were the winners, with Emma Brangwin, Sue Panton, Josh Marshall, and Ben taking the

honours. This was our third win of the season and with two matches to play we should manage a mid-table finish to the season.

In Division 3 the B team took on Middleton Cheney A. Jane Minchin, Sue Johnson, Ash Chand, and Steve Attridge enjoyed a very close match, and after the first two rubbers the score was 2-2. Steve and Jane kept it on levels terms halving their mixed doubles, but the home pair edged out Sue and Ash to secure a 5-3 win. With five matches to go Harbury sit in sixth place, just above the relegation place.

The floodlit C team suffered two defeats in Division 4. In the first against Deddington C Sue Panton, Jeunine Crabtree, Ash Chand and David Bristow lost a hard-fought match. It followed a similar pattern to the B team match, all square at half-time, but the visitors won three of the four sets in the mixed doubles and an overall 5-3 win. Jeunine and David were joined by Lucy Ewen and Craig Lenton for the next match against Byfield D, yet another match that was level after the first two rubbers. The mixed doubles were very close with a tie-break set in both, but Byfield won both and went home with a 6-2 win. That leaves us bottom of the league but six matches to play, so still hope!

The weekend team started with the short trip to Warwick for Sue Panton, Sue Johnson, Maka Kandola and Colin Mercer. Surprise, surprise it was all square at half-time! In the mixed doubles Sue P and Colin drew theirs but Warwick made the most of home advantage winning both sets against Sue J and Maka who were playing on AstroTurf for the first time. Next came Kings Sutton B on our familiar hard courts, but in dreadful weather. For this one, Sue Johnson, Jane Minchin, Nigel Eaton and Ash Chand adjusted to the windy conditions better than the visitors and chalked up an excellent 6-2 win taking us to second place in Division 2.



GUIDES AND SCOUTS SUPPORT

Laura Harris - G.A.S.S. Committee

Firstly, a big thank you to the Co-op Heart of England Community Foundation who have granted us £1,000 to install a new bike shelter at the hut. We look forward to getting the work done this summer, look out for further updates from us.



We are very happy to announce that we have had lots of interest from children and their parents in starting up the 1st Harbury Cubs pack. Fourteen 8–10-year-olds attended a taster session last week with some of our scout leaders and the soon to be new Cubs leader who is now completing his training and safety checks. We really hope that some more volunteers take his lead and step forward so that we can restart regular sessions after Easter and even join the district camp this summer.

Beavers is sadly still closed but we would love to see the same enthusiasm from the community for getting 6-8 year olds started on their scouting journey.

If you think that you can help to get either of these groups up and running, by offering to lead, help in sessions or with admin please call Rosanna 07770 704056 or email g.a.s.s.harbury@hotmail.com, we are happy to answer any questions. Don't forget, GASS does all the fundraising and hut maintenance so that leaders can focus on running sessions and we're a very supportive team!

We have some important dates for your diaries, please come and support GASS and find out a bit more about what we do.



Coffee Morning Fundraiser 14th May, 10am-12pm in the Tom Hauley Room behind the church - raffle, hot drinks, biscuits and fabulous cakes.

AGM 17th May at 8pm via Zoom - all welcome - login details to follow.

In addition to the usual Chair, Treasurer and Section reports, there will be a special presentation on the Scout Hut improvements planned for 2022-23.

Please attend if you have an interest in this community building and want to know more about the project. We currently have a Greenshoots grant of £22,000 for the first stages but we're also seeking planning permission and more funding.



HARBURY TODDLER GROUP

Lynne Barton

Hello from everyone at Toddlers

We held our annual AGM recently and looked back at an eventful and unsettling couple of years. We feel we have missed a whole group of children, not being able to wish them well on their forward journey to school and celebrate their achievements. However, we are pleased to be back! It is great to be able to run Toddlers once again on a more regular basis and we remain grateful for your support.

During the 'lockdown' periods between October 2020 to March 2021 we endeavoured to be creative and offer Toddler sessions online most notably with a visit from Princess Elsa, resident in her Castle, Storytime from The Letterpress Project, Rhythm Time with Rachel and our ever helpful Miss Lorraine, founder of Love Ballet. During these online sessions 24 children and parents were able to join us on Zoom. It was a humbling experience in some ways because, as usual, with under fives there is a joy and wonder we sometimes forget to see. Princess Elsa told them how cold it was in the Castle and that she would send the snow and as if by magic shortly afterwards it really did begin to snow!



We re-opened our doors for face-to-face sessions on 10th May 2021 with a small cohort of families. We had to use, at that time, a prior booking system so no one could just pop along, we had to be fully compliant with Covid regulations and restrictions and endeavoured to keep everyone safe with masks, hand sanitizer and good ventilation. We invested in our Toddler gates and used a one-way system for entry and departures. Thank you to everybody for your co-operation.

We delivered 19 sessions from May through to December last year, 2021; the highest number of children attending in any one week was registered as 17. There was an average attendance of 11 children per week. This compared with an average of 22 per week during 2019, our last full year pre-Covid. The least we had was just five children and their parents.

The Christmas party in the Tom Hauley at All Saints Church was a particular highlight to the year with the Soft Play takeaway experience, pass the parcel, food and our fabulous Father Christmas.

Since January 2022 our numbers have grown a little and we have run another 10 sessions to date with an average of 14.6 attendances.

Toddlers is once again starting to feel like a 'family' and we are pleased that parents and grandparents are, as always, very welcoming to both new and familiar faces, thank you all.

We are particularly grateful to Entrust Care Partnership, a not for profit organisation working with disabled children, young people and families based in the village. They continue to run and sponsor the Toddler Group with its volunteers and a substantial financial contribution which from January 2021 to date stands at £1,509. The money has enabled us to run on a weekly basis providing the activities, guest programme, Christmas Party, Summer Trip and other resources.

Recent Activities

The visit from **Princess Belle** was really exciting and well received with not only glitter tattoos but our very own West End performance of songs from Beauty and the Beast and other Disney Princesses. Great job DBA Theatre Company.

The promise of Spring encouraged us to plant early spring flowers, the children liked selecting the colours, digging in the compost and making a flowerpot to take home.



We celebrated **Pancake Day** with some super sensory activities provided by Emily Robinson and danced the morning away with songs, rhymes and the thrill of popping lots of bubbles!

Yes, we are back so...

Please do help spread the word that we are running our regular Monday morning (9.30-11.15am) Toddler sessions at the Scout Hut located at the rear of the Library. There is always plenty to do, a warm welcome, a nice cuppa and the opportunity to make new friends, all this for just £1.50 per session. All welcome you don't have to be 'toddling' to attend.

With much affection, stay safe and we look forward to seeing you all very soon. Love from Lynne, Selina, Reg, Debbie, Suzi and Judi x x



HARBURY PRE-SCHOOL

Staff and Committee



Pancake Day: We returned after half term to Pancake Day. The children enjoyed a story about Mr Wolf's pancakes at circle time and then we split up into smaller groups to make yummy pancakes.

The children cracked the eggs, poured the milk and took it in turns to stir up their mixture. We talked about the consistency of the pancake mix before and after adding the different ingredients and what we needed to do to the mixture before we could eat the pancakes. We then enjoyed our pancakes with various toppings for our snack.



World Book Day: We celebrated World Book Day over the week. The children were able to dress up as character from one of their favourite books and they each brought in one of several books from home to share which we read during circle time or small group time.

The adults and children alike thoroughly enjoyed hearing some new stories and the children loved sharing their favourite books with their friends.





The Role Play area became a Theatre. We alternated between a puppet theatre and a stage, both having 'audience' seating. The children had a lot of fun with the puppet theatre making up their own stories and it was great to watch our budding performers dancing, singing or putting on a 'show'.

Feeding the Birds: We often hear birds when we're outside in the garden so we decided it would be nice to feed them.

We acquired a bird feeder and some seeds and the children went outside to fill the feeder. We hung it up and the children have been bird watching to see how many birds we can spot and whether we need to top up the feeder with seeds.

Visit to the Park: As the weather has been so nice over the last few weeks, we took some of the children for play in Harbury Park. They thoroughly enjoyed climbing, swinging and sliding and playing with their friends before coming back to a well-earned snack.



Mothering Sunday: The children have had a busy week making lovely butterfly cards for their mothers. They have been painting lovely symmetrical butterflies by painting on one side of the paper before folding it over to make a pattern on the other side. The children have then either written their name inside or drawn something.

We would like to wish all our Pre-School Mummies a lovely Mother's Day.



HOMEBUYER SURVEYS, BUILDING SURVEYS & VALUATIONS

If you need **honest and pragmatic** advice, but also appreciate a friendly face and heaps of enthusiasm, then **Karena** is the lady to go to for all your surveying solutions.

- RICS Chartered Surveyor
- RICS Registered Valuer
- RICS Level 2 & 3 Property Surveys
- Short Property Reports
- Party Wall Awards
- Valuations for Help to Buy, Shared Ownership & Probate
- Over 33 years' experience



Please contact **Karena** for more information.

01926 612121 / 07752 134874

admin@greenchameleon.net
www.grechameleon.net

MB Plastering PLASTERING AND HOME IMPROVEMENTS

For all your plastering needs
from ceilings, coving and walls
to artex removal, plaster
boarding and partitions



07494471217

plasteringmb@gmail.com

www.mb-plastering.co.uk



D F J HEWER BUILDERS LTD



DESIGN AND BUILD COMPANY

*Established over 56 years working for the community
for all your building requirements*

We build today with an eye to the future

MAINTENANCE – REPAIRS

EXTENSIONS – ALTERATIONS

LISTED BUILDING CONSENTS

SPECIALISTS IN LISTED BUILDING WORKS

PLANNING AND BUILDING REGULATION APPROVALS

Telephone: 01926 813070 or 813627

Email: admin@hewerbuilders.co.uk

Web: www.hewerbuilders.co.uk



Registered house builders

Auction Sales & Valuations

Valuation, collection and auction service of individual items through to complete property and commercial clearances.

Call for a free no obligation quote or email info@leauction.co.uk

SALE ENTRIES NOW INVITED

www.leauction.co.uk



LOCKE & ENGLAND
AUCTIONEERS & VALUERS

**01926
889100**

**18 Guy Street,
Leamington Spa,
CV32 4RT**

Rollason

Fencing and Sheds
EST 1964



You've seen the rest now see the
BEST!

Professional erection service available
(01926) 612066 or 613009.
Mobile: 07748946142.

**GOOD FENCING
MAKES
GOOD NEIGHBOURS!**

**FREE
QUOTE**

HARBURY PARISH COUNCIL

Unit 2, Bull Ring Business Centre
Church Terrace, Harbury CV33 9HL
Tel: 614646

Website: www.harbury-pc.gov.uk

Open: Monday - Thursday
10.00am 12.00pm

CHAIRMAN:

Tim Lockley

Email: chair@harbury-pc.gov.uk

CLERK:

Alison Biddle

Email: clerk@harbury-pc.gov.uk

Parish Council meetings are
open to the Public.

To speak on any issue, please
contact the Parish Clerk

Harbury Village Library & Biblio's Café

Harbury Village Library

Browsing & Borrowing, Click and Collect, Home Delivery and Takeaway Shelves for Children's and Adults' Books, Audio Books, Jigsaws, and Board Games. Public Access Computers, WiFi access and Printing Facilities, Events & Activities, Food Bank Collections, Recycling Boxes, Art Gallery, Books & Greetings Cards by local artists for sale.

Biblio's Café

Offering a selection of hot and cold drinks, cakes and baked goods either served at your table inside the cafe or as takeaway items

Please check the Harbury & Ladbroke News, on Social Media, www.HarburyVillageLibrary.org.uk and village notice boards for information about current opening times



Harbury Village Library, The Wight School,
High Street, Harbury CV33 9HW
01926 258776
- library@harburyvillagelibrary.org.uk

Places filling fast: We have a record number of pre-schoolers currently enrolled and some of our sessions from September 2021 are already full. If you are considering Harbury Pre-School for your child, please do get in touch.

If you would like further information, or to register a child for Harbury Pre-School, please e-mail enquiries@harburypre-school.org.uk text 07907 598461 or look at the web site www.harburypre-school.org You can also find us on Facebook.



HARBURY LIBRARY & BIBLIO'S CAFE

Rich Fowler



Covid: With Covid still a presence in the village we will continue to encourage our visitors to wear a face covering when entering the building. Sadly, we have had to postpone two events because of concerns about the virus, but we have been able to reschedule both, and tickets already purchased can be used for the new date or returned for a refund.

Bridging the Gap: Harbury Village Library will be working with Arts Uplift and Harbury Primary School on an intergenerational project to create a mural exploring seventy years of school life, to be displayed in the School hall. We will shortly be recruiting people to take part in three workshops to create elements reflecting the school's motto, 'To learn, love and grow together'.



Playlist for Life: At the suggestion of Warwickshire County Libraries, we have agreed to become a Help Point for the Playlist for Life scheme. Playlist for Life is a music and dementia charity trying to reach as many older people as possible, and those living with dementia. The library will be a place where people can get information about creating and using a personal playlist to help someone living with dementia.

What's On

- Friday 1st April - A road safety event with Warwickshire Road Safety Education team to include specially written story, followed by a bike marking event.
- Friday 15th April, 2022 - Ma Bessie's Prohibition Party - The very best of 20s/30s blues and jazz.
- Thursday 21st April - Meet Bella Osborne, Warwickshire author, winner of this year's Romantic Novelists Association Comic Romance award for her book, "The Promise of Summer".
- Thursday 5th May - A talk by Helen Barlow of the Dogs Trust.

Don't forget, you can hire the library for your own event. Rates are £5 an hour for community or social events, £10 an hour for commercial or profit making events. For more information email us at events@harburyvillagelibrary.org.uk



Library Art Gallery: After 8½ years as 'Curator of Art' in the Library, Peter McDonald handed over responsibility for organising the displays to Martin Randall in April 2021. I'm sure all who have exhibited and enjoyed looking at the art on display over that time will be grateful to Peter for the way he developed this enhancement to the Library. This is Martin's report:

"Despite the Covid situation, we had 68 exhibits in 2021, compared with 38 the previous year and 82 in 2019. There were 23 exhibitors, the highest number since 2015, with nine new exhibitors. Many of those new exhibitors have been from the Harbury Art Group who meet in the Tom Hauley Room twice each month. We also used this as an opportunity to advertise the Harbury Heritage Calendar, with a display of some of the Group's original artwork from the calendar. I am grateful for their support and for the continuing support of other exhibitors during my first year".



If any other local artists would like to exhibit some of their work in the library, please contact Martin on harburylibraryart@gmail.com

Martin Randall

Easter Closing: The library and cafe will be closed on Good Friday (April 15th), Easter Saturday (April 16th), and Easter Monday (April 18th).



Biblio's: Please remember that customers are able to book tables in advance for Biblio's Café. To make a booking email bookingsbiblioscafe@outlook.com. Tables are restricted to a maximum of six people.

On arrival customers are asked to wait to be allocated a table, where their order will be taken.

Regular Opening Times

Library - Monday and Tuesday - 10am to 4.30pm; Wednesday, Thursday and Friday - 9.15am to 4.30pm; Saturday - 10am to 12 noon.

Biblio's Café - Wednesday to Saturday - 9.15am to 12 noon, Saturday - 10am to 12 noon

Please note that it will be table service only in the café, apart from takeaway items.





HARBURY CLUB & INSTITUTE

Judy Morrall

It is officially Spring and today 22nd March the temperature is a massive 19° degrees and set to stay fair for the next few days.



The last weeks of February were quieter at the club, but now that the nights are getting lighter we have welcomed more members and visitors to the club. We intend to review the opening hours as we had to close on two occasions recently with very short notice due to staffing issues - our apologies for this. Once we have spoken to our bar staff and ensured that the revised opening hours are to the benefit of our members, we will put the hours on Facebook and posters around the village. We will also put posters

on the windows of the club facing Crown Street so that passers-by can easily see them.

Hopefully, as the word spreads more societies will be using the concert room which is free to hire. We are hoping to encourage junior members who will pay £5 to join and who be able to enjoy the children's games room and, with supervision, be shown how to play pool and will then when over the age of 18 become adult members. They are the future of the club and, as you can see, lots more ideas to follow.

The new discount prices for paid up members has been very well received. About 24 members did not renew their memberships but obviously circumstances change and we appreciate all their past support. The few Sundays I spent processing the payments flew past. There are many paid up membership cards ready to collect behind the bar. I have hand delivered some membership cards in the village. Please pop into the club to collect your cards and enjoy our new selection of drinks.

There are parties booked over the next few weeks and with the warmer weather the new outside seating area can also be enjoyed. Steve has been and cut the grass and it looks so green and verdant as do the pots along the wall to the entrance. The rockery is in full flower and the daffodils, narcissus and crocus are putting on a display and tulip bulbs will do the same shortly. I will be planting annual seeds along the top once the bulbs have finished flowering to ensure a colourful display throughout next few months.



I reduced the cost of a book of eight tickets for the bingo and buffet for the one held in February. It was a success and the prize money was the same as more people bought more than one book. The bumper raffle was also enjoyed as was the buffet. Nice to welcome some members who used to come to the Friday bingos and some more new faces. The next one is this Friday 25th March. I have already been given some great prizes for the raffle from my volunteer friends at Upton House. Look forward to seeing everyone and for another enjoyable evening. On the next day Saturday 26th March some of us will be at the Village Hall at the Produce Market

selling raffle tickets and food and drinks as the Club has been lucky enough to be chosen to receive the profits.

As said in my last article there will be CPR training at the club from 1.30pm the same day and we wish Ann Lynch a successful event. In the evening the live group Stone Meadow will be performing so something for everyone. Easy Street who practise on Thursday evenings at the club will be putting on a free show for us at the beginning of June - more about that in next article. The bingo and buffet in April will be on Saturday 23rd April and there are a couple of parties booked in between, so things are happening at a pace.



Also, more good news, the Folk Group will be back at the club. Depending on the current Covid spike we will be welcoming them back on either Thursday 5th May or Thursday 11th June. We will ensure that you are kept informed. Who can forget their last performance in February 2020 for our centenary celebrations, a night to remember.

A preliminary date for your diaries, Monday 25th April we are planning to hold the AGM but you will be informed by Facebook, email or posters in the village. The lists for members to enter nominations for President, Vice President, Treasurer and committee members will be out on the notice board in the foyer 10 days before the meeting.

I have finally managed to start digging at my allotments. The plot I started on has my gooseberry bushes and rhubarb in and I ended up digging out so much bindweed. Thought I had eradicated it but no such luck! It was a lovely Sunday afternoon, the birds were singing and it was a joy to be communing with nature again. My back thought otherwise the next day! I can soon start off my seed sowing in my plastic greenhouse - exciting times ahead.

We are getting busy at Upton House as Charlecote is still closed. The deep spring clean is almost finished, the scaffold tower still in place. We have had some very appreciative visitors who love hearing the stories about the Samuel family and how they arrived in the UK in late 1700's from Holland to escape persecution for their Jewish faith and went on to establish a fortune. They were and still are a very generous family giving support to good causes. Sam Waley Cohen is in the list of 100 riders with his horse Jett for inclusion in the Grand National on Saturday 9th April. We saw him again with his family visiting his parents at Upton Viva just before the Cheltenham Festival where he did have second place in a race on the Thursday on Mister Coffey. Last year in the National he led all the way until the second last fence, let's hope he is included and can finish first. We will be running a tote at the club on that Saturday from 1.00pm. I know who my money is on!!!

Thank you for reading my articles and your lovely comments. I hope that you all stay safe and enjoy the fabulous Spring weather whatever you do. My very best wishes to everyone.

May Edition - Harbury & Ladbroke News

Adverts to: 36 Manor Orchard, Harbury or e-mail to advertising@hlnews.co.uk by 20th April

Articles to: Harbury Pharmacy, High Street or e-mail to articles@hlnews.co.uk by 5.30pm, Thursday 21st April





GARDEN JOTTINGS

Christine Dakin from Bridge Nursery

Fame at last. There is a new gardening programme starting on TV in the near future. The aim is to provide plenty of information for people with specific needs or locations. There will also be one or two weird and whacky subjects. The producers and I have been discussing the content and they want to film the first session here so they can focus on gardening on clay soil. I am not allowed to mention the presenter's name but I guess it will be familiar to many of you. I'm merely providing the location for the filming but it feels like a real feather in my cap.

They will want to look at the plants which grow well here, this will include roses, willows, asters, ornamental grasses, hardy geraniums, verbena, hellebores and many more. Some hints and tips will be suggested about how to improve the ground using homemade compost which should be useful for anyone who has this challenging soil.



The series will also feature the highly secret spaghetti tree farm, plus the fields where beef flavoured carrots are grown.

I can't wait until 1st April when the filming begins!

Bridge Nursery, Tomlow Road, Napton
www.bridge-nursery.co.uk



NATURE NOTES

John Hancock

As I write this on Sunday 19th March we are under the influence of a high pressure system giving rise to clear skies and lots of sunshine coupled with a breeze of variable strength. The temperature peaked at 18°C in the middle of the day. This is sufficient, in sheltered places, for the first butterflies of the year to be coaxed out of hibernation. I wondered which species I would see first as I took a brief 'constitutional'.

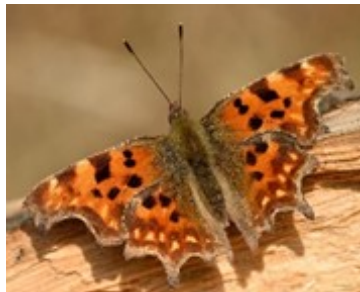


Walking from The Beeches on the path which arrives in the sloping field looking down to Chesterton Road, a butterfly crossed my vision but it was difficult to say which species. Patience was required and was rewarded in a few minutes when a Small Tortoiseshell displayed itself, wings held open absorbing the heat at ground level. It was sitting on its caterpillar's food plant, the humble nettle-*Urtica dioica*. A decent patch of this plant in a sunny location virtually guarantees the presence of this butterfly in any part of the British Isles.

Later, on the same walk, I saw a male Brimstone butterfly. Many authorities believe that the very word 'butterfly' derives from this insect as 'butter' yellow perfectly describes its colouration. It is a leaf mimic. The female which emerges about a week after the male is much paler in colour and could be mistaken for a Large White when on the wing.

My third sighting, this time at Harbury Spoil bank, was that of a Comma. After undergoing a change in fortunes, this insect is increasing its range in a northerly direction. (My sister-in-law sent a picture of one this week taken in her garden in Newcastle-on-Tyne.) Hop gardens were once its preferred location but these are now a rarity and nettles have taken over as the caterpillar's food plant.

To our eyes the male and female Comma look identical. How do the insects differentiate one from another? The answer lies in the female's possession, and dissemination, of a chemical known as a pheromone. A male can pick up the scent and home in from afar to fertilise a female and thus continue the insect's life cycle.



Now, every few days, whilst taking a country walk, another wild flower is added to the list. Today I found a large patch of Colts' Foot (*Tussilago farfara*) growing on the verge as I walked up Chesterton Road. The Latin name refers to *Tussis* meaning a cough. The plant's leaves were used as a cough medicine but also, ironically, as a herbal tobacco.



Go down to Harbury Spoil bank to see the turf glittering with the dried flower heads of Carlina thistle which persist through winter. Unlike its giant cousin, the Chardon Soleil of Southern Europe, there is no tradition of nailing it to the door to bring good luck.

Pussy Willow is now much in evidence. It's the male catkin of Goat Willow and frequently used as a 'palm' to decorate churches at Easter.

Rooks, magpies and their relatives, collectively known as corvids, are collecting sticks and busy making their nests. The annual round of egg laying, hatching and rearing young has commenced.



LOCAL FOODBANK - The foodbank supplies the local area, including Harbury. Please bring donations of non-perishable food to the Wight School (library) car park on Mondays between 11.30am and 12.30pm, one of the e-Wheels drivers will be there to receive your items. Alternatively, donations may be dropped off at the library foyer during its normal opening hours.

Thank you



HARBURY GENERAL NEWS



HARBURY GARDEN GROUP

Jacqui Temple

I'm writing this in the garden as it's such a gorgeous day. It's at this time of year I suddenly realise how much needs to be done! It's also when I'm reminded of some of my favourite plants as they start to emerge from the ground as new shoots, it always fills me with joy!

After putting together an article last month asking if anyone is interested taking part in a garden group, I have had an excellent response.

Our first informal get together will have taken place by the time you read this! At the meeting we will start to get to know each other and decide how we want the group to run.

If you are interested, please email me at jacquitemple.jt@gmail.com or call me on 07729 381293.



HARBURY GARDENS WALKABOUT

Peter Walshe

2nd / 3rd July 2022

After the successful return last year of the Harbury Open Gardens event we are pleased to announce it will be on again this year.

Harbury e-Wheels is organising the Harbury Gardens Walkabout and we hope to have 20+ gardens, including old favourites, spread around the village with some offering teas, cakes, drinks and maybe lunches. Why not also visit the Harbury Heritage Centre?

Many garden owners have already expressed an interest to take part, but if you would like to open your garden, please contact Peter Walshe on 07446 779879 or peterdouglasswalshe@gmail.com. We would love to include some gardens that have not opened before. The plan is to open 12noon-6pm on Saturday and 2pm-6pm on Sunday.

Here's hoping for a blooming good July!



HARBURY VILLAGE SHOW

Show Committee

We have the first draft of the show schedule so hope to get the final copy out as soon as possible. The format is similar to previous years.

A few hints to get you thinking -

Photography - "Recycling" category from last year but a new category is "Door" which gives lots of scope.

Baking - Savoury scones - have you got a favourite recipe?

Craft – there will be a poem again this year!

Alongside these classes there are the usual vegetables, fruit and flowers. The weather is improving so hopefully everyone is starting to sow seeds and starting to plant out.

Look out for the schedule soon.



DO YOU PLAY BRIDGE? _____

Hilary Nealon

If so, would you like to join a group of like-minded people who play at The Grange Hall in Southam on Monday evenings and Wednesday afternoons? Monday is Duplicate and Wednesday is Chicago, complete with a cup of tea and biscuits. At the moment we have about 24 members but are looking to expand.

If you are interested or would like more details, please phone Hilary, 612789.



HARBURY DISTRICT COUNCILLOR UPDATE _____

Jacqui Harris

March in like a lion out like a lamb!

Another steady month as we move into Spring with such lovely weather. I have the usual council meetings both local and in Stratford. Work progresses at Upper Lighthorne and with HS2. I hope both less hazardous with lighter days and better weather conditions.

Planning

No new large applications at this time. I am aware of interest in and around the ward.

Enforcement is investigating the helipad situation in Lighthorne Heath, Upper Lighthorne, no update at the moment.

Housing

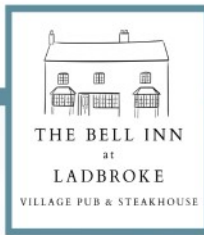
I remain in contact with Orbit dealing with ongoing issues.

Stratford District Council

The momentum and work for the amalgamation of Stratford District Council and Warwick District Council continues, no specific update at this time.

Harbury

I have been saddened at the loss of a few friends in the village, one of which is Deb Parker, a lovely lady who will be greatly missed.



SPRING HAS SPRUNG!

Spring is fast upon us already and we are excited for some of the great events we have planned here at The Bell Inn.

Every WEDNESDAY evening from 6pm, we are offering 20% off all of our delicious Oxfordshire steaks.

The FIRST THURSDAY of every month we will be hosting a special Chef's Night! Keep your eyes peeled on our socials for the latest announcements on monthly menus.

EASTER is just around the corner and we have a few things planned... We will be holding an EASTER EGG HUNT on Saturday 16th April, 3pm-5pm. So drop in, sit back and relax with a coffee (or cocktail?) whilst the children have some fun! We will also be running an Easter Egg colouring competition for children of all ages over the Easter weekend with chocolatey prizes! We will of course be serving our delicious SUNDAY ROASTS on Easter Sunday too! Give the team a call to book your table.

To finish off the Easter weekend we will be hosting a EASTER SUNDAY GARDEN PARTY, 6pm - 8.30pm with cocktails in the garden, delicious food from our wonderful Freespirit Foodtruck and live music. Joining us will be the amazing one man band "Thom Kirkpatrick" for some live music in the (hopefully) sunshine!

To find out more about all the latest events and menus and to book please head over to our website www.bellinnatladbroke.co.uk





Modern Homes

for everything inside your home



**Pop in for a chat or call to book
a free consultation on 01926 883 338**



As a family business in our 50th year of trading we are proud of our exceptional levels of customer care and quality of service.

Let our award winning team manage the planning, design and installation of your new kitchen, bathroom and bedroom.

We will guide you at every stage from concept to completion, ensuring a stress free experience that delivers the room of your dreams.

We have a fantastic team of quality tradesmen from bathroom and kitchen fitters to plasterers, plumbers, carpenters and many more.

Whatever your project involves we can provide the help you need.

With a wide range of products from market leading British suppliers, quality and value for money is guaranteed.

No matter what your style and taste we can come up with a design perfect for you.



THE HOME
SPECIALISTS
ASSOCIATION

*Find us on Facebook, Twitter, Pinterest,
Houuzz and YouTube.*

**www.modernhomesleamington.co.uk
info@modernhomesleamington.co.uk**

37 Longfield Road, Leamington Spa CV31 1XB

Deppers Bridge

Roads open and clear, traffic flowing, the issue of speeding continues to be monitored.

Chesterton & Kingston

Things are slowly progressing in closing The Old Gated Road, watch this space along with getting the traffic lights in at Harbury - Fosse junction. A campaign promise of mine since 2015 and I secured the money for this to happen. It is just time now folks. It will be delivered!

Warwickshire County Council promised movement in March, doesn't seem to be the case sadly. I will continue to chase them.

Upper Lighthorne

Building in and around Lighthorne Heath continues. The area has changed quite a bit! The helipad issue continues but will be resolved.

I hope you all have a lovely Easter!



REPAIR CAFÉ

Rich Fowler

Our next Repair Café will be on Saturday 23rd April, from 2pm to 4pm at Harbury Village Library.

In addition to our team of volunteer repairers, we have glue, string, tape, lubricants, and a range of tools available so that you can carry out your own repairs.

This month we'll also have the Harbury Seed Library for you to select seeds from, and a new Green Label collection of books about the Environment and Climate Change, which is being created collaboratively by Harbury Village Library and Harbury Energy Initiative.

We have a monthly email newsletter which we send out in the week before each Repair Café as a reminder, and with extra information about any special repair skills we'll be offering that month. If you'd like to receive a copy email us at repaircafeharbury@gmail.com



SOUTHAM FRENCH STREET MARKET

Pam McConnell

Sunday 24th April 2022, 10am - 4pm

Southam French street market is held in the main street of Southam and is a traditional French market with lots of fresh tasty produce, including bread, croissants, patisserie, saucisson, olives, street food, plus local crafts and artisan producers.

All enquiries to southamfirst@outlook.com



SOUTHAM INDOOR MARKET

Pam McConnell

Southam indoor market is held on the **third Saturday** of the month at the Grange Hall, Coventry Road, Southam, CV47 1QA from 10am to 12.30pm.

There are a good range of stalls featuring local producers and crafters: food, drink, homewares, gifts, pet products, plants, baking, chocolate, honey, and other tasty treats.

Free entry, car parking and refreshments available.

All enquiries to southamfirst@outlook.com

Forthcoming Indoor Market dates:

Saturday 16th April (Easter special), Saturday 21st May and Saturday 18th June.



READERS' LETTERS

Dear Editors

I wanted to say a heartfelt thank you to all those who have donated to the Dementia Charity on behalf of the late Christine Gore. We have raised an amazing £820 to date!!

Best wishes

Michael Gore

Dear Editors

Through these pages I wish to thank and promote e-Wheels for the excellent service they provide. I was forbidden from driving for six hours following an examination at the eye clinic in Warwick and e-Wheels came to my rescue, taking me and bringing me home.

Some years ago, I took out a standing order to make an annual donation to e-Wheels not knowing that one day I would have need for their services. This service, even though it is run by volunteers, needs money to keep the vehicles running. So, if you wish to keep this excellent service operating for the benefit of those who are prevented from reaching important, sometimes vital appointments for financial or physical reasons, please consider doing as I did, and make an annual donation to e-Wheels.

For more information visit the Harbury e-Wheels website.

Tony Thomas

Harbury & Bishops Itchington Surgeries

 **01926 612232**

www.harburysurgery.org.uk harbury.surgery2@nhs.net

HARBURY SURGERY

	Monday	Tuesday	Wednesday	Thursday	Friday
AM		Dr H Parkinson	Dr D Lewis	Dr K Panting	Dr D Lewis
	Dr R Collins	Dr M Wood	Dr S Chard	Dr S Chard	Dr M Wood
	Alice Woodward (Phlebotomy)	Rachael Pearson (HCA)	Rachael Pearson (HCA)	Rachael Pearson (HCA)	Janette Robson (Practice Nurse)
	Dawn Gibbs (Practice Nurse)	Dr D Lewis			Rachael Pearson (HCA)
PM	Dr D Lewis	Dr D Lewis	Dr M Wood	Dr S Chard	Dr M Wood
	Dr R Collins	Dr H Parkinson	Dr S Chard	Dr H Parkinson	Dr H Parkinson
	Rachael Pearson (HCA)	Dawn Gibbs (Practice Nurse)	Rachael Pearson (HCA)	Janette Robson (Practice Nurse)	Janette Robson (Practice Nurse)
	Dawn Gibbs (Practice Nurse)	Rachael Pearson (HCA)		Rachael Pearson (HCA)	

For Harbury ring 01926 612232 during their opening hours
(doors open Monday - Friday 8.30am to 12.00pm and 1.30pm to 6.00pm)
(Telephone lines open Monday - Friday 8.00am to 12.15pm and 1.30pm to 6.15pm)

For the practice dispensary please email harburysdisp@harburysurgery.nhs.uk
or call 01926 612232 and select dispensary (Lines open Monday - Friday 2.00pm to 5.00pm)
Prescription collection hours from Harbury Surgery dispensary are
Monday - Friday 9.00am - 12.00pm and 3.30pm - 6.00pm

BISHOPS ITCHINGTON BRANCH SURGERY

	Monday	Tuesday	Wednesday	Thursday	Friday
AM	Dr D Lewis	Dr K Panting	Dr M Wood	Dr H Parkinson	Dr S Chard
	Rachael Pearson (HCA)	Dawn Gibbs (Practice Nurse)	Alice Woodward (Phlebotomy)	Janette Robson (Practice Nurse)	
PM	Dr K Panting	CLOSED	Dr D Lewis	CLOSED	CLOSED
	Dawn Gibbs (Practice Nurse)		Rachael Pearson (HCA)		

For Bishops Itchington ring 01926 612232 during their opening hours
(doors open Monday - Friday 8.45am to 12.00pm and on
Monday and Wednesday afternoons 3.45pm to 6.00pm)
(Telephone lines open Monday - Friday 9.15am to 11.45am and on
Monday and Wednesday afternoons 4.00pm - 6.00pm)

Harbury & Ladbroke News

ANNUAL SUBSCRIPTION 2022/23

The Annual Subscription is due this month, the cost of this will be £6.00 covering the year up to March 2023.

If you would like to continue having the magazine delivered, and you have not already paid your subscription. You can still pay in one of three ways.

- Payment by BACS. Visit www.hlnews.co.uk and select the 'Subscription and BACS payments' Tab. Complete the online form and **then make the £6 payment from your bank account**. It is vital that you give us the first line of your address as the reference when making the online payment.
- You can put the £6 subscription in an envelope marked with your address and deliver to your distributor. If you are unsure who your distributor is please call 07900 852236.
- Alternatively, if neither of the above is an option for you, your distributor will call for the money when delivering a future edition of the magazine.

Many thanks and we look forward to your continued support.



Meeting Point

*We meet on the **First Tuesday** of every month at
The Crown Inn, Crown St., Harbury
Lunches start at 12.30pm - cost £6.00*

Dates for this year

3rd May – bookings please by 29th Apr

7th June – bookings please by 3rd June

*More details from Fliss Harris 612395
or Gemma Took 614193*

~~ www.vhs2dvd.info ~~



Have your treasured VHS videos transferred to
DVD or converted to MP4 files

Also most camcorder formats to DVD or MP4

Editing service available!

Makes a great birthday gift!

***Locally based - visit website or
call 01926 338825 or 07733 368245***



TONY'S ROOFING

Roof repairs - Tiles/Slates, Re-pointing, Ridges, Leadwork, Chimney repairs,
Flat roofs (torch on felt), Velux windows fitted, UPVC Soffits, Fascias & Guttering,
Gutters cleaned

We won't be beaten on price. All work guaranteed Tel: 07881 411265



YOUR LOCAL LOG SUPPLIER



THE LOG DOG

Order your seasoned logs from us and you may even get to meet The Log Dog.

Delivering to local villages throughout Oxfordshire, Warwickshire and
Northamptonshire.

Contact Joe Attfield on 01295 256436

www.thelogdog.co.uk

Est. 1956

WIPE-OUT WASPS



7-day service
Competitive rates
Full pest control service



For a local, friendly service tel
Alan or Dawn 07867 768 533 / 01926 889711
www.wipe-out-pest-control.co.uk



**FREE ANTIQUES
VALUATION DAY**

St Francis of Assisi Church Hall,
110 Warwick Road, Kenilworth CV8 1HL



Thursday 12th May | 10am - 4pm

**Bring along your Books, Works on Paper, Prints,
Jewellery, Gold, Watches, Toys and Collectables**

Consigning for Jewellery and Fine Art Auctions and Specialist Auctions

Free Home Visits for large/multiple items.

House clearance and downsizing advice Probate and Insurance Valuations

For further information please contact Carol Jones

Hansons Regional Manager on 07802 839915

cjones@hansonsauctioneers.co.uk www.hansonsauctioneers.co.uk

Hansons Auction Centre, Heage Lane, Etwell, Derby, DE65 6LS

Refreshments in aid of the NSPCC

TIRED OF SEARCHING THE INTERNET FOR A COMPETITIVE INSURANCE QUOTE?

LET YOUR LOCAL EXPERIENCED BROKER DO THE LEG WORK FOR YOU?



Please contact Deb, Sue or Hannah on

01926 812574

Reynolds Insurance Services Ltd

Independent Insurance Advisors

5 High Street, Southam, Warwickshire, CV47 0HA

enquiries@reynoldsinsurance.co.uk | www.reynoldsinsurance.co.uk

Regulated by the Financial Conduct Authority

Ed's Music Tuition

- Do you want to learn keyboards, guitar or ukulele with a qualified teacher with a passion for music?
- Lessons available for all ages.
- Learning an instrument is rewarding and great fun, and I can help you on your way.
- Fully DBS checked.
- Competitive rates and flexible timetable with lessons tailored to your own individual learning style and needs.
- Tuition in playing, reading music, performance and theory.
- Give me a call to discuss your musical future!



Ed Hudson, Harbury.

Mob: 07801 430029

email: eddhudson@me.com



FOR ALL YOUR FENCING NEEDS

New Fences | Replacements
Supply and Fix - Repairs

ALL WORK GUARANTEED

FREE QUOTATIONS



A.J. FENCING

t: 01926 499751

m: 07974 918098

miles of tiles

(midlands) ltd

ceramic . porcelain . natural stone . sanitary ware . bathroom furniture



Leamington Spa

Unit 1-3 St Mary's Road, Sydenham
Industrial Estate, Leamington Spa,
CV31 1PR

Email: sales@milessoftiles.co.uk

Tel: 01926 312777

www.milessoftiles.co.uk

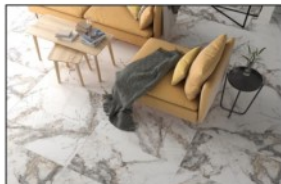


Coventry

96-100 Foleshill Road,
Coventry, Warwickshire
CV1 4JJ

Email: coventry@milessoftiles.co.uk

Tel: 02476 228800



Rugby

103-107 Albert Street
Rugby, Warwickshire
CV21 2SW

Email: rugby@milessoftiles.co.uk

Tel: 01788 546622

Monday to Friday 8am - 5.30pm & Saturday 9am - 5pm



We won't be beaten on price...

Stocked items only and not subject to any other discounts or offers.

20% OFF
Only with
this advert
H&L Direct



Simons Systems

For all your computer requirements
New & used PC's & Laptops,
Repairs & upgrades, Virus removal
Internet problems, Wireless & Networking
No call out charge

T: 01926 316 119

M: 07751 811 097

E: sales@simons-systems.co.uk

W: www.simons-systems.co.uk



Nifty Needle

Curtains and Soft Furnishing

Nifty Needle specialise in creating stylish custom curtains, blinds and soft furnishings, individually designed to create beautiful solutions.

Free measuring service.

At our shop in Kineton we now stock a range of home wares, including lamps, cushions, footstools and other items to accessorise your home.

We're open Tuesday to Friday 9:00am to 5:00pm
and Saturday 9:00am to 2:00pm.

Nifty Needle Curtain Workroom, 1 Banbury Street, Kineton, Warwickshire, CV35 0JS
Tel: 01926 641741 E-mail: info@niftyneedle.co.uk Website: www.niftyneedle.co.uk



Are you worried about spiralling moving costs?

With Alsters Kelley fixed rate conveyancing, there are no unexpected costs. Plus there is an experienced team to guide you through the stages of your move!

- Instant no obligation quote via our website
- No additional administration charges
- Personal service with allocated contacts

kind, helpful, excellent

Helen Checketts, Paralegal, Residential Property
01926 355868 or email helen.checketts@alsterskelley.com



1B Daventry Street, Southam CV47 1PH

www.alsterskelley.com





TOM RODGERS Tree Services

All aspects of
tree and hedge work

Stump
Grinding

Free
Estimates

Competitive
Prices

Local Trader
20 Years

Member
of
Arboricultural
Association

Tree
Reductions

24 hour
call out

Professional and Friendly Tree Care Service

www.tomrogers.co.uk Tel: 07958 794180 or 01926 710383

4 Nelsons Way, Stockton, CV47 8PL

Ever thought of extending your
home?

Does it have the potential to
change?

Do you need more space?

Are you looking for a local design practice that
can prepare proposals for your ideal home?

Contact Chris Hill M.C.I.A.T

Call: 01926 613780 (evenings)

0777 218 9266 (mobile)

Email: chris.hill100@btinternet.com

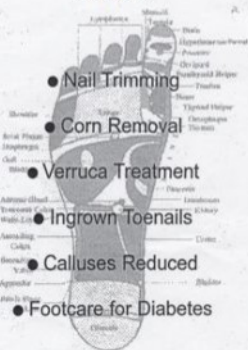
A Member of the Alliance of Private Sector Practitioners

Jackie Biddle
Healthy Feet are Happy Feet

Foot Health Practitioner



Dip CHIP MPS Pract
CRB Checked



Home Visits Telephone

T: 01926 612503

M: 07872 907429

LOCKMEDICS

MOBILE LOCKSMITHS



Upvc - Multipoint locks
All B.S. Locks supplied and fitted
Domestic and Commercial
Security Upgrades and Advice
Key Cutting

Tel: 01926 885560

Mob: 07971 818892

www.lockmedics.co.uk

**ADVERTISING IN THE
HARBURY & LADBROKE NEWS**

EMAIL: ADVERTISING@HLNEWS.CO.UK

TEL: 01926 612687

	¼ PAGE	½ PAGE	FULL PAGE
1 MONTH	£11.50	£21.00	£37.00
3 MONTHS	£30.50	£54.00	£98.00
6 MONTHS	£56.00	£99.00	£180.00
12 MONTHS	£103.00	£180.00	£345.00

Adverts with payment to:

**Sue Dronfield,
36 Manor Orchard, Harbury
by the 20th day of the month**

**Cheques payable to 'Harbury & Ladbroke News'
or BACS details upon request**



Slimming World

taste the *freedom*

Contact your local Slimming World Consultant
and join a warm and friendly group today!

**WEDNESDAY
EVENING**

**Harbury RFC
5.30 & 7pm
Jodie 07771 930568**

**TUESDAY MORNING
& EVENING**

**Southam Sports &
Social club
Elaine 07763200836**

**THURSDAY
EVENING**

**Kineton Scout Hut
Elaine 07763200836**

   **slimmingworld.co.uk**

Slimming
WORLD®
touching hearts, changing lives

Childcare from 3 months to 5 years of age

at Banana Moon Day Nursery Harbury.



Providing a safe, caring environment for children from 3 months to 5 years of age.

- Open 7.30am – 6.30pm
- All major childcare vouchers accepted
- Full-day and half-day sessions available
- Highly experienced, friendly staff
- Sibling discount
- Outdoor learning environment.



Outdoor learning environment



Home-cooked food

To find out more or to book a visit, call **01926 612374** or email info@bananamoon-harbury.co.uk



Banana Moon Day Nursery Harbury
Ivy Lane, Harbury, Warwickshire CV33 9HN
Call us on 01926 612374
or visit bananamoon-harbury.co.uk

*Subject to terms and conditions. *Government funding available.

Need an Electrician? Try our 24 hour Emergency Response Service

ELECTRICAL

- Loss of Power
- Fuse boards
- Rewiring
- Smoke detectors
- Fault finding
- Security Lighting
- Lights/Sockets/Cookers/Shower



Tel. 01926 293 515/07856 250 619
www.lightworksservices.co.uk

Card payments accepted. Full T&Cs on website.

FRIENDLY · RELIABLE · PROFESSIONAL

LOCAL ELECTRICIAN



Fully Insured **Free Estimates**

- Fault finding
- Outdoor lights & sockets
- Fuse board replacements
- Power to outbuildings: sheds, workshops & home offices
- Extra sockets & switches

“ Steve's work is excellent. I would definitely recommend him to anyone. ”

“ Very polite & efficient. The job was done on time and to a high standard. ”



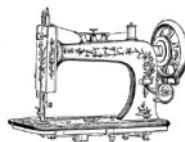
ROOLIVE

Call Steve on: 07792 971018

Email: steve@roolive.co.uk

www.roolive.co.uk

Drop Dead Gorgeous Curtains.



Beautiful Bespoke Curtains, Cushions and Roman Blinds all made to measure.

Curtain alterations and restorations also undertaken. All items are handmade by myself, a fully qualified soft furnisher.

From fabrics to poles, all your needs are catered for.

I'm also happy to work with customers own fabric.

Free measuring service, no obligation quotes and free curtain fitting and dressing.

Call Sharron for friendly and helpful advice, or to make an appointment on 07760395805 or 01926 718220

Email: dropdeadgorgeouscurtains@gmail.com

Website: www.dropdeadgorgeouscurtains.com

Find me on Facebook and Instagram.

Love Ballet Dance Company LOVE TO DANCE? SOUTHAM CLASSES

FREE TRIAL CLASS

Ballet

Tap

Modern

Gymnastics

Musical Theatre

Street Dance

Commercial

Contemporary

Mini Movers

Funky Dance

Cheerleading

Adult Classes

★ confidence ★ fun ★ friendships

Professional Purpose Built Dance Studios in

Southam

www.loveballet.co.uk



07921 853773



FOR ALL
YOUR ROOFING
NEEDS

AJ ROOFING

- NEW ROOFS
 - REPOINTING
 - FLAT ROOFS
 - REPAIRS
 - GUTTERING
- FREE ESTIMATES
ALL WORK GUARANTEED
INSURANCE WORK
NO JOB TOO SMALL
- ESTABLISHED 16 YEARS

TEL: 01926 499751

M: 07974 918098

www.ajroofing.org.uk



www.stratfordlandscapes.com

(We live in Harbury)

Small garden experts • Garden Design • Porcelain & other types of Paving
Real & artificial lawns • Stunning plant collections • Decorative Pergolas & Fences
Privacy Solutions • Low Maintenance Gardens

"Let Dave & the boys work their magic & you won't be disappointed"

Contact David Lewis on 01789 721851 or 07990975158 or visit our website



Emily Jayne's

Poplar Road, Bishops Itchington CV47 2RQ · Tel: 01926 611944

- * All types of hairdressing services
- * Brazilian blow dry
- * We now welcome Bella'U aesthetics within the salon
- * Luxury facials & pedicures, Hot stone massages
- * All types of waxing. * Individual lash extensions
- * Acrylic & Poly Gel nail extensions

*** SUNBED ***

Unisex Salon

Opening hours: Tuesday to Thursday 9am till 7pm
Friday 9am till 6pm Saturday 8.30am till 3pm.

L'ORÉAL
PROFESSIONNEL



W. Goodwin & Sons Funeral Directors

38 Coventry Street, Southam
CV47 0EP

Telephone: 01926 812445

**Private Chapels of Rest
Monument Service provided**



SUNILMEHRA

PAINTING & DECORATING

PAINTING IS AN ART. YOUR SPACE IS OUR CANVAS.

T: 01926 613158 M: 07976 241949 E: s.mehra@btinternet.com



Your Local Professional Chimney Sweeping Service

**Full Range of Chimney Sweeping
Open Fires, Stoves, Rayburn and Aga's Cows
& Bird Guards Fitted. Bird Nest Removal**



**Please contact Martin Jakeman
07816 337962 or 01926 614695
Email: theshiresweep@gmail.com
www.theshiresweep.co.uk**



CLEANING | RESTORATION | PROTECTION | MAINTENANCE

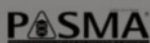
MOSS-GONE.COM

07788 574 586

Tom@Moss-Gone.com

- Roof Moss Removal and Treatment
- Gutter Clearing - Repairs - Install
- Driveway Cleaning
- Patio Cleaning
- Soft washing

- Render Cleaning
- Operated Access Hire-
6m Tracked Spider Cherry Picker



DOOR & KITCHEN STORE

Making your space a better place

Quality Fitted Kitchens – Internal & External Doors - Supply & Fit.

T. 01926 888806 or E. doorandkitchenstore@gmail.com

Alveston Place Oxford Street Leamington Spa CV32 4SN

More! Service - Expertise - Quality - Range - Value

Southam Carpets



Visit our shop to see a large range of Carpets,
Vinyl Flooring, Karndean, Curtains and Blinds.

Free expert advice.

Professional installation.

Call now for a free Quote.



 **01926 814944 - www.southamcarpets.co.uk**

THE SALON

LADIES & GENTS HAIRDRESSERS

TO BOOK AN APPOINTMENT CALL 612400 & 07778 454528

CHAPEL STREET HARBURY



Which?
Trusted trader

10% DISCOUNT
WITH THIS ADVERT

**DOMESTIC AND COMMERCIAL HIGH QUALITY
CLEANING FOR CLIENTS WHO DEMAND THE BEST**

BEFORE

AFTER



STEAMING SAM specialise in **professional** cleaning, work is carried out by **fully trained, trustworthy** technicians and we are insured for your peace of mind.

Call us or check out our website for further information

WHAT WE DO:

- deep 'van mounted' carpet cleaning
- stain removal
- fabric protection
- specialist oriental rug cleaning
- hard floor, tile and grout cleaning
- upholstery cleaning
- leather restoration
- end of tenancy cleaning

...AND MORE!