

Harbury & Ladbroke News

Is published monthly and reflects all aspects of local life.

January 2021

No.562

Editorial Office

31 Binswood End

☎ 612155

✉ articles@hlnews.co.uk

Article drop off point:
Harbury Pharmacy,
High Street

Advertising Office

36 Manor Orchard

☎ 612687

✉ advertising@hlnews.co.uk

Distribution Manager

49 Mill Street

☎ 612009

✉ distribution@hlnews.co.uk

Inserts by prior arrangement
with the Distribution Manager

IN THIS ISSUE

Page

EDITORIAL	2
HARBURY DIARY & REFUSE ROTA	3
FROM THE RECTOR & CHURCH NEWS	3
LADBROKE NEWS	5
CLUBS & SOCIETIES	11
SPORTING ACTIVITIES	21
EARLY YEARS & SCHOOL	23
VILLAGE HALL, LIBRARY & CLUB	26
CHRISTMAS LIGHTS 2020.....	30
GARDENING & NATURE	32
GENERAL SECTION	35

Editorial Team

Chris Barber - Chris Finch - Paulette Kavanagh - Peter McDonald - Daralyn Warren -
Jackie West - Katy Wiltshire

*The views of contributors are not necessarily those of the Editorial Team.
The Editors reserve the right to amend articles as they see fit.*



Editorial

This year even more householders in Harbury have decorated their homes with festive illuminations and, together with the extra lights purchased by the Parish Council, the village has looked even more magical - see photos in the magazine.

The usually dark streets of Ladbroke were shining brightly with lights in trees, windows and marking out roof outlines. There were icicles, snowflakes, stars and a handful of fun displays, such as this one.



The National Institute for Health Research / University of Southampton are seeking volunteers who have had Covid 19 to complete their survey – see page 38, and VASA are looking for volunteer drivers and telephone operators. Harbury Village library is involved in a number of Covid safe initiatives too - if you are interested in the online Spanish classes starting up again this month or getting involved with the Seed Share scheme see the library article.

On Thursday 28th January, if you fancy taking part in a virtual guided tour showing how the Ladbroke church repairs are coming along, you will need to book your place to receive the joining instructions on Zoom - see the Ladbroke Heritage article.

The Harbury & Ladbroke News committee would like to thank everyone for their continued support of the magazine in what has been a challenging year, be it through submitting articles, advertising or subscribing. We also


appreciate having our fantastic distribution team back in the swing of monthly deliveries.

With the increasing roll out of the Covid vaccines we can only hope that 2021 will be a better year for us all.

Finally, we extend our condolences to the family of Jane Rutherford.

Harbury Diary

**Most activities normally shown are suspended at present.
Please check village websites & noticeboards for updates.**

Refuse Collection Rota			
	Deppers Bridge	Harbury, Ladbroke & Deppers Bridge outlying properties	Collection Week
January	Wed	Fri	
	13	15	Grey Bin
	20	22	Green & Blue Lid Bins
	27	29	Grey Bin
Feb	3	5	Green & Blue Lid Bins
	10	12	Grey Bin
	17	19	Green & Blue Lid Bins



**All Saints
HARBURY**

From the Rector

Rev Andy Batchelor

The Rectory, Vicarage Lane, Harbury ☎ 01926 714295 ✉ rev.andyb@gmail.com

I expect many of us will be glad to see the back of 2020, and are hoping that 2021 will finally see Covid 19 under control as the vaccines are rolled out and restrictions eased. It's been a tough 12 months for all kinds of reasons, and it almost seems to have put our lives on hold as so much of normal life has been turned upside down. For myself and my family it has been a strange time to move in to our new parish and home, although we have been very touched by the warm welcome we have received. So, as we look to this new year what will it hold? Hopefully longed-for reunions with family and friends, the opportunity to socialise again, to go on holiday again, to be able to shake

hands, to hug – how we have missed that physical connection with others, because, as the Bible reminds us, we were not made to live in isolation. The building projects at both Harbury and Ladbroke churches continue this year, and I want to say how much I value the talented and committed people who have put in so much time and effort to bring about these much-needed renovation and improvement works. This is a lengthy process with many elements that need to come together, but I know the final result will be worth it. Both churches are looking forward to engaging positively with our local communities, and making our buildings accessible and welcoming places. I look forward to exploring more of the wonderful countryside around us in 2021, and hope to be able to meet with those people who have not been able to mix with others for so long. So, whatever your hopes and dreams for this coming year I pray that you may find fulfilment and joy, and know that you will always find a warm welcome at either of our churches.



From the Churchwardens

Liz & Michael

We did go ahead with candlelit services for Midnight Mass and Christmas morning in church.

It was a little cold at midnight but I may have overdressed!



Mothers' Union

Gillian Hare

It was such a treat for so many of us to be together for our service last month and meet Andy face to face - or mask to mask. No plans at the moment for a repeat but we will keep you informed. Meanwhile, keep safe and praise the Lord for the skills and dedication which are bringing the vaccine nearer by the day. Although it is still so gloomy, the days are already a little bit longer; we pray that the light of Christ shines in all our days.

Ladbroke News & Diary

<http://www.ladbroke-pc.org.uk>

Due to Covid restrictions many events are on hold or subject to last minute changes. For up to date details of church services and opening for private prayer, please refer to ladbrokechurch.org.uk

The following on-line events are planned:

JANUARY

- Wed 13 Parish Council Meeting, 7.45pm on Zoom
(email ladbrokeparishcouncil@gmail.com for joining instructions)
- Thurs 28 Guided Tour of Church Repairs, 2.00pm on Zoom (book on Eventbrite for joining instructions)



Ladbroke Church News

Peter Rigby

www.ladbrokechurch.org.uk

As someone has pointed out, if Jesus had come this year, there would have been no room at the inn because it would have been closed! For the same reason our carol singing was without beer this year, but around 20 joined us to sing, socially distanced, outdoors around the village and the rain miraculously stopped at just the right time.

We are grateful that we were still able to meet in Church, and particularly that our Carol and Christmas Day Services could go ahead, albeit rather differently from usual. Many thanks to all those who cleaned and decorated the Church in time for our services, and to the Collins family for their kind donation of our Christmas tree.

Our Carol Service was an opportunity to listen to some recordings of carols sung by our Choir in previous years, and to listen/hum along to our favourites. On Christmas Day, Rev Andy led a family service for which the Church was almost as full as it could be with the current restrictions.

With the move into Tier 4 and escalating transmission of the virus, we are anticipating a mixture of live Zoom and pre-recorded YouTube services for a few weeks before we are physically back in church for Sunday worship. To receive weekly updates and links to online services please email ladbrokechurch@gmail.com

We were saddened to hear just before Christmas of the death of Jane Rutherford, whom many in the village will have known as she lived in Ladbroke for over 50 years until quite recently. It is planned to hold a service of thanksgiving for her life in Church when conditions allow. Our prayers are with her husband David and the family at this time.



Ladbroke & Deppers Bridge Women's Institute

Carol Lane

We obviously have a little while longer yet before it is safe for us to meet up again in the Village Hall.

Our thanks go again to Joan for keeping us all informed with letters from the President and details of Denman online courses.

Thanks this time also go to Dianne who forwarded this seasonal poem:

What a year for all of us.
 How do we cope with such bad stuff?
 We stick together and pretend we're tough.
 We really have had enough.

Wash our hands until skin is sore.
 Smile 'till we can smile no more.
 Respect that space, just stand away.
 Don't question this, do as they say.

Look at your children on the phone.
 Pray when we can all be in one home.
 Hugs for grandchildren missed so much.
 We can look from afar but cannot touch.

Have faith, look forward, try not to look back.
 Be thankful and joyful, spread the love.
 Hold very tight to all that's dear.
 Hopefully live life without this fear.

Open arms wide and have that hug.
 Spread hope around without this bug.
 Our heartstrings may take a few more hurts,
 But around the next corner there surely lurks
 A bright sun shining full of hope and love.

So once again we are able to share.
 Our space; our love; and show we care.

By Julia (mother of Charlotte Griffiths Parmenter)

Having shielded since March and, for the first time in her life, unable to share Christmas with her family.



Ladbroke General Section



In Loving Memory of Jane Rutherford

The Rutherfords and the Winkfields had been friends and neighbours in Ladbroke for about 45 years.

My earliest recollection was in the winter of 1969. Jane came over the road bringing Thomas in his carry cot. "Please can you look after him. I have lost the dog!"

Carol Lane took me over to see Jane in Shipston a week or so before she died on Thursday, 10th December. Jane and I had a conversation about the dog "Oh I was always losing the dogs". Over the many years I knew Jane, that memory stays with me.

She was a keen gardener and, with the help of her gardener, Mr Sherriff, it always looked a picture.

She also planted the Rambling Rector rose tree which has taken over the yew tree on the left of the path into church. The yew tree trunk had split and was a very ugly sight but over the years, the Rambling Rector has turned it into a thing of beauty especially in Springtime.

I remember, too, all the village tea parties in the Rectory Garden. Photographs have been taken of the social gatherings there. Not least among them was Charlotte's wedding - that was a special occasion - the whole village was there.

Who can forget her as one of the ugly sisters in Ladbroke's first pantomime, Cinderella, and she regularly sang in the church choir.

I don't know at what stage in her life she became a magistrate in Warwick. She was also the deputy Lord Lieutenant of the county. She gave me two tickets to a Buckingham Palace Garden Party and Trish and I bought hats for the occasion but that's another story!

When we can kneel again at the altar rail, take a look at the kneeler you are kneeling on. That was designed by Jane, the majority of the stitching was done by her and she arranged for it to be made into the kneeler.

It felt very strange for quite a while not to see David and Jane in their pew on Sunday mornings when they had moved to Shipston. I know she missed her garden and was never quite satisfied with the garden there.

I shall have to stop here. My sadness is overtaking me.

Loved you Jane.

Betty Winkfield



Ladbroke Heritage

For many people 2020 was a year when many things **didn't** happen but that was certainly not the case for our All Saints for All Generations project.

Back last January we were preparing for the pre-assessment visit from the National Heritage Lottery Fund. In March we heard the good news - the lottery would support the repairs to our church building and sharing the heritage of Ladbroke to the tune of £339,000! Then Covid arrived and we crossed our fingers, and everything else, that the money would not be clawed back to tackle the pandemic before we had even started. By the end of May we could relax; the grant was secure, the stonemasons and specialist

HAPPY NEW YEAR

and a
big thank you
to our
contractors,
volunteers,
fund raisers
and supporters



glaziers selected and contracts ready for signing. 15th June was the official start date and within a fortnight the tower was hidden in scaffolding and the organ wrapped up against dust. One month, and two Covid weddings later, the chancel at the opposite end of the building suffered a similar fate. In the following months the masons worked hard, chiselling out rotten stonework and replacing it with new. It was hard to see progress because of all the poles, planks and sheeting hiding the working areas until December when the "scaffies" removed these from the tower and all was revealed. The first two windows came back that same week, just in time for Christmas.

But 2020 was just the start; 2021 will see the repairs continuing and the interpretation and activity side of the project gaining momentum, so watch this space or follow **Ladbroke Heritage** on Facebook or Instagram.

We had planned guided tours of the repairs now the low level work is starting and people could see the stonemasons at work. However, Covid regulations don't look as if they will be relaxing any time soon, so the first of these tours will happen virtually, on Thursday 28th January at 2pm on Zoom. Book your place on Eventbrite (search for Ladbroke Church) to get the joining instructions or watch the recording afterwards. Hopefully we'll be able to welcome you to a guided tour on site in the spring, when it will be warmer to stand around and admire the centuries old techniques involved.

Jackie West



From Your District Councillor for Ladbroke

HS2

I have had a number of conversations with HS2 and their contractors about traffic. Although HGV movements are regulated by the Act of Parliament, light van and vehicle movements are less constrained and I have been working with WCC and HS2 to influence some of the routings to address the problem of smaller vehicles going through villages to HS2 sites. Of course, this is all much more difficult because of the unexpected long term closure of the A425, but I am told vehicle routing for interaction with villages will be considered in future.

Green Bin Collections

From 1st April charging for green bin garden waste collection is to go ahead. The proposed charge of £40 had been deferred from earlier in 2020, after widespread opposition. I and my colleagues opposed this change as we believed that the charge was a fund-raising exercise not justified by the financial position. I am also concerned about the impact charging may have on the volume of garden waste which is recycled and the pressure on local recycling centres, but more details on the new system can be



found in the Council magazine that is being delivered to homes at the moment.

If you want to keep having your green waste collected you can sign up between 11th January and 28th February for a first year's discount of £5 to £35 for the year. www.stratford.gov.uk/gardenwaste or call 01789 260628.

Stratford is investigating new collection arrangements for the longer term in coordination with Warwick District Council called a 123+ system. This would involve:

- Once-weekly separate food waste collection
- Two-weekly mixed recycling collection in a wheelie bin, plus garden waste service (which unfortunately would still be chargeable as described above)
- Three-weekly general residual waste black bin collection

It is early days on this idea with a three-week cycle instead of two-weekly, and possible government action is another variable factor in all waste collection arrangements. It seems to be taking a long time for central government to say what they are going to do, having given an indication of supporting more waste recycling.

Covid

The Covid situation changes constantly. At the time I wrote this item, Stratford District continued to have the lowest rates in Warwickshire, but with an increasing trend. Most concerning is the upsurge in cases to high levels in Rugby Borough which by 22nd December had gone up by 2.5 times over two weeks to 313 per 100,000. Stratford numbers had risen by a similar factor to 144 per 100,000.

Please bear in mind you can catch Covid as readily from people you know as you can from strangers. In fact, the data shows that the spread is much greater among family and friends.

There is really good news for the spring with vaccines coming along, but this will not reach most of us quickly. The roll out is expected to be through a combination of GPs and hospitals. Please do not contact the NHS or GPs to ask for a jab. You should be contacted as and when you are prioritised, but this is a major task across the country.

I wish all residents compliments of the season. After a difficult and strange year we hope for a new year and new opportunities.

Nigel Rock - 07971 343065
Councillor for Ladbroke, Napton and Fenny Compton Ward
nigel.rock@stratford-dc.gov.uk

Ladbroke Village Hall Millennium Draw for November 2020

£50	Steve and Val Copley	£50	Alan Lord
£25	John and Jenny Barrett	£25	Pam Collins
£25	Nicky Lewis	£10	Joley Malby
£10	Helen Morten	£10	Scott and Siobhan Roberson

Margaret Bosworth



Harbury Society

Linda Ridgley

Below are the notes taken from a talk given by Cecil Bloxham to the Society in 2002. In many ways the building of the railway in the 1840's caused as much disruption as HS2 is today.

Cecil first gave a short history of the evolution of the railway from its beginnings in the 17th Century when wooden rails carried skips of coal from the mines to the coast, through to the replacement of wood, first by iron rails and then by steel in the period before the invention of steam power.

The railway came slightly later to Harbury and it wasn't until 1847 that Harbury Cutting, 124 feet deep and half a mile long was completed. Cecil wasn't about then but he remembers a man who remembers the first turves being cut! Before the railway, Harbury was a backwater. The road to Warwick was very rough in winter. The nearest stagecoach called at Harwoods House and the route was plagued by highwaymen.

Lord Willoughby was one of the first to hear that the Great Western Railway was surveying a route from Banbury to Birmingham and, as he was determined that they should not ruin hunting in the area, he set about buying up land round Ladbroke, Stoneythorpe, Bascote, Long Itchington and the Leam Valley. If he thought he could thwart the GWR he was wrong for they appointed Isambard Kingdom Brunel as Chief Engineer and he decided that they should divert the route and dig a tunnel and cutting at Harbury.

Some local landlords were in for an unexpected windfall. Harbury and Chesterton Churches had considerable holdings along the line of the railway, as did Edward Sabin, Charles Palmer, John and Richard Mann of Binton, the Newsomes, and Mr Martin who owned the Childyke area where the gangers' cottages were built.

The railway caused considerable disruption. Brethrens Farm had a crossing put in to access the other half of its land. Orchard House Farm holding also was cut in two. Many wells ran dry as the aquifer was breached, but Solomon Gasgoyne who owned the allotments had already made an agreement that the GWR should deepen his well to 100 feet and Harbury Hall has an artesian well constructed in their paddock.

For the rest of the village the coming of the railway was an eye-opener! Not only were there the gangs of navvies who stayed for three years, but there were all their followers and suppliers. Barns for living in and horses and carts for moving the spoil were all in great demand. The 800-900 navvies particularly liked their drink and there was considerable lawlessness.

The methods used to excavate the line were simple and based on the mining techniques in use at the time. An initial cut was made 20 foot wide and 6 foot deep all along the Cutting and "Jubilee" rails, on which wooden tubs ran, were put in up to the face, which was then undercut. The Cutting moved down six foot at a time and the spoil taken out was spread out beyond the excavation.

There was, until recently, a drift left on the Deppers side of the Cutting where the limekilns were which produced the lime mortar for the tunnel. A small brickyard was set up in the Spinney but the blue bricks were brought in from Stourbridge by canal to Bascote Wharf.



Western House was the headquarters building with the second-in-command living at Tunnel Cottage (Walnut Tree Cottage now). The Great Western Hotel was built and John Stiff was the landlord and cabdriver. At that time The Dog had its own brewery and the landlord was a butcher as well. William Reading is recorded as having more than a dozen jobs, including well-sinker and pump maker. The Misses Hill set up the Reading Room at the Village Club and the Reverend William Wight started the Public School in 1856.

The non-conformist Bustins, Enoch and Jabez began the Co-op to help the agricultural labourers, but the railway was a salvation to the village. It brought employment in its construction and then later work at the quarries. Greaves Bull & Kershaw came from Wilmecote to Stockton where blue lias was found. Coal could be brought in by canal to process the limestone. The

Lakins owned Bull Farm in Harbury and found similar stone in a trial pit so they joined with Greaves & Bull to start the limeworks here. They sold out to Red Triangle in 1930 who in turn sold the Quarries to Blue Circle.

Harbury came alive at 6am as the men went off to work in the quarries. There was a railway siding put in to bring in coal and take cement out for distribution round the country. The railway brought many things to the village. The post came by rail, and the weekly papers. Many villagers became carriers, transporting goods to and from the station. Farmers brought their milk to be loaded at the level crossing. (The footbridge was put in later when a Mr Perry from Ladbroke was killed there.)

People travelled to Malvern for the show and to Cheltenham for the racing. There were special excursion trains to the Grand National. Horse breeders could send their animals to the Newmarket races and sales by train and Bonzo remembers as a young man in his first pair of long trousers, taking a mare and foal to the Banbury Horse Show. Thirty people would go to Banbury by train on a Thursday for the market. There was also a cattle market in Fenny Compton until the Second World War.

We thanked Cecil sincerely for his talk and were delighted that he donated his fee from a previous presentation to the Harbury Society. He is of course a life-member.



Harbury Women's Institute

Mary Thompson

Our meeting on 10th December was held on Zoom again and attended by 22 members who are all getting more confident with the use of Zoom. It was good to see two members who share a friendship bubble so could join together; we also know that at least one member joined her family bubble so they could assist with using Zoom.

As it was our Christmas meeting, members had festive hats, jumpers and jewellery and were showing their festive drinks. Ann outlined changes to the WI constitution which had been made necessary by the restrictions of Covid-19, particularly with AGMs. The committee had considered the changes and agreed to them. Hilary outlined changes which the Warwickshire WI are going to make in order to cope with the loss of income due to Covid-19. The Warwickshire Federation continue to advertise events which will happen via Zoom - thanks to Hilary and Ann who ensure members know about these dates.

Our speaker was Diane Vernon who told us about her journey as a blacksmith. Diane is a retired midwife having worked in the UK and Canada. Six years ago, in her early 50s, she reinvented herself to being a blacksmith and glass artist and



clearly loves her new life. She is the resident blacksmith at Middleton Hall. Diane attended a course at Acton Scott in Shropshire and the School of Blacksmiths in Hereford where she spent one week every eight. She said it was very hard work but she clearly enjoyed what she was doing. Sadly, she hasn't been able to continue with the second year of training because of Covid-19.

She was asked by the gardener at Middleton Hall to assist with a competition at the Chatsworth Flower Festival where she created stakes with coloured glass in to match the flowers in a 7m border. They received a gold award for this exhibition. There is an increased interest in people using traditional skills and Diane is very much part of the blacksmith community and she mentioned gatherings in Edinburgh last January and work at Alverson Castle during the summer.

Diane's grandfather was a blacksmith and she has discovered 13 blacksmiths in her family. This prompted two of our members to relate that they too had blacksmiths in their families. Rosemary gave a very amusing vote of thanks with lots of puns about forging ahead etc.

The evening concluded with the singing of three carols and Christmas readings from Chris and Lin. Our thanks to Ann and Philip for organising the words and suitable pictures.



The next day, committee members distributed beautiful poinsettias to every member - these should have arrived the day before but had been delayed at the port - is this a sign of things to come asked Ann? Members also received next year's programme which has been beautifully designed by Chris. The committee hope that this will remind members that we still think about them even if they can't join our meetings at present. Judging by the messages of thanks received, our members clearly appreciated the gesture.

One of our members, who lived in America for ten years, tells me that the plant was made popular by a man called Joel Poinsett who lived in a town in South Carolina; half the streets and hotels are named after him..

Unfortunately, we have had to cancel our New Year party in January but we will be having our normal meeting on Thursday 14th January when Sharon Hancock will be talking about her research on the World War 2 soldiers on our war memorial. Current restrictions will mean that this meeting will have to be on Zoom again. Maybe more of our members will have been practising with Zoom over Christmas!





Harbury Heritage Centre

Bill Timson

By the time that you read this we will be into a new and hopefully better year.

Already one of Harbury's traditions and part of its heritage should have taken place on the first day of January and many of you will have missed seeing 'The Hangover Tour'.

So, do the words 'ruggles' and 'baldricks' mean anything to you?

In 1987, Peter McDonald and his wife Margaret, together with Folk Club members from Harbury, formed the Hereburgh Morris side. Thirty plus years later and the traditional dancing group are still very much active and form part of recent Harbury tradition.



In the Heritage Centre we have some articles and photographs of Hereburgh Morris (named after the Iron Age noblewoman who reputedly founded the settlement of Harbury). Of particular note is document HM 1597, 'Hereburgh Morris the First 10 Years', containing some great photographs and information of how the group evolved and grew.

There is also an autobiography written by Peter in 1992 (HM 148) outlining his reasons for starting the Morris side and his personal story during the first five years.

Hereburgh Morris has not just danced locally and in many English counties; the members have been much further afield, overseas in fact to various

European countries including France where they performed in Samois-sur-Seine, our twin village. It is clear that the members enjoy themselves and keep fit at the same time. They have also raised thousands of pounds for charity.

Thirty-three years on and Peter is still involved, as are one or two of the other founder members.

A quick search on our website catalogue database (www.harburyheritage.org) identified other articles related to Hereburgh Morris. What do you know about other groups and organisations within our very active village? Come along to the Heritage Centre and find out.

'Ruggles' by the way are the bell pads worn below the knees and 'baldricks' are the colourful cross-ribbons worn over the shirt.

We are hoping to open the Centre later this month – look out for details on the parish notice boards, on our website and Facebook page 'Harbury Heritage Room' for dates and times including how to book a 'slot'. We look forward to welcoming you.

Fantastic News!



We sold all 200 Heritage Calendars featuring paintings by local artists and as a result we were able to send a cheque for **£500** to Myton Hospice. What a brilliant way to start off 2021. To the artists and the people of Harbury who bought the calendars: **a massive thank you!**

The photograph shows David Turner, Mary Thompson and Bill Timson outside the Heritage Centre with the cheque ready for posting off to Myton Hospice.

On behalf of the Heritage Group Committee, I wish all Harbury residents and their families **'A Very Happy and Healthy New Year'**.



Harbury Energy Initiative

Bob Sherman

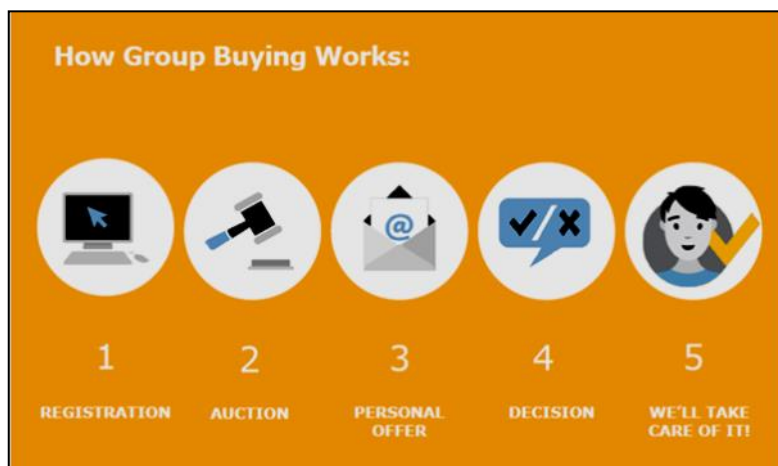
☎612277 ✉info@harburyenergy.co.uk

Just about everything that could be said about 2020 has been spoken, written and thought, so we won't talk about that. Our bid for funding for the Low Carbon Warwickshire Network was not successful, so we will leave that aside. And you have heard quite enough for now about our RCEF funded EV charging station; anyway, there is nothing new to tell you at the moment. There will be. Instead, I am going to write about possibilities and opportunities.

Just as the race for vaccines was triggered by a major and visible threat, so the sound of the starting gun for solving the destructive blanket of human-derived carbon dioxide has finally penetrated to the ears and consciousness of policy and decision makers. It was first fired in the 1980s. It's now happening. There are solutions and initiatives and incentives racing round the bend and into view. Engineers and research scientists are, as ever, focused on solutions. But we all have to play our part. Here are some of the opportunities for citizens, home owners and community groups that are either already open or will be soon.

Switch and Save

There have been commercial energy switching sites operating for many years. By using one of these we have switched our household energy supplier three times in the last ten years and saved significant money every time. And yet many households have never switched, staying loyal to a supplier that is doing them no favours. The County Council operates a bulk purchase scheme getting the best prices for their residents through a competitive auction. Register on <https://www.warwickshire.gov.uk/switchandsave> and become part of a large customer group. The County then holds an auction for suppliers to make bids to supply all these new customers. This happens three times a year and the next auction is on 9th



February, so register now if you want to be in on the deal. If, as I and others in HEI have done, you decide to go for a green tariff, you can still get very good deals through organisations such as the Cheap Energy Club, USwitch, Moneysupermarket, Which? and others. All the work is done for you by the new supplier and it takes just a few weeks to switch over.

Solar Together

A similar County scheme is due to launch in February to capture the best deals for householders for installing solar panels. Once again, a competitive auction of suppliers is held and potential customers must register before the auction. Registering does not hold you to signing a contract and the final deal is done between you and the supplier.

Warwickshire is working in partnership with independent experts iChoosr, offering residents an opportunity to take part in and benefit from group buying of solar panels to be installed on the roofs of their houses. This initiative is part of Warwickshire County Council's commitment to addressing the climate emergency and reducing the county's collective carbon footprint.

Solar Together Warwickshire is a group-buying scheme for solar panels whose aim is to boost solar power for UK homes by making it easier for residents to find trustworthy installers. The scheme offers a straightforward way to help residents buy high quality solar panel systems for a competitive price, and to make a significant impact on carbon reduction targets within the boroughs and districts of Warwickshire. The offer comes with the option to add battery storage to the new or to existing solar PV installations.

Similar schemes have been delivered through iChoosr by Norfolk, Suffolk, Kent, Cambridgeshire, Devon and Essex County Councils, Mayor of London and Greater Manchester Combined Authority.

To take part, residents are invited to register an interest when the scheme launches on 15th February 2020.

The dates for WCC's first "Collective Solar System" Scheme are:

Registrations Opens	15/02/21
Auction	23/03/21
Decision phase and acceptance period	12/04/21-24/05/21
Installation phase	31/06/21-31/10/21

Green Homes Grants

The national government's Green Homes Grants Voucher scheme has been open for a while. You can see the details here: <https://www.gov.uk/apply-green-homes-grant>

The scheme has not been without teething troubles but it remains a good way to afford energy efficiency and renewable generation measures to your property. It only applies to domestic properties.

Green Shoots

Green Shoots is another Warwickshire County scheme that is due to launch early next year. Green Shoots is aimed at communities with a desire to take positive measures locally to reduce carbon emissions and improve their environments. Although this is something we have been doing for 11 years now in Harbury there is always more to be done. Amongst the ideas still unrealised in the HEI wish list are a community orchard and small woodland, micro anaerobic digestion and the projects that I wasn't going to mention. If you want to help us achieve these and other schemes of your own don't hang back. If you drive an electric car you might want to start an information group to encourage and support others, as Kenilworth has done. You might be a keen tree planter or have spotted some other opportunity to cut carbon or improve our local environment. If you feel motivated, tell us! We need a bit of land for some of our ideas but mostly we need people with enthusiasm and resolve to make beneficial change happen.

And I didn't mention Covid-19 once. Oh dear, I just have.

Happy New Year from HEI and Harbury e-Wheels



Harbury e-Wheels

Bob Sherman

✉ harburyewheels@gmail.com  www.harburyenergy.co.uk

Harbury e-Wheels would like to thank all our supporters in 2020. Without the village behind us we would not be able to keep the operation going. We have had all the same problems as other charities through the year, with no opportunity to hold any of our planned events to raise funds but all of our costs still to pay. We were fortunate to secure two small grants from Tesco Bags of Help and receive a generous donation from Let's Talk Ageing, the sponsor of the website we share with HEI.



After a brisk start to 2020 with a crammed diary of bookings until March, the cars fell silent (they are anyway being electric) and slept quietly behind the library for much of the rest of the year. We continued to supply the food bank in Kineton regularly, however, taking record amounts of essentials to help the growing number of people in desperate trouble financially. Just before Christmas we had to take two cars to deliver the groceries as we had too much donated by you to fit into one.

Please continue to support us through 2021 and keep donating to the food bank. We can never fully know the benefit of your donations but I believe your help has sustained hundreds of people in their emergency. We will be back doing passenger trips as soon as we are allowed.

From all at Harbury e-Wheels: A happy, successful and healthy New Year.



Guides and Scouts Support

Laura Harris
G.A.S.S. Committee

We are delighted to welcome our newest member to be voted onto the committee just before Christmas. Rob will be gradually taking over the role from Claire as GASS Treasurer who is stepping down after four years. She managed to take care of all our finances while performing a keyworker role in the NHS this year, we are very grateful to Claire for her sterling effort and commitment. We look forward to working with Rob in the future!



Harbury Christmas Post

We are thrilled to have received record donations of £920.58 for the 2020 Christmas post.

We would like to thank the Harbury Village Library for hosting both post boxes this year and the extra work involved in keeping the 24hr service running. Rich Fowler put in a lot of time, checking the post bag regularly for us, not to mention coming up with such a brilliant idea in the first place!

The new box on the door was wonderfully brought to life by David Turner who designed, printed and installed it to make a really successful alternative to the usual "inside" service.

The sorting was a bit more complicated this year with social distancing and fewer sessions with the young people, but our post elves kept up their step counts and got the job done by Christmas. Even the cards without addresses were eventually delivered by some helpful villagers on Facebook. We would like to thank everyone who volunteered their time to collect, stamp, sort and deliver a record number of cards.

There were so many lovely notes saying how grateful people are for the service; we received £470 via online payments so everyone embraced the new system to help make this a really vital fundraiser for 2020. The only other event we could organise was the coffee morning back in March.

More Thank You's

We are very pleased to have been awarded an HPC grant to contribute to the costs of installing a one-way system at the scout hut and extra hand washing facilities. This will enable us to safely use the indoor space when restrictions are once again lifted and allow the young people to enter the hut via the front door and exit via the doors at the back, along a new path.

We are also able to put the remainder of a HEI grant, obtained for us by Bob Sherman early in 2020, towards LED outside lighting for the new one way system. Many thanks to Bob and HEI.

Our 2021 Wishlist

- Updating the Scout hut with all the new Covid-safe requirements
- Getting back to some face-to-face sessions with all the young people – preferably indoors as well as outdoors!
- A new leader for the Cubs so that the colony can continue all of its activities with 8-10 year olds.
- Organising some successful events to raise much needed funds.
- Much more opportunity to help out in the local community (restrictions permitting).

That just leaves us to wish you **a very Happy, Healthy and Safe New Year!**



The popularity of Tuesday night **Training Sessions** delivered by Club Coach Hendry Rheeders followed by **Fitness Sessions** on Thursday night continued until mid-December when the cold, rain and Christmas looming saw them put on hold until the New Year!

The first “match” of the season finally took place at Southam RFC on Saturday 19th December when Covid restrictions required that the game be played without both scrums and mauls being allowed. Harbury arrived short of numbers with some players still travelling to the game and others having to finish work before arriving around half time. In the meantime, Southam lent Harbury several players to even up the sides and the game commenced. The match was played in four 20 minute sessions, and by the end of the first session, Southam were four tries up thanks to their bigger, stronger, faster runners.

A fresh set of Southam players joined Harbury at the start of the second session and despite the lack of player continuity, were rewarded with a couple of well worked tries. The arrival of Harbury lads at half time boosted the team allowing them to make the game a more even contest.

By the fourth quarter, Joe Hunt dictated more of the play, Brad Sheasby tackling anything that moved and Doddsy effectively clearing out the rucks. Whilst Southam won on the scoreboard (so much so we stopped keeping the score) Harbury performed well under trying circumstances never giving up the contest. The game was played in an excellent sporting spirit - somewhat different to the matches played between the two teams over previous years!!!!

Having said that, I think it is fair to say that both players and socially distanced spectators enjoyed a different afternoon's entertainment.

A "match" has been arranged for 9th January 2021 against Shotton at home. Unfortunately, as I write this the Government has just announced that Warwickshire has been moved into Tier Four, meaning that we will probably have to wait a little longer for that next game. We will have to see how Tier Four restrictions will impact on Seniors, Minis, Juniors Rugby, Ladies Touch Rugby and Tae Kwon Do sessions in the New Year.

It is with sadness we note the passing of our game keeper Paul Cooper. Whilst Paul was responding well to cancer treatment, he caught an aggressive form of Covid-19 which he was unable to combat. We offer our sincere condolences to Paul's family - he will be greatly missed at the Club.

Have a happy, healthy and prosperous New Year.

Keep safe.

Ps – nearly forgot, have a Happy Brexit!!!!



Harbury Tennis Club

Colin Mercer

<https://clubspark.lta.org.uk/HarburyTC>

Happy New Year! It was great to be able to get back on the courts after lockdown part 2 and members have made the most of it at club sessions. Some were so desperate to play they braved some awful conditions – Eira, Clare, Maka and Nigel pictured after a good soaking! Unfortunately we weren't able to hold our traditional New Year Muffler tournament but at the moment we're just relieved to be able to play any tennis!



We had high hopes that we'd be able to resume our Banbury League matches. Unfortunately, when the Tiers were announced Warwickshire's status meant we couldn't play clubs in Oxfordshire and Northamptonshire which at that time were in Tier 2. We were able to play our away match

against Warwick B in the weekend Division 2 as we're both in Tier 3. Sue Panton, Helen Cooper, Ben Fish and Colin Mercer enjoyed an excellent 5-3 win to put us top of the league, but with Oxfordshire now in Tier 4 there's a high chance the season will have to be abandoned.

Our coaching programme is scheduled to re-start on 4th January with *coolsportz* LTA accredited coaches Lianne Candappa, Adam Darby and Scott Smith delivering sessions for juniors and adults. For more details contact Lianne at: lianne@coolsportz.co.uk or phone/text 07919 104093

2020 was a really tough year for everyone but we hope there's light at the end of the tunnel for 2021, albeit some difficult times as well. Stay safe!



Harbury Toddler Group

Lynne Barton

Hello to all Harbury News readers.

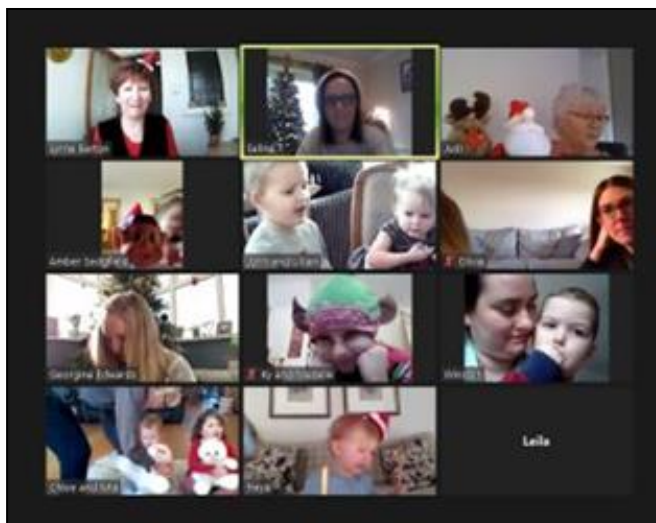
We hope that you had a lovely Christmas, however it unfolded for you. Wishing each and every one of you a healthy and positive 2021.

The 'roll out' of the vaccine does bring hope for the future thank goodness.

Toddlers has been closed since 16th March and we have really missed all our wonderful families, some have already moved on to the next phase of their educational journey, we know you will do well.

Online Connections

We have tried to stay connected with some online dance, singing, yoga and movement opportunities via the Zoom platform which was rather magical.





Our online Christmas Special was a great hit. We sang songs, rang bells and our tech savvy Santa read a delightful Christmas story.

Individual Christmas presents and sweets had been secretly collected beforehand from a Christmas sack, North Pole, Harbury Branch and hidden for the children to find at home - just like Santa said.

We know that at least one delightful little girl explained at great length to Mummy how the elves had come to her house to deliver the gift. Through the eyes of a child just wonderful!

Thank you so much to Warwickshire Community and Voluntary Action (WCAVA) for locating St Nicholas on our behalf (yes that was his name LOL).



We are liaising with our insurers, Early Learning Alliance, and studying the guidelines in the hope that we will be able to safely open our Toddler Doors to a small number of families in 2021. We will keep you posted as soon as we have any further information.

With much affection and best wishes for the New Year from Lynne, Selina, Reg, Suzi and Judy xx



Harbury Pre-School

Staff & Committee



The Nativity Story: We have been using our lovely knitted nativity set to read the Christmas story to the children. We have been learning all about Mary and Joseph and their journey to Bethlehem on a donkey. We located some Frankincense and Myrrh that had been kindly gifted to us by Reverend Gill last year for the children to look at and smell. Some of

the children have been really captivated by the story and it has become a favourite at circle time.

Christmas Crafts: The children have been kept busy indoors with a wide variety of Christmas-related activities.

The children have made some lovely Christmas cards using stencils, sponges and glitter. They have also painted their Diva lamps using bright coloured paint and added some jewels and will take them home for Christmas.

They have also made some fabulous Rudolph hats which they wore with pride for our Christmas Songtime.

The children have decorated the Christmas tree and since a Christmas tree is not complete without presents, the children have been busy wrapping boxes, bottle lids, in fact anything and everything they could find! We have got through an enormous amount of Sellotape and paper but now have a lovely big pile of 'presents' under the tree.

Christmas Songtime: This year, our traditional Nativity Songtime unfortunately couldn't go ahead in the usual way. However, we still had a fantastic time practising our beautiful Christmas singing and this week, have held three separate Songtimes via Zoom for the parents and carers to watch from the comfort of their homes. The advantage of Zoom is that some of the Grandparents were also able to watch and the children who were self-isolating were given the option of singing along from home. The children were undeterred by the technology and did a wonderful job singing Christmas songs whilst wearing their amazing Christmas reindeer hats that they have been busy making. We are



extremely proud of all the children who took part. Thank you to the parents for their support.

Party time: After each Christmas Songtime, the children in session were treated to some well-deserved party food which went down a treat.

Thank you: The staff would like to say thank you for the Christmas gifts and cards that we have received from parents.

We would also like to say a huge thank you to all the parents and children for their support this term. It has not been without its challenges but we have remained open throughout the Autumn and are very excited about welcoming the existing children and meeting some new faces in January.

Happy Christmas from everyone at Harbury Pre-School!

If you would like further information, or to register a child for Harbury Pre-School, please contact e-mail enquiries@harburypre-school.org.uk text 07907 598461 or look at the web site www.harburypre-school.org You can also find us on Facebook.



Village Hall Update

Andy Rutherford

What a quiet Christmas! Not a party in sight, and very few people to be seen walking around the village. I thought I saw a Triffid on Boxing Day.

Use of the Hall has been very limited during the last month or two, and is unlikely to get much better in January and February. The Church Services currently being held in the Hall are very welcome. We have been using the quiet time to carry out some work in the building. We have new doors to the Farley Room, new flooring this week in the Farley and Windmill Rooms, and redecoration of the Farley Room over the next few weeks. Work on the new extended foyer is expected to start on the 11th January, and last until mid-April. The current doors in the main hall will be screened off, and availability of the main hall will be largely unaffected until at the end of the project the new entrance to the Hall is knocked through. Entrance to the Hall will be through the side door (toilet corridor), and exit through the Farley Room.

It is worth pointing out (again), that these renovations, renewals, extensions have been made possible by grant funding from several different sources. Money which can only be used for these purposes. Our day to day running expenses are mainly met by hiring charges of the facilities, and have been severely restricted over the last 10 months!





Harbury Village Library & Biblio's Café

Rich Fowler

Happy New Year from all of us at Harbury Village Library and Biblio's Café.

Subject to changes in government regulations, library services will resume on Monday 4th January. As a minimum we will be offering a click and collect and home delivery service for books, audiobooks, board games, and jigsaws. We will be open on Mondays from 10am to 12 noon, and on Thursdays from 2pm to 4pm. At those times you will be able to collect the books you've requested, either from our own stock, or from Warwickshire County Libraries, to return and donate books, and to leave Food Bank donations.

Sadly, given the current restrictions Biblios will not be able to open for the foreseeable future.

GASS Christmas Postbox

We have been thrilled at how successful the GASS Christmas Postbox has been this year and happy that we were able to help. If you think there's a way that we can help your local organisation during these difficult times, please get in touch.

Seasonal Light Trail

While the Seasonal Light Trail continues to bring a bit of sparkle into our lives, walking trail maps will continue to be available from the library and on the library website.

Hola!

Spanish Classes

Spanish classes will be restarting, online, in January. If you are interested in taking a class please email us at spanish@harburyvillagelibrary.org.uk



Comic Books

A kind person recently donated some comic books to the library and these were instantly borrowed. If you think we should have more comic books and graphic novels available to borrow from the library, or have some comics in good condition that you'd like to donate, email us at library@harburyvillagelibrary.org.uk.

Reminders

While our opening times are severely curtailed at the moment, we still have an active online presence. In addition to our website, you can find us on Facebook (@HVLBC), Instagram (@harburyvillagelibrary), and Twitter (@HarburyLibrary). We also have a blog, so if you fancy writing a "guest" post about Harbury Village Library or Biblio's Café (or about books, coffee or cake in general), please get in touch.

We now have an online shop from which you can purchase books about Harbury, including "Community Spirit: Harbury in Lockdown", and greetings cards and postcards produced by local artists.

Just because our building isn't open to the public it doesn't mean that there isn't work going on behind the scenes, so if you're interested in volunteering in the library or café send us an email at volunteers@harburyvillagelibrary.org.uk.



Harbury Village Club & Institute

Judy Morral

Welcome to the first article of a New Year and we all hope for a much better year. We are not anticipating reopening in the immediate future but looking forward so much for when we do. The curry van will continue to be at the club on the car park every two weeks. Please see our Facebook page for definite dates, the first Friday possibly 8th January. There are extra meals now on the menu and all who have bought meals have thoroughly enjoyed them. Obviously as soon as we do open, food can be eaten inside the club. Smiley Chef will wait a few more weeks before he comes to the car park.

The new tenants have moved into the cottage. Both chimneys have had remedial work carried out and the damp problem all sorted. As I said before, the interior decoration is stunning. Beckie spent four hours cleaning it; as you can imagine lots of dirt and dust. Thank you to Beckie for making it sparkling again. The new carpets were then fitted in all of the rooms except the kitchen which has some really nice tiles. Sarah, John and I then did a final vacuum and tidy up. For some reason the dryer was upstairs? So this was moved downstairs. There are four bedrooms and so much room upstairs I was surprised at just how much space there is. We hope that the new tenants will enjoy living in the cottage. I was really pleased to see that they have brought some nice plants and ornaments with them which will enhance the outside and the decking area.

We are so lucky that both The Crown and The Shakespeare have been providing take away food and a delivery service for us all since the lockdown began in March. We enjoyed a superb four course Christmas meal delivered to our door. I have thanked all involved and it was so nice not to be confined to the kitchen on Christmas Day. Then all plates etc in the dishwasher. We were so full up too! Harbury is such a caring village and so nice to see dog walkers, cyclists and the horses and their riders along Mill Street. Chesterton Windmill has been lit up in the evenings again this year. There are always loads of cars parked on the verges alongside the windmill and so much space, so very easy to keep the required social distancing.

I have been busy tidying up the slope in Crown Street around our new fence. Hadn't realised what a mammoth task it was. I did all the weeding, not easy going up and down the slope but after two three hour sessions I did it all. I then decided to plant in a rockery style and three more two hour sessions

later I have planted some lovely evergreens, some plants from our garden which I was able to divide, green grasses, sedges, ferns, heucheras, euphorbias, oregano and hellebores then supplemented with some hebe plants, polyanthus, box and heathers from Stratford garden centre. Luckily it is in tier three as unable to go to Farnborough nurseries as they were tier two but now tier four. Do go and have a look, I received some super comments as I was doing all this. I have planted about two thirds now and will finish it when weather improves. As I was at the top nearer to the fence, I unearthed over twelve empty bottles and six cans which must have been there for years when the conifers were still in situ. I have also tidied up the plants at the entrance to the drive. Still looking colourful, as are the four pots along the wall of the club.



I have missed volunteering at Upton House. As it is also in tier three they are unable to open the House. I did go to the shop a couple of weeks ago as I needed diaries and calendars and they were all reduced - even better! A lovely walk down the drive and a quick look at the gardens. I also saw a couple of staff members so had a nice catch up. Luckily about a dozen of us are in a WhatsApp group and we are in touch frequently. We met up last Summer and Autumn at the Herb Centre; some lovely walks there and then the best bit - cream teas. Let's hope it's not too long before we can do this again. I had organised our first day trip on 25th March to the Black Country Living Museum but of course we couldn't go but we are hoping to enjoy at least three day trips in 2021.



I have finished my winter digging at my allotments and we are enjoying sprouts, carrots, turnips and celeriac. We have some horse manure now and, as soon as conditions allow, I will be barrowing some of it to my plots. Still making soup but running out of room in my freezer. Next thing will be buying seeds, I have a long list but it is quite nice at this time of year to plan what to plant and where and to get

more seeds of what performed best. The courgettes were very productive as were the squashes. My favourites are always runner and climbing beans and French beans. As garden centres and nurseries did not open until July this year we were unable to buy canes for support. It is amazing what you can use instead though including old ladders and steps!! Hopefully it will not be a problem next year.

Harbury Village Club continues on page 32





Continued from page 29.....

Thankfully now the shortest day has gone and it stays lighter by two minutes a day we can enjoy longer daylight hours. When I worked in Oxford I used to leave home in the dark during December and January and get home in the dark. When you can see the moon and stars there have been some fantastic sightings of planets.

Our thanks to the team at Harbury and Ladbroke News for collating and delivering the monthly magazine and ensuring that we are kept informed. Thank you also to all of the contributors.



Our members and visitors have been so supportive during a very difficult year and our grateful thanks to them. We have some new ventures to tempt you all with once we are able to reopen. We have taken advice from our insurers and we are able to open the club for a few hours once a week in order for you to pay your annual subscriptions. The amount payable is

either £12.50 or pensioners rate of £5. You can pay by cash, card or cheque. It will be perfectly safe, separate entry and exit, all areas sanitised and hand sanitisers throughout, please wear a mask. Myself and Sarah will be at the club on Sundays from 10th January from midday (12 noon) until 2.30pm. Obviously we are not able to serve drinks. We look forward to seeing you. New members are very welcome.

We hope that you all keep safe and send all our best wishes for a healthy, happy and kinder New Year.

**Nature Notes****John Hancock**

Wednesday, 23rd December was cloudy with rain falling intermittently and lots of standing water. I set off for a bike ride heading south east through Bishops Itchington to Knightcote. There was little colour to be seen. Seeding plants such as Rose Bay Willow herb were flattened at the side of the road in places. My favourite blackberry picking spots of early autumn were now yielding withered fruit soon to be colonised by mildew and other fungi. Crossing the railway which runs roughly east-west from Fenny Compton to Kineton and onwards to Stratford, I took the minor road connecting Northend with Gaydon. It is just a narrow strip of tarmac, about eight feet wide set between hedges and provides some shelter from wind and the elements in general. The railway now links the main Great Western line with the extensive military ammunition depot. Before the Beeching axe, most towns in the country were linked to one another by rail. It was these lines which took soldiers from our villages to the western Front throughout World War 1. A poignant poem written by Edward Thomas (killed at Arras in 1917) gives a flavour of the idyll he was leaving behind. Adlestrop is just down the road in Oxfordshire.

Adlestrop

Yes. I remember Adlestrop -
The name, because one afternoon
Of heat the express train drew up there
Unwontedly. It was late June.

The steam hissed. Someone cleared his throat.
No one left and no one came
On the bare platform. What I saw
Was Adlestrop - only the name.

And willows, willow herb, and grass
And meadowsweet and haycocks dry,
No whit less still and lonely fair
Than the high cloudlets in the sky.

And for that minute a blackbird sang
Close by, and round him, mistier,
Farther and farther, all the birds
Of Oxfordshire and Gloucestershire.



There is no longer a station at Adlestrop though the line is still used. The station nameplate takes pride of place in the centre of the village and serves as a memorial to Edward Thomas. It is certainly worth a trip in the summer with lovely walks in the vicinity.

Last month I mentioned a book I was looking forward to reading - 'The Swallow: A Biography' by Stephen Moss. Sharon bought it for me and I read it compulsively as the writing is so eloquent. The author is a naturalist and broadcaster originally from London. He now lives with his family on the Somerset Levels. He describes the Swallow's 6000 mile journey with all its dangers so vividly. Swifts are about as closely related to Swallows and Martins as Owls are to Kestrels i.e. not at all. The superficially similar appearance is due to the process of convergent evolution. Both are hunters of flying insects. Another book I have thoroughly enjoyed is 'Wilding - The Return of Nature to a British Farm' by Isabella Tree. The farm in question is at Knepp in West Sussex. Forced to accept that intensive farming of the heavy clay soil did not make economic sense, Isabella Tree and her husband Charlie Burrell took a spectacular leap of faith and turned their 3,500 acres back to nature. With minimum human intervention and herds of free-ranging animals stimulating new habitat, their land is now heaving with wildlife.

Rare species such as Turtle Doves, Peregrine Falcons, and Purple Emperor butterflies are breeding at Knepp. Biodiversity has rocketed. It should be a must read for all those anxious about the direction intensive farming is taking us.

Yvonne Hancock told me that she and Paul had been entranced to see a lavender bush in their garden taken over by a group of Goldfinches feeding on the seeds. A 'charm' is the collective noun I believe and so they were. David and Sue Turner report many Redwings on their side of the village. These European Thrushes along with their relative the Fieldfare feast on Hawthorn and Cotoneaster berries which have been softened by frost.

On a frosty morning with the promise of sunshine to come, we met our son Stephen and his wife Sally about halfway between Harbury and their home in Sheffield for a walk and a picnic. I chose the village of Gotham with its wooded hills immediately to the south of Nottingham and the River Trent. If the name is somehow familiar it is of course because the Batman stories are set in Gotham City. This is shorthand for New York City which acquired the name from the writings of Washington Irvine in the 19th century. He is believed to have been influenced by the legends associated with the Nottinghamshire village. In the time of King John when the monarch progressed through the country, surveyors were instructed to plot a route and improve the roads for the comfort of the royal cavalcade. The local inhabitants had to do the work and pay for the improvements. The good people of Gotham feigned madness in order to avoid the expense. The malady was thought in those days to be infectious so the King's men avoided that route to Nottingham. Further strange happenings ensued and the village now boasts a decorative pole with some of the legendary figures (including Batman) and an entertaining story board.

Close to the village is a source of Gypsum which has been quarried leaving the landscape pot holed and uneven and not amenable to ploughing. Part is now a nature reserve known as Gotham Sandbanks with a typical, rich, lime loving flora. Go in springtime to find Restharrow, Yellow Rattle, Bee Orchid, Lady's Bedstraw, Fairy Flax and many other species.



Now we can look forward to lengthening days. There are primroses in sheltered places in our villages. This very difficult year has given many people a greater appreciation of the natural world. The arrival of effective vaccines gives hope that 2021 will eventually be more normal. May I wish you a Happy New Year.





General Section



Wednesday Walks

The all-encompassing mud has rather limited us but we are still meeting, suitably distanced, and thank goodness for Thwaites. At least it's fresh air and company, and lovely to get back home afterwards! If anyone would like to join us, just come to the village hall car park at 9.40am any Wednesday.

Gillian Hare



Entrust Care Partnership

Entrust Care Partnership is a local Social Enterprise and Director, Lynne Barton, lives in Harbury, as does their Employment Development Manager, Aimee Mann.

Aimee manages the Pathway to Employment initiative which runs within the Blue Butterfly Community Centre in Bishops Itchington every Monday and Wednesday, during term time, from 9am - 1pm.

There are approximately 1.5 million people in the UK with a learning disability and around 94% are unemployed. Entrust Care Partnership is working towards changing that within Warwickshire, via their Pathway to Employment initiative.

Come along and support our young trainees with learning disabilities in their quest for employment. We look forward to warmly welcoming you to the café with excellent WiFi, freshly baked goods, hot drinks and light lunches.

We strongly believe that people with learning disabilities have the right to purposeful, paid employment and that it is a key part of living a fulfilling life and social inclusion.

During our café sessions at The Blue Butterfly, our trainees have the opportunity to

- Make friends and build confidence and relationships in a supported work environment.
- Learn skills to become work ready eg money management, customer facing skills, baking, cooking and barista skills.
- Trainees also learn about Food Hygiene, Nutrition and Healthy Eating, Manual Handling and Resilience at Work. All in a friendly, fun, supported and nurturing environment.
- Receive support and coaching with CV's, interviews and gaining employment.

If you, or anyone you know, is a young person with a learning disability and would like to become an Entrust Trainee to pursue gainful paid employment, please contact Aimee on 07967 680085 or by email at aimeemann@entrustcarepartnership.org.uk



"I love being a trainee at the Entrust Café. Seeing the customers every week, making friends and learning new skills has given me so much more confidence."

Suzie, Entrust Trainee

Equality, inclusivity and employability are at the heart of all we do.

Aimee Mann
Employment Development Manager
Entrust Care Partnership



Your Police, Your Views

Warwickshire Police and Crime Commissioner Philip Secombe wants to hear from the public about the future of policing in the county, as he launches a major new consultation ahead of deciding how funding should be prioritised in the year ahead.

The 'Your Police, Your Views' survey aims to get opinions from all parts of Warwickshire on how local people feel money should be spent on policing and community safety, including what types of initiatives should be financed through grants and commissioned services.

The questions also give the opportunity for people living and working in the county to provide further feedback on policing and community safety, to help the commissioner understand what they feel works well and also what needs improvement.

The results will help inform the budget setting process for the 2021/22 financial year.

The survey is open now and will run until early January 2021 at: <https://www.surveymonkey.co.uk/r/WPFundingSurvey>

Harbury Parish Council

White Buckets!

When driving to Southam via Deppers Bridge have you ever wondered why there are rows of white buckets along the hedgerows in the fields as you approach the town? There are also more white buckets to be found on the far side of Ladbroke beyond the by-pass. Well, this is the answer to the question, provided by HS2 Ltd. It turns out they are to capture the Great Crested Newt (GCN).

HS2 writes: *"throughout the season in 2020 we have been installing specialised Great Crested Newt fencing and pit-fall traps, to allow us to catch the GCN so that they can be moved to new mitigation habitats that we have created. The newts are caught in the pit-fall traps and these buckets are then checked daily by Ecologists who at that point move the amphibians to their new habitat. When the weather is not suitable, these buckets are covered to ensure the welfare of the newts."*



GCN are a protected species under UK and European legislation. We, as LM, are undertaking works to protect these populations of GCN and other protected species. These works must happen before undertaking vegetation clearance works and ahead of the mains civil construction works for HS2.

LM is a joint venture between Laing O'Rourke and Murphy and Sons and we are responsible for delivering the early works for HS2 in the West Midlands - covering Warwickshire, Solihull, Birmingham and Staffordshire. LM is undertaking the largest scale programme of ecology works in the UK and this ecological work is undertaken under a licence from Natural England by suitably

qualified ecologists who are licenced specifically for this very specialist and delicate work.

We recently hosted a webinar on our work to manage protected species, which goes into our work with GCN in more detail. You can find this webinar on the HS2 YouTube channel: www.youtube.com/user/HS2Ltd"

John Holden

HELP US UNDERSTAND WHAT WORKS TO PREVENT AND TREAT COVID-19

What have you done to try and prevent you, or a loved one catching Covid-19?

If you became ill, what treatments did you try?

By filling out our survey, your answers will be combined with thousands of others from across the world. Together we can work towards a better understanding of Covid-19 and how to beat it.

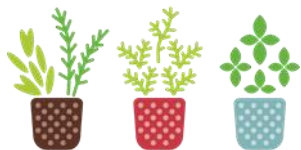
Anyone over the age of 16 is eligible to participate in the study so please spread the word and encourage others to complete it. Everyone who completes the survey can be entered into a prize draw to win one of 60 vouchers worth between £5 and £500.



For more details and to complete the survey
scan the QR code or go to www.rtocovid19.com



Ethical approvals: Southampton ERGO 56975, IRAS 289510. Poster version 3.0.
Recruitment ends 31st March 2021



Harbury Seed Share

At the beginning of lockdown, Harbury Seed Share was started as a way of helping our community cope with the pandemic by encouraging people to get outside in a garden, plant some seeds and grow their own flowers and vegetables. The initiative was a collaboration between the Harbury School Gardening Club (Earthworms) and Harbury Village Library, and was supported by Harbury Parish Council.

Now that the season for sowing seeds is approaching, the initiative is being reactivated, but is now being managed by Harbury Village Library as one of its community services.

From the beginning of January we will be accepting donations of seeds, and at the end of January will publish a register of seeds from which you can make your selections. Click and collect and home delivery options will be available. If you're interested in receiving more information about Harbury Seed Share, please email us at seedshare@harburyvillagelibrary.org.uk. You can also follow Harbury Seed Share on Facebook (@HarburySeedShare).

Harbury Village Library has a selection of gardening books, and over time we plan to build a collection of gardening tools which can also be borrowed. A 'library of things' alongside the traditional library of books. There will be much more on this in coming months.

Richard Fowler

Repair Café Harbury and a Bicycle Repair Clinic

In early 2020 it was decided to start a Repair Café in Harbury. Repair Cafés are free meeting places where people get together to repair things and where there are tools and materials to help people make repairs on clothes, furniture, electrical appliances, bicycles, crockery, appliances, toys, etc. Importantly, there are expert volunteers, with repair skills in all kinds of fields.

The idea for Repair Cafés started in the Netherlands and quickly spread throughout the world. Before lockdown there were active local Repair Cafés in Southam, Leamington, and Rugby.

Our first Repair Café was scheduled to be held in the Harbury Scout Hut on Saturday 25th April 2020, and then on every fourth Saturday of the month. Almost as soon as the initiative had been put in place all activity had to be suspended. We have now tentatively scheduled our first Repair Café for the fourth Saturday of April 2021.

A Bicycle Repair Clinic



In order not to let a good idea go to waste, and because of an increase of interest in cycling during lockdown, we've decided to do a trial run of a Bicycle Repair Clinic. While the Repair Café

needs to take place indoors, the Repair Clinic can be held outdoors, making social distancing restrictions easier to comply with.

Subject to prevailing government regulations, our first Bicycle Repair Clinic will take place on the first dry Saturday afternoon in 2021. Given the unpredictability of the weather it won't be possible to confirm a date until a few days in advance, so please keep an eye open on Facebook (@RepairCafeHarbury), or send an email to repaircafeharbury@gmail.com and we'll send you a notification as soon as the date is confirmed.



The plan is for people who have something wrong with their bikes to come along to the clinic where one of our bike experts will help to diagnose, and possibly fix the problem, or at least give advice on how it can be fixed.

We will be collaborating with Harbury Village Library over time to build a collection of bicycle maintenance and repair tools which people can borrow from the library in the same way they borrow books at the moment. The library will also have a few basic bicycle repair and maintenance manuals as well as some more general books about cycling. We also plan to create maps of local cycling routes, similar to the walking trail maps the library prepared for the Seasonal Lights Trail.

The picture above shows a bicycle repair taking place at the Repair Cafe in Leamington shortly before lockdown started.

Richard Fowler

HS2

HS2 in Warwickshire

The first images of one of our largest construction sites in the Midlands have been revealed, showing preparations being made for the launch of a tunnel boring machine (TBM) that will dig under Long Itchington Wood in Warwickshire, creating a 1 mile twin bore tunnel, before the route heads north and into Birmingham's Curzon Street Station.



Current works on the 1km square north portal site include a large and deep excavation, with 250,000m³ of material being removed in layers before being transported and deposited

locally to form environmental embankments for the main line. The 2,000 tonne TBM, manufactured in Germany by Herrenknecht, is due for delivery on site early in 2021 and will be launched next summer, with the boring completed by mid-2022.

The tunnel will be around 9-10 metres in diameter, with the TBM taking around five months to complete the first bore of the twin bore tunnel. Once completed, the TBM will be extracted at the South Portal and transported by road back to the North Portal to commence the second bore.



This key site is managed by the BBV Joint Venture (Balfour Beatty Group and VINCI Construction), who will be one of the biggest recruiters in the Midlands over the next two years, expecting to recruit 7,000 jobs to support the delivery of Britain's new high speed railway. There are currently 60 workers on site including student engineers and apprentices.

There are already 25 new apprentices from Warwickshire working with us and our supply chain, representing 7% of total new apprenticeships. We have also been working with stakeholders in Warwickshire to develop our Job Brokerage Model, due for launch in 2021. A major part of this is a new Job Brokerage Platform developed to showcase the vacancies being created by the delivery of Phase One of HS2.

Across Warwickshire, 82 businesses are supporting the delivery of the project, over 80% of which are SMEs, from sectors including construction training, builders' merchants, forestry, electrical suppliers and labour providers. We are actively promoting supply chain opportunities to businesses in Warwickshire through partners that include Coventry and Warwickshire Chamber of Commerce, Coventry and Warwickshire LEP (Growth Hub), West Midlands FSB and Kenilworth Chamber.



There are 100 bridges, 35 viaducts, 36 cuttings and 70 bridge structures on this part of the route and BBV are also building the Bromford Tunnel. Works on a Green Tunnel located south of the Long Itchington Wood south portal will also begin later this year.

At the peak of construction on the whole of Phase One, ten tunnel boring machines - each a self-contained underground factory - will work 24 hours a day, seven

days a week. Weighing up to 2,200 tonnes, each 160m long machine will bore and line the tunnels as they drive forward at speeds of up to 15 metres per day.

If you have a question about HS2 or our works, please contact our HS2 Helpdesk team on 08081 434434 or email hs2enquiries@hs2.org.uk

HS2 Team



New Care Farm Provision in Harbury

Having taught in special education colleges for many years, Katie Aldham and Stuart Wootton had a vision to establish a provision that could offer a day service that differed to other more mainstream services available to people with a learning disability. New Pastures Care Farm has successfully been running as a day service and educational provision for the past 9 years. Originally located in the north of the county on a county council farm, we have now developed a sister site at another council farm in the village of Harbury (formerly Whitegates Farm), whilst also running a small suckler herd and flock of Lleyn sheep.



Care Farming, defined as the therapeutic use of farming practices, allows us to utilise the farm, animals and outdoor environment to support people to improve their mental wellness, those with a learning disability and autism. Young people who struggle to engage with full time education due to a variety of reasons also access our provision, often to complete a qualification. People who attend are given opportunities to take part in structured activities involving traditional farm animals, small animals and conservation or estate skills.



Our service allows people to be active and improve their physical and mental health whilst carrying out meaningful tasks as part of a friendly team. Many of the people that attend our service say that the farm gives them a purpose, something to look forward to and a reason to get out of bed in the morning. People say that the farm has changed their lives. We strive to help people improve their social skills and work towards their own individual goals, this could be as simple as sitting down in the morning in a social group to have a cup of tea and discuss jobs for the day. To many that is a huge achievement and we feel proud that we can help build these important life skills. Yes, the animals are an extremely important part of what we offer as a provision, but life skills, building friendships and achieving goals are equally as integral to our service.



Our educational provision is accessible to everyone that attends. We are fully qualified teachers and are an accredited City and Guilds centre, which allows us to offer and deliver inclusive, nationally qualified qualifications. Some of the units that can be achieved include small animal care, agriculture, horticulture, conservation, personal development and independent living skills. Day to day activities are very varied. Whether completing a qualification or not, just some of the activities may include: bottle feeding young calves, grooming horses, walking goats to health checking a rabbit!



Developing our site in Harbury has been extremely challenging throughout 2020, but we have worked very hard to be able to open and offering our service to some of the most vulnerable when they have needed it most. We hope to support many more people throughout 2021 and are very much looking forward to an open day when we are able to do so. Meanwhile, we

remain open for referrals and are able to offer taster sessions to those interested in joining the farm.

To access our provision, referrals can be made in a variety of ways to include: direct from families, a social worker, schools and health trusts. Please feel free to contact us for an informal chat info@newpasturescarefarm.co.uk - 01926 614720.

Katie Aldham & Stuart Wootton



Warwickshire Trading Standards

Warwickshire County Council Trading Standards is warning consumers to beware of scammers offering bogus Covid-19 tests and fake 'Covid free' certificates.

Warwickshire Trading Standards is currently investigating a case in which a consumer may have unwittingly paid over £100 to fraudsters for a 'quick-turn-around' Covid-19 test and received a fake 'all-clear' certificate in return.

For more information visit <https://www.warwickshire.gov.uk/news/article/1623/beware-fake-covid-19-tests-warn-trading-standards>



Bogus Highways Department Workmen Warning!

Schools, churches, pubs, social clubs, business premises and other buildings with private car parks are being targeted by bogus 'Highways Department workmen'.

The bogus workmen claim they have been renewing road markings before offering to use their leftover paint to repaint lines on the car parks. They will quote a very low price, usually a few hundred pounds, but after the work is completed will demand thousands!

The bogus workmen are reported to be making unexpected phone calls to the owners/operators of buildings with car parks across the County. They may claim to be Council Highways or Traffic Management staff.

Warwickshire County Council Highways staff or companies operating on behalf of the Council will never make offers of this sort.

Scam Phone Upgrade Call



A Warwickshire resident reported receiving a scam phone call from someone falsely claiming to represent Carphone Warehouse. The caller asked for personal information including occupation, date of birth and bank details before asking for an upfront payment of £53.00. No money was paid on this occasion. Another resident reported a similar approach by someone pretending to be calling from EE offering a mobile upgrade. **Never** provide personal or financial information cold callers.

Gumtree Car Seller Warning

A Warwickshire resident selling a vehicle on Gumtree reported an approach from a scammer. The scammer began by showing an interest in purchasing the vehicle before asking the seller to make an 'agents fee' payment of £650 direct into a bank account for 'security reasons' before full payment for the vehicle could be made. The scammer was reported to have made a very convincing approach before they asked for the 'agents fee'. They were also described as being extremely persistent. If you are selling a vehicle on Gumtree or any other sales platform, never agree to send money to secure the sale. Gumtree offers advice on safe buying and selling here: <https://help.gumtree.com/s/safety>

Raffle Scam



Residents are warned to beware of unexpected emails offering £1 raffle entry. A resident provided their bank details and paid the £1, before being informed that they had 'won'. However, the 'winner' was then asked to send a further £5 to receive their prize. **Never** send money to receive a prize gift.

'Win an iPhone' Continuous Payment Scam

Beware of online surveys that are created simply to encourage consumers to unwittingly sign up to continuous payment authorities.

One Warwickshire resident reported completing an online survey to be entered into a competition to win an iPhone. The resident paid a £1 fee to enter the competition using a debit card. However, by doing so the consumer unwittingly signed up to a £49.00 per month competition/games fee.

Be wary of any request to provide your debit or credit card details online, especially if it relates to entering a competition or paying postage and packaging to receive a free gift. You may have unwittingly signed up to a subscription!

More about continuous or recurring payment scams: <https://www.getsafeonline.org/shopping-banking/subscription-traps/>

Stopping a continuous or recurring payment: <https://www.citizensadvice.org.uk/debt-and-money/banking/stopping-a-future-payment-on-your-debit-or-credit-card/>

Your Parcel is Awaiting Collection Scam



Several Warwickshire residents have reported receiving bogus text messages informing them that an item is awaiting their collection at a drop box. The item is often a high-priced product such as an iPhone. A link is usually provided in the text message directing them to pay £1 shipping costs. However, this is just an attempt by fraudsters to obtain financial information such as bank details and credit and debit card

numbers. Residents have also reported receiving similar bogus Royal Mail text messages telling them that a parcel will be delivered to their home address and giving an approximate time. Again, a link is provided in the text to direct the recipient to the scammers.

Finally, a resident reported receiving a similar bogus Lidl text message, again directing the recipient to a link in the text message.

Never click on any suspicious links in emails or text messages and remember, scam text messages can also appear amongst genuine texts!



Solar Panel Maintenance Scam

Residents with solar panels are warned to beware of bogus phone calls and letters from unscrupulous traders offering 'free' solar panel checks. The traders usually claim they represent the original solar panel fitters, come to carry out a free check because the solar panels are more than five years old. Once there, they claim that to cover future maintenance a

new payment will need to be made, usually of several thousand pounds. Once the money is paid, the trader then disappears.



Businesses Targeted by Scam Publishers

Warwickshire businesses are again being targeted by scam publishers who charge hundreds of pounds for advertisements in or sponsorship of, publications that have little or no circulation and in some cases are never published. The scammers often claim that the publication is a safety

related magazine for schools and may state that they are working on behalf of a local authority, Fire Service or the Police. Businesses are advised to put the phone down on unexpected calls of this nature and not to ask to see examples of the publication. Some scammers may phone businesses already claiming that the company has agreed to advertise/sponsor in order to get a sale.

Please feel free to reproduce/cascade this email alert as you see fit.

This alert is also available here: <https://safeinwarwickshire.com/2020/12/09/bogus-highways-department-workmen-and-other-scams/>

Simon Cripwell - 01926 738987
Warwickshire County Council

vasa

We Need You!

We need volunteers to help get local patients to receive the Coronavirus vaccination.

Have you got some spare time during the day?

We expect to be very busy in January, February and March once the vaccination programme begins to roll out. We are going to need many more:

Volunteer drivers: If you have a clean driving license and would like to help people in your community who would otherwise struggle to get to their vaccination appointment and home again, please get in touch. **45p mileage costs paid.**



Telephone operators: Have you got your own computer, decent admin skills and like talking on the telephone? We need plenty of people to help take transport bookings to vaccination appointments. If you could spare one or two mornings or afternoons a week we would love to hear from you? **Volunteering from home with training and support.**

To help, please call 01789 262889 or email recruitment@vasa.org.uk

Emma McCappin
VASA

Diary Dates

Most activities normally shown are suspended at present. Please check village websites & noticeboards for updates.

HARBURY PARISH COUNCIL: 4th Thursday of the month (next meeting 28th Jan), via Zoom. Please contact the Parish Clerk to join, clerk@harbury-pc.gov.uk

HARBURY VILLAGE LIBRARY: Wight School, High Street, Harbury. Tel: 258776, Monday, 10am - 12 noon & Thursday, 2pm - 4pm, Click & Collect and Drop Off service plus donations for Foodbank

W.I.: 2nd Thursday of month (next meeting 14th Jan), 7.45pm, via Zoom. Tel: 612708

WEDNESDAY WALKERS: Wednesday, 9.40am, meet Village Hall Car Park, Tel: 614188 or 614809



CONGRATULATIONS, THANKS AND ACKNOWLEDGEMENTS

If you would like to include:



- A Birthday message
- Congratulations to anyone for their achievement
- Wedding or special occasion wishes
- Thanks to someone



We will be more than happy to include it in the magazine.

There is no charge for this service, just email your message to articles@hlnews.co.uk or drop it into Harbury Pharmacy by the advertised deadline date.



LOCAL FOODBANK - there is a facility in the village to donate non-perishable food to your local Foodbank, which supplies the local area, including Harbury. At the present time please bring any donations to the Wight School (library) car park on Mondays between 11.30am and 12.30pm. One of the e-Wheels drivers will be there to receive your items. Alternatively, donations can be dropped off at Harbury Village Library, Mondays 10am - 12 noon and Thursdays 2pm - 4pm. Please do not leave items outside the door when the library is not open. Please observe all the usual safety advice and distancing. Thank you.

February Edition - Harbury & Ladbroke News

Adverts to: 36 Manor Orchard, Harbury or e-mail to advertising@hlnews.co.uk by 20th January

Articles to: Harbury Pharmacy, High Street or e-mail to articles@hlnews.co.uk by 5.30pm, Thursday 28th January

Harbury & Bishops Itchington Surgeries

 **01926 612232**

HARBURY SURGERY

	Monday	Tuesday	Wednesday	Thursday	Friday
AM	Dr K Panting	Dr C Snowdon	Dr C Snowdon	Dr R Collins	Dr M Wood
	Dr M Wood	Dr M Wood	Dr H Parkinson	Dr K Panting	
	Alice Woodward (Phlebotomy)	Practice Nurse / HCA (alternative week)	Rachael Pearson (HCA)	Janette Robson (Practice Nurse)	Janette Robson (Practice Nurse)
		Alice Woodward (Phlebotomy)			Rachael Pearson (HCA)
PM		Dr K Panting	Dr M Wood	Dr H Parkinson	Dr H Parkinson
	Dr R Collins	Dr J Wilkinson	Dr H Parkinson	Dr R Collins	Dr M Wood
	Rachael Pearson (HCA)	Janette Robson (Practice Nurse)		Janette Robson (Practice Nurse)	Janette Robson (Practice Nurse)
		Rachael Pearson (HCA)			Rachael Pearson (HCA)

For Harbury ring 01926 612232 during their opening hours
 (door opens Monday - Friday 8.30am to 12.30pm and 1.30 to 6.30pm)
 (Telephone lines open Monday - Friday 8.00am to 12.15pm and
 1.30 to 6.15pm)

BISHOPS ITCHINGTON BRANCH SURGERY

	Monday	Tuesday	Wednesday	Thursday	Friday
AM	Dr R Collins	Dr K Panting	Dr M Wood	Dr H Parkinson	Dr C Snowdon
	Rachael Pearson (HCA)	Practice Nurse/ HCA (alternative Week)	Alice Woodward (Phlebotomy)	Alice Woodward (Phlebotomy)	Alice Woodward (Phlebotomy)
PM	Dr K Panting	CLOSED	Dr C Snowdon	CLOSED	CLOSED
			Rachael Pearson (HCA)		

For Bishops Itchington ring 01926 612232 during their opening hours
 (door opens Monday - Friday 8.45am to 12.00 noon and on
 Monday and Wednesday afternoons 3.45 to 6.00pm)
 (Telephone lines open Monday - Friday 9.00am to 12.00 noon and on
 Monday and Wednesday afternoons 4.00 - 6.00pm)

BTTJ EXPERTISE GIVES PEACE OF MIND TO LOCAL CLIENTS

Local solicitors Brindley Twist Taftt & James (BTTJ), have recently acquired offices of McNamara King, including their office in Southam. BTTJ is helping clients in Southam and the surrounding areas to protect themselves and their loved ones by making sure they have appropriate arrangements in place, for these uncertain times.

More than ever, clients of all ages are now thinking ahead, exploring options to ensure their affairs are taken care of should anything happen to them or should they no longer have the capacity to make crucial decisions for themselves.

Lasting Powers of Attorney are legal documents allowing an individual to hand over the running of their affairs to someone they trust – allowing that person to make decisions on matters such as health and wellbeing and finance and property.

Once completed, the documents can be used when a person is no longer capable of managing their own affairs, or when they no longer wish to manage them. Their nominated person (their attorney) – usually a relative or someone else close – is given full legal powers to act or make decisions on their behalf.

Granting powers of attorney while a person is still physically and mentally able gives them certainty on who will take over the running of their affairs and helps prevent heartache and grief in the future.

Helen Strong, Head of Private Client at BTTJ, said that “while historically clients enquiring about Powers of Attorney might have generally fallen into an older age bracket, today’s enquiries come from people of all ages, including young adults.”

She said the pandemic seemed to have brought home the reality that everyone is vulnerable, and lives can change at any given moment.

Katie Nightingale the solicitor who provides wills and probate support for Southam and the surrounding areas commented: “We are receiving more enquiries, particularly from young people, as it seems more of us are realising the importance of putting our arrangements in place.


This includes enquiries about powers of attorney - whether looking at their health and welfare, or their property and financial affairs, and it is advisable to do this no matter how young or old you are, because you never know what’s round the corner.

“If someone does fall ill or has an accident, an absence of a will and any other arrangements can lead to panic and have a knock-on effect for other concerns, such as accounts in danger of being frozen and inheritance arrangements sometimes unclear. Preparing Lasting powers of attorney and also making sure a will has been completed helps alleviate these problems.”

It has been business as usual for BTTJ throughout the Covid crisis, with clients able to arrange powers of attorney and other legal or financial matters over the phone or via Zoom meetings, or where necessary face-to-face.

In the interests of staff and clients alike the company’s safety protocol is strictly adhered to at all times, in line with government rules, with staff wearing masks and strictly observing social distancing.

For further information please call 01926 217555 or email enquiries@bttj.com



Dentist

Podiatrist

Optometrist



*We fix
the feet
others
can't fix*

www.healthfirstsoutham.co.uk

ADVERTISING IN THE HARBURY & LADBROKE NEWS

EMAIL: ADVERTISING@HLNEWS.CO.UK

TEL: 01926 612687

	$\frac{1}{4}$ PAGE	$\frac{1}{2}$ PAGE	FULL PAGE
1 MONTH	£10.50	£19.00	£33.50
3 MONTHS	£28.00	£49.00	£89.00
6 MONTHS	£51.00	£90.00	£165.00
12 MONTHS	£94.00	£168.00	£315.00

Adverts with payment to:

Sue Dronfield,
36 Manor Orchard, Harbury
by the 20th day of the month

*Cheques payable to 'Harbury & Ladbroke News'
or BACS details upon request*

HANSONS
Auctioneers and Valuers

FREE CHARITY VALUATION DAY

Please call 07802 839915

for information about the January Valuation Day
which will be either at Leek Wootton or Kenilworth

Valuing Paintings, Watches, Gold, Fine Art & Collectables

Now consigning for our Spring Jewellery and Fine Art Auctions
and Specialist Auctions

Free Home Visits for large/multiple items.

House clearance and downsizing advice. Probate and Insurance Valuations

For further information please contact Carol Jones on 07802 839915

cjones@hansonsauctioneers.co.uk www.hansonsauctioneers.co.uk

Bishton Hall, Bellamour Lane, Wolseley Bridge, Staffordshire ST17 0XN

Refreshments in aid of the NSPCC

TIRED OF SEARCHING THE INTERNET FOR YOUR INSURANCE?

LET YOUR LOCAL BROKER DO THE LEG WORK FOR YOU!

We have been in Southam
with the same staff since 1983
We will be happy to offer you a

Free competitive quote
for all types of insurance

Please contact
Deb, Sue or Hannah on

01926 812574



Reynolds Insurance Services Ltd - Independent Insurance Advisors

5 High Street, Southam. CV47 0HA

enquiries@reynoldsinsurance.co.uk | www.reynoldsinsurance.co.uk

Regulated by the Financial Conduct Authority

Ed's Music Tuition

- Do you want to learn keyboards, guitar or ukulele with a qualified teacher with a passion for music?
- Lessons available for all ages.
- Learning an instrument is rewarding and great fun, and I can help you on your way.
- Fully CRB checked.
- Competitive rates and flexible timetable with lessons tailored to your own individual learning style and needs.
- Tuition in playing, reading music, performance and theory.
- Give me a call to discuss your musical future!



Ed Hudson, Harbury. Mob: 07801 430029
email: eddhudson@me.com



FOR ALL YOUR FENCING NEEDS

New Fences | Replacements
Supply and Fix - Repairs

ALL WORK GUARANTEED

FREE QUOTATIONS



A.J. FENCING

t: 01926 499751

m: 07974 918098



Simons Systems



Available for all your computer requirements including:
 PC's & Laptops, New & used systems, Repairs & upgrades
 Virus/Malware Removal, Data back & Windows re-installation
 Upgrading memory/Hard drives/Rom drives/Graphics, etc
 Internet - modems fitted, wireless, networking.
 Any repairs or computer problems. **No call out charge**

T: 01926 316 119

E: sales@simons-systems.co.uk

M: 07751 811 097

W: www.simons-systems.co.uk

miles of tiles

(midlands) ltd

ceramic . porcelain . natural stone . sanitary ware . bathroom furniture



Leamington Spa

Unit 1-3 St Mary's Road, Sydenham
 Industrial Estate, Leamington Spa,
 CV31 1PR

Email: sales@milessoftiles.co.uk

Tel: 01926 312777

www.milessoftiles.co.uk



Coventry

96-100 Foleshill Road,
 Coventry, Warwickshire
 CV1 4JJ

Email: coventry@milessoftiles.co.uk

Tel: 02476 228800



Rugby

103-107 Albert Street
 Rugby, Warwickshire
 CV21 2SW

Email: rugby@milessoftiles.co.uk

Tel: 01788 546622

Monday to Friday 8am - 5.30pm & Saturday 9am - 5pm



We won't be beaten on price...

Stocked items only and not subject to any other discounts or offers.

20% OFF
 Only with
 this
 advert
H&L News

Nifty Needle

Curtains and Soft Furnishing

Nifty Needle specialise in creating stylish custom curtains, blinds and soft furnishings, individually designed to create beautiful solutions.

Free measuring service.

At our shop in Kineton we now stock a range of home wares, including lamps, cushions, footstools and other items to accessorise your home.

We're open Tuesday to Friday 9:00am to 5:00pm
and Saturday 9:00am to 2:00pm.

Nifty Needle Curtain Workroom, 1 Banbury Street, Kineton, Warwickshire, CV35 0JS
Tel: 01926 641741 E-mail: info@niftyneedle.co.uk Website: www.niftyneedle.co.uk



Alsters Kelley
Southam Office
1 B Daventry Street
Southam
CV47 1PH

Are you a victim of medical negligence or personal injury?

Making a claim can be complex and stressful so having an experienced team to pursue your claim is essential. Get the best results with Alsters Kelley Solicitors.

- ◆ Legal Aid available
- ◆ No Win No Fee Agreements
- ◆ Free consultation at any of our offices
- ◆ Call now to book an appointment



Call 01926 356072

Kiran Jalota
Solicitor, Head of Medical Negligence & Personal Injury
medical.negligence@alsterskelley.com

www.alsterskelley.com

Kind, helpful, excellent

- Painting
- Tiling
- Plumbing repairs
- Furniture building
- Flooring
- Shelving
- Locks
- Picture Hanging



- Outdoor painting
- Patio's
- Fencing
- Sheds
- Gardening
- Gravel
- Jet washing
- Turf Laying

No job too small

Call Adrian on 07472 901082

Valid DBS

ADVERTISING IN THE HARBURY & LADBROKE NEWS

Email: advertising@hlnews.co.uk Tel: 01926 612687

ADVERT SIZE	1 MONTH	3 CONSECUTIVE MONTHS	6 CONSECUTIVE MONTHS	12 MONTHS
¼ page	£10.50	£28.00	£51.00	£94.00
½ page	£19.00	£49.00	£90.00	£168.00
Full Page	£33.50	£89.00	£165.00	£315.00

ADVERT WITH PAYMENT TO:

Sue Dronfield, 36 Manor Orchard, Harbury by 20th day of the month
(Cheques payable to 'Harbury & Ladbroke News' or BACS details upon request)

Ever thought of extending your home?

Does it have the potential to change?

Do you need more space?

Are you looking for a local design practice that can prepare proposals for your ideal home?

Contact Chris Hill M.C.I.A.T

Call: 01926 613780 (evenings)

0777 218 9266 (mobile)

Email: chris.hill100@btinternet.com

A Member of the Alliance of Private Sector Practitioners

Jackie Biddle

Healthy Feet are Happy Feet

Foot Health Practitioner



Dip CHIP MPS Pract
CRB Checked

• Nail Trimming

• Corn Removal

• Verruca Treatment

• Ingrown Toenails

• Calluses Reduced

• Footcare for Diabetes

Home Visits Telephone

T: 01926 612503

M: 07872 907429

LOCKMEDICS

Mobile Locksmiths

Upvc - Multipoint locks
All B.S. locks supplied and fitted
Domestic and Commercial
Security Upgrades and Advice
Key Cutting

Tel: 01926 885560

Mob: 07971 818892

www.lockmedics.co.uk



**Gently pasteurised,
non-homogenised milk available
direct from our farm.**

Our grass-fed cows spend their days grazing
in the fields surrounding the village.

When the weather is cold and wet,
they are snuggled up on fresh straw eating
silage made from grass cut from our fields
during the summer months.

**£1.20 for 1 litre of delicious whole milk.
Bring your own container or purchase
one of our reusable glass bottles for £2.**

Open every day 6.30am – 10pm
Chesterton House Farm, Mill Street,
Harbury, CV33 9HR



APRICUS PEST CONTROL



RODENTS – MICE, RATS & SQUIRRELS

MOLE TRAPPING

RABBIT CONTROL

WASPS NESTS



PROPRIETOR – GILES BRADLEY

FRIENDLY LADBROKE BASED SERVICE AVAILABLE MOST DAYS

COMPETITIVE RATES

FULLY INSURED

NATIONAL PEST TECHNICIANS ASSOCIATION (NPTA) MEMBER

Mob – 07930 351375

email – apricuspestcontrol@gmail.com

www.apricuspestcontrol.com

Childcare from 3 months to 5 years of age

at Banana Moon Day Nursery Harbury.



Providing a safe, caring environment for children from 3 months to 5 years of age.

- Open 7.30am – 6.30pm
- All major childcare vouchers accepted
- Full-day and half-day sessions available
- Highly experienced, friendly staff
- Sibling discount
- Outdoor learning environment.



Outdoor learning environment



Home-cooked food

To find out more or to book a visit, call **01926 612374** or email info@bananamoon-harbury.co.uk



Banana Moon Day Nursery Harbury
Ivy Lane, Harbury, Warwickshire CV33 9HN
Call us on **01926 612374**
or visit bananamoon-harbury.co.uk

*Subject to terms and conditions. *Government funding available.

Need an Electrician or Plumber? Try our 24 hour Emergency Response Service

ELECTRICAL

- Loss of Power
- Lights/Sockets/Cookers/Showers
- Fuse boards
- Rewiring
- Smoke detectors
- Fault finding
- Security Lighting

PLUMBING

- Burst Pipes
- Leaks
- Boiler Breakdowns
- Heating
- Blocked Toilets
- Blocked soil vent pipes
- Drainage



Tel. 01926 293 515/07856 250 619
www.lightworksservices.co.uk

Card payments accepted. Full T&Cs on website.

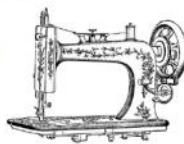


Acupuncture, Reiki, Remedial
and Holistic Massage
at *The Petite Retreat*, Harbury

25% OFF
first treatment
with this voucher
Gift vouchers available

Contact **Mireille Hartley** Lic Ac, iTec, MBRCP
Tel. 07970 418936
email. mhartley_33@hotmail.com
visit www.thepetiteretreat.co.uk

Drop Dead Gorgeous Curtains.



Beautiful Bespoke Curtains, Cushions and Roman Blinds all made to measure.

Curtain alterations and restorations also undertaken.
All items are handmade by myself, a fully qualified soft furnisher.

From fabrics to poles, all your needs are catered for.
I'm also happy to work with customers own fabric.
Free measuring service, no obligation quotes and free curtain fitting and dressing.

Call Sharron for friendly and helpful advice, or to make an appointment on 07760395805 or 01926 718220
Email; dropdeadgorgeouscurtains@gmail.com
Website; www.dropdeadgorgeouscurtains.com
Find me on Facebook and Instagram.

Love Ballet Dance Company LOVE TO DANCE? SOUTHAM CLASSES

FREE TRIAL CLASS

Ballet	Commercial
Tap	Contemporary
Modern	Mini Movers
Gymnastics	Funky Dance
Musical Theatre	Cheerleading
Street Dance	Adult Classes

★ confidence ★ fun ★ friendships

Professional Purpose Built Dance Studios in

Southam

www.loveballet.co.uk

07921 853773



FOR ALL
YOUR ROOFING
NEEDS

AJ ROOFING

- NEW ROOFS
 - REPOINTING
 - FLAT ROOFS
 - REPAIRS
 - GUTTERING
- ESTABLISHED 16 YEARS
- FREE ESTIMATES
ALL WORK GUARANTEED
INSURANCE WORK
NO JOB TOO SMALL

TEL: 01926 499751

M: 07974 918098

www.ajroofing.org.uk



www.stratfordlandscapes.com

(We live in Harbury)

Small garden experts • Garden Design • Porcelain & other types of Paving
Real & artificial lawns • Stunning plant collections • Decorative Pergolas & Fences
Privacy Solutions • Low Maintenance Gardens

"Let Dave & the boys work their magic & you won't be dissapointed"

Contact David Lewis on 01789 721851 or 07990975158 or visit our website



Emily Jayne's

Hair & Beauty Salon

Poplar Road, Bishops Itchington CV47 2RQ - Tel: 01926 611944

*All types of hairdressing services

* Brazilian blow dry

* Luxury facials & Pedicures, Hot stone massages,

* All types of waxing. * Individual lash extensions

* Acrylic & Poly Gel nail extensions

*** SUNBED ***

Why not treat someone this Christmas? Gift vouchers available.

Unisex Salon

Opening hours: Tuesday to Thursday 9am till 7pm

Friday 9am till 6pm Saturday 8.30am till 3pm.

L'ORÉAL
PROFESSIONNEL



that
Slimming
World
feeling!

Contact your local Slimming World Consultant and book
your place in a warm and friendly group today!

WEDNESDAY EVENING

Harbury Village Hall Jodie 07771 930568

TUESDAY MORNING & EVENING

Southam Sports & Social club

Elaine 07763200836

THURSDAY EVENING

Kineton Scout Hut Elaine 07763200836

BOOKING IS ESSENTIAL

New Year - New You

Slimming[®]
WORLD

   slimmingworld.co.uk

touching hearts, changing lives