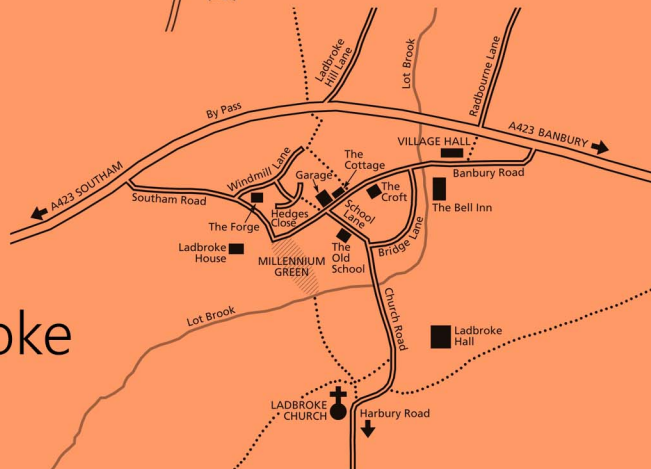


Harbury



Ladbroke

June 2020
Online Edition

Harbury & Ladbroke News

Is published monthly and reflects all aspects of local life.

June 2020

No.555

Editorial Office

31 Binswood End

☎ 612155

✉ articles@hlnews.co.uk

Article drop off point:
Harbury Pharmacy,
High Street

Advertising Office

36 Manor Orchard

☎ 612687

✉ advertising@hlnews.co.uk

Distribution Manager

49 Mill Street

☎ 612009

✉ distribution@hlnews.co.uk

Inserts by prior arrangement
with the Distribution Manager

IN THIS ISSUE

Page

EDITORIAL	2
REFUSE ROTA	3
FROM THE RECTOR & CHURCH NEWS	3
LADBROKE NEWS	6
HARBURY PARISH COUNCIL	18
CLUBS & SOCIETIES	22
75 TH ANNIVERSARY OF VE DAY	27
SPORTING ACTIVITIES	39
HARBURY PRIMARY SCHOOL PTA	39
LIBRARY & CLUB	41
GARDENING & NATURE	45
GENERAL SECTION	48

Editorial Team

Chris Barber - Chris Finch - Paulette Kavanagh - Peter McDonald - Daralyn Warren -
Jackie West - Katy Wiltshire

*The views of contributors are not necessarily those of the Editorial Team.
The Editors reserve the right to amend articles as they see fit.*



Editorial

Another month in lockdown gone, though the good news is that the rules are slowly being eased. From 1st June, outdoor gatherings of up to six people from different households were allowed and will no doubt bring joy to many families who can once again meet up with relatives and friends. We very much hope that the lovely weather we have been having will continue to shine to help with any social gathering plans. Schools have also been given the green light to return in stages and some employees are being encouraged to go back to work. Of course, this does not mean that the virus has gone, but keeping alert will continue to help us all stay safe and well.

Our villages are well known for their friendly and welcoming atmosphere but due to the current social distancing measures this can result in people feeling isolated or indeed being avoided when passing in the street. When social distancing do please remember to keep up the camaraderie where possible.

Whilst many of our popular village events continue to be cancelled and with the Beer Festival not now going ahead, the Village Show Committee are still planning on running the Show in September. You will find a reduced Show Schedule attached to the end of this magazine, so please do take a look. All being well this yearly event will be able to take place.

Congratulations to Ladbroke Church, who have been awarded a National Lottery Heritage Fund grant of £339,000 for their exciting heritage project - All Saints for All Generations. Well done to one of our editors, Jackie West from Ladbroke who we know has spent a lot of time on the application process.



This month sees a number of photographs submitted showing decorated houses and some village residents celebrating VE Day on Friday 8th May. Thank you to all who have sent photos in.

The work on the new Heritage Centre overseen by Bill Timson (H&L News Treasurer), has been progressing and photos have been sent in by Bill showing how the old 'After School Club' building has been transformed.



Harbury Diary

All events normally listed are suspended at present.

We welcome items for inclusion in the July edition of the Harbury News eg articles on hobbies, memories of living in the village, items on self-isolation, photos and quizzes.




July Edition - Harbury & Ladbroke News

Articles to: Harbury Pharmacy, High Street or e-mail to articles@hlnews.co.uk by 5.30pm, Thursday 25th June



Refuse Collection Rota

	Deppers Bridge	Harbury, Ladbroke & Deppers Bridge outlying properties	Collection Week
June	Wed	Fri	
	10	12	Green & Blue Lid Bins
	17	19	Grey Bin
	24	26	Green & Blue Lid Bins
July	1	3	Grey Bin
	8	10	Green & Blue Lid Bins
	15	17	Grey Bin



From the Rector


Alison Abbott (Reader)

You may have spotted red bunting around the church gate and balloons around the village last weekend and wondered what it was all about. The answer is that last Sunday was the festival of Pentecost when the church remembers the coming of the Holy Spirit on the first disciples. It marked the beginning of a big change in the disciples. Until that point the disciples had been a rather timid bunch, keeping themselves hidden away, frightened that they faced the same fate as Jesus and would be crucified too. Following the coming of the Holy Spirit they boldly told the Good News to everyone who would listen. Yes, some of them did go to prison, some died for their beliefs, but they were no longer fearful. Pentecost marks the birth of the church when

a rag-tag group of scared people became a group who changed the world through the power of God's Spirit.

The people writing about it struggled to find the right words, but described the Spirit coming like tongues of fire and a rushing wind. Two powerful but useful elements. Both can bring life, but need to be respected because, as storms and forest fires remind us, they are beyond our ability to control. The Holy Spirit is sometimes described as the 'giver of life', which it is, but it is also God's power and beyond our ability to control. God's Spirit blows where it blows and we cannot control it. The word used in the Bible for wind also means breath and spirit, which nicely captures the idea of life giving. We talk about a lively person being spirited, and equate breathing with life.

Pentecost is more than an historical event because God is still at work in the world today. The church building in Harbury may be closed, but we are more than a building, we are a people who know the life-giving Spirit of God in us. We are continuing to meet using social media, so please contact us if we can help you.

	<h2>From the Churchwardens</h2>	<p>Liz & Michael</p>
---	---------------------------------	---------------------------------

The lychgate has been brightened up for Pentecost (or Whitsun, in old money) which Alison has written about in the previous article. We still cannot open the church for private worship but maybe this restriction will be lifted in the coming weeks. I do hope so. And I have ordered gallons of hand sanitizer.

We have been working on three activities in the past months which may come to fruition in the next few months.

- 1) An appeal - called Heat, Light & Stone - to raise funds to replace the heating and lighting in an energy efficient manner. Please read the article elsewhere in this magazine.
- 2) Advertising for a new priest started in May with applications to be in by 5th June so we may know more by the end of the month.



- 3) A new website is under construction which will allow a team of people to update and refresh information in a timely manner. Thank you to Sarah, Amy and Will for all their efforts on this especially as they are coping with home schooling and work.

Various meetings and groups are continuing via virtual channels and we thank the organisers for doing these, especially Alison and Ann. Should you wish to receive the pew sheet and information regarding online services by email please call Liz on 612421.

And lastly may we add our congratulations to the team at Ladbroke who have been successfully awarded the National Lottery Heritage Fund grant. (The CofE described it as the “tiny village of Ladbroke” - not that small!)

Please do contact either of us should you have any queries relating to church life. Liz McBride (tel: 612421) and Michael Vincent (tel: 614806).



Mothers' Union

Gillian Hare

We hope all our members are coping with “lockdown” and enjoying the peace. We praise the Lord for our blessings of living in a lovely place, for the many acts of kindness we are hearing about and for the wonders of technology. Many of us are able to see our families on screen, and we can all keep in touch on the phone. There are lots of acts of worship online but even without that we can watch and listen on TV and radio. The recent commemorations of V E day helped us realise how much harder it was then - not knowing where your loved ones were and no groceries delivered to the doorstep. And enemy bombers overhead!

We send our condolences to Sue Boniface on the death of her dear husband, Brian. He was a big part of our Church life and greatly missed when his health failed.

We would have been planning for our coffee morning and summer outing now but instead wish you well and safe. We look forward to the day when we can be together again.



LOCAL FOODBANK - there is a facility in the village to donate non-perishable food to your local Foodbank, which supplies the local area including Harbury. For the time being please bring donations to the Wight School (library) car park on Mondays between 11.30am and 12.30pm, during these times only. One of the e-Wheels drivers will be there to receive your items. Please observe all the usual safety advice and distancing. Thank you.

Ladbroke News & Diary

<http://www.ladbroke-pc.org.uk>

All events normally listed are suspended at present.

When church, meetings and events are allowed again this will be communicated by e-news and on websites.



Ladbroke Church News

Peter Rigby

Official permission for us to publicise the fact that we have been successful with our National Lottery Heritage Funding bid came too late for last month's edition but I am delighted to be able to now officially confirm that our bid for £339,000 towards the "All Saints for All Generations" Project has been approved. This will enable work first for the repairs on the Church and then the associated activity programme that has been put together to start within a few weeks. Huge congratulations to all who have been involved, most particularly to Jackie West, for getting us to this stage.

May I also take this opportunity of thanking everyone in the community who has already supported the project, either financially or with their time. Your support has helped to make all of this possible, and the extent of the backing of our community was also an important factor in helping the bid to be successful. There is a separate article in this edition of the Harbury & Ladbroke News explaining what will be happening in the next few months.

Meanwhile, our church building has of course been closed for the past eight weeks due to the lockdown. We are hopeful that a limited reopening will soon be possible, but at this stage we do not know what will be permitted or when – we shall use Ladbroke e-news to keep you updated.

During this period, we have been discovering new ways to worship together even though we have not been permitted to meet physically. For several, this has meant joining in with online services broadcast from Coventry, Lillington or Leamington Spa. Thanks to our former Priest, Rev Craig, there has also been opportunities to join in with the "Zoom" Services from his new parish of St Andrews, Shotton.

We have also started meeting (virtually) for a Sunday morning chat after these services. If anyone would like to join us, please email ladbrokechurch@gmail.com and we will send you details of how to join in.



Ladbroke & Deppers Bridge Women's Institute

Carol Lane

The members obviously have not been able to meet together this month but we have received regular newsletters from Ann Bufton-McCoy, the Warwickshire Federation Chairman.

Many members have been using the lockdown time in sewing items of PPE equipment, like masks, scrubs and aprons. The police also asked for laundry bags so that they can immediately keep their soiled uniform separate, so ladies have been providing those in white cotton.

There has been a doorstep photographic competition and the results showed an amazingly wide range of subjects. Members are now being asked for articles entitled Life in Lockdown which could be printed in next month's Warwickshire magazine, Corunna News.

Events which had to be cancelled are being given provisional alternative dates but we are not as yet able to arrange any meetings in the Village Hall.

There is now a Federation Summer Verses Poetry Competition ... You are invited to 'put pen to paper' and write a poem to enter our competition.

The rules are simple

- 1) Your poem could be funny, sad, futuristic, about your WI, Covid 19, your dog ... anything you like!
- 2) One entry per WI member.
- 3) All entries to be emailed to Sarah admin@wfw.co.uk (Your entry should be typed into the email or attached to the email as a Word doc. No other formats can be accepted).
- 4) Make sure you tell us which WI you are a member of.
- 5) Closing date for entries 12.00 noon - Thursday 19th June.

Ladbroke Village Hall Millennium Draw for April 2020

£50	Joley Malby	£50	Miranda Lowman
£25	Mary Coley	£25	Geoff Timms
£25	Nicky Lewis	£10	Debs and Seth Brown
£10	Alan Rylance	£10	Trevor and Dianne Surgey
£10	Donna Griffith	£10	Derek and Colette Batty

Again no cash until I can safely go to the bank! Sorry we will not be offering any interest on the payments!! Many thanks

Margaret Bosworth



Our March meeting opened with great expectations. Jackie West gave an excellent interview on BBC CWR and we were looking forward once again to a visit to the Gloucester & Warwickshire Steam Railway set up by David Hannan. This trip seems to be jinxed because last year it was rained off and this time it was frustrated by the virus. We did, however, hold our AGM and competition on the theme of 'Water' in March, just before restrictions came into force.

It is always difficult to choose pictures to go into the Harbury & Ladbroke News but one liberating effect of online publishing is that they appear in full colour making those shown below and on the next pages stand out.



Sea Shore by Tim Clayton



Getting to the Point by Jackie West

Although we could not meet in April, we went online so that members could share their photographs for the quiz on the theme of 'Household objects' taken from unusual angles, like 'Getting to the point' shown here. Anyone is welcome to view the site kwarr.co.uk/photography You will also see other months, including entries for May's topic which is 'View from my window' - well adapted to the present situation - and early submissions for June's themes of 'Food and Food Faces' (we also welcome children to make faces from food and send in their photos).



Splash by Richard Bedwell

One of our members, Steve, who should have been on a photographic holiday has instead been trying out different things at home, including creating a "tiny planet" of his garden. He followed the instructions on this website

<https://www.blipfoto.com/entry/2693875474341301791> and produced this impressive result.





**Ash Trees in Late Sunlight by
Steve Gale**



**Pigeon outside my
Window by Kip Warr**

Does that encourage you to become a member? Why not contact:
Ladbrokephotoclub@btinternet.com



Ladbroke General Section



Green Light for AS4AG project thanks to the National Lottery Heritage Fund

Ladbroke Church is very pleased to formally announce (to anyone who hasn't heard yet!) that we have been awarded a National Lottery Heritage Fund grant of £339,000 for our exciting heritage project, All Saints for All Generations. Thanks to money raised by National Lottery players, repairs to the building are about to start, together with a three year programme to share Ladbroke's heritage.

The project, made possible by The National Lottery Heritage Fund, other donors and fantastic village support, will stabilise the tower, walls and windows of our wonderful church building, conserving it for future generations. Through activities for young and old, the fit and the frail, people of all faiths or none, the past will be better understood, the present improved and the future enhanced. Critical though the repairs are, it's the activities that are exciting. Many people do not venture into churches, thinking they are not for me, but this project will show that our church and Ladbroke's heritage are multi-faceted and everyone is welcome to enjoy and be inspired by them.

With many different opportunities to be involved in activities either as volunteers or participants, people will discover more about our built and natural environment, the rich history of Ladbroke and some of the colourful characters in its past. Unusually for a church project, the thrust of our educational programme will be to inspire children in STEM* subjects (that is Science, Technology, Engineering & Maths), with roll out of the resources to other churches.

The PCC, congregation and everyone who has supported the project so far, including the Harbury & Ladbroke News, have been delighted by the news of this grant.

Rev Ann said, *"This wonderful building and important part of our national heritage has been a place of sanctuary and the centre of community and of prayer for the village for many thousands of people over the centuries. It's a great joy that this special place can continue to inspire people in the years to come and to speak of God's love and peace and grace to all".*



Assessment Visit

Anne Jenkins, Director, England, Midlands & East at The National Lottery Heritage Fund, who was one of the people who came on the assessment visit back in January said, *"Thanks to National Lottery Players, we are delighted to award All Saints Church with a grant that not only carries out urgent repairs to this beautiful historic building but will engage the whole local community and beyond in fascinating activities that will truly widen the range of people who are able to engage with their heritage"*

So what is going to happen, when and will coronavirus change the plans?

Repairs

The repair work will begin very soon. Scaffolding the tower starts on 15th June and the stonemasons are due on site a couple of weeks later. **During the working week, the porch, inside of the church and anywhere in the churchyard marked as such will be a contractor-only zone.** This is for general health and safety reasons and especially to prevent inadvertent transfer of coronavirus from handles, surfaces and passing too close. People will still be able to use the footpath through the churchyard to the kissing gate into the field and, with care, visit most graves. We hope it won't be too long before coronavirus restrictions are relaxed and we can go into the church at weekends, though it will still remain out-of-bounds in the week while the contractors are here.

Activities

With a three year plan, we don't think that coronavirus will change things that much, though a few things may be postponed or move online.

An opportunity for you?

Just as repairs are very timely in providing employment, there are many opportunities for volunteers to help us share Ladbroke's heritage. Do you want to be part of it and make a difference by joining our volunteer team? Perhaps lockdown and coronavirus restrictions have taken away some of your regular activities, you are looking for a challenge or seek a way to contribute to the wider community. Maybe you know a young person who wants to develop a skill or get experience to put on their CV or university application form. Events for the public are still a way off but there is still lots to do and many opportunities both short and long term. For more information about volunteering, please contact ladbrokechurch89@btinternet.com or phone 810331.

Jackie West

Thatching in Ladbroke

You may remember back in 2014 Church Cottage had a new roof thanks to the late Andy Crompton. In fact, you can still read articles about it online at <https://hlnews.co.uk/Back%20Issues.html> in the October and December 2014 editions.



Now the roof on The Cottage is having a makeover by master thatcher, Dan Quartermain and his men. More on this in next month's magazine but in the meantime, here is photo of Michael dressing the thatch with a leggett.

Jackie West



Learning at Home

One good thing that has come out of school closures is the wider sharing of ideas.

STEM Learning provides education and careers support in science, technology, engineering and mathematics (STEM) and now its website has lots ideas for family home learning in these topics. There is something for all ages and it's free. Take a look at their website [STEM.org.uk](https://www.stem.org.uk) although there is so much on their website I find it a bit overwhelming.

However, they have been issuing a weekly sheet with 10 simple ideas called Starters for STEM which I can thoroughly recommend. They are on <https://www.stem.org.uk/resources/elibrary/resource/468235/starters-stem> Here are a couple of examples from week 11:

Keeping cold drinks cold

Which cup is best at keeping your cold drink cold in the summer? A glass, a mug or a plastic cup? Place an ice-cube in your drink and see which one stays frozen the longest. What other cups could you test?

Building a bionic hand

It is difficult and tiring for humans to work in space. Bionic hands that can be remotely operated can help humans work more efficiently in space. Try making a model bionic hand using cardboard, straws, string and elastic bands. You will need to think about how a human hand works to help you with your design. The supporting worksheet is at <https://bit.ly/2XDvx0j>

Jackie West



From Your District Councillor for Ladbroke

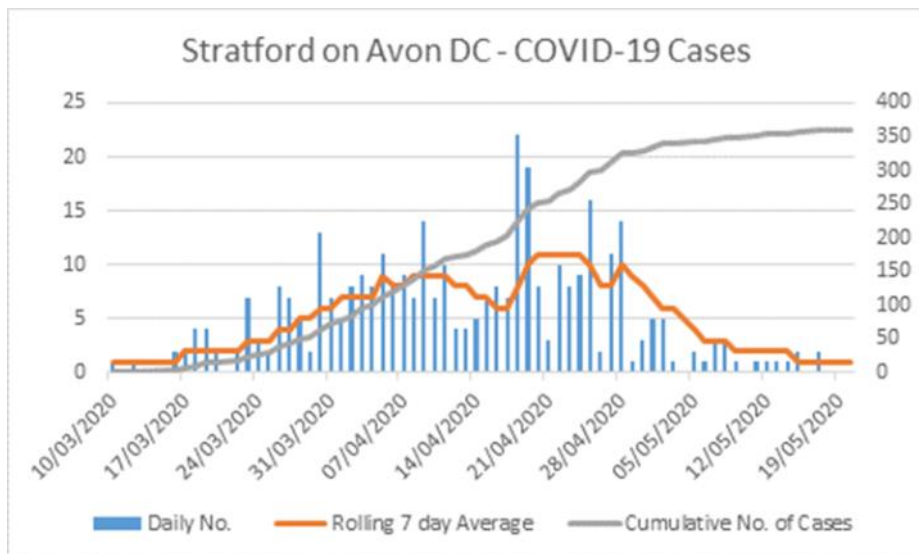
It will come as no surprise that my report focuses on coronavirus.

Stratford held its first 'virtual' council meeting by video conferencing on 27th May, and passed resolutions to permit democratic decisions by this means. <https://www.stratford.gov.uk/council-democracy/council-meeting-webcasts.cfm>. Whilst there is some learning to be done, I hope we will now be able to go forward with important matters such as planning committees which have been disrupted. (The first video conference planning meeting is expected for 6th June.) At the Council meeting, one of my Lib Dem colleagues asked about reports of increased fly tipping while household waste recycling centres have been closed. Apparently there have been 234 fly tipping incidents reported since the beginning of March. This has cost the Council a total of £1,475 to clear. In terms of enforcement, a total of six warning letters and four Fixed Penalty Notices have been issued. Whilst it is definitely no excuse, the closure of household recycling centres has not helped the fly tipping trend, I and my colleagues had been putting pressure on the County Council to reopen them. From 18th May these reopened at Wellesbourne, Leamington and Rugby (but not Stockton). Appointments are required to use them (to manage social distancing) - book at <https://www.warwickshire.gov.uk/hwrc>.

Councillors and senior staff have been communicating fairly continuously by video conference in the absence of office working, with nearly everyone working from home. It has been a very busy period for all of us with fallout from the pandemic, as some individuals have been badly affected.

Just like the rest of the country, tragically there have been deaths in the District (at least 65). It has proved difficult getting infection data for the District, but I have now been supplied with figures showing that 359 Covid cases have been recorded up to 19th May.

The daily reported cases fluctuate, but the averaged out pattern of these peaked around 21st April at twelve infections a day falling to two a day by 19th May. As far as I can see, these must be minimum figures that get reported, but they do show a pattern. Good progress - let us hope that everyone continues to behave responsibly (as in this locality people have done) and that the numbers do not rise again.



Recovery

Covid-19 has caused enormous upheaval to local government and our local communities in Stratford-on-Avon District. Many businesses have closed. (Some businesses were already in financial difficulties pre COVID-19. The pandemic appears to have been the last straw.) £35.5m grants to businesses have been made in various forms. The District Council has lost £8.1m in revenue projected for 2020/21.

Stratford District has been forecast to be the fourth worst affected District out of more than 300 across the whole of the UK in economic terms. (This decline is in a measure called Gross Value Added for the second quarter of this year). This is mostly because the Stratford local economy is based around tourism and the automotive sector, although of course there are other substantial business enterprises that have been affected.

Although our first priority has to be to contain and defeat the pandemic, we have to plan the way forward afterwards. There will not be an immediate return to the previous 'normal'. Until the pandemic is over and a vaccine developed, 'social distancing' will become the new normal.

I thought I would share with you some of the thinking my colleagues and I have been discussing.

A way forward means that economic recovery must go hand in hand with environmental and social ambition to build back a better society. The impact of Covid-19 has emphasised new ways of working that could be exploited, and a greater, wider, appreciation of the natural environment, that we here are so lucky to enjoy. The recovery package must seek to address these issues. International tourism will probably not return to the Stratford town or district on any scale for some years. A UN report states that international

tourism will be down 80% for at least a year. UK tourism could fill some of the gap, but social distancing has to be built into the model.

We should spread the somewhat narrow economic base of the District (international tourism and automotive) whilst also tackling energy and resource waste, developing transport and planning alternatives that are friendly for both environment and for local people. Part of what we need to do is to pin down exactly which areas of economic life are most severely hit and which groups of residents most adversely affected by the crisis.

We are seeing a return to appreciation of local towns and communities. Change is in the air and we must build on this. We must not just try to go back to the previous status quo but develop different ideas.

We don't have a monopoly of ideas, so if anyone has thoughts they want to share with me, please email me.

HS2

Along with other councillors, I attended another virtual meeting with Jeremy Wright MP on 20th May. It was said that HS2 would be bringing forward disruptive highway works to occur during the lockdown. It is difficult to see how this might work, as I had been told by the contractor for this area that work had been slowed up because of social distancing needs. That said, HS2 has taken possession of most of the sites to the south of Southam and also work has been proceeding to divert the A425 through the polo ground. Further ahead, plans to remove the roundabout at Ufton continue to change, probably delaying that job much further into the future. Councillors asked for the latest timing plan on the works that affect our communities.

Nigel Rock - Tel: 07971 343065

Councillor for Napton, Fenny Compton Ward & Ladbroke
nigel.rock@stratford-dc.gov.uk

70's Music Quiz



For those who remembered the sixties I hope you enjoyed our music quiz last time. As we still have nothing to report this month, I've included a seventies music quiz instead. Below are sets of three track titles from number one albums (according to the New Musical Express) - two from each year. You can probably name most artists, but can you also name the album? **Award yourself one point for**

each correct album title.

HINT: None of the answers are soundtracks, various artists, or 'greatest hits' compilations.

1970:

a) The Boxer; El Condor Pasa; Cecilia

b) Across the Universe; One After 909; Two of Us

1971:

- a) Wild Horses; I Got the Blues; Brown Sugar
- b) The Story in Your Eyes; Nice to be Here; My Song

1972:

- a) Morning Has Broken; Moonshadow; Ruby Love
- b) Smoke on the Water; Space Truckin'; Highway Star

1973:

- a) Never my Love; Good Morning Freedom; Welcome Home
- b) Here Comes the Night; See Emily Play; Sorrow

1974:

- a) Jet; Bluebird; Nineteen Hundred and Eighty-Five
- b) Summerlove Sensation; Be My Baby; Shang-A-Lang

1975:

- a) I Saw the Light; Down Down; Over and Done
- b) Tower of Babel; Curtains; Someone Saved my Life Tonight

1976:

- a) Oh Sister; Romance in Durango; Hurricane
- b) Pastime Paradise; Sir Duke; Village Ghetto Land

1977:

- a) Unchained Melody; Way Down; Pledging my Love
- b) The Last Resort; Victim of Love; New Kid in Town

1978:

- a) The Man with the Child in his Eyes; The Saxophone Song; Strange Phenomena
- b) Dreams; The Chain; Songbird

1979:

- a) 11:59; Hanging on the Telephone; Picture This
- b) As Good As New; Angel Eyes; Kisses of Fire

Answers on page 53.

David Wright





Harbury Parish Council

Linda Ridgley
Harbury News Correspondent

Official minutes can be viewed in the Library, on the Parish Council website www.harbury-pc.gov.uk or obtained from the Parish Clerk, Tel: 01926 614646

May 2020 Meeting Report

A full house of Councillors plus two residents listening in to our Parish Council's latest social distancing "Zoom" meeting heard a Covid-19 Emergency Report from the Chairman Tim Lockley.

He had contacted village organisations to ask if they needed financial help. All were pleased to have been asked and most said they had no problems. The Village Club had lost income but made no formal request for assistance at present. Cllr Rutherford said the Village Hall was OK as it had a contingency fund. GASS had a grant request for £550 approved with more available if needed. Their young people would fund raise with a car wash on the car park on Saturdays.

Cllr Gibb reported the School was ready to start part way through the next week with Reception, Years 1 and 6, but was still waiting for a risk assessment. Other classes would be sent work to complete at home, and teachers were having good feedback about the online work. They would not have all the children in at the same time and would continue to educate the key worker and vulnerable children as before and solely those children, on Fridays.

He was pleased with the work to improve the School which included: the refurbishment of the old pool site to provide an outdoor classroom (funded partly by S106 money), Bill Timson and his team's fantastic efforts to set up the new Heritage Room and Murphy's provision of ramp access to the hut. Also, the alterations to allow for increased class sizes for Key Stage 2 completed by Arden Construction with professional expertise from Paul Quinney and others.

But the best news was that the school had made 30 offers for children for the Reception Class this September, despite the County believing the total would be much less. Cllr Gibb was now confident that the school would have healthy finances for the next three years.

Chairman Tim Lockley was pleased that the Surgery had said they knew of no virus cases in the village and that all recent tests had come back negative. His colleagues supported his idea for recognising the contributions of local volunteers who helped those self-isolating.

County Councillor Bob Stevens said the main recycling centres and country parks were now taking bookings for access. Stratford District and Nuneaton and Bedworth had the highest levels of virus cases. There were Test and Trace trials going on in the County.

Two planning applications were considered: No comments were made on the reduction to the crowns of conifers at Trice's Farm. The Council added an objection to planned removal of trees at 41 Farm Street.

Deppers Bridge is still concerned about speeding and dangerous driving and considered setting up a "Community Speed Watch" or traffic monitoring system.

The PC has had considerable discussion about setting up CCTV (at a cost of over £5K) to monitor the Village Hall and car park. Both the County and Stratford DC were possible sources of grant aid.

The WI sent a request to use the playing fields for a village picnic when Covid restrictions are lifted. This would need the agreement of the Village Hall as well but the PC agreed in principle. New Cllr Julie Balch suggested everyone who had been in lockdown might like a similar event to meet the volunteers who helped them. This could only really happen when shielding ceased.

Tim Lockley reminded Cllrs of the photo competition for villagers. Residents were urged to send in pictures to "show off" Harbury. The four residents, whose photographs were judged to be the best, would be rewarded and their pictures used to depict our village on the website. **Details are on page 50.**

The battens in the roof of the Burial Grounds Chapel have been found to be rotten and will need to be replaced and the roof re-tiled.

The Cllrs decided there was no need to clean/sanitise the play equipment after lockdown as natural ultraviolet light would do the job.

They liked to idea floated by Deppers Bridge to use their "phone box" to house a defibrillator and this was put on the agenda for the next meeting which is scheduled for 25th June, 7.30pm.

Venue or virtually by Zoom, to be arranged.

Current Parish Council members contactable via the Parish Office are:

Tim Lockley (Chairman), Keith Thompson (Vice-Chair), Samantha Allen, Julie Balch, Steve Ekins, Chris Gibb, Alan Knowles, Tony Mancell, Andrew Rutherford, Janet Thornley



Harbury WCC Councillor Annual Report - May 2020

As I write this report in lockdown and self-isolation, I reflect back on the past 12 months with disbelief. This time last year, Theresa May was our Prime minister, Brexit was about to happen and the country was beginning to lose the shackles imposed by austerity. The effects of climate change were considered to be a prominent influence on all decisions. Since then we have had a new Prime Minister, a general election and Brexit has eventually happened (or has it?). As a mild winter turns into Spring we now have to face the worst pandemic this country has ever experienced and whose end is nowhere to be seen. How has all this affected life and Harbury, Ladbroke and Deppers Bridge in particular?

The County Council

As a result of prudent and cautious financial management, the County council has weathered the effects of austerity and this year's budget was based on an optimistic but achievable four year plan and an easing of the purse strings particularly with respect to Adult Care, Public Health and Children's Welfare (including early years provision) was proposed. Climate change was the driver in all departmental budgets as was the intention to strengthen communities and maintain Warwickshire's reputation as being a good area in which to live. However, despite grants from the government, the extra costs associated with the pandemic are likely to reflect in the future spending and balance sheet of the County Council over the next few years.

At the same time, the top management of the County Council had a significant reorganisation. Monica Fogerty became the new Chief Executive and three new directors were appointed into a revised management structure. A new Chief Fire Officer, together with a new Director of Public Health, was also appointed. As each new director reorganised their "new" departments many senior officers in the organisation were allocated a change in their responsibilities. A few took early retirement and redundancies were minimal. Further reorganisation at a lower level is still being implemented.

Flooding

The effect of new housing developments is creating excess pressure on the highway drainage system. Increased jetting has alleviated some of the worst areas and the WCC highways department is working with other utility providers to resolve this. I hope the next 12 months will see further progress towards a long-term solution of the flooding problems in the village.

HS2

One of my responsibilities as a County Councillor is lead member for coordination of HS2 activities in Warwickshire. I report to the leader/relevant portfolio holder. The County Council has a team of officers who work directly with HS2 and liaise with the sub-contractors, in particular over traffic management. Most of the activities associated with the building of the railway are covered by a hybrid act of parliament. Deviations are dealt with by the WCC team except for some planning decisions when deviation is required from the act. At present the work being carried out is the early preparatory works in preparation for the construction of the line for which permission to proceed has now been given. This early work involves clearing forestry, archaeological exploration north of Ladbroke, test pits (eg at Wormleighton) and cable laying. The A423 is being used as a main access route to some of the sites. HS2 Ltd are responsible for ensuring that their sub-contractors conform to the social isolation regulations.

Highways

Warwickshire roads are rated by the UK highways authority as being in the top quartile in the UK. From day to day maintenance to longer term planning, the underfunded department performs above its weight. The increase in housing together with the growth of the county's industrial base (in particular at JLR) has created more traffic and consequently more speeding in all our villages. At the same time, the police force is unable to fully enforce speed

limits with their reduced numbers. During the coronavirus lockdown only essential highway work is being undertaken. I have however suggested that it may be a good time to install the safety measures proposed along the Fosse Way. Balfour Beatty, the main contractors, are revising their work programme to conform with the lockdown regulations.

Fire Service

The County Council, who is the fire authority, has a new fire chief who is reviewing the organisation of the management structure and revisiting methods of improving cross fire authority working.

Education

Over the year the move toward academisation has continued especially with our secondary schools. Kineton has joined the Stowe Valley MAT, joining Bilton and Southam in this expanding trust. Southam College's new sports hall is progressing but is delayed by the present lockdown.

Climate change

Fire, floods and famine all featured in the world's headlines during the past year and were accredited to climate change. A young Swedish girl captured the world's imagination, especially school children, with her campaign to reduce carbon emissions. Local governments in England (including Warwickshire County Council) declared a climate change emergency. The County Council has established a working group to monitor all the council's activities with respect to their possible effect on the climate and has produced a set of proposals as to how the County Council can reduce the county's carbon footprint. All residents can play their part in improving our atmosphere and save the planet and the Harbury Energy Initiative puts the village in front in this.

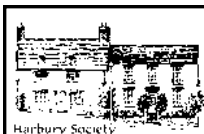
The Year Ahead

Over the last two months everything has changed and the future is uncertain. The coronavirus has disrupted the lives and ambitions of the whole nation and here, in Warwickshire, the County Council have reduced activities on all fronts unless they are connected with fighting the pandemic. The majority of staff are working from home and some have been reassigned to help with the increased social care requirements. Shire Hall is closed for usual business. Information sharing and joint working between all levels of local Government (County, District and Parish Councils), as well as the tremendous efforts in all our communities to help the most vulnerable, has demonstrated that community spirit is alive and well, for which we all deserve credit. Web conferences and home working is becoming the norm and may well continue as we return to normality. However, the next few months are unpredictable as the lockdown regulations are modified to meet the ever-changing situation and the nation returns to a work ethos, trying to catch up on a lost year.

Emerging from this crisis I hope we will see a more streamlined local government that is fit for all as we enter the next decade

Bob Stevens
County Councillor Feldon Division

PS - WCC web site has a mass of information on the coronavirus



Harbury Society

Linda Ridgley

Cecil Bloxham's History of Harbury - Part 2

Below is the second part of notes of a talk that Cecil Bloxham gave to the Harbury Society in the late 1990's on the village tradesmen. Cecil was a true village character who died in 2007.



Linda Ridgley presents Bonzo with a picture following one of his talks to the Society

Cecil maintains that his childhood days were wonderful and there was always something to do and money to be earned. He worked for Mrs Cooper who ruled the Post Office with a "rod of iron", and he got 6d for running a telegram, but she would not let him draw money out of his Post Office Account without telling his dad.

He got sixpence a time from Billie Owen, the Sexton, for ringing the church bell on Sunday. Usually he sneaked out unseen but, after Mr Dickens caught him one Sunday and made him sit through the sermon, he asked for 2/6p next time.

People had simple pleasures, like running a "Book" on the Parish Council elections and fitting the candidates up with a pedigree, as if they were horses. There were day trips and excursions to Blackpool Illuminations. One year there was a "shotgun wedding" in the February following the October trip and when the Co-op advertised a repeat, the aggrieved mother-in-law put her foot down and forbade her son-in-law the pleasure for that year.

Bands used to come from Southam and Bishops Itchington to play in the Bull Ring on Sunday nights before there was a dispute about the status of the ground in front of the Bull Ring Cottage. Once, when the Bishops Band was marching through the village playing, the drummer kept on going, up to Binswood End, after the rest had turned into Farm Street. Cecil remembers laying bets on Bishops to lose in a band competition.

The Domino Suppers were a highpoint of the year to which Bonzo was often invited as a boy. Arthur Shields ran the Dog Inn and Mrs Shields put on a super spread for the prize-giving, with cottage loaves from Bob Thornicroft and a "Baron of Beef" that Perce Cowley carved.

Bob Thornicroft was Harbury's historian, and kept a scrapbook recording everyday happenings in the village. He came from a long line of bakers; Edwin his grandfather and Herbert his father were bakers before him. Edwin wore a bowler hat and was a "secret drinker". He used to sneak across from the Bakery to the Shakespeare for a quick half-pint and be back kneading the dough before he could be missed.

During the War, production had to be doubled literally overnight to cope with the influx of evacuees. Deliveries were undertaken by horse and cart and once, down at Ewefields in Chesterton the horse took off following the hunt! In 1940 when the big snowfall paralysed the countryside they even took the horse out of the shafts and put the bread in sacks across its back to get food out to the people.

The Bakery took in cakes and meat on Sundays and baked them for 6d a time for those who had no oven. Those who did not have chimneys big enough to cure bacon dried it off over the baker's oven.

When Bob Thornicroft could no longer continue, Cecil wanted to buy the bakehouse for a betting shop and was pleased that the Methodists at the Chapel opposite did not object to his plans. One lady from the village however told him in no uncertain terms that she would have nothing to do with the place. He was very gratified later when the business was thriving and he had opened the fresh produce shop, to find that she readily accepted the fruit he donated to the "Golden Age Party".

When the estates of the Sixties were going up in Harbury, Cecil had seen the potential for a fresh produce shop and so converted the old bakehouse. He had to throw out the old oven and there found an old "reed lamp" and faggots which were used to heat the oven before the bread was put in to bake. These relics of a former age were donated to Bill Allan and are now in Warwick Museum.

Cecil travelled far and near to buy the goods for his shop. He had a great respect and affection for the countrymen from whom he purchased the produce. The three brothers Redbourn from Clifton Chambers supplied the cabbages and sprouts. They were cider makers too and worked hard for twelve months with just one extravagance - a chauffeur driven trip to Royal Ascot where they were "toffs" for the day.

One brother recalled being taken into the Warneford Hospital for an operation. He waited what seemed like all day for the surgeon and was concerned that at three in the afternoon the man might be too tired to do a good job, for he was used to "early hours". Cecil later met Mr Lord the surgeon who recalled the countryman who worried that his hand might not be steady.

George Brooks of Ettington, who supplied lettuces and onions for the shop, was another who got up early and would be sitting with his bread and cheese waiting for Cecil to call. Bonzo believes that "morning" people are more friendly and have time for their friends. George was happy with the world and his only wish was to die with a pint in his hand. Once Cecil gave him a good

tip for an outsider for the Hunt Cup and next day George had a bandage on his head, for it had won and he drank so much that he fell into a hedge and had to be taken home in a wheelbarrow. Years later Cecil got a message from his son, Peter, that George had got his wish. He had keeled over in the White Lion at Ettington with a pint in his hand.

Some time later, Cecil went to see where he had lived and found sadly that all the land had been built on. Bonzo feels that the M40 will make a great difference to Harbury. He loves the old Harbury and is concerned about what will happen to it. He remembers the Burton Dassett Hills from his childhood when he visited them on school excursions. It was always a land of mists and he is sure that there will be accidents on the motorway there.

He told a story about a man there, carting in the mist, being followed by footsteps that ran when he did and stopped when he did. Then he saw a ghost who exclaimed at what a good run they had had! People do hear the shouts of men at the battleground of Edgehill and there are Will-o-the-Wisps to be seen there. Mind you, he admitted that the old lengthman out there who woke from beside his fire was terrified by a clamour, but had only been disturbed by the Warwickshire Hunt.

People say that our village was once known as "Hungry Harbury" because of the soil, but country people adjusted their lifestyles to the circumstances. Now that is all changing. Cecil is saddened by the fate of a pig farmer who set up a few years ago far away from habitation but then found houses had been built close by and the residents were trying to shut him down. As Bonzo says, **he** had not moved!

Bonzo worries about finite resources and the land in particular. Eventually there will be no more "ground" to build on. He told a parable of a man offered as much ground as he could stake out between dawn and dusk, as long as he returned at nightfall to the place where he began. Off he went to stake his claim as the sun rose, on and on till midday. Greed seized him and it was not until the afternoon that he thought about returning. Faster and faster he staked on his way back but to no avail. At sunset he was in despair and died. And so, said Cecil triumphantly, he got all the ground he needed - six foot of it!

The only "ground" Cecil ever coveted was at Greenhill. As a lad he thought it was truly the "Green Hill Far Away" and he dreamed of training racehorses there.

Cecil cares about the village and its history, and grieves for what has been lost. He quoted details from Jorge's Charity, where John Jorge left certain lands and premises for the up-keep of the Church and for the relief of the poor. In 1780 these lands, 24 acres in four fields, were enclosed and allotments given in their place. The Poor's Allotments were 30 acres awarded in lieu of the right to cut furze from Bushy Heath, which in 1870 were enclosed and divided into 118 allotments.

Now there are only the Pineham Allotments. He can remember allotments up Bush Heath and opposite Pineham. Where did all the ground go, Cecil asked. How did Harbury come to lose so much land?

Other things have gone. Once Harbury was part of leafy Warwickshire, with the Oak the "King of Trees", and the Elm, "the Commonest of All". Bonzo remembered that loony Linda Ridgley going out to record the trees in 1971 and wondering why, but within ten years Dutch Elm Disease had killed 900,000 trees in Warwickshire alone.

Elm was not a particularly good wood, it was used by the poor, but we will never see the like of the stately Elm in our lifetime. Sutton-under-Brailes had the biggest Elm in Warwickshire, 150 foot high and 192 inches round. Destroyed, said Cecil with regret.

Bonzo thinks that the newcomers have done a lot of good for the village but he urged them to respect the country ways, and not to suburbanise Harbury; for after all "you don't need lights to poach!"

	<h2>Harbury Women's Institute</h2>	<p>Mary Thompson</p>
--	------------------------------------	-----------------------------

Sadly, events are still being cancelled or postponed at a local and county level. The Warwickshire Federation hopes to restart with new and postponed activities on 1st September. We have had to cancel our June meeting but Trevor Langley will be talking about the Earls of Warwick at our March 2021 meeting - hopefully we may be back to normal by then.

The committee are meeting regularly by conference call and encouraging our members to make contact with each other and do some activities remotely. Each member has been given four sunflower seeds to grow and the results will be judged later in the summer. As summer holidays seem unlikely we should be able to give the plants plenty of attention! More news on this later in the year.

The Warwickshire Federation have challenged WIs to raise money for a worthwhile local charity. The London Marathon was cancelled and many charities have been affected by the cancellation of the London and local half marathons plus fetes etc. The idea is to relate to the 26 miles of the London Marathon. Harbury WI have chosen to raise money for Myton Hospice which we know has been affected by staff illness as well as loss of funding through their shops being closed and lots of fundraising activities cancelled. We have asked each member to donate a minimum of £2.60 for our Myton Hospice appeal. So far we have raised £902.10 which is amazing.

The Warwickshire Federation also challenged members to enter a photographic competition entitled "From My Doorstep". We are pleased to announce that Maureen Handle's photograph of a robin feeding her young was highly commended (picture on page 26).



**Maureen
Handle's
award winning
photograph**



WI member making scrubs in her garden

Some of our members may remember that in June 2018 we had a talk about Medical Detection Dogs by Frances Liversage. It has been interesting to see these dogs being trained to detect Covid 19. Some of the training methods being shown on news items were demonstrated to us during the talk. At least six of our members are still helping to make scrubs for local hospitals and care homes.

When this is all over, the WI are hoping to organise a **HUGE Picnic in the Park** from 3pm to 5pm - hopefully on the first Sunday after the end of lockdown. Bring your own picnic and chair/blanket - we will have tea/coffee/squash available. A chance to meet and chat at a social distance to all those you haven't seen for a while or chat to those you have only said hello to while out exercising. All this subject to government guidelines. See the July magazine and village notice boards for more details.





***Binswood End, Manor
Orchard & Mill Street***



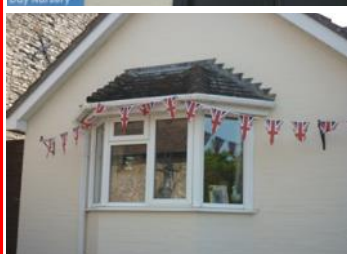


*Manor Orchard
Harbury*





Harbury decorates to celebrate VE Day





Harbury Twinning Association

Tony Thomas

When the friendship link was accomplished

As there have not been any twinning activities since the lockdown I thought it could be worth reporting on when the linking with the village of Samoïs-sur-Seine was made.

It was Saturday 28th March 1998 when 50 members of the Harbury Twinning Association, including members of the Hereburgh Morris Dancers who, during the celebrations demonstrated their art, made their first official visit to Samoïs-sur-Seine and the bond was made.



Left to Right: Jean-François Robinet (District Councillor); Annick Irlinger (Mayor of Samoïs); James Turner (District Councillor); Nelly Touchard (President of Samoïs Twinning Society); Ken Stevenson (Chairman of the Parish Council & Harbury

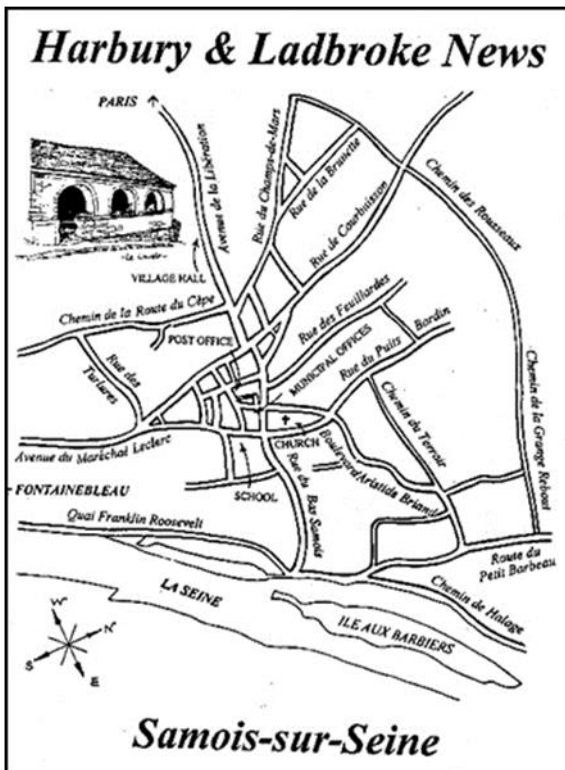
A formal celebration took place, a Twinning Oath was taken and the first "Twinning Charter" and "Pledge of Friendship" dated 28th March 1998 were signed on behalf of the Harbury Parish Council by the Chairman of the Parish Council, Ken Stevenson. He also participated in a twinning tree planting ceremony in the home for elderly people.

Simultaneously delivered in both villages, a common and bilingual brochure which both villages jointly produced and edited, was published to commemorate the official twinning ceremonies.



The return visit took place on the 16th to 18th October 1998 when 106 members of the Samoisi-sur-Seine Twinning Association travelled to Harbury to be hosted and entertained.

In November 1998 the Harbury & Ladbrooke News broke with tradition by displaying a street map of Samoisi-sur-Seine on its front cover in place of Harbury.



Harbury Heritage Room

Bill Timson

Memories of Growing Up and Living in Harbury

Back in March I wrote the first instalment of Tony Ceney's memories. This article continues our 'walk' around the village during last Summer and details some more stories of his life growing up and living in Harbury. We pick up our journey outside The Manor House, until the 1960's Manor Farm House. (see aerial photo overleaf). About this time architect Peter Wright lived there and he had the buildings and grounds sympathetically renovated to provide a stunning home. Most of the land belonging to the farm had been sold off when Captain Farley died; Manor Orchard, Heber Drive, Wagstaffe Close and Knightlow Way were all built around this time, together with the houses on the south side of Mill Street. Previous large scale development in the village had

been Manor Road in the 1950's and after that Bush Heath Lane; all council housing built in the 'boom' time after the War.

Next to the cemetery on Park Lane was a market garden worked by Tom Morgan, whose brother was Bert Morgan, the slaughter man. Every year, Mr Thacker (Temple End) bred a pig, Bert slaughtered it and the young boys,



including Tony, would wait to be given the bladder to make a football out of! The forge on the corner of Park Lane and Chapel Street was run by Sid Enffer, 'he was a rough diamond', yet his wife was 'very prim and proper'.

Kath Ellis's hairdresser's shop in Chapel Street, now a residential home since Kath retired, was Mrs Colwell's Shop. The first house in Chapel Street was Mr Payne; he would charge accumulators (an early form of battery): you could hear the 'humming' as you passed his front door. Mrs Baylis had a sweet shop which she ran from her front room selling goods off a scrubbed kitchen table. If you were lucky she would sell you a packet of 'Bar One' flat cut cigarettes. The current hairdressers next to the Gamecock was



Tony as a Choirboy

Mr Fisher's clothing shop run for many years by Tony's Mum. You could buy anything clothing and accessory wise there. Mr Fisher would travel over from his other shop in Kineton to measure you for a suit.

'Saddlers' was Lines Store, next door was Thornycroft the bakers, more recently Mugleston's. Beyond that, on the corner of High Street was a row of cottages, condemned and knocked down to make way for the supermarket and flats built by Marshalls Builders.

Continuing our walk up South Parade, on the left was an alleyway. It's a grass track today, with four cottages known as Springfield Terrace; these were demolished. Mr Bird lived at number 19 South Parade, on the corner of Ivy Lane; the Newberry's lived at 'Owl Cottage'. Further along, 'Sunnyside' was the home of Captain Kenyon-May. He started the Leamington Driving School; John Day worked for him and later Tony and John became partners and ran the driving

school together. Tony told me that Kenyon-May's grandson is Christian Horner, boss of Formula One team, Red Bull.

Halfway along South Parade, the Knights lived in a bungalow - Tony claims that they 'owned half of Harbury'. The Owen family in Mill Street 'owned the other half!'

There was a field beyond the Old Police House; it was used each year for the village fête. Tony remembers that one year a boxing ring was set up and the Turpin brothers, Jackie and Randy had a sparring match much to the enjoyment of the crowd. In later years the fete was moved to Sutcliffe Pastures off Farm Street. Tony's job, amongst others was to mow the grass on the morning before the fete which he did on many occasions.

Mr Sabin-Smith owned the field where Queens Close was built. Bill Neale, later a local councillor, rented the field to keep livestock in. Cllr Neale ran a boxing club and when he lived in Manor Road he had a boxing ring in his back garden. Sabin-Smith lived in Ashton House at the end of Butt Lane; Dave Andrews lived in Harbury House. Tony's friend, Tony Chamberlain bought a plot of land on the corner of South Parade and Vicarage Lane and had a house built there. He had the option of buying the field behind the house as well, but declined. Later this field was sold, developed and became Percival Drive.



In Vicarage Lane, Mr Dickens, school master and church organist lived at Carlisle Lodge. 'Fairview' was the home of the Russell family, related to the farmers on Middle Road. At one time, Tony and Hazel lived at Sussex Cottages; there were three small cottages. Today there is just one dwelling; one was demolished and the remaining two knocked into one. (left).

There were two old cottages where the 'Blue Plaque' maisonettes are; nearby there was a wooden hut up some steps - this was Dr Smorfitt's Doctors' surgery.

There was an electrical shop run by Tony Colwell together with Mick Bishop, near to the house called 'Edgeways'. Tony sent me this photo of him as a choir boy at All Saints; around this time Mr Smith, the vicar offered the stable boy's cottage in the yard of the vicarage, (on the site of the new vicarage), to the 'youth' of the village (Tony included), as a youth club. They worked very hard to turn it into a suitable venue which included a table tennis table and a TV. The next generation did not value it as much as Tony and his friends and it was 'soon ruined' much to Tony's annoyance.

Interesting aside - Tommy Fox - a 'bit of a hermit', lived at 'The Spires' on Chesterton Road. Tony and his mates used to go scrumping from Tommy's orchard. Somehow he knew they were coming and as soon as they put their hands on the wall to climb over he hit them with a stick! 'We never got one apple from Tommy Fox' said Tony.


More from Tony later in the year. If any facts do not quite add up that is *my* fault not Tony's. Thanks for your memories Tony!

Progress on the New Heritage Centre

During lockdown I was becoming increasingly frustrated seeing the new centre sitting there half finished so I contacted Kate Guymmer, Head Teacher of the Primary School, with a request to carry on with the outside repairs and decoration. I was delighted to receive a positive response with the proviso that I worked alone and obeyed social distancing regulations. To date, rotting fascias have been replaced and the whole of the outside has been decorated. Network Rail contractors Murphy's, have agreed to build the disabled access ramp, hopefully at the end of May. The inside of the room is now ready to be organised. David and Sue Turner have already made a start on this - many thanks to them for their efforts. Hopefully we will be able to have the new blinds fitted by Leamington Blinds in the near future (this has been postponed twice) and we should hear about our grant applications to complete the project in the next few months.

Once again, a BIG thank you to all the people who contributed financially to our appeal at the start of the year.

On the next page are a few photographs of 'before and after'. Apologies to the people receiving a paper copy of the magazine as this is in black and white; online you should see colour photos.

	<h2>Harbury Energy Initiative</h2>	<p>Bob Sherman</p>
<p>☎612277 ✉info@harburyenergy.co.uk</p>		

Future charging - the survey

I am jumping ahead a bit here but then I live in a permanent dream of the future. It seems a slightly better option at the moment than the present - although it might not be and we should all live in the present, I am told. Thank you to all those who completed the Harbury Future Energy survey on electric cars and charge points for Harbury. Last month I reported:

'An article in Energy Live News reports that, in the wake of Covid-19, almost half of UK drivers are considering switching to electric for their next car. 62% of people in their survey wanted to see greater investment in charging infrastructure and 38% wanted to see more 'Clean Air Zones'.

THE NEW HERITAGE CENTRE - BEFORE AND AFTER



We were hoping to see a similar trend in our little bit of England, Harbury. The full survey results were not in as I wrote this column but it seems so far that we do mirror the general trend. There are about 11 electric car owners in Harbury and the majority of the rest of us, from the survey results so far, are thinking about switching to electric cars for our next vehicle. I don't want to pre-empt what the survey will indicate when all the responses are in but it does also seem that a large number of residents feel that having public charge points in Harbury would be a good thing even if they have off road parking themselves and probably won't need external charging.

If you have forgotten what this is all about, you can refer back to last month's digital edition, where I explain it in more detail. You can always talk to Philip Mayer, Peter Walshe or Hugh Tottle if you want confirmation that this is not just my crazy idea; it's theirs too.

We are still in the middle of the feasibility study and, whilst the development group are brimming with excitement at what we might be able to achieve, I must restrain myself and not anticipate a favourable conclusion. The report, due for completion probably late in July, may conclude that there isn't a strong financial or technical case for Harbury Future Energy. In that case it will be Harbury Past Flat Battery. We are quite hopeful, however, as the project concept has attracted quite a lot of interest in interesting places. There is still a way to go yet. We plan to involve the village as much as possible in the final decisions, working our way round Covid-19 restrictions if they still apply in July.

Then there will be the small challenge of raising the money.

Acting Local

My brain isn't quite as agile as it used to be but I can be readily inspired by those whose minds can still perform cartwheels and get us thinking. There are very few people now that don't see the climate as in crisis because of human activity and behaviour. I suspect that the global majority are waiting for governments, corporate business, technical businesses, anyone, to fix things. I recently read a very contrary view put forward by a blog writer called Lucy Stone. In her view the solutions will emerge from local communities taking positive action; governments and large corporate businesses are slow to respond, always lag behind the curve, rarely leading from the front. If she is right it is a major endorsement for what we have been doing since 2010 in Harbury. It also suggests that our current move to create a Low Carbon Warwickshire Network, sharing ideas and stimulating new community action, is along the right lines.

Once again we have been thwarted by the virus, having to cancel three events, but we are able to keep some movement going. We will need to seek funds to develop the group at greater speed; I can do that. We can continue to maintain contact between the other organisations in the consortium put together to progress ideas. The consortium consists of HEI, Community Energy Warwickshire, Act on Energy and the RSA. All these organisations have a track record of successful delivery. Let's keep that trend going.

Spinning a new web

I nearly forgot to mention that we have had a major website upgrade. In fact, we have a pretty much totally new website that covers HEI, Harbury e-Wheels, Harbury Future Energy and the Low Carbon Warwickshire Network. The 'spinning' in the paragraph heading refers to the state of my head when Dan McGovern, the professional web designer, had whisked us through an hour of editing guidance. I am not sure I followed any of it but fortunately Doug Freeman, one of the small team volunteering from our side to work with Dan, was also paying attention and seems to understand what it all means. I find plants much more friendly.

We owe this beneficial extravagance to Graeme McKenzie, whose business, Let's Talk Ageing, has generously sponsored the website. Without that it would not have been possible. I invite you all to take a look at the new website www.harburyenergy.co.uk You can also reach it via www.harburyewheels.co.uk



Harbury e-Wheels

Peter Walshe

✉ harburyewheels@gmail.com 🌐 www.harburyenergy.co.uk



Harbury e-Wheels Monthly Fun Online Quiz

In these times of no multiple gatherings, Harbury e-Wheels is still fundraising.

Every second Tuesday of the month (next quiz 7.05pm Tuesday 9th June) you can have 25 minutes of fun by registering with www.virtualquizevents.com (if you have not already done so) and then click on 'Available Quiz Events' and search for 'e-wheels'. You can then enter (paying a small fee of £3). On the night make sure you log in before the start and then enjoy the challenge. The quizzes are simple multiple-choice questions with a time limit for your answers. People who played the inaugural event loved it, so we thought we would make it a regular date.

Thank you for supporting Harbury e-Wheels.

Peter Walshe
(e-Wheels Trustee)

SCOUTS

John Rea

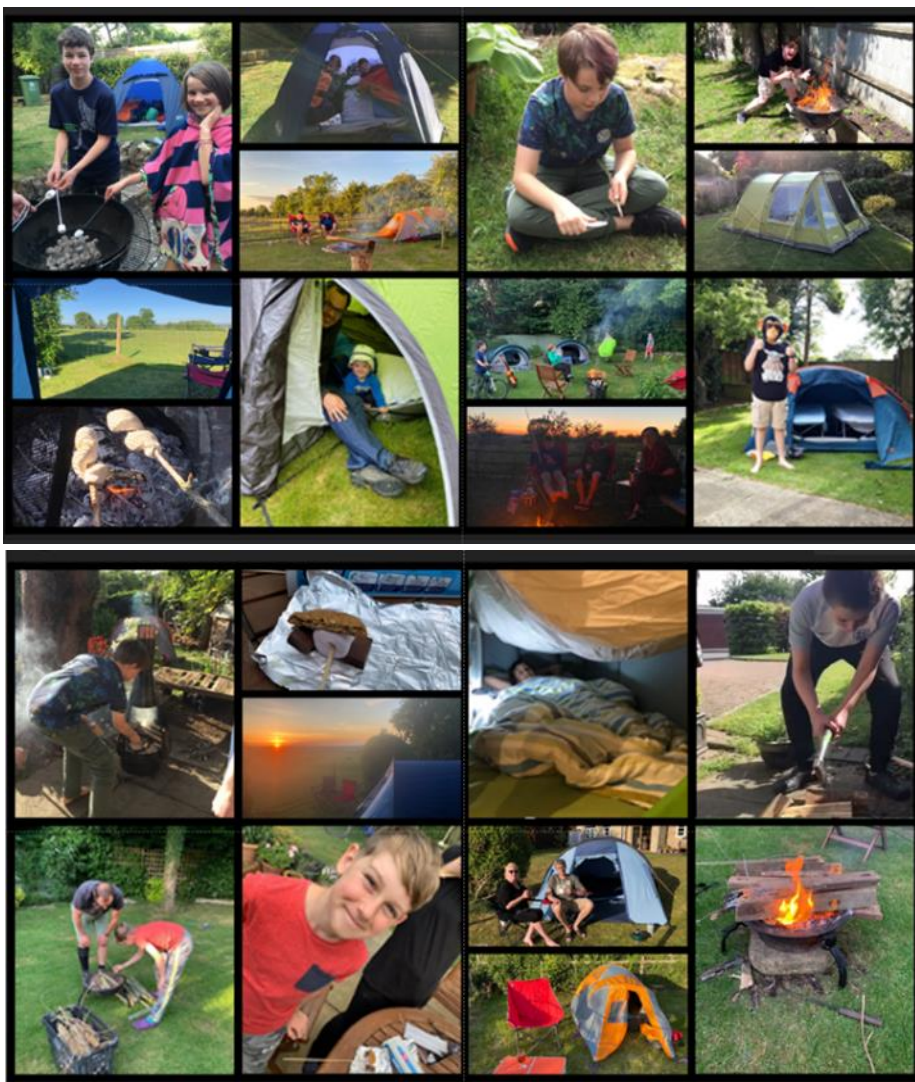
Harbury Scouts continue to hold 'virtual' Scout sessions on Thursday nights. Just a short online get together, we'll have a chat about what we've been up to, have a quiz or some form of challenge, before breaking early to join the clap-for-carers.

We should have been away on our annual camp this week, we would have been overlooking the Dorset Coast just inland from Lulworth Cove, we should

have been going to Brownsea Island, but we're not. **However**, Harbury Scouts aren't put off that easily, and finding ourselves unable to go away to camp we decided to bring the camp to us!

Many of our Scouts and their families entered into the spirit, and the fantastic Bank Holiday weather certainly helped. We all camped in our back gardens or in home-made dens, cooked our teas over fires and toasted marsh-mallows in the evening. Some of our Scouts arranged hikes and bike rides and even dragged their families out on an adventure.

We met up on the Monday morning for a chat via Zoom and shared some of our exploits. It may not have been Dorset, but it was still good fun. The pictures below go a little way to tell the story.





Harbury Tennis Club

Colin Mercer

<https://clubspark.lta.org.uk/HarburyTC>

The great news was that, with some of the lockdown restrictions being eased, we were able to resume playing tennis from 15th May. Play is restricted to a maximum of two people per court (singles play only) when players can be from different households. The only exception is where a group of four players are all from the same household, in which case they can play doubles. The LTA has also issued important guidance for players about use of equipment, tennis balls and hygiene, and of course, social distancing must be observed at all times. Courts have to be booked in advance and the clubhouse is still out of bounds.

The first week of the partial resumption coincided with some glorious weather and many members have grasped the opportunity to get back on court! I'm pleased to report that we have been able to change our online booking system so that non-members can also book courts as the usual arrangements of booking in person at the village Library are not available at the moment. During our first virtual committee meeting via Zoom (never thought I'd come out with a statement like that!) we decided that in the current circumstances we should suspend the £4 an hour charge. The courts are bookable between 9am and 9pm. Non-members should go to

<https://clubspark.lta.org.uk/HarburyTC/Membership/Join>

This has been very popular. At the time of writing 30+ have signed up for the temporary membership and I've had some very positive feedback.

Let's hope that in the July edition I can give news of further positive developments, but in the meantime stay safe!



Harbury School PTA

PTA Committee

Just a little 'Hello' from Harbury School PTA....

We hope you have been keeping well during these very strange times and that the children are all Ok. I must say, it has been an interesting time in our house trying to juggle work, school, and full-time childcare, but we have managed, mainly by lowering our standards somewhat and increasing our purchases of gin!!

On this note we would like to say a huge thank you to all the staff at school and at The POD, you have all been absolutely amazing and you must be exhausted, keeping going through the Easter and Half Term holidays too! I have been so impressed and very thankful for all the support and home learning on Class Dojo, and some of the assemblies have definitely brought a

tear to my eye. The effort that has gone into everything is brilliant and we are very thankful to have children at Harbury School.

As you may well have guessed, PTA fundraising for this year has now sadly been put on hold, with all our exciting plans for the coming months postponed until further notice. As you can imagine, this is going to make a big difference to what we as a PTA can do/provide for school next year. However, on a positive note we are currently spending some of the fantastic money raised last year on our brilliant 'Outdoor Classroom'/'Stage Under the Stars' which is coming complete with living roof! Work has now started on this exciting project which should really add value for the school and the wider community.

Please do not forget however that there are some ways that you can continue to support the school and our fundraising buckets, should you wish to, without incurring any extra costs. Using **Amazon Smile** and nominating Harbury School PTA as your chosen charity, or using **Easy Fundraising** to purchase things and again, nominating Harbury School for donations is a really simple way of helping out. The link for easy fundraising is [here](#). We do appreciate that this has been a really tough time financially for a lot of people, so this is something you can perhaps do without noticing, especially if you are already ordering things online.



Joining the school lottery is also a great and easy way to help - this is £2 per month to enter and is drawn monthly; just email us and we can arrange this for you. Alternatively if you do wish to make a direct donation to school and the PTA whilst we are unable to fundraise, then there is also the Virgin Money Giving page, which can be accessed from the school website or on the following link <https://uk.virginmoneygiving.com/giving/>. A massive thank you to those who have already donated. If you are trying to do any of these things and running into trouble then please do not hesitate to email us on harburypta@gmail.com

We know that these are testing times, and that some children may well be returning to school in the near future, but we as a team are very much looking forward to planning some lovely things for everyone to enjoy together when it is safe for us to do so. Until then, we all send you our very best wishes and look forward to seeing you soon.



Harbury Village Library & Biblio's Café

Janice Montague

One good thing to come out of the lockdown is that there is more time to read all those books you have meant to get around to reading, or to discover new authors. We at Harbury Village Library are continuing to try to give you access to our collection of books and other materials to help to pass the time in an enjoyable fashion. In addition to our existing *Takeaway* and *Home*

Delivery offers we are adding *Click and Collect*. No doubt you can see a theme developing here. Let's hope it won't be too long before we can revert to *Self Service*!

Weather permitting, we will have the **Takeaway** shelves, with a selection of popular novels and biographies to choose from, out in front of the Library **twice** a week from **10am - 12.30pm on Mondays** and also on **Thursday afternoons from 2 - 4pm**. The **Home Delivery** service will continue to allow **any** borrowers, not just those self-isolating, to request specific books from our catalogue by ordering online from our own Blue Label Collection (BLC) of over 4000 titles.



Our new service, **Click and Collect**, as the name implies, will allow borrowers to select their books in advance online and collect them from the Library during the two limited weekly opening times above. Borrowers will not be coming into the Library, but simply collecting the books from the lobby.

The rules about social distancing will be strictly observed at all times, as will the careful and limited handling of the book stock, all of which will have been quarantined before lending. There will also be boxes for donated books and returned BLC and WCC library books during these sessions.

For further details, please see our website:

http://www.harburyvillagelibrary.org.uk/library/hvl_harbury_collection You can also access Warwickshire County Council's online selection of e-books and audio books, and online newspapers, magazines and other media directly from our website.

Please note that if you or anyone you know is without access to the internet and would like a book or two, requests for specific authors or genres can be made by posting a written request through the Library letter box, or coming along during the times above where your request can be dealt with.

For those who are missing the selection of home baked cakes from Biblio's, recipes for their delicious cakes can be found on our Facebook page/website. Until we can welcome you back inside safely, we hope you can take advantage of these offerings. However, to tempt you, on the next page there is a recipe for Lemon Cake.

library@harburyvillagelibrary.org.uk biblios@harburyvillagelibrary.org.uk

Whole Lemon Cake with Mascarpone Icing

Cake

2 small thin-skinned lemons or 1 large one

275g softened butter

275g caster sugar

275g SR flour

2 level teaspoons baking powder

4 eggs

Filling

50g softened butter

175g icing sugar

250g full fat mascarpone

Icing and decoration

175g fondant icing, or make icing from icing sugar and water

1 thin-skinned lemon

50g caster sugar

Method

Grease two 20cm sandwich tins and base-line them.

Make lemon decoration. Peel long strips of lemon rind and cut into fine strips. Save the lemon juice for icing. Place peel in saucepan with half caster sugar, cover with boiling water and boil for one minute. Drain, pat dry, place on baking paper and scatter over the remaining caster sugar. Leave in a warm place to dry out (or in a very low oven) until crispy.

Put the two whole small (or one large) lemons in a pan, cover with water, bring to boil then simmer for 20 minutes until soft. Drain, cut in half and remove pips. Process in a food processor until it is a smoothish pulp but with some chunky bits. Transfer to a small bowl.

Put the remaining cake ingredients in processor and blend until smooth. Add just over half the pulp and stir in.

Divide mixture between the tins and bake at 180°C (160C fan) for 30mins until golden and just starting to shrink from sides of tin. Leave for 5 mins in tin then turn out and leave until cold. Slice both cakes in half horizontally.

For the filling, blend butter and icing sugar until smooth and creamy. Add the mascarpone and blend again, then stir in the remaining pulp until just mixed. Spread between the cake layers and top.

Decorate with candied lemon rind.





Harbury Village Club & Institute

Judy Morraill

Hello again everyone, another month has flown by and hopefully we are that bit nearer to welcoming our members and visitors back to the Club. As I type this article (Tuesday 26th May) the conifers along Crown Street are nearly all down and what a difference it is making already. It will be exciting to actually hold a committee meeting and discuss what we can plant there. I am going a bit more regularly now to water the four pots along the wall and the plants along the entrance to the car park. I hate to say it but we do need rain and a lot of it. Not just for pots but for the gardens too. The lawn at the top of our garden is so dry that it has huge cracks in the ground and is much too hard to even get a spade in. We gardeners are never satisfied. We had so much rain three months ago and the fields were flooded and now the complete opposite.



I hope that you managed to watch Alan Titchmarsh last night about growing your own vegetables etc. I wish we could have had a full hour but what we saw was proper old fashioned advice which is so relevant today. Also, if you can, watch Beechgrove on a Sunday morning on BBC2, the presenters are of the same ilk as Mr T plus a bonus these last two weeks of Chris Beardshaw. Again, sensible and proper advice relevant to the current situation. The two best gardening programmes on TV. I do watch other TV programmes and it would be nice to hear what everyone else has been enjoying these last few weeks.

My allotments also could benefit from rain but plants can adapt to the variances in the weather and the urge to water everything should be avoided. Once planted their roots will find their own level and adapt accordingly. Also we need to conserve the water for the Summer months. Hopefully a bumper crop of strawberries will be enjoyed next month plus gooseberries. John has trimmed back the grape vine which is outside on our patio against a south facing wall. Last year we had a good crop of grapes and John made red wine. It looks as though it will be another good crop this year - what a hardship, more red wine to enjoy!

These last eight or nine weeks with less noise and no planes has been a wonderful experience. The birds are singing their hearts out and we have nests in the garden. The only problem we have in common with most of us are the pigeons. The mess they make and usually all over our cars is disgusting. But we have some lovely goldfinches, wrens and a very tame robin alongside the blackbirds and sparrows. It is starting to get a bit busier on the roads now but bearable. I doubt that us National Trust volunteers will be back at Upton House for at least three months. The gardens will be open first. I have missed it especially seeing all my friends but we are keeping in touch with each other.

I will be first in the queue for the hairdressers Saul in Leamington where I go as I'm sure Sharon will not recognise me! I need a trim and my roots and colour definitely need attention. The sun has made my hair go much blonder and I am not at all sure what colour my hair really is. I know that I am not alone as when I speak to Liz my friend and fellow volunteer from Upton via facial recognition we are both in the same boat. Another place I want to go to is the dentists, yes the dentists. I never thought I would say this but I will look forward to seeing the hygienist as my mouth is in need of freshening up. My needs are not overly ambitious as I really do not need any more clothes at present. So sad to see Debenhams closing in Leamington such a brilliant shop and such a choice. Thank heavens for White Stuff and I will miss Cath Kidston. I don't have expensive tastes but know what I like and what suits me.

I do hope that once other shops start to reopen in next two weeks that we will all continue to support our two treasures in the village the Co-op and the Post Office and supermarket. Everyone working in these shops are so helpful and understanding, we are lucky to have them. At least the garden centres have reopened but we have been able to buy compost and plants from the supermarket. A big thank you to all of you.

I have included a missing links quiz for you to use your little grey cells. I have more quizzes so you have been warned! Seriously, thank you for taking the trouble to read my articles and attempt the quizzes. I can't wait to see you all again at our Club. Please keep safe and well. Don't forget "always look on the bright side of life".

Very best wishes.

Missing Links

Find the word that links these three words, ie snowed, world and study linked by under.

- 1) Bag-Bath-Cake.....
- 2) Belief-Measure-Repair.....
- 3) Human-Rate-Vested.....
- 4) Blonde-Mark-Tree.....

- 5) Baby-Duck-Room.....
- 6) Collie-Herbaceous-Patrol.....
- 7) Animal-Peppers-Mushroom.....
- 8) Blue-Mass-Oil.....
- 9) Nothing-Time-Wrong.....
- 10) Leather-Letters-Medicine.....
- 11) Driver-Floating-Fly.....
- 12) Animal-Come-United.....
- 13) Comb-Favour-Powder.....
- 14) Electric-Foil-Static.....
- 15) Great-Scheme-Selling.....
- 16) British-Jelly-Liquid.....
- 17) Bath-Carpet-Delight.....
- 18) Manager-Method-Play.....
- 19) Federal-Judgement-Price.....
- 20) Surgery-Explosive-Bag.....

Answers on page 54.



Garden Jottings from Bridge Nursery

Christine Dakin

All our lives have changed during the last few weeks and one big difference is the recognition of how important gardening and being outdoors is for many people. It has long been accepted that gardening is therapeutic for both mind and body. I have seen many of you who were so pleased and grateful to be able to buy plants to beautify their outdoor areas. Many beginner gardeners have found it a very satisfying activity for themselves and their children.

I suspect there has never been a time when so many gardens have had so much attention! I doubt there are many weeds in all your well-loved plots. For those of you looking for something extra to do, I suggest you have a go at taking cuttings from your favourite shrubs. Trim pieces about 3 or 4cm in length, take off the lower leaves and put into a small pot of compost, water and leave in a sheltered place out of the sun. Check the bottom of the pot in about six weeks time to see if any roots are popping out and then re-plant into a bigger pot. It is very exciting to grow your own plants.

Although there has been a relaxation in some of the rules during the lockdown, I have decided to keep the gate shut here and to keep an appointment system going for a while longer, it feels safer this way.

Please get in touch for advice or an appointment.

Bridge Nursery, Tomlow Road, Napton
www.bridge-nursery.co.uk



Nature Notes

John Hancock

The ground was rock hard this morning (Tuesday 26th May) when I walked around Ufton Fields. The water table must still be quite high as the pools have not dried out and the stream flowing off eastwards towards the River Itchen is still running. Looking at a map it seems that the stream coming across from Ladbroke joins the Itchen pretty well opposite the tributary from Ufton though I have yet to visit the spot to prove it. The water will be a lifeline for both flora and fauna especially birds such as the Swallow which rely on mud to construct their nests and a plentiful supply of insects to feed their young. I spoke to Graham Robson, a retired farmer from Marton, who has turned two of his fields into a nature reserve. He has planted plenty of native trees and constructed a small lake with an island for roosting and nests. When I visited, swallows had returned and were nesting in a barn. Graham reported that they come each year but last year all the chicks had died. He thought this was due to the scarcity of insects. Let us hope for a better result this time.

Chris Finch tells me swifts are back around the Old New Inn making a great aerial display as they scream a greeting to their family. Martin Randall sent me a picture he had taken of a Poplar Hawk moth in pristine condition against the brickwork of their house. There have been numerous reports of cuckoos seen and heard. I heard one clearly as I cycled towards Gaydon Road along Knightcote Bottoms. I do recommend listening on BBC Sounds to a fascinating dissertation on the Cuckoo and how it has evolved strategies to lay its eggs in other birds' nests. The author describes what is going on as evolutionary warfare. Just put 'Cuckoo' in the BBC Sounds search engine.



Today at Ufton Fields I found a few seeding Man Orchids but was too late to see them in their prime. The Common Spotted Orchids are just flowering and the Bee Orchid will not be far behind. If you are careful, using a well sharpened pencil you can imitate the action of a bee collecting nectar from the Common Spotted. Insert the pencil into the mouth of a floret. On withdrawal, two pollen sacs may adhere to the pencil and are in a vertical position. Remarkably as you watch, the pollinia tilt to the horizontal so that they would come into contact with the stigma of the next flower. This complicated process has evolved over long periods of time to ensure fertilisation and continuation of the species.



Common Spotted Orchid

Our local nature reserves, Ufton Fields, Harbury Spoilbank and Bishops Hill are the result of past industrial activity. It is strange to think that generations yet to come may use the M40 cutting beside Itchington Holt as a cycle route as we use redundant railway lines today. The cutting is already a corridor for wildlife and has an increasingly rich flora.

Bishops Hill is the spoil heap from our quarry, now Bishops Bowl fishing lake. Walk up the Hill from the Yellow Land off Ladbroke Road (CV47 2UT) to discover the Small Blue butterfly which is Britain's smallest. The caterpillars' food plant is Kidney Vetch and the Hill at this time of year is awash with the yellow flower.

The view from the top is impressive especially away to the east into Northamptonshire. Other Lepidoptera to be seen on the Hill at this time of year include Grizzled Skipper, Dingy Skipper, Green Hairstreak and the day-flying Cinnabar moth.

Gradually, much of the Hill is being colonised by hawthorn scrub and a rotation of clearance is a priority so that the warm, sheltered habitats beloved by butterflies can be preserved. Small-leaved Cotoneaster is much in evidence. The environment suits this low-lying, bird-sown import from the Himalayas via our gardens.

At Draycote Meadows, the display of green-winged orchids is coming to an end. Here, in two ridge and furrow, unimproved fields you get a glimpse of the rich flower bedecked meadows of yesteryear with their anthills and buzz of insects. Weed killing and insecticides may have improved crop yields but there has to be a better balance. I hope it's not too late to learn some lessons. Perhaps Covid-19 has brought us round to knowing that wildlife needs its place in what seemed our profit driven brave new world.



General Section

Wednesday Walks



May was out so I “cast a clout” and soon put it back on again! The oak was out before the ash (though we could do with more of a soak than a dash!) And the March winds (plenty), April showers (few) did bring forth May flowers. It has been a lovely month of green and white, a display from the froth of keck (cow parsley or Queen Anne’s Lace), Hawthorn hedges to the Horse Chestnut candles towering above.

In the quietness I expect we all were aware of more birdsong and I’ve particularly noticed more thrushes than for years and seen how they each favour a certain tree. And a lot of goldfinches in the hedgerows as well as the garden.

I hope you are still enjoying your solitary walks and keeping safe, till we meet again.



Gillian Hare

‘Warwickshire Scrubbers’ - Harbury Hub

This marvellous group of sewers has continued sewing and has now produced around **90 sets of scrubs**, plus numerous laundry bags and headbands for health workers and Warwickshire Police. The initiative has continued throughout the county of Warwickshire and a phenomenal total of items has been delivered to the NHS.

At the time of writing the totals are:

Scrubs 4,746

Laundry Bags 12,582

Headbands 4,489

Hats 605

Ear savers 23,229

In addition to scrubs, our Harbury sewers started an initiative to supply gowns to a Covid-19 Referral Centre. A nurse I know put out a call for help as she knew that we were making scrubs. After making a sample, they initially asked for around 30 gowns, which quickly turned into an order for 100! So we went into production: sourcing a pattern, downloading it, sticking 48 A4 sheets together to create it; copying it for others; recruiting sewers and sourcing fabric.

Fabric was difficult to get hold of so to get underway we started with a donation to Warwickshire Scrubbers of sheets and duvet covers. (One of the photos below shows how a duvet cover was turned into a gown). As with scrubs the fabric has to withstand laundering at 60° degrees and has to be sewn to withstand frequent washing. We then sourced rolls of fabric in several colours and within a week of starting sewing, 25 ladies in Harbury, Lighthorne and Leamington had produced 110 gowns to provide the doctors and nurses with more protection while working so hard to treat the patients in their care.



Well done again to our super sewers: Ann, Carol, Chris, Gill H, Gill T, Lin, Liz, Nicky, Rosemary and Sally.

Anne Greenwell



Harbury Seed Share

Thanks to the generosity of our community and the hard work of our volunteers, Harbury Seed Share has been able to offer a valuable service during the early days of the coronavirus lockdown. In addition, we have been able to raise £25 for the Earthworms Gardening Club and £23.40 for GASS to go towards Scout Hut costs.

Now that restrictions are starting to be lifted the focus of the scheme is changing.

Seedling donations are declining at the same time that traditional supplies of plants have begun to return. As a result, the regular drop off and pick up sessions will stop at the end of May and the online seedling register will no longer be available. If we receive further donations we'll hold an occasional pop-up session, publicised in advance.

The initial Seed Share was very successful and even though the Spring sowing season is over that doesn't mean there aren't still seeds to sow. We have supplies of seeds for successional sowings for salad crops, and it will soon be time to start sowing seeds for late Autumn and early Winter crops. Please keep looking at our online Seed Register.

Many thanks for your support and we look forward to the Seed Share being a regular part of our community.

Cllr Julie Balch, Wendy Crowder, Richard Fowler



Harbury Photo Competition

We are redesigning the Parish Council website and we would like to include recent pictures of the village (NB Chesterton Windmill is not in Harbury!). We invite villagers to submit electronic copies of their picture by **10th June 2020** to:

clerk@harbury-pc.gov.uk Pictures need to be taken in landscape orientation, and need to be high quality.

The best four pictures will receive a prize at one of the village businesses (such as a meal for two or a beauty treatment), funded by the Parish Council.

Good luck and get snapping!

Harbury Parish Council



Harbury Village Show

We hope that you have all been enjoying the good weather in your gardens and on your allotments. I know lots of families have been having a go for the first time at growing their own fruit and veg.

Hopefully, they have all started well and now need to be nurtured and watered regularly, if this dry spell continues.



We are continuing to make plans to hold a village produce show on 12th September 2020. To this end we have drawn up a reduced schedule and you will find this attached to the electronic copy of this edition of the Harbury and Ladbroke News. You can also view or download a copy from our

website – harburyvillageshow.uk or go to our Facebook page for a link to the website. We will be producing a paper schedule which at the moment will be available outside the library on Monday mornings and Thursday afternoons during their outdoor sessions.

You will see from the front of the schedule that, as the future of these types of events is still uncertain, we may have to make changes but at the moment we are keeping our fingers crossed that we can still go ahead.

It would be lovely to have lots of new participants in the show this year as I'm sure many of you will have wonderful produce to show. Don't forget the art, photography and craft classes too. So please do take a look at the schedule. Judging this year will also be by the public – it will be great for everyone to support our fellow villagers.

Village Show Committee



Southam Area Green Party

The Southam Area Green Party has now been officially established. The group represents Stratford District Green Party members living in the Kenilworth and Southam constituency (Harbury, Deppers Bridge, Ladbroke, Chesterton, Southam, Napton, Stockton, etc).

Normally meetings will be held in Harbury Village Club on the third Wednesday of the month, but for the duration of the current pandemic we'll be meeting online.

Our next meeting is on Wednesday 17th June at 7pm. More information at fb.me/southamareagreenparty

Richard Fowler

How easy is it to get around Harbury?

We recently had a letter submitted for publication from a Harbury resident who has mobility issues but wished to remain anonymous. The magazine's policy has always been that articles and letters published should always be attributed to a named individual or organisation. However, as a number of the issues they mentioned and have encountered, apply equally to other villagers with similar issues and indeed younger residents with pushchairs and prams, listed below are some general points raised.

- Cars parked across pavements preventing access
- Refuse wheelie bins put out on pavements as early as two days before collection day and then not taken back in promptly
- When notices are put up/removed from the village notice boards be careful not to drop drawing pins as they can puncture mobility scooter tyres, as well as harming children and dogs

- Difficulty in accessing some of the retail establishments due to displays and/or goods waiting to be unloaded
- Overgrown hedges spilling out onto pavements

There were a number of specific instances raised about access to public buildings and these have been forwarded to the concerned parties.

So, when going about the village, **please, please** do consider the needs of residents who do not have full mobility, sight impediments or other disabilities.

John Holden
Chairman – Harbury & Ladbroke News



Southam Heritage Collection Update

Many people from Harbury and Ladbroke are familiar with and indeed supporters of, the Southam Heritage Collection and are probably wondering what will happen to the Collection following the closure of all the facilities at Tithe Place due to the Covid-19 outbreak. Right now, the Library, physiotherapist, public toilets and café are all closed as well as ourselves and it may well be some months before any of us can reopen. Currently we have no information on when this might happen, but we are keeping in close touch with Orbit so that we can start planning what to do as soon as we get some information.

Naturally this is having a big impact on our work, our income stream (it's expensive to run those rooms) and on our ability to implement our objective of promoting the town's history for the benefit of the town and surrounding area. However, all is not lost, and we are determined to keep going. I would like to give you some ideas about what we are doing and how you can still be engaged.

Many of you will be familiar with the Cardall's Corner article which appears each month in the District Advertiser. The District Advertiser is not currently being printed owing to the lockdown, however we are still writing the articles each month and they continue to be published at the start of each month on our website www.southamheritage.org under the menu heading of "Southam History". Please go to the website and take a look if you are missing reading these articles, or indeed have not seen them previously – there are about 60 of them available.

We are also putting information up on the website about the various books and other items we have for sale and we can arrange for these to be delivered anywhere. You can find details about all these items under the "Publications" menu on our website.

Each year we run a 200 Club Draw from June through to the following May to enable supporters to contribute towards our funds. A ticket (valid for 12 monthly draws) costs £5 per annum and each month there is a £10 prize and in May and November this is increased to a significantly higher figure depending on the number of tickets sold. Tickets are available now, and if you

would like to take part, please contact us as soon as possible by emailing southamheritage@hotmail.com or by telephoning our Treasurer, Pam on 01926 814923. Alternatively, you can apply by post - simply download an application form from our web site under the "Getting Involved / 200 Club" menu heading and find all the details about how to join in. We will let you know your ticket numbers before the first draw takes place at the end of June.

Finally, we did manage to put some of the posters from our current exhibition "Southam Bobbies" in the external window at the front of Tithe Place before lockdown, so you can still read some of the stories about policing in Southam from the 1840's by looking at the window to the right of the entrance to Tithe Place if you happen to be in Southam.

If you want any more information please contact us via southamheritage@hotmail.com and in the meantime keep safe, and we look forward to seeing you again when life starts to get back to normal.

Bernard Cadogan
Chairman, Southam Heritage Collection

70's Music Quiz - Answers



- 1970:** a) Simon & Garfunkel - Bridge Over Troubled Water
b) The Beatles - Let it Be
- 1971:** a) The Rolling Stones - Sticky Fingers
b) The Moody Blues - Every Good Boy Deserves Favour
- 1972:** a) Cat Stevens - Teaser and the Firecat
b) Deep Purple - Machine Head
- 1973:** a) Peters & Lee - We Can Make it
b) David Bowie - Bowie Pin-Ups
- 1974:** a) Paul McCartney & Wings - Band on the Run
b) Bay City Rollers - Rollin'
- 1975:** a) Status Quo - On the Level
b) Elton John - Captain Fantastic and The Brown Dirt Cowboy
- 1976:** a) Bob Dylan – Desire
b) Stevie Wonder - Songs in the Key of Life
- 1977:** a) Elvis Presley - Moody Blue
b) The Eagles - Hotel California
- 1978:** a) Kate Bush - The Kick Inside
b) Fleetwood Mac - Rumours

- 1979:** a) Blondie - Parallel Lines
b) Abba - Voulez-Vous

How did you do?

- 20:** Top of the World
15-19: Glass of Champagne
10-14: Halfway Down the Stairs
5-9: It's a Shame
1-4: Rock Bottom
0: Tragedy



Missing Links Answers

- | | |
|-------------|---------------|
| 1) Sponge | 2) Beyond |
| 3) Interest | 4) Strawberry |
| 5) Sitting | 6) Border |
| 7) Stuffed | 8) Midnight |
| 9) Doing | 10) Patent |
| 11) Crane | 12) Kingdom |
| 13) Curry | 14) Hydro |
| 15) Pyramid | 16) Petroleum |
| 17) Turkish | 18) Acting |
| 19) Reserve | 20) Plastic |

July Edition - Harbury & Ladbroke News

Articles to: Harbury Pharmacy, High Street or e-mail to articles@hlnews.co.uk by 5.30pm, Thursday 25th June

We welcome items for inclusion in the July edition of the Harbury News eg articles on hobbies, memories of living in the village, items on self-isolation, photos and quizzes

Download back copies of the Harbury News from

<https://www.hlnews.co.uk/>



Regular Diary Dates

HARBURY E-WHEELS ONLINE QUIZ: 2nd Tuesday of month, 7.05pm, register at www.virtualquizevents.com and then search 'Available Quiz Events' for 'e-wheels'

E-WHEELS FOODBANK COLLECTION: Wight School (Library) car park, Monday, 11.30am -12.30pm

HARBURY VILLAGE LIBRARY: Wight School, High Street, Harbury. Takeaway Service: Monday, 10.00am - -12.30pm & Thursday 2.00 - 4.00pm. Click and collect and home delivery available from website:

http://www.harburyvillagelibrary.org.uk/library/hvl_harbury_collection

TENNIS CLUB: Harbury Tennis Courts, South Parade. CV33 9HZ. The courts are bookable between 9am and 9pm. Non-members should go to:

<https://clubspark.lta.org.uk/HarburyTC/Membership/Join>

CONGRATULATIONS, THANKS AND ACKNOWLEDGEMENTS

If you would like to include:



- A Birthday message
- Congratulations to anyone for their achievement
- Wedding or special occasion wishes
- Thanks to someone



We will be more than happy to include it in the magazine.

There is no charge for this service, just email your message to articles@hlnews.co.uk or drop it into Harbury Pharmacy by the advertised deadline date.



LOCAL FOODBANK - there is a facility in the village to donate any non perishable food to your local Foodbank, which supplies the local area including Harbury. For the time being please bring any donations to the Wight School (library) car park on Mondays between 11.30am and 12.30pm, during these times only. One of the e-Wheels drivers will be there to receive your items. Please observe all the usual safety advice and distancing. Thank you.

Harbury & Bishops Itchington Surgeries

 **01926 612232**

Main telephone line open: 8am - 12.15pm and 1.30 - 6.15pm

HARBURY SURGERY OPENING TIMES

Monday: 8.30am - 12.30pm & 1.30 - 6.30pm

Tuesday: 8.30am - 12.30pm & 1.30 - 6.30pm

Wednesday: 8.30am - 12.30pm & 1.30 - 6.30pm

Thursday: 8.30am - 12.30pm & 1.30 - 6.30pm

Friday: 8.30am - 12.30pm & 1.30 - 6.30pm

	Monday	Tuesday	Wednesday	Thursday	Friday
AM	Dr Wood	Dr Wood	Dr Snowdon	Dr Wilkinson	Dr Snowdon
	Dr Panting	Dr Wilkinson	Dr Chard	Dr Panting	Dr Wood
PM		Dr Panting	Dr Wood	Dr Chard	Dr Chard
	Dr Snowdon	Dr Wilkinson	Dr Chard	Dr Wilkinson	Dr Wood

BISHOPS ITCHINGTON SURGERY OPENING TIMES

Monday: 9.00am - 12 noon & 4.00 - 6.00pm

Tuesday: 9.00am - 12noon CLOSED

Wednesday: 9.00am - 12 noon & 4.00 - 6.00pm

Thursday: 9.00am - 12 noon CLOSED

Friday: 9.00am - 12 noon CLOSED

	Monday	Tuesday	Wednesday	Thursday	Friday
AM	Dr Snowdon	Dr Panting	Dr Wood	Dr Chard	Dr Wilkinson
PM	Dr Panting		Dr Snowdon		

REPEAT DISPENSING

Dispensary collection hours during COVID19

Monday - Friday 9.00 - 12.00 and 3.30 - 6.00pm

(Phone Dispensary between 2.00pm - 5.00pm)

e-mail via www.harburysurgery.org.uk

Please allow at least 72 hours' notice on all repeat prescription requests.

Registered patients can now book appointments and order prescriptions online.

Home Visits - Telephone 01926 612232 between 8.30 and 10.30am

For out of hours help ring NHS DIRECT - 111

**For full practice details, please pick up a leaflet from either surgery
or visit our website at www.harburysurgery.org.uk**



HARBURY VILLAGE SHOW CONTACTS:

Sheila Burt
Fox Cottage, Chapel St.
Harbury, CV33 9HT
Tel: 613671

Gordon Robbins
49, Mill Street
Harbury, CV33 9HR
Tel: 612009



SHOW RULES AND ENTRY DETAILS

IMPORTANT: Please read the show rules and class requirements carefully and observe them; any doubts should be referred to the Show Secretary, Sheila Burt 613671

- 1 The show is open to any resident of Harbury, Deppers Bridge, Ladbroke and Chesterton.
- 2 No Cups or trophies will be issued this year.
- 3 All exhibits must have been grown or made by the exhibitor (with the exception of Section E). Pot plants must have been in exhibitor's possession for at least three months, prior to the show.
- 4 Exhibits which have been awarded prizes at previous shows are not eligible for this show.
- 5 Where Section A, B and C specify a number of items they must all be of one cultivar.
- 6 Exhibitors may enter only **one** entry per class
- 7 Exhibitors should provide their own containers and staging materials which remain their responsibility at the end of the show.
- 8 THE DECISION OF THE SHOW SECRETARY IS FINAL.
- 9 The show management take no responsibility for any loss, error or damage but will use reasonable care to avoid this.

HARBURY VILLAGE SHOW

SHOW SCHEDULE (including the Young People's Schedule)

Download @ www.harburyvillageshow.uk



**Saturday, 12th September 2020
Harbury Village Hall**

As the current Pandemic Situation dictates, we are looking to operate a safe Social Distancing show with separate Entry and Exits. There will be a strictly one-way system for viewing the exhibits. Voting will be by public vote, with each person being given a sheet of Voting Stickers.

Please Note: If the Pandemic Situation deteriorates, or the event is deemed to be unsafe, the Show may be cancelled at short notice!

SECTION A. VEGETABLES

Categories 1 to 23 & 30 should be judged on quality, and uniformity of shape and size.

- 1 Three Onions from seed, trimmed
- 2 Three Onions from sets, as grown
- 3 Three Chillies (any variety)
- 4 Three Courgettes
- 5 Three Leeks, as grown and washed
- 6 Three Stump-rooted Carrots, (*trimmed and washed*)
- 7 Three Pointed Carrots, (*trimmed and washed*)
- 8 Three Parsnip(*trimmed and washed*)
- 9 Three Beetroot, (*as grown and washed, tied together*)
- 10 Three Cobs of Sweetcorn, (*Kernels exposed to show uniformity*)
- 11 Two Round Cabbages
- 12 Two Pointed Cabbages
- 13 Two Crispheart Lettuce
- 14 Five Tomatoes Cherry
- 15 Five Tomatoes
- 16 Three Potatoes
- 17 Three Peppers, any colour
- 18 Two Butternut Squash
- 19 Eight Pods of Runner Beans
- 20 Eight Pods of French Beans
- 21 Two Cucumbers
- 22 Three Garlic
- 23 One Vegetable not specified above (*Judged on Quality*)
- 24 Wonky Vegetable
- 25 Heaviest Marrow
- 26 Longest Runner Bean
- 27 Heaviest Onion, Not dressed
- 28 Heaviest Potato
- 29 **Top Tray** Most Colourful Display
- 30 **Novice Entry.** Three of any single variety (Open to an inexperienced exhibitor, i.e. Showing for the first or second time in Section A)

SECTION B. FRUIT

Categories 31 to 36 should be judged on quality, and uniformity of shape and size.

- 31 Three Culinary Apples
- 32 Three Dessert Apples
- 33 Three Plums
- 34 Three Pears
- 35 Five of any one Fruit (soft fruit)
- 36 Five of any one Fruit.(none of the above)

SECTION C. FLOWERS

- 37 Three Pom Pom Dahlias. To fit through a 5cm (2") ring.
- 38 Three Décor Dahlias
- 39 Three Cactus Dahlias
- 40 Five of any Annual
- 41 Three Hydrangeas
- 42 One Rose Bloom
- 43 Three Rose Blooms
- 44 Three Chrysanthemums
- 45 Three Spray Chrysanthemums
- 46 Three of any Perennial
- 47 Five French Marigolds
- 48 Five Pansies
- 49 Five Asters
- 50 One Pot Plant Foliage (max 8" pot)
- 51 One Pot Plant Flower (max 8" pot)
- 52 One Geranium (max 10" pot)
- 53 One Fuchsia (max 10" pot)
- 54 One Cactus (max 8" pot)
- 55 One Succulent (max 8" pot)
- 56 **TOP VASE** (see Notes)

SECTION D

ALLOTMENT HOLDERS CHALLENGE TROPHY
for best-kept allotment.

Prizes sponsored by the Parish Council.

SECTION E. FLOWER ARRANGING

(using flowers from the garden)

- 58 **Novice Entry.** 'Afternoon Tea'
- 59 'I Do Like to be Beside the Seaside' A miniature arrangement not to exceed 10x10x10 cm.
- 60 An arrangement, 'Bring the cottage garden indoors'. Not to exceed 45x45cm height unlimited.
- 61

SECTION F. FOOD

None This Year

SECTION G. ART & CRAFT

Please read Rule 5.

Please label exhibit as original design if this is so.
Exhibits may be mounted but NOT framed.

- 78 A Summer Poem
- 79 A Knitted or Crocheted Vegetable approx. 15cm x 15cm depending on shape of vegetable.
- 80 Piece of Jewellery.
- 81 A Bag in any medium.
- 82 Most Colourful and Original Facemask.
- 83 Watercolour painting, max size A3 not framed
- 84 A drawing or painting in any medium, max size A3 not framed

SECTION H. PHOTOGRAPHY

Photographs, min 6"x4", max 10"x12" (including mount) should be MOUNTED but NOT framed.

- 85 "Bluebells" (From Last Year)
- 86 "From My Window"
- 87 Memories of the Lockdown
- 88 "Animal Portrait"
- 89 Heroes

For Next Year 'Surprising Nature'

SECTION J YOUNG PEOPLE'S CLASSES

YP aged 7 years and under.

- 90 Any fruit, vegetables or flowers that you have grown yourself.
- 91 Make a mini bug house in a seed tray or similar container, max size 38x23cm height 20cm.
- 92 Potato prints. Paper size A4
- 93 An animal made out of fruit and/or vegetables.
- 94 Draw/paint a picture of your favourite animal, bird or flower.

YP aged 8-12 years.

- 95 Any fruit, flowers or vegetables that you have grown yourself .
- 96 A healthy eating poster. Maximum paper size A3.
- 97 Photograph 'time spent outside during lockdown' max size 18x13cm.
- 98 Make a scarecrow max. height 1metre.
- 99 A jam jar arrangement of garden flowers and greenery.



NOTES

TOP TRAY (See Class 29)

1 entry only per exhibitor

The tray is to consist of 3 types of vegetables of any type to give the most colourful display

These must be displayed within an area of 18" x 24" (45x60cm). No exhibit must exceed the size of the tray. A black cloth is allowed, and the tray may be painted. .

Notes for exhibitors:

- Carrots and parsnips must have foliage trimmed back to 7.5cm (3").
- Peas and beans must be displayed with some stalk attached.
- Tomatoes must be displayed with calyces (the green flower bud-case).

TOP VASE (See Class 56)

1 entry only per exhibitor

The Vase is for a total of between 5 and 10 mixed stems taken from a minimum of 2 kinds of plants. Two varieties of the same plant are not allowed. The Vase will be viewed from all directions. The stems must be showing flowers only, no seeds or berries allowed. Foliage must be still attached to the stem. No accessories allowed. The flowers can be in oasis to keep them in place.

ENTRY FORM: HARBURY SHOW 2020

Please complete and forward, to a contact address
(overleaf) NOT LATER THAN **6pm on Wednesday
9th September 2020.**

**NO ENTRIES WILL BE ACCEPTED ON SHOW
DAY.**

NO ENTRY FEE This year
NO MORE THAN ONE ENTRY PER CLASS

Class		Class		Class		Class	
1		24		47		86	
2		25				87	
3		26				88	
4		27		50		89	
5		28		51			
6		29		52			
7		30		53			
8		31		54			
9		32		55			
10		33		56			
11		34		57			
12		35		58			
13		36		59			
14		37		60			
15		38		61			
16		39		78			
17		40		79			
18		41		80			
19		42		81			
20		43		82			
21		44		83			
22		45		84			
23		46		85			

Total number of entries

Name:
(please print)
Address:

Telephone:



HARBURY VILLAGE SHOW Saturday 12th September 2020 YOUNG PEOPLE'S SECTION

ENTRY FORM

I wish to enter the following classes and agree to
abide by the rules of the Show. (Please tick the
box next to the classes you wish to enter).

For Young People aged 7 years and under		
90	Fruit/Vegetables/Flowers	
91	Mini Bug House	
92	Potato Prints	
93	Fruit or Vegetable Animal	
94	Picture of Animal, Bird or Flower	
For Young People aged 8 to 12 years		
95	Fruit/Vegetables/Flowers	
96	A healthy eating poster	
97	Photograph	
98	Scarecrow	
99	Jam Jar Arrangement	

Name:

Address:

Telephone:

I am years months old on
Saturday 12th September 2020