

Harbury & Ladbroke News

Is published monthly and reflects all aspects of local life.

November 2019

No.548

Editorial Office

31 Binswood End

☎ 612155

✉ articles@hlnews.co.uk

Article drop off point:
Harbury Pharmacy,
High Street

Advertising Office

36 Manor Orchard

☎ 612687

✉ advertising@hlnews.co.uk

Distribution Manager

49 Mill Street

☎ 612009

✉ distribution@hlnews.co.uk

Inserts by prior arrangement
with the Distribution Manager

IN THIS ISSUE

Page

EDITORIAL	2
HARBURY DIARY & REFUSE ROTA	3 - 5
FROM THE RECTOR & CHURCH NEWS	6
LADBROKE NEWS	8
HARBURY PARISH COUNCIL	15
CLUBS & SOCIETIES	17
SPORTING ACTIVITIES	30
EARLY YEARS & SCHOOL	31
VILLAGE HALL, LIBRARY & CLUB	40
GARDENING & NATURE	44
GENERAL SECTION	46
LETTERS TO THE EDITORS	50

Editorial Team

Chris Barber - Chris Finch - Paulette Kavanagh - Peter McDonald - Daralyn Warren -
Jackie West - Katy Wiltshire

*The views of contributors are not necessarily those of the Editorial Team.
The Editors reserve the right to amend articles as they see fit.*



Editorial



Congratulations to all the volunteers involved with Harbury Village Library and Biblio's Café for being honoured with the Queen's Award for Voluntary Service. This is the highest award given to local volunteer groups across the UK and is the equivalent of an MBE. A recent presentation by the Lord Lieutenant of Warwickshire, Mr Timothy Cox took place in the Village Hall and photographs celebrating this event are featured on our middle pages. Our editorial picture shows Sharon Hancock who is Chairperson of the Library and Café receiving the award from the Lord Lieutenant.

During November in Harbury, the Library is hosting a double helping of their popular Murder Mystery evening. With the original date selling out fast, an additional date of Wednesday 20th has been added - buy your tickets early if you don't want to miss out! There will be the Craft Fair in the Village Hall on Saturday 16th and Harbury Theatre Group presents 'Snow White and the Jealous Queen' on 28th, 29th and 30th. Please do support these events if you can.

Harbury is now fortunate to have two defibrillators. As well as there being one outside Banana Moon Nursery the second machine is now in Brooks Drive on the Oakfields Estate. Both of these machines have been donated to the community.

In Ladbroke you are invited to help pack Christmas shoe boxes (for boys and girls and families who otherwise would not receive a gift), on 15th November; see article for details.

Next month the Harbury & Ladbroke News will be publishing Christmas greetings from those villagers who prefer to give donations to charity rather than send individual greetings cards; please submit these to the magazine in good time and no later than Thursday 21st November.

Finally, we extend our condolences to the families of Alan Dronfield and Doug Megeney.

Harbury Diary

NOVEMBER

- Sat 2 Coffee Morning, 10.00am - 12 noon, Tom Hauley Room in aid of Embrace ME
Harbury Bonfire and Fireworks, gates open 5.30pm, bonfire lit 6.00pm, firework display at 6.30pm, Village Hall playing fields
- Sun 3 **ALL SAINTS' DAY**
Holy Communion (Said Service), 9.00am
'Little Saints' service, 10.30am, Tom Hauley Room
All Souls' Service, 6.00pm
Youth Group, 7.00 - 8.30pm, Tom Hauley Room
Zumba, 9.00am, Village Hall
- Mon 4 Karate, 5.30pm Village Hall
Yoga, 8.00 - 9.00pm, Village Hall
- Tue 5 MeetingPoint with tea, coffee and biscuits, 2.00 - 4.00pm, The Crown Inn
Holy Communion, 7.30pm
Heritage Room open, 6.30 - 8.30pm, Harbury School
- Wed 6 Wednesday Walk, meet 9.40am, Village Hall Car Park - Bishops Hill (4 miles)
Mothers' Union AGM & Quiz, 2.00pm, Tom Hauley Room
Inspire Dance, 4.30pm, Village Hall
Ballroom Dancing, 7.30pm, Village Hall
- Thurs 7 Holy Communion followed by coffee, 9.45am
Folk Club, 8.00pm, Village Club
- Sat 9 Coffee Morning, 10.00am - 12 noon, Tom Hauley Room in aid of Southam Heritage Collection
Coffee with Harbury Lib Dems, 10.00am - 12 noon, Harbury Village Library
Rehearsal for Remembrance Sunday Service in church, 11.30am
Harbury Village Cinema presents, 'Rocket Man', doors open 6.15pm, film starts 7.00pm
- Sun 10 **REMEMBRANCE SUNDAY: THIRD SUNDAY BEFORE ADVENT**
Holy Communion (Said Service), 8.00am
Remembrance Day Service led by The Bishop of Warwick, 10.00am
Messy Church, 3.00 - 5.00pm, Tom Hauley Room
Zumba, 9.00am, Village Hall
- Mon 11 Karate, 5.30pm Village Hall
Yoga, 8.00 - 9.00pm, Village Hall
- Tue 12 Holy Communion, 7.30pm
- Wed 13 Wednesday Walk, meet 9.40am, Village Hall Car Park - Snitterfield - Welcombe Monument (4 miles) with optional pub lunch
Away Day, 10.00am - 4.00pm, Tom Hauley Room


- Wed 13 Inspire Dance, 4.30pm, Village Hall
Murder Mystery, 7.30pm, Harbury Village Library
- Thurs 14 Holy Communion followed by coffee, 9.45am
Harbury Jazz Hot Club, Gypsy Django & Stephane Jazz Swing,
doors open 7.30, music starts 8.00pm, Harbury Village Hall
Harbury WI, 7.45pm, Tom Hauley Room - Annual Meeting
- Fri 15 Twinning Association AGM, 7.30pm, Tom Hauley Room
- Sat 16 Coffee Morning, 10.00am - 12 noon, Tom Hauley Room in aid
of Guide Dogs
Harbury Craft Fair, 10.00am - 4.00pm, Village Hall
Tennis Club Men's & Ladies' Doubles Tournament,
10.00am - 4.00pm
- Sun 17 SECOND SUNDAY BEFORE ADVENT**
Holy Communion (Said Service), 8.00am
'Saints' Alive', All Age Informal Service, 10.30am
Evensong, 6.00pm
Youth Group, 7.00 - 8.30pm, Tom Hauley Room
Zumba, 9.00am, Village Hall
- Mon 18 Karate, 5.30pm Village Hall
Yoga, 8.00 - 9.00pm, Village Hall
- Tue 19 Antiques Valuation, 4.00 - 6.00pm, Harbury Village Library
Holy Communion, 7.30pm
- Wed 20 Wednesday Walk, meet 9.40am, Village Hall Car Park -
Charwelton - Woodford Halse (4½ miles)
Connections (Dementia) Café, 2.00 - 4.00pm, Tom Hauley Room
Inspire Dance, 4.30pm, Village Hall
Ballroom Dancing, 7.30pm, Village Hall
Murder Mystery (additional date), 7.30pm, Harbury Village Library
ADVERTS FOR THE NEXT ISSUE TO 36 MANOR ORCHARD,
HARBURY OR EMAIL ADVERTISING@HLNEWS.CO.UK
- Thurs 21 Holy Communion followed by coffee, 9.45am
ARTICLES FOR NEXT ISSUE TO: HARBURY PHARMACY,
HIGH ST OR EMAIL ARTICLES@HLNEWS.CO.UK BY 5.30PM
- Sat 23 Coffee Morning, 10.00am - 12 noon, Tom Hauley Room in aid
of Harbury Society
- Sun 24 CHRIST THE KING**
Holy Communion (Said Service), 8.00am
Holy Communion and Children's Church, 10.30am
Informal Service, 6.00pm
Zumba, 9.00am, Village Hall
- Mon 25 GASS Christmas Post opens, post box in Harbury Village Library
PCC Meeting, 7.30pm, Tom Hauley Room
- Tue 26 Heritage Room open, 6.30 - 8.30pm, Harbury School
Harbury Society talk, Pillory to Prison Cell, 7.30pm for 8.00pm,
Tom Hauley Room
Holy Communion, 7.30pm
Julian Group, 8.00pm
- Wed 27 Wednesday Walk, meet 9.40am, Village Hall Car Park -
Combrook (4 miles)

- Wed 27 Pleasant Pastimes, 2.00 - 4.00pm, Tom Hauley Room
Inspire Dance, 4.30pm, Village Hall
Ballroom Dancing, 7.30pm, Village Hall
- Thurs 28 Holy Communion followed by coffee, 9.45am
Harbury Theatre Group presents, "Snow White and the Jealous Queen", doors open 7.00, performance 7.30pm
Folk Club, 8.00pm, Village Club
- Fri 29 Harbury Theatre Group presents, "Snow White and the Jealous Queen", doors open 7.00, performance 7.30pm
- Sat 30 Councillors' Corner Session, 10.00 - 11.00am, Harbury Village Library
Coffee Morning, 10.00am - 12 noon, Tom Hauley Room in aid of Harbury Heritage Room
Local Produce Market: 10.00am - 1.00pm, Harbury Primary School
Deadline for Senior Citizens' Party invite replies, 12 noon, return to Harbury Village Library
Ufton Christmas Fair, 2.00 - 4.00pm, Ufton Village Hall
Harbury Theatre Group presents, "Snow White and the Jealous Queen", Matinee - doors open 2.00, performance 2.30pm, evening - doors open 7.00, performance 7.30pm

DECEMBER

Sun 1 FIRST SUNDAY OF ADVENT

Holy Communion with Advent Carols, 9.00am
'Little Saints' service, 10.30am, Tom Hauley Room
Celtic Advent Service, 6.00pm
Youth Group, 7.00 - 8.30pm, Tom Hauley Room
Christmas Quiz in aid of Macmillan Cancer Support Service, doors open 7.00pm, quiz starts 7.30pm, Harbury Village Club

Refuse Collection Rota			
	Deppers Bridge	Harbury, Ladbroke & Deppers Bridge outlying properties	Collection Week
November	Wed	Fri	
	6	8	Grey Bin
	13	15	Green & Blue Lid Bins
	20	22	Grey Bin
	27	29	Green & Blue Lid Bins
Dec	4	6	Grey Bin
	11	13	Green & Blue Lid Bins
	18	20	Grey Bin



From the Rector

Alison Abbott (Reader)

By now you should be getting used to the article "From the Rector" not being from the rector! This month it is my privilege to write. Let me briefly introduce myself. I am Alison, one of the Readers in the church. I am a pharmacist, and when I am not busy preaching or leading services I can often be found in Boots in Leamington or you may have seen me in our own village pharmacy.

On the 17th October Harbury Church was open all day for people to come in and pray for the process for choosing the next rector. During the day over 60 people from Ladbroke or Harbury spent some time in church praying alone or together. There were various areas of the church set up with creative ways of praying and prompts to help us pray. Thank you to Gill and Ann for organising this. It was good to join together in this way at an important time in our churches' development.

It set me thinking about prayer. Most of us have prayed at some time or another, maybe in a crisis or in gratitude. What does prayer do? Does it change God's mind? Does it change the outcome? Or are we the ones that are changed through it? It is said that there are no atheists in a fox hole, yet I know that sometimes when we face difficult situations, such as the serious illness of a family member or friend it can be hard to pray.

Prayer is in essence the bridge between the ordinary and the holy. It is more than the way in which we bring the concerns and events of life into God's presence, because God is already aware of them. Maybe it is better to say it is the way in which we bring an awareness of God into the ordinary things and concerns of life. You can pray anywhere and about anything; nothing is too mundane and nothing is too big, because God's presence fills the universe. Some prayers may be selfish, but our heavenly father would rather hear us ask, than us not talk to him at all.

But, what happens when we pray? That is a very big question to which there is no short answer. We are changed when we pray and situations are changed when we pray. Some people dismiss answers to prayer as mere coincidence, but as William Temple said, "When I pray, coincidences happen, and when I don't, they don't." God can work through natural means and through ways we don't understand. I don't think anyone understands quite how prayer works, but I know a lot of people who have experienced the power of prayer. In some ways prayer is like a laser beam. A laser beam is powerful because all the light is the same wavelength and oscillating in phase. The power comes from all the energy working together. In a similar way, when we pray our will and God's are brought together to produce a powerful beam. If you want to know more of this for yourself feel free to talk to me or one of the other church leaders. We will be happy to talk to you about the way prayer impacts our lives.

So, as we continue to work towards and wait for our new rector, let's keep on praying for each other and for the appointment of the right person.



From the Churchwardens

Liz & Michael

As we said last month - we will be joined by Bishop John of Warwick at the Remembrance Service this year. However, the start time for the service will be at 10.00am which does allow for all to get to the war memorial before the names are read out. Please do not park your car near the war memorial that morning and, if possible, avoid driving along Church Street, Crown Street or the church end of Vicarage Lane from 10.45am to 11.15am on Sunday 10th November.

Looking further forward we will be holding the long running (or is that just me?) Christmas Fayre on Saturday 7th December with doors open at 2.00pm. There will be a variety of stalls selling luscious gifts along with games and entertainment and, of course, Father Christmas will be in residence for the afternoon in his silvery and sparkling grotto.

This year the raffle is to support a very worthwhile charity - Save the Children Fund. We hope you will be able to support this charity by buying some tickets when the street sellers call at your door in November. There are some terrific prizes to be won, including a Grand Food & Wine Hamper, free range bronze turkey, a £25 M&S voucher, Christmas cake, lots of wine, and many other prizes.

We mentioned we may get messy in the October Messy Church – well we did. See photo of a few of us “treading grapes”.

Please do contact either of us should you have any queries relating to church life.

Liz McBride (tel: 612421) and Michael Vincent (tel: 614806)



From the Registers:

Baptism

13th October

Archie William and Freya Grace Mellings

Funeral

21st October

Alan Dronfield (90 years)

22nd October

Douglas Megeney (87 years)



Mothers' Union

Gillian Hare

After a short act of worship, thoughtfully prepared by Jo, members had the opportunity to meet two of our diocesan trustees – former president Felicity Hawkes and Karen Morris, who was very involved in launching parenting projects. They came to explain MULO – a process which gives grass roots members a chance to be heard and so identify key policies for the future.

As a list was compiled of all the activities our members are involved in, both within the church and the wider community, it became evident that 'small things' add up to a great force for good. We were much heartened.

Our November meeting on the 6th will include worship led by Chris, our AGM and a quiz.

The Advent carol service will be on Monday 2nd December and lifts can be arranged. And on 4th December Gillian will lead the worship followed by an Advent themed social time.

Visitors are always welcome – we meet in the Tom Hauley Room at 2pm.

Ladbroke News & Diary

<http://www.ladbroke-pc.org.uk>

NOVEMBER

- | | | |
|------------|-----------|---|
| Sat | 2 | Bonfire & Fireworks, 6.30pm, Farmyard Field |
| Sun | 3 | ALL SAINTS SUNDAY
Family Communion, 10.30am followed by refreshments |
| Mon | 4 | Pause and Pray, 7.00 - 8.00pm, Church |
| Tue | 5 | Photography Club, 7.30pm Village Hall |
| Wed | 6 | Table Tennis, 7.30 - 8.30pm, Village Hall |
| Thurs | 7 | WI, 7.30pm, Village Hall |
| Sun | 10 | REMEMBRANCE SUNDAY
Village Remembrance Service 3.00pm (no morning service this week) |
| Wed | 13 | Parish Council, 7.45pm, Village Hall |
| Fri | 15 | Christmas Shoe Box packing, 10.00am - 12 noon, Village Hall |
| Sun | 17 | 2ND SUNDAY BEFORE ADVENT
Holy Communion (BCP), 9.00am |
| Mon | 18 | Ladbroke Matters / Village Hall / Millennium Green AGMs,
7.30pm, Village Hall
Homegroup, 8.00pm, 2 Hedges Close |
| Wed | 20 | Table Tennis, 7.30 - 8.30pm, Village Hall |
- ADVERTS FOR THE NEXT ISSUE TO 36 MANOR ORCHARD,
HARBURY OR EMAIL ADVERTISING@HLNEWS.CO.UK

Thurs 21 ARTICLES FOR NEXT ISSUE TO: HARBURY PHARMACY,
HIGH ST OR EMAIL TO ARTICLES@HLNEWS.CO.UK BY
5.30PM

Sun 24 SUNDAY BEFORE ADVENT

Holy Communion (sung), 9.00am

Wed 27 Table Tennis, 7.30 - 8.30pm, Village Hall

DECEMBER

Sun 1 ADVENT I

Christingle service with Family Communion, 10.30am
followed by refreshments

Mon 2 Pause and Pray, 7.00 - 8.00pm, Church

Tue 3 Photography Club, 7.30pm Village Hall

Wed 4 Table Tennis, 7.30 - 8.30pm, Village Hall

Fri 6 Film Night Christmas Special, doors open 7.00pm, Village Hall



Ladbroke Church News

Peter Rigby

As a Church, we are continuing to hold all our normal services during the Vicar vacancy, and we are very grateful to the Revds Ann and Bob for all the extra responsibilities they have been shouldering, ably supported by Alison, Gemma and Peter, our Lay Readers. In addition, we are also having the opportunity to invite visiting clergy to lead our services, and are finding that they all conduct the services in slightly different ways! This can bring a freshness to familiar routines, as was well demonstrated when we welcomed Rev Claire Maxim to our monthly BCP service last month.

During November, our 10.30am Family Service on Sunday 3rd will be led by Rev Steve Hood, who will be updating us on our latest "Eight Essential Qualities" Survey, and on 8th December we shall be welcoming Archdeacon Sue Field at 9.00am.

It is some time since we updated the community on our "All Saints for All Generations Project". Whilst little may appear to be happening on the surface, an awful lot has been going on behind the scenes - meetings with the architect to prepare the detailed specification of repairs, preparing a major grant application to the National Lottery Heritage Fund and putting together an activity programme that will be necessary to support this bid. Nicky Lewis and in particular Jackie West have been putting in an enormous amount of time and effort for which we are most grateful. We are currently at the stage of going out to formal tender for the works – when these responses are received we shall have a clearer idea of exactly how close we are to our target and how soon we shall be able to proceed - so watch this space!

Finally, a reminder that the Village Remembrance Day Service will be on **Sunday 10th November at 3.00pm**. There will be no 9.00am service that day. Also, our Family Service on Sunday 1st December will be our Christingle Service.



Ladbroke & Deppers Bridge Women's Institute

Joan Perry

The October meeting was our AGM. Our President, Hazel, displayed the names of the current committee and asked if there were any other members who would like to stand, otherwise the current committee would remain with the exception of our current Treasurer, Sally, who wished to stand down. We are sorry to lose her and asked the members present if anyone would like to take on the role. Unfortunately, no-one came forward at the time but we will be canvassing members who were not present to see if any of them would be willing to take this on. Hazel, the current President, agreed to stay for another year. We had the yearly report and adoption of finances by Sally followed by an annual report by Joan of all our activities during the past year. This was followed by the, main meeting highlighting forthcoming events, ie lunch with Paul Martin, information about the Warwickshire Denman weekend in June 2020, the Annual WFWI meeting at Dallas Burtons Polo Ground in March 2020, the WFWI Produce and Craft Club, making a Victorian Christmas tree decoration to go on the WI Tree in St Mary's Church, Warwick for their Christmas Tree Festival, and a Serious Science talk about Digital Autopsy in February 2020.

We also received some WI leaflets which we can use to advertise our WI in this area; we can distribute them around the village or appropriate venues further afield in order to encourage more ladies to come and see what we do and perhaps join us.

We have booked our Christmas lunch at Denman College in December and as most of our members are coming, Hazel has hired a coach to take us so we can all have a relaxing and enjoyable day, commencing with a tour of the College followed by a three course lunch before our return later.

Dianne told us that she has been in touch with a WI Member living near Christchurch in New Zealand who contacted her through the WI Facebook page. She read out correspondence she had received outlining what they do in their WI, it was all very similar to the way we do things here, and she is hoping to keep in touch via Facebook.

For the November meeting we will be "Bottle Wrapping" with Alan Keach. Ladies can bring a bottle (preferably full) that perhaps they wish to give as a present and have it nicely wrapped, the paper will be provided for £1 unless ladies wish to bring their own. Sounds very interesting, so much nicer than just putting it in a bottle bag!

Our meeting was completed and we all tucked into a delicious cheese and wine supper put on by the committee, and a quiz provided by Hazel, it was a lovely way to end.

We were also reminded of our annual WI Group Carol Service this year being hosted by Southam WI at St Wulstan's Church in Southam on 9th December, so we look forward to that.



Ladbroke Matters

David Wright

The Ladbroke Matters team looks after the Village Hall and the Millennium Green. To help with this we organise regular fundraising events so that we can continue to offer both facilities for the benefit of our community. We hope to see you at some or all of these.



We are anticipating that the work to improve the toilet facilities in the Village Hall will be finished this month. We hope you will agree that it's a welcome enhancement. We are also upgrading the car park to include a disabled parking space.



Our Annual General Meeting will be held in the Village Hall on **Monday 18th November at 7.30pm**. Everybody is welcome to attend as it will be an opportunity to meet the team, hear about what we do, and our plans for next year. There will also be a chance to ask questions and to suggest future events.



The **Ladbroke Film Night** is back with our Christmas Special on **Friday 6th December**. Start the festive season with an evening of delicious food, a great film and good company. Further details and tickets (£15 each) are available from Nicky Lewis on 01926 815196 or nicolalewis1958@gmail.com. **Doors open at 7pm**, film screening 8pm. Bring your own drinks.



Don't forget that you can hire the Village Hall for your party or celebration at a very reasonable rate (£15 per hour with a 20% discount for Ladbroke residents). We have a kitchen, and room for up to 80 people. To book your special occasion contact Nicky (tel 815196 or email nicolalewis1958@gmail.com).

If you would like to join the Ladbroke Matters team, have any suggestions for future events, or any other comments please contact the Trustees (details on the Ladbroke website).

Ladbroke Village Hall Millennium Draw for September 2019

£50	Alan Lord	£50	John Liverton
£25	A and H Dowdeswell	£25	Kate Liverton
£25	Mike Todman	£10	Caryl Thompson
£10	Keith Archer	£10	Simon and Jackie West
£10	Heather Crompton	£10	David Rose

Margaret Bosworth



Ladbroke Photography Club

Kip Warr

Travel the world in images with the Photography Club! Europe, Russia, Africa, Asia, Australia, New Zealand, USA and Canada all featured when members displayed their 'ten of the best' at our October meeting. Amongst the hundred or so images we had stunning photographs of insects on plants, birds on the water and seals and turtles in exotic seas. Closer to home we had this happy picture at Chesterton Windmill.

Our other main task was to name the photographs selected for display at the John Turner Festival at Southam School on 2nd November. We chose titles with a touch of humour where possible but you will have to go and see them for yourself to appreciate the fun we had. The title of Nicky's striking photo, shown here, of the feet of a gigantic statue in St Petersburg gives you an idea.



Joy at Chesterton Windmill by Graham Gee



Cobblers! By Nicky Lewis

On 2nd November we plan to visit the Gloucester and Warwickshire Steam Railway and our meeting, on 5th November, will be all about animals of all types (except human) and our photos of Stratford. Our plans for December include a competition and photo topic "Vintage" and also sharing "Southam then and now" images. Visitors and guests are welcome at our meetings which are usually at 7.30pm on the first Tuesday of the month in Ladbroke Village Hall.

For more information see our website (tinyurl.com/ladbrokephoto) or contact jackieszone-photogclub@yahoo.co.uk



Ladbroke General Section



Christmas Shoe Boxes

Once again the ladies in Ladbroke will be joining the Christian charity Teams4U in their campaign to: **Give Love in a box this Christmas** - so please join us if you can on **Friday 15th November, 10.00 - 12.00 noon** in Ladbroke Village Hall for **coffee, cake and shoe boxes!!**

As in previous years, we will be filling boxes for boys, girls and families who otherwise wouldn't receive a gift this Christmas. Information about ideas can be found on their website www.teams4U.com or do contact me if you haven't been along before and would like some help with ideas.



If you aren't able to come but would like to contribute please feel free to bring things to me in advance. Each box needs to be accompanied by £2.50 for travel costs so any money donations would also be greatly appreciated.

Any questions please do contact me and thanks in anticipation for your interest.

Sue Wright, 01926 811874 / 07768 333675
Cherry Trees, School Lane, Ladbroke

Shadows of Flight

Richard Jenkins, known to some of us in Harbury and Ladbroke, has done some unusual things in his life - from flying jet fighters from the deck of an aircraft carrier, starting a farm from scratch in the wilds of Northern Rhodesia (as it was then) to becoming a commercial training pilot for Cyprus Airways. You can discover all in his entertaining autobiography, *Shadows of Flight*. Richard has kindly given 10 signed copies for the church to sell in aid of the repair project. If you purchase one this month there would even be time for a sneak read before you give it to someone for Christmas! To purchase a copy please contact me on 01926 810331 - all we ask is a minimum of £10 for the paperback version; we have a few ebook codes too, in return for a donation.

Jackie West

From Your District Councillor

The public Consultation on the Sites Allocation Plan is now closed with a timetable for it to go to independent review, and for a scheduled adoption by summer 2020. Among other things this will, if adopted, constrain housing development in and around Southam.

<https://www.stratford.gov.uk/consultation-performance/>


Another consultation (on the same web page) is being proposed by the Council Cabinet, this time on charging for green waste collection. The idea is to charge £40 a year per green bin. Clearly this will produce financial benefit for the Council, which is the main purpose, but it is not straight forward as the Cabinet papers acknowledge.

If the green waste bin is removed, where will food waste go? It is reported that only a small amount (6%) of local food waste currently goes into the green bins, but the Government is currently consulting on introducing a food waste collection service, so this decision could be premature. Assumptions have been made about how many residents will pay for a green waste collection – so there is some risk in the financial planning. There is also the issue of those who can't afford an extra charge, this has to be set against those who do not have gardens and only have food waste to dispose of. The environmental impacts have to be considered as well. As I say, the issue is not straight forward.

Another waste matter being looked at is the idea of the Council building its own Material Recycling Facility (MRF) in collaboration with five neighbouring councils. At the moment the contents of the blue bin are taken to a facility at Ettington by Biffa, for sorting and recycling with the materials recovered for reuse. This contract expires in 2022 and under the plan being discussed; our 15000 tonnes of recycle from the blue bins would go to a new plant in Coventry. Stratford would contribute funds to acquire shares in a joint company and also make a loan of up to £5 million to that joint company. In my view both the environmental and business case for this will need to be carefully considered.

There has been a review of polling station accessibility. I visited all the polling stations in this ward last May and did not see any problems, but then I don't have mobility issues. I do note that electors at around Ladbroke in the rural areas have to travel to the village to vote in person, they may find that a postal vote can be more convenient. Please note that anyone can have a postal vote without giving a reason. If anyone has comments on this issue I will pass them on to the elections team.


Nigel Rock, Councillor for Napton and Fenny Compton Ward
nigel.rock@stratford-dc.gov.uk
07971 343065



December Edition - Harbury & Ladbroke News

Adverts to: 36 Manor Orchard, Harbury or e-mail to
advertising@hlnews.co.uk by 20th November

Articles & Christmas Greetings to: Harbury Pharmacy,
 High Street or e-mail to articles@hlnews.co.uk by 5.30pm,
 Thursday 21st November





Harbury Parish Council

Linda Ridgley
Harbury News Correspondent

Official minutes can be viewed in the Library, on the Parish Council website www.harbury-pc.gov.uk or obtained from the Parish Clerk, Tel: 01926 614646

October 2019 Meeting Report

Perhaps the most interesting outcome of this meeting was later information from the Chairman about Stratford DC's consultation on introducing a £40 charge for collecting garden waste. Central Government is cutting over £4million of its grants to Local Authorities. This had led them to look for savings and garden waste is SDC's target. They have issued a consultation <https://www.stratford.gov.uk/consultation-performance/garden-waste-service-consultation.cfm> on this, but will still have to collect food waste and recycling.

The Chairman dubbed it "A terrible idea" driven by austerity and that it would have been better for the District to increase council tax.

Parish Councils are really the only tier of local government which do not have funding restrictions, so ours has been able to fund several village projects. Mary Thompson, for the Heritage Room, sounded Councillors out about a grant to help with improvements to their new facility at the School. She was supported by both the Chairman and Cllr Gibb as the move from the School to the Cabin will be an improvement for both the School and the archive. The PTA representative thanked the Council for their funding for the school playground improvements.

The Councillors expressed their pride at the Lord Lieutenant's presentation of the Queen's Award for Volunteering to our Library and its many volunteers and were pleased that the Library is planning to support our school by providing books.

Cllr Gibb was pleased to announce that the "Pod" (before and after School Club) was well attended and would be fully staffed by half-term. At present the Headteacher runs it before and after School! He was however concerned that more "marketing" of the School was needed as it was likely that there would only be about 20 pupils in the reception class Autumn 2020. He hoped to attract some children from the Bishops Hill development.

Chairman Tim Lockley said he had "little joy" from the County Council over the recent ejection from school transport of those children without their bus passes. However, the school has now intervened and been told by the bus company that drivers will be provided with a list of those entitled to transport. Cllr Gibb reported that the change to 7.45am for the bus to Leamington had made it more reliable. He emphasised that the £5 return fare to Leamington would continue.

Cllr Rutherford, Chair of the Village Hall said it needed new booking secretary. He complained of the struggle to extract S106 grant money owed for improvements to the Hall.

County Councillor Bob Stevens also reported that although HS2 had “stalled” it had been trying to close local roads without authority. The long awaited Bendigo/Mitchell Crossroads traffic lights had been designed but the County might need to compulsorily purchase some land to facilitate their installation. Our Chairman pointed out that this work MUST be done before building of the “New Village” at Gaydon commenced.

There will be a consultation in the Library on Monday 3rd February from 4pm to 7pm on a site on the playing fields for the proposed youth shelter. Both the Parish Council and the Village Hall Committee want CCTV installed and will work together on costing this. Cllr Rutherford volunteered to help with the regular inspection of the play equipment.

There was discussion on the provision of a bus shelter on Binswood End green on the assumption that it would encourage more people to use the bus service and Councillors made various suggestions on possible grant aid for this. The Chairman wanted them to seek the views of residents whilst the Environment Group looked into the costs etc. They were delighted that there were no longer vehicles parking on the green there.

Cllr Thornley invited Cllrs to the celebrations to mark the Club's Centenary, where there was to be a Children's Day with old fashioned games on 4th January. There will also be an evening entertainment event and buffet on a date to be announced.

The Chairman had visited Oakfields to see the new defibrillator. More than 100 people had been trained in its use and he reminded everyone that there were other machines at the Surgery and Banana Moon.

Tim Lockley had been delighted to attend the public celebration of the improvements to the Post Office and supermarket given by Bob and Preet, in gratitude for our community contributing money to help deal with the damage caused by the robbery. The day was sunny and the wine and samosas were good!

The cemetery tap now works! Councillors' Corner in the Library is to be on alternate months.

There were no contentious planning applications this month!!

Next Meeting is in the **Tom Hauley Room**, 7.30pm on Thursday 28th November.

Current Parish Council members contactable via the Parish Office are:

Tim Lockley (Chairman), Keith Thompson (Vice-Chair), Samantha Allen, Steve Ekins, Chris Gibb, Alan Knowles, Tony Mancell, Andrew Rutherford, Pat Summers, Janet Thornley



Harbury Society

Linda Ridgley

A society for the villagers of Harbury which celebrates the heritage of the area by way of lively talks and outings.

Linda Doyle's talk on the Civil War in Warwickshire was a fascinating account of the impact on the villages and villagers in our area. She used photographs of the present day "Sealed Knot" re-enactors to illustrate the type of weapons and costume worn by the armies.

Initially there was little difference in the uniforms of the protagonists in our area. Indeed, most looked the same whether they were fighting for the Parliamentarians or the King! The Officers could usually be differentiated from the men by the feathers in their hats. The troops all wore the same style of leather jacket and trousers. Occasionally the armies were identified by a sash and it was claimed this made it easy for men to change side. Sometimes men found they were wearing the same colours and that is how during the "Battle of Southam" Cpt Legg got mixed up with the Parliamentary side and was captured.

Warwickshire was singly unfortunate being in the middle of the kingdom with the King's HQ in Banbury and the Parliamentary stronghold at Warwick. The War ebbed and flowed across our County with troops serially billeted on the villagers who were forced to provide them with food, lodgings, horses and often such medical care as was available.

Warwickshire was the seat of several important Lords both for and against the King - Lord Brooke at Warwick for Parliament, the Earl of Northampton at Compton Wynyates for the King. Some such as Richard Shuckburgh tried to stay neutral but that did not work! Edward Peyto abandoned Chesterton and its inhabitants to the Parliamentary troops and left for Warwick.

Our villages and especially Southam were similarly divided. Southam's vicar, a Puritan, had a strong hold on his flock and several times the town's bell-ringers refused to sound a peal for the King when he was in town. He was followed by Rev Holyoak who pressed the congregation to support the King, but when Cromwell came to Southam he killed the Reverend's servant, mistreated his wife and took his money and property.

Before the more well-known Edgehill fight, came the "Battle of Southam" on 23rd August which appears not to have had a decisive outcome. The King returned to Southam on 21st October and was housed in the Manor House, now the pharmacy.

Linda then turned to a description of the impact on the surrounding villages and their owners. Robert Catesby of Ladbroke fought at Edge Hill and as a consequence was heavily fined. Others who kept a low profile managed to keep their lives and estates. Several of the Harbury Wagstaffes were Royalist supporters but Sir Joseph who was born in Harbury in 1611 was not.

Bishops Itchington Parish records show that, a month after Edgehill, a Royalist soldier injured in the battle died whilst trying to reach Chester and was buried in the parish. An unknown red-headed young man (possibly a Scottish soldier from the same battle) was found dead and also buried by the Parish.

The Parliamentary Loss Accounts show how the villages had been affected after three years of fighting. They had fed and sheltered the soldiers on the way to and from Nasby and looked after the injured. Troops stopped in Bishops Itchington for two days and nights so that the villagers had to feed them on the way there and on the way back! The Cavalry and the Officers rarely ever paid the villagers. However other villages probably fared even worse - Wappenbury had 185 Cavalry and Milverton 750 foot soldiers to feed. It's quite likely the villagers starved.

Linda ended by reminding everyone to look at the Old Mint Doorpost when in Southam as it still bears the marks of where soldiers sharpened their swords. The large audience was delighted with Linda's presentation and she offered the Society a tour of Southam History displays.

Next Meeting: Tuesday 26th November, 7.30pm, Tom Hauley Room - Pillory to Prison Cell.

Future Events:

Please find below details of our Autumn/Spring Programme of talks and events.

Saturday 23rd November: Coffee Morning in the Tom Hauley Room 10am to noon. Any contributions for the raffle, cake stall, bric-a-brac, books or other sale items welcome.

Tuesday 26th November: A talk by Ginny Davis 'From the Pillory to the Prison Cell'. Ginny chronicles the changes in the treatment of criminals ranging from the pillory to transportation, hard labour and eventually, imprisonment. 7.30pm for 8pm in the Tom Hauley Room.

Tuesday 18th February: A talk by Sean Neill 'Interpreting Canal Towpaths: Traces of Horses'. Sean's talk focuses on canal architecture and how it developed to 'accommodate' working horses. 7.30pm for 8pm in the Tom Hauley Room.

Tuesday 17th March: A talk by Gordon Robbins 'The Honey Bee and Beekeeping - What's the Buzz?'. Gordon's aim is to raise people's awareness of honey bees. 7.30pm for 8pm in the Tom Hauley Room.

You don't have to be a member to attend, so please come along as a visitor.

We won't press visitors to join the Society, but hope that you might consider it having seen what we do.

Sue Turner

On 10th October we were pleased to welcome Valerie Powell to our meeting. Val has been a Registrar of Births, Marriages and Deaths for 24 years. Registration was first implemented in 1837 and hasn't changed a great deal since. When Val started you had to have legible hand writing - now it is all computerised. South Warwickshire Registry offices are now based in Stratford and Warwick.

Val has registered all the births of her grandchildren. She said registering a birth is relatively straight forward, although sometimes you get a bit too much information and some very unusual names. A birth has to be registered within 42 days.

When people are giving notice of marriage they now have to provide passports or other evidence of their date of birth and where they live - they have had to tighten up on proof of who the people marrying are. There are many different styles of weddings and wedding venues in South Warwickshire - the two registry offices can only hold 35 people.

A death has to be registered within five days, although for a variety of reasons, this isn't always possible. She is often amazed what people tell her and how they behave. Interestingly if you are English but die in Scotland or Northern Ireland you are deemed to have died abroad.

We found Val's talk both interesting and amusing. There were many curious stories of the odd things people admitted to as well as the more unusual style of weddings. Even after 24 years Val can still be surprised!

We shall hold our AGM at our next meeting on 14th November. Members will hear various reports and elect our new committee and president - we are hoping to welcome some new members on to the committee. Wine and nibbles will be served to make it a social occasion as well.



At the next Cinema on Saturday 9th November, the film will be "Rocket Man". Tickets will be on sale at the pharmacy until Wednesday 6th November. The last two films have proved to be very popular. We can only sell so many tickets - if this is a film you really want to see don't leave it too late to buy tickets.

A reminder that neither the pharmacy nor WI committee members hold a waiting list for tickets.



Harbury Theatre Group

Keith Hayes



As I am sure regular followers of the Theatre Group will know, once every two years we attempt to stage a pantomime. This is the year and our production of ***Snow White and The Jealous Queen*** is now well into rehearsal.

Even though I only have a very small part (I am a dwarf!), it is good to be involved again, and I am enjoying my Sunday and Thursday evenings as we try to knock it into shape. A pantomime requires a very big team and there are a lot of new faces this time.

Following the success of "Under Milk Wood" earlier this year a few new members of that cast have stayed on, and very welcome they are too.

Add to that a few who only like to do panto (good to see them back) and we have a different mix of people at our rehearsals.



Amateur Theatre is very much a team game and there is a great deal involved other than just acting. Andrew Lawrence, our Director, has spent many hours burning the candle at both ends, as he works out what he wants from the show, who should be where, what sort of grouping he wants to create for the best effect and what the scenes and scenery should look like. Having decided on that, it is over to the back stage team to deliver it. New props and flats need to be made so DIY and carpentry skills are very useful, then it's time for the art team to get involved (this year, overseen by Celia Stockdale). There is a great deal of painting to be done to create those iconic panto scenes that our audiences expect. This is a chance for an artist to paint some really large pictures.

Running alongside this we have our technical team, lighting, sound, special effects (all an art in themselves), the props department, which is always very busy, and our prompt (very important).

Then there is the costume department. Another very big job. Our house will be piled high with costumes for weeks yet.

Of course, no pantomime would be complete without music and our Theatre Group is so lucky at present to have the services of Simon Stenner as music director. The amount of work he has put in on the songs is staggering. He is extremely talented so why he is prepared to spend so much time on us is a mystery to us all. We are very grateful.

That is the team that presents what you see on stage. However, that is not all. We also have to have a "Front of House Team" to set out the chairs, to collect and sell tickets on the door, to sell sweets, tea and coffee and work behind the bar.

All of the above comes under the control of the Producer. For this production that is Geoff Allen. He has to make sure that all the pieces of the jigsaw fall into place (not an easy job). That of course is after he has arranged for the publicity, the posters and the ticket sales.

So “you do the maths” - that is a lot of people. Harbury Theatre Group is a very fluid organisation.

People come and go and come back again. We always need new people. Have you seen a job you might be interested in? If so, do come and join us. As you can see from the above it is not just actors we are looking for.

However, if you feel that is not for you just come and enjoy the show. I don't think you will regret it.



Folk Club

Stephen & Maureen Darby

Folk Club Report Number 419

With a combination of illness and holidays several regulars were absent and Steve hosted the evening without Maureen who was not well, as was her normal singing partner Janny. The theme for the evening was “Endings and Beginnings”. At the beginning, there was some nervousness as there were not the usual number of performers and it was likely that there would be only two halves but by the end, with a few late arrivals, it “turned out nice again” and we had a full evening's entertainment.

Norman was asked to open the evening but there was a delay as he had misplaced his capo. Pete Bones owned up that he had picked it up by mistake thinking it was his. We finally got underway as Norman sang Herman's Hermits' “I'm into Something Good” as it reminded him of the beginning of a first loving relationship and he followed it with Joni Mitchell's “Urge for Going” which signified the end of summer and the beginning of a new season. Rik sang a song which was a top 20 hit from 60 years ago called “Little Jimmy Brown” and then sang a song to the tune of “Early One Morning” about the demise of a man due to his drinking habit at his local pub. Sue Harris took us back to the beginnings of life with what she referred to as “Grandparents' songs”, firstly “Welcome to the World” and then a song, ‘Everything is Possible’ about the end of the day and tucking a child in bed. Both were beautifully sung with feeling. Pete Mason reminded us of the end of the summer holiday season with “Punch and Judy Man” and then sang Eric Bogle's “Now I'm Easy”. Bob announced he was singing songs “of epic scale”, firstly with his 40 year old “DDT ditty”, which was about what's wrong with the world and the way we pollute the planet. He ended with “Here at the End of all Things”. To close the first half Steve introduced Ron who was really Don alias Bernard amongst some friends. He performed “The Waters of Leith” and, in a wonderful bluesy guitar style, “Amazing Grace” which signified a new start in life for the writer of the song John Newton who was formerly a slave trader.

The Folk Club Choir opened the second half with a first performance of "That Lonesome Road" and then "Home Lads Home" which signified the end of the first world war. Pete and Liz gave us a rendition of Cecil Sharp's 1709 hit "High Germany" which, in keeping with theme, did feature the word "begun" and then sang their classic "Isle of Eigg" which was about the beginning and end of a relationship. Peter McDonald firstly sang about being in love and growing old with Ralph McTell's "Naomi", followed by Peter Morton's "Another Train", where the message was the start of the beginning is now. Robin gave us Ralph McTell's "First and Last Man", a sad song about a South American native tribe which caught a cold from the white man that killed them all. He followed this with Dave Swarbrick's "Farewell to a Poor Man's Son". Pete Grassby was on fine form with the self-penned "Fosse Way Shanty" and "Up the Noran Water". Keith Donnelly closed the second half with "Free Ride Around the Sun" and then told us his next song was a stark but not finished song "Hit the Ground Running the Day I was Born".

Late arrival Pete (our fourth Peter of the evening) opened the third half with a song about a railway train and its ending followed by "Derry Down Down Down". Pete Grassby sang from the Coppers' repertoire "Thousands or More", followed by Ron, Don, or was it Bernard, who sang a song written by Eddie Reader's husband John Douglas and the evening was closed by Liz and Pete who sang the Celtic Blessing "May the Road Rise Up to Meet You".

The raffle raised a magnificent £85 for TOFS, a charity that supports children who were born unable to swallow.

Next month's Folk Club is hosted by Pete and Liz Bones, when the theme will be "History and Historic Events".



Harbury Twinning Association

Tony Thomas

In the Tom Hauley Rooms, on Friday 11th October, Richard and Julie arranged another French film night and provided us with tasty interval refreshments.

The film, *Au Revoir La-Haute*, was set in November 1919, a few days before the Armistice. Their Lieutenant, by ordering a senseless assault into the frantic and muddy battleground, on the last day of the war, destroyed the lives of two soldiers, one a brilliant artist who was badly disfigured, the other an ex-accountant. The situation they found themselves in bound them as companions in misfortune. They had managed to survive the carnage and were presumed dead. After the war they concocted a daring plan, or shameless scam, to get their hands on some easy money by cashing in on the myriads of war casualties by selling paintings of non-existent war memorials. By hiding behind elaborate masks, the artist manages to stay in the background. At the same time the Lieutenant is about to make a fortune from the corpses of war victims but comes to a sticky end when discovered by the two soldiers.

On a lighter note, we will be holding our Annual General Meeting, followed by a cheese and wine supper, in the Tom Hauley Rooms on Friday 15th November. This is an open meeting but anyone wishing to stay for the supper must notify the Secretary of their intention.



Harbury Energy Initiative

Bob Sherman

☎612277 ✉info@harburyenergy.co.uk

First of all let me apologise for failing to supply you with an article to read last month. I was away. I realise that the trauma of having to survive without my florid (or tedious - depending on your point of view) prose could have profound consequences on your wellbeing. Let me make amends with some good news.

Look what the wind blew in

You may remember through the fog of time, that back in September, before it started raining relentlessly, I mentioned our application to the Rural Communities Energy Fund (RCEF) for a Stage 1 grant to fund a feasibility study. We got it. Not only that but ours was one of only three projects put forward that was successful. We now start the long process to realising this dream that begins with a consultancy carrying out a feasibility study for us.

Last September I asked for your opinions on our idea. There weren't any - which allows me to think that you totally endorse our plans. Since I don't dare to believe that, we will at some point hold a public event for the village to put our proposals before you, when they are ready. If we are successful in our plans we aim to ensure that the benefits of this project stay in the village. As RCEF, managed by the Midlands Energy Hub, has been generous enough to give us this encouraging grant, here is their logo:



GASS lighting

And here's some more good news. Just a few days ago I received an email from Heart of England Community Fund to tell us that HEI has been successful in its application for £1,500 to pay for LED lighting replacements in the scout hut. GASS is pleased and so are we. And to show that we appreciate it, here is the Heart of England Community Fund logo.



Spreading out

And here's some more quite good news. About the time my copy was due to be handed in to the Harbury & Ladbroke News editors, the third event in the Low Carbon Warwickshire Network development was held in Henley-in-Arden. This network is an idea that HEI started back in late April at an event

we held, working with the RSA, here in our village. We want to join up initiatives and activity across south Warwickshire on carbon reduction and the environment to support each other and stimulate new activity where there is none. We are now joined by some very brilliant folk from Napton, who held the second event as a result of which new action has started there. We hope the same happens at Henley-in-Arden. I think it will. You should come to one of the events. They only last a few hours and bring the expertise and knowledge of national and local experts into rural parishes. Changing lifestyles to reduce our burden on the planet is tricky. Many people are trying to work out what they can do personally to make a difference. We hope these events will help with that.

And if you want to be part of the action locally why not join in with HEI activities. No requirement to climb onto the roof of a train. Our action is practical.



Harbury e-Wheels

Bob Sherman

✉ harburyewheels@gmail.com  www.harburyenergy.co.uk

Thanks to all those who came to the Harbury e-Wheels Ceilidh on 12th October. I hope you enjoyed it as much as we did. There are a few pictures to view on our Facebook page, if you can bear to see what you look like when dancing. The evening raised a very welcome £578.49 for e-Wheels funds, enough to deliver around 35 hours of free transport. To put that in perspective, we will deliver around 1,500 hours this year. We are always hugely appreciative of the support we get from the village. And so are our passengers.

Our next event is the murder mystery night in the library on 13th November. Bring your own lead piping. See also Peter's note about the repeat.



Extra performance of Murder Mystery - 20th November

'Tottering Towers', the murder mystery by John Stringer on behalf of e-Wheels, has sold out on 13th November and so an additional performance is taking place in the Harbury Village Library on Wednesday 20th November for all those who could not get tickets.

BOOK IN THE LIBRARY SOON TO AVOID FURTHER DISAPPOINTMENT!

Peter Walshe
On behalf of E-Wheels

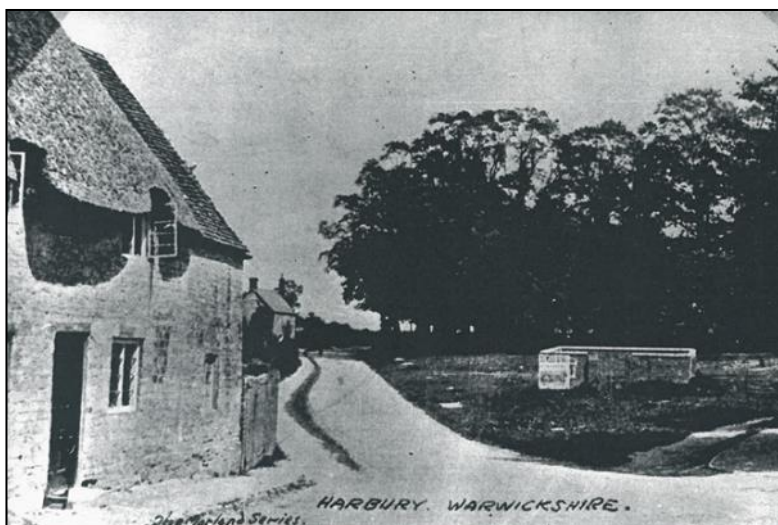




Harbury Heritage Room

Bill Timson

THEN & NOW This month's article in the series shows a photograph of Hall Lane looking towards Butt Lane and the B4452. The cottage in the foreground, 'Orchard House' is mainly thatched and if you take a walk down you can see the original roof line on the gable end. On the right is 'The Pound', it's the place where stray livestock were impounded. Animals were kept in a dedicated enclosure, until claimed by their owners, or sold to cover the costs of impounding. I'm not sure when it was demolished. The other house in view is 'Laurel Cottage'. The second photograph below shows the same view as it appears today.





We attended the Leamington History Day on Saturday 28th September held in the Parish Church towards the bottom of The Parade.

It is an annual event where organisations from all over Warwickshire display collections of local heritage.

If you are interested in the history and heritage of Harbury

please email us at harburyheritage@gmail.com

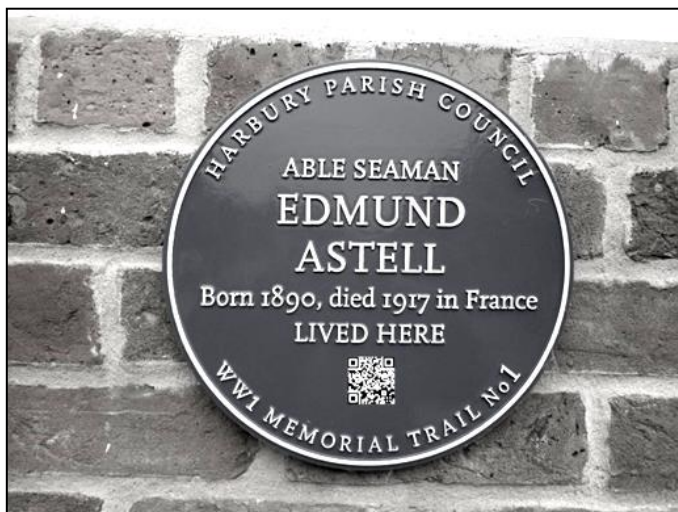
We would be delighted to hear from you!

You can, of course, visit our website, 'harburyheritage.org.uk' to view the catalogue and then come to the Heritage Room based in the Primary School. It is open to the public on the **first Tuesday in the month from 6.30pm**. We have a Facebook page too: '**Harbury Heritage Room**' - if you want to join please apply.



Kids' Corner

Congratulations to Hannah who won a prize in last month's competition. This month sees two annual events: it's Bonfire Night on the 5th which will be celebrated on Saturday 2nd at the Village Hall and playing fields. It's Remembrance Day on the 11th. You might be planning to come to the service with your parents at 10.10am in the Church or 11am at the War Memorial on **Sunday 10th** to remember the men who died in wars fighting for our country. Around the village there are many 'Blue Plaques' acknowledging some of those heroes.



So, this month's quiz is to identify which house this 'Blue Plaque' is attached to? Secondly what were the dates of the First World War?

Send the answers via email to

harburyheritage@gmail.com by the 30th November. There will be a prize for the winner. **Age limit is 11 years old and under. GOOD LUCK!**

See you in December.



Paul Quinney

After several years of helping with and latterly running Beavers, Dom Murphy has made the tough decision to step down from his Harbury Beaver Leaders role this Christmas. We thank him for his time and commitment and wish him well for the future.

So therefore, for moving forward and for our Beaver Colony in Harbury to continue, we need to pull together and get a new team in place as soon as possible!

Scouting provides skills for life and there are over 60000 people registered nationally on waiting lists, who can't have this opportunity due to the shortage of volunteers. Volunteering can be fun, learning new skills and helping young people develop.

So if you or anyone you know would like to be part of a team to help Beavers continue to enjoy their first taste of scouting then please contact me.

Paul Quinney, Group Scout Leader (GSL) 1st Harbury Scout Group

t: +44 (0)1926 613386

m: +44(0)7970 058 272

e: harburygsl@hotmail.co.uk



Paul Quinney

Explorers is the 4th section of the scouting movement allowing 14-18 year olds to follow on from Beavers, Cubs and Scouts, move across from girl guiding or join afresh.

Recently the Harbury Explorer group have celebrated their first birthday as a unit and an enthusiastic group of young people. This celebration required a party! which they all enjoyed thoroughly while eating and laughing while looking back at the past year and all the exciting things they have been up to in the last 12 months including our recent hammock bushcraft camp and many other exciting activities and excursions. All of the young people have greatly enjoyed the past year at Explorers which has brought new friendships and provided fantastic opportunities that have been a thrill for both the

leaders and the young people. One of the explorers said that Explorers has proved vital for their exam stress and provides a time to relax and defocus with their friends in a familiar environment, being exposed to new activities.

This has truly been a great first year and thanks to Mark Harris and Steve Gowland as leaders supporting this and all the young people for their energy and enthusiasm.



Guides and Scouts Support

Laura Harris
G.A.S.S. Committee

Our main focus for the past few weeks has been planning our biggest fundraising event, the **2019 Harbury Bonfire & Fireworks night on 2nd November.**

Please remember that entry is via the Village Hall entrances **ONLY** and that the gate to Ridgley Way will be locked. If you have already purchased tickets, please show them at the gate and proceed to collect your free hotdog and Kitkat. Otherwise, entry is £5 per adult, £3 per child (under 3's free) payable on the gate, no food included. We ask that you give us a hand with the clean-up, if it's safe to do so, please take dead sparklers and all your litter home with you.

By the time you read this, the big event may well have already happened, we're sure that it will be as successful as ever and we hope that everyone will enjoy this fantastic community event. It could not run without the massive team of volunteers from all over the village and of all ages. Detailed thank yous to our volunteers and sponsors will be given in the next edition.

Following concerns from the public and Parish Council last year, we shall be running an Electromagnet engineering session with the Scouts and an "Electromagnet Nail hunt" on the Saturday following the bonfire, where the young people can put their inventions to good use to sweep up stray nails. In the interim, please be aware that there may be debris inside the bonfire area so please keep dogs, children and bike tyres away.

WI Donation

We are thrilled to receive a generous £500 donation from the Harbury WI which will go towards much needed tents for our new Explorers unit. Our Chair will be attending your meeting on November 14th to collect the cheque, thank you ladies!



G.A.S.S. Christmas Post

As usual G.A.S.S. will be running the "Harbury Christmas post". In return for a generous donation, why not let us deliver all of your local Christmas cards in that busy run up to the festive season?

This year's service will start on **Monday 25th November** and the last posting day will be on **Tuesday 17th December.**

You will find our special post box inside Harbury Library. Please remember to put the **house name/number and the road name** on your envelopes as we cannot deliver your cards without this information! We are able to deliver anywhere in Harbury village but unfortunately, we do not have the capacity to deliver any further afield.



LOCAL FOODBANK - there is a facility in the village to donate any non perishable food to your local Foodbank, which supplies the area around when need arises, including Harbury. Please put your contributions into the large plastic box located inside our Parish Church open 8.30am to 5pm. Enter the main door and you will find it on your left, just in front of the red curtain. Thank you.



Harbury Tennis Club

Colin Mercer

<https://clubspark.lta.org.uk/HarburyTC>



We held our fifth annual fun quiz in the Village Club in October and Trevor Montague set some fiendish questions to provide an evening of great entertainment (and only a little controversy). Questions included a Rugby World Cup themed round with subjects such as the world's shortest escalator, tallest hedge and longest national anthem! As ever our MC Peter Walshe did a great job to add to the entertainment and reported: *"The scores were closely oscillating between the top five teams throughout as they battled to have the honour of winning a quiz, the proceeds of which went to*

support junior activities and events. 'Canal Crew' (The Thompsons and Hancocks) were in the lead until the very last round but faltered at the end as 'Black Sheep' (the Steve Fitzgerald, Peter Woodward, Alasdair Reid and Clive Whorton combo) brought themselves home by one point. Slightly controversially, 'Winter's Wonders' (Fran and Dave Winter with Terry Hunt and Paul Crowton) decided that the name of the Russian monarchs' residence was The Hermitage and not The Winter Palace. (The Hermitage is now the museum which contains what was The Winter Palace.) The result: a forfeit of four points in the 'Sudden Death' round. Otherwise they would have won the quiz..."



Oh, and in case you were wondering, the world's shortest escalator is in Japan, the tallest hedge is in Scotland and the country with the longest national anthem is Uruguay (105 bars of music lasting about 6 minutes!) - all countries in the Rugby World Cup.

On the playing front the winter season started with all three of our teams having a home match against Byfield. Harbury Floodlit A (Adam, Ben, Caroline, Eira) got the season off to a good start, with a 6-2 win over Byfield C. Both our floodlit teams are in the same division this year, so the following

week Harbury Floodlit B (Jane, Josh, Neil and Sue) also faced Byfield C! There were a couple of first time match pairings in the Harbury team, which together with a strengthened Byfield side resulted in a reversal of the previous week's result. Harbury's 2 points came from the ladies' doubles, with Jane and Sue staging a fine recovery from 1-4 in the first set, to win by 2 sets to love. The third match was in the weekend league, this time against Byfield B. Eira and Caroline were joined by Nigel and Steve for an enjoyable match which ended in another 2-6 defeat for Harbury, but a big improvement on last winter's 0-8 at home to the same team!

The Club's singles tournaments were very well supported this year, with a lot of our new members taking part. Nigel Eaton retained his men's singles title, beating Steve Stark in the final. The ladies' singles tournament was the first for five years - the field of nine, was randomly drawn into three groups, with the group winners Louise Roberts, Emma Brangwin and Caroline Morland playing against each other to determine the overall winner, with Caroline taking the trophy.

Our Autumn 2019 coaching programme, delivered by coolsportz coaches is going well and for Juniors caters for ages 4 to 16 years. Rob West runs sessions on Thursdays and Elizabeth Holding on Mondays. There are also sessions for adults on Monday and Thursday evenings and a Ladies' group on Friday mornings. All sessions are open to members and non-members (small surcharge applies) and coolsportz offer a free introductory session. For more details please contact Lianne Candappa, lianne@coolsportz.co.uk or phone/text her on 07919 104093.



Harbury Toddler Group

Lynne Barton

Hello Harbury - happy news from Toddlers

We are really delighted to have been given a much-needed donation from Harbury Women's Institute. We had the news by letter recently from Ann Mayer, the President. The money is being used to purchase two fold away nursery sized tables. Hurrah - children will now be able to sit on small chairs at the tables to do all their lovely art and craft. We thank the Stockton Toddler Group for the loan of their table for a short period which we very much appreciated.

Furthermore, the WI will be kindly paying for a soft play treat with ball pool, small bouncy castle and sit and rides to enhance our Christmas Party taking place in December at the Tom Hauley Room. We can't wait for the cheque presentation in November and are looking forward to saying a huge thank you.

Harbury Toddlers Report continues on page 34

Harbury Village Library & Biblio's

Photographs



Villagers at the reception, awaiting the arrival of the Lord Lieutenant of Warwickshire, Mr. Timothy Cox.



Lord Lieutenant greeted on arrival by
Lieutenant Cadets from the Army Cadet Force,
Air Training Corps and Sea Cadet Corps.



Sharon Hancock speaks to assembled guests.



The Queen's Award for Voluntary Service 2019.



Sharon Hancock receives the Queen's Award
from the Lord Lieutenant.

Café Queen's Award Presentation

by Mike Abbott



by his Lord
Adet Force,
Adets.



Lord Lieutenant meets with Trustees



Lord Lieutenant with invited guests.



The Lord Lieutenant alongside his Lord Lieutenant Cadets.



The Lord Lieutenant presents Queen's Award for Voluntary Service pin badges to all volunteers. Neville Sheasby pictured.



Sharon Hancock with the Queen's Award certificate.

Continued from page 31.....

Disney Princess

We had a surprise visit from Disney Princess Cinderella recently who treated the children to glitter tattoos which everyone enjoyed. She had a fab singing voice and whilst we had our drink and biscuit enchanted us all by bursting into a sing along song from the Disney film. The children were mesmerised in a 'good way' whilst parents and volunteers were, in the words of the song, just giving it their all with a rendition of 'Let it Go'. The microphone, huge professional amplifier and music made it a real performance.



Lavender Bags

It is great to live in Harbury, a place where everyone is willing to help. We had some pretty coloured organza bags, small spoons and trays all ready to make lavender bags, always a relaxing calm activity when the scent fills the room. The lavender in our own garden was rather sparse this year so our good friend Barbara Thistlethwaite kindly asked neighbours in South Parade if they could spare some flowers and of course they said yes. Thank you all for your support.

Hedgehogs and Halloween

Our mums, grandmothers, dads and grandads are all super and make such a valuable contribution to running Toddlers.

We thank the following for their acts of kindness:

Clare for leading the songs and rhymes, always willing to ensure the children enjoy music, even when asked at a moment's notice.

Amy and Emma for offering to put our name forward for the Harbury Market next year and making plans for more fundraising activities.

Suzi for volunteering each week.



And super duper Emily Robinson who is a mother to four lovely children and presently acting as project manager for a house extension but still found time to make a Halloween sensory extravaganza and organising the clay and resources for the children to make spiders and hedgehogs to take home.

Paint & Glaze

Emma from a small local Company called Paint & Glaze saved us a trip to the shops by bringing potential Christmas presents to us. First select what gift you like, then paint and print it. She takes it home to glaze in her kiln and brings it back the following week. Job done!

Future Plans

We are pleased that our volunteer Judi is back safely from Japan, experiencing not only the wonderful culture but also the hurricane and storms. Our thoughts are with the people of this country particularly those who have lost loved ones.

We still have plenty to look forward to until the end of the year end including The Cookery Kitchen, Love Ballet and SpOt Drama - can't wait !!!!!

Come and join us

If you want to join us at the Toddler Group then Lynne, Selina, Suzi, Judi and Reg look forward to welcoming - you come on round the kettle's on.

We are based at the Scout Hut, High Street, Harbury, CV33 9HW and meet every Monday during term time at 9.30am saying bye bye at 11.15am. Thinking of coming along or need more information - please do ring Lynne on 01926 612748 or email lynnebarton@btinternet.com



Harbury Pre-School

Staff & Committee

Open Morning: We are holding an open morning for prospective children and their parents/carers on **Saturday 9th November 9.30am – 12.00pm.** Come along to meet the staff and find out what we have to offer.

Harvest Time: We were delighted to welcome Reverend Ann and Gill Guilford who visited Pre-School to talk about Harvest.

They brought with them some grains of wheat and we talked about how wheat is grown and made into flour.

The children were enthusiastic to share their knowledge about which foodstuffs contain flour and wheat, for example, breakfast cereals, bread, pasta, biscuits and cake!



We finished with some lovely singing and actions songs related to Harvest time. Thank you to Reverend Ann and Gill for a thoroughly enjoyable and informative morning.

Shape Walk: As part of our learning about shapes, we became detectives and went for a shape hunt around the village. Armed with a square, triangle, circle and rectangle, we set off to find out if we could match these shapes within our local environment.

What a lot of shapes there are in Harbury! As well as our four shapes, we found diamonds, semi circles, an oval and even a heart on a gate. One child was particularly excited to find, '*a rectangle inside a rectangle*' on the post box!

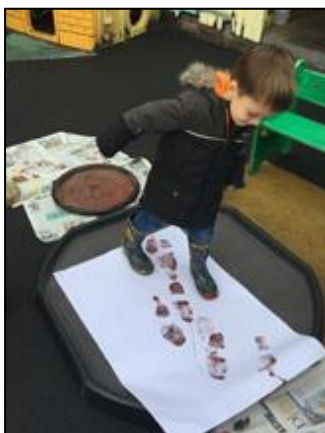


We're going on a bear hunt: Inspired by Michael Rosen's story about a family taking an exciting trip to find a bear, the children experienced all the same things as the fictitious family but at Pre-School.

We found some great resources to create our very own swishy swashy grass, splashy sploshy water, squelchy squerchy mud to make footprints, a swirling snowstorm and of course a narrow gloomy cave where we found a bear!

The story really captured the children's imaginations and it was lovely to watch them re-enact the story, recalling some of the phrases in the book as

they negotiated the obstacles. A week on from the activity and they are continuing to ask when we are going on another bear hunt!



Forthcoming Events:

Speed Quiz:

Friday November 15th at Harbury School - £20 per table.

Produce Market

(with fundraising for Pre-School) Saturday 30th November, 10am – 1pm

Santa's Grotto

At the Christmas Fair: Saturday 7th December, 2-4pm in the Village Hall.

Please come along and support your local village Pre-School. Further details can be found on our Facebook page or from the Pre-School direct.

If you would like further information, or to register a child for Harbury Pre-School, please e-mail enquiries@harburypre-school.org.uk text 07907 598461 or look at the web site www.harburypre-school.org You can also find us on Facebook.



After two years of fundraising, we officially opened the infants' playground and the new computer suite on the 4th October.

The infants' playground was opened by Tim Lockley, Chair of the Parish Council and Neil Stephens, Managing Director of Stairways, the two large financial contributors to the big build, a big thank you.

The "hub" was opened by Mark Harris, who set up code club several years ago, and who has now passed on the baton to Chris Woodhams, who runs the school's code club with Gareth Richards. It's been great to see all the pupils of the school using the suite on a daily basis.

On 16th October, we had the PTA AGM, a big thank you to everyone who turned up and joined the PTA. After two years, Sue and Rob stood down as Chairperson and Secretary, and Vicky and Lindsey were nominated and will start as the new Chairperson and Secretary, with many new and whacky ideas planned on how to raise money going forward. A big thank you to David for continuing as Treasurer and Clare who will continue as Vice Chair.

David confirmed the PTA last year raised an incredible **£21,000!** (£2,000 more than the previous year)

I was contacting other school PTAs earlier this year to advertise our village fun run, and on average a school of our size (200ish pupils) raises between £4-8k, so thank you to the pupils, parents, village members and businesses who have supported us. Every penny we raise goes to the children.

What we funded last term

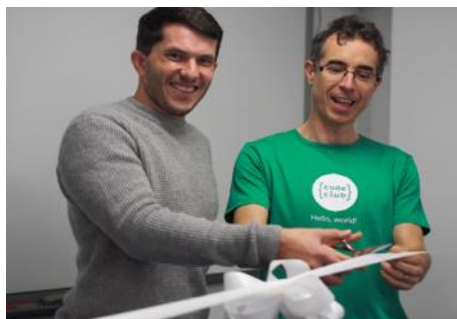
- £18,000 32 computers for the HUB
- £10,000 co-funding the infant playground
- £2,500 all WoW days, leavers' hoodies and party etc

What we will fund in the next year

As outlined in the summer, the school is facing a funding gap, and so the PTA is being asked to continue and expand its financial contributions to the school. The requests to date include:

- **32 iPads** (one for each child in the class). We have discussed buying kindles/tablets which are cheaper, however their learning apps, interconnectivity with other children/teacher is inferior to iPads.
- **Books**, in classroom materials (eg atlases, subject matter books (stone age, Tudors for example) and whole class readers.
- **Library** - evolving the space outside the year 3/4 classroom to be a library.

**OPENING OF THE NEW INFANTS PLAYGROUND AND CODE CLUB -
ALL PURCHASED BY THE PTA**



- Utilising the great work of Earthworms (school gardening club) through **outdoor learning**, needing mini wheelbarrows (for the infants) and mats to sit on.
- **Scooter/bike park**
- Ongoing support for all **WoW** days etc etc

So a lot to keep us all busy....

Outdoor Classroom/Community stage under the stars

Chris Gibb (chair of Governors) has secured a £10k grant and the Parish Council has awarded a £7.5k grant for the transformation of the amphitheatre space into a "stage under the stars"/outdoor classroom for use by the school and community.

We are in the process of applying to the National Lottery for refurbishment of the changing rooms, so all the sports clubs at the School can use the facilities.

We hope to start the work in January/February.

PTA AGM - 16th October

Thank you to everyone who attended the AGM this week. The minutes from last year were approved, David outlined the financial report, we appointed a new Chair Vicky Woodhams and Secretary, Lindsey Stephens, and four new people joined.

The PTA exists to raise money to enhance the learning environment of Harbury School for our children, have some fun doing it, and bring the community together.

Date for your diary

Clothing Drive - 13th November, please start gathering all clothing/textiles/shoes, as we will have another village clothing drive. The last one netted £350, so truly rags to riches!

This is my last newsletter, as I am stepping down after two years as Chair (working and living in two countries is a bit exhausting) thank you to everyone who has contributed, said yes to those many requests to help at some daft event. It's been fabulous fun and I will continue to write grant letters behind the scenes to inject funding into our school however and whenever I can.

We are your PTA - contact us on harburypta@gmail.com



Village Hall Update

Andy Rutherford

The Hall continues to be well used by members of the Harbury community, supplemented by hirers from other local villages. There is no doubt that improvements to the Hall in recent years have contributed to healthy booking rates.

Our next round of improvements will create a larger foyer, and a much improved disabled access. The steps at the front of the hall will be more

manageable with built in lighting - improved safety all round. The Farley Room will be redecorated and refloored, with all of the double fire exit doors being replaced with more robust, safer (removing raised steps), alternatives. All of this is to be carried out in the Spring. We expect to make an announcement of funding within the next few weeks.

Past development phases at the Village Hall were completed with the help of some excellent development grants and the fantastic fundraising activities of the local community. Several people have recently suggested that, as the Village Hall is so "well off", we really should be reducing or cancelling our hiring fees. The answer is simply that money raised for development cannot be used for everyday running costs. The running costs of the Hall are covered by the income from hirings and general (not development) fundraising. We do cover the running costs, but only by a fairly thin margin.

Our Booking Secretary, Celia Neill, has sadly told us that she would like to give up that role as soon as we can get a replacement. Celia has done a fantastic job for a very long time and has been much appreciated; she would like us to emphasise the sociable side of the task and how much fun it has been, when we are looking for a new volunteer.



Harbury Village Library & Biblio's Café

Janice Montague



**The Queen's Award
for Voluntary Service**

On the evening of Tuesday 15th October at the Village Hall, the Lord Lieutenant of Warwickshire presented Harbury Village Library and Biblio's Café with **the Queen's Award for Voluntary Service**. This award is the equivalent to an MBE for volunteers, so it is a great honour to have been granted it.

We were pleased to welcome a large number of dignitaries to the ceremony, in addition to the Lord Lieutenant and his wife, including the Chair of Warwickshire County Council, several Deputy Lieutenants, our District and County Councillors and many of our own Parish and Parochial Church Councillors, plus two representatives from Warwickshire County Library Service. Speeches from our Chair, Sharon Hancock, and former Chair, Tim Lockley, were followed by the presentation by the Lord Lieutenant of a domed glass crystal and a certificate signed by the Queen to Sharon.

Volunteers past and present were then each presented with a commemorative badge to celebrate their contribution and commitment to the success of Harbury Village Library and Biblio's Café. Congratulations are owed to them all on this significant achievement, which recognises the hard work necessary to keep the Library and Café running as a community volunteer run enterprise for over seven years.

Photographs of this well attended and enjoyable evening can be viewed In the centre pages of this magazine.

The crystal dome is now on view on the shelf behind the issue desk in the Library before a more appropriate and permanent location is provided, and the certificate will be proudly displayed once it has been suitably framed.

In other news, the tickets for the **Murder Mystery** sold out so quickly that a second performance will take place on the following **Wednesday, 20th November**, so if you wanted to see this, please come into the Library to get your tickets as soon as possible. While there, why not choose a couple of titles from our vast stock of books and audio books, or buy a couple of greetings cards from our selection on the issue desk? There are also art works by local artists for sale which may make excellent Christmas gifts. If you visit on one of the four mornings each week that Biblio's Café is operating, you can also enjoy freshly brewed hot drinks and home baked cakes.

We are always keen to recruit new volunteers to join **our award winning team**, so if you would like to find out more please contact us as shown below. No experience is necessary, just a willingness to learn, as full training will be given. We look forward to hearing from you.



Antiques Valuation Session

Hansons Auctioneers and Valuers will be hosting an Antiques Valuation Session **on Tuesday 19th November from 4-6 pm in Harbury Village Library.**

Bring along any antiques, watches, silver, gold, paintings or collectables for valuation by Hansons' experts, which you can then leave with them for subsequent auction. There will also be refreshments available, provided by Biblio's café.

library@harburyvillagelibrary.org.uk

biblios@harburyvillagelibrary.org.uk

www.harburyvillagelibrary.org.uk

01926 258776



Harbury Village Club & Institute

Judy Morrall

Yet another month passed and we are well into Autumn now. I will replace the plants in the pots and along the drive but not for about two weeks as they are still looking colourful. As before I will save the various corms and take cuttings as and when. At least there is not a lot of watering required now. The hedge along the car park has been trimmed and it looks so much better. Hopefully the new signage will soon be in place and we will sparkle! Do come along and see all our changes over the next few weeks.

The second session of CPR training took place recently and we are so proud to support this very worthwhile cause. Ann is hoping next year to do something very special so watch this space. We have had parties and quizzes and the team games have all restarted so it is much busier now. Lovely to see the children all having a good time at the parties.

At our last committee meeting we were advised that the card machine is imminent. I know I said that last month but you would just not believe all the red tape needed and the amount of information the providers have asked for as we are a club and not a business. I thought that when I worked for the Revenue (hiss hiss!) we had a lot of red tape but this beats it hands down. There have been no takers for the juke box so it will now be taken down and advertised on the internet. In the meantime, we will be buying a tablet so that we can download Spotify as we know it will be appreciated by very many members.

We approved five more new members and one new booking - fantastic. I have noticed though that after the meeting I notify the prospective new members of acceptance by hand and ask that the membership fees be left at the club and I will prepare the membership card and leave behind the bar. Recently at least six have not done this and it would be a shame not to have you as members so I will either follow this up with a phone call or email.

We are aware that the height of the conifers along Crown Street is a matter of concern and we are hoping to get a few of our members together in an effort to lop the tops off, no mean task. Just an early mention of the Christmas Family Bingo it will be held on Saturday 7th December. Further information nearer the date. Hate to mention Christmas already as today (22nd October) it is a glorious Autumnal day and the colours of the trees and shrubs are amazing.

We had another sub-committee meeting for the centenary celebrations and again we achieved a great deal. The games for the children on Saturday 4th January will be old fashioned ones such as Snakes and Ladders, Blow Football, Shove Halfpenny, Bagatelle and many more. We would like to invite the children of non-members as well as members to come along and have an enjoyable and fun few hours with a few treats. The adult games are not too complicated, Quoits, Aunt Sally, Shuffle Board, Darts, Table Skittles and more including one I had never heard of - Toad in the Hole. I will give a further explanation in my next article. Suffice to say it does not concern sausage!

I have not had any offers of old photos of the club but I have found some in a book written by Frances Mann called Kecks, Cowpats and Conkers. I'm sure that many of you will have this book there are some taken in the WI hut which used to be in the grounds of the club. I also found out that the current snooker room was used by the home guard during World War II, it was also a garage. I will collate all this information as I go along to be displayed on boards for the 18th January for our visitors to hopefully read and enjoy. As on the 4th January we would like to invite non-members to this celebration on Saturday 18th January. It will be lovely to see the rooms buzzing. It is not often that we can celebrate 100 years and it is a privilege to do so.

Regarding my advice on the glut of courgettes, I was asked about beetroot by the same gentleman. Well, I have an amazing recipe for beetroot chutney which is delicious so I was very glad to pass this on. At this rate I shall have

to write a cookery column on what to do with an excess of vegetables but of course there is always soup! No need for Delia to be worried.

As always, please let me have any feedback as it is very welcome. Come along and enjoy our club and all that we have to offer. It is a great pleasure for me to stop and talk to everyone - thank you for your lovely comments.



Garden Jottings from Bridge Nursery

Christine Dakin

Update on the professional photographer.....Clive came back when the asters and grasses were at their best on a beautifully calm and sunny day and took lots of wonderful pics. It was fascinating watching him at work; he whizzed around quite quickly because the light changed so fast in early morning and late afternoon. He noticed things which I miss, and he clearly enjoyed what he was doing. He will submit the photos to various glossy garden magazines, watch this space. Then, (a bit like buses) a week later, another garden photographer came (from Garden News) and he took lots of photos too! I've felt quite elated by these two visitors.

Back to reality and jobs for the month.....

Plant garlic.....sow broad bean seeds..... plant tulips (you may have to protect from squirrels).....rake up fallen leaves and add to your compost bin or bag up and leave in a corner for 12 months.....be prepared to protect any slightly tender plants with horticultural fleece.....now is a good time to plant bare-root trees and hedging.....lift dahlias especially if you're on heavy, wet clay soil. Store them in a frost free place and keep fairly dry.....put grease bands round apple trees.....and last but not least plant all those new plants, they're better off in the ground than in pots.

Bridge Nursery, Tomlow Road, Napton
www.bridge-nursery.co.uk



Nature Notes

John Hancock

The U3A Natural History Group enjoyed a visit to Guy's Cliffe Walled Garden on a warm day in early September. It's tucked away behind Hinton's Nursery off the A429, the Coventry road out of Warwick. It's a hidden gem, having been brought back to its former glory by the volunteers of the Guy's Cliffe Walled Garden Trust. We were given a talk - 'An Introduction to Ferns' by Dr Barry Meatyard whilst sitting surrounded by these living fossils in the fernery. Most Victorian walled gardens had a specific area set aside for ferns. Indeed, there was competition by owners to show off their collections. Fossil ferns date from the Devonian period some 360 million years ago whilst flowering plants did not appear on the scene until the Cretaceous period

beginning 135 million years ago. Ferns have leafy fronds that contain chlorophyll and carry out photosynthesis. We learnt how ferns have a life cycle in two distinct stages. Spores develop on the underside of a frond. When they are dispersed by the wind and a spore falls on wet ground it can develop into a so-called prothallus which contains male and female reproductive structures.

The Warwickshire Wildlife Trust Reserve at Draycote Meadow is renowned for its orchids. Less well known is the fact that two unusual species of fern can be found there. Adder's Tongue is so named due to its supposed similarity to a snake's tongue and the belief that it could be used as an antidote to snake bites. It's quite hard to find as it only reaches 20cm (8") in height and is well camouflaged in its grassy habitat. Likewise, Moonwort is difficult to discern. I have been within a few feet of this most unusual fern and it still had to be pointed out to me.

Today (Monday 21st October) whilst cycling home from Napton along the Welsh Road, Meadowsweet was still flowering though my book says it flowers from June until August. It may have been named because it was used to flavour mead and not because it adorned wet meadows. It is a member of the large Rose family which includes Blackberry, Silverweed, Wild Strawberry, Agrimony, Hawthorn, Apple, Roses of various types and many other species.

Coming into Ladbroke my eye was attracted by two plants which are introductions. The Snowberry with its distinctive white pompom fruit is from North America and was introduced to gardens here in the early 19th century. It has 'escaped' and now adorns many hedge lines. Cyclamen, the attractive garden flower of autumn, is originally from southern Europe and has colonised areas of short grassland bringing a welcome splash of colour along the verge of Southam Road near Ladbroke House.

We took a closer look at Oakley Wood on a 'fungi foray' with John and Val Roberts on Monday 14th October. It's an ancient wood on acidic soil; witness the bracken, silver birch and bluebells. In just a few hours we were to find 50 species of fungi, from the tiny Candle Snuff to the much larger Birch Bracket (*Piptoporus betulinus*). Find a rotting oak branch and you may see it is stained a blue colour. This is caused by a fungus called Green Elf Cup (it also has a very long Latin name). In time the Green Oak becomes hard. It has been used as an inlay in decorative wooden items known as Tunbridge Ware.

Now our first frosts of autumn cannot be far away. Leaf fall is gathering pace. Enjoy a walk along our fine network of local footpaths, not forgetting the sterling work done by volunteers maintaining our ancient rights of way.





General Section



Harbury Supermarket and Post Office

We would like to say a big thank you to the whole village for their support and kindness particularly over the last difficult few months. We feel very lucky that we are part of this lovely community.

Special thanks must go to Dave Vials Electrical who saw to all the electrical requirements in the shop – some of this free of charge. Also to John Coullen who did the decorating of the shop and Post Office at a favourable price.

Lastly, our very special thanks to someone who has asked not to be named and who gave us a very generous donation towards the repair costs.



It was lovely that so many of you could join us on 19th October for our “thank you” party. We enjoyed seeing you all.

We are always here if we can help the community in any way.

Thank you again.

Bob & Preet



Public Defibrillators or AEDs

We now have two 24 hour publicly available AEDs (automatic external defibrillators) in the village at the following locations:

- On the wall outside Banana Moon Nursery, Ivy Lane
- On the wall of the sub-station in Brooks Drive, just off Bush Heath Lane

Please note however, that in an emergency you should always phone 999 first. The ambulance service will direct you to the nearest available AED if required. They will also tell you the code for opening the cabinet and talk you through what you need to do.

Sometimes, AEDs can be taken out of service at short notice so there is no guarantee that they will be rescue ready on any given day which is why you should always phone 999 first. The ambulance service will have the latest information on each AED.

These AEDs have been provided for the community by Lucy Nealon at Banana Moon and Ann Lynch (Brooks Drive AED). We are very grateful to each of them.

Harbury Parish Council
Tel 01926 614646
clerk@harbury-pc.gov.uk



Christmas Quiz in aid of the Macmillan Cancer Information & Support Service at the Aylesford Unit, Warwick Hospital

Following the success of our previous quizzes in aid of local charities, this year we are raising money for the Macmillan Cancer Information & Support Service at the Aylesford Unit, Warwick Hospital.

The Service helps to improve the quality of life for people affected by cancer by providing information and practical support to cancer patients, families, friends and carers.

When: Sunday 1st December 2019 at 7.30pm (Doors open 7.00pm)

Where: Harbury Village Club

Teams: £20 per team of four to include nibbles and sandwiches

Our ingenious and fun questions have been devised, the food has been ordered and the raffle prizes are accumulating! Places are booking up quickly but we need your team to be there to make the evening complete!

Make sure you join us for this fun start to the festive season - book your place by contacting: **Pat Whorton on 01926 613358 or email pwhorton@hotmail.co.uk**

Sheila Burt, Angela Cook, Sue Ward, Pat Whorton



Southam & District Lions Christmas Float 2019

Ho, ho, ho.....early warning!

Southam and District Lions will once again be taking Father Christmas around Southam and our surrounding villages, starting on Saturday 30th November. However, Santa's elves can no longer visit every road and street because Southam and all the villages are getting bigger, so we have had to make changes to stops that the Christmas Float will make. This year Santa will only be stopping at five or six places each evening. The schedule below

shows which roads he will be stopping at in Harbury. For details of the time he plans to be there look out for notices placed at each stop. You can follow our progress on Facebook each evening, with up to the minute details of where we are.



Monday 2nd December - Vicarage Lane, South Parade, Manor Road, Hereburgh Way, Rainbow Crescent. Starting from 5.30pm.

Tuesday 3rd December - Heber Drive, Manor Orchard, Dickens Road, Hillside, starting 5.30pm.

Southam & District Lions



Coffee with Harbury Lib Dems

Whatever is happening in Parliament, or elsewhere, Harbury Lib Dems are always here!

If you would like to join us for an excellent cup of coffee and maybe a delicious cake, please come along to Biblio's Café in Harbury Village Library on **Saturday 9th November** any time **from 10am to 12 noon**, for a friendly chat.

Sue (Bushill) and Andrew (Patrick)



Harbury Senior Citizens Committee Update

We hope that you are looking forward to the Christmas Party and that you have the date set in your diaries. As a reminder, it will be on **Saturday 14th December** in the Village Hall from 5.00pm. Invitations will be delivered to you in early November and we ask that they be returned to the Library by **Saturday 30th November**.

Since our last major update of the distribution list, based on GDPR we know that a number of people have moved into the village who may be eligible and want to take part in our events. In simple terms, you have to be receiving a state pension to be eligible and live in either Harbury or Deppers Bridge.

If you want your name added, then please contact a member of the committee and we will update our lists.

As usual we will be having a raffle at the Christmas Party. If you would like to donate prizes they will be most welcome and can be delivered to either 1 Park Lane or 32 South Parade.

If you want further information or are interested in joining or helping us, please contact Mike McBride on 612421 or Julie Clarke on 612066 or talk to a committee member.

Meanwhile, we look forward to seeing you at the party and hope that you will enjoy yourselves.

Mike McBride

On behalf of the Harbury Senior Citizens Benefit Association



Harbury Golf Classic

On Saturday 5th October, the above was held at the Leamington and County Golf Club. A good turnout of 19 golfers enjoyed a rain free afternoon and some excellent golf! The presentation was held in the clubhouse and the recipient of the famed Green Jacket and overall winner, with a score of 38pts, was Andy Sheill (see photo). Runner up was Rob Sherrington, Ladies' Best score was Kath Phelps, nearest the pin was Gill Thorpe and longest drive was Ed Wilson.

An enjoyable afternoon was had by all and we look forward to next year's outing.



Rob Sherrington



**Southam Heritage
Collection**

Preserving Southam's past for the future

Southam Heritage Collection

Coffee Morning: Southam Heritage Collection is your host for the Tom Hauley Room coffee morning on Saturday

9th November, and will be providing delicious homemade cakes, biscuits and pastries for sale, alongside heritage cards, calendars, local history books and other items. There will also be a raffle with some lovely prizes to win.

This local charity exists to promote and preserve the history of Southam and District, and is run entirely by volunteers. All proceeds from the event will go to help pay the costs of their new premises in Tithe Place, High Street, Southam. If you have not yet visited the museum, then do please call in next time you are in Southam - it is open on Tuesday, Friday and Saturday mornings from 10am to 12 noon and is located in the foyer of Tithe Place, opposite the entrance to the Library. For more information about the work of the group, please visit their website southamheritage.org

Pam McConnell

Christmas Fair



Christmas Fair at Ufton

Ufton's Christmas Fair will be held on Saturday 30th November, 2.00 - 4.00pm at Ufton Village Hall.

Gifts, crafts, cards, cakes and real Christmas trees on sale.

Shop early for Christmas!

Gillian Ingham



LETTERS TO THE EDITORS

Dear Editors

My family and I were overwhelmed by the support we received on the sudden death of my husband Doug. We would like to thank everyone for their cards, messages and their presence in Church and at the Club afterwards. We were greatly comforted listening to you talk of happier times. Thank you.

Anne Megeney

Dear Editors

I wish to thank everyone for their kindness in the last few weeks on the death of my husband Alan and especially the church flower arrangers for thinking of leaving the harvest arrangements for the local farmer's funeral. It was greatly appreciated by the family and the farming community who attended the thanksgiving service for Alan's life on 21st October.

Eileen Dronfield

Dear Editors



Harbury Local Market would like to send huge thanks to Helen and Mark Onens at the Shakespeare Inn Harbury who have been so supportive of the market.

From small acorns and all that, starting on Karena's drive with five producers, they offered the use of their pub to hold the market indoors, and it is through them for over a year that we have grown to a point that Harbury Primary School have now offered their hall for the markets as we are having requests for tables of 25 plus every month now.

Without their help, the market would never have grown and we can only thank them for their support of local groups and activities.

We look forward to the village's continued support at the Shakespeare and at the local market every last Saturday, bar December, 10 - 1pm with the Christmas event on 30th November...Santa is visiting!

Regards

Harbury Local Market Team

Dear Editors

We are somewhat overwhelmed and humbled by the generous response of the village to Martin's drive situation. We are very appreciative of the monies raised – a reflection of the caring and supportive village in which we live – with an effective Neighbourhood Watch!

Many thanks

Martin and Family

FREE TO A GOOD HOME! Six Foot Artificial Christmas Tree Complete with Stand and Assembly Instructions. Phone 01926 612427 to arrange collection

BOOKINGS FOR

HARBURY SCOUT HUT	HARBURY VILLAGE CLUB CONCERT ROOM	HARBURY VILLAGE HALL
Naomi Moir Tel: 611966 nandpmoir@googlemail.com	(evenings) Tel: 612498 harburyvillageclub@gmail.co.uk	Celia Neill Tel: 612819 harburyvillagehall@googlemail.com
HARBURY VILLAGE LIBRARY	TOM HAULEY ROOM HARBURY	THR COFFEE MORNINGS
Peter Walshe Tel: 612477 events@harburyvillagelibrary.org.uk	Sally Stringer Tel: 613214 ss74hby@outlook.com	Sarah Brooke-Taylor Tel: 883651 brooketaylor@hotmail.co.uk

CONGRATULATIONS, THANKS AND ACKNOWLEDGEMENTS

If you would like to include:



- A Birthday message
- Congratulations to anyone for their achievement
- Wedding or special occasion wishes
- Thanks to someone



We will be more than happy to include it in the magazine.

There is no charge for this service, just email your message to articles@hlnews.co.uk or drop it into Harbury Pharmacy by the advertised deadline date.



All Saints' Church Harbury Sunday Services

1 st Sunday in the month:	9.00am 10.30am 6.00pm	Sung Eucharist Little Saints Various/Ad hoc (see pew sheet)
2 nd Sunday in the month:	8.00am 10.30am 12.30pm	Said Communion Sung Eucharist Baptisms
3 rd Sunday in the month:	8.00am 10.30am 6.00pm	Said Communion Saints Alive! Informal Communion Service Evensong
4 th Sunday in the month:	8.00am 10.30am 12.30pm	Said Communion Sung Eucharist Baptisms
5 th Sunday in the month:	8.00am 10.30am	Said Communion Sung Eucharist
Every Tuesday:	7.30pm	Weekday Said Communion
Every Thursday:	9.45am	Weekday Said Communion followed by coffee



SILKE DESIGN

*Graphic designer based in Harbury
undertaking all kinds of work including:*

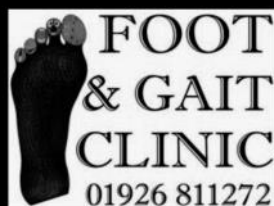
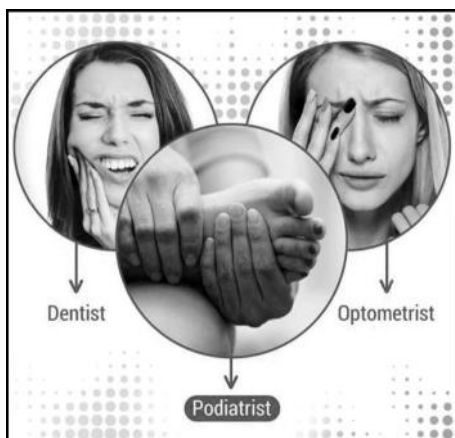
Event invitations and promotional material
Personalised printed clothing and gifts
Logos / re-draws and stationary
Photo editing, enhancing and cropping
Good value freelance rates



katie.silkedesign@gmail.com



07722 466999



*We fix
the feet
others
can't fix*

www.healthfirstsoutham.co.uk

FARMHOUSE B & B & SELF CATERING SUITES



All our rooms have ensuite bathroom, TV & hospitality tray, beamed ceilings, antique furniture and **free and fast wifi**. Prices include breakfast and **onsite parking**.

Church Hill Farm, Lighthorne
Warwickshire CV35 0AR
tel: 01926 651251
mobile: 07780 548981
email: sue@churchhillfarm.co.uk

TOLLGATE FARM, BISHOPS TACHBROOK



Bronze Free Range Turkeys

Traditional Barn Reared

White Turkeys

Free Range Christmas Cockerels

Quality producer for 58 years

01926 651790

www.freerange-turkeys.co.uk

Proprietor Charles Hammond, Tollgate Farm is a member of the Traditional Farm Fresh Turkey Association


LOVE TO DANCE?
 SOUTHAM CLASSES

FREE TRIAL CLASS

Ballet Tap Modern Gymnastics Musical Theatre Street Dance	Commercial Contemporary Mini Movers Funky Dance Cheerleading Adult Classes
--	---

★ confidence ★ fun ★ friendships

Professional Purpose Built Dance Studios in
Southam
www.loveballet.co.uk 07921 853773



FOR ALL
YOUR ROOFING
NEEDS

AJ ROOFING

• NEW ROOFS • REPOINTING • FLAT ROOFS • REPAIRS • GUTTERING ESTABLISHED 16 YEARS	FREE ESTIMATES ALL WORK GUARANTEED INSURANCE WORK NO JOB TOO SMALL
--	---

TEL: 01926 499751
M: 07974 918098
www.ajroofing.org.uk


HARBURY PRE-SCHOOL
 Learning Through Play

Sessions are available at our small, friendly village Pre-School

Harbury Pre-School can offer you and your child:

- Early years provision for children aged 2 years 9 months to school age
- Higher than average staff-child ratios (1:6)
- Dedicated key person allocated to each child
- Links with Harbury CE Primary School
- Direct access to safe outdoor space
- Highly qualified staff team

Open from
8.30am – 3.30pm
from September
Lunch club available

Contact Catherine or Deborah today to find out more or arrange an informal visit.

The Wight School, High Street, Harbury, CV33 9HW
 Telephone: 07907 598461 Email: harburypreschool2@gmail.com
 Visit our website <http://www.harburypre-school.org.uk/>

Registered Charity No. 1027295 Registered Company No. 7322726



TIRED OF SEARCHING THE INTERNET FOR YOUR INSURANCE?

LET YOUR LOCAL BROKER DO THE LEG WORK FOR YOU!

We have been in Southam
with the same staff since 1983
We will be happy to offer you a

Free competitive quote
for all types of insurance

Please contact
Deb, Sue or Hannah on

01926 812574



Reynolds Insurance Services Ltd - Independent Insurance Advisors

5 High Street, Southam. CV47 0HA

enquiries@reynoldsinsurance.co.uk | www.reynoldsinsurance.co.uk

Regulated by the Financial Conduct Authority

Ed's Music Tuition

- Do you want to learn keyboards, guitar or ukulele with a qualified teacher with a passion for music?
- Lessons available for all ages.
- Learning an instrument is rewarding and great fun, and I can help you on your way.
- Fully CRB checked.
- Competitive rates and flexible timetable with lessons tailored to your own individual learning style and needs.
- Tuition in playing, reading music, performance and theory.
- Give me a call to discuss your musical future!



Ed Hudson, Harbury. Mob: 07801 430029
email: eddhudson@me.com



FOR ALL YOUR FENCING NEEDS

New Fences | Replacements
Supply and Fix - Repairs

ALL WORK GUARANTEED

FREE QUOTATIONS



A.J. FENCING

t: 01926 499751

m: 07974 918098



Simons Systems



Available for all your computer requirements including:
 PC's & Laptops, New & used systems, Repairs & upgrades
 Virus/Malware Removal, Data back & Windows re-installation
 Upgrading memory/Hard drives/Rom drives/Graphics, etc
 Internet - modems fitted, wireless, networking.

Any repairs or computer problems. **No call out charge**

T: 01926 316 119 E: sales@simons-systems.co.uk
 M: 07751 811 097 W: www.simons-systems.co.uk

miles of tiles

(midlands) ltd

ceramic . porcelain . natural stone . sanitary ware . bathroom furniture



Leamington Spa

Unit 1-3 St Mary's Road, Sydenham
 Industrial Estate, Leamington Spa,
 CV31 1PR

Email: sales@milessoftiles.co.uk

Tel: 01926 312777

www.milessoftiles.co.uk



Coventry

96-100 Foleshill Road,
 Coventry, Warwickshire
 CV1 4JJ

Email: coventry@milessoftiles.co.uk

Tel: 02476 228800



Rugby

103-107 Albert Street
 Rugby, Warwickshire
 CV21 2SW

Email: rugby@milessoftiles.co.uk

Tel: 01788 546622

Monday to Friday 8am - 5.30pm & Saturday 9am - 5pm

Leamington Spa Store open late night Thursdays!



H&L News

We won't be beaten on price...

Stocked items only and not subject to any other discounts or offers.

20% OFF
 Only with
 this
 advert

Electride



e-Bike Conversions

Fed up of the costs, traffic and pollution of driving? Want an easy and fun way to cycle faster and further?

We can add electric assistance to your existing bike, giving up to 100km range. The conversion is reversible and continues to operate as normal bike too.

Book a conversion through our website, or contact us for more information.

www.electride.co.uk
07512 275550

kit@electride.co.uk
Or on Facebook @ Electride

ADVERTISING IN THE HARBURY & LADBROKE NEWS

Email: advertising@hlnews.co.uk Tel: 01926 612687

ADVERT SIZE	1 MONTH	3 CONSECUTIVE MONTHS	6 CONSECUTIVE MONTHS	12 MONTHS
¼ page	£10.50	£28.00	£51.00	£94.00
½ page	£19.00	£49.00	£90.00	£168.00
Full Page	£33.50	£89.00	£165.00	£315.00

ADVERT WITH PAYMENT TO:

Sue Dronfield, 36 Manor Orchard, Harbury by 20th day of the month
(Cheques payable to 'Harbury & Ladbroke News' or BACS details upon request)



alsters kelley *solicitors*

Alsters Kelley
Southern Office
18 Daventry Street
Southern
CV47 1PH

Are you considering contesting a Will?

If you think you have grounds to dispute a Will, or where someone has died with no Will, it is important that you act as quickly as possible.

Alsters Kelley can help you with your claim and guide you through the complex process:

- ◆ If the Will is unfair
- ◆ When you are excluded
- ◆ Where there is a dispute with the Trustees or Executors
- ◆ If you think the Will is invalid



Call 01926 359355

Neenu Puri
Alsters Kelley Solicitors
neenu.puri@alsterskelley.com

www.alsterskelley.com

Kind, helpful, excellent

GardenAid Services

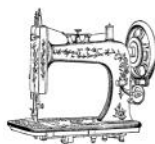
Our services include

- Lawn mowing & edges
- Borders and beds
- Tree, hedges & shrub trimming and pruning
- Leaf clearance
- General garden maintenance

Contact Aid:
Aidsgarden@gmail.com
07447967861



Drop Dead Gorgeous Curtains.



Beautiful Bespoke Curtains, Cushions and Roman Blinds all made to measure.

Curtain alterations and restorations also undertaken. All items are handmade by myself, a fully qualified soft furnisher.

From fabrics to poles, all your needs are catered for. I'm also happy to work with customers own fabric. Free measuring service, no obligation quotes and free curtain fitting and dressing.

Call Sharron for friendly and helpful advice, or to make an appointment on 07760395805 or 01926 718220
Email: dropdeadgorgeouscurtains@gmail.com
www.dropdeadgorgeouscurtains.co.uk
Find me on Facebook and Instagram.

Ever thought of extending your
home?

Does it have the potential to
change?

Do you need more space?

Are you looking for a local design practice that
can prepare proposals for your ideal home?

Contact Chris Hill M.C.I.A.T

Call: 01926 613780 (evenings)

0777 218 9266 (mobile)

Email: chris.hill100@btinternet.com



Goldfinch
Accountants & business advisors

www.goldfinchfs.co.uk
contact@goldfinchfs.co.uk
01926 612 925

- **Accountancy** -
- **VAT (inc Making Tax Digital)** -
- **Bookkeeping** -
- **Corporation Tax** -
- **Payroll** -
- **Business Consultancy** -
- **Personal Tax/Self Assessment** -

**Professional - Reliable
Affordable**

Contact Tom Avery MAAT
tom@goldfinchfs.co.uk
01926 612 925 (Harbury)

Licensed and regulated by the AAT

LOCKMEDICS

Mobile Locksmiths

Upvc - Multipoint locks

All B.S. locks supplied and fitted

Domestic and Commercial

Security Upgrades and Advice

Key Cutting

Tel: 01926 885560

Mob: 07971 818892

www.lockmedics.co.uk



Harbury Reared Pigs

Rare breed pigs, including Gloucester Old Spot and Saddlebacks, reared outdoors with plenty of space.

Sausages available at £3.50 per lb (5-6 large sausages)

- Pork
- Cumberland
- Pork and Chive
- Chilli

Also Gammon steaks in packs of 2 at £3.50- £4.50 and Back Bacon £2.00 per ½ lb.

Call George Clarke- 07733158680 or email: clarkegeorge05@gmail.com

Free Delivery.

Nifty Needle

Curtains and Soft Furnishing

Nifty Needle specialise in creating stylish custom curtains, blinds and soft furnishings, individually designed to create beautiful solutions.

Free measuring service.

At our shop in Kineton we now stock a range of home wares, including lamps, cushions, footstools and other items to accessorise your home.

We're open Tuesday to Friday 9:00am to 5:00pm
and Saturday 9:00am to 2:00pm.

Nifty Needle Curtain Workroom, 1 Banbury Street, Kineton, Warwickshire, CV35 0JS
Tel: 01926 641741 E-mail: info@niftyneedle.co.uk Website: www.niftyneedle.co.uk

Childcare from 3 months to 5 years of age

at Banana Moon Day Nursery Harbury.



Providing a safe, caring environment for children from 3 months to 5 years of age.

- Open 7.30am – 6.30pm
- All major childcare vouchers accepted
- Full-day and half-day sessions available
- Highly experienced, friendly staff
- Sibling discount
- Outdoor learning environment.



Outdoor learning environment



Home-cooked food

To find out more or to book a visit, call **01926 612374** or email info@bananamoon-harbury.co.uk



Banana Moon Day Nursery Harbury
Ivy Lane, Harbury, Warwickshire CV33 9HN
Call us on **01926 612374**
or visit bananamoon-harbury.co.uk

*Subject to terms and conditions. *Government funding available.

Need an Electrician or Plumber? Try our 24 hour Emergency Response Service

ELECTRICAL

- Loss of Power
- Lights/Sockets/Cookers/Showers
- Fuse boards
- Rewiring
- Smoke detectors
- Fault finding
- Security Lighting

PLUMBING

- Burst Pipes
- Leaks
- Boiler Breakdowns
- Heating
- Blocked Toilets
- Blocked soil vent pipes
- Drainage



Tel. 01926 293 515/07856 250 619
www.lightworksservices.co.uk

Card payments accepted. Full T&Cs on website.



Acupuncture, Reiki, Remedial
and Holistic Massage

at *The Petite Retreat*, Harbury

25% OFF
first treatment
with this voucher
Gift vouchers available

Contact **Mireille Hartley** Lic Ac, TRec, MBRCP
Tel. 07970 418936
email. mhartley_33@hotmail.com
visit www.thepetitere retreat.co.uk

A Member of the Alliance of Private Sector Practitioners

Jackie Biddle
Healthy Feet are Happy Feet

Foot Health Practitioner



Dip CHFP MPS Pract
CRB Checked



Home Visits Telephone

T: 01926 612503
M: 07872 907429

HANSONS
Auctioneers and Valuers

**FREE ANTIQUES
VALUATION DAY**



And Painting Restoration Demonstration

Thursday 14th November 10am - 4pm

St Francis of Assisi Church Hall, 110 Warwick Road, Kenilworth CV8 1HL

Charles Hanson - Chinese

Kate Bliss - Jewellery and Silver

Adrian Rathbone - Paintings, Watches & Collectables

Bring along your damaged/ripped/dirty oil painting and

HAYDN ROBERTS will show you how to bring it back to life

Now consigning for the Christmas 2019 Jewellery and Fine Art Auctions
and Specialist Auctions

For further information please contact Carol Jones

Hansons Warwickshire Area Manager on 07802 839915

cjones@hansonsauctioneers.co.uk www.hansonsauctioneers.co.uk

Hansons Auction Centre, Heage Lane, Etwell, Derby DE65 6LS Regulated by RICS

Refreshments in aid of the NSPCC

**Adrian Rathbone will be doing valuations at Harbury
Library on Tuesday 19th November - from 4 - 6pm**

Stratford Landscapes

Garden Design Service
 Paving • Decking
 Natural Stone Paving
 Seeded Lawn Turf
 Driveways • Gravel & Slate
 Limestone Paving Stockist
 Pergolas • Fencing
 & Pruning

Visit the website to see our
 extensive portfolio of projects
 and our customers comments

Contact Dave Lewis
on 01789 721851
or 07990975158

or visit our website **www.stratfordlandscapes.com**

The small garden specialists



Over 25 years experience - classic garden
 design from the small garden specialists



Emily Jayne's

Hair & Beauty Salon

Poplar Road, Bishops Itchington CV47 2RQ - Tel: 01926 611944

*All types of hairdressing services

* Brazilian blow dry

* Luxury facials & Pedicures, Hot stone massages,

* All types of waxing. * Individual lash extensions

* Acrylic & Poly Gel nail extensions

*** SUNBED ***

Why not treat someone this Christmas? Gift vouchers available.

Unisex Salon

Opening hours: Tuesday to Thursday 9am till 7pm

Friday 9am till 6pm Saturday 8.30am till 3pm.

L'ORÉAL
 PROFESSIONNEL

Harbury Village Cinema presents



Sat. November 9th

Doors open 6.15pm Film begins 7pm

Tickets: £10 to include fish'n'chips & 10 raffle tickets

OR £5 to include 10 raffle tickets only

Spare £5 tickets sold on the door

All tickets available in advance from

Harbury Chemist High St.

CV33 9HW 01926 612 858

subject to availability.

Canal Wines Bar.

Any inquiries to: Chris Rutherford
613757

**A VERY HAPPY CHRISTMAS TO YOU ALL
FROM EVERYONE AT HARBURY PHARMACY**

High Street, Harbury

Tel: 01926 612858

**Lots of gifts
for men,
women &
children**

**We are agents
for TOPS dry
cleaners. 10%
discount for 3
or more items
in Nov & Dec**

**Wide
range of
£1
toiletries**

**Photocopier
& Passport
ID photos
available**