

Harbury & Ladbroke News

Is published monthly and reflects all aspects of local life.

October 2017

No.523

Editorial Office

31 Binswood End

☎ 612155

✉ articles@hlnews.co.uk

Article drop off point:
Harbury Pharmacy,
High Street

Advertising Office

36 Manor Orchard

☎ 612687

✉ advertising@hlnews.co.uk

Distribution Manager

49 Mill Street

☎ 612009

✉ distribution@hlnews.co.uk

Inserts by prior arrangement
with the Distribution Manager

IN THIS ISSUE

Page

EDITORIAL	2
HARBURY DIARY & REFUSE ROTA.....	2 - 5
FROM THE RECTOR & CHURCH NEWS	5
LADBROKE NEWS	8
HARBURY PARISH COUNCIL	19
CLUBS & SOCIETIES	21
EARLY YEARS & SCHOOL.....	30
VILLAGE HALL UPDATE	33
GARDENING & NATURE	34
GENERAL SECTION	38
LETTERS TO THE EDITORS	49

Editorial Team

Chris Barber - Chris Finch - Paulette Kavanagh - Peter McDonald
Janice Montague - Jackie West - Katy Wiltshire

*The views of contributors are not necessarily those of the Editorial Team.
The Editors reserve the right to amend articles as they see fit.*



Editorial

The Beer Festival in September was well attended with many people enjoying the sunshine and making the most of the green outside space (see photo).

The Village Hall also hosted the Village Show where there was a good display of vegetables, flowers and crafts. The results and photos are within the magazine.

We would like to thank Judy Morrall for writing the Horticultural Society reports over the last number of years. This month will be her final report for the Society. We are sure that our readers will have enjoyed her articles and tips for places to visit.



There are many events in both villages in the coming weeks – please see the diaries for details. These include the e-Wheels Ceilidh on 28th October, the comedy 'Family Spirit' in Ladbroke on 11th November and Harbury Bonfire and Fireworks Display on 4th November – please see the article and insert should you wish to take advantage of the bonfire material collection service.

Finally, we extend our condolences to the family of Charles Winkfield.

Harbury Diary

OCTOBER

- | | | |
|------|----|---|
| Sat | 7 | Coffee Morning, 10.00am - 12 noon, Tom Hauley Room in aid of Harbury Rugby Football Club (Minis & Juniors)
Quiet Time, 2.00 - 4.00pm, Tom Hauley Room
Southam Bowling Club Quiz Night, 7.30pm, Village Club |
| Sun | 8 | TRINITY XVII
Holy Communion, 8.00am
Sung Eucharist and Children's Church, 10.30am
Messy Church, 3.00 - 5.00pm
Zumba, 9.00 - 10.00am, Village Hall |
| Mon | 9 | Upholstery Class, 9.15am - 11.15am, Village Hall
Martial Arts, 6.30 - 7.30pm, Village Hall |
| Tues | 10 | Holy Communion, 7.30pm
Confirmation Course, 7.30pm, Tom Hauley Room
Pilates, 9.30am, Village Hall
Junior Theatre, 6.30 - 7.30pm, Village Hall |


- Wed 11 Wednesday Walk, meet 9.40am, Village Hall Car Park - Wellesbourne Airfield - Loxley (4 miles flat)
Inspire Dance, 4.30 - 7.00pm, Village Hall
Ballroom Dancing, 7.30 - 9.30pm, Village Hall
- Thurs 12 Holy Communion followed by coffee 9.45am
WI Meeting, 7.45pm, Tom Hauley Room, 'Celebration of Entertainment' with David Moylan
- Fri 13 Pre-School Music Movement, 9.15am -12.15pm, Village Hall
- Sat 14 Coffee Morning, 10.00am - 12 noon, Tom Hauley Room in aid of Great Ormond St. Hospital
Harvest Supper, 7.00 for 7.30pm, Village Hall
- Sun 15 TRINTIY XVIII**
Holy Communion, 8.00am
Saints Alive Harvest Festival all Age Informal Communion Service with School, 10.30am
Evensong, 6.00pm
Zumba, 9.00 - 10.00am, Village Hall
Tennis Club Quiz, 7.30pm, Village Club
- Mon 16 Upholstery Class, 9.15 - 11.15am, Village Hall
Martial Arts, 6.30 - 7.30pm, Village Hall
Harbury Society, 7.30 for 8.00pm, Tom Hauley Room,
Alison Hodge gives illustrated talk on 'The Uniqueness of the Farnborough Parkland'
- Tues 17 Holy Communion, 7.30pm
Confirmation Course, 7.30pm in Tom Hauley Room
Pilates, 9.30 - 11.30am in Village Hall
Junior Theatre, 6.30 - 7.30pm, Village Hall
- Wed 18 Wednesday Walk, meet 9.40am, Village Hall Car Park - Ratley with optional pub lunch (4 miles hilly)
Connections (Dementia) Café, 2.00 - 4.00pm, Tom Hauley Room
Inspire Dance, 4.30 - 7.00pm, Village Hall
Ballroom Dancing, 7.30 - 9.30pm, Village Hall
- Thurs 19 Holy Communion followed by coffee, 9.45am
- Fri 20 Pre-School Music Movement, 9.15am -12.15pm, Village Hall
ADVERTS FOR THE NEXT ISSUE TO 36 MANOR ORCHARD, HARBURY OR EMAIL ADVERTISING@HLNEWS.CO.UK
- Sat 21 Coffee Morning, 10.00am - 12 noon, Tom Hauley Room in aid of Multiple Sclerosis
Harbury Village Cinema presents 'The Sense of an Ending', doors open 6.30pm, film starts 7.00pm, Village Hall
- Sun 22 TRINITY XIX**
Holy Communion, 8.00am
Sung Eucharist and Children's Church, 10.30am
Zumba, 9.00 - 10.00am, Village Hall
- Mon 23 Martial Arts, 6.30 - 7.30pm, Village Hall
- Tues 24 Holy Communion, 7.30pm
Confirmation Course, 7.30pm, Tom Hauley Room
Julian Meeting, 8.00pm

- Tues 24 Pilates, 9.30 - 11.30am, Village Hall
- Wed 25 Wednesday Walk, meet 9.40am, Village Hall Car Park -
Wormleighton (4 miles mostly flat)
Pleasant Pastimes, 2.00 - 4.00pm, Tom Hauley Room
Heritage Group AGM, 8.15pm, Village Club
- Thurs 26 Holy Communion followed by coffee, 9.45am
ARTICLES FOR NEXT ISSUE TO: HARBURY PHARMACY,
HIGH ST OR EMAIL TO ARTICLES@HLNEWS.CO.UK, 5.30PM
Parish Council, 7.30pm, Village Hall
- Fri 27 Myton Hospice Christmas Card Coffee Morning, 10.00am -
12 noon, Tom Hauley Room
- Sat 28 Coffee Morning, 10.00am - 12 noon, Tom Hauley Room in aid
of RNLI
E-Wheels Ceildh/Barn Dance, doors open 7.15, starts 7.30 -
11.30pm, Village Hall (Tickets call 612002)
- Sun 29 TRINITY XX BIBLE SUNDAY**
Holy Communion, 8.00am
Sung Eucharist and Children's Church, 10.30am
Zumba, 9.00 - 10.00am, Village Hall
- Mon 30 Upholstery Class, 9.15 - 11.15am, Village Hall
Martial Arts, 6.30 - 7.30pm, Village Hall
- Tues 31 Holy Communion, 7.30pm
Junior Theatre, 6.30 - 7.30pm, Village Hall

NOVEMBER

- Wed 1 Wednesday Walk, meet 9.40am, Village Hall Car Park -
Baddesley - Wroxall (4 miles flat)
Inspire Dance, 4.30 - 7.00pm, Village Hall
- Thurs 2 Holy Communion followed by coffee, 9.45am
- Sat 4 Coffee Morning, 10.00am - 12 noon, Tom Hauley Room in aid
of Save the Children
Harbury Bonfire & Fireworks, bonfire lit 6.00pm, fireworks 6.30pm,
Harbury Playing Fields
- Sun 5 TRINITY XXI ALL SAINTS DAY**
Holy Communion, 9.00am
Little Saints Service followed by breakfast, 10.30am
Confirmation Service (at Ladbrooke) led by Bishop of Warwick,
10.30am
- Tues 7 Meeting Point, 2.00 - 4.00pm, The Crown Inn
Heritage Room, open 6.30 - 8.30pm, The School
Holy Communion, 7.30pm
- Wed 8 Wednesday Walk, meet 9.40am, Village Hall Car Park -
Lapworth (3 miles flat)
Mothers Union Service, 2.00pm followed by meeting, Tom Hauley
Room
- Thurs 9 Holy Communion followed by coffee, 9.45am
WI Annual Meeting, 7.45pm, Tom Hauley Room
- Sat 11 Coffee Morning, 10.00am - 12 noon, Tom Hauley Room in aid
of Ladbrooke & Deppers Bridge WI
Craft Fayre, 10.00am - 4.00pm, Village Hall

Refuse Collection Rota

	Deppers Bridge	Harbury, Ladbroke & Deppers Bridge outlying properties	Collection Week
October	Wed	Fri	
	11	13	Grey Bin
	18	20	Green & Blue Lid Bins
	25	27	Grey Bin
Nov	1	3	Green & Blue Lid Bins
	8	10	Grey Bin
	15	17	Green & Blue Lid Bins



**All Saints
HARBURY**

From the Rector

Reverend Craig Grocock

The Rectory, Vicarage Lane, Harbury ☎612377 ✉kankudai43@aol.co.uk

Harvest time

I love Harvest time and Harvest Festival. For me there's nothing like the smell of a village church on Harvest Festival when it's full of flowers, fresh fruit and vegetables – wonderful.

Harvest is from the Anglo-Saxon word *hærfest* meaning "Autumn". It then came to refer to the season for reaping and gathering grain and other grown products. The full moon nearest the autumnal equinox is called the Harvest Moon. So, in ancient traditions, Harvest Festivals were traditionally held on or near the Sunday of the Harvest Moon – the moon is the full moon which falls in the month of September.

An early Harvest Festival used to be celebrated at the beginning of the Harvest season on 1st August and was called Lammass, meaning 'loaf Mass'. Farmers made loaves of bread from the fresh wheat crop. These were given to the local church as the Communion bread during a special service thanking God for the harvest. Nowadays the festival is held at the end of harvest time, which varies in different parts of Britain.

Farmers celebrated the end of the harvest with a big meal called a harvest supper. We of course as villages have our harvest suppers too!

The modern British tradition of celebrating Harvest Festival in churches began in 1843, when the Reverend Robert Hawker invited parishioners to a special thanksgiving service at his church at Morwenstow in Cornwall. Victorian hymns such as "We plough the fields and scatter" (the farmers' hymn), "Come ye thankful people, come" and "All things bright and beautiful"

helped popularise his idea of harvest festival and spread the annual custom of decorating churches with home-grown produce for the Harvest Festival service.

At Harvest time we are once again reminded to give thanks for our farmers. Harvest is a particularly difficult and stressful time for them. We are thankful for all they give all year round.

If we don't do this already, let's make a special effort to support them, not only with our thoughts and prayers but by buying locally where we can, from our farm shops and from grocers who stock locally produced fruit and vegetables.

Happy harvest to you all!

From the Registers

Wedding Blessing:

26th August Anthony Nockalls and Diane Cowley

Baptism:

27th August Oscar John McVarish

10th September Toby Moor

24th September Harvey Scott



From the Churchwardens

Liz & Michael

October is the month in our church calendar when we celebrate harvest even though our local harvests may well have been safely gathered in. Our main service of thanksgiving is on Sunday 15th October at 10.30am where we look forward to the school joining in the presentation. If people wish to bring gifts to harvest may we suggest tins or packets that could be taken to the foodbank?

Harvest will also be celebrated at Messy Church on 8th October (3 to 5pm) as well as at the Harvest Supper on Saturday 14th October - tickets may still be available from Felicity Harris. Little Saints will have got in on the act on 1st October at 10.30am too.

We will be sowing rather than reaping in the Memorial Garden as 154 plants are now on order. We will be calling on gardeners to help out with the planting which will be guided by Wendy Crowder. Thank you, Wendy. The grass seeds will also be sown - perhaps the scarecrow from the Messy Church session would be useful here!

And charging straight through November and Advent we arrive at Christmas Eve. The Village Candlelit Carol service has started at 6.30pm since before recorded time - well, for a long time anyway. **This year the service will start at 5.00pm.**

If you have any queries please do not hesitate to contact either of us.

Liz McBride (tel: 612421) or Michael Vincent (tel: 614806)



Mothers' Union

Gillian Hare

Our autumn season started happily with a service in church followed by a tea party. It was good to welcome some visitors to join us.

We send our condolences to Betty Winkfield on the death of her husband.

October's meeting – before you read this – will have featured a crime prevention talk.

Next meeting: 1st November – this will be our brief AGM followed by a social time.



Little Saints

Little Saints is a service for babies, toddlers, pre-schoolers and their carers. It takes place in church at 10:30am on the first Sunday of every month and lasts approx. 20mins. We tell a story, sing a song and do a craft activity before enjoying brunch together in the Tom Hauley Room. All are welcome to join us.

5th November 2017 - Remember Remember

3rd December 2017 - Christmas is coming

www.allsaintsharbury.org



Rev Nikki Moon



HARBURY SURGERY MILL STREET, HARBURY

Surgery opening hours:

Monday to Friday 8.30am - 12.30pm and 1.30 - 6.30pm

Appointments can be made by telephoning 612232 or calling in at reception.

Online services are also available to book appointments, order prescriptions or to view your patient record - please ask reception staff for more details.

For out of hours emergency service call: 111

Ladbroke News & Diary

<http://www.ladbroke-pc.org.uk>

OCTOBER

Sat 7 Quiz Night, 7.30pm, Village Hall

Sun 8 Trinity XVII

Holy Communion (sung), 9.00am

Mon 9 Homegroup, 8.00pm, 2 Hedges Close

Wed 11 Table Tennis, 7.00 - 8.00pm, Village Hall

Thurs 12 Yoga, 6.30 - 7.15pm, Village Hall

Sun 15 Trinity XVIII

Holy Communion (BCP), 9.00am

Wed 18 Table Tennis, 7.00 - 8.00pm, Village Hall

Thurs 19 Yoga, 6.30 - 7.15pm, Village Hall

Fri 20 Coffee Morning, 10.30am - 12.30pm, Village Hall, in aid of Agnes Court Home Banbury (Leonard Cheshire Disability)
ADVERTS FOR THE NEXT ISSUE TO 36 MANOR ORCHARD, HARBURY OR EMAIL ADVERTISING@HLNEWS.CO.UK

Sat 21 Harvest Supper, 7.00pm, Village Hall

Sun 22 Trinity XIX

Holy Communion (sung), 9.00am

Mon 23 Homegroup, 8.00pm, 2 Hedges Close

Wed 25 Table Tennis, 7.00 - 8.00pm, Village Hall

Thurs 26 ARTICLES FOR NEXT ISSUE TO: HARBURY PHARMACY, HIGH ST OR EMAIL TO ARTICLES@HLNEWS.CO.UK BY 5.30PM

Yoga, 6.30 - 7.15pm, Village Hall

Sun 29 Bible Sunday

Holy Communion (said service), 9.00am

NOVEMBER

Wed 1 Table Tennis, 7.00 - 8.00pm, Village Hall

Thurs 2 Yoga, 6.00 - 6.45pm, Village Hall

WI, 7.30pm, Village Hall

Sun 5 All Saints Patronal Festival

Confirmation Service (including Family Communion) 10.30am, followed by refreshments

Mon 6 Homegroup, 8.00pm, 2 Hedges Close

Tues 7 Photography Club, 7.30pm, Village Hall

Wed 8 Parish Council Meeting, 7.45pm, Village Hall

Thurs 9 Yoga, 6.30 - 7.15pm, Village Hall

Fri 10 Coffee, Cake & Shoeboxes, 10.00am - noon, Village Hall

Sat 11 Play, 'Family Spirit', 7.30pm, Village Hall

Sun 12 Remembrance Sunday

3.00pm Village Remembrance Service (NB no morning service at Ladbroke, 8.00am Communion at Harbury)



Ladbroke Church News

Peter Rigby

What makes a “healthy” Church? And how “healthy” is our church? These are questions that Reverend Craig posed at our service on 24th September. According to a group led by the aptly named Christian Schwarz that has researched over 70,000 churches across 86 different countries, the answer to the first question is “8 Essential Qualities”. You can find out what these are at <http://www.dioceseofcoventry.org/HealthyChurches/Definingthe8EQs>

We are currently looking at these 8EQs in the Home Group which meets on alternate Monday evenings and to help us discover the answer to the second question we shall be completing a questionnaire during our service on 29th October. All views are welcome, so do come along either to the Home Group or to that service. If you are unable to come that day, but would like to take part in the questionnaire, please ask Jackie or Peter for a form.

The Heritage Open Days on 8th – 10th September were well attended with around 80 visitors, some from quite far afield. A special thanks to Jackie and Linda for all their hard work and the ladies on refreshments too. Thanks also to those who helped at and attended the coffee morning at the Tom Hauley Room on 23rd September.

By the time you read this our Harvest Festival Service will have happened but the Harvest Supper has now been rearranged for Saturday 21st October in the Village Hall; we hope that you will join us. Looking ahead to November, we will be welcoming Bishop John on Sunday 5th for a Confirmation Service at 10.30am. The following Sunday (12th November) there will be no 9.00 am service but we shall be holding a Service of Remembrance at 3.00pm.

From the Registers

Baptism

3rd September

Ted Jaxon Russell

Funeral

6th September

Charles Winkfield

November Edition - Harbury & Ladbroke News

Adverts to: 36 Manor Orchard, Harbury or e-mail to advertising@hlnews.co.uk by 20th October

Articles to: Harbury Pharmacy, High Street or e-mail to articles@hlnews.co.uk by 5.30pm, Thursday 26th October



Ladbroke Parish Council

Jackie West

This is a summary of key information from the meeting on 13th September. The formal minutes taken by the clerk will be put on the noticeboard by the pub and on the village website in due course.

New Councillor: Erica Kemp has been co-opted into the vacant position of our fifth parish councillor.

Defibrillator: Although no training is needed to use the defibrillator on the wall of the Village Hall, as the 999 operator and the machine itself will talk you through, awareness training has been investigated. It is not cheap, but thought valuable for both individuals and representatives from village organisations to know how it works etc, and therefore a good use of Parish Council funds. Training on a Saturday is to be provisionally organised but only progressed if sufficient people sign up.

SDC: Chris Williams advised that while a Housing Needs Survey is not legally required, each parish should have one done every five years so Ladbroke's credibility is affected by us not having an up to date one, also when planning applications are considered there is no evidence whether the proposed new houses are needed or not. The surveys are organised and paid for by Warwickshire Rural Community Council. This triggered a debate that while they were supposed to identify the needs for local people, eg children who have grown up in the village, people wanting to downsize, our experience of social housing is that any such local restrictions on their residents are soon lost. Cllr Williams will provide an example of a survey for further discussion and feedback from other parish councils will also be sought.

WCC: Brief extracts of Bob Steven's report were read out in his absence. Children's Centres (which are actually family outreach centres rather than nurseries) are under review. Road disruption around Southam is expected to continue.

Planning: The council will object to the proposal for two 6-bedroom houses behind The Bell Inn and encouraged residents to send in their own comments on-line or in writing. They had no objections to removal of a dead tree at the Lares. SDC had approved changes at Sarah's Cottage and planning permission was granted on appeal at Oaklee.

Councillors raised major concerns about missing planning notifications from SDC - Ladbroke Parish Council had not received any notification for two tree applications at Sarah's Cottage and Sycamores (now decided by SDC) nor a full planning application at the Lares (in its ninth week, but still pending). In addition, no site notice had been seen for the latter and at least one neighbour notification for the houses behind The Bell Inn had intentionally not been sent. They also questioned why the Planning Department had rejected a number of proposals, supported locally and allowed without change on

appeal, surely a waste of taxpayers' money. This was partially attributed to a high turnover of planners and lack of experience of planning in a rural district by new ones.

The notification procedure for planning applications is changing; rather than automatically sending a paper copy to the parish council an emailed notification will be sent. A paper copy is available on request but our councillors would prefer to be sent a pdf file.

Highways & footpaths: Karen Arnold, a local horse rider raised concerns about the proposed kissing gate at the end of Windmill Lane. Councillors said they had proposed this as a more accessible solution to the current barrier put up by a nearby resident. Mrs Arnold advised that as an E road, access should not be restricted and if a barrier was needed for safety reasons to consider parallel rails as erected where Radbourne Lane joins the by-pass, as this allowed access to all. Councillors were still seeking the definitive status of the "rusticated" parts of both Windmill Lane and Radbourne Lane near the bypass on the village side and agreed to re-reconsider the type of access needed at the end of Windmill Lane.

The drains near the church are still blocked.

Flooding: Cllrs Batty and Neal would be attending a meeting on 19th September with WCC. The money allocated three years ago (approx £50,000) must be spent this financial year or it will be lost so if the meeting does not have a definitive plan matching this timescale, the parish council will escalate the issue again.

Village Hall & Millennium Green: The council approved a grant of £1500 towards the new windows in the hall. The annual safety inspection of on the green has identified only minor issues. The next fundraising events are a quiz on 7th October and a play on 11th November.

Broadband: Ductworks continue and there is no date yet when users will be able to obtain fibre to the home if they wish.

Fly tipping: Old plaster, aluminium strips etc. had been dumped near the end of Windmill Lane. It had been reported to SDC and villagers were asked to watch out for an unexpected van entering Windmill Lane from the village for this purpose in future.

School Transport Consultation: The proposals for reduced services can be found at https://askwarks.wordpress.com/2017/09/06/home-to-school-transport-consultation/?preview_id=3397&preview_nonce=d949525954&preview=true.

Responses need to be in by 2nd November.

Next meeting: Wednesday 8th November at 7.45pm.



At our meeting on Thursday, 7th September we were treated to a truly inspirational lady, Viv, who had been the instigator and founder of a local school for children who are not able to cope with main stream education.

Viv and Fred Morgan's original contact with the Education Authority was to supply curtains and blinds to

schools from their 10 bedroomed bed and breakfast. However, they wished to see their large house put to better use and in 2012, moved by the newspaper story of a young girl who had thrown herself off a bridge because she could no longer cope with constant bullying, Viv persuaded the Education Authority to provide some funding and allow her to turn the house into a school for bullied children

Viv then recounted the experiences of some of the children. It is obvious that she has intimate knowledge of every child and approaches each set of problems with empathy, understanding, patience and just plain common sense. One girl who came to the school had thrown her books away and had bald patches where her hair had been pulled out; a boy had been subjected to beatings and Facebook bullying and had barricaded himself in his room; a low academic boy was badly disturbed and a 14 year old girl wondered 'what she was for'. Over half of the children had attempted suicide.

Each child is allowed to emerge from their anxiety at their own pace and many go on to further education, sixth form college and even university. The badly disturbed boy was found to be a good cook and he was able to take over the school's flock of chickens. All these children need is a chance to fulfil their potential and Northleigh School certainly seems to have what it takes to provide this chance.

There are 26, mainly part time, teachers and the school offers a basic curriculum of English, Maths, Sciences, and IT to GCSE level with individual needs, like photography, art, dressmaking and dance catered for.

Accompanying Viv was her dog, Ben, and apparently the school psychologist said that Ben can turn a child round in three minutes where it takes him upwards of 1½ hours!

The school won a Pride of Britain award and television cameras spent the day in the school to the excitement of many of the pupils.

Sadly, Fred died in July but Viv remains committed to this amazingly worthwhile enterprise. The Local Authority pays for the running costs but not for any extras so Viv, now in her 70s, as well as taking an active part in the running of the school, is fundraising as she is determined that 'it will live forever'.

I came away from that meeting in wonderment at the force of personality of Viv and Fred which persuaded the educational establishment to give two unqualified people the chance to help these vulnerable children. There have now been more than 50 through the school and I can only imagine the relief not only of the children but also their parents that their lives have been able to be turned around.

People wishing to know more can contact Viv on viv@northleigh.co.uk or see the school at www.northleigh.co.uk

Business Meeting

Dianne thanked Sue Moore for arranging the recent outing to the Sikh Temple in Leamington Spa. It was most interesting to have a guided tour of the building and learn something about their religion.

Future Events:

Pudding Party: As you know we are 45 years old this year and to celebrate we are having a pudding party on Thursday 12th October. The committee will provide some delicious puddings for your delectation so I do hope that you will come along to our birthday bash - there may be a few surprises! Please note that the starting time will be 8.00pm.

December Social - The date of this has been changed to 14th December to allow any members to go on the WFWI outing to Bath and the Christmas market.

Group Carol Service - Monday 11th December – we are hosting here in Ladbroke church.

NFWI Open Days, London - 22nd November 2017 and 23rd November 2017

Historic Bath & Christmas Market - Thursday 7th December, 9.30am, Tesco, £25 (leave Bath 7.00pm)

Tai Chi - Monday 15th January 2018, Newton Regis Village Hall, 10.30am-12.30pm, £8

Indoor Bowls - Monday 22nd January, Lapworth Village Hall, 10.30am-12.30pm, £8

Centenary Cook Book Launch Lunch - Wednesday 24th January, Dallas Burston Polo Ground, 11.30am for 12.00 noon, £32 (Jonathan Moseley will be demonstrating his floral table centres)

Richard III Talk - (the discovery and identification) Tuesday 30th January, Leamington Spa Baptist Church, 7.30pm, £8

Denman, WFWI Weekend - Friday 15th to Sunday 17th June 2018. Those who are keen to go would be well advised to book early to avoid disappointment. Included this year is a gala dinner to celebrate the centenary. Bookings are made individually with WFWI and please note that the deposit is non-refundable once a place has been offered (insurance is recommended).

Date of Next Meeting: Thursday 7th October will be the AGM starting at 7.30pm when we will enjoy cheese and wine so please come and support our committee.



Ladbroke Matters

David Wright

The Ladbroke Matters team is responsible for the upkeep of the Village Hall and Millennium Green. To help with this we organise regular fundraising events so that we can continue to offer both of these resources for the benefit of our community.



Saturday 7th October is the time for the annual **Ladbroke Village Hall Quiz**. Starting at 7.30pm, the evening will include a mini fish supper and a bar. Tables will be for four quizzers but we are happy to take other numbers and match people as necessary to make up full teams. To book your tickets or for more details call either Martin on 812668 or Helen on 814516.



The thespians and backstage crew are hard at work learning their lines and designing props for our drama production on **Saturday 11th November** - Pat Wollaston's comedy 'Family Spirit' in **Ladbroke Village Hall**.

When Arthur dies, he's a little surprised to find that he's still in his old house. His guide angel, Simon, explains that he's being assessed to determine which way he goes next, but there are a few complications between Arthur's funeral and his final destination.

Curtain up at 7.30pm. Tickets £12 to include a drink on arrival - there will be a bar. Contact Kip on 815004 for tickets and information.



Our next supper and film extravaganza will be a Christmas special on **Friday 8th December** and we have already taken some bookings! More details will be available nearer the time, but you'll need to be quick to book as places are limited! Email Nicky (nicolalewis24@tiscali.co.uk) if you would like to be added to the film night email list.



Next year we are hoping to have one of our popular safari suppers on **Saturday 27th January**. Watch this space for more details!

If you would like to join the Ladbroke Matters team, have any suggestions for future events, or any other comments please contact the trustees (details on the Ladbroke website).

Ladbroke Village Hall Millennium Club

August 2017

£50	Elaine Taylor	£50	Rob Kendall
£25	Kate Liverton	£25	Russell Griffith
£25	Cyril Spence	£10	Clive Coleman
£10	Kip and Mif Warr	£10	Simon and Jackie West
£10	Jill Norgate	£10	Trevor and Jan Jay

Margaret Bosworth



Ladbroke Photography Club

Jackie West

Members shared some of their best images at our September meeting. Everyone spread out a selection of their prints on the tables at the Village Hall from which we shortlisted two per photographer for our exhibition. The standard this year meant it was no easy task but Mike Todman kept us focussed to the end. If you would like to see our exhibition it is part of the John Turner Festival at Southam College on Saturday 4th November, this year there is no entry charge, which is ideal for popping in to look at our photos, though I'm sure the organisers hope you will stay a while longer.

The second half of the meeting required no difficult decisions, we sat back and saw the results of our August meeting - taking pictures at Ladbroke Church, followed by the Oxford Challenge to capture four aspects of the city -



Tourists' Oxford by Mike Todman



**Oxford Character by
Maggie Watts**

as a tourist destination, academic institution, a place where time goes slow and Oxford characters, here are just a couple of examples - though of course we saw them on the big screen in colour! If small black and white images and snippets about our meetings in HLNews reports have whetted your appetite for more, why not come along and join us on the first Tuesday evening each month. For more information look at our website (tinyurl.com/ladbrokephoto) or contact jackieszone-photogclub@yahoo.co.uk



Ladbroke General Section

Tribute to Charles Winkfield 1930 - 2017

Charles was born in Manchester in November 1930, which is strange to think really as he couldn't abide townies. When he was four years old his parents moved to Stratford-upon-Avon; his school years were spent there and he won a scholarship to Stratford Grammar School. He should have matriculated in his school certificate but failed oral French, funny how that was repeated two generations later! However Charles did excel in mathematics, a talent he passed on to his daughter and granddaughter. For a present, one year, Trish bought him a calculator; he did use it on several occasions but always had to check its calculations and make sure it was right. At an all boys school, sports could be pretty tough and Charles broke his nose while boxing and sustained various injuries playing rugby. However he was excellent at cricket, a sport he loved and continued to love throughout his life. One year Charles and his mother went to visit relations in Devon and he was invited to join his cousins on their village cricket team. He was no mean bowler and the way his mum told the story he must have bowled the opposition out for a duck, needless to say the Devon boys wanted to know when he was coming back.

Charles learnt to love farming at his grandfather's farm, Crowleys at Ullinshall, just outside Henley-in-Arden so, although he had done well at school, when he left aged 18, he started work as a farm labourer. Labour was the right word, hoeing in the field by hand in the blazing sun and carrying 2cwt sacks of corn up into lofts was tough work, he latterly blamed his arthritis troubles on that job. The next farmer he worked for encouraged him to go to Morton Morrell Agricultural College and it was there he met Derek Smith, late of Hodnell Manor. After college, Charles worked at a farm just outside Evesham and joined the Inkberrow Young Farmers Club where he met Betty. Having got the right answers to two important questions, "What religion are you?" and "Can you milk a cow?" Charles went on to marry Betty in 1956 and their children Doug and Trish were born a few years later.

Charles dreamed of buying his own farm and with their joint resources, a mortgage and £100 overdraft limit he and Betty managed to buy eight acre Crab Tree Farm in Bidford-on-Avon for £4000. They had no mains water, drainage nor any electricity until they clubbed together with three other properties to get the latter installed. They did have 1000 hens, 25 ewes,

eight sows and a "house cow" with more milk than the family needed so, with the help of a cream separator and a Calor gas fridge, they sold cream at the door along with most of the eggs and dressed poultry and, in autumn, apples, pears, plums and damsons from their four acre orchard.

Charles still wanted a "proper" farm and in 1962 bought 76 acres of grassland in Elmley Castle just outside Evesham and the family squeezed into a caravan, parked in a barn while the house was built. Then came the winter of 1963, it snowed on Boxing Day and froze until Easter at the end of which Charles and Betty were nearly bankrupt and were forced to sell up. Charles went to work for a poultry farmer just outside Balsall Common - it was hard going with just free eggs, a pint of milk and about £10 a week in wages. All the while Charles was looking for somewhere else and one day the pint of milk was covered by a page of the Banbury Guardian with an advert for the auction of a farm in Shutford, 60 acres of grassland, a milking parlour and a four bedroom thatched house. Charles bought it, Trish and Doug went to school there and Betty became the district nurse. Charles milked about 30 cows (you could make a living with 30 cows then) and he also had 50 ewes and a couple of sows. He and Betty were approached by agents for a buyer offering above the going rate for the farm so they decided to look for another one quickly and bought Hall Farm, Ladbroke at an auction in Rugby.

Life still wasn't easy. Charles bought some in-pig sows. The first thing they did when they got off the lorry was roll in wet manure from the pig farm at Garden Cottage which was diseased so all the piglets were born dead. Through perseverance and trial and error Charles found that rearing calves on the bucket 25 at a time, to 18 months and selling them on and having a flock of 250 ewes which lambed in February was the best way of making things pay. It was tough but they were happy years.

In his mid 60s Charles' lifelong physical hard labour started to catch up with him and he had his first hip operation, it was expected to last 10 years. All in all he had five operations but it wasn't until he was around 80 that his life changed to reading, television, supporting and offering advice to his children and grandchildren. He died on 20th August 2017.

Edited from the Family tribute at Charles' Memorial Service

Heritage Open Days 2018

Is that a misprint you may be wondering? No, after the success of this year's event we are already starting to think about the next one and, since 2018 will be the centenary of the end of World War 1, our topic is going to be War and Peace. Ladbroke has an unusual war memorial in that it lists not only the nine men who died in WWI but a further 32 who survived and we would like to include information on all 41 of them in next year's exhibition. Obviously finding out about so many previous residents of Ladbroke is a big task so we are looking for help from others to research them. If you are interested in this please contact Linda Doyle on linda@allhistoric.co.uk

Linda Doyle & Jackie West

Coffee Morning

As many of you know, our son-in-law, Sasha, suffered two catastrophic strokes in January and February this year. We are so grateful for all your thoughts and prayers over these last, long nine months. Sasha is now happily settled – as far as we are able to tell – and well cared for, in Agnes Court, a Leonard Cheshire Home, in Banbury.

The Friends of Agnes Court raise money to provide extras, for example - equipment for the gym, residents' outings and garden projects.

To help with this I am holding a **Coffee Morning in Ladbroke Village Hall on Friday 20th October from 10.30am - 12.30pm.**

Donations of cakes, jams and pickles, raffle prizes, books and bric-a-brac would be gratefully received.

Please come and support this event and men would be particularly welcome!

Carol Lane (Telephone 814715)

Strange Calls in Ladbroke

Did you hear the loud intermittent "hoy.....hoy" after dark last month? Walking home around 9.30pm on Monday 18th September I wondered if someone was in distress and suggested to Simon that we should walk around the block to check but he thought it was coming from further away across the fields. And that proved right, a few clicks on the computer confirmed it was a muntjac deer barking. The animal was still around and calling on subsequent evenings. Perhaps you heard it too.

Jackie West



Ladbroke Harvest Supper

Our Harvest Supper is now planned for Saturday 21st October at 7pm in Ladbroke Village Hall. Tickets will be £10 to include a delicious two course meal with either tea or coffee. All are welcome, please bring your own liquid refreshment, glasses are provided. Tickets are available from either Sue Lord 815153 or Margie Bosworth 817312.

Margaret Bosworth



Love in a box

Please join us on Friday 10th November from 10.00am till 12.00 noon in Ladbroke Village Hall for coffee, cake and shoe boxes!! We will be joining the Christian charity Teams4u in their campaign to 'Give Love in a box this Christmas'.

As in previous years we will be filling boxes for boys, girls and families who otherwise wouldn't receive a gift this Christmas. Information about items to be included can be found on the Teams4u website www.teams4u.com or contact me if you haven't been along before and would like some help with ideas.

If you aren't able to come but would like to contribute items, please feel free to bring them to me, Sue Wright (Cherry Trees, School Lane, Ladbroke), in advance. Each box needs to be accompanied by £2 for travel costs so any money donations will also be greatly appreciated.

Contact Sue Wright if you need more information: Tel: 01926 811874, Mobile: 07768 333675, Email: suewright21@gmail.com

Sue Wright

Freestyle Fitness Yoga

Fitness Freestyle Yoga is a fitness program that incorporates stretch, strength and Yoga postures. Every element of FFY is validated from a fitness perspective. Any one taking part in a FFY class can expect to improve their strength and flexibility. I hope you can join me early on Thursday evenings in Ladbroke Village Hall, for times see the Ladbroke Diary.

Rachel Coggins

	<h2>Harbury Parish Council</h2>	<p>Linda Ridgley</p>
--	--	-----------------------------

Official minutes can be viewed in the Library, on the Parish Council website www.harbury-pc.gov.uk or obtained from the Parish Clerk, Tel: 01926 614646

Extraordinary Meeting - 7th September 2017

Over thirty villagers turned out to give the Parish Council their views on the Spitfire developer's plans to build on the Old Orchard behind Wissett Lodge. Tim Lockley confirmed Harbury had more than achieved the additional housing total (113 dwellings), set by Stratford District. The yet to be adopted Neighbourhood Plan made it more difficult to object to developments within the village, as it specifically forbade building beyond the tightly drawn village boundary and this site was inside it. He appealed for any historic records showing the orchard as part of the Wissett Lodge estate, as residents had asserted.

Parish Councillor Summers gave an explanation about the land ownership as her family had lived in Ivy Cottage for many years when Mr Sperling owned Wissett Lodge. Residents' objections were many, varied and detailed. The Roberts, from Wissett Lodge, said they had a right of access over the driveway to the rear of their property; and the Ivy Cottage resident complained her home was to be demolished, the tree plan was incorrect and

there were bats roosting. Rev Craig wanted the PC to support the villagers because the plans did not provide the affordable homes local people needed; there were suggestions the village could buy the land for a community orchard. Ken Stephenson summed up the difficulties – the space belonged to the village but the land was owned by others.

There were many concerns about the loss of the wildlife, the orchard and forest trees. Many residents maintained the site and tree plans were incorrect and that trees in their gardens were scheduled to be reduced to their great detriment. Mr Mayer had appealed to Stratford's Enforcement Officer because the canopy of the ash tree, to be retained, had been reduced before any permission had been given. Although the tree was now smaller it would suffer as its roots would extend under some of the houses proposed and this would compromise its survival.

Other residents were concerned about Highways management. County Highways had commented that plans of the vision splays onto Vicarage Lane were inaccurate but not yet given their final views. Harbury Society requested that, should the plans be approved, any construction traffic should be routed away from the village centre and Church Street, citing the recent damage done to Greens and verges by other developers' HGVs.

Cllr Gibb criticised Spitfire's estimate of traffic movements generated by the site, (only 7 in the morning rush and 8 in the evening). There would be ten houses, some with 4 bedrooms. He estimated the vehicle numbers would be more like 20 in the morning, 20 in the evening, plus "they would all drive down Church Street to the Co-op!

The Chairman pointed out to Councillors that if the Council did object, one of them would then have to justify their views when District Councillors judged the application. However, he went on to list what he thought were important points: Harbury had exceeded its housing total and was being overwhelmed with 10% extra growth in a short space of time, no affordable housing was to be provided for the village, the site was within the historic curtilage of Wissett Lodge and would do demonstrable damage to the Conservation Area and resident's fears about the trees and biodiversity were valid. The Council should also draw attention to the Highways concerns and consider what representations to make about the threats to the trees and the building materials specified. They did not want inappropriate stone used as on other recent estates.

The Councillors, with one exception, voted to object to the application. On other planning issues, they had no objection to plans to extend 6 Wagstaffe Close or for amendments to the site layout at the Quarries development. However, they had a dilemma over the latest full planning application for the Henry's site where most unusually the Planning Officer had asked them to withdraw their objection.

Cllrs were amazed as this was a full application and thus subject to consideration against the already achieved housing quota. They did not initially see why they should withdraw their previous objection. The developer claimed the footprint of the "bungalows" was little changed from his previous application; the roadside hedge that in the permission granted had to be

retained had been grubbed out because it was “a garden hedge”. Cllr Gibb did not want to create a precedent by not objecting as the housing total had been exceeded but Cllr Summers counselled her colleagues to withdraw their objection which they agreed to do.

The Council's final decision was to pay £295 to replace the junior football goal crossbar damaged by a group of young boys, three of whom had offered to contribute to the costs.



Harbury Society

Linda Ridgley

Guided Tour of Guys Cliffe Walled Garden

In 1716 the Greatheeds owned Guys Cliffe House and work began on the walled garden in 1773. Barry Meatyard likened it to a supermarket for the Big House. In the 1930's there were three family members in the big house and 17 staff! The field behind the Garden was augmented with an ornamental canal which helped to keep the run-off from flooding the site.

When the volunteers took over the Garden in January 2014, it was overgrown with scrub, ivy and trees. Now in its second full season it is a riot of autumn flowering plants and vegetables, with fruit trees, a fernery and proper paths laid out as near to the original scheme as possible.

In the intervening three years they have cleared the ground, ploughed and rotavated it, marked out the structure and planted as many heritage plants, vegetables, fruit trees and shrubs as they could match to the originals. They installed a water system, put a temporary cover over the ruined Melon House of the 1830's and hope to save the Peach House too.

They found the soil quite fertile but have enhanced it with horse and alpaca manure! The volunteers continue to remove the rampant horsetail weeds, the record length of which was 37"! They recently built cages for the brassicas to stop the predation of pigeons and Cabbage White Butterflies. However, they do encourage beneficial wildlife and have recorded six species of bumble bees this year.

Fruit trees (heritage varieties used in the original garden like the Charles Ross Apple) are espaliered or fan trained on wires at the back of borders and on the old brick walls. One of the next big jobs will be to repair the coping on these walls using original clay tiles and local stone.

Volunteers provide fresh vegetables in season on sale in the small wooden building at the entrance to Hintons. I bought a huge spaghetti squash for 50p!

Our Next Events (both in the Tom Hauley Room 7.30-9.30pm) are:

Monday 16th October:- The Uniqueness of the Farnborough Hall Landscape by Alison Hodge.

Tuesday 21st November:- Barry Franklin on the WW2 Camouflage Unit in Leamington Spa.

We couldn't get enough of Marie Rowe, our inspiring September speaker - she'll just have to come back. A gifted presenter, candid and brimming with enthusiasm, she entertained us with anecdotes and lessons learned during her progress from shorthand typist in Coventry to writer, casting director, publicist, producer and actress in Hollywood. We enjoyed her behind-the-scenes tales from familiar films she'd worked on with the director, Barry Levinson, including the award-winning "Good Morning, Vietnam", "Rain Man", "Disclosure" and "Avalon". Lots of name-dropping, but why not when you can dish the dirt on Dustin Hoffman, Tom Cruise, Robin Williams, Robert DeNiro, Warren Beatty, Al Pacino, Michael Douglas and Anthony Hopkins ... ?

WFWI has asked all WIs to nominate two local charities for support. The two most popular county-wide will be supported throughout 2018, as part of the centenary activities. We've suggested Mollie's Wishes and Myton Hospice.

Following our talk in April about Female Genital Mutilation, Norma wrote on our behalf to both the Warwickshire and the National Federations of WIs, urging more attention be paid to eradicating FGM. Turned into an article, her letter appeared in this month's *Corunna News*, the magazine of WFWI.

Thanks to all who supported our first Village Cinema show last month, and helped with it. 100 years ago, women in the newly formed Harbury WI sewed gloves from rabbits they'd caught and skinned, and got things done about drains - in line with the fledgling organisation's aims to encourage women to learn new skills and to work on issues that mattered to them and their communities. These aims remain at the heart of the WI, so although we may now buy our gloves online, we still campaign, learn and seek to add value to the life of the village. Naturally, we like to have fun while doing that, so we're delighted to have the chance to keep the film shows going.

Members News...

Harbury WI

Female Genital Mutilation: A plea to all WIs

In April, Harbury WI had an illustrated talk on FGM by Alison Byrne, a midwife working in Birmingham. She sees the effects of this terrible ordeal daily, and is one of the top midwives in the field. Women sufferers often cannot give birth safely without surgical intervention. Alison conducts these operations, and trains other medical staff.

Because Alison is appalled by FGM she, other midwives and health departments are publicising it, in the hope of ending such a pitiless act.

It is an ordeal which affects the girls physically and mentally for life.

This is not a religious practice, but an ancient cultural one. It is illegal in Britain and Europe, so mothers and grandmothers send their little girls from the

UK back to their homelands for the procedure.

Alison and her colleagues are happy to give talks about FGM, and have approached many WIs, yet it seems only a handful have taken up the offer. Ignorance is not always bliss, and as women of the free world, we should do more to help those less fortunate than ourselves. Every woman has the right to a good and healthy life, no matter where in the world she lives.

Although the stories and photographs she shared were shocking, all of us knew it was right for us to understand FGM. The NFWI is one of the largest women's groups in the world, so if every WI became more aware of FGM and its effects, we could help to stop it. We urge WIs to invite professionals such as Alison Byrne to help them find out about it.



Next up is *The Sense of an Ending* (15) on Saturday 21st October. Adapted from Julian Barnes's Man Booker prize-winning novel, the movie stars Jim Broadbent, Harriet Walter and Charlotte Rampling. Ritesh Batra directs. It's a subtle romantic mystery, revolving around the reclusive Tony, who becomes haunted by his past, following a strange legacy from the mother of a previous girlfriend.

Admission is £10.00 with fish "n" chips, or £5.00 without. Both include 10 free raffle tickets. There'll be refreshments, and Cana Wines will provide a bar. Tickets from Harbury Pharmacy (01926 612858). The closing date for £10.00 tickets is 5pm on Thursday 19th October. Any £5.00 tickets remaining after this point will be available on the door. However, shows often sell out before then, so be sure to **buy your tickets well in advance.**



**Charlotte Rampling & Jim Broadbent star in
The Sense of an Ending**

Forthcoming Village Cinema dates are 21st October 2017, 11th November 2017, 13th January 2018, 24th February 2018.

Other WI dates for your calendar:

- Thursday 12th October 7.30 for 7.45pm, - General Meeting, with David Moylan, magician at Warwick Castle - *Celebration of Entertainment and Entertainers of Days Gone By* (jokes, songs, magic) www.facebook.com/magicdavemoylan
- Thursday 9th November 7.30 for 7.45pm, - Harbury WI AGM
- Monday 11th December 7.30pm Ladbroke Church - Southam Group of WIs Carol Service
- Thursday 14th December 7.30 for 7.45pm, Gift presentation ideas with Alan Keech - *Thoughtfully Wrapped* - www.thoughtfullywrapped.com

Harbury WI meets at the Tom Hauley Room, 7.30 for 7.45pm, on the second Thursday of the month. All women are welcome, whether it's to hear a particular speaker, or to see if WI is for you. Contact us on harburywi@gmail.com, or 07834 667 523. You can also keep up to date on our Facebook page - www.facebook.com/harbury



Harbury Theatre Group

Brian Wade

We've jumped off the diving board and the water is rapidly approaching. We know that we're going to enter the water but we're not sure how it's going to turn out. It's a bit like that with producing the pantomime; the plans are in place but the details need to be filled out. Merlin has one of the largest casts Harbury Theatre Group has ever assembled. We have twenty-two adult actors and two sets of eleven junior actors. With potentially thirty-three actors, all on the stage at any one time, we are testing the new stage to its limits.

Rehearsals are well under way and we have had our first sessions with our Musical Directors Joy Russell and Simon Stenner. We are very fortunate in having Joy and Simon who take comments like "you want us to sing, act, dance and breathe!" in good part. They take our voices to places we didn't even know existed.

This month the Back-Stage Team will start work on the sets and scenery. If you have talents in these areas please come and join us. Also, my thoughts are turning towards assembling a Front of House Team which ensures that our audiences are well looked after. Ticket collectors, programme sellers, refreshment providers, bar staff, ice cream sellers are all needed. This team needs a Front of House Manager to co-ordinate its efforts. With such a large cast, we would like some extra help at the front of house. If you feel that you would like to get involved with the Back Stage or Front of House Teams please give me a call on 01926 612831.

Tickets for the four productions on 23rd, 24th and 25th of November will be on sale from the 21st October at the Chemist, the Library or ring 01926 613488. Harbury Theatre Group would like to take this opportunity to thank Mary and Paul Mugleston for their support in selling tickets over many years.

Right, back to learning my lines and all those songs!



Folk Club

Deborah Ellis

Rebellion!

With the nights drawing in, a group of non-conforming, rule-breaking, establishment-rattling and resistance-fighting bunch of folk performers (and their associates) came to Harbury Village Club to start up a local anarchic and maladjusted melodious free-for-all! Des was performing elsewhere tonight and so the MC Deb started off the 394th Folk Club (and our 33rd birthday!) with a call to arms:

*"Good evening Harbury I hope that you're well? We've got songs to be sung and stories to tell! We've got raffle prizes and tickets to sell. So, let's take to our seats as it's time to **Rebell!**"*

After that rabble-rousing welcome (this month's theme being Rebellion!), she went straight in and recited a poem of hers "The Rioter", and then up came *Ruthless Rick* who entered into the spirit of things by stating that he couldn't be bothered with the theme and would 'sing about what he wants to sing about!' His song, "The Hair of the Widow of Bridlington", was all about a very free-spirited individual with a dash of brutality thrown in. His second offering was all about two fighters reminiscing about their experiences in the Mexico rebellion of 1910 with the unforgettable ABBA classic, "Fernando".

Up came Harbury's answer to Thelma and Louise in the shape of Maureen and Janny and they sang a song by the Rainmakers called "Avila" which was all about a town dweller with a rebellious attitude. And the effects of this were "sweet peace...never have you fallen upon this town." Their next was by the Silly Sisters, "The Burning of Auchindoun", which told us of a castle in Auchindoun, Scotland, that was owned by the *Herod of the North* and his assault on a neighbour's castle. He wreaked havoc everywhere he went and the result was a rather nasty beheading! Lou and Mary are Grandfather and Granddaughter who have performed at Harbury on many occasions. They sang "Step it Out Mary" where a personal rebellion ended in tragedy. This got the Harbury chorus engine up and running. Then Lou recited a fabulous Robert Burns poem "National Rebellion" all about the Jacobite uprising. Then they both sang "Ye Jacobites by Name" where we were treated to beautiful harmonies from both performers.

Marc was our next performer and he was pleased to tell us about the warm and friendly welcome that we have given him at Harbury Folk Club. Both of his songs were French songs (that would please the Harbury Twinning Society members in the audience!). His first was called "Mandrin" who was a crook and highwayman who lived in the 1750s and challenged the state. His second was a self-penned song called "Baby Boy" that spoke about "freedom no more your own" and "cut off your beautiful hands". It was a hard-hitting song of medieval practices still going on in the 21st Century.

Norman Wheatley, our fine and dandy Pimpernel, took to the floor and sang a self-penned song called Rebellion – Part One, which was all about pencils and '2B or not 2B!' Then he recited a poem called "Brighton Rock" from a Graham Greene novel that had a fabulous play on words. This was all about redundancy. And to finish our first half, Norman sang another self-penned creation called "Rebellion!" This was a comedic look at all the reckless things done by a young man. The catchy chorus went, "I was going to be a teenage rebel and it's all about rebellion."

Our second half was opened by Deb reciting another one of her poems called "Under the Radar" about rebelling in the workplace. Then we had the fabulous Gangster and his moll, Ted and Sue Crum who sang about a "Female Drummer" who fell in love with another female soldier. And then Ted sang "Bitter Withy" which was about Jesus as a naughty child!

Peter Mason was our next performer who sang “Dears” all about the Luddites, named after Ned Ludd, who lived in Anstey, and then “General Ludd” all about the Luddite Rebellion. Sue and Ian Hartland sang the “Lee Boys Lassie” that told us of a girl being accepted in a new community. Then it was shaky-egg time with “Garden Party”. To finish off the second half and the evening we had the Godfather of Folk, Peter McDonald, who sang “England Green, England Grey” which was a protest song about protests and people protesting. And his last number was a tune by Phil Cunningham called “Golden Memories”. Using modern technology, Peter used a backing track of his own piano part, whilst he played his concertina. He told us that he “can’t play both at the same time!” but Ted Crum thought the Folk Club was becoming a bit like Karaoke!

And with that our rebellion came to an end but, to top the evening off, the raffle raised £100 for the RNLI. The next Folk Club will be hosted by Steve and Maureen Darby and the theme is ‘Pack of Cards’.



We are nearing the end of our year and look forward to appointing our new Chairman at the Annual General Meeting in November. Peter Rollason has done an excellent job during his period in the office but has now decided it is time to relinquish the role and pass the duties onto another member.

There are two activities planned for October; a barbecue and boules tournament at the Village Club on Sunday 1st October and a French film show with refreshments which we will be holding in the Tom Hauley Room. (At the time of going to press we had not finalised the date).

Next year will be the 20th anniversary of the establishment of the Twinning Association which we will celebrate in Samois-sur-Seine when we visit in May.



Harbury Bonfire and Fireworks - Saturday 4th November 2017

GASS (Guides and Scouts Support) are already making preparations for this year's Guy Fawkes Night bonfire and firework spectacular at the Village Hall playing fields on Saturday 4th November.

- The bonfire will be lit at 6pm and the fireworks let off from 6.30pm, so make sure you get to the playing fields on time. For safety reasons, entry will be via South Parade only (unfortunately we will have to close the Ridgley Way pedestrian gate for the evening due to its proximity to the firework launch zone).

- **Advance tickets only will include a hotdog and a chocolate bar** - Cost £4.00 for adults and £3.00 for children. Tickets will be on sale from early October until Thursday 2nd November at Harbury Chemist.
- **Tickets bought on the gate will not have food** - Cost £3.50 for adults and £2.50 for children aged 3-16yrs.
- Warming drinks of mulled wine and hot chocolate will be on sale on the night.
- Do you have any unwanted wood? If you would like the Scouts/Guides to collect it on the morning of the bonfire, please **book a collection**. Just complete the slip enclosed with this magazine, also available from Mrs C Butler at 65 Mill Street with a **generous donation** before Friday 3rd November. There is a safe limit to the size of bonfire we can build and hence a limited number of wood collections that we can make, so **please get your booking slip in early** (bookings will be accepted on a first come first served basis).
- **Please do not deliver bonfire material to the Village Hall car park or playing field. this will cause an obstruction and can be dangerous so you will be turned away!**

All proceeds from this event will be used for the upkeep of Harbury Scout Hut and for supporting our uniformed youth groups – Rainbows, Brownies, Guides, Beavers, Cubs and Scouts.

We look forward to seeing you there!



Harbury Rugby Football Club

Steve Kittendorf

Saturday 26th August. Player numbers were in short supply, the hosts starting with 16 and Harbury travelling with 15 players. Four x 20 minute periods were planned but towards the end of the third period, three Harbury players had been side lined. The Captains and referee decided to call time on 60 minutes. Good luck to “The Bold” in their campaign this season, being newly promoted to **Midlands Premier League**.

Saturday 2nd September. Harbury were due to play a pre-season friendly match against Bedworth but unfortunately a society referee was unavailable and the game was pulled. Not deterred, the lads turned out for an extra-curricular training session!

Sunday 3rd September. The first of four registration Sundays was held by the Mini and Junior section at the Club. Numbers were encouraging with players signing up for the Minis (U6, through each year group to U12) and the U13, U14 and U16 Junior age groups.

Saturday 9th September: Harbury away to Coventry Welsh for their first League match. Welsh opened the scoring with a penalty after 17 minutes. Into the second quarter, Harbury won a lineout five metres out and then drove over for Knight to score, Morphet converting, score line 3-7. Harbury began to dominate play moving their attack wide which resulted in two more tries from Godwin and Fisher. Half time 3-17. Playing up the slope Harbury defended well before Welsh persistence paid off with a try wide-out. Harbury continued to play open rugby with Fisher running in a fine bonus point try. Welsh scored a try at the death but this was Harbury's day and the team fully deserved to win 13-22.

Saturday 16th September: Harbury "A" side entertained Kenilworth 2s. Kenilworth started well whilst Harbury were lack lustre, resulting in three unconverted tries by the visitors within the first quarter. Harbury rallied and scored a try either side of half time. Kenilworth responded with two quick goals before Harbury scored a goal near the end. Final score 19-31.

Sunday 17th September: Harbury U13s welcomed Old Leamingtonians for their first game this season. It is probably just as well I do not have a match report to give as we probably wouldn't have enough space for a score line 60-0!

Saturday 23rd September: Harbury "A" side played against Shipston 2s in the **Joe Greenwell** memorial game. As just mentioned, we also do not have enough space to report on a game won by 10 tries to three. Despite the score line, we thank Shipston for taking part in a game that was played in the right spirit, which is as it should be for this annual memorial game.

Forthcoming events:

Sunday 1st October: HRFC Minis Festival. U14s **A** to Worcester Warriors Festival.

Sunday 8th October: Minis **A** to Newbold. U13s & U14s **H** to Stow. U16s **H** to Earlsdon.

Saturday 14th October: 1st XV **A** to Redditch.

Sunday 15th October: Minis **H** to Old Leam's. U13s & U16s **A** to Stratford. U14s **A** to Alcester.

Saturday 21st October: 1st XV **H** Stoke Old Boys.

Saturday 28th October: 1st XV **A** St. Neots.



Harbury Tennis Club

Colin and Sue Mercer

<https://clubspark.lta.org.uk/HarburyTC>

The Club's Banbury Summer league fixtures were finally completed with two matches against Byfield, which had been re-arranged several times since May! The first was at Harbury with Eira Owen, Jane Minchin, Nigel Eaton and Joe Robson taking on the visitors. It proved to be a very close affair, and Byfield were in front after the first round, winning three of the four sets.

Harbury came back strongly in the mixed doubles with Eira and Nigel comfortably winning both sets. Jane and Joe had a really tight match, narrowly losing the first set 5-7, but winning a tiebreak second set 7-6 to seal an overall 4-4 draw. In the return match at Byfield, Nigel and Joe were joined by Caroline Morland and Tamsin Frost. It was all square after the first round but, as in the home match, Harbury were the stronger team in the mixed doubles with Caroline and Nigel halving their rubber, while Joe and Tamsin had a straightforward 6-2, 6-1 win. This gave Harbury a 5-3 win but wasn't quite enough to move above Byfield into second place. By the time you read this we will have completed our first matches in the Winter Leagues!



We held our 2017 doubles tournaments in September and everyone enjoyed some competitive tennis. The Ladies was a great three set final between Sue Panton/Clare Callaghan and Caroline Morland/Florence Thomas. Sue and Clare won the deciding set and lifted the shield. Nigel Eaton and Josh Marshall were worthy winners of the Men's event.

Cool/sportz coaching has started with sessions for Juniors on Mondays (coach Elizabeth Holding) between 4.30pm and 7.30pm, with a session for Adult Beginners/Improvers at 7.30pm. On Thursdays coach Rob West runs Junior sessions between 3.45pm and 5.45pm, and on Friday mornings (9.30-10.30am) has a Ladies Group. For more details email Lianne Candappa at lianne@coolsportz.co.uk



Quiz Time for all!

Sunday 15th October starting 7.30pm sharp in the Village Club.

The Tennis Club Fun Quiz to whom ALL are welcome (not just Tennis Club members) – get your friends and family together in teams of four for a great night out (£20 a team). Delicious sandwiches supplied, prizes for the winners and no tennis knowledge required!

Please book your team in: Contact Peter Walshe on 01926 612477 or 07770 641437 or peter.walshe@kantarmillwardbrown.com

Peter Walshe



Harbury Toddler Group

Lynne Barton

Welcome back from everyone at Toddlers following our summer break. It was great to see both familiar and new faces at our first session of the new 'term'. We have lots planned between now and the end of the year, including an 'Hawaiian style Beach Party', too cold for 'cozzies' but sunglasses and brightly coloured tops will look very cool.



Planned 'special visitors'

First day back and Rachel from *Rhythm Time* started things off on a glorious singing and rhythmic note. Listening to the beat, the children were particularly good at playing instruments and stopping on Rachel's command - great fun and a vital skill to learn for their next phase of nursery education. Rachel runs classes locally so check out the website: www.rhythmtime.net



As a parent or carer it is often difficult to find any 'me time' so we regularly ask Corinne from *Stop and Smell the Roses*, a therapeutic practice based in Wolston to visit Toddlers and offer a quiet taster massage or treatment during the bustle of the morning. Mostly children will carry on playing with the range of toys we have on offer or they will cuddle up and look on whilst parents have hands or feet or necks massaged. Mmmmm lovely. We applaud you all for doing one of the most important roles in the world, raising the next generation.



Shout Out for Toys & Children's Clothes

We are in need of good quality children's toys and clothes which we sell to raise funds so if you have any that you would like to donate please give me a call, telephone number below and we can arrange collection or leave on the doorstep at 26 Vicarage Lane. We hope that you are able to help.

Coffee Morning at All Saints

We love doing the coffee morning in the Tom Hauley Room at All Saints Church and are always made to feel very welcome. The build-up can be sometimes a little stressful, wondering if we will have enough cakes, raffle prizes and bric-a-brac but social media 'shout outs' and approaching friends and family usually does the trick!



This time the proceeds were for Entrust Care Partnership, all funds raised on the morning go directly to providing services for disabled children and that's a promise as we have no huge overheads or admin charges and our founding Director lives in the village. So, **THANK YOU** everyone who came and supported us on the day and beforehand.

We raised a huge **£200**, which is our very best ever. Young Oliver pictured at the front, cheeky smile and blond hair, helps regularly at our fundraising events; he is a little star. When we counted all the coins and notes we were just £1.00 short of the £200 and Oliver stepped up and gave us his pocket money - thank you very much Oliver, a social conscience at a tender age.



Come and join us

If you want to join us at the Toddler Group then Lynne, Selina, Chelly and Reg look forward to welcoming you - come on round the kettle's on.

We are based at the Wight School, High Street, Harbury, CV33 9HW (brown gate to the side) and meet at 9.30am saying bye bye at 11.15am.

Thinking of coming along or need more information? Please do ring Lynne on 01926 612748 or email lynnebarton@btinternet.com



Harbury Pre-School

Staff & Committee



New Term: We were delighted to welcome new faces to Pre-School at the start of the new term. William, Toby, Elsie, William R, Harry and Noah-Jake who are settling in very well with their new friends. We also welcomed Catherine, our newest member of staff, who has already become a fantastic addition to our wonderful team.

Teddy Bears: At the beginning of the term, the children brought in their teddies, which provided a lovely provocation for the children to communicate their thoughts and draw pictures

resulting in lots of creative pieces of work. Photos taken with each child along with their painting of their teddy were then proudly displayed on the wall.

Linking with bears, and great for so many learning opportunities, is of course Goldilocks and The Three Bears. With this in mind our roleplay area was transformed into the Three Bears kitchen stocked with 'porridge' and differing sized implements and chairs. At snack time the children had an opportunity to eat real porridge which they actually enjoyed thanks to Deborah's culinary skills!



Outdoor Play: The British weather in September was typically unpredictable, however, as Harbury Pre-School possesses a great soft play surface coupled with a canopy, we can provide an excellent safe area to play no matter what. There is shade from the sun or shelter from the rain, ensuring the children get plenty of outdoor fun whatever the weather.



Moving towards Autumn the children are encouraged to "freeflow" between the indoor and outdoor classrooms, making good use of the climbing and balancing equipment, ride on vehicles and water play; a wonderful way for our new children in particular, to begin their new adventures at Pre-School.

A bumper crop of juicy red apples were harvested by the children from the Pre-School apple tree, and have been enjoyed at snack times throughout September.



AGM: The annual general meeting of the Pre-School will be at Harbury Pre-School, The Wight School, Harbury on Wednesday 1st November at 7.45pm.

If you would like further information, or to register a child for Harbury Pre-School, please contact Angie Clifton, Business Manager: e-mail enquiries@harburypre-school.org.uk phone 07907 598461 or look at the website www.harburypre-school.org.uk. Please note that although the starting age for Pre-School is normally two years nine months, your child is never too young to be registered.



Village Hall Update

Geoff Thorpe

The Village Cinema started again on 23rd September with the WI in charge. Our grateful thanks to them for taking over this popular event. Once again it was a sell out, please buy your tickets early to avoid disappointment in the future.

The next film night is Saturday 21st October. The film showing is **The Sense of an Ending** starring **Jim Broadbent, Charlotte Rampling and Michelle Dockery**, Downton's Lady Mary.

We have realized that a few cinema-goers are bringing their own food and drink. This is very disappointing, to come and see a film and enjoy a fish and chip supper for £10 is very good value, to buy a ticket without food and then to bring your own is abusing the hard work of our volunteers and does not support the running of the hall, a vital part of our community. We must ask that people do not do this.

The newly decorated main hall coupled with the new lighting, heating and insulation has received a lot of praise, the "mood lighting" especially so. The real benefit will be in the winter months, a warm and comfortable hall.

Burn's Night 2018. The Village Hall will be combining with Southam Rotary for the first time to run this very popular annual event. So please make a date for Friday 19th January 2018. Full details to follow in future issues.

Lost property. It is amazing what we get left in the hall! Can anyone claim a pair of small galvanized watering cans!!! Please phone 613801.



Since my last article unfortunately no one has come forward to take over the running of our Society so this will be the last article I will write under this heading. I will submit future articles from time to time but as gardening experiences etc.

The early autumn colours are putting in an appearance now and are looking stunning so it promises to be a spectacular few weeks. Children have been collecting the conkers - nice to know this is still happening. The blackberries have been so prolific this year as are the apples and pears. I have lots of fruit in the freezer from my allotments and a few crumbles. I am still picking rhubarb but at last the end is in sight for the courgettes! It has been an excellent year for runner beans, French beans, sweetcorn, all kinds of fruit, tomatoes, cucumbers and so much more. It never ceases to amaze me that you plant seeds in trays then after a few weeks transfer to the allotments and after that they grow to become very tasty vegetables in such a short time. My pumpkins and squashes continue to grow at an alarming rate so lots more soup will be made eventually.

One of my failures was celeriac but I shall persevere next year and hopefully I will net some of the cabbages and kale before the pigeons get to them! We will still be receiving the seed catalogue from Dobies which we should get November time. How great it is in the dark month of December to spend hours leafing through to choose next year's seeds etc. They are very good value and some of the heritage seeds are well worth trying. Talking of Plant Heritage some of us from the Horticultural Society have joined it. You remember Rob and Diane Cole from Meadow Farm in Inkberrow? They run the Warwickshire branch and hold meetings at the Lord Leycester Hospital in Warwick. A superb setting and some very interesting talks. Nice to go along as a member and sit back and enjoy. The treasurer, Jane, also volunteers in the offices at Upton House so a nice link.

I have a lovely yellow buddleia in my garden and it has been flowering for weeks and attracting many butterflies. The huge evergreen clematis has flowered six times this year and the lovely yellow flowered clematis, Bill Mackenzie is still going strong. The sedums too never fail at this time of year to attract the bees and butterflies. The strawberry tree in our front garden has so many bees on the flowers at the moment and the small strawberries that follow attract many birds.

My tree fern, in a large pot, has gone mad this year and the two heavenly bamboos, nandina domestica are putting on a show of autumn colour. These plants came from Hard Exotics near Penzance as do other plants in the garden and are such good value. I just cover up the tree fern with fleece and move it near to the back wall of the house and it survives as do the huge agaves which are also in large pots, much too heavy to move. If ever you are near to Penzance do call in and walk around the nursery. Julie and Clive will

not sell a plant to you if it will not survive where you live. A lovely couple who both work so hard for very little financial reward. Thank goodness there are such dedicated people around to ensure that we gardeners can enjoy the fruits of their labours.

I have looked on the NGS website and wasn't able to find any gardens open in October but there are still plenty of gardens locally that we can visit. I do hope that you were able to see a three part programme on More 4 recently with Dee Hart Dyke and her daughter called All Gardens Great and Small. Her favourite garden visited was in Warwick at 55 Mill Street, the Mill Garden, started by the late Arthur Measures and now still in the family. It is on the bank of the river and is overlooked by the castle and is stunning. They are open daily from 9am to 6pm until the end of October and admission is £2.50.

If you have never visited the Masters Garden at Lord Leycester Hospital that too is well worth seeing. Open daily from 10am to 4pm with a superb knot garden, Victorian pineapple pit, thatched summer house and much more. The Bretherens Kitchen serves food so another nice visit.

At Hill Close gardens on Sunday 15th October it is Apple Day and Country Fair. Admission is £3 and open from 11am to 5pm. Something for everyone, craft stalls, food stalls, cider stalls and juicing refreshments available throughout the day. This is another gem of a garden, we are so lucky to have these so close to us.

Just a bit further away, now is a good time to visit the arboretum at Batsford, Moreton in Marsh. Open from 9am to 5pm Monday to Saturday and 10am to 5pm on a Sunday, admission is £5.95. On their excellent website the Autumn colours are described from yellows to reds to crimson with an abundance of berries and exhibit a natural fireworks spectacular. It has a great shop and some good value plants on sale and the restaurant is very good.

Whatever you choose to do I hope that you will enjoy Autumn with the wonderful colours. We are very lucky to live in leafy Warwickshire which comes into its own over the coming weeks.



Garden Jottings from Bridge Nursery

Christine Dakin

I try not to repeat myself when writing these monthly notes but this is definitely something which I have mentioned before. Autumn is a good time for planting. The soil is warm, the roots will get established during the winter and there should be no need to water them next year. This is also the best time to move plants and to divide clumps which have become too large. Most people are used to planting bulbs in the autumn so why not shrubs and perennials too? Leave it another month before planting bare-root hedging.

Jobs for this month include the following:

- Hardwood cuttings of roses and other deciduous shrubs....cut 12 inch long stems and place in a trench with some sand at the bottom.

- Spread compost onto borders or manure if you can get it. This will help improve the clay soil.
- Trim back some herbaceous plants. Leave some for ladybirds and hedgehogs to hibernate in.
- Rake up leaves from lawns but leave on borders for the same reason as above.

Last but not least come and try some of the black garlic, it's so delicious and tasty.

Bridge Nursery, Tomlow Road, Napton
www.bridge-nursery.co.uk



Nature Notes

John Hancock

Conditions are cooler now (19th September) at both ends of the day. With a mist this morning I needed gloves and several layers when cycling into Southam after breakfast. By the time I came home sunshine had broken through heralding a lovely autumn day. The ploughed fields at Bascote Heath seemed to smoke as the mist evaporated in contact with the warm earth. We have had a good deal of rain but now high pressure has moved in and while not quite an Indian summer, it's very acceptable.

Last month I stated prematurely that the swallows and martins had flown. Well they have gone from Harbury but round and about, particularly over water, they are still active. They stagger their migration with the youngest being shepherded by some older birds until they are in shape for the journey to Africa. Bad weather can always intervene making food scarce and hindering flight.

Tony and Shirley Brunton had a rewarding holiday in the Shetland Islands. At one stage whilst out in a boat they saw a Minke Whale feeding on a shoal of herring. Perhaps it had been attracted to the area by the gannets flying above and at intervals plunging down to take a fish. The gannet is our largest and most impressive seabird. These islands support more than two thirds of the world's population (some 186,500 pairs). Apparently a gannet can hit the water at more than 100kph. They have a spongy bone plate at the base of their bills to reduce the impact. I am indebted to 'Birds Britannia', the encyclopaedic work by Mark Cocker and Richard Mabey for these facts.

Whilst on the River Avon earlier in September several of our party saw kingfishers which are always a thrilling sight. We were cruising between Stratford and Bidford. It was good to slow the pace of life for a while and soak up the colours and sounds of the countryside. We took all day to travel a distance which by car would have taken half an hour. I know I am getting on a bit but why exactly are we rushing so much?

Yesterday, the U3A Natural History Group crossed the county boundary and looked at a nature reserve in North Oxfordshire. We visited Hook Norton

Cutting which slices through a Jurassic limestone ridge and has a short tunnel so mimics Harbury Cutting in many ways. . . . The GWR line at Hook Norton closed in 1964 and has reverted to nature in its northern section. The southern section has been managed with 'scrub bashing' and selective grazing to yield species rich calcareous grassland. The line was built in the 19th century to transport iron ore from Oxfordshire and Northamptonshire to the blast furnaces of the Midlands and South Wales. In the open warmer southern half we saw Woolly Thistle, Oxeye daisy, wild carrot, thyme and even one pristine violet. Butterflies were basking in the sunnier parts and species seen were Comma, Red Admiral, Speckled Wood, and Green-veined White. It was also worth going to see the massive Jurassic limestone piers of the viaduct which carried the line across the gorge like valley cut by the River Swere which is a tributary of the Cherwell south of Banbury. Each pier, some 75ft in height, is isolated as the track was removed when the line closed. Ivy covers much of the rock and the air hummed with bees taking nectar. Thoughts of Conan Doyle's 'Lost World' went through my mind as we craned our heads back to look up hoping to spot an alien life form. Sorry readers this is meant to be a factual article not a flight of fancy.

The flowers of ivy are an important nectar source during autumn and into winter for a great number of insects. So, whilst rampant growth of ivy can weigh heavily on a tree and make it more susceptible to falling in a gale, it is all a question of balance where nature is concerned.

I couldn't resist picking up a Prickly Pear when Sharon and I were walking the coastal footpath around Cap Ferrat, just east of Nice on the Cote D'Azur. It looked harmless enough so I slipped it into my pocket to try later. Otherwise known as the Barbary Fig it is the fruit of a South American cactus (*Opuntia ficus-indica*) which has become, like Japanese Knotweed, an invasive species in countries such as Australia. Later my hands were stinging from the tiny spines on the skin of the fruit. Most foragers wear thick gloves so beware. The cut fruit resembles a large gooseberry. It tasted good too and is sold in many continental markets. Has any reader experienced the flavour or made jam with the pulp?

We noticed the contrast in leaf colour when coming from the largely evergreen Mediterranean littoral to our deciduous woods which seem especially colourful this year. With some sunshine the contrast is even greater. Enjoy autumn and its mellow fruitfulness.

HARBURY VILLAGE LIBRARY

Monday to Friday
9.00am - 5.00pm
and

Saturday
10.00am - 12 noon



Telephone:
01926 258776

BIBLIO'S CAFÉ OPEN

**Wednesday, Thursday &
Friday**

9.15am - 12 noon
and

Saturday
10.00am - 12 noon

Email: library@harburyvillagelibrary.org.uk

Email: biblioscafe@gmail.com

www.harburyvillagelibrary.org.uk



General Section

Village Show

Another successful and well attended day; our judges were very impressed by the standard of our exhibits even though the vagaries of the summer weather saw some of the vegetable classes less hotly contended than usual. Thank you to everyone involved, especially the WI for the splendid cakes and to Roanne who presented the prizes on behalf of her mother, Chris Finch, this year's "Spirit of Harbury" recipient. And congratulations to team member Heather Clarke (and George) on the timely arrival of baby Ralph.

Here are the prizewinners:

<i>Farley Cup:</i>	<i>Pat Clarke</i>
<i>Finch Challenge Cup:</i>	<i>Pat Clarke</i>
<i>Top Tray:</i>	<i>Pat Clarke</i>
<i>Harold Wilkins Cup:</i>	<i>Pat Clarke</i>
<i>All Saints Cup:</i>	<i>Margaret McDonald</i>
<i>Reg Harris Cup:</i>	<i>David Thistlethwaite</i>
<i>Courier Cup:</i>	<i>Dawn Teverson</i>
<i>Rosamund Schofield Salver:</i>	<i>Dawn Teverson</i>
<i>Top Vase:</i>	<i>Dawn Teverson</i>
<i>Brunton Challenge Cup:</i>	<i>Gillian Hare</i>
<i>Daniel Challenge Trophy:</i>	<i>Dorothy Groves</i>
<i>W.I. Trophy:</i>	<i>Dorothy Groves</i>
<i>Horticultural Society Trophy:</i>	<i>Mandy Brain</i>
<i>Rigden Cup:</i>	<i>Tony Mancell</i>
<i>Barns Cup:</i>	<i>Liz Robbins</i>
<i>Allotment Holders Challenge Trophy: Malcolm Bloxham</i>	

The children's entries were all worthy of a prize, especially the amazing vegetable monsters. The winners were:

<i>John Smith Cup:</i>	<i>Hannah Stanley</i>
<i>Buck Trophy:</i>	<i>Poppy Russell</i>
<i>Jean Dunn Cup:</i>	<i>Dylan McDonald</i>
<i>Fred Lines Cup:</i>	<i>Sofia Edwards</i>
<i>Janice Siddle Trophy:</i>	<i>Anna Dimmock</i>

Thank you again to the Parish Council for their continued support of this event. And from me, Gillian Hare, to a wonderful team. I am delighted that my role will be taken on by Sheila Burt so next year's show, on 8th September will be in safe hands.

Gillian Hare

Harbury Village Show - September 2017

Photos taken by: Gordon Robbins





Harbury & District Poppy Collection

I have agonised for months about the organisation of the poppy collection this year for Harbury and the surrounding district. I have come to the conclusion that it will be best arranged by providing various sites in the village with a box and not expect any individual to do a street collection. I have therefore ordered enough boxes to have them placed in the following locations:

- The Co-op
- Harbury Supermarket
- Mugglestons
- The Crown Inn
- The Gamecock
- The Shakespeare
- Harbury Church
- Harbury Primary School
- The Fosse Garage

I hope this will enable people to obtain a poppy in time for the Remembrance Day service on Sunday 12th November. Wreaths have already been ordered for placing at the War Memorial by the Guides, Scouts and the Royal British Legion and these will be delivered in good time.

Chris Finch



Saturday Lunches in the Tom Hauley Room

New residents in the village may not be aware that, from time to time, there is a lunch to be enjoyed. These are open to all, though particularly appreciated by folk who normally eat alone. A three course meal of home cooked food, reasonably priced includes a vegetarian option; any profits go to the Church. Menus are displayed at the regular Saturday coffee mornings and in The Hub at the back of church; these should be returned by the Sunday prior to the event. It would be lovely to welcome new people; please pass on this information.

The next lunch will be on 28th October.

Gillian Hare



Kate's Quiz

It is now the fifth year that I have been doing my quiz in aid of various charities. The first year was in aid of the Air Ambulance and disappointingly had two and a half teams turn up. Only the fact that I had sold

quite a lot of raffle tickets stopped it being a disaster. In fact, I had more raffle prizes than quizzers. The second year was in aid of the Alzheimer's Society and again not a lot of quizzers, however I got five teams. My third year was in aid of Zoe's Place, a hospice for babies and children and, thanks to Murphy's construction team buying over £60 in raffle tickets I made over £300. Again, not a full house from quizzers, plus it seems there was a film on at the Village Hall that night. Last year I did the quiz in aid of MacMillan nurses and got more people attending. This year I am again doing my quiz for the Warwickshire and Northampton Air Ambulance. I was told though that I would have got more people turning up if I held my quiz on a Saturday. So this year it is 28th October, which is a Saturday. So for those of you who in the past have said if it was on a Saturday you would attend, well here you go. Starting at 8pm and costing £10 for a team of four. I realise that there is a barn dance on the same night, however, if you are not a dancer come to the Village Club and join in the fun. Local landlords again have been generous and pledged meals as raffle prizes, plus other prizes as well. I would like to say thank you to the people who have attended in the past and hope to see you again this time.

Kate Bennett



Operation Christmas Child

We shall be packing shoeboxes for sending joy to children in a most deprived area of the world, on Friday 3rd November, 10am – 12 noon in the Tom Hauley Room. You are invited to bring shoeboxes in seasonal wrapping and good things to go in them or just to support the work by enjoying a cup of coffee and making a donation towards transport costs. Do check the leaflets for suggested dos and don'ts; better still make up your own box with a specific child in mind. Leaflets will be in The Hub at the back of church or phone 614809 for advice. This will be the last time here unless anyone would like to take it on; let's make it a good one. Thank you on behalf of the children.

Mike Jones & Gillian Hare

Harbury Craft Fair – Saturday 11th November 2017

Myton Hospice Harbury Support Group's Annual Craft Fair will be held on Saturday 11th November from 10.00am to 4.00pm and, as always, is free to enter.

The Village Hall will be full of handmade craft stalls giving you an opportunity to treat yourself or make a start on your Christmas shopping!

As usual we will be serving tea, coffee, cakes and a selection of hot lunches.

First prize in the raffle will again be a 7 night holiday in Cornwall with various other prizes. Tickets are £1 and can be purchased before the event or on the day. The draw will be made at 3.30pm before the Craft Fair closes.

If anyone is interested in helping on the day or would like to donate a raffle prize or bottle for the ever popular 'Bottle Tombola' please get in touch. All help/donations are greatly appreciated. Please contact either Shirley on 01926 612798 or Fiona via email ficadwallader@btinternet.com if you can help in any way.

On behalf of myself and all the Harbury Myton Support Group Ladies, I would like to thank you in advance for your continued support of the Craft Fair, year on year, with your help, we have continued to raise much needed funds for this vital local charity. Thank you!

Fiona Cadwallader



Christmas Quiz in aid of Warwickshire Air Ambulance

In July, we read that the NSPCC fund raising group were disbanding. The group did a fabulous job over many years raising thousands of pounds while many of us enjoyed their varied social events. In particular, we enjoyed the annual Christmas quiz held on the first Sunday in December which used to signal the beginning of Christmas activities in the village. However, with the demise of the local NSPCC group, this event was likely to disappear. Therefore, a group of like-minded individuals are going to keep the Christmas Quiz event going. We will raise money for local charities and hope lots of you will be able to support us.

So, in our inaugural year we will be holding the quiz in aid of **Warwickshire and Northamptonshire Air Ambulance**.

When: 7.30pm, Sunday, 3rd December 2017

Where: Village Club

Teams: £20 per team of 4 to include nibbles, sandwiches and festive bites

To book your team please contact Sheila Burt on 613671 or email sheila.burt1@gmail.com

Charity Quiz Group



Harbury Village Library and Biblio's Café

As the darker nights draw in, why not take a tip from the Jane Austen quote on our new £10 notes: "I declare after all there is no enjoyment like reading" and come along to Harbury Village Library to choose a book to curl up with in front of the fire, or under the duvet? We have some great titles on offer, such as copies of the Robert Galbraith books which formed the basis of the recent popular TV series, *Strike*; the new Philippa Gregory bestseller *The Last Tudor*; the autobiography of new *Strictly* star, the Reverend Richard Coles, and lots of other new and current titles. You can search for and reserve copies of any of these by going to our website at

www.harburyvillagelibrary.org.uk, or come along during our opening hours, 9am-5pm every weekday and 10am-12 noon on Saturday.

The ever popular **Tunes and Tales** sessions for pre-school children and their carers has moved forward in time from 10am to 9.15am every Thursday for half an hour. Everyone welcome: just turn up, and enjoy a drink and chat afterwards in our café, Biblio's. The café is open from 9.15am – 12 noon Wednesday to Friday and 10am -12 noon every Saturday and serves hot and cold drinks and home baked goods, including scrummy hot buttered teacakes, in pleasant surroundings.

Both the Library and Biblio's are run entirely by volunteers, and if you would like to join them please come in while we're open or contact library@harburyvillagelibrary.org.uk or biblios@harburyvillagelibrary.org.uk or phone 01926 258776.

Who Dunit?

And talking of dark nights.....make a note in your diary now to join us in the Library on Thursday 16th November for an exciting **Murder Mystery Evening**. Look out for more details in next month's Harbury and Ladbroke News and elsewhere.

Janice Montague

Harbury Senior Citizens Committee Update

It is still a few months away but as a reminder the Christmas party will be on **Saturday 9th December** in the **Village Hall from 5pm**. Invitations will be delivered to you in early November.

As usual we will be having a raffle at the Christmas Party. If you would like to donate prizes they will be most welcome and can be delivered to either 1 Park Lane or 32 South Parade.

If you want further information or are interested in joining or helping us, please contact Mike McBride on 612421 or Julie Clarke on 612066 or talk to a committee member.

Meanwhile, we look forward to seeing you at the party and we hope that you will enjoy yourselves.

Mike McBride
on behalf of the Harbury Senior Citizens Benefit Association

Harbury Village Club & Institute

Hello once again to everyone, it has been another busy time over the last few weeks at the club. It will be even busier from now on as the snooker, dominoes and crib season starts again. Plus we have been joined by two teams of pool and darts players from the Old New Inn. A big welcome to them and nice to have some younger players. The snooker tables have now been refurbished and I am reliably informed that the balls now travel much faster. The snooker room looks so clean and smart - come along and see the

transformation. As I said in my last article we owe a huge thank you to Bob for the decorating.

All of the events held recently have been so successful, it is great to see the facilities being used by such a range of ages. Next weekend there will be boules outside when the Twinning Society will be enjoying themselves. The flowers in pots, baskets and at the entrance to the car park are still looking so colourful and all the watering and feeding has paid off. Towards the end of October I will be changing the contents of the containers and ensuring that there will still be a display of colour to welcome everyone.

Our Friday bingo sessions continue to be enjoyed by all who participate and we do have a lot of laughter. It is so nice to see everyone - please do come along and join us for a lovely way to spend a couple of hours or so in pleasant company, friendly atmosphere and chance to win. The £100 jackpot was won on 22nd September but don't despair it will have started all over again on 29th. I hope that you are tempted and I look forward to meeting you.

As promised, I have been delving into the deeds etc of the club and it has been fascinating to discover the origins. In 1903 the lease of the now Club Cottage was granted and a tenancy agreement drawn up. At this time Crown Street was previously known as Pump Street. Then in 1919 on 29th December, the Village Club was formed and from the papers I have seen it was formerly a bowling court belonging to the occupants of Harbury Hall. There were 19 trustees with some very familiar village names and some of their occupations were shown as quarry man, labourer, gardener, builder, bricklayer and stockman. The agreement was signed by Helen Osborne the widow of Captain Frank Osborne. I will continue with my findings in my next article.

At our last committee meeting held on 18th September which was again a short one we approved four, yes four, new members and one new booking for the concert room. Clive circulated takings figures and confirmed that as before, the finances are looking very healthy. Obviously with all the team games being held at the club our takings will rise. So all of the hard work of the last few months is resulting in increased revenue, brilliant. Due to increased usage of the television room, lounge and concert room we have a new system for ensuring that all of our staff will be aware of who is using which facility and when.

Pam has finalised the arrangements for the annual pensioners' Christmas party which will be on Tuesday 5th December and entertainment too has been booked. You will be contacted nearer to the date with full details. So, as you can see, we follow up as promised and if you would like a matter raised at our next committee meeting on 16th October please contact one of us. We hope shortly to co-opt more committee members so watch this space.

Due to the increasing number of members and events we are looking to recruit extra bar staff. Posters etc will be displayed and adverts placed in various magazines so if you are interested or know of someone who would like to join our team please let me know. Thank you for reading this and for all of your compliments.

Judy Morrall

Harbury Energy Initiative

Opportunities for HEI to help to reduce the energy consumption of our community buildings have diminished a bit since austerity became the theme of the decade. One bright possibility is LED lighting. These bulbs use very little energy and are rapidly falling in cost making them ever more affordable. At the same time old incandescent bulbs are already no longer allowed to be sold and halogen spots are likely to follow in 2018. It will not be long before LEDs and their predecessor compact fluorescent lamps (CFLs) are the only bulbs available. Both CFLs and LEDs are a cost-effective option for most general lighting requirements. Replacing a traditional light bulb with an LED of the same brightness will save you about £3 to £6 per year. LEDs are available to fit most fittings and are particularly good for replacing spotlights and dimmable lights; they are more efficient than CFLs and will save you more money in the long term. By replacing all bulbs in your home with LED alternatives, you could save about £35 a year on your electricity bills.

If you have CFLs at the moment it is worth waiting till they expire before replacing them with LEDs; but if you have any incandescent bulbs still in use you would be advised to change them now. By 2019 you may not be able to get replacement bulbs for your halogen spotlights, so it's probably not a good idea to buy new fittings of that type now.



What else can I do?

- You can save money and energy by implementing control mechanisms and being conscious of how you use your lighting.
- Always turn lights out when leaving a room, regardless of how long for.
- Be conscious of how many lights you have on and whether they all need to be in use.
- Arrange light switches so that it's convenient to turn them off i.e. place switches at top and bottom of stairs, each end of a hallway and each door to a room.
- Use a sensor and timer on external lights so they are only in use when they need to be.
- Use appropriate lightings i.e. a low background light while watching television and a bright, concentrated light for reading. Having a range of lights in a room with separate switches will make this easier.

Taken from <http://www.energysavingtrust.org.uk/home-energy-efficiency/lighting>

Lighting up the school

For some time we have been working to find a way to upgrade the school's lighting to LED throughout, so that they can spend less money on electricity and more on books and resources for the children. We recently succeeded in

securing a grant of approximately £2,000 from the Heart of England Community Fund. With the agreement of the County Council to match this we can now put in another £4,000 of efficient LED lighting. It will all happen this half term. Another bright idea from HEI.

We would be happy to see what we can do for other community buildings, if you would like our help.

Driving on

It wouldn't be the HEI column if I didn't mention electric vehicles (EVs) at some point. You cannot have escaped the recent news coverage of EVs, pollution and the government target to remove all diesel and petrol cars by 2040. I hope you have noticed that by bringing an electric car club to Harbury (the only one in Warwickshire) we are ahead of the game. We would be even more ahead of the game if our 70 car club members actually used the cars more!



Rural transport options are diminishing and car ownership is likely to become more expensive. It is certainly true nowadays that life without at least one car in a village is restricting and inconvenient. If, however, you have two but one is not used very frequently, you would do well to consider the car club. It will almost certainly save you money. Do talk to us about it. And take a look at <https://ecarclub.co.uk/locations/warwickshire/harbury>

Bob Sherman - 612277
info@harburyenergy.co.uk



Harbury E-Wheels

Dance crazy

It won't be quite like 'Strictly' but our barn dance/ceilidh will be the event of the autumn and allow you to give full rein to your ambitions to strut your stuff, without being voted out. It won't be in a barn but in the Village Hall on **28th October**, doors opening at 7.15pm. Tickets are limited, as we cannot fit the entire village into the hall all at once. Don't miss out as tickets have been selling for a week or two now, even before we advertised. Tickets are £10 each to include ploughman's style food and all the dancing you can do to our local barnstormers Reel to Reel with their caller Tom Tilley. There will be a bar. Money raised from this event will help to keep e-Wheels rolling, as we seek to reduce isolation and help people with physical and financially difficulties to reach their appointments.

You can get tickets from: Bob Sherman 612277,
Hugh Tottle 614276 or Doug Freeman 612002.



...and please vote for us at Southam Tesco!

We now expect to deliver about 100 hours of free transport every month with our exceptional volunteers. We need to raise over £500 for every month we operate, so we are very grateful to Tesco for selecting us to be one of the charities to benefit from their Bags of Help programme. **When you shop in Tesco Southam you can vote for us by asking for the blue tokens that are at the checkout.** They won't give them to you automatically. Voting, which continues to the end of October, has been going on for a month now and we are, I think, just in second place, which means we are in line for £2,000 if we maintain this.

You can also support us by setting up a standing order for a small amount every month (£2 to £5 or more). Quite a few people now do this for us and it helps enormously. Contact Liz McBride for details of what to do at lizzie.mcbride@talk21.com or 612421.

Bob Sherman - Tel: 612277

Email: shermanbob55@gmail.com



Harbury Heritage Room

The Heritage Room is open on the first Tuesday of the month from 6.30 to 8.30pm, though we are happy to open at other times by request of local societies and groups. The next two open evenings are 3rd October and 7th November. If you are a parent at the school, you will be aware that it is Parents' Evening on both 7th and 9th November. The Heritage Room will be open on both evenings so you can come and view the Collection after your appointment with your children's class teacher(s). It would be good to see you.

If you would like to join the Group our AGM is on Wednesday 25th October at 8.15pm in Harbury Village Club. Please feel free to come along - you might even get a free drink!

We have a large collection of photos relating to the village which we have started to sort out, but would be delighted if other people could give us a hand. They need putting into categories e.g. relating to the Carnival, WI etc. If you have a spare moment on Sunday 29th October from 2 - 4pm we will be in the Heritage Room at the school.

From the parish magazine on 3rd March 1900

"Each evening there is heard, beginning at the Station end of the village, a series of sounds like the trumpeting of wild elephants, accompanied by the rolling of wheels. This brings many people out of their houses and into the street, quite eagerly it seems. What does it all mean? Suddenly from out of the darkness some youthful voices are heard calling out "Paper". Immediately several people bawl "Here" and the boys carrying dimly discerned bundles go where they are summoned. And now (I have already alluded to the darkness) a considerable amount of fumbling takes place, the buyers feel for their paper

and the boys for the halfpennies tendered to them (which of course they can't see). At last the sales are effected, then the elephantine notes alluded to again rend the air; the juvenile shouts are renewed and the wheels roll onwards. Such is the way the evening news is circulated in Harbury. By what means the weird blasts of sound just referred to are produced I do not know. When there is a moon perhaps there will be a chance of finding out".

Nigel Chapman
nigel.chapman@hotmail.co.uk



Interested in Calligraphy?

We meet every Thursday, 9.30am - 12.30pm at the Village Hall in Bourton-on-Dunsmore. All levels of experience are welcome. Just come along or ring Caroline on 07855 646 348 for more details.

Howard Collerson



Free Electric Blanket Testing - Don't Miss Out! Book Now!

Autumn has arrived and Warwickshire residents are being urged to book their free electric blanket test now. Bookings are now open to all residents irrespective of age (previously aged 50+).

Warwickshire County Council Trading Standards is launching its annual electric blanket safety testing campaign. Have your electric blanket safety tested **FREE** of charge this coming October.

In 2016, one in every three of the electric blankets tested failed and faulty electric blankets are a known cause of house fires.

The service is also offering to safety test kettles, irons, toasters and Christmas lights (again, free of charge) at the same time.

Free electric blanket safety checks will take place at venues across all five districts and boroughs this coming October. Safety tests will be carried out by an expert electrical examiner.

- Monday 2nd October: Rugby Library
- Tuesday 3rd October: Nuneaton Fire Station
- Wednesday 4th October: Leamington Town Hall
- Thursday 5th October: Atherstone Library (9am to 12pm) and Coleshill Library (1pm to 4pm)
- Friday 6th October: Briars Croft Stratford upon Avon

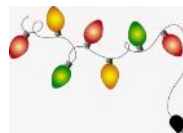
This service is now open to **all** Warwickshire residents.

Book today by calling the Trading Standards Service on 01926 414080 (office hours) or email: ebtesting@warwickshire.gov.uk Appointments are allocated on a first come first served basis and are limited.

Don't miss out - book now!

If you are unable to take advantage of the testing programme you can check your own blankets by looking for the following warning signs:

- the fabric is worn or frayed
- there are scorch marks anywhere
- the tie tapes are damaged or missing
- the flex is worn or damaged
- any connections are loose



Remember older blankets in regular use are much more likely to have one or more of the above faults.

For a complete guide to checking your electric blanket visit our website: www.warwickshire.gov.uk/electricblanket

Simon Cripwell
Trading Standards Officer



LETTERS TO THE EDITORS

Dear Editors

We wish to thank all our many friends both in Harbury and Ladbroke for all the many cards and flowers we received after Charles died on 20th August.

It is amazing how comforting they are, even just seeing them displayed is uplifting. It could be very lonely if it were not for friends and family to support us.

Many thanks to Reverends Craig and Nikki and our Church Wardens who oversaw "things" in church.

Much love to you all with God's blessings.

Betty and Doug Winkfield, Trish, Mark and their lovely family.

Dear Editors

It seems impossible that 10 months have passed during which I have not been around the village. However, as I have mentioned to the many people who have called at the house; I have been very grateful for their visits. I was also overwhelmed by the delivery of the Spirit of Harbury Award that I received whilst a patient in the University Hospital Coventry & Warwickshire.

I have continued to be surprised by the constant flow of cakes, flowers, fruit and magazines. I have so appreciated all the thoughts of everyone and hope to be able to express my thanks in person before the end of the year.

Chris Finch



All Saints' Church Harbury Sunday Services

1 st Sunday in the month:	9.00am 10.30am 6.00pm	Sung Eucharist Little Saints Various/Ad hoc (see pew sheet)
2 nd Sunday in the month:	8.00am 10.30am 12.30pm	Said Communion Sung Eucharist Baptisms
3 rd Sunday in the month:	8.00am 10.30am 6.00pm	Said Communion Saints Alive! Informal Communion Service Evensong
4 th Sunday in the month:	8.00am 10.30am 12.30pm	Said Communion Sung Eucharist Baptisms
5 th Sunday in the month:	8.00am 10.30am	Said Communion Sung Eucharist
Every Tuesday:	7.30pm	Weekday Said Communion
Every Thursday:	9.45am	Weekday Said Communion followed by coffee

BOOKINGS FOR

HARBURY SCOUT HUT	HARBURY VILLAGE CLUB CONCERT ROOM	HARBURY VILLAGE HALL
Corinna Butler Tel: 612852 g.a.s.s.harbury@hotmail.com	(evenings) Tel: 612498 harburyvillageclub@gmail.co.uk	Celia Neill Tel: 612819 harburyvillagehall@goolemail.com
HARBURY VILLAGE LIBRARY	TOM HAULEY ROOM HARBURY	THR COFFEE MORNINGS
Nic Burt Tel: 613671 events@harburyvillagelibrary.org.uk	Sally Stringer Tel: 613214 sal.47@hotmail.co.uk	Sarah Brooke-Taylor Tel: 883651 brooketaylor@hotmai.co.uk

HARBURY VILLAGE LIBRARY

Monday to Friday
9.00am - 5.00pm
and
Saturday
10.00am - 12 noon



Telephone:
01926 258776

BIBLIO'S CAFÉ OPEN

**Wednesday, Thursday &
Friday**
9.15am - 12 noon
and
Saturday
10.00am - 12 noon

Email: library@harburyvillagelibrary.org.uk

Email: biblioscafe@gmail.com

www.harburyvillagelibrary.org.uk



MEN'S WRIST WATCHES FOR COLLECTOR

Working or Not - Spares or Repairs - and any related ephemera
Please phone Paul - without obligation - on

07788 461284

UNDER NEW OWNERSHIP

Little Kineton Plant Centre

Red Rd, Little Kineton CV35 0DH

Come and meet our new
and enthusiastic team
who are here to help you
make your garden
look the best

Seasonal bedding plants

Hanging baskets

Perennial plants

Shrubs and Climbers

Turf, Topsoil, Paving

... and much, much more



Ever thought of extending your
home?

Does it have the potential to
change?

Do you need more space?

Are you looking for a local design practice that
can prepare proposals for your ideal home?

Contact Chris Hill M.C.I.A.T

Call: 01926 613780 (evenings)

0777 218 9266 (mobile)

Email: chris.hill100@btinternet.com

TOLLGATE FARM, BISHOPS TACHBROOK



Bronze Free Range Turkeys

**Traditional Barn Reared
White Turkeys**

Free Range Christmas Cockerels

Quality producer for 50 years.

01926 651790

www.freerange-turkeys.co.uk

Proprietor Charles Hammond, Tollgate Farm is a member of the Traditional Farm Fresh Turkey Association

miles of tiles

(midlands) ltd

ceramic . porcelain . natural stone . sanitary ware . bathroom furniture



Leamington Spa

Unit 1-3 St Mary's Road, Sydenham
Industrial Estate, Leamington Spa,
CV31 1PR

Email: sales@milessoftiles.co.uk

Tel: 01926 312777

www.milessoftiles.co.uk



Coventry

96-100 Foleshill Road,
Coventry, Warwickshire
CV1 4JJ

Email: coventry@milessoftiles.co.uk

Tel: 02476 228800



Rugby

103-107 Albert Street
Rugby, Warwickshire
CV21 2SW

Email: rugby@milessoftiles.co.uk

Tel: 01788 546622

Monday to Friday 8am - 5.30pm & Saturday 9am - 5pm

Leamington Spa Store open late night Thursdays!



H&L News

We won't be beaten on price...

Stocked items only and not subject to any other discounts or offers.

20% OFF
Only with
this
advert



Professional Carpet and Floor Cleaning Specialist

Let us put some life back into your carpets and get your carpets, rugs and upholstery looking like new again.

Covering Warwickshire and all surrounding villages, we use state of the art professional Prochem equipment and products to ensure we obtain the best possible carpet and upholstery cleaning results.

Carpets are normally dry in less than two hours and our prices include vacuuming, spot treatments, deep clean and deodorising.

Call for a free quotation

T: 01926 810476 M: 07971 414954

Email: info@pjscleaning.co.uk
www.pjscleaning.co.uk

Carpet Cleaning | Upholstery Cleaning | Rug Cleaning | Patio Cleaning | Driveway Cleaning | Natural Stone Cleaning & Restoration | Wooden Floor Maintenance



Specialising in creating and maintaining low maintenance gardens for you to enjoy.

Other services offered include:

- Leaf clearance
- Hedge trimming and shaping
- Fence installation and repair
- Turfing - Repair or laying a new lawn
- Borders and beds - Removed, improved or created
- Trees and shrubs - Planted or pruned
- General garden clearance

Operating in Harbury since 2010.

Email: Richard Everett
info@leafyservices.co.uk

Phone: 07923 167420
www.leafyservices.co.uk

Business hours: Monday to Friday, 9am-5pm

ADVERTISING IN THE HARBURY & LADBROKE NEWS

EMAIL: ADVERTISING@HLNEWS.CO.UK

TEL: **01926 612687**

	¼ PAGE	½ PAGE	FULL PAGE
1 MONTH	£10.50	£19.00	£33.50
3 MONTHS	£28.00	£49.00	£89.00
6 MONTHS	£51.00	£90.00	£165.00
12 MONTHS	£94.00	£168.00	£315.00

Adverts with payment to:
Sue Dronfield,
36 Manor Orchard, Harbury
by the 20th day of the month

*Cheques payable to 'Harbury & Ladbroke News'
 or BACS details upon request*



Available for all your computer requirements including:
 PC's & Laptops, New & used systems, Repairs & upgrades
 Virus/Malware Removal, Data back & Windows re-installation
 Upgrading memory/Hard drives/Rom drives/Graphics, etc
 Internet - modems fitted, wireless, networking.
 Any repairs or computer problems. ***No call out charge***

T: 01926 316 119 E: sales@simons-systems.co.uk
 M: 07751 811 097 W: www.simons-systems.co.uk



Learn to Nordic Walk and turn every walk into a workout

The workout that tones the whole body

Nordic Walking is an enhancement of ordinary walking- it makes something we can all do twice as effective. It is a specific fitness technique and not simply walking with poles like trekking or rambling. Nordic Walking poles are planted behind you to propel you along and engage the upper body as well as the legs. To gain maximum benefit from Nordic Walking it is essential to learn the correct technique from a qualified walking instructor who is licensed by Nordic Walking UK

- You use 90% of your major muscle groups so your upper body gets toned as well as your legs.
- You can burn 20% to 40% extra calories by using the poles.
- It takes the pressure of your knees and joints and is great for back and neck problems.

If you want to find out more before committing why not try a 45-minute taster session. Your local Nordic Walking UK instructor is Emma White. For further details of courses visit nordicwalking.co.uk or you can directly contact her on 07759120811.

SADDLERS BED & BREAKFAST

SELF-CONTAINED COTTAGE IN THE HEART OF HARBURY.
DOUBLE BED, SHOWER ROOM, LIVING AREA, BED SETTEE,
TV'S & RADIO, KITCHENETTE/DINING AREA
SLEEPS 2 TO 4. OFF ROAD PARKING
£70 PER NIGHT INCLUDING CONTINENTAL BREAKFAST.

JULIE YOUNG, SADDLERS, CHAPEL STREET, HARBURY
01926 614050 OR EMAIL enquiries@saddlersbed.co.uk
www.saddlersbed.co.uk



Extension Specialists

Extensions, Garage conversions
and Renovations.

www.climarconstruction.co.uk

Tel: Clive 07734865775 Martin 07583330517

Fully insured References supplied



CliMar
Construction LTD



alsters kelley *solicitors*

Alsters Kelley
Southam Office
18 Daventry Street
Southam
CV47 1PH

Ease the pain of family & relationship breakdown

It can be difficult to imagine a positive future when you're going through a family or relationship breakdown.

The friendly team at Alsters Kelley will work with you to find practical solutions for a brighter outcome.

- ◆ Book your FREE initial 30 minute one-to-one appointment
- ◆ Also open Saturdays 10am – 1pm



Call 01926 356048

Erica Kemp
Head of Family Law
erica.kemp@alsterskelley.com

www.alsterskelley.com

Kind, helpful, excellent

Ed's Music Tuition

- Do you want to learn keyboards, guitar or ukulele with a qualified teacher with a passion for music?
- Lessons available for all ages.
- Learning an instrument is rewarding and great fun, and I can help you on your way.
- Fully CRB checked.
- Competitive rates and flexible timetable with lessons tailored to your own individual learning style and needs.
- Tuition in playing, reading music, performance and theory.
- Give me a call to discuss your musical future!



Ed Hudson, Harbury. Mob: 07801 430029
email: eddhudson@me.com



Drop Dead Gorgeous Curtains



Beautiful Bespoke Curtains, Cushions and Roman Blinds. All made to measure and sewn by hand.

I can supply a range of fabrics and poles or I'm happy to work with yours.

Free measuring and free fitting.

I also take on curtain alterations and restorations big or small.

Please call Sharron for friendly and helpful advice or to arrange a free quote on:

01926 612226 or 07760 395805

Email: dropdeadgorgeouscurtains@gmail.com

Or visit my website
www.dropdeadgorgeouscurtains.co.uk



Admin & paperwork stretching you to the limit?

Take the professional approach to your typing needs, send it to Tidy Type for a reliable and efficient service

Tidy Type Online Typing Service

Tel: 0737 593 2305

Email: office@tidytype.co.uk

www.tidytype.co.uk



- ✓ Digital dictation
- ✓ Copy typing
- ✓ Mailshots
- ✓ Data Entry
- ✓ Reports
- ✓ Invoices, etc

GardenAid Services

Our services include

- Lawn mowing & edges
- Borders and beds
- Tree, hedges & shrub trimming and pruning
- Leaf clearance
- General garden maintenance

Contact Aid:

Aidsgarden@gmail.com

07447967861



LOCKMEDICS

Mobile Locksmiths

Upvc - Multipoint locks

All B.S. locks supplied and fitted

Domestic and Commercial

Security Upgrades and Advice

Key Cutting

Tel: 01926 885560

Mob: 07971 818892

www.lockmedics.co.uk



Harbury Reared Pigs

Rare breed, Gloucester Old Spot and Tamworth pigs reared outdoors with plenty of space.

Sausages available...

- Pork
- Cumberland
- Pork and Chive
- Apple and Stilton
- Chilli

£3.00 per lb (5-6 large sausages).

Also Gammon steaks are available.

Call George Clarke- 07733158680 or

email: clarkegeorge05@gmail.com

Free Delivery.

Nifty Needle

Curtains and Soft Furnishing

Nifty Needle specialise in creating stylish custom curtains, blinds and soft furnishings, individually designed to create beautiful solutions.

Free measuring service.

At our shop in Kineton we now stock a range of home wares, including lamps, cushions, footstools and other items to accessorise your home.

We're open Tuesday to Friday 9:00am to 5:00pm
and Saturday 9:00am to 2:00pm.

Nifty Needle Curtain Workroom, 1 Banbury Street, Kineton, Warwickshire, CV35 0JS

Tel: 01926 641741 E-mail: info@niftyneedle.co.uk Website: www.niftyneedle.co.uk



kitchen, bathroom & bedroom specialists

● design ● supply ● installation

Why move when you can improve?

We offer a personal, quality service in the comfort of your own home, delivered by a local family run business, with prices to suite every budget.

Every room we create is tailored to your needs and fitted to the highest standard.

Our all inclusive service takes the hassle out of finding the right people for each job. We come to your home, measure the space so it is utilised to its best advantage, then take you through a range of products so you can choose exactly what you want. We then create the room of your dreams!



What our customers say.....

'...a great job from start to finish - no hitches, hassles or other problems. Thank you also for doing the extra plastering and other details, and all so well finished. I am delighted, believe me!'

Call for a FREE design & quote:

T: 01926 810665

M: 07966 164396

www.southamservices.co.uk E-mail: sales@southamservices.co.uk



Canai Wines

Free Delivery Harbury & Ladbroke

200 wines online at www.canaimport.co.uk

Use code HARB10 at the checkout for 10% off, and free delivery, every time.

Canai Wines can offer 'Sale or Return' for your events or parties, including free glass hire. If you prefer, we can run your bar for you, working closely with your caterers.



0800 288 9863

info@canaimport.co.uk
orders@canaimport.co.uk

@canaimport
/canaimport





Acupuncture, Reiki, Remedial
and Holistic Massage
at *The Petite Retreat*, Harbury

25% OFF
first treatment
with this voucher
Gift vouchers available

Contact **Mireille Hartley** Lic Ac, iTec, MBRCP
Tel. 07970 418936
email. mhartley_33@hotmail.com
visit www.thepetiteretreat.co.uk

FENCES : TREES



All types of fencing and gates

Tree felling and reduction

Hedge laying and trimming

Patios

Seasoned logs available

**Call Adrian Dollar on
01926 817077 or
07914 623989**

Qualified and Insured

HANSONS
Auctioneers and Valuers

FREE ANTIQUES VALUATION DAY



Thursday 12th October 10.00am - 4.00pm

St Francis of Assisi Church Hall, 110 Warwick Road, Kenilworth CV8 1HL

Meet Charles Hanson's team of Valuers and

Lars Tharp - as seen on Antiques Roadshow
Oriental Works of Art

**Bring along your Antiques, Oriental Works of Art,
Art, Gold, Pictures, Watches and Collectables**

Now consigning for our Christmas Jewellery and Fine Art Auctions

Free home visits for larger collections

For further information please contact Mrs Carol Jones

Hansons Warwickshire Area Manager on 07802 839915

service@hansonsauctioneers.co.uk www.hansonsauctioneers.co.uk

Hansons Auction Centre, Heage Lane, Etwall, Derby DE65 6LS

Refreshments in aid of the NSPCC

Stratford Landscapes

Garden Design Service
 Paving • Decking
 Natural Stone Paving
 Seeded Lawn Turf
 Driveways • Gravel & Slate
 Limestone Paving Stockist
 Pergolas • Fencing
 & Pruning

*Visit the website to see our
 extensive portfolio of projects
 and our customers comments*

**Contact Dave Lewis
 on 01789 721851
 or 07990975158**

or visit our website www.stratfordlandscapes.com

The small garden specialists



*Over 25 years experience - classic garden
 design from the small garden specialists*



Be-spoke wedding photography with the simple aim of letting
 you enjoy your big day.

Elegant, simple and catered to your needs however extravagant
 or low key your event might be.

**Wedding photography Business headshots Family portraits
 Event coverage Printing Personal client area**

Web: www.thomas.co.uk Mail: Mail@thomasj.co.uk

Tele: 07877640081

GET ON THE MARKET FOR FREE!

**Yes, it's really
FREE**

Launch your Property with the Area's Leading Estate Agent

Call Today on 01926 81 82 88

or Email support@insidehomeslimited.co.uk

 **insidehomes**



Martin Jakeman
07816 337962 / 01926 614695
www.theshiresweep.co.uk



Professional Chimney sweep service

Bird guard/cowls supplied and fitted, Bird nest removal. Smoke test carried out as part of the sweep, fully insured. Guild certificates issued once the sweep is completed. *Stop birds nesting in your chimney, get a cowl fitted.*

Contact Martin on 01926614695 or 07816 337962 or email:theshiresweep@gmail.com

ADVERTISING IN THE HARBURY & LADBROKE NEWS

Email: advertising@hlnews.co.uk Tel: 01926 612687

ADVERT SIZE	1 MONTH	3 CONSECUTIVE MONTHS	6 CONSECUTIVE MONTHS	12 MONTHS
¼ page	£10.50	£28.00	£51.00	£94.00
½ page	£19.00	£49.00	£90.00	£168.00
Full Page	£33.50	£89.00	£165.00	£315.00

ADVERT WITH PAYMENT TO:

Sue Dronfield, 36 Manor Orchard, Harbury by 20th day of the month
 (Cheques payable to 'Harbury & Ladbroke News' or BACS details upon request)

green
chameleon



8 Park Lane
Harbury
CV33 9HX

For sale offers over £455,000

4 bed detached property
 3 bath/shower rooms
 Fabulous family kitchen/diner
 Garden & off road parking

8 Leycester Close
Harbury
CV33 9LP

For sale offers over £179,950

3 bed first floor apartment
 Fully refurbished to high standard
 Amazing space.
 Parking

VEIHING ESSENTIAL

OTHER SERVICES PROVIDED: Homebuyer & Building Survey

Mediation Commercial & Family **Snagging Survey** for new properties
Party Walls **Valuation** Shared Ownership, Help to Buy, Probate

Contact: Karna @ Green Chameleon

Tel: 01926 612121/07796 575716 **Email:** info@greenchameleon.net

Childcare from 3 months to 5 years of age

at Banana Moon Day Nursery Harbury.



Providing a safe, caring environment for children from 3 months to 5 years of age.

- Open 7.30am – 6.30pm
- All major childcare vouchers accepted
- Full-day and half-day sessions available
- Highly experienced, friendly staff
- Sibling discount
- Outdoor learning environment.



Outdoor learning environment



Home-cooked food

To find out more or to book a visit, call 01926 612374 or email info@bananamoon-harbury.co.uk



Banana Moon Day Nursery Harbury
Ivy Lane, Harbury, Warwickshire CV33 9HN
Call us on 01926 612374
or visit bananamoon-harbury.co.uk

*Subject to terms and conditions. *Government funding available.



Kenilworth Properties Ltd
BUILDING CONTRACTORS



Extensions-Alterations-Refurbishment-New Builds
Bespoke Kitchens and Bathrooms
Design-Planning & Building Regulations Application
Service available.

Web: www.kenilworthproperties.co.uk
Email: tony@kenilworthproperties.co.uk

Telephone: Harbury 612260 Mobile: 07779 096104

Harbury Business Centre, Church Terrace, Harbury, Leamington Spa CV33 9HL

A Member of the Alliance of Private Sector Practitioners

Jackie Biddle

Healthy Feet are Happy Feet

Foot Health Practitioner



Dip CIMP MPS Pract
CRB Checked

- Nail Trimming
- Corn Removal
- Verruca Treatment
- Ingrown Toenails
- Calluses Reduced
- Footcare for Diabetes

Home Visits Telephone

T: 01926 612503
M: 07872 907429

Mr Plumb



Beautiful bathrooms created from initial design to finished room

Visit our website for full list of plumbing and heating services

www.mrplumbwarwickshire.co.uk
Call Marcus on 07904 670055



Need home and contents' insurance? Reynolds Insurance holds the solution!

We offer impartial professional advice on all of the insurances we offer, in our Southam office or over the telephone. Same experienced, friendly staff for more than 20 years, who are on hand to give you competitive quotes across the market and continued assistance and support whenever required.

Competitive quotes also available on:

Motor • Tradesmen • Shops • Offices

Call Deb or Sue on 01926 812574

Reynolds Insurance Services Limited | 5 High Street | Southam

Email: enquiries@reynoldsinsurance.co.uk

Reynolds Insurance Services Ltd
is regulated by the
Financial Conduct Authority.

reynolds insurance
SERVICES LTD

Independent Insurance Advisers





LOVE TO DANCE?

CLASSES TO SUIT EVERYONE!

Professional purpose built dance studios in Southam

Monday

Baby Ballet (18mths+)
9.30am - 10.15am
Mini Mix (4-7 yrs)
4.45pm - 5.45pm
LoveDance (14yrs+)
6.45pm - 8.15pm
Adult Tap (Beginners)
7.15pm - 8.15pm
Adult Tap (Inter)
8.15pm - 9.15pm

Tuesday

Prima Ballerinas (3-4yrs)
4.00pm - 4.30pm
Grade 1 Tap (10-11yrs)
4.15pm - 5.00pm
Intro to Ballet (5-6yrs)
4.30pm - 5.15pm
Grade 2 Tap (12-13yrs)
5.00pm - 5.45pm
Pre-Primary Ballet (6-8yrs)
5.15pm - 6.00pm
Grade 4 Tap (14yrs +)
5.45pm - 6.30pm
Primary Ballet (8-9 yrs)
6.00pm - 6.45pm
Grade 3 Tap (13 yrs +)
6.30pm - 7.15pm
Grade 5 Ballet (15yrs +)
6.45pm - 8.00pm
Adult Tap (Adv)
7.15pm - 8.15pm
Inter Foundation Ballet
8.00pm - 9.15pm
Adult Tap (Beg / Inter)
8.15pm - 9.15pm

Wednesday

Mini Movers (0-5yrs)
9.30am - 10.30am
Grade 2 Modern (12yrs+)
4.45pm - 5.30pm
Grade 4 Ballet (15yrs+)
5.30pm - 6.30pm
Grade 3 Modern (13yrs+)
6.30pm - 7.15pm
Grade 4 Modern (14yrs+)
6.30pm - 7.15pm
Pointe Class (Beg/Inter)
7.15pm - 8.00pm
Grade 5 Tap (15yrs+)
7.15pm - 8.15pm
Pointe Class (Inter/Adv)
8.15pm - 9.00pm
Adult Ballet (no exp req)
8.00pm - 9.00pm

**FREE TRIAL
FOR
ALL CLASSES**

(ex Mini Movers & Zumba)

Thursday

Zumba (Over 50's)
10.00am - 11.00am
Adult Ballet (Over 50s)
11.00am - 12.00pm
Funky Dance (3-6yrs)
4.00pm - 4.30pm
Acro Gym (all ages)
4.30pm - 5.00pm
Commercial / Contemporary (9yrs+)
4.45pm - 5.45pm
Grade 1 Ballet (10-11yrs)
5.00pm - 5.45pm
Funky / Modern (7-10yrs)
5.45pm - 6.30pm
Boys Street Dance
5.45pm - 6.30pm
Grade 2 Ballet (11-13yrs)
6.30pm - 7.15pm
Grade 1 Modern (10-12yrs)
7.15pm - 8.00pm
Grade 3 Ballet (14yrs+)
8.00pm - 8.45pm

Friday

Mini Movers (0-5yrs)
10.00am - 11.00am
Little Tappers (3-5yrs)
4.00pm - 4.30pm
Pre-Primary Tap (6-8yrs)
4.30pm - 5.15pm
Cheerleading (6 yrs+)
4.45pm - 5.30pm
Primary Tap (8-10yrs)
5.15pm - 6.00pm
GCSE Dance
5.00pm - 7.00pm
Inter Ballet (16yrs+)
7.00pm - 8.15pm



Saturday

Rhythmic Gymnastics
9.00am - 9.45am
Musical Theatre (4-8yrs)
9.00am - 10.30am
Aesthetic Gymnastics (11 yrs+)
9.45am - 11.15am
Baby Ballet (18mths+)
10.30am - 11.15am
Musical Theatre (9yrs+)
11.15am - 12.45pm
Acro Gym (all ages)
11.30am - 12.15pm
Lyrical & Jazz (8yrs+)
12.15pm - 1.15pm

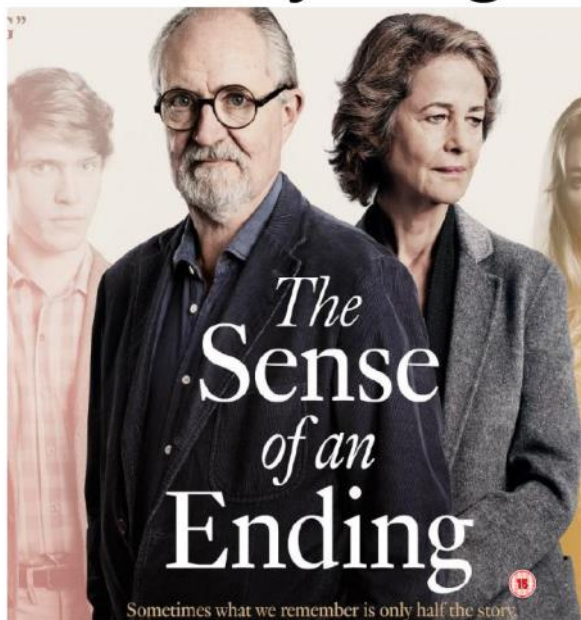
Contact Miss Lorraine

LoveBallet Dance Studios
Insight Park, CV47 1NE
lorraine@loveballet.co.uk
07921 853773
www.loveballet.co.uk



Harbury WI
is proud to present

Harbury Village Cinema



Based on the
novel by
Julian Barnes

Starring Jim
Broadbent
Charlotte
Rampling
Harriet
Walter

Saturday October 21st 2017
Doors open 6.30pm film starts at 7pm

Tickets: £10 to include fish'n'chips & 10 raffle tickets
OR £5 to include 10 raffle tickets only

All tickets available in advance from
Harbury Chemist High St. CV33 9HW 01926 612 858

Spare tickets sold on the door subject to availability

Refreshments and Cana Imports Bar.

Any inquiries to: Chris Rutherford 613757

LADBROKE HARDWOOD LOGS

HALF THE PRICE OF COAL



**BARN STORED
(AS GOOD AS KILN
DRIED LOGS)**



*** Free Delivery * AND * Same Day Delivery ***

Dropped at nearest point

Discount on more than one bag

Call William on 07946 319908 or 01926 257571

www.bwebbservices.co.uk

The Country Pig

The Country Pig supply high quality catering using rare breeds such as Gloucester Old Spot, Saddlebacks and Tamworth pigs. All pigs are reared outdoors and free range with animal welfare being our priority. Available to hire for any special occasion e.g. Parties, Weddings.

Carnivals etc.

Call George Clarke - 07733158680

Email: clarkegeorge05@gmail.com



Claws

For all your nail and beauty treatments

Why not pop into Claws Beauty
and let us pamper you?



View our range of treatments online at
www.clawsbeauty.co.uk
on Facebook or download the Claws App



/claws.beauty



Claws Nail & Beauty App

For further information and bookings please call
01926 614422

or email clawsbeauty@hotmail.co.uk

Bank Chambers, High Street, Harbury CV33 9HW