

# Harbury & Ladbroke News

Is published monthly and reflects all aspects of local life.

**September 2015**

**No.498**

Editorial Office

☎ 612155

Articles to

Harbury Pharmacy, High Street

Email address

articles@hlnews.co.uk

Advertising Office

31, Binswood End (☎ 612155)

advertising@hlnews.co.uk

Distribution Manager

49, Mill Street (☎ 612009)

distribution@hlnews.co.uk

Inserts by prior arrangement

☎ 612009

## IN THIS ISSUE

## Page

EDITORIAL .....	2
HARBURY DIARY & REFUSE ROTA.....	2 - 5
FROM THE RECTOR & CHURCH NEWS .....	5 - 8
LADBROKE NEWS .....	8 - 13
HARBURY PARISH COUNCIL .....	13
CLUBS & SOCIETIES .....	18
EARLY YEARS & SCHOOL.....	23
VILLAGE HALL UPDATE .....	28
GARDENING & NATURE .....	29
GENERAL SECTION .....	33
LETTERS TO THE EDITORS .....	44

## Editorial Team

John Holden - Chris Finch - Marian Millington  
Janice Montague - Sally Stringer - Jackie West

*The views of contributors are not necessarily those of the Editorial Team.  
The Editors reserve the right to amend articles as they see fit.*



## Editorial

This year's Holiday at Home staycation was one of the most successful held and was enjoyed by those who attended. A big thank you to those who gave up the week to help make it a success.

In this edition there are a number of volunteering opportunities. Firstly, there is 'Connections Café' for those suffering from Dementia and their carers. There is a meeting for interested volunteers on the 6<sup>th</sup> October. Chris Gibb is seeking help with researching the lives of the Harbury villagers who died in the First World War. Then e-Wheels is asking for volunteers to coordinate transport arrangements for the needy.

The weekend of the 12<sup>th</sup> and 13<sup>th</sup> September will be a busy one; Harbury Village Show is on Saturday, opening at 2pm in the Village Hall. It is also the Heritage open day's weekend. Ladbroke Church is open both days, displaying local history, guided tours of the Church and churchyard discovery sessions. Also Chesterton Windmill is open over the two days.

Finally, with the increasing amount of vehicles coming into Harbury, would drivers please be aware of the various traffic pinch points in the village and take time to check that the road ahead is clear before driving past parked cars. Do please be considerate to other road users and pedestrians.

# Harbury Diary

## SEPTEMBER

- |      |   |   |
|------|---|---|
| Sat  | 5 | Coffee Morning, 10.00am - 12 noon in Tom Hauley Room in aid of Badminton                                |
|      |   | Banana Moon Nursery Summer Fete, 10.00am - 12 noon  |
| Sun  | 6 | <b>TRINITY XIV</b>  |
|      |   | Sung Communion, 9.00am  |
|      |   | Little Saints' Service, 10.30am, followed by food & refreshments  |
|      |   | Taizé Service, 6.00pm   |
|      |   | Zumba, 9.00am in Village Hall   |
|      |   | Twinning Association Petanque & BBQ, 2.00 - 6.00pm, Village Club  |
| Tues | 8 | Pilates, 9.30am in Village Hall   |
|      |   | Junior Theatre Group, 6.30pm in Village Hall  |
|      |   | Holy Communion, 7.30pm  |
|      |   | Horticultural Society visits Harbury Heritage Room, 6.30 - 8.30pm                                       |
| Wed  | 9 | Wednesday Walkers, meet 9.40am, Village Hall Car Park - Ratley with Optional Pub Lunch (4½ miles hilly) |


- Wed 9 Pleasant Pastimes, 2.00 - 4.00pm, Tom Hauley Room  
Inspire Dance, 4.00pm in Village Hall
- Thurs 10 Holy Communion, 9.45am, followed by coffee  
Blood Donors in Village Hall 1.30 - 3.30pm and 4.30 - 7.30pm  
Harbury W.I., 7.45pm in Tom Hauley Room, -  
"From the Baltic to the Caspian" - Jennie Boye
- Sat 12 Coffee Morning, 10.00am - 12 noon in Tom Hauley Room in aid  
of Harbury School PTA  
Chesterton Windmill Heritage Open Day, 10.30am - 4.30pm  
Harbury Village Show, 2.00pm in Village Hall
- Sun 13 TRINITY XV**  
Holy Communion, 8.00am  
Sung Communion, 10.30am  
Zumba, 9.00am in Village Hall  
Chesterton Windmill Heritage Open Day, 10.30am - 4.30pm
- Mon 14 Upholstery Class, 9.15am in Village Hall  
Harbury Society talk "150 years of Harbury Cutting", Tom Hauley  
Room, 7.30pm for 8.00pm - All Welcome
- Tues 15 Pilates, 9.30am in Village Hall  
Junior Theatre Group, 6.30pm in Village Hall  
Holy Communion, 7.30pm  
First meeting of Duke of Edinburgh Bronze Group, 8.00pm in  
Tom Hauley Room  
ADVERTS FOR THE NEXT ISSUE TO 31 BINSWOOD END,  
HARBURY OR EMAIL ADVERTISING@HLNEWS.CO.UK
- Wed 16 Wednesday Walkers, meet 9.40am, Village Hall Car Park -  
Frankton - Draycote (3½ miles)  
Inspire Dance, 4.00pm in Village Hall  
Ballroom Dancing, 7.30pm in Village Hall
- Thurs 17 Holy Communion, 9.45am, followed by coffee
- Fri 18 Inspire Dance, 4.00pm in Village Hall
- Sat 19 Coffee Morning, 10.00am - 12 noon in Tom Hauley Room in aid  
of Ladbroke & Deppers Bridge W.I.
- Sun 20 TRINITY XVI**  
Holy Communion, 8.00am  
Family Communion Service, 10.30am  
Evensong, 6.00pm  
Zumba, 9.00am in Village Hall  
Quiz in aid of Zoe's Place, 7.00 for 7.30pm, Harbury Village Club,  
contact Katie Bennett 07742 834712 for details
- Mon 21 Upholstery Class, 9.15am in Village Hall
- Tues 22 Pilates, 9.30am in Village Hall  
Junior Theatre Group, 6.30pm in Village Hall  
Holy Communion, 7.30pm  
Julian Meeting, 8.00pm

- Wed 23 Wednesday Walkers, meet 9.40am, Village Hall Car Park - Boddington (4 miles)  
Pleasant Pastimes, 2.00 - 4.00pm, Tom Hauley Room  
Inspire Dance, 4.00pm in Village Hall  
Ballroom Dancing, 7.30pm in Village Hall
- Thurs 24 Holy Communion, 9.45am, followed by coffee  
**ARTICLES FOR NEXT ISSUE TO: HARBURY PHARMACY, HIGH ST OR EMAIL TO ARTICLES@HLNEWS.CO.UK BY 5.30PM**  
Extra Parish Council Meeting, 6.00pm in Village Hall  
Parish Council, 7.30pm in Village Hall
- Fri 25 Macmillan Nurses Coffee Morning, 10.00am - 12 noon, Tom Hauley Room
- Sat 26 Coffee Morning, 10.00am - 12 noon in Tom Hauley Room in aid of Harbury Heritage Room
- Sun 27 TRINITY XVII**  
Holy Communion, 8.00am  
Sung Communion, 10.30am  
Zumba, 9.00am in Village Hall
- Mon 28 Upholstery Class, 9.15am in Village Hall
- Tues 29 Pilates, 9.30am in Village Hall  
Junior Theatre Group, 6.30pm in Village Hall  
Holy Communion, 7.30pm
- Wed 30 Wednesday Walkers, meet 9.40am Village Hall Car Park - Hunningham (4 miles)  
Inspire Dance, 4.00pm in Village Hall  
Ballroom Dancing, 7.30pm in Village Hall

## OCTOBER

- Thurs 1 Friends of Harbury Cemetery meet 9.00 - 11.00am, (weather permitting). Volunteers needed.  
Holy Communion, 9.45am followed by coffee  
Folk Club, 8.00pm at Village Club
- Fri 2 Harbury Primary School Sponsored Walk
- Sat 3 Coffee Morning, 10.00am - 12 noon in Tom Hauley Room in aid of Save the Children
- Sun 4 TRINITY XVIII**  
Sung Communion, 9.00am  
Little Saints Service, 10.30am, followed by food & refreshments  
Holy Communion with Laying on of Hands, 6.00 pm  
Tennis Club Quiz, 7.30 for 8.00pm at Village Club
- Tues 6 Dementia Café (Connections) volunteers' meeting, 2.00pm in Library  
Heritage Room open 6.30 - 8.30pm in Village School  
Holy Communion, 7.30pm
- Wed 7 Wednesday Walkers, meet 9.40am Village Hall Car Park - Lapworth (3 miles flat)

- Wed 7 Holy Communion, 2.00pm  
Mothers' Union Meeting, 2.30pm, Tom Hauley Room -  
"Thanks for the Memory" - Bring a "Treasured Object"
- Thurs 8 Holy Communion, 9.45am, followed by coffee  
Harbury W.I., 7.45pm in Tom Hauley Room, -  
"From Downton Abbey to Watership Down" - Nick Chandler
- Sat 10 Coffee Morning, 10.00am - 12 noon in Tom Hauley Room in aid  
of RNLI  
Choral Evensong with Interdum Singers, 4.30pm
- Mon 12 Harbury Society talk on Leamington Lights Tom Hauley Room -  
7.30 for 8.00pm - All Welcome

Refuse Collection Rota			
	Deppers Bridge	Harbury, Ladbroke & Deppers Bridge outlying properties	Collection Week
September	Wed	Fri	
	9	11	Green & Blue Lid Bins
	16	18	Grey Bin
	23	25	Green & Blue Lid Bins
	30		Grey Bin
Oct		2	Grey Bin
	7	9	Green & Blue Lid Bins
	14	16	Grey Bin

 <b>All Saints HARBURY</b>		<b>From the Rector</b> <b>Reverend Craig Grocock</b> The Rectory, Vicarage Lane, Harbury ☎612377 ✉kankudai43@aol.co.uk
---	--	--

## Memorial Garden at Harbury

Many of you will know that we are currently in the planning stage for the development of a new memorial garden at Church. It is over a hundred years now since burials took place in the churchyard but we do of course continue to allow the burial of ashes. However, we are fast running out of space for this, hence the plans to create a space at the rear of the church grounds that is sensitive, dignified and fitting for ashes to be placed there for years to come.

Wendy Crowder, garden designer in the village, has been working with us in creating plans for a new garden which will provide ample space for the next 25 years. You will be aware that physical space is limited at the rear of the churchyard which means that in future we will have to pour ashes into designated plots rather than bury caskets as we have up to now. Many churches are moving towards the pouring of ashes. I know a number of places where this has worked well and been received very positively by the local community. The idea will be that every burial will be mapped onto a simple grid system so we will always know where a person's ashes have been laid. We will arrange for the name of a loved one to be inscribed on a stone tablet, which will be permanently on display in the garden. We will also have a book of remembrance open in church throughout the year.

If you haven't seen the plans yet, Wendy has made a model of the garden which is on display in the library for you to look at.

In terms of the time scale for all this, we are currently waiting on Stratford District Council and the Diocese of Coventry to grant us licence and faculty to begin the work.

Please do let us know what you think. We want to provide the best for the village for many years to come.

God bless you.

## From the Registers

### *Holy Matrimony, All Saints' Harbury*

22<sup>nd</sup> August                  Nic Lee and Victoria Stafford

### *Holy Baptism, All Saints' Harbury*

9<sup>th</sup> August                      Samuel Minchin

23<sup>rd</sup> August                  Willow Robertson



## From the Churchwardens

**Elaine & John**

We are pleased to report that the Memorial Garden is progressing nicely. The plans and model for the new memorial garden are now available to be viewed in the village library and we would encourage you to go and have a look. Estimates are being sought for the various landscaping works. The approval documents are now being worked on to be put forward to the Diocese shortly.

Our recent annual 'Holiday at Home' event was a great success – and thanks to all those who organised, helped, and provided food, transport and entertainment for the entire week for about 20 lovely people who otherwise might not get a break away from home.

As the year progresses, please put the following date for the Harvest Supper in your diary – Saturday 10<sup>th</sup> October – more details to follow.

We have spent some time thinking about the format of our Family Service 'Saints Alive' service and after much soul searching we have decided to reintroduce a very simple communion, whilst maintaining the more informal and contemporary style of worship. We have planned the format to appeal to all ages and would love to see you at our next service (The Stuff of Life!) on 20<sup>th</sup> September.

And don't forget the massive Messy Church being held at the Grange, Southam between 11am and 1pm on Saturday 12<sup>th</sup> September.

And finally, we offer a variety of service to meet all worship requirements and styles as follows:

When	Service	Time
1 <sup>st</sup> Sunday of the month	Sung Eucharist Little Saints Various/Ad hoc (see pew sheet)	9.00am 10.30am 6.00pm
2 <sup>nd</sup> Sunday	Said Communion Sung Eucharist Baptisms	8.00am 10.30am 12.30pm
3 <sup>rd</sup> Sunday	Said Communion Saints Alive! Evensong	8.00am 10.30am 6.00pm
4 <sup>th</sup> Sunday	Said Communion Sung Eucharist Baptisms	8.00am 10.30am 12.30pm
5 <sup>th</sup> Sunday	Said Communion Sung Eucharist	8.00am 10.30am
Tuesdays	Said Communion	7.30pm
Thursdays	Said Communion	9.45am

We would love to see you at any of our services – and more information can be found on our website: <http://www.allsaintsharbury.org/>. For those of you who are unable to get to church but would like to listen to the sermons, these are now recorded and can be accessed via <http://www.allsaintsharbury.org/podcasts.php>



## Mothers' Union

Gillian Hare

Our tea party on 6<sup>th</sup> August was a very happy occasion, when we were joined by over 50 members from the deanery branches. The room was cheered with pretty tablecloths (including one from M.U. members in Madagascar) and flowers, and a sumptuous tea was shared. It was a lovely opportunity to build on friendships with other churches.

As you read this, we shall have celebrated our 110<sup>th</sup> year as a branch in Harbury, with a service, reminiscences and a party without tea! More next month when we shall be back in our autumn routine with a meeting on 7<sup>th</sup> October.

Enjoy what's left of this summer.

### Deanery Massive Messy Church

**Where:** The Grange Hall, Southam

**When:** Saturday 12<sup>th</sup> September – 11am to 1pm

**With:** Puppets

All are invited.

**Bryan Pratt**

## Ladbroke News & Diary

<http://www.ladbroke-pc.org.uk>

### SEPTEMBER

Sat 5 Whist Drive, 7.30pm, Village Hall

**Sun 6 Trinity XIV**

Family Communion, 10.30am followed by refreshments

Tues 8 Photography Club, 7.30pm, Village Hall

Wed 9 Table Tennis, Children: 6.30 - 7.15pm, Adults: 7.15 - 8.15pm, Village Hall

Sat 12 Heritage Open Day at Ladbroke Church, 11.00am - 4.00pm

**Sun 13 Trinity XV**

Holy Communion (sung,) 9.00am

Heritage Open Day at Ladbroke Church, 2.00 - 4.00pm

Tue 15 ADVERTS FOR THE NEXT ISSUE TO 31 BINSWOOD END, HARBURY OR EMAIL ADVERTISING@HLNEWS.CO.UK

Wed 16 Parish Council Meeting, 7.45pm, Village Hall

Sat 19 Whist Drive, 7.30pm, Village Hall



**Sun 20 Trinity XVI**

Holy Communion (BCP), 9.00am

Wed 23 Table Tennis, Children: 6.30 - 7.15pm, Adults: 7.15 - 8.15pm,  
Village Hall

Thurs 24 ARTICLES FOR NEXT ISSUE TO: HARBURY PHARMACY,  
HIGH ST OR EMAIL TO ARTICLES@HLNEWS.CO.UK BY  
5.30PM

WI, 7.30pm, Village Hall

Sat 26 Whist Drive, 7.30pm, Village Hall

**Sun 27 Trinity XVII**

Holy Communion (sung), 9.00am

Wed 30 Table Tennis, Children: 6.30 - 7.15pm, Adults: 7.15 - 8.15pm,  
Village Hall

**OCTOBER**

Sat 3 Whist Drive, 7.30pm, Village Hall

**Sun 4 Harvest Festival**

Family Communion, 10.30am

Harvest Lunch, 12.30pm at The Old Rectory

Tues 6 Photography Club, 7.30pm, Village Hall

**Ladbroke Church News**

**Jackie West**

Our family service on the first Sunday of August saw the church full again, this time for the baptism of Arthur Hollins. It was an opportunity for his family to get together, celebrate and thank God for Arthur and a time to remember that as well as being a member of a human family this child is part of God's family too, the family of the church. A baptism service uses many symbols to remind us of God's love - the Easter candle was lit again, the sign of the cross was made on his forehead and a handful of water from the font gently poured over him. On this occasion there was one more - Arthur's young relatives were invited to draw around their hands and write their names on a huge scroll of paper so that in years to come he could know that these members of his family saw him baptised.

Families and communities share many things in common and it's great that those in and around Ladbroke are so supportive of the church and our special events. David Badman, Betty and Keith and their team or helpers did a fantastic job organising the clearance sale at Sarah's Cottage which raised around £900 and here are some more events at which we hope will join us:

Saturday 12<sup>th</sup> & Sunday 13<sup>th</sup> September - Heritage Open Days

Sunday 4<sup>th</sup> October - 10.30am Harvest Festival Service,

12 noon Harvest Lunch at The Old Rectory

There is more information about the free Heritage Open Day activities later in the magazine.

## Harvest Festival Gifts

Traditionally Ladbroke All Saints Church has donated all the offerings brought to the Harvest Festival to a worthy cause. This year we would like to go a step further and ask that your offerings on the day could be of a non-perishable variety suitable for us to donate to the local food bank.

This will enable us to share God's bounty with others who may not be as fortunate as ourselves.

Thank you.

**Margaret Bosworth**

## Ladbroke Harvest Lunch

The Ladbroke Church Harvest Lunch will again be hosted by David and Jane Rutherford at the Old Rectory Ladbroke on Sunday 4<sup>th</sup> October at 12.30pm.

This beautiful venue and superb lunch was very much enjoyed by everyone who attended last year.

Tickets will be £10 each to include a glass of wine. Children under 12; half price. Further details in church or ring Sue Lord 815153 or Margaret Bosworth 817312.

**Sue Lord**

## From the Registers

### *Holy Baptism*

2<sup>nd</sup> August

Arthur Hollins

### Flower Rota

6<sup>th</sup> & 13<sup>th</sup> September

Kate Pickin

20<sup>th</sup> & 27<sup>th</sup> September

Mary Whitehouse

4<sup>th</sup> October

Harvest Festival



**Ladbroke & Deppers Bridge Women's Institute**

**Carol Lane**

Instead of a meeting in August, a coach-load of us spent a day at the Cotswold Farm Park belonging to Adam Henson of Countrywide fame. Sue Moore drove the Southam Community Coach with great panache and Adam hopped onto the coach as soon as we arrived to welcome us. (You will have

to take my word that this happened as I missed that photo opportunity which no-one in our esteemed Photography Club would ever have done!)

In pleasant weather we had a thoroughly enjoyable and relaxing day. Despite the fact that there were lots of people present it did not feel crowded and it was easy to access the informative tractor ride through the grounds. The farm specialises in rare breeds and examples of pigs, cattle,



goats and sheep were dotted about the fields. We didn't take this photo but we did see these pigs as well as Adam!

May I remind you that the next WI Coffee morning is on the 19<sup>th</sup> of September and gifts of wrapped and labelled cakes, bric-a-brac and raffle prizes are welcomed - as well as help on the day between 9.30am and 12 noon.

The next meeting is on September 24<sup>th</sup> starting at 7.30pm. Val Brodie's talk about nursing in the Second World War is entitled 'Bandages and Fresh Air'. Visitors are always welcome.



## Ladbroke Matters

David Wright

The Ladbroke Matters team is responsible for the upkeep of the Village Hall and Millennium Green. To help with this we organise regular fundraising events so that we can continue to offer both of these resources for the benefit of our community.



At the time of writing, our Village Hall film and supper night is due to be held on **Friday 4<sup>th</sup> September**. We are planning to screen 'Testament of Youth' using our new audio visual system. I hope by the time that you are reading this that the evening was once again a great success.



We have a quiz night planned for **Saturday 17<sup>th</sup> October** in the village hall. Start time 7.15pm. Teams should consist of no more than 4 players. The cost to take part is £10 per person including a fish and chip supper. So start putting your teams together now for this popular, fun event. Tickets can be bought from Carol (814715) or David (07940 413707) or by email from [bookings@ladbrokematters.uk](mailto:bookings@ladbrokematters.uk).



Keep your ears and eyes peeled for news about our **Christmas Extravaganza** planned for December. More information will be available soon.

Copies of our 2015 information leaflet and event programme is available at *The Bell* pub. If you would like to join our team, have any suggestions for future events, or any other comments please contact us (details are in our leaflet and on the Ladbroke website).

## Ladbroke Village Hall Millennium Club

£50	Pete Edgar	£50	Sophie Kendall
£25	Sheena Healey	£25	Keith Tancock
£25	Carole Loftus	£10	Martin and Debra Neal
£10	Joan Perry	£10	Tracy Lochhead
£10	Jill Norgate	£10	Geoff Lane

**Margaret Bosworth**



## Ladbroke General Section

### House Clearance Sale in Ladbroke

We are extremely grateful to David Badman for allowing the public into his parental home last weekend (22<sup>nd</sup> & 23<sup>rd</sup> August). He managed to sell the majority of the contents of "Sarah's Cottage" which raised the magnificent sum of £900 for All Saints Church, Ladbroke.

We thank everyone who paid so generously for the goods they bought. I am personally grateful to Keith Archer who used his selling skills to great advantage. It was a wonderful weekend for us; even the weather managed to stay fine until the last couple of hours.

**Betty Winkfield**



## Heritage Open Days

Ladbroke Church will be taking part in Heritage Open Day weekend this year. This free national event takes place every September; you can visit places not normally open to the public and other venues, like All Saints Church, Ladbroke put on something special for visitors.

Come along on **Saturday 12<sup>th</sup> September 11am – 4pm** or on **Sunday 13<sup>th</sup> 2 – 4pm** to see a **display of local history** – from fossils and Roman coins found within a mile or so of the church to facsimiles of the auction brochures

when Ladbroke Hall and much of the village was up for sale in 1918, 1930 and 1966! If you are interested in finding out more about the church building and its stained glass windows there will be **guided tours at 2pm** on both days. You can also help us find out more about who is buried in Ladbroke Churchyard by joining one of our **Churchyard Discovery Sessions** between 11 and 12.30 on Saturday and 3-4pm each day.

**Jackie West**

## Celebrations at The Bell Inn

Anyone driving through Ladbroke around 7pm on Sunday 23<sup>rd</sup> August must have wondered what was happening - as more than a hundred people strolled down the lanes to the pub and those in outlying properties arrived by car. We were all there to help Huw, Ruth and the team celebrate their second anniversary at The Bell Inn. They are a great asset to the village having brought life back to the pub and delicious food too. Laura presented bouquets to Ruth and Denise, and Huw thanked us for being not only customers but neighbours and friends too. Go to the gallery page on village website [ladbroke-pc.org.uk](http://ladbroke-pc.org.uk) if you want to see more pictures.



**Jackie West**



**Harbury Parish Council**

**Linda Ridgley**

*Official minutes can be viewed in the Library, on the Parish Council website [www.harbury-pc.gov.uk](http://www.harbury-pc.gov.uk) or obtained from the Parish Clerk Tel: 01926 614646*

## July 2015

A lot of people were present anticipating discussion on the planning applications for Village with a Vision and the demolition of the Old New Inn and erection of nine dwellings. However a special meeting would discuss these applications on the 4<sup>th</sup> August.

## Other Organisations

The Library Lease is progressing. The Energy Group asked the Council to support its grant application for solar panels on the Library roof. Councillor Summers didn't agree with it and Councillor Mancell was worried there was no cost benefit analysis on potential damage to the roof and pondered on the insurance liabilities. Councillor Gibb thought listed building consent would be needed and Councillor Thornley wanted more evidence. They voted against supporting the initiative.

Chris Finch updated the meeting on the Village Hall improvements. WiFi was now available and, for a fee, hirers get a one-off code to use it. The extension was ahead of schedule and the break through should be in September.

Proper signage was needed at the village Club's car park to prevent visitors leaving the site from driving the wrong way up Hall Lane.

County Council - Bob Stevens: Southam College had an extra £1m for a classroom and additional car parking. Network Rail would repair Ufton Road and there was money to improve the Middle Road junction. The Community Forum on 12<sup>th</sup> September, 6.30pm at Southam College, would include discussions on Stratford's Core Strategy, Village with a Vision and Southam OAPs' homes.

Stratford District Councillor Jacqui Harris: the Core Strategy was discussed in Council but it would be February before its provisions were approved and in place. Traffic impact from the proposed Lighthorne Heath New Village would be considerable. The County could not afford improvements although there would be some finance provided by developers. Councillor Gibb worried about increased traffic flows at the Fosse/Harbury Lane crossroads. Bob Stevens said the improvements at the M40 J12 were supposed to relieve that.

Planning - Councillors made no representation on a minor amendment regularising the Hillside site boundary nor to hedgerow removal at Walworth Farm to allow the use of large machinery. They were content with the pre-application consultation on the solar farm off the Fosse and Councillor Ekins had offered his experience with opposing the Deppers scheme to Long Itchington where a solar farm was also planned. Councillors made no representation for an extension at 17 Hereburgh Way nor on plans to fell the churchyard spruce.

Stratford District had given permission for extensions at 11 Neales Close; 15 Honiwell Close; 25 Pineham Avenue and 12 Ridgley Way. They gave permission for external wall insulation in Pineham Avenue for Nos. 14, 16 and 17. Approval was also given for the solar farm on Kineton Road, Southam and the erection of a replacement dwelling at Stapenhall Farm, but was refused for a new house at The Barn, Spiers Farm, Chesterton Road.

Ken Stephenson reported that Warwick and Stratford District Council had to find permanent pitches for gypsies and travellers. Warwick's sites included the Harbury Lane Football Ground and others were considered for compulsory purchase. If the Brakes Ground was confirmed Stratford might not be able to choose somewhere in our Parish due to the cumulative effect. He wanted the Parish Council to ensure residents could make their views known to Stratford during the Autumn Consultation period.

Pat Summers updated colleagues on the Neighbourhood Plan progress. The consultant would seek the Council's approval once the discussion draft had been revised. It would then go on the NP Facebook page. It was important as many residents as possible voted on the Plan, for if it were passed the Parish could claim 25% Infrastructure Levy from subsequent developers.

**Properties** - Play Area safety surface and Skatepark; a date is still to be set for repairs. New Cemetery rules were formally adopted. The beech tree needs maintenance and the quote for removing excess soil from the perimeter was finally agreed. The Chapel will be cleared out as the Chairman wants to store surplus library books there. There was discussion about hosepipe use at the allotments and overgrown plots spreading weeds into neighbouring gardens. The Clerk pointed out that the PC made no profit on the allotments as the rents just covered PC payments to the County.

**Environment** - All but one street lamp in Deppers Bridge had now been upgraded. Councillors discussed the merits of paying an extra £200 to replace Constance Drive's demolished lighting column in a better position.

**Finance** - New financial regulations were approved. It was agreed to fund the cleaning of the War Memorial.

**Next Meeting:** Thursday 24<sup>th</sup> September, 7.30pm in Harbury Village Hall.

## **Extra Parish Council Meeting - August 2015**

The Clerk and I were both counting as the public poured in. I stopped at 75 but there seemed to be more. There were two planning applications to be considered.

### **Bull Ring Farm Lane Development**

After much discussion and public input, the Council agreed (four objecting and two abstentions) to oppose the Price Family Trust Application for a 32 unit three storey block of flats and 21 houses on land to the north west of Bull Ring Lane. The grounds were: inadequate access; volume of traffic generated; danger to road users and pedestrians and lack of adequate disabled access. They insisted that if the application were approved Stratford must attach conditions to ensure the flats were built and serviced before the enabling housing was built.

The run up to this decision was fascinating with some very cogent arguments by objectors.

Tony Thomas and his wife Joan spoke for local residents challenging the change of use of the pasture land; suitability of flats for elderly people and particularly the inadequacy of the access.

The Lane was only four metres wide and unsuitable for heavy traffic. Tony doubted that these plans were what Village with a Vision (VwV) had imagined and claimed the accommodation would be too expensive for many.

The agent, John Hallam, could not say what price the flats would be, but admitted there was no end-user signed up and claimed County Highways had inspected Bull Ring Farm Lane four years ago and supported the project. This did not go down well with the audience and led to a tsunami of other objections: SDC had set a limit of 10 dwellings on the site; they were not "village" buildings; lack of adequate access for emergency vehicles; potential chaos during construction phase; affordable houses should be for villagers; no guarantee that a Care Provider would be found and the enabling housing was not needed.

Several people praised the ideal of VwV that the village needed to keep its community together including older people who wanted to stay here in their retirement. However, they did not believe the site, access or the scale of development was suitable. Tony Stubbs for VwV explained the background to the application stressing the partnership with County Social Services, consultation with the village and the loss of Care Provider Bromford's involvement.

Councillors discussed the pros and cons. Councillor Summers was not opposed to the application. She stressed the need for care provision but not the small flats proposed. There would be added pressure on medical services. Councillor Thompson, part of the VwV Group, said this was the only site and the County used Harbury as an exemplar of good consultation practice. Councillors Ekins and Thornley agreed provision was needed but the site was not right. She thanked VwV for their work but thought the land owner had taken advantage of the community. Councillor Allen could not see how any of the dangers and disadvantages of the site and its access could be mitigated.

Chairman Tim Lockley asked agent John Hallam for a guarantee that the Care Home would be built and operated as in the plans, reminding residents that a Care Home had been approved on the Cement Works site but would not now be built as there was no-one willing to operate it. The agent replied the site would be "passed" to someone who would build and operate it, provoking the Chairman to declare that a pre-condition was needed to ensure a Care Provider was signed up and S106 Agreements providing money for village infrastructure improvements.



## Old New Inn Application

The Public Participation Session on the plans to demolish the Old New Inn and erect nine dwellings including a three storey round tower of flats, was very lively. Ken Stephenson kicked off saying it was very emotive but should be considered on planning grounds and went on to list the imperative to protect and enhance the Conservation Area; the overdevelopment; the loss of an important heritage building; the overbearing height of the tower; the minimal car parking; poor design; inadequate access and impact on the Old New Inn Green's setting.

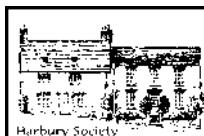
The agent said the previous three rejected applications kept the present building but that SDC had told him they did not "make the best opportunity to develop the site" and he concluded that nine dwellings were needed to make the scheme viable.

The immediate neighbours claimed it was gross over-development; they would have no privacy or light; Long Thatch would look out at a "vernacular" three-storey round tower of flats. The Temple End/Farm Street junction was dangerous and accidents would increase; the design was like urban office accommodation on a business park; parking outside the site hampered access to Farm Street for vehicles now and could only worsen. Sharon Hancock regretted the loss of historic buildings in the 1960s and said "the future would not think well of Harbury if it allowed the destruction of the Old New Inn".

Chair of the Planning Working Party, Pat Summers said the building may not continue as a pub and if demolished there would be room for nine dwellings, but that would be a shame. She believed the owners should be able to do what they liked with their property, but thought the Council should object. Councillor Thompson was similarly conflicted but agreed the present plans were inappropriate. Councillor Ekins objected to the use of an Outline Application – what they saw was not necessarily what they would get. He cited the loss of the amenity (the pub), the impact on the Conservation Area and the overdevelopment of the site.

Councillor Allen said that at 55 dwellings to the hectare, this was overdevelopment; the access was not good enough, it would impact on the Conservation Area and visual amenity. Chairman Tim Lockley agreed, adding that the application lacked a Housing Need Survey. 61 houses had been approved since the last survey in 2011 and our needs had been met. He outlined six grounds for objection; the harm to the Conservation Area; loss of amenity (the pub); lack of Housing Need Survey; overdevelopment; poor design and highways concerns. On these grounds the objection was passed unanimously.

**Next Parish Council Meeting**, Thursday 24<sup>th</sup> September, 7.30pm in the Village Hall.



## Harbury Society

Linda Ridgley

For the colder months (can they be?) we have organised a series of talks on a variety of topics we believe will be of general interest. They all take place in the Tom Hauley Room as usual, starting at 7.30pm with the talks beginning at 8pm.

Monday 14<sup>th</sup> September - "150 years of Harbury Railway Cutting" by Luke Swain - Network Rail.

Monday 12<sup>th</sup> October - "Leamington Lights", illuminated by Margaret Rushton.

Tuesday 17<sup>th</sup> November - "Dickens and Leamington", an illustrated talk by Trevor Humphreys.



## Harbury Women's Institute

Jeanne Beaumont

There was no meeting in August but we had a super Centenary Garden Party held in the Farley Room, Village Hall. The weather wasn't too bad at all and some members were able to sit outside – and very glam they looked too!

The refreshments were very "moreish" (and we had more) with wine etc and we toasted the W.I. and friendship. The committee and helpers worked very hard and we thank them for their efforts.

I must mention the Village Show on Saturday 12<sup>th</sup> September and do hope it will be supported. The Show has been going for many years and is a village occasion. Anyone is welcome, even if they enter just one item. It makes a pleasant afternoon viewing, with refreshments and a raffle as well. See you there.

We send best wishes to Peggie and Bill Middleton and Pat and John Smith on their 60<sup>th</sup> wedding anniversaries.

The next meeting is at the Tom Hauley Room on Thursday 10<sup>th</sup> September, 7.45pm. Speaker: Janice Boyle, "From the Baltic to the Caspian".

### October Edition - Harbury & Ladbroke News

**Adverts to:** 31 Binswood End, Harbury or e-mail to [advertising@hlnews.co.uk](mailto:advertising@hlnews.co.uk) by 15<sup>th</sup> September

**Articles to:** Harbury Pharmacy, High Street or e-mail to [articles@hlnews.co.uk](mailto:articles@hlnews.co.uk) by 5.30pm, Thursday 24<sup>th</sup> September



## Folk Club

Peter McDonald

The theme for the 369th Harbury Folk Club on 6<sup>th</sup> August was 'Good News and Bad News' and that set the tone for the evening. It being holiday time, there could have been some Bad News in that there might not have been many singers nor audience, but instead the Good News was that we had plenty of both. In fact, I had to limit the 24 performers – who sang as soloists, duos or trios – to just two numbers each.

I opened the proceedings with 'To name but A FEW', a song which studies the good and bad attributes of the elements – Air, Fire, Earth and Water. Peter Mason and his daughter Jess were next up with Jez Lowe's 'Idle Time' and 'Ginger Billy' and they were followed by Debbie who read one of her own poems, 'Raiders', and sang 'Liverpool Lullaby'. Thrup'nny Bits (alias Des, Gareth and Barbara) sang two contrasting songs – 'The Magpie' and 'Breaking Wind (Suddenly)', though I'm not sure that Kathleen Ferrier would have approved of the latter! We were all delighted to welcome Norman Wheatley back to the Club after his major surgery in May; he was looking remarkably fit and on good singing form with Kris Kristofferson's 'Here Comes that Rainbow Again' and his own hilarious composition, 'Everything's Alright Blues'. Keith brought the first half to a close with two of his own songs, 'When I Learn to Fly' and 'I Don't Think your Father Likes Me'.

I used John McCutcheon's 'Red Corvette' to start the second half and then I handed over to the resident band from Stockton Folk Club, 'Away With the Fairies', making their first appearance at Harbury (although guitarist Mike used to be a regular in the 80s and 90s). They (Colin, Frank and Mike) performed a couple of great songs – 'Jock Stewart' and 'Lovely Nancy', both featuring some fine harmonies. Sue Harris was next up with a wonderful Joyce Grenfell monologue, where she got into character and a suitable hat, followed by 'The Ballad of Bethnal Green'. Pete and Liz gave us one of their greatest hits, 'The Marvellous Fish', and then Liz sang a lovely Roger Watson song about Gilliver, a faithful pit pony, with a clear moral to the story. In complete contrast, Rik sang Jim Croce's 'Dreamin' Again' and then Ron Shuttleworth's 'Ballad of Joseph Jones'. Making their second appearance at Harbury, Matthew and Harry finished the second half with two very different songs – the traditional 'Death of Queen Jane' and the Beatles' 'A Day in the Life', a complex song featuring some excellent acoustic bass playing from Harry.

After a short pause, we were back with the music in the third half, starting with Barbara singing 'The Salmon Nets of Cowie' then, accompanied by Barbara, Malcolm played the tune 'Room upon the Sky' on his soprano saxophone. Martin presented his own updated version of the traditional 'Henry Martin' and then the intriguing story of 'The Kiss'. He was followed by

Pat and John from Byfield who sang a song about growing old (songs like that always go down well) followed by 'Roger the Miller'. Guitar virtuoso, Mick Bisiker, finished the evening with a favourite traditional song, 'Bonny Light Horseman', and closed the session with a tune which went faster and faster, accompanied by Colin on bodhran who did well to keep up!

The raffle raised a worthy £75 for Cancer Research. By the time you read this, the September Folk Club (our 31<sup>st</sup> birthday) will have passed so we'll be looking forward to more great music at 8pm on October 1<sup>st</sup> in the Village Club when we will have enjoyed three years in this excellent venue.



## Harbury Twinning Association

**Andrew Patrick**

It's that time of year again. Despite the unseasonable weather in August, Harbury Twinning hope you've had a good summer, and would like to wish you

### ***Bonne Rentrée!***

(which isn't about re-entry from space, but hoping you enjoy getting back to normality!)

By the time you read this, Madame Thornley will have polished the Pétanque cup. We will all have done battle on the *pistes* of the Village Club. And we'll know the identity of our new Pétanque champion.

In October we're hoping to have another film evening. November is the wine-and-cheese-fuelled AGM and December will of course find us playing charades and other games at the one-and-only Twinning Christmas Party.

If you're not a member but you'd like to join us at any of these, please contact me or Sally (s47stringer@gmail.com).

Bonne Rentrée!

Andrew Patrick (614359 / andrewpharbury@gmail.com)



## Harbury Junior Netball Club

**Beccy McDaid**

As we get ready to start our 40<sup>th</sup> season we must take a moment to reflect on a most fantastic 39<sup>th</sup> season!!! After several very testing years, Harbury Senior Netball club definitely pulled it out of the bag last season! Over the past few years our emphasis has most certainly been on bringing through the next generation of netball players. This has proved to be the making of our club, with both senior teams having many junior players now playing in them. This has in turn led both teams to promotion last season.

The A team finished as runners up in Coventry and Warwickshire Division 3 and a new and very young B Team finished Champions of CW Division 7. A brilliant result as the majority of the team were U16! They also picked up the Newcomers Trophy for the league, this was extremely well deserved and we couldn't be more proud of them.

Our success did not end there, with Polly McDaid collecting the Margaret Holt Young Umpires Award. Hilary Wilson picked up the June Beck Special Person's award for services to netball and Beccy McDaid received the Coach of the year award. As you can imagine we are absolutely over the moon with all of these achievements, especially for such a small village club competing in a very large and competitive league as the Coventry and Warwickshire Netball League.

We attribute our recent success to the fact that our Club offers a friendly and all inclusive environment for anyone to play netball. At junior level the motto is if you train, you play. The only way any of us get better is to play more and learn from playing alongside people of all abilities. We ran four junior teams last year and I can truly say they all played to the very best of their abilities. Trophies were not our aim last year, but progression certainly was and this was bountiful! I am confident that all the hard work players, coaches and parents put in last year will prove very well rewarded this coming season.

As ever I am very excited about the oncoming season. There is a new found confidence within the junior teams and we are sure that this will shine through on court. New divisions bring new challenges for both senior teams. Which I am sure everyone will rise to.

As a mark of our success we are also entering a third senior team this year into the Flexileague to accommodate the next influx of U17 players along with some more senior players who are returning to our sport. These are very exciting times for Harbury Netball Club. If you would like to be part of the fun please contact Beccy McDaid on [mcdaidmadhouse@talktalk.net](mailto:mcdaidmadhouse@talktalk.net). We train on Thursday evenings at Harbury Courts. Seniors play on Saturdays and Wednesday evenings (Flexileague). Juniors play on Sunday mornings.

I am hoping to post the home fixtures on the community FB page this year to let people know when our matches are. It's always great to get support at our home games, and it might even encourage some of you to join in!



## Harbury Tennis Club

**Colin and Sue Mercer**

**[www.tennis-today.net/harbury](http://www.tennis-today.net/harbury)**

First of all here's a date for your diary! After last year's successful launch with MC Peter Walshe in full tennis gear, it's time for the second Harbury Tennis Club General Knowledge Quiz. This will be at the Village Club on Sunday 4<sup>th</sup> October, 7.30 for 8pm start. **All** are welcome as this quiz is based upon general knowledge so no tennis knowledge is required to stand a chance to win.

Teams of four can be entered at £16 per team with prizes for winners and runners up. This includes sandwiches and a raffle will be held on the night. And don't forget there's the Village Club's famous selection of delicious beer on tap throughout to 'stimulate' those thought processes. Please e-mail Colin Mercer on [sucolmercer@btinternet.com](mailto:sucolmercer@btinternet.com) to register your team.

As announced last month, our new coaching provider **coolsportz** starts on Monday 7<sup>th</sup> September. Experienced LTA Level 4 coach Lianne Candappa will be heading up the programme supported by Rob West, LTA Level 3. For Juniors there will be sessions on Mondays and Thursdays catering for Tots Tennis 3-4 years, Mini Reds (4-8 years), Mini Orange/Green (9-10 years) and Yellow Ball (11+ years). Costs for a six week course are £22.50 for Tots (45 minute sessions) and £30 for members in the other age groups (1 hour sessions) or £36 for non-members. For adults there is a session on Mondays from 7.30-8.30 at £5 per session (£6 non-members), paid weekly.

We look forward to welcoming back our existing members and meeting lots of new players. To book a **FREE** trial lesson and a place, or get further information contact Lianne on 07919 104093 or at [lianne@coolsportz.co.uk](mailto:lianne@coolsportz.co.uk)

On the playing front our BBQ tournament was played on one of the few evenings this summer that it's been warm enough to sit outside at 9.00pm! It was very enjoyable with Helen Cooper and Colin Mercer winning the tournament. A special thanks to Ian Panton who "volunteered" to man the BBQ!

We played three fixtures during August to complete our Banbury Summer League programme. It started with a trip to Kings Sutton who have been in a rich vein of form of late and proved too strong for the Harbury six of Caroline Morland, Eira Owen, Helen Cooper, Steve Stark, Geoff Prince, and Josh Marshall. It was a 2-7 defeat but could have been much closer had we been able to "sneak" the 2 rubbers that were settled on tiebreaks. Our last home match was against table topping Banbury. Caroline and Geoff were joined by Debs Brookes, Sue Panton, Joe Robson and Colin Mercer. It was an extremely close match and was only decided in the final mixed doubles where Debs and Geoff started well and were leading 3-1 but the visitors came back strongly to take the rubber and go home with a 5-4 win. That meant we went to Tysoe for our final fixture needing a win to guarantee Division 4 status. Things looked pretty bleak at 1-5 as we went into the final 3 mixed doubles rubbers. Fortunes turned and Caroline and Colin, Eira and Josh, and Helen and Joe won all 3 on tiebreaks – they coincided with the floodlights being turned on, anything significant there??!! That leaves Tysoe requiring a 9-0 win in the final match of the season against promotion chasing Kings Sutton on 3<sup>rd</sup> September to send us down – fingers crossed!!!





## Harbury Toddler Group

Lynne Barton

After the rather long summer holidays the new term, begins on Monday 7<sup>th</sup> September.

During the summer we have spruced up our half of the toy shed with new storage boxes having had a general 'clear out'. The shelves holding our toys and equipment were mostly arched and bent and we are so grateful to David Bristow (granddad of one of our toddlers) for his sterling efforts in straightening them out! On behalf of everyone – thank you so much.



We have some exciting visitors in the forthcoming weeks, Miss Lorraine from the local Love Ballet Dance Company will be hosting an hour's toddler dance sessions with music and movement suitable for all. The first session will be on **14<sup>th</sup> September** and a subsequent one on **12<sup>th</sup> October** so do please try to join us for those.

Deborah Dutton, from Southam Children's Centre will be leading a creative art session on 21<sup>st</sup> September.

Please also can you note that the coffee morning at All Saints Church, Tom Hauley Room will be run by Entrust Care Partnership to raise funds for Toddlers on **24<sup>th</sup> October**, between 10am – 12 noon, so cakes and raffle prizes will be welcome nearer the time.

Entrust Care Partnership, a not for profit organisation which provides services for disabled children and families is responsible for running Toddlers, and during the past 18 months Emma has supported the group, volunteering her time and skills. The good news is we are now supporting many more disabled children but the bad news is that Emma is no longer able to commit to the group. Selina, also through Entrust Care Partnership is now helping us, with her young son Elijah but we would really welcome some local support. If you are able to help for a short time, on the odd occasions or on a regular basis please do give me a call. It is rewarding and you meet some wonderful children and their parents.

We are based at the Wight School, High Street, Harbury, CV33 9HW (brown gate to the side) and meet at 9.30am saying bye bye at 11.15am. Please come along ..... the kettle's on.

For more information please contact Lynne on 01926 612748 or email [lynnebarton@btinternet.com](mailto:lynnebarton@btinternet.com)



## Banana Moon Day Nursery

Lucy Nealon



Wow, what a year! August marked our first anniversary of being open and we celebrated with a teddy bear picnic and obviously a big cake. I would like to take this opportunity to thank everyone for their support. There has been nothing more rewarding than being involved in the care and development of so many fantastic local children. August also saw us say goodbye to a number of children from our Pre-school who are heading off to the big world of school. In the months leading up to the end of term, we have worked closely with the children and the schools to help make the transition as smooth as possible, including a number of visits to school. We finished off the pre-school year with a graduation ceremony to celebrate the end of their life at nursery.

The book (Maisie goes on Holiday) and rhyme of the month (I Had a Little Turtle) for August were all about holidays and the children have been doing a number of activities focused on holidays. This has included taking our dogs – Roxy and Rocco on a number of exciting adventures. They have been everywhere from Whipsnade Zoo, Italy, Skegness to Switzerland and Cornwall.



We are continuously reviewing the nursery to make sure it is a stimulating, inviting and most importantly a fun environment to be in. We are currently developing the garden and over the next few weeks we will be building a very exciting mud kitchen.

We look forward to welcoming lots of you to our summer fete on Saturday 5<sup>th</sup> September between 10am – 12 noon.





## Harbury Pre-School

Staff & Committee

### Harbury Pre-School – Outdoor Learning

At Harbury Pre-School we value greatly our wonderful outdoor learning space. A stable door from the main Pre-School room leads directly and safely out to the area allowing children freedom of choice to play and learn outside. The area itself is sheltered and fully enclosed with a newly installed brightly patterned safety surface, large canopy for all weather play, colourful murals, natural garden areas, pergola, sheltered wooden seated area, playhouse and large chalkboard all as permanent features together with a great view of Harbury's windmill!



The outdoor area is used by the children during every session in all seasons offering a wealth of learning opportunities in addition to all the activities that take place inside the Pre-School building. The warm dry weather inspires even more experiences to be enjoyed outside for longer periods of play as the children 'free-flow' between areas. This includes lots of water and sand play, gardening, role play, construction, small world play, creative work, mark making, investigating natural objects and mini beasts, making music, ring games, exploring books and enjoying a picnic snack, all outdoors!





The safe open space also gives the children lots of opportunities to develop their physical skills whether it be playing chasing games with their friends, using our wide range of bikes and vehicles, mastering our climbing frame and slide, practising their ball skills or being challenged by an obstacle course.



The activities that take place at Pre-School in all areas are both child-led and adult-planned covering learning outcomes across all 7 areas of the Early Years Foundation Stage curriculum. Just as they are inside, the children are supported to develop and learn to be independent to access and share the resources, take turns and be kind and caring to each other as they play in the relaxed outdoor environment.



We look forward to even more learning through play in the great outdoors as we welcome our Pre-School children for the new academic year starting in September.

*If you would like further information, or to register a child for Harbury Pre-School, please contact Rosemary Jackson, Pre-School administrator: e-mail [enquiries@harburypre-school.org.uk](mailto:enquiries@harburypre-school.org.uk) text 07907 598461 or look at the web site [www.harburypre-school.org](http://www.harburypre-school.org)*



## Harbury Primary School P.T.A.

**PTA Committee**

With the school children currently off on their summer holidays PTA activities are reduced during August but we look forward to welcoming everyone back in September for a busy autumn term including the sponsored walk, our popular quiz night and the school Christmas discos.

Congratulations to our 100 Club winners who each received £50 in the July draws at school. They included Helen Strong (84), Karen Rea (29), Jane Kempton (56) and Naomi Neale (46). The 100 Club is open to friends of the school as well as parents and teachers so with the new academic year starting in September, if you are interested in a number (£12 for the year) please email [HarburyPTA@outlook.com](mailto:HarburyPTA@outlook.com). The draws take place 5 times a year with 2 lucky numbers being picked at each draw.

We come straight back from the holidays to host the coffee morning in the Tom Hauley Room on Saturday 12<sup>th</sup> September. If you could help bake cakes, donate a raffle prize or even just come along to support us we would love to see you.

Another important date for the PTA is our Annual General Meeting which is on Tuesday 13<sup>th</sup> October. This is an opportunity to find out what has happened with the PTA in the last year, including events and things we have done jointly with the school to enhance the experience our children have at Harbury Primary School. We also have a number of committee members standing down this year so we are looking for new members to make up the committee which is also elected during the evening if you are interested. Please contact Katharine Giblin (Chair) on [HarburyPTA@outlook.com](mailto:HarburyPTA@outlook.com) for further information. We hope as many parents as possible will come along to celebrate the achievements of the PTA which we are all a part of.

### **Dates for the Diary**

Coffee Morning – 12<sup>th</sup> September 10am-12pm Tom Hauley Room.

PTA Meeting – 15<sup>th</sup> September 8pm in the Gamecock

Sponsored Walk – 2<sup>nd</sup> October

PTA AGM – 13<sup>th</sup> October 7pm

Thursday Market – 15<sup>th</sup> October 3.15-4pm

Quiz Night – 13<sup>th</sup> November 8pm



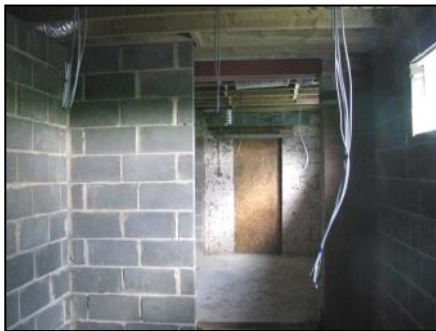
## Village Hall Update

Chris Finch

Maybe members of the Village Hall committee should have arranged a 'topping out' (topping off) ceremony now that the splendid roof has been completed? Topping off ceremonies are commonly carried out on prestigious buildings in the UK, Scandinavia and other European countries with the main construction workers and those responsible for putting the plans into action.



**Extended Village Hall Roof**



**Changing room area with first fix electricity cables**

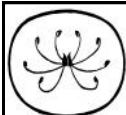
Unfortunately these days, Health and Safety guidelines would probably have decreed a special scaffolding tower / ropes and harnesses for all who ascended the dizzying heights, as well as the obligatory hard hats! There should, however, come a time in future when it should be possible to celebrate the contribution of all those who have made the modernisation of the Village Hall a reality.

In recent weeks, the Chairman has learnt of another marvellous contribution to the completion of the extension, as villager, Neal Stevens (Stairways - Midlands) has offered to provide a staircase and balustrade for the stage completely free of charge. It is unexpected generosity of this nature which is so welcome and so heart-warming, as each item for the proposed plans have had to be costed very carefully and it means that the overall expenditure will hopefully not over-run the expected total outlay. There has been more good news on the horizon, as a media studies student from Southam College has volunteered her services to make a short video about the construction work carried out on the premises, as BIFFA (one of the two main funders of the

project) has requested documentary evidence for their Landfill Trust support. Apart from the magnificent in-kind support provided by Neal, the committees did raise a pleasing amount at the recent coffee morning in the Tom Hauley room, which helps to pay the monthly bills all community buildings are expected to find. Fortunately, the solar panels on the rear roof make a good contribution towards the electricity bills for the storage heaters currently in use, but as with all facilities at the hall, the committees, led by the chairman, are constantly reviewing how to improve existing out-of-date utilities, so that the hall becomes even more cost effective. BIGGER BUT ALSO BETTER are watchwords for the current committees! Next time, anyone visits the hall (probably for the village show?), it is possible that there may have been a breakthrough from the new build into the existing hall, so it will definitely be a case of WATCH THE SPACE!



**Rear wall of main hall  
before the first  
'breakthrough'**



**Horticultural Society**

**Judy Morraill**

We were so lucky again with the weather for our evening trip to Sulgrave Manor on 11<sup>th</sup> August. We went there a few years ago but then we did a guided tour of the house and the gardens were really in their infancy. We were taken on a tour by the Head Gardener, Sue McNally, who was so enthusiastic and knowledgeable. We started off at the rear of the house on a huge lawned area where they have events. Around this area there are some lovely specimen trees such as liquidamber, cercis and a huge tulip tree. From there we went to the Tudor vegetable garden via a lovely mediaeval smithy. This was of especial interest to me as at least 8 of my great grandfathers, and my grandfather Parker were village blacksmiths. I watched him shoe horses and make very ornate garden gates a great number of times.

There were some well known and lesser known vegetables and herbs and all had medicinal properties. To name only a few: feverfew, good king Henry, milkthistle, purslane, comfrey, red orack, burdock, borage, wode, some lovely black and white carrots as of course the red ones are a relatively new variety. Even a form of inula was put to good use. I grow some herbs on my allotment and plan to expand the range there so watch this space!

We then went into the orchard which has some amazing old varieties of fruit trees from 1920's planting including cooking and eating apples and pears. It was noticeable that there were a lot of windfalls and this is due to the lack of



rain and nothing significant. One poor old tree a Loddington apple was bent double and had to be propped up but still producing fruit. The orchard is a very tranquil area and like the rest of the gardens very well tended and loved.

We then went down the steps to the front of the house, which as you know is the ancestral home of George Washington. Originally from Durham they adopted the name of Washington from the town of the same name and Lawrence Washington built Sulgrave Manor but it did fall on hard times until the 1920's when it was extended but within keeping of the existing architecture. Above the front door there is a family coat of arms with three stars and two stripes and it is thought to be the origin of the American flag the stars and stripes. History bit now over!

At the side of here stands an old walnut tree which has developed a crack in the middle and it is hoped that it can be rescued, a very fine specimen. On to the rose garden where some of the roses, despite the loving care and attention of the gardeners, were struggling. There were box hedges here but they suffered from box blight. You can now see the bones of the original rose garden and alongside a very colourful wide border with some lovely planting.

Then into a wonderful restored herb garden with a herb wheel in the centre with again a superb collection of herbs. This is the National herb collection, not to be confused with the herb centre at Warmington. Lots of thymes, mints oreganos, marjoram and so on. A truly superb selection to smell and appreciate in the colours of the rainbow. Sue answered a lot of our questions and she only has a team of three and volunteer gardeners and what she has achieved in the gardens is amazing. The plants that were for sale were so reasonable. We enjoyed tea and cake and went home after a truly enjoyable evening.

The next event will be in the Heritage Room at the school on the evening of Tuesday 8<sup>th</sup> September from 6.30pm to 8.30pm when Nigel will be showing us archives of all things gardening and horticultural connected to the village and our Society. Please do go along, everyone is more than welcome and we owe so much to Nigel who freely gives up his time to show such brilliant archives that otherwise we would not have the opportunity to look at.

Our new season starts on Tuesday 6<sup>th</sup> October so in case you do not have your copy of the Harbury and Ladbroke magazine by then I will just mention it here. We will be collecting the annual subscriptions and the speaker will be Howard Drury who will paying us a very welcome return visit. His visual presentations are truly something to be experienced and his topic will be the Great Plant Hunters. Not to be missed and a great way to spend a Tuesday evening to enjoy a splendid talk then tea/coffee and biscuits plus our excellent raffle.

There are still places to visit in September to enjoy the colours and sights of this lovely month. All of these are for the NGS, a very worthy charitable organisation. On Sunday 13<sup>th</sup> September there will be six gardens open at

Boars Hill in Oxford post code OX1 5JH. It only takes about 50 minutes to get there (and this is not speeding on the M40!) and all of the different gardens have wonderful views over Oxford, shades of Morse and Lewis. I have visited these gardens before and can recommend them very highly. Open from 2.00pm to 5.30pm and cost is £5, with teas available. Staying in Oxford the Botanic gardens in Rose Lane just off Magdalene Bridge post code OX1 4AZ are the oldest in the country and boast the most species of plants anywhere else in the world. With seven glasshouses, national collections and overlooking the river they really are well worth a visit. Their day for the NGS is Tuesday 15<sup>th</sup> September from 9.00am to 5.00pm and cost is £4.50. On Sunday 20<sup>th</sup> September do go and visit Christine at Bridge Nurseries near Napton. The gardens are really lovely and she has some very good priced plants too. Open from 10.00am to 4.00pm and cost is £2.50 with teas available. Then on Saturday 26<sup>th</sup> September Hill Close Gardens will be open under the scheme from 11.00am to 5.00pm a chance to see these lovely restored pleasure gardens and much more. Cost is £3.50 and teas are available.

Lastly, come and visit us at Upton house and Gardens during the two weeks from Monday 14<sup>th</sup> September (closed on Thursdays) to see our national collection of asters. The gardens are looking stunning now with the sloping terraces at their very best and showing off! If you visit on a Wednesday or a Saturday pop in and say hello would love to see you.

I do hope to see you at the Heritage Room in September then at our new season in October and I hope that you manage a visit to one or more of the NGS gardens listed above. Enjoy the season of mists and mellow fruitfulness.



## Garden Jottings from Bridge Nursery

Philip Martino

We are fast approaching autumn, our Asters will be flowering as will Crocosmia and Cerinthe (we have them!) Apples will be almost ready to pick. Ornamental grasses will be looking their best now - we have a good selection.

Our big sale of plants will be throughout September this year and the early bird will get the best of the bunch. Seriously, autumn is a really good time to be planting up for next year; the ground is still warm and should be moist enough to encourage good rooting for next year.

September is also the month when most of the **Macmillan "World's Biggest Coffee Morning"** happens and we shall be running ours again this year on 25<sup>th</sup> September. Who has not been affected by cancer? I have and will support Macmillan as long as I can. Who knows when they will need their support? So put the date in your diary, try some delicious cake (Christine is a great cake maker) with a coffee and enjoy a walk round our show garden.

Maybe even buy some home grown plants (no imports here!). The time: 10.30am until 12.30pm - although we won't chuck you out until closing time at 4pm.

You may notice a change of style this month. That is because I am the more likely of the two of us to need Macmillan and I need to make the plug for our coffee morning.

Back to gardening and a few jobs for the month.....

- Buy bulbs and plant them
- Pick tomatoes, even if they are green, they will ripen on the kitchen windowsill.
- Take cuttings of roses, penstemons and Cistus.

*Bridge Nursery, Tomlow Road, Napton*

*Tel: 01926 812737*

*[www.bridge-nursery.co.uk](http://www.bridge-nursery.co.uk)*



## **Nature Notes**

**John Hancock**

It's cool this morning (26<sup>th</sup> August) after heavy overnight rain. The wheat is mostly gathered in and many fields are ploughed. A field of barley by Welsh Road West at the Bascote Heath crossroads awaits the combine. I have been picking blackberries all month and there are plenty more ripening. A good crop of wild cherry plums down Wasperton Lane towards Barford has proved another happy hunting ground. Discussing the fruit with Chris and Stan Finch, the word 'bullace' was mentioned (learned from Bob Sherman). This name probably comes from the Old French 'beloce' meaning sloe via the Middle English word 'bolas'. Wild plums were given the related name 'bullies' in parts of Lincolnshire. (This information I gleaned from Wikipedia).

I mentioned the plant collector Ernest Henry Wilson (1876-1930) in a previous article. He was born in Chipping Campden and I would recommend a visit to the 'hidden' garden there. It is accessed via a low arch through a wall at the northern end of the main street not far from the church. He was sometimes known as 'Chinese' Wilson as he became an expert on the flora of that country. Recently when walking through Brueton Park in Solihull, I found an information board giving some more facts and linking him to that area. The family moved from Chipping Campden to Shirley and he was educated there before finding employment at a local nursery and then at age 16 at Birmingham Botanic Gardens. Near the main gate of the park is an impressive statue known as 'The Prancing Horse' by the Hungarian sculptor Sir Joseph Boehm. I thought it a superb lifelike creation on a classical theme which would not be out of place in Rome.



On July 27<sup>th</sup>, The U3A Natural History Group was taken on a butterfly walk by Steve Cheshire, one of the naturalists at Brandon Marsh, the HQ of Warwickshire Wildlife Trust. Despite a relatively poor day in terms of weather (it was cool and breezy), we were in for a treat. Steve showed us feeding damage on the leaves of sorrel made by the caterpillar of the Small Copper. We saw several of the exquisite butterflies. The crowning moment was finding its tiny egg on the midrib of a sorrel plant. The Small Copper is a member of the family Lycaenidae which includes the Blues and Hairstreaks. About a third of the world's butterfly species belong to this family. Ants play a role in the development of many Lycaenids as documented in last month's Nature Notes.

During a visit to Northumberland for a family wedding, Sharon and I had several walks along the sandy bays of the coastline south of Lindisfarne (Holy Island). One morning at Beadnell Bay with a strong wind and a big sea, the kite surfers were out in force. We saw a Grey Seal just off shore, several Oystercatchers with their characteristic tumbling flight and smaller waders like Dunlin flying in formation. I briefly explored the dune slacks which are low lying areas within dune systems that are seasonally flooded and where nutrient levels are low. The plant communities, given time to develop, in such habitats include Willow, Marsh Pennywort and various rushes and sedges unlike the dry dunes themselves where Muran grass predominates. On one higher grassy area I found a Pyramidal Orchid still in flower though beginning to seed. Most flowering plants have set or are setting seed now, though down at Harbury spoil bank, the delightful Autumn Gentian is in bloom. Here, this biennial thrives in the thin calcareous grassland.

Back in the north, whilst sitting in my brother-in-law's garden, we spied a Painted Lady butterfly and two Red Admirals gorging on nectar from a buddleia. Perhaps, like the House Martins wheeling for insects, they were feeding up for a flight south.



## General Section



## Harbury Village Show

At last, show time is here - on Saturday 12<sup>th</sup> September, in the Village Hall. Visitors £1 (children free) from 2pm. Exhibitors – have you double checked the schedule? (Available in the Library and in Country Fayre).

Because of the building work there will be a few changes which we ask you to bear with; the most obvious is a tea tent, courtesy of the local Conservative Association.

There will not be a tombola this year, but the raffle will be extra special, thanks to the very generous offers of several local pubs and businesses.

Most of all, it is **your** show so come and show the judges what we can do and come and enjoy it.

**Gillian Hare**

## **Baptisms at All Saints Harbury and All Saints Ladbroke**

As a general rule, for Harbury these take place on the second and fourth Sundays of the month at 12.30pm, and for Ladbroke on the first Sunday of the month at 10.30am within the family service. We do not have baptisms in December in the run up to Christmas or during a 2 to 3 week period over Easter.

At the moment we are fully booked at Harbury until January 2016 and Ladbroke's diary is filling up rapidly. We do get parents contacting us having decided upon a date with family and godparents and then being disappointed as they find their chosen date is unavailable. This can come as a bit of a shock to the parents and we are sorry not to be able to help them with their chosen date.

So, the purpose of this article is to explain to Harbury and Ladbroke residents our policy and current situation. We would also suggest that if you are thinking about baptism for your child, you contact Revd. Craig Grocock on 612377 or [kankudai43@aol.co.uk](mailto:kankudai43@aol.co.uk) or Rosemary Eld on 613340 or [r.eld@btinternet.com](mailto:r.eld@btinternet.com) as a first step before making any definite plans.

**Rosemary Eld**

## **Harbury Holiday at Home 2015**

Our staycation this year was a resounding success. 19 people joined us in the Tom Hauley Room for the week of 10<sup>th</sup> August. There were several craft activities completed during the week, cards, money wallets, Christmas tree ornaments and some rather lovely bowls and boxes.

The outing on Wednesday was to Webbs of Wychbold; we had good weather and some people chose to



enjoy the lovely gardens while others shopped and the restaurant facilities were well used – and we have photographic evidence of rather large ice-creams being consumed! We were driven to and from Webbs by two Harbury residents, both volunteers with Back and 4<sup>th</sup> transport.

Debbie Ellis entertained all on Monday afternoon with a selection of her very clever poetry, some singing and anecdotes about Harbury. A very different entertainment on Tuesday when we had a visit from five stunt dogs, with trainers Sonia and Sue. These dogs are trained to perform to hand signals and act in films and television productions. The week concluded with music and dancing on Friday afternoon with Phil and Ken playing for us.

Many people are involved in organising, cooking and managing the week in order to ensure it runs smoothly and everyone enjoys a good holiday. A big thank you to all those involved and also to the PCC for enabling us to use the Tom Hauley Rooms. We look forward to next year's fun week.

But before next August there are plans being made to offer an 'away day' once each month during the winter. This will be similar to Holiday at Home with craft activities and board games available. We will provide coffee and tea and a 'one pot' lunch with a warm welcome and lots of fun and fellowship. It is hoped to be able to begin in October and we will be contacting all our holiday makers once the arrangements have been finalised. In the meantime, if there is anyone who has not been involved with Holiday at Home and would like more details of this new venture, please contact Sue (613831) or Gill (614206).

**Sue Boniface**



## **Harbury Wins WW1 Centenary Project Lottery Grant - Now Your Village Needs You !**

The Parish Council is pleased to report that we have been successful with an application for a Heritage Lottery Fund First World War Centenary Project grant of £10,000. A further £3,000 has been donated to the project by Harbury firm CLGR Limited, which is owned by Cllr Chris Gibb and his wife Cathy.

The project is called the **"Harbury WW1 Memorial Trail"**. The first task will be to learn more about the 33 village men who gave their lives in WW1, who they were, and how and where they lived in the village. Their stories will then be written up and preserved for present and future generations, in print in the Village Library and Heritage Room, and on the Parish Council website. Finally we plan to commemorate their former homes (with the current home owner's consent, of course), with blue plaques, connected together to form a trail around the village. We hope to conclude this by July, 2016, the centenary of the Battle of the Somme.

The project will be overseen by a Management Board consisting of Cllr Tim Lockley (representing the Parish Council and Library), Sharon Hancock (representing the Harbury Society) and Nigel Chapman (representing Harbury Heritage and Harbury Primary School). Cllr Chris Gibb has volunteered to be the Project Leader.

The first steps will be to build on the extensive research by Sharon Hancock, and conduct new searches by all available means, such as the Heritage Room, County Records Office, military records, press reports, museums and the internet. To do this **we are seeking between 15 and 33 volunteers from the village to each research one or two of the men's stories over the next six months**. Volunteers can be any age, and no previous experience or connection to any of the men is needed. The men lived in all the older parts of the village, including Temple End, Mill Street, Park Lane Terrace, Binswood End and Deppers Bridge, and came from a range of different backgrounds. Some we know quite a lot about, some nothing at all, and some of their addresses, such as Springfield Terrace, no longer exist. To become involved, please contact Chris Gibb at [chrisgibb38@hotmail.com](mailto:chrisgibb38@hotmail.com), by phone on 07766 668876 or visit him at Phoenix House, High Street, Harbury.

The Imperial War Museum's Peter Hart, who has written many books about WW1, has offered to help. We will have a workshop at the **Village Hall on Thursday, 24<sup>th</sup> September, 6pm – 7.30pm**, to meet up and hear from Peter and learn about WW1 and how to begin our research. All villagers are welcome. We will have at least one further workshop with other experts on the subject, as we have several who have offered to help.

Chris will collect together the information gathered, and it will then be written up in a consistent way by Exeter University English undergraduate Alice Woodhouse, who lives in Harbury and went to Harbury Primary School. The historical background content will be reviewed and written by Dr Pierre Purseigle of Warwick University, an expert on the comparative history of WW1, and the finished work will be professionally presented on the Parish Council website by our website designers.

Once we have established the houses where the men lived, or the location of where the houses stood if they no longer exist, Chris will consult with property owners about the blue plaques. These represent most of the cost of the project, and a competitive tender exercise will be undertaken by the Management Board to choose a company to make the plaques.

We hope the finished Harbury WW1 Memorial Trail, with about thirty plaques around the village, will keep alive the memory of the men and events of WW1 for the current and future generations of villagers, and add to the character of the village. The trail will be designed for all ages; for example we know it will be used by our Primary School to teach one class each year about WW1, life in the village at the time and the villagers' involvement in it.

Separately to the above project, the Parish Council has recently submitted a grant application to the War Memorials Trust to help with the restoration of the village war memorial, which we hope to be able to undertake in 2016.

**Harbury Parish Council**



## **Harbury and District Poppy Collection 2015**

It might seem to be a bit early to be asking all the poppy collectors who have helped in previous years, if they are willing to help again, but it's now time to send in the request to the Royal British Legion for all the items to fill each poppy box. It's always a bit of a guessing game as to which products should be ordered, as each year sees new items added to the list and some have a particular appeal one year and there is not as much interest the following year. The metal poppy pins which are now dated each year were particularly requested last year, but it is difficult for poppy collectors on the doorstep to ask for the suggested donation; similarly for the poppy bracelets which proved popular with younger people. This year each box will have the amount / per product recommended by the R.B.L. so that collectors can feel a bit more easy about letting people know how much is appropriate. As always, the standard poppies are available for any contribution, whilst wreaths and crosses again have a suggested payment to cover the cost of creating the items at the R.B.L. workshops. I hope that as many collectors as possible will agree to continue doing their usual rounds, but if anyone feels they need to pass on a round to another volunteer, perhaps they could let me know as soon as possible? Harbury and District shows tremendous support for the Poppy Appeal (last year raising almost £4,000) and hopefully the tradition will be maintained this year.

**Chris Finch - 612305**



## **Harbury DofE Award – Calling those going into Year 10!**

We still have a few places remaining to join the Bronze Duke of Edinburgh Award starting in Harbury in September. If you are 14 and going into Year 10 in September and want to be part of this group, or if you just want to find out more about the Award, please email me ([ksampson@solidsolutions.co.uk](mailto:ksampson@solidsolutions.co.uk)) or register via our website ([www.harburydofe.co.uk](http://www.harburydofe.co.uk)) which also gives you more information about the Duke of Edinburgh award.

The first meeting will be on Tuesday 15<sup>th</sup> September at 8pm in the Tom Hauley Room. Future meetings will be on Monday evenings, spread throughout the term (approximately every fortnight).

**Kathy Sampson**



## Harbury Heritage Room

**Open on the first Tuesday of each month 6.30-8.30pm, or at other times by request**

We had a very busy evening at the beginning of August. Many thanks to those who came along. We hope you enjoyed your visit. We thought you might like the menu, and particularly the prices, from The Shakespeare in 1972.

### The Shakespeare Inn – 1972

On a Midsummer Night, park your Portia in the car park, Romeo around the garden and say Othello to your Friends, Romans and Countrymen at the Shakespeare Inn in the Hamlet of Harbury.

*Gammon, Double Egg & Chips £1.30*

*Chicken & Chips £1.00*

*Scampi & Chips with Peas £1.10*

*Cheese & Tomato Pizza 40p*

*Plaice & Chips with Peas £1.00*

*Pizza with Chips 65p*

*Rump Chipsteak Roll 60p*

*Rump Chipsteak & Chips 85p*

*Ploughman's Lunch 45p*

*Ham, Tomato, Cheese & Mushroom Pizza 45p*

*Available Monday to Saturday mid-day.*

*Basket meals are available from 7.00-9.00 p.m.*

For that special occasion, your hosts ObeRON and TitANNYa suggest you try a "Shakespeare Special" which is guaranteed to leave you spellbound:-

Fillet of a fenny snake,  
In the cauldron boil and bake.  
Eye of newt and toe of frog,  
Wool of bat and tongue of dog,  
Adder's fork and blind-worm's sting,  
Lizard's leg and owlet's wing,  
For a charm of powerful trouble,  
Like a hell-broth boil and bubble.  
Scale of dragon, tooth of wolf,  
Witches' mummy, maw and gulf  
Of the ravined salt-sea shark,

Root of hemlock digged i' th' dark,  
 Liver of blaspheming Jew,  
 Gall of goat and slips of yew  
 Slivered in the moon's eclipse,  
 Nose of Turk and Tartar's lips,  
 Finger of birth-strangled babe  
 Ditch-delivered by a drab,  
 Make the gruel thick and slab.  
 Add thereto a tiger's chaudron,  
 For the ingredients of our cauldron.

Round off the evening with a bottle of our superb Dandelion and Hemlock wine.

**Nigel Chapman**



## **Bumps and Bundles**

Greetings from Bumps, we have had a lovely summer, with Bumps staying open throughout the holidays - a few older siblings came along and did some craft activities and enjoyed playing with the baby toys. We had a picnic in the park too during August and the weather stayed fine for us to enjoy morning snacks.



And finally I'd like to say good luck to the original Bumps group when they start school this September, just doesn't seem that long ago that they were all lying on the baby mats together (pictured).

Bumps and Bundles every Tuesday from 10:30am in the Tom Hauley Room.

**Kelly Jones**

## Connections Café session for those with a Dementia Diagnosis and Their Carers

As mentioned last month, we are intending to run a regular afternoon session in Harbury Village Library with refreshments and suitable activities for local people who have been diagnosed with dementia, along with their carers. We plan to have our first session of the Connections café on **Wednesday 21<sup>st</sup> October from 2-4 pm**, and thereafter on the third Wednesday of each month. We hope that this will provide a supportive and friendly environment in which those living with this condition can meet others. If this is you, or someone you know in the area, we would like to extend a warm invitation to attend, at no charge – just turn up on the day!

We need some willing volunteers to help out at the meetings - chatting, serving and helping with activities - and we would also be pleased to hear from anyone able to give lifts to people who may otherwise have difficulty in getting to the Library. No previous experience of working with people with dementia is required, and we would like to ask anyone who is interested in helping out to attend a volunteers' meeting on **Tuesday 6<sup>th</sup> October at 2pm in the Library** to talk over our plans and discuss any issues. If for any reason you cannot attend, you can contact either of us at the addresses below with questions or offers of help.

We look forward to seeing as many of you as possible on 6<sup>th</sup> October and/or the 21<sup>st</sup>.

**Jill Baker: 612483 - [jillbaker2015@outlook.com](mailto:jillbaker2015@outlook.com)**  
**Janice Montague: 612340 - [janellmont@gmail.com](mailto:janellmont@gmail.com)**



### Harbury Energy Initiative

#### Powerless

I am afraid that the sun went down on my sunny idea for the library roof. It all had to be done in a bit of a rush, as is often the case with grants, and the Parish Council didn't have time to consider the idea carefully. Since they have responsibility for the roof, their support for the bid was essential. They were not keen.

Grants come up rarely and you have to be quick to seize the opportunity. It would be really helpful for HEI to have a list of energy reducing or renewable generating project ideas that already have approval, so that when the money is wafted temptingly in front of our faces we can respond with confidence and breathe in the intoxicating fumes deeply. HEI steering group can put a list together itself but we would much rather have ideas from you, the community we serve, so that we can plan ahead.



## Car Club

Car usage is increasing. About 1,000 hours have been clocked up in August. I hope that members are enjoying these great little cars and finding them useful. Most people are only ever likely to use them on short journeys but some would like to pluck up courage for a longer trip. For them, by popular demand, here is a little electrified adventure story from Peter Ball:

*"Yesterday I did my first trip in one of our E-Car Club Zoes. I set off to visit Bletchley Park, more than a single battery charge away, having planned my stops in advance.*

*I went via Cherwell Valley service area where I had to wait 5 minutes for the free Ecotricity point, not because someone was charging already but while a white builder's van driver got his butties in Greggs. A guy in a Nissan helped me get connected when he had finished. After a short top-up (a sort of trial charging to get experience) I went to replace the lead on the charger and eventually got it to sit on the holder bracket. I then tried to finish the process on the screen and 'validate' (horrible word - 'confirm' would have felt less intimidating) to get 'Start Screen' for next user - but without success. It all seemed to work for me, however, and I later reported this fault to Ecotricity.*

*Later I topped up at IKEA in Bletchley, driving straight in but on the Nissan side (there are different charging sides for Renault and Nissan). A lady in a Nissan was parked on the Renault side, waiting for someone to bring her charge card card from home, as she had forgotten it and didn't have enough juice to get home and back! I went from 50% to 99% charge in 23 mins, with a predicted 83 miles available. I was very happy with that.*

*I was talking, upon my return, to a friend who is a very experienced engineer/software developer and has used the car more than me. He said that as yet he has not had the courage to do a longer run that needed a charge-up. This is the aspect of electric vehicles that I too found most intimidating before I set off but thought 'just dive in and have a go. You have your mobile and you can always phone a friend!'. So I did, was successful, and have already said that my next car will be electric. I found it much less hassle to drive than a conventional car."*

Honesty requires me to tell you that not every long journey has been a source of joyous adventure. The network of charging points is pretty comprehensive across the UK but not all of them are working well all the time. You can be unlucky, as a couple of our members found recently. But I haven't found too many dents in the bonnet from frustrated drivers' foreheads yet.

Useful advice is to carry a smart phone and make sure it is fully charged before you leave on a longer trip. Short journeys of less than 70 miles are very straightforward.

## Wheels

The wheels are in motion for our next project - called 'e-Wheels'. We are doing this in conjunction with our church's Transforming Communities group. The aim is to meet a social need by providing free transport to people referred to us by one of the local social agencies. We will not be taking direct calls to the scheme from individuals, relying in preference on the assessment and judgement of local agencies to request our help.

We have started by contacting the local food banks and gained very good advice and support from them. We now have 8 volunteer drivers, all of whom are part way through the security checks now known as DBS (formerly CRB) or fully certified as fine upstanding citizens. We have in-kind support from E-Car Club with free memberships for these and reduced rate hours. 250 hours are now in the bank in that Big60Million, who operate the Southam Solar Farm, has donated us £1,000 to get started. We still have a few things to organise but hope to launch very soon.

We have enough drivers now but are looking for two or three people to act as a volunteer coordinator for this scheme and would welcome any offers of help. One person could do it but we feel that it might be better to spread the tasks, which will be relatively simple, between a group. If you want to be part of this new project, please contact Hugh Tottle or me:

Hugh - tel - 614276; email - hughtottle1@gmail.com

Bob - tel - 612277; email - shermanbob55@gmail.com

**Bob Sherman**

## NSPCC Ladies' Lunch

Harbury NSPCC Committee is holding its next Ladies' Lunch on Thursday 8<sup>th</sup> October in the Tom Hauley Room. It starts at **12.30pm** and tickets are priced £15 with wine or £12.50 for food only which includes a two course meal plus tea or coffee.

Our speaker is going to be Dr Steve Hancock, son of Sharon and John, who is going to give us a talk entitled "Children's Emergency Rescue – The Work of a Critical Care Transport Service".

If you would like to reserve a ticket for this event please ring Elaine Bruce on 614664.

**Harbury NSPCC Committee**



## Blood Donors

The next session in Harbury Village Hall will be on Thursday 10<sup>th</sup> September. Times are 1.30 – 3.30pm and 4.30 – 7.30pm.

**Gillian Hare**



## Katie's Quiz – In Aid of Zoe's Place

On 20<sup>th</sup> September Katie's Quiz in aid of Zoe's place (baby and children's hospice) will be held at Harbury Village Club, 7pm for a 7.30pm start. Teams of a maximum of four are £10 per team. Raffle prizes also. Contact Kate Bennett on 07742 834712 or Harbury Club 01926 612498 to register.

**Kate Bennett**



## Wednesday Walkers

As we near the end of four years as a group, our numbers are steady around a dozen each week. But there is plenty of room for more, so if you feel a bit more exercise would do you good – or you would like to explore more of our lovely countryside with new friends, please join us. We are quite informal – no committee or register and no requirement to come more often than you wish. The programme is included in the diary at the beginning of this magazine, with the distances; the average walk takes us about two hours. Just turn up at the Village Hall car park by 9.40am with suitable footwear and a drink. And, as an encouragement, on 9<sup>th</sup> September we finish with a pub lunch at Ratley.

**Gillian Hare**



## Get Your Electric Blanket Tested Before the Winter

Warwickshire Trading Standards Service is providing FREE Electric Blanket Testing for over 50s living in Warwickshire, at the following venues near you:

- Monday 5<sup>th</sup> October 2015 - Rugby Library
- Tuesday 6<sup>th</sup> October 2015 - Kenilworth Library
- Wednesday 7<sup>th</sup> October 2015 - Leamington Spa Library
- Thursday 8<sup>th</sup> October 2015 - Asda Community Room Nuneaton
- Friday 9<sup>th</sup> October 2015 - Stratford Briar Croft Residential Home

Book today by calling the Trading Standards Service on 01926 414016 9am - 5pm or email: [ebtesting@warwickshire.gov.uk](mailto:ebtesting@warwickshire.gov.uk)

**Simon Cripwell**  
**Warwickshire Trading Standards Service**

**Dates for inclusion in the Harbury Diary please to Linda Ridgley,  
 Tel 612792**



## LETTERS TO THE EDITORS

### **Dear Editors**

*Thanks to all you great people who have in one way or another helped Teresa and her family in getting on with a difficult situation over the last 12 years or so. Teresa has MS (Multiple Sclerosis) in the worst way, i.e. in bed mostly, she is an unbelievable person and has remained strong through most of her ups and downs.*

*Teresa, me (John), and the kids would like to say thanks to all of you for the help you have given us, especially to our kids Aimee and Danny. A special pair of youngsters indeed.*

*A thank you to those below which have made a difference, any left off the list will be included next time as it's difficult to get it all right.*

*Thanks to our late mum June Luke who, despite cancer, always offered Sunday dinner for Teresa, and sitting for Teresa and the kids. Ken, and Jane Luke and family, for providing the same, even coming from down south to assist. Thanks for the garden help too.*

*Martin Ellis (Mellis) and Karen for their support and unbelievable memories for the kids' birthdays, also their actions in times of need.*

*The Harbury friends who showed we were not alone. Marie, Brian, Adam and Rhodda for supplying transport and help for Teresa at any time, great stuff. Sarah and Linden for Teresa's sitting and care. John and Elaine for making Teresa so welcome.*

*From our old address thanks to Mary and Merv, great neighbours, and Pete and Barbara, both of who were always offering to help Teresa and the kids. Two of the best Steve and Sally.*

*Thanks from us all,*

***Teresa, John, Aimee and Dan***

### **Dear Editors**

#### **Should we be concerned?**

*We moved into Chapel Street, Harbury six years ago, and thought what a lovely uncluttered village it was. But now we are seeing it starting to turn into a giant car park. All access roads into the village are reduced to one lane only, and the centre is now experiencing grid lock on a daily basis.*

*What does this mean for the future? Firstly the biggest concern is that of the emergency services, delays cost lives. We must make sure that at all times the roads are clear to allow fire engines and ambulances free access.*

*Next the bus company run the buses to a time table. If they cannot keep to this timetable they will start to assess the problem, and would firstly re-route the buses away from the bottle neck. If this did not work they would next divert the route away from the centre of Harbury.*

*We also have a problem with the Co-op lorries who are having great difficulty getting to and from the centre of Harbury. Time is money to the Co-op, when deciding if this store is viable this would be taken into account.*

*Yes we should be concerned. I know that to achieve this will require some tough decisions and not everyone will agree with what needs to happen. However the people responsible for the roads in Harbury must act now if we want to keep the buses, the Co-op, and our LIVES.*

**IF YOU ARE CONCERNED MAKE YOUR VOICE HEARD.**

**Ted Ross**

---

### **Dear Editors**

*Can I, through your columns please thank all the wonderful people of Harbury for their cards and letters of support following my car accident in Yorkshire some six weeks ago. They have been a great encouragement to me to get better and I am very glad to be home again with the help of my sister.*

*When Frank and I came to live here some 44 years ago with two very small children we little knew what a brilliant choice we were making. It is a wonderful village to live in and we have enjoyed being a part of it. Thank you all so much.*

**Liz Bunting**



## **HARBURY SURGERY MILL STREET, HARBURY**

**Surgery opening hours:**

Monday to Friday 8.30am - 12.30pm and 1.30 - 6.30pm

Appointments can be made by telephoning 612232 or calling in at reception.

For out of hours emergency service call: 111

**[www.harburysurgery.org.uk](http://www.harburysurgery.org.uk)**

## Regular Diary Dates

**ART CLASSES:** The Studio, Church House, Crown St, Monday & Tuesday 1.00-3.00pm, Tuesday 7.30-9.30pm & Wednesday 10.00am – 12 noon (614251)

**ART TUTORIALS:** Tom Hauley Room 1st Thursday of the month (814923 or 01295 276465)

**BEAVERS:** Scout Hut, Thursdays 5.30 - 6.40pm (01788 816214 )

**BELL RINGING PRACTICE:** Church, Fridays 7:30pm (612939)

**BIBLE STUDY GROUPS:** various homes 1st & 3rd Thursday of the month 2.00-3.00pm (614809); 2nd & 4th Tuesday of the month 10.30 - 12.00 noon (612864)

**BIBLIO'S CAFÉ (WITHIN HARBURY VILLAGE LIBRARY):** Wednesday, Thursday and Friday 9.15am – 12 noon and Saturday 10.00am – 12 noon

**BROWNIES:** Scout Hut, Mondays 5.45pm - 7:00pm (612538)

Brownies & Rainbows Waiting List - Bobbie Sharpe (614040)

**BUMPS & BUNDLES:** Tom Hauley Room, Tuesdays, 10.30am – 12 noon (611914)

**CHILDREN'S DANCE CLASSES:** Farley Room Wednesday 4.00 - 8.00pm (07837 152839)

**COFFEE MORNING:** Tom Hauley Room Saturdays 10:00am - 12:00 noon (613214)

**CUBS:** Scout Hut, Wednesdays 6:45 - 8:15pm (614730)

**GUIDES:** Scout Hut, Mondays 7.15pm – 9.00pm (614375)

**GYMNASTICS:** Harbury School, Mondays 6:00 - 8:00pm (07939 679533)

**HARBURY FOLK CLUB:** Harbury Village Club, 1<sup>st</sup> Thursday in the month 8:00pm (613730)

**HARBURY FRIENDS:** Tom Hauley Room, 2nd Tuesday in the month 8:00pm (612534)

### Regular Diary Dates

#### HARBURY JUNIORS FOOTBALL CLUB:

##### Under 6's – Year 1 (Mixed)

Coach: Katie Wales Tel: 07785 459232

Training: Saturday 9.00am. Harbury School

##### Under 7's, 8's & 9's – Year 2, 3 & 4 (Mixed)

Coach: Katie Wales Tel: 07785 459232

Training: Saturday 10.15am. Harbury School

##### Under 10's – Year 5 (Mixed)

Coach: Jane Workman Tel: 07803 414380

Training: Saturday 9.00am. Harbury School

##### Under 11's – Year 6 (Mixed)

Coach: Malcolm Tanner Tel: 01926 612617

Training: Saturday 9.15am. Harbury Park

##### Under 12's – Year 7 (Mixed)

Coach: Richard Gillingham Tel: 07528 580761

Training: Tuesday 6.30pm. Southam College 3g Pitch

##### Under 13's – Year 8 (Mixed)

Coach: Steve Burnell Tel: 07795 428087

Training: Tuesday 6.00pm. Southam College 3g Pitch

##### Under 15's – Year 9 & 10 (Mixed)

Coach: Richard Woodhead Tel: 07786 802803

Training: Tuesday 6.00pm. Southam College 3g Pitch

**HARBURY PRE-SCHOOL:** Wight School (behind Library), High St. Monday 12 noon – 3.30pm, Tues & Thurs – 9.00am, - 3.30pm, Wed & Fri – 9.00am – 1.30pm (07939 122087) enquiries@harburypre-school.org.uk

**HARBURY THEATRE GROUP:** Last Tuesday of the month, The Shakespeare (611930)

**HARBURY TODDLER GROUP:** Wight School, Monday 9.30 - 11:15am, Tel: 612748

**HARBURY UKULELE GROUP:** Shakespeare Inn, 1st & 3rd Monday of the month 8.00pm, contact Craig (612377)

**HARBURY VILLAGE CINEMA:** Contact Lana Long, 01926 613311, email: markandlana@aol.com

**HARBURY VILLAGE CLUB:** Contact 612498 (evenings).

Bingo every Friday 8.30pm - non members welcome.

**HARBURY VILLAGE LIBRARY:** Monday to Friday 9.00am – 5.00pm and Saturday 10.00am – 12 noon

**HEREBURGH MORRIS DANCERS:** School Hall, Wednesdays 8:00 - 10:00pm (613730)

**HORTICULTURAL SOCIETY:** Tom Hauley Room, 1st Tuesday in the month (Oct to May) 8:00pm Contact Judy Morrall (613103)

**KICK START APPALACHIAN STEP DANCERS:** Scout Hut, Saturdays, 10:00am - 12:00noon (612734)

**NETBALL CLUB:** Village Hall Car Park, Training Thursday evenings, Juniors 6.00 till 7.30pm & Seniors 7.30 till 8.30pm, Matches on Saturday Afternoon (613163)

**MOTHER'S UNION:** Tom Hauley Room, 1st Wednesday in the month 2.30pm; (613831)

**RAINBOWS:** Scout Hut Tuesdays 5.30 - 6.30pm, Unit Leader Bobbie Sharpe (614040)

**SCOUTS:** Scout Hut, Thursdays 7:00 - 8.30pm (612897)

**SLIMMING WORLD:** Community Centre, Ladbroke Road, Bishops Itchington, Wednesdays 5.30 and 7.30pm sessions, Jodie Tel: 07771 930568

**TABLE TENNIS:** Village Hall, Thursdays, 9.30 - 10.30am (614809)

**TAI CHI:** Ufton Village Hall, Monday, 7.30 (612277)

## **TENNIS CLUB:**

### **Adult / Student Members Playing Times:**

Tuesdays: 6.30pm– 10.00pm, Thursdays: 6.30pm – 10.00pm

Saturdays: (from Sept to March) 10.00am – 12 noon

Sundays: (from April to August) 10.00am – 12 noon

**Members** may play at other times free of charge, provided the courts are not already booked. **Guests** playing with members should pay £1 an hour.

If you would like to become a member or find out more about Harbury Tennis Club, please contact Colin Mercer (613284 or email [sucol-merc@tiscali.co.uk](mailto:sucol-merc@tiscali.co.uk)

**Non-members** - Courts should be booked at Country Fayre, Chapel Street £4 per court per hour) Floodlit bookings - £7 per court per hour.

**Minis and Juniors** (age 3 - 17) For details of Junior membership, contact Sue Mercer: [sucol-merc@tiscali.co.uk](mailto:sucol-merc@tiscali.co.uk)

**Coaching:** Adult and Junior coaching takes place throughout the year.

For up to date information contact [admin@tennisolutions.co.uk](mailto:admin@tennisolutions.co.uk)

**TUNES & TALES:** Harbury Village Library, Wednesday, 10.00 - 10.30am

**W.I.:** Tom Hauley Room, 2nd Thursday in the month 7:45pm (612710)

**WEDNESDAY WALKERS:** Village Hall, Wednesday 9.40am (614188)

**YOGA:** Tom Hauley Room, Tuesday 1.30 - 3.00pm and Tom Hauley Room, Wednesday 7.00 - 9.00pm. Dianne Surgey (817904)

**YOUTH GROUP-ICON @ All Saints':** Tom Hauley Room, Sundays 7.00 – 8.30pm (612377)

# ADVERTISING IN THE HARBURY & LADBROKE NEWS

Email: [advertising@hlnews.co.uk](mailto:advertising@hlnews.co.uk) Tel: 01926 612155

ADVERT SIZE	1 MONTH	3 CONSECUTIVE MONTHS	6 CONSECUTIVE MONTHS	12 MONTHS
¼ page	£10.50	£28.00	£51.00	£94.00
½ page	£19.00	£49.00	£90.00	£168.00
Full Page	£33.50	£89.00	£165.00	£315.00

## ADVERT WITH PAYMENT TO:

Gill Holden, 31 Binswood End, Harbury by 15<sup>th</sup> day of the month  
(Cheques payable to 'Harbury & Ladbroke News' or BACS details upon request)

Karena Ellis-Greenway  
MRICS, RICS Acc.Med., BSc Hons

green  
chameleon



M: 07796 575716 T: 01926 612121

E: [info@greenchameleon.net](mailto:info@greenchameleon.net) Web: [www.grechameleon.net](http://www.grechameleon.net)

• Chartered Surveying • Valuation • Mediation • Letting & Management

The Green Room, 31 Manor Road, Harbury, Warks CV33 9HY



Pilates



**BodyJam**



*BodyBalance*



**ZUMBA**

PAYG fitness classes in Harbury, Southam,  
Cublington & Radford Semele.

**ZUMBA - Sundays at 9am**  
**Harbury Village Hall**

£5

For more details call 0789 067 1869 or visit the website:

**[www.warwickshirefitness.com](http://www.warwickshirefitness.com)**



A Member of the Alliance of Private Sector Practitioners

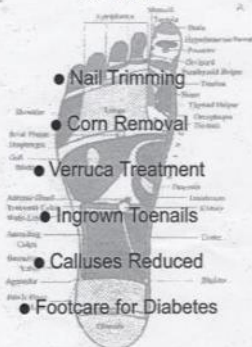
## Jackie Biddle

### Healthy Feet are Happy Feet

Foot Health Practitioner



Dip CHIP MPS Pract  
CRB Checked



Home Visits Telephone

T: 01926 612503

M: 07872 907429

## Teacake Homebakery

Autumn.... toasted teacake time!

Homemade using organic flour and butter, Fairtrade sugar and fruit.

As supplied to Biblio's Café.

Have some in the freezer, ready for those chilly days.

Sultana, date and walnut or cheese scones also baked to order.

**Tel: 613207**

Lesley Jones  
15 Pineham Avenue  
Harbury

## Siena Domestic Cleaning Services

Unit 1 The Old Barn  
Churchlands Business Park  
Harbury CV33 9GX

For a professional, affordable and stress free clean either regularly or as a one off, our reliable and trustworthy staff will deliver a high quality clean assuring satisfaction.

Family run business  
Professional DBS checked cleaners  
Eco friendly products  
Personalised Service  
Free Quotations

**Siena Domestic Cleaning Services**  
01926 257650  
[www.sienacare.co.uk](http://www.sienacare.co.uk)





## Outside Cleaning Direct

professional external surface  
restoration and maintenance for  
domestic and commercial  
properties.

freephone: 0800 7723411

mobile: 07714 791371

email: [info@outsidecleaningdirect.com](mailto:info@outsidecleaningdirect.com)

**Pressure cleaning services in Harbury**  
**Block paving cleaned, re-sanded and sealed**

**Professional restoration service:**

**Patios - Decking - Drives**

**Walls - Fascias - Fencing**

**Gutters Cleaned from £40**

**We also offer a range of sealants and treatments to help protect your  
surfaces for longer.**

**Call OCD for a free quote**

**inspire**  
**dance**  
COMPANY

**AVAILABLE CLASSES**

Starting Wednesday 9th September at Harbury Village Hall

4:00-4:30pm Preliminary 1 Ballet & Tap (under 5 years)

4:30-5:00pm Preliminary 2 Ballet & Tap (5 years+)...

5:00-6:00pm Grade 2 Ballet, Tap & Freestyle Gym Dance (combined class 9 yrs+)

5:00-6:00pm Grade 1 Freestyle Gym Dance, Ballet & Tap (combined class 7 yrs+)

6:00-7:00pm Street / Hip Hop (7 yrs+)

6:00-7:00pm Contemporary Dance class (10 yrs+)

*To book your FREE trial contact us via Facebook, call/text Frankie on 07875 715 876  
or email us at [inspire-dance@hotmail.co.uk](mailto:inspire-dance@hotmail.co.uk)*



All Square  
Cleaning

Domestic &  
Commercial

## ***Carpet, Rug & Upholstery Steam Cleaning***

Quick drying times  
Stain removal & proofing  
Removes dust mites & allergens

***Hard floor cleaning inc  
Tiles & grout, Vinyl, Rubber etc***  
Stripping, cleaning & polishing  
Karndean & Amtico restored

Free survey & written quotes  
7 day service & fully insured

Contact Neil Worsnop on  
01926 492696 or 07557 944461

[www.allsquarecleaning.co.uk](http://www.allsquarecleaning.co.uk)

## **FENCES : TREES**



**All types of fencing and gates**

**Tree felling and reduction**

**Hedge laying and trimming**

**Patios**

**Seasoned logs available**

**Call Adrian Dollar on  
01926 817077 or  
07914 623989**

**Qualified and Insured**

**H**ANSONS  
Auctioneers and Valuers

## **FREE ANTIQUES VALUATION DAY**



**Thursday 10<sup>th</sup> September, 10.00am - 4.00pm**

**St Francis of Assisi Church Hall**

110 Warwick Road, Kenilworth. CV8 1HL

**Meet Charles Hanson's team of Valuers and  
Kate Bliss - Jewellery and Silver  
Don Collins - Coins and Militaria 10am-2pm**

**Bring along your Antiques, Jewellery, Silver, Coins,  
Stamps, Ceramics and Collectables**

Items may be consigned into Hansons Antiques and Collectors Auctions  
or a Specialist Auction

**Free home visits for larger collections**

**For further information please contact Mrs Carol Jones**

Hansons Warwickshire Area Manager on 07802 839915  
[service@hansonsauctioneers.co.uk](mailto:service@hansonsauctioneers.co.uk) [www.hansonsauctioneers.co.uk](http://www.hansonsauctioneers.co.uk)

**Hansons Auction Centre, Heage Lane, Etwall, Derby. DE65 6LS**

**Refreshments in aid of the NSPCC**

## Kleinmann Properties

*Our success is built on our reputation and customer recommendation*

Sales Lettings Financial Services

Serving Harbury & Surrounding Area

- Free no obligation valuation
- A Confidential, Personal and Professional Service Guaranteed
- All viewings accompanied – by appointment only
- Excellent Rates
- Lettings – Fully managed or tenant finding service

Telephone: 01926 612463

Mobile: 07710 040494

Email: [enquiries@kleinmannproperties.co.uk](mailto:enquiries@kleinmannproperties.co.uk)

Web: [www.kleinmannproperties.co.uk](http://www.kleinmannproperties.co.uk)

**3 Bull Ring Business Centre Church Terrace Harbury CV33 9HL**

## Domestic Gas Services



**CENTRAL HEATING, INSTALLATION, SERVICE, REPAIR AND  
POWERFLUSHING....the next best thing to a new heating  
system!**



Are your radiators cold at the  
bottom?  
If so they need  
**POWERFLUSHING!**

**POWERFLUSHING** removes the build  
up of sludge and sediment in your  
radiators which is making them less  
effective therefore *costing you  
money!*

**POWERFLUSHING** will maximise the  
efficiency of your radiators ensuring  
you get the very best from your  
heating system therefore saving you  
money!



**For all your heating requirements please call  
Martin Evans on 07980 740720**





# Simons Systems



Available for all your computer requirements including:  
PC's & Laptops, New & used systems, Repairs & upgrades  
Virus/Malware Removal, Data back & Windows re-installation  
Upgrading memory/Hard drives/Rom drives/Graphics, etc  
Internet - modems fitted, wireless, networking.  
Any repairs or computer problems. ***No call out charge***

T: 01926 316 119

E: [sales@simons-systems.co.uk](mailto:sales@simons-systems.co.uk)

M: 07751 811 097

W: [www.simons-systems.co.uk](http://www.simons-systems.co.uk)

## Spa Roofing Co.

**(Roofing Specialists)**

**For all Roofing, Guttering and  
General Repairs**

**(Free Estimates)**

**All Work Guaranteed**

**Call: 07876 508032**

**or 01926 770822**



**Kenilworth  
Properties Ltd**  
BUILDING CONTRACTORS



**Extensions-Alterations-Refurbishment-New Builds  
Bespoke Kitchens and Bathrooms  
Design-Planning & Building Regulations Application  
Service available.**

Web: [www.kenilworthproperties.co.uk](http://www.kenilworthproperties.co.uk)

Email: [tony@kenilworthproperties.co.uk](mailto:tony@kenilworthproperties.co.uk)

Telephone: Harbury 612260 Mobile: 07779 096104

Harbury Business Centre, Church Terrace, Harbury, Leamington Spa CV33 9HL

## **B. Webb Services**

### **Garden Clearances**



Large & small garden makeovers.

Decking specialists.

All types of fencing work.

New driveways or driveway repairs.

Any aspect of tree surgery, stump grinding,

Hedge cutting or pruning.

**FOR A FREE QUOTATION CALL WILLIAM ON**

**01926 257571 or 07946 319908**

*Fully Insured*



# Nifty Needle

## Curtains and Soft Furnishing

Nifty Needle specialise in creating elegant and stylish custom curtains, blinds and soft furnishings, individually designed to create beautiful solutions. Free measuring service.

At our shop in Kineton we will shortly be stocking a new range of home wares, including lamps, cushions, footstools and other items to accessorise your home. We're open Tuesday to Friday 9:00am to 5:00pm and Saturday 9:00am to 2:00pm.

Nifty Needle Curtain Workroom, 1 Banbury Street, Kineton, Warwickshire, CV35 0JS  
Tel: 01926 641741 E-mail: [enquiry@niftyneedle.co.uk](mailto:enquiry@niftyneedle.co.uk) Website: [www.niftyneedle.co.uk](http://www.niftyneedle.co.uk)

### Helping Hands

The Home Care Specialists

Est. 1989



### Do you need a Helping Hand?

If you are looking for an **alternative to residential care** or extra support for those everyday tasks that are becoming difficult for you or a loved one – then we're here to help - **from 30 minutes per week to Live-in Care.**

Our **Harbury & Ladbroke care team** has been providing award winning quality homecare since 1989 and can help with: personal care, housekeeping, help getting around or even to provide a break to an existing family member or care-giver.



To find out how we can help you,  
call: 01926 680 763 or  
visit: [www.helpinghands.co.uk](http://www.helpinghands.co.uk)



Camra Member  
Discount

*Chapel Street, Harbury – 01926 258859*

Lunch served 12-2pm on  
Friday and Saturday

Food served Tue-Thurs 6-9pm  
Friday 12-2 & 5-8pm Saturday 12-2 & 6-9

New menu with regular changes

**Sunday Lunch served from 12 to 3pm**  
**(regularly fully booked, reservation advised)**

*30 Wines all  
available by  
the glass*

*A conversational pub,  
with a promise of no TV  
screens*

**Tuesday Fish & Chips**  
Peroni Beer Battered Fish  
& Triple Cooked Chips  
£5.00 6-9pm.

**Wine Wednesdays**  
A bottle of wine for  
the price of two  
large glasses

**Sparkling Saturdays**  
Prosecco at just £15 a  
bottle all day long



TheGamecockHarbury

[www.thegamecockharbury.com](http://www.thegamecockharbury.com)



@GamecockHarbury



We are a family  
friendly pub and  
we love your  
dogs too



## Ed's Music Tuition

- Do you want to learn keyboards or guitar with a qualified teacher with a passion for music?
- Lessons available for all ages.
- Whether you want to take exams or just learn for fun, I can help you on your way.
- Fully CRB checked.
- Competitive rates and flexible timetable with lessons tailored to your own individual learning style and needs.
- Tuition in playing, reading music, performance and theory.
- Give me a call to discuss your musical future!



Ed Hudson, Harbury. Mob: 07801 430029  
email: [eddhudson@me.com](mailto:eddhudson@me.com)



## Drop Dead Gorgeous Curtains



Beautiful Bespoke Curtains, Cushions and Roman Blinds. All made to measure and sewn by hand.

I can supply a range of fabrics and poles or I'm happy to work with yours.

Free measuring and free fitting.

I also take on curtain alterations and restorations big or small.

Please call Sharron for friendly and helpful advice or to arrange a free quote on:

01926 612226 or 07760 395805

Email: [dropdeادgorgeouscurtains@gmail.com](mailto:dropdeادgorgeouscurtains@gmail.com)

Or visit my website  
[www.dropdeادgorgeouscurtains.co.uk](http://www.dropdeادgorgeouscurtains.co.uk)





## WOULD YOU LIKE TO KNOW THE VALUE OF YOUR HOME?

Call Inside Homes for a free valuation  
on **01926 818288** or email us on  
[support@insidehomeslimited.co.uk](mailto:support@insidehomeslimited.co.uk)

## USE YOUR LOCAL ESTATE AGENT TO GET YOU MOVING!



**We're pro-active, friendly and we know  
South Warwickshire very well**

## INTRODUCING BANANA MOON DAY NURSERY HARBURY



- Offering childcare from 7.30am – 6.30pm for children from 3 months to school age, 51 weeks a year.
- Breakfast & two home cooked meals a day.
- Full and half day sessions available.
- Sibling discount.

Give us a call today to arrange a viewing  
on 01926 612374



**Banana Moon Day Nursery, Ivy Lane, Harbury, Warwickshire CV33 9HN**  
Telephone: 01926 612374 [bananamoon-harbury.co.uk](http://bananamoon-harbury.co.uk)

## Why you should buy your new kitchen or bathroom from Modern Homes!

- With over 46 years of trading we are the longest established specialist in your area.
- Predominantly British Manufactured products
- Family run 'local' business
- Personal recommendations
- Large kitchen and bathroom showroom
- Full installation service with employed fitters
- Value for money... We offer styles to suit all tastes and budgets
- Kbsa members offering Consumer care protection

[www.modernhomesleamington.co.uk](http://www.modernhomesleamington.co.uk) Email: [info@modernhomesleamington.co.uk](mailto:info@modernhomesleamington.co.uk)

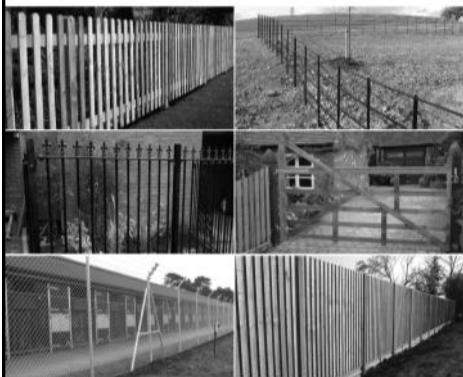
**01926 883338**

**Modern Homes, 37 Longfield Road, Sydenham Estate, Leamington Spa CV31 1XB**  
(between Wilts and CAS)



**Roger Frogley & Sons Fencing Ltd**  
30 years of quality service

High quality *domestic, industrial and agricultural* fencing  
offering a service second to none,  
competitively priced – clean, efficient, reliable.



t. 07970 652145 & 01926 815863  
frogleyfencing@gmail.com | www.frogleyfencing.co.uk

*No job too small* **Phil's** *Free Quotations*  
**Plumbing and Heating**  
**Fully Qualified**  
**and**  
**Insured Plumber**

Bathrooms, Central Heating & showers

I am a locally based plumber  
offering very competitive rates  
on any plumbing or heating job.

No job too small,  
Please give Phil a call

Call Phil

Daytime: 07971 046392

Evening: 01926 400746

Email: philmunday@hotmail.co.uk

Bishops Tachbrook  
Leamington spa



**Need home and contents' insurance?**  
**Reynolds Insurance holds the solution!**

We offer impartial professional advice on all of the insurances we offer, in our Southam office or over the telephone. Same experienced, friendly staff for more than 20 years, who are on hand to give you competitive quotes across the market and continued assistance and support whenever required.

Competitive quotes also available on:  
Motor • Tradesmen • Shops • Offices

Call Deb or Sue on 01926 812574

Reynolds Insurance Services Limited | 5 High Street | Southam

Email: enquiries@reynoldsinsurance.co.uk

Reynolds Insurance Services Ltd  
is regulated by the  
Financial Conduct Authority.

**reynolds insurance**  
**SERVICES LTD**

Independent Insurance Advisers





# LOVE TO DANCE?

## CLASSES TO SUIT EVERYONE!

Professional purpose built dance studios in Southam



LoveBallet is a leading Dance School in Warwickshire, established in 2007 we are dedicated to every pupil - for those wishing to dance for fun or to train for a career in dance. You will be taught by ex-pro dancers who are fully qualified and experienced teachers.

### Monday

**Baby Ballet (18mths+)**  
9.30am - 10.15am  
**LoveDance (14yrs+)**  
7.00pm - 8.30pm  
**Adult Tap (Beg)**  
7.30pm - 8.30pm  
**Pointe Work Class**  
8.30pm - 9.15pm

**FREE TRIAL  
FOR  
ALL CLASSES**

(ex Mini Movers & Zumba)

### Tuesday

**Prima Ballerinas (3-4yrs)**  
4.00pm - 4.30pm  
**Pre-Syllabus Ballet (5-6yrs)**  
4.30pm - 5.15pm  
**Grade 1 Tap (10-11yrs)**  
4.30pm - 5.15pm  
**Pre-Primary Ballet (6-8yrs)**  
5.15pm - 6.00pm  
**Grade 2 Tap (12-13yrs)**  
5.15pm - 6.00pm  
**Primary Ballet (8-9yrs)**  
6.00pm - 6.45pm  
**Grade 4 Tap (13yrs+)**  
6.00pm - 6.45pm  
**Grade 5 Ballet (15yrs+)**  
6.45pm - 8.00pm  
**Adult Tap (Inter)**  
6.45pm - 7.45pm  
**GCSE Dance (Yr 10 & 11)**  
6.45pm - 8.45pm  
**Zumba**  
7.45pm - 8.45pm

### Wednesday

**Mini Movers (0-5yrs)**  
9.30am - 10.30am  
**Ballroom & Latin (all ages)**  
5.00pm - 5.45pm  
**Grade 2 Modern (12yrs+)**  
5.45pm - 6.30pm  
**Grade 4 Ballet (15yrs+)**  
6.30pm - 7.30pm  
**Grade 3 Modern (13yrs+)**  
7.30pm - 8.15pm  
**Adult Ballet (no exp req)**  
8.15pm - 9.15pm

### Thursday

**Zumba (Over 50s)**  
10.00am - 11.00am  
**Adult Ballet (Over 50s)**  
11.00am - 12.00pm  
**Funky Dance (3-6yrs)**  
4.00pm - 4.30pm  
**Gymnastics (all ages)**  
4.30pm - 5.00pm  
**Acting & Performance (all)**  
4.45pm - 5.45pm  
**Grade 1 Ballet (10-11yrs)**  
5.00pm - 5.45pm  
**Funky / Modern (7-10yrs)**  
5.45pm - 6.30pm  
**Boys Street Dance**  
5.45pm - 6.30pm  
**Grade 2 Ballet (11-13yrs)**  
6.30pm - 7.15pm  
**Grade 1 Modern (10-12yrs)**  
7.15pm - 8.00pm  
**Grade 3 Ballet (14yrs+)**  
8.00pm - 8.45pm

### Friday

**Mini Movers (0-5yrs)**  
10.00am - 11.00am  
**Little Tappers (3-5yrs)**  
4.00pm - 4.30pm  
**Pre-Primary Tap (6-8yrs)**  
4.30pm - 5.15pm  
**Primary Tap (8-10yrs)**  
5.15pm - 6.00pm



**100%  
EXAMINATION  
PASS RATE**

Thousands of Entries

### Saturday

**Musical Theatre (4-8yrs)**  
9.00am - 10.30am  
**Rhythmic Gymnastics**  
9.00am - 9.45am  
**Baby Ballet (18mths+)**  
10.30am - 11.15am  
**Musical Theatre (8yrs+)**  
11.15am - 12.45pm  
**Grade 3 Ballet (14yrs+)**  
4.45pm - 5.30pm

### Contact Miss Lorraine

LoveBallet Dance Studios  
Insight Park, CV47 1NE  
lorraine@loveballet.co.uk  
07921 853773  
www.loveballet.co.uk