

# Harbury & Ladbroke News

Is published monthly and reflects all aspects of local life.

**March 2015**

**No.492**

Editorial Office

☎ 612155

Articles to

Harbury Pharmacy, High Street

Email address

articles@hlnews.co.uk

Advertising Office

31, Binswood End (☎ 612155)

advertising@hlnews.co.uk

Distribution Manager

49, Mill Street (☎ 612009)

distribution@hlnews.co.uk

Inserts by prior arrangement

☎ 612009

## IN THIS ISSUE

## Page

EDITORIAL .....	2
HARBURY DIARY & REFUSE ROTA.....	3 - 5
FROM THE RECTOR & CHURCH NEWS .....	6
LADBROKE NEWS .....	9
HARBURY PARISH COUNCIL .....	15
CLUBS & SOCIETIES .....	18
EARLY YEARS & SCHOOL.....	27
VILLAGE HALL UPDATE .....	31
GARDENING & NATURE .....	32
GENERAL SECTION .....	37
LETTERS TO THE EDITORS .....	51

## Editorial Team

John Holden - Chris Finch - Marian Millington - Janice Montague - Sally Stringer  
Ralph Swadling - Jackie West

*The views of contributors are not necessarily those of the Editorial Team  
The Editors reserve the right to amend articles as they see fit.*



## Editorial



The recent landslide in the railway cutting has certainly put Harbury on the national map - one railway magazine's headline refers to it as 'Headache at Harbury'. Network Rail have submitted an article to the magazine and there is also information on where concerns should be referred.

After many years of fundraising, the work to extend and modify the Village Hall will be commencing after Easter. The majority of events in the Hall will be continuing as normal during the building work.

Ladbroke Village Hall will be hosting a supper and race night with traditional wooden horses and people power on Saturday 21<sup>st</sup> March.

Magazine subscriptions are due next month and are remaining at £6.00, your distributor will be calling on you to collect this.

Finally we extend our sympathy to the families of Doreen Bristow and Danny Killian.

### **April Edition - Harbury & Ladbroke News**

**Adverts to:** 31 Binswood End, Harbury or e-mail to [advertising@hlnews.co.uk](mailto:advertising@hlnews.co.uk) by  
15th March

**Articles to:** Harbury Pharmacy, High Street or e-mail to [articles@hlnews.co.uk](mailto:articles@hlnews.co.uk) by  
5.30pm, Thursday 26th March

# Harbury Diary

## MARCH

- Sat 7 Coffee Morning, 10.00am to 12 noon in Tom Hauley Room in aid of Harbury Pre-School
- Sun 8 **LENT III**  
Holy Communion, 8.00am  
Sung Communion, 10.30am  
Zumba, 9.00-10.00am in Village Hall
- Mon 9 Upholstery Class, 9.15am in Village Hall  
Lent/Confirmation Course, 7.30pm in Church  
Village Hall Committee, 7.30pm in Village Hall
- Tues 10 Pilates, 9.30am in Village Hall  
Junior Theatre Group, 6.30pm in Village Hall  
Holy Communion, 7.30pm
- Wed 11 Wednesday Walkers, Wormleighton (4 miles), meet 9.40am in Village Hall Car Park  
Pleasant Pastimes, 2.00-4.00pm, Tom Hauley Room  
Ballroom Dancing, 8.00pm in Village Hall
- Thurs 12 Holy Communion, 9.45am followed by coffee  
NSPCC Ladies Lunch, 12.30pm in Tom Hauley Room  
Harbury WI, 7.45pm in Tom Hauley Room "The Art of Coarse Guiding" by Maureen Sutherland
- Fri 13 Pre-School Music Movement, 9.15am Village Hall
- Sat 14 Coffee Morning 10.00am to 12 noon in Tom Hauley Room in aid of Harbury WI  
Morris Workshop, 10.00am-4.00pm in Village Hall
- Sun 15 **LENT IV – Mothering Sunday**  
Holy Communion, 8.00am  
"Saints Alive", 10.30am, followed by food and refreshments  
Zumba, 9.00-10.00am in Village Hall  
ADVERTS FOR THE NEXT ISSUE TO 31 BINSWOOD END,  
HARBURY OR EMAIL ADVERTISING@HLNEWS.CO.UK
- Mon 16 Upholstery Class, 9.15am in Village Hall  
Lent/Confirmation Course, 7.30pm in Tom Hauley Room
- Tues 17 Pilates, 9.30am in Village Hall  
Junior Theatre Group, 6.30pm in Village Hall  
Holy Communion, 7.30pm  
Harbury Society AGM and Talk (see article) 7.30pm in Tom Hauley Room
- Wed 18 Wednesday Walkers, Lowsonford (4 miles), with optional meal at the Fleur-de-Lys, meet 9.40am in Village Hall Car Park.  
Ballroom Dancing, 8.00pm in Village Hall

- Thurs 19 Holy Communion, 9.45am, followed by coffee  
Harbury School PTA, Easter Thursday Market, 3.15-4.00pm,  
School Hall  
From sounds to silence open evening, 7.00pm prompt,  
The Barns, Station Road, Harbury
- Fri 20 Pre-School Music Movement, 9.15am Village Hall
- Sat 21 Coffee Morning 10.00am to 12 noon in Tom Hauley Room in  
aid of Harbury Church  
Harbury Village Cinema presents 'The Imitation Game', doors  
open 6.30, film starts 7.00pm
- Sun 22 LENT V – Passion Sunday**  
Holy Communion, 8.00am  
Sung Communion, 10.30am
- Mon 23 Lent/Confirmation Course, 7.30pm in Church
- Tues 24 Pilates, 9.30am in Village Hall  
Junior Theatre Group, 6.30pm in Village Hall  
Holy Communion, 7.30pm  
Julian Meeting, 8.00 pm
- Wed 25 Wednesday Walkers, Stratford to Welcombe Hills, (3½ miles),  
meet 9.40am in Village Hall Car Park  
Pleasant Pastimes, 2.00-4.00pm, Tom Hauley Room  
Ballroom Dancing, 8.00pm in Village Hall  
Hereburgh Morris, Open Practice, 8.00pm, Harbury School  
Hall
- Thurs 26 ARTICLES FOR NEXT ISSUE TO: HARBURY PHARMACY,  
HIGH ST OR EMAIL TO ARTICLES@HLNEWS.CO.UK BY  
5.30PM  
Parish Council Meeting, 7.30pm in Village Hall
- Fri 27 Pre-School Music Movement, 9.15am, Village Hall
- Thurs 26 Holy Communion, 9.45am, followed by coffee
- Sat 28 Paul Winchester's Quiz, 7.00pm start in aid of the  
Senior Citizens and Harbury Albion in Village Hall  
Coffee Morning 10.00am to 12 noon in Tom Hauley Room in  
aid of Save the children
- Sun 29 PALM SUNDAY**  
Holy Communion with distribution of Palms, 8.00am  
Procession from School (with Donkey!) 10.15am  
Sung Communion with distribution of Palms, 10.30 am  
Tennis Club AGM and Cheque Book Tournament 10.00am
- Mon 30 Eucharist and Stations of the Cross, 7.30pm
- Tues 31 Healing and Holy Communion Service, 7.30pm
- APRIL**
- Wed 1 No Wednesday Walk in Holy Week  
Holy Communion, 2.00pm  
Mothers' Union Meeting, 2.30 pm, Tom Hauley Room  
Service of Light and Shadows, 7.30pm

- Thurs 2 **MAUNDY THURSDAY**  
 Holy Communion, 9.45 am, followed by coffee  
 Eucharist and Washing of Feet, 7.30 pm at LADBROKE  
 The 'Watch' at Altar of Repose, 8.00pm till Midnight (Harbury)  
 Folk Club, 8.00pm in Village Club
- Fri 3 **GOOD FRIDAY**  
 Children's Service with Hot Cross Buns! 10.30 am  
 Devotional Service with Hymns and Readings 1.00-3.00pm  
 "The Cross of Christ", a Devotion for Congregation and Choir,  
 Joint service at LADBROKE, 6.30pm
- Sat 4 **HOLY SATURDAY**  
 Confirmation Service, Renewal of Baptism vows, and first  
 Eucharist of Easter, with the Bishop of Warwick - in Harbury  
 Church, 8.00pm (Joint Service with Ladbroke)  
 Coffee Morning 10.00am to 12 noon in Tom Hauley Room in  
 aid of World Challenge Expedition
- Sun 5 **EASTER DAY**  
 Sung Communion, 9.00am  
 Little Saints' Service, 10.30am, followed by food and  
 refreshments
- Tues 7 Holy Communion, 7.30pm  
 Heritage Room open 6.30 to 8.30pm at School  
 Horticultural Society, 8.00pm Tom Hauley Room Dob &  
 Diane Cole – "Autumn Fare"
- Wed 8 No Wednesday Walk  
 Pleasant Pastimes, 2.00-4.00 pm, Tom Hauley Room
- Thurs 9 Holy Communion, 9.45 am, followed by coffee

**DATES FOR INCLUSION IN THE HARBURY DIARY PLEASE TO:  
 LINDA RIDGLEY - TEL. 612792.**

Refuse Collection Rota				
	Deppers Bridge	Harbury	Ladbroke	Collection Week
March	Wed	Thurs	Fri	
	11	12	13	Green & Blue Lid Bins
	18	19	20	Grey Bin
	25	26	27	Green & Blue Lid Bins
April	1	2	3	Grey Bin
	8	9	10	Green & Blue Lid Bins
	15	16	17	Grey Bin



## From the Rector

**Reverend Craig Grocock**

The Rectory, Vicarage Lane, Harbury ☎612377 ✉kankudai43@aol.co.uk

### In the Wilderness

As I write this, we have just entered Lent once again, the time when we think about the 40 days that Jesus spent in the wilderness before he began his ministry.

I shared some thoughts about this in church last week and it resonated with many people so I thought I'd share them with you too.

'Wildernesses' come in so many shapes and sizes and I guess many of you have already been in one or are in one now.

The 'wilderness' may have been a hospital waiting room to you, or maybe it looked like the day you were made redundant or lost your job, or the time when tragedy struck and the bottom fell out of life.

Often the only way you can really tell you are in one is to look around for what you normally count on to save your life and you come up empty.

Needless to say, this is not a situation many of us seek. Most of us, in fact, spend a lot of time and effort trying to stay out of them. Sooner or later though, every one of us will be in a 'wilderness' place and it will feel dark, lonely and endless.

I guess that could sound like bad news, but I don't think it is. I think it is good news because even if no one ever wants to go there, and even if those of us who end up there want out again as soon as possible, the 'wilderness' is still one of the most reality-based, spirit-filled, life-changing places a person can be. Oddly, our experience of the wilderness can be a place of growth.

Jesus went there - what did that long, famishing stretch in the wilderness do for him?

Well, it freed him essentially, freed him from all devilish attempts to distract him from his true purpose. Through his wilderness Jesus came to understand why he was here, what mattered most to him and he formulated the values for the rest of his life. After forty days in the wilderness, Jesus had not only learned to manage his appetites, he had also learned to trust God that he would lead him out again, with the kind of clarity and grit he couldn't have found anywhere else.

I do not know what your 'wilderness' looks like. All I know for sure is that, like Jesus, if we have faith and trust in God, however dark, empty and lonely the wilderness appears to be, when we have no strength to help ourselves, God will lead you out again and into a stronger place.

God bless.

## From the Registers

### *Holy Baptism, All Saints' Harbury*

22<sup>nd</sup> February

Katherine Oliver

### *Funerals at All Saints' Harbury*

4<sup>th</sup> February

Doreen Bristow (91 years)

5<sup>th</sup> February

Danny Killian (78 years)



## From the Churchwardens

**Elaine & John**

It's March already and it's lovely to see the spring flowers blossoming in the churchyard.

Well we are now in Lent and whilst there is not so much to report for February, the church diary is busy up until Easter. Please do join us for our reflective Lent course which commences on Monday 2<sup>nd</sup> March for 4 weeks, either in the church or the Tom Hauley Room – 8pm for the first meeting, 7.30pm thereafter.

Our Family Service 'Saints Alive' theme for this coming month (15<sup>th</sup> March) is Mothering Sunday and the local schoolchildren will join with us for what promises to be a lovely service.

We have been very pleased to see so many new faces to our Little Saints service for young children (and their mums and dads) that takes place at 10.30am on the 1<sup>st</sup> Sunday every month and lasts for no more than 30 minutes – please come along and stay afterwards for coffee, bacon rolls and pain au chocolat – and take the opportunity to get to know some of the familiar faces within the church.

And just a reminder that a Massive Messy Church will be held in the Grange Hall, Southam on Saturday 7<sup>th</sup> March 11am – 1pm – the theme will be Creation. Every Messy Church in the Deanery is involved so do bring your children along to share in God's work in our local area and meet new friends.

For those of you who are unable to get to church but would like to listen to the sermons, these are now recorded and can be accessed via the church website: <http://www.allsaintsharbury.org/podcasts.php>

We are pleased to announce that we are being blessed with a second curate in the summer. Nicky Moon will be joining us in June. More information to follow.

And finally, you may be aware that we have commissioned a safety report on the trees outside the Library. Whilst the outcome of the report confirms that there are no immediate problems, before a final decision is made on future actions, we would like to invite you to provide any comments and feedback you have in relation to the trees. In particular we are sensitive to your thoughts around the Tree of Light. Please contact John (614206) or Elaine (813654).

	<h2>Mothers' Union</h2>	<p><b>Gillian Hare</b></p>
---	-------------------------	----------------------------

Our afternoon meeting on a cold day – Wednesday 4<sup>th</sup> February 2015 – began with a reading by Gillian Hare followed by prayers in place of Communion as Reverend Craig Grocock was ill. However, at the time of writing he is much better.

Chris gave us all the Mothers' Union news, dates and notices.

Committee member Barbara Fowkes gave us a very entertaining talk of her life and experiences which included her childhood in South Africa. However, Barbara told us that there have been very radical changes in the last 20 years which have made South Africa a very different place today.

Barbara by her own admission was quite mischievous as a young child. Her many recollections kept us laughing as she related incidents from her schooldays, working life and particularly when she was a student nurse. Flagpoles and underwear and late nights out caused us much hilarity.

However Barbara, throughout life's trials, has kept her optimism and is still full of fun, "a glass half full" hopeful person. We will await eagerly the next instalment!

Next meeting: in the Tom Hauley Room, Wednesday 1<sup>st</sup> April 2015, 2pm to join in Communion, 2.30pm for our meeting. The topic will be the rituals and traditions associated with Easter. Please bring a guest; all are welcome.

In line with our objective of supporting parents in bringing up their children in the faith of the Church, members will be staffing a display of Easter carols and books for children. This will be after the Mothering Sunday 10.30am service on 15<sup>th</sup> March.

And, as part of the Church outreach to the community, we shall be catering for the lunch in the Tom Hauley Room on Saturday 18<sup>th</sup> April.

## Mothering Sunday

Not everyone is a mother – though we all had mother once – but everyone is a member of God's family. At All Saints' Church, Harbury on 15<sup>th</sup> March, we shall be celebrating that at the Saints Alive service at 10.30am.



As well as songs, drama, activities for all ages and flowers, there will be coffee, cakes and a Fair Trade stall. And Mothers Union members will be displaying a selection of Easter Cards and children's books. Do join us – dads are welcome too! This is a non-communion service lasting about 40 minutes.

## Ladbroke News & Diary

<http://www.ladbroke-pc.org.uk>

### MARCH

- Sun 8 Lent III**  
Holy Communion (sung), 9.00am
- Wed 11 Lent Lunch, 12 noon-1.30pm, Chapel Ascote Farm  
Table Tennis, 6.30-7.30pm, Village Hall  
Parish Council, 7.45pm, Village Hall
- Sun 15 Lent IV**  
Holy Communion (said), 9.00am  
Mothering Sunday Family Service, 10.30am  
ADVERTS FOR THE NEXT ISSUE TO 31 BINSWOOD END,  
HARBURY OR EMAIL ADVERTISING@HLNEWS.CO.UK
- Wed 18 Table Tennis, 6.30-8.00pm, Village Hall  
Home group, 8.00pm
- Sat 21 Supper and Race Night, 7.00pm, Village Hall (tickets from  
Martin 814715 or Kip 815004)
- Sun 22 Lent V**  
Holy Communion (sung), 9.00am
- Tues 25 Lent Lunch, 12 noon-1.30pm, Hallsfield
- Wed 25 Table Tennis, 6.30-8.00pm, Village Hall  
Annual Church Meeting, 7.00pm, Church
- Thurs 26 ARTICLES FOR NEXT ISSUE TO: HARBURY PHARMACY,  
HIGH ST OR EMAIL TO ARTICLES@HLNEWS.CO.UK BY  
5.30PM
- Sat 28 Whist Drive, 7.30pm, Village Hall
- Sun 29 Palm Sunday / Passion Sunday**  
Holy Communion (said), 9.00am

### APRIL

- Wed 1 Table Tennis, 6.30-8.00pm, Village Hall
- Thurs 2 Maundy Thursday service, 7.30pm
- Fri 3 One Hour at the Cross, 12 noon  
The Cross of Christ - a devotion for congregation and choir,  
6.30pm
- Sat 4 Whist Drive, 7.30pm, Village Hall
- Sun 5 Easter Day**  
Family Communion, 10.30am followed by Easter Egg Hunt and  
refreshments



## Ladbroke Church News

Jackie West

The first Sunday each month is our family service and in February we celebrated Christingle. Betty and four young assistants had made the Christingles from oranges with a red ribbon around the centre and a candle - representing the earth, God's love and Jesus, the light of the world, respectively. They also have dried fruits and tiny sweets on cocktail sticks stuck into the orange to remind us of God's creation - though it is a helpers' perk to do taste trials of these, which may result in not quite enough to represent all four seasons!



On Thursday 12<sup>th</sup> February, a large contingent of us from both Ladbroke and Harbury churches went to Deddington to join the large 'rumble' of clergy and sizeable local congregation to see Rev Annie instituted, inducted and installed. Luckily the order of service explained these three 'i's. Institution is admission into the spiritual oversight and care of the parish and was symbolised by various people presenting Annie with water for baptism, oil of healing, the bible, the service book, bread and wine as used at communion and a map of the benefice before she swore her oaths. Induction is the admission into possession of the church buildings, churchyards and parsonage represented during the service by the key to Deddington Church and installation was the formal placing of the vicar into her seat in the church by the Bishop of Oxford.

Our own Bishop of Warwick, John Stroyan, joined us at Ladbroke the following week for our Ash Wednesday service to mark the start of Lent.

There is quite a lot happening apart from regular Sunday morning services during the next few weeks:

As we often do in Lent, we are having a series of soup and cheese lunches in people's homes, see the Ladbroke diary or the notice in the church porch for more details. Everyone is welcome, but please let the host know if you plan to come to help them cater for the right number.

This year Mothering Sunday falls on the third Sunday of the month (15<sup>th</sup> March), so our BCP service at 9.00am will be a short spoken service and

then we will have a family service at 10.30am to celebrate our mothers and those that care for us.

Our Annual Church Meeting is on Wednesday 25<sup>th</sup> March. As it is Lady Day we will start with a very short time of worship before the election of church wardens and the main meeting. As you would expect of an AGM, there will be elections to the PCC, summaries of last year with a brief look forward to the coming year including information on the work we need to do on the church building and how we see the Friends of Ladbroke Church supporting this. Everyone from the village and/or linked with the church is welcome to come and join us.

During Easter week, at the beginning of April, there will services at Ladbroke as follows:

Maundy Thursday	7.30pm - with Bishop John
Good Friday	12 noon - One Hour at the Cross 6.30pm - The Cross of Christ, a devotion for choir and congregation
Easter Sunday,	10.30am - Family Communion, followed by refreshments and an Easter Egg Hunt

My special thanks this month are to everyone who helps with catering including: hosting the lent lunches, refreshments after family services and at home group and making the cake for Reverend Annie's leaving do.

	<b>Ladbroke &amp; Deppers Bridge Women's Institute</b>	<b>Carol Lane</b>
--	--	-------------------

The talk, which preceded the business meeting on Thursday 26<sup>th</sup> February, recounted many of the experiences of Heather Alford, physiotherapist, in her volunteering activities in Nepal.

The fascinating presentation demonstrated the picturesque, remote high areas and, by contrast, the polluted concrete jungle of Kathmandu. She explained that, as tax was paid on completed buildings, most structures were left unfinished leading to a hotch potch. This was offset by the vibrancy of the people in their bright clothing and the fruit and vegetable markets selling mounds of in-season produce. One market was decorated with garlands of yellow French marigolds which were given to the men by their women in the festival of Tihar. Many villages were so remote that they could only be reached on foot and travelling salesmen would carry their wares on their backs or heads from village to village.

It led us through a year and showed the labour intensive planting, weeding, reaping and drying of rice, work which all appeared to be undertaken by the women and was a cooperative function to make sure that everybody's crops were ready at the appropriate time.

The cooking, mainly of rice and dhal, was carried out using wood fires under clay structures and the women would eat last after any guests and the rest of the family, which occasionally led to malnutrition. This and the poor levels of sanitation contributed to the spread of leprosy and it was this which took Heather to the area.

The second part of the talk concentrated on one young woman's return to a worthwhile functioning life following physiotherapy and surgery to correct, as much as possible, the effects of leprosy to her hands. Heather stressed that this can be cured if it is caught early enough but social stigma results in the disease going unreported until it is too late. While this young woman was in hospital she had taken the opportunity to learn to read and write and wrote her story for Heather to share with the Leprosy Mission.

Many of us bought items of jewellery and woven goods from the selection Heather had brought.

She can be contacted on [h\\_alford@btinternet.com](mailto:h_alford@btinternet.com)

### **Dates for your diary:**

Saturday 18<sup>th</sup> April - Coffee Morning: Contributions of cakes (labelled to show any allergens and covered to prevent cross contamination), books, bric-a-brac and raffle prizes welcomed.

Monday 11<sup>th</sup> May - Denman Taster.

Tuesday 11<sup>th</sup> August - Visit to Adam's Farm.

WI craft evenings will be held in people's houses. Dates to be announced later.

### **Competitions:**

Photography. Three pictures entitled 'What the countryside means to me' may be submitted per WI. Please let Dianne know of your contribution so that the best three may be chosen.

Lane Cup Centenary Challenge. Sections to include produce and craft first round to be judged in September.

As part of the aid for the Association of Country Women in parts of the world where women support their families, contributions of unwanted jewellery, old foreign coins and spare cash will be collected at next month's meeting.

Special event! A Royal Garden Party specifically for WI members is to be held on 2<sup>nd</sup> June. Each WI will be issued with one invitation and the name of the Ladbrooke and Deppers Bridge representative will be pulled out of the hat at the next meeting so you'd better be there!

This will be held on Thursday 26<sup>th</sup> March starting at 7.30pm where Paul Taberner will talk about his work in Police Dramas.



## What we do

The Ladbroke Matters team is responsible for the upkeep of the Village Hall and Millennium Green. To help with this we organise regular fundraising events so that we can continue to offer both of these resources for the benefit of our community.

Here is a rundown of our latest events and activities:-



### Film Night

Our supper and film night was a total sellout last month. The film *The Hundred-Foot Journey* was preceded by a delicious selection of curries and side dishes - in keeping with the story of the film about an Indian restaurant competing with a Michelin-starred

restaurant in a small French village.

Our next film night is scheduled for **Friday April 10<sup>th</sup>**. Watch this space for further details.



### Supper & Traditional Race Night

Will take place on **Saturday 21<sup>st</sup> March** in the Village Hall starting at 7pm. Tickets are £10 for adults and £5 for children aged 12 years and less, and can be obtained from Kip Warr (tel: 815004) or Martin Neal (tel: 814715). The price includes a fish and chip supper.

### Get involved

Copies of our 2015 information leaflet and event programme should now be available at *The Bell* and at All Saints Church. If you would like to join the team, have any suggestions for future events, or any other comments please contact us (details are in our leaflet and on the Ladbroke website).

## Ladbroke Village Hall Millennium Club

£50	Sheena Healey	£50	Pat Kennedy
£25	Andy and Heather Crompton	£25	A Dowdeswell
£25	Kate Pickin	£10	Tim Malby
£10	Brian and Margaret Whitehouse	£10	Geoff Timms
£10	Pete Edgar	£10	Trevor and Jan Jay

**Margaret Bosworth**



## Ladbroke Photography Club

Kip Warr

February is AGM time and a chance to see how we are doing. And we have been doing a lot over the past year! Our meetings have included workshops and competitions (of the friendly kind), talks and outings. We had a workshop session with Sue Dudley, a professional photographer of pets and wildlife, who inspired us to get down on our bellies and photograph animals at their own level. Richard and Nathalie Crompton gave us a flavour of modern China with pictures from their stay there, with images from the giddy heights of Shanghai skyscrapers. We had a walkabout in Leamington and a display at the John Turner Festival in Southam (at which a number of our members won awards). It is a pleasure to see that our membership comes not only from Ladbroke but also from surrounding areas - Harbury is very well represented.

Our Photographer of the Year was Tony Mancell for his consistently excellent pictures.

After the formalities of the AGM we had a workshop on Depth of Field; how to take pictures in which the really interesting bit is in sharp focus while the rest is blurred or else how to get as much as possible in focus.

The coming year promises plenty of activity. We shall be taking more pictures for the photobook we intend to produce showing everyday life in the area. Our next meeting will be in Ladbroke Village Hall at 7.30pm on Tuesday, 3rd March, when we shall be seeing photographs by two of our more expert members, and the meeting after that will be on Tuesday 14<sup>th</sup> April. Visitors will be welcome as always. For more information about the club and our programme see our website



**Depth of field - focus and blur**

([tinyurl.com/ladbrokephoto](http://tinyurl.com/ladbrokephoto)) or contact [jackieszone-photogclub@yahoo.co.uk](mailto:jackieszone-photogclub@yahoo.co.uk)



### **HARBURY SURGERY MILL STREET, HARBURY**

**Surgery opening hours:**

Monday to Friday 8.30am - 12.30pm and 1.30 - 6.30pm

Appointments can be made by telephoning 612232 or calling in at reception.

For out of hours emergency service call: 111

[www.harburysurgery.org.uk](http://www.harburysurgery.org.uk)



## Harbury Parish Council

Linda Ridgley

*Official minutes can be viewed in the Library, on the Parish Council website [www.harbury-pc.gov.uk](http://www.harbury-pc.gov.uk) or obtained from the Parish Clerk Tel: 01926 614646*

### **Extra-Ordinary Meeting – Henrys, Bush Heath Lane**

Here we go again! Another Extra-ordinary meeting to discuss a speculative planning application. This time for seven “retirement” dwellings on the site of Henrys on Bush Heath Lane. The Councillors seemed in agreement that bungalows were needed but were concerned about the design, the size and the location.

The plans are for seven large three-bedroomed two-storey houses. Nine hundred glossy brochures were circulated to all homes in the village and seventeen responses were received not all of them approving of the development.

Ken Stephenson and the Harbury Society expressed their concerns including: application only Outline; no indicative price; no proper Housing Need Survey; alien design – many trees would be felled and homes isolated from village services.

The applicant’s developer said; he had 20 years’ experience providing “retirement” homes for the over 55s; Harbury has a massive demographic time bomb; the better off also needed retirement provision and all trees “of merit” would be retained.

Chairman Tim Lockley was concerned that, as pension age was increased, the more elderly and frail would have the greatest need. Most over 65s wanted bungalows and these were two storey homes of a design irrelevant to Harbury. He did not think the location, so far from village services was suitable. There was no marketing or allocation strategy and homes should be restricted to people with a local connection.

The developer responded that there was a draft s106 agreement with the District (which was not made public); dwellings to these designs were well received elsewhere in the country (including Heathcote); most residents would have an able partner and they would “jump in the car to go to the shops”!

Councillor Hancock said people needed to be part of the community not isolated; there was no provision for care so it would have to be brought in, and having a bedroom downstairs did not make these homes suitable for elderly people. Councillor Knowles agreed the accommodation should be on one level and the site was too remote. Councillor Thompson said the design was inappropriate and wanted a survey to show the true need but

Cllr Summers disagreed. Councillor Thornley pressed for some estimate of the marketing price, which was not forthcoming.

The Chair suggested the consensus was that the Council objected to the designs and distance from the village but the vote went 4 for the project and 3 against. The Clerk reminded Councillors if they supported the application it would not go before the Planning Committee. So they felt they had to object to get more information on price, allocation, design etc. If this was forthcoming and satisfactory they could withdraw their objection at the next ordinary Parish Council meeting.

## **Ordinary Parish Council Meeting - February**

Planning gets more and more depressing. Only the Chairman looks on the bright side, pointing out the Parish gets some money from developers for improvements in the village.

Gladmans got permission for 75 homes west side of Bush Heath Lane and Henrys retirement "bungalows" architect clarified what we would get out of that - a footpath and lighting and homes "marketed" for local people. There was no movement on Parish Council demands for input to the design, mix and type of dwelling built, but they could ask to be consulted on a Design and Access Statement. It was obvious, as was with the Gladmans plans, there was considerable concern about the size of the Henrys' dwellings and their density but after long discussion our Councillors agreed to change their 'objection' to 'no representation'. Chairman Tim Lockley revealed Harbury was still below its new homes quota but this development would bring that closer.

Pat Summers was more optimistic about the Neighbourhood Development Plan, marketed by government as a way for villages to have some control over planning development. The project was to have a website; would employ a consultant and Bob Sherman was working on a mission statement. Despite being advised the project would take 18 months the Council aims to complete it by the Autumn!

And there was some potential good news for Harbury. Despite the County saying the Bendigo Mitchell Crossroads was not its top priority for improvement, the consultation on the New Village at Lighthorne Heath has it down for "signalisation". Tim also saw the recent "informal consultation" as an opportunity for the parish to press for mitigation of the undoubted impact on Harbury of traffic congestion. The Council would press for a Traffic Assessment and Mitigation Study.

Councillor Thompson had met the Prices' consultant who hoped to submit plans for the Village with a Vision Extra Care Homes in 4-6 weeks' time.

The Parish Council made no representation on; treeworks at 7 Binswood End and an Orangery at 14 Constance Drive, in addition to the Henrys application.



(My apologies for reporting last month the bungalows in the garage court in Frances Road would be two storeys).

Stratford passed plans for treeworks at the Old Bakery, Chapel Street; extensions at 7 Ridgley Way, 75 Mill Street and 14 Constance Drive and a garage at 22 Dovehouse Lane. They refused a two storey extension at 15 Honiwell Close and the Old New Inn application for 1 new dwelling; a terrace of 5 fronting Temple End and the conversion of the pub to 2 homes and the application for a Farm house at Springfield Farm on Treens Hill.

The appeal on 3 Queens Close extension was refused. The Deppers Solar Farm is in progress.

The Spiers Farm application has been withdrawn temporarily for amendments and Martin Shepherd offered Councillors a tour of the site to better understand his project there.

District Councillor Kettle piled on more planning woes, revealing all other developers were rubbishing Stratford's New Village Plans (Mandy Rice Davis's reposte comes to mind here!). County Councillor Stevens was more upbeat. There was money for 20mph limits near schools; the County was talking to Birmingham, Coventry and Solihull about seeking devolution of powers.

We've got moles again and they are widespread in the playing fields. The bark in the play area will remain until the new safety surface is down. More glass has been shattered by the skatepark. The basketball boards have arrived. The car parking lines are wearing away. There is a spare allotment but a previous holder left rubbish there. £100 is set aside to clear it.

The rules for the Burial Grounds are being updated and the Burial Register is to be made available in the Library. The Council's arborist has examined the lime tree which is not diseased or dangerous but the Council agreed to bring forward the scheduled thinning.

Councillors would not make a decision on a loan to the Village Hall for improvements until they knew if it were needed but were pleased with plans to install Wi-Fi there. They agreed to fund the cost of Village Hall hire again for the Village Show. They were also pleased the WWI Centenary plans are progressing.

Councillors were initially minded to agree to the Fun Fair setting up on the playing fields some days in advance of the Carnival until they realised it intended to open on those days. They worried about additional damage to the field, the nuisance to neighbours and potential to attract troublemakers. Pat Summers, remembering her childhood, was in favour but they agreed to seek more information before making a decision.

**Next Meeting:** Thursday 26<sup>th</sup> March 7.30pm Farley Room, Village Hall.

## Report Road Faults Online

Problems with any of the following can easily be reported direct to Warwickshire County Council via their website: [www.warwickshire.gov.uk/reportroadfaults](http://www.warwickshire.gov.uk/reportroadfaults)

- Highways
- Street lights
- Traffic signals
- Potholes
- Rights of way

Please use the internet to report these problems direct whenever possible as it will result in a faster response than reporting them to the parish council.

Thank you for your co-operation.

**Harbury Parish Council**

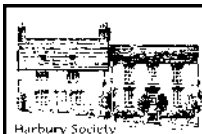
## Parish Council Election 2015

**Bus shelters** – street lights - **library** - playing fields – **litter bins** – play areas - **cemetery** – allotments - **Christmas lights** - carnivals and festivals – **grants for local organisations**

All of these things affect our everyday lives and are provided or supported by your parish council. Would you like to be more involved? Do you have a few hours to give? Are you keen to find new ways to support and improve village life? If so, have you thought about becoming a parish councillor?

The next parish council election takes place on Thursday, 7<sup>th</sup> May 2015. We need new people to come forward. Please contact us **now** on 01926 614646 for more information or call into the parish council office in Church Terrace. We are looking forward to hearing from you.

**Harbury Parish Council**



**Harbury Society**

**Linda Ridgley**

Alan Winterburn led us on a virtual ramble through some of the prettiest, and most strange parts of the Cotswolds, starting at Moreton in Marsh, the gateway to the Cotswolds; taking in Stow, Broadway, Blockley, Winchcombe, Witchford, Stanway, Burford and many more.

On the way he drew our attention to historic sights we might have overlooked; Market Crosses, Towers, Follies, Gargoyles, Memorials, Inscriptions, Lockups, Pubs and even a Thatched Cricket Pavilion.

There were relics of our history such as the Martyrs Memorial to Bishops Latimer and Ridgley in Oxford; the tomb of Francis Lovell who died walled up in his home for safety at the end of the Civil War and was not discovered for 230 years; and the Levellers held prisoner in Burford Church in 1649.

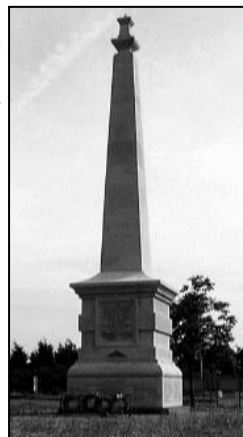


But the story I liked best of all was of Tiddles, the stray cat who adopted Fairford Church. He lived in the Church, attended all the services and was considered to be one of the most devoted of the parishioners. He “guarded” the churchyard and its precincts from 1963 to 1980 and on his demise was buried in the Churchyard with his own memorial stone.

We thanked Mr Winterburn for his excellent talk. He was our first speaker to use the new PA system in the Tom Hauley Room, jointly funded by the Society and the Carnival Committee.

Our next talk on Tuesday 17<sup>th</sup> March, 7.30 for 8pm in the Tom Hauley Room, is by Chris Holland about the Monument to the fallen of the Gallipoli Campaign of WWI.

The Monument stands where the Fosse and A45 Coventry Roads cross.



## Work on the Railway cutting

If you are suffering noise, dust, or light pollution then contact Stratford District Council Environmental Protection and click on their Complaints form link which is on the page:

<https://www.stratford.gov.uk/community/environmental-protection.cfm> or ring 01789 267575.

You should also complain to Network Rail at <http://www.networkrail.co.uk/aspx/1005.aspx> and follow the links. Or ring Network Rail's national customer helpline (08457 114 141). They are obliged to respond and should seek to mitigate the nuisance. As the work is, by their estimation, to go on until October the sooner they do something the better.

Harbury Society asked County Waste Disposal for clarification on the need to obtain a Waste Licence. We are informed that is not necessary as the spoil will be spread over the Biffa Tip.

We also asked the Highways Department to look into the damage to the carriageway and the danger caused by parked vehicles and mud on the road. The response to this was less positive. We are assured that the damage to the road must be paid for by Network Rail but at present the County believes that the use of the sweeper is sufficient to maintain road safety.

The Parish Council Chairman has been very proactive on these problems and I would suggest that as well as contacting SDC and Network Rail with any complaints or concerns, you also keep the Parish Clerk informed on 614646, email clerk@harbury-pc.gov.uk or visit her at the Parish Office, Unit 2 Bull Ring Business Centre Monday to Thursday between 9am and Noon.

	<h2>Harbury Women's Institute</h2>	<p><b>Jeanne Beaumont</b></p>
---	------------------------------------	-------------------------------

Far busier in January.

The New Year party was a great success. The super food was donated by all members and presented by a hard working committee. The entertainer and his wife joined us for supper. Mel Harvey is a Punch and Judy man. He was excellent and gave us a resume of its history. He also told us that they meet from all over the world every year.

The audience went back to their childhood and joined Mel in the banter. We thoroughly enjoyed the evening and thank everybody for their help.

Jean Mann and Phylis Taylor reported on their visit to Denman and what a great time they had. It seemed a weekend of endless meals, cooking a cake in a flowerpot, flower arranging, silk scarf dyeing and they were entertained by a magician. They toured Denman too and enjoyed their bursary weekend.

Harbury played host to various W.I.'s for the Federation Quiz Trophy. We did not win but did quite well.

We have our coffee morning on Saturday 14<sup>th</sup> March with a raffle, sales table and a cake stall. Will members please put a small label on their cakes stating the ingredients.

At the April meeting there will be an Easter bonnet competition.

The speaker this month was Bernard Cadogan on The Shaping of Southam. Southam's Collection was started by George Cardall with people giving him the information they had. Now it is known as the Southam Heritage Collection and is run by Bernard and Linda Doyle.

Bernard gave us so much information about Southam and to state a few facts:

The historical Holy Well, Southam was in the Domesday Book and that Southam became a market town in 1227. There was a cattle market and Chick-a-Biddy Lane led to the chicken market.

At one time money was minted at what is now the Old Mint.

Stoneythorpe Hotel was a hospital for ear and eye infections. It was also the first free dispensary in the country.

The Southam chemist was the Manor House with much land.

There was far more information and Bernard is the one to inform you.

There is an open viewing every Tuesday morning at Basement, Vivian House, 21 Market Hill, Southam.

The next meeting is at the Tom Hauley Room on Thursday 12<sup>th</sup> March, 7.45pm. Speaker: Maureen Sutherland (tourist guide).

## **Another Man's Shoes – Thursday 7<sup>th</sup> April**

**A talk by Ellie Targett, hosted by Harbury WI**

All are welcome to attend to hear this extraordinary story of a war hero's flight to freedom from the Nazis. Sven Somme was arrested in Norway for spying for the Allies but he escaped and made an epic 200 mile trek across the mountains to Sweden pursued by 900 German soldiers with sniffer dogs.

His account is re-told by this daughter, Ellie Targett, who re-traced her father's daring escape and met some of the people who helped him along the way.

Tom Hauley Room, doors open at 7.30pm, talk starts at 7.45pm. £4 entry.

For more information contact Dorothy Groves, 612710.

**Dorothy Groves**



**Harbury Theatre Group**

**Keith Hayes**

We have had a few weeks' break but now here we are again, at the start of rehearsals for our next production in May.

I am pleased to say that we have found another very funny play. The right material is half the battle and our thanks must go to Sue Lawrence who read a lot of scripts in search of something suitable. Now the rest is up to us. Under the directorship of Andrew Lawrence we have to turn it into something we are proud to present to you, our Harbury audience.

The one we have found is called "Stage Struck" by John and Yvonne Eddleston. We have high hopes, although it is somewhat of a challenge as it has some extremely difficult moves in certain parts (known as business in the theatre world), in fact it is the most difficult that, I personally, can remember since we did "Dry Rot" and that could have been 30 years ago!

The story revolves around the trials and tribulations of the Topspot Theatrical Agency, who happen to be next door to the Hot Shot Private Detective Agency. As you can imagine this could lead to confusion and it does. Be prepared to laugh until it hurts as long as we can get it right.



## **Folk Club**

**Steve & Maureen Darby**

Steve welcomed everyone to Folk Club number 363 and immediately Maureen opened the evening singing the immortal lines, 'Is it worth the waiting for? If we live till eighty-four, all we ever get is gruel!' They both continued singing the hit from the film 'Oliver' to introduce the theme for the evening of 'Food, Glorious Food' with the audience enthusiastically joining in with the chorus.

Maureen and Janny sang about the 'Loyal Lover' with reference to corn, fish and thyme and they were followed by Rik who explained how, on Christmas morning, his oven blew up as the turkey had been stuffed with popcorn that had not yet popped. He was of course joking, wasn't he? He sang a Harry Cox number together with 'I fell in Love with a Greasy Cook'. Pete and Liz sang a very traditional 'foll de roll' folk song 'Daddy Fox' and we all smiled as they made mention of 'Home Brewed Cheese' in the Kipper Family's 'Rusty Cold Farmer'. Sue and Ian continued with the theme for the evening with reference to chickens in 'Rail Road Bill' followed by a Bluegrass number, 'Turkey in the Straw', played on Ian's his brand new instrument. The Folk Club Choir closed the first half with 'Teddy Bears' Picnic' and 'Bringing in the Sheaves'.

The second half was opened with a very colourful reprise from the Daft Dames recent performance at the Village Hall with 'Tetrahedron Ron' and linked the song to the theme by reference to Toblerone packaging being in the shape of a tetrahedron. Des announced the release of his first solo album 'Gosford Gate' and in celebration sang 'A Rosebud in June' followed by 'The Bacon Song' which the Hairy Bikers had aptly named as it mentioned tatties and fatty bacon. Peter and Margaret performed a very atmospheric version of Steve Knightley's 'Tall Ships' blended with Margaret reading 'The Wreckers' Prayer'. We were all left spellbound! They continued with 'To Name but a Few' relating to Air, Fire, Earth and Water which dealt with good and bad aspects of the elements. Rich made his folk club debut as he played his harmonica with such feeling to the tunes of 'Summer Time' and 'The Cavern

Girl'. Sue and Ted sang 'The Farmer's Toast' and Ted then played his own arrangement of 'Buttered Peas'. Mick told us the story of the inequalities of life he witnessed between the opulent spending at Harrods whilst tramps were begging for food outside the McDonald's burger bar just down the road, so he sang 'London Road' as a reminder followed by 'The Down Hills of Life'. A slightly reduced Folk Club Orchestra closed the second half with two very appropriate medleys which incorporated 'La Fete du Village' (also referred to as 'Frogs Legs'), 'Shove the Pig's Foot Closer to the Fire', 'Salt Fish and Dumplings' and 'The Barbecue Hornpipe'.

The evening's theme featured strongly throughout the third half with Maureen and Janny singing 'My Husband's got no Porridge in him', Peter McDonald performing Eric Bogle's 'Barbecue Song', Ted Crum with 'Have some Madeira m' Dear', Pete Bones' comedy of the 'Dog in the Microwave', Mick's tongue twister of 'What I want is a Proper Cup of Coffee' and Des finally closed the evening with a rousing chorus of 'Rolling Home'.

The themed raffle for the evening contained an array of prizes including sausages and mustard, jelly and custard, 3 jars of homemade jam donated by Margaret, tea and biscuits, a selection box of biscuits and the statutory bottle of wine, although it was only 18.75cl. Everyone was incredibly generous as we raised a magnificent £84 which will be donated to TOFS, a charity which provides support to families with children born unable to swallow.

Next month's Folk Club is hosted by Pete Bones on 5<sup>th</sup> March when the theme is 'Special Places'.

## Harbury Folk Club - Memory Lane Concert

The Village Hall was filled to capacity on Saturday 31<sup>st</sup> January for the Harbury Folk Club Memory Lane concert. This, our fourth annual concert, was sold out within 9 days of its announcement at the beginning of November.



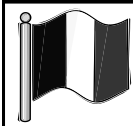
The evening featured 25 local artists and an energetic support crew of 7. Debbie Ellis, our MC, introduced the splendid variety of acts; Ted and Sue Crum, Rumble-o, Pete and Liz Bones, Janny Freeman and Maureen Darby, The Harvesters, 5 Daft Dames, Danansooz, Peter McDonald, the Folk Club Orchestra, and the Folk Club Choir. The evening concluded with a rousing encore featuring all the performers.

We received many generous comments about the evening, and I include just a few. *What a tremendous evening everyone had in the VH yesterday. Once again, a succession of class acts. Such a concentration of talent in one place must surely be positively dangerous.*

I would like to thank the many people who so freely gave their time to make the evening such a success. The performers would like to say a big thank you to our very appreciative audience. The concert photograph was taken by Mike Castle.

We made a profit of £668.70 which has been donated to the Harbury Village Hall. The four concerts have raised a total of £2791.03 for the Village Hall.

**Doug Freeman**



## **Harbury Twinning Association**

**Tony Thomas**



First we wish to thank everyone who supported our coffee morning at the end of January. We also wish to give a big warm welcome to the new members who have recently joined our association.



At the time of going to press we will have held our quiz in the Village Club and are currently making plans for the visit of our friends from Samour-sur-Seine who are returning to Harbury for the weekend commencing Friday 8<sup>th</sup> of May. We look forward to this reunion and have already arranged for *Playing Django* the popular Gypsy Jazz group to perform in the Village Hall on Saturday evening and a stately home visit on Sunday followed by a pub supper.

On Friday 24<sup>th</sup> April we will be having our annual supper with skittles for members and friends at the Navigation Inn in Wootton Wawen.

We are a community activity open to all residents and welcome new members, especially young families. You don't have to be able to speak French or host a French family. Become a member and enjoy the friendship and social activities that we arrange throughout the year.





## 1<sup>st</sup> Harbury Scouts

John Rea, Mark Clifton & Richard Tonge

It has been quite a few months since Harbury Scouts have written in these pages to let you know what we've been up to. We've certainly been busy with all sorts of things on our Thursday evening troop-nights. Too much to mention here in fact, but here's a selection to give you a flavour; we've been out and about night-hiking, practiced some traditional skills such as knots, morse-code and first-aid, we spent a spooky 'night at the museum' in Warwick, we've made candle powered pop-pop boats and of course we've built campfires and cooked sausages over them.

At the start of last week's half term holiday fifteen Scouts and four leaders went to the Peak District for our now traditional February YHA weekend. One of our younger Scouts Joe takes over the story...

*".... on the 14<sup>th</sup> February 2015, 1<sup>st</sup> Harbury Scouts set off on a weekend trip to the Peak District. We all met at the Scout hut at the crack of dawn on Saturday, loaded up the Southam Community minibus and headed off. After a couple of hours of travelling, we reached our Youth Hostel, Ravenstor, located at the point where Tideswell and Millersdale meet, high above the River Wye. There was no waiting around because as soon as we got there we set off on our 9 mile walk across*



*Monksdale, part of the Monsal Trail and back over the mountains. It was great to find a fair bit of snow in the Peaks which we couldn't help throwing at each other! In the evening, after we had eaten, we did a quiz, played charades and then went to bed (though not to sleep for a little while longer!). In the morning we went to a rocky place called the Roaches and played some games while admiring the view. It was then back on the minibus for a short trip to Waterworld near Stoke-on-Trent. We all swam and played on the slides and chutes. After scoffing homemade cake it was back on the minibus and heading for home. We got back to Harbury Sunday evening tired but happy!"*

If any of you noticed the date at the start of that passage you'll understand why us leaders say a big thank you to our long suffering wives! We are now planning for our next camp in May when we will be camping at St Brides in Pembrokeshire – we'll get back to let you know how that goes later in the year.



## Harbury Juniors Football Club

Ian Jones

### Chairman's Report: Ian Jones

Thank you to all those supported our recent coffee morning and for the huge amount of kindly donated raffle prizes and cakes. Our helpers were most efficient and it was a successful morning raising funds for the Club.

### Under 10's Match Report: Malcolm Tanner

#### 31<sup>st</sup> January: Harbury Juniors 3 v Tysoe Tornadoes 4

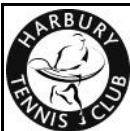
After some excellent training sessions, Harbury put their skills into practice dominating the first quarter which resulted in a well taken goal from Thomas M. Against the run of play, Tysoe scored two goals and whilst Harbury continued to press with individual runs from Ollie S and long range shooting from Ben H, Tysoe scored two further goals from defensive errors.

From then on it was all Harbury with Archie C controlling midfield and Harry L's persistence resulted in two well deserved goals to make the score 4-3 to Tysoe. Whilst Harbury threw everything into attack and despite "Fergie time", Harbury could not score the equaliser that they deserved.

#### 14<sup>th</sup> February: Kineton 0 v Harbury Juniors 5

Harbury recorded their first win of the season in emphatic style scoring from their first attack after a brilliant solo run from Ollie S crossing the ball from the bye line for Archie C to score. With Harbury competing for every ball, further pressure resulted in a goal for Josh C followed by a well taken goal with a diving header from Archie C.

Ollie S was causing the Kineton defence all sorts of problems on the right wing and Ben H on the left wing scored by cutting inside the defenders to score two excellent goals. All the players were excellent giving maximum effort and are now starting to play with composure and as a team.



## Harbury Tennis Club

Colin and Sue Mercer

[www.tennis-today.net/harbury](http://www.tennis-today.net/harbury)

Jamie Smith and Arthur Giblin represented Harbury when we hosted a Round Robin stage of the Warwickshire LTA Orange Mini Tennis Classic for boys in the 9 and under age group and welcomed teams from Kenilworth, Leamington, Coventry & North Warwicks, and Warwick Tennis Club. This is a county wide knock-out competition and the final will be played at Edgbaston Priory during the Aegon Classic on Saturday 20<sup>th</sup> June. Everybody played excellent tennis despite the bitterly cold wind with

Kenilworth winning the group with 4 wins followed by Coventry & North Warwicks to qualify for round 2.

In the Banbury Leagues we were able to play the 3 scheduled matches which was a relief after the postponements in January and February. The first was a very close match against Warwick D in the Weekend League with the start slightly delayed because of frosty conditions. It looked bleak when Caroline Morland and Debs Brookes lost the ladies doubles, and Steve Stark and Colin Mercer had a similar result in the men's doubles. Fortunes changed in the mixed with Debs and Steve winning both sets and Caroline and Colin sharing the spoils in their match. The overall final score was 3-5 and the defeat, with just one match to play, probably means Harbury's time in Division 3 will be over after just one season!! Better news in the Floodlit League with 2 emphatic wins which took us to second place in Division 3 with just 3 matches to play. In the first match the Harbury 4 of Caroline Morland, Sue Panton, Steve Stark and Colin Mercer were in fine form and overcame the visitors Brackley C by 8-0. In the next match against Byfield C David Bristow joined Steve, Caroline and Sue. David and Steve had a marathon men's doubles which Harbury finally won after a 7-6 tiebreak win in the second set. This helped Harbury to a 6-2 win to complete a double over their Northamptonshire visitors.



## Harbury Toddler Group

Lynne Barton

'Marilyn's Mop Day' proved to be as exciting as it sounds, with the usual Toddler pretend corner transformed into a boat, children were able to climb on board for a quick fringe trim. Marilyn, Nana to Lola, made the whole experience great fun with her enthusiasm, skills and lovely interaction with everyone. Thank you so much. What a STAR.



Our Annual General Meeting went ahead and minutes are displayed on our notice board and available if anyone wants a copy. We are grateful to have a new Treasurer,



Selina Turner, who works for Entrust Care Partnership and agreed to undertake the role following the resignation of Donna Higgins who did a sterling job for us for a number of years.

Entrust Care Partnership have hosted the Toddler Group since January 2014 and we now feel very much at home, know the ropes and can make playdough!

During the year we welcomed 54 different children and their parent(s) or carer (s) which was a 50% increase on the previous year. 75% of families used the service on multiple occasions - thank you for supporting the group and helping it thrive.

We hope you feel that we are doing a good job but please, please do let me know if you have any suggestions for improvement.

We are based at the Wight School, High Street, Harbury, CV33 9HW (brown gate to the side) and meet at 9.30am saying "bye bye" at 11.15am.

Thinking of coming along or need more information? Please do ring Lynne on 01926 612748 or email [lynnebarton@btinternet.com](mailto:lynnebarton@btinternet.com) we look forward to welcoming parents, carers, grandparents, childminders and children under five.



## Harbury Pre-School

Staff & Committee

**New Starter** – Firstly we would like to wish a warm welcome to Henry, who has just joined us and is settling in with his new friends.



**Chinese New Year and the Pre-School curriculum** – The month was mostly taken up with Chinese New Year celebrations, which covered all areas of the Early Years' Foundation Stage curriculum.

**Personal, social and emotional development** -

The role play area became a

Chinese home, with the children sharing with friends the experience of trying on Chinese style clothing, using Chinese cooking and eating utensils and play food including wool noodles!





**Communication and language** came into play as the children learned how to say “Happy New Year” in Chinese, listened to the Chinese zodiac story, dragon poems and songs and gave their descriptions of the Chinese dragon. James said, “His nostrils are blowing out fire and his teeth are hanging down. I’ve done a long nose. I’ve cut out for his teeth and then I’ve done his whole mouth and his head and his eyebrows.”

**Physical development** - At the snack bar the children chopped vegetables for a delicious, healthy stir fry. They later had a go at using chopsticks to eat their stir fry, some very successfully!

**Literacy** - At the graphics table, they produced amazingly good observational work in recreating their own names in Chinese.

**Mathematics** – As the children explored the dry and cooked noodles, they used hands, spoons and bowls to help calculate the quantity of items needed to fill any given receptacle and appropriate language such as “full” or “empty”. Size and shape language was also extended to the description of the dragon, e.g. “huge” and “sharp, pointy teeth”.

**Understanding the world** - Artefacts from China were looked at and discussed at circle time. The children tried different foods at snack time including noodles, prawn crackers and rice cakes.



### **Expressive Arts and Design –**

The children's creative skills were demonstrated in their wonderful observational paintings of our model dragon, their Chinese style watercolour blossom paintings and in creating their own dragon from recycled materials. They listened to Chinese piano music

and performed the Dragon dance with their home-made dragon using drums to create the rhythms.



*If you would like further information, or to register a child for Harbury Pre-School, please contact Rosemary Jackson, Pre-School administrator: e-mail [enquiries@harburypre-school.org.uk](mailto:enquiries@harburypre-school.org.uk) text 07907 598461 or look at the web site [www.harburypre-school.org](http://www.harburypre-school.org)*



**Harbury Primary School**

**Kate Guymer**

Dear members of our community,

At Harbury C of E Primary School we would like to be able to offer our children as broad a curriculum as possible and support them in acquiring some really useful life skills.

Do you have an hour to spare in your week? We would love to hear from you if you have a talent you could share with the children - maybe you are a brilliant baker, a qualified first aider, a fantastic knitter, interested in drama or yoga or something similar - the possibilities are endless.

It would be for an hour in an afternoon every week during term time and you would be supported by a member of staff throughout.

If you would like to volunteer your services or find out more about it, please contact school either by email at [head3032@welearn365.com](mailto:head3032@welearn365.com) or on 01926 612656.

It would be great to hear from you.





## Harbury Primary School P.T.A.

PTA Committee

Our Thursday Market in February (run by the PTA), had a 'Valentine' theme with crafts, cakes, sweets, uniform and other stalls including Phoenix Cards and a selection of planted bulbs and seeds for sale run by the school's Earthworms Club (ably assisted by Mr Chapman). Thursday Markets occur twice a term in the school hall and parents/children or people from the local community can hire a table for £1.50. Our next 'Easter' themed event is 19<sup>th</sup> March 3.15pm-4pm.

Also in February Harbury Primary School hosted the Cross Country Relay Race where children from years 5 and 6 across the local area represented their schools in teams of 4. The PTA provided refreshments for this event from the Village Hall.

Unfortunately our wine tasting event had to be cancelled due to lack of interest which may have been the result of being on a Sunday. We will look to do another date in due course if enough people want us to.

It is a short second half of term and the PTA will be running a special shop at school where children can buy their mother a small gift for £3 ready for Mothering Sunday on 15<sup>th</sup> March. As well as this we are running our annual Easter egg colouring competition which awards prizes to the best in each class. All children at school also get a smaller Easter egg at the last assembly of term.

Finally, the next 100 Club draw will be on 27<sup>th</sup> March so 'friends of the school' can purchase spare numbers for £9.60 each which will be entered into the remaining 4 draws of the academic year. At each draw two lucky people win £50 and any proceeds from the 100 club go to the PTA. Please email HarburyPTA@outlook.com if you would like a number.

### Dates for the Diary

**Easter Thursday Market – 19<sup>th</sup> March 3.15pm-4pm** in the School Hall. Book a table for £1.50 by emailing HarburyPTA@outlook.com.

**PTA Beer Walk – 21<sup>st</sup> June** followed by an evening BBQ at The Gamecock.

**PTA Summer Fayre – 4<sup>th</sup> July** on the school grounds.



## Village Hall Update

Chris Finch

It's countdown time now, as it's just over 30 days until the most ambitious modernisation of the Village Hall takes place from the time when the original Hall was developed in the sixties. The work is programmed to start just after Easter, but it is expected that all events already in the diary until September will take place in the main Hall. Unfortunately the only casualty will be the

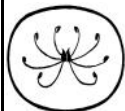
annual Beer Festival, since there will be insufficient space around the outside of the building where CAMRA aficionados usually enjoy sitting at tables or picnicking on the grass. This is due to the need to cordon off all the work materials and equipment for the entire time whilst the work is in progress.

Apart from the obvious effect on the Village Hall income, since committee members have always provided the food throughout the two days festival, it is extremely regrettable that this has meant that the local CAMRA organisation are unable to celebrate the 25<sup>th</sup> year that they have held their event in Harbury. Hopefully the increased space will mean a bigger and better event for the postponed anniversary in 2016.

Last month there was an unexpected, but very welcome surprise of a £150 donation from Leamington firm Bravissimo which regularly pledges financial support for local organisations which are endeavouring to raise money for 'worthwhile causes'. The committees are extremely grateful for the recognition of our efforts on behalf of the community and a letter of thanks has been sent to the firm acknowledging our appreciation.

As a result of a previous donation of some smaller stackable tables, which are used in the Farley Room part of the Veolia suite, there are several Formica topped tables and approx 20+ upholstered chairs which are surplus to requirements. If these would be of use to any organisation which would be willing to collect them, Geoff Thorpe 613801 would be pleased to receive a call.

The next film for the rural Cinema will be The Imitation Game to be shown on March 21<sup>st</sup>. It's an excellent film about Alan Turing, an eminent mathematician who, it is now recognised, shortened the extent of the Second World War as a result of his code-breaking of the German Enigma machine. Although Oscar nominees, Keira Knightley and Benedict Cumberbatch did not receive the top honours, it is an incredibly worthwhile film and definitely worth seeing. Tickets (with or without a fish and chip supper) will be available as usual from CANA Wines.



## Horticultural Society

**Judy Morrall**

Almost 40 members, current and new, attended the February meeting despite the cold weather. Thank you to everyone who came; we enjoyed another fabulous talk by Linda Smith. This was her fourth visit and the topic covered was 'Enjoying Water in Small Garden Spaces'.

Why add water?? For sound, vision and movement in the garden. With any water feature you can enjoy all of these sensations and it re energises areas and is a great mood changer. It brings a garden to life and with the proper planting you then attract more wildlife. Bees for honey, frogs and toads which



will hopefully eat the slugs and water boatmen who will skate across the top of the water.

Linda then showed some pictures of small ponds... a 6 foot wide circular one within a gravel area. The reflections and colour of the planting added a new dimension to a garden. We saw some modern contemporary ponds which, whilst not to everyone's taste, did fulfil the ideas of sounds with small rills and water flowing downwards. It is not at all difficult to fit a pump to replicate these water features.

One delightful water feature is now a permanent fixture at the Malvern Show ground. A set of steps had water cascading down either side to create different levels, very effective. Some plantings were mainly one dominant colour, ferns are good as are hostas. One modern design showed water flowing down a blank wall, with lovely planting at the bottom and only occupying a small space. Balcony boxes are another example of clever arrangement of flowing water. At ground level we saw three grass balls, globes and many other quirky plantings. You just have to have a solid metal grid in the reservoir and Linda showed us some very easy bucket type installations which you need to dig down to install.

We then moved on to pots and barrels with still water but these are very effective too. We saw a huge pot on its side, a wooden barrel, metal containers even an old tin bath. If using a ceramic pot you need to seal it as it is porous and ensure that any holes in the base are sealed too. Do not use terracotta pots as these are not frost hardy. Linda and her husband have developed some lovely fibre glass pots from small to large. These have the advantage of not being heavy. They come in a delightful range of colours too. Fill with rain water and have enough oxygenating plants for the space. Miniature irises, bullrushes, grasses, hottuynia and many more plants were shown. You can just plant one colour themed pot, there are so many opportunities to play around with plants and see what works. You can have colour from April through to November. You can get very small water lilies so something for all conditions, shapes and sizes. Linda was asked if fish were a good idea in a static water feature but said not really.

Linda will be at Chelsea again this year hoping to be awarded another prestigious gold medal to add to her collection. She and her husband work so very hard, they now have two part time workers at their waterside nursery and how they produce such stunning displays at the shows on a small budget is an absolute credit to them both. Have a look on the website [www.watersidenursery.co.uk](http://www.watersidenursery.co.uk) which is excellent. I hope that Linda will be able to visit us again soon.

Don't forget to sign up for the two day trips I have organised. First one is on Thursday 11<sup>th</sup> June to Croome Court and Meadow Farm, leave the Village Hall at 9.30am, returning at 5.00pm so we will be back by 6.00pm. Cost for this including tea and cake is £22. Second one is on Thursday 16<sup>th</sup> July, a full day at Trentham Gardens near Stoke on Trent, leave at 9.00am and depart

from Trentham at 5.00pm. Cost for this is £22.50. If anyone is interested and would like to join us please give me a ring; you will be very welcome, I would like to have a full coach for each trip.

Snowdrops, aconites, hellebores, euphorbias and clematis are all showing off now and some gardens have daffodils in flower so Spring is only a couple of weeks away. Try Coughton Court near Alcester for some lovely riverside walks with the added bonus of a host of golden daffodils, look in your National Trust book for opening times etc. Near there is Ragley Hall which will be open daily from 7<sup>th</sup> March from 10.00am to 5.00pm. The gardens here are stunning too with great views of Warwickshire. Just think as a child I used to play hide and seek inside Ragley whilst my lovely father was playing cricket on the pitch which is situated within the grounds. Enough of all our yesterdays! Mill Dene Garden in Blockley is open under the NGS on Sunday 15<sup>th</sup> March which I think is Mothering Sunday, from 2.00pm to 5.00pm. We have visited here as a group but always nice to make a return visit.

Lots happening at Hill Close Gardens and not far to go. Batsford Arboretum too is looking good now. Well worth a visit and not that far is the Cheltenham H S Flower show in the pump rooms in Cheltenham, on Sunday 29<sup>th</sup> March from 12.30 to 4.00pm. A local nursery from Evesham, Harrells Hardy Plants will be exhibiting. If you get chance on a Sunday do go to the nursery post code WR11 4JR it is crammed full with some very interesting hardy plants.

I will just mention two other nurseries which are very good. Lodge Farm Herbs Plants and Wildflowers at Five Ways, Hatton post code CV35 7JD have some very reasonably priced plants and some lovely wildflowers. Open from Tuesday to Sunday from 10.00am to 5.00pm. The other one is near to Evesham, Mulu Nurseries at Wickhamford, post code WR11 7RP open daily from 10.00am to 5.00pm. They have a huge stock of exotic plants both hardy and tender, hard to resist.

Time now to get outside in next few weeks when hopefully it will be warmer to begin to sow seeds and decide what to plant where, so exciting. By the time you read this we will have had our March meeting when we will have enjoyed another talk from Adrian James, so at the April meeting on 7<sup>th</sup> at 8.0pm in the Tom Hauley Room we will be welcoming Rob and Diane Cole (whose garden we will be visiting on 11<sup>th</sup> June) and the topic will be Autumn Fare.

It has been so nice to welcome some new members recently and I look forward to seeing you all. Happy Gardening.





## Garden Jottings from Bridge Nursery

Christine Dakin

I'm fed up with wildlife. The main problem is the damage from rabbits. They are digging up the garden and also the paths in the sales area. Some pots have been 'investigated' by them so there is compost and bits of plants left scattered around. When they dig in the borders they leave the roots of plants exposed so during the frosty weather it could be bad news for the health of the plants.

Almost as serious a problem are mice. We have/had a blue leaved grass called *Elymus magellanicus*. There were several clumps which looked good in the summer.....they have all been eaten. Another grass seems to be a special delicacy for them and this one is *Carex dipsacea*, this had orangey leaves but this too has been destroyed. Today when I was gardening I found that a large clump of one of the hardy geraniums just came away in my hands because it also had been nibbled at the base. I have found numerous mouse nests in among plants this winter. I'm sure there are more than there has ever been. Is it because there are fewer kestrels?

My success rate with lavender cuttings is not usually very good so, in the autumn I decided to try something slightly different. I took lots of cuttings but put them in one of the cut flower beds out in the open as an experiment. Can you imagine my annoyance when I found that every single one had been pulled out of the ground? They were lying exposed to all the frosts so it's very unlikely that they will be any good even though I poked them back in the soil in a hopeful way.

This all makes me wonder just why we all put so much time, money and effort into gardening. Eternal optimism? I wonder what difficulties any of you struggle with?

Bridge Nursery, Tomlow Road, Napton

Tel: 01926 812737

[www.bridge-nursery.co.uk](http://www.bridge-nursery.co.uk)



## Nature Notes

John Hancock

So far this winter we have got off rather lightly in terms of harsh weather. We have had the occasional frost usually heralding a day of blue sky and sunshine which is preferable to the soggy grey overcast conditions that often prevail at this time of year. Alan Lea told me what a real winter can produce over in Canada and the resilience of nature. He and his wife were visiting their daughter Raquel and family in Alberta. Alan noticed in the garden a bush

full of uneaten Rowan berries frozen fast in temperatures that reached -35C during their stay. However, towards the end of January, the temperature rose, probably due to the Chinook winds which can raise temperatures very suddenly. As the temperature reached 0C and the Rowan berries defrosted, a large group of Bohemian Waxwings descended to eat their fill. He was surprised to see such small and beautiful birds in such a hostile environment.

With my knee still in recovery, walks have been limited. On a couple of occasions I have reached the splash of colour which is the gorse in flower on the Thwaites Estate just round the first corner after leaving Five Ways. Jephson Gardens and Victoria Park have also provided a useful exercise ground. There is always the hot house to hide in if the weather deteriorates. There, I had a field day looking and reading about exotics such as Bottle Pine and Banana. They have a specimen Norfolk Island Pine which presently fits the building but will doubtless have to be transferred outside at some stage as it can reach a height of 50-70 metres. Apparently when the island was visited by Captain Cook on one of his voyages of discovery he was taken by the absolute straightness of the tree and declared it would be perfect as a ship's mast. In fact the trunk lacked resilience when tests were carried out back in England.

The Pump Room Gardens were exactly that when the Baths opened in 1814. They were for patrons only. They were extended in the 1820s and later opened to the public. The Linden Arches, bandstand and York Bridge were all added before the close of the 19<sup>th</sup> century to give us the layout we use today. We should thank the civic planners like De Normanville whose foresight gives us much pleasure. The Linden Arches were restored in 2012 for the Queen's Diamond Jubilee. The mature limes have been supplemented by new planting to ensure a continuum when the old trees have to go.

A visit to Batsford Arboretum on February 9<sup>th</sup> with the U3A gave me a chance to safely negotiate some hillier terrain. Kingcups were opening in a sheltered marshy hollow. We got a good view of a Mistle Thrush and heard the drumming of woodpeckers. I always thought this was the bird searching for food but I am told the louder notes are the birds acting in a territorial way. We had chosen a day of bright skies and sunshine. The mature as yet leafless trees let in the light to reveal swathes of Snowdrop and Winter Aconite. A few daffodils were beginning to open. Less showy flowers such as Dog's Mercury and Winter Heliotrope were also to be found. One of the group showed us the tiny bright red Elf Cup fungus poking through the leaf litter.

On Monday 23<sup>rd</sup> February I visited Slimbridge with U3A. Set up by Sir Peter Scott in 1946 this Wetland Reserve on the east bank of the Severn estuary is a haven for migrating wildfowl and will be known to many. We had an excellent guided tour to give us a flavour of the place before visiting a selection of the bird hides in smaller groups. I was particularly impressed by some cranes on a grassy sea wall near the Holden Tower. Later we had a most informative talk about the Great Crane project which started 10 years

ago and aims to reintroduce this bird to suitable sites in Britain using eggs from Germany. So far 100 young cranes have been released at West Sedgemoor Nature Reserve on the Somerset Levels and some have bred. Cranes became extinct in this country 400 years ago due to hunting and loss of habitat. Once its sonorous bugling call and distinctive appearance in flight were heard and seen throughout the land. At Henry III's Christmas Feast held at York in 1251 some 115 Cranes were consumed. Place names using cran (Saxon) and tran (Norse) refer to the presence of cranes (eg Cranford and Tranmere).

I could go on but will close as we look forward to springtime and its abundance.



## General Section

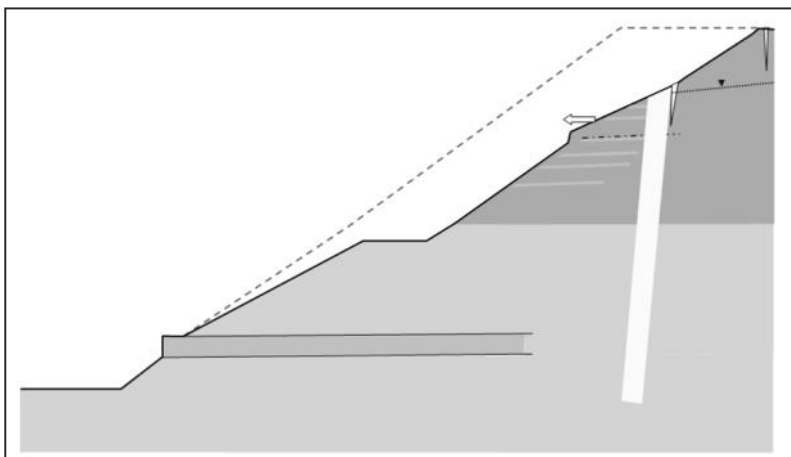
### Moving heaven and earth in Harbury

The 350,000-tonne landslide of 31 January 2015 caused a huge problem for Network Rail, the train companies and rail passengers. But local residents live with this problem all day, every day. And the solutions are even more disruptive than the landslide itself.

Network Rail's Andy White explains how the organisation is shifting heaven and earth in its efforts to deal with this huge and unexpected event.

Harbury cutting is very deep, very steep and there are two kinds of rock lying under the soil.

Our engineers found a previously unknown fault running up the slope from the tunnel to the west. The fault zone (vertical white line in the diagram) is a band of clay between 3 and 5 metres thick. This clay is softer and less permeable than the Rugby limestone on either side (shown in dark grey).



This means water is held on the right-hand side and cannot get to the left. The weight of the water pushes to the left like the water in a paddling pool.

The lack of trees on the slope did not cause the landslide. The movement during the landslide occurred much deeper than any tree roots.

Network Rail cut the large trees down because they affect the clay topsoil of the cutting, making it swell in wet weather and crack in dry weather. Tree roots also block and break drains, causing more instability.



For all these reasons, Network Rail will not be planting trees on the slope once the repair work is finished. We want to encourage low vegetation by the side of railways – grass, shrubs and bushes whose small root systems bind the topsoil better.

Network Rail is doing everything we can to clear the soil as fast as possible to make the cutting safe for trains to run again. This means working round the clock, using giant machinery. We appreciate this is noisy and dirty, but by working such long hours with such big trucks, we aim to be finished and out of your village sooner.

Currently, we are ahead of our target to shift 40,000 tonnes of soil every week. We are taking the spoil onto an agreed stockpiled area. We have a road sweeper constantly going along the B4452. We are also cleaning the wheels of our landfill vehicles at the site exit to make sure as little dirt as possible gets onto your roads.

At the present, we are concentrating on the site of the landslide. We have no plans at the moment to work on the other side of the cutting.



This is a huge piece of work for us, which we weren't expecting. We are simultaneously working on our first priority – to get the railway up and running safely again as soon as possible – and long-term plans to find a solution to the cutting's problems. There are lots of unknowns at the moment, and we don't have a final completion date to tell you yet. But I promise to keep you as up-to-date as I can.

If you have any questions, please call our 24-hour helpline on 08457 11 41 41. That way, your concerns will be logged properly in the system before they are passed on to me and my team.

Thank you for your patience – you are being a tremendous help to our efforts and we do appreciate your forbearance.

**Alison Bell**  
**Senior Communications Manager**  
**Network Rail - London North Western route**

## **Harbury NSPCC Committee**

Ladies' Lunch – Harbury NSPCC Committee are organizing another Ladies' Lunch on Thursday 12<sup>th</sup> March in the Tom Hauley Room starting at 12.30pm.

Chris Drewett, who lives in Harbury, is coming to talk to us about 'Motor Sport – not just Boys' Toys!' Tickets are priced at £15 with wine or £12.50 without wine and this includes a two course lunch plus tea and coffee.

If you are interested in booking a ticket please ring Elaine Bruce on 614664.

**NSPCC Committee**



## **Harbury Village Library**

Do you know anyone who would like to attend **lip reading classes** if these were available in Harbury? If there is sufficient interest, it may be possible to arrange classes with a qualified teacher. Please contact Ann Vincent on 614806.

We have had very positive feedback about the newly expanded children's area. With the additional bookcase, we've been able to spread out the books to make them easier to find. We still have to improve the signage on the shelves but some of the volunteers are working on it. By the time you read this article, we are hoping to have a second book browser for our ever expanding collection of picture books for our youngest borrowers.

Have you received a new library card as part of the **Library Card for Every Child** initiative? Warwickshire County Libraries have announced a Prize Draw for all primary-school-age children borrowing at least two books with a new ticket issued in the scheme before the end of March 2015. Winners will

receive personal reading-related prizes and some will win an author visit or books for their school. Please ask the library staff for an entry form.

We love that our Biblio's customers visit for their weekly coffee and cake to catch up with friends, and make new ones. We have a fantastic team of volunteers, who in essence work as a co-operative, ensuring Biblio's is up and running every week. With changes to our core team (we are sad to say that Lynn is leaving), it remains imperative that we always have new people coming on board who are willing to share in the responsibility. No upper age limit once you are over 15 - everyone is welcome. For parents, cafe hours fit in nicely too with school hours. Please leave your details in Biblio's or the library and someone will get back to you straight away.

### **Committee news from Chairman Tim Lockley**

We would like to thank Lynn Macwhinnie for her expertise and enthusiasm in helping to establish Biblio's as an important and vibrant community hub. Lynn worked very closely with Jill and Bobbie from 2011 in setting out a clear vision for Biblio's, and the café has been even more successful than we dared hope in generating income to support the library. Lynn is stepping down from the committee at the AGM to concentrate on her business. We wish her well for the future.

### **Easter opening times.**

**Biblio's** will close at noon on Thursday 2<sup>nd</sup> April and reopen at 9.15am on Wednesday 8<sup>th</sup> April.

**Harbury Library** will close at 5pm on Thursday 2<sup>nd</sup> April and reopen at 9am on Tuesday 7<sup>th</sup> April.

**Sue Wurr**



### **Harbury Pre-School Fundraising Group**

**Coffee Morning – 7<sup>th</sup> March, 10am – 12 noon,  
Tom Hauley Room**

Pre-School are running the coffee morning on 7<sup>th</sup> March and we hope to see you there. Emma and her scarves will be there, as will Phoenix Cards too. Any profits from both of these lovely businesses will go to Pre-School so we are very grateful for their support. There will be lots of loaf cakes and Victoria sponge's to buy whole, as well as little cakes and biscuits to have with your tea. Please do come along.

### **Barn Dance – Saturday April 25<sup>th</sup>, 8pm – late, Village Hall**

We are pleased to announce the first of our party nights this year. Pop on your boots, grab your hat and get ready to “hoe down” with our live band. Tickets will be available in March and will include dinner and dessert too.



A bar will, of course, be available. Grab your partners.....look out for our posters around the village soon with further information.

### **Dates for your Diary**

As we have so much to raise this year it's a busy one; here are the next few events for your diaries.

11<sup>th</sup> May – Bags 2 School Collection

13<sup>th</sup> June – Carnival BBQ

5<sup>th</sup> July – Party Night

### **Pamper Evening Update**

Our Pamper Event was a huge success and everyone had a great time. The beauticians were fully booked all night and the stall holders reported lots of sales too. A happy bunch! We raised £702 for Pre-School which we are thrilled about and gives our targets a boost.

We would like to thank everyone who came along to enjoy the evening, and the beauticians and stall holders who provided not only great treatments and goods to buy, but also the best raffle prizes we have ever had. We'll definitely be running the event again next spring.

Thank you,

**Julie Balch**

## **Harbury Senior Citizens Committee Update**

### **Summer Outing**

This year we have decided to cross a border for our trip and we will be going to sunny Wales, or more specifically, Cardiff. The trip will be on **Wednesday 17<sup>th</sup> June** and we will be leaving the Village Hall at 8.30am.

Quoting from the Cardiff website it says:

*"The capital city of Wales, Cardiff has a population of 346,100 people, and is a base for many of the country's political, cultural, sporting and commercial institutions. Points of pride include the city centre's iconic Millennium Stadium, the recently opened St David's shopping centre, and historic Cardiff Castle. The redeveloped Bay area now houses the Senedd, Wales Millennium Centre, and BBC studios. Cardiff City Football Club and rugby union side Cardiff Blues are also both based in the capital. It is also the home of Brains brewery, the Welsh national brewer."*

We will be sending out invitations in April or early May. So we can get a good idea of the numbers of people who will be coming we would like you to return them to Mugleston's Country Fayre by **Friday 15<sup>th</sup> May**.

More details will follow in the coming months but if you want to know anything about the outing please contact Julie Clarke on 612066 or me on 612421.

**Mike McBride**

**On behalf of the Harbury Senior Citizens Benefit Association**



## Hereburgh Morris

Spring is in the air! Shake off that winter stuffiness! By joining the Hereburgh dancers at their open practice on Wednesday 25<sup>th</sup>

March you too could be shaking the dust from your feet and pronking like a new born lamb. This time of year is ideal to come along and have a go, before our summer season kicks in.

Not only will you feel great from regular weekly exercise and a sense of achievement, but you will be warmly welcomed into the social side too. Enthusiasm is the only thing you'll need, no other prior experience or special skills are required. With live music, what better way to keep an English village tradition alive.

Open practice: Wednesday 25<sup>th</sup> March, 8pm, Harbury School Hall. Find us on Facebook, online [www.hereburghmorris.org.uk](http://www.hereburghmorris.org.uk) or email [hereburghmorris@gmail.com](mailto:hereburghmorris@gmail.com)

**William Jones  
Foreman**



## Bumps and Bundles

February was a nice month with new babies and toddlers, plus a fab half term session with craft and activities for the siblings that came along. Come to Bumps – it's on every Tuesday from 10:30am to 12 noon in the Tom Hauley room behind the church, for a informal drop in, to meet new friends, and have a relaxing cup of tea.

**Kelly Jones**



## Open Gardens

We will be holding our Open Gardens on the weekend of Saturday 20<sup>th</sup> and Sun 21<sup>st</sup> June. Harbury Pre-School will be doing tea and cakes and Wendy Hancock will be opening her garden with light lunches, tea and cakes. There will be opportunity for our pubs, Biblios and Tom Hauley coffee morning, scarecrows/art installations for those without gardens who would like to join in. We are still looking for more people to open their gardens. Please contact Margaret Commons, 613963 or Kathleen Ellis, 612326.

**Margaret Commons**

## Change in Food Bank Distribution

Until recently all the food collected in Harbury has gone to the Coventry Foodbank, as there wasn't a local one available to help. This had been overseen by the Mothers' Union. However, as a local foodbank is now firmly established, the church has decided to change the destination and send all

donated food to the centre which warehouses it, in Kineton. From there it goes to several local distribution centres to be used as needed. Any food nearing its sell by date is sent over to Coventry, so none is ever wasted. Later in the year we hope to have a speaker to explain in detail how foodbanks work, especially locally, so that anyone who wants to know more, or who wants to ask questions will have an opportunity. In the meantime, if you wish to contribute to the foodbank, we would welcome your donations of food (non-perishable items please.) There is a labelled box, just at the entrance to the choir vestry in church, where food can be placed, with a list on the lid of some suggested items to buy. I'm sure the recipients would like to thank those who so generously give food to help people in times of crisis.

**Jill Winter 612585**

## **Christian Aid Week**

Christian Aid week this year is from 10<sup>th</sup> to 16<sup>th</sup> May. In previous years, the Harbury and Ladbroke Church Men's Society provided the door-to-door collectors. But this group folded in 2014, and there is no organisation to take on the task.

If you or your organisation would like to make an official collection in either Ladbroke or Harbury for this valuable cause, please go to: [www.christianaid.org.uk/getinvolved/christianaidweek/](http://www.christianaid.org.uk/getinvolved/christianaidweek/)

The week is always heavily publicised in the newspapers and on television, and Christian Aid will provide the envelopes and identification for the collectors.

**John Stringer**



## **Harbury Heritage Room**

As usual the Heritage Room, with its hundreds of Harbury related documents and photos, is open on Tuesday 7<sup>th</sup> April from 6.30-8.30pm. If this is not convenient, why not request a more suitable time and date? You are welcome to come and browse at your leisure. We would be delighted to see you. Have you seen our website: [harburyheritage.org.uk](http://harburyheritage.org.uk)?

I wonder if anyone can shed some light on the provenance of this document? We have a hand-written sheet with the name M.H. Knight written beneath it. It is entitled Reminiscences and has the date July 1933 written at the top. This can't be an original though, as it is written in biro and is on A4 paper as opposed to foolscap or whatever. It contains notes on the tennis and cricket clubs, plus a piece about the Friendly Societies fete. We reproduce here the paragraph on the cricket club.

*This is probably the oldest existing institution in Harbury, and Mr A Verney our oldest cricketer. Some notable cricketers of the past were*

*Messrs. Savage, Lodge, A. Pratt, J Wilkins and the Gascoigne family who helped the club for many years. We might also mention Mr and Mrs Wells who, for many years, provided teas on the field. Nine members of the club gave their lives in the war – a large number for a Village Club. A year or two ago to everyone's regret the club ceased to exist. This year an enthusiastic band started the club again, with headquarters at the Village Club. They have had a most successful season winning many games and losing some. The Club possesses a strong and varied bowling attack. The batting, considering the limitations of the local grounds, is quite good, and the fielding, when the fielders have lighted their "fags", is something to be seen. At the home matches there has always been a large crowd of interested spectators who follow the game with great interest and appreciation, and sometimes a little criticism. MH Knight.*

**Nigel Chapman**

## **Harbury Energy Initiative**

### **Car Club Update**

Did anyone think that setting up a car club would be fairly straightforward? Yes, me. I was probably alone in that... and wrong, as usual. We are, however, still on course for the original aim of a full launch in May. I should never have mentioned March, should I. It was tempting Fate and she responded gleefully. The library building doesn't have 3-phase electricity, therefore we have a new plan to have one car at the library and one at the village hall, which does have 3-phase. The single phase charger will take longer to recharge a car but vehicles are rarely returned drained of energy, so one car can readily be recharged in reasonable time. Recharging two cars from a single phase supply, however, would be much too slow.

Everything else remains the same but it means two lots of agreements and discussions. Everyone thinks this is a fine result and so we are driving forward to the starting line in good spirits.

The setup involves quite a lot of computer technology, as well as marketing to get you all excited, if you are not already. The original deal we offered of half price life membership to anyone who did the survey is still valid and will be actioned once we are all set up. Don't rush me on this; I am learning about patience...a bit.

### **Community Energy**

On Friday 20<sup>th</sup> February two of the HEI steering group met with two directors of Luminous Energy to look at the possible site on the Churchlands Industrial Estate for a solar installation (see last month's copy). Our 'Big Idea' is just too fraught with difficulties but the 'Smaller Idea' might just be a possibility. There are one or two preliminary decisions from others that we need to wait for first and then some energetic activity. This will need to be done by additional

people apart from the HEI steering group; the new group formed will have a specific focus on this project. Please think about whether you might like to be part of this exciting venture if we have the initial decisions in our favour. We will need fundraising and financial expertise in particular.

### **Other Stuff**

I mentioned last month that our school children have been invited to help us create a logo for HEI. We have entries. By the time you read this we will have chosen a winning design and I will reveal it in April's copy in advance of its installation on the two cars. The cars will carry two discreet logos, one for E-Car Club and one for HEI. The logo will also appear on all new literature we produce, on letterheads and anywhere else that we need one.

To clarify any confusion over eligibility for Renewable Heat Incentive payments, I should point out that if your renewable heat system was installed as part of the building process from new, you will not be eligible. There is one exception, which is for self build. Otherwise you only qualify if you have replaced a fossil fuel system with a new low or zero carbon approved technology. The payments can make the switch much more affordable.

**Bob Sherman - 612277**  
**shermanbob55@gmail.com**

## **The Unusual Story of Pippy - A Story of Hope**

Few things change our lives so extraordinarily as the arrival of the patter of tiny feet. In my case the feet arrived in March of 2012, four of them, furry ones, with claws attached. They came in the form of a young and comical female cat called Pippy, a black and gold shorthaired cat with big green, owl-like eyes, long legs and very big ears.

She appeared out of a bush one evening and cleverly snuck under the table where I was having my supper, on the terrace of the luxury beach hotel where I lived and worked, on the shores of the Arabian Gulf in Kuwait.

Pippy's timing was spot-on: she was homeless, most probably parent-less and, at 3 or 4 months old, was little more than skin and bones. She clearly hadn't eaten for days and had been sleeping rough. Yet, even at her worst, she was still a very distinguished looking cat. And how she talked.

After a few minutes careful consideration, she made her decision. With her (now trademark) loud miaow of approval, I was duly adopted as her resident Cat Slave. As any cat owner will attest, you never actually own a cat, a cat owns you.



The hotel's chef soon became used to my bizarre room service orders, raw chopped tuna – no salt or pepper. Incredibly the chef never caught on, but the menu did with Miss Pippy. She put on weight and soon came to sleep on the terrace adjoining my room in a specially arranged cardboard box filled with fluffy towels.

When I finally left the hotel, she left with me, howling in a cat box as a VIP delegation of oil ministers arrived to check in, much to the delight of the staff, and the chagrin of the newly-arrived hotel manager.

I took a new job and she soon settled happily into life in a wonderful rooftop flat where she enjoyed air conditioning in the long hot summer, and a place under the duvet in the short, but chilly Arabian winter, and a 2000 square metre roof terrace to play on.

Once a week I'd go to the local fishmonger and buy a single, filleted Bangala – a type of sardine for about 30p. The Egyptian fishmonger couldn't quite understand why each week I only bought ONE sardine, and not ONE KILO. He must have thought I was very poor, until I learned the Arabic word for cat, '*gatwa*'. Then, in dreadful Arabic, and not without some theatrical miaowing, I explained. I found he stopped looking at me with his habitually pitiful gaze and instead he peered at me ruefully. I was clearly '*mejnoon*' (bonkers).



Pippy had by now developed some pretty *mejnoon* habits herself, these included playing golf in the bath, sleeping in the wash basin and talking back. Not just talking back, but actually imitating the disgruntled tone of my voice when she talked back – in a sly, feline attempt at Cat Slave mockery.

She loved playing ping pong, so I found a long cardboard tube in which I hid her table tennis balls. Her forepaws were not quite long enough to reach them so she'd run from one end to another until a ball rolled out. She'd lay under a towel or bedspread and then rush out from under cover to ambush her 'prey'.

We became firm friends but she remained very scared of children. However when we were alone she would come and sit next to me, or lay on my laptop if I ignored her. Then I got the news that I would be moving to Asia.

I immediately checked the pet import requirements, even though Pippy was fully vaccinated, she would have to spend 4 months in quarantine in Hong Kong. I noticed my contract was for a six-day week, with lots of travel to China. My heart dropped. I had already lived in Asia for many years and knew well the rigours of the corporate workplace.

Pippy is a companionable cat. I had noticed she'd get very distressed if left alone. I knew she would hate being quarantined and worse, I realised she'd be living in a small flat with no garden to run around in, and seeing me just once a week.

I could not do this to my best friend. So I decided to bring Pippy to Britain and rehome her here, so she would have a chance of a long, happy life in a temperate climate.

Pippy is now in Warwickshire enjoying the novelty of rain, snow and wood pigeons twice her size. Her long legs get lots of exercise climbing trees. Being an extremely smart cat, she has adapted to a new diet and cat door. The only thing she is missing is a new home and a fresh sardine now and then.

My employers are being very kind and have given me a few more weeks to get to Hong Kong but time is running out for me and my adored cat. Can you help?

Do you know a patient and caring cat-lover who would give Pippy a lovely new, rural home in, or near Harbury? If you do, please get in touch. I can guarantee she is cat like no other, and as her new Cat Slave, you will benefit from hours not just of incoherent conversation from her, but much loyalty, joy and amusement.

Please call 01789 840029, 07918 514947 or 07857 698164 or email [springblossom18@yahoo.com](mailto:springblossom18@yahoo.com)

**Charlotte, aka 'Auntie Cheesman'**

## **Superfast broadband is now available in more parts of Harbury!**

CSW Broadband has now brought superfast broadband to even more parts of Harbury! Cabinet Harbury 1 has been upgraded meaning that properties connected to the upgraded cabinet can now order the improved service.

To check which cabinet you are connected to and what speeds you might achieve visit <https://www.dslchecker.bt.com/> For the best results you will need to be able to enter a BT landline number for your property. If you do not have this then you can use your address, but it may be less accurate. It should be noted that you are not restricted to buying a service from BT and that you can go to any Internet Service Provider (ISP).

There are a number of different Internet Service Providers (ISPs), and it is best to check carefully as there are a wide range of packages available, with some including telephone calls and even TV options. For impartial advice and to see which might be best for you visit: <http://www.moneysavingexpert.com/phones/cheap-broadband>

The CSW Broadband website has lots of information about Internet Service Providers, a very useful jargon buster to help you to get through the sometimes baffling terms surrounding broadband, and lots of self-help guides so that you can get the most from your new, improved service: <http://www.cswbroadband.org.uk/about-broadband/>

Happy surfing!

**Joanna Smith**  
**CSW Communications Assistant**  
**Warwickshire County Council**

## **Fly Tipping**

There has been a recent incident of tipping of waste in the Spinney off Hall Lane. Apart from being lazy and antisocial, it is illegal under the Environmental Protection Act of 1990 and the later Clean Neighbourhoods and Environment Act of 2006 which makes it a criminal offence punishable by a fine of up to £20,000 or six months imprisonment.

Any fly tipping or information about perpetrators should be reported in the first instance to Stratford District's Street Scene Department on 01789 260616 or email [streetscene@stratford-dc.gov.uk](mailto:streetscene@stratford-dc.gov.uk) or you can report over the internet at [www.stratford.gov.uk/community/fly-tipping/cfm](http://www.stratford.gov.uk/community/fly-tipping/cfm) and click "Visit Fly-Tipping Form".

**Linda Ridgley**

## **From Sound into..... Silence**

A few of us have been meeting monthly for the past year or so to share half an hour of silence together, followed by a chat. Many people are afraid of the idea of silence or meditation; in our techno-babble culture it seems alien. We have found this gentle experience to be a deeply refreshing time spent together; a time of reflexion, peace, sharing and trust.

We would like to invite anyone interested to an 'open' evening on Thursday, 19<sup>th</sup> March. The venue is at June Eaves house; The Barns, Station Road, Harbury, at 7.00 prompt. If you would like further information, or a lift, please ring me, Joan Smith, on 613680, or June Eaves on 612006.

**Joan Smith**



## **Music at Leamington Hastings**

A number of Harbury music lovers have been regular members of the audience at concerts in Leamington Hastings and I think we are all agreed that they are very special. The beautiful church has splendid acoustics and the standard of performance is very high. There are six concerts between May and December. The first one on 9<sup>th</sup> May is by the



distinguished pianist John Lill with a programme of Bach, Schumann, Chopin and Beethoven. On 13<sup>th</sup> June the Gould Piano Trio gives a programme which includes Dvorak and Schubert. On 11<sup>th</sup> July comes the welcome return of the Yehudi Menuhin School Orchestra. Previous performances by these brilliant young musicians have been spellbinding. On 12<sup>th</sup> September there is a recital by violinist Alexander Sitkovetsky who recently gave a superb performance of the Tchaikovsky Violin Concerto at Warwick Arts Centre. On 10<sup>th</sup> October the Wihan String Quartet plays Mozart, Schubert and Beethoven. The season rounds off with seasonal music from Schola Cantorum Oxford on 12<sup>th</sup> December.

Those who have been to Leamington Hastings in the past will be pleased to hear that the route to the car park is now lit and that all tickets are numbered. I know some people are daunted by chamber music but if you enjoy classical music do give it a try. Full details are to be found on [www.MusicAtLeamingtonHastings.co.uk](http://www.MusicAtLeamingtonHastings.co.uk) and you can book on 07966 584 328 or e-mail [dpotts@musicatleamingtonhastings.co.uk](mailto:dpotts@musicatleamingtonhastings.co.uk)

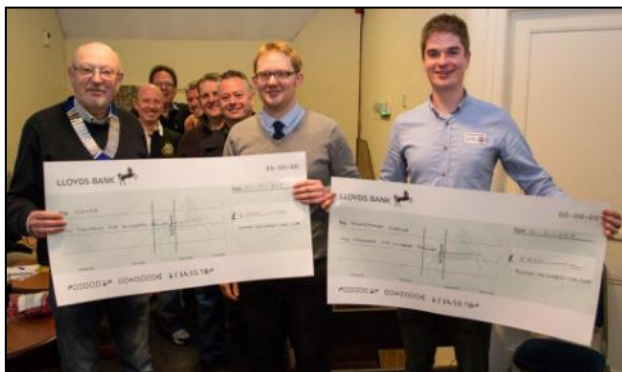
**Sharon Hancock**



## **Southam Lions**

Over the days leading up to Christmas, Southam Lions were busily collecting money and bringing Father Christmas to the children from all over Southam and the surrounding villages. Literally thousands of bags of chocolate buttons were given to youngsters, and some it has to be said were consumed by ravenous Lions. Father Christmas, whose memory never ceases to amaze everyone, promised lots of presents to the children, and the number of drinks and carrots left outside homes on Christmas Eve meant that he slowed up considerably but still managed to get the job done! Well done Santa!!

We are naturally very excited to tell you that £5,000 was raised and the two charities benefitting from the collection were SENSE and The Shakespeare Hospice. At a recent Lions meeting we were happy to present the cheques each for £2,500.



Our heartfelt thanks to everyone who gave so generously.

## Southam Lions Grand National – 11<sup>th</sup> April 2015

On Saturday 11<sup>th</sup> April, 2015 the Lions will be holding their 'Grand National' Race Night event at the Graham Adams Centre. This will be great fun for all the family. Paddock entry is £2.50 – horses 'made' from a local stable. Gates open at 7.00pm – first race at 7.30pm. Horses sold pre-race to highest bidder – winning owner receives 50% of the pre-race auctions/winners enclosure with photo opportunity. Children welcome, action by dice roll, audience participation, formal race attire encouraged!



Tote, licensed bar, soft drinks, raffle and snacks. Come along and have 'a flutter' in aid of Zoe's Place.

For tickets and more information, please contact Lion Brian Howard on 01926 812797 or visit our website for a full explanation. [www.southamlions.org.uk](http://www.southamlions.org.uk)

**Peter Guy, Southam Lions**



### Napton Art Group

Napton Art Group will be holding their Art Group Easter Exhibition at Napton Village Hall on 4<sup>th</sup> and 5<sup>th</sup> April – 10.00am – 5.00pm, admission £1, children free. Paintings in oils, watercolor, acrylic and pastels, craft items, card sales, raffle, refreshments.

**Howard Collerson**



## Great British Fish and Chip Supper – Friday 15<sup>th</sup> May 2015

*Hold a Fish and Chip Supper to help spinal cord injured people rebuild lives after injury*

Want to eat fish and chips, while raising money for charity? Hold a fish and chip supper on Friday 15<sup>th</sup> May 2015 whilst raising awareness of spinal cord injury and supporting SIA's vital services.

You can hold a fish and chip supper in your own home, at work or hold a larger supper at your local community centre.

SIA will provide a fundraising pack containing hints and tips, recipes, invitations and donation envelopes. By inviting 8 friends and asking them to donate an additional £5.00 means you will raise at least £40.00 from your

supper but we will also give you additional fundraising ideas to raise even more money for SIA.

In 2015 we want to make the batter matter and raise £40,000 from everyone holding suppers. Last year we raised £20,000 from the suppers.

The money raised from the suppers will help the Spinal Injuries Association offer support to individuals who become paralysed and their families, from the moment a spinal injury occurs, and for the rest of their lives by providing services and publications which enable and encourage paralysed people to rebuild lives after spinal cord injury.

Every year in the UK over 1,000 people experience a spinal cord injury and there are an estimated 40,000 spinal cord injured people in the UK alone.

For more information or request a fundraising pack call Elizabeth Wright on 0845 071 4350 or email [fundraising@siafishandchips.co.uk](mailto:fundraising@siafishandchips.co.uk) or visit [www.siafishandchips.co.uk](http://www.siafishandchips.co.uk)

**Amanda Giles**  
**Community Fundraising Officer**



## LETTERS TO THE EDITORS

### **Dear Editors**

*We would like to thank everyone who supported our recent coffee morning for STEPS, supporting children with lower limb disorders. The raffle prizes, cakes and donations were very much appreciated. £272.10 has been sent to STEPS.*

*We would especially like to thank Liz McBride, Carol Jackson, Rickie McMahon, Gill Howell and Kelly Jones for all your help on the day. We could not have done it without you .*

*Many thanks*

***Helen, Steve, Seren, Willow Robertson and Isobel Clarke***

---

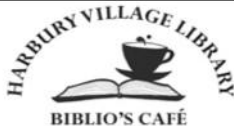
### **Dear Editors**

*Many thanks to everyone who attended our recent coffee morning which raised £151.36 for Club funds which will be used to support our Juniors' activities. It was our first time in the refurbished kitchen and really brought home what great facilities are available to community groups. With the Tom Hauley Room **and** the Village Hall we are very well provided for, thank you to everyone who runs them!*

**Colin Mercer**  
**Chairman - Harbury Tennis Club**

## HARBURY VILLAGE LIBRARY

**Monday to Friday**  
9.00am - 5.00pm  
and  
**Saturday**  
10.00am - 12 noon



**Telephone:**  
**01926 258776**

## BIBLIO'S CAFÉ OPEN

**Wednesday, Thursday &  
Friday**  
9.15am - 12 noon  
and  
**Saturday**  
10.00am - 12 noon

Email: [library@harburyvillagelibrary.org.uk](mailto:library@harburyvillagelibrary.org.uk)

Email: [biblioscfe@gmail.com](mailto:biblioscfe@gmail.com)

[www.harburyvillagelibrary.org.uk](http://www.harburyvillagelibrary.org.uk)



## All Saints' Church Harbury Sunday Services

- 1<sup>st</sup> Sunday in the month: 9.00am Sung Communion  
10.30am "Little Saints' Service" followed by  
*food & refreshments in the Tom Hauley Room*  
6.00pm Evening Worship - a different style of service  
each month
- 2<sup>nd</sup>, 4<sup>th</sup> (and 5<sup>th</sup>) 8.00am Holy Communion  
Sunday in the month: 10.30am Sung Communion
- 3<sup>rd</sup> Sunday in the month: 8.00am Holy Communion  
10.30am "Saints Alive" All-age Service without Communion  
(40 minutes maximum)  
6.00pm Choral Evensong
- Every Tuesday: 7.30pm Weekday Said Communion  
Every Thursday: 9.45am Weekday Said Communion followed by coffee

Times of weekday services are displayed on the notice in the lychgate.

**Priest in Charge: Reverend Craig Grocock**

The Rectory, Vicarage Lane, Harbury Tel.: 612377

Email: [kankudai43@aol.co.uk](mailto:kankudai43@aol.co.uk) [www.allsaintsharbury.org](http://www.allsaintsharbury.org)



## Harbury Rambling Hounds

Let us walk your dog over the  
rambling fields of Harbury.

On or off the lead

£10 for a good hour's walk

**Call Kary on**

**07521 800625 / 01926 613598**

# Siena Domestic Cleaning Services

Unit 1 The Old Barn  
Churchlands Business Park  
Harbury CV33 9GX

For a professional, affordable and stress free clean either regularly or as a one off, our reliable and trustworthy staff will deliver a high quality clean assuring satisfaction.

Family run business  
Professional DBS checked cleaners  
Eco friendly products  
Personalised Service  
Free Quotations

Siena Domestic Cleaning  
Services  
01926 257650  
[www.sienacare.co.uk](http://www.sienacare.co.uk)



Pilates



**BodyJam**



*BodyBalance*



**ZUMBA**

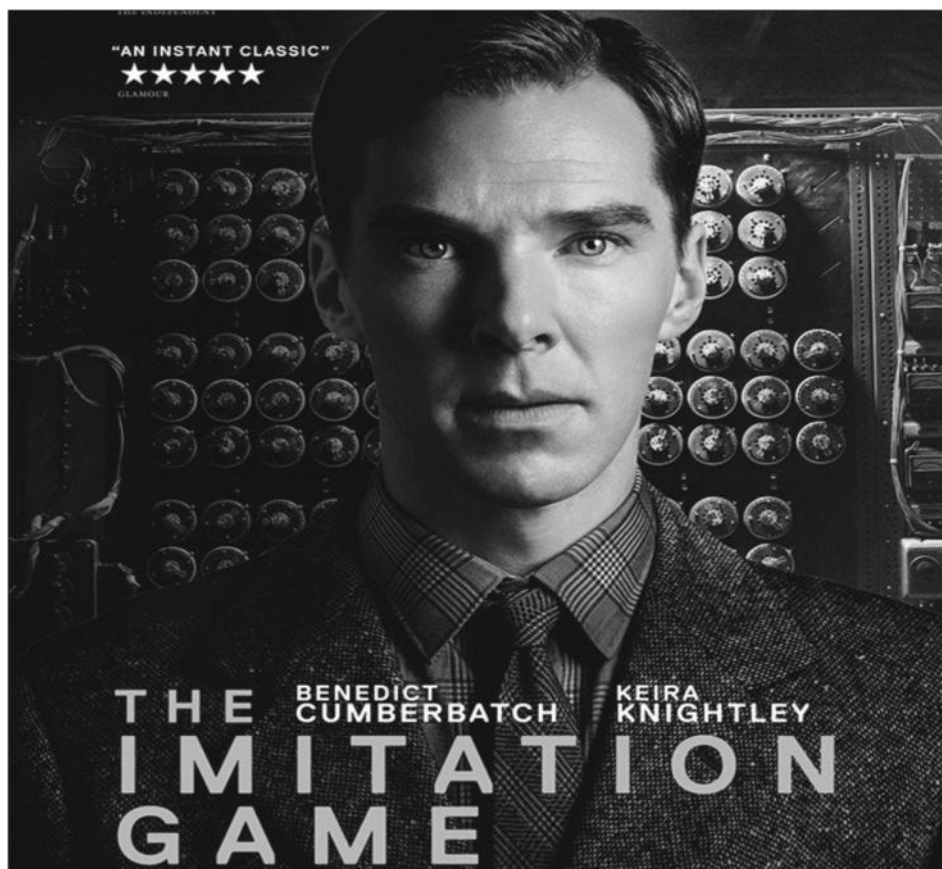
PAYG fitness classes in Harbury, Southam,  
Cubbington, Warwick & Radford Semele.

**Personal Training also available.**

Call 0789 0671869 or visit the website:

**[www.warwickshirefitness.com](http://www.warwickshirefitness.com)**





**Harbury Village Cinema**

**THE IMITATION GAME**

Film Certificate 12a

**Saturday 21st March 2015**

doors open at 6.30pm ~ film starts at 7.00pm

**Ticket Options**

£10.00 — includes a portion of fish 'n' chips and two strips of raffle tickets

OR

£5.00 — includes two strips of raffle tickets

**All Tickets Available In Advance From Cana Import**

High Street, Harbury: 01926 613716 – 07967 100153 – [www.canaimport.co.uk](http://www.canaimport.co.uk)

*spare tickets will be sold on the door subject to availability*

Tuck Shop – Refreshments – Cana Import Bar – Raffle

All profits from the village cinema are donated to the Harbury Village Hall refurbishment project

Further details: 01926 613311 ~ 07535 622707 ~ [markandlana@aol.com](mailto:markandlana@aol.com)



# Sewing Bee

With

Jacqueline Doxey

**Designer and dressmaker**

Have you got the sewing bug? Then come along to my Sewing workshops and learn how to sew or improve your sewing skills. Get to know the basics of how to use a sewing machine and understanding a clothes pattern. Feel confident in making your own clothes and improve your competency with couture techniques. As a designer of bespoke Bridal and Special Occasion wear, I have over 25yrs experience in making clothes.



For more information on the workshops, dates available and costs, please call 01926 614382 or email [design@jacquelineboxey.co.uk](mailto:design@jacquelineboxey.co.uk) All courses will be held in my studio in Chesterton. Sewing machines will be provided – along with tea, coffee and cakes.

[www.jacquelineboxey.co.uk](http://www.jacquelineboxey.co.uk)



**Kenilworth  
Properties Ltd**  
BUILDING CONTRACTORS



**Extensions-Alterations-Refurbishment-New Builds  
Bespoke Kitchens and Bathrooms  
Design-Planning & Building Regulations Application  
Service available.**

Web: [www.kenilworthproperties.co.uk](http://www.kenilworthproperties.co.uk)

Email: [tony@kenilworthproperties.co.uk](mailto:tony@kenilworthproperties.co.uk)

Telephone: Harbury 612260 Mobile: 07779 096104

Harbury Business Centre, Church Terrace, Harbury, Leamington Spa CV33 9HL



## INSIDE HOMES - WE SELL HOMES IN HARBURY

Based minutes away, we know the village well, which means we can sell the benefits of both your home and Harbury. We believe we can sell your home faster and for a higher asking price than other Estate Agents.



CALL US TODAY TO FIND OUT HOW ON  
**01926 81 82 88**

Or visit: [www.insidehomeslimited.co.uk](http://www.insidehomeslimited.co.uk)  
Email: [support@insidehomeslimited.co.uk](mailto:support@insidehomeslimited.co.uk)

 **insidehomes**



# Simons Systems



Available for all your computer requirements including:  
PC's & Laptops, New & used systems, Repairs & upgrades  
Virus/Malware Removal, Data back & Windows re-installation  
Upgrading memory/Hard drives/Rom drives/Graphics, etc  
Internet - modems fitted, wireless, networking.

Any repairs or computer problems. ***No call out charge***

T: 01926 316 119 E: [sales@simons-systems.co.uk](mailto:sales@simons-systems.co.uk)  
M: 07751 811 097 W: [www.simons-systems.co.uk](http://www.simons-systems.co.uk)

## Spa Roofing Co.

**(Roofing Specialists)**

**For all Roofing, Guttering and  
General Repairs**

**(Free Estimates)**

**All Work Guaranteed**

**Call: 07876 508032**

**or 01926 770822**

Karena Ellis-Greenway  
MRICS, RICS Acc.Med., BSc Hons

green  
chameleon



M: 07796 575716 T: 01926 612121

E: info@greenchameleon.net Web: www.grechameleon.net

• Chartered Surveying • Valuation • Mediation • Letting & Management

The Green Room, 31 Manor Road, Harbury, Warks CV33 9HY



~ ~ **www.vhs2dvd.info** ~ ~

Have your treasured VHS videos  
transferred to DVD or converted to MP4 files

*Also most camcorder formats to DVD or MP4*

***Editing service available!***

***Locally based - visit website or  
call 01926 338825 or 07733 368245***



## Outside Cleaning Direct

professional external surface  
restoration and maintenance for  
domestic and commercial  
properties.

freephone: 0800 7723411

mobile: 07714 791371

email: info@outsidecleaningdirect.com

**Pressure cleaning services in Harbury**  
**Block paving cleaned, re-sanded and sealed**

**Professional restoration service:**

**Patios - Decking - Drives**

**Walls - Fascias - Fencing**

**Gutters Cleaned from £30**

**We also offer a range of sealants and treatments to help protect your  
surfaces for longer.**

**Call OCD for a free quote**



Mon – Thurs  
6 – 11 pm

Fri 5pm –  
Sat – Sun 12pm –

*Chapel Street, Harbury – 01926 258859*

*A conversational pub,  
with a promise of no TV screens*

4 Cask Ales, with regular guest  
**Camra member discount**

**Wed 18<sup>th</sup> March**  
Moroccan Dinner  
£20 per person

**Wed 15<sup>th</sup> April**  
Italian Dinner  
£20 per person

**Thur 23<sup>rd</sup> April**  
St George's Day  
Celebration

More than 25 wines always available by the  
glass, with regular specials. All supplied by  
Cana Import

Food served from 6-9pm weekdays  
12-2 & 6-9 Saturdays

**Sunday Lunch served from 12 to 4pm**  
**(regularly fully booked, reservation advised)**

*Quiz on the last Sunday of each month.*



**Mother's Day**  
**15<sup>th</sup> March**

Book early to avoid  
disappointment.

**Wednesdays**  
A bottle of wine for  
the price of two  
large glasses

**Friday Fish & Chips**  
Peroni Beer Battered  
Fish & our famous  
chunky chips for just  
£5.00 from 5-7pm.

[www.thegamecockharbury.com](http://www.thegamecockharbury.com)



TheGamecockHarbury



@GamecockHarbury



**All aspects of garden maintenance including:**

- Regular maintenance: Lawns cut, leaf clearance, hedges trimmed or shaped.
- Fence repair or installation.
- Turfing to repair a lawn or install a new lawn.
- Borders and beds: removed, improved or created.
- Trees and shrubs: Planted or pruned.
- Planters: We can supply a range of planters.
- General garden clearance.

**Regular maintenance or one off jobs.**  
**For all your outdoor chores, call your reliable,  
friendly gardener:**

**Richard Everett**  
**07923 167420 or 01788 567774**  
**[info@leafyservices.co.uk](mailto:info@leafyservices.co.uk)**  
**[www.leafyservices.co.uk](http://www.leafyservices.co.uk)**

## Drop Dead Gorgeous Curtains



Beautiful Bespoke Curtains, Cushions and  
Roman Blinds. All made to measure and sewn by hand.

I can supply a range of fabrics and poles or I'm  
happy to work with yours.

Free measuring and free fitting.

I also take on curtain alterations and restorations  
big or small.

Please call Sharron for friendly and helpful advice or to  
arrange a free quote on:

01926 612226 or 07760 395805

Email; [dropdeadjorgeouscurtains@gmail.com](mailto:dropdeadjorgeouscurtains@gmail.com)

Or visit my website  
[www.dropdeadjorgeouscurtains.co.uk](http://www.dropdeadjorgeouscurtains.co.uk)



A Member of the Alliance of Private Sector Practitioners

# Jackie Biddle

## Healthy Feet are Happy Feet

Foot Health Practitioner

Dip CRP MPS Pract  
CRB Checked

Home Visits Telephone

T: 01926 612503  
M: 07872 907429

# Phil's

## Plumbing and Heating

**Fully Qualified**  
**and**  
**Insured Plumber**

Bathrooms, Central Heating &amp; showers

I am a locally based plumber  
offering very competitive rates  
on any plumbing or heating job.

No job too small,  
Please give Phil a call

Call Phil

Daytime: 07971 046392

Evening: 01926 400746

Email: philmunday@hotmail.co.uk

Bishops Tachbrook  
Leamington spa



## Need home and contents' insurance? Reynolds Insurance holds the solution!

We offer impartial professional advice on all of the insurances we offer, in our Southam office or over the telephone. Same experienced, friendly staff for more than 20 years, who are on hand to give you competitive quotes across the market and continued assistance and support whenever required.

Competitive quotes also available on:  
Motor • Tradesmen • Shops • Offices

Call Deb or Sue on 01926 812574

Reynolds Insurance Services Limited | 5 High Street | Southam

Email: enquiries@reynoldsinsurance.co.uk

Reynolds Insurance Services Ltd  
is regulated by the  
Financial Conduct Authority.

reynolds insurance  
SERVICES LTD

Independent Insurance Advisers





**Helping Hands**  
The Home Care Specialists

Est. 1989



## Do you need a Helping Hand?

If you are looking for an **alternative to residential care** or extra support for those everyday tasks that are becoming difficult for you or a loved one – then we're here to help - **from 30 minutes per week to Live-in Care.**

Our **Harbury & Ladbroke care team** has been providing award winning quality homecare since 1989 and can help with: personal care, housekeeping, help getting around or even to provide a break to an existing family member or care-giver.

To find out how we can help you,  
call: 01926 680 763 or  
visit: [www.helpinghands.co.uk](http://www.helpinghands.co.uk)

# Nifty Needle Curtain Shop

**1 Banbury Street, Kington**

**Made to measure curtains and blinds.**

**Free measuring service.**

## Nifty Nik Naks Gift Shop

**For interesting presents**

01926-641741 email: [niftyneedle@fsmail.net](mailto:niftyneedle@fsmail.net)

Open: Tuesday - Friday 9.00am - 5.00pm

Saturday 9.00am - 2.00pm

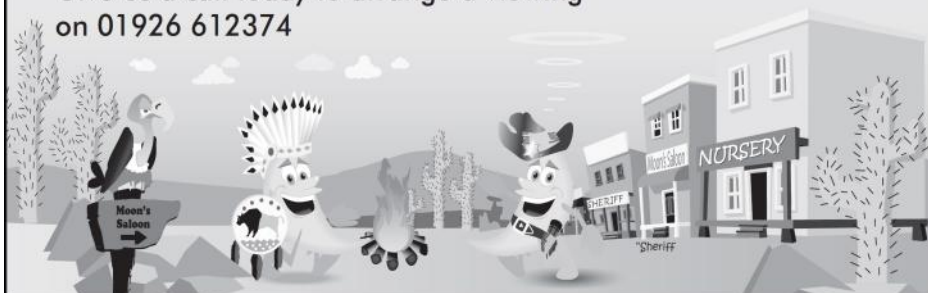
(Harbury Resident)

# INTRODUCING BANANA MOON DAY NURSERY HARBURY



- Offering childcare from 7.30am – 6.30pm for children from 3 months to school age, 51 weeks a year.
- Breakfast & two home cooked meals a day.
- Full and half day sessions available.
- Sibling discount.

Give us a call today to arrange a viewing  
on 01926 612374



**Banana Moon Day Nursery, Ivy Lane, Harbury, Warwickshire CV33 9HN**  
Telephone: 01926 612374 [bananamoon-harbury.co.uk](http://bananamoon-harbury.co.uk)



## A COMPLETE TREE SURGERY AND HEDGE CARE SERVICE

- QUALIFIED PROFESSIONALS
- STUMP GRINDING & LOGS
- COMPETITIVE PRICING
- FULLY INSURED

☎ 01926 332229

☎ 07411 520578

[www.tarzantreeservices.co.uk](http://www.tarzantreeservices.co.uk)



**Roger Frogley & Sons Fencing Ltd**  
30 years of quality service

High quality **domestic, industrial and agricultural** fencing  
offering a service second to none,  
competitively priced – clean, efficient, reliable.



t. 07970 652145 & 01926 815863  
frogleyfencing@gmail.com | www.frogleyfencing.co.uk



**LOCKE & ENGLAND**  
AUCTIONEERS & VALUERS Established 1834



## Downsizing?

Valuation, collection & auction service  
of individual items through to complete  
property clearances. Call for a free no  
obligation collection quote or  
email [info@leauction.co.uk](mailto:info@leauction.co.uk)

### COLLECTION SERVICE

12 Guy Street, Leamington Spa, CV32 4RT

**01926 889 100**

**[www.leauction.co.uk](http://www.leauction.co.uk)**



## Why you should buy your new kitchen or bathroom from Modern Homes!

- With over 46 years of trading we are the longest established specialist in your area.
- Predominantly British Manufactured products
- Family run 'local' business
- Personal recommendations
- Large kitchen and bathroom showroom
- Full installation service with employed fitters
- Value for money... We offer styles to suit all tastes and budgets
- Kbsa members offering Consumer care protection

[www.modernhomesleamington.co.uk](http://www.modernhomesleamington.co.uk) Email: [info@modernhomesleamington.co.uk](mailto:info@modernhomesleamington.co.uk)

**01926 883338**

Modern Homes, 37 Longfield Road, Sydenham Estate, Leamington Spa CV31 1XB  
(between Wilts and CAS)





# The Crown Inn *at Harbury*

**NEIL AND MICHELLE**

*welcome you to the Crown Inn, Harbury*

## **MOTHER'S DAY**

*Come and join us for Mother's Day - Sunday 15<sup>th</sup> March*

*Two courses for £16.95 or three courses for £19.95*

*Mothers receive a free gift.*

## **CURRY NIGHT**

*Every Wednesday starting from Wednesday 4<sup>th</sup> March*

## **BREAKFAST**

*Is now being served Saturday and Sunday 9.00 to 11.00am*

~~~~~

*Fully refurbished restaurant, friendly atmosphere, with disabled and baby changing facilities.*

*Now showing Live Sky and BT Sports.*

## **LIVE MUSIC**

*New and exciting bands playing every Saturday night from 9.00pm*

## **Food served**

*Monday to Thursday 5.00 to 9.00pm*

*Friday and Saturday 1.00 to 9.00pm and Sunday 12.00 to 6.00pm*

The Crown Inn, Crown Street, Harbury, CV33 9HE - Phone 01926 614995

[www.crowninnharbury.co.uk](http://www.crowninnharbury.co.uk) Email: [info@crowninnharbury.co.uk](mailto:info@crowninnharbury.co.uk)



[www.facebook.com/thecrowninn](http://www.facebook.com/thecrowninn)

## Kleinmann Properties

*Our success is built on our reputation and customer recommendation*

Sales Lettings Financial Services

Serving Harbury & Surrounding Area

- Free no obligation valuation
- A Confidential, Personal and Professional Service Guaranteed
- All viewing accompanied – by appointment only
- Excellent Rates
- Lettings – Fully managed or tenant finding service

Telephone: 01926 612463

Mobile: 07710 040494

Email: [enquiries@kleinmannproperties.co.uk](mailto:enquiries@kleinmannproperties.co.uk)

Web: [www.kleinmannproperties.co.uk](http://www.kleinmannproperties.co.uk)

**3 Bull Ring Business Centre Church Terrace Harbury CV33 9HL**

## Domestic Gas Services



**CENTRAL HEATING, INSTALLATION, SERVICE, REPAIR AND  
POWERFLUSHING....the next best thing to a new heating  
system!**



Are your radiators cold at the  
bottom?

If so they need  
**POWERFLUSHING!**

**POWERFLUSHING** removes the build  
up of sludge and sediment in your  
radiators which is making them less  
effective therefore *costing you  
money!*

**POWERFLUSHING** will maximise the  
efficiency of your radiators ensuring  
you get the very best from your  
heating system therefore saving you  
money!



**For all your heating requirements please call  
Martin Evans on 07980 740720**

## Carpets, Rugs and Upholstery Professionally Cleaned

- Free quotes & advice
- Deep cleans & freshens
- Stain removal
- Stain proofing
- Fully insured
- 7 day service



### All Square Cleaning

Also:  
End of tenancy cleans  
Deep cleans  
Odour control  
Decontamination  
Dehumidification

Contact Neil

01926 492696 or 07557 944461  
neilworsnop@allsquarecleaning.co.uk

## FENCES : TREES



**All types of fencing and gates**

**Tree felling and reduction**

**Hedge laying and trimming**

**Patios**

**Seasoned logs available**

**Call Adrian Dollar on  
01926 817077 or  
07914 623989**

**Qualified and Insured**

**HANSONS**  
Auctioneers and Valuers

## FREE ANTIQUES VALUATION DAY



**Thursday 12<sup>th</sup> March, 10.00am - 4.00pm**

**St Francis of Assisi Church Hall**

110 Warwick Road, Kenilworth. CV8 1HL

**Meet Charles Hanson's team of Valuers and  
Lars Tharp - Chinese Ceramics and Oriental Works of Art  
Don Collins - Coins and Militaria**

**Bring along your Antiques, Jewellery, Coins, Textiles,  
Ceramics, Books and Collectables**

Items may be consigned into Hansons Antiques and Collectors Auctions

**Free home visits for larger collections**

**For further information please contact Mrs Carol Jones**

Hansons Warwickshire Area Manager on 07802 839915  
service@hansonsauctioneers.co.uk www.hansonsauctioneers.co.uk  
Hansons Auction Centre, Heage Lane, Etwall, Derby. DE65 6LS

**Refreshments in aid of the NSPCC**

## Ed's Piano & Keyboard Tuition

- Do you want to learn keyboards with a qualified teacher with a passion for music?
- Lessons available for all ages on piano or digital keyboard.
- Whether you want to take your ABRSM Grade exams or just learn for fun, I can help you on your way.
- Fully CRB checked
- Competitive rates and flexible timetable with lessons tailored to your own individual learning style and needs.
- Give me a call to discuss your musical future!



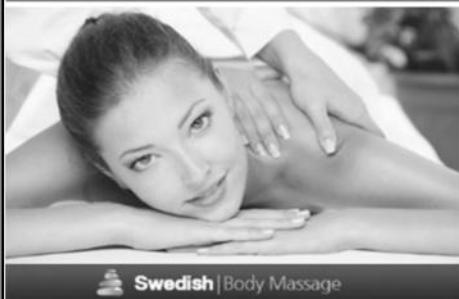
Ed Hudson, Harbury. Mob: 07801 430029


email: [eddhudson@me.com](mailto:eddhudson@me.com)



# ABSOLUTE BEAUTY

Tel Rosina on 01926 612403 - [www.rosina.moonfruit.com](http://www.rosina.moonfruit.com)



 Swedish | Body Massage

Ladies, for all your beauty/holistic needs also hair make-overs for that special occasion.

Spa Jacuzzi Pamper Parties for all ages.

Contact Rosina (01926) 612403 or  
07762 702102

## SEASONAL HARDWOOD LOGS HALF THE PRICE OF COAL



**BARN STORED  
(AS GOOD AS KILN DRIED LOGS)**

**£70 PER BAG  
one off bag charge**

**\* Free Delivery \* AND \* Same Day Delivery \***

**Dropped at nearest point**

**Large pickup loads - price on application**

**Call William on**

**07946 319908 or 01926 257571**