

Harbury & Ladbroke News

Is published monthly and reflects all aspects of local life.

February 2015

No.491

Editorial Office

☎ 612155

Articles to

Harbury Pharmacy, High Street

Email address

articles@hlnews.co.uk

Advertising Office

31, Binswood End (☎ 612155)

advertising@hlnews.co.uk

Distribution Manager

49, Mill Street (☎ 612009)

distribution@hlnews.co.uk

Inserts by prior arrangement

☎ 612009

IN THIS ISSUE

Page

EDITORIAL	2
HARBURY DIARY & REFUSE ROTA.....	2 - 4
FROM THE RECTOR & CHURCH NEWS	5
LADBROKE NEWS	9
HARBURY PARISH COUNCIL	18
CLUBS & SOCIETIES	21
EARLY YEARS & SCHOOL.....	24
VILLAGE HALL UPDATE	28
GARDENING & NATURE	28
GENERAL SECTION	33
LETTERS TO THE EDITORS	42

Editorial Team

John Holden - Chris Finch - Marian Millington - Janice Montague - Sally Stringer
Ralph Swadling - Jackie West

*The views of contributors are not necessarily those of the Editorial Team
The Editors reserve the right to amend articles as they see fit.*



Editorial

Both Harbury and Ladbroke Parish Councils will have vacancies in May and are seeking volunteers to stand. Nominations must be in by the 9th April and if there are more volunteers than seats vacant, then there will be elections on the 7th May when the General Election and District Council vote will take place.

Harbury Library is now stocking board games which are available for loan or use in the library. There are games to suit all ages including old favourites like Cluedo, Scrabble and Monopoly as well as other newer games.

After the successful showing in the Village Hall of the film 'What We Did on Our Holiday', this is being quickly followed by 'The Hundred-Foot Journey' and if you miss it in Harbury, it is being shown in Ladbroke on Friday 20th February.

A number of years ago the Harbury and Ladbroke News had a Youth Editor and we would like to re-establish this post or even two posts. If you are interested and may be thinking about a career in journalism, this could be a good addition to your CV. Please contact John Holden on 612155 if you are interested.

Finally we extend our sympathies to the families of Gwynne Badman, Sue Collins, Charlie Dodd and Christine Payne.

Harbury Diary

FEBRUARY

- | | |
|---------|--|
| Sat 7 | <p>Coffee Morning, 10am-12 noon in Tom Hauley Room in aid of STEPS</p> <p>Cross Country Relay Race, 10.00-11.30am at Harbury Village Hall</p> <p>Harbury Village Cinema presents 'The Hundred Foot Journey', doors open 6.30, film starts 7.00pm</p> |
| Sun 8 | <p>II BEFORE LENT</p> <p>Holy Communion, 8.00 am</p> <p>Sung Communion, 10.30 am</p> <p>Zumba in Village Hall, 9.30am</p> <p>Harbury School PTA, Wine Tasting Evening, 8.00pm at The Gamecock</p> |
| Mon 9 | <p>Upholstery Class, 9.15am in Village Hall</p> <p>WI Quiz in Village Hall</p> |
| Tues 10 | <p>Holy Communion, 7.30pm</p> |

- Tues 10 Pilates, 9.30am in Village Hall
Junior Theatre Group, 6.30pm in Village Hall
- Weds 11 Wednesday Walkers, Stoneleigh (3 miles), meet 9.40am
in Village Hall Car Park
Pleasant Pastimes, 2.00-4.00pm, Tom Hauley Room
- Thurs 12 Holy Communion, 9.45am, followed by coffee
Harbury WI, 7.45pm in Tom Hauley Room – 'The Shaping of
Southam' by Bernard Cadogan
- Sat 14 Coffee Morning, 10am-12 noon in Tom Hauley Room in aid
of Harbury Junior Football
- Sun 15 THE SUNDAY NEXT BEFORE LENT**
Holy Communion, 8.00am
'Saints Alive' Service, 10.30am
Evensong, 6.00pm
Zumba 9.30am in Village Hall
ADVERTS FOR THE NEXT ISSUE TO 31 BINSWOOD END,
HARBURY OR EMAIL ADVERTISING@HLNEWS.CO.UK
- Tues 17 Pilates, 9.30am in Village Hall
Holy Communion, 7.30pm
- Weds 18 Wednesday Walkers, Grandborough with Pub Meal, (3 miles
flat) - meet 9.40am in Village Hall Car Park
ASH WEDNESDAY
N.B. Service at LADBROKE, 7.30pm
- Thurs 19 Holy Communion, 9.45am, followed by coffee
- Sat 21 Coffee Morning, 10am-12 noon in Tom Hauley Room in aid
of the NSPCC
- Sun 22 FIRST SUNDAY OF LENT**
Holy Communion, 8.00am
Sung Communion, 10.30am
- Mon 23 Upholstery Class, 9.15am in Village Hall
- Tues 24 Pilates, 9.30am in Village Hall
Junior Theatre Group, 6.30pm in Village Hall
Harbury Society talk – 'Cotswold Curiosities', 7.30 for 8.00pm
in Tom Hauley Room
Holy Communion, 7.30pm
Julian Meeting, 8.00pm
- Weds 25 Wednesday Walkers, Hampton Lucy to Wasperton, (4 miles
flat) - meet 9.40am in Village Hall Car Park
Pleasant Pastimes, 2.00-4.00pm, Tom Hauley Room
- Thurs 26 Holy Communion, 9.45am, followed by coffee
ARTICLES FOR NEXT ISSUE TO: HARBURY PHARMACY,
HIGH ST OR EMAIL TO ARTICLES@HLNEWS.CO.UK BY
5.30PM
Parish Council, 7.30pm in Village Hall
- Sat 28 Coffee Morning, 10am-12 noon in Tom Hauley Room in aid
of the Toddler Group

MARCH**Sun 1****LENT II**

Sung Communion, 9.00am

Little Saints' Service, 10.30am, followed by food & refreshments

Taizé Service, 6.00pm

Zumba in Village Hall 9.30am

Mon 2 Harbury Village Library AGM, 7.00pm in Library

Lent Course, 8.00pm in Tom Hauley Room

Tues 3 Harbury Heritage Room open 6.30-8.30pm at School

Holy Communion, 7.30pm

Horticultural Society, 8.00pm, Tom Hauley Room –

Adrian James – 'Bodenham Arboretum through the Seasons'

Weds 4 Wednesday Walkers, Stratford Greenway to Clifford Chambers (4¾ miles flat) - meet 9.40am in Village Hall Car Park

Holy Communion, 2.00pm

Mothers' Union Meeting, 2.30pm, Tom Hauley Room

Thurs 5 Holy Communion, 9.45am, followed by coffee

Folk Club, 8.00pm at Village Club

Sat 7 Coffee Morning, 10am-12 noon in Tom Hauley Room in aid of Harbury Pre-School

Sun 8**LENT III**

Holy Communion, 8.00am

Sung Communion, 10.30am

Mon 9 Lent Course, 7.30pm in Church

Wed 11 Wednesday Walkers, Wormleighton (4 miles)

- meet 9.40am in Village Hall Car Park

Thurs 12 Harbury WI, 7.45pm in Tom Hauley Room, 'The Art of Coarse Guiding' by Maureen Sutherland (Tourist Guide)

Refuse Collection Rota

	Deppers Bridge	Harbury	Ladbroke	Collection Week
February	Wed	Thurs	Fri	
	11	12	13	Green & Blue Lid Bins
	18	19	20	Grey Bin
	25	26	27	Green & Blue Lid Bins
March	4	5	6	Grey Bin
	11	12	13	Green & Blue Lid Bins
	18	19	20	Grey Bin



From the Rector

Reverend Craig Grocock

The Rectory, Vicarage Lane, Harbury ☎612377 ✉kankudai43@aol.co.uk

True love . . .

A bunch of flowers, a perfectly wrapped box of luxury chocolates, a romantic meal. Isn't that what Valentine's day is all about?

Maybe, maybe not. Valentine's day probably replaced a Roman fertility festival in the 5th century, but there are various legends and fables about Valentine.

A well-known one concerns a 3rd Century Roman priest. While Emperor Claudius II reigned he decided that unmarried men made better soldiers and so he outlawed marriage for single men in his service. In secret, Valentine performed marriages between young men and women and led to his popularity. But this was his undoing and as a result he got the chop (literally!)

Another legend suggests that Valentine fell in love with a girl who visited him while in prison. Before his execution he wrote a letter, signed 'from your Valentine'. The expression was used subsequently in a romantic way.

Whatever we choose to believe about history, the truth is that Valentine's Day is a celebration of love and if we want to look at the nature of true love, we have to dig deeper than the romantic cards, flowers and gifts. Even though Valentine's Day is highly commercialised, the one thing it gets right is to remind us that love *does something* – to love is to act, or it is not love at all.

I talk about this a lot at weddings; love is a verb, an action, a choice we make not just an emotion or feeling. True love is active and is picked up in the words of a passage often used at weddings; 'Love is patient, love is kind...it always protects, always trusts, always hopes, always perseveres' (1 Cor 13.4,7). The way it describes love is self-giving and sacrificial which is exactly God's love for us seen in Jesus.

Real love isn't soppy and sloppy; it's gritty, determined and deliberate. Real love gives without wanting anything in return; it bears no grudges and is quick to forgive. Maybe this is what Valentine's Day should be about; making a real effort to love as a choice, not based on our feelings but thinking about others first.

Mind you, if you still want to send me chocolates, that's fine with me!

God bless you.



From the Registers

Burial of Ashes

18th January Frank Bunting

Holy Baptism

11th January Esme Sophia Montanaro

24th January Jessica Griffin

24th January Megan Griffin

25th January Noah-Jake Zachary Bowell



From the Churchwardens

Elaine & John

Well, 25th January saw us say a sad farewell to the Reverend Annie Goldthorp who has been with us for 3.5 years, initially as Curate and then as an ordained priest for both Ladbroke and Harbury. During that time she made many new friends in the village and earned a reputation for engaging folk of all ages and from all walks of life in the many and varied church activities that she has introduced and led. She goes off to head up her own group of parishes in the Cotswolds (Deddington, Clifton, Hempton and The Barfords.) We thank her wholeheartedly for what she has brought to the villages and wish her every success and blessing as she starts her new ministry.

Services are back to normal now and we held our first Little Saints' service for young children in early January. Little Saints takes place at 10.30am on the first Sunday every month and lasts for no more than 30 minutes and afterwards we offer bacon rolls and pain au chocolat for breakfast.

We also met the church cleaners, Betty and Flo, at our Family Service, Saints Alive (every third Sunday), who discovered, for all their moaning, that they had many 'reasons to be cheerful' after all, the main one being the never failing love of God for all of us.

All Saints is a friendly welcoming church and we would love to see you at one of our services.

And finally, as a growing church that provides a variety of opportunities for worship and community outreach, we are ever on the lookout for additional hands to help with all sorts of activities – irrespective of whether or not you attend church. Each one of us has special gifts that can be used to help each other and others in the local community. Last month I said that I would provide more details on the sorts of opportunities we have and would therefore point you to the short following article from the Reverend Craig.

Your village - Your Church!

We are all blessed to live in these wonderful communities of Harbury and Ladbroke and as priest in charge of the parishes, I am delighted that Harbury and Ladbroke churches are such an integral part of the villages.

Many of you will have come through the doors of Harbury church, whether that be to celebrate a baptism, share the love and happiness of a wedding or to pay your respects of a family member or friends you still love but no longer see. You may come along to the regular services - Eucharistic, Saints Alive, Evensong, Taizé or Celtic services on a Sunday, or one of the special services during Easter, or the Carol Concert, or Midnight mass over the Christmas period.

Maybe you enjoy activities that go on in and around church – coffee mornings and lunches. Bumps and Bundles provides a great meeting place for new or expectant mums to make new friends, share their concerns and joys, whilst Holiday at Home provides a week of fun and activities for those who are young at heart albeit slightly older in age! Messy Church is a time and place for young families to enjoy stories from the bible using their creativity, and the Live Nativity in 2014 - Follow the Star - attracted over 250 villagers as they followed the story of the Nativity through the village into church to celebrate the birth of the baby Jesus. Or perhaps you have just wandered into the church when it has been empty – just to sit and reflect.

Whatever has prompted you to walk into our beautiful church, it has been great to see you!

However, the privilege of being able to walk into your village church is not something we can take for granted. It takes a huge amount of effort, often from a small band of volunteers, to be able to maintain the church and to run the variety of services and activities that we do. This is where you come in.....

We are looking to create a pool of volunteers with different skills, knowledge and expertise with some time to give (no matter how much that may be), who would be interested in getting involved in the life of the church. There will be no requirement for you to come along to services - you just tell us how you would be willing to get involved, whether it be to do some ad hoc work or some more regular involvement, and we'd be delighted to work alongside you.

Do you enjoy gardeningso how about helping with the upkeep of the churchyard? Writing or design may be your special interestso what about helping with posters or our many regular or one off communications about what's happening in church..... or how about using your computer skills to develop and maintain our web site? Have you got a creative streak and might you like to suggest ways that we can raise funds? Do you enjoy baking or arranging get togethersif so, how about getting involved with

some of our regular and one off events? And what about all those D-I-Y skills that many of you have that could be put to good use? You tell us how you would like to get involved / help out and I'm sure we can find something for you to do!

If you would like to find out more, please simply give me or one of the churchwardens, John (614206) or Elaine (813654) a call for an informal, no commitment chat. We look forward to hearing from you.

With every blessing.

Reverend Craig



Follow the Star—December 2014



Mothers' Union

Gillian Hare

We all met for the Christmas Party on a very cold day, Wednesday 7th January 2015. Sadly, a number of you were unable to come due to illness. These viruses have been really bad this year. However the committee provided plenty of delicious food which was enjoyed by everyone there. We had music with our traditional pass the parcel, enjoying the jokes, trivia questions and chocs inside each unwrapping of the parcel. It was also a nice surprise to exchange our gifts out of the bran tub and wish each other a happy New Year.

Our next meeting is on **Wednesday 4th February 2015**, 2pm in the Tom Hauley Room – Barbara will give a talk; 'From Africa to Middlesborough via Oxford'.

Wednesday 4th March 2015, 2pm in the Tom Hauley Room to include Holy Communion, or 2.30pm for the meeting; - Chris Cookes will explain about how the MU project money is used for projects abroad and at home. Everyone is welcome to come along.

On each Thursday during February at 11.50am – midday in the Church, members will be present to join with fellow members around the world in the Midday World Wave of Prayer: - for just 10 – 15 minutes, do come and join us when we can pray for Mothers' Union work and support for all those who need help or comfort.

The Mothers' Union coffee morning held on Saturday 10th January in the Tom Hauley Room was well attended – thank you to all who donated raffle prizes, cakes and bring and buy items. Also thanks to all who helped on the day. The sum raised was £167.76 which will be used for Mothers' Union projects/work.

Ladbroke News & Diary

<http://www.ladbroke-pc.org.uk>

FEBRUARY

Sun 8 2ND SUNDAY BEFORE LENT

Holy Communion (sung), 9.00am

Wed 11 Table Tennis, 6.30 - 8.00pm, Village Hall

Sat 14 Blues Valentine Evening, 8.00pm, Village Hall

Sun 15 SUNDAY BEFORE LENT

Holy Communion (BCP), 9.00am

ADVERTS FOR THE NEXT ISSUE TO 31 BINSWOOD END,
HARBURY OR EMAIL ADVERTISING@HLNEWS.CO.UK

Wed 18 Table Tennis 6.30 - 8.00pm, Village Hall

Ash Wednesday Service, 7.30pm

Thurs 19 Homegroup, 8.00pm, The Old School

Fri 20 Film Night, 'The Hundred-Foot Journey' doors open 7.00pm,
film starts 8.00pm, Village Hall

Sun 22 LENT I

Holy Communion (sung), 9.00am

Wed 25 Table Tennis, 6.30 - 8.00pm, Village Hall

Thurs 26 WI, 7.30pm, Village Hall

ARTICLES FOR NEXT ISSUE TO: HARBURY PHARMACY,
HIGH ST OR EMAIL TO ARTICLES@HLNEWS.CO.UK BY
5.30PM

MARCH

Sun	1	LENT II Family Communion, 10.30am followed by refreshments
Tues	3	Photography Club, 7.30pm, Village Hall,
Wed	4	Table Tennis, 6.30 - 8.00pm, Village Hall
Thurs	5	Home Group, 8.00pm, The Old School
Sun	8	LENT III Holy Communion (sung), 9.00am
Wed	11	Table Tennis, 6.30 - 7.30pm, Village Hall Parish Council, 7.45pm, Village Hall

**Ladbroke Church News****Jackie West**

January has been a month full of memories and goodbyes. One was to Claire, who has been on placement with Rev Craig since September and now has returned to college, and another to Rev Annie, who after more than three years with us, conducted her last service as our vibrant and enthusiastic curate. However many of us will see her very soon as we are off to her induction as Vicar of Deddington etc. on the 12th February. Friends and relatives have been remembering how their lives have been touched by Gywnne Badman (see tribute later in this section), Sue Collins, who died after the tragic accident in Southam, and Charlie Dodd all of whom had funerals at All

Saints' Ladbroke last month. We send our love and sympathy to their families and also to that of Christine Payne, another village character we will see no more. On a happier note, we were very pleased to celebrate the marriage of Paul and Olivia and wish them a long and happy life together.

For us the words Ladbroke Church describe both the people and the building. Thinking about the latter, some of the PCC have been studying the 36 page Quinquennial report on the building and as expected it confirms the need for a lot of work in the next five years to ensure it remains standing and watertight! Our architect also alerted us to a new grant that might be available to help with the roofing and gutter work so an application for this has been made. However it's a one off scheme and very oversubscribed, therefore a grant from the "Roof Repair Fund" is by no means guaranteed. We will need to apply for other grants and also conduct some major fund raising ourselves. To this end I propose we create a Friends of Ladbroke Church group (village residents may remember we had one before), composed of both regular church goers and others who would like to

support Ladbroke's beautiful Grade 1 Listed church. Watch this space for more information and if you would like to be part of the group please email ladbrokechurch89@btinternet.com or call me on 810331.

On Wednesday 18th February, Ash Wednesday, we will mark the start of Lent with an evening communion service at 7.30pm.

From the Registers

Marriage

31st January Olivia Neal and Paul Brant

Funerals

6th January Gwynne Badman

28th January Sue Collins

29th January Charlie Dodd



Ladbroke Parish Council

Jackie West

The formal minutes will be issued by the parish clerk and go up on the noticeboard by the pub, but for those that prefer to read a summary in the comfort of their homes, these were my notes on the proceedings of the meeting on 21st January 2015.

Defibrillator: The Parish Council supported in principal having a defibrillator in Ladbroke so they will look into the practicalities e.g. which one, where, how to finance it etc.

Noticeboard: This had been repaired at about half the cost of the original.

Budget: The parish precept will remain as before. However there may be slight changes in cost to residents/money in the Parish Council budget linked with the SDC social benefit levy.

Planning: Existing lawful development has been granted for Ladbroke Grove Farm as a private dwelling but prior approval of change of use for Woodlands House Farm was refused i.e. full planning permission must be sought because it is a change to three buildings not one. No comments would be made regarding the felling of four pines at Hallsfield. Comments have been sent regarding the shed at 9 Hedges Close and therefore a councillor would need to attend the planning meeting at which it was discussed and had three minutes to put the Parish Council's case. The exhibition about the large solar farm proposed at Fields Farm (near Southam Rugby club) on 27th January is part of the pre-planning public engagement. Although the site is beyond our parish boundaries and our council was not formally notified, Cllr Batty planned to attend.

Highways, Footpaths & Drainage: The new road surface was extremely slippery in the recent icy conditions with at least two accidents in a fortnight and a serious fall. There appear to be two separate issues:-

- As discussed in The Telegraph, the surface used, SMA, is notoriously slippery but has been brought back across the country on cost grounds. It does improve after two years of normal use but will take much longer here as there is only light use. Highways will be asked if short sections close to the by-pass junctions can have a surface with improved grip.
- Like many others in Warwickshire no roads in the village are gritted, only the A423. Gritting routes are decided once a year, it is too late for this winter but we can submit now for consideration for next winter. In the meantime villagers are reminded that there are three grit bins and, since we do not have snow wardens it's down to villagers to put some of this down at the road junctions when it is icy.

The state of the A423 over the culvert has triggered a survey of the banks – feedback is awaited.

Chris Williams (representing SDC and WCC) assured us that the drainage work on Banbury Road would happen this financial year and would not involve digging up the road surface.

Windmill Lane and Radbourne Lane need patching beyond the bypass - Highways only consider potholes more than 4 inches deep as urgent smaller ones go on the 'To do' list. Members of the public pointed out issues with two rusticated roads, detritus on the old Radbourne Lane near the Village Hall needed clearing and the fence which acts as a stile across the end of Windmill Lane just before the bypass is disintegrating - maintaining a barrier here is thought appropriate on safety grounds.

Ladbroke Matters: The hedge on the Millennium Green has been traditionally layered and light weight insulation for the Village Hall is being looked into. Various events are scheduled for the year including the imminent safari supper and a film night on Friday 20th February. A leaflet with all the events will be coming out soon.

HS2: The petitions from Ladbroke (Parish Council, Action Group and individuals), to maximise mitigation for the village, go to the Select Committee on 2nd February. Our major concerns are traffic during construction, ensuring no increased risk of flooding, the height of the line and A423 crossing and we have requested a cycle path to Southam. Thanks were expressed to those presenting (Graham Long, Martin Neal and Valerie Copley) and those supporting them, especially Kip Warr for preparing the slides. The Action Group's petition is seen as the last opportunity for them to have an impact on how HS2 develops and its chairman, Graham Long, plans to stand down and the formal Action Group cease to be after five years working hard to get the

best for the village. Subsequent activities, such as discussing traffic control with WCC will be led by the Parish Council.

SDC: The core strategy (where and how much new housing is needed in the next 15 years) is being publically examined by a Government Planning Inspector until the end of January and the report should be issued in April/May. There are two contentious issues. Firstly, the amount of new homes (11,500 are proposed but developers want more) and secondly the proposed new development at Gaydon/Lighthorne Heath which, although it meets the planning sustainability criteria by having good road access, employment opportunities and no significant loss of agricultural land, will be the creation of a new town, bigger than Southam.

The next meeting of the Southam & Feldon Community Forum will be on Wednesday 4th March 2015, 7pm at Bishops Itchington Primary School where parish councillors and others can discuss issues such as rural crime, transport issues and provision of health support.

SDC is preparing its budget proposals for next year; Council Tax will probably be restricted to a 2% increase and it will continue to be one of the lowest taxing authorities in the country.

WCC: The 2015 budget is being prepared and as the second year of a four year budget there will just be minor alterations to keep it on track. However the cost of school transport is being looked into; WCC is obliged to provide transport for all students who live more than 3 miles from their nearest appropriate school. The rule has been relaxed in recent years but with the current budget pressures there is a move to address funding for this operation.

The regionalisation debate is intensifying following the approach by Birmingham City Council that there should be one authority including Coventry, Solihull, Dudley and Warwickshire forming a Metropolitan District for the West Midlands. The proposal was not supported in principle, initially by either Coventry, Solihull and Warwickshire, and there will be a Public Debate at Shire Hall on the morning of Tuesday 24th February to decide whether or not Warwickshire wants to take this issue further.

Dates of 2015 Meetings: 11th March, 15th April (Annual Village Meeting), 13th May, 15th July, 16th September, and 18th November.

Elections: 7th May is not only the date for the election of a new Government but also for SDC and Ladbroke Parish Council. Nominations for the five seats on the Parish Council must be made 16th March - 9th April. We need a minimum of three councillors or we lose our Parish Council and voice and if there are more than five nominations the election is contested and goes to a vote. At present we only have four councillors and it would be good to get back to five. Anyone interested in supporting Ladbroke by becoming a Parish Councillor who would like to find out more about what is involved, should speak with Derek Batty, Valerie Copley, Phil Maffey or Martin Neal.

The meeting held in the Ladbroke Village Hall on Thursday, 22nd January began with the talk given by Paul Parker on Clinical Hypnotherapy. Paul lives locally and has clinics in Southam, Daventry and Spain. His initial interest was in past life regression which he uses to help people overcome their phobias. The subconscious mind contains everything that has been done in your life so Paul helps the mind to go back until the first occasion which sparked the phobia.

He emphasised that he does not 'hypnotise' people but helps them to a 'state of relaxation' where all stress disappears. In this state he can work with people who wish to give up smoking, reduce weight or generally live a less stressful life. For this to work the person must want to do it and he gave us the mantra 'if it is to be then it is up to me'. Another facet of his work is in pain relief which, while not curing the condition, can make it easier to live with.

Paul will take sessions for weight reduction with up to six participants but smokers wishing to stop are seen individually as each situation is different.

Find out more about clinical hypnotherapy and Paul at www.pauljparker.co.uk or ring 07766 885350.

Dianne Surgey, president, gave the information for many future events from which I will mention a few:

Saturday 18th April - coffee morning in the Tom Hauley Room. A recent change in the law means that any food sold must be labelled with known allergens and we must be able to answer questions regarding the ingredients used. Also food for sale needs to be wrapped so that there can be no cross contamination.

Monday 18th May - Tom Heap is to speak at the Group Meeting at Napton Village Hall. Individual photography competition on the subject of 'what the countryside means to you'.

Thursday 4th June - Centenary Meeting in Albert Hall. A live transmission will be shown at Napton Village Hall.

Wednesday 2nd September - Warwickshire Federation outing to Sudeley Castle.

October - date to be announced later. Harvest Supper and Auction of Promises at Federation House.

Southam Leisure Centre are to run short mat bowls on Wednesdays from 11.00am to 12.00 noon for the over 45s at a cost of £1.50 per session.

Dianne also asked us to consider changing our monthly meeting date in 2016

from 4th Thursday in the month to the 1st. This would mean that we would not be the last WI members in the group to book for events. This sometimes results in the event being full before we get a chance to apply.

The next meeting will start at 7.30pm on February 26th when Heather Alford will talk about volunteering in Nepal.



Ladbroke Matters

David Wright

What we do

The Ladbroke Matters team is responsible for the upkeep of the Village Hall and Millennium Green. To help with this we organise regular fundraising events so that we can continue to offer both of these resources for the benefit of our community.

Here is a rundown of our latest events and activities:-

Millennium Green Hedge

We recently arranged to have the Millennium Green perimeter hedges layered. We think this an improvement on how they look, and it also means less maintenance, so saving on our costs.

Village Hall

- We have installed a new reception counter; and improved the lighting in the entrance, reception and kitchen areas.
- Plans are under way to allow wheelchair access to the main entrance and to install a toilet for use by less able persons.
- The leaky roof has been repaired and will soon be insulated.
- Thanks to all who faithfully keep the hall clean and tidy; especially those on the weekly rota, and the occasional 'Saturday task force'.

Safari Supper

42 people took part in our safari supper last month, most of whom provided a starter, main course, or dessert for the evening. By all accounts, there was a mouth-watering array of food on offer at all participating homes. A number of those taking part managed to congregate at *The Bell* afterwards for a nightcap.

Film Night

Another of our popular supper and film nights is planned for **Friday 20th February** in the village hall. The film will be '*The Hundred-Foot Journey*', a comic tale of rivalry between two restaurants in a small French town:

one Michelin-starred and the other offering Indian fare. In keeping with that, we plan to provide pre-film curries. Doors open at 7pm.

Race Night

On **Saturday 21st March** we are planning a race night in the Village Hall. Veterans of our race nights will know that we use genuine wooden horses – none of your new-fangled video nonsense! This is a great fun event so mark it in your diary now. We can confirm that a fish-and-chip supper will be included.

Copies of our new 2015 information leaflet will soon be available at *The Bell* and at All Saints' Church. If you would like to join the team, have any suggestions for future events, or any other comments please contact us (details are in our leaflet and on the Ladbroke website).

Ladbroke Village Hall Millennium Club

£50 Tracy Lochhead

£50 Sophie Kendall

£25 Tim Kelly

£25 Graham and Pauline Long

£25 Andy Bendzak

£10 Carole and Peter Loftus

£10 Simon and Jackie West

£10 Kate Pickin

£10 Debs and Seth Brown

£10 Andy Pittaway

Margaret Bosworth



Ladbroke General Section



Tribute to Gwynne Badman

Gwynne spent her childhood in her beloved Wales and often talked of her father who was a captain in the Merchant Navy and her mother, to whom she was devoted.

Much of her adult life was lived abroad with Francis who was in the Diplomatic Service, before they moved to Sarah's Cottage in Ladbroke in 1970 with sons David and Jonathan who were always the primary focus of her life

Gwynne worked as the boss' secretary for a firm in Rugby for some years and I would imagine that the boss had to toe the line!

For the next 35 years or so until poor health forced her to withdraw from

village activities, Gwynne was a dynamic force in many aspects of village life.

A founder member of Ladbroke and Deppers Bridge WI she became its first secretary in 1973 and remained a member for the remainder of her life. Gwynne's name will be recorded in the WI Memorial Book and a donation from Ladbroke and Deppers Bridge WI will be given in her memory.

She was on the Parochial Church Council for many years and was the president of the Friends of Ladbroke Church. Her fund raising bric-a-brac stalls were well known and I know she gained much pleasure in sorting it all out in her front room before amassing it on the stall.

She thoroughly enjoyed choosing the poems and readings which enhanced the service of nine lessons and carols each Christmas for many years.

An excellent and inventive cook, Gwynne's Welsh cakes were legendary as was her soup at the Lent Lunches and the bonfire night celebrations.

Many of you will remember her knocking on your door collecting for the Life Boats and British Legion Poppy fund. You didn't have to worry if you didn't have any change - she would come back!

Her garden was a great joy for her and she would sit outside at the small cast iron table with a G and T or a red wine well into the evening. Even when she could no longer tend her own garden it gave her great pleasure to look at catalogues of flowering plants and plan where in the garden they would look best.

A larger than life character, the village has been missing her for some time now.

Gwynne had a very firm belief in God and even in the difficult circumstances of her final year she thanked Him continually for her good fortune.

Betty Winkfield & Carol Lane

Ladbroke Film Night – Friday 20th February

The next Film Night in Ladbroke Village Hall will be on Friday 20th February and we will be screening '**THE HUNDRED-FOOT JOURNEY**', starring Helen Mirren and Om Puri. Set in France, it tells the story of an Indian family who open a restaurant 100 feet from Michelin starred Le Saule Pleureu. Maison Mumbai does not impress Madame Mallory (Helen Mirren) of the posh eatery who declares war.....come along to find out what happens!

To accompany this film, we will be serving a selection of curries/rice/chutneys etcplus our famous mini puds! Doors open at 7pm, film starts at 8pm. Please bring your own drinks. Ice creams available at the interval. Tickets are £12 from Nicky Lewis on 815196 or nicolalewis24@tiscali.co.uk

Nicky Lewis



Harbury Parish Council

Linda Ridgley

Official minutes can be viewed in the Library, on the Parish Council website www.harbury-pc.gov.uk or obtained from the Parish Clerk Tel: 01926 614646

January 2015

Planning still dominates these meetings as, until the Local Plan is approved and Harbury has its Neighbourhood Development Plan (NDP) in place we have few defences against rapacious developers! It will mean that we have to spend more to defend ourselves and as a consequence of this and other causes the Precept will rise.

Neighbourhood Development Plan - Councillor Pat Summers revealed that new broom Councillor Samantha Allen had found a Consultant to hire to help with the process and source grant aid.

Library - The Parish Council has paid the legal fees for negotiating the lease which is still waiting Land Registry approval.

Playing Fields - The moles have returned as has dog fouling which the PC agreed to attack by purchasing large warning notices. Repairs to the play area safety surface will be expensive, but more durable. Janet Thornley is seeking grants to defray some of the cost or the area might have to be closed.

Cemetery - The Council will seek advice from their arborist on the consequences of pruning for one of the Burial Grounds' lime trees which overhand nearby gardens. Residents asked for the pruning for fear branches might fall on their gardens.

Environment - A request for an extra light in Farm Street could cost us around £2,000.

War Memorial - Councillors agreed to pay for the cleaning of the Memorial for the Centenary.

Grants

From this year's allocated funding which concentrates on the young the Councillors agreed grants of:

£3,000 for new tents for GASS

£1,200 for Lego Wedo software for the PTA.

Sharon Hancock was opposed in principle as this was a requirement of the National Curriculum and should be fully funded.

The Councillors also agreed in principle to guarantee a £50,000 loan to the Village Hall to cover any temporary shortfall in their grants to fund the final phase of the upgrade. Grants secured need to be spent within the year. Money is promised from the development at the Quarries but this may not be released in time.

When it came to it there were only two contentious planning applications to be discussed!

Mr and Mrs Ellis who live adjacent to the Burgess Care Home for autistic people were seeking support for their objection to retrospective consent for the conversion of an office to residential use. The behaviour of the autistic occupant caused them great distress and embarrassment by her continual shouting and swearing. This despite the efforts of the management to abate the nuisance.

Councillors agreed to object to the application on grounds of the noise and nuisance to the neighbours and because the accommodation, in the countryside, was not for an agricultural worker.

Unfortunately for local residents the Council had already made no representation on plans for housing on the garage court at Frances Road. Neighbours would be overlooked by these two storey homes but it was too late for the Parish Council to support them.

Other plans to which the Parish Council responded were:

No representation on a garage at 22 Dovehouse Lane and a two storey extension and single to rear at 15 Honiwell Close.

Stratford District Council refused the retrospective application for a store and garden room at 10 Constance Drive and granted permission for a single storey extension at 3 The Beeches; insulation work to the roof and repairs at 8 Farm Street; the erection of another house on the Spinney Paddock in Hall Lane and the repositioning of the garage to another previously approved large house to create a roadway.

Appeals are on-going for extensions at 3 Queens Close and Deppers Solar Farm. Appeals were dismissed for Stapenhall Farm - a link to the swimming pool and for two semis to the rear of the Old New Inn.

The application for a large 4 bedroomed house on land at Lullington Lodge, Dovehouse Lane has been withdrawn.

County Councillor Bob Stevens updated the Parish on HS2 compensation which in cases not adjacent to the line, was “not very generous”; the talks with Birmingham on forming a joint authority rumbled on; and the oversubscription for places at Southam College which was likely to impact on families in Northamptonshire not Warwickshire.

Stratford District Councillor Chris Kettle

- Expected a decision on the Core Strategy soon;
- Financial Services would be the first that Stratford District Council would share with Cherwell and South Northamptonshire Councils;
- Local tenants had complained to him about Orbit's poor maintenance;
- The campaign to improve safety at the Fosse Crossroads was unlikely to succeed as there were 12 more highly supported petitions;
- He had received complaints that SDC was housing non-locals in homes in Harbury.

Councillors seized on this last assertion and demanded to know to which homes this applied as several more recently built housing estates, especially Hereburgh Way had homes legally reserved for those with a local connection.

There were concerns too about the impact of remedial work being undertaken on the sides of the Railway Cutting which involved the removal of many trees.

Finally the Council had to nominate one of their colleagues for the draw to attend the Queen's Garden Party. Chair Tim Lockley noted he had been unsuccessfully nominated several times, so they chose Tony Mancell.

Next Meeting: 26th February, 7.30pm in the Village Hall, Farley Room.

Parish Council Election 2015

Bus shelters – street lights - **library** - playing fields – **litter bins** – play areas - **cemetery** – allotments - **Christmas lights** - carnivals and festivals – **grants for local organisations**

All of these things affect our everyday lives and are provided or supported by your parish council. Would you like to be more involved? Do you have a few hours to give? Are you keen to find new ways to support and improve village life? If so, have you thought about becoming a parish councillor?

The next parish council election takes place on Thursday, 7th May 2015. We need new people to come forward. Please contact us **now** on 01926 614646 for more information or call into the parish council office in Church Terrace. We are looking forward to hearing from you.

Harbury Parish Council

Allotments Available

We currently have a couple of vacant allotment plots. They have been neglected for some time and require hard work and determination to get them back into shape and ready for planting. If you think you are up to the challenge, please contact the parish council office on 01926 614646 for more information.

Harbury Parish Council



Harbury Society

Linda Ridgley

The frosty conditions did not deter members and the Wellesbourne Wander day turned out to be sunny although quite cold. We began and ended at the King's Head. We walked slowly round part of the circulatory system, up to the Church, along the Dene to the White Bridge and down Church Walk where there is a delightful collection of old cottages and bigger houses and of course, Chedham's Yard. On the way we caught glimpses of the early-Georgian Rectory and Wellesbourne Hall.

At Chestnut Square we inspected the bus shelter where tablets explain Joseph Arch's fight to form the Agricultural Workers Union. We studied some of the most attractive old houses that lie either side of the Square, especially the Manor House, property of the Venours, which Rev John Lucy of Charlecote, bought and rebuilt.

We wandered down Chapel Street and managed to see the Old Granary – failed to find flood lines made on cottages in Chapel Street (the Dene is only a few yards to the north) - but did come upon the site of the vanished Peacock Inn. We returned via Garden Terrace – a row of Victorian Cottages with beautifully tended front gardens but no vehicular access - walked up Bridge Street and looked back across the Dene to the rear of Chedhams Yard and finally made it back to the King's Head for a very convivial meal.

Our next events - both 7.30 for 8pm in Tom Hauley Room:

Tuesday 24th February - Cotswold Curiosities a talk by Alan Winderburne.

Tuesday 17th March AGM - Chris Holland "World War Fallen Memorial" on the A45/Fosse Roundabout



Harbury Women's Institute

Jeanne Beaumont

Members recently attended the funeral of Mary Entwistle. She was an active member who was always in the Carnival and the darts team as well as other activities in the village.

It was the popular Members' Evening we have every year and members were asked to participate with a short account of an interesting experience. It certainly was interesting from a pet, a grandfather's silver cup, a student exchange, a young teacher's experience, also a doll's, nursing and Biffa the Robin to name a few.

We must do that again and thank everybody who made it a pleasant evening.

The next meeting is at the Tom Hauley Room on Thursday 12th February, 7.45pm. Speaker – Bernard Cadogen – 'The Shaping of Southam'.



Folk Club

Deborah Ellis

The first Folk Club meeting of the year took place on the first night of the year at the Village Club. Deb chose the theme – ‘The Best of 2015’ – and, for all the performers who showed up, they certainly did their best considering it was 1st January.

In Part One, Des sang ‘When I’m Sixty Four’, because he soon will be and for this, he went without his usual hat to show off his rather handsome head of hair! He followed this with ‘The Plains of Waterloo’ as it is the 200th anniversary of the famous battle this year. Peter McDonald entertained us with ‘Jam Tomorrow’ and ‘Geordie Will Dance the Jig Tonight’. It has been a long time since we had Ruth come and perform for us and it was a treat to hear her perform ‘Now and For Always’ and the ‘Raggle Taggle Gypsy’. Sue and Ted Crum sang the ‘Wassail Song’ and ‘It All Makes Work for the Working Man to Do’. Graham, from Rumble-o, gave us his rendition of the ‘Rest of the Day’. He also sang a delightful version of ‘The Ladies Go Dancing at Whitsun’ that was interspersed with a verse from ‘To the Maypole Haste Away’ or ‘Staines Morris’. The Harvesters finished part one with the ‘End of the Line’ and ‘Light from the Lighthouse’ that got the Harbury chorus engine going.

Deb opened up Part Two with ‘Donna Donna’ and her poem ‘Mobility Morris’. Rumble-o were next and they brought us the ‘Greenland Whale Fishery’ and ‘A Man Is In Love’. Bob sang ‘Nelson’ and a song about ‘Sparky’s Magic Contraceptive!’ Pete Grassby contributed ‘Follow the Heron’ and ‘Terror Time’, which was a song about the travelling people and their persecution. Christine sang the ‘Bargee Song’ and the ‘Narrow Boat Man’. We had a Bob and now we had Rob who entertained us with ‘Homeward Bound’ and the ‘White House Blues’, which was about a president who suddenly died of lead poisoning!

Part Three started with the Harvesters and ‘Say Darlin’ Say’ that had Sue showing us her Appalachian flat footing that both she and Ian are so good at. Ruth had to give us one more offering and she did not disappoint us at all with ‘Colors’ (that’s how the Americans spell it!) and we had Pete Grassby help us with the spelling of his last song of the night with ‘Taumaranui On the Main Trunk Line’. Rob, not Bob, sang ‘Deep River Blues’ even though he had promised Des a punk song! Rumble-o sang about the ‘Life of a Country Boy’ (‘I Like to Rise When the Sun She Rises’). Dave and Bob, not Rob, sang ‘King of the Road and, last but not least, we had Peter finish the evening with ‘We’ll Sing Hallelujah’.

The raffle raised £51 for Amnesty International and I have included a link to their website for you to look at.

http://www.amnesty.org.uk/?gclid=CO3Huf_j9clCFabLtAodfWQAHw

The next Folk Club will be on 5th February, the theme is 'Food, Glorious Food' and your hosts will be Steve and Maureen Darby.



Harbury Tennis Club

Colin and Sue Mercer

www.tennis-today.net/harbury

Rain, wind and ice have disrupted activity so far this year. The first casualty was our traditional New Year 'Muffler' Tournament when ice skates would have been more appropriate than tennis shoes! It finally took place on Sunday 25th January when a strong field keenly contested the medals playing, for the first time, 'Fast 4 Tennis'. This format has been trialled in



Australia and is tennis' answer to Twenty 20 Cricket – making tennis approachable and fun (not that it isn't so in the first place!). The principle difference affects the service rule when instead of playing a 'let' when the ball touches the net the ball is deemed to be 'in play' and the receiver has to play a shot. Most of us are so conditioned that we tend to leave a let and expect another serve, but in Fast4 Tennis you have just lost the point! Pictured are the winners Mathieu Savin and tournament organiser Peter Walshe, a perfect combination of youth and 'experience'. Peter of course claimed that was just how the pairings worked out! In silver place, only just behind, were Sue and Colin Mercer, followed by Joe Robson and Chris Cousins in bronze position. The tennis was followed by some lovely mulled wine and lunch and socialising when Fast4 Tennis was definitely voted a hit!

In the Leagues we have only managed to play two of the five matches scheduled in January. In the first, the team had a good win against Priors Marston 'A' in the Weekend League. Debs Brookes, Sue Panton, Steve Stark and Colin Mercer adapted well in difficult conditions (high wind and bright sunshine!) to overcome the previously unbeaten visitors 6-2. That has taken us off the bottom of the Division 3 league table, although we've played more matches than other teams, so a relegation battle is definitely on! In the only floodlit match played, Caroline Morland joined Sue, Steve and

Colin for the long trip to Towcester, who are second in the league. This was a really close match and the Harbury four were delighted to come home with a 4-4 draw to maintain our third place in the league table.

Our Junior winter programme run by tennisolutions caters for 'tots' to teenagers with sessions on Mondays and Fridays. More information is available at www.tennisolutionsltd.com and places can be booked by emailing Lucy at admin@tennisolutions.co.uk



Harbury Toddler Group

Lynne Barton



Twirling Toddlers came to visit us last month providing a fun morning of dance, music, singing and sensory experiences to enhance children's development.

On **23rd February** we will be having an exciting session with '**Marilyn's Mop Day**'.

Our very own Marilyn (Nana to Lola) a renowned bridal hair stylist will trim fringes, shape hair and demonstrate plaiting during the course of the morning.



As a registered charity we are required to hold an Annual General Meeting; this will be **on Tuesday 17th February** at 7.30pm at the Shakespeare, lasting no longer than an hour.

On **Saturday 28th February** between 10 – 12 noon we are hosting the coffee morning in the Tom Hauley Room at All Saints' Church, please

do support us and pop in during the morning.

All money raised will be used towards the running of the Group which costs us between £800/900 per year; volunteers give their time freely.

If you are unable to come, we would welcome contributions of raffle prizes and home made cakes to sell.

Harbury Toddler Group continues to welcome both familiar and new faces and we do hope that each and every one of you always feels at ease, particularly on your first visit.

We are based at the Wight School, High Street, Harbury, CV33 9HW (brown gate to the side) and meet at 9.30am, saying 'bye bye' at 11.15am.

Thinking of coming along or need more information? Please do ring Lynne on 01926 612748 or email lynnebarton@btinternet.com - we look forward to welcoming parents, carers, grandparents, childminders and children under five.



The New Term – Firstly we would like to wish a warm welcome to Seren, who joined us at Pre-School at the beginning of the term and has settled in very well with her new friends.

The Weather - We were rather hoping for some snow and frost over the Christmas holiday period, so that the role play area could be a Winter Wonderland, reflecting the outdoor conditions, but the mild wet weather continued and the new term began with wellies and raincoats being the order of the day rather than thick coats and warm mittens! Nevertheless, the children soon set to work to make cold weather collages and paintings, using different items and paint in pastel shades of blue, mauve, grey and white, which was applied using rollers and sponges as well as brushes.



We talked about the weather conditions, discussed the sort of clothing that we might need to keep ourselves warm, sang songs and read stories about cold climates and wintry weather.



Tea Bag Splosh - The rain also made the 'teabag splosh' all the more appropriate, as wonderful patterns were made by dipping teabags into watery paint and dropping them from a height onto paper.



ICT – The children enjoyed practising their ICT skills using the Pre-School camera with great efficiency, both inside in the photographic studio set up in the role play area and in the outdoor classroom.



Construction Site Office – Following the children's interest in using building blocks and creating plans, the role play area became a very popular site office, with clipboards and pens, telephones, charts and clothing suitable for a building site. The children were able to draw their own plans, and constructed buildings, using our new magnetic construction set.



Sound and Rhythm Factory – In the creative area, the children filled small tubes with a variety of items, such as rice, beads and pasta, experimenting with the sounds and rhythms that could be made with them. They then decorated the tubes with paint and collage materials and used them to make their own music.



Laura very kindly came to play her clarinet and saxophone and the children were able to join in using their own sound makers.

February – With Chinese New Year upon us, look out for all sorts of Chinese activities next month

If you would like further information, or to register a child for Harbury Pre-School, please contact Bud Jackson, Pre-School Administrator: e-mail enquiries@harburypre-school.org.uk phone 07907 598461 or look at the website www.harburypre-school.org.uk.



Harbury Primary School P.T.A.

PTA Committee

The Spring Term is traditionally quieter for the PTA as we recover from Christmas events and begin to start planning for the busy Summer Term with our popular Beer Walk on Father's Day (21st June) and our biggest fundraiser the Summer Fayre (4th July) which is held on the school grounds.

The focus this term is working with the School to look at computing resources in response to the big change in the National Curriculum. Last year the PTA funded 10 mini iPads for the school to use and this term we are purchasing some more to allow a whole class to be taught using this resource. In addition to this we are also funding a charging trolley for the school that allows the iPads to be stored securely and makes them more portable. The PTA would also like to thank Harbury Parish Council for granting the school £1200 as part of this computing resource project.

The PTA hosted the Church Coffee Morning in the Tom Hauley Room and raised over £200 for the school. Thank you to everyone who came along and supported us and special thanks to our bakers, helpers on the day and to those people who donated raffle prizes.

Come along to our Wine Tasting evening on 8th February which is being hosted by Cana Wines at The Gamecock. Ticket price includes a wine tasting card and a light buffet with proceeds going to the PTA.

Throwing out unwanted clothes and shoes? The PTA has a clothing bank outside the school where items can be brought tied up in a carrier bag and the PTA earns money on the total weight of all items.

Dates for the Diary

Valentine's Thursday Market – 5th February 3.15pm-4pm in the School Hall. There will be our normal array of stalls including books, toys, cakes, sweets and crafts with a Valentine's theme. Book a table for £1.50 (email HarburyPTA@outlook.com).

Cross Country Relay Race – 7th February 10am-11.30am at Harbury Village Hall. The PTA will be running refreshments at this event.

Wine Tasting Evening – 8th February 8pm in The Gamecock. Cana Wines will be hosting some wine tasting accompanied by a light buffet. Tickets £12 (inc £5 wine tasting card). Tickets from Cana, The Gamecock or HarburyPTA@outlook.com.



Village Hall Update

Chris Finch

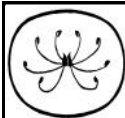
It's official!

The Management Committee can now confirm that building work for the extension phase of the Village Hall will begin in April. Although it will be necessary to cordon off an area at the front and side of the Hall to maintain the essential Health and Safety requirements, it is not envisaged that events programmed for the first few months after work starts will be unduly affected. At present, it is not possible to envisage the likely disruption of events in the main Hall when building work requires the breakthrough of the far wall and the dismantling of the changing room facilities, but this is expected sometime in the Autumn.

Although most of the finance needed to cover the cost of the modernisation will be found from the funds applied for from external sources, it is still essential for the committees to maintain a fund-raising focus, as the day-to-day running costs of the Hall have to be addressed, so that hiring charges can be kept at a reasonable level for all groups. Fortunately, there are many people who support the regular events, such as the New Year's Dance and the recent film night, which all help to maintain a healthy balance for the monthly bills.

Phill King and the Royals played their hearts out for the dance night and there was never a moment without a crowd of dancers on the floor. More recently the film 'What We Did On Our Holiday' drew over 140 people and it is hoped that 'The Hundred-Foot Journey' starring Helen Mirren will also prove to be an attraction to those who regularly turn up to screenings organised by Lana and Geoff. It's a partnership which works well, even when there is a gremlin in the system, as last time when they managed to avoid a potential disaster when our projection system failed to operate and Lana retrieved the County projector which just happened to be in her possession at the time!

All was well that ended well!!



Horticultural Society

Judy Morrall

The Gardeners' Question Time which was the January meeting was a great success. Our panel of three were local hero Bob Sherman ex-Garden Organic; Pat Smith, plants lady and ex-chairman of our society and Maggy Thomson who is a garden guide and volunteer at Upton House and Gardens. All three enjoyed the evening very much and were able to answer some tricky and problematic questions.

We learned that to avoid black spot on roses, hygiene is very important. Clear away the dead leaves from around the base and pick off any whitefly or similar bugs. You can spray with water with a drop of washing up liquid. Garlic planted beneath the roses does not make any difference at all despite lots of garden advice given by some so-called experts. Gillian's *Garrya Elliptica* caused scratched heads due to its reluctance to bear the long catkins. The consensus was to wait and see. Bay trees that have grown very tall can be hard pruned and they soon bounce back. I have one which is about 18 feet high so I will be giving it a very hard cut back in a couple of month's time.

It is best to remove bases of trees that have been cut down to eliminate the dreaded honey fungus. Do not dig sandy soil in the Autumn but we do not have much of that in the village. Leaf mould is one of the best sources of nutrient for the soil as it improves structure and is best spread and dug into the soil in Autumn. Manure which is high in potash is best dug into the soil in Spring.

Pigeons are a menace and are best kept off vegetables and salad crops with netting. I also put CDs on poles which works in the short term as the sun dazzles the birds. Camellias in pots need ericaceous soil and need to be watered well in Summer to promote new buds. Best in a sheltered spot too. Plants for a shady north facing spot were discussed: ferns are an option but the hydrangea varieties are also good and do not seem to mind the shade.

Clematis pruning advice is that once they have flowered in the Spring (and some Summer ones) prune back to almost the base. Even the evergreen varieties can be hard pruned after flowering. You really can't kill them off they just need a bit of TLC. To avoid potato blight grow a resistant variety such as Blue Danube which you can get from Thomson and Morgan. If it does happen just cut back the foliage. Slugs which are a menace are best drowned, but it seems a waste of good beer! Egg shells, copper bands and coffee waste do sometimes work. Kathleen cuts the slugs in half or you could go out at night with a torch and collect them and drown them later. Nematodes are a good option and organic too.

Favourite gardens of the panel include many that we have visited. Too many to mention but a firm favourite was John Treasures' garden in Herefordshire, Stockton Bury Gardens and Wollerton Old Hall Gardens in Shropshire. Many more questions were addressed such as fruit pruning and hygiene in the greenhouse. Many laughs were had and everyone who attended thoroughly enjoyed the evening. I shall be looking forward to no potato blight, fruit on my quince tree and parsley germinating....watch this space! I found out later when I was at a coffee morning at Upton that it was actually Maggy's birthday on the 6th. I did take a small thank you gift as she would not have any expenses for travelling from Priors Marston.

Maggy also volunteers at Canons Ashby and she will do an evening tour of the Elizabethan gardens there in the Summer. I shall arrange a date with her in due course. I have finalised the two day trips and will be taking names at the February meeting. The first trip is on Thursday 11th June when we will leave Harbury at 9.30am to go to Croome Court near Worcester. This is a superb National Trust property which is undergoing many renovations but the Capability Brown gardens are just fantastic. There is a wonderful wild flower meadow and so much more to enjoy. Lunch here, then on to Meadow Farm Garden and Nursery nearby (Rob and Diane Cole's home - he is giving a talk to us in April) for an introduction. Then free flow in the garden and afternoon tea and cake included in total cost of trip.. leave at 5.00pm. The cost for the day is £22. The second trip is on Thursday 16th July and we will be spending the whole day at Trentham Estate near Stoke on Trent. These gardens have undergone a stunning contemporary revival of the historically important layout and are ranked as one of the finest examples in Europe. Superb planting, a huge lake, a large garden centre and lots of choice for eating. Depart from Harbury at 9.00am and return from Trentham at 5.00pm. The cost of this trip will be £22.50. Both of these trips are excellent value and if anyone is interested, give me a ring; you will be most welcome to join us.

The snowdrops are now making a very welcome appearance in our gardens and here are a few places where you can see collections etc in February. Evenley Wood Garden near Brackley on the A433 will be open on the 8th, 12th and 15th from 1.30pm. The cost is £5 and refreshments are available. Coton Manor near Guisborough (post code NN6 8RQ) is open from 21st February to 8th March from 11.00am to 4.00pm and the cost is £3.50 with food available. Nearer to home, Hill Close Gardens in Warwick are open on 14th and 15th from 11.00am to 4.00pm and entry is £3.50 with refreshments available too.

Near to Cheltenham is the home of the Elwes family who have been breeding snowdrops for many years. Colesbourne Park on the A433, (post code GL53 9NP) will be open on 21st, 22nd, 28th February and 1st March from 1.00pm to 4.30pm and entry here is £7.50 and there is a tea room. Between Cirencester and Tetbury, Rodmarton Manor will be open on 8th, 12th, and 15th from 1.30 to 4.30pm and entry here is £5. I do hope that you are able to visit at least one of these places to see carpets of snowdrops at their best.

The next meeting after our February one is on Tuesday 3rd March in the Tom Hauley room at 8.00pm. The speaker making another welcome return will be Adrian James who will be talking about Bodenham Arboretum through the seasons. We went on our first day trip there last June so it will be another chance to enjoy the wonderful trees, shrubs and plantings. Everyone is welcome and it would be nice to have some more new faces as we did in January. I look forward to seeing you there.





Garden Jottings from Bridge Nursery

Christine Dakin

It might still feel like the depths of winter but there are things to be done to prepare for the growing season. Unfortunately the ground is getting wetter and wetter so you have to be careful not to make too much mess while working outside.

Snowdrops are beginning to appear as are hellebore flowers. Also flowering right now are quince, viburnums and winter jasmine. I did a count of the different plants which were flowering on New Year's Day. There were 10 in the garden and 17 in the unheated polytunnel. Some of the willows are starting to show their catkins, and the coloured stems on willows and dogwoods are bright and cheerful.

Jobs.....

- Remove the leaves of hellebores to help get rid of diseases.
- Prune late flowering clematis e.g. Jackmanii or vitticellas (but not the spring or summer flowering ones.)
- Cut back ornamental grasses to about two inches. The rule is to leave the evergreen grasses but cut the ones that have become straw coloured.
- Seed potatoes need to be placed somewhere light and frost free so they can grow strong shoots before you plant them.
- Cut down the old autumn fruiting raspberry canes.
- Dogwoods (Cornus) should also have the older thicker stems removed later this month. This will encourage the younger, more colourful stems to grow. (One of my pet hates is where dogwoods are trimmed just at the tips so there is hardly any colour in the winter on the stems).
- If you had hyacinths indoors for Christmas you can now plant them outside. It may be a year or two before they flower again but worth the wait.

The daylight is slowly lengthening, spring is on the way!

Bridge Nursery, Tomlow Road, Napton, Tel: 01926 812737

www.bridge-nursery.co.uk

March Edition - Harbury & Ladbroke News

Adverts to: 31 Binswood End, Harbury or e-mail to advertising@hlnews.co.uk by 15th February

Articles to: Harbury Pharmacy, High Street or e-mail to articles@hlnews.co.uk by 5.30pm, Thursday 26th February



Before I injured my right knee by falling downstairs at our son's house in Sheffield, Sharon and I, together with our daughter-in-law Sally and granddaughter Megan, enjoyed a bracing walk over Blacka Moor. Lying on the edge of the Peak District National Park this 180 hectare Wildlife Trust Reserve consists of a deeply dissected east facing hillside covered with birch and oak with an under storey of bilberry, heather and bracken. Little did I know that this was to be my last substantial walk for some time. There were no special sightings, just the pleasure of the breeze, grit stone boulders, peaty hollows and views across the city far below.

Thanks for your messages and words of cheer. I appreciated them all. I am managing to get out now with Sharon's assistance but as I write, (26th January), there is no tramping in the mud or sliding down banks. I am having to keep to the straight and narrow. Still, there is more time to read and reflect which is something to savour. Yesterday we were out at Draycote reservoir walking along the dam with the sun on our backs. It lacked power but was welcome nonetheless as it lit up the sailing craft taking part in a series of races. The village of Thurlaston above the north shore is an ancient settlement. It is mentioned in the Domesday Book of 1086 as Torlaueston probably derived from original Saxon Thorlaf's tun (farmhouse). We could just make out some of the Alpacas at Toft Farm towards Dunchurch. Great Crested Grebe seemed to have paired off. Watching them dive and guessing where they would surface was fun.

Today, the U3A Natural History Group welcomed David Brown, County Moth Recorder, to the Tom Hauley Room. He talked to a full house on the subject of Phenology which I suspect we will be hearing a lot more about in the years to come. It means the study of how climate affects our flora and fauna. David talked to us on how climate change is affecting Lepidoptera. Red Admiral butterflies, for instance, are now occasionally over wintering and he reported that a friend had seen one in Warwick on 3rd January. The Speckled Wood has shown how a species on the verge of extinction can make a comeback. It is now one of those insects you are almost certain to see on a woodland walk in summer. It can over winter as a caterpillar and therefore, with warmer winters, adults can be seen as early as March enabling three generations to occur in some years.

A moth with the intriguing common name of the 'Four Spotted Footman' once seen only in Cornwall has now spread east and north. Its larval food plant is lichen and this thrives in clean unpolluted air with a suitable amount of moisture. In 2013 it was first recorded in Warwickshire. David, half in jest, stated that in a few years a species known as the 'Hoary Footman' would

arrive in the county and a second edition of his book 'The Larger Moths of Warwickshire' would be needed to document such newcomers.

Snowdrops are appearing. I learnt today that they are native to countries such as Hungary, Romania and the Ukraine but have been introduced here. Due to bulb collectors they are becoming quite rare in their home countries. Hazel catkins are bursting open to release clouds of pollen in certain sheltered locations and no doubt when the Harbury and Ladbroke News is distributed Daffodils will be blooming. Our average temperatures are creeping up so let us hope that wildlife can adapt but it will not be easy.

Moir Lamont reported Firecrests in her garden early in January. I would appreciate any other special wildlife sightings. Please contact me on 612860 or email j.hancock43@btinternet.com



General Section

Harbury School Kids Club



Thank you Jean

Everyone at Kids Club has said a big thank you and a sad farewell to Jean Herbert, who is retiring at the grand age of 85. For the past 16 years Jean has looked after the children who attend the early morning breakfast club. Jean has been a fantastic member of the team over the years and her cheerful help will be

greatly missed by staff and children alike. The children presented Jean with flowers and cards on her last day.

Jean has promised to pop in and see us from time to time, but she is definitely looking forward to quieter and more relaxing early mornings!

Kids Club is open daily Monday to Friday before and after school, and also most school holidays and teacher training days. For more information call Lynn Hill: 07702 898171.

Lynn Hill



The John Ridgley Tree of Light

Harbury Charities would like to thank all those who donated to the Tree of Light this year. A total of £250 was raised all of which will be used to benefit the children and young people of Harbury.

Over the five years the Tree of Light has been run in excess of £1800 has been raised. Among others, we have been pleased to help The Duke of Edinburgh Award scheme, Guides and Scouts, Harbury PTA, as well as various playgroups and individuals.

Thank you for your help.

Gordon Bennett



Harbury Heritage Room

We were changing the displays in the Heritage Room the other day, when we came across a folder of work from 1984. In it were drawings of Sussex Cottages in Vicarage Lane carried out by Class 10. These cottages were going to be demolished, and the children were rather incensed! They decided that it would be a good idea to record the occupants' memories of the place, and also to try to prevent the demolition. They wrote to Avoncroft Museum for advice, and even the District Council! Here is part of Maurice Ceney's reply to the questionnaire sent to him by the children.

'When we first moved in to Sussex Cottages, we had to fetch the water in buckets from a cold water tap outside the front door, there was one tap to the three cottages, and when the winters were very hard it used to freeze up. The toilet was at the top of the back yard, no water toilets in those days. There was also a wash house just across the yard, this had a brick built copper in it with a fire underneath it. On wash days my wife had to light the fire in order to get the water to boil so she could do the washing. There was no central heating either we had an open coal fire in the living room, but in the bedrooms there wasn't anything to heat them with, so in the winter you had plenty of blankets on your bed and a hot water bottle. The back yard was all covered with ashes, so I had to clear all these away, and cement it from top to bottom. In the kitchen there was a black lead fire place which we used to light sometimes, at the side of this fire place, but in the living room there was a cupboard which used to get hot when the fire was lit. This is where my wife used to air all the washing. I suppose it was the equivalent of the modern day airing cupboard. Over the years I have done a lot of alterations to my cottage and it is quite comfortable for me.'

Just a reminder: the Heritage Room is open from 6.30pm to 8.30pm on the first Tuesday of the month, but there's nothing to stop you requesting a more convenient time, particularly for a group or village organisation.

Nigel Chapman



Harbury Village Library & Biblio's Café

Annual General Meeting 2nd March 2015

Harbury Village Library will be holding its Annual General Meeting, in the library, on Monday 2nd March at 7pm. The meeting is open to anyone who uses the library, or has an interest in it, and we hope that you will come to give us your opinions and suggestions. The library is run for the benefit of its customers and we'd like to know if we're getting it right and learn of any ideas for improvements.

A selection of adult and children's board games is now available. These can either be played in the library or borrowed using your library card. For a trial period there will be no charge for borrowing the games and the loan period will be for one week. Please see more details on our website, where you will also find information on the new books available for borrowing. <http://www.harburyvillagelibrary.org.uk>

There is now a new display area for Local History, Local Interest, Family History and Genealogy which will include books by local authors.

We have recently installed a new hanging system for exhibited art work and a short video on our website shows the current display. There is work by eight local artists with some items just for display and others for sale. Do come and have a look at the paintings during normal library opening times.

Our children's area has been improved and enlarged. Some of the books have been moved and we're hoping to get a second holder for picture books, which will make it easier for little hands (and big ones) to find what they want.

Tunes and Tales had a difficult start to the year, when the first session was cancelled because Carolyn was ill. Laura Harris volunteered to run the second session and did so very successfully. Now Carolyn has returned and everyone is able to enjoy using the enlarged children's area, which is great for marching and dancing around. If you want to hear stories and sing some songs, please join us every Wednesday in term time from 10 to 10.30am.

Finally, a reminder that Biblio's Café is open each Wednesday, Thursday and Friday from 9.15am. to 12 noon and on Saturday from 10am to 12 noon. Come and enjoy a freshly made hot drink and our home made cakes and other baked items.

Sue Wurr



Harbury Pre-School Fundraising Group

Pamper Evening – 5th February

By the time this article is in print we will have had our Pamper Evening. We have been so thrilled by the support of local beauticians and stall holders.

We are planning a super night, with a bar, really brilliant raffle, a chance to relax and catch up with friends and buy a few lovely things.

A full report to follow next month but we hope you enjoyed it too.

Coffee Morning – 7th March

Our mums and grannies are already planning their bakes for the coffee morning on 7th March and we'll have lots of Victoria Sponges for sale this time too. Emma will be there selling her fabulous scarves again and Phoenix Cards will be there too. Any profits from both of these lovely businesses will go to Pre-School too so we are very grateful for their support.

Spare Cupboard Appeal

Does anyone have a spare cupboard that we could store our fund raising "kit" in? We have about 5 boxes and would only need to access it before and after an event (approximately 5 a year). At the moment we are storing this in our car boots, which causes a few problems when we do the weekly shop..... that's the issue with having little ones isn't it – our garages and lofts are stacked full of things for them and we have no room. Can anyone help us?

Dates For Your Diary

Coffee Morning - 7th March in the Tom Hauley Room –

Party Night – 25th April in our Village Hall

Christmas Market Update

Just a quick note of thanks to Mike McBride and the Senior Citizens Benefit Committee for leaving their Christmas decorations up in the Village Hall so that we could use them too. Sorry Mike, we forgot to mention you last time, but the tree and decorations were lovely and really helped create a festive theme. Thank you ☺

Happy February.

Julie & The Fund Raising Team



Village Show

I am pleased to report that last year's amazing team are on track to put on the show again this year. It will be on Saturday 12th September. The schedule is being put together, but be assured that the traditional flowers, fruit and vegetable classes will be unchanged, so you can get your seeds in. The photography subject carried over from last year is "Weather". No shortage of that then! And this year we have acquired the services of some new, local judges. Any queries to Gillian, 614809.

Gillian Hare



Bumps and Bundles

January saw the anniversary of the start of Bumps – it's now four years old! We've had a few new bumps and bundles join us. Sadly we said goodbye to Reverend Annie who always popped in to see us every week and enjoyed meeting all the new babies, she will be missed but we wish her well in her new parish.

Bumps and Bundles is a drop in group for mums to be, baby bundles and tots up to 3, it is a nice place to meet people, have a cuppa and a play for the little ones, on every Tuesday in the room behind the church, from 10:30am to 12 noon.



Kelly and Rosie



Blood Donors

Congratulations to all the brave souls who coped with the late date change, the wild weather and a long wait at a very busy session. Apparently, two team members were off sick. However, your perseverance paid off with the three year record of 113 units collected. Great news. The next session here will be on Thursday 11th June – so at least the weather should be better.

Gillian Hare

Harbury NSPCC Committee

Burns Night – Many thanks to everyone who attended the Burns Night on the 23rd January in the Village Hall. It was organized by Southam Rotary 2000 but they kindly allowed us to organize the raffle and we made an excellent total of £309. It was a fun evening, enjoyed by all.

Ladies' Lunch – Harbury NSPCC Committee are organizing another Ladies' Lunch on Thursday 12th March in the Tom Hauley Room starting at 12.30pm.

Chris Drewett, who lives in Harbury, is coming to talk to us about 'Motor Sport – not just Boys' Toys!' Tickets are priced at £15 with wine or £12.50 without wine and this includes a two course lunch plus tea and coffee.

If you are interested in booking a ticket please ring Elaine Bruce on 614664.

NSPCC Committee

Harbury Energy Initiative

HEI is going corporate. Actually we aren't. We don't have the time for all that off-shore investment and tax avoidance stuff. But we are going to have a logo, which will make us a 'proper' organisation. After an extensive target market exercise and organisational profile analysis that took all of five minutes we are entrusting our future image to Harbury Primary School. They clearly will do a much better job than we can and we are delighted that the children have taken up the challenge to help us. There will be prizes, of course. My honest nature compels me to tell you that we are adopting this symbol of maturity not for any canny branding purposes but because we feel driven (note the tortured pun) to it, as the electric cars are to carry our logo - and at the moment we don't have one.

Car club update

The latest news on the car club is that we have all the agreements in place and in February we will be welcoming the technical people to check out the venue and work out the cabling and complete the infrastructure installation. We are still aiming at a launch date in March or early April. I'll put any exciting breaking news on the 'Harbury News' group Facebook page. How corporate is that!

New solar farm

Some of you will have heard about or even seen the churned up fields off Plough Lane at Bishop's Itchington, where the Southam Solar Farm is being constructed by Belectric and Luminous Energy. Unlike the infamous Deppers solar project, the Southam Solar Farm developer has made firm commitments to the local community and surrounding environment. It should not be an eyesore nor a gleaming roadside distraction, as the plans show it to be well screened. Their proposal involves social benefits to the local community, educational opportunities for local schools and a major effort at improving the local habitats with extensive wildflower plantings and thus blissful birds and bees. If you think that I am being facetious, I am not. This solar farm seems to me to be a fine model of how the industry should be working with local communities. We will also, I believe, have an opportunity to buy shares in the project.

Grants and incentives

There is still some financial help available for people in receipt of certain benefits for insulating your home, installing a new energy efficient boiler and some other measures to cut your energy use to a more affordable level. There is advice available on all this from The Energy Saving Trust. They can be contacted on 0300 123 1234, Monday to Friday, 9am to 8pm and on Saturdays, 10am to 2pm. or online at www.energysavingtrust.org.uk. They can also tell you about claiming Renewable Heat Incentive (RHI) payments. If you have installed any heating system that uses a renewable energy source since July 2009 or plan to do so now, you can apply for a regular RHI payment from the government similar to the Feed-in Tariff payments for

electricity. Renewable technologies include solar hot water panels, heat pumps (such as those installed in Hereburgh Way and Ridgley Way), new wood chip or pellet-fuelled biomass boilers but not, I regret, wearing a thicker jumper or jogging to keep warm. Applying can require some tenacity if you have complications but I am happy to advise on our experience to help you succeed - we failed!

Save by switching

The other thing you can do much more easily these days is switch to a cheaper energy supplier. There are several online services to help this, such as USwitch, Which?Switch, Comparethemarket.com, Moneysupermarket.com and moneysavingexpert.com. There is also an Ofgem accredited site called ukpower.co.uk. You may be surprised at how much you can save. Green tariffs, which encourage the use of renewables, are also available from most companies. Good Energy and Ecotricity are, as far as I know, the only ones that provide 100% 'clean' energy.

**Bob Sherman – Tel: 612277
shermanbob55@gmail.com**

Harbury Carnival – 13th June 2015

This year's Carnival will present a new challenge. We have been advised by the police that we need to close the roads used for the procession (under threat of prosecution if we do not!). We have applied to the District Council for permission to do so and are advised that this will not be unreasonably refused. However, this is the easy part. We will be responsible for providing the necessary 'Road Closed' signs and advising all interested parties of the closures. We are hoping that we will be permitted to operate the closures on a rolling basis, which will leave roads closed for the minimum amount of time. This will hopefully reduce the number of signs that we need to purchase and the number of potential objections.

We are still working through exactly how we will organize all this but what we do know is that we will need some additional help. So,

- Does anybody have (or have access to) 'Road Closed' signs that they would be willing/able to make available to us?
- Would you be willing to volunteer to help us manage the road closures on the day? We need bodies and transport to move the signs around the route.
- If anyone has experience of operating road closures and would be willing to share their experiences, please get in touch.
- Any other help or advice that you can think of would be gratefully received.

Please call either Mike McBride on 612421 or me on 614258 if you can help.

John Broomfield, on behalf of the Carnival Committee

Wonderful Winter Walks

Blow away those winter blues with a bracing walk in the Warwickshire countryside. There is nothing quite like being toggled up in hat, coat and wellington boots and taking the dog for a rambling walk on a frosty morning, or a blustery afternoon before the light begins to fade.

We are fortunate to be surrounded by some lovely countryside and very pretty villages in this area. There are some great local walks along established footpaths, some of which form part of the Blue Lias Rings walks and the Millennium Way. These walks take you through woods, across farmland and to villages such as Harbury, Stockton, Napton and Ladbroke.

This area is known for its fossils, especially ammonites, due to deposits of blue lias clay. This is the same material which has formed the cliffs at Lyme Regis in Dorset. The Blue Lias Rings walking guides are complete with easy to follow navigation, maps and notes on historical points of interest. You might just come across a fossil yourself.



Several walks go from The Bell Inn, Ladbroke and take in some of the beautiful architecture in the village including thatched cottages and All Saints Church, before heading out across farmland, along bridleways and passed woodland. As part of the Blue Lias Rings walks, there are two circular routes, one of which is 5¾ miles and the other 8¾ miles, both of which start and end at The Bell. Here you can leave your muddy boots in the

porch and warm up with a beverage or spot of lunch by the fire. Our menu includes freshly baked baguettes with fries or soup (from £5.75), fresh seasonal dishes as well as pub classics such as fish & chips and pie of the day. We also offer a Prix Fixe Menu during the week – 2 courses £13.50 / 3 courses £16.50.

For more information on local walks and printable guides visit **thebellinnladbroke.co.uk/walks**. The Bell Inn welcomes walking groups. You are welcome to leave your car at the pub while you head off on your

walk. By pre-ordering your lunch, we can ensure it is ready for you on your return. Our restaurant is warm and comfortable and can seat large groups, as well as offering more intimate dining for smaller groups. Dogs are welcome in the bar.

So remember, “there's no such thing as bad weather, just the wrong clothing” (Billy Connolly) so get yourself toggged up and head over to The Bell Inn!

Please advertisement for contact details.

Ruth Griffiths

Be Aware when Using a Cash Machine!



These two items were placed on the cash machine at the Co-op in Long Itchington recently.

The item on the left is commonly known as a Lebanese loop and is placed over the slot in which a bank card is placed. The unsuspecting user then places their card in the machine and enters their pin number. The item on the right is placed on the upper underside of the cash machine. It is an adapted mobile phone with a camera encased in metal housing designed to look like part of the cash machine. The small black circle that you can see is the camera lens and records the unsuspecting user entering their pin number.

When the user finishes using the machine and attempts to recover their bank card the Lebanese loop stops the card being ejected, the idea being that the victim enters the shop to let them know the machine won't return the card. In the meantime the offenders return to the machine and recover their 'tools' along with the bank card and recording of the pin number.

Fortunately on this occasion the person using the machine was switched on and managed to remove the offending items and recover their bank card.

A reminder of the crime prevention advice given for use of cash machines.

- Don't use ATMs that appear visually different from the norm, especially around the card slot. Have extra things been added onto the surfaces of the ATM? (Tell the bank or shop about your suspicions immediately).
- If in the company of a friend/partner, have them stand close to you at the ATM to help block views of the keypad.
- Stand outside any 'privacy boxes' painted on the footway until it's your turn to use the ATM.

- Be aware of somebody sitting in a car near to the ATM and be very aware of the people standing behind you and off to the side that are close enough to see you input your PIN.
- If you are at all concerned about the people near you, walk away and come back later or use a different machine. Trust your instincts!
- Don't use your mobile phone during a transaction. Be totally focused on the matter in hand. Try not to be distracted by incidents around you.
- Be suspicious of people talking to you and of people trying to assist you with your transactions, no matter how friendly they appear to be.
- When inputting your PIN always stand up close to the ATM and cover the keypad with your other hand to stop your PIN being seen by people and cameras.
- If you are withdrawing cash, place the cash and your card into your pocket or bag immediately and walk away. Don't stand at the ATM counting it.

PC 1638 Jamie Cramp, Southam SNT Beat manager

(t) 01926 684984

jamie.cramp@warwickshire.pnn.police.uk



LETTERS TO THE EDITORS

Dear Editors

I have been completely overwhelmed by the amount of cards and letters received following Dan's death and by everyone who has taken the trouble to share memories of Dan with me. I have had so many hugs and cuddles, offers of help and 'call in anytime for a chat and a cup of tea'. Dan loved Harbury and being involved in bringing the community together and he always said that Harbury was a caring village and you have all proved him right and I don't have enough words to thank you for showing so much love and care.

I have very special thanks to give to Kathleen Ellis and Anthony Allcock (and their families) for being on call night and day during this very difficult time for me and it is their love for both Dan and me that has kept me going during Dan's stay in hospital and the days after. Once again, my heartfelt thanks and love to everyone.

Julie Killian

Dear Editors

I would like to pass on my sincere thanks to all friends and neighbours who attended Peter's funeral. My family and I were comforted by all the lovely cards and words of encouragement at this time.

Special thanks to Gill, John and helpers whose guidance and assistance was greatly appreciated, also to Mary at Mugleston's for the lovely flowers.

Evelyn, Jill, Paul, Ann, Lucy & Holly, David & Lynn Hagan

Dear Editors

We would like to take this opportunity to say a really heartfelt thank you to the many amazingly kind people in the village who have encouraged and helped us since our son Xander collapsed and nearly died whilst training for the Berlin marathon last July. Delicious meals have appeared as if by magic when we are at home, our garden has been tended with the most expert care, and our house looked after whilst we've been in London with him. We've received lovely cards, letters, emails, texts and telephone messages, and both Xander and we have been upheld by so many people's prayers which have made a huge difference to our lives.

Thank you all enormously, we are profoundly grateful for all the care and love we have received, it has been and remains wonderful! We hope that many of you will meet him as he's coming out of hospital to live with us at home in April.

With very best wishes,

John and Sara Bennett

Dear Editors

The coffee morning held just before Christmas for the Multiple Sclerosis Society raised £370. The raffle, cakes etc and donations were very much appreciated. We thank everyone for supporting it. A cheque for the above amount was sent to the MS Society.

Again, thank you.

Doreen Bloxham and Shirley Crossan

Dear Editors

On Saturday 7th March my daughter Hayley is holding her 6th Annual Charity Ball – "My Dad's Do", at the Chesford Grange Hotel in aid of "Brain Tumour Research" and the "Aylesford Cancer Unit" at Warwick Hospital.

It's a superb night of fun, music and laughter and includes a drinks reception at 6.30pm followed by a three course dinner, coffee and chocolates plus

an 11 piece band for dancing, a great comedian to entertain you and a late night DJ (until 2am!).

Already she has raised over £35,000 with lots of hard work and the support of some wonderful people.

Would you like to join us and help support these two great charities even more as well as having a fantastic evening? We would love to see you!

If so, please contact Hayley for details on 07702 683788 or Hayley@green761.freemove.co.uk

Many thanks.

Sylvia Green

Dear Editors

Just before Christmas my son left a rucksack in Harbury park. It was a Leamington FC bag, and had tracksuit and water bottle inside. Did anyone pick it up?

Thank you.

Donna

dmh120670@yahoo.co.uk

HARBURY & LADBROKE NEWS

- ◆ Are you interested in our village community?
- ◆ Do you have a few hours to spare each month?
- ◆ Would you like to be part of a team producing a successful magazine for the villages of Harbury & Ladbroke?
- ◆ Do you have a good understanding of the written English language?

The Committee is looking to recruit additional editors to assist with the production of the magazine. The editorial team meets for about two hours towards the end of each month to edit and proof articles submitted for publication.



If you think this might be for you and you would like to know more, please contact John Holden on 612155.



Telephone: (01926) 632994

Mobile: 07985 256009

- Driveways - Block Paved - Tarmac
 - Patio Design and Construction
 - All Hard and Soft Landscaping
 - Fencing and Brickwork
 - Excellence as Standard
- Professional Qualified Local Tradesman

www.warwickshiregroundworks.co.uk



Pilates



BodyJam



BodyBalance



ZUMBA

PAYG fitness classes in Harbury, Southam,
Cubbington, Warwick & Radford Semele.

Personal Training also available.

Call 0789 0671869 or visit the website:

www.warwickshirefitness.com

ADVERTISING IN THE HARBURY & LADBROKE NEWS

EMAIL: ADVERTISING@HLNEWS.CO.UK

TEL: 01926 612155

	¼ PAGE	½ PAGE	FULL PAGE
1 MONTH	£10.50	£19.00	£33.50
3 MONTHS	£28.00	£49.00	£89.00
6 MONTHS	£51.00	£90.00	£165.00
12 MONTHS	£94.00	£168.00	£315.00

Adverts with payment to:
Gill Holden,
31 Binswood End, Harbury
by the 15th day of the month

*Cheques payable to 'Harbury & Ladbroke News'
or BACS details upon request*

Health First, Daventry Street, Southam

- ✓ **CHIROPODISTS / PODIATRISTS** registered with all major Health Insurers and Health Professions Council
- ✓ Former NHS specialists with over 25 years experience
- ✓ Daytime, evening, and Saturday appointments available
- ✓ Treatment plans to CURE even longstanding problems
- ✓ Insoles / orthotics / nail surgery / diabetic reviews
- ✓ Able to diagnose and treat extensive range of problems:

COLLAPSED (FALLEN) ARCHES

LEG LENGTH DIFFERENCE

EXCESSIVE PRONATION

KNEE / HIP / BACK PAIN

INGROWING TOE-NAILS

PLANTARFASCIITIS

METATARSALGIA

ATHLETE'S FOOT

**01926
811272**

FREE PARKING
NEARBY WITH
EASY
GROUND
FLOOR ACCESS

DEFORMITIES

HEEL PAIN

TENDONITIS

INFECTIONS

VERRUCAE

HARD CORNS

SOFT CORNS

NEUROMAS

HARD SKIN

CALLOUSES

FISSURES

HEEL CRACKS

BUNIONS

ARTHRITIS

FOOT ULCERS

Further information at
www.healthfirstsoutham.co.uk

Class Timetable

Mon		Baby Ballet 18mths+ 9.30am - 10.15am		Adult Tap (Beginners) 7.30pm - 8.30pm	
Tues		Studio 1 Studio 2		LoveDance 14yrs+ (Commercial, Street Jazz, Contemporary) 7.00pm - 8.30pm	
Weds		Mini Movers (0-5 yrs) 10.00am - 11.00am		Pointe Work Class 8.30pm - 9.00pm	
Thurs		Zumba Over 50's 10.00am - 11.00am		GCSE Dance Yr 10 & Yr 11 7.45pm - 8.45pm	
Fri		Mini Movers 0-5yrs 10.00am - 11.00am		Zumba 7.45pm - 8.45pm	
Sat		Musical Theatre 4-8yrs 9.00am - 10.30am		Zumba 7.45pm - 8.45pm	

Prima Ballerinas 3-4yrs 4.00pm - 4.30pm	Pre-Syllabus Ballet 5-6yrs 4.30pm - 5.15pm	Pre-Primary Ballet 6-8yrs 5.15pm - 6.00pm	Primary Ballet 8-9yrs 6.00pm - 6.45pm	Grade 5 Ballet 15 yrs 6.45pm - 8.00pm	GCSE Dance Yr 10 & Yr 11 7.45pm - 8.45pm
Grade 1 Tap 10-11yrs 4.30pm - 5.15pm	Grade 2 Tap 5.15pm - 6.00pm	Grade 3 Tap 11yrs+ 6.00pm - 6.45pm	Grade 4 Ballet 15 yrs+ 6.00pm - 7.00pm	Adult Tap (Inter) 6.45pm - 7.45pm	Zumba 7.45pm - 8.45pm
Ballroom & Latin (all ages) 5.15pm - 6.00pm	Grade 4 Ballet 15 yrs+ 6.00pm - 7.00pm	Grade 2 Modern 13 yrs+ 7.00pm - 7.45pm	Adult Ballet (no exp req) 7.45pm - 8.45pm		
Funk / Modern 7-10yrs 5.45pm - 6.30pm	Grade 2 Ballet 11-13yrs 6.30pm - 7.15pm	Grade 1 Modern 11yrs+ 7.15pm - 8.00pm	Grade 3 Ballet 14yrs+ 8.00pm - 8.45pm		
Boys Street Dance 5.45pm - 6.30pm	Grade 4 Modern 14 yrs 6.30pm - 7.15pm				
Little Tappers 3-5yrs 4.45pm - 5.15pm	Pre-Primary Tap 6-8yrs 5.15pm - 6.00pm	Primary Tap 8-10yrs 6.00pm - 6.45pm			
Grade 3 Ballet 14yrs+ 4.30pm - 5.15pm					

Love Ballet
Dance Company

LoveBallet Dance Studios
Insight Park, Southam CV47 1NE
lorraine@loveballet.co.uk 07921 853773
www.loveballet.co.uk



THE BELL INN

COUNTRY PUB & DINING

Enjoy a fabulous 2 course meal in our lovely country pub for just £13.50

(Prix Fixe Menu available lunchtimes Tues to Fri, and evenings
Tues, Wed & Thurs - 2 courses £13.50 / 3 courses £16.50)



Fresh, seasonal food for every day and every occasion

Real Ales | Handpicked Wines | Fixed Price Menu | Mouth-watering Steaks
Vegetarian & Gluten Free Options | Traditional Sunday Roasts

A warm welcome awaits you

Recommended on  **tripadvisor** ^{Alastair} **Sandday's**

THE BELL INN, LADBROKE, SOUTHAM CV47 2BY
TEL: 01926 811 224 WWW.THEBELLINNLADBROKE.CO.UK

Carpets, Rugs and Upholstery Professionally Cleaned

- Free quotes & advice
- Deep cleans & freshens
- Stain removal
- Stain proofing
- Fully insured
- 7 day service



All Square Cleaning

Also:
End of tenancy cleans
Deep cleans
Odour control
Decontamination
Dehumidification

Contact Neil

01926 492696 or 07557 944461
neilworsnop@allsquarecleaning.co.uk

FENCES : TREES



All types of fencing and gates

Tree felling and reduction

Hedge laying and trimming

Patios

Seasoned logs available

**Call Adrian Dollar on
01926 817077 or
07914 623989**

Qualified and Insured

HANSONS
Auctioneers and Valuers

FREE ANTIQUES VALUATION DAY



Thursday 12th February, 10.00am - 4.00pm

St Francis of Assisi Church Hall

110 Warwick Road, Kenilworth. CV8 1HL

Meet Charles Hanson's team of Valuers and

Kate Bliss - Jewellery and Silver

Bring along your Antiques, Jewellery, Coins, Textiles, Ceramics, Books and Collectables

Items may be consigned into Hansons Antiques and Collectors Auctions

Free home visits for larger collections

For further information please contact Mrs Carol Jones

Hansons Warwickshire Area Manager on 07802 839915
service@hansonsauctioneers.co.uk www.hansonsauctioneers.co.uk

INSIDE HOMES - WE SELL HOMES IN HARBURY

Based minutes away, we know the village well, which means we can sell the benefits of both your home and Harbury. We believe we can sell your home faster and for a higher asking price than other Estate Agents.



**CALL US TODAY TO FIND OUT HOW ON
01926 81 82 88**

Or visit: www.insidehomeslimited.co.uk
Email: support@insidehomeslimited.co.uk

 **insidehomes**



Simons Systems



Available for all your computer requirements including:
PC's & Laptops, New & used systems, Repairs & upgrades
Virus/Malware Removal, Data back & Windows re-installation
Upgrading memory/Hard drives/Rom drives/Graphics, etc
Internet - modems fitted, wireless, networking.

Any repairs or computer problems. ***No call out charge***

T: 01926 316 119 E: sales@simons-systems.co.uk
M: 07751 811 097 W: www.simons-systems.co.uk

Spa Roofing Co.

(Roofing Specialists)

**For all Roofing, Guttering and
General Repairs**

(Free Estimates)

All Work Guaranteed

Call: 07876 508032

Harbury Village Club & Institute

is inviting tenders for the maintenance of
the grounds and grass cutting

Please submit your tender in writing

to the Secretary by

Monday 16th March 2015

Contract to commence April 2015

For further details and spec sheet
please contact the Secretary or a
committee member

Tel: 612498



**Kenilworth
Properties Ltd**
BUILDING CONTRACTORS



**Extensions-Alterations-Refurbishment-New Builds
Bespoke Kitchens and Bathrooms
Design-Planning & Building Regulations Application
Service available.**

Web: www.kenilworthproperties.co.uk

Email: tony@kenilworthproperties.co.uk

Telephone: Harbury 612260 Mobile: 07779 096104

Harbury Business Centre, Church Terrace, Harbury, Leamington Spa CV33 9HL



Mon – Thurs
6 – 11 pm

Fri 5pm –
Sat – Sun 12pm –

Chapel Street, Harbury – 01926 258859

*A conversational pub,
with a promise of no TV screens*

4 Cask Ales, with regular guest
Camra member discount

More than 25 wines always available by the
glass, with regular specials. All supplied by
Cana Import

Wednesdays

Steak & Wine.

Our 8oz Rump from
Rumps of Warwick
£10

A bottle of wine for
the price of two
large glasses

Sunday Lunch served from 12 to 4pm
(regularly fully booked, reservation advised)

Quiz on the last Sunday of each month.



Mother's Day 15th March

Book early to avoid
disappointment.

Friday Fish & Chips

Peroni Beer
Battered Fish & our
famous chunky
chips for just £5.00
from 5-7pm.

www.thegamecockharbury.com



TheGamecockHarbury



@GamecockHarbury



- Regular maintenance: Lawns cut, leaf clearance, hedges trimmed or shaped.
- Fence repair or installation.
- Turfing to repair a lawn or install a new lawn.
- Borders and beds: removed, improved or created.
- Trees and shrubs: Planted or pruned.
- Planters: We can supply a range of planters.
- General garden clearance.

**All aspects of garden maintenance including:
Regular maintenance or one off jobs.**

**For all your outdoor chores, call your reliable,
friendly gardener:**

Richard Everett
07923 167420 or 01788 567774
info@leafyservices.co.uk

Drop Dead Gorgeous Curtains



Beautiful Bespoke Curtains, Cushions and
Roman Blinds. All made to measure and sewn by hand.

I can supply a range of fabrics and poles or I'm
happy to work with yours.

Free measuring and free fitting.

I also take on curtain alterations and restorations
big or small.

Please call Sharron for friendly and helpful advice or to
arrange a free quote on:

01926 612226 or 07760 395805

Email: dropdeadgorgeouscurtains@gmail.com

Or visit my website
www.dropdeadgorgeouscurtains.co.uk



A Member of the Alliance of Private Sector Practitioners

Jackie Biddle

Healthy Feet are Happy Feet

Foot Health Practitioner



Dip CRP MPS Pract
CRB Checked



Home Visits Telephone

T: 01926 612503

M: 07872 907429

Phil's

Plumbing and Heating

**Fully Qualified
and
Insured Plumber**

Bathrooms, Central Heating & showers

I am a locally based plumber
offering very competitive rates
on any plumbing or heating job.

No job too small,
Please give Phil a call

Call Phil

Daytime: 07971 046392

Evening: 01926 400746

Email: philmunday@hotmail.co.uk

Bishops Tachbrook
Leamington spa



Need home and contents' insurance? Reynolds Insurance holds the solution!

We offer impartial professional advice on all of the insurances we offer, in our Southam office or over the telephone. Same experienced, friendly staff for more than 20 years, who are on hand to give you competitive quotes across the market and continued assistance and support whenever required.

Competitive quotes also available on:
Motor • Tradesmen • Shops • Offices

Call Deb or Sue on 01926 812574

Reynolds Insurance Services Limited | 5 High Street | Southam

Email: enquiries@reynoldsinsurance.co.uk

Reynolds Insurance Services Ltd
is regulated by the
Financial Conduct Authority.

reynolds insurance
SERVICES LTD
Independent Insurance Advisers



Helping Hands
The Home Care Specialists
Est. 1989



Do you need a Helping Hand?

If you are looking for an **alternative to residential care** or extra support for those everyday tasks that are becoming difficult for you or a loved one – then we're here to help - **from 30 minutes per week to Live-in Care.**

Our **Harbury & Ladbroke care team** has been providing award winning quality homecare since 1989 and can help with: personal care, housekeeping, help getting around or even to provide a break to an existing family member or care-giver.

To find out how we can help you,
call: 01926 680 763 or
visit: www.helpinghands.co.uk

Nifty Needle Curtain Shop

1 Banbury Street, Kington

Made to measure curtains and blinds.

Free measuring service.

Nifty Nik Naks Gift Shop

For interesting presents

01926-641741 email: niftyneedle@fsmail.net

Open: Tuesday - Friday 9.00am - 5.00pm

Saturday 9.00am - 2.00pm

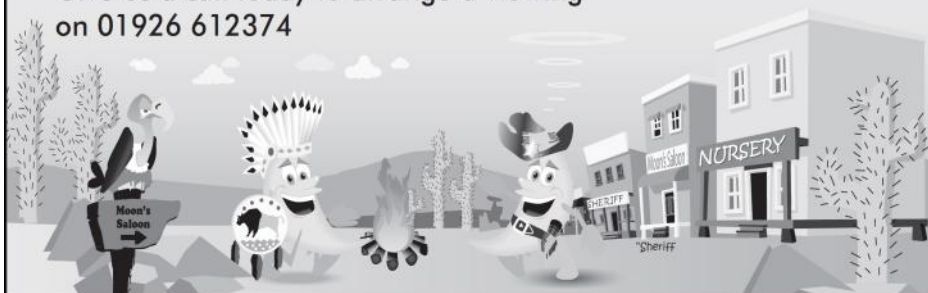
INTRODUCING BANANA MOON DAY NURSERY HARBURY

BANANA
moon
DAY NURSERY



- Offering childcare from 7.30am – 6.30pm for children from 3 months to school age, 51 weeks a year.
- Breakfast & two home cooked meals a day.
- Full and half day sessions available.
- Sibling discount.

Give us a call today to arrange a viewing
on 01926 612374



Banana Moon Day Nursery, Ivy Lane, Harbury, Warwickshire CV33 9HN
Telephone: 01926 612374 bananamoon-harbury.co.uk



A COMPLETE TREE SURGERY AND HEDGE CARE SERVICE

- QUALIFIED PROFESSIONALS
- STUMP GRINDING & LOGS
- COMPETITIVE PRICING
- FULLY INSURED

☎ 01926 332229

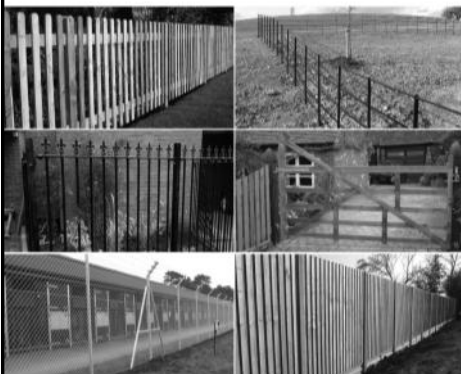
☎ 07411 520578

www.tarzantreeservices.co.uk



Roger Frogley & Sons Fencing Ltd
30 years of quality service

*High quality domestic, industrial and agricultural fencing
offering a service second to none,
competitively priced – clean, efficient, reliable.*



t. 09790 652145 & 01926 815863
frogleyfencing@gmail.com | www.frogleyfencing.co.uk



LOCKE & ENGLAND
AUCTIONEERS & VALUERS Established 1834



Downsizing?

Valuation, collection & auction service
of individual items through to complete
property clearances. Call for a free no
obligation collection quote or
email info@leauction.co.uk

COLLECTION SERVICE

12 Guy Street, Leamington Spa, CV32 4RT

01926 889 100

www.leauction.co.uk



Why you should buy your new kitchen or bathroom from Modern Homes!

- With over 46 years of trading we are the longest established specialist in your area.
- Predominantly British Manufactured products
- Family run 'local' business
- Personal recommendations
- Large kitchen and bathroom showroom
- Full installation service with employed fitters
- Value for money... We offer styles to suit all tastes and budgets
- Kbsa members offering Consumer care protection

www.modernhomesleamington.co.uk Email: info@modernhomesleamington.co.uk

01926 883338

**Modern Homes, 37 Longfield Road, Sydenham Estate, Leamington Spa CV31 1XB
(between Wilts and CAS)**



The Crown Inn *at Harbury*

NEIL AND MICHELLE

welcome you to the Crown Inn, Harbury

TWO FOR ONE

Due to the successful launch of our two for one menu, we are extending this through February with a new exciting menu.

When 2 people dine together and each purchase a main course meal, the second lower priced meal is

FREE

Monday to Thursday - 6.00 to 8.30pm and Friday - 6.00 to 7.30pm

BOOKINGS ONLY

~~~~ On presentation of this advert on the evening ~~~~

BREAKFAST

Is now being served Friday and Saturday 9.00 to 11.30am

Sunday 9.00 to 11.00am

Fully refurbished restaurant, friendly atmosphere, with disabled and baby changing facilities.

Now showing Live Sky and BT Sports.

LIVE MUSIC EVERY SATURDAY NIGHT

Food served

Monday to Thursday 5.00 to 9.00pm

Friday and Saturday 1.00 to 9.00pm and Sunday 12.00 to 8.00pm

The Crown Inn, Crown Street, Harbury, CV33 9HE - Phone 01926 614995

www.crowninnharbury.co.uk Email: info@crowninnharbury.co.uk



www.facebook.com/thecrowninn

Kleinmann Properties

Our success is built on our reputation and customer recommendation

Sales Lettings Financial Services
Serving Harbury & Surrounding Area

- Free no obligation valuation
- A Confidential, Personal and Professional Service Guaranteed
- All viewing accompanied – by appointment only
- Excellent Rates
- Lettings – Fully managed or tenant finding service

Telephone: 01926 612463

Mobile: 07710 040494

Email: enquiries@kleinmannproperties.co.uk

Web: www.kleinmannproperties.co.uk

Domestic Gas Services



**CENTRAL HEATING, INSTALLATION, SERVICE, REPAIR AND
POWERFLUSHING....the next best thing to a new heating
system!**



Are your radiators cold at the
bottom?
If so they need
POWERFLUSHING!

POWERFLUSHING removes the build
up of sludge and sediment in your
radiators which is making them less
effective therefore *costing you
money!*

POWERFLUSHING will maximise the
efficiency of your radiators ensuring
you get the very best from your
heating system therefore saving you
money!



**For all your heating requirements please call
Martin Evans on 07980 740720**

Karena Ellis-Greenway
MRICS, RICS Acc.Med., BSc Hons

green
chameleon



M: 07796 575716 T: 01926 612121

E: info@greenchameleon.net Web: www.grechameleon.net

• Chartered Surveying • Valuation • Mediation • Letting & Management

The Green Room, 31 Manor Road, Harbury, Works CV33 9HY



RICS

WARWICKSHIRE CHIMNEY SWEEPING SERVICES

**LOCAL INDEPENDENT SWEEP. PROFESSIONAL AND FULLY INSURED SERVICE.
SWEEPING CERTIFICATES ISSUED**



BOB CHURCH 01926 614366 MOBILE: 07530 604451

CLEANER CHIMNEYS ARE SAFER CHIMNEYS



Outside Cleaning Direct

professional external surface
restoration and maintenance for
domestic and commercial
properties.

freephone: 0800 7723411

mobile: 07714 791371

email: info@outsidecleaningdirect.com

Pressure cleaning services in Harbury

Block paving cleaned, re-sanded and sealed

Professional restoration service:

Patios - Decking - Drives

Walls - Fascias - Fencing

Gutters Cleaned from £30

**We also offer a range of sealants and treatments to help protect your
surfaces for longer.**

Call OCD for a free quote

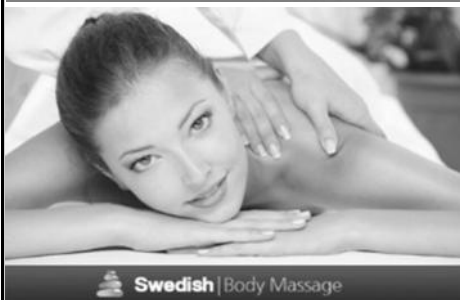
Ed's Piano & Keyboard Tuition

- Do you want to learn keyboards with a qualified teacher with a passion for music?
- Lessons available for all ages on piano or digital keyboard.
- Whether you want to take your ABRSM Grade exams or just learn for fun, I can help you on your way.
- Fully CRB checked
- Competitive rates and flexible timetable with lessons tailored to your own individual learning style and needs.
- Give me a call to discuss your musical future!



ABSOLUTE BEAUTY

Tel Rosina on 01926 612403 - www.rosina.moonfruit.com



Ladies, for all your beauty/holistic needs also hair make-overs for that special occasion.

Spa Jacuzzi Pamper Parties for all ages.

Contact Rosina (01926) 612403 or
07762 702102

SEASONAL HARDWOOD LOGS HALF THE PRICE OF COAL



**BARN STORED
(AS GOOD AS KILN DRIED LOGS)**

**£70 PER BAG
one off bag charge**

*** Free Delivery * AND * Same Day Delivery ***

Dropped at nearest point

Large pickup loads - price on application

**Call William on
07946 319908 or 01926 257571**