

Harbury & Ladbroke News

Is published monthly and reflects all aspects of local life.

February 2014

No.479

Editorial Office

☎ 612155

Articles to

Harbury Pharmacy, High Street

Email address

articles@hlnews.co.uk

Advertising Office

31, Binswood End (☎ 612155)

advertising@hlnews.co.uk

Distribution Manager

49, Mill Street (☎ 612009)

distribution@hlnews.co.uk

Inserts by prior arrangement

☎ 612009

IN THIS ISSUE

Page

EDITORIAL	2
HARBURY DIARY & REFUSE ROTA.....	2 - 4
FROM THE RECTOR & CHURCH NEWS	5
LADBROKE NEWS	9
HARBURY PARISH COUNCIL	18
CLUBS & SOCIETIES	20
EARLY YEARS & SCHOOL.....	31
VILLAGE HALL UPDATE	37
GARDENING & NATURE	38
GENERAL SECTION	42
LETTERS TO THE EDITORS	56

Editorial Team

John Holden - Chris Finch - Marian Millington - Janice Montague
Ralph Swadling - Jackie West

*The views of contributors are not necessarily those of the Editorial Team
The Editors reserve the right to amend articles as they see fit.*



Editorial

This month we can report on the return of some favourites and new opportunities. The Ladbroke Rockers return with a gig in their Village Hall on the 8th March. Also the Harbury Games will be staged again on the 28th June, with the make-up of the teams being widened to make it easier to get a team together. Also in Harbury, the Village Show will be held on the 6th September and it is not too early to start planning your entry!

Then there is a new opportunity for youngsters aged between 7 and 11, to develop their acting skills with the formation of the Harbury Theatre Group Juniors. Details of all these events can be found in the magazine.

There is also a meeting to initiate the working groups to draw up the Neighbourhood Development Plan being held on the 20th February in the Farley Room at the Village Hall.

Finally we extend our sympathies to the family of John Wyatt.

Harbury Diary

FEBRUARY 2014

- Sat 8 Coffee Morning, 10.00am-12.00 noon, Tom Hauley Room
in aid of Twinning Association
Harbury Village Cinema presents 'Philomena', doors open
6.30pm, film starts 7.00pm (tickets in advance)
- Sun 9 4th before Lent**
Holy Communion, 8.00am
Sung Eucharist, 10.30am
Zumba, 9.00am in Village Hall
- Mon 10 Upholstery Classes, 9.15am in Farley Room, Village Hall
- Tues 11 Pilates, 9.30am in Village Hall
Holy Communion, 7.30pm
- Wed 12 Wednesday Walkers, Stratford Greenway (4¾ miles flat), meet
9.40am, Village Hall Car Park
Pleasant Pastimes, 2.00-4.00pm, Tom Hauley Room
Ballroom Dancing, 7.30pm, Village Hall
- Thurs 13 Holy Communion, 9.45am, followed by coffee
Slimming 4 All, 12.00-1.00pm, Farley Room, Village Hall
Warwickshire Young Voices, 6.30pm, Village Hall
Windmills Nursery, Indulgence Evening, 7.30-10.00pm in
Harbury Village Club

- Thurs 13 Harbury W.I. Member's Evening, 7.45pm, Tom Hauley Room
- Sat 15 Coffee Morning, 10.00am-12.00 noon, Tom Hauley Room
in aid of Harbury Toddler Group
ADVERTS FOR THE NEXT ISSUE TO 31 BINSWOOD END,
HARBURY BY 5.30PM
- Sun 16 3rd BEFORE LENT**
Holy Communion, 8.00am
Family Service, 10.30am
Evensong, 6.00pm
Zumba, 9.00am in Village Hall
- Tues 18 Pilates, 9.30am in Village Hall
Holy Communion, 7.30pm
- Wed 19 Wednesday Walkers, Leamington Hastings (4 miles), meet
9.40am Village Hall Car Park
- Thurs 20 Holy Communion, 9.45am, followed by coffee
Slimming 4 All, 12.00-1.00pm, Farley Room, Village Hall
Harbury's Neighbourhood Development Plan Meeting, 7.30pm
in the Farley Room at the Village Hall
- Sat 22 Coffee Morning, 10.00am-12.00 noon, Tom Hauley Room
in aid of Harbury Juniors Football
- Sun 23 2nd BEFORE LENT**
Holy Communion, 8.00am
Little Saints' Service, 9.00am, followed by breakfast in
Tom Hauley Room
Sung Eucharist, 10.30am
Zumba, 9.00am in Village Hall
- Mon 24 Upholstery Classes, 9.15am in Farley Room, Village Hall
Harbury Society, John Home - Bees Abroad, 7.30 for 8.00pm,
Tom Hauley Room
- Tues 25 Youth Theatre Group, 6.45pm - 7.45pm, Village Hall
Holy Communion, 7.30pm
Julian Meeting, 8.00pm
- Wed 26 Wednesday Walkers, Bubbenhall with optional pub meal
(4 miles), meet 9.40am, Village Hall Car Park
Pleasant Pastimes, 2.00-4.00pm, Tom Hauley Room
- Thurs 27 Holy Communion, 9.45am, followed by coffee
Slimming 4 All, 12.00-1.00pm, Farley Room, Village Hall
ARTICLES FOR NEXT ISSUE TO: HARBURY PHARMACY,
HIGH ST OR EMAIL TO ARTICLES@HLNEWS.CO.UK BY
5.30PM
Warwickshire Young Voices, 6.30pm, Village Hall
Parish Council, 7.30pm in Village Hall

MARCH

- Sat 1 Coffee Morning, 10.00am-12.00 noon, Tom Hauley Room
in aid of STEPS
- Sun 2 SUNDAY NEXT BEFORE LENT**

- Sun 2 Sung Eucharist, 9.00am
Holy Communion with Laying on of Hands for Healing, 6.00pm
- Tues 4 Holy Communion, 7.30pm
Horticultural Society, 8.00pm in Tom Hauley Room,
Adrian James - Four Seasons and a Festival
- Wed 5 Wednesday Walkers, Claydon (4½ miles), meet 9.40am
Village Hall Car Park
ASH WEDNESDAY
Holy Communion, 2.00pm, Tom Hauley Room
Mothers' Union Meeting, 2.30pm, Tom Hauley Room
Discussion on Lent with Chris Rutherford
- Thurs 6 Holy Communion, 9.45am, followed by coffee
Blood Donors, 1.30–3.30pm and 4.30-7.30pm, Village Hall
Men's Group Meeting, 7.45pm, Tom Hauley Room
Folk Club, 8.00pm at Village Club
- Fri 7 Women's World Day of Prayer Service, 2.00pm
- Sat 8 Coffee Morning, 10.00am-12.00 noon, Tom Hauley Room
in aid of Harbury Pre-School
- Sun 9 FIRST SUNDAY OF LENT**
Holy Communion, 8.00am
Sung Eucharist, 10.30am
- Mon 10 Harbury Society, Radford Semele's Brewery by Henry Marriott,
7.30 for 8.00pm, Tom Hauley Room
- Tues 11 Holy Communion, 7.30pm
- Wed 12 Pleasant Pastimes, 2.00-4.00pm, Tom Hauley Room

**DATES FOR INCLUSION IN THE HARBURY DIARY PLEASE TO:
LINDA RIDGLEY - TEL. 612792.**

Refuse Collection Rota				
	Deppers Bridge	Harbury	Ladbroke	Collection Week
February	Wed	Thurs	Fri	
	12	13	14	Green & Blue Lid Bins
	19	20	21	Grey Bin
	26	27	28	Green & Blue Lid Bins
March	5	6	7	Grey Bin
	12	13	14	Green & Blue Lid Bins
	19	20	21	Grey Bin



From the Rector

Reverend Craig Grocock

The Rectory, Vicarage Lane, Harbury ☎612377 ✉kankudai43@aol.co.uk

‘Saints Alive!’

Do you attend Church? There could be several answers to that question. The simple answer might be ‘no’ because you don’t believe in God. Another answer might be ‘yes, but I attend Church elsewhere’. Another response could well be ‘I would attend but the services do nothing for me’.

It might be that Sunday is not the best time for you to attend Church after all, Sunday mornings are often taken up with other pursuits like Zumba or the kids football training, etc.

At Harbury we have for some time now been concerned that our monthly Family Service has not really been hitting the mark in terms of drawing new families and children. We have spoken with parents and the feeling is that the current Family Service, which includes Holy Communion, can be exclusive especially for children and those not yet confirmed. Because of this the Service does tend to be a bit long which isn’t good when you’re a young mum trying to pacify a toddler! (been there myself!)

We want to provide a monthly service that is inclusive for everyone and one that is not too long either. The good news is that on 16th February we will be starting a brand new service that we are calling ‘Saints Alive!’ It will be at the usual time of 10.30am and will last no longer than forty minutes. It will be a non-Communion service with songs that all will enjoy and will include a drama or talk that will engage everyone. We will be welcoming a special guest at this first service who will be jumping out of a blue box - the Doctor! (not sure if there will be any Daleks though!)

There is more information about ‘Saints Alive!’ in this edition of Harbury & Ladbroke News.

We hope you will come along and join us on 16th February!

God bless

From the Registers

Funerals at All Saints’ Harbury

9th January John Wyatt (86 years)

Holy Baptism, All Saints’ Harbury

26th January Eddie Fairbrother



From the Churchwardens

John & Will

Our new Family Service will commence on Sunday 16th February (10.30am) and thereafter, as usual, on the third Sunday of each month. These will be non-communion services, geared towards families and children and fun! Please do come along.

We have recently been working closely with the Coventry Diocese to gain permission to take a number of projects forward in the Church including:

- a superb tryptych which now adorns the wall overlooking the Children's corner; huge thanks to all involved in this wonderful craft work.
- initial designs (for discussion) for a new memorial garden in the Church grounds will be presented at the Parochial Church Council Standing Committee on the 3rd February.
- agreement has been given to replace 7 cracked and broken cast iron down pipes and hoppers, which drain the Church roof, with a long lasting aluminium alternative which looks very much like the existing down pipes.
- thanks to a kind donation, a new Union flag for use during the Remembrance Service, will be mounted in the Lady Chapel, adjacent to the existing British Legion flag.

When the weather improves we will be looking to start some ongoing general maintenance work around the outside of the Church e.g. cleaning overgrown gullies, removing ivy and weeds, grass cutting and generally tidying up. If there are any keen gardeners in the village who have a few hours to spare each month and would like to get involved please contact John on 614206.



Mothers' Union

Gillian Hare


In January members were joined by many friends to enjoy our post Christmas party. There was a brain teasing quiz, a hilarious game of Pass the Parcel and a sing song followed by tea. Particular thanks to Marion for the games, Michael for the music and the committee for the food.

A few days later we ran the Tom Hauley coffee morning which raised a generous amount for Mothers' Union projects.

Our March meeting will be on Ash Wednesday, 5th March when Chris Rutherford will lead a discussion on Lent.

As always, visitors are welcome to join us for communion at 2pm followed by the meeting at 2.30pm, both in the Tom Hauley Room.

And Friday 7th March will be the annual Women's World Day of Prayer. This year the service has been produced by women of Egypt, a country much in the news at the moment. All are welcome – men included!

	<p>Church Men's Group</p> <p>John Guilford (Co-Chair)</p>
--	---

We welcomed back an old friend to our January meeting – David Eaves. David had previously spoken to the Group about his love of photography and the lengths he goes to, to find that perfect photograph.

This time we were treated to some fantastic slide shows under the umbrella of "Pictures from around the world". We were taken to picturesque Austria at Christmas time, enchanting Peru and the lost city of the Incas and then to the famous Tibetan monasteries and their colourful national costumes.

We were then reminded that we have some beautiful countryside closer to home with some recognisable slides from the Lake District, with views of Thirlmere and Langdale and some beautiful glimpses of spring in and around Harbury. David ended with a unique cartoon he and his family had put together.

The captivating slide shows certainly made us forget for an hour about the miserable weather outside!

On Thursday 7th February at 7.45pm (in the Tom Hauley Room) Su McClellan will talking to us about "Whose Promised Land.....reflections on Palestine". This I'm sure will be an interesting and thought provoking evening. Please come and join us.

Finally, we are sorry to see our Treasurer, Lyn Edwards leave us for a new stage of his life - and no doubt other Treasurer's roles – as he and Mrs Lyn (!) move to Minehead. We wish them well and thank Lyn for his involvement with our Group and for keeping us solvent! Good luck from us all.

Saints Alive!!

All Saints, Harbury is doing something new.... on Sunday 16th February 2014, we will be launching '**Saints Alive**', an opportunity for everybody to explore new ways to find God, wherever you are on life's journey.

Whether young or old - or indeed anywhere in between, we all belong to God's family, and Saints Alive presents a special time to meet together in a place where everyone respects each other and nobody feels left out.

What is it? Saints Alive is a chance to praise God through words, actions and songs. It is a time for us to learn together from a message that is both accessible and appropriate to everybody, regardless of age or level of understanding and which **is not** a Communion service!

When will it happen? Saints Alive will usually happen on the third Sunday of every month – but we will give you dates and reminders throughout the year.

How long will it last? Saints Alive will be short and informal – lasting no longer than 40 minutes (we promise!). It will always be followed by refreshments – tea, coffee, soft drinks, homemade cakes and biscuits – in the Tom Hauley Room.

We at All Saints invite you to come along and see for yourselves - you will be really surprised when you find out 'Who's coming' in February and we can guarantee you a warm and friendly welcome!

Ann Goldthorp

Women's World Day of Prayer 2014

Women's World Day of Prayer is an international, inter-church organisation which enables us to hear the voices of women from all parts of the world: their hopes, concerns and prayers. The preparation for the day is extensive. An international committee works from New York and each participating country has its own national committee. Regional conferences meet to consider the service and then local groups make their plans. Finally, on 7th March, women and men will gather in their local churches to celebrate using a programme of worship offered this year by the women of Egypt.

One of the oldest civilisations in the world, Egypt has long been home to Coptic Christians. Since the uprising in 2011 there has been conflict between religious groupings. Political change affects individual lives and we pray with the women of Egypt for peace.

We envisage a great wave of prayer, rising with the sun over the island of Samoa and sweeping across Asia, Africa, the Middle East, Europe and the Americas, coming to rest in American Samoa some 36 hours later. By then WWDP services will have been celebrated in over 170 countries.

Please join us at All Saints Harbury at 2pm on 7th March. All are welcome to attend, men and women and people of all ages.

Sue Boniface

Ladbroke News & Diary

www.ladbroke-pc.org.uk

FEBRUARY

Sun 9 4th BEFORE LENT

Holy Communion (sung), 9.00am

Tues 11 Yoga, 10.00am, Village Hall

Sat 15 ADVERTS FOR THE NEXT ISSUE TO 31 BINSWOOD END,
HARBURY BY 5.30PM

Whist, 7.45pm, Village Hall

Sun 16 3rd BEFORE LENT

Holy Communion (BCP), 9.00am

Wed 19 Church Home Group, 8.00pm, Cherry Trees

Sat 22 Whist, 7.45pm, Village Hall

Sun 23 2nd BEFORE LENT

Holy Communion (sung), 9.00am

Tues 25 Yoga, 10.00am, Village Hall

Thurs 27 ARTICLES FOR NEXT ISSUE TO: HARBURY PHARMACY,
HIGH ST OR EMAIL TO ARTICLES@HLNEWS.CO.UK BY
5.30PM

WI, 7.30pm, Village Hall

MARCH

Sat 1 Whist, 7.45pm, Village Hall

Sun 2 SUNDAY BEFORE LENT

Family Communion, 10.30am, followed by refreshments

Tues 4 Yoga, 10.00am, Village Hall

Photography Club, 7.30pm, Village Hall

Wed 5 Ash Wednesday Service, 7.00pm

Sat 8 Ladbroke Rockers Return, 8.00pm (doors open), Village Hall

Sun 9 1st SUNDAY OF LENT

Holy Communion (sung), 9.00am

Tues 11 Yoga, 10.00am, Village Hall

Wed 12 Annual Church Meeting, 7.30pm, Church



Ladbroke Church News

Sue Lord & Jackie West

The Church of England requires each church to have a professional advisor to conduct quinquennial inspections and oversee any work on the building. We are overdue this five yearly inspection and, if significant remedial work is identified, we will probably need to seek grants towards the costs of these. Most organisations giving grants require a competitive tendering

process to have been followed so it is advised that churches appoint their professional advisor by such a process. As a consequence, we have advertised the position, short-listed four applicants and the PCC should be making the final decision in February.

Rev Craig will be taking a three month sabbatical from 1st March. During this time Rev Annie will be holding the reins at both Ladbroke and Harbury, her phone number is 614868 and her day off Fridays.

Some future dates for your diaries: on Ash Wednesday (5th March) there will be an evening service at Ladbroke at 7.00pm and on Mothering Sunday (29th March) although it is the 5th Sunday in the month our service will be at 10.30am, which will give time for Mums to have a lie in and be taken out for lunch as well!



Ladbroke Flower Rota

1st & 8th February

Helen Morten

15th & 22nd February

Sue Lord



Ladbroke Parish Council

Jackie West

For once I was at the meeting on 15th January in person to make notes of the points which may interest readers. The formal minutes, taken by the secretary, will appear on the village website and the noticeboard by the pub in due course.

Neighbourhood Watch & Police Matters: There have been a number of catalytic converters stolen in the area and a Jeep taken from Bishops Itchington. Within Ladbroke, one resident has had things moved around in their carport at 1am, but nothing appears to have been taken. A new police constable, from Shipston has joined the local police team. If the police merge with West Mercia there will be no need to retain a forensic lab in Southam and the magistrates court may close, making the site available for development. The police have been seen monitoring speed on the A423, what a shame it was on a Wednesday and not a Sunday!

Finances: The Parish Precept will remain at £5000.

Planning: The Parish Council made no representations on the felling of a beech tree at Whiteways, Bridge Lane but sent a response regarding the Brocklebank Farm Stud application which included installation of horse walker, erection of a hay, sheep and agricultural building and retrospective change of use of land for the siting of a temporary dwelling for three years.

The application for change of use of land from amenity use/service strip to garden land and the retention of an existing garden shed at 7 Hedges Close was discussed, but it was concluded that this was a respective application and since the current position appeared OK, no representation would be made.

Approval had been granted for the revised changes at Church Cottage. Decisions are still pending for the 9 wind turbines near Wormleighton and the solar farm at Deppers Bridge.

Flooding: After the review of projects by the Environmental Agency, £50,000 may be available next financial year from the WCC budget to start the official study and work on the Ladbroke balancing pond (see report in Oct 2013 H&L News for more details). A copy of previous information is going to be sent to Mike Green in case his predecessor had not passed it on, together with a reminder that the Parish Council wishes to be involved and not just informed.

There was flooding in the village across the Banbury Road in December and Tollgate Cottage nearly flooded in early January - the sandbags and village pump helped prevent it but it was a very close thing. These problems appear to be related to surface water and drains not coping rather than the brook flooding. The authorities have done various work – replacing a gully by Banbury Road, digging in Windmill Lane etc but is this just moving the site of the problems? Photographs of flooded points and a face to face meeting were needed so that issues were really understood and the right action defined and communicated to the contractors doing the work.

Village Hall & Millennium Green: The two charities are working closely together now and this format (ie same trustees for each and single team supporting both) is expected to last for the next few years, with any further movement towards merging just happening in the background. Monthly fund raising events were planned including film nights every two months and various other events in the alternate months.

The Parish Council confirmed it could make a grant this year towards new external doors or a code lock for the Village Hall. On the Millennium Green, the tree guards had been removed and sold for over £700 and the silver birch nearest the adjoining house had been felled (conservation area approval had been given earlier, in 2013).

HS2: The Local Action Group (LAG) has responded to the environmental statement and Warwickshire County Council has congratulated them on their document. The Parish Council is sending in a similar response. Both documents are on the village website ladbroke-pc.org.uk in the Parish Council section. Villagers are encouraged to send in their own responses too. The deadline for these had been extended to 10th February (at the time of the Parish Council meeting) *and now to 27th February 2014*. One village concern is that during the construction phase Ladbroke will become a rat-run for drivers trying to avoid hold ups on various A-roads. Ideas of what we could do

to discourage and slow traffic will be sought and discussed at the Annual Village Meeting in April.

SDC & WCC: Warwickshire Fire Brigade broke the strike to attend a fire at Alcester. If they merge with Hereford & Worcestershire they will become a separate precept authority (like the Police) rather than be included in the WCC budget.

The boundaries of the County Council wards are being looked at, numbers per councillor will rise from 6000 to 8000 people in 2017.

Long Itchington has five proposed developments. Bishops Itchington Parish Council have agreed to accept the Harbury Cement works proposals which include 200 new homes, a care home and some industrial units. Harbury Parish Council has not yet responded. There are some worries about the traffic this development will generate. If outline planning permission is granted at Easter and detailed permission runs smoothly, building could start before the end of 2014.

M40 J14 changes are just about complete, J12 should finish in 2 years.

There are no fracking proposals in Warwickshire but there may be for gasification, where oxygen is pumped in to burn coal *in situ* below ground.

The draft SDC core strategy now proposes 10,500 new homes with 3,500 at Lighthorne, though it seems that some of these are on land that Jaguar Land Rover wants for other purposes! Locations for travellers' sites still need to be identified.

Future meetings: Some dates were changed and the next three meetings will be on 26th March, 16th April (Annual Village Meeting) and 7th May.

	Ladbroke & Deppers Bridge Women's Institute	Carol Lane
--	--	-------------------

There was a good turnout for the first meeting of 2014 which was held in the Village Hall on Thursday 23rd January.

Future Dates for your diary:

7th May - Group Meeting. This is an annual event linking 7 local W.I.s and will be held in Harbury this year. The competition is to write a limerick on the theme of sport.

16th June - Warwickshire Federation trip to Mary Rose Museum and Dockyards.

28th June - Warwickshire Federation Sari Silk workshop.

The Board of Trustees of Warwickshire Federation of WIs has asked all WIs in Warwickshire to support the Trussel Trust who administer most of the food banks in the area.

A typical food bank works in this way:

- Food is donated.
- Volunteers pack food into individual food boxes.
- Frontline care professionals, such as doctors or social workers issue food bank vouchers to people in crisis.
- The vouchers are exchanged for a 3 day supply of food.
- Food banks take time to listen and signpost clients for further support.

To coordinate the best selection of food, Ladbroke and Deppers Bridge ladies have already contributed £55.00 at their meeting this month and will be collecting again next month.

Rachel, our treasurer, has volunteered to do the shopping. If anyone would like to contribute, contact Rachel on 01926 814396.



The speaker for the evening was Bernard Cadogan who is the Chairman of the Friends of the Cardall Collection which has just moved to new housing in Vivian House on Market Hill.

Bernard gave a fascinating and well illustrated talk on The Shaping of Southam starting from when records were first kept after 1066. The Holy Well is particularly interesting and was first mentioned in 1206 where its waters were said to have medicinal properties especially for eye complaints. Perhaps this helped the foundation of the eye and ear hospital in the building which is now called Warwick House and the first provident dispensary in the country.

Southam became a town in 1227 and was far more important than Leamington with many fairs and markets and as a staging post. The involvement in the civil war was related and the fact that 7,000 troops came into the area gave some idea of the impact, as this is the same number as current residents!

Certain action by various individuals prevented the railway and canal systems from coming to Southam which led to its relative decline until new housing estates were built in the 1950s.

As Southam's main heritage organisation, Bernard explained that they are hoping to work with other local groups to present a series of events/exhibitions from next year to commemorate the Centenary of World War I.

Planning is in the early stages, but initially they will be focusing on the Grange's use as a VAD hospital during the War, and the impact this had on the lives of local women. If you would like to contribute to this project, please do get in touch with Bernard on 01926 613503.

The February meeting will be held on Thursday 27th February where there will not be a speaker but members are asked to bring along their wedding albums to share.



Ladbroke Photography Club

Kip Warr

You probably don't want to see a picture of us stuffing our faces at our annual January dinner so we'll spare you that. Suffice to say that we had an enjoyable evening with an excellent meal at the Bell in Ladbroke which is hugely improved in the quality and variety of its cuisine.

Our next meeting on 4th February should interest anyone using a digital camera: a practical session on image manipulation. Then, on 4th March, we shall be looking at black-and-white photography and textures.

Visitors are always welcome. For more information see tinyurl.com/ladbrokephoto or email jackieszone-photogclub@yahoo.co.uk



Ladbroke General Section



Ladbroke Rockers Return - Saturday 8th March

Remember the crowded dance floors and toe-tapping onlookers as the Ladbroke Rockers took the decibels up? Heard about our local band (or heard them practising) but not yet experienced the fun of one of their gigs? You need wait no longer! After a year's absence The Ladbroke Rockers are back - the band you love with some new talent. They will be at Ladbroke Village Hall on Saturday 8th March, with a mix of rock music from the '50s to today. Doors open at 8pm - come along, have a drink from the bar, enjoy the music and join in the fun. This is a fundraiser for Ladbroke Village Hall and Millennium Green, tickets costing £5, are available from Jackie West 810331, Tracy Lochhead, Kip Warr and Allan Ballard.

Jackie West

It's All In the Name



At the end of last year the combined team supporting Ladbroke Village Hall and the Millennium Green came up with the name: the Operation Ladbroke team. On reflection we thought this could give the wrong impression - there is no crisis needing a quick fix and certainly not a heart transplant by external experts! So we have changed our name to the **Ladbroke Matters** team to emphasise how we want everyone to feel about the village community, our facilities and what goes on here. Our thanks go to Laura Taylor for creating this wonderful logo.

We are grateful to everyone who supports the Village Hall and Millennium Green in various ways, with special thanks this month to all who helped make the murder mystery dinner such a success and those who have recently joined The Millennium Draw.

The Ladbroke Matters Team: Margie Bosworth, Carol Lane, Gray & Nicky Lewis, Alan Lochhead, Alan Lord, Helen Morten, Debra & Martin Neal, Kip Warr, Jackie West, David & Sue Wright

Ladbroke Village Hall Millennium Club

£80	Jill Norgate	£50	Carol Lane
£25	Colin and Kay Constable	£10	Steve and Val Copley
£10	Peter and Carol Loftus	£10	Pete Edgar
£10	Pat Kennedy	£10	Elaine Taylor

Margaret Bosworth



HARBURY SURGERY MILL STREET, HARBURY

Surgery opening hours:

Monday to Friday 8.30am - 12.30pm and 1.30 - 6.30pm

Appointments can be made by telephoning 612232 or calling in at reception.

For out of hours emergency service call: 111

www.harburysurgery.org.uk



Ladbroke's Murder Mystery Evening

On a Saturday evening in January, around sixty budding Marples and Poirots gathered in Midsomer, sorry, Ladbroke Village Hall for a Murder Mystery dinner. On arrival, once we had a drink in our hands, we were assigned a place on one of eight tables where we could watch the action unfold.

Soon the hall lights were dimmed. I need to mention here that a small group of local residents had spent weeks rehearsing a short playlet enacting the murder. As it began to unfold on the stage, it was clear that they had mastered their roles – in some cases to a worrying degree! They assumed the personas of a group of amateur actors arguing with the director in a sitting room over their assigned roles in a forthcoming play. Visibly upset by the way the roles were allocated, they made excuses to leave the room until all were gone. Then we heard one of them knocking on the bathroom door, seemingly locked in. We heard a telephone ring, then three gunshots and the stage lights went out. But who had been murdered? We would have to wait to find out.

Before the next instalment, we tucked into the main course. There was a mouthwatering array of casseroles accompanied by baked potatoes and salad, all provided by Ladbroke's super catering ladies. After we had eaten our fill, the lights dimmed again and the actors returned to the stage. We learned who had been murdered and where everyone had been at the time of the murder, but who was telling the truth and who was lying? It was up to us to decide.

Then it was time for pudding. There was a splendid selection of desserts to die for (well, it was a murder mystery evening!), again provided by the tireless catering team. While we were eating, we were given police and other evidence sheets to read and a form to complete with our accusations and deductions. These were eventually collected and taken away for assessment.

Finally, the solution! We were told the motive, the method, and the name of the murderer. There is a rumour that this event might be repeated in other villages therefore it wouldn't be right for me to reveal the solution here. Suffice it to say that it was a thoroughly enjoyable evening and many of us were surprised by the conclusion. A prize was awarded to the super-sleuth who came closest to getting it right. So well done, Paul 'Poirot' Taylor! His table also won the prize for the most correct answers.

However, none of us left empty-handed as we were all given a budding detective bookmark. Many villagers worked hard to make this evening a success, so thanks must go to all of them, including Kate, who directed the action; the cast who expertly acted out the murder mystery; those responsible for providing the delicious meal; and Alan and Tracy for their technical expertise on sound and lighting. Well done, team!

David Wright (report) & Simon West (photos)





Harbury Parish Council

Linda Ridgley

Official minutes can be viewed in the Library, on the Parish Council website www.harbury-pc.gov.uk or obtained from the Parish Clerk Tel: 01926 614646

Grants - After Brian Wade explained Harbury Games (28th June) needed money for medals, insurance and a PA system, the Council agreed a £500 grant. They also agreed £500 for Harbury Cheerleader Group but requested more information about the new Horticultural Show's proposals having informally agreed they would pay the cost of hiring the Village Hall.

Library - Chairman Tim Lockley said that the Library lease negotiations were celebrating their second anniversary. Some progress was being made on determining the nature of a land charge on the site which appeared to relate to the sale of a small piece of land in 1990. On the positive side a grant had been secured to improve insulation in the roof and the railings to the ramp were being replaced.

Properties

Playing Fields - Councillor Hancock was applying for grants for a replacement "zipwire" and had 50 letters of support.

The ruts in the field would be rolled flat as the weather allowed. The Tennis Courts fencing had been done and an insurance claim made for the storm damage to the clubhouse.

Trees - The Council agreed the quote for revitalising the allotment hedge over the span of three years. The tree overhanging a neighbour's garden there and the one in the cemetery were not diseased and as the Parish Council received no replies to its letters suggesting householders contribute to the cost of pruning the trees no action would now be taken.

Environment

Lighting - Hopes that a light could be fixed outside a private dwelling to illuminate the Bull Ring area were dashed by Western Power Distribution whose policies would not allow this. However Chairman Tim Lockley agreed to talk to the new owner of the Dog Inn about providing a light there.

The village now had 15 lamps lit by LEDs and 122 mercury lights. The lighting maintenance contract had only increased marginally. Mercury lights will be phased out after 2015 and there would be substantial costs involved in replacing them.

Planning - Cement Works - Councillors expressed concerns about how and by whom the Nature Reserve might be managed, but still they resolved to support the plans.

They made no representations on removing a conifer hedge and reducing other Leylandii at 7 Binswood End; extensions at 11 Constance Drive; or work at Stapenhall Farm, Deppers Bridge but they did support the return to domestic use of Bull Ring Old Farmhouse.

Stratford District Council had permitted a new house and the change of use at the Dog Inn to house a nursery; work to extend the caravan site at Harbury Fields Farm; extensions at 11 Constance Drive, 11 Hereburgh Way and 44 Farley Avenue; tree works at 7 Binswood End and Crown Close and a replacement dwelling at Eastfields Farm.

They refused permission for a change of use to a market garden at Station Road, Deppers Bridge and the pool link at Stapenhall Farm, Deppers Bridge.

Neighbourhood Development Plan

Councillor Summers will hold a meeting for volunteers on 20th February in the Farley Room of the Village Hall where she hoped working groups might be formed to research specific topics.

District Councillor Hamburger said the latest Core Strategy Consultation would be out soon and outlined the sites for 10,500 houses which included one site north of Southam.

County Councillor Bob Stevens did not think that site was viable. He revealed Adult and Children's Services were to "take the biggest hit" of the coming cuts in County spending. This greatly upset Councillor Hancock who was angry that the least able residents were being disadvantaged.

Finance

Cemetery fees which had not increased for three years were to go up. The Council's administrative costs were down by £2,000, as savings were made on insurance. The precept would be very slightly less this year - due to the increase in the number of homes in the village!

Next Meeting: 27th February, 7.30pm in the Farley Room, Village Hall.

Quarterly Report January 2014

In the past three months the Parish Council has:

- Agreed a budget with a modest increase in the overall precept, but the per household amount will decrease slightly due to the Bush Heath Lane development.
- Planned for the replacement of the zipwire in the park.

- Worked with the developers of the Harbury Estate, and Bishops Itchington Parish Council, to formulate a plan for the cement works that will provide additional housing, a care home, a country park and a new surgery for Bishop's Itchington.
- Agreed a maintenance plan for the hedge on the allotment track.
- Worked with the Tennis and Netball Clubs to fund the resurfacing of the netball court and replacement fencing.

Tim Lockley
Chairman, Harbury Parish Council

Harbury's Neighbourhood Development Plan Meeting

Thursday 20th February at 7.30pm in the Farley Room at the Village Hall

Stratford District Council states *"Neighbourhood Plans are intended to give local people a direct say in the future development of their area. A Neighbourhood Plan gives local people the chance to create a planning document that guides and shapes development in their local communities. In turn, this will help to influence what facilities are provided in the area."*

When the Parish Questionnaires were returned in December a number of Harbury residents volunteered to help. This is the first meeting and it is open to anyone who would like to be involved as well as the original volunteers. Meetings will be once a month. The intention is to divide the volunteers into working groups who will liaise with local people, businesses, shops, farms, clubs and groups to collate information and opinions. It is essential that we produce an NDP to protect our community from uncontrolled developments in the future.

It is an immense undertaking, but we are sure it can be achieved with your help.

Harbury Parish Council



Harbury Society

Linda Ridgley

Our Social at the Harvester, Long Itchington was a select but very companionable event with excellent food.

For our next meeting on 24th February we have invited John Home to explain the way Bees Abroad helps improve the lives of farming families by providing them with equipment and training to produce honey as a cash crop. That is followed on 10th March by a talk on Radford Semele's Brewery by Henry Marriott and, on 29th April, Anne Langley recounts the adventures of

Percy Greatheed, one of the entrepreneurs who helped develop Leamington Spa.

All these meetings are in the Tom Hauley Room starting at 7.30pm. Everyone is welcome to attend and learn more about these topics and the Harbury Society.



Harbury Women's Institute

Jeanne Beaumont

January sped by so quickly in 2014 and the meeting was somewhat quieter than December's.

Dorothy wished Lyn Edwards good luck on her move to Somerset on the 29th January. We will miss her.

I must remind readers that our coffee morning is on Saturday 15th March and hope to see you there.

Did I say the meeting was quieter? Well, our speaker Debbie Ellis came and we certainly livened up. Debbie is a well known local girl and she writes poetry. The thing is; Debbie touches on all subjects of life: funny, serious, work, illness, travel etc. In fact she does write a lot of straightforward sense too.

She sent a poem to Barnardo's which was published in their magazine. She says she is writing for People's Friend next!! She is booked up for W.I.s in 2014 and they will have an enjoyable time.

We look forward to our New Year's party on 7th February.

Next meeting at the Tom Hauley Room is on Thursday 13th February, 7.45pm when it will be Members' Evening.



Harbury Theatre Group

Emily Jackson

Harbury Theatre Group (HTG) would like to announce the start of an exciting new group - Harbury Theatre Group Juniors.

In recent years, HTG has welcomed the up and coming young acting talent of Harbury, and we are now very pleased to announce that three experienced teachers, Joy Russell, Emily Jackson and Katie Morrell, all with a background in Performing Arts, will be leading a theatre workshop for children aged 7 - 11 in the Village Hall on Tuesday evenings from 6.45pm - 7.45pm.

The classes will include workshops in acting, singing and dancing, all in preparation for performances to be put on at dedicated times throughout the year.

Harbury Theatre Group Juniors is a non-profit organisation, therefore the classes will only cost £2 a week to cover the overheads.

If your child is interested in signing up for this exciting new group, please email their name, age and date of birth to htgjuniors123@gmail.com. If we have more than 36 children interested (the maximum size of the group to begin with), your child's name will be held on a waiting list and you will be informed when there is a space available.

We are aiming to start the group the first week back after February half term - the exact date will be confirmed with you via email.

We look forward to welcoming you to Harbury Theatre Group Juniors.

In other news, the next HTG meeting will be held in The Gamecock at 8pm on 25th February.



Folk Club

Sue Hartland

The theme for the 350th Harbury Folk Club was Occupations. This theme proved to be very popular as there are plenty of songs to choose from.

Ian and Sue opened the evening with 'The Blacksmith', a song which we first recorded on an L.P. record many years ago! We followed this with a song Ian wrote called 'Soldier of Fortune'. Rik continued with 'The Logger' and 'Daisy Lady'. Maureen and Janny sang about tinkers, tailors, hedgers and ditchers and then Pete and Liz followed with 'Blue Eyed Sailor' and 'The Factory Girl'. Martin sang a song written 28 years ago about politicians which proved nothing has changed! He followed with a mining song. Sue Harris had us all joining in with the First World War song 'Dolly Grey' and then treated us to the hilarious 'Joyce the Librarian'. Peter McDonald closed the first half with 'I Once Was a Fisherman' and 'Painting the Town' about a factory worker who hated his job and couldn't wait for the weekend to arrive.

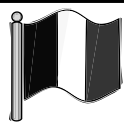
The second half commenced with the Choir singing their two Christmas Eve carols, 'Angelus and Virginum' and 'The Candle Song'. Debbie was next with 'Liverpool Lullaby' and a poem 'Under the Radar'. Peter Mason followed with 'Hull, Halifax and Hell' and 'January Man'. Des sang 'The Lollipop Man' and then read a Thomas Hardy poem called 'The Ruined Maid'. Ted and Sue continued with 'The Serving Girl's Holiday' and Ted sang 'Bedstead Men'. Santa had given Barbara a cold for Christmas so she played a couple of tunes on the accordion, 'Ashokan Farewell' with volunteer band and 'Mr Smith's Vegetable Garden'. Mick and Nigel closed the second half with two tunes which Mick called 'Jobseekers' Jig' and 'Golden Handshake Reel' followed by a song 'Bottom Lock'.

We had a packed third half, opening with Ian and Sue singing 'The Calico Printer's Clerk'. Barbara played a tune called 'Salmon Nets' and Peter McDonald followed with 'The Knocker Upper Man'. Ted sang about a weather forecaster and then Martin sang 'Lazy Bones' accompanied by ukelele and kazoos. Peter Mason was next singing 'Go Boys Go' and then Des did a rousing version of 'Bad Beer to Sailors'. Mick and Nigel closed the evening with 'The Merry Blacksmith'.

The raffle raised the large sum of £70 for Myton Hospice, so thank you to everyone.

Next month's theme is 'Warmth' and your hosts will be Doug and Janny.

Thank you to all the performers and to the audience for a good night out!



Harbury Twinning Association

Andrew Patrick

Help! It turns out I've been giving out the wrong phone number. If you're interested in joining us on one of our Saturday morning bike rides, please check first with Richard Marshall-Hardy on **613355**. (Or simply come to the Library car park at 9.30).

It's a gentle pace, we're always back in good time for lunch, and so far we've managed to avoid the rain . . .



Harbury Juniors Football Club

Ian Jones

Chairman's Report: Ian Jones

It's great to see lots of children once again playing and enjoying their football after the Christmas break. It's also good to see the development of the coaches which means we are better equipped to teach the game to the children. We have 1 x UEFA B, 2 x FA L2, 1 x FA L2 goalkeeping coach, 7 x FA L1 and coaches in various stages of the FA Youth modules working in the club. We have two coaches in the middle of their FA L2 course also. Congratulations to Jane Workman (U9's) who recently completed her FA L1 course. This is great news for the club and for the kids as we are able to consistently coach the FA curriculum which is based on skills/technical development with age appropriate games/drills in a safe environment. The coaches/managers and officers of the club give up a lot of time to make it happen. To do it right, and to do it well is a big undertaking for these volunteers, so a big thanks from me on behalf of the kids and parents.

HJFC Coffee Morning: This is on 22nd February at the Tom Hauley Room from 10am. Please show your support by popping along and by providing cakes and raffle prizes if you can.

Skool Disco II: Following on from the success of the first Skool Disco fundraiser, we are doing it again. This time it's on the 15th March from 8pm at Harbury Village Hall. This is an over 18's event. Skool uniform is optional! Please come along and support this great night out, the tunes will be from the 70s, 80s and 90s.

Under 9's Match Reports: Malcolm Tanner

11th January: Harbury Juniors 1 v Kitebrook 0

This was Harbury's first game after the Christmas break with Josh C and Daniel C playing well in midfield and Ollie S controlling the defence.

Despite their supremacy, the match provided few goal scoring opportunities with Kitebrook being restricted to one chance which was well saved by Rebecca H. The deadlock was broken by a well taken free kick on the edge of the area by Ben H which proved to be the winning goal and a well deserved victory.

18th January: Tysoe 5 v Harbury Juniors 2

On the back of their win the previous week, Harbury were confident and controlled the match against an enthusiastic Tysoe side. Harbury scored a well earned goal from another Ben H free kick from outside the box and at that stage looked comfortable. However Tysoe's tricky forward was causing problems which led to three goals in the third quarter.

Harbury rallied with some great runs from Harry L which could have led to two goals, and he finally scored from a tap in after another well taken Ben H free kick. The match had a cup final atmosphere as Harbury threw everything against Tysoe who scored another two goals as Harbury left themselves exposed in defence. The result did not reflect the closeness of the game but all the players should be pleased with their performance.

Under 10's Match Reports: Bob Church

14th December: Harbury Juniors 10 v Kenilworth Town 0

Harbury were dominant from the start playing some 'eye-catching' football. Hatrick heroes Sam C, Charlie C and Ben HB terrorised the Kenilworth defence with Harry T scoring the last goal to make the final score 10-0 to Harbury. The coveted 'MOTM' trophy was awarded to the entire team for such a solid performance all round.

11th January: Wellesbourne 3 v Harbury Juniors 2

Harbury were clearly 'weighed down' after a Christmas of too much turkey and Xmas pudding. Wellesbourne deservedly won a close game 3-2 with

Ben HB notching both goals. Euan J winning the MOTM award for a very 'dogged' and certainly muddy performance!

18th January: Khalsa 7 v Harbury Juniors 1

Against 'table topping' Khalsa who would have been surprised to have edged a gritty first half 2-0. Harbury came out fighting in the second half and soon the score was reduced to 2-1 with Charlie C netting at the end of a nice passing move. Harbury pushed to equalise but eventually were overcome in the last minutes of the game and finally lost 7-1 with the scoreline flattering the opposition. Ellis RS was awarded the MOTM trophy for a solid defensive performance.

25th January: Leek Wootton 3 v Harbury Juniors 2

A severely under strength Harbury team travelled to Leek Wotton to play on an extremely steep pitch without the luxury of any substitutes. Playing uphill on a sticky pitch Harbury went into half time 3-1, Ben HB netting late on. A 'rallying' half time team talk saw Harbury dominate the second half. Euan J brought Harbury back into the match, however some spirited opposition goalkeeping and wasted chances saw the match end 3-2 to a very lucky Leek Wootton. Josh W picking up MOTM for a fine goalkeeping performance.

Harbury Juniors are seeking additional players and coaching help for next seasons U11 team which will move to playing 9-a-side matches on a Sunday. Please contact Coach Bob Church if interested on 01926 614366.

Under 11's Match Reports: Ian Jones

15th December: Hillmorton 0 – Harbury Juniors 3

A much, much better performance by Harbury against the team who are second in the league. Dan C made a major contribution up front this week, with his MOTM outing. There was a real desire for the battle which started up front, putting Hillmorton under pressure in their own half.

Hillmorton nearly scored in the first minute, with Harbury slow to wake up. Harbury managed to contain and get into the game. Harbury's backline was solid with good performances across the defensive unit. Dan C was persistent at chasing down and got a reward with a deft toe poke to capitalise on Hillmorton's defensive mistake. In the first half it was an even game, with most of the luck going Harbury's way and the team working hard to hold and build on their lead.

Harbury delivered within the first minute of the second half with Morgan J picking up a ball in the middle and making space to get a good shot away and in the net. For the rest of the second half Harbury created more chances, Hillmorton had some but great defending kept them out. Harbury had several breaks, Morgan J popped up again for his second from the left with another solid strike. Hillmorton tried to get back into the game but couldn't break

Harbury down to create many clear cut chances. Dan C was unlucky not to have at least one more.

An excellent performance from Harbury, showing the coaches what they can do. Harbury started defending from the front and grafted up and down the pitch, a well deserved victory. Well done to the whole team and to Dan C for his MOTM honour this week.

22nd December: Harbury Juniors 4 v Baginton Lions 0

Baginton turned up with only 7 players. To be sporting we decided to field 7 players only. This threw our pre-match plans into turmoil, as we now had to accommodate multiple player and positional changes on the hoof. The weather started bright but was to play an important part in the game....

Harbury dominated play but were somewhat thrown by the 7-a-side game and as such went in at half time 1 nil up, thanks to a Morgan J goal. The black clouds were approaching as the second half got underway...

Harbury continued to dominate and scored another two goals with Dan C and Jack D getting a goal apiece. Then it started raining, well, I say raining it was more like a storm of horizontal hail. Everything and everyone was soaked and cold. The coaches and the ref were just about to abandon the match when it stopped, 5 minutes to go and Morgan J got his second. A fair result and all were glad that the match was not abandoned and therefore subject to re-schedule. Harbury had done well in poor conditions and had adapted to a 7-a-side game.

19th January: Lawford Utd Whites 0 – Harbury Juniors 3

The first few minutes were evenly matched before Harbury started to play a bit. Lawford pressed but were caught offside a number of times as the Harbury defensive line held its shape/position (well done defence).

Harbury got their passing game going albeit they were playing somewhat narrow, Liam O played a great through ball and Morgan J was onto it in acres of space and made it 1 nil. Millie T did her usual and was sweeping up everything that got through. Harbury created a few more chances, Morgan J went close again as he hit the bar. Jack P did well to hold onto some great Lawford corners.

In the second half Jack P made a couple of good saves, but the defence was doing well to prevent Lawford from getting through. Harbury had created more chances with Oliver K breaking through from midfield and just failing to get his shot on target. Joshua B also got the ball in good positions and was unlucky not to get a goal. Morgan J carried the ball into the box and lobbed the keeper from close range and a narrow angle to make it 2 for Harbury and 2 for him.

Liam O and Oliver K continued to work hard in midfield with Liam O showing some good skill and Oliver K being determined. Morgan F was battling with

his long throws to get Harbury on the front foot several times. Joe D did well, carrying the ball down the flanks as well as in defence. Jacob W, Edward L, Jared R and Ryan A were also solid. Lawford again went close before Harbury went on the counter. A vicious shot from Morgan J was deflected into the path of Jack D who was pleased to get on the score sheet with a tap in.

A good start to 2014 with good performances across the park. Well done Harbury. Stand out players were Liam O and Millie T, with the Player of the Match going to Millie T.



Harbury RFC

Rugby Football Club

Jerry Birkbeck

Coventrians 15 Harbury 37

Midlands 4 West (South)

After a disappointing couple of matches, in the league and then the Junior Vase, Harbury were looking to move forward in 2014. They did this with some style in an excellent team performance in challenging conditions.

The heavy rain over the previous twenty four hours had cast some doubt as to whether the match would be played. Indeed Harbury's home fixture for the second XV against their counterparts from Pinley was cancelled on Saturday morning. However, Coventrians' pitch drains well, although the overnight rain had led to the markings being washed out and re-done prior to the game.

Harbury, were aware that this game could be awkward, as it could well be a forward dominated match and that the underfoot conditions would be difficult. This was borne out as the pitch cut up during the course of the game and Harbury's physio Emma Hickman was called on to deal with twisted ankles and knees as the heavy surface took its toll on players.

Harbury started brightly with their pack very much in the ascendancy and this was typified by an excellent rolling maul, from a well taken lineout by Tom Kittendorf that took play 30 metres down the pitch with prop Dave Heydon being forced over for the touchdown. Outside half Rich Clarke added the conversion. Harbury scored a further try from a sharply taken 5 metre tap penalty by Chris Milburn for a 12-0 lead. Coventrians responded with a penalty and try to reduce the deficit. However, two well struck penalties from Clarke put his side 18-8 ahead at the break.

Harbury dominated the opening exchanges of the second half and added an early score through another try through a forward pick up and go and the ball worked wide to wing George Bostock who choose an excellent line to drive over into the corner, the well struck conversion attempt drifting marginally wide.

Coventrians then enjoyed a period of pressure as Harbury conceded a number of penalties. Sound defence kept the hosts at bay but a five metre scrum in their favour, though well controlled by the Harbury pack, was well picked up by the home number eight who choose a good running line and touched down under the posts. The conversion was added reducing Harbury's lead to eight points.

This spurred on Harbury who then finished the stronger side with another two excellent forward tries, the first from a line out take by Milburn and from the resulting maul lock Gaz Evans crossed the line. This was followed by another catch and drive from the line out touched down by Luke Dunne. Both brilliantly converted by Clarke to give his side a thoroughly deserved victory.

An excellent team performance with the forward play of the highest calibre, coupled with determined and forceful play in the backline.

Harbury are at home to Coventry Welsh on Saturday in Round 12 of the League.

Redditch 10 Harbury 17

Midlands 4 West (South)

Rugby is played in some dire circumstance on occasions, but the horrendous weather on Saturday would take some beating!

Harbury found themselves on what would normally be an excellent playing surface. However, this had to be tempered by a wind of considerable force blowing directly down the pitch which, coupled with exceptionally heavy rainfall, thunder and more worryingly lightning, did not present the most ideal of conditions.

Playing into the wind it was soon obvious that to keep the score line down to no more than ten points by half time would be an advantage. After just four minutes Harbury found themselves two thirds of the way to that total. A quick scrum in midfield to Redditch was well run by the home 10 who found his inside centre at hand who ran through non-existent cover for the simplest of tries. The conversion was added and Harbury hadn't even come to the party. Skipper Gaz Evans drew his troops together reinforcing the need for greater steel and commitment. This was exemplified when minutes later a quick move from Redditch was stopped with an excellent tackle by Tom Webb in the unusual position of full back. Gradually Harbury pulled themselves back into the match, but the wind and rain were not to their advantage. Both sides were struggling to retain possession in attack and Harbury's attempts to move play out of their half were too often thwarted as players slipped on the greasy surface. Redditch extended their lead on fifteen minutes through a straightforward penalty goal.

Harbury were frustrated on at least three occasions when clever breaks through the midfield by Steve Alford and Daz Kittendorf were once more disrupted as the players and their support runners lost their footing.

Harbury moved play to the home five metre line with a spell of sustained play but then were pushed back 60 metres down field as a stray pass was gathered and kicked deep with the aid of the wind.

Harbury though picked up their game in the second half, but the referee stopped the match to discuss further progress as lightning lit up the sky and torrential rain made conditions even worse. However, both captains decided to play on. Harbury took play down into the Redditch 22 and from a strong forward drive, centre Kittendorf brushed aside some desperate defence to touch down for a fine try. Richard Mazurek converted. Harbury added a further try through another strong approach by the pack with Dan Taylor on hand to put his team ahead, again Mazurek converting. Any advantage of the elements lessened significantly as the wind dropped and the rain abated. Harbury though added a penalty to extend their lead to seven points. Once more they were unlucky when a number of slashing breaks were hindered by the pitch surface.

In the final ten minutes Redditch were awarded a series of penalties that enabled them to work their way upfield. From a series of driving mauls and attacking scrums the home forwards tried to break the excellent defence of their visitors. Harbury conceded several penalties close to the line, although the reasons for the decisions were not always entirely clear. Nonetheless, Harbury stood firm and amply demonstrated the total commitment that skipper Evans had asked for after the hosts early try. The sheer determination and refusal to yield showed great character from all the players and is something that will be needed to the full over the remaining seven league matches if Harbury are to gain promotion. A credit though to both teams as they made their way off to warm showers after playing in some of the worst conditions imaginable.

As a footnote Redditch's second match on an adjoining pitch was abandoned after 50 minutes and twenty miles away at Middle Road Harbury 2nd's Warwickshire League match against Old Laurentians was also abandoned after 57 minutes with the visitors leading 17-14. The match will have to be replayed later in the season.



Harbury Tennis Club

Colin and Sue Mercer

www.tennis-today.net/harbury

Rain stopped play has been the most frequently used phrase so far in 2014 and then the gales ripped the roofing felt off the Clubhouse! As a result we had to postpone the official opening of the £20,000 refurbishment of the courts but I'm pleased to say the roof was quickly repaired and the insurance cheque is in the post!

The “Muffler” tournament is the Club’s traditional opener for the New Year and brings out the hardy members suitably wrapped up for winter. As you can see, this year was no exception but the incessant rain left us with no choice but to call it off even before the punch was ready to sample!



Only one of the 5 scheduled Banbury League matches has been played. That was a top of the table clash at Middleton Cheney and it turned out to be a very close match all round with all rubbers following a similar pattern. Caroline Morland and Sue Panton won the first set and lost the second as did Steve Stark and Colin Mercer although the second set went to a very long tiebreak before the home pair were able to secure a draw. In the mixed doubles it looked bleak when both Caroline and Steve, and Sue and Colin lost the opening sets but both couples rallied strongly to win the second sets and draw the match. That left the league positions unchanged, Middleton Cheney top, Harbury second.



I’m delighted to report that at the other end of the age spectrum Harbury’s Under 8’s were in action in the Warwickshire LTA Mini Tennis Red League at Coventry. Our Junior programme is run by Tennisolutions and through this we have established close links with Shipston Tennis Club so there was a little rivalry when in the first match Harbury were drawn against their training partners from Shipston! The team

of Thomas C, Stephen H, Samuel G and Daniel S made a flying start, winning 3 of the first 4 matches before eventually being overhauled 7-3. It was a great effort by all and the result could easily have been very different as there were many very close matches of the highest standard, with rallies in some cases of around 50 shots.

For details of the Junior programme please contact Lucy at admin@tennisolutions.co.uk

Let’s hope the weather improves and I have more to report next time!



Harbury Toddler Group

Lynne Barton

A big thank you to all those who attended and those parents who sent their good wishes in support of Harbury Toddler Group for its first session of the New Year.

There was certainly a buzz about the place with cakes, balloons and party bags as a special treat. Pippa from *Sing and Sign* was brilliant and captivated the attention of children and parents alike.

Deborah, from Southam Children's Centre joined us the following week with easels, paints and aprons to extend the children's creative experience. She will be visiting again in March with more art opportunities.

Two important dates for your diaries, both in the same week!

The Annual General Meeting will be held on **Tuesday 11th February at 8pm** at the Shakespeare Inn, Mill Street, Harbury. We promise that the business element won't take long. It is an opportunity to give your views on how the group can develop through 2014 and learn what your 'subs' contribute to.

Another regular feature of the year is our hosting of the **Coffee Morning** at the Tom Hauley Room attached to All Saint's Church. This will run from **10am – 12noon on Saturday 15th February**. We will need some helpers, cakes and prizes for the raffle. All donations to 26, Vicarage Lane beforehand if possible please.

We would like to welcome mums, dads, grandparents, carers and children under five. We open our doors every Monday at 9.30am and finish at 11.15am. You are guaranteed a warm welcome, a friendly chat, refreshments, activities and toys to entertain and stimulate your child.

Need more information or would like to just say hello before you come? Then please do ring Lynne Barton on 01926 612748 or email lynnebarton@btinternet.com

With very best wishes to you all.

BOOKINGS FOR		
HARBURY SCOUT HUT	HARBURY VILLAGE CLUB CONCERT ROOM	HARBURY VILLAGE HALL
Debbie Dimmock Tel: 612036 debbie@dimmock.org.uk	(evenings) Tel: 612498 harburyvillageclub@hotmail.co.uk	Celia Neill Tel: 612819 harburyvillagehall@googlemail.com
HARBURY VILLAGE LIBRARY	TOM HAULEY ROOM HARBURY	THR COFFEE MORNINGS
Sarah Sherman Tel: 612277 hvlbookings@gmail.com	Sally Stringer Tel: 613214 sal.47@hotmail.co.uk	Sally Stringer Tel: 613214 sal.47@hotmail.co.uk



Harbury Pre-School

Staff & Committee



The New Term – Firstly we would like to wish a warm welcome to Henry, Eliza, Gabriel and Joe who joined us at Pre-School at the beginning of the term and are settling in with their new friends.

Outdoor Classroom - The new term was heralded by mild, damp, almost spring like conditions. The children made the most of the rain in the outdoor classroom, looking at their reflections in the puddles and then making puddle pictures from their experiences.

The rain also made the “teabag splosh” all the more appropriate, as wonderful patterns were made by dipping teabags into watery paint and dropping from a height onto paper.



Then, for a few days, the frost came, albeit fairly briefly, and we were able to talk about the cold weather. The frost on the outdoor mirror provided a great medium for mark making and we used the story sack to tell the story of “A Perfect Day for IT”, setting up the play table with the characters

from the story and suitable props, so that the children could re-enact it with a small world theme. Winter songs were sung, and ‘cold’ colours were used in the creative area for paintings and collages. We talked about the weather conditions, discussed the sort of clothing that we might need to keep ourselves warm, and coats, hats, gloves and scarves were donned for outdoor play.



Sound Factory – In the creative area, the children filled small tubes with a variety of items, such as rice, beads and pasta, experimenting with the sounds that could be made with them. They then decorated the tubes with paint and pastels and used them to make their own musical rhythms.



Exploratory Play – Foil trays were covered with a layer of cornflour mixed with shaving foam and the children had a wonderful time investigating the different textures that could be achieved when the mixture was moved about with their fingers.



Sainsbury's Active Kids vouchers

– We are once again collecting Sainsbury's Active Kids vouchers at Pre-School. The vouchers will be issued in Sainsbury's stores, petrol stations and with online groceries. Please send in to Pre-School any vouchers you have collected and please ask neighbours and friends if they would like to collect for us too!

February – With Chinese New Year upon us, look out for all sorts of Chinese activities next month!

If you would like further information, or to register a child for Harbury Pre-School, please contact Rosemary Jackson, Pre-School administrator: e-mail enquiries@harburypre-school.org.uk phone 07907 598461 or look at the website www.harburypre-school.org.uk



In Nursery

We welcome Jessica who has joined us in January. The children returned from a wonderful Christmas break with their families. One of the children received a guitar for Christmas which has provoked a range of activities involving instruments:-



- Mrs Wilson and her African Jembe drum.
- Mrs Giblin and her flute.
- Making their own instruments to play.
- Playing musical games on the computer.

Angus – “I can make it sound like rain. I can play it loud. I’ve got a piano at home. Hamish plays the piano. I’ve got one chair.”



Amber – “Mum has those at home, and then I started to eat it – pasta. When you tip it out you get pasta. I stuck the spottys under there and that is a yellow bit. That is a green one underneath. Pasta – hard, I bang it on the table. Tap, Tap, BANG! BANG! Shake it now. It’s a wiggly sound – musical!”



The children delighted in looking through their personal Learning Journals, sharing experiences and reflecting on their achievements during 2013. It was wonderful to observe the friendly praise offered within the group and the expressions of proudness.

Luke – “Me! – It Luke. That one! Pointing! Stick it, hair (ribbon). Car – tractor – wheels!”

Charlotte – “My folder is fantastic. I’ve done lots of things. I liked drawing my flower pictures. It was a very long time ago, it can stay in my lovely purple folder – the same as my top, purple!”

Jack – “It’s cool! It’s my work! I’ve got two of them! It’s all my own. I did it all. The best is my painting and the sticking bits.”

Dates for the Diary

Indulgence Evening – Thursday 13th February 7.30pm-10pm in Harbury Village Club. Advance tickets £3.50 from 613084 or Windmills (£4 on door). Tickets include nibbles and a free gift. Lots of treatments and gift stalls for a wonderful pamper evening ready for Valentine’s Day.

Bag2School – Monday 10th March. Please bring filled bags to 10 Constance Drive or ring 613084 if you need help.

To register a nursery place for your child ring the administrator on 01926 613084, email info@windmillsnursery.co.uk, visit our website www.windmillsnursery.co.uk or call the nursery on 07906 519148.



Harbury Primary School

David Cousens

Two weeks ago we completed a whole school curriculum week based upon a wintery themed picture book. Read on to find out more.

Betty and the Yeti

Two weeks ago we had a whole school science week based upon the book ‘Betty and the Yeti’, by Ella Burfoot. There is a wonderful display in the school’s entrance hall which demonstrates some of the scientific

investigations the children completed. Below are some of the activities the children were involved with:

- Reception looked at the effects the cold has on vegetables and fruit.
- Year 1 investigated which materials were best at keeping out the cold to help Betty keep warm.
- Year 2 investigated what could be used to help Betty clear a path in the ice and snow to let Betty's friends visit.
- Years 3 and 4 worked together to discover which materials made the best runners for a sledge.
- Years 5 and 6 considered what materials could be used to help keep Betty's soup warm.



It was a pleasure to see so much scientific enquiry going on around the school and the questioning and investigative skills of the children were brilliant. A massive well done to all the staff and children for their super science work.

Let's get Cooking!

I am pleased to announce that we have again been awarded the 'Let's Get Cooking' accreditation for the work done by our cooking club, run by Mrs Rea and Miss King. The Children's Food Trust recognized some of our key achievements from 29.11.12 to 30.12.13 as: 24 club members have learnt new cooking skills; 117 new cooking skills have been taught to club members; 13 club sessions have been held and reported.

Child Illness

Please do not send children to school who have been sick within the previous 24 hours. This helps us to prevent the spread of any illnesses and enables those who have been ill to fully recover. Many thanks for your support.

The Comenius Project



Mrs Neale, Mrs Lines and myself returned from our wonderful visit to Finland on Sunday evening. It was fantastic to teach in a Finnish school and the children enjoyed the activities we did with them. We have shown the children a video of some of the highlights of our trip and of what school is like in Finland which included; children ice-skating and playing ice-hockey at breaktimes,

children serving themselves dinner in their classrooms at lunchtimes and the school day finishing between 1 and 2pm.

Coventry Olympic Gymnastics Club is holding general gymnastics classes at Harbury School, every Monday evening 6-8pm. This is for ages 4 upwards. All coaches are trained and subject to DBS checks (formally CRB). For more information about prices and availability please contact Tex Coton on 07806 700606.



Village Hall Update

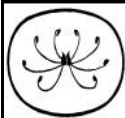
Chris Finch

Looking back to the start of the year, the Village Hall committees can report on a very successful New Year's dance, both in terms of enjoyment and financial outcome. Phil King and the Royals created a lively atmosphere with their sixties/seventies numbers, which encouraged continuous 'twisting and shouting', especially from those who had dressed the part remembered from their 60's heydays?? The result was a great one for the Village Hall with many happy customers and a profit of over £2K. Within days, Geoff Thorpe had heard that his efforts in applying to the County Councillors Grant Fund had resulted in a donation of £1k, which will be used to replace some of the tables, which are definitely 'past their sell-by date' – many thanks to Bob Stevens (County Councillor) for his support in assisting our bid. Southam Rotary Club, which organised the Burns Night, in conjunction with the NSPCC, reported an excellent evening, with the external caterers being very complimentary about the 'superb kitchen facilities'.

Looking forward to the months ahead, the booking secretary has noted that there are not many Saturdays, which are completely free and she recommends making contact with her as soon as possible, if a celebration or party is planned (612819). Just recently, a new booking for the Theatre Youth Group has been made on a Tuesday, which is squeezed in between the JLR badminton group's session and the regular Band practice later in the evening. Another wedding has also been booked in August which will use the internal marquee linings, which proved so successful on the first outing last year.

There are several groups in the village, notably the Theatre Group, Harbury Twinning Association and the Folk Club, which hold regular fund-raising events in support of the future plans for improved changing rooms and a permanent stage at the Hall. We are very grateful to the Folk Club for an excellent evening of music and entertainment on 1st February.

Thanks to all the members of the local groups who continue to support our on-going efforts; their efforts are **VERY** much appreciated!



Almost 40 members braved a dark evening in January to hear our speaker Linda Smith. Her topic was the History of Modern Water Lilies. We remember Linda's previous talks and again she did not disappoint us. You will remember that Linda and her husband create and display their water garden features in a lot of RHS shows and have now won three gold medals.

A French man, Bory Latoir-Marliac, who lived from 1830 to 1911 was responsible for developing the water lily at his nursery where he sold mostly bamboos. We saw pictures of the nursery which still produces new hybrids. He succeeded in 1875 with pollinating a rhizome of a white lily by hand with a brush and eventually produced more colours, mostly pinks and shades of yellow. Over a period of time more colours were produced. Once fertilised, the lilies were placed in terracotta pots around the ponds. If a viable specimen was produced, these were then put into ponds in a grid of squares. These pots are no longer used but we saw them at the nursery as they would have been in the 19th century. It sounds simplistic but it took many hours of dedication.

We were shown some lovely varieties such as pygmalia helula, a yellow lily first developed in 1879. A gorgeous pink lily followed in 1889 by reds in all hues. At this time Latoir-Marlic was still selling bamboos and it was not until the Grand Exposition later in 1889 for the Eiffel tower launch that he displayed his collection and won first prize. He also experimented with variegated leaves and that wonderful artist Claude Monet became aware of his collection. Not all water lilies are hardy but at Giverny, Monet's garden outside Paris, he bought extra land and created his world famous ponds and the lilies he bought from Marliac adapted to the climatic conditions - the rest, as they say, is history. If you have been to Giverny you will of course remember the Japanese bridge, which is overlooking the ponds and the surroundings are shaded with plants which help to protect the lilies. The reason for the shading is that some of the original lilies he bought did not survive so he experimented with various plants until he got the right amount of shade and light. The new head gardener there is James Price from Liverpool; what a wonderful opportunity for him.

Linda showed us some superb pictures of Giverny where you could see the reflections in the water and various angles of the bridge which when I visited in Spring was covered in wisteria (and full of Japanese tourists!) She apologised if there were too many pictures of this garden but there were just the right amount for us to appreciate all of the colours. Monet of course painted the water lilies and there are the huge canvasses displayed in Paris which surround you. When I visited I had to be almost physically removed as I was so engrossed!!!

Over the course of the years it is seen that a lot of the causes for water lilies to die are due to overcrowding and failure to remove the dead leaves. It is most important that this is done so as not to pollute the pond water. Tropical lilies are taller with long stalks and some examples were seen again an explosion of colour. Of course not forgetting the huge Amazonian water lilies as at Kew. The pads are four feet across and the flowers one foot. An interesting fact Linda gave was that Marliac only sold infertile species so that he virtually had the monopoly at that time.

So many wonderful pictures of all shapes, colours and sizes of lilies were seen. The nursery in France stayed in the family until 1991 when Stapeley Water Gardens (from Cheshire) took it over until 2004. It again has new owners who have developed the site but kept the original lay out and clay pots. Linda was an excellent speaker, we could all hear her even though she had competition for a time from the heating system. Her knowledge of the subject was fantastic and she did not have any notes. If you are going to Chelsea this year she will again be in the Marquee, do say hello. I look forward to welcoming her back again maybe next year.

Here are a few ideas for visits in February to see snowdrops and hellebores. Perhaps by then it will have stopped raining?! Ashwood Nurseries which we visited a few years ago in the West Midlands are holding an open day on 15th from 10.15am to 2.30pm with one hour behind the scenes tours to see how the hellebores are bred and grown. Cost is £2.50 and for more information, directions etc. go to www.ashwoodnurseries.com

For snowdrops here are just a few suggestions....Hill Close Gardens in Warwick are open on 22nd to see the snowdrops from 11.00am to 4.30pm and the cost is £3.50. Painswick Rococo Gardens (again we have visited here) are open every Wednesday to Friday in February for talks etc from 11.30am to 3.00pm at a cost of £5.50. There are carpets of white here, a fantastic sight. At Hanwell Castle near Banbury on Saturday 8th and Sunday 9th they will be open from noon to 5.00pm and 10.30am to 5.00pm respectively for the annual display of snowdrops. This is a fascinating walk and the millennium telescope will also be open. Cost is £2.50 with teas available at a cost of £2. I can really recommend a visit here, you could always go for a meal first at the Moon & Sixpence. The home of the Elwes family at Colesbourne Park on the A435 between Cheltenham and Gloucester has a historic collection of snowdrops. It is open for weekends in February from 1.00pm to dusk at a cost of £7.50. At Trench Hill, Sheepscombe in Gloucestershire, a woodland setting, there will be open days on 16th and 23rd from 11.00am to 5.00pm at a cost of £3, it is about 35 miles away.

I hope that you can get to visit at least one of these venues as the sight of snowdrops brings the knowledge that better things are on the way. I was talking to a lady visitor at Upton House last weekend when we got talking about snowdrops and she told me that she wanted to buy an expensive new variety from a nursery in Cambridge but the owners wrote and told her that

they were unable to supply these plants as the collection had been stolen. How awful. Snowdrops are showing themselves as are lots of daffodils and I have two lovely white clematis in full flower.

I am about to finalise the day trips for this year and will announce the dates at the February meeting. We will be going to David Austen Roses and Bodenham Arboretum in June and Sir Harold Hiller Gardens in July. As before if any one who is not in the Horticultural Society is interested we would love to include you in our trips.

I look forward to seeing you all at the meetings, the March speaker on 4th will be Rob Cole who will be talking about Summer Perennials and will be bringing plants to sell. We look forward to a return visit from him and his wife Diane; they are both leading lights in the Warwickshire group of the NCCPG.

It is getting lighter at night and we shall soon be able to get on with our gardening, whatever you do, enjoy, but do not overdo things at first. Happy gardening.



Nature Notes

John Hancock

In last month's article, I reported on the remains of a giant oak which sits on the wide verge of Hambridge Road, south of Holmes House, Bishops Itchington. At first glance it could be taken for a large, pyramidal shaped rock, but examine more closely and the rough bark of our national tree is revealed. Gerry Parker who lived at Holmes House as a child told me the tree was known as the Granny Oak and he and other children used its environs as a playground. Perhaps someone has a photograph.

Beyond Holmes House lies Grange Farm and the third bridge over the Itchen between Bishops Itchington and Knightcote on this back road. Appropriately it's called Ham Bridge on the local 1:25,000 map. A crack-willow by a pond just north of Holmes House was harbouring a young yew tree. This is typical of these willows which gather leaves and soil in hollow places, amidst their trunks, and become receptacles for seeds, doubtless left there by birds, which germinate to produce a variety of local trees from hawthorn to apple. *Salix fragilis* is well named since it has a tendency to split open under its own weight. Pollarding of willows along water courses in lowland Britain provided both wood and a tree less likely to split open thus stabilising the banks which can prevent flooding which is a topical subject at present.

Yesterday (January 25th) produced an interesting weather phenomenon. I thought I would get a dry afternoon when I went out on my bike but instead got caught in wind and torrential rain. Turning along the Salt Way and cycling past Knightcote Bottoms Farm, I looked due west to the whaleback of Itchington Holt. It was 3pm and the cloud in that direction might be expected

to be lighter than that in other quarters. Instead it was battleship grey and evening seemed to be coming on apace. On reaching the road through the Thwaites Estate, I could just pick out the white sails of Chesterton Windmill about 3 kilometres away. A car's headlights appeared to flash in the distance. Next moment a pillar of light seared down out of the cloud to illuminate the mill. It was a bolt of lightning. Then the rain started and the wind gathered strength. I briefly conversed with Father Craig who was exercising his dog Gus; then we both speeded up to get to the shelter of our respective homes. In less than an hour, the sky had cleared and a calm blue late afternoon settled upon us.

Today it has been dank with heavy showers but this evening it is clear with Orion's Belt shining overhead. We are waiting for the European space probe Rosetta, which was launched three years ago, to catch up with its quarry, a comet outside the orbit of Jupiter. Maybe it can send a lander down onto the surface and explore a small world which apparently predates our solar system.

Coming back to earth and looking for signs of spring, I took a walk through Bascote Woods on Monday 20th January. Sunshine and blue skies made me glad to be out. Some trees were partly clothed in fronds of lichen. We apparently have some 1,400 species of lichen in the British Isles and the processes by which they reproduce are still not fully understood. Lichen 'plants' consist of a fungus growing in close (symbiotic) association with algae. The organism can reproduce either via a small piece of the parent breaking off or the fungal element producing spores which float away. In this case, the spores must encounter the relevant algae for reproduction to occur.

Under the leaf mould in the wood, bluebell shoots were several centimetres high and young primrose leaves were well advanced. Rooks broke cover to float out over the valley in the direction of Offchurch. A line of temporary pools circled the hillside where ground had slumped. Soon frogs will be emerging to look for a mate and the year will really kick off.

In our back garden, two male blackbirds were squaring up to one another. One was feeding on some apples and chased off the newcomer. Later, I saw the sooty brown female so perhaps food was not the only cause of the fight. Along a roadside I found the tiny crucifera, Shepherd's Purse in flower. Its Latin name is *Capsella bursa pastoris* and its heart shaped seed pods, which were already formed lower down the stem, are like miniature medieval peasants' purses. In the Far East, this plant can be a spicy addition to a meal of wontons (Chinese savoury filled dumplings).

Now the green spears of Wild Arum are prominent under hedges and young Stinging Nettles can be found. The mild weather may not be kind for hibernating animals which wake and search for nourishment. There could be a lot of winter still to come.



General Section

Harbury Senior Citizens Committee Update

We do not have a lot to say this month. However we would like to give you some dates for your 2014 diaries.

The summer outing will be on **Wednesday 18th June 2014**.

The summer lunch fund raising event will be on **Saturday 19th July 2014**.

The Christmas Party will be on **Saturday 13th December 2014**.

We are still deciding where the summer trip will be and will let you know the destination as soon as we have it.

Meanwhile, like many other organisations we are looking for a few more committee members. If there is anyone who would like to join us, please call me on 612421 or Julie Clarke on 612066 and we will be happy to talk through what it involves.

Thank you.

Mike McBride

On behalf of the Harbury Senior Citizens Benefit Association



Bumps & Bundles

January saw Bumps Bundles and Tots Too celebrating our third birthday. Annie brought in some cakes which were enthusiastically eaten by the children. Over the last three years Bumps has welcomed many new Mums and their Bumps and Babies, who always get a warm welcome, a cup of tea for the grown-ups and a chance to meet new



people and catch up with friends. We also welcomed Amber and Imogen this month who have just moved into the village.

Come along to Bumps - it's every Tuesday in the Tom Hauley Room (behind the Church) from 10.30am to 12 noon.

Rosemary Scott



Harbury Pre-School Fundraising Group

We had a very busy autumn term with the Victorian Street Fair, Bags to School textile collection and also the Christmas Market. These were all very successful, so thank you to everyone who supported these events.

The next dates for your diary are:

Pre-School Coffee Morning at the Tom Hauley Room, **Saturday 8th March**
10am until 12pm.

Harbury Pre-School is hosting the coffee morning with delicious homemade cakes, a raffle and something for the children to do so please come along to support us. Any donations of cakes and biscuits will be gratefully received, please bring them along to the Tom Hauley Room on Saturday morning from 9am.

Bags to School Textile Collection - 17th June

We would be very grateful for any unwanted textiles such as linen, children's and adults clothing, paired shoes, soft toys, curtains, towels, handbags, belts etc.

BBQ at the Harbury Carnival - Saturday 14th June

80's Disco - Watch this space, date to be announced!

New members of the Fundraising group are always welcome. Please contact Rosemary rosemaryscott4@gmail.com for more information.

Rosemary Scott



Windmills
Nursery School

Windmills Fundraising Group

A big thank you to everyone who came to our coffee morning on 18th January and to all the mums and dads who donated cakes and raffle prizes and helped on the day.

Dates for your diary:

Indulgence Evening - Thursday 13th February 7.30pm - 10pm Harbury Village Club

Don't miss out on our exciting Indulgence Evening on Thursday 13th February. Only £3.50 a ticket in advance or £4 on the door to include nibbles and a FREE GIFT.

We have a variety of stalls lined up to pamper you which include eyebrow threading, reflexology, reiki, neck and shoulder mini massages, facials, mini makeovers, a whole range of nail treatments including manicures, polish, calgel, geilish, hand massages.

We even have a psychic if you fancy a reading!!

Stalls include beauty products, jewellery, cards, art work, massage oils, candles, handbags, scarves and other things. A perfect opportunity to get that perfect gift for Mother's Day.

For tickets, please ring Katharine on 613084 or email. info@windmillsnursery.co.uk

Bag2School

Our next Bag2School collection is on Monday 10th March at 9am so please start collecting now. We offer a free collection service, so just fill any bag and give Sue a ring on 614448 who will happily collect.

Thanks for all your support.

Windmills Fundraising Group

Harbury Duke of Edinburgh's Award Group

At the end of December, Harbury Duke of Edinburgh's Award Group presented Bronze and Silver Awards to a large number of young people from Harbury and the surrounding villages. 27 youngsters received their Bronze awards, and 23 received their Silver Awards. The awards were presented by the group's first Gold Award holder, Eleanor Clarke, who also inspired them to continue with the Award Scheme, by talking about her recent visit to St James' Palace in London to receive her Gold Award from Prince Philip – a very special and unique opportunity.

All those present have worked tremendously hard to achieve their Awards, and most are continuing on to further Awards. The group leaders are very proud of their achievements and look forward to many more Gold Awards in the future!

Caroline Hill



Harbury Art Group

Well, unfortunately we had to cancel our first workshop of the New Year! The first Thursday of the month fell on 2nd January, and with only five people willing to brave the weather and shake off the post-New Year hangovers, there were not enough people to make the session viable for our tutor.

Harbury Art Group was set up 14 years ago, and professional artist, Nick Baldwin (www.nickbaldwinartist.co.uk) has been running his workshops every month in the Tom Hauley Room since then. Initially the workshops attracted large numbers of people from Harbury village, but now most of the attendees travel into Harbury from as far afield as Kenilworth, Leamington, Barford and Southam. Numbers have fallen recently and travel costs have risen, so the viability of the group is in question. Various suggestions have

been made by our regular painters as to how the group can continue with a new format, and we will reach a decision on its future at the February workshop. Watch this space!

Our next 'social' painting day is planned for **Thursday 20th March**. These social days are untutored sessions from 10am to 1pm, where you bring your own subject and materials. We are always happy to see new members, and the charge is £5 per person to cover the hire of the room.

To find out more, contact Pam on 01926 814923 or email harburyart@hotmail.com.

Pam McConnell



Blood Donors

The next session in Harbury will be on Thursday 6th March, 1.30 – 3.30pm and 4.30 – 7.30pm. If you want to book an appointment, go online to www.blood.co.uk, phone 0300 123 2323 or just turn up.

Gillian Hare



Harbury Village Library

Another new year and the number of books in the library continues to grow! At the end of January, 116 new books from Warwickshire County Council were delivered and Harbury Village Library currently has 1097 new and donated books.

Even though there are an increasing number of titles to read, the library will still be very pleased to accept donated books if they have been published from 2011 onwards and are in good condition.

Sue Wurr

New railings for Harbury Village Library



The Trustees responsible for the Library had been planning to replace the railings leading into the Library entrance for some time, when a villager unwittingly managed to break one of the horizontal rails to the right of the steps before the work could be carried out. A **DANGER** notice was quickly erected, so that another unsuspecting person would not try to

use the wooden structure as a supportive hand-hold, as the framework had become rotten in parts.

On a very wet, miserably grey day two Harbury 'lads', who had actually been to school in the premises, toiled throughout the day to remove the unsafe wooden structure and replace it with impressive metal railings, which had been constructed by George Worrall Engineering Ltd. (Heathcote). Shaun Green and Gary Overton are both employed by the engineering firm and they made light work of removing the existing railings/ digging holes for the concrete and erecting the new metal posts, which were in place by the end of the day.

The cost of the replacement railings leading in to the Harbury Village Library and Biblio's Cafe has been met partly from donations left in memory of Derek and Eve Lowe and also from 106 funding received by the Library from Linfoot Homes, who are currently building Stage 2 of the Bush Heath Lane development. The Section 106 funding, available from local housing development, can be used to



support the Library premises, so the combined finance from the two sources has been put to very good use for the benefit of the whole community.

Chris Finch



Harbury Games – Excitement is Growing!

The Harbury Games will be held at the recreation ground on Saturday 28th June, where medal-tastic performances of running, jumping, throwing and being very silly, will be rewarded as well as enjoyed.

As before, the format of the Games provides events for people of all ages and abilities, though this year we have a Commonwealth theme to coincide with the Commonwealth Games to be held this summer.



We are aware of tremendous interest and excitement about the teams and who is going to be in them; if you would like to enter a team, or join one that

someone else has entered, please contact Andrew Hunt on andrew.hunt@me.com

Team composition: each team should consist of a minimum of **three** individuals from each of the **four** groups:

- primary (up to, and including, Year 6)
- secondary (up to, and including, Year 9)
- women
- men
- plus any additional members up to a maximum of **20**



Do visit our Facebook page – *Heart of Harbury Games* – and post photos of your happy memories from previous Games. The photos here, by Brian Young, are pleasant reminders of sunny, summer delights!

Terry Hunt
on behalf of the Games Masters



Harbury Village Show

As there seems to be some uncertainty about the future of this long established event, readers will be reassured to know it will indeed happen this year. It will return to its old venue in the Village Hall, allowing more space but naturally necessitating a greater expense, so will only be viable with maximum support both from entrants and spectators. Whilst our wonderful allotment holders and gardeners can be relied on for maximum “wow” factor with their produce (how **do** they grow parsnips so long and straight?) there will be lots of classes for the less devoted. Most gardens could produce 3 dahlias or 3 perennials, let alone 1 rose. Then there are classes for art, photography, a wide range of crafts, not to mention for children to enter. And it wouldn't be a show without the cooking and preserves – look out for honey classes this year for our local producers.

A reminder that one class for photographs will be titled “Balloons” – time for the imaginative juices to get flowing.

This year's date will be Saturday 6th September – put it in your diaries. But a show only works if there are lots and lots of entries. Let's give the judges something to get their teeth into and be proud of our village's ability to rise to a challenge.

Gillian Hare
On behalf of the Show Steering Group

Oil Buying Group – Harbury & District

The oil buying group, which was set up over two years ago is still going strong - going from strength to strength, in fact! There are 27 customers in Deppers Bridge, Harbury, Ladbroke, Southam and Ufton joined together in a loosely arranged consortium to purchase oil, as and when, needed. There is no fixed time for a delivery, since a request is always triggered off by one of the group emailing to say they will need a 'top up' in the following week and then an email is sent out to all members in the group to see if anyone else needs a refill. Once an estimate of the approximate total has been ascertained, the supplier of choice, (which has remained RIX) is asked for a price which is then fed out to each person. There is no charge for joining the group (unlike official schemes organised within the County) and the benefit of being part of a consortium is gained by all members. Several people have become part of the group as a result of 'word of mouth' spreading the good news in the past months, but an update in the Harbury & Ladbroke News might reach those for whom the expense of filling an oil tank is one of the financial headaches of the current time. To reinforce the idea about the saving to be gained from being 'all in it together'(!), the last delivery to our buying group was quoted at a price of 54.25p/litre whilst customers on their own were paying anything from 59.75p – 62.55p/litre. For a customer buying 1,000 litres, the saving was therefore a minimum of £55 compared with 'going it alone' and could have saved as much as £83 on one load against the highest quote received from another company. If there is anyone in the area, using oil fired heating, concerned about cutting the cost of oil, it might be worth checking your recent bill against the price obtained by members of our group, as given above.

If you can't beat us and you want to join us, all that is needed is either a phone call to Chris **(01926 612305)** or an email to: **m.c.finch@btinternet.com**. There's no commitment in being part of the group, as each person is able to check the price they could obtain on their own and decide whether to be part of the group or not. All invoices are settled directly with the oil supplier and no money changes hands within the group. If it sounds like a money-saving idea to anyone not already 'in the know' then please make enquiries, it can only **save YOU money!!**

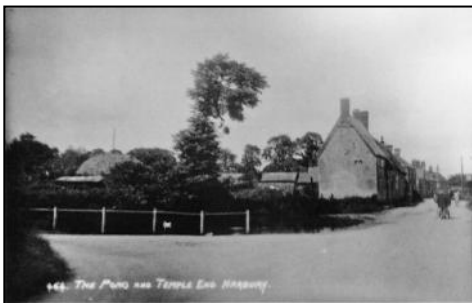
Chris Finch

Harbury Then and Now!

Whenever there is a heavy downpour (and there have been a few during the winter months of 2013), two or three areas in the village (Cemetery corner/the Village Hall entrance and Bush Heath Lane corner), nearly always manage to flood to a greater or lesser extent. By comparison with areas in the south of England our minor floods are of no consequence to householders and only provide the excitement of a water splash to some 'boy racers' or a

mini-soaking to some village youngsters who enjoy the effects of the water cascades caused by passing motorists.

Many times people, especially newcomers to the village, have wondered why flood signs are erected at the junction of Park Lane and Temple End when the standing water reaches almost completely across the road in either direction. For those who



have lived in the village for many years, there will be memories of the Park Lane Pit, which used to ice over in years gone by and provide many happy hours of skating and sliding for all those children who wandered down the 'bottom end' of the village. Until recently, even those of us who have been in the village since 1970 had no real concept of what the 'Pit'

looked like, but an observant villager managed to pick up a postcard of 'the pond at Temple End', which shows the extent of the standing water, which even attracted some local wildlife – ducks! There was a fence around the edge of the pond (as in the photos), but obviously this wasn't enough to deter the young locals from their occasional winter fun – maybe there are still those who can remember the excitement, which was generated by simple pleasures in the days before Health & Safety rules would probably have banned such innocent activities? The photograph below is from the Warwickshire County Council collection.

It's hardly surprising that the Bush Heath Lane flooding is the most extensive of the three areas which occasionally appear in our village, but where did all that water from the 'Pit' go once houses were built at the bottom of the road?? The men from the Council appeared after the most recent flood (see 2014 photo) and scraped away all the leaves which were blocking a nearby drain, so within hours our mini-flood had disappeared. It's always fascinating



to see photos of Harbury in years gone by and anyone could spend many a happy hour in the Harbury Heritage Room, which has hundreds of photos

showing events/people and scenes from several decades ago – thanks to the efforts of Nigel Chapman, who has been responsible for collecting them and a team of willing volunteers who have catalogued and displayed them. It's worth a visit to the room at Harbury School (open on the first Tuesday of every month from 6.30pm) if you want to know a bit more about Harbury – then and now!!

Chris Finch

Harbury Energy Initiative

Inspiration! In April last year we ran a youth packed Harbury Energy Day. Year 5 pupils of our school took an active part in making that happen and in making their views known in poetry. We published a few of those in Harbury and Ladbroke News last year but missed this one.

*What would happen if there was no
countryside?
Just big cities,
All full of pride,
save, save, save, save energy.*

*No trees or water,
Just nuclear war,
All full of slaughter,
Save, save, save, save energy*

*No joy or fun,
Just dust and grey,
No beautiful shining sun,
save, save, save, save,
energy*

*The world is being ruined,
What will you do about it?
Stop pollution, smoking and
cutting down trees,
Then we will have a perfect
world,
Save, save, save, save energy.*

Morgan Jones, age 11

Morgan, inspired by Harbury Energy Initiative, has become a champion of the environment and a keen energy saver. Moreover his poem has been selected to appear in *Poetry Rivals Collection 2013 – Poetic Expressions*. Many congratulations to him. I look forward to seeing Morgan running the Harbury Energy Initiative in a decade or so when the current team has finally run out of energy!

Success! One of our three bids to the e.on Energy Action Fund was successful – more than one, I suppose, would have been greedy. As a result we will now be able with the £2,000 grant to complete the insulation of the Library and Biblio's cafe, making the room warmer and saving on energy costs. Part of the project will be to put up a display of information to help people make their own energy savings. If there is anything you would like to see as part of this display, we are keen to know. Do, please, contact me.

I would also be pleased to hear from anyone who would be interested in working with us to develop and produce this material.

And a sad failure. During last year the Energy Saving Cooperative helped a number of us to install energy saving insulation measures. A number of others were planned. It is therefore with great disappointment that I learned that the organisation is to go into liquidation, not having generated enough business. Time for us, therefore, to look again at whether we need a 'preferred partner' approach and how best to help Harbury cut its energy costs.

In December and January I mentioned the Immersun system for converting unused electricity generated by PV panels into hot water without loss of FiT payments. A number of people have since contacted me. If anyone else is interested in this opportunity I am still creating a list. Do get in touch by phone or email.

Bob Sherman - 612277
shermanbob55@gmail.com

Nurses at the World War I Red Cross Hospital, Southam

I am trying to track down the relatives of those who volunteered and trained as VADs at the hospital. They cared for the wounded soldiers who came to the 'Springs' (now called the 'Grange') to rehabilitate. Did your mother, auntie or granny serve? Tucked away in their possessions may be a photo, a medal, a certificate or even the slim volume that is the Red Cross training manual. I am hoping to find the names, and tell the story of this group of women and girls from the town and the surrounding villages, and the big houses, so that their contribution to WWI is not forgotten.

Please get in touch if you have any information; I would love to hear from you. Phone Val Brodie on 01926 812179 or email val.brodie@zen.co.uk

Thank you.

Val Brodie - Cardall Collection

Three-year Bees Abroad project in Kenya wins Government funding

Bees Abroad has secured major funding from the UK Department for International Aid for a three-year project to alleviate poverty through advancing beekeeping skills and supporting bio-conservation and bio-enterprise in the arid and semi-arid land in the Kenyan district of Laikipia. The Bee Products Enterprise Development aims to raise incomes of 900 pastoral households through beekeeping, providing for improved production, value addition, trade and profit sharing.



Catcher boxes waiting for the migrating bees during the flowering season

It will also increase opportunities for women and marginalized members of society to engage in sustainable economic activity and increase control of their income. Beekeeping is a potentially vital source of income for these rural communities. As well as teaching beekeeping skills, the project will provide vital training in business and marketing, to help rural communities run successful enterprises.

Introducing low-cost beekeeping equipment, often made from locally sourced materials, enables producers to expand to

commercial levels. Community cohesion will be supported by the democratic decision-making and participation in the enterprise, especially under fair trade standards. Better bee colony management also increases the stability of local food supplies through the bees' pollination activities. Understanding the need to preserve natural resources for honey production promotes care for sustainable natural resources.

The project will be implemented for Bees Abroad by me along with my wife Mary and we already act as volunteer project managers for several of the charity's projects in Kenya. As well as helping community groups improve their beekeeping skills, we have been teaching beekeepers how to make value-added products such as hand creams and wax polish.

You can help me raise money for the Bees Abroad charity using Everyclick <http://www.everyclick.com/john-home>

John Home

Good Nutrition helps you to slim...

Slimming4All.co.uk is up and running in Harbury but what is different with our approach and how will people benefit from joining our support groups?

There is no 'quick fix' to a lifetime of weight management, which is why we have created the Forever Nutri-Lean Programme to assist you. In fact the most fundamental purpose of this programme is to show you that **you** can control your weight. We will teach you how to learn the difference between good and bad fats, help you make friends with your metabolism and, most importantly, learn to listen to your body.

This easy-to-follow programme is designed to help you lose weight both gradually and healthily. It is not a fad diet as carbohydrates, proteins and fats are in balance with no exclusion of a natural food category. Our programme is based on a 1,500-calorie eating plan but calorie intake is adjusted to individual calorific needs. These vary depending on how much energy you use whilst at work, rest and play.

The Forever Nutri-Lean Programme is a two-step process, combining a 9-day nutritional cleansing plan followed by a longer-term weight loss plan. We all lose weight at different rates but the purpose of this 9 day plan is to give your weight loss goals a kick start.

The next step, Forever Nutri-Lean, will continue to aid in your body's natural cleansing process, while burning your stored fat cells, and teaching you how to achieve and maintain your desired weight.

Remaining committed to completing this programme will help you develop good habits for life-long weight management and overall improved health.

We know it is not easy and as a S4A Wellness Consultant I have personally experienced the highs and lows of losing weight. I know that sometimes you can read all the books in the world, attend all the groups, search the internet for inspiration but if your mind is not in the right place then you are likely to struggle.

I can help here too because I am with you all the way until you reach your weight loss goal. You may prefer, for instance, individual, rather than group, support or a mix of both. There is a 60-day customer satisfaction money back guarantee, so should you start this programme and not be entirely satisfied then you will receive an immediate refund. If you just want moral support and a weekly weigh-in then I would be delighted to see you. Meetings at Harbury Village Hall, Thursdays, 12.00pm - 1.00pm. See my advert on page 62 for further details.

Marilyn Farmanfarmai – Mobile: 07831 471228
marilyn@slimming4all.co.uk
www.slimming4all.co.uk

Harbury and Ladbroke News invited to Grand Opening of IXL Events Centre

As a result of a recent article about the Dallas Burston Polo Club in the News, an invitation was received by one of the magazine Editors to attend the Grand Opening of the newly completed IXL Events Centre. Ray and Jan Playdon accepted the invitation on behalf of the magazine, as members of the Editorial committee were unavailable due either to prior engagements or hospitalisation. They returned after the event, enthusing about the fabulous night they had enjoyed, as the hospitality and entertainment on the evening were 'par excellence'!

There was so much high class entertainment on offer that they said they had been 'privileged to attend' as Harbury's representatives, since they had witnessed a contingent of the Household Cavalry standing guard outside the 3,000 capacity IXL Events Centre, an exhibition polo game, a Parisian Cabaret choreographed by a former Moulin Rouge Captain, a homage to Frank Sinatra, a musical accolade by Ava Leigh and a performance by Ms Kym Mazelle – the list seemed endless!

The new IXL Events Centre has splendid facilities with state of the Art Technology, an elevated stage and re-tractable catwalk, as well as a concert standard sound system and wrap around terraces for watching polo in style and comfort. The Polo Club grounds are world renowned and, as some villagers discovered in 2013, it's possible to have a thoroughly enjoyable family day out in beautiful countryside, as there are many days when special attractions are laid on to complement the polo as for which the grounds have been developed. Look out for details of the 2014 programme of events to see what excitement will be on offer at the Dallas Burston Polo Club in the coming months.

Chris Finch

Harbury & Chesterton Conservatives

If you look up 16th March on the Internet you won't find very much. It looks like one of the most boring days of the year with virtually nothing happening, unless of course you're into full moons, Miley Cyrus (don't ask), or are in training for running the 10K Wimbledon Common run! However, here in Harbury there will be something interesting happening. Harbury Conservatives will be holding their annual Spring Drinks event starting at 12 noon and this year it will be at The Manor House, Park Lane, home of Angela and Philip Bushill-Matthews. Tickets are only £10 to include canapés and first drink. There will be a licensed bar and a raffle, plus of course much excellent company. Finally, subject to any last minute Parliamentary crises, we hope Jeremy Wright M.P. will be able to join us. Tickets are available now, but are limited. Get yours from any committee member or call 613503.

Bernard Cadogan



Great British Fish and Chip Supper – Friday 16th May 2014

Want to eat fish and chips, while raising money for charity? Hold a fish and chip supper on Friday 16th May 2014 whilst raising awareness of spinal cord injury and supporting SIA's vital services. You can hold a fish and chip supper in your own home, at work or hold a larger supper at your local community centre.

SIA will provide a fundraising pack containing hints and tips, recipes, invitations and donation envelopes. Inviting eight friends and asking them to donate an additional £5.00 means you will raise at least £40.00 from your supper, but we will also give you additional fundraising ideas to raise even more money for SIA.

In 2014 SIA is celebrating its 40th anniversary and so we want to make the batter matter and raise £25,000 from everyone holding suppers. Last year we raised £12,500. The money raised from the suppers will help the Spinal Injuries Association offer support to individuals who become paralysed and their families from the moment a spinal injury occurs, and for the rest of their lives, by providing services and publications which enable and encourage paralysed people to rebuild lives after spinal cord injury.

Every year in the UK over 1,000 people experience a spinal cord injury and there are an estimated 40,000 spinal cord injured people in the UK alone. For more information or to request a fundraising pack call Elizabeth Wright on 0845 071 4350 or email fundraising@siafishandchips.co.uk or visit www.siafishandchips.co.uk

Elizabeth Wright
Volunteer



Southam Lions

Well Christmas has been and gone for another year but the Southam Lions are feeling pretty good right now and it's not just because of overeating and maybe the occasional 'nip'!



This Christmas the Santa Sleigh was out again for 14 visits around Southam and the local villages. Santa gave out chocolates to huge numbers of children (and if truth be known to people outside the usual 'children category'!!!), but all to good avail since a whopping £5374 was accumulated over the period for the President's Charities.

On 15th January Southam Lions will be rounding up the money and giving £3000 to The Acorns Hospice Charity and £3000 to Teenage Cancer Trust at a special presentation.

The Lions wish to thank everyone who kindly and so generously gave so much money for these very special charities.

Peter Guy

Chesterton Church

Thank you to all who came to our Candlelit Carol Service. You made it a special service.

Chesterton Church is looking for a Treasurer: you may be retired and would like to keep your grey cells active and use your computer skills, if so please get in touch with the Churchwarden 614431. It is not necessary to become involved in religious issues or belong to the PCC.

Jo Spurr



LETTERS TO THE EDITORS

Dear Editors

It is not very often I am rendered speechless but I certainly was on Monday lunchtime, 27th January.

May I say a very big thank you to Pam Parton and Eunice McCracken for organising the party in the Tom Hauley Room for my special birthday - it was absolutely fantastic!

Also, many thanks to all my friends who came and provided the excellent buffet, flowers and beautiful cake.

I was overwhelmed and cannot thank you all enough.

Peggie Middleton

Dear Editors

To everyone who joined us the coffee morning for the Multiple Sclerosis Society in December, made cakes, gave to the bring and buy, gave raffle prizes and other donations, we thank you for your generosity. We were able to send a cheque for £371.60.

Doreen B and Shirley C

Dear Editors

My family and I have now lived in Harbury for just over two and a half years. We moved here due to the reputation of it being a good community spirited village. Not what we experienced with our first house, Rose Cottage in South Parade. We renovated and extended it but came across a small number of objections, to the permitted development. We went through the awful distress of submitting planning applications (recommended by District Council planners) to having planning refused for the detached garage, porch and rear extension that we had already built. We lowered the roof of the garage by

10cm and changed the oak post that was holding the porch up for a brick pillar and lo and behold, we were within permitted development. Regrettably we felt we had to sell the house and move on after putting so much effort into it.

We found our ideal home, a similar distance to the school and all on its own and were lucky enough to be the highest bid - Henry's in Bush Heath Lane. Barely visible from the road and with no neighbours to either side and open fields to the rear; surely we would be able to develop and make ourselves a lovely family home.

We have done our best to renovate and improve the 1932 house to keep its character. We have built a garage, changed the windows and cleared the overgrown land. All keeping it within the style of the original house. However, firstly objections raised to the District Council resulted in a planning enforcement visit. All works we have done are within permitted development and require NO planning permission.

Secondly we have recently had another person trespassing at the bottom of the garden taking pictures of our house and property. Permitted development allows you to build detached buildings, so long as you don't use more than 50% of your garden (we have an acre) and you don't go over 4 metres in height. Unless you are within 2 metres of your boundary it cannot exceed 2.5m in height.

Any Harbury resident or ward representative who is interested in seeing what we are doing can contact me and I will show them round. Do please stop taking pictures at the bottom of our garden.

Paul Cockell and family

March Edition - Harbury & Ladbroke News

Adverts to: 31 Binswood End, Harbury by 15th February

Articles to: Harbury Pharmacy, High Street or e-mail to
articles@hlnews.co.uk by 5.30pm, 27th February

Dream Clean Domestic Service

A fantastic cleaning service offering tailored one-off or regular cleans to suit you.

Local service, affordable prices, insured and reliable cleaners.

Call now to book your free quote.

Call Sarah Now on 07720 622570

Email: sarah@dreamcleands.co.uk visit www.dreamcleands.co.uk

ADVERTISING IN THE HARBURY & LADBROKE NEWS

EMAIL: ADVERTISING@HLNEWS.CO.UK

TEL: 01926 612155

Monthly

¼ page – £10.50 or £28 for 3 months

½ page – £19.00 or £49 for 3 months

Full page – £33.50 or £89 for 3 months

Annual

¼ page – £ 94.00

½ page – £168.00

Full page – £315.00

(coloured pages printed in April for the year)

Advert with payment to:

Gill Holden,

31 Binswood End, Harbury

by the 15th day of the month

Cheques payable to 'Harbury & Ladbroke News'

FENCES : TREES



All types of fencing and gates

Tree felling and reduction

Hedge laying and trimming

Patios

Seasoned logs available

Call Adrian Dollar on

01926 817077 or

07914 623989

Qualified and Insured



FREE CHARITY VALUATION DAY

CHINESE CERAMICS, ORIENTAL WORKS OF ART,
COINS, SILVER, ANTIQUES, JEWELLERY,
TOYS AND COLLECTABLES

Lars Tharp - Chinese Ceramics

Don Collins - Coin Specialist

Thursday 13th February, 10.00am - 4.00pm

Items may be left to be entered into a suitable sale

St Francis of Assisi Church Hall

110 Warwick Road, Kenilworth. CV8 1HL

Free home visits for larger items

For further information please contact Mrs Carol Jones

Hansons Warwickshire Representative on 07802 839915

Email: service@hansonsauctioneers.co.uk www.hansonsauctioneers.co.uk

Refreshments in aid of the NSPCC





All aspects of garden maintenance and landscaping including:

- Borders and beds: Removed improved or created.
- Fence repair or installation.
- Lawns - cut, edged, strimmed, turfed.
- Hedges trimmed or shaped.
- Specialist in chemical weed control.
- Ponds installed or removed.
- Garden stone walls.
- General garden clearance.

Genuine references available on request.

All outdoor maintenance considered.

No job too large, or too small.

For all your outdoor chores, call your local, friendly gardener:

Richard Everett

07923 167420 or 01788 567774

info@leafyservices.co.uk

www.leafyservices.co.uk



**ABSOLUTE
BEAUTY**

Tel Rosina on 01926 612403 - www.rosina.moonfruit.com



Swedish | Body Massage

For all your beauty and holistic needs

NEW - Virtual French Nails + Shellac & Minx

Tel Rosina – 612403

www.rosina.moonfruit.com



**Kenilworth
Properties Ltd**
BUILDING CONTRACTORS



**Extensions-Alterations-Refurbishment-New Builds
Bespoke Kitchens and Bathrooms
Design-Planning & Building Regulations Application
Service available.**

Web: www.kenilworthproperties.co.uk

Email: tony@kenilworthproperties.co.uk

Telephone: Harbury 612260 Mobile: 07779 096104

Harbury Business Centre, Church Terrace, Harbury, Leamington Spa CV33 9HL



Mr. Plumb



Plumbing & Heating Services

ALL General Plumbing Undertaken
 Leaks / toilets / saniflows / radiators / showers/
 washing machines / baths / ball valves
 Beautiful bathrooms designed and installed
 Harbury based / References Available

M: 07904 670055 E: marcusbirch@mrplumb.org www.mrplumb.org

SADDLERS BED & BREAKFAST

SELF-CONTAINED COTTAGE IN THE HEART OF HARBURY.
 DOUBLE BED, SHOWER ROOM, LIVING & DINING AREA WITH
 KITCHENETTE, TV/DVD; CD/RADIO. SLEEPS 2 TO 4.
 OFF ROAD PARKING.

£60 PER NIGHT INCLUDING CONTINENTAL BREAKFAST.

JULIE YOUNG, SADDLERS, CHAPEL STREET, HARBURY.
 01926 614050 OR EMAIL enquiries@saddlersbed.co.uk
www.saddlersbed.co.uk



Why you should buy your new kitchen or bathroom from Modern Homes!

- With over 43 years of trading we are the longest established specialist in your area.
- Predominantly British Manufactured products
- Family run 'local' business
- Personal recommendations
- Large kitchen and bathroom showroom
- Full installation service with employed fitters
- Value for money... We offer styles to suit all tastes and budgets
- Kbsa members offering Consumer care protection

www.modernhomesleamington.co.uk Email: info@modernhomesleamington.co.uk

01926 883338

Modern Homes, 37 Longfield Road, Sydenham Estate, Leamington Spa CV31 1XB
 (between Wilts and CAS)



Roger Frogley & Sons Fencing Ltd

30 years of quality service

High quality **domestic, industrial and agricultural** fencing
offering a service second to none,
competitively priced – clean, efficient, reliable.



t. 07970 652145 & 01926 815863

frogleyfencing@gmail.com | www.frogleyfencing.co.uk



LOCKE & ENGLAND

AUCTIONEERS & VALUERS

Established 1834

AUCTIONS

Every Thursday

Viewing every Wednesday 12noon - 7pm

Entries are accepted Friday, Monday & Tuesday between 8.30am and 5pm

If you are thinking of moving, downsizing or clearing a property or business. Call for a free no obligation collection quote. Our auctions feature antique & general furniture and effects, office furniture, modern electrical and household goods, vehicles, garden furniture & equipment, garage tools, architectural reclaims, commercial assets, ex-retail and other stock.



COLLECTION SERVICE

12 Guy St, Leamington Spa, CV32 4RT

01926 889 100

www.leauction.co.uk



kitchen, bathroom & bedroom specialists

● design ● supply ● installation

Why move when you can improve?

We offer a personal, quality service in the comfort of your own home, delivered by a local family run business, with prices to suite every budget.

Every room we create is tailored to your needs and fitted to the highest standard.

Our all inclusive service takes the hassle out of finding the right people for each job. We come to your home, measure the space so it is utilised to its best advantage, then take you through a range of products so you can choose exactly what you want. We then create the room of your dreams!



What our customers say.....

'...a great job from start to finish - no hitches, hassles or other problems. Thank you also for doing the extra plastering and other details, and all so well finished. I am delighted, believe me!'

Call for a FREE design & quote:

T: 01926 810665

M: 07966 164396

www.southamservices.co.uk E-mail: sales@southamservices.co.uk

Helping Hands
The Home Care Specialists

Est. 1989



Do you need a Helping Hand?

If you are looking for an **alternative to residential care** or extra support for those everyday tasks that are becoming difficult for you or a loved one – then we're here to help - **from 30 minutes per week to Live-in Care.**

Our **Harbury & Ladbroke care team** has been providing award winning quality homecare since 1989 and can help with: personal care, housekeeping, help getting around or even to provide a break to an existing family member or care-giver.

To find out how we can help you,
call: 01926 680 763 or
visit: www.helpinghands.co.uk

Slimming 4 All

Join our WEEKLY SUPPORT GROUP
Leaders with PERSONAL EXPERIENCE of the Programme
Understand how GOOD NUTRITION
HELPS YOU BECOME SLIMMER, and STAY SLIM

Local meeting:
Thursdays 12.00 pm - 1.00 pm
Harbury Village Hall

Register online at:
www.slimming4all.co.uk
or call:
Marilyn on 07831 471228



The Crown Inn

Portuguese inspired pub & restaurant



Cinda & Aran invite you to come and experience the traditional pub as it should be; real cask ales, authentic wines and fresh and exciting food.

Specials Board – Look out for our specials on Friday and Saturdays, but be quick as they don't hang around for long!

Live Music – Every Saturday night is music night. with some great acts lined up; Phil & Ken, Skyline, Piano Man.

Sunday Lunch – Take the hassle out of Sundays and let us cook you up a tasty 2 or 3 course roast dinner.

Keep up to date – For the latest events and offers check out our website or:

 www.facebook.com/thecrowninn

Upcoming Events

Fri 14th Feb – Valentines Day

Mon 17th Mar – St Pa tricks Day

Sun 30th Mar – Mothers Day

New Arrivals



Quality Costa coffee including Cappuccino, Latte & Espresso.



Range of Kettle Chips crisps now in the bar.



Families welcome



Dogs Welcome



The Crown Inn, Crown Street, Harbury, CV33 9HE
Phone: 01926 614 995 - Web: www.crowninnharbury.co.uk

Domestic Gas Services



CENTRAL HEATING, INSTALLATION, SERVICE, REPAIR and

POWERFLUSHING....the next best thing to a new heating system!



Are your radiators cold at the bottom?
If so they need **POWERFLUSHING!**

POWERFLUSHING removes the build up of sludge and sediment in your radiators which is making them less effective therefore **costing you money!**

POWERFLUSHING will maximise the efficiency of your radiators ensuring you get the very best from your heating system therefore **saving you money!**



For all your gas requirements please call
Martin Evans on **07980 740720**

Drop Dead Gorgeous Curtains



Beautiful Bespoke Curtains, Cushions and Roman Blinds.

All made to measure and sewn by hand.

I can supply a range of fabrics and poles or I'm happy to work with yours.

Free measuring and free fitting.

I also take on curtain alterations big or small.

Please call Sharron for friendly and helpful advice or to arrange a free quote on:

01926 612226 or 07760 395805

Email; dropdeadgorgeouscurtains@gmail.com

Or visit my website

www.dropdeadgorgeouscurtains.co.uk

I also offer sewing classes covering a range of topics and techniques or can tailor one to your needs, please visit my website for details and call me to book a place

or make an enquiry.



Harbury Juniors FOOTBALL CLUB

Registered Charity: 1150608



Presents

SKOOL Disco II

Over 18's only

Assembly at 8pm

Class Dismissed at 11.30pm

Saturday 15th March 2014

Harbury Village Hall

old skool music 70's through 90's

School uniform if you dare!!



Tickets Available from Suzanne Jan: 612201



“combining baby sign,
music and sensory fun!”

award-winning baby new baby and toddler classes

Develop... language and communication skills, confidence, listening skills, social and emotional skills and co-ordination.

Stimulate... the senses and the imagination

Through... signing, making music, sensory experiences, tactile parachute hoops, singing, sharing special time and having lots of fun!

dandydevelopment.co.uk



Dandy is coming to Harbury Village Hall on Friday mornings from April! Classes fill up quickly so if you're little one is between four months and two and a half years reserve your place soon! Contact Nikki on...
07890 241301 nikki.sayers@hotmail.co.uk



The Shakespeare Inn

New Steak House & Grill



- ♦ Traditional 18th century country inn
- ♦ Choice of real ales and guest beers
- ♦ Meals served Monday - Saturday
12 noon - 3.00pm and 6.00 - 9.00pm
- ♦ Lunchtime Specials Monday - Saturday
2 courses for £6.50
- ♦ Mid-week Roast on Wednesday - 12 noon - 3.00pm
- ♦ Monday Evening - Pie Night
- ♦ Sunday Roast - 12 noon - 3.00pm
- ♦ Large car park and beer garden
- ♦ Function room available for family events and corporate meetings



Also offering a wide range of other menu choices including:
Vegetarian options

Specials Board also available

9-11 MILL STREET, HARBURY, LEAMINGTON SPA, CV33 9HR. Telephone: 01926 613822

The Gamecock Inn

OPEN 4.00PM TILL CLOSE

Selection of Fine Ales

Thursday Evening
Poker Night

Sunday Evening
Quiz Night starts 9.00pm
plus 'Play Your Cards Right'

All Welcome



CHAPEL STREET, HARBURY. TELEPHONE: 01926 612306



ap Electrical
and Home Maintenance

Fully qualified (Part 'P') and insured electrician with **over 20 years' experience**

All types of electrical work undertaken (domestic and commercial) including:

- Full rewires or additions to circuits
- Consumer unit upgrades
- Showers, heating, kitchen appliance connections
- External and garden lighting
- EICR Inspection and testing / PAT testing
- Part 'P' approved by ELECSA, 17th edition qualified and insured to £2 million

ELECSA
Part of the ECA Group

We also cover **all aspects of home maintenance** from general repairs and plumbing to a full bathroom or kitchen refit, including tiling, grouting – and so much more!

Call us or visit our website for more details...

Call us on **07855 850044** or **01926 450594** for your **FREE**, no obligation quotation, or visit **www.ap-electrical.org.uk** for more information.

Class Timetable

Mon	Baby Ballet 18mths+ 10.00am - 10.45am					LoveDance 14yrs+ (Commercial, Street Jazz, Contemporary) 6.15pm - 7.45pm		
Tues	Studio 1 Studio 2	Prima Ballerinas 3-4yrs 4.00pm - 4.30pm	Pre Syllabus Ballet 5-6yrs 4.30pm - 5.15pm	Pre-Primary Ballet 6-8yrs 5.15pm - 6.00pm	Primary Ballet 8-9yrs 6.00pm - 6.45pm	GCSE Dance 6.45pm - 8.45pm		
Weds		Boogie & Bounce 2yrs+ 1.30pm - 2.30pm		Boys Street Dance 4.30pm - 5.15pm	Grade 1 Tap 10-11yrs 5.15pm - 6.00pm	Grade 2 Tap 11yrs+ 6.00pm - 6.45pm	Adult Tap 6.45pm - 7.45pm	Zumba 7.45pm - 8.45pm
				Ballroom & Latin (all ages) 5.15pm - 6.00pm	Grade 4 Ballet 15 yrs+ 6.00pm - 7.00pm	Adult Ballet (no exp req) 7.00pm - 8.00pm		Adult Ballroom & Latin (no exp or part req) 8.00pm - 9.00pm
Thurs	Zumba Over 50's 10.00am - 11.00am	Funky Dance 3-6yrs 4.00pm - 4.30pm	Gymnastics (all ages) 4.30pm - 5.00pm	Grade 1 Ballet 10-11yrs 5.00pm - 5.45pm	Funky / Modern 7-10yrs 5.45pm - 6.30pm	Grade 2 Ballet 11-13yrs 6.30pm - 7.15pm	Grade 1 Modern 11yrs+ 7.15pm - 8.00pm	Grade 3 Ballet 14yrs+ 8.00pm - 8.45pm
Fri	Mini Movers 0-5yrs 10.00am - 11.00am		Little Tappers 3-5yrs 4.45pm - 5.15pm	Pre-Primary Tap 6-8yrs 5.15pm - 6.00pm	Primary Tap 8-10yrs 6.00pm - 6.45pm			
Sat	Musical Theatre 4-8yrs 9.00am - 10.30am	Musical Theatre 9yrs+ 10.30am - 12.00pm	Grade 3 Ballet 14yrs+ 4.00pm - 4.45pm	Grade 4 Modern 13yrs+ 4.45pm - 5.30pm	Grade 5 Ballet 16yrs+ 5.30pm - 6.30pm	LoveBallet Dance Studios Insight Park, Southam CV47 1NE lorraine@loveballet.co.uk 07921 853773 www.loveballet.co.uk		

Family Owned, Full-Time Nursery Childcare

Opening Summer 2014



Banana Moon Day Nursery
The Bull Ring
Harbury
CV33 9EZ

- Offering childcare from 7:30am – 6:30pm
 - Welcoming children from 3 months – 5 years
 - Open 51 weeks per year
 - Breakfast & two home cooked meals per day
 - A loving and nurturing, educational environment
-
- Get in touch to find out more about places and employment opportunities. *(We are recruiting now.)*
 - Tel: 01926 338497
 - Email: lucy@bananamoon-harbury.co.uk

Prix Fixe Lunch Menu

2 courses £11.95

3 courses £15.95

(Tues to Sat)



*Enjoy freshly prepared cuisine,
 real ales and fine wines in our beautiful
 character country pub near Southam*
www.thebellinnladbroke.co.uk

THE BELL INN
 COUNTRY PUB & DINING

BANBURY ROAD, LADBROKE, SOUTHAM CV47 2BY TEL: 01926 811 224

Karena Ellis-Greenway
MRICS, RICS Acc.Med., BSc Hons

green
chameleon



M: 07796 575716 T: 01926 612121

E: info@greenchameleon.net Web: www.grechameleon.net

• Chartered Surveying • Valuation • Mediation • Letting & Management

The Green Room, 31 Manor Road, Harbury, Warks CV33 9HY



WARWICKSHIRE CHIMNEY SWEEPING SERVICES

LOCAL INDEPENDENT SWEEP. PROFESSIONAL AND FULLY INSURED SERVICE.
SWEEPING CERTIFICATES ISSUED



BOB CHURCH 01926 614366 MOBILE: 07530 604451

CLEANER CHIMNEYS ARE SAFER CHIMNEYS

Carpets, Rugs and Upholstery Professionally Cleaned

- Free quotes & advice
- Deep cleans & freshens
- Stain removal
- Stain proofing
- Fully insured
- 7 day service



**All Square
Cleaning**

Also:
End of tenancy cleans
Deep cleans
Odour control
Decontamination
Dehumidification

Contact Neil

01926 492696 or 07557 944461

neilworsnop@allsquarecleaning.co.uk

SEASONAL HARDWOOD LOGS HALF THE PRICE OF COAL



GET STOCKED UP FOR THE WINTER
£65 PER BAG

* Free Delivery *

Dropped at nearest point
Large pickup loads - price
on application

Call William on 07946 319908
or 01926 257571



Available for all your computer requirements including:
PC's & Laptops, New & used systems, Repairs & upgrades
Virus/Malware Removal, Data back & Windows re-installation
Upgrading memory/Hard drives/Rom drives/Graphics, etc
Internet - modems fitted, wireless, networking.
Any repairs or computer problems. ***No call out charge***

T: 01926 316 119 E: sales@simons-systems.co.uk
M: 07751 811 097 W: www.simons-systems.co.uk

Spa Roofing Co.

(Roofing Specialists)

**For all Roofing, Guttering and
General Repairs**

(Free Estimates)

All Work Guaranteed

Call: 07876 508032

or 01926 770822



Pilates with Diane

improving Flexibility, Posture & Wellbeing

My Classes suit beginners to intermediate levels unless otherwise stated.

They are small to allow individual attention if needed.

UFTON VILLAGE HALL

Tuesday 2-3pm -- Full – Waiting list in operation

Wednesday 9.30 - 10.30am -- Improvers to Intermediate level

New Class for 2014 due to popularity – a few places available

HARBURY VILLAGE HALL - Tuesday 9.30 - 10.30am

Full – Waiting list in operation

UFTON VILLAGE HALL – Monday 9.30 - 10.30am

Southam Community Education – places available

"In 10 sessions, you will feel the difference & in 20 you will see the difference."

Joseph Pilates

*Call **Diane** on **07809 621142** for more info or to book*

Truly Scrumptious

www.trulyscrumptious-salons.com



*Gelish Nails, Calgel Nails, Waxing,
Eyebrow definition*

*Weddings, Special Events, Pamper Parties,
Hen Parties, we also do Gift Vouchers*

*Check out our very special
current offers online...*

Four Acres
10 Greenhill Farm
Bishops
Itchington
Southam
Warwickshire
CV47 2SS

* Excludes already
discounted package

Tel: 08450 943 923

Please produce this voucher to claim your discount



Home /Artisan Bread Baking Courses



Learn the joy of baking your own bread or develop your skills

The day will start at 9.45am and finish around 4pm - a full day of Bread Baking.
The day is also planned so that anybody doing a school pick up will fit in with the day
- just an early finish.

THE DAY

Arrive: Coffee / Cookies

Baking

Lunch - Soup / Quiche / Cheese / Bread / Wine

Baking

Tea

Take all that you have baked home with you.

Full day £85

School Run day £70

Gift Vouchers available

Please contact Nick at "Windmill Baking" for dates
Baking at home, Briarwood, Windmill Lane, Ladbroke, CV47 2BN
01926 815787 / 07778 679670
Nick@windmillbaking.co.uk

