

# Harbury & Ladbroke News

Reflects all aspects of local life, is published monthly and produced with the assistance of  
All Saints' Parochial Church Council.

**May 2013**

**No.470**

Editorial Office

☎ 612155

Articles to

Harbury Pharmacy, High Street

Email address

articles@hlnews.co.uk

Advertising Office

31, Binswood End (☎ 612155)

advertising@hlnews.co.uk

Distribution Manager

49, Mill Street (☎ 612009)

distribution@hlnews.co.uk

Inserts by prior arrangement

☎ 612009

## IN THIS ISSUE

## Page

EDITORIAL .....	2
HARBURY DIARY & REFUSE ROTA.....	2-5
FROM THE RECTOR & CHURCH NEWS .....	5
LADBROKE NEWS .....	9
HARBURY PARISH COUNCIL .....	16
CLUBS & SOCIETIES .....	18
EARLY YEARS & SCHOOL.....	28
VILLAGE HALL UPDATE .....	33
GARDENING & NATURE .....	34
GENERAL SECTION .....	39
LETTERS TO THE EDITORS .....	56

## Editorial Team

John Holden - Chris Finch - Marian Millington - Janice Montague  
Ralph Swadling - Jackie West

*The views of contributors are not necessarily those of the Editorial Team  
The Editors reserve the right to amend articles as they see fit.*



## Editorial

Preparations are ongoing for a multitude of summer activities in both villages. It looks hopeful for Harbury to be able to muster a cricket team for the summer – good luck for a successful season. The Garden Walkabout is set for the weekend of 1<sup>st</sup> and 2<sup>nd</sup> June and there will be scarecrows on display in the open gardens. The Wheelbarrow Race and week of games that precede the Carnival start on the same weekend.

For those who are enjoying the Rural Cinema films, Les Misérables is being shown on the 31<sup>st</sup> May in both Harbury and Ladbroke Village Halls, with the choice of an accompanying meal being between a ploughman's supper in Ladbroke and fish and chips in Harbury!

Finally we have to report on the passing of a popular character – Magic the grey pony who, until a couple of years ago lived in Harbury, recently died at the grand old age of 58 – a record length of life for a pony.

## Harbury Diary

### MAY


- |       |   |   |
|-------|---|---|
| Sat   | 4 | Coffee Morning, 10.00am – 12.00 noon in Tom Hauley Room<br>in aid of Church Work with Children  |
| Sun   | 5 | <b>EASTER VI</b><br>Zumba, 9.00am in Village Hall<br>Sung Eucharist, 9.00am<br>First Light Service, 10.30am, Tom Hauley Room<br>Service for Spring, 4.00pm, followed by tea and cake  |
| Tues  | 7 | Harbury Heritage Room open 6.30 - 8.30pm at school<br>Holy Communion, 7.30pm<br>Horticultural Society Demonstration of Hanging Baskets and<br>Troughs by Derek Walker 8.00pm in Tom Hauley Room                             |
| Wed   | 8 | Wednesday Walkers - Ryton Woods (4 miles) - all meet<br>9.40am at Village Hall Car Park<br>Ballroom Dancing (beginners 7.30pm). Rest of group 8.00 –<br>9.30pm in Village Hall<br>Heritage Group AGM, 8.15pm at Shakespeare |
| Thurs | 9 | <b>ASCENSION DAY</b><br>Holy Communion, 9.45am, followed by coffee<br>Movement to Music, 2.00-3.00pm in Village Hall<br>Warwickshire Young Voices, 6.30pm, Village Hall   |

- Annual Parish Meeting, 7.30pm in Village Hall  
 Harbury WI, 7.45pm, Resolutions in Tom Hauley Room
- Sat 11 Coffee Morning, 10.00am – 12.00 noon in Tom Hauley Room in aid of British Heart Foundation to include the presentation of the 'Spirit of Harbury Shield'  
 Deanery Renewal Service 12.30 - 5.00pm in Church  
 (Please bring a packed lunch, drinks provided)
- Sun 12 **EASTER VII – SUNDAY AFTER ASCENSION DAY**  
 Holy Communion, 8.00am  
 Zumba, 9.00am in Village Hall  
 Sung Eucharist, 10.30am  
 Tennis Club "Bring your Mum or Dad, 2.00-4.00pm
- Tues 14 Holy Communion, 7.30pm
- Wed 15 Wednesday Walkers - Combrook-Butlers Marston (5 miles - some hills) - all meet 9.40am at Village Hall Car Park  
 Tea, 3.00pm, Tom Hauley Room  
**ADVERTS FOR THE NEXT ISSUE TO 31 BINSWOOD END, HARBURY BY 5.30PM**  
 Ballroom Dancing (beginners 7.30pm). Rest of group 8.00 - 9.30pm in Village Hall
- Thurs 16 Holy Communion, 9.45am, followed by coffee  
 Movement to Music, 2.00-3.00pm in Village Hall  
 Harbury Art Group social painting session - theme 'Sunrise/Sunset', 10.00am-1.00pm in the Tom Hauley Room  
 Harbury Theatre Group presents 'A Fete worse than Death', 8.00pm, Harbury Village Hall (see advert)
- Fri 17 Leamington Music concert, 7.30pm, All Saints' Church, Harbury (see advert)  
 Harbury Theatre Group presents 'A Fete worse than Death', 8.00pm, Harbury Village Hall
- Sat 18 Men's Prayer Breakfast, 7.30am, Tom Hauley Room  
 Coffee Morning, 10.00am – 12.00 noon, in Tom Hauley Room in aid of Pre-School  
 Harbury Theatre Group presents 'A Fete worse than Death', 8.00pm, Harbury Village Hall
- Sun 19 **PENTECOST (WHIT SUNDAY)**  
 Holy Communion, 8.00am  
 Zumba, 9.00am in Village Hall  
 Family Communion Service, 10.30am  
 Evensong, 6.00pm  
 Chesterton Church Horse Blessing and Pleasure Ride 2.00pm  
 Tel: 614431 for details  
 Twinning Association, 5.30pm in Village Hall
- Tues 21 Holy Communion, 7.30pm
- Wed 22 Wednesday Walkers - Saxon Mill or thereabouts (3 miles) - all meet 9.40am at Village Hall Car Park

- Thurs 22 Ballroom Dancing (beginners 7.30pm). Rest of group 8.00 - 9.30pm in Village Hall
- Thurs 23 Holy Communion, 9.45am, followed by coffee  
NSPCC Ladies Lunch, 12.30pm in the Tom Hauley Room. Tel 614664 for details  
Thursday Club, 2.30pm in Village Hall  
ARTICLES FOR NEXT ISSUE TO: HARBURY PHARMACY, HIGH ST OR EMAIL TO ARTICLES@HLNEWS.CO.UK BY 5.30PM  
Warwickshire Young Voices, 6.30pm, Village Hall  
Parish Council, 7.30pm in Village Hall
- Sat 25 Coffee Morning, 10.00am – 12.00 noon in Tom Hauley Room in aid of the Village Hall Development Fund  
Harbury Society tour of Leamington Railway Station, 2.00pm
- Sun 26 TRINITY SUNDAY**  
Holy Communion, 8.00am  
Little Saints' Service, 9.00am  
Zumba, 9.00am in Village Hall  
Sung Eucharist, 10.30am
- Mon 27 Petanque, 1.30pm at the White Hart, Ufton
- Tues 28 Holy Communion, 7.30pm  
Julian Meeting, 8.00pm
- Wed 29 Wednesday Walkers - Shuckburgh-Grandborough (4 miles) - all meet 9.40am at Village Hall Car Park  
Ballroom Dancing (beginners 7.30pm). Rest of group 8.00 – 9.30pm in Village Hall
- Thurs 30 CORPUS CHRISTI  
Holy Communion, 9.45am, followed by coffee  
Movement to Music, 2.00-3.00pm in Village Hall
- Fri 31 Moving Pictures presents - 'Les Misérables' doors open 6.00pm, film starts 6.30pm at Harbury Village Hall (see advert)
- JUNE**
- Sat 1 Coffee Morning, 10.00am – 12.00 noon in Tom Hauley Room in aid of the PCC  
Ufton Village Church Fete 2.00-4.00pm at The White Hart followed by Hog Roast and music 6.30-10.30pm. Proceeds to Ufton Church  
Harbury Garden Walkabout and Scarecrow Trail, 11.00am - 6.00pm
- Sun 2 TRINITY I**  
Zumba, 9.00am in Village Hall  
Sung Eucharist, 9.00am  
First Light Service, 10.30am, Tom Hauley Room  
Wheelbarrow Race assemble at 12.30pm for a 1.00pm start, Old New Inn  
Quiet Contemplative Service in the Celtic Tradition, 6.00pm

- Sun 2 Harbury Garden Walkabout and Scarecrow Trail, 2.00 – 6.00pm
- Mon 3 Pub Games begin
- Tues 4 Holy Communion, 7.30pm
- Wed 5 Wednesday Walkers - Ladbroke-Southam (5 miles) - all meet 9.40am at Village Hall Car Park  
Holy Communion, 2.00pm, Tom Hauley Room  
Mothers' Union Meeting, 2.30pm, Tom Hauley Room  
"Way Ahead Plus" – The Salvation Army  
Men's Group outing to Stratford Theatre
- Thurs 6 Holy Communion, 9.45am, followed by coffee  
Folk Club, 8.00pm at Harbury Village Club
- Sat 8 Coffee Morning, 10.00am – 12.00 noon in Tom Hauley Room  
in aid of Ladbroke & Deppers Bridge W.I.  
Harbury Carnival - Parade assembles in Sutcliffe Drive, judging at 12.15pm
- Sun 9 **TRINITY II**  
Holy Communion, 8.00am  
Zumba, 9.00am in Village Hall  
Sung Eucharist, 10.30am

Refuse Collection Rota				
	Deppers Bridge	Harbury	Ladbroke	Collection Week
May	Wed	Thurs	Fri	
	8	9	10	Green & Blue Lid Bins
	15	16	17	Grey Bin
	22	23	24	Green & Blue Lid Bins
	29	30	31	Grey Bin
June	5	6	7	Green & Blue Lid Bins
	12	13	14	Grey Bin
	19	20	21	Green & Blue Lid Bins

 <b>All Saints HARBURY</b>	<h2 style="text-align: center;">From the Rector</h2> <p style="text-align: right;"><b>Reverend Craig Grocock</b></p> <p style="text-align: right;">The Rectory, Vicarage Lane, Harbury ☎612377 ✉kankudai43@aol.co.uk</p>
---	--

### The wrong direction

I guess like you, I was both horrified and amazed when I saw both video and still images of the bomb blasts near the finish line at the Boston Marathon. Horrified at the gruesome damage done to human lives by bombs intended to

do what they did. Amazed at those who responded — police, fire and medical crews - who ran "in the wrong direction" from the rest of the crowd. While everyone was running away to escape the danger, these people were running toward the danger to help others. What amazed me most was their reaction "to run in the wrong direction" - to run toward the trouble, to run toward the danger, to run to rescue the wounded and hurting.

This reverse instinct "to run in the wrong direction" in the face of danger and death moves us to something deeper than admiration. Their confidence of purpose in the face of grave risks is something most of us are not sure we possess. We are even less sure we want to find out! Yet stirring just below the surface of our conscious thought, there lurks the hidden realization that all of us, in one way or another, will have to face these life and death realities. Sooner or later, we are all going to have to decide "to run in the wrong direction" in the face of our life's ultimate realities.

We will all reach a point where we have to decide what we believe. We have to decide what truth we will build our lives upon. We have to determine if we have the courage "to run in the wrong direction" from the rest of the world.

The old apostle Paul, now in his second imprisonment in Rome, finds himself in the cold, dank, dark, and oppressive confines of prison. Winter is coming. A number of Paul's friends have abandoned him. Paul is alone and knows he is facing certain death.

In the face of certain death, this well-travelled, often beaten, imprisoned, and persecuted follower of Jesus once again runs "in the wrong direction". By example, he calls us to face danger with courage. He calls us to a hope that is stronger than death. He invites us to share a confidence that our future is connected to and invested in a Kingdom that cannot be taken from us by anything.

Paul chooses "to run in the wrong direction" from the crowd and he chooses to run in the direction of Jesus, fully convinced that victory and deliverance and reward are ahead.

We have great admiration for those first responders in Boston. St Paul shows us how to have that first responder's mentality in the face of life's ultimate crisis, he says:

*'And now the prize awaits me - which the Lord will give me on the day of his return. And the prize is not just for me but for all who eagerly look forward to his appearing.'*

We would do well to look carefully at these words and grab hold of them and take them into our hearts. They can be our confidence when we face that ultimate reality when we have to decide what we really believe and need "to run in the wrong direction".

God bless.

## From the Registers

### *Holy Baptism, All Saints' Harbury*

14<sup>th</sup> April      Cosmo Valentine Bayley



### From the Churchwardens

**Liz, Will & John**

We are now getting round to re-organising the vestry beneath the tower as it has been over filling up with things which have no homes. By rationalising the existing cupboard space, removing several items of scrap metal, re-homing other items and relocating the spare Tom Hauley Room chairs, this has cleared the south wall. Shelving and cupboards can now be erected to house things in an orderly manner.

The Tom Hauley Room has also seen action in the past month. A working party headed up by John Stringer has been in to redecorate the internal walls and woodwork and a second coat should have been applied by the time you read this. This has long been over due with the walls still having their original paint on. In addition, our generously donated dishwasher is up and running. Our thanks go to all concerned for getting on with things.



### Mothers' Union

**Barbara Thistlethwaite**

On Wednesday 3<sup>rd</sup> April we had a lovely afternoon of singing. Gillian Hare had co-ordinated all of our favourite songs and told us a short history of where they had come from and who had written them. Chris Rutherford had produced copies of the songs and photographs and these were put up on the screen for us to read and sing.

To keep us all in tune Michael Hare played the music on his electric organ. We finished with our usual tea and biscuits. A very enjoyable afternoon was had by one and all.

On Monday 8<sup>th</sup> April a service to commemorate Lady Day was held at All Saints Church, Harbury. We welcomed many Mothers' Union members from the area and banners were presented from Kington, Bishops Tachbrook, Southam, Whitnash and Harbury. We also enrolled four new members to the Mothers' Union.

If you would like to join us on the first Wednesday of each month in the Tom Hauley Room at 2.00pm for a communion service or at 2.30pm to come to our meeting you are very welcome.



One of the better known stories that Jesus told was about a son who takes his inheritance and squanders it on fast living and parties. When he comes to his senses, he returns home and is welcomed back by his father who throws a party to celebrate. It is a powerful story of reconciliation. However, lurking in the shadows is a brother whose bitterness prevents him coming to the party. There is a little bit of this older brother in all of us when we declare, "It's not fair." so we are continuing the story of the lost son in May when we think about the big brother.

We would welcome you along to First Light whether you have been before or not, whether you are regular at church or feel as if it is a new experience.

We start with coffee and biscuits at about 10am, get underway at 10.30am and are usually finished by 11.15am. First Light is informal and there is no service sheet to follow or hymn book to navigate. Whether you are a child, a parent, single, young or old, you will be welcome.

## **Harbury & Ladbroke Church Men's Group**

Bill Davies, a long standing member of our group, was our guest speaker last month and all we knew was that his talk was entitled "A pinch of salt". As it turned out, the talk was about Bill's love and passion for the sea and his life as a seasick sailor.

The talk was hugely entertaining and we heard of how Bill was encouraged to join the Navy by his family and he started his Naval career at the age of 15 on HMS Ganges. Bill likened this to being in a prison of 1,500 boys where they all lost their identity as everyone dressed the same, ate the same and lived the same.

Bill had many interesting and amusing stories to tell us including trying to sleep in a hammock in an engine room corridor, why toilet paper on board ship was wider than usual and of an unusual gift while he was posted in Ghana from the USSR of a snow plough!

One of the best gifts he received was a consignment of Boosey and Hawkes brass band instruments with which, after some initial reluctance, a brass band was established. To Bill's delight, some 50 years later when he returned to Ghana, he was welcomed back by the band.

We could have also done with the support of the band as we closed the evening singing a couple of verses of "Hearts of Oak". We won't be appearing with this rendition on Britain's Got Talent any time soon but it was a great way to round off a thoroughly enjoyable evening.



Bill was our last speaker before the summer break, although we are all looking forward to sharing an evening of fellowship and fun at our annual dinner on the 2<sup>nd</sup> May. For more information, please contact John Guilford (614206) or John Stringer (613214).

**John Guilford, (Co-Chair)**

## Ladbroke News & Diary

[www.ladbroke-pc.org.uk](http://www.ladbroke-pc.org.uk)

### MAY

- |            |           |  |
|------------|-----------|--|
| Sat        | 4         | Whist Drive, 7.45pm, Village Hall  |
| <b>Sun</b> | <b>5</b>  | <b>Easter VI</b><br>Family Communion, 10.30am followed by refreshments   |
| Tues       | 7         | Yoga, 10.00am, Village Hall<br>Photography Club, 7.30pm, Village Hall  |
| Thurs      | 9         | Ascension Day Service, 7.30pm  |
| <b>Sun</b> | <b>12</b> | <b>Easter VII</b><br>Holy Communion (sung), 9.00am   |
| Tues       | 14        | Yoga, 10.00am, Village Hall  |
| Wed        | 15        | ADVERTS FOR THE NEXT ISSUE TO 31 BINSWOOD END,<br>HARBURY BY 5.30PM<br>Parish Council Meeting, 7.45pm, Village Hall                                |
| Sat        | 18        | Whist Drive, 7.45pm, Village Hall  |
| <b>Sun</b> | <b>19</b> | <b>Pentecost</b><br>Holy Communion (BCP), 9.00am   |
| Tues       | 21        | Yoga, 10.00am, Village Hall  |
| Thurs      | 23        | ARTICLES FOR NEXT ISSUE TO: HARBURY PHARMACY,<br>HIGH ST OR EMAIL TO ARTICLES@HLNEWS.CO.UK BY<br>5.30PM<br>Women's Institute, 7.30pm, Village Hall |
| Sat        | 25        | Whist Drive, 7.45pm, Village Hall  |
| <b>Sun</b> | <b>26</b> | <b>Trinity Sunday</b><br>Holy Communion (sung), 9.00am   |
| Tues       | 28        | Church redecoration starts - church building closed except for<br>Sunday Services<br>Yoga, 10.00am, Village Hall                                   |
| Fri        | 31        | Moving Pictures Film Night - Les Misérables, 7.15 for 8.15pm,<br>Village Hall  |

### JUNE

- |            |          |   |
|------------|----------|---|
| Sat        | 1        | Whist Drive, 7.45pm, Village Hall   |
| <b>Sun</b> | <b>2</b> | <b>Trinity I</b><br>Family Communion, 10.30am   |
| Tues       | 4        | Yoga, 10.00am, Village Hall<br>Photography Club, 7.30pm - walkabout - location to be<br>confirmed |



## Ladbroke Church News

Jackie West & Sue Lord

Our Easter services at the end of last month were full of meaning as we remembered The Last Supper, Crucifixion and Resurrection using symbolic acts, words and music. Our thanks to everyone who was involved, especially Craig and Annie, Bill Bosworth and the choir and the ladies who decorated the Church so beautifully. One of the few benefits of the cold weather in early April was that we have been able to enjoy the floral displays for weeks.

It was a treat to have so many children at the Children's Service on Good Friday this year. Father Craig gathered them around the altar and discussed the Cross, using it as different symbols. A tick or a cross on school work was one and Father Craig was under the impression his teacher was sending him kisses on his homework! A thoughtful service which was enjoyed by all and after the service we had delicious hot cross buns.

On Ascension Day, Thursday 9<sup>th</sup> May, there will be an evening service at 7.30pm. All are welcome.

Major redecoration of the nave and aisles is due to start on Tuesday 28<sup>th</sup> May and will take up to seven weeks. During that time the main part of the Church will be full of scaffolding so it will not be open during the week. However we will still be able to hold our Sunday Services at the usual times in the chancel, entering by the small door at the side. It will not be possible to have any services for large numbers of people while the nave is full of scaffolding, so should the need arise, e.g. for a funeral with a large congregation, we would organise for this to be held at Harbury or another nearby church. Offers to help move things out of the decorators' way on Sunday 26<sup>th</sup>/Monday 27<sup>th</sup> May or to join a working party to move things back and clean the Church after the decorators leave will be gratefully received.

### **St. Mark Passion at All Saints' Church, Ladbroke**

As part of the series of Easter services at All Saints' Church, Ladbroke there was a performance of the *St Mark Passion* on the evening of Good Friday. This seldom heard oratorio was completed in August 1920 by Charles Wood, in response to a request from the Dean of King's College, Cambridge. It tells the story of Jesus' last days leading up to and including His crucifixion as written in St Mark's Gospel. At its conclusion the Resurrection is acknowledged leading us to a hopeful expectation of Easter Day.

The Ladbroke augmented choir, pictured here, had been hard at work since January preparing and rehearsing; so it was very encouraging to see the Church almost filled to capacity by those who had come to listen. We were grateful to soloists John Kiefert (Jesus), Richard Johnson (Evangelist) and

Abigail Rhodes (Soprano) for their strong performances, which gave emotion and depth to the characters they portrayed. Peter Flower gave sensitive yet powerful support on the Ladbroke church organ. The choir, conducted by Bill Bosworth, conveyed the atmosphere of the piece with dramatic effect, and the congregation had a chance to participate by singing the hymns which formed part of the work.



Thanks to the commitment and talent of all those involved, we left the Church having had a good opportunity to reflect on that first Good Friday 2000 years ago.

**David and Sue Wright**

## **Ladbroke Flower Rota**

5<sup>th</sup> May      Sue Lord  
 12<sup>th</sup> May     Kate Todman  
 19<sup>th</sup> May     Kate Todman  
 26<sup>th</sup> May     Wedding  
 2<sup>nd</sup> June      Betty Winkfield



**Ladbroke & Deppers Bridge Women's  
Institute**

**Jackie West**

Our meeting on 25<sup>th</sup> April started with WI business matters but these were quickly dealt with. Our speaker was James Watson an electrical engineer working for National Grid who summarised his job as "keeping the lights on". For the next hour he entertained and educated us about electricity, focusing on how electricity is safely transmitted from power station to substation before onward distribution at lower voltage by companies such as Western Power Distribution. Transmission is mainly at 400kV as high voltage is more efficient; James compared electricity to a child with attention deficit disorder

always wanting to escape to the ground. Air is a good insulator, thus stopping it from escaping, but at 400kV an earthed object does not need to touch the wires as electricity can jump 3.1m (about 10 feet); for this reason the emergency services are told "Think 5, stay alive", that is do not get closer than 5m. Most "pylons" (we were told we must call them towers) carry two lines and, even though switched off, the dead one may still be at 20kV induced by the magnetic field from other line!



James illustrated his talk with maps, pictures, video and samples that were passed around the audience. It was amazing to hold a length of steel reinforced aluminium cable and see close up examples of the large glass insulators and separators used for overhead cables that march across the landscape. In cities, the high voltage supply has to go underground and we held a small sample of underground cable. This was about 6 inches across with a copper core, cross linked polyethylene insulation and metal sheath and it costs £500 per metre. This type of cable also needs junctions every 750m costing £1.5million each, so it wasn't surprising to be told that

cost is the reason why outside of built-up areas, high voltage cables are usually overhead rather than underground.

In the final part of his talk James showed us some of his colleagues at work in the National Control Room balancing supply with demand, second by second. There are 27 people on duty round the clock ensuring that there is enough electricity being generated and transmitted to the right place but not too much as this would cause serious damage. We saw how the demand from the public could rise by more than the output of a whole power station when people put the kettle on during breaks in transmission of very popular TV programmes such as England football matches, Britain's Got Talent or a Royal Wedding. It was all very enlightening.

Our next meeting on Thursday 23<sup>rd</sup> May will consider the WI resolutions and we are promised cheese and wine too.

### **June Edition - Harbury & Ladbroke News**

**Adverts** to 31 Binswood End by 15th May

**Articles** to Harbury Pharmacy or e-mail to [articles@hlnews.co.uk](mailto:articles@hlnews.co.uk)  
by 23rd May



## Ladbroke Photography Club

Kip Warr



**Jousting by Tony Mancell**

There are going to be some cracking good photographs in our exhibition at the Ladbroke Fete on 15<sup>th</sup> June. Members brought along their pictures for selection at the April meeting and we voted for two images from each member. Something strange always seems to happen when we vote; in this case the numbers were mixed up and we had to re-count several times to make sure we had selected the right ones. The ones

shown here were among those not selected - you'll have to come along to the fete to see how good the final selection is.

During the technical session that followed we experimented with photographing items that Jackie had brought along. Some of the stuff was taken behind the stage curtains and we kept hearing oohs and aahs from the darkness there. What we found there in the gloom was a laptop showing a blank white screen, a plastic glass and members peering through their cameras and twiddling filters in front of their lenses. The results were dramatic, weird, brightly coloured images. It works like this: the screen issues polarised light which is refracted through a clear plastic object and photographed through a rotated circular polarising filter. Got it? Well it's much easier to show than to explain, so why not come along to a meeting to find out how it is done and try some other techniques as well?

On 7<sup>th</sup> May we shall meet at 7.30pm in Ladbroke Village Hall for a competition on the theme of "Creatures" and a talk. On 4<sup>th</sup> June we shall be having a walkabout in Warwick. We meet monthly, usually on the first Tuesday in Ladbroke Village Hall, and visitors are always welcome. For more information contact Jackie West at [jackieszone-photogclub@yahoo.co.uk](mailto:jackieszone-photogclub@yahoo.co.uk)

**Waterfall by Jackie West**





## General Section

### Moving Pictures in Ladbroke

**Les Misérables - Friday 31<sup>st</sup> May - Doors open 7.15pm**

Ladbroke Village Hall Committee invites you to join them to watch the popular film "Les Misérables". Tickets cost £10 and include a delicious ploughman's supper and a free drink which will be served on arrival. The film will be shown at around 8.15pm. There will be a bar available.

Please come along and support us and enjoy a sociable evening of good company, food, drink and this excellent film. Tickets available from Nicky Lewis 815196 or Margaret Bosworth 817312.

**Magaret Bosworth**  
**on behalf of Ladbroke Village Hall Committee**

### Quiz Night

Over 60 people had their thinking caps on for the Quiz Night on Saturday 20<sup>th</sup> April and, having been runners up 18 months ago, *Nice but Dim* were the winners this time - they will have to change their name next time to *Nice and Bright* or risk being accused of breaking the Trades Description Act! The various rounds challenged our knowledge of food and drink, history, science etc and there were not many points between each team until the results of the picture round were revealed. Then those who had been glued to the Olympics on TV last summer went ahead and those that had been on holiday and missed it all fell away from the peloton. But it was the taking part that mattered and hopefully everyone enjoyed the challenge, the company of friends and the fish and chips provided most efficiently by Southam Sea Star. The Millennium Green Trustees would like to thank Kevin and Kate Pickin our quizmaster and elegant score keeper and everyone who helped make the evening such a success.

**Helen Morten & Jackie West**

### Ladbroke Fete, 15<sup>th</sup> June 2013

Only a few weeks to go now so here are some tasters of what happening at this year's fete. As usual it will be held on Ladbroke Millennium Green starting at 1pm with a good mixture of activities to look at and participate in (photography and history exhibits, Tae Kwon-Do display, a dog event and of course the sports), plus a wide range of stalls with games to try and things to buy. We would like to borrow gazebos again and will be very pleased to

receive donations for the Produce Stall and the Bottle Tombola run by the Village Hall Committee and **good** prizes for the raffle in aid of the Millennium Green. However, please note that there will **not** be a second hand book or bric-a-brac stall this year so if you have been hoarding items to give to these, please send them to another event or a charity shop!

For budding cooks, the Ladbroke Bake Off will have 3 categories:

- Under 8: 4 decorated fairy cakes on a plate
- 8-14: 4 decorated fairy cakes on a plate
- Over 14: Any cake or tray bake

Entries will be judged on appearance and taste and (unless return at the end of the fete is requested) may be used as prizes in a game of musical cakes or sold in aid of the Millennium Green.

Look out for our posters and flyers towards the end of the month and the June edition for more details about the fete or, if you can't wait or want to offer help, phone us on 810331 or 815196.

**Jackie West & Gray Lewis**

## **New Look Website**

The village website at [ladbroke-pc.org.uk](http://ladbroke-pc.org.uk) has been updated. It has a wealth of information about Ladbroke past and present, including details of events, the Church and village organisations, local services, Parish Council aspects with a useful link to local planning applications and lots and lots of pictures in the photo galleries. Do take a look.

**Jackie West**

## **Ladbroke Village Hall Millennium Club**

£80	Peter Baker
£50	Margaret Bosworth
£25	Gwynne Badman
£10	Helen Ballard
£10	Carol and Peter Loftus
£10	Pat Kennedy
£10	Christine Payne
£10	Nicky Lewis

**Margaret Bosworth**



## Harbury Parish Council

Linda Ridgley

*Official minutes can be viewed in the Library, on the Parish Council website [www.harbury-pc.gov.uk](http://www.harbury-pc.gov.uk) or obtained from the Parish Clerk Tel: 01926 614646*

**For planning matters** this was a very busy meeting and the Councillors considered six applications. Many of the applicants were there to explain what they intended for their properties. Objectors were there too!

Councillors made no comment on the application for a new dwelling at Westfields Farm. The applicant had explained that it was to house her father who was ill and needed alternative accommodation.

The Council supported the application for replacement timber window frames at Phoenix House, High Street. They thought these were an improving and thoughtful enhancement to a listed building in a prominent position.

The purchasers of the Old Farm House at Bull Ring Farm had done extensive research into its history and occupation. They explained they were applying for a Lawful Development Certificate to enable them to turn it into a family home. The research had obviously fascinated the Councillors who supported moves to bring the building back into residential use.

The Council made no comment on the application for tree works at the Shakespeare Inn as long as it was done properly and the trees were made safe. Their only comment on the outline proposal for two detached dwellings at Shenley, Deppers Bridge was they would have preferred a full application.

On the subject of the retrospective application for Rose Cottage, South Parade, Councillors objected to the size of the garage; the garage roof at 2.9 metres was too high and impacted adversely on the house to the rear. They were concerned that the garage was used for a business which was unsuitable in a residential area, and wanted conditions applied to prohibit this.

Stratford District had approved, with conditions, to ensure it was for private recreational equestrian use, the change of use to a ménage of a specific area of previous agricultural land at the Ranch House, Chesterton Road. The District had refused the erection of four wind turbines between Knightcote and Bishops Itchington but an appeal had been lodged and it would be subject to a Planning Inquiry.

Councillors' reports from other bodies included news that Planning and Building Regulation approval had been given for the next phase of the Village Hall upgrade; the specification was ready to go out to tender and funding for this was being sought.

**Warwickshire County Councillor Bob Stevens** reported that the Judicial Review of HS2 had found in favour of the Government except in the



case of compensation. An Environmental Impact Assessment was due to be published in April which would show the road closures round Southam.

Redevelopment of the centre of Southam was going ahead and the Library would move to Pendicke Street, and 70 Sheltered houses would be built at Victor Hodges House. There was a consultation on the future of Stockton Tip.

The County Council was “Going for Growth” and would support small businesses, Market Towns and apprenticeships. He reminded the Councillors that there were small Community Grants to be had as well as grants for Highways improvements.

**Stratford District Councillor Richard Hamburger** said the “Shottery Appeal” had made it difficult to reject or phase development plans until Stratford’s Core Strategy had been approved, and as a consequence 90 homes in Kineton had had to be allowed.

**Grants** - The Parish tries to target its grant aid to the youth of Harbury and it therefore did not feel able to support the Southam Children’s Centre but did agree to find money for the PTA to support the Street Fayre planned for 5<sup>th</sup> October. They gave them the £1,200 left from this year’s allocation and told the group they could reapply for the other £1,200 in the next financial year.

**Parish property** - Much work has been held up because of the appalling weather. The BMX Track will be dealt with whenever this improves as will the safety surface for the play area and the planting of a tree and erection of a decorative plaque to signify the new status of the playing fields.

The Council is to seek quotations for the insurance of parish property including the Chapel and War Memorial.

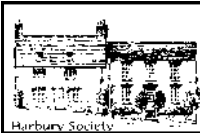
**Environment – Lighting:** There is ongoing discussion over the cost and position of the new light associated with the Hereburgh Way development. The old wooden poles on which some village lights are attached have to be replaced and by 2015 all the Sodium lamps must be removed.

Lanterns are cleaned every five years by the contractor but Cllr Lewis will get a quote for cleaning off the chemical build up prior to the change to LED bulbs, after which time cleaning would be less frequent. An allocation of money would be set aside for painting the columns in 2014-15.

**Consultations** - Cllr Mann had encouraged Councillors to respond to the consultation on the Electoral Review for Stratford District. There was no enthusiasm for responding to the County’s Infrastructure Strategy and Cllr Mancell said he had read the Waste Core Strategy and was “underwhelmed”.

**Annual Parish Meeting** This is scheduled for Ascension Day, Thursday 9<sup>th</sup> May, the speaker will be Sarah Brooke-Taylor, Neighbourhood Development Officer, from WRCC talking on Neighbourhood Plans.

**Next Parish Council Meeting:** Thursday 25<sup>th</sup> April 7.30pm.



## Harbury Society

Linda Ridgley

### Cubbington Pub Walk

Someone must love me! We had the most glorious weather for the Harbury Society Pub Walk. We met at the pub by the Church and strolled along for a couple of hours along the side of South Cubbington Wood where the wood anemones were in full bloom.



At the end of the wood, and beyond

a group of rare Wild Service trees is the Cubbington Pear which at 30 foot tall and 12 feet round its trunk is the country's largest Wild Pear.

These trees and most of the wood will be swallowed up by the High Speed 2 Railway. Stephen Falk says the Pear is very rare. He estimated it to be between 200 and 250 years old. It has "National Champion" status.

We pottedered on down to the Leam and along to Hunningham and back past Weston to Cubbington to be greeted by the churchyard cat before we had a fabulous lunch at the Kings Head. Thanks Ed.

Our next event on Saturday 25<sup>th</sup> May will be a guided tour of Leamington Station to see the gardens and the improvements made by the "Friends"



## Harbury Women's Institute

Jeanne Beaumont

We had some nice days in April and what a difference it made to everybody.

Thanks to everyone who supported our coffee morning and to the helpers and cake makers etc. Always a pleasant morning.

Mary Thompson gave a super report of the Annual Meeting at Stoneleigh.

The first speaker was Kay Alexander, the retired newsreader who was also Chairman of Birmingham Assay Office in the Jewellery Quarter, Trustee of the Birmingham Hippodrome and Chair of Acorn Hospice. She spoke of the changes over the years as a newsreader and of the Jewellery Quarter and Assay Office.

The next speaker was Peter Lien from the Denman Cookery School who joined Denman in 2011. He gave a good resumé of how cooking has changed since the 1970s, when at one time olive oil could only be purchased in a chemist. Now, one can get so many spices and palates are more sophisticated these days, influencing the way we cook. Denman Cookery School offers inspiration to all cooks and will help you to enjoy cooking. Happy cooks are better cooks.

The afternoon speaker was Mandy Hickson, the first female pilot in a front line Tornado Squadron. She had wanted to be a pilot since she was 13, when women were not allowed to be RAF pilots. As she said, everyone should have a goal and she certainly did. She got an RAF flying scholarship at 17 and after a gruelling selection process, was eventually selected to fly in combat missions in Iraq. She was contracted to serve until she was 38. She still flies but is now a tutor to aircraft cadets aged 13 to 18 years old. Her motto: "Dream it, Believe it, Do it". Such great speakers.

We did not get to Waitrose because we were let down but Dorothy Groves got a fantastic speaker, Vince Williams, a Mountain Rescue Team member who we have had before. Vince gave an illustrated account of an emotional trek in the Karakoram mountains of northern Pakistan to the base camp of K2 with his cousin from Canada. The trek was undertaken in memory of his cousin's son, Jeff, who died after accomplishing a feat never before achieved by any climber on this notorious peak. They were able to visit Jeff's grave and place a plaque.

Greatly enjoyed and the men would have enjoyed the talk too.

Next meeting: Thursday 9<sup>th</sup> May, 7.45pm in the Tom Hauley Room – "Resolutions"

## Harbury WI Litter Pick

The ladies of Harbury WI recently spent a Thursday morning in wet and windy weather collecting over 22 bags of litter/rubbish left around the village - a sad reflection of the untidiness of some people.

The picture shows some of the ladies enjoying a welcome cup of hot soup in Ann's garage at the end of the morning.





## Harbury Theatre Group

Alison Hodge

### **Spring production 8.00 pm, Thursday 16<sup>th</sup>, Friday 17<sup>th</sup>, Saturday 18<sup>th</sup> May**

A Fete Worse than Death, by Richard James, is still keeping us chuckling even after three months of rehearsal, that's how good the script is! Here is an extract:

"Bunny: So what have you made this year, Miss Parmenter? No more pickled eggs, I hope?

Miss Parmenter: No dear, I've had a change of direction.

Bunny: Oh good.

Miss Parmenter: Plum and custard piccalilli.

Bunny: Oh... Lovely.

Miss Parmenter: Pickled tripe?" *Holding another jar up under Bunny's nose*

I hope you will be amazed at how we have transformed the stage into a marquee and the Hall into a Village Produce Show.

As well as enjoying yourselves you will also be supporting the Village Hall Development fund. Harbury Theatre Group has to date donated over £1000 to the fund and will continue to give financial donations.

Doors and bar opens 7.30pm, curtain up 8.00pm on Thursday 16<sup>th</sup>, Friday 17<sup>th</sup> and Saturday 18<sup>th</sup> May, Harbury Village Hall. Tickets, £7.00 adults and £5.00 concessions, available from Cana Wines, Country Fayre, or Tel 613488. Suitable for children aged 10 and upwards.



## Folk Club

Deborah Ellis

The theme for Folk Club meeting 341 was 'Liberty, Equality and Fellowship'. On entering the Village Club venue, I saw that Ted Crum had set up his recording equipment for the evening so instantly knew that we had to be on our best behaviour!

Des opened up the first half of the evening with a song celebrating John Ball and warmed up the folk chorus engine. His next song was all about slavery and the harmonies from the audience were beautiful to hear. Peter McDonald sang a Jez Lowe song, "She'll Always be Freedom to Me", about a daughter's letter to a pen-friend in Northern Ireland. His second, a James Keelaghan song, was "River Run". Maureen and Janny announced that their CD, "Never Thought We Would", has raised £130 for TOFS which is very commendable.

They sang “The Flame” about brotherhood and “Free World” all about freedom for the people. For this they were joined by Sue Crum on her ukulele. This was a beautiful atmospheric song.

Up came Rik with “Manchester Rambler” which was a song all about the freedom to roam across the countryside that included the line “I am a free man on Sunday!” His second song “Rio” was all about getting away from it all. Next was Peter Mason and Jess (on her ukulele) with “The Winds of Freedom” and “Jim Jones in Botany Bay” based on a Mumford and Sons interpretation of a traditional Australian song. To finish the first half came Debs with two songs “The Rose” and “Summertime” that brought the sub theme of the weather into the evening.

The second half was opened by the Harbury Folk Club Choir who sang “Weeping” which was all about apartheid being abandoned and “Freedom is Coming” that was dedicated to Nelson Mandela. Both of these offerings were beautifully arranged and sung. Up came Ted and Sue Crum. Ted delighted us with his harmonica playing and their song “Transport of Delight” was all about buses. If there was an award for the most original finish to a song this one would have won it.

Then came Richard with a Jeremy Taylor song that was a list of sweets and drinks and his second song, “There but for Fortune”, was all about prison, jail and prisoners. He also announced that there is the Aberystwyth Street Choir Festival on 19<sup>th</sup> - 21<sup>st</sup> July. Then we had the Harvesters with a song about fellowship and “Jack in the Green” where we had the treat of Sue playing a bowed psaltery. This was so beautiful and haunting. Then along came Rik and then Keith Donnelly with his first visit of 2013. He sang about apartheid and then about “Two Tall Trees”.

Deb opened the third half with her poem “Liberation”. Peter McDonald sang about “Painting the Town” followed by Richard. Des got the chorus engine “rolling home” and Ted and Sue Crum sang about “Charles de Gaulle”. Keith finished the evening and showed us his lovely sandal socks!

The raffle made £47 for Amnesty International. The next Folk Club will be on 2<sup>nd</sup> May where the theme will be “Springtime Fun”.

[amnesty.org.uk/](http://amnesty.org.uk/)      [tinyurl.com/harburyfolkclub](http://tinyurl.com/harburyfolkclub)

	<h2 style="margin: 0;">Harbury Twinning Association</h2> <p style="text-align: right; margin: 0;"><b>Andrew Patrick</b></p>
--	---

At our Friday 19<sup>th</sup> April Skittles evening, the teams were named after types of wine. And who won? Appropriately, *Champagne*!

May will be the month of this year's visit to Harbury by our friends from Samois-sur-Seine. By the time you read this, 12 of them will already be *en route*, having decided to anticipate the *Tour de France* by **cycling** to Harbury.

From Paris to Dieppe they'll follow the *Avenue Verte*, a traffic-free route created in 2012 all the way to the London Olympics. At Newhaven, four of us will meet them to tackle the rather trickier problem of how to ride safely or easily (preferably both!) the 150 miles to Harbury. How well will we get on? Watch this space!



After that, the question of how to entertain 25 French families for the weekend should be *un morceau de gâteau*. There will be a walk, visits to some village gardens, pub games, a safari supper, a day's visit to Oxford and to round off the weekend a pig-roast followed by a folk-dancing *ceilidh* with some special Scottish country dances. Just like a normal Harbury weekend, really.

*Bon weekend!*



## Harbury Cricket Club

**Jez Hunt**

### 2013 season to start

With the signs of summer (hopefully) arriving, so does Sunday afternoon cricket.

We have 15 games booked in for the summer with a large number at home (played down on the rugby ground), so if you fancy relaxing in the sunshine and watching the beautiful game, then you are most welcome to come on down. Post match diagnosis always ends in the Old New Inn for a jar or two.

The first game kicks off at home on the 5<sup>th</sup> May versus Southam and continues regularly into the beginning of September. We have been having nets to get us 'into the mood' and these will continue when the light picks up on Tuesday evenings, starting 7<sup>th</sup> May from 6pm onwards.

Have you ever thought of having a game? If you want to know more or would like to dust off your whites please give me a call on 0780 1105994 or drop your contact details in at Mugleston's Country Fayre.

Hope to see you over the season in this Ashes year!

### **Chairman's Report: Ian Jones**

I am pleased to announce that Harbury Juniors FC recently became a registered Charity (1150608). This is a landmark in the history of the club and will open many doors with respect to funding and support opportunities. This is great news for the club and its membership.

We have agreed the date for the annual Presentation Evening which will take place on the evening of Saturday 15<sup>th</sup> June at Harbury Village Hall: more details to follow. The committee is also keen to run the annual internal tournament again this year. We are in the early stages of planning, but anticipate that this will take place late June/early July on either a Saturday or a Sunday. Also, HJFC will be running Skool Disco II at the Village Hall on 28<sup>th</sup> September - more info to follow.

We will be saying goodbye to Steve Darby at the end of this season as he's retiring after two long stints at the club combined of almost 20 years. Steve has been fundamental in establishing/developing youth football in Harbury and has given the opportunity to learn the game to hundreds of children. Steve is now even coaching the children of children he coached all those years ago! Steve really has made a massive contribution to the sporting lives of many children (and parents) over the years and has given up so much time for others. In fact, Steve has given up the equivalent of two years of work to make this incredible contribution. In many respects, Steve Darby has been Mr HJFC and we are all very grateful for his contribution.

We really need help with coaching next season (2013/14) for the U6/7 (Year 1/2 children) and for U8 (Year 3 children). I know there are a lot of keen parents at training on a Saturday morning at the school. If people don't step up then there's a risk we won't be able to run these age groups, which would be a terrible shame for the kids and something we really, really want to avoid. The club can help with training and ensure our volunteers get access/funding to the necessary coaching and child welfare courses. As one of the biggest youth organisations in the village we can only survive and prosper with the help and support of the community. All our present coaches became coaches because their children were involved at some point.

Finally, I'd like to thank Nicola Perrett who has been the Club Welfare Officer (CWO) for a number of years and is stepping down. Nicola has done a great job being both CWO and Treasurer at one point. I'd also like to welcome Jacky May who takes over as CWO having completed the necessary FA training.

### **U7's: Steve Darby**

It has been great to be back coaching in fine weather during April and all of the boys have worked hard to improve their awareness of where the space is on the field of play. We will be joined at our next session by a professional coach from the Birmingham County FA. He will work with the group to further improve the decisions each child makes during a game when it comes to where is the best place for them to move to in the heat of a match. Congratulations to Tate, Harrison and Sam on winning the weekly trophy.

### **U10's Colts: Steve Burnell**

#### **Balsall & Berkswell 1 : 1 Harbury Colts, League (20<sup>th</sup> April 2013)**

This was always going to be a low scoring game with two good teams coming together to fight this out to make up the gap between them and the league leaders.

Harbury started brightly and all of the children played really well. Jack P made some strong saves (one of which was goal bound which he pushed onto his cross bar) and Millie T, Ollie K and Joe were tight at the back. Josh B, Beau S, Oscar B and Morgan F won the ball and linked up with the forward line really well with some great inter play and passing with Luca W and Jack D chasing down the dead ball superbly.

Harbury went close on several occasions through Beau, Luca and Oscar but we were just unable to finish off. Balsall took the lead with a soft goal just before half time, but Harbury came out of the blocks fighting and looked much the better team throughout. Harbury pressed time and time again and scored a good goal through Oscar B, but spurned chances early on cost the Colts dearly. 1 : 1 was the final score; a great game for the neutral, however the Colts should have taken their chance to kill off this game in the first half.



### **Harbury 41 - Coventrians 0**

#### ***Midlands 4 West (South)***

Harbury put behind them their disappointing display with a committed performance against Coventrians who the previous week had produced a shock home victory against champions Old Yardleians. They welcomed back Ricky Alford who suffered whiplash in a tackle but had fortunately recovered to make an important contribution to the match.

The game was less than three minutes old when Harbury moved the ball wide and Ricky Alford touched down after a forceful run down the wing. Another strong break through the backs and sharp timing put full back Greg Peebles through for a fine try, which Ricky Alford converted.



Coventrians, taken aback by this initial pace and scoring, began to find their legs and contribute to the match. However, Harbury prevented their visitors making any real headway through determined defence and strong scrummaging and lineout play and commitment at the break down. Matt Timlin, Matt Knight and Chris Milburn proved to be an effective back row unit through which quick attacks were launched.

The zest of the three quarters play was further exemplified when centre Steve Alford made a powerful run breaking tackles to cross for a further try, converted by brother Ricky to give Harbury a 24-0 half time lead.

The weather deteriorated in the second half and the play became scrappy. In spite of superiority in set play with Dave Heydon, Daz Nicholls, Ian Kimberley, Gaz Evans and Tom Kittendorf providing a powerful front five and enabling quick ball to be won, it took a while for Harbury to translate territorial advantage into points. A fine run by wing Sam Reeves was stopped on the line and two moves from skipper Matt Knight (showing real panache with a quick offload to Hendry Rheeders) seemed certain to result in scores – only for the ball to be lost in the act of grounding.

A sharp move by scrum half Tom Webb resulted in a try mid way through the second half.

Strong breaks by outside half Andy Sandford enabled the ball to be moved quickly along the line with Daz Kittendorf handing off the cover to create the space for Ricky Alford to add his third try. He then added a further try when he gathered an attempted chip kick by his opposite number and ran in to score beneath the posts and add the conversion.

Harbury are away to Atherstone on Saturday in their penultimate match of the season.

## **Harbury 2<sup>nd</sup> XV 9 Old Laurentians 3<sup>rd</sup> XV 10**

### ***Warwickshire 3***

A game as tight as the scoreline suggests. Harbury led 9-5 at the break through the boot of Adam Morris, who kicked three penalties with OL's adding a sole try. However, OLs caught their hosts out immediately on the start of the second half with a try. Thereafter defences dominated and Harbury were left frustrated by the final outcome after all the hard work put in by the team.

## **Harbury Wild Hogs aka Dave Andrews XV 40 Old Leamingtonians XV 5**

Harbury stalwart Dave Andrews celebrated his 70<sup>th</sup> Birthday with a very special match against a side drawn from Old Leamingtonians together with guests from Kenilworth and Warwickian.

Dave had drawn together old favourites from the 'Fat Boys' 3<sup>rd</sup> XV that played together during the 1980's. Many had not played for at least 10 years (when

they celebrated Dave's 60<sup>th</sup>!) and others more recently or even further back in time!

So the match in Dave's words:

"Great memories came flooding back of matches with the likes of Tilli, Steve Street, Daryl, Hawkeye, Phippo, Wobbler, John Hirons and the others.

A great memory I'll keep of Saturday's rather good performance from our scratch side....was like they played week-in, week-out together.

Can't remember the score for sure (35-5?) but some of the link-up play between Sean Geary, Rob Andrews and Pete Roberts was superb, and the try from the scissors move between Martin Boag and Pete Roberts was classic.

Dave Megeney and Tilli Talamini were solid up front, as were Henry Bryan, and Keith Phipps (who travelled from Germany for the game!)

I awarded 'Man of the Match' to Steve Harrold No. 7, who hadn't played since my last retirement game in 2002 but was dynamic around the pitch. As was Carl Wallington when he came on.

Won't mention the laboured style of the scrum-half except to say that Lester Hunt (O.L's s/h) put in a solid tackle that was a "130 year collision" (he 60, me 70). Last time we played against each other it was 120 year old crash. *(Dave is doing an injustice to himself and very modest in his personal assessment which was a real cameo of scrum half play).*

The scoreline belied how close the game actually was. It was pretty competitive, no quarter given.

Barry Dutton did a really good job for us refereeing. I'm actually quite glad the way it worked out."





## Harbury Tennis Club

Colin and Sue Mercer

[www.tennis-today.net/harbury](http://www.tennis-today.net/harbury)



We were lucky enough to pick a warm day on 7<sup>th</sup> April to welcome in the new season with our traditional cheque book tournament which was preceded by our AGM and followed by the Club ballot for our allocation of 17 pairs of Wimbledon tickets – a busy day! There was no mood for revolution so yours truly is still Chairman! The tennis, expertly organised as ever by Peter Walshe, was very enjoyable and eventually won by Steve Stark and Robert Rollason who beat Caroline Morland and Chris Cousins.

The Club welcomes new players and we've got a couple of events lined up to give anyone interested a chance to come and see what's on

offer. All are invited whether you'd just like to try tennis, you've not played for some time and would like to knock the rust off, or you've been playing for years and want to try a new club. The first is for adults on Thursday 2<sup>nd</sup> May when our Club session will be open to all – just come along any time between 6.45pm and 8.15pm.

The second is on Sunday 12<sup>th</sup> May when we're having a "Bring a Parent (or 2)" afternoon, when the whole family can come along and take part in some fun tennis activities including parent and child matches. This is between 2.00pm and 4.00pm. If you're interested and would like more information please give me a call on 01926 613284.

**Junior** coaching is in full swing, running until the week ending Friday 13<sup>th</sup> July, with a break for half term. There are groups every day after school, catering for children aged from 3 to 18 years. The coaching programme is run by "Tennisolutions", with Head Coach Mark Boden supported by Bishop Ousebi and Matt Molyneux. If anyone is interested in joining the programme please contact [admin@tennisolutions.co.uk](mailto:admin@tennisolutions.co.uk) or Mark Boden on 07710 087934.

Going back to winter, we ended our Banbury Winter League Division 4 campaign with a home match against Tysoe "B" with the second promotion place still undecided. Regulars Steve Stark, Sue and Colin Mercer were joined by Debs Brookes who was making her debut for the club. In very windy conditions Colin and Steve got off to a good start winning both sets but the visiting ladies levelled the match also winning both sets. In the mixed doubles Debs and Steve halved their rubber and with Colin and Sue winning both sets Harbury finished with a 5-3 win. Unfortunately our nearest rivals

Priors Marston also won their last match and finished with the same points tally as Harbury but they were promoted having a better games difference.

In the floodlit league March was a very busy month catching up with the fixture backlog caused by the bad weather with four matches left to play. It started with Caroline Morland, Sue Panton, Colin Mercer and Keith Thompson taking on unbeaten Deddington "C". Keith had a nasty fall in the first game but soldiered on to help secure an excellent 4-4 draw.

For the next match against Buckingham, Jim Griffiths made his home debut joining Caroline, Sue, and Colin. It was a close match but Harbury made the most of their home advantage and scraped home by 5-3.

This was followed by a long trip down the A5 to Towcester where there was still some snow around but the courts were playable, albeit the temperature was around freezing point. For this one Caroline and Colin were joined by Eira Owen and Liam Crossling. A hard fought match ended in a 4-4 draw which left Harbury in with a chance of promotion to Division 4 with the final match to play at home against nearest rivals Banbury. This time the team had a good mix of experience with Caroline and Eira, and youth with Marcus Sharpe and Adam Crossling! It proved to be very effective and they inflicted a 7-1 defeat on their visitors to leapfrog them into second place. Unfortunately Banbury still had one match to play which they won to clinch the second promotion spot so we were pipped at the post in both leagues!

There were only two days rest before the summer league season started, although it didn't feel like summer as we needed the lights on from the start and there was a gale force wind! Harbury are in Division 4 after winning promotion last year and faced a strong Middleton Cheney team. Harbury's team were Caroline Morland, Debs Brookes, Sue Mercer, Steve Fitzgerald, Jim Griffiths and Colin Mercer and were "blown away" 7-1 with Sue and Debs recording the only success of the night.

If you would like more details about coaching, joining the tennis club or anything else about the club, please contact Sue or Colin Mercer, email: [sucol-merc@tiscali.co.uk](mailto:sucol-merc@tiscali.co.uk) or call 01926 613284.



## Harbury Toddler Group

**Rosemary Scott**

Harbury Toddler Group is supported by the Children's Centre in Southam and this term they have arranged for Deborah Dutton to come and do some craft activities with us. This month the children enjoyed painting on easels and were able to take many masterpieces home with them. Deborah will also be at the Toddler Group on 13<sup>th</sup> May, 10<sup>th</sup> June and the 24<sup>th</sup> June.

With the arrival of some nice weather we have also been able to make the most of the outside space that we have and the children have been playing on the slide, cars, bikes and scooters.

I am stepping down from running the group at the end of April and it will now be run by a group of people. However if you are interested in helping out at Toddler Group please do get in touch - [harburytoddlergroup@gmail.com](mailto:harburytoddlergroup@gmail.com).

If you are interested in joining us at Toddler Group we are always pleased to see newcomers. We have lots of toys each week as well as play dough and another craft activity. We run every Monday from 9.30am to 11.15am at the Wight School (behind the library), and cater for children from birth to school age.



## Harbury Pre-School

Staff & Committee

**New Term:** With the Easter holidays behind them, the children returned to Pre-School full of enthusiasm for the new term. We are delighted to welcome Oliver, Carrie and Lucy who are already settling in very happily with their new friends.

The Sea Life theme of last term spilled over into April, with the children still remembering their visit. They produced some fantastic large scale paintings for an "underwater" display and enjoyed using our listening centre to listen to some of their favourite stories.



**Walking Through The Jungle:** We then turned our attention to the new Jungle theme, starting with two visits to the Kemptons' beautiful garden. There, the children found a wonderful trail winding its way through the bushes, complete with partially hidden animals ready to be spotted and identified. They had to go over, under, round and through various branches, tree roots and bushes while they searched for well camouflaged snakes and monkeys and more obvious, brightly coloured parrots and "Tiggers", as well as elephants, lions, a crocodile appearing to come out of the swimming pool and even a hippo near the pond. Our thanks to Jane and Luke for letting us

take over their lovely garden and to their children for getting up extra early to set the trail before school.



When the children returned to Pre-School, they quickly became involved in the Simple City Zoo program on the computer, produced paintings of wild animals, using photographs for inspiration and made trees for the small world jungle using painted tubes and tissue paper to excellent effect.



In the role play area, there was jungle themed imaginary play, including dressing up in safari style clothing fit for explorers, jungle soft toy animals and a supply of binoculars, cameras and compasses to be used in the adventures. Outside, the “jungle jeeps” helped to keep the children ahead of the animals that lurked in the corners of the play area and they were challenged in the use of stilts to keep at a safe height.

At circle time we had jungle themed books and stories and sang songs and rhymes such as ‘Walking in the Jungle’, ‘An elephant goes like this, like that’ and the elephant balancing song.

**Date for the Diary:** Harbury Pre-School will be hosting the coffee morning in the Tom Hauley room on Saturday 18<sup>th</sup> May. Please come along to support the Pre-School.

If you would like further information, or to register a child for Harbury Pre-School, please contact Rosemary Jackson, Pre-School administrator: e-mail [enquiries@harburypre-school.org.uk](mailto:enquiries@harburypre-school.org.uk) phone 07833 597973 or look at the website [www.harburypre-school.org.uk](http://www.harburypre-school.org.uk). Please note that although the starting age for Pre-School is two years nine months, your child is never too young to be registered.



**Windmills**  
Nursery School

## Nursery School Staff & Committee

- Located on the grounds of Harbury Primary School.
- Children taken from age two up to school age.
- Opening hours: Monday – Thursday 9.05am-3.00pm, Friday 9.05am-12.35pm during term time (Kids Club operate outside these hours for children aged 3+).
- We offer NEF Funded places to all 3 and 4 year olds. Funded places available for some two year olds from Sept 13. We also operate an Assisted Places Scheme and accept childcare vouchers.
- Places now being booked for school years 2015 & 2016.
- To register a place for your child ring the administrator on 01926 613084 or email [info@windmillsnursery.co.uk](mailto:info@windmillsnursery.co.uk), visit our website [www.windmillsnursery.co.uk](http://www.windmillsnursery.co.uk) or call the nursery on 07906 519148.

### Open Afternoon – Thursday 9<sup>th</sup> May, 1pm-2pm

Windmills Nursery will be holding an Open Afternoon in the Nursery for prospective parents on Thursday 9<sup>th</sup> May from 1pm-2pm. Parents are welcome to bring their children with them. If you are unable to attend, please ring Nursery to arrange a new date to visit us.

Address Windmills Nursery School, c/o Harbury Primary School, Mill St, Harbury CV33 9HR. Tel: 07906 519148.



### In Nursery



The children have been talking about their Easter holidays and bringing in photos to show. Several had been to the beach which led to activities in Nursery based around the seaside including shell drawings and looking at the story "Sharing a Shell".

We have been celebrating St George's Day which included dressing up as knights and princesses, performing puppet shows with princesses and dragons, creating England flags, decorating biscuits and building castles out of different recycled materials.

In French the children have been learning about vegetables and have planted some carrots and potatoes. Now the weather is getting warmer the outside classroom is being put to good use.



This term we are looking at the roles of doctors and nurses, hospitals, babies, measuring and growing.

Congratulation to Mrs Giblin who has completed her paediatric first aid course.

Whether the child is just two or soon to be five and starting school in September, there are activities to suit all ages at Windmills Nursery and the children are able to self-resource throughout the day from a variety of resources that are changed regularly.

### **Out and About**



The Wednesday Welly Walks have proved a big success with the children. They are safely taken around the school grounds or further afield throughout Harbury looking at things of interest and nature. This term we are looking at flowers, trees, birds and insects. The children went on a bug hunt around the small woodland on the school site armed with magnifying glasses and collection pots. The children found worms, woodlice and spiders.

We have regular play on the infant playground of the school and keep bikes and scooters there for the children to use. We had our annual sponsored bike ride on 15<sup>th</sup> April where the children did laps of the playground and received a sticker for each lap they did. Thank you for all the sponsorship money.





## Dates for the Diary

Thursday 9<sup>th</sup> May, 1pm-2pm – Open Afternoon at Windmills Nursery

27<sup>th</sup>-30<sup>th</sup> May – Half Term

Saturday 8<sup>th</sup> June – Harbury Carnival

Monday 17<sup>th</sup> June, 9.30am – Group Photos

Saturday 29<sup>th</sup> June – Windmills Summer Ball

Wednesday 3<sup>rd</sup> July, 6.30pm-7.30pm – Parents Evening



## Village Hall Update

Chris Finch



**Nightmare for the Village Hall?** Well not really but at the 51<sup>st</sup> AGM in April Janet Thornley stood down as Secretary. Janet was press ganged into the job “only for a short time please” ten years ago when the committee was in a bit of a crisis. Peggie Middleton was similarly persuaded into the chair and with the help of other stalwarts pulled the situation round. The Hall is now in a healthy position and is the valuable asset that Harbury deserves. Janet has been a major driving force at the Hall and the Chairman presented her with a flower arrangement and thanked her profusely for her help and guidance over the

years. Julie Linforth was welcomed onto the committee to take over Janet’s role. Janet is not going lightly though and will remain on the committee.

Lyn Edwards, the Treasurer, reported on the current financial position and detailed the strides that have been made in the last few years. The Hall has seen the refurbishment of the kitchen and toilets, the strengthening of the collapsing rear section of the main roof, the installation of photovoltaic panels, the new partition and fire doors in the Farley Room, new curtains, new chairs and re-roofing of the kitchen. A total expenditure, including planning fees and professional charges, in the region of **£200,000**. A large proportion of the money having been raised through hard work, many functions, the generosity of the village and also with grants from The National Lottery, several landfill bodies and other grant awarding organisations.

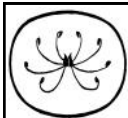
Reports were also received from Keith Thompson for the Health and Safety sub-committee, John Hancock, the Fundraising Chairman and of course

the Chairman himself. The necessary, mundane work all done by volunteers that is essential to the smooth running of the Hall was acknowledged.

**What next?** The early suggestions for updating the Hall were, at best, rather over optimistic in the current financial climate but there is still more to do. In the early 60s the concept of adding a permanent stage was first mentioned and has been mentioned on and off ever since. Planning permission was obtained last year for a stage for use by Harbury Theatre Group and also for new changing rooms for football, tennis, netball, etc. The tender documents for this work have now been sent out and the fundraising group led by John Hancock will be working hard to raise the necessary money. This “final” stage of the improvements will include some form of commemoration of the generosity of the village and especially of all those who gave to the initial “Buy a Brick” campaign.

It is our Village Hall. The booking level is fantastic. In April there were no less than six private parties, the amazing Long family’s Rural Cinema, four badminton bookings each week, the Warwickshire Young Voices Choir, Jean Champ’s Dance Classes, Sunday’s Zumba class, the list is endless. If you feel you can help or have any suggestions do please get in touch.

The next date for the Rural Cinema is for **Les Misérables** on Friday 31<sup>st</sup> May.



## Horticultural Society

**Judy Morrall**

Another full house for our April meeting. Also a first as we have never had a talk about growing and using herbs and where better to get all the information than from Christine Vick from the National Herb Centre at Warmington. When I asked how she would like me to introduce her she very modestly said “I am in charge of the plants.” I’m sure she is a very important part of the successful Herb Centre.

She explained that the centre was founded in 1996 by Peter Turner. We were shown the construction of the early demonstration gardens which, as you know, are not for the faint hearted being on a steep slope down, but what views. The style is like monastic gardens with formal narrow beds and herbs grown for medicinal usage. Lots of these beds are lined with lavender hedges probably Munstead, pinks in the middle with yellow St John’s Wort too. At the back of these gardens are huge areas of Angelica which grows very tall.

We were shown a still for distilling essential oils. It takes very many plants to produce a small amount. Lavender is a favourite as is Albus oil. We went on to see favourites such as Purple Sage which is now used to treat memory loss. After flowering you need to cut off the flowering stems to the base in Spring. Rosemary has about 60 varieties and has a great medicinal content. As you know you get spreading and upright varieties and, as well as having a

fantastic smell, they are very much used in cooking. Sissinghurst in Kent has lots growing in pots, mainly Mrs Jessop's upright. At Warmington they have developed a new variety just called number 16. Mint is best plunged into the ground in pots to stop the roots spreading. Again they need lots of water and shade.

Thymes are very useful, the creeping sort is not good for cooking but lovely in a path where you brush against the smell. Yellows and greens with lovely pink flowers need full sun and, of course, good drainage. I love both Marjoram and Oregano and they grow well on my soil, the secret again is good drainage. However what I haven't been doing as with my lavenders is to cut back to base after flowering to prevent the plants getting woody. I leave the heads for the birds in Spring. I will take this advice on board!!

Lots of plants have edible flower such as nasturtium, pansies and calendula. Crystallised rose petals can be used to perk up a pear tart. Mary Berry eat your heart out!!! Cardoons are like artichokes but again big plants need lots of space. Bergamot makes a lovely herb tea similar to earl grey.

Some plants are poisonous such as the Foxglove from which digoxin is extracted. James Wong has written books which give excellent advice as to the usage of herbs. Wormwood is used as an insect repellent. Cotton lavender with yellow flowers is used to flavour Chartreuse. Whisky now has an infusion of herbs.

Regarding containers, Christine said to always use one big enough with good drainage. You need to fill with one third grit, one third loam and one third organic compost. A good selection is of small plants to start with such as thymes and basil. She showed us some examples of pots which are topped off with grit, they all looked splendid. I fully expect to see lots of gardens with herb pots throughout the village this Summer!!!

Christine had brought along a selection of herbs to sell and amongst them were chamomile, vervain, lemon verbena lots of lavenders and also some unusual ones such as tree onion, a basil with mint flavour, alexander (like celery), sorrel, dyers weed and thymes. There was a question and answer session and we all felt that the evening had been a total success. Do go along to Warmington on 11<sup>th</sup> May to a Kitchen Door Herb Workshop. It will be from 2.00pm to 4.00pm and the cost is £20 to include coffee and herb cake. Booking is essential.

I still have a few spaces to fill for the two day trips; the first is on Wednesday 12<sup>th</sup> June to Stourhead and Great Chalfield Manor. Cost £15 if in National Trust or £22, leave Village Hall at 8.30am. The second one is on Wednesday 10<sup>th</sup> July to Burford House and Gardens then to Westonbury Mill Water Gardens. Cost is £20, leave Village Hall at 9.00am. Just give me a ring if you are interested.

The last meeting of the season is on Tuesday 7<sup>th</sup> May when Derek Walker will be giving a demonstration of hanging baskets and troughs.

Just a few suggestions of gardens etc to visit in May, all open under the NGS.

Coton Manor near Guilsborough which we have visited as a group will be open on Tuesday 7<sup>th</sup> May cost is £6. By then the bluebells should be out so that will be a fantastic sight. I remember the flamingos and the unusual chickens. The planting is very colourful too. For something completely different as my friend Eric Idle would say (name dropper!!!) go along to Daylesford House just five miles west of Chipping Campden on Wednesday 8<sup>th</sup> May between 1.00 and 5.00pm at a cost of £5. This is the home to the Bamfords of JCB fame. An 18<sup>th</sup> century landscaped garden being restored with lakes and woodland walks. A large walled kitchen garden and secret garden with a pavilion and spectacular views. Lots of walking but refreshments are available. This is home to Daylesford Organics - you don't get much better than that!!

Charlton Gardens near Banbury are open on Sunday 19<sup>th</sup> May between 2.00 and 5.30pm when six gardens will be open. This is a really pretty village; turn off the B400 at Aynho then take the turning to Farthinghoe, parking at the Village Hall and the cost is £5. The six different gardens vary from courtyard to cottage styles. Blockley Gardens are open on Sunday 19<sup>th</sup> May from 2.00 to 6.00pm and the cost is £6. There will be 11 gardens open including Mill Dene where teas are being served. This hillside village has a great selection of high quality gardens large and small and old and new.

Lastly on Sunday 26<sup>th</sup> May there will be seven gardens open at Broad Marston and Pebworth villages. Take the Bidford turn on B439 to Honeyborne. Gardens open include the private one of the owners of Fibrex Nurseries which we visited a few years ago. The cost is £5 and it will be from 2.00 to 6.00pm. Most of these will have plants for sale too so do go and be inspired.

Currently it is warm but the return of cooler weather is expected at the weekend, oh to be a gardener but we all like a challenge. Enjoy the rest of spring with all the new growth, sights and sounds, there is nowhere else quite it.

## **Garden Walkabout and Scarecrow Trail – 1<sup>st</sup> & 2<sup>nd</sup> June**

Many thanks to everybody who has said yes to opening their garden this year. We now have just about enough gardens to make it worthwhile proceeding - although nowhere near the amount that took part in its heyday. Still, I feel confident that lots of people will help to make this a fun event by constructing a scarecrow for their front garden. If you would like to be included on a trail map please ring me by 25<sup>th</sup> May, otherwise feel free to make one last minute. There will be a £10 prize for the best scarecrow.

The gardens will be open from 11.00am – 6.00pm on Saturday 1<sup>st</sup> June and 2.00pm - 6.00pm on Sunday 2<sup>nd</sup> June and the trail map will be available from the Village Hall. Refreshments will be served at the Village Hall on Saturday and at the Tom Hauley Room on Sunday.

**Margaret Commons, Tel: 613963**



## **Garden Jottings from Bridge Nursery**

**Christine Dakin**

There is a wonderful organisation called The National Garden Scheme which raises money for various cancer charities when people open their gardens to the public. This could be anything from a small town garden to a large country estate. There are county booklets which give details of dates of opening, how to find it and what type of venue it is. One can often have a cup of tea and piece of cake too. Bridge Nursery is part of the scheme and is open every day from April to October. Last year we collected £750 to pass on to the central office. If you were one of those who donated to these worthy causes we would like to express our thanks.

The latest news on our rabbit problem is that we have acquired a cat from the Cats Protection League who is supposed to be a good mouser but so far he seems quite content to sit around on MY chair and he curiously has no curiosity in his surroundings. Meanwhile the rabbits are having a grand time!

There are many, many things to do now:

- Buy bedding and plant up your containers
- Apply lawn feed and weed
- Plant out brassicas
- Sow sweet corn, carrots, French beans, runner beans, lettuce, courgettes
- Earth up potatoes
- Prune spirea arguta, flowering currant, and forsythia after the flowers have finished

And weed and weed again!

*Bridge Nursery, Tomlow Road, Napton, Tel: 01926 812737  
www.bridge-nursery.co.uk*





Generally cool conditions still prevail as I write this on the 22<sup>nd</sup> April. At the weekend, with a clear blue sky and negligible breeze, I donned shorts on one bike ride. Now, with a cool south-westerly and overcast conditions, it will be back to long bottoms and gloves. Blossom is unfolding slowly. The damson trees in the back garden hedge have still to fully flower. All will speed up as temperatures rise.

Earlier in the month, Sharon and I set off to do another section of the South West Coast Path. Arriving by train in Falmouth on a cold breezy day (4<sup>th</sup> April), we walked from the station to the pier and boarded the small ferry for St Mawes. The boat took quite a buffeting as it crossed Carrick Roads. Passengers huddled together in the sheltered forward section to avoid getting drenched with spray. It is about three miles across and we reached calmer waters as we came past Castle Point. I could not resist walking out to St Mawes Castle after we had checked in at the Rising Sun Inn. It dates from the mid 16<sup>th</sup> century when Henry VIII reigned and England felt threatened by continental powers. It was built in a clover leaf pattern, really a set of interlocking, low, gun platforms. Now, it is a peaceful relic of bygone times staring across to Pendennis Castle at the western entrance to the Roads.

Next day was a complete contrast with blue skies, no wind and a calm crossing to the start of our five day walk at St Anthony. Primroses bedecked the route together with the attractive white bell flowers of three-cornered garlic (*Allium triquetrum*) which is ubiquitous in the West Country having escaped after being introduced to Britain in 1752 from the Western Mediterranean.

Headland followed by bays with tiny beaches, sometimes inaccessible, sometimes approached by cliff paths were the order of the day. Dodman Point seemed a long way off as we started our second day but we knew we must pass it to get to a bed in Mevagissey. A tree trunk washed up on a beach seemed to move and turned out to be a seal of epic proportions. We met a man with some sailing experience when it was blowing hard on Pencarrow Point west of Polperro. He told me how to recognise the position of an area of low pressure. Stand facing the wind, stick out your left arm and it points in the direction of the low. This might be useful.

I am reading a delightful book at the moment - 'In Pursuit of Spring' by Edward Thomas (re-published by Laurel Books in 2002). It tells the story of a bicycle ride he made in the spring of 1913 from his parents' home in Clapham to the Quantock Hills in Somerset. It is a poignant read as he rides through a largely rural landscape about to be shattered, though not in a physical sense, by the First World War. His poetry eclipsed his prose writing and many of you

will know his evocative poem 'Adlestrop' and visited the place close to Stow-on-the-Wold. As he cycles in March 1913 on the way to crossing Salisbury Plain, he comes to the River Test near Dunbridge and I quote:-

'The water and its alder, many of them prostrate, and its drab sedges mingled with intense green and with marsh-marigolds' yellow were seldom more than a hundred yards away on my right. Pewits wheeled over it with creaking wings and protests against the existence of man'. Edward Thomas was killed at the Battle of Arras in 1917 aged 39.

On 15<sup>th</sup> April, the U3A Natural History Group visited Snitterfield Bushes Nature Reserve (OS sheet 151; SP200603). This is a favourite of mine since I saw my one and only Fly Orchid in its central clearing some 20 years ago. We were fortunate to have the Warden, Roger Dukes, to take us round. He found frogspawn lurking in a pool, the spotted leaves of Early Purple Orchid, a group of wild daffodils and even the emerging shoots of Herb Paris all of which I had missed on my reconnoitre the day before. It warmed up too and a Comma, a Small Tortoiseshell and a Peacock butterfly were all seen on the wing. Another insignificant small white flower we would not have spotted turned out to be Common Whitlow Grass (*Erophila verna*). This is described in Richard Mabey's *Flora Britannica* as 'a modestly cheerful and many branched annual which will grow in the smallest cracks in calcareous walls, rocks and dunes. It is amongst the first flowers to appear in March and is followed by seed-pods a little like miniature Honesty. It was used by medieval herbalists to treat whitlows'. Here it was growing on concrete runways put down during World War II and since surrounded by woodland.

Now daylight is stretching out. The swallows are back. Arable farmers have prepared their fields and sown seed much later than usual due to our strange weather. Geoff Thorpe reports a fledgling blackbird in his front garden as we entered the third week of April. So many shades of green as our deciduous trees show their leaves at last. The cuckoo may have arrived and May is the month to hear the male bird's call. Let me know when you do.



## General Section

### Tribute to Magic

Magic the pony, now passported as aged 58 going into his 59<sup>th</sup> year (born 1954), passed away while sleeping in his stable on St George's day in April, looking so peaceful, it was everything we had prayed for. Lisa had owned Magic for the last 16 years.

Magic had miraculously recovered from what could have been a stroke in the month earlier. During an examination for treatment, Magic fell down which made us decide to 'end it all'. While the vet went to get the injection,

Magic, although under sedation and having not eaten for a day and having had a possible stroke, jumped to his feet and prevented us from carrying on with the task in hand (thankfully). Magic grazed out in the next couple of weeks, enjoying his stable and also wandering around the farm which he loved, as the spring had at last arrived.

This picture taken last summer shows Magic looking over the new fencing which was constructed for him.

So many people loved Magic and it has taken a few days to contact them all! And 'thank you' to Harbury News for suggesting this Tribute. I always wanted Magic to go when he was ready, I feel so happy we did not make any 'rushed' decisions, as he was not suffering, just tired. A bit of patience and natural instincts work wonders and you get a better ending like this!



**Chris, Lisa and Lydia**



## **Blood Donors**

Yet again, a big "thank you" to everyone who attended the session in April. With 97 units given, we just missed our target, but even so that represents a lot of lives improved or saved. If you didn't manage it this time, please make a special effort next time on 21<sup>st</sup> August. This is a Wednesday for a change and is bound to be affected by holidays so, if you could encourage a friend or neighbour to join you, they would be very welcome.

**Gillian Hare**

## **Leamington Music**

After a gap of two years, Leamington Music is back at All Saints' Church with a concert on Friday 17th May featuring violinist Harriet Mackenzie and guitarist Morgan Szymanski. Harriet came to Harbury for a particularly exciting concert as leader of the group Kosmos four years ago and other concerts in the past put on in the Church by Leamington Music have included the Badke String Quartet and the leading baroque group, Florilegium.

Harriet and Morgan are coming to Warwickshire a day early so that on the afternoon of Thursday 16th May, they will give workshops at



Harbury Primary School, with the second one for Key Stage 2 pupils open to parents as well, to give them a foretaste of the Friday night concert. The concert has music by a range of European and Latin American composers including Vivaldi, Ponce, Bartok, Mangore, De Falla, Paganini, Bach and the tango king Astor Piazzolla.

Harriet Mackenzie has toured through most of Europe, both Americas, South Africa, China and Japan as a soloist playing concertos and chamber music. Kosmos, a string trio and Retorica, a violin duo are two of her big interests and she released three CDs in 2012. As anyone who remembers her terrific playing in All Saints' four years ago, she is a great improviser, playing Mediterranean music and klezmer music. The charismatic guitarist Morgan Szymanski was born in Mexico City. The Szymanski family emigrated from Poland to New Orleans and then to Mexico and his father married a lady from Edinburgh, hence Morgan as a first name. He has played on almost as many continents as Harriet, having come to London to study at the Royal College of Music where he won all the guitar prizes. He has played regularly in Leamington, Stratford and Warwick over the last ten years and has often given workshops in schools. He is a wonderful performer and the opportunity to hear him is, as the billboards say, "unmissable"!

Tickets for the concert in All Saints' Church Harbury on Friday 17th May at 7.30pm cost £10.00, £1.00 for children and students and are on sale through Felicity Harris on 612395 and at Harbury Library. Online bookings at [www.bridgehousetheatre.co.uk](http://www.bridgehousetheatre.co.uk)

**Richard Phillips**

## **Harbury NSPCC Committee**

We are holding another Ladies Lunch on Thursday 23<sup>rd</sup> May in the Tom Hauley Room. The event starts **at 12.30pm** and tickets are priced at **£12.50** which includes a two course lunch plus coffee/tea.

Marion Canning, a local toastmaster is coming along to talk to us about her experiences.

We would be delighted if you could join us. Please telephone Elaine Bruce on 614664 if you are interested in purchasing a ticket.

**NSPCC Committee**

## **Movement to Music**

### **Are you over 60?**

Regular exercise keeps you healthy so come and join us at "Movement to Music" and have some fun and give your body a treat.

Sessions are held in Harbury Village Hall normally on the 1<sup>st</sup>, 2<sup>nd</sup> and 3<sup>rd</sup> Thursday afternoons of each month from 2pm to 3pm. Check the Harbury News for dates. The next dates are 9<sup>th</sup> May and 16<sup>th</sup> May. (2<sup>nd</sup> May is the Council Elections).

The routine consists of continuous gentle exercise in sitting and standing positions designed for people of your age group to improve joint flexure and muscle tone.

Led by a dance teacher, you will enjoy the effort and the fun atmosphere amongst people you know with all levels of ability. Anyone can turn up at anytime to see if it suits them.

The rule is - if you can't do it, do what you can!

Regular exercise is recommended by your doctor and you will find that each week your mobility improves and you can do that little bit more.

**Men don't be shy!** -- We already have some regulars who enjoy the exercise and the company of the ladies. So come and join us and improve your mobility and general fitness.

The cost is £2.50 a session which just covers the teacher's costs and hall hire. Any questions? – ring Chris Finch on 612305 or Jackie Rankin on 612750.

**John Smith**

## **Village with a Vision**

On Thursday 18<sup>th</sup> April we held out second AGM in the Tom Hauley Room.

All members of the committee had indicated their willingness to stand for re-election, and were duly proposed and seconded to continue.

Sadly there was no further news; but Bromford Support and ourselves are still actively looking at sites and are hopeful of beginning initial negotiations with owners.

The minutes of the meeting are now on our website, [www.villagewithavision.co.uk](http://www.villagewithavision.co.uk).

**Tony Stubbs**  
**Chairman**

## **New Hedge Planted at side of Village Hall Car Park**

As residents of Constance Drive, Sue Field and myself decided to enhance the appearance of the Village Hall car park by removing the litter under the hedge. To get at this litter we had to cut back the ivy and brambles which had not been touched for many years. I would like to thank Sue for the hours of work this has taken and to the residents of the Constance Drive estate who gave us their verbal support, unwanted bulbs to plant and lent us their green

bins for disposal of the green waste. (Eventually we filled between 30-40 bins!)

Thanks also to Colin Sheasby who viewed our efforts, declared the original hedge 'dead' and donated hedglings (called Quicks) for us to plant. Thanks to the efforts of Brian Summers these Quicks were soon planted. Apparently the new hedge will take two years to become established and hopefully it will thrive and look good for future generations.

We hope you agree that the area looks better for being opened up, with the plants giving added colour.

**Cllr Pat Summers**

## **The Spirit of Harbury**

The Spirit of Harbury shield will be presented on 11<sup>th</sup> May in the Tom Hauley Room at the Heart Foundation coffee morning.

**Alison, Andrew & Stephen Hunt**



## **Harbury Art Group**

Our tutored workshop on the first Thursday of April was a watercolour session in which Nick taught the group how to use salt and white candles to create texture in a painting. Using a material which resists water (like candlewax) or absorbs water (like salt) can create interesting patterns and effects in a watercolour painting. Although I did not attend this session, I understand the group had a great time doing two paintings, each featuring different effects. On 2<sup>nd</sup> May our workshop will be using colour pencils. This is one of Nick's favourite mediums and, if you have not tried using coloured pencils since your schooldays, why not come along and see the amazing results that can be achieved. As yet, we do not know the subject – Nick likes to keep us in suspense!

The tutored sessions are always on the first Thursday of the month and cost £15 for the day with the subject and tuition provided. These are full day sessions starting at 10am and finishing at about 3pm. Contact Nick on 01295 276465 for more information.

Our social painting sessions are on the third Thursday of the month and the next one is on Thursday 16<sup>th</sup> May with the theme 'Sunrise / Sunset'. We start at 10am in the Tom Hauley Room and finish at about 1pm, and the cost is usually £5 per person, depending on numbers attending, (we just need to cover the cost of the room hire). These social sessions are very relaxed and you bring your own subject material. New members are always welcome to join us, but please let us know if you are coming by telephoning Pam on 01926 814923.

Full details of all workshops are available by emailing [harburyart@hotmail.com](mailto:harburyart@hotmail.com) or by ringing Pam on 01926 814923.

**Pam McConnell**



## Bumps and Bundles

Bumps, Bundles and Tots is as busy as usual; during April we held a coffee morning and raised a fantastic £131 for Bumps and Bundles, we had lots of lovely cakes and great raffle prizes, thanks to all who donated and helped out in anyway (see photo).

We had a visit from Debra who came from the Southam children's centre to do painting with the tots, we had a lovely art gallery at the end of the session and the tots thoroughly enjoyed



it (see photo). Next month Debra will return with boxes to explore and puppets to play with, the dates of her visits will be the 7<sup>th</sup> and 21<sup>st</sup> May.



Soon the Carnival will be here; Bumps theme this year is nursery rhymes and fairy tales so look out for some bears, mice and many more characters! Come along to Bumps, Bundles and Tots every Tuesday 10:30am to 12 noon in the Tom Hauley room (behind the Church).

**Kelly and Henry**



## Harbury Village Library

We have had a very good response to our Buy a Book appeal and so far the money received is over £750. Everyone involved with the Library would like to thank those of you who have already made a contribution and also encourage those who have not yet donated to do so. Since the Library is registered as a charity, agreeing to Gift Aid your donation will increase its value by 25%. The new tax rules also mean that any donation between £1 and £20 does not need any form filling to enable the Library to claim the benefit.

Volunteers have been delivering leaflets to all the streets in Harbury but if you have not yet received one, there are still plenty available at the library. Please help to support YOUR library and enable us to fill the shelves with books that everyone would like to read.

We have already begun buying brand new books but have also added to the shelves some excellent, almost new copies, which have been donated, and

some slightly older books, which are still very good reads, many of which have been professionally covered. If you haven't been into the Library for a while, please come and visit us. We hope that you will be impressed by our increased range of titles – from Mills & Boon to Julian Barnes plus some rather eccentric and funny autobiographies.

**Sue Wurr**

## **Building Biblio's Team**

Our team is great, as they all do whatever they can in juggling their busy lives and the spare time they have available. It is, though, sometimes a stretch for everyone, particularly during holidays and on Saturday mornings. We are keen to continue building the team so that we can be sure there are always enough people to open the cafe and to bake for all our lovely customers. We had hoped to develop an intern programme commencing this summer for Year 10 and above, although we are still awaiting responses to gauge levels of interest. In the meantime if you would like to join us (no ageism) you will discover that your volunteer experience working in Biblio's will help you meet people, develop your skills, enhance your confidence, build your CV too if you want, and be fun. Email [biblioscafe@gmail.com](mailto:biblioscafe@gmail.com) or pop in and leave your contact details with one of the team, and we will get straight back to you.

**Lynn Macwhinnie, Jill Credland, Bobbie Sharpe**

## **Plan your Gear, Carnival is Nearly Here!**

### **Harbury Carnival Saturday June 8<sup>th</sup>**

**Carnival is only a few weeks away** - It's May already and that means time to plan. Please buy your raffle tickets from volunteers who will be knocking on doors – remember the proceeds go to local charities and organisations.

We look forward to seeing you with your local organisation, pub, street or friends and see what ideas you have come up with for either a float or a walking group for the procession. Here is a reminder of the list of categories for the Parade: (*NOTE: Parade assembles in Sutcliffe Drive, judging at 12.15pm*) Trade Float, Independent Float, Children's Float, Decorated Bike/Pram/Car, Horse Drawn/Mounted/Lead, Walking Tableau Children 2-8 persons, Walking Tableau Children more than 8 persons, Walking Tableau Family, Walking Tableau Adults, Walking Adult and Walking Child.

The programme includes the famous Dog Show, the cheerleaders Flippin' Flyers, Punch & Judy, Harbury's own Aero Dancers and the stirring Shirley Pipe Band.

There will also be refreshments, ice cream, an inflatable, roundabouts, and lots of fun for all at the many stalls with their games and wares.

There may just be time to book a stall/pitch on the field, please call Mike McBride on 612421 and, if you have any questions about the Carnival, please feel free to call John Broomfield, Carnival Committee Chairman, on 614258. He will be happy to provide whatever help he can.



**The newly crowned Carnival King Ben and Queen Evie** (and some words from them):

***My name is Evie,** I am 11 years old and I live in Harbury with my mum, dad and sister. I have a fat cat named Daisy who loves cuddles. Besides school I like*

*to go to dance lessons and the best thing about dancing is the shows and competitions I do every year. Furthermore, the best thing about Harbury School is the fun and interesting sports we do. I love to play: netball, football, running and doing P.E. on a Friday. Sometimes I compete in gymnastic competitions.*

*I am looking forward to being Carnival Queen because we get to sit in a nice fancy car.*

***Hi, I'm Ben,** I am 10 years old and I've lived in Harbury since I was six months old. I have many hobbies like rugby, tennis, football and running.*

*I like Harbury School because everyone is kind and helpful. Although my friends are going to Southam College I am going to Warwick School. I decided to go to Warwick because I will be the third generation to go and the school really likes rugby which is my favourite sport.*

*I have a sister called Imi, she is kind and sometimes when I am in a bad mood she is a devil. I like dogs a lot, mine is called Bailey. She is a Springer Spaniel. Our family share a farm just outside Harbury. There are pigs, ducks, chickens and a cat called Oscar.*

Make sure you cheer them into the Carnival.

Don't forget the **Games Week** and the **Wheelbarrow Race** – Mike McBride is your contact on 612421.

**Submitted by Peter Walshe on behalf of the Carnival Committee**

## **Harbury Carnival Wheelbarrow Race and Games 2013**

### **Wheelbarrow Race**

This year's race will take place on Sunday 2<sup>nd</sup> June, and is being hosted by The Old New Inn. Competitors are requested to assemble at 12.30pm for a 1.00pm start. Entry forms are available from Mike McBride - 01926 612421 - or from the local pubs. Would all those wishing to participate please return the completed entry forms (make sure you tick which race and also sign the disclaimer), with the appropriate entry fee to Mike BEFORE RACE DAY PLEASE.

### **Pub Games**

The format is the same as for previous years - a maximum number of 12 per team with 4 players from each team competing in each event (smaller teams are most welcome but, obviously, the minimum number is 4). Team members may take part in more than one event. The entry fee is £1 per team member and entry forms are available from Mike McBride - 01926 612421 - or local pubs. Please return the completed entry form, together with the appropriate entry fee, to Mike PRIOR TO GAMES WEEK PLEASE.

This year's events and venues are as follows:-

Monday, 3<sup>rd</sup> June – Skittles – The Village Club

Tuesday, 4<sup>th</sup> June - Horseshoes - The Gamecock

Wednesday, 5<sup>th</sup> June – Aunt Sally – The Crown

Thursday, 6<sup>th</sup> June - Quiz - The Shakespeare

All events commence at 7.30 prompt.

**Mike McBride**  
**Harbury Carnival Committee**

## **Harbury Senior Citizens Committee Update**

The invitations to this year's outing will be delivered early in May. Please return them to Mugleston's Country Fayre by Friday 31<sup>st</sup> May.

As usual, if you are new to the village and think you may be eligible to come along, or you think we may not have you on our list of invitations, please contact Thelma Gulliver on 613269, Julie Clarke on 612066 or me on 612421.

Also, we are aware that some people who are eligible do not wish to receive any invitations from our organisation. If you would like to be removed from our postal list, please let us know and we will honour your request.

We have received some items for our tombola stall at the Carnival. Thank you for those. If you feel able to support us, any further donations will be welcome and much appreciated.

**Mike McBride**  
**on behalf of the Harbury Senior Citizens Benefit Association**

## **Harbury Pre-School Fundraising Group**

**Pre-School Coffee Morning at the Tom Hauley Room, Saturday 18<sup>th</sup> May, 10.00am-12.00pm**

Harbury Pre-School is hosting the Tom Hauley Room Coffee Morning on Saturday May 18<sup>th</sup> 10.00am - 12.00pm. There will be delicious cakes, a raffle and face painting for the children so please come along to support us. Any donations of cakes and biscuits will be gratefully received - please bring them along to the Tom Hauley Room on Saturday morning from 9.00am or call Helen on 07976 935 439 to arrange delivery or collection.

### **Recycling:**

- Our collection of recycled CDs and DVDs raised £40 - thank you very much to everyone who donated.
- Donations of unwanted electrical leads, mobile phones and used ink cartridges are still welcome.
- Our next Bag2School collection is **14<sup>th</sup> June** at Saddlers, Chapel Street and we would be very grateful for any unwanted textiles such as linen, children's and adult's clothing, paired shoes, soft toys, curtains, towels, handbags, belts, etc.

### **90 of Harbury's Favourite Recipes:**

The last few copies of our wonderful recipe book are still available for sale at Mugleston's and Harbury Library/Cafe. All recipes have been sent in by friends and family of Harbury Pre-School and will make a lovely gift for your friends and family. All proceeds to Harbury Pre-School.

### **Pre School Fundraising Events for your diary:**

- May 18<sup>th</sup> 2013 - Pre -School Coffee Morning at the Tom Hauley Room
- June 14<sup>th</sup> 2013 - Bag2School Textile Collection
- June 2013 - Cream Teas at Harbury Open Gardens
- June 2013 - Barbecue at Harbury Carnival

Thank you for your continued support. For more information about any of the above, or if you would like to join our friendly group, please call Sarah on 07791 807970.

**Helen Edwards**

## **Windmills Fundraising Group**

Windmills Fundraising Group are pleased to say we raised £140 from our Bag2School collection in March, so thank you everyone who donated.



Our next collection is **26th September 2013** so please start collecting now. Please feel free to ring Sue on 614448 if you need any bags collecting.

### Dates for your diary:

**8<sup>th</sup> June** - Windmills will be running a soft toy tombola, jam jar sweetie tombola and a lucky dip at the Harbury Carnival, so please show your support and join us on the playing fields after you have watched the wonderful floats go around the village.

**29<sup>th</sup> June** - Dance the night away at our Summer Ball on the 29<sup>th</sup> June. We have a live band lined up together with fantastic catering, so watch this space for more details.

Thanks again for your continued support.

### Windmills Fundraising Group

### Harbury Energy Initiative



#### Year 5 Present their Poems and Survey Findings

Club together for a better deal was one of the main messages coming out of the Harbury Energy Day on 20<sup>th</sup> April and we would like to act on that. Susan Juned outlined Stratford District Council's Act on Energy Together scheme which aims to operate rather like Chris Finch's oil buying club. Strength in negotiating a good price for energy comes from numbers. Leaflets on this scheme are

available from me or (with their permission, I hope) from the Library. Many of you will remember that the Village Hall event on photovoltaic panels a couple of years ago brought together enough people to reduce the price for installation considerably. The same is very possible for energy saving measures and HEI is keen to collect names of those interested in advice and home energy assessments for Green Deal or other finance possibilities.

Decisions can be tough - especially if it is a fabulous sunny day and the option is to sit indoors and hear about energy saving. But people did come and were rewarded with a wonderfully confident and fluent presentation of poems and the results of their survey by the children of Year 5. In addition there was excellent advice and information from four experts on energy saving options and ways to afford it. Even more difficult, perhaps, is to decide whether and when to act. Many, not surprisingly, hesitate.

*Will it keep its name?  
 When I grow up,  
 Will the earth be as boring as a grey sky?  
 Will it keep its name?  
 Will the sky stay blue?  
 Will destroy me and you?  
 Will it keep its name?  
 Will cities take over?  
 Will pollution wreck the earth?  
 Will the water stay clean so people can surf?  
 Will it keep its name?  
 Stop smoking, cutting down trees, floods And many more. Stop everything  
 And make the world amazing for me and you.*

**Written by Beau Craig-Shearer**

Keith Budden of E-ON put things in stark perspective by pointing out that today's average energy bills at £1300 are about three times as high as they were in 2004. In five years' time that cost will almost certainly rise to £2000 per annum. Most of our gas comes from abroad, supplies are vulnerable to political inconstancy and exploitation and all energy companies are buying from the same market. It will pay for certain to act soon.



Bill Hawthorne, an independent Green Deal assessor, put the challenge to the audience to think about the future for their children and the young people who had just spoken so eloquently as a call to action rather than indecision. There is no doubt from Bill's explanation of the mathematics that, despite all the reservations, the Green Deal is a good option for many in paying for insulation and other energy saving methods. It is particularly advantageous to go for it now, as there are cash incentives for early applicants. The Energy Company Obligation (ECO) is the name for a separate fund to which energy companies are 'obliged' to contribute. This provides grants rather than loans to cover the most difficult situations, such as non-cavity walls, homes not within the gas grid network, the elderly, vulnerable and others.

Paul Foulkes, a consultant from the Energy Saving Cooperative, explained an alternative way offered by this new cooperative, which has a community focus. Paul is keen to work with us to add to their successful portfolio to date in Birmingham and Oxford. HEI will talk more with Paul and his colleagues to see if this will work well and how we can benefit the village.

HEI would like to hear from anyone who is interested in clubbing together to reduce the cost of a Green Deal home assessment. There is one lucky person who won the prize draw on Saturday and she will pay nothing for hers, as HEI will pick up the bill. Let's see if we can get a good deal for everyone else.

By the way we have a new Facebook page. Some people in the village seem to like us, which is a relief. It is to our daughter Sarah too, as she set it up.

**Bob Sherman – Tel: 612277  
shermanbob55@gmail.com**



## **Victorian Street Fair – 5<sup>th</sup> October**

There will be another fantastic Victorian Street Fair on Saturday 5<sup>th</sup> October 2013 in Chapel Street. There will be a variety of entertainment, stalls and competitions for all the family throughout the day and evening. If you wish to book a stall please contact Amanda Lewis (e-mail: [cllrlewis@harbury-pc.gov.uk](mailto:cllrlewis@harbury-pc.gov.uk) or ring: 07771 594827). More details nearer the time – save the date in your diaries and book your stall now! A discounted stall rate will be available for non-profit/charitable organisations.

**The Victorian Street Fair Committee  
Harbury Primary School PTA**

## **Special Request**

I am currently studying for an MA in Events Management and have created a survey to be used in my dissertation. I would very much appreciate it if you could spare a few minutes to complete it. The survey is about volunteering. If you are over 18 and have undertaken any voluntary work in the past, you are eligible to take part. The survey can be found at: <https://www.surveymonkey.com/s/attitudesandtrendsinvoluteeering> or email me at: [violetlunar@hotmail.co.uk](mailto:violetlunar@hotmail.co.uk) and I will send you the link.

Thank you very much.

**Sarah Sherman**



## **Heritage Group**

Mr Parker the village milkman until 30 years ago, wrote the following information in 1985. I think times might have changed!

### **Mr. Parker, Dairyman, June 1985**

"The price of milk when I first started as a dairyman was 4½d a pint old money. When I first started we delivered just milk, cream and eggs. Now the van in Harbury carries four types of milk, cream and eggs, yoghurt, squashes and fruit juices. I started as a dairyman in 1955, and retired last year (1984).

For 20 years I worked seven days a week. The only day off was Christmas Day as not many households had fridges. I rose at 4.15am every morning, starting at 5am delivering, and when finished, time was taken up maintaining four vehicles. We made household deliveries to Bishop's Itchington, Deppers Bridge, Ladbroke, Bascote, Ufton, Harbury, Chesterton and Lighthorne Heath! In those days all school children received a third of a pint of milk daily at school and we delivered these to all the schools above, plus Southam, Napton, Flecknoe, Stockton and Long Itchington, also two churns of milk daily to Southam Central Kitchen where all school meals were cooked. The round today is just Harbury which has expanded considerably. When I first began I used petrol vans, but soon after changed to petrol floats. For the past ten years I have used an electric float which is a great improvement for economy and easier working."

The hundreds of photos, maps, documents and so on which make up the Heritage Room archives are ready for inspection on the first Tuesday of each month from 6.30pm. Alternative dates for individuals or groups can also be booked if necessary. Entry is free, but donations are always welcome as the project is totally self-funding.

We are progressing with our proposed publication charting the history of shops in the village. Our thanks are due to many who have taken time to read the early drafts and make corrections, even grammatical ones like what we don't usherly make and stuff. The children of Year 6 at the village school have drawn some impressive pictures to illustrate the text. Many thanks to them.

**Nigel Chapman**  
[nigel.chapman@hotmail.co.uk](mailto:nigel.chapman@hotmail.co.uk)



## **Bitter Weather Takes its Toll on Warwickshire's Honey Bees**

Early spring is the most difficult time for honey bees which have survived in a cluster over the long, cold winter months protecting their queen bee and looking forward to reasonable weather allowing them to leave their hive to collect pollen. This is the vital food for raising a new family of bees which become the workforce pollinating much of the food we eat.

The unprecedented cold weather has led to the death of thousands of honeybees and local beekeepers are therefore appealing to anyone interested in becoming a beekeeper to join us on a 'taster day' to find out if beekeeping is something they would like to do. Warwick and Leamington Beekeepers are anxious to increase the number of beekeepers because, as well as being a rewarding hobby, caring for a hive contributes towards making good the loss of honey bees that has taken place.



This course, which costs £18, will take place on Saturday 18th May 2013 from 10.00am until 4.30pm in Marton Village Hall. The course includes visiting an apiary and handling the bees if you wish. You can enrol by going to the home page of our website, [www.warleambees.com](http://www.warleambees.com) or phone our course leader Tim Foden, 01926 632388.

**Mike Townsend**

## **Your Water – Your Choices**

Do you want a say in the future of your water and sewerage services?

Severn Trent Water, who provides these, are in the process of developing a business plan for the period from 2015–2020. They have already widely consulted with both domestic and business customers to understand the priorities that customers place on different aspects of service.

Currently on their website ([www.stwater.co.uk](http://www.stwater.co.uk)) within the section entitled **‘Let’s talk Water’** they provide information on topics such as water quality, customer service and affordable bills and also outline their proposals for 2020. They present their initial ideas on what they could achieve and you can then get involved by seeing how the average household water and sewerage bill could look by 2020 and either complete an on-line poll or, if you wish, respond to their full consultation.

In addition, under **‘Water Choice Calculator’**, those of you who like interactive website features can find out more about how to balance water supply and demand by 2040 and dynamically manipulate these components to achieve balance, while seeing the potential impact of these measures on your bill. Try balancing supply and demand, see how your choices affect your future bill and the company’s carbon impact and when you are happy you can submit your solution to Severn Trent.

Severn Trent really is interested in your views and I urge you to visit the website and provide a response. It will help them to try to meet your needs in the future whilst keeping bills at a level that you are prepared to pay.

**Dave Wurr**

## Chesterton Church - Horse Blessing and Pleasure Ride

After a successful Blessing last year we are holding our Service on Sunday 19<sup>th</sup> May at 2pm followed by a pleasure ride through our beautiful countryside. Please book with Jo Spurr 614431 jospurr@hotmail.co.uk or Lynne Smith 07759454195. £10 on the day or £8 pre-booked. Refreshments available. Your horse will love it.

**Jo Spurr**

## Polo in the Park



At one time, it might have been thought that polo was an elitist sport only available in the South of England, but the superb Dallas Burston Polo Club, set in the delightful setting of the Stoneythorpe Estate, has made the 'Sport of Kings' accessible to all-comers who want to experience the fast-moving sport at close quarters in our area.

The Polo Grounds (previously known as RLS Polo Club), have recently been rebranded as Dallas Burston Polo Club (sometimes referred to as DBPC), in recognition of the immense contribution to the development of the grounds by founder, Dr Dallas Burston, who has been the driving light behind all the improvements which have taken place in recent years. It would be impossible to drive along the Leamington to Southam road these days and not notice the impressive stone walled entrance, the attractive Clubhouse and Golden Jubilee Pavilions and the twin stands of Union Jacks which border the outer limits of the fields.

Recently one lucky family secured a voucher for a BBQ/meal in the restaurant offered at DBPC at the Auction of Promises evening held in Harbury Village Hall at the end of April, so that not only will they be able to enjoy the spectacle of a day's exhilarating polo matches, but also take advantage of the on-site catering. The complete range of high quality menus including bar snacks, BBQs, canapés, picnic menus and Sunday roasts etc can all be found on the DBPC web-site ([www.dbpoloclub.com](http://www.dbpoloclub.com) or Google: Dallas Burston Polo Club followed by: about us/food and beverage to see sample menus). Mark Higgs, the Managing Director of Indievictual, the company which now operates the catering at the grounds, has run restaurants in several village pubs, including the Holly Bush at Priors Marston and The Fox at Farthingoe; the latter being a finalist in the recent top 50 gastro pubs. In order to find out about everything the Polo Club has to offer, including holding a wedding or hiring a venue, making restaurant reservations or simply finding out which events are taking place, just telephone 01926 811111.

The website gives a comprehensive list of all the tournaments which take place at the weekends from April through to September when the grounds become alive. For the majority of the events there is complimentary parking. The Club welcomes 'families and four legged friends' and it is possible to take a picnic, so that a whole day's entertainment can be enjoyed in delightful surroundings, whilst appreciating the skill of the many riders and their polo ponies, as they cover the ground at great speed in order to score a goal in the chukka. For anyone who is mystified by the rules of the sport, there is often a commentator on hand to explain the finer rules of the chukkas, which may involve between 4-6, 7 minute time periods, with the scores recorded on the scoreboard at the head of the field.

There are several dates in May, which may prove of interest to local families, including the Mounted Games Association (MGA) Warwickshire Friendly event on May 11<sup>th</sup>/12<sup>th</sup>; the Southam Trophy on 18<sup>th</sup>/19<sup>th</sup> and the Summer Cup and the Jubilee Cup between 22<sup>nd</sup>-27<sup>th</sup> May. At the first of these events and particularly on Sunday 12<sup>th</sup> May, the club is also holding its annual DBPC Opening



Season Party alongside polo and mounted games. There will also be a variety of stalls on this occasion, BBQs and drinks stations, as well as a bouncy castle for youngsters. The aim of DBPC on the 'key event' days (see website or telephone for details) is always to provide 'something for everyone', in addition to the polo matches – whether it be shopping, walks around the grounds or fun activities for families.

During June there are polo challenges arranged for each weekend with the DBPC Ladies' Day event being held on Sunday 23<sup>rd</sup> June offering wine-tasting, flower arranging demonstrations, shopping and a very special and prestigious exhibition polo game between HAC Polo Team and The Grenadiers. If you would like to enjoy the full corporate hospitality experience, tickets cost £60 and include a sit down lunch, glass of bubbly, goody bags etc. Otherwise, if you'd like to simply bring a picnic and watch polo on the surrounding banks, entrance is free as with every other weekend. Car parking charges apply on Sunday 14<sup>th</sup> July and Sunday 1<sup>st</sup> September only.

July also has a packed programme of Cup events, including the Fine & Country Warwickshire Gold Cup on Sunday 14<sup>th</sup>, when there will be a food village promoting a range of classic food products, lots of shopping and a range of activities for the children. This event attracts international players who often arrive at the site by helicopter, so the air is 'buzzing with excitement' in more ways than one!

Polo continues right through August and September with the club's annual highlight DBPC Polo in the Park on Sunday 1<sup>st</sup> September, concluding the

season with the Farewell Trophy on 21<sup>st</sup>/22<sup>nd</sup> September. So there is plenty of opportunity for all local residents to take advantage of being part of a high-end country sport, which offers excitement to all who decide to have a day with a difference at Dallas Burston Polo Club. If you haven't so far ventured out to witness 'Rugby on Horseback', then maybe 2013 is the time to drive through the impressive entrance of the DBPC and learn about the challenging sport, which even allows crowd participation at half time, when spectators are allowed on to the pitch to 'stomp the divots' created by the polo ponies hooves!!

Check the website – you won't be disappointed that you decided to try something different on a Summer weekend, and who knows, you may end up wanting to be more than a spectator, as others have become active participants in the sport after witnessing the action at close hand.

**Chris Finch**

## **Bagot's Castle, Baginton**

Please come along and visit Bagot's Castle, Baginton, CV8 3AR, West Midlands, a 13th century castle ruin set in a beautiful 19 acre site alongside the River Stowe. The whole site is a scheduled monument, which includes buried remains of a Saxon settlement, the ruins of an 18th century gazebo and remains of a WWII tank testing site. The site also has medieval fish ponds, two of which have been restored as a nature habitat.

Our newly opened Education Visitor Centre displays artefacts from the 1930 excavations, with photographs of the history on our display boards and children's Activity Packs. There are lovely walks, bluebells in May and a picnic area. An ideal place for all ages to visit. Schools are welcome.

**Open April – October:** Weekends 12.00 – 1700 and Bank Holidays. Weekdays by appointment through our website: [www.bagotscastle.org.uk](http://www.bagotscastle.org.uk) or call 07786 438711.

**David Hewer**



## **LETTERS TO THE EDITORS**

**Dear Editors**

**Church Flowers**

*Through the Harbury & Ladbroke News I would like to thank everyone who so kindly donated money towards the Easter flowers. Also I would like to say a big thank you to all the loyal team of ladies who helped me make our Church in Harbury look so splendid over the Easter period.*

*Thank you all.*

**Jo House**



## Regular Diary Dates

**ART CLASSES:** The Studio, Church House, Crown St, Tuesday 10am -12 noon (614251)

**ART TUTORIALS:** Tom Hauley Room 1st Thursday of the month (814923 or 01295 276465)

**BADMINTON:** Village Hall, Monday mornings 10:00am -12:00 noon (612877)

Mondays evenings 7:30 - 9:00pm; (612627)

**BEAVERS:** Scout Hut, Thursdays 5.30 - 6.40pm (01788 816214 )

**BELL RINGING PRACTICE:** Church, Fridays 7:30pm (612939)

**BIBLE STUDY GROUPS:** various homes 1st & 3rd Thursday of the month 2.00-3.00pm

(614809); 2nd & 4th Tuesday of the month 10.30 - 12.00 noon (612864)

**BIBLIO'S CAFÉ (WITHIN HARBURY VILLAGE LIBRARY):** Wednesday, Thursday and

Friday 9.15am – 12 noon and Saturday 10.00am – 12 noon

**BROWNIES:** Scout Hut, Mondays 5.45pm - 7:00pm (612538)

Brownies & Rainbows Waiting List - Bobbie Sharpe (614040)

**BUMPS & BUNDLES:** Tom Hauley Room, Tuesdays, 10.30am – 12 noon (614150 or 611914)

**CHILDREN'S DANCE CLASSES:** Farley Room Wednesday 4.00 - 8.00pm (07837 152839)

**CHURCH MEN'S GROUP:** Tom Hauley Room 1st Thursday in the month 7.45pm (612765)

**COFFEE MORNING:** Tom Hauley Room Saturdays 10:00am - 12:00 noon (613214)

**CUBS:** Scout Hut, Wednesdays 6:45 - 8:15pm (614730)

**GUIDES:** Scout Hut, Mondays 7.15pm – 9.00pm (614375)

**GYMNASTICS:** Harbury School, Mondays 6:00 - 8:00pm (07939 679533)

**HARBURY FOLK CLUB:** Harbury Village Club, 1<sup>st</sup> Thursday in the month 8:00pm (613730)

**HARBURY FRIENDS:** Tom Hauley Room, 2nd Tuesday in the month 8:00pm (612534)

**HARBURY JUNIORS FOOTBALL CLUB:**

**Under 6's/7s - Year 1 & Year 2 (Mixed)**

Coach: Steve Darby Tel: 01926 613330

Training: Saturday 9.00 am Harbury School

**Under 8s - Year 3 (Mixed)**

Coach: Malcolm Tanner Tel: 01926 612617

Training: Saturday 9.00 am Harbury School

**Under 9s - Year 4 (Mixed)**

Coach: Bob Church Tel: 01926 614366

Training: Tuesday 6.30pm Southam College 3g Pitch

**Under 10s – Year 5 (Mixed)**

Coach: Steve Burnell Tel: 07795 428087

Training: Tuesday 6.30pm Southam College 3g Pitch

**Under 12s – Years 6 & 7 (Mixed)**

Coach: Richard Woodhead Tel: 07786 802803

Training: Tuesday 6.30pm Southam College 3g Pitch

**HARBURY PRE-SCHOOL:** Wight School (behind Library), High St. Monday 12 noon –

3.30pm, Tues & Thurs – 9.00am, - 3.30pm, Wed & Fri – 9.00am – 1.30pm (07939

122087) [enquiries@harburypre-school.org.uk](mailto:enquiries@harburypre-school.org.uk)

**HARBURY THEATRE GROUP:** Last Tuesday of the month Shakespeare Inn (611930)

**HARBURY TODDLER GROUP:** Wight School, Monday 9.30 - 11:15am

**HARBURY UKULELE GROUP:** Shakespeare Inn, 1st & 3rd Monday of the month

8.00pm, contact Craig (612377)

**HARBURY VILLAGE CLUB:** Contact 612498 (evenings).

Bingo every Friday 8.30pm - non members welcome.

**HARBURY VILLAGE LIBRARY:** Monday to Friday 9.00am – 5.00pm and Saturday 9.00am – 12 noon

**HEREBURGH MORRIS DANCERS:** School Hall, Wednesdays 8:00 - 10:00pm (613730)

**HORTICULTURAL SOCIETY:** Tom Hauley Room, 1st Tuesday in the month (Oct. to May) 8:00pm Contact David Powell-Tuck (614492)

**KICK START APPALACHIAN STEP DANCERS:** Scout Hut, Saturdays, 10:00am - 12:00noon (612734)

**NETBALL CLUB:** Village Hall Car Park, Training Thursday evenings, Juniors 6.00 till 7.30pm & Seniors 7.30 till 8.30pm, Matches on Saturday Afternoon (613163)

**MEN'S BREAKFAST:** Tom Hauley Room, 3rd Saturday in the month 7.30am (612782)

**MOTHER'S UNION:** Tom Hauley Room, 1st Wednesday in the month 2.30pm; 3rd Tuesday in the month 8.00pm (613831)

**RAINBOWS:** Scout Hut Tuesdays 5.30 - 6.30pm, Unit Leader Bobbie Sharpe (614040)

**SCOUTS:** Scout Hut, Thursdays 7:00 - 8.30pm (614177)

**TABLE TENNIS:** Village Hall, Thursdays, 9.30 - 10.30am (614809)

**TAI CHI:** Ufton Village Hall, Monday, 7.15pm – 8.45pm (612277)

**TENNIS CLUB:**

**Adult / Student Members Playing Times:**

Tuesdays: 6.30pm– 10.00pm, Thursdays: 6.30pm – 10.00pm

Saturdays: (from Sept to March) 10.00am – 12 noon

Sundays: (from April to August) 10.00am – 12 noon

**Members** may play at other times free of charge, provided the courts are not already booked. **Guests** playing with members should pay £1 an hour.

If you would like to become a member or find out more about Harbury Tennis Club, please contact Colin Mercer (613284) or email [sucol-merc@tiscali.co.uk](mailto:sucol-merc@tiscali.co.uk)

**Non-members** - Courts should be booked at Country Fayre, Chapel Street (£4 per court per hour) Floodlit bookings - £7 per court per hour.

**Minis and Juniors** (age 3 - 17) For details of Junior membership, contact Sue Mercer: [sucol-merc@tiscali.co.uk](mailto:sucol-merc@tiscali.co.uk)

**Coaching:** Adult and Junior coaching takes place throughout the year.

For up to date information contact [admin@tennisolutions.co.uk](mailto:admin@tennisolutions.co.uk)

**THURSDAY CLUB:** Farley Room of Village Hall 4th Thursday in the month 2:30pm (612877)

**WARWICKSHIRE YOUNG VOICES:** Village Hall, Thursdays 6.30 - 8.00pm (614150)

**W.I.:** Tom Hauley Room, 2nd Thursday in the month 7:45pm (612708)

**WEDNESDAY WALKERS:** Village Hall, Wednesday 9.40am (614188)

**WINDMILLS NURSERY SCHOOL:** In the grounds of Harbury Primary School, Monday-Thursday; 9:05am - 3.05pm; Friday 9.05am -12.35pm (07906 519148) [info@windmillsnursery.co.uk](mailto:info@windmillsnursery.co.uk)

**YOGA:** Ladbroke Village Hall, Tuesday 10.00 – 11.30am and the Tom Hauley Room, Wednesday 7.00 – 9.00pm Dianne Surgey (817904)

**YOUTH GROUP-ICON @ All Saints':** Tom Hauley Room, Sundays 7.00 – 8.30pm (612377)

**DATES FOR INCLUSION IN THE HARBURY DIARY PLEASE TO:  
LINDA RIDGLEY - TEL. 612792.**

# Missing



Please help us find Tilly our much loved cat who lives on Frances Road.  
She was last seen on the morning of Tuesday 23<sup>rd</sup> April.

Tilly does not have a collar but is microchipped which any vet can scan.  
Please check outhouses, sheds and garages as she has been known  
to get locked in them sometimes.

**Please call anytime Steve 07792 971 018**



**FREE ANTIQUES VALUATION DAY  
IN AID OF THE NSPCC  
JEWELLERY, SILVER, GOLD, ANTIQUES,  
CERAMICS AND COLLECTABLES**

**Notty Hornblower - Vintage Textiles  
and Charles Hanson**

**Thursday 9<sup>th</sup> May, 10.00am - 4.00pm**

Items may be left to be entered into a suitable sale

**St Francis of Assisi Church Hall**

110 Warwick Road, Kenilworth. CV8 1HL

**FREE HOME VISITS FOR LARGE COLLECTIONS AND  
ADVICE ON HOUSE CLEARANCES**

**Charles Hanson is available for Charity events**

**For further information please contact Mrs Carol Jones**

Hansons Warwickshire Area Manager on 01926 770066

service@hansonsauctioneers.co.uk [www.hansonsauctioneers.co.uk](http://www.hansonsauctioneers.co.uk)

**Refreshments in aid of the NSPCC**





Leamington Music

Summer Concerts

**All Saints Church HARBURY (CV33 9HD)**

**Friday 17 May 2013 at 7.30pm**

**Harriet Mackenzie** *violin*  
**Morgan Szymanski** *guitar*



**Vivaldi** *Violin Concerto in D RV230*, **Ponce** *Estrellita*,  
**Bartok** *Romanian Folk Dances*, **Mangore** *Una Limosna por el Amor de Dios*,  
**De Falla** *Five Spanish Folk Songs and Spanish Dance*,  
**Paganini** *Cantabile in D*, **Bach** *Andante from Sonata No 2 in A*,  
**Piazzolla** *Bordell, Café and Nightclub*

Harriet Mackenzie came to Harbury with the group Kosmos four years ago for a memorable concert. She returns with the charismatic Mexican guitarist Morgan Szymanski, who has been a regular visitor to the Warwick and Leamington area for a decade now. They will take us on a musical journey embracing Europe and South America. Forget the cold winter, enjoy the spring and an early summer!

As part of the Leamington Music Education Programme, Harriet Mackenzie and Morgan Szymanski will visit Harbury Primary School for a workshop during the afternoon of Thursday 16 May.

Tickets £10.00, £1.00 for children and students  
 from Felicity Harris 01926 612395 and 01926 776438  
 Online – [www.bridgheousetheatre.co.uk](http://www.bridgheousetheatre.co.uk)

Project supported by the Fondo  
 Nacional para la Cultura y las Arts

CONACULTA FONCA



Concert promoted by Leamington Music – [www.leamingtonmusic.org](http://www.leamingtonmusic.org)



## **D.A.Knowles Plumbing Services**

- Over 25 years experience
- All aspect of plumbing including bathroom and kitchen installations
- Full tiling service available
- Competitive rates
- Project Management available for larger projects
- No job too small!!

**Mobile: 07721 522298   Home: 01926 613776   Email: da.knowles@btinternet.com**

### **Thinking of selling?**

Local family looking to buy a family home  
in Harbury.

Currently in rental with no chain.

Contact: marknlor@gmail.com

01926 259039 to discuss further.



## **Drop Dead Gorgeous Curtains**



Beautiful Bespoke Curtains, Cushions and Roman Blinds  
all made to measure.

Curtain alterations also undertaken.

All your needs catered for from fabrics to poles.

Free no obligation quotes.

Contact Sharron for friendly and helpful advice on  
07760 395805 or 01926 612226

Or email: dropdeadgorgeouscurtains@gmail.com

ovenu.co.uk

**oven**

oven valeting service

...punctuality, pride, courtesy and quality  
all come as standard...

- Range & AGA Specialist
- Ovens & Hobs
- Extractor Hoods
- Microwave Ovens
- Traditional Stoves

LET US HELP - PHONE NOW

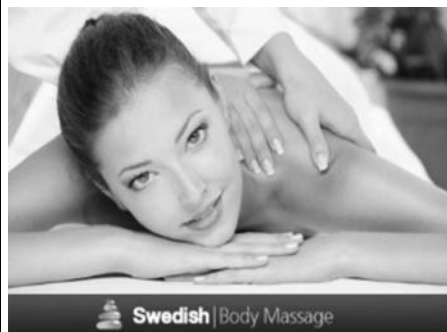
**01926  
321915**

*the UK's favourite oven cleaning specialists*



**ABSOLUTE  
BEAUTY**

Tel Rosina on 01926 612403 - [www.rosina.moonfruit.com](http://www.rosina.moonfruit.com)



For all your beauty and holistic needs  
**NEW** - Virtual French Nails + Shellac & Minx  
Tel Rosina – 612403  
[www.rosina.moonfruit.com](http://www.rosina.moonfruit.com)



**Kenilworth  
Properties Ltd**  
BUILDING CONTRACTORS



**Extensions-Alterations-Refurbishment-New Builds  
Bespoke Kitchens and Bathrooms  
Design-Planning & Building Regulations Application  
Service available.**

Web: [www.kenilworthproperties.co.uk](http://www.kenilworthproperties.co.uk)

Email: [tony@kenilworthproperties.co.uk](mailto:tony@kenilworthproperties.co.uk)

Telephone: Harbury 612260 Mobile: 07779 096104

**Harbury Business Centre, Church Terrace, Harbury, Leamington Spa CV33 9HL**

HUGH JACKMAN RUSSELL CROWE ANNE HATHAWAY AMANDA SEYFRIED



# Les Misérables

Film Certificate 12a

**Harbury Village Cinema**

**Friday 31<sup>st</sup> May 2013**

**doors open at 6.00pm ~ film starts at 6.30pm**

**Ticket Options**

**£10.00 Single Ticket – includes a portion of fish ‘n’ chips during the interval**

OR

**£3.50 Single Ticket with no food**

**All Tickets Available In Advance From Cana Import**

High Street, Harbury: 01926 613716 ~ 07967 100153 ~ [www.cana.import.co.uk](http://www.cana.import.co.uk)

**Tickets on sale at Cana Import up to Thursday 30<sup>th</sup> May ~ subject to availability!**

*spare tickets will be sold on the door subject to availability*

Tuck Shop – Refreshments – Cana Import Bar – Raffle

**All profits from the village cinema are donated to the  
Harbury Village Hall refurbishment project**

Further details: 01926 613801 ~ [geoffthorpe49@hotmail.co.uk](mailto:geoffthorpe49@hotmail.co.uk)

## ADVERTISING IN THE HARBURY & LADBROKE NEWS

EMAIL: [ADVERTISING@HLNEWS.CO.UK](mailto:ADVERTISING@HLNEWS.CO.UK)

TEL: 01926 612155

### Monthly

¼ page – £10.50 or £28 for 3 months

½ page – £19.00 or £49 for 3 months

Full page – £33.50 or £89 for 3 months

### Annual

¼ page – £ 94.00

½ page – £168.00

Full page – £315.00

(coloured pages printed in April for the year)

**Adverts with payment to:**

**Gill Holden,**

**31 Binswood End, Harbury  
by the 15<sup>th</sup> day of the month**

*Cheques payable to 'Harbury & Ladbroke News'*

*No job too small* Phil's *Free Quotations*  
**Plumbing and Heating**  
**Fully Qualified**  
**and**  
**Insured Plumber**

Bathrooms, Central Heating & showers

I am a locally based plumber  
offering very competitive rates  
on any plumbing or heating job.

No job too small,  
Please give Phil a call

### Call Phil

Daytime: 07971 046392

Evening: 01926 400746

Email: [philmunday@hotmail.co.uk](mailto:philmunday@hotmail.co.uk)

Bishops Tachbrook  
Leamington spa



Lose those extra pounds quickly whilst having  
loads of fun!

**Sunday mornings at 9am, Harbury Village Hall**

£4 per class, discounts available



**[www.warwickshirefitness.com](http://www.warwickshirefitness.com)**

**Phone 0789 067 1869 for more details**





# Simons Systems



Available for all your computer requirements including:  
PC's & Laptops, New & used systems, Repairs & upgrades  
Virus/Malware Removal, Data back & Windows re-installation  
Upgrading memory/Hard drives/Rom drives/Graphics, etc  
Internet - modems fitted, wireless, networking.  
Any repairs or computer problems. ***No call out charge***

T: 01926 316 119

E: [sales@simons-systems.co.uk](mailto:sales@simons-systems.co.uk)

M: 07751 811 097

W: [www.simons-systems.co.uk](http://www.simons-systems.co.uk)

## Spa Roofing Co.

**(Roofing Specialists)**

**For all Roofing, Guttering and  
General Repairs**

**(Free Estimates)**

**All Work Guaranteed**

**Call: 07876 508032**

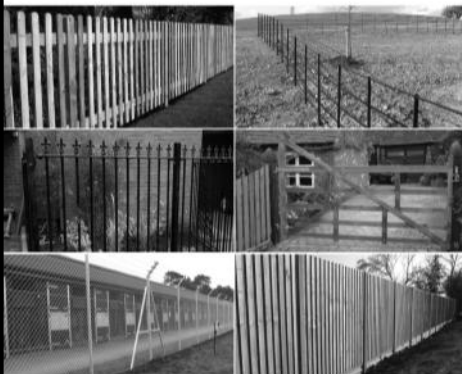
**or 01926 770822**



## Roger Frogley & Sons Fencing Ltd

30 years of quality service

High quality **domestic, industrial and agricultural** fencing offering a service second to none, competitively priced – clean, efficient, reliable.



t. 07970 652145 & 01926 815863  
frogleyfencing@gmail.com | www.frogleyfencing.co.uk



## LOCKE & ENGLAND

AUCTIONEERS & VALUERS

Established 1834

## Auction Every Thursday

Viewing every Wednesday 12noon - 7pm

If you are thinking of moving, downsizing or clearing a property or business. Call Annette Haile for a free no obligation collection quote on **01926 889 100** and for valuations call or email [valuers@leauction.co.uk](mailto:valuers@leauction.co.uk)

### ENTRIES FOR OUR WEEKLY SALES CAN INCLUDE:

Antique & Modern Furniture • Clocks • Books  
Ceramics & Glassware • Pictures & Prints • Bicycles  
Jewellery & Watches • Garage Tools & Equipment  
Household Electrical Items • Timber & Building Materials  
Office Furniture & Equipment • Retail Products & Stock  
Horticultural & Commercial Equipment • Vehicles  
Garden Furniture & Effects • Collectables

12 Guy Street, Leamington Spa, CV32 4RT  
[www.leauction.co.uk](http://www.leauction.co.uk)



## kitchen, bathroom & bedroom specialists

● design ● supply ● installation

### Why move when you can improve?

We offer a personal, quality service in the comfort of your own home, delivered by a local family run business, with prices to suite every budget.

Every room we create is tailored to your needs and fitted to the highest standard.

Our all inclusive service takes the hassle out of finding the right people for each job. We come to your home, measure the space so it is utilised to its best advantage, then take you through a range of products so you can choose exactly what you want. We then create the room of your dreams!



### What our customers say.....

'...a great job from start to finish - no hitches, hassles or other problems. Thank you also for doing the extra plastering and other details, and all so well finished. I am delighted, believe me!'

### Call for a FREE design & quote:

T: 01926 810665  
M: 07966 164396

[www.southamservices.co.uk](http://www.southamservices.co.uk) E-mail: [sales@southamservices.co.uk](mailto:sales@southamservices.co.uk)

**Plots 41, 42, 43 & 46  
already reserved!**

# Harbury *fields*

Bush Heath Lane, Harbury

**PHASE TWO**

## **Exclusive Sales Period**

**for people with a local connection to Harbury**

Following the successful launch of the first 10 plots at Harbury Fields Phase Two, people with a local connection to Harbury have an exclusive period of 3 months\* to reserve one of the remaining plots in the first release before sales are opened to the full market.

2, 3 and 4 bedroom traditionally built homes are available on this select development.

\*3 months runs from 9 March 2013 and relates to plots 40-49 only. Plots 33-39 have not yet been released.



**Don't miss the opportunity to make a reservation –  
contact the agents for a brochure and further information**

**LINFOOT**  
*Country* HOMES

[www.linfoothomes.co.uk](http://www.linfoothomes.co.uk)

SELLING AGENTS

**ehB**  
RESIDENTIAL

**01926 881144**

# The Shakespeare Inn

## New Steak House & Grill



- ♦ Traditional 18th century country inn
- ♦ Choice of real ales and guest beers
- ♦ Meals served Monday - Saturday  
12 noon - 3.00pm and 6.00 - 9.00pm
- ♦ Wednesday Carvery - 12 noon - 3.00pm
- ♦ Friday - Curry Night 6.00 - 9.00pm
- ♦ Sunday Carvery - 12 noon - 3.00pm
- ♦ Large car park and beer garden
- ♦ Function room available for family events and corporate meetings



Also offering a wide range of other menu choices including:  
Vegetarian options

***Specials Board also available***

9-11 MILL STREET, HARBURY, LEAMINGTON SPA, CV33 9HR. Telephone: 01926 613822

# The Gamecock Inn

OPEN 4.00PM TILL CLOSE

Selection of Fine Ales

Thursday Evening

Poker Night

Saturday Evening

Open Mic Night starts 8.30pm

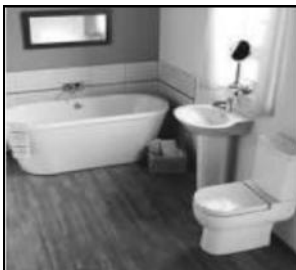
Sunday Evening

Quiz Night starts 9.00pm  
plus 'Play Your Cards Right'

All Welcome



CHAPEL STREET, HARBURY. TELEPHONE: 01926 612306



# Mr. Plumb



## Plumbing & Heating Services

**ALL General Plumbing Undertaken**

Leaks / toilets / saniflors / radiators / showers/  
washing machines / baths / ball valves  
Beautiful bathrooms designed and installed  
Harbury based / References Available

**M: 07904 670055 E: [marcusbirch@mrplumb.org](mailto:marcusbirch@mrplumb.org) [www.mrplumb.org](http://www.mrplumb.org)**

## SADDLERS BED & BREAKFAST

SELF-CONTAINED COTTAGE IN THE HEART OF HARBURY.  
DOUBLE BED, SHOWER ROOM, LIVING & DINING AREA WITH  
KITCHENETTE, TV/DVD; CD/RADIO. SLEEPS 2 TO 4.  
OFF ROAD PARKING.

£60 PER NIGHT INCLUDING CONTINENTAL BREAKFAST.

JULIE YOUNG, SADDLERS, CHAPEL STREET, HARBURY.  
01926 614050 OR EMAIL [enquiries@saddlersbed.co.uk](mailto:enquiries@saddlersbed.co.uk)  
[www.saddlersbed.co.uk](http://www.saddlersbed.co.uk)



## Why you should buy your new kitchen or bathroom from Modern Homes!

- With over 43 years of trading we are the longest established specialist in your area.
- Predominantly British Manufactured products
- Family run 'local' business
- Personal recommendations
- Large kitchen and bathroom showroom
- Full installation service with employed fitters
- Value for money... We offer styles to suit all tastes and budgets
- Kbsa members offering Consumer care protection

[www.modernhomesleamington.co.uk](http://www.modernhomesleamington.co.uk) Email: [info@modernhomesleamington.co.uk](mailto:info@modernhomesleamington.co.uk)

**01926 883338**

Modern Homes, 37 Longfield Road, Sydenham Estate, Leamington Spa CV31 1XB  
(between Wilts and CAS)



### Has your lawn suffered over the Winter?

Now is the perfect time to re-turf the worst areas or install a new lawn. We also offer a regular lawn cutting service to keep your turfed lawn beautifully trimmed.

Services also available include: hedge trimming, lawn edging, border maintenance, stone wall construction or repair, fence repair or replacement, pond installation or removal, pond covers fitted, patio installation and repair and gravel driveways.

### Do you have unwanted weeds?

Why not ask us about our chemical weed control, we are fully qualified and have everything you need to have a weed free summer!

*All outdoor maintenance considered.*

*No job too large, or too small.*

*For all your outdoor chores,  
call your reliable, friendly gardener:*

*Richard Everett*

*07923 167420 or 01788 567774*

*info@leafyservices.co.uk*

*www.leafyservices.co.uk*

## FENCES : TREES



**All types of fencing and gates**

**Tree felling and reduction**

**Hedge laying and trimming**

**Patios**

**Seasoned logs available**

**Call Adrian Dollar on  
01926 817077 or  
07914 623989**

**Qualified and Insured**

## Domestic Gas Services



**CENTRAL HEATING, INSTALLATION, SERVICE, REPAIR and**

***POWERFLUSHING....the next best thing to a new heating system!***



**Are your radiators cold at the  
bottom?**

**If so they need *POWERFLUSHING!***

***POWERFLUSHING*** removes the build up of sludge and sediment in your radiators which is making them less effective therefore ***costing you money!***

***POWERFLUSHING*** will maximise the efficiency of your radiators ensuring you get the very best from your heating system therefore ***saving you money!***



**For all your gas requirements please call  
Martin Evans on 07980 740720**





*Harbury carnival will never be the same again!*

*Harbury Theatre Group presents*

*A Fete Worse Than Death,*



*a comedy by Richard James*

*by arrangement with Lazy Bee scripts*

*Harbury Village Hall*

*Thurs 16 May 8.00 pm*

*Fri 17 May 8.00pm*

*Sat 18 May 8.00 pm*

**Tickets £7.00 and  
£5.00 concessions  
available from  
Cana Wines High St  
Country Fayre Chapel St  
or Tel 613488  
On sale from 20th April**

**Bar and refreshments**

*a*  
VILLAGE  
**FETE**  
NOT FOR THE FAINT  
HEARTED!