

Harbury & Ladbroke News

Reflects all aspects of local life, is published monthly and produced with the assistance of
All Saints' Parochial Church Council.

June 2013

No.471

Editorial Office	☎ 612155
Articles to	Harbury Pharmacy, High Street
Email address	articles@hlnews.co.uk
Advertising Office	31, Binswood End (☎ 612155)
	advertising@hlnews.co.uk
Distribution Manager	49, Mill Street (☎ 612009)
	distribution@hlnews.co.uk
Inserts by prior arrangement	☎ 612009

IN THIS ISSUE

Page

EDITORIAL	2
HARBURY DIARY & REFUSE ROTA.....	2 - 6
FROM THE RECTOR & CHURCH NEWS	6
LADBROKE NEWS	10
HARBURY PARISH COUNCIL	16
CLUBS & SOCIETIES	21
EARLY YEARS & SCHOOL.....	30
VILLAGE HALL UPDATE	34
GARDENING & NATURE	35
GENERAL SECTION	39
LETTERS TO THE EDITORS	52

Editorial Team

John Holden - Chris Finch - Marian Millington - Janice Montague
Ralph Swadling - Jackie West

*The views of contributors are not necessarily those of the Editorial Team
The Editors reserve the right to amend articles as they see fit.*



Editorial



Councillor Tim Lockley, who along with the Parish Council, masterminded the re-opening of the Wight School building as a 'Community Library', accepted the Spirit of Harbury award for 2013 on behalf of the Library and Biblio's Cafe. This being in recognition of the tremendous community effort from a large number of volunteers. The Library is now open for longer hours and more days each week and Biblio's Cafe meets a long recognised social need for villagers to meet together.

One resident who made the recommendation for this year's award said that 'the library/cafe project was a wonderful example of the Harbury Spirit, which has brought many residents together for the common good and, as such, deserves recognition'.

Congratulations to Eleanor Clarke on achieving her Duke of Edinburgh Gold Award, the first for Harbury's reformed DoE Group.

Harbury Tennis Club is keen to attract new members and is holding an open evening on Tuesday 11th June from 6.45pm onwards. The club has excellent facilities and friendly members. Volunteers are also needed to help with the running of Harbury Scout Group – see articles.

This month sees Harbury Carnival and Ladbroke Fete, both annual favourites, please go along and enjoy the stalls, fun and entertainment. We also hope that the sun will shine for both events.

Finally we extend our sympathies to the family of Anne Woodward.

Harbury Diary

JUNE

- | | | |
|-----|---|---|
| Sat | 1 | <p>Coffee Morning 10.00am - 12.00 noon in Tom Hauley Room
in aid of PCC</p> <p>Harbury Garden Walkabout and Scarecrow Trail -
11.00am - 6.00pm start from Village Hall</p> <p>Harbury Heritage Room open 11.00am - 6.00pm at School</p> |
|-----|---|---|

- Sun 2 TRINITY I**
 Sung Eucharist, 9.00am
 First Light Service, 10.30am, Tom Hauley Room
 Quiet Contemplative Service in the Celtic Tradition, 6.00pm
 Zumba, 9.00am in Village Hall
 Wheelbarrow Race, assemble at 12.30pm for a 1.00pm start at Old New Inn
 Harbury Garden Walkabout and Scarecrow Trail - 2.00pm - 6.00pm start from Village Hall
 Harbury Heritage Room open 2.00 - 6.00pm at School
- Mon 3** Pub Games begin
- Tues 4** Holy Communion, 7.30pm
 Harbury Heritage Room open 6.30pm
- Wed 5** Wednesday Walkers, Ladbroke - Southam (5 miles), all meet 9.40am at Village Hall Car Park
 Holy Communion, 2.00pm, Tom Hauley Room
 Mothers' Union Meeting, 2.30pm, Tom Hauley Room - "Way Ahead Plus" - The Salvation Army
 Men's Group outing to Stratford Theatre
- Thurs 6** Holy Communion, 9.45am, followed by coffee
 Harbury Art Group, 'Early Summer' 10.00am Tom Hauley Room
 Movement to Music, 2.00 - 3.00pm, Village Hall
 Warwickshire Young Voices, 6.30pm in Village Hall
 Folk Club, 8.00pm, Harbury Village Club
- Sat 8** Coffee Morning, 10.00am - 12.00 noon in Tom Hauley Room in aid of Ladbroke & Deppers Bridge W.I.
 Harbury Carnival – parade assembles in Sutcliffe Drive, judging of floats 12.15pm, Carnival Procession 1.00pm
- Sun 9 TRINITY II**
 Holy Communion, 8.00am
 Sung Eucharist, 10.30am
 Zumba, 9.00am in Village Hall
- Tues 11** Tennis Club Open Evening, 6.30pm onwards
 Holy Communion, 7.30pm
- Wed 12** Horticultural Society outing to Wiltshire, 8.30am from Village Hall
 Harbury Senior Citizens outing to Gloucester, 9.15am from Village Hall
 Wednesday Walkers, Fenny-Oxford Canal (5 miles) with optional pub lunch, all meet 9.40am at Village Hall Car Park
- Thurs 13** Holy Communion, 9.45am, followed by coffee
 Movement to Music, 2.00 - 3.00pm, Village Hall
 Parkinson's UK Leamington and District Branch meet 2.00 - 4.00pm, The Sydni Centre, Cottage Square, Marloes Walk, Sydenham

- Thurs 13 Warwickshire Young Voices, 6.30pm in Village Hall
Village Hall Management Meeting, 7.00pm in Village Hall
Harbury W.I., 7.45pm, Tom Hauley Room - The work of the Prince's Trust - Peter Guy
- Sat 15 Men's Prayer Breakfast, 7.30am, Tom Hauley Room
Coffee Morning, 10.00am - 12.00 noon in Tom Hauley Room in aid of Thursday Club
ADVERTS FOR THE NEXT ISSUE TO 31 BINSWOOD END, HARBURY BY 5.30PM
Football Presentation Evening in Village Hall
- Sun 16 TRINITY III**
Holy Communion, 8.00am
Family Communion Service, 10.30am (with School taking part)
Evensong, 6.00pm
Zumba, 9.00am in Village Hall
Harbury School PTA Beer Walk - Register at the school between 11.30am and 12.30pm with BBQ from 5.00pm until 8.00pm at the Old New Inn.
- Tues 18 Tennis Club Strawberry Tournament, 6.30pm
Holy Communion, 7.30pm
- Wed 19 Wednesday Walkers, Draycote wild-flower meadow (fairly flat, not stiles - 3.5 miles), all meet 9.40am at Village Hall Car Park
Tea, 3.00pm, Tom Hauley Room
- Thurs 20 Holy Communion, 9.45am, followed by coffee
Harbury Art Group - 'Comfort', 10.00am in the Tom Hauley Room
Movement to Music, 2.00 - 3.00pm, Village Hall
Warwickshire Young Voices, 6.30pm in Village Hall
- Sat 22 Coffee Morning, 10.00am - 12.00 noon in Tom Hauley Room in aid of Toddler Group
Councillors' Corner, 10.30 - 11.30am outside Post Office, Chapel St.
Warwickshire Singers, 4.00pm at Chesterton Church
- Sun 23 TRINITY IV**
Holy Communion, 8.00am
Little Saints' Service, 9.00am
Sung Eucharist, 10.30am
Zumba, 9.00am in Village Hall
Harbury Heritage Room open 1.00 - 4.00pm at School
- Tues 25 Holy Communion, 7.30pm
Julian Meeting, 8.00pm
- Wed 26 Wednesday Walkers, Bishops Bowl (3-4 miles), all meet 9.40am at Village Hall Car Park
- Thurs 27 Holy Communion, 9.45am, followed by coffee
Thursday Club, 2.30pm in Village Hall

Thurs 27 ARTICLES FOR NEXT ISSUE TO: HARBURY PHARMACY,
HIGH ST OR EMAIL TO ARTICLES@HLNEWS.CO.UK
BY 5.30PM

Parish Council, 7.30pm Farley Room, Village Hall
Sat 29 Coffee Morning, 10.00am - 12.00 noon in Tom Hauley Room
in aid of Harbury Theatre Group
Windmill Nursery School Summer Dance, 8.00 - 11.30pm in
Village Hall

Sun 30 TRINITY V
Holy Communion, 8.00am
Sung Eucharist, 10.30am
Zumba, 9.00am in Village Hall

JULY

Tues 2 Harbury Heritage Room open 6.30pm
Holy Communion, 7.30pm

Wed 3 Wednesday Walkers, Brailes (4.5 miles), all meet
9.40am at Village Hall Car Park
N.B. No 2.00pm Communion Service today
Mothers' Union visit to Hunningham Church followed by
Strawberry Tea in Tom Hauley Room

Thurs 4 Holy Communion, 9.45am, followed by coffee
Harbury Art Group Pastel Workshop, 10.00am, Tom Hauley
Room
Movement to Music, 2.00 - 3.00pm, Village Hall
Harbury & Ladbroke Church Men's Group AGM, 7.45pm,
Tom Hauley Room

Folk Club, 8.00pm in Harbury Village Club
Sat 6 Coffee Morning, 10.00am - 12.00 noon in Tom Hauley Room
in aid of Myton Hospice
Harbury Primary School Summer Fayre, 12.00pm to 3.00pm
Harbury Society tour of Bubbenhall Quarry

Sun 7 TRINITY VI
Sung Eucharist, 9.00am
First Light Service, 10.30am, Tom Hauley Room
Taizé Service, 6.00pm

Tues 9 Holy Communion, 7.30pm

Wed 10 Horticultural Society outing to Herefordshire 9.00am from
Village Hall

DATES FOR INCLUSION IN THE HARBURY DIARY
PLEASE TO: LINDA RIDGLEY - TEL. 612792.



Refuse Collection Rota				
	Deppers Bridge	Harbury	Ladbroke	Collection Week
June	Wed	Thurs	Fri	
	5	6	7	Green & Blue Lid Bins
	12	13	14	Grey Bin
	19	20	21	Green & Blue Lid Bins
	26	27	28	Grey Bin
July	3	4	5	Green & Blue Lid Bins
	10	11	12	Grey Bin
	17	18	19	Green & Blue Lid Bins

	All Saints HARBURY	<h2>From the Rector</h2>	Reverend Craig Grocock
The Rectory, Vicarage Lane, Harbury ☎612377 ✉ kankudai43@aol.co.uk			

Harbury Twinning Weekend

It was a real joy for Su and I being involved with the twinning this last weekend. It was great to host a family at the Rectory and for them to share something of our lives for a while. The safari supper around the village and the ceilidh at the Village Hall were brilliant evenings.

To my shame though I have to admit that my French isn't too good and I had to rely on not only my wife but also our French visitors to bail me out! (Something I must rectify for next year). But it didn't matter really. We all got on well and although communication was an issue at times there was a wonderful sense of oneness during this weekend, it was great!

We've made new friends too. Not just Jean-Pierre, Anne, Pauline and Claire who were our guests but all the wonderful people from Samois.

Once again I have been reminded of what matters – people! It is people that we should invest in for when we do that we get so much back. We so often look at what divides us; language, culture, class, colour or religion and not at what unites us. Dancing and eating together on Saturday evening illustrated this most powerfully for me. It didn't matter whether we were English or French, we were all rubbish dancers together! But what really mattered was the laughter, the hugs and the joy of spending time in each other's company.

I was so glad to be involved this year. Thank you to all who worked so hard in making the weekend such a success and for reminding me of something important too.

God bless.

From the Registers

Holy Matrimony, All Saints' Harbury

27th April Richard David Morris to Katy Jane MacVarish

18th May David Ellis to Samantha Marsh

Holy Baptism, All Saints' Harbury

4th May Albert James Garvin Iles

12th May Amber Bethany Hanson

Funerals at All Saints' Harbury

23rd May Anne Woodward

Anne Elizabeth Woodward

Passed away aged 63 on 29th April 2013 at her much loved home in Izmir, Turkey.

A loving mother of three and a dear friend of many. The Funeral Service was held at All Saints' Church, Harbury on Thursday 23rd May 2013.

Donations in memory of Anne may be made by cheque payable to the NSPCC or Mencap and sent c/o John Taylor Funeral Service, 1-3 Russell Terrace, Leamington Spa, CV31 1EZ.



From the Churchwardens

John & Will

During May the Archdeacons of the Diocese have been touring five churches and swearing in the newly elected church wardens for the coming year. We attended the service at St James, Southam where around 100 were sworn in.

They thanked retiring wardens for the work that they have put in, already retired wardens for supporting those currently in office and the newly elected for being willing to commit themselves for the coming year.

The family service last month was a departure from the normal course of events. We were visited by a Christian pupating group from Hunningham.

"Pilgrim Puppets" enthralled the children as they sang, danced and talked about Jesus and Pentecost. Because of the set and equipment which they brought is was not feasible to have a "normal" All Age Communion so a

special non-communion Family Worship was held. Your thoughts on this would be most welcome whether you attended or not.

Our thanks must go out to Beryl and all those involved for yet another memorable Spring Thanksgiving service. If you missed it; look out for it next year.

	<p>Church Men's Group</p> <p>John Guilford (Co-Chair)</p>
---	---

Our speaker programme for this season has come to an end, and this month, and the following two months, we have specific events to enjoy.

On Thursday 3rd June an evening of merriment was had at our annual dinner in the Tom Hauley room where, along with our better halves, we thoroughly enjoyed a superb three course dinner provided by Ray Playdon and his wonderful team.

We were delighted that Reverend Craig and his wife Su were able to come along as our guests and we very politely allowed them, along with Sally (Stringer), to win the quiz at the end of the evening. At least that's the line the other group members were spinning!

Next month, it's our annual day out with a trip to Stratford Theatre and a tour "Behind the scenes", which comes highly recommended to us.

Our AGM this year falls on the 4th July so it will have an American theme, with members being asked to tell the group about their American experiences (good or bad) in 5 minutes, following the normal AGM business that has to be completed.

For more information, please contact John Guilford (614206) or John Stringer (613214).

	<p>Mothers' Union</p> <p>Gillian Hare</p>
---	---

Gavin Kibble, the speaker at our May meeting, had us horrified and inspired in equal measure. Horrified, by the facts and figures of the many thousands of people who are in such desperate need that the gifts from food banks are all that stand between them and seeing their families go hungry. And that so many of them are not careless or extravagant, but are victims of unemployment, illness, family breakdown or the intricacies of the benefit system. One mistake in filling in a form or misdirected post can lead to a delay of some weeks before they are back on track. Inspired, by the work of

the food banks, which is growing all the time. Operated by groups of churches of various denominations, they are a presence in all our local towns, soon to include Kineton, Leamington and probably Stratford. Recipients are referred by professionals e.g. doctors and social workers and have vouchers for three days of food whilst they get sorted.

Of course, this is only possible through the generosity of people like us. There is a box in Harbury Church; most non-perishable food items in date are welcome and Gavin especially mentioned tinned meat, fish and fruit, tea, coffee, sugar and UHT milk.

Thank you to everyone who supported the recent coffee morning, as a result of which we have sent £100 to A.F.I.A – the scheme which provides short breaks for families who never get a holiday.

Our next meeting also has a theme of helping those in need, as our speaker will be from the Salvation Army. It will be in the Tom Hauley Room on Wednesday 5th June at 2.30pm following Holy Communion at 2pm. All are welcome to join us.



First Light

Gillian Hare

Last month saw the last part of our trilogy about the Prodigal Son – the running away, the reconciliation and then the resentment of the faithful older brother. As the old newspaper headline had it “all human life is there”. Many of us secretly recognised that hidden jealousy and lack of appreciation, but began to understand that in God’s eyes we are **all** valued.

On 2nd June (10.30am in the Tom Hauley Room) we are acknowledging the 60th anniversary of Her Majesty’s coronation by looking at “Good King, Bad King” through history. And if you can’t make it the Royal theme may be carried on to 7th July.

As Alison wrote last month, First Light is informal, undemanding, requires no prior experience of “church” and welcomes all the family. And it’s usually over by 11.15am – time to put the dinner in the oven!

July Edition - Harbury & Ladbroke News

Adverts to 31 Binswood End by 15th June

Articles to Harbury Pharmacy or e-mail to articles@hlnews.co.uk by 27th June

Ladbroke News & Diary

www.ladbroke-pc.org.uk

JUNE

Sat 1 Whist Drive, 7.45pm, Village Hall

Sun 2 Trinity I

Family Communion, 10.30am

Tues 4 Yoga, 10.00am, Village Hall

Photography Club - walkabout in Warwick

Sat 8 Ladbroke WI Coffee Morning, 10.00am - 12.00 noon at
Tom Hauley Room, Harbury

HS2 Roadshow on Draft Environmental Statement

10.00am - 5.00pm at Graham Adams Centre, Southam

Sun 9 Trinity II

Holy Communion (sung), 9.00am

Tues 11 Yoga, 10.00am, Village Hall

Sat 15 Fete, 1.00 - 4.30pm on the Millennium Green, Bake Off entries
to arrive by 1.30pm

ADVERTS FOR THE NEXT ISSUE TO 31 BINSWOOD END,
HARBURY BY 5.30PM

Whist Drive, 7.45pm, Village Hall

Sun 16 Trinity III

Holy Communion (BCP), 9.00am

Tues 18 Yoga, 10.00am, Village Hall

Wed 19 Village AGM, 7.45pm, Village Hall

Sat 22 Whist Drive, 7.45pm, Village Hall

Sun 23 Trinity IV

Holy Communion (sung), 9.00am

Tues 25 Yoga, 10.00am, Village Hall

Thurs 27 ARTICLES FOR NEXT ISSUE TO: HARBURY PHARMACY,
HIGH ST OR EMAIL TO ARTICLES@HLNEWS.CO.UK BY
5.30PM

Women's Institute, 7.30pm, Village Hall

Sat 29 Whist Drive, 7.45pm, Village Hall

Sun 30 Trinity V

Holy Communion (spoken), 9.00am

JULY

Tues 2 Photography Club BBQ, details to be confirmed

Sat 6 Whist Drive, 7.45pm, Village Hall

Sun 7 Trinity VI

Family Communion, 10.30am



Ladbroke Church News

Sue Lord & Jackie West

With the beautiful Dudley communion plate on the altar and the heating on, Ladbroke Church welcomed members of the Harbury congregation to celebrate Ascension Day. The service conducted by Rev. Craig was beautiful, recalling how Jesus left this earth and returned to his Father, ascending into heaven to take his throne over all dominions and powers.

By the time you read this, the work to redecorate the walls of the nave and aisles should have started. Many thanks to everyone who helped get the Church ready to hand over to the workmen, it was much appreciated. While this part of the Church is filled with scaffolding, the Church will **not** be open during the week and we will hold our regular Sunday services in the chancel, entering by the small door to the right of the porch.

All Saints' Home Group: A Home Group is what it says on the tin - a small group that meets regularly in someone's home. It is a place for people to meet and chat informally, to learn about God together in a relaxed way, to pray andyes, drink tea and eat biscuits too! The Home Group aims to provide another time, outside of church on Sundays, for people to meet together and enjoy one another's company and grow in their understanding of the Christian faith. It is open to everyone, whether you regularly come to church or not. The first meeting will be on Wednesday 5th June, 7.30pm at Cherry Trees, School Lane. We will discuss together then how often the group will meet and the subjects we will explore together in the weeks ahead.

From the Registers

Holy Matrimony, All Saints' Ladbroke

25th May Polly Anne Liverton and Christopher William Dedman

Holy Baptism, All Saints' Ladbroke

5th May Lucy June Reeves

19th May Rafferty Raymond Paul Kermode

Ladbroke Flower Rota

2 nd June	Betty Winkfield	9 th June	Betty Winkfield
16 th June	Sue Collins	23 rd June	Sue Collins
30 th June	Jenny Barrett	7 th July	Jenny Barrett



Ladbroke Parish Council

Jackie West

Again I didn't make the meeting in person but I have kindly been given information on what happened on 15th May by one of the councillors there.

AGM: This preceded the main meeting; Derek Batty was re-elected Chairman and Martin Neal was elected Vice Chairman

Matters arising: New road signs are still awaited for Ladbroke Hill Lane, formerly Windmill Lane (beyond the by-pass). A letter had been received from Rev Craig Grocock about possible development of the Church building for community use, this will be discussed at the Village Meeting in June. Neighbourhood Watch briefings are being circulated with the e-news; the main issue at present is breaking into outbuildings and removal of power tools.

Planning: No representations would be sent from the PC regarding a side extension at Tollgate Cottage. Planning decisions made by SDC since the last meeting included approval of treeworks at Ladbroke Hall, part refusal for treeworks at Woodlands and refusal for variation from holiday home to permanent dwelling for several cottages at Manor Farm Barns. The four wind turbines between Bishops Itchington, Knightcote and Gaydon had been refused but would be going to appeal. Decisions were pending for applications for 9 x 125m wind turbines and associated works east of Fenny Compton and for a mobile home to provide seasonal accomodation for an agricultural worker at Folly Fields farm.

Highways, Footpaths and Drainage: There has been a deterioration in road surfaces in the village and a number of areas have been identified for repair with temporary repairs to be made permanent. The money allocated to Ladbroke for flooding issues will not be taken away, even though it had not been spent in the last financial year. Cllr Williams (SDC) reported that the balancing pond is on the list for debate and if approved should happen this financial year with the Environmental Agency paying for capital costs.

Village Hall - the work on the kitchen was completed. The planning application granted five years ago for a new Village Hall had now expired.

Millennium Green - A successful quiz was held in late March and the next fund raising event will be the fete on 15th June.

HS2 - release of the draft environmental impact assessment by HS2 is imminent - *see article in General Section.*

Website - the new site is up and running at ladbroke-pc.org.uk

WCC report - Councillor Bob Stevens thanked villagers for their support in the recent elections. There is now a new leader of WCC and no party has overall control. The budget continues to be reduced so there will be further

cuts and more joint working with neighbouring authorities. There will be a new development of Extra Care Homes in Southam to support more people living independently. Pressure on hospitals is increasing, South Warwickshire Hospital is building a 40 bed wing and the rehabilitation unit at Leamington Hospital will be enlarged. Grammar Schools that have become Academies now administer their own admissions. Community grants are still available from County Councillors. Grants for Highways works should be received by January 2014 for safety related issues.

Next meetings: The Annual Village meeting will be on Wednesday 19th June and the next Parish Council meeting on Wednesday 17th July.



Ladbroke Photography Club

Kip Warr



Hedgehog by Paul Taylor

The birds and the bees - and all sorts of beasts: butterflies, hedgehogs, squirrels, dogs, insects and even toads and a snake - appeared in this month's competition on the theme of 'Creatures'. There were forty entries in all (including some strange, inanimate ones, one of which was labelled 'Do not vote for me') so the competition was hotter than ever. The winners of the big prints were Paul Taylor and

Graham Gee, and of the small prints were Jenny Daniels (whose close-up of a fly's head deserves special mention) and David Geary.

Graham Gee then showed us photographs he has taken during many visits to New Zealand. They amounted to a virtual tour of the two main islands and included everything from sun-drenched beaches to glaciated mountains. He showed us the attractiveness and variety of the country and explained the importance of the relationship between the Maori people and



**Cathedral Cove, New Zealand
by Graham Gee**

the more recent settlers. It was a visual feast and left us wanting to go there but wishing it was not so far!

Our Photography Club website is now up and running at tinyurl.com/LadbrokePhoto. We hope that all members will bring their digital images to meetings so that we can build up our gallery.

We shall be out of doors in the coming months. On 4th June we shall be wandering the streets of Warwick before converging on the Zetland Arms. Then, on 15th June, we shall be exhibiting at Ladbroke Fete and on 2nd July it will be barbecue time. In August there will be a shoot at the Battle of Southam (photoshoot, that is) and later, we hope, another day with cameras at the polo ground.

We meet monthly, usually, on the first Tuesday in Ladbroke Village Hall. For more information contact Jackie West at jackieszone-photogclub@yahoo.co.uk. I know we keep saying this but new members and visitors do appear and are always welcome.



Ladbroke General Section

HS2 - How it will affect our area during construction and long term

HS2 have opened a consultation on their draft environmental statement which runs until 11th July 2013. Full details are available from www.hs2.org.uk/draft-environmental-statement. There are a large number documents covering the whole of the proposed line to Birmingham so the most relevant ones to us have been copied to the Parish Council section of the village website ladbroke-pc.org.uk

- Volume 1: The introduction covers generic information relevant to the whole line up to Birmingham
- Area report 16: Specific Ladbroke and Southam information
- Relevant maps

Note: On the village website, clicking on the title may open the document (this depends on your computer settings), if this doesn't happen, download by clicking the arrow on the right hand side of the title.

The draft environmental statement can be discussed with representatives of HS2 on Saturday 8th June, 10am - 5pm at the Graham Adams Centre, St James Road, Southam, CV47 0LY. It is also expected to be a topic at the Ladbroke Annual Village Meeting on Wednesday 19th June.

Graham Long

Fifi's New Family



There isn't much peace if you are Mum of nine. Luckily Fifi, a beautiful black labrador brood bitch for Guide Dogs For the Blind, is of a calm disposition. She gave birth to eight black and one honey coloured pup in early May. In their first couple of weeks they have spent all their time drinking and sleeping but when I visited them on 22nd May their eyes had opened and they could just about stand so things are about to get a lot more hectic. Look out for the full story about them next month.

Jackie West

Ladbroke Fete, Saturday 15th June

The fete will be on the Millennium Green running from 1.00 - 4.30pm. Admission is £2, free for those under 12 years old. Come along and watch displays by LA-Nor Gundogs (starting about 1.45pm) and Southam Tae Kwon-Do (approx 3pm). There will be a good mixture of stalls selling things from quality plants and local produce to wooden gifts and aloe vera products and various games of skill from hooking a duck to the tin can alley. You can also see if Lady Luck favours you in the raffle or tombola so bring along loose change and help us construct the coin picture of Ladbroke Church, find out more about local history and take a look at the exhibition by Ladbroke Photography club. Those of an energetic inclination can join in the races for kids and adults or you may just prefer to chat and people watch as you take tea and cake with the WI, munch though a hot dog or ice cream or have a drink at the bar.

This year the fete will also include "The Great Ladbroke Bake-off". You do not need to live in the village to participate but you do need to bring along your entry by 1.30pm.

There are 3 categories:

- Under 8: 4 decorated fairy cakes on a plate
- 8-14: 4 decorated fairy cakes on a plate
- Over 14: Any cake or tray bake

Entries will be judged on appearance and taste and (unless return at the end of the fete is requested) may be used as prizes in a game of musical cakes or sold in aid of the Millennium Green.

There will **not** be a book or bric-a-brac stall this year but we will be very pleased to receive donations for the Produce Stall and the Bottle Tombola run by the Village Hall Committee and good prizes for the raffle in aid of the Millennium Green. For more information, phone 810331 or 815196.

Jackie West & Gray Lewis

Ladbroke Village Hall Millennium Club

£80	Derek and Colette Batty	£50	Trevor and Jan Jay
£25	Geoff Timms	£10	Jill Norgate
£10	Linda Spence	£10	Mary Coley
£10	Peter Edgar	£10	Mike Todman

Margaret Bosworth



Harbury Parish Council

Linda Ridgley

Official minutes can be viewed in the Library, on the Parish Council website www.harbury-pc.gov.uk or obtained from the Parish Clerk, Tel: 01926 614646

April 2013

Once again Planning was an important aspect of this meeting. Lucy and Duncan Nealon, who intend to open a Nursery at the former Dog Inn along with the new owner Jess Stokes, were there to explain their plans. Market research had shown an unmet need for care for children between 7-23 months of age. Three quarters of local parents wanted to take their child to a nursery between 7.30-8.30am and collect between 5.30-6.30pm.

Existing child care in Harbury was on offer for only 39 weeks of the year. The proposed fifty place family-run nursery would be open 51 weeks a year from

this September. The former pub had excellent parking. Villagers did not want it demolished and Jess Stokes promised to improve it. The building was basically sound but needed looking after. He would be applying for a Change of Use for the nursery and for an apartment on the first floor.

Councillors were largely in favour; Councillor Hancock commenting that the building clearly had no future as a pub. But there was resistance from the existing childcare providers and residents of Ivy Lane who were concerned about the potential noise and traffic the new facility would generate.

Chairman Tim Lockley pointed out that the planners would put conditions on any planning approval to cover such problems.

Other Planning Matters

The Parish Council made no representation on extensions at 2 Wagstaffe Close or 17 South Parade. They supported installation of replacement windows for Phoenix House, High Street. The District Council had approved amendments to plans for Field House, by the Pound. The appeal on the refusal for a mobile home at Davis Equestrian Centre, Bull Ring Lane was dismissed. An appeal had been lodged against refusal for four flats at Dovehouse Autos.

The Library and Café won this year's "Spirit of Harbury Award". It has 37 volunteers but more are needed to cover afternoons. The Buy a Book Scheme has so far raised £700 and 680 books have been donated and added to the "Harbury Books". Stratford has zero rated the Library for business rating purposes.

County Cllr Bob Stevens reported that the 70 unit Adult Care development in Southam should be ready in November next year. The Environmental Impact Consultation on HS2 would be available for comment for four weeks at the end of May.

The playing fields are plagued with moles again and, as the ruts caused by the bonfire were drying out, the Clerk would arrange for repairs. The car park bollard was causing problems and the special tool needed to remove it was missing.

Lighting - Councillors were annoyed that the Courier still thinks the County provides our lighting and had reported the lights would be turned off at night - they will not be. The Parish Council is retro-fitting energy saving LED lamps to save money and energy and the lights stay on.

Trees - The acacia on the unclaimed land on the corner of Queen's Close was diseased and had split in the gales. As it was an emergency, the Parish agreed to pay a third of the cost of taking it down on the understanding that the adjacent landowner who has taken over the plot contributed too.

There was concern that three holly trees close to the Cemetery chapel were damaging the fabric of the building. It is also covered in ivy which needs to be removed.

Harbury Parish Council, Quarterly Report April 2013

In the past three months the Parish Council has:

- Completed the replacement of old concrete lamp-posts.
- Agreed to split the cost of a new streetlight for Bush Heath Lane with the developers
- Worked with HJFC and Cllr Bob Stevens to get new goal posts at the park
- Contributed towards the removal of a dangerous tree in Queen's Close
- Continued planning for the refurbishment of the Skate Park and BMX track
- Commented on various planning applications
- Arranged for a new, larger, bin outside the post office

Tim Lockley
Chairman, Harbury Parish Council

Harbury Parish Council Annual Parish Meeting

This was a select and quiet meeting albeit serenaded by the Warwickshire Young Voices who were practising in the main hall.

Sarah Brook-Taylor from Warwickshire Rural Community Council gave a presentation on Neighbourhood Plans. These are policies and a vision for the future produced by the community, and are mainly concerned with allocation of specific sites for development. Unfortunately they have to comply with all the national and local policies and cannot take less development than the Local Plan sets out.

The process is a long and bureaucratic one. A wide range of agencies have to be consulted. The community has multiple opportunities to influence the outcome which should ultimately reveal what the local people need and want. The Plan has to be vetted by the Planning Authority and is subject to an Independent Inspector's review. Only then can it go to a referendum where it must achieve 50% support from the community, after which it can be "adopted" by the local authority.

One problem for us is that Stratford District Council has yet to get its Core Strategy approved and this could take until late 2014. Three national pilot projects were awarded £20K grants, but locally there is only £7K on offer. The process can take up to three years. In the interim we can rely on

our Parish Plan and Village Design Statement which are adopted as “Material Planning Considerations”.

Councillors’ Reports

County Cllr Bob Stevens was grateful to those whose votes returned him in the recent elections. He reported that the County Council had saved £60m last year but staffing was reduced by 25% and it may have to save a further £40-50m this year. They are already working jointly with neighbouring authorities in efforts to make savings. Problems were compounded by the ageing population which put extra pressure on Health and Social Services. The County was now responsible for Public Health. It had sold its care homes and was building more extra care homes like those being developed in Southam.

District Cllr Hamburger announced that from May 2015 the boundary changes would reduce the number of SDC Councillors from 53 to 35. He warned the Core Strategy could allocate up to 100 more houses to villages like ours.

The Chairman reported the Library take-over a major success, with 60,000 people “through the door” and the café serving 6,000 drinks, which more than covered the Library’s running costs.

Planning was a growing and contentious issue but in contrast the Hereburgh Way development met with general approval and showed that “appropriate development that met local needs” was welcomed.

Deppers Bridge - Steve Ekins was pleased to report the damaged sewerage pipe was to be replaced. However, HGVs were still using the railway bridge despite the weight limit and the Solar PV project was on hold.

In the Planning report from Jenny Patrick, she set out some planning processes and suggested that a Neighbourhood Plan might be in the village’s interest, but not yet, as the initiative was “still in its infancy”. The Chairman remarked that they were receiving more contentious planning applications (due to the relaxation in planning regulation and the lack of an approved SDC Core Strategy).

Environment – Amanda Lewis raised a cheer when she announced the last of the concrete lamp standards had been replaced and the developers had agreed to part fund an additional light in Bush Heath Lane. A flashing 40mph warning sign would go up in Bush Heath Road. She praised Pat Summers for getting a bus bay in Binswood End which had helped with sight lines up the road and she invited the public to come forward with ideas for village improvements.

Properties - this is the largest area of work for the Council and the greatest expense, covering the greens, cemetery, playing fields and allotments. Despite the appalling winter most areas looked good. Councillor Summers said there was still a problem with dog mess on the fields and reminded owners the ordinary bins can now be used for disposal of this waste.

Finance - money had been put aside to support the Library as the PC has to take over the lease and be responsible for any repairs. This year's budget also allows for repairs and replacement to play equipment; grants to village organisations especially for projects which benefit young people; maintenance of green spaces and continued improvements to street lighting including the change to LED lamps.

Other Bodies

Village Hall - The message from Geoff Thorpe was positive. The recent Auction had raised over £4K towards the latest improvements. The Rural Cinema continued to make a large contribution to those funds. Tenders for the extension were awaited.

Twinning - Sixty visitors were expected from Samois, some of whom were cycling all the way. A range of entertainment was planned and more members would be welcome, especially young families as the children gained enormously from the experience.

Linda Ridgley



Councillor's Corner

Bev Mann

Saturday 22nd June 2013 - Venue – Outside the Post Office, Chapel Street, Harbury.

A Councillors' Corner session will be held between 10.30am and 11.30am outside the Post Office, Chapel Street, Harbury. These useful sessions are for our elected Council representative, County, District and Parish Councillors to meet and answer any concerns/questions from residents in a more informal and relaxed setting than at Council meetings.

If there is a question which cannot be answered on the day, Councillors will follow this up and get back to the resident. If you are unable to attend on this day and have any Council queries, please contact in the first instance the Parish Office Tel: 614646.

Your County Councillor writes:

I am extremely grateful to the electors of Harbury, Ladbroke, Deppers Bridge and Chesterton for their confidence in allowing me to represent their villages on Warwickshire County Council for the next four years. It was a pleasure meeting you as I came round. As a result of the County wide elections, Warwickshire County Council now has no party in overall control. The breakdown of Councillor numbers is: Conservative 26, Labour 22, Liberal Democrats 9, Independents 3 and Green Party 2. I shall still be in a position to influence aspects of County Council decisions and will continue to liaise

with your District Councillors (Richard and Bev) as well as working closely to support your Parish Council whose meetings I will continue to attend regularly. I am, as always, available at any time to help any of you with any advice or personal problems you may have with local government bureaucracy. My phone number is 01926 814031; please leave a message if I am not at home.

Thank you and best wishes to you all.

Bob Stevens
County Councillor, Feldon Division

Stratford District Core Strategy

On Wednesday 15th May, Stratford Council agreed a new District Core Strategy housing requirement of 9,500 for the District for the 20 year period 2008 to 2028 following recommendations from the Cabinet in April.

This figure reflects the conclusions reached in an independent review of housing requirements carried out by Environmental Resources Management (ERM). This review concluded that a minimum of 9,000 new dwellings is required to meet the housing needs arising from both the natural change in the resident population and an assumption of ongoing net in-migration of 1,000 people annually.

The figure of 9,500 preferred by the Cabinet is required to give more assurance that the Core Strategy will support modest economic growth in the District. ERM had concluded that any figure beyond 10,000 would be likely to drive higher levels of in-migration and out-commuting.

As further work is done on how the figures affect our rural village allocation and possible sites I will report back.

Bev Mann
District Councillor, Harbury Ward
Tel. 01926 614006



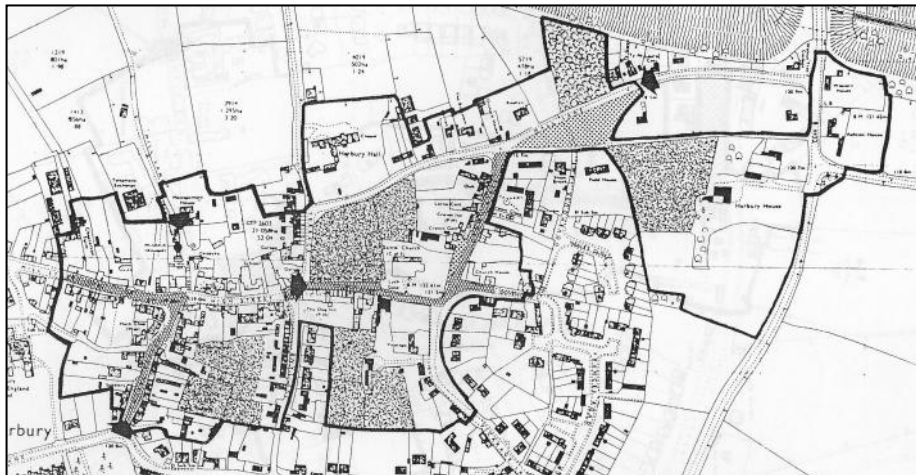
Harbury Society

Linda Ridgley

The Society has submitted an objection to plans for the block of flats on the Dovehouse Autos site which it believes would have a damaging impact on the adjacent Conservation Area.

A great deal of lobbying over the years, surveys and consultations eventually resulted in the designation of two Conservation Areas in Harbury,

one covering the historic heart of the village including most of the important Listed Buildings, which have separate protection.....

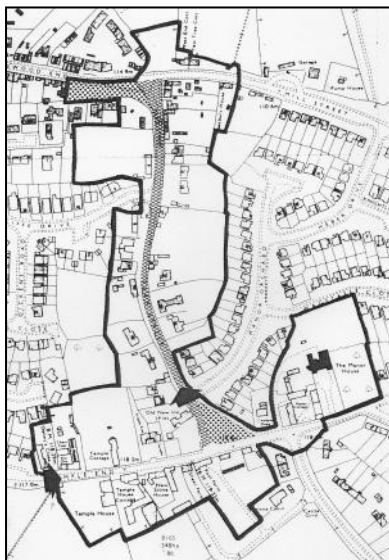


.....and the western extension of the village.

Any alterations, building or tree work within these two areas must have approval from the Planning Authority. Grants to help keep historic buildings in good repair and to make improvements were originally available but these ceased long ago.

The Clerk has maps showing the extent of the Conservation Area at the Parish Office at the Bull Ring Centre.

Next month the Society has a trip to **Bubbenhall Quarries** organised for **Saturday 6th July**.



Harbury Women's Institute

Jeanne Beaumont

We have finally had some nice days in May but mixed with the usual cold ones. A pleasant Annual Group Meeting was held at Southam, meeting some friends and enjoying refreshments. The guest speaker was Andrew Davies who was the main writer of the recent T.V "Mr Selfridge" series. Thanks to Gillian and Diana for their lovely floral displays.

The Group outing on 28th August is to Burley. Our outing to Bakewell is on 1st July, meeting at the Village Hall at 8.30am and returning at 5.30pm.

A reminder to members to order diaries and bulbs.

All are preparing for the Carnival. The cake stall hopes for cakes etc and possibly more helpers on the day. Bring from 12 noon onwards. Ann Mayer has baked a lovely cake for the "Guess the Weight" competition.

Our last meeting was voting for the Resolutions and, after much discussion, wine and tasties, we came to our decision, much to our relief.

Next meeting in the Tom Hauley Room is on Thursday 13th June at 7.45pm. Speaker: Peter Guy – The Work of the Prince's Trust.



Folk Club

Doug & Janny Freeman

The recent improved weather set the mood for Harbury Folk Club number 342 and some "Springtime Fun". The performers mainly stuck to the theme, although one person declared that he lacked the frivolity gene, and we were treated to an evening of excellent entertainment to banish those winter blues.

The Band of Folk opened the club with a couple of Morris tunes in honour of Hereburgh Morris who danced at Chesterton Windmill from 5am on May Day and saw in a wonderful sunrise. Rik went for the risqué award by singing about outdoor activities that apparently start on the 1st of May. Terry then decided it was the time for some blues, and included a worrying plea to "Let it rain, Let it pour". Pete Mason had us back on track by celebrating a "Spring Day" and a "Bright May Morning". Ted and Sue sang about that devious maiden "Lovely Joan", and Ted explained the "Misalliance" climbing habits of the honeysuckle and the bindweed. The first half ended with Janny and Maureen "Searching for Lambs", followed by a fine song about a "Loyal Lover" with musical accompaniment from Peter McDonald and Ian Hartland.

The second half started with the Choir for All Seasons in full voice belting out the uplifting "May Song" and "Padstow May Day Song". Peter McDonald having rambled in lonely places "Where Ravens Feed", was then joined by a ukulele ensemble to have some fun, fun, fun, with that traditional Noah and the Whale shanty "Five Years Time". Des acknowledging the event of the week, a new King of The Netherlands, sang "We Be Soldiers Three" who were from the Low Country. He was then joined by Nigel for "To the Maypole Haste Away", and Nigel followed this with some "Pace Egging". Ian and Sue sang a North Carolina ballad "Willie Moore" which mentioned the 10th May, and "Dancing in Whitsun" when men went to fight in the Great War leaving the women to continue the Morris dance tradition. The newly formed group "Jolly Rum Below", featuring Tina, Anna and David, treated us to some Morris tunes and a craftily adapted instrumental version of

Coldplay's song "Paradise". Pete Bones closed the second half with his homage to a lass called "Blooming Heather", and then a great song about the problems caused by the 1974 local government reorganisation when Bournemouth was moved from Hampshire to Dorset.

The final half was opened by a dynamic new Blues duo with Terry on guitar and Ted on harmonica. Matt Crum, on a fleeting visiting from Sheffield, gave his Dad's melodeon a blistering workout much to the enjoyment of all. The formal part of the evening was brought to a close by the Band Folk, who after a medley of waltzes, led a session for all to join in.

The raffle raised £83 which was divided equally between two charities; "Caring for Life" and "Christians Against Poverty". The raffle collection was then matched with further donations to both the charities. A fun evening and thanks to all the performers, audience, and the club staff. Sue Hartland will host the next Folk Club on Thursday 6th June when the theme will be "Parts of the Body".



Harbury Theatre Group

Chris Beaton

As I write, we've just finished our recent production, "A Fete Worse than Death", and what a success it was too! Lots of hard work was evident both on and off stage, and the Village Hall was festooned with bunting, gazebos and carnival stalls to turn it into a suitable "fete-like" setting – there were even marrows being given away as prizes!

We had a great turn out and nearly 200 people came to see us during our three night run, and I can only hope they had as much fun watching us as we did performing to them - there was certainly a lot of laughter which is always a good sign!

The stalls were run as a fundraiser for the Village Hall, and raised an impressive £167! More importantly, what with other fundraising by the Theatre Group this means we're able to donate another £500 to them. This brings our total donations to the Village Hall Development Fund to £1500 so far – well done to everyone involved.

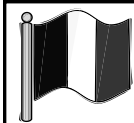
Looking ahead, Harbury Carnival is just around the corner, and we're back! After an absence of several years, HTG are planning to enter a float and so we've managed to borrow a tractor and a farm trailer (and more importantly, someone to drive it!) Look out for us, we should be easy to spot - as one of our members remarked "it's so big you could stage Ben Hur on it!!! Many thanks in advance to George Clarke for driving it and to Pearl and Lou Trice for kindly lending it to us in the first place.

Lastly, a quick reminder that if you want to get involved we normally meet in the Shakespeare on the last Tuesday on the month – all welcome, none refused! For more information call Chris Beaton – Tel: 611930.

Harbury Theatre Group presents

A FETE WORSE THAN DEATH





Harbury Twinning Association

Andrew Patrick



In 2014 the Tour de France starts in Yorkshire; this year it finished in Harbury!

Well, the unlikely happened, and all 15 French and English cyclists reached Harbury together on Friday 17th May, just in time for the annual twinning visit weekend.

If the group gathered round the village sign look pleased with themselves, one reason is the 280 miles that most of them had covered over the previous 7 days. Another may be the fact that, as planned, they had got there just before the coach, which they then led in triumphant style to the meeting-point outside the former Dog Inn.

The other highlights of the ride? Your correspondent would nominate Brighton Undercliff in the rain, Windsor Great Park in glorious sunshine, and the well-surfaced Phoenix Trail in the Chilterns.

Our French friends had had three punctures in Paris soon after setting off. In England, between us we had five more, always in the morning. (Why?)



The French support driver had never driven on the left, or visited England before, and was driving someone else's car. Nonetheless, he too had a great time. Maybe it was the thought that he wasn't having to cycle?

After that, we had a great weekend! Our French visitors have the happy knack, if not of bringing good weather with them, of making it happen when they're here. They ought to visit us more often!

With true visitors' luck (sorry, skill), they duly won the Saturday afternoon pub games, held at the Old New Inn. They then honed their orienteering skills in the Saturday evening Safari Supper Challenge.

On Sunday we all became dark-blue undergraduates for the day in a visit to Oxford. And that evening we wore outlandish Scottish garb for a ceilidh, led by none other than Harbury's very own Reel-2-Reel.

If you would like to join in any of this kind of activity in the future, please let us know. You don't have to be able to speak French, **or** to be able to host. We are particularly keen to recruit younger members.



1st Harbury Cubs

Katy Spencer Hammon

Cubs have a silver lining!!

1st Harbury Cubs have gone from strength to strength since their new leadership team started in September and provide 24 boys and girls aged 8-10 with an exciting and varied programme which centres around six areas – Community, Promise, Outdoor, Creative, Fitness and Global. If a Cub earns his/her challenge badges in all these areas then they are awarded with their Chief Scout Silver Award – the highest award that can be achieved by a Cub Scout.

We are delighted to say that at the recent Harbury Scout and Guides GASS AGM eight of our oldest Cubs received this award – which includes a certificate signed by Bear Grylls, our current Chief Scout.

Well done to Jonty Wood, Morgan Ford, Morgan Jones, Millie Thompson, Nat Houldey, Oliver Kirk, Jacob Watson and Seb Priest - you have all been great members of our Pack and we are very proud to see you achieve this well-deserved award.



1st Harbury Scout Group

Scout Group Leader, Emma Masfield

Are you seeking adventure?

Are you seeking a challenge?

Are you seeking fun?

If the answer is 'yes' to these three questions then read on, and 'Be Prepared' for a surprise... 1st Harbury Beaver Scouts is in danger of folding unless we can find **just a few** volunteers. Are you prepared to let that happen?

Did you know... ?

- The Scouting Association provides fun, challenge and everyday adventure to over **400,000** young people across the UK.
- The Scouting Association offers over **200** different activities from abseiling and archery to drama, street sports and water zorbing to 6 -25 year olds.
- The Scouting Association helps young people grow in confidence, achieve their full potential and become active members of their communities.
- The Scouting Association is trusted by nearly **1 million** parents each week.
- The Scouting Association welcomes members from all backgrounds, faiths and cultures.
- The Scouting Association is part of a worldwide movement of **31 million** Scouts working for peace and global friendship.
- This is only possible through the efforts of **100,000** volunteers.

You do know...

1st Harbury Beaver Scouts is in danger of folding unless we can find **just a few** volunteers. Please don't let that happen. Instead:

- Be Prepared for the Everyday Adventure
- Be Prepared to take the Challenge
- Be Prepared for the Fun.

Call Emma now on 01788 816214 or 07952 017460 to find out more.

Thanks to Everyone at Harbury Guides and Scouts



Jim and Sue would like to say a huge thank you to everyone involved with the group for the lovely flowers, gifts and kind words on the occasion of Jim's standing down at the Awards/AGM event held in the Scout Hut recently. As Jim said on the day it will be a wrench to leave after such a long time, but it's been a wonderful experience working with so many great people, and being involved with members doing the many varied and

exciting activities that scouting has to offer. Good luck to Emma and Hayley who are taking over the role of Group Scout Leader as a 'job share', and many thanks again to you all.

Jim and Sue Ward



Harbury RFC

Harbury Mini & Midi Rugby

Steve Priest



The HRFC under 10 team completed another excellent season by winning both the Leamington RFC Festival and the Old Coventrians Festival. The team won 13 matches, drawing one, scoring an impressive 49 tries and only conceding 10. The opposition in both festivals represented some of the strongest and longest established clubs in Warwickshire including Kenilworth, Broadstreet,

Barker Butts, Earlsdon, Shipston and Rugby Lions. Congratulations to all of the players.



Harbury Tennis Club

Colin and Sue Mercer

www.tennis-today.net/harbury

Harbury had a good May in league matches, winning both fixtures. The first was away at Tysoe which was nip and tuck throughout the evening; 4 of the 9 rubbers went to tiebreaks, 3 of which were in the mixed doubles! Sue Panton partnered Adam Crossling and won theirs, while the home side levelled it narrowly beating Caroline Morland and Colin Mercer. That meant the match hinged on the final rubber of the evening with Sue Mercer and Geoff Prince holding their nerve in the fading light and heavy drizzle to win 6-5.

The next match was at home against Byfield with the start being delayed by rain – a reminder that it's the summer league. Debs Brookes and Steve Marshall joined Caroline, Sue P, Adam and Colin for this one. The first three rubbers were very close, Adam and Colin, Debs and Steve winning theirs with the visitors overcoming Caroline and Sue but only after a very long tiebreak! That was the end of Byfield's resistance though and Harbury won the remaining six rubbers to record a convincing 8-1 which took us to the top of Division 4.

We're keen to attract new members and on Tuesday 11th June we're holding an open evening as part of our club session. This is open to anyone who would like to try tennis, anyone who hasn't played for a long time and is feeling rusty, or anyone who has been playing for years and wants to try a new club. Just come along at any time between 6.45 and 8.15pm.



Harbury Toddler Group

Jenny Davies

A new committee of committed Mums have now taken over the long running Harbury Toddler Group. As Rosemary Scott has recently stepped down as Chair, the group is now being run as a co-operative of all of the members that attend the group. A big thanks to Rosemary, by the way, for running it so efficiently and thanks to Donna for continuing to be treasurer.

So, looking forward, the group will be attending the Harbury Carnival, as ever on 8th June so watch out for some Princesses and Super Heroes parading the streets! And yes that includes the Mums and Dads also.

The group will also be hosting a tea and cake morning on 22nd June from 10 -12am at The Tom Hauley Room. Please do come along and sample the lovely cakes and there will be raffle as well. All monies raised will be in aid of the group.

Harbury Toddler Group will also be hosting some great arts and crafts sessions with Debs from the Southam Childrens Centre running them on 10th and 24th June so come along and get arty.

All the usual toys and singing will be there every Monday as well from 9.30am to 11.15am at The Wight School (Harbury Pre-School).

Each session is £1.50 this includes a cup of tea and juice and snack for your child. If you would like more information then please e-mail Harburytoddlergroup@gmail.com.



Harbury Pre-School

Staff & Committee

The Jungle: During May, the children continued enthusiastically to expand on the Jungle theme started in April. We had small world jungle animals on the play table, a huge cardboard box jungle jeep in the outdoor play area and a smaller one indoors, with maps and directions, drawn by the children, to help them through the jungle. We also built on our repertoire of jungle stories and songs, such as "Lost in the Jungle" story and "An elephant goes like this, like that" and "Three cheeky monkeys" songs. We welcomed a visit



from Tracey Pettipher and her pet snake which fascinated all the children – and staff! Thank you Tracey.

Noah's Ark: As an extension to the jungle theme, the Noah's Ark story was introduced, with the Ark and pairs of animals on the play table. The children sang "The Animals went in two by two" and other songs based on the story.



The Garden: We are very grateful to Hannah Drabble for giving her time and expertise to source and plant some vegetables and lovely climbing and bedding plants. We discussed the care of the garden and the children enjoyed digging in the raised flower bed and watering the plants. Spring flowers inspired some truly wonderful observational paintings which now form a delightful display.



Japanese Children's Day: In recognition of the Japanese tradition, the children learned about how the people in Japan celebrate their Children's Day and made some wonderful carp streamers which they enjoyed waving in the breeze as they danced outside.

Woodwork: After Sandy managed to obtain some excellent pieces of softwood, specially cut into twelve inch lengths, the children learned about the safety issues involved in using the tool bench. They then carefully measured, marked and sanded their chosen piece of wood, before hammering in drawing pins to fasten on their selection of ribbons and small pieces of fabric.



Cornflour: This messy but thoroughly satisfying activity was very much enjoyed by the children as they investigated the properties of the cornflour and watched what happened as water was added. They used their hands (usually up to the elbows!) to pick up the mixture as a hard lump and then watched it turn back into liquid.

Coffee Morning: The recent coffee morning raised a magnificent sum of just under £300. Many thanks to Eugene and Emma of “Lua” who donated scarves to sell and to all who supported the coffee morning by baking cakes, helping in the kitchen or simply turning up to enjoy the morning!

If you would like further information, or to register a child for Harbury Pre-School, please contact Rosemary Jackson, Pre-School administrator: e-mail enquiries@harburypre-school.org.uk, phone 07907 598461 or look at the website www.harburypre-school.org.uk. Please note that although the starting age for Pre-School is normally two years nine months, your child is never too young to be registered.



Windmills

Nursery School

Nursery School Staff & Committee

- Located on the grounds of Harbury Primary School.
- Children taken from age two up to school age.
- Opening hours: Monday – Thursday 9.05am-3pm, Friday 9.05am-12.35pm during term time (Kids Club operate outside these hours for children aged 3+).
- We offer NEF funded places to all 3 & 4 year olds. Funded places available for some 2 year olds from Sept 13. We also operate an Assisted Places Scheme and accept childcare vouchers.
- Places now being booked for school years 2015 & 2016.
- To register a place for your child ring the administrator on 01926 613084 or email info@windmillsnursery.co.uk, visit our website www.windmillsnursery.co.uk or call the nursery on 07906 519148.

In Nursery

Welcome to Lyra and Jayden who have joined Windmills this term and are already making friends at nursery. There have been lots of creative activities in nursery as preparations are underway for the Harbury Carnival; the children have had lots of fun painting and sticking. In French the children have been learning the words for different colours and have produced a beautiful rainbow collage. We have celebrated May Day by creating floral headbands and doing some May Day dancing which the children really enjoyed.





We've had three special visitors to Windmills this month. Jack's mother Hisako came to tell the children about Children's Day in Japan which is celebrated on 5th May. The children learnt where Japan is and tried saying some Japanese words. They then produced some traditional koi carp streamers. Thank you to Hisako for a very enjoyable visit.

The children were also treated to a visit from a baby lamb and Summer's mother brought in their puppy dog to show the children. Thank you to Becky and Daisy for bringing in their animals which the children had a great time meeting.

Continuing our theme of doctors and nurses, the teddies and dolls have been in safe hands with Dr Anna and Nurse Eilidh and others from the Windmills medical team.



"I've put the bandages on the chair. They are for poorly heads. I'm not poorly, I'm better. I'm phoning my mummy but she is busy ... Hello Mum. Good luck and be kind" – Eilidh.

Out and About

There have been regular trips to the woodland, walks around the school grounds and further afield in Harbury. The children always love the outside environment and we benefit from all the outside space around Windmills Nursery. The children especially enjoyed our parachute game out on the school playing fields.

Dates for the Diary

Tuesday 4th June, 7pm – New Reception Parents to school

Saturday 8th June – Harbury Carnival (fundraising)

Monday 17th June, 9.30am – Group Photos



Wednesday 19th June, 10.10am - Reception Assembly

Monday 24th June – Closed for Teacher Training

Tuesday 25th June, 10.10am - Reception teacher visits Windmills

Saturday 29th June – Windmills Summer Dance (fundraising)

Tuesday 2nd July, 10.15am - Windmills children visit Reception Class

Wednesday 3rd July, 6.30pm-7.30pm – Parents Evening

Wednesday 17th July – Last day of term



Harbury Primary School P.T.A.

PTA Committee

Harbury School PTA has a busy summer ahead and your support, as always, is much appreciated. Here are some dates for your diary:

Saturday 8th June: The children will be dressing up as Superheroes for the Carnival, so look out for several Batmen, Spidermen, Cat Women or Wonder Women on the day.

Sunday 16th June (Father's Day): We have our annual **Beer Walk** - registration is at the school between **11.30am and 12.30pm**. Children will be able to collect stickers en route at each of the venues you visit. There is also a **barbeque** from 5.00pm until 8.00pm at The Old New Inn.

Saturday 6th July: We have the school's **Summer Fayre** taking place, from **12.00 to 3.00pm**. There will be a wide range of stalls to browse and lots of games for the kids (and big kids!) to play, along with tea, coffee, cakes and barbeque goodies you may be tempted to buy. We really hope to see you there!



Village Hall Update

Geoff Thorpe

Does our Village Hall need a permanent stage and new changing facilities?

Well, if the weekend of May 18th and 19th is anything to go by, the sooner the better. The Zumba Dance class were in action first thing on Sunday whilst the Theatre Group were champing at the bit to move in to dismantle the stage

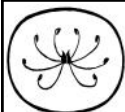
and tidy up after their excellent production of a "Fete Worse than Death". As soon as that was sorted out then the Twinning Group were preparing for a pig roast in the evening to entertain their French counterparts. Thank heavens that the planned football match was changed to an away fixture at the last minute!

On the subject of the proposed new stage and changing facilities, tenders from builders are currently being evaluated and the fundraising will need to step up another gear.

The most recent fundraising event was the Promises Auction. A great success, raising just over £4,000. Our thanks to many generous donors and helpers, too numerous to mention but including Virgin Trains, Jaguar Land Rover, Aston Martin, Ryebrook BMW, The Crown, The White Hart, Sainsbury's, Serenity Slendertone, The Butcher's Arms, the Dallas Burston Polo Ground and many individuals. Breakfast with Rosemary Harley, beer tasting with John Crossling, a bee keeping introduction with Joe van Hoorebeek.

The final and major thanks goes to Peter Rollason for stepping in at the last minute and doing a wonderful job as auctioneer and, in addition, generously donating towards the cost of preparing a Will through Rollason's Solicitors.

A major milestone has been passed this month. The Rural Cinema has raised over £10,000 in just over five years. All this money all goes to the development fund. Our thanks to Lana Long and her family including Mum and Dad, Flo and Tom.



Horticultural Society

Judy Morrall

Any suggestions for future fundraising will be gratefully received.

I was not able to be at the May meeting which was the last of the season. My thanks to all who helped to make the evening another successful one. Derek Walker demonstrated hanging baskets which were sold at the end of the talk plus many plants which he had grown. He went home with much less than he came with!!! I have sent a thank you note and wished him success with his own open garden later this year.

I do hope that everyone enjoyed the talks this season, I did manage to get some new speakers and topics which will make booking speakers for 2013/14 that much harder but I do like a challenge!!

My thanks to the sub-committee for organising the open gardens this year. By the time you read this all the preparations and hard work will be over, with hopefully some decent weather, although today (Thursday 23rd May it is overcast and cold) but our weather is fickle and can change, fingers and toes crossed.

I look forward to seeing everyone on the two day trips, on Wednesday 12th June (leave Village Hall at 8.30am) to Wiltshire and the last one on Wednesday 10th July to Herefordshire (leave Village Hall at 9.00am). Let us hope that we have decent weather. I promise not to do a rain dance!!!

Here are some suggestions of NGS gardens, etc in June. There are two gardens either in or near to Chipping Campden open on Wednesday 5th and 12th June. In the village in High Street, the Earnest Wilson Memorial Garden is a walled garden in memory of the great plant hunter packed with colour, open between 7.00am and 8.00pm and the cost is £5 which enables you to see another garden close by. This is Campden House on the Weston Sub Edge Road, two acres of mixed borders, with superb views over lakes and ponds open between 2.00 and 6.00pm.

The Granary on Wharf Road, Fenny Compton will be open on Sunday 16th between 10.30am and 5.30pm, cost £4 with refreshments available. Attractive canal side garden with views of the Dasset Hills, herbaceous beds, water feature, herb garden and kitchen garden. Also a three acre copse of native trees in the paddock. On the same day, Priors Marston Manor will be open between 2.00pm and 6.00pm, cost £4 with refreshments. Walled kitchen garden, herbaceous beds, a sunken terrace with a water feature by William Pye. Lawns lead to the lake with amazing wildlife. If you want to make a day of it visit Fenny Compton first then go onto Priors Marston.

Warmington Village have their open gardens on Sunday 23rd June between 2.00pm and 6.00pm. There will be eight gardens open and the cost is £5 with home made teas in the village hall. A variety of different styles of gardens from the Manor House to the Wheelwrights.

One of my childhood haunts, Ragley Hall, near Alcester, will be showcasing the roses which will be at their best on Thursday 27th June. Open between 11.00am and 3.00pm and the cost is £5. There is so much more to see with a diverse variety of trees and plants with the emphasis on both horticulture and bio-diversity. I can still remember the late Marquess of Hertford (the father of the present Marquess) riding into Alcester to the sub Post Office where I occasionally worked and tethering his horse outside to purchase national insurance stamps for his work force. He had a lisp and being quite young at the time I had difficulty keeping a straight face!!! Those were the days but he did do an awful lot to Ragley to help make it into the lovely stately home that it is today.

Lastly open gardens on Sunday 30th June at Wasperton between 2.00pm and 5.00pm cost of £6 and Hatton open gardens between 12.00 and 4.00pm at a cost of £4, again something different to enjoy.

I do hope that you will have the time to visit at least one of these gardens; I have seen some of them and the NGS is such a good cause to support. Enjoy the lovely month of June with longer days and sights and sounds of summer.



Garden Jottings from Bridge Nursery

Christine Dakin

Last time I wrote it was too wet to do anything unless one was prepared to get claggy clay stuck to boots, tools and hands. This time it's now too dry to dare to do any planting, I always forget where I've put plants so they don't get watered. If you have a small garden this shouldn't be a problem. Maybe, by the time this publication arrives on your doormat it will be wet again.

The early May Bank Holiday was beautiful with warm sunny weather which brought people to the nursery in droves, something we're not used to. Many plants seemed to be doing their best to catch up and there has been an abundance of flowers. The greening of the hedgerows has happened incredibly quickly. A few years ago I planted 5 or 6 cowslips. They are now all over the site. Each year they happily seed around and I've also transplanted them to different places. This spring they are flowering particularly well. Also doing well are the dandelions which creep in surreptitiously until one day you spot one with those great big yellow heads ready to set seed everywhere.

- Jobs for this month include
- Sowing more carrots and peas
- Plant out dahlias and cannas and *Melianthus major* (a wonderful foliage plant which is not hardy)
- Take softwood cuttings of fuchsias, penstemmons and other shrubby plants.
- Plant out brassicas.
- As always keep weeding.

Bridge Nursery, Tomlow Road, Napton

Tel: 01926 812737

www.bridge-nursery.co.uk



Nature Notes

John Hancock

Now it seems that each day brings new growth as flowers burst forth in their annual race to set seed and replicate themselves. The trees in Ufton Woods are in leaf but the canopy is not so dense as to shade out the ground flora. Large areas are a sea of bluebells and wood anemones with the less showy Dog's Mercury also abundant. Look closer and you will see the occasional Early Purple Orchid (*Orchis mascula*). As its name suggests, this is the first to

flower in the orchid hierarchy with some blooming in April. It isn't until late May and further into summer that its relatives begin to show. Perhaps the next in line, so to speak, is the Green-Winged Orchid (*Orchis morio*). Try to visit Draycote Meadows Nature Reserve (OS sheet 140: SP 448706) in the first week of June to see this orchid in its prime. These traditional hay meadows are described as the 'crème de la crème' of unimproved grassland in Warwickshire today. (I quote from Warwickshire Wildlife Trust's guide to local nature reserves). If you would like me to help you find this hidden gem please get in touch. (612860)

On Monday 13th May, the U3A Natural History Group visited Temple Balsall Nature Reserve (OS sheet 139: SP 203760). Now a shady damp woodland, it was formerly an exotic water garden of the Springfield estate. It is bisected by Cuttle Brook as it flows towards the River Blythe. We were lucky to have the warden Adrian Smith to take us round and explain how judicious coppicing was letting in light and promoting the spread of woodland flowers. Without Adrian I don't think we would have found the small greenish flowers of Moschatel, the only representative of the family Adoxaceae in the British flora. Also known as the Townhall Clock or Good Friday plant it is an inconspicuous but delightful flower of woods and shady banks. I had only seen it once before when a Harbury Society walk took us through woods at Leek Wootton and we were shown the plant by a passing rambler. Why Townhall Clock? The flowers are arranged in a remarkable fashion at right angles to one another like the faces of a town clock. Spoiling the idea, one flower faces the sky.

Otters live along the brook as they do now in increasing numbers throughout the county. In a marshy zone, Butterbur was in flower and its leaves enlarging. By mid-summer they would reach umbrella size and share space with Giant Bellflower, Yellow Iris and Water-Plantain.

Closer to home, do visit Bishop's Hill approached down Ladbroke Road. (OS sheet 151: SP 393581) Walk down the track which runs in the direction of Deppers Bridge and enter the Yellowland by a metal gate on the left. This, as many know, is the piece of land given to Bishops Itchington by Blue Circle Cement when they wound up their business in the area. An attractive display board describes the history of the limestone quarry and the cement industry together with a resume of the wildlife to be discovered. The hill has been described as like 'a Sussex Down in miniature'. Under the turf lies the spoil from years of cement production. Walk up the left hand side of the hill (nearest Bishops Itchington) and with luck you may see, as I did recently, the Small Blue butterfly (*Cupido minimus*). I was also rewarded with good sightings of two small butterfly species with exquisite markings. They were the Grizzled and Dingy Skipper. The former was originally called the Marsh Fritillary by James Petiver, a 17th century entomologist. In those days, any chequered animal or plant was called a fritillary after the Latin for chequer board. The Skippers or Hesperidae are the most moth-like and primitive of the families of butterflies evolving millions of years before insects such as

the Red Admiral. All have specific food plants on which the females lay their eggs and the larvae feed. The Grizzled Skipper favours wild strawberry while the Dingy Skipper utilises Birds foot Trefoil. Both these plants grow at Bishops Hill together with Kidney Vetch which is essential for the survival of the Small Blue. Butterfly Conservation, led locally by Mike Slater is making great strides in promoting suitable habitats for these superb insects.

I can't close without telling you about a visit to Oversley Wood near Alcester with David Brown's Lepidoptera Group. He had brought along a large female Emperor Moth from Shropshire as 'bait' as the Emperor had not been reported from Oversley since 1960. The group walked through the wood with the moth in a cage. Pheromones exuding from the moth's sex gland could attract a male from a distance of ten kilometres we were told. Just as we were reaching the car park after two hours in the wood, two males appeared and David netted one for us to view.

In last month's article, I finished by asking readers to let me know when they heard the Cuckoo. Thanks to those lucky respondents. I have yet to hear it myself but there is still time. Enjoy the summer season.



General Section

Warwickshire Open Studios - June 29th - July 14th

This is now an annual event following its huge success and popularity.

Interested in art? Don't understand art, but want to ask some artists what it is all about? Want to nose around a beautiful art studio and have a cup of tea or possibly a glass of wine? Nowhere to go on a rainy summer's day?

Harbury has no less than 11 artists showing and selling art in 7 studios and also on the walls of the library/cafe.

We beaver away all year and produce a wide range of beautiful paintings, pottery, sculptures, jewellery, stained glass, prints, cards, wall hangings, and objects of beauty, and we love to show you what we have produced.

You don't have to buy anything, we are happy for you to come and browse. However, you will be pleasantly surprised to see that, should you fall in love with something, you will probably find it more than affordable. There are items to suit all pockets.

Most of the studios are open on Thursdays - Sundays inclusive, over three weekends, giving you plenty of opportunity to drop in. The actual opening times vary slightly but are usually from 10.30am-5.30pm. More specific details will be shown on the village notice boards or in the Warwickshire Open Studios booklet which will be available from the Library and the Co-op.

Follow the sign posts to a venue and you will be given a tour map of all the studios. Friends and family welcome!

Jan Freeman



Harbury Art Group

Our May workshop was all about using colour pencils, and Nick had brought along two photographs for us to choose from as our subject. The vote was for an English landscape view of distant hills, a field of oil seed rape in full yellow bloom in the middle ground, fronted by an interesting shaped tree. So the challenge was to create depth in the distance and detail in the foreground using different techniques with colour pencils. A lot of concentrated effort produced some pleasing and varied results from the ten members present. The next workshop is on 6th June when the theme is 'Early Summer' using our own choice of medium – watercolour, oil or acrylic. Then on 4th July there will be a pastel workshop.

The tutored sessions are always on the first Thursday of the month and cost £15 for the day with the subject, tuition and tea/coffee provided. These are full day sessions starting at 10am and finishing at about 3pm. Contact Nick on 01295 276465 for more information.

Our informal social painting sessions are held on the third Thursday of the month. At these sessions we have no tutor, and we bring our own subject material. On Thursday 16th May the theme is 'Sunrise / Sunset', then on Thursday 20th June our theme is 'Comfort'. We start at 10am in the Tom Hauley Room and finish at about 1pm. The cost is just £5 per person, to cover the cost of hiring the room. These social sessions are very relaxed and new members are always welcome to join us. Please ring Pam on 01926 814923 or email harburyart@hotmail.com if you would like to come along.

Pam McConnell



Spirit of Harbury Award

The entire team behind the Library, cafe and art gallery were delighted and deeply honoured to hear that they were the 2013 recipients of the John Hunt Memorial Shield. Tim Lockley, Chairman of the Trustees, received the award on our behalf from Alison Hunt at the Tom Hauley Room's coffee morning



last month. We are very grateful to the people who nominated us. You can see the impressive Shield on display in the Library, which also shows all the previous recipients who have contributed to the Harbury spirit over the years.

Biblio's - The Spirit of Harbury Award felt like a special birthday present, because Biblio's and the Library reached its first birthday that same week. Over the course of the past 12 months we have served 6,000 drinks – is this a record we wonder for a community cafe that is open ten hours a week?

Special opening during Art Fortnight - To support Harbury's very talented local artists opening their studios to the public during 29th June – 14th July, we are hoping (volunteers are signing up now) to offer additional opening hours on the Saturday and Sunday afternoons between 2.30pm - 4.30pm. So, if you still haven't made it into Biblio's yet, be sure to seize the opportunity to do so then, and also to view (and buy!) some stunning artwork.

Join the team - We regularly welcome new members to the team. If you have time to spare and would like to be part of this friendly team, we'd be delighted to hear from you. Please phone 614707 or email your contact details to biblioscafe@gmail.com and we'll get straight back to you.

Lynn Macwhinnie, Jill Credland & Bobbie Sharpe

Harbury Village Library

What a difference a year makes! By the beginning of June 2012, Harbury Village Library, run by its many volunteers, had been open for just three weeks, with Biblio's café starting up a week later. The opening times had increased from 12 to 40 hours a week, there were three free computers and free Wi-Fi access, but would people want to return to the library after it had been closed for three months?

We needn't have worried, as previous borrowers from Harbury and the surrounding villages came to take advantage of the increased opening hours and others looked out their old library card or joined for the first time. There have been many donations of good quality books and following the very generous contributions to the 'Buy a Book' Fund, the first 12 newly published books have been purchased. Amongst the new titles are 'Gold Mine' by Wilbur Smith, 'The Hit' by David Baldacci and also 'Inferno', the latest book from Dan Brown, but you can see the full list on our website. All of these books have now been issued



but they can be reserved. More new books will follow so please keep watching this space and visiting your library.

Advance Notice. When Biblio's is open on Saturday and Sunday afternoons for Artists' Fortnight, the Library will also be open. However, there may be some operations via the Warwickshire Libraries' site which may not be available on Sundays.

Carnival: Harbury Library will be running a second hand book stall at the Carnival. Any donations will be gratefully received at the Library.

Sue Wurr

Harbury Carnival

Get on your gear, Carnival is here!

Harbury Carnival - Saturday June 8th

(Parade Judging Starts 12.15pm from Sutcliffe Drive)

Carnival has arrived!

It's June already and that means it's Carnival: time for you to dress up and have fun. Please buy your raffle tickets from volunteers who will be knocking on doors – remember the proceeds go to local charities and organisations.

The Parade: Vehicles, floats and walking entries in position in Sutcliffe Drive by 12 noon and judging begins at 12.15pm.

We look forward to seeing you with your local organisation, pub, street or friends and see what ideas you have come up with for either a float or a walking group for the procession. Here is a reminder of the list of categories for the parade: (NOTE: parade leaves at 1pm) Trade Float, Independent Float, Children's Float, Decorated Bike/Pram/Car, Horse Drawn/Mounted/Lead, Walking Tableau Children 2-8 persons, Walking Tableau Children more than 8 persons, Walking Tableau Family, Walking Tableau Adults, Walking Adult, Walking Child.

The programme:

- 12:00 pm Float vehicles must be in position
- 12:15 pm Judging of floats at Sutcliffe Drive
- 1:00 pm Carnival Procession led by the Shirley Pipe Band
- 1:45 pm Fancy Dress Competition
- 2:30 pm Punch and Judy
- 3:00 pm Acro Dancers
- 3:15 pm Shirley Pipe Band
- 3:45 pm Flipping Flyers
- 4:00 pm Dog Show
- 4:30 pm Grand Carnival Draw
- 5:00 pm Fete Closes

There will also be refreshments, ice cream, an Inflatable, roundabouts, and lots of fun for all at the many stalls with their games and wares.

There may just be time to book a stall/pitch on the field; please call Mike McBride on 612421 and, if you have any questions about the Carnival, please feel free to call John Broomfield, Carnival Committee Chairman, on 614258. He will be happy to provide whatever help he can.

See you there...

Peter Walshe
On behalf of the Carnival Committee

Harbury Duke of Edinburgh Award Group



Congratulations to Eleanor Clarke for getting her Gold award; the first since this award group was reformed four years ago. A great achievement.

Expedition season is now in full swing. Bronzes explored the local area for their practice expedition; Silvers had to contend with snow in the Shropshire Hills whilst Golds were lucky with great weather in the Black Mountains.

Current Year 9s wanting to start Bronze D of E in September 2013 please contact us through our website: www.harburydofe.co.uk

There will be meeting for you and parents/guardians to explain what is involved at 7.45pm on Monday 9th September in the Tom Hauley Room. Last year we were oversubscribed so it is worth letting us know soon if you want to do the award with us. You can also find out about the award on www.dofe.org

If you are not already doing the award with us and want to see if there is space in the Silver or Gold groups for 2013-14, contact us via the website above. Decisions are made about all the groups when we have a complete picture of who is interested in September.

Nick Tawney (01926 614062) Bronze 2013-14, **Kathy Sampson** (01926 612116) Silver 2013-14, **Caroline Hill** (01926 613780) Gold 2013-14



Nick Tawney



Bumps and Bundles and Tots too

We have had a fun month in May; we have been making puppets and building towers with boxes with Debra from the children's centre. Lots more newborns and tots are arriving every week. June is Carnival month so look out for some nursery rhyme and fairy tale characters from Bumps and Bundles. Come along to Bumps and Bundles every Tuesday to meet new people and have a cup of tea or coffee made for you. Located in the Tom Hauley Room (behind the Church) from 10.30am - 12.00 noon.

Kelly and Henry



Harbury Pre-School Fundraising Group

Harbury Pre-School hosted the Tom Hauley Room Coffee Morning on Saturday 18th May. We really enjoyed the lovely atmosphere and raised nearly £300 for Pre-School. Many thanks to everyone who donated the delicious cakes and wonderful raffle prizes, Emily Jackson for her talented face painting, local business Lua Ltd for generously donating all the proceeds from the sale of their beautiful scarves, and to everyone who supported us by coming along or helping out on the day.

Harbury Pre-School Fundraising Events for June:

Saturday 1st June: Cream Teas at Village Hall 11.00am-4.00pm as part of Harbury Open Gardens:

Harbury Pre-School will be serving **Cream Teas and cakes** at Harbury Village Hall on **Saturday 1st June 11.00am-4.00pm** as part of the Harbury Open Gardens weekend. There will be a raffle and face painting and a Lucky Dip for the children. We hope to see as many of you there as possible - rain or shine, there will be plenty of tea and cakes on offer! Any donations of cakes, biscuits or scones will be gratefully received - please bring along to the Village Hall at 10.00am or call Helen on 07976 935 439 to arrange collection.

Saturday 8th June Harbury Carnival BBQ:

We are delighted to be running the BBQ at Harbury Carnival on Saturday 8th June. As usual we are sourcing top quality burgers and sausages from local business Glebe Farm on the Fosse Way. We will be serving hot dogs and burgers all day and all proceeds will go to Pre-School. So why not have a delicious BBQ lunch on Carnival day? Hope to see you there.

Bag2School: Textile Collection:

Our next **Bag2School collection is 14th June 9.00am** at Saddlers, Chapel Street. We would be very grateful for any unwanted textiles such as

linen, children's and adult's clothing, paired shoes, soft toys, curtains, towels, handbags, belts, etc. Please drop off at Saddlers, Chapel Street (using any plastic bag) between 7th June and 9am 14th June. Our January collection raised £220 for Pre-School so please donate if you can. If you have any questions, would like an official Bag2School bag or would like to arrange collection please call Helen on 07976 935 439.

Recycling:

Donations of unwanted electrical leads, mobile phones and used ink cartridges are still welcome.

90 of Harbury's Favourite Recipes:

The last few copies of our wonderful recipe book are still available for sale at **Muglestone's and Harbury Library/Cafe**. All recipes have been sent in by friends and family of Harbury Pre-School and will make a lovely gift for your friends and family. All proceeds to Harbury Pre-School.

Pre-School Fundraising Events for your diary:

- 14th June 2013 - Bag2School Textile Collection
- Saturday 1st June 2013 - Cream Teas at Harbury Open Gardens
- Saturday 8th June 2013 - Barbecue at Harbury Carnival

Thank you for your continued support. For more information about any of the above, or if you would like to join our friendly group, please call Sarah on 07791 807970.

Helen Edwards



Windmills
Nursery School

Windmills Nursery School Fundraising Group

Our preparations for the Carnival are well underway and please make sure you visit our exciting Tombola stall on the field.

Date for your diary – Summer Dance 29th June 8.00 till 11.30pm

Don't miss out on our Summer Dance being held on 29th June from 8.00pm till 11.30pm. Tickets are £15 which include entertainment from live band "The Loose Covers" who will perform a fantastic variety of songs. Tickets include a glass of summer punch on arrival and a delicious hot buffet. Get your tickets today by visiting Cana / Mugleston's Country Fayre or ring Sue on 614448.

Thanks to the whole community for your continued support.

Windmills Fundraising Group

Harbury Senior Citizens Committee Update

At the time of writing (23rd May), we have had to introduce a wait list for the outing this year. If you have requested a place on the trip and have not heard from us then **you do have a place** so please turn up on Wednesday 12th at the Village Hall at 9:15am. If you are unable to go please contact Mike McBride on 612421 so we can re-allocate your place. Thank you.

We hope that those who wanted to go this year but are unable to do so are not too disappointed. For planning purposes, the outing in 2014 will be on **Wednesday 18th June** with the venue to be decided early next year. We hope to see you then.

A note for your diaries. We would like to remind you that the next event is the Summer Lunch which is a fund raising event and as such the lunch is open to anyone who wants to come, subject to availability. The lunch includes a Ploughman's, dessert, tea or coffee for £5 and will be held in Harbury Village Hall on **Saturday 27th July** between 12:00 noon and 2:30pm. More details will be in the next edition and on posters around the village.

Mike McBride,
On behalf of the Harbury Senior Citizens Benefit Association

Harbury Energy Initiative

This month's Earth Poem:

Think what you're doing

BANG! Go the trees as they are cut down.

Think what you're doing

CRACK! Go the glaciers as they break

Polluting the earth

*SNAP! Go the horn of the rhino, the tusk
of an elephant*

Destroying the countryside

Think what you're doing

So come on,

Destroying the rainforests

Let the tremendous trees grow tall

Glaciers melting,

And preserve the countryside

The poor polar bear dies

*Let the elephant's tusk grow long and
sharp*

And the rhino's horn be sharp

Think what you're doing

And the fin remain on the shark

Smoke and fuel

Destroying the O-zone layer

So think what you're doing

This shouldn't be happening, not at all

*Let the earth live long and stop all this
now*

By Joe Dolphin, Year 5, Harbury Primary School

Following the Harbury Energy Day in April, we have now found a local cooperative consortium of Green Deal Assessors. In the last month we have referred about a dozen people to this company and some others to the Energy Saving Cooperative for advice. This advice is free and a good option for those who are uncertain what they might be able to do and how to proceed. The Green Deal does not suit everyone but is a way to afford home improvements that will cut your energy costs increasingly over time. If you are interested in finding out more, do contact me or another of the HEI team and we will help you to get in touch with the appropriate source of help. You can contact me on: shermanbob55@gmail.com

The HEI team is working on a way to show you potential benefits and savings according to the type of house that you have. In the original LEAF supported work we did early in 2012, we identified five property types that typify housing in the village. Our aim is to use these as models to explain, in a way that even I can understand, what the next few years' payments for your energy might be according to 3 possible decisions:

- Do nothing
- Make improvements with Green Deal finance
- Make improvements without Green Deal

We hope this will make it easier for you to decide.

The Sherman household has already decided and we are progressing gently towards acting on the Green Deal Assessment. One benefit of spending on this is that we are entitled to ECO (Energy Company Obligation) funding and the Energy Saving Cooperative has made that possible for us by registering our house for the scheme. ECO is aimed to help particular groups of people to afford efficiency measures. In our case it is because we live in an old cottage with no cavity walls. Other parts of the fund are to help communities in 'fuel poverty' or those where there is no mains gas. This will make it possible for us to afford more improvements by part funding the most expensive change, external insulation.

Anyone not on the gas grid may well be able to apply for a Renewable Heat Premium Payment now, if you are considering replacing, for example, an oil-based heating system to a biomass boiler or heat pump. Details can be found on the DECC website. Next spring, house owners will be able to gain payments for renewable heat generation, similar to the Feed-In Tariff for photovoltaic panels and other renewable electricity generation, under a scheme called the Renewable Heat Initiative (RHI).

Get in touch with me if you want to see how you might save money on your energy. I'll be happy to connect you to our chosen Green Deal Assessor or to other expert help.

Bob Sherman – Tel: 612277
Email: shermanbob55@gmail.com

Harbury NSPCC Committee

We are holding a Greek evening on Friday 12th July in the Tom Hauley Room at 7.30pm. Tickets are priced £20 which includes a two course supper plus wine.

If you are interested in coming along, please ring Elaine Bruce, 614664.

NSPCC Committee

Portuguese Night at The Crown



On Sunday 5th May, Cinda and Joe produced a five course Portuguese meal at The Crown. It was a great success; 45 people sat down to eat with another 10 regulars coming in for nibbles and to appreciate the music. Cinda, being Portuguese, did the cooking and Joe waited on tables. The masks show that they took the job-role swap seriously! Let's hope that it is the first of many successful theme nights for them.

For the village to retain its unique character our pubs need to survive. If you haven't tried The Crown for some time it certainly is worth another visit. Joe came into the village and expected great things. At first he could be intense but Harbury has

mellowed him and he really is making an effort to fit into our community. Cinda is delightful and they work well together.

Pat Summers



Harbury Heritage Room

As usual this month, we are open on the first Tuesday, which happens to be 4th June. So by the time you get this magazine, you've probably missed it! We are open for an afternoon on Sunday 23rd June though, from 1pm until 4pm. Everyone welcome.

The Heritage Group is nearing completion of its book "Let's Go Shopping in Harbury". It should be ready by early summer, we hope. Many thanks to John and Gill Holden for starting to pull it together and to all those in the village who have spent time writing articles and making corrections.

Contact nigel.chapman@hotmail.co.uk for further information.

Nigel Chapman

Chesterton Church

The Warwickshire Singers will be performing their usual delightful repertoire of songs at the Church on the afternoon of Saturday 22nd June at 4pm. We look forward to your support at a cost of £7 a ticket, children free. Relax and enjoy the singing, refreshments included. Bookings with Jo Spurr on 01926 614431 or jospurr@hotmail.co.uk.

Every Sunday in July and August, afternoon teas will be served from 2pm at the Church.

Jo Spurr

Proposed New Childcare in Harbury

We wanted to share what we hope will be exciting plans for a much needed extension to the childcare provision within Harbury Village. We are aware that there has already been much speculation about our plans, so thought this would be an excellent opportunity to communicate our proposals.

Harbury Village already has two excellent childcare services in the Pre-School and Windmills. We respect these organisations and their work considerably; they offer a fantastic and valued service. Their offer does not, however, extend to children under two years of age, and they only allow for childcare from 9am until 3pm, during school term times which, whilst perfect for some, does not necessarily suit everyone's needs. What we are looking to provide is full 'wrap-around' care that enables parents to receive care for their children that fits around the pressures on their time. The reality is that more and more families have to sustain two income earners to make ends meet, and this requires childcare that can support the associated hours. Similarly, some people require childcare for their child before the age of two years (our market research shows that the majority of local people who put their children into childcare, ideally plan to do so from the age of 9 months upwards.) Over the years, many people within Harbury who have required these services have had to travel some distance to achieve them. Hopefully now they can achieve them within the village they love.

Our plan is to open our nursery in what was formerly The Dog Inn. We were both very fond of The Dog as a pub, and actually enjoyed a drink in there on our wedding day! Sadly though, after nearly a year of trying to market it as a pub, the brewery who owned The Dog (and The Gamecock) felt it was no longer viable as a public house, so sold it to our associate. Our commitment is to keep the external structure of the building the same, whilst retaining a large number of the internal features (probably not the bar!). We do not want to forget The Dog's past, but to build on it and turn the building into a much needed community facility. We have committed to a 15 year lease, should our planning application be successful, ensuring the community can count on our service, this year, next year, in ten years and beyond.

This is to be a family owned and run nursery. We are a married couple with a two year old daughter. We both grew up in Harbury (Lucy in Manor Orchard and Duncan in The Beeches) and both attended Harbury School. We are not a 'big-chain;' we are local, village people who are excited about what we hope will be a welcome enhancement to community facilities, and the restoration of a well-loved village building.

In terms of next-steps, our planning application has recently been submitted. Provided we are successful in this application, we plan to be open in Autumn of this year. Between now and then we promise to keep you up to date on our progress via the Harbury News and then when there is more to see we plan to organise an open day to share our plans.

In the meantime, if you have any queries or questions, or would just like to talk about our plans, please get in touch with Lucy at: lucy@bananamoon-harbury.co.uk

Lucy (née Thompson) & Duncan Nealon

Southam in Bloom - Open Gardens

This year **on Saturday 20th and Sunday 21st July, 11am to 5pm.**

There will be 24 gardens to visit, a wonderful selection including riverside, walled, large, small, cottage, vegetable, the Peace Garden in the grounds of the Grange Hall, St James Church in Park Lane and the Cardall Collection of Southam Memorabilia will also be open.

Entrance will be by programme, £3 for adults, school age children free. Available from Jacqueline the Florist, St James Church, and gardens on the day.

Several of the gardens will be selling refreshments, and some will be selling plants, so come along and have a great day out, and pick up plenty of ideas for your own garden!

Enquiries to Lesley 01926 813986 or Hellen 01926 259009.

Hellen Emblin



Southam Lions Mayday Fete – Bank Holiday Monday 6th May

What a difference a year makes! Last year the Fete was literally 'washed out' with teeming rain all day and this year we had the warmest day of the year with unbroken sunshine! With the fine weather the crowds turned out to try and win things or purchase the mouth watering cakes and other goodies on display. Punch and Judy were there to entertain the kids, and the crowds were treated to a lovely display of dancing and gymnastic skills from the



children of the Secret Garden Musical Theatre School. Mary Rhodes from BBC Television opened the event and spoke warmly of the work of Southam Lions, as too did Mike Gaffney the current Mayor of Southam who was present with his wife and consort Gwenda.

Mary and Mike, together with Lions' President, Roger Lane, toured the area and spoke to crowds stopping every now and

then for the obligatory photographs. A great day was enjoyed by everyone and maybe this was in part due to the location which was at the Bowling Green Pub in Southam – thirsty work for all involved!!

Peter Guy



Guide Dogs Breeding Centre

The Guide Dogs National Breeding Centre offers tours for individuals or groups of 2-50. Ideal for families, social groups or companies planning a team building outing. It is only a short distance from Harbury and Ladbroke on the B4100.



Tours take place on Tuesday and Wednesday afternoons and Friday mornings. In addition there are a limited number of Saturday tours during the summer. As well as learning about the work carried out at the National Breeding Centre - who supply all of the guide dog pups throughout the UK - and seeing pups, you can experience our sensory tunnel, and purchase gifts in the shop.

Simply call 0845 3727432 or email nbcvisitors@guidedogs.org.uk

See website for further details:

<http://www.guidedogs.org.uk/aboutus/national-breeding-centre/visit-the-nbc/>

We look forward to welcoming you soon.

Susi Cheshire, Mobility Services Support Worker NBC

Parkinson's UK

Parkinson's UK Leamington and District Branch meet at:- The Sydni Centre, Cottage Square, Marloes Walk, Sydenham on the second Thursday of the month from 2pm to 4pm. For information call Margaret on 01926 853023.

Pamela Ruggles



Dear Editors

We would like to warmly thank you all for your lovely prayers, good wishes, cards and practical help over quite a difficult time. Our many thanks to you all.

Every blessing

Jen and Colin Ingram

Dear Editors

May I please say a big thank you to everybody who contributed to the success of the coffee morning in aid of the Brain Tumour Charity. Thank you very much to all who gave donations, cakes and raffle prizes, all who helped on the day and all who came and supported the charity.

Altogether we raised £230 towards the work of helping people with brain tumours and their families and funding vital research into the condition.

Mary Catt

BOOKINGS FOR		
HARBURY SCOUT HUT	HARBURY VILLAGE CLUB CONCERT ROOM	HARBURY VILLAGE HALL
Debbie Dimmock Tel: 612036 debbie@dimmock.org.uk	(evenings) Tel: 612498 harburyvillageclub@hotmail.co.uk	Celia Neill Tel: 612819 harburyvillagehall@googlemail.com
HARBURY VILLAGE LIBRARY	TOM HAULEY ROOM HARBURY	THR COFFEE MORNINGS
Sarah Sherman Tel: 612277 hvlbookings@gmail.com	Sally Stringer Tel: 613214 sal.47@hotmail.co.uk	Sally Stringer Tel: 613214 sal.47@hotmail.co.uk

All Saints' Church Harbury Sunday Services

1 st Sunday in the month:	9.00am	Sung Communion
	10.30am	First Light contemporary style service in the Tom Hauley Room
	6.00pm	Evening Worship - a different style of service each month
2 nd , 4 th (and 5 th) Sunday in the month:	8.00am	Holy Communion
	10.30am	Sung Eucharist
3 rd Sunday in the month:	8.00am	Holy Communion
	10.30am	Family Communion Service
	6.00pm	Choral Evensong
Every Sunday: (except 1 st)	10.30am	Funday Club (in term time)
Every Tuesday:	7.30pm	Weekday Said Communion
Every Thursday:	9.45am	Weekday Said Communion

Times of weekday services and any variations are displayed on the notice in the lychgate.

Priest in Charge: Father Craig Grocock, The Rectory, Vicarage Lane, Harbury
Tel.: 612377, Email: kankudai43@aol.co.uk www.allsaintsharbury.org



D.A.Knowles Plumbing Services

- **Over 25 years experience**
- **All aspect of plumbing including bathroom and kitchen installations**
- **Full tiling service available**
- **Competitive rates**
- **Project Management available for larger projects**
- **No job too small!!**

Mobile: 07721 522298 Home: 01926 613776 Email: da.knowles@btinternet.com

ADVERTISING in the Harbury & Ladbroke News
Email: advertising@hlnews.co.uk Tel: 01926 612155

Monthly Prices

$\frac{1}{4}$ page £10.50
(or 3 consecutive months for £28.00)
 $\frac{1}{2}$ page £19.00
(or 3 consecutive months for £49.00)
Full page £33.50
(or 3 consecutive months for £89.00)

Annual Prices

$\frac{1}{4}$ page £ 94.00
 $\frac{1}{2}$ page £168.00
Full page £315.00

Advert with payment to: Gill Holden, 31, Binswood End, Harbury
by 15th day of the month (Cheques payable to 'Harbury & Ladbroke News')

Teacake Homebakery



Lesley's homemade **Teacakes**

baked using organic flour & butter; fairtrade sugar & dried fruit.
Perfect for toasting! Can be split & frozen. As supplied to Biblio's Café.
6 for £3.75 or 12 for £7.00

Also good crusty home-made **Bread**, baked to order using organic flour.
From a plain **Brown Cob** to **Walnut & Raisin** bread or **Fig & Hazelnut** loaf.
Prices from £1.40. Scones, cakes and other bakes available, please ask.

To place an order, call me on 613207, leave a message or email lk.jones@hotmail.co.uk
Lesley Jones - 15 Pineham Avenue, Harbury. CV33 9JF



FREE ANTIQUES VALUATION DAY
JEWELLERY, SILVER, GOLD, ANTIQUES,
COINS, CERAMICS AND COLLECTABLES

Charles Hanson with

Kate Bliss - Jewellery and Silver

Don Collins - Coin Specialist

Thursday 13th June, 10.00am - 4.00pm

Items may be left to be entered into a suitable sale

St Francis of Assisi Church Hall

110 Warwick Road, Kenilworth. CV8 1HL

FREE HOME VISITS FOR LARGE COLLECTIONS

Charles Hanson is available for Charity events

For more information contact Mrs Carol Jones

Hansons Warwickshire Area Manager on 01926 770066

service@hansonsauctioneers.co.uk www.hansonsauctioneers.co.uk

Hansons Auction Centre, Heage Lane, Etwell, Derbyshire. DE65 6LS

Refreshments in aid of the NSPCC





Mr. Plumb



Plumbing & Heating Services

ALL General Plumbing Undertaken

Leaks / toilets / saniflors / radiators / showers/
washing machines / baths / ball valves

Beautiful bathrooms designed and installed

Harbury based / References Available

M: 07904 670055 E: marcusbirch@mrplumb.org www.mrplumb.org

SADDLERS BED & BREAKFAST

SELF-CONTAINED COTTAGE IN THE HEART OF HARBURY.
DOUBLE BED, SHOWER ROOM, LIVING & DINING AREA WITH
KITCHENETTE, TV/DVD; CD/RADIO. SLEEPS 2 TO 4.
OFF ROAD PARKING.

£60 PER NIGHT INCLUDING CONTINENTAL BREAKFAST.

JULIE YOUNG, SADDLERS, CHAPEL STREET, HARBURY.
01926 614050 OR EMAIL enquiries@saddlersbed.co.uk
www.saddlersbed.co.uk



Why you should buy your new kitchen or bathroom from Modern Homes!

- With over 43 years of trading we are the longest established specialist in your area.
- Predominantly British Manufactured products
- Family run 'local' business
- Personal recommendations
- Large kitchen and bathroom showroom
- Full installation service with employed fitters
- Value for money... We offer styles to suit all tastes and budgets
- Kbsa members offering Consumer care protection

www.modernhomesleamington.co.uk Email: info@modernhomesleamington.co.uk

01926 883338

Modern Homes, 37 Longfield Road, Sydenham Estate, Leamington Spa CV31 1XB
(between Wilts and CAS)

Pilates with Diane

Come & join my Pilates Classes

Pilates improves strength and flexibility resulting in better posture plus a healthy body and mind

My classes are suitable for all abilities.

***Where: Harbury Village Hall
Farley Room***

***When: Tuesdays 9.30 – 10.30am
July 2nd to 23rd***

Restart – 17th September 2013

***Cost: £5 each week or £20 for full course
(preferred)***

***Contact Diane now to book your place
Tel: 07809 621142***

***Diane is a REPS Registered
CYQ Level 3 Pilates Instructor***

Come along and see how Pilates can work for you!

Phil's **Plumbing and Heating**

**Fully Qualified
and
Insured Plumber**

Bathrooms, Central Heating & showers

I am a locally based plumber offering very competitive rates on any plumbing or heating job.

No job too small,
Please give Phil a call

Call Phil

Daytime: 07971 046392

Evening: 01926 400746

Email: philmunday@hotmail.co.uk

Bishops Tachbrook
Leamington spa



Lose those extra pounds quickly whilst having loads of fun!

Sunday mornings at 9am, Harbury Village Hall

£4 per class, discounts available



www.warwickshirefitness.com

Phone 0789 067 1869 for more details

ovenu.co.uk

oven

oven valeting service

...punctuality, pride, courtesy and quality
all come as standard...

- Range & AGA Specialist
- Ovens & Hobs
- Extractor Hoods
- Microwave Ovens
- Traditional Stoves

LET US HELP - PHONE NOW

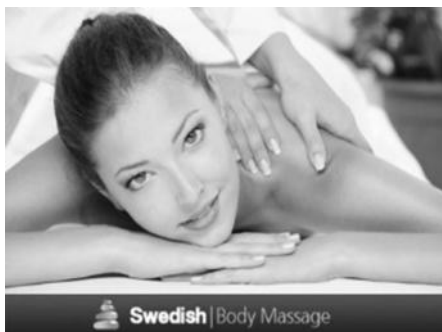
**01926
321915**

the UK's favourite oven cleaning specialists



**ABSOLUTE
BEAUTY**

Tel Rosina on 01926 612403 - www.rosina.moonfruit.com



For all your beauty and holistic needs

NEW - Virtual French Nails + Shellac & Minx

Tel Rosina – 612403

www.rosina.moonfruit.com



**Kenilworth
Properties Ltd**
BUILDING CONTRACTORS



**Extensions-Alterations-Refurbishment-New Builds
Bespoke Kitchens and Bathrooms
Design-Planning & Building Regulations Application
Service available.**

Web: www.kenilworthproperties.co.uk

Email: tony@kenilworthproperties.co.uk

Telephone: Harbury 612260 Mobile: 07779 096104

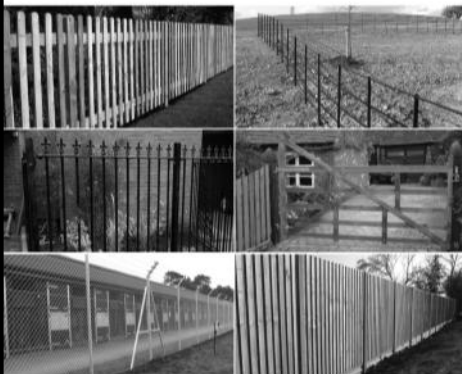
Harbury Business Centre, Church Terrace, Harbury, Leamington Spa CV33 9HL



Roger Frogley & Sons Fencing Ltd

30 years of quality service

High quality **domestic, industrial and agricultural** fencing offering a service second to none, competitively priced – clean, efficient, reliable.



t. 07970 652145 & 01926 815863
frogleyfencing@gmail.com | www.frogleyfencing.co.uk



LOCKE & ENGLAND

AUCTIONEERS & VALUERS

Established 1834

Auction Every Thursday

Viewing every Wednesday 12noon - 7pm

If you are thinking of moving, downsizing or clearing a property or business. Call Annette Haile for a free no obligation collection quote on **01926 889 100** and for valuations call or email valuers@leauction.co.uk

ENTRIES FOR OUR WEEKLY SALES CAN INCLUDE:

Antique & Modern Furniture • Clocks • Books
Ceramics & Glassware • Pictures & Prints • Bicycles
Jewellery & Watches • Garage Tools & Equipment
Household Electrical Items • Timber & Building Materials
Office Furniture & Equipment • Retail Products & Stock
Horticultural & Commercial Equipment • Vehicles
Garden Furniture & Effects • Collectables

12 Guy Street, Leamington Spa, CV32 4RT
www.leauction.co.uk



kitchen, bathroom & bedroom specialists

● design ● supply ● installation

Why move when you can improve?

We offer a personal, quality service in the comfort of your own home, delivered by a local family run business, with prices to suite every budget.

Every room we create is tailored to your needs and fitted to the highest standard.

Our all inclusive service takes the hassle out of finding the right people for each job. We come to your home, measure the space so it is utilised to its best advantage, then take you through a range of products so you can choose exactly what you want. We then create the room of your dreams!



What our customers say.....

'...a great job from start to finish - no hitches, hassles or other problems. Thank you also for doing the extra plastering and other details, and all so well finished. I am delighted, believe me!'

Call for a FREE design & quote:

T: 01926 810665
M: 07966 164396

www.southamservices.co.uk E-mail: sales@southamservices.co.uk



Simons Systems



Available for all your computer requirements including:
PC's & Laptops, New & used systems, Repairs & upgrades
Virus/Malware Removal, Data back & Windows re-installation
Upgrading memory/Hard drives/Rom drives/Graphics, etc
Internet - modems fitted, wireless, networking.
Any repairs or computer problems. ***No call out charge***

T: 01926 316 119

E: sales@simons-systems.co.uk

M: 07751 811 097

W: www.simons-systems.co.uk

Spa Roofing Co.

(Roofing Specialists)

**For all Roofing, Guttering and
General Repairs**

(Free Estimates)

All Work Guaranteed

Call: 07876 508032

or 01926 770822

The Shakespeare Inn

New Steak House & Grill



- ♦ *Traditional 18th century country inn*
- ♦ *Choice of real ales and guest beers*
- ♦ *Meals served Monday - Saturday*
12 noon - 3.00pm and 6.00 - 9.00pm
- ♦ *Lunchtime Specials Monday - Saturday*
2 courses for £6.50
- ♦ *Mid-week Roast on Wednesday - 12 noon - 3.00pm*
- ♦ *Wednesday Evening - Pie Night*
- ♦ *Sunday Carvery - 12 noon - 3.00pm*
- ♦ *Large car park and beer garden*
- ♦ *Function room available for family events and corporate meetings*



*Also offering a wide range of other menu choices including:
Vegetarian options*

Specials Board also available

9-11 MILL STREET, HARBURY, LEAMINGTON SPA, CV33 9HR. Telephone: 01926 613822

The Gamecock Inn

OPEN 4.00PM TILL CLOSE

Selection of Fine Ales

Tuesday - Friday, Food Served 6.00 - 9.30pm
Curries, Fish & Chips - Take Away available

Thursday Evening
Poker Night

Sunday Evening
Quiz Night starts 9.00pm
plus 'Play Your Cards Right'

All Welcome



CHAPEL STREET, HARBURY. TELEPHONE: 01926 612306

Kleinmann Properties

Our success is built on our reputation and
Customer recommendation

Can we help you sell or rent out your property?

- Personal, confidential & professional service guaranteed
- All viewings accompanied – by appointment only
- Excellent rates
- Lettings - Fully managed or tenant finding service

Telephone: 01926 612463

Mobile: 07710 040494

Email: enquiries@kleinmannproperties.co.uk

Web: www.kleinmannproperties.co.uk or find us on Zoopla and
Prime Location

3 Bullring Business Centre Church Terrace Harbury CV33 9HL

Tel: 01926 612463/07710 040494

Drop Dead Gorgeous Curtains



Beautiful Bespoke Curtains, Cushions and Roman Blinds
all made to measure.

Curtain alterations also undertaken.

All your needs catered for from fabrics to poles.

Free no obligation quotes.

Contact Sharron for friendly and helpful advice on
07760 395805 or 01926 612226

Or email: dropdeadgorgeouscurtains@gmail.com

www.dropdeadgorgeouscurtains.co.uk





Has your lawn suffered over the Winter?

Now is the perfect time to re-turf the worst areas or install a new lawn. We also offer a regular lawn cutting service to keep your turfed lawn beautifully trimmed.

Services also available include: hedge trimming, lawn edging, border maintenance, stone wall construction or repair, fence repair or replacement, pond installation or removal, pond covers fitted, patio installation and repair and gravel driveways.

Do you have unwanted weeds?

Why not ask us about our chemical weed control, we are fully qualified and have everything you need to have a weed free summer!

All outdoor maintenance considered.

No job too large, or too small.

*For all your outdoor chores,
call your reliable, friendly gardener:*

Richard Everett

07923 167420 or 01788 567774

info@leafyservices.co.uk

www.leafyservices.co.uk

FENCES : TREES



All types of fencing and gates

Tree felling and reduction

Hedge laying and trimming

Patios

Seasoned logs available

**Call Adrian Dollar on
01926 817077 or
07914 623989**

Qualified and Insured

Domestic Gas Services



CENTRAL HEATING, INSTALLATION, SERVICE, REPAIR and

POWERFLUSHING....the next best thing to a new heating system!



**Are your radiators cold at the
bottom?**

If so they need *POWERFLUSHING!*

POWERFLUSHING removes the build up of sludge and sediment in your radiators which is making them less effective therefore ***costing you money!***

POWERFLUSHING will maximise the efficiency of your radiators ensuring you get the very best from your heating system therefore ***saving you money!***



**For all your gas requirements please call
Martin Evans on 07980 740720**

A Member of the Alliance of Private Sector Practitioners

Jackie Biddle

Healthy Feet are Happy Feet

Foot Health Practitioner



Dip CNP MPS Pract
CRB Checked



Home Visits Telephone

T: 01926 612503

M: 07872 907429



Ballet Lessons

Tuesdays, The Grange, Southam



4.00pm - Prima Ballerinas (3-4yrs)
4.30pm - Pre-Syllabus (5-6yrs)
5.00pm - Pre-Primary (7-8yrs)
5.45pm - Primary (8yrs+)

Dance Classes

Thursdays, The Grange, Southam



4.00pm - Funky Dance (4-6yrs)
4.30pm - Gymnastics (all ages)
5.00pm - Grade 1 Ballet (9yrs+)
5.30pm - Funky & Modern (7yrs+)
6.00pm - Grade 2 Ballet (11yrs+)
6.45pm - Grade 3 Ballet (13yrs+)

Tap Lessons

Fridays, The Grange, Southam



4.00pm - Little Tappers (3-5yrs)
4.30pm - Pre-Primary Tap (6-8yrs)
5.00pm - Primary Tap (8-10yrs)
5.30pm - Grade 2 Tap (10yrs+)

Limited places available - FREE TRIAL CLASS

Call Lorraine 07711 010404 - www.loveballet.co.uk - lorraine@loveballet.co.uk

5 High Street
Southam
Warwickshire
CV47 0HA

Tel: 01926 812574

Email: enquiries@reynoldsinsurance.co.ukWebsite: www.reynoldsinsurance.co.uk

reynolds insurance

SERVICES LTD

Independent Insurance Advisers



Are you fed up with hanging on the phone or searching the internet?

Would you like to talk to friendly, experienced staff who will explain the small print?

We have been established in Southam since 1983 with the same staff who would be happy to offer you a competitive quote for all classes of insurance private or commercial.

Call Deb or Sue - 01926 812574

FREE QUOTES ON:

Household

Motor

Short Term Learner Driver Insurance

Fleet/Vans/Trucks

Public/Employers Liabilities

Shops

Travel

Restaurants & Pubs

Business Insurance

Tradesman Insurance

Let Properties/Holiday Homes

70% reserved!

Harbury *fields*

Bush Heath Lane, Harbury

PHASE TWO

Exclusive Sales Period

for people with a local connection to Harbury

Following the successful launch of the first 10 plots at Harbury Fields Phase Two, people with a local connection to Harbury have an exclusive period of 3 months* to reserve one of the remaining plots in the first release before sales are opened to the full market.

2, 3 and 4 bedroom traditionally built homes are available on this select development.

*3 months runs from 9 March 2013 and relates to plots 40-49 only. Plots 33-39 have not yet been released.



**Hurry - secure your reservation before
exclusive sales period expires on 9 June 2013**

LINFOOT
Country **HOMES**

www.linfoothomes.co.uk

SELLING AGENTS

ehB
RESIDENTIAL

01926 881144