

# Harbury & Ladbroke News

Reflects all aspects of local life, is published monthly and produced with the assistance of  
All Saints' Parochial Church Council.

**September 2012**

**No.462**

Editorial Office	☎ 612155
Articles to	Harbury Pharmacy, High Street
Email address	articles@hlnews.co.uk
Advertising Office	31, Binswood End (☎ 612155)
	advertising@hlnews.co.uk
Distribution Manager	49, Mill Street (☎ 612009)
	distribution@hlnews.co.uk
Inserts by prior arrangement	☎ 612009

## IN THIS ISSUE

## Page

EDITORIAL .....	2
HARBURY DIARY & REFUSE ROTA.....	2- 5
FROM THE RECTOR & CHURCH NEWS .....	5
LADBROKE NEWS .....	7
HARBURY PARISH COUNCIL .....	13
CLUBS & SOCIETIES .....	16
EARLY YEARS & SCHOOL.....	22
VILLAGE HALL UPDATE .....	28
GARDENING & NATURE .....	29
GENERAL SECTION .....	34
LETTERS TO THE EDITORS .....	46

## Editorial Team

John Holden - Chris Finch - Marian Millington - Janice Montague  
Ralph Swadling - Jackie West

*The views of contributors are not necessarily those of the Editorial Team  
The Editors reserve the right to amend articles as they see fit.*



## Editorial

Whilst the summer holiday will not be remembered for good weather, some residents from both villages attended Olympic events and, like those who watched on TV, will remember the dedication of the sportsmen and women and the enthusiasm of the spectators.

From the quotes in Sue Boniface's article on the Holiday at Home week, an enjoyable time was had by all. Congratulations to the organisers and helpers who gave up their time to ensure its success.

TV personality and antiques expert Charles Hanson is paying not one but two visits to us in the coming weeks. On Tuesday 18<sup>th</sup> September he will be giving valuations at the Library, then on Saturday 6<sup>th</sup> October he returns to Ladbroke to give a talk on antiques and items brought to the Antiques and Afternoon Tea event in the Village Hall.

Harbury Village Show is on Saturday 8<sup>th</sup> September; entry forms must be returned by Wednesday 5<sup>th</sup> September and the show opens at 2pm on the Saturday.

## Harbury Diary

### SEPTEMBER

#### Sun 2 TRINITY XIII

Sung Eucharist, 9.00am

First Light Service, 10.30am Tom Hauley Room

Holy Communion with Laying on of Hands, 6.00pm

#### Tues 4 SCHOOL STARTS

Heritage Room at School open 6.30-8.30pm

Holy Communion, 7.30pm

#### Wed 5 Wednesday Walkers, Ryton Woods, (4 Miles), 9.45am from Village Hall

Holy Communion, 2.00pm, followed by Tea in the Tom Hauley Room (Mothers' Union)

Village Show entry forms deadline by 6.00pm

#### Thurs 6 Holy Communion, 9.45am, followed by coffee

**NB** No Men's Group

Movement 2 Music, 2.00pm, Village Hall

Art Group, 10.00am – 3.00pm, "Movement" Acrylic/Gouache/

Pastel in Tom Hauley Room

Folk Club 8.00pm in Dog Inn

- Sat 8 Coffee Morning, 10.00am – 12 noon in Tom Hauley Room in aid of 'Affected by Bowel Cancer'  
Rugby Season starts  
Harbury Village Show, 8.00-11.00am open for exhibitors,  
2.00pm Show opens for general viewing at the Village Club
- Sun 9 Trinity XIV**  
Holy Communion, 8.00am  
Sung Eucharist, 10.30am  
Zumba, 9.00am - 10.00am in Village Hall
- Tues 11 Holy Communion, 7.30pm
- Wed 12 Wednesday Walkers, Southam, Bascote, Holy Well, (4 Miles),  
9.45am from Village Hall
- Thurs 13 Holy Communion, 9.45am, followed by coffee  
Movement 2 Music, 2.00pm, Village Hall  
WI, 7.45pm in Tom Hauley Room - "Magistrates in the Community".
- Sat 15 Men's Prayer Breakfast, 7.30am, Tom Hauley Room  
Coffee Morning 10.00am – 12 noon in Tom Hauley Room  
in aid of Marie Curie  
Moving Pictures presents "The Pirates", doors open 2.00pm, film  
starts 2.30pm, Harbury Village Hall, £3.50 each, £10 family  
ADVERTS FOR NEXT ISSUE TO: 31 BINSWOOD END,  
HARBURY OR EMAIL TO ADVERTISING@HLNEWS.CO.UK  
BY 5.30PM
- Sun 16 TRINITY XV**  
Holy Communion, 8.00am  
Harvest Festival Family Communion, 10.30am  
Evensong, 6.00pm  
Zumba, 9.00am - 10.00am in Village Hall
- Mon 17 Windmills Nursery, (c/o Harbury Primary School) Open  
Afternoon, 1.30-2.30pm
- Tues 18 Valuation Event (Antiques & Collectables) by Charles Hanson,  
4.00 - 8.00pm in Harbury Village Library (see advert)  
Holy Communion, 7.30pm
- Wed 19 Wednesday Walkers, Napton Reservoir (4 Miles), 9.45am from  
Village Hall  
Tea, 3.00pm, Tom Hauley Room  
Southam/Feldon Community Forum, 7.00pm at Southam  
College  
Ballroom Dancing (Beginners 7.30 – 8.30pm), 8.00 – 9.30pm in  
Village Hall
- Thurs 20 Holy Communion, 9.45am, followed by coffee  
Movement 2 Music, 2.00pm, Village Hall
- Sat 22 Coffee Morning, 10.00am – 12 noon in Tom Hauley Room  
in aid of Badminton Group

**Sun 23 TRINITY XVI**

Holy Communion, 8.00am

Sung Eucharist, 10.30am

Zumba, 9.00am - 10.00am in Village Hall

Tues 25 Drop in Tea for the Bereaved, 2.30 to 4.30pm, 19 Farm Street  
Holy Communion, 7.30pm

Julian Meeting, 8.00pm

Wed 26 Wednesday Walkers, Wellesbourne to Charlecote (5 Miles),  
9.45am from Village Hall  
Ballroom Dancing (Beginners 7.30 – 8.30pm), 8.00 – 9.30pm in  
Village Hall

Thurs 27 Holy Communion, 9.45am, followed by coffee

Thursday Club, 2.30pm in Village Hall

ARTICLES FOR NEXT ISSUE TO HARBURY PHARMACY,  
HIGH STREET OR EMAIL TO ARTICLES@HLNEWS.CO.UK  
BY 5.30PM

Parish Council, 7.30pm in Village Hall

Fri 28 Macmillan Coffee Morning 10am - 12 noon in Tom Hauley Room  
NSPCC, "Any Questions", 7.30pm in Tom Hauley Room -  
Tickets £20 (includes supper and wine).

Sat 29 Coffee Morning, 10.00am – 12 noon in Tom Hauley Room  
in aid of Harbury Heritage  
Councillors Corner, 10.00 – 11.30am outside the Post Office,  
Chapel Street, Harbury  
Harbury Society Members' visit to Chedham's Yard 3.00pm

**Sun 30 TRINITY XVII**

Holy Communion, 8.00am

Sung Eucharist, 10.30am

Zumba, 9.00am - 10.00am in Village Hall

**OCTOBER**

Tues 2 Holy Communion, 7.30pm

Wed 3 Wednesday Walkers, Newbold Comyn (3 Miles), 9.45am from  
Village Hall

Holy Communion, 2.00pm, Tom Hauley Room

Mothers' Union Meeting 2.30pm, Tom Hauley Room

Ballroom Dancing (Beginners 7.30 – 8.30pm), 8.00 – 9.30pm in  
Village Hall

Thurs 4 Holy Communion, 9.45am, followed by coffee

Art Group, 10.00am – 3.00pm in Tom Hauley Room, "Autumn"  
Watercolour.

Movement 2 Music, 2.00pm, Village Hall

Men's Group, 7.45pm, Tom Hauley Room

Folk Club, 8.00pm at Dog Inn

Fri 5 WI Harvest Supper 7.00 for 7.30pm in Village Hall

Sat 6 Coffee Morning 10.00am – 12 noon in Tom Hauley Room  
in aid of Save the Children

- Sat 6 Harvest Supper, 7.00 for 7.30pm in Village Hall
- Sun 7 **TRINITY XVIII**  
 Sung Eucharist, 9.00am  
 First Light Service, 10.30am, Tom Hauley Room  
 Evening Taizé-style Service, 6.00pm  
 Zumba, 9.00am - 10.00am in Village Hall
- Wed 10 Ballroom Dancing (Beginners 7.30 – 8.30pm), 8.00 – 9.30pm in Village Hall
- Thurs 11 Blood Donors in Village Hall  
 Movement 2 Music, 2.00pm, Village Hall  
 WI 7.45pm in Tom Hauley Room - “Chocolate” by Simon Read

Refuse Collection Rota				
	Deppers Bridge	Harbury	Ladbroke	Collection Week
September	Wed	Thurs	Fri	
	5	6	7	Grey Bin
	12	13	14	Green & Blue Lid Bins
	19	20	21	Grey Bin
	26	27	28	Green & Blue Lid Bins
Oct	3	4	5	Grey Bin
	10	11	12	Green & Blue Lid Bins
	17	18	19	Grey Bin

	<b>All Saints HARBURY</b>	<h2>From the Rector</h2>	<b>Reverend Craig Grocock</b>
The Rectory, Vicarage Lane, Harbury ☎612377 ✉ kankudai43@aol.co.uk			

### Challenge – the stuff that life is made of

The Olympic Games were brilliant weren't they? I was glued to the TV screen and when I couldn't do that, the radio was on! It was fantastic to see the medals coming in and the country getting behind the event, supporting our athletes and benefitting so much from the buzz and the excitement the games generated. As I write, the Paralympics are due to begin. We have supported our athletes, now we support the real super humans!

All those representing their country over the next few weeks will be amazing people, who have fought against great personal adversity and enormous odds to compete. Not only will they have trained just as hard as those competing in the Olympics, they will have done so with the added dimension

of their physical limitations. And, if that isn't enough to fill us with awe, just wait to see what will be achieved on the track and other places.

My Karate instructor used to say that 'challenge is the stuff life is made of'. These Olympians will know only too well what challenge means; most of them will have lived with challenge all of their lives. They will also know that rising to the challenge, facing it down and hitting it head on is the only way to produce a winner and a gold medal.

We may not be athletes but we all have challenges to face and some of them will be very tough ones in our lives. Jesus knew what facing challenge was too. When facing his own death, the night before in the garden of Gethsemane, we are told his sweat fell to the floor like great drops of blood, such was the stress because of the challenge he faced - would he go the way of love or would he walk away? Would he go to the cross to save the world or would he save himself?

If indeed 'challenge is the stuff life is made of' then let's thank God that Jesus rose to his. Because of the death he died we now have life – losers have become winners!

God bless.

## From the Registers

### *Holy Matrimony, All Saints' Harbury*

11<sup>th</sup> August David Birnie to Fiona Seal

### *Holy Baptism, All Saints' Harbury*

12<sup>th</sup> August Charles Frederick John Turner

12<sup>th</sup> August Eloise Margaret Jones



## From the Churchwardens

**Liz & Will**

During the summer most of us manage to get away for a holiday at some time or other. There are some in our community for whom this might not be a possibility for many and varied reasons. Described as a holiday club for the elderly, Holiday at Home was born to fulfil this need. Following its success in summer last year, August saw it return to the Tom Hauley Room. By all accounts, it was another rip roaring success which included performing artists, singing, crafts, games, tea and cake and hot meals, a trip to Webbs Garden Centre all topped off with a magic show from Mel Harvey. A tremendous amount of effort has been put in by many volunteers headed up

by Sue Boniface and we owe our thanks to them all for providing a quality community event.

During some recent heavy rain it has become abundantly apparent, not least through the very wet altar cloth, that the Chancel roof has developed a leak. On our project plan (see posters dotted about the premises) roof repairs have been ear marked and now need to be completed with a matter of urgency.

Also on the plan are improvements to the Tom Hauley Room – a much used space over the last 25 years. The external window frames have been repaired and repainted in August and a quote for deep cleaning the kitchen has been sought and accepted. The toilets will be refurbished over the next few months – the aim will be to keep one toilet fully working at all times. Later – we will redecorate the hall. Should a windfall land in our laps then the kitchen will also be renewed – otherwise much fundraising would be required to get this done by the end of 2013.



**First Light**

**Alison Abbott**

First Light in August focused on the Olympics. We even had our own torch to pass on as we considered the value of preparation, perseverance, and passing it on. We are continuing in a sporting theme because not everyone is a winner. For every gold medal there are many who don't make the podium. How do we cope with that? Is it really taking part that counts? We welcome all ages, so join us on 2nd September in the Tom Hauley Room for drama, stories, action songs and more. If you arrive about 10.15am you can enjoy a cup of coffee or tea before we begin.

## Ladbroke News & Diary

### SEPTEMBER

#### **Sun 2 TRINITY XIII**

Family Communion, 10.30am followed by refreshments

Tues 4 Photography Club, 7.30pm in Village Hall

Wed 5 Pilates, 10.00am in Village Hall

Sat 8 Whist Drive, 7.45pm in Village Hall

#### **Sun 9 TRINITY XIV**

Holy Communion, 9am

Wed 12 Pilates, 10.00am in Village Hall

Sat 15 ADVERTS FOR NEXT ISSUE OF HARBURY NEWS TO  
31 BINSWOOD END OR EMAIL TO  
ADVERTISING@HLNEWS.CO.UK BY 5.30PM

Sat 15 Whist Drive, 7.45pm in Village Hall

**Sun 16 TRINITY XV**

Holy Communion (Book of Common Prayer), 9am

Photography Club photo shoot and picnic at Dallas Burston polo grounds

Wed 19 Pilates, 10.00am in Village Hall

Parish Council Meeting, 7.45pm, Village Hall

Sat 22 Whist Drive, 7.45pm in Village Hall

**Sun 23 TRINITY XVI**

Holy Communion (sung), 9am

Thurs 27 Women's Institute, 7.30pm, Village Hall

ARTICLES TO HARBURY PHARMACY, HIGH STREET AND  
EMAIL ARTICLES TO ARTICLES@HLNEWS.CO.UK BY  
5.30PM

Sat 29 Whist Drive, 7.45pm, Village Hall

**Sun 30 TRINITY XVII – MICHAELMAS**

Holy Communion (spoken), 9am

**OCTOBER**

Tues 2 Photography Club, 7.30pm in Village Hall

Wed 5 Pilates, 10.00am in Village Hall

Sat 6 Antiques & Afternoon Tea, 2.30pm in Village Hall

**SUN 7 TRINITY XVIII**

Family Communion, 10.30am – Harvest Festival

Fri 12 Harvest Supper in Village Hall



## Ladbroke Church News

**Sue Lord**

New external window grills have now been installed and additional window repair work completed. Let's hope that this will be an adequate deterrent against future potential crime. A new water butt has been installed next to the outside tap. This replaces the rather large one that was removed during external refurbishments.

Su and Craig celebrated their Silver Wedding on Saturday 11th August at Harbury with a Thanksgiving Service for Marriage and the Renewal of Marriage Vows. Everyone at All Saints Ladbroke would like to send them blessings for a continued happy family life together.

This year's Harvest Festival Service will take place on Sunday 7th October at 10.30am and the Harvest Supper will be on Friday 12th October at 7.30pm in Ladbroke Village Hall. For more details and tickets please call Margie Bosworth (817312) or Sue Lord (815153).



## *Burial of Ashes, All Saints' Ladbroke*

24<sup>th</sup> May

Paul Francis Collins

2<sup>nd</sup> August

Katherine Margaret Spence

## **Ladbroke Flower Rota**

2<sup>nd</sup> September

Carol Lane

9<sup>th</sup> September

Margaret Bosworth

16<sup>th</sup> September

Margaret Bosworth

23<sup>rd</sup> September

Kate Pickin

30<sup>th</sup> September

Kate Pickin



**Sue Lord**



## **Ladbroke & Deppers Bridge Women's Institute**

**Carol Lane**



Our August outing on the 16<sup>th</sup> took the form of a river trip. The picture shows Sue Moore leading the way onto the Countess of Evesham which drifted gently up the river past the Stratford Theatre while 16 of us enjoyed scones with jam and cream.

The September meeting on the 27<sup>th</sup> starts at 7.30pm with Mary Davies talking about 'Get Ahead Hats.' Posh Frocks are the order of the evening for a champagne reception which follows the talk, to acknowledge our 40<sup>th</sup> anniversary. Please make sure any past members know about this as we would love them to be with us for this celebration.

## **ADVERTISING in the Harbury & Ladbroke News** Email: [advertising@hlnews.co.uk](mailto:advertising@hlnews.co.uk) Tel: 01926 612155

### Monthly Prices

¼ page £10.50  
(or 3 consecutive months for £28.00)  
½ page £19.00  
(or 3 consecutive months for £49.00)  
Full page £33.50  
(or 3 consecutive months for £89.00)

### Annual Prices

¼ page £ 94.00  
½ page £168.00  
Full page £315.00

Advert with payment to: Gill Holden, 31, Binswood End, Harbury  
by 15<sup>th</sup> day of the month (Cheques payable to 'Harbury & Ladbroke News')



## Ladbroke Photography Club

Kip Warr

Our monthly meeting started with a barbecue. The rain held off for long enough for Simon to reveal his expertise at the grill and for us to sit in the Wests' garden and enjoy the sumptuous variety of food brought by members. The congenial atmosphere was helped along with some champagne and candles to celebrate a birthday!

We all then set about voting for photographs illustrating the letters of the alphabet. I think that most of us were a bit bewildered when this idea was first put forward. I spent several walks looking for letters in the landscape: the sails of that windmill make an X and the crook of that tree could be a Y... As the photos here show, there was plenty of ingenuity and quality in the entries. Our winners were a Q (Mooring Ring, below ,by Andy Pittaway) and K (Gate with flower, by Allan Ballard).



A welcome announcement during the evening was that the club has now bought a projection screen and mounted it in Ladbroke Village Hall. This was made possible by a generous grant from the Alibone Charity.

Our next meeting will be about photo books - a great idea for Christmas presents perhaps, - at 7.30pm on Tuesday, 4th September in Ladbroke Village Hall. If you are at all interested in photography, whatever your experience, do come along. More information from [jackieszone-photogclub@yahoo.co.uk](mailto:jackieszone-photogclub@yahoo.co.uk)



## Ladbroke General Section

### Antiques and Afternoon Tea

We are now able to confirm the date of the "Antiques and Afternoon Tea" event to be held in Ladbroke Village Hall on Saturday 6th October from 2-30 to 5-30pm. You are invited to bring along items of interest which we will display on tables. The afternoon will commence with Charles Hanson (of Antiques Road Trip fame) sharing his wealth of knowledge on all things old. Charles will talk for about an hour. For the remainder of the afternoon Charles will talk about items on display either to all, small groups or individuals. Items may be selected to be entered into a suitable sale if desired.

Also available will be a delicious homemade "Afternoon Tea" which is included in the price of the ticket. We believe this event will follow on well from the Antiques Valuation to held in Harbury Library in September, and will give everyone the opportunity to hear Charles speak of his many experiences and to share his knowledge.

Tickets are priced at £10 (£5 for children under 12) and are in aid of Ladbroke Village Hall Development Fund. Available from Margaret Bosworth 817312 or from the Ladbroke Village Hall Trustees.

**Margaret Bosworth**

### Buzzing Visitors Seek New Home

A while ago I was in my garden tackling the weeds which have been growing as if on steroids this year. As I shuffled along on my knees I became aware of a loud buzzing. "A-ha" I thought, "That must be bees enjoying some of my flowers". However, they were not on the tamarisk - the only thing in flower in that part of the garden, so I moved closer to the source of the hum, a flowerless evergreen shrub. A few honey bees were coming in and out between its large glossy leaves and in the centre of the bush I spied a large cluster of them, a swarm!

Now I had been very attentive at the WI meeting on bees the previous year and knew just what to do - contact the Warwickshire Beekeepers' Association. So I hot-footed it to my computer, typed *warwickshire beekeepers* into Google and in two clicks was on the Warwick and Leamington branch's page where the swarm co-ordinator's phone number was prominently displayed. He answered the call immediately, asked a few questions including the size of the swarm and hearing it was "about the size of a rugby ball" said I would be contacted soon by someone who would come and collect it. Within half an hour I had not only received that phone call but the beekeeper assigned the



task was in my garden inspecting the swarm with me. Jo Vanhoorebeek had not travelled far, just from Harbury; in fact I discovered he has a connection with this magazine being one of the people who delivers it.

Anyway, back to the bees which luckily had not decided to move on but were still there inside my bush. Jo took a look and explained that he would try to shake the majority of the cluster into a wooden transport box

he had brought. This was like a bee caravan - a mini-hive compact enough to move around easily but with everything they needed including a plate partially filled with honeycomb to make them feel at home. I suggested that he cut away some of the branches to get better access, the bush needed pruning anyway and, after donning his protective white suit, helmet and thick gloves, Jo got down to work. First of all he squirted some smoke into the bush to make the bees less likely to sting and then, after removing a couple of



branches, he pushed the opened box in and shook until the cluster fell inside. The bees that had fallen into the box must have included the queen for, once the lid was on, hundreds of the workers covered its surfaces to get near her; eventually they started to sort themselves out and get in through the small entrance slit. Since I was local, Jo decided to leave the box and return for it at dusk by which time not only all those outside would have made it through the slit but others scouting around for a new location would have returned to the colony for the night. So, just as it was getting dark my bees left Ladbroke. In the coming days they would be given to a new beekeeper and by next year should be making honey.

Bees usually swarm between April and September looking for a new home. They will land on a temporary site and move on to a better one several times until they find somewhere to settle on a more permanent basis. So if you get a swarm, do take the action I did, it was interesting, informative and you'll be doing the bees and a new beekeeper a good turn.

**Jackie West**

BOOKINGS FOR				
SCOUT HUT	TOM HAULEY ROOM	THR COFFEE MORNINGS	VILLAGE HALL	VILLAGE CLUB CONCERT ROOM
Debbie Dimmock Tel: 612036 debbie@dimmock.org.uk	Sally Stringer Tel: 613214 sal.47@hotmail.co.uk	Sally Stringer Tel: 613214 sal.47@hotmail.co.uk	Celia Neill Tel: 612819 harburyvillagehall@googlemail.com	Tel: 612498 (evenings) harburyvillageclub@hotmail.co.uk

## Ladbroke Christmas Cards

I know Christmas is months away but some people do like to get cards in stock early! Christmas cards with a picture of Ladbroke Church, from a painting by local artist Malcolm Wray, are now available, costing £4 for a pack of 10. All profits will go to All Saints' Church, Ladbroke. Please contact me at church, around the village or phone 810331 if you are interested in buying some.

**Jackie West**

## Ladbroke Village Hall Millennium Club

£80	Kay and Colin Constable	£10	Jonathan Ford
£50	Lesley Loveday	£10	Mike Connon
£25	Jim and Pauline Laidler	£10	Kim Bendzak
£10	Carole and Peter Loftus	£10	Malcolm Wray

**Margaret Bosworth**



**Harbury Parish Council**

**Linda Ridgley**

## July Meeting

### Public Participation

Ian for the Junior Football Club outlined the need to change the size of some of the pitches because of the growing numbers of Juniors playing. There would be a small pitch for 7-a-side near the car park but the middle pitch would need to be expanded and the sockets for the goalposts moved. New goalposts were needed as the old steel ones are near the end of their life and are heavy to lift and manoeuvre. The Club would need £1200 to £1400 a set for new goalposts and were seeking grants.

There followed long discussions on the details and the potential for grants. Ian explained that the Junior Football Club had over 100 members, boys and girls, aged 5-12 years old and intended to apply for FA Chartered Standard – their stamp of approval. The Parish Council agreed to pay for re-marking the pitches and for the removal of the redundant goalpost sockets.

**Planning** - The resident of 20 Dovehouse Lane set out his plans to extend his property forward by six feet across what is presently a green strip. The Parish Council appeared to have no great objection to this but were concerned about the loss of yet another area of green space.

Councillors made no comments on an application to extend a bedroom by linking two dormers together at 1 Vicarage Lane and rear extensions at 16 Park Lane and Helen Owen House, High Street.

Stratford granted permission to re-point The Cottage, High Street; fell an Ash at the Scout Hut; build a rear extension at Willow Bank, Vicarage Lane; build a new dwelling to the rear of Co-op Terrace, Ivy Lane and various minor matters to do with the next phase of homes for local people off Bush Heath Lane.

The Parish Council then discussed the pre-application plans for a retirement bungalow at the Old New Inn on land at present occupied by concrete section garages. Chairman Tim Lockley commented that the garages “would not be a loss” and as the site would be considered brownfield land it had the potential to be redeveloped.

The consensus seemed to be that there was no overall objection in principle but that a number of issues would need to be resolved; access, materials, parking, loss of green space (this is becoming a running theme) and the impact on the Conservation Area.

**Library** - The legal niceties of the Library take-over rumble slowly on. Who insures what; who maintains the boiler; the tenant agreement, etc. However, the Councillors were very pleased with the turn-out for the official opening which attracted all the political great and good.

Chairman Tim Lockley was pleased to announce that, at present, the Café was making enough money to cover the Library costs, and that the space could be let out for meetings etc – it has computers and Wi-fi.

**Properties** - The search for someone to put into practice the plans for the BMX track and repairs to the Skatepark seem to drag on forever. The little kids Play Area repairs have been scaled back to the essentials at a cost of no more than £1,500.

The Councillors received the long awaited report on the potential to extend the Village Hall car park and were shocked at the cost. None of the options was considered feasible. They still harboured hopes of impinging on Village Hall land to the north and had looked at extensions to the west and the south but even using Grasscrete this would cost £44,000 to provide only a dozen more spaces.

Pat Summers had organised the refurbishment of the public noticeboard and had found the lost post for the dragon’s teeth at the car park entrance. Work on the Cemetery trees had been delayed by the theft of Colin Sheasby’s tools and machinery.

**Environment** - Amanda Lewis announced that Stratford had approved the erection of a safety railing outside the Co-op. Tim Lockley was amused to have been asked by the Courier for the Parish view on WCC plans to reduce night-time street lighting. He explained we provided our own footway lighting

and the improvements in energy efficiency that Harbury was making by installing LED lamps.

Amanda Lewis for the Energy Group urged the Council to press for the new Bush Heath homes to be built to Sustainable Homes Code 4 which would make them more energy efficient; she also explained they wanted to promote cycling to school. The group was investigating the possible creation of a Community Orchard.

**Highways** - Tim wants a brown tourist sign at the Crown Street junction with Vicarage and Dovehouse Lane to advertise the Library Café.

Councillors were pleased that the County eventually had cleared the “hedge” of vegetation that grew up round the Fosse Speed Camera every year. It considerably reduced visibility at this very dangerous junction and the Clerk was asked to insist that it was made an annual priority.

There was still concern about the use of the Allotments footpath by vehicles. Parking by the contractors renovating Field House has damaged the Pound, but the Council was assured that this would all be made good.

The access to Mrs Trice's field in Mill Street had been resurfaced but was already being damaged by the tractors which, Sharon Hancock declared, needed to slow down and not cut off the corner.

**Stratford DC** - Bev Mann reported that the District Council had a new part-time “Monitoring Officer” “You will be able to get hold of him electronically” she said. Reporting on the problems with the Deppers Bridge Sewerage System Richard Hamburger said “We know nothing more than it is on the move”!

**Next Meeting:** 27<sup>th</sup> September 7.30pm in Village Hall.

*Official minutes can be viewed in the Library, on the Parish Council website [www.harbury-pc.gov.uk](http://www.harbury-pc.gov.uk) or obtained from the Parish Clerk Tel: 01926 614646*



## Councillor's Corner

**Bev Mann**

**Saturday 29<sup>th</sup> September 2012**

Venue – Outside the Post Office, Chapel Street. Harbury

A Councillors Corner session will be held between 10.00 and 11.30am.

These useful sessions are for our elected Council representatives, County, District and Parish Councillors to meet and answer any concerns/questions from residents in a more informal and relaxed setting than at Council meetings.

If there is a question which cannot be answered on the day, councillors will follow this up and get back to the resident.

If you are unable to attend on this day and have any Council queries, Councillors numbers are below.

District Councillor - Richard Hamburger: Tel: 07547 679230

District Councillor - Bev Mann Tel: 614006

County Councillor - Bob Stevens Tel: 814031

Parish Council Chairman - Tim Lockley Tel: 614532

	<h2 style="margin: 0;">Harbury Society</h2>	<p style="text-align: right; margin: 0;"><b>Linda Ridgley</b></p>
---	---	---

A reminder to everyone that Heritage Open Days this year run from 6<sup>th</sup> to 9<sup>th</sup> September; see [www.heritageopendays.org.uk](http://www.heritageopendays.org.uk) for details.

I can recommend the Leamington Local History Exhibition, the Saltisford Canal Trust in Warwick and, for those who are willing to travel further, the Rugby Local History Group and Polesworth Abbey (B78 1DU) Community Archaeology.

As Secretary of the Harbury Society it fell to me recently to lead an enthusiastic group from the Coventry Society round our village explaining how it grew up and pointing out important buildings and giving some historical context.

We finished off with a visit to the Archive Room at the School which the visitors found fascinating, so much so that it was difficult to draw them away for a drink in the Shake! Thanks Nige!

Nigel and the volunteers had put on a wonderful display. The Committee has decided that our October meeting will take place at the Archive Room so that members can see for themselves the enormous range of material that has been collected and catalogued there.



For 20<sup>th</sup> November we have invited the Leamington Society to explain just what the Leamington Station group has achieved to bring back much of the GWR Art Deco splendour to the Station.

Our trip on Saturday 29<sup>th</sup> September to Chedham's Yard is fully booked.





## Harbury Women's Institute

Jeanne Beaumont

There was no meeting in August but we have been quite active. A few members have been in hospital this month but we are pleased to report they are now getting back to normal. Some of us went to see Dirty Dancing and yes, we did enjoy the show, joining in whenever we could.

Members also visited Wightwick Manor on the outskirts of Wolverhampton. A late Victorian manor house, built in the "Old English" style by the local industrialist, Theodore Mander, this is perhaps the best surviving example of a home furnished under the influence of the Arts and Crafts movement. Very interesting.

We went to visit James Butler's studio at Radway to see the fantastic exhibition of his sculptures. He showed us how he constructed them from start to finish which proved very hard work, but this man loves every part of it. At the moment he is working on a statue of Shakespeare for Stratford-on-Avon and we hope to go the presentation day. We thank Pam Parton and Peggie for arranging these trips. We also visited the Birmingham Jewellery Quarter on 29<sup>th</sup> August.

On Saturday 8<sup>th</sup> September, we will be helping at the Village Show at the Village Club. We do hope to see lots of entries especially from the children. Entries from 8am to 11am, then the show opens at 2pm. Cakes are requested please for refreshments and also anything for the tombola stall. See you there.

On Friday, 5<sup>th</sup> October we have the W.I. Harvest Supper, 7 – 7.30pm.  
**September meeting:** 13<sup>th</sup> September, 7.45pm in the Tom Hauley Room – "Magistrates in the Community".



## Harbury Theatre Group

Keith Hayes

It's been a tough month trying to cast "Wizard of Oz" but I think we have done it. Following our article in this magazine last month, we did have a few replies. Not as many as we would have liked and certainly no men but, following a lot of 'phone calls, I now think we have the hard core of a cast.

We will, of course, be contacting all who replied but if you haven't phoned or emailed me yet please do so. We still need a chorus of adults and children. There are a lot of walk on parts and we still have some "Munchkins" to find before we start learning the songs.

Our first rehearsal will be on Sunday 9<sup>th</sup> September and will be run by Joy Russell (our Musical Director). It will be a chance to meet all who want to be in the chorus.

The following Sunday should be our first floor rehearsal. From then on things should start to take shape. If you have already emailed us, we will be in touch. If not, please do so to keith.hayes@which.net or phone me on 613488. As I said at the start of this article, it has been tough casting this show. We especially struggle with a shortage of men. We have managed it this time by changing at least one part to a female role, but it will be the same next year. Please Harbury men, come and join us. It is good fun.



## Folk Club

**Deborah Ellis, Clerk of the Court**

In my role as Clerk of the Court of the 333<sup>rd</sup> Session of the Harbury Folk Club (this month's theme being 'Crime and Criminality'), I began proceedings by asking the audience, in their capacity as jury and as members of the public in the public gallery, to raise their glasses and toast the arrival of the Judge. Des took to his role of Judge with ease. He opened the first session of the court. Below are tables of each court session:

### First Hearing in Court One

Defendant	Description of Crime	Charge	Sentence
Des	Tolpuddle Martyrs	Civil Unrest/Rioting	Transportation
Norman Wheatley	Rickety Tickety Tin Sister Josephine	Poisoning Burglary	<i>Awaiting Sentencing</i>
Dave Fry	A compilation of two songs (Prickly Bush, Gallows Tree). Sent to Australia	Various Crime	Hanging and Transportation
Rick	Ballad of Henry Martin (Turn Robber on the Salt Sea)  In Good King Arthur's Day (Three Thieving Rogues Together)	Piracy and Theft	Death
Terry	Sittin' in my Cell All Alone  Blow my Blues away (Woman That I Loved)	Theft	Prison
Pete and Liz	Hare That Runs at Night Ladylike Lady Policeman	Poaching Law Enforcement	<i>Jury Out</i>
Ted and Sue	The Deserter, Gonzales	Court Marshall, Law Breaker	Royal Pardon

After a very entertaining first hearing, Judge Des went around the Jury and the public gallery to extract money for the raffle. Once everyone had recharged their glasses, I managed to bring the court to order and we resumed the second session of the court. Des opened the second half with Thrup'nny Bits.

### Second Hearing in Court Two

Defendant	Description of Crime	Charge	Sentence
Thrup'nny Bits	John Ball Fortune My Foe	Peasant Revolt Embezzling	Overruled by Council
Miriam Backhouse	Early One Morning Lord Lankin	Betrayal Child Murder	<i>Awaiting Medical Reports</i>
Pete Mason	Rolls in, Rolls in Oakham Poachers	Poaching	<i>Jury Out</i>
Peter McDonald	Durham Gaol Captain Swing	Theft Rioting/Arson	3 months
Cameron	Still Shadow Theatre, Maid of the Well and McGoldricks	Various Crime	<i>Awaiting Sentencing</i>
The Harvesters	Wind and Rain One Misty Morning Early	Murder by Drowning Poaching	Hanging

After the second half we managed to sell some more raffle tickets. There were rumours around the court that some of the prizes may have been boot-legged or may have in fact been acquired, albeit illegally, but they managed to raise a fantastic £46 for the charity Victim Support. Could this be a form of legal aid? For our traditional third half we opened this up to court appeals.

### Appeals in Court Three

Prisoner	Description of Crime	Charge	Sentence
Norman Wheatley	It Keeps Me Off the Street	Vagrancy	<i>Awaiting Sentencing</i>
Cameron	The Sleeping Tune	Various Crimes	<i>Awaiting Sentencing</i>
David Fry	The Ballad of Timothy Evans	Murder - Hung	Posthumous Pardon
Debbie	Miss Otis Regrets With Deepest Sympathy	Gun Crime Breakdown of Society	Hanged
Thrup'nny Bits	Babylon is Fallen	Rebellion	<i>Awaiting Sentencing</i>
Ted Crum	The Old Triangle	Various Crimes	Life in Prison
Peter McDonald	The Prickly Bush	Various Crimes	Hanging

At the end of this wonderful evening, Judge Des brought the court to order. Not one song had been murdered. Everyone's alibis stood up in court. The evidence proved that, once again, Harbury Folk Club (at the Dog Inn) is the place to be on the first Thursday of the month. Next month's theme is Europe. It would be a crime to miss that. Then the Judge Des dismissed the court.



## **Harbury Junior Netball Club**

**Beccy McDaid**

We are fast approaching another season and this will be our busiest yet. We are hoping to enter seven teams into the Coventry and Warwickshire Junior Netball Club. This is absolutely brilliant especially for a village club. If you are or know of anyone who is interested in playing netball either as a junior or senior, please contact me on 613163.

Last season brought many changes to our club as it moves from strength to strength. We have girls competing for County places; girls attending young leader courses; the club has achieved its bronze CAPS award; we had five teams, our biggest turn out and it seems this year we are carrying on in the same vein.

We started last season with the pre-season Stockton under 16 tournament, which I am very pleased to say we won. Then our season proper began. Extremely busy as you can imagine compounded by the fact that the under 16 team entered the regional qualifying league. This was a massive learning curve for the girls and coaches alike!!! We finished with our heads held high but realised the extremely high standards of netball that are needed for regional level.

Then on to the Coventry and Warwickshire league. All teams gave a fantastic account of themselves, each team improving greatly throughout the year, with the teams finishing as follows: U16s 5<sup>rd</sup>, U14 3<sup>rd</sup>, U13 Green team 3<sup>rd</sup>, U14 Red team 5<sup>th</sup> and the U12s came 7<sup>th</sup>. Well done to all of the girls; they all show great spirit and enthusiasm and Donna, Leasal, Ali and myself are very proud of them all.

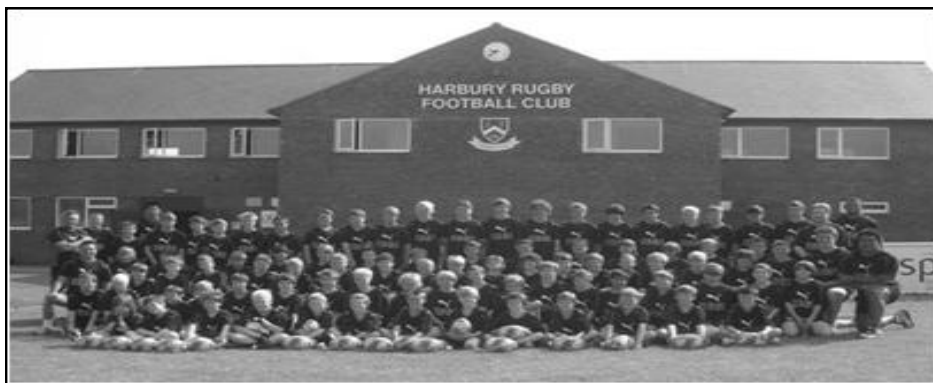
In April a junior club from Bermuda visited the UK and the local league organized a mini tournament for U12s and U14s and I am very pleased to say both teams finished 2<sup>nd</sup> in their age groups. This was particularly super for the U12s as I'm sure this will fill them with confidence for next season.

The End of Season League tournament was postponed due to bad weather! However we re- scheduled and we had a fabulous day - shock of all shocks the sun shone all day. We clearly love the sun as our trophy tally shows. U16 3<sup>rd</sup>, U14 1<sup>st</sup> Brilliant result girls this has been a long time coming and I am thrilled for you. The U13 Red finished 3<sup>rd</sup> and it was runners up for the U13 green team again - fantastic girls, you really played super netball all day.

Several of the girls were selected to play in an Elite Players' game. This is very encouraging for the future. Our U12s didn't play as they were all off on a school jolly.

Good luck to Jodie Simpson, Polly McDaid, Destiny Sheasby, Charlotte Webster, Nikki Simpson, Bethan McDaid, Connie White and Nina Chand who are all competing in the County trials this month. We are so pleased to be sending so many girls to the trials; I know they will all put 100% into them and that next year we will be sending even more girls.

As you can see, our little village club is growing from strength to strength and I am very proud to be part of such a great group of young players whose energy, commitment and sense of fun never ceases to amaze me. We're just having the best time ever.



### **Tuilagi Skills Course**

The photo shows the 90 participants at the recent rugby skills course organised by Tuilagi Rugby at Harbury RFC over a three day period at the end of July. The course which was organised by Andy Hunt with the Tuilagi brothers is to teach rugby skills to young players from the age of 10-16. This follows on from last year when the course was first held at Harbury RFC and the numbers have doubled on this occasion!

The ninety players came from Harbury, Old Coventrians, Old Leamingtonians, Stratford and Shipston with a handful of others drawn from clubs across the county. The coaching staff, which included former Samoan international Henry and Freddie Tuilagi and several other international players were complemented by current Leicester and England International Manu Tuilagi.

To have the opportunity of learning skills from the likes of these players was a fantastic experience for these up and coming players. This is perhaps best summed up by Andy Hunt a coach with Harbury U13s:

*'Total Rugby enjoyment is the best way to describe a Tuilagi Rugby Skills course. Freddie's experience and knowledge of coaching and playing at the very highest level, is expertly woven into a structured programme from which it is impossible not to emerge a better player.'*

*The enthusiasm of all the coaches is infectious. Through this they teach not only a whole range of new skills and techniques to improve rusty ones, but a love of Rugby and its culture of Teamwork, Respect, Enjoyment, Discipline and Sportsmanship. My two boys left the course as better players, with smiles on their faces, many new friends and tales of playing with rugby legends.'*



## Harbury Toddler Group

**Sarah Hanson**



**Admiring the rhinos**

Toddler Group has been running throughout the summer holidays and we have welcomed some of the older siblings who are normally at school or pre-school into the group. Activities have carried on as normal with lots of outdoor play, crafty activities and sing songs.

The highlight of the holidays has been the Toddler Group annual summer outing, this year at the Cotswold Wildlife Park. We were lucky that we chose a sunny day to visit and the toddlers (and their mummies!) had a

fabulous time looking at all the animals and birds as well as taking a ride on the little train which took us around the park. We stopped for a lovely picnic in the sunshine at lunchtime which was handily located near to their very nice park area!

Sarah Hanson and Reena Hawkins have been running Toddler Group for the last year and their time in this role has come to an end. They are handing the reins over to

**So many stripes on those zebras**





**All aboard the safari train**

Rosemary Scott who we are sure will do a fine job in running Toddler Group. We wish her all the best in this new venture!

If you are interested in joining us at Toddler Group, we are always pleased to see newcomers. We run every Monday from 9.30am to 11.15am at the Wight School (behind the library), and cater for children from birth to school age. We are open

throughout the school holidays, except Bank Holidays, and older siblings are welcome to come along too!!

Please note that Harbury Toddler Group will be closed for one week only from Monday 10th September.



**Picnic Time**



**Windmills**  
Nursery School

**Nursery School Staff & Committee**

Windmills Nursery is situated in the grounds of Harbury Primary School and has the benefit of its own Forest School and qualified Forest School Leader. We are open all day between school hours and take children from the age of two years. If you would like to register a place for your child you can email us at [info@windmillsnursery.co.uk](mailto:info@windmillsnursery.co.uk), visit our website at [www.windmillsnursery.co.uk](http://www.windmillsnursery.co.uk), call Tina/Sally on 07906 519148 (nursery mobile) or Katharine on 01926 613084 (admin). We have free Nursery Funded places available (including afternoons from Sept 2012) and we also accept childcare vouchers and offer an Assisted Places Scheme.

With Windmills Nursery closed over the summer holidays we would like to look back over the last year at some of the special moments we have had.

### **Autumn Term**

The French Club was started, enabling all the children to have weekly French lessons which have proved very popular. Regular outdoor activities have included Forest School, football and tennis, all taught by qualified professionals.

Munchkin Melodies visited to conduct musical sessions with the children and they also helped put together the Windmills Christmas Concert which took place in the Tom Hauley Room and was attended by the general public. There was also the Christmas Party where Father Christmas made a special

visit to the nursery. The children of Windmills have also attended the monthly Toddler Service at church.

### **Spring Term**

The children celebrated Chinese New Year with lots of multi-cultural activities which made it into The



Courier. Other celebrations included Pancake Day and Easter where Windmills had a special visit from Gill and Annie who told stories to the children and there was an Easter party and Easter egg hunt for the children. Windmills Nursery also celebrated World Book Day where the children came to nursery dressed as their favourite book character.

The Little Green Bear Club visited nursery and taught the children about road safety and they also learned about disability awareness which included the loan of a mobility scooter from Mrs Lines' father. Charlie's parents visited to tell the children about being Scottish and Charlie's father played some music. The children also visited Harbury Primary School to attend the assembly given by Reception Class.



The fundraising group organised a very successful Indulgence Evening in the Village Club and the children participated in a sponsored bike ride around the infant playground of the school.

### **Summer Term**

Celebrations included the Diamond Jubilee and Harbury Carnival where the Windmills float came first in its category, and the special end of year party. There was also a visit to Harbury Library and Biblio's Café which the children enjoyed. Other highlights included a visit from Becky with a newborn lamb and Mrs Houghton brought in her rabbit for the children to see. Tina and Sally were delighted to attend the ordaining of Annie Goldthorp at Coventry Cathedral.

A small group of parents climbed Mount Snowdon to raise money for the nursery which was an amazing achievement, and the fundraising finale was the Maharaja's Ball in the Village Hall which included some special Indian dancing and an Indian banquet by Jasmine Spice. This year the fundraising group has managed to exceed £3500 in fundraising and huge thanks must go to the dedicated group of parents who work so hard to organise events, to the staff at Windmills Nursery and to the parents and local community who support our events.





## Dates for your Diaries

### Windmills Open Afternoon - Monday 17<sup>th</sup> September, 1.30 - 2.30pm

- Prospective parents are invited to visit Windmills Nursery to look around. Children are more than welcome.
- Windmills Nursery, c/o Harbury Primary School, Mill Street, Harbury, CV33 9HR.

### Nearly New Sale - Saturday 29<sup>th</sup> September, venue and timings to be confirmed

- Windmills Nursery will be organising a nearly new table top sale of children's toys, clothing and baby equipment. Sellers will be able to hire a table at this event.
- More details will be displayed on posters around Harbury and on the Windmills website from early September.



### Coffee Morning - Saturday 13<sup>th</sup> October, 10am in Tom Hauley Room

- Windmills Nursery will be hosting the weekly coffee morning in the Tom Hauley Room on 13<sup>th</sup> October. Please join us for refreshments, cakes and a raffle with proceeds going towards the nursery. If you have any donations for our raffle, please contact Katharine on 613084.

**Bag2School Collection – w/c 26<sup>th</sup> November:** If you are having a clear out of clothes (adult or kids), bedding, handbags, belts, shoes (paired) or soft toys then both preschools in the village do regular clothing collections to raise much needed funds for our charities. The next one for Windmills Nursery is week commencing 26<sup>th</sup> November, though we will store bags before this if needed. Please ring 613084.



## Harbury Pre-School

**Staff & Committee**

At Harbury Pre-School we value our partnership with parents. One way in which they can share their thoughts about the Pre-School is through our regular questionnaires. Here are just a few of the comments we received this year.



"There is a lovely atmosphere. Nothing is too much trouble – and the children definitely come first."

"There are regular trips and outings."



"My child loves the wide variety of activities and learning subjects."

"I believe Harbury Pre-School has given an excellent start to my children's educational experience."

“Lots of parental involvement”



“The opportunity to be creative.”

“The different activities and arts and craft that are allowed at school but not at home, such as messy painting!”

“Friendly staff, welcoming atmosphere, caring and nurturing environment.”  
 “Always a lovely, relaxed place to be. Our child seems happy and confident – what more could we want?”



If you would like further information or to register a child for Harbury Pre-School, please e-mail [enquiries@harburypre-school.org.uk](mailto:enquiries@harburypre-school.org.uk). The website can be found at [www.harburypre-school.org.uk](http://www.harburypre-school.org.uk).



## Village Hall Update

Chris Finch

The latest application for planning permission for extension and modernisation of the 'Constance Drive' end of the Village Hall has been forwarded to Stratford District Council by the architect, Terry Hart. The plans can be viewed on line at the Council's web-site and hopefully planning permission will be granted within a two month time frame. This will allow detailed specifications to be prepared, followed by careful analysis by a quantity surveyor who will create costings based on the proposals. This is essential information for the fund-raising group who need to know how much we need to raise for the latest development, which will include a permanent stage and new changing facilities. Following in depth discussions over many weeks, the final plans incorporate both the vital elements for improvement of the Hall at one end of the building, and not as previously envisaged with the stage at one end and the changing room area at the 'children's playground' end. This should cut the cost of the development proposals significantly and make the funding target more achievable.



The most recent improvement to the kitchen has received many favourable comments and it's almost hard to remember the 'tired' fittings and equipment, which had been in place for almost 50 years. The stainless steel units, new cooker and extraction fan and, most importantly, the incredibly efficient dish-washer have all made a significant impact on events requiring food preparation. Already a wedding reception has been booked in for next

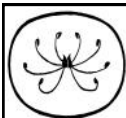
year and it is hoped that there may be other commercial opportunities which might develop in future. The chart included opposite shows the hiring charges which will be implemented from September with a reminder that use of the kitchen is a 'one-off' charge per event, NOT an hourly charge. Our Hall is still significantly cheaper to hire than many others in the surrounding villages and the committee intend to ensure that this situation is retained – the greater the number of hirings, the lower the rate of hire can be kept.



## Harbury Village Hall - Charges for Hire

<b>ROOM</b>	<b>PARISH</b>	<b>NON-PARISH</b>
Hourly Charges for Hire Effective September 2012		
<b>Excluding any use of Kitchen...</b>		
Main Hall	£10.00	£20.00
Farley Room	£8.00	£14.00
All Rooms	£15.00	£25.00
<b>Additional charges....</b>		
Use of any Kitchen Equipment Per event	£10.00	£20.00
Surcharge per day at any event at which alcohol will be sold	£17.50	£17.50

In the coming months, there will be a number of fund-raising events, including the Rural Cinema, which re-opens for business on 15<sup>th</sup> September with a showing of 'The Pirates' – doors open at 2.00pm for a 2.30pm start - and a Folk Concert on 20<sup>th</sup> October, which is a follow-up to the previous very successful event. There are other events in the 'pipe-line', which will keep the focus on our fund-raising for the foreseeable future, as well as ensuring that the Hall is maintained in a good condition for all users. The repairs to the roof over the entrance and the kitchen will commence in October after CAMRA's Beer Festival, so it's onwards (future development) and upwards (the roof) for our intrepid committees who have to keep the funds rolling in!



## Horticultural Society

**Judy Morral**

Sadly no trips to report back on this month. The time has really flown by since our July outing. At least we have had spells of decent weather since then, the only drawback being that the weeds are growing at an alarming rate. It has been rewarding though to be able to eat the home grown produce from the allotments. I am however struggling to come up with different ways to cook courgettes apart from ratatouille. I have frozen courgette soup, made courgette risotto, and I am about to try courgette fritters. Any recipes gratefully received!!

My evergreen clematis has flowered for the third time, the magnolia is poised to flower again and the flowers on my catalpa (Indian bean tree) have been spectacular this year. Each year seems to bring something extra in the garden; it really is exciting. My Cornish plants are thriving, especially the echeveras from Duchy Nurseries. I had a reply to an email I sent to my friends at Hardy Exotics near Penzance and they are struggling as the constant wet weather has had a very adverse effect on sales; they have had to let staff go and are doing everything between the two of them for seven days a week. I replied again and said such a pity it was so far away as I would love to organise a trip there.

I know that Jane included an article last month about the forthcoming Village Show. Please do go along to the Village Club on Saturday 8<sup>th</sup> September. Even if you are not entering anything (just look at the schedule, something for everyone) go along to support her and Patrick who both work so hard to ensure that the day goes smoothly. There will obviously be the produce, cakes etc., flowers, preserves and much more and of course the children's exhibits to admire and there will also be raffle and a tombola. I wish all the success to part of our village heritage.

There are still many gardens both large and small with superb planting to see in September. Here are just a few to visit. Canons Ashby near to Daventry, a National Trust property, has some lovely restored gardens to see. Apart from topiary and fernery there are reinstated beds and borders seasonably planted to reflect the Victorian tastes of one of the past owners, Sir Henry Dryden. Look for opening times etc in your National Trust Handbook. Not far from there is Sulgrave Manor; we did an evening trip there a few years ago but the herbs and orchard have matured a lot since then.

Closer to home, if you have never visited the Master's Garden at Lord Leycester Hospital, Warwick, do pop along to see this restored historic walled garden and, even better, then enjoy a lovely cream tea. It is open daily. Also in Warwick is the wonderful garden of the late Arthur Measures, now looked after by his daughter and son in law. It is in Mill Street and sits below the walls of Warwick Castle, with winding paths that lead you around every corner to evoke the dramatic views. It is planted in the cottage style with colour all year round. Open every day in September. The house number in Mill Street, Warwick is the same as ours in Mill Street and we often get the odd wrongly delivered Christmas card!!!

Worth a visit too is Kenilworth Castle to see not only this historic ruin but the restored Elizabethan Garden. The gardens have matured now and you can see and wander through where Elizabeth I and Lord Leycester would have also trod. It is run by English Heritage and has been lovingly restored, open daily. Also on Thursday 13<sup>th</sup> September from 6.30 to 8.30pm Ruth Goodman who has appeared in many period programmes including Victorian and Edwardian Farm will be giving a talk. There will be a champagne reception earlier in the evening. Just look at the website of English Heritage for

more details. Ragley Hall and Gardens near Alcester are open for the NGS on Friday 7<sup>th</sup> September. These really are superb gardens, acres of them! The new Rose Garden is maturing nicely. There is so much to see there, always worth a visit at any time of the year. Don't forget to come and visit Upton House and Gardens. The gardens are stunning this year and the view from the top of the lawn is amazing. The agapanthus are particularly good and the various enclosed gardens on the way to the pool are very colourful. The pool is crystal clear and the fish are thriving. One little boy told me last week that the fish were like monsters!! The gardens will be open for the NGS on Friday 21<sup>st</sup> September from 11.00am to 5.00pm. The asters should be at their peak then but always worth a visit at any time. The volunteers in the garden have worked extremely hard this year, not a weed in sight. How the snapdragons have not keeled over in the recent downpours I will never know!! I suspect they dare not as Heather the Head Gardener is pretty fierce at times!! Lastly the gardens at Baddesley Clinton, that lovely moated house near Solihull, are at their peak now. At the moment there is an artist in residence, a Japanese gentleman who has painted most of the National Trust properties with an almost wide angled view. His pictures are breathtaking and very reasonably priced, as are the packs of postcards.

Our first meeting of the new season will be on Tuesday 2<sup>nd</sup> October. I will mention it now as the October edition of the magazine will not be distributed by then. As usual we will meet in the Tom Hauley Room at 8.00pm. The speaker will be Dr John Page who always brings his wife Kate and the topic will be Tulips in the Wild and in Cultivation. This promises to be an informative and colourful talk and it will be nice to see what we can be planting in October and November. I have some new speakers this season as well as some familiar ones and in April and May next year there will be plants etc. for sale too. I hope that I am tempting you and it will be lovely to see everyone again in October. New members too are most welcome. Until then do enjoy the rest of the summer.



## **Garden Jottings from Bridge Nursery**

**Christine Dakin**

Have things improved in your garden in the last few weeks? I've heard various tales of woe regarding the growing of fruit and vegetables. Many of you seem to have failed to succeed with carrots; some people have also had no success with different beans although my neighbour's beans are growing so well that they are climbing into the apple tree! I'm not sure if there are any beans though because there have been very few bees around to pollinate the flowers. I suspect that some of the village produce shows might be a bit short of the usual quantities of fruit, vegetables and flowers.

Slugs and snails have caused much devastation for everyone. The conditions have been perfect for these pests. I rarely use slug pellets and if I do there always seems to be a toad looking at me reproachfully. My chosen system of reducing the numbers of these slimy creatures is to get a bucket of soapy water and a spoon and then go round lifting pots of plants and trays where they love to hide. The grandchildren were helping me the other day and had a great time competing with each other to find the biggest. I know it's the tip of the iceberg but nonetheless it's very satisfying.

Weeds continue to thrive so it really is important to get rid of them before they spread their seeds everywhere.

The autumn is such a good time for planting new plants. We may not be doing an end of season plant sale but we do have a bench with a selection of plants for £1.....bargains!!

**Bridge Nursery, Tomlow Road, Napton, Tel: 01926 812737**

**[www.bridge-nursery.co.uk](http://www.bridge-nursery.co.uk)**



## **Nature Notes**

**John Hancock**

As I write, on August 20<sup>th</sup>, heavy, sometimes thundery outbreaks of rain are the norm. Perhaps one of the few bonuses are rainbows, which are not often associated with this time of year. The temperature yesterday reached 25C (77F), falling to 14C (57F) last night. The high humidity can disturb sleep. Still, what is normal weather? A statistician's field day.

Harbury Society, as you may have seen in July's Harbury and Ladbroke News, had an excellent tour of Reeve's Farm near Long Itchington. I've since been in contact with Richard Reeve to talk about this year's harvest. Thanks to the weather it will be poor. A wheat variety known as Solstice grown for bread flour has been badly affected by a fungus. It could not be sprayed at the optimal time as the ground was too soft to take machinery. The grain is described as 'wizened' and the yield is likely to be about an eighth of that expected.

Now, it's blackberry time and the rain has produced luxurious growth. Nothing beats a walk designed to fill a punnet or two, and we have an enormous variety from which to choose. Part of the enjoyment is the chance of finding a heavily laden bush or berries with a subtle change of flavour. I found wild plums of various colours on some trees beside Wasperton Lane as it descends towards Barford from Oakley Wood. They do well here away from the frost pocket at the base of the hill. Our garden damsons are in short supply.

On a very wet Friday August 17<sup>th</sup>, Sharon and I drove to Slad in Gloucestershire to meet our daughter Jane and her children. We took Edith,



one of our grandchildren, to be reunited with her family after spending some of her summer holiday with us. Slad was the home of Laurie Lee and the setting of his marvellous autobiography 'Cider with Rosie'. Walking up a hill through dripping beech woods was a slog, but careering back down for a picnic in a bus shelter was fun. There was lots of deep leaf mould, withered Dog's Mercury and thickets of Holly. Later at an old quarry, now grassed over and a Gloucestershire Wildlife Trust Reserve [Elliot/SO 877067], I walked over a carpet of late summer flowers. Field Scabious, pale lilac in colour, predominated with Knapweed and some Teasel mixed with the plump heads of Woolly Thistle.

The following day, we were with our son Stephen and his wife Sally in Sheffield and with better weather had a delightful walk from Eyam (pronounced Eem) in North Derbyshire. This is known as the plague village because so many of its inhabitants died of that dreaded disease in 1664. Instead of fleeing as many did they stayed to try and contain the outbreak. At the parish boundary is a flat stone with holes for coins. Here, money was left in vinegar in exchange for food.

Eyam is on grit stone with a typical acid loving flora including bracken, bilberry, foxglove and silver birch. Within a mile we crossed onto limestone with a greater variety of species. Meadow Brown and Gatekeeper butterflies were on the wing, there was an occasional Common Blue and one superb Peacock.

At the Spoil Bank Nature Reserve next to the Great Western, you will see a lot of clearance work was done earlier in the year. Flower seed of Kidney Vetch (*Anthyllis vulneraria*) was broadcast in an attempt to create an environment suitable for the Small Blue butterfly which is now present at several sites in South Warwickshire, notably Bishops Hill, Southam by-pass and Stockton Cutting.

I looked in at Phil Pain's cottage by Oakley Wood the other day. Like David Brown's in Charlecote his garden is maintained to encourage butterflies and moths. There are fruit trees and bushes, buddleias of many hues, tall grasses, a small pool and a profusion of flowers some of which, such as Rose Bay Willow Herb, would be treated as weeds in many gardens. The butterflies like it though. There were numerous Peacocks, one superb mint Red Admiral, a female Brimstone and a Silver Washed Fritillary which had come from a colony in the wood. It just shows what can be done when wildlife is included in the equation.

### **October Edition - Harbury & Ladbroke News**

**Adverts** to 31 Binswood End, Harbury by 15th September

**Articles** to Harbury Pharmacy or e-mail to [articles@hlnews.co.uk](mailto:articles@hlnews.co.uk) by 27th September



## General Section



### Harbury Art Group

August's workshop was pencil drawing using ordinary graphite pencils in the range 2H to 2B. Nick gave us a choice of subject, and we chose a view of Dovedale valley, showing the river, stepping stones, trees and cliffs. At first it was hard to see how such a typical 'watercolour' scene could be successfully rendered in pencil – especially the river with all its ripples and reflections. However we learnt to create recession by using the lighter 2H pencil for the background, HB for the middle ground and 2B for the foreground. Also, having shaded the river with mirror image reflections vertically, an eraser could be used to take out tiny horizontal 'stripes' and create the illusion of light reflecting off the water – just like magic! Again, we produced some very satisfactory pictures, all different, and my drawing was chosen as the best this month (I may even get it framed...).

Nick's next workshop is on 6<sup>th</sup> September, and will be a painting session using acrylic, gouache or pastel, with the theme 'Movement'. Then, on 4<sup>th</sup> October Nick will be doing a watercolour workshop with the theme 'Autumn'. Nick's workshops cost £15 per day, which covers tuition, tea, coffee and biscuits - bring your own materials and packed lunch. We meet on the first Thursday of every month in the Tom Hauley Room behind Harbury Church, between 10am to 3pm. Contact Nick on 01295 276465 or Pam on 01926 814923 to book a place.

Our first 'social' painting day on 19<sup>th</sup> July in the Tom Hauley Room was enjoyable and well supported with some new faces and a wide variety of subjects, styles and ability. We had another on Thursday 23<sup>rd</sup> August with the theme 'Stones', and the next is on 20<sup>th</sup> September when the theme will be 'Gold'. These social painting days are open to anyone interested in 'having a go' at painting and drawing. There is no tuition and the cost is just £5 per person which includes tea and coffee. If you would like more information, contact Pam on 01926 814923.

**Pam McConnell**

### Last Chance!

I've nearly completed the story of our Church, and I hope to publish before the end of the year. Huge thanks to all who provided information, advice, documents and pictures. If you have anything else to contribute, please contact me before the end of September, or it will be too late.

**John Stringer, 30 Mill Street, 613214**



## John Turner Festival 2012 Photographic Competition

Open to all ages. Digital photography with four categories:

- "Natural World"
- "Celebrations"
- "Artisan"
- "Home" and "General"

Prizes include a large canvas print (approx. 75 x 40cm). A monopod and other photographic accessories.

Full terms and conditions, along with entry details can be found at [southamlions.org.uk/photo](http://southamlions.org.uk/photo)

All photographs will be displayed at the festival on 3<sup>rd</sup> November 2012. The closing date for entries is 6<sup>th</sup> October.

**Steve Hoyle**



### Bumps and Bundles...Now with Tots

Bumps has been steadily busy throughout the holidays. We have had two picnics in Harbury park which were

both fortunate to have good weather.

Tots up to three years old are welcome at Bumps and Bundles. There is room for them to play and toys to play with.

So come along all Bumps, Baby Bundles and Tots, to the Tom Hauley room [room behind Church] every Tuesday from 10:30am to 12 for tea, coffee, and play.



**Kelly and Henry**

### Harbury Pre-School Fundraising Group

**Textile Collection:** We have organised another Bag2School textile collection for **Friday 14th September at 9am**. Please drop off any unwanted clothing, shoes (paired), linen, towels, curtains, bags, soft toys etc at Saddlers, Chapel Street from **7th September**. Please use any bag. Our last collection raised over £330 for Pre-School so please donate anything you can. Thank you for your support!

### **Pre-School Fundraising Events for your diary:**

- Friday 14th September (9am) - Bag2School Textile Collection from Saddlers, Chapel Street
- Saturday 1st December - Christmas Disco at Harbury Village Hall
- Sunday 9th December - Christmas Market at Harbury Village Hall

At the Pre-School, we are also collecting unwanted electrical leads, mobile phones, and used ink cartridges. Please drop them in to the box in reception.

For more information about any of the above, please call Sarah on 07791 807970.

**Helen Edwards**

### **Harbury Energy Initiative**

In the last year Harbury has removed at least 11.7 tonnes of carbon from expected emissions through the investment by villagers in photovoltaic panels. That's a pretty fine statistic and shows what can be done. The installation of just over 100KWp of energy generating capacity on roofs, however, has been done by just 3% of households plus the Village Hall, assuming that the 31 returned forms we have received represents more or less all the contributors to this figure. Average return on investment, based on how much these householders have earned from generating their own electricity, runs at around 12%, with a variance between 6% and 16%. Even 6% is better than most savings accounts can offer. The emphasis in government funding and advice is now concentrating on renewable heat and energy saving measures. Vouchers towards the costs are available for a variety of installations that generate heat. Below is an extract from the Energy Savings Trust website advice:

**The Renewable Heat Premium Payment scheme - Phase Two will run from 1st May 2012 to 31st March 2013, subject to available funding.**

The amount received as part of the Renewable Heat Premium Payment scheme depends on which technology you are applying for:

<b>Technology</b>	<b>Voucher Value</b>
Solar thermal hot water	£300
Air-to-water heat pump	£850
Ground source or water source heat pump	£1250
Biomass boiler	£950

There are a few rules that apply to determine eligibility. If you want to know more have a look at [www.energysavingtrust.org.uk](http://www.energysavingtrust.org.uk).

Harbury Energy Initiative only raises funds for specific projects and activities. We do need a small amount of money in the account, however, to cover incidental expenses. We also have identified a draft set of plans for the future in pursuit of our aims, so we know roughly what we want to do next. Which is why we have taken up the invitation from Localgiving West Midlands to provide a web page for HEI on [localgiving.com](http://localgiving.com) with a free three-month trial. This website provides an opportunity for small enterprises like ours to be seen more widely and to attract gifts from supporters that might otherwise not know of us. We will, as you might anticipate, be delighted and terribly grateful if you choose to donate to us or direct your benevolent friends to support our work. Do take a look on [www.localgiving.com](http://www.localgiving.com).

Some of these plans involve inviting collaboration from other Harbury societies. We may be in touch!

Later this month we will be on show by invitation at the Heart of England Community Foundation Showcase event in Coventry. Chris Finch and I (and maybe some others) will be at the Coventry Rugby Club from 4.30pm on Monday 24<sup>th</sup> September for a few hours with our stand.

Don't forget you have free membership of Community Energy Warwickshire's Energy Saver Club till the end of the year. Take a look at their ideas for this scheme and other plans on [www.cew.coop](http://www.cew.coop).

**Bob Sherman - 612277**

## **Summer Lunch in aid of Harbury Senior Citizens**

We provided 79 lunches at our summer fundraising event at the end of July. We would like to thank everyone who came along to support us and we hope that you enjoyed the lunch and the company. Thank you also for your generous support for the raffle and tombola; it was greatly appreciated by members of the committee.

Thanks also to the extra helpers who came along to help set-up and take down. Your generous help and donation of your time helps us all. Thank you.

Next up is the Christmas party on **Saturday 8th December** – more details will appear later in the year.

**Mike McBride,**  
**On behalf of the Harbury Senior Citizens Benefit Association**

## **Harbury NSPCC Committee**

We are holding another "Any Questions" evening on Friday 28<sup>th</sup> September at 7.30pm in the Tom Hauley Room. Tickets cost £20 per person and this includes a two course supper and wine.

We held a similar event two years ago and it was very successful. We have a panel of four local people; Kath Ellis, Sharon Hancock, Geoff Thorpe and Philip Bruce together with Philip Bushill-Matthews as our chairman. People attending are asked to bring along a selection of questions on topical issues both national and local. The chairman will decide which questions are put to the panel. Last time we had some serious debate and some fun questions too. We would be delighted if you could join us - please ring Elaine Bruce on 614664 for more information.

## **NSPCC Committee**



### **Operation Christmas Child**

Many thanks to everyone who supported the coffee morning for the Shoebox Appeal, resulting in a welcome profit of £152.82. There will be another in the Tom Hauley Room on Friday 9<sup>th</sup> November to pack up our boxes. If you could look out for gifts to go in them between now and then, that would be great. If you want ideas, I should be delighted to talk to you; just ring 614809.

**Gillian Hare**



### **Wednesday Walks**

Has a month of watching our wonderful Team GB left you worn out? Would you like to see more of our lovely countryside and meet new friends? Are you free on Wednesday mornings? Each week, anything from four to twenty four people assemble at the Village Hall car park with boots and coffee flasks, going off at 9.45am for a walk of about four miles, lasting about two hours. You would be most welcome – and might find you're not as unfit as you thought! The month's programme can be found in the diary at the beginning of this magazine.

**Gillian Hare**



### **Harbury Village Library and Biblio's Cafe**

#### **Discover more about your antiques...**

Auctioneer Charles Hanson, of TV's Flog It! will be at the Library on Tuesday 18<sup>th</sup> September 4pm-8pm to give you his expert knowledge and valuations on your antiques and collectables. For up to five items, we suggest a £2 donation to the Library. If you decide to send anything off to auction, that can be arranged directly with Charles. There will be a number system, so you can collect a ticket and pop back for your slot. Or of course, sit in Biblio's and chat about your wonderful antiques over some special tasty treats and delicious coffee and tea.

## **New term, new hours**

To coincide with the new term from September 5th, Biblio's will resume usual hours: Wednesday, Thursday and Friday 9.15-Noon and Thursday 2-5pm.

## **Menu update**

Due to popular demand, we now have a toaster (thanks to a generous donor) and will add toast and teacakes to the menu.

## **Any old china?**

We've not had much luck scouring the charity shops for nice bone china cups, saucers and tea plates in good condition. If you have any cluttering up your cupboards, and would like to donate them to Biblio's we'd be delighted to give them a home!

## **Cafe team**

We have a fantastic team in the cafe as well as great bakers. We are always open to new people joining the team, so please contact Lynn on 614707 if you would like to get involved in supporting this terrific community initiative that has got off to such a flying start.

**Lynn Macwhinnie**

## **Harbury Village Show**

Once again, the Village Show is nearly upon us. This year it is being held on Saturday 8<sup>th</sup> September in the Village Club. On the day, the club opens for exhibitors from 8.00am until 11.00am and then re-opens at 2:00pm for general viewing.

Schedules, containing all the usual classes, have been placed in Mugleston's and in the Library. Please remember to return your completed entry forms to Patrick Clarke or Jane Giddings by 6:00pm on Wednesday 5<sup>th</sup> September.

We are running a Tombola Stall and a Raffle and, as always, are in need of prizes. If you are able to donate items, we would be extremely grateful. These may be dropped off with Kath Ellis at 2 Chapel Street, Margaret Commons at 10 Chapel Street, Jane Giddings at 11 South Parade or Patrick Clarke at 32 South Parade.

Tea and homemade cakes are being served throughout the afternoon. If you would like to help, either by making a cake or by assisting with the teas on the day, Jane Giddings would love to hear from you.

And finally ..... if you have never entered anything in the show before, why not have a go? To persuade you, there is even a Novice Class Trophy for Vegetables to be won by an exhibitor who has never before won a prize.

(We ruled out a novelty class for the largest slug or snail as we thought we would be overwhelmed with entries!)

**Patrick Clarke - 612066 and Jane Giddings - 614266**

## **World's Biggest Coffee Morning for Macmillan Cancer Support**

Please come and support our Macmillan Coffee Morning at the Tom Hauley Room on Friday 28<sup>th</sup> September, 10.00am – 12 noon. There will be a raffle, cakes and “Bring and Buy”. We hope you will call in, have a coffee, bring your friends or meet them here, have a chat and help us raise money for this very worthy cause, to help provide much needed help and support for people affected by cancer. We hope you will call in and see us.

**Mary & Friends**

## **Movement 2 Music**

The first session in September for the newly formed M2M group will take place in the Village Hall on Thursday September 6<sup>th</sup> at 2.00pm. As mentioned in a previous Harbury & Ladbroke News, it is hoped that the sessions will run on the 1<sup>st</sup>, 2<sup>nd</sup> and 3<sup>rd</sup> Thursday of each month, with a break on the 4<sup>th</sup> week for the regular Thursday Club organised by Bill and Peggie Middleton. Each session will cost £2.50 and there is no particular ‘dress code’, but loose clothing and flat shoes are recommended, as the trainer offers a variety of exercises from co-ordinated movements carried out whilst sitting; to the more active stepping routines. There’s something for everyone in the over 60’s group, who feels the need to concentrate the mind and the body in some physical activity without resorting to expensive gym fees or walking round ‘the Bush’ – the circular walk around the village taking in Bush Heath Lane, Bush Heath Road and Butt Lane. We will look forward to seeing you as M2M starts its ‘feel fitter’ sessions this month.

**Chris 612305, Jackie 612750**

## **Holiday at Home 2012**

‘A wonderful week’;

‘A very relaxing and enjoyable time for all’

‘Food, craft activities, and entertainment were all first rate’

‘The quiet corner with comfortable chairs was appreciated by all’

‘New friendships made’

‘Thank you for a lovely time’

Above are some of the remarks made by participants in the ‘staycation’ held during the week of 13<sup>th</sup>-17<sup>th</sup> August.



Four days were spent in the Tom Hauley Rooms, a different craft activity on offer each morning. There were board games, cards, puzzles (including jigsaws), and a selection of daily newspapers. Everything one would hope to find in your hotel lounge during a week's holiday. During the afternoons, there was a variety of interesting talks and entertainment, culminating with Mel Harvey's magic hour on Friday. Some holiday makers participated in everything, others preferred to watch, while some relaxed in the quiet corner.

In the middle of the week, an outing to 'Webbs of Wychbold' was organised. Sadly it was not a good weather day and we were unable to look around their beautiful gardens. However shopping, browsing and eating in the excellent restaurant were enjoyed by everyone attending.

We are very grateful to everyone who gave their time and talent to make the 2012 'Holiday at Home' such a success.

**Sue Boniface**

## **Warwickshire Young Voices – Selected for UK's Largest Arts Festival**

We start the term with a bang after being selected to perform at Birmingham Arts Fest on 8<sup>th</sup> September – an honour we are very excited about! Existing choir members are delighted to be part of this nationally acclaimed festival of music and the arts. They will perform in a programme of events alongside big names such as the City of Birmingham Symphony Orchestra and the Birmingham Conservatoire, as well as smaller groups like ourselves. If you want to come along to support us and attend some of the other free events surrounding the UK's largest Arts Festival, we will be performing from 11.30am at Birmingham Museum and Art Gallery in the magnificent Round Room on Saturday 8<sup>th</sup> September.

After we come back down to Earth, term will start for real on Thursday 13<sup>th</sup> September at Harbury Village Hall 6.30pm-7.30pm.

There are a few remaining places available to join this exciting choir. The choir is open to all 7-16 year olds with no previous experience necessary – we do not hold auditions. We are a fun choir who sing a wide range of music from current chart songs to classical. Our team of experienced volunteer singing teachers aim give our young singers many opportunities to perform using professional equipment, as well as the amazing events and venues we attend.

If you want more information or wish to put your name down to secure a place, visit [www.warwickshireyoungvoices.org](http://www.warwickshireyoungvoices.org) and click on 'Join Us.' Every potential new choir member is entitled to two free sessions to try us out.

PS: Keep an ear out for us on Classic FM this Autumn where you might hear a beautiful recording of us singing 'Before I Speak a Word' written by our Musical Director, David Iles (or if you are too impatient, you can also hear this on our website or via Facebook!)

**Helen Iles - Singing Teacher**  
**Warwickshire Young Voices**  
[www.warwickshireyoungvoices.org](http://www.warwickshireyoungvoices.org)

## **An Evening of Autumn Entertainment: Saturday 20<sup>th</sup> October**

Following last December's sell-out entertainment evening, Harbury Folk Club proudly presents an evening of music hall and traditional music in the Village Hall on Saturday 20<sup>th</sup> October from 7.30pm to 10pm, doors open at 7pm.

Come and be entertained by the Harbury Folk Club Choir, The Harvesters, Ted and Sue Crum, Peter McDonald, Janny Freeman and Maureen Darby, Pete and Liz Bones and Guy, Morris and Thompson. The MC for the evening will be Debbie Ellis.

Tickets are £7.50 from me and this includes a glass of wine. You can if wish bring your own wine, beer, soft drinks and we will provide glasses. All profits will be donated to the Village Hall.

**Doug Freeman (21 Farm St, 612002, [douglasfreeman@gmail.com](mailto:douglasfreeman@gmail.com))**

## **Flu Clinics – November 2012**

### **Will be held at Harbury Surgery**

Weds 7<sup>th</sup> Nov 11.00am - 12.00 noon and 4.00pm - 6.30pm

### **Bishops Itchington Surgery**

Weds 14<sup>th</sup> Nov 9.00am -12.00 noon and 4.00pm - 6.30pm

No appointment necessary – just turn up at the clinic of your choice. Please note that letters will not be sent out inviting eligible patients to attend.

The Department of Health strongly recommends that the following patients should be vaccinated:

- all those aged 65 and over
- 'At Risk' groups: Respiratory disease, Heart Disease, Diabetes, Asthma, Kidney Disease, A weakened immune system, Liver disease, History of stroke

The earlier clinics tend to be busier but, as we will have plenty of flu vaccine, you can safely attend any of the later and quieter clinics. The above Flu clinics are for seasonal Flu vaccinations **ONLY**.

**Drs Snowdon and Wilkinson**

## **Harbury and District Poppy Collection – 2012**



In order to ensure that the local area retains its house to house Poppy Appeal, I've agreed to organise the ordering and distribution of the boxes and wreaths to collectors, pubs and shops in Harbury and Upton. Last year a number of new collectors were recruited to cover streets close to where they lived and it is hoped that most of the new volunteers in addition to many long-standing collectors will still be available to cover the villages for this year. At a recent celebration event for the Warwickshire branch of the Royal British

Legion, Quona Huntley was presented with a framed certificate and special RBL badge in recognition of her service for over 25 years as a collector. It is possible that other collectors in the villages may have taken on the vital role of house-to-house collections over a similar period and if he/she would care to get in touch, I'll make sure that they receive recognition at next year's celebration event. Please contact me on 612305 to volunteer or to put your name down for RBL's recognition – the organisation is keen to acknowledge the support it receives from its volunteer force.

**Chris Finch**



## **Traditional Cream Teas - Raising funds for Rotary Charities**

On Sunday 9<sup>th</sup> September 2012, 3.00 – 6.00pm at Holt Farm, Holt Road, Napton, free entry. Relax on a Sunday afternoon in beautiful surroundings and enjoy a selection of teas, coffee, cakes and Holt Farm's famous traditional cream teas. Also see the Pets Corner. Easy access by road or walk along from the canal to the farm. Go on - spoil yourself and help raise money for charity at the same time.

Rotary Club of Southam 2000 - Proceeds to Rotary Charities.

**Richard Hall**

## Free Electric Blanket Safety Tests from Warwickshire County Council

Warwickshire Trading Standards Service will provide electric blanket tests **FREE OF CHARGE**, for people aged 50 or over, between Monday 1<sup>st</sup> October 2012 and Friday 5<sup>th</sup> October 2012. Don't miss this opportunity!

Old or damaged electric blankets cause a number of fires each year, which can result in injury or death. These can be avoided by simply getting your electric blanket checked.

Testing, **by appointment only**, will take place at the following venues around Warwickshire:

Leamington Town Hall, Monday 1<sup>st</sup> October 2012

Nuneaton Fire Station, Tuesday 2<sup>nd</sup> October 2012

Rugby Library, Wednesday 3<sup>rd</sup> October 2012

Kenilworth Library, Thursday 4<sup>th</sup> October 2012

Stratford Fire Station, Friday 5<sup>th</sup> October 2012

Electric blanket tests are only available to Warwickshire residents. Please book soon as places are limited.

To book an appointment, call the Trading Standards Service on: 01926 414016 (Monday to Friday, 9am - 5pm) or email [ebtesting@warwickshire.gov.uk](mailto:ebtesting@warwickshire.gov.uk)

**Simon Cripwell**  
**Warwickshire County Council**



### Harbury Heritage Room

These are the entries in the 1881 census for Hall Lane. Can anybody match the property numbers and residents to any building still standing?

Do you know who was living in YOUR house in 1881? We would love to hear from you!

The Heritage Room is open on the first Tuesday of each month from 6.30 to 8.30pm and at other times by appointment.

Please come along and browse through our huge collection of photos and documents – you might even find yourself!

Contact; [nigel.chapman@hotmail.co.uk](mailto:nigel.chapman@hotmail.co.uk).

**Nigel Chapman**

	Forename	Surname	Position	Marital S	Age	Occupation
9	Mary	Wilkins	H	Widow	63	
	Thomas	Wilkins	Son	U/M	22	Labourer
10	Fredric	Belcher	H	M	30	Labourer
	Emma	Belcher	W	M	64	
11	William	Wincott	H	M	58	Bricklayer
	Maria	Wincott	W	M	54	
	Henry	Wincott	Son	U/M	14	Tool Carrier GWR
12	William	Gibbs	H	M	25	Agricultural Labourer
	Emma	Gibbs	W	M	37	
	Thomas	Gibbs	Son	U/M	7	Scholar
	? John	Gibbs	Son	U/M	1	
	Henry	Gibbs	Son	U/M	1	
13	John	Finch	H	M	82	Former Labourer
	Mary	Finch	W	M	81	
14	William	Barnacle	H	M	78	Agricultural Labourer
	Mary	Barnacle	W	M	76	
	Mary	Harwood	D	Widow	52	
15	Henry James	French	H	M	27	Rough Carpenter
	Amy	French	W	M	25	
16	Amy Martha	French	D	U/M	3	Scholar
	Henry	Goodwin	H	M	29	Signalman
	Mary Ann	Goodwin	W	M	29	
	Harry	Goodwin	Son	U/M	7	Scholar
	Clare	Goodwin	D	U/M	5	Scholar
	Fredric G	Goodwin	Son	U/M	2	
	Sarah Emily	Goodwin	D	U/M	1	
17	John	Sheverington ?	H	M	44	Gardener
	Amelia	Sheverington ?	W	M	43	
	Beatrice	Sheverington ?	D	U/M	18	
	Albert	Sheverington ?	Son	U/M	8	
	Ernest	Sheverington ?	Son	U/M	6	
18	?John	Humphris	H	M	29	Coachman
	Sarah	Humphris	W	M	26	
19	Ann	Dickinson	H	U/M	33	Cook, Domestic Servant
	Mary	Sabin		U/M	26	Housemaid
	Elizabeth	Over		U/M	16	Kitchen Maid
	Charles	Kilvert		U/M	42	Butler

## Southam/Feldon Community Forum

Your Community Forum's next meeting is scheduled to take place at 7pm on Wednesday 19<sup>th</sup> September at Southam College, Welsh Road West, Southam CV47 0JW.

Join us to hear about the latest news and updates on the District Councils Core Strategy, Town Centre Redevelopment, Superfast Broadband and Highways issues. You will also have your chance to help identify YOUR priorities for local policing.

If you have a specific concern or problem, then drop in to the local surgery from 6.30 – 7.00pm where you will be able to speak to your Neighbourhood Policing Team, Councillors and Officers from Warwickshire County and Stratford-on-Avon District Councils. During this time you can also join us for a cup of tea and a chat.

If you would like to suggest an issue for a future Community Forum meeting, or find out more, please contact Amanda Wilson-Patterson on 01789 260135 or email: [amandawilsonpatterson@warwickshire.gov.uk](mailto:amandawilsonpatterson@warwickshire.gov.uk)

**Lizzie Price**

## Chesterton Events

The windmill will be open as part of the Heritage Open Days on Saturday 8<sup>th</sup> and Sunday 9<sup>th</sup> September, from 10.00am to 4.30pm. There will also be stalls selling local produce and other items by the windmill.

Chesterton Church will be holding their Candlelit Harvest Festival on Sunday 30<sup>th</sup> September at 6.00pm; all are welcome.

**Jo Spurr**



## LETTERS TO THE EDITORS

### Dear Editors

*The wedding took place on 4th August 2012 at The Royal Memorial Chapel, Sandhurst of Captain Alec McKenzie of the Royal Yeomanry and Anna Woodworth.*

*Alec lived in Harbury whilst growing up, going to Harbury school for a time, then going away to school and subsequently university. As a 6th former he worked at The Crown at weekends and still enjoys a pint.*

*Alec and Anna met during their time at Bangor University and Anna became a daughter to us during Alec's posting in Afghanistan last year.*

*They are now going to live in Whalley in the Ribble Valley, which according to Alec is the Harbury of the North.*

*Many thanks to our Harbury friends, who attended the wedding and helped to make it such a memorable day, especially Mr P Rollason's contribution to the entertainment!*

**Charles and Jo McKenzie**



### **Dear Editors**

*I would like to say a big thank you to my wonderful family and friends who made my 90<sup>th</sup> birthday such a lovely day. It was a complete surprise to have a party and thank you everyone for the lovely presents, cards and good wishes.*

*Thank you everyone; love you all.*

**Rennie Delin**

 <p><b>BRICKLAYING LTD</b></p>	<p><b>EXTENSIONS RENOVATIONS REFURBISHMENTS NEW BUILD GARDEN WALLS BRICK WORK AND STONEMWORK SPECIALISTS</b></p> <p>FAMILY RUN BUSINESS WITH OVER 35 YRS EXPERIENCE</p> <p>CALL US FOR A QUOTATION</p> <p>RECOMMENDED BY AGE CONCERN</p> 
<p>THE BEECHES THE OLD GATED ROAD CHESTERTON WORKS CV33 9LD TEL: 01926 614335 MOBILE: 07786838627 EMAIL: <a href="mailto:info@rjdconstructionltd.co.uk">info@rjdconstructionltd.co.uk</a></p>	

**LOOKING FOR HELP****TO****FIND THE RIGHT JOB?**

Senior Technical Recruiter based in Long Itchington will help write cv's, carry out interview techniques and prepare application letters.

This will help you to take the next step in your professional career.

If you are leaving college or university, these techniques could help you get one step ahead.

**LEARN WHAT EMPLOYERS ARE REALLY LOOKING FOR,**

Contact Val Martin  
01926 814140

valmar46@hotmail.co.uk

*No job too small* **Phil's** *Free Quotations*  
**Plumbing and Heating**  
**Fully Qualified**  
**and**  
**Insured Plumber**

Bathrooms, Central Heating & showers

I am a locally based plumber offering very competitive rates on any plumbing or heating job.

No job too small,  
Please give Phil a call

**Call Phil**

Daytime: 07971 046392

Evening: 01926 400746

Email: philmunday@hotmail.co.uk

Bishops Tachbrook  
Leamington spa



**ADAMSTRANKS**  
BUILDING CONTRACTORS



**Extensions-Alterations-Refurbishment-New Builds**  
**Bespoke Kitchens and Bathrooms**  
**Design-Planning & Building Regulations Application**  
**Service available.**

Web: kenilworthproperties.co.uk

Email: kenilworthprops@btconnect.co.uk

Telephone: Harbury 612260 Mobile: 07779 096104

Harbury Business Centre, Church Terrace, Harbury, Leamington Spa CV33 9HL





BIBLIO'S CAFÉ

[www.harburyvillagelibrary.org.uk](http://www.harburyvillagelibrary.org.uk)



# Valuation Event

Tuesday 18th September 4pm-8pm

Harbury Village Library

Valuation of your antiques & collectables by auctioneer Charles Hanson.

Maximum 5 items and £2 suggested donation to Harbury Village Library.

Biblio's café will be open for great tea, coffee, savoury scones and teacakes.

Biblio's

**H**ANSONS  
Auctioneers and Valuers



Biblio's hours from September: Wed, Thurs, Fri 9.15-Noon and Thurs 2-5pm

Toast and Teacakes now on the menu!

Your café in the heart of Harbury





## Fiona's Frames

Bespoke Picture Framing

Wide choice of mouldings & mounts for paintings, prints and needlework

Friendly Professional Service

Phone 01926 812807

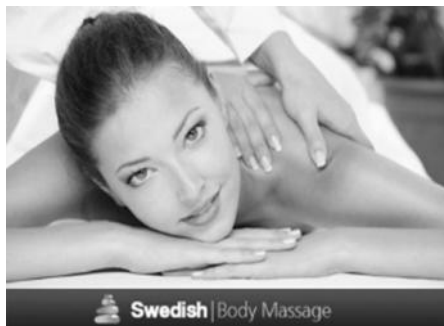
Hillside, Napton

email: enquiries@fionasframes.co.uk



ABSOLUTE  
BEAUTY

Tel Rosina on 01926 612403 - [www.rosina.moonfruit.com](http://www.rosina.moonfruit.com)



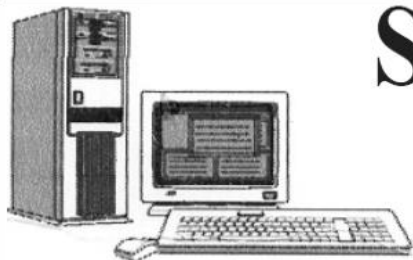
Swedish Body Massage

For all your beauty and holistic needs

**NEW** - Virtual French Nails + Shellac & Minx

Tel Rosina – 612403

[www.rosina.moonfruit.com](http://www.rosina.moonfruit.com)



# SIMONS SYSTEMS

Available for all your computer requirements including:  
PC's and Laptops, New and used systems,  
Upgrading memory/hard drives/rom drives/graphics, etc  
Internet – modems fitted, wireless, networking.

Any repairs. **NO CALL OUT CHARGE**



**Tel: 01926 316119**



**Mob: 07751 811097**



**E-mail: [simons.systems@virgin.net](mailto:simons.systems@virgin.net)**

## HOME BOARDING FOR YOUR DOG



**Wouldn't you enjoy your holiday much more  
knowing your pet was going on holiday too!**



Why not let me look after your dog on our 22 acre farm where he will live as one of the family. No being shut in a kennel all day and night, just as much exercise as he wants with our own two friendly dogs who love to play with new friends. All needs catered for.

You will find our prices very reasonable and our care second to none. Give us a call on 01926 612921 or 07967 762475 and see how we can ensure you all have a good time!

All prospective boarders whose dogs didn't care for cats, please do ring again,  
as sadly, we no longer have cats.

Karena Ellis-Greenway  
MRICS, RICS Acc.Med., BSc Hons

green  
chameleon



**M:** 07796 575716 **T:** 01926 612121

**E:** info@greenchameleon.net **Web:** www.grechameleon.net

• Chartered Surveying • Valuation • Mediation • Letting & Management

The Green Room, 31 Manor Road, Harbury, Warks CV33 9HY



**RICS**

## Domestic Gas Services



**CENTRAL HEATING, INSTALLATION, SERVICE, REPAIR and  
POWERFLUSHING....the next best thing to a new heating system!**



Are your radiators cold at the  
bottom?  
If so they need **POWERFLUSHING!**

**POWERFLUSHING** removes the build up  
of sludge and sediment in your radiators  
which is making them less effective  
therefore *costing you money!*

**POWERFLUSHING** will maximise the  
efficiency of your radiators ensuring you  
get the very best from your heating  
system therefore *saving you money!*



For all your gas requirements please call  
Martin Evans on **07980 740720**



## **D.A.Knowles Plumbing Services**

- Over 25 years experience
- All aspect of plumbing including bathroom and kitchen installations
- Full tiling service available
- Competitive rates
- Project Management available for larger projects
- No job too small!!

Mobile: 07721 522298 Home: 01926 613776 Email: da.knowles@btinternet.com

## **WARWICKSHIRE CHIMNEY SWEEPING SERVICES**

LOCAL INDEPENDENT SWEEPS. PROFESSIONAL AND FULLY INSURED SERVICE.  
SWEEPING CERTIFICATES ISSUED

BOB CHURCH  
01926 614366



PHIL CAPERS  
01926 614559

MOBILE: 07530 604451

*REMEMBER CLEAN CHIMNEYS ARE SAFER CHIMNEYS*



# **ZUMBA®**

**FITNESS**

Lose those extra pounds quickly whilst having loads of fun!

**Sunday mornings at 9am, Harbury Village Hall**

£4 per class, discounts available



**[www.warwickshirefitness.com](http://www.warwickshirefitness.com)**

**Phone 0789 067 1869 for more details**



### Ballet Lessons

Tuesdays, The Grange, Southam



4.00pm - Prima Ballerinas (3-4yrs)  
4.30pm - Pre-Syllabus (5-6yrs)  
5.00pm - Pre-Primary (7-8yrs)  
5.45pm - Primary (8yrs+)



Wednesdays, Kineton High School  
Banbury Road, Kineton, CV35 0JX

6.45pm - Zumba

### Dance Classes

Thursdays, The Grange, Southam



4.00pm - Funky Dance 1 (4-6yrs)  
4.30pm - Gymnastics (all ages)  
5.00pm - Grade 1 Ballet (9yrs +)  
5.30pm - Funky Dance 2 (7yrs +)  
6.00pm - Grade 2 Ballet (11yrs+)  
6.45pm - Grade 3 Ballet (13yrs+)

### Tap Lessons

Fridays, The Grange, Southam



4.00pm - Little Tappers (3-5yrs)  
4.30pm - Pre-Primary Tap (6-8yrs)  
5.00pm - Primary Tap (8-10yrs)  
5.30pm - Grade 1 Tap (10yrs+)  
6.00pm - ZumbAtomic



Limited places available - FREE TRIAL CLASS

Call Lorraine 07711 010404 - [www.loveballet.co.uk](http://www.loveballet.co.uk) - [lorraine@loveballet.co.uk](mailto:lorraine@loveballet.co.uk)



## The Crown Inn

Full A La Carte Menu  
plus Bar Snacks

### Sunday Lunch

12.00 noon - 4.00pm  
From £7.50

**Bed & Breakfast now available.**

Please see our website  
for menus and more information.

Open: 12.00-2.30pm

6.00-10.30pm

Closed Sunday evening and Mondays

**☎01926 614995**

**[www.crowninnharbury.co.uk](http://www.crowninnharbury.co.uk)**

# Cana at Bank Chambers

200 Wines of the World  
Case Discounts Available  
Free local delivery

Tues to Thurs 2.00 – 8.00PM  
Friday 12.00 – 8.00 PM  
Saturday 10.00 AM – 8.00 PM

Nyetimber  
English sparkling  
now in stock

### Wine tasting party?

At home or a venue of your choice, we can  
arrange a tasting to cover a range of wines to  
suit your preference and budget.

### Having a party?

Let Cana supply your drinks 'sale or return'  
including free glass hire.  
Alternatively we can run a bar for you.

### Need a special present?

Hampers & Gift Vouchers

### Real Ales

Ciders  
Prosecco  
Champagne  
Chocolate Wine  
Toffee Vodka  
Gins  
Ports  
Sherries  
Liqueurs

### Real Lemonade

Cheese & Biscuits  
Olives  
Salami  
Cured Hams  
Antipasti  
Olive Oil  
Balsamics  
Cuban Havana  
Greeting Cards



Bank Chambers, High Street, Harbury, CV33 9HW  
01926 613716 / 07967 100153  
[rob@canaimport.co.uk](mailto:rob@canaimport.co.uk)



@canaimport

/canaimport

Do you want to know  
how solar panels can make  
a better return on your  
money than the bank?  
Or how to cut your  
carbon footprint?

Call our specialist consultants now on

**01562 745 265**

or email

**info@eco2solar.co.uk**

**eco<sub>2</sub>solar**

The Natural Choice for Your Power

Solar PV panels, solar heating and heat pumps

**www.eco2solar.co.uk**

**Harbury Village Cinema**

is proud to present



**Saturday 15<sup>th</sup> September**

Harbury Village Hall

**Tickets: £3.50 each, £10.00 per family**

tickets available on door only

(family ticket admits 2 adults & 3 children under the age of 12)

\*Parents/carers must remain with, and are responsible for, their children at all times\*

**doors open at 2.00pm - film starts at 2.30pm**

**Refreshments - Raffle Hot Dogs - Cana Import Bar - Tuck Shop**

all profits from the village cinema are donated to the Harbury Village Hall refurbishment project  
Further details: 01926 613311 - 07535 622707



**Moving Pictures**

Sheffield District Council's rural cinema

**Film**

**Certificate U**



**HANSONS**  
Auctioneers and Valuers

**FREE CHARITY VALUATION DAY**

**JEWELLERY, GOLD, SILVER,  
ANTIQUES, BOOKS AND TOYS**

**Kate Bliss - Jewellery Expert**



**and Charles Hanson**

**Thursday 13<sup>th</sup> September, 10.00am - 4.00pm**

Items may be left to be entered into a suitable sale

**CHANGE OF VENUE AND TIMES**

**St Francis of Assisi Church Hall**

**110 Warwick Road, Kenilworth. CV8 1HL**

**FREE HOME VISITS FOR LARGER ITEMS**

Hansons employs **Kate Bliss** as a consultant to advise clients on Jewellery and Silver and **Lars Tharp** (here in October) to advise on Chinese Ceramics and Oriental Works of Art.

**Charles Hanson is available for Charity events**

**For further information Please contact Mrs Carol Jones**

**Hansons Warwickshire Representative on 01926 770066**

**Email: service@hansonsauctioneers.co.uk www.hansonsauctioneers.co.uk**

**Refreshments in aid of the NSPCC**



## Gardens by Wendy

phone: 01926 614877

mobile: 07595 289331

e-mail: [wendy@gardensbywendy.co.uk](mailto:wendy@gardensbywendy.co.uk)

- Garden design services from one-off consultations to full designs
- Advice on rejuvenating tired or problem areas of planting
- Help with growing fruit & veg, organic gardening, pests & diseases, etc.
- Specialist gardening work such as pruning, border maintenance etc.

## SADDLERS BED & BREAKFAST

SELF-CONTAINED COTTAGE IN THE HEART OF HARBURY.  
DOUBLE BED, SHOWER ROOM, LIVING & DINING AREA WITH  
KITCHENETTE, TV/DVD; CD/RADIO. SLEEPS 2 TO 4.  
OFF ROAD PARKING.

£60 PER NIGHT INCLUDING CONTINENTAL BREAKFAST.

JULIE YOUNG, SADDLERS, CHAPEL STREET, HARBURY.  
01926 614050 OR EMAIL [enquiries@saddlersbed.co.uk](mailto:enquiries@saddlersbed.co.uk)  
[www.saddlersbed.co.uk](http://www.saddlersbed.co.uk)



## Why you should buy your new kitchen or bathroom from Modern Homes!

- With over 43 years of trading we are the longest established specialist in your area.
- Predominantly British Manufactured products
- Family run 'local' business
- Personal recommendations
- Large kitchen and bathroom showroom
- Full installation service with employed fitters
- Value for money... We offer styles to suit all tastes and budgets
- Kbsa members offering Consumer care protection

[www.modernhomesleamington.co.uk](http://www.modernhomesleamington.co.uk) Email: [info@modernhomesleamington.co.uk](mailto:info@modernhomesleamington.co.uk)

**01926 883338**

Modern Homes, 37 Longfield Road, Sydenham Estate, Leamington Spa CV31 1XB  
(between Wilts and CAS)



## **JAMIESON JOINERS**



Manufacturers of quality windows, doors,  
stairs, conservatories,  
fitted kitchens/bedrooms.

Established 25 years.  
Competitive prices. Private/Trade

Tel 01926 612921/07968 009094  
or e-mail your enquiry to:

[stablesatharbury@live.co.uk](mailto:stablesatharbury@live.co.uk)

# **Spa Roofing Co.**

**(Roofing Specialists)**

**For all Roofing, Guttering and  
General Repairs**

**(Free Estimates)**

**All Work Guaranteed**

**Call: 07876 508032  
or 01926 770822**



A Member of the Alliance of Private Sector Practitioners

# Jackie Biddle

## Healthy Feet are Happy Feet

Foot Health Practitioner

Dip CRP MPS Foot  
CRB Checked

Home Visits Telephone

T: 01926 612503

M: 07872 907429

# LOUISE BEALE

photography

studio in  
Fenny  
Compton



Wayland House, Station Fields, Fenny Compton,  
Southam, CV47 2XD, 0783 4071210

[louise@louisebeale.co.uk](mailto:louise@louisebeale.co.uk)

[www.louisebeale.co.uk](http://www.louisebeale.co.uk)

**5 High Street**  
**Southam**  
**Warwickshire**  
**CV47 0HA**

**Tel: 01926 812574**

**Email: [enquiries@reynoldsinsurance.co.uk](mailto:enquiries@reynoldsinsurance.co.uk)**

**Website: [www.reynoldsinsurance.co.uk](http://www.reynoldsinsurance.co.uk)**

# reynolds insurance

## SERVICES LTD

*Independent Insurance Advisers*



Are you fed up with hanging on the phone or searching the internet?

Would you like to talk to friendly, experienced staff who will explain the small print?

We have been established in Southam since 1983 with the same staff who would be happy to offer you a competitive quote for all classes of insurance private or commercial.

**Call Deb or Sue - 01926 812574**

### FREE QUOTES ON:

Household

Motor

Short Term Learner Driver Insurance

Fleet/Vans/Trucks

Public/Employers Liabilities

Shops

Travel

Restaurants & Pubs

Business Insurance

Tradesman Insurance

Let Properties/Holiday Homes



Services available include, lawn mowing and edging, border maintenance, stone wall construction or repair, fence repair or replacement, patio and outdoor furniture cleaning.

**Do you have unwanted weeds?**

Why not ask us about our chemical weed control, we are fully qualified and have everything you need to have a weed free summer.

**\*\* Leafy News – Date for your Diary\*\***

Come along to our 1<sup>st</sup> Open Garden on

**Saturday 8<sup>th</sup> September from 1:00pm**

See a local garden lovingly brought back to life, meet the owner and see what we can do.

An afternoon for the whole family, enjoy a drink and a cake and be inspired while children enjoy the games!

(1 Dovehouse Lane, Harbury - Phone the number below for more info)

*All outdoor maintenance considered.*

*No job too large, or too small.*

*For all your outdoor chores, call your local, friendly gardener:*

**Richard Everett**

**07923 167420 or 01788 567774**

**Leafyservices@gmail.com**

**www.leafyservices.co.uk**

## **FENCES : TREES**



**All types of fencing and gates**

**Tree felling and reduction**

**Hedge laying and trimming**

**Patios**

**Seasoned logs available**

**Call Adrian Dollar on**

**01926 817077 or**

**07914 623989**

**Qualified and Insured**

# **Nifty Needle Curtain Shop**

**1 Banbury Street, Kington**

**Made to measure curtains and blinds.**

**Free measuring service.**

## **Nifty Nik Naks Gift Shop**

**For interesting presents**

**01926-641741 email: niftyneedle@fsmail.net**

**Open: Tuesday - Friday 9.00am - 5.00pm**

**Saturday 9.00am - 2.00pm**

**(Harbury Resident)**

## Roger Frogley & Sons Fencing



High quality domestic, industrial and agricultural fencing offering a service second to none.  
*competitively priced - clean, efficient & reliable*

If you require some fencing - look no further!  
Visit our **fully featured website** for ideas and examples and get in touch.

**[www.frogleyfencing.co.uk](http://www.frogleyfencing.co.uk)**

or ring 07970 652145



## LOCKE & ENGLAND

**AUCTIONEERS & VALUERS**

Established 1834

## Auction Every Thursday

Viewing Wednesday 12.00noon - 7.00pm  
and morning of sale from 9.00am

Bi-Monthly Antique  
& Collectors' Auctions

Regular Valuation Days

Valuations for Insurance,  
Probate & Family Division

Specialist & Commercial Sales

Collection Service

**ENTRIES INVITED FRIDAY,  
MONDAY & TUESDAY**

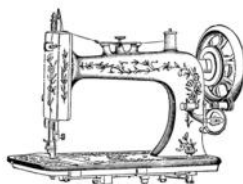


12 Guy Street, Leamington Spa, Warwickshire CV32 4RT

**01926 889 100**

**[www.leauction.co.uk](http://www.leauction.co.uk)**

## Drop Dead Gorgeous



Beautiful Handmade Curtains, Cushions and Roman Blinds all made to measure. Curtain alterations also undertaken.

Free Quotes and Free Fitting.

Contact Sharron for Friendly and Helpful Advice.

07760 395805 or 01926 612226

or email: [dropdeadgorgeouscurtains@gmail.com](mailto:dropdeadgorgeouscurtains@gmail.com)

# The Shakespeare Inn

## New Steak House & Grill



- ♦ Traditional 18th century country inn
- ♦ Choice of real ales and guest beers
- ♦ Meals served Monday - Saturday  
12 noon - 2.30pm and 6.00pm onwards
- ♦ Sunday Lunch - 12 noon - 3.00pm
- ♦ Large car park and beer garden
- ♦ Function room available for family events and corporate meetings



Also offering a wide range of other menu choices including:  
Pasta / Rice dishes and Vegetarian options

***Specials Board also available***

9-11 MILL STREET, HARBURY, LEAMINGTON SPA, CV33 9HR. Telephone: 01926 613822

# The Gamecock Inn

OPEN 4.00PM TILL CLOSE

Selection of Fine Ales

Wednesday Evening  
Open Mic Night starts 8.30pm

Sunday Evening  
Quiz Night starts 9.00pm  
plus 'Play Your Cards Right'

All Welcome



CHAPEL STREET, HARBURY. TELEPHONE: 01926 612306