

Harbury & Ladbroke News

Reflects all aspects of local life, is published monthly and produced with the assistance of
All Saints' Parochial Church Council.

May 2012

No.458

Editorial Office

☎ 612155

Articles to

Harbury Pharmacy, High Street

Email address

articles@hlnews.co.uk

Advertising Office

31, Binswood End (☎ 612155)

advertising@hlnews.co.uk

Distribution Manager

49, Mill Street (☎ 612009)

distribution@hlnews.co.uk

Inserts by prior arrangement

☎ 612009

IN THIS ISSUE

Page

EDITORIAL	2
HARBURY DIARY & REFUSE ROTA.....	2-5
FROM THE RECTOR & CHURCH NEWS	5
LADBROKE NEWS	8
HARBURY PARISH COUNCIL	18
CLUBS & SOCIETIES	25
EARLY YEARS & SCHOOL.....	36
VILLAGE HALL UPDATE	42
GARDENING & NATURE	44
GENERAL SECTION	49
LETTERS TO THE EDITORS	62

Editorial Team

John Holden - Chris Finch - Marian Millington - Janice Montague
Ralph Swadling - Jackie West

*The views of contributors are not necessarily those of the Editorial Team
The Editors reserve the right to amend articles as they see fit.*



Editorial



After several months' closure, Harbury Library will be re-opening on Thursday 10th May with its cafe opening the following week on 16th May. We wish the organisers and volunteers well in this significant undertaking.

Our editorial photograph was taken by John Eld outside the Library and shows that in Harbury we teach our youngsters about Health and Safety at an early age!

Preparations are now underway in both villages for the Jubilee and June events. In Ladbroke the fete will be on Saturday 2nd followed by a Festival on Monday 4th. In Harbury the wheelbarrow race on Sunday

3rd June kicks off the traditional week of pub games ahead of the Carnival and Heart of Harbury Games later in June.

The Harbury & Ladbroke News AGM will be held on Tuesday 8th May, 8pm at The Shakespeare, all welcome.

Finally we extend our sympathies to the families of David Delin and Roland Padbury.

Harbury Diary

MAY

- | | | |
|------|---|---|
| Sat | 5 | Coffee Morning 10.00am – 12 noon in Tom Hauley Room in aid of Senior Citizens
Harbury Society Archaeology Walk, 1.30pm, Chesterton Church |
| Sun | 6 | EASTER V
Sung Eucharist, 9.00am
First Light Service, 10.30am, Tom Hauley Room
Holy Communion with Laying on of Hands 6.00pm
Zumba 9.00am in Village Hall |
| Tues | 8 | Holy Communion, 7.30pm
Toddlers Service, 2.00pm, Tom Hauley Room
Harbury & Ladbroke News AGM, 8.00pm, Shakespeare Inn |

- Wed 9 Wednesday Walkers - Combrook - Oxhouse Farm (4 miles)
meet 9.45am, Village Hall
Ballroom Dancing, 7.30pm beginners, 8.00pm main group in
Village Hall
- Thurs 10 Holy Communion 9.45am followed by coffee
Parish Council meeting in Village Hall 7.30pm
WI 7.45pm in Tom Hauley Room - Resolutions
- Fri 11 Pre-school 80's/90's Disco from 8.00pm 'till late Village Hall
Tickets £5 from Country Fayre
- Sat 12 Coffee Morning 10.00am – 12 noon in Tom Hauley Room in
aid of Toddler Group
- Sun 13 EASTER VI**
Holy Communion, 8.00am
Sung Eucharist, 10.30am
- Tues 15 ADVERTS FOR NEXT ISSUE TO: 31 BINSWOOD END
HARBURY BY 5.30PM
Holy Communion 7.30pm
- Wed 16 Wednesday Walkers - Bishops Itchington to Ladbroke (5 Miles)
9.45am, Village Hall
Tea 3.00pm, Tom Hauley Room
Ballroom Dancing, 7.30pm beginners, 8.00pm main group in
Village Hall
- Thurs 17 ASCENSION DAY
Holy Communion, 9.45am followed by coffee
NSPCC Ladies Lunch in the Tom Hauley Room, tel 614664 for
details
Harbury Theatre Group presents 'Breakfast for One' and 'Visitors
from Forest Hill', doors open 7.30pm, curtain up 8.00pm,
Village Hall
- Fri 18 Harbury Theatre Group presents 'Breakfast for One' and
'Visitors from Forest Hill', doors open 7.30pm, curtain up 8.00pm
Village Hall
- Sat 19 Men's Prayer Breakfast, 7.30am, Tom Hauley Room
Coffee Morning 10.00am – 12 noon in Tom Hauley Room in
aid of Tennis Club
Harbury Theatre Group presents 'Breakfast for One' and 'Visitors
from Forest Hill', doors open 7.30pm, curtain up 8.00pm,
Village Hall
- Sun 20 EASTER VII (SUNDAY AFTER ASCENSION)**
Holy Communion, 8.00am
Family Communion Service, 10.30am
Evensong, 6.00pm
- Tues 22 Holy Communion, 7.30pm
Julian Meeting, 8.00pm
- Wed 23 Wednesday Walkers: Hidcote (bring picnic), meet 9.45am at
Village Hall

- Wed 23 Ballroom Dancing, 7.30pm beginners, 8.00pm main group in Village Hall
- Thurs 24 Holy Communion, 9.45am, followed by coffee
Thursday Club, 2.30pm in Village Hall
ARTICLES FOR NEXT ISSUE TO HARBURY PHARMACY,
HIGH STREET & EMAIL ARTICLES DEADLINE BY 5.30PM
- Thurs 24 Annual Parish Meeting in Village Hall, 7.30pm
- Sat 26 Coffee Morning 10.00am – 12 noon in Tom Hauley Room in aid of Myton Hospice
Ufton Village Church Fete, 2.00-4.00pm, Old Rectory, Ufton
Energy Generation & Efficiency Event, 1.00pm, Village Hall
Harbury Juniors Football Club Presentation evening starts 6.30pm in Village Hall
- Sun 27 WHIT SUNDAY/PENTECOST**
Holy Communion, 8.00am
Sung Eucharist, 10.30am
- Tues 29 Drop in Tea for the Bereaved, 2.30 to 4.30pm, 19 Farm Street
Holy Communion, 7.30pm
- Wed 30 Wednesday Walkers - Warmington (4 miles), meet 9.45am at Village Hall
Ballroom Dancing, 7.30pm beginners, 8.00pm main group in Village Hall
- Thurs 31 Holy Communion, 9.45am followed by coffee
Experiences in the Holy Land, 7.30pm, Tom Hauley Room
- JUNE**
- Fri 1 HALF TERM STARTS
- Sat 2 Coffee Morning 10.00am – 12 noon in Tom Hauley Room in aid of Harbury Energy Initiative
- Sun 3 TRINITY SUNDAY**
Sung Eucharist, 9.00am
First Light Service, 10.30am, Tom Hauley Room
Wheelbarrow Race, 12.30pm for 1.00pm start at The Shakespeare Inn
Quiet Contemplative Service in the Celtic Tradition, 6.00pm
- Mon 4 SPRING BANK HOLIDAY
Aunt Sally Pub Game, 7.30pm at The Dog Inn
- Tues 5 DIAMOND JUBILEE DAY HOLIDAY
Horseshoes Pub Game, 7.30pm at The Gamecock
Holy Communion, 7.30pm

**DATES FOR INCLUSION IN THE HARBURY DIARY PLEASE TO:
LINDA RIDGLEY - TEL. 612792.**

Refuse Collection Rota				
	Deppers Bridge	Harbury	Ladbroke	Collection Week
May	Wed	Thurs	Fri	
	9	10	11	Green & Blue Lid Bins
	16	17	18	Grey Bin
	23	24	25	Green & Blue Lid Bins
	30	31		Grey Bin
June			1	Grey Bin
	6	7	8	Green & Blue Lid Bins
	13	14	15	Grey Bin

	<h2>From the Rector</h2>	Reverend Craig Grocock
All Saints HARBURY	The Rectory, Vicarage Lane, Harbury ☎612377 ✉kankudai43@aol.co.uk	

Jesus who?

We had a great Easter at both Harbury and Ladbroke this year. Once again, it was really good to see so many of you from the villages at our services.

I am always fascinated in the fact that many people, whilst they may not be churchgoers or religious people, are often interested nevertheless in the person of Jesus Christ. People are interested to know who he was, what he stood for, why he had to die so horrifically etc. On the Harbury Church website I have posted something about him. In case you cannot access this electronically, here it is:

Jesus was born into an ordinary carpenter's family in Israel over 2000 years ago. As an adult he began the work of teaching and healing. He had a deep relationship with God as his Father and invited all people to come to God afresh. His message was the good news of God's love and the coming of God's kingdom. The invitation was to follow him, to love God and to love one another. His actions and miracles backed up his words and ordinary people flocked to hear him.

The religious leaders of the day didn't like what was happening, their authority being usurped by this upstart, as Jesus challenged the very nature of their role and the religious system that flowed from it. They began to look for a way to silence him. Many agree that Jesus was a

great teacher. Even contemporary historians mention his miraculous deeds.

Throughout the accounts of Jesus' life, he went out of his way to reach those who were broken, abused, marginalised and outcast. These were people who knew their failings and their needs. They found a life-changing hope in Jesus, and his forgiveness offered them a new start that was rooted in God's love for them.

But the more popular Jesus became, the greater his challenge to the religious authorities. It culminated in his betrayal, arrest, show trial and execution.

If that was all, we would be left with a mere historical figure to admire from afar. But two days later, the tomb where Jesus had been laid was found to be empty, and Jesus was seen alive again!

Fair-minded people will agree that Jesus has made quite an impact on the world through the centuries. But the key question remains: "What has all this about Jesus got to do with my life today?"

The answer is **"Everything"**.

If you would like to talk about the Christian faith and the difference we believe Jesus makes, then do get in touch with me. I am always up for coffee and a chat.

God bless.

From the Registers

Funerals, All Saints' Harbury

10th April David Delin (92 Years)

19th April Roland Padbury (72 Years)

Burial of Ashes, All Saints' Harbury

20th March Derek Lowe

4th April June Sharpe

Holy Matrimony, All Saints' Harbury

24th March Jonathan Montanaro to Rownea Broomfield

28th April Alan Guildford to Katie Orr



Mothers' Union

Sue Boniface

Our Diocesan President, Di Sliwinski was the speaker at our March meeting. Di talked about her visit to the Netherlands last Autumn and reported on her findings regarding the differences in approach to sex education and the small number of teenage pregnancies in comparison with those in the UK.

At the beginning of April, Christine Rutherford led our meeting with a meditation on the relevance of The Crucifixion to our lives today. Sixteen members were present for this most interesting and thought provoking discussion.

We look forward to hearing about the work of the Night Shelter from John Guilford at our meeting on 2nd May.

Visitors are welcome to join any of our meetings which take place on the 1st Wednesday of each month in the Tom Hauley Room at 2.00pm. Copies of our programme are available in the Church.



Toddlers' Service

Barbara Thistlethwaite

Mrs Katharine Giblin started our service by playing our chosen song "Jesus' love is very wonderful". Mrs Dorothy Travis then told us the story of "the Lost Coin". The lady had to work very hard to earn just one coin. She scrubbed and cleaned and was always very tired when she got home. Each night she would count the coins very carefully and put them safely into her purse. She would then go to bed tired but happy and content.

One night when she got home from work and took out her purse an awful thing had happened and one of her coins had gone missing.

We then all went on a hunt around the Tom Hauley room and around the Church looking for the coin. The poor lady was very upset and did not think that she would find the missing coin but she did find it and was happy again.

Mrs Travis said that, like the lady looking for her small coin, God will always look for us if we get lost because however small we are we are very precious to him.

We then said our thank you prayer, did some stickings, had our drinks and played until it was time to go home.

Our next Toddlers' Service is on Tuesday 8th May at 2.00pm in the Tom Hauley Room. All babies and toddlers, accompanied by an adult, are welcome.

Experiences in the Holy Land

In February twelve people from Harbury and Ladbroke joined others from Stockton, Warwick and the South of England for an unforgettable week in the Holy Land. Our journey, led by Biblelands representative Su McClellan, was not just a pilgrimage, although we visited holy sites, but an eye opening educational encounter to see situations as they really are. It is a land where we experienced faith and the sacred in no small measure and all of us are the richer for it. It is also a land of stark contrasts, geographical, political and social. Since our return many people have asked us to share thoughts about our visit with them. In response we would like to invite you to come and travel with us, by watching a visual presentation and hearing some of our experiences and reflections. It will be on Thursday 31st May at 7.30pm in the Tom Hauley Room. There will be refreshments, no charge, but donations to Biblelands would be gratefully received. For more information please phone Jill Winter, 612585, John or Sally Stringer, 613214 or Elaine Barnden, 817441.

Jill Winter

Ladbroke News & Diary

MAY

Sun	6	EASTER V Family Communion, 10.30am followed by refreshments
Sat	12	Whist Drive, 7.45pm, Village Hall
Sun	13	EASTER VI – ASCENSION DAY Holy Communion, 9am
Tues	15	ADVERTS FOR NEXT ISSUE TO: 31 BINSWOOD END HARBURY BY 5.30PM
Thurs	17	Holy Communion, 7.00pm
Sat	19	Whist Drive, 7.45pm, Village Hall
Sun	20	SUNDAY AFTER ASCENSION Holy Communion, 9.00am – Book of Common Prayer

- Thurs 24 Women's Institute meeting, 7.30pm, Village Hall
 ARTICLES FOR NEXT ISSUE TO HARBURY PHARMACY,
 HIGH STREET & EMAIL ARTICLES DEADLINE BY 5.30PM
- Sat 26 Whist Drive, 7.45pm, Village Hall
- Sun 27 PENTECOST – WHIT SUNDAY**
 Holy Communion, 9.00am
 Photography Club, 7.30pm in Village Hall
- JUNE**
- Sat 2 Fete, 1.00 – 4.30pm on the Millennium Green
- Sun 3 TRINITY SUNDAY**
 Jubilee Civic Service, 10.30am
- Mon 4 Festival of Arts, Crafts and Hobbies, 10.00am – 4.00pm in Church



Ladbroke Church News

Sue Lord

The Good Friday performance of The Crucifixion by Sir John Stainer was amazing. The Augmented Choir led by Bill Bosworth, featuring guest Tenor and Bass soloists, sang to a packed Church. The audience participation with hymns was quite moving. Thanks go to Bill and the choir for working so hard in making this a most memorable occasion and also to Will Morten for playing the organ so competently.

The Easter Day service was well attended and the Church looked stunning with amazing displays of floral arrangements. Thank you to everyone who gave their time and demonstrated such creative skills.

Improvements continue to the exterior of the Church. The latest activities include new protective grills over certain stained glass windows and a more secure lightning conductor system.

Ladbroke Flower Rota

- 6th May Sue Collins
- 13th May Kate Todman
- 20th May Kate Todman
- 27th May Betty Winkfield



Sue Lord

Our meeting on 27th April began as usual with news since the last one. Sue Moore thanked everyone involved with the coffee morning in the Tom Hauley Room which raised £237 and we heard about a number of future activities including the Warwickshire Federation's Plant Sale at Corunna Court, Warwick, CV34 5HQ on Saturday 19th May, 2-4pm, which is open to everyone with free admission.



We were joined again by a number of male visitors as the subject for the evening was the technical development of the RNLI's new Shannon lifeboat, explained by their principal electronics engineer, John Nurser. He told us how nothing off-the-shelf is ever right for the work of the RNLI – marine equipment tends to be too luxurious and too large while the standard yachting equipment is

not robust enough for the sea conditions in which the RNLI has to work. So, as well as operating and maintaining boats and supporting equipment, the RNLI is now designing and building its new boats in-house.

The Shannon started with a long list of requirements to be met by the final design, e.g. it needed to be self-righting, no serious damage after grounding on flat ground, have seating for six crew plus six survivors, operate in 50 foot waves with 60 knot winds, run 10hrs at full power and still have 10% fuel in reserve, travel at 25 knots in Force 2 and 17 knots in Force 7 conditions and able to pull 3.3 tonnes. All this while being small enough fit through 6m x 6m boat house doors. The first prototype seemed OK but during sea trials in 2008 it was apparent that as the boat descended from big waves it shook the crew sideways putting dangerous stress on their necks and backs. A new hull shape giving a much smoother ride was developed using a wave tank and then open water tests on 1/8 scale models. We then saw a series of photos showing how the inside of the boat was kitted out, video of the sea trials conducted only a week previously and pictures of it just fitting through the doors of the Exmouth Lifeboat Boathouse. The RNLI has already started making the second of their Shannon boats and plan to have nearly 60 enter service over the next 10 years, half of them beach-launched and the others kept afloat. As the boat is 13 metres long the serial number of all these will

start with the number 13 – let's hope it's a lucky number for those who sail in them. There is lots of information about the Shannon on the RNLI website, www.rnli.org.uk - you can even see a video clip of the sea trials in April.

We then heard about the development of the very special crew seat which has so much suspension it looks a bit like a seat attached to pogo sticks. But they do a good job giving the crew a comfortable ride and more importantly prevent back problems even when forces exerted are up to 5 or 6G! Although designed by the RNLI, these seats are made by a commercial company and a few have been bought for other boats operating in severe conditions such as for the coxswain of boats taking people to and from oil rigs. John concluded his talk with information about the Systems and Information Management System (SIMS) that he himself was responsible for. This takes all the communications, navigation, machinery, electrical and marine systems data and makes it available at any one of six computer screens that the crew can see and operate from their seats. So there is no more grovelling around in the depths of the boat to check a bilge pump; crew members can do this while seated in the wheel house, though perhaps that should be renamed since in this computer age there is no wheel in it anymore!

After the talk there was an opportunity to buy something from the Leamington RNLI branch's sales table and give a few pounds towards the next £1.5M Shannon lifeboat.

Our next meeting on 24th May will be to discuss the WI Resolutions and also local events, including confirming the arrangements for the refreshment stall at Ladbroke Fete and what our members will bring to display in the WI section at the Festival of Arts, Crafts and Hobbies.



Ladbroke Photography Club

Kip Warr

From Marrakech to Fez by way of the desert.

This was definitely not a collection of holiday snaps; it was a polished presentation of excellent and often striking images by two men who take their photography (and holidays) seriously. Andy Pittaway and Mike Todman had enrolled in an extended tutorial trip through Morocco with a professional photographer, Simon Green. His first instruction was the most scary: to turn off all automatic features on their cameras and to set aperture, shutter speed and focus manually for each shot. For most owners of modern cameras this is truly unsettling but Andy and Mike rose to the challenge and their results spoke for themselves.



The cities provided scenes of narrow alleys, Islamic architecture, exotic markets, street cafés and an open air tannery (imagine the stench!). They also offered bright colours and portraits that each told a story (a man carrying chickens, a girl with a goat kid, someone disappearing down a narrow passageway). There

were less obvious and more challenging shots of night-time streets from a moving minibus and pictures taken at dusk when fading daylight is balanced by street and vehicle lights.

From the desert they brought pictures of the sweeping lines of dunes with curls, curves, shadows, ripples and long, mysterious landscape views. Through the clear black night sky they produced long-exposure photographs of the stars. And during the day they struggled with the technical difficulties of taking pictures from the back of a walking camel!



Now they have booked another such holiday and we relish the prospect of seeing their next batch of pictures.



Ladbroke General Section

Annual Village Meeting

The meeting on 18th April brought residents up to date with reports of the past year and future activities from local government and village organisations. Each one thanked everyone who has supported them in

the past year, users of the hall said how much they appreciated the central heating and there was lots of other information shared.

Police – Ladbroke is within a 100 sq mile area which, following the structural changes in May 2011, is covered by one police officer and two PCSO's. Ladbroke is a low crime area however nearby places suffered several crime spikes, such as that in Harbury in the New Year, and this triggered extra patrols. Since the closure of the front desk at Southam the police can be contacted by phone either from the Warwickshire Direct desk in Southam Library or directly - 101 is the number to use for non-emergencies. Do report suspicious incidents on this number as additional resource is only supported when there is evidence that it is needed. A police representative will come to the Parish Council if there is an issue to be discussed, however the Community Surgeries are under review due to poor attendance from the public.

HS2 Action Group – The proposed route is still to the north of Windmill Hill but now with a small diversion off the A423 to Southam where it will cross the rail line. The village meeting on 1st March brought people up to date and raised £2000 towards HS2AA's £200,000 legal challenge. The approach is based on the legal and political aspects to try to halt HS2 but, should it proceed, it would be essential to ensure noise limitation and a reduction in the visual impact on the surrounding area. Local benefits, including getting a good Southam to Ladbroke footpath and improved flood protection would be needed, as well as compensation for properties affected by the proposals. The Action Group is working closely with the Parish Council and WCC and the first HS2 Community Forum for this area was held here in Ladbroke on 26th March. The Action Group's website has been minimised now that the WCC website has comprehensive information on HS2. If you wish to be on the group's mailing list let Graham Long know; you can also register online to get WCC updates.

Parish Council – This now meets seven times per year plus some planning meetings. The precept has increased from £4700 to £5000 to cover ending of the website grant etc. All monies and allocated funds will be consolidated into the main PC accounts and all expenditure trimmed where possible, e.g. the village website will now be at **ladbroke-pc.co.uk** as this domain name is significantly cheaper than the previous (.gov) one. The parish council has been involved in HS2, the Windmill Lane name change, a flooding review, reviewing 251 pages of strategy documents from the district council and various legislative documents, planning applications etc. Documents stored locally will be reviewed and minimised e.g. old magazines to be disposed of but pre-electronic planning applications to be retained where appropriate. There was concern about the lack of water pressure when needed to tackle the fire in Ladbroke.

Subsequent measurements have shown instant pressure is OK but cannot be sustained and a map, plotting areas with good and poor pressure, doesn't show any clear patterns. **If you are aware of any leaks in the village let Severn Trent and also Derek Batty know.** It was also suggested that the Chief Fire officer was contacted about our concern.

Warwickshire County Council – Bob Stevens reported that WCC is “going for growth” and that, to help regenerate the economy, the Coventry, Warwickshire and Solihull Local Enterprise Partnership has £8.3m to distribute. To reduce costs, the Fire Service is now in a strategic alliance with Northants with a joint control centre and training in Leamington planned; the Police are in alliance with West Mercia; Adult Services are a commissioning service, i.e. WCC uses contractors rather than employing people directly, saving £2m. Restructuring of the NHS, losing the PCT and having three GP consortia starts on 1st April 2012. In Warwickshire 70% of secondary schools have opted to change to Academies – Southam College will decide soon. WCC is part of 51M against HS2 but is also talking to HS2 to ensure we get best mitigation possible if it cannot be stopped. The contract for roads is now with Balfour Beatty and is much more stringent than before so repairs should happen quicker. The Southam town centre development has 60 extra care homes (= sheltered care) planned, Tesco will make a significant financial contribution to this, provided the money is spent in next 2.5 years. A lot of the cement works has been flattened and it is expected that the quarry will be the other side of the road within five years. Across the county many street lights will be switched off at midnight - 5am, Ladbroke Parish Council can decide the timing of the ones here.

Stratford District Council – Chris Williams reported that SDC continues to have the lowest council tax in Warwickshire and now employs 275 people to cover planning, rubbish and recycling, social housing, leisure activities etc. Planning guidance for new homes has changed, rather than being told to have a specific number in places with highest population, SDC can set its own which it has done: up to 2028 SDC needs 5500 new homes; only 10% should be in Stratford, the others to be split equally between the market towns and villages with facilities. The maximum size of developments should be 100 homes or 2% of the existing housing stock and they should be built on brownfield land of which there is more than enough. The government has defined the responsibilities of councils towards Travellers in a similar way to those for the homeless. Travellers can stay legally for 28 days and councils must have enough legal places for them to live on to prevent the development of unofficial sites. SDC have identified a need for 52 “pitches” and sites for these are being identified. When reviewing plans for wind farms and turbines, such as those at Knightcote, Wormleighton and Shuckburgh, SDC has to be

aligned with the government thinking and is not allowed to reject on economic grounds. Planning has to focus on the impact on the nature and character of the landscape, however there is a large difference between approving a mast to measure wind speed and the actual turbines; note any cables and pylons are exempt as they are a “permitted development”.

Jubilee Celebrations – these will include the Fete, Civic Service, an exhibition in Church, Bell Ringing and, later in the year, planting a tree.

The Alibone Trust – £500 has been given to the Church; the non-ecclesiastical portion has not been spent yet as there have been no requests.

All Saints' Church – Rev Craig reminded us that the Church is there for all the community whether it is at the Sunday service, weddings (5 last year) funerals, special services and events or just during the day as a place of tranquillity. C of E churches receive no central funding and must raise their own funds. It costs about £20,000 per year to keep Ladbroke Church going - we are in a much better position financially than three years ago thanks to generous support from church members and many other villagers, please continue. Also if you would like something different to make the Church more relevant to you, please tell us.

Village Hall – the highlight of the year was installation of the gas-fired central heating, other improvements included the blinds and new paint. The committee are now looking into roof insulation and grants to help finance this; they would also like to improve the kitchen facilities. Events included the Xmas Party with the Ladbroke Rockers, Panto and Film Nights. Look out for the Treasure Hunt in the summer, Antiques Roadshow in autumn and another Xmas party. The merger with the Millennium Green is progressing but is a slow process.

Millennium Green – it costs approx £2000 per year to insure the green and have the grass and hedges cut. The trustees also have working parties to weed and clean the play area and do any repairs. Funds were raised last year by the Safari Supper, Fete, Live Music event and Quiz. This year's Fete will be on 2nd June (see separate article). There is now a draft constitution for the merged Millennium Green and Village Hall which is under review. It should go to the Charity Commission later this year.

WI – meets on 4th Thursday, members are women but men are welcome as guests if interested in any of the talks. Our WI started 40 years ago and will be celebrating this in September. It is involved in several village events including teas at the Fete, the Civic Service on 3rd June and will be exhibiting on 4th June.

Whist – meets 7.45pm most Saturdays. It is well attended but would welcome newcomers, especially younger ones who could keep this tradition going.

Photography Club – meets on 1st Tuesday and had a successful year with regular reports of its activities in the Harbury & Ladbroke News. The calendar sold over 160 copies and was sent to five continents! Our next major event will be the display at the exhibition in Church on 4th June.

Bell Ringers – practice on Mondays 7.30-9pm and welcome newcomers. They ring regularly, including at weddings, and conduct routine maintenance in the tower. A Quarter Peal (2hrs ringing) is planned for St George's Day and also during Jubilee Week.

Jackie West

Jubilee Weekend

Ladbroke Fete – Saturday 2nd June, 1.00 – 4.30pm

Plans are progressing well and we hope you are busy saving up 1p, 2p and 5p pieces for the coin picture of The Queen. You can also celebrate it being Jubilee weekend by coming along to the fete dressed in our theme colours – we'll be awarding prizes for the best red, white and blue outfits.

We are especially pleased that so many “new hands” will be helping the “old hands” run the fete on the day. As you would expect there will be stalls selling bedding and other plants, books and bric-a-brac, games of skill and chance, WI teas, hot dogs and beer plus the races for children and adults. The local produce stall will be there, selling cakes, pies, biscuits, sweets, bread, jam, chutney plus seasonal fruit and vegetables and would welcome donations of any of these, especially cakes.



This year we are expecting a number of new stalls and events including Phoenix greetings cards, The Ladbroke Natural Health Centre (with demonstrations and info about Acupuncture, Herbal Medicine, Reflexology and a range of Massages and other treatments), a paper plane competition, live music from Harbury Ukulele Group, and a Gatka display with accompanying exhibition on Anglo-Sikh military history. Gatka, if you haven't come across it before, is an

ancient martial art using a range of weapons, it's visually spectacular so bring along your camera to capture the action!

The fete is on the Millennium Green on Saturday 2nd June from 1pm – 4.30pm, entrance £2, free for under 12s. For more info or to hand over things to be sold, please contact Graham (815196) or Jackie (810331) or email jackieszone-fete@yahoo.co.uk.

Jackie West

Ladbroke Civic Service – Sunday 3rd June, 10.30am

Members of our local community will be taking part in this family service which will include the Jubilee Prayer, linking us with similar services in many countries and with the official Jubilee Thanksgiving Service in St Paul's Cathedral on the following Tuesday. Come and join us in celebrating the Queen's Diamond Jubilee here in your local church.

Jackie West

Ladbroke Festival of Arts, Crafts and Hobbies

All Saints' Church, Monday 4th June, 10am – 4pm

Our festival in All Saints' Church is to celebrate the creativity of local people. We have had a great response with many people offering to exhibit their talents from train models to a crocheted wedding dress, with local history, painting, ceramics, waxed furniture, flowers, cakes and more along the way. The WI are planning to show items made by their members, Ladbroke Photography Club will be exhibiting more of their photos and we're expecting children from St James School, Southam to make a contribution too. There is still time to submit your work so please contact Nicky Lewis (815196) or Margaret Bosworth (817312). For those who would like to sell their work there will be an opportunity to price pieces and collect contact details of buyers; it is not our intention to take payment. The main focus of this exhibition is fun, so please dust off your favourite works and let everyone see them.

The photography competition at the festival is open to all non-photography club members*. Just send one photo you have taken (any subject), as an unmounted print maximum size 210mm x 125mm (6x8"), smaller is fine, together with a slip of paper with the title of your picture, your name, address and your age if you are under 16. All the pictures will be displayed and people visiting the festival will vote for their favourites, the winners being those with the most votes. Photos and details need to arrive at Hallsfield, School Lane, Ladbroke by Monday 28th May, i.e. one

week before the festival. **If you are in a photography club or a professional, rather than enter the competition it's suggested you exhibit larger pictures.*

Do come and spend some time on 4th June to visit the exhibition in our lovely Ladbroke Church. A warm welcome awaits, admission is free (though donations to the Church are always welcome) and tea, coffee and cakes will be available. We will also encourage musicians to come and play our organ to the visitors.

For more info about the festival email **nicolalewis24@tiscali.co.uk** or **margandboz@btinternet.com** or if you have a question regarding the photography competition **jackieszone-festival@yahoo.co.uk**

Nicky Lewis & Margaret Bosworth

Ladbroke Village Hall Millennium Club

£80	Pete Edgar
£50	Geoff Lane
£25	Deb and Seth Brown
£10	Kate and Kevin Pickin
£10	Carole Loftus
£10	Lorna Carlton
£10	Keith Archer
£10	Jim and Pauline Laidler

Margaret Bosworth



Harbury Parish Council

Linda Ridgley

Official minutes can be viewed on the Parish Council website www.harbury-pc.gov.uk or obtained from the Parish Clerk Tel: 01926 614646

March 2012

This was the first meeting for highly experienced Alison Biddle, Harbury's new Parish Clerk, who is also Clerk to Bishops Itchington Parish Council and it was not one of the fastest under Tim Lockley's Chairmanship.

Public Participation

Colin Sheasby was spokesperson for a group concerned about the impact on green space of plans to build on the former Dovehouse Autos site on the corner of Dovehouse Lane and Frances Road.

Colin talked with great passion about the loss of wildlife, meadowland, hedgerows and the many fruit trees in that area over fifty years . A right of way, now largely tarmacked or lost, had run from Vicarage Lane across the development site and down Dovehouse Lane to the Pound.

He understood the need to provide homes for local people but on this site he would like to see the boundary hedge replanted for the Jubilee. Local people were willing to provide clones from existing trees for this purpose.

Other local residents complained about the dereliction of the site and would prefer that a single bungalow be built there. It had an existing commercial designation and there was a proven local need for offices and workshops, but efforts to buy it for these purposes had failed.

The Chairman explained that, at present, the planning application had been withdrawn and that the green area was owned by Stratford District whose permission would be needed before the hedge could be planted. However, Cllrs thought it a good idea in principle and that it would be better received by the District if the initiative came from the Parish Council.

Marian Millington agreed to attend the Stratford Police Independent Advisory Group and report back to the Parish Council.

Library – The lease was progressing and an energy survey had been conducted which suggested that the roof should be insulated and the boiler replaced. The Council decided the boiler could wait but the insulation was a good idea. The Council was still negotiating with the Trustees over a contribution for repair of the Car Park as long as that entitled the public to use it. The concrete floor had still not been installed but the Chairman hoped the Library could open on 10th May.

School - there was progress in finding a new Headmaster for Harbury School and the Heritage Room would be officially open to the public on 21st April. County Cllr Bob Stevens reported that Southam School funding was reducing as it had not yet decided whether to convert to academy status.

County Councillor Stevens said there was pressure from government for Primary Schools to become academies too.

He said that Community Forums would be changed. Ladbroke was hosting a forum on HS2 and Parish Councillor Elkins would represent Harbury. The Health Bill had now been passed and GP control of funding would begin in April 2013. Cllr Hancock pointed out that this did not include funding for Specialist Services.

District Councillor Hamburger urged people to comment on the Core Strategy planning policy document. He announced that Biffa had at last

arranged for the removal of plastic rubbish caught in trees near the site. He was pleased that his, and County Cllr Stevens' intervention may lead to a resolution of the sewerage problems in Deppers Bridge. This led County Cllr Stevens, uncharacteristically, to assert: "The whole thing STINKS"!

Cllr Patrick reported that huge lorries were still using Deppers' weak railway bridge and Chairman Lockley was disappointed that despite assurances that the school buses would be able to use the Ufton Road during resurfacing, workmen had directed the buses down Station Road and over the bridge.

Cllr Elkins thought HGV drivers were confused by weight limit signs at Ladbrooke Road and might not realise that the prohibition also referred to the railway bridge. County Cllr Stevens said WCC was addressing this problem.

Planning

The District granted permission for new windows and a roof-light at Leycester Barn on Chesterton Road and sun lounge and first floor extension to 11 Neales Close.

The Parish Council made no representation on tree-works at 4 Farm Close; or extensions to Westfield Cottage, Westfields Farm, Fosse Way and Field House on the Pound.

They did comment that they would like to see the Horse Chestnut at the Village Hall, which is diseased, replaced. They wanted conditions placed on permission for a caravan for an equestrian business at Bull Ring Farm Road to prevent its use as a residential dwelling. They demanded assurances from the Tree Officer that the fine Atlas Blue Cedar at Herons Cabin Bush Heath Lane was responsible for the "suspected damage to property" before its removal was granted.

A complaint about chickens kept in a residential garden was not pursued because, a) it is legal to keep chickens providing it was not for commercial reasons and b) the complaint was anonymous.

Both the Chairman and District Cllr Hamburger had been involved unsuccessfully in trying to resolve complaints from residents about a Leylandii hedge planted in a neighbouring field boundary. These Leylandii at two metres high were legal as they are on farm land.

Properties

The Council accepted the estimate for the BMX track subject to a risk assessment and insurance cover for the volunteer constructors and care being taken with the existing drainage system. Cllr Thornley is working

with local lads to price up equipment needed for their improvement plans for the Skatepark.

An application has been sent for Jubilee Playing Fields status which would give access to improvement grants. The Council agreed £500 for a surveyor to look at the feasibility of extending the existing Playing Fields Car Park.

Burial Grounds - The Cllrs discussed a complaint that undertakers whilst digging a grave had placed spoil on an adjacent plot. It was not in any way the Council's responsibility. This was confirmed as normal practice and necessary because of the configuration of the site. The work was done respectfully and complete restoration of the adjacent grave was made afterwards, the Chairman confirmed. The Council could not accede to the complainant's demand that they waive a £75 memorial fee.

Environment

The energy efficient lights (LEDs) had still not been installed but the Council would like to install an LED lamp to illuminate the Mill Street entrance to the School on one of the adjacent garages and will approach householders for permission to do so.

There was discussion about asking the County for pinch-points on Bush Heath Lane to slow down traffic but these and "entrance gates" had been ruled out by the County before.

Cllr Hancock complained about the filthy state of Mill Street due to the hauling of manure. The tractors had damaged the footway at the entrance to Mrs Trice's field and the County would be asked to effect repairs.

Cllr Thompson said the County's Jetting Crew (who travel daily from Chesterfield!) reported the Cemetery Corner drain needed rebuilding and was more like an underground compost heap and full of roots.

Finance

There was nothing left in this year's budget for grants so the Pre-School would be asked to resubmit their application for a canopy next month!

Elections

All the Parish Councillors are standing for re-election in May.

April 2012

No-one else sought election so our present Councillors will continue in their role. I hope they do not become complacent!

They have been very bold in taking on the lease for the Library and Wight School and have weathered several setbacks, mainly caused by

delays on the part of the County, in undertaking the “dilapidations” work – repairs to bring the building up to a satisfactory standard. These delays have had a knock-on effect on the energy efficiency work, the painting and carpeting, but Parish Chairman Tim Lockley was confident that the Library would be open to the public by 10th May and the Café by 16th May. There are still decisions to be made about taking on responsibility for the car park which will need resurfacing. The County will fund 50% of the cost if it is done within twelve months and costings would be sought from WCC.

Cllrs were full of praise for the recently opened Heritage Room at the School and the Chairman singled out Cllr Janet Thornley’s efforts for special praise. She modestly insisted that it was the achievement of many other people. It is hoped that much of the archive, in digital format, can be made available at the Library where there will be at least four computer terminals.

Cllr Thornley reported that work to update the Village Hall kitchen was nearing completion and there was now a display in the Hall showing the electricity saving from the PV panels.

Planning

Stratford granted permission, with conditions, for extensions at 14 Farley Avenue and Field House, The Pound. The Parish Council made “no representations” on plans for rear extensions at 1 Park Lane and Willow Bank, Vicarage Lane; front extension at 2 Penelope Close and the felling of an Ash Tree at Blenheim House, 4 Farm Close.

They commented that an application to fell a willow at Western House, Station Road came with no evidence that the tree was causing damage and asked that it be inspected by the District Tree Officer. Listed consent to replace concrete pointing with more sympathetic lime mortar at The Cottage, High Street was still pending.

Details of access, layout, scale, appearance and landscaping of the second phase of ten affordable and seventee market homes for local people at Bush Heath Lane would be supported by the Parish Council which had been involved in commenting on the plans previously and were content with the outcome.

Cllrs agreed to look at the mechanism for claiming new Village Greens.

Village with a Vision

Cllr Thompson reported that the Bishop of Warwick had been very supportive of the project and a meeting had been arranged with the developers and the Price Family Trust to explore the suitability of sites they owned in the village.

High Speed Rail 2

Cllr Elkins had attended a meeting at Ladbroke where it was accepted that the railway project was likely to go ahead. Concerns had turned to the impact of the construction phase and people were concerned about a number of local implications.

The Southam - Radford Road would be closed at some time and there was a fear that traffic, including lorries would be redirected through Deppers Bridge and over the railway bridge which has a weight limit.

District Cllr Hamburger claimed that the proposed Priors Marston Wind Farm would be directly in the line of the railway track.

Playing Fields

- The burnt out litter bin by the picnic bench would be replaced “before the sun comes out again”.
- The footballers are still complaining about dog mess on their pitches.
- Quotes were pending for repairs to the multi-play equipment.
- Cllr Thornley got permission from Councillors to consider ideas drawn up by George, a twelve year old boy, who had costed and planned Skate Park improvements himself.
- The Council is exploring extending the Playing Fields car park and agreed to pay for a feasibility study into the costs of three options: extending up the Fields; behind the Village Hall and onto Village Hall land on the western side.

Complaints

- The Hall Lane/Bull Ring Lane/Church Terrace corner now floods so badly Cllr Thompson is thinking of building an ARK!
- The Parish notice boards are full and the Clerk had difficulty finding anywhere to display the statutory poster about the elections. The problem has been caused by commercial interests using these boards. **This is not allowed and any such notices will in future be removed.** The notice-boards are for village voluntary groups to advertise their events. The Co-op and Post Office provide space for commercial advertisements.
- Cllr Hancock will show the divisional engineer where urgent repairs to the carriageway are needed at Frances Road garages and in Mill Street. Complaints that the South Parade verges are being

churned up by parked cars will also be referred to the Highways Department.

- Cllrs could not understand why County Highways was opposed to the installation of village gateways on Bush Heath Lane, as many other authorities used them to slow traffic entering a village.
- The Ambulance Service has again complained it could not drive onto the Playing Fields to deal with a casualty, although details of key-holders are posted there.
- A safety barrier is needed outside the Co-op to save children running into the road.
- It was reported that children waiting for the school bus were climbing onto walls in Vicarage Lane.

Next Council Meeting: Thursday 10th May 7.30pm in the Village Hall

Annual Parish Meeting: Thursday 24th May 7.30pm in the Village Hall

Quarterly Report April 2012

In the past three months the Parish Council has:

- Engaged contractors to make alterations to the BMX track.
- Been consulted by the developers over the second phase of the Bush Heath Lane development.
- Agreed to take on the lease for the Library part of the Wight School building.
- Applied for the playing fields to become a Queen Elizabeth Playing Field in recognition of the Diamond Jubilee.

Would all parishioners please note that parish notice boards are for village events and societies, not for commercial activities. Commercial notices will be removed.

Dr Tim Lockley
Chairman, Harbury Parish Council



Annual Parish Meeting

This year's Annual Parish Meeting will be held on Thursday 24th May, 7.30pm in Harbury Village Hall.

Please join other local residents to celebrate all the good things that have happened in our community over the last twelve months.

There will be an opportunity to meet your local councillors and ask questions about current issues. Refreshments will be served.

Everyone welcome.

Alison Biddle
Clerk to Harbury Parish Council

	<p>Harbury Society</p> <p>Linda Ridgley</p>
--	---

I think we were fooled by the beautiful weather we had at the beginning of April into organising a summer of outdoor events!

The first is on Saturday 5th May when David Adams is leading a walk round Chesterton to explain the history and archaeology that he has been studying for many years. Cost £1, meet at the Church at 1.30pm with suitable clothing!

Our Carnival Stall (9th June) will have a Regal theme – it being Jubilee Week – with a Quiz about the Kings and Queens of England. As Alice said, they're just a pack of cards. We have a visit to Reeve's Farm at Shakers Lane, Long Itchington on 18th June (7pm at the farm) ending with Cheese and Wine. This will be £1 a head. This is quickly followed on 1st July by a guided tour of Warmington Church and village with afternoon tea in a village garden. Cost £5 per person to help their Church and village funds.

After that we start to get some cover! In the Autumn we are arranging a visit to Chedham's Yard and then a series of talks in the Tom Hauley Room.

Expect an Indian Summer!

	<p>Harbury Women's Institute</p> <p>Jeanne Beaumont</p>
--	---

Members enjoyed the WFWI Spring Council meeting on a lovely sunny day at Stoneleigh. Chris Rutherford gave an excellent report of the proceedings:

Adam Henson was the main speaker and readers will know him from "Countryfile" on Sunday evenings on T.V. He grew up on a farm and loved it. He was never pressured into going into the family business and travelled the world after Agricultural College but now lives in his old family house.

His grandfather, Leslie Henson, was an actor and comedian. His father became a farmer and presented T.V. from time to time and his uncle is actor Nicky Henson who reads his audio book: Countryfile – Adam's Farm: My Life on the Farm.

He explained the running of the farm with its collection of breeds which were dying out. He has started his own beer called Adam Henson's Rare Breed. He also markets their own animal supplement feed. 70% of visitors are adults but many bring children.

Adam is a farming ambassador on environmental issues for Lloyds as well as being concerned with the social issues of farming families and employees. He received terrific applause.

The Group Meeting is at Priors Marston on Wednesday 2nd May at 7.30pm.

A visit to Birmingham Botanical Gardens is on Monday 14th May. Meet at the Village Hall at 9.45am. Our Garden Party is on 17th July in the evening at the home of Anne Meyer. A visit to Wightwick Manor is on 30th July. We are going to James Butler's studios at Radway on 6th August in the afternoon. Well done Rosemary on winning the table tennis match. There is croquet at Napton at 2.30pm for those taking part.

Our speaker this month was Margaret Hine who came to speak on Clarice Cliffe.

Margaret was a delightful elderly lady with a bonny Scottish accent who told us about the life of Clarice Cliffe, a Midlands girl born in 1899. Some do not always take to her bright designs but others love them. She left school at 13 and found a job just down the road (so she could come home for lunch), for one shilling a week. But from then on she learnt everything she could about pottery and mixing paints on china. At 16 when she joined Wilkinsons, she worked for a son of Wilkinson called Coley and between the two, they introduced the different ranges of the pottery which were so successful. Margaret showed us sketches of Clarice Cliff's designs saying she had not brought any along as she could not afford them. But she did show us cushions she had made with Clarice Cliff's designs and they were lovely.

A very pleasant evening with lots of laughter due to Margaret.

Next meeting: Thursday 10th May, Tom Hauley Room, 7.45pm – Resolutions.

June Edition - Harbury & Ladbroke News
Adverts to 31 Binswood End by 15th May
Articles to Harbury Pharmacy or e-mail to articles@hlnews.co.uk by
 24th May



Folk Club

Peter McDonald

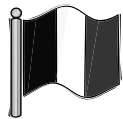
At the 329th session of Harbury Folk Club on 5th April, the theme was 'Light and Dark' and the charity raffle raised £45 in aid of PHABkids, a worthy cause selected by Ian Hartland for his London Marathon run on 22nd April.

Seventeen performers used their imagination to interpret the theme in various different ways. I started the evening with 'Sing me a song, Mr Bloom', a song which tells of an entertainer who brings light to the darkness of residents in an old people's home. Terry followed with two fine ballads, beautifully sung – 'Bay of Biscay' and 'Lakes of Pontchartrain'. Sue and Ted sang the topical 'Twas on an April morning' and then Ted reminded us of the wicked songs of Tom Lehrer with 'National Brotherhood Week'. Debbie read one of her own poems before getting the audience to reach for the high notes in 'You'll never walk alone'. Janny and Maureen left us wanting more after their single song – 'Avila' (the Sweet Peace song) – then Rik finished the first half with 'Stardust' (with a very nifty guitar accompaniment) and the rather more folky 'Spanish Lady'.

I had hoped that the second half would start with a massed orchestra of a dozen or so musicians. In the event, just five of us (Lynne, Margaret, Ted, Celia and I) got up to play the haunting tune, 'The Slokit Light', a melody of lament by the late Tom Anderson, inspired by the declining population of the Shetland Isles, as evidenced by the reduction of lights visible from the ferry. Des was next up with 'Nana's Song' followed by Ron Shuttleworth's classic 'St. George for England' (a song that Ron would have surely sung himself had he been well enough to come). Pete Mason's songs were Jez Lowe's 'Idle Time' and Peggy Seeger's 'Springhill Mining Disaster' so we were grateful to the Harvesters for cheering us up with 'Keep on the sunny side of life', although their second, 'Long Black Veil', was no bundle of laughs. Keith Donnelly entertained us in his own unique style with 'Little Miss Jekyll and Hyde' followed by a bizarre story about a Goth wedding!

In the third half, there was time for an extra song from each of six performers. Pete Bones showed off his new guitar on 'Clown' and Ted closed the evening for us with 'The Farmer's Toast', a song we could all get our teeth into (with some fine chorus singing).

By the time you read this, the next meeting of the Folk Club will be on 7th June, starting at 8pm in the Dog Inn. For more information about Harbury Folk Club, please visit: www.welcome.to/HarburyFolkClub.



Harbury Twinning Association

Tony Thomas

The early weeks of April have been a quiet time for our members but it all springs into action again at the end of the month starting with a members and friends evening of supper and skittles on Friday 27th April at the Navigation Inn at Wootton Wawen. By the time this edition is circulated we will be on our way to Samois-sur-Seine for our bi-annual visit to our twinning partners. Highlights of the visit will be reported in next month's edition.



Harbury Albion Football Club

Steve Fitchett



Harbury Albion Football Club, who compete at senior level in Division 1 of the Leamington Sunday Football League, have received a financial boost from TalkTalk.

The home phone, broadband and mobile provider who is bringing its next generation network to the area, have agreed a twelve month sponsorship deal with Albion, which has not only provided the team with a

new kit, but will also help towards new facilities.

Albion's 2011-12 campaign is nearly over; however they are looking for new players for next season and would welcome anyone of 16 years of age or above, who are looking to play to a good standard on a Sunday morning.

Pre-season training starts in August and for further details please contact Nathaniel Cleaver on 07793 363210, or visit our website harburyalbion.com.



Harbury Juniors Football

Steve Darby

Chairman's Report: Ian Jones: The main season is drawing to a close, many teams are finishing up their league commitments and the younger teams are now starting to play some of their first friendly games.

Most of the football through the closed season will be based on the various tournaments that the club participates in. These are great days out with the kids having the chance to play lots of games against many different teams.

The club's Presentation Evening will be on 26th May in Harbury Village Hall starting at 6.30pm (more details will be published soon). The presentation night is a great chance to reflect on and recognise the achievements of the children over the season. I am sure we will have another great night. There's nothing quite like the look of surprise and delight on the face of child when they realise they have won one of the team trophies. It makes me very proud to see and hear about the achievements of the children.

Another date for your diary is Sunday 1st July when we will hold the Harbury Juniors tournament. This event is just for Harbury Juniors players from all of the age groups run by the club and is another fantastic day out. This year the tournament will be themed around EURO 2012 and, if there are some competitive mum's and dad's out there, there may be the possibility of them playing in a match.

Congratulations to Bob Church on successfully completing his FA L1 coaching qualification. Bob and I recently completed this coaching course.

U6's and U7's report - Steve Darby

The season is rapidly drawing to a close for these two age groups and I'm happy to report that the groups have doubled in numbers since the start of the season (last September). We currently have a total of 28 children involved from Reception, Year 1 and Year 2 age groups and they are all progressing well. On Saturday 28th April, Ted Grizzell from the Football Association will take the age groups coaching session to help them improve certain aspects of their skills by introducing them to a range of practice routines and techniques for improving ball manipulation.

U6's match reports vs Wellesbourne

The U6's played 4 x 10 minute matches against a strong Wellesbourne side. In the first match the teams were evenly matched with a 0-0 score line reflecting the balance of play. In the remaining three games, Harbury worked very hard to contain a more athletic and mature group of Wellesbourne players. Despite narrowly losing all three games, they all enjoyed themselves, with Jacob R being awarded man of the match for three consistently outstanding performances and scoring a fine goal.

U7's match report vs Wellesbourne

The U7's turned out in full with all 16 players being available to play in 3 x 20 minute 7-a-side matches. In the first match Harbury fielded a strong

starting line up, played some lovely football and took a deserved 1-0 lead but, as substitutions were made to allow for all players to get involved, Harbury began to struggle and were eventually beaten by a very quick Wellesbourne team, who had one outstanding player that Harbury could not contain. All of the children worked incredibly hard with several of the squad playing their first ever competitive match from which they learnt how hard you have to concentrate and work when on the field of play. Goals were scored by Ben H and Daniel C with man of the match going to Harry L for displaying both great technical skills and all round effort and energy in every game he played in.

On 20th May, Harbury U7's (with a small number of U6's) will be taking two teams to the annual Southam Football Club tournament; we wish them well as there will be some tough opposition!

This will be the last season that Steve Darby will be running the current U7's (next season's U8's) and the club is seeking a new lead coach for this age group from September. If anyone is interested in becoming involved, please contact Ian Jones for details. Steve will continue next year with just the current U6's (next year's U7s).

U9s: Match reports Ian Jones and Steve Burnell

1/03/12: Kenilworth Wardens Harriers 4 Vs Harbury Juniors 1

HJFC were up against 2nd place Kenilworth Wardens Harriers and were without their talisman captain Morgan J, coupled with many players having to play out of position due to school holiday absenteeism. Notwithstanding, this the team started brightly after strict instructions from their coach; Harbury battled well and closed down early with Seb P and Edward L keeping the back line tight. Harbury had several attempts on goal through Luca W and Cameron D but to no avail in the early stages, however as the game continued, a lapse in concentration led to the home team taking the lead through a very sloppy engagement. Again, after some good Harbury battling by Jacob W and Ollie K flying in with some tremendous tackles and some confident saves from Jack P, the lead was doubled soon after a well worked goal very much against the run of play. Daniel C played well in the holding roll doing much of the running and Morgan F did not stop chasing the loose ball. Josh B went close with a free kick 30 yards out which when launched was travelling like a rocket towards the top right hand corner, but was put around the post through a good save by Kenilworth's imposing keeper. Coming out time, Harbury battled again to attempt to restore the 2 v 0 deficit. Again HJFC started brightly then, within minutes Harbury broke, the ball landed at Jack D's feet and he turned on a sixpence, shimmied through two players, exchanging the ball between both feet and calmly struck the ball past the Kenilworth keeper to make it 2 v 1.

As time went on, the heavy conditions impacted both teams, but again with further momentary lapses, Harbury slipped behind by two further sloppy goals despite Harbury's continued persistence.

Not a true reflection of the performance at the end of the day, but, once again, the scores on the doors were the headlines of a good performance by Harbury against a very highly rated opponent.

10/04/12: Norton Lindsey 3 Vs Harbury Juniors 1

On a sunny spring morning, Harbury travelled to highly rated Norton Lindsey, whom some would see as being the Man Utd of this area!

Harbury started brightly but went down to an early goal through a well-worked set piece corner which left the guys somewhat on the back foot but undeterred, Harbury dug in and started to play football. Good passing and link up play prevailed through Cameron D, Jack D, Morgan J and Luca W with some good battling in the rear quarters by Seb P, Josh B and Joe D, who was playing out of his normal position. As Harbury battled they matched Norton Lindsey man for man and went in at half time only one goal the difference. After the break, Harbury continued as they had left off but further chances were spurned, albeit the game was thoroughly entertaining with end to end stuff with Jack P keeping his end of the bargain between the posts. As time passed, Harbury continued to press when the ball was launched to Cameron D some 25 yards out on the left flank whereupon he speculatively lashed out at the ball on the volley looping it over the Norton keeper to make it 1 v 1. Harbury continued and played very well going into the last seven minutes of the game very much the equivalent to their highly rated opponents. The furrowed brow of the opposing manager continued to deepen as Harbury pressed his team further and continued to dominate the game when two momentary lapses in concentration in the closing minutes of the game led to two late sloppy goals which effectively ended Harbury's afternoon.

A great performance by all members of the Harbury team against very good opponents; the referee called the teams together at the end and congratulated both on a great performance, which was much supported by both teams coaches and managers.

18/04/12: Brinklow Juniors Blues 0 Vs Harbury Juniors 1

Having lost narrowly (and undeservedly) a few weeks previously, the team were determined to make amends on what turned out to be a wet night. The first half was a bit of a ding-dong battle with Brinklow having the best of the opening exchanges. Harbury eventually settled down and started to compete. Both teams created good goal scoring chances, Jack P being the busiest keeper in the first half. After the break Harbury started to assert themselves getting more possession. Brinklow battled back

and won a penalty, which fortunately for Harbury was sent wide. Harbury won a corner, Joshua B knocking it in. The ball came back out to Joshua B from the corner, he set himself up and scored a cracker lifting the ball above the keeper. Luca W and Cameron D went close, Jacob W and Edward L both had strong performances across the park. Morgan J's work rate was again exceptional up and down the pitch. Lady luck had finally shone on Harbury. Joshua B won the Man of the Match for his decisive goal and all round contribution.

21/04/12: St Peters Celtic 0 v Harbury Juniors 3

What an exciting game, real end to end stuff. St Peters were looking at this game as a great chance to register a victory, the home support being vast and vocal. There were great battles all over the park as both teams tried to get the victory. The first half was close with both teams creating plenty of chances. The defence held firm as Harbury started to create chances. Into the second half and Harbury were getting on top. Lots of chances being created with Luca W and Cameron D's chance somehow not going in. A breakthrough....a penalty awarded to Harbury, alas Morgan J's penalty was struck well but saved. The Harbury coaches and parents were starting to think it was going to be 'one of those days'. With about five minutes to go, it's a free kick to Harbury. Luca W lines it up on the right hand side, it's a tight angle. He hits it hard, low and in it goes. Harbury push on with a quick counter-attack, with Edward L carrying the ball brilliantly out of defence, he sets up Cameron D who puts it away: 2 - nil. St Peters heads drop as we entered the last couple of minutes, some excellent passing leads to a third goal with Luca W getting his second.

A deserved victory with great performances across the team. Again, the defensive duo of Edward L and Jacob W were excellent. Joe D really battled well in midfield. Luca W and Cameron D worked hard for their goals. However, the Man of Match went to Morgan J who once again was all over the pitch to support defence and make some last ditch tackles, he was breaking up play and completed some excellent passing from midfield. Well done to all.

Under U11/12: Match reports Marcus and Woody

Tysoe Saxons 4 v Harbury Rockets 6

We Arrived – We Rocked the Place – We Left Victorious

After our 7-1 drubbing two weeks earlier by the Saxons you could be forgiven for thinking it would be another bad day at the office but we have a knack of coming back with a vengeance. On a sunny day we fiercely got into the Saxons and this unsettled them, which was good for the Rockets,

they never got into their play and we settled very quickly and passed the ball around effectively.

This was a false dawn as the Saxons went into a 2 nil lead totally against the run of play. Harry W pulled one back with brilliant trickery and setup from Riley B, the comeback was on! Riley B then scored from the goalkeeper hitting the ball against his legs. Tim B scored the third with a stunning header delivered via a corner, Tim was very unlucky not to score from a header moments earlier. At the end of the first twenty minutes we were leading. The next 20 minutes was very much an even contest but the Saxons levelled to make it 3-3. Our first 10 minute was “even stevens” in match play, but Adam K chased a long ball making the Saxons defender and goalkeeper hesitate and the ball ran through resulting in Adam scoring. The next 10 minutes was crucial to us winning, as we know the Saxons would come at us all guns blazing so we scored again via Ben H again receiving the ball from the tricky Riley; the two-goal cushion felt great. The Saxons made it within one by scoring again but we finished it off with Harry W second - job done let the celebrations begin with our win at our biggest rivals.

The staff would like to give a big thanks to the defence: Matty W Tim B, Tim J, Danny L, Ben H and Finn B who all played out of their skins and defended like lions. Also to the midfield who ran their socks off and the front line who created and scored goals.

Scorers: Riley B 1, Ben H 1, Tim B 1, Adam K 1, Harry W 2

Harbury Rockets 1 v Tysoe Saxons 7

The score line looks savage and to be honest we deserved to be beaten as the Rockets didn't turn up for this match, we can walk away with positive feedback on all our players and now it's the coaches jobs to address the situation.

You need to be firing on all cylinders against a good team like the Saxons and we made too many mistakes. If we had converted a few more chances in front of goal then it would have been a tighter game. The Rockets pass and move style didn't appear until the last twenty minutes and this is when we started to frighten them. Congratulations on the goal we scored, as it was a textbook move we have come to associate with the Rockets play. A bad day at the office today but the kids thoroughly enjoyed themselves and that is what junior football is all about.

A huge boost for the Rockets was the welcome return of Dominic P who couldn't play due to injury. A big thank you for our man of the match Jordan who, despite being the goalkeeper, kept the score line to seven with tremendous heroics.

Scorers: Riley B 1

Harbury Rockets 5 v Byfield U12's 1

What a Match!!!! We have played this Byfield side twice previously and lost both but our team had a plan of tackle, pass and score. The team responded and executed this to perfection and we not only outplayed our older tougher opponents, but showed what an accomplished team we are. Every one of our players stood up and was a star in their positions. The Byfield manager even responded in kind words to how well they had played against their team. Every time the Rockets went forward we carried an element of danger that always looked liked we would score. All the goals were a delight to see but the pick of the bunch was a 20 yard screamer from Riley B. The coaches would also like to congratulate Peter G for his wing wizardly that resulted in a goal.

Scorers: Riley B 2, Tim B 2, Dominic P 1

Harbury Rockets 3 v Tysoe Vikings 2

This is our Bogey team from the league we never seem to beat them and it looked like another bad day at the office when we went one down after the first twenty minutes. The Rockets must have all got up late because the performance to this point was very lacklustre. After a team talk from our head coach the fluid football returned and before long we were 2-1 up, after forty minutes the score line was even at 2-2 and the teams were matching each other on the pitch. The next ten minute quarter produced an end-to-end performance but ended in a stale mate. Do we sit back and take a well earned draw was the coaches dilemma, but this team doesn't know how to sit back and defend and they went on to steal a well earned victory courtesy of Harry W popping up at the right time to score. COME ON THE ROCKETS! Congratulations to Adam K for scoring on his debut - long may he keep scoring and performing well.

Scorers: Ben H 1, Adam K 1 Harry W 1



Harbury Tennis Club

Colin and Sue Mercer

www.tennis-today.net/harbury

Activities during April have been somewhat curtailed by the cold, wet weather but Harbury made a winning start in Division 5 of the Banbury Summer League. Byfield "D" were the first opponents and got a very warm reception from the "Harbury Six" of Caroline Morland, Sue Panton, Sue Mercer, Marcus Sharpe, Steve Stark and Colin Mercer. The various combinations proved too strong for the visitors and recorded a comfortable 7-2 win. The scheduled match against Hook Norton the following week was postponed due to rain.

In the Junior competition Alex Sabin and George Tonge played in the second round of the South Warwickshire Junior Cup, Pool A, at Snitterfield. They were up against strong teams from Henley-in-Arden, Claverdon and Snitterfield and lost all three but had great satisfaction in taking a game off Henley who had won their first 5 games by 6-0. The lads go to Henley for Round 3 next month.

Spotlight on Ed Lockley



Ed Lockley aged 9, who has been with us for several years and is one of our best young players, has told us about his weekly tennis activities. On Mondays after school he is in a group of six children for an hour. In this session he does some technical training on ground strokes and serves, and practices the strokes in various fun activities including:

Waves - a rallying game, with three players on each team.

Champion - another rallying game with one player on each side. At the end of a point, the winning player stays on to play the next challenger.

Prisoner - three players each side, plus one coach on each side. Players drop out if they put a shot in the net but their team mates can 'free them' with bit of skill.

Volleyball - using rackets with three players on each side, the objective being to keep the ball up and over the net without it touching the ground.

On Wednesdays he has one-to-one coaching with James, the head coach, at Harbury for 1 hour a fortnight; mainly working on technical aspects of key skills such as serving, ground strokes, volleys etc.

He rounds his tennis week off on Fridays in an 'improvement squad' for 1¾ hours every week with five other players. This is at Sibford, another venue used by Shipston based "tennisolutions." They play "Mexican Tennis" to work on power shots and spin, and "Around the World", a rallying game involving hitting and then running to the other side of the court with three players on one side of the net and two on the other. Ed has also taken part in tournaments and matches around the county.

www.tennis-today.net/harbury



Harbury Toddler Group

Sarah Hanson

The toddlers have been doing lots of running around and scooting about on toddler cars in the playground which has burned off all that Easter choccie! We have been continuing to learn about the Spring time through our activities, including making lovely woolly lamb pictures from cotton wool. To celebrate St George's Day we made some cheery red and white flags.

At home, the toddlers are continuing to water and nurture their seedlings which are steadily growing. We will be selling these and a selection of cakes and other items at the Coffee Morning at the Tom Hauley Rooms on 12th May. We have some fabulous raffle prizes including vouchers for family days out and lots of lovely treats so do come along and join us for this if you can! Proceeds will help towards a Toddler Group summer outing to a nearby attraction.

We will soon be getting creative to start preparing for Carnival Day in which Toddler Group will be taking part in the parade.

If you are interested in joining us at Toddler Group we are always pleased to see newcomers. We run every Monday from 9.30am to 11.15am at the Wight School (behind the library), and cater for children from birth to school age. We are open throughout the school holidays, except Bank Holidays, and older siblings are welcome to come along too!!



Harbury Pre-School

Staff & Committee

New Term: With the Easter holidays behind them, the children returned to Pre-School full of enthusiasm for the new term. We are delighted to welcome Jayden and Lucy who are already settling in very happily with their new friends.

Gardening: After the dry spring, the rain during April has encouraged growth in the garden areas and the children have enjoyed weeding and digging the soil. We are very grateful to Wendy Crowder who brought sunflower and calendula seeds and helped the children to plant them in individual pots to take home. She also very kindly produced a number of vegetable seedlings, strawberry plants and seed potatoes which are now growing in the large tubs and raised troughs and we look forward to



seeing them develop and, hopefully, harvesting at the end of the summer term.

Creative: Lots of large scale artwork has been produced using a variety of paint and collage materials, based on a different colour each week. The children have also developed a Jackson Pollock style canvas using vehicles to make track marks, layering different colours to produce a wonderful effect.



Communication, Language and Literacy: In order to develop the children's understanding of letters and sounds, new games are being introduced at small group time, such as 'digging for treasure' in sand, where they have to find objects beginning with certain letters. They also take part in 'describing activities', where they identify an object from its verbal description amongst a group of similar objects.

New Equipment: Pre-School's fantastic fund raising group has enabled us to invest in lots of new resources, which have been very popular with the children. These include kitchen aprons and chef hats, a kettle, toaster, cups and saucers and plates for role play; number rings and puzzles for maths work; and a Happy Land road track complete with people and vehicles for the construction area.

Thanks: We are very grateful to the Priest family who donated an extremely useful triple shelving unit. This is being used to store everyday resources from



which the children can choose the items they need and it is proving a very popular addition to the Pre-School room.

If you would like further information, or to register a child for Harbury Pre-School, please contact Rosemary Jackson, Pre-School administrator: e-mail enquiries@harburypre-school.org.uk phone 07833 597973 or look at the website www.harburypre-school.org.uk.



Windmills
Nursery School

Nursery School Staff & Committee

Windmills Nursery is situated in the grounds of Harbury Primary School and has the benefit of its own Forest School and qualified Forest School Leader. We are open all day between school hours and take children from the age of two years. If you would like to register a place for your child you can email us at info@windmillsnursery.co.uk, visit our website at www.windmillsnursery.co.uk, call Tina/Sally on 07906 519148 or Katharine on 01926 613084. We have Nursery Funded places available and also accept childcare vouchers and offer an assisted places scheme.

In Nursery



We have four children Anna, George, Harry and Laura who have recently started at Windmills Nursery School. The end of last term saw lots of preparations for Easter including a visit from Reverend Annie Goldthorp and Gill Guilford who told the story of Easter and about forgiving people. We had our “eggs-travagant” Easter party in nursery with lots of party food donated by the parents; the children have made

cupcakes and have been on an Easter egg hunt and they have also made lovely Easter bookmarks to take home.

Over the Easter holidays the outside area has been transformed with the addition of a new Wendy house kindly donated by Amy and Danny Luke which was reroofed by Steve Lines and has been converted into a flower shop. Thanks also to Chris Houghton who has reroofed our main shed



which had a leak. Big thanks to Steve and Sally Lines who worked hard over Easter and erected a tepee for the children to use and enhanced the outside area with new things to interest the children. Finally thank you to Gemma North who donated some unwanted toys to the nursery.



This term we have had a special visit from a new-born lamb, and the children have been experimenting with light and dark to become impressionist painters. There has also been the monthly visit to the Toddler Service held in the Tom Hauley Room and the weekly sessions of tennis and French.

Indulgence Evening

Thank you to everyone who supported our Indulgence Evening last month in the Village Club. We raised £430 for Nursery and those who attended were treated to an enjoyable social night with pampering; thank you also for the lovely feedback received from many who attended.

Sponsored Bike Ride

The children took to bikes and scooters for our annual sponsored bike ride around the infant playground at School. Thank you to all the parents and families who sponsored their children; we raised £226 for Windmills Nursery School.



Visit from a New-born Lamb

Thank you to Becky Lines for bringing in a gorgeous three week old lamb to show the children and a big thank you to Richard Mann from Hill Farm, Ufton for the loan of the lamb.

"He's white" – Chloe. "The baby lamb sounds like a baby. He's blue on his back – a blue line" – Madison. "This is so the farmer knows who



the baby lamb belongs to” – Evelyn. “He has big lumps on his head. He has fluffy ears” – Lily. “That’s where the horns grow through” – Freddie. “Nanny does knitting with wool” – Emily.

Forest School and Spring

In Forest School the children have been making birds’ nests and producing wooden necklaces to take home. In Nursery the children have produced hand-made seed packets and have planted tomato seeds and re-potted primroses and daffodils.



Staff News

Mrs Wilson has been on an IDS training course. Mrs Varriale and Mrs Lines have visited the Southam Children’s Centre to attend a multi-agency meeting.

Dates for the Diary

Sunday 6th May – Charity climb of Mount Snowdon (<https://mydonate.bt.com/events/windmillsnursery/75174>)

Monday 7th May – Nursery closed for the Bank Holiday.

Tuesday 8th May – Toddler Service, 2pm. Saturday 30th June – The Maharaja’s Ball.



Harbury Primary School

Denis Daly

Opening of Harbury School Heritage Room at Harbury Church of England Primary School – Saturday 21st April 2012

At 2.30pm on Saturday 21st April a ribbon was cut by Nigel Chapman, retired deputy head of the school, to mark the official opening of Harbury School Heritage Centre.

The Centre has been a joint development between the school and one of the local village groups, Harbury Heritage. As well as the school library, the Centre will house a large collection of historical documents, photographs and recorded material



accumulated over many years by staff and children at the school. It will also host a series of themed events, open to the public, where work undertaken by the children will be enhanced and complemented by resources and artefacts donated by parents and other residents of the village.

Headteacher Denis Daly commented, "This is an exciting new development for the school. As well as being a major opportunity to enhance the curriculum for our pupils, it also reinforces the already close relationship between the school and village. I would like to thank all those villagers, too many to mention by name, who have helped in any way with the development of the Centre."

Congratulations – To the school football team who this week were confirmed as having finished as runners-up in the Central Warwickshire Small Schools' League. In addition, on Tuesday evening, they finished third (out of eight teams) in a tournament at Southam College, playing some excellent football through the evening. Well done, boys.

Riding bikes to school – For the remainder of this school year, the children in Years 5 and 6 only will be allowed to ride their bikes to school. Whether individual children in these classes actually come to school on their bikes is, of course, a matter for parents! However, the children have been told that if they do bring their bikes to school, they must wear a cycle helmet, they must chain their bikes up against the fence near the swimming pool, and they must not ride their bikes on the school site. Parents should also be aware that the school can take no responsibility for bikes that are brought in to school.

Reception Class, September 2012 – The meeting for parents with children starting school in September will be held on Wednesday 23rd May at 7.30pm. All parents on our list will be receiving an invitation to this meeting in the next week or two – if you have a child due to start school in September, but have not received an invitation to this meeting by Friday 11th May, please come in to see me, as it may mean that we do not have your child registered to start!

Headteacher Appointment - The Governing Body has appointed Mr David Cousens, currently Deputy Headteacher at Southam Primary School, to the post of Headteacher at Harbury School from 1st September 2012.

We are certain that Mr Cousens is the right person to lead our school in the next phase of its development, and that all parents will offer him their total support.

Parking – Yet again, I have had complaints from local residents! Please, have regard for our neighbours when parking in the vicinity of the school,

especially in Wagstaffe Close, where complaints are that parents are parking across residents' drives. In addition, please do not park on the yellow zig-zag lines on Park Lane. I have had so many complaints this year that I will be asking the local police to make the occasional visit before and after school. As we now enter the summer term, perhaps the situation may be alleviated if parents took advantage of the better weather and walked to school.

Job Vacancy: Cleaner required to work two hours per week; for more information please contact Mr Daly at Harbury Primary School on 01926 612656.



Harbury Primary School P.T.A.

PTA Committee

Well Easter has gone and summer is on its way and this is a busy term for the PTA. There are several events planned starting with the Carnival on 9th June. The children will be taking part in the Walking Tableau. This year the theme is 'The Olympics'.

Sunday 17th June is the annual Beer Walk and BBQ. What better way to treat your fathers, or even grandfathers, with an organised walk around Harbury, that will lead you to a lunch stop where rolls and snacks can be bought along with beer and soft drinks, then end the day with a BBQ.

The annual Summer Fayre will be held at the school on Saturday 7th July. As usual there will be several stalls and games for everyone to enjoy. Please put these dates in your diary and there will be more details in next month's Harbury & Ladbroke News.



Village Hall Update

Chris Finch

We're getting there – for now! That was the message at the recent AGM for the Village Hall Management and Fundraising committees. As always, the committed volunteers on each committee keep looking ahead and the next phase proposed for development is a permanent stage, storage area and changing rooms at the Constance Road side of the building.

It probably won't have escaped anyone's notice that throughout April, there were builders' vehicles and a skip in the Village Hall grounds for the refurbishment of the kitchen. Local builder John Warner was first on site

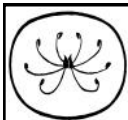
and did a superb job in removing all the old kitchen fittings and then installing a larger window overlooking the playing fields, a new door towards the front of the building, whilst also blocking up the existing door and a window. His electrician, James Davies, then took out the decidedly unattractive electrical fittings and laid cables for all the proposed new equipment, including oven, fridge, dishwasher and overhead lights. On one occasion, when members of the committee went along to the Hall to do a thorough spring cleaning of all the tables, chairs and woodwork created by the construction work, James was crawling the length of the Hall under the sprung floor in a gap about two feet high to order to install a very heavy, unwieldy cable. It was not a job for the faint hearted and those involved in the cleaning tasks felt claustrophobic at the thought of the skilled tradesman beneath their feet! The next stages involved lining the walls with plasticized sheeting, which it is hoped will make the kitchen more easy to clean; followed by new flooring which should get rid of the 'skating rink' effect, which happened at big events where the condensation built up. In the final week in April, Caterquip were involved in fitting all the new units, so that hirers from May onwards should see a massive improvement to the previously dated kitchen. We hope everyone will approve! This latest set of improvements were funded in part by a grant of £15K (less administration costs) by WREN (Warwickshire Recycling Environmental organisation), who support community activities from their Landfill Tax Credit Scheme. As always however, this GRANT money is ONLY provided to communities which demonstrate that they have made a significant effort to at least 'match fund' the cost of any capital project. In his annual report at the AGM, Geoff Thorpe thanked all individuals and organisations in the village for their continued generosity in raising funds. Most recently, donations have been given by the Horticultural Society from their coffee morning, the Twinning Association from their Jazz evening and the Theatre Group has provided £500. Some donations still keep coming in from Jan Freeman's cascading lunches and the Rural Cinema is a regular contributor to the main funds.

The next main event organised in support of the Hall development will be the Heart of Harbury Games, which is being master-minded this time by Peter Walshe and his lively team of supporters. He is being aided and abetted by Village Hall committee member, Andrew Lawrence who set the 'ball rolling'; the ropes being tugged and the faces being pulled (in the gurning competition!) last year by arranging the first event of its kind in the UK. As on the earlier occasion, a selection of delicious food will be available, so that villagers can head to the playing fields and make a day of it, as the teams battle it out to win individual gold, silver and bronze medals as well as team prizes. Keep an eye out for date published elsewhere and make sure you don't miss this wonderfully entertaining day.

We're getting there – for now (!), but we will have to keep working hard to put in place all our proposals for the next stage of development, but with your help we will get there – although the next phase will need a longer lead in time to raise the money than has been needed so far! Just to remind you all that in a fairly short space of time, the V.H committees have:

- Installed the new toilets
- Created the sliding door feature opening up the Farley Room into the adjacent Youth Room to form the 'Veolia suite'
- Purchased new fire retardant curtains
- Improved the roof of the rear extension
- Installed the PV's – photovoltaics
- Fitted new hatches from the kitchen into the Hall and the Farley Room
- Refurbished the kitchen

All of these initiatives have been helped in no small way by the efforts of many people, for which we are very grateful. We will carry on the good work on your behalf and next time you visit the Hall, check out all the improvements, including the digital display in the Entrance Hall, which shows the generation figures and performance of the photovoltaics, which should keep our energy costs down and generate some income. Everything helps to keep the Village Hall finances healthy to enable us to 'get there'!



Horticultural Society

Judy Morrall

Another packed house for our April talk from Derek Walker. He talked about Growing for Showing; he is a judge at local shows and he exhibits.

He started with onions...well these were really cosseted vegetables from seed planting at 65 degrees under cover to the final lifting. These had an ingenious watering system and were also heated. Seeds are sown in October; he gets his from Master Seed Suppliers; who have exhibited so the stock is good. We saw the onions from tiny little growths to very large ones. Always supported by sticks to ensure that they grow straight, and planted in a good compost. By the end of June the onions begin to swell

and, as the layers grow, these are removed very carefully. If they get too hot under cover they have their own fans to cool down!! They are lifted the first week in August and dried. The heaviest onion has been eighteen pounds. To show them they are dried very slowly and the surfaces wiped with his own magic formula.

Leeks are grown in pipes and again cosseted with top and bottom heat. They are planted out the first week in April and sunk into the ground with a seep hose system to ensure correct watering. As the leaves grow they are kept upright with bars and a pulley system, the leaves are draped over the bars. They can grow to seven feet but ideally six feet for the show bench.

Parsnips are sown in a saucer on moist kitchen paper to ensure even chitting. Once growing they are planted three seedlings to a very large pot and covered with the top of a plastic bottle. The strongest is then selected and covered with mesh to stop carrot fly. They reach a height of ten feet from the base to the top. As you can imagine very difficult to lift and it takes two people to do so. A good variety of parsnip is Pinnacle.

Carrots are treated in the same way as parsnips, Derek feeds his growing plants with seaweed a good form of nutrition, and again covered to prevent carrot fly. Mind you where these are planted they are very sheltered and away from other plants. Again for display purposes they are arranged in bunches with all roots intact.

Shallots are grown from seed under cover and receive the same treatment with seep hoses and are grown in four foot pots, very heavy. Some excellent results were seen.

Tomatoes next, Derek prefers a variety called Big Zak, and they can yield up to four pounds per plant. Another variety is Cedriko and these are grown in a trough of about 18 inches deep in loam with a split grow bag on top. Trusses are picked off as he likes to leave three or four no more. Some are grown in 17 litre pots - nothing here on a small scale!!

He briefly touched on celery; it hates direct sunlight and likes a well mulched trench. Again, once growing, it has supports to ensure straight growth.

Potatoes are also grown in large pots, they like lots of nutrition too and are given lots of manure.

Cucumbers are grown up a support system to ensure straightness and uniformity; the results looked amazing.

He does have his own water supply and said that it didn't take up all of his time, don't forget he also opens his garden in Spring although not this

year due to tulip fire. What a way to spend his retirement - I thought I did well!!!

He then moved on to local shows in the Kidderminster area where he lives. Some of the exhibits were of a very high standard, particularly the carrots with all roots intact and about three feet long and all identical. The leeks too were all identical on the show bench. Potatoes were on a plate, five to a plate, again roughly the same shape and size. The runner beans were all straight and long and are taken to the show wrapped in a damp tea towel with a cane to ensure length and straightness. Some were 36 inches long.

The tomatoes were again on plates, five to a plate. The onions were dusted with talcum powder to ensure maximum effect and tied in the appropriate way. Beetroot - three on a plate of similar size and shape; these are sprayed to give the colour even more of a glow.

He then showed us some displays of mixed vegetables with four items and two of each variety. The displays were stunning.

He did say at the end before he answered questions that local shows should show a bit of leniency as many of the exhibitors just enter for the pleasure of it.

We all enjoyed his talk and slides and he is such an inspiration. He mentioned before he left that he now does talks with demonstrations for either Winter wreaths or Summer pots and hanging baskets; I think the latter sounds most interesting so watch this space!!

I still have spaces on both trips, the first on Wednesday 13th June to Anglesey Abbey and Gardens near Cambridge. Wonderful gardens, good woodland walks, excellent food, plants for sale and an interesting house. Cost is £12 if you are a National Trust member otherwise £18. The second trip is on Wednesday 11th July to Cotswold Wildlife Park in the morning, superb gardens and food then in the afternoon to Buscot Park, excellent water gardens and planting - the house is very good too. Cost is £15 if in National Trust otherwise £21. Both leave the Village Hall at 9.00am and both are really good value. If you would like to come you would be most welcome, just give me a ring.

There are some gardens nearby open under the NGS - here are just a few to visit in May. Cedar House Wasperton will be open on Sunday 20th May. It is an old vicarage garden of three acres with shrubs, trees and perennials. Cost is £4 and open from 2.00pm to 5.00pm. Burmington Grange at Cherington is open on Sunday 27th May from 2.00pm to 6.00pm and costs £5, one and a half acres of lush planting, a vegetable plot, unusual trees and stunning views. For something more "upmarket"

try Daylesford House, Daylesford, five miles west of Chipping Norton off the A436. Lady Bamford runs an organic shop and tea room (very expensive) so a visit to her garden is a must. It is an 18th Century garden with grand lake, lush woodland planting and much more. Open Wednesday 9th May from 2.00pm to 5.00pm and costs £5. Folly Lodge at Halford will be open on 29th May from 2.00pm to 5.00pm and costs £3. It is an informal country garden with a twist. If you have never visited Stone House Cottage Gardens at Stone near Kidderminster, you have missed a treat. Open from March to September from 10.00am to 5.00pm, £3 if you are not an RHS member, a wonderful selection of climbers and compartments and exuberant planting. There is also a well-stocked nursery. A win win situation!!! Don't forget to visit Bridge Nurseries at Napton, not only are the gardens brilliant but we also get a discount on plant sales.

The last meeting of the season is on 1st May, so, if I don't see you there, I look forward to seeing everyone on the trips. It has to stop raining soon although we do need it. Whatever you are doing enjoy English gardens at their very best.



Garden Jottings from Bridge Nursery

Christine Dakin

Those of us who live in the Severn Trent Water area are lucky enough (so far) not to have a hose pipe ban. There are a number of ways of conserving water and gardening accordingly. Essentially, it is not necessary to water established plants; in fact in some cases this can do more harm than good. So that will save water and time. Vegetables will need watering in order to get a good crop but try doing a thorough soak once a week rather than a little bit every day.

When planting new plants it is always wise to add plenty of organic matter to the hole. Then give the plant some water and mulch with more compost. This will help keep the moisture in the ground around the roots.

Hanging baskets and containers will probably need daily watering so use water from water butts for this. It is possible to incorporate some water absorbent gel in the potting compost which should help reduce the amount of water needed.

There are many plants which will grow quite happily in dry conditions. Examples include most herbs, cistus, Helianthemums, dianthus, sedums, sea holly and many, many more. Having said all this, we shall probably have a wet summer and the drought will be long forgotten.

It's a busy time - so get out there and tick some of the following off the list.

- Plant sweetcorn, runner beans, courgettes, French beans towards the end of the month.
- Sow more carrots, spring onions, lettuce and other salad leaves.
- Prune spring flowering shrubs i.e. forsythia, flowering currant and spirea arguta.
- Feed roses
- Plant out dahlias
- Use weed and feed products on the lawn.

And weed, weed, weed.

Bridge, Nursery, Tomlow Road, Napton
Tel: 01926 812737 www.bridge-nursery.co.uk



Nature Notes

John Hancock

Visiting Brandon Marsh Nature Reserve (The HQ of Warwickshire Wildlife Trust) on the 15th April, I was gratified to see Sand Martins for the first time this year. A warden told me that they had arrived on the 30th March having overwintered in sub-Saharan Africa (The Sahel, which includes countries such as Niger and Mauritania). Other signs of spring were a pair of swans and patches of marsh marigolds, commonly known as Kingcups (*Caltha palustris*), standing out against the dead fronds of last year's marsh vegetation. I visited an area of closely cropped grassland overlying sandy soil where rabbits had produced something akin to an extensive putting green. A tiny pink-flowered plant was identified as Dove's-foot cranes-bill (*Geranium molle*).

Recently Sharon and I have journeyed to the West Country to complete another section of the South West Coastal Footpath, namely the stretch between Penzance and Falmouth. Despite the poor weather forecast, we were lucky to have plenty of sunshine. Sometimes the wind was very keen but as it was usually at our backs this caused us little concern and enhanced the seascapes with waves, at high water, battering the cliffs of the Lizard. Where does the name Lizard come from? I asked our landlady at Lizard village. She thought its origins were unknown. Some research back home revealed it may be derived from the Cornish words *Lys Arah* meaning High Court. Serpentine, the distinctive rock of the area was surely named with 'Lizard' in mind. This rock is actually oceanic crust pinched up and exposed in this place when two tectonic plates collided.

Talking of serpents, Sharon spotted a superb adder sunning itself on the path east of Cadgwith. She was ahead, stopped and raised her hand. When I caught up and peered over her shoulder to see for myself, the creature had silently glided into the surrounding gorse. A pity, but at least one of us saw it and marvelled at its beautiful markings.

There were wild flowers in profusion, too many to name. We were particularly struck by the drooping white bellflowers of the three-cornered garlic (*Allium triquetrum*). The three-corners refers to its triangular shaped stem. Apparently it was introduced to Cornwall from the western Mediterranean in 1752 and has been spreading east ever since. There were numerous primroses, thrift, bluebells and the small blue-flowered Spring Squill (*Scilla verna*). In several places we found Early Purple Orchids in flower. To see these locally, walk from Ufton to Bascote Heath keeping just inside the woods. There is an unofficial path and about half way along in amongst the Dog's Mercury and bluebells, you should see some. Another good place for these now quite occasional blooms is Snitterfield Bushes Nature Reserve (Map Ref SP200603 Sheet 151). This reserve was, together with the nearby glider station, an aerodrome during World War Two. Many of the paths, now moss covered, are actually concrete tracks laid in 1940. It's the only place I've seen the unusual herb -paris (*Paris quadrifolia*).

If you have never been, take time to visit the unimproved grassland at Draycote Meadows towards the end of May and you should be rewarded by large numbers of Green Veined Orchids. It's not the only place to see them in Warwickshire but for sheer numbers and perhaps a glimpse back in time to the county's meadows a hundred years ago, I recommend it. (Grid ref.SP448706.OS sheet 140.)

Butterflies have appeared on warmer, less windy, days. We only saw half a dozen on our walk. A Speckled Wood, two Small Whites, a Small Tortoiseshell and a couple which moved too quickly for certain identification. Geoff Thorpe reports seeing a Pied Flycatcher at Ufton Fields. There is a superb patch of cowslips growing on the verge at Ladbroke where the village road joins the bypass on the Southam side. I haven't heard a cuckoo yet; perhaps a report next month.



General Section

Harbury NSPCC Committee

We are holding a special Jubilee Ladies' Lunch on Thursday 17th May at 12.30pm in the Tom Hauley Room. Tickets costs £12.50 per person

which includes a two course lunch plus coffee. Pam Goddard from "Hats & Co" in Regent Street, Leamington Spa will be giving a talk after lunch. If you are interested in coming along, please ring Elaine Bruce on 614664. We would be delighted to see you there.

NSPCC Committee



Harbury Art Group

For our April workshop we had a real challenge - a still life of apples, carnations and glassware, including faceted wine glasses, glass candlesticks and glass jugs. The objective was to try to represent the transparency of glass by painting the reflections and highlights within it and the appearance of objects and colours behind it – very tricky, and it certainly made us look at our subjects closely. After a great deal of head-scratching, sighing and furrowed brows, we all managed to produce some decent artwork and Nick was very pleased with our efforts. This month Sue's picture was chosen as the best one of the day.

Our workshop on Thursday 3rd May is 'pen and wash', and we'll be using black or sepia pen on cartridge paper, with the addition of a watercolour wash. Nick has promised us that the subject will not be as difficult as April's. On Thursday 7th June our workshop will be a watercolour session titled "Early Summer".

If you would like to join us for a day's drawing and painting, please do get in touch. We are a small friendly group and always welcome new members. The workshops are run on a 'pay as you go' basis of £15 per day, and there is no joining fee. We meet on the first Thursday in the month in the Tom Hauley Room behind Harbury Church, between 10am to 3pm. All levels of ability attend, from beginner to the more experienced. Tea, coffee and biscuits are provided but please bring your own packed lunch.

For more information about Harbury Art Group, please contact Pam on 01926 814923 or the tutor Nick on 01295 276465 or e-mail harburyart@hotmail.com.

Pam McConnell



Blood Donors

The next session will be in Harbury Village Hall on Thursday 7th June, 1.30 – 3.30pm and 4.30-7.30pm.

Although everyone between 17 and 65 is welcome at any time, you can cut down waiting by booking beforehand. This is easily done by phoning 0300 123 23 23 or online at www.blood.co.uk.

After the incredible response last time, we look forward to another really well supported session to help boost stocks before the summer holiday take people away. Sadly, accidents and illnesses do not take holidays – the need is always present.

Gillian Hare



Bumps and Bundles

Great goings on at Bumps and Bundles. We had an Easter party with some nice food and some card making activities. Eliza's mummy helped us by creating hand and footprint marks from the babies using paint and very patient babies and then we decorated the card with



Easter styles. We have the usual tea, coffee and biscuits every week at 10:30am until 12.00 noon in the Tom Hauley room on Tuesday; come along with your bump or your baby and meet other mums. We are planning our carnival entry for this year so look out for Bumps and Bundles.

**Kelly and Henry
Bumps and Bundles**

Harbury Duke of Edinburgh Award Group

Date for your diaries: June 15th 7.30pm Harbury School Hall - General Knowledge Quiz night – Call Caroline Hill on 613780 to enter teams of four at £20 each.

Current Year 9s wanting to start Bronze Duke of Edinburgh in September 2012 – there is a short meeting for you and parents/guardians to explain what is involved at 7pm before the quiz in the School Hall. Last year we were oversubscribed so it is worth letting us know soon if you want to do

the award with us. Come to that meeting and, if you are not on the list already, contact us through our website: www.harburydofe.co.uk.

Award Completion Rates

	National	Harbury
Bronze	40%	94%
Silver	41.5%	100%



Gold Navigation Training in North Wales

The achievements of our young people were recognised in February when James Vann from WCC Duke of Edinburgh Award Scheme came to present Bronze and Silver certificates. James pointed out what a committed lot they are by contrasting the completion rates across the country with Harbury's record.

**Kathy Sampson, Caroline Hill,
Alan Sampson, Sam Butler,
Max Wilcox, Nick Tawney**

Harbury Carnival 2012

Wheelbarrow Race

This year's race will take place on Sunday, 3rd June, and is being hosted by The Shakespeare. Competitors are requested to assemble at 12.30pm for a 1.00pm start. Entry forms are available from Dan Killian - 01926 612265 - or from the local pubs. Would all those wishing to participate please return the completed entry forms (make sure you tick which race and also sign the disclaimer), with the appropriate entry fee to Dan, BEFORE RACE DAY PLEASE.

Pub Games

The format is the same as for previous years - a maximum number of 12 per team with 4 players from each team competing in each event (smaller teams are most welcome but, obviously, the minimum number is 4). Team members may take part in more than one event. The entry fee is £1 per team member and entry forms are available from Dan Killian - 01926 612265 - or local pubs. Please return the completed entry form,

together with the appropriate entry fee, to Dan PRIOR TO GAMES WEEK PLEASE.

This year's events and venues are as follows:-

Monday, 4th June - Aunt Sally - The Dog

Tuesday, 5th June - Horseshoes - The Gamecock

Wednesday, 6th June - Skittles - The Old New Inn

Thursday, 7th June - Quiz - The Village Club

All events commence at 7.30pm prompt.

Harbury Carnival Raffle

We are looking for volunteers to sell raffle tickets in the following streets: Mill Street, High Street, Mill Lane, Church Terrace, Church Street, Crown Street, Bull Ring Farm Road and Hall Lane.

The raffle is our main fundraiser and all the proceeds go to village causes. Obviously the more tickets that we sell, the better, so if you are willing to give us a hand with this, please contact me, John Broomfield, on 614258. Please leave a message if I am not able to answer the phone. Your help will be much appreciated.

John Broomfield
Harbury Carnival Committee

Harbury Senior Citizens Committee Update

Summer Outing

Just a reminder that the Summer Outing this year will be to Bournemouth on **Wednesday 13th June** leaving the Village Hall at 8:30am. The invitations have been delivered and we would like you to return your replies to Mugleston's Country Fayre by Friday 1st June. If you are new to the village and think you may be eligible to come along, or you think we may not have you on our list of invitations, please contact Thelma Gulliver on 613269, Julie Clarke on 612066 or Mike on 612421.

Carnival Stall

The Senior Citizens' Committee is running a tombola stall at the Carnival and we would very much welcome any donations that people would like to give. You can drop them off at No. 4 South Parade or No. 32 South Parade; if you prefer we could collect them from you – just ring 612066 to arrange a time.

Thank you for your support.

Mike McBride & Julie Clarke
On behalf of the Harbury Senior Citizens Benefit Association



Are you ready for the Heart of Harbury Games?

16th June 2012 on Harbury Playing fields

Some pictures from last year:



For more information please phone: Peter Walshe (612477), Trevor Montague (612340) or Andrew Lawrence (614937).

Andrew Lawrence
(on behalf of the organising group)



Soft play group starts in Harbury

Two local Harbury mums have set up a soft play group to keep the toddlers of Harbury occupied. "Tiny Tinklers" is a fun structured soft play session taking place every Tuesday in the Harbury Scout Hut from 10am – 11.30am and is suitable for toddlers aged from 9 months to 4 years. Equipment includes a ball pit, rockers, tunnels, ride-ons, climb on shapes, building blocks and much more, and there is a different activity included at the end of each session. The equipment is also available to hire for parties. For more information contact Sarah: sarahlouise_mowbray@yahoo.com, Tel: 612602.

Sarah Hanson

Movement 2 Music

So far, after last month's article, twelve people have expressed an interest in the proposal to start an exercise class for the over 60's, which is an encouraging start. There would probably need to be about twenty people to make the group viable in terms of paying the leader, as well as the cost of hiring the Village Hall. Jackie and I who attend the weekly class in Kinton will be preparing a flyer, which will be displayed on notice-boards around the village and we will hope to hear from a few more people before we ask the trainer to start a weekly session in Harbury. Please look out for the posters and get in touch with one of us.

Chris Finch, 612305

Harbury Village Library Update

The Library is due to re-open on 10th May, with the new café opening on 16th May. It's been a lot of hard work, but, hopefully, it will be worth it. We hope that villagers will drop in to see what the new facility is like, to borrow a book and enjoy some refreshments. We plan to have a formal opening ceremony once things have settled down.

Dr Tim Lockley

Holiday at Home

13th – 17th August 2012

After the success of last year's 'Holiday at Home', All Saints Church is once again planning a similar 'Staycation' for August 2012. This year plans are being made to offer four days of activities, crafts and entertainment in the Tom Hauley Room and one full day outing.

We are looking for people prepared to be involved in the organisation of this week. We will be needing a small team of people to help with the catering, some individuals prepared to lead, plan and facilitate craft activities and one or two able people to put out tables and chairs in the mornings and return to clear up in the afternoons.

Monday, Tuesday, Thursday and Friday will be in the Tom Hauley Room and on Wednesday there will be a full day out at Webbs, Wychbold.

Booking forms for the holiday will be available towards the end of May.

If you feel able to offer help for any of the above activities please contact Sue (613831), or Gill (614206).

Sue Boniface



Very Nearly There!

Friday 20th April saw my final big push of fundraising efforts for my climb of Mount Kilimanjaro this summer and, with some generous help, I held a Race Night at the Village Hall for the evening. This saw betting on a sequence of eight horse races on a DVD projected onto a screen with a novelty pig race as well, complete with a hot supper of cottage pie and a bar. After a few tense weeks of organizing, the night proved to be a success and raised just over £900 for the charity Childreach International, adding to my personal total and getting me extremely close to my £2450 target.

It was brilliant to see so many familiar faces coming to support me and I've heard so many lovely comments about what a great night people had, one even saying we have to do it again! I'd like to give special thanks to Ray Playdon, for preparing some great food as usual, Gill and John Holden and Julie and Martin Collier for all their help behind the scenes, and of course my parents, Don and Denise Vincent, without whom most of the night would have been a complete shambles. Thank you to everyone that attended and made it all possible, and you can always count on Harburarians to help with the clearing up afterwards!

I'm so very close to making all the money I need now, and with less than a month until my deadline, I'm on a final trawl for donations towards such a great cause. If you would like to sponsor me and donate to the charity I have an online page at: <https://mydonate.bt.com/fundraisers/albanyvincent>.

Every donation is greatly appreciated and I can't thank everyone who has supported me thus far. Hopefully the next time you hear from me I will have conquered the summit of Kilimanjaro, so until then.

Albany Vincent

Harbury Energy Initiative

Our LEAF (programme) has not yet turned to a new chapter, although the commissioned work is all finished and the bills paid. We still have to capitalise on the benefits we gained from it. On 24th April a slightly enlarged group of us met to fuse (pun of the month) ideas and make plans for the community buildings that received an energy assessment as part of the project. Now we know what needs to be done we would be wasting the opportunity if we took no action.

We didn't, as you know, get everything we wanted from LEAF. The missed chance for an aerial heat map of Harbury and Deppers Bridge was a disappointment to us all. What we had to settle for is a very

moderate tool. I know that quite a few of you had a go at the Bluesky mapping site and didn't get far off (or on to) the ground. The issue seems to be with entering too much information into the search box. If you just enter the postcode and then select your house from the menu, it does work. However, as Ian Dee of Bluesky is ready to admit, the information given was prepared for DECC with a different purpose in mind and very broad parameters. It will only tell you if you *might* have the right conditions to install PV panels.

By the way, most of those in Harbury who have already installed panels are getting over 10% annual return on their investment. I am still hoping that those who have installed them will get in touch with me and help us build a picture of what Harbury is achieving already. Real local figures for Harbury are far more useful in advising others than general national averages from DECC.

What is clear, as George Allen emphasised at our meeting, is that small, cheap changes can make a major difference. You can save a lot of heat (and money and carbon) by drawing the curtains in the evening. Loft and cavity wall insulation is not expensive and is sometimes subsidised for the most vulnerable or for those on low incomes. Old inefficient appliances cost more money to run than newer ones. Thus the kindly donated unwanted fridge can be an unintentional burden on your purse that soon costs more than buying a new one.

Some of you still have doubts about the Green Deal. HEI is not a government mouthpiece and our aim is to give as much impartial advice as possible. Even so, we believe that there isn't going to be any other offer on the table and it does make carbon saving and cost cutting possible for everyone. The aim is to save you money as well as reducing the energy demand nationally. We are assured that the Green Deal will be able to reduce your bills. However, we'll be keeping an eye on how it shapes up and keep you up to date. The Green Deal launches in October.

Bob Sherman - Tel 612277
bob@churchterrace8.freemove.co.uk



Windmills
 Nursery School

Windmills Nursery School Mt Snowdon Climb

Only a few days now until a group of parents and staff take on the challenge to climb to the summit of Mt. Snowdon. The climb is taking place on Sunday 6th May when a group of ten of us will be making our way up and down the slopes of the 1085 metre mountain to raise much needed funds to help buy some equipment for the charity

pre-school nursery including a sensory garden and an outside covered area.

We will be ascending the Pyg Track which is three and a quarter miles to the top. The group will then be breaking for lunch before descending the mountain.

We would be very grateful for any sponsorship contributions to help us raise money for Windmills Nursery (Charity number 1122970). To sponsor this event please go online to <https://mydonate.bt.com/events/windmillsnursery/75174>

Thank you!

Sarah Hanson

Harbury Pre-School Fundraising Group

As part of our fundraising efforts for the Summer Term we are taking part in the following recycling initiatives:

- **Old/unwanted clothing, linen, shoes, bags etc**

As part of the **Bag2School** scheme, this will raise an amazing **£400-£450 per tonne** for Harbury Pre-School. Please donate the above to Julie Young at Saddlers, Chapel Street, Harbury. The collection will take place on **June 14th at 9am** so please donate from June 7th. Any bag can be used.

- **Used ink cartridges**
- **Old/unwanted mobile phones, chargers and electrical leads**
- **Unwanted 0.5 litre Kilner jars**

Please donate the above to Helen Edwards at The Hollies, South Parade, Harbury.

Your support and donations are greatly appreciated - thank you.

80s-90s Disco!!!

Don't forget our fabulous **80s-90s Disco** which is taking place on Friday 11th May at Harbury Village Hall, 8pm 'til late!! Tickets are **only £5** and available from Mugleston's or Sarah on 07791807970. Fancy Dress if you dare (but no obligation!!) Bar by Cana Wines and hot dogs for sale. We hope to see you there for a bit of retro fun!!!

Helen Edwards
On behalf of Harbury Pre-School Fundraising Group

Village with a Vision

I'm sure that you must have felt, as we have, that the path to our vision for Harbury's own Extra Care Housing Facility was never ending! This has been caused in part by our need to visit similar schemes, and talk to people with experience of them, because we want to do our best to get things right for Harbury.

We're delighted to be able to tell you that things are beginning to move. Our Partners, Bromford, recently held a preliminary meeting with agents, about suitable land close to the centre of the village.

We shall continue with our regular meetings with Bromford, and we will of course, keep you up to date on what's happening. We're hoping and praying that it won't be too long till we can shout HOORAY! - a deal is done!

In the meantime, perhaps you'd join us in thinking about some interesting ways to fundraise for all those "extras" that will be needed.

As ever please continue to support us in our project, which we know will make the declining years of many Harburians happier than they otherwise might have been.

Tony Stubbs

Ufton Village Church Fete - Saturday 26th May

Ufton Church Fete will be held on Saturday 26th May, 2.00 - 4.00pm at the Old Rectory, Southam Road, Ufton (Parking off White Hart Lane).

Produce including cakes, plants, bric-a-brac, tombola, grand raffle, cream teas. There will also be a Children's Wonderland and 'Diamond Jubilee' theme and a fancy dress competition.

Gillian Ingham



Warwickshire Association for the Blind

Warwickshire Association for the Blind runs a fortnightly club for people with a visual impairment at the Congregational Church Hall in Southam on a Wednesday afternoon. It is run by a friendly group of volunteers who arrange a varied programme of speakers and musical entertainment; this is followed by afternoon tea, which is very popular.

The club is seeking a volunteer organiser/leader to oversee the meeting and generally ensure the club runs smoothly. They will have the support

of the existing volunteers and WAB staff. If you are interested in this role, please contact me on 01926 411331 or e-mail: Sue.Morris@wa4b.org.uk.

Sue Morris - Warwickshire Association for the Blind

Volunteering at the Heritage Motor Museum Gaydon

Our plan is for a new building at Gaydon in 2013, with space for the 100+ cars we have in the reserve collection, together with room for expansion in the future.

We're looking for people who can give some spare time to help with this project. There's work to do straight away – assisting with the survey and conservation of cars stored in the reserve collection, for example. Then there'll be an opportunity to become a volunteer tour guide and look after the collection once the new building is open.

If you have an interest in motor cars, the motor industry or just want a project for your spare time, we'd love to hear from you. We promise you it will be rewarding – all you need are a few hours to spare and lots of enthusiasm. No previous experience needed!

Check the role profiles, download or fill in an online application from www.heritage-motor-centre.co.uk or email to volunteers@heritage-motor-centre.co.uk or phone 01926 645027.

Parkinson's UK

Have you been diagnosed or are connected to someone with Parkinson's? Then Parkinson's UK may have the answer for you.

On Sunday 20th May Parkinson's UK West Midlands is holding an information day at The Heart of England Conference Centre, Meriden Road Fillongley, Warwickshire CV7 8DX. From 2pm-4pm.

You will have the opportunity to learn more about Parkinson's, speak to our specialist staff and meet our local groups. If you are interested in attending, please call 0844 225 3460 or email: RPatel@parkinsons.org.uk.

The Leamington & District branch of Parkinsons UK meets on the second Thursday in each month - 2 to 4pm in the Sydni Centre, Marloes Walk, Sydenham. For more information please call the Secretary, Margaret on 01926 853023.

Jean Smith
Parkinson's UK

HS2 Community Forums

As I'm sure you are aware, Justine Greening the Secretary of State has given the go ahead for the construction of a high speed rail link between London and Birmingham. More information can be found on the government web site: www.highspeedrail.dft.gov.uk.

The next stage is that HS2 Ltd are holding a number of Community Forums for the purpose of consultation on draft scope and methodology for the environmental impact assessment. These forums will meet regularly over the coming years. So that representatives of the local community can work with HS2 Ltd.

The purpose of these Forums are:

- inform the local community about HS2 proposals and consultations
- highlight local priorities for the route design
- discuss potential ways to avoid and mitigate the environmental impacts of the route such as screening views of the railway, managing noise and reinstating highways
- identify possible community benefits

As a member of the Local Forum representing Harbury and Deppers Bridge, I would like your comments on how you feel the construction and operation of HS2 may affect you!

For example: At our first meeting, I raised concerns that during the construction phase the Southam to Ufton road will have to be closed and that the diversion cannot be through Deppers Bridge, because of the weak Railway Bridge that has a 7.5 Tonne weight limit. This has been recorded.

For more information on the consultation process please visit www.hs2.org.uk.

Please send your comment for my attention at the Parish Council Office (e-mail cllrekins@harbury-pc.gov.uk). I look forward to receiving and raising them at our next meeting in two months time.

Steve Ekins

BOOKINGS FOR				
SCOUT HUT	TOM HAULEY ROOM	THR COFFEE MORNINGS	VILLAGE HALL	VILLAGE CLUB CONCERT ROOM
Caroline Hill Tel: 613780 -	Sally Stringer Tel: 613214 sal.47@hotmail.co.uk	Sally Stringer Tel: 613214 sal.47@hotmail.co.uk	Celia Neill Tel: 612819 harburyvillagehall@googlemail.com	Tel: 612498 (evenings) harburyvillageclub@hotmail.co.uk



LETTERS TO THE EDITORS

Dear Editors

The family of Dave Delin would like to thank everyone for the cards and messages on their sad loss.

Our thanks to everyone who attended the service in Church, to everyone who made donations to Myton Hospice and to reader Gemma North for the lovely service and words of comfort.

Many thanks to all our many friends for their kindness.

Rene, Yvonne and Margaret

Dear Editors

Hazel Sharples

We would like to thank all who came to Hazel's funeral, but special thanks must go to Rev. Craig, Rev. Annie and Rev. Canon Roy Brown for taking a very special service.

Craig, Timothy, Deborah, Matthew and family

Dear Editors

I would like to send a special thank you to all my friends and neighbours who have been so supportive to my wife Joan whilst under the care of Warwick and Walsgrave Hospitals.

Once again many thanks.

Andrew Teeney

Dear Editors

*To all the wonderful people of Harbury whose prayers, cards and gifts have sustained me during the past 11 months together with my excellent chauffeurs - **THANK YOU.***

Sally (Heigl)

Dear Editors

I would like to thank everyone who so generously gave donations towards the Easter flowers at Harbury Church.

Also a big thank you to my team of flower arrangers who voluntarily give up so much of their time to help us make our Church look so beautiful.

Jo House

Dear Editors

The right of way that goes from Temple End across the fields has been under constant attack from vandals recently. The barbed wire fence is not only cut, but strands are pointed inwards thus endangering the horses that graze in the field. Normal warning notices have been ignored, so the police have been alerted, but so far nothing has come of their enquiries. If anyone has any idea who is trespassing on the private land which runs alongside the footpath and damaging the fence, or indeed if you observe a vandal in action, please pass the information to Warwickshire Police: crime reference S/12/1716 – Investigating Officer: Polsta/4281/Coles.

A. Johnston

Regular Diary Dates

ART CLASSES: The Studio, Church House, Crown St, Tuesday 10am -12 noon (614251)

ART TUTORIALS: Tom Hauley Room 1st Thursday of the month (814923 or 01295 276465)

BADMINTON: Village Hall, Monday mornings 10:00am -12:00 noon (612877)

Mondays evenings 7:30 - 9:00pm; (612627)

BEAVERS: Scout Hut, Thursdays 5.30 - 6.40pm (01788 816214)

BELL RINGING PRACTICE: Church, Fridays 7:30pm (612939)

BIBLE STUDY GROUPS: various homes 1st & 3rd Thursday of the month 2.00-3.00pm (614809); 2nd & 4th Tuesday of the month 10.30 - 12.00 Noon (612864)

BROWNIES: Scout Hut, Mondays 5.45pm - 7:00pm (612538)

Brownies & Rainbows Waiting List - Bobbie Sharpe (614040)

BUMPS & BUNDLES: Tom Hauley Room, Tuesdays, 10.30am – 12 noon (614150 or 611914)

CHILDREN'S DANCE CLASSES: Farley Room Wednesday 4.00 - 8.00pm (07837 152839)

CHURCH MEN'S GROUP: Tom Hauley Room 1st Thursday in the month 7.45pm (612765)

COFFEE MORNING: Tom Hauley Room Saturdays 10:00am - 12:00noon (613214)

CUBS: Scout Hut, Wednesdays 6:45 - 8:15pm (614730)

DROP-IN TEA FOR THE BEREAVED: 19, Farm Street, last Tuesday in the month (except August and December) 2.30 to 4.30pm (612585)

GUIDES: Scout Hut, Mondays 7.15pm – 9.00pm (614375)

GYMNASTICS: Harbury School, Mondays 6:00 - 8:00pm (07939 679533)

HARBURY FOLK CLUB: Dog Inn 1st Thursday in the month 8:00pm (613730)

HARBURY FRIENDS: Tom Hauley Room, 2nd Tuesday in the month 8:00pm (612534)

HARBURY JUNIORS FOOTBALL CLUB:

Under 6's/7's - Year 1 & Year 2 (Mixed)

Coach: Steve Darby Tel: 01926 613330

Training: Saturday 9.00 am Harbury School

Under 8's - Year 3 (Mixed)

Coach: Bob Church Tel: 01926 614366

Training: Saturday 9.30 am Harbury School

Under 9's - Year 4 (Mixed)

Coach: Steve Burnell Tel: 07795 428087

Training: Tuesday 6.00pm Harbury Rugby Club

Under 11's/12's - Year 6 (Mixed)

Coach: Richard Woodhead Tel: 07786 802803

Training: Saturday 9.00 am Harbury Playing Fields

Under 15's - Year 10

Coach: Malcolm Tanner Tel: 01926 612617

Training: Saturday 9.00 am Harbury Playing Fields

HARBURY PRE-SCHOOL: Wight School (behind Library), High St. Monday 12 noon – 3.30pm, Tues & Thurs – 9.00am, - 3.30pm, Wed & Fri – 9.00am – 1.30pm (07939 122087) enquiries@harburypre-school.org.uk

HARBURY THEATRE GROUP: Last Tuesday of the month Shakespeare Inn (611930)

HARBURY TODDLER GROUP: Wight School, Monday 9.30 - 11:15am

HARBURY UKULELE GROUP: Shakespeare Inn, 1st & 3rd Monday of the month 8.00pm, contact Craig (612377)

HARBURY VILLAGE CLUB: Contact 612498 (evenings).

Open Mic 8.00pm, last Saturday in the month. For more information 07799 896891.

Bingo every Friday 8.30pm - non members welcome.

HEREBURGH MORRIS DANCERS: School Hall, Wednesdays 8:00 - 10:00pm (613730)

HORTICULTURAL SOCIETY: Tom Hauley Room, 1st Tuesday in the month (Oct. to May) 8:00pm Contact David Powell-Tuck (614492)

KICK START APPALACHIAN STEP DANCERS: Scout Hut, Saturdays, 10:00am - 12:00noon (612734)

NETBALL CLUB: Village Hall Car Park, Training Thursday evenings, Juniors 6.00 till 7.30pm & Seniors 7.30 till 8.30pm, Matches on Saturday Afternoon (613163)

MEN'S BREAKFAST: Tom Hauley Room, 3rd Saturday in the month 7.30am (612782)

MOTHER'S UNION: Tom Hauley Room, 1st Wednesday in the month 2.30pm; 3rd Tuesday in the month 8.00pm (613831)

RAINBOWS: Scout Hut Tuesdays 5.30 - 6.30pm, Unit Leader Bobbie Sharpe 614040

SCOUTS: Scout Hut, Thursdays 7:00 - 8.30pm (614177)

TABLE TENNIS: Village Hall, Thursdays, 9.30 - 10.30am (614809)

TAI CHI: Ufton Village Hall, Monday, 7.15pm – 8.45pm (612277)

TENNIS CLUB: Adult / Student Members Playing Times:

Tuesdays: 6.30pm– 10.00pm, Thursdays: 6.30pm – 10.00pm

Saturdays: (from Sept to March) 10.00am – 12 noon

Sundays: (from April to August) 10.00am – 12 noon

Members may play at other times free of charge, provided the courts are not already booked. **Guests** playing with members should pay £1 an hour.

If you would like to become a member or find out more about Harbury Tennis Club, please contact Colin Mercer (613284 or email sucol-merc@tiscali.co.uk)

Non-members - Courts should be booked at Country Fayre, Chapel Street (£4 per court per hour) Floodlit bookings - £7 per court per hour.

Minis and Juniors (age 3 - 17) For details of Junior membership, contact Sue Mercer: sucol-merc@tiscali.co.uk

Coaching: Adult and Junior coaching takes place throughout the year.

For up to date information contact admin@tennisolutions.co.uk

THURSDAY CLUB: Farley Room of Village Hall 4th Thursday in the month 2:30pm (612877)

WARWICKSHIRE YOUNG VOICES: Village Hall, Thursdays 6.30 - 8.00pm (614150)

W.I.: Tom Hauley Room, 2nd Thursday in the month 7:45pm (612708)

WEDNESDAY WALKERS: Village Hall, Wednesday 9.45am (614188)

WINDMILLS NURSERY SCHOOL: In the grounds of Harbury Primary School,

Monday-Thursday; 9:05am - 3.05pm; Friday 9.05am -12.35pm (07906 519148)

info@windmillsnursery.co.uk

YOGA: Tom Hauley Room, Wednesdays, 7:30-9:30pm Dianne Surgey (817904)

YOUTH GROUP-ICON @ All Saints': Tom Hauley Room, Sundays 7.00 – 8.30pm (612377)

**June Edition - Harbury & Ladbroke News
Adverts to 31 Binswood End by 15th May
Articles to Harbury Pharmacy or e-mail to
articles@hlnews.co.uk by 24th May**



Gardens by Wendy

phone: 01926 614877

mobile: 07595 289331

e-mail: wendy@gardensbywendy.co.uk

- Garden design services from one-off consultations to full designs
- Advice on rejuvenating tired or problem areas of planting
- Help with growing fruit & veg, organic gardening, pests & diseases, etc.
- Specialist gardening work such as pruning, border maintenance etc.



D.A.Knowles Plumbing Services

- Over 25 years experience
- All aspect of plumbing including bathroom and kitchen installations
- Full tiling service available
- Competitive rates
- Project Management available for larger projects
- No job too small!!

Mobile: 07721 522298 Home: 01926 613776 Email: da.knowles@btinternet.com

HOME BOARDING FOR YOUR DOG



Wouldn't you enjoy your holiday much more knowing your pet was going on holiday too!



Why not let me look after your dog on our 22 acre farm where he will live as one of the family. No being shut in a kennel all day and night, just as much exercise as he wants with our own two friendly dogs who love to play with new friends. All needs catered for.

You will find our prices very reasonable and our care second to none. Give us a call on 01926 612921 or 07967 762475 and see how we can ensure you all have a good time!

All prospective boarders whose dogs didn't care for cats, please do ring again, as sadly, we no longer have cats.

25 YEARS BUILDING EXPERIENCE



**Don't just take
our word for it!!**
Two customer references
provided with
every quote!

GROUNDWORKS

NEW BUILDS

RENOVATIONS

EXTENSIONS

BRICKWORK

PLASTERING

PATIOS

DRIVEWAYS



BEFORE



AFTER

Contact us Today For a **FREE** No Obligation Quotation
Office: 01926 612195 - Mob: 07960 133105 - Email: info@harburybs.co.uk

GREEN CHAMELEON: SALES, LETTING & MANAGEMENT

RENTAL



**BINSWOOD END
HARBURY**

£850 pcm

3 BED
LOUNGE
KITCHEN/DINER
UTILITY
LARGE GARDEN with OFFICE
OFF ROAD PARKING

RENTAL



**FARLEY AVENUE
HARBURY**

£750 pcm

2 DOUBLE BED
LOUNGE
KITCHEN
FAMILY BATHROOM
GARDEN/GARAGE
PARKING

Tel: 01926 612121/ 07796 575716

info@greenchameleon.net www.grechameleon.net



JAMIESON JOINERS



Manufacturers of quality windows, doors,
stairs, conservatories,
fitted kitchens/bedrooms.

Established 25 years.
Competitive prices. Private/Trade

Tel 01926 612921/07968 009094
or e-mail your enquiry to:

stablesatharbury@live.co.uk



The Crown Inn

Friday Night

6.00 - 7.30pm

**Steak & Ale Pie
served with**

Chips or New Potatoes

£3.50

~~~~~

## Sunday Lunch

12.00 noon - 4.00pm

**From £7.50**

~~~~~

Brand New

**Bed & Breakfast
now available.**

£25.00

**per person, per night
to include a**

Full English Breakfast

~~~~~

**Please see our website for  
menus and more  
information.**

**☎01926 614995**

**[www.crowninnharbury.co.uk](http://www.crowninnharbury.co.uk)**



### Tap Lessons



*Fridays, The Grange, Southam*

4.00pm - Little Tappers (3-5yrs)  
4.30pm - Pre-Primary Tap (6-8yrs)  
5.00pm - Grade 1 Tap (8yrs+)

### Dance Classes



*Thursdays, The Grange, Southam*

4.00pm - Funky Dance 1 (4-6yrs)  
4.30pm - Gymnastics (all ages)  
5.00pm - Grade 1 Ballet (9yrs +)  
5.45pm - Funky Dance 2 (7yrs +)  
6.15pm - Grade 2 Ballet (11yrs+)  
6.45pm - Grade 3 Ballet (13yrs+)

### Ballet Lessons



*Tuesdays, The Grange, Southam*

4.00pm - Prima Ballerinas (3-4yrs)  
4.30pm - Pre-Syllabus (5-6yrs)  
5.00pm - Pre-Primary (7-8yrs)  
5.45pm - Primary (8yrs+)

### Acting, Performance & Singing



*Mondays, The Grange, Southam*

4.00pm - Juice (3-5yrs)  
4.45pm - Rocket (6-8yrs)  
5.45pm - Upload (9-12yrs)

**Limited places available - FREE TRIAL CLASS**

Call Lorraine 07711 010404 - [www.loveballet.co.uk](http://www.loveballet.co.uk) - [lorraine@loveballet.co.uk](mailto:lorraine@loveballet.co.uk)

*No job too small*

## Phil's Plumbing and Heating

*Free Quotations*

**Fully Qualified  
and  
Insured Plumber**

Bathrooms, Central Heating & showers

I am a locally based plumber  
offering very competitive rates  
on any plumbing or heating job.

No job too small,  
Please give Phil a call

### Call Phil

Daytime: 07971 046392

Evening: 01926 400746

Email: [philmunday@hotmail.co.uk](mailto:philmunday@hotmail.co.uk)

**Bishops Tachbrook  
Leamington spa**

# Domestic Gas Services



CENTRAL HEATING, INSTALLATION, SERVICE, REPAIR and  
***POWERFLUSHING....the next best thing to a new heating system!***



Are your radiators cold at the  
bottom?  
If so they need ***POWERFLUSHING!***

***POWERFLUSHING*** removes the build up  
of sludge and sediment in your radiators  
which is making them less effective  
therefore ***costing you money!***

***POWERFLUSHING*** will maximise the  
efficiency of your radiators ensuring you  
get the very best from your heating  
system therefore ***saving you money!***



For all your gas requirements please call  
Martin Evans on **07980 740720**



## FREE VALUATION DAY

**ANTIQUES, JEWELLERY, SILVER,  
CERAMICS, BOOKS AND COLLECTABLES**

**Charles Hanson**



**as seen on BBC Antiques Road Trip  
and his team of Antiques Experts  
Thursday 10<sup>th</sup> May, 12.00 - 4.00pm**

Items may be left to be entered into a suitable sale

**Leek Wootton Village Hall**

Warwick Road, Leek Wootton, Warwick, CV35 7RB

**FREE HOME VISITS FOR LARGER ITEMS**

**Charles Hanson is available for Charity events and talks etc**

Hansons employ Lars Tharp to advise on Chinese Ceramics and Oriental Works of  
Art and Kate Bliss to advise clients on Jewellery and Silver

**Please contact Mrs Carol Jones**

Hansons Warwickshire Representative on 01926 770066

Email: [service@hansonsauctioneers.co.uk](mailto:service@hansonsauctioneers.co.uk) [www.hansonsauctioneers.co.uk](http://www.hansonsauctioneers.co.uk)

Refreshments in aid of the NSPCC

green  
chameleon



Karena EA Ellis

MRICS, RICS Acc.Med., BSc Hons

M: 07796 575716 T: 01926 612121

E: info@greenchameleon.net

www.grechameleon.net

Chartered Surveying ■

Mediation ■

Letting & Management ■

The Green Room, 31 Manor Road,  
Harbury, Warks CV33 9HY



**RICS**



## Clare Fulford

B.Ed. Hons (Cantab), ALCM

### Flute and Piano Lessons

Free Introductory Lesson

t. 01327 262529

m. 07775 915790

clare.fulford@btinternet.com

# RJD

**BRICKLAYING LTD**

**EXTENSIONS  
RENOVATIONS  
REFURBISHMENTS  
NEW BUILD  
GARDEN WALLS**

**BRICK WORK AND STONEMASONRY  
SPECIALISTS**

FAMILY RUN BUSINESS WITH OVER  
35 YRS EXPERIENCE

CALL US FOR A QUOTATION

THE BEECHES  
THE OLD GATED ROAD  
CHESTERTON  
WORKS CV33 9LD  
TEL: 01926 614335 MOBILE: 07786838627  
EMAIL: info@rjdconstructionltd.co.uk

RECOMMENDED BY  
AGE CONCERN

**AGE**  
*Concern*

## FENCES : TREES



**All types of fencing and gates**

**Tree felling and reduction**

**Hedge laying and trimming**

**Patios**

**Seasoned logs available**

**Call Adrian Dollar on  
01926 817077 or  
07914 623989**

**Qualified and Insured**



**Are you concerned about the hosepipe ban?**

Why not contact us about installing a water butt to ensure you have enough water to keep your flowers and plants glowing throughout the summer.

Services also available include, hedge trimming, lawn mowing and edging, border maintenance, stone wall construction or repair, fence repair or replacement, pond installation or removal, pond covers fitted, patio and outdoor furniture cleaning.

**Do you have unwanted weeds?**

Why not ask us about our chemical weed control, we are fully qualified and have everything you need to have a weed free summer!

*All outdoor maintenance considered.*

*No job too large or too small.*

*For all your outdoor chores, call your local, friendly gardener:*

*Richard Everett*

*07923 167420 or 01788 567774*

*Leafyservices@gmail.com www.leafyservices.co.uk*



Lose those extra pounds quickly whilst having loads of fun!

**Sunday mornings at 9am, Harbury Village Hall**

£4 per class, discounts available



[facebook.com/warwickshirefitness](https://facebook.com/warwickshirefitness)

**Phone 0789 067 1869 for more details**

# The Shakespeare Inn

## New Steak House & Grill



- ♦ Traditional 18th century country inn
- ♦ Choice of real ales and guest beers
- ♦ Meals served Monday - Saturday  
12 noon - 2.30pm and 5.00pm onwards
- ♦ Sunday Lunch - 12 noon - 3.00pm
- ♦ Large car park and beer garden
- ♦ Function room available for family events and corporate meetings



See us on [facebook](#)

Also offering a wide range of other menu choices including:  
Pasta / Rice dishes and Vegetarian options

***Specials Board also available***

9-11 MILL STREET, HARBURY, LEAMINGTON SPA, CV33 9HR. Telephone: 01926 613822

# The Gamecock Inn

(Sister pub to the Shakespeare Inn)

**OPEN 4.00PM TILL CLOSE**

Selection of Fine Ales

Wednesday Evening

Open Mic Night starts 8.30pm

Sunday Evening

Quiz Night starts 9.00pm

All Welcome



CHAPEL STREET, HARBURY. TELEPHONE: 01926 612306



## Roger Frogley & Sons Fencing



High quality domestic, industrial and agricultural fencing offering a service second to none. *competitively priced - clean, efficient & reliable*

If you require some fencing - look no further! Visit our **fully featured website** for ideas and examples and get in touch.

**[www.frogleyfencing.co.uk](http://www.frogleyfencing.co.uk)**

or ring **07970 652145**



**LOCKE & ENGLAND**

**AUCTIONEERS & VALUERS**

Established 1834

**Auction Every Thursday**

Viewing Wednesday 12.00noon - 7.00pm  
and morning of sale from 9.00am

**Bi-Monthly Antique  
& Collectors' Auctions**

**Regular Valuation Days**

**Valuations for Insurance,  
Probate & Family Division**

**Specialist & Commercial Sales**

**Collection Service**

**ENTRIES INVITED FRIDAY,  
MONDAY & TUESDAY**

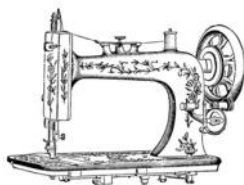


12 Guy Street, Leamington Spa, Warwickshire CV32 4RT

**01926 889 100**

**[www.leauction.co.uk](http://www.leauction.co.uk)**

## Drop Dead Gorgeous



Beautiful Handmade Curtains, Cushions and Roman Blinds all made to measure. Curtain alterations also undertaken.

Free Quotes and Free Fitting.

Contact Sharron for Friendly and Helpful Advice.

07760 395805 or 01926 612226

or email: [dropdeadgorgeouscurtains@gmail.com](mailto:dropdeadgorgeouscurtains@gmail.com)

Regulated by the Institute of Certified Bookkeepers

**A local Bookkeeping Service** for Sole Traders & Small Businesses, including Sales & Purchase Ledgers, Bank Reconciliations, Expenses, VAT Returns, Credit Control, Payroll and Final Accounts.

**An affordable outsourcing solution**

Call 01926 800123 for an informal chat  
or email [info@cc-bookkeeping.co.uk](mailto:info@cc-bookkeeping.co.uk)



[www.cc-bookkeeping.co.uk](http://www.cc-bookkeeping.co.uk)

## SADDLERS BED & BREAKFAST

SELF-CONTAINED COTTAGE IN THE HEART OF HARBURY.  
DOUBLE BED, SHOWER ROOM, LIVING & DINING AREA WITH  
KITCHENETTE, TV/DVD; CD/RADIO. SLEEPS 2 TO 4.  
OFF ROAD PARKING.

£60 PER NIGHT INCLUDING CONTINENTAL BREAKFAST.

JULIE YOUNG, SADDLERS, CHAPEL STREET, HARBURY.  
01926 614050 OR EMAIL [enquiries@saddlersbed.co.uk](mailto:enquiries@saddlersbed.co.uk)  
[www.saddlersbed.co.uk](http://www.saddlersbed.co.uk)



## Why you should buy your new kitchen or bathroom from Modern Homes!

- With over 43 years of trading we are the longest established specialist in your area.
- Predominantly British Manufactured products
- Family run 'local' business
- Personal recommendations
- Large kitchen and bathroom showroom
- Full installation service with employed fitters
- Value for money... We offer styles to suit all tastes and budgets
- Kbsa members offering Consumer care protection

[www.modernhomesleamington.co.uk](http://www.modernhomesleamington.co.uk) Email: [info@modernhomesleamington.co.uk](mailto:info@modernhomesleamington.co.uk)

**01926 883338**

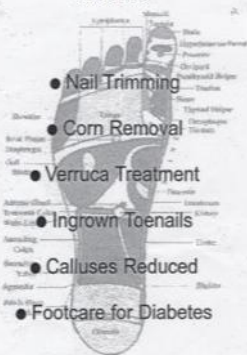
**Modern Homes, 37 Longfield Road, Sydenham Estate, Leamington Spa CV31 1XB**  
(between Wilts and CAS)

A Member of the Alliance of Private Sector Practitioners

# Jackie Biddle

## Healthy Feet are Happy Feet

Foot Health Practitioner

Dip CRP MPS Foot  
CRB Checked

Home Visits Telephone

T: 01926 612503

M: 07872 907429

# LOUISE BEALE

photography

studio in  
Fenny  
Compton



Wayland House, Station Fields, Fenny Compton,  
Southam, CV47 2XD, 0783 4071210

[louise@louisebeale.co.uk](mailto:louise@louisebeale.co.uk)

[www.louisebeale.co.uk](http://www.louisebeale.co.uk)

**5 High Street  
Southam  
Warwickshire  
CV47 0HA**

**Tel: 01926 812574**

**Email: [enquiries@reynoldsinsurance.co.uk](mailto:enquiries@reynoldsinsurance.co.uk)**

**Website: [www.reynoldsinsurance.co.uk](http://www.reynoldsinsurance.co.uk)**

# reynolds insurance

## SERVICES LTD

*Independent Insurance Advisers*



Are you fed up with hanging on the phone or searching the internet?

Would you like to talk to friendly, experienced staff who will explain the small print?

We have been established in Southam since 1983 with the same staff who would be happy to offer you a competitive quote for all classes of insurance private or commercial.

**Call Deb or Sue - 01926 812574**

### FREE QUOTES ON:

Household

Motor

Short Term Learner Driver Insurance

Fleet/Vans/Trucks

Public/Employers Liabilities

Shops

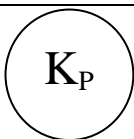
Travel

Restaurants & Pubs

Business Insurance

Tradesman Insurance

Let Properties/Holiday Homes



# Kleinmann Properties

SALES LETTINGS  
MORTGAGES & FINANCIAL SERVICES

Special introductory offers in May, June & July.

- Free no obligation valuation
- Personal and professional service guaranteed
- All viewings accompanied – by appointment only
- Excellent rates
- Lettings - Fully managed or tenant finding service

Telephone: 01926 612463

Mobile: 07710 040494

Email: [enquiries@kleinmannproperties.co.uk](mailto:enquiries@kleinmannproperties.co.uk)

Web: [www.kleinmannproperties.co.uk](http://www.kleinmannproperties.co.uk)

*3 Bull Ring Business Centre, Church Terrace, Harbury. CV33 9HL*



**Extensions-Alterations-Refurbishment-New Builds**  
**Bespoke Kitchens and Bathrooms**  
**Design-Planning & Building Regulations Application**  
**Service available.**

Web: [kenilworthproperties.co.uk](http://kenilworthproperties.co.uk)

Email: [kenilworthprops@btconnect.co.uk](mailto:kenilworthprops@btconnect.co.uk)

Telephone: Harbury 612260 Mobile: 07779 096104

**Harbury Business Centre, Church Terrace, Harbury, Leamington Spa CV33 9HL**

## **ADVERTISING IN THE HARBURY & LADBROKE NEWS**

**EMAIL: [ADVERTISING@HLNEWS.CO.UK](mailto:ADVERTISING@HLNEWS.CO.UK)**

**TEL: 01926 612155**

### **Monthly**

¼ page – £10.50 or £28 for 3 months

½ page – £19.00 or £49 for 3 months

Full page – £33.50 or £89 for 3 months

### **Annual**

¼ page – £ 94.00

½ page – £168.00

Full page – £315.00

*(coloured pages printed in April for the year)*

**Adverts with payment to:**

**Gill Holden,**

**31 Binswood End, Harbury**

**by the 15<sup>th</sup> day of the month**

*Cheques payable to 'Harbury & Ladbroke News'*

## **Warwickshire Groundworks**

**Your local contractor for:**

- ♦ Driveways - Block paved
- ♦ Tarmac or Coloured Stone
- ♦ Patio Design & Construction
- ♦ Brickwork
- ♦ Fencing
- ♦ Shed Bases & Sheds Supplied
- ♦ Turfing
- ♦ All Hard & Soft Landscaping

**City & Guilds Qualified  
20 Years in the Business**

**Telephone Roger on:**

**01926 632994**

**07985 256009**

*High Quality of workmanship  
as Standard*

# **Nifty Needle Curtain Shop**

**1 Banbury Street, Kineton**

**Made to measure curtains and blinds.**

**Free measuring service.**

## **Nifty Nik Naks Gift Shop**

**For interesting presents**

01926-641741 email: [niftyneedle@fsmail.net](mailto:niftyneedle@fsmail.net)

Open: Tuesday - Friday 9.00am - 5.00pm

Saturday 9.00am - 2.00pm

(Harbury Resident)



## Fiona's Frames

Bespoke Picture Framing

Wide choice of mouldings & mounts for paintings, prints and needlework

Friendly Professional Service

Phone 01926 812807

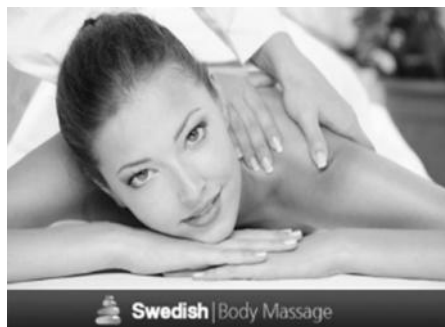
Hillside, Napton

email: [enquiries@fionasframes.co.uk](mailto:enquiries@fionasframes.co.uk)



## ABSOLUTE BEAUTY

Tel Rosina on 01926 612403 - [www.rosina.moonfruit.com](http://www.rosina.moonfruit.com)

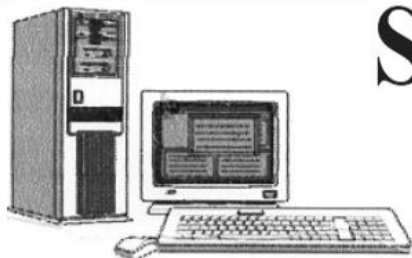


For all your beauty and holistic needs

Minx & Shellac Nails available

Tel Rosina – 612403

[www.rosina.moonfruit.com](http://www.rosina.moonfruit.com)



# SIMONS SYSTEMS

Available for all your computer requirements including:  
PC's and Laptops, New and used systems,  
Upgrading memory/hard drives/rom drives/graphics, etc  
Internet – modems fitted, wireless, networking.  
Any repairs. **NO CALL OUT CHARGE**



**Tel: 01926 316119**



**Mob: 07751 811097**



**E-mail: [simons.systems@virgin.net](mailto:simons.systems@virgin.net)**

Harbury Theatre Group presents

**Two one act plays**

# **BREAKFAST FOR ONE**

By David Foxton

&



# **VISITORS FROM FOREST HILL**

taken from *Plaza Suite* by Neil Simon

## **Harbury Village Hall**

Thurs 17<sup>th</sup> Fri 18<sup>th</sup> & Sat 19<sup>th</sup> May

Doors open at 7.30 pm Curtain up at 8.00pm

Tickets £6.00 Concessions £4.00

2 for 1 on Thurs only

Saturday Supper Evening £8.00

**Folk Band Trio**  
**Guy, Morris and Thompson**  
**on Thurs & Fri**

Tickets available from  
Muglestone's, CANA Wines  
or  
Tel 613488



# *The White Hart at Upton*

*UNDER NEW MANAGEMENT*

*Lunchtime Specials*

*Fine wines, real ales and delicious home made  
food!!*

*Sunday Lunches*

*Magnificent views*

*Warm and friendly atmosphere*

*White Hart Lane, Upton CV33 9PJ*

*01926 612976*

*<http://www.facebook.com/Thewhitehartupton>*

*[thewhitehartupton@gmail.com](mailto:thewhitehartupton@gmail.com)*