

Harbury & Ladbroke News

Reflects all aspects of local life, is published monthly and produced with the assistance of
All Saints' Parochial Church Council.

March 2012

No.456

Editorial Office	☎ 612155
Articles to	Harbury Pharmacy, High Street
Email address	articles@hlnews.co.uk
Advertising Office	31, Binswood End (☎ 612155)
	advertising@hlnews.co.uk
Distribution Manager	49, Mill Street (☎ 612009)
	distribution@hlnews.co.uk
Inserts by prior arrangement	☎ 612009

IN THIS ISSUE

Page

EDITORIAL	2
HARBURY DIARY & REFUSE ROTA.....	2-5
FROM THE RECTOR & CHURCH NEWS	5-9
LADBROKE NEWS	9
HARBURY PARISH COUNCIL	16
CLUBS & SOCIETIES	17
EARLY YEARS & SCHOOL.....	24
VILLAGE HALL UPDATE	32
GARDENING & NATURE	34
GENERAL SECTION	40
LETTERS TO THE EDITORS	58

Editorial Team

John Holden - Chris Finch - Marian Millington - Janice Montague
Ralph Swadling - Jackie West

*The views of contributors are not necessarily those of the Editorial Team
The Editors reserve the right to amend articles as they see fit.*



Editorial

The Harbury Festival fortnight in June promises to be an action packed time. Preparations for the Carnival and Harbury Games are underway and if you want to be involved in either or both, please contact the organisers. Similarly, Ladbroke is planning a range of Jubilee events with opportunities for everyone to take part.

Whilst Harbury Library is closed for repairs, prior to re-opening as a community library, a mobile library is visiting the village on Wednesday afternoons, parking at the Dog Inn.

There is an opportunity to obtain faster broadband in Harbury and Ladbroke if there is sufficient demand. In the magazine there is an article with details of a survey that needs to be completed.

Following six free issues of the Harbury & Ladbroke News, annual subscriptions of £7 (no increase) will be collected in April.

Finally, we extend our sympathies to the families of Doug Green and Wendy Jackson.

Harbury Diary

MARCH

Sun	4	LENT II
		Zumba, 9.00am in Village Hall
		Sung Eucharist 9.00am
		First Light Service, 10.30am, Tom Hauley Room
		Evening Taizé-style Service, 6.00pm
Tue	6	Holy Communion 7.30pm
Wed	7	Holy Communion, 2.00pm, Tom Hauley Room
		WCC Mobile Library, 2.00pm – 4.30pm on the Dog Inn car park
		Mothers' Union Meeting, 2.30pm, Tom Hauley Room -
		Di Slwinski (Diocesan President) reports on her visit to Holland
		Ballroom Dancing, 7.30pm (last session) in Village Hall
		Hereburgh Morris Practice, 8.00 – 10.00pm Harbury School
Thurs	8	Holy Communion 9.45am
		BLOOD DONORS 1.30pm – 3.30pm and 4.30pm – 7.30pm in Village Hall
		Warwickshire Young Voices 6.30pm Village Hall


- Thurs 8 WI 7.45pm in Tom Hauley Room – The Sculptures of James Butler
- Fri 9 Mid-day Prayer at 12 noon followed by Lent Lunch
- Sat 10 Coffee Morning 10.00am – 12 noon in Tom Hauley Room in aid of Guide & Scout Support (GASS)
Councillor's Corner 10.00 – 11.30am outside the Post Office, Chapel Street
- Sun 11 LENT III**
Holy Communion, 8.00am
Zumba, 9.00am in Village Hall
Sung Eucharist, 10.30am
- Tue 13 Toddlers' Service, 2.00pm Tom Hauley Room
Holy Communion 7.30pm
- Wed 14 WCC Mobile Library 2.00 – 4.30pm on the Dog Inn car park
Hereburgh Morris Practice 8.00 – 10.00pm Harbury School
- Thur 15 Holy Communion 9.45am followed by coffee
ADVERTS FOR NEXT ISSUE TO: 31 BINSWOOD END, HARBURY BY 5.30PM
- Fri 16 Mid-day Prayer at 12 noon followed by Lent Lunch
- Sat 17 ST PATRICK'S DAY
Men's Prayer Breakfast, 7.30am, Tom Hauley Room
Coffee Morning 10.00am – 12 noon in Tom Hauley Room in aid of Twinning Association
Moving Pictures presents 'Johnny English Reborn', doors open 2.00pm, film starts 2.30pm
- Sun 18 LENT IV – MOTHERING SUNDAY**
Holy Communion, 8.00am
Zumba, 9.00am in Village Hall
Family Communion Service 10.30am, with School taking part
Evensong, 6.00pm
- Tue 20 Holy Communion, 7.30pm
- Wed 21 WCC Mobile Library 2.00 – 4.30pm on the Dog Inn car park
Tea, 3.00pm, Tom Hauley Room
Community Forum at Napton Village Hall from 6.30pm
Hereburgh Morris Practice 8.00 – 10.00pm Harbury School
- Thurs 22 Holy Communion, 9.45am followed by coffee
Thursday Club, 2.30pm in Farley Room, Village Hall
Warwickshire Young Voices, 6.30pm, Village Hall
Parish Council 7.30pm in Farley Room of Village Hall
- Fri 23 Mid-day Prayer at 12 noon followed by Lent Lunch
Chesterton 'Hole in the Wall' fundraising Quiz Night, 7.30 for 8.00pm Harbury Rugby Club
- Sat 24 Coffee Morning 10.00am – 12 noon in Tom Hauley Room in aid of Church Flowers
Energy Initiative "Green Future – Green Deal" event 2.00 - 4.00pm in the School Hall

- Sat 24 Twinning Association present an evening of Hot Jazz with the Django Reinhardt tribute group in the Village Hall
- Sun 25 LENT V – PASSION SUNDAY**
 Holy Communion 8.00am
 Zumba, 9.00am in Village Hall
 Sung Eucharist 10.30am
- Mon 26 Village with a Vision AGM, 7pm in the Tom Hauley Room
- Tue 27 Drop in Tea for the Bereaved 2.30 to 4.30pm, 19 Farm Street
 Harbury Society AGM/Warmington Hoard talk, 7.30pm in the Tom Hauley Room
 Holy Communion, 7.30pm
 Harbury Village Club Annual General Meeting at 7.30pm - open to all members
 Julian Meeting, 8.00pm
- Wed 28 WCC Mobile Library 2.00 – 4.30pm on the Dog Inn car park
 WFWI Spring Council at Stoneleigh
 Hereburgh Morris Practice, 8.00 – 10.00pm, Harbury School
- Thurs 29 Holy Communion, 9.45am
DEADLINE FOR ARTICLES TO HARBURY PHARMACY, HIGH STREET OR BY EMAIL BY 5.30PM
- Fri 30 **SCHOOL ENDS FOR EASTER**
 Mid-day Prayer at 12 noon followed by Lent Lunch
- Sat 31 Coffee Morning 10.00am – 12 noon in Tom Hauley Room in aid of Ladbroke W.I.
 Hereburgh Morris Workshop 10.00am onwards in Village Hall
- APRIL**
- Sun 1 PALM SUNDAY**
 Sung Eucharist, 9.00am
 Tennis AGM and Chequebook Tournament, 10.00am
 First Light Service, 10.30am, Tom Hauley Room
 Special Service for beginning of Holy Week, 6.00pm
- Mon 2 Holy Communion, 7.30pm
- Tue 3 Holy Communion, 7.30pm
 Horticultural Society, 8.00pm, Tom Hauley Room
- Wed 4 Holy Communion, 2.00pm
 WCC Mobile Library 2.00 – 4.30pm on the Dog Inn car park
 Mothers' Union Meeting 2.30pm Tom Hauley Room – Easter Meditations
 Holy Communion 7.30pm
 Hereburgh Morris Practice 8.00 – 10.00pm Harbury School
- Thurs 5 **MAUNDY THURSDAY**
 Holy Communion 9.45am followed by coffee
 Art Group "Still Life" Water Colour and Pencil 10.00am Scout Hut
 Holy Communion 7.30pm (Harbury)
 Men's Group Meeting 7.45pm Tom Hauley Room, John Travis – "Horse Racing"

Thurs	5	'The 'Watch' at the Altar of Repose (Harbury) 8.00pm - Midnight Folk Club 8.00pm Dog Inn
Fri	6	GOOD FRIDAY Children's Service with Hot Cross Buns 10.30am Devotional Hour 2.00 to 3.00pm
Sat	7	HOLY SATURDAY Coffee Morning 10.00am – 12 noon in Tom Hauley Room in aid of Harbury W.I. The Blessing of Easter Candle and Renewal of Baptismal Vows 8.00pm
Sun	8	EASTER DAY Holy Communion 8.00am Sung Eucharist 10.30am

**DATES FOR INCLUSION IN THE HARBURY DIARY PLEASE TO:
LINDA RIDGLEY - TEL. 612792.**

Refuse Collection Rota				
	Deppers Bridge	Harbury	Ladbroke	Collection Week
March	Wed	Thurs	Fri	
	7	8	9	Grey Bin
	14	15	16	Green & Blue Lid Bins
	21	22	23	Grey Bin
	28	29	30	Green & Blue Lid Bins
April	4	5	6	Grey Bin
	11	12	13	Green & Blue Lid Bins
	18	19	20	Grey Bin

 All Saints HARBURY		From the Rector Reverend Craig Grocock The Rectory, Vicarage Lane, Harbury ☎612377 ✉ kankudai43@aol.co.uk
--	--	---

Thinking about the cross

It has become quite fashionable over the years to wear crosses, not necessarily as a sign of faith, but as a trendy accessory. Crosses are fairly hip – do you remember when Madonna used to wear a rosary round her neck during performances? An anecdote often shared in Christian

circles tells of an encounter at a department store jewellery counter. The customer says she is interested in buying a cross, to which the sales clerk replies: "Do you want a plain one, or one with the little man on it?"

On Good Friday, we think about the cross. The cross is more than a fashion statement. Take a moment to consider what the cross meant in Jesus' day.

There wasn't a hot debate then about lethal injection or other methods of putting criminals to death in the Roman Empire. The Romans wanted executions to be excruciatingly painful and as public as possible in dealing with the worst in society. The cross did the job very well indeed!

We often turn away from the horror of the cross. Sometimes we want to take encouragement from the fact that Jesus died for us, but skip over the messy details. But we shouldn't. The reality of the cross is increasingly lost upon today's society. I remember a few years ago going to watch the Mel Gibson film "The Passion of the Christ". It was horrific and very violent but it certainly made me see the cross in a different and deeper way.

We must never lose sight of the true meaning of the crucifixion. It reminds us that the full expression of God's love we see there didn't come cheap. Jesus Christ paid a huge price for our forgiveness. All it will cost us is our pride and self-will.

The extraordinary power of the cross is that no matter where we've been or how far we've wandered, we can stand in God's presence – just as we are. It serves as the bridge between a broken people and a Holy God.

Take a moment this season of Lent to ask yourself which side of the breach you're on and then believing in the power of Jesus' death and risen life, cross that bridge and find God's deep and lasting peace for yourself.

God bless you this Lent.

From the Registers

Funerals at All Saints', Harbury

30 th January	Doug Green
31 st January	Wendy Jackson

Holy Baptism, All Saints', Harbury

12 th February	Seren Esme Robertson
---------------------------	----------------------



From the Churchwardens

Liz & Will

The Devil made an appearance in Harbury Church last month! We were treated to a dramatic reconstruction of Jesus being tempted in the desert during the All Age Communion.

Hopefully Bishop John will have visited to celebrate communion with us during which he will have dedicated the new floor. So this now sees that project pretty much finished.

Every Friday during Lent, a short service will be held at midday followed by a simple lunch. All are welcome and money raised will be sent to a good cause - last year this was for a charity called "Send a Cow".

Mothering Sunday is on 18th March and Harbury School will be joining us for the Family Communion at 10.30am.

We learned last month that the Archbishop of Canterbury will be making a visit to the Diocese on Sunday 27th May. There will be an open air worship at Kenilworth Showground at 12pm - so make a date in your diaries.

In addition Reverend Annie will be ordained Priest in Coventry Cathedral on Saturday 30th June. There may well be a coach going from Harbury.

Please make a point to read about the plight of the monthly Tom Hauley Room lunches later in this magazine.



Mothers' Union

Chris Rutherford

Rev. Annie Goldthorp's talk about her life journey was fascinating. She had a choice between a lovely house, an excellent salary with a publishing house, continuing to live in Warwickshire with her son, or entering the clergy. God called her, as he did Samuel, and she chose to be ordained. She has never regretted that decision, in spite of the huge change in her life. She spoke of God's influence on her work with social outcasts, with all the variety of souls which pass through a church, with a calmness which did not disguise her enthusiasm for the job. It was a most uplifting and interesting session. Then we embarrassed Marion by singing happy birthday and giving her a pink cake with a candle on, which we all shared so, as usual, we combined a spiritual experience with our common

humanity. Our next meeting is on 7th March, when Di Sliwinski will report on her visit to Holland as part of MU's continuing campaign against the commercialisation and sexualisation of childhood. Visitors are always most welcome to come to our meetings.



Toddlers' Service

Barbara Thistlethwaite

Mrs Dickerson told us the story of Noah and his ark. God told Noah that he was going to send lots and lots of rain so Noah must build a big boat to escape the floods. Noah's wife laughed at Noah when he told her this because where they lived was very, very hot and it hardly ever rained. God's words came true and it started to rain. (We sang a song about the thunder and did all the actions.)

God also said to Noah to get together two of each kind of animal and put them on the boat to save them from the floods. We then sang the song "the animals went on two by two". Mrs Dickerson then put on her wellies and got out her umbrella because she said it was raining so hard that Noah's boat was starting to float and the water got so deep that it covered all the land.

Noah and the animals were in the boat for a long time and it started to get a bit smelly with all the animals being there. Noah decided to send the dove to look for land and when the dove came back it had a leaf in its mouth so they knew land was not too far away. They were soon back on dry land.

God then created a lovely rainbow and said he would always do that to let everyone know when the rain had finished.

We then stuck lots of animals on a picture of a boat, played and had our drinks until it was time to go home.

Our next Toddlers' Service is on Tuesday 13th March at 2.00pm in the Tom Hauley room. All toddlers and babies accompanied by an adult are welcome to join us. We hope to see you all there.



First Light

Alison Abbott

"Phone a Friend" was the title of last month's First Light as we compared prayer to phoning a friend on your mobile.

Just as you can use your phone for all sorts of conversations - to share good news, to ask for help or advice, to pass on information or just for a chat; so we can talk to God in prayer about all kinds of things. Unlike a phone the battery doesn't run down, you can always get a signal and God does not have an answer phone - He is always there.

There was a sketch in three parts, a fun song (which was less chaotic than I feared) and time for quiet contemplation as we "texted" our prayers to God.

In March we continue the theme, this time thinking about listening, rather than talking to God. First Light starts at 10.30am, with coffee served before from 10.00am, and it lasts about 35 minutes. We are relaxed and informal and aim to include all the family. The next one is on the 4th March, and I would love to see you there.

Ladbroke News & Diary

MARCH

Sat	3	Whist Drive, 7.45pm in the Village Hall
Sun	4	LENT II Family Communion, 10.30am followed by refreshments
Tues	6	Photography Club, 7.30pm in Village Hall
Wed	7	Lent Lunch, 12.30pm at 3 Hedges Close
Sat	10	Whist Drive, 7.45pm in Village Hall
Sun	11	LENT III Holy Communion (sung), 9.00am
Wed	14	Lent Lunch, 12.30pm at The Old School
Thurs	15	ADVERTS FOR NEXT ISSUE TO 31 BINSWOOD END, HARBURY BY 5.30PM
Sat	17	Whist Drive, 7.45pm in the Village Hall
Sun	18	LENT IV Holy Communion (Book of Common Prayer), 9.00am Mothering Sunday Service with distribution of posies, 3.00pm
Wed	21	Lent Lunch, 12.30pm at The Croft Parish Council Meeting, 7.45pm in Village Hall
Thurs	22	Women's Institute Meeting, 7.30pm in Village Hall
Sun	25	LENT V Holy Communion (sung), 9.00am
Wed	28	Lent Lunch, 12.30pm at Hallsfield
Thurs	29	ARTICLES TO HARBURY PHARMACY, HIGH STREET AND EMAIL ARTICLES DEADLINE BY 5.30PM
Sat	31	Whist Drive, 7.45pm, Village Hall

APRIL**Sun 1****PALM SUNDAY**

Family Communion with distribution of Palm Crosses, 10.30am
followed by refreshments

Tues 3

Photography Club, 7.30pm in Village Hall

Fri 6**GOOD FRIDAY**

Children's Service, 10.30am

Holy Hour, 12 noon – 1.00pm

Service based on a performance of Stainer's "*The Crucifixion*",
7.00pm in Church

Sun 8**EASTER SUNDAY**

Holy Communion, 9.00am

**Ladbroke Church News****Sue Lord**

The external repair work on the Church is now completed. Internally the plaster has been removed and the wall will take 12 months to completely dry out before redecoration. The exposed stonework is very interesting and actually looks quite attractive.

The coffee morning held in the Tom Hauley room on 4th February raised £235. It was very cold with snow on the ground so many thanks to all of you who supported us and helped raise so much to help Church funds.

Our Lent lunches have commenced and the remaining venues for March are:

7th March - Sue Lord, 3 Hedges Close, Ladbroke

14th March - Carol Lane, The Old School, School Lane, Ladbroke

21st March - Val Copley, The Croft, Banbury Road, Ladbroke

28th March - Jackie West, Hallsfield, School Lane, Ladbroke

The Trumpets, Trains and Terrific Tales concert is now confirmed for 28th April. See the detailed article in this edition.

**Ladbroke & Deppers Bridge Women's Institute****Carol Lane**

The Village Hall was enlivened by many visitors – some of them of the male gender – when the W.I. met for an open meeting on 23rd February.

Sue Moore led the business meeting and confirmed that nine members of Ladbroke and Deppers Bridge W.I. had been successful in their

application for tickets to the Annual W.I. meeting to be held on 28th March at Stoneleigh.

Our next coffee morning in the Tom Hauley room is to be held on Saturday, 31st March. Donations of good quality bric-a-brac and cakes will be appreciated as well as help on the morning.

The W.I. Olympics are already underway and representatives of Ladbroke will be taking part in a table tennis knockout on Tuesday 28th February in Ladbroke and in a skittles event in Stretton on 20th March. We will let you know their names if they are successful.



This meeting took place in front of a backdrop of the Concorde and Captain David Rowland then fascinated us for the next hour in talking about this magnificent aircraft.

He told us that he had been in the right place at the right time for his development as a pilot to coincide with the progress of Concorde with which he was involved as a pilot and manager.

The visionary idea was to build a plane which could transport 100 people from London to New York at twice the speed of sound. Committees were set up as long ago as 1956 to begin the research into the engine, the aerodynamics and the frame. We were given a glimpse into the varying needs – for example in the shape of the wings, the need for a large area for lift off against a streamlined design for speed and the nose cone had to be hinged in order for the pilots to see where they were going. All this was done without the aid of computers and it resulted in the unique flying machine we all recognise which took its first flight in 1969.

One amazing fact was that, even though it was flying at the edge of outer space in extreme cold, the speed through the air made the frame so hot that it expanded, resulting in a 10 inch increase in length! This was accommodated by, for example, overlapping carpets in the passenger section and greater tolerance in the fastenings of the lockers and doors.

I didn't think a lump of metal (aluminium I think Captain Rowland said) could evoke such romantic feelings and I envied the few people in the room who had been lucky enough to have flown on her. Captain Rowland can be contacted at dcrowland@btinternet.com.

The next meeting is to be held on 22nd March when Julia Staite will tell us about the history of perfume.



Ladbroke Photography Club

Kip Warr

The Club is a year old! The story started in October 2010 when Jackie West ran a series of informal photography sessions that culminated in our deciding to form a club; our inaugural AGM was held on 8th February 2011. A committee was elected, Club Rules were agreed, a bank account was set up and there we were - Ladbroke Photography Club in all our glory!

We have had different activities in every month of the year: workshops to improve techniques, competitions to test our mettle, a display at Ladbroke fete to display our wares, a calendar to illustrate the village and raise funds, a village walkabout around Ladbroke, a walk along the canal to The Blue Lias, a special outing to the Cotswolds to photograph birds of prey in Batsford and the Cotswold stone buildings of Chipping Camden (with the special challenge of taking pictures without tourists in the way!) and a photography session at the dress rehearsal of the village pantomime, Aladdin, which produced some excellent shots that are on the Ladbroke village website. We also have a 'Photographer of the year' trophy. This year's winner is Andy Pittaway who clinched the title with two stunning pictures in the 'Creative Eye Competition' using polarising filters on a transparent subject.



Edward and eagle

A number of the club's photographs are displayed on the Ladbroke village website and we hope that there will be many more. Some have been specially featured as 'Picture of the Month'. The Village Hall Committee has agreed to displaying our photographs in the hall, so our masterpieces will be given a public airing!

At the end of the year our membership stands at twenty, with members from Ladbroke, Harbury and surrounding areas. But we must report sadly on two recent deaths that have affected us all: Catherine Spence, an enthusiastic member from the outset and full of humour, and Paul Collins from Southam who came as a visitor and active participant. Our sympathy goes to their families.



Photographers' Action Shot Evening

The Club has become a meeting place for photographers of all levels of experience and with all types of equipment. It has provided learning opportunities for us all and the standards of photographs in recent competitions have been getting higher and higher as skills have improved. Our programme for the coming year is every bit as active as last year's and we can look forward to our second year as a well-established and successful club. New members,

beginners or experienced, are welcome (we usually meet on the first Tuesday of the month at 7.30pm in Ladbroke Village Hall). For more information contact jackieszone-photogclub@yahoo.co.uk.



Ladbroke General Section

Queen's Jubilee

As most people should have realised by now there will not be a late May Bank Holiday this year but instead an extra long Bank Holiday weekend at the beginning of June. We will be celebrating the Queen's Diamond Jubilee in Ladbroke with a series of events:

Saturday 2nd June	Village Fete
Sunday 3rd June	Special Service at All Saints' Church
Monday 4th June	Ladbroke Festival (art, craft, photography, flowers, music etc)

In addition, it is hoped that people will offer to organise and/or host a street or garden party.

Planning is still at the very early stages, so if you would like to be involved in any of these, or an additional Jubilee event, please get in contact with Graham and Nicky (815196), Margaret (817312) or Jackie (810331).

Jackie West

April Edition - Harbury & Ladbroke News

Adverts to 31 Binswood End by 15th March

Articles to Harbury Pharmacy or e-mail articles to articles@hlnews.co.uk by 29th March

Trumpets, Trains and Terrific Tales – Saturday 28th April

Bill Houghton, former principal trumpet of the BBC Symphony Orchestra and pianist Sophia Rahman will perform their entertaining “*Trumpets, Trains and Terrific Tales*” at All Saints' Church, Ladbroke on Saturday 28th April 2012, starting at 7.30pm. This musical entertainment is one in a series of concerts being held in historic buildings along the proposed route of HS2. Below are extracts from a letter by Peter Bassano describing why he has organised these concerts.

Tickets, to include a glass of wine or juice during the interval cost £10 for adults, £4 for accompanied children under 16, and are available from Jackie West (810331) or Margaret Bosworth (817312). The proceeds will be divided equally between All Saints' Church and The Stradivari Trust. For more information email jackieszone-concert@yahoo.co.uk

Conserving Rural England, A Musical Pilgrimage, No HS2 - by Peter Bassano (extract):

“On Tuesday January 10th 2012, Justine Greening confirmed the government's route for High Speed Rail 2 from London to Birmingham. When implemented, this project will create an act of cultural vandalism not seen in this country since the Dissolution of the Monasteries and yet very few people in the country have realised what is happening.

The route runs close to some of the most quintessentially English towns and villages of Warwickshire, Northamptonshire, Oxfordshire and Buckinghamshire, with hundreds of historic buildings; churches, farms, pubs and country houses, whose settings of peace and tranquility, as well as their fragile foundations, will be wrecked by a train in such close proximity that will intrude with the unbearable decibels of a low-flying jet fighter. There are more than 300 listed buildings along the first leg of the route which will be affected and in some cases demolished; there must surely be many more once phase 2 is disclosed.

In order to raise awareness of this situation and oppose the construction of HS2, I have devised a series of concerts by the very best professional ensembles to be performed in endangered and blighted historic buildings along the route from London to Lichfield. Pastoral and liturgical English music for chamber orchestra, string orchestra, chamber choir, madrigal singers and brass bands (for outside venues) spanning four centuries from Tallis to Tavener. The Cambridge based charity, The Stradivari Trust, noted for its support of music and musicians, is backing the series.

The English Chamber Orchestra, Grimethorpe Colliery Band, Claire Jones - HRH the Prince of Wales' Harpist, the prize-winning violinist Tamsin Waley-Cohen, and countertenor James Bowman have all thrown their support into the anti HS2 Musical Pilgrimage. There have been two concerts so far and further ones are confirmed at St Mary Magdalene, Great Hampden with the *Gentlemen of the Chappell*, which will be repeated at St Peter's Wormleighton. The Bassanos (my wife and four music scholar children) will be giving a concert of Bach, Beethoven, Elgar, Haydn and Mozart at The Lee, Old Church. **Bill Houghton, former principal trumpet of the BBC Symphony Orchestra and pianist Sophia Rahman will give their entertaining "*Trumpets, Trains and Terrific Tales*" at All Saints' Church, Ladbroke, St Mary and the Holy Cross, Quanton and Hampden House.** There will be two further concerts at St Mary's Wendover.



When my Venetian musician ancestors came to England in 1540 most of the threatened buildings were already standing, some of them for centuries; once these ancient buildings collapse after falling into disrepair, they will vanish forever - that is a strong possibility. It is difficult to find anyone living within the vicinity of the HS2 route who

isn't appalled by the prospect of their community and its fabric being wrecked, and so I believe there will be tremendous local support for each and every concert" - Peter Bassano.

Jackie West

Stainer's "The Crucifixion"

The Augmented Choir, which has members from Ladbroke, Harbury and surrounding area is putting together a devotional service for Good Friday based on a performance of "*The Crucifixion*" by Sir John Stainer. This will be held at All Saints' Church, Ladbroke on Good Friday at 7pm. We extend a warm welcome to everyone to come to this service; it will be full of hymns that you will recognise, including ones for the congregation.

Bill Bosworth

Ladbroke Village Hall Millennium Club

£80	Margaret Bosworth	£50	Beverley Bradley
£25	Roger Plaskett	£10	Jim & Pauline Laidler
£10	Graham and Pauline Long	£10	Pam Collins
£10	Scott and Siobhan Roberson	£10	Ken Whiteley

Margaret Bosworth



Harbury Parish Council

Dr Tim Lockley

Would You Like To Be a Parish Councillor?

The Parish Council for Harbury and Deppers Bridge will stand for election in May 2012. If you would like to be more involved in deciding what happens in your village you might consider standing for election - becoming a parish councillor is an interesting and rewarding way to "put something back" into the community.

Candidates for the Parish Council must either live within the parish, or within 3 miles of it or own a business or property within the village. Some further criteria do apply – for an exhaustive list of the criteria please contact the Parish Clerk. Current councillors are a mixture of working and retired people, men and women, some of whom have lived in the village for more than 40 years, others for far less, who come from a wide range of backgrounds - business, public sector, and entrepreneurial. Most importantly, candidates should have a genuine interest in the local community and the issues facing it.

Further details on how to stand for election will be included in the next edition of the Harbury News and will also be posted on the Parish notice boards and on the Parish website www.harbury-pc.gov.uk. Interested persons can also contact the Parish Clerk for more details.

Harbury Parish Council: Mrs N Thompson (Clerk), Unit 2, Bull Ring Business Centre, Church Terrace, Harbury, Leamington Spa, CV33 9GZ, e-mail clerk@harbury-pc.gov.uk, Tel 01926 614646.



Councillor's Corner

Bev Mann

Saturday 10th March 2012: Venue – Outside the Post Office, Chapel Street, Harbury: A Councillors Corner session will be held between

10am and 11.30am on Sat 10th March. These useful sessions are for our elected Council representatives, County, District and Parish Councillors to meet and answer any concerns/questions from residents in a more informal and relaxed setting than at Council meetings.

If there is a question which cannot be answered on the day, Councillors will follow this up and get back to the resident. The following month a report on issues which are a real concern to residents are included in the Harbury & Ladbroke News.

If you are unable to attend on this day and have any Council queries, Councillors can be contacted by visiting the Parish website at www.harbury-pc.gov.uk and following the link "Council members".



Harbury Society

Linda Ridgley

Roger Cragg's talk gave us a flavour of the amazing construction feats undertaken by the Civil Engineers of the past. The term "Civil" Engineering covers everything that is not Military Engineering.



Until the Eighteenth Century most transport of goods was undertaken by packhorses. Most early bridges were of arched stone or brick construction, often built for ecclesiastical houses. Wixford Bridge 1800, on the Arrow, is a fine 65ft span arched bridge. Two circular openings on either side of the arch reduce the bridge's weight, allow flood water to pass

through and provide a route for pedestrians.

Hampton Lucy's 60ft span cast iron bridge (1826) was paid for by Rector John Lucy. Leamington Engineer, William De Normanville's 100 foot span Jepson Gardens Suspension Bridge built in 1903 has wrought iron rods not cables. The Princes Drive reinforced concrete Bridge of 1923 was built by the Trust Steel Concrete Co.



Canal building stretched from the 1760's to 1830 when railway mania started. Fenny Compton "Tunnel" on the Oxford Canal was opened out in 1869 to make a shallow cutting. The Shrewley Tunnel (overleaf) on the Warwick and Birmingham Canal is



430 yards long with no towpath but a rising tunnel takes pedestrians up to the village street and down the other side.

The Stratford Canal has three important aqueducts. At Wootton Wawen the Cast Iron Trough of 1813 is by W. Whitmore.

England's longest aqueduct is at Enstone and the later railway runs beneath it.



The spectacular Hatton Flight raises the



canal up 146ft above the Avon with 21 Locks. In the 1930's it was converted to take 14ft barges by building new locks alongside the 7ft narrowboat ones. This cut journey times for narrowboats as two could fit in the new locks at once.

The Stratford to Moreton Tramway in 1826 was one of the country's oldest railways but used horsepower as the government refused to allow locomotives to run

adjacent to the highway. The sidings and wharfs are now part of the Canal Basin in Stratford and the Tramway Bridge over the Avon is now used as a footbridge.



Other structures he described included: the now demolished Hillmorton Radio Masts, 820 ft high, built for the GPO in 1924; Danzey Green Post Mill, now at Avoncroft Museum; Chesterton Windmill; Charlecote Watermill and Warwick Gas Works on Birmingham Rd, 1822; and Leamington Swimming Baths at the Pump Rooms by William De Normanville,

1890, the wrought iron 120ft long roof of which is preserved in the present Library.



Warwickshire and Worcestershire Life Feature

In 1972 Warwickshire and Worcestershire Life ran a feature on our village. The article has something to say about our remote history focusing on the “ancient Fosse Way” and its “ghostly legions”. It points out that the Fosse would be closed temporarily “for improvements” and that the village would suffer a sharp increase in through traffic using Middle Road which was in parts only sixteen and a half feet wide.

The Parish Council had expressed great concern for the safety of village children who were “accustomed to village streets almost untouched by the misery of through traffic”. (It is amazing to reflect that it was not long before this that the Fosse Way was a single track, gated road).

As well as including comments from the Vicar, School Headmaster and Chairman of the Parish Council, the article features some well-known residents.

Cobbler and postman, Stan Smith, is pictured with a pint in his hand in the Gamecock always at 12.36pm prompt each day “you can set your watch by him”. He used a motor scooter to deliver post to the outlying farms and hamlets. Mrs Margaret Stott (then) for twenty years, landlady of the Gamecock, prized for its floral displays and winning darts teams described Harbury as “a friendly, good-humoured, well-balanced community” and recalled only one incident of trouble when “youngsters” from other villages caused such disturbance at Youth Club dances that the events were banned. Her response to the trouble makers was simple but effective: “we just locked the door and the locals came and tapped on the pub window when they wanted to come in” (just as I remember!).

At that time the village had five pubs (the Fox was empty) and three of those were run by women and formidable ladies they were.

Then Chairman of the Parish Council, Ralph Gurden, is quoted as saying that the village was “greatly improved by the newcomers. It was dead ten years ago and they’ve livened us up. They take part in local activities and we welcome them”. This was backed up by comments from Vicar, Rev Fred Mackley; who said that social problems were virtually non-existent and newcomers mingled well with locals, playing a full part in community life; and from Headmaster, Mr Morris, whose pupils “caused none of the problems experienced by many city headmasters”. He however was concerned that there was a shortage of Grammar School places and although the village had two independent nursery schools he would have wished for the state to provide these facilities.

Mr Morris described Harbury as a middle class and “swinging” village! Some residents of long standing might like to expand on this!

Next event is the AGM followed by a talk on the Warmington Hoard - Tuesday 27th March 7.30 for 8.00pm, Tom Hauley Room.



Harbury Women's Institute

Jeanne Beaumont

We had an excellent New Year's Eve party. The food was provided by all members and the selection was superb! The committee and helpers worked so hard presenting a successful evening. We even had "two girls" to clear and wash up after us. Then, of course, we could not forget Nigel Chapman who came to make us laugh, as he does, with his memories and experiences. Many thanks to everybody for their help.

The WFWI Spring Council is at Stoneleigh on 28th March. February was members' evening. Now these ladies have been organising the evening for years and we always enjoy the informal time when one can mix and join in some silly things at times.

What caused hilarity was the list of activities that members had done with a list of names to pair them up with. Examples:

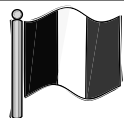
- I learnt to abseil in my early 50's
- I played tennis at Queen's Club
- I have stroked a cheetah
- I met Terry Wogan whilst placing a bet at Ascot
- I danced as a Golly at the Town Hall
- I bowled out three choirboys from St Paul's in three overs
- I won first place in the live competitions at the Palais

Just a few activities that were short but the names given were rarely right but amusing. It was interesting to hear what some members have done and just goes to show how interesting they were.

Thank you to all who made the evening enjoyable.

March meeting: Tom Hauley Room, Thurs 8th March at 7.45pm.

Speaker: James Butler – The Sculpture of James Butler.



Harbury Twinning Association

Tony Thomas

When this edition comes out we will have held our Annual Quiz Night. Our next venture is to host the Tom Hauley Room Coffee Morning on Saturday 17th March.

On Saturday the 24th March we will be presenting an evening of Hot Jazz with the Django Reinhardt tribute group, with a hot supper and licensed bar. Many of the people who were fortunate enough to attend the similar evening we hosted last year have already reserved their tickets so if this is something you don't wish to miss you will need to contact Sally Stringer on Harbury 613214 or myself on Harbury 612689.

Our April activity is to visit the Navigation Inn at Wootton Wawen for a members and friends evening of supper and skittles. For further information please contact Margaret McDonald on Harbury 613730.

Wanted – Two Families!

Our French twins in Samoia are looking for two new families to twin with two families who have recently joined them. We are going to Samoia this year May 4th to 7th, and there may well be spare places on the coach if you are interested. The families they are looking for are as follows:

1) A single lady in her 40's with a daughter of about 14 years old (the daughter, Estelle, likes horse-riding, gym, music, dancing, TV and shopping but is allergic to cats and dogs).

2) A family with (ideally) a girl aged about 12 - 13 and a son aged about 9 - 10.

If you think you might be interested, and would like to know more please do give me a call on 613214. I can promise you that twinning is a great experience for adults and children - we always have a wonderful weekend, and living with a French family is a terrific experience.

Sally Stringer (Harbury Twinning Association)



Harbury Theatre Group

Jo Banbury

Harbury Theatre Group Spring Production

Thursday 17th May, Friday 18th May and Saturday 19th May

As many of you Harbury Theatre Group followers are aware, come the Spring time we endeavour to host an evening of entertainment, consisting of two light hearted one act plays, with the acclaimed supper included for the final performance. However this year, as in 2010, we are finding it a bit of a challenge.

Finding good plays is never a problem; but having the cast to select from is increasingly challenging. We have been fortunate in the past few productions to have welcomed several new members to the group. Yet

sadly we have also had to say goodbye to equal numbers. Time is now an increasingly precious commodity to everyone, which also takes its toll on how much commitment can be given by individuals to a production.

We hope all is not lost for this season, and would urge any of you would-be-actors to get in contact with us, and join our merry band. You can call us on 613120, or pop by our regular meeting which is held usually on the last Tuesday of the month, at The Shakespeare at 8pm. (The next meeting following this publication should be March 27th). As well as actually performing two productions a year, in May and November, we also try to host a variety of social events, from skittle evenings, to play readings and barbecues.

The spring production is scheduled to take place on Thursday 17th, Friday 18th and Saturday 19th May, with the Saturday evening ticket to include the cost of the supper. We look forward to seeing you there!



Folk Club

Peter Bones

The theme of the meeting of the Folk Club on 2nd February was "Choruses and Refrains" and was intended to encourage audience participation. I wasn't disappointed.

Liz and I opened the evening with the Valentine song, which had enough choruses for us to realise that once again the attendees of the club were in fine voice as they joined in with gusto.

This atmosphere continued throughout the evening as we were treated to a variety of musical items, most of which had choruses and refrains with which we could join in.

The first half included items from Rick Middleton, followed by Terry, a relative newcomer who impressed us all with his dextrous guitar playing. It was good to see Barbara from Braunston after quite a long absence and she sang a couple of songs accompanied on her guitar. One of these was "Still Waters" – a beautifully written song penned by our own Ian Hartland. Threepenny Bit followed and in their repertoire had us all singing an impressive four part round. They were followed by Peter Mason before Janny and Maureen took us up to the first break with a couple of lovely songs with rich harmonies.

In the second half it was soon back to enthusiastic singing. After a warm up song from Liz and me, Ted and Sue followed with a couple of songs delivered to their usual high standard. This was followed by John who is now becoming quite a regular. There then followed one of the highlights

of the evening when two flautists known as “Cameron” captivated the audience by playing a couple of beautiful sets of tunes. This was followed by Des who must be regarded as one of the masters of getting audiences singing, and he lived up to his reputation. Our up and coming local supergroup, “Morris, Thompson and Guy” treated us to a couple of delightful songs and once again the audience was captivated, particularly with the song “Bright Eyes”. The mood then changed when Keith Donnelly had us aching with laughter in his very entertaining spot which took us up to the second break.

The third half was quite short but we enjoyed repeat items from Terry, “Cameron”, “Morris Thompson and Guy”, and Keith Donnelly. Lynne Cooke also led us in a short music session.

For the full list of who sang what, please visit [www//Welcome.to/HarburyFolkClub](http://www.Welcome.to/HarburyFolkClub).

The raffle raised £70 for Auditory Verbal UK, a charity that provides therapy for profoundly deaf, pre-school-age children. Many thanks to those who bought tickets. Thanks also to all who took part and helped make the evening such a pleasant experience and again thanks also to Wayne and the staff of the Dog Inn for being so hospitable and welcoming.

The meeting in March would have taken place by the time you read this, so the next meeting will be on 5th April. As usual, it will be in the restaurant of the Dog Inn and start at 8:00pm.



Guides And Scout Support

Mark Clifton



Due to the imminent retirement of the current GASS committee members and three Leaders, our fund raising activities plus Cubs/Scouts are under threat so.....

OUR GROUP NEEDS VOLUNTEERS – IF SHE CAN, CAN'T YOU?

“HRH The Duchess of Cambridge has become Scouting's newest volunteer and will help at her local cub packs and beaver colonies” was the report from The Scout Association today.

Wow! What a fantastic endorsement for Scouting. It's amazing that somebody with such a busy lifestyle can find time to give to the young people in her community.

If she can do it why can't you? Do you have a skill that you could offer to help the young people in your community?

- Would you be able to help maintain our Scout Hut?
- Could you help to organise the Harbury Bonfire this year?
- Do you have a talent for project management?
- Are you bursting with bright ideas?
- Do you have secretarial skills?
- Would you be able to show a young person how to cook a healthy meal or act or keep fit or put up a tent or look after the environment or stay safe on the internet or ?
- If the answer to **ANY** of the above is "Yes" or "Maybe" then you are just the person we need. If the answer is "No" then could you pass this on to somebody else who may be able to say "Yes"?

There are a wide variety of roles available, from uniformed leader (getting involved in the weekly activities with the children) to non-uniformed support committee member.

So what is the role of the non-uniformed support committee otherwise known as GASS (Guides And Scouts Support)? Basically it exists to fundraise and maintain the Scout Hut for all the uniformed groups, thus leaving the uniformed leaders to concentrate on.....well leading.

The current Committee are bowing out after a very successful and enjoyable (yes really!) period of time and we need some new blood to continue the good work that has been carried out. So if you can't commit to leading a group, GASS really may be for you.

To discuss how your skills may be of use to Scouting & Guiding please call: Jim Ward, Harbury Group Scout Leader – 612576 or 07795 221305 or Mark Clifton, Harbury GASS (Guides And Scouts Support) Chairperson – 614085 or 07730 923504 or contact anyone you may know connected with the group.



Harbury Toddler Group

Sarah Hanson

We have been enjoying the beginning of the year and the children have been making the most of the lovely variety of toys that we have as the cold has meant we have been playing more indoors. Lots of the toddlers have been busy cooking away on the cooker or taking their shopping trolleys around the room to collect food (and anything else that fits in their baskets!). We have some creative ones amongst us and the new play

dough has been going down a treat – although some little ones seem to think it tastes nice too (mentioning no names Amber!).

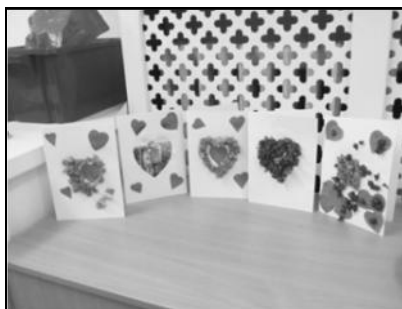
We celebrated Chinese New Year by making some bright lanterns and coloured dragons. The toddlers wanted to show their daddies and other loved ones how much they loved them by making them a lovely Valentine card with tissue paper and we had lots of sticky fingers when we decorated some heart cookies although not many of those made it home to daddy!



Ben and Lottie with play dough



Elidh with heart cookie



The toddlers' Valentines cards



Sam and Finlay busy decorating their heart cookies

We learned about Shrove Tuesday by decorating some pretend pancakes and are now looking forward to lots of other activities we have coming up in March including creating houses from card, making Mothers' Day gifts and Easter cards.

If you are interested in joining us at Toddler Group we are always pleased to see newcomers. We run every Monday from 9.30am - 11.15am at the Wight School (behind the library), and cater for children from birth to school age. We are open throughout

the school holidays, except Bank Holidays, and older siblings are welcome to come along too!!



The already short month of February is always made even shorter by the half term break, but the children managed to pack plenty into the two and a half weeks available to them.

Starting with a story...The Elves and the Shoemaker - At the start of the month they had a wonderful time making the role play area into a magnificent shoe shop, with shoes, trainers, ballet shoes, boots, flip flops and sandals, in all shapes and sizes. They measured one another's feet, selected shoes, tried them on, and paid for them at the till, before carefully putting them into bags to take away.



In another area, a workshop was set up for shoe making and repairs, while the "Elves and the Shoemaker" story was told and retold in a variety of different versions. The children were even able to listen using our new headphones, while following the story through the pictures in the book.

Problem solving and numeracy came to the fore as the children made price tags for the shoes and paper money, and worked out how much they would have to pay for their chosen purchases. At the creative table, the children made observational pictures, using paint, glue and collage materials, and they ably demonstrated their talent in recognising the differences between the various shoes, and developing them in their own creations.

Snow! - The long awaited snow arrived and, although it was somewhat short-lived, the children had a great



time in the outdoor play area, making footprints and shovelling up the snow.

Pets and Vets - After the half-term break, we turned our attention to the new topic of pets and, in particular, visits to the vet. Stories such as "Hairy Maclary's Rumpus at the Vet" were introduced and we talked about using our "kind hands" for caring for



pets and for each other. The children took turns to paint each other's hands and made a fantastic large scale rainbow using hand prints.

Pancakes - On Shrove Tuesday, the children measured out and mixed the ingredients so that they could have pancakes, with a choice of topping, at snack time. On being asked what they liked on their pancakes at home, the replies came back as 'lemons', chocolate spread' and even 'potatoes'!

If you would like further information, or to register a child for Harbury Pre-School, please contact Rosemary Jackson, Pre-School administrator: e-mail enquiries@harburypre-school.org.uk phone 07939 122087 or look at the website www.harburypre-school.org.uk.

Harbury Pre-School Fundraising Group

Howdy Partners!!! Just a quick low down or should I say 'Hoedown' on our Barn Dance Fundraiser for Harbury Pre-School, which was held on 11th February at the Village Hall.

The evening started with an authentic set Hall with hay bales, scarecrows and some lovely bunting. Most people arrived sporting apt barn dancing attire with some great looking stetsons and cowboy boots which all added to the atmosphere of the night - the complimentary Moscow Mule cocktail certainly kick started the night very well and lead to some great moves on the dance floor!

At around 9pm we stopped to enjoy fish and chips (from the chip shop at Heathcote) with crusty bread followed by the most delicious home-made puddings all made by Jo Banbury and the fundraising team; just as well we were able to dance all those calories off!!!! The raffle had an amazing draw and made just under £300.00. Thanks must go to Helen Edwards for her sterling efforts in obtaining so many fabulous prizes, donated from Room 4, Castle Galleries, Wesley Barrell Furniture, Therapy, Cologne and Cotton, Esque, Clinique and Clarins at Boots, The Cook Shop, Neal's Yard, Fabulous Jewellers, Walnut & Weave, Blaze, Saks, Toni & Guy, Achille, Regis and Thorntons.

I would also like to mention Rosanna Hunt, Sarah Smart, and Mark and Sonya Evans who all worked really hard behind the scenes on the night and in the run up to make this such a memorable event.

Many thanks to the staff, parents and everyone who supported the event by attending and buying raffle tickets, Cana wine for providing the bar and 'Four in a Bar' and Tom Tilly who undoubtedly provided more fun and entertainment than you could shake a stick at.

All in all, we raised over £850.00 which will all go back into Harbury Pre-School and benefit all the children who attend there.

We would like to officially welcome Mark Evans (who has been helping out for some time now) and new recruit Sarah Terry who will join us in time for putting some ideas forward for our next fundraiser venture "Cream Teas" in June and of course the Harbury Carnival.

Finally we would all like to extend our thanks and gratitude to Ian and Helen Cuthbertson who are leaving the fundraising group. Both have contributed immensely over the years and they will be sorely missed but haven't quite hung up their aprons yet and will come back and help run the Carnival BBQ.

Thank you all for your continued support.

Hannah Drabble

For and on behalf of Harbury Pre-School Fundraising Committee



Windmills

Nursery School

Nursery School Staff & Committee

Windmills Nursery is situated in the grounds of Harbury Primary School and has the benefit of its own Forest School and qualified Forest School Leader. We are open all day between school hours and take children from the age of 2 years. If you would like to register a place for your child you can email us at info@windmillsnursery.co.uk, visit our website at www.windmillsnursery.co.uk, call Tina/Sally on 07906 519148 or Katharine on 01926 613084. We have Nursery Funded places available and also accept childcare vouchers.

In Nursery

February has been busy with the continuation of our Chinese theme after Chinese New Year; we have had several sessions of Forest School, our termly parents' evening and a week off with half term. Post half term we welcomed Anna who has just started at Windmills Nursery and we celebrated Pancake Day. In nursery the theme has changed from the Arctic, complete with igloo and tuff trays filled with ice blocks, to the emergence of spring. The children



have also enjoyed the small amount of snow and have been on walks finding different footprints in the snow. They have been to the monthly Toddlers' Service at church where they heard the story of Noah's Ark and we have had a special visit from The Little Green Bear Club to learn about road safety. A new series of tennis lessons has also started.

Road Safety

The Little Green Bear Road Show came to visit Windmills Nursery with Caroline. We talked about road safety using her puppets Polly and Bobby and why you have to stop, look and listen.

"You have to hold hands and look" – Finlay.

"Roads are dangerous because cars come and they can squash you" – Charlie.



"We need to wear bright colours so the drivers can see us" – Audrey.

Pancake Day



The children have had great fun making pancakes and then eating them.

"It feels like flour we use for making play dough. I have my pancake rolled up and cut into quarters" – Daniel.

"You shouldn't eat raw egg. You need to cook it first" – Charlie.

"The egg is white when it is cooked" – Lily.

"It's easier to mix now we've added water. It tastes yucky if it's not cooked" – Isla

French

This term the children have been on an imaginary journey to Paris and had to produce their own passports and choose how they wanted to travel to France. They have been on a bus ride around Paris and visited some of the famous tourist sites such as the Eiffel Tower and The Louvre - "it is a triangle" – Max.



They have learnt about French meals and did a tasting of some typical French foods including baguettes, croissants, pain au chocolate, brie and gherkins. The children have been looking at what things are healthy and have been learning some of the French words for different fruit. They have also been creating their own French story book based on The Hungry Caterpillar.

Forest School

The children have been involved in the RSPB Big Garden Bird Watch and made their own binoculars. In the following session they talked about different birds and listened to some noises and made special cakes for the birds.



Dates for the Diary

Thursday 1st March – World Book Day

Thursday 22nd March – Indulgence Evening Fundraising

Ladies' Indulgence Evening

The Ladies Indulgence Evening is back!

Book a date in your diary for **Thursday 22nd March** at the **Village Club** in Harbury (CV33 9HE), **doors open at 7.30pm** until 10pm.



- Wash away the winter blues with a make-over, spring facial, eyebrow threading or mini manicure.
- Relax with an Indian Head Massage.
- Treat yourself to a gift from one of the lovely stalls.

With Mothers' Day coming up why not treat yourself or a loved one to an evening of pampering?

Tickets can be purchased in advance (£3.50) by calling Katharine on **613084** or email **info@windmillsnursery.co.uk**. Tickets will also be available to buy on the door (£4.00). Tickets include a selection of light nibbles and a free goody bag. There will be a raffle during the night and there is also a bar to purchase drinks. All proceeds from this fabulous event are going to the charity of Windmills Nursery School.

We look forward to seeing you there.



Harbury Primary School

Denis Daly

Congratulations – To the children in Year 6 who all took part in the Southam Area Indoor Athletics competition recently, and won. They now go forward to represent the Southam area in the Central Warwickshire competition next month. Well done, everyone.

To the netball team, who beat St Mary's 12-2 last week to maintain their unbeaten record so far this season. Well done, girls.

To the cross country teams, who ran in the recent Central Warwickshire Relay Championship held in Harbury. A very depleted boys' team finished in an excellent 4th place (out of 29 teams), while the girls, also missing one of the "usual" team, finished 8th (out of 24). Well done to everyone who took part, especially the children in Year 5 who were having their first race.

Update on Headteacher Vacancy – I have been asked by Alan Bennett, the Chair of Governors at the school, to update parents on where the school has got to in its search for a new head teacher for September. The Governors have had a number of meetings over the past few weeks, involving both the Local Authority and the Diocesan Board of Education, regarding the vacancy. An information pack for potential candidates is in the final stages of being agreed, and a national advert should be going out, with interviews expected to be held, and hopefully an appointment made, before Easter.

Help, please!! – As you are probably aware, we were advised last term to cut down the willow tunnel as it was dying. This was undertaken by two parents – thanks to them. However, we now have to get rid of the large amount of willow that has been cut off – it is presently in the swimming pool area. Is anyone with access to a chipper able to help? If so, please contact me or Mr Chapman, who is in school on Friday afternoons. Many thanks.

The Infant department have asked me to put out an appeal for "Pringles" tubes – if you do have Pringles at home, could I ask parents to save the tubes and send them into school, please. Thank you.



Harbury Primary School P.T.A.

PTA Committee

A big thank you to everyone who attended the charity ZUMBA class. We all had a lot of fun and raised over £130 - many thanks to all who

contributed. I think there may be a few new recruits for Sam's lessons now!

The next PTA event is the Thursday Market on Thursday 22nd March. Please drop into the school hall after the end of the school day - you never know you may grab yourself a bargain. If your child's school uniform is starting to look a bit shabby, why not have a look at the second hand school uniform stall - very reasonable prices. Similarly if you have some good quality clothes that your child has outgrown, we would appreciate some more stock to sell. The cake stall always has some yummy treats for sale too.... If you would like a table to sell your old toys, books etc, for only £1.50, please email Julie at juliejennings25@btinternet.com.

Easter is on its way and time for the annual Easter egg colouring/ decorating competition. Father Craig will judge the competition and will choose one lucky winner from each class, who will receive an Easter egg. Non-uniform day is our final event of the term on Friday 30th March. Please can you ensure that the children each bring £1 in with them on that day, as this is a fundraising event for the school.

The PTA page on the school's website is now fully updated. This will be checked and updated on a monthly basis so please keep your eye on it for any new diary dates.



Village Hall Update

Chris Finch

What happened in the village 50 years ago this month? Is there anyone in the village who remembers the day the Village Hall was officially opened because they actually attended the opening ceremony? If there is anyone in Harbury who recalls the ceremony, it would be good to hear from them. So far, I've managed to find two accounts in an old exercise book from Southam High School (as it was then); one from Gary Lowe, who many villagers will know and another from Doreen Gardner.

Gary writes that it "looks like a very big bungalow with a stage at one end and a room at the other end where you can have refreshments. The toilets are very modern and there are double doors at the side with two doors each side of the stage. The floor is made of wood and so is the stage". Present day villagers who have used the hall in recent years would probably not have thought that the toilets which had been in existence since 1962 were 'very modern', but these were replaced by the re-developed toilet block two years ago. It is doubtful, however, if many people remember the wooden stage and if anyone does, it would be interesting to know what happened to it? Did Gary mean the wooden

blocks which still get used from time to time for quizzes and musical events – or was there a fitted stage at one end, which has since been removed?

Doreen writes that “ten boys and girls who lived in Harbury went from our school. It started at two forty five and the ten children had to meet Mr Hill outside the Hall at twenty five to three. ... Mr Bamford introduced all the people on stage and said that Mr Profumo usually opens very big buildings, but he had brought himself down to open a little one like this”.

A wooden plaque commemorating the event is being restored and will shortly be placed in a prominent position in the Hall. The plaque stated that the ‘official opening was carried out on the 24th March 1962 by Mr John Profumo, M.P., O.B.E. Her Majesty’s Minister for War and others present included, Mrs Profumo (actress Valerie Hobson), Mr Way, chairman of Southam Rural District Council, Alderman Fryer, Deputy Mayor of Royal Leamington Spa, Alderman Farley from W.C.C, Mr P.E. Brodie, Chief Constable of Warwick, Mr L. Burrows representing the County Education Authority and the Reverend R. Mackley, Vicar of All Saints Church.

The plaque explains that ‘the need for a village hall in Harbury was very apparent on the occasion of the celebration in the village marking the coronation of H.M. Queen Elizabeth on 2nd June 1953. Inclement weather made the planned outdoor function impractical and the Wight School was found very inadequate. A small group of people started the movement to raise funds for the building of a Hall. In 1962 with the help of substantial grants from the Ministry of Education and W.C.C. the funds were raised’.



Eager helpers make Wednesday's late preparations for tomorrow's opening of the new £12,000 Harbury Village Hall by the Right Hon. John Profumo. The hall, planned in 1953, will be one of the most up to date structures of its kind in the county. Our picture clearly shows the unusual height of the roof design which will allow badminton to be played. A concert will follow the opening.

The total cost of the original building was £12,000 and much of this was raised within the village by contributions and fund raising events, including ‘three house warming events, which realised more than £100 which went towards the small debt remaining on the property when it was opened’. It’s a salutary observation that the Hall is celebrating its Golden Jubilee in

the same year that the Queen will be recognised for her 60 years on the throne, after her accession following the death of her father in 1952. It's also intriguing to recognise that 50 years after villagers raised money for the original building, we have continued to fund raise – for new toilets, improved rear doors and new hatches, which will be in place by the time the magazine is delivered.

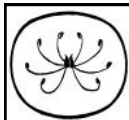


This photo shows the recently enlarged space for the hatch from the kitchen into the Farley Room, which will reduce the need for people on either side to stoop, as previously, when orders were placed for refreshments. The earlier photo shows the Hall set out for the opening ceremony, with the double doors referred to in Gary's article

opening straight out onto the recreation area behind, as they did before the extension for the Farley Room was built.

What no-one could have foreseen, even a few years ago is that photo-voltaics would be placed on the roof to offset energy consumption or that present day requirements would need better kitchen fittings and an updated changing facility for footballers – at present the only sports team which regularly uses the outdated showers.

If you want to be part of an enthusiastic team who are always hoping to improve our community building, please come along to the A.G.M on Thursday 12th April at 7.30pm. New talent and fresh ideas are always needed to maintain our 50 years old GOLDEN building.



Horticultural Society

Judy Morrall

Over forty members braved the cold weather on 7th February for a fantastic talk about a plant lovers guide to Fiji and Samoa, by Roger Umpelby. Thank you to all who came; it was well worth it. We were transported to the other side of the world. A few years ago Roger and his wife attended a wedding in New Zealand (as you do!) and took the opportunity to visit the Islands. They started in Fiji on the two main Islands.

The capital is Suva and is surrounded by a coral reef with turquoise seas and immaculate beaches. It is hot and humid, an excellent climate for the vegetation and flora. The sunsets are amazing with all colours from yellow

to red. The houses are single storey and they visited one of these and were offered the local drink in coconut shells but it was mildly narcotic! The houses have matting on the floors and have no windows. We were shown a picture of a most unusual loo outside a local church, up a set of steps and not very private. The population is about 50% Indian; they came to the islands originally to help with the building and stayed. Education is paid for by the parents and the children sometimes walk for three hours to attend school.

There are high mountains away from the towns and national parks. They visited one of these in an old vehicle as there are not many roads and you definitely need a 4 x 4. The vegetation is lush and a local guide was on hand to point out the various plants and trees. The main export is sugar and is transported in very old trains to the processing plant. The national flower, Tagimacha, is red and white a bit like a very large fuschia. Some trees are covered in huge orange flowers and we saw tulip trees, frangipani in all colours, very scented, lilies in all shapes and colours, and much more. It is worth noting that about two thirds of the flora and fauna is not native to the islands.

Raymond Burr, of Ironside fame, retired to Fiji and started an orchid nursery. I am not playing an early April fool's joke - it really is true!! So many thousands of orchids from very small to very large in pots in a rainbow of colours.

We were then taken to Samoa which is American and Western. We Brits pulled out and the USA moved in, oh dear! The cities looked very colourful but a closer look revealed loads of litter, what a shame. Away from the cities there is a different atmosphere, the islanders follow the Bahai faith and we were shown a magnificent temple with manicured grounds. We were then shown pictures of Robert Louis Stevenson's house. He moved here in 1890 as he thought the climate would help his tuberculosis and died here in 1894. We saw his tomb and a statue which celebrated the last of cannibalism, very strange. Again the houses are single storey and open to the elements. They get lots of rain and it is humid - again ideal growing conditions for the tropical plants. The trees are massive; there are mango swamps but it is not as fertile as Fiji. They went to visit a small island which looked amazing, with so many flowers and chillies, pineapples, mangoes, bread fruit, almonds and trees which grow cocoa and coffee beans. Sadly this tiny island was washed away in a tsunami as was more of the main island. We saw pictures of before and after, such devastation. The tree ferns were of huge proportions as were the ginger lilies. The hibiscus and other familiar plants such as coleus, mimosa formed huge hedges, as did poinsettias, which grow like weeds. The insects too are quite large, spiders, beetles, moths and massive

butterflies. Lizards, sea snakes and a venomous King Cobra are native to the islands, as are fruit bats.

The Samoans changed to driving on the left hand side as they can get very cheap cars from Australia who very sensibly also drive on the left hand side. You will remember too that at the start of this year they moved to the other side of the date line as they were losing two days a week before. How clever is that!

All good things come to an end and we all thoroughly enjoyed being taken to the other side of the world. Roger is an excellent speaker and I am sure that I will be inviting him back again.

Many thanks to all who helped at the recent coffee morning we made a wonderful total of £147. I will let you know at the next meeting where we propose to allocate this amount.

March is the perfect time to visit Coughton Court near Alcester to see a wonderful display of thousands of daffodils. Open from 10th to 25th March at weekends between 11.00am and 5.00pm. Hill Close Gardens in Warwick will be open at Easter and from Thursday 5th April will be full of all things Easter, including an Easter bonnet parade and Easter egg hunt. They are having many exciting events over the next few months and I will keep you posted in the future. Ryton Organic will be at the Edible Garden Show at Stoneleigh from 16th to 18th March. The show is crammed with money-saving ideas, some celebrity gardeners, chefs, growers, unique products, cookery demonstrations and fun filled events for the whole family. The ticket hotline is 0844 337 8001 or just go along on any of the three days. It promises to be a great event and it was a big success last year.

The next meeting in March on 7th will be a first visit from John Edgley who will talk about fruit in small gardens. He will be demonstrating pruning techniques as well as showing slides. Promises to be a great first time visit. Then on 3rd April we will be welcoming back Derek Walker who will be talking about growing for the show. You will remember Derek who showed us slides of his own garden which is full of tulip bulbs and other spectacular plants. He was unable to open his gardens last year as his garden got tulip blight and he has to start again this year. He also organises local shows twice a year and this again promises to be another treat to look forward to.

Well, spring is almost with us, the nights are getting lighter and we are all itching to get growing vegetables and flowers. Can't wait.

Look forward to seeing everyone at the meetings.



Garden Jottings from Bridge Nursery

Christine Dakin

Your local Hardy Plant Specialists

Also: Fresh cut flowers and bedding plants in season

Compost

What sort of compost do you use in and around the garden? It's a hot topic in the gardening media and has been for many years. But at the nursery we are never asked what we grow our plants in or if we are organic growers (we're not).

The government is muttering about phasing out peat based composts by the year 2020. There are also suggestions of adding a tax to bags of peat to discourage people from using it. At the moment, it certainly costs more to buy the peat-free alternatives so unless you are very 'green' you would naturally buy the cheaper option.

After years of doubt I tentatively started to use peat-free compost because we were supplying plants to the National Trust and they have a peat-free policy across the country. The results were most encouraging. During the last four years I have gradually used it more and more so that now about half of all compost used is peat-free. It is easier to weed out the weeds; it takes up water better and some plants over-winter more successfully.

I would really like to know what happens to the green waste that is collected fortnightly and how amateur gardeners can get hold of it to use in their gardens. There must be tons of it somewhere just waiting to be used. Please let me know if you have any information on this.

Jobs..... weeding, dividing snowdrops and replanting, sowing broad beans, prune roses, plant raspberries, plant onion sets and shallots, sow parsnips and peas, and maybe start mowing but have the blades set a little higher than normal.

Bridge Nursery, Tomlow Road, Napton, Tel: 01926 812737

www.bridge-nursery.co.uk



Nature Notes

John Hancock

The first serious snow of the winter fell as darkness descended on Saturday, 4th February, blanketing a swathe of the country. The Midlands

and the South were particularly affected. For a while the Middle Road into Harbury was treacherous, but good work by the gritting teams and a slow rise in temperature allowed people to get about, albeit rather slowly the following day. Sharon and I left for a holiday on the 6th, so missed the return of the cold weather. We await Harbury & Ladbroke News reports of what transpired while we were away.

Breaking our journey in Singapore, we experienced temperatures over 30 degrees Celsius. In the Botanic Gardens, a visit to the orchid collection is a must. A great many specimens find a niche growing in trees. They have adapted to take moisture from the atmosphere as well as via roots attaching to their host. A group of Australian ornithologists positively identified the raucous black birds taking crumbs from beneath picnic tables. They were White Vented Mynahs.

Another speciality of the gardens are the numerous types of bamboo. Related to grass, bamboo flowers rather erratically; the gardens are still waiting for one species to flower and it is coming up for ninety years old. Whilst exotic flowers are eye catching, it is the behind the scenes work, often connected with actual or potential crops which is perhaps more important. The 'story' of rubber is a case in point. Seeds brought to Singapore in 1877 from Brazil formed a basis for the rubber plantations in Malaysia, a most important economic resource.

On Friday, 10th February, we flew into Cairns in tropical North Queensland, and were made most welcome by Sharon's cousin, Graham Jorgensen and his wife Joyce. By the shore of the Coral Sea and backed by the forested slopes of the coastal range, Cairns has grown into a modern city of 150,000 people. Port Douglas to the north and Bowen to the south, were both ahead as harbour sites in the race to open up the hinterland. Deeper water around Cairns and the increase in the size of ships proved decisive.

A few minutes' walk from Graham and Joyce's home is a park beside the tumbling Freshwater Creek. Every plant and animal encountered is so different to those back in Warwickshire. Green ants, the size of our wood ants, were coursing up and down a tree. I found their nest, a cleverly constructed 'box' made out of leaves. Apparently they use their grubs, which exude a sticky threadlike substance, to stitch the leaves together. In another spot, Graham showed us a delicate lace fungus. Best seen in the morning when the cage-like lace drapery hangs from the growing tip; by afternoon, it has collapsed. Parrots, large butterflies, including the beautiful green Cairns Birdwing were a feast for the eyes. In the garden, Yellow Breasted Sunbirds (*Nectarinia jugularis*) had made a nest hanging from a drain pipe. It was pendulous and tailed, with a hooded entrance, and made of bark, grass and leaves bound with spiders web. Flitting from

flower to flower, this bird is a nectar feeder. So much more to tell, but space dictates a halt.

Amongst other things, Graham and Joyce took us to Undarra National Park. Lying about 300kms inland from Cairns, beyond the Atherton Tableland, this park is famous for its lava tubes. If you want to find out more try www.undarra.com.au. There we met Ross and Dale Rogers and it was Ross, (an old school friend of Graham's), who was to be our guide. The tubes were formed as lava flowed away from volcanic events about 200,000 years ago – a negligible time geologically – for instance, granite tors here about were formed of rock 300 million years old. It was from the top of one of these that we watched the sunset etching the mountains on the skyline towards Normanton.

The Undarra Lava Tubes are massive subterranean tunnels running in broken fashion for as much as 160kms beneath the open bush. Where the roof has caved in, evergreen vine thicket marks the route, even visible on satellite images. Bats in their thousands streamed in and out of one entrance as darkness closed in. Ross told us that they could fly as much as 50kms in a night and must consume half their weight, in terms of insects, per night to survive. Despite our close proximity, their echo sounding allowed them to steer around us. Ross' torch picked out the occasional Night Tiger snake, positioned on a nearby branch, waiting to strike at a bat brushing against it.

The following morning, we were taken into a tube, and got some idea of the scale of things. Rivers of lava coursing away from the volcano cooled at the surface and hardened, insulating the liquid lava within, which continued to run until the tube had drained. Wild life including various types of kangaroo and wallaby were to be seen in the surrounding bush. They are all macropods. Kangaroos have pointed ears, whilst wallaby ears are rounded. Near Ross and Dale's railway carriage home, dating from 1888, we saw the strange looking Tawny Frog Mouth (*Podargus strigoides*), a night hawk looking somewhat like a Nightjar. We learnt from Ross how traditional burning, in a mosaic pattern, is conserving the bush and making a wild fire less likely. A tree such as the Bloodwood, oozes sap and is further protected from fire by its cork like bark, which acts as an insulator until the fire has passed. The continent of Australia, far larger than Europe, is full of plants and animals which have evolved to withstand the extremes of climate they encounter - the dry, hot interior being a particular challenge.

A special thanks to Joyce for typing this article. More on Australia when Sharon and I return next month.



General Section

John Ridgley Tree of Light

Thank you so much for your kind donations to the Tree of Light which this year totalled £392.50 all of which will benefit children and young people in the village.

Harbury Charities have received a request from the Harbury School PTA who are to purchase computers for the school and the Trustees are pleased to give £100 towards their funds for this purpose, with the possibility of a further contribution in the future. As no other requests for funding have been received at this time, the balance will be held in the Wagstaffe's Educational Foundation account and will only be used for the purpose for which donations were given.

Over the last 12 months grants have been made to a number of village organisations including the Scouts and Guides, The Duke of Edinburgh Award group, Windmills Nursery and Harbury Pre-School and it is hoped that we can continue to support such organisations in the future.

Gordon Bennett

Calling all Blood Donors

The last session in Harbury produced a record 113 units. Can we equal it – or even beat it this time?

The session will be in Harbury Village Hall on Thursday 8th March; 1.30 – 3.30pm and 4.30 – 7.30pm. It is open to anyone aged 17 and over; new donors need to be under 65 but existing donors can continue as long as their health permits. And there are some changes to the exclusion caused by some medications, so worth checking.

There is no need to make an appointment and the afternoon session is usually fairly quiet. However if you have a busy day, you can do so online – www.blood.co.uk or simply phone 0300 123 23 23.

Go on – you know it's a good idea!

Gillian Hare

Wanted for Artwork – “Bling”!

I would be very grateful if any ladies, in particular, have any cast off non valuable bits and bobs of decorative buttons, brooches, badges, jewellery, beads, interesting material bin ends, feather, fur, leather or anything small and shiny, for me to incorporate into one of my Onion Jake painting series.

There seems to be a demand from galleries for pictures of the Queen for the celebrations in June, so I need a lot of “bling” for her crown.

If you do have a clear out and pop a contribution through my letter box, don't forget to leave your name, so I can thank you.

Jan Freeman
Church House, Crown Street
614251



Harbury Art Group

February's workshop introduced many of the group to the new technique of combining watercolour and pastel in one painting. Nick brought along a photograph of the snowy Dolomite Mountains, with a foreground of an Italian village – very picturesque. Lovely effects were achieved using pastels for the sky and foreground trees and foliage, with watercolour for the middle ground and buildings. Maurice's painting was chosen as the favourite work this month.

At our March workshop (Thursday 1st March) Nick has invited us to bring along our own source material to interpret the theme of 'Peace'. We will be using watercolours or can bring our own choice of medium. So this is a real chance to put our imaginations into gear. Nick will be bringing some 'peaceful' subjects of his own – just in case we need some inspiration. Then in April (Thursday 5th) we will be painting a still life.

If you would like to join us for a day's painting and drawing in good company please get in touch – we are always happy to see new members. The workshops are run on a 'pay as you go' basis of £15 for the day, and there is no joining fee. We meet on the first Thursday of every month in the Tom Hauley Room behind Harbury Church, from 10am to about 3pm. All levels of ability attend, from beginner to the more experienced. The full 2012 programme is now available, and can be sent to you by email or post. Please telephone Pam on 01926 814923, or the tutor Nick on 01295 276465 or email harburyart@hotmail.com for more information.

Happy painting!

Pam McConnell

Harbury Village Club - AGM

Harbury Village Club is holding their Annual General Meeting on Tuesday 27th March at 7.30pm and is open to all members. We will be looking for new committee members so if you feel you could devote some time in helping run the Club then please do put your name up on the board.

Deborah Gee

A Year of Singing Success with Warwickshire Young Voices

The last year has been extremely busy and exciting for us as we have grown and gained a reputation on a local and national level. Here are some of our highlights:

Local Charity - We have performed for several events throughout the Midlands including a Village Hall dedication day and a fundraising musical evening, singing songs by Take That, Leona Lewis, Ellie Goulding and Alexandra Burke.

Handel's Messiah and Birmingham Cathedral - Members of our Chamber Choir were invited to sing in Birmingham with a massed choir and soloists from the Birmingham Conservatoire.



The National Memorial Arboretum - The whole choir was invited to sing as part of Remembrance Day at this very special place, including 'Wherever You Are' - a piece written especially for the choir by our Musical Director, David Iles. We sang to over 2000 people as they laid their wreaths and made it into the local and national press.

Babushka - our first full production was a huge success, telling the traditional Russian Christmas tale with song, miming, film and photography. We had lots of lovely audience comments on how unusual, beautiful and moving our production style was.

We have a lot to live up to, to match our total of 14 public performances again in the coming year! For more information about the choir, as well as photos and recordings from some of our events, please visit our website: www.warwickshireyoungvoices.org.

Helen Iles
Warwickshire Young Voices

Don't Forget: Carnival is Saturday 9th June

Now is the time to book a stall/pitch on the field for Carnival: please call Mike McBride on 612421. It is also time to book your programme advert by calling Ann Winchester on 612128.

And if you have any questions about the Carnival, please feel free to ask John Broomfield, Carnival Committee Chairman, on 614258. He will be happy to provide whatever help he can.

Part of **Harbury Festival Fortnight** 3rd June to 16th June: Wheelbarrow Race, Carnival Games, **the Carnival** and Harbury Games.

Peter Walshe
On behalf of the Carnival Committee

Carnival Queen and King Reunion 2012

Harbury, your Carnival Queen of 1986 needs your help. With 2012 being the year of celebrating our Queen's Diamond Jubilee and with London hosting the Olympics I want to make our Carnival in June one to remember too. So how can you help me?

I would like to have a reunion of as many past Carnival Queens as I can. I would also like to involve past Carnival Kings too. I have not heard of this being done before and it would make this year's Carnival really unique and memorable.

I am particularly sensitive to making sure that this does **not** encroach or have any negative impact upon the current Carnival Queen and King. I have spoken to John Broomfield and outlined my proposal to ensure that this will not happen.

So how can you help me? If you know of any past Queens and/or Kings or you have been one yourself, please contact me on 01926 612326. This is so that I can get an idea as to those able to attend the Carnival, and working with the Carnival Committee, how this reunion can be managed on the day.

Thank you very much.

Deborah Ellis
Carnival Queen 1986



Get involved in the Harbury Games on Saturday 16th June!

Arrangements are well underway for this year's Heart of Harbury Games at the Recreation Ground on 16th June and there are lots of ways you can get involved:

- 1) You could enter your own team by contacting Peter Walshe on 612477 or Trevor Montague on 612340. We have eight teams already signed up but we have room for twelve teams (three more than last year).

- 2) If you would like to join one of the teams that has already been entered, contact Peter or Trevor and they will tell you which teams are looking for more participants and they'll put you in touch with the team captains.
- 3) For the amazing price of £25 you could sponsor an event. Your donation would be recognised in the programme and you would be invited to present the medals for the event you have sponsored. There will be between thirty and forty events including one or two new ones such as our "Harbury's got talent" event. If you'd like to be a sponsor, please contact Andrew Lawrence on 614937.
- 4) We need volunteers to help with judging, timekeeping, serving refreshments etc. Please contact Peter or Trevor if you'd like to help.
- 5) We'll have some events that are open to all-comers (whether you are in a team or not). All you need to do is turn up on the day with some suitable kit.
- 6) Or you can of course just come and watch, cheer your friends and family, eat, drink and enjoy the day.

Andrew Lawrence (on behalf of the organising group)



Bumps and Bundles

Bumps is still going strong we have had some new mummies and babies join us which is great. I hope to have some events in the coming weeks, like making easter cards - watch this space. Come along and join us for tea, coffee and company in the Tom Hauley room 10.30am to 12 noon every Tuesday.

Henry and Kelly

Notice Boards – Free Hire for Community Groups

Residents might be interested to know that the Parish Council owns five free-standing display boards which are available free of charge for village community groups to borrow for events. For further details please contact the Parish Clerk on 614646, e-mail clerk@harbury-pc.gov.uk.

Harbury Parish Council



Harbury Ukulele Group

It's been a quiet few weeks for the HUG, but we are gamely rehearsing some new songs for our 2012 repertoire, and we've already had a few enquiries about playing at summer events. We're glad that Craig is up and about again, and hope he'll be able to play with us again soon.

We meet on the first and third Monday of the month at the Shakespeare Inn, 8pm. For further information email contact@harburyukulele.me.uk, see our website at www.harburyukulele.me.uk or call Craig on 612377.

Magnus Lewis-Smith
contact@harburyukulele.me.uk
www.harburyukulele.me.uk

Tom Hauley Room Lunches

The monthly Tom Hauley Room lunches have been running for many years. Sometimes regular events die a natural death and should be allowed to do so. This is not true of the lunches. Since we wrote an article for last year's Harbury and Ladbroke News, the number of punters has grown, the number of organisers has not.

'Organiser' may be a daunting term and the task certainly involves hard work. But – organise your friends: one to make soup; several to cook main courses, meat and vegetarian; several to make puds. Then all you'll have to do is devise the menu, collate the orders, provide the ingredients (cost to be taken out of proceeds) and be there in charge on the day. Quite simple really! It may take a few days out of your year, but isn't it worth it? These lunches provide such a service to the community; such a form of outreach; such a chance for people who mostly eat alone to enjoy a good meal in the company of friends.

There is no lunch in December so we aim to cover 11 months. One month is always taken by the Mothers' Union and over the past three years we have depended on regular volunteers to cover at least three months. So, we are talking of finding 6 or 7 more organisers. You do not have to go it alone. Most of us work in pairs. Please think seriously about this. If you feel unable to volunteer yourself, please approach friends with this information. There are veterans who are prepared to be shadowed. There is never a shortage of people willing to cook, wait, and help generally on the day.

If you feel able to help in any way please contact Fliss Harris on 612395.

Fliss Harris



Inverted Morris Dancing?

Is it possible to do Morris dancing upside down? Well, yes, in a manner of speaking, if you're prepared to travel 'down-under' to do it. Perhaps you thought that Morris dancing was only practised in England? It is, after all, a form of English traditional dance, several centuries old. However, groups of Morris dancers can be found all around the world, usually where English immigrants have exerted some influence on their local communities.

On our recent holiday to New Zealand, we met up with one of the teams in that country, the City of Auckland Morris Dancers. One of the joys of being a Morris dancer or musician is that you can be sure of a warm welcome if you meet another team anywhere in the world. Margaret and I were offered accommodation for a night and we enjoyed swapping experiences and anecdotes with our hosts, Helen and Richard. In the past, we have also exchanged hospitality with two teams based in California.



The Auckland team are very similar to Hereburgh Morris with a similar mix of ages and gender and a similarly relaxed, fun-loving approach to their dancing. They were taking part in the Auckland Folk Festival and presented an entertaining open-air show called 'Dancing Around England' (see photo). I also attended a workshop that they ran, led by Steve Dancer

who really does have a son called Maurice!

We hope to see the City of Auckland Morris Dancers next year, along with some other NZ dancers, when they visit on their UK tour. Who knows, we may even see them perform in Harbury.

If you're tempted to try global Morris dancing, or even the local variety, why not come along to one of Hereburgh Morris' 'taster' sessions on Sunday afternoons in Leamington? These are at Holy Trinity Church Hall (Trinity Street) from 3pm to 4pm, on March 4th, 11th and 18th. Of course, there is no commitment but, be warned, once you've tried it, you might find it difficult to resist! For more information, please call me (613730) or see our website www.come.to/hereburgh.

Peter McDonald

Harbury Library

The Library is now closed for renovations. There is some good news and bad news about that. The good news is that Warwickshire County Council will be replacing the floor, which was rotten, but the bad news is that this will put back our opening date. We now hope to open on April 16th, but watch out for a further update next month. We plan on running our own 'Harbury book stock' alongside the county stock. To that end we would like donations of good quality/condition, recent books BUT please do not bring them on day one - there will be enough to do! We hope to open the library 9am - 5pm, 4 days a week (closed Wednesday). If you are willing and able to volunteer in the café or the library and can commit to a regular shift please ring me on 614532.

Tim Lockley
Chairman, Harbury Village Library

Mobile Library

Whilst Harbury Library is closed for essential maintenance, residents can access a mobile library service provided by Warwickshire County Council. The mobile library will visit the village on Wednesdays between 2pm and 4.30pm and can be found on the car park of The Dog Inn.

Harbury Parish Council

Harbury Energy Initiative

24TH MARCH AT 2PM is a date we want you to **mark and keep free**.

On that day at Harbury Primary School we plan to show you how you will be able to afford energy and cost saving measures for your home with the help of new funding schemes being planned by the government. We will also be revealing the results of the work we have been doing with the DECC LEAF grant.

We will show you dramatic pictures of the aerial survey of heat loss from houses in Harbury and Deppers Bridge and you will be able to have a personalised pictorial card for your own home, if you want it, with advice as to what you could do to reduce your bills.

You will hear explanations from Matthew Rhodes of Encraft and other experts on what measures can make a real difference to the energy consumption and running costs of a building (and that doesn't mean necessarily making big comfort sacrifices), based on what they have discovered through their energy surveys of some of our community

buildings. Included in these are the Church, the School, the Wight School, the Rugby Club and the Village Club, as well as a representative sample of some of the typical housing stock in the village. We will by then have almost completed our work in the library and we can explain a little too about 'dry lining' of non-cavity walls. Many older buildings cannot benefit from insulation material pumped into the gap between the inner and outer wall of the house because there is no cavity to fill. Using an internal insulating material can be very effective.

Improvements to the home need not be costly but some can be and photovoltaic panels and other new technology are beyond the reach of many. To help with this, the government is introducing a Green Deal later this year and we have invited Martin Orrill, who is responsible for the investment in renewable heat systems nationally for British Gas to explain the basic principles behind this new deal.

All this is too fascinating to miss.

Come and get energised on 24th March at 2pm in the school.

Bob Sherman

612277 or bob@churchterrace8.freemove.co.uk

Fuel Community Update

The price of oil continues to escalate as further unrest occurs in the Middle East. The Harbury buying group now numbers over 20 customers and although only a few people order at one time (sometimes three; sometimes eight) the fuel company (RIX) always gives a good price for orders which may vary in total between 2,500 litres and 7,500 litres. At present 'our' system works that when one person in the group signals their need for a delivery by the next week, I ring or email everyone else on the list to see if they also require a 'top up' of 500 litres or a greater amount, which could be 1,000 or 2,000+ litres. As mentioned previously, the greater the quantity ordered at any one time; the better the price, so householders gain by grouping together for one consignment to the village.

There are probably still a number of properties needing oil which haven't joined the group yet, especially those on outlying properties e.g. farms which are more likely to need oil, as gas is unavailable in isolated places. If any householder in the surrounding area wants to join the group, it only takes a phone call to **Chris on 612305** to enquire about the arrangements, which can reduce the bill by £100+ per year for the average property. RIX drivers have mentioned that they have delivered to farms and cottages in the local area which will probably have been quoted

a higher price because they are not part of the 'community buying potential'.

It's never too late to join and it only takes a phone call in the first instance to check how the system works. Listeners to a money-saving programme recently will have heard how a small village was operating a similar system to the one I organise with only 15 customers, but they all placed orders at regular intervals mainly for 'top ups' and again the saving was significant. Whether this would be a better arrangement for us, I don't know, but it's worth a thought. Certainly if all 20+ customers placed an order during a period of low demand e.g. during the summer months, we could secure an even better deal, if an 18,000litre tanker only had to deliver to Harbury. Please get in touch, if you're interested; it can only save you money – even with our present system.

Chris Finch

Village with a Vision

We were very encouraged by the attendance at the Drop-In Day on Monday 6th February, when 59 people came along. Having the chance to discuss our hopes and needs with Helen, Sue and Mike, of Bromford Support, gave all of us a clearer idea of what it is we hope to achieve.

Although it seems to be taking lots of time, we want to get things as right as possible, so as to accommodate everyone who wishes to live in Harbury's own Extra Care Housing. There's still a great deal of behind the scenes discussion and negotiation to take place, and we'll keep you informed as time goes on.

In the meantime, please stay with us. We know that we'll need to raise funds for many of the "extras" that will be needed; and this will be a great opportunity for our caring community to help bring this exciting project to fulfilment.

We will be holding our first AGM in the Tom Hauley Room on Monday 26th March 2012 at 7pm. As ever, thank you for all your support and good wishes, we can't do this without you.

Tony Stubbs

Neighbourhood Watch

Following on from my article last month I have had a good response, and those of you who have registered your e-mail address with the police should have had a few e-mails through by now. If not let me know and I

will look into it. If you would like to get the summary of recent incidents and relevant crime protection advice by email, contact me and I will send you the relevant form. You will then start to receive information directly from the police.

There is a meeting on 15th March at Southam Police Station for NHW co-ordinators. If you want to attend you just need to let Claire Murray at Southam Police know. I am attending on your behalf and will let you know the outcome in next month's Harbury and Ladbroke News. And finally there has been a spate of burglaries in the area, so it seems timely to remind you to make sure doors and windows are secure and to keep valuables out of sight. As spring approaches many of us will be out in the garden; don't forget to lock doors even if you are not far away. It doesn't take long for an opportunistic intruder to be in and out while you are otherwise occupied.

Alison Abbott (alison@vantagegraphics.co.uk)
Village co-ordinator for Harbury

The Spirit of Harbury Award

There are so many people who enrich our lives in this special village by voluntarily giving their time, care and support to the numerous events, activities, clubs and associations that we all enjoy. The Spirit of Harbury, is one small way of recognising their invaluable contribution. Please do take a minute to nominate someone for 2012 by email: andrew.hunt@me.com, phone: 612931 or by dropping a note into Cana Wine or Mugleston's next time you are doing some shopping. A short explanation of why you are making the nomination would be helpful, but is most certainly not necessary. Thank you.

Andrew Hunt

A Walk in the Countryside and the Compensation Culture

I refer back to an earlier article written by the local ramblers' group, expressing the view that the writer would no longer be giving notice of their walks in the *Harbury and Ladbroke News* because they had been told that if there was an accident then the organisers would have to pay compensation. This is unfortunately a classic example of the exaggerated fears held as a result of the so called 'Compensation Culture', referred to in a recent government paper as the 'insidious mythology about being sued', which the Prime Minister has brought back into the news recently with his call for whiplash injuries to be more carefully scrutinised.

The position for those organising a walk, or indeed any other sort of leisure activity, is that no successful claim can be brought unless the organisers were at FAULT in some way, for example, if they had chosen a route which was known to be unsafe and issued inadequate warnings about the hazards. Unfortunately, the media covers stories about claims that have been made for large sums in preposterous circumstances, but rarely follow up to report that the claims have been dropped, lost, or settled for far smaller sums. Similarly, advertisements for 'No Win, No Fee' claims services give the impression that insurance companies will pay out large sums at the mere threat of a claim. While there may be some which will have a policy of not bothering to contest relatively small amounts, on the grounds that it will cost more to do so than to pay up, the courts are full of companies and individuals disputing claims. A recent example which made the news was the National Trust being found not liable for a rotten branch which fell on and killed one child and injured several others – the judge held the Trust had not been at fault in that it was unreasonable to expect it to do more than it had done to prevent the tragic accident. It is the issue of what is *reasonable* that is crucial to liability, whether as a householder to one's guests; someone organising a leisure activity for a group of adults or children (clearly more care is necessary in the latter case); or a business or local authority in relation to its responsibility to visitors to its property.

Although no-one can prevent a threat of legal action in circumstances where 'someone to blame' after an accident is being sought, anyone taking legal advice would be told that without fault there is no liability, and therefore that provided 'reasonable care' has been taken, a claim for damages can be resisted. It is also possible that a leader of a consenting group of adults would not be held to owe any duty in the first place to other members of the group, provided they were all in a position to assess the 'risks' of the activity themselves. It might be possible to reinforce this point by giving out some form of written disclaimer before starting the walk – it should be noted that as a non-business activity it is possible to exclude liability for causing death or personal injury; not so for businesses – but this formality will not be strictly necessary. In the spirit of this 'belt and braces' approach, I should state that although I have taken all reasonable care in putting together this short article, I cannot accept liability for its contents!

The previous government introduced legislation in 2006 called the Compensation Act, specifically designed to counter the Compensation Culture by drawing attention to the fact that courts should bear in mind the deterrent effect of imposing liability on those organising 'desirable activities'. Our MP, Jeremy Wright, made an unsuccessful attempt to strengthen this aspect of the law with a private members' bill in 2010.

However, in spite of little judicial guidance so far, there is little doubt that a walking group would be regarded as a 'desirable activity' and thus the chances of liability being imposed are extremely low.

I hope the ramblers will feel able to resume publishing the dates/ times of their walks in the light of this information, as it would seem to be a welcome addition to village activities.

Janice Montague (Senior Lecturer in Law)

Marathon Man

On 22nd April 2012 I will be running for my third time in the world-famous London Marathon for an excellent cause. PHABKids (www.phabkids.co.uk) is the leading national charity committed to promoting and encouraging disabled and non-disabled children and adults to take part in a wide range of social and sports activities. It's a well-established charity, having been in existence for half a century.

I am hoping to raise as much money as possible from as many sponsors as possible and would welcome a donation, no matter how small or large. Like so many other charitable organisations, PHABKids relies upon donations to continue its invaluable work and every pound contributed makes a difference.

Donations can be made on-line at my VirginMoneyGiving page: www.virginmoneygiving.com/IanHartland.

If you're not keen on donating this way, you can simply write out a cheque for however much you think my efforts are worth, make it payable to: PHAB Marathon, and send it to me (or deliver it, if you're passing by) to: 45 Mill Street, Harbury, CV33 9HR.

If you'd rather have something in return for your donation, you could buy one of our (The Harvesters) CDs, "Brief Encounter" or "Pearls before Wine" for £5.00. From this, we will give £4.00 directly to PHAB Kids. This way, everyone gets something!

My training is going well, so I expect to be there in London on Sunday 22nd, waving to the television cameras (along with 40,000 other people!) and taking part in the largest annual fundraising event in the world.

Ian Hartland
612734



Three months left...

Thank you to everyone who has supported me so far on my forthcoming climb of Kilimanjaro this summer. As I write this,

I've just hit my first target of £580 a week before the deadline, and I'm past the £600 mark! Already it's a huge amount of money for Childreach International but I still have quite a way to go to reach £2450 by 25th May. Every donation is greatly appreciated and if you can spare anything for this amazing cause my "BT My Donate" page can be found at:

<https://mydonate.bt.com/fundraisers/albanyvincent>

Alongside other fundraising evenings being held at the University I am studying at, plans are currently underway to hold a Race Night at the Village Hall towards the end of April, with all the proceeds going to the charity on top of my total. I hope that as many of you as possible can attend. Keep your eyes peeled for more details soon!

Albany Vincent

Adding Value in Kenya for Income Generation

John Home is a lifelong bee keeper who, together with Mary, is the Project Leader for Bees Abroad in Kenya. The organisation was started in 2002 and is now working in more than eight countries throughout Africa. Project Leaders support 'their' projects long range throughout the year and try to make at least one in-country visit to check on the progress and the financial position of the various groups. Mary and John went out in late 2011 and spent nearly five weeks in Kenya for training, support and planning and visited twelve groups each in the semi-arid areas where they had experienced three years of drought. This ended with unusually heavy rains making travel even in 4x4 vehicles difficult during their visit.

The drought in East Africa had affected the flowering plants so affecting the bee keeping and honey production. In an effort to overcome their resulting hardship the local farmers often resort to environmentally destructive activities, cutting down trees to make space for cultivation of food crops. They burn the trees to make charcoal for sale by the women, giving an immediate income. Over grazing by livestock in arid conditions obliges men to move livestock for long distances to find even minimal grazing for the animals.

On this visit the aim was to work where possible with the local women encouraging them with bee keeping activities year round. The plan was to develop their confidence in adding value to the honey and beeswax so creating saleable products which could provide year-long employment and income. Training had been given previously in harvesting honey and wax, but the products were sold immediately after harvesting providing only short term income at variable prices.

At the National Bee-keeping Station in Nairobi a programme was developed to train members of the local projects in adding value to their hive-harvest using the wealth of skill and knowledge at the Station, in honey and bee-keeping; also their knowledge of suitable available aromatic ingredients and possibilities for sourcing local containers for the end products, including creams and soaps.

Local trainers gave the Added Value training to participants from a number of the groups. Everyone benefited from meeting up and had fun making candy sweets, skin care products, cough and cold medicine and candles. Interestingly the men taking part soon became users of the products and everyone was impressed with the calculation of the profit obtainable.

The Sinyati women's group is in a remote location and the village had been raided by the Pokot tribe: men had come in, sprayed the village with bullets and then without resistance stole the herd of forty milking goats which was the main village livelihood. There were discussions on bee-keeping as a safer income generator because raiding warriors would not run off with hives of angry bees! They had planted field beans as a food crop and the nectar was potential bee food.

Caroline Lentupuru from the project won International Campaigner of the Year Award for work in her local area to ensure that young girls between 12 and 16 years are not forced to undergo genital mutilation followed by early marriage, resulting in them dropping out of school. Her work helps the community to become better educated and free from poverty. Caroline came to the UK at the end of November to receive the Award and skill-building training. She met MPs and had the opportunity to explain the importance of giving aid to small efficient local organisations. At the end of her visit she came and stayed with John and Mary. See www.beesabroad@org.uk.

Marian Millington

Chesterton Church Fundraising Project 'Hole in the Wall'

We are holding a quiz night at Harbury Rugby Club, 7.30pm for 8.00pm on Friday 23rd March. Teams of four, refreshments provided, the big raffle will be drawn, £20 a team. This promises to be a fun evening. For further details please contact: elizabethholding@gmail.com.

Jo Spurr

Wind Farm Technology



I am fascinated by this country's slavish intent on renewable energy at any cost. We are now being asked to sacrifice one of Warwickshire's most vaunted views at the Burton Dassett Hills, to a technology in its infancy, producing little electricity at vast, unsightly cost to us the consumer. We seem to be intent on arresting climate change at the cost of our countryside. Building a wind farm in a valley simply confirms the folly.

I was one of the villagers invited by the developer of the Starbold Wind Farm project, Broadview Energy, to their latest working operation at Low Spinney, north of Lutterworth in Leicestershire. Their full planning application for Starbold is anticipated soon. The site in Leicestershire is ideal; it's on the top of rolling downs with no long distance views, and no higher hills to mar the wind. There are virtually no houses

in the vicinity and the noise from the motorway in the field next door drowns out much of the whump.... whump... of the turbines' blades. None of those advantages exist just outside Bishops Itchington.

The operation in Leicestershire seems to make sense. Broadview and its venture capital partners stand to do "rather well" from money that simply flows out of our pockets to pay ever increasing utility bills; there appears to be no end to what the consumer will pay. In fairness to Broadview, they have brought together venture capital and know-how and produced a state of the art wind farm that does produce electricity. The turbines are vast but the site is tidy and it looks efficient. As they said themselves, in a few years' time when the technology evolves further, we will look at this site and wonder when the turbines will be replaced with their modern, far more efficient, far smaller equivalent.

It may be that the future generations of wind turbines will be less obtrusive and no longer dominate the countryside. At that point the Starbold site may come into its own and Warwickshire residents would welcome the opportunity to embrace the technology and not ruin their countryside. But not yet.

Richard Hamburger - Stratford District Councillor
richard.hamburger@stratford-dc.gov.uk

Do You Want Faster Broadband?

Warwickshire County Council, along with Solihull and Coventry Councils, has been allocated £4.07m by Government to help improve broadband connectivity. That amount has to be match-funded by the local authorities, and the private sector is expected to invest a considerably larger amount to ensure that all properties achieve speeds of at least 2Mbps and 90% of properties achieve at least 24Mbps by the end of 2015.

Faster broadband will facilitate a step-change in all our lives, including working from home; the provision of health and care facilities to help people stay in their own homes for longer; business benefits such as less travelling and cloud computing; and many, many more technologies which just a few years ago were unthinkable but which are available now – providing you have a fast enough connection.

In order to encourage the private sector to invest we need to show that they will get a return on their money and that people will actually use the service, and to do that we have set up two questionnaires, one for businesses and one for residential. If you work from home please complete both – just because a building doesn't have a sign over the door doesn't mean that there is no business activity inside! The survey can be found at www.cswbroadband.org.uk.

We are also looking to recruit local Champions who will be able to promote the project within their own villages and to encourage others to sign up (resources will be provided). If you would be interested in becoming a Champion or have any other queries about the project, please email broadband@warwickshire.gov.uk.

Warwickshire County Council



Southam Lions

At the Southam Lions Club Meeting on Wednesday 15th February, we welcomed Bob Carter from TEENAGE CANCER TRUST and presented the Trust with a cheque for £2,250 in respect of one of two charities chosen to benefit from the highly successful Father Christmas Float tour of Southam and surrounding villages in December. A similar sum will be presented shortly to SENSE, the other chosen charity

Club Meeting on Wednesday



to benefit from our Christmas collections. Southam Lions would like to thank all those people who gave so generously to two very worthwhile causes.

Horse Race Night Extravaganza

Southam Lions invite you to a Horse Race Night Extravaganza with a difference! This evening will be held on Saturday 31st March at the Graham Adams Centre – the Paddock opens at 7.30pm with the first “race” at 8.00pm. Licensed bar and light refreshments available. Paddock entrance fee is £2 per person. For further details contact Brian on 01926 812797 or email: brinuk44@gmail.com.

Peter Guy
Publicity Officer – Southam Lions

Harbury Village Show 2012

A date for your diary - the Village Show will be held on Saturday 8th September in the Village Club at 2pm. More details will follow later in the year but, in the meantime, if you have any queries or comments please do contact Patrick or Jane.

Patrick Clark - 612066 and Jane Giddings - 614266



Nightrider – Practical Action Challenges Poverty

Nightrider is Practical Action's flagship event, with a team of 225 cyclists taking to the streets to cycle 100km around London overnight on 9th/ 10th June 2012. The route takes in some of the capital's major attractions and sights, passing the London Eye, the Houses of Parliament and Tower Bridge. 2012 Nightrider is the third year of this fantastic event with more cyclists than ever and our biggest ever Practical Action team.

Practical Action's work helps millions of people across the developing world support themselves out of poverty. Bikes are just one of the technologies that we use in Nepal. Here bikes can be used with trailers for transporting goods and also as bike ambulances, ensuring people can get the urgent medical attention they require.

We hope to raise over £60,000 from this one exciting night. So challenge yourself and challenge poverty - www.practicalaction.org/nightrider or 01936 634513.

Natasha Russell, Practical Action Community and Events



LETTERS TO THE EDITORS

Dear Editors

Please may we say a huge "thank you" to all our friends and neighbours in Harbury for your enormous support, cards, letters and care during Doug's illness and unexpected death. Thank you all also for attending his memorial service. We were overwhelmed with the much needed strength you gave us on a very sad day. We miss him so much!

Grateful thanks must go to Father Roy Brown for such a lovely service, John Batty for his wonderful eulogy, Dr John Hancock for his kindness and of course Jan and Ray for looking after everyone so well.

Harbury really is full of special caring people.

Our heartfelt thanks to you all.

The Green Family

Dear Editors

We would like to thank everyone who attended our daughter Wendy's funeral and to all those who sent cards, flowers and donations to the Air Ambulance. Thank you to Rev. Craig for his kindness and a lovely service. Our thanks also go to Ray and Jan Playdon for the lovely spread of food. We have been overwhelmed with the kindness of everyone.

Jeff and Joy Moore and Family

Dear Editors

May I please thank all the people who supported the coffee morning in aid of the Samantha Dickson Brain Tumour Trust.

It raised a total of £218.25, which has been sent to the charity, in aid of research into brain tumours.

A very big thank you to all who helped on the day, to all who donated money, raffle prizes, and cakes, etc. and to all who came.

Mary Catt

Dear Editors

I write on behalf of all responsible dog owners of Harbury. We know that people are sometimes troubled by dog mess. We assure you that we do

clean up after our own dogs and also pick up other dogs' poo which has been missed. In return, we ask for your consideration.

We walk our dogs in the playing field and in the field at the bottom of Mill Street. We have found broken glass, bread and remains of sandwiches, chips and chicken bones on the playing field and sharp raw bones in the Mill Street field. Bread and chips can cause bloating; not good for dogs. Bones splinter inside a dog and are therefore very dangerous indeed, a real threat of death.

Harbury, quite rightly, prides itself on being a caring community, and so, in this context, we ask you to respect us and our dogs as we respect you.

Thank you.

Fliss Harris

Regular Diary Dates

ART CLASSES: The Studio, Church House, Crown St, Tuesday 10am -12 noon (614251)

ART TUTORIALS: Tom Hauley Room 1st Thursday of the month (814923 or 01295 276465)

BADMINTON: Village Hall, Monday mornings 10:00am -12:00 noon (612877)

Mondays evenings 7:30 - 9:00pm; (612627)

BEAVERS: Scout Hut, Thursdays 5.30 - 6.40pm (01788 816214)

BELL RINGING PRACTICE: Church, Fridays 7:30pm (612939)

BIBLE STUDY GROUPS: various homes 1st & 3rd Thursday of the month 2.00-3.00pm (614809); 2nd & 4th Tuesday of the month 10.30 - 12.00 Noon (612864)

BROWNIES: Scout Hut, Mondays 5.45pm - 7:00pm (612538)

Brownies & Rainbows Waiting List - Bobbie Sharpe (614040)

BUMPS & BUNDLES: Tom Hauley Room, Tuesdays, 10.30am – 12 noon (614150 or 611914)

CHILDREN'S DANCE CLASSES: Farley Room Wednesday 4.00 - 8.00pm (07837 152839)

CHURCH MEN'S GROUP: Tom Hauley Room 1st Thursday in the month 7.45pm (612765)

COFFEE MORNING: Tom Hauley Room Saturdays 10:00am - 12:00noon (613214)

CUBS: Scout Hut, Wednesdays 6:45 - 8:15pm (614730)

DROP-IN TEA FOR THE BEREAVED: 19, Farm Street, last Tuesday in the month (except August and December) 2.30 to 4.30pm (612585)

GUIDES: Scout Hut, Mondays 7.15pm – 9.00pm (614375)

GYMNASTICS: Harbury School, Mondays 6:00 - 8:00pm (07939 679533)

HARBURY FOLK CLUB: Dog Inn 1st Thursday in the month 8:00pm (613730)

HARBURY FRIENDS: Tom Hauley Room, 2nd Tuesday in the month 8:00pm (612534)

HARBURY JUNIORS FOOTBALL CLUB:

Under 6's/7's - Year 1 & Year 2 (Mixed)

Coach: Steve Darby Tel: 01926 613330

Training: Saturday 9.00 am Harbury School

Under 8's - Year 3 (Mixed)

Coach: Bob Church Tel: 01926 614366

Training: Saturday 9.30 am Harbury School

Under 9's - Year 4 (Mixed)

Coach: Steve Burnell Tel: 07795 428087

Training: Tuesday 6.00pm Harbury Rugby Club

Under 11's/12's - Year 6 (Mixed)

Coach: Richard Woodhead Tel: 07786 802803

Training: Saturday 9.00 am Harbury Playing Fields

Under 15's - Year 10

Coach: Malcolm Tanner Tel: 01926 612617

Training: Saturday 9.00 am Harbury Playing Fields

HARBURY PRE-SCHOOL: Wight School (behind Library), High St. Monday 12 noon – 3.30pm, Tues & Thurs – 9.00am, - 3.30pm, Wed & Fri – 9.00am – 1.30pm (07939 122087) enquiries@harburypre-school.org.uk

HARBURY THEATRE GROUP: Last Tuesday of the month Shakespeare Inn (611930)

HARBURY TODDLER GROUP: Wight School, Monday 9.30 - 11:15am

HARBURY UKULELE GROUP: Shakespeare Inn, 1st & 3rd Monday of the month 8.00pm, contact Craig (612377)

HARBURY VILLAGE CLUB: Contact 612498 (evenings).

Open Mic 8.00pm, last Saturday in the month. For more information 07799 896891.

Bingo every Friday 8.30pm - non members welcome.

HEREBURGH MORRIS DANCERS: School Hall, Wednesdays 8:00 - 10:00pm (613730)

HORTICULTURAL SOCIETY: Tom Hauley Room, 1st Tuesday in the month (Oct. to May) 8:00pm Contact David Powell-Tuck (614492)

KICK START APPALACHIAN STEP DANCERS: Scout Hut, Saturdays, 10:00am - 12:00noon (612734)

NETBALL CLUB: Village Hall Car Park, Training Thursday evenings, Juniors 6.00 till 7.30pm & Seniors 7.30 till 8.30pm, Matches on Saturday Afternoon (613163)

MEN'S BREAKFAST: Tom Hauley Room, 3rd Saturday in the month 7.30am (612782)

MOTHER'S UNION: Tom Hauley Room, 1st Wednesday in the month 2.30pm; 3rd Tuesday in the month 8.00pm (613831)

RAINBOWS: Scout Hut Tuesdays 5.30 - 6.30pm, Unit Leader Bobbie Sharpe 614040

SCOUTS: Scout Hut, Thursdays 7:00 - 8.30pm (614177)

TABLE TENNIS: Village Hall, Thursdays, 9.30 - 10.30am (614809)

TAI CHI: Ufton Village Hall, Monday, 7.15pm – 8.45pm (612277)

TENNIS CLUB:

Adult / Student Members Playing Times:

Tuesdays: 6.30pm– 10.00pm, Thursdays: 6.30pm – 10.00pm

Saturdays: (from Sept to March) 10.00am – 12 noon

Sundays: (from April to August) 10.00am – 12 noon

Members may play at other times free of charge, provided the courts are not already booked. **Guests** playing with members should pay £1 an hour.

If you would like to become a member or find out more about Harbury Tennis Club, please contact Colin Mercer (613284 or email sucol-merc@tiscali.co.uk)

Non-members - Courts should be booked at Country Fayre, Chapel Street (£4 per court per hour) Floodlit bookings - £7 per court per hour.

Minis and Juniors (age 3 - 17) For details of Junior membership, contact Sue Mercer: sucol-mercet@tiscali.co.uk

Coaching: Adult and Junior coaching takes place throughout the year.

For up to date information contact admin@tennisolutions.co.uk

THURSDAY CLUB: Farley Room of Village Hall 4th Thursday in the month 2:30pm (612877)

WARWICKSHIRE YOUNG VOICES: Village Hall, Thursdays 6.30 - 8.00pm (614150)

W.I.: Tom Hauley Room, 2nd Thursday in the month 7:45pm (612708)

WEDNESDAY WALKERS: Village Hall, Wednesday 9.45am (614188)

WINDMILLS NURSERY SCHOOL: In the grounds of Harbury Primary School,
Monday-Thursday; 9:05am - 3.05pm; Friday 9.05am -12.35pm (07906 519148)
info@windmillsnursery.co.uk

YOGA: Tom Hauley Room, Wednesdays, 7:30-9:30pm Dianne Surgey (817904)

YOUTH GROUP-ICON @ All Saints': Tom Hauley Room, Sundays 7.00 – 8.30pm (612377)
Sundays: (from April to August) 10.00am – 12 noon

April Edition - Harbury & Ladbroke News

Adverts to 31 Binswood End by 15th March

Articles to Harbury Pharmacy or e-mail articles to articles@hlnews.co.uk
by 29th March

BOOKINGS FOR

SCOUT HUT	TOM HAULEY ROOM	THR COFFEE MORNINGS	VILLAGE HALL	VILLAGE CLUB CONCERT ROOM
Caroline Hill Tel: 613780 -	Sally Stringer Tel: 613214 sal.47@hotmail.co.uk	Sally Stringer Tel: 613214 sal.47@hotmail.co.uk	Celia Neill Tel: 612819 harburyvillagehall@googlemail.com	Tel: 612498 (evenings) harburyvillageclub@hotmail.co.uk

ADVERTISING in the Harbury & Ladbroke News
Email: advertising@hlnews.co.uk Tel: 01926 612155

<u>Monthly Prices</u>	<u>Annual Prices</u>
¼ page £10.50 (or 3 consecutive months for £28.00)	¼ page £ 94.00
½ page £19.00 (or 3 consecutive months for £49.00)	½ page £168.00
Full page £33.50 (or 3 consecutive months for £89.00)	Full page £315.00

Advert with payment to: Gill Holden, 31, Binswood End, Harbury
by 15th day of the month (Cheques payable to 'Harbury & Ladbroke News')



D.A.Knowles Plumbing Services

- Over 25 years experience
- All aspect of plumbing including bathroom and kitchen installations
- Full tiling service available
- Competitive rates
- Project Management available for larger projects
- No job too small!!

Mobile: 07721 522298 Home: 01926 613776 Email: da.knowles@btinternet.com

HOME BOARDING FOR YOUR DOG



Wouldn't you enjoy your holiday much more knowing your pet was going on holiday too!



Why not let me look after your dog on our 22 acre farm where he will live as one of the family. No being shut in a kennel all day and night, just as much exercise as he wants with our own two friendly dogs who love to play with new friends. All needs catered for.

You will find our prices very reasonable and our care second to none. Give us a call on 01926 612921 or 07967 762475 and see how we can ensure you all have a good time!

All prospective boarders whose dogs didn't care for cats, please do ring again, as sadly, we no longer have cats.

25 YEARS BUILDING EXPERIENCE



**Don't just take
our word for it!!**
Two customer references
provided with
every quote!

GROUNDWORKS

NEW BUILDS

RENOVATIONS

EXTENSIONS

BRICKWORK

PLASTERING

PATIOS

DRIVEWAYS



BEFORE



AFTER

Contact us Today For a **FREE** No Obligation Quotation
Office: 01926 612195 - Mob: 07960 133105 - Email: info@harburybs.co.uk

GREEN CHAMELEON SALES, LETTING & MANAGEMENT

Tel: 01926 612121/ 07795 575716
www.greenchameleon.net
info@greenchameleon.net

RENTAL Plum Tree Cottage Harbury

£625 PCM inc
 (6 months let – March/Sept)

2 BED COTTAGE
 KITCHEN/DINER
 LOUNGE
 FAMILY BATHROOM
 GARDEN
 PARKING

Harbury Village Cinema

is proud to present



Film
 Certificate 12a

JOHNNY ENGLISH REBORN

Saturday 17th March

Adults & Children over 12: £3.50, Family Tickets: £10.00

(family ticket admits 2 adults & up to 3 children under the age of 12)

'Parents/carers must remain with, and are responsible for, their children at all times'

doors open at 2.00pm, film starts at 2.30pm

Hot Dogs — Tuck Shop — Refreshments — Cana Import Bar — Raffle

all profits donated to the Harbury Village Hall refurbishment project

further details: 01926 613311 markandlana@aol.com



JAMIESON JOINERS



Manufacturers of quality windows, doors,
 stairs, conservatories,
 fitted kitchens/bedrooms.

Established 25 years.
 Competitive prices. Private/Trade

Tel 01926 612921/07968 009094
 or e-mail your enquiry to:

stablesatharbury@live.co.uk

The Crown Inn



**Come and enjoy a
traditional Sunday lunch
served between
12 noon and 4.00pm
from £7.50**



**We are now taking
bookings for Mother's Day
Sunday 18th March**



**Our new and exciting
menus are coming soon!**



**Please see our website
for more information
and details.**

☎01926 614995

www.crowninnharbury.co.uk

Follow us on Facebook

No job too small! Phil's **Free Quotations**
Plumbing and Heating
**Fully Qualified
and
Insured Plumber**

Bathrooms, Central Heating & showers

I am a locally based plumber
offering very competitive rates
on any plumbing or heating job.

No job too small,
Please give Phil a call

Call Phil

Daytime: 07971 046392

Evening: 01926 400746

Email: philmunday@hotmail.co.uk

Bishops Tachbrook
Leamington spa



Tap Lessons

Fridays, The Grange, Southam



4.00pm - Little Tappers (3-5yrs)
4.30pm - Pre-Primary Tap (6-8yrs)
5.00pm - Grade 1 Tap (8yrs+)

Dance Classes

Thursdays, The Grange, Southam



4.00pm - Funky Dance 1 (4-6yrs)
4.30pm - Gymnastics (all ages)
5.00pm - Grade 1 Ballet (9yrs +)
5.45pm - Funky Dance 2 (7yrs +)
6.15pm - Grade 2 Ballet (11yrs+)
6.45pm - Grade 3 Ballet (13yrs+)

Ballet Lessons

Tuesdays, The Grange, Southam



4.00pm - Prima Ballerinas (3-4yrs)
4.30pm - Pre-Syllabus (5-6yrs)
5.00pm - Pre-Primary (7-8yrs)
5.45pm - Primary (8yrs+)

Acting, Performance & Singing

Mondays, The Grange, Southam

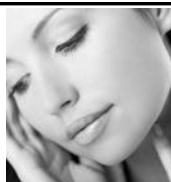


4.00pm - Juice (3-5yrs)
4.45pm - Rocket (6-8yrs)
5.45pm - Upload (9-12yrs)

Limited places available - FREE TRIAL CLASS

Call Lorraine 07711 010404 - www.loveballet.co.uk - lorraine@loveballet.co.uk

**NOUVEAU
CONTOUR**
Perfection in Permanent Make-Up



NEW YEAR, NEW YOU

BUY 1 AREA OF PERMANENT COSMETICS AND GET A 2ND AREA HALF PRICE.

THE PERFECT GIFT FOR MOTHERS DAY

MAKE 2012 THE YEAR FOR YOU



Before Eyebrow Reconstruction



After Eyebrow Reconstruction

Contact Teresa for further information 07825 881360

Web: www.aestheticarewarwickshire.com

Email: teresa.gold@hotmail.com

Gift Vouchers also available



ADAMSTRANKS
BUILDING CONTRACTORS



**Extensions-Alterations-Refurbishment-New Builds
Bespoke Kitchens and Bathrooms
Design-Planning & Building Regulations Application
Service available.**

Web: kenilworthproperties.co.uk

Email: kenilworthprops@btconnect.co.uk

Telephone: Harbury 612260 Mobile: 07779 096104

Harbury Business Centre, Church Terrace, Harbury, Leamington Spa CV33 9HL

green
chameleon



Karena EA Ellis

MRICS, RICS Acc.Med., BSc Hons

M: 07796 575716 T: 01926 612121

E: info@greenchameleon.net

www.grechameleon.net

Chartered Surveying ■

Mediation ■

Letting & Management ■

The Green Room, 31 Manor Road,
Harbury, Warks CV33 9HY



RICS

SEEKING: A 4/5 BEDROOM DETACHED HOUSE IN HARBURY TO BUY

We are a family currently living in Ufton who are desperately looking for a detached house in Harbury to buy.

Ideally we are looking for a 4 or 5 bedroom house with a decent sized garden (preferably south or west facing).

Please contact Jane & Jason on 614999 if you are thinking of selling your house (and would like to avoid incurring agents fees!).

We look forward to hearing from you.



ABSOLUTE BEAUTY

30 MINUTE BACK MASSAGE
+

30 MINUTE FACIAL
FOR JUST £30

OR

DETOX HERBAL
COMPRESS MASSAGE
FOR £25 (30 MIN)

OFFER VALID TO 31ST MARCH

Shellac & Minx Nails

Please email for a full range of beauty treatments - Harbury Studio
contact Rosina on 01926 612403 - www.rosina.moonfruit.com

FENCES : TREES



All types of fencing and gates

Tree felling and reduction

Hedge laying and trimming

Patios

Seasoned logs available

**Call Adrian Dollar on
01926 817077 or
07914 623989**

Qualified and Insured



Has your lawn suffered this Winter?

If so, we can target trouble areas or re-turf or seed the whole area.

Services also available include, lawn mowing and edging, chemical weed control, border maintenance, stone wall construction or repair, fence repair or replacement, patio and outdoor furniture cleaning.

**** Leafy News – Date for your Diary****

Come along to our 1st Open Garden on

Saturday 5th May from 1:00pm

See a local garden lovingly brought back to life, meet the owner and see what we can do.

An afternoon for the whole family, enjoy a drink and a cake and be inspired while children enjoy the games!

(1 Dovehouse Lane, Harbury – look out for more info in next month's Harbury & Ladbroke News)

All outdoor maintenance considered.

No job too large, or too small.

For all your outdoor chores, call your local, friendly gardener.

Richard Everett

07923 167420 or 01788 567774

Leafyservices@gmail.com

www.leafyservices.com



Lose those extra pounds quickly whilst having loads of fun!

Sunday mornings at 9am, Harbury Village Hall

£4 per class, discounts available



facebook.com/warwickshirefitness

Phone 0789 067 1869 for more details

The Shakespeare Inn

New Steak House & Grill



- ♦ Traditional 18th century country inn
- ♦ Choice of real ales and guest beers
- ♦ Meals served Monday - Saturday
12 noon - 2.30pm and 5.00pm onwards
- ♦ Sunday Lunch - 12 noon - 3.00pm
- ♦ Large car park and beer garden
- ♦ Function room available for family events and corporate meetings
- ♦ Live music Saturday evenings



See us on [facebook](#)

Also offering a wide range of other menu choices including:
Pasta / Rice dishes and Vegetarian options

Specials Board also available

9-11 MILL STREET, HARBURY, LEAMINGTON SPA, CV33 9HR. Telephone: 01926 613822

The Gamecock Inn

(Sister pub to the Shakespeare Inn)

OFFERS A CAFÉ STYLE MENU

From 9.00am - 12 noon

Join us for a full English Breakfast or other Breakfast snack choices

From 12 noon - 2.00pm

A selection of snacks and light bites are available

5.00pm onwards

We have a menu offering traditional dishes
such as fish and chips, pie and chips either to eat in or takeaway.



CHAPEL STREET, HARBURY. TELEPHONE: 01926 612306

Roger Frogley & Sons Fencing



High quality domestic, industrial and agricultural fencing offering a service second to none.
competitively priced - clean, efficient & reliable

If you require some fencing - look no further!
Visit our **fully featured website** for ideas and examples and get in touch.

www.frogleyfencing.co.uk

or ring **07970 652145**



LOCKE & ENGLAND

AUCTIONEERS & VALUERS

Established 1834

Auction Every Thursday

Viewing Wednesday 12.00noon - 7.00pm
and morning of sale from 9.00am

**Bi-Monthly Antique
& Collectors' Auctions**

Regular Valuation Days

**Valuations for Insurance,
Probate & Family Division**

Specialist & Commercial Sales

Collection Service

**ENTRIES INVITED FRIDAY,
MONDAY & TUESDAY**



12 Guy Street, Leamington Spa, Warwickshire CV32 4RT

01926 889 100

www.leauction.co.uk

Drop Dead Gorgeous



**Beautiful handmade Curtains, Cushions and Roman Blinds
all made to measure.**

Curtain alterations also undertaken.

Free Quotes and Free Fitting.

Contact Sharron for Friendly and Helpful Advice.

07760 395805 or 01926 612226

or email:

dropdeadgorgeouscurtains@gmail.com

Regulated by the Institute of Certified Bookkeepers

A local Bookkeeping Service for Sole Traders & Small Businesses, including Sales & Purchase Ledgers, Bank Reconciliations, Expenses, VAT Returns, Credit Control, Payroll and Final Accounts.

An affordable outsourcing solution

Call 01926 800123 for an informal chat
or email info@cc-bookkeeping.co.uk



www.cc-bookkeeping.co.uk

SADDLERS BED & BREAKFAST

SELF-CONTAINED COTTAGE IN THE HEART OF HARBURY.
DOUBLE BED, SHOWER ROOM, LIVING & DINING AREA WITH
KITCHENETTE, TV/DVD; CD/RADIO. SLEEPS 2 TO 4.
OFF ROAD PARKING.

£60 PER NIGHT INCLUDING CONTINENTAL BREAKFAST.

JULIE YOUNG, SADDLERS, CHAPEL STREET, HARBURY.
01926 614050 OR EMAIL enquiries@saddlersbed.co.uk
www.saddlersbed.co.uk



Why you should buy your new kitchen or bathroom from Modern Homes!

- With over 43 years of trading we are the longest established specialist in your area.
- Predominantly British Manufactured products
- Family run 'local' business
- Personal recommendations
- Large kitchen and bathroom showroom
- Full installation service with employed fitters
- Value for money... We offer styles to suit all tastes and budgets
- Kbsa members offering Consumer care protection

www.modernhomesleamington.co.uk Email: info@modernhomesleamington.co.uk

01926 883338

Modern Homes, 37 Longfield Road, Sydenham Estate, Leamington Spa CV31 1XB
(between Wilts and CAS)

A Member of the Alliance of Private Sector Practitioners

Jackie Biddle

Healthy Feet are Happy Feet

Foot Health Practitioner

Dip CRP MPS Pract
CRB Checked

Home Visits Telephone

T: 01926 612503

M: 07872 907429

LOUISE BEALE

photography

studio in
Fenny
Compton



Wayland House, Station Fields, Fenny Compton,
Southam, CV47 2XD, 0783 4071210

louise@louisebeale.co.uk

www.louisebeale.co.uk

5 High Street
Southam
Warwickshire
CV47 0HA

Tel: 01926 812574

Email: enquiries@reynoldsinsurance.co.uk

Website: www.reynoldsinsurance.co.uk

reynolds insurance

SERVICES LTD

Independent Insurance Advisers



Are you fed up with hanging on the phone or searching the internet?

Would you like to talk to friendly, experienced staff who will explain the small print?

We have been established in Southam since 1983 with the same staff who would be happy to offer you a competitive quote for all classes of insurance private or commercial.

Call Deb or Sue - 01926 812574

FREE QUOTES ON:

Household

Motor

Short Term Learner Driver Insurance

Fleet/Vans/Trucks

Public/Employers Liabilities

Shops

Travel

Restaurants & Pubs

Business Insurance

Tradesman Insurance

Let Properties/Holiday Homes

The Bell Inn, Ladbroke

Give your mum a well-deserved break and let us take care of the cooking and washing up this Mother's Day.

Mother's Day 2012, 18th March

Special Menu - 3 courses £19.95

Homemade Cream of Mushroom Soup, Chunky Bread
Classic Prawn Cocktail
Homemade Ham Hock Terrine, Piccalilli

Roast Turkey with all the Trimmings
Poached Salmon, Hollandaise
Chicken with Creamy white Wine & Tarragon Sauce
(All served with seasonal vegetables and potatoes)
Mushroom Stroganoff served with Rice (v)

Gingerbread Cheesecake
Strawberries and Shortbread Stack
Tart Au Citron

The Perfect way to
say thank you...

Booking Essential Tel. 01926 813562
The Bell Inn, Banbury Road, Ladbroke CV47 2BY
Email: the-bell-inn@btconnect.com
Website: bellinnwarwickshire.co.uk



K_P Kleinmann Properties

LETTINGS SALES

MORTGAGES & FINANCIAL SERVICES

Competitive Rates for Harbury and surrounding area

Telephone: 01926 612463

Email: enquiries@kleinmannproperties.co.uk

Web: www.kleinmannproperties.co.uk

Unit 3

Bull Ring Business Centre

Church Terrace

Harbury

CV33 9HL



Gardens by Wendy

phone: 01926 614877

mobile: 07595 289331

e-mail: wendy@gardensbywendy.co.uk

- Garden design services from one-off consultations to full designs
- Advice on rejuvenating tired or problem areas of planting
- Help with growing fruit & veg, organic gardening, pests & diseases, etc.
- Specialist gardening work such as pruning, border maintenance etc.

WANTED

Bungalow in Harbury

Two double bedrooms

or

Three bedrooms

Must have garage

Tel: 01926 427362



Fiona's Frames

Bespoke Picture Framing

Wide choice of mouldings &
mounts for paintings, prints
and needlework

Friendly Professional Service

Phone 01926 812807

Hillside, Napton

email: enquiries@fionasframes.co.uk

P.D SPECIALIST JOINERY

SPECIALISING IN ALL TYPES
OF JOINERY AND CARPENTRY WORK

Bespoke furniture

Shop fitting

General carpentry and joinery

Fitted kitchens

Doors

Windows

Bars

Cabinets

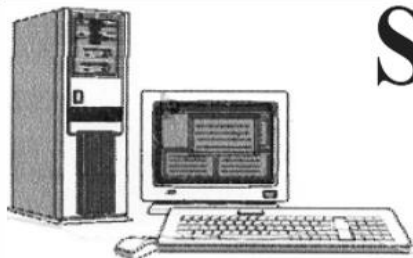
Contact me today for your FREE estimate

24Hour call outs for boarding
up doors or windows - call out fee will apply

Website: www.pdspecialistjoinery.com

Email: paul@pdspecialistjoinery.com

Tel: 07930 222413



SIMONS SYSTEMS

Available for all your computer requirements including:
PC's and Laptops, New and used systems,
Upgrading memory/hard drives/rom drives/graphics, etc
Internet – modems fitted, wireless, networking.
Any repairs. **NO CALL OUT CHARGE**



Tel: 01926 316119



Mob: 07751 811097



E-mail: simons.systems@virgin.net

Domestic Gas Services



CENTRAL HEATING, INSTALLATION, SERVICE, REPAIR and
POWERFLUSHING....the next best thing to a new heating system!



Are your radiators cold at the
bottom?
If so they need ***POWERFLUSHING!***

POWERFLUSHING removes the build up
of sludge and sediment in your radiators
which is making them less effective
therefore ***costing you money!***

POWERFLUSHING will maximise the
efficiency of your radiators ensuring you
get the very best from your heating
system therefore ***saving you money!***



For all your gas requirements please call
Martin Evans on **07980 740720**



FREE VALUATION DAY

**JEWELLERY, GOLD, SILVER,
ANTIQUES, BOOKS AND TOYS**

**Kate Bliss - Jewellery Expert
and Charles Hanson**



Thursday 8th March, 12.00 - 3.30pm

Items may be left to be entered into a suitable sale.

Leek Wootton Village Hall

Warwick Road, Leek Wootton, Warwick, CV35 7RB

FREE HOME VISITS FOR LARGER ITEMS

Hansons employ Kate Bliss as a consultant to advise clients on Jewellery and Silver
and Lars Tharp to advise on Chinese Ceramics and Oriental Works of Art.

Charles Hanson is available for Charity events
e.g. valuation days, talks, auctions etc.

For further information please contact Mrs Carol Jones
Hansons Warwickshire Representative on 01926 770066

Email: service@hansonsauctioneers.co.uk www.hansonsauctioneers.co.uk



The White Hart at Upton

UNDER NEW MANAGEMENT

Lunchtime Specials

*Fine wines, real ales and delicious home made
food!!*

Sunday Lunches

Magnificent views

Warm and friendly atmosphere

White Hart Lane, Upton CV33 9PJ

01926 612976

<http://www.facebook.com/Thewhitehartupton>

thewhitehartupton@gmail.com