

Harbury & Ladbroke News

Reflects all aspects of local life, is published monthly and produced with the assistance of
All Saints' Parochial Church Council.

February 2012

No.455

Editorial Office	☎ 612155
Articles to	Harbury Pharmacy, High Street
Email address	articles@hlnews.co.uk
Advertising Office	31, Binswood End (☎ 612155)
	advertising@hlnews.co.uk
Distribution Manager	49, Mill Street (☎ 612009)
	distribution@hlnews.co.uk
Inserts by prior arrangement	☎ 612009

IN THIS ISSUE

Page

EDITORIAL	2
HARBURY DIARY & REFUSE ROTA.....	2 – 5
FROM THE RECTOR & CHURCH NEWS	5
LADBROKE NEWS	10
HARBURY PARISH COUNCIL	18
CLUBS & SOCIETIES	21
EARLY YEARS & SCHOOL.....	29
VILLAGE HALL UPDATE	34
GARDENING & NATURE	35
GENERAL SECTION	40
LETTERS TO THE EDITORS	57

Editorial Team

John Holden - Chris Finch - Marian Millington - Janice Montague
Ralph Swadling - Jackie West

*The views of contributors are not necessarily those of the Editorial Team
The Editors reserve the right to amend articles as they see fit.*



Editorial



Our Editorial photograph shows a recent meet of the Warwickshire Hunt at the Shakespeare Inn. Around twenty horses and a large pack of hounds left the village down Mill Street heading for Chesterton.

The spectacle of the month in Ladbroke was the pantomime, Aladdin, when months of hard work by the large cast and crew resulted in a

colourful and hilarious show. Well done to all those involved.

On a more serious note, Harbury and Deppers Bridge are currently experiencing a series of thefts; in particular from garages and sheds. A deputation attended the last Parish Council meeting and the magazine contains advice from the Police on securing premises.

Although still four months away, plans are being formulated for celebrations for the Queen's Jubilee, including street parties and other events. We are sure both villages will mark the occasion in style.

Finally we extend our sympathies to the families of Paul Collins, Derek Lowe and Jim Pratt.

Harbury Diary

FEBRUARY

Sun 5 3RD BEFORE LENT

Sung Eucharist 9.00am

First Light Service 10.30am, Tom Hauley Room – "Phoning a Friend"

"Worship & Word" (informal worship with teaching) 6.00pm

Zumba 9.00am in Village Hall

Mon 6 "Village with a Vision" Drop in event 1.30-7.00pm,
Tom Hauley Room

- Tues 7 Holy Communion 7.30pm
- Wed 8 Ballroom Dancing beginners 7.30pm, main group 8.00pm in Village Hall
Hereburgh Morris Practice 8.00-10.00pm Harbury School
- Thurs 9 Holy Communion 9.45am followed by coffee
Police Community Surgery 11.30am – 12 noon outside Co-op High Street
Warwickshire Young Voices 6.30pm in Village Hall
WI 7.45pm in Tom Hauley Room – Members Evening
- Fri 10 SCHOOL ENDS FOR HALF TERM
- Sat 11 Coffee Morning 10.00am – 12 noon in Tom Hauley Room in Aid of Harbury Junior Football
Harbury Pre-School Barn Dance in Village Hall, 7.30pm tickets £20 from Muggleston's
- Sun 12 2ND BEFORE LENT**
Holy Communion 8.00am
Sung Eucharist 10.30am
Zumba 9.00am in Village Hall
- Tues 14 NB No Toddlers Service (transferred to 21st)
Holy Communion 7.30pm
Harbury Society Engineering Heritage 7.30pm in Tom Hauley Room
- Weds 15 Tea 3.00pm Tom Hauley Room
ADVERTS FOR NEXT ISSUE TO: 31 BINSWOOD END, HARBURY BY 5.30PM
Ballroom Dancing beginners 7.30pm, main group 8.00pm in Village Hall
Hereburgh Morris Practice 8.00-10.00pm Harbury School
- Thurs 16 Holy Communion 9.45am followed by coffee
- Sat 18 Men's Prayer Breakfast 7.30am Tom Hauley Room
Coffee Morning 10.00am – 12 noon in Tom Hauley Room in aid of Samantha Dickson Brain Tumour Trust
Warwickshire Young Voices "Make a Noise" 10.00am to 6.00pm in Village Hall
- Sun 19 SUNDAY NEXT BEFORE LENT**
Holy Communion 8.00am
Family Communion Service 10.30am
Evensong 6.00pm
Zumba 9.00am in Village Hall
- Mon 20 SCHOOL STARTS
- Tues 21 SHROVE TUESDAY
Toddlers Service, 2.00pm, Tom Hauley Room
Holy Communion with Imposition of Ashes 7.30pm
- Weds 22 ASH WEDNESDAY
School Service, 9.30am in Church


- Wed 22 Ballroom Dancing beginners 7.30pm, main group 8.00pm
in Village Hall
Hereburgh Morris Practice 8.00-10.00pm Harbury School
- Thurs 23 Holy Communion 9.45am followed by coffee
DEADLINE FOR ARTICLES TO HARBURY PHARMACY,
HIGH STREET OR BY EMAIL BY 5.30PM
Warwickshire Young Voices 6.30pm in Village Hall
Parish Council, 7.30pm in Village Hall
- Fri 24 Mid-day Prayer at 12 noon followed by Lent Lunch
in Tom Hauley Room
- Sat 25 Coffee Morning 10.00am – 12 noon in Tom Hauley Room in
Aid of “Village with a Vision”
- Sun 26 FIRST SUNDAY OF LENT**
Holy Communion 8.00am
Sung Eucharist 10.30am - Bishop John will dedicate the new
church floor
Zumba 9.00am in Village Hall
Twinning Association ‘Quiz Night’ 7.30pm at the Village Club
- Mon 27 Scouts/Guides Panetarium 5.30pm in Village Hall
- Tues 28 Drop in Tea for the Bereaved 2.30 to 4.30pm, 19 Farm Street
Holy Communion 7.30pm
Julian Meeting 8.00pm
- Wed 29 Ballroom Dancing beginners 7.30pm, main group 8.00pm in
Village Hall
Hereburgh Morris Practice 8.00-10.00pm Harbury School

MARCH

- Thurs 1 Holy Communion 9.45am followed by coffee
Thursday Club 2.30pm in Tom Hauley Room
Men’s Group Meeting 7.45pm Annie Goldthorp, ‘Land Rover’s
first woman apprentice’ in Tom Hauley Room
Art Group “Landscape” (Pastel & W Colour) 10.00-3.00pm
Tom Hauley Room
Horticultural Society 8.00pm in Tom Hauley Room
Folk Club 8.00pm at Dog Inn
- Fri 2 Mid-day Prayer at 12 noon followed by Lent Lunch
in Tom Hauley Room
Women’s World Day of Prayer Service 2.00pm
- Sat 3 Coffee Morning 10.00am – 12 noon in Tom Hauley Room in
aid of First Light
- Sun 4 LENT II**
Sung Eucharist 9.00am
First Light Service 10.30am Tom Hauley Room
Evening Taizé-style Service 6.00pm
Zumba 9.00am in Village Hall

Refuse Collection Rota				
	Deppers Bridge	Harbury	Ladbroke	Collection Week
February	Wed	Thurs	Fri	
	8	9	10	Grey Bin
	15	16	17	Green & Blue Lid Bins
	22	23	24	Grey Bin
	29			Green & Blue Lid Bins
March		1	2	Green & Blue Lid Bins
	7	8	9	Grey Bin
	14	15	16	Green & Blue Lid Bins

**DATES FOR INCLUSION IN THE HARBURY DIARY PLEASE TO:
LINDA RIDGLEY - TEL. 612792.**

 All Saints HARBURY	<h2>From the Rector</h2>	Reverend Craig Grocock
The Rectory, Vicarage Lane, Harbury ☎612377 ✉ kankudai43@aol.co.uk		

Stop and re-stock

The beginning of this year was a strange one for me. I went down with a nasty virus called Labyrinthitis at the end of December and spent the following three weeks recovering. It was horrible. I lost all my sense of balance as the virus affects the inner ear. I spent three whole days in bed, unable to move and the rest of the time trying to be patient as my sense of balance returned. I haven't been able to work, which has driven me mad; I've had to rely on others to cover work for me and I have become the leading candidate for a new series of 'Grumpy Old Men!' However, as I write this, I am back on my feet again (thankfully).

Although the experience of being ill was on the whole very unpleasant there has been a positive side. It has made me reflect on a number of different things as I have lain there contemplating the ceiling. It has made me see just how over busy we can all become at times and how easily we can lose our sense of perspective amidst our frenetic lives. It has made me think about how bad we are at looking after ourselves. I have seen again what is truly important in my life and how important it is to build on those things and yes, sometimes, to be prepared to let other things go. I have appreciated just how much my wife Su and others have carried for me while I have been in such a pathetic state and I have been reminded

of the care and love that people have for me – thanks for all the cards (and boxes of chocolate!).

Our lives are busy. For many of us life seems to be one long marathon on a tread-mill that never slows down. If we're not too careful time will simply pass us by and then we might realise that all too late; we failed to notice the important things, we were too busy to recognise what was really valuable and we were too preoccupied to hear the love of those around us. Remember, no one was ever heard to say on his or her deathbed; 'I wish I'd spent more time at the office'.

Don't wait until you're ill to reflect on these things. Make a point of taking more time doing what you enjoy doing, pick up that hobby again or find a new one. Make time with those you love - have some walks, kick some leaves together or simply enjoy doing nothing for a change.

Use the beginning of this year to stop and re-stock on all those things that really matter and try and hang loose on the rest.

God bless.

From the Registers

Holy Baptism, All Saints' Harbury

8th January Amelie Summers

Funerals at All Saints' Harbury

29th December Derek Lowe
19th January Jim Pratt (89 years)



From the Churchwardens

Liz & Will

Warwickshire County Council has given the PCC, as the Wight School Trustees, notice of their intention to vacate the library with effect from 31st March 2012. The PCC are in discussions with the Parish Council to grant them a long lease on the Wight School so they can use it to run a community library and internet cafe. It is hoped that the new lease will be in place by 1st April 2012 although there are various legal technicalities that we need to address. Furthermore, Warwickshire County Council have to make some repairs to the building and Harbury Energy Initiative will also be carrying out some works internally to improve the energy

efficiency of the building following their successful bid for a DECC LEAF grant. At present it is not known exactly when these repairs and improvements will be made and how this might affect the opening hours of the library. However, the PCC is committed to working with Warwickshire County Council, Harbury Parish Council, Harbury Energy Initiative and the Harbury Pre-School to limit any disruption and to maintain the Wight School as a library and a community facility for Harbury.

The PCC would like to take this opportunity to formally thank Harbury Energy Initiative for all their hard work so far and to congratulate them on their successful bid for the DECC LEAF grant. Unfortunately the portion of the grant for a new, more efficient boiler and lighting for the Church and Tom Hauley Room was not successful, which is a shame as several people had put effort in, in a restrictively tight timescale.

Thanks to all those who helped keep our services running during Craig's unavoidable absence.

The Bishop of Warwick, Bishop John, will be paying us a visit on Sunday 26th February. During the 10:30am service he will dedicate the new church floor. Come along and let's celebrate.



Mothers' Union

Chris Rutherford

We started the New Year with a party and general silliness followed by high tea – and everyone got a belated gift. This was closely followed by the MU coffee morning which raised £142.15. Many thanks to all who contributed to this wonderful sum. We intend to use the money to buy Bibles for couples who marry in All Saints Church this year and in the future. Sadly, we have decided to suspend evening meetings for the time being as numbers have fallen, but our last evening event was the Faith Supper. A magnificent spread appeared and quickly disappeared and we were highly entertained, by the Ukulele Group, with a repertoire of songs we all knew – more or less.

By the time you read this, you will either have heard or missed Rev. Annie Goldthorpe talking to us about her life journey on 1st February but please put a note in your diary for the Women's World Day of Prayer on 2nd March, which is an inspirational service. MU programmes are on display in church and visitors are always most welcome to come to our meetings.



Toddlers' Service

Lorna Bedford

Mrs. Barbara Thistlethwaite led our Toddlers' Service in January. Our story for the afternoon was about Jesus healing ten men, but only one of them came back to him to say thank you.

Mrs Thistlethwaite used Fred the Ted, a hand puppet, whose favourite saying was "always remember to say thank you." We talked about lots of people to whom we should always say thank you.

We sang the song 'Thank you Lord' accompanied by Mr Michael Hare on the accordion. We also sang our thank you prayer and used the children's instruments.

We coloured in a picture of Fred the Ted, had refreshments and played until it was time to go home.

Our next service will be on 21st February (one week later than usual) in the Tom Hauley Room at 2pm. All babies and toddlers, accompanied by an adult, are welcome to join us.



First Light

Alison Abbott

"Travelling light" was our theme in January, as we thought about our journey through 2011 and the unexpected things, both good and bad that had happened.

We reflected that no one knows what 2012 will bring or how best to prepare for it. Debbie packed her rucksack for a journey, taking something to cover any situation - waterproof clothing and a sun hat, a compass and a map, a blanket, a teddy bear, several litres of water, her diary. Plenty of money and much more; then discovered she could barely lift it! Then as she slowly unpacked it Brian helped us to realise that God is all we need as we face the unknown.

If this sounds like the kind of thing that would help you give your spirit a bit of space then join us in the Tom Hauley Room on 5th February when we will be "Phoning a Friend". We start at 10.30am, but we serve coffee from about 10.00am, so come a little early for a coffee and a chat. We are quite informal and children are positively encouraged (but not a requirement). So whether you come as a family or you come alone we will make you welcome.



Harbury and Ladbroke Church Men's Group

Calling all men.....

We welcome men of any faith or indeed no faith at all, to the Tom Hauley Room on the first Thursday of most months, to enjoy an evening's fellowship and a talk from one of our interesting and varied speakers. The meetings start at 7.45pm with a general update for members and then our speaker takes centre stage. We finish with an informal chat over tea and coffee, and close with a prayer around 9.15pm.

Recent speakers have included Sarah Falkland from BBC Midlands Today and a couple who set up a bakery in Tanzania. The planned programme for 2012 is as follows:

Thursday, 2nd February: Bob Hodge will be explaining how he built a bicycle from scratch, manufacturing the parts.

Thursday, 1st March: Annie Goldthorp, our Curate, will be telling us about being Land Rover's first woman apprentice.

Thursday, 5th April: John Travis will be engaging us with his interest in horse racing.

Thursday, 2nd May: The Annual Dinner, catered by Jan and Ray Playdon.

Thursday, 7th June – afternoon: The annual outing, this year to the Morgan sports car factory in Malvern, followed by a pub meal.

Thursday, 5th July: The Annual General Meeting and Hobby Evening. We are inviting members to bring along examples of their spare time occupations, to display and share with others.

Why not come along? Speak to John Stringer (613214) or John Guilford (614206) to find out more or simply come along and enjoy the evening. We'd be delighted to see you!

John Stringer

Women's World Day of Prayer

'Let Justice Prevail'

On Friday 2nd March over three million people worldwide will be praying and worshipping together during an annual day of prayer, using a form of service prepared by Christian women in Malaysia.

The first service will be held in Tonga and services continue around the world until the final service takes place, some 35 hours later, in neighbouring Western Samoa.

Malaysia is a multi ethnic and multi religious country. Throughout its history it has attracted migrants from other parts of Asia and beyond and it is one of the wealthiest and most developed countries in South East Asia. Women have made important contributions to its social and economic development but, nevertheless they still face discrimination and violence at all levels of society. Even today a girl child is seen as less valuable than a boy.

Although Malaysia's multi-ethnicity has added to the rich heritage of its land and people, it has also given rise to many problems. In the service those issues of concern are named and the women voice their hope for the future. Justice for all is their hope, and their prayer is "Let Justice Prevail".

Although organised and led by women, this is essentially a day of prayer for everybody, demonstrating our solidarity with our sisters and brothers in other countries and all are welcome to attend. Please join us at All Saints, Harbury at 2pm on Friday 2nd March for the service which will be followed by a fellowship tea in the Tom Hauley Room.

Sue Boniface

Ladbroke News & Diary

FEBRUARY

Sun	5	3RD BEFORE LENT Christingle Service with Holy Communion, 10.30am followed by refreshments
Tues	7	Photography Club AGM, Village Hall
Sat	11	Safari Supper (in aid of Millennium Green)
Sun	12	2ND BEFORE LENT - Holy Communion (sung), 9am ADVERTS FOR NEXT ISSUE TO 31 BINSWOOD END, HARBURY BY 5.30PM
Sun	19	SUNDAY BEFORE LENT Holy Communion (Book of Common Prayer), 9am
Wed	22	Ash Wednesday Service, 7pm, in Church
Thurs	23	Women's Institute, 7.30pm, Village Hall ARTICLES TO HARBURY PHARMACY, HIGH STREET AND EMAIL ARTICLES DEADLINE BY 5.30PM
Sat	25	Whist Drive, 7.45pm, Village Hall
Sun	26	LENT I Holy Communion, 9am

MARCH

Sat	3	Whist Drive, 7.45pm, Village Hall
Sun	4	LENT II Family Communion, 10.30am, followed by refreshments



Ladbroke Church News

Sue Lord

Our various Christmas services and events were all well attended especially the Carol Service. A huge thank you to everyone who provided flower displays in order to make the Church so beautiful and to Bill and the choir for making the Carol Service so special. The altar flowers for Christmas were in memory of Mary Coley's father.

This notice will probably be too late for many but we have a Coffee Morning in aid of Ladbroke Church on 4th February in the Tom Hauley Room.

Ash Wednesday is on 22nd February and there will be an evening 7.00pm service at Ladbroke Church to include Ashing.

Building work continues and is nearing completion. The rendering of the East wall is a tremendous improvement.

The Book Swap is proving successful. However, we are running out of shelf space. If anyone has a bookcase that they could donate it would be put to good use. Please give Sue a call (815153). Any unwanted DVDs or tapes would also be appreciated as these are very popular.

We had the sad occasion of the funeral for Paul Collins on 17th January. What an amazing attendance with over 300 people. The tributes and support from family, friends and work colleagues were wonderful. This was the loss of a lovely man and valued member of the congregation.

We are planning an evening concert in church potentially for Saturday 28th April with a theme of 'Trumpets, Trains and Terrific Stories'. There will be a full feature in the March issue of Harbury and Ladbroke News.

From the Registers

Holy Baptism, All Saints' Ladbroke

14th January 2012 Heidi Suzie Day

Funerals, All Saints' Ladbroke

17th January 2012 Paul Francis Collins

Ladbroke Flower Rota

5th February	Carole Loftus
12th February	Helen Moreton
19th February	Helen Moreton
26th February	Lent



Ladbroke Parish Council

Betty Winkfield

The Parish Council had held a short meeting on 19th December to discuss a planning application.

Public Participation: The first item for discussion on the agenda this evening was from a member of the public about the condition of the road surface and the verges leading down to the junction with the Kinton Road at Deppers Bridge. There was also concern about the worsening condition of the road surface by Hall Farm, Harbury Road. This is where the road re-surfacing was not done last year or when previous re-surfacing was done two or three years ago. These problems were to be examined.

Matters Arising: The containers in the field behind Ladbroke Farm are still "in situ". A notice has been served and enforcement action will be taken by Stratford District Council in three months time if they haven't been removed by the owner by then. This item will remain on the agenda for the time being.

The name change of upper Windmill Lane is making slow progress.

The Parish Council has agreed a £500 grant to the Village Hall towards the new heating system.

Finances: The spreadsheet was approved.

The Precept for 2012/13 - it was finally agreed, after much debate, that this would be set at £5000, subject to approval Stratford District Council.

The Council considered that an increase in the precept, of £300, was necessary due to the current low level of reserves and planned expenditure levels. Reserves are required in the event of emergencies e.g. vandalism and accidents to street light poles

Planning Applications: These have all been granted, mainly for felling of trees and also construction of a garage door at the Croft. Also for the replacement of a 20kw westwind wind turbine, with one 11kw gale wind

turbine with a hub height of 18.3 metres and overall height of 25 metres to top of blades at Ladbroke Hill Farm.

Highways and Flooding: A grant is available for flood defence maintenance, ideally to divert the water before it reaches the bypass. The owner of the land involved is to be contacted.

The Highways Officer will be asked to walk around the village to inspect the condition of some of the roads.

Report from Millennium Green Committee: There will be a Safari Supper on 11th February. There was nothing to report regarding the Millennium Green/Village Hall merger.

HS2: A meeting is to be arranged when there will be some clarification of the government's plans. The go-ahead has only ministerial approval – M.Ps haven't voted on it. Legal challenges are planned by the anti-HS2 Groups. Engineering problems are still to be resolved.

It was proposed and agreed to ask Graham Long to attend the next Parish Council meeting in March.

Website: A meeting with the webmaster is to be arranged.

Warwickshire County Councillor's Report: The budget will remain the same as in 2010/11. Tax grants will be carried forward. There will be rises next year.

Stratford District Councillor's Report: The Councillor confirmed that public toilets in Stratford and other market towns were to remain open, dispelling rumours to the contrary. Following the consultation last April with Parish Councils and others, the District Council has come forward with a revised Development Framework for the next fifteen years. This primarily concerns the establishment of housing numbers and possible location sites for travellers. There are also recommendations to reinstate Special Landscape Areas. There will be workshops for Parish Councillors where these sessions will be useful for ultimately determining the environment for our district. The Parish Council Chairman asked the County and District Councillors about possible development along the A423 but there were no reports available. He also asked about possible water leakage in our system; were the Councillors aware of this? The Fire Service officers were concerned about the low water pressure when they attended a fire in the village last autumn.

Finally, would recipients of the Ladbroke e-newsletter let Cllr Martin Neal know if they change their e-mail address.

The meeting closed at 9.37pm. The next meeting is on **21st March, 7.45pm in the Village Hall.**

The Ladbroke and Deppers Bridge W.I. year started on 26th January with Sue Moore welcoming the assembly - with special mention for one visitor and a returning member, Diane Surgey - before giving us the news that Mary Entwistle is shortly to be moving to sheltered accommodation in Warwick. Our good wishes are with her in this new venture.

The speaker for the evening was Jackie West who gave a beautifully illustrated talk – as you would expect from the founder of the Ladbroke Photography Club – on ‘Australia, the Land of Contrasts.’

Jackie set the scene by showing an Aborigine settlement, which had been influenced by Christian missionaries, giving rise to a church with interior decorations showing the patterns and colours of their culture. She continued through the basic existence of the convict settlers to the opulent houses of the governors and finally the modern sky scrapers.

The talk was then cleverly divided into sections covering the red centre with its varied geology and limited vegetation. The most enduring legacy of Sir Charles Todd who was instrumental in furthering the overland telegraph system was the name Alice Springs after his wife, Alice.

Jackie's photographer's eye sees detail and aspect which gave us wonderful effects of light and shade on the many gum trees against myriad skies; she picked out native animals in the wild (as seen in the accompanying kookaburra right); colourful plants and finally a whistle stop tour round Australia's beautiful coast line finishing up in picturesque Sydney. The Australian tourist board should give her a job!



The evening was rounded off with a celebration of Beryl Ross's 90th birthday next week with cake and champagne. A founding member, Beryl has always taken a lively part in all activities and can regularly be seen behind the raffle table. The twinkle ever present in Beryl's eyes does not seem to dim with this great number

of years and we all wish Beryl the happiest of birthdays and many more to come.

The next meeting will be held on Thursday, 23rd February when Captain D.C.Rowland will be talking about the Concorde Aircraft. New members and visitors are always welcome.

Beryl Ross at her 90th Birthday Celebration



Ladbroke Photography Club

Jackie West

January was something of an unusual month for the club with just a few coming along to the photoshoot at the pantomime dress rehearsal. Some of the results, plus pictures taken by members of the cast and backstage crew, can be seen on the Ladbroke Village website, **ladbroke-pc.gov.uk** in the photo gallery section. More club members made it to our meal at The Bell Inn the following week where we were well fed and well looked after by Chris and Viv.

Our next meeting on Tuesday 7th February is our AGM and will include the presentation of the "Photographer of the Year" trophy. We will also be collecting annual subscriptions (£20 for adults, £10 for children) and viewing the Aladdin photos. For more information about the club email **jackieszone-photogclub@yahoo.co.uk**



Ladbroke General Section

The Queen's Diamond Jubilee Celebrations

The Celebrations, which are to take place on the weekend of 2nd - 4th June, will soon come around and our Parish Council is not aware of any plans in Ladbroke, for the celebrations. Most villages in the area are planning to light a Beacon. Where could we have a Beacon? Is anyone interested in organising this?

Betty Winkfield

Aladdin – Ladbroke Pantomime

It was great fun from start to finish and if you didn't get to see our village pantomime you missed a treat.

It was obvious from the start that everyone involved with the show was really enjoying themselves. The fun and laughter was contagious and how they managed to keep straight faces in some of the scenes I'll never know. Ten out of ten for that.

Was there really a "knicker nicker" in the original tale? I don't remember that. There was some very clever dialogue (and word perfect) in the detecting of the thief and you wouldn't believe who that was!

The scene changes went unnoticed – in a small hall like ours that was clever – and they were beautifully painted. The costumes were just right too.

Thank you very much to all involved with the production. You must all feel exhausted and something must be missing in your daily routines after all those rehearsals.

When is the next one?

Betty Winkfield

More audience feedback on *Aladdin*:

"So much humour - exactly what pantomime is all about!"
KA, Ladbroke

"A terrific performance and the costumes were fantastic"
DN, Ladbroke

"Most impressed. All the characters were excellent." - BS, Ipswich

"Thank you for inviting us to come to the dress rehearsal it was great fun!" - MR, Southam

"I liked the deliberate ad-libbing. I could see the director following the lines on the page and then her finger would stay still for 2 or 3 minutes before continuing!" - MS, Ipswich

Aladdin



Ladbroke Village Hall Millennium Club

£80	Cyril Spence	£50	Mike and Kate Todman
£25	Mike Connon	£10	Sue Lord
£10	Peter Baker	£10	Carole and Peter Loftus
£10	Moiria Brierley	£10	Debra Neal

Margaret Bosworth



Harbury Parish Council

Linda Ridgley

Official minutes can be viewed in the Library, on the Parish Council website www.harbury-pc.gov.uk or obtained from the Parish Clerk Tel: 01926 614646

The room was packed well before the off, by the victims of a spate of thefts from sheds and garages, all convinced they knew who the perpetrator was and all frustrated that this person had not yet been arrested. In the face of such pent up emotion Chairman Tim Lockley asked for one or two spokespersons to set out the main complaints and two people did this with considerable flair, backed-up by the rest of the protestors.

In recent weeks the crime rate had increased dramatically and a show of hands illustrated the number of victims. Residents were cautioned to beware of anyone entering onto their property without consent for fear they were on a reconnoitring mission. Residents were frightened by their recent experiences but insistent that they did not blame the local police who were too few and too far away. They said much petty theft was not reported and so the problem was bigger than official figures.

PC James Butler insisted every incident should be reported and the 101 number could be used for non-urgent contact with the police. This would allow crimes to be plotted and the evidence would help to secure more resources for the area. PC Butler had changed shifts to be in the village longer and there would be unmarked vehicles patrolling Harbury.

Everyone understood the lack of man-power and resources for rural areas. Cllr Hancock summed up the situation: "We have a roomful of people very upset by their experiences. The Parish Council must tell the Superintendent to give us more resources". It was agreed that he and the local MP should be apprised of the situation and the unrest.

PC Butler said "He was working seven days on this and will work until we can get it resolved". He hoped to arrange a Crime Prevention Day to help

residents make their properties more secure. The Parish Council would also attempt to beef up Neighbourhood Watch.

Next, Phil Ward the Housing Enabler gave the results of the Housing Need Survey. A good response of 32% included positive comments about the initial phase of development in Bush Heath Lane and revealed a need for 23 affordable and 38 market sale homes for local people.

Claire Linfoot for the developers said this need represented a split of 38% rented and 62% market and that Stratford DC recommended building 10 rented and 17 market sale homes on the remainder of the Bush Heath Lane site. The market sale houses would help to subsidise the rented properties because there was no government money available to the Housing Association this time.

The Councillors were presented with a draft layout and there would be a Public Consultation about the development on Saturday 3rd March in the Village Hall from 10am to 3pm.

Chairman Tim Lockley was reassured that maintenance of the proposed "Village Green" would not be a charge on the Parish. He asked Claire to include a street light by the junction of Manor Road and Bush Heath Lane in the plans.

Next Andy Lawrence pitched for a grant to help run the second Harbury Games on 16th June, as there had been such a public demand for it to be repeated in Olympic Year. After considerable quizzing the Council agreed to give £500.

There were long discussions of the plans for the village to take on the lease for the Wight School and the running of the Library. It is all terribly complicated as to who owns and who is responsible for what with the building. Basically after the new School was built the County leased the Library part from the Wight School Trustees. Now the County is giving up the Library lease and must bring the building up to the standard it was in when they took it over.

The Parish Council is considering taking on a 35 year full repairing lease of the Wight School but the County has first to make the whole building good and will close the Library from 20th February. Harbury Energy Initiative has secured money for the building to be dry-lined to improve energy efficiency and this must be completed by the end of March.

Councillors decided they needed their own legal advice and a survey of the building's condition as although a separate "Library" group will run the facility and hopes a café and renting out space will cover running costs, the PC is underwriting that to the tune of £3,000 a year and will be responsible as lessee for the repairs and insurance.

There was even more complexity involving interlocking leases; responsibility for the playground; where the Scout Hut fits into this; the separate lease the Playgroup has on their part of the building and their ownership of the new block but not the ground it stands on; and the need to have everything done and dusted by the time the County relinquishes the lease on 10th March.

Families in Highfield Terrace, Deppers Bridge have great problems with their sewerage. The sewer over the railway bridge has been broken in two parts and, as it is not adopted, it could cost them thousands for repairs. Severn Trent has been helping by pumping sewage out of their holding tank to prevent it flooding the area again. The Parish Council is seeking help from the Water Consumer Watchdog and Stratford's Environmental Health Department.

Planning - Stratford granted felling of a Sycamore at the Dog Inn and at 39 Farm Street; fitting metal guards to leaded lights at the Church; extensions to 6 Chapel Street; replacement of glazing with aluminium shutters at the Telephone Exchange and roof raising and adding windows to 36 Temple End.

The Parish Council made no comments on the felling of a willow at Pool Yard or extensions at 11 Neales Close and 44 Farley Avenue. They agreed to meet a representative of the Price Family Trust to discuss their land holdings at the Spinney and Paddock, Hall Lane; land off Bull Ring Lane and the Church Paddock. Cllr Hancock was supported by her colleagues when she affirmed that she would not be party to any development of the Church Paddock.

The Parish will try to register our Recreation Grounds as Queen Elizabeth II Playing Fields because they think this might bring with it potential grant aid. The spikes installed on top of the Deppers swings have completely seen off the perching birds and solved the cleaning problems.

The Energy Group's LEAF bid will pay for an aerial energy survey of the village, the results of which will be available at the next Energy Day at the School on 24th March.

The Parish Precept will increase by 6.5% meaning that Band D payers will pay £4.34 more this year. Councillors remarked that the Parish Plan had shown there was support for the Parish to take on the Library and Councillors had agreed to give financial assistance to the Community Links Bus which provides journeys for those with mobility or transport problems.

The next meeting is 23rd February in the Village Hall at 7.30pm.

Harbury Parish Council – Quarterly Report

In the past three months the Parish Council has:

- Agreed a precept for 2012-13 that includes an increased amount set aside for community buildings.
- Made grants to the Pre-School, the Duke of Edinburgh group, the Harbury Games, and the Community Links Bus.
- Established 'Books in the Box' in Deppers Bridge.
- Been consulted regarding the next phase of the Bush Heath Lane Development.
- Begun to assist in the re-establishment of an effective Neighbourhood Watch.
- Ordered three new LED streetlights.



Harbury Society

Linda Ridgley

In 1972 Warwickshire and Worcestershire Life ran a feature on our village. It described Harbury, erroneously, as one of Warwickshire's oldest villages with some cottages dating from the sixteenth century, where homes were available at prices "considerably lower" than in other villages in the county.

It quoted the then Headmaster, Mr Morris, describing Harbury as a "nice friendly village, where nothing much happens and we get on well together", and it remarks on the fact that although the old Vicarage was unoccupied for six months, "not a single window was broken" and when demolition took place there was "no evidence of vandalism".

The village population grew by twelve hundred between 1961 and 1971 from 1,300 to 2,500 but with the sewerage system at capacity the reviewer did not foresee any further growth! The village was described as "one of the few to maintain its own cemetery and one of the first to have its own sewage scheme".

However water supply had always been a problem and reports in 1941 had highlighted school teachers having to send out for buckets of water to wash a child who had fallen in the playground!

Shopping facilities were described as "fairly limited" with no dispensing chemist (I think the Surgery would have dispensed) or fish shop!

They seem to have ignored: the Co-op which had been serving the village then for over a hundred years; the two butchers; the cobbler; the bookie's and produce shop, although they did comment that the local newsagent delivered to 700 homes.

Our Christmas Fayre Picture Quiz raised £41 and the Coffee Morning £147.

Our next event on **14th February 7.30 for 8pm in the Tom Hauley Room** is 'Civil Engineering in Warwickshire and the West Midlands' which describes the heritage structures we have around us.

Entrance is free, but we do remind members that subscriptions are now due. Non-members are welcome to come to try out our meetings and if they enjoy our events they may like to sign up too.



Harbury Women's Institute

Jeanne Beaumont

I must first mention that Mary Entwhistle will be moving in February and we send her good wishes for her happiness. Mary has been a W.I. member for many years, also has had good friends who have helped her. She played outdoor bowls at Fenny Compton and also had many darts practices at her home. The door shows the evidence of that.

The panto was an enjoyable evening as usual with us joining in and slapping our thighs. Many thanks to Ann for organising the evening.

Ann has been getting venues together for playing darts, skittles, scrabble and table tennis to take part in the Federation Olympics.

Please could I remind members not to forget to suggest outings.

The speaker this month was Andrew Patrick – “My Bike Ride Across the Roof of France”. Andrew has a language degree and spent time working in France. Years later he mapped out a route that he would like to take and took a dummy run with Jenny in 2008.

He spoke to Bill Davies who said his existing bike would be fine but needed some adaptation and 27 gears etc. After some attention, it was great.

He started with a coast to coast ride starting at Bridlington. In 2011 he crossed the Channel to Calais and from there down to Sète on the Mediterranean in 23 days.

He spoke about the beautiful countryside and places of historical interest on his travels without him needing to cross a river. Jenny and his daughter met up with Andrew on the latter part of his journey.

He has raised well over £1000 for Cancer Research which is wonderful.

One feels that speaking the language was a great way of meeting people who were so helpful. Such an interesting talk and fully recommended.

February – Members' Meeting, Thursday 9th February, 7.45pm in the Tom Hauley Room.



Harbury Theatre Group

Chris Beaton

Here we go again! It only seems like five minutes since we were in the final stages of the “Toad of Toad Hall” production, and we’re now starting to get the ball rolling for our May production already!

An initial play reading’s been held to decide on our next choice of production and, whilst we’re yet to settle on a final one, a couple of cracking little comedies were read through that might be suitable – watch this space! As ever though, we could do with some new recruits to help us cast the plays, so if you fancy treading the boards (or even walking about quietly in the background!) please don’t hesitate to contact us!

The Theatre Group also had a night out recently as a belated Christmas party, and went across to Snitterfield for a Skittles evening at the local club. The assembled crowd was split into two teams of nine and then battle commenced! With three games before our dinner and a further three afterwards, everybody had a chance to get their eye in and there were some surprisingly good players amongst us! A prize for the top player on each team helped to add a bit of competition within the ranks and Andy Jackson and Richard Bloxham eventually won the prizes for best individual score. Bob Hodge also did well, scooping the prize pot in the final game of the evening, a round of winner-takes-all “killer”.

Mention must also be made of the delicious lasagne dinner laid on by the club for us – the food was superb and I don’t remember the last time I saw such a huge cheeseboard! Many thanks to Malcolm Bloxham for organising this event for us, and if anybody would like to book the skittles alley for a similar event they can be contacted on (01789) 0731731.

Another social event to look forward to is a play reading evening, kindly hosted by Mary-Lou Milner on 24th February. The chosen script is “Under Milk Wood” by Dylan Thomas (*A vigorous and rich narrative with sparkling dialogue, “Dylan Thomas’s beautiful, bawdy, affectionate, reckless and deeply original play was justly crowned at its first performance by a storm of cheers...” Sunday Times*) all welcome, please just contact me for more

details. And finally, you can now follow us on Facebook! We've set up a Facebook page ("Harbury Theatre Group"), although it's in its infancy at the moment so please bear with us! However, if you have any old photos of past productions etc please put them on.

As ever, I can be contacted on 01926 611930.



Folk Club

Doug & Janny Freeman

The theme for the Harbury Folk Club number 326 was "Kings, Queens and Castles". The room was bursting at the seams, and the balancing act of getting performers to and from the "stage", further complicated by a couple of large (in numbers) groups, and the temporary placement of a food heating cabinet occupying half the stage area. We apologise to those in the audience who could not get a seat, but with normal club humour everybody adapted to the limited available space.

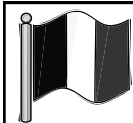
Unlike other folk club correspondents, we do not try and make a list of who sung/played what. We are instead busy enjoying the acts, and not being seasoned folkies, most of the offerings are new to us. We do though keep a record of who performed, and try to give an idea of the off theme topics that sneak into the evening.

The first half had excellent performances from Janny and Maureen, John (not the John H of the third half), Ted and Sue, Terry, Rik, Peter McD, Janny and Maureen and Harriet and Ian. Our notes suggest that most acts tried to fit in with the theme, and although the "Shinfield Boys" connection was tenuous, it was an excellent self penned offering from Terry. Our "Scottish" representative could not resist trying to justify a Glencoe connection, but did placate us with a pot of coffee.

The standard in the second half equalled the first, with fine performances from the Harbury Ukulele Band, Band and Ragged Friends, Ian and Sue, Pete Mason, Des, Keith Donnelly, Guy and Morris and Thompson. The Ukulele Band won the prize for the largest number of performers, and Guy and Morris and Thompson were awarded the endurance prize for waiting for their spot.

Our favourite third half arrived, and there was now room for everybody to have their own seat. John H, a new singer to the club, was a little reluctant to perform but went down a treat. Pete Bones's first song title, let alone the words, failed the censor's pen, and he then had the audience choir roaming through the Streets of London. Finally, Guy and Morris and Thompson had a more relaxing spot and finished the evening on a very high note.

The raffle raised £70 for the “Caring for Life” charity based in Leeds. A great evening and thanks to all the performers, audience, the pub landlord and staff. Peter Bones will host the next Folk Club on Thursday 2nd February when the theme will be “Choruses and Refrains”, and then Peter McDonald on Thursday 1st March with a theme of “The Environment”.



Harbury Twinning Association

Tony Thomas

Thanks to the generosity of June and David Eaves who kindly opened their home for the evening we held a very successful Twelfth Night, “Fete des Rois” celebration on the 6th January.

Our next event is our annual Quiz Night which we will be hosting in the Village Club on Sunday 26th February at 7.30p.m. This is open to all and as well as teams of friends it would be nice to see teams representing the many village organisations. The entry fee is £12 for teams of four. There is a prize for the winning team and a light supper provided for all.

Get prepared for March where on the 24th Saturday we will be bringing back to the Village Hall an evening of hot Jazz with the very talented Django Reinhardt tribute group. Once again, we will be serving a hot supper and providing a licensed bar. Last year’s event was very popular and as numbers in the Village Hall are limited to 120 we suggest that you place your orders with Sally Stringer on Harbury 613214 or myself on Harbury 612689 as soon as possible.



Harbury Juniors Football

Steve Darby

U6's – Steve Darby

21st January – Harbury U6s v Byfield

The Under 6s played their first ever competitive games versus Byfield. The Harbury team comprised a higher proportion of Reception School Year children than the Byfield team who were mainly Year 1's. However, despite this, the Harbury team acquitted themselves extremely well over the three twenty minute matches. We lost two of our older players early on due to injury so had to make unexpected demands on the younger members of the team. The team learnt a lot about the physical demands of competitive games as well as how little time you have “on the ball” when in possession. Byfield were awarded an early penalty to take the

first game and by the third game the younger Harbury team were tiring, but Tate managed to score a well deserved goal for the rewards of his and the teams efforts. The parents all enjoyed the matches and congratulations went to Matthew as “Man of the Match” for his outstanding defensive display.

U7's – Steve Darby

22nd January - Leamington Brakes v Harbury U7s

The U7s played their first competitive game of the season against a very talented, well organised and experienced Leamington Brakes side in very windy conditions on a badly sloping pitch. We played three 20-minute matches with many of the Harbury team never having played a competitive game before. In the first game we were overwhelmed in the first ten minutes by conceding four quick goals. However, Harbury pulled their socks up and realised how hard they have to work against such opposition and defended much better to stop additional goals being conceded. Harbury managed to create more pressure in the second game as we were kicking downhill and really challenged the Brakes team with Finn scoring our only goal of the day with a great run and shot. In the last ten minutes of the third game we kept a clean sheet, which was a very positive note to end the match on. There were some outstanding performances from individuals and Man of the Match went to Harry for listening to what the coach wanted players to do; he was able to demonstrate his step-over skills, good ball control and passing as well as some strong running and tackling. The coach learnt that the players needed more help with maintaining their shape as a side and also how rewarding it is to give every child the opportunity of playing in a game, irrelevant of their ability.

Under 8's - Bob Church

21st January: Harbury Juniors U8s v Byfield

A full squad of twelve players headed for an away fixture at Byfield and were well supported by an away supporter following numbering just over twenty. The teams played 4 x 10 minute games of well-contested football and all players battled hard in the muddy conditions. Harbury Juniors early season training paid off and they were unbeaten on the morning.

The first game saw an exciting 1-1 draw with Charlie C on target for Harbury. The second game was a hard fought 0-0 draw. The third game was Harbury's best performance with Seb P coolly finishing a well-worked attack and then Sam Church with a 'net-busting' poacher's goal to secure a well-deserved 2-0 win. The final game saw the pitch conditions worsen and both teams battled hard for a 1-1 draw with Charlie C scoring his second of the morning.

Euan J picked up the much 'coveted' coaches Man of the Match award. Next match is scheduled for Saturday 4th February, a home tie against Tysoe.

U9s - Ian Jones and Steve Burnell

07/01/12: Banbury Irish 3 v Harbury Juniors 1

Following an extended Christmas break the team was ready for action on a brisk day at Chipping Walden. The first half was a close, hard fought battle with Harbury having most of the play. Harbury were awarded with a brilliantly taken goal by Beau mid-way through the first half. Harbury continued to press and came very close on at least two more occasions, Jack P keeping Harbury in it with a superb save. As Harbury pushed forward gaps appeared in the defence and a breakaway led to a Banbury equaliser.

The second half started in a similar fashion with both teams being combative. Great battling performances from Jacob, Liam, Joe and Josh, who really got amongst the tackling. As Harbury pushed on to try to get back on level terms a slick move from Banbury led to their second goal. Harbury pressed further, piling forward to get back on level terms. Then came the sucker punch. The third Banbury goal. The teams were well matched, home advantage had paid off for Banbury (Harbury having beaten them twice earlier in the season). Harbury were unlucky not to get something from the game; a determined Joe getting Man of the Match for his great work in the middle of the park.

21/01/12: Harbury Juniors 2 v Kenilworth Wardens Falcons 3

The eagerly awaited reverse fixture from the 3-3 draw at Kenilworth in December. Evenly matched teams competed well. The coaches were encouraged by the work on closing down and making it difficult for the opposition that Harbury demonstrated. Kenilworth took an early lead with an excellent looping shot (the wind blew it in). Harbury continued to contest and get their tackles in against a good footballing side who are rightly in the top three of the table. Harbury continued to pressure the opposition, trying to make it difficult for Kenilworth to get their passing game going.

Liam grabbed the ball in midfield and held off a defender to put a great pass into space for Morgan J, who sped onto the ball and coolly rounded the keeper to tap it in with his right foot. Kenilworth made some subs and brought on their 'big guns', the tactical plan paying dividends as Kenilworth scored two more goals as Harbury's defence lost some shape and discipline. 1-3 with about 5 mins to go. Morgan J and Cameron linked up together well to cut open the Kenilworth defence, Cameron scoring Harbury's second. Alas, in spite of a mammoth last effort, time ran out

and Kenilworth ran out the victors. A really great game, with an unfortunate outcome. All the team played very well; Morgan J's work rate up and down the pitch was exceptional, as was the tackling and battling of Millie. Daniel had a strong first outing in the mid warks. It was a tough call to name the Man of the Match. In the end it went to Liam for some great tackling, his carrying of the ball and his excellent assist for the first goal.



Harbury Tennis Club

Colin and Sue Mercer



The Club ushered in 2012 with its traditional "Muffler" tournament and a large contingent enjoyed a morning of fun tennis. Peter Walshe organised the proceedings with his usual efficiency and enthusiasm and made sure the pairs were evenly matched.

Trevor Montague and Josh Marshall triumphed over Sara Peters and Robert Stockdale in a closely fought final. During the round robin stage hot punch was in plentiful supply and the morning ended with an excellent buffet. A great start to the year!

The league fixtures resumed with a home match against Tysoe and a good 5-3 win. The visitors started strongly with their ladies winning both sets against Caroline Morland and Sue Mercer. Steve Stark and Colin Mercer lost their first set but won the second to keep Harbury in the match. Fortunes changed in the second half with Harbury winning both mixed doubles to complete a double over Tysoe. The next match was a floodlit fixture against Hook Norton with Sue Panton and Peter Walshe joining Caroline and Colin. Caroline and Sue had a comfortable win whereas Peter and Colin had a marathon match which they eventually won, but only after a long second set tiebreak which put Harbury in a very strong position.

In the mixed doubles Sue and Peter were edged out but Caroline and Colin won both sets to record an overall 6-2 win. The winning run came to an end in the next floodlit fixture against Deddington on a very damp evening! Caroline and Peter played with Eira Owen and Robert Stockdale and were narrowly beaten. At the halfway stage the match was all square after Deddington's men were too strong for Peter and Robert but Caroline

and Eira won both sets leaving it all to play for in the mixed doubles. Eira and Robert halved theirs but Caroline and Peter lost a very close match and Deddington went home with a 5-3 win.



Harbury Pre-School

Staff & Committee

The New Term – Firstly we would like to wish a warm welcome to Annabelle, Oliver, Samuel and Joseph who joined us at Pre-School at the beginning of the term and are settling in with their new friends.

The “Winter Wonderland” that had been created in anticipation of some wintry weather, turned out to be a little premature, as the new term was heralded by mild, damp, almost spring like conditions. However, the rain made the “teabag splosh” all the more appropriate, as wonderful patterns were made by dipping teabags into watery paint and dropping from a height onto paper. This activity was backed up a similar program on the computer, honing the children’s ICT skills.



Then at last the frost came, albeit fairly briefly – the water tray was filled with ice and became an arctic scene, with arctic animals and Eskimos, complete with sled and husky dog. Winter songs were sung, and ‘cold’ colours were used in the creative area for paintings and collages. The story “A Lovely Day for It” was shared by all, as the children chose props from the story bag.

Chinese New Year – The role play area became a Chinese home, with the children sharing with friends the experience of trying on Chinese style clothing, using Chinese cooking and eating utensils and play food including wool noodles! Dry noodles were put in the



builders' tray, and then water was added so that the children could see, smell and feel the difference.

In this, the year of the dragon, the children's creative skills were ably demonstrated in their wonderful observational paintings of our model dragon and in creating their own dragon from recycled materials. The Chinese zodiac story was listened to



with great concentration, dragon poems and songs were sung and, at the graphics table, the children produced amazingly good observational work in recreating their own names in Chinese. They also learned how to say "Happy New Year" in Chinese. At the snack bar, the children chopped vegetables for a delicious stir fry, which they ate using chopsticks and they tried different foods including noodles and prawn crackers as well as fortune cookies kindly provided by Carolyn, April's mummy. They listened to Chinese piano music and performed the Dragon dance with their home-made dragon, using a drum to create the rhythms.





If you would like further information, or to register a child for Harbury Pre-School, please contact Bud Jackson, Pre-School Administrator, e-mail enquiries@harburypre-school.org.uk phone 07939 122087 or look at the web site www.harburypre-school.org.uk.



Windmills
Nursery School

Nursery School Staff & Committee

Windmills Nursery is situated in the grounds of Harbury Primary School and has the benefit of its own Forest School and qualified Forest School Leader. We are open all day between school hours and take children from the age of two years. If you would like to register a place for your child you can email us at info@windmillsnursery.co.uk, visit our web site at www.windmillsnursery.co.uk, call Tina/Sally on 07906 519148 or Katharine on 01926 613084. We offer places with NEF funding and accept childcare vouchers.

Welcome to our three new children Ben, Isla and Riley who have all started at Windmills Nursery this term; we wish them a very enjoyable time with us.

Chinese New Year Special Article

Windmills Nursery celebrated Chinese New Year. We would like to share some of the experiences of the children.

By Freddie: "At Windmills we got dressed in Chinese clothes. I wore blue clothes. Audrey and Daniel wore a Chinese hat. At snack time we ate noodles and vegetables. Mrs Houghton cooked them in a special frying pan called a wok. The noodles were cooked in a saucepan with hot boiling water. They smelt yummy, they made me hungry. I liked the noodles; I didn't like the vegetables that much. We had some special



crisps but I can't remember what they are called. With Mrs Giblin we didn't do French, we learnt Chinese numbers. We sang a song with the Chinese dragon, it goes like 'Twinkle Twinkle little star'. We did a special dragon dance. The dragon had a head, a tail and a body. We made the head from a cardboard box and then mixed the paints and painted it.



The body was material. A man came with a camera for the paper. He took a picture of everyone and our Chinese dragon. Then Mr McVeigh read a Chinese book about a magic paintbrush that Charlie brought in. I made a fan and some of the others made a Chinese lantern"

By Evelyn: "I went in the dragon, it was a bit dark but I could see where I was going. There was a little hole in there and I got my finger stuck, then I pulled it out. We sang the 'Dragon

Dance Around' song. It went like 'Twinkle Twinkle Little Star'. The dragon was dancing to it. We sat in a circle and helped Mrs Houghton cook noodles and vegetables. They smelt yummy! I liked the noodles; I didn't like the vegetables because Mrs Houghton put some stuff in them. And we had prawn crackers which are white crisps, they were yummy and nice. A man took a picture because he wants to put us in the newspaper. Then he went home. We read a book Charlie brought in called 'The Magic Paintbrush'. A horrible man was trying to steal the paintbrush from the girl. I can't remember what she was called. It was good fun at the Chinese New Year party. I really liked having Chinese food for snack time. Mrs Giblin brought in some Chinese music. It was good".



By Emily: "I got to watch the dragon dance on the computer. It was just a head with a long tail going that way, straight, then back. It was coloured in all orange. It was out in the street and all the people in different clothes were holding it up and dancing. I was listening to music and people were

in lion costumes. One person at the back and one standing at the front with the head on. They were balancing on two tight ropes".

Gung Hei Fat Choi (Happy New Year).

Dates for the Diary

13th-17th February – Nursery closed for Half term

Tue 21st February – Toddler Service 2pm in Church

Thurs 22nd March – Indulgence Evening Fundraising Event

Indulgence Evening – Thursday 22nd March

Windmills Nursery will be hosting an Indulgence Evening in Harbury Village Club on Thursday 22nd March. It will be an evening of pampering with treatments available and stalls. With Mothering Sunday on 18th March this is an opportunity to treat yourself or a loved one. More details to follow next month.

If you would like to book a stall please contact Nicole on 07814 526983.



Harbury Primary School P.T.A.

PTA Committee

By the time you read this our latest event will have been taken place - the charity ZUMBA class. If you came, thank-you for supporting us and if you didn't – you missed out! Thanks must go to Katy Spencer-Hammon for organising it and to Sam Russell for giving up her time to run it.

There has been a slight re-arranging of committee members this term with Katy resigning as Chair due to family and work commitments, however, we are pleased to announce that Claire Panek has very ably stepped up to the role, Ruth Coulter is supporting her as Vice-chair and Sue Wheatley has stepped down from Vice-chair but remains on the committee.

Spring Term is a fairly quiet one for the PTA but we do have a couple of little events happening: Non-uniform day at the end of term and the Easter colouring competition.

Then it's all go for the summer term: the return of the Father's Day Beer Walk on Sunday 17th June and the Summer Fayre on Saturday 7th July. More on these events to follow in future editions.

Further information about the PTA, including fundraising events, can be found on the PTA page of the School website www.harbury.warwickshire.sch.uk which is currently being updated but should be available by the time you read this - if not please keep checking back there.



Village Hall Update

Chris Finch

New Year is a time for resolutions and at January's meeting, the committee resolved to continue their efforts for the next main phase of development due to start soon – the refurbishment of the kitchen, planned for March/April. In the meantime, work has commenced on the replacement of the MDF shutters with roller blinds, which will comply with the current essential Health and Safety regulations. Although it had been hoped to do all the work at one time, it is vital that the work on the hatches is completed and invoices presented before the end of March, otherwise we would lose the grant from Southam Vision, which stipulates a time-scale by which all projects must be completed.

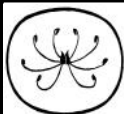
All the proposals for development at the Hall depend on the commitment of members of both the fund-raising and the management committees who devote considerable time as volunteers to research opportunities for grant funding, as well as planning an on-going programme of activities to raise funds from within the village. The New Year's Dance is one of the main money spinners and this proved to be the case again when the Likely Lads brought their own inimitable style of entertainment to create a superb atmosphere for the black tie event – maybe they should re-name themselves the Lively Lads?

As has been mentioned previously, there have been a number of new bookings in recent months, including another badminton group, the Warwickshire Young Voices and Zumba and there have been enquiries for a wedding reception and a possible holiday activity for children during the Easter and Summer holidays. It is hoped that once the kitchen complies with the requirements expected for a commercial kitchen that other business groups/commercial enterprises might decide to use the

Hall – particularly during the weekday mornings/afternoons which are not already used.

Recently, the Hall was able to offer a much needed facility, not previously available - the use of the toilets, which are now accessible from outside. There were many people who wondered what had created a mini (or maxi) parking problem along South Parade, around Constance Drive and up into Frances Road, as well as on the car park on a Saturday morning and the answer was a cross country run involving eight local schools. The toilet facilities were much appreciated on this occasion and it was pleasing to see that although the conditions on the field were extremely muddy, the runners respected the Hall and it did not take too long to clean up after their departure.

For those with long memories of earlier times, there was one family in the village whose name was synonymous with the care of the Village Hall – Jim (Curly) Pratt and his wife. They treated the Hall as if it was their own house and gave time and effort over and above the hours they were paid for to maintain the rooms in splendid condition. Sadly Jim's funeral took place last month within a year of his wife's death, but their names will linger on in the minds of all those who knew about their commitment to the Hall and will always recall their generosity of spirit towards our community building.



Horticultural Society

Judy Morral

We had another super talk at our January meeting. A first visit from Linda Smith and what a pedigree! She (with much help from her husband) won a Gold medal at Chelsea last year for her exhibit in the marquee. This was the first Gold medal for an aquatic display awarded for over twenty years - what a fantastic achievement. They run a nursery in Leicestershire which anyone can visit by appointment; we were all given her pamphlet with details. The nursery is for pond plants and essentials, plus much more. It is called Waterside Nursery and the website is www.watersidenursery.co.uk.

Linda opened her talk by showing us a typical pond and said that by the end of her talk we would all understand the workings of it. Fish need at least a depth of 2 feet 6 inches (a girl after my own heart no metric figures!). There is also a need for shelves on the edges of ponds to a depth of between 6 and 12 inches. The shelves are for wildlife to make full use of the pond. A piece of advice is not to mix fish with frogs and newts. Then you need to surround the pond with cobbles not slabs to create a flat surface.

In March the first plants to make a welcome appearance are the marsh marigolds and the first visitors are newts. They go to the bottom of the pond and duly mate with an obliging female; they both have several partners in the Spring. The eggs are then wrapped in individual leaves mainly on myositis or veronica beccabunga, which both have lovely blue flowers later. After four weeks the eggs will hatch and the babies swim. How clever is that? Then the frogs do their thing on top of the water - if you have these in your pond the din they make when mating is truly loud! The frogspawn can often be eaten by birds, in particular blackbirds, but so much is laid that at least 80% survives. Toads travel further and spawn in deeper water. It can be sixteen weeks before the babies leave the pond. How they all know when to do this is incredible and never ceases to amaze me.

A very attractive plant for protection is the golden grass. In May and June some ponds can suffer from blanket weed and a good remedy is the addition of barley straw. This will disperse the weed and give a clear pond again. Of course nature has to be helped with the addition of oxygenators. The common elodia cripia can be invasive, homewort is a good alternative. Irises make a lovely addition and you can get all different heights and colours. The slides of these were just magical.

A predator to the pond is of course the heron and it will eat newts. So take precautions and ensure that the surface of your pond is almost covered with plants etc, the water lilies are very good for this. The spread of the leaves also cools the pond, again some wonderful colours were shown. Rams horn snails and water soldiers are a useful addition. Zebra grass is quite tall and striking and an excellent plant for the dragonflies to lay their larvae. This exquisite creature with lacy wings only survives for three months but what a display it gives in this time. We were shown more plants that do not pollute the pond; at this point the church alarm decided to go off and someone's mobile phone rang but calm was restored and we returned to the plants again! In late Autumn it is time to cut back many of the plants to prevent rot and leaves falling into the pond. In Winter if the pond does get frozen over for a long period just put a ball on the surface and this will leave some of the surface clear as birds will come and drink here. Maintenance is the key to a healthy pond and there are many products which do not contain harmful chemicals that do the trick. Just look on Linda's web site for all sorts of useful tips and information. We were then shown the opening slide and could identify with all the plants and wildlife and looked at it with new eyes. It was a fascinating talk from a very enthusiastic lady and we wish her and her husband much luck with their exhibit for this year's Chelsea Flower Show. If you are lucky enough to be going just go and say hello. I'm sure Linda will be back to visit us as she has more talks; we look forward to that.

I forgot to mention in my last article that the Society will be giving a trophy to the Village Show this year engraved as the Janice Siddle cup, we thought it to be appropriate as she did so much for the Show and her memory will thus live on.

The snowdrops are coming along nicely now and here are a few suggestions of places to visit. Batsford Arboretum which I'm sure we all know is now a mass of colour. We visited Painswick Rococo Gardens a few years ago and they are famous for their displays. They are open in February every day with talks on Wednesdays and Fridays - look at www.rococogarden.co.uk. There is a great article this month in The Garden which features Colesbourne Park where the Elwes family have bred so many varieties of snowdrop; it is on the A435 between Cheltenham and Gloucester and is open Saturdays and Sundays in February from 1.00pm to 4.30pm. Also near to there is Rodmarton Manor open on 12th, 16th and 19th from 1.30pm onwards - look at www.rodmarton-manor.co.uk. A bit nearer is Ragley Hall which, as well as snowdrops, has a wonderful Winter garden. It will be open in February on 3rd 10th and 24th from 11.00am to 3.00pm; for more information go to www.ragleyhall.com.

Hopefully the weather will be good to us as the garden is filling up ready for Spring. I have some lovely violets in bloom, the Hellebores are full of fat buds and the Clematis Armardii is almost out. I have managed a few hours at weekends just tidying up etc and can't wait for the better weather. My seeds have also arrived from Dobies so in a few weeks it will be all systems go.

The February talk on the 7th is from Roger Umpelby and is called a Plant Lovers View of Fiji and Samoa - can't wait. The March talk on 6th is from a new speaker to us, John Edgley and he will be talking about Fruit in Small Gardens. As well as slides etc, he will demonstrate pruning and give all sorts of useful advice. It promises to be another talk to look forward to. I hope to see you at our next meetings; don't forget new members are always welcome as are visitors. Enjoy the next few weeks with all the sights and smells that nature provides.



Garden Jottings from Bridge Nursery

Christine Dakin

Your local Hardy Plant Specialists

Also: Fresh cut flowers and bedding plants in season

All good things come to those who wait. In terms of weather there have been some perfect days for getting out and getting on in the garden. It has been unusually mild for the beginning of the year which has been a

great opportunity to catch up on many of the jobs which have been outstanding for over twelve months. Plants which have I have tired of have been removed and the ground dug over and new plants planted. Compost has been barrowed and added to help make the soil more workable. After fourteen years of continually adding compost to the garden the soil is no longer the horrible sticky, hostile clay that we started off with.

By the time the News is distributed the story could be quite different weatherwise which is why there is a sense of urgency to get as much done as is possible while the going is good. It also helps to feel that there needn't be such a rush when spring arrives when there is normally so much to do. Gardening in winter is wonderful and such good exercise too!

There are plenty of things to do now as well as planting:

- Buy potatoes and put in frost free place to 'chit'
- Maintain mowers and other tools
- Order seeds
- Prune late flowering clematis
- Sow sweet peas
- Cut back ornamental grasses and other herbaceous plants
- Cut back dogwoods
- Plant onion sets
- Add compost to the borders
- Prune climbing and rambling roses
- And last but not least don't forget to do the weeding

Bridge Nursery, Tomlow Road, Napton Tel: 01926 812737, www.bridge-nursery.co.uk



Nature Notes

John Hancock

It's 5pm and the light has faded after a mainly dry day (21st January), which has been warm for the time of year (11C/52F) with a stiff breeze from the west. Now, rosettes of fresh primrose leaves are prominent in Harbury churchyard and I found one in flower this afternoon. Snowdrops are out around the Stobo memorial on the south side and spear-like leaves of daffodils are a handbreadth above the turf. Immediately on the

left of the south door close to the sign saying 'Tom Hauley Room' is an interesting carving on a sandstone block. Does anyone know what this represents? At the base of the first buttress on the right is a bench mark. These arrowhead marks pointing to a horizontal line were etched by the Ordnance Survey and plot the height above mean sea level. It tells us, when referring to an OS map, that Harbury Church stands at a height of 125mts.

A great show of snowdrops can be seen in the copse by the roundabout on the left hand side of the A425 as it approaches the Avon River Bridge in Warwick. It is best to be on foot to get a good view. I saw my first snowdrop in the village on 20th December. Bill Griffin has a mass in his back garden which faces north and they have been flowering for a month.

I noticed the ivy, clothing the pollarded lime trees inside the churchyard wall, has been cut through. This is a good housekeeping move as luxuriant growth of ivy makes trees susceptible to being blown down in winter gales. I've done the same to some ash trees in our back garden hedge. It was a difficult decision as ivy gives cover to roosting and nesting birds as well as supplying nectar and pollen to many insects at a time of shortage. As in a lot of things there is a balance to be struck so leave some ivy for wildlife.

We did have some gale force winds earlier in January and the venerable ash at Five Ways is no more. It's possible I suppose that another will spring from the root. Trying to count the rings on the sawn through trunk, I believe the tree was about 125 years old.

In the middle of the month we had a calm period of high pressure with blue skies and hard frosts. This coincided with a visit Sharon and I made to our respective brothers in the north-east. On 14th January, we had a walk in Allendale near Hexham. At first, the route followed the bank of the West Allen as it tumbled northwards to join the Tyne. The temperature barely rose above freezing and frost remained on north facing slopes. After a picnic lunch, we headed up towards our goal, the chimneys of a Victorian lead smelter. The frost proved a blessing as marshy tracts were frozen and we kept our feet dry. The last mile or so was on a track running alongside a linear mound. This in turn hid a sizeable tunnel which was the flue for the smelter's furnace. In parts the tunnel had been broken into, presumably to harvest the stone for building work. In the 19th century, this area supplied Europe's need for lead. The industry largely shut down when cheaper foreign ore became available. The earliest records of lead mining date to 1230. A primitive method of extracting ore was known as 'hushing'. Streams were dammed and the lake formed would be suddenly released to scour the hillside of peat and expose underlying galena.

Old farmsteads in this borderland are fortress like, built to defend against the Reivers who raided this frontier zone and made development risky until well into the 18th century. At Corbridge, the vicarage is more like a castle keep.

My next article will be from Australia and, with the Antipodes in mind, I've been doing some research into Eucalyptus. There are some 700 species of this tree largely confined to Australia and New Guinea. They are all evergreens so spotting them in our area is much easier in winter. They have a characteristic peeling bark with an outline more akin to deciduous trees than our evergreens. There is a good specimen in the front garden of 2 Pineham Avenue, and further examples near the Fox and Hen in Bascote Heath and on Welsh Road West in Southam close to its junction with St. James Road. On a brief visit to Ladbroke, I could not see a Eucalyptus though I am fairly confident there will be one. The largest locally that I've found must be approaching 30mts [100ft]. It's in

Leam Terrace this side of Willes Road. Eucalyptus belongs to the Myrtle family and dates from a time 35-50 million years ago soon after Australia separated from the super continent of Gondwana.

Now fresh stinging nettles, Wild Arum and Cow Parsley are noticeable along hedge lines and woodland margins. Just leaves at present; we'll have to wait a while for the flowers. Hazel catkins are shedding pollen already. The small red female flowers are there as well but you've got to get close to find them. Will February 'full dyke' make an appearance and replenish the water table? Has winter got a sting in its tail?



General Section

Farewell to John

I'm sure most of you know that John Hancock worked his last day at the Surgery on Wednesday 24th January. Although he officially retired a few years ago, he has continued to work for one day every week at both Harbury and Bishops Itchington surgeries since then and often covering holidays.

He has now decided to finish altogether and I'm sure each and every one of us will miss him, but thank him for all that he has achieved and for all his help and kindness. He always gave more than 100% and will be a hard act to follow. I know that he is off to Australia shortly which is a wonderful place to visit. We wish him all the best in future ventures and hope he will now have time to enjoy his hobbies.

The very best of luck to John and Sharon.

Judy Morrall



Harbury Art Group

Our first workshop of 2012 on Thursday 5th January was well attended. We had quite a challenging subject this month – a landscape photograph of Corfe Castle, with the early evening sun glinting on the castle and very frosty gorse bushes in the foreground. Most of us chose to do the scene in watercolour, with a bit of help from white gouache for frosting the gorse bushes, and pencil for the detail on the castle. At the end of the session we had some really good paintings, and the tutor Nick was very pleased with our efforts, eventually choosing Barbara's as the nicest painting of the day.

Next month we are trying something new. On Thursday 2nd February we will be using pastels with watercolour on watercolour paper. Many of us have not used pastels before, so this will be a new challenge. (There will be a supply of pastels to borrow, for those of us who do not have them already).

If you would like to join us for a day's painting and drawing in good company please get in touch – we are always happy to see new members. The workshops are run on a 'pay as you go' basis of £15 for the day, and there is no joining fee. We meet on the first Thursday of every month in the Tom Hauley Room behind Harbury Church, from 10am to about 3pm. All levels of ability attend, from beginner to the more experienced. The full 2012 programme is now available, and can be sent to you by email or post. Please telephone Pam on 01926 814923, or the tutor Nick on 01295 276465 or email harburyart@hotmail.com for more information.

Happy painting!

Pam McConnell



Hereburgh Morris

The Unbelievable Truth

Recent articles have outlined many worthy incentives for joining Harbury's Morris side. Other than the many health and social benefits, the opportunities to entertain, raise money for charity and participate in a living folk music and dance tradition, can there really be other reasons to join? My own motivation was far more trivial and basically a misunderstanding. Turning up to a practice in the hope of being able to get involved in the music side of things, I soon realised that there would be very little call for alpine horn in Morris music. As it would have seemed impolite to admit my mistake and walk straight out, I stuck

around and returned often enough to get drawn in to the dancing side of things and eventually became thoroughly hooked.

In my experience, Morris dancing is a good stress-buster, practices being conveniently scheduled midway through the working week (Wednesday evenings 8pm in the School Hall). Initially the sheer physical and mental effort required to get to grips with the moves, the dance sequences and the hanky flourishes provided a bewildering distraction from the stresses of the week. Since becoming marginally less of a danger to myself and the other dancers and being able to become more actively involved, (best not to mention how long it took to reach that point), I still find the weekly chance to leap about and clash sticks for a couple of hours a great way to completely switch off from work and recharge the batteries.



**Morris Dancing with Alpine Horns -
a missed opportunity?**

The immediate post-Christmas months provide a short break in the Hereburgh events calendar, and a chance to practise and prepare for our spring and summer repertoire. As part of our drive to introduce more people to the joys of Morris dancing this year we are using this quieter part of our season to launch a new series of free taster sessions starting from Sunday 26th February and running initially for four weeks at Holy Trinity Church Hall (Trinity Street), Leamington Spa from 3-4pm. For further details see our website at www.come.to/hereburgh/ or contact Douglas (on 01926 832598) or Rosie (on 01926 512893).

David Thompson

WRVS Emergency Team

Recently two members of the WRVS Emergency Team were called out to help at Henley Green Community Centre, Coventry when copper water pipes were stolen. The water cascaded down into the electrics of the high rise block of flats and the occupants were all evacuated to this nearby community centre.

Gill Thorpe

Harbury Village Club

A reminder to all members of Harbury Club that subs for 2012 are now due. Thank you.

Debbie Gee

Bull Ring Business Centre – New Businesses



Marukyu, pitbull and dynamite as saleable items probably don't mean much to the 'man (or woman) in the street' who might think that pitbull has something to do with dogs, whilst dynamite would be recognised as an explosive product. However, you can find these items, as well as marukyu available for sale in the Bull Ring Business Centre, so it's maybe a good

idea to know what is on offer? Moore's Fishing Tackle shop opposite the Parish Council office has been open since 14th November and sells a range of fishing equipment, tackle and baits for coarse, game and sea fishing. Marukyu is a ground bait product for attracting bream, carp and tench; pitbull is a trade name for 'boilers', which can be used to encourage fish into the fisherman's area and dynamite is used to lure many types of fish towards the hopeful angler. There's also a fridge full of dead bait, which includes frozen sprats (to catch a mackerel??), herrings and lamprey and any fisherman 'worth his salt' would know what he would hope to catch with each item.

The shop has been opened by Nick Moore who originated from Lighthorne Heath, but now lives in Bishop's Itchington. As a 'local lad', he attended Gaydon Junior and Infant school, followed by Kineton High School and then went on to Mid-Warwickshire College where he was an apprentice mechanic. He loved fishing from the age of nine years and joined the Jet Breakers Fishing Club in Leamington, which used to fish at the Lighthorne Pools. He is very knowledgeable about the range of fishing products which he sells, both in the shop and on line (www.mooresfishingtackle.co.uk); and is anxious to promote his lines, including fishing rods, poles and whips to the local community. Since he started his enterprise in Harbury, he has had regular support from a number of local fishermen, but there are several keen anglers who are

only just beginning to realise the new opportunity to purchase all their needs in the village rather than travel to other outlets in Banbury, Rugby, Stratford or Warwick. It is possible for Nick to order any item, which can be delivered within two days by recorded delivery. He receives a fresh stock of maggots every week and has all the lures, nets and prepared flies to keep any coarse or fly fisherman happy.

Fishing is often listed as the most popular pastime in this country and it is hoped that the new venture in the Bull Ring will support all those who enjoy sitting by the river bank or alongside the local canal with their hobby's needs. As Isaak Walton wrote in his book, the Compleat Angler, published in 1653 (the third best-selling book after the Bible and Shakespeare), "in writing (about fishing), I have made myself a recreation of a recreation". Fishing is an activity which attracts all ages, so it is to be hoped that Nick's venture draws young and old alike into his shop.

Nick's shop is open Monday-Saturday 9.00am-5.00pm and on Sunday from 10.00am-2.00pm; contact can be made on 01926 613857/07426 547544.

Chris Finch

Harbury Senior Citizens Committee Update

We do not have a lot to say this month. We are still deciding where the summer trip will be and will let you know the date and destination as soon as we have it.

Meanwhile, like many other organisations we are looking for a few more committee members. If there is anyone who would like to join us, please call me on 01926 612421 and I will be happy to talk through what it involves.

Thank you.

Mike McBride,
On behalf of the Harbury Senior Citizens Benefit Association

A Harbury Festival of Fun and Games – 3rd to 16th June

Wheelbarrow Race, Carnival Games, the Carnival and Harbury Games

Starting on Sunday 3rd June, the Harbury Festival kicks off with the famous WHEELBARROW RACE around the Village touring the Pubs and Village Club.

Then the Carnival Games and Quiz week keeps the celebration going until the GREAT CARNIVAL DAY Saturday 9th June.

And as was inaugurated last year, the HARBURY GAMES complete the Festival on Saturday 16th June (see separate announcement).

Now is the time to book a stall/pitch on the field for Carnival: please call Mike McBride on 612421. It is also time to book your programme advert by calling Ann Winchester on 612128.

Finally, if you have any questions about the Carnival, please feel free to ask John Broomfield, Carnival Committee Chairman, on 614258. He will be happy to provide whatever help he can.

Peter Walshe
On behalf of the Carnival Committee

Run, Jump and Throw Things on Saturday 16th June!

This year's half term week at the beginning of June promises to be a lot of fun in Harbury with all the Jubilee celebrations and the Harbury carnival but things could seem a bit flat when it's all over, so here's something to put in your diary for the following Saturday (16th June).

By popular demand, we are going to hold another Heart of Harbury Games on similar lines to last year at the Harbury Recreation Ground, when about 170 people competed in nine teams of men, women and children for Olympic style gold, silver and bronze medals. There will be fun events that will have you rocking with laughter as well as serious ones that will produce some great performances (if last year is anything to go by). There will be food and drink on sale all day so, whether you are taking part in a team or just watching and cheering, Harbury Recreation Ground will be the place to be on Saturday 16th June.

If you want to enter, join or sponsor a team please contact Peter Walshe on 612477 or Trevor Montague on 612340.

More details to follow in the March, April and May editions of the Harbury and Ladbroke News – Watch this space!

Andrew Lawrence
(Last year's organiser but handing the chair over to Peter Walshe
who is clearly just as mad as I am)

March Edition - Harbury & Ladbroke News
Adverts to 31 Binswood End by 15th February
Articles to Harbury Pharmacy or e-mail articles to
articles@hlnews.co.uk by 23rd February

Warwickshire Young Voices

Calling all Young Singers:

There are a few remaining spaces for this year's 'Make a Noise' workshop on Saturday 18th February. This year's event promises to be the biggest yet, as we produce 'Alice's adventures with Queen.' Don't stop the White Rabbit now - he is late. It's a kind of magic when Alice falls down the Rabbit hole, then joins the fandango at the Mad Hatter's tea party. Everybody needs somebody to love, the cards will surely rock you, but who will be the champion at the Red Queen's croquet tournament or will their heads bite the dust?!

The word is obviously getting out, as we have children booked to come from all over the county, as well as some travelling from Birmingham to join us for the day. To book one of the remaining spaces, please visit our website (www.warwickshireyoungvoices.org).

The day will end with a FREE public performance of our work at 4.30pm in the Village Hall - why not come along to see what we get up to!

The Warwickshire Young Voices regular choir members have also been very busy during rehearsals this term. We have kick started our new awards scheme, with written workbooks to learn music theory. We are following the RSCM Voice for Life scheme, which incorporates learning music theory to be able to read a four part vocal score, as well as sections on using the voice well and an individual singing assessment done in house. We currently have 15 children now working towards their White Level Award, 7 working towards Light Blue, and 3 working towards their Dark Blue Award. We also have one candidate hoping to go for their prestigious 'Deans Award' which will involve an external solo examination.

Warwickshire Young Voices are also delighted to welcome Liz James to the team. Liz is a local primary school teacher and fully qualified ballet instructor. Liz enjoys teaching singing games with movement and rhythm and will bring new skills to benefit the whole choir in performance. She joins our teaching team, which is made up entirely of volunteers with a passion for music, who all give up their time freely on top of demanding full time jobs.

An extra singing tutor also means that we are able to expand the choir, opening more spaces up to local children. Please visit our website for more information about joining the choir as a regular member if you are interested.

Helen Iles
Warwickshire Young Voices
www.warwickshireyoungvoices.org
01926 614150



Bumps and Bundles

Happy new year from
Bumps and Bundles!

We have celebrated our first birthday; we had a lovely party. We had daddies come to Bumps and lots of nice food.

Are you expecting a baby or have had a baby? Please come along to Bumps for tea, coffee, company and chat. The babies have fun playing

or laying on our nice soft duvets whilst you can enjoy a drink and meet new people. Contact Kelly Jones for more information or just come along and see..... every Tuesday from 10.30am 'til 12.00 noon in the Tom Hauley Room behind Church.



Kelly Jones

Harbury Library Update

As many of you know, Harbury Library will cease to be run by Warwickshire County Council on 31st March. "Harbury Village Library" will take over the library on 1st April, with longer opening hours and an internet café. We hope that this will be an improvement on the current service, and that villagers will pop in for coffee, cakes, and a browse.

Unfortunately the building will need to close for refurbishment for a period of time in February and March. We think the building will close from Monday 20th February but WCC have told us that a mobile library will be visiting the village instead.

There will be a meeting for those who have volunteered to work in the library - either on Friday 10th February at 10.30am or Tuesday 15th February 6pm, both meetings to be held in the Library.

Look out for another update next month!

Tim Lockley

Village with a Vision

I'm pleased to be able to tell you that things are beginning to happen! You'll all have received our questionnaire, and lots of people have already

completed and returned theirs. Don't worry, there's still time if you haven't done so yet.

The results we get from them will help us to decide the size of the Extra Care Housing complex; and then other things can begin to happen. The architect can pick up his pencils, and others will begin working on suitable parcels of land. There's lots of work to be done this year! At the same time, we will be keeping in touch with our very supportive Parish, District and County Councils.

Please remember that we are holding a Drop-in Day on Monday 6th February in the Tom Hauley Room, from 1.30pm till 7.30pm, which will be attended by people from Bromford Support, who together with members of our Group, will be there to talk to you and answer any questions you may have.

Can I take this opportunity of giving you advance notice that we will be holding the Annual General Meeting of the Village with a Vision Committee on Monday 26th March in the Tom Hauley Room. This will be an open meeting for anyone to attend.

Oh Yes! Don't worry if you're late with returning your questionnaire, or if you've mislaid your copy, there'll be a chance to bring it, or fill one in, at the Drop-In Session.

This project will really develop this year, and we're looking forward to your continuing help and support, especially when the time comes to begin fundraising for the extras needed within the complex.

Tony Stubbs

Harbury Energy Initiative

A leaf fluttered by our door and we caught it and found it was golden.

Our 'leaf' was a golden opportunity to bid for a grant from LEAF (Local Energy Assessment Fund), set up by the Department for Energy and Climate Change (DECC) to prepare communities for the Green Deal, which is expected to open for business in August. We had asked for an ambitious £128,000, in the hope of reprising our efforts with the Energyshare fund - but this time with more success and less public hassling (or 'engagement' as it might officially be termed). Although we have been offered and have accepted just £47,000 we are pleased with this result, as we can now begin a cost and carbon reduction programme, which we hope will eventually benefit the whole village. And now that we are 'plugged in' to this supply (this month's energy pun) from DECC we

believe that we can access further funds to complete the work that we set out to do a year ago.

The grant allows us to conduct energy surveys on the Church, Rugby Club, Wight School and village school with appropriate advice on improvements. We might think that we already know but these surveys will make it considerably easier to access other funds. The grant also makes provision for Energy Performance Certificate checks for four buildings, domestic, commercial or community, within the village. These will provide extremely useful background information for us, showing the efficiency of different types of building and an indication for people using or living in those buildings of how much money they could save by investing in some efficiencies, which is where the Green Deal comes into effect (see January issue for explanation of the Green Deal). Most unexpected is LEAF's support for our application to commission an aerial thermal imaging pass over the village which will reveal where heat loss is occurring. This will have to be done soon as it needs to be conducted on a clear, cold night when heating is on in houses. It is unlikely that any of us will know it has happened. I shall be extremely keen to see if all that loft insulation we installed actually worked. Loft insulation is not expensive and can, in fact, often be free or subsidised.

Of the physical works that we had requested – boilers, insulation, PV panels, LED lights – only internal insulation in the Wight School has been allowed. We suspect that this is because the building does not have cavity walls. There is much of this type of housing stock and the Green Deal hopes to make owners of these buildings aware of the options and savings and make it affordable.

All of this we will share with you at an event we will hold at the school on 24th March. More details on this will be in next month's edition.

We are interested in hearing from anyone who would like to be considered (their building at any rate) for an Energy Performance Certificate (EPC). We can only choose four and want a representation of property types across the village. Please contact Paul Quinney by emailing paulquinney@allen.uk.com to express your interest.

Bob Sherman
612277

Blood Donors

The next session in Harbury will be on Thursday 8th March.

Gillian Hare

Albany Climbs “Kili” - £2000 to go!

I hope everyone has recovered from a lovely Christmas and New Year and, following up from my previous article in the December issue, I'd like to give you an update on my fundraising for my Kilimanjaro climb for charity Childreach International, this summer.

As I write this, I am just under £400 into my target of £2450 which I am incredibly pleased with, as it is a great start for this mammoth challenge. I started on Christmas Eve with a bucket collection in The Dog Inn, and since then they have allowed me to keep my bucket on the bar for loose change and small donations. From this I have collected around £120 so far and with my bucket still in its place on the bar I hope to be able to collect more in the coming months. Not only this, but I've been proactive in spreading the word around the village, something which possibly couldn't have happened without my parents and their long list of friends and acquaintances! Following this, I've received many kind and extremely generous donations from close family friends and neighbours and each one of them have added hugely to my total and I couldn't thank them enough for their support. I've continued to spread the word on Facebook to my friends to ask for donations, though with most of them being students now as well it's a lot more difficult than first imagined! Now I'm back at university, I plan on another bucket collection in bars in Nottingham's city centre, as well as organising fundraising events and bag packing with other people doing the climb with me. With all this I'm confident I'll meet my first target of £580 by 28th February and I'll hopefully meet my final target of the full £2450 by 25th May. However, I still need all the donations I can get and if you'd like to donate my “BT Mydonate” page is:

<https://mydonate.bt.com/fundraisers/albanyvincent>

I fully appreciate anything you can spare if you choose to, and Childreach International is an incredible charity so it will definitely go to a brilliant cause.

Albany Vincent

Meet the Author

Local author Nigel Rock will be talking about his recent World War II novel ‘Sure Strike’. The talk is being held on Thursday 16th February at 7.00pm in Southam Library. His book tells the story of a special unit of the RAF which is given the task of eliminating the threat which would expose the secrets of the Enigma Code breakers at Bletchley Park. By carrying out

precision raids a small anonymous group set out to achieve the impossible - a sure strike on a small target.

Tickets are free but must be booked in advance. For more information or to reserve tickets please contact Southam Library 01926 812523.

Andrew Patrick



Do you need help?

The Citizens Advice Bureau is opening an outreach centre at the Children's Centre, Lighthorne Heath in early February. The opening hours will be the second and fourth Wednesday of each month 10.00am - 1.00pm, by appointment only which can be made by ringing 01789 200136. The national telephone helpline is also available on 0844 855 2322. For opening hours at Stratford bureau please go to: www.stratforduponavoncab.org.uk

Spencer Colquitt

Neighbourhood Watch - Update

I have not been receiving any updates or information from the Police for some time and after contacting them I have found out that their system has changed. Now in order to receive email updates from the Police, we need to complete a Data Protection Form and return it to Southam Police Station.

After this, updates etc, will be sent to you by e-mail. This is available to anyone, not just those who have previously been receiving and distributing them.

What I am suggesting is that all existing Neighbourhood Watch co-ordinators e-mail me and I will e-mail them a copy of the form to complete. If they print it off, fill it out and then return it to me I will send them to Southam (this will save postage). This will also ensure that I have your correct contact details. In addition if anyone else wishes to receive the updates directly feel free to also e-mail me, I will send the form and you too can be added to the data base. If you have received a paper copy in the past, speak to the person who delivers it to let them know whether you want to continue to do that or want to receive it by e-mail. By having it as an e-mail we will save paper.

If someone in the village has been forwarding the information to you, there is no reason for them to stop doing so - that is up to you, but you can be added to the data base and have the information direct. Contact

the person who has been sending you the information to let them know what you would like to do.

Anyone who has never received the updates and is not on e-mail but would like to be kept informed you will need to find someone who receives them by email and ask them to print it out and deliver it to you. If you do not know anyone who can do this for you, contact me and I will try to put you in touch with someone. Also if you are willing to do this for someone let me know and I will put you in touch.

I hope this helps. I don't think it is quite as complicated as it first sounds - I have tried to cover all bases and hopefully we will soon be "back in the loop". Contact me if I have totally confused you and I will try to help.

Alison Abbott - 612939
alison@vantagegraphics.co.uk

Warwickshire Police - Don't let green fingered thieves spring clean your shed . . .

Sheds . . .

With the array of lawnmowers, power tools, garden equipment, bicycles, sports and other valuable equipment kept in them, security measures should certainly be put in place.

- Make sure that the shed is near to the house or clearly visible from the house.
- Make sure that the door, door frame and walls are solid and replace any damaged or rotten areas with new sections.
- Often sheds are left unlocked or without any appropriate security, such as padlocks, chains or lighting. Installing these simple items can give better protection to your property.
- Replace broken glass panes with laminated glass. Fit windows with a grille fixed to steel plates inside the shed.
- Fit key-operated window locks on opening windows. If the windows are never opened, screw them permanently shut from the inside.
- Use metal rings and chains fixed to the shed frame with security screws to enable you to secure your electrical items, ladders and tools.
- Fit a battery powered alarm. These can be purchased from DIY stores and garden centres.

- Make sure your household insurance policy covers sheds, garages and outbuildings.

Garages . . .

- If you have a household alarm fitted, consider extending the system into the garage area to detect intruders.
- Purchase a separate garage alarm, which can be connected to a standard electrical 240v socket with a three pin plug.
- Fit a garage door blocker on the outside of the door. This product bolts permanently to the floor, has a large 'T' bar shaped restrictor and a quality locking device.
- Consider fitting a pair of garage doors that are fitted either vertically or horizontally and can be locked either from the inside or the outside of the garage.
- Install dead bolts mounted one on each edge of the door inside the garage. When in use, the locks throw a bolt into the doorframe or the concrete floors of the garage.
- Various good quality 'up and over' or 'rolling' deadlocking door handles can be purchased to replace the existing poor quality locks to give better security.
- Consider purchasing loop cables. These have a long braided steel cable and a two-bolt anchor locking point. These fix to garage walls or floors and can be passed through expensive property such as quad bikes, etc. Some cables are alarmed.

Property . . .

Gardening tools and garden furniture are not cheap - what's more they are very saleable items for a thief. Don't make it easy for them to be stolen, and remember that tools stolen from your shed could be used to burgle your house, or someone else's.

- Postcode or property mark anything in your shed or garage that is of value and might be stolen, for example, lawnmowers, garden furniture, bicycles, sports equipment.
- Take photographs of expensive items - they may be useful to police for identifying the goods and returning them to you, should you be unfortunate enough to have them stolen.
- Never leave garden tools and equipment outside, even if you are just popping back into the house. It only takes minutes for an opportunist thief to take them.

Outdoors . . .

You can make it difficult for a thief to get into your garden.

- Fit lights which come on when it gets dark and turn themselves off when it becomes light. Alternatively, install lights that come on automatically with a movement sensor.
- Make sure all fences are in good repair and that panels cannot be easily moved or lifted. The height for a perimeter fence or wall around the back garden is 1.8 metres (6ft). Attaching trellis to the top of the wood panels can increase the height of a fence and act as a further deterrent.
- Fit a padlock or bolt on the inside of all garden gates for security.
- Laying a thick gravel path makes it impossible for thieves to approach without making a noise and is a good crime reduction alternative to slabs and concrete.
- Plant protection is another way of guarding your property. A selection of thorny bushes and prickly plants planted near to potential access routes, such as fences or walls, are not only visual deterrent but also a physical barrier to intruders.

Remember the more difficult it is for a thief to enter your property the more likely they will leave it alone, they do not like noise or light or preventative measures which requires their time and the bigger chance of them being seen or heard.

Please report all crimes and/or incidents on the new non-emergency reporting number **101**. All emergencies on **999**.

Claire Murray
Police Community Support Officer

Police Community Surgeries

Warwickshire Police will be holding surgeries at the following dates and times in Harbury outside the Co-op:

Thursday 9th February, 11.30am to 12 noon

Thursday 8th March, 11.30am to 12 noon

Please visit <http://www.warwickshire.police.uk/> for more force news and information.

PC James Butler
Southam Safer Neighbourhood Team

Coventry Cathedral

Have you memories of the building of the cathedral?

The BBC's Songs of Praise team is visiting the Cathedral this spring and their researchers are looking for a) people with stories to tell about what it was like to be there in 1962 and b) people with stories to tell about their own personal experience of peace and reconciliation at any time over the last 50 years. Please talk to Canon David Stone or contact Janis Knox directly by phone on 07712 872487 or by emailing janis.knox@bbc.co.uk.

John Stringer, Cathedral Liaison Officer

Rotary Club of Southam Tree of Light 2004 – 2011

The Rotary Club of Southam would like to thank this publication and all its readers for the excellent support received in our seventh year of the Tree of Light in Southam. This year we raised £1859 for the Acorns Children's Hospice. Over the last seven years we have donated over £11,500 to Acorns Children's Hospice from the Tree of Light.

Southam Library staff have been extremely helpful to our cause with displaying the Book of Remembrance and receiving donations.

Acorns Hospice receives no subsidy from government funds and, at present, is sorely in need of money, so the help provided by all our supporters will give them encouragement and help in their vital work.

A final word of thanks to all who helped to distribute our leaflet and collect donations including Southam Carpets and Jacqueline's Florists and to those who reproduced it in their parish magazines and of course our many donors.

A special thanks to DSI Southam who have supported us for seven years with free printing and to Southam Christmas Lights Committee for their assistance with the Tree of Light.

We look forward to your help and support in 2012 and hope to meet our annual target of £1500 once again.

**Rotarians Peter Jackson and Mike Gaffney
The Rotary Club of Southam**



Southam & District Lions

'We are very pleased indeed to advise you all that our Father Christmas Float in 2011 raised the enormous sum of £4,466.57 and on Wednesday Feb 15th we will be presenting cheques to our two chosen charities:

The Teenage Cancer Trust and Sense for Deaf/Blind People

Representatives from both Charities will receive cheques for £2,250.

This would not have been possible without the generosity of all those lovely people from Southam and surrounding villages who came out in very cold weather to support our work. Thanks of course to all the Lions and Partners who give up so much of their time at a very busy time of the year.

Happy New Year from Southam & District Lions Club!

STOP PRESS! -The Lions are holding a Barn Dance featuring the 'Mean Fiddlers' Ceilidh Band on Friday 10th February 2012 at Southam College at 7.30pm. Tickets are £10.00 per head – ploughman's supper and bar. For more information please contact peter.guy@princes-trust.org.uk or www.southamlions.org.uk

Peter Guy

Upton House and Gardens 2012



Upton House launches its 2012 calendar with a wonderful array of special events for all the family. This magnificent local property is taking you back to the 1930's when Lord Bearstead, chairman of Shell, owned the house and you can discover more about the family and immerse yourself in 1930s living and

a millionaire's country house party. You can read the papers, pick up the phone and listen to family stories and view his renowned art collection of internationally renowned artists. The property caters for all the family, with children's activities going on all through the year and wonderful gardens hidden below the ha ha!

So whether it's the kid's art club or Easter egg trail, a jazz evening, a herbal workshop, the tulip weekend or taking part in the 'millionaire's mansion murder' there is always a reason to visit and enjoy the different aspects of Upton House and gardens....your local treasure!

Next 3 months events:

- | | |
|---|---|
| 11 th - 13 th Feb | Sugar & Spice and all things nice – children's cooking - booking essential. |
| 17 th Feb | Kid's Art Club 11.30 – 3pm ...only £2 for children |
| 23 rd Feb | Herbal workshop 10am – 12 noon - booking essential. |

10 th March	Spring Art Focus
24 th March	The History Papers – Come and explore the archives & help in the conservation of the Library.
6 th - 9 th April	Easter Egg Trails with Ricky Rabbit 12-4pm. Great fun for all the family and only £2 for children
13 th April	Kid's Art Club 11.30 -3pm - booking essential.
13 th —15 th April	Amazing Tulip Weekend and wonderful arrangements in the house – a great way to celebrate the beginning of spring
23 rd April	Body Beautiful Herbal Workshop - booking essential.
29 th April	Opening Ceremony of the Local Olympics.

For more events later in the year check the website:

www.nationaltrust.org.uk/uptonhouse

Don't just drive by ... drive in!

Andrew Overton
Marketing & Events Volunteer



LETTERS TO THE EDITORS

Dear Editors

I would like to thank friends, neighbours and the many Harbury residents who sent cards and letters of condolence on the death of my husband Derek Lowe.

In particular the support I received from Mothers' Union, Thursday Club and The Knitwits was really appreciated.

Derek was a well known character in the village up until the time he needed nursing care and moved to Newstead Lodge in Southam. So many letters referred to happier days when he managed the Co-op, or when he used to help out as barman at The Crown.

My thanks must go to Revd Philip Bullock who officiated at a really personal, thoughtful funeral service and to Ray and Jan Playdon who laid on a splendid tea for the mourners.

Once again thank you for the prayers and love.

Eve Lowe and family

Dear Editors

Sue and the family of Paul Collins wish to thank everyone who attended Paul's funeral on Tuesday 17th January, especially Ladbroke Church, Warwickshire Police and all our friends and family. Your support has been invaluable.

Lorna Kermode

Dear Editors

The family of Jim Pratt would like to thank everyone who attended Jim's funeral and for all the cards, flowers and donations to Myton Hospice. Thank you to Revd. Annie Goldthorp for a lovely service and to W. Goodwin & Sons for all their help and kindness.

Thanks also to Mary Mugleston for the lovely flower arrangement and Grosvenor Catering for the lovely refreshments.

Shirley, Alan, Una and the family

Dear Editors

We were so sad to hear that our neighbour Doug Green had died; we have been living next door to Doug and Sylvia for 21 years and Doug was a lovely neighbour and a very hard working man. We will both miss him very much.

Brian and Wendy Hancox
Witsend

Dear Editors

We would like to thank everyone who helped Natalie and I find the body of our lovely little kitten Thomas. He passed away after having been run over on South Parade. Thanks as well to the kind man who treated him with so much dignity. We have brought him home and placed him in the back garden where he belongs. Thanks again.

James and Natalie
Ivy Lane

Dear Editors

Thank you for all the get well messages, cards and prayers sent to me whilst in hospital. I cannot praise the staff of Willoughby Ward, Warwick Hospital enough and, thanks to the care and prompt attention I received, I am making a good recovery.

Sue Lord

Dear Editors

Through the Harbury News I would like to thank the gentlemen who came to my aid just before Christmas when I fell in Park Lane. In particular I would like to thank the gentleman who took me to the surgery, waited for me and then took me home. He made sure I got into the house safely, then made me a cup of coffee and stayed until he felt I was alright to be left on my own.

Unfortunately I don't know his name, so all I can say is a very big thank you to this very Good Samaritan.

A thank you too to everyone who sent good wishes for my speedy recovery. I am almost back to normal. A very Happy New Year to you all.

Gladys Hutchins

Dear Editors

On behalf of Harbury Pre-School fundraising group, I would like to thank everyone who supported our coffee morning at the Tom Hauley Room on 14th January. We made £276 from the cake and tea and coffee sales, balloons and face painting for the children and bric-a-brac stalls. This is a wonderful contribution to the fundraising pot and we hope our barn dance on Saturday 11th February at the Village Hall is supported as generously as this.

I would like to take this opportunity to thank all of the Pre-School parents and extended families, both past and present, for the huge level of commitment they continue to show for the Pre-School's fundraising efforts. The genuine love shown to our children by the Pre-School staff must be infectious, as the level of support from the village really is overwhelming. May our community continue to thrive throughout 2012.

Rosanna Hunt

Harbury Pre-School Fundraising Group

Dear Editors

I read with interest Richard Hamburger's short article on the Knightcote wind farm development. He explained concisely the issues surrounding wind energy and the cost that all of us will bear for very little, if any saving, in CO2. One aspect that wasn't mentioned by Mr Hamburger is that of noise. I visited the Broadview Energy's public consultation and spoke at length to the company's representatives about this issue.

Many may be unaware of the case of a Lincolnshire couple who were driven from their farm by the noise generated by a near-by eight turbine wind farm. This case was due to go to court in December but was settled by the "wind industry" out of court "under strictly confidential terms". If the wind industry had been sure of winning, this would never have occurred. This leads one to suspect that they know that noise can be an issue and that the physics of

noise generation caused by varying wind speed and direction is far from perfect. As I commented to the representative, computer modelling involving air movements is used extensively in the aero industry and Formula One, yet both require their "products" to be extensively tested following their build. The issue with wind turbines is that such detailed noise testing can only be done after the turbines have been erected in their final location, which is a bit late, it seems to me.

To be fair to the representative, he said that if noise became a problem due to wind direction/speed the turbines could be "switched off". But this begs the question in relation to the subsidy that each of is paying through our energy bills in the first place. And how does switching them off reduce the CO2 the wind turbines are said to be saving?

As Mr Hamburger pointed out, if we must have wind farms then it would be a good idea to put them in the windiest locations and far from centres of population.

Alan Lea

Dear Editors

I am so pleased that John Stringer is putting together a history of our church. I have given him all the papers, photographs and research I have collected together over a number of years with some help from my friend, Ralph Swadling. I intended to produce a new information booklet but, due to my ongoing health problems, I have had to abandon the project. I will help John all I can and look forward to reading the finished book.

Neville Ellis

BOOKINGS FOR		
SCOUT HUT	TOM HAULEY ROOM	THR COFFEE MORNINGS
Caroline Hill Tel: 613780 -	Sally Stringer Tel: 613214 sal.47@hotmail.co.uk	Sally Stringer Tel: 613214 sal.47@hotmail.co.uk
VILLAGE HALL	VILLAGE CLUB - CONCERT ROOM	WIGHT SCHOOL
Celia Neill Tel: 612819 harburyvillagehall@googlemail.com	- Tel: 612498 (evenings) harburyvillageclub@hotmail.co.uk	Anna Wilson Tel: 614217 anna9650@btinternet.com

Regular Diary Dates

ART CLASSES: The Studio, Church House, Crown St, Tuesday 10am -12 noon (614251)

ART TUTORIALS: Tom Hauley Room 1st Thursday of the month (814923 or 01295 276465)

BADMINTON: Village Hall, Monday mornings 10:00am -12:00 noon (612877)

Mondays evenings 7:30 - 9:00pm; (612627)

BEAVERS: Scout Hut, Thursdays 5.30 - 6.40pm (01788 816214)

BELL RINGING PRACTICE: Church, Fridays 7:30pm (612939)

BIBLE STUDY GROUPS: various homes 1st & 3rd Thursday of the month 2.00-3.00pm (614809); 2nd & 4th Tuesday of the month 10.30 - 12.00 Noon (612864)

BROWNIES: Scout Hut, Mondays 5.45pm - 7:00pm (612538)

Brownies & Rainbows Waiting List - Bobbie Sharpe (614040)

BUMPS & BUNDLES: Tom Hauley Room, Tuesdays, 10.30am – 12 noon (614150 or 611914)

CHILDREN'S DANCE CLASSES: Farley Room Wednesday 4.00 - 8.00pm (07837 152839)

CHURCH MEN'S GROUP: Tom Hauley Room 1st Thursday in the month 7.45pm (612765)

COFFEE MORNING: Tom Hauley Room Saturdays 10:00am - 12:00noon (613214)

CUBS: Scout Hut, Wednesdays 6:45 - 8:15pm (614730)

DROP-IN TEA FOR THE BEREAVED: 19, Farm Street, last Tuesday in the month (except August and December) 2.30 to 4.30pm (612585)

GUIDES: Scout Hut, Mondays 7.15pm – 9.00pm (614375)

GYMNASTICS: Harbury School, Mondays 6:00 - 8:00pm (07939 679533)

HARBURY FOLK CLUB: Dog Inn 1st Thursday in the month 8:00pm (613730)

HARBURY FRIENDS: Tom Hauley Room, 2nd Tuesday in the month 8:00pm (612534)

HARBURY JUNIORS FOOTBALL CLUB:

Under 6's/7's - Year 1 & Year 2 (Mixed)

Coach: Steve Darby Tel: 01926 613330

Training: Saturday 9.00 am Harbury School

Under 8's - Year 3 (Mixed)

Coach: Bob Church Tel: 01926 614366

Training: Saturday 9.30 am Harbury School

Under 9's - Year 4 (Mixed)

Coach: Steve Burnell Tel: 07795 428087

Training: Tuesday 6.00pm Harbury Rugby Club

Under 11's/12's - Year 6 (Mixed)

Coach: Richard Woodhead Tel: 07786 802803

Training: Saturday 9.00 am Harbury Playing Fields

Under 15's - Year 10

Coach: Malcolm Tanner Tel: 01926 612617

Training: Saturday 9.00 am Harbury Playing Fields

HARBURY PRE-SCHOOL: Wight School (behind Library), High St. Monday 12 noon – 3.30pm, Tues & Thurs – 9.00am, - 3.30pm, Wed & Fri – 9.00am – 1.30pm (07939 122087) enquiries@harburypre-school.org.uk

HARBURY THEATRE GROUP: Last Tuesday of the month Shakespeare Inn (611930)

HARBURY TODDLER GROUP: Wight School, Monday 9.30 - 11:15am

HARBURY VILLAGE CLUB: Contact 612498 (evenings).

Open Mic 8.00pm, last Saturday in the month. For more information 07799 896891.

Bingo every Friday 8.30pm - non members welcome.

HEREBURGH MORRIS DANCERS: School Hall, Wednesdays 8:00 - 10:00pm (613730)

HORTICULTURAL SOCIETY: Tom Hauley Room, 1st Tuesday in the month (Oct. to May)
8:00pm Contact David Powell-Tuck (614492)

KICK START APPALACHIAN STEP DANCERS: Scout Hut, Saturdays,
10:00am - 12:00noon (612734)

NETBALL CLUB: Village Hall Car Park, Training Thursday evenings, Juniors 6.00 till 7.30pm
& Seniors 7.30 till 8.30pm, Matches on Saturday Afternoon (613163)

MEN'S BREAKFAST: Tom Hauley Room, 3rd Saturday in the month 7.30am (612782)

MOTHER'S UNION: Tom Hauley Room, 1st Wednesday in the month 2.30pm; 3rd Tuesday in
the month 8.00pm (613831)

RAINBOWS: Scout Hut Tuesdays 5.30 - 6.30pm, Unit Leader Bobbie Sharpe 614040

SCOUTS: Scout Hut, Thursdays 7:00 - 8.30pm (614177)

TABLE TENNIS: Village Hall, Thursdays, 9.30 - 10.30am (614809)

TAI CHI: Ufton Village Hall, Monday, 7.15pm – 8.45pm (612277)

TENNIS CLUB:

Adult / Student Members Playing Times:

Tuesdays: 6.30pm– 10.00pm, Thursdays: 6.30pm – 10.00pm

Saturdays: (from Sept to March) 10.00am – 12 noon

Sundays: (from April to August) 10.00am – 12 noon

Members may play at other times free of charge, provided the courts are not already booked. **Guests** playing with members should pay £1 an hour.

If you would like to become a member or find out more about Harbury Tennis Club, please contact Colin Mercer (613284 or email sucol-merc@tiscali.co.uk)

Non-members - Courts should be booked at Country Fayre, Chapel Street
(£4 per court per hour) Floodlit bookings - £7 per court per hour.

Minis and Juniors (age 3 - 17) For details of Junior membership, contact Sue Mercer: sucol-merc@tiscali.co.uk

Coaching: Adult and Junior coaching takes place throughout the year.

For up to date information contact admin@tennisolutions.co.uk

THURSDAY CLUB: Farley Room of Village Hall 4th Thursday in the month 2:30pm (612877)

WARWICKSHIRE YOUNG VOICES: Village Hall, Thursdays 6.30 - 8.00pm (614150)

W.I.: Tom Hauley Room, 2nd Thursday in the month 7:45pm (614459)

WEDNESDAY WALKERS: Village Hall, Wednesday 9.45am (614188)

WINDMILLS NURSERY SCHOOL: In the grounds of Harbury Primary School,
Monday-Thursday; 9:05am - 3.05pm; Friday 9.05am -12.35pm (07906 519148)
info@windmillsnursery.co.uk

YOGA: Tom Hauley Room, Wednesdays, 7:30-9:30pm Dianne Surgey (817904)

YOUTH GROUP-ICON @ All Saints': Tom Hauley Room, Sundays 7.00 – 8.30pm (612377)

ADVERTISING in the Harbury & Ladbroke News
Email: advertising@hlnews.co.uk Tel: 01926 612155

Monthly Prices

¼ page £10.50
 (or 3 consecutive months for £28.00)
½ page £19.00
 (or 3 consecutive months for £49.00)
Full page £33.50
 (or 3 consecutive months for £89.00)

Annual Prices

¼ page £ 94.00
½ page £168.00
Full page £315.00

Advert with payment to: Gill Holden, 31, Binswood End, Harbury
by 15th day of the month (Cheques payable to 'Harbury & Ladbroke News')



Gardens by Wendy

phone: 01926 614877

mobile: 07595 289331

e-mail: wendy@gardensbywendy.co.uk

- Garden design services from one-off consultations to full designs
- Advice on rejuvenating tired or problem areas of planting
- Help with growing fruit & veg, organic gardening, pests & diseases, etc.
- Specialist gardening work such as pruning, border maintenance etc.



FREE VALUATION DAY

**ANTIQUES, JEWELLERY, SILVER,
 CERAMICS, BOOKS AND COLLECTABLES**

Charles Hanson as seen on BBC Antiques Road

Trip and his team of Antiques Experts

Items may be left to be entered into a suitable sale.

Thursday 9th February, 12.00 - 3.30pm

Leek Wootton Village Hall

Warwick Road, Leek Wootton, Warwick, CV35 7RB

FREE HOME VISITS FOR LARGER ITEMS

Charles Hanson is available for Charity events and talks etc

**Hansons now employs Kate Bliss as a consultant to advise clients on
 the value and sale of Jewellery and Silver.**

For further information please contact Mrs Carol Jones

Hansons Warwickshire Representative on 01926 770066

Email: service@hansonsauctioneers.co.uk www.hansonsauctioneers.co.uk

Refreshments in aid of the NSPCC





Public Consultation Event

Following the successful completion of Phase 1, Harbury Parish Council, in partnership with Warwickshire Rural Housing Association, Linfoot Homes Ltd and Warwickshire Rural Community Council, is holding a Public Consultation Event on Saturday 3rd March 2012 regarding the proposed design and layout of Phase 2 of the development off Bush Heath Lane in Harbury for which outline planning permission for 27 new homes for local people has already been granted.

The event will be held at Harbury Village Hall from 10.00am to 3.00pm. There will be an opportunity to see plans for the new homes, to ask questions, and to comment on the plans. It is intended to be a 'drop-in' event so people can come along at any time.

The 27 new homes are proposed to meet the housing needs of Harbury Parish as identified through the most recent Housing Needs Survey. Occupancy of the new homes will be controlled by a Planning Agreement, giving priority to people with a local connection to Harbury.

If you have any questions regarding the event please contact Warwickshire Rural Community Council.

Telephone number (01789) 472610.
Email address philw@wrccrural.org.uk

No job too small **Phil's** **Free Quotations**
Plumbing and Heating
Fully Qualified
and
Insured Plumber

Bathrooms, Central Heating & showers

I am a locally based plumber offering very competitive rates on any plumbing or heating job.
 No job too small,
 Please give Phil a call

Call Phil
 Daytime: 07971 046392
 Evening: 01926 400746
 Email: philmunday@hotmail.co.uk

Bishops Tachbrook
Leamington spa

Love Ballet
 Dance Company

Tap Lessons
Fridays, The Grange, Southam
 4.00pm - Little Tappers (3-5yrs)
 4.30pm - Pre-Primary Tap (6-8yrs)
 5.00pm - Grade 1 Tap (8yrs+)

Dance Classes
Thursdays, The Grange, Southam
 4.00pm - Funky Dance 1 (4-6yrs)
 4.30pm - Gymnastics (all ages)
 5.00pm - Grade 1 Ballet (9yrs +)
 5.45pm - Funky Dance 2 (7yrs +)
 6.15pm - Grade 2 Ballet (11yrs+)
 6.45pm - Grade 3 Ballet (13yrs+)

Ballet Lessons
Tuesdays, The Grange, Southam
 4.00pm - Prima Ballerinas (3-4yrs)
 4.30pm - Pre-Syllabus (5-6yrs)
 5.00pm - Pre-Primary (7-8yrs)
 5.45pm - Primary (8yrs+)

Acting, Performance & Singing
Mondays, The Grange, Southam
 4.00pm - Juice (3-5yrs)
 4.45pm - Rocket (6-8yrs)
 5.45pm - Upload (9-12yrs)

Limited places available - FREE TRIAL CLASS
 Call Lorraine 07711 010404 - www.loveballet.co.uk - lorraine@loveballet.co.uk

The Crown Inn

A traditional Sunday lunch from £7.50

Valentines Candlelight Dinner in the Bistro
£35.00 for two people
 Glass of Cava on arrival
Choice of
 Stuffed field Mushroom with Paté
 Tomato and Mozzarella Salad
 Home made Soup of the Day

~~~~~

Grilled 8oz Rump Steak Garni served with chips  
 Cod fillet in Cajun spices served with vegetables and potatoes  
 Breast of Chicken Tarragon served with vegetables and potatoes

~~~~~

Selection of Desserts of the Day

Valentines Candlelight Dinner in the Restaurant
£45.00 for two people
 Glass of Cava on arrival
Choice of
 Home made Chicken Liver Paté
 Flat Mushroom with Bacon and Black Pudding
 Cassoulet of Prawns and Mushrooms with butter beans
 Tomato and Mozzarella Salad with basil dressing

~~~~~

Blade of Beef  
 Slow cooked Belly Pork with Black Pudding and Bacon  
 Poached Cod fillet in Lobster Sauce with Prawns  
 Grilled Sirloin Steak Garni with chips  
 Stuffed Pancake with roast Mediterranean vegetables in a rich tomato and cream sauce

~~~~~

Selection of Desserts of the Day or Cheese

All menus and more information is available on our website!!

☎01926 614995
www.crowninnharbury.co.uk



D.A.Knowles Plumbing Services

- Over 25 years experience
- All aspect of plumbing including bathroom and kitchen installations
- Full tiling service available
- Competitive rates
- Project Management available for larger projects
- No job too small!!

Mobile: 07721 522298 Home: 01926 613776 Email: da.knowles@btinternet.com

HOME BOARDING FOR YOUR DOG



Wouldn't you enjoy your holiday much more knowing your pet was going on holiday too!



Why not let me look after your dog on our 22 acre farm where he will live as one of the family. No being shut in a kennel all day and night, just as much exercise as he wants with our own two friendly dogs who love to play with new friends. All needs catered for.

You will find our prices very reasonable and our care second to none. Give us a call on 01926 612921 or 07967 762475 and see how we can ensure you all have a good time!

All prospective boarders whose dogs didn't care for cats, please do ring again, as sadly, we no longer have cats.

25 YEARS BUILDING EXPERIENCE



**Don't just take
our word for it!!**
Two customer references
provided with
every quote!

GROUNDWORKS

NEW BUILDS

RENOVATIONS

EXTENSIONS

BRICKWORK

PLASTERING

PATIOS

DRIVEWAYS



BEFORE



AFTER

Contact us Today For a **FREE** No Obligation Quotation
Office: 01926 612195 - Mob: 07960 133105 - Email: info@harburybs.co.uk



9-11 MILL STREET, HARBURY
LEAMINGTON SPA, CV33 9HR
Telephone: 01926 613822

The Shakespeare Inn

- Traditional 18th century country inn
- Choice of real ales and guest beers
- Meals served Monday - Saturday
12 noon - 2.30pm and 5.00 - 9.00pm
Sunday Lunch - 12 noon - 3.00pm
- Large car park and beer garden
- Function room
- Live music Friday evenings



See us on [facebook](#)



ALL ASPECTS OF
BUILDING WORK,
INC. - MASONRY,
CARPENTRY,
DRI-LINING,
KITCHEN AND
BATHROOM FITTING,
TILING ETC....

M.B. EDWARDS GENERAL BUILDER

CONTACT:
HOME - 01926 641057
MOBILE: 07790 047588

EMAIL:
medwards2006@btinternet.com

NEW BUILD,
RENOVATION,
MAINTENANCE
INTERNAL,
EXTERNAL,
HOUSE AND HARD
LANDSCAPING.

REASONABLE RATES
NO JOB TOO SMALL.



JAMIESON JOINERS



Manufacturers of quality windows, doors,
stairs, conservatories,
fitted kitchens/bedrooms.

Established 25 years.
Competitive prices. Private/Trade

Tel 01926 612921/07968 009094
or e-mail your enquiry to:

stablesatharbury@live.co.uk

green
chameleon



Karena EA Ellis

MRICS, RICS Acc.Med., BSc Hons

M: 07796 575716 T: 01926 612121

E: info@greenchameleon.net

www.greenchameleon.net

Chartered Surveying ■

Mediation ■

Letting & Management ■

The Green Room, 31 Manor Road,
Harbury, Warks CV33 9HY



RICS

WARWICKSHIRE CHIMNEY SWEEPING

◀ • SERVICES • ▶

LOCAL SWEEPS OFFERING RELIABLE, PROMPT AND FRIENDLY TRADITIONAL BRUSH
AND VACUUM SERVICE. BIRDCARDS AND COWLS ALSO FITTED.

ALL WORK FULLY INSURED.

PLEASE CONTACT:

BOB CHURCH OR PHIL CAPERS

01926 614366

01926 614559

MOBILE: 07530 604451

WWW.WARWICKSHIRECHIMNEYSWEEPINGSERVICES.CO.UK

REMEMBER CLEAN CHIMNEYS ARE SAFER CHIMNEYS



ABSOLUTE BEAUTY

30 MINUTE BACK MASSAGE
+

30 MINUTE FACIAL

FOR JUST £30

OR

DETOX HERBAL
COMPRESS MASSAGE
FOR £25 (30 MIN)

OFFER VALID TO 31ST MARCH

Shellac & Minx Nails

Please email for a full range of beauty treatments - Harbury Studio
contact Rosina on 01926 612403 - www.rosina.moonfruit.com

FENCES : TREES



All types of fencing and gates

Tree felling and reduction

Hedge laying and trimming

Patios

Seasoned logs available

**Call Adrian Dollar on
01926 817077 or
07914 623989**

Qualified and Insured



Take advantage of our 10% discount!

Jobs for the Winter:

- Hedges and trees: Planted, trimmed, pruned or layed.
- Borders: Improved, removed or installed.
- Patios: Slabs re-laid or cleaned.
- Stone walls and fences: Repaired, installed or pointed.
- Ponds: Constructed, removed, managed and pond cover installation.

Leaf or snow clearance, general tidy and all aspects of outdoor maintenance considered.

Regular maintenance or odd jobs.

No job too large or too small.

For all your outdoor chores, call your local, friendly gardener:

Richard Everett - Mobile: 07923 167420

E-mail: Leafyservices@gmail.com

www.leafyservices.com

*10% off quotes of £150 or more or pay for 9 hours and get 1 hour free (labour only).

Work must be booked and completed before March 1st 2012.

Local references available



Lose those extra pounds quickly whilst having loads of fun!

Sunday mornings at 9am, Harbury Village Hall

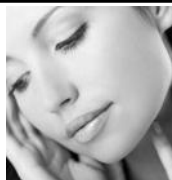
£4 per class, discounts available



facebook.com/warwickshirefitness

Phone 0789 067 1869 for more details

**NOUVEAU
CONTOUR**
Perfection in Permanent Make-Up



NEW YEAR, NEW YOU

**BUY 1 AREA OF PERMANENT COSMETICS AND GET A 2ND AREA HALF PRICE.
THE PERFECT GIFT FOR VALENTINES DAY AND MOTHERS DAY
MAKE 2012 THE YEAR FOR YOU**



Before Eyebrow Reconstruction



After Eyebrow Reconstruction

Contact Teresa for further information 07825 881360

Web: www.aestheticarewarwickshire.com

Email: teresa.gold@hotmail.com

Gift Vouchers also available



ADAMSTRANKS
BUILDING CONTRACTORS



**Extensions-Alterations-Refurbishment-New Builds
Bespoke Kitchens and Bathrooms
Design-Planning & Building Regulations Application
Service available.**

Web: kenilworthproperties.co.uk

Email: kenilworthprops@btconnect.co.uk

Telephone: Harbury 612260 Mobile: 07779 096104

Harbury Business Centre, Church Terrace, Harbury, Leamington Spa CV33 9HL

Roger Frogley & Sons Fencing



High quality domestic, industrial and agricultural fencing offering a service second to none.
competitively priced - clean, efficient & reliable

If you require some fencing - look no further!
Visit our **fully featured website** for ideas and examples and get in touch.

www.frogleyfencing.co.uk

or ring **07970 652145**



LOCKE & ENGLAND

AUCTIONEERS & VALUERS

Established 1834

Auction Every Thursday

Viewing Wednesday 12.00noon - 7.00pm
and morning of sale from 9.00am

Bi-Monthly Antique
& Collectors' Auctions

Regular Valuation Days

Valuations for Insurance,
Probate & Family Division

Specialist & Commercial Sales

Collection Service

ENTRIES INVITED FRIDAY,
MONDAY & TUESDAY



12 Guy Street, Leamington Spa, Warwickshire CV32 4RT

01926 889 100

www.leauction.co.uk

Drop Dead Gorgeous



Beautiful handmade Curtains, Cushions and Roman Blinds
all made to measure.

Curtain alterations also undertaken.

Free Quotes and Free Fitting.

Contact Sharron for Friendly and Helpful Advice.

07760 395805 or 01926 612226

or email:

dropdeadgorgeouscurtains@gmail.com

Regulated by the Institute of Certified Bookkeepers

A local Bookkeeping Service for Sole Traders & Small Businesses, including Sales & Purchase Ledgers, Bank Reconciliations, Expenses, VAT Returns, Credit Control, Payroll and Final Accounts.

An affordable outsourcing solution

Call 01926 800123 for an informal chat
or email info@cc-bookkeeping.co.uk



www.cc-bookkeeping.co.uk

SADDLERS BED & BREAKFAST

SELF-CONTAINED COTTAGE IN THE HEART OF HARBURY.
DOUBLE BED, SHOWER ROOM, LIVING & DINING AREA WITH
KITCHENETTE, TV/DVD; CD/RADIO. SLEEPS 2 TO 4.
OFF ROAD PARKING.

£60 PER NIGHT INCLUDING CONTINENTAL BREAKFAST.

JULIE YOUNG, SADDLERS, CHAPEL STREET, HARBURY.
01926 614050 OR EMAIL enquiries@saddlersbed.co.uk
www.saddlersbed.co.uk



Why you should buy your new kitchen or bathroom from Modern Homes!

- With over 43 years of trading we are the longest established specialist in your area.
- Predominantly British Manufactured products
- Family run 'local' business
- Personal recommendations
- Large kitchen and bathroom showroom
- Full installation service with employed fitters
- Value for money... We offer styles to suit all tastes and budgets
- Kbsa members offering Consumer care protection

www.modernhomesleamington.co.uk Email: info@modernhomesleamington.co.uk

01926 883338

Modern Homes, 37 Longfield Road, Sydenham Estate, Leamington Spa CV31 1XB
(between Wilts and CAS)

A Member of the Alliance of Private Sector Practitioners

Jackie Biddle

Healthy Feet are Happy Feet

Foot Health Practitioner

Dip CRP MPS Foot
CRB Checked

Home Visits Telephone

T: 01926 612503

M: 07872 907429

LOUISE BEALE

photography

studio in
Fenny
Compton



Wayland House, Station Fields, Fenny Compton,
Southam, CV47 2XD, 0783 4071210

louise@louisebeale.co.uk

www.louisebeale.co.uk

5 High Street
Southam
Warwickshire
CV47 0HA

Tel: 01926 812574

Email: enquiries@reynoldsinsurance.co.uk

Website: www.reynoldsinsurance.co.uk

reynolds insurance

SERVICES LTD

Independent Insurance Advisers



Are you fed up with hanging on the phone or searching the internet?

Would you like to talk to friendly, experienced staff who will explain the small print?

We have been established in Southam since 1983 with the same staff who would be happy to offer you a competitive quote for all classes of insurance private or commercial.

Call Deb or Sue - 01926 812574

FREE QUOTES ON:

Household

Motor

Short Term Learner Driver Insurance

Fleet/Vans/Trucks

Public/Employers Liabilities

Shops

Travel

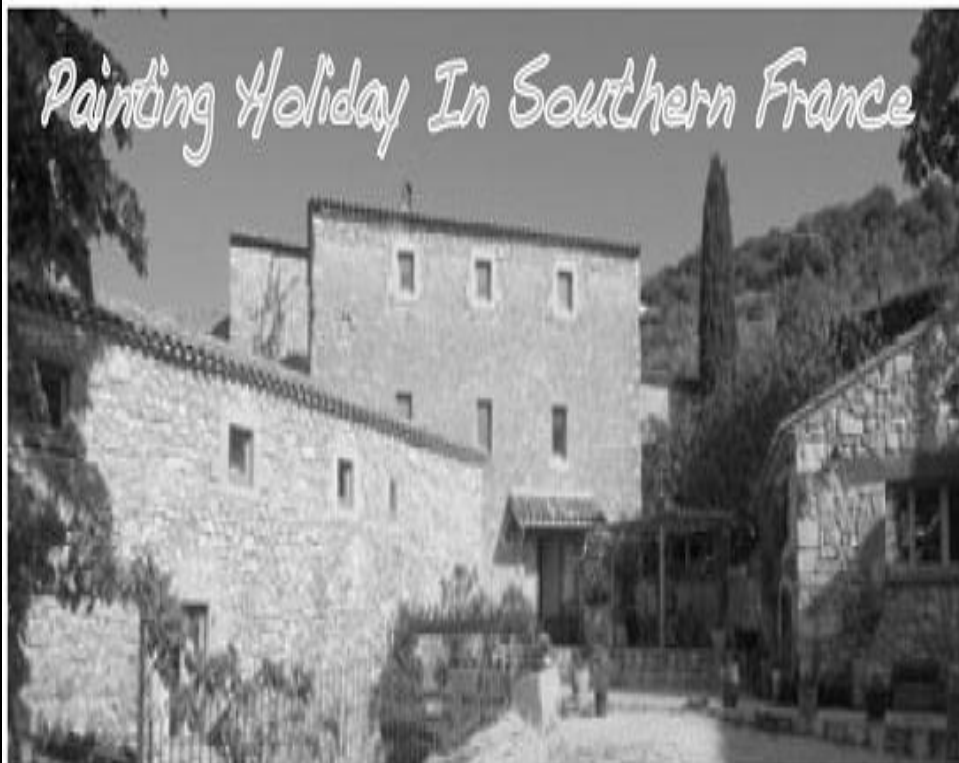
Restaurants & Pubs

Business Insurance

Tradesman Insurance

Let Properties/Holiday Homes

Painting Holiday In Southern France



Friendly and supportive tuition, comfortable self-contained accommodation, appetizing and wholesome meals. Our property with its picturesque stone buildings, attractive Mediterranean garden and large, luxury swimming pool provide the setting for a memorable watercolour painting holiday.

Come, paint & be pampered!

www.painting-holiday.com

Wed 23 May - Wed 30 May 2012....please visit our website for more info & for booking & contact details!

Welcome to our painters paradise in Southern France!

Reserve now to save €150...reduced to €835 for a limited period...

**This exciting and motivating painting-holiday watercolour course will run from
Wed 23 May to Wed 30 May 2012.**

A following holiday is Wednesday 19 September to Wednesday 26 September 2012.
All accommodation and facilities are on our property - Le Mas de la Source.



We are **located** in a traditional Ardeche stone village nestled between dramatic hills and sitting astride a pretty river with its weirs and waterfall, surrounded by picturesque vineyards and olive groves.

Le Mas de la Source is a large property of 2800 sq metres comprising an ancient farmhouse and it's lovely refurbished old stone buildings, where you will stay. Attractive Mediterranean gardens with olive trees, ancient mulberry tree, ruined stone arch and interesting courtyards surround the property, to inspire the artist in you! Our studio is a dedicated ***Maison de L'Artiste*** which enjoys great lighting.



Accommodation is provided in comfortable and self contained cottages on our property. The large heated pool will be open and we expect warm (25°- 30°) afternoons.

Tuition and gentle guidance will be provided by **Nicole Finiels**. Nicole qualified at **L'Ecole Nationale Supérieure des Arts Décoratifs** in Paris. A link to her blog site where you can learn about her art career and view samples of her work is available on our website.



Nicole will provide tuition over five days and work with everybody regardless of ability or experience. There will also be plenty of opportunity for you to work alone as you progress. The painting holiday is limited to just seven people so we can provide more time for the individual...time for **you**.

During your stay all meals will be provided. Healthy breakfasts to start your day; leisurely, delicious lunches; and in the evening, convivial aperitifs and relaxed French dinners with free flowing local wine. During the day while at Le Mas, tea and coffee, soft drinks and biscuits are available.



**We love to talk to people so give Phil a call on:
+33 (0)4 75 89 73 21 and we will ring you back,
or send us an e-mail with your questions!**

Email: info@le-mas-source.com

**URL "www.painting-holiday.com" &
URL www.le-mas-source.com"**

"registered in France; siret no. De l'établissement 50309443500016"



Fiona's Frames

Bespoke Picture Framing

Wide choice of mouldings & mounts for paintings, prints and needlework

Friendly Professional Service

Phone 01926 812807

Hillside, Napton

email:enquiries@fionasframes.co.uk

Domestic Gas Services

MARTIN EVANS

ACS 2007 Accredited Gas Safe Registered 197039

A Local Leamington Company

- **CENTRAL HEATING**
- **INSTALLATION**
- **SERVICE - REPAIR**
- **POWERFLUSHING**

Are your radiators not as warm as they should be?

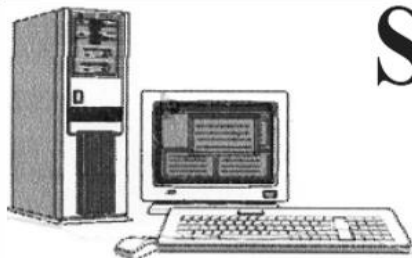
Powerflushing removes sludge build-up, leaving your radiators warm and efficient again.

Ring for details.

07980 740720

gas safe

Can be contacted via 15 Offchurch Lane, Radford Semele, CV31 1TN



SIMONS SYSTEMS

Available for all your computer requirements including:
 PC's and Laptops, New and used systems,
 Upgrading memory/hard drives/rom drives/graphics, etc
 Internet – modems fitted, wireless, networking.
 Any repairs. **NO CALL OUT CHARGE**



Tel: 01926 316119



Mob: 07751 811097



E-mail: simons.systems@virgin.net