

# Harbury & Ladbroke News

Reflects all aspects of local life, is published monthly and produced with the assistance of  
All Saints' Parochial Church Council.

**August 2012**

**No.461**

Editorial Office	☎ 612155
Articles to	Harbury Pharmacy, High Street
Email address	articles@hlnews.co.uk
Advertising Office	31, Binswood End (☎ 612155)
	advertising@hlnews.co.uk
Distribution Manager	49, Mill Street (☎ 612009)
	distribution@hlnews.co.uk
Inserts by prior arrangement	☎ 612009

## IN THIS ISSUE

## Page

EDITORIAL .....	2
HARBURY DIARY & REFUSE ROTA.....	2 – 4
CHURCH NEWS .....	4
LADBROKE NEWS .....	7
HARBURY PARISH COUNCIL .....	13
CLUBS & SOCIETIES .....	16
EARLY YEARS & SCHOOL.....	26
VILLAGE HALL UPDATE .....	32
GARDENING & NATURE .....	33
GENERAL SECTION .....	37
LETTERS TO THE EDITORS .....	57

## Editorial Team

John Holden - Chris Finch - Marian Millington - Janice Montague  
Ralph Swadling - Jackie West

*The views of contributors are not necessarily those of the Editorial Team  
The Editors reserve the right to amend articles as they see fit.*



## Editorial

The end of the school year saw the retirement of two senior members of staff at Harbury School, Mr Daly and Mrs Rathbone. We wish them both well for the future and thank them for their contribution to the well being and education of the village children.

Plans are underway for the Harbury Village Show on 8<sup>th</sup> September. As usual there is a wide range of classes to suit everyone.

Ladbroke Parish Council is considering giving guided walks along local Rights of Way to raise awareness of their existence. See page 9 for further details.

The Yellow Brick Road is coming to Harbury in November! The Theatre Group is seeking cast members and other helpers for their forthcoming production of the Wizard of Oz.

The Editors wish their readers a happy holiday season, whatever the weather.

## Harbury Diary

### AUGUST

#### Sun 5 TRINITY IX

Sung Eucharist, 9.00am

First Light Service, 10.30am Tom Hauley Room

Quiet Contemplative Service in the Celtic Tradition, 6.00pm

Tues 7 Holy Communion, 7.30pm

Wed 8 Wednesday Walkers, Marton Doles 4 miles, 9.45am from Village Hall

Thurs 9 Holy Communion, 9.45am, followed by coffee

Sat 11 Coffee Morning, 10.00am - 12noon in Tom Hauley Room in aid of Farm Crisis Network

#### Sun 12 TRINITY X

Holy Communion, 8.00am

Sung Eucharist, 10.30am

Tues 14 Holy Communion, 7.30pm

Weds 15 Wednesday Walkers - to be announced

Tea 3.00pm, Tom Hauley Room

ADVERTS FOR NEXT ISSUE TO: 31 BINSWOOD END,  
HARBURY BY 5.30PM

Thurs 16 Holy Communion, 9.45am, followed by coffee

- Sat 18 Men's Prayer Breakfast, 7.30am Tom Hauley Room  
Coffee Morning, 10.00am - 12noon in Tom Hauley Room in aid of Tom Hauley Room
- Sun 19 TRINITY XI**  
Holy Communion, 8.00am  
Family Communion, 10.30am  
Evensong, 6.00pm
- Tues 21 Holy Communion, 7.30pm
- Wed 22 Wednesday Walkers, Burton Dassett, 4 miles, 9.45am from Village Hall
- Thurs 23 Holy Communion, 9.45am, followed by coffee  
Harbury Art Group – Social Painting Day 10.00am - 3.00pm in Tom Hauley Room  
ARTICLES FOR NEXT ISSUE TO HARBURY PHARMACY, HIGH STREET OR EMAIL TO ARTICLES@HLNEWS.CO.UK BY 5.30PM
- Sat 25 Coffee Morning, 10.00am - 12noon in Tom Hauley Room in aid of CINDI
- Sun 26 TRINITY XII**  
Holy Communion, 8.00am  
Sung Eucharist, 10.30am
- Tues 28 **NB** No Drop in Tea  
Holy Communion, 7.30pm  
Julian Meeting, 8.00pm
- Wed 29 Wednesday Walkers, Fenny Compton, 9.45am from Village Hall
- Thurs 30 Holy Communion, 9.45am, followed by coffee
- Fri 31 Ladies and Men's Doubles Tennis Tournament  
Beer Festival 5.30 - 11.30pm at Village Hall

## SEPTEMBER

- Sat 1 Coffee Morning 10.00am - 12noon in Tom Hauley Room in aid of Harbury Theatre Group  
Beer Festival 11.30am - 4.00pm and 6.00 - 11.30pm at Village Hall
- Sun 2 TRINITY XIII**  
Sung Eucharist, 9.00am  
First Light Service, 10.30am Tom Hauley Room  
Holy Communion with Laying on of Hands, 6.00pm
- Tues 4 SCHOOL STARTS  
Holy Communion, 7.30pm
- Weds 5 Wednesday Walkers, Ryton Woods 4 miles, 9.45am from Village Hall  
Holy Communion 2.00pm, followed by Tea in the Tom Hauley Room (Mothers' Union)
- Thurs 6 Art Group "Movement" Acrylic/Gouache/Pencil  
**NB** No Men's Group

Refuse Collection Rota				
	Deppers Bridge	Harbury	Ladbroke	Collection Week
August	Wed	Thurs	Fri	
	8	9	10	Grey Bin
	15	16	17	Green & Blue Lid Bins
	22	23	24	Grey Bin
	29	30	31	Green & Blue Lid Bins
Sept	5	6	7	Grey Bin
	12	13	14	Green & Blue Lid Bins
	19	20	21	Grey Bin

## From the Registers

### *Holy Baptism, All Saints' Harbury*

8<sup>th</sup> July      Grace Ballinger

15<sup>th</sup> July      Jasper Rowan Hunt

22<sup>nd</sup> July      Charlotte Anna Hastie

### *Burial of Ashes, All Saints' Harbury*

19<sup>th</sup> July      Michael Lambert



## From the Churchwardens

**Liz & Will**

For the past month, Annie has been enjoying being fully ordained and able to preside on her own Holy Communion and Weddings in addition to those tasks she has already been doing. Thus far under Craig's watchful eye. However, now he has jetted off on holiday, Annie's ability to fill in in his absence relieves the burden of having to find clergy to cover during the holiday season.

During the July family service we all enjoyed a drama based on a TV talk show with the presenter interviewing fishermen with interesting stories to tell about discipleship.

The eagle eyed among you may have noticed that, as a trial, two of the south facing windows have been covered with mesh guarding. The PCC have now decided that there was no adverse effect from them and so will arrange for the remaining windows to be fitted. The guards in their entirety have been a gift to the Church for which our thanks are due.

Alternative materials for the current cast iron downpipes on the guttering are being looked into (cast iron replacements are very expensive). They have sorely needed attention for some years now.



## Mothers' Union

**Sue Boniface**

At our June meeting we explored the life of Mary Sumner, the founder of The Mothers' Union.

Mary Elizabeth Heywood was born in Lancashire in 1828 and married George Henry Sumner in 1848. The family moved to Old Alresford Rectory in 1851 when George was made Rector. In 1876, Mary was inspired to bring together the mothers of the parish in mutual support and held the first meeting of what was to become the Mothers' Union in the rectory.

Mary led the Mothers' Union to act in rebuilding the heart of Britain after the First World War, and saw the first Mothers' Union Conference of Overseas Workers in 1920. Mary died in 1921 at the age of 92 and is buried in the grounds of Winchester Cathedral.

Today, the Mothers' Union's range and depth of work far exceeds Mary Sumner's original vision of a circle of prayer upholding family life. It now has 4 million members in 81 countries. Members continue to promote family life through parenting group work, marriage support and advocating for family -supportive policies whilst at the same time upholding families affected by poverty, homelessness, imprisonment, and relationship difficulties.

In July, members paid a visit to St. Gregory's Church at Offchurch and enjoyed a most interesting talk about the history of the church before returning to Harbury for the "Annual Strawberry Tea."

Our coffee morning, at the beginning of July raised £125.00. Thank you to all who supported and provided cakes and raffle prizes. The money will be donated to a UK project enabling training for relationship group facilitators.

### **September Edition - Harbury & Ladbroke News**

**Adverts** to 31 Binswood End by 15th August

**Articles** to Harbury Pharmacy or e-mail to [articles@hlnews.co.uk](mailto:articles@hlnews.co.uk) by 23rd August



## Toddlers' Service

**Barbara Thistlethwaite**

What a lovely way to finish our last Toddlers' Service - Mrs Marion Dickerson took us on one of her special picnics. She had everything we could possible want in her special big bag. A very posh picnic bag, it had everything from glasses, to serviettes in it. Plus she had her emergency bag which had all things from a sewing kit to a bee sting cream. Clothing for the sunshine (which we decided we had not had enough of) and wet weather clothes (which we decided we had had too much of). Then, last but not least, some food. Then she said to us that we all knew who Jesus was and how one day he was out telling stories to lots of people, he told so many that it had got quite late and everyone started to get very hungry. In those days there were no mobile phones so they could not ring McDonalds or go for a pizza. So what could they do? One little boy had a packed lunch; his mummy had packed him two fishes and five loaves. He went up to Jesus and said "I would like to share my food". Jesus blessed the food and there was enough to share with everyone. Marion had brought with her two fishes (they were made of chocolate) and five small doughnuts. Mr Bedford broke ours up and we all shared them. Mr Hare then played for us and we sang a lovely song called "As I went a walking one morning in May". There were lots of great actions for us to do to this song. Then we had our picnic of gingerbread men, strawberries, crisps and lovely cake.

Then Mrs Bedford thanked everyone who had taken part over the last 26 years for making Toddlers' such a lovely service. Too many people to name, but lots of "thank you's" to say. Then Windmills gave Mrs Bedford and Mrs Thistlethwaite some lovely framed drawings, done by the children, of themselves plus, in the middle, a drawing of the Church. We would like to say a big thank you to all the children who helped to do that. We will be putting that up in the children's corner in Church so please try and find time to pop in and have a look at it. Also a big thank you from both Mrs Bedford and myself for the biscuits and plants that we were given.

It just leaves us now to say God Bless you all and take lots of care and do look out for the new things that Reverend Annie hopes to be starting in September to take the place of the Toddlers' Service.



**First Light**

**Alison Abbott**

It has been quite a summer for sport. OK England didn't win the football, Andy Murray only came second, and we won't even mention the cricket, but Bradley Wiggins has lifted our spirits by winning the Tour de France, and we are hoping for gold in the Olympics. Whether you were lucky enough to get

tickets to the events, or will be glued to the television cheering our athletes on, it will be exciting to watch and be wowed by their Olympic achievements.

We have taken up this sporting theme for First Light in August, so why don't you come along to the Tom Hauley Room on Sunday 5th August and join us as we take time to listen to what sport and the Olympics might have to teach us about living.

## Ladbroke News & Diary

### AUGUST

Sat	4	Whist Drive, 7.45pm in Village Hall,
<b>Sun</b>	<b>5</b>	<b>TRINITY IX</b> Family Communion 10.30am followed by refreshments
Tues	7	Photography Club BBQ/Buffer (depending on the weather!)
Sat	11	Whist Drive, 7.45pm, Village Hall
<b>Sun</b>	<b>12</b>	<b>TRINITY X</b> Holy Communion (sung), 9.00am
Wed	15	ADVERTS FOR NEXT ISSUE TO 31 BINSWOOD END, HARBURY BY 5.30PM
Sat	18	Whist Drive, 7.45pm, Village Hall
<b>Sun</b>	<b>19</b>	<b>TRINITY XI</b> Holy Communion (Book of Common Prayer), 9.00am
Thurs	23	ARTICLES TO HARBURY PHARMACY, HIGH STREET AND E-MAIL ARTICLES TO ARTICLES@HLNEWS.CO.UK BY 5.30PM
Sat	25	Whist Drive, 7.45pm, Village Hall
<b>Sun</b>	<b>26</b>	<b>TRINITY XII</b> Holy Communion (sung) 9.00am
Wed	29	Pilates, 10.00 – 11.00am in Village Hall

### SEPTEMBER

Sat	1	Whist Drive, 7.45pm, Village Hall
<b>Sun</b>	<b>2</b>	<b>TRINITY XIII</b> Family Communion, 10.30am followed by refreshments
Tues	4	Photography Club, 7.30pm, Village Hall
Wed	5	Pilates, 10.00 – 11.00am in Village Hall



### Ladbroke Church News

Sue Lord

At our 9.00am service on the 15th July the congregation presented Reverend Annie with a silver pendant and gift token to mark her recent ordination. The pendant is a replica of the Coventry Cathedral Cross of Nails and was made

by a Coventry jeweller. We are most privileged in now having both Annie and Craig to lead our worship.

At the PCC meeting we welcomed Hilary Wankling, Head of St. James School, Southam, and Valerie Copley, Chair of Governors who discussed the possibilities of a closer working relationship between the school and our Church. This was seen as a very positive idea.

A sound system for the Church has been agreed in principle, together with a hearing loop, but precise requirements have yet to be agreed. Despite the heavy rain of the last few weeks the roof has not leaked, probably due to changing wind direction. However this is still to be investigated further. No doubt we are in for yet more expense.

## From the Registers

### *Holy Matrimony at All Saints' Ladbroke*

7 <sup>th</sup> July	Samantha Sheasby and Adam Hughes
26 <sup>th</sup> July	Victoria Gunter and Ian Brumby

## Ladbroke Flower Rota

5 <sup>th</sup> August	Jenny Barrett
12 <sup>th</sup> August	Sue Lord
19 <sup>th</sup> August	Sue Lord
26 <sup>th</sup> August	Margaret Bosworth
2 <sup>nd</sup> September	Margaret Bosworth

Sue Lord



## Ladbroke Parish Council

Jackie West

Neither Betty nor I could make it to the Parish Council meeting on 18<sup>th</sup> July due to a PCC meeting the same evening but I chatted with Martin Neal, one of our four Parish Councillors the next morning, and gleaned the following information.

**Village Facilities** - The pub is up for sale, the Village Hall is old and Rev Craig would like to see the Church used more. So the Parish Council propose it chairs a meeting in September for interested parties, including the



Church, Village Hall and Millennium Green Trustees and Punch (who own the pub) to discuss community facilities in Ladbroke.

**Planning** - Nothing special to report.

**Dog Fouling** - SDC say that if more access to a dog warden is required, councils can pay for a part share in one; the PCC are investigating what the cost would be for very occasional support.

**Flooding** - There had been no problems reported, despite the recent rain. WCC special warnings are circulated using the Ladbroke e-news distribution list. If you are not yet on this list and getting the e-news (typically one a month) please send your email address to martinneal@hotmail.co.uk . *If you do not use email you could ask a relative, friend or neighbour to be on the distribution list and bring you a printed copy of the messages.*

**HS2** - Ladbroke sent in a response to the Environmental Assessment Report Method and Scoping consultation. The second HS2 Community Forum was held in June, about 30 people attended this meeting between HS2 and community representatives; it focused on communication of info. Graham Long (Ladbroke Action Group leader) and Martin Neal (from the Parish Council) have had a specific meeting with HS2 to discuss priorities for our village: noise, visual impact, construction phase, flood risk, A423 etc. There has also been a meeting organised by WCC to support villages without the necessary expertise or contacts, allowing each an hour's discussion of their ideas with WCC engineers.

**Rights of Way** - Investigating what HS2 will affect has revealed that there are many rights of way around the village, some are footpaths/bridleways, others are Green Lanes or Unclassified Roads. It is not surprising that some rights of way are in a poor state as they are not well known and not even marked as footpaths on OS maps! **Would there be interest in a few guided walks along the local rights of way?** All the rights of way found in these investigations are on the village website at [http://www.ladbroke-pc.org.uk/pdfs/pdf%27s/Others/Footpaths\\_and\\_Rights\\_of\\_Way\\_June-2012.pdf](http://www.ladbroke-pc.org.uk/pdfs/pdf%27s/Others/Footpaths_and_Rights_of_Way_June-2012.pdf)

**DEFRA** are consulting on rights of way, how they are managed and bureaucracy around making changes etc. If anyone has strong views they can send in an individual response but need to be quick as the consultation closes on 6<sup>th</sup> August!

**Ladbroke Village Website** – Remember this is now at [ladbroke-pc.org.uk](http://ladbroke-pc.org.uk) and update your bookmark if necessary. The site was hacked in June and if accessed via Google showed adverts for “inappropriate pharmaceuticals”. The costs of upgrading the software to reduce the risk of a repeat is being checked.

**SDC** - The consultation on the District's Core Strategy to 2026 received 7000 responses. There will be a further consultation on the two top topics: "Distribution of new housing" and "Which landscape areas need protection?"

Ladbroke PC will try to let local people know when this consultation starts via the e-news.

**St James' School, Southam** - Since the closure of our village school many years ago there has been a strong link to St James' School in Southam with two of the governors appointed by Ladbroke Church and children from Ladbroke having a high priority for admission and free bus travel.

**Next meeting** - Wednesday 19th September at 7.45pm in the Village Hall.



## Ladbroke & Deppers Bridge Women's Institute

Carol Lane

The W.I. members met in the very warm Village Hall on 26<sup>th</sup> July. Sue Moore, president, informed those who are booked on the trip on the Countess of Evesham from Stratford on August 16<sup>th</sup> that she will be driving the 16 seater coach which will pick up members in Southam at 1 o'clock, Ladbroke Village Hall at about 1.10pm and Deppers Bridge at about 1.15pm.

Following the Warwickshire W.I. knitting competition, there are many squares which need to be crocheted together into blankets. Two afternoons have been arranged for members to get together in Foundation House to work together to effect this task. The dates are 18<sup>th</sup> September and 20<sup>th</sup> November.

Information will be disseminated regarding the W.I.'s support for the British dairy farmers advising what individual members can do to help.

For the remainder of the evening, four volunteers, Heather, Rachel, Kay and Sue worked with Diane Clark who is a registered Pilates instructor. With a background of gentle music, Diane demonstrated some basic moves to strengthen and stretch backs, hips, arms and shoulders, some using a giant elastic strip and others a soft ball as you can see in the pictures. Diane instructs classes at a variety of times in Ufton and Southam College and can be contacted on [dianec1966@sky.com](mailto:dianec1966@sky.com) or on 07809 621142.



There is no meeting on the fourth Thursday in August as there is an outing instead. The meeting to be held on 27<sup>th</sup> September will include celebrations for our 40<sup>th</sup> anniversary and everyone in touch with past members are encouraged to contact them.



## **Ladbroke Photography Club**

**Kip Warr**

A sunny, warm, balmy July evening spent strolling through the peaceful back streets and byways of a Warwickshire village, stopping occasionally to take a leisurely photograph of a thatched building and rounding the evening off in a pub garden. How nice that would have been!

Our Photography Club walkabout session was actually spent sloshing about Long Itchington in the rain but our members are not easily discouraged. Armed with wellingtons, umbrellas and cameras a hardy few spread out through the wet streets. Photography proved tricky because, to keep the camera dry, we had to clamp an umbrella between shoulder and cheek whilst



aiming the lens below the dripping brim. It was time for inventive thinking. These were good conditions for shots of umbrellas, approaching headlights reflected in the wet road and, of course, the ducks on the pond. And we finished, appropriately, at The Duck on the Pond.



## **Ladbroke General Section**

### **The Ladbroke Village Treasure Hunt 2012**

"The last time we had a treasure hunt in this village was about 20 years ago". So observed one of our more longstanding residents as, in the late afternoon of Saturday the 14<sup>th</sup> July, and undeterred by the promise of yet more rain, just over 40 of us set off in teams from the Village Hall to embark upon the Great Ladbroke Treasure Hunt 2012. Each team's mission was to scour the village following clues to find six pieces of hidden 'treasure'. These turned out to be a piece of wool, various tokens, a star, and a small plastic tortoise. Team sizes varied from around six people to one man and his dog, Jangle.

On the way, there were photos of village features to identify, questions about Ladbroke to answer, and objects to find. In the course of our expedition we were amazed to discover amongst other things that Ladbroke has two street lamps each displaying the number one in different parts of the village; there is a 'marriage window' in All Saints Church which nobody knew about and some of us still can't find; there are more metal posts in the fence bordering the field on Church Lane than you can possibly imagine (or count in my case); and Ladbroke has four thatched cottages - can you name them?

About halfway round, the inevitable happened – a rain shower drenched us all, but we carried on regardless under umbrellas and cagoules. This at least made it easy for us to look for one of the required objects – a snail shell. Most teams brought one back still containing the snail much to the bemusement of the judges. I don't know how many teams there were in total but I'm told we did very well as we all got at least 75% of the total marks on offer. The winning team comprised of two long established Ladbrokeans and a couple who had only just moved into the village. Take a bow Kip and Mif and Ali and Erika!

After everybody had returned to the Village Hall with their 'treasure' and their completed sheets for marking, we were treated to a delicious buffet meal. There were succulent 'roasts in a roll' (pork and beef), sizzling sausages, mouth-watering quiches, crisp salads, and four tasty desserts as well as fresh strawberries and raspberries. There was enough for 'seconds' for those, like me, who couldn't decide which dessert to have first time round, and drinks from the bar to wash it all down.

So thank you to the Village Hall and Millennium Green Committees who worked together to make this event such a success and kept the weather from dampening our spirits. Special thanks must also go to Jackie for devising the treasure hunt; to Margie, Mif, Nicky, and Sue who provided the excellent food; and to Alan for lending us his magnificent music machine.

If you are having any visitors over the summer and don't know what to do with them why not let them have a go? Copies of the treasure hunt clues, questions and photos are available from Jackie West – telephone 810331. Please let's not leave it another twenty years before we have the next one!

**David Wright**

## **Antiques and Afternoon Tea**

An "Antiques and Afternoon Tea" event is being planned, with Charles Hanson of Antiques Road Trip fame. Details are still being finalised with him, including confirmation of the date, but we are hoping it will be on Saturday 6th October. So pencil that date in your diaries now and look out for more information in next month's Harbury & Ladbroke News.

**Margaret Bosworth**

## Pilates

There are plans to start a regular weekly Pilates class in Ladbroke Village Hall on Wednesdays 10 -11am, starting on September 5th. The teacher is Kate Taylor, who is well qualified and is offering an initial series of five sessions for £35 per person. Both women and men are welcome, all you need is to register with Kate in advance and then come along wearing comfortable clothing; mats will be provided but people can bring their own if they wish. There will be a FREE taster session on Wednesday 29th August at 10am with the first main session starting the following week. To sign up for the taster and/or main sessions or for more information, please phone Kate on 07748 262866 or email her at ktpilates@hotmail.co.uk.

**Jackie West**

## Ladbroke Village Hall Millennium Club

£80	Wild Indians
£50	Cyril Spence
£25	Helen Ballard
£10	Carole and Peter Loftus
£10	Kate Pickin
£10	Cyril Spence
£10	Scott and Siobahn Roberson
£10	Martin and Debra Neal

**Margaret Bosworth**



**Harbury Parish Council**

**Linda Ridgley**

## June 2012

### Public Participation

Jo from the Pre-school asked the Parish Council for £2K towards a canopy but Councillors voted them £500.

The Vice-Chair of Bishop's PC was given ten minutes to try to persuade our PC to support their objections to the Starbold Windfarm. He took half an hour, throwing in everything, but insisting Bishops Itchington were not anti-renewable energy, but just against it in this area. So, what is indisputable? Five x 125 metre high wind turbines; access to the site along a

widened Salt Way; substations and other infrastructure including pylons, some on Christmas Hill; turbines visible for miles.

Other objections: Too many villages nearby; impact on human and animal health; danger to motorists on M40 from “flicker effect”; won’t supply local employment; effect on tourism; will be seen from the Burton Dassett Hills; company will be making money but would not be viable without subsidy; wet area; important for birds; masses of concrete used for the turbine bases and no regulations on remediation or removal.

Claims: Average windspeeds are less than the applicant suggests (Cllr Knowles pointed out Broadspeed had put up a test rig and have measured the speeds); prime archaeological area with Roman remains (?); impacts on the Cotswold Area of Outstanding Natural Beauty (only really visible from Tysoe and Edge Hill); Equine Hospital will not be able to bring horses onto their site.

As a result of this lobbying the Cllrs decided 7 to 3 that they would object because: the site was not windy enough; it would be visible from the Burton Dassett Hills; the effects of the construction; it was in the wrong place; it would destroy wildlife and heritage.

## **Library**

There is now an interim agreement whilst a full lease is negotiated. The Café is doing well and enough money is being generated to pay the bills. A formal Opening Ceremony by children’s author Celia Rees, was held on Saturday 21<sup>st</sup> July at 2pm.

## **Village Hall**

Harbury Games made £1,500 for Village Hall Funds and the Catering Group reported that using the new kitchen “was a joy”.

## **County Council**

Cllr Bob Stevens had hopes Social Services and Health would be working more closely together. Elections for a Police Commissioner would be on 17<sup>th</sup> November.

Chairman Tim Lockley complained that there had been only a week’s notice of the resurfacing of Mill Street. One car was left parked in the street and that patch had to be by-passed.

Cllr Ekins thanked the County Cllr for his help over the sewerage problems in Deppers Bridge. Severn Trent would put a camera down the drains to identify the extent of the problems.

## **Planning**

Stratford granted with conditions: single storey extensions at 2 Penelope Close and 1 Park Lane; felling of a willow at Western House, Station Road and felling of a horse chestnut and trimming work to a horse and sweet

chestnut at the Village Hall. The Parish had no comments on the re-pointing of The Cottage, High Street; the felling of an Ash at the Scout Hut.

The Parish commented on; plans for a new dwelling off Ivy Lane that it considered overdevelopment of back-land; barn and stable conversion at Harbury Fields Farm, Middle Road, which it welcomed but wanted the resulting dwellings to be offered first to local people; demolition at Lawston House, Chesterton Road and replacement with a two storey house and garage which they were concerned might impact on the view from the Fosse and Middle Road.

The Parish Council objected to plans to demolish Dovehouse Autos and replace it with four apartments and a terraced house, saying there were too many units on the site; insufficient parking spaces; and a loss of the green space provided by the verge.

Right of Way - Councillors were exercised by the recent use of this footpath to the allotments by vehicular traffic. A resident of Pineham Avenue was reported to be using the footpath to drive to the rear of his property. The Clerk was instructed to write to the resident asking that he made good the damage to this footpath.

Good practice - Councillors had received instruction that they needed to show transparency in their determination of planning application responses. The recommendations of the planning group will be pre-circulated, and each application will then be considered at the full Council meeting.

### **Parish Property**

Cllrs agreed that the burnt out picnic bench should stay in situ for a while so that the public could see the damage that had been done. It had been a deliberate act to torch it and the Parish was asking for witnesses to come forward. It had been a well-used facility for the village and would be replaced subject to an insurance claim being agreed.

Young children's multi-play unit - A huge estimate (£3K+) had been received for repairs to the unit including £534 just for the ladder access net; nevertheless it would be replaced, but other parts might have to wait as there was only £4,500 in total for maintenance and repairs.

Cemetery beech tree - It was agreed the work should be done on the tree which was overhanging an adjacent garden. Colin Sheasby will be asked to provide a survey of urgent tree work.

QE2 Fields – A registration paper was signed to apply for our playing fields to be eligible for some funding under this scheme.

Skatepark - More meetings had been held with enthusiasts, and the County's Grants Officer had given Cllr Thornley some information on potential grants for the upgrade and repairs. The skateboard ramps were deteriorating and would need repairs.

Other repairs etc. - Treen's Hill bench is over hung by vegetation. The Chairman will ask villagers to cut back any of their trees and shrubs which are impinging on the footways. The pavement in Mill Street had been repaired. The bus stop markings in Binswood End are due to be painted on the road. The Heber Drive sign has still not been replaced. Cllr Knowles was volunteered to repair the allotments' tap!

**Next Meeting:** Thursday 26<sup>th</sup> July 7.30pm in the Village Hall

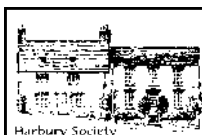
**Official minutes can be viewed in the Library, on the Parish Council website [www.harbury-pc.gov.uk](http://www.harbury-pc.gov.uk) or obtained from the Parish Clerk Tel: 01926 614646**

## Harbury Parish Council Quarterly Report July 2012

In the past three months the Parish Council has:

- Continued to work on the details of the Library lease
- Planned repairs to the multi-play unit in the play area
- Commissioned a report on extending the Village Hall car park
- Made a grant to Harbury Pre-School
- Agreed to investigate replacing the goal posts at the playing fields

**Tim Lockley, Chairman  
Harbury Parish Council**



**Harbury Society**

**Linda Ridgley**

A smaller group than expected (some defected to the Torch Relay) visited Warmington. We started in the churchyard. The graveyard of St Michael has eighty listed gravestones - the most remarkable, is that of Captain Alexander Gordon, the only Edgehill Battle commemoration.

The Church interior is an interesting mix of styles and ages with some original sturdy Norman pillars and the font, for it was the Church of the Benedictine monks of nearby Prieux Priory.

The vestry - an interesting survival, was a Chantry Chapel, housing the priest above it in the oldest house in the village. A simple altar is set into its upstairs east window. Another window looks onto the church altar. The room has a fireplace, a wonderful old oak door and a loo!

Karen showed us old repaired and refreshed church needlework and the beautiful Parish map illustrating important parts of the village, its wildlife and history. Alec Newman displayed photos, historical items and Heritage Group village history research <http://www.warmingtonheritage.com>.





Liz Newman gave us a short history of the village augmented with further details as we walked about. Villages in this area are built of the local Horton stone, thatched or roofed with stone slates. Warmington was recorded in Domesday and then given by the Earls of Warwick to the Norman Prioux Monastery.

Southam RDC's Council Houses, built in the 1950s uncovered what Liz believes were the remains of this

Priory, but it was not properly excavated or recorded. The Elizabethan Manor House overlooking the pond is relatively unchanged. Liz believes the Green, once much bigger, stretching downhill and back up to the Church and Priory, was laid out by the monks as a market place. Commoners still used it in the 1960s.

We saw the surprisingly formal Manor Gardens and finally, as the sun emerged, we headed for the Georgian Springfield House for a splendid afternoon tea and to look round its cottage gardens.

Next event: **Saturday 29<sup>th</sup> September** at 3pm - Members' visit to Chedham's Yard.



## Harbury Women's Institute

Jeanne Beaumont

At the July meeting, Ann wished everybody a pleasant and sun-filled summer break and I think she hit her target. This was a full meeting with ten visitors.

We had a very successful coffee morning in June. The 140 W.Is in Warwickshire have been joining the celebrations leading up to the Olympics by staging their own relays. They have been passing the special pennant made for the occasion and also holding inter-W.I. competitions in various sports and activities. Jo and Rosemary came fourth in the finals of the croquet and table tennis.

As we were holding our coffee morning, we decided to hand on the baton from



Anne Jakeway of Southam to Jean Abrahams of Harbury, who then presented the baton to Christine Smith of Radford Semele at the Church lych gate. Everything of course was red, white and blue. They all joined us at the very pleasant coffee morning. Thanks to everybody.

The Garden Party on 17th July at the home of Ann Mayer was excellent. The weather was perfect as was the marquee and garden. The refreshments were most enjoyable including the wine. We presented Ann with a lovely rose bush to thank her for her hard work as president, for holding the Garden Party at her home and also for her special birthday.

Our guest speaker this month was Sharon Hancock who gave a very moving talk on the Harbury War Memorial at the Church. Thirty three men from the village were killed in the 1914-1918 War and ten in the 1939-1945 War. Sharon has really researched the names on the memorial as well as the history in the two wars.

There were some familiar names and some of their relations were with us. It was very moving and some tears were shed. Sharon must have been very moved collecting the information. We thank her so much and hope that she will inform other villagers.

Next Meeting: 13th September, 7.45pm in the Tom Hauley Room – “Magistrates in the Community”.



## Harbury Theatre Group

**Keith Hayes**

It's that time again. Time to get our November production off the ground.

Traditionally this should be a pantomime as it will be two years since our last one and I had taken several on holiday with me to read.

However, democracy is a great thing and, following a suggestion from Jo Banbury there has been a ground swell of opinion that we should throw caution to the wind and look seriously at the “Wizard of Oz”! Yes, you did read that correctly, we are thinking of doing a musical!

Now we have done a musical before, in fact I directed it myself (how many of you remember Murder in the Red Barn?), but I must admit that this sounded a bit ambitious to me.

However, we have a strong back stage team at the moment, and following a very jovial meeting they have all convinced me that we can stage it. It will be a challenge but it will be fun.

So the process is under way; the DVD of the film is being passed around and Lin and I have even been to London to see how the professionals do it, (very scary). We have had the first read through and we now have to see if we can cast it.

This is where you all come in. This show doesn't have many main parts, 6 or 7 at most, but it does have lots of minor roles and walk on parts. All of these will be required to join in the many chorus numbers.

So, how about it? How many of you fancy taking part? You don't need to be great actors or singers, you only have to be enthusiastic and committed to doing your best. In return I think I can promise some fun evenings at rehearsals plus a great sense of achievement if we manage to pull this off.

We will also need a lot of Munchkins so there will be opportunities for the children as well.

So, what do you do now you ask? Well first a few details. The show itself will be on 22<sup>nd</sup>, 23<sup>rd</sup> and 24<sup>th</sup> November. The previous weekend (17<sup>th</sup> and 18<sup>th</sup>) will be a busy one and we will have major rehearsals on the Monday and Tuesday of 19<sup>th</sup> and 20<sup>th</sup>.

Rehearsals will actually start in early September and will probably be on a Sunday evening. However, this is still to be confirmed. We do understand, of course, that not everybody can get to every rehearsal. All we ask is that you try very hard to get to as many as possible. This is a **team** game and missing players do cause problems for those who are there.

Right, now that you are burning with enthusiasm, or if you have children who would like to have a go, email me on keith.hayes@which.net or phone me on 613488. We will gather the names together and fit in who we can. Let the fun begin.



## Folk Club

**Ted & Sue Crum**

Folk Club No. 332: Theme: "(S)he loves me, (S)he loves me not".

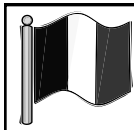
Dodging showers has become a national sport this year and, as we picked our way through the puddles in the car park, we looked forward to our monthly inhalation of folk with fine anticipation. We were not disappointed. Bang on 8.00pm, your scribe started the proceedings with "The Girl I left Behind Me", and then was joined by Sue to sing "Oh No John". Rik accompanied himself on concertina singing "The Apprentice Boy" and gave us a *capella* version of "The Youthful Lover". Terry sang an Australian song called "The Banks of The Reedy Lagoon", then produced a set of pan pipes on which he gave a fine performance of a set of old dance tunes. Liz Bones took the stage to sing "By the Roving of her Eye", properly accompanied by Peter on his beloved Taylor guitar. He followed this with his now legendary version of "The Wild Mounting Time". Pete Grassby pitched in with "Daisy Lady", a tribute to the late lamented Dave Bennett, and his interpretation of the Bonny Raitt number "I Can't Make you Love Me if You Don't". Janny, in the absence of Maureen (who was on Grandma duty), unshipped the

concertina and played Will Atkinson's tune "93 Not Out". John Rowan, (just back from Belgium where he had been on Grandad duty), sang a Canadian logger's love song and finished the half with a song from 1890s Ireland, "Dawning of the Day".

The Folk Club Choir began the second half with "Early One Morning", "O Makunde", and "Afton Water". Pete Mason gave us songs from Jez Lowe and Steve Knightley before Des strode purposefully to the stage to deliver the plaintive "Will you Walk with Me" and the definitely non-plaintive "Bold Sir John" to the delight of the Harbury Harmony Engine. A newcomer, Mick Bisiker, then produced a super performance of "The Green Mossy Banks of the Dee" and a self-penned song inspired by the Irish troubles, "Both Ends of the Street". Peter McDonald sang Ralph McTell's song "Naomi" and Alan Taylor's "The Rose and the Briar". Ian and Sue finished the second half with "I Don't Believe You Met my Baby", and "I Was Born in West Virginia" with Sue on concertina.

The raffle produced the extraordinary spectacle of one person having three successive winning tickets drawn: there is a stewards' inquiry meeting as I write because we want to know how he managed it since he drew two of them himself!!

In a busy third half, your scribe began with "Have some Madeira, my Dear", Peter Mason returned with "Wings", and Des descended to the swamp with the "Hippopotamus Song". Terry fired up his amazing panpipes again with three traditional tunes, and Mick sang "Blow the Candles Out". Peter McDonald and Margaret gave a fine performance of "Lover's Heart". Pete Grassby closed proceedings with "The £40 Wedding", and was moved to remark what an ocean of talent we have turning up every first Thursday to sing and play, which from someone who attends so many folk events is praise indeed. The raffle raised £57 which has made its way to the Motor Neurone Association. Next month's theme will be "Crime and Criminality".



**Harbury Twinning Association**

**Tony Thomas**

Bastille Day, the 14<sup>th</sup> July, is a National Holiday in France to commemorate the storming of the Bastille prison in 1790. Although the prison only contained seven prisoners at the time of its capture, the storming of the prison was a symbol of liberty and the start of the fight against the absolute power of the kings and the establishment of a republic.

So on Saturday July 14<sup>th</sup>, as a tribute to our friends in Samois-sur-Seine, we celebrated Bastille Day with a safari supper hosted by members of the Association. During that evening approximately 30 members could be seen walking to the designated locations for aperitifs, main course, cheese course and finally dessert and coffee. A big thank you must go to all those who were

involved; organising, hosting and catering, for making the evening a most enjoyable success.

August, being holiday time, is the only month in the year when the members of the Association do not gather for one of their regular social functions.



**Harbury RFC**

**Rugby Football Club**

**Jerry Birkbeck**

## **Recent Improvements**

As a part of our RFU Club Accreditation we had to prepare a Development Plan. This was originally set out in 2009 following a survey of our full membership – Senior, Junior, Mini and Social Members. Although only requiring a 3 year Plan it was decided that a more long term arrangement was more worthwhile. We therefore prepared a plan that covers the period 2009-2020.

## **Why the need for a Plan?**

In order to develop an organisation – be it a club or a business then the need to have some objectives set out and how and when they can be achieved, and at what cost, is essential. We found the process time consuming but it has enabled us to have a clear vision for the future. It covers the playing, administration and facilities that we feel will be needed over the next few years.

## **Where are we now?**

Midway through 2012 we reviewed our progress to date and we have achieved most of the projects that we set out. These included:

- An improved entrance from Middle Road
- An extension to the car park to minimise any car parking on Middle Road
- The drainage and subsequent improvement to our two back pitches
- The installation of a lift for the disabled and infirm
- Gym upgrade

The lift installation was a project driven by Steve Kittendorf, one of our club members, with support from Paul Winchester who raised £3,000 with his quiz nights. Our funding also came from Southam Vision, Stratford Community Development Fund and the Big Lottery.

We were keen to ensure that anyone who is infirm or has difficulty in climbing stairs and has been unable to attend our many events at the Club could now do so.

The project was completed towards the end of March 2012. It has and will continue to enable us to hold events for the community and make more use of the Clubroom for social and village activities. We have also undertaken a revamp of the gym, with support from Joe Greenwell, to the list of project/improvements already made.

### **Where next?**

Our next major project is completing the drainage for the 1<sup>st</sup> XV pitch and training area. If we are to coach and develop player skills, then a well drained surface is essential. The floodlit training area is not only used by the rugby club but also Harbury Albion during the winter. Heavy rain and regular use places a premium on the effectiveness of the area.

We are looking at funding opportunities with the RFU and Sport England. If we are able to raise the funds, then the 1<sup>st</sup> XV pitch would be out of use for nearly a season. However, the improvements to the back field would make both pitches available for Senior and Junior and Mini Rugby.

The improvements would significantly enhance the quality of the remaining playing surfaces in line with the recently enhanced back pitches. It would ensure that both rugby and football training could continue unimpeded during the winter. Moreover, the quality of the outfield would be of benefit to the cricket club.

For the future, we have a proposal to construct a new enlarged gymnasium with physio room, along with a balcony at the front of the Clubhouse looking out on the first team pitch and cricket square.

### **In the meantime!**

Training has recently commenced on Tuesdays and Thursdays under the direction of our Director of Rugby Hendry Rheeders.

The annual Paddy Festival (in the memory of Alan Padbury who died of cancer in his early 30's) is to be held on Saturday 25<sup>th</sup> August with Long Buckby, Shipston and Southam Clubs attending.

The 2012-13 season commences on 8<sup>th</sup> September with the 1st XV at Home to Atherstone in a Midlands 4 West (South) League Fixture, KO 3.00pm. All welcome to all our fixtures with details posted on the information board outside the Clubhouse.

<b>BOOKINGS FOR</b>				
<b>SCOUT HUT</b>	<b>TOM HAULEY ROOM</b>	<b>THR COFFEE MORNINGS</b>	<b>VILLAGE HALL</b>	<b>VILLAGE CLUB CONCERT ROOM</b>
Debbie Dimmock Tel: 612036 debbie@dimmock.org.uk	Sally Stringer Tel: 613214 sal.47@hotmail.co.uk	Sally Stringer Tel: 613214 sal.47@hotmail.co.uk	Celia Neill Tel: 612819 harburyvillagehall@googlemail.com	Tel: 612498 (evenings) harburyvillageclub@hotmail.co.uk



## Harbury Tennis Club

**Colin and Sue Mercer**

**[www.tennis-today.net/harbury](http://www.tennis-today.net/harbury)**



July has been the social month for the Club starting with an excellent Strawberry Tournament on a dull overcast evening. That was more than compensated for by some excellent tennis and some very tasty strawberries and lashings of cream! After the round Robin stage the final was won by Colin Abrahams and

Steve Fitzgerald who overcame Eira Owen and Robert Stockdale. That event was followed on the following Sunday with a Wimbledon get together to watch Andy Murray's efforts against Roger Federer in the men's singles final. It was a rare warm and sunny afternoon and the disappointment of the result was to a certain extent overcome by plenty of food, Pimms and wine!

On the playing front, moving into the second half of the season Harbury leapfrogged previously unbeaten Banbury West End "D" to claim top spot in Division 5 of the Banbury League. Regulars Caroline Morland and Sue Mercer were joined by Sarah Bunting who made her debut for the Club. Geoff Prince, Steve Stark and Colin Mercer were all in good form winning all three of the men's doubles which contributed to a convincing 7-2 win.

### **Harbury Tennis Club Junior Championships 2012**

Delighted to report that the rain stayed away and the smiles came out in force at the inaugural Harbury Junior Championships on Saturday 14<sup>th</sup> July.

Over twenty Harbury Tennis Club juniors aged 7 to 12, competed in four age categories in a high quality morning of tennis excellently organized by Sarah Bunting. For several children this was their first time in a competitive event and there were some very close matches played in great spirit. All juniors played a round robin format which saw 39 matches completed through the morning.

In the Mini-Red (8 years and under), seven children contested the round robin with Rhys Bennett and Jamie Smith making it through to the final. As Jamie took the Mini Red title 10-7, one of the senior club players commented, "These 7 year olds have better backhands than me!"





Eight children took part in the hotly contested Mini-Orange (9 years and under) with several matches going to the full 3 sets. The eventual winner was Tana Taikato over Edward Lockley 5-7 7-5 7-2 in a tight game full of strong shots from both players. A special mention to Edward for being so genuinely gracious in defeat – setting a great example for us all.



Ten-year-old Thomas English took the Mini-Green title (10 years and under) without dropping a game, before going on to also compete solidly in the Under 12's event.

Finally, four players competed on the full court in the Under 12's with many long matches and great rallies. The eventual winner was Chris Simmons who was undefeated to take out the Under 12's title.

Everyone watching was impressed by the strong level of play throughout all the junior age groups which stands Harbury in good stead for the future. Harbury are always looking for more players – if you are interested, please contact Sue Mercer –

01926 613284 or email: [sucol-mercer@tiscali.co.uk](mailto:sucol-mercer@tiscali.co.uk)



## Guides And Scout Group News

**Jim Ward**

Good news! After much recruitment activity over the last twelve months our requests for volunteers have been answered and we've had a number of people come forward to take up the various roles.

At our AGM back in April the GASS committee of Mark Clifton (Chair), Rachel Brown (Treasurer), Caroline Hill and Rob Cooper said their good-byes. They have been a brilliant committee, successfully combining their talents to succeed in raising lots of funds from the events that we do, plus also completing numerous jobs in the Scout Hut. Together they've made a great



team which is probably why they've really enjoyed their time doing it. Many thanks from us all for everything, it's much appreciated.

Perhaps the mark of a successful committee is the ability to replace itself, and so welcome to our new GASS team led by John Kirk (Chair), Susan Wood (Treasurer), Corinna Butler and Debbie Dimmock. The hand-over has been seamless, and with the first event (Beer Festival) already on the horizon there has been plenty for the new team to get to grips with. We wish them luck, and hope they get as much out of the experience too.

As well as GASS changes, some of our Leaders have stood down. The Barretts (June, Ted and Mike) have been running Cubs for some years – it's been a rather unique 'family affair' of Mike's youthful energy and enthusiasm, Ted's patience and quiet dedication, and June's terrific experience, organisation and leadership. Another winning combination that has given so much to Cubs and the group overall. There was a presentation on their last Cub night to say farewell and thank you, and we wish them luck in their new roles within the County Scout organisation. Thankfully for the section, Isobel Clarke and Richard Bloxham, who have provided such terrific support over many years, have agreed to stay which will be invaluable for continuity and help for the changed team. So, from September there will be new Leaders in place and we are most grateful to Paul and Jacqui Quinney, Matt Watson and Sally Barlow for stepping up to the mark, and we wish them all the best with it.

Scouts is the other section that is seeing people move. Nick Green who has led with John Rea in recent years departed at the end of the term. Like many volunteers, Nick was unsure how things would work out when he joined, but the combination with John plus Andy Hunt helping, has been very well balanced, and together they've delivered a great programme for their members. He also had a presentation on his last night to mark the occasion and of course thank him for all his efforts. To fill the gap Mark Clifton has 'transferred' from GASS, and Richard Tonge is now also involved, so we wish them luck too with running the group.

Quite a lot of change but the good news is that we have the injection of new people that will no doubt bring lots of energy and enthusiasm to the roles involved. We are grateful that the adults in Beavers and Guiding remain the same at the moment. Beavers continue to thrive under Emma Masefield and Hayley Bennett, plus they've recently invested Katy Spencer Hammon to the team so we wish her well in the role. Guiding is flourishing with a particular expansion in the number of Guides under the leadership of Jane Minchin and Nicky Kirk. The experienced hands of Fiona Cole and Bobbie Sharpe continues to ensure that Brownies and Rainbows is as popular as ever, and although they are grateful for the help they get in running the sections, they could always do with more!

Best wishes for a happy and hopefully sunny summer holidays. It's been another brilliant year with our members doing fantastic things, some of which

you've heard about through the Harbury News, and a lot of which can only happen within the Scouts and Guides organisation. Despite the challenge of change we still have a wonderful group of Leaders, assistants, helpers and GASS committee people, without whom none of this would be possible, and indeed we wouldn't have a group at all! Many thanks to all of them for their hard work during the year in making our group such a lively and active one.



## Harbury Pre-School

Staff & Committee

Well, what a busy time we have had at Pre-School during the last three weeks of the summer term!



**Buildings:** During July, we looked at different types of buildings. The role play area became a site office, with plans, clipboards, hard hats and tools. The children drew up plans for buildings, discussed them with clients on the phone, then donned their hard hats and prepared to build using small scale blocks and lego indoors and large blocks outside. In the creative area,

they made their own buildings out of cartons, selecting their own resources to make chimneys, windows and doors.

**Drama:** Later, the wooden blocks were used to build a stage, and the children enjoyed dressing up in their favourite costumes to perform song and dance routines, magic tricks and acrobatics, to an enthusiastic audience. Tickets were issued for each performance with many being a sell-out!



**Garden:** The plants in the garden areas of the outdoor classroom continued to grow and the children have been harvesting the first of their vegetables. They particularly enjoyed being able to make observational pictures of the strawberries and peas before tasting these at circle time.

**Olympic Physical Challenge:** Making the most of what dry weather we had, the children's physical skills were put to the test as they each completed our Olympic Physical Challenge. After displaying many



physical skills including standing jumps, throwing challenges and walking along balancing beams, they were each awarded a special certificate and their own Olympic medal (which they had created themselves) at our award ceremony.

**School Visit:** To give the Pre-schoolers a taste of what to expect in Primary School they

were invited to spend time with their teachers in the Reception classes at school. After exploring the classrooms, they joined the school children in the playground at their break time, and were made to feel very welcome.

**Puppy visit:** Some of the children were lucky enough to be invited to visit Bud's 10 guide dog puppies. They were able to watch them playing with one another and many children also carefully stroked or held a puppy. Thanks to Bud and Tony for allowing us to visit their extended family!



**Farewells:** We have now said our very sad farewells to Annie, who is emigrating to Australia with her family and to our older children who will be starting at Primary School in September. However, April, Amy, Archie, Charles, Chloe, Emma, Jack, Jake, James, Lacey, Lola, Lucy, Margaux, Martha, Matthew, Nicholas, Sam, Sienna and Wilbur are now confident individuals who we are sure will enjoy their new adventure and we wish them well in this very important step in their young lives.

**And Finally .....** We would like to say a huge **"Thank You"** to all the parents for their wonderful words of thanks, cards and gifts to all the staff. We look forward to starting the new term on Tuesday 4<sup>th</sup> September. **Have a happy summer!**

If anyone would like further information about Harbury Pre-School, please e-mail [enquiries@harburypre-school.org.uk](mailto:enquiries@harburypre-school.org.uk). The web site can be found at [www.harburypre-school.org.uk](http://www.harburypre-school.org.uk).



Windmills Nursery is situated in the grounds of Harbury Primary School and has the benefit of its own Forest School and qualified Forest School Leader. We are open all day between school hours and take children from the age of two years. If you would like to register a place for your child you can email us at [info@windmillsnursery.co.uk](mailto:info@windmillsnursery.co.uk), visit our website at [www.windmillsnursery.co.uk](http://www.windmillsnursery.co.uk), call Tina/Sally on 07906 519148 (nursery mobile) or Katharine on 01926 613084 (admin). We have free Nursery Funded places available (including afternoons from Sept 2012) and we also accept childcare vouchers and offer an Assisted Places Scheme.

### **Events in Nursery**

The end of term saw a multitude of events in Nursery ending in a special Celebration Week for all the children. The Maharaja's Ball organised by Windmills Nursery raised £1000 for the nursery and was a fantastic evening; thank you to the fundraising group for all their efforts and to everyone who came along or donated raffle prizes.

The children have continued to enjoy curriculum enriched activities such as French and Forest School where they became minibeast detectives. July saw the last ever Toddlers' Service and the children from Windmills Nursery presented Mrs Bedford and Mrs Thistlethwaite with a lovely thank you picture. There was also a parent's evening in Nursery which was very well attended by the parents.



### **Celebration Week**



A fun-filled last week of term included some special activities for the children. They had a go at making crowns and decorating cakes, there was a special visit from Mrs Houghton's rabbit and a mini sports day on the school field which included medals and the highlight was the end of year party. All the children received a present from Windmills Nursery on their last day.



### **Transition to School, Windmills Memories and Farewells**

Those children starting primary school in September began their transition to school. The Harbury reception teachers Miss Maher and Mrs Rea have already visited Windmills Nursery and the children starting there had two visits in July to their new classroom, one with Windmills staff and one with their parents.

#### ***What do you like about Windmills Nursery?***

George – “I like building with the bricks and playing with Charlie”.

Max – “I like making fireman squirters and building with the Duplo. I like stories as well”.

Evelyn – “I like playing with my friends. I like Forest School”.

Audrey – “I like drawing. I like splashing in the water outside. I like painting letters and playing with the farm. I like going into school to the assemblies”.

Daniel – “I like going on the computer. I like playing with Charlie”.

Charlie – “I like building doggy kennels with the bricks. I like playing tennis with James. - I like hitting the ball high”.

Lily – “I like playing with Evelyn and Chloe. I like sticking and French”.

Madison – “I like playing with the babies and playing on the bikes on the playground. I like playing with the parachute on the school field”.

Riley – “I like going outside on the bikes. I like writing and colouring. I like all my teachers”.

Lacey – “I’m a good girl and I like tidying up and I do it all day. I like animals, dressing up and the babies and that’s the end”.

Freddie – “I like the parties. I like playing with the animals and making houses for the babies. I like running on the school field and getting a medal”.

Isla – “I like writing letters and I like building dens in Forest School”.



Bayley – “I like playing with the cars. I like playing with Charlie and Daniel. I like playing on the bikes and when we play football”.

Sadly we say goodbye to George, Max, Evelyn, Audrey, Daniel, Charlie, Lily, Madison, Riley, Lacey, Freddie, Isla, Bayley, Emily

and Laura and we wish them well at primary school and beyond. Some of these children have been at Windmills Nursery since they were two years old and we will miss them all. The school leavers were each presented with a special certificate from Windmills Nursery.

Finally a big thank you from all the staff for the wonderful cards and presents they received from Windmills parents and children.



Windmills Nursery is closed over the summer holidays and will reopen on Tuesday 4<sup>th</sup> September at 9.05am.

There will be an open afternoon on Monday 17<sup>th</sup> September, 1.30pm-2.30pm. Prospective parents are welcome to bring their children and have a look around Windmills Nursery School.



## Harbury Primary School

**Denis Daly**

**New Beginnings** – While today sees the start of a holiday for most of us, it is the start of a new era in the lives of the children in Year 6, who transfer to Secondary education in September. They have been an excellent year group, and many of the children have achieved very high standards in a range of activities. We wish them all the very best for the future, and hope that their time at their new school is a happy and successful one.

A number of our “long established” families also leave us today as their youngest child leaves the school. We wish these families every happiness for the future and hope that they will be able to look back with fond memories on their association with the school.

**PTA** – We are incredibly lucky at this school to have such a magnificent PTA. This has been one of their busiest periods of the year, with the Beer Walk and the Summer Fayre among the highlights. Despite the weather, I understand that a profit of around £1,700 was made at the Summer Fayre – a wonderful achievement on such a dreadful day weather-wise and a fitting reward for all of the work that went in to organising the event. Well done, and thanks everyone.

**Thanks** – As the school year draws to a close, now is the time to say “Thank You” to all those people, far too many to mention, who have helped in any way over the past year. Your efforts and your commitment to the school are fully appreciated by all the staff. **MANY THANKS.**

**Miss Maher** – We will have a new name on the staff in September, as Miss Maher is getting married during the summer holidays! We wish Mr and Mrs Nalci all the very best for their future together.

**And Finally.....** – On behalf of Mrs Rathbone and myself, I would like to thank everyone involved for such a wonderful send-off over recent days and for all the presents and cards that have been given to us. The staff organised an after-school party for us on Tuesday, inviting friends and former colleagues, and then we had a really moving assembly this morning. Harbury Primary School is a special place, and will hold very special memories for both of us – it has been a real privilege to have worked among such a lovely community – our magnificent children, of whom we as a school are so proud, our really supportive parents and all in the wider community who help and support the school in so many ways. We would also like to given a special mention to all of the staff who work at the school, both teaching and non-teaching – we both agree that throughout our careers, they have been the most talented, committed, professional and friendliest team that it has been our pleasure to have worked with.

We thank everyone for their help, encouragement and support over the years and wish everyone the very best for the future.



**Harbury Primary School P.T.A.**

**PTA Committee**

Have a great summer – the new term starts on **Tuesday 4<sup>th</sup> September** at 9.00 am.

This year's Summer Fayre was a huge success despite the weather, with over £1700 raised. The majority of the Fayre was held indoors but some were brave enough to dodge the showers with the playground activities. We would like to thank all of the parents who helped, the teachers for clearing their classrooms and all those that spent their money!

The lucky winners of all events and prizes are shown overleaf:

**Aunt Sally:**

5 – 8yrs      Thomas Mallard  
 9 – 13yrs    Josh Savage  
 14 – 17yrs   No winner  
 18+          Phil Heatherington

**Football shootout:**

Infants - Ben Holding  
 Juniors – Riley Birch  
 Seniors – David Ford

**Raffle Boxes:**

Yellow      Jacqui Quinney  
 Red          Eli Priest  
 Blue        Gil Guilford  
 Orange     Lyn Edwards

Black – Len  
 White – Julie Taylor  
 Green – Millie

**Teddy Bear name:** (Moorcroft)

Ruby Young

**Treasure Hunt:** (Square number 100)

Ryan Bradford

**Colouring Competition**

Kaia Taikato

**The 100 club draw:**

Summer Fayre week:

Two lucky winners won £50 each: Julie Young (7) and Helen Edwards (58)

The last assembly: Two lucky winners won £50 each: Joley Craig (90), and Sally Stringer (65)

**Village Hall Update**

**Chris Finch**

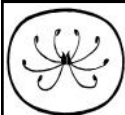
August is always the quietest month for bookings at the Village Hall and this year is no exception, but perhaps the fortnight during the Olympics has meant that everyone is focusing on the expected excitement of watching – or even attending the non-stop events in London and elsewhere? Several of the regular hirers will be turning up as usual, including the Monday badminton group, Cactus Jam (who practise their music) and the Zumba fitness group, whilst Southam Children's Centre are organising an activity session in the Hall and on the playing fields.

On the fund-raising front, the committee held a coffee morning at the end of July and are starting to plan their contribution to the annual CAMRA Beer Festival in collaboration with members of the GASS committee. There's always room for volunteers who might enjoy producing bacon butties, hot dogs, and ploughman's lunches on Friday night and all day Saturday, so if anyone would enjoy the challenge of catering to the assembled real ale



experts, please contact Geoff on 613801; geoffthorpe49@hotmail.co.uk or John Kirk on 614316; John.ekirk@btopenworld.com in the near future.

The theme for this year's Festival is Ale at Sea, inspired by the anniversary of the sinking of the Titanic, so all the names of the beers have some connection with the sea - a type of ship, a famous sea captain or even a well-known meteorological phenomenon!? It's amazing how each year the CAMRA committee manage to find approx. 60 beers and ciders, selected from all over the country, including representatives from all the Warwickshire breweries, which manage to mirror the chosen theme for their annual event. Someone obviously puts in a lot of research and maybe tasting (?) to come up with such an impressive range. The CAMRA Festival is on August 31<sup>st</sup> from 5.30-11.30pm and on Saturday Sept. 1<sup>st</sup> from 11.30-4.00pm and 6.00-11.30pm. Hereburgh Morris Dancers always provide entertainment during the Saturday lunch-time session and 'Time after Time', a local duo, play a mix of Irish songs and hits from the Sixties in the evening. It only costs £10.00 to get in at all sessions, which includes a special Festival glass, programme and beer tokens, so it's a value-for-money event with the entertainment 'thrown in'. The weather should not be mentioned, BUT it's always been good for the Festival – fingers crossed for this year!?



**Horticultural Society**

**Judy Morral**

Our second day trip on 11<sup>th</sup> July was another success despite the weather!! We started off in lovely sunshine and when we arrived at the Cotswold Wildlife Park it was still shining. There was a heavy shower in the morning but it didn't spoil things. The exotic planting is just fantastic, huge bananas, tree ferns, bamboos and palms which were so like a Cornish garden. The curator of the gardens is Tim Miles who is from Falmouth and has worked at my very favourite garden The Lost Gardens of Heligan and has such talent. The lovely border plants were at their best and by the giraffes and zebras the huge island beds of grasses and other exotic plants formed an amazing backdrop.

The animals were cute too, especially the meerkats and penguins. The coachloads of children were so interested in all the animals it was a joy to watch. The giraffes had a baby who was at least five feet tall but so cute. The huge tortoises too were a fantastic sight, one of them made a very nasty noise as the other one was in the way - I wouldn't like to upset them!!! We didn't see the lemurs but all who did said they were worth watching and there were babies too.

I can certainly recommend a visit and it is apparently quite spectacular in September when all of the plants reach their peak. After a nice lunch we moved on to Buscot Park, only about 20 minutes away. It rained as we got there but eased off and we were able to enjoy some stunning deep border

planting in the walled garden. It is called the Four Seasons Walled Garden and you can see why. The day lilies were a sight as were the huge catalpa trees (Indian bean trees) and the planting was just so colourful and very clever. Whoever was in charge has a wonderful eye for detail and colour and is to be applauded.

A walk up the terraces revealed 18 terracotta soldiers, life size too, most unexpected. The views all round were spectacular, something to see from any angle. Huge swathes of trees and lovely walks by water features. We didn't manage all of the walks but did sit in the swinging garden, the swinging seats were all occupied but we did find alternative seating. At this point it started to thunder so we decided to make for the house and shelter. The storm passed over but not before it deposited some huge hailstones.

I did like the house but couldn't believe that the furniture was not protected by blinds. Someone at Upton told me later that Lord Faringdon who looks after the property on behalf of the National Trust is not a bit bothered by fading, saying that he won't be around when it does!!!! A superb Rembrandt portrait took my breath away. I am not a fan of either Burne-Jones or Rossetti but their portraits were very eye catching, it is those bee sting lips and masses of hair that put me off!!!

The tea was excellent and we eventually left about 5.45pm and got back to Harbury at 7.00pm. Another property I would like to visit again sometime. As ever our driver Martin from Cheney Travel was his usual courteous and helpful self. I always send thank you notes to the places visited and to Cheney Travel on behalf of the Society as I'm sure you agree that it is nice to do so, especially when a good time has been enjoyed by all. Here's to the trips next year.

I am battling away to organise the speakers for 2012/13, no easy task as the speakers I have asked on particular months cannot sometimes make the dates given so I think I am at Plan H at present with three confirmed and four more to go. Watch this space!!

On the way to Cornwall a few weeks ago we stopped off at Rosemoor RHS gardens in Torrington North Devon. There was a rose festival on but it was the planting that I went to see and the superb walled kitchen gardens. The vegetables and fruit were a delight. There was one bed consisting of all sorts of lettuce and displayed in the shape of the Union Jack - quite a sight. If you are ever in the vicinity it is well worth a visit and if you are in the RHS you get in for free.

I have mentioned before about Hardy Exotics near Penzance, again if you are near pay Julie and Clive a visit. They both work so very hard and you can get exotics that will stand our Midlands climate; all plants have a star rating which will tell you if suitable. The show gardens are full with echiums, palms, bamboos, huge phormiums and bottle brush plants and so much more. I never come away from there empty handed and this year was no exception!!

Could be worse - I could have gone somewhere else and bought another Radley handbag!!

Do visit Ryton Gardens this month on Saturday 18<sup>th</sup> August; there will be a chilli day.... all things hot and exotic and tasting etc. It is on from 10.00am to 4.00pm. Then, on Tuesday 21<sup>st</sup> there will be a tour of the garden with the Head Gardener followed by tea/coffee and a scone. Places limited so contact to book in advance on 02476 313517. Ragley Hall near Alcester and Coughton Court also near Alcester both have stunning gardens that look good in August.

Don't forget to pay a visit to Bridge Nurseries and say Hello to Christine; her plants are such good value and you can enjoy refreshments too. Avondale Nurseries at Russell's Nurseries Mill Hill Baginton are also a delight. A vast array of flowers and ornamental grasses, a technicolour rainbow. Do go along and explore open every day. Lastly don't forget to visit us at Upton House and Gardens, lots happening in the House and Gardens in August. On some Sundays, Doreen my fellow volunteer and I have volunteered to serve Pimm's on the Terrace, no hardship at all!!!!

Have a good August; as I write this it is sweltering, not a word I have used at all this so called Summer - long may it continue. Enjoy.



## Nature Notes

**John Hancock**

Good summer weather has arrived this week (I am writing on Monday 23<sup>rd</sup> July). There is not a cloud in the sky and the temperature has risen to 26C. This comes as a great contrast to earlier in the month when heavy downpours and cool conditions proved taxing for insect feeders such as swallows and also caused a delay in the emergence of butterflies. A final meeting of David Brown's Lepidoptera Group on 2<sup>nd</sup> July should have been a stroll through Ryton Woods looking for White Admiral butterflies and perhaps the even rarer Purple Emperor. It was a washout so we settled for lunch in the Three Horseshoes at Princethorpe and a look through David's moth trap from the night before. Cycling home through the wet Warwickshire lanes, the frothy white flowers of Meadowsweet brightened the roadside verges.

I determined to break out on the first fine day and look at pastures new. So, on July 5<sup>th</sup> I drove to Rutland Water, a reservoir with a 25 mile circumference which would make an excellent cycle ride in the future. My goals were two nature reserves on the local limestone. The first was at Collyweston (OS sheet 142. TF 004038) where the hill above the River Welland had been quarried for roofing stone, similar to that in the Cotswolds. The quarry, really a series of shallow pits, was now covered in springy turf. Lots of Common Rockrose and Bird's Foot Trefoil were to be seen.

After an extensive search I found just two Pyramidal Orchids though the book I was using, (*Orchids of Britain and Ireland* by Anne and Simon Harrap), stated that they were abundant. This is typical of orchid species in general; in some years, at a particular site, it is difficult to avoid treading on them and the following year they can be counted on the fingers of one hand.

Cycling via Easton-on-the-Hill, I joined a superb arrow straight bridleway (was it on the line of a Roman road?) which took me over the A1 and into the outskirts of Stamford. It was then a simple ride along the northern boundary of Burghley Park to the village of Barnack and a National Nature Reserve of renown. Pyramidal Orchids were in profusion. Here the Jurassic limestone had been quarried to provide the stone for Ely and Peterborough Cathedrals. I met a botanist from Nottingham who directed me to a patch of Bee Orchids. He was searching for the Frog Orchid, a short (just a few inches tall), green flowered plant which is difficult to spot, blending in so well with its grassy environment. Despite a lot of crawling about, we were unable to find one. It would have been a first for me and as it is extinct in Warwickshire, another journey to Northamptonshire next year will be the thing to do. It's always best, if possible, to contact the warden of a site before making a long journey. They can advise on the best time to visit and may even be on hand to guide. Butterflies, Marbled White, Ringlet, and Meadow Brown abounded and made my visit worthwhile.

I did contact the warden of Clowes Wood Nature Reserve before taking a U3A Natural History Group there this morning. Ron Hill was most obliging and gave us an excellent two hour walk round his patch where he has worked with others for over 30 years. Clowes Wood and New Fallings Coppice, to give its full name, is an SSSI with a fascinating mosaic of trees, shrubs, ditches, streams, ponds, a small reclaimed meadow and a remnant of heath. It is some 5 miles south of Solihull with a car park on Wood Lane (OS sheet 139, SP101743). The name Clowes is probably from the French 'clos' meaning an enclosure. Oak, Silver Birch, Downy Birch, Holly, Aspen and Mountain Ash are common. Ron showed us one Wild Service tree and later a stand of Sweet Chestnut. Many woodland plants are quite insignificant in-as-much as their flowers are not showy. We found and tasted the leaves of Water-Pepper (*Polygonaceae hydropiper*), a native knotweed and therefore related to Japanese Knotweed which is said to be the most pernicious weed in Britain. Our small plant certainly had a burning peppery taste and must have been used as a condiment in times past. An immature Robin with its breast not yet red came hopping to within a few feet of our group seemingly without fear. Later we saw Jays and a Great Spotted Woodpecker. The leaves of Lily-of-the Valley were prominent and we tasted some Bilberries, not a common plant in our county now. The railway line from Leamington to Birmingham bisects the wood. It was clear felled in 1900 in preparation for the line being built in 1903. It was hard to believe that most of the trees around us were just 100 years old as they included mature looking Beech. The presence of the railway and the small risk of trees falling on the track mean a swathe of

land each side of the line has been cleared of standing timber. In fact this has proved a haven for wildlife. Honeysuckle, bramble and bracken vie with each other and the resultant warm, sheltered terrain has attracted warblers, butterflies and moths. Ron took us to look under three pieces of corrugated matting where grass snakes often lurk. There were none but a return visit in cooler conditions would be prudent.

In Hall Lane, against the wall opposite the paddock, I found a tall spike of the yellow flowered Wild Mignonette (*Reseda lutea*). Half a dozen full grown caterpillars were busily munching away at its flowers and leaves. They had a familiar look; I'd met them before doing the same to our brassicas. They were the larvae of the Large or Cabbage White butterfly. A book told me that eggs are sometimes laid on Mignonette. I hope you have some exciting wildlife discoveries in the coming months. If so I'd like to hear about them.



## General Section



### Harbury Art Group

We had a good turnout for our July workshop, with 13 people painting a scene of the estuary at Portmeirion in North Wales - a vast expanse of beach, trees in the background and some interesting buildings in the foreground. Some of us used acrylics and some used watercolour, and Nick demonstrated using acrylics. Again, we produced some lovely work, all different, and Norma H's work was voted to be the best this month.

Nick's next workshop is on 2<sup>nd</sup> August, and will be a pencil drawing session. Then on 6<sup>th</sup> September Nick will be doing an acrylic, gouache or pastel workshop with the theme 'Movement'. Harbury Art Group workshops cost £15 per day, which covers tuition, tea, coffee & biscuits - bring your own materials and packed lunch. The workshops are led by Nick Baldwin, a professional artist based in Banbury and we are always pleased to see new faces. We meet on the first Thursday of every month in the Tom Hauley Room behind Harbury Church, between 10am to 3pm. All levels of ability attend, from beginner to the more experienced. For more information about Harbury Art Group, please contact Pam on 01926 814923 or the tutor Nick on 01295 276465 or e-mail [harburyart@hotmail.com](mailto:harburyart@hotmail.com).

On Thursday 19<sup>th</sup> July we are having a 'social' painting day to supplement the monthly workshops with Nick. This will also be in the Tom Hauley room, 10am to 3pm, and is open to anyone who likes the idea of a relaxed day's painting in the company of like-minded people. The cost is £5 per person, and the theme for this first untutored session is 'Summer Holidays'. We hope to hold social painting days every month, and the next session is planned for

Thursday 23<sup>rd</sup> August with the theme 'Stones'. If you are interested in attending social painting days, or would like more information, please contact Pam on 01926 814923.

**Pam McConnell**



## **Harbury Ballroom Dancing Group**

It's time to put on your top hat and brush down your tails again. Annie's ballroom dance classes kick off on Wednesday, 19th September for five consecutive weeks at the Village Hall. There is an enthusiastic beginners group from 7.30pm to 8.30pm, with the rest of the troupe waltzing in later at 8pm to cha cha through to 9.30pm.

If you have ever dreamed of having a "strictly" moment on a well sprung floor, or been interested in working up a sweat with your partner in a Turkish towel, now's your chance. It's all very informal, so come along and join in the fun on Wednesday 19th September. Newcomers are most welcome.

For more information call Jo or Geoff on 613341 or email us at [jomulley@doctors.org.uk](mailto:jomulley@doctors.org.uk).

**Jo Marston**



## **Cold, wet and magnificent – Harbury Games 2012**

It may have been wet. It may have been cold but that did not deter the people of Harbury who took part in the second Harbury Games, competing for Olympic style medals in over 30 events.

This year we had seven teams – about 140 people of all ages and we saw great performances on the running track, in throwing events, Tug of war and lots more. We had some great performances in the dramatic department with Tantrum throwing reaching new heights and some great acts in the new "Harbury's got talent" event, won by Nicky and Paige with their Harbury pom pom rap.

Thanks to our many sponsors and to everyone who took part or bought raffle tickets and refreshments, we made over £1,400 for the Village Hall Development Fund.



Despite struggling to raise a full team just a week before the Games, the winning team was "Cana be bothered" with 166 points and 11 gold medals but there were some great successes for every team. For the record, here's the final medal table:

Place	Team	Gold	Silver	Bronze	Total	Points
1	Canabe bothered	11	9	7	27	166
2	Junior Football	8	4	4	16	150
3=	Perdo Inconcessus	5	7	5	17	135
3=	DoE	5	9	3	17	135
5	Rugby Club	6	7	6	19	133
6	Pirates	2	2	7	11	107
7	Twinning	1	1	7	9	105

Malcolm Tanner summed up feelings with these kind words:

"I am writing to say a big thank you once again from Harbury Junior football to all of you involved in organising the games. All of our team had a fantastic time and dare I say are looking forward to next year! I appreciate the amount of work involved but feel it was just as successful as last year, despite the conditions. I hope the Games will continue for not only are they enjoyable, but it is a great village event in which families can participate which doesn't often happen".



**Andrew Lawrence (on behalf of the organising group, chaired this year by Peter Walshe)**

## Movement 2 Music

The taster session for Movement 2 Music attracted 20 people and there were several more over 60's who had registered interest, but couldn't manage to make the first afternoon. The trainer from Kineton varied the movements from coordinated activities in the seated position to more energetic dance movements, so that there was something for everyone in which to get involved. Hopefully some of those who attended the session will provide feedback, so we know whether the balance for the 1 hour session appeals to the majority. As a result of the initial response, we have asked Geraldine to commence taking regular sessions in September on the 1<sup>st</sup>, 2<sup>nd</sup> and 3<sup>rd</sup> Thursdays of the month, as Thursday Club always provides an interesting

afternoon for Senior Citizens each fourth week. The dates for the diary in September will be 6<sup>th</sup>, 13<sup>th</sup>, and the 20<sup>th</sup>. The cost per session payable 'on the door' will be £2.50 and provided that all costs are covered, as they were by the attendees in July, we hope to make Movement 2 Music a regular activity on most weeks of the year.

**Chris (612305), Jackie (612750)**



## **Harbury Village Library and Biblio's Café**

### **Busy July**

The county art event in July was a boon to the cafe in particular. Visitors to the Harbury open studios became Biblio's customers, especially on each Saturday afternoon. It was very busy, and on more than one occasion there were parties perched on the cubes in the children's books area, awaiting a table.



Our expectations were exceeded by the fantastic turn-out for the official opening of the library and cafe, with many people who work during the week seizing the opportunity to finally visit the refurbished building. The sun was shining, the speeches were short and sweet, and the cakes and cool fruit punch were ideal refreshments. The level of support in the village for the library and cafe is incredibly encouraging, and this was enhanced further by the accolades from first-time visitors including author Celia Rees, MP Jeremy Wright, District Councillor Bob Stevens and the Head of Warwickshire Library Services, Ayub Khan.



Please take a look at the photo album on our Facebook page – you might see yourself on there!

### **Summer Hours**

With the electric fans gently whirring away, the building is pleasantly cool in this hot weather – perfect conditions to browse for books, relax over a coffee and meet up with friends.



In August, Biblio's will be open on the same days as usual (except Thursday afternoon) but at slightly later times: Wednesday, Thursday, Friday 10am-12.30pm.

The library hours are Monday 9am-6.30pm and Tuesday to Friday 9am-5pm. Our library is open more frequently and for longer hours than any of the other community libraries. This is a significant achievement and commitment from the library team, so please do support them by using the library and/or computers regularly.

### **Children's Summer Reading Challenge**

Do you enjoy reading a book when lying in the shade or sitting up a tree? Let your imagination be fired up this summer by participating in the national reading challenge. Visit the library and sign up. It is free!

### **Art Gallery**

Our curator Bill Davies, arranged for display boards to be mounted, and there are several very talented artists currently displaying their work including Libby January, Caius Dutton, Moira Lamont, Nick Baldwin and many others such as young photographer Bethany Conway. Please come in and view the gallery. You may even find yourself tempted to buy artwork for your home or office too....

Artists interested in exhibiting, will find all the relevant details on: [www.harburyvillagelibrary.org.uk](http://www.harburyvillagelibrary.org.uk)

**Antiques valuation – 18<sup>th</sup> September:** Put this date in your diary: Tuesday, 18<sup>th</sup> September 4pm-8pm as we have just confirmed that auctioneer Charles Hanson will value your antiques in the library. Biblio's will also be open. Look out for more details in the next issue of the Harbury & Ladbroke News.

### **Booking the cafe space for your meetings**

We are in the process of setting up the booking procedure and finalising rates. Please email Sarah at [hvlbookings@gmail.com](mailto:hvlbookings@gmail.com) with your enquiries.

### **Appreciation**

As ever, huge thanks are due to the teams who work so hard on Harbury's behalf in the library and Biblio's, and in baking the cakes. What makes it all worthwhile is that the community is so positive about this venture and is ensuring its success by using the facilities. We have really appreciated all your feedback and suggestions, and if you ever want to join any of the teams, please leave your contact details at the library desk or in Biblio's diary. The more the merrier!



**Lynn Macwhinnie**

## Directory of Businesses at Harbury Village Library

Harbury Village Library would like to make a directory of businesses which operate within Harbury. Many people would prefer to use a local business if possible.

The idea is to have a folder with each business having one sheet of A4 – single or double sided – which explains and advertises the business, giving contact details and so on. The folder would be readily available in the library.

At the moment, this would be a free service. Obviously, any small donation you would like to make towards the running of the library would be appreciated, but it is not a condition of inclusion.

If you would like your business to be advertised in this way, please bring a copy of your advert into the library. If you would prefer to have one of us draw up a sheet using the information you give us about your business, we can do that and submit it for your approval before putting that in the folder. This would attract a nominal charge of £1. Contact Chris Rutherford in the library or on [chris@harburyvillagelibrary.org.uk](mailto:chris@harburyvillagelibrary.org.uk).

**Chris Rutherford**



### The Duke of Edinburgh's Award

The twelve young people undertaking the Silver section of the Duke of Edinburgh's Award in Harbury have just completed a very challenging but highly rewarding three day expedition in the Shropshire Hills. The weather was atrocious for the early stages of their expedition, and coupled with many over-grown and often non-existent footpaths, they found their team-work and survival skills put to the test! They were required to walk approximately 15km a day, carrying everything they needed, camping at night and demonstrating good camp-craft skills (including cooking a good meal!)





The sun eventually came out for their final day, and they all successfully completed the expedition, with their Assessor commenting 'Overall an excellent expedition that exceeds the requirements of the silver award'. They should feel very proud of themselves and their achievement in such trying circumstances. The group leaders are certainly very proud of them!

These photographs show the two groups of six at varying stages of their expedition, in rain and shine!

They are now busy completing the other sections of their Silver award, with the majority of the group wanting to continue to the Gold award in the Autumn.

**Caroline Hill**



## Mount Kilimanjaro

After months of fundraising and anticipation, the time to go and take on this huge challenge finally came. On 8<sup>th</sup> July, I met with the rest of my group at Heathrow, most of whom I hadn't met before, and flew via Ethiopia to Kilimanjaro International Airport. After nearly 24 hours of travelling, we eventually made it to a hotel where we would stay before and after the climb and were greeted by the tour operators and ambassadors of Childreach International from the Tanzanian Office.

On our first full day, we went to visit the Uwa Primary School in the Kilimanjaro Region, one of 60 schools which has benefitted from the £1.4 million from Childreach in Tanzania. This was such a rewarding experience, and after a tour of the school's grounds and buildings we were able to spend a little time with the children. I found myself with the youngest children in the Kindergarten room where they are all totally baffled by cameras and we all came back with random photographs they'd taken themselves!



After this was their playtime and we encountered a rather large and violent game of football, whilst we held the skipping ropes for the younger girls. The charity has done amazing work here. They've built 16 toilets, renovated the kitchen and all 9 classrooms and constructed a rainwater tank with a capacity of 30,000 litres. Amongst other things this has increased the attendance to over 95% and exam results have improved significantly. After this visit we visited the local town Moshi for lunch and to buy souvenirs before relaxing and bracing ourselves for the 6 days ahead.



We started our climb at the Machame gate on the South West side of the mountain. The gate was at 1640m, so we were already higher than the peak of Ben Nevis! I was later told by our guides that the Machame Route is the most challenging route to take as it really tests your body's ability to cope with the altitude and we also completed it in a day less than most people do. We arrived at our lunch point half way through the day and were surprised at the novelty of table and chairs set out for 33 people and hot food! I think most of us thought this was unnecessary though a couple of days later it was complete luxury! This first day was short and steep and we arrived at the Machame Hut camp, at 2850m, long before tea time and experienced our first 'long drop' toilet or as most people preferred, the bushes.

The second day was my favourite day of walking, as we'd finally broken through the clouds and the views were phenomenal! We had taken this day a bit less seriously as it wasn't as much of an ascent and actually involved a bit of rock climbing! We arrived at Shira Camp, 3810m, overlooking the Shira Plateau much later than our guides had wanted and most of us had forgotten to apply suncream throughout the day and were looking a little red!

On our third day I really started to feel the altitude. From Shira Camp we took a gentle incline all the way up to Lava tower, at 4630m, a great pinnacle of rock as if it had just been placed there, before descending back down to Barranco Camp at 3976m. Although we were only camping about 150m higher than the previous night, the rising up and down prepared our bodies for the altitude. Barranco Camp was situated in a valley overlooking the rainforest and, as our guides described, it had a 'loo with a view!' Little did we know that we were actually camping on the overhang of a massive cliff...

The fourth day was another steep and steady day, with the altitude affecting quite a few in the group by now. To start the day we had the 200m high Barranco Wall to climb, which wasn't quite vertical but still had a few of us in shock when we looked over the edge! Our day ended at our base camp for

the summit climb, Barafu Hut at 4600m, and after a huge meal we were sent to bed at around 7pm.

We were woken up at 11pm that evening giving us only four hours sleep if that, and after hot tea and biscuits we were on our way to the summit by midnight with our headtorches on. This was the toughest eight hours I think I will ever have, but after some sheer determination from somewhere and



some incredibly pushy guides I made it up to Stella Point just after sunrise. However, I still had another 100m to climb and an hours walk around to Uhuru Peak but I eventually made it and can safely say that it was definitely worth it! The views were beyond what I'd seen in photographs and I had an overwhelming sense of achievement! It was then time to descend back to base camp for lunch followed by another five hours of walking down to Mweka Camp at 3068m, for our final night of long drops and tents. The following day we were up bright and early to walk the final four hours down to Mweka Gate where we gave our tips to the porters and guides and said our goodbyes, before heading off to the hotel where, unsurprising for a group of Uni students, we celebrated hard that night!

After harassing people for sponsorship and donations since November, I'm extremely pleased with myself that I managed to complete the challenge and raise nearly £3000 for Childreach International. I owe a huge thank you to everyone in the village who has supported me throughout and although the fundraising got a little bit stressful at times, it was an enjoyable experience which I shall never forget!

**Albany Vincent**

## **Cycling for the Children of Harbury**



Four local dads have decided to don the Lycra, and polish those saddles, in aid of raising funds for the Harbury Pre-School.

Michael Banbury, Andy Jackson, Matthew Watson (pictured left to right, relaxing after a training ride) and Guy Roddis are heading up North on September 14<sup>th</sup> to embark on a three day cycle ride, Coast to Coast, starting

in Whitehaven, Cumbria, and finishing three days and 150 miles later in Newcastle.

The dads are doing this in aid of raising funds for a new external canopy, which will run along the wall of the Harbury Pre-school and cover part of the play area. The canopy will allow the children to have outside play and learning time, even in poor weather, and provide shade when the sun does come out. Fundraising for this project has been underway for a while now, and donations have been gratefully received from local businesses, Harbury Parish Council and Barclay's corporate matching scheme. But with still a way to go to reach the target, this group of fathers, have found a way to combine their passion for cycling on the open road and helping to raise cash for their local charity.

If you would like to support the dads, and the Harbury Pre-School, then you can drop any donation/sponsorship along with your name in an envelope marked "Coast to Coast/Canopy" to 11 Neales Close, where it will all then be collated and given to Pre-School at the beginning of term in September. Alternatively, should you prefer you can transfer any donation electronically; a bank account has been specifically set up for this purpose – please contact Jo on 613120 for the details. Please remember any donation – no matter how small – will really help and be most appreciated.

**Jo Banbury**



## **Bumps and Bundles**

July has been a quiet month at Bumps and Bundles. We have a small consistent number of mothers and babies. We had a lovely reunion with seven mothers that first came to "Bumps" when it started and returned with toddlers and had a lovely catch up (see picture).

We are carrying on throughout the holidays and we may visit the park a couple of times too. We have a small ball pool now too for babies to enjoy and explore. Come along to the room behind the Church every Tuesday from 10:30am for tea, coffee, chats and toys.



**Kelly and Henry**

## **Harbury Energy Initiative**

Let me begin by thanking all those who have submitted figures to me for the productivity of their PV installations. I am sure there are plenty more to come in and I look forward to getting more data to add to the picture. If you haven't had the brief questionnaire through your door yet, please let me know and I'll

get one to you. We are dying to know how much Harbury as a whole is generating and how much, therefore, we have managed to reduce the carbon output locally. One or two of you have expressed the same sentiment.

It will also be of considerable interest to compare the financial return for those who have installed since the Feed in Tariff (FiT) changed. Because the price of PV panels has dropped steadily it should still be a valuable investment. The strident protests and legal challenge to government when a major drop to the FiT rate was announced late last year has led to a clear staged process of reduction that should bring stability back to the market and encourage householders that may have been put off to have another look. Current returns on investment seem to vary between 6% and 14%, better than any available interest rate.

One person has reported a problem with their PV system, experiencing high voltage at times (260 volts instead of 230) that shuts down the system for a period. Has anyone else experienced this?

On Saturday 21<sup>st</sup> July the official opening of the village library and Biblio's café attracted the usual enthusiastic Harbury crowd. The HEI steering group was delighted to be allowed the opportunity to explain our role in reducing the energy costs of the building. Anticipated reductions are £1300 in heating costs and 5,500kg of carbon emissions every year. We achieved this by using some of our LEAF money to insulate the walls using dry lining. LEAF was a fund set up by the Department of Energy and Climate Change to prepare communities for the Green Deal with an emphasis on solutions for houses with no cavity walls. We left some leaflets in the library about low carbon energy solutions and how you can benefit from the Green Deal. Do take a look; it's in your interest.

The legislation to deliver the Green Deal is on track for the completion of the framework legislation in October, becoming fully active at the end of January. From October providers will be able to start offering services. It all sounds quite complicated but we'll keep you up to date and unravel the mysteries as best we can. To help us do that we will, as a community group, be able to take advantage of advice and guidance provided with DECC support by the Centre for Sustainable Energy.

**It's the one big chance we all have to cut bills and get our houses up to date without massive spending. Let's not miss it!**

**Bob Sherman – 612277**  
**bob@churchterrace8.freeserve.co.uk**

## **Harbury NSPCC Committee**

We are holding another "Any Questions" evening on Friday 28<sup>th</sup> September at 7.30pm in the Tom Hauley Room. Tickets cost £20 per person and this includes a two course supper and wine.

We held a similar event two years ago and it was very successful. We have a panel of four local people; Kath Ellis, Sharon Hancock, Geoff Thorpe and Philip Bruce together with Philip Bushill-Matthews as our chairman. People attending are asked to bring along a selection of questions on topical issues both national and local. The chairman will decide which questions are put to the panel. Last time we had some serious debate and some fun questions too. We would be delighted if you could join us - please ring Elaine Bruce on 614664 for more information.

**NSPCC Committee**

## **Can we Prevent Crime?**

Have you been concerned about the number of burglaries around the villages recently: have you had an 'entry' to your property? What could we do to prevent incidents and make the community safer and what can the Police Service do?

Warwickshire Police are holding a Crime Prevention Day in the Grange Hall, Southam, commencing at 10am on Sunday 5<sup>th</sup> August, providing ideas and information.

**Marian Millington**

## **Pink Parkrun**

May I say a massive thank you to all the lovely people in Harbury who supported my "Pink Parkrun" in aid of Breast Cancer Research which was held on Saturday 7<sup>th</sup> July. Firstly, to Jan Brough, Jo Marsden, Liz Eley and my sister Carolyn who, between them, ran a cafe and raffle. Secondly to all the local businesses who were kind enough to provide fantastic raffle prizes: Libby and Rob at Cana Wine, Guv at the Harbury Supermarket, Katie at Southam Leisure Centre, Tesco in Southam and Paul and Mary at Mugleston's. Next I would like to thank Quona, Geraldine, Sophie, Tom and Lola, Liz and Pam who made such superb goodies to be sold at the cafe. Every single one of them went! Also my wonderful band of raffle ticket sellers and to you if you bought tickets. And finally, thank you to everyone that ran the 5k race, donned their pink outfits and to those who did the other three laps with me. I hope you felt it was worth getting out of bed so early for and getting stiff legs (Ben?).

The whole event raised a wonderful £398.31. Many, many thanks to you all.

**Susie Tawney**

**DATES FOR INCLUSION IN THE HARBURY DIARY  
PLEASE TO: LINDA RIDGLEY - TEL. 612792.**





## **The A.B.C Club (Affected by Bowel Cancer)**

The A.B.C Club was first formed in 2007 by the Colorectal Nurse Team at Warwick Hospital. The need for a support group had been apparent for a time and now, five years on, it is well established with a steady number of attendances.

We fundraise in order to sponsor set projects for the benefit of current and future patients, as well as assisting the professional medical staff. We are also able to offer benevolent support to individuals where the nursing team feel it to be appropriate.

At our General meetings we have a variety of speakers who always offer helpful advice, e.g. surgeons, pharmacists, dieticians, nurses and also other specialists in a range of related subjects. This is a great time for people to meet and talk with each other, often gaining help by doing so.

Our social calendar includes skittles, walks, Christmas lunch and a trip out (recently to the National Memorial Arboretum). This year we are also holding a coffee morning in the **Tom Hauley Room on Saturday 8<sup>th</sup> September**, 10am – 12 noon. We shall do the usual refreshments and cakes with the ever popular raffle and there will also be a second hand book table and some cards for sale.

We look forward to meeting you there.

**Colorectal Nurse Team:** 01926 495321, ext. 4336, Website: [www.warwickabc.co.uk](http://www.warwickabc.co.uk)

**Moya Waterman**

## **Barking Dogs**

If you are concerned about a neighbour's dog barking, remember that many owners are not aware that their dog barks when they are out. If possible, tell the neighbours so that they are aware and can seek advice.

Under the Environmental Protection Act 1990, a barking dog can be a noise nuisance and result in prosecution. An owner can be taken to court by their local authority if they do nothing to stop the barking. If a neighbour's dog is barking constantly and the owner does nothing to prevent this happening, it is recommended that you report it to the local authority noise control service in Stratford-upon-Avon's Environmental Health Department 01789 260856.

If you are concerned about a dog's welfare, for example being left outside all day without food or water or shelter, or it appears to be in poor condition, please contact the RSPCA – 0300 1234 999.

**Pat Summers**



## **Don't Lose your Vote!!**

Voter registration forms have been dropping through letterboxes across Stratford-on-Avon District and residents are being urged to return them as soon as possible to make sure their voice is heard, not only in next year's County elections, but in the new Police and Crime Commissioners election in November.

Stratford-on-Avon District Council's elections team are sending forms to around 55,000 households in the District to compile the electoral register.

Registering to vote is very simple and should only take a few minutes to complete. All you have to do is update the annual canvass form with the details of everyone in your household who is eligible to vote and return it to us as soon as possible. If your details haven't changed you can also reply by phone or by internet.

Each year you have to register - you are not automatically entitled to vote because you pay council tax or have voted before. By law, the registration form is required to be completed and returned from all households. Also returning the form or registering by phone or internet helps to keep down costs and reduce the number of reminders that will otherwise have to be sent out.

It is important that you complete your registration so you're able to take part in the upcoming elections enabling you to vote for the people who will make decisions that affect your everyday life.

For further information or if you haven't received your form after 13th July, please contact the District Council on 01789 260208.

**Bev. Mann - Stratford on Avon District Councillor**

## **Harbury Village Show**

Once again, the Village Show is nearly upon us. This year it is being held on Saturday 8<sup>th</sup> September in the Village Club. On the day, the club opens for exhibitors from 8.00am until 11.00am and then re-opens at 2:00 pm for general viewing.

Schedules, containing all the usual classes, have been placed in Mugglestones and in the Library. Please remember to return your completed entry forms to Patrick Clarke or Jane Giddings by 6:00pm on Wednesday 5<sup>th</sup> September.

We are running a tombola stall and a raffle and, as always, are in need of prizes. If you are able to donate items, we would be extremely grateful. These may be dropped off with Kath Ellis at 2 Chapel Street, Margaret Commons at 10 Chapel Street, Jane Giddings at 11 South Parade or Patrick Clarke at 32 South Parade.

Tea and homemade cakes are being served throughout the afternoon. If you would like to help, either by making a cake or by assisting with the teas on the day, Jane Giddings would love to hear from you.

And finally ..... if you have never entered anything in the show before, why not have a go? To persuade you, there is even a **Novice Class Trophy for Vegetables** to be won by an exhibitor who has never before won a prize.

(We ruled out a novelty class for the largest slug or snail as we thought we would be overwhelmed with entries!)

**Patrick Clarke - 612066 and Jane Giddings - 614266**

## Harbury Blue Circle Cement Works



This photograph records the recipients of the Blue Circle Group of Companies - Midland Area, Long Service Presentation which was held on 29<sup>th</sup> May 1962. The Ceremony was held at the Whatley Hotel, Banbury and employees received a salver and a few then received gold watches for completing 30 years' service with the company. The photograph, lent to us by Alan Holder via Eileen Dronfield, includes his father (third row and third from right). All the employees receiving awards in the photograph were based at the Harbury Cement works.

**John Holden**



## Southam Lions Poetry Competition 2012

The Southam & District Lions are pleased to present their 4<sup>th</sup> Annual Poetry Competition 2012. The competition is open to all residents (all ages) of Southam & District.

There is no entry fee and there are **Cash Prizes** for the best poems. Up to 3 poems (any style – any topic) may be submitted. Each must be no more than 40 lines.

Entry forms are available from Southam Library or you can enter online at: <http://southamlions.org.uk>

Post your entries along with the entry form to: Lion Dave Brough: 7 Millholme Close, Southam, Warks. CV47 1FQ or put in the box in the Library. **The closing date is September 21st.**



### Party Time

Southam and District Lions present the 2012 Ken Graham Party for Senior Citizens, to be held at Southam College on Saturday 22<sup>nd</sup> September 2012 at 2.00pm. We are pleased to invite all senior citizens. Please contact Malcolm Jakeway, 01926 814294 or Brian Howard, 01926 812797.

**Peter Guy**

## Village with a Vision

We're pleased to say that Bromford Support are continuing discussions for the purchase of a plot of land for our Extra Care Home. We expect that initial discussions with various local authority officers will also be taking place in the near future.

We're sure there'll be many hoops we have to jump through as time goes by: Highways, Planning and whatever else officialdom requires. Thankfully we have the support and help of many influential people and things are moving forward; albeit very slowly!

Sometimes it's hard to curb our impatience, but slowly and gently are the watchwords!

But the main thing is that it all looks very positive, and as ever we'll be keeping you up to date with progress as time goes by.

**Tony Stubbs**

## Is that the Clock Ticking?

Having been deaf for over 15 years and with my hearing deteriorating quite rapidly, I was very fortunate in July of last year to be accepted for the Cochlear Implant Programme and Assessment at the new Queen Elizabeth Hospital in Birmingham. The assessment consisted of a CT scan and an MIR scan, hearing tests and speech therapy and was over several months.

On 25<sup>th</sup> January this year I met with Mr Reid, the cochlear implant surgeon, and his team and received the good news that I was a suitable candidate and the operation would go ahead as soon as possible.

The operation was performed on 15<sup>th</sup> May at the Q.E. and lasted just over three hours. It involves inserting the implant and magnet under the skin behind and just above the ear and an electrode coil being inserted into the cochlear. Fortunately, I had no ill effects from the anaesthetic and did not have a great deal of pain and the following morning the bandage was removed and there was no need to apply a dressing. The stitches were left to dissolve. After four weeks' convalescence, I returned on 18th June for the 'switch-on' and fitting of the sound processor. The processor is very similar to a hearing aid, just a bit bigger, with a cable attached to a magnet which links with the magnet under the skin. At first the sounds were electronic via a computer with a series of beeps and I had to grade the volume and comfort. I had 22 electrodes in my implant and all were performing perfectly and the Senior Audiologist played them to me individually and it sounded like a musical scale! The processor was then detached from the computer and the audiologist asked me a question, which I was able to answer. I answered several more questions correctly and, as he thought I might be lip reading, he put a piece of paper over his mouth, but I had not been 'cheating' and heard everything he said. He then asked Dan to say something and, again, I was able to hear what he had said, but we all had a laugh when I said they both sounded like Mickey Mouse on speed! The Audiologist was quite surprised I was able to understand speech so soon and said it was quite unusual but that he was very pleased and that the sounds would become more natural as time went by. I have had two more visits for hearing assessment and speech therapy and having attained high scores for all the exercises do not now have to visit again for three months.

Was it all worth it? Yes, it most certainly was – to be able to hear again, even though a lot of the sounds are robotic, is absolutely fantastic. The scar is hardly noticeable and my hair is beginning to grow. I no longer have to twiddle behind my ear to adjust volume and programmes as I had to with a hearing aid as I now have a remote control which looks like a mobile phone. I know I will have to practice for quite some time yet but already I am able to join in conversations. All members of the Cochlear Implant Team are extremely professional but are also very kind and caring and I just can't thank them enough. Also, many thanks to everyone who has shown interest and kindness to me during this time, but especially to Kath Ellis who has listened patiently over many weeks and came with Dan to collect me from hospital – no-one could wish for a better friend. Not only has it changed my life but Dan's also – he no longer has to act as my interpreter and repeat things over and over again – he has shown infinite patience over many years and with his support and encouragement I am now able to enjoy life and no longer feel isolated. If you are ever offered this opportunity please take it – it comes highly recommended!

**Julie Killian**

## Scam Awareness

Below is an extract from are some guidance notes provided by Warwickshire County Council Trading Standards Service as a result of my reporting a financial scam to them recently. The item in question was a prize win received through the post and it requested a fee paid by credit card. It originated in Holland.

Scam letters, emails and telephone calls are usually sent or made by criminal gangs operating from outside the UK who use the same sorts of marketing tools, such as lists of names and addresses, that legitimate businesses do. Because they operate abroad, it can be very difficult to close them down or recoup money that has been lost. It is wise to bear in mind the following:

1. Avoid filling in marketing surveys or questionnaires. Junk and scam mailers buy this information to enable them to send mail, email and make bogus phone calls
2. If you receive junk mail with a return address on the envelope, write *'unsolicited mail, please return to sender'* on the envelope and put it back in the mail unstamped. This may disrupt their activities and increase their costs.
3. Remove your name and address from 192.com by downloading a form from [www.192.com/download/CO1.pdf](http://www.192.com/download/CO1.pdf). 192.com is one of the principal directories used to obtain names, addresses and telephone numbers.
4. Register regularly with the Mailing Preference Service on [www.mpsonline.org.uk](http://www.mpsonline.org.uk) and the telephone Preference Service on [www.tpsonline.org.uk](http://www.tpsonline.org.uk) . These are free services.
5. When you fill out your annual Electoral Registration form read the instructions carefully and tick the appropriate box to ensure you will only appear on the Full Register and not on the Edited Register which is sold for marketing purposes.
6. When you give your name and address to an organisation, for instance when you buy a product or service and perhaps register a guarantee, make sure you tick the opt-out boxes to say you don't want information about other products or services.
7. Never respond to a scam letter or email or bogus or unsolicited phone call from any source including banks and the Inland Revenue. Don't provide them with any personal or financial information. Never click on a link in any email or website you don't trust, delete suspicious emails without opening them, and put the phone down on bogus or unsolicited callers. They are very persuasive.

8. More information is available on the WCC website:

[www.warwickshire.gov.uk/scams](http://www.warwickshire.gov.uk/scams)

Fraud can be reported to Action Fraud on 033 123 3040 or [www.actionfraud.police.uk](http://www.actionfraud.police.uk)

The Citizens Advice consumer service provides free, confidential and impartial advice. Visit [www.adviceguide.org.uk](http://www.adviceguide.org.uk) or call the Citizens Advice consumer helpline on 08454 04 05 06 or 0208 1850 710.

Warwickshire Trading Standards can be contacted on 01926 414040 and welcome information on scams from members of the public.

Be aware, be careful, and be wise, some unfortunate people have lost thousands of pounds responding to some of these scams.

**John Smith**



## **Harbury Heritage Room and Memories**

The Heritage Room at Harbury School is open from 6.30-8.30pm on the first Tuesday of every month or at other times by arrangement. It contains hundreds of photos and documents concerning the history of the village.

The following article relates to a questionnaire sent to Bob Thornicroft who used to be the village baker, living in Chapel Street at what is now curiously called the Old Bakery.

### **Bob Thornicroft's Memories of Harbury**

Bob Thornicroft was given a questionnaire by some of the children of the top class at Harbury Primary School. In italics are the questions they asked.

#### ***Could you tell us where GT Alcock's butcher's shop was?***

G.T. Alcock's butchers shop was the building on the corner of High Street and Chapel Street now known as Phoenix House.

#### ***What kind of meat did he sell?***

He sold every kind of meat, beef, pork, mutton, lamb all of a very high quality. Much better than the meat that is sold today. He would buy most of the animals locally and slaughter them himself. It was a small shop.

#### ***How did he display his meat? Was his meat dear or cheap?***

The meat was on display on large hooks all along the front of the house. All the stray dogs would sit and look longingly at it. But it was too high for them to reach. Meat was never cheap. It has always been our most expensive food.

#### ***How big was Thornicroft the baker's shop?***

The bakery shop was the front part of what is now Mr Mugleston's shop.

#### ***Did it sell anything else apart from bread?***

Cakes, pork pies and animal foodstuffs were also sold.

***How did you display your bread?***

There was little need to display the bread as most of it was delivered daily.

***How many employees did you have? What time did you get up? What time did you open up? Can you tell us anything else of interest about the bakery?***

People in those days received service from the shopkeepers. The bakery and oven was where the back part of Mr Mugelston's shop is. The oven was 14 ft long by 9 ft wide and held 320 large loaves. Bakery work was very hard work. The day began at 4am when two of us would start to get the first oven load of bread made up. The dough for this was made at 8pm the night before. In the early days this was made by hand, very hot and hard work. Afterwards we used an electric mixer which was a great help. The next dough would be made at about 6am in the morning. This would follow on when the first was baked.

To make the 320 large loaves it needed: 480 lbs of flour, 24 gallons of water, 21 ½ lbs yeast and 6 lbs salt.

Every baker also used what was known as "improvers." These were of course kept secret from the customers.

I hope this has answered most of your questions. But if you wish to ask any more I will help if I can.

**Nigel Chapman**

**Do you need help with any of the following?**

*Harbury Helpline is for you!*

**EMERGENCY TRANSPORT:** John Travis 613264

**HELP WITH FORM FILLING:**

- **For University/Job Applications, interviews, CVs:** Call Philip Bushill-Matthews 612476.

**HOME VISITING:** Caring for a sick or elderly relative and need a break for a few hours, or you would like someone to call on you. Call Sue Dormer 613254.

**VISITING:** Hospital. If you are unable to visit a parent or relative, or parents would like support with a child in Hospital: Keith Dormer 613254.





## LETTERS TO THE EDITORS

### **Dear Editors**

*The family of Hazel Sharples wishes to thank everyone who went to Hazel's funeral and donated so generously. The money given was divided between three charities: Myton Hospice, Epilepsy Research and the Simon Adams Trust (Motor Neurone disease). The total amount raised was £1127.*

**Betty Winkfield on behalf of the Sharples family**

---

### **Dear Editors**

*I would like to send a very special thank you to everyone for their overwhelming concern, kind thoughts, good wishes and gifts both floral and nutritional during my recent critical and unexpected admission to Warwick Hospital.*

*Also, my sincere thanks to everyone who gave John and the boys moral and physical support and encouragement, especially at the dangerous time. Although my total recovery may take a while, I am pleased to say I am making good progress, confident that this will continue, and hope I will see you all "around the village" very soon.*

*Once again, many thanks to you all.*

*Kind regards*

**Pat Woodward**

---

### **Dear Editors**

*I read with interest the letter from Paul Cockell in the June edition of the Harbury & Ladbroke News and his request to create a 'no go zone' for door to door salesmen.*

*The inference being that door to door salesmen demonstrate threatening behaviour and show the signs of drug use, both of which Mr Cockell thinks is a risk to elderly or vulnerable residents. Mr Cockell is probably right about the threatening behaviour. However there are plenty of people who would argue that drug takers are more likely to be apathetic, lethargic and*

*non-threatening. However the reality is that anyone with a front door, by definition, invites people to knock on it.*

*In order to provide some balance, I wanted to share my own recent experience. I opened the door to a man selling homewares. He was well presented. He showed me his I.D. He explained he was an ex-offender and proceeded to expertly describe the goods he had for sale. I even made a purchase.*

*I recognised a person who was doing his best to earn a living and who was probably operating well outside his comfort zone and was not taking the easy way out (benefits and/or reoffending). He was honest about his past but I could clearly see that, through his actions, he was trying to make himself, his boss and the company he represented an honest profit.*

*Let's not forget that most people who earn a living in the private sector are either selling something or relying on other people to sell something on their behalf.*

*So please be sure to exclude me from the 'No cold calling zone'.*

**James Head**  
**The Old Post Office**

## **All Saints' Church Harbury Sunday Services**

1 <sup>st</sup> Sunday in the month:	9.00am	Sung Communion
	10.30am	First Light contemporary style service in the Tom Hauley Room
	6.00pm	Evening Worship - a different style of service each month
2 <sup>nd</sup> , 4 <sup>th</sup> (and 5 <sup>th</sup> ) Sunday in the month:	8.00am	Holy Communion
	10.30am	Sung Eucharist
3 <sup>rd</sup> Sunday in the month:	8.00am	Holy Communion
	10.30am	Family Communion Service
	6.00pm	Choral Evensong
Every Sunday: (except 1 <sup>st</sup> )	10.30am	Funday Club (in term time)
Every Tuesday:	7.30pm	Weekday Said Communion
Every Thursday:	9.45am	Weekday Said Communion

Times of weekday services and any variations are displayed on the notice in the lychgate.

**Priest in Charge: Father Craig Grocock**  
The Rectory, Vicarage Lane, Harbury Tel.: 612377  
Email: [kankudai43@aol.co.uk](mailto:kankudai43@aol.co.uk) [www.allsaintsharbury.org](http://www.allsaintsharbury.org)

## BOOKINGS FOR

SCOUT HUT	TOM HAULEY ROOM	THR COFFEE MORNINGS	VILLAGE HALL	VILLAGE CLUB CONCERT ROOM
Debbie Dimmock Tel: 612036 debbie@dimmock.org.uk	Sally Stringer Tel: 613214 sal.47@hotmail.co.uk	Sally Stringer Tel: 613214 sal.47@hotmail.co.uk	Celia Neill Tel: 612819 harburyvillagehall@googlemail.com	Tel: 612498 (evenings) harburyvillageclub@hotmail.co.uk



## D.A.Knowles Plumbing Services

- **Over 25 years experience**
- **All aspect of plumbing including bathroom and kitchen installations**
- **Full tiling service available**
- **Competitive rates**
- **Project Management available for larger projects**
- **No job too small!!**

**Mobile: 07721 522298    Home: 01926 613776    Email: da.knowles@btinternet.com**



## FREE VALUATION DAY

**ANTIQUES, JEWELLERY, SILVER,  
CERAMICS, BOOKS AND COLLECTABLES**

**Charles Hanson**



**as seen on BBC Antiques Road Trip  
and his team of Antiques Experts**

**Thursday 9<sup>th</sup> August, 12.00 - 4.00pm**

Items may be left to be entered into a suitable sale

**Leek Wootton Village Hall**

Warwick Road, Leek Wootton, Warwick, CV35 7RB

**FREE HOME VISITS FOR LARGER ITEMS**

**Charles Hanson is available for Charity events and talks**

Hansons employs Lars Tharp to advise on Chinese Ceramics and Oriental Works of  
Art and Kate Bliss to advise clients on Jewellery and Silver.

**Please contact Mrs Carol Jones**

Hansons Warwickshire Representative on 01926 770066

**Email: service@hansonsauctioneers.co.uk    www.hansonsauctioneers.co.uk**

Refreshments in aid of the NSPCC



## **JAMIESON JOINERS**



Manufacturers of quality windows, doors,  
stairs, conservatories,  
fitted kitchens/bedrooms.

Established 25 years.  
Competitive prices. Private/Trade

Tel 01926 612921/07968 009094  
or e-mail your enquiry to:

[stablesatharbury@live.co.uk](mailto:stablesatharbury@live.co.uk)

# **Spa Roofing Co.**

**(Roofing Specialists)**

**For all Roofing, Guttering and  
General Repairs**

**(Free Estimates)**

**All Work Guaranteed**

**Call: 07876 508032**

**or 01926 770822**



### Ballet Lessons

Tuesdays, The Grange, Southam



4.00pm - Prima Ballerinas (3-4yrs)  
4.30pm - Pre-Syllabus (5-6yrs)  
5.00pm - Pre-Primary (7-8yrs)  
5.45pm - Primary (8yrs+)

### Dance Classes

Thursdays, The Grange, Southam



4.00pm - Funky Dance 1 (4-6yrs)  
4.30pm - Gymnastics (all ages)  
5.00pm - Grade 1 Ballet (9yrs +)  
5.30pm - Funky Dance 2 (7yrs +)  
6.00pm - Grade 2 Ballet (11yrs+)  
6.45pm - Grade 3 Ballet (13yrs+)

### Tap Lessons

Fridays, The Grange, Southam



4.00pm - Little Tappers (3-5yrs)  
4.30pm - Pre-Primary Tap (6-8yrs)  
5.00pm - Primary Tap (8-10yrs)  
5.30pm - Grade 1 Tap (10yrs+)

Limited places available - FREE TRIAL CLASS

Call Lorraine 07711 010404 - [www.loveballet.co.uk](http://www.loveballet.co.uk) - [lorraine@loveballet.co.uk](mailto:lorraine@loveballet.co.uk)



## The Crown Inn

**Bank Holiday**

**Monday 27th August  
BBQ and Bouncy Castle**

Entrance Fee £2.50 per family  
(donated to Cancer Research)

Burgers - £2.50, Hot dogs - £2.00

Chicken Burgers - £2.50

Spicy Ribs £1.50, Rump Steak - £7.50

Mixed Salad - £1.50, Potato Salad - £1.00

Pasta Salad - £1.00

~~~~~

**During August Only  
Fun for all the Family at  
The Crown Inn**

Celebrating the Great British Favourite  
Burgers

Tuesday, Wednesday & Thursday only

Lunch 12.00 - 2.30pm

Dinner 5.30 - 7.30pm

Classic Cheese Burger - £3.00

Fish Burger with sweet Chili - £3.00

Chicken Burger - £3.00

Bacon Burger - £3.00

Special Combo Giant Burger - £5.50

Chips

small £1.00, medium £1.50, large £2.00

Salad

small £1.50, medium £2.00, large £2.50

~~~~~

**Sunday Lunch**

12.00 noon - 4.00pm

From £7.50

~~~~~

**Bed & Breakfast now available.**

Please see our website  
for menus and more information.

**☎01926 614995**

**[www.crowninnharbury.co.uk](http://www.crowninnharbury.co.uk)**

*No job too small* **Phil's** *Free Quotations*  
**Plumbing and Heating**  
**Fully Qualified**  
**and**  
**Insured Plumber**

Bathrooms, Central Heating & showers

I am a locally based plumber  
offering very competitive rates  
on any plumbing or heating job.

No job too small,  
Please give Phil a call

**Call Phil**

Daytime: 07971 046392

Evening: 01926 400746

Email: [philmunday@hotmail.co.uk](mailto:philmunday@hotmail.co.uk)

Bishops Tachbrook

Leamington spa



## Fiona's Frames

Bespoke Picture Framing

Wide choice of mouldings &  
mounts for paintings, prints  
and needlework

Friendly Professional Service

Phone 01926 812807

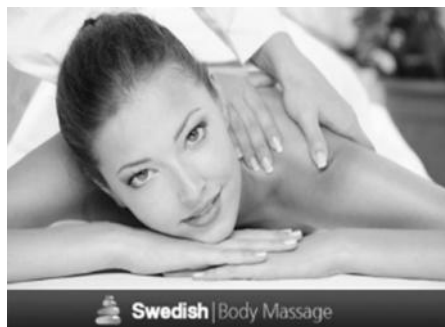
Hillside, Napton

email: [enquiries@fionasframes.co.uk](mailto:enquiries@fionasframes.co.uk)



## ABSOLUTE BEAUTY

Tel Rosina on 01926 612403 - [www.rosina.moonfruit.com](http://www.rosina.moonfruit.com)

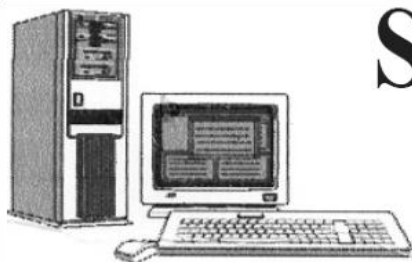


For all your beauty and holistic needs

**NEW** - Virtual French Nails + Shellac & Minx

Tel Rosina – 612403

[www.rosina.moonfruit.com](http://www.rosina.moonfruit.com)



# SIMONS SYSTEMS

Available for all your computer requirements including:

PC's and Laptops, New and used systems,  
Upgrading memory/hard drives/rom drives/graphics, etc

Internet – modems fitted, wireless, networking.

Any repairs. **NO CALL OUT CHARGE**



**Tel: 01926 316119**



**Mob: 07751 811097**



**E-mail: [simons.systems@virgin.net](mailto:simons.systems@virgin.net)**

## HOME BOARDING FOR YOUR DOG



**Wouldn't you enjoy your holiday much more knowing your pet was going on holiday too!**



Why not let me look after your dog on our 22 acre farm where he will live as one of the family. No being shut in a kennel all day and night, just as much exercise as he wants with our own two friendly dogs who love to play with new friends. All needs catered for.

You will find our prices very reasonable and our care second to none. Give us a call on 01926 612921 or 07967 762475 and see how we can ensure you all have a good time!

All prospective boarders whose dogs didn't care for cats, please do ring again, as sadly, we no longer have cats.

Karena Ellis-Greenway  
MRICS, RICS Acc.Med., BSc Hons

green  
chameleon



M: 07796 575716 T: 01926 612121

E: [info@greenchameleon.net](mailto:info@greenchameleon.net) Web: [www.grechameleon.net](http://www.grechameleon.net)

• Chartered Surveying • Valuation • Mediation • Letting & Management

The Green Room, 31 Manor Road, Harbury, Warks CV33 9HY



## Domestic Gas Services



CENTRAL HEATING, INSTALLATION, SERVICE, REPAIR and

**POWERFLUSHING....the next best thing to a new heating system!**



Are your radiators cold at the bottom?

If so they need **POWERFLUSHING!**

**POWERFLUSHING** removes the build up of sludge and sediment in your radiators which is making them less effective therefore *costing you money!*

**POWERFLUSHING** will maximise the efficiency of your radiators ensuring you get the very best from your heating system therefore *saving you money!*



For all your gas requirements please call  
Martin Evans on **07980 740720**

# RJD

## BRICKLAYING LTD

**EXTENSIONS  
RENOVATIONS  
REFURBISHMENTS  
NEW BUILD  
GARDEN WALLS**

**BRICK WORK AND STONEMASONRY  
SPECIALISTS**

**FAMILY RUN BUSINESS WITH OVER  
35 YRS EXPERIENCE**

**CALL US FOR A QUOTATION**

THE BEECHES  
THE OLD GATED ROAD  
CHESTERTON  
WORKS CV33 9LD  
TEL: 01926 614335 MOBILE: 07786838627  
EMAIL: [info@rjdconstructionltd.co.uk](mailto:info@rjdconstructionltd.co.uk)

**RECOMMENDED BY  
AGE CONCERN**

**AGE**  
*Concern*



**Lose those extra pounds quickly whilst having  
loads of fun!**

**Sunday mornings at 9am, Harbury Village Hall**

£4 per class, discounts available



**[www.warwickshirefitness.com](http://www.warwickshirefitness.com)**

**Phone 0789 067 1869 for more details**



## Roger Frogley & Sons Fencing



High quality domestic, industrial and agricultural fencing offering a service second to none.  
*competitively priced - clean, efficient & reliable*

If you require some fencing - look no further!  
Visit our **fully featured website** for ideas and examples and get in touch.

**[www.frogleyfencing.co.uk](http://www.frogleyfencing.co.uk)**

or ring 07970 652145



## LOCKE & ENGLAND

AUCTIONEERS & VALUERS

Established 1834

## Auction Every Thursday

Viewing Wednesday 12.00noon - 7.00pm  
and morning of sale from 9.00am

Bi-Monthly Antique  
& Collectors' Auctions

Regular Valuation Days

Valuations for Insurance,  
Probate & Family Division

Specialist & Commercial Sales

Collection Service

ENTRIES INVITED FRIDAY,  
MONDAY & TUESDAY

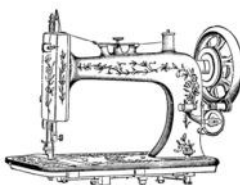


12 Guy Street, Leamington Spa, Warwickshire CV32 4RT

01926 889 100

**[www.leauction.co.uk](http://www.leauction.co.uk)**

## Drop Dead Gorgeous



Beautiful Handmade Curtains, Cushions and Roman Blinds all made to measure. Curtain alterations also undertaken.

Free Quotes and Free Fitting.

Contact Sharron for Friendly and Helpful Advice.

07760 395805 or 01926 612226

or email: [dropdeadgorgeouscurtains@gmail.com](mailto:dropdeadgorgeouscurtains@gmail.com)



Services available include, lawn mowing and edging, border maintenance, stone wall construction or repair, fence repair or replacement, patio and outdoor furniture cleaning.

**Do you have unwanted weeds?**

Why not ask us about our chemical weed control, we are fully qualified and have everything you need to have a weed free summer.

**\*\* Leafy News – Date for your Diary\*\***

Come along to our 1<sup>st</sup> Open Garden on

**Saturday 8<sup>th</sup> September from 1:00pm**

See a local garden lovingly brought back to life, meet the owner and see what we can do.

An afternoon for the whole family, enjoy a drink and a cake and be inspired while children enjoy the games!

(1 Dovehouse Lane, Harbury - Phone the number below for more info)

*All outdoor maintenance considered.*

*No job too large, or too small.*

*For all your outdoor chores, call your local, friendly gardener:*

**Richard Everett**

**07923 167420 or 01788 567774**

**Leafyservices@gmail.com**

**www.leafyservices.co.uk**

## **FENCES : TREES**



**All types of fencing and gates**

**Tree felling and reduction**

**Hedge laying and trimming**

**Patios**

**Seasoned logs available**

**Call Adrian Dollar on**

**01926 817077 or**

**07914 623989**

**Qualified and Insured**

# **Nifty Needle Curtain Shop**

**1 Banbury Street, Kington**

**Made to measure curtains and blinds.**

**Free measuring service.**

## **Nifty Nik Naks Gift Shop**

**For interesting presents**

**01926-641741 email: niftyneedle@fsmail.net**

**Open: Tuesday - Friday 9.00am - 5.00pm**

**Saturday 9.00am - 2.00pm**

**(Harbury Resident)**



## Gardens by Wendy

phone: 01926 614877

mobile: 07595 289331

e-mail: [wendy@gardensbywendy.co.uk](mailto:wendy@gardensbywendy.co.uk)

- Garden design services from one-off consultations to full designs
- Advice on rejuvenating tired or problem areas of planting
- Help with growing fruit & veg, organic gardening, pests & diseases, etc.
- Specialist gardening work such as pruning, border maintenance etc.

## SADDLERS BED & BREAKFAST

SELF-CONTAINED COTTAGE IN THE HEART OF HARBURY.  
DOUBLE BED, SHOWER ROOM, LIVING & DINING AREA WITH  
KITCHENETTE, TV/DVD; CD/RADIO. SLEEPS 2 TO 4.  
OFF ROAD PARKING.

£60 PER NIGHT INCLUDING CONTINENTAL BREAKFAST.

JULIE YOUNG, SADDLERS, CHAPEL STREET, HARBURY.  
01926 614050 OR EMAIL [enquiries@saddlersbed.co.uk](mailto:enquiries@saddlersbed.co.uk)  
[www.saddlersbed.co.uk](http://www.saddlersbed.co.uk)



## Why you should buy your new kitchen or bathroom from Modern Homes!

- With over 43 years of trading we are the longest established specialist in your area.
- Predominantly British Manufactured products
- Family run 'local' business
- Personal recommendations
- Large kitchen and bathroom showroom
- Full installation service with employed fitters
- Value for money... We offer styles to suit all tastes and budgets
- Kbsa members offering Consumer care protection

[www.modernhomesleamington.co.uk](http://www.modernhomesleamington.co.uk) Email: [info@modernhomesleamington.co.uk](mailto:info@modernhomesleamington.co.uk)

**01926 883338**

Modern Homes, 37 Longfield Road, Sydenham Estate, Leamington Spa CV31 1XB  
(between Wilts and CAS)

**LOOKING FOR HELP**  
**TO FIND THE RIGHT JOB?**

Senior Technical Recruiter based in Long Itchington will help write cv's, carry out interview techniques and prepare application letters.

This will help you to take the next step in your professional career.

If you are leaving college or university, these techniques could help you get one step ahead.

**LEARN WHAT EMPLOYERS ARE  
REALLY LOOKING FOR,**

Contact Val Martin  
01926 814140

valmar46@hotmail.co.uk

**ADVERTISING IN THE  
HARBURY & LADBROKE  
NEWS**

EMAIL: [ADVERTISING@HLNEWS.CO.UK](mailto:ADVERTISING@HLNEWS.CO.UK)

TEL: 01926 612155

**Monthly**

¼ page – £10.50 or £28 for 3 months

½ page – £19.00 or £49 for 3 months

Full page – £33.50 or £89 for 3 months

**Annual**

¼ page – £ 94.00

½ page – £168.00

Full page – £315.00

(coloured pages printed in April for the year)

**Adverts with payment to:**

**Gill Holden,**

**31 Binswood End, Harbury**

**by the 15<sup>th</sup> day of the month**

*Cheques payable to 'Harbury & Ladbroke News'*



**Extensions-Alterations-Refurbishment-New Builds**  
**Bespoke Kitchens and Bathrooms**  
**Design-Planning & Building Regulations Application**  
**Service available.**

Web: [kenilworthproperties.co.uk](http://kenilworthproperties.co.uk)

Email: [kenilworthprops@btconnect.co.uk](mailto:kenilworthprops@btconnect.co.uk)

Telephone: Harbury 612260 Mobile: 07779 096104

Harbury Business Centre, Church Terrace, Harbury, Leamington Spa CV33 9HL

A Member of the Alliance of Private Sector Practitioners

# Jackie Biddle

## Healthy Feet are Happy Feet

Foot Health Practitioner

Dip CRP MPS Foot  
CRB Checked

Home Visits Telephone

T: 01926 612503

M: 07872 907429

# LOUISE BEALE

photography

studio in  
Fenny  
Compton



Wayland House, Station Fields, Fenny Compton,  
Southam, CV47 2XD, 0783 4071210

[louise@louisebeale.co.uk](mailto:louise@louisebeale.co.uk)

[www.louisebeale.co.uk](http://www.louisebeale.co.uk)

**5 High Street  
Southam  
Warwickshire  
CV47 0HA**

**Tel: 01926 812574**

**Email: [enquiries@reynoldsinsurance.co.uk](mailto:enquiries@reynoldsinsurance.co.uk)**

**Website: [www.reynoldsinsurance.co.uk](http://www.reynoldsinsurance.co.uk)**

# reynolds insurance

## SERVICES LTD

*Independent Insurance Advisers*



Are you fed up with hanging on the phone or searching the internet?

Would you like to talk to friendly, experienced staff who will explain the small print?

We have been established in Southam since 1983 with the same staff who would be happy to offer you a competitive quote for all classes of insurance private or commercial.

**Call Deb or Sue - 01926 812574**

### FREE QUOTES ON:

Household

Motor

Short Term Learner Driver Insurance

Fleet/Vans/Trucks

Public/Employers Liabilities

Shops

Travel

Restaurants & Pubs

Business Insurance

Tradesman Insurance

Let Properties/Holiday Homes

**MOST CLASSES COMMENCE WEEK BEGINNING MONDAY, 10<sup>TH</sup> SEPTEMBER. EVENING COURSES RUN FROM 7.30-9.30 FOR A MAXIMUM OF 12 WEEKS (EXCLUDING HALF TERM BREAK BEGINNING 29<sup>TH</sup> OCTOBER) UNLESS SHOWN OTHERWISE. PLEASE ARRIVE 15 MINUTES EARLY FOR THE FIRST SESSION TO ALLOW TIME FOR ENROLMENT. FOR FURTHER INFORMATION AND TO REGISTER TO GUARANTEE YOUR PLACE, PLEASE CONTACT SUE HAWTHORN OR CHRIS DUDLEY ON 01926 810942 OR AT [COMMED.S@WE-LEARN.COM](mailto:COMMED.S@WE-LEARN.COM)**

### **SOUTHAM COLLEGE EVENING COURSES BEGINNING:**

#### **MONDAY 10<sup>TH</sup> SEPTEMBER 2012**

Cake decorating and sugar paste flowers  
Mandarin Chinese for beginners – 7.00–9.00pm  
Salsa – 8.00–9.00pm  
Self Defence for women – 6 weeks 7.00– 8.00pm  
Spanish for beginners – 7.00–9.00pm  
Watercolour painting for beginners – 6 weeks  
Woodturning for beginners – 6.30-8.00pm  
Woodturning–improvers – 8.00-9.30pm

#### **WEDNESDAY 12<sup>TH</sup> SEPTEMBER 2012**

Basic Computing and internet – 6 weeks  
Christmas Make and Bake – 6 weeks (start 7<sup>th</sup> November)  
Crafty Computing for Christmas - 2 weeks (starts 28<sup>th</sup> November)  
Indian cookery – 6.30-8.30pm (starts 19<sup>th</sup> September)  
Intro to Excel 2007 – 3 weeks (starts 7<sup>th</sup> November)  
Introduction to Photoshop – 7.00-9.00pm – 6 weeks  
Yoga for beginners - 6.30–7.30pm  
Yoga – 7.45–9.15pm

#### **THURSDAY 13<sup>TH</sup> SEPTEMBER 2012**

BHS Horse Owners Certificate 7.00-9.00pm  
Cake decorating and sugar paste flowers  
Creative Sewing – 6 weeks  
Dressmaking for Autumn – beginners – 7.00-9.00pm – 6 weeks  
French for Business  
Meditation, Relaxation and you – 7.00-9.00pm – 6 weeks  
Pilates - 7.00-8.00pm  
Preparing to Teach in the Lifelong Learning Sector (PTLLS) – initial teacher training (11 weeks) – 6.30-9.00pm

**THERE ARE NO COURSES AT SOUTHAM COLLEGE ON THE EVENING OF THURSDAY 20<sup>TH</sup> SEPTEMBER DUE TO THE COLLEGE OPEN EVENING.**



**DAYTIME COURSES IN SOUTHAM**
**GRAHAM ADAMS CENTRE**

Fitness, Fun and Flexibility (starts 19/9) Wednesday 9.30-10.30am  
 Water Colour Painting - Wednesday 1.00-3.00pm  
 Water Colour Painting - Thursday 1.00-3.00pm  
 Water Colour Painting - Friday 1.00-3.00pm

**SOUTHAM LIBRARY**

On line basics - a free 6 weeks beginners IT course Monday 1.00-3.00pm

**COMING SOON**

Daytime courses in Family History, French, Spanish, Sewing.  
 Please contact us to register interest and availability.

**COURSES IN THE VILLAGES**
**BISHOPS ITCHINGTON COMMUNITY CENTRE**

Cake decorating for beginners Monday 7.30-9.30pm

**TOM HAULEY ROOM, HARBURY**

Yoga - Wednesday 7.00-9.00pm

**OFFCHURCH VILLAGE HALL**

Upholstery & soft furnishing -Tuesday 9.30-11.30am

**STOCKTON VILLAGE HALL**

Upholstery & soft furnishing - Tuesday 1.00-3.00pm

**UFTON VILLAGE HALL**

Pilates - Monday 9.30-10.30am

Pilates - Wednesday 2.00-3.00pm

Cake decorating and sugar paste flowers - Tuesday 10.00am - 12 noon

Cake Icing and sugar craft - Thursday 10.00am - 12 noon

**COURSE FEES START FROM £4.00 PER HOUR WITH SOME REDUCTIONS AVAILABLE.  
 PLEASE ASK FOR FURTHER DETAILS.**

**PROGRAMME SUBJECT TO AMENDMENT. FOR THE MOST UP TO DATE INFORMATION AND A SHORT  
 DESCRIPTION OF MOST OF THESE COURSES PLEASE CONTACT US OR VISIT OUR WEBSITE  
[www.southamcollege.com](http://www.southamcollege.com) AND FOLLOW THE COMMUNITY EDUCATION LINK. FROM HOMEPAGE  
 (LATEST NEWS) OR UNDER 'ABOUT US' TAB.**

# The Shakespeare Inn

## New Steak House & Grill



- ♦ Traditional 18th century country inn
- ♦ Choice of real ales and guest beers
- ♦ Meals served Monday - Saturday  
12 noon - 2.30pm and 5.00pm onwards
- ♦ Sunday Lunch - 12 noon - 3.00pm
- ♦ Large car park and beer garden
- ♦ Function room available for family events and corporate meetings



Also offering a wide range of other menu choices including:  
Pasta / Rice dishes and Vegetarian options

***Specials Board also available***

9-11 MILL STREET, HARBURY, LEAMINGTON SPA, CV33 9HR. Telephone: 01926 613822

# The Gamecock Inn

OPEN 4.00PM TILL CLOSE

Selection of Fine Ales

Wednesday Evening

Open Mic Night starts 8.30pm

Sunday Evening

Quiz Night starts 9.00pm  
plus 'Play Your Cards Right'

All Welcome



CHAPEL STREET, HARBURY. TELEPHONE: 01926 612306