

# Harbury & Ladbroke News

Reflects all aspects of local life, is published monthly and produced with the assistance of  
All Saints' Parochial Church Council.

**April 2012**

**No.457**

Editorial Office	☎ 612155
Articles to	Harbury Pharmacy, High Street
Email address	articles@hlnews.co.uk
Advertising Office	31, Binswood End (☎ 612155)
	advertising@hlnews.co.uk
Distribution Manager	49, Mill Street (☎ 612009)
	distribution@hlnews.co.uk
Inserts by prior arrangement	☎ 612009

## IN THIS ISSUE

## Page

EDITORIAL .....	2
HARBURY DIARY & REFUSE ROTA.....	2 - 4
FROM THE RECTOR & CHURCH NEWS .....	4
LADBROKE NEWS .....	8
HARBURY PARISH COUNCIL .....	18
CLUBS & SOCIETIES .....	27
EARLY YEARS & SCHOOL.....	39
VILLAGE HALL UPDATE .....	46
GARDENING & NATURE .....	48
GENERAL SECTION .....	53
LETTERS TO THE EDITORS .....	68

## Editorial Team

John Holden - Chris Finch - Marian Millington - Janice Montague  
Ralph Swadling - Jackie West

*The views of contributors are not necessarily those of the Editorial Team  
The Editors reserve the right to amend articles as they see fit.*



## Editorial

There will be local elections on 3<sup>rd</sup> May for the District and Parish Councils.

Despite the Government announcement that HS2 will proceed, the Ladbroke Action Group continues its focus on minimising local impact, principally through the HS2 Community Network meetings.

Congratulations to the Hereburgh Morris dancers who celebrate their 25<sup>th</sup> anniversary this month.

Harbury Primary School has benefited from a generous donation of 10,000 Active Kids vouchers from the CEO of Sainsbury's, Justin King.

Finally we extend our sympathies to the families of Dennis Freeman, Frances Killoran, Michael Lambert, Hazel Sharples and Janet Watts.

## Harbury Diary

### APRIL

#### Sun 8 **EASTER DAY**

Holy Communion 8.00am

Easter Holy Communion 10.30am

Tues 10 NB No Toddlers Service (transferred to 17<sup>th</sup>)

Holy Communion, 7.30pm

Thurs 12 Holy Communion, 9.45am followed by coffee

Village Hall Management AGM 7.30pm Farley Room Village Hall

Women's Institute, 7.45pm, Tom Hauley Room. Speaker:

Margaret Hine – the work of Clarice Cliffe

Sat 14 Coffee Morning 10.00am – 12 noon in Tom Hauley Room in aid of the PCC

#### Sun 15 **EASTER II**

Holy Communion, 8.00am

Family Communion Service, 10.30am

Evensong, 6.00pm

Zumba, 9.00am in Village Hall

ADVERTS FOR NEXT ISSUE TO: 31 BINSWOOD END, HARBURY BY 5.30PM

Mon 16 **SCHOOL STARTS**

Tues 17 Tennis Club Open Evening – 6.30pm onwards non members welcome

Toddlers Service, 2.00pm, Tom Hauley Room

Holy Communion 7.30pm

- Wed 18 Tea, 3.00pm, Tom Hauley Room  
Wednesday Walk from Hunningham, meet 9.45am Village Hall
- Thurs 19 Holy Communion, 9.45am followed by coffee
- Fri 20 Race Night 7.30 for 8.00pm in Village Hall - contact  
Don Vincent 613285 for tickets
- Sat 21 Men's Prayer Breakfast, 7.30am, Tom Hauley Room  
Coffee Morning 10.00am – 12 noon in Tom Hauley Room in aid  
of Brownies  
Heritage Room Official Opening, 2.45-4.00pm at School - all  
welcome  
Guides & Scout Support (GASS) AGM 5.00pm at the Scout Hut
- Sun 22 EASTER III**  
Holy Communion, 8.00am  
Sung Eucharist, 10.30am  
Service of Thanksgiving for Spring, 4.00pm in Church followed  
by tea and cake  
Zumba, 9.00am in Village Hall
- Mon 23 St George's Day
- Tues 24 No Drop in Tea for the Bereaved this month  
Holy Communion 7.30pm  
Julian Meeting 8.00pm
- Wed 25 Wednesday Walk in Ryton Woods meet 9.45am, Village Hall  
Ballroom Dancing 7.30pm beginners 8.00pm main group in  
Village Hall
- Thurs 26 Holy Communion, 9.45am followed by coffee  
Thursday Club, 2.30pm in Village Hall  
**ARTICLES TO HARBURY PHARMACY, HIGH STREET AND  
EMAIL ARTICLES DEADLINE BY 5.30PM**  
Warwickshire Young Voices, 6.30pm in Village Hall  
Parish Council 7.30pm Village Hall
- Sat 28 Coffee Morning 10.00am – 12 noon in Tom Hauley Room in  
aid of Inner Wheel  
Moving Pictures presents War Horse in Village Hall - doors open  
5.00pm, film starts 5.30pm – Tickets £10.00 to include food –  
see advert
- Sun 29 EASTER IV**  
Holy Communion, 8.00am  
Sung Eucharist, 10.30am  
Zumba, 9.00am in Village Hall
- MAY**
- Tues 1 Holy Communion 7.30pm  
Horticultural Society: Speaker Howard Drury – Madeira, the  
Islands, its Gardens and People
- Wed 2 Wednesday Walk near Wootton Wawen meet 9.45am at the  
Village Hall  
Holy Communion, 2.00pm, Tom Hauley Room

- Wed 2 Mothers' Union Meeting, 2.30pm, Tom Hauley Room:  
John Guilford talks about the work of the Night Shelter in  
Leamington Spa  
Ballroom Dancing, 7.30pm beginners, 8.00pm main group in  
Village Hall
- Thurs 3 ELECTION DAY (District and Parish) – Voting in Village Hall  
Holy Communion 9.45am followed by coffee  
Art Group - Pen and Wash, 10.00am-12.00 noon, Scout Hut  
Folk Club 8.00pm at the Dog Inn  
Men's Group Annual Dinner 7.30pm Tom Hauley Room
- Sat 5 Coffee Morning 10.00am – 12 noon in Tom Hauley Room in  
aid of Netball Club  
Harbury Society Guided Tour of Chesterton 1.30pm at  
Chesterton Church
- Sun 6 **EASTER V**  
Sung Eucharist, 9.00am  
First Light Service, 10.30am, Tom Hauley Room  
Quiet Contemplative Service in the Celtic Tradition 6.00pm
- Mon 7 MAY DAY BANK HOLIDAY
- Tues 8 Harbury & Ladbroke News AGM 8.00pm, The Shakespeare Inn

**DATES FOR INCLUSION IN THE HARBURY DIARY PLEASE TO:  
LINDA RIDGLEY - TEL. 612792.**

Refuse Collection Rota				
	Deppers Bridge	Harbury	Ladbroke	Collection Week
April	Wed	Thurs	Fri	
	11	12	13	Green & Blue Lid Bins
	18	19	20	Grey Bin
	25	26	27	Green & Blue Lid Bins
May	2	3	4	Grey Bin
	9	10	11	Green & Blue Lid Bins
	16	17	18	Grey Bin



**All Saints  
HARBURY**

## From the Rector

**Reverend Craig Grocock**

The Rectory, Vicarage Lane, Harbury ☎612377 ✉kankudai43@aol.co.uk

A friend posted something to me last week on Facebook that said something like; ' If we learn so much from our mistakes then I'm for making more of them!' It was a positive view of making blunders or dropping clangers.

In most cases though we view errors in the negative and we then so often turn those negatives inward leaving ourselves feeling rubbish.

We all make mistakes, we wouldn't be human if you didn't and some of them can be humongous. We all do things that make us feel like failures. Sometimes they are just silly things that could have been avoided. Like for example the pupil who read the question wrong in the exam and to the question 'What is the boiling point of water?' answered 'The point of boiling water is to make a cup of tea!'

There are also the mistakes that we feel there is no way back from. Mistakes where someone has been left deeply hurt or betrayed perhaps, mistakes that seem unforgivable.

I was taking an assembly at school the other week and I was telling the children about a man whose experience left him feeling like this. He had let his best friend down when he needed him most. He lived in another country under an oppressive regime. His friend was arrested, imprisoned and tortured and eventually executed for something he hadn't done. The man watched and allowed all this to happen and did nothing to try and stop it – in fact the man ran to save his own skin. The man had let his friend down in the worst way possible.

You might be interested to know that the man was called Peter and his friend was called Jesus. The amazing thing was Jesus forgave him for the denial and sense of betrayal.

This is why the Christian faith offers us so much. With God, no matter what we've done, and how bad the past has been, it can be forgiven. We too have the chance to start again and it's possible because Peter's friend paid the price of our failures on the cross so we can be forgiven.

Easter is about hope. The empty tomb points to the God of new beginnings, of fresh starts and of hope for the future.

May God bless all of you this Easter time.

## **From the Registers**

### *Funerals at All Saints' Harbury*

27 <sup>th</sup> Feb	Michael Lambert (81 years)
14 <sup>th</sup> March	Frances Beatrice Killoran (94 years)
15 <sup>th</sup> March	Janet Watts (69 years)
19 <sup>th</sup> March	Dennis Freeman (69 years)

### *Holy Baptism, All Saints' Harbury*

11 <sup>th</sup> March	Michael Noah Birch
------------------------	--------------------



## From the Churchwardens

**Liz & Will**

You may well have noticed that during the past few weeks the sound system in Church has been playing up. It would appear that a fault has arisen in the hearing aid induction loop. This has now been fixed by the manufacturer so hopefully that will have sorted out the recent anomalies.

Once again the children of the school brought a lovely presentation about what Mothers Day means for them. It is such a joy to see the Church full with young and old alike.

Please take note of the cream Easter cards which have been posted through your door. They give times for all of the Holy Week and Easter celebration services at both Harbury and Ladbroke. A particular favourite is the Easter morning communion and there may well be a 'tasty' treat in store.

Now that the dust has settled, quite literally, from the work on the floor, we are planning to organise a spring cleaning day after Easter.

Dig out your favourite duster and keep a lookout!



## Toddlers' Service

**Lorna Bedford**

For our March service Mrs Beryl Checkley told us the story of Moses when he was a baby. He was in danger from Pharaoh of Egypt, so his mother placed him in a basket amongst the bulrushes at the side of the river Nile. He was found by a princess who took him to the palace where he was looked after by his real mother.

To illustrate the story, Mrs Checkley bought along a baby doll wrapped in a blanket, a wicker basket and lots of greenery and bulrushes. We said a prayer to thank God that Moses' life had been saved and he lived on to be a great leader of the Israelites.

We sang songs, one being 'He's got the whole wide world in his hands', which includes a verse, 'He's got the tiny little baby in his hands' Mr. Michael Hare played the accordion to accompany our singing.

We made a picture of the river with Moses in a basket with bulrushes all around him. After refreshments we played until it was time to go home.

Please note our next meeting is on Tuesday 17th April at 2pm in the Tom Hauley Room (not the usual 2<sup>nd</sup> Tuesday of the month . This change is due to the Easter holiday break). All babies and toddlers, accompanied by an adult, are welcome to join us.



By time you read this, April First Light will have come and gone. So you will have missed all the fun of Palm Sunday. So instead I will tell you about the great time we had listening to God at the March First Light. We had fun listening to some celebrity voices. Harry Hill was recognized more quickly than the Queen, and Stephen Fry more easily than Paul McCartney! We learnt to recognize these voices by hearing them often; in the same way if we make space to listen, we will learn to recognize God.

Our theme in May is "The Power and The Glory" to fit in with the 60<sup>th</sup> anniversary of the consecration of Coventry Cathedral. I am not sure quite what we will do, but it will be lighthearted with a serious centre, and you will be very welcome. First Light takes place on the first Sunday of each month in the Tom Hauley Room and we begin at 10.30am, with coffee beforehand from about 10ish.

## The Bishop's Visit



**Waiting to walk with the Bishop**



**Our Laid Back Rector**

The above photos were taken whilst waiting for Bishop John to arrive to walk the Harbury to Radford Semele leg of the Coventry Cathedral pilgrimage.

**Sally Stringer**

# Ladbroke News & Diary

## APRIL

<b>Sun</b>	<b>8</b>	<b>EASTER DAY</b> Easter Holy Communion (sung), 9.00am
Sat	14	Whist Drive, 7.45pm in Village Hall
<b>Sun</b>	<b>15</b>	<b>EASTER II</b> Holy Communion (Book of Common Prayer), 9.00am ADVERTS FOR NEXT ISSUE OF HARBURY & LADBROKE NEWS TO 31 BINSWOOD END BY 5.30PM
Wed	18	Village Hall AGM in Village Hall
<b>Sun</b>	<b>22</b>	<b>EASTER III</b> Holy Communion (sung), 9am
Thurs	26	DEADLINE FOR ARTICLES TO HARBURY PHARMACY, HIGH STREET, HARBURY OR BY EMAIL BY 5.30PM Women's Institute Meeting, 7.30pm in Village Hall
Sat	28	"Trumpets, Trains and Terrific Tales" concert in Church Whist Drive, 7.45pm in Village Hall
<b>Sun</b>	<b>29</b>	<b>Holy Communion (spoken), 9.00am</b>
<b>MAY</b>		
Tues	1	Photography Club, 7.30pm in Village Hall
Sat	5	Whist Drive, 7.45pm, Village Hall
<b>Sun</b>	<b>6</b>	<b>Family Communion, 10.30am followed by refreshments</b>



## Ladbroke Church News

Sue Lord

This year's series of Lent Lunches have once again been very well supported. A big thank you goes to all of those who kindly hosted lunches and to everyone who attended in order to make them both a social and financial success.

The Easter Festival is here with a very active programme of events and services. Hopefully everyone has received the Easter Services Card which provides all of the relevant details. Of specific interest at Ladbroke Church will be the performance of Sir John Stainer's "The Crucifixion". This will be held on Good Friday at 7.00pm.

The concert "Trumpets, Trains and Terrific Tales" is confirmed for Saturday 28th April at 7.30pm at Ladbroke. There are more details about the performers in a separate article. For tickets call Jackie on 810331 or Margaret on 817312.



The funeral was held on 14th March for Hazel Sharples. A full church was able to celebrate Hazel's life and acknowledge her devotion to the church and the local community. She was a very active member of the congregation who will be greatly missed.

## From the Registers

### *Funerals at All Saints', Ladbroke*

14<sup>th</sup> March Hazel Sharples

## Ladbroke Flower Rota

8<sup>th</sup> April Jean Clews

15<sup>th</sup> April Jean Clews

22<sup>nd</sup> April Christine Baker

29<sup>th</sup> April Christine Baker

6<sup>th</sup> May Sue Collins



Sue Lord



## Ladbroke Parish Council

Betty Winkfield

**Public Participation:** Yet again dog fouling was reported. A resident of Radbourne Lane complained of a regular offender who walks their dog in the lane. It was suggested that the Dog Warden be asked to visit the village.

There was concern about vehicle attacks – damage to tyres. It was also reported that a car was seen parked in “passing areas” at the end of Windmill Lane. The driver seemed to be making a reconnoitre of the surrounding area. Two people have seen this car and have taken note of the registration number – it is a grey Vauxhall.

**Name Change of Windmill Lane:** This is still on the agenda. The Parish Clerk is trying to “push things along”.

**The Merger of the Millennium Green and the Village Hall:** This is on-going through the various Charity Commissions, but it is likely to take some time due to the legal implications.

**Street Lighting Maintenance:** Each street light costs £7.17 to maintain. Ladbroke's lights are only on during hours of darkness. There was a question about them being turned off before dawn (4 or 5am).

The finances were approved, including street lighting.

**Planning Matters:** The alterations to outbuildings at the High House were approved. However there was some discussion about the holiday let housing at Manor Farm concerning non-compliance with Condition 3 of the Planning Permission.

**Diamond Jubilee Celebrations:** There are several activities being organised by people in the village; these are “coming together”. The Parish Council likes the idea of planting a tree to commemorate the occasion.

On Sunday 3<sup>rd</sup> June, the Church is having a Civic Service at 10.30am. The Church of England has produced a special service sheet to be used throughout the country.

It is hoped that all interested parties will meet together to finalise all the various activities.

**Stratford District Council's Draft Core Strategy:** The original draft is a two hundred page book. The Council has suggested that they divide the reading between them, each studying a given section. It mainly concerns the building of 6,000 or more houses within the Stratford District. They need to be built between now and 2026. HS2 will also have to be taken into consideration in this area. There is also talk of Travellers' sites being designated. This will be an added problem eventually.

**Superfast Broadband:** There is very little interest being shown about this in the local area. Residents are encouraged to complete the residents' forms online at [www.cswbroadband.org.uk](http://www.cswbroadband.org.uk).

**Footpaths around the Village:** The Council is taking the lack of usability of footpaths seriously. Some paths are impassable and other are not even identified at all. Stratford District Council is very interested in them being opened again. Councillor Neal is taking an active interest in the situation.

**HS2:** The opposition is as strong as ever. Several members of the Ladbroke HS2 Action Group joined with other groups to walk the proposed route of the railway line. They have already got the original route moved further away from the village and have also stopped the viaduct going over the A423 road. They are now looking at legal challenges, compensation during the construction of the line and also access to areas such as farmland. The group is also looking at the possibility of a footpath to Southam as in the Parish Plan and raising the awareness of possible flooding in some areas.

**Parish Council Storage Facilities in the Village Hall:** Is this storage really needed? The Parish Clerk and the Chairman are to sort out old planning applications and minutes. It was suggested that Warwick Archives may be interested in some of these items; this possibility will be investigated before the items are thrown away.

There was no report from the Village Hall Committee. The Millennium Green Committee is getting a team together to have a "tidy up". They are also looking into the use of the Green for the Jubilee celebrations.

**Ladbroke Website:** There was lengthy discussion about this - how to reduce the costs and how to get more people interested in it. It was agreed to put the address of the website in the Harbury and Ladbroke News (see below).

The meeting closed at 9.40pm. The next meeting is on Wednesday 16<sup>th</sup> May at 7.30pm.

**Ladbroke Village website can be found at [www.ladbroke-pc.gov.uk](http://www.ladbroke-pc.gov.uk)**

	<p><b>Ladbroke &amp; Deppers Bridge Women's Institute</b></p>	<p><b>Carol Lane</b></p>
--	---	--------------------------

Standing in for Sue Moore, who could not be with us on Thursday, 22<sup>nd</sup> March, Lesley Jeffries was delighted to announce that Janet Yeates was the overall winner of a skittles competition between local WIs and will go on to represent this area at the next stage of the contest.

The coffee morning we are hosting will be on Saturday 31<sup>st</sup> March in the Tom Hauley room from 10am to 12 noon.

There will be a Bring and Buy plant sale at Federation House, 1 Corunna Court, Warwick, CV34 5HQ on May 19<sup>th</sup> between 2.00pm and 4.00pm.



After the business meeting, Lesley invited Julia Staite to talk about the history of perfume. As well as being the buyer for Boots for 32 years, Julia is a collector of perfume containers and the table held a wonderful display of memorable bottles and boxes. Julia suggested that we should think carefully before throwing empty bottles away as these could be saleable.

Prior to the twentieth century all perfumes were made from natural sources, like musk from the musk deer and resins such as frankincense and myrrh. Some were also used as an antiseptic and others had a very short shelf life. The Yardley Company stretches back into the 1700s and the famous 4711 preparation was given to a banker's wife by one of the monks from the local monastery.

The biggest change came in and was initiated by Françoise Coty who responded to the desires of the girls in the 1920s to have 'something different' and was prominent in the perfumery field for 40 years.

Gabrielle Chanel was a girl with a peasant background who developed the famous Chanel No. 5 with the help of sponsors. This perfume was launched on the fifth day of the fifth month in 1921 and is still popular.

There were murmurs of recognition as all the familiar names came into the story: Elizabeth Arden, Estee Lauder, Helena Rubenstein etc to the present day celebrity fragrances, like the His and Hers perfumes by Victoria and David Beckham.

The future of the production of perfumes for the masses is being taken over by science and, because of the high labour costs associated with the harvesting of biological products, only the very rich will be able to purchase natural perfumes. Julia showed a picture of one brand which marketed at £15,000. I am not expecting one of those in my Christmas stocking next year!

Anyone wishing to know more may contact Julia at [julia.staite@btinternet.com](mailto:julia.staite@btinternet.com).

The April meeting will be held on Thursday, 26<sup>th</sup> starting at 7.30pm when John Nurser will be telling us about the work of the RNLI.

	<h2>Ladbroke Photography Club</h2>	<p><b>Kip Warr</b></p>
---	------------------------------------	------------------------

We had a first-rate workshop in our March meeting. Angie Neale, professional wedding and portrait photographer, showed us how to take portraits. First she illustrated her own skills with a presentation from her portfolio, showing the importance of lighting, composition, focus, background and so on. Her expertise and enthusiasm were evident but many of us were beginning to feel somewhat inadequate; how could we ever get a model to pose as she does - it's all a bit embarrassing isn't it?

Sure enough, when we moved on to the practical session, we all stood around awkwardly and took endless shots of our models, each picture looking much the same as the other. Until Angie showed us how to direct the model: "Stand up ... turn to the side ... sit on the floor ... look there ... lean back..."



**Before.....**



**After**

Suddenly it all seemed natural to the photographers and easier for our lovely and ever-patient main model, Anna. Then Angie moved on to the photographers: "Move around, get in close, stand on a chair, lie on the floor"; - our shots were beginning to look much more interesting and there are some great ones for the village website. Even better - Angie has offered to come to our summer barbecue for another session and to help us improve on our evening's efforts.



**Anna**

Many thanks to Angie Neale and to our willing models Anna, Nathalie, Edward and Henry. And watch out, Gran. Next time we take family photos we'll ask you to sit on the floor, look over your shoulder and flick your hair!



## **General Section**

### **A Tribute to Hazel Sharples 1930 – 2012**

Hazel's family has lived in Stockton for many years. Of her early years all I know is that she went to Leamington Grammar School. Three of her school friends were at her funeral; they had all kept in touch throughout the years.

Hazel talked about her years at a nursing home where she must have been the matron; she had definitely been in charge. Where and when she did her nursing training, unfortunately, I don't know.

Stockton people, many of whom were at her funeral, speak fondly of her. She had opened The Shop in Stockton which she ran for many years at the same time as bringing up her family, Timothy, Craig, Matthew and Deborah. I was told by a Stockton resident who had worked for her that, if they hadn't got in stock what a customer asked for, she would "move heaven and earth" to get it. She was always "kindness itself" and worked hard for Stockton Church and the community.

She was just the same when she moved to Ladbroke in 1988. She soon got involved with the Church, becoming its PCC secretary for about ten years. She was busy in the Women's Institute and the Women's Fellowship. Hazel was always caring about people, even moving in with some after cataract surgery, and she always made sure that people had a car to take them to outings and events. She moved to Southam about twelve years ago where she was near the shops, but she never moved from Ladbroke Church, that remained unchanged until her final illness when she moved to her son's home back in Stockton. Her final five months were a very testing time for,

having refused surgery, she battled bravely and was looked after caringly by her family.

Hazel's family were very dear to her and she was always very proud of their achievements.

We offer our prayers and thoughts to them at this sad time.

**Betty Winkfield**

## **Trumpets, Trains and Terrific Tales – Saturday 28<sup>th</sup> April**

Bill Houghton and Sophia Rahman will perform "*Trumpets, Trains and Terrific Tales*" at All Saints' Church, Ladbroke on Saturday 28<sup>th</sup> April 2012, starting at 7.30pm. This entertainment, with a wide range of music from baroque to Lloyd-Webber and amusing tales from Bill's time in various orchestras, is part of "A Musical Pilgrimage", a series of concerts being held in historic buildings along the proposed route of HS2 as explained by the organiser, Peter Bassano in last month's magazine.

Tickets, to include a glass of wine or juice during the interval, cost £10 for adults, £4 for accompanied children under 16, and are available from Jackie West (01926 810331) or Margaret Bosworth (01926 817312). The proceeds will be divided equally between All Saints' Church and The Stradivari Trust, the musical charity who are sponsoring this concert and others in the series. For more details email [jackieszone-concert@yahoo.co.uk](mailto:jackieszone-concert@yahoo.co.uk) but read on for more information about the performers – as you can see we are very privileged to host such fine musicians and in for a real treat.

### **Bill Houghton**



Bill first discovered the trumpet aged eight after spending his summer in hospital following a farming accident. His father asked what he wanted as a consolation prize and he requested a toy trumpet. Father brought home the real thing and after working out the purpose of the mouthpiece, Bill played "Stranger in Paradise" within fifteen minutes (top of the Hit Parade in 1955!). By the following summer he was winning talent competitions along the East Coast.

At the age of eleven Bill became a Junior Exhibitioner at the Royal Academy of Music - two notable fellow students being Andrew Davis (now Sir) and Reg Dwight (now Elton John). Then at twelve years old Bill went on his first ever tour, to Norway with the Wicken Chamber Orchestra. He became Principal Trumpet with the Essex Youth Orchestra at 14 and at 16 he passed his LRAM and became a full-time student at the Academy.

Bill has been one of the world's leading orchestral trumpet players since the age of 19, when he accepted his first appointment with the Royal Opera House, Covent Garden. In his career he has played principal trumpet with all the main London orchestras as well as holding the principal position for the Academy of St Martin in the Fields and the English National Opera. He was the Principal Trumpet of the BBC Symphony Orchestra for 25 years before leaving in 2007 and has played in some 20 *Last Night of the Proms* Concerts. He is leader of the London Gabrieli Brass Ensemble and a Fellow of the Royal Academy of Music.

During his career Bill has travelled the world, visiting 49 separate countries and over the years he has taken part in a great many musical recordings. He has also played on more than a dozen film sound tracks including Star Wars, The Snowman and Amadeus.

### ***Sophia Rahman***



Sophia is a pianist with a varied career which encompasses solo, chamber, adjudicating and coaching activities. She acts as an official accompanist for a number of organisations and events, including international viola & oboe competitions.

Sophia studied at the Yehudi Menuhin School, took a first-class honours degree in English from King's College, London and completed her piano studies at the Royal Academy of Music. She was the winner of the Royal Overseas League's Accompanist Award and

the Liza Fuchsova Memorial Prize for a chamber music pianist in consecutive years.

She was Artist-in-Residence at Queen's University, Belfast for eight years, and has given masterclasses at conservatoires throughout the UK and also in Russia, China and New Zealand. She also founded the ongoing Norburton Hall Masterclass series in Dorset, for amateur pianists and string-players.

Sophia has recorded over twenty chamber music discs for companies including Naxos and Meridian.

## **Ladbroke Fete - Saturday 2nd June**

The theme will be **Red, White and Blue** in honour of both the Jubilee and Team GB at the Olympics and as usual there will be a mix of things to see, do, buy and eat. One event at this year's fete will be a Gatka (martial arts) display. Another will be making a giant picture of The Queen out of coins. So please start saving up 1p, 2p and 5p pieces now and bring them along on the day to help us complete this numismatic masterpiece.

Ladbroke fete raises money for the upkeep of The Millennium Green and is good fun, but of course it only happens thanks to the support of lots of people

beforehand and on the day itself. We would like to borrow gazebos again, though we hope they will be protecting us from sun rather than rain this year! We would also welcome more offers to help run stalls and games by families, groups of teenagers and individuals. So, if you have own idea or would like to help run an old favourite, please get in touch with Graham (815196) or Jackie (810331) by the end of April so that we can add you to the overall plan.

**Jackie West**

## **Ladbroke Festival - Monday 4th June**

We are planning a celebration of arts, crafts and hobbies in Ladbroke Church to exhibit the talents of local people e.g. painting, music, woodwork, jewellery, sewing, sugarcraft etc.

Our festival is open to everyone so, if you have a hobby or skill that you would like to show to others, whether you are a beginner or an expert, please contact: Nicky (815196) [nicolalewis@tiscali.co.uk](mailto:nicolalewis@tiscali.co.uk) or Margaret (817312) [margandboz@btinternet.com](mailto:margandboz@btinternet.com). As part of the festival there will be a display of pictures by Ladbroke Photography Club and a photo competition (any subject) open to all non-members. There will be more details about this in next month's magazine.

**Margaret Bosworth**

## **HS2 – Where Are We Now?**

On Thursday 1st March the Ladbroke HS2 Action Group gave a presentation to the village updating residents on the Government's proposed high speed railway line (HS2).

Further maps showing amendments to the proposed route through Warwickshire were released in January and these can be viewed on the WCC website at [www.warwickshire.gov.uk/hs2](http://www.warwickshire.gov.uk/hs2). The Ladbroke HS2 website has recently been reduced in its scope and accessibility and for the future we will be placing greater reliance on the Warwickshire County Council's website for local information.

Following the Secretary of State's announcement, also in January, that the Government is to proceed with this £36bn project (this figure excludes a number of significant costs and assumes construction comes in on budget) the association of local authorities opposed to HS2 and known as 51M, of which Warwickshire County Council is a leading member, served notice upon the Secretary of State that they intend to seek a Judicial Review of the process followed in arriving at Government's decision to proceed. Very shortly afterwards HS2 Action Alliance Ltd also served notice of their intention to seek Judicial Review on environmental grounds and also in respect of the process followed with regard to compensation. We understand that other



bodies are also in the process of challenging the Government's decision through the Courts and the European Commission. These are the opening shots in what will be a protracted legal battle and we will keep you up to date as matters develop.

In the meantime, whilst continuing our unstinting opposition to this extremely costly and unnecessary project, we are also working closely with WCC to prepare our cases for local mitigation of the impact of HS2, should building ever commence. On Tuesday 13th March the Ladbroke HS2 Action Group (AG) and Ladbroke Parish Council (PC) were represented at an all day workshop organised and run by WCC on behalf of all Warwickshire communities affected by HS2. This was a very informative day covering subjects as diverse as tunnels and bridges, cuttings and bunds, noise mitigation, environmental impacts, landscaping, footpaths, bridleways, archaeological and heritage concerns to name but a few subjects. The knowledge gained was put to good use at the first HS2 Community Forum meeting for the Ladbroke and Southam area held on Monday 26th March at Ladbroke village hall when PC and AG representatives put our concerns directly to HS2 Ltd. If you have concerns that you want raised at future meetings please let your local PC or AG member know.

Looking to the future, we believe that HS2 Ltd will present to the Secretary of State at the end of March their proposals for the lines to Manchester and Leeds, which will eventually be released for public scrutiny by the end of 2012; expect further public outcry at that stage and probably further increases in build costs!

We also understand that yet another public consultation on compensation is planned for the summer (May or June?) of 2012, although given the lack of attention apparently shown by Government to our responses to the two earlier public consultations on this subject we have grave concerns that this is nothing more than yet another public relations exercise.

Assuming that the Courts, the European Commission, HM Treasury or other political or economic realities don't derail this project, the original timetable suggests that the hybrid bill granting Government the powers to proceed with construction might be presented to Parliament sometime in 2013 with construction starting in 2015.

In the meantime there has been increasing recent press speculation, fuelled by a speech given by Professor McNaughton, Chief Engineer to HS2 Ltd., that the proposed new high speed rail station at Birmingham airport is the prelude to a massive new city development filling the 'gap' between Coventry and Birmingham with all the attendant increased air and road traffic that will entail.

If you wish to contribute to the significant costs of HS2 Action Alliance's Judicial Review action please forward your cheques payable to

Ladbroke HS2 Action Group to Graham Long, Chair, Ladbroke HS2 Action Group, 'Newlands', Windmill Lane, Ladbroke CV47 2BN. We are doing very well in our fundraising efforts but still have some way to go before the full costs are completely underwritten - please don't leave this to everybody else, your help is needed now!

**Graham Long**  
**Chair, Ladbroke HS2 Action Group**

## **Ladbroke Village Hall Millennium Club**

£80	Margaret Whitehouse	£50	Lorna Carlton
£25	Peter and Carol Loftus	£10	Alan Lohead
£10	G and G Middleton	£10	Alan Lord
£10	Avril Court	£10	S and S Roberson

**Margaret Bosworth**



**Harbury Parish Council**

**Linda Ridgley**

**Official minutes can be viewed on the Parish Council website, [www.harbury-pc.gov.uk](http://www.harbury-pc.gov.uk) or obtained from the Parish Clerk Tel: 01926 614646**

### **February 2012**

**Police** - Forensics have identified two burglary suspects who are actively being sought. A BMW stolen from a householder's drive was thought to be taken by a Daventry gang. County Cllr Bob Stevens praised PC Butler for his efforts. District Cllr Bev Mann received confirmation that police "response" now came from Rugby. Marian Millington agreed to attend the Independent Police Advisory Group for the Parish Council. Villagers were reminded of the 101 non-emergency number for contacting the police.

**Library** - There was very long discussion on three options for taking over the Library. The First involved the Parish Council taking a 35 year lease on all the Wight School (Including the Pre-School Room and car park) with a break option on the lease in five years. The second would be for just the Library area and the third was as the first option but excluded responsibility for the Pre-school roof with the Parish Council paying a third of the cost of a roof survey.

The eventual decision was for the Second Option (taking on just the Library area with a five year break clause) with the Library Group as their tenants. The Parish Council agreed to pay up to £850 of the Wight School Trustees'

legal fees. They may be able to reclaim VAT on repairs although there is a £7.5K yearly limit on this.

The County Council is replacing the rotten Library floor with concrete and offered to pay 30% of Car Park resurfacing costs if this took place within six months of the County giving up the lease.

## **Reports**

School - Progress was reported on appointing a new Head. Governors were investigating ways to refurbish the School pool and the Heritage Room would be opened on 21<sup>st</sup> April 2.45pm – 4.00pm.

Village Hall - Work was in progress on serving hatches and the kitchen update would start in April.

District Council - Beverley Mann advised that the Consultation on the Core Strategy ran until 30<sup>th</sup> March. Parish Cllr Patrick hoped Hereburgh Way homes would count towards the homes Harbury would be expected to provide. Cllr Hamburger raised the Knightcote Windfarm application again.

County Council - Cllr Stevens reported that the County was part of a consortium seeking judicial review over HS2 proposals. There would be a 0% increase in the County rate but the Police asked for 3.9% increase, and to that must be added the Parish Council's rates.

**Deppers Bridge** - Sewerage was still a problem, the latest damage being thought to have been caused by road repairs. Cllr Hamburger promised to try to get Severn Trent to do something to get it repaired.

## **Planning**

Stratford granted the conversion of a garage into living space at 44 Farley Avenue, extensions at 33 Manor Road and the felling of a willow at Pool Yard, Temple End.

The Parish Council had nothing to say about extensions at 14 Farley Avenue or a replacement dwelling and garaging plus new windows at Leicester Barn, Chesterton Road.

Cllrs had met agents for the Price Family Trust and had made it clear that they would not support development of the Church Paddock. The Trust also owns the Spinney and adjoining Paddock and land in Bull Ring Lane.

Cllrs expressed concern about the felling the diseased Horse Chestnut in front of the Village Hall, wanting a suitable semi-mature replacement to be planted.

They wanted assurances that tree planting for the extension to Hereburgh Way, would not adversely affect neighbours and also queried the parking arrangements in the draft layout.

But there was much discussion about the estate's sewerage system which some thought was causing blockages in Frances Road and smells in Constance Drive. However Severn Trent's investigations revealed no problems.

### **Properties**

Skatepark - A quote of £4160 was to be accepted for the remodelling of the track, but volunteer labour would be needed to complete the work. There did not appear to be sufficient space to extend the Skateboard Park.

Dog Bins - Cllr Thornley remarked that although she no longer had a dog of her own she was still picking up dog poo on the Recreation Grounds. The new dog bin is due and more anti-fouling signs will be needed.

Lighting - The cost of maintaining the street lighting has risen by 5% but three more energy efficient LED lights have been ordered.

Parish Plan - the Update is ready and the Harbury News would distribute it.

Flooding was still a problem at South Parade and Temple End (as well as on Cemetery Corner).

New Road - Mr Brough successfully lobbied for a name for the private drive off Bush Heath Lane that services properties to the south of Temple End and the Parish Council approved it being called Pool Lane.

**Elections** - Cllrs were reminded that they needed to put in their nomination papers for the coming elections.

**The Clerk** – Nicola Thompson tendered her resignation saying that she would be sad to leave after nine years. She was presented by Cllrs with a basket of roses.

**Next Meeting** - Thursday 22<sup>nd</sup> March 7.30pm in the Village Hall.

## **Parish Council Elections - 3rd May 2012**

Nominations to stand for the Parish Council close after the magazine's publication date. The current Parish Councillors are standing again and there may be more candidates who come forward.

### **Steve Ekins**



I moved into the Village with my family three and a half years ago from Lillington. Harbury has always been the kind of place that we wanted to live, because of its reputation of community spirit and village life and we very quickly felt part of the village.

I have always felt the importance of community involvement and whilst in Lillington, I was an assistant leader in the

1<sup>st</sup> Lillington Scouts, Chairman of North Leamington School PTA and also Governor at the School during its change in status to an Academy.

My hobbies/interests include cycling, walking and hashing, I have been involved with Harbury's annual Hash and its fund raising for over ten years.

So, when the opportunity came two years ago to apply to be a Parish Councillor, I took it and was pleased to be co-opted onto the Parish Council as the representative for the Ward of Depper's Bridge. I am a member of the working parties covering: Planning, Finance and General Purposes.

I feel very strongly that more affordable housing is needed for the future generations of Harbury to be able to stay in the village they love.

So if you will vote for me, I will be happy to continue to serve the communities of Harbury and Depper's Bridge in any way I can. Thank you!

### **Sharon Hancock**



I came to live in Harbury in 1969 and became a Parish Councillor in 1977. During that time I have been involved with many aspects of the Council's work and seen it change into a much more modern organisation with an office, a website and better communication with residents. Currently, I am Chairman of the Properties Working Party, responsible for the Recreation Ground, Cemetery and village greens.

I have been involved with a number of other organizations in the village and at present I am on the committees of the Twinning Association and the NSPCC.

I consider the housing development in Bush Heath Lane to be a success and am glad that progress is being made towards the second stage of the development. The provision of houses for rent for local people both young and old is vital if our community is to continue to thrive.

The current severe restraints on public spending which are likely to continue for years to come, presents many challenges. Already we have seen the withdrawal of County Council support for the Library and severe reductions in police numbers. Harbury it has been said has been doing the 'Big Society' for years and it is heartening to see volunteers coming forward to salvage a library service but the most willing of volunteers need funding and the new Council will have to work hard to maintain an adequate level of services.

I hope very much to continue to serve on the Council and work for the future of our village.

### **Alan G Knowles**

My name is Alan G Knowles and I have lived in Harbury for over forty years during which time I ran a small Plumbing and Heating Business.



I am now retired and I have been on the Parish Council for some years now and would like to continue for another term.

I find being a Parish Councillor very fulfilling and I hope to continue for many years to come being of service to the local community.

### **Amanda Lewis**

I have lived in the village for nine years, and having two young children, fully appreciate the facilities and sense of community that this village has to offer. In 2009 I took the opportunity to become more involved in the Community by being co-opted onto the Parish Council.



As a Parish Councillor my goal has been to ensure that there is appropriate debate on all matters ensuring that decisions taken are in the best interests of the Community as a whole and in so doing I often find myself challenging the status quo.

I chair the Environment working party and am a member of the Finance and General Purpose's working party and the newly constituted Library working party, providing the Parish Council with viable options of how to save our Library but also limiting liability to the Community and precept.

My key achievements have been the introduction of LED streetlights, which reduce costs and our carbon footprint by an annual equivalent of 125Kg CO<sup>2</sup> per bulb and the development of the recent energy survey in conjunction with the Village School, through my involvement with Harbury Energy Initiative.

With your support I hope to continue playing an active role on the Parish Council.

### **Tim Lockley**



I have been a Parish Councillor since 2003, serving as chair of the Environment working party, Vice-Chairman, and since 2007 as Chairman of the Council. As a Parish Councillor my sole focus is on what I believe is best for Harbury and its residents. All the money raised by the Parish Council is spent within the Parish maintaining and enhancing our facilities, and supporting village organisations. I have also worked with our District and County representatives to ensure that Harbury gets its fair

share of their resources. If re-elected I will work to ensure that village amenities are retained and future development is sustainable.

I have lived in the village for fifteen years, my children attend Harbury Pre-School, Harbury Primary School and Southam College. In the past I have served as secretary to the Tennis Club, and currently I am chairman of Harbury Village Library.

### **Tony Mancell**

When we moved into Harbury 36 years ago, the strong community spirit was immediately noticeable and this is one thing that still exists within our village. This community spirit exists because of the people who live here and the way we work together, making Harbury the village that it is.



I've been a member of Harbury Parish Council for the last ten years, holding the position of Chairman of the Finance & General Purposes group. Over these years, the group has managed the Parish budget, setting the Parish Precept so that the Council can carry out its plans and responsibilities for the village, as well as supporting many village organisations.

We make sure that the Council does not over-spend as well as ensuring that we use all of the Precept we have collected. The 'G' in the Group's title is for General; this means that any tasks the Parish Council has that don't fall into the other sub-groups areas, Planning, Environment and Properties, fall into ours.

I have felt privileged to be a Parish Councillor for the past ten years and would like to continue in this role, so I am seeking your vote on 3<sup>rd</sup> May. Thank you.

### **Jenny Patrick**



I have been on the Parish Council eleven years and I would be pleased to serve again. I was Chairman for three years when we gained an award in the Village of the Year competition. The money we won was used to build the bus shelter which is a great asset. I currently chair the planning working party and helped to set up the Harbury Energy Initiative.

I believe that a Parish Council can best collect the views of the Parish and make representation on their behalf to higher authorities to get things done that make for better facilities for everyone in the village.

Harbury is lucky in that there is great community spirit and the Parish Council can further this by supporting activities for all age groups within the village which is what I have been actively involved in doing and would hope to continue. The important community facilities I strongly support are the Village Hall, Village with a Vision, and the Library.

## Pat Summers



My name is Pat Summers and I have lived in Harbury all my life. My father was Derek Lowe, the Co-op Manager, my grandfather was the postman, and my great-grandfather was the tailor.

When I married Brian we bought one of the new houses being built on the Sutcliffe Pastures estate, and have moved three times within the village – never wanting to leave. My mother, my daughter and two granddaughters also live in Harbury.

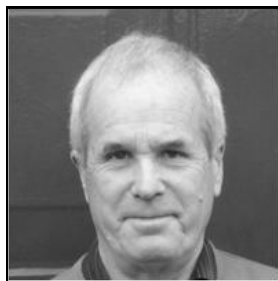
Over the years I have been involved in many village organisations and am proud of what has been achieved as Harbury has grown from the small village of my childhood to the vibrant, social and caring community that it is now.

I was co-opted onto the Parish Council in November 2010 as I wanted to 'put something back' into our very special society and find that I enjoy the variety of council business. I am on both the Environment and Properties working groups, and helped co-ordinate the updated Parish Plan.

My only interest is the protection and wellbeing of Harbury for future generations and I hope to be re-elected so that I can do that.

## Keith Thompson

I have had the privilege and pleasure to serve on the Parish Council for 31 years. During this time I have been Chair of the PC for three years and Chair of the Properties and Finance Working Parties. I am currently Vice Chair of the Parish Council and also serve on the Properties and Planning Working Parties. Part of this work involves coordinating the weekly Play Equipment Safety Inspection programme.



Since my retirement from work with Warwickshire County Council in January 2007 I have had more time to dedicate to village life and other interests. I am a member of the Village Hall Management Committee and enjoy playing tennis with Harbury Tennis Club. As a National Trust Volunteer Guide I enjoy making a contribution to the running and conservation of Charlecote. I am also an Exam Invigilator with Warwickshire College.

I have joined the Village with a Vision Group and we are working hard in seeking to provide Care Facilities within our Community.

I believe that I have the necessary skills, enthusiasm, commitment and time to continue to serve the Parish Council and our Village community which my family and I value so much and so I am seeking your vote on 3rd May. – Many thanks!



## Janet Thornley



I am 75 years' old and have lived in Harbury for 48 years and have been a Parish Councillor for the last eight years. I have two children and my daughter also resides in Harbury.

My main personal interests are bowls, music and theatre. I am also Secretary of the Village Hall Committee and the Heritage Group, and a member of the Theatre Group and Twinning Association.

My Parish Council commitment is largely concerned with provision of facilities for young children and addressing problems of our youth. I was a prime mover in raising money to provide a skate park and in recent years, the building of a BMX track for which I raised funds. I am also concerned with environmental issues within the locale.

My aims are to foster closer relationships and promote respect across the age groups. I am also involved in the community energy conservation programme.

I am passionate about future development and retaining rural lifestyles in all aspects of the uniqueness of Harbury village life.

I have felt privileged to be elected as a Parish Councillor and hope to continue in this role.

## Stratford District Council Elections - 3<sup>rd</sup> May 2012

### Bev Mann - Independent Candidate



On Thursday 3<sup>rd</sup> May I will be standing for election for a second term at the Local Government Elections. On this occasion, I have made the decision to stand as an Independent candidate.

As an Independent Councillor I believe in putting people before politics focusing my energy away from the mainstream parties. I will not be tied to any party political voting at Stratford District Council and can vote at Council meetings in the best interests of Harbury Ward.

I have lived in Bishops Itchington all my life and, for many years, have managed my own business in the village. Living and working locally I understand the issues that affect this area, giving me the opportunity to pick up on any problems and concerns of residents.

Over the last four years as your Ward District Councillor I have managed to acquire a great deal of knowledge of local government. Some issues are very common, the lack of affordable housing over the Ward being one.

The new Local Plan (Core Strategy) will control all forms of new development for the period to 2028 including new housing. Any development in Harbury Ward should be in accordance with the community and not the developer's choice, with the Parish Plans giving direction for any future development.

Local business development within Harbury Ward, including home workers, should be supported and good broadband connection is a necessity in business. This is something I am supporting through the District Council.

I would be honoured to be elected for a second term as your District Councillor and to continue to support the future of our local community and represent the views of Harbury Ward residents.

If you would like to help with leaflet delivery, display a window or garden poster or help on the day of the election that would be fantastic.

**Please contact me on Tel: 01926 614006 or email: [bevmann@ymail.com](mailto:bevmann@ymail.com)**

**Bev Mann**

### **Jim Parker – Conservative Party**



I'm Jim Parker. I'm standing as Conservative Candidate in the Stratford District Council elections on the 3rd May. I live in Chesterton with my wife and 11 year-old son and I know Harbury well and have many friends who live here.

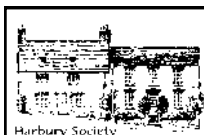
I believe that being a local Councillor is more about looking after the interests of people in your area than about party politics. However, it is much easier to get things done if you belong to the group who controls the local council than if you are an Independent. That is one of the reasons I am standing as a Conservative.

I am well aware of the effect of the proposed route of the High Speed railway line on the area and do not believe that you have anything to gain by having it so near and probably a great deal to lose from a noise point of view. I am also aware of the feelings regarding the proposed wind farm in Bishops Itchington. This will not result in cheaper electricity for local residents and, since each of the five windmills is the height of 28 double decker buses piled on top of each other it will seriously impinge on the views in this local area of natural beauty. I also know that there has been trouble lately from vandalism and anti-social behaviour as well as some theft in the area and will work with the local police to alleviate these problems.

As your Council representative, I would make it top priority to look after your interests and to preserve the reasons why most of us choose to live here. I know that some Councillors, once elected, are not heard of again until the next election and do not return your calls or emails.

It's happened to me recently. I can assure you that I will not be like that and as a sign of good faith here is my mobile number, which I will always answer or return your call. If you would like to meet me or make me aware of any issues which concern you please give me a ring. My number is 07557765095. All the best.

**Jim Parker**



## **Harbury Society**

**Linda Ridgley**

At our AGM Chairman, John Hancock outlined the year's work, meetings and events. The Treasurer, John Holden reported on the finances and Secretary, Linda Ridgley gave programme news. The existing Committee was then re-elected en-bloc.

It had been an unseasonably hot day but that was nothing to the warmth of the audience's response to Keith Bennett's explanation of the thrill of metal detecting and his discovery of the South Warwickshire Hoard of over 1,000 silver denarii.

Keith has used a metal detector since he was eleven, inspired by his father's interest in ancient history. He emphasised the need to gain permission from the landowner and respect the Treasure Act which he explained in detail. His interest in the historic importance of finds (not their monetary value) was obvious and he was able to convey the "buzz" of making a discovery.

He highlighted some of his favourite finds and explained how he came to be invited to help Warmington History Society explore a massive early Medieval village site. He could detect no medieval artefacts but there were corroded Roman bronze finds.

Then on 8th July 2008 – a hot and arid day - Keith followed Warmington Society members field-walking and found one "grotty" late Roman coin. He was ready to head home at 6pm but could not resist trying a more remote field where the year before he had the pleasure of encountering a herd of grazing deer. He walked round the standing crop and saw what he thought was a tinned Victorian button. It was a very early silver Roman Republican coin! As he put his detector down it gave two very loud beeps!

Keith knew this was something special. He found another Republican coin and a silver Augustan coin - three coins - Treasure Act, he thought. By 8pm he had 50-60 silver coins and there were signals everywhere. The scatter of coins meant there could be a nucleus of coins buried deeper. Next morning Keith was back at 7.30am with twenty History Society members and villagers helping everyone including the landowners detect and excavate coins themselves.

Then on Tuesday they found a broken pot containing 700 coins. In total there were 1041 silver denarii which may have been kept for their 80% silver content when Nero tried to recall all silver coinage in 64AD.

The Treasure was reported to the British Museum. They did not want it so Warwickshire bought it for the County Museum and paid Keith and the landowner each half of its value.

Keith was rewarded with loud and sustained applause from a very appreciative audience who then had more time to examine the extensive collection of finds he had displayed.

**Next event:** Sunday 5<sup>th</sup> May, 1.30pm Guided Archaeological tour of Chesterton.

	<h2>Harbury Women's Institute</h2>	<p><b>Jeanne Beaumont</b></p>
---	------------------------------------	-------------------------------

We have been experiencing some lovely weather lately and, with spring flowers this gives one such a lift. Let us hope this will not be our early summer.

The Federation W.I Olympic Games is going well and taking place with some finals on 26th April at The Green Man, Long Itchington.

There is croquet in May and table tennis in Harbury Village Hall in April. There will hopefully be a visit to Birmingham Botanical Gardens on 14th May. Please note that the W.I coffee morning at the Tom Hauley Room is on Saturday 23rd June and not on 7th April as stated in the Harbury Diary.

Our speaker this month was James Butler, talking about his sculptures. I just cannot believe what marvellous sculptures they were. Eighty year old James was always interested in drawing when young and thought he would be an artist. Although he worked in banks etc, he went to art school after doing various courses. As soon as he worked in clay, stone carving and wood carving his mind was made up. He got a job as a stone carver for an Italian industrial firm, then as an art teacher for ten years. He showed at the Royal Academy. Then he concentrated on sculpture and we were shown on film the magnificent work he had done and which is everywhere in England and the world, some done with very moving stories. He is still working and has a good personality. He lives at Radway with a studio and has invited us to see his work. We are definitely going. Do have James Butler show you his work because he is brilliant.

**April meeting:** Tom Hauley Room, Thursday 12th April, 7.45pm. Speaker – Margaret Hine: The work of Clarice Cliffe.



## Harbury Theatre Group

Alison Hodge

### *Harbury Theatre Group Spring Production*

***Thursday 17<sup>th</sup> May, Friday 18<sup>th</sup> May, and Saturday 19<sup>th</sup> May***

We are preparing an evening of great entertainment for you, and we are pleased to be able to offer you **two tickets for the price of one on the Thursday night** performance. There will be the usual supper on the Saturday evening and a bar on all three nights.

First half will be Plaza Suite by Neil Simon, set in an American hotel suite. The comedy rises as the parents of a bride, who has last minute nerves before her wedding, desperately try to persuade her to come out of the bathroom. For the second half we change continents to a Parisian apartment. Mistaken identity and an inebriated tramp all add to the humour of 'Breakfast for One' by David Foxton.

To make it a really full evening, we've secured the local well known folk trio of Guy, Morris and Thompson. They'll be bringing along their double bass, accordion and fiddle to provide musical entertainment.

Tickets £6.00 full price and £4.00 concessions for Thursday, and Friday nights, don't forget two for one on Thursday night only. A single price of £8.00 to include supper on Saturday night. To help the caterers, if at all possible, **please buy your ticket for Saturday by evening of Thursday 17<sup>th</sup> May.** Tickets on sale from Monday 16<sup>th</sup> April available from Cana's, Mugleston's or telephone 613488. Early bookings recommended especially for the ever popular Saturday night.



## Folk Club

Sue Hartland

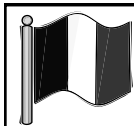
Peter McDonald chose the theme 'The Environment' for the 328<sup>th</sup> Folk Club but unfortunately he was unwell and didn't get to host the night. The Harvesters opened with 'Farewell to Fuinary' and then Ian played the fiddle for Sue to do an Appalachian step dance. Stuart followed with a song about his life and then a song about the Working Man. Debbie read us two of her poems and we also sang happy birthday to her left hip it was five years old that very day! John was next, he was in a Bruce Springsteen mood, followed by Rick who accompanied himself on an Appalachian mountain dulcimer and then Des closed the first half with 'Farewell to England' and 'Windmill in Old Amsterdam'.

As it was St David's Day, the choir opened the second half with 'Myfanwy', whilst Sue Crum's and Lynne's welsh cakes were passed round (yummy).

Morris, Thompson and Guy followed the theme well with 'Green grows the Laurel' and 'Over the Lancashire Hills', Pete Mason sang about the Islands and also performed a great version of 'But you Go', Pete and Liz stuck to the theme admirably with 'Green grow the Rushes O' and 'The Trees they do grow high'. We then enjoyed two songs from Norman, a Canadian song and then, in contrast, one about a place called Nemprit Thrubwell (or something similar!) The Crums were next; Sue sang 'The Dragon Song' and Ted gave us a Flanders and Swann number called 'The Bedstead Men'. Pete Grassby sang about the sea and then Maureen and Janny were spot on with the theme when they sang 'The Village Green Preservation Society' and 'Gown of Green'. Keith Donnelly closed the evening singing 'Well Met' and 'Green Grow the Issues O'

As it should have been Peter's night, Margaret organised the raffle, provided the prizes and chose the charity which was Ovacome/Cancer Research. £65 was raised and will be winging its way there. The theme for April's Folk Club is Light and Dark hosted by Peter McDonald.

Thank you to all the performers and to the enthusiastic audience who make it all worthwhile.



## Harbury Twinning Association

**Tony Thomas**

March has been a very active month for the Association. On Saturday 27<sup>th</sup> March we hosted the Tom Hauley Room Coffee Morning and on Saturday the 24<sup>th</sup> we welcomed "Playing Django" back to the Village Hall for an evening of "Hot Jazz" which included a hot supper. Playing Django are a Five piece Gypsy Jazz group whose musical talents never fail to delight and amaze their audiences with their interpretations of the classic sounds of swing of the 20's, 30's and 40's, as played by Django Reinhardt and Stephane Grappeli.

On Friday 27<sup>th</sup> April we will be holding an evening of supper and skittles for members and friends at the Navigation Inn at Wootton Wawen. If you wish to join us please contact Margaret McDonald on Harbury 612689.

The Harbury Twinning Association is a community activity twinned with the village of Samois-sur-Seine. Membership is open to all residents and new members, especially young families, are always welcome. You don't have to be able to speak French. Playing host to a French family is not compulsory. You don't have to make the bi-annual journey to France. You can just enjoy the social activities that we arrange throughout the year.

**May Edition - Harbury & Ladbroke News**

**Adverts** to 31 Binswood End by 15th April

**Articles** to Harbury Pharmacy or e-mail articles to [articles@hlnews.co.uk](mailto:articles@hlnews.co.uk) by 26th April



## Harbury Cricket Club

**Phil Mugleston**

It's that time again, the cricket season has arrived, and even the weather is looking good for us, but I'm still not convinced the heavens won't open for the first game of the year. It just always seems to happen!

Come rain or shine though, I for one cannot wait to start playing again, and I am very hopeful of a successful year on the field as captain of the side once again. Before we kick off however, I would like to take this opportunity to thank all of the vice presidents and sponsors that contributed to the club last year, as without your support, the club could not function and cricket in Harbury wouldn't exist. Recent years have seen the club build a squad of young players, who, since beginning cricket at Harbury, have come on leaps and bounds to become highly competitive league players. This shows just how important village cricket is in Harbury, and you never know, the next Freddie Flintoff could be in our ranks, so cheers everyone!

I'm also pleased to tell you that the Major has once again worked his magic and the ground is looking fantastic, and I'm sure plenty of runs will be notched up down there this year. However, as the season is yet to get underway I'm going to dip into the archives and give you a quick match report from a cracker that took place in 1995 and saw Harbury pull off an unlikely win against Chipping Campden.

Batting first, Harbury got off to a steady start with skipper John Wilkinson and Gary Lowe putting on an opening stand of over 50 before Gary was dismissed for 28. John however remained focussed and batted the whole innings making an excellent 95 not out, leaving Harbury with 172 off 40 overs. Chipping Campden came out all guns blazing as their opener Nichols smashed the bowling to all parts, however he received little support from his batting partners with five of them getting ducks (that's more like Harbury these days!). With the Harbury bowlers taking regular wickets at the other end, Nichols continued to smash his way to a magnificent 120 and it looked as if he was about to win the game for Chipping Campden. However he was finally dismissed as the last man out and Harbury gained a hard fought 12 run victory, cracking stuff!

Matches such as this are what Harbury cricket club is all about, tense finishes and some real high quality cricket, which I'm glad to say still happens, nearly every week. Well I don't have much else to say apart from if you fancy a game of cricket or would even like just to practice with us we are always looking for new players, so don't hesitate to contact me on 01926 612382. Also if you ever want to know more about the club you can always pop into Mugleston's and my dad will talk to you about cricket for as long as you like, he knows more than any of us!

**Chairman's report: Ian Jones**

We are in to the business end of the season and some are on the home straight. All the age groups from U6s through to U15s are now busy with games. What's really gratifying is to see the younger ones starting to play their first friendly matches. The kids (and the parents) get very excited by the chance to play in their first games against other teams.

Dog mess continues to be a problem at the park; it's really unfortunate that a few selfish dog owners/walkers give all the responsible dog owners a bad name. However, we do see dogs in the park who appear to be unsupervised (this is probably a bigger danger to the kids playing football as they will often run onto the playing area to chase the ball/want to play). Please consider that it's your child, nephew/niece, brother/sister, etc that could be rolling about in dog muck when all they want to do is play football (or just play in the park). It's not reasonable to expect football coaches to clear this mess away before the kids get to play.

Strange as it may sound, we also turn our attention to next season as we need to determine which teams will play in which leagues and how we will use the limited pitch space we have. The club is continuing to develop and more age groups will be playing regular competitive league football next season.

A couple of reminders to put into your diaries:

**May 26th - The Annual Club Presentation Evening.** All of the age groups come together at Harbury Village Hall to celebrate their achievements during the season with medals and trophies being handed out.

**1st July - Harbury Juniors Euro 2012 Football Festival.** A family footballing fun day where all the age groups play small sided games, dads, and possibly mums, get the chance to play against each other. Full details will be in the next Harbury news.

**Harbury U6's and 7's - Steve Darby**

On Saturday 24th March, the U6s and U7s were joined by a Level 3 Skills Coach from the Football Association. Ted Grizzell came to observe the coaching session, get feedback from parents about the coaching set up and introduce himself to the children with a view to working with them and the coaching staff for a few weeks to lead some sessions with a range of routines to help improve those aspects of their skills that the lead coach wants to focus on. Over the coming weeks, Ted will help develop improved "ball manipulation" skills as well as better player movement on the field of play.



The club has been able to get hold of Ted through the Tesco sponsored, FA Skill Development Programme, a resource that is normally only provided to clubs who have already reached F.A. Chartered Status but the County FA have been so impressed with the Harbury set up that they want to support the ongoing development of the club.

### **Harbury U6's vs Byfield**

This was the U6s first ever away match which was a new experience for them - playing competitive football in an unfamiliar territory. It was a return fixture where Harbury were determined to show Byfield how much they had improved since the last match. As Harbury had a number of reception age children, it was agreed that we could supplement the squad with a small number of the U7s to balance the teams. Four short matches were played. The first game was a tense 0-0 draw with the Byfield goalie putting in an outstanding performance. In the second game, Harbury put on a great display with some excellent passing, strong determined tackling and some lovely individual skills including step-overs, drag backs and Jacob attempting the odd Cruyff Turn, all resulting in a comfortable 3-0 win. The third game was another tense 1-1 draw and the final match was another comfortable 3-0 win for Harbury. There were some notable outstanding performances from Benjamin W and Jamie S, who both played their best tackling games so far, Tate W who ran and ran and made some great passes and the hot shot trio of Finn M, Daniel C and Josh C, who were lethal in front of goal - Finn's last goal was loudly applauded by both the Harbury and Byfield spectators as he hit the ball from the edge of the area into the top corner of the net with the Byfield keeper left stranded. An all round great display from Harbury with proud parents having enjoyed a great Saturday morning's entertainment.

Both age groups next fixture will be away at Wellesbourne on Saturday 21st April 10.30am kick off.

### **U9s: Ian Jones and Steve Burnell**

#### **28/01/12: Whitnash Town 3 Vs Harbury Juniors 0**

Having beaten Whitnash convincingly at the start of the season the team went into the game with high hopes. It was clear from the off that Whitnash had strengthened their squad with some new additions and the team were now well organised. Harbury huffed and puffed but struggled to get any parity in the game either in territory or possession. In fact, Harbury struggled to get going at all. By half time Harbury were 3 nil down and had been the architects of their own downfall. A stern team talk at half time and there was more motivation in the 2nd half, as the work rate went up and the tackles started to go in. If only we had started that way! Jack P in goal was superb making a number of great saves. Edward and Jacob worked so hard in defence. A special mention to Jack D who came on for his debut. All in all, not the best outing of the season and some lessons to be learnt for coaches and players.

### **18/02/12: Harbury Juniors 3 Vs Lawford United Colts 3**

What an improvement, the team were fired up for this one and it showed. Harbury pushed from the start and were soon a goal up. The team continued to press and forced an own goal. Excellent play all over the park with great link up play between Cameron and Morgan J. Strong defensive performances from Edward and Jacob with great tackles coming in from Josh and Seb also. Lawford continued to battle and managed to get back into the game. With two minutes to go Harbury still held the lead, however a breakaway from Lawford, tired legs from Harbury and Lawford snatched the equalizer. The final whistle went and it ended a draw, Harbury deserved more today. The Harbury goal scorers were Morgan J and Cameron.

### **25/02/12: Harbury Juniors 6 Vs St Peters Celtic 0**

With the confidence on the up, Harbury really fancied their chances today against a team who had been struggling. St Peters were slow to get going and Harbury soon scored. Harbury were completely dominant during the early part of the game. The goals started to come, a fantastic long range shot from Joshua and another good finish (his first goals of the season) for his man of the match performance. Morgan Jones scored an excellent brace, Joe got his first goal this season and Cam weighed in with his goal. Half time 6 nil.

The 2nd half and St Petes benefited from a good team talk and were much more competitive throughout, coming close to scoring on a couple of occasions. A great result, achieved by getting into the game from the first whistle to put the opponents on the back foot. Got the game won quick - Well done Harbury!

### **03/03/12: Harbury Juniors 0 Vs Khalsa 5 (Supp cup 1/4 final)**

It was always going to be tough against a big and skilful Khalsa team who were riding high at the top of division 1. From the off Harbury were on the break and a good attempt from Luca just went over the bar. A combative Harbury team competed well, (much to the surprise of the Khalsa coach) until just before half time when Khalsa scored their first; they then quickly followed up with another. Harbury never let their heads go down and kept on competing. Lady luck had once again left the Harbury team as they just couldn't get that vital goal back. How different it would have been if the first attempt had gone in. Strong commitment from all, the result not reflecting the performance.

### **17/03/12: Harbury Juniors 2 Vs Brinklow Juniors Blues 3**

With the Harbury team heavily compromised by a nasty bug, that had ripped through the team, a brave patched up Harbury side went out to face a highly rated Brinklow team several places above them in the league. Harbury flew from the starting blocks and attacked Brinklow. The midfield all did very well in the early stages, Cameron ran the defence ragged and the response from the off was relentless. With advancing pressure from the long trade mark

throw-ins of both Daniel and Josh, Brinklow were very much under the cosh of the ever advancing Harbury after several attempts on goal.

Good work from Joe and Morgan J led to Cameron once again scoring for Harbury. We attacked once again but a momentary lapse in concentration led to Brinklow pulling back a very soft goal just before the break. In the second half the Harbury attack was ever fiercer, with the spectators wondering why we had not reached double figures by now, when Jack D popped up after only being on the pitch for a matter of minutes to net his first Harbury goal, only matched by his humorous celebration. Again, Harbury pressed from the re-start, however yet another rare break led to Jack P making his only real save of the game having very little to do all morning. Harbury had the majority of the possession, with the strong foundations of Edward and Jed behind them with another pivotal performance in defence. One way traffic continued with several chances to finish this encounter. Towards the end of the game, Harbury rued those wasted opportunities as yet another rare break led to yet another soft Brinklow goal putting them 2-3 up. Harbury pressed ahead, Luca was busy again in the front quarters, however, his pursuits went un-rewarded. Daniel covered every blade of grass but Harbury's persistence just could not sway the situation. As the whistle blew, all acknowledged that lady luck had once again deserted us and momentary lapses in concentration left the team physically and emotionally drained given the effort the team had put in.

A great performance by all, however Daniel picked up the Man of the Match award. Many independents would argue not the right result this time around, however the away fixture is now much awaited in order to redress the balance.

## **Harbury U15's - Malcolm Tanner**

### **Harbury 4 Tysoe 2**

Following their success in Three Counties League, Harbury u15's are now competing in Division 1 of the Mid-Warwickshire league and met long standing rivals Tysoe in wet and muddy conditions at Harbury. Harbury started brightly and after creating many chances eventually were rewarded with a well taken goal from Sunny. With Harbury in control of the match, further pressure resulted in goals from Ellis who was rewarded for his persistency and Matt who was combining well with Toby in midfield. However following substitutions which seemed to unsettle the team, it allowed Tysoe back into the game and scored two goals which made for a tense game up to half time.

In the second half, Harbury regained control of the match which resulted in one further goal from Ellis with a delicate chip from 20 yards. There could have many more but for some excellent goalkeeping from the Tysoe keeper. Whilst this has been a tough league for the players this season, they are now playing some excellent passing football.



## Harbury Tennis Club

Colin and Sue Mercer

[www.tennis-today.net/harbury](http://www.tennis-today.net/harbury)

It's been a busy month for the Junior section and April has also got a busy feel to it!

### Junior Match Play

The Club had its first competitive action of the year when Christopher Simmons and Alex Sabin played in the first round of Pool A of the South Warwickshire 12Us Summer Cup. Harbury hosted the first of four rounds and welcomed teams from Claverdon, Snitterfield and Henley-in Arden. This was the first time the boys had played in an inter-club competition and they got off to a winning start with a 6-4 win against Claverdon which was followed by another narrow win, this time 7-5 against Snitterfield. The final match was against a very experienced Henley team who had won their first two matches 6-0. Chris and Alex gave a very good account of themselves even though they were unable to prevent Henley completing a clean sweep with a third 6-0 win. Harbury achieved second place in the group and now have three more matches against the same clubs over the next three months – one at each venue. The boys are pictured with the Henley pair.



### New – Junior Mix N Match

As well as the normal programme which is currently catering for Mini Tots (Preschool and Reception) right through to 17 year olds, the Club is launching on Sunday 22nd April (4-6pm) a new initiative with a **“Junior Mix N Match”** programme led by Tennisolutions coach Sarah Bunting. Sarah lives in Australia but grew up in Harbury and is currently staying here for a few months, so it's great to add a local and international dimension! The emphasis of **“Junior Mix N Match”** will be on putting coaching into practice in a social atmosphere, while learning how to score, as well as having fun games and activities on court. Everyone aged nine and under is welcome, with sessions open to members and non-members, and Sarah hopes parents will get involved as well! If you are interested and would like more details please contact Sarah on 07757 538325 or 612450 or email her at [buntingsarah@hotmail.com](mailto:buntingsarah@hotmail.com) If any teenager players would like to volunteer to help with these sessions, please contact Sarah. If you are age ten or older,

please contact Sarah. Matches for older age groups will be added if there's enough interest.

### **Tennis in the School Holidays**

Another forthcoming attraction is lined up for the school holidays with a series of **Easter Tennis Camps** between 2<sup>nd</sup> – 5<sup>th</sup> April and 10<sup>th</sup> - 13<sup>th</sup> April. On each day there are sessions between 10.00-11.00am for children 4yrs to 6 yrs and from 11.00am – 3.00pm for 7yrs to 14yrs. The camps are being organised by Tennisolutions and led by Harbury's head coach James Marsh. For more details please contact Carolyn at [admin@tennisolutions.co.uk](mailto:admin@tennisolutions.co.uk).

### **Adult League Matches**

The older generation have also been busy playing a lot of matches in a short time to catch up with postponed matches before the end of the season. In the Floodlit league Caroline Morland, Sue Mercer, Keith Thompson and Colin Mercer didn't find the artificial grass (Astroturf) at Brackley to their liking! Caroline and Sue managed to halve their doubles but that was the only point Harbury managed as the home team romped to a 7-1 win. The same four then went to Deddington and on familiar hard courts returned to winning ways with a 6-2 success. Finally on a very foggy night Harbury had an excellent win with a 5-3 win at top of the table Byfield when Caroline, Sue and Colin were joined by Steve Stark. That win secured 3<sup>rd</sup> place in Division 3.

In the weekend league, Hook Norton were the opponents for the last league match and fielded a "family team" of mum, dad, daughter and son! They were obviously used to playing together and were too strong for Harbury's four of Sara Peters, Geoff Prince, Sue and Colin Mercer and went home with a 6-2 win which took them to the top of the league. Sue and Colin scored Harbury's points with a straight sets win in the second mixed doubles. There was still a mathematical chance of promotion to Division 4 going into the last match of the season at second placed Charlbury. It proved to be a closely fought match with Steve and Colin halving their first rubber. The outcome of the match effectively turned on Caroline and Sue's epic rubber which went to two tie breaks but, unfortunately, the home side won both! Caroline and Steve won their mixed doubles but Sue and Colin were second best in theirs which gave Charlbury a 5-3 win and secured their promotion and left Harbury in 3<sup>rd</sup> place.

### **Open Evening**

Finally, on Tuesday 17<sup>th</sup> April (from 6.30pm onwards) we're having an **open evening** for members and non-members. This will be during a normal club session but we're opening our "doors" to anyone who would like to try tennis or has played before but is a bit rusty to come and see what the Club has to offer - which is plenty! If anyone who falls into either category would like to know more about the evening please do not hesitate to contact me at [sucol-mercer@tiscali.co.uk](mailto:sucol-mercer@tiscali.co.uk).



## 1st Harbury Guides

Jane Minchin



The Guides have been doing a lot of activities this term. We have learnt about the night sky in a mobile planetarium and we are learning First Aid for our First Aid Badge. We went to the gangshow and celebrated World Thinking Day. We collected money in a Smartie tube so we all got a little treat as well but the whole reason was for helping Guides in different countries. Lots of people from around the village have helped with our recent

activities including Mary from Mugglestons who helped us with flower arranging for Mother's Day. It was a great success! We've enjoyed every minute of Guides and hope there's much more in store to do with Guides. We've had a great time already, all we can do is thank everyone who has come to join us. – **Chloe Kempton and Georgia Christou.**

### Coventry City Football Trip

On 10<sup>th</sup> March, Harbury Guides & Scouts went to Coventry Ricoh Arena to watch a football match (Coventry vs Birmingham). We got on the coach at 8am and arrived an hour later. Before the game we took part in lots of activities such as: Bouncy Castle, Penalty shoot out, ball kick speed, 5-a-side football, met the mascots, magic show and some of us bought Sky Blues merchandise. We even got it signed by some players. We toured the pitch before the game began. After 90 minutes of us cheering and shouting, they drew 1-1. We had an incredibly exciting day that we all enjoyed and we'd love to go again - **Eve Rea, Gwyneth Jones and Rebekah Dimmock.**



### Guides And Scout Support

Mark Clifton

Harbury GASS invite any interested parties to join them for their AGM on the 21<sup>st</sup> April 2012 at 5pm.

As last year we hope to provide hot dogs and refreshments to all those that attend and have a short presentation section where each of the uniformed

groups will briefly review their activities and make presentations to any children that have recently worked for or won awards.

There will also be on display some of the equipment bought by funds raised through GASS activities.

To discuss how your skills may be of use to Scouting and Guiding please call: Jim Ward, Harbury Group Scout Leader – 612576 or 07795 221305, or Mark Clifton, Harbury GASS (Guide And Scout Support) Chairperson – 614085 or 07730 923504 or anyone you may know connected with the group.



## Harbury Toddler Group

**Sarah Hanson**

What a splendid time we have been having at Toddler Group this spring time! We have been playing outside lots with our outdoor toys and enjoying some of this sunshine we have been having! We have welcomed some new faces to the group – it is always good to have more little people to join us for the toddlers to make more friends!

We braved a messy play session early in March in which the toddlers played with sea toys in water – this proved a great splashy hit! We also had some lovely drawing on our floor art panels.

For Mothering Sunday, us lucky mummies were treated to a beautiful yellow daffodil card made by our loved ones. We also had some mucky hands with our seed planting session and the toddlers have taken their pots home to water and grow so we can sell them at our fundraising Coffee Morning at the Tom Hauley Rooms on Saturday 12<sup>th</sup> May - please join us there if you can as we will have some lovely plants, cakes and much more on offer!

We have been looking forward to Easter and we have been making some Easter cards for our families. We will also be getting our first chocolate treats on our Easter egg hunt just before Easter – yummy! We are open over the school Easter holidays although we do shut on the Bank Holiday Monday on 9<sup>th</sup> April.

If you are interested in joining us at Toddler Group we are always pleased to see newcomers. We run every Monday from 9.30am to 11.15am at the Wight School (behind the library), and cater for children from birth to school age. We are open throughout the school holidays, except Bank Holidays, and older siblings are welcome to come along too!!



## Harbury Pre-School

**Staff & Committee**

At the beginning of March, our thoughts continued to focus on pets and their care. The role play area became a vet's surgery, with reception area, waiting

room and examination room, where there were bandages, stethoscopes and syringes, all of which were put to good use on the variety of soft toy animals. April kindly brought



in her guinea pigs Brown Monkey and Whiskers to see us and the other children were thrilled to be able to stroke and hold them in their laps. April showed us what they had to eat while Brown Monkey and Whiskers munched happily through pieces of carrot. In the creative area, the children made great carry boxes for their soft toy friends, complete with handles, entrances and air holes. These varied in size from fairly large, to a tiny shelter for a little mouse.



With Mothering Sunday approaching, the children decorated small trinket boxes, into which they popped a delicious chocolate for their mother. They made beautiful cards, using their "kind hands" to help each other paint their fingers and palms in their own chosen colours to make colourful handprints. Inside their card was their personal quote "My mummy is special because ....." These ranged from "She makes yummy cakes and my Mummy's lovely because I love her," to "When I'm at Pre-School my Mummy does the gardening. My Mummy likes chocolate."



We were very pleased to be invited to the Primary School to see the Reception Class Assembly, where the children watched intently as Pre-Schoolers from last year gave a wonderful presentation on the weather. As the sun came out, our creative area took on a spring-like feel. The children produced beautiful observational paintings of spring flowers and made some delightful collages using a variety of materials with a springtime colour scheme.



We also began to look at transport and, in particular, aeroplanes. Our new model aircraft whizzed along the runway and a long roadway snaked its way across the Pre-School floor taking would-be passengers to the airport.

Outside, a role play aeroplane took shape, with a cockpit for the pilot, and cabin crew, complete with refreshment trolley, for the passengers. We were delighted to welcome Captain Craig Bolton, a







real life pilot, who talked to the children all about flying an aircraft and brought some great models to try out, as well as showing the children how to make paper aeroplanes to fly outside. A few days later, our second visitor, Joley Craig-Shearer, told

us all about her role as a member of the cabin crew. The children tried on items of her uniform and heard about how passengers, pilot and crew are cared for on a flight.

During a busy final week of the term, we had another visit, this time from the Revd. Annie Goldthorp and Gill Guilford – the latter dressed in pyjamas! They told the story of Palm Sunday and how God always forgives those who are sorry. We read the Easter story and the children made chocolate Easter nests to take home.



*If you would like further information, or to register a child for Harbury Pre-School, please contact Rosemary Jackson, Pre-School administrator: e-mail [enquiries@harburypre-school.org.uk](mailto:enquiries@harburypre-school.org.uk) phone 07939 122087 or look at the website [www.harburypre-school.org.uk](http://www.harburypre-school.org.uk).*



## Harbury Pre-School Fundraising Group

Were YOU born in the 80's.... or even in the 90's? If not, did you enjoy them?? Think glitter balls, leg warmers and permed hair dos. Well, your chance to re-live the musical element of those wonderful years is coming up on Friday 11th May at the Village Hall (no obligation to dress up!!!) From 8pm till late, we will be holding an 80's/90's Disco. Tickets are £5 (in aid of the Harbury Pre-School) and available from Mugleston's from 28th April. Hot dogs will be available for a mere £1.50 later in the evening to keep that energy up for the dancing! Come and enjoy a fun night out.

**Rosanna Hunt**

**On behalf of Harbury Pre-School Fundraising Group**



**Windmills**  
Nursery School

**Nursery School Staff & Committee**

Windmills Nursery is situated in the grounds of Harbury Primary School and has the benefit of its own Forest School and qualified Forest School Leader. We are open all day between school hours and take children from the age of two years. If you would like to register a place for your child you can email us

at [info@windmillsnursery.co.uk](mailto:info@windmillsnursery.co.uk), visit our website at [www.windmillsnursery.co.uk](http://www.windmillsnursery.co.uk), call Tina/Sally on 07906 519148 or Katharine on 01926 613084. We have Nursery Funded places available and also accept childcare vouchers and offer an assisted places scheme.

### **In Nursery**

March has had a variety of activities for the children including a session on Scottish music, World Book Day, visits to the outside woodland in Forest School, the monthly trip to the toddler service where the children made pictures of Moses in the bulrushes and producing Mother's Day cards and decorating a picture canvas to take home to their mothers. The older children were invited to the assembly at school given by Reception and in nursery we have been looking at disability awareness with the children. There have also been tennis sessions and French lessons weekly during March. The children are now preparing for Easter.

### **Scottish Music**

Charlie's parents visited Windmills Nursery to talk to the children about Scotland and to play some Scottish music. The children had a wonderful time learning about Scottish culture and trying on a kilt. Charlie strummed the strings to 'Ally Bally Bee' while his Daddy held the guitar. Thank you to Stuart and Penny for giving such an informative session.

Charlie – "My Uncle Craig wears a kilt. Sweeties were in my sporran".

Bayley – "If you are in Scotland and you look down you will see England".



### **World Book Day**

The children celebrated World Book Day by coming into nursery dressed as their favourite book character and bringing in their favourite book.

"I'm Peter Rabbit. There's Mr McGregor in it, and Peter Rabbit eats all the vegetables. Mr McGregor tries to put Peter Rabbit in the pie. Peter is in the watering can and he can't see him" – Riley.

"I'm a dinosaur. It's green and it's a T.Rex. It roars; he's got teeth" – Ben.

"My dress is Tinkerbell. She flies to find a balloon. The animals come

to find her and she flies away. She's a fairy. She's little but she's getting grown up. She's wearing green" – Lacey.



"I've got the book today. 'It's the tiger who came to tea'. It's on my shirt. I've got a real tiger from my house" – Finlay.



### Disability Awareness

We have been learning about people with disabilities and the children have been shown things which can assist disabilities such as scooters, walking frames, wheel chairs and crutches.

"You can push a wheelchair from the back if you hold the handles. There are big wheels at the back that you can hold onto and move by yourself, if your friend is not with you" – Lily.

"If you have a poorly leg, these

will help you to hop, but you might need a bandage. They are called crutches" – Madison.



### Reception Assembly

The children starting school this September were invited to attend the assembly at school given by Reception class. The theme was 'How to Share a Shell' book and the children thoroughly enjoyed going.



### Mother's Day

"I gave her the things I made at Windmills and she loved them" – Audrey.

"Me and Daddy and Mia made pudding and dinner for mummy but I didn't like the pudding. It was just chocolate sauce. She liked her bath and shower things and we bought her a white bear with a pink heart. It said 'I Love You Mummy'. Her card had buttons and if you pressed them they went flash, flash, flash. She liked the purple and pink picture I made at Windmills and the writing on my card" – Emily.

### Forest School

There has been plenty of activity in Forest School. The children have been acting out the three little pigs and have entered the world of the Lilliput garden and have had a session on nest weaving.




## Staff News

Mrs Varriale, Mrs Lines and Mrs Wilson have attended a SENCO surgery in Stratford which included three workshops. They are also now on the committee of the Pre-School Learning Alliance (PLA) which will allow them to keep up-to-date with current changes to the Early Years Foundation Stage (EYFS) curriculum.

## Dates for the Diary

Friday 30<sup>th</sup> March – Nursery closes for Easter holidays at 12.35pm and will reopen on Monday 16<sup>th</sup> April at 9.05am. Tuesday 17<sup>th</sup> April – Toddler Service, 2pm. Sunday 6<sup>th</sup> May – Charity climb of Mount Snowdon, Saturday 30<sup>th</sup> June – The Maharaja's Ball.

	<h2>Harbury Primary School</h2>	<b>Denis Daly</b>
---	---------------------------------	-------------------

**Ofsted** – Congratulations to the staff, Governors and children on reaching the standards whereby the school's next Ofsted inspection has been deferred for a year. Ofsted's decision was not taken lightly as it was based on a detailed, centrally produced, 78 page analysis of the school's performance in terms of attainment and progress of pupils over the past three years. Well done, everyone.

**Sport congratulations** – To the Netball team, who finished as runners-up in the area tournament last Thursday, losing by the odd goal in five in an excellent final. This was the girls' last match of the season, and their first defeat. Well done, girls.

To the Football team, who returned to winning ways with an excellent performance against St Mary's, winning 3-1 on the new artificial surface at Southam College. Most pleasing of all, however, was an e-mail that we received from the manager of the St. Mary's team the next day: "You have some very talented players, but perhaps more importantly their skill levels are matched by their politeness, team spirit and fair play attitude – they are a credit to you and your school." Excellent – well done, boys.

For Cross country - Dominic (32nd) and Chloe (39th), who represented Central Warwickshire in the County Cross Country championships last Saturday – both excellent performances in very high quality races on a tough course at Princethorpe College.

**Mothering Sunday Family Service** – Many thanks to all of the children and their families who represented the school at this service – many parishioners came up afterwards to say how much they had enjoyed it. Well done, everyone.

**Parking** – I have had complaints from some parents regarding cars parking on the yellow zig-zag lines outside the school's entrance on Park Lane. Could I ask all parents to ensure that they do not park either illegally or obstructively when dropping off/collecting children. Thanks for your co-operation in this matter.

**School Grounds** - Many thanks to all of the children and their parents who did a wonderful job in the school grounds last week – we really do appreciate all that our “Earthworms” groups – both adult and children groups – do for the school in their own time and the school grounds are emerging from the winter looking really good. There are too many involved to thank individually, but to you all - many thanks.

### **Donation of Vouchers**



The school would like to thank local resident and CEO of Sainsbury's, Justin King, for a generous donation of 10,000 Sainsbury's Active Kids vouchers to recognise his close association with the village. Sainsbury's Active Kids vouchers is a scheme by which schools can purchase sports and PE equipment and the 10,000 vouchers, which equate to about 50% of a full year's worth for the school, will be used

to purchase new PE mats for the school hall. Many thanks, Justin.

The photograph above shows three of our Reception Class pupils, Imogen, Joseph and Kaia, with the cheque for 10,000 vouchers.

### **Harbury School Heritage Room**

Working with the Harbury Heritage Group, the school has just completed the development of an exciting new facility, the Harbury School Heritage Room. The aim has been to develop the existing school library to become a room where the school and village can work together to produce displays and exhibitions which would be of interest to villagers of all ages. In addition, it will be a facility which will store and make available to interested parties all of the school's very extensive local history information and records.

The official opening of the Heritage Room will take place at 2.30pm on Saturday 21<sup>st</sup> April, and the room will be open to the public from 2.45pm until 4.30pm that afternoon. May I take this opportunity to invite everyone to come along and view not only our new facility, but also the displays. The room will then be open to villagers in the evening of the first Tuesday of each month.

The first exhibition to be housed in the Heritage Room will be on the theme of “Britain Since 1948”. The older children at the school have already worked extensively on this topic, and their work will be on display in the room.

In addition, we invite anyone from the village to send in material, photographs or artefacts which could enhance the children's displays – I am sure that many villagers will have some wonderful resources which could be displayed!

If you are able to contribute to the exhibition, please send or bring it to the school between Monday 16<sup>th</sup> and Wednesday 18<sup>th</sup> April. Obviously, every effort will be made to keep any loaned items safe, but anyone sending in anything for the display should be aware that the school cannot be held responsible for any loss or damage to the items.

Finally, on behalf of the school, may I thank all who have been involved in the development of the Heritage Room – it has taken a long time to get to this stage, but I am certain that the room has the potential to be a major asset, not only for the children at the school, but for the village as a whole.



## **Harbury Primary School P.T.A.**

**PTA Committee**

A plea (or 2!) from the PTA:

Is there anyone interested in helping with the second-hand uniform sales? We need someone to help out with the sale of these items at the Thursday market once each half-term and with keeping a general eye on quality of clothing as it is donated. If you can help please contact Jane on 611930 or [chrisandjane@tesco.net](mailto:chrisandjane@tesco.net).

Unfortunately the grill that belongs to the PTA's barbeque has been mislaid. If there is anyone out there who is able to make another one for us or if anyone has a spare bit of grill-like material in their garden shed and would be willing to help, please contact Jane for sizes on 611930 or email [chrisandjane@tesco.net](mailto:chrisandjane@tesco.net).

Congratulations to the winners of the Easter egg competition. There were some wonderful designs but unfortunately there could only be one winner from each class. Many thanks to Reverend Annie for choosing the winners who will all enjoy an Easter egg.

**HAPPY EASTER FROM THE PTA COMMITTEE**



## **Village Hall Update**

**Chris Finch**

After last month's article about the opening of the Village Hall, two Harbury families got in touch to pass on their knowledge relating to some of the queries raised about the development and use of the Hall.

Tony Ceney recalled that the 'wooden stage' referred to by schoolboy Gary Lowe in his school diary, was in fact a series of planks and trestles

which had been stored in the Wight School, but were eventually moved to a hut located by the side of the Hall. They were used for many years until the present wooden blocks sited at the rear of the Hall were purchased and then eventually, the Theatre Group managed to obtain the current system of supports and integrated boards, which are used for all their current performances. Hopefully one day, there will be a permanent stage to provide better facilities for the continued efforts of the Theatre Group who provide the much appreciated local entertainment.

Bryan and Marie Wallington provided further details about the building of the Village Hall, including a list of all the local families who were part of the team engaged by local builder, George Marshall. It is an impressive list when the length of time it took to build is taken into account together with the costs which must have been incurred to pay each worker. There were 7 bricklayers – Jack Allingham, Frank Bloxham, Fred Field, Jack Marshall, Bob Rolfe, Ray Southam and Len Wallington; 4 carpenters - all whom still live in the village apart from Jim (Curly) Pratt who died recently – John Davies, Richard Freeman and Bryan Wallington and 2 painters – Mick Birch (from Ufton) and Bob Loach. The plasterer was Bert Powell from Warwick and the plumbing was carried out by Adams and Simmonds from Leamington.

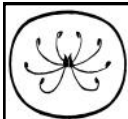
The Wallington family have a particular reason to remember the official opening of the Hall as Len, one of the bricklayers, married Pip on that day and as there was a ceremony already booked in the new Hall, they held their reception in the W.I. hut which was behind the Club premises and accessed from Crown Street. Marie remembers that in the evening after the reception, many of the guests attended the dance in the Village Hall which had been arranged to celebrate the 'grand opening' and there was much jubilation that there was now a 'proper Hall' in which to hold events, as the previous Village Hall had been a small tin hut in Ivy Lane. This was subsequently used as a factory, employing up to six people who made nuts, bolts, screws and castings. It was eventually demolished to make way for the 60's properties, which were also built by George Marshall, who used his own manholes covers impregnated with his name to show where his latest development had taken place. There are many such manhole covers still visible in the Harbury streets!

The continued improvements at the present Hall still continue apace, with the refurbishment next month to the kitchen. Whilst the original Hall cost £12,000 to build, which was a considerable amount of money in the 60's, improvements in the past few years have cost in the region of £100K to date and the new kitchen alone will be over £30,000. How times have changed (?), but fortunately the present committees keep themselves updated about any financial opportunities to support community buildings and another grant of £15,000 has been secured in support of the latest phase.

The regular Rural Cinema organised by Lana Long and her family is always a regular contributor to the Hall funds and it is hoped that next month will see a

good response to the film War Horse, which is the next presentation. Tickets at £10.00 will include a curry meal, presented in cafe style – see advert elsewhere for details of how to book. There may be tickets for the film only, but it will only be possible to turn up on the night to see if there are any spaces left, as it will be a case of 'first come, first served' and if there is a full house for CURRY and FILM, it may not be possible to accommodate those who only want to see the film. Please check with the organisers when you call.

Finally, a reminder to all those who regularly use the Village Hall; there is the AGM of the Hall committee **at 7.30pm on Thursday, 12<sup>th</sup> April**, followed by the AGM of the fund-raising committee. It is hoped that villagers will turn up to listen to reports from each committee and more importantly to volunteer to serve on one or both committees. The Management Committee would particularly welcome anyone who has specific Health and Safety knowledge, as one of our superb H&S representatives, Doug Freeman, resigned recently as he has taken on additional voluntary activities in the past weeks. We hope to see some newcomers on the committee(s)! **JOIN US and keep the Hall in business for the next 50 years!**



**Horticultural Society**

**Judy Morrall**

There was an excellent attendance at our March meeting, fifty members at least. The speaker was John Edgley whose topic was Fruit in Small Gardens. John was a senior lecturer at Pershore College and is on the RHS Fruit Assessment Panels whose brief is to assess all sorts of fruit which can be awarded the AGM (Award of Garden Merit). He has written books about all aspects of pruning and general advice for all types of fruit.

He started with strawberries, everyone's favourite, and showed us different ways to grow them - in grow bags, in hanging baskets, on steps of a ladder, on a tower and many more really good ideas. Strawberries do need a good organic feed and to keep those pesky slugs at bay use organic pellets (growing Success) or copper pipes. If you don't fancy surrounding your plants with straw you can get strawberry collars, a bit like the ones you put around cabbages. It is best to pot up small runners he suggested in ice cream or yogurt cartons and add water granules. These can be transferred to the garden when fully grown and will produce fruit the following year. You can buy sixty day strawberries from Ken Muir called Sleeping Beauty and you can, with careful planning, have strawberries for ten months of the year.

Raspberries can be Summer or Autumn fruiting and, providing they are cut back to ground level in February, will produce good fruits. You do need a good pair of secateurs, John has had his Felco anvil ones for ten years and has only had three pairs in the last thirty years. Obviously you need to cover



with netting to prevent the birds getting to the fruit first. It is the same with blackberries; it is important to keep the new growth from touching the ground as this will prevent disease spreading.

Redcurrants and blackcurrants need to be trimmed every year by a third. You can grow some of the new varieties as half standard or cordon, worth a try for something a bit different. To prevent mildew in gooseberries give the bushes a dose of potassium bicarbonate in the early spring. Again don't let new growth root on the garden floor. There is a new variety called Invicta (wasn't that a name used by one of the teams on the apprentice!) which will not get mildew but it has huge thorns!

Blueberries do need an ericaceous compost and will do well in pots, just renew the top two inches of soil each Spring. It is important to prune grapevines in Winter as the sap rises and late pruning can be very harmful. Kiwi fruits are now self pollinating so no need to have a male and female variety to produce fruit. I have two very healthy specimens in pots on the patio, they flower most beautifully but never produce fruit, so I must have two of the same sex!

John then moved briefly to tree fruits. The basic rules for pruning are to ensure a good light can reach the branches to allow photosynthesis and to eliminate any crossing branches, also not to have any straggling branches at the base of the tree. He demonstrated where to prune and said to do this in Winter. He showed us all varieties of apples from step over to cordons and reminded us that a good rootstock is essential - M27 is the best. To eliminate peach leaf curl it is important to protect the tree in the Winter by covering with fleece or similar. He showed us traps to catch codling moths and pheromone traps for plum maggots. Soft soap is good for killing all sorts of bugs. It is important to look after our ladybirds too; make traps from canes in a roll. The ladybirds love to devour aphids as do hover flies. Grow a few nettles to encourage caterpillars - don't worry about these being unsightly, they really do encourage nature to do its thing. He told us about a lace wing hotel he had made from recycled lemonade bottles and canes etc and showed it to Prince Charles at Highgrove. Although HRH approved it in theory, he ordered some to be made from wood from his estate! John completed his talk with a lively question and answer session. He has many more talks so I hope to invite him back soon. He did telephone me the day after the talk to thank us for the hospitality he was given and the friendliness of our Society.

A brief mention about the trips: the first one is a full day trip to Anglesey Abbey near Cambridge. A National Trust property and garden with something for everyone, huge colourful borders, woodland walks, statuary and much more. The date is Wednesday 13<sup>th</sup> June, leaving the Village Hall, at 9.00am and the cost is £12 if in National Trust, otherwise £18. The second trip is on Wednesday 11<sup>th</sup> July and will be to the Cotswold Wildlife park in the morning. I haven't gone mad! Apart from some amazing animals, the gardens

there are a triumph, exotic planting and huge borders, in the afternoon we travel to Buscot Park another National trust property with splendid water gardens and features, walled gardens, lake, monkey puzzle avenue and more. We leave the Village Hall at 9.00am and the cost is £15 if a National Trust member, otherwise £21. Where else could you get such value! I have some spare places so if you are interested please phone me.

There will be a specialist Plant Fair at Spetchley Park gardens near Worcester on Sunday 22<sup>nd</sup> April from 11.00am to 5.00pm; the cost is £5 to the Fair and gardens. Westonbirt Arboretum has a full programme this year including Exploring The Spring story - for more information go to [www.forestry.gov/westonbirt-spring](http://www.forestry.gov/westonbirt-spring). A nursery well worth a visit is Old Court Nurseries and The Picton garden at Walwyn Road, Colwall, Malvern, open from May to September Wednesday to Saturday. They are specialist growers of Michaelmas Daisies plus many unusual perennials, I can recommend a visit and do combine it with a walk in the Malvern Hills..perfect. If you want something a bit different and a bit nearer visit Cotswold Garden Flowers at Sands Lane, Badsey, Evesham. Open 7 days a week from March to September, from 10.00am to 5.30pm. He stocks easy to grow plants and the demonstration gardens are a treat. Lastly there will be a talk by Jekka McVicar at Pershore College on 18<sup>th</sup> April entitled Herbs for all Seasons. It starts at 7.30pm and RHS members will pay £7 or non-members £8.50. Her stands at Chelsea have been amazing and she has won so many gold medals too. Enjoy Easter - I don't suppose the current hot spell will last until then but do get out and about, especially to local National Trust properties, Upton House and gardens in particular!

The May talk is on 1<sup>st</sup> and Howard Drury will be returning again to talk this time about Madeira, the Islands, gardens and people. He has the most amazing sound system and his pictures are so distinct. Not to be missed.

I look forward to seeing everyone at the last two talks of the season and the Day Trips.

Happy gardening and garden visiting.



## **Garden Jottings from Bridge Nursery**

**Christine Dakin**

*Your local Hardy Plant Specialists*

*Also: Fresh cut flowers and bedding plants in season.*

We have some amazing news to tell all the readers of this wonderful magazine. Just four weeks ago we discovered a rather unusual plant quite close to the pond. It was first noticed because the leaves are red and similar to a cut leaved acer but they are more leathery and certainly rather shiny. It is fairly small, about 15cm high and a bit lost among the taller grasses that edge the pond. It has a most promising set of flower buds close to the base which we are watching daily. We called in an expert botanist who declared that he'd

never seen anything like it and has suggested that we have a new plant. He knows of something similar but with more rounded green leaves which he said only flowers on or around the beginning of April but only once every ten years or so. We have decided to name it *Pontis palmata sanguinea*. If I can propagate it I will.

Meanwhile, this month is usually one of the busiest in the year so you need to get out there and do lots of jobs.

Plant potatoes, sow peas, beans, carrots parsnips, leeks, cabbages, radishes, beetroot and spinach. Dead-head daffodils when they've finished flowering. This is a good time to plant alpiners. Prune forsythia and flowering currants when the flowers have finished. Take cuttings of penstemons, gaura and delphiniums. Sow seeds of hardy annuals such as pot marigolds, nigella and larkspur. Use feed and weed products on the lawn. And lastly, keep planting all those lovely new plants you can't resist buying when visiting your local nursery.

Just one more thing.... The café is reopening on Good Friday.

*Bridge Nursery, Tomlow Road, Napton, Tel: 01926 81273*

*[www.bridge-nursery.co.uk](http://www.bridge-nursery.co.uk)*



## **Nature Notes**

**John Hancock**

Sharon and I arrived home from Australia on Sunday 18<sup>th</sup> March. We had worked our way down the eastern side of the continent, ending our holiday in Tasmania. This island was discovered by the Dutch navigator Abel Tasman in 1642 and named by him Van Diemen's Land in honour of the Governor of the Dutch East Indies. The British came and settled in 1804 after French ships had been noted in the vicinity the year before. Slightly smaller than Scotland, Tasmania has a population of some half a million and what you notice when clear of the capital Hobart is the absence of people. That is good for wild animals and the landscape. Tasmania boasts many fine National Parks; in fact 40% of the land area is protected. That has not happened without a fight against logging and hydro-electric interests. A National Park in Australia means near enough pristine wilderness and no development is allowed. A charge is made to enter and a strict system of signing in means any search party has a good idea where to start looking.

We did some splendid walks both in the mountains and on the east coast. Climbing to the top of Mount Rufus (1400m), we first had an 8km (5mile) walk through mature eucalyptus forest. The rocky summit was the highest point on a whaleback ridge of sandstone exposed to the elements but luckily the day was calm. The landscape was shaped by the last Ice Age. Corries, hanging valleys and ribbon lakes are much in evidence reminiscent of the Highlands

of Scotland. Late in the day we saw wedge-tailed eagles (*Aquila audax*) riding the thermals. This is Australia's largest raptor, being slightly larger than our Golden Eagle.

Coming down the mountain, we passed through a superb fern forest with clearings where the grass was like a lawn. I suggested to an Australian backpacker that rabbits may have produced this effect. She said no, it would be kangaroos. Later she pointed out some fresh faecal material containing bones and said it would have been deposited by a Tasmanian Devil. This carnivorous marsupial is about the size of a terrier and suffering a crash in numbers due to a viral disease producing facial tumours.

Two days later, walking in the vicinity of Cradle Mountain, we saw a wombat wander across our path. This chunky vegetarian marsupial is somewhat akin to a medium sized pig. After lots of hot weather on the mainland, we now had a taste of home when the temperature dropped to 4C at night. A full moon and the stars of the southern hemisphere were more than adequate compensation. Some of the leaves of the deciduous Beech (*Nothofagus gunni*) were beginning to take on an autumn tint. A few days later we were back in summer on the pristine beaches of the east coast, with huge granite boulders and white sand. At Wineglass Bay we watched a pod of dolphins jumping and diving just off shore.

Lots of wildlife sightings are in my camera waiting for identification. There are at least half a dozen butterflies and moths for instance. We had a wonderful experience on the coast near Bundaberg in Queensland. We went at night to Mon Repos Beach and watched tiny Loggerhead turtles come up through the sand from their 'nest' and start heading for the sea. Apparently they can see the horizon out to sea as it is lighter than the background land. If development near their ancient egg-laying sites is allowed, artificial light confuses them. A warden told us that the first turtle they had tagged as a hatchling had returned to the beach to lay eggs after an astonishing 28 years.

Arriving back to the beautiful spring weather has been a real treat. The fresh greens of the young leaves after the evergreen Australian forests have been entrancing. Unfolding Horse Chestnut, pale green Weeping Willow, tiny Hazel, also the early butterflies - Peacock, Brimstone and Small Tortoiseshell. We have enjoyed the colours of the early wild flowers; primroses on the banks and ditches beside Ufton Wood, Wood Anemones and a solitary early Bluebell on the woodland floor. Today, (27<sup>th</sup> March), I've had a feast of roadside violets and Coltsfoot whilst cycling to Priors Hardwick.

Chiefly, I think, we have missed the more ordinary, what could be called the structure in our lives, our family and friends, coffee in the Tom Hauley Room, walking up for the paper every morning. It's good to travel but it's good to be home.



## General Section



### Blood Donors – Congratulations!

Not only did last month's blood donations beat the previous one, but created an all time record! There was an attendance of 141 people of whom 127 successfully donated. Particular thanks to the 14 new donors; I do hope that they found the experience sufficiently rewarding to want to continue.

For your diaries: the next session in Harbury will be Thursday 7<sup>th</sup> June.

**Gillian Hare**

### Mad Hatter's Tea Party Comes to Life with Warwickshire Young Voices!

Warwickshire Young Voices' 4th annual *Make a Noise* workshop sold out to a record high of 53 young people from across the Midlands - some travelling over 45 minutes to be there!



The workshop days aim to give youngsters the best possible experience of live music and performance, working with qualified singing teachers and a fantastic live band.

This year's event used the popular music of 'Queen' within the story of 'Alice in Wonderland' in an

action-packed day of singing, dancing, acting, face painting and crafts.

53 children, 15 musicians and 5 singing teachers worked against the clock to put together a public performance in five hours of rehearsal time - with a fantastic, highly professional result from all the

youngsters!



*'The performance was incredible; I can't believe you did all that in one day! My daughter had a great time and is still singing the songs at home now. It was standing room only at the back.'*

*'Thanks to Warwickshire Young Voices and especially the band! The workshop day was such*

*an amazing experience for my children. They were made to feel like 'real' singers with their stage makeup, microphones, lights and even their very own live band - they certainly rose to the challenge!*

If you missed the performance, make sure you check out the short video of extracts, photos and music from the day. Visit our website at [www.warwickshireyoungvoices.org](http://www.warwickshireyoungvoices.org).



**Helen Iles**

## **Ballroom Dancing**

Our summer five week session of ballroom dancing will start on Wednesday 25th April. The session will be split into three weeks and two weeks as we cannot have the Village Hall on the 16th May (Theatre Group production). As before, we are hoping to continue with the beginners' group from 7.30 pm and the main group from 8.00pm. See you all there. Contacts - for beginners Mike Vincent, 614806, or myself, 613680.

**Joan Smith**

## **Harbury Carnival**

**The clocks have sprung forward in anticipation of Carnival time! (Remember Saturday June 9th, 2012)**

Punch & Judy are dusting themselves off...

And of course we have the perennial favourite Dog Show. But the star of the show is really you with the Parade. There are coveted ribbons to be won for the first three places for most categories that include:

Trade Float

Independent Float

Children's' Float

Decorated Bike/Pram/Car

Horse Drawn/Mounted/Lead

Walking Tableau Children 2-8 persons

Walking Tableau Children more than 8 persons

Walking Tableau Family

Walking Tableau Adults

Walking Adult

Walking Child



Get your creative ideas up and running and prepare to make this a real Jubilee Parade.

If you would like to book a stall/pitch on the field, please call Mike McBride on 612421, or if you would like to advertise in the Programme telephone Ann Winchester on 612128 and, if you have any questions about the Carnival, please feel free to call John Broomfield, Carnival Committee Chairman, on 614258. He will be happy to provide whatever help he can.

### **And get your Barrows in!**

As we are probably the only Carnival in the World with a Wheelbarrow Race, you can take part on Sunday 3<sup>rd</sup> June. You will need to complete an entry form and pay the entrance fee BEFORE the day. Forms will be available from the pubs and Dan Killian on 612265. And Pub Games Week follows (details in next month's Harbury News).

Get it all in the diary now!

**Peter Walshe**

**On behalf of the Carnival Committee**



## **Count down to the Harbury Games**

- Not selected to represent GB at the London Olympics?
- You couldn't get tickets for your favourite sport?
- And you haven't been selected as a volunteer?

No worries. The real action will be at Harbury on **16<sup>th</sup> June** and everyone has a chance of standing on the winners' podium to receive a gold medal.

**But don't miss out on the fun.**

**Here's what you need to do:**

- Contact Peter Walshe on 612477 or Trevor Montague on 612340 if you want to enter your own team, join one of the teams that has already entered or volunteer to help with judging, timekeeping, refreshments etc.
- Contact Andrew Lawrence on 614937 if you would like to sponsor an event for £25.
- Start training and get yourself in shape to win a medal.
- Or just come and watch, cheer, buy food and drinks from one of our stalls and enjoy the fun.

**Andrew Lawrence (on behalf of the organising group)**



## Harbury Art Group

Some of our members looked forward to the workshop in March with a great deal of trepidation. The theme was to be 'peace', which conjured up all sorts of visions including sleeping babies, woodland scenes, poppy fields etc. When we were all assembled however, Nick produced a beautiful scene of misty trees and sheep grazing 'peacefully' in a field. Most of the group chose to create a watercolour of that scene but some used other media and brought their own subjects. It was a very enjoyable and creative day with Alma's painting being judged favourite on this occasion.

Our April workshop (Thursday, 5<sup>th</sup> April) is a Still Life and Nick will be using watercolour and colour pencil. Members are always encouraged to be adventurous and use other media if they prefer. Our workshop on 3<sup>rd</sup> May is to be 'pen and wash'.

If you would like to join this friendly, sociable group for a day's painting, please get in touch. We are always happy to meet new members. The workshops are run on a 'pay as you go' basis of £15 per day, and there is no joining fee. We meet on the first Thursday in the month in the Tom Hauley Room behind Harbury Church, between 10am to 3pm. All levels of ability attend, from raw beginner to the more experienced. Tea, coffee and biscuits are provided but please bring your own packed lunch.

The full programme for 2012 is available on request and can be sent to you either by e-mail or post. For more information, please contact Pam on 01926 814923 or the tutor Nick on 01295 276465 or e-mail [harburyart@hotmail.com](mailto:harburyart@hotmail.com). We look forward to seeing you.

**Pam McConnell**

## Bumps and Bundles



We have had a new flourish of babies and bumps join us, which is brilliant. There are plans for an Easter party on the 3<sup>rd</sup> April with opportunity to make an Easter card for someone. Please come along and join us every Tuesday 10:30am to 12 noon in the Tom Hauley room (back of church) for tea, coffee and company. Watch this space for plans for this year's Carnival plans.

**Kelly and Henry**





## Hereburgh Morris

The winter season is almost finished; it will terminate as usual with the annual workshop on 31<sup>st</sup> March. This will be followed, as is traditional, by a meal in the evening. This year however will be more of an event than is usual. This year Hereburgh celebrates its 25<sup>th</sup> birthday and so the meal is a little more special than the usual invasion of a local curry house by a rabble of weary dancers. This year we will be dining in style joined by members from past years; there are even rumours of speeches.

The main event for us this coming season is on 19th May. We have invited friends from other sides to join us in a day of dance, something which should bring colour and excitement to the streets of Harbury.

Our 'Morris Taster Sessions' have just finished and have been popular enough for us to run some more later in the year, so anyone wishing to have a go at Morris Dancing without commitment will have another opportunity. Of course we welcome potential members to any of our practices: Wednesday evenings 8.00-10.00pm in the School Hall during term time or the Scout Hut when the school is closed.

**Douglas Bates**  
**Squire of Hereburgh Morris**

## Movement 2 Music

At a recent Thursday Club meeting, a lady from Kineton came to demonstrate a range of exercises, which are designed to promote co-ordination and control for the older person – both male and female. At present, there is nothing in Harbury which provides an appropriate level of activity for the over 60's, but Geraldine's programme of movement to music, exercises all the joints in the body without taxing anyone unduly. Many of the exercises can be carried out sitting down, although there are a number of activities which do involve various leg movements whilst standing up, but again if anyone feels they are too demanding they can remain seated. It is hoped that a class might get started here – probably on either a Monday afternoon or Thursday am/pm, but it will depend on the number of people who express an interest in joining a weekly group. It's the kind of physical activity recommended by the Health Service to keep older people more active and there are the social benefits to be gained from meeting regularly outside the home. It is proposed that a class might be started in the Village Hall in the near future, if there is sufficient interest. The Kineton group has been going for several years and usually has 20+ regular attendees from age 65+ to 90+ and they all agree that the sessions are enjoyable and beneficial. If a group gets started here, the cost would depend on the number of people who attend regularly. If you are interested, please ring Chris on 612305 or make contact at one of the Saturday coffee mornings when information will be available.

**Chris Finch**



**Windmills**  
Nursery School

## **Windmills Nursery School Mt Snowdon Climb**

A group of parents and staff are looking forward to putting on our walking boots to climb to the summit of Mount Snowdon on 6<sup>th</sup> May to raise much needed funds for Windmills Nursery. Many of us have started trying to get fitter to take on the challenge on which we will be ascending the Pyg Track to reach the mountain's peak.

At least ten parents and staff of the nursery are participating in the climb and we are hoping to raise funds to go towards buying new equipment for the children who attend the nursery school.

For further information or to enquire about sponsoring us please contact Sarah Hanson: sarahlouise\_mowbray@yahoo.com.

**Sarah Hanson**

## **Senior Citizens' Update**

At the Christmas party in December we asked you for some ideas for where we might go on your summer outing. After removing trips to Dubai, Malta and Disneyland from the list and deciding that we should be going to see the sea this year, we have decided to go to Bournemouth.

So, we will be going to Bournemouth on **Wednesday 13th June** leaving the Village Hall at 8.30am. The invitations are being delivered and we would like you to return them to Muglestones Country Fayre by Friday 1st June.

If you are new to the village and think you may be eligible to come along, or you think we may not have you on our list of invitations, please contact Thelma Gulliver on 613269, Julie Clarke on 612066 or me on 612421.

**Mike McBride**

**On behalf of the Harbury Senior Citizens Benefit Association**

## **Edinburgh Marathon**

Steve Harrold who lives in the village is running the Edinburgh Marathon on 27<sup>th</sup> May. Steve has very kindly said he will support the Senior Citizens of Harbury and donate all the sponsor money he raises to the charity.

The Senior Citizens' committee raises money throughout the year to enable the senior citizens of Harbury and Deppers Bridge to enjoy a day's outing in June and also a Christmas dinner, both free of charge.

If you would like to sponsor Steve there will be collection boxes around the village or you could pop the money through the door of 1 Park Lane or 32 South Parade.

Thank you for your support.

**Senior Citizens' Committee**

## Harbury Library

As promised last month, here's another update about the library. The laying of the new floor has not gone as smoothly as we had hoped and so we now plan that the Library will re-open on Thursday 10th May. This will allow us enough time for the concrete floor to dry properly, and for the necessary alterations to take place. There's a small chance this date might slip further so please look for confirmation in next month's Harbury and Ladbroke News. We have asked that the mobile library continues to visit on a Wednesday afternoon until we are open. The good news is that we hope to open the library Monday-Friday 9am-5pm, far longer than it was open before.

**Dr Tim Lockley**



### Café Competition

On Thursday 10<sup>th</sup> May, Harbury will have a terrific new library with Wi-Fi plus the special bonus of a café serving tempting tea, fabulous freshly ground coffee, and delicious home-made cakes using fair-trade, organic or local ingredients.

The café has a unique setting and it would be great if its name reflected the location. What literary associations (i.e. Cup and Chaucer) or other inspired ideas do you have that would be a perfect name for our café? We are sure there are lots of very creative minds in Harbury, and look forward to receiving some excellent suggestions.

The winner of the competition and their guest will get to enjoy a free drink and cake when we open.

Send your café name ideas in an email (no attachments) with your telephone number to: [cafecompetition@btinternet.com](mailto:cafecompetition@btinternet.com). Deadline 19th April 2012.

**Invitation to join our Café Team:** Are you job-redundant or retired and would like to offer your experience and people skills to a village initiative? Or do you want to regain confidence or enhance your CV? Either way, we would love for you to join the café team within Harbury Library. You can get involved for as little as four hours a month - or more if you like! In exchange for your donated time we will provide training on food hygiene and the intricacies of the fancy coffee machine, and an enjoyable place for you to help co-create a wonderful community space. Please call: Lynn 614707.

**Calling all Cake Bakers :** Do you enjoy baking cakes? Do people compliment you on your baking skills? Could you be Harbury's answer to Delia or Nigella? If so, Harbury's village cafe situated in the library needs you – if you can bake and are prepared to offer your skills weekly/fortnightly or even monthly we would love to hear from you.

Please contact Bobbie on 01926 614040 or email: [bobbie.sharpe@tiscali.co.uk](mailto:bobbie.sharpe@tiscali.co.uk).

**Dr Tim Lockley**

## Request for Children's Musical Instruments

When Harbury Library reopens I will be running a Story and Song Time every other Thursday 10am to 11am. I would love to include some opportunities for the children to make music using things like shakers, tambourines and bells so I am asking if you could donate any unwanted instruments into the box marked Harbury Library Musical Instruments in the entrance hall of Harbury Pre-School which is open during session times. These instruments must be in good working order (not cracked or broken) and must be able to be cleaned. Any donations of large "sharing" books (ones aimed at teacher use that are usually A3 or larger) would also be greatly appreciated.

Story and Song time will run during term time and will be open to everyone, including those at Harbury Pre-school and Windmills if they would like to attend. Details of dates will follow. I look forward to seeing many of you there.

**Carolyn Murray**

## Harbury Energy Initiative

It seems that Harbury are doing just the right thing in working as a community on energy solutions. Or at least that's what Martin Orrill, a senior executive at British Gas, told those attending our '*Green Future Green Deal*' event on 24<sup>th</sup> March. This was echoed by David Barrington, another of our speakers, who had immediately noted on entering the village how much progress Harbury has made on taking up solar panel installation.



About fifty people came to look at the displays and hear what we have been doing for the village with the LEAF (Local Energy Assessment Fund) grant we received from the Department of Energy and Climate Change just a few weeks ago. We are realistic enough to recognise that a warm and sunny Saturday afternoon is tough competition for an indoor

event on energy, so we were delighted with the active attendance we had. One idea that came out of that was a suggestion that we collect actual data on solar panel costs savings from those people who have installed them as a more real guide to what can be achieved in Harbury, instead of relying on general national estimates. I would welcome opinions on that from those who have had panels installed (preferably by email – see below).

Just six weeks after receiving our grant from the Local Energy Assessment Fund the group have charted a way against a tide of challenges (= irritating difficulties) and delays to deliver some ambitious targets. And it isn't quite over yet. In the time since I last wrote we have:

- Worked with the company Blue Sky to identify houses that could benefit from solar panels

- Assessed four community buildings for potential energy saving improvements and generation opportunities
- Looked at four different types of home in the village to see how efficient they are and what cost reductions could be achieved.
- Planned (and maybe implemented – see below) the internal insulation of the Wight School to make it fit to be our village library and internet cafe with the eventual aim of cutting running costs massively.
- Planned and delivered the 'Green Future Green Deal' event.

Not everything has gone according to plan. The flyover to gain a thermal image of Harbury's roofs at night needed a cold, clear, calm night. We had the perfect weather in February... but no grant, so we couldn't commission the plane. As the weather turned to warm cloudy skies, the grant arrived! Blue Sky, the company concerned has given us a map showing which houses will benefit most from solar panels. You can look up and view your own house on-line by visiting the website:

[www.bluesky-world.com/solarviewer](http://www.bluesky-world.com/solarviewer)

Enter the username [harburyenergy@groups.facebook.com](https://www.facebook.com/groups/harburyenergy)

password: harburyenergy

Almost daily delays by the County Council's contractor means that we are still waiting for them to complete concreting the Wight School floor as I write. Until they finish that we can't get in there to do the dry lining insulation of the walls. We owe Paul Quinney a great debt for his stoical determination to manage this through to completion for us.

We will use the information we have gathered through LEAF and the reports we have commissioned to access more funds for the village to cut energy bills. In the meantime, you might like to know that, as residents within the Stratford District Council area, we can access FREE loft and cavity wall insulation and save considerably on the cost of heating our homes. To be eligible you must have less than 60mm of loft insulation, at least 80sq.m. of loft space and 120sq.m. of cavity wall. You have just a few weeks to take advantage of this offer before it closes. Contact Rockwarm for a free survey on 024 7634 5554 or 0800 132689.

Finally, Climate Change Solutions has extended Harbury residents an invitation for their **Smart Low Carbon Cities and Communities Conference** on 23<sup>rd</sup> May 2012 at the NEC with a 50% discount booked as a group. This would also include some time to visit the adjoining SustainabilityLive Exhibition. Anyone interested should contact Bob Sherman.

And join us on 24<sup>th</sup> April at 8pm in the village club for an update and become part of the power surge to a greener Harbury!

**Bob Sherman, Tel: 612277**  
**email: [bob@churchterrace8.freemove.co.uk](mailto:bob@churchterrace8.freemove.co.uk)**

## Village with a Vision

Our Partners, Bromford's, were delighted with the response to the Drop in Day, which 59 of you attended. They also made ten home visits to people who couldn't get along on the day. So they went back with lots of very useful information about what people would like to see. There is certainly plenty of support in the village for them to now move ahead.

The next steps will see them discussing the project in detail with their own Development officers, and making contact with landowners.

The team visited many Extra Care Facilities, both near and far, and brought home a list of their best features, which we'll be passing on so that the architects can incorporate as much as possible into our project.

As always, our heartfelt thanks to you all for your continuing support. Please get in touch if you have any questions, which we'll do our best to answer. You can of course, visit our web site which is [www.villagewithavision.co.uk](http://www.villagewithavision.co.uk).

**Tony Stubbs**

## Advance Notice – Holy Land Experiences

This will be held on Thursday 31st May at 7.30pm in the Tom Hauley Room. Look for an article in the May edition or, if you would like details sooner, ring Jill Winter, 612585.

**Jill Winter**

## London Marathon 2012 – ABF Soldiers Charity



I am about to run in my first ever Marathon on Sunday 22nd April 2012 and I am running on behalf of the Army Benevolent Fund the Soldiers Charity.

The ABF Soldiers Charity gives lifetime support to serving and retired soldiers and their families. They have seen a 30% rise over the past two years in applications from soldiers who have taken part in previous and current conflicts and they currently raise £7 million a year to meet this need. As a result of current operations in Afghanistan it is anticipated that the requests for help will rise significantly in the coming years and they depend entirely on your

donations and goodwill to do this.

If you can donate any amount, no matter how small, the Charity would be very grateful. Donations can be made on line at [www.virginmoneygiving.com/stevewilkins2](http://www.virginmoneygiving.com/stevewilkins2)

Or, if you wish, you can post a cheque made out to ABF The Soldiers Charity to myself at The Lymes, Church Street, Harbury, opposite the Church Gate.

Hopefully I will complete the course in time for a well deserved pint in the pub afterwards, if I can walk!!!!

Thanking you in advance for your support.

**Steve Wilkins**

## **Marathon Man**

On 22nd April 2012 I will be running for my third time in the world-famous London Marathon for an excellent cause. PHABKids ([www.phabkids.co.uk](http://www.phabkids.co.uk)) is the leading national charity committed to promoting and encouraging disabled and non-disabled children and adults to take part in a wide range of social and sports activities. It's a well-established charity, having been in existence for half a century.

I am hoping to raise as much money as possible from as many sponsors as possible and would welcome a donation, no matter how small or large. Like so many other charitable organisations, PHABKids relies upon donations to continue its invaluable work and every pound contributed makes a difference.

Donations can be made on-line at my VirginMoneyGiving page: [www.virginmoneygiving.com/lanHartland](http://www.virginmoneygiving.com/lanHartland)

If you're not keen on donating this way, you can simply write out a cheque for however much you think my efforts are worth, make it payable to: PHAB Marathon, and send it to me (or deliver it, if you're passing by) to: 45 Mill Street, Harbury, CV33 9HR.

My training is going well, so I will be there in London on Sunday 22nd, waving to the television cameras (along with 40,000 other people!) and taking part in the largest annual fundraising event in the world.

**Ian Hartland, 612734**



## **Neighbourhood Watch Meeting 15<sup>th</sup> March 2012**

As promised I attended the Neighbourhood Watch meeting at Southam Police station on your behalf along with Brian Cooke. It was a well attended meeting with representatives from Southam and most of the villages around.

We received an explanation of how the area is now policed since the changes on 9<sup>th</sup> May 2011. The team at Southam cover 100sq miles from Southam, and consist of the one Police Officer, PC Jim Butler and two Police Community Support Officers PCSO Claire Murray and PCSO Matt Hodgetts. The 999 responses are now from Rugby, no longer Stratford.

Although sometimes if it is busy, the response will be from Leamington Spa. The team are looking to work very closely with the local NHW to help prevent crime through informing the communities of good crime prevention and community spirit and remaining vigilant.

We all had a chance to raise any issues of particular concern. I asked if any progress had been made regarding the recent spate of burglaries. The good news is yes, the spate seems to have died down and thanks to some undercover work "progress is being made."

There seems to have been a problem with the new 101 number for contacting the police. I am not alone in finding that you wait a long time on the line. The basic problem is one of manpower, there are just not enough people to answer the phones and if 999 is very busy staff are pulled from 101 to answer the emergency calls.

Just to reiterate 101 is now the number for contacting the Police if it is not an emergency.

**101** can be used for:

- Reporting a crime that has happened
- Providing information about a crime
- Asking for information and advice

**In an emergency, when there is a crime in progress or a life at risk, always call 999 or 112**

Other matters raised included:

Scrap dealers who have become a nuisance (e.g. taking things that they do not have permission to take) - Claire will send out some information about the requirements scrap dealers must comply with.

A skimming device on the cashpoint in Long Itchington.

Nuisance phone calls regarding computer issues mainly to the elderly – Claire Murray will look at getting out some crime prevention advice regarding nuisance phone calls.

Charity workers coming to the doorstep to get people to sign direct debits. Claire will send out some details about the standards door to door sellers must comply with. Also good advice is "don't open the door if you don't know who it is and don't sign up to anything on the doorstep."

Another important issue is that of people not reporting crimes. If it's reported then the resources will be allocated accordingly, as was seen recently when extra police resources were put into Harbury with result. So even if the crime is small report it.

Overall it was a successful meeting; it was good to meet up to talk and the next meeting will be organised for June.

**Alison Abbott**



## New Businesses – Bull Ring Centre

Kp Kleinmann Properties is the second of three newly established businesses operating from the Bull Ring Centre to be featured in the Harbury & Ladbroke News. Keith and Pina have lived in Harbury for 18 years and have established their lettings and sales business with the intention of providing a competitive service to local people in Harbury, Southam and the surrounding villages. Their business is advertised on [Zoopla.co.uk](http://Zoopla.co.uk) where customers can find the type of property in which they are interested in a particular area. Pina does all the web-site maintenance, including web-pasting, whilst Keith provides the photographs and relevant details about the available properties. Customers interested in visiting Kp Kleinmann are directed to the office on the first floor, by a metal figure mounted outside the main entrance to the Business Centre. In addition to the arrangements made for lettings and sales, Keith also provides information about mortgages and financial services and both he and Pina stress that they want to provide a very LOCAL service.

There will be many people in the village who know that Keith previously worked in the Mercedes Benz dealership in Coventry, which is where he met Pina. Whilst Keith was raised in Coventry and has Welsh ancestry; Pina was born in Leamington and has Italian ancestors. It would be intriguing to know which rugby team they supported during the recent Six Nations Cup, as Keith was a regular rugby player for many years and joined Coventry RFC at 18 years, followed by Coventry Welsh and then Kenilworth RFC. A cartoon which is proudly displayed in his office shows him in rugby kit with the caption 'Built for Speed!' Pina also demonstrated athletic ability during her school years and represented her school in the Warwickshire Schools Championships at 1,500m.



Keith and Pina have a four year old son, Giorgio, who is in the reception class at Crackley Hall school. His photograph is displayed alongside other family photos, which include Keith's son James, 34, who is Director of Cameo Productions based in Piccadilly, London. His company is involved in

working with 20th Century Fox, Warner Bros and other major film companies, as he interviews stars for reviews preceding the release of their latest films, for radio and television. His high profile role has meant that he has been able to invite Keith, Pina and Giorgio to several film Premiers, including Happy Feet and Ice Age 4.

As always with articles featuring local businesses, the Harbury and Ladbroke News encourages residents to discover the facilities which are made available in the village and it is encouraging to hear regular comments, which indicate that villagers are 'extremely happy' by the service provided by the many advertisers who feature in the magazine. As Keith mentioned, he is a LOCAL man; who wants to provide a service to LOCAL people at competitive rates and he has joined an increasing number of businesses which provide substantial financial backing to the 'Harbury News', which help to keep costs down for all our subscribers.

**Chris Finch**

## **Are you Interested in Supporting the Lifeboats?**

Ladbroke and Deppers Bridge W.I and the Leamington Spa branch of the Royal National Lifeboat Institution would like to invite you to a talk by John Nurser, RNLI Principle Design Engineer, about the work of the RNLI and how the lifeboats are designed and built. Tea/coffee/RNLI souvenirs will be available.

Come along and join us at Ladbroke Village Hall, Thursday 26<sup>th</sup> April at 7.30pm. 50p admission.

Further details from Tina Gilbert, 07761 235238.

**Tina Gilbert**



## **Rural community gives Thumbs-up to More Affordable Homes**

Villagers have thrown their support behind plans for more affordable homes in Harbury - after a similar scheme significantly boosted the community. Residents moved into Hereburgh Way, the first phase of Warwickshire Rural Housing Association's development last summer.

Villagers are now supporting WRHA's second phase of development plans, which were unveiled at a public consultation event on 3rd March in partnership with Warwickshire Rural Community Council and developer Linfoot Homes.

Outline planning permission has been granted and the partners will now, with community support, go back to Stratford-on-Avon District Council for full permission to start on site. The scheme will be built next to the first phase of properties and include ten WRHA homes for social rent and seventeen for local market sale. Subject to final approval, construction will start in August and take about 18 months to complete.

The recent public consultation event attracted around 100 people from the village and about twenty applications for the new homes were made, which shows the level of demand for affordable homes in Harbury.

As part of the development agreement, specialist provider WRHA and partner Linfoot Homes have made financial contributions to help sustain community facilities in Harbury, including the local library, footpaths and public transport. In addition, a £55,000 contribution towards education in the area was given via Warwickshire Country Council.

Through its community work, WRHA challenged pupils from Harbury C of E Primary School to take part in a house-drawing competition to develop links and raise awareness about the need for affordable homes. The competition included a £50 prize which has been spent on garden tools for Earthworms, an eco-friendly group of green-fingered pupils who help look after the school grounds.

The WRHA homes for social rent in phase two will include six two-bedroom and two three-bedroom houses and two two-bedroom bungalows. All will have energy saving features and be built to the Lifetime Homes Standard, so they are easily accessible and adaptable to meet residents' changing needs.



To be eligible for a WRHA home, residents need to have been born in the parish, lived or worked there for at least twelve months or have close family members living in the area.

**Photo Left: Members of Harbury  
C of E Primary School Earthworms  
Club get their hands dirty with  
WRHA board member Linda Ridgley**

**Kerri Smith  
On Behalf of Warwickshire Rural Housing Assoc.**

## **Chesterton Church – Horse and Rider Blessing**

After a successful outdoor service and hack last year and on popular demand, we are once again holding a 'Horse and Rider Blessing' on Saturday 19<sup>th</sup> May at 2pm followed by a hack. The route will also be open to walkers. Prebooking £8 and walkers £3. On the day £10 and £5. Horses welcome to just come for a blessing. Bookings with Jo Spurr, 614431.

**Jo Spurr**

## **Galanos House, Southam**



Requests the pleasure of the company of ex-service personnel and their partners for a reunion afternoon on Thursday 7<sup>th</sup> June at 3.00pm.

Join us for afternoon tea and entertainment, please R.S.V.P. by calling the reception on 01926 812185 to book your free ticket.

Closing date Monday 28<sup>th</sup> May 2012, proof of forces connection required and transport can be provided if necessary.

**Jo-Anne Wilson, Matron/Manager**



## LETTERS TO THE EDITORS

### **Dear Editors**

*Hazel Sharples*

*Hazel passed away peacefully, at the home of her son, on 23<sup>rd</sup> February. She had not been well for some time. Since living in Ladbroke she had been an active member in the community, particularly involved with the Church and fundraising. She will be missed – especially for her “Tarmac”!*

*Her funeral took place at All Saints, Ladbroke, on 14<sup>th</sup> March, at which there was a tremendous turnout. We would like to thank all those who attended and also those who assisted in the smooth running of the funeral.*

**Deborah Service (daughter)**

### **Dear Editors**

*The family of Frances Killoran would like to thank everyone who attended her funeral and to all those who sent cards, flowers and donations. Special thanks to the Reverend Anne Goldthorp for her kindness and lovely service.*

**Tony and Dave Killoran**

### **Dear Editors**

*My family would like to thank our friends and neighbours in Harbury for all your kind letters, cards and good wishes following the death of my husband, Michael.*

*It means a great deal to us to know that so many people were fond of Michael and that he touched so many people's lives. Your thoughtful letters have been a great source of comfort to us.*

*Thank you also to everyone who attended Michael's Thanksgiving service in All Saints, which was so well conducted by the Reverend Craig, to Mary of Mugglestons for the beautiful flowers, Ray and Jean Playdon for the food at the wake and all the staff at the Village Club.*

*We would also like to express our appreciation for the generous charitable donations made at the service.*

**Anne Lambert**

**Dear Editors**

*I have been informed that the donations collected at the funeral of my husband Derek Lowe amounted to £405.*

*This amount has been passed on to benefit his chosen charity, the new Harbury Village Library.*

*With many thanks to everyone,*

**Eve Lowe**

**Dear Editors**

*I would like to extend a very big thank you to all those kind people who have rummaged through their drawers to find little pretty bits and bobs to use in my Union Jake paintings. They have made it so much easier for me to do my work. I also extend an invite to them to visit the studio in the first two weeks of July when my studio will be open as part of Warwickshire Open Studios. They may be able to spot some of their items in the paintings!*

**Jan Freeman**

**ADVERTISING IN THE  
HARBURY & LADBROKE  
NEWS**

**EMAIL: [ADVERTISING@HLNEWS.CO.UK](mailto:ADVERTISING@HLNEWS.CO.UK)**

**TEL: 01926 612155**

**Monthly**

¼ page – £10.50 or £28 for 3 months

½ page – £19.00 or £49 for 3 months

Full page – £33.50 or £89 for 3 months

**Annual**

¼ page – £ 94.00

½ page – £168.00

Full page – £315.00

*(coloured pages printed in April for the year)*

**Adverts with payment to:**

**Gill Holden,**

**31 Binswood End, Harbury**

**by the 15<sup>th</sup> day of the month**

*Cheques payable to 'Harbury & Ladbroke News'*

**GREEN CHAMELEON  
SALES, LETTING & MANAGEMENT**

**Tel: 01926 612121/ 07795 575716**

**[www.greenchameleon.net](http://www.greenchameleon.net)**

**[info@greenchameleon.net](mailto:info@greenchameleon.net)**

**RENTAL  
Farley Avenue  
Harbury**

**£750 PCM**

**2 BED BUNGALOW  
KITCHEN  
LOUNGE  
FAMILY BATHROOM  
GARDEN  
GARAGE/PARKING**



## D.A.Knowles Plumbing Services

- Over 25 years experience
- All aspect of plumbing including bathroom and kitchen installations
- Full tiling service available
- Competitive rates
- Project Management available for larger projects
- No job too small!!

Mobile: 07721 522298 Home: 01926 613776 Email: da.knowles@btinternet.com

## HOME BOARDING FOR YOUR DOG



Wouldn't you enjoy your holiday much more knowing your pet was going on holiday too!



Why not let me look after your dog on our 22 acre farm where he will live as one of the family. No being shut in a kennel all day and night, just as much exercise as he wants with our own two friendly dogs who love to play with new friends. All needs catered for.

You will find our prices very reasonable and our care second to none. Give us a call on 01926 612921 or 07967 762475 and see how we can ensure you all have a good time!

All prospective boarders whose dogs didn't care for cats, please do ring again, as sadly, we no longer have cats.

## 25 YEARS BUILDING EXPERIENCE



**Don't just take  
our word for it!!**  
Two customer references  
provided with  
every quote!

**GROUNDWORKS**

**NEW BUILDS**

**RENOVATIONS**

**EXTENSIONS**

**BRICKWORK**

**PLASTERING**

**PATIOS**

**DRIVEWAYS**



**BEFORE**



**AFTER**

Contact us Today For a **FREE** No Obligation Quotation  
Office: 01926 612195 - Mob: 07960 133105 - Email: info@harburybs.co.uk

## **Warwickshire Groundworks**

Your local contractor for:

- ◆ Driveways - Block paved
- ◆ Tarmac or Coloured Stone
- ◆ Patio Design & Construction
- ◆ Brickwork
- ◆ Fencing
- ◆ Shed Bases & Sheds Supplied
- ◆ Turfing
- ◆ All Hard & Soft Landscaping

City & Guilds Qualified  
20 Years in the Business

Telephone Roger on:  
01926 632994  
07985 256009

*High Quality of workmanship  
as Standard*

## **MOWER FOR SALE HAYTER R48 Electric Start Recycling Mower**



**Little Used  
£200**

**Telephone: 01926 612397  
(Ufton)**



## **JAMIESON JOINERS**



Manufacturers of quality windows, doors,  
stairs, conservatories,  
fitted kitchens/bedrooms.

Established 25 years.  
Competitive prices. Private/Trade

Tel 01926 612921/07968 009094  
or e-mail your enquiry to:

**stablesatharbury@live.co.uk**



# The Crown Inn

**☎01926 614995**

**[www.crowninnharbury.co.uk](http://www.crowninnharbury.co.uk)**

***Please see our website for more information and details.***

***Dear friends and guests, past and present..***

First of all thanks so much to all of you that have supported us over the past 18 months - your kind words and feedback has been very much appreciated! As some of you are now no doubt aware we have chosen to renew our commitment to the Crown (and the village!) and decided to re-launch the venue with new menu's and themed nights.

Our À la carte menus have undergone a complete overhaul and we are very excited to introduce these menus to you all. We have definitely tried to deliver a menu that will inspire and offer you something different to what else is currently on offer in Harbury.

In addition we are proud to launch our 'Signature Dishes' board which celebrates the best and most popular of what we have done over the past 18 months. We have sourced locally and changed seasonally the offering and we really hope you will come and give the new menu a bash..

Although there is a new menu we are sticking with some of our most popular items such as the 'Gastro Pub Fish and Chips' to take away on a Friday PM, our daily changing fish specials board and our Sunday Lunch offers you a choice of 3 roasted meats with all the trimmings from £7.50.

## **Bank Holiday Monday**

**9th April**

**Special Lunch**

**12.00 noon - 2.30pm**

## **SPECIAL TAPAS TABLE**

**For two people - £15.00**

**12 Tapas**

**Chips**

**Salad**

**Kids Beef Burger**

**& Chips FREE**

## **SPECIAL MUSIC EVENING**

**Saturday 21st April**



**R&B**

**Soul**



**Motown**



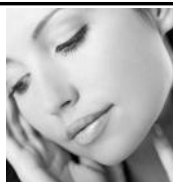
**From 7.30pm 'til late**

**FREE glass of Cava**

**for the ladies**



**NOUVEAU  
CONTOUR**  
Perfection in Permanent Make-Up



**GET SET FOR SUMMER  
SEMI-PERMANENT COSMETICS FOR  
EYEBROWS, LIPS, EYELASH ENHANCEMENT AND EYELINER  
ANY AREA FOR HALF PRICE**

**INCLUDES FREE CONSULTATION, OFFER ENDS 30/4/12**



Before Eyebrow Reconstruction



After Eyebrow Reconstruction

**Contact Teresa for further information 07825 881360**

Web: [www.aestheticarewarwickshire.com](http://www.aestheticarewarwickshire.com)

Email: [teresa.gold@hotmail.com](mailto:teresa.gold@hotmail.com)

Gift Vouchers also available



**ADAMSTRANKS**  
BUILDING CONTRACTORS



**Extensions-Alterations-Refurbishment-New Builds  
Bespoke Kitchens and Bathrooms  
Design-Planning & Building Regulations Application  
Service available.**

Web: [kenilworthproperties.co.uk](http://kenilworthproperties.co.uk)

Email: [kenilworthprops@btconnect.co.uk](mailto:kenilworthprops@btconnect.co.uk)

Telephone: Harbury 612260 Mobile: 07779 096104

Harbury Business Centre, Church Terrace, Harbury, Leamington Spa CV33 9HL

green  
chameleon



Karena EA Ellis

MRICS, RICS Acc.Med., BSc Hons

M: 07796 575716 T: 01926 612121

E: info@greenchameleon.net

www.grechameleon.net

Chartered Surveying ■

Mediation ■

Letting & Management ■

The Green Room, 31 Manor Road,  
Harbury, Warks CV33 9HY



**RICS**



## Clare Fulford

B.Ed. Hons (Cantab), ALCM

### Flute and Piano Lessons

Free Introductory Lesson

t. 01327 262529

m. 07775 915790

clare.fulford@btinternet.com

# RJD

**BRICKLAYING LTD**

**EXTENSIONS  
RENOVATIONS  
REFURBISHMENTS  
NEW BUILD  
GARDEN WALLS**

**BRICK WORK AND STONEMASONRY  
SPECIALISTS**

FAMILY RUN BUSINESS WITH OVER  
35 YRS EXPERIENCE

CALL US FOR A QUOTATION

THE BEECHES  
THE OLD GATED ROAD  
CHESTERTON

WORKS CV33 9LD

TEL: 01926 614335 MOBILE: 07786838627

EMAIL: info@rjdconstructionltd.co.uk

RECOMMENDED BY  
AGE CONCERN

**AGE**  
*Concern*

## FENCES : TREES



**All types of fencing and gates**

**Tree felling and reduction**

**Hedge laying and trimming**

**Patios**

**Seasoned logs available**

**Call Adrian Dollar on  
01926 817077 or  
07914 623989**

**Qualified and Insured**



**Is your lawn ready for the Spring?**

We can target trouble areas or re-turf or seed the whole area.

Services also available include, lawn mowing and edging, chemical weed control, border maintenance, stone wall construction or repair, fence repair or replacement, patio and outdoor furniture cleaning.

### **\*\* Leafy News \*\***

Due to unforeseen circumstances, we have had to postpone the event on Saturday 5th May until later in the year.

Further details will be available nearer the time.

If you would like any further information, please contact us.

*All outdoor maintenance considered.*

*No job too large, or too small.*

*For all your outdoor chores, call your local, friendly gardener.*

**Richard Everett**

**07923 167420 or 01788 567774**

[Leafyservices@gmail.com](mailto:Leafyservices@gmail.com)

[www.leafyservices.co.uk](http://www.leafyservices.co.uk)



**Lose those extra pounds quickly whilst having loads of fun!**

**Sunday mornings at 9am, Harbury Village Hall**

£4 per class, discounts available



[facebook.com/warwickshirefitness](https://facebook.com/warwickshirefitness)

**Phone 0789 067 1869 for more details**

# The Shakespeare Inn

## New Steak House & Grill



- ♦ Traditional 18th century country inn
- ♦ Choice of real ales and guest beers
- ♦ Meals served Monday - Saturday  
12 noon - 2.30pm and 5.00pm onwards
- ♦ Sunday Lunch - 12 noon - 3.00pm
- ♦ Large car park and beer garden
- ♦ Function room available for family events and corporate meetings
- ♦ Live music Saturday evenings



See us on [facebook](#)

Also offering a wide range of other menu choices including:  
Pasta / Rice dishes and Vegetarian options

***Specials Board also available***

9-11 MILL STREET, HARBURY, LEAMINGTON SPA, CV33 9HR. Telephone: 01926 613822

# The Gamecock Inn

(Sister pub to the Shakespeare Inn)

**OFFERS A CAFÉ STYLE MENU**

From 9.00am - 12 noon

Join us for a full English Breakfast or other Breakfast snack choices

From 12 noon - 2.00pm

A selection of snacks and light bites are available

5.00pm onwards

We have a menu offering traditional dishes  
such as fish and chips, pie and chips either to eat in or takeaway.



CHAPEL STREET, HARBURY. TELEPHONE: 01926 612306

## Roger Frogley & Sons Fencing



High quality domestic, industrial and agricultural fencing offering a service second to none.  
*competitively priced - clean, efficient & reliable*

If you require some fencing - look no further!  
Visit our **fully featured website** for ideas and examples and get in touch.

**[www.frogleyfencing.co.uk](http://www.frogleyfencing.co.uk)**

or ring **07970 652145**



## LOCKE & ENGLAND

**AUCTIONEERS & VALUERS**

Established 1834

### Auction Every Thursday

Viewing Wednesday 12.00noon - 7.00pm  
and morning of sale from 9.00am

**Bi-Monthly Antique  
& Collectors' Auctions**

**Regular Valuation Days**

**Valuations for Insurance,  
Probate & Family Division**

**Specialist & Commercial Sales**

**Collection Service**

**ENTRIES INVITED FRIDAY,  
MONDAY & TUESDAY**

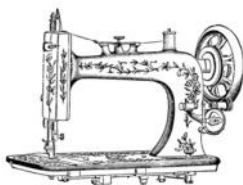


12 Guy Street, Leamington Spa, Warwickshire CV32 4RT

**01926 889 100**

**[www.leauction.co.uk](http://www.leauction.co.uk)**

## Drop Dead Gorgeous



**Beautiful handmade Curtains, Cushions and Roman Blinds  
all made to measure.**

**Curtain alterations also undertaken.**

**Free Quotes and Free Fitting.**

**Contact Sharron for Friendly and Helpful Advice.**

**07760 395805 or 01926 612226**

**or email:**

**[dropdeadgorgeouscurtains@gmail.com](mailto:dropdeadgorgeouscurtains@gmail.com)**

Regulated by the Institute of Certified Bookkeepers

**A local Bookkeeping Service** for Sole Traders & Small Businesses, including Sales & Purchase Ledgers, Bank Reconciliations, Expenses, VAT Returns, Credit Control, Payroll and Final Accounts.

**An affordable outsourcing solution**

Call 01926 800123 for an informal chat  
or email [info@cc-bookkeeping.co.uk](mailto:info@cc-bookkeeping.co.uk)



[www.cc-bookkeeping.co.uk](http://www.cc-bookkeeping.co.uk)

## SADDLERS BED & BREAKFAST

SELF-CONTAINED COTTAGE IN THE HEART OF HARBURY.  
DOUBLE BED, SHOWER ROOM, LIVING & DINING AREA WITH  
KITCHENETTE, TV/DVD; CD/RADIO. SLEEPS 2 TO 4.  
OFF ROAD PARKING.

£60 PER NIGHT INCLUDING CONTINENTAL BREAKFAST.

JULIE YOUNG, SADDLERS, CHAPEL STREET, HARBURY.  
01926 614050 OR EMAIL [enquiries@saddlersbed.co.uk](mailto:enquiries@saddlersbed.co.uk)  
[www.saddlersbed.co.uk](http://www.saddlersbed.co.uk)



## Why you should buy your new kitchen or bathroom from Modern Homes!

- With over 43 years of trading we are the longest established specialist in your area.
- Predominantly British Manufactured products
- Family run 'local' business
- Personal recommendations
- Large kitchen and bathroom showroom
- Full installation service with employed fitters
- Value for money... We offer styles to suit all tastes and budgets
- Kbsa members offering Consumer care protection

[www.modernhomesleamington.co.uk](http://www.modernhomesleamington.co.uk) Email: [info@modernhomesleamington.co.uk](mailto:info@modernhomesleamington.co.uk)

**01926 883338**

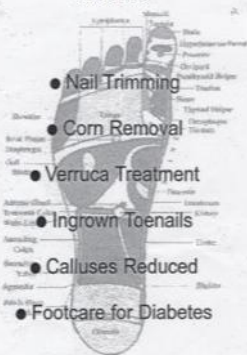
Modern Homes, 37 Longfield Road, Sydenham Estate, Leamington Spa CV31 1XB  
(between Wilts and CAS)

A Member of the Alliance of Private Sector Practitioners

# Jackie Biddle

## Healthy Feet are Happy Feet

Foot Health Practitioner

Dip CRP MPS Foot  
CRB Checked

Home Visits Telephone

T: 01926 612503

M: 07872 907429

# LOUISE BEALE

photography

studio in  
Fenny  
Compton



Wayland House, Station Fields, Fenny Compton,  
Southam, CV47 2XD, 0783 4071210

[louise@louisebeale.co.uk](mailto:louise@louisebeale.co.uk)

[www.louisebeale.co.uk](http://www.louisebeale.co.uk)

**5 High Street**  
**Southam**  
**Warwickshire**  
**CV47 0HA**

**Tel: 01926 812574**

**Email: [enquiries@reynoldsinsurance.co.uk](mailto:enquiries@reynoldsinsurance.co.uk)**

**Website: [www.reynoldsinsurance.co.uk](http://www.reynoldsinsurance.co.uk)**

# reynolds insurance

## SERVICES LTD

*Independent Insurance Advisers*



Are you fed up with hanging on the phone or searching the internet?

Would you like to talk to friendly, experienced staff who will explain the small print?

We have been established in Southam since 1983 with the same staff who would be happy to offer you a competitive quote for all classes of insurance private or commercial.

**Call Deb or Sue - 01926 812574**

### FREE QUOTES ON:

Household

Motor

Short Term Learner Driver Insurance

Fleet/Vans/Trucks

Public/Employers Liabilities

Shops

Travel

Restaurants & Pubs

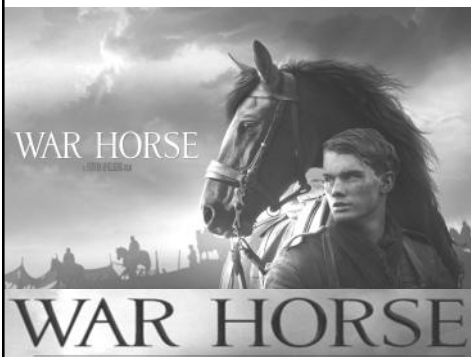
Business Insurance

Tradesman Insurance

Let Properties/Holiday Homes

## Harbury Village Cinema

is proud to present



# WAR HORSE

## Saturday 28<sup>th</sup> April

doors open at 5.00pm  
film starts at 5.30pm

**Tickets : £10.00**

*ticket price includes curry, rice  
& naan bread*

to be served during the interval  
food supplied by Jasmine Spice,  
The Dog Inn, Harbury

**Tickets available in advance  
only from**

**Cana Import  
High Street,  
Harbury:**

**01926 613716 / 07967 100153**

**(deadline for ticket orders  
Friday 20<sup>th</sup> April)**

Raffle – Licensed Bar – Tuck Shop  
Teas & Coffees

**Further Details: 01926 613311  
markandlana@aol.com**

*No job too small* **Phil's** *Free Quotations*  
**Plumbing and Heating**  
**Fully Qualified**  
**and**  
**Insured Plumber**

Bathrooms, Central Heating & showers

I am a locally based plumber  
offering very competitive rates  
on any plumbing or heating job.

No job too small,  
Please give Phil a call

### Call Phil

Daytime: 07971 046392

Evening: 01926 400746

Email: philmunday@hotmail.co.uk

Bishops Tachbrook  
Leamington spa



### **Tap Lessons**

*Fridays, The Grange, Southam*



4.00pm - Little Tappers (3-5yrs)  
4.30pm - Pre-Primary Tap (6-8yrs)  
5.00pm - Grade 1 Tap (8yrs+)

### **Dance Classes**

*Thursdays, The Grange, Southam*



4.00pm - Funky Dance 1 (4-6yrs)  
4.30pm - Gymnastics (all ages)  
5.00pm - Grade 1 Ballet (9yrs +)  
5.45pm - Funky Dance 2 (7yrs +)  
6.15pm - Grade 2 Ballet (11yrs+)  
6.45pm - Grade 3 Ballet (13yrs+)

### **Ballet Lessons**

*Tuesdays, The Grange, Southam*



4.00pm - Prima Ballerinas (3-4yrs)  
4.30pm - Pre-Syllabus (5-6yrs)  
5.00pm - Pre-Primary (7-8yrs)  
5.45pm - Primary (8yrs+)

### **Acting, Performance & Singing**

*Mondays, The Grange, Southam*



4.00pm - Juice (3-5yrs)  
4.45pm - Rocket (6-8yrs)  
5.45pm - Upload (9-12yrs)

**Limited places available - FREE TRIAL CLASS**

Call Lorraine 07711 010404 - [www.loveballet.co.uk](http://www.loveballet.co.uk) - [lorraine@loveballet.co.uk](mailto:lorraine@loveballet.co.uk)



# K<sub>P</sub> Kleinmann Properties

LETTINGS SALES

MORTGAGES & FINANCIAL SERVICES

Competitive Rates for Harbury and surrounding area

Telephone: 01926 612463

Email: [enquiries@kleinmannproperties.co.uk](mailto:enquiries@kleinmannproperties.co.uk)

Web: [www.kleinmannproperties.co.uk](http://www.kleinmannproperties.co.uk)

Unit 3

Bull Ring Business Centre

Church Terrace

Harbury

CV33 9HL



## Gardens by Wendy

phone: 01926 614877

mobile: 07595 289331

e-mail: [wendy@gardensbywendy.co.uk](mailto:wendy@gardensbywendy.co.uk)

- Garden design services from one-off consultations to full designs
- Advice on rejuvenating tired or problem areas of planting
- Help with growing fruit & veg, organic gardening, pests & diseases, etc.
- Specialist gardening work such as pruning, border maintenance etc.

# Nifty Needle Curtain Shop

**1 Banbury Street, Kington**

**Made to measure curtains and blinds.**

**Free measuring service.**

## Nifty Nik Naks Gift Shop

**For interesting presents**

01926-641741 email: [niftyneedle@fsmail.net](mailto:niftyneedle@fsmail.net)

Open: Tuesday - Friday 9.00am - 5.00pm

Saturday 9.00am - 2.00pm

(Harbury Resident)



## Fiona's Frames

Bespoke Picture Framing

Wide choice of mouldings &  
mounts for paintings, prints  
and needlework

Friendly Professional Service

Phone 01926 812807

Hillside, Napton

email: enquiries@fionasframes.co.uk



ABSOLUTE  
BEAUTY

Tel Rosina on 01926 612403 - [www.rosina.moonfruit.com](http://www.rosina.moonfruit.com)

### CND Shellac Power Polish

the 14 day experience! – April Offer  
Zero Drying Time with High Shine & Chip Free

### Strengthens Weak Nails

New Colours Available

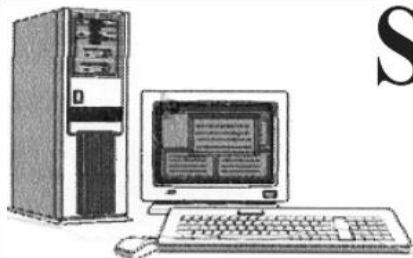
£20 including FREE bottle of CND Solar Oil

Also included is wrap removal &  
mini-manicure

### Etre'

Dead Sea Mineral non-surgical Facelift  
Normally £30.00 - April offer just £20.00

Tel Rosina – 01926 612403



# SIMONS SYSTEMS

Available for all your computer requirements including:  
PC's and Laptops, New and used systems,  
Upgrading memory/hard drives/rom drives/graphics, etc  
Internet – modems fitted, wireless, networking.  
Any repairs. **NO CALL OUT CHARGE**



**Tel: 01926 316119**



**Mob: 07751 811097**



**E-mail: [simons.systems@virgin.net](mailto:simons.systems@virgin.net)**

## Domestic Gas Services



CENTRAL HEATING, INSTALLATION, SERVICE, REPAIR and  
***POWERFLUSHING....the next best thing to a new heating system!***



Are your radiators cold at the  
bottom?  
If so they need ***POWERFLUSHING!***

***POWERFLUSHING*** removes the build up  
of sludge and sediment in your radiators  
which is making them less effective  
therefore ***costing you money!***

***POWERFLUSHING*** will maximise the  
efficiency of your radiators ensuring you  
get the very best from your heating  
system therefore ***saving you money!***



For all your gas requirements please call  
Martin Evans on **07980 740720**



## FREE VALUATION DAY

**ANTIQUES, JEWELLERY, SILVER,  
CERAMICS, BOOKS AND COLLECTABLES**

**Charles Hanson**



**as seen on BBC Antiques Road Trip  
and his team of Antiques Experts  
Thursday 12<sup>th</sup> April, 12.00 - 3.30pm**

Items may be left to be entered into a suitable sale

**Leek Wootton Village Hall**

Warwick Road, Leek Wootton, Warwick, CV35 7RB

**FREE HOME VISITS FOR LARGER ITEMS**

**Charles Hanson is available for Charity events and talks etc**  
Hansons employ Kate Bliss as a consultant to advise clients on the value  
and sale of Jewellery and Silver

**Please contact Mrs Carol Jones**

Hansons Warwickshire Representative on 01926 770066

Email: [service@hansonsauctioneers.co.uk](mailto:service@hansonsauctioneers.co.uk) [www.hansonsauctioneers.co.uk](http://www.hansonsauctioneers.co.uk)

Refreshments in aid of the NSPCC



# *The White Hart at Upton*

*UNDER NEW MANAGEMENT*

*Lunchtime Specials*

*Fine wines, real ales and delicious home made  
food!!*

*Sunday Lunches*

*Magnificent views*

*Warm and friendly atmosphere*

*White Hart Lane, Upton CV33 9PJ*

*01926 612976*

*<http://www.facebook.com/Thewhitehartupton>*

*[thewhitehartupton@gmail.com](mailto:thewhitehartupton@gmail.com)*