

Harbury & Ladbroke News

Reflects all aspects of local life, is published monthly and produced with the assistance of
All Saints' Parochial Church Council.

June 2011

No.447

Editorial Office	☎ 612155
Articles to	Harbury Pharmacy, High Street
Email address	articles@hlnews.co.uk
Advertising Office	31, Binswood End (☎ 612155)
	advertising@hlnews.co.uk
Distribution Manager	49, Mill Street (☎ 612009)
	distribution@hlnews.co.uk
Inserts by prior arrangement	☎ 612009

IN THIS ISSUE

Page

EDITORIAL	2
HARBURY DIARY & REFUSE ROTA.....	2
FROM THE RECTOR & CHURCH NEWS	5
LADBROKE NEWS	9
HARBURY PARISH COUNCIL	16
CLUBS & SOCIETIES	21
EARLY YEARS & SCHOOL.....	31
VILLAGE HALL UPDATE	37
GARDENING & NATURE	38
GENERAL SECTION	43
LETTERS TO THE EDITORS	61

Editorial Team

John Holden - Chris Finch - Marian Millington
- Janice Montague - Ralph Swadling

*The views of contributors are not necessarily those of the Editorial Team
The Editors reserve the right to amend articles as they see fit.*



Editorial

Annie Goldthorp's ordination as deacon at Coventry Cathedral on Sunday 3rd July will lead to her joining the pastoral team at both our parish churches. We welcome her to the villages.

Our twinning partners from Samois-sur-Seine arrive on Friday 3rd June, and one of the highlights of their visit will be their participation in the Wheelbarrow Race on Sunday 5th.

Harbury Carnival is the first of the major village summer events the following weekend and, on Saturday 18th June, there will be the Heart of Harbury Games and the Ladbroke village Fete.

The consultation on the proposed High Speed Rail route closes on 29th July. There is an article about this in the Ladbroke section of the magazine.

Finally we extend our sympathies to the families of Peter Heigl and Matthew Tanner.

Harbury Diary

JUNE

- | | |
|----------------|---|
| Sun 5 | EASTER VII - SUNDAY AFTER ASCENSION
Sung Eucharist 9.00am
First Light Service 10.30am, Tom Hauley Room
Quiet Contemplative Service in the Celtic Tradition, 6.00pm
Pilates and Zumba, 9.00am – 11.00am in Village Hall |
| Mon 6 | SCHOOL STARTS |
| Tues 7 | Holy Communion, 7.30pm
Mother and Toddler Music and Dance 1.30-2.30pm in Village Hall |
| Wed 8 | Ballroom Dancing, 8.30-10pm in Village Hall |
| Thurs 9 | NB: No 9.45 Church Service due to floor repairs
BLOOD DONORS 1.30 – 3.30pm & 4.30 – 7.30pm in Village Hall
WI 7.45pm in Tom Hauley Room – Ifakara Bakery Project
Tanzania – Eugene & Margaret Schellenberg |
| Sat 11 | Coffee Morning in Tom Hauley Room 10.00am in aid of St. James Ministry
CARNIVAL – Procession begins at 1.00pm from Sutcliffe Drive |

- Our Lady's RC Primary School Summer Fete, Princethorpe,
2.00pm - fun for all the family
- Sun 12 PENTECOST/WHIT SUNDAY**
Holy Communion 8.00am
Sung Eucharist 10.30am
- Tues 14** Mother and Toddler Music and Dance 1.30-2.30pm in Village Hall
Toddlers' Service 2.00pm, Tom Hauley Room
Holy Communion, 7.30pm
- Weds 15** Senior Citizens outing to Windsor, coach leaves 8.30am from Village Hall
Tea 3.00pm Tom Hauley Room
ADVERTS FOR THE NEXT ISSUE TO 31 BINSWOOD END, HARBURY BY 5.30PM
- Thurs 16** NB No 9.45am Service today
Harbury Choir School, 6.30-8.00pm, Village Hall
- Fri 17** Duke of Edinburgh Quiz Night, 7.30pm for 8.00pm in School Hall
Southam High School Leavers 1986, 25 Year Reunion 7.30 'til late Harbury Rugby Club
- Sat 18** Men's Prayer Breakfast, 7.30pm in the Tom Hauley Room
Coffee Morning in Tom Hauley Room 10.00am in aid of Children in Church
Heart of Harbury Games on Recreation Grounds all day
- Sun 19 TRINITY SUNDAY**
FATHERS' DAY
Holy Communion, 8.00am
Family Communion Service with Harbury School, 10.30am
Evensong 6.00pm
Pilates and Zumba 9.00am – 11.00am in Village Hall
PTA Father's Day Beer Walk and BBQ
Harbury Society Tour Bishops Itchington Nature Reserve 2.15pm Ladbroke Rd
- Tues 21** Mother and Toddler Music and Dance 1.30-2.30pm in Village Hall
Holy Communion 7.30pm
Mothers' Union Meeting 8.00pm Tom Hauley Room – Religion in Primary Schools Today
- Thurs 23** NB: No 9.45am Service today
Thursday Club 2.30pm in Village Hall
Harbury Choir School 6.30-8.00pm Village Hall
Parish Council 7.30-10.00pm in Village Hall
ARTICLES TO HARBURY PHARMACY, HIGH ST. AND EMAIL ARTICLES DEADLINE BY 5.30PM
- Sat 25** Coffee Morning in Tom Hauley Room 10.00am in aid of Men's Group

Sat 25 Windmills Nursery Summer Ball 8.00pm until midnight in Village Hall, ring 613084
Harbury Club Open Mic from 8.00pm. All welcome. For more information please ring 07799 896891

Sun 26 TRINITY 1

Holy Communion, 8.00am

Sung Eucharist 10.30am

Pilates and Zumba, 9.00am – 11.00am in Village Hall

Tues 28 Mother and Toddler Music and Dance 1.30-2.30pm in Village Hall

Drop in Tea for the Bereaved, 2.30-4.30pm, 19 Farm Street

Holy Communion 7.30pm

Julian Meeting 8.00pm in Church

Thurs 30 NB: No 9.45am Service today

Harbury Choir School 6.30-8.00pm Village Hall

JULY

Sat 2 Coffee Morning in Tom Hauley Room 10.00am in aid of Fair Trade

Sun 3 TRINITY 2 - St Thomas

NB: No 9.00am Service today—(Annie Goldthorp's Ordination as Deacon at Coventry Cathedral)

First Light Service 10.30am Tom Hauley Room

Evening Eucharist Service 6.00pm at Ladbroke

Our Lady & St Wulstan Church Southam Summer Fete 11.00 – 3.00pm at St. Mary's Primary School, Southam

Tues 5 Holy Communion, 7.30pm

Harbury Society Evening Farm Visit

Thurs 7 Mixed Media art workshop using watercolours, coloured pencils and ink. 10am to approx 3pm in the Tom Hauley Room. £15 per person, all levels of ability welcome.

To book your place and find out what to bring call Nick on 01295 276465 or Pam on 01926 814923 Harbury Art Group Folk Club 8.00pm in Dog Inn

Sat 9 PTA Summer Fayre

**DATES FOR INCLUSION IN THE HARBURY DIARY PLEASE TO:
LINDA RIDGLEY - TEL. 612792.**

JULY EDITION – HARBURY & LADBROKE NEWS

Adverts to 31, Binswood End by 15th June

Articles to Harbury Pharmacy by 23rd June

Refuse Collection Rota

	Deppers Bridge	Harbury	Ladbroke	Refuse Collection Week
June	Wed	Thurs	Fri	
	8	9	10	Green & Blue Lid Bins
	15	16	17	Grey Bin
	22	23	24	Green & Blue Lid Bins
	29	30	1	Grey Bin
July	6	7	8	Green & Blue Lid Bins
	13	14	15	Grey Bin
	20	21	22	Green & Blue Lid Bins



From the Rector

Father Craig Grocock

The Rectory, Vicarage Lane, Harbury Tel.: 612377



A sad day for the British Legion

It was with great sadness that the Harbury Branch of the Royal British Legion closed this last month after almost eighty years in the village. At the end of Evensong last month All Saints' congregation, half a dozen members of the Branch and myself gathered around the war memorial in Church.

The Last Post and the Reveille were sounded by Tony Helliwell, we remembered the fallen in war as we do on Remembrance Day and we kept a peaceful silence as the Legion Standard was dipped. The Standard was then presented to myself with the commission 'to keep the Standard in Church forever'.

It was a solemn moment as we brought to an end a significant era. I am grateful to those members of the Legion who came to Church and shared in this ceremony. The closure of the Legion in our village has come at a great price to them borne out of their many years of commitment.

There was much sadness expressed by these gentlemen, a sadness all of us at All Saints' share in.

However, I said in my introduction to the service that, although the Branch closes in Harbury, the importance of remembrance goes on. The Royal British Legion has led us faithfully in keeping the act of remembrance alive year on year and, as a village, individually and collectively, and as a Church, we will keep this act alive into the future.

Jesus teaches us through his life and his death that love wins the day. St. Paul, who wrote much of the New Testament, reminds us; 'faith, hope and love remain but the greatest of these is love'. As we resolve to always remember those who paid the ultimate sacrifice, let us resolve to be driven by love and heed the lessons of the past.

Blessings.

From the Registers

Burial of Ashes, All Saints', Harbury

14th May Bill Alcock

21st May Gillian Cooper

Funerals at All Saints' Harbury

19th May Peter Heigl 68 years

20th May Matthew Tanner 32 years

Holy Baptism, All Saints' Harbury

22nd May Henry Jones

Holy Matrimony, All Saints' Harbury

27th May Stuart Hemming to Clare Ekins

28th May Paul Foster to Clare Aherne



From the Churchwardens

Will, Liz & Fliss

May began with a service to welcome spring when we celebrated new birth and beginnings in hymns, readings and songs.

It was a very prayerful time for us all and we thank Beryl who arranged it, everyone who took part and all who supported it in so many ways.

Lesley gave the presentation at May's All Age Communion: Jonah's story was her subject. We were treated to a rocking boat and a spectacular whale and, through Bible readings, prayer and drama, we were invited to revisit the timeless cycle of human experiences: revolt, acceptance, obedience, forgiveness and fulfilment. Thank you to Lesley and all who helped her.

It won't be very long now before we welcome Annie Goldthorp as Craig's and our curate. Please keep her in your thoughts and prayers as she moves through these coming weeks of change and of emotional and spiritual preparation for her ordination as Deacon in Coventry Cathedral on 3rd July.

Finally, the floor: except it's not final! It won't be until the end of the summer. Please be understanding of the difficulties and keep an eye out for appeals for help. We've had a great response so far for which we're very grateful, but we shall need you on many future occasions. We really do give thanks to God for the skills and talents of all who have given unstintingly of their time. Everyone's efforts will make it possible for us to pass on our rich inheritance to future generations of worshippers in Harbury.

Mothers' Union

Gillian Hare

This month's speakers have been most interesting. At the afternoon meeting, Mrs Daphne Cook shared her study of the life of St. Francis. There was a lot more to him than the Saint who talked to animals. Born in Assisi, in Umbria, as a boy he was a glamorous troubadour and then a soldier. His work for his father's cloth business came to an end when he used the proceeds to rebuild a neglected church according to God's call; he gradually attracted followers to his teaching of chastity, poverty and obedience. His respect for creation made him an environmentalist before his time; he created the first Nativity play with real animals and today there are Franciscans around the world.

Our evening speaker, Mrs Carol Davis, challenged our Bible knowledge with a quiz. Her talk was about Biblical families and the answers pointed up that many of these would nowadays be called dysfunctional – yet were used by God to grow His Kingdom.

Important to note for July: 6th July: trip to Chesterton Church followed by tea.

19th July: a fish and chip supper.

For both of these, numbers are needed; please return to Sue as soon as possible.

21st June: 8pm, following 7.30pm Communion – a discussion about R.E teaching in our schools. If this interests any readers, please join us.



Toddlers' Service

Lorna Bedford

At our May service Jeff Bedford told us the Bible story of David and Goliath. The people of Israel were being threatened by the Philistines and the only way to overcome them was for someone to fight their warrior Goliath. The soldiers of King Saul were very afraid, but a shepherd boy called David said that he would fight the warrior.

By using his sling and a few pebbles, and with the help of God, David overcame Goliath and saved his people from the Philistines.

Accompanied by Mr Michael Hare on the accordion, we sang three songs, one of which was "Only a boy called David".

We then coloured in a picture of Goliath and put cardboard pebbles into a small sling-type bag.

We then said a prayer and had refreshments until it was time to go home.

Our next Toddlers' Service is on Tuesday 14th June at 2pm in the Tom Hauley Room. Due to work in progress on the Church floor, please use the access to the THR via the path to the rear of the Church.

Babies and toddlers, accompanied by an adult are welcome to join us.



First Light

Alison Abbott

It seems a long time ago now, but our May First light was on the theme of weddings. We had just seen Prince William and Kate Middleton get married and continued the theme by transporting ourselves back 2000 years to a wedding in Cana. Through it we were reminded how Jesus, who transformed water into wine, can transform our ordinary lives into something very special.

Our June First Light is called "Going Up" and we will be reflecting on the Ascension. I hear you say, "The what?" - come and find out.

Looking forward to July, First Light is on the same day that Annie is to be ordained deacon. There will not be a 9 o'clock communion as many people are going to support her, but First Light will be on at the same time in the same place. Everyone who is not going to the Cathedral is very welcome to join us at 10.30am in the Tom Hauley Room. First Light is not just for children or families so do come.

You never know you might just find something to amuse, encourage or help you.

Ladbroke News & Diary

JUNE

- | | | |
|------------|-----------|--|
| Sun | 5 | 1st AFTER ACSESION
Family Communion, 10.30am followed by refreshments |
| Tues | 7 | Photograph Club evening walkabout in Ladbroke, meeting
In the Bell afterwards |
| Wed | 8 | Yoga Class, 6.30pm, Village Hall |
| Sat | 11 | Whist Drive, 7.45pm, Village Hall |
| Sun | 12 | PENTECOST, WHIT SUNDAY
Holy Communion (sung), 9.00am |
| Wed | 15 | Yoga Class, 6.30pm, Village Hall
Parish Council Meeting, 7.45pm, Village Hall |
| | | ADVERTS FOR NEXT ISSUE TO 31 BINSWOOD
END, HARBURY BY 5.30PM |
| Sat | 18 | Village Fete, 1.00pm start on the Millennium Green
Whist Drive, 7.45pm, Village Hall |
| Sun | 19 | TRINITY SUNDAY
Holy Communion (Book of Common Prayer), 9.00am |
| Wed | 22 | Yoga Class, 6.30pm, Village Hall |
| Thurs | 23 | Women's Institute, 7.30pm, Village Hall |
| | | ARTICLES TO HARBURY PHARMACY, HIGH ST.
AND EMAIL ARTICLES DEADLINE BY 5.30PM |
| Sun | 26 | Holy Communion (sung), 9.00am |
| Wed | 29 | Yoga Class, 6.30pm, Village Hall |

JULY

- | | | |
|------------|----------|--|
| Sun | 3 | Holy Communion, Please note: 6.00pm |
| Tues | 5 | Photography Club, 7.30pm in Village Hall |



Ladbroke Church News

Sue Lord

A huge thank you to Church Warden Stephen Copley and his muscle man, Simon for clearing and widening the path around the Church. The two flower beds have also been cleared and covered in gravel. One of these is now the site of the memorial bench which is securely installed. This is a major improvement and enhances the setting of our beautiful Church. Another improvement is the provision of an outside water tap and the removal of the rather large water butt which will enable access for the imminent repointing work to the East wall.

Our new curate Annie Goldthorp will be ordained at Coventry Cathedral on Sunday 3rd July at 10.30am. In order to support Annie there will be a coach leaving Vicarage Lane, Harbury at 9.00am at a cost of £6.00 per person. Upon returning, refreshments will be served in the Tom Hauley Room. Could anyone from Ladbroke wishing to go please contact Sue Lord on 815153. Please note that on this day our Ladbroke Sunday Service will be a Eucharist at 6.00pm.

Ladbroke Village Fete is Saturday 18th June and the Church stall would be grateful of any bric-a-brac or books. Please contact Betty Winkfield (812234) or Sue Lord (815153) or feel free to leave any items inside the Church.

Ladbroke Flower Rota

5th June - Wedding
 12th June - Margaret Bosworth
 19th June - Laura Taylor
 26th June - Hazel Sharples
 3rd July - Hazel Sharples
 10th July - Jenny Barrett



Sue Lord



Ladbroke Parish Council

Betty Winkfield

The proceedings began with a short AGM. Derek Batty was unanimously re-elected as Chairman and Valerie Copley was elected as the new Vice-chairman. The other two members of the Council are

Cllr Martin Neal and Cllr Philip Maffey. As Ladbroke is entitled to five councillors, at some stage it may be necessary to co-opt another councillor; this will be considered at a later date.

The Parish Council meeting began with some debate about the declaration of interests. Two councillors declared interests in the Ladbroke HS2 Action Group. Martin Neale is part of the group, as is Valerie's husband. Eventually it was duly noted and the meeting continued.

The caravan behind Ladbroke Farm is still there and no further action has been taken so far regarding the enforcement notice. The change of name regarding Windmill Lane – north – is making slow progress. The name agreed was Lady Hill. The Parish Council is now paying for the website; all of the grant has been used.

Parish Plan: There is still grant money available for the plan update. Localisation will require a different format or style.

Storage of old Parish Council data was discussed; much of this can be discarded.

Planning Applications: Paper plans are still distributed to councillors and any objections can be e-mailed.

Flooding and Emergency Plans are to be updated.

Footpaths: Questions were asked about the footpaths in and around the village. We haven't got a local co-ordinator at the moment. It was suggested that the County Council could help. Some gates and stiles are overgrown and, in some cases, they are the landowner's responsibility.

There was no information from the Village Hall or the Millennium Green – except that the village fete is on 18th June.

HS2: A report on the HS2 Action Group was handed out. Please get your letters of objection written soon. They must be in **before** Friday 29th July when the Public Consultation closes. Donations for the Action Group can be given to Peter Williamson, The Forge, Windmill Lane, cheques payable to "Ladbroke HS2 Action Group". Neither County or District councillors were present at the meeting, but it is known that they are both opposed to HS2. It is hoped that both Councils will respond to the application, as HS2 would affect the highways especially during construction of the railway.

Chairman's Items for Discussion: The on-going problem of dog fouling was mentioned. Someone has complained again but there were no photographs.

The meeting closed at 8.50pm. Next Meeting: Wednesday 15th June at 7.45pm.



Ladbroke & Deppers Bridge Women's Institute

Carol Lane

There were two occasions in May when the W.I. members met. Ladbroke and Deppers Bridge W.I. provided the refreshments for the joint meeting of seven local W.I. branches on May 4th. This was held in Long Itchington School and well over 100 ladies met to hear the reports from the individual branches, to enjoy the 'superb' food made by our members and to hear Three Men in a Boat perform their variety of folk songs, instrumental pieces and jokes!

Then on 26th May we met again to discuss the resolutions for the year. As a result of the process to select topics which will become the National focus for the year, we were each given papers which presented the arguments for and against the two resolutions under discussion, namely:

- This meeting abhors the practice of factory farming particularly large animals such as pigs and cows and urges H.M. Government to ensure planning permission is not granted for such projects.
- This meeting urges H.M. Government to maintain support for local libraries, as an essential local educational and information resource.

Much informed discussion followed the presentation of these topics. The votes of the members from Ladbroke and Deppers Bridge are to be sent to the person who will represent the local W.I. branches at the National meeting which is to be held later in the year in Liverpool.

Future dates: 18th June - Ladbroke Fete. The W.I. will be providing tea and cakes as usual, so contributions of small cakes or ones to be cut into portions will be much appreciated.

14th July Summer Dinner at Kenilworth Golf Club.

The next meeting will be held on Thursday 23rd June at 7.30 pm. It would be a good idea to wear comfortable shoes as the subject is line dancing.



Ladbroke Photography Club

Jackie West

Our May meeting started with the selection of photographs we will be showing in our Exhibition at the Ladbroke Fete on 18th June. We hope that readers of this magazine will come along to our stand to see them and perhaps buy some of our lovely photo-cards too.

After the break we had Photographers' Question Time which covered topics such as printing problems and their resolution, experiences making photobooks and improving the dynamic range of digital pictures to get detail in both bright areas and shadows.

Our next meeting on **Tuesday 7th June** is a walk about Ladbroke taking photos, meeting up at the Bell Inn afterwards. For more information email: jackieszone-photogclub@yahoo.co.uk.



General Section

Ladbroke Fete, Saturday June 18th, gate opens at 1pm

With over twenty stalls plus a range of activities and displays in the "Arena" there will be lots to see and do at this year's fete whatever your age.

- Come and meet the scarecrows or better still bring one to join in the competition – there will be awards for the best in each category (creators under 12, 12-18, adults, families etc.)
- Test your luck in the raffle and tombola
- Find out about life a century ago
- Check out your skills smashing plates or beating the goalie
- Recharge your batteries with ice-cream, tea and cake, hot dogs or beer or, new in 2011, try out a delicious crepe
- Enjoy live music
- Look at the exhibition by Ladbroke Photography Club
- Buy homemade produce, quality plants or find a bargain on the 2nd hand books and white elephant stall
- Get that all important information on how to respond to the HS2 consultation
- Watch the dancers – Learning Curve are making a return visit and there will also be a belly dancing display
- Join in the races

With face painting, hunting mice and guessing the name of the teddies designed to amuse the little ones too, the fete should be hit with all the family. Admission is £2 (free for those under 12 years).

Donations for Stalls

If you would like to help organise or contribute to the Local Produce stall (anything **edible**: cakes, jam, chutney, biscuits, sweets, bread or **handmade** crafts etc) please contact Nicky Lewis on 815196.

Please bring any homemade or home grown produce, 2nd hand books, bric-a-brac, plants or old crockery on Tuesday 14th – Friday 17th June to Hallsfield, School Lane 4 - 8pm or leave in the porch of Rose Cottage, Bridge Lane. Alternatively, bring to the Millennium Green on the Saturday morning, 10am – 12 noon. Thanks.

For more info please email jackieszone-fete@yahoo.co.uk or contact Graham on 815196 or Jackie on 810331.

Jackie West

Hedgerow surveying along the HS2 route

There is an attempt to survey a 1km wide path along the proposed HS2 route through Warwickshire to gauge habitat biodiversity. I have recently been trained by the CPRE to conduct hedgerow surveys, assessing at the position, condition and heritage value of the hedgerows in the Ladbroke section. A group of ladies from Priors Hardwick were at the same training session and will be doing a similar thing in their section of the route. If you would like to know more or help me survey, please get in contact on 810331. Also, if you own land within a 500m band either side of the HS2 route, containing hedges or lines of trees with overlapping canopies more than 20m long; please expect a call requesting your permission to survey those on your land.

Jackie West

High Speed Rail (HS2)

Public consultation on the Government's proposal to build a new high speed rail link from London to the West Midlands and then on to Manchester and Leeds is now out to public consultation. This is the only opportunity we will have to make our views known about this proposed massive public expenditure which will cost a minimum of £32bn (yes, £32,000,000,000!) and which will come into operation in 2026 to Birmingham and 2033 onwards for the other destinations, if built on time and on budget. The cost is the equivalent of over £1,200 for every household in the UK but there will be no stations in Warwickshire - just a vast, noisy 400kph railway line. If you want to know more about the proposal, please visit the Ladbroke HS2 Action Group website at www.hs2-ladbroke.net.

As a group we support the principle of making substantial improvements to our transport infrastructure but are strongly opposed to the current HS2 proposals which we consider represent very poor value for money and create significant additional damage to our environment and Warwickshire in particular. We have proposed less expensive, quicker to implement improvements to our existing rail services, but Government refuses to listen to common sense and is apparently set on spending your money on HS2 unless we can persuade them otherwise in our responses to public consultation. You can send your response on line at <http://highspeedrail.dft.gov.uk> . The Ladbroke website Consultation page has a 'drop down' series of suggested points you might like to make in response to each question - you can make your answer as long or as short as you wish but the important point is that you respond.

If you agree with the Ladbroke HS2 Action Group your basic answers to the seven questions should be Qs 1-5 'NO'; Q6 if you wish to comment on the Appraisal of Sustainability then 'YES' followed by your comments, otherwise answer NO; and Q7 YES; but only in respect of Option 2 as Options 1 and 3 are unacceptable. Much more information can be found on our website.

You can also obtain a paper response form by telephoning 0300321 1010 and asking for a form to be sent to you, but you cannot use both paper and online responses - only one or the other, although each adult in a household can send a separate response.

Finally, if you require any help in responding there will be a stall at the Ladbroke Fete on the Millennium Green on Saturday 18th June where members of the group will be available to answer your questions. Or you can 'phone Graham Long, Chairman of Ladbroke HS2 Action Group on 01926 811376 who will try to help.

Public Consultation closes on 29th July 2011. This is your only opportunity to respond so please use it.

**Graham Long Chairman
Ladbroke HS2 Action Group**

Ladbroke Summer Sounds

On Saturday 20th August from 6pm until late, come rain or shine, there will be a music event on the Millennium Green with a variety of local musicians and bands. Put the date in you diary now. More details next month or, if you can't wait until then, email mcneal2@live.com.

Jackie West

Ladbroke Village Hall Millennium Club

The results of the draw for April were:

£80 Jim & Pauline Laidler
 £50 Carol Lane
 £25 Geoff & Georgina Middleton
 £10 Geoff Timms
 £10 Lesley Loveday
 £10 Carole & Peter Loftus
 £10 Richard Walker
 £10 Cyril Spence

Janet Goldson



Harbury Annual Parish Meeting

Linda Ridgley

Councillor Peter Butlin, Libraries' Portfolio holder at Warwickshire County Council backed up by several officers, explained the forced cuts of £66 million that had to be made in the next three years, of which £2m would come off the Libraries' budget.

That is an enormous amount and they are doing what they can to reduce costs: working across boundaries with other authorities; bringing in a serve-yourself system for books; reducing costs on supplies and services, cutting public computer access, pruning mobile library buses and service, sharing library premises with other users, but ultimately having to close some libraries.

We would obviously argue that our Library should be saved but their statistics show that, for instance, PC use there has dropped 17% and that 70% of all visits are to the eight largest libraries. The economics are compelling.

You have to feel sorry for the people who are forced to make these painful decisions and there is at least some support for "The Big Society" – volunteer involvement - which of course is what we already do here!

Harbury is working on a plan to save our Library (and the other users of the Wight School site). The County has a £100K capital fund to which we can apply for assistance and the Library service promised to train volunteers to run our Library.

There were lots of questions from the audience: transport problems for rural communities which meant some people could not access alternative

Libraries; whether using volunteers was a sustainable option and what would happen if enthusiasm waned.

Parish Chairman Tim Lockley explained that the business plan for the Library would allow it to be open more often and secure the building for the village, the other organisations located there and allow greater community use.

Speaking about the impact of government cuts on the whole of Warwickshire CC services, County Cllr Bob Stevens said the £66m reduction in the revenue grant had led to 1,800 posts going of which 600 were through redundancy; there were now three Directors (down from seven) and 17 Senior Managers (down from 24).

Rural transport grants had been cut; three fire stations were to be closed and the County was likely to be fined as a result of the warehouse fire at Atherstone on Stour. Youth Services were to be “streamlined” and ten care homes were to close but there would be “Extra-Care units” to take their place.

Parish Cllr Sharon Hancock protested that those with dementia and the elderly who needed residential care would be forced into the private sector where WCC could not afford to pay their fees. Where, she asked, were these people to go?

The Parish Council then whizzed through its reports for the year.

Chairman Tim Lockley thought the Bush Heath Lane homes were a positive development. Demand for the houses had been high from eligible local people. There was potential for two more phases subject to a Housing Need Survey. He emphasised the dwellings would be ring-fenced for local people.

Tim warned that as government reduced funding, more would need to be done locally and that could mean the Parish had to raise its precept. They would have “no blank cheque” and difficult decisions would have to be made but he emphasised all money raised by the Parish Council was spent in the Parish.

For the Planning Working Party Jenny Patrick stressed that they were happy that members of the public raised with them any planning concerns they had. Planning applications could be viewed at the Clerk’s office or online at Stratford District’s Planning Portal, which she praised.

Cllr Sharon Hancock (Properties) hoped to have the rest of the staked memorials in the Burial Grounds laid flat this coming year. Despite strenuous efforts to find relatives, not all have been identified or come forward. In answer to Alison Hodge’s questions she admitted that the Council currently had no plans to find extra burial space.

Amanda Lewis reported for Environment that energy saving lights would be put in the Windsor (fancy) lamp standards that could not take LEDs. She told Bill Middleton that three lamps were installed at Hereburgh Way.

Alison Hodge asked why the Parish Plan Survey Forms had been made available mainly on-line with a few hard copies in the Post Office, and whether in view of the poor response they should now be distributed to every house. She was told that the cut-off date for returns had been extended to 16th May!

Tony Mancell sent his apologies for the meeting, but his Finance Report; showed the Precept up by £1,000 (1.5% or about 5p/year/person) - a modest increase compared to the past, he said.

There were also Annual Reports from the Choir School, which received a £400 PC grant for a data projector and screen; Pre-School - £4,000 towards a disabled toilet at the Wight School; Rugby Club - £3,000 for extra car parking space; Theatre Group - £165 for a skip to help clear the Village Hall loft.

Geoff Thorpe for the Village Hall thanked the Parish Council and those who had contributed to the on-going refurbishment of the Hall. The southern-facing roof had been repaired so that photo-voltaic panels could be added; new curtains had been ordered for the extension rooms and plans were being drawn up for a new kitchen. In the longer term there would be a stage and improved and extended changing rooms.

We then enjoyed wine, nibbles and informal discussion with Councillors.

Chairman's Report - April 2010 – March 2011

As some challenges are overcome, new ones arise to take their place. Such is the experience of Harbury Parish Council. The Bush Heath Lane development nears completion, with a variety of new homes being made available for local people to rent or buy. The demand for the rented homes was particularly high and demonstrated that this part of the development was truly needed. A new housing needs survey will take place before any further development takes place on the site.

In March the long awaited consultation on the future of the library service began. As we had feared, Harbury library was marked for closure but we have been given the opportunity to make a business case for its continuation. The PC organised a public meeting which attracted about a hundred people and it is clear that there is considerable demand in the village for the library service. As a result, a small steering group is currently drawing up a business plan that, hopefully, will result in the library remaining in the village. For this to succeed it will require a lot of

goodwill from volunteers who will be staffing the library in the future. I am confident that this can be done since Harbury has such a strong community spirit.

The threat to the library is a consequence of the cuts being made to the County Council's budget. The subsidised bus service is also being cut back and there are other things that both WCC and SDC currently do that will cease. Some of these functions could be replaced by cheaper alternatives, and it is possible that the Parish Council will be invited to take over a service. All will involve added cost and we will have to think carefully about what we can and cannot do.

While budgets are generally being cut, the government remains determined to build a High Speed Rail Line through Warwickshire, within a mile of the village. The Parish Council sees no benefit in the line, and continues to oppose it.

The Parish Council is a collaborative affair and works by relying on the goodwill of the councillors and of the parish clerk. I thank all of them for their hard work this year, especially Nicola whose unfailing good humour is much appreciated.

Dr Tim Lockley
Chairman, Harbury Parish Council



Councillor's Corner

Bev Mann

At the recent Councillors' Corner in May attended by Parish, District and County Councillors, a number of issues were raised by residents of Harbury.

The withdrawal of the Flexibus has caused concern for residents. This unfortunately is one of the cutbacks that the County Council has had to make within this year's budget.

There is concern about the speed of traffic using Butt Lane and in general around the roads in Harbury.

Also issues were raised with regard to the general appearance of roads in Harbury and also inconsiderate parking especially on pavements and edges of junctions making it difficult to see for other road users.

A new street light was mentioned as being needed near to the new housing development in Bush Heath Lane; this is being addressed by the Parish Council.

Sutcliffe Drive estate has not had junction lines re-instated after road re-gritting - the County Council will be notified.

Thank you to all residents who contributed to Councillors' Corner. It is a very informal way to approach your local elected Councillors at all levels with any concerns you may have. We try to have at least three sessions per year but of course all Councillors can be reached at all times by phone or email and details are on the Parish website or relevant Council websites.

Apologies

In the May edition of the Harbury & Ladbroke News, we printed an incorrect telephone number for District Cllr Bev Mann. Apologies to Bev and would residents please note that her correct telephone number is **01926 614006**.

The Editors

Heartfelt thanks from your new District Councillor Richard Hamburger



It gives me great pleasure to say "thank you" to all those that voted for me at the District Council elections on 5th May 2011. I was very lucky to have a dedicated team that did a great deal of the work. For the first time in a while one of your two District Councillors for the Bishops Itchington and Chesterton and Harbury ward is represented by a Conservative. The results confirm a hard fought election with a great deal of effort by both parties to reach the electorate. The result; 994 votes to 950, a very narrow majority.

Now the hard work starts in earnest; I am here to serve the community, acting as liaison between Stratford District Council and all the people in the ward. It's a role I cherish, where I can give something back to the community in which I live. We have to pilot the council's services through the most stringent cut backs and at the same time maintain as much of the current service as possible, a tough call.

I am happy to give time to all of you, if you have issues with the District Council, I am keen to listen and intervene where necessary.

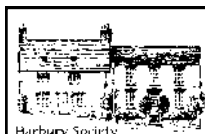
Apart from the obvious email and phone contacts there are also the regular Councillors' Corners in both Bishops Itchington and Harbury.

Next date, is in Bishops Itchington and is scheduled for Saturday 4th June outside the newsagents in Chapel Street, between 10.00am and 11.30am. There will be notices in both Parishes of future Councillors' Corners.

It is also my intention to be present at regular Parish Council meetings in all villages.

Contact details: richard.hamburger@stratford-dc.gov.uk. Telephone 07547 679230.

Cllr. Richard Hamburger



Harbury Society

Linda Ridgley

We had a lovely day for our guided Pub Walk which took place round Ratley. It was sunny and warm but not so hot that we could not make it up the hills. The view over the Warrington Valley was stunning and we were able to identify Fenny Compton, Avon Dassett Church, the Burton Dassett Hills and the Beacon.

We heard birds and battle games (farm diversification?); saw ridge and furrow, pretty cottages, flowers, rabbit holes and broken birds' eggs.

The pub was a proper village pub with good food and a convivial atmosphere - so thanks to Ed Wilson and John Smith for suggesting it and piloting us round safely.

Our next event is the Carnival Stall 11th June where we will have Bat the Rat for you to try with your children or grandchildren. Be warned – they will be better at it than you. We also hope to have a Sustainability Quiz for you to try.



Harbury Women's Institute

Jeanne Beaumont

We attended the Annual Group Meeting run by Ladbroke and Deppers Bridge W.I at Long Itchington. There was entertainment, super refreshments and even a quiz to keep us occupied. One of the trips with them is to Westminster Abbey in August, so some of us have put our names on the list.

At the pleasant spring Thanksgiving Service on 1st May, Pam Parton and Peggie Middleton read for W.I and the Horticultural Society.

Just a reminder to bring cakes etc to the stall at around 12 noon on Carnival Day please. Anne Mayer is making a special one for the guessing the weight of the cake competition and that will be a super one.

The W.I Garden Party is being held on Thursday 16th June, 3.00 - 5.00pm and is an afternoon tea. It will be held at the home of Janice Siddle at Percival Drive.

It's time again to order 2012 calendars.

With wine and tasties we got down to much discussion and voting for the resolution for our representative to take to the NFWI AGM at Liverpool in June.

To round off the evening, three members each gave a great talk on their travel experiences; Lin Hayes on Gabon where her son Mark works, Mary Thompson on South America and sailing along the Panama Canal and Jean Abrahams on Lanzarote.

I cannot believe what information we learnt about the places they had been to. Would like to hear it all again as it was so interesting. Many thanks to them.

The next W.I meeting is on 9th June, 7.45pm at the Tom Hauley Room. Speakers: Ifakara Bakery Project, Tanzania – Eugene and Margaret Schellenberg.



Harbury Theatre Group

Chris Beaton

Monday 9th May saw our AGM at the Shakespeare, with the existing officers continuing in their current roles with one notable exception – the position of Chairman.

After a rocky year which saw Keith Hayes unexpectedly taking on the Chairmanship and then successfully guiding the group through some difficult times, he felt that as the age profile and emphasis of the group is now changing (with more and more members with young families joining) then it should be reflected in the group's leadership, and I'm proud to take over as the public face of the Harbury Theatre Group.

Given that I only joined a year ago with the simple aim of making some new friends and occasionally nailing a few things together before painting the end result, this is quite a rapid promotion!

However, my aim is to continue consolidating the group, encourage many more new faces along and generally raise the profile of this wonderful little Theatre Company.

But for that I need your help - Harbury's support for it's various societies and groups is to be envied and admired and they can never have too many friends – in our case, whether they pop of out the woodwork to paint a backdrop, offer some space for storage, want to tread the boards themselves or just turn up to help take tickets, all are welcome, none are refused, so give it a go (you could even end up as Chairman – stranger things have happened!!!)

So then, moving forward, we'll have a brand new stall at this year's Carnival for you to try your hand at – simply roll a coin across a table to hit a target to win a bottle of wine (adults) or a bar of chocolate (little 'uns) ...sounds ever so simple, so why not come along and have a go...!

We're also supporting the Heart of Harbury games this year and are proudly sponsoring an event for your enjoyment – “Throwing a Tantrum!” Should be good fun all round, although we may be assessing the winning entry with half an eye on signing them up for the Theatre Group!

Other than that, our next meeting is on Monday June 6th at 8pm in the Shakespeare and I hope to see you there, or alternatively I can also be contacted on 611930.



Folk Club

Doug & Janny Freeman

The theme for the Harbury Folk Club number 318 was “Fun and Frivolity”. The room was soon full of performers and audience, and we had sixteen acts ready to entertain us with funny and frivolous folk.

It can be a challenge deciding who to schedule in which of the “three” halves, but we had our running order in place as Janny and Maureen started the evening. We had a fine and varied first half with other performances from Martin, Pete Mason, Ted and Sue, Stuart, Rik, Ian and Sue. As expected, some of the performers had fun being frivolous with the theme, and a couple of acts more than tested the decency boundaries of before the nine clock watershed. They will of course remain nameless, but Rik, Ian and Sue know who they are.

The second half started with the massed ensemble of the Harbury Folk Club Choir. They were followed by some first time visitors from the Black Country, who performed under the name of “Billy and Lozz” and they treated us to some fine Black Country musical stories. One of the duo, Brian Dakin, is a research associate from Aston University working on a

“Black Country and Birmingham” dialect project. He had come along to record Ian and Sue, and to ask members of the audience to complete a questionnaire on his project. The second half was filled with excellent and varied contributions from Des, BARF (Janny, Rosie, Tina, David), Norman and Peter McDonald.

The raffle was held at the end of the second half. Apart from the obligatory bottle of wine, there was the treat of some Dutch “stroopwafels”, to celebrate the liberation of The Netherlands on the 5th of May 1945. The raffle raised £60 towards the cost of our daughter’s August trip to Uganda, when she is on a working holiday with the Teams4U charity she works for, and they are building a school for disadvantaged children including AIDS orphans.

I would like to thank those performers who patiently waited until the third half before taking to the stage. Those who had left missed a truly mesmerising performance by Four Play (Celia, Pete B, Peter McD, Ted), when they became a single 8 armed and 4 melodeon creation. Celia was severely disadvantaged by her height, but I am sure she enjoyed a good squeeze. Pete Grassby had to follow this extravaganza, which he did with great aplomb. Finally Pete Bones reluctantly agreed to finish the evening. He gave a truly unforgettable and tuneful rendition of that Kipper Family great “The Wild Mounting Time”.

A great evening and thanks to all the performers, audience, the pub landlord and staff. Sue Hartland will host the next Folk Club on Thursday 2nd June when the theme will be “Home, Sweet Home”.



Harbury Junior's Football

Malcolm Tanner

U8 update: Three Counties Tournament

The U8s took a depleted two team squad over to the Three Counties Tournament and a great day was had by all. Having had to reorganise the teams both the Hawks and Harriers competed well. Both teams battled hard but Lady Luck had deserted the Hawks and some results just didn't go their way in spite of very strong performances. The Harriers (without their regular keeper) put in some strong performances and surprised the opposition by ending up at the top of the tournament league table and making it to the final having not lost a game. This was itself a great achievement in that most of the opposition teams were a year older.

The final was a tense affair with the Harriers taking an early lead. After that, it was nip and tuck with chances for both teams going astray.

With less than one minute remaining Kinton managed an equaliser and the game was drawn. It was going to penalties! Five penalties were taken and it was all square, it was now sudden death! Alas, it wasn't to be and Kinton took the cup. Tears and upset followed (and that was just the parents!). However, all was made better with the aid of ice cream and a medal! Great performances all round, a real team performance by the Harriers.

3 Counties Tournament Hawks: Jack P, Jacob W, Edward L, Jared R, Luca W, Emmanuel V, Morgan F

3 Counties tournament Harriers: Daniel C, Kasey C, Liam O, Morgan J, Oscar B, Matthew D, Cameron D

Ian Jones and Steve Burnell

U14's: Three Counties Tournament

Having entered three teams all of whom played well, it was Harbury Raiders who reached the final with excellent goalkeeping from Ollie N and well taken goals from Kane H. The final was a tense game with the match drawn after normal time: it was decided on penalties. With penalties even, it was down to the goalkeepers and, with the Tysoe keeper missing his kick, Ollie won the match and the tournament with a well taken penalty.

Tysoe Tournament

With eight teams competing, Harbury entered two teams and whilst Harbury Sharks edged the match against Harbury Jets, it was the Jets that went through to the Supplementary Final with a comfortable win at Tysoe with Matt J scoring the winning goals.

This concludes a successful season in the Mid Warwickshire league and with a squad of 18 players and new players looking to join the club, it is looking positive for next season.



Harbury Netball Club

Beccy McDaid

Well I can't quite believe it, but another netball season is over. Both senior and junior teams have enjoyed a very busy season. Unfortunately the senior season started with the decline of our newly formed C team, after a suburb season last year seeing the C team finish 3rd and being awarded the 'Best Newcomers' Award for the Coventry and Warwickshire Netball League. Due to work commitments we were only able to enter two teams this year.

The A team had an explosive start winning their first run of games, however mid season saw a few injuries creeping in and their winning streak faded. I am pleased to say most of the injuries were short lived and the end of the season brought a second wind for the A team, producing some fantastic results; in fact on a couple of occasions I would go as far as to say they produced some of the best club netball I have ever seen. Well done ladies for a mid table finish in the 1st Division.

The B Team had a slower start to the season, struggling to find the net and gel as a newly formed squad. However they persevered and the second half of their season was far stronger. More goals scored and a new found energy surprised many teams on the return matches. I must say that team spirits throughout the season have been second to none, with everybody staying focused and supportive of each other. Also thanks must go to the A team for their support every week; it really helps having people cheering for you on the side line. Unfortunately great team spirit doesn't win games on its own and the B Team finished second from bottom in division 3 and are waiting to hear whether they will be relegated for next season. So fingers crossed that they are not!!! There is always a silver lining and ours was that, due to our low position in the league we had a great handicap in the end of season tournament in which the B team played some super netball and finished winners, a fitting way to finish their season. Well done B Team.

The senior season finished with our annual tour to Brean Sands. Hugely looked forward to by everyone. Packed up and ready to go we made our way down the M5. Tour theme this year was PJ's or Kit and a few heads were turned as one car full of excited netballers pulled up at the services in their PJ's and slippers ambled in, used the facilities and ambled out!! As ever we all met at our Chalets on Friday evening, cracked open the pop and had an early night! As if!!! Out came the wine and on came the dancing shoes(well slippers) and away we went. Needless to say our first couple of games were not our finest but as the morning progressed so we improved, managing a credible 5th position. Happy with that, the youngsters went to bed (light weights) and the rest of us partied till dawn once again. This seemed to be the same for most teams and on the Sunday morning there were some very tired looking ladies



on the courts. However not Harbury - we were on fire, winning our first match 17-0. Our spirits high we just kept winning and before long we found ourselves playing in the final of the plate. And we only went and won it!!!! A brilliant end to an enjoyable but mixed season.

Whatever the results you can also guarantee that Harbury Netball Club will have great fun and this year once again really was great fun.

On to the juniors. I am amazed every year with the amount of young talented netball players there are locally. With four junior teams this year we have been very busy. All the teams have played some super netball.



The Under 14 team started their season very well by winning the Stockton under 16 tournament. It looked for most of the season that they were in for a trophy at the end of the season. But a surprise result in the very last game of the season left them 3rd tied with 1st and 2nd place on points narrowly missing out on goal difference. However all disappointment was put to one side at their end of

season tournament where they played some really rather fine netball and finished in top spot. Fantastic girls, well done. The Under 13 team newly formed this season is packed full of talent but throughout the season they struggled to slot together as a team. I think the other teams had better watch out next year, as when this team does link together they will be a force to reckon with. Showing some promising signs that this is about to happen, they came away runners up in their end of season tournament. Brilliant result girls well done.

With sixteen Under 12 players, we obviously have two teams, the red and the green team. We have tried to make them as even as possible and with them finishing 3rd and 4th in their league I think we managed it. Both teams have been a pleasure to coach this year, each one of them has a real character and have kept me amused all season. They finished 3rd and 4th in their end of season



U12 Red Team

tournament and I know they all thoroughly enjoyed their first season in club netball. Well played girls.

To follow the junior tournaments we had our club annual presentation evening. This was extremely well supported and I am pleased to list below all our trophy winners:-



Under 14

Players' Player - Emma Nash.

Coaches' Player - Abbie Stanford. Versatility Award - Kate Woldanski.

U12 Green Team

Under 13



Players' Player - Lucy Cramp.

Coaches' Player - Lucy Hunter. Most improved - Sian Chapel-Hyam.

Under 12 Red Team

Players' Player - Lauren Mann.

Coaches' Player - Isobel and Lydia Folkes-Skinner. Most Improved - Chloe Young.

Under 12 Green Team

Players' Player - Emily Tedds. Coaches' Player - Nikki Simpson. Most improved - Katie Butlin.

Seniors

"A" Team Players' Player - Zoe Petrie

"B" Teams Players' Player - Jade Young

Young Player of the Year - Jade Young

Best Achievement Award - Jane Pittom

Club Person of the Year - Leah Wallington

Club Players Player of the Year - Gemma Cooper

Donkey of the season - Gemma Cooper

Coventry and District Junior League Special Person Award - Beccy McDaid

Last, but very much not least: thanks most go to all the coaches and helpers, to the parents and, of course to all the players; without the input from you all this club would not be the great success it is. Thank you



Harbury RFC

Rugby Football Club

Jerry Birkbeck

Harbury RFC will start their Golden Jubilee season in Midlands 4 after a frustrating season which saw them lose more than half of their matches by three points or less and five of those by a single point. During the 2010/11 season the RFU introduced the principle of bonus points at all levels of rugby, a system that had only existed at Premiership levels. This encouraged teams who scored four or more tries in a match or were within seven points or less on the completion of a game. Under this arrangement, Harbury benefited by picking up 15 points from 22 league matches. This was the highest level recorded by any club in the lower three levels of Midland's rugby. The season finished on a high note as they scored 25 tries in their last five games and recorded an outstanding 46-12 victory over Southam, running in six tries in an excellent local derby.

Golden Jubilee Season

In March 2012 Harbury RFC will celebrate their 50th Anniversary. Founded in that month in 1962 by Glen Hales, who sadly died suddenly in August 2010, the Club, initially known as Whitnash, played at the Sports and Social Club. After initial success they were forced to move and then President John Bromley was offered the use of a pitch on the Playing Fields at Harbury with use of the Village Hall for changing facilities and eventually "The Crown" PH for after match refreshments. This was in 1967 and the club became known as Harbury RFC.

The Club then expanded considerably and in 1979 moved to their current location in Middle Road. This comprises 10 acres, which is owned by the club and is now also the home of Harbury Cricket Club.

Matthew Knight appointed skipper for 2011/12

Matthew Knight, who began his rugby at Harbury RFC, was appointed skipper for the forthcoming season following the AGM at the end of April. Now in his 10th season, Matt is a hugely popular figure and is very much looking forward to taking the Club forward. He noted: *"We have made huge strides as a club, both on and off the pitch. Last season we were only the second club in Warwickshire to be awarded the coveted 'Whole Club Seal of Approval' which is an RFU initiative to set the standard for*



Ian Holroyd & Dave Andrews are awarded the RFU Whole Club Seal of Approval

the management, coaching and delivery of the game of rugby at all levels from senior through to mini.

This has enabled us to access funding from the RFU to install a comprehensive drainage scheme for our two back pitches and these will be available for our Junior and Mini Rugby teams and provide excellent surfaces for developing their skills. This will add to the great work that Dave Andrews, our Facilities Manager, has undertaken on the main pitch training area, car park and clubhouse improvements.

I am looking forward to next season under our coach Hendry Rheeders, the former Coventry RFC Captain and a new Team Manager, Steve Dunne,

together with all the players to achieve promotion and seek success in both the Warwickshire Cup and the National Junior Vase. All of which I believe are attainable and would be a fitting tribute in our 50th year.'

The appointments were:

Matt Knight

1st XV Captain

Shane Dunne

1st XV Vice Captain

Steve Dunne

Team Manager

Andy Sandford

2nd XV Captain

Dan Bennett

Vice Captain

Ben Linnett & Tony Cowley

2ND XV Team Managers

Hendry Rheeders	Club Coach
Pete Gololaszczyk	Physiotherapist
Ian Holroyd	President
Graham Foster	Chairman
Dave Jones	Secretary
Ian Kimberley	Treasurer
Jerry Birkbeck	Fixture and Match Secretary
Dave Andrews	Facilities
Mike Steele/Mark Easton	Junior/Mini Sections Representatives
Tom Jamieson	Entertainments
Darren Nicholls	Website
Darren Nicholls/Ben Linnett	Player Representatives
Charlie Gladden	Social And Membership

Pre-Season training commences at the beginning of **June** and up to date details can be found on the club website: www.harburyrfc.co.uk.

We are keen to encourage new members of any age whether playing or general members. We have an excellent Social Membership which, for £15 a year, includes access to the club, facility hire, opportunities to apply for international tickets and a generous discount system for a wide range of products and services.

Rounders at Harbury RFC

As a footnote - we have been working with Rounders England to develop the sport of rounders, for all ages, during the summer months. We have been providing coaching in the game as part of a ten week introduction by RE appointed coaches. Do come along and join; it's on every **Thursday** night from 7.00pm onwards. For more details either visit our website or contact JERRY BIRKBECK (07855 566325/01926 424953/ E-MAIL: jerrybirkbeck@btinternet.com).



Harbury Pre-School

Staff & Committee

During May we were delighted to welcome new starters, Martha, Lucy and Lola, who have already settled in very well with their new friends.



The Royal Wedding –

Having heard lots about the wedding over the weekend, the children enthusiastically celebrated in their own way. There were gorgeous dresses and suits to try on, Kate and William masks and a fabulous street party type spread in the role play area, which was beautifully decorated with home-made

bunting to rival that seen anywhere else in the village!

Japanese Children's Day –

In recognition of the Japanese celebrations on 5th May, the children made some wonderful carp streamers which they enjoyed waving in the breeze as they danced outside.



The Jungle – Meanwhile, our theme for the first half of the term continued apace, with two visits to the Kempton's beautiful garden. There, the children found a wonderful trail winding its way through the bushes, complete with

partially hidden animals ready to be spotted and identified. Our thanks to Jane and her children for getting up extra early to set the trail before school and for providing picnic rugs and refreshments at the end, and also to all the parents and grandparents who helped along the way.





After seeing the soft toy tortoises in the Kempton's garden, the children were delighted when William's daddy brought in Sophie, the real tortoise to see them. Thank you Jez.

Graphics – As a follow up to the visits, the children made their own "Jungle Book", using photographs of the trail and their own stories of their experiences.

Role Play – The role play area changed from the domestic scene to a jungle theme. Soft toy animals joined in with a picnic, which included "barbecued" food, cooked on a carefully made "grill". The children tried on jungle type attire and made, painted and drove their own jeep as they went on safari to search for wild animals. Finally, to complete the scene, a pop-up tent was included for camping.

Makaton Signing – The children also learned the Makaton signs for animals and incorporated them into the "Dear Zoo" story, sang songs about jungle animals and looked at topical books, as well as using the zoo programme on the computer. Some fabulous paintings of wild animals were made at the creative table, with added furry collage materials to give them a tactile dimension.



The Pre-School Garden –

The lovely weather provided great growing conditions and the children enjoyed planting, in buckets, the potatoes kindly provided by Claire Panek. We are also very grateful to Toby's mum for spending time with the children, showing them how to sow lettuce seeds and plant French beans and other

vegetables, all of which are growing well under the children's continued care and watering. *For further information about Harbury Pre-School, please e-mail bud.jackson@btinternet.com or phone 07939 122087. The web site can be found at www.harburypre-school.org.uk.*



Windmills Nursery is situated in the grounds of Harbury Primary School and has the benefit of its own Forest School and qualified Forest School Leader. We are open all day between school hours and take children from the age of two years. If you would like to register a place for your child you can email us at info@windmillsnursery.co.uk, visit our web site at www.windmillsnursery.co.uk or call Tina/Sally on 07906 519148. Afternoon spaces are available now with limited spaces on morning sessions from September 2011 and bookings now being taken for September 2012.

The theme this term is journeys and transport. The children made their monthly visit to the Toddlers' Service where they were told the story of David and Goliath. June will be a busy month for the Nursery with the building and decorating of the Windmills float ready for Carnival day and then the Black Tie and Bollywood Summer Ball on 25th June.

Little Charley Bear



Windmills Nursery School was very lucky to win a competition to have the first official visit from Little Charley Bear from cBeebies. He is a wonderful animated bear who uses his imagination to go on lots of adventures and his journeys of discovery are narrated by James Corden. Windmills Nursery invited the children from

Reception and Year 1 classes at Harbury Primary School to meet Little Charley Bear in the school hall; the children were able to ask him questions and to give him a hug and have their photos taken.

Little Charley Bear then came back to Windmills Nursery to spend some time with the children and they played games together. Little Charley Bear then went to visit the





woods next to the Nursery where Forest School is held. It really was a magical day and thank you to Little Charley Bear for visiting and to the production company who supplied all the children with a small beany toy.

Some comments from the children about Little Charley Bear:

Phoebe – “He was furry and we danced with him”.

Niamhaina – “We went to big school to see Charley Bear in the school hall. He was really big.”

Megan – “We laughed at him because he was funny. He gave us a present – a little Charley Bear”.

Forest School

Forest School classes run weekly in the small woodland next to the Nursery and the children join either the Badgers or Squirrels group. Forest School improves knowledge and understanding, one of the Early Years Foundation Stages. Recently the children have been on a sensory trail:

Max – “I’m watering the flowers because they need a bath. I’ve got a green watering can at home with a frog.

Evie noticed a leaf with tiny holes in it. “Caterpillars made the holes, it looks lacy now”.

Tennis

Last Wednesday James Marsh, the qualified head coach at Harbury Tennis Club gave some of the children at Windmills Nursery a taster session of tennis in the school hall. We will be setting up a regular session with James for those children who wish to do it.

Staff News

The managers recently attended the Childcare Managers Meeting run by Warwickshire County Council over in Rugby. Topics discussed included

statutory requirements for safeguarding children. After half-term Windmills Nursery School will be welcoming a student from Southam College.

Dates for Your Diaries

Sat 11 th June	Harbury Carnival
Wed 15 th June	Tempest Photography 10am
Fri 17 th June	Teacher Training Day (Windmills Nursery Closed)
Sat 25 th June	Windmills Summer Ball
Wed 29 th June	Miss Maher to visit Windmills Nursery
Tue 5 th July	Children starting school to visit Reception Class
Fri 22 nd July	Nursery Closes for Summer Holidays at 12.05pm

Summer Ball: Windmills Nursery will be hosting their famous annual Summer Ball on Saturday 25th June from 8pm to midnight in Harbury Village Hall. The theme this year is Black Tie and Bollywood and there will be bubbly on arrival followed by a three course traditional Bangladeshi and Indian banquet. RetroEvolution will provide the music this year and there will be a bar, disco and raffle. Tickets are £20 and can be purchased from Cana at Bank Chambers or Tracey Pettipher on 01926 614923.



Harbury Primary School P.T.A.

PTA Committee

Wondering what to do for Father's Day on Sunday 19th June? Why not come along to our **Father's Day Beer Walk, Sunday 19th June.**

Join us for a family walk visiting the pubs in the village and following a sign-posted walk across the fields to a beer stop at Chesterton where Slaughterhouse Ale, soft drinks, rolls, crisps and biscuits will be available.

Register at the school between 11.30am-12.30pm and then follow the trail at your own pace. Beer Walk entry £4 per adult and £2 per child.

After the walk you are invited to join us at our...**Father's Day Family BBQ.**

Why not treat Dad/Grandad to a meal out on Father's Day? Whether you have been on our Beer Walk or elsewhere for the day, please join us for our family BBQ at The Old New Inn.

Food on sale from 5pm - organic burgers and sausages from Glebe Farm, veggie option available.

For further information please contact Corinna, 612852 corinnafield@hotmail.com.

Summer Fayre, Saturday 9 July, 12 noon – 3 pm

Presenting Harbury Choir School and Harbury Ukulele Group. In the school grounds, fun and games for all the family, BBQ, Bar and Cafe.



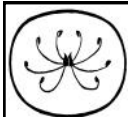
Village Hall Update

Chris Finch

Hopefully villagers will notice a significant difference in the coming weeks, as new curtains have been ordered to replace the existing 'drapes', which have seen the linings gradually disintegrating over recent years. Members of the committee are also working to ensure that photo-voltaic panels will be fitted on the rear roof in the near future, so that energy costs will be reduced and the Village Hall will receive a Feed in Tariff by sending surplus electricity to the National Grid. The hatches from the kitchen into the main Hall and Farley Room are also the subject of research from a number of companies, as the replacements will have to be fire-proof and conform to current Health and Safety standards.

As always, there have been impressive efforts recently in support of the continuous fund-raising to improve the premises - notably the event arranged at the Crown Inn on Bank Holiday Monday and the showing of 'The King's Speech', which drew a capacity crowd to the Hall to see the much celebrated film, with the added attraction of a fish and chip supper in the interval. The fund-raising committee appreciated the barbeque arranged by 'Joe' and Cinda and the stalwart efforts of Lana and her family never go un-noticed by those who recognise her tireless commitment to the Rural Cinema, which she organises on behalf of the Village Hall.

July will see the Harbury Olympics, arranged for the week after the Carnival, and this should prove to be an extra special event involving the many families in the village who have agreed to take part in the range of activities. There will be plenty of excitement engendered during the day and it is hoped that there will be a good turn-out to watch the once in a life-time spectacle, which will take place in front of an Olympic athlete, as Dave Moorcroft has agreed to present the prizes to the winning competitors. There will be information about this superbly organised event elsewhere in the magazine from the 'brains' behind the organisation – Andrew Lawrence. As with all events organised in the village, there has been a lot of work 'behind the scenes' with a host of people pledging their support to make the HOHO (Heart of Harbury Olympics) something which will be remembered for years to come. Thank you to all the supporters of the Village Hall who work hard to maintain the momentum, which ensures we continue to make progress.



Again over fifty members enjoyed our last meeting of the season on 3rd May and what a way to finish!! Stanley Lampard spoke about Borneo, a Botanical Paradise. I hadn't realised until I looked it up on our world atlas what a huge island it is. In fact it is the 3rd largest island in the world. To the west of it is Singapore and the Malay peninsula and to the east is Papua New Guinea. At the top of the island is Brunei, a huge mountain range through the middle, and south Indonesian and Malayan influence throughout.

Stanley has visited here three times, the last time eleven years ago with his very lucky students. They stayed in the mountain range in the North in Kambawla which is the highest mountain in Asia and is half the size of Everest. It is glacial and has three zones, cloud level, tropical then alpine levels. It is within a national park and due to the size and space they had guides to escort them. They stayed in quite nice huts which were high up in the mountain and their clothes and equipment all had to be transported by the female guides. It is about eight kilometres up and took them six hours to climb.

Sunrise is a spectacular sight at 6.00am with the colours of the sky changing from yellows, oranges, pinks and reds. The glacial valley was quite a sight, very large and with its own habitat. It contains an extinct volcano which never actually erupted. The cracks between the layers had the most delightful alpines almost like leucospermums that we grow and very colourful. There are also various species of rhododendrons which of course like cold chilly positions. There was a cable car to get back down into the valley, a hazardous undertaking, but worth it! The tropical aspect was typical rain forest conditions. This forest at least has not been decimated by the locals, as have many more throughout Asia; there was also a very narrow rope walkway over a gorge, not for the fainthearted! But the view looking down was mind-blowing. The plants had huge Gunnera like leaves only bigger, and very tall trees providing a canopy. Below these were all types of gingers, palms, huge bamboos (more about bamboos later) so colourful. Down another level were orchids like you have never seen before. The island has the biggest collection of orchids anywhere in the World, over 1500 species. The Victorian plant hunters used to bring these back to England but for some of the other species of plants they took so many that some became extinct. The slides of the orchids showed all shapes and sizes and in all lovely colours. The Rothschilds were great plant collectors and such was the extent of their

collecting that by the 1990's three colonies of the orchids had to be protected.

We were then shown slides of all kinds of pitcher plants, such as clever plants to lure in their prey by sweet nectar; the insects then slide down inside the plants to their fate. There were some enormous specimens only seen in Borneo - it shows just how clever nature is to work out how to catch and eat prey etc. Some species there are just waiting to be discovered; it was fascinating to see the diversity of the island.

Back to the Bamboo, there is one type which actually has thorns on its trunk and, unfortunately, Stanley had climbed up it to take photos etc and then got caught on the thorns and had a huge gash on his leg. He had to be taken to ground level and his students carried him all the way down. He was then taken by helicopter to a hospital to be treated; luckily he wasn't too badly injured and made a good recovery. What a Boy's Own adventure that turned out to be. The last slides were spectacular too of climbing plants up trees and seeming to go on forever to the roof of the sky. Lots of pines, ferns and other tropical plants that we cannot buy here but some we can see at Kew. The lizards and butterflies were very colourful. We were all so captivated by the sights, colours and landscapes and oh so jealous of Stanley's students. I have probably missed some plants out but I was so captivated by the slides as there was so much to take in. Stanley answered questions at the end, then left as he gets up at 5.30am each day as he is on a keep fit regime in readiness for his next trip to exotic places. I'm sure we will be welcoming him back in the future.

I have not got very far with the new programme for 2011/12 but am sticking to it; a lot of the people I have contacted are already booked for this year - quite a challenge but I will do my best. The next event is our trip to Hinton Ampner and West Green House Garden on 8th June. I have to email the food requirements tomorrow, Wednesday, so now to that task!!! We leave the Village Hall at 8.30am and we will leave West Green House just after 5.00pm so we shouldn't be too late getting home.

Here are a few ideas for you for visits etc in June. Hill Close Gardens have a few events in June, on the 10th there will be a Gardeners Walk with a guided tour, cost in total £5 from 2.30pm to 3.30pm. On the 21st there will be a Midsummer Soiree picnic and musical entertainment, cost £5 from 6.30pm to 9.30pm.

On Sunday 10th June Dorsington gardens will be open from 12.00noon to 5pm, admission £6 and there are fourteen gardens to view. On Sunday 19th Warmington Village Gardens will be open between 2.00 and 6.00pm and cost is £5; there will be six gardens for viewing.

In Oxfordshire, not very far to go, try Adderbury Gardens on Sunday 19th when five gardens will be open from 2.00 to 6.00pm and cost is £5, proceeds to the local Hospice. On Sunday 26th Middleton Cheney gardens will be welcoming visitors to seven gardens, admission will be £5 and you can visit between 1.00 and 6.00pm. All of the gardens are open under the National Gardens Scheme and proceeds all go to charities so what a lovely way to raise funds. By the way, last year our open gardens numbered over twenty so our admission of £6 compares very favourably to these.

There is a Plant Finders Fair on 24th, 25th and 26th at Cottesbrooke Hall in Northamptonshire which is not too far away. One of the guest speakers will be Dan Pearson. It is in a fabulous setting of the 1702 house and gardens and will be open each day from 10.30am to 5.30pm, admission is £8.50 BUT don't be put off - it really is a very pleasant day out with superb plants etc to buy and this includes entry to the gardens, a plant crèche and refreshments with free parking. Do go along and let me know what you think.

I am looking forward to seeing everyone on the trips; I hope that you can get out and about in the next few weeks as despite the drought conditions, our wonderful plants seem to have given us such a show with the promise of more to come. Enjoy.



Garden Jottings from Bridge Nursery

Christine Dakin

Your local Hardy Plant Specialists
Also: Fresh cut flowers and bedding plants in season.

Have the months got themselves all muddled up? April was hot, dry and sunny which meant a very busy time at the nursery but for gardeners and farmers it was the wrong weather for the time of the year. Anyone sowing vegetable seeds had to be able to water them to get them to germinate and although we were selling many plants it really wasn't suitable planting conditions. I planted several different things one Wednesday morning because the forecast said there would be rain in the afternoon but there wasn't a drop and I've had to hand water those that I could remember where I'd put them.

Everything has been flowering early, in particular a rose called Agnes which has looked better than it's ever looked. People have been buying bedding plants much earlier than is generally thought to be wise and indeed we had frosts for a couple of mornings at the beginning of May. It damaged a lot of soft foliage on several plants.

So, apart from not one but two break-ins recently, we have had a very successful start to the year.

- This is now the time to put out all the tender plants including runner beans, bedding plants, courgettes, tomatoes, sweet corn etc.
- Cut back early flowering shrubs after they have finished flowering.
- House plants could also go outside for the summer.
- Dead-head roses and maybe give them a feed of rose fertiliser.
- And keep up with the weeding.

*Bridge Nursery, Tomlow Road, Napton, Tel: 01926 812737,
www.bridge-nursery.co.uk*



Nature Notes

John Hancock

I heard the Cuckoo loud and clear on a bright day in May - it was the 9th and I was in Wyre Forest just over the River Severn in Worcestershire. I was there to meet David Brown's Lepidoptera Group and our target species was the richly patterned Pearl Bordered Fritillary butterfly (*Bolaria euphrosyne*). This is the earliest of the British Fritillaries to appear and was once known as the April Fritillary before the Gregorian calendar was adopted and dates were moved back by eleven days. Leaving the car high above the east bank of the river, I freewheeled on my bike to the small village of Arley where a ferry used to take the odd vehicle and foot passengers across. Now, there is a footbridge but otherwise the road is a dead end. Visit the church to see an effigy of an early soldier, thought to be from the 13th century. The river runs between Bridgenorth and Bewdley in a gorge-like valley and it was a stiff pull pedalling up to the forest. We were not disappointed and found many more Pearl Bordered Fritillaries than on a previous visit. The rides through the mixed woodland have been managed with butterflies and other insects in mind. The Fritillary's food plant is the Violet. In areas sheltered from wind and with sunshine warming up the vegetation at ground level, conditions were just about perfect. We also found the Green Hairstreak, and Dingy and Grizzled Skipper butterflies. These three can also be found at Spoilbank Nature Reserve on Station Road near the Great Western so it is not necessary to travel very far to see some quite rare species.

Later in the day, after I had heard the Cuckoo, there was a hailstorm followed by prolonged rain, so I thought myself very lucky to have had

such a fine morning. I have not heard the Cuckoo in our area yet; I know some readers have been luckier.

We've had a very dry spell. Today, the 22nd May, Sharon and I have been up to Yorkshire to see our family in Sheffield. Up here, on the edge of the moors, it's blowing a gale with an occasional squally shower tracking through. We walked out of the house with our son Steve and were soon on the footpath network of Blacka Moor, a steep, wooded, bracken covered hillside owned by Sheffield Wildlife Trust and a Site of Special Scientific Interest. Peaty tracts overlie millstone grit and the dominant trees are Birch and Oak. Bilberry with its fresh green leaves and small red flowers contrasted with the heather which had a dead look but which, according to our daughter-in-law Sally, is glorious seen from their house when in flower. Some of the Bilberry flowers were morphing into fruit and it appeared to be a bumper crop. We were glad to find a small square rock built shelter, admittedly without a roof, in which to eat our picnic sheltered from the gale. Later, coming down about 1000ft off the moorland dome to the valley, we passed a great swathe of bluebells clothing the hillside. Before the moor was managed for grouse and grazed by sheep it would have been forested and the bluebells are a reminder of that time. In the shelter of the trees we came across a small herd of Red Deer grazing on fresh leaves. We were about fifty yards away and although wary, they did not move off. Two fine stags and half a dozen hinds were a beautiful sight. We remembered the same terrain in December when the steep paths were icy and crampons would have been useful. Back in Dore, a wild plum tree was laden and will be worth a visit in July. The pavement was littered with green cherries stripped by the wind so the birds won't be as fortunate.

Closer to home in Ufton Wood on Friday 20th May, in amongst the seeding bluebells, I came across two early Purple Orchids well past their best. A Butterfly Orchid nearby was pristine so hurry down to Ufton Fields Nature Reserve where there is usually a good number.

The following day we visited Pepper Wood near Bromsgrove. It is managed by The Woodland Trust who nationally protect and restore native forest. They have over 1000 woods in their care and deserve a "plug". Search "woodlandtrust.org.uk" to find out more. This was an open day and an excellent occasion. A heavy horse called Bruno was pulling tree trunks down one of the tracks. We were told he was an Ardennes breed and it was fascinating to watch his delicate footwork and obedience to command. Fences were being constructed out of split Sweet Chestnut and I helped make a hurdle out of Hazel.

So, on to high summer. Enjoy some new vistas and special wildlife moments.



General Section



Bumps and Bundles

Hello, my name is Henry and I am one of the babies that go to Bumps and Bundles in the Tom Hauley Room on Tuesday mornings at 10.30am.

We have been very busy at "Bumps" over Easter; we have had a picnic in the park and some of our daddies came along to see what we do. There's a lot going on at Bumps and Bundles. Come along if you are expecting a baby or a new mummy. Look out for us at the Carnival!



Henry Jones reporting for Bumps and Bundles

Ufton Village Church Fete

Ufton Village Church Fete will take place on Saturday 4th June 2-4pm at Colbourne House, Ufton Fields. Children's fancy dress theme - Royal Garden Party

Kings and Queens Past and Present. Plus fun for all the family and cream teas.

Gillian Ingham

Harbury Village Club - Open Mic

Sat 25th June - Harbury Club "Open Mic" from 8pm. Every last Saturday in the month. All welcome. For more information please ring 07799 896891.

Debbie Gee

Harbury Carnival Saturday June 11th, 2010 (Parade Judging Starts 12.15pm from Sutcliffe Drive)

Carnival has arrived!

It's June already and that means it's Carnival time. AND NEW THIS YEAR THERE WILL BE A LIVE BAND PLAYING IMMEDIATELY AFTER THE CARNIVAL DRAW FOR ABOUT AN HOUR OR SO.

Please buy your raffle tickets from volunteers who will be knocking on doors – remember the proceeds go to local charities and organisations.

NOTE: We start half an hour earlier like we did last year: Vehicles in position in Sutcliffe Drive by 12 noon, judging begins at 12.15pm and the parade leaves at 1.00pm.

We look forward to seeing you with your local organisation, pub, street or friends and see what ideas you have come up with for either a float or a walking group for the procession. Here is a reminder of the list of categories for the Parade: Trade Float, Independent Float, Children's' Float, Decorated Bike/Pram/Car, Horse Drawn/Mounted/Lead, Walking Tableau Children 2-8 persons, Walking Tableau Children more than eight persons, Walking Tableau Family, Walking Tableau Adults, Walking Adult, Walking Child.

The programme:

12:00pm	Float vehicles must be in position
12:15pm	Judging of floats at Sutcliffe Drive
1:00pm	Carnival Procession led by the Shirley Pipe Band
1:45pm	Fancy Dress Competition
2:30pm	Punch and Judy
3:00pm	Shirley Pipe Band
3:30pm	Dog Show
4:00 m	Belly Dancing
4-15pm	Lucky Programme/Grand Carnival Draw
4-30pm	Live Band 'JKP'
6:00pm	Fete Closes

There will also be refreshments, ice cream, an inflatable, roundabouts, vintage vehicles, pony rides and lots of fun for all at the many stalls with their games and wares.

There may just be time to book a stall/pitch on the field; please call Mike McBride on 612421 and, if you have any questions about the Carnival, please feel free to call John Broomfield, Carnival Committee Chairman, on 614258. He will be happy to provide whatever help he can.

Many thanks to our twenty five great **Sponsors**: Avonvale Veterinary Centre, Braeside Bed & Breakfast, Cana Imports, Mr Brooks The Chimney Sweep, Communication & me (Bev Walshe), The Crown Inn, The Door Store, Fosse Garage, The Gamecock, Green Chameleon, TM & JM Grey, Harbury Pharmacy, Harbury Supermarket and Post Office, Jasmine Spice at the Dog Inn, The Kitchen Kompany, Miles of Tiles, Mugleston's, Nifty Needle, The Old New Inn, Rollason Fencing, Rollason's Solicitors, Samaritans, The Salon, The Shakespeare, and the Village Club.

Dress up and cavort at the Carnival! See you there...

Peter Walshe
On behalf of the Carnival Committee

Wheelbarrow Race Refreshments at the Dog Inn

From 10.30am on Sunday 5th June in the Dog Inn car park. Bouncy castle, burgers, hot dogs and pork batches.

The Dog Inn

Wheelbarrow Race

Starts and ends at the Crown Inn Sunday 5th June.

Harbury Carnival Week is the only one in the world with a Wheelbarrow Race. This unique Wheelbarrow Race will start (and finish) at The Crown Inn on Sunday 5th June. Please assemble at 12.30pm for a 1.00pm start. Again, can we please ask you to make sure you complete an entry form and pay the entrance fee BEFORE the day. Forms are available from the pubs and Dan Killian on 612265 or Mike McBride on 612421.

And Pub Games Week follows so please enter a team or just come and watch.

If you want to enter a team, please contact Dan Killian on 612265 or Mike McBride on 612421. You can have a maximum of TWELVE nominated players for the team although only FOUR are allowed to take part in any particular game – players can take part in more than ONE game.

Also, you do not have to have TWELVE team members so teams can be smaller, but obviously with a minimum of FOUR people. Entrance fees for the games are £1 per head.

Aunt Sally The Shakespeare – Monday 6th June

Horseshoes The Gamecock - Tuesday 7th June

Skittles Old New Inn - Wednesday 8th June

Quiz Night The Village Club - Thursday 9th June

The games start at 7.30pm each evening and may the best one win!

Peter Walshe
On behalf of the Carnival Committee

Myton Hospice Support Group at Harbury Carnival

We are hosting the refreshments in the Village Hall again this year for Myton Hospice. If anyone will make a cake for us, we would appreciate it very much.

Myton Hospice Harbury Support Group

Blood Donors

The next session in Harbury Village Hall will be on Thursday 9th June; 1.30pm – 3.30pm and 4.30 – 7.30pm. Attendance often drops in the summer, as people are taking holidays but, as many of us are only too aware, the need is always present. As more complex procedures are now possible, blood and blood products are used in surgery, childbirth and supporting patients with acute and chronic illnesses – most of us know someone who has been saved by this precious gift. Last time we were so close to 100 donations – can we get there this time? Donors can start at the age of 17 and existing donors now have no upper limit if their health is good.

Gillian Hare, 614809



Wednesday Walkers

Come walk with us across the fields

We're quite a friendly bunch

By woods, canals, up hill, down dale

Then maybe a pub lunch.



We enjoyed an excellent pub lunch at Hellidon after yet another dry walk – how lucky have we been this year? Although, we were conscious of the need for rain when our walking sticks jammed in cracks in the ground.

8th June Edgehill Four miles

15th June Ufton to Bascote Four miles

22nd June Cropedy with optional pub lunch, three or five miles

29th June Flecknoe Five miles

6th July Priors Marston Three miles

Several of these clash with village outings so, if anyone else would like to swell our numbers they would be more than welcome. Just turn up at the Village Hall by 9.45am – or check with Pam Parton, 614188 or Gillian Hare, 614809.

Gillian Hare

Lost - Garmin Sat Nav

On the evening of the 15th of April my wife and I suffered premature senility.

Whilst packing our car for departure to Germany we conspired to lose our "Gary Garmin".

Our last hope is that we left it on the roof of the car and drove off on the morning of the 16th depositing it either in Binswood End or Farm St. If you have found Gary we'd be delighted to have him back.

Please telephone us on 614800 and make our day if you have him – many thanks.

Ian & Sue Panton

Cascading Lunches

Well done to all of you who have held a cascading lunch. A double thank you to Joan Broomfield who has held two lunches. Our efforts have raised £1112.00 so far. I hope that more lunches will take place over the

next few months and I am sure that anyone who has hosted one will agree that it is great fun.

Jan Freeman

Art Classes

Art classes are held in the Scout Hut every Tuesday morning during term time.

The artists have been building on their water colour techniques. We are working with a seriously limited palette - just two colours. There are several good reasons to paint in this way. Firstly it teaches you how to look at tonal variations, seeing not only black and white but two or three grey tones in between.

Painting in a limited palette will stop you from slavishly putting every colour you see in the painting, giving your work a harmonious flow of colours that work together. The result will look totally original and will have a mood about it.

I often paint in this way as it is the easiest way to create a stunning painting and you don't have to worry about what colour to choose as you only have two. We will develop this technique over the remainder of this term and maybe increase our colour range to three colours.

Over the Easter break I held a portrait workshop, a still life workshop and three sketching days. All the courses were fully subscribed and people are asking me to do some over the summer holidays. If you are interested in joining one of these painting days you can look at my web site on <http://web.mac.com/janfreemanartist> where I shall put details of the courses nearer the time.

After the summer break, I will continue with the water colourists, but also open up the classes to a beginner group. If you are thinking about taking up painting, this is the time to join - at the very beginning. You will be taught to draw with pencil, charcoal and ink and then you will learn to paint in pastel. This gives you an excellent grounding before you get to paint with a brush and builds up your artistic knowledge and confidence.

Call Jan on 01926 614251 if you are interested.

Jan Freeman

Harbury Art Group

We are a very friendly group that meets for tutor led painting and drawing workshops on the first Thursday of the month in the



Tom Hauley Room, Harbury between 10am and 3pm (approx). The tutor provides the subject each month, and guides us on how to proceed, giving individual help as needed. All ranges of ability attend the group and we always welcome new members. There is no joining fee or commitment to attend

each month, all you do is pay £15 on the day (fee includes tea, coffee & biscuits - bring your own packed lunch). To find out more, please telephone Pam on 01926 814923 or the tutor, Nick on 01295 276465. If you would like to see the group in action, please feel free to drop into the Tom Hauley room during our sessions.

Pam McConnell
Harbury Art Group Organiser



Nine teams entered for Heart of Harbury Games -Saturday 18th June

We now have nine teams (with over 160 participants) signed up to take part in the Heart of Harbury Games on Saturday 18th June:

- Brown, Wilkinson, Kempton, Marston & Woodhouse families
- Simpson, Grey, White, Gibbs, Dodds, Love families
- Jackson, Quinney families and others
- "The Temple Enders" led by Rosemary Harley
- DoE team led by Susie Tawney
- Twinning Association with Peter Rollason & Colin Humphreys
- Junior Football captained by Malcolm Tanner
- Cana Imports led by Rob and Libby
- Rugby Club headed by Charlie Gladden



There may still be a few places left in some of the teams so contact the team captains if you want to be added to a team. Let me know if you want to sponsor an event (for £50) or donate a raffle prize. In any case, please come along and support your favourite team, buy a snack for lunch and enjoy the fun:

- Opening ceremony at 10.00am with Dave Moorcroft, arrival of Olympic style flame etc
- Lots of serious competition plus many fun events
- Medal ceremonies with flags and anthems
- Barbeque, drinks and snacks for sale
- Raffle and Lucky Programme
- And a whole lot more!

If you want to take part but you're not in a team, why not enter the mile race (open to all comers)?

All proceeds to the Village Hall Development fund.

Andrew Lawrence, Chair of the Organising Group, (614937)

BBQ at the Crown Inn

The barbeque at the Crown on 2nd May was bathed in glorious sunshine. The high wind prevented the marquee going up, but did not blow the bouncy castle away and, thanks to Andy and team, no child bounced off it. The food was really good; David sold beautiful plants on his stall while Barbara quietly oversaw books being recycled to new readers. Among other delights there were some very colourful painted faces and the chance of therapy: i.e. chucking sticks at Aunt Sally, ending with a good number of happy raffle winners. Many thanks to Joe, his staff and everyone who came and made it such an enjoyable day and raised £1474.80 divided between Myton Hospice and the Village Hall fund.

Chris Rutherford

Harbury Senior Citizens Committee Update

At the time of writing, we have several seats available for the trip to Windsor. If you have had a last minute change of mind, please contact Thelma Gulliver on 613269 or Margaret Sherrington on 613704 to book your place.

We are also able to offer some seats for £10 return, which is great value for a day out. These will be available to both Harbury and non Harbury residents who would like to join us on the trip. Please call Thelma or Margaret on the numbers listed if you are interested in going.

The coaches will leave the Village Hall at 8:30am on Wednesday 15th June, come rain or shine. We hope that you all enjoy yourselves.

Mike McBride,

On behalf of the Harbury Senior Citizens Benefit Association



Harbury Energy Initiative

By now you will have noticed several houses having solar panels or PV's put on their roof. These make electricity from the sun and when the use is low in the home the extra is sold back to the grid. This means householders gain by being paid and this helps offset their electricity bill as well as being a greener production of their electricity. We hope that we will soon see some on the Village Hall roof too.

A small group met recently to be trained as Energy Advisers; they will be able to give advice to householders on the best way to cut their fuel bills and how to make their home warmer and more efficient. If you have a question do ask for help from your friendly neighbourhood advisers by contacting David Bristow 01926 612536 or bristowfamily@hotmail.co.uk.

We are here to help you save money and help the planet at the same time. We learned that the best thing to do is change your light bulbs to low energy ones. The payback is about eight weeks. The next best is to get your home well insulated. For people over seventy there are grants available and for some on benefits it is free. To find out get in touch with advice@actonenergy.org.uk or phone free on 0800 9882881. You can also benefit from a grant to fit renewable energy in your home. For advice on this go to www.energysavingtrust.org.uk or phone free on 0800 512012. Another activity we are engaged in is to investigate the possibility of making our own electricity in the village or at least some, so that we can all benefit. This is a long term project but watch this space!

We have been working with the primary school and will be sharing their Green Memories and Green Futures on 8th October when they launch their Heritage project and Energy Day. It will be opened at 11.00am by Jeremy Wright our MP. We hope many of you will be able to come on that day and find out about energy saving and see the Heritage collection for yourselves and see the results of their energy surveys that some of you filled for them.

On 25th May we held an open meeting in the Old New Inn and had feedback from groups including the school project on energy who will display their findings from the 500 surveys that were returned at the event in October. The Technology Group will set up an Owl meter for people to borrow to monitor their electricity use. This will be on display at our Carnival stall. We are also hoping to arrange a visit during the day to the Wolveley energy centre in Leamington in September or October to find out if there is anything else we can pass on to others in saving energy in the home. The next open meeting at the Old New Inn will be 14th September at 7.00pm. Everyone is invited to come and share ideas to progress the Harbury Energy Initiative. We will also be holding a coffee morning in the future.

Jenny Patrick

Village with a Vision

It is a real relief to be able to tell you that things are now moving faster with the Harbury Extra Care Home project. We have chosen a Partner and are arranging to meet with them to set up our working arrangements.

It will be for them to arrange funding, negotiate the purchase of the land, plan, design apply for planning permission, and follow the project through to completion. This will obviously not happen overnight, but things should really begin to move over the next few months.

The chosen Partner is sensitive and sympathetic to the needs of our community, and having worked for Warwickshire County Council and been recommended by them, we have every faith in their being able to deliver an Extra Care Home which meets our needs, and of which the village can be proud.

We'll keep giving you updates month by month.

Tony Stubbs

Chesterton Mid-Summer Prom 25th June 2011 at 6.30pm

Once again we are holding a Mid-Summer Prom outside concert on the jousting field at the back of the Church. Please bring along your seating, picnic, wine and flags for an evening of entertainment from Espresso and the Stoneleigh Men's Choir. Tickets available from Country Fayre, £12 each, children aged fourteen and under free. The Prom is held in association with Cancer Research and Chesterton Church.

Jo Spurr

1986 School Leavers Reunion

Well we have now been officially left school for twenty five years!! It would be wrong not to celebrate the fact. So, if you left Southam High School in 1986 and fancy a trip down memory lane, catch up with old friends and generally have a good laugh, please come to Harbury Rugby Club on Friday 17th June from 7.30pm onwards. It is £5 per head to include a disco, light supper and camping (with your own tent) if accommodation is required. It would be great to see loads of us there re-living the old Rugby Club nights!!! For more info please contact Beccy on 07969 071544 or mcdaidmadhouse@talktalk.net.

So to everyone born between 1st Sept 1969 and 31st August 1970 we really hope to see you there.

Beccy McDaid

Revisions to Bus Services for Harbury

The first phase of bus service revisions in South Warwickshire have begun to take effect from the end of May. From Tuesday 31st May, new timetables have been put in place due to the reduction in Government funding for bus subsidies.

In its 2011/2012 budget, Warwickshire County Council has had to manage a 45 per cent reduction in the amount of bus subsidies it pays to operators to provide services which are not commercially viable but are necessary for communities. However, the County Council has allocated an additional £350,000 to the budget to protect Sunday services and maintain Flexibuses which provide accessible bus services for the community.

The local authority is carrying out a series of bus service revisions in a phased programme over the next few months with the new network expected to be fully implemented by the end of September 2011.

Some of the key features of the first phase are the removal of evening bus services subsidised by the County Council and revisions to the current network of rural bus services operated by Johnsons. Also, from Tuesday 31st May 2011, the following service will be withdrawn: Flexibus Service 500 – Harbury – Stratford.

I would like to take this opportunity of reminding residents that they can, if they wish, use the dial a ride Community Links scheme which operates Mondays to Fridays between 0915 and 1500. The service is available to people of all ages where conventional public transport is unavailable or very limited, and for people with mobility difficulties. The cost of the

service is £1.30 per single journey and people need to contact Community Links on 01789 264491 in advance to make a booking.

The county council has provided details of the revised bus services on its website at www.warwickshire.gov.uk/busservicechanges.

Dennis Young
Publicity Team Manager, Transport Operations
Warwickshire County Council

Old New Inn Royal Wedding Street Party

Masterminded by Chris “Biggles” Rigby in co-operation with landlady Sandra Moffitt and some very able young women, the Street Party Celebrations at the Old New Inn turned out to be a lovely, friendly and lively day with super hot dogs and beef burgers at £2 a time, games for children and an evening’s entertainment by the Road Hogs all for free.

The burgers, raffle and very generous donations raised £1,000 for Help for Heroes, the charity chosen by Sandra.

Linda Ridgley

‘Royal Wedding’ Family Picnic at Deppers Bridge

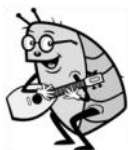
Well done William and Kate – your day was a triumph. And, in our own very modest way, so was ours! On Saturday, 30th April, at long last, residents of Deppers Bridge came together for our own Family Picnic at our recreation ground. What we lacked in numbers was amply made up for in goodwill and enthusiasm. The day was bright and sunny and would have been perfect but for a chilly wind. But that didn’t dampen spirits – far from it. It was rewarding to see so many willing and able to enjoy the simple pleasures of a family picnic. Everyone agreed – it was long overdue and we must do it again. So come on everyone – get your heads together for the next event. Thank you for coming and well done!

Hazel Turner

Harbury Duke of Edinburgh’s Award Group Quiz Night

The village D of E group is holding a fund-raising quiz night on Friday 17th June in Harbury School Hall, doors open 7.30pm, the quiz starts at 8pm. Bar by Cana Imports and refreshments will be served during the evening. There will also be a raffle. If you would like to book a team of four for this fun night out in the village, please call Caroline Hill on 613780 or email caro.hill@btinternet.com as soon as possible, so as not to be disappointed!

Caroline Hill



Harbury Ukulele Groups

Harbury Ukulele Group (HUG) goes from strength to strength and for the last couple of months we have welcomed Stratford Ukulele Group to our sessions, resulting in twenty six Ukuleles being played!

We meet on the first Monday of the month at the Shakespeare. For further information contact Craig Grocock (kankudai43@aol.co.uk) or check out our Facebook page – “Harbury Ukulele”. Next meet is Monday 6th June 8pm onwards.

We have our first major public performance coming up in July at Harbury School PTA's Summer Fayre on Saturday 9th July, so why not come along and see what we do.

Magnus Lewis-Smith

Sounds of the Sixties Event 2011

The marquees will be erected, the stage and dance floor constructed, the electrics wired up and the raffle and auction displayed, ready for the final SOTS charity event on 9th July at the Rugby Club ground. The small band of willing helpers, who have supported the event for the past ten years will make one final effort to push the amount raised for the Teenage Cancer Trust as close as possible to £70K, which is an incredibly impressive amount from the Harbury Support Group. Already four bands have pledged their services, which they provide free, so that the maximum amount can be raised for the charity. JKP, Mr Rock and Roll's Reelin' and Rockin', the Road Hogs and Phil King and the Royals are already in the line-up and there may be another band which is prepared to join 'the gang' before the final arrangements are made.

There will be food available at the event and bars will be open in the Rugby Club and in one of the outside marquees. The remaining smaller marquee displays the impressive range of prizes given in aid of TCT and nearby there are a number of items which can attract bids throughout the night, until the final call for offers is made at 11.00pm. Tickets for the last SOTS event can be ordered from Joe Griffin – 01926 613151/ 07831 405651 in the middle of June and it's advisable to get in a request as soon as possible since the event is often sold out. Before the night, tickets cost £10, but 'on the gate' admission costs £15.

Joe Griffin

A New Vision for Our Choir



We had a great afternoon singing at the Chesterton Horse and Rider Blessing on the 21st April with the Bishop of Warwick. The weather was great and over fifty horses of all colours and sizes came to take part.

We sang two hymns and a lovely version of The Lord's my Shepherd in two part harmony. We also sang some

Michael Jackson and Take That as the horses were being blessed and riding off for their hack. The children sang well and produced a lovely balanced sound, showing how they have learned to listen to each other and blend as they are singing - not an easy skill for any choir to master.

We have now started rehearsing for our next outing to Birmingham, where we are singing at the ceremony of the inauguration of the Lord Mayor for the third year running. It is a great privilege to be invited back yet again, and the music seems to get tougher each year, so we are looking forward to the challenge!

As the choir goes from strength to strength and sings further afield throughout the Midlands, we are now looking to expand. As a result, we will be renaming the choir 'Warwickshire Young Voices' and recruiting from a wider area. We have also expanded our teaching team, with the addition of Natalie Pinfield-Williams, a wonderful local soprano, saxophonist and fully qualified voice coach with a diploma in Music Theatre Performance, on top of her professional career in Nursing.

We will still be committed to providing the same high quality music and vocal teaching; hoping to give our singers many more varied opportunities to perform as young professionals, passing on even more of our own passion for music and live performance.

We believe in 'singing for all' as a skill for life, we do not hold auditions and welcome all youngsters to come along and be part of something great. We rehearse on a Thursday evening 6.30-7.30pm at Harbury Village Hall during term time. For more information, please visit www.warwickshireyoungvoices.org or phone 01926 614 150.

Helen Iles
Warwickshire Young Voices

Scarecrow Workshop

Artist Deborah Dutton will be running this event in Harbury Village Hall on Saturday 17th September at 10.00am – 4.00pm. Children with an adult are welcome. After learning the skill, construct your own scarecrow and put it somewhere around the village. On Sunday 18th we will issue a map featuring the scarecrows. Come along at 2pm to the Village Hall and try to follow the scarecrow trail. Teas will be available on Sunday. Most material will be supplied but suitably old clothes to dress your scarecrow should be brought along. Cost of workshop £3.00. About twenty places are available. Contact Moira Lamont (613527) or John Hancock (612860) to book. See you there.

John Hancock
Harbury Village Hall Fundraising Committee

Boogie and Bounce - New Classes for 18 Months - School Age

LoveBallet Dance Company is offering some exciting new classes for children and their carers from 18 months to school age. These classes are a great way for children and their carers to introduce their child to dance at a young age. The classes are brilliant fun, and involve a mix of dance, gymnastics, rhythm and music. A lovely opportunity to give your child something new to try so they can explore and enhance their learning and creativity.

Lessons will start on the dates below. Feel free to come along - Free Trial Class for your first lesson.

Harbury Village Hall Tuesdays 1.30pm - 2.30pm (starting Tuesday 7th June)

The Grange Hall, Southam 11.00 - 12 noon (starting Wed 8th June)

For more information please contact Lorraine@loveballet.co.uk or call 07711 010404.

Lorraine Heath
LoveBallet

Harbury Company Flip-In Hair wins Award

Congratulations to Dayle Adams, Managing Director of Flip-In Hair Limited who collected, the SME/Business Start-up of the Year at the recent Coventry Evening Telegraph Business Awards 2011, from celebrity guest presenter, Quentin Willson.

Flip-In Hair Limited has been based in Harbury since 2009, when it launched a unique human hair extension into an incredulous Hair Industry. The extension allows clients to transform their appearance in less than one minute, without any damage to their natural hair. It attaches to the head and not the hair using an almost invisible wire. Simple, effective and safe.

Flip-In Hair Limited has continued to expand and employ local people. Pictured with Dayle is Harbury born Lisa Tebaldi, the UK Sales Manager, who has played a vital part in the company's growth.



Flip-In Hair



Make a World of Difference with Rotary

Join Rotary and a world of possibilities opens up for you

The enormous sense of achievement you will experience in helping your local community – and other communities around the world – will be matched only by the fun you will have doing it!

Right now we are looking for more men and women of all ages and backgrounds to join our network of Rotary clubs throughout Great Britain and Ireland, to use their energy, humour and professional skills to make a real difference to the lives of others.

Rotary is a highly respected world-wide organisation and it works closely with United Nations organisations like UNICEF and the WHO. It believes that by working together we can help produce "Peace the World Over". It also works within its own communities to support the young and old alike to help them live better and more fulfilling lives.

Interested in joining?

If you would like to 'give something back', Rotary can give you the chance you have been waiting for.

The Rotary clubs in Southam serving their local communities would like to ask if you would consider joining us in our endeavours? Both clubs meet at the Fox & Hen public house in Bascote Heath, Southam.

To find out more about Rotary, please contact us via :

email: sec@southam2000rotary.org.uk Secretary: Dave Roberts

Via our website: www.southam2000rotary.org.uk or freephone: 0800 228 9104 [message service]

And discover how you can make a world of difference, with Rotary!

Jim Sleight
Rotary Club, Southam

Southam Open Gardens Sunday 17th July

This year, Southam In Bloom is holding an Open Gardens Day. Seventeen-plus gardens will be open from 11:00am to 5:00pm. On show will be a wonderful variety of small and large gardens including riverside, walled, cottage, vegetable and even one with its own (small) railway - in fact something for everyone!

Entrance will be by programme (£3 per adult, children free), available beforehand from Goodwin's or Jacqueline the Florist and, on the day, from St James Church or any of the gardens. The Church and Cardall Collection will be open to visitors and a number of the gardens will be serving refreshments.

Tessa Sadler

Have you heard about Community Forums?

Community Forums are public meetings led by the County Council and Stratford-on-Avon District Council to engage the public in council business. Warwickshire Police promote 'Safer Neighbourhoods' through the Community Forums. Additionally the Neighbourhood Policing Teams hold a surgery prior to the forum during which time tea/coffee is available.

Your Community Forum's next meeting is scheduled to take place on Wednesday 8th June 2011 at The Dasset Primary School, Memorial Road, Fenny Compton CV47 2XU where the main topics will be Transformation of Youth Service, Southam Vision update and lots more.

If you have a specific concern or problem, then drop in to the local surgery from 6.30pm–7.00pm where you will be able to speak to your Neighbourhood Policing Team, Councillors and Officers from Warwickshire County and Stratford-on-Avon District Councils.

If you would like to suggest an issue for a future Community Forum

meeting, or find out more, please contact Amanda Wilson-Patterson on 01789 260135 or email: amandawilsonpatterson@warwickshire.gov.uk.

Amanda Wilson-Patterson, Warwickshire County Council

Superfast Broadband

Coventry, Warwickshire and Solihull could see superfast broadband rolled out across the sub-region – but businesses and individuals need to complete a survey to help release the money to make this happen.

Warwickshire County Council, in partnership with Coventry City Council, Solihull Borough Council and the CW Local Enterprise Partnership (LEP) want to bid for government funding to see high-speed broadband delivered to every part of the sub-region.

But, to do this, evidence is needed to show how current broadband provision is working, or not working, for businesses and individuals locally. The bid will only be successful if it demonstrates that families, businesses and communities in all areas of the sub-region want and need faster broadband.

Register your details now and be a part of better broadband for Warwickshire. We won't pass your details on to any third parties and you are not committing yourself to any new broadband contract or service.

Further information log on to Warwickshire County Council site as below: www.warwickshire.gov.uk/superfastbroadband.

Bev. Mann
District Councillor Harbury, 01926 614006

Village Voices

Village Voices Choir will be joined by Skellingthorpe Village Choir from Lincoln for a concert in aid of Warwickshire and Northamptonshire Air Ambulance on Saturday 2nd July at 7pm, Weston-under-Wetherley Village Hall. Tickets at £6 (including refreshments) are available at the door. A varied programme of songs will provide a delightful evening's entertainment. For further details: www.villagevoices.co.uk.

Sue Grimby
Village Voices

Madrigals to Musicals

Our Lady and St Wulstan R.C. Church, Southam, Saturday 25th June 2011 at 7.30pm

Southam's Windmill Singers present a concert, *Madrigals to Musicals* at

Our Lady and St Wulstan Church, Southam on Saturday 25th June at 7.30pm.

The concert traces music through the ages with the choir performing sacred music, spirituals and modern selections from *Les Miserables* and songs made famous by Elton John, Sting, Chrystal Gale, George Shearing and a few surprises!

The Choir will also perform the Vivaldi *Credo* with string accompaniment. The concert is free, but donations will be gratefully received.

This summer the Windmill Singers have been invited to make a guest appearance at Wakefield Cathedral.

For further information please contact: Windmill Singers Musical Director, Gary Beaman on 01926 498264 or Windmill Singers Chairman, Bill Buckler on 01926 633409.

Bob Teers



LETTERS TO THE EDITORS

Dear Editors

Thank you to everyone who gave to Christian Aid this year. We raised a total of £1260.41.

Mike Hare

Dear Editors

Many thanks to all our wonderful friends in Harbury, Leamington Brakes Colts Football Club and Harbury Juniors Rugby Club who supported us at a recent fund raiser held in aid of the Birmingham Children's Hospital following Jamie's accident at the park.

Their overwhelming support on the day (and whilst Jamie was in hospital) was very much appreciated.

We were delighted to have raised £400 on the morning and will be donating this to the Liver Ward where Jamie spent a month.

We will also be making a donation to the magnificent Ronald McDonald Charitable Hostel next to the hospital, who gave us free accommodation and twenty four hour support at a very difficult time.

*RMCH (as it's known) is run totally on donations, and without their help, many parents would not be able to be with their children who are long term in hospital, so thanks to them also. Next time you are in a McDonalds give them your pennies in the collecting boxes by the tills. They do **fantastic** work!!*

We are delighted to report Jamie is now fully recovered and thanks once again to all in Harbury who yet again rose to the occasion and made us so proud to be "Harburians!"

Lily & James Head
The Old Post Office

Dear Editors

A great day was had by all at our Harbury Street Party, held at the Old New Inn, to celebrate William and Kate's wedding.

There was plenty of food to share and thankfully the weather exceeded our expectations, despite the weathermen's forecast of rain.

Everyone had fun, adults and children alike, with some traditional English games such as the egg and spoon race and sack race.

Hot dogs and burgers kept everyone going into the night when we enjoyed the music of the Road Hogs.

A huge thank you to Chris Rigby for organising the day, with thanks to Rosina, Tracey, Haydee, Linda, Alison and to Sandra and Brian for letting us hold the event at the Old New Inn., and a big thank you to every one who came along and made it such a success and helping us to raise £1000 for Help for Heroes, as well!

Yvette Tanner

Dear Editors

Why oh why do the youth of today have to cause damage instead of enjoying the countryside.

Recently several trees have been chopped down in the Spinney in Hall Lane for no reason at all! Perfectly healthy trees all in blossom, causing no problems to anyone.


The Spinney is actually a Conservation Area and any damage can result in a fine!

Over the years it has been enjoyed by many local families for pleasure but now we feel it is unsafe at times as it has become a haven for drug abuse, lighting of fires and litter!

Please let us enjoy nature not destroy it!

Hall Lane Residents

BOOKINGS FOR		
SCOUT HUT	TOM HAULEY ROOM	THR COFFEE MORNINGS
Caroline Hill Tel: 613780 -	Sally Stringer Tel: 613214 sal.47@hotmail.co.uk	Sally Stringer Tel: 613214 sal.47@hotmail.co.uk
VILLAGE HALL	VILLAGE CLUB - CONCERT ROOM	WIGHT SCHOOL
Celia Neill Tel: 612819 harburyvillagehall@googlegmail.com	- Tel: 612498 (evenings) harburyvillageclub@hotmail.co.uk	Anna Wilson Tel: 614217 anna9650@btinternet.com



Lambes Locks

Locksmith Services (Harbury Based)

- Locks opened using Non Destructive Entry (NDE)
- Locks replaced / upgraded
- On site key cutting
- Police Vetted, fully insured
- Member of the NNAL & FSB

See our website www.lambeslocks.co.uk Call us on 07593 657305

Please add this number to your phone. You never know if you'll need it.

OFSTED REGISTERED CHILD MINDER - KNIGHTCOTE

Ofsted Registered with 10 years of experience who has recently moved into the local area. Full or part-time care, before and after school care, flexible hours, weekend and night cover. Vacancies available.

Please phone Mel on 01295 770831, 07576 759212 or email rbllmywd@aol.com for further information.



A Member of the Alliance of Private Sector Practitioners

Jackie Biddle

Healthy Feet are Happy Feet

Foot Health Practitioner



Dip CFP NPMS Pract
CRB Checked



Home Visits Telephone

T: 01926 612503

M: 07872 907429

FENCES : TREES



All types of fencing and gates

Tree felling and reduction

Hedge laying and trimming

Patios

Seasoned logs available

**Call Adrian Dollar on
01926 817077 or
07914 623989**

Qualified and Insured



THE CROWN INN

Serving a Gastronomic,
International Menu
with a Mediterranean flavour.

Friday - Fish and Chip Day

with mushy peas

Eat in £7.95 / Takeaway - £6.50

Available between 5.00 - 7.00pm must be pre-ordered

A traditional Sunday lunch

Three course lunch - £13.95
from 12.00 noon - 5.00pm

Our Bistro is now enjoying a successful run.

Large choice of starters and mains
to choose from ranging in price from
£1.50 to £6.95

Bistro Opening Times:

Tue/Wed/Thurs/Fri

12.00 - 2.30pm and 6.30 - 8.30pm

Saturday at the Bistro

Enjoy a traditional Brunch
between 11.00am-1.00pm

Menus and more information are
available on our website!!

We have a dog friendly bar.

☎01926 614995

www.crowninnharbury.co.uk



Harbury Garden Design

Mature gardens... redesigned, replanted, revitalised.

Call Richard Wilne at Harbury Garden Design to arrange a free initial consultation.

01926 612204 – richard.wilne@gmail.com

Right tree, right place | High performance shrubs | Succession planting

HOME BOARDING FOR YOUR DOG



Wouldn't you enjoy your holiday much more knowing your pet was going on holiday too!



Why not let me look after your dog on our 22 acre farm where he will live as one of the family. No being shut in a kennel all day and night, just as much exercise as he wants with our own two friendly dogs who love to play with new friends. All needs catered for.

You will find our prices very reasonable and our care second to none. Give us a call on 01926 612921 or 07967 762475 and see how we can ensure you all have a good time!

**5 High Street
Southam**

**Warwickshire
CV47 0HA**

Tel: 01926 812574

Email: enquiries@reynoldsinsurance.co.uk

reynolds insurance

SERVICES LTD

Independent Insurance Advisers



Are you fed up with hanging on the phone or searching the internet?

Would you like to talk to friendly, experienced staff who will explain the small print?

We have been established in Southam since 1983 with the same staff who would be happy to offer you a competitive quote for all classes of insurance private or commercial.

Call Deb or Sue - 01926 812574

FREE QUOTES ON:

Household

Motor

Fleet/Vans/Trucks

Public/Employers Liabilities

Shops

Travel

Restaurants & Pubs

Business Insurance

Tradesman Insurance

Let Properties/Holiday Homes



Tap Classes

Friday evenings, The Grange, Southam

4.30pm - Little Tappers (3-5yrs) 4.30pm - Preparatory Tap (6-8yrs)



Dance Classes

Thursday evenings, The Grange, Southam

4.30pm - Funky Dance 1 (4-6yrs) 5.30pm - Funky Dance (7yrs +)
5.00pm - Gymnastics (all ages) 6.00pm - Grade 1 Ballet (9yrs +)



Ballet Lessons

Tuesday Evenings, The Grange, Southam

4.00pm - Prima Ballerinas (3-4yrs) 5.00pm - Pre-Primary (7-8yrs)
4.30pm - Pre-Syllabus (5-6yrs) 5.45pm - Primary (8yrs+)



Free Trial Class

Contact lorraine@loveballet.co.uk to book a place

Call 07711 010404

visit www.loveballet.co.uk



Boogie & Bounce



A great way to introduce your little ones to movement, dance, rhythm and basic gymnastics.

A wonderful fun, action packed class for children 18 months upwards and their carer's.

Harbury Village Hall, Harbury

Tuesdays (starting 7th June) 1.30pm - 2.30pm

The Grange Hall, Southam

Wednesdays (starting 8th June) 11.00am - 12noon

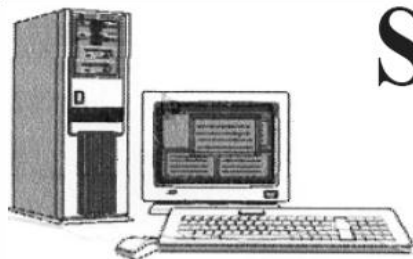
Boddington Village Hall, Upper Boddington

Wednesdays (starting 8th June) 11.45am - 12.45pm



Limited places available - FREE TRIAL CLASS

Call Lorraine 07711 010404 - www.loveballet.co.uk - lorraine@loveballet.co.uk



SIMONS SYSTEMS

Available for all your computer requirements including:
PC's and Laptops, New and used systems,
Upgrading memory/hard drives/rom drives/graphics, etc
Internet - modems fitted, wireless, networking.
Any repairs. **NO CALL OUT CHARGE**



Tel: 01926 316119



Mob: 07751 811097



E-mail: simons.systems@virgin.net


Fit2Burst

Personal Training @ Home

Specialising in:

- Weight loss
- Pilates
- Body conditioning

Free 1/2 hour consultation!



Claire Hever-Barnett
Personal Trainer

Group Exercise Classes With Claire

Mondays
Pilates, 9.30am - SGMS, Southam (starts 6th June)
Zumba, 6.30pm - Bishops Itchington Primary School
Pilates, 7.30pm - Bishops Itchington Primary School

Wednesdays
Pilates, 9.30am - Leamington Hastings Parish Hall
Zumba, 7.00pm - Bishops Itchington Primary School
Total Toning, 8.00pm - Bishops Itchington Primary School

Fridays
Fit 'n' Tone, 9.30am - SGMS, Southam (starts 10th June)
Pilates, 10.30am - SGMS, Southam (starts 10th June)

SGMS - Secret Garden Musical Theatre School, (Stairways, behind Southam Tyres)

Tel: 0787 989 6888
Email: clairehewer@hotmail.co.uk

www.fit2burst.co.uk

Avoid disappointment
Book in now!

Phil's
Plumbing and Heating

Fully Qualified
and
Insured Plumber

Bathrooms, Central Heating & showers

I am a locally based plumber
offering very competitive rates
on any plumbing or heating job.
No job too small,
Please give Phil a call

Call Phil
Daytime: **07971 046392**
Evening: **01926 400746**
Email: philmunday@hotmail.co.uk

Bishops Tachbrook
Leamington spa

NEWSPAPERS DELIVERED TO YOUR DOOR

Early morning deliveries to Harbury, Ladbroke, Deppers Bridge and surrounding properties of all newspapers and magazines.

One to seven days a week.

All vouchers accepted. Monthly billing Business accounts.

For more information and immediate start telephone

BISHOPS ITCHINGTON NEWS: 01926 612387

green
chameleon



Karena EA Ellis
MRICS, RICS Acc.Med., BSc Hons
M: 07796 575716 T: 01926 612121
E: info@greenchameleon.net
www.greenchameleon.net

Chartered Surveying ■
Mediation ■
Letting & Management ■

The Green Room, 31 Manor Road,
Harbury, Warks CV33 9HY





D.A.Knowles Plumbing Services

- **Specialising in complete BATHROOM and KITCHEN INSTALLATIONS**
- **Full TILING service available**
- **Competitive rates**
- **Project Management available for larger projects**
- **Over 25 years experience**
- **No job too small!!**

Mobile: 07721 522298 Home: 01926 613776 Email: da.knowles@btinternet.com



Gardens by Wendy

phone: 01926 614877

mobile: 07595 289331

e-mail: wendy@gardensbywendy.co.uk

- Garden design services from one-off consultations to full designs
- Advice on rejuvenating tired or problem areas of planting
- Help with growing fruit & veg, organic gardening, pests & diseases, etc.
- Specialist gardening work such as pruning, border maintenance etc.

Zoe's Beautique
No Time



07946170450

Gift Vouchers Available

Want a natural & healthy glow this summer?

Then try Sunless Solutions Spray Tan, available for every skin type.

A hassle free, long lasting & safe way to looking good.

Free OPI File & Polish nails with every Spray Tan

All for just £20 (Saving £10)

Receive 30% off all Tanning Products

Checkout our New Brochure at **www.zoesbeautique.com**

Quality treatments & Expert advice, in a warm friendly environment

Beauty consultant over 12 years – email: relax@zoesbeautique.com

Advanced Waxing - Electrolysis - Spray Tanning - Eyelash Extensions - Facials - Massage
Manicures – Pedicures - Wedding makeup - Pamper Parties - Ladies@Lunch - Online Shop
Station Road, Bishops Itchington, CV47 2QB. By Appointment Only

SADDLERS BED & BREAKFAST

SELF-CONTAINED COTTAGE IN THE HEART OF HARBURY.
DOUBLE BED, SHOWER ROOM, LIVING & DINING AREA WITH
KITCHENETTE, TV/DVD; CD/RADIO. SLEEPS 2 TO 4.
OFF ROAD PARKING.

£60 PER NIGHT INCLUDING CONTINENTAL BREAKFAST.

JULIE YOUNG, SADDLERS, CHAPEL STREET, HARBURY.
01926 614050 OR EMAIL enquiries@saddlersbed.co.uk
www.saddlersbed.co.uk



STORM LOCKS

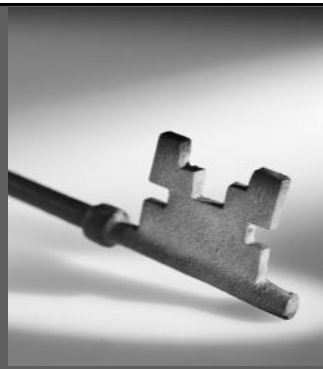
Your local friendly service

Security, Locks, Carpentry
Low prices

Call Kev on:

0778 774 6253

01926 811990



ADAMSTRANKS
BUILDING CONTRACTORS



Extensions-Alterations-Refurbishment-New Builds
Bespoke Kitchens and Bathrooms
Design-Planning & Building Regulations Application
Service available.

Web: kenilworthproperties.co.uk

Email: kenilworthprops@btconnect.co.uk

Telephone: Harbury 612260 Mobile: 07779 096104

Harbury Business Centre, Church Terrace, Harbury, Leamington Spa CV33 9HL



Charles Hanson Bargain Hunt
Expert and his team

of Valuers
 Refreshments in aid of the NSPCC



**FREE ANTIQUES, JEWELLERY, BOOKS, TOYS &
 COLLECTABLES VALUATIONS**

Items may be left to be entered into a suitable sale.

Thursday 9th June, 1.00 - 4.30pm

Leek Wootton Village Hall

Warwick Road, Leek Wootton, Warwick, CV35 7RB

**FREE JEWELLERY AND SILVER VALUATION DAY
 WITH KATE BLISS**

Thursday 14th July, 12.15 - 4.30pm

FREE HOME VISITS FOR LARGER ITEMS

Charles Hanson is also available for Charity events

Hansons now employs Kate Bliss as a consultant to advise clients on the value and sale of Jewellery and Silver.

Please contact Mrs Carol Jones, Hansons Warwickshire Representative on 01926 770066

Email: service@hansonsauctioneers.co.uk www.hansonsauctioneers.co.uk

**ADVERTISING IN THE
 HARBURY & LADBROKE
 NEWS**

EMAIL: ADVERTISING@HLNEWS.CO.UK

TEL: 01926 612155

Monthly

¼ page – £10.50 or £28 for 3 months

½ page – £19.00 or £49 for 3 months

Full page – £33.50 or £89 for 3 months

Annual

¼ page – £ 94.00

½ page – £168.00

Full page – £315.00

(coloured pages printed in April for the year)

**Adverts with payment to:
 Gill Holden,**

**31 Binswood End, Harbury
 by the 15th day of the month**

Cheques payable to 'Harbury & Ladbroke News'

**Roger Frogley
 & Sons Fencing**



High quality domestic, industrial and agricultural
 fencing offering a service second to none.
competitively priced - clean, efficient & reliable

If you require some fencing - look no further!
 Visit our fully featured website for ideas and
 examples and get in touch.

www.frogleyfencing.co.uk

or ring 07970 652145

Moore & Tibbits

Solicitors

Are you or your family facing difficult decisions about moving into a Care Home and the financial consequences of this?

We have a friendly specialist team who can provide practical support and guidance in relation to:-

- Care Fees and who should pay them
- Entitlement to NHS Public Funding
- Mental Capacity
- Court of Protection Applications and Lasting Powers of Attorney
- Wills, Probate and Inheritance Tax planning

We also undertake Family, Matrimonial and Conveyancing work

For further information please contact Angela Woodruff
on **01926 491181** or email **awoodruff@moore-tibbits.co.uk**

**Moore & Tibbits Solicitors,
34 High Street, Warwick,
CV34 4BE**

www.moore-tibbits.co.uk

Tel: 01926 491181
Fax: 01926 402692





June Specials from Absolute Beauty

2 hours of Ultimate Relaxation
 Full Body Massage (including Hot Stone)
 Neck, Shoulder & Relax Scalp Massage
 Aroma Full Facial with Lymphatic Drainage Massage
 Relax with Hand/Arm & Foot Massage while mask is on
 All for just £40

Airbrush Full Body Spray Tan for Just £10
 When you book with Minx or Shellac Nails

Express Eyelash Extensions
 Trial introductory price - £10

Full range of beauty treatments available
 Children's and Adult Pamper Parties

Tel Rosina on 01926 612403
 Web – www.rosina.moonfruit.com
 email - rosina@crigby.f9.co.uk
 (Harbury Studio)



9-11 MILL STREET, HARBURY
 LEAMINGTON SPA, CV33 9HR
 Telephone: 01926 613822

The Shakespeare Inn

- Traditional 18th century country inn
- Choice of real ales and guest beers
- Sunday Lunch / Hot food menu and snacks available 7 days a week
- 12 noon to 9.00pm
- Large car park and beer garden
- Function room



See us on [facebook](#)

Tom Greenway ADI **Local Driving Instructor**



- Competitive Rates
- Refresher Lessons

- One to one Instruction
- Pass Plus Registered

Tel: 01926 614462

Mobile: 07989 576561

PASS PASS PASS PASS PASS PASS PASS PASS



M.B. EDWARDS GENERAL BUILDER

NEW BUILD,
RENOVATION,
MAINTENANCE
INTERNAL,
EXTERNAL,
HOUSE AND HARD
LANDSCAPING.

ALL ASPECTS OF
BUILDING WORK,
INC. - MASONRY,
CARPENTRY,
DRI-LINING,
KITCHEN AND
BATHROOM FITTING,
TILING ETC....

CONTACT:
HOME - 01926 641057
MOBILE: 07790 047588

EMAIL:
medwards2006@btinternet.com

REASONABLE RATES
NO JOB TOO SMALL.



PROPERTY HIVE

- ✓ Specialising in rural properties in Warwickshire
- ✓ Quality properties at competitive prices
- ✓ Personal friendly service for Landlords and Tenants
- ✓ Total value in letting and property management
- ✓ No expensive 'bundled' packages

For all enquiries contact Julie:
Tel: 07894 716406
enquiries@property-hive.co.uk
www.property-hive.co.uk

Why you should buy your new kitchen or bathroom from Modern Homes!

- With over 43 years of trading we are the longest established specialist in your area.
- Predominantly British Manufactured products
- Family run 'local' business
- Personal recommendations
- Large kitchen and bathroom showroom
- Full installation service with employed fitters
- Value for money... We offer styles to suit all tastes and budgets
- Kbsa members offering Consumer care protection

www.modernhomesleamington.co.uk Email: info@modernhomesleamington.co.uk

01926 883338

Modern Homes, 37 Longfield Road, Sydenham Estate, Leamington Spa CV31 1XB
(between Wilts and CAS)



Fiona's Frames

Bespoke Picture Framing

Wide choice of mouldings & mounts for paintings, prints and needlework

Friendly Professional Service

Phone 01926 812807

Hillside, Napton

email:enquiries@fionasframes.co.uk

Domestic Gas Services

MARTIN EVANS

ACS 2007 Accredited Gas Safe Registered 197039

A Local Leamington Company

- **CENTRAL HEATING**
- **INSTALLATION**
- **SERVICE - REPAIR**
- **POWERFLUSHING**

Are your radiators not as warm as they should be?

Powerflushing removes sludge build-up, leaving your radiators warm and efficient again.

Ring for details.

07980 740720

gas safe
REGISTERED

Can be contacted via 15 Offchurch Lane, Radford Semele, CV31 1TN

eau ≈

the complete bathroom

design
supply
installation



call 01295 477477 or visit us at www.eaubathrooms.co.uk


LOCKE & ENGLAND
AUCTIONEERS & VALUERS

Established 1834

Auction Every Thursday

 Viewing Wednesday 12.00noon - 7.00pm
 and morning of sale from 9.00am

**Bi-Monthly Antique
& Collectors' Auctions**
Regular Valuation Days
**Valuations for Insurance,
Probate & Family Division**
Specialist & Commercial Sales
Collection Service
**ENTRIES INVITED FRIDAY,
MONDAY & TUESDAY**


12 Guy Street, Leamington Spa, Warwickshire CV32 4RT

01926 889 100
www.leauction.co.uk

Leafy
 Garden Services

Make the most of your garden this summer!

Whether you are looking for regular lawn mowing (from £10*), chemical weed control, tree / hedge trimming or any other outdoor job we have the skills and knowledge to help.

Why not ask about our new high pressure water cleaning service for patios, garden furniture and driveways.

Regular maintenance or odd jobs – No job too large or too small.

For your free, no obligation quote call your local, friendly gardener:

Richard Everett

Harbury: 613509 Mobile: 07923 167420

E-mail: leafyservices@gmail.com

Other services offered: fence repairs, borders removed or created, ivy clearance and small tree felling.

* Prices correct at time of print



JAMIESON JOINERS



Manufacturers of quality windows, doors,
stairs, conservatories,
fitted kitchens/bedrooms.

Established 25 years.
Competitive prices. Private/Trade

Tel 01926 612921/07968 009094

or e-mail your enquiry to:

stablesatharbury@hotmail.com

Warwickshire Groundworks

Your local contractor for:

- ◆ Driveways - Block paved
- ◆ Tarmac or Coloured Stone
- ◆ Patio Design & Construction
- ◆ Brickwork
- ◆ Fencing
- ◆ Shed Bases & Sheds Supplied
- ◆ Turfing
- ◆ All Hard & Soft Landscaping

City & Guilds Qualified
20 Years in the Business

Telephone Roger on:
01926 632994
07985 256009

*High Quality of workmanship
as Standard*



JOHN KING & SON

... The autobody repair specialists

Over 30 years of
"Quality, Value and
Service".



Courtesy car available

For a FREE estimate and
a Quality Affordable service

01926 817443

Mobile: 07852 882878 - 24/7

Email: tjkjohnkings@tiscali.co.uk

Unit 2, The Folly Lane, Napton,
Warwickshire CV47 8NZ

Lose weight fast whilst having fun!



Classes at Harbury Village Hall, Warwick Gates,
Leamington and Southam. Second class starting
in Southam 29th May!

For more information, call or visit my Facebook page:
www.facebook.com/warwickshirefitness

Please book in
Spaces limited!

Suitable for all abilities!



Phone Sam today on 0789 067 1869