

Harbury & Ladbroke News

Reflects all aspects of local life, is published monthly and produced with the assistance of
All Saints' Parochial Church Council.

September 2010

No.438

Editorial Office	☎ 612155
Articles to	Harbury Pharmacy, High Street
Email address	articles@hlnews.co.uk
Advertising Office	31, Binswood End (☎ 612155)
	advertising@hlnews.co.uk
Distribution Manager	49, Mill Street (☎ 612009)
	distribution@hlnews.co.uk
Inserts by prior arrangement	☎ 612009

IN THIS ISSUE

Page

EDITORIAL	2
HARBURY DIARY	3
FROM THE RECTOR & CHURCH NEWS	5
LADBROKE NEWS	8
HARBURY PARISH COUNCIL	15
HARBURY SOCIETY	20
HARBURY WOMENS INSTITUTE	21
HARBURY THEATRE GROUP	22
HARBURY FOLK CLUB	23
HARBURY TENNIS CLUB	24
HARBURY TODDLER GROUP	25
HARBURY PRE-SCHOOL	26
WINDMILLS NURSERY	28
VILLAGE HALL UPDATE	31
HORTICULTURAL SOCIETY	33
NATURE NOTES	36
GENERAL SECTION	38
LETTERS TO THE EDITORS	39

Editorial Team

John Holden - Chris Finch - Marian Millington, Janice Montague,
Ralph Swadling - Janice Thraves

*The views of contributors are not necessarily those of the Editorial Team
The Editors reserve the right to amend articles as they see fit.*



Editorial



Wendy, Cinda, and Giuseppe at their recent open evening.

We would like to welcome Giuseppe and Cinda, the new licensees at the Crown Inn. Over the last few months we have welcomed other new landlords to the village and we wish them all well in their new ventures. We hope to carry features on the local hostelries over the next few months.

The theft of fuel oil from Harbury Rugby Club is particularly disappointing. This would have been one of the first deliveries to the club as part of the village fuel buying group.

The Village Show which is on 11th September is moving to a new venue – The Club. We wish The Show every success and don't forget to get your entries in.

The Victorian Street Fayre is being revived and is being held on 9th October. We hope this will be well supported by stallholders – see the article for details on how to apply for a stall.

A reminder that the bus service changes on Monday, 6th September. Timetables are published in the magazine and are available from www.stagecoachbus.com/timetables

The revised timetable will give Ladbroke a service to Banbury and Leamington.

There are opportunities coming up for musicians. The Theatre Group are looking for musicians for the pantomime, and Father Craig is hoping to form a Ukulele group.

Congratulations to all successful students on the recent exams results. Southam College had a particularly good set of results.

Finally, we extend our sympathies to the family of Ken Hughes.

Harbury Diary

SEPTEMBER

- Sat 4 Coffee Morning 10.00am in Tom Hauley Room in aid of Harbury Society
Beer Festival in Village Hall
- Sun 5 **TRINITY XIV**
Sung Eucharist 9.00am
First Light Service 10.30am Tom Hauley Room
Service of Benediction 6.00pm
- Mon 6 **Remember Harbury Buses 65 & 66 replace No 64**
- Tues 7 **SCHOOL STARTS**
Holy Communion 7.30pm
- Wed 8 Ballroom Dancing 8.30-10.00pm in Village Hall
- Thurs 9 Holy Communion 9.45am
Table Tennis 9.30-10.30am in Village Hall
Choir School 6.30-7.30pm in Village Hall
WI 7.45pm in Tom Hauley Room, Fay Palmer on 'Dousing for Health'
- Fri 10 Tai Chi 7.00pm in Tom Hauley Room
Duke of Edinburgh Group Introductory meeting 7.45pm in Tom Hauley Room
- Sat 11 Coffee Morning 10.00am in Tom Hauley Room in aid of Tom Hauley Room
Harbury Village Show 2.00pm at the Village Club
Windmills Nursery Fundraising Event - Ella Kendrick 6.00pm at The Old New Inn
- Sun 12 **TRINITY XV**
Holy Communion 8.00am
Sung Eucharist 10.30am
- Mon 13 Art Classes re-start 1.00-4.00pm in Tom Hauley Room
Village Hall Cttee 7.30pm in Village Hall
- Tues 14 Toddlers Service 2.00pm Tom Hauley Room
Holy Communion 2.30pm
- Weds 15 Tea 3.00pm Tom Hauley Room
**ADVERTISEMENTS FOR NEXT ISSUE TO:
31 BINSWOOD END BY 5.30PM**
Ballroom Dancing 8.30-10.00pm in Village Hall
- Thurs 16 Holy Communion 9.45am
Table Tennis 9.30-10.30am in Village Hall
Choir School 6.30-7.30pm in Village Hall
- Sat 18 Men's Prayer Breakfast 7.30am
Linfoot Homes 'Off Plan Sales Launch' for Bush Heath development 9.00am-2.00pm in Village Hall

Coffee Morning 10.00am in Tom Hauley Room in aid of
 Harbury Theatre Group
 Southam Lions Annual Senior Citizens Party 2.15pm at
 Southam College ring 814294, 814436 or 811448 for details.

Sun 19

TRINITY XVI

Holy Communion 8.00am
 Harvest Family Communion Service 10.30am
 Harbury Hash - Registration 1.30-2.00pm at Chesterton
 Evensong 6.00pm
 General Knowledge Quiz in aid of Farm Crisis Network 7.00 for
 7.15pm start The Village Club

Mon 20

P.C.C. Meeting 7.30pm Tom Hauley Room

Tues 21

Holy Communion 7.30pm
 Mothers' Union Meeting 8.00pm Tom Hauley Room:
 Action & Outreach Projects - Chris Rutherford

Wed 22

Ballroom Dancing 8.30-10.00pm in Village Hall

Thurs 23

ARTICLES TO HARBURY PHARMACY, HIGH STREET AND
 EMAIL ARTICLES DEADLINE BY 5.30PM

Holy Communion 9.45am
 Table Tennis 9.30-10.30am in Village Hall
 Thursday Club 2.30pm in Village Hall
 Choir School 6.30-7.30pm in Village Hall
 Parish Council, 7.30pm in Village Hall

Fri 24

WI Harvest Supper 7.00 for 7.30pm in Village Hall
 Tai Chi 7.00pm in Tom Hauley Room

Sat 25

Coffee Morning 10.00am in Tom Hauley Room in aid of
 Village with a Vision
 Moving Pictures 'Nanny McPhee and the Big Bang', doors open
 4.00pm film starts 4.30pm in Village Hall
 Dinner Dance & Auction, Galanos House, Southam Tel: 812185

Sun 26

TRINITY XVII

Holy Communion 8.00am
 Sung Eucharist 10.30am
 Tues 28 Holy Communion 7.30pm
 Weds 29 Julian Meeting Quiet Day, Southam Retreat House
 Drop in Tea for the Bereaved 2.30 to 4.30pm, 19 Farm Street
 Ballroom Dancing 8.30-10.00pm in Village Hall
 Thurs 30 Holy Communion 9.45am
 Table Tennis 9.30-10.30am in Village Hall
 Choir School 6.30-7.30pm in Village Hall


OCTOBER

Fri 1

Tai Chi 7.00pm in Tom Hauley Room
 Ballroom Dancing 8.00pm in Village Hall
 Tickets £10 Tel: 613757

- Sat 2 Flu Clinic 9.30am – 12 noon at Harbury Surgery, Mill Street
(no appointment necessary)
Coffee Morning 10.00am in Tom Hauley Room in aid of
Cinnamon
Harvest Supper 7.00 for 7.30pm in the Village Hall
- Sun 3 **TRINITY XVIII**
Sung Eucharist 9.00am
First Light Service 10.30am Tom Hauley Room –
50th Meeting celebration
Quiet Contemplative Service in the Celtic Tradition 6.00pm

Refuse Collection Rota				
	Deppers Bridge	Harbury	Ladbroke	Refuse Collection Week
September	Wed	Thurs	Fri	
	8	9	10	Grey Bin
	15	16	17	Green & Blue Lid Bins
	22	23	24	Grey Bin
	29	30	1	Green & Blue Lid Bins
Oct	6	7	8	Grey Bin
	13	14	15	Green & Blue Lid Bins
	20	21	22	Grey Bin

	From the Rector	
	Father Craig Grocock The Rectory, Vicarage Lane, Harbury Tel.: 612377	

What happened to the summer?

We had a lovely June this year, plenty of sunshine, lots of hours spent in the garden, even hose pipe bans in parts of the country; then what happened? Rain and more rain! On top of this the nights are notably drawing in once again and it's feeling cold! What a disappointment, it feels somehow that we've been robbed of summer once again.

But let's be honest, it hasn't been great has it? Unless of course you've got webbed feet! I've hardly donned my shorts; the fan that optimistically came out of the attic was I think used once and as for the sun cream . . .?

As I write this I am once again preparing, with the family, to visit the Greenbelt Christian Arts Festival at Cheltenham Racecourse held over the Bank Holiday weekend – and yes, we are camping (cannot wait). Each year the Festival has a theme. This year the theme is 'Looking Sideways'. The idea is to encourage and invite us to look at the world and those around us with new eyes rather than simply looking at our own individual worlds and what we want.

This is so important for all of us. Yes, we all moan about the weather, we all despair as we see yet more rain falling, but if we dare to 'look sideways', we'll see with new eyes those suffering in Pakistan; we see with new eyes the plight of the two hundred woman raped recently in the Congo; we'll notice in a new way the poor in our country and we'll notice too those in our own communities who so desperately need to be loved.

So, as you begin to notice the onset of the darker evenings, as you put the fans back into the attic and pine for a summer that wasn't, take a chance and look sideways, count what blessings you have and reach out to those who need you.

God bless.

From the Registers

Holy Matrimony, All Saints' Harbury

7 August – Gregory Thomas Grant Sherrington to

Rebecca Lucy Jones

Service of Thanksgiving, All Saints' Harbury

19 August – Kenneth Capstick Hughes (83 yrs)



From the Churchwardens

Will & Fliss

Welcome back to Craig, Sue, Jess and Elliot after their holiday and thank you to the priests who ministered to us while Fr. Craig was away.

Thank you, too, to Gemma North who gave the presentation at the August All Age Communion Service. Basing it on the story of Jesus' feeding of the five thousand, Gemma reminded us of the abundance of God's love for us, more than we shall ever understand, greater than we can ever merit. We also thank Ralph, her grandson, and all who supported her in the music, word and action.

We hope that you've all had a restful, happy summer. Now we look ahead to our Harvest celebrations: the next All Age Harvest Communion Service, led by the school, on 19th September and the Harvest Supper on 2nd October. We look forward to seeing you there!



Mothers' Union

Gillian Hare

Welcome back after the summer break: we hope all our members are rested and refreshed.

As you read this, we shall have started our autumn programme with a service on September 1st. The next meeting will be on Tuesday September 21st; 8.00pm following 7.30 communion; at this Chris Rutherford will describe some of the work of the Action and Outreach Unit. In fact, this is so wide-reaching that there will be more at the afternoon meeting on October 6th.

Very many thanks to everyone who supported the coffee morning on August 7th, this raised the magnificent sum of £172.

Still to come:

Saturday September 25th – Diocesan Service to celebrate 10 years of the parenting projects and literacy initiative. This will be at St. Martin's, Finham at 2.00pm; lifts are available.

Tuesday October 12th – A quiet evening, also at Finham led by Bishop John.

Visitors, whether or not thinking of joining, are always welcome at M.U. meetings.



First Light

Alison Abbott

In Old Testament times, every 50th year was declared a Jubilee, when slaves were freed and debts were cancelled. We don't expect to free any slaves at First Light, but on October 3rd we do celebrate **our** Jubilee; our 50th meeting. What better excuse for a celebration? So please join us, in the Tom Hauley Room at 10.30am (or earlier for coffee).

There is no fixed pattern for First Light, but each time explores an aspect of our faith, using music, words, sometimes drama, sometimes participation, and is suitable for any age in an informal setting.

Ladbroke News & Diary

SEPTEMBER

Sun 5 TRINITY XIV

Family Communion 10.30am in Church

Wed 8 HS2 Action Group meeting 7.30pm

Sat 11 Whist Drive 7.45pm in Village Hall

Sun 12 TRINITY XV

Holy Communion Sung 9.00am in Church

Mon 13 Table Tennis 8.00pm in Village Hall

Wed 15 ADVERTISEMENTS FOR NEXT ISSUE TO 31 BINSWOOD END, HARBURY BY 5.30PM

Parish Council Meeting 7.45pm in Village Hall

Sat 18 Whist Drive 7.45pm Village Hall

Sun 19 TRINITY XVI

Holy Communion BCP 9.00am in Church

Mon 20 Table Tennis 8.00pm in Village Hall

Thurs 23 ARTICLES TO HARBURY PHARMACY, HIGH STREET AND EMAIL ARTICLES DEADLINE BY 5.30PM

Women's Institute 7.30pm in Village Hall Nigel Bishop will talk about The Retirement Garden

Sat 25 Whist Drive 7.45pm in Village Hall

Sun 26 TRINITY XVII

Holy Communion Sung 9.00am in Church

Mon 27 Table Tennis 8.00pm in Village Hall

OCTOBER

Sun 3 TRINITY XVIII

Harvest Thanksgiving 10.30am in Church

Mon 4 Table Tennis 8.00pm in Village Hall

Fri 8 Harvest Supper 7.00 for 7.30pm in Village Hall

Ladbroke Flower Rota

SEPTEMBER

5th Carol Lane / Carolyn Taylor

12th Carol Lane / Carolyn Taylor

19th Margaret Bosworth

26th TBA



Sue Lord



Ladbroke Church News

Sue Lord

The Ladbroke Church coffee morning held in the Tom Hauley room on 31st July was very enjoyable and raised the excellent sum of £220 for the church funds. A great result and many thanks to all who helped, contributed and came along.

Harvest Festival Family Service will be held on Sunday 3rd October at 3.00pm followed by tea and cake. Please come and join us in celebration and enjoy the church which is always beautifully decorated. Harvest Supper will be held as usual in the Village Hall on Friday 8th October at 7.30pm.

This year's Ride & Stride is on Saturday 11th September. Help preserve our historic churches with sponsorship. Visit as many local churches as you wish. Details from Betty Winkfield 812234.



Ladbroke & Deppers Bridge Women's Institute

Carol Lane

The members of the W.I. were very amusingly entertained on 22nd July by Pam Miller, who recounted many Pam Ayres type anecdotes, using experiences familiar to most of her audience!

On Wednesday, 18th August, 16 of us enjoyed a day at Coughton Court (I was interested to learn that it is pronounced 'Coat-un') near Alcester. We spent the morning in the gardens and between us we could identify nearly all of the huge variety of plants, Jean Clews being the arbiter in the odd difference of opinion.

After lunch we toured the house and learned that it had been the home of the Throckmorton family for 600 years. Some members of the family still live there.

There were very many interesting items, but the room which particularly fascinated me was the Tower Room, which contained the Tabula Eliensis, a painted canvas dated 1596 which showed the arms of the Catholic gentry imprisoned for their faith in the reign of Elizabeth I. It was rediscovered in 1910 from its hiding place in the roof where it had been placed in times of persecution.

In the corner of the same room was a double priest hole which, when opened up, also in 1910, still contained a portable altar, bed and rope ladder.

Also to be seen were the two churches, one Church of England and one Roman Catholic, within the grounds. It was a thoroughly good day out.



The next meeting will be held on September 23rd starting at 7.30 in the Village Hall when Nigel Bishop will talk about the Retirement Garden.



Ladbroke Parish Council - August 18th

Betty Winkfield

We must still be in the “Silly Season”, as the Parish meeting somehow interrupted a rehearsal for the band playing for the “Picnic in the Park” evening. After some “diplomatic” discussion the Council held its meeting.

Matters Arising

The owners of the caravan being lived in, in a field by Windmill Lane off the bypass, are still causing problems. While still being faced with eviction from the site, they have made a planning application for the erection of stabling and two storage containers.

Dog Waste bins – Discussions are taking place with the residents committee of Ladbroke Hall about this topic.

Gritting Bins – It was agreed that a fourth bin should be sited near Bridge Lane.

Remembrance Day Service – The Council would contact Rev. Grocock regarding this.

Flooding – (Exercise Watermark) – There is a meeting on September 8th in Leamington Town Hall about this subject 7.00 for 7.30pm.

Windmill Lane – Residents are to be contacted about the problem of parking and bollards. What is the combined consensual approval?

Ongoing Reports

David Tiley is to be consulted regarding flooding of a field alongside the brook in cases of emergency.

The Parish Plan is on its journey through the various committees. It has its representation on 21st September at 6.00pm at Elizabeth House, Stratford-upon-Avon.

There were no reports from the Village Hall. The HS2 Action Group is meeting next on 8th September at 7.30pm.

It was reported that the Goal Posts on the Millennium Green had been damaged again. There were empty beer cans lying about - so was it late night revellers?

Highways etc. The Police are aware of our “visitors” at the Southam end entrance to Ladbroke.

The Council were concerned about the various obstacles by Harbury Road where the road narrows before joining the Kineton Road at Deppers Bridge. Wide machinery and heavy lorries are a problem for any on-coming traffic they may meet - “not satisfactory”.

Janice Berry’s Memorial Tree is to be planted in the Millennium Green on the 16th October at 2.30pm.

Councillor Stevens’ (Warwickshire County Council) report

He had a great deal to say about the financial cuts that are coming our way - but there are many statements and no facts. We may know more after the spending review announcement on October 22nd.

Cllr. Stevens thought that the Fire Service would be more streamlined following the closure of three fire stations – they should be more efficient, Fenny Compton is to stay open. The minimum cuts would be 2% - £20m per year in Warwickshire. There would be more “Electronic Policing” – whatever that means?

The G.Ps would be virtually buying their patients beds in hospitals. The G.Ps would be funding the hospitals. It would mean G.Ps working in groups.

There is to be more sheltered accommodation for the elderly – Galanos House is already being extended.

The biggest cuts will be to roads and transport.

Education – only three schools in Warwickshire applied for academy status. Junior schools will continue to be responsible to Local Authorities.

The County Council are to encourage more forums, so that more decisions will be taken at a local level. There is to be more transparency to show where the money is spent.

The meeting closed at 8.50pm. The next meeting is on Wednesday September 15th.



Ladbroke General Section

Ladbroke Village Hall Millennium Club

The results of the draw for July were:

£80	Geoff and Georgina Middleton
£50	Richard Walker
£25	Carole and Peter Loftus
£10	Pete Edgar
£10	Kate and Kevin Pickin
£10	Keith Tancock
£10	Helen Ballard
£10	Mary Coley

Janet Goldson

Ladbroke Guided History Walks

May I say thank you to the response I had from Ladbroke and Harbury with the guided history walks around Ladbroke village. I'm pleased to say that those who enjoyed the walks also donated a further £280 for Parkinson's UK through my Trek China 2010 Challenge walk of a section of the Great Wall. This is now only days away, as I leave for China on September 18th.

For those who were unable to find the time to join us on a history walk, I've put together a booklet called "A Self-Guided Historical Walk Around Ladbroke" for £3.50 (+ 50p p&p) which can be ordered through me. I've paid all my own expenses for the Great Wall walk and so all donations go directly into Parkinson's UK, including the present proceeds from my booklet.

Anyone who wishes to order a booklet and would rather donate directly or to donate a larger sum and be gift-aided, can do so through the internet site "www.justgiving.com/Linda-Susan-Doyle".

I've been asked to consider a "Ghost Walk" one evening in Ladbroke around Halloween time - which could be fun! This would have to be limited to booked places only, so if there is any interest then do let me know!

linda@allhistoric.co.uk
Linda Doyle

The Ladbroke Hoard

In 1995 a metal detectorist found over 50 Roman coins near the ancient well spring (now filled in) on Weddington Hill, south west of Ladbroke. The coins are thought to have been a savings hoard hidden there in the latter part of the 4th century AD, when the Roman empire fell. The following year the coins were examined by Dr Stanley Ireland of the University of Warwick and Philip Wise of Warwickshire museum and, although the coins had degraded over time, some were still identifiable.

The earliest coin is from the time of emperor Hadrian (117-138 AD), famous for establishing the wall in northern Britain. Not surprisingly this coin is very badly worn as it is much older than others in the find.

The next 2 oldest coins are from the time of emperors Postumus (259-268 AD) and Allectus (293-296 AD). The head on the front of each of these coins wears a pointed or radiate crown showing they are what is nowadays called an *antoninianus*. This was a double denarius - 2 denarii being the amount that the Good Samaritan in Jesus' parable left with the innkeeper to cover the cost of looking after the man he had helped.



Most of the coins are a little smaller than a 5p piece but one is larger and thinner than the others. Roman mints were not worried about the dimensions of the coins, it was the weight that was important. This coin also shows a person wearing a radiate crown, but it may not be an *antoninianus*, because in 295 AD emperor Diocletian reformed the coinage using a cheaper metal mix, still keeping the radiate crown picture on the front. Due to a shortage of coins in circulation there were even some non-Roman ones issued with a similar picture and Warwick museum identified one of these *barbarous radiates* within the Ladbrooke hoard.

Many of the coins are from the Constantinian dynasty (307-364 AD). One good example is an *URBS ROMA commemorative*. Just as we have different designs on the back of 50p pieces to celebrate certain occasions, when emperor Constantine I moved the capital of the Roman Empire from Rome to Constantinople, a series of coins were issued to commemorate the event. Not only was there a design representing the new capital city but, in an ancient act of political correctness, perhaps not wishing to offend the Roman citizens too much, coins honouring Rome were issued as well. These have the personification of Rome, that is a head in a plumed helmet facing left on the front of the coin and on the back the wolf-suckling Romulus and Remus, the traditional founders of the city.



Above the wolf it is possible to see one of the two stars, representing the twin sons of Zeus. Below the picture are letters indicating where the coin was minted but unfortunately they are not clear or complete enough to do this for the Ladbroke example.

The coins found have the image of many different emperors or members of their families on the front showing that they are from across a wide time period. Some are as late as emperor Valentinian I (364-378), so the Ladbroke hoard must have been buried after that date. There are various pictures on the back and although not many of the mint marks are clear one coin was made in Lyons (PLG) and another in Arles (CON), also in France. One can only speculate how many people had owned these coins before they were buried on Weddington Hill, not to be discovered again until 16 centuries had passed.

Jackie West



Harbury Parish Council

Linda Ridgley

Official minutes can be viewed in the Library on the Parish Council website www.harbury-pc.gov.uk or obtained from the Parish Clerk Tel: 01926 614646

July 2010 Report

Public Participation

As a resident, Cllr Janet Thornley brought to her colleagues attention the difficulties faced by residents who wanted to put their names down for the new homes being built on Bush Heath Lane.

Like other Housing Authorities, Stratford now operated Choice Based Lettings and she had been advised that people would have to "bid" for properties. The only way to discover when these homes were available and make a bid was to look at the District's site over the internet, or phone an 0845 number. Cllr Hancock thought the Parish Council should complain to the District about these difficulties and make sure that residents were aware of the process.

Mrs Pratt of Park Lane complained about scooters being ridden about noisily late at night and early morning. This has been reported to the police. A number of blocked drains were also identified and vegetation which blocked street lights.

New Councillors

The Council had to choose two replacement Councillors and had three applicants:- Steve Edkins, Bill Hayward and Pat Summers. After all had had the opportunity to outline why they wanted to be Councillors and what their experience was Pat Summers and Steve Edkins were co-opted.

Planning

Stratford granted permission for the retrospective application for tennis courts at The Lodge, Hall Lane. It granted a single storey extension at 4 Wagstaffe Close, the erection of an agricultural building at Walworth Farm, and gave Tesco permission for a minor increase in parking spaces at its Kinton Road, Southam store. It refused permission for the School's Swimming Pool.

The Parish Council had no comments on extensions at 4, 6 and 11 Wagstaffe Close, the pruning of an Ash at Harbury House or the Grain Store at Eastfields Farm. It did comment that the planned extension at 38 Farley Avenue could overlook properties in Temple End and asked the District to make sure it properly informed these neighbours of the plans. The sewer to serve the Bush Heath Lane Development was in the process of being taken across the Playing Fields.

Parish Council Representatives Reports

Harbury School will appeal against the refusal of Planning Permission for a new pool. The Police are investigating the ring-barking of the Copper-leaved Acer.

Southam College has to improve the security of its site and separate the reception area from the rest of the school. There will be 234 pupils starting in September (24 got in on appeal) and extra teaching space has to be found. Mr Dudley and Mr Broderick are retiring.

Twinning made £250 with their Safari Supper.

Village Hall fund raising had elicited an excellent response from the village. Members of CAMRA had given their labour free to help create the new bar area and Southam Vision had provided funds for the materials and doors.

Deppers Bridge - BT had removed its equipment from the old phone box and there is now a notice explaining that it belongs to the Parish Council.

Cllr Thompson reported that he had been learning about the High Speed Rail route and praised the work Ladbroke had done to show its impact on their village.

Parish Properties

Cllr Hancock reported the BMX Track was being well used, but Cllr Thornley was concerned that youngsters were using it with no protective clothing. The Clerk would organise a notice to say that they should wear helmets.

The Picnic Table had been vandalised. It would be removed and not replaced.

The Tennis Court netting had also been vandalised and would need replacing.

There was no progress on dealing with unsafe headstones in the Burial Grounds. The PC would need to apply for a “facility” from the Diocese if the 40+ stones were to be laid flat.

Allotments - The Clerk had succeeded in getting the rent the Parish paid the County for the Allotments reduced from £750 a year to £650. The Parish had to give allotment holders a year's notice before it could raise their rents.

Water - The Clerk had also negotiated down the amount the County was demanding for an easement for the Tennis Courts water supply but Colin Mercer for the Tennis Club thought they were being bullied into paying an inflated price and thought an increase should be related to inflation. Cllr Hancock suggested that our County Councillor, Bob Stevens should be asked to investigate.

Trees - The Parish Council approved the quote to remove damaged trees and would ask Colin Sheasby to suggest suitable replacements.

Traffic Management - Cllr Hancock asked if the ‘Speed Aware’ sign worked but was assured that it did when anyone exceeded 35mph. But there were “no bollards” yet.

Environment - Another Environment Day was being planned and it was hoped to include a contribution from the children of Harbury School.

Finance - New office equipment was to be supplied by a local firm and the Parish Council would be able to reclaim the VAT. Cllr Hancock was pleased that the Parish was supporting local businesses.

Next Meeting 23rd September in Harbury Village Hall.

Harbury Parish Council Annual Parish Meeting Finance and General Purposes Working Party (F&GP) Annual Report for 2009 - 2010

The current year's precept, 2010/11 has been increased by £3,115 (4.9%) to £66,252; this gives an increase of £3.24 per year on a Band 'D' property, these increases are slightly lower than last year's increase.

The F&GP working party recommended to the full Parish Council that a 4.9% increase in the Parish Precept would enable the Parish to fully fund its plans for the year 2010/11

This level of Precept will allow the additional spending in the following areas;

- **Play areas** – Some of the existing equipment has already been replaced and this process is on-going. The replacement of the see-saw and resurfacing of the basketball courts are now in the plan. The proposed setting up of a fund to gradually build up sufficient funds to replace play equipment and carry out maintenance is underway.
- **S137** – We have set our budget at £5,000 for this year and the Council intends to spend these funds by targeting, not just local groups, but with priority for the local youth groups. In the last year donations were made to All Saints Church Youth Group, Harbury Duke of Edinburgh Scheme, Harbury Junior Rugby Club and Harbury Choir School, along with other groups – Twinning Association, Harbury News, Heritage Group, Village with a Vision and the British Legion.
- **Village Maintenance** – The contract for maintenance has been awarded to a new supplier, we believe this will give the Village better value for our money.
- **Village Hall Car Park** – We have carried over this budget to cover maintenance and repairs, due to the start of the Bush Heath Lane building works which will involve excavations through the car park.
- **Village Hall Development** – Again this year we have set aside funds to directly support the development plans for the Village Hall, this amount is set at £5,000.
- **Cemetery** – The risk assessment is still on-going and £1,500 is available to cover the works required to make the headstones safe.

- **Street Lighting** – £4,000 to cover new and replacement columns with an additional £4,000 for maintenance, with the budget for electricity being increased to £4,000 in anticipation of the rises that may be imposed by our supplier, E-On.

A summary of the past years (2009-2010) accounts are shown below and overleaf. These are well in line with our planned budgetary controls. Copies of the full accounts are included in the Parish Council Annual Report.

The Parish Office, which is open four mornings a week, gives us all access to the Parish Council, via the Clerk, to minutes, reports planning applications etc.

The Harbury Parish Council website provides yet another means to keep in touch with the Parish Council, with online viewing of the minutes, meeting schedules, quarterly reports and the contact details for all of the Council.

Current Harbury Parish planning applications can be viewed via our website, along with the details of other village groups. Please note the web address, <http://www.harbury-pc.gov.uk/>

On a personal note I would like to thank our Clerk, Nicola Thompson, for all of the help and support she has given to me and all of the Parish Councillors in the last year.

My thanks also go to my colleagues on the F&GP Working Party, Councillors Tim Lockley, Sharon Hancock and Ron Grey for their help, contributions and commitment throughout the past year.

Tony Mancell
Chair, Finance & General Purposes Working Party
May 2010

INCOME	
Precepts	63,137.00
Interest Received	193.73
Allotment Rents	765.00
Bural Ground Fees	1,798.00
Playing Fields Hire	200.00
Wayleave	33.86
Grass Verge Contribution	1,251.20
TOTAL INCOME	67,378.79

EXPENDITURE

General Administration	15,547.77
Training	300.00
Purchase of Office Equipment	152.95
Parish Office	3,963.71
Section 137 (Grants to Village Groups)	3,033.34
Contribution to Village Hall	5,000.00
Concessionary Travel	31.50
Allotments	1,152.92
Burial	3,165.20
Open Spaces	5,121.67
Playing Fields & Car Park	9,056.87
Non-Estate Roads	1,638.04
Street Lighting	9,194.99
BMX Track	540.00
Xmas Lights	155.00
Contribution to Sport's Club Fund	2,100.52
Councillor's Allowances	2,000.00
TOTAL EXPENDITURE	62,154.48



Harbury Society

Linda Ridgley

By the time you read this, we will probably have held our event for September, the Fund raising Coffee Morning in the Tom Hauley Room. The Committee has managed to arrange to visit the Green Waste Facility at Ufton Tip and will write a report on what happens there.

In October, on Tuesday 19th, by popular request, we have invited Mr Howe to give another of his entertaining and informative talks. This one is entitled "Accustomed as I am" and is about Public Speaking.

On 9th November Mick Jeffs will talk about the subject of his new book on "Warwickshire Landscapes". In the New Year we have a return visit on 25th January of Mr Close who will give us an update on progress at Chedhams Yard, Wellesbourne.

All of these talks will be in the Tom Hauley Room starting with coffee at 7.30pm; talks begin 8.00pm.

There will be a Social in February and then another Fund Raising Coffee Morning in March! The AGM is in April, a Pub Walk in May, the Carnival in June and then a Farm Visit in July and the year is over!

The Society continues to monitor and comment upon Planning Applications and Policy Documents. It keeps a watching brief on the High Speed Rail 2 and Quarries proposals and is involved in plans to provide a home for the archive which Nigel Chapman aka Elias Gruntfuttock has amassed at the school.

If you want to know more about the Society and its members come along to one of our meetings (they are free). See for yourself and if you like what you see, pay a subscription and join.



Harbury Women's Institute

Jeanne Beaumont

Hope everybody enjoyed their summer break. We have had some lovely weather although we have also had some heavy rain in August. This, of course, was needed badly for the garden and to replenish the area's water store which was only three quarters full.

We had a super day out at Hanbury Hall calling at Webbs Garden Centre, Wychbold. The journey from there should have taken fifteen minutes but the coach driver took a turn taking us along the narrowest lane which seemed to get worse. At one point he had to reverse into a farm entrance to allow a car to pass. It was decided to turn back. Unfortunately he took another turn, but then reached a low bridge so had to reverse nearly a mile back to the right lane. Good old Sat Nav, I don't think!

Because we were late, the booked tour of Hanbury Hall was shorter but the guide was excellent and most interesting. We enjoyed the lovely garden, park and lunch. We then continued to the Jinney Ring Craft Centre and spent a pleasant hour before the journey home. Thanks to Jo and Chris for organising the day.

We look forward to the visit to the Hill Close Victorian Gardens on Wednesday 22nd September at 2.30pm.

As Judy Morrall has already reported the Village Show is on Saturday 11th September at the Village Club and will be run by Patrick Clarke. Programmes are at Mugleston's, Dorothy Groves and Patrick's. Do consider entering as there is something for everybody. We look forward to the children's entries. Then do join us in the afternoon at 2.00pm for viewing and join in the Tombola, Raffle and refreshments. Articles for the Tombola would be very welcome. See you there.

The W.I. Harvest Supper is on Friday 24th September, 7.00 – 7.30pm at the Village Hall.

September meeting is at the Tom Hauley Room on Thursday 9th, 7.45pm. Speaker: Fay Palmer – Dowsing for Health



Harbury Theatre Group

Keith Hayes

Well done Harbury. You have rallied to the flag and looks as if we might have a Pantomime this year after all.

It may have a new look. Some faces you have not seen before. Some faces that you haven't seen for some time, and some faces that were a lot younger last time, but we have a willing team and we have a Panto that we are all keen to put on.

I expect that we will still have our problems over the next three months. How do we turn our new actors into semi-professionals? How do we simplify the sets to suit our stage? What do we do about the scenery we have had to throw out now that we have lost our storage in the Hall loft?. And, most important of all, what do we do about music?

We could put on the Panto without music but that would be a shame. Music adds so much to the "smile factor" and makes the whole thing so much less boring. (And so much more of a challenge.) I know we don't have much of a reputation on the music front but we have always given it our best shot and we haven't been too bad have we?

So one last appeal Harbury. Any budding musicians out there who would be willing to play at the last few rehearsals and through three performances at the Hall? Any one willing to help me put our cast and chorus through a few singing rehearsals? It could be fun.

You can contact me on 613488 or email keith.hayes@which.net



The theme for the 309th Folk Club was "Whatever takes your fancy?". Even though the audience was a little less than usual, this did not stop the Harbury Folksters from making the August Folk a really good night out. We did put it to the vote whether we did a singaround or kept to the usual formal setting. The usual setting won hands up!!!

Des began the evening with a setting-the-mood type of song and starting up the Harbury Chorus Engine. We listened to some beautiful lyrics about "a harvest being gathered in from Kent" and "when Autumn skies are blue". Maureen and Janny chose a green theme and sung about young men getting what they fancy!! Their second was about "Living in a Big Green Credit Machine", which was a song from Artisan. Rik, who brought with him a rather dandy velvet guitar case, sang one of Deborah's favourites – a song about three generations of rather fruity girls. His second was a song about getting over a broken heart in "Flying Down to Rio".

Peter Mason told us about going to his DADGAD guitar tuning workshop at the Warwick Folk Festival but discovered that the tutor had not shown up! Rather than waste the time, they all decided to have a playaround instead. Peter sang a Peter Roberts song "Paris and the Bear" and his second an Eric Bogle song. Up came the Harvesters who presented us with an old favourite of the Harvesters circa 1969 where a "stranger came up from the north where the pineapples grow". Then out came the Sue's banjo and a track was played from an LP by the Steelhouse Bottom Band (and played in a minor key) with the catchy "Don't you rock 'em Daddy O".

It was Ron's 80th last month and he spoke about the anniversary of the America's Cup back in 1983 and the Racing Yacht Australia. This was another good one for the Harbury Chorus Engine. Ron then went onto entertain us with a Toby Faginson song that Summer had sung once where we heard about "Slowing down to Lethargy". Peter McDonald was up next and he had immediately thought of Kate Rusby for the "Whatever Takes Your Fancy" theme. Instead he sang a Paul Metsers song "One More Time" that we all loved singing along to. He then followed that with Jez Lowe's "One Man Bound". Then the MD's (Mike and Debs) presented "Moon River" and a song written by Debs called "Carnival Queen".

Keith Donnelly came to the stage next and sang that he "can't get folk enough for me" and about "My sister, Laura and me".

To open the second half Des sang a couple of love songs – "Fakenham Fair" and "Down Below". Maureen and Janny were persuaded to sing for us again and they sang a song about "Cupid's Garden" so we could relish their beautiful close harmonies once more. Peter Mason sang a Jez Lowe song, another of Debbie's favourites, with the chorus "Idle Time" and then a Ralph McTell song. The Harvesters got us singing along to "Let the mystery be" then we had a marvellous display of flat-footing to the song "Goodbye Liza Jayne". Ron told us about 14th July and the celebrations of Bastille Day and had us singing about "Death to the traitor". Next he read out a very clever poem all about a town in America called Morrow. Peter McDonald sang two Dougie MacLean numbers – "Feel So Near" and "Caledonia". Debs then sang another self-penned song called "Down the Road" and then "Miss Otis Regrets". Keith Donnelly was given a request to sing about "Jesus at the airport" which he dedicated to a taxi driver in Gloucester.

Even though a lot of Folk Club members were unable to be with us this month it was still a great evening to be able to sing up to four songs each. The raffle raised £40 for Young Carers Warwickshire. So thank you very much. Doug and Janny are running the folk club next month and the theme is "Games and Pastimes."



Harbury Tennis Club

Colin and Sue Mercer

There are big changes afoot at Harbury Tennis Club from September! Sadly Linda Casement is leaving the village to move to Stratford after many years as the Club's head coach. During this time she has helped to build the Club's Junior membership and delivered a very popular and successful programme. We wish her well!

This has resulted in a complete re-think on our approach for the Junior Coaching Programme from September. We are pleased to say that we have now signed up "tennisolutions", led by director Mark Boden, to manage all the coaching for both junior and adult members. Mark is a successful performance coach who has worked with us in the past and is Head Coach at Shipston Tennis Club and also organises the tennis programmes at Victoria Park in Leamington. James Marsh is our new head coach and will be taking all coaching groups, using our own qualified assistants when needed. This opens up opportunities for

more of our Juniors to play in matches and tournaments and provide access to extra coaching for talented players. Sue Mercer is continuing as the Junior Co-ordinator and will deal with any enquiries.

The first Banbury league win of the summer season is still proving elusive but we're getting closer! The team against high flying Banbury West End was Caroline Morland, Eira Owen, Sue Mercer, Steve Stark, Keith Thompson and Colin Mercer. This ended in a 3-6 defeat but it could have been very different had Eira not injured her calf during her win with Caroline. She started well in her mixed doubles with Colin and they were leading 3-0 but she had to retire and concede the rubber and also her second ladies doubles with Sue. Harbury's other winners were Caroline and Steve and Colin and Keith (after a tiebreak). Caroline nearly had a hat-trick of wins but lost a close tiebreak with Sue.

The next 2 matches were both against Middleton Cheney. Eira had recovered for the away leg where Peter Walshe and Rosemary Harley replaced Keith and Sue. This was even closer with the final score being 5-4 to the home team. 3 rubbers were lost by the narrowest of margins, 5-6, the crucial one being Rosemary and Colin's rubber which went to a tiebreak. In the return match Sue Panton and Adam Crossling joined Caroline, Sue Mercer, Steve and Colin. This was again very close with 4 rubbers going to the wire. Unfortunately the visitors won 3 of them and went back to Northamptonshire with a 6-3 overall win, effectively confirming Harbury's relegation to Division 4.

01926 613284 - Email: sucol-merc@tiscali.co.uk



Harbury Toddler Group

Jemima Balcam

We've had another busy month at the Toddler Group, and a particularly messy one! We painted stones and enormous pine cones to make ladybirds and hedgehogs, and as usual when we're painting the table was packed and we couldn't get the brushes and paint ready fast enough. Everyone particularly loved the pine cones which Rosie and Lola's gran had donated, and some of the mums wanted to just take them as they were without the paint!

We also had a messy play session which was messier than we imagined, with sand, jelly, shaving foam, water and spaghetti to play with. The kids added to this some of the soil from the digging area and we found quite a few interesting mixes at the end of the session.

The children absolutely loved it, and we were reminded why we definitely don't do that at home!

We cut our session short on 9th August so that we could all join in a picnic being run by the Southam Children's Centre in Harbury Park. This was fantastic fun and it was like a 'Toddlers away from Toddlers' as everyone was there. The weather was glorious and the Children's Centre had brought along some fun outdoor toys so everyone had a fabulous time. Also, after chatting with the Children's Centre team, we hope that they will come and run some craft activities for our Toddler Group from September.

We finished the month with a seaside theme session, making jelly fish from paper plates and hand prints.

We have some lovely autumn craft activities lined up for next term, so if you would like to come along to the Harbury Toddler Group you will be very welcome! We run on Monday mornings only, 9.30 until 11.30, at the Wight School behind the library and have activities for children from 0-4, plus it's a great opportunity to meet other mums, carers and children in Harbury.



Harbury Pre-School had a fantastic year, highlighted by the "outstanding" OFSTED report. Activities and outings were wide-ranging and brought out the best in all the children, seventeen of whom left at the end of the summer term as confident little individuals, ready to start at Primary School in September.

Much of what was achieved would have been impossible without the wonderful efforts of our fund raising team, led by Julie Young. From the James Bond night to the "Bag2School" scheme, the work was unstinting and raised money for new toys and equipment that we could not otherwise have had.

The team already has plans for the coming term, so do look out for more information on:

"Bag2School" collection. Please leave any unwanted clothes, shoes, bedding (in bags - bin liners are good), on the driveway of "Saddlers", Chapel Street by 9.30am on **Friday 10th September**.

10th Harbury Victorian Street Fayre – back by popular demand on **9th October** to be organised jointly by Harbury Pre-School and Windmills Nursery. Anyone who would like to be involved, donate raffle prizes etc., please contact Julie Young on 614050. For more information on the Street Fayre, please see separate article in this issue.

Elvis Night – details to follow.

Treasure Hunt

Just a reminder to parents of children who took part in the sponsored Treasure Hunt: please return sponsorship forms and monies raised to Julie by 13th September (or to Pre-School).



The new Pre-School term starts on Tuesday 7th September and finishes on 17th December. Half term is from 25th – 29th October.

We look forward to welcoming a host of new children at the beginning of term, to join the “old stagers” who will be starting school in 2011, and more children will be joining us as the term progresses.

If anyone would like further information about Harbury Pre-School, please contact Jacqui Quinney, Chair of the Pre-School Committee on Harbury 613386.



Participating in the sponsored Treasure Hunt at Ufton nature Reserve.

For enquiries about available places please email bud.jackson@btinternet.com. The website can be found at www.harburypre-school.org.uk

**Windmills**

Nursery School

Nursery School Staff & Committee

Windmills Nursery is situated in the grounds of Harbury Primary School and has the benefit of its own Forest School and qualified Forest School Leader. We are open all day and take children from the age of 2 years. We still have a few places remaining for September 2010 when the new government funding system will be fully implemented allowing parents to access **free** morning sessions for those children over 3 years old. If you would like to register a place for your child you can email us at info@windmills-nursery.co.uk, visit our web site at windmillsnursery.co.uk or call Nicola on 614564 or Tina and Marie on 07906 519148.

We are now beginning a new school year after enjoying our summer holidays. We have searched through our archives and would like to share some memories of our time spent at Windmills covering the six areas of learning within the Early Years Foundation Stage. The photographs show:



Making footprints in the snow

Having fun with the parachute on the school field





Booking appointments in the role play veterinary surgery

Demonstrating cooking skills



Developing ICT skills on our new laptop computer



Visiting the school pond

We are looking forward to welcoming back old and new faces to Windmills when the new term begins on Tuesday 7th September 2010 at 9.05am. We are also pleased to announce our student placement from last year Michael McVeigh will be joining our dedicated team of staff from September.

Dates for your Diaries

Windmills Nursery is holding a fundraising event featuring local singer Ella Kendrick on 11th September at 6.00pm in the Old New Inn. There will be a barbeque and raffle.

Windmills Summer Trip to Warwick Castle

On the last Thursday before the end of term, staff, children and parents of Windmills nursery were all treated to a summer trip to Warwick Castle, which was very kindly organised by David and Kate Johnson (Freya's parents), following on from the huge success of the Christmas trip there to meet Santa. I was very lucky to join them with my partner and my girls, Mia and Emily, who both attend Windmills.

The weather was mixed, bright sunshine and heavy showers, but thanks to the wide variety of activities available, and David's planning, we didn't get too wet and we all had an absolutely fabulous time.

We started by sitting on the grass eating delicious home-made cookies, courtesy of Finley's mum, Erica, and drinking juice, courtesy of Kate, watching the trebuchet being wound up and fired. Mia particularly enjoyed the trebuchet and we had to return later for a closer look. Nearby were some birds of prey which caught our attention, in particular, the eagle.

We all then high-tailed it to the Princess Tower where David had booked us a slot all to ourselves; on the way some of our bold knights tried their luck with the sword in the stone. The Princess we met in the tower showed us some presents she had been sent, including a tatty dress from Cinderella, a frog from Snow White which she kissed (no luck on a prince materialising), and the spinning wheel from Sleeping Beauty on which she pretended to prick her finger and fall asleep. Freya and Sofia both got to test whether they were true princesses, by feeling for the pea under 20 mattresses in the special bed. We then helped to choose the sash, shoes and tiara to go with Princess Arabella's wedding dress, and the children really enjoyed voting for their favourites. Finally, the children were all amazed as the portrait of Princess Arabella came to life and spoke to us.

We then wound our way upstairs to dress up as princesses and knights. The children absolutely loved it, and there was plenty for all to dress up in, tiaras, pointy hats, cloaks, swords, shields, tabards, helmets, anything you could wish for. They all looked so sweet we took plenty of pictures of them! Then we went to make wishes and came away with our own peas for the princess test.

Unfortunately Emily's wish, for water, came true straight away and the heavens opened, so we all dashed across to the state rooms to have a good look around. This was a real treat, especially for Emily who has a real thing for castles you can go inside, and this is where you realise Warwick Castle really is the best in the country, as there is so much left inside!

Emily was so impressed that we were forced back for another look around later.

While looking out of the windows at the pouring rain we spotted a water mill, so when the rain subsided we took a trip to find it and we weren't disappointed. We were able to get right next to the waterwheel and could see lots of fish in the river, and then inside the adjoining building we could see the dynamo converting the energy to electricity and powering the lights. It was very noisy inside but this didn't seem to deter the dove which was perched on part of the works, going round and round and round. The girls both loved this and wanted to keep going back.

After a brief stroll around the rose garden and some shouting in the echoey ice house it was time for us to go as the girls were so tired, although there was still so much to see. We took the usual pictures of the girls in the stocks and then walked back to the car, during which Emily fell asleep.

This was a truly wonderful trip out for everyone, I know it was enjoyed immensely by all of the parents, carers and children, and we all really do thank David and Kate for giving us yet another wonderful, memorable Windmills' trip.

Jemima Balcam



Harbury Primary School P.T.A.

PTA Committee

Quiz Night!

Harbury School PTA will be holding their annual Quiz Night on Friday 12 November. This will be held in the school hall, and we welcome back Quizmasters Jason and Jane Burrows.

Watch this space and village noticeboards for further details.



Village Hall Update

Chris Finch

August was a relatively quiet month for usage of the Village Hall, as all special events are, not surprisingly, postponed by village organisations until families return from their summer holidays.

The regular hirers, however, carry on with their usual activities and ensure that apart from the Chairman of the Management Committee on his daily rounds, the premises are open for business.

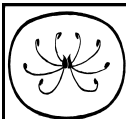
The Autumn calendar starts with a swing (or should it be a swig?) on the first weekend in September with the annual CAMRA Festival, which draws real ale enthusiasts from around the County. The local group have been as good as their word and provided the manpower and expertise to open the Windmill Room into the Farley Room, so that an enlarged space has been created at the back of the Hall. The former Youth Room has been expertly painted thanks to a villager (and his wife!), so that it is completely ready for the Festival, which takes place on Friday and Saturday (3rd and 4th Sept.) As in previous years, members of GASS and the Village Hall will be preparing food for the visitors and sharing the profit for their respective organisations. It is to be hoped that the drains cope with the sudden influx of activity, as there are still problems with the 'runs' (no pun intended!) in front of the Hall, which have been inspected by PCB (Paul Barrett) and by John Warner who created the new toilet block. There have been on-going problems for some years and the crumbling brickwork will need fresh linings to ensure a good flow towards the main drains.

The Rural Cinema also starts up again in September, so check the posters around the village and in the Hall to find out the latest offering of the Moving Pictures (see advert). There are also notices posted around the centre of Harbury about a generous donation of a complete garden activity centre (swing, slide, climbing area etc) from a local resident who has agreed that it can be sold in aid of the Fund-raising set aside for the development of the Hall. There are pictures of the exceptionally well constructed equipment on the posters and a check on relevant web-sites will give an indication of the original cost to a potential buyer. The item is in exceptional condition and can be viewed before purchase by ringing Geoff on 613801/Chris on 612305 to arrange an appropriate time, by agreement with the current owner.

At the last Management meeting, the proposed costs for hiring the Hall, which haven't been increased during the past year were revised (as shown below). It has also been agreed that, in future, there should be a small charge for hiring the kitchen equipment, as many items have 'gone missing' in recent months, as mentioned in the H&L News. It is regrettable that this has become necessary, but would not have been instituted, if all hirers respected the communal belongings in the same way.

As the committee continually stress, they are acting on behalf of the community and the costs shown for Parish and Non-Parish organisations cover the maintenance costs only and are not used for the entirely separate fund-raising exercise intended to modernise the premises. There is always an opportunity for anyone in the village to join the Management committee, as more hands will make 'lighter work' – hopefully?

ROOM Hourly Charges for Hire Effective September 2010	PARISH Non-profit	PARISH Profit-making events including fund raising	NON-PARISH Non-profit	NON-PARISH Profit-making events including fund raising
Excluding any use of Kitchen...				
Main Hall	£9.00	£13.50	£18.00	£27.00
Farley Room	£7.00	£10.50	£12.00	£18.00
All Rooms	£12.00	£18.00	£20.00	£30.00
Additional charges....				
Use of any Kitchen Equipment	£5.00	£7.50	£8.00	£12.00
Surcharge per day for any event at which alcohol will be sold	£17.50	£17.50	£17.50	£17.50



Horticultural Society

Judy Morraill

I simply cannot believe a month has gone since my last article! What a shame our trips have come and gone but I have received such positive feedback from all who came on either or both visits, Thank you for that. I was beginning to feel that it was all a bit much but after such lovely comments I shall soldier on and already have ideas for next year. . . watch this space!

The show is looming ever nearer and much has been accomplished and plans for the exhibits etc for "The Big Day" on **Saturday 11th September** are coming to fruition. As you already know Patrick has taken over as Show Secretary and has put together the Schedule which can be obtained from Muggleston's, the Library and the Village Club. One of our regular exhibitors has however pointed out a small mistake at Section C, can you ignore the words. . Theme "Pastimes", thank you to Gillian for spotting this. As you can see from the Schedule there are 88 classes for Adults and 12 for Children, I'm sure there is something for everyone and we look forward to the usual influx of entries, we really do have such talented gardeners, cooks, artists, craftspeople, photographers and children, Good Luck to you all. Don't forget the change of venue this year to the Village Club. As well as the exhibits there will be a raffle, Tombola and guess the number of sweets in a jar. Also tea coffee and cakes will be served throughout

the day. If you gave me your name on my clipboard to bake a cake etc can you please take it to Village Club on the Saturday morning. I really do not have enough time to contact everyone by phone, Thank you. If you have anything suitable for the Tombola you can leave things in my porch until Wednesday 8th September. After that you can take contributions to Kath Ellis as she and Margaret will be running the Tombola, again Thank you. Make sure that your completed Schedules and entry fees are taken to Patrick at the address on the Schedule NO LATER THAN 6.00pm on **Wednesday 8th September**. If you are not exhibiting do come along to the Club on the day from 2.00pm onwards and have an enjoyable afternoon.

We are hoping to get discount at Ranson's Garden Centre at Hatton Country World, I will keep you posted next month. Don't forget to go to Farnborough Garden Centre, Stratford upon Avon Garden Centre, Badgers Nurseries or Bridge Nurseries and take your membership card with you to claim discount. Lots of lovely plants to buy at present and the excuse to try out the food too!

There are still many gardens nearby to visit in September, here are a few suggestions. Folly Lodge near Shipston on Stour will be open under the NGS on 14th September, from 2.00-5.00pm admission £3 lots to see here, lawns, perennials, trees, shrubs, superb grasses and some spectacular sculptures. Teas also available. If you have never been to Ragley Hall near Alcester you have missed a treat. The house and contents are pretty spectacular as are the gardens. My brother and I used to go here often as our lovely Dad played cricket for Studley and the Alcester Cricket Club's ground is in the grounds at Ragley. Many a happy afternoon has been spent exploring the grounds and we were allowed into the House where we played hide and seek! We did watch the Cricket too. There are 24 acres of gardens here which will be open under the NGS on 19th September from 11.00 - 3.00pm. There are wonderful mature trees and shrubs which just blend into the landscape beautifully. The newly planted Rose Garden should still look quite stunning and much more to see and do. Do come and visit us at Upton House and Gardens especially on 29th September when the gardens are open for the NGS and the asters should be looking at their very best. The newly planted borders around the terraces have been planted to replicate the original 1930's design by Kitty Lloyd Jones. There are dahlias and chrysanthemums which are coming along nicely and again should be really colourful then.

The gardens this year have been amazing thanks to Heather and her team. Don't take my word for it come along and see for yourselves, you may even spot a familiar face or two from Harbury amongst the Room Guides.

Also on 19th September just outside Oxford, Garsington Manor will be open. This is where they have outdoor operas in the Summer, a mini Glyndebourne but absolutely brilliant acoustics and a superb setting. There is a 17th century Manor House surrounded by early monastic fish ponds, a water garden, lake, and flower parterre. Also an Italianate terrace and loggia complete with statues. It really is a magical place to visit, I can recommend it. Admission is £4.50. Just a little further away near to Farringdon, Woolstone Mill House will be open from 2.00-5.00pm on 22nd and 29th September. There are great views of the Uffington White Horse, a pretty garden with a stream meandering through it. Large mixed herbaceous borders with a kitchen and bog garden and lots of topiary too. There are even some old medlar trees mingling with old fashioned roses and a tree house where you can see great views of the White Horse. Admission is £4 but it does make for a lovely day out. The money raised under the NGS does all go to Charities, mainly Cancer Care, so a very worthy cause. If you are interested and need more details of any of these gardens just give me a ring and I will gladly give you more information.

So lots more to see and enjoy so do go and enjoy the fruits of other people's labours. You never know you often see something in a garden which you can adapt in your own. Do savour the rest of August and September.

A quick mention about our first meeting of the New Season on Tuesday 5th October at the Tom Hauley Room. The speaker will be Adrian James (another speaker from the RHS list) who will be paying his first visit to our Society and the Topic is "Down the Garden Path". I will not spoil your anticipation by giving more details, just come along and enjoy. Our meetings start at 8.00pm and we have a brilliant raffle then after the speaker we enjoy tea or coffee and biscuits. All this for £9 annual membership. New members are always welcome and I look forward to seeing some new faces along with existing members too.

As Alan would say, enjoy your garden, see you on 5th October.





Garden Jottings from Bridge Nursery

Christine Dakin

Does your garden look tired and drab?

Maybe it feels like summer is over. It might be getting darker earlier at night, but there are still 4 months to go to the end of the year and by thinking ahead it is possible to have attractive plants right up until 31st December.

The autumn colours in trees could be even better this year after the long dry summer. It is well worth visiting Batsford Arboretum or Westonbirt or, as I have mentioned before, Bluebell Arboretum/Nursery. In all these places you will see rare and unusual trees looking splendid before the leaves fall.

Garden trees such as Mountain Ash or Birch also look beautiful as the leaves change colour. Other plants which help to extend colour in the garden in for the weeks ahead include Asters, *Salvia uliginosa*, *Schizostylis*, Cyclamen, Gaillardia and ornamental grasses. (All these are available at the nursery).

This is the traditional time to plant new bulbs. There are two problems with this. One is that the ground is often rock hard, making it extremely difficult to dig the holes to plant them and the other is that inevitably you will find that the space you chosen for your new bulb is already occupied by a previous planting! This causes much annoyance.

My solution is to pot up your bulbs, keeping them protected from the worst of the winter weather then plant them in the spring where you can see where the gaps are. Easy!

Bridge Nursery, Tomlow Road, Napton.
Tel: 01926 812737 www.bridge-nursery.co.uk



Nature Notes

John Hancock

As I write (August 24th), the weather has taken on a distinctly autumnal feel. A deluge yesterday afternoon with over an inch (30mms) of rain in about an hour was followed by a clear night, so the temperature plummeted to 10C (50F). Today, I was glad of a windproof jacket while out cycling and we are promised more of the same. It is a pity, for the wheat harvest was going along quite nicely. Today I saw one combine

in action near Southam but many fields are partly cut and completion needs a window of several dry days.

In the garden, we've been glad of the rain with runner beans a particular beneficiary. I wondered why the brassicas were looking in bad shape and closer inspection has revealed they are fast being eaten by healthy looking Cabbage White caterpillars. In fact, these are rather attractive, having yellow longitudinal stripes and black and pale green colours on each segment. The female butterfly lays 40-100 eggs in a group. They are quite conspicuous being yellow in colour and this is the time to remove them if you are keen to conserve your crop. The Large White butterfly (*Pieris brassicae*) has 2-3 generations a year. It is now ubiquitous but once would have been scarce before Stone Age man first tilled the land and began domesticating the wild cabbage. Migration patterns are from north to south, the reverse of butterflies such as Clouded Yellow and Painted Lady which have a much better 'press'. The mustard oils present in cabbage are concentrated by the caterpillar and make it unattractive to birds as a food source.

At the end of July, the Rose Bay Willow Herb down at the Spoilbank Reserve was full of flower. Now, it has seeded and is spreading on the breeze, each seed attached to a tuft of down. It's surprising how many plants from Dandelion to Thistle use this method of seed dispersal. Close to the entrance of the reserve is a large patch of Bird's Foot Trefoil and this was attracting large numbers of Common Blue butterflies (*Polyommatus icarus*) a few days ago.

The butterfly which exemplifies high summer par excellence is the Red Admiral. It is usually common enough by August and September to be seen throughout the land but it is never so common that a sight of this impressive insect does not impart a thrill to the observer.

Blackberry picking is in full swing and I have added one or two more places to my list where damsons and wild plums can be gathered. Try the meandering lane which climbs out of the Avon valley at Barford to join the B4087 at Oakley Wood. Halfway up is a cornucopia of plums, both small and large and varying in colour from yellow to deep red. The blackberry bush, or should I say hedge, in George and Brenda Turner's field is a roosting place for a large flock of Starlings. The younger ones, picked out by their browner plumage are gradually changing to the glossy black with hints of purple seen in the adult bird.

On August 8th, Janet and Dave Kempton found a large moth resting and dormant on a wooden plank fence at their property. They tentatively identified it as a Clifden Nonpareil. If so, according to David Brown's encyclopaedic 'Larger Moths of Warwickshire', this would have been the third sighting in 100 years. Unfortunately, I arrived too

late and the insect had flown. When it opened its wings, the colour of the underwing was red so it was most likely a Red Underwing (*Catocala nupta*). The Clifden Nonpareil (*Catocala fraxini*) is similar but has a blue underwing. I was intrigued by the name. Nonpareil means peerless but Clifden? In fact this is a small town on the coast of Connemara in the Irish Republic and was the point at which Allcock and Brown landed in 1919 after the first transatlantic flight. It seems that Victorian clergymen had time on their hands and became avid observers and collectors of all things natural. As well as the Nonpareil they coined the exotic names of many other moths such as the Satin Lutestring, the Lime Tree Tussock and the Uncertain. Further evidence of a clergyman's talent was to be found at Birkenhead. Whilst waiting with two friends for the ferry to cross the Mersey, Sharon and I were intrigued by a replica of Britain's first submarine designed by a reverend towards the end of the 19th century. After successful sea trials in the North West, it sunk with its crew en route for Portsmouth and scrutiny by the Lords of the Admiralty.

Now, many fields are ploughed and the purple of Knapweed mixes with the yellow of Ragwort in uncultivated enclaves. The Swifts have left and our Swallows will soon follow; summer is coming to an end but autumn delights await us. Down the Middle Road, I picked some mushrooms on the soft verge today and chestnuts are ripening. Please let me have any wildlife sightings you have made or comments in general which you think would interest readers of H&L News (612860).



General Section

Record GCSE results at Southam College

Students at Southam College were celebrating record GCSE results on 24th August with 80% of students gaining 5 A*-C grades. This breaks all previous records at the College and is a 7% improvement on last year.

13 students gained an A* and A grade in every exam they sat and every single student achieved some passes at grade A*-G with over 98% getting at least 5 GCSE's.

This excellent performance was supported by the results for students gaining 5A*-C grades including English and Maths which was at 67%, again breaking all previous records.

Head of year 11 Mrs Maughan said "the results were absolutely brilliant" and praised all the students for their achievements in the exams. I've known many of the students for 5 years and it's great to see so many happy faces and the celebrations of the students when they received their results."

The Governors are delighted with the results and praised the students and staff for all their hard work.

Many teachers attended the exam results to congratulate their pupils with 80% of subjects showing improved performance.

Ranjit Samra, Headteacher, said "this has been an exciting and rewarding first year for me personally. I was extremely pleased at the achievement of such results which are testimony to the hard work of all the students, staff and governors at the College. We look forward to building on these excellent results next year."

Sharon Hancock-School Governor

Would you like to try Morris dancing?



Hereburgh Morris, your local Morris team, is now over 23 years old and has gained a solid reputation in the Morris world for high quality dancing and an interesting repertoire.

Currently we have 22 members of both sexes and we are keen to attract new members to lower the average age and safeguard the future of the team. Young men would be particularly welcome! In a few words, Morris dancing with Hereburgh is:

- A sociable way of keeping fit in a light-hearted atmosphere
- Having fun whilst keeping an ancient English village tradition alive
- An opportunity to travel to festivals and other events, at home and abroad
- The possibility to play or learn a musical instrument in an informal style
- Visiting lots of pubs in the name of culture!

We normally practise in Harbury School hall on Wednesday evenings from 8.00 to 10.00pm. The winter months are mainly for practising and now would be a good time to join. Why not come along one Wednesday and have a go, without any obligation of course?

Our next two performances are at the Harbury Beer Festival from 12:30pm on Saturday, September 4th (at the Village Hall), and then at the Cape of Good Hope, Warwick, at 8pm on Wednesday, September 8th.

If you're tempted, please telephone me for more information (and look at our website to see what we get up to).

Peter McDonald - Foreman

Telephone: 613730

Hereburgh Morris website: <http://come.to/hereburgh>

Farm Crisis Network: General Knowledge Quiz at the Village Club, Crown Street, Sunday 19th September 7pm



We need teams for the quiz on September 19th so get your thinking caps on, put the date in your diary and think up a team name! The quiz will raise funds for Farm Crisis Network and features 8 rounds on a variety of themes (not all agricultural!) plus an interval quiz. The cost is £16 per team. Come and enjoy an evening out instead of in front of the telly and partake of sandwiches and crisps at half time.

Thank you in advance to Peter Rollason for being Quiz Master and to Sally Stringer who (hopefully!) will be writing up the scores. There's a bar and a raffle plus a prize for the winning team – and the losers!

So if you can sort your wheat from the chaff and your John Deeres from your old grey Fergies come along and join in the fun – you won't need to wear your wellies but you can if you really want to!

If you would like to donate a raffle prize or help with sandwiches please let me know.

For more information and to enter a team please contact Karen Ellis on 01926 614514

Thank you for your support.

Karen Ellis

Harbury Duke of Edinburgh Group



Young people queuing to make sure they don't miss September's introductory D of E meeting?

Don't miss it!

Friday September 10th, 7.45pm in the Tom Hauley Room.

All parents welcome.

www.harburydofe.co.uk

Nick Tawney



Fuel Community Update

The first foray into the world of purchasing fuel as a 'buying group' happened at the end of August with five private customers and one organisation – the Harbury Rugby Club, agreeing to buy fuel at a slightly reduced price compared with the cost it would be to an individual customer. Unfortunately when the RIX tanker turned up early in the morning to deliver to HRFC, it was found that the pipe-work had been damaged as a result of the action of a person/persons unknown who had siphoned off the remaining oil in the tank in the previous days. The fuel pumped into the tank therefore started leaking out and the tanker had to return to the depot with some of its load still on board. The Facilities Manager at the Club consequently had to place an urgent order with another company in order to have sufficient fuel to fire up the boiler for the hot water needed by the rugby players after their practice game on Thursday and their following match on Saturday. As a result, the 'best laid plans', which had been discussed with the 5 individual customers and the HRFC went somewhat awry, but at least the intention to commit to a community programme had made progress. On a separate note, if anyone hears on the grapevine about any criminal movement of oil from the local club, the local police would doubtless welcome a call, as HRFC is not the only premises to lose a quantity of heating oil in recent weeks – as reported on the Neighbourhood Watch details sent out by the local force to NW co-ordinators. The next purchasing order for oil will probably be around Christmas at the earliest, but again prices will be checked with

several local companies to ensure the best price on the day an order is placed – as it can fluctuate daily and all companies adjust their prices accordingly on an almost hour by hour basis. If anyone might think about joining the group in future, please ring 612305 – it might save you some £££'s!

Chris Finch

Tai Chi is back

Harbury Tai Chi classes will be back after our short summer break on 3rd September and until 8th October will take place in the Tom Hauley Room on Fridays from 7pm, reverting to the Village Hall from 8th October onwards. There will not be a class on 17th September, however, as no room is available.

This is not an advanced class and is open to all. You can join at any time, even if you have no experience at all. Just turn up, call me on 612277 or email bob@churchterrace8.freeseve.co.uk.

Bob Sherman

Village with a Vision

In the last edition of the magazine you read the facts and figures showing that it's desirable, indeed necessary, that our community should have Continuing Care facilities.

In one way or another, the lives of almost everyone in the village will be affected by having a parent, uncle or aunt, friend or neighbour, who will need extra care; or YOU may need it yourself. We have all witnessed how distressing it can be for elderly people to be uprooted from their home environment, and placed in a Care Home in another town or village, where their friends and relations have difficulty in visiting them.

This affects our whole community, and as our Adviser, Professor Andrew Kerslake pointed out, it is essential that the entire village works together to bring the Vision to fruition. We still have some hurdles to get over, but with your help it WILL happen.

And finally, we invite you to our Coffee Morning at 10.30am on Saturday 25th September, in the Tom Hauley Room. Raffle prizes and cakes will be greatly appreciated.

Tony Stubbs - Village with a Vision

Free Electric Blanket Safety Tests from Warwickshire County Council

Warwickshire Trading Standards Service will provide electric blanket tests **FREE OF CHARGE**, for people aged 50 or over, between Monday 4th October and Friday October 8th 2010.

Testing, by appointment only, will take place at the following venues around Warwickshire:

Nuneaton Fire Station, Monday 4th October

Leamington Town Hall, Tuesday 5th October

Rugby Library, Wednesday 6th October

Kenilworth Library, Thursday 7th October

United Reformed Church, Stratford-upon-Avon, Friday 8th October

Don't miss this opportunity. Old or damaged electric blankets cause a number of fires each year, which can result in injury or death. These can be avoided by simply getting your electric blanket checked.

To book an appointment, call the Trading standards Service on:

01926 736477 (Monday to Friday, 9am - 5pm) or email ebtesting@warwickshire.gov.uk

Pat Whorton

Summer Lunch in aid of Harbury Senior Citizens

We would like to say a big thank you to everyone who came to support our fundraising event on Saturday 7th August. Approximately 80 people came along to have lunch and support our fundraising via a raffle and tombola. We hope that you all enjoyed it.

Thanks must also go to the "extended committee" – to those who helped with serving and tidying up on the day, a real team effort. On an occasion like this, many hands really do make light work.

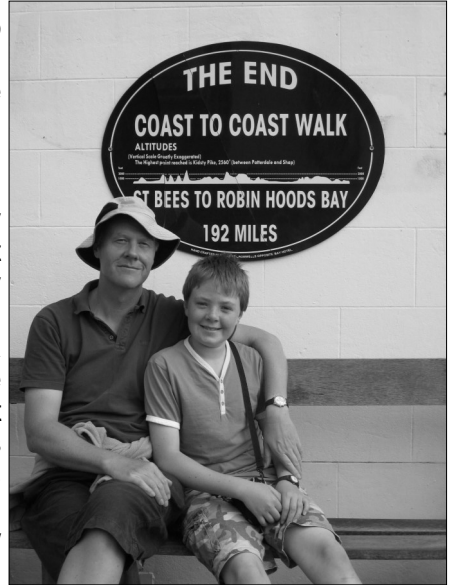
We look forward to seeing many of you at the Christmas party – details will appear later in the year.

Mike McBride

On behalf of the Harbury Senior Citizens Benefit Association

Coast to Coast Adventure Part 2....

Exhausted, blistered, damp, euphoric.....some of the words to describe how we felt when we arrived at Robin Hoods Bay on the North Yorkshire coast, after our 192 mile walk from St Bees on the Cumbrian coast last month. Thirteen days of beautiful but rugged and hilly countryside across the Lake District and the Yorkshire Dales, and finally the bleak endless North York Moors, with the glistening North Sea awaiting in the far-off distance. The weather could have been better, but the wet and windy days just made us appreciate the warm and sunny days more! We met some fascinating people along the way, and also saw some fascinating sights.



We would like to say a huge thanks to all our sponsors in Harbury who followed our daily blog, and supported us from a distance. We have raised nearly £500 for the Mountain Rescue Charity (who, thankfully, we didn't need to use!) We thoroughly enjoyed the experience of walking across Britain, and would highly recommend it!

Chris and Josh Hill

Flu Clinics

Harbury Surgery

Saturday 2nd October from 9.30am to 12noon and Monday 1st November from 5.00pm to 7.00pm.

Bishops Itchington Surgery

Saturday 16th October from 9.30am-12noon and Wednesday 3rd November from 5.00pm to 7.00pm.

No appointment necessary - just turn up at the clinic of your choice. Please note that letters **will not** be sent out inviting eligible patients to attend. The Department of Health strongly recommends that the following patients should be vaccinated:

- All those aged 65 and over
- Younger people in certain 'At Risk' groups. These groups are:

Respiratory disease

Heart disease

Diabetes

Asthma

Kidney disease

A weakened immune system

Liver disease

History of stroke

The earlier clinics tend to be busier but as we will have plenty of flu vaccines you can safely attend any of the later and quieter clinics.

Drs Snowdon and Wilkinson

Children's Society - annual box collection



**The
Children's
Society**

I'm the parish secretary for the Children's Society and it will soon be time for the annual box collection. Thank you to everyone who has a collecting box. Times are difficult as we know and The Children's Society is grateful to all its supporters.

The Children's Society was founded in 1881 by Sunday school teacher Edward Rudolf, supported by Archbishop Archibald Tait. Edward found two of his pupils begging for food on the streets of London. He didn't like the large, institutional children's homes of the day and so set up a model children's home, offering vulnerable children a smaller, more caring alternative. The Children's Society has remained allied to the Church of England: the collection at Harbury's Christingle Service goes to The Children's Society.

The charity reaches out to those forgotten children who face danger or disadvantage in their daily lives; children who are unable to find the help or understanding they need anywhere else.

The work is based on the Christian principles of love, justice and forgiveness. The Children's Society supports children in trouble with the law, young runaways at risk on the street, disabled children who face exclusion and young refugees rebuilding their lives in the UK. The Children's Society works with children who are often forgotten or whose needs are ignored, such as young carers, Travellers' children or children whose parents are affected by alcohol or drug use.

In recent times, the nature of the work of The Children's Society has kept pace with the changing needs of children in an evolving society. See www.childrenssociety.org.uk to learn more.

If you would like to know more about the work of The Children's Society or would like a collecting box please contact Karen Ellis on 01926 614514. Thank you.

Karen Ellis

Rotary Tree of Light

Thanks to the generosity of the Christmas Lights Committee the Tree will again shine out after the official "Lights On" on the evening of December 6th.

The Rotary Club of Southam would like to thank you all for all that you do to make it possible to continue to support the Acorns Children's Hospice through the Tree of Light. We are determined to continue the work because it is so vital to provide care, comfort and help to these children and their families.

Throughout December the Love and Memories of those who sponsor a light will be represented.

The Book of Remembrance will again be on display at Southam Library. The Library staff have been most helpful to our cause.

The use of the Tree on land owned by Goodwin and Sons is also much appreciated.

For people who wish to record the memory of a person they still love and miss at this time of year there will be leaflets with donation slips available in Southam from November onwards. Please let us know if you have any difficulty finding these. (Ring 864234 Peter Jackson)

Peter Jackson and Mike Gaffney
The Rotary Club of Southam

Ukulele Orchestra of Harbury

Well, not yet but possibly!



I am interested to hear of anyone who plays the Ukulele (or would be willing to learn) and who would be interested in forming a village Ukelele group.

If you are interested, then contact Craig on 612377 - Go for it!

Fr. Craig

Victorian Street Fayre – 9th October

This year's Victorian Street Fayre will take place in Chapel Street from 4pm onwards. There will be a wide variety of entertainment and things to see and do; some familiar and some new to the village.

The street Fayre is a wonderful event for all the family, with fairground rides, plenty of side shows and amusements, entertainment on stage and in the street, games of skill and stalls with a variety of goods for sale, all with a Victorian theme.

This year all profits will go to support the wonderful work both the Harbury (Wight School) and Windmills Pre Schools continue to do with our young children.

Although October is still a few weeks away, if you are thinking of having a stall make sure you contact Julie or Brian on 614050 as the quantity of stalls is limited.

Remember to start working on your fancy dress costume; there will be prizes for the best children (girl and boy) and best adults (man and woman). Also if any buskers or street entertainers want to come and be part of the street fayre then please let us know on 614050.

Raffle tickets will be on sale soon with excellent prizes. Top prize is a 4* self catering holiday cottage in South East Devon for one week. Other prizes include four tickets for Warwick Castle, £100 cash and a case of wine.

Lucky prize draw programmes will be on sale in advance at Mugleston's or on the day in the street.

If you would like to support the fund raising and/or be willing to make a donation to a hamper for the raffle please call Julie or Brian on 614050.

Brian Young

Harbury Fields Farm and Caravan Park

Harbury Fields Farm has been a family run business since the property was purchased in 1943 by Jack Rigg, grandfather of the current occupier, Rob Davis. The farm is situated off Middle Road, at the end of a drive which leads over half a mile to the house and outbuildings, which can really only be seen in the middle of agricultural land on the left of Rabbit Hill, as you drive up into the village.

The farmland covers 90 hectares, of which 40 are arable land for growing field beans and wheat with the other 50 hectares as pasture-land on which Rob keeps 250 ewes, lambs and 7 rams. Rob took over the partnership in 1996; which had previously been held by his grandfather and grandmother Phyllis, having grown up on the farm and helping out from his teenage years. As with many farms in the U.K. in recent years, it was necessary to diversify to maintain the family business and in 2001 a touring caravan site was set up as a certified location with the Caravan Club. The site was originally laid out on a grass field behind the house, which had only been used as a paddock field, but two subsequent planning agreements in 2004 and 2007 have seen the development of 30 hard-standing pitches with electric hook-ups and water pipes providing all 'mod cons' for the discerning caravanner.



Three years after the site opened and with the first planning agreement, Richard Carr and Les Sollis converted redundant barns, which had previously been used as cow sheds, into a shower and toilet block with a separate disabled facility, an office, a laundry room and a general cleaning area for accessing water. Three years later, a further block was added with the ground work carried out by Ted Dowdeswell and Ray Gillam and as Rob readily admits, it was the fact that long-time caravanner Ray was involved in the later development that all the essential requirements for touring caravans were put in place. Again, Richard and Les constructed a new shower block with an adjacent washing-up room and they also created separate systems for grey water disposal and for chemical waste disposal. The latter is

carefully controlled and waste is removed on a regular basis, so that the site is maintained in an excellent condition; a feature which has been commented on by several reviews of the site, including the national magazine, Practical Caravan.

The site, which is now a Caravan Club Affiliated site, only closes between December 19th and January 2nd and for most of the year apart from school holidays, it is mainly supported by the 'grey economy' with retired visitors travelling to the area to enjoy the Cotswolds and the local attractions in Leamington, Stratford and Coventry. At the height of the season, when the numbers are swelled by family groups, there can be as many as 100 people on site; with the children given the chance to collect eggs; watch the sheep and lambs in spring-time in the surrounding fields and see swallows nesting in the barns in summer. There's also a perfect view of Chesterton windmill from the middle of the site, which is described as a "small and peaceful; with attractive, rural views".

The current partnership running the farm, include Rob; Sheila Carr and Maggie Ellis (who runs Hill Top farm along the Fosse Way near Hunningham), the daughters of the original owner, Jack Rigg. Sheila is a regular visitor to the site and maintains all the facilities in spotless condition, so that village caravanners recommend the site to friends and relatives with caravans and motor-homes when they are visiting the area.

Harbury Fields Farm remains as it has done for over 60 years, a family home, currently occupied by Rob, wife Jill and their three children, Samuel (21), Emily (18) and Lucy (14). Samuel, who helps out on the farm 2 days a week attended Southam School, where Lucy is a current student, whilst Emily went to Rugby High School. She is currently spending time working in a Leamington hotel, so that she can build up the necessary funds to go travelling after January, during her gap year, as a break from studying.



Rob has always had farming in his blood and works hard with other family members to provide the welcome which is appreciated by all caravanners to the site. As he mentioned, it is estimated that each family brings a significant benefit to the local economy and he often sees visitors using the shops and pubs in the centre of the village, whilst some families also use the local bus service, which has a stop at the end of the farm drive. Harbury Fields Farm is another example of a local business featured in the Harbury and Ladbroke News and other businesses will be recognised in the coming months. For information on the site, see the web-site www.harburyfields.co.uk or if you need to get in touch, ring Harbury 612457.

Chris Finch

Back to School Time!!

I'm sure all will agree that the choir went from strength to strength during the last academic year. It seems a very long time ago that we led a very nervous bunch of children out to perform for Remembrance Day. You would hardly have recognised them as the same choir singing 'Let me Entertain You' at the 'summer pops' concert – such have they grown in confidence and singing ability.

To celebrate individual achievements, awards were given out and are listed below for the children to 'see their name in lights'

Graded awards receive a pin badge. These are given according to our own structured syllabus of progression in technique, confidence and music theory.

Certificates were also awarded for Chamber Choir Entrants and Special Commendations.

Level One – Adagio Award:

Danny, Ben and Elizabeth

Level Two – Andante Award:

Lauren, Chloe, Eleanor, Jessica and Sophie

Level Three – Allegro Award:

Chelsea, Jo, Lucinda, Meredith and Aimee L

Chamber Choir Certificates:

Dominic, Jay, Caitlin, Eve M, Aimee C and Jasmine

Special Commendation Certificates:

Aimee L – *for confident and attentive singing*

Jo – *for keen, attentive singing*

Lauren – *for keen, confident singing*

Lucinda – *for leadership, reliability and confidence*

The end of last year ended on a high and that is where we plan to kick off from. We asked the children what music they would like to do next. We were met by lots of enthusiasm for music from Glee. Having the summer to think about this, David has now become a “gleek”, watching both series for inspiration.

Our reputation has also grown and we now have four booked engagements before Christmas already and the chance to record our very own CD.

As ever, new and old faces are always welcome, Choir school starts back on the 16th September at the Village Hall 6.30-7.30pm for children aged 7-16.

Helen Iles

www.harburychoirschool.org

Parkinsons Coffee & Information Morning

Parkinsons UK Leamington & District Branch are holding a Coffee and Information Morning on Saturday 2nd October - 10.30 to 11.30 am at Southam Congregational Church, Wood Street, Southam.

Our monthly meetings as follows:

Parkinsons UK Leamington & District Branch - meetings held on the second Monday of each month - at Sydni Centre, Marloes Walk, Sydenham, 2.00 pm to 4.00pm.

Welfare Officer - Marion Grimwood - 01926 337695, Secretary - Margaret Holland - 01926 853023

Jean Smith

Southam Lions Annual Party

Southam and District Lions present their 39th Annual Party for Senior Citizens at Southam College on Saturday 18th September 2010, starting at 2.15pm. All senior citizens are very welcome to join us at this party. Please contact me on 01926 814294 for details.

Malcolm Jakeway

Harbury Art Group



Calling all budding artists - this friendly art group is looking for more members! We meet on the first Thursday of every month in the Tom Hauley room. All levels of ability attend, and newcomers are made very welcome. We start at 10.00am and finish around 3.30pm. If you have done a beginners' course, you may like to try a full day painting within a small, supportive group. Or, if you already paint but wish to improve your techniques, this could be the group for you.

There is no membership fee. Each workshop costs £15 for tuition, tea, coffee and biscuits, and you only pay for the workshops you attend. The sessions are led by a professional artist who provides the subject. We usually use watercolours, but may use other media such as coloured pencils, pen drawing, gouache and sometimes acrylics.

For beginners, the tutor offers sympathetic guidance. For those with greater experience, he encourages you to develop your own style. The sessions are very informal with regular coffee/tea breaks. You can walk around the class, chat with your fellow artists and see how everyone is progressing. At the end of the workshop, we put all our paintings together and compare notes.

If you would like to attend a workshop, please telephone Bill Davies on 01926 614104 to book a place and find out what to bring. If you would like to drop in to see a workshop in progress, please feel free to call into the Tom Hauley room on the first Thursday of the month. Our subject for 2nd September is 'Pencil Drawing', 7th October is 'Mixed Media', 4th November is 'Late Autumn' and 2nd December is 'Watercolour Christmas'. Look forward to seeing you!

Pam McConnell

Village Voices Choir

Village Voices is a mixed voice social choir of some 40 singers. For fifteen years we have enjoyed singing for our own pleasure, to give others pleasure and to help raise money for charity. Each year we perform about four concerts and also sing at a number of events such as fetes, private weddings and christenings. Our next concert will be at Cubbington Village Hall on 30th October to raise funds for the Royal Lifeboat Institution with more to follow in November and December.

Our current Musical Director is Clare Langstone who has been in the choir for two years.

She has enjoyed singing all over the world during 40 years of amateur music making, under the baton of some of the world's leading choral and orchestral conductors, notably Sir David Willcocks, David Hill and Simon Halsey.

The choir meets for rehearsal most Thursday evenings in Leamington Spa from 8.00 pm - 10.00 pm at Radford Road Church Hall, Radford Road, CV31 1NF.

This year's events have included a concert at Radford Village Hall in aid of Radford Church restoration and another in Wappenbury Church where we joined the Royal Spa Brass Ensemble and cello duo, Will Langstone and Ethan Gardner for a joint concert. In June we spent a warm summer's afternoon singing to the visitors of the Offchurch Village Open Gardens and Scarecrows event. This started with a performance at the bottom of the village, followed by a walk through some of the gardens open to the public and tea at the Village Hall after which we performed again in a garden at the top of the hill. In July a group of us sang for the residents of the Castel Froma Specialist Care Centre in Leamington Spa where both residents and staff thoroughly enjoyed themselves.

Between concerts our members enjoy a number of social events. This year we have had a walk through fields and woods at Wootton Wawen followed by a pub lunch, as well as two barbecues, a quiz evening and a talent show. A pudding evening is planned for this month and the run up to Christmas is always good fun. Sometimes we can combine singing and social activities as we did at Offchurch and last October we had a very pleasant day in and around Lincoln as guests of the Skellingthorpe Choir prior to giving a concert with them in the evening.

New members are always welcome, whether experienced singers or those who have never joined a choir before but are keen to learn. We do not have a formal audition. If you enjoy singing, like making new friends and think you might like to join us, then please contact our Secretary, Pauline Weeks for more information Tel: 01926 771731 Email: choir@villagevoices.co.uk or Website: www.villagevoices.co.uk

Sue Grimby

Found..

Has anyone lost a gold coloured badge which may be of military origin. It was found outside the Co-op in High Street in early August. It is slightly damaged but may have sentimental value. If you think it's yours please call 01926 613205.

Gladden Family

Southam Lions Ladies



During the past year (July 09 - June 10) Viv Hoyle - wife of Steve Hoyle the Southam Lions President for that period, arranged with the Lions Ladies a number of fundraising events to support two charities - Warwickshire and Northamptonshire Air Ambulance and Zoe's Place a children's hospice based in Leamington. Both charities each received a donation of £1000 and the monies were raised from several fundraising initiatives including: raffles, a car boot sale, a quiz night, a pamper day and an accessories swap evening. Whilst it was a lot of hard work it was also fun as indeed are all the events undertaken by Southam Lions.

The picture shows Southam Lions Ladies presenting cheques to Jill Chambers - Warwickshire and Northamptonshire Air Ambulance (on the left) and Helen Fairhurst - Zoe's Place Hospice for Children based in Leamington Spa (on the right).

Peter Guy
Publicity Office-Southam Lions



LETTERS TO THE EDITORS

Dear Editors

We are extremely touched and grateful for the enormous support, care and concern we have received, both during Ken's last illness and after he died. The cards and letters containing tributes to Ken and offering sympathy and help are overwhelming. There are too many people, both professionals and individuals, to start naming anyone.

We have had a wonderful response to the request for donations to be shared between Harbury Church and Sightsavers, and we intend, in due course, to raise funds for Myton Hospice whose care of Ken could not have been bettered.

Thank you all so much

Annette Hughes, Helen, Rob, Colin, Dan and all the family.

Dear Editors

Thank you to everyone who supported the coffee morning on Saturday August 14th for Farm Crisis Network. We raised £155.34 which is brilliant. Thank you to all who helped and to those who baked cakes, made marmalade, donated raffle prizes, made tea and coffee, washed up and turned up!

With thanks

Karen Ellis

Farm Crisis Network Warwickshire

Dear Editors

We would like to take this opportunity to thank the community for their kindnesses and generosity following the birth of our first daughter. Eden Elizabeth Rose was born on 10th August at 11.54am following an amazing home water birth in our tiny Ivy Lane living room! She weighed in at 6lb 10oz .

The support we received in the run up to the birth (especially during our last minute madness of having a new kitchen fitted the week before) was truly amazing. Thank you to everyone who cooked for us when we had no oven and to those who provided us with a food parcel of frozen home-cooked meals to get us through the first week of parenthood. Also to everyone who has sent best wishes, cards and gifts – we feel very supported by them.

We would also like to thank Helen and Ian Cuthbertson. Helen for being an amazing birth companion, as we feel we would not have achieved the birth we wanted without her. Ian for making the tea and putting up with endless talk about natural birth!

David, Helen and Eden Iles

**DATES FOR INCLUSION IN THE HARBURY DIARY PLEASE TO:
LINDA RIDGLEY - TEL. 612792.**

Bookings for:

Scout Hut	Caroline Hill	613780
Tom Hauley Room	Liz Bunting	612450
T. Hauley Room Coffee Morning	Sally Stringer	613214
Village Hall	Celia Neill	612819
Wight School	Lin Hayes	613488

Regular Diary Dates

ART CLASSES: The Scout Hut, Tuesday 10am -12 noon (614251)

ART TUTORIALS: Tom Hauley Room 1st Thursday of the month (614104)

BABY CLINIC: Surgery, 2nd & 4th Wednesday 1.00 – 3.00pm

BADMINTON: Village Hall, Monday mornings 10:00am -12:00 noon (612877)

Mondays 7:00 - 9:00pm; (612627)

BEAVERS: Scout Hut, Thursdays 5.30 - 6.40pm (612822)

BELL RINGING PRACTICE: Church, Fridays 7:30pm (612939)

BIBLE STUDY GROUPS various homes 1st & 3rd Thursday of the month 2.00-3.00pm (613207); 2nd & 4th Tuesday of the month 10.30 - 12.00 Noon (612864)

BRIDGE CLUB: Thursday in Village Club at 7.00pm (612714)

BROWNIES: Scout Hut, Mondays 5.45pm - 7:00pm (612538)

Brownies & Rainbows Waiting List - Bobbie Sharpe (614040)

CHILDREN'S DANCE CLASSES Farley Room Wednesday 4.00 - 8.00pm (01789 290733)

CHOIR PRACTICE: Church, Fridays 6:30pm (612978)

CHURCH MEN'S GROUP: Tom Hauley Room 1st Thursday in the month 7.45pm (612753)

COFFEE MORNING: Tom Hauley Room Saturdays 10:00am - 12:00noon (613214)

CUBS: Scout Hut, Wednesdays 6:30 - 8:00pm (614730)

DROP-IN TEA FOR THE BEREAVED: 19, Farm Street, last Wednesday in the month (except in December) 2.30 to 4.30pm (612585)

GUIDES: Scout Hut, Mondays 7.15pm – 8.45pm

GYMNASTICS: Harbury School, Mondays 6:00 - 7:00pm (07939 679533)

HARBURY FOLK CLUB: Dog Inn 1st Thursday in the month 8:00pm (613730)

HARBURY FRIENDS: Tom Hauley Room, 2nd Tuesday in the month 8:00pm (612534)

HARBURY JUNIORS FOOTBALL CLUB:

Under 6's – Year 1 (Mixed)

Coach: Steve Darby Tel: 01926 613330

Training: Saturday 9.00am Harbury School

Under 7's – Year 2

Coach: Steve Burnell Tel: 07912 578605 or Ian Jones 01926 612201

Training: Saturday 9.00am, Harbury School

Under 9's - Year 4 (Mixed)

Coach: Richard Woodhead Tel: 07786 802803

Training: Saturday 9.00am, Harbury Playing Fields

Under 11's - Year 6 (Boys)

Coach: Carolyn Dorning Tel: 01926 612037

Training: Saturday 9.00am, Harbury Playing Fields

Under 11's - Years 5,6,7 Girls

Coach: Judith Woodfield Tel: 01926 312021

Training: Saturday 9.00am, Harbury Playing Fields

Under 12/13's – Year 8 Boys

Coach: Malcom Tanner Tel: 07950 312541

Training: Saturday 9.00am, Harbury Playing Fields

HARBURY PRE-SCHOOL: Wight School (behind Library), High St. Monday 12:30pm – 3:00pm, Tuesday to Friday 9:00am - 1:00pm (613386)

HARBURY THEATRE GROUP Last Monday of the month Shakespeare Inn (612150)

HARBURY TODDLER GROUP: Wight School, Monday 9.30 - 11:30am

HARBURY VILLAGE CLUB: Contact 612498

HEREBURGH MORRIS DANCERS: School Hall, Wednesdays 8:00 - 10:00pm (612819)

HORTICULTURAL SOCIETY: Tom Hauley Room, 1st Tuesday in the month (Oct. to May)
8:00pm Contact Daphne Clifford 01926 612829

KEEP FIT FOR LADIES: Harbury Primary School, Thursdays (term time) 7.00-8.00pm,
contact Sue Hawthorn (810942)

KICK START APPALACHIAN STEP DANCERS: Scout Hut, Saturdays,
10:00am - 12:00noon (612734)

LIBRARY: (613297) Mondays 2:00 - 5:00pm and 5:30 - 7:00pm;

Thursdays 10:00am - 1:00pm; 2:00 - 5:00pm & 5:30 - 7:00pm;

NETBALL CLUB: Village Hall Car Park, Training Thursdays 6:30pm; (613163)

Matches on Saturday Afternoon

MEN'S BREAKFAST: Tom Hauley Room, 3rd Saturday in the month 7.30am

MOTHER'S UNION: Tom Hauley Room, 1st Wednesday in the month 2.30pm; 3rd Tuesday in
the month 8.00pm (613831)

PARISH PATHS PARTNERSHIP: Meeting on 2nd Wednesday in the month at the
Shakespeare 8:00pm (612792)

RAINBOWS : Scout Hut Tuesdays 5.30 - 6.30pm, Unit Leader Bobbi Sharpe 614040

SCOUTS: Scout Hut, Thursdays 7:00pm (614062)

SLIMMING WORLD: Village Club, Wednesdays 6.30pm Sarah Edwards Tel: 07964 513 154

TAI CHI: Village Hall, Friday, 7.00pm – 8.30pm (612277)

TAP & DANCE FOR ADULTS: Wednesday, 8.30-9.30pm (Jane - 07989 834416)

TENNIS CLUB: MEMBERS PLAYING TIMES:

Adults and Students:

Tuesdays: 6.30pm– 10.00pm, Thursdays: 6.30pm – 10.00pm

Saturdays: (Winter only) 10.00am – 12 noon,

Sundays: (Summer only) 10.00am – 12 noon

Members may play at other times free of charge, provided the courts are not already booked. **Guests** playing with members should pay £1 an hour.

If you would like to become a member or find out more about Harbury Tennis Club,
please contact Colin Mercer (613284 or email sucol-merc@tiscali.co.uk)

Juniors and Minis (Reception to Year 11)

Group coaching takes place throughout the year. For up to date information contact
Sue Mercer (613284 or email sucol-merc@tiscali.co.uk)

NON MEMBERS - Courts should be booked at Country Fayre, Chapel Street (£4 per
court per hour) **Floodlit bookings** £7 per court per hour. Ring 613284 to book.

COACHING – for individuals or small groups please contact Head Coach,
Linda Casement (614734)

THURSDAY CLUB: Farley Room of Village Hall 4th Thursday in the month 2:30pm (612877)

W.I.: Tom Hauley Room, 2nd Thursday in the month 7:45pm (614188)

WINDMILLS NURSERY SCHOOL: In the grounds of Harbury Primary School,

Monday-Thursday; 9:05am - 3.05pm; Friday 9.05am -12.30pm (07906 519148)

YOGA: Tom Hauley Room, Wednesdays, 7:30-9:30pm Dianne Surgey (817904)

YOUTH GROUP-ICON @ All Saints': Tom Hauley Room, Sundays 7.00 – 8.30pm (612377)

OCTOBER EDITION – HARBURY & LADBROKE NEWS

Adverts to 31, Binswood End by 15th September
Articles to Harbury Pharmacy by 23rd September

Do you need help with any of the following?

Harbury Helpline is for you!

EMERGENCY TRANSPORT: John Travis 613264, Tony Brunton 612191

HELP WITH FORM FILLING:

- **For University/Job Applications, interviews, CVs:** Call Philip Bushill-Matthews 612476.

HOME VISITING: Caring for a sick or elderly relative and need a break for a few hours, or you would like someone to call on you. Call Sue Dormer 613254.

VISITING: Hospital. If you are unable to visit a parent or relative, or parents would like support with a child in Hospital: Keith Dormer 613254.

Daventry • Southam • Harbury • Leamington

65

Banbury • Southam • Harbury • Leamington

66

MONDAYS TO SATURDAYS, except Public Holidays

route number	65	65	66	65	66	65	66	65	66	65	65	66
	S	M-F										
Banbury Bus Station			0850		1050		1250		1450			1840
Little Bourton Plough			0859		1059		1259		1459			1849
Fenny Compton Wharf Inn			0906		1106		1306		1506			1856
Ladbroke by-pass			0910		1110		1310		1510			1900
Daventry bus station	0742	0745F		0954		1154		1354		1650	1830	
Staverton Park	0748	0751		1000		1200		1400		1656	1836	
Lower Shuckburgh	0754	0757		1006		1206		1406		1702	1842	
Napton Crown	0758	0801		1010		1210		1410		1706	1846	
Southam Bowling Green	0806	0809	0918	1018	1118	1218	1318	1418	1518	1714	1854	1908
Bishop's Itchington	0816		0929	1029	1129	1229	1329	1429	1529	1725		1918
Harbury Supermarket	0822		0935	1035	1135	1235	1335	1435	1535	1731		1924
Radford Semele White Lion		0820									1905	
Tachbrook Road Spa Park	0832		0948	1048	1148	1248	1348	1448	1548	1744		1936
Tachbrook Road Kingsway	0833		0949	1049	1149	1249	1349	1449	1549	1745		1937
Leamington Parish Church	0836	V	0953	1053	1153	1253	1353	1453	1553	1749	V	1941
Leamington Upper Parade	0840	0835T	0957	1057	1157	1257	1357	1457	1557	1753	1915	1945
Leamington Parish Church			C								1919	

Leamington • Harbury • Southam • Daventry

65

Leamington • Harbury • Southam • Banbury

66

MONDAYS TO SATURDAYS, except Public Holidays

route number	65	66	65	66	65	66	65	66	65	65	65	66
	M-F									M-F	S	M-F
Leamington Upper Parade	0635	0735	0840	0940	1040	1140	1240	1340	1440	1540	1610	1710 1715E 1740
Leamington Parish Church	0639	0739	0844	0944	1044	1144	1244	1344	1444	1544	1614	1714 1719 1744
Tachbrook Road Kingsway		0741	0846	0946	1046	1146	1246	1346	1446	1546	1616	
Tachbrook Road Spa Park		0743	0848	0948	1048	1148	1248	1348	1448	1548	1618	
Radford Semele White Lion	0645										1720	1725 1750
Ufton bus shelter	0651											1730 1755
Harbury Supermarket		0756	0901	1001	1101	1201	1301	1401	1501	1601	1631	1730
Bishop's Itchington		0802	0907	1007	1107	1207	1307	1407	1507	1607	1637	1736
Southam Bowling Green	0659	0813	0918	1018	1118	1218	1318	1418	K	1618	K	1747L 1739 1804
Napton Crown	0706		0925		1125		1325			1625		1808 1746
Lower Shuckburgh	0710		0929		1129		1329			1629		1812 1750
Staverton Park	0716		0935		1135		1335			1635		1818 1756
Daventry bus station	0724		0943		1143		1343			1643		1826 1804A
Ladbroke by-pass		0820		1025		1225		1425				1811
Fenny Compton Wharf Inn		0824		1029		1229		1429				1815
Little Bourton Plough		0831		1036		1236		1436				1822
Banbury Bus Station		0845		1045		1245		1445				1831

All Saints' Church Harbury Sunday Services

1 st Sunday in the month:	9.00am	Sung Communion
	10.30am	First Light contemporary style service in the Tom Hauley Room
	6.00pm	Evening Worship - a different style of service each month
2 nd , 4 th (and 5 th) Sunday in the month:	8.00am	Holy Communion
	10.30am	Sung Eucharist
3 rd Sunday in the month:	8.00am	Holy Communion
	10.30am	Family Communion Service
	6.00pm	Choral Evensong
Every Sunday: (except 1 st)	10.30am	Funday Club (in term time)
Every Tuesday:	7.30pm	Weekday Said Communion
Every Thursday:	9.45am	Weekday Said Communion

Times of weekday services and any variations are displayed on the notice in the lychgate.

Priest in Charge: Father Craig Grocock

The Rectory, Vicarage Lane, Harbury Tel.: 612377

Email: kankudai43@aol.co.uk www.allsaintsharbury.org



COMING SOON
AFTER MANY REQUESTS

1 Bull Ring Business Centre
Church Terrace
Harbury
CV33 9HL
01926 613332

YARDLEY ENGLISH LAVENDER
BODY PRODUCTS

ENGLISH-MADE
CLAREMONT AND MAY
ROOM FRAGRANCING
AND STONEGLOW
CANDLES

Open Mon, Wed, Thurs, Fri
and Sat

10.00 till 5.30

The Fragrant Room in Harbury

ADVERTISING in the Harbury & Ladbroke News
Email: advertising@hlnews.co.uk Tel: 01926 612155

<u>Monthly Prices</u>	<u>Annual Prices</u>
¼ page £10.50 (or 3 consecutive months for £28.00)	¼ page £ 94.00
½ page £19.00 (or 3 consecutive months for £49.00)	½ page £168.00
Full page £33.50 (or 3 consecutive months for £89.00)	Full page £315.00

Advert with payment to: Gill Holden, 31, Binswood End, Harbury
 by 15th day of the month (Cheques payable to 'Harbury & Ladbroke News')

FOR SALE OR SWAP

2 bedroom, modern, detached bungalow, with garage,
 large garden on corner plot.

Farley Avenue, Harbury.

Looking to sell or swap for a 3 bedroom semi / detached property
 in Harbury.

Call Steve 07912 578605

Townsend Electrics



Your local electrician

Qualified to IEE Wiring Regulations
- 17th Edition

From changing fuses to
 house rewires - no job too small.

Free estimates

Office: 01926 613420
Mobile: 07833 246846
Email: i-townsend@hotmail.co.uk

13 Farley Avenue, Harbury.
CV33 9LX

LOCKE & ENGLAND
 AUCTIONEERS & VALUERS

AUCTION EVERY THURSDAY

Viewing Wednesday 12noon - 7pm
 and morning of sale from 9am

- House Clearance & Collections
- Auction Valuations Friday 2-5pm
- Bi-Monthly Selected Antique Sales
- Valuations for Insurance, Probate, Family Division & Commercial
- Frequent Specialist Auctions



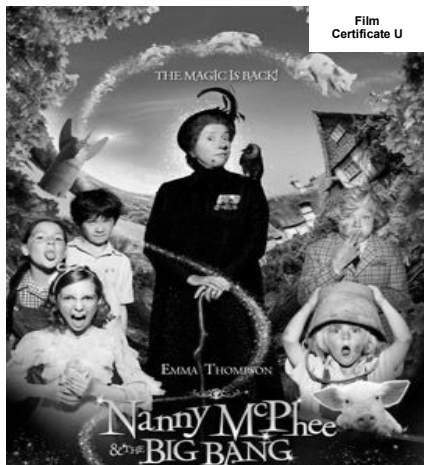
FURTHER ENTRIES INVITED

12 Guy Street, Leamington Spa CV32 4RT

01926 889 100
www.leauction.co.uk

Harbury Village Hall

is proud to present



Saturday 25th September

Tickets: £3.50 each or £10.00 per family

(family ticket admits 2 adults & up to 3 children under the age of 12)

tickets available on the door only

'parents/carers must remain with, and are responsible for, their children at all times'

doors open at 4.00pm - film starts at 4.30pm

Hot Dogs – Tuck Shop – Refreshments – Cana Import Bar – Raffle

01926 613311

Flora Dora Rag Dolls



Hand-crafted in Harbury

01926 613207

www.floradoraragdolls.co.uk

AbeTec computers

Maintain

Repair

Upgrade

Custom Build

NO CALL-OUT CHARGE

Laurence Abraham

Microsoft Certified Professional

01926 613979

computers@abetec.co.uk

or visit

www.abetec.co.uk

Domestic Gas Services

MARTIN EVANS

ACS 2007 Accredited Gas Safe Registered 197039

A Local Leamington Company

- **CENTRAL HEATING**
- **INSTALLATION**
- **SERVICE - REPAIR**
- **POWERFLUSHING**

Are your radiators not as warm as they should be?

Powerflushing removes sludge build-up,

leaving your radiators warm and efficient again.

Ring for details.

07980 740720

gas safe
REGISTERED

Can be contacted via 15 Offchurch Lane, Radford Semele, CV31 1TN

**Giuseppe (Joe) & Cinda
have taken a long lease of**

The Crown Inn



Bringing stability and quality to a beautiful village pub.

**Serving a Gastronomic, International Menu
with a Mediterranean flavour.**

Daily specials and Flambé.

Traditional Sunday Lunch and Bar Food Specials.

All at reasonable prices.

Telephone: 01926 614995



Tap Classes

Friday evenings, The Grange, Southam

4.30pm - Little Tappers (3-5yrs) 4.30pm - Preparatory Tap (6-8yrs)



Dance Classes

Thursday evenings, The Grange, Southam

4.30pm - Funky Dance 1 (4-6yrs) 5.30pm - Funky Dance (7yrs +)
5.00pm - Gymnastics (all ages) 6.00pm - Grade 1 Ballet (9yrs +)



Ballet Lessons

Tuesday Evenings, The Grange, Southam

4.00pm - Prima Ballerinas (3-4yrs) 5.00pm - Pre-Primary (7-8yrs)
4.30pm - Pre-Syllabus (5-6yrs) 5.45pm - Primary (8yrs+)



Free Trial Class

Contact lorraine@loveballet.co.uk to book a place
Call 07711 010404
visit www.loveballet.co.uk



**Deppers Bridge
Plumbing Services**

all types of plumbing including:

- Bathrooms
- Kitchens
- Central Heating

No job too small

**For a reliable, local service call
Steve Norman**

T 01926 613532

M 07921 259639



Fiona's Frames

Bespoke Picture Framing

Wide choice of mouldings & mounts for paintings, prints and needlework

Friendly Professional Service

Phone 01926 812807

Hillside, Napton

email: enquiries@fionasframes.co.uk

Warwickshire Groundworks

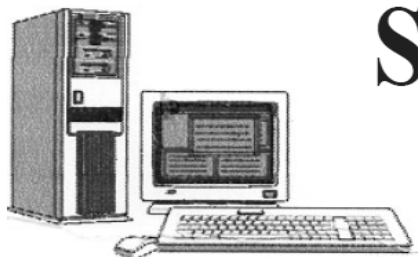
Your local contractor for:

- ◆ Driveways - Block paved
- ◆ Tarmac or Coloured Stone
- ◆ Patio Design & Construction
- ◆ Brickwork
- ◆ Fencing
- ◆ Shed Bases & Sheds Supplied
- ◆ Turfing
- ◆ All Hard & Soft Landscaping

City & Guilds Qualified
20 Years in the Business

Telephone Roger on:
01926 632994
07985 256009

*High Quality of workmanship
as Standard*



SIMONS SYSTEMS

Available for all your computer requirements including:
PC's and Laptops, New and used systems,
Upgrading memory/hard drives/rom drives/graphics, etc
Internet – modems fitted, wireless, networking.
Any repairs. **NO CALL OUT CHARGE**



Tel: 01926 316119



Mob: 07751 811097



E-mail: simons.systems@virgin.net

Rob Loveday Electrical Services

NICEIC Part P Approved Electrician

The local electrician you
can rely on - no job too small

Call Rob for a fast, friendly
and efficient service

Tel :01926 429082
Mobile : 07825 345009
Email:- robertloveday@sky.com



Leafy Garden Services

Lawn and Garden Maintenance

Lawns cut (includes edges trimmed and striped lawn finish), gardens cleared and tidied, hedges trimmed, borders weeded, licensed chemical weed control.

***Regular maintenance or odd jobs.
No job too large or too small.***

***For all your outdoor chores,
call your local gardener***

Richard Everett

***Harbury 613509
Mobile: 07923 167420***

green
chameleon



Karena EA Ellis

MRICS, RICS Acc.Med., BSc Hons

M: 07796 575716 T: 01926 612121

E: info@greenchameleon.net

www.grechameleon.net

Chartered Surveying ■

Mediation ■

Letting & Management ■

**The Green Room, 31 Manor Road,
Harbury, Warks CV33 9HY**



SADDLERS BED & BREAKFAST

SELF-CONTAINED COTTAGE IN THE HEART OF HARBURY.
DOUBLE BED, SHOWER ROOM, LIVING & DINING AREA WITH
KITCHENETTE, TV/DVD; CD/RADIO. SLEEPS 2 TO 4.
OFF ROAD PARKING.

£60 PER NIGHT INCLUDING CONTINENTAL BREAKFAST.

JULIE YOUNG, SADDLERS, CHAPEL STREET, HARBURY.
01926 614050 OR EMAIL enquiries@saddlersbed.co.uk
www.saddlersbed.co.uk



STORM LOCKS

Your local friendly service

Security, Locks, Carpentry

Low prices

Call Kev on:

0778 774 6253

01926 811990



ADAMSTRANKS
BUILDING CONTRACTORS



Extensions-Alterations-Refurbishment-New Builds
Bespoke Kitchens and Bathrooms
Design-Planning & Building Regulations Application
Service available.

Web: kenilworthproperties.co.uk

Email: kenilworthprops@btconnect.co.uk

Telephone: Harbury 612260 Mobile: 07779 096104

Harbury Business Centre, Church Terrace, Harbury, Leamington Spa CV33 9HL



11 MILL STREET, HARBURY
LEAMINGTON SPA, CV33 9HR
Telephone: 01926 613822

The Shakespeare Inn

- Traditional 18th century country inn
- Choice of real ales and guest beers
- Breakfast from 9.00am - 12 noon
- Afternoon tea and cakes available
- Mon-Sat food served 12 noon - 9pm
- Home cooked Sunday roasts
- Large car park and beer garden
- Function room



See us on [facebook](#)

Tom Greenway ADI

Local Driving Instructor



- Competitive Rates
- Refresher Lessons

- One to one Instruction
- Pass Plus Registered

Tel: 01926 614462

Mobile: 07989 576561

PASS PASS PASS PASS PASS PASS PASS PASS

FENCES : TREES



All types of fencing and gates

Tree felling and reduction

Hedge laying and trimming

Patios

Seasoned logs available

Call Adrian Dollar on
01926 817077 or
07914 623989

Qualified and Insured

A Member of the Alliance of Private Sector Practitioners

Jackie Biddle

Healthy Feet are Happy Feet

Foot Health Practitioner



Dip CRP MPS Pract
CRB Checked

• Nail Trimming

• Corn Removal

• Verruca Treatment

• Ingrown Toenails

• Calluses Reduced

• Footcare for Diabetes

Home Visits Telephone

T: 01926 612503

M: 07872 907429



*Hello – my name is
Rosina and I have
been a beautician for
over 8 years.
I specialize in
Facials, Swedish and
Hot Stone massage
in my private
Harbury Studio –
ladies only*

Absolute Beauty

*Full Range of beauty & holistic
Treatments – Pamper Parties
Tel. Harbury – (01926) 612403
18 Farm St.,
Harbury, CV33 9LS*



Caring for you and your pet.

Opening hours

Monday - Friday 8.30am - 7.00pm

Saturday 8.30am - 5.00pm

Sunday 9.00 - 12.30pm

Full 24 hour emergency service

Recently refurbished premises
with large client car park

123, Heathcote Road, Whitnash,
Leamington Spa, Warwickshire
CV31 2LX Tel: 01926 337790

www.heathcotevets.co.uk



**FREE ANTIQUES,
JEWELLERY, BOOKS, TOYS AND
COLLECTABLES VALUATIONS**

Thursday, 9th September, 1.00 - 4.30pm

Thursday, 14th October, 1.00 - 4.30pm

No appointments necessary - Refreshments in aid of the NSPCC

**Charles Hanson Bargain Hunt Expert
and his team of Valuers**

Leek Wootton Village Hall

Warwick Road, Leek Wootton, Warwick, CV35 7RB

Items may be left to be entered into a suitable sale. For larger items, an appointment
can be made to see you in your home or office.

Charles Hanson is available for Charity events

e.g. valuation days, talks, auctions etc.

Please contact Mrs Carol Jones

Hansons Warwickshire Representative on 01926 770066

or email service@hansonsauctioneers.co.uk www.hansonsauctioneers.co.uk



petpals 
your best friends friend
Professional Pet Care in your own home.

**Dog Walking, Cat/Small Pet Visits,
 Home & Pet Sitting,
 Home Boarding, Pet to Vet,
 Pet Taxi, Pet Friendly Vehicles.**

**Registered, Insured,
 Police Checked Staff.**

**Contact Louise: 0560 344 6658
 banbury@petpals.com
 www.petpals.com**

No job too small **Phil's** *Free Quotations*
Plumbing and Heating

**Fully Qualified
and
Insured Plumber**

Bathrooms, Central Heating & showers

I am a locally based plumber offering very competitive rates on any plumbing or heating job.
 No job too small,
 Please give Phil a call

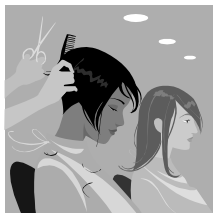
Call Phil
 Daytime: 07971 046392
 Evening: 01926 400746
 Email: philmunday@hotmail.co.uk

Bishops Tachbrook
 Leamington spa

Karen's Kuts Mobile Hairdressing

Unisex Hairdressing by Qualified Stylist

Personal friendly service, in the convenience of your own home or at my house in Harbury.



**Call Karen
 for an appointment on
 01926 614628
 0789 421 3068**

Richard's Dog Walking Service

Do you have a dog that needs walking?
 Are you going on holiday and need your dog walked and fed?
 Richard's dog walking service is run by an experienced dog owner
 and would be more than willing to look after your dog,
 by providing a home visit to your best friend.

Available at short notice!

To contact your local, friendly dog walking service:

Tel: Harbury 613509 or Mobile: 07923 167420



Tel: 0845 643 2869
 Mob: 07590 603475
 02476 616789

- **Having problems with your computer?**
- **Need a wireless network?**
- **Tired of waiting in a phone queue for help you don't understand?**
- **Frightened of what it might cost?**

PC Repairs, Enhancements and Configuration, Wireless Networking, Broadband Problems, Multi media set up, Equipment wiring & connection faults, Internal & External Communication, Virus eradication, additional Telephone Sockets.

Call Don Mayers. We specialise in home computer and connection problem solving and set up. Our rates are excellent and we are local to you.

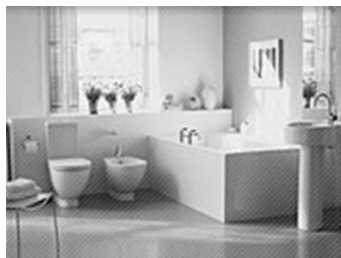
For more information, please visit www.thebroadbandman.co.uk.

Mr Plumb



Plumbing & Heating Services

- ✓ **Beautiful bathrooms designed and fitted.**
- ✓ **Wall & Floor Tiling / Plastering.**
- ✓ **General plumbing including: radiators / toilets / sinks/ taps / showers / cylinders**
minor and major leaks / outdoor taps.
- ✓ **Harbury based, fully insured & references available.**



For a friendly and reliable service contact Marcus

01926 614448 / 07904 670055

mrplumb@fsmail.net

Harbury *fields*

Bush Heath Lane, Harbury

Road Name?

What do you think?

Harbury Fields is a new community-led development with nine local-market homes for sale and 13 affordable homes to rent.

A new access road leading off Bush Heath Lane will be created and we would like your ideas for the road name.

Local names, historical names ... we welcome your suggestions.

Please email your ideas to claire.linfoot@linfoothomes.co.uk or Nicola Thompson at harburypc@btinternet.com. Alternatively you can complete a form held at the Parish Council office in Church Terrace.

We need your suggestions by 30th September.

A Parish Council initiative in conjunction with Linfoot Country Homes.


LINFOOT
Country HOMES
www.linfoothomes.co.uk

ehB
 RESIDENTIAL
01926 881144

Harbury *fields*

Bush Heath Lane, Harbury

Exclusive Off-Plan Sales Launch

From Saturday 18th September and for a limited period of ten weeks, we will be offering purchasers with a local connection the opportunity to make off-plan reservations on our nine local-market new homes.

So register with our agents, ehB Residential, to receive the brochure / price list – and avoid disappointment!



**HARBURY VILLAGE HALL
SATURDAY 18TH SEPTEMBER
FROM 9am - 2pm**

Come along, our agents will be available for consultations and reservations with specification samples and full site details

LINFOOT
Country HOMES
www.linfoothomes.co.uk

ehB
RESIDENTIAL
01926 881144

Call today...
and register to
receive a brochure
& price list prior to
the launch event

Moore & Tibbits

Solicitors

Are you or your family facing difficult decisions about moving into a Care Home and the financial consequences of this?

We have a friendly specialist team who can provide practical support and guidance in relation to:-

- Care Fees and who should pay them
- Entitlement to NHS Public Funding
- Mental Capacity
- Court of Protection Applications and Lasting Powers of Attorney
- Wills, Probate and Inheritance Tax planning

For further information please contact Angela Woodruff

We also undertake Family, Matrimonial and Conveyancing work

on **01926 491181** or email **awoodruff@moore-tibbits.co.uk**

**Moore & Tibbits Solicitors,
34 High Street, Warwick,
CV34 4BE**

www.moore-tibbits.co.uk

**Tel: 01926 491181
Fax: 01926 402692**

