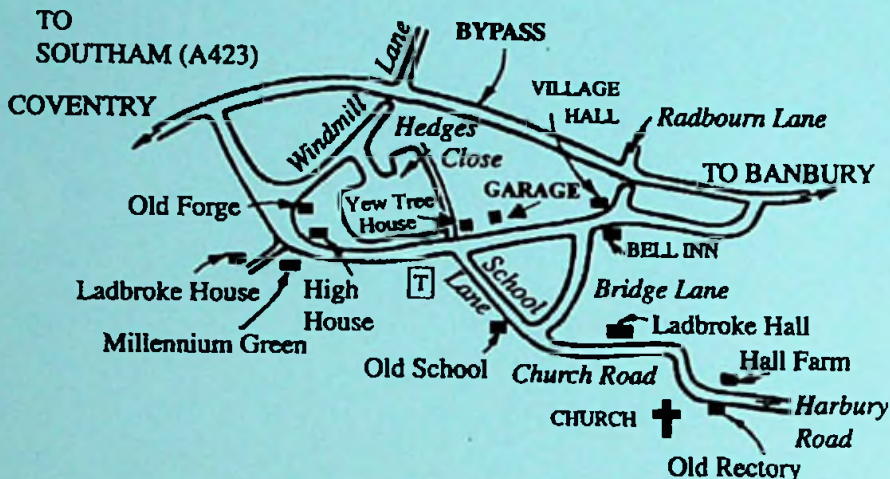




Ladbroke



THE FOSSE GARAGE

Servicing, MOT, Bodywork Specialists
24 Hr. Recovery, Self-Drive Car & Van Hire

QUALITY USED CARS FOR SALE

Cars Purchased for Cash - Free Valuation - No Obligation

FOSSE WAY, HARBURY, CV33 9JW
01926 613260 or 07710 613260 (24hr.)

Established
in 1974

VISIT OUR VIRTUAL SHOWROOM AT
www.fossegarage.co.uk

MOTA-BARS FOR TOWBARS

Specialising in Towbars & Parking Sensor Systems

Professional - Reliable - Quality Service

Specialists in the Latest Vehicle Technology

VERY COMPETITIVE PRICES

Town Centre Workshop, Established since 1986

01926 426382

42 Morton Street, Leamington Spa www.motabars.co.uk

This magazine is available by subscription delivered within Harbury,
Deppers Bridge and Ladbroke. Telephone 01926 612009 for details

Harbury & Ladbroke News

Reflects all aspects of local life, is published monthly and produced with the assistance of
All Saints' Parochial Church Council.

August 2010

No.437

Editorial Office	☎ 612155
Articles to	Harbury Pharmacy, High Street
Email address	articles@hlnews.co.uk
Advertising Office	31, Binswood End (☎ 612155)
	advertising@hlnews.co.uk
Distribution Manager	49, Mill Street (☎ 612009)
	distribution@hlnews.co.uk
Inserts by prior arrangement	☎ 612009

IN THIS ISSUE

Page

EDITORIAL	2
HARBURY DIARY	2
FROM THE RECTOR & CHURCH NEWS	4
LADBROKE NEWS	8
HARBURY PARISH COUNCIL	11
HARBURY SOCIETY	16
HARBURY TWINNING ASSOCIATION.....	17
HARBURY WOMENS INSTITUTE	17
HARBURY FOLK CLUB	18
HARBURY TENNIS CLUB	20
HARBURY TODDLER GROUP	21
HARBURY PRE-SCHOOL	22
WINDMILLS NURSERY	24
HARBURY PRIMARY SCHOOL.....	26
HARBURY 1ST SCOUTS.....	28
VILLAGE HALL UPDATE	30
HORTICULTURAL SOCIETY	32
NATURE NOTES	35
GENERAL SECTION	37
LETTERS TO THE EDITORS	60

Editorial Team

John Holden - Chris Finch - Marian Millington
Ralph Swadling - Janice Thraves

*The views of contributors are not necessarily those of the Editorial Team
The Editors reserve the right to amend articles as they see fit.*



Editorial

The Stagecoach Bus Company are re-scheduling and re-numbering the buses which serve Harbury from Monday 6th September. Further details are included in the magazine and timetables are awaited.



Ladbroke is holding a Party in the Park evening of entertainment on 21st August with music, a bar and hampers to order. We wish them good weather.

The Coffee Morning in aid of the British Heart Foundation in May helped raise over £800. This is a truly commendable effort.

Our editorial photograph shows the new footpath entry from Bush Heath Road leading to the Recreation Ground, avoiding Pineham Farm.

Finally, we extend our sympathies to the family of Warren Wood.

Harbury Diary

AUGUST

- Sat 7 Coffee Morning 10.00am in Tom Hauley Room in aid of Mothers' Union
Senior Citizens Fund raising Lunch 12 noon – 2.30pm in Village Hall
- Sun 8 **TRINITY X**
Holy Communion 8.00am
Sung Eucharist 10.30am
- Tues 10 No Toddlers Service today
Holy Communion 7.30pm
- Thurs 12 Holy Communion 9.45am
WI 7.45pm in Tom Hauley Room
- Sat 14 Coffee Morning 10.00am in Tom Hauley Room in aid of Farm
Crists Network
- Sun 15 **TRINITY XI**
Holy Communion 8.00am
Family Communion Service 10.30am
Evensong 8.00pm
ADVERTISEMENTS FOR NEXT ISSUE TO 31 BINSWOOD
END BY 5.30PM

- Tues 17 Holy Communion 7.30pm
No Mothers' Union meeting today
- Weds 18 Tea 3.00pm in Tom Hauley Room
- Thurs 19 Holy Communion 9.45am
- Sat 21 Men's Prayer Breakfast 7.30am
Coffee Morning 10.00am in Tom Hauley Room in aid of First Light
"Party in the Park" – 5.30pm -8.30pm, Ladbroke Millennium Green
- Sun 22 TRINITY XII**
Holy Communion 8.00am
Sung Eucharist 10.30am
- Tues 24 Holy Communion 7.30pm
Julian Meeting AGM 8.15pm at 14 Manor Orchard
- Weds 25 No Drop in Tea today
- Thurs 26 ARTICLES TO HARBURY PHARMACY, HIGH STREET AND
EMAIL ARTICLES DEADLINE BY 5.30PM
Holy Communion 9.45am
- Sat 28 Coffee Morning 10.00am in Tom Hauley Room in aid of Tennis Club
- Sun 29 TRINITY XIII**
Holy Communion 8.00am
Sung Eucharist 10.30am
- Mon 30 BANK HOLIDAY
- Tues 31 Holy Communion 7.30pm

SEPTEMBER

- Weds 1 Holy Communion 2.00pm
Mothers' Union Meeting and Tea 2.30pm in Tom Hauley Room
- Thurs 2 Holy Communion 9.45am
Art Group in 10.00am – 4.00pm in Tom Hauley Room
No Men's Group Meeting today
Folk Club 8.00pm in Dog Inn
- Sat 4 Coffee Morning 10.00am in Tom Hauley Room in aid of Harbury Society
Beer Festival in Village Hall
Fete starting 2.30pm at Galanos House, Southam Tel: 01926 812185
- Sun 5 TRINITY XIV**
Beer Festival in Village Hall
Sung Eucharist 9.00am
First Light Service 10.30am Tom Hauley Room
Service of Benediction 6.00pm
- Tue 7 Return to school – new term starts



Editorial

The Stagecoach Bus Company are re-scheduling and re-numbering the buses which serve Harbury from Monday 6th September. Further details are included in the magazine and timetables are awaited.



Ladbroke is holding a Party in the Park evening of entertainment on 21st August with music, a bar and hampers to order. We wish them good weather.

The Coffee Morning in aid of the British Heart Foundation in May helped raise over £800. This is a truly commendable effort.

Our editorial photograph shows the new footpath entry from Bush Heath Road leading to the Recreation Ground, avoiding Pineham Farm.

Finally, we extend our sympathies to the family of Warren Wood.

Harbury Diary

AUGUST

- Sat 7 Coffee Morning 10.00am in Tom Hauley Room in aid of Mothers' Union
Senior Citizens Fund raising Lunch 12 noon – 2.30pm in Village Hall
- Sun 8 **TRINITY X**
Holy Communion 8.00am
Sung Eucharist 10.30am
- Tues 10 No Toddlers Service today
Holy Communion 7.30pm
- Thurs 12 Holy Communion 9.45am
WI 7.45pm in Tom Hauley Room
- Sat 14 Coffee Morning 10.00am in Tom Hauley Room in aid of Farm Crisis Network
- Sun 15 **TRINITY XI**
Holy Communion 8.00am
Family Communion Service 10.30am
Evensong 6.00pm
- ADVERTISEMENTS FOR NEXT ISSUE TO 31 BINSWOOD
END BY 5.30PM

Tues 17	Holy Communion 7.30pm No Mothers' Union meeting today
Weds 18	Tea 3.00pm in Tom Hauley Room
Thurs 19	Holy Communion 9.45am
Sat 21	Men's Prayer Breakfast 7.30am Coffee Morning 10.00am in Tom Hauley Room in aid of First Light "Party in the Park" – 5.30pm -8.30pm, Ladbroke Millennium Green
Sun 22	TRINITY XII Holy Communion 8.00am Sung Eucharist 10.30am
Tues 24	Holy Communion 7.30pm Julian Meeting AGM 8.15pm at 14 Manor Orchard
Weds 25	No Drop in Tea today
Thurs 26	ARTICLES TO HARBURY PHARMACY, HIGH STREET AND EMAIL ARTICLES DEADLINE BY 5.30PM Holy Communion 9.45am
Sat 28	Coffee Morning 10.00am in Tom Hauley Room in aid of Tennis Club
Sun 29	TRINITY XIII Holy Communion 8.00am Sung Eucharist 10.30am
Mon 30	BANK HOLIDAY
Tues 31	Holy Communion 7.30pm

SEPTEMBER

Weds 1	Holy Communion 2.00pm Mothers' Union Meeting and Tea 2.30pm in Tom Hauley Room
Thurs 2	Holy Communion 9.45am Art Group in 10.00am – 4.00pm in Tom Hauley Room No Men's Group Meeting today Folk Club 8.00pm in Dog Inn
Sat 4	Coffee Morning 10.00am in Tom Hauley Room in aid of Harbury Society Beer Festival in Village Hall Fete starting 2.30pm at Galanos House, Southam Tel: 01926 812185
Sun 5	TRINITY XIV Beer Festival in Village Hall Sung Eucharist 9.00am First Light Service 10.30am Tom Hauley Room Service of Benediction 6.00pm
Tue 7	Return to school – new term starts

Refuse Collection Rota				
	Deppers Bridge	Harbury	Ladbroke	Refuse Collection Week
August	Wed	Thurs	Fri	
	11	12	13	Grey Bin
	18	19	20	Green & Blue Lid Bins
	25	26	27	Grey Bin
Sept	1	2	3	Green & Blue Lid Bins
	8	9	10	Grey Bin
	15	16	17	Green & Blue Lid Bins



All Saints
HARBURY

From the Rector

Father Craig Grocock

The Rectory, Vicarage Lane, Harbury Tel.: 612377

Do nothing to change your life.

As I write this I am on my last week before going away on holiday. Holidays are such important things, a chance to recharge the batteries and take some rest and relaxation. Someone asked me the other day what I intended to do on holiday I replied 'a lot of nothing!' which to me is about right!

This reminds me of a small but wonderful book by the Bishop of Reading entitled 'Do nothing to change your life' that I recommended to my congregation at Ladbroke last week. The book is about the joy of discovering what happens when you stop!

One of the chapters is entitled 'plumbing the depths of a single moment' and invites us to enjoy the 'moment' rather than dwelling on the past or worrying and fretting about the future. The moment, the here and now, is a gift from God. We can so easily be preoccupied with what we've got to do, the deadlines we have to meet, the people we need to see etc that we miss the moment for what it is. The more I talk with people, the more I see this longing just simply to be and find this sense of stillness within.

At Harbury Church over the last couple of years we've been using various evening services on the first Sunday of the month that aim to provide people with the opportunity for a little more stillness, quietness and reflection in worship.

Please do have a look at our website www.allsaintsharbury.org where you will find more details.

All Saints' is here for all in our community. You are warmly invited to come along and join as we stop, enjoy the moment and do nothing to change our lives!

God bless

From the Registers

Holy Matrimony, All Saints' Harbury

10 July Darren Hall to Sara Beman

Holy Baptism, All Saints' Harbury

27 June Joseph Jones

11 July Jai Williams

Burial of Ashes

29 July Warren Wood



From the Churchwardens

Will & Fliss

Sister Martha's dinner was held on 17th July in the Tom Hauley Room. Sister Martha, a Russian Orthodox nun, is the Principle of Bethany Girls' School and an inspiring speaker. We all listen to the news, but to hear of the dangers and privations of life in the Occupied Territories from someone who experiences them on a daily basis was quite different. The dinner was very well attended and raised funds for the work of BIBLELANDS. Thank you to Su, whose initiative the evening was, and to all who helped her.

"This is our story", our new all-age Family Communion Service, was launched on 18th July. The presentation was given by the School who took, as their theme, "New beginnings", obviously appropriate to the occasion and meaningful to them as Year 6 prepare to move on to new schools and Reception to Year 5 prepare to move up. Thank you to everyone involved in the many aspects of this service and to everyone who supported both it and the Bring and Share lunch which followed.

On 21st July, we were very pleased to welcome Year 6 and their families to their Leaver's Service. The children had written very sensitively about their hopes and their anxieties for the future. Those who heard the readings and the music were impressed by the care and thought given to their preparation. Thank you to them, to Mr Daly and his staff. We wish them all a happy, restful summer. Year 6 will be in our thoughts as they begin a new stage in their lives.



Mothers' Union

Gillian Hare

As usual, July was our social month. At the afternoon meeting, members were entertained by Chris Rutherford's account of her recent trip to Arizona: a vivid description of an awesome place. Father Craig sang some unrepeatable songs before everyone enjoyed a strawberry tea.

For the evening we repeated last year's successful skittles tournament, this time in the Village Club. Thirty two people enjoyed the event. Thanks are due to the Management of the Club, to Sue and Chris for the food, to Brian for keeping score, to Richard Everett for valiantly restacking the skittles all evening and, most of all, to Mike Jones for keeping everyone in order. Congratulations to the winners: Sue Lord, Peter Ball and team "Mother's Ruin".

Your may read this just in time to support our coffee morning on **Saturday 7th August**.

Wednesday 1st September: 2.00pm Communion in Church, with hymns and an address, followed by tea.

Tuesday 21st September: 8.00pm, Chris Rutherford on M.U Action and Outreach Projects

Saturday 25th September: 2.00pm, Diocesan Service to celebrate 10 years of the Parenting and Literary Development Programmes – venue to be confirmed.

Tuesday, 12th October: Bishop John will lead a quiet evening – details not yet available.

It is time to order next year's calendars and diaries. And don't forget our book exchange and unwanted postcards for work in Sudan.

SEPTEMBER EDITION – HARBURY & LADBROKE NEWS

Adverts to 31, Binswood End by 15th August
Articles to Harbury Pharmacy by 26th August



Toddlers' Service

Lorna Bedford

Mrs Gillian Hare related a story to the children that Jesus told to his followers. It was about a foolish man who built his house on sand and a wise man who built his house on a rock. When the rain came, the house built on sand fell down, whereas the one built on the rock stood firm. Mrs Hare demonstrated the story by having a plastic container half full of sand, with a rock in the other half. A house made of Lego was placed on each of the different foundations. Then, with the help of the children, she poured water onto the two houses. When the house on the sand fell apart, the children laughed and wanted to help pour more water on to the sand to make the house fall down even more!

During the service we had great fun singing and doing the actions to two songs, "Jesus' love is very wonderful" and "The wise man built his house upon a rock", accompanied by Mr Michael Hare on the accordion.

We had our refreshments in the way of a picnic and played with toys until it was time to go home.

There will be no Toddlers' Service in August. Our next service is Tuesday 14th September at 2.00pm in the Tom Hauley Room – entrance via the Church. All babies and toddlers, accompanied by an adult, are most welcome to join us.



First Light

Alison Abbott

Over the last three months we have taken wind, fire and water as our themes. They all are powerful, full of life, and cannot be contained. Although we try, and often succeed, in harnessing their power for our use, they all can break free and surprise us. It has helped to remind us that although we might want to contain God and control Him we cannot, He never fails to surprise us.

What is truth? How can I really enjoy life? What is the best way to live? Questions we have probably all asked from time to time and questions we will be addressing in First Light style on September 5th. They are big questions and you could think, 'how can they tackle it in a way children can understand?' Two things: I think children have a much deeper sense of the spiritual than we often give them credit for and, secondly, adults often make things far too complicated. If we look through the eyes of a

child it is often easier to see what really matters. Come along and let's explore together; first Light is not just for children.

So everyone, whatever your age, is welcome at First Light on the first Sunday of each month in the Tom Hauley Room, where we enjoy a short time of music, drama and prayer in an informal atmosphere.

Ladbroke News & Diary

AUGUST

- Sun 8 TRINITY X**
Holy Communion, 9.00am in Church
- Sun 15 TRINITY XI**
Holy Communion, 9.00am in Church
ADVERTISEMENTS FOR NEXT ISSUE TO 31 BINSWOOD
END BY 5.30PM
- Wed 18** W.I outing to Coughton Court
Parish Council Meeting, 7.45pm in Village Hall
- Sat 21** "Party in the Park", 5.30pm – 8.30pm on the Millennium Green
- Sun 22 TRINITY XII**
Holy Communion, 9.00am
- Thurs 26** ARTICLES TO HARBURY PHARMACY, HIGH STREET
AND EMAIL ARTICLES DEADLINE BY 5.30PM
- Sun 29 TRINITY XIII**
Holy Communion with spoken service, 9.00am

SEPTEMBER

- Sun 5 TRINITY XIV**
Family Communion, 10.30am, followed by refreshments in Church



Ladbroke & Deppers Bridge Women's Institute

Carol Lane

The Annual Dinner held at the Kenilworth Golf Club on 10th July seemed a particularly enjoyable event this year. A coach collected about 22 ladies from Southam and Ladbroke in time for us to enjoy a drink overlooking the golf course before our 3 course meal in their function room. (22 W.I. ladies can be daunting to any other diner, so a room of our own had to be a bonus all round!)

You may wonder about the brave young man in the picture. He was the barman!



Later in the month Pauline Brailsford and I attended a weekend course on Dance Heritage, gaining a better understanding of the origins of some of our British dances, including a Morris dance from the Cotswolds, a folk dance from Wales, sailor's hornpipe, a Viking Longsword Dance and clog dancing. These we danced with varying degrees of precision but maybe the most enjoyable was skipping round the maypole in the wonderful grounds of

Denman college on a beautiful morning.

For non W.I. readers, Denman College, set in 17 acres of Oxfordshire countryside, is 'the W.I.'s home of cookery, craft and life style courses' and its 69 bedrooms and teaching suite host 6,000 students over the year attending some 500 short residential courses.

The pictures show the group from different W.I.s dancing in front of Denman College and ready to perform the 'Nutting Girl' Morris dance.





Ladbroke General Section

Ladbroke Millennium Green

At the July Trustees' meeting it was agreed to plan a "Music on the Green" evening for the 21st August. It is hoped to attract groups and families to bring a picnic down to the Millennium Green to enjoy an evening of live music.

The AGM for the Millennium Green has been set for Thursday 21st October 1930 in the Village Hall. The meeting will be open to the public.

Martin Neal

Secretary to the Millennium Green Trustees

Party in the Park - Music on Ladbroke Millennium Green, 21st August

Come and enjoy live music on the Millennium Green by the Ladbroke Rockers, The Stone Brothers and Ella Kenrick from 5.30pm to 8.30pm or later. Bring your own rugs, chairs, gazebos and picnics (or buy a hamper) and soak up the atmosphere. Prices are £7.50 for adults, £3.00 for children. There will be a bar serving drinks and coffee. Hampers, to order, from Mif Warr - 815004. Proceeds will go to the Church, Millennium Green, Village Hall and HS2 action group. See the village website - www.ladbroke-pc.gov.uk - Millennium Green page.

Kip Warr

The Coventry and Warwickshire Historic Churches Sponsored Ride and Stride – September 11th 10.00am – 6.00pm

It's that time of the year again – if you would like to join in. There is a local ride around the Dasset/Southam area all mapped out this year. Alternatively sponsor the Morton family who have volunteered to "pedal" again. I have all the details already plus the sponsor forms.

Betty Winkfield

THE SALON

Ladies & Gents Hairdressers

Tel: 612400 ~ Chapel Street, Harbury

NEWSPAPERS DELIVERED TO YOUR DOOR

Early morning deliveries to Harbury, Ladbroke, Deppers Bridge, and surrounding properties of all newspapers and magazines.

One to seven days a week.

All vouchers accepted. Monthly billing. Business accounts.

For more information and immediate start telephone

BISHOPS ITCHINGTON NEWS: 01926 612387



**D F J HEWER
BUILDERS LTD**



NFB

National Federation of Builders

DESIGN AND BUILD COMPANY

*Established 45 years working for the community
for all your building requirements*

We build today with an eye to the future

MAINTENANCE – REPAIRS

EXTENSIONS – ALTERATIONS

LISTED BUILDING CONSENTS

SPECIALISTS IN LISTED BUILDING WORKS

PLANNING AND BUILDING REGULATION APPROVALS

Telephone: 01926 813070 or 813627

Email: admin@hewerbuilders.co.uk

Web: www.hewerbuilders.co.uk



Registered
house builders



W. Goodwin & Sons Funeral Directors

**38 Coventry Street, Southam
CV47 0EP**

Telephone: 01926 812445

**Private Chapels of Rest
Monument service provided**

Gino's Decorating

Internal Painting & Decorating

Over 30 years experience

For a free quotation

please phone 01926 612486

or Mobile: 07733 265694



NIFTY NEEDLE CURTAIN WORKROOM

Banbury Street, Kineton (Harbury resident)

01926-641741 ccnn@fsmail.net www.niftyneedle.co.uk

For all your made to measure curtains and blinds and poles.

ALSO NIFTY NIK NAKS GIFT SHOP

Free Quotes

Open Tue - Fri 9.00 - 5.00pm Sat 9.00 - 1.30pm Est. since 1987

HARBURY LANDSCAPING

Local specialists for all your Landscaping requirements including -

**Block Paving, Driveways, Patios, Paths & Walls.
Stonework, Decking & Woodwork, Concrete & Footings.
Turfing, Fencing, Shed Bases & Installation,
Internal Flooring & Tiling.**

For a free quotation from a reliable, fully insured, local tradesman

Please tel. JEFF MAULE on 01926 614923 or mobile 07952 864607

Ladbroke Village Hall Millennium Club

The results of the draw for June were:

£80 Richard Walker
 £50 Malcolm Wray
 £25 Jill Norgate
 £10 Carol Lane
 £10 Christine Payne
 £10 Margaret Bosworth
 £10 Graham & Pauline Long
 £10 Helen Ballard

Janet Goldson



Harbury Parish Council

Linda Ridgley

Official minutes can be viewed in the Library on the Parish Council website www.harbury-pc.gov.uk or obtained from the Parish Clerk Tel: 01926 614646

Tribute Cllr Sharon Hancock paid fulsome tribute to Iory Davies who as well as being a fellow Parish Councillor, farmed at Lower Westfields for many years. He had served as a School Governor, JP, Rural District Councillor and trustee of the Wagstaffe Charity. He had been a gentleman and would be much missed. She remembered him with pride and affection. Cllr Thompson added that he had been a mentor to himself and Sharon.

Public Participation

Energy Group

David Bristow presented the report for adoption by the Council. It set out their intentions to help reduce village energy use, demand high levels of insulation in new homes, encourage options for community energy generation and to run an energy awareness campaign.

Village with a Vision

Tony Stubbs reported that the Housing Needs Survey was being analysed. The response of 28% was considered reasonable for such an exercise, so they believe there is need and support for progressing the scheme and would hold a meeting on 9th July with Professor Curslake and Juliet Blyth as speakers.

The County and District have been very supportive and they hoped to set up a Charitable Trust to control any sheltered housing that was built.

They had three potential sites offered by the Price Family Trust; the Spinney Paddock, the Church Paddock and the land to the west of Bull Ring Lane. They asked the Parish Council to support and fund their efforts. This was agreed in principle and the request for money would be considered at a later meeting.

Public Safety

The thieves who stole a JCB from the Bush Heath Lane development were apprehended in Oxford.

Katrina, the Community Beat Officer urged residents to attend the Community Forum meetings to report their problems. Priorities for action are determined at the meeting by those who attend. Speeding through Napton on the A245 and anti-social behaviour in Wattons Lane, Southam are the current action points. However Katrina said residents could email concerns to Southam Police - Southam.snt@warwickshirepolice.uk

She reported on the recent problems with nuisance youths (displaced from Southam?) damaging trees and riding vehicles on the Playing Fields. That afternoon she had seen four giving rides to passengers who had no helmets, and explained that she served a Section 59 notice on them, after which their vehicles can be confiscated.

Katrina left to deal with a disturbance caused by youths on the Playing Fields and returned later to announce she had issued another Section 59 Notice.

Reports from Councillors

Ufton PC pays for free bus passes in summer holidays for its young people; runs a sports day for them and some sit on the Parish Council.

Bishops Itchington has opened the Blue Butterfly Café for older people in the old British Legion Club where there is also a Youth Centre. They are considering switching off some of their lights and shutting off alleyways.

Harbury Youth Club is oversubscribed and caters for 10-13 year olds.

Twinning group thanked the PC for the grant which subsidised travel for the young people who went to Samois sur Seine. The French will no longer receive an EU grant to support their visits so will have to fundraise as we do in Harbury.

Village Hall Fund raising for improvements continues and plans for the next phase will be on display at the Coffee Morning in July.

Planning

Councillors made no representation on the Southam Tesco store proposal.

They were annoyed that the Bush Heath Lane Developer had called the site "Harbury Fields" and believed it would confuse campers seeking Rob Davies's site off Middle Road.

Cllr Jenny Patrick hot-footed it back from the planning meeting to report the Swimming Pool proposals were rejected. Objectors had given a slide show and the School's presentation did not emphasise the facility was for School use.

She also reported that the tennis courts' retrospective application at "The Lodge" Hall Lane was passed.

Parish Properties

BMX Track - Stage one would be done before the School broke up.

Seesaw - Cllr Amanda Lewis reported that it was "really good!"

Trees - The mess on the Pound caused by vandalism to the trees had been cleared by Colin Sheasby, but the Copper Beech on the Playing Fields was irreparably damaged and would die. Residents with information about the culprits were urged to contact the Clerk.

Burial Grounds - Cards had been attached to the staked memorials asking relatives to contact the Clerk about arrangements to make them safe.

Allotments - The County Council wants to put up the rent but the Cllrs believe they should be given 12 months notice and will challenge this as they themselves have to give plot holders 12 months notice too.

Tennis Club - The County is also increasing the Water Easement costs by £150 and this too will be challenged.

Memorial Garden - The broken wall will be repaired.

Playground Inspections - will be increased to once a week during the school holidays. Cllr Knowles was praised for removing the chocolate that had been smeared on the swings.

Lighting - All the fancy Windsor lights have been cleaned and the PC will ask for the Bush Heath Lane development to have energy saving LED lamps.

Traffic Calming - The no-parking lines on Mill Street to enable the Milk Tanker to access Trice's Farm were still not in the correct position.

There were suggestions that double yellow lines should be placed all the way down to Back Lane to improve visibility for those turning into Mill Street.

The police would not support the extension of the 40 mph limit on Butt Lane.

And I think for my benefit it was reported that the "Bollards are coming!"

Finance -The Audit had been completed and sent to the outside Auditor. Carried over funds would be clearly identified and Budget monitoring was "back on track" Cllr Mancell reported. The Accounts were approved.

Cllr Mancell intended to update the Council's IT systems at a cost of £680.

The Rugby Club and Harbury Choir School thanked Cllrs for their grants.

Harbury Parish Council Annual Parish Meeting

**Nicola Thompson, Clerk
Harbury Parish Council**

Properties Working Party Report

The Parish Council's properties include the Playing Fields, the Cemetery, and the Village Greens. Most of the maintenance of these is done by a contractor and the three year contract was up for renewal in April. The Working Party reviewed and updated the contract in January and it then went out to tender. As a result, the contract was awarded to Philip Cook Landscapes who has now commenced work.

The play equipment is regularly professionally inspected. It is also checked at frequent intervals by Councillors Thompson and Knowles. We aim to repair any deficiencies as quickly as possible. In the last year, as well as numerous minor repairs, there have been major repairs to the aerial runway and the skate park. A new see-saw has been ordered to replace the one that had to be taken out of commission some time ago and it should be installed soon; along with an extension to the safety surface.

Thanks to the tenacity of Councillor Thornley, it should not be long before a BMX track is built near the skate park. A grant of £6000 has been obtained from the District Council Community Development Fund which added to the money already raised for the project will enable the work to be done.

The hard play area is now in a poor condition and will be expensive to renew but the Council hopes to be able to undertake this work in the not too distant future.

The Parish Council and the Tennis Club jointly fund the maintenance of the tennis courts which are an excellent facility for the village, and it is good to see the efforts the club makes to encourage youngsters to learn the game.

The issue of safety of memorials in the cemetery is a major and continuing problem. Following guidance then in existence, a large number of memorials were staked. Considerable effort was made by the Clerk to contact relatives and as a result a number of memorials were repaired. In the light of a more relaxed approach to safety being recommended, the Working Party along with a professional contractor reviewed all the remaining staked memorials. As a result, 13 stakes were removed, and 5 extremely dangerous and crumbling stones were laid flat. 27 memorials were restaked and another effort to contact relatives is being made. Where this fails, the Council must either repair the memorial which would be expensive, or apply to lay it flat. It is not an option to leave the stakes indefinitely.

During the fairly severe winter, roads in the village were hazardous and the Council has provided 2 extra grit bins in Honiwell Close and Mill Street which should be helpful if we have similar conditions next winter.

I would like to thank Councillors Thornley, Thompson and Knowles for all their help and support over the last year. I would also like to thank the Parish Clerk, Nicola Thompson for all her excellent work.

Sharon Hancock

Environment Working Party Report

The Environment Working Party's major achievement in 2009-10 has been the traffic calming in the village. This has involved new signage, tarmac and paint in Binswood End and Temple End, bollards in Binswood End and a speed aware sign in Mill St (these last two were both still awaited at the time of writing). There is no magic solution to the problem of speeding cars, but we hope that this might remind some visitors and residents to cut their speed in the village.

We organised a 'Save Money – Save Energy' day at the Village Hall in March which was attended by more than 50 villagers. There were stalls about alternative fuels, solar energy, proper loft insulation, recycling, and a great display by the school on what they have been doing about this topic. This was our first attempt to address the issues of climate change and carbon footprint and, while we could perhaps have hoped for more attendees, no doubt we will continue to think about what we can do in the future.

We have had several discussions about streetlighting, in particular trying

to see how we can save money either by turning off some lights between the hours of midnight and 5am, or by switching to lower energy light fittings. These discussions are ongoing and currently we think that switching to new LED lights might be the best way forward. We will need to change our old bulbs soon anyway as they are no longer being manufactured.

As in the previous year we funded the purchase of 500 native daffodil bulbs that were planted around the village last autumn. Our thanks to the scouts who actually planted them; I for one think that they have looked lovely this spring.

Dr Tim Lockley
Chair, Environment Working Party



Harbury Society

Linda Ridgley



We had a beautiful day for our tour of Graham Robson's Nature Reserve at Marton. The weather was warm but not too hot. It was sunny enough to bring out the butterflies, moths and especially the dragonflies round his lake. Ted Dowdeswell even managed to capture a photograph of one!

We started with coffee at the farm house and the chance to see the owls on their nest through a live feed from the video camera installed in the barn. Then we examined the moth trap which

had several Elephant Hawk moths in it.

On our walk out to the lake we saw the Kestrel box on one of the old oak trees. Then by the lake, Graham showed us several orchids and helped identify other wildflowers and the Skippers, Meadow Browns, Burnett Moths and the amazing Dragonflies that flitted back and forth over the water.

Graham says he only has one family of moorhens now – he thinks the pike took the others although there was a large dead fish floating on the lake surface so maybe next year their offspring will survive. He had newts in the pond too but thinks the heron took them.

It really was a perfect day and, for many of us, recalled the countryside that we knew as children. It was Graham's wish that any contributions should be for Myton Hospice and members were very generous.

The next event is our Fund Raising Coffee Morning in the Tom Hauley Room on Saturday 4th September 10.00am-12 noon.



Harbury Twinning Association

Colin Humphreys

The Twinning Association has for many years held some form of light hearted celebration on 14th July, the date of the falling of the Bastille to the citizens of Paris at the start of the French Revolution.

This year was no exception, and took the form of a 'Safari Supper', which involves a visit to different members' houses where they host us to one of the various courses of a meal.

The evening started with us all meeting at Jenny and Andrew Patrick's home for aperitifs and starters; there were about 33 of us in total, including two visitors from the Czech Republic.

We then went off in groups of six to various houses where we had a main course, and then off in different groups of six or seven for the cheese course, again at a different house, all meeting up again at Elaine Nomura's home for sweets and coffee. It was a very successful and enjoyable evening, with super food, good company and naturally a seemingly endless supply of French wine.



Harbury Women's Institute

Jeanne Beaumont

To start the July meeting, Toni Heatly, our representative to the NFWI AGM in Cardiff in June, gave an excellent report. Amazingly, 1900 new members joined the WI last year, with 118 new W.I.'s opening in locations as varied as the Varda Museum and Brighton University to Bronzefield Prison in Surrey. We can't be that bad! The AGM was an enjoyable day with very interesting speakers. Delegates passed the resolution for "clear and mandatory country of origin labelling all meat, poultry and fish products". Then, to round off an unforgettable day, Only Men Allowed entertained with classical hits, Welsh ballads and pop favourites with some cheeky dance moves. No underwear was thrown.

Next year's NFWI AGM will be in Liverpool on 8th June 2011.

The next annual Federation meeting, usually held at the Spa Centre, will be at the Showground at Stoneleigh Park on 23rd March 2011.

Chris Rutherford read her super entry for the NFWI Lady Denman Cup competition.

Our outing to Hanbury Hall on Wed. 11th August, leaves the Village Hall at 9.00am – NT cards please. A tour of Hill Close Victorian Gardens has been booked for Wed 22nd September at 2.30pm. The Horticultural Show is on 11th September at the Village Club.

The W.I Harvest Supper is on Friday 24th September. We are also participating in the Victorian Street Fayre on Saturday 9th October.

Our next coffee morning is not until 30th April 2011.

Finally, a reminder to save shoe boxes and collect things to fill them for the Christmas Child Appeal.

The speaker at our last meeting was Ann Runacres who spoke on the Amish and their quilts. The Amish communities in the United States are clustered primarily in Pennsylvania, Ohio and Indiana. These are descendants of the Swiss Amish who repudiated elaborate religious garb and ornate churches, opting instead for the plain and simple style. They migrated to the States around 1727. Other waves followed throughout the eighteenth century and settled in Pennsylvania at the invitation of William Penn, a Quaker, who aided their efforts to flee from religious persecution in Europe. The foundation of their faith is the Bible. They have traditionally rejected luxury and progress, such as the car, telephone, electricity, power driven farm equipment, rubber tyres and modern fashions. We saw that in the slides we were shown of their way of life. Very simple domestic environment with blinds, no curtains, plain rugs and no pictures. The Amish quilts are a work of art and it is hard to establish their history. Designs do vary in each area and the natural dyes are amazing although a few commercial ones are now used. We were shown a few quilts and samplers, a very interesting talk.

September meeting: Tom Hauley Room, 9th September, 7.45pm, speaker: Fay Palmer – "Dowsing for Health"



Folk Club

Ted Crum

The weather was fairly warm and The Dog's windows gaped as if panting (those we could open that is!). The theme was "Work, Rest and Play", and a prompt 8 o'clock start saw your scribes kicking off the proceedings with 'Serving girls holiday'.

Ruth followed with fine renditions of two Joni Mitchell songs, the second of which (Big yellow taxi) was accompanied by Ian on guitar. Stuart then gave us '£4 a day' and 'Now I'm easy', and warned us of his forthcoming operation which will keep him from us for a while. We wish him all the best and look forward to his triumphant return later in the year. Following a typically dreadful joke from Peter Bones, he and Liz produced a beautifully sung version of 'Dalesman's litany', followed by 'Little man, you've had a lovely day', and dedicated to their grandson Callum. Rik played his Appalachian dulcimer and sang 'Love till you've loved them away' and Cyril Tawney's 'Chase the buffalo'. Judith gave us a moving song relating the testimony of Patience Kershaw, a child working in the mines in the eighteen hundreds, following with 'They sent a woman', a song of equal pay and equal rights for women. Pete Grassby brought a song from New Zealand, 'Black Matai', which is a lament from the deer cullers in the nineteenth century. He then gave us 'Go to sea no more' and brought the first spasm to an end with much chorus going on. Your scribe began the second half with a Flanders and Swann song 'All Gaul', sketching out the life of Charles de Gaulle and his effect on history.

The Folk Club Choir then assembled to perform 'Pastime with good company' and 'Unison in harmony', both of which disturbed a fair amount of dust from the woodwork. Sensing our desire to get stuck in, Des brought forth two cracking chorus jobs, 'John Kanakanaka' and 'Esakiba river'. Pete McDonald sang 'The Knocker-up Mann' which he thinks came from Gary and Vera Aspey, then gave us Paul Metser's song 'Play it all again', a tribute to the great Nic Jones. Deb's reading of 'The rules of work' was a typical tour de force, and she followed it with her poem 'The play'. Pete Mason sang a fine version of Jez Lowe's song 'Cursed be the caller', followed by Steve Knightley's 'The keeper'. Maureen and Janny brought us typically polished renditions of 'What shall we do if we have no money' from the Silly Sisters, followed by 'The Whitby maid'. Mr Shuttleworth then took charge and sang 'The Ebenezer' followed by his own song 'The auto-engineer' which was a master-class in the use of innuendo. Ian and Sue rounded off the evening with 'A begging I will go', 'Dreaming America', and to my eternal shame, I didn't note their closing number so it will ever remain a mystery but I know it was good because I remember the applause!

The raffle raised an amazing £76 which will go to the Motor Neurone Society: well done everybody!

Next month's club is on **Thursday 5th August** and will be hosted by Des and Deb with the theme 'Whatever takes your fancy'.



Harbury Tennis Club

Colin and Sue Mercer

In league matches the Men's doubles team ended their Stratford Prudden League season with 2 excellent wins but they came too late to avoid relegation to Division 3. The first match at fourth placed Stratford saw Steve Starke, Geoff Prince, Adam Crossling and Marcus Sharpe return with a 3-1 win. They followed this with another 3-1 win against third placed Claverdon, which moved them off the foot of the table but still 2 points below Littleton.

In the Banbury league Division 3, missing out on tie breaks means the team is still looking for its first win. Caroline Morland, Sue Mercer, Debi Radford, Steve Stark, Colin Mercer, and Adam Crossling made the trip to Banbury West End and lost 2-7. The match was much closer than the score suggests as 4 of the 9 rubbers were decided by the narrowest of margins but all 4 were lost 5-6. Caroline with Steve and Colin with Adam were Harbury's winners. It was even closer in the next match against second placed Kings Sutton when Sue Panton and Geoff Prince replaced Debi and Adam. This time it was a 3-6 defeat with 5 rubbers decided on 6-5 scores but at least Harbury won 3 of them this time. Harbury are now



second from bottom and well adrift of the rest of the league with 4 matches to play.

The weather

continued to be kind for the Club's Mixed Doubles Tournament with BBQ. There were some very close matches in the round robin stages which saw Rosemary Harley and Alan Guy winning their group to meet

Karen Bristow and Colin Mercer in the final. This went to a tiebreak with Colin and Karen holding their nerve to win the trophy.

Junior Summer Holiday Tennis

There are still spaces left in the summer holiday tennis programme for 5-16 year olds. The 1½ hour sessions, which are taking place every weekday morning, started on 2nd and end on 27th August.



WIGLESWORTH & CO

Chartered Surveyors

Thinking of selling your home?

For unrivalled experience
and local knowledge
contact Chris Thomas
or Nick Williams
on **01926 888998**

www.wiglesworth.com

AUCTIONEERS • VALUERS • ESTATE AGENTS

NOAHSARK

Painting
Company

SIMPLY BEAUTIFUL DECORATION
All forms of interior and exterior painting
and decorating, specialising in murals.



Pebsham Cottage
Aynho Road, Adderbury
Oxon OX17 3NL
T: 01295 811026

E: pete@noahsarkpainting.co.uk
W: noahsarkpainting.co.uk

R & S DOMESTIC SERVICES

REPAIRS TO MOST
MAKES OF
Washing Machines
Tumble Dryers
Cookers
Dishwashers



PHONE -
ROB CENEY on
HARBURY 613707

ADVERTISING IN THE HARBURY & LADBROKE NEWS

EMAIL: ADVERTISING@HLNEWS.CO.UK

TEL: 01926 612155

Monthly

¼ page – £10.50 or £28 for 3 months
½ page – £19.00 or £49 for 3 months
Full page – £33.50 or £89 for 3 months


Annual

¼ page – £ 94.00
½ page – £168.00
Full page – £315.00
(coloured pages printed in April for the year)

Adverts with payment to:
Gill Holden,


31 Binswood End, Harbury
by the 15th day of the month

Cheques payable to 'Harbury & Ladbroke News'



T.M. & J.M. GREY

BUILDERS



KITCHENS - BATHROOMS
WINDOWS & CONSERVATORIES
EXTENSIONS - ALTERATIONS
RENOVATIONS

GREY GABLES, 46 BANBURY ROAD, SOUTHAM CV47 1HJ

☎ Southam 01926 817744

Mobile: 07885 495384

Email: tmgrey@tiscali.co.uk

Southam & Harbury

BOUNCY CASTLES

For Hire of:

Bouncy Castles / Inflatable Slides
Obstacle Courses / Gladiator Duel
and Sumo Suits

Suitable for Children & Adults

2 days for the price of 1
Monday to Thursday

Safety Tested

100% Guaranteed Delivery
Friendly & Professional Service Provided
BIHA member

"5% Discount with this advert"

Please call for a
Free No Obligation Quotation

Call Louise on:

01926 815467 or 07947 476549

www.southambouncycastle.co.uk

Harbury



Marquee Hire

MARQUEES FOR ALL OCCASIONS.
BIRTHDAY PARTIES, CHRISTENINGS,
WEDDINGS, CORPORATE EVENTS.

Also hirers of
Chairs, Tables and Dance Floors.

www.harburymarqueehire.co.uk

Tel: 01926 614777

The programme is open to **all children**, non-members as well as members, whatever their tennis experience. Any number of sessions can be booked.

For more details and a booking form please email sucol-mercer@tiscali.co.uk or phone Sue Mercer on 01926 613284



Harbury Toddler Group

Jemima Balcalm

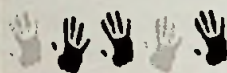
We've been busy this month at the Harbury Toddler Group, in particular with our annual summer outing, this year to Twycross Zoo, with the tickets mostly funded by the coffee morning held at the Tom Hauley rooms in May - so many thanks to all those who attended that!

We had a good turnout for the Zoo trip, and despite the weather we all had a lovely time. Mia spent a good half hour playing hide and seek with a cheeky monkey who liked playing tricks, and we were yet again amazed at the height of the giraffes! It was lovely to see the gorillas so active, and we particularly enjoyed the elephants (Rosie insisted on a trip to see these before leaving despite the torrential rain). The animals at Twycross always seem so active, and we enjoyed seeing the elephants, including the new baby, having a bath.

This month also saw a return visit from Caroline Bance who brought along some new fruit for the children to taste, mango, pineapple and avocado – mango was the clear favourite – and we had another lovely singing session out in the sunshine, and learnt some more new songs.

We are planning an action filled summer, as so many other activities close during this time. We will be making ladybirds and bees from stones on Monday 2nd August. 16th August will be a special messy play session so come in old clothes and bring a change for the kids – this is all the messy stuff you wouldn't dare do at home! 23rd August will have a 'seaside and under the sea' theme, which will include water play and the sand pit. Our session on 9th August will be finishing early, at 11, as the Southam Children's Centre is running a picnic in Harbury Park starting then, and we thought our mums would like to join in, so bring your lunch with you on that day.

If you want to come along to the Harbury Toddler Group you will be very welcome! We run on Monday mornings only, 9.30 until 11.30, at the Wight School behind the library.



Harbury Pre-School

Staff & Committee



Site Office – At the beginning of July, in keeping with the building theme, the role play area became a site office, with plans, clipboards, hard hats and tools. The children drew up plans for buildings, discussed them with clients on the phone, then donned their hard hats and prepared to build using small scale blocks and Lego indoors and large

blocks outside.

Orchard Visits – Despite a very doubtful weather forecast, two trips were made in a week to the Jackson's orchard, where the children had a great time den building, mini-beast hunting, singing songs around an unlit camp fire and playing hide and seek. When it rained on the second trip, we dashed into the barn where we had our snack while we waited for it to stop.

School Visit – To give the Pre-schoolers a taste of what to expect in Primary School, they were invited to spend time with Miss Maher, Mrs Johnson and Mrs Reeves in the Reception class. After exploring the class room, they joined the school children in the playground at their break time, and were made to feel very welcome.



Teddy Bears' Picnic – The sun shone in the morning, so we were able to hold the annual Pre-School Teddy Bears' Picnic in Harbury Park as planned. The children, along with their parents, siblings, and of course, teddy bears, enjoyed a lovely morning playing in the park and then all sat on the massive ground sheet provided by the Kitcheners to have their picnic lunch.

Write Dance – During July, Bud was inspired by a course entitled "Write

Dance" and we decided to try out some of the work during the last week of the term. The scheme uses music, rhythm, story, song, rhyme, sensory play and dance to teach skills necessary for handwriting, without needing to reach the stage of letter formation. In the early stages, the children performed large scale movements with their arms and hands to music. They began by imagining themselves as a volcano, with the lava erupting from the centre and later, using their finger tips in different shades of blue, purple and white paint, they walked around a table, making beautiful seaside waves on a long sheet of paper.



Farewells – We were very sad at the end of the term to be saying our farewells to Lesley who has now left Pre-School to start her maternity leave. The children presented her with a lovely card full of their pictures of her. Our very best wishes go with her. We also said our goodbyes to our older children who will be starting at Primary School in September. However, due to Pre-School's close links with Miss Maher and Mr Daly at the school, the children have received visits from Miss Maher and have been to see her in their new classroom. They are now confident individuals who we are sure will enjoy their new adventure and we wish them well in this very important step in their young lives.

And Finally We would like to say a huge **"Thank You"** to all the parents for their wonderful words of thanks, cards and gifts to all the staff. **Have a happy summer!**

If anyone would like further information about Harbury Pre-School, please contact Jacqui Quinney, Chair of the Pre-School Committee, on Harbury 613386. For enquiries about available places in the next school year, please e-mail bud.jackson@btinternet.com. The web site can be found at www.harburypre-school.org.uk


Windmills

Nursery School

Nursery School Staff & Committee

Windmills Nursery is situated in the grounds of Harbury Primary School and has the benefit of its own Forest School and qualified Forest School Leader. We are open all day and take children from the age of 2 years. We still have a few places remaining for September 2010 when the new government funding system will be fully implemented allowing parents to access free morning sessions for those children over 3 years old. If you would like to register a place for your child you can email us at info@windmills-nursery.co.uk, visit our web site at windmillsnursery.co.uk or call Nicola on 614564 or Tina and Marie on 07906 519148.



Forest School

During the first session the children demonstrated excellent problem solving and personal, social and emotional skills when they created an intricate water feature with the bamboo tubes and helped Incey Wincey spider travel along the drainpipe. There were many activities for the children to take part in during our last forest school session including our listening and '123 where are you?' game.



Windmill's Sports Day

We celebrated the last day of term with our annual sports day which was held on the school field. Our children had been disappointed when it had to be postponed earlier in the month due to bad weather. They were thrilled, very excited and enthusiastically took part in a variety of team games and individual running races.

All the children were presented with a medal afterwards and then there were a few sad farewells as we said goodbye to our older children who will be starting school in September. It was lovely to see so many parents supporting their children at this event.

Other activities this month have included:

- A visit from Miss Maher to meet the children, and then later in the week making a return visit to see their new class room. As it was Sofia's birthday, she had brought in cakes for everyone including Miss Maher.
- Creating a 'Very hungry caterpillar display' developing their language for communication and encourage them to anticipate key events and phrases in stories
- Drawing spider's webs using the chalks, to develop their fine motor skills
- A visit from Evie's mum Kate with her new baby Freddie. Evie proudly introduced her new baby brother to all her friends at Windmills after talking about him at circle time.
- Celebrating the end of another school year with a visit to Warwick Castle courtesy of David and Kate Johnson. A huge thank you to David for giving up his day off to escort us around the castle. Also thanks to Erica Finley's mum for baking wonderful castle cookies for the children to enjoy on our Warwick Castle trip.
- Windmills held a parents evening on Thursday, 15th July, parents were shown the Learning Journals that were compiled by key workers during their child's time at Nursery, and also discussed their transition to school.



Visitors from Australia

Windmills always likes to promote its multi-cultural links so was delighted when 3 Australian children came back to visit and tell us about their home and schools in Sydney. Carys was so pleased to be back she ended up staying to play all morning!

Thank you's

Thank you to everyone who supported our Summer Ball, including those people who bought tickets, donated raffle prizes, decorated the hall, made desserts, and helped to clear away afterwards, we raised over £2,000.00. A special thank you to Haidee and Tracey who organised sponsorship from Baldwins & Co, Accountants, and Midland Metal enabling us to raise such a fantastic amount of money. A huge thank you to all those people who have helped or contributed in any way over the past year - your commitment to Windmills is fully appreciated by all the staff and Directors. We are grateful for the gifts and beautiful cards which have made it a memorable ending to a successful year.

Dates for your Diaries

Windmills Nursery is holding a fundraising event featuring local singer Ella Kendrick on 11th September at 6pm in the Old New Inn. There will be a BBQ and raffle.

Windmills will re-open on Tuesday, 7th September, 2010 at 9.05am. Windmills staff would like to wish both parents and children an enjoyable summer holiday.



Harbury Primary School

Denis Daly

School Sport – It has, to say the least, been a very busy time over the last few weeks for the various sports teams, with some tremendous performances being achieved:

The **Year 4 Mini-Tennis team** have pride of place, having finished 2nd in the South Warwickshire final recently – an outstanding performance. Our **Year 5 team** had also got through to the final stages, finally finishing in a very creditable 7th place.

The **Rounders team** have also been successful, winning the Southam area competition last month.

The **Mini-Rugby team** took part in the Leamington RFC festival in June, and fought their way through to the quarter final stages.

The **Athletics team** have had a magnificent few weeks. Danny Luke, Oliver Bright, Morgan Hall, Callum Jayes, Leonie Reid, Sophia Adams, Chelsea Kempton, Paige Adams, Chloe Kempton, Connie White, Nina Chand, Evie Bastin, Eve Murphy, Dulcie Bushell and the Year 4 and 5 Girls', and Year 4 Boys', relay teams all won their events at the Southam Area Sports, and, along with Nikki Simpson, were all selected for the

Central Warwickshire championships at Edmondscote. There, in a very high quality championships, involving representatives from around 60 schools, pride of place must go to the Year 4 Girls' relay team, who became Central Warwickshire champions. Superb runners-up spots went to Leonie Reid (Y4 sprint), the Year 5 girls' relay team and Nina Chand (Y5 high jump), while Chelsea Kempton (Y6 150m), Chloe Kempton (Y4 long jump), Evie Bastin (Y3 throw) and the Y4 boys' relay team all performed brilliantly to finish 3rd. This was undoubtedly our best ever performance at this level – congratulations to all of the children involved.

Maths Challenge – Congratulations, too, to our mathematicians, who took part, and won, the Southam College Year 6 Maths challenge. Well done.

Multi-cultural Festival – Congratulations to the children in Years 3 and 4 who took part in the multi-cultural workshop and/or the festival at the Spa Centre. I am told that the children who attended the workshop were outstanding, while the performance of our children at the Spa Centre was described by one parent as “breathtaking”. Well done everyone.

New Beginnings – It is the start of a new era in the lives of the children in Year 6, who transfer to Secondary education in September. They have been an excellent year group, and many of the children have achieved very high standards in a range of activities. We wish them all the very best for the future, and hope that their time at their new school is a happy and successful one.

A number of our “long established” families leave us this week as their youngest child leaves the school. We wish these families every happiness for the future and hope that they will be able to look back with fond memories on their association with the school.

School Uniform – As the summer is the usual time for buying new school uniform (as a teacher it is great to see “Back to School” posters on display in shops from Monday!!!!!!!), may I take a second to remind parents that all uniform should be clearly labelled with your child's name.

New Term – May I remind parents that the Autumn Term starts on Tuesday 7th September at 9.00am.

And Finally.... As the school year draws to a close, now is the time to say “Thank You” to all those people, far too many to mention, who have helped in any way over the past year. Your efforts and your commitment to the school are fully appreciated by all the staff. MANY THANKS.

Have a Great, But Safe, Summer Holiday



Harbury Primary School P.T.A.

PTA Committee

Summer Fayre

Wow! What a fantastic day we had! The sun shone down on Harbury School's annual Summer Fayre this year, enabling us to enjoy a barbeque lunch with a glass of Pimms, and then stroll around the various stalls including tombola and toys. Adults and children alike had a go at welly wanging and a treasure hunt, and we all bought tickets hoping to win one of the marvellous "colour" raffle hampers on offer. Having worked up an appetite again, cups of tea and gorgeous home-made cakes were on offer at the school hall café.

Harbury School PTA would like to thank all those concerned in making this such a great day. Local business wise we would like to thank CANA for running the bar and Country Fayre for helping with boxes and wrapping for the raffle hampers. We'd also like to thank Ufton for their loan of Fayre essentials such as Hook a Duck and Splat the Rat. Thanks also to the school staff, in particular Jenny for letting us loose in her kitchen, Mrs Reeves and her café team and Mrs Rathbone with her raffle helpers. A huge thank you to all our volunteers who worked tirelessly to make it such a great day, and, of course, a big thank you to all the family and friends who came along to support us. Plus a pat on the back to the Committee members themselves who have worked so hard and worked so well as a team this year making all the events we have held a success.

We're all putting our feet up for a few weeks but we'll be back!

Have a fantastic summer everyone and good luck to the Year 6's and their families who are moving on to bigger things next term.



1st Harbury Scouts

John Rea



With another successful term now over, 1st Harbury Scouts are enjoying a few weeks off before returning with renewed vigour in September. We've had a great year, covering all sorts of activities from the more traditional; first-aid, knots, hiking, local community service and camp fires to the more unusual; grass-sledging,

rock climbing, rifle shooting, disc golf and kayaking to name but a few. We've enjoyed exciting activity weekends away in Wales and the Peak District, had a fantastic few days under canvas in the Lake District and just recently took part in a national 'Le-Mans' pedal kart race; the team not only did the full 18 hours for their age group but came third in category covering 180 miles in the process - a brilliant result!

We have a terrific bunch of Scouts, and it has been great to see them grow and mature as they rise to the challenge of new experiences and develop the interpersonal and leadership qualities needed for the troop to operate so well. The photos with this article sum up scouting this term – children having fun, learning things about the outdoors and challenging themselves.



Many of you will already know that after some five years of sterling service as Scout Leader, Nick Tawney is hanging up his woggle to devote more time to the Harbury Duke of Edinburgh group. We had a 'thank you and goodnight' session for Nick at our last Scout evening of the year, where we presented him with a card and 'Go Outdoors' voucher (one of Nick's favorite shops!), however I'd like to reiterate our heartfelt thanks and gratitude through the pages of this H&L News – 1st Harbury have been very lucky to have your enthusiasm and passion Nick, you'll be a hard act to follow!



So, what of the future? For the next chapter of 1st Harbury Scouts Nick Green and I will be jointly taking the reins as Scout Leader, working on a

job-share basis as we juggle other work and home commitments. Sue and Ian Panton will continue as assistant leaders and we are lucky to have recently convinced Andy Hunt that he'd like to be an assistant leader too! Operating on a 'capacity crowd' basis for our hut, we already have a waiting list and there will be plenty of new recruits to come up from Cubs. We will aim to continue to deliver a balanced programme, promoting the Scouting values and principles of trust, self-confidence, responsibility and respect, but most of all we aim to have fun!



Village Hall Update

Chris Finch

The next phase of modernisation at the Village Hall took place last month and regular hirers will have noticed the extra light flooding into the back rooms, as the wall separating the Farley Room from the Windmill Room has been removed. At present, the colour scheme in the smaller room might not be to everyone's taste – dark green and blue walls with an attempt at a cross of St George on the ceiling, but the last time it was decorated, it was by teenagers as their youth room, which is no longer in use. The work was carried out over two weekends by members of CAMRA led by builder, Steve Bolton, who gave all their services free, whilst the cost of materials and the sliding door which will be fitted in the coming weeks will be covered by a grant from the Southam Vision 2020 fund. The re-positioning of some of the wall-mounted electric heaters and associated electrical work was carried out before the wall came down, by local electrician James Davies, who also provided his expertise as a service to the community, which was also much appreciated.

It was all 'action stations' in July when the wall was removed, as members of Harbury Theatre group were up in the loft space removing costumes and dramatic props, which have been stored in the roof space for some considerable time. A survey had revealed that one or two of the rafters supporting the roof were cracked and a structural survey recommended that as much of the stored material as possible should be removed. The Village Hall committee recognises that the HTG have had to make considerable efforts in arranging for their items to be stored elsewhere, although the temporary stage will remain in one of the side rooms, until such time as it is no longer needed when a permanent stage is constructed, as one part of the plans for the future.

One of the next main fund-raising events at the Village Hall will be the CAMRA Beer Festival on Friday 3rd and Saturday 4th September. As in previous years, the Village Hall committee and supporters will join members of GASS to provide the food throughout the weekend. The usual fare is pasties, hot dogs and mini ploughman's lunches, which keep

the crowds of real ale supporters sufficiently replenished to keep on trying their 'favourite beer'. If anyone could join the band of willing volunteers either on the Friday night or at any time during Saturday, Doug on 612002 would be pleased to hear from you.

By now, most people in the village will have been in receipt of forms about the requests to support the development of the Hall, but if any family has mislaid the prepared leaflet, forms have been made available throughout the village in the pubs and the shops. There is no deadline for the time by which a donation can be made and so far over 170 households have made donations raising a considerable sum to date.

Whilst the fund-raising committee continues to be hard at work raising a substantial sum, which will be used as evidence of village support for the modernisation proposals in applying for grants from corporate bodies, the management committee is having to consider spending a considerable sum on repairing some of the drains at the front of the Hall. The two funds (developmental and maintenance) have been kept entirely separate and the latter is raised only from the payments made for hiring the premises or from activities supported by the management committee such as coffee mornings, the CAMRA event and the New Year Dance. A recent survey by a drainage company has revealed that several of the 'runs' have cracked pipes and although several needed repair some time ago as a result of tree roots penetrating the drain casings, the intrepid chairman of the committee suspected that there was a problem again due to the regular need of his drain-rodding services!

It has been estimated that over the course of a year there are almost 20,000 visitors who use the Hall - from those who attend Carnival Day, a variety of social dances, dance and choir practices, meetings, including the monthly Parish Council meeting, sports activities including badminton, football and yoga, Senior Citizens get-togethers and Christmas Party, Theatre productions, the Christmas Fayre and the very popular CAMRA event held every September. It is an incredibly well used Village Hall and the present committees are 'committed' (is that how the term was derived?) to ensuring that the facilities will continue to keep abreast of the times for present and future generations. Please lend your support; we are working on behalf of everyone.

Harbury Village Hall Development Fund

This is progressing very well and now stands at £30,000 (when the tax refund is taken into account), which is a sound basis towards the hundreds of thousands of pounds that we need to raise. I would like to thank everyone who has responded to our 'Buy a Brick' appeal.

Any donation large or small is most welcome and if you are able to sign up for gift aid we gain a further 28%. Forms are available in shops and pubs throughout the village or from any member of the committee.

Feedback so far is favouring development at the west (Constance Drive) end of the hall to include a permanent stage and new changing rooms.

John Hancock



Horticultural Society

Judy Morrall

I can't believe it is 3 weeks since our second and last day trip...time seems to be flying past! Thank goodness the weather behaved itself again for 7th July, the awful heat had abated and we enjoyed a warm summer day, just perfect for garden visiting. Just a short trip this time, about an hour and 10 minutes, arriving at the very stately home of the Marquess of Northampton (his other one is more modest...Compton Wynates!!!) This one resembled Blenheim and what a view from the terraces. Our first stop was at the excellent Tea Rooms, very friendly and helpful staff and great homemade food.

The estate is over 10,000 acres, thankfully we only had to cover 25. Such wonderful buildings in the garden, an Orangery, wonderful fuchsia house and a super thatched summer house. The arboretum had a huge lake and must be stunning in the spring when all the wildflowers are out. The farmyard was very entertaining too - funny little fowl, miniature pigs and much more. I bought some eggs from these hens and they tasted delicious. The borders had lush plantings with a butterfly garden and Italian garden and great topiary too. One poor old tree was being felled whilst we were there; it was enormous. There were some unusual trees including several of my favourite catalpas (Indian bean tree). It was a shame that the huge walled garden was bare but I spoke to the head gardener after our return and he said that plans were afoot to restore and plant this, a massive undertaking but should be well worth all the effort and worth returning to see it.

The family church was open and had lots of huge stone statues and monuments. A group of angels were blowing what looked like vuvuzelas! Thankfully these were silent!!!!

After a really delicious lunch we left for our afternoon destination and the sun was shining too. Coton Manor Gardens were an absolute treat for us all. This 10 acre garden was laid out in 1925 by the present owner's grandparents. When you enter past the lovely stone house and garden room, the sight you see is breathtaking.

The terraces had pots full of pelargoniums in all colours, the walls clad in all varieties of climbers and the borders here plus the pond stuffed with blues, yellows and whites. Then you turn another corner and there are more huge borders, this time vibrant colours that just stand out, each border with a different colour theme, very Christopher Lloyd. On the lawn here were hens with fluffy legs, very comical. On the lawns at the other side were flamingos very colourful characters. The wild flower meadow was at its peak too, it will be cut down by now but we caught it at just the right time. The bluebell wood is stunning in May - can you imagine all those perfumed bluebells.

The brochure says that 3 full time staff maintain the gardens with some volunteers. They are all to be congratulated on such a fantastic achievement. We sampled the home made scones and jam and cream - delicious. Then on to the plant nursery which went on and on, over a thousand varieties of plants are propagated here from the plants grown in the gardens. Most of us took some plants home with us; the coach looked very full!!! We left at 5.30pm after another really memorable day, tired, very full, but very enjoyable.

I always send a "Thank You" card to the gardens visited, also to Cheney Coaches and I have had some very nice e-mail replies from all of them.

If you are still wanting to visit more local gardens, here are a few suggestions for August. Avondale Nurseries at Mill Hill, Baginton near Coventry Airport is open under the NGS scheme on 8th August from 11.00am to 4.00pm. They have an impressive collection of ornamental grasses and rare and unusual perennials. There is often sculpture on display too. On 7th August The Folly Lodge, just past Halford taking the Idlicote turn, will be open from 2.00pm until 5.00pm, admission £3. Look in your Warwickshire NGS book for more details.

Adderbury, on the A4260 from Banbury, will be having 6 gardens open on 15th August under the NGS scheme from 2.00pm to 6.00pm; admission is £5. Homemade teas are available at either The Institute or Church House. Adderbury is a lovely village which just meanders on and on; I used to regularly stop off here when I worked in Oxford and can vouch for all of the gardens. Incidentally we charged £5 for 2 days for over 20 gardens last month value for money!!!! Still in Oxfordshire, another great place to visit is Kingston Bagpuize House just off the A413 near to Abingdon. It has a notable collection of unusual trees, many perennials and bulbs for all season colour. It will open again under the NGS on 22nd August from 2.00pm until 5.00pm admission £6 but it does include the house as well. This is another place I visited on my travels around Oxfordshire and well worth a visit. If you are out towards Oxford do visit the Botanic Gardens,

the oldest in the country. Also some of the University gardens are very attractive and now that there are no students it is a very good time to visit, perhaps tea at The Randolph? I have sampled their tea and morning coffee - you just have to experience this at least once or even twice.

The Village Show is drawing nearer; it will be on 11th September at the Village Club. Programmes are available from Muggleston's or from myself or Dorothy or Patrick. To the ladies who signed up to make a cake, a very big thank you, can you remember to take your cakes to the Club on the morning of the Show. Patrick, as you know, agreed to take on the running of the Show this year and I'm sure we will all support him in any way we can. I am looking for a willing volunteer to take charge of the Tombola this year. Can you help please - if so just give me a ring. I know this is a very difficult year for some vegetables due to the unusual weather etc but please consider entering the Show. There is a category to suit everyone whether exhibiting fruit or vegetables or the craft or photographic sections. Give it a try - you never know. We do have very clever gardeners in our village (not forgetting Ladbroke) so share the fruits of your labours and be proud. My courgettes turn into marrows overnight but we have enjoyed potatoes, French and broad beans, lettuce, tomatoes, garlic, onions and much more. What better way to spend your time digging planting and then eating!!!! I hope I have encouraged you to enter and good luck.

Whatever you do whether on the allotment, in your gardens or out visiting gardens, enjoy these lovely summer days.



Garden Jottings from Bridge Nursery

Christine Dakin

*Your local Hardy Plant Specialists
Also: Fresh cut flowers and bedding plants in season.*

It's fairly easy to distinguish gardeners from non-gardeners. Calloused, dirt-ingrained hands as opposed to soft clean ones are always a give-away sign.

During weeks of dry weather, many people have delighted in near-constant sun and heat but real gardeners, especially vegetable growers, are most concerned that their plants are wilting and crops are not abundant. Any rain we have had has instantly been evaporated by the constant wind. If I had one wish, it would be to have moderate weather with just enough rain and warmth, appropriate to the time of year!

Our customers seem to be getting better at selecting plants for the future, rather than simply going for the ones in flower now. This is always a wise move because the plant gets a chance to become established before its natural flowering time. Having said that, it's always tempting to go for something to fill a gap or give immediate impact now.

Jobs for August:

- Keep picking veg, e.g. courgettes, beans, peas.
- Take cuttings of favourite shrubs including Philadelphus, Hydrangea and Spirea.
- Pot up rooted Strawberry runners
- Cut out the fruited branches of Blackcurrants
- Lift Shallots, Onions and Garlic and hang up to dry

The Café continues to go from strength to strength, serving delicious cakes and tasty lunches. Philip is currently extending the cabin roof to give space for a couple of extra (sheltered but outside) tables.

PS. We do like to receive any feedback; you can email us via our website.

Bridge Nursery, Tomlow Road, Napton, Tel: 01926 812737 www.bridge-nursery.co.uk



Nature Notes

John Hancock

After I stated in last month's article that I had failed to find Bee Orchids locally, Geoff Thorpe put me right. He had found a small group at Ufton Fields and it turned out that I had led Harbury Beavers right past them - sorry lads. Having been told where to look, I paid a return visit and sure enough, there they were. If you've seen them yourself, I think you will agree that the word magical is not too strong. If you haven't had a glimpse for yourself, please let me know in time for the 2011 flowering.

Now the harvest is with us. Barley was being cut as we came home yesterday (18th July) and we've had such a dry summer so far that the wheat will surely be early. Today I picked some wild plums and it's a week since I tasted my first blackberry of the season. Look for bushes with their 'feet' in the water so to speak. There's a very good one beside the Leisure Centre on Newbold Comyn next to the River Leam.

On June 21st, whilst out for an evening cycle ride, I saw a Little Owl sitting on a wire at Chesterton. A male pheasant had lost its breeding plumage and looked rather dowdy. The following day, on Bishops Hill, I found a caterpillar of the Small Blue butterfly, perfectly disguised, head down feeding on the seeds of its host flower Kidney Vetch. When fully grown by late July, having undergone three moults, it deserts the disintegrating flower head and settles on the ground in a crevice or under moss where it remains dormant for nine months. In late April, or early May, it pupates before emerging as a fresh Small Blue in June. At some stage it may be attended by ants which are attracted by the caterpillar's honey gland. In exchange so to speak, the ants protect their charge from some predators.

If you get a chance, pay a visit to the terrain round Oxhouse Farm in the valley of the River Dene just a few miles down the Fosse Way. The National Nature Reserve (GR 305507 Sheet 151 Stratford-upon-Avon) is best approached on the footpath from Combrook. After walking in a southerly direction for 1Km, you will cross a disused railway line and enter the reserve through a five-bar gate. The unimproved grassland is a riot of wild flowers - Greater Knapweed, Hedge Bedstraw, Meadow Sweet, Tufted Vetch, Field Scabious, and many more. One first for me was Spiny Restharrow, a member of the family Leguminosa. Then, there are the grasses, Upright Brome, Tor-Grass and Meadow Oat Grass. In June, this is the place to find one of our most spectacular butterflies, the Dark Green Fritillary (*Argynnis aglaja*). It is the size of a Red Admiral and seen with a posse of other species inhabiting the site such as Meadow Brown, Ringlet, Gatekeeper and Large Skipper.

Over at Ryton Woods on July 12th with David Brown's Lepidoptera Group, we had a feast of butterfly species including Purple Hairstreak, White Admiral, Silver Washed Fritillary and Marbled White. I told David that Sharon and I were off to northwest Somerset for a few days with Harbury friends and he said that, weather permitting, the Fritillary would be a likely species to find. Sure enough, in a glade of the oak forest under Dunkery Beacon, we caught sight of one much to our delight. The following day, on the Quantock Hills above the beech woods we had a great view of a female broad-bodied Chaser Dragonfly as it hovered over a peaty pool possibly laying eggs. The yellow and brown colouration makes this insect look like a gigantic wasp. Dragonflies are a very ancient group having been around for some 300 million years. Some of these (found in the fossil record) had wing spans of 70cms, compared with today's 6.5cms. They are part of the order Odonata and undergo partial metamorphosis with no pupal stage (unlike butterflies and moths). Their young are known as nymphs.

Further on our Quantock walk, Margaret McDonald found a large green caterpillar. Each segment was banded by black and yellow spots crowned

by tufts of hair. After consulting David Eaves copy of 'Insects of Britain and North Europe' by Michael Chinery published by Collins, I identified this as the larva of the Emperor Moth (*Saturnia pavonia*), our only member of the family which worldwide includes 1,300 species. Once, the Emperor moth was commonly found amongst the heather in Sutton Park but now it is a rarity in the county according to David Brown's encyclopaedic book 'The Larger Moths of Warwickshire' [published by Atropos].

Fruit picking and seed collection will be key tasks in the months ahead. I wish you good fortune.



General Section

Blood Donors

The session in July resulted in 87 units of blood. The next session in Harbury will be on 28th October.

Gillian Hare

Ballroom Dancing

The Autumn sessions of ballroom dancing – again with our wonderful teacher, Annie – will be for 6 weeks starting on Wednesday 8th September to 13th October and then 4 weeks, from 3rd to 24th November (to get you up to speed for Christmas!). The venue is the Village Hall and time, 8.30pm – 10.00pm. For more information, please contact me, Joan Smith, 613680.

STRICTLY FUND RAISING – Ballroom Dance in the Village Hall

The Ballroom Dancing Group is holding a fundraising dance for the improvements to the Village Hall on Friday 1st October at 8.00pm. This will be on a self-help basis to maximise fund raising: **music** – carefully selected CDs; **food** – a bring and share supper; **drinks** – a bar will be available; **fun and atmosphere** – posh frocks and black tie (optional).

As this will be "strictly ballroom", we're limiting the tickets to 50. All present and past clientele of the ballroom dancing lessons are warmly encouraged to come along with anyone else who would like to resurrect or demonstrate their dancing skills! If you feel a bit rusty, why not refresh yourselves by joining us for a few sessions from 8th September (see article above).

Tickets are £10 and are available from Chris Rutherford, 613757.

Joan Smith

Harbury Pre-School's New Sessions and Special Offer!



Did you know that Harbury Pre-School now offers full days on Tuesdays and Thursdays?

Also, for a limited time only Harbury Pre-School has a special offer for Autumn 2010. Your child can now be part of this amazing small and friendly pre-school from only £2.50 for a **Monday afternoon session**.

Awarded **OUTSTANDING** by Ofsted January 2010.

To find out more please visit our website www.harburypre-school.org.uk or email enquiries@harburypre-school.org.uk

Card-Making Workshop

For the last couple of years, a monthly card-making workshop has been held at the Tom Hauley Room in Harbury.

During this period, a whole range of card making techniques have been introduced, which include iris folding, rubber stamping, embossing, dry embossing and 3D decoupage to name but a few.

We also have occasional sessions which focus on scrapbooking, which for those of you not in the know, is a decorative way of preserving and showcasing your treasured photographs - they also make great unique gifts for friends and family. Scrapbooking also allows you to add "journaling" which records details relating to the photo or other items, i.e. dates, places, names, thoughts, special memories that are associated with people/places etc.

We are always keen for new members to join us. You do not have to be creative or arty as instructions and support is provided for each technique. Each session costs £8.50 – which includes all materials plus tea/coffee.

If you are aged 16 or over and are interested in joining or require further information, please contact us on either of the numbers below or send an e-mail to michelecrossan@tiscali.co.uk.

Michele Crossan: 07957 173583 or 024 7654 0644, or Shirley Crossan: 01926 612798.

Why not come along and give it a go, but beware, this hobby is addictive!

Michele Crossan

Know Your Rights! Advice from Warwickshire County Council Trading Standards Service

Summer is a particularly busy time for rogue traders and Trading Standards, together with the Police have been cracking down on them with special intelligence -led operations.

Whether it's tarmac your drive, gardening or building work, rogue traders use all types of tricks and intimidation to get householders to pay high prices for poor workmanship or in some cases no work at all. Here are some of their tricks that you should avoid:

- Pretending to be from the local council, offering to tarmac your driveway using materials they falsely claim are "left over".
- Claiming they are working on a neighbour's property in order to give you a false sense of "trustworthiness".
- Making up problems which don't exist in hard to reach places e.g. the roof.
- Using false names and addresses and untraceable mobile phone numbers.

Starting work straightaway to prevent you from changing your mind and not giving cancellation rights which they are obliged to by law.

To avoid becoming a rogue trader victim, never agree to work being done by the first person who comes to your home and don't be rushed into making a decision on the doorstep. If you need work doing, seek recommendations from trustworthy local traders.

To report a suspected rogue trader, contact Consumer Direct on 08454 040506.

Pat Whorton
Trading Standards Service



Slimmers do miles and gain £££s for Charity!

Slimmers from Harbury have walked over 50 miles to raise money for the NSPCC.

The men and women who are all members of the Slimming World group in Harbury have taken part in the sponsored challenge to raise money for Slimming World's very own charity SMILES (Slimmers Making It a Little Easier for Someone) which is supporting the NSPCC.



The walk was part of an annual national event called Miles for Smiles, held each year to raise awareness about the amazing benefits of getting active - great for boosting weight loss, increasing energy levels, reducing stress and building self-esteem.

Slimming World set a challenge to all its members in its 6,500 groups across the UK to cover as many miles as

possible. Participants can walk, run, cycle or swim the distance, or try something different. Last year one team line-danced for 40 miles!

SMILES' charity partner for 2010 is the NSPCC and all of the money raised in the UK from the event will go to NSPCC's Child's Voice Appeal to improve ChildLine and the NSPCC Helpline.

Slimming World Consultant Sarah Edwards, who runs the group in Harbury says: "Miles for SMILES is a great way to raise money for charity and get fitter.

"We encourage members to get moving as part of the Slimming World's Body Magic Programme. People are put off exercise because they think they have to wear Lycra or get all sweaty in a gym, but Slimming World encourages you to incorporate a regular small amount of activity into your daily routine because we know it can make a huge difference. Everything from dancing, walking or swimming counts and even activities such as washing the car, walking the dog and gardening add up.

"It's called Body Magic because combining activity with our Food Optimising Healthy eating plan gives members the best results in the long run (excuse the pun!) It's nothing short of magic! By doing just three or four sessions of moderate activity a week, slimmers can boost their weight loss by around one or two pounds (lbs) a month - that's 12lbs to 24lbs a year. Being active can also boost your mood, increase your energy levels, and reduce stress. As well as all that, it brings many, many health benefits such as lower blood pressure, a reduced risk of cancer and type 2 diabetes, and stronger bones, joints and muscles," adds Sarah.

"So far Harbury has raised £227.00 when we walked 50 miles and in total since taking over the group in April the members have lost an incredible 405lbs (28 stone) between them." For more information on the group please call Sarah on 01926 813022 mobile 07964 513 154 "or just come along to one of our friendly meetings held in Harbury Village Club, Crown Street, Harbury on Wednesday evenings at 6.30pm. Everyone is more than welcome."

Sarah Edwards

'Race for Life'

Sunday, July 4th, was a beautiful summer day. A group of friends met at Stoneleigh Park to participate in the 'Race for Life', a 5km race which raises money to support Cancer Research UK, a world-leading charity dedicated to beating cancer through research.



Before the race, there was entertainment and a short talk about the work of the charity. Then, a very emotional silence when we could remember friends lost to us through cancer and also be thankful for the survivors we know. Kathryn and I had a very special hug and we were all very moved. This was followed by a very positive video showing

survivors of various types of cancer, the result of ongoing research. We enjoyed the 'buzz' of the event, taking part with over 3000 other women. We are all grateful to our sponsors and thank you all for your support.

Margaret McDonald

Art Classes

I am delighted to announce that everyone in the Art Group has now completed the 'beginner' drawing and pastel courses and that they are now ready to tackle a wet medium. The group has shown an amazing amount of talent and many of the paintings have been beautifully executed.

It is wonderful for me to see everyone grow in confidence as they begin to feel in control of the medium. Many members of the group are managing to find time at home to put in some extra practice and I daresay that spare bedrooms will soon be commandeered to become art studios. Well, that's how I started! I shall have to brush up my skills in order to remain one step ahead of them!

We start classes again on the 14th September when I shall teach water colour from scratch. Anyone who feels that they would like to join us for the term is most welcome. Phone Jan on 01926 614251.

I would also like to take this opportunity to thank everyone who came along to my art show during Warwickshire Arts Week, who brought along friends, who bought cards, mugs and paintings. I am sure that the 7 other artists who were also exhibiting would like to add their thanks too.

I now have planning permission for my studio to be built and I intend to do art demonstrations and workshops in my studio throughout the year. These will possibly take place on a Saturday to enable those of you who work to be able to come along too. If all goes to plan these will start in September.

Jan Freeman

Visit to Leamington and Warwick Gurdwara

On Thursday 19th August at 11.00a.m the Coventry Interfaith Group are visiting the wonderful Sikh Temple in Tachbrook Park Drive and people are welcome to join us (it really is a fantastic building both inside, as well as out). Further details from Rosemary Harley, 26 Temple End, tel. 613402.

Rosemary Harley

Fuel Communities

After the last article in the Harbury and Ladbroke News, three householders in the village and one organisation got in touch to enquire about the possibilities of joining one of the 'buying groups', for oil deliveries, which are apparently springing up throughout rural communities. I made enquiries from six different fuel companies on one day and found that the price per litre varied from 39.5p a litre to 41.5p a litre. It might not sound much at the outset, but with a delivery averaging 1,000 litres per household, it could amount to a saving of approximately £20.00/load and since most householders order between twice and three times a year, a saving of £40.00+ could result. In addition, to the range in

initial prices, I also found that companies would offer from 1p - 2p off the basic price for delivering in quantity to a village, so that the overall saving might amount to £60-£80 throughout the year. Obviously, the amount which can be saved would be affected by the number of households expressing an interest, as the greater the number of people willing to get involved, the greater bargaining power on the price. All the people who have given their names as interested in the fuel community scheme so far, would **only need a delivery at the very end of August**, so I will ring those who have expressed an interest in sharing a load after making further enquiries at the beginning of September. Gaydon is the nearest village which is already organised into a buying group and if we coincided with their delivery time an additional saving might be made. **Usually 1-2 days notice has to be given** to request a delivery, so I will make enquiries about price/ delivery times etc at the end of August and let everyone know the details. There is no advantage to be gained these days, by buying in the 'cheap periods', as previously i.e. summer months, as all oil prices are controlled by the price of oil on the international market, which all companies have to buy into at more or less the same time.

If anyone else is interested in joining the scheme (Deppers Bridge, Harbury or Ladbroke) now that a few more details are available, please ring 612305 before the end of the month.

Chris Finch

Village Energy

It is now over 6 months since David Bristow and I met over a couple of pints – of blood. There is time to kill whilst the scalding tea cools and we fell to discussing the need to get some action going on sustainability in Harbury. Perhaps a little heady from blood loss we agreed to meet again to allow others to join in the discussion. All of which led to the forming of the Harbury Energy Initiative, which shyly showed its face first at the Parish Council's Save Energy Save Money Day in early May. At that time the group consisted of David and Karen Bristow, Jenny Patrick, Amanda Lewis, Steve Dolley, Ted Dowdeswell and me. For a short time we had the benefit of Ron Grey's ideas too until he needed to devote all his time to supporting Muriel. The group has now reported back to the Parish Council with suggestions for actions.

Some of these ideas need a bit more discussion by the Harbury PC Environment Group. We have, however, been given the encouragement that comes so readily to eager volunteers to move ahead on three of our suggestions. We shall therefore be contacting other village institutions

and groups, starting with the school, to see how we can raise awareness of the issues and possibilities, looking at new technology and the suitability of each for village solutions to carbon reduction and looking out for funding streams to develop and ease in some of the ideas.

This is an active and responsible village and we hope to find others now who will join us and make our ideas become real. We can no longer afford to be indifferent to the effects we all have on our environment. Some cheap and simple ideas can make a significant difference when enough people take them up; equally when enough people take them up some more costly solutions can become much more affordable.

To make all this happen we are initiating three task groups with representation from the original steering group to work on different aspects towards a sustainable Harbury and we are looking to others now to join in.

The **Launch Group** will work with the school and others on a basic energy audit of the village and an energy awareness campaign. It will have two main roles, liaison and launch planning, and communications. These may eventually separate into two task groups.

The **Technology Group** will investigate appropriate new technology, keep up to date on potential solutions and look at creating energy clubs to increase buying power and reduce costs to individual households. We have already done quite a bit of that.

A **Finance Group** will seek sources of funding for any relevant energy or carbon reduction projects that arise to benefit the whole village.

If you are interested in being part of this work, please make contact with Steering Group members as follows:

Launch Group (school liaison etc) – Karen Bristow e: bristowfamily@hotmail.co.uk; tel: 612536 or Amanda Lewis e: cllrlewis@harbury-pc.gov.uk

Launch Group (communications) – Bob Sherman

e: bob@churchterrace8.freemove.co.uk; tel: 612277 or Jenny Patrick

e: cllrpatrick@harbury-pc.gov.uk; tel: 614359

Technology Group (gizmos and buying groups etc) – David Bristow e: bristowfamily@hotmail.co.uk; tel 612536 or Ted Dowdeswell e: tedwell@aol.com; tel: 612943

Finance Group (project funding) – Steve Dolley e: stevedolley@aol.com; tel: 613963

Bob Sherman, Chair of Harbury Energy Initiative

New BMX Track

People regularly visiting the playing fields will have noticed that the overgrown "mounds" in front of the skateboard park have been moulded into a new BMX track. The track has been made possible by a grant from Warwickshire County Council and further amendments to it including a limestone based covering and slight changes in its contours will be made over the next few months.

PARENTS ALERT: the track is for the enjoyment of all BMX cycle riders who should be wearing protective safety gear, particularly helmets at all times. Please supervise your children using the track either by your direct presence in the case of younger children or by ensuring that older children have helmets etc before setting off for the track.

Harbury Parish Council

Galanos House – Fete 4th September

The Galanos House Fete will take place on September 4th at 2.00pm.

We have various stalls including Tombolas, bric-a-brac, cakes jams/pickles, craft etc, cream teas, a barbeque and entertainment from the Lutterworth Band. Also we are having our Grand Auction dinner dance on September 25th, £30 a ticket, which includes a five course meal, two bottles of wine, and entertainment all evening.

For more information on either of these please phone Galanos House 01926 812185.

Jan Finch
Activites Co-Ordinator



96 mile Isle of Man Coastal Walk

An update on our sponsored coastal walk around the Isle of Man. Well, for those who do not know, we did it!! We started on 8 July and completed it on the morning of 13 July. It was a fantastic experience which has also enabled £1041 so far to be raised for MusaweNkosi, a charity working in the area around Zululand, looking after orphans who have had their lives changed as a result of their parents dying of HIV/AIDS.

Some memories of the walk.....

We were about a mile into the walk on the first day when we came across our first sheer cliff edge. Isy informed me that she doesn't 'do' sheer drops so could we hold hands! A brief discussion about this being the coastal path and that cliffs like this were likely to be a recurring feature took place, but she assured me that so long as there was something between us and the edge she wouldn't hyperventilate. Fine, on we go.

Isy got me back, also on Day 1, when we had to walk through a field of cows. Definitely not my favourite past-time so we had to leg it to the stile in the corner of the field with the cows running towards us. Hope those experiences are kept to a minimum....

I should also mention that when I arrived on the Island, I called into the newspaper offices and passed a copy of the charity details to them so as to raise awareness to the people I knew on the Island. A journalist was called to Reception who had his shorthand pad handy and started asking many questions. When the paper came out, there was a quarter page spread about it! Amazingly, there were no inaccuracies.

We were really blessed with good weather which was not too hot, with a warm breeze. One morning was rainy but that day we were walking along a disused railway line, so we had the chance to shelter in the tunnels. This was also the day that we had to walk 14 miles along deserted coastline on the west of the Island to Point of Ayre. The coastguard was very helpful in confirming to us about the high tide times and we felt safe enough to start our trudge. The cliffs are made of sand with many landslides so if you are caught out by the tide, you have no place to go. By the time we started along the beach, the sun had come out and we were able to dry our clothes by tying them to our rucksacks and we then became walking washing lines (amazing how quickly clothes dry in the wind). That day was a long one and also one where we didn't have lifts so had to get a taxi from Point of Ayre (remote place) and then a bus back to base.

We passed a place I knew which sold amazing home-made fudge, so that was great sustenance for Day 2.

Day 3 took us up the highest peaks of our trip. There were two of them; it was a fine clear day and the views of the south of the Island, England, Wales and Ireland were breathtaking.

The loneliness of the coastal path was striking. We met less than six other walkers during the five days.

The scenery was at its best. We discovered an amazing smuggler's cove; there were some superb houses overlooking the coast which you never see from the road; the heather and other rock flowers were beautiful; the waterfalls in some of the glens were crystal clear.

When we arrived at Niarbyl, a tiny cove, there were film crews over from the UK and the place was swarming with actors - David Tennant being one of them. They didn't need any hikers for the film - it wasn't that type, so we carried on.

We came across a man tagging sand martins that had flown from South Africa. He had one in his hand which he then released back into the wild while we were talking to him.

This is a great walk to undertake – very little previous experience is required! The Coastal Path is clearly set out with way markers. The scenery is very varied – obviously the sea is a constant feature and a great one when we live in Warwickshire.

A huge Thank You to those who have sponsored the walk. The charity website is still open at www.charitygiving.co.uk/rachelbright until end August, so if anyone would still like to sponsor the walk and support MusaweNkosi, please do. Thanks again.

Rachel Bright

Books for Reading Circle

Offchurch Reading Circle occasionally buys books for their group instead of relying on a choice from the library. We have three sets of books that we would like to sell on to other groups:

The Return by Victoria Hislop x 8

The Hundred Secret Senses by Amy Tan x 8

The Secret Garden by Mark Mills x 8

These books are in good condition and consist of paperback and hardback. We paid £2.76 for each book from Amazon but would be willing to accept any reasonable offer.

If you would like any further information, please contact:

Sue Lyne
sue.lyne@sky.com
 01926 332892

18th Annual Harbury Hash

This event for all the family will be held on Sunday September 19th. The Hash is for walkers and runners and is loosely based on a paper trail, but the trail is marked in flour. It is for all ages, levels of fitness, or lack of, and short-cutting is actively encouraged.

The start will be in the Chesterton area, and there will be signs from Chesterton village to the start location (where to park cars and bikes). Registration is from 1.30pm to 2.00pm.

There will be a BBQ after so please bring your own meat, veggie, drinks, salads, etc. We will provide bread plus some drinks for the down downs (penalties). Dogs on a lead with well behaved owners are most welcome. The cost is £3 an adult or child, or £8 a family, and any profits will be donated to Harbury GASS.

<http://www.actionability.co.uk/hh/>

Doug Freeman (612002) and Mali Murphy (613063)



W.I Anniversary Tree

Those who read last month's H&L News were no doubt, like us, incensed at the wanton damage to the delightful tree on the path leading to the playing fields from South Parade. Provided by the WI in recognition of 75 years of activities in Harbury, the photograph shows President Barbara Sutton, Bertha Kettle and Diana Buck on a cold day in December 1990 standing alongside the newly planted tree. We would be very grateful if anyone can give a lead in identifying the guilty person(s).

Ann Mayer

WI President

Tel: 01926 612708



Party Time

Southam and District Lions Club present the 39th Annual Senior Citizens Party, at Southam College on Saturday 18th September 2010 at 2.15pm. All senior citizens are cordially invited. Please call Malcolm 01926 814294, Peter 01926 814436 or David 01926 811443.

Peter Guy

New Housing Development at Bush Heath Lane

As many residents will be aware, Linfoot Homes in conjunction with South Warwickshire Rural Housing Association are currently building new homes, designed principally for local residents and people with a strong local connection. There will be 13 homes of varying styles to rent and 9 available to buy outright. It is expected that the development will be completed around the beginning of 2011. The following information has been obtained from Martin Cowan, Housing Advice Manager, Stratford District Council regarding the District Council's policy of "Home Choice Plus" which will decide the allocation of the rented houses:

FOR RENTED HOMES:

"- all allocations of new affordable (social) housing schemes in Stratford District area are carried out through Home Choice Plus. Home Choice Plus is the waiting list system which is administered by the District Council's Housing Advice Team.

- any household interested in social housing in the area needs to be registered on Home Choice Plus. **Applicants who are not registered will not be able to apply for social housing.**

- Home Choice Plus is a "choice based lettings" scheme - most CBL schemes operate in the following way:

i) applications are placed in "bands" according to the housing need of the applicant. Applicants in the same band are then placed in date order so those who have been waiting longest will be considered first.

ii) vacant properties are advertised through the Scheme (this includes new developments)

iii) applicants are able to express an interest in properties by "bidding" (this is not a financial process, just expressing an interest)

- social housing vacancies are advertised via Home Choice Plus. Registered applicants are able to see what properties are available in a number of ways (via the Home Choice Plus website; via the property line; via a paper newsletter).

- applicants are then able to "bid" on a property they are interested in a number of ways (via the Home Choice Plus website; via the bidding phone line; via text message; via contact through Council offices).

- bidding cycles last for one week. At the end of the week, the system will generate a short list of all applicants who have bid on the property. The shortlist will be in housing need order, with those with the highest need at the top of the list.

- for new build rural housing schemes in our District, there will be a section 106 in place which defines who will be a "qualifying person" for the purposes of an allocation. The District Council will also have nomination rights which means that the Housing Advice Team will do the short listing and nominate qualifying persons to the owning housing association.

- the section 106 agreements can differ, but almost always include the following ways that an applicant can demonstrate a local connection:

i) birth in the parish

ii) residence in the parish for at least 12 months

iii) employment in the parish

iv) previous residence in the parish, but had to move away due to lack of affordable housing

v) residence of immediate family in the parish (mother, father, sister, brother) for at least the last 5 years

- the Housing Advice Team will obtain documentary evidence to confirm a genuine parish local connection. It is worth noting that the local connections listed above are of equal value. It is not the case that 5 years residence in the parish provides a stronger local connection than 1 year. The connections are of equal weighting - what determines which applicants are nominated will be their housing need.

- when shortlisting for properties where a local connection is required, the Housing Advice Team will work through the shortlist and disregard any applicants who do not meet the local connection criteria. When this has been done, the remaining applicants will then be listed in housing need order, with those with the greatest need at the top of the list.

the Housing Advice Team will then provide nominations to the relevant housing association.

Key messages:

- all households interested in new affordable housing must be registered on Home Choice Plus (households who fail to register will not be offered housing)

- all properties will be advertised via Home Choice Plus

- applicants must place bids if they are interested in properties
(applicants who don't bid will not be offered housing)

- the above process will be applied for all new housing schemes. Households who have completed a housing needs survey or told the

Parish Council they are interested still need to register on Home Choice Plus and place bids for properties."

Useful links below:

- Home Choice Plus website:

<http://www.homechoiceplus.org.uk/Data/ASPPages/1/2.aspx>

Contact Stratford District Council, Housing Advice Team on 01789 260861 or e-mail housingadviceteam@stratford-dc.gov.uk

Further advice can also be gained by contacting your District Councillors, Beverley Mann, Tel 614977 or e-mail Beverley.Mann@stratford-dc.gov.uk or Richard Tonge, Tel: 613116 or e-mail Richard.Tonge@stratford-dc.gov.uk

FOR PRIVATE HOUSING

The nine private houses, of varying sizes are being marketed by Linfoot Homes in association with Evans Hardy Bromwich. It is expected that further details of the houses, including price guides, will be available in the autumn. The S106 criteria giving preference to people with a strong local connection will also apply. For further information, please contact Linfoot Homes on 01789 488208.

A plan of the layout of the scheme is also available to view at the Parish Office, Unit 2, Bull Ring Business Centre, Church Terrace, Harbury, telephone 614646 or e-mail clerk@harbury-pc.gov.uk.

Harbury Parish Council

CANA At Bank Chambers – Harbury



It needs determination to 'go against the grain' and open a new shop at a time in the current economic climate when shops in the high street throughout the UK are closing down. However, this is exactly what Rob and Libby Darlison decided to do when they opened the CANA Imports shop in High Street, Harbury in March.

The shop front boasts 'London, New York, Paris and Harbury' etched into the glass and certainly many of the wines pass through London City Bond whilst others are sourced directly from growers on the continent. Rob explains that the "tongue in cheek" shop front reference could actually be backed up with phone numbers for friends and family in New York and Paris!

The attractive window displays are set out by Libby, who uses her artistic skills to great effect and she has created themes based on the World Cup and Seascapes in recent months with another change planned over the summer holiday. The interior of the shop is just as imaginatively decorated with a range of wine posters and advertisements. Also on display are various vintage prints, some of which are available to purchase. Although passers-by might be forgiven for thinking that Cana is 'just a wine shop', the reality is very different, as customers can buy a range of cheeses, speciality biscuits (including Scottish Groaties), liqueurs, olives, salamis and anti-pasti, as well as authentic wine boxes, which make excellent, attractive storage items for the house and garden. There are also various virgin olive oils, including 5 litre cans for those looking for the healthy option for cooking and salad dressings. The main business centres around the sale of wine and there are now over 120 wines from all over the world, starting at £4.00 of which more than 30 have won International Wine Awards in 2010, so the refined palate can enjoy some of the best wines available on the open market. There is also a range of Real Ales, which are mainly local, although there are a few more unusual brews and the occasional 'guest' county ale to choose from.

The CANA business started 6 years ago, as a wine importing and distributing operation and was initially run from the couple's home off the Fosse Way where Rob and Libby established an internet customer network throughout U.K. The first event they became involved in for village organisations was for Windmills Nursery School and they have since become familiar faces at local discos, football presentation nights, PTA Quiz Nights, Summer Balls and in the Village Hall supporting dances and offering a bar at the 'Moving Pictures' events. They also create bars for private parties and weddings, including a full bar service and staff. They can provide wine on a sale or return basis for any event including glass hire or can arrange wine tasting parties in your own home.

Cana also undertakes a home delivery service for their wines in the local area and the opening times for the shop are: Tuesday-Thursday 2.00pm-8.00pm; Friday 12.00-8.00pm and Saturday 10.00am-8.00pm. It is also possible to take advantage of a tasting session on Saturdays and the chocolate wine and toffee vodka have proved extremely popular. For those in the village thinking about a 'present with a difference', Rob and

miles of tiles



15% OFF

Leamington Spa
Alveston Place, Oxford Street
Royal Leamington Spa, CV32 4SL
Tel.: 0808 108 8742

Coventry
Foleshill Road (next to Magnet)
Coventry, CV1 4NR
Tel.: 0808 108 8744

All Stocked Wall and Floor Tiles

NOT SUBJECT TO ANY OTHER DISCOUNT OR OFFER. ONLY WITH THIS ADVERT

Harbury and Ladbroke News

Rugby
103-107 Albert Street
Rugby, CV21 2SW
Tel.: 0808 108 8740

where good tiles cost less

MINTCLEAN

*Carpet & Upholstery Cleaning,
including Leather Suites,*

Domestic & Commercial

*Contract Cleaning for communal
stairs and hallways*

Tel: 01926 611926

Mobile: 07970 835686

Chris Hall

www.mintclean.com



M1930

THE TELEPHONE MAN

**01926
315 238**



**07761
077167**

Kyle Boyce

Former BT Engineer

26 yrs service

www.thetelephoneman.biz

RESIDENTIAL ENGINEER

INTERNAL FAULTS

ADSL LINE OPTIMIZATION

ADDITIONAL SOCKETS

IT'S YOUR CALL

D.W.A.G.

O Builders **R**
U Tel: 01926 612460 **E**
G Mobile: 07860 849777 **E**
N

Local Tradesmen who take pride in their work.

We specialise in rebuilding half-timbered and period buildings, renovations, extensions, conservatories, patios - in fact any form of building work.

ESTABLISHED OVER 40 YEARS

Christina Sherman, BA, MAR

REFLEXOLOGY

This safe, natural therapy can help a wide range of conditions while balancing the whole system.

Deeply relaxing, it is especially beneficial for reducing stress.

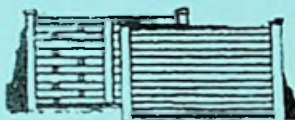
Additional, very effective techniques can be used to suit individual needs.

Ring 01926 612277
for further information

8 Church Terrace, Harbury

ROLLASON

FENCING AND SHEDS
EST 1964



**"You've seen the Rest
Now see the BEST"**

British Timber Used
therefore

Reducing Carbon Footprint

Professional erection service available
(01926) 613009 or (01926) 612066
Fosse Garage, Fosse Way, Harbury

**GOOD FENCING
MAKES GOOD
NEIGHBOURS**



FORTRESS

DOMESTIC SEPTIC TANKS

**TANKS EMPTIED • HELP & ADVICE
BEST RATES**



**WARWICK
(01926) 493414**

DONGAN ROAD, WARWICK CV34 4JW

Libby can create speciality wine boxes with individually chosen wines or gift boxes with a mixtures of wines and food products from the range of speciality cheeses, meats, olives etc. Gift vouchers can also be purchased for those who wish to give the recipient a chance to make their own selection.

Over the years, the Harbury and Ladbroke News has championed support for village businesses and this latest venture deserves our support – there's something for every palate, so it should be checked out to discover the range of grain, grape and hop products on the shelves. Rob and Libby may have 'gone against the grain' in setting up their business venture, but they have brought everything in store for locals to enjoy a great 'night in' at a drinks party. It's supposed to be the new way of enjoying yourselves with friends – so try it every now and again?

Chris Finch



Farm Crisis Network – a New Group in Warwickshire

Last year, despite an already busy life as secretary of Rare Breeds Survival Trust Warwickshire and member of several village clubs, I became a volunteer with FCN and am the coordinator of the Warwickshire county group. The coffee morning in the Tom Hauley Room on August 14th is for Farm Crisis Network (FCN) and I thought readers might like to know what the charity does. FCN provides practical and pastoral support to farming people experiencing anxiety and stress from problems with the farm business or the farm household.

FCN has a national confidential Helpline **0845 367 9990** which is staffed 7am–11pm every day of the year with an answer service out of hours. To respond to calls for support there are 300 volunteers throughout England, Wales and Northern Ireland who can visit individuals and offer support in resolving difficulties and problems. Increasingly, cases relate to financial problems, but health issues, animal welfare, family breakdown, bereavement, bureaucracy, retirement and succession are frequent requests for help. Farming as an industry is not in crisis, but individuals and businesses within the industry do from time to time hit problems and circumstances which are too big for them to handle alone. This is where FCN can help.

Most counties have a local FCN group. The Warwickshire group was formed 15 months ago and has dealt with 32 cases to date. There are currently 11 group members who bring a wide range of skills, experience and geographical spread to the work from both inside and outside of the farming industry.

We meet regularly for mutual support, training and to share good practice. It's important that we keep up to date with current farming practice and issues.

Learning about mental health and depression is also important. Depression affects 1 in 6 of the population at some point during their lives. In farming, a financial problem will impact on the family and the business, putting strain on relationships. Decision making becomes difficult, depression may set in and the problem can seem much bigger.

Most cases come via FCN's confidential helpline. Case work is allocated to appropriately skilled volunteers and client confidentiality and empathy is assured. Volunteers 'walk with' a farmer and their family as they seek to resolve their difficulties. For some, all that is needed is an opportunity to talk in confidence. Others may need someone to 'walk with' them for weeks, months or even years. FCN volunteers are prepared to relate to all aspects of the situation and have links with sources of professional help where needed. We don't give advice and can't 'do' the things that may need doing. In many cases farmers tell us that having someone to talk to outside of the situation and in confidence can be a great help in helping them to see the issues and a way forward to make appropriate decisions.

We're always happy to give talks about the work of FCN. Like all charities, FCN needs to raise funds to go forward and Warwickshire has several events in the pipeline. We're running a general knowledge quiz at Harbury Village Club on Sunday 19th September. We also raise awareness of FCN's work at county shows as we have a display trailer. At Kenilworth Show a friend commented that in a way it was a shame that FCN was needed – but that 'by golly, what a good job it does exist!'

FCN aims to raise awareness of farming issues and the needs of the farming community within the churches and in the wider community and Father Craig and I met recently to talk about this. Recently FCN published Stress and Loss, a report on the impact of Bovine TB on farmers and their families, to draw attention to the emotional effects on the farmer and the farming family when the herd is closed because of Bovine TB. If anyone is interested, the report is available to download at www.fcn.org.uk

If you would like to know more about the work of FCN and the Warwickshire group or if you would like to support FCN or become a volunteer please contact Karen Ellis on 024 7685 3081 or 07870 187525 or email karenfcnworks@gmail.com

Remember that our farmers will produce the milk for our tea and coffee on 14th August - and they've grown the ingredients for our biscuits!

Come along and join us on August 14th for a cuppa plus a raffle, cakes and produce. Thank you.

Founded in 1995 FCN is a registered charity whose patron is HRH The Prince of Wales. It is part of the Farming Help group of charities working in the farming community www.farminghelp.org.uk

Karen Ellis

The 64th Annual Airborne March at Oosterbeek in Holland

On Saturday 5th September, myself along with three other local residents, Steve Wilkins, Dave Hudson and Mark Blanchard, will be part of a team of 18 taking part in the 64th annual Airborne March at Oosterbeek, near Arnhem in Holland.

We will join around 30,000 participants from over 17 different countries to remember the events of 17th September 1944 when thousands of paratroopers descended from the sky. Their objective was to secure the bridges across the rivers in Holland so that the Allied army could advance rapidly into the lowlands of Germany and help bring the war to an end.

Sadly, however, the crossing at Arnhem proved to be 'a bridge too far'. After 10 days of bitter fighting the operation ended with the evacuation of the remainder of the 1st British Airborne Division from the Arnhem area. Approximately 10,600 men fought at Arnhem, but only some 2,400 returned. Over 1,700 were killed; the remainder were captured or wounded.

Last year I was fortunate enough to be involved in one of the longer walks in Arnhem, the 40K trek which visited many of the landmarks associated with the landings of 1944. The Airborne March is a wonderful event with, on one hand, a really party atmosphere of bands, music, flags and banners, and on the other, many stark reminders of the sacrifices that were made by so many 66 years ago. This was clearly brought home to us when we visited the Airborne Cemetery where there was row after row of headstones bearing the details of those young lives lost in the conflict. The cemetery is tended by local school children, each grave being looked after by a youngster from local schools and when that child moves onto senior school they hand over that responsibility to one of the younger children. It was impossible not to be moved by the dedication and care shown by the local community.

When we travel to Holland in September we will be undertaking the walk in memory of Private Joe Whittaker, a young soldier from the Parachute

Regiment who was sadly lost on operations in Afghanistan in June 2008. Joe came from Stratford-upon-Avon and his mum, Naomi, and a number of his friends will be walking with us. Naomi has come up with a great idea to help fundraising for two really important military charities, 'Help for Heroes' and 'ABF The Soldier's Charity'.



'My Key People' is a fundraising enterprise which will provide personalised keyrings with photos of your loved ones, friends, family, etc for very modest prices. Simply send / email two photos of your children / grandchildren / husband / wife / girlfriend / baby / granny / friends / pet ... and you can have a unique personal photo keyring, from only **£1.50** each!! All proceeds will go to our 'Airborne Trek for Joe' in Arnhem, September 2010 supporting military charities. Great little gifts for family and friends, stocking fillers etc. Email your pictures to naomi.mykeypeople@gmail.com.

If you would prefer to sponsor the charities directly here are the links to the appropriate justgiving sites.

Help for Heroes : www.justgiving.com/airbornetrekforjoe2010

ABF The Soldiers Charity : www.justgiving.com/michael-vallance

Many thanks for your help.

Jim Farrell

Harbury Duke of Edinburgh Group

On 9th - 11th July 2010, Harbury D of E group conquered the Shropshire Hills for their qualifying Bronze expedition. On the Friday evening, we all squashed in a minibus down to Wilderhope Manor youth hostel, entertained by Jack's rapping and Lauren and Eleanor's singing the whole way there. At first we all thought the youth hostel was a bit spooky because we didn't realise that the birds flying around were not bats; they were actually swallows. After fresh croissants and eggs and bacon for breakfast, we split into our 2 groups of 7 and began our two day hike into the hills. The A Team (Ben, Albany, Lauren B, Kerry, Liam, Annie, Jack) had a successful first day, and arrived at Sparchford Farm campsite hours before the other group, Hippo Disco (Lauren W, Bethany, Eleanor, Ellie, Sam, Tom, Peter). We had an encounter with angry cows, twin forests (of which we picked the wrong one to walk through and had to go back) and Tom being one hundred percent certain we were going the right way when in fact we were not.

Eventually everyone had pitched tents in a circle, at the corner of the field furthest away from the toilets and the water.

After cooking our dinner, it started to rain. Despite the 5 minute shower we still managed a short game of rounders before Eleanor lost the ball...

The following day was more successful for both teams. We all finished ahead of schedule and to celebrate the end of our expedition our lovely leaders bought us ice creams. We all really enjoyed the weekend despite the heavy packs, millions of head high stinging nettles and overgrown footpaths. Bronze D of E has been a fantastic experience for all of us and the leaders have been very supportive and have helped us along the way – we couldn't have done it without them. We are all really looking forward to starting our Silver awards in September.



Lauren and Bethany

Changes to Bus Service

Please could residents note the following forthcoming alterations to the current bus service:

Stagecoach currently operate services 63 and 64 as follows:- 63 - Leamington - Radford Semele - Ufton - Southam - Rugby (Hourly) 64 - Leamington - Radford Semele - Harbury - Bishops Itchington - Southam (Hourly) continuing to Long Itchington and Marton every two hours or Napton and Priors Marston every two hours.

Starting on **Monday 6 September 2010** they will operate the following:-63 - Leamington - Radford Semele - Ufton - Southam - Rugby (Hourly)

64 - Leamington - Radford Semele - Ufton - Southam - Long Itchington (Hourly)

65 and 66 - Leamington - Harbury - Bishops Itchington - Southam (Hourly), the 65 continuing to Napton and Daventry every two hours, with the 66 continuing to Banbury every two hours. The 65 and 66 will serve Harbury and Bishops Itchington and therefore maintain the hourly service to both Leamington and Southam. Villagers will however have the additional benefit of direct bus travel to either Daventry or Banbury.

The 64 will no longer serve both villages.

Dennis Young
Warwickshire County Council

Village with a Vision

Our meeting on 9th July was well attended, and Professor Andrew Kerslake from the IPC, and Tim Willis from WCC gave us lots of information, which included results from our Survey.

Prof. Kerslake began with some general national information. We learned that in 1984 there were 660,000 over 65's in the UK, and by 2034 this would rise to 3.5 million, or 5% of the population. Shire counties were worse than average, with care being more difficult to deliver due to rural isolation. This increased travelling times and staff recruitment could be difficult. It was also hindered by 2 tier authority difficulties.

Although the elderly want to stay in their own homes, the reality is that at least 25% now move at least once. Choices were often limited, and most didn't want to move in with children. What they looked for was the ability to remain in their own homes, with choice about how and what services could be delivered.

The figures for Warwickshire show that over the next 15 years the over 80's will increase from 26,000 to 43,000 – a 65% rise -, and that by 2025 a quarter of the population will be over 65; with up to 1,000 Care places needed.

He then showed two videos of Extra Care Housing.

The first at Stanton Lodge, built in 2005 for the Methodist Housing Association. This provided independence and social care, allowing couples to continue to live together. Staff were also trained in dementia care.

The second was Meadow Court, built for the Ridgeway Housing Association. The facility worked on the Spoke and Hub principle, with the Care staff also going out into the community. The elderly and disabled living in the community were also able to use the facilities.

Tim Willis, WCC Care and Choice Accommodation Programme, spoke to us. He is responsible for all models of Housing Care in the County. Having learned about Village with a Vision, he found our project very inspiring.

He explained that the County want 500 Care Units to be built by 2013, and are already working with partners around the County. They are remodelling Sheltered Housing, and upgrading to Extra Care Housing. They are aware of the distress caused when people have to move up to 30 miles from their home to get care and that what they want is care in their own community.

Stratford on Avon DC has over 250 different communities, and with people living longer, housing is limited. In some areas there is no specialist care available locally. The Local Authorities and PCT are forming partnerships to overcome these problems. Having learned of Harbury's Vision they are very keen to support it.

Briar Croft in Stratford has recently opened, and already has a waiting list. It offers self contained accommodation for rent or shared ownership.

From our recent Survey we can report that 354 forms were returned which was nearly 27% :-

24% from 50-60 year old; 44% from 65+; 16% from 75+.

93% were home owners; 23% lived alone, and mostly were 65+.

The average length of residence in the village was 24 years.

55 people had mobility problems, 25 had vision and 16 with hearing loss.

Less than 15% had mobility equipment or received care at home.

6% of people were interested in joining the scheme now; 74% possibly in the future.

4% had a relative interested now; 20% knew someone interested later.

80% wanted independent living; 74% self contained accommodation.

Access to garden, village and social contact were crucial, as were safety issues.

Following these positive results, coupled with the support from the County and our Local Authorities; we are now looking into possible sites in the village, and the formation of a Charitable Trust centred in the village. We will continue to keep you up to date with our progress.

And to close a quote from a response: "It is so important that we're not uprooted from the village that we love".

Tony Stubbs
Village with a Vision



LETTERS TO THE EDITORS

Dear Editors

I would like to thank all the very many friends, relatives and customers of the Old New Inn who have sent me get well messages during my recent stays in hospital. I have really appreciated all the cards and flowers I have received and the offers of help from many people. I would particularly like to thank Tracey for looking after me so well and all the helpers who have rallied round to 'man' the bar in recent weeks. The people in the Old New Inn are like my extended family and everyone has been so kind. Many thanks to all.

Sandra

Dear Editors

I would like to say thank you to everyone who supported the coffee morning at the Tom Hauley Room on Saturday 26th June in aid of the Village Hall Development Fund. Thanks to you, we raised £175 which will go towards the next phase of construction.

John Hancock (Chairman, Fundraising Committee)

Dear Editors

We would like to thank all our friends in Harbury for all the good wishes that we received for our recent wedding. We are delighted to report that, as a result of our appeal for donations, instead of presents, that over £365 will be donated to our favourite charities, Macmillan Nurses and Myton Hospice.

Best wishes

Sue and Ted Coupe

Dear Editors

We would like to thank the many who supported the British Heart Foundation Coffee Morning, organised by Gladys Hutchings which, helped by The Butterflies, and the friends of Frank Bunting, raised the magnificent sum of £827. The money will purchase pulse oximeters which are used to measure the exercise tolerance of people who have had heart failure or heart attacks. One will be kept in the Cardiology Department of the hospital and another for use in the community. They will therefore be of great benefit to those served by the hospital, including residents of Harbury.

Gladys Hutchings and Frank Bunting

**DATES FOR INCLUSION IN THE HARBURY DIARY PLEASE TO:
LINDA RIDGLEY - TEL. 612792.**

Bookings for:

Scout Hut	Caroline Hill	613780
Tom Hauley Room	Liz Bunting	612450
T. Hauley Room Coffee Morning	Sally Stringer	613214
Village Hall	Celia Neill	612819
Wight School	Lin Hayes	613488

Do you need help with any of the following?

Harbury Helpline is for you!

EMERGENCY TRANSPORT: John Travis 613264, Tony Brunton 612191

HELP WITH FORM FILLING:

- **For University/Job Applications, interviews, CVs:** Call Philip Bushill-Matthews 612476.

HOME VISITING: Caring for a sick or elderly relative and need a break for a few hours, or you would like someone to call on you.
Call Sue Dormer 613254.

VISITING: Hospital. If you are unable to visit a parent or relative, or parents would like support with a child in Hospital: Keith Dormer 613254.

ADVERTISING in the Harbury & Ladbroke News
Email: advertising@hlnews.co.uk Tel: 01926 612155

Monthly Prices

¼ page £10.50
(or 3 consecutive months for £28.00)
½ page £19.00
(or 3 consecutive months for £49.00)
Full page £33.50
(or 3 consecutive months for £89.00)

Annual Prices

¼ page £ 94.00
½ page £168.00
Full page £315.00

**Advert with payment to: Gill Holden, 31, Binswood End, Harbury
by 15th day of the month (Cheques payable to 'Harbury & Ladbroke News')**

Richard's Dog Walking Service

Do you have a dog that needs walking?
 Are you going on holiday and need your dog walked and fed?
 Richard's dog walking service is run by an experienced dog owner
 and would be more than willing to look after your dog,
 by providing a home visit to your best friend.

Available at short notice!

To contact your local, friendly dog walking service:
 Tel: Harbury 613509 or Mobile: 07923 167420

Mr. Plumb



Plumbing & Heating Services

- ✓ Beautiful bathrooms designed and fitted.
- ✓ Wall & Floor Tiling / Plastering.
- ✓ General plumbing including: radiators / toilets / sinks/ taps / showers / cylinders minor and major leaks / outdoor taps.
- ✓ Harbury based, fully insured & references available.



For a friendly and reliable service contact Marcus
 01926 614448 / 07904 670055
mrplumb@fsmail.net



Tel: 0845 643 2869
 Mob: 07590 603475
 02476 616789

- Having problems with your computer?
- Need a wireless network?
- Tired of waiting in a phone queue for help you don't understand?
- Frightened of what it might cost?

PC Repairs, Enhancements and Configuration, Wireless Networking, Broadband Problems, Multi media set up, Equipment wiring & connection faults, Internal & External Communication, Virus eradication, additional Telephone Sockets.

Call Don Mayers. We specialise in home computer and connection problem solving and set up. Our rates are excellent and we are local to you.

For more information, please visit www.thebroadbandman.co.uk.

HARVEY BUILDERS LTD

Registered Since 1979

YOUR LOCAL BUILDER FOR ALL YOUR HOME EXTENSIONS
AND ALTERATIONS FROM PLANS TO COMPLETION.



Chris Harvey

Mobile: 07976 357142

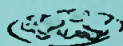
email: harvchrs@aol.com



FOR PROMPT, PERSONAL SERVICE PHONE 01926 817906



Braeside Bed & Breakfast



Comfortable accommodation £26.00 - £30.00 per person per night, including wide choice of breakfast. One double en-suite and one room either double or 2 foot 6 inch twin beds, with private bathroom opposite.

Contact: Rosemary Harley, 26 Temple End, Harbury

☎ 613402 or 07747 772497

Email: rosemary@braesidebb.co.uk

Website: www.braesidebb.co.uk



Bull Ring Garage

Bull Ring Garage

Church Terrace

Harbury

Leamington Spa CV33 9HL

Telephone: 01926 612275

Mobile: 07968 146534

Email: bullringgarage@btconnect.com

We are Harbury's only official M.O.T. station for the following classes:

Class 1 & 2 Motor Cycles

Class 4 Car and Commercial up to 3000kg.

Servicing and Mechanical repairs.

Air conditioning service.

Full Diagnostic facilities.

Full tyre fitting bay for Cars, 4x4, Vans, Motor Cycles and Scooters.

Opening hours:

Monday - Friday 8.00am - 6.00pm

Most Saturdays 8.30am - 12.30pm

Ben Timbrell

Gas Safe registered Engineer

For all your plumbing & heating needs.

- Complete heating systems
- Boiler changes
- Cylinder replacements
- Bathrooms
- Cookers
- Outside taps etc

NO JOB TOO SMALL

All work guaranteed

07812 144 330

Free Estimates!



214542



Avonvale

Veterinary Centres

Consultations by appointment

Caring and knowledgeable staff

Full surgical facilities

Comfortable secure kennels

24-hour Emergency Service staffed by

Avonvale vets and nurses

01926 812826



88 Coventry Street
Southam CV47 0EA

www.avonvets.co.uk

Health First, Daventry Street, Southam

- ✓ CHIROPODISTS / PODIATRISTS registered with all major Health Insurers and Health Professions Council
- ✓ Former NHS specialists with over 25 years experience
- ✓ Daytime, evening, and Saturday appointments available
- ✓ Treatment plans to CURE even longstanding problems
- ✓ Insoles / orthotics / nail surgery / diabetic reviews
- ✓ Able to diagnose and treat extensive range of problems:

COLLAPSED (FALLEN) ARCHES

LEG LENGTH DIFFERENCE

EXCESSIVE PRONATION

KNEE / HIP / BACK PAIN

INGROWING TOE-NAILS

PLANTARFASCITIS

METATARSALGIA

ATHLETE'S FOOT

01926

811272

FREE PARKING
NEARBY WITH
EASY
GROUND
FLOOR ACCESS

DEFORMITIES

HEEL PAIN

TENDONITIS

INFECTIONS

VERRUCAE

HARD CORNS

SOFT CORNS

NEUROMAS

HARD SKIN

CALLUSES

FISSURES

HEEL CRACKS

BUNIONS

ARTHRITIS

FOOT ULCERS

Further information at
www.healthfirstsoutham.co.uk

HARBURY PARISH COUNCIL

Unit 2, Bull Ring Business Centre

Church Terrace

Harbury CV33 9HL

Tel: 614646

Open: Monday - Thursday 10.00am - 12.45pm

CHAIRMAN:

Tim Lockley

CLERK:

Nicola Thompson

Parish Council meetings are open to the Public. To speak on any issue, please contact the Parish Clerk.

Email: clerk@harbury-pc.gov.uk

Website: www.harbury-pc.gov.uk



Forget You Not

A unique care service for people in their later years

- Personal Care
- Emotional Support
- Advice on problems affecting older people
- Conversation and time to reminisce
- Shopping and trips out and about

All clients are treated with:

- Respect
- Patience and
- Kindness

Flexible hours, all days of the week

Julie Collier - Registered Nurse

T: 01926 613760

M: 07961 087735

Email: support@forgetyounotcare.co.uk

Web: www.forgetyounotcare.co.uk



Those special moments captured!

Zoe is a creative natural light photographer, capturing artistic images that are individual to each moment. Zoe aims to produce a body of work that is true to atmosphere and spirit of the day, thus giving you hand crafted images that you will want to cherish forever.

Available for Portraiture, weddings,
commercial, press & P.R.

Tel:- 07971 072045

Domestic Gas Services

MARTIN EVANS

ACS 2007 Accredited Gas Safe Registered 197039
A Local Leamington Company

- **CENTRAL HEATING**
- **INSTALLATION**
- **SERVICE - REPAIR**
- **POWERFLUSHING**

Are your radiators not as warm as they should be?

Powerflushing removes sludge build-up,
leaving your radiators warm and efficient again.
Ring for details.

07980 740720

safe

Gas Safe registered 197039, Leamington Spa, Warwickshire, CV31 1TH



11 MILL STREET, HARBURY
LEAMINGTON SPA, CV33 9HR
Telephone: 01926 613822

The Shakespeare Inn

- Traditional 18th century country inn
- Choice of real ales and guest beers
- Breakfast from 9.00am - 12 noon
- Afternoon tea and cakes available
- Mon-Sat food served 12 noon - 9pm
- Home cooked Sunday roasts
- Large car park and beer garden
- Function room



See us on 

ART CLASSES

Have you ever wished you could draw or paint?

Have you been painting a while and feel you are making no progress?

Jan Freeman has over 10 years experience in teaching art to adults.

Classes are held on Tuesday mornings in Harbury.

For more information, call Jan on: 01926 614251/07746 871134



Tap Classes

4.30pm - Little Tappers (3-5yrs) 4.30pm - Preparatory Tap (6-8yrs)



Dance Classes

Thursday evenings, The Grange, Southern

4.30pm - Funky Dance 1 (4-6yrs) 5.30pm - Funky Dance (7yrs +)
5.00pm - Gymnastics (all ages) 6.00pm - Grade 1 Ballet (9yrs +)



Ballet Lessons

Tuesday Evenings, The Grange, Southern

4.00pm - Prima Ballerinas (3-4yrs) 5.00pm - Pre-Primary (7-8yrs)
4.30pm - Pre-Syllabus (5-6yrs) 5.45pm - Primary (8yrs +)



Free Trial Class

Contact lorraine@loveballet.co.uk to book a place

Call 07711 010404

visit www.loveballet.co.uk



Deppers Bridge Plumbing Services

all types of plumbing
including:

Bathrooms, Kitchens &
Central Heating

No job too small

For a reliable,
local service call:

Steve Norman

T 01926 613532

M 07921 259639

fully insured





Fiona's Frames

Bespoke Picture Framing

Wide choice of mouldings & mounts for paintings, prints and needlework

Friendly Professional Service

Phone 01926 812807

Hillside, Napton

email: enquiries@fionasframes.co.uk

Warwickshire Groundworks

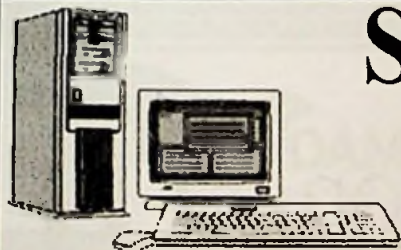
Your local contractor for:

- ◆ Driveways - Block paved
- ◆ Tarmac or Coloured Stone
- ◆ Patio Design & Construction
- ◆ Brickwork
- ◆ Fencing
- ◆ Shed Bases & Sheds Supplied
- ◆ Turfing
- ◆ All Hard & Soft Landscaping

City & Guilds Qualified
20 Years in the Business

Telephone Roger on:
01926 632994
07985 256009

*High Quality of workmanship
as Standard*



SIMONS SYSTEMS

Available for all your computer requirements including:
PC's and Laptops, New and used systems,
Upgrading memory/hard drives/rom drives/graphics, etc
Internet – modems fitted, wireless, networking.

Any repairs. **NO CALL OUT CHARGE**



Tel: 01926 316119



Mob: 07751 811097



E-mail: simons.systems@virgin.net

Rob Loveday
Electrical Services

**NICEIC Part P Approved
 Electrician**

The local electrician you
 can rely on - no job too small

Call Rob for a fast, friendly
 and efficient service

Tel :01926 429082

Mobile : 07825 345009

Email:- robertloveday@sky.com



Leafy Garden Services

Lawn and Garden Maintenance

Lawns cut (includes edges trimmed and striped lawn finish), gardens cleared and tidied, hedges trimmed, borders weeded, licensed chemical weed control.

*Regular maintenance or odd jobs.
 No job too large or too small.*

*For all your outdoor chores,
 call your local gardener*

Richard Everett

**Harbury 613509
 Mobile: 07923 167420**

green
 chameleon



Karena EA Ellis

MRICS, RICS Acc Med., BSc Hons

M: 07796 575716 T: 01926 612121

E: info@greenchameleon.net

www.grechameleon.net

Chartered Surveying ■

Mediation ■

Letting & Management ■

**The Green Room, 31 Manor Road,
 Harbury, Warks CV33 9HY**



RICS

SADDLERS BED & BREAKFAST

SELF-CONTAINED COTTAGE IN THE HEART OF HARBURY.
DOUBLE BED, SHOWER ROOM, LIVING & DINING AREA WITH
KITCHENETTE, TV/DVD, CD/RADIO. SLEEPS 2 TO 4.
OFF ROAD PARKING.

£60 PER NIGHT INCLUDING CONTINENTAL BREAKFAST.

JULIE YOUNG, SADDLERS, CHAPEL STREET, HARBURY.
01926 614050 OR EMAIL enquiries@saddlersbed.co.uk
www.saddlersbed.co.uk



STORM LOCKS

Your local friendly service

Security, Locks, Carpentry

Low prices

Call Kev on:

0778 774 6253

01926 811990



ADAMSTRANKS
BUILDING CONTRACTORS



Extensions-Alterations-Refurbishment-New Builds
Bespoke Kitchens and Bathrooms
Design-Planning & Building Regulations Application
Service available.

Web: kenilworthproperties.co.uk

Email: kenilworthprops@btconnect.co.uk

Telephone: Harbury 612260 Mobile: 07779 096104

Harbury Business Centre, Church Terrace, Harbury, Leamington Spa CV33 9HL

FENCES : TREES



All types of fencing and gates

Tree felling and reduction

Hedge laying and trimming

Patios

Seasoned logs available

**Call Adrian Dollar on
01926 817077 or
07914 623989**

Qualified and Insured

A Member of the Alliance of Private Sector Practitioners

Jackie Biddle
Healthy Feet are Happy Feet

Foot Health Practitioner



Day Clinic NHS Practitioner
CRB Checked

- Nail Trimming
- Corn Removal
- Verruca Treatment
- Ingrown Toenails
- Calluses Reduced
- Footcare for Diabetes

Home Visits Telephone

T: 01926 612503
M: 07872 907429

Tom Greenway ADI

Local Driving Instructor



- Competitive Rates
- Refresher Lessons

- One to one Instruction
- Pass Plus Registered

Tel: 01926 614462

Mobile: 07989 576561

PASS PASS PASS PASS PASS PASS PASS PASS

PAINTING, FLOORS, GARDENING

Neil and Alfonso

Mobile: 07932 172241

Tel: 02476 502852





*Hello – my name is
Rosina and I have
been a beautician for
over 8 years.*

*I specialize in
Facials, Swedish and
Hot Stone massage
in my private
Harbury Studio –
ladies only*

Absolute Beauty

*Full Range of beauty & holistic
Treatments – Pamper Parties
Tel. Harbury – (01926) 612403
18 Farm St.,
Harbury, CV33 9LS*



Caring for you and your pet.

Opening hours

Monday - Friday 8.30am - 7.00pm

Saturday 8.30am - 5.00pm

Sunday 9.00 - 12.30pm

Full 24 hour emergency service

Recently refurbished premises
with large client car park

123, Heathcote Road, Whitnash,
Leamington Spa, Warwickshire
CV31 2LX Tel:01926 337790

www.heathcotevets.co.uk

HANSONS
Auctioneers and Valuers

**FREE ANTIQUES,
JEWELLERY, BOOKS, TOYS AND
COLLECTABLES VALUATIONS**

Thursday, 12th August, 1.00 - 4.30pm

Thursday, 9th September, 1.00 - 4.30pm

No appointments necessary - Refreshments in aid of the NSPCC

**Charles Hanson Bargain Hunt Expert
and his team of Valuers**

Leek Wootton Village Hall

Warwick Road, Leek Wootton, Warwick, CV35 7RB

Items may be left to be entered into a suitable sale. For larger items, an appointment
can be made to see you in your home or office.

Charles Hanson is available for Charity events

e.g. valuation days, talks, auctions etc.

Please contact Mrs Carol Jones

Hansons Warwickshire Representative on 01926 770066

or email service@hansonsauctioneers.co.uk www.hansonsauctioneers.co.uk



Really Wanted – Passionate People!

I am looking for people who are passionate about the products they use and sell!
NYR Organics is an ethical company with local training with no pressure selling.

Consultants can be anyone – **why not you?**

Host a party and see for yourself how great **NYR Organics** products really are.

Contact me to see what a difference

NYR Organics could make to you, your life and your finances.

Karena: 01926 614462/07796 575716

Family looking to buy

Spacious 3/4 bedroom detached
 home in Harbury, prefer bungalow
 approx £300K max

(Renovation/extension considered)

Sold ours and awaiting suitable property

Call Russ

01865 751238 (Evenings) or Mobile: 07772 186305

Townsend Electrics



Your local electrician

Qualified to IEE Wiring Regulations
 - 17th Edition

From changing fuses to
house rewires - no job too small.

Free estimates

Office: 01926 613420

Mobile: 07833 246846

Email: i-townsend@hotmail.co.uk

13 Farley Avenue, Harbury.
CV33 9LX

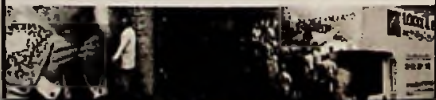


LOCKE & ENGLAND
 AUCTIONEERS & VALUERS

AUCTION EVERY THURSDAY

Viewing Wednesday 12noon - 7pm
 and morning of sale from 9am

- House Clearance & Collections
- Auction Valuations Friday 2-5pm
- Bi-Monthly Selected Antique Sales
- Valuations for Insurance, Probate, Family Division & Commercial
- Frequent Specialist Auctions



FURTHER ENTRIES INVITED

12 Goy Street, Leamington Spa CV32 4R1

01926 389 100

www.leauction.co.uk

petpals 

your best friends friend

**Professional Pet Care in your
own home.**

Dog Walking, Cat/Small Pet Visits,

Home & Pet Sitting,

Home Boarding, Pet to Vet,

Pet Taxi, Pet Friendly Vehicles.

Registered, Insured,

Police Checked Staff.

Contact Louise: 0560 344 6658

banbury@petpals.com

www.petpals.com

No Job Too Small
Phil's
Free Quotations
Plumbing and Heating

**Fully Qualified
and
Insured Plumber**

Bathrooms, Central Heating & showers

I am a locally based plumber
offering very competitive rates
on any plumbing or heating job.

No job too small,

Please give Phil a call

Call Phil

Daytime: 07971 046392

Evening: 01926 400746

Email: philmunday@hotmail.co.uk

**Bishops Tachbrook
Leamington spa**

Karen's Kuts Mobile Hairdressing

Unisex Hairdressing by Qualified Stylist

**Personal friendly service, in the convenience of
your own home or at my house in Harbury.**



**Call Karen
for an appointment on
01926 614628
0789 421 3068**

Moore & Tibbits
Solicitors

Are you or your family facing difficult decisions about moving into a Care Home and the financial consequences of this?

We have a friendly specialist team who can provide practical support and guidance in relation to:-

- Care Fees and who should pay them
- Entitlement to NHS Public Funding
- Mental Capacity
- Court of Protection Applications and Lasting Powers of Attorney
- Wills, Probate and Inheritance Tax planning

We also undertake Family, Matrimonial and Conveyancing work

For further information please contact Angela Woodruff
on 01926 491181 or email awoodruff@moore-tibbits.co.uk

**Moore & Tibbits Solicitors,
34 High Street, Warwick,
CV34 4BE**

www.moore-tibbits.co.uk

**Tel: 01926 491181
Fax: 01926 402692**



MICHAEL JEROME CARPETS

The Complete Carpet Service

- Choose a New Carpet from our Home Selection Service
- Expert Fitting - Fully Guaranteed
- Existing Carpets Re-fitted
- Professional On-site Cleaning
- Vinyl Sheet Flooring
- Free Estimates

Telephone
(01926) 813325

Mobile
07768 083364

*Michael Jerome is a Master Fitter
of the National Institute of Carpet Fitters
Over 30 years experience!*



S. MEHRA

PAINTING & DECORATING

Domestic & Commercial

EST 1991

T 01926 451012

M 07976 241949



The ideal choice for all your property repairs,
kitchen and bathroom fitting
and all decorating requirements.
Please contact us for a free quotation.

Manor Property & Decorating Services

Telephone: 01926 612887

Mobile 07765 717552



FIXIT4U.CO.UK
PROPERTY MAINTENANCE

01926 611930

07795 411868

chris@fixit4u.co.uk

For all types of Internal & External
Property Maintenance
including Floor & Wall Tiling,
Painting & Decorating etc.

Most jobs considered, all work insured.

Call Chris now for a free quote



CAR CONSULTANTS



UFTON GARAGE, SOUTHAM ROAD, UFTON, LEAMINGTON SPA CV33 9PF

WE BUY CARS & 4X4'S - OVER 40 IN STOCK

Contact us now on 01926 613795 or out of hours 07860 452222

or visit: WWW.uftongarage.co.uk

Southam Carpets

CARPET - VINYL - CURTAINS - BLINDS

Quality, value & service for over 30 years.



01926 814944

39 Coventry St. SOUTHAM CV47 0EP
www.southamcarpets.co.uk

A J BRUNT

Carpenter & joiner with over 40 years experience

All types of doors, porches, made to measure replacement windows, kitchens & wardrobes, plus bespoke joinery and all your carpentry needs.

Park Lane Terrace, Harbury

Tel: 01926 612867 Mobile: 07531 405206

THE DOOR STORE

- ❖ QUALITY DOORS in HARDWOOD, HEMLOCK & SOFTWOOD
- ❖ HANDLES in BRASS, CHROME & SATIN CHROME
- ❖ KITCHENS FULLY FITTED TO YOUR DESIGN
- ❖ PURPOSE MADE JOINERY, DOOR & WINDOW FRAMES
- ❖ STAIRS & STAIR PARTS in WOOD, IRON & CHROME
- ❖ JALI RADIATOR CABINETS, MADE TO MEASURE
- ❖ STAINED & ETCHED GLASS TO YOUR OWN DESIGNS
- ❖ ALL AVAILABLE IN MANY DESIGNS & VARIOUS SIZES
- ❖ FULL FITTING SERVICE, KITCHEN PLANS & ADVICE

Alveston Place, Oxford Street, Leamington Spa. Tel: 01926 888806.

Email: sales@the-door-store.co.uk Website: www.the-door-store.co.uk