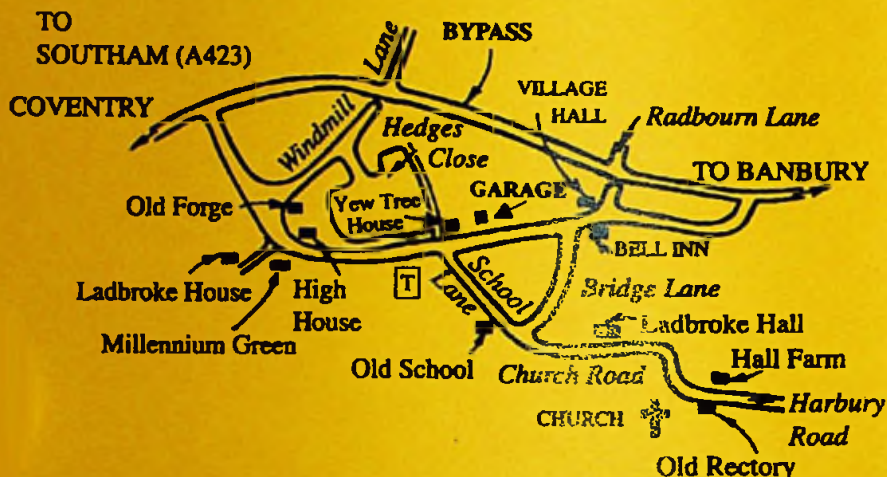




# Ladbroke



## THE FOSSE GARAGE

Servicing, MOT, Bodywork Specialists  
24 Hr. Recovery, Self-Drive Car & Van Hire  
**QUALITY USED CARS FOR SALE**

Cars Purchased for Cash - Free Valuation - No Obligation

FOSSE WAY, HARBURY, CV33 9JW  
01926 613260 or 07710 613260 (24hr.)

Established  
in 1974

VISIT OUR VIRTUAL SHOWROOM AT  
[www.fossegarage.co.uk](http://www.fossegarage.co.uk)

## MOTA-BARS

FOR TOWBARS

**Specialising in Towbars & Parking Sensor Systems**  
Professional - Reliable - Quality Service  
Specialists in the Latest Vehicle Technology  
**VERY COMPETITIVE PRICES**  
Town Centre Workshop, Established since 1986

**01926 426382**

**42 Morton Street, Leamington Spa [www.motabars.co.uk](http://www.motabars.co.uk)**

This magazine is available by subscription delivered within Harbury,  
Deppers Bridge and Ladbroke. Telephone 01926 612009 for details



# Harbury & Ladbroke News

Reflects all aspects of local life, is published monthly and produced with the assistance of  
All Saints' Parochial Church Council.

**April 2009**

**No.421**

|                              |   |
|------------------------------|---|
| Editorial Office             | ☎ 612155  |
| Articles to email address    | Harbury Pharmacy, High Street<br>articles@hlnews.co.uk  |
| Advertising Office           | 31, Binswood End (☎ 612155)<br>advertising@hlnews.co.uk |
| Distribution Manager         | 49, Mill Street (☎ 612009)<br>distribution@hlnews.co.uk |
| Inserts by prior arrangement | ☎ 612009  |

## IN THIS ISSUE

## Page

|                                       |    |
|---------------------------------------|----|
| EDITORIAL .....                       | 2  |
| HARBURY DIARY .....                   | 3  |
| FROM THE RECTOR & CHURCH NEWS .....   | 5  |
| LADBROKE NEWS .....                   | 9  |
| HARBURY PARISH COUNCIL .....          | 13 |
| HARBURY SOCIETY .....                 | 18 |
| HARBURY WOMENS INSTITUTE .....        | 18 |
| HARBURY THEATRE GROUP .....           | 19 |
| HARBURY TWINNING ASSOCIATION.....     | 20 |
| HARBURY FOLK CLUB .....               | 20 |
| HARBURY SPORTS CLUBS .....            | 22 |
| HARBURY TODDLER GROUP .....           | 31 |
| WINDMILLS NURSERY SCHOOL.....         | 32 |
| HARBURY PRE-SCHOOL .....              | 36 |
| HARBURY PRIMARY SCHOOL.....           | 38 |
| GUIDES & SCOUTS ASSOCIATION NEWS..... | 40 |
| HORTICULTURAL SOCIETY .....           | 42 |
| NATURE NOTES .....                    | 46 |
| VILLAGE HALL UPDATE.....              | 48 |
| GENERAL SECTION .....                 | 51 |
| LETTERS TO THE EDITORS .....          | 59 |

## Editorial Team

John Holden - Chris Finch - Marian Millington  
Ralph Swadling - Janice Thraves

*The views of contributors are not necessarily those of the Editorial Team  
The Editors reserve the right to amend articles as they see fit.*



## Editorial



**Daffodils on the Pound**

There have been two examples in the past month of the generous response of villagers to fundraising by both communities. A "Grand" Coffee Morning for the people of Gaza raised £788 and £7500 was recently handed over to a representative of the Teenage Cancer Trust.

A number of recent village incidents have been reported to the Police. These include the theft of a sat nav from a vehicle; a garden shed broken into; a theft from a local pub and two cars being scratched during the night. Remember there is a local Neighbourhood Watch Scheme – the local co-ordinator is Alison Abbott, telephone 01926 612939.

The editors wish to pass on the apologies of the printers for the transposition of the text in several places in last month's edition.

A reminder that the green waste collection service for our villages commences in the week of 13<sup>th</sup> April.

Finally we extend our sympathies to the families of Robin Barnes, Jim Chapple and Kitty Doran.

# Harbury Diary

## APRIL

- Sat 4 Coffee Morning in Tom Hauley Room in aid of GASS
- Sun 5 **PALM SUNDAY**  
 Holy Communion 9.00am with Distribution of Palms  
 First Light Service 10.30am Tom Hauley Room  
 Evening Service 6.00pm
- Mon 6 Holy Communion 7.30pm  
 Stations of the Cross 8.00pm  
 Village Hall AGM at 7.00pm in Village Hall
- Tues 7 Holy Communion 7.30pm  
 Stations of the Cross 8.00pm  
 Horticultural Society 8.00pm in Tom Hauley Room
- Weds 8 Holy Communion 7.30pm  
 Stations of the Cross 8.00pm
- Thurs 9 **MAUNDY THURSDAY**  
 Holy Communion 9.45am  
 Passover Meal 7.00pm in the Tom Hauley Room  
 Sung Eucharist 8.00pm, followed by the 'Watch' at the Altar of  
 Repose until Midnight  
 WI 7.45pm in Tom Hauley Room, Sarah Davies – Pole Dancing
- Fri 10 **GOOD FRIDAY**  
 Children's Service 10.30am  
 Devotional Hour 2.00pm – 3.00pm
- Sat 11 **HOLY SATURDAY**  
 Coffee Morning in Tom Hauley Room in aid of Meningitis  
 The Blessing of the Paschal Candle & Service of Renewal 8pm
- Sun 12 **EASTER SUNDAY**  
 Holy Communion 8.00am  
 Sung Eucharist 10.30am
- Mon 13 **BANK HOLIDAY**
- Tues 14 Holy Communion 7.30pm
- Weds 15 Tea 3.00pm to 4.00pm Tom Hauley Room  
**ADVERTISEMENTS TO 31 BINSWOOD END HARBURY BY 5.30PM**
- Thurs 16 Holy Communion 9.45am
- Sat 18 Men's Prayer Breakfast 7.30am Tom Hauley Room  
 Coffee Morning in Tom Hauley Room in aid of PCC
- Sun 19 **EASTER II**  
 Holy Communion 8.00am  
 Family Communion Service 10.30am  
 Evensong 6.00pm



- Tues 21 Toddlers Service 2.00pm in Church  
 Senior Citizens Benefit Committee 8.30pm in Village Hall  
 Holy Communion 7.30pm  
 Mothers' Union meeting 8.00pm Tom Hauley Room  
 Lynda Howells – Women's Refugees
- Thurs 23 **St. GEORGE'S DAY**  
 Holy Communion 9.45am  
 Thursday Club 2.30pm in Village Hall  
 ARTICLES TO HARBURY PHARMACY, HIGH ST, HARBURY  
 & EMAIL ARTICLE DEADLINE BY 5.30PM  
 Parish Council in Village Hall, 7.30pm
- Sat 25 Coffee Morning in Tom Hauley Room in aid of Men's Group  
 Moving Pictures in Village Hall,  
 The Water Horse – doors open 2.00pm, film starts 2.30pm.  
 Slumdog Millionaire – doors open 6.00pm, film starts 6.30pm
- Sun 26 **EASTER III**  
 Holy Communion 8.00am  
 Sung Eucharist 10.30am  
 Galanos House, Southam, Spring Fayre , 2.00pm - All welcome.  
 For more details contact Galanos House on 01926 812185
- Tues 28 Holy Communion 7.30pm  
 Harbury Society Alan Griffin talk on early photography 7.30pm  
 Tom Hauley Room  
 Julian Meeting 8.00pm in Church
- Weds 29 Drop in Tea for the Bereaved 2.30 to 4.30pm at 5 Penelope Close
- Thurs 30 Holy Communion 9.45am
- MAY**
- Sat 2 Coffee Morning in Tom Hauley Room in aid of Fair Trade  
 Myton Hospice Plant Sale at Dog Car Park 10.30-1.30pm  
 TWINNING VISIT
- Sun 3 **EASTER IV**  
 Sung Eucharist 9.00am  
 First Light Service 10.30am Tom Hauley Room  
 Quiet Contemplative Service in the Celtic Tradition 6.00pm
- Mon 4 **MAY DAY BANK HOLIDAY**
- Tue 5 Holy Communion 7.30pm
- Wed 6 Holy Communion 2.00pm  
 Mothers' Union Meeting 2.30pm Tom Hauley Room  
 Marian Millington – "The Soup"
- Thurs 7 Holy Communion 9.45am  
 Art Group in Tom Hauley Room 10.00 – 4.00pm  
 Men's Group Dinner Tom Hauley Room  
 Folk Club at Shakespeare Inn 8.30pm
- Sat 9 Myton Hospice Plant Sale at Dog Car Park 10.30-1.30pm
- Mon 11 Harbury Society Priory Park Guided Walk 7.30pm

### Refuse Collection Rota

|  | Deppers Bridge | Harbury | Ladbroke | Refuse Collection Week |
|--|----------------|---------|----------|------------------------|
| April  | Wed            | Thurs   | Fri      |                        |
|  | 8              | 9       | 10       | Grey Bin               |
|  | 15             | 16      | 17       | Green & Blue Lid Bins  |
|  | 22             | 23      | 24       | Grey Bin               |
|  | 29             | 30      | 1 May    | Green & Blue Lid Bins  |
| May  | 6              | 7       | 8        | Grey Bin               |
|  | 13             | 14      | 15       | Green & Blue Lid Bins  |
|  | 20             | 21      | 22       | Grey Bin               |
|  | 27             | 28      | 29       | Green & Blue Lid Bins  |
| <p style="text-align: center;"><b>Green Waste service resumes week commencing Monday 13 April.</b><br/> <b>From this week onwards Grey Bins will only be collected every other week.</b></p> |                |         |          |                        |



**ALL SAINTS  
HARBURY**

### From the Rector

**Father Craig Grocock**  
The Rectory, Vicarage Lane, Harbury Tel.: 612377

### **We are Easter People!**

Have you ever made a mistake? Well you wouldn't be human if you hadn't. It's something we all do. Mind you, some people have dropped real clangers, here's one for you that made me laugh;

A lady was once appalled to find three teeth in a Mars bar. She complained to Mars and her story got into the national papers complete with a photo of the lady holding the teeth that she'd found embedded in the chocolate. But, to her shock and horror, when the lady eventually went to the dentist for a check up, she was told that she had three teeth missing at the back!

We all do things that make us feel like failures. Sometimes they are just silly things that could have been avoided. Like for example the pupil who read the question wrong in the exam and to the question 'What is the boiling point of water?' answered 'The point of boiling water is to make a cup of tea!'

There are also the mistakes that we feel there is no way back from. Mistakes where someone has been left deeply hurt or betrayed perhaps, mistakes that seem unforgivable.

I heard of a man whose experience left him feeling like this. He had let his best friend down when he needed him most. He lived in another country under an oppressive regime. His friend was arrested, imprisoned and tortured and eventually executed for something he hadn't done. The man watched and allowed all this to happen and did nothing to try and stop it – in fact the man ran to save his own skin.

You might be interested to know that the man was called Peter and his friend was called Jesus. The amazing thing was Jesus forgave him – for the denial and sense of betrayal, the lowest probably anyone could sink.

And this is why the Christian faith offers us so much. With God, no matter what we've done, and how bad the past has been, it can be forgiven. We too have the chance to start again and it's all possible because Peter's friend paid the price of our failures.

Easter is about hope. The empty tomb points to the God of new beginnings, of fresh starts and of hope for the future. We are Easter people and you can be too.

May God bless all of you this Easter time.

|   |   |
|---|---|
| <b>All Saints' Church - New Website!!</b> | <b><a href="http://www.allsaintsharbury.org">www.allsaintsharbury.org</a></b> |
|---|---|

## From the Registers

### *Funerals at All Saints' Harbury*

March      4      Robin Barnes (55)

### *Holy Baptism, All Saints' Harbury*

March      8      Ruby Markham

March      22      Zak and Lula Favrie



### *Burial of Ashes at All Saints' Harbury*

March      20      Jim Chapple (81)

### *Holy Matrimony, All Saints' Harbury*

March      20      Stephen Padbury to Claire Singleton





## From the Churchwardens

Tony & Fliss

Thank you to all who took part in the Women's World Day of Prayer Service, especially to Ruth and her team and to Daphne Cooke who was our speaker. The service, prepared by the women of Papua New Guinea, reminded us that we are all part of one body in Christ; everyone present really appreciated the message and its delivery.

Once in February and once in March we have welcomed our school into church. They came, as usual, on Ash Wednesday to mark the beginning of Lent. More recently, they led the presentation at the Family Communion Service which fell on Mothering Sunday and was a really joyous occasion. The church was packed to hear a very thoughtful series of prayers and readings, to appreciate artwork and, through them, to give thanks for motherly love. It was good to end this service with a presentation to Stephanie, celebrating 25 attendances at Funday Club.

As most of you will know, Joyce Windsor is - sadly for us - shortly to leave Harbury. To celebrate her life with Harry here, to give thanks for all that they've done for the village and to mark the end of an era, we're holding a 'Bring and Share' lunch for her on Sunday 26<sup>th</sup> April in the Tom Hauley Room from 1.00pm - 2.30pm. If you would like to come, please bring a plate of finger food which can be delivered to the Tom Hauley Room from 12.30pm onwards. We look forward to seeing you there.

When you read this, you will doubtless already have received your Easter card, telling you the times and nature of our services. Please do come and join us. We wish you all a blessed and joyful Eastertide.



## Mothers' Union

Gillian Hare

Members will be saddened to hear of the death of Mrs Kitty Doran. Although she had not been in our branch for very long, we shall miss her cheerful presence at our afternoon meetings, and send our sympathy to her family.

At our March afternoon meeting, Mrs Lesley Eldridge talked about the M.U. banners in Coventry diocese. She explain the origin of banners

– the word comes from the Latin for a piece of cloth – as a rallying point in battle; the symbols of regiments and great families, and signs of bodies like the Trade Unions and Scout and Guides. Her collection of photographs and information included Harbury. We were told that our M.U. here was founded in 1905, and our banner made in 1943. It was designed by Mrs Raisin, and a golden foot was stitched by Edna Lines. Does anyone know anything more about what was a considerable achievement amid wartime stringencies?

At the evening meeting, Carol Davies spoke about various ways in which M.U. members can be involved in church events such as baptisms, weddings and funerals. With our own experience of family life, we can play a role in supporting people who feel that church is the right place to treat these rituals with appropriate respect.

A reminder of our book exchange stall at each meeting.

May 14<sup>th</sup> - Deanery Festival at Harbury, 2.30pm

April 21<sup>st</sup> – 8.00pm women's refuge

May 6<sup>th</sup> - 2.30pm 'making soup'. As this talk is by Marion Millington, it may not be what it seems!

Visitors are always welcome to join us; meetings are in the Tom Hauley Room following Holy Communion in Church at 7.30pm and 2.00pm respectively.



## **Toddlers Service**

**Barbara Thistlethwaite**

Mrs Marion Dickerson told us the story of "Moses". We started by singing "Row, Row, Row Your Boat" because she said that Moses was found in a river. Moses was loved very much by his family but when he became too big for them to hide in their home, Moses' mother made a special basket for him and hid him in the bulrushes.

His sister, Miriam, stayed close by to watch what happened. A Princess came down to the river to bathe and when she heard Moses crying took pity on him and decided that she would take care of him. Miriam came and asked the Princess if she could find a nursemaid to look after Moses for the Princess and the Princess said yes, so Miriam went and got her mother to act as nursemaid, so Moses' mother was able to look after him until he grew up.

We then talked about how we help to look after our brothers and sisters. Mr Hare played for us and we sang "He's got the whole world in his hands" we then had a prayer thanking God for everyone who helps to look after us all.

We then had fun making babies and baskets out of play dough. We had our drinks and played with the toys until it was time to go home.

Please note that because of Easter our next Toddlers Service will be on Tuesday 21<sup>st</sup> April at 2.00pm in Church. All babies and small children accompanied by an adult are very welcome to join us.

We look forward to seeing you all then.

## Ladbroke News & Diary

### APRIL

|            |           |   |
|------------|-----------|---|
| <b>Sun</b> | <b>5</b>  | <b>PALM SUNDAY</b><br>Family Communion 10.30am in church  |
| Mon        | 6         | Table Tennis 8.00pm in Village Hall   |
| Thurs      | 9         | <b>MAUNDY THURSDAY</b>  |
| Fri        | 10        | <b>GOOD FRIDAY</b><br>Children's Service 10.30am<br>Holy Hour 12 midday<br>Devotional Service 7.00pm with music and readings  |
| Sat        | 11        | <b>HOLY SATURDAY</b><br>Whist Drive 7.45pm in Village Hall  |
| <b>Sun</b> | <b>12</b> | <b>EASTER SUNDAY</b><br>Holy Communion 9.00am in church   |
| Mon        | 13        | <b>BANK HOLIDAY</b>   |
| Wed        | 15        | <b>ADVERTISEMENTS TO 31 BINSWOOD END HARBURY BY 5.30PM</b><br>Village AGM 7.30pm in Village Hall  |
| Sat        | 18        | Whist Drive 7.45pm in Village Hall  |
| <b>Sun</b> | <b>19</b> | <b>EASTER II</b><br>Holy Communion 9.00am BCP in church   |
| Mon        | 20        | Table Tennis 8.00pm in Village Hall   |
| Thurs      | 23        | <b>St. GEORGE'S DAY</b><br><b>ARTICLES TO HARBURY PHARMACY, HIGH ST, HARBURY &amp; EMAIL ARTICLE DEADLINE BY 5.30PM</b><br>Women's Institute 7.30pm in Village Hall |
| <b>Sun</b> | <b>26</b> | <b>EASTER III</b><br>Holy Communion 9.00am in church  |
| Mon        | 27        | Table Tennis 8.00pm in Village Hall   |



**MAY****Sun 3 EASTER IV**

Family Communion 10.30am in church

**Mon 4 MAY DAY BANK HOLIDAY****Flower Rota – after Easter**

April 26 Pam Barnett

May 3 Margaret Whitehouse

May 10 Kate Todman

**Ladbroke Church News****Betty Winkfield**

Following our church AGM on 19<sup>th</sup> March (where were you all?) we have elected Sue Lord as our new churchwarden. She will take over this position after she has been "sworn in" by the Bishop of Coventry in June. At that moment David Rutherford will stand down after a good many years in that office. Steve Copley remains as the other churchwarden.

We had a good congregation for our Mothering Sunday Service and the posies were – still are – beautiful, thank you Rose.

We shall soon be receiving our church Easter card with all the times of the services. Please make a note of them. On Good Friday we start with the children's service at 10.30am followed by Holy Hour at 12 midday.

In the evening at 7pm there will be a Devotional service of music and reading. The choir are busy rehearsing for this. Easter Sunday is the usual 9am Holy Communion Service. Maundy Thursday will be a joint service with Harbury at Harbury, 7.30pm I think – check your Easter card.

We made £190 for church funds at the Saturday Coffee Morning, held in the Tom Hauley Room in Harbury. Thank you to those from both villages who supported the event.

A very Happy and Blessed Easter to everyone.

## Bench Television

22 Oxford Street, Southam  
01926 812304

AGENTS FOR  
PANASONIC  
ROBERTS RADIO

### The Services We Can Offer As Your Local Dealer

Our audio and visual sales stock includes;  
Panasonic LCD televisions, DVD recorders and Roberts radios  
at competitive prices.

A complete delivery/installation service for televisions  
and DVD recorders.

Our expert knowledge on the repair of your television, DVD, VCR  
or small audio units, at reasonable charges.

So if you are in the market to purchase, or have a repair of any  
visual or audio equipment let us have an opportunity to help,  
you may be pleasantly surprised with the outcome.

# THE SALON

Ladies & Gents Hairdressers

Tel: 612400 ~ Chapel Street, Harbury



The ideal choice for all your property repairs,  
kitchen and bathroom fitting  
and all decorating requirements.

*Please contact us for a free quotation.*

## Manor Property & Decorating Services

Telephone: 01926 612887

Mobile 07765 717552



## **W. Goodwin & Sons Funeral Directors**

**38 Coventry Street, Southam  
CV47 0EP**

**Telephone: 01926 812445**

**Private Chapels of Rest  
Monument service provided**

## **Gino's Decorating**

**Internal Painting & Decorating**

**Over 30 years experience**

**For a free quotation**

**please phone 01926 612486**

**or Mobile: 07733 265694**



## **NIFTY NEEDLE CURTAIN WORKROOM**

**Banbury Street, Kington (Harbury resident)**

**01926-641741 ccnn@fsmail.net www.niftyneedle.co.uk**

**For all your made to measure curtains and blinds and poles.**

**ALSO NIFTY NIK NAKS GIFT SHOP**

**Free Quotes**

**Open Tue - Fri 9.00 - 5.00pm Sat 9.00 - 1.30pm Est. since 1987**

## **HARBURY LANDSCAPING**

**Local specialists for all your Landscaping requirements including -**

**Block Paving, Driveways, Patios, Paths & Walls.**

**Stonework, Decking & Woodwork, Concrete & Footings.**

**Turfing, Shed Bases & Installation, Internal Flooring & Tiling**

**For a free quotation from a reliable, fully insured, local tradesman**

**Please tel. JEFF MAULE on 01926 614923 or mobile 07952 864607**





## Ladbroke & Deppers Bridge W.I.

Christine Baker

The speaker at our February meeting was Deborah Brady. The talk was 'Lady in Fleet Street'. This was a fascinating insight into the incredibly fast moving life of a national newspaper photographer operating from Fleet Street. Deborah displayed many of the wonderful photographs she has taken over the years and we enjoyed hearing the 'behind the scenes' stories on how she attained many of the front paper photos and headlines we had all read on their day. Member, Betty Winkfield was 'volunteered' to be loaded up with all the everyday equipment photographers have to use even down to small stepladders!

March meeting – we will be enjoying a spring flower demonstration.

Meeting every 4<sup>th</sup> Thursday in Ladbroke Village Hall - 7.30pm, all welcome.



## Ladbroke Parish Council

Betty Winkfield

**Public participation** – The Council was asked about the maintenance of the telephone kiosk now that the village had bought it – for £1 – the broken pane of glass has been replaced and in due course the box will be re-painted when the special paint is delivered.

**The Police Report** – Sergeant Crust, PSO Dominic and Rob Leahy from WCC were at the meeting. We were told that we had the lowest crime figures in the area, no crime reported at all. Sergeant Crust emphasised that the PSO's were an integral part of the police and that they were the "eyes and ears" of the local police team. They dealt with low level crimes in the area. We must also realise that it was easy for the criminals to target this area because of the M40 and rural routes.

A recent success for the police was a local firm being raided and the police were there to catch the criminals "red-handed".

Rob Leahy from the Warwickshire County Council came with the police. He is the county officer responsible for liaising with travellers. They are a nuisance to us but they have a right to camp on common ground. They cannot be moved in cases of illness or welfare, e.g. pregnancy. We were told that camping on the entrance into the village

is not such a problem as travellers camping in the middle of the village, e.g. village green. They are not criminals and the police do visit them and know who they are.

Speeding on the A423 will be monitored this year for motorbikes etc.

**New Notice board** – An estimate of £640 has been approved. The grant received is £250.

**The Welcome Pack** – This is in the form of a booklet, which will be delivered to every household. A directory will be enclosed – this will be similar to the usual one – which can be regularly updated.

Planting of an Oak Tree at the entrance to the village in memory of Claude Leray – the motorcyclist killed on that corner last year. There was much discussion about this. The councillors had mixed feelings about the tree siting and the maintenance of it.

**Planning Matters** – No new plans, but there is some concern at the District Council about the impact on the surrounding area of the proposed new Village Hall, whether the new building would be too imposing.

**Highways and Drainage** – The new inspector, Patch Bryne, has made a thorough inspection of our highways and drains. The drains are to be cleared and Councillor Bennett has drawn up a map of all the gullies in the village and numbered them. The clerk has made a copy of this.

**The Parish Plan** – The final draft plan was received by all councillors and there will be a further meeting to discuss this with the Parish Plan Committee. There is a district meeting in July where the plan can be presented.

**Millennium Green** – Circa £700 was made on St Valentines evening, when the "party" in the Village Hall was enjoyed by a full house.

### **District Councillors Report**

There are no planning applications in at the moment – all very quiet. Small extensions do not need planning consent. Week commencing April 6<sup>th</sup> Green Wheelie Bins will be emptied again. Food waste in the green bins **MUST BE WRAPPED IN PAPER NOT PLASTIC**. The black bins will be emptied fortnightly, (we are getting good at recycling) I don't know when this begins!

**Items for Discussion** – Councillor Clews suggested that the Parish Council enter the Competitions for Village Communications, e.g.

Website, newsletters and welcome pack booklet. Kip Warr suggested that we advertise the Annual Village Meeting in the Express Advertiser – it's FREE!

The Annual Village Meeting is on April 15<sup>th</sup> at 7.30pm in the Village Hall.

Next Parish Council Meeting is Wednesday 20<sup>th</sup> May at 7.45pm.



## Ladbroke General Section

### Ladbroke Quiz

To be held at Ladbroke Village Hall on 24<sup>th</sup> April 2009. Doors open at 7pm for 7.30pm start. £5 pp to include sandwiches. Bar available

(Maximum of 4 players in a Team). To book a team please contact :

Christine Baker – 01926 811606

Janet Goldson – 01926 817733



## Harbury Parish Council

Linda Ridgley

*Official minutes can be viewed in the Library on the Parish Council website [www.harbury-pc.gov.uk](http://www.harbury-pc.gov.uk) or obtained from the Parish Clerk*

### First, Some Opportunities To Have Your Say:–

- 29<sup>th</sup> April      Public Meeting on the Tesco Store at Southam College at 6.00pm;
- 19<sup>th</sup> May        Annual Parish Meeting in Village Hall at 7.30pm;
- 21<sup>st</sup> May        Bush Heath Lane development Consultation in Village Hall 2.00pm – 9.00pm;

The Parish Council wants to know residents' views on turning off some of the street lights late at night to save money. They are going to have a rolling programme of changing the lamps in the street lights (at £50 a throw) because EU regulations phase out our Mercury ones.

As part of the "Village Improvements", traffic calming measures are going to be installed, but probably not until June. The PC secured a grant to help pay for this and will ask the County to put on a public



display. This will be your first opportunity to see what they have in store for Binswood and Temple End. Don't miss it!

**More improvements** - Denis Daly, Head of Harbury School was there to explain the plans for the refurbished School Pool which will have the same "footprint" as the previous one but will be very "green" with a Sedum roof, solar panels, rainwater harvesting, ground source heating and an ultra-violet water filter – but NO WIND TURBINES! It is hoped to have the pool open again in September 2010.

The pool would be available for use by community groups in a controlled way and other schools will use it too. Opening hours would be 9.00pm – 7.00pm with possibly Saturday mornings too. A Minibus system would bring those children to a new pedestrian entrance on Park Lane. Parents and neighbours have been consulted.

The Parish Council gave its support to the project and appointed Cllr Rob Darlison to monitor the transport issues and report back.

**Schools** - The Ofsted Report on Harbury School had been good with only two minor areas for attention. School Secretary Carol Jackson will retire at the end of the summer term.

Cllr Hancock reported that Mr Knapp the Deputy Head of Southam College was also retiring. The new Headmaster designate was now working there two days a week.

**Twinning** - The French party are visiting Harbury on 29<sup>th</sup> May when they will be welcomed with Cream Teas. A recycling conference and Car Boot Sale are planned, a buffet in the Village Hall on Saturday and a visit to Warwick Castle on Sunday followed by a Mediaeval Banquet in the Village Hall are all included in the programme.

**Village Hall** - Planning Permission for the extensions and refurbishment had been granted and a Fund-raising Committee set up. Students from Warwick and Coventry Universities had painted the Changing Rooms with free paint from Dulux.

**Councillors Corner** - Stratford Cllr Andrew Patrick highlighted the public's concerns: potholes in Leycester Close; missing Harbury sign on the Fosse; threat of closure of the Library. He said pressure was being put on Severn Trent to clean up the mess and re-build the culvert damaged when the Pumping Station overflowed.

**Deppers Bridge** - Having succeeded in their aim of preventing HGV's from passing through their hamlet by getting a weight limit on the Railway Bridge, residents were now faced with a long walk up to the Great Western to catch a bus.

Cllr Ron Grey (Deppers representative) said they wanted a smaller bus that could pass over the bridge, but the County Council ruled this impossible. The County Council suggested the use of the Flexibus and Community Links for those with mobility problems, but OAPs Free Bus Passes are not valid on these services. The Parish Council is to investigate the cost of providing vouchers for these residents.

**Planning** - The Parish Council did not object to the plans for a two-storey extension to Henry's on Bush Heath Lane but pointed out that this was the third time permission had been requested.

They made representations about the planned Tesco's store in Southam pointing out that SDC's own Draft Core Strategy wanted to increase the "economic vitality of .... Market towns" and supported the "Vision for Southam" which focused on "a thriving and cohesive market town". They were concerned about the future of the small shops in the centre of the town if the store was built.

Warwickshire County Council had made strong objections to the plans for car storage at the Quarries with a long list of highways conditions.

**Recreation Grounds** - The Skateboard Ramp has been repaired but there was no progress on making safe the Aerial Runway. There is a real danger this well used piece of equipment will be lost. The Playbark will be topped up but Cllr Hancock wants a long term plan for the Children's Play area and better safety surfaces. Cllr Knowles and Thompson are to be trained as Playground Inspectors.

**Cemetery** - Cllr Hancock had inspected a gravestone that was staked and explained to the family why it was unsafe. They will now deal with it but few other families have come forward in this manner.

**Other Repairs** - The Picnic Bench at the Recreation Grounds and the Old New Inn Noticeboard are to be replaced. The memorial plaque will be put on the new bench in Chapel Street. Topsoil will be used to fill in the goal areas on the football field

**Road Safety** - There is much concern about the safety barrier installed on the south side of the Fosse/Bendigo Mitchell Crossroads. The County has admitted that it obscures motorists' view along the Fosse but claims it has to be there to protect the speed camera operatives. DCllr Beverly Mann has also protested to the County and County Cllr Bob Stevens has told officers that the barrier must be removed.

**Ufton Tip** - The Liaison Meeting with Biffa heard that the in-vessel composter has been installed and screen planting will be done next

season. There will be fewer lorry movements overall and the site will have a shorter life than previously planned.

Finally, Green bin collection (with Blue Bin) starts 19<sup>th</sup> April; Grey Bin days 9<sup>th</sup> & 23<sup>rd</sup>

Next Parish Council Meeting Thursday 23<sup>rd</sup> April 7.30pm in the Village Hall.



## Councillor's Corner

Andrew Patrick

### Councillors' Corner Saturday 21<sup>st</sup> March

On the final day of rugby internationals, the sun shone for us gathered outside the Post Office. Bob Stevens was there for the County, Bev Mann and I for the District, and Sharon Hancock, Jenny Patrick and Janet Thornley for the Parish Council. And as usual, residents gave us lots to think about!

#### Highway matters (WCC)

The safety barrier on the Fosse Way at Harbury Lane is still causing concern for people who feel it restricts their view. It has been put there for the safety of the maintenance crew when they need to attend to the speed camera, and we have passed on your concerns. If you want to get in touch directly, contact Andrew McGrath on 01926-410410 ([andrewmcgrath@warwickshire.gov.uk](mailto:andrewmcgrath@warwickshire.gov.uk)) or the Road Safety Engineering section on 01926-418612 ([safetyengineering@warwickshire.gov.uk](mailto:safetyengineering@warwickshire.gov.uk)).

Still on the Fosse Way, we were reminded that the 'Harbury' sign is missing at the Middle Road turn for drivers coming from the north.

There is a long-standing complaint about the state of the potholes in Leycester Close. On the other hand, the repair team got a very welcome "Well done!" from a resident for their prompt repair of the pothole on the corner of Farm Street/Sutcliffe Drive.

All of these points have been taken up with County Highways.

#### Library (WCC)

Still on County matters, we were left in no doubt by one resident what a calamity it would be if the Library were to close. We all agreed with her. And another resident wanted to know why the Library had had to close one day in February because of the snow. We have found that on that one day all village Librarians were instructed – no doubt, very wisely – to stay at home for the sake of road safety.



## Planning (SDC)

One resident asked about Camden Fleet Solutions' application for vehicle preparation and storage at the former Harbury Quarries – and about long-term plans for managing the asbestos risks. The application certainly seems to have gone quiet, so we'll find out what has become of it.

Concerning Tesco's application for a store on the south side of Southam, this will be decided at a special meeting of the East Planning Committee at Southam College on Wednesday 29 April at 6pm. It will be a public meeting, but if you wish to speak you must ask SDC Planning beforehand.

We were asked about plastic window-frames in a Conservation Area. The answer concerning the Old New Inn is that they were given permission for the uPVC frames as they closely matched the originals and there was little or no public objection.

And there were questions about activities at Bull Ring Farm, which we've passed on to the appropriate Planners.

## Refuse & recycling (SDC)

Another resident wanted to know what Biffa's new building at Ufton was for. The answer is that it's the inner core of an in-vessel composting facility. (That's where our mixed green and kitchen waste will go after April.) But Biffa are unable in the present economic climate to proceed with their permitted plans for a Materials Recycling Facility. So until the new plant at Ettington is ready, our recyclable waste will continue to be taken to a site near Birmingham.

What about those concrete bases? Stratford tell us they are "hopeful that we can get this sorted in the new financial year". Don't hold your breath, but don't give up hope either, just yet!

And don't forget that you can revert to putting out green garden refuse for collection, starting this month.

## Cemetery (Parish Council)

A resident was concerned about the way graves have had stakes added, to secure the headstones. The Parish Council are aware of these concerns, and have explained the Health & Safety reasons to the people concerned.

On these or any other matters please get in touch with us if you wish. In the meantime, Happy Easter!

**County Councillor:**

Bob Stevens  
01926-814031

**District Councillors:**

Bev Mann                      Andrew Patrick  
01926-614006                01926-614359

[cilrstevens@warwickshire.gov.uk](mailto:cilrstevens@warwickshire.gov.uk)   [beverley.mann@stratford-dc.gov.uk](mailto:beverley.mann@stratford-dc.gov.uk)   [andrew.patrick@stratford-dc.gov.uk](mailto:andrew.patrick@stratford-dc.gov.uk)

**Harbury Society**

**Linda Ridgley**

The Harbury Society was set up in 1974 in response to threats to demolish our Manor House. The Society, which is affiliated to the Civic Trust, aims to raise awareness of the village, its history, buildings, landscape and setting and to encourage people to make it an even better place to live in.

We have undertaken practical projects like planting the Jubilee Tree on the Old New Inn Green and the Millennium Oaks. We have published two books; Cross the Stile (footpath walks round the parish) and Hungry Harbury (a history of our village), both of which are on sale at The Fragrant Room and at Mugglestons.

We helped organise and produce the Village Design Statement (copies from Linda at 612792) and helped with research and consultation for the Parish Plan.

We have a series of talks through the Autumn, Winter and early Spring on topics relevant to our aims. We organise walks and visits to places of interest. We have a stall at the Carnival and run a photographic quiz at the Christmas Fayre. We are part of the group working to open up the School archives.

All our talks are open to the public. We don't charge for entry but hope that if you enjoy yourself you will consider becoming a member. It only costs £5 or £8 for a family.

Our next event takes place in the Tom Hauley Room on Tuesday 28<sup>th</sup> April when Alan Griffin tells the story of early photography here. Starts 8pm - with free coffee and biscuits from 7.30pm onwards.

**Harbury Women's Institute**

**Jeanne Beaumont**

The March meeting was Members Evening and always enjoyable when "The Gels" compile quizzes. They also asked us to give some

helpful tips and we certainly got a few when Lin produced a book full of them. Members went home wondering what to do with corks that Peggie told us about.

Our team in the Federation Quiz Finals were just pipped to 4<sup>th</sup> place by one point. The whole score was very close and they did well.

The Animal Council Meeting at the Spa Centre was well supported by our members and Mary Thompson will be giving a report next month.

The Walk started from the Swans Nest Lane car park in Stratford to Ann Hathaway Cottage then back walking by the river, with refreshments of course. This used to be a very popular occasion and it is hoped that more members will be joining in future walks.

The group meeting is at Long Itchington Community Centre on Wednesday, 6<sup>th</sup> May, 7.30pm with entertainment by the Three Amigos. The Competition is an accessory made from recycled material.

The trip to Hardwick Hall is on Wednesday 20<sup>th</sup> May and the coach will leave the Village Hall at 9.30am. Members don't forget to put names down and make payment. I have been requested to state the date of the monthly meetings with the time the meeting starts. Fair enough, although I would have thought the Harbury Diary and poster would have been enough. However, April's meeting will be held at the Village Hall on Thursday, 9<sup>th</sup> at 7.45pm



## Harbury Theatre Group

**Bob Hodge**

What does it feel like to be 60? Well great, actually, never felt better – full of energy & keen to take on new challenges. The secret is very simple - put on a wide variety of plays, have lots of fun doing so, and enjoy the support of a dedicated audience.

On 15/16 May, HTG is celebrating its 60<sup>th</sup> anniversary with a comedy night "It Only Hurts when we Laugh" (see advert elsewhere). If rehearsals are anything to go by, the performances will be a hoot but this is not the only reason to come along.

To mark the occasion, on the Friday the play is completely FREE - as long as you book in advance - or pay a nominal charge to buy any remaining tickets at the door. On Saturday the play itself will also be free but because we are serving supper there will be a small charge to



cover the food – tickets for this will only be available in advance and there will be no 'play-only' tickets.

Additionally, on Friday, we will be holding a 'come and meet us' event after the performance. If you have ever thought you might like to get involved with the group, either in an acting capacity or in one of the many back-stage activities, please stay behind and let us tell you about all the fun we have had over the years. You don't have to be 60 to join!



## **Harbury Twinning Association**

**Colin Humphreys**

This month may appear to have been quiet and uneventful from the Association's point of view, but this belies the work being carried out by the committee and others to make the forthcoming visit by our French friends in May, as great and enjoyable as on previous visits.

There is to be a very busy and interesting itinerary and full details will be sent to all members when they have been finalised. However, one new aspect is to be a presentation to the French on how recycling of waste is organised in this area, this is a follow up to the talk they gave on the same subject when we visited them last year. To make this of more general interest we will be holding a car boot sale in the Village Hall car park at the same time, May 30<sup>th</sup>, as this illustrates an alternative form of recycling!

Anyone wanting to book a pitch should ring 612688.



## **Folk Club**

**Ian Hartland**

It being the occasion of the Organiser's birthday, it was a case of "It's My Party And I'll Cry If I Want To!" Hence, the chosen theme for the monthly meet was "Sorrow", and what a diverse and superbly miserable bunch of songs were wheeled out for public approbation.

The Harvesters kicked off proceedings with their own "Southern Cross", a story of forced transportation to Australia and "Once I Had A Sweetheart". Rick followed with two suitably melancholy songs, including one about "Ashes to Ashes, Dust To Dust". We were then

treated to two appropriate songs from Summer and Jenny, the first stating "I'll Never See You Again", and the second delivered in impeccable French. Ted and Sue Crum were next, imploring us to "Go and Kill a Dragon" and then relating the sad tale of the "Rambling Sailor" played skilfully in a key for which the Melodeon had never been intended. The theme of Mick McTiernan's first song is not appropriate for a family magazine, but was a superb piece of satire about a World War 1 General, called Shute. He continued with the almost upbeat "Lord Won't You Buy Me A Mercedes-Benz?". I wonder if he got his wish? The first half was brought to a suitably sombre conclusion by Peter and Margaret McDonald with Richard Farina's "Pack up Your Sorrows". Peter then concluded alone with "I Once Was A Fisherman", a sad tale of fish quotas and idle trawlers. Appropriately disheartened by the first half's songs, we all trooped dutifully to the bar for some anti-depressant fluid.

The second half was started by the Harbury Folk Choir with "Myfanwy", a mournful song of Welsh origin and unrequited love. Stuart was next with a song inspired by the novel "Brick Lane", all about a life of sorrow. Then his song "I've Got a Surprise for You" delved even greater depths of depression. This was more like it! Peter Bones, who claimed not to know any sad songs, gave us Les Barker's poem about the Titanic from a polar bear's point of view, "Have You Got Any News of the Iceberg?" Peter Mason sang a Jez Lowe song about guilt not hurting him, and followed it with Eric Bogle's "My Youngest Son Came Home Today". Debbie Ellis followed with a song about a rape victim and then a poem about a nervous breakdown, both hugely powerful. Janny and Maureen were up next and lightened the mood ever so slightly with "Bushes and Briars" followed by "Let The Cold Wind Blow". Just when it looked as if we might be verging on the faintly cheerful, Ron completed the half with "The Tyranny Of Time" and a comprehensive version of "The Foggy Dew", neither destined to raise a gale of laughter. Well done, Ron!

After another fix of happy juice at the bar, the third half started with Des singing "I Wish, I Wish" and then the mournful shanty "Shallow Brown". Barbara chose a song about the closing of the Lancashire cotton mills and then another favourite tear-jerker, "Puff the Magic Dragon", proving that a song doesn't have to be deep to be sad. Keith Donnolly performed the first and only fully instrumental offering of the night with "The Antithesis of Sorrow" and then a fine version of "Rock A-Bye Baby". The final act of the evening was almost immediately excused their departure from the evening's theme. The three-quarter

complete reunion of The Somerville Gentleman's Band kicked off with a lively French tune, before regaling us with "The Batchelor's Fate". With so much fine instrumental prowess and vocal skill, their songs earned them with a well-deserved encore. They completed their set, and the evening, with "The Cheerful 'Orn", with everyone singing along.

All in all, a very pleasant evening of sorrow, if such a thing can be said to exist, combined with some memorable and thought-provoking performances. Who says you need to be happy to have a good time? The Raffle was in aid of Myton Hospice and raised a generous £40.00. If you're reading this after April 2<sup>nd</sup>, you will have missed another memorable night at the Folk Club, when Doug and Janny hosted the evening with the theme of "Jam".



# **Harbury RFC**

## **Harbury Mini & Midi Rugby**

**Debbie Steele**

### **March 1 – Away at Leamington**

#### **Under 7's**

Two close games on a bright and warm early March morning saw Harbury draw and lose. It was by far the biggest pitch the U7s had ever played on, and really suited those who could step out, definitely giving Leamington the home advantage.

Throughout both matches Leamington's large squad allowed them frequent substitutions whilst the stalwart Harbury 7 soldiered on and removed some of the cobwebs from their collective legs.

#### **Match 1 - Leamington 10 Harbury 10**

A very even game with a final score of 10-10 saw several turnovers and a stunning tag in the dying seconds taken by Ben White preventing a last ditch try for Leamington.

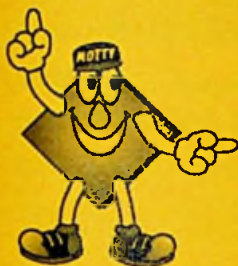
Luke Curtlin and William Banfield both scored 3 tries whilst every member of the team contributed an important part by either tagging or try scoring (Alex Masefield, Ben White, Jack French, Adam Bennett and Jack Knowles).

#### **Match 2 - Leamington 7 - Harbury 6**

Harbury took the field against Leamington's A squad and were narrowly defeated by 1 try, all squad members again contributed by either tagging or try scoring, Luke Curtlin and Jack Knowles leading the tries with 2 a piece.



**miles of tiles**



**20% OFF**

Leamington Spa  
Alveston Place, Oxford Street  
Royal Leamington Spa, CV32 4SL  
Tel.: 0808 108 8742

Coventry  
Foleshill Road (next to Magnet)  
Coventry, CV1 4NR  
Tel.: 0808 108 8744

**All Stocked Wall and Floor Tiles**

NOT SUBJECT TO ANY OTHER DISCOUNT OR OFFER . ONLY WITH THIS ADVERT

Harbury and Ladbroke News

Rugby  
103-107 Albert Street  
Rugby, CV21 2SW  
Tel.: 0808 108 8740

**where good tiles cost less**

**MINTCLEAN**

*Carpet & Upholstery Cleaning,  
including Leather Suites,*

*Domestic & Commercial*

*Contract Cleaning for communal  
stairs and hallways*

**Tel: 01926 611926  
Mobile: 07970 835686**

**Chris Hall**

[www.mintclean.com](http://www.mintclean.com)



M1930

**THE TELEPHONE MAN**



**01926  
315238**

**07761  
077167**

**Kyle Boyce**

**Former BT Engineer      26yrs service**  
[www.thetelephoneman.biz](http://www.thetelephoneman.biz)

**RESIDENTIAL ENGINEER**

**INTERNAL FAULTS**

**ADSL ACTIVATION FAULTS**

**ADDITIONAL SOCKETS FOR PHONES,  
SKY+, BROADBAND ETC**

**QUALITY AT NO EXTRA COST**

**IT'S YOUR CALL**

# D.W.A.G.

**O** Builders **R**  
**U** Tel: 01926 612460 **E**  
**G** Mobile: 07860 849777 **E**  
**N**

Local Tradesmen who take pride in their work.

We specialise in rebuilding half-timbered and period buildings, renovations, extensions, conservatories, patios - in fact any form of building work.

**ESTABLISHED OVER 40 YEARS**

## ROLLASON

FENCING AND SHEDS  
EST 1964



**"You've seen the Rest  
Now see the BEST"**

British Timber Used  
therefore

Reducing Carbon Footprint

Professional erection service available  
(01926) 613009 or (01926) 612066  
Fosse Garage, Fosse Way, Harbury

**GOOD FENCING  
MAKES GOOD  
NEIGHBOURS**



*Christina Sherman, BA, MAR*

## REFLEXOLOGY

This safe, natural therapy can help a wide range of conditions while balancing the whole system.

Deeply relaxing, it is especially beneficial for reducing stress.

Additional, very effective techniques can be used to suit individual needs.

Ring 01926 612277  
for further information

8 Church Terrace, Harbury

# FORTRESS

## DOMESTIC SEPTIC TANKS

**TANKS EMPTIED • HELP & ADVICE  
BEST RATES**



**WARWICK  
(01926) 493414**

DONGAN ROAD, WARWICK CV34 4JW

## **Under 8's**

### **Match 1 – Leamington 6 - Harbury 7**

Tries from Chloe, Dominic, Katie and Alex x4.

### **Match 2 – Leamington 9 - Harbury 8**

Tries from Chloe x3, Amy, Ceallach, Dominic, Hugh and Tim

## **Under 9's**

### **Match 1 – Leamington 25 - Harbury 10**

### **Match 2 – Leamington 15 - Harbury 25**

The under 9's had two good games against Leamington with strong defence and focus from the whole team throughout the morning. Leamington proved the stronger team in the first game but Harbury gained their revenge in the second.

The tries were scored by Jamie Head (2), Jim Owen (2), Mario Palmer (1) and Tiernan Welland (2). "Crash" Stone was man of the match for some outstanding tackling and defensive play.

## **Under 10's**

### **Match 1 - Leamington 25 - Harbury 1**

There were good individual performances from Bay, Jack, Luke and Matt who stood tall. Our only try scorer was Luke who, with aggression and determination, drove forward to achieve a deserved try.

### **Match 2 - Leamington 20 - Harbury 5**

We had new forwards, in the form of Connor, a novice, Saul, sometimes a scrum half and J. B. (James Butlin). Straight away the new forwards took the match to the opposition and were often too strong for Leamington in the scrum. The Ref had to pull them back when they drove their opposite numbers back several yards and into the turf. Fantastic play throughout by JB and Connor. Matt made a great break and ran the best part of the pitch to score a wonderful try. Fear of being caught, gave wings to his feet as a snorting, baying Leamington gave chase, but Matt was home. In the second half Lewis replaced Matt as Scrum Half and played well in his new position. Joe who has not played for several months, regained his confidence in the tackle.

The final result was a disappointment to Harbury, who came with high expectations. Well done to Leamington, who were a better team on the day. We'll be back!



## **Under 11's**

### **Match 1 - Leamington 21 - Harbury 7**

Good defence from Harbury in a tight match, not reflected by the score. The first half finished 0 – 0 with Ben Taylor unlucky not to score and Adam Grey displaying determined tackling skills. The second half saw three hard won tries from Leamington. Sam Tutt was unfortunate not to score for Harbury but good support play earned Ben Taylor a well deserved try which was converted by Henry Steele.

### **Match 1 - Leamington 7 - Harbury 14**

Harbury started strongly in the second match, scoring two tries in the first half. William Morton scored his first try of the season, which was safely converted by Henry Mancell. George McGowan had a good run to touch down for the second try, converted again by Henry Steele. In the second half Harbury displayed great stamina to hold off continuing pressure from strong opposition, eventually beating Leamington by two tries to one. As always Harbury under 11's showed excellent team spirit and a determination never to let the opposition have an easy game.

## **Under 12's**

### **Leamington 5 - Harbury 19**

Probably the lads best ever performance in a short game (10 mins each way). Right from the kick off Harbury forwards caught the ball and rucked and mauled to the Leamington line without the opposition touching the ball. Number eight Finn Toner picked up from the back of the ruck and dived through the forwards to score, William Winchester added the conversion.

Harbury's tackling was awesome and Leamington struggled to get over the gain line. Man of the Match George Brooks used his pace to run round the outside of the defence and score in the corner.

In the second half Leamington managed to pull a score back but George Brooks burst through to touch down for his second try. Bradley King and Sam Cave played well in the forwards, Jack Hewson and Rory Pickin in the backs. A really great team performance.

### **Keresley 12 - Harbury 7**

The large Keresley pack dominated early on in the rucks against our tiring forwards, their second row scored a try after two minutes. Aaron Ward got one try back and William Winchester added the extra points. In the second half a Keresley forward managed to just reach the line and they were ahead again. Aaron Ward burst through in the last minute but was tackled two metres short.

## **March 8 – Away at Rugby St Andrews**

What started out as an early bright and sunny Sunday morning turned slowly into a rainy and windswept lunchtime.

### **Under 7's**

Harbury's under 7's didn't seem to be affected by the downturn in the weather and put in 2 solid performances.

### **Match 1 - Rugby St Andrews 3 - Harbury 8**

William Banfield and Murray Gibson were the leading try scorers in a game that saw Harbury turn the ball over twice to give them a comfortable Victory. Ben White was one of the leading Taggers with a tally of 7, beaten narrowly by Murray Gibson who took 9. Rugby scored a lovely try on the left flank, but Harbury kept their cool and went on to win 8.

### **Match 2 – Rugby St Andrews 5 - Harbury 8**

A rejuvenated Rugby St Andrews side were leading at the half way point. On field coach Steve gave Harbury some pointers that seemed to spur them on (was a bribe for Chocolate involved?) Harbury came out a different squad and turned the ball over and then cemented an 8 – 5 win. With several good running tries. Murray Gibson & William Banfield again the leading try scorers with Murray taking seven tags closely followed by Ben Whites 5. A good performance all round with every team member contributing to the final score.

### **Under 8's**

### **Match 1 – Rugby St Andrews 8 - Harbury 9**

Tries from Amy, Ceallach, Hugh, Tim, Chloe x3, Dominic x2.

### **Match 2 - Rugby St Andrews 5 - Harbury 12**

Tries from Alex x3, Ceallach x2, Chloe x2, Dominic x2, Finn, Peter and Tim. We only played 5 a side as Rugby only had 5 players, one was then injured in the first quarter so we had to 'lend' a player for the rest of the match.

### **Under 9's**

### **Match 1 – Rugby St Andrews 0 - Harbury 20**

### **Match 2 – Rugby St Andrews 10 - Harbury 30**

The U9's had two very good games against Rugby St Andrews.

Strong defence, together with good passing and teamwork, resulted in two wins for Harbury. Tries were scored by Jamie Head (2), Josh Steele, Mario Palmer (3), Sam Clifton, Ryan Caruana (2) and Tiernan Welland.

## **Under 10's**

### **Match 1 – Rugby St Andrew's 20 - Harbury 5**

In the first half St Andrew's forwards commanded the ruck and maul and pushed Harbury off every ball. Some changes at half time improved Harbury's game. Matt, our only scorer took the ball from the scrum to cross the line.

### **Match 2 – Rugby St Andrews 10 - Harbury 30**

In an improved performance Harbury took the play to the opposition. Try followed try as Harbury dominated the game. It was hard and it was fast with great tackling especially by Jack. Unfortunately Bay had to leave the field of play after receiving a boot to the face. Harbury gave no quarter eventually winning 6 tries to 2. Try scorers Connor 1, Lewis 1, Luke 2, Matt 2. The lads left the field with pride intact, a well deserved victory.

## **Under 11's**

### **Rugby St Andrews 14 - Harbury 28**

Harbury got off to a good start with an early try from Harry White. A second try followed shortly from Connor Gladwin. The second half saw the points clocked up evenly with both teams scoring two tries (Henry Steele and William Irving, in only his third rugby match, pushing up the total for Harbury). Harbury converted all four tries (Henry Steele, Henry Mancell and Sam Tutt – 2) into a strong headwind.

As we have come to expect, the under 11s played a good team game and displayed excellent handling and passing of the ball throughout, with every member of the squad contributing to the win. A second, shorter game saw Harbury victorious again. Try scorers were Connor Gladwin (playing for the first time in the forwards) and Adam Grey. Harry White put away the conversion.

## **Under 12's**

### **Rugby St Andrews 21 - Harbury 35**

A positive start from the Harbury pack who drove the opposition back and enabled prop Joe Webster to use his strength and score two early tries. Winger Shane Fennel put in a couple of great runs early on and was unlucky not to score. Rugby St. Andrews responded well and scored shortly afterwards. Harbury always threatened from rucks and mauls and it was no surprise when Aaron Ward broke off from a defensive ruck and ran the length of the field to score. Scrum Half Ted Easton set up good ball for the backs, but Rugby St. Andrews tackled well under pressure. However once hooker Aaron Ward gets up



speed he is very difficult to stop, he ran in two more tries before half time. Full back William Winchester kicked all of Harbury's conversions. In the second half a much changed Harbury side were on the back foot and Rugby St. Andrews added two early tries. William Rea and replacement fly half Jack Hewson tackled well and there were no further scores by either side.

### **March 15 – Away at Claverdon**

#### **Under 7's**

Two close games on a beautiful March morning saw Harbury victorious in both matches. After climbing Claverdon's hill to the pitch, Harbury played some good Rugby and 1 turnover in each match made the difference.

#### **Match 1 – Claverdon 9 - Harbury 10**

A tit for tat game of rugby saw Harbury win 10 – 9, William Banfield and Luke Curtlin were the leading try scorers with 3 each and Luke Curtlin with the most tags at 6. All 5 team members got on the score sheet with some good passing rugby. A slightly weak defence let Claverdon in for several tags, but overall Harbury proved to be the better side on the day.

#### **Match 2 - Claverdon 7 - Harbury 9**

An early turnover saw Harbury take a 2 try advantage throughout this match, William Banfield and Luke Curtlin were again the leading try scorers with 3 each, Luke Curtlin again the leading tagger with 4. Harbury's defence was more solid in this match. Some fantastic tagging sequences and good off the ball running saw Harbury defeat Claverdon with a slightly larger margin.

#### **Under 8's**

#### **Match 1 – Claverdon 4 - Harbury 9**

Tries from Alex, Ceallach, James, Lucas, Murray and Dominic x4

#### **Match 2 - Claverdon 2 - Harbury 7**

Tries from Danny, Dominic, James, Lucas, Murray and Alex x 2. Due to lack of numbers on the Claverdon side the U8's had to play two 5 a side matches which unfortunately left Peter and Tim playing only half a match each. This did not dampen the players' enthusiasm though with Harbury coming out on top in both matches.

#### **Under 9's**

#### **Match 1 – Claverdon 25 - Harbury 35**

#### **Match 2 – Claverdon 10 - Harbury 20**

The U9's had two strongly contested games against Claverdon. After a slow start the team pulled together and produced some very effective defensive play and teamwork. This resulted in two wins for Harbury. Tries were scored by Beth Mancell, Jim Owen, Mario Palmer (5), Morgan Hall (2) and Tiernan Welland (2).

### **Under 11's**

#### **Claverdon 42 - Harbury 7**

Harbury struggled against a well organised Claverdon team, starting very slowly they were two tries down before they got into the game. Although Harbury failed to win any set play ball the rest of the first half was then far more even with Alex Marston scoring a good try from open play, George McGowan adding the conversion. Harbury improved in the scrums in the second half when Henry Steele moved to prop and excellent tackling from Sam Tutt, Connor Gladwin, Joe Perry and Adam Grey kept Harbury in touch but eventually Claverdon made the most of some interesting refereeing decisions to score four unanswered tries.



### **Harbury Junior Netball Club**

**Beccy McDaid**

Well we are more than half way through the junior season, and what fun we are all having!! The season started fantastically with our under 14 team competing in the Stockton Junior under 16 Tournament and returning as winners. All the girls played really well and this set them up for a cracking season. All through the season the girls (Maggie McDaid, Dale Ingram, Sophie White, Shannon King, Lauren Brough, Eleanor Clarke, Sammy Collier, Sophie Potter and Molly Gladden) played some outstanding netball; ending the season having scored over 350 goals!! They reached the Semi finals but were narrowly beaten by a very strong Henley team. Well done to the girls for their commitment and team spirit which has been an inspiration to the younger members of our club. We look forward to next season with baited breath!!!

No sooner had the under 14 season finished, and we are tackling the under 12 league!! We are very very pleased to say that we have so many keen and talented year 7 girls that we have entered 2 teams in this league. An incredible achievement for a village club. Both teams are improving match by match and are showing marvellous passion

and enjoyment for their sport. The A team (Kate Woldanski, Katie Knowles, Ellie Potter, Polly McDaid, Lucy White, Emma Nash and Zara Grudzinski) started the season very strongly and are half way through this season lying in second place, a super start. The B team (Abbie Stanford, Charlotte Clarke, Alanna Cadwallader, Abbie Hunt, Jodie Simpson, Sally Harwood, Sophie Heritage and Scarlet Wakelin) had a very difficult start having to play the strongest teams first but have shown true grit and determination and are improving massively with every game.

Well done to all of the girls it is a real pleasure to see so many girls enjoying playing Netball and benefiting from taking part in a team sport. If there are any girls out there from year 6 upwards that fancy joining the fun please contact Beccy 07969071544 or Paula 07769972174.

Not only has this been a very exciting playing year but we are very pleased to thank George and Jo Simpson (Positive Solutions, Independent Financial Advice) for their very generous sponsorship enabling both of the under 12 teams to have very smart



**The A Team**



**The B Team**



**Under 12's in their smart new hoodies!**



new hoodies (as shown overleaf). We can't thank George and Jo enough as the girls are over whelmed with them. In fact I have had reports that many are actually sleeping in them!!! And we truly think the hoodies have enhanced the girls play!!!

That's it for now from the Juniors.

### **Ladies Netball**

Just a quick word on the Senior Girls!!! After a year in the Premier League our A Team are back where they belong in the 1<sup>st</sup> division, playing some lovely netball and really enjoying themselves!!! Our B Team are having a mixed season when we're good; we're really good and when we're bad; we're (you guessed it) really bad!!! But I am pleased to say that the team spirit throughout the whole season has been brilliant!!! We are nearly at the end of our season, but we are hoping to enter the Leamington Summer league this year. If there are any ladies out there who fancy a run around and a bit of a laugh please call myself or Paula on these numbers: Beccy - 07969071544; Paula - 07769972174.



### **Harbury Tennis Club**

**Colin and Sue Mercer**

The main event in the last month has been the installation of floodlights on the tennis/netball court, at a cost of £12,000 and additional baffles on the existing lights to minimise light spillage. We won't get the full benefit until the autumn when we'll have more capacity for club sessions and be able to offer additional junior coaching. However, the summer league team which uses 3 courts will be able to complete the early season fixtures in decent light and hopefully the Netball Club will be able to take advantage of them and extend their pre-season training sessions.

Off court the Club had a social night out at Hellidon Lakes Bowling Alley. A large group demonstrated some varied styles of bowling, some not exactly conventional, over a couple of hours. At the end Paul Crowton and Sue Mercer were declared the winners, after which the party moved on to the Balti Hut in Southam for a very enjoyable curry!

The bad weather in February has led to a fixture pile up and we've only managed 3 matches in the last 6 weeks and one of those, a Banbury League match against Hook Norton had to be abandoned

because of heavy rain. In that game Sara Peters and Sue Mercer lost their doubles in the dry, but Keith Thompson and Colin Mercer carried on in the rain and halved theirs. By doing that enough sets were completed to avoid having to re-arrange yet another match!

In the Stratford Men's Doubles League Harbury's last match was against the very strong Alcester team and Jon Scothern, Geoff Prince, Adam Crossling and Jon Guy lost 0-4.

The most recent match was in the Banbury Floodlit league when Deddington were the visitors. In the ladies doubles Sue Mercer and Kelly Lintott, making her debut, fought hard, but went down in 2 sets. Colin Mercer and Paul Crowton got off to a good start winning the first set but couldn't keep that going and lost the second set, putting Deddington in a strong position for the mixed doubles. They duly completed a win when Sue and Colin were dispatched in straight sets, but the best rubber of the night involved Kelley and Paul who put up a tremendous battle before going down 5-7, 5-7.

## **Juniors**

Details of the summer programme have now been sent out, so check your emails!

There are 3 new groups starting on Saturday mornings after Easter for children of Primary School age. There are still some places left in these groups, so if you are interested, please contact Sue Mercer on 01926 613284 as soon as possible.



## **Harbury Toddler Group**

**Julie Young & Hilary Riemer**

Spring has finally sprung and we have been making the most of the sunshine with lots of outdoor play for the children and a bit of sitting in the sun for us mums.

But it is not all play; we have also been busy having a spring clean in the shed and had a bit of a revamp at toddlers by introducing 'Singing time' at the end of each session.

After juice and biscuits we get out the musical instruments and sing our favourite songs and nursery rhymes. So far it has proved really popular and we hope to make this a regular thing.

## Shed Tidy

A big thanks to all those who came to help tidy up the shed - a mammoth job but the shed looks great and much tidier.

## Carnival Appeal

Although it is a few months to go until the village Carnival we at Toddler Group are looking ahead and appealing for some help. As yet we do not have a vehicle to use for a float for this year's procession and are looking for a volunteer with a trailer or lorry who would let us use it. The children love being in the procession and always have lots of fun creating the art work for the float. Anyone who could help us should contact Hilary on 613897.

## And finally...

If you haven't been to Toddler Group yet please come and give us a try. Sessions are held every Monday morning 10-11.30am and Weds afternoon 1.30-3pm. With exciting activities and the opportunity to play alongside friends for the toddlers it gives you the chance to meet other parents and carers and enjoy a well earned cuppa! Please feel free to come and join us - you really will be most welcome.



**Windmills**

Nursery School

**Nursery School Staff & Committee**

This half term we will be talking about people who help us and about spring. We have already had a visit from a nurse - Jayne Savage, and we would welcome anyone else whose work involves helping others to come in and talk to the children about what they do.

**Ofsted** - As you may be aware, we had Ofsted in Windmills on Thursday 26<sup>th</sup> February. The report should be back in the next couple of weeks, but we can tell you that the initial feedback at the end of the inspection was extremely positive and the staff are all very pleased.

## Sponsored Pancake Race

Our sponsored pancake race was held on Tuesday 24<sup>th</sup> February on the school playground.





The children helped to cook their own pancakes and then tasted them at snack time with lemon and sugar. The children ran along a short course and attempted to toss their pancakes. Please take time to look at the photographs of this event which are now on display.

### **Student placement**

We are fortunate to have been approved by mid-Warwickshire College to receive a placement of one of their students - Lilly Clarke. Lilly is doing a level 3 diploma in childcare and education and will be in the nursery on Wednesdays and Thursdays until the end of June.

### **Visits this term**

On Thursday, 12<sup>th</sup> March, during the morning session Mrs Lines brought her 9 week old puppy into nursery to show the children.

On Monday 23<sup>rd</sup> March, also during the morning session Karen Thomas, who is a nurse on the accident and emergency ward at Warwick Hospital visited Windmills to talk to the children about her job and how she helps people.

On Tuesday 24<sup>th</sup> March, during the afternoon session we took the children to visit Mrs Houghton's garden to see her rabbits and guinea pigs.

On Thursday, 26<sup>th</sup> March, we had a 'People who help us' fancy dress day. Please encourage your child to dress up and join in the fun.

On Tuesday 31<sup>st</sup> March, we took some of the children into school to see the Reception class assembly, at 10.10am.

### **Easter Egg Hunt**

On Wednesday, 1<sup>st</sup> April, 2009 we held an Easter egg hunt in our woodland area during our morning session. As well as being fun this encouraged the children's use and understanding of positional language.



# TEENAGE CANCER TRUST CELEBRATION EVENT



Joe Griffin and Michelle Griffin, local event organisers with Martin Dunne - Lord Lieutenant of Warwickshire and John Matlin - Trustee of the Teenage Cancer Trust

John Matlin, Paula Hancocks - Appeals Manager for the West Midlands with Martin Dunne and Joe Griffin



Jerry and Pauline Walsh with Martin Dunne



# VOLUNTEERS PAINTING THE VILLAGE HALL

Volunteers  
from the  
University  
of  
Warwick



Volunteers  
from  
Coventry  
University



## Training

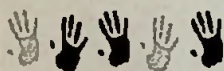
Mrs Wood has now embarked on her NVQ level 2 in early years care and education. Mrs Varriale, Mrs Kennedy and Mrs Wood have all attended a full day child protection course and Mrs Kennedy has also updated her food hygiene certificate, and attended a workshop on exploring Polish culture.

## Dates

Please note Windmills closed for Easter at 11.45am on Friday 3<sup>rd</sup> April and will re-open on Monday 20<sup>th</sup> April at 9.05 am.

A date for your diaries - on Saturday 4<sup>th</sup> July 2009 Windmills will be holding a summer ball in Harbury Village Hall. Popular local band "The Frets" will be back by popular demand. More details to follow nearer the time.

Windmills Nursery School is situated in the grounds of Harbury Primary School if you would like to register a place for your child or require any information on Windmills Nursery you can email us at [info@windmills-nursery.co.uk](mailto:info@windmills-nursery.co.uk), log onto our web site at [windmillsnursery.co.uk](http://windmillsnursery.co.uk) or call Nicola on 614564 or Tina and Marie on 07906 519148.



## Harbury Pre-School

Staff & Committee

During March we were delighted to welcome Thomas to Pre-School and he has settled in very well with his new friends.

## Our World:



At the beginning of the month, the role play area was transformed into a grocery shop, where the children had a wonderful time making lists and selecting their groceries before taking them to the till to be scanned and paid for. Their ideas for the shop were enhanced by their earlier visits to the local shops. These visits also inspired some wonderful 3D models of local buildings, as did a variety of photographs, both local and international.

**Technology Development:** Photographs taken by the children of various local landmarks are now on display, demonstrating their growing ability with the camera.

**Mothering Sunday:** The children were delighted to decorate small boxes and to choose a chocolate to go in these for their mums. They also took home their hand made cards inspired by Chinese watercolour flowers. We understand that they all made it home and as one child said, "Mummy always shares" so we're sure many of the chocolates weren't eaten by the mums!

**Outdoor Classroom:** The fine weather during March enabled us to make full use of our outdoor classroom. The dressing up rail, blackboard, painting easel, quiet book area, bats and balls, picnic area and construction materials all took their places in the outdoor play area and the children had free rein to choose their favourite activities. All areas were well used, with the children adapting the equipment to suit their own imaginative ideas.



**Garden:** The developing garden areas have now been planted with potatoes, beans, chives and peas and we look forward to witnessing their growth and, ultimately, we hope to see the fruits of our labours during next term.



**Diary Date:** **What:** A concert performed by the Heart of England Concert Orchestra.

**Where:** Harbury Church.

**When:** Sunday 17<sup>th</sup> May.

**Time:** In the afternoon, exact time to be confirmed.

**Tickets:** £5 each from Jo Johnstone on 614672.

This promises to be a wonderful afternoon of music in the church, with refreshments during the interval, so early booking of tickets is advisable.

**And Finally ....** Many thanks to Bradley Sheasby for donating creative materials and a large quantity of toy cars.

*For further information about Harbury Pre-School, please contact Jacqui Quinney, Chair of the Pre-School Committee, on Harbury 613386 or log onto [www.harburypre-school.org.uk](http://www.harburypre-school.org.uk)*



## Harbury Primary School

Denis Daly

**Swimming Pool** – The Swimming Pool Committee made a presentation to Governors last week about the proposed new swimming pool at the school. Governors have agreed to the committee moving to the next stage, which is sharing the plans with the village. However, we feel that before going outside the school community, we would like to give our parents the opportunity to see what work has already been done.

**Lent** – Last Wednesday saw the beginning of the church's season of Lent – many thanks to the parents who accompanied us up to Church for the special Ash Wednesday service.

During Lent we try and create an ethos of encouraging pupils to commit to either trying to make themselves "better children" during Lent (eg by keeping their bedrooms tidy, by going to bed at the first time of asking, etc) or to make some sort of sacrifice during Lent (eg by giving up something that they like – sweets, biscuits, etc). The children have already been thinking about these issues, and so should have some sort of idea about what they are trying to do during Lent. Could I ask you to discuss this with the children and try to encourage them in their efforts.

Lent is also the time when we concentrate on our charity fund raising. The School Council are meeting early next week, with the selection of charities for our Lenten fund raising on their agenda – I shall let you know which charities the children have chosen after the meeting.

**Story time** -This a piece of writing Phoebe completed in class. The focus was on punctuation as well as content. She made such a good job of it, that we thought it should be published!



## **The Boy Who Never Returned**

*I woke suddenly; there was a strange noise.*

*I sat up in bed, and decided to go downstairs to see if anything was there; 'Oh it's only my mind playing tricks on me,' I muttered to myself.*

*The next day I asked my friends if they'd been hearing strange noises at night, but they said they hadn't heard anything; apart from their pets.*

*That night it happened again. So I went downstairs to check (just in case), but there was nothing there.*

*When I went to school the next day, everyone was fussing over Jack Dodds, just because he had a new marble! I didn't think it was that nice anyway, but everyone else seemed to think it was.*

*Later that day, I was so annoyed about Jack being the centre of attention; I decided that when everyone was at afternoon break, I would take something from Jack's Desk. And so, when everyone was at afternoon break, I cautiously slipped inside and shut the door behind me. I strolled over to his desk, and opened it. As I did, it creaked slightly, and then I saw it. A golden pen. I quickly snapped it out of the desk and put it into my bag. But of course, every one knows that once you see something you can't stop yourself. So I kept stealing. Until one night, when the noises got worse and there was a terrible storm outside. I tried to ignore it, but they were just too loud! I tumbled across the hall-way and downstairs, and sure enough, there was a ghost. He had chains on his neck, hands and feet. He spoke. 'Why did you steal?'*

*'I couldn't help myself.' I stuttered.*

*'If you don't return what you stole, then...'*

*'Then what?!'*

*'You will have to find out.'*

*Of course I didn't listen, I thought it was a dream... and the next night I silently went downstairs, and the ghost was there again. Before I could say anything, he put his arm through my chest, pulled my heart out; and I puffed away in a cloud of purple smoke, leaving a trail of green slime behind me.*

*The next day my Mum went to wake me up, but I wasn't there. Mum and Dad ran downstairs...where was I?*

*They never knew what happened to me, and for all I know they're still looking for me now...*

**By Phoebe Dolphin Year 6, Harbury Primary School**



## 1<sup>st</sup> Harbury Rainbows

Bobble Sharpe

The girls at 1<sup>st</sup> Harbury Rainbows, as always, have been really busy this term. They have worked very hard in a recent art competition run by Warwickshire Children & Voluntary Youth Services (WCVYS) in which, I am proud to announce, they came runners up winning £25 for the Unit, 'Well Done' to them all!

We have also been along to the church to meet Father Craig who told us all about churches and saints and all the girls got to taste a communion wafer. Shrove Tuesday was particularly busy cooking pancakes for 18 Rainbows but they all thoroughly enjoyed them with some having seconds!

Our three newest Rainbows, Stephanie, Laura-Lydia and Ione made their Rainbow Promise this term and we all had a party to celebrate with a beautiful Rainbow Cake made by Mary Grace. We were also very lucky to have a visit from Pilgrim Puppets and their production of the 'Lost Sheep', which the girls thoroughly enjoyed; many thanks to them for their time.

We are incredibly fortunate at Rainbows to have two wonderful young leaders in Lauren and Becky. Lauren is incredibly talented at art and was a real help to the girls in their recent art competition and Becky, who has a great talent for cooking, helped the girls to make some delicious chocolate truffles to take home. Our thanks to them both!

To round off our term we will be having our badge presentation party, in which all the girls will be awarded their badges for their hard work all year. Well done to them all.

**Unit assistants  
Elizabeth and Lisa  
with the Rainbows at  
their Promise Party**





Back in the February half-term the 1<sup>st</sup> Harbury Scouts had a trip to the Peaks for a long weekend. Jack Rea's last week in Scouts coincided with this trip, Jack having reached the age at which Scouts move up to Explorers. He has therefore written his last Scouts article, both about the trip and his thoughts on his time with us.

## **My Final Camp**

*Last half term I set off early in the morning on my final scout camp. I felt slightly sad as this was not just my final scout camp but the final time I would ever do any scout-related activities. I was also excited - because of previous experiences of scout camps I knew it was going to be very enjoyable. The journey to the youth hostel was quite long but we all had fun. We did not get dropped off at the youth hostel but several miles away. We were split into several groups and I was leader of mine. Each group was dropped at different places. Our route was not too long but steep and tiring. The icy weather made walking conditions difficult. Due to my "expert" map reading and a lot of help from Nick G (our leader) we finally made it to the youth hostel ready for relaxation. I on the other hand was feeling a bit under the weather.*

*The youth hostel was fantastic. It had comfy beds, a games room and a great room where we all sat down and had tea, except for me who was at this point in bed. I stayed there all night whilst the others had fun. They all played games and I heard they were brilliant. I felt a little better the next morning and ready for the next walk. This time we visited Treak Cliff cavern and were guided around. It was quite interesting actually. Afterwards we all got a piece of Blue John (a famous stone found there) and polished it. I still have mine.*

*That evening after the walk we played games again and I felt well enough to actually eat some tea, which was delicious. We then played games and Nick gave a speech about me. He said I had been a great scout and everyone was sad I was leaving! This made me feel really sad, but there was nothing I could do except leave Scouts and move on.*

*I've got a lot out of my years of Scouting, and I really wanted to stay. I have now joined an explorer group though so I should be okay! I made some great friends through Scouts and have learned many new skills.*

*I just want to thank all the leaders for giving up their time to keep this wonderful group going.*



**A very wet  
and foggy  
Peak  
District!**



## **Horticultural Society**

**Judy Morrall**

At last a meeting to report on! I was surprised that so many members turned out last month on a very wet and windy night, thank you to all who came along.

I knew we wouldn't be disappointed; Ian Nex and his wife as usual delivered a splendid talk with some stunning slides. The subject being 20<sup>th</sup> Century Gardens, Ian started by explaining that many of the gardens of today have been greatly influenced by the styles of the past centuries. Starting with the Edwardians, the main gardeners being Gertrude Jekyll and Miss Willmot. Their gardens were wild but with huge herbaceous borders with all the colours from subtle to blousy displayed together. A good example of this is at Hestercombe where Lutyens, signature walls, balustrades and steps together with Gertrude Jekylls wonderful designs are still in evidence today.

Another garden nearby, Kiftsgate which was started by Miss Binnie and today is gardened by her granddaughter, reflects the Edwardian style but with a modern twist. It was interesting to learn that women gardeners were not admitted as students at Kew until the 1950's. However there were two very formative Horticultural Colleges for ladies, namely at Studley which sadly ceased in the 1980's and at

Watersperry near Oxford which is still going strong. Of course we have to include Vita Sackville West whose garden at Sissinghurst set the scene for garden rooms, her white garden is amazing and still looks good today. Hidcote is another example of garden rooms, started by Lawrence Johnson and has lately been updated.

A little later Rosemary Verey arrived on the scene (her many admirers included Prince Charles) and her garden at Barnsdale has a wonderful laburnum arch underplanted with alliums, a joy to see when it is in full flower. Her potager shows that combining fruit, flowers and vegetables creates another garden element which is stunning. All these gardens have shape, form, texture and most importantly vision for the future. Beth Chatto took on a very awesome task at her gardens in Essex, the soil being very barren but she created a gravel garden and lakes with the most wonderful colours in her planting.

John Brookes garden at Denmans which demonstrates his love of architecture and plants is also worth a visit. Percy Thrower and Arthur Billett were then featured on television which gave a boost to gardens and gardening. Who can forget the late Percy Thrower gardening with a collar and tie! Then we heard about the late great Geoff Hamiltor whose gardens at Barnsdale are a tribute to his knowledge and support of organic gardening. A very hard act to follow. Other gardens of note are Audley End, Hanbury Hall, Mottisford Abbey and some gardens which we have visited, Stockton Bury, Abbey Gardens at Malmesbury, Painswick and one which we will be visiting this year Hampton Court in Herefordshire. Ian's slides were stunning and I'm sure gave many of us encouragement to go and visit those that we haven't been to yet. A most enjoyable evening to make up for the awful weather.

The May meeting is on 5<sup>th</sup> and our speaker will be Stanley Lampard who will be talking about Venezuela "Plants of the Lost world", sounds like another visual treat. That will be the last talk of this season but we will have two trips to look forward to; then the Show. Both trips are fully subscribed and I would like to thank everyone for their support this year, just a reminder that payment is to be made by the May meeting.

With spring now upon us there is much to see and do. I will give just a few details of what is on offer nearby or not too far away. Ragley Hall near Alcester has an Alpine Garden workshop on Wednesday 29<sup>th</sup> April from 10.00am - 3.00pm for more information phone 01789 762090. Closer to home Hill Close Gardens event in April is on Saturday 18<sup>th</sup> and is Know and grow Vegetables, the cost is free with admission. There are some lovely gardens in Gloucestershire in the

NGS scheme, Higham Court and Brockworth Court, also Lydney Park Spring Garden in the A48 between Lydney and Aylburton is open from 29/03/09 to 03/05/09 from 10.00am - 5.00pm, admission is £4 and there is a tearoom.

On Sunday 19<sup>th</sup> April the garden at 19 Church Lane Lillington will be open under the NGS scheme from 2.00pm - 5.30pm admission is £2. The gardens at Avondale Nursery in Bagington are a hidden gem and Russells Nursery has a quarry garden; there are many events there during Spring and Summer. I will bring along all details to the next two meetings. The NCCPG is holding its annual plant sale again in the Pump Rooms in Leamington on Sunday 3<sup>rd</sup> May from 10.00am - 3.00pm. If you fancy venturing into Derbyshire there are two more plant fairs for the NCCPG at Chatsworth on 19<sup>th</sup> April and at Renishaw on May 10<sup>th</sup> both 10.30am - 4.00pm.

I hope that you are able to get out and enjoy some of the delights that are on our doorstep. We are so lucky to live near to such a diverse range from modest to grand gardens - enjoy. A gentle reminder to finish on, still no luck with replacements for Daphne and Jean, we only have about 4 or 5 committee meetings a year and it would be so nice to welcome some new members. Please do think about it, ask any of the committee for more information. I look forward to seeing everyone at the April and May meetings.



## **Garden Jottings from Bridge Nursery**

**Christine Dakin**

### *Your local Hardy Plant Specialists*

Remember April 2007? According to my diary it was hot, sunny and dry, whereas last year was a real mixed bag:- cold, cloudy, some frosts and even snow! The changeable weather makes it difficult to plan your jobs in the garden, but, the clocks have changed and even if you are lucky enough to have a 9 to 5 job, there will be time to garden in the evenings. After two years of wet summers and a 'proper' winter this year, there is almost certainly lots of catching up to be done.

So here are some ideas:

- Plant potatoes
- Prune Forsythia and flowering currants after flowering
- Cut back Fuchsias and Penstemons towards the end of the month



- Sow peas, French beans and carrots
- Leave Daffodil foliage to die back naturally (puts goodness back into the bulbs).
- Feed your roses – they really will reward you with glossy, healthy foliage and abundant flowers.
- Weed, weed, weed. (And maybe some more weeding!)

### Plant Names.

This month we will look again at the species name in a bit more detail. Remember the 4 main categories from last month? :

A) Names which give an indication of the origin of the plant e.g. region, country, continent

B) Names that describe its preferred habitat e.g. in woodlands, on mountains, by streams and ponds, on hillsides etc

C) Names that describe a particular feature of the plant such as habit, size, flower, fruit, colour etc

D) Names that commemorate people e.g. plant collectors, botanists patrons

Continuing with C) – examples include:

|                        |   |
|------------------------|---|
| <i>hirsuta(us, um)</i> | -hairy leaved eg <i>Lotus hirsutus</i>                |
| <i>macrophylla(us)</i> | -large leaved eg <i>Rhododendron macrophyllum</i>     |
| <i>microphylla(us)</i> | -small leaved eg <i>Euonymus microphyllus</i>         |
| <i>nitida</i>          | -shining leaves eg <i>Lonicera nitida</i>             |
| <i>splendens</i>       | -glittering, shining eg <i>Stipa splendens</i>        |
| <i>floribunda</i>      | -free flowering eg <i>Rosa floribunda</i>             |
| <i>grandiflora</i>     | -large flowers eg <i>Magnolia grandiflora</i>         |
| <i>alba</i>            | -white flowers eg <i>Geranium sanguinum</i> 'Album'   |
| <i>nigra</i>           | -black eg <i>Phyllostachys nigra</i> ('Black Bamboo') |

There are still some places left on our Propagation and Pruning Workshops. Pop into the nursery for an application form.

They are:

**Pruning** 18/04/09 and 17/10/09

**Propagation** 04/04/09 and 03/10/09

If you are interested and would like more information please

Phone 01926 812737 or email: [pemartino@tiscali.co.uk](mailto:pemartino@tiscali.co.uk)



## Nature Notes

John Hancock

A fortnight's superb spring weather with blue skies, plenty of sunshine during the day followed by cold nights and occasional frosts seems to be coming to an end as I write (Sunday 22<sup>nd</sup> March). The hedges are leafing up and there are plenty of catkins to be seen on Hazel, Birch, Poplar and Alder. The country lanes are bordered by wild flowers in certain spots. I saw a swathe of blue violets on the verge bordering Ufton Fields Nature Reserve immediately past the turn to Ufton Hill Farm. There are other patches of blue and white violets on Harbury Lane heading towards Warwick just past the turning to Chesterton Windmill. A real treat is to be had by walking along the towpath of the Grand Union Canal past Bascote Toll Cottage which sits at the top of Bascote Locks. Go under Bridge 28 which carries a bridleway over the canal. Now you enter a short cutting in the direction of Long Itchington. Several large clumps of white violets were blooming there when I visited on the 20<sup>th</sup> March. Over the years I've watched them extend their range. They were confined to the copse which sits atop a mound of clay excavated during the canal building era opposite the cottage. It's good to see the plants spreading rather than the pessimistic reports we have become used to of our once common wild flowers 'clinging on'.

Colts Foot (*Tussilago farfara*) was blooming on the mound at Fiveways on the 12<sup>th</sup> March and now it is a common sight on waste ground. I'm not trying to be derogatory but point up the fact that it is so called waste ground which is often best for wildlife. (e.g. Harbury Spoilbank which was formed from earth and rock taken from Harbury Railway Cutting, and Ufton Fields, an old opencast limestone quarry).

On 28<sup>th</sup> February, I left for a week's mountain biking in Morocco. It's a fascinating country about the size of France with a population of some 30 million. Oranges were ripening and almond in blossom as we left Agadir for the mountains of the Anti Atlas. This granite range rises to 2,500 metres (over 8000 ft) south of the Sous Valley but our high point was a good deal lower. The Argan tree flourished in certain favoured spots. Looking like an Olive, the trees are browsed by goats that often climb up into the branches to get at the fruit. They eat the fleshy part leaving the hard nut which is cracked open and the kernel crushed to extract the expensive oil. This is used in many Moroccan dishes and on salads.

 **WIGLESWORTH** 

Chartered Surveyors

## Thinking of selling your home?

For unrivalled experience  
and local knowledge  
contact Chris Thomas  
or Nick Williams  
on **01926 888998**

[www.wiglesworth.com](http://www.wiglesworth.com)

AUCTIONEERS • VALUERS • ESTATE AGENTS

**NOAH'S ARK**  
*Painting  
Company*

SIMPLY BEAUTIFUL DECORATION



exterior house painting



bespoke murals

*EVERY FORM OF  
INTERIOR & EXTERIOR  
PAINTING & DECORATING*

**TEL: 01295 257785**

[www.noahsarkpainting.co.uk](http://www.noahsarkpainting.co.uk)

## R & S DOMESTIC SERVICES

REPAIRS TO MOST  
MAKES OF  
*Washing Machines*  
*Tumble Dryers*  
*Cookers*  
*Dishwashers*



PHONE -  
**ROB CENEY on**  
**HARBURY 613707**

## ADVERTISING IN THE HARBURY & LADBROKE NEWS

### Monthly

1/4 page - £10.50 or £28 for 3 months

1/2 page - £19.00 or £49 for 3 months

Full page - £33.50 or £89 for 3 months

### Annual

1/4 page - £ 94.00

1/2 page - £168.00

Full page - £315.00

(coloured pages printed in April for the year)

**Adverts with payment to:**

**Gill Holden,**

**31 Binswood End, Harbury**

**Tel: 612155**

**by the 15<sup>th</sup> day of the month**

*Cheques payable to 'Harbury & Ladbroke News'*





# **T.M. & J.M. GREY**

## **BUILDERS**



**KITCHENS - BATHROOMS**  
**WINDOWS & CONSERVATORIES**  
**EXTENSIONS - ALTERATIONS**  
**RENOVATIONS**

**GREY GABLES, 46 BANBURY ROAD, SOUTHAM CV47 1HJ**

**☎ Southam 01926 817744**

**Mobile: 07885 495384**

*Email: [tmgrey@tiscali.co.uk](mailto:tmgrey@tiscali.co.uk)*

## **Southam & Harbury**

### **BOUNCY CASTLES**

For Hire of:

**Bouncy Castles / Inflatable Slides**  
**Obstacle Courses / Gladiator Duel**  
**and Sumo Suits**

Suitable for Children & Adults

**2 days for the price of 1**  
**Monday to Thursday**

Safety Tested

100% Guaranteed Delivery  
Friendly & Professional Service Provided  
BIHA member

"5% Discount with this advert"

Please call for a  
Free No Obligation Quotation

**Call Louise on:**

**01926 815467 or 07947 476549**

[www.southambouncycastle.co.uk](http://www.southambouncycastle.co.uk)

## **Harbury**



### **Marquee Hire**

**MARQUEES FOR ALL OCCASIONS.**  
**BIRTHDAY PARTIES, CHRISTENINGS,**  
**WEDDINGS, CORPORATE EVENTS.**

*Also hirers of*  
**Chairs, Tables and Dance Floors.**

[www.harburymarqueehire.co.uk](http://www.harburymarqueehire.co.uk)

**Tel: 01926 614777**

The largely arid terrain blooms after rain and in this respect we were lucky coming after a wet spell. White Asphodel (*Asphodelus albus*) was common amongst the rocks. Date palms were a feature of the gorges and I occasionally saw some of last year's dates high up and unharvested. Most had been garnered, no doubt at some risk as the trees were often 15 metres (50ft) tall. On our only wet day, I came across an interesting item when we stopped for a snack. It proved to be an owl pellet packed with rabbit bones and fur. It was about 8cms (over 3") in length and could, I reasoned, only have been regurgitated by an Eagle Owl (*Bubo bubo*). This powerfully built owl is the largest of the world's owls, 70cms (28") in length and nearly twice the size of our Barn Owl.

Butterflies and Dragonflies were on the wing and I identified a Large Tortoiseshell (*Nymphalis polychloros*) and several Clouded Yellow (*Colias croceus*). The former is probably extinct in the British Isles having last been seen in numbers in the 1940's. The latter is a summer visitor from North Africa and Southern Europe. In favourable years large numbers arrive, when populations further south explode.

Back in the UK, I joined my U3A Naturalists' Group on a visit to Coombe Abbey east of Coventry. (OS sheet 140 Leicester and Coventry. GR 404798). The 12<sup>th</sup> century Cistercian Abbey came into the hands of the Craven family after the Dissolution. Later, Capability Brown was employed to lay out the park in his typical style. He had the Smite brook dammed and the resultant 2km (1.4 mile) long lake is a haven for wildfowl. Make sure you visit the bird hide on the north shore. This is close to an island heronry. Here 60% of Warwickshire herons come to breed, some 55 pairs. We witnessed the adults repairing their nests, flying in with what looked like long twigs of willow. In April, egg laying will commence. Other birds included Great Crested Grebe and Cormorant on the lake. The bird table nearby attracted Nuthatch, several species of Tit, Chaffinch and Dunnock.

On March 15<sup>th</sup>, we found some frogspawn in a water course in Bushy Park near Hampton Court. Rex Humphreys told me he had seen a nest where a Collared Dove had already laid her eggs in the first week of March. Brian and Angela Hewins told me that a small party of Red Poll (*Acanthus flammea*) part of the Finch family had visited their garden on the 23<sup>rd</sup> March. Now the weather is entering a colder phase but spring will not be held back for long.



## Village Hall Update

Chris Finch

Last month the Village Hall committee had every reason to feel uplifted by the generosity of others who assisted with the much-needed improvement of the areas of the interior, which were looking tired and 'well past their prime'. There were two groups of people to whom our entire community should say a grateful 'thank you', as several rooms in the premises had an impressive painting overhaul.

The first stroke of luck came about as a result of a chance remark by a member of the committee who mentioned the Dulux, 'Colouring the Community' initiative. It was brought to the attention of the Chairman that the major paint company offered cans of paint to those who worked voluntarily on behalf of the community. As that included all members of the committee of the Village Hall – past and present, Geoff researched the offer and found that Dulux did indeed offer paint to those who had a community project in mind. What he could not have envisaged is just how much paint the company makes available to community efforts. Whilst we might have imagined sufficient to cover the walls of the two changing rooms, which were most in need of attention, we were the recipients of sufficient paint to cover the ceilings and walls of not only the changing rooms, but also the Farley room and the kitchen. The cost of purchasing that amount of paint would have made a serious dent in the funds and it was incredible to find that the paint company were willing to offer such an amazing amount of material.

The second bit of luck arose from an article which appeared in a previous edition of the Harbury and Ladbroke News about the community efforts of students from Coventry and Warwick Universities. Again, our intrepid Chairman followed up the article with an email to the Volunteers and was given a date of March 1<sup>st</sup> when the students would arrive to paint those areas of the Hall, which had been identified as 'in need of attention'. Again, we could not have believed how many students turned up at the appointed time with all their equipment – roller brushes for the walls and ceilings and hand brushes for the areas which needed careful attention to detail. 23 students from the two Universities, accompanied by their organisers, appeared mid-morning on a Sunday and after a briefing from their volunteering coordinators, Corinne and Jamie they set to work in different parts of the building – approximately 7 students in each area – each armed



with a 'tool of the trade' and a clear idea of the aim of the mammoth task ahead of them. There were students from Latvia, Mauritius, Nigeria, Hong Kong and Nigeria as well as many from throughout the U.K. It was heart-warming to find that they appreciated the welcome they received in Harbury with cups of tea or coffee and lots of chocolate biscuits provided and there were several comments about 'this is the best volunteering opportunity we have had as everyone is so friendly and welcoming'. The committee, in turn were 'bowled over' by the way in which the students worked non-stop and the amazing results they achieved. None of them had held a paintbrush many times previously and they managed to produce a very professional looking finish in a relatively short space of time. With a break for a packed lunch half way during their time with us, they spent a total of just over 6 hours working continuously on the 'tasks in hand'. By the end of the afternoon, the rooms looked lighter and brighter and the students were very pleased with the outcomes they had achieved. Certainly the committee members pronounced themselves to be 'over the



moon' about such an incredible community venture, which had surpassed all expectations. Sunday March 1<sup>st</sup> was certainly a day when students from the two local Universities acquitted themselves exceptionally well and as one student commented, "we hope it redresses the negative press which is sometimes associated with students who move into an area whilst they carry out their studies". Undoubtedly those of the committee who were on hand for most of the day would concur that not only did they 'do a good job', but they also did it with considerable enthusiasm and a genuine feeling for the difference they hoped the community would gain from their efforts. As one student enquired, "what is this place used for?" and was then amazed to hear a long list of the activities which are vital to a living community, including badminton, ballet classes, Carnival day, dances, Fayres, film shows, meetings and parties etc. Apart from the 23

students who visited Harbury for the day last month, other University groups were at South Field Primary school painting a sports Hall; another group at St Christopher's Primary school painting a mural, a further group at Coombe Abbey doing some conservation work and a final group working on allotments to assist Coventry Care Centre. The volunteers also get involved in fund-raising for Kidz Kamp and assist PHAB young adults with karaoke and dancing activities. If anyone needs to feel good about the work they are doing, it's certainly the Coventry and Warwick Volunteers. We are extremely glad they came to our attention through the H&L NEWS and are very grateful for the amazing support provided for the venture by DULUX, which has put colour into the fabric of the Village Hall by its exceptionally generous donation of paint. Many, many thanks to all – the committee could not have anticipated the difference it has made.

If you need to hear more about the work of the Village Hall committee, please accept an invitation to the AGM which will be on Monday April 6<sup>th</sup> at 7.00pm, followed by the committee meeting at 7.30pm. Please try and come along, particularly Group representatives – all are welcome.

### **Moving Pictures Programme**

The Village Hall Management Committee would like to express our grateful thanks for the very generous donation of Easter Eggs from Asda, Sainsbury's and Tesco's, for the Tombola which was held at the film performance of "High School Musical" on Saturday 21<sup>st</sup> March. We would also like to thank the generosity of villagers who also donated Easter eggs. The children particularly enjoyed the Tombola.

The next film performance is on Saturday, 25<sup>th</sup> April which will be a double bill as follows –

**Water Horse** : Legend of the Deep cert PG – Doors open at 2.00pm, film starts at 2.30pm

**Slumdog Millionaire cert 15** – Doors open at 6.00pm, film starts at 6.30pm. This film is subject to availability.

We are offering the option of pre-ordered food with the evening film – Curry, rice and mini nan bread – extra cost of £6.50.

Food **MUST** be ordered (and paid for) in advance and please ring Lana Long on 613311 – deadline for food orders is Thursday, 16<sup>th</sup> April.

Choose from Chicken Korma (mild), Chicken Balti (medium) or Vegetable Balti (medium), served with plain boiled rice and a mini nan bread – COST PER PERSON - £6.50 (payment with order).

The Indian food is being freshly prepared by the very popular, "Delhi Palace" in Leamington Spa. There will also be a tuck shop, licensed bar, teas and coffees including a raffle.

Offers of help greatly appreciated.

Thank you for your continued support.

**Janet Thornley, Secretary, Village Hall Management Committee**



## General Section

### Teenage Cancer Trust Celebration Event

The T.C.T. organisers and volunteers have just celebrated a milestone event with a buffet dance at the Village Hall in March. The Lord Lieutenant of Warwickshire, Mr. Martin Dunne, was on hand to signal his recognition for the incredible work carried out in support of the charity, which has resulted in excess of £50,000 being raised in the last eight years. An original founder and trustee of the Trust, John Matlin came up from London to praise the efforts of the local group and singled out the contributions of Joe Griffin and his daughter, Michelle, in particular, as the driving forces behind the annual event which is held on the Rugby club ground each July. The event was also attended by Paula Hancocks, appeals manager for the West Midlands. The Lord Lieutenant presented a cheque for £7,500 to the T.C.T. representative, which was the amount raised at last year's Sounds of the Sixties event.

In presenting an overview of the concept for the TCT fund-raising, Ian Holroyd mentioned that in previous years, the Rugby Club had held an annual BBQ and dance at which well known groups, including Marmalade, Dozy, Beaky, Mick and Tich and Brian Poole and the Sound of the Tremeloes had performed.



**Martin Dunne presenting the cheque to John Matlin**





**Mrs Dunne and  
Dave (Crockett) Edmunds**

After the collapse of this event, Joe and Dave (Crockett) Edmunds decided to do a 'one-off' Sixties night after they had persuaded Susie (Q) Dronfield and Michelle to get involved and enlisted the help of Andy Cowan. The group decided to organise a charity event and since then not only have the local acts been willing to accept

an invitation to perform, but they have also given their services free, so that all the funds raised from ticket sales, an auction and a raffle are given directly in aid of the T.C.T. unit at the Birmingham Childrens' Hospital.

During the recent evening attended by over 130 people who regularly support the July event charity, Michelle was presented with a bouquet of flowers by the Trust representative, who thanked her for all her hard work in being Joe's 'right hand man'!

Pauline Walsh, whose daughter's memory is commemorated each year at the Annual S.O.T.S event, also presented flowers to Mrs Dunne in appreciation of her attendance with the Lord Lieutenant at the Saturday night Celebration event.

All the invited guests at the recent event enjoyed a superb buffet prepared by a number of local ladies and the evening went with a swing as guests danced to the music of the talented Roadhogs.

As always, Joe and Michelle are looking forward to organising the next event on July 11<sup>th</sup> at the Rugby Club and if you've never witnessed non-stop Sixties Music from six different groups in the Massive 'tent' Joe organises, maybe 2009 should be the year you come on down and be part of the action, which is putting Harbury on the map for all the right reasons.

**Chris Finch**

## **Spirit of Harbury**

Nominations are invited for the person(s) you believe should be considered for the Spirit of Harbury Award for contribution to village life. Please send these to: [all@thehunts.eu.com](mailto:all@thehunts.eu.com) or to 10 Farley Avenue.

**Andrew Hunt**

## Blood Donors

Congratulations! You beat our target of 100 donations by 6. A special thank you to the 11 new donors too, and apologies to those who had to wait for the session nurse to arrive. To keep up the good work, please make a note of the next sessions in Harbury, on July 30<sup>th</sup> and November 19<sup>th</sup>.

Gillian Hare

## A "Grand" Coffee Morning



A "Grand" Coffee Morning in the Tom Hauley Room was held on Tuesday 10<sup>th</sup> March 2009. The event was advertised, somewhat hesitantly, as a "Grand" Coffee Morning. Coffee there was, tea too, pots and pots, along with buttered scones and a variety of cakes ready to welcome all comers.

Soon the event took on the shape of a big, happy, Harbury party. Friends and neighbours greeted each other with handshakes and hugs, "Hello lovely to see you. How's your father, mother, sister, brother?" People wandered amongst the stalls, giving generously, "Oh, keep the change, it's for a good cause."

Residents from our sister village arrived to support us. Thanks Ladbroke!

All was chatter and laughter. In the background, Mr Music man, Michael Hare (hey lady, can you spare a dime?) played on, happily obliging the many requests for favourite tunes.

Our Reverend, Craig, showed potential as a budding auctioneer teasing extra pounds from us for Eileen's beautiful cake.

Eventually the finale was upon us. Time had come to draw the raffles and hope our numbers came up for one of the fabulous prizes that included return rail tickets to London and a family trip to Warwick

Castle (compliments of Chiltern Rail). There were vouchers from village pubs, shops and services and a host of table top presents.

Mid-day! A good time had been enjoyed by all. The "Grand" in Coffee Morning was justified.

Many thanks to EVERYONE who helped and came along. We raised £788 for the stricken people of Gaza that will be channelled by "Biblelands", irrespective of religious or political beliefs.

**Su, Mary and Moira**

## **Harbury Hopes to go the Extra Mile to Help People Living with Cancer**

Once again I am organising another "Macmillan Miles Challenge" - raising money to help Macmillan Cancer Support aid people living with cancer.

Last year we raised £569.59 Can we beat that this year?

On Friday and Saturday May 8<sup>th</sup>/9<sup>th</sup> along with willing supporters we are hoping to achieve lines of coins on the footpath in the centre of the village. It's a simple way to support the Macmillan Charity in our region and we ask that you give generously.

In the UK one in three people will be diagnosed with cancer during their lifetime and over a million people are affected. Macmillan Cancer Support is a UK charity which helps to provide the expert care and practical and emotional support that makes a real difference to people living with cancer.

For cancer information and support contact Macmillan Cancer Support  
Tel: 01676 535452 [www.macmillan.org.uk](http://www.macmillan.org.uk)

**PLEASE GIVE GENEROUSLY WHEREVER YOU SEE THE  
MACMILLAN SIGNS**

**Ann Mayer**

## **NSPCC**

There will be a Ladies Luncheon in aid of NSPCC in the Tom Hauley Room on Wednesday 22<sup>nd</sup> April at 12.30pm. Tickets cost £8. There will be a speaker from the NSPCC and a demonstration from fashion colourist, Suzanne Sausage.

For more information contact Pauline (612179) or Sue (612286).

**Margaret Wilson**



## Harbury Choir School - Mamma Mia!



Nearly 40 youngsters, ranging in age from 5 to 12 (or 30 if you count the young at heart leaders!), came together to put on the 'show in a day'.

The youngsters put together acting, song, dance and live performance skills in a very short space of time; by working incredibly hard throughout the day. They also enjoyed learning fun warm-ups such as an African rhythm song in harmony and some very funny singing tongue twisters.

The day really brought together a diverse group of children with all ages enjoying themselves as much as each other. It was great to see boys joining in, especially in their cool role as the 'fathers of the bride' and striking that pose!

We were very privileged to be joined by members of The Warwickshire Band, who accompanied the kids and gave them the unforgettable experience of singing with a live band. It was also a chance for the youngsters to see and hear instruments ranging in size from a piccolo to a tuba, and even three types of saxophone, up close.

The day came together for a free open performance of our show, with acting scenes telling the story between the songs. It was wonderful to see the youngsters giving it their all throughout the day.

If any parents have any pictures or video from the day please get in touch!

You can find pictures from the day on the choir school website.

**David Iles and Helen Garvin**

[www.harburychoirschool.org](http://www.harburychoirschool.org)

## Harbury Carnival - Saturday June 13<sup>th</sup>, 2009

What's so special about Carnival?

It's local, fun and open to anyone.

Whatever the weather more than a thousand people come to enjoy the variety of stalls, floats, games and entertainment on offer.

'It's one of the greatest fun events I have been to, so I always make a point of coming' (Satisfied attender)

'The Dog Show is just great' (Happy spectator)

'I won a Rosette!' (Junior winner)

So make sure YOU come and participate and help us continue the great Carnival tradition. Get together with your local organisation, pub, street or friends and see what ideas you can come up with for either a float or a walking group for the procession. The more participants there are the more fun it is for everybody and I promise that you will enjoy the experience. Here is the list of categories:

Trade Float

Independent Float

Children's' Float

Decorated Bike/Pram/Car

Horse Drawn/Mounted/Lead

Walking Tableau Children 2-8 persons

Walking Tableau Children more than 8 persons

Walking Tableau Family

Walking Tableau Adults

Walking Adult

Walking Child

If you would like to book a stall/pitch on the field, please call Mike McBride on 612421 and, if you have any questions about the Carnival, please feel free to call John Broomfield, Carnival Committee Chairman, on 614258. He will be happy to provide whatever help he can.

If having fun is like the sun coming out, then Carnival is like a complete perfect summer! Put it in your diary now.

**Peter Walshe, On behalf of the Carnival Committee**

## Surface Water Drainage Rebate

Many people assume that rainwater that falls on their roof or driveway goes down the same drain as everything else and ends up in the public sewers. But this is not always the case. If rainwater drains to a soakaway in the garden or a local watercourse then a rebate can be claimed off your water charges. This can save customers between £30 and £34 per year, but they must make an application to Severn Trent to qualify for the rebate.

If you think your property may fall into this category then advice can be obtained from the Consumer Council for Water at: [www.ccwater.org.uk](http://www.ccwater.org.uk) or telephone 0121 345 1013.

**Steve Grebby - Policy Manager**

## The Potting Shed

The programme has had to be changed for April as Tom Sage is unable to do the workshop on Hanging Baskets. Luckily Chris Smith (who should have come in February) is able to come in April to talk on the 'Restoration of the Victorian Garden at Canons Ashby'. The May talk will be on "Exotic vegetables". As always, meetings start at 8pm in Stockton Village Hall and new members are most welcome.

**Christine Daki**

## Southam Lions

On April 4<sup>th</sup> (Saturday) Southam Lions will be holding their annual Presidents dance at the Grange Hall Southam. Once again we are proud to announce that the Official Receivers will be performing. If you like soul music and feel like dancing all night – then this event is for you! Tickets are £15 each to include supper. A superb night is guaranteed! For tickets call Terry on 01926 817744.

Our May Day fete (again an annual event) is on Bank Holiday Monday May 4<sup>th</sup>. It is held on the library grounds Southam from 2pm – 4.30pm. Lots of fun for all the family including: games, punch & judy, bouncy castle, ice creams, refreshments, hot dogs and burgers, cake stall, tombola, raffle plus additional stalls run by the local community groups. So come along and support the 'Lions' bring your friends & family....who knows maybe there is a new Lion recruit out there! Call Malcolm for stall information on 01926 814294.



The Lions play a huge part too in the organisation of the Southam Carnival on spring Bank Holiday Monday – May 25<sup>th</sup>. This year the theme is "heroes and villains" and the floats for the carnival procession should be lively and colourful! The floats assemble in Wood Street car park Southam at 12.00 noon for the judging and then the procession moves off led by the Carnival princess.

Meanwhile at the Southam recreation ground there will be a fair, games, stalls, beer tent, football competition, belly dancers and demonstrations by Southam's young fire fighters plus more... so please come along and support the Carnival Day and have a great time! To enter a float call Jackie on 01926 817744 or Richard on 01926 814066. To arrange a stall call Malcolm on 01926 814294

The rural cinema Southam – Graham Adams Centre. This is becoming a popular monthly event and on April 26<sup>th</sup> we will be showing 'Slumdog Millionaire' cert 15. This is sure to be very popular but remember on this occasion only people over 15 years of age will be admitted. Prices are £3 per person or where applicable a family ticket for 4 people - £10. refreshments are available and the film starts at the usual time of 4pm. The next film show will be on Sunday May 31<sup>st</sup> – the film is unknown at present but do please visit our website to determine the film nearer the date. [www.southamlions.org.uk](http://www.southamlions.org.uk)

**Peter Guy, Southam Lions**

## **Oxjam Update**

We have had a very successful March so far with a diverse range of events! One event in the village was the Harbury Folk Club Oxjam Special held in the Shakespeare Inn, Harbury. A packed and varied night with more than a little humour when the theme was "Jam".

### **Don't Miss the Ten Bears Good Friday in Coventry!**

Get your tickets now and see the outrageously talented Ten Bears play at the Kabash on 10<sup>th</sup> April along with Razmataz, Stereofix, Sizzlin Gypsies and more to be confirmed. Performing their debut this year at Glastonbury, Ten Bears are set to be big, so catch them here first! Tickets just £3.50 from [www.wegotickets.com](http://www.wegotickets.com), the Oxfam Shop on Hertford Street or Hannigans clothes shop on Hales Street.

**Sat 25<sup>th</sup> April** - Basement Boogaloo @Dogma, 8pm, £3. Best bands in Coventry and Warwickshire get together for an evening of boogie!

# HARVEY BUILDERS LTD

Registered Since 1979

YOUR LOCAL BUILDER FOR ALL YOUR HOME EXTENSIONS  
AND ALTERATIONS FROM PLANS TO COMPLETION.



Chris Harvey

Mobile: 07976 357142

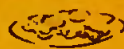
email: harvchrs@aol.com



**FOR PROMPT, PERSONAL SERVICE PHONE 01926 817906**



## Braeside Bed & Breakfast



Comfortable accommodation £26.00 - £30.00 per person per night, including wide choice of breakfast. One double en-suite and one room either double or 2 foot 6 inch twin beds, with private bathroom opposite.

Contact: Rosemary Harley, 26 Temple End, Harbury

☎ 613402 or 07747 772497

Email: [rosemary@braesidebb.co.uk](mailto:rosemary@braesidebb.co.uk)

Website: [www.braesidebb.co.uk](http://www.braesidebb.co.uk)



**Bull Ring Garage**

**Bull Ring Garage**

**Church Terrace**

**Harbury**

**Leamington Spa CV33 9HL**

**Telephone: 01926 612275**

**Mobile: 07968 146534**

**Email: [bullringgarage@btconnect.com](mailto:bullringgarage@btconnect.com)**

We are Harbury's only official M.O.T. station for the following classes:

Class 1 & 2 Motor Cycles

Class 4 Car and Commercials up to 3000kg.

Servicing and Mechanical repairs.

Air conditioning service.

Full Diagnostic facilities.

Full tyre fitting bay for Cars, 4x4, Vans, Motor Cycles and Scooters.

**Opening hours:**

**Monday - Friday 8.00am - 6.00pm**

**Most Saturdays 8.30am - 12.30pm**

# BEAUTY TREATMENTS

## FACIALS

BODY MASSAGE

EYEBROW / LASH  
TREATMENT

WAXING

MANICURES

PEDICURES

Available locally

For more details contact

Sarah Terry

Tel: 01926 613220

Mobile: 07798 821686

Fully qualified Beauty Therapist  
with over 10 years experience

*Gift Vouchers available  
for those special occasions*



# AVONVALE

VETERINARY CENTRES

Consultations by appointment  
**01926 812826**

88 Coventry Street, SOUTHAM

Also at

Wellesbourne 01789 841072

Warwick 01926 400255

Kenilworth 01926 854181

Plus

24-hour Emergency Service staffed with our own  
vets & nurses at our Veterinary Hospital

[www.avonvets.co.uk](http://www.avonvets.co.uk)



## Health First, Daventry Street, Southam

- ☒ CHIROPODISTS / PODIATRISTS registered with all major Health Insurers and Health Professions Council
- ☒ Former NHS specialists with over 25 years experience
- ☒ Daytime, evening, and Saturday appointments available
- ☒ Treatment plans to CURE even longstanding problems
- ☒ Insoles / orthotics / nail surgery / diabetic reviews
- ☒ Able to diagnose and treat extensive range of problems:

COLLAPSED (FALLEN) ARCHES

LEG LENGTH DIFFERENCE

EXCESSIVE PRONATION

KNEE / HIP / BACK PAIN

INGROWING TOE-NAILS

PLANTARFASCIITIS

METATARSALGIA

ATHLETE'S FOOT

CHIROPODY  
PODIATRY  
TREATMENTS  
FROM ONLY  
£22.50

DEFORMITIES

HEEL PAIN

TENDONITIS

INFECTIONS

VERRUCAE

HARD CORNS

SOFT CORNS

NEUROMAS

HARD SKIN

CALLOUSES

FISSURES

HEEL CRACKS

BUNIONS

ARTHRITIS

FOOT ULCERS

Further information at  
[www.healthfirstsoutham.co.uk](http://www.healthfirstsoutham.co.uk)

## HARBURY PARISH COUNCIL

Unit 2, Bull Ring Business Centre

Church Terrace

Harbury CV33 9HL

Tel: 614646

Open: Monday - Thursday 10.00am - 12.45pm

### CHAIRMAN:

Tim Lockley

### CLERK:

Nicola Thompson

Parish Council meetings are open  
to the Public. To speak on any  
issue, please contact the Parish  
Clerk.

Email: [clerk@harbury-pc.gov.uk](mailto:clerk@harbury-pc.gov.uk)  
Website: [www.harbury-pc.gov.uk](http://www.harbury-pc.gov.uk)



For more information: To find out how you can sign up and for more information on Oxjam please visit [www.oxfam.org.uk/get\\_involved](http://www.oxfam.org.uk/get_involved) or contact Sarah Cook 07949626769 [centralengland@oxjam.org](mailto:centralengland@oxjam.org). See also Oxjam Central England on [www.facebook.com](http://www.facebook.com) or visit [www.myspace.com/oxjamfestivalcentralengland](http://www.myspace.com/oxjamfestivalcentralengland)



## LETTERS TO THE EDITORS

**Dear Editors**

*The Samantha Dickson Brain Tumour Trust have asked me to thank all those who helped with the coffee morning in February. We raised £168.49 for the Trust, so a big thank you to those who gave cakes, raffle prizes, etc., to those who helped on the day, and to all those who came to the coffee morning.*

*Yours sincerely*

**C. Mary Catt**

**FOR SALE:** Boys bike, 10-14 years, vgc £30. Acoustic guitar excellent for beginners £25 ring Peter Tel: 614452

**DATES FOR INCLUSION IN THE HARBURY DIARY PLEASE TO:  
LINDA RIDGLEY - TEL. 612792.**

**Bookings for:**

|                               |                |        |
|-------------------------------|----------------|--------|
| Scout Hut                     | Caroline Hill  | 613780 |
| Tom Hauley Room               | Liz Bunting    | 612450 |
| T. Hauley Room Coffee Morning | Sally Stringer | 613214 |
| Village Hall                  | Kate Johnson   | 613087 |
| Wight School                  | Lin Hayes      | 613488 |

## MAY EDITION - HARBURY & LADBROKE NEWS

|                    |                  |               |
|--------------------|------------------|---------------|
| <b>Adverts to</b>  | 31 Binswood End  | by 15th April |
| <b>Articles to</b> | Harbury Pharmacy | by 23rd April |

## THE PERILS OF LIVING IN A HARD WATER AREA

### LIMESCALE DAMAGE

If you live in or around a CV postcode, your domestic or commercial water supply is classified as 'hard'. This includes Harbury, Ladbroke, Warwick, Leamington Spa, Rugby, Coventry, Kenilworth, Stratford Upon Avon, Wellesbourne and all other, smaller towns and villages in and around the County and beyond - such as Oxfordshire, Northamptonshire and Leicestershire. (Typical obvious signs of hard water existence are kettles and irons 'furring' up). It is to be noted that even 'moderately hard' water causes severe, *unseen* problems.

Layer upon layer of tough lime scale is building up inside pipes, boilers, cylinders. They break down, appliances break down, everything needs maintenance or replacement far earlier than necessary, because of premature ageing caused by lime scale build up.

Fuel costs are already on the rise. What has to be noted is that layers of this very tough coating inside your pipes and tanks is vastly reducing heating efficiency.

Installing a water softener will prevent further damage and start to reverse existing damage. You will feel the benefits, not just unseen ones (think system breathing a big sigh of relief) but also softer skin, hair, clothes, less detergents, brighter clothes.

**ECZEMA** - can switching to softened water help?

More than 60% of households are located in hard water areas in England and Wales. Research carried out at the University of Nottingham by dermatologists, medical geographers and statisticians in 1998 indicated that hard water could play a part in causing eczema flare-ups in some children. The study, involving more than 7,500 school age children, found that eczema is around 50% more common in primary schoolchildren living in hard water areas than those who live in soft water areas. This could not be attributed to differences in age or social class.

The Soft Option Company, Kenilworth, Warwickshire. Please contact us for more information on 0845 257 4022

You will find our free advice friendly and very informative.

[www.softoption.co.uk](http://www.softoption.co.uk)

## Kinetico Water Softeners



Telephone or e-mail  
for a FREE HOME  
SURVEY

**Water Softeners  
Drinking Water Filters  
Reverse Osmosis  
Block and Tablet Salt Supply  
Maintenance & Servicing**

Compact under the sink automatic non-electric water softener. The Kinetico 2020c is the most efficient system available in the UK backed by over 30 years of water engineering experience and a 10 year parts warranty.

**Save £ on Home Energy Costs.** Just 4mm of lime scale build up in your immersion tank and boiler can cause a **25% loss** in water heating efficiency.

**[www.softoption.co.uk](http://www.softoption.co.uk)**

**The Soft Option Company**

Wren House, Stoneleigh Park, Kenilworth CV8 2RR

Tel: 0845-257-4022 e-mail: [info@softoption.co.uk](mailto:info@softoption.co.uk)

## ADVERTISING in the Harbury & Ladbroke News

### Monthly Prices

|                                      |        |
|--------------------------------------|--------|
| ¼ page                               | £10.50 |
| (or 3 consecutive months for £28.00) |        |
| ½ page                               | £19.00 |
| (or 3 consecutive months for £49.00) |        |
| Full page                            | £33.50 |
| (or 3 consecutive months for £89.00) |        |

### Annual Prices

|           |         |
|-----------|---------|
| ¼ page    | £ 94.00 |
| ½ page    | £168.00 |
| Full page | £315.00 |

Advert with payment to: Gill Holden, 31, Binswood End, Harbury Tel: 01926 612155  
by 15<sup>th</sup> day of the month (Cheques payable to 'Harbury & Ladbroke News')

## SADDLERS BED & BREAKFAST

SELF-CONTAINED COTTAGE IN HEART OF HARBURY.  
DOUBLE BED, SHOWER ROOM, LIVING & DINING AREA WITH  
KITCHENETTE, TV/DVD; CD/RADIO.  
£60 PER NIGHT INCLUDING CONTINENTAL BREAKFAST.

JULIE YOUNG, SADDLERS, CHAPEL STREET, HARBURY.  
01926 614050 OR EMAIL [jsyoung@btconnect.com](mailto:jsyoung@btconnect.com)  
[www.saddlersbed.co.uk](http://www.saddlersbed.co.uk)



**ADAMSTRANKS**  
BUILDING CONTRACTORS



**Extensions-Alterations-Refurbishment-New Builds**  
**Bespoke Kitchens and Bathrooms**  
**Design-Planning & Building Regulations Application**  
**Service available.**

Web: [kenilworthproperties.co.uk](http://kenilworthproperties.co.uk)

Email: [kenilworthprops@btconnect.co.uk](mailto:kenilworthprops@btconnect.co.uk)

Telephone: Harbury 612260 Mobile: 07779 096104

Harbury Business Centre, Church Terrace, Harbury, Leamington Spa CV33 9HL





Caring for you and your pet.

Opening hours

Monday - Friday 8.30am - 7.00pm

Saturday 8.30am - 5.00pm

Sunday 10.00-11.00am (urgent cases)

Full 24 hour emergency service

Recently refurbished premises  
with large client car park

123, Heathcote Road, Whitnash,  
Leamington Spa, Warwickshire  
CV31 2LX Tel: 01926 337790

[www.heathcotevets.co.uk](http://www.heathcotevets.co.uk)

## The MOBILE CARPET SHOWROOM

DOMESTIC & COMMERCIAL FLOORING CONTRACTORS

The unique walk-in mobile carpet showroom that brings a vast selection of carpets and vinyl to your door. Choose from over 2000 carpet and vinyl samples in the comfort of your own home.

### HOME SELECTION SERVICE

- FREE furniture moving and FREE uplift & disposal of old carpets
- 7 DAY SERVICE - DAY AND EVENING APPOINTMENTS A PLEASURE
- Friendly relaxed professional service
- All work fully guaranteed

ALL LEADING  
MAKES SUPPLIED  
AXMINSTERS, WILTONS  
TWISTS, NATURALS



Telephone: 01926 814833

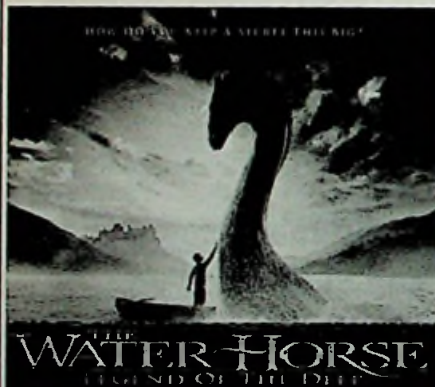
Mobile: 07816 814978

[www.mobilecarpetshowroom.co.uk](http://www.mobilecarpetshowroom.co.uk)



## Harbury Village Hall

is proud to present



Film Certificate: PG

**Saturday 25th April**

Tickets: £3.50 each or £10.00 per family  
(family ticket admits 2 adults & up to 3 children under the age of 12)

\*Parents/carers must remain with, and are responsible for, their children at all times\*

doors open at 2.00pm - film starts at 2.30pm

Kid's Tuck Shop - Refreshments - Raffle - Bar

01926 613311

## Harbury Village Hall

is proud to present



Film Certificate: 15

**Saturday 25th April**

Advance tickets available by ringing Lana Long : 01926 613311  
Tickets: £3.50 each

doors open at 6.00pm, film starts at 6.30pm

Refreshments - Raffle - Licensed Bar

Pre-ordered Curry & Rice available during interval  
choose from

Chicken Korma, Chicken Balti or Vegetable Balti  
with plain boiled rice and a mini nan bread - £6.50

Curry will be freshly cooked to order by the Delhi Palace  
in Leamington Spa

To order food ring Lana on 01926 613311 by Thursday 16th April at the latest!



## Fiona's Frames

Bespoke Picture Framing

Wide choice of mouldings &  
mounts for paintings, prints  
and needlework

Friendly Professional Service

Phone 01926 812807  
Hillside, Napton



**LOCKE & ENGLAND**

**AUCTIONEERS & VALUERS**

## AUCTION EVERY WEEK

- Open to the general public
- The exciting way to shop
- 600 lots sold every week
- A great way to buy and sell when changing décor
- Frequent specialist sales
- Valuations for Insurance & Probate, Family Division
- Regular Valuation Days
- House Clearance & Collections

If you have items to sell, or would like more information on other services we offer please contact us:



**01926 889100** [www.leauction.co.uk](http://www.leauction.co.uk)  
12 Guy Street, Leamington Spa, CV32 4RT

## FENCES : TREES



**All types of fencing and gates**

**Tree felling and reduction**

**Hedge laying and trimming**

**Patios**

**Call Adrian Dollar on  
01926 817077 or  
07914 623989**

**Qualified and Insured**

## Thinking of selling your house?



Family looking to buy  
spacious 4 bedroom detached  
home in or around Harbury  
(Renovation/extension considered)  
No Chain, currently renting

**Call Ian or Helen  
on 613957**

## **LOVEBALLET DANCE COMPANY**

Ballet & Dance lessons in Southam,  
Upper Boddington & Daventry.

### **Southam**

#### **Tuesday Evenings - Ballet**

4.00pm - 6.30pm - All age ranges from 3 yrs +

### **Southam**

#### **Thursday Evenings**

#### **Funky Dance & Gymnastics**

4.30pm - 6.30pm - All age ranges from 4 yrs +

### **Upper Boddington**

#### **Saturday & Monday mornings**

#### **Monday 10.30am Ladies Ballet**

(fun informal class)

#### **Street Dance Class -**

Upper Boddington Saturdays

### **Daventry**

#### **Monday Evenings - All ages**

#### **Adult Ballet Class offered at Daventry**

For more info - [Lorraine@loveballet.co.uk](mailto:Lorraine@loveballet.co.uk)

Tel: 07711 010404

[www.loveballet.co.uk](http://www.loveballet.co.uk)

## **HANDYMAN PAUL**



*Do you never have time to do that odd job. Are there jobs around the house and garden you wish were done?*

If the answer is yes, then I may be able to help?

Decorating, Gardening, Pressure Cleaning patios/drives, all jobs considered.

Competitive rates, reliable and friendly service.

Phone Paul (CRB Checked)

01926 315319 or 07973 142625

or email me at:

[paul-gardner@sky.com](mailto:paul-gardner@sky.com)

green  
chameleon



Karena EA Ellis

MRICS, RICS Acc.Med., BSc Hons

M: 07796 575716 T: 01926 612121

E: [info@greenchameleon.net](mailto:info@greenchameleon.net)

[www.grechameleon.net](http://www.grechameleon.net)

Chartered Surveying ■

Valuation ■

Mediation ■

Letting & Management ■

Bull Ring Business Centre, Church Terrace,  
Harbury, Wars CV33 9HL



**RICS**



## THERAPEUTIC MASSAGE REIKI HEALING REFLEXOLOGY

Today's stresses and strains can deplete the immune system and disturb the delicate balance of the body and lead to illness.

Regular holistic treatments can help to correct this imbalance.

**JUNE EAVES** ITEC MAR  
Experienced qualified therapist  
**HARBURY**  
**(01926) 612006**

## Ben Timbrell

Corgi registered Engineer

*For all your plumbing & heating needs.*

- Complete heating systems
- Boiler changes
- Cylinder replacements
- Bathrooms
- Cookers
- Outside taps etc

**NO JOB TOO SMALL**

All work guaranteed

**07812144330**

*Free Estimates!*

214562

## THE BELL INN

VILLAGE PUB AND DINING  
BANBURY RD, LADBROKE,  
NR SOUTHAM, CV47 2BY

www.pubrestaurantladbroke.co.uk  
Email: info@thebellinn-ladbroke.co.uk



**FOR BOOKINGS TEL: 01926 813562**

Private Parties/Weddings catered for and outside catering  
... All events ... **CALL NOW**

**NEW MAIN MENU AND SPECIALS MENU NOW AVAILABLE**

Restaurant open daily (Closed Mondays)

Tue - Sat 12.00 - 2.00 lunch and 6.30 - 9.30pm evenings

Sunday 12 noon - 8.30pm (last tables)

**LUNCHTIMES OFFERS AT THE BELL INN**

Available Tuesday - Saturday. Two meals for the price of one.

Enjoy two main meals from our menu and only pay for the higher priced one. Booking essential.

### WEEK NIGHT OFFERS

**"NEW THREE COURSE FIXED PRICE DINNER MENU"**  
**ONLY £10.00 PER PERSON (TUE, WED, THUR)**

Offer only available for bookings quoting offer - valid until end April - cannot be used in conjunction with any other offer

**WEDNESDAY EVENINGS - STEAK AND CHOCOLATE NIGHT**

**£19.95 FOR TWO**

Enjoy either 2 x 8oz Prime Rump Steaks or 2 Mixed Grills served with house chips, onion rings, mushrooms and tomato followed by our homemade Chocolate and Amaretto Torte.

### SUNDAY LUNCH CARVERY MENU

We now offer an exciting Sunday Carvery menu every Sunday served between 12 noon & 3.00pm. On offer will be a choice of freshly roasted joints including: Roast Prime Beef - Roast

Warwickshire Turkey - Roast Pork served with fresh vegetables and all the trimmings. 3 courses £14.95 per person  
Main menu is also available from 12 noon till 8.30pm

**SUNDAY EVENINGS - GRILL & PUB FAVOURITES MENU**

New from March, 3 course Sunday evening roast menu only  
£10.00 per person (served from 5.00-7.30pm bookings only)

### EVENTS AT THE BELL

**EASTER SUNDAY 12<sup>th</sup> APRIL - 3 COURSE CARVERY**

Price at £17.50 per person - open all day

**FRIDAY 24<sup>th</sup> APRIL**

**ROBBIE WILLIAMS TRIBUTE NIGHT AND DINNER**  
"he is back after popular demand for one night only!"  
Three course dinner and show £30.00 per person

**THURSDAY 30<sup>th</sup> APRIL**

Half price A la Carte evening - simply book a table quoting half price offer and enjoy the dishes from our menu and only pay half price. Offer includes starters - mains - desserts.

Back by popular demand - booking essential.

**FRIDAY 1<sup>st</sup> MAY - COMEDY STAGE HYPNOTIST EVENING AND DINNER WITH "MICKEY TAKE"**

Join us for an evening of hilarious comedy stage hypnosis & psychological illusion show

Three course dinner and show £22.50 per person

# Tom Greenway ADI



**Local Driving Instructor**

- **Competitive Rates**
- **Refresher Lessons**

- **One to one Instruction**
- **Pass Plus Registered**

Tel: 01926 614462

Mobile: 07989 576561

**PASS PASS PASS PASS PASS PASS PASS PASS**



## *Visage a' Visage*

A full range of beauty treatments available specialising in Facials, Massage, Manicures, Pedicures, Waxing, Ear Piercing, Airbrush Spray Tans, Make-up, Nail Extensions and Overlays.

*Spa Jacuzzi Pamper Parties for all ages.*

**We specialise in children's birthday pamper parties.**

Tel: Rosina - 01926 612403 for appointments, gift vouchers and special offers.

# Myton Hospice

## 50's & 60's NIGHT!

Saturday 25th April

7:30pm-Midnight

Fancy Dress Optional

Harbury Village Club

Tickets £5.00

Contact: Karen  
- 07894 213068

or Fiona - 07940 750826



Organised by Harbury Support Group

**Carol, Mark and team welcome you to**



*The Crown Inn*  
*Crown Street, Harbury*  
*Tel: 01926 613037*

**Open daily for good pub food and excellent  
real Ales.**

(Green King, I.P.A. and guest Ales).

**Open Monday - Saturday at 12.00 noon**  
for breakfast and snacks plus freshly ground coffee,  
latté, espresso, cappuccino, etc.



Full lunch time menu from 12.00 noon - 3.00pm

Evening menu and specials from 6.00 - 9.00pm

Children's menu available 7 days a week

**Sundays**



Try our 3 course Carvery  
from £7.95 for main course  
plus any starter or dessert £3 each



**Harbury Theatre Group**  
**60<sup>th</sup> Anniversary Production**

# **It Only Hurts When We Laugh!**

*An evening of FREE comedy entertainment  
 in the Village Hall*

## **The Retiring Highwayman** **By Michael Legat**

## **The Laboratory** **By David Campton**

Plus a selection of sketches, including  
 Elementary Courting for Men      Shakespeare's Agent  
 And other pieces stolen from the Edinburgh Festival

Friday 15<sup>th</sup> May, 8pm

**FREE!**

If you book in advance  
 (20p for any remaining tickets  
 on the Door)

Saturday 16<sup>th</sup> May, 8pm

**£5**

Including supper,  
 advanced tickets only.

We will be especially pleased to see you on the Friday when we will be holding a 'come and meet us' event after the performance. Do stay for this; we would love to tell you how much fun it is to put on a production and how pleased we are to welcome new members....

**Tickets available from Mugleston's or 612029**

# MICHAEL JEROME CARPETS

## The Complete Carpet Service

- Choose a New Carpet from our Home Selection Service
- Expert Fitting - Fully Guaranteed
- Existing Carpets Re-fitted
- Professional On-site Cleaning
- Vinyl Sheet Flooring
- Free Estimates

Telephone

(01926) 813325

Mobile

07768 083364

*Michael Jerome is a Master Fitter  
of the National Institute of Carpet Fitters  
Over 30 years experience!*



# S. MEHRA

EST 1991

## PAINTING & DECORATING

Domestic & Commercial

T 01926 451012

M 07976 241949



## HEWER

## BUILDERS

### D. F. J. HEWER (BUILDERS) LTD.

### DESIGN & BUILD COMPANY

for all your building requirements  
EXTENSIONS - ALTERATIONS  
MAINTENANCE - REPAIRS  
PLANNING & BUILDING  
REGULATION APPROVALS



Registered House Builder



Telephones: 01926 813070 and 813627 — email [admin@hewerbuilders.co.uk](mailto:admin@hewerbuilders.co.uk)

Web: [www.hewerbuilders.co.uk](http://www.hewerbuilders.co.uk)



## FIXIT4U.CO.UK

PROPERTY MAINTENANCE

01926 611930

07795 411868

[chris@fixit4u.co.uk](mailto:chris@fixit4u.co.uk)

For all types of Internal & External  
Property Maintenance

including Floor & Wall Tiling,

Painting & Decorating etc.

Most jobs considered, all work insured.

Call Chris now for a free quote



# CAR CONSULTANTS



UFTON GARAGE, SOUTHAM ROAD, UFTON, LEAMINGTON SPA CV33 9PF

*WE BUY CARS & 4X4'S - OVER 40 IN STOCK*

*Contact us now on 01926 613795 or out of hours 07860 452222*

*or visit: [www.uftongarage.co.uk](http://www.uftongarage.co.uk)*

## *Southam Carpets*

**CARPET - VINYL - CURTAINS - BLINDS**

 **01926 814944** [www.southamcarpets.co.uk](http://www.southamcarpets.co.uk)

**30th  
year**

## **A.J. BRUNT** Carpenter & Joiner

For all types of replacement windows, doors, porches, i.e. UPVC,  
Aluminium & Timber, double or single glazed.

Fitted kitchens/wardrobes and all your carpentry needs.

**Harbury 01926 612867 • 2 Park Lane Terrace, Harbury**

# **THE DOOR STORE**

- ❖ QUALITY DOORS in HARDWOOD, HEMLOCK & SOFTWOOD
- ❖ HANDLES in BRASS, CHROME & SATIN CHROME
- ❖ KITCHENS FULLY FITTED TO YOUR DESIGN
- ❖ PURPOSE MADE JOINERY. DOOR & WINDOW FRAMES
- ❖ STAIRS & STAIR PARTS in WOOD, IRON & CHROME
- ❖ JALI RADIATOR CABINETS, MADE TO MEASURE
- ❖ STAINED & ETCHED GLASS TO YOUR OWN DESIGNS
- ❖ ALL AVAILABLE IN MANY DESIGNS & VARIOUS SIZES
- ❖ FULL FITTING SERVICE, KITCHEN PLANS & ADVICE

Alveston Place, Oxford Street, Leamington Spa. Tel: 01926 888806.  
Email: [sales@the-door-store.co.uk](mailto:sales@the-door-store.co.uk) Website: [www.the-door-store.co.uk](http://www.the-door-store.co.uk)