

# Harbury & Ladbroke News

THE HARBURY AND LADBROKE NEWS, reflecting all aspects of local life is published monthly and produced with the assistance of the All Saints' Parochial Church Council.

Editorial Office

☎ 612155

Articles to

Harbury Chemist, High Street

email address

articles@harburynews.freemove.co.uk

Website

http://www.harburynews.freemove.co.uk

Advertising Office

31, Binswood End (☎ 612155)

Distribution Manager

49, Mill Street (☎ 612009)

Inserts by prior arrangement

☎ 612009

Magazine Photographer

☎ 614167

*The views of contributors are not necessarily those of the Editorial Committee.*

**February 2006**

**No. 383**

## IN THIS ISSUE

## Page

EDITORIAL .....	2
HARBURY DIARY .....	2
FROM THE RECTOR .....	5
FROM THE CHURCHWARDENS .....	6
MOTHERS' UNION .....	7
TODDLER SERVICE .....	7
LADBROKE NEWS .....	8
HARBURY PARISH COUNCIL .....	11
HARBURY SOCIETY .....	14
HARBURY WOMENS INSTITUTE .....	15
FOLK CLUB .....	17
HARBURY TWINNING ASSOCIATION .....	18
HARBURY TENNIS CLUB .....	18
HARBURY JUNIOR FOOTBALL CLUB .....	21
HARBURY CRICKET CLUB .....	23
HARBURY TODDLER GROUP .....	24
WINDMILLS NURSERY SCHOOL .....	25
HARBURY PRE-SCHOOL .....	27
HARBURY PRIMARY SCHOOL .....	32
GENERAL NEWS SECTION .....	35
SPOTLIGHT ON LOCAL BUSINESSES .....	42
SOUTHAM LIONS LADIES .....	46
TIME OUT AT UFTON .....	46
HORTICULTURAL SOCIETY .....	47
NATURE NOTES .....	48
LETTERS TO THE EDITORS .....	50



We congratulate Rosemary Harley on being awarded an MBE for services to the community in the Queen's New Year's Honours List. For over thirty years Rosemary has been helping others in the village and her award was in recognition of this.

Another local achievement will be the release of an album of folk music by Dan and Susie Bones on February 10<sup>th</sup>. Danansooz have been regular members of the Folk Club and we wish them every success.

We welcome Dal and Lakh Theara who have taken over at the Harbury Supermarket together with Guv Salh the new sub-postmaster. We wish them every success in this venture.

We wish our Rector, Father Roy, a favourable outcome with his treatment. Our thoughts are with him and his family at this time.

The Editors are aware of a number of break-ins into garages together with the theft of a horsebox from Binswood End. We would urge all residents to be vigilant and keep their property secured.

If you enjoy a game of whist, regular whist drives are held in Ladbroke Village Hall about once a fortnight.

Finally we extend our sympathies to the families of Maurice Newbold and Gordon Rees.

# Harbury Diary

## FEBRUARY

- |     |   |  |
|-----|---|--|
| Sat | 4 | Coffee Morning in Tom Hauley Room in aid of Toddler Group<br>10am – 12noon                             |
| Sun | 5 | <b>FOURTH BEFORE LENT</b><br>Sung Eucharist 9am<br>Evening Worship 6pm<br>Stage up in the Village Hall |

- Tues 7 Holy Communion 7.30pm  
Horticultural Society 8pm in Tom Hauley Room,  
RSPB: Action for Birds, John Clews
- Thurs 9 Holy Communion 9.45am  
WI 7.45pm in Tom Hauley Room  
Thursday Club 2.30pm in Village Hall
- Fri 10 PLAY 'Table Manners' in Village Hall 7.30 for 8pm
- Sat 11 Coffee Morning in Tom Hauley Room in aid of Myton Hospice  
Support Group 10am 12noon  
PLAY 'Table Manners' in Village Hall 7.30 for 8pm
- Sun 12 **THIRD BEFORE LENT**  
Holy Communion 8am  
Sung Eucharist 10.30am
- Tues 14 **ST VALENTINE'S DAY**  
Toddlers Service 2pm  
Holy Communion 7.30pm with Laying on of Hands  
Senior Citizens Benefit Committee 8pm in Village Hall
- Wed 15 Dave Perry Photography Session 9.30am - 1.30pm in the Tom  
Hauley Rooms.  
Tea in the Tom Hauley Room 3-4pm  
**ADVERTISEMENTS to 31 Binswood End Harbury, by 5.30pm**  
"Talk it Through" at 33 South Parade 8pm
- Thurs 16 Holy Communion 9.45am
- Fri 17 **RECYCLING & GREEN WASTE COLLECTION**
- Sat 18 Men's Prayer Breakfast 7.30am in Tom Hauley Room  
Coffee Morning in Tom Hauley Room in aid of Tom Hauley  
Room 10am- 12noon  
Oriental Carpet Sale in Village Hall
- Sun 19 **SECOND BEFORE LENT**  
Holy Communion 8am  
Family Communion 10.30am  
FAIRTRADE stall in Tom Hauley Room after Family Service  
Evensong 6pm
- Tues 21 Holy Communion 7.30pm  
Toddlers Service in church 2.00pm  
Mothers Union 8pm
- Wed 22 Drop in Tea for the Bereaved 2.30-4.30pm at 6 Farley Avenue
- Thurs 23 Holy Communion 9.45am  
Thursday Club 2.30pm in Village Hall  
Parish Council 7.30pm in Village Hall
- Fri 24 **ARTICLES to Harbury Pharmacy, High St, Harbury & Email**  
**Article deadline by 5.30pm**
- Sat 25 Coffee Morning in Tom Hauley Room in aid of P.C.C.  
10am -12noon  
Barn Dance organised by Harbury Pre-School 8pm-Midnight at  
Harbury Village Hall. (See Advert)



- Sun 26 **NEXT BEFORE LENT**  
 Holy Communion 8am  
 Sung Eucharist 10.30am
- Mon 27 Harbury Society 7.30 for 8pm Tom Hauley Room  
 Mr Howe's Laughter the Best Medicine
- Tues 28 **SHROVE TUESDAY (PANCAKE DAY)**  
 Holy Communion 7.30pm Julian Meeting 8pm
- Wed 29 "Talk it Through" at 33 South Parade 8pm

## **MARCH**

- Wed 1 **ST DAVID'S DAY**  
**ASH WEDNESDAY**  
 School Service 10.30am  
 Holy Communion with imposition of Ashes 2pm.  
 Mothers Union 2.30pm
- Thurs 2 Holy Communion 9.45am  
 Harbury Art Group 10am to 4pm in Tom Hauley Room  
 Vision 4 Southam Open Meeting in Modern Languages Room,  
 Southam College at 7.30pm  
 Church Mens' Group 7.45pm  
 Folk Club 8.30pm in Shakespeare Inn
- Fri 3 **RECYCLING & GREEN WASTE COLLECTION.**  
 Holy Communion 12 noon  
 Lent Lunch 12.30pm  
 Women's World Day of Prayer 2pm
- Sat 4 Coffee Morning in Tom Hauley Room in aid of Junior Football  
 10am – 12noon
- Sun 5 **LENT I**  
 Sung Eucharist 9am  
 Evening Worship 6pm

## **FORTHCOMING EVENTS**

### **MARCH**

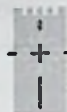
- Fri 10 Southam Twinning Association will be holding a **Quiz Night** at Stockton Football Club. For more information, call 813637

### **APRIL**

- Sat 29 Harbury Junior Football Club Presentation Evening

### **MAY**

- Sun 7 Harbury Junior Football Club - Kineton Tournament
- Sun 14 Harbury Junior Football Club - Harbury Tournament



**All Saints  
HARBURY**

## **From the Rector**

**Father Roy Brown**

The first day of next month – Ash Wednesday – starts Lent. We keep the season of Lent so that we might prepare for Holy Week, Good Friday and Easter, when we commemorate with thanksgiving the Death and Resurrection of Our Lord.

Christians need to examine their lives and conduct throughout the whole year, but especially during Lent, which leads up to the most holy period in the Christian calendar. We should all give time to considering how we will keep Lent.

What, then, might a Lent Rule consist of?

We might surely try to love God better – perhaps more frequent and more careful church worship, by reading the Bible, by giving more serious time to prayer, by doing something extra for our neighbour.

We should examine ourselves and see which sins beset us most – so that we can, with God's help, overcome them.

We should give up something we like, or attempt something we find difficult, to show Our Lord that we want to share in a very small way in his suffering.

A Lent Rule should be practical – something we can try to keep, rather than something too ambitious. It ought to be helpful to us, and not a burden that is unnecessarily negative. Above all, it should bring us closer to Our Lord, and to his way for us.

## **From the Registers**

### ***Funerals at Oakley Wood***

January 12      Maurice Newbold (87)

January 30      Gordon Rees (79)



## Thought for the Month

John Wesley

*Do all the good that you can  
By all the means that you can  
In all the ways that you can  
In all the places that you can  
To all the people that you can  
As long as ever you can.*

## From the Churchwardens

Tony and Fliss

As it will be February when you read this, Christmas will be a memory but there is an excuse to bring it back with this happy photograph of the Christingle presentation.



There is also due reason to thank first, Father Roy for uplifting services, many with a record attendance, and secondly, everyone who gave of their time and gifts to make the festival so special.

With the aid of a block of wood, several nails and some splendid contributions from the children, John demonstrated – with Ronnie's help, of course – that, whatever we have done wrong, Jesus' forgiveness gives us all the chance to start afresh every day. Not a bad message for the presentation in the first Family Service of the New Year!

As most of you will know Father Roy has recently been into hospital for tests. A tumour on the liver has been diagnosed and treatment will begin in the very near future. He wants no fuss, no "cotton wool", but we do ask you to hold him, Pam and the family in your thoughts and prayers.





## Mothers' Union

Gillian Hare

As usual, January saw us celebrating 2006 with parties. At the afternoon meeting members enjoyed a tea party, after attempting one of Anne's quizzes. This was won by Hazel, Ruth and Eunice. The evening party was enlivened by the company of husbands and friends sharing a delicious selection of food – and another two quizzes! Where does she find them?

By the time this goes to print we shall have had a coffee morning and our talk about Age Concern.

February 21<sup>st</sup> – at 8pm, Steven Thomas about the Salvation Army

March 1<sup>st</sup> – at 2.30pm Celebrating Ash Wednesday with a meditation on 'A Quartet of Candles'.

A reminder of the invitation to join the Church men's Group at 7.45 on Thursday 2<sup>nd</sup> March. This is to listen to various people who are involved in work with prisoners, either professionally as officers, as chaplains or as volunteers who bring a message that these people are not completely forgotten by the outside world. Please try to attend.

## Toddler Service

Barbara Thistlethwaite

Mrs Mary Catt came to visit and told us the story about the rich man who arranged a party for his rich friends.

We talked about what kind of houses we all lived in and what kind of house the rich man would live in. We decided that he would live in a big house so that he would be able to have lots of friends to his party.

Everything was prepared for the feast and he sent his servants to collect his friends and bring them to the party. Unfortunately all of his friends said that they were too busy doing other things and could not come to the party.

The rich man was very upset and sad that his friends could not come and he wondered what to do. He decided to invite all the poor people to come instead and sent his servants to collect them. The poor people were all very happy to come to such a wonderful party the likes of which they had never seen before.

This made the rich man very happy and he made lots of new friends.

We then sang two songs about Jesus being everyone's friend to the music played by Mr Charles Catt.

Our next meeting is in the children's corner of the Church on Tuesday 21<sup>st</sup> February at 2.00pm. Young children and babies, accompanied by an adult, are very welcome to come and join us.

## Ladbroke News

### FEBRUARY

Wed 8	Holy Communion 2pm Women's Fellowship 2.45pm
Sat 11	Whist Drive in Village Hall 7.45pm
Sun 12	<b>THIRD BEFORE LENT</b> Sung Communion 9am
Sat 18	Whist Drive in Village Hall 7.45pm
Sun 19	<b>SECOND BEFORE LENT</b> Sung Communion 9am
Thurs 23	WI meeting, Speaker Alan Griffin on Assassinations
Sun 29	<b>NEXT BEFORE LENT</b> Sung Communion 9am

### MARCH

Wed 1	<b>ASH WEDNESDAY</b> Lent Lunch 12 noon at Hall Farm Sung Communion and Imposition Ashes 7pm
Sat 4	Whist Drive in Village Hall 7.45pm
Sun 5	<b>LENT I</b> Family Communion 10.30am
Wed 8	Lent Lunch 12 noon Holy Communion 2pm Women's Fellowship 2.45pm
Thurs 9	PCC Meeting 7.30pm at Chapel Ascot
Fri 24	Millennium Green Quiz

### Ladbroke Flower Rota

February 5 <sup>th</sup>	Jenny Barrett
February 12 <sup>th</sup>	Jenny Barrett
February 19 <sup>th</sup>	Margaret Bosworth
February 26 <sup>th</sup>	Margaret Bosworth

**No flowers in Lent**



**Jane Rutherford**



## **Women's Fellowship**

**Betty Winkfield**

Our January meeting, apart from seeing a video of the work of "Save the Children", was a business affair. We talked about the Lent Lunches and what charities we would support. We decided the money would be divided between John Eld's Siloam Christian Mission and the Church.

The first Lent Lunch will be here at Hall Farm on Ash Wednesday 1<sup>st</sup> March at 12 o'clock mid day.

The next Women's Fellowship meeting is at The Old Rectory by kind permission of David and Jane Rutherford, our hostess is Hazel Sharples. The speaker is Gerry Bishop talking about her work as an Acupuncturist. The date is February 8<sup>th</sup> at 2.45pm after Holy Communion in Church at 2pm.

## **Ladbroke and Deppers Bridge W.I.**

**Sue Halsall**

I can't believe it is a month since Christmas which means I last wrote the article two months ago, doesn't time fly.

In December we had a busy time. 16 members had a wonderful Xmas meal at Moreton Hall. They looked after us so well that it was a perfect day and even the sun was shining! On the 8th December several members attended the Xmas Capers Production which was hilarious; well done to the script writers, photographer, singers and actors and everyone involved - it was superb and so professionally presented; not forgetting of course our very own Susan Moore, who obviously has a hidden talent for acting (if there are any scouts out there).

It was lovely to see 25 members at our January 26 meeting, especially good to see Jill Norgate returning to the fold after her long illness, but looking so well; she wasted no time in volunteering to do be a tea hostess at the next meeting, thank you Jill. Our speaker Claudia Larynn had us enthralled as she talked and demonstrated Holistic healing with crystals.

Sorry about the delay with the programmes due to printing problems but they will be available at the next meeting.

Winners of the raffle: Collette Batty

Next meeting 23 February Speaker Alan Griffin - on Assassinations.

Tea Hostess for this meeting Sue Rayner & Jill Norgate.

# Ladbroke Parish Council—January 2006

Betty Winkfield

Much of the meeting was about planning and other applications.

The Bell Inn (still very busy) has not yet applied for planning for alterations which was mentioned before Christmas.

Extensions to Toll Gate Cottage have been granted with conditions.

The removal of secondary branches to a sycamore tree at the Paddocks, School Lane, has had permission granted.

**New applications** – High House asked for permission to remove a fir tree, horse chestnut tree and a spruce tree.

Request to fell four broadleaf trees belonging to 'Dovecote', Ladbroke.

An appeal has been received from Church Cottage, regarding the planned extension.

Regarding the developments at Bishop Bowls, Harbury Estate, meetings are still taking place between all parties/villages concerned. The Parish Plan has in most cases been distributed.

**Millennium Green** – The Trust are hoping to buy new equipment. There are plans 'a-foot' for a Village Fete in June, a quiz night and a race night.

**Police** – no policeman at the meeting, but a report from the Neighbourhood Watch stated that we have had two crimes committed in the village recently. Four motorbikes and a van stolen from Poultry Farm, which were recovered. A set of tools was also stolen from a house in the village.

Our District and County Councillors were present and gave reports; mostly about regional changes to Police, Health and Education services. Our council tax rises will be spent mainly on education. The new Hospital in Coventry will be concentrating on special areas of treatment – what effect this will have on Warwick hospital we will wait and see.

**Southam Quarries** – have permission to quarry both sides of the Dunchurch/Rugby Road.

We are still waiting for our Harbury road to be closed for repairs, BUT at the same time as our road is closed so will the road in Deppers Bridge for work on the railway bridge. Be warned!! Work starts February through to March!

**Special Transport** – will become available for disabled people to call upon, for shopping, hospital, doctors etc. It will be equipped to take wheelchairs and cost £1 return.

## **Ladbroke Village Hall**

**Christine Baker**

A wonderful evening was had by all who attended the event at Ladbroke Village Hall on 30th December.

Dave Dean performed 'Rat Pack' songs and he was fantastic, as was the meal and bar provided by 'The Bell' catering team. The team who decorated the Hall ready for this event excelled themselves and should be pleased to know that many people commented on this. Well done them! We all look forward to more such events.

All agreed, 'A terrific end to 2005'.

## **Whist Drives**

**Betty Winkfield**

The whist drives in the Village Hall have been running now for two years. The money raised is going to the Village Hall Fund. We meet on average about once a fortnight, Saturday evenings; start 7.45pm. We have about six tables - sometimes more, it is quite a relaxed affair; please come and join us. The Hall is booked for February 11<sup>th</sup> and 18<sup>th</sup>, March 4<sup>th</sup> and 18<sup>th</sup>.

We would love to see you.

## **Harbury Parish Council**

**Linda Ridgley**

*Official minutes can be viewed in the Library or obtained from the Parish Clerk*

**ENCOURAGING NEWS** on the housing front:- Warwickshire Rural Housing Association reported good progress securing land for local needs housing. Although the scheme would take several years, a master plan would be drawn up with an initial phase of 17 dwellings. Thirteen would be a mix of rented and Shared Ownership properties and four would be for sale on the open market, but all would be restricted to local people. Anyone with housing needs should register with Stratford District Council which decide who occupy the homes when they are built.

**DEPRESSING NEWS:-** Pc Hill reported local villages being hit regularly by "teams" of travelling Northamptonshire criminals. Cars and garages are targeted, mainly for tools. Since 1st January Southam Area Beat recorded 222 incidents. On the bright side Southam Police were now up to strength with two new officers.



**GOOD NEWS:** Southam School's new Technical block will be finished in February. The school did well in the League Tables and is encouraged to become a Specialist Vocational College. The downside is a significant oversubscription for September. Harbury School and Windmills Nursery have been "Ofsteded".

**INTERESTING NEWS:** The Village Hall Management Chairman thought improving facilities for the disabled was not cost-effective, so the Parish Council recommended taking advantage of funding available for such upgrades. Councillors passed on a variety of complaints about the Hall concerning the toilets, changing rooms and the locked gate to the car park.

**JOYFUL NEWS:** Dutch van Spall mentioned Bollards again! Those in Deppers Bridge need repair and appear to have been run over with large "tractor" type tyres.

**WORRYING NEWS:** Follett Properties are seeking a Certificate of Lawful Use for the Quarries which would allow them to use the site for Distribution. They claimed the Quarries were used for storage and distribution of cement products until 30th June 1993. We need to establish when this ceased and how much of the site was used.

**PLANNING NEWS:** Stratford refused permission for an extension at West End Cottage, Mill Street and granted permission for conifers to be reduced in height at Aberley, Hall Lane and trees to be felled at Temple Cottage and Sheen Farm; extensions at Chain Cottage, Temple End, Roundhill, Binswood End and 4 Hall Lane; a Conservatory at 4 Pirie Close; replacement shop front and other changes to the Co-op. Tree Preservation Orders were placed on the two Yews in the front garden of Hauley House/West End Cottage in Mill Street.

The Parish Council made no representation on an extension at Old Toms Barn, Hall Lane; a rear extension at Hazebrook, The Pound and the pleaching of Limes in the Churchyard with the felling on one diseased tree.

They were sympathetic to barn conversions at Harbury Fields Farm but were concerned they would not satisfy the local defined housing need. They had no objection to the porch and conservatory in the retrospective application for 19 South Parade but did not like the white picket fencing and asked that the left hand fence be reduced to the 1.3m shown in the plans.

Stratford granted permission on the retrospective application for 35 South Parade but imposed all the conditions requested by the Parish

and the neighbouring property owner. However, Harbury Councillors were unhappy that permission was given. Cllr Ellis complained it was a shame the District had not taken a stronger line and Dutch van Spall wanted more done to co-ordinate Building Regulations and Planning.

District Councillor Patrick said Officers had to judge whether what was applied for retrospectively would have been granted permission if the plans had been lodged prior to the work being undertaken, and that in this instance the officers believed the application would have been passed, but your Councillors remained unconvinced.

**FINANCIAL NEWS:** The Council approved the precept for 2006-07 with an increase of 3% putting £1.19p on a Band D payer's parish rate. This is in large part to cover Stratford's withdrawal of rate relief on green and playground maintenance. The Parish Council is putting in money from reserves to keep the increase to 3%. Other items budgeted for in the coming year include a three-year cycle of tree maintenance, safety resurfacing of the Play area, the Concessionary Travel Vouchers for pensioners and grants to village groups.

The Councillors confirmed their grant of £100 to the WI for framing their hanging, £250 towards equipment for the newly set up Rainbows troupe and £270 for the Junior Football Club to cover the costs of white lining the Parish Council owned pitch!

**RECOGNITION NEWS:** Colin Mercer was voted "Volunteer of the Year" by the Warwickshire Lawn Tennis Association. A memorial to Cllr John Drinkwater has been commissioned and the Council is to choose a site for it in the Burial Grounds.

**INTRIGUING NEWS:** Cllr Tim Lockley was surprised to see a new street light installed on Binswood End Green one day, removed the next and then one positioned higher up Binswood End. There should be two new "Windsor" lights for the area so was one stolen? For £50 each the County would undertake a safety audit of the lamp-standards but as Harbury already pay them to inspect and maintain the lights this offer was declined.

Further the County says that before the Parish Council can reinstall a Bus Shelter outside the Supermarket it has to pay them for a Traffic Safety Audit at a cost of £500. Understandably your Council ignored this and will find a local craftsman to build the replacement.

The dropped curbs which had been requested have been installed except for those requested for Frances Road (where a wheelchair-user was hurt) and at the Farm St/Mill St junction, where the County considers it is too dangerous to encourage people to cross!

**SUSTAINABILITY NEWS:** Dutch van Spall wants our shops to stop using plastic bags and our Parish to recycle more and to consider the full environmental costs of Waste disposal. The Parish Council will be able to give its views in the Consultation on the Waste Strategy Framework. District Cllr Andrew Patrick reported green plastic sacks were available if residents could not manage the green Wheelie bins.

**NEWS:** The next Parish Council meeting is on Thursday 23rd February, 7.30pm in the Farley Room of the Village Hall and the next Councillors Surgery takes place outside the Post Office on Saturday 11th March from 11am.

## Harbury Parish Council Quarterly Report - January 2006

Tim Lockley

In the last three months the Parish Council has:

- Continued the upgrades to the streetlights in the village.
- Had discussions with WCC about reinstating a bus shelter outside the supermarket.
- Been represented at the first meeting of interested parties to agree the master plan for the Harbury Estate.
- Arranged for dropped kerbs to be installed at four locations in the village.
- Continued to have meetings with the Rural Housing Officers from SDC regarding affordable homes in the village.
- Made grants totalling more than £500 to the Women's Institute, the Junior Football Club and Harbury 1<sup>st</sup> Rainbows.
- Agreed a budget for 2006-7 that will raise the parish precept by 3%.



## Harbury Society

Linda Ridgley

Our Burns Night at the Shakespeare Inn on Burns Night was a very jolly affair, what I remember of it. The food was good and so was the company. There were quizzes, the first; I think won by Jenny Patrick with persistence; the second by John Hancock by intellectual prowess



and the third appropriately by Sheila Scott recalling the Folk Songs of her childhood.

Our next event is on Monday 27th February, the return of Mr Howe to give us "Laughter – the Best Medicine" 8pm in the Tom Hauley Room. On April 3rd Mr Harding will tell us more about the Fosse Way (same place and time).

You will see elsewhere that we desperately need information (and preferably written proof) of the date that Blue Circle stopped using the Works to distribute Cement. We know it was sometime after production stopped but do not believe it was as late as Follett's are claiming. Nicola Thompson, Parish Clerk on 614646 would be pleased to hear what you know about this as soon as possible.



## Harbury's Women's Institute

Jeanne Beaumont

We are well into the New Year and there are many activities and trips on offer.

"Meet Nell Gwyn" and "Life in the High Chair" by a tennis umpire are both at the Grange Hall, Southam in February and April. There is a "Willow Weaving Day" and a "Learn to play Bridge course" in March with trips to Caulke Abbey and Kew Gardens in April and May. These are all being organised by the Federation.

The Spring Council Meeting at the Spa Centre is on March 29<sup>th</sup>, the speaker is Pam Rhodes, the TV presenter, and the WI Annual General Meeting will be at Cardiff this year.

I must mention that the coffee morning in December was well attended and we thank Celia for her hospitality, also all helpers. Our target for the Parish Map Hanging has been reached but more of that at a future date.

"Oh, yes we did" enjoy the panto recently, joining in as big kids do. Thanks to Nora for organising the evening.

The New Year party was a great evening. Sixty members and guests enjoyed the excellent spread with entertainment provided by the mad few. Amazing what one can do behind a disguise! The potted pantomime is always a favourite with audience participation and the Chastity Belt by some "game" husbands----well! We thank everyone who helped and made the evening a success.



Mrs Louise Griew came to talk on "Colour and Style". How many of us say we have nothing to wear? Many of us buy wrongly ending up with a mismatch of clothes and colours. Louise says we buy too many unnecessary clothes, where a few of the right colour and style to co-ordinate would be quite adequate. Accessories are important as Louise took off her earrings, necklace, belt and jacket, making her appearance quite uninteresting. She impressed upon us that the most important article of clothing is the top.

Colour is most important. If one is praised in a particular colour then it is liked. If one is told they look well, it is the colour that has helped. Looking tired or not well, it can be an unflattering colour. Well, all is not lost ladies, as Louise and her colleagues are there to help. Established in 1985 the House of Colour, the leading British colour and image

consultancy has a team of 90 consultants throughout the UK and around the world. At the Colour Analysis class you will discover colours that will be in closest harmony with eye colour, skin and hair tones. At the Image day you will discover the clothing shapes that best suit your body's natural lines. There is a Make-up Class where one learns expert skin care. Many more services are offered, such as, Women's Tailoring, Wedding Service, Wardrobe Review, Shopping Trips and Fashion updates. Louise demonstrated colour on Liz and Lyn, giving food for thought.

February's speaker: Tour of Britain and Europe, Johnson's Coaches.

## **Folk Club**

**Peter Bones**

2006 got off to a good start for Harbury Folk Club with an excellent evening on Thursday 5<sup>th</sup> January.

The theme for the evening was "Battle and Booze" and with the atmosphere of Christmas still hanging in the air, I thought it would be appropriate to introduce an element of seasonal silliness. I therefore suggested that we dress in appropriate attire to represent something based on the theme. This provided quite a challenge and many rose to the occasion with splendid costumes. "Colonel" Peter and "Major" Margaret McDonald cut dashing figures in their full combat fatigues. However the most impressive costume was probably that of Celia Neil, dressed as Bloody Mary with her new found companion Sven, dressed as her headsman.

The music again was varied and performed to a high standard by no fewer than 12 different combinations of performers. In addition to songs on the theme for the evening, some were still clinging on to the subject of Christmas. This included the Trunch Wassail sung by Des, which is always one of my favourites. It was also good to welcome David Johnson from Whitnash, who had never played at a folk club before but came across very well.

The highlight of evening for me took place in the second half when Mal Waite, who is a well known singer/songwriter from Chester, thrilled us all with an extended spot of five or six songs. I have been a great fan of Mal since 1989 when I first heard her during a memorable folk festival in Shipston so I was delighted that she was able to visit us and take part.



The evening concluded with a mass band indulging in an informal music session. This created a fitting end to a great evening. Many thanks to all those who took part.

Thanks also to those who contributed to the raffle which raised £45.00 for Emmaus, which is an international charity set up by the Anglican Church with the aim of tackling the problem of homelessness.

The folk club meets on the first Thursday of every month in the Garden Room of the Shakespeare Inn, and starts at 8:30pm. Everyone is welcome, whether as audience or performer.

## **Harbury Twinning Association**

**Moira Lamont**

Fete des Rois held on January 6<sup>th</sup> hosted by Peter and Moira Rollason was a great success. Members old and new enjoyed an evening of fun and games accompanied by Gallettes and of course beaucoup de vin. Once again a big thank you to Peter and Moira.

Plans are now in the final stages for our visit to Samois at the end of April. Over 60 members are looking forward to a long weekend of French hospitality with old and new friends in Samois.

There will be a short meeting for everyone involved in the visit and we let you know the date and time next month.

Our next event is a Quiz Night to be held at the Village Club on March 5<sup>th</sup> at 7.30pm. Please let Moira Lamont (613527) or Sally Stringer (613214) know if you wish to enter a team as soon as possible.



## **Harbury Tennis Club**

**Colin and Sue Mercer**

The Club ended its 25<sup>th</sup> Anniversary year on a very high note when it came second in the Warwickshire LTA's Club of the Year Awards sponsored by Bank of Ireland. The results were announced at the AGM and I was delighted to accept a cheque for £300 from the WLTA President, former Wimbledon Champion Ann Jones. We intend to put the money towards further development of the junior section.

We welcomed 2006 on 2<sup>nd</sup> January with our traditional Muffler Tournament. With an extra day to get over the New Year's Eve

celebrations numbers were up, as were playing standards! 24 players took part with Lucy Dean and Graham Alder making a formidable combination of youth, experience and skill to win all their matches and take the first trophy (well, bottles of wine!) of 2006.

The installation of floodlights to the second court has enabled the Club to expand its programmes in all areas. Numbers have increased at Club sessions and for the first time we have offered year round coaching. For adults there have been sessions for beginners and "rusties" as well as more experienced team players. It has been very encouraging that a number of non-members have



come back to tennis and tried the "rusties" sessions and we hope to welcome them to Club sessions in the coming months.

At the end of the year, the Club's four teams were experiencing mixed fortunes in their respective winter leagues. In the Banbury league the "A" team are top of Division 2 but the "B" team are 5<sup>th</sup> (of 6!) in Division 4. In the floodlit league Harbury occupy third place but only 2 points behind the leaders. The men's doubles team are finding life somewhat difficult in Division 6 of the Stratford league but have been hampered by injuries and non-availability.

League action after the Christmas break has been limited due to bad weather and of the 2 matches started only one was completed, so a fixture backlog is building up. The "B" team have yet to win a game after losing at home to Tysoe "C" by 3 rubbers to 1. Ian Panton and Colin Mercer won their first set and had some good chances to win the second but didn't take them. Tysoe's ladies proved too strong for Caroline Morland and Sue Mercer and in the mixed doubles Caroline and Ian couldn't break down the opposition, losing both sets. Sue and Colin won their first set comfortably but Tysoe came back strongly to take the second set in a tiebreak.

In the first floodlit match of the season against Buckingham 2, Caroline Moreland and Angie Dean had an easy win and then had to wait for half an hour for Richard Harding and Colin Mercer to complete a very close men's doubles. Unfortunately they lost it, so it was all square going into the mixed doubles and with Caroline and Colin winning their first set and Angie and Richard losing theirs the whole match hinged on the final two sets. Harbury were marginally in front when Jack Frost intervened at 9.15 p.m. and the match had to be abandoned when the courts became dangerous. We think it will be classed as a draw but are still waiting confirmation from the league's fixtures secretary.

## **Juniors**

The Club's first full winter programme is proving to be very popular and, like the adults has benefited immensely with the additional floodlights. 50 plus youngsters took part in the pre-Christmas course and a similar number are on the 10-week course that started in January. Outdoor sessions are on Mondays, Fridays and Saturdays with other sessions in the village hall on Tuesdays. Feedback is that the coaching "team" of Tom Sandall and Linda Casement ably assisted by Sue Panton is doing a fine job.

The benefits of a year round programme combined with the partnership with Shipston Tennis Club are already in evidence with rapidly improving standards. In December the Club played in a Mini Orange (under 9 years) Tournament on the outdoor courts at Esporta (Coventry) with the "big guns" of Kenilworth, Warwick Boat Club and hosts Esporta. Harbury's team of Sam Tutt, Sam Casement, Joseph Gray and Thomas Conway acquitted themselves very well and won about half their matches.

Elle Scothern and Joshua Savage were invited to a Warwickshire LTA talent-spotting event at the Norman Green Centre in Birmingham. The event for 50 children, 6 to 8 years old was led by the County's head coach Graeme Adams who put them through a variety of drills. This is the first time anyone from Harbury has taken part in this type of event and I'm sure there will be soon be others!

Pride of place however goes to Becky Casement who is now part of the Shipston Futures Academy girls' squad that is part of Warwickshire's development programme. This is quite a commitment and involves two one and a half hour sessions at Shipston and Esporta. This is supplemented by a 30-minute individual session with Tom Sandall plus any more practices she can get with mum and dad!



Finally, another new development with Shipston is to take tennis into schools during January and February. Road shows have been arranged for primary schools in Long Itchington, Saint James' Church of England School Southam and Stockton. In the summer term Linda Casement is planning to run a course in Harbury School, which will be funded by our Club of the Year award.

# Harbury Juniors

FOOTBALL CLUB

## Match Reports

### U11's

Priors Marston 7-1 Harbury

Our first game back after Christmas against Priors Marston was tough going for the team, Priors proved to be more physical in all areas of the pitch and we struggled to match their effort and commitment until the 2nd period of the game. The team tried hard to raise their game but eventually went down 7-1. Good play from Luke, Nathan & Sam kept the score respectable, Ash scored our only goal.

Harbury 10 - 3 Fenny Compton

The team really responded from last weeks defeat to put on an inspired performance against Fenny, going ahead after only 15 seconds. The team continued to show great team work and consistent effort all through the match. A spirited come back by Fenny kept Harbury on their toes right to the end. Sam & Matty kept Harbury safe at the back and with our super sub goalkeeper Dan doing his best between the sticks allowed our forward players to take their chances. Goals were scored by Ash (5) Nathan (3) & Taylor (2).

Well done boys keep it up for the next game!!

**Andy Dickson & Graham Bell**

### U10's

Harbury 11 - 2 Kineton

Harbury proved too strong for Kineton. Once again Adam Miles was outstanding and scored 8 goals, most of which were set up by the 'inform' Angus Murray. Also on the score sheet were James Barker-Wall, Harry Morrice and George Hendry. A memorable match for two reasons: goals scored were of the highest standard and also it was keeper Matty's last match. We wish him and his family well as they

move to France and thank Matty for his fantastic contribution to this team over the last three seasons.

## **U9's**

**Harbury Eagles 0 - 4 Fenny Compton**

Harbury put in a lot of effort but Fenny were a physically stronger side. Aidan McAuley in goal had a great match with some super saves. Austin Dickson worked hard to get Harbury back into the match but Fenny had the edge. The Eagles look forward to their next game - a re-match with Harbury Hawks.

**Neil Murray**

**Harbury Hawks 0 - 0 Hornton.**

Once again a spirited performance by the Hawks was watched by appreciative parents from both teams. The game was hard fought with both teams having chances, but failing to get them past goal keepers that were on form. At times there was real 'end-to-end' action with plenty of 'oohs' and 'aahs' from the supporters. All players in the squad are continuing to develop and the draw was a good result against a team that we lost to earlier on in the season.'

**Tony Chamberlain**

## **U7/8 Group**

The group has been focussing on passing, dribbling and awareness when they have the ball.

It's important that they grasp these basic skills as early as possible as they form the basis of more advanced techniques and skills, especially in playing matches

The group has shown steady progression over the last few months, and their enthusiasm is fantastic.

As always there are a number of players who are stronger than others and it is important for us to ensure that they all develop at a speed that is right for the individual. This is something I focus on every week.

I have to mention the members of the U16 team that have helped me so far, Matt Edwards, Ben Janes and Jake Lee. It not only helps my group see that the older teams are interested and that they can continue to play for a number of years for the club; it also helps the older lads develop their own skills by thinking about how to demonstrate and explain basic skills.

Also having this many assistants gives me the opportunity to split the children into smaller groups for the skills training, which ensures they get a more focussed session, and we have more time to spend on individual development.

### **Diary Dates for HJFC:**

Fund-raising coffee morning in the Tom Hauley rooms on 4th March, 10am-12noon.

HJFC Presentation Evening Saturday 29th April

Kinton Tournament Sunday 7th May

Harbury Tournament Sunday 14th May

**David Hoey**

## **Harbury Cricket Club**

**Ian Holroyd**

The Cricket Club held a very successful evening at its Annual Dinner in the Village Hall in the middle of January. Over 70 players, Vice Presidents and supporters of the club enjoyed a highly sociable evening and many thanks to John and Christine Wilkinson for organising this years Dinner.

The club had the most successful season for a long time and the aim of promoting the club and the game of cricket to the youth of the village is starting to pay off—credit to Ed Russell and this year's captain, Paul Bennett for bringing on some very good young players.

The results were:

PLAYED 19

WON 14

LOST 5

Some excellent cricket was played by the team and some of the wins were against strong opposition who the club have struggled against in years gone by.

Awards handed out at the Dinner were:

Captains Award - a new cricket bat donated by Paul Bennett for the highest batting average by an Under 21, was won by Stuart Muggleston.

**Player of the Year** was Greg Neale

**Young Player of the Year** was Jamie Newport

**Duck of the Year** (a very coveted award!) - Richard Holmes.



Richard did make many excellent team contributions despite this award!!

Special Awards were made to **Richard Carr** for, as ever, his excellent preparation of the ground and to **Sheila Carr** for her great work in keeping the team fed at every home game.

The season starts at the end of April and the club will again be making its annual appeal for villagers, young and old, to think about contacting Ed Russell (Tel 612684) and offering to play during the 2006 season.



## Harbury Toddler Group

Emma Legg

Toddler group has been thriving since our return back after Christmas. It is great to see so many of you braving the cold weather and joining us for play, juice, coffee and if you're lucky, a rousing sing-song.

The children have been enjoying the different craft events during the sessions, taking home paper plates pasted with different photos of food (very inventive) and dealing with some of the gloopiest play-dough they are every likely to come across in their busy lives.

The effort the weekly volunteers put in to organising creative play for the children is really spectacular and appreciated by both the children and parents.

On behalf of everyone at Toddlers we would like to thank **GASS** for their kind and generous donation to the group last year. We were able to purchase two new baby gyms, a driving game and a totally captivating activity centre toy for the children. We are having a bit of a run of new babies lately so the extra equipment is really appreciated.

We are looking forward to our annual coffee morning which is being held at the **Tom Hauley room on Saturday 4<sup>th</sup> Feb between 10am-12pm**. This year's theme is Cakes and Cuddlies. As you might guess from the title we are hoping to re-house cute homeless teddy bears for a small donation and to sell cakes and biscuits. We will also be selling raffle tickets with some superb prizes on offer; contributors including Warwick Castle, Tesco, Twycross Zoo, Ragdoll, Newbold Comyn Leisure and Mega Bowl in addition to the generous donations received from residents of the village.

All proceeds from the coffee morning will help to subsidise this year's Toddler Group outing where we hope to organise a trip to Twycross Zoo.

Finally, I need to apologise to our Christmas Hamper winner who I named as Stephanie but was actually Saffie. Sorry about that. But thank you again to every one who attended the party and bought tickets for the hamper, we raised £92 on the day!



**Windmills**

Nursery School

**Nursery School Staff and Committee**

The Christmas decorations have been replaced with a beautiful winter collage that the children created together following our talk to them about the colours and different aspects of winter including looking after the birds. Mrs Varriale took small groups outside to our woodland area to explore and discuss the sights and sounds of winter.

"The trees fall off the leaves in winter but not evergreen trees they don't lose their leaves" (Alex)

"I heard a pigeon – look there it is" (Adam)

"Look after the birds – give them bread" (Olivia)



As well as discussing winter our theme this half term is fairytales. We began with the story of the Elves and the Shoemaker and Cinderella. We invited the children to bring in lots of different types of shoes and then we created our own role-play shoe shop. Mrs Cook's diving flippers were particularly popular.

There was also an abundance of children waiting to try on the sparkly glass slippers that Cinderella wore to the ball. Amy brought in her old baby shoes for one of our younger members of the nursery who has especially small feet and Joe



brought in his sisters glittery blue party shoes. At circle time the children played a game pairing up all of the different shoes by matching the shapes, patterns, and noticing similarities; one of the stepping-stones for mathematical development in the foundations stage curriculum. They then drew around their own shoes and compared sizes and the variety of patterns of the soles.

We braved the January weather when we made our monthly visit to the church toddler service. Thank you to the ladies at the toddler service for thinking about us and rearranging the date of the February service to Tuesday 21<sup>st</sup> February because of our half term holiday.

The children's knowledge and understanding was demonstrated when they made gingerbread men with Mrs Kennedy. They commented and noticed the changes to the ingredients particularly when they added some water.

"It's made it go brown and sticky" (Lauren)

"It's turned into dough" (Amy)

The children enjoyed acting out and retelling the story of the gingerbread man outside chasing around on the playground, taking turns to be the gingerbread man and the sly old fox, shouting out "run, run as fast as you can, you can't catch me I'm the gingerbread man."



Three members of our staff visited Stockton Pre-school for a PLA 'fun with food' workshop. They returned with lots of healthy cooking tips and ideas to try with the children.

A big thank you to both Lilly Head and Debbie Gee who have generously donated toys this term, all of which have been much appreciated by the children and staff.

### **Dates for your Diary**

**Friday 10<sup>th</sup> February, 2006** - During the morning session we will be holding a Chinese New Year fancy dress party, to celebrate the year of the dog. We will be making Chinese decorations and cooking and tasting Chinese food. If you would like to book child in for this session please contact Tina or Marie on 07906 519148

**March 25<sup>th</sup> 2006 – James Bond Themed Casino Night.** This is to be held in the Village Hall from 8.00 pm until 12.00 noon. There will be the usual casino tables, a quiz, raffle and the chance to win some fabulous Aston Martin prizes. Tickets are £12.50 each to include a catered buffet. We hope you can join us.

Windmills Nursery School is situated in the grounds of Harbury Primary School. If you would like to register a place for your child or require any information on Windmills Nursery you can email us at [info@windmills-nursery.co.uk](mailto:info@windmills-nursery.co.uk) , call Nicola on 614564 or Tina and Marie on 07906 519148.



**Harbury Pre-School**

**Harbury Pre-School Staff and Committee**

**Welcome Back** - The children returned to Pre-School in the New Year full of stories of Christmas and ready for the new term. We are delighted to welcome Sebastian, Poppy and Carmen as they take the next big step in their young lives in starting their Pre-School careers. All three have settled in very well and join in happily with all the activities.

**Winter Wonderland** – In keeping with the chilly January weather, the book area of Pre-School was transformed into a fantastic Winter Wonderland with a canopy, twinkling fairy lights and hanging icicles. As always, the children helped with the decorating and a wonderful

piece of artwork was created, using teabags dipped in runny paint and dropped from a standing position onto a canvas. The result was amazing as the children discovered the lovely patterns that could be produced by this unusual method of painting.

**Ice and Snow** – To expand on the cold theme, the water tray was filled with blocks of ice in assorted shapes and sizes, some containing interesting objects that became apparent as the ice melted. Later, in the absence of real snow outside, fake snow was substituted for the ice and the children had great fun experimenting with it and retelling winter stories using small toy animals as props.

**Rain** – The inevitable wet weather gave us the opportunity to put on our wellies and look at the effects of rain (as well as children) splashing into puddles. Matthew's enthusiastic: *"I splashed in the puddle and there were little driplets on my wellies"*, Jack's: *"It got splashy and I got wet"* and Anna's: *"I was splishing and splashing in the puddle outside"* described their experiences to perfection. Afterwards, as seen in this photo, all the children created wonderful 'puddle pictures' using cold colours and materials such as bubble wrap, cellophane and fabrics.



**Clothes Shop** - During January, the role play area became a clothes shop with a variety of items, from bikinis to sweaters, coats, hats and gloves. A till, money, purses and bags for shopping completed the scene and the children enjoyed sorting the goods, trying them on, making purchases and acting as shop keeper.



"Do you have a refunds policy?"

**Huge Thanks** - ....once again to Jonathan Jennings and John Kirk who have done sterling work in painting and freshening up the toilet area and resource room. Also to David Thompson who kindly leapt into action to replace the handle on the main gate after it had been inexplicably unscrewed and thrown aside overnight, by persons unknown.

**Staff Training** - The staff have continued to enhance their knowledge and skills during January, with Kate attending a course on 'Attention and Listening: Ideas and Activities for Early Years Practitioners' and Lisa undertaking a two-day course, 'Catch them being

Good; a positive approach to managing behaviour' for practitioners working in the foundation stage and also an 'Effective Partnership with Parents' course.

Our biggest fundraiser of the year is coming up, a Barn Dance on Saturday 25<sup>th</sup> February in Harbury Village Hall. The evening (8pm-Midnight) is just £12.50 per person, which includes a light supper. The dancing is led by 'Reel to Reel' an excellent Harbury group. Last year's event was a sell out and great fun. Tickets are now on sale from Kate on 614633 or Corinne on 07946 615481. Please join us for what looks set to be a great night.

We are also pleased to let you know that Dave Perry has agreed to do a photographic session once again between 9.30am – 1.30pm on Wednesday 15th February, during half term. The session will be held in the Tom Hauley Rooms. Dave Perry is well-regarded for taking excellent natural black and white photographs, particularly of young children, but families are also welcome. There is no obligation to buy but Harbury Pre-School will receive 15% commission on all purchases.

If anyone would like further information about Harbury Pre-School, please contact Nicky Kirk, Chair of the Pre-School Committee, on Harbury 614316.





**Susie Tawney presents the prizes to the overall winners  
Harbury Cross Country Girls Team**



**Woodloes Girls can't wait to start**

# FESTIVAL OF RUNNING

31



The boy's are away!



Harbury School—Girls Cross Country Team



This is a piece of creative writing written in class by Alice Woodhouse age 10. She had been asked to translate Lewis Carroll's "Jabberwocky", which you probably know starts "Twas brillig and the slithy toves did gyre and gimble in the wabe." We thought her use of English was superb, and we would like to share it with you.

## The Jabberwocky

*It was a brittle wind, and the forest floor was damp, the recent rainfall having turned it swamp-like. The trees swayed and creaked in the wind as the gloomy cloudy sky warned slimy little creatures into the twisted undergrowth. Animals called to each other of the incoming storm; the air was thick and stuffy, fungi were releasing spores into the wind.*

*An old man walked through the wood giving warnings to a lad, his son just out of boyhood, "I give you a warning my son (sniff) if you must go and slay the Jabberwocky take care, oh take care".*

*Fluorescent red eyes glared at them as the old man began again having controlled himself and stopped wailing, "also, beware the Jubjub bird and the terribly rude Bandersnatch, goodbye my son, goodbye".*

*The young man, taking his deadly looking sword, ran off into the blackness. He stopped underneath a slimy, rotten, mossy Tumble Tree covered in poisonous looking fungi crawling up its trunk - so deadly that not even the toughest birds (except the Jubjub Bird) would nest in the branches. Thinking, the man settles down and looks at the raindrops falling down his silver sword, wondering where this famous Jabberwocky could be?*



As he thought, a rustling in the wood aroused his attention, he turned .....and there, with eyes like burning fire and as cold as ice, stood the Jabberwocky, burbling with breath so foul it knocked the lad clean off his feet. It smelt of hate and cruelty, of pain and mothers screams and oh, oh no would even this monstrous creature have had the heart to have eaten a helpless baby, nappy and all?

The sword glinted as he brought it up to a crystal arch, shimmering above his head. Drops of rain flew off it as the weapon flew through the air, so amazingly quickly that as it flew it seemed to pick up heat, the drops of moisture evaporated. One two, one two, the sword dealt the beast a deadly blow, the Jabberwocky's body tottered for a moment, then, collapsed. Poisonous fumes of sickly green and overripe lemons poured out of its neck.

Tying a handkerchief around his mouth the lad picked up the Jabberwocky's severed head and put it into his sack. A rich gold, setting sun peaked through the clouds and shone his way home.

It was late evening by the time the boy reached home, his father's eyes were once again filled with tears but this time he wept with joy. "My son, oh my son" he choked "you have slain the Jabberwocky YOU my Beamish boy, MY son". Then he recovered and laughingly shouted "Oh callooh callay, oh frabjous day" and other such sayings as he held his son close.

**Written by Alice Woodhouse**

**Harbury School's "Festival of Running"** – On Saturday 21<sup>st</sup> January, the school organised a "Festival of Cross Country Running" at the Village Hall playing fields. There were four events:

- The Central Warwickshire Primary Schools' Cross Country Relay Championships (a girls' race followed by the boys)
- A children's Fun Run
- An adults fun run relay

The morning was a great success, with pride of place going to the school's girls' relay team, who won their race to be crowned Central Warwickshire Champions – a magnificent achievement for what is one of the smaller schools in Central Warwickshire. Team captain Katie Hawley's report gives more details of the relay championships, although the main results are given here:

### **Girls' Race**

- 1<sup>st</sup> Harbury
- 2<sup>nd</sup> Park Hill, Kenilworth
- 3<sup>rd</sup> Woodloes, Warwick
- (17<sup>th</sup> Harbury B team)

### **Boys' Race**

- 1<sup>st</sup> All Saints, Leek Wootton
- 2<sup>nd</sup> St Margarets, Leamington
- 3<sup>rd</sup> Park Hill, Kenilworth
- (7<sup>th</sup> Harbury A)
- (14<sup>th</sup> Harbury B)

The children's fun run, of one lap of the playing fields, was well supported, with around 30 children taking part. All the children kept going for the whole lap, including some from the Reception class who showed that they are potential stars of the future.

The adult's relay was hotly contested by eight teams, with the standard all the way through the field being especially very high.

Finally, many thanks to the numerous parents who helped out on Saturday – their reward lies in the fact that a great morning's running was had by all.

### **Cross Country by Captain, Katy Hawley**

On Saturday the 21<sup>st</sup> January we held the Warwickshire Cross Country relays at Harbury Village Hall playing fields.

The Girl's A Team which was Katy Hawley, Sammy Collier, Taisia Shuttleworth and Eleanor Clarke did really well and came an AMAZING 1<sup>ST</sup>!

The B Team which was Zoe Grey, Polly Howell, Ellie White and Savannah Williamson came 17<sup>th</sup>. The boy's A Team came 7<sup>th</sup> and the boy's B Team came 14<sup>th</sup>.

We all ran really well and the girl's A Team received gold medals!

**WE ARE THE CHAMPIONS!!!**

Rosemary was awarded an MBE in the New Year's Honours list. She was initially reluctant to accept. With typical modesty, she insisted that the honour was deserved by many in Harbury and Ladbroke and she was finally persuaded to receive it 'on behalf of the village'. Many people will know Rosemary through her active involvement in so many village organizations. No event is complete without her – and until recently, her disabled Mum – who Rosemary pushed everywhere in her wheelchair, setting her up at dances and on tennis courts with a cigarette and a G&T.

But what few of us know is the extent to which Rosemary has been involved in caring for others, formally and informally – largely because Rosemary seldom talks about it. In her view 'everybody does it', and she is nothing special. Judge for yourself.

Rosemary came to Harbury in 1977 after her first husband left her with their three small children. Family commitments did not stop her getting actively involved in the PTA, the scouts and guides committee and junior tennis. She drove a tail-lift minibus for Southam Link for the disabled, and worked with Rugby sport for the disabled and the Gateway Club for people with learning difficulties. From 1980-90, she taught at Bishops Itchington School. In 1988 she met and married Andrew Harley, but tragically he died of a heart attack before they could celebrate a year together. Typically, she rejoices in their precious months of happiness. Rosemary studied at Birmingham University, gaining a B Phil degree as a teacher of the deaf, and then went on to support children with hearing difficulties at Whitley Abbey School. Meantime, she helped set up swimming for the disabled at Southam Leisure Centre.

When this job ended, she worked as a care assistant at the Rehab Hospital, and then became a full-time carer for her mother. When her mother died, Rosemary began to care voluntarily for older ladies living alone in the village, together with Sheila Scott and Margaret McDonald, visiting them in their homes, taking them out, and giving much-appreciated respite to other carers. More formally, she helps with Meals on Wheels, the WRVS Emergencies team and First responders. She runs a successful bed and breakfast and is a loving, hands-on grandmother. Somehow she finds time to play tennis, golf and badminton, dance with the Morris side and to be involved with every organization from the church to the twinning association.



30

When the honours list was published, a year or two ago, I was having my characteristic whinge about the time-servers and self-publicists who swell its ranks. 'It's people like Rosemary who ought to be honoured' I said. My bluff was called and without her knowledge, I applied on behalf of Rosemary with the support of just a sample of the many who owe her such a lot. I still think the system is flawed; but just once in a while, it appears that it works.

## **Warwickshire LTA 'Volunteer of the Year'**

**Keith Thompson**

Harbury Tennis Club is delighted to congratulate our Chairman Colin Mercer on his very well deserved 'Volunteer of the Year' award. Colin was presented with the award at the Warwickshire Lawn Tennis Association's presentation evening held at the Botanical Gardens, Birmingham on Friday January 20th. Some of Colin's many recent achievements include:-

- Achieving planning permission for floodlights to our second court
- Securing grants totalling £8,500 towards the costs of the floodlighting project
- Managing the installation of the lighting
- Negotiating with Harbury Parish Council and Warwickshire County Council for permission to install a water supply to our new clubhouse, obtaining a grant towards the cost and managing the installation work
- Working with Shipston on Stour Tennis Club to facilitate a coaching partnership with Shipston Academy, creating a high quality year round junior programme. This has recently been rewarded by the Lawn Tennis Association (LTA) with Mini Tennis accreditation as a satellite club to Shipston
- Obtaining several grants to facilitate Junior coaching
- Managing 3 teams in the South Warwickshire Junior Boys Doubles League
- Providing monthly articles for the Parish Magazine and supporting the Tennis Club website.

Colin is currently Joint Chair of the WLTA Area 2 Club Forum and is always ready and willing to give help and advice to Clubs on planning issues, leases and potential sources of funding.

Well done Colin and congratulations from all at Harbury Tennis Club.

## Lock them up and throw away the key?

**Jill Winter**

The U.K. has one of the highest prison populations in Western Europe. What goes on inside? Would you like to know more? The Church Men's group has kindly agreed to host an open evening on Thursday March 2<sup>nd</sup> at 7.45pm, in the Tom Hauley room, when people who are involved with prison life will come to talk about their work. They include chaplains, a prison officer and an experienced volunteer worker. There will be time for questions and discussion. This meeting is open to everyone, you will be most welcome. For more information please contact Jill Winter 612585 or Joan Smith 613680.

## Are you stuck for Transport?

**Nicola Thompson**

Stratford District Council is currently developing a transport project to be called "Community Links" in partnership with Warwickshire County Council. The scheme will start in Spring 2006 and will aim to help people who are stuck for transport to get to local destinations on set weekdays between 9am and 3pm. The scheme is aimed at those who:

- Previously qualified for transport tokens (SDC)
- Do not have access to a car.
- Cannot access public transport because of mobility problems
- Live in a rural isolated location with no other form of transport available

There will be a small charge for the service based on miles travelled.

The District Council has asked for help in compiling a register of any people who fit one or more of the above criteria. The process of registering involves filling out a very simple form with your name, address and most common destinations that you wish to travel to.

If you feel that you or someone you know would benefit from this scheme, please contact The Parish Clerk, Nicola Thompson on 614646 for an application form.

## Drop-In Tea

Jill Winter

The February meeting of the Drop-in Tea will be held, just for this month, at the home of Gladys Hutchins, 6 Farley Avenue. It will be on Wednesday 22nd February anytime between 2.30pm and 4.30 pm.

## The Depot

Mandy Chapman (Team Leader)

For advice and information for young people aged 13 – 25 years.



They called into Harbury Youth Drop-in at the Village Hall, parked the van, fitted with equipment and were on duty to give advice.

Issues covered included smoking, bullying, sexual and substance misuse, also health and well-being. Regular outreach and drop-in sessions are held on the barge moored at the water-side in Stratford-upon-Avon.

The "Depot" covers the whole Stratford District area. To request a visit for your area call 01789 260114.

## Recycling and Waste Management

Chris Finch

The most recent edition of Stratford-on-Avon District Council's, 'Your review' included an article on the trial Wash n' Squash scheme for plastic bottles. One of the trial sites is situated on the Wood Street car park in Southam, but when I last visited it there didn't appear to be much usage of the facility, unlike the nearby recycling bins for glass and paper. On peering into the deep recesses of the two bins, I wondered whether other people had experienced difficulty in



squashing milk bottle containers or deciding whether a particular plastic container was HDPE or PET. Having contacted SDC on 01789 260616, I was provided with all the answers I needed!

- In order to squash plastic bottles, pour in very hot water and they will crumple before your eyes.
- **PET** stands for Polyethylene Terephthalate and includes all fizzy drink and mineral water bottles, which should also have a triangle with a number 1 on the container (usually on the base). Once these are recycled they are made into non woven fibres for polyester materials
- **HDEP** stands for High Density Polyethylene and includes all the fabric conditioner and milk containers, which may have a triangle with the number 2 shown. This material can be recycled to make plastic pipes.

Currently the plastic bottles from 7 trial sites throughout the District are collected by Delleve Plastics at Goldicote, near Ettington where they are processed. As plastic accounts for a considerable bulk of the waste thrown out of each household, it would be helpful if as many bottles as possible could be recycled. The Council has a priority to increase the amount of material recycled and plastic is a new addition to the list.

For those who consider environmental issues and recycling important, it is also worth noting that:

- a new clothing and shoes recycling bin has been placed in the alcove adjacent to the Old New Inn in recent months
- SDC will always pick up any items which have been 'fly-tipped' in the area, providing that they are given a clear description of the nature of the material and the location where it can be collected from – i.e. name of road / directions.

## **Christmas and New Year Street Lights**

**Mike McBride**

On behalf of the volunteers who erect the festive lights I would like to pass on our thanks to those householders and businesses who allow us to use their walls, gutters, roofs and of course their electricity, to ensure the yearly display takes place. The businesses this year included Kath Ellis, The Gamecock, The Shakespeare and the Dog Inn. Thank you.

If you have any positive suggestions for consideration about the festive lights, please contact Mike McBride on 612421.

## **Harbury Carnival - June 10th 2006**

**John Broomfield**

Just a short piece this month to deal with the basics.

Please make a note of the date. As usual, it is the second Saturday in June. The wheelbarrow race will be held on the previous Sunday, June 4<sup>th</sup> (plenty of time to get into shape) and the usual team events will be held during the week commencing June 5<sup>th</sup>. This year's selection process for the King and Queen will as usual be organised by Harbury School.

We are looking for someone to run the teas in the Village Hall and any organisations interested should please contact me – first come, first served! This is a good money making opportunity.

If you want to book a stall or space on the field for Carnival Day, please call Mike McBride on 612421. It is not too early to do this; it does not have to be left until the last minute!

More news next month but, in the meantime, please remember, the Carnival is not only a lot of fun for everyone but brings lasting benefits to the village. So, with that in mind, I encourage you all to think about how you can contribute to its continued success. Feel free to contact me, John Broomfield, on 614258, if there is anything you would like to know.

## **Harbury Senior Citizens Committee Update**

**Mike McBride**

A belated thank you to all of those who helped at the Christmas Party. All of your efforts have been recognised in the tremendous feedback we have had about how enjoyable the night was. We would like to give special thanks to the Folk Club who entertained the party goers and A&M Cars who provided the transport.

Now, to the events planned for this year. The summer outing will be to Minehead in Somerset on Wednesday 14<sup>th</sup> June. Other dates to be added to your diaries are the Summer Lunch on Saturday 5<sup>th</sup> August and the 2006 Christmas Party on Saturday 9<sup>th</sup> December. Further details will be provided nearer the dates.

## **Licensing Act 2003**

**Eric Dally, SDC Cllr Harbury Ward**

On November 4<sup>th</sup> 2005, this Act came into being and thereby replaced every Licensing Act on the Statute books to date. Now that it has operated for a few months and matters have settled into the new regime, as a licensing panel member of the Stratford District Council, it is time that I made a comment for your benefit....

All residents are perceived as being part of what is known as "a Responsible Authority" under the terms of the ACT. Therefore, if anyone has reason to feel aggrieved by the actions in a pub/club in the village which you believe to have contradicted their licensing conditions, in other words, if you are being disturbed, I would urge you to make a note of times and dates, and send this detail in a request to the Licensing Team at Stratford District Council, for an investigation or review of the License of the establishment. Send a copy also to the police at Stratford Police Station. You all need to understand, that as Ward members, neither I nor Andrew Patrick may ask for action. I, with my training and experience in issuing these licences, may, however, give you advice. Hence this message.

## **N.S.P.C.C. Italian Evening**

**N.S.P.C.C. Committee**

Come and join us for a delicious Italian meal on February 25<sup>th</sup> in the Tom Hauley Room. Tickets are £15 per person to include a three course meal and coffee. Bring your own alcohol. Tickets are limited so call 612179 as soon as possible.

## **Complementary Therapies Interest Group**

**Rosemary Harley**

Meetings take place in the day room at Myton Hospice, Warwick on the third Wednesday of each month at 7.30pm and all are welcome. Yearly membership £10 (evening meetings free) or non-members £2 a meeting.

If you would like more information the following people from Harbury are members: Brenda Thomas, Pam Brown, Elaine Nomura and Rosemary Harley.



## Spotlight on Local Businesses

Chris Finch

At a time when the debate about services in rural communities continues to make the news, the Harbury & Ladbroke News is focusing on the businesses currently in Harbury and hoping to raise awareness of the range of facilities available in the village. This month features the Co-op, Harbury Foodmart and Parkinson Jones, Estate Agents, whilst next month will cover the Chemist and Country Fayre.

Last month after almost 5 years in the village, Malcolm, 'Bobby' and son, Rocky finally closed the doors on their family run business at the Harbury Foodmart and Post Office. During that time Malcolm and Rocky have manned the Post Office, which Malcolm admits took a 'lot of understanding'. Whilst Malcolm was also involved in all the 'wholesale runs' to pick up the stock for the shelves, 'Bobby' was the main face at the till for the majority of the week taking a break only from late afternoon when Malcolm returned after completing his stock ordering or from purchasing 'the goods'.



The entire family has enjoyed the experience of working in the village and thank all their customers for their regular support. The Foodmart has been very much a family enterprise and 'Bobby' has created a delightful atmosphere as a result of her cheerful chats with each customer, so that for some villagers, the shop almost became a 'home from home'. Unfortunately, the long hours, particularly in the winter months, have proved very demanding and the family reluctantly decided to pass on the business to an acquaintance who has been looking to take on a P.O. and shop in this area.

43

Whilst the P.O. sorters commence their tasks shortly after 6.00am, Bobby and Malcolm have arrived half an hour later to receive and then sort the daily papers. The shop has then been open continuously until late in the evening, so that a 12+ hour day has not been unusual. The family enlisted the help of villager, Richard Bloxham who helped with the papers on Sunday, but otherwise they managed all the operation themselves. They have certainly managed to carve out a well recognised niche for themselves in the village for their friendliness and good service and all the users of the shop wished them well for any future enterprise they may undertake. At present, their immediate plans are to take a 6-week holiday with all the family – Jas, Ravita and Rocky, in the Punjab - in an area close to the Golden Temple of Amritsaar.

Guv Salh has already taken over the role of Sub-Postmaster whilst Dal and Lakh Theara are continuing to operate all aspects of the shop business, as before including the magazines and papers, cards and stationery as well as the Lottery. We wish them well.

## Harbury Co-op

Previous references in the magazine, show that the Harbury Co-op has been in existence for over 100 years, first as an independent Co-op then as part of the Rugby Co-op, but more recently as a branch of the Heart of England Co-operative Society. The building was completely remodelled last October with a new frontage, which included moving the door away from Windmill Lane and installing modern wide pane glass panels. Inside the changes have been no less dramatic, with stripped wooden flooring and all new refrigeration units throughout the store, which has been completely re-aligned, so that the aisles now allow easy passage and access to the shelves.

It may not be instantly obvious that the Co-op has also made considerable provision for access by the disabled, partially sighted and those with impaired hearing. There is now, however, a fully fitted disabled toilet at the rear of the store, whilst anyone with sight difficulties can ask for a specially prepared pack of information located near the exit tills and a hearing loop has been fitted for those with hearing difficulties who might need assistance from the Co-op employees in locating a particular product. In the coming months, a slope will be built at the main entrance to aid access to the store by wheelchairs or those for whom mobility is a problem.

In addition to the full time Manager and Deputy Manager, the store currently employs 9 part-time staff; the majority of whom are recruited from the village; including a number of local students who assist with shelf stocking and maintaining the tills at the weekend. The Managerial staff open up the shop at 6.30am and the Co-op is then open for business from 7.00am until 8.00pm each weekday night and on Saturday. On Sunday the hours are from 8.00am until 4.00pm.



Since the refit before Christmas, custom has grown and many people from Harbury and the surrounding villages make regular use of the Card Cash machine, which is situated close to one of the shop front pillars.

It is possible to find all the ingredients for a specially prepared meal – fresh meat, spices, vegetables, but for those who want to return to an 'easy meal' option after a hard day's work, there is a range of prepared products in the freezer cabinets. The Co-op also offers the freshly baked 'Cuisine de France' bread and cakes, for which many people make a special journey into the village each day. There's also a small range of electrical goods, children's and adult books at discounted prices, as well as CD's, DVD's and videos. Maybe the Co-op actually offers more than you thought possible and the only way to check out the goods in store is to enter and take a wander around the fully stocked shelves to find out?

### **Parkinson Jones - Estate Agents**

Ralph Jones opened his local Estate Agents 4 years ago and has branched out during that time from selling just village properties to those in the surrounding area and on the Continent.



The Bussiness was established with son Glyn who provides the expertise for an excellent range of advertising photographs and leaflets, as well as a comprehensive web-site advertising the Company's other range of services.

Since the New Year, as a result of a chance meeting, Ralph has recruited a new member of staff who will be working within the firm as a Surveyor, as well as assisting with the Estate Agency and Letting side of the business.

Karena Ellis (MRICS/B.Sc Hons) who lives in the village with her three children, Claudia, Clarice and Carmen is adding her expertise as a General Practice Chartered Surveyor, so that she can work alongside Ralph on 'General Practice' matters such as Building Surveys, Adjudication and Boundary Disputes. This is a growing aspect of the business and to comply with new Government legislation they are both studying to become licensed 'Home Inspectors'. This is an issue of vital importance to all home owners, since a 'Home Conditions' survey will be essential for all properties coming on to the market from June 2007. In essence, this will require a report on the 'energy efficiency' of all properties - with a review of the heat loss from a property, as well as the heat consumption.



As a 'Jack of all trades', Karena will also be working alongside Glyn to expand the steadily growing Estate Management and Lettings, as rented properties are increasingly sought after. As Karena explained, "I am hopeful that I can bring new work into the business as a result of

further expansion into the surrounding villages. It is always good to see local people using our services, as I believe it is vital for a vibrant business to build up a good reputation based on communication within the community. I am looking forward to being a part of a local business, which can provide a range of services in Harbury and further afield."



## Southam Lions Ladies

**Val Steele**

Are holding a 'Grand Quiz Night' on **Friday 24<sup>th</sup> February** at the Grange Hall, Coventry Road, Southam, 7.00pm for 7.30pm start. Entry is £5.00 per team of four. There will be a licensed bar with waitress service. Cash prizes are to be won, so why not enter a team from your office, shop, or with friends and family. The event, which is sponsored by Malcolm Hawkesford Estate Agents, is to help raise funds for the Southam Lions Ladies Charities – Coventry and Warwickshire Air Ambulance and the Julie Raggett Cancer Fund. To enter your team, send a cheque payable to 'Southam Lions Ladies' including your team name to: Mrs Val Steele, 3 Meadow Road, Southam. CV47 1EN

## Take Time Out

**Karin Kirk**

### Leisure Time Project for Ufton

Making Ribbon Flowers in January was oversubscribed with several people on the waiting list. So please do book early!

### Weaving with Willow

Thursday 9th February 10.00am – 12.30pm and 1.00pm – 3.30pm  
Ufton Village Hall

Tom Hare is a greenwood artist and has exhibited his marvellous sculptures and furniture at BBC Gardeners World Live. He works mainly in willow and hazel and is coming to Ufton to talk about his work and to teach us how to weave an item to take home. This has proved so popular that there will now be two sessions on the day.

Cost £9.50 includes all materials.

# **Dates for your diary:**

Friday 17th March 10.00am – 12.30pm – Papercraft

Thursday 20th April 10.00am – 2.00pm – Transfer any image onto any surface

To book these events and for a copy of the 2006 programme, contact me on this number Karin Kirk 613003



## **Horticultural Society**

**Muriel Grey**

Mr Ian Nex gave an enthusiastic talk on "Birmingham Botanical Gardens Past, Present and Future" a subject obviously very dear to his heart. He showed us slides, some of early maps and important documents etc, also features and plants and so on. There have often been financial problems over the years, the shape and extent of the garden has changed many times, once part of the library contents were sold off for £300. Needless to say they would be worth considerably more today. A hedge was planted following the original boundaries back in the mid 19<sup>th</sup> century, now there are two surviving hawthorns. In the Victorian times orchids were grown – and flowered – and part of the land was used as a menagerie when an alligator lived in the deep pond of the fountain! Parts of the fountain remain – but not the alligator! In the 1950's Percy Thrower started the BBC Gardening Club which continued for many years. In 2002 an Organic Garden was established, in which is a beautiful willow sculpture. The children haven't been forgotten, they have been very well catered for.

The days are noticeably lengthening, the shoots are showing and we hope it won't be too long before the early spring flowers are in full bloom - something to look forward to; so much depends on the weather – as we all know! Actually we have had three winter cyclamen flowering a few weeks now, under the shelter of an old apple tree.

The next talk – Tuesday 7<sup>th</sup> March – will be given by Mr Roger Smith entitled "The History of Paeonies". I am sure it will be very interesting.

A note for your diary – Linda Egging will give a talk "Plant Pilgrimage to Western China" on Tuesday 4<sup>th</sup> April.



Today [Monday 23rd January] is overcast, grey and cold. Pressure is high at 30.5 millibars and we are promised similar, cold, conditions all this week, though Central Europe is much colder. A week ago I went with the U3A naturalist group, of which I am a member, to Draycote Water. [U3A is continuing education for retired people. It is run by the members and there are no exams. Find out what's on offer at [www.u3a.org.uk](http://www.u3a.org.uk)]. We did a circuit of the lake, looking principally at the bird life. A large 'raft' of Canada geese and an equal number of coots squeezed out most competing species in the bays at the eastern end. Draycote is a sizeable body of water measuring approximately 2x1.5kms and in shape rather like the island of Cyprus. The main entrance lies just past Kites Hardwick on the A426 Southam - Rugby road. Another way in is via the recently opened Warwick - Rugby National Cycle Route 41. [For more information see [www.nationalcyclenetwork.org.uk](http://www.nationalcyclenetwork.org.uk)]. An excellent view of the lake can be had from the newly constructed visitor centre which includes a first rate cafe. Amongst the big flocks were occasional teal, wigeon, pochard and tufted duck. A dozen cormorants had commandeered a raft and appeared to be resting. A number of mute swans and great crested grebes were mixed in with mallard and a pair of goosanders. A solitary heron was difficult to spot, standing stock still and blending in with the background. In a bird hide was a list of the latest sightings which included a goldeneye.

Recently I asked Walter Griffin, just up the road, whether his snowdrops were in flower. I find his are some of the first to bloom in the area. I was invited to take a look and sure enough there they were. Round the Stobo memorial, outside the church, winter aconite and snowdrops were in evidence though the flower heads were closed.

My first wildflower of the year was a clump of Winter Heliotrope by the roadside on the Ashorne side of Bromson Hill. This rather insignificant pink Compositae originally escaped from gardens but is now established on many roadsides and waste places. Its leaves are rather like those of Coltsfoot, to which it is related, being large, round and flat. In gardens, Daffodils are in bud, and primrose leaves enlarging. Soon we will have a general movement in the vegetation signalling spring and warmer times ahead.

I cycled out on the 17th January to take a look at one of Warwickshire's lesser known nature reserves - Goldicote Railway

Cutting - (grid reference 248506-OS sheet 151, Stratford-on-Avon). My route took me via Ashorne, Newbold Pacey, and Wellesbourne to the hill village of Loxley. Rather apart from the village proper stands the ancient church of St Nicholas. I couldn't resist a peep and thoroughly recommend you take a look some time. The church has a Saxon wall on the north side of the chancel dating from 950AD. The site was apparently given by Offa, King of Mercia, to the cathedral church of Worcester in 760AD. The church was open which was good as, unlike our own All Saints, many are locked to deter thieves. Between the churchyard and the large hall was a well clipped Yew hedge of epic proportions. Close to the road were a patch of Winter Aconite and scattered about were Snowdrops in flower. Inside, the lectern cloth was decorated by a cartoon depicting an unusual St Nicholas. He was balding, dressed in pyjamas and carpet slippers. Below were three almost identical young women saved from degradation by three bags of gold depicted as three golden balls.

Outside was a memorial cross to George Frederick Kendall of Loxley Hall and his son, Alexander Francis, a Royal Naval Cadet, born 2/11/1894, and died 23/10/1914.

I went on through the village, deviating to look at the manor house, then steeply down to the A422-Stratford-Banbury road. I took a left and after 300 metres a right turn to Alderminster. Almost immediately on the right is the gate to the small car park above Goldicote reserve. An excellent board describes the route ahead and some of the flora and fauna to be seen throughout the year. This includes Blackcap, Chiffchaff, and Willow Warbler. The cutting was the track bed of the Stratford-on-Avon and Midland Junction Railway built in 1823 and closed in 1952. In its heyday it provided a cross country link with four other lines and carried passengers and freight including iron and limestone. The deep overgrown cutting is entered by a narrow path and steep, rather greasy steps. Take care and wear boots because the bottom is distinctly marshy and a good example of willow carr; not a common Warwickshire environment. A stream now runs through the cutting and one of the most conspicuous plants was the Horsetail which on my visit was brown and flattened. In early summer it will carpet areas of the marsh, lending a primitive air to the scene which seems apt as the rock of the cutting sides is Lower Lias Limestone and was laid down in a shallow sea when Dinosaurs predominated.

Come back in summer to find the White Letter Hairstreak, Dingy and Grizzled Skipper butterflies. At the western end, the cutting opens out, and here may be found Bee Orchids and a Warwickshire rarity, the

Pyramidal Orchid. By the stream, I thought I'd found a collection of fossils-tubes formed of limestone. In fact, these were examples of dripstone and each contained a twig coated with limestone - rather akin to the artefacts produced in Mother Shipton's Cave in Knaresborough, Yorkshire. There was amusement rather than awe when I showed them to my fellow students at the Open Studies course on fossils which I am attending.

The route home via Ettington followed the A422 and then the Fosseway to Harewoods House. It was like going back in time, quiet most of the way, as the road is closed to traffic for three weeks for repairs to the carriageway.

## Letters to the Editors

*Dear Editors, I would like to thank all the people who have been so kind to me during my time in Warwick Hospital and more recently whilst I have been in the Heathcote Hospital. I am very grateful to all those who have sent cards, get well messages and bouquets of flowers. It has also meant a lot to me to have people from the village visit me and keep me up to date with all the Harbury news. Thankfully, I am now on the mend and hope to be back in the village soon amongst my friends.*

*Thanks to everyone - you have cheered me up no end.*

*Ethel Solliis*

---

*Dear Editors, I would like to thank the person or persons who sent me a lovely hamper for Christmas. Also I would like to thank them personally if they would make themselves known to me.*

*Doug Tanner*



Dear Editors, I want to take this opportunity to thank my family, my friends, Knitwits, Mothers Union and Thursday Club who came to my "surprise" coffee morning. I really must say it was a lovely surprise. Thank you for all the lovely cards and good wishes for my 80th birthday.



I was amazed at the effort everyone had put in to keep it a surprise from me. I wasn't expecting any type of birthday party.

Many thanks to my lovely daughter, Pat, for organising it all with the help of the family.

Eve Lowe

---

Dear Editors, As 2005 closes and 2006 begins the Rotary and Inner Wheel clubs of Southam would like to thank all villagers who supported our charity fundraising coffee mornings in Harbury in the past year and hope for continued support in 2006.

Your readers may be interested to know that they have helped us to contribute £250 towards amenities for the residents at Galanos House, Southam, £300 towards a shelter box for the Pakistan Earthquake Disaster and £1200 for the Tree of Light in Southam and the surrounding villages which will be donated to Acorns Children's Hospice.

Many thanks and a prosperous New Year

Mike Gaffney, President of Rotary Club of Southam and Gwenda Gaffney, President of Inner Wheel Club of Southam.

---

Dear Editors, To celebrate the New Year, the majority of my family from Durham, had the desire to spend time in Harbury with our daughter, her husband and their two daughters. The only problem was accommodation; four of us could stay with our resident daughter but that left four adults and a grandson, aged two, to find beds for.

Cognisant of the fact that it was the New Year holiday and perhaps Guest Houses would not be taking boarders we telephoned Mrs Harley at Braeside, Temple End and explained our situation. "No problem" was the answer, so we booked for Friday and Saturday nights 30<sup>th</sup> and 31<sup>st</sup> December.

We arrived apprehensively at Braeside on a very cold and wet evening but once across the threshold the warmth of the very friendly greeting from Rosemary immediately made us feel very much at home. The bedrooms were beautifully clean and well presented and on each bed was a very comprehensive list of items we could request for breakfast, we were asked to state a time as to when we would like to eat the following morning. The Full English took the majority vote and as we are early risers when travelling with our two year old grandson we picked a time of 8am.

Friday evening we were to have a family gathering, with a meal, at The Shakespeare Inn. Thirteen of us thoroughly enjoyed a wonderful meal and service provided by Darren and his staff. Saturday morning was fairly fine as we had places to visit and things to do and at 8am the breakfasts were ready and they didn't disappoint.

what a wonderful way to start the day!

our kind landlady, Rosemary had explained that we would have to let ourselves into the house that evening as she too would be out celebrating, this we did at about 1am on New Years morning, Rosemary had yet to arrive! Later that morning we assembled for yet another wonderful breakfast, and even though she had had a late night the breakfast was ready and as tasty as the previous one. We then said our farewells and departed to spend our final day with our family. It was while we were still with our daughter that we learnt of the award of the M.B.E in the New Years Honours List, to Rosemary Harley, she, being a modest person, hadn't mentioned it!!

we were delighted for her and were not surprised of the award because of her MAGNIFICENT BREAKFASTS and henceforth she should be addressed as Rosemary Harley M.B.E. Magnificent Breakfast Expert.

Congratulations Rosemary from Gordon Dixon and Family.

---

Dear Editors, I would like to publicly thank John Stringer for all the trouble he went to in filling in the complicated forms that resulted in my nomination to receive an MBE and to Sheila, Margaret and Sharon for supporting him. Also thank you to all who have kindly congratulated me by word of mouth, telephone, email and cards.

At first I was rather embarrassed by the situation, but I'm now looking forward to my visit to the Palace, hopefully accompanied by Penny, Chris and Wendie.

Rosemary Harley M.B.E. - Mistress of Bacon & Eggs



Dear Editors - Planning Permission at 35 South Parade, Harbury  
 In response to Mrs. Dronfield's comments as reported in the Parish  
 Council report in the December 2005 issue, and the Councillors  
 serious concerns regarding the lack of any planning permission  
 for the recent building work at our property, we would like to  
 reassure those concerned that full planning was in place before  
 any building work commenced. There was, however, a retrospective  
 planning application to cover a change in the height of the roof  
 pitch due to a design fault.

Full details can be viewed on the Stratford District Council web site.

Klm Fitzharris

---

Dear Editors, I have approximately 40 video tapes which my late  
 father recorded, the majority of which are of televised golf  
 tournaments, i.e. Ryder Cups, Pro-Am, Masters, etc., most of which  
 are of fairly good quality. I would like someone to have the tapes who  
 has an interest in golf, or to any organisation or charity who could  
 use them for re-recording or recycling.

There would be no charge and the only stipulation would be for the  
 tapes to go as a 'job lot' and to be collected. Please phone me on 01926  
 612265 if you are interested.

Yours sincerely

Julie Killian

**FOR SALE – Pine Table (Oblong) & 4 Chairs £40.00**  
**Exercise Bike V.G.C £50.00. Tel: 01926 612588**

80

**DATES FOR INCLUSION IN THE HARBURY DIARY PLEASE TO:  
LINDA RIDGLEY - TEL. 612792.**

**Bookings for:**

Scout Hut  
Tom Hauley Room  
T. Hauley Room Coffee Morning  
Village Hall  
Wight School

Lesley van Kesteren 613411  
Liz Bunting 612450  
Mrs. J. Windsor 612504  
Wendy Hawkes 613198  
Mrs. L. Hayes 613488

**MARCH EDITION — HARBURY & LADBROKE NEWS**

**Adverts to 31, Binswood End**

**by 15th February**

**Articles to Harbury Chemist**

**by 24th February**

**ADVERTISING IN THE  
HARBURY & LADBROKE NEWS**

**Monthly**

¼ page — £ 9.00 or £24 for 3 months  
½ page — £16.00 or £43 for 3 months  
Full page — £30.00 or £80 for 3 months

**Annual**

¼ page — £ 83.00  
½ page — £149.00  
Full page — £280.00  
(coloured pages printed in April for the year)

**Adverts with payment to:**

**Gill Holden, 31 Binswood End, Tel: 612155  
by the 15<sup>th</sup> day of the month**

**HARBURY & LADBROKE  
NEWS**

**Classified Adverts accepted  
10 pence per word  
(minimum £1.00 per advert)**

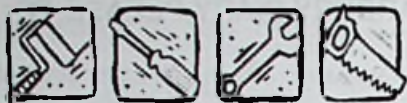
**Payment with advert please to:  
31 Binswood End  
Harbury  
☎ 612155**

**INSERTS**

**Inserts must be arranged in  
advance ☎ 612009  
£15.00 per 950 copies\*\***

**Advertiser to supply  
advert on A5 paper or smaller.  
Price includes distribution.**

**\*\*Charities/non profit making organisations may  
quality for this service free of charge.**



**FIXIT4U.CO.UK**  
PROPERTY MAINTENANCE

**01926 611930**

**07795 411868**

For all types of Internal & External Property  
Maintenance

including Floor & Wall Tiling, Painting &  
Decorating etc.

Most jobs considered, all work insured.

Call Chris now for a free quote



**CHAMELEON**

**Karena EA Ellis MRICS BSc Hons**

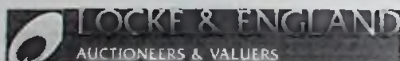
Mb: 07796 575716

Email: [keae@chameleon-ellis.com](mailto:keae@chameleon-ellis.com)

[www.chameleon-ellis.com](http://www.chameleon-ellis.com)

- When your business is tight, contact Chameleon.
- With all the abilities to adapt and blend in with any surroundings. Like the Chameleon, I will adapt to suit your business requirements.
- Work includes: PA, reports, CV's & business organisation.
- All aspects of work will be considered.

Contact **Chameleon** to discuss what you will need to make your time more efficient.



Do you really know the value of that heirloom  
in the attic?

Where do you find that special piece to add to  
your collection?

- Bi-monthly sales of selected antique furniture and collectors' items
- Weekly sales of antique and later furniture and effects
- We provide valuations for auction, insurance and probate purposes
- We offer a collection service of items for sale carried out by our own team
- Our experienced valuers are on hand to answer your queries

Please telephone for more information or to  
make an appointment

18 Guy Street, Leamington Spa

Warwickshire, CV32 3JF

01926 614589 [www.lockeandengland.co.uk](http://www.lockeandengland.co.uk)

**FU GARDEN**

**NOW AT**

**The Gamecock**

Chapel Street, Harbury, Leamington Spa



Authentic  
chinese food  
to eat in  
or take away.  
Booking  
advisable.



Phone the **FU GARDEN** on  
**01926 614589**

**FREE POOL**

Lunchtime rolls, baguettes and hot pies

**The Gamecock**

**01926 611963**

**FRIENDLY ATMOSPHERE**



**Kiddies  
Parties !!**  
with  
**LIZA THE  
DIVA!**



Kids Karaoke,  
Flashing Lights and Groovy  
Dance Routines!!

Dance Competitions

Party Games

Team Games

Prizes Galore

Tel: 614009 or

07854 165007



**PIANO/SINGING TEACHER**

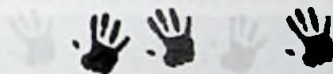


Visits Harbury alternate  
Tuesdays

Limited places available  
Beginners of all ages welcome

Must want to enjoy lessons!

£10 per half hour  
Please call to discuss  
07788 661417



**HARBURY PRE-SCHOOL**

Presents a

**Barn Dance**

Saturday 25<sup>th</sup> February

8pm - Midnight

Harbury Village Hall

Tickets £12.50 to include light supper

Entertainment provided by the Harbury band 'Reel to Reel' - no previous  
barn dance experience necessary! Bar and raffle.

For tickets please phone Kate on 614633 or Corinne on 07946 615481



Deppers Bridge  
**Plumbing Services**

**all types of plumbing  
including:**

Bathrooms, Kitchens &  
Central Heating

No job too small

**For a reliable,  
local service call:**

Steve Norman



**T 01926 613532  
M 07921 259639**

fully insured



**82 Heathcote Road  
Whitnash  
Leamington Spa  
CV31 2NF**

**Tel: 01926 421237**

**Website - [Bluebellflorist.com](http://Bluebellflorist.com)  
Email - [info@bluebellflorist.com](mailto:info@bluebellflorist.com)**

**Flowers for all occasions**

**Delivery service available to  
Harbury**

## **HARBURY LANDSCAPING & GROUND WORK'S**

Specialists in Hard Landscaping,

Block Paving, Gravel Drives,

Patios & Walls

Internal Flooring, Slate, Tile & Wood

Fencing, Decking, Pergolas,

Stone Work Including Dry Stone Walls

Drainage Works & Concreting

Disabled Access

General Maintenance For

Both Home & Garden

For a Free

No Obligation Quote

From a Professional  
& Reliable Tradesman

Contact:

**Jeff Maule**

**Phone: 01926 614923**

**Mobile: 07952 864607**



## HARBURY PRE-SCHOOL

Learning Through Play

### **Harbury Pre-school requires a pre-school assistant**

We are a small, friendly and caring pre-school with accredited status in recognition of the top quality, educational care we provide. Our sessions take place in the Wight School, in Harbury village centre.

We need someone to join our team of dedicated staff.

Initially one session per week with flexibility to increase to two.

NVQ level 2/3 or equivalent preferred, willingness to train acceptable.

Call Nicky Kirk on 614316 for information or an application form

## Davenant of Harbury Ltd

for

### **Carpentry & Joinery**

- All requirements for internal and external repair or replacement including doors, windows, frames, fitted units, timber or laminate flooring, stair spindles / rails, skirting / architrave, etc.,

### **Kitchens**

- Quality kitchens in a wide range of styles and budgets with built-in appliances and sinks by well-known manufacturers.
- Worktops in laminate, timber, Minerelle solid surface and granite.
- Expertly planned, supplied and fully fitted including plumbing, wiring, plastering and tiling to your requirements.
- Also worktop changes and kitchen facelifts.

All work carried out by established and experienced craftsmen offering a professional and personal service at fair prices.

HAVE YOUR WORK DONE FOR YOU (D F Y) instead of D I Y

**Tel: 01926 614107**



## JOHN DICKERSON, ACCOUNTANT

Having recently moved to Harbury after 30 years in practice in Birmingham, I would welcome enquiries from self-employed persons, partnerships and small businesses who would like a friendly, personal and economical service for their accounting, VAT and book-keeping needs.

☎ 01926 612220 (home office) or 01926 611913 after hours



*Mr Plaster*

**Professional and reliable  
plastering service**

**Call today on 01926 614448  
for a free no obligation quote**



## Dust'in Time

**Domestic Cleaning Service**  
Southam based

For information, please contact:

Jackie: 01188 868 202  
Kat: 01183 676 411

**Professional & friendly, cleaning  
service, for your home.**