

Harbury & Ladbroke News

THE HARBURY AND LADBROKE NEWS, reflecting all aspects of local life is published monthly and produced with the assistance of the All Saints' Parochial Church Council.

Editorial Office

☎ 612155

Articles to

Harbury Chemist, High Street

email address

articles@harburynews.freemove.co.uk

Website

<http://www.harburynews.freemove.co.uk>

Advertising Office

31, Binswood End (☎ 612155)

Distribution Manager

49, Mill Street (☎ 612009)

Inserts by prior arrangement

☎ 612009

Magazine Photographer

☎ 614167

The views of contributors are not necessarily those of the Editorial Committee.

December 2005

No. 381

Last month saw national recognition on two counts. Firstly Arthur Turner who paraded at the Cenotaph on Remembrance Sunday. Secondly, the Harbury Juniors Under 11's football team appeared on BBC TV.

Locally, both village church towers rang bells, half-muffled, on Remembrance Sunday. This is the first time Ladbroke had rung half-muffled bells for some years.

The Bell Inn at Ladbroke has re-opened after many months, and we wish Gary and Nick every success.

After ten years writing 'Gardening Notes' and 'Plant of the Month' the Editors thank Pat Smith, who is giving up after this edition. A reminder to any contributors submitting digital photographs, please can you use the highest resolution possible to ensure good quality reproduction. As with last month digital pictures taken from a website can lose their clarity when printed in the magazine.

We wish all of our readers a happy and peaceful Christmas and New Year.

Finally we extend our sympathy to the families of Mary Coulan and Gerald Overton.



Harbury Diary

- Sat 3 Coffee Morning in Tom Hauley Room in aid of Save the Children
10am – 12noon
Christmas Fayre at Village Hall with Santa's Grotto
- Sun 4 **ADVENT II**
Sung Eucharist 9am
Evening Worship 6pm
NSPCC QUIZ in the Village Club
- Tues 6 Youth Drop in 7pm-9.15pm in Wagstaffe Room of Village Hall
Holy Communion 7.30pm
Horticultural Society "Fun Evening" 8pm in Tom Hauley Room
- Wed 7 Holy Communion 2pm
Mothers Union 2.30pm
Toddler Group Christmas Party in Village Hall
"Talk it Through" at 33 South Parade 8pm
- Thurs 8 Holy Communion 9.45am
Thursday Club Carol Service at 2.30pm
WI 7.45pm in Tom Hauley Room
- Fri 9 **RECYCLING & GREEN WASTE COLLECTION**
- Sat 10 Coffee Morning in Tom Hauley Room in aid of Windmills Nursery
School 10am – 12noon
All Saints' Children's Party 2-4pm in Tom Hauley Room
Senior Citizens Party in Village Hall
- Sun 11 **ADVENT III**
Holy Communion 8am
Sung Eucharist 10.30am
- Mon 12 Brownies Christmas Party in Village Hall
- Tues 13 Toddlers Service 2pm
Youth Drop in 7pm-9pm in Wagstaffe Room of Village Hall
Holy Communion 7.30pm with laying on of hands
- Thurs 15 Holy Communion 9.45am
BLOOD DONORS IN VILLAGE HALL
ADVERTISEMENTS to 31 Binswood End Harbury, by 5.30pm
- Sat 17 Free Coffee Morning in Tom Hauley Room 10am – 12noon
Men's Prayer Breakfast 7.30am in Tom Hauley Room
- Sun 18 **ADVENT IV** Holy Communion 8am
Family Communion 10.30am with Christingle
Evensong 6pm
- Tues 20 Youth Drop in 7-9pm in Wagstaffe Room of Village Hall
Holy Communion 7.30pm

- Wed 21 Tea in the Tom Hauley Room 3-4pm
 "Talk it Through" at 33 South Parade 8pm
 Thurs 22 Holy Communion 9.45am
 Fri 23 **RECYCLING & GREEN WASTE COLLECTION**
ARTICLES to Harbury Pharmacy, High St, Harbury & Email
Article deadline by 5.30pm
 Sat 24 **CHRISTMAS EVE**
 Dressing of the Crib 2.30pm
 Carol Service 6.30pm
 Midnight Mass 11.15pm
 Sun 25 **CHRISTMAS DAY**
 Sung Eucharist 11am
 Mon 26 **ST STEPHEN**
 Holy Communion 10.30am
 Tues 27 **ST JOHN**
 Holy Communion 7.30pm
 Wed 28 **HOLY INNOCENTS**
 Holy Communion 10.30am
 Thurs 29 Holy Communion 9.45am
 Fri 30 **REFUSE COLLECTION TODAY**
 Sat 31 **NEW YEAR'S EVE**
 Coffee Morning in Tom Hauley Room in aid of N.S.P.C.C
 10am - 12noon

JANUARY

- Sun 1 **NEW YEARS DAY**
SECOND OF CHRISTMAS
 Sung Eucharist 9am
 NO Evening Service
 Tues 3 Youth Drop in 7pm-9pm in Wagstaffe Room of Village Hall
 Holy Communion 7.30pm
 Horticultural Society 8pm in Tom Hauley Room, Ian Nex on
 Birmingham Botanical Gardens, Past, Present and Future.
 Wed 4 Mother Union Party 3pm
 Thurs 5 Holy Communion 9.45am
 Mens Society Meeting in Tom Hauley Room 7.45pm
 Fri 6 **RECYCLING & GREEN WASTE COLLECTION**
 Sat 7 Coffee Morning in Tom Hauley Room in aid of Rotary
 10am - 12noon
 Sun 8 **BAPTISM OF CHRIST**
 Holy Communion 8am
 Sung Eucharist 10.30am



From the Rector

Tell me the truth! The Official Secrets Act. Censorship. The Right Wing papers. The Left Wing Press. Can we be sure that we ever hear the truth especially when we listen to the News? With all the hurdles a particular event has to overcome before the general public learns about it, we are left wondering, "What actually did happen?" Getting at the truth is very difficult. The slant that a particular story is given in the papers will alter the truth about it. Sometimes, for reasons of security, we only hear what is good for us to hear.

Pontius Pilate, the Roman governor asked Jesus that question at the trial, "What is truth?" Ironically he was so physically close to the Truth but, because of his inner blindness, he never recognised Truth. Christians would answer Pilate's question not by a big philosophical explanation but by the simple statement: "Jesus Christ is the Truth." Truth is embodied in the person of Jesus Christ, the Son of God and the Son of Man. It is only from God that we will learn the truth; the full unabridged version. It is from the devil that we receive darkness and negativity. The truth about man and about his life is told by God. And God gave His Word in creation. God's Word was made flesh: Jesus Christ. The life and the words of Jesus are the authentic expression of Truth. The life of Jesus is the example of true human living because it is a life lived in union with the Father. If we want to live the truth in our lives then we must invite Jesus Christ into our lives. Anything less, is less than authentic. When we live by the words of Jesus Christ, and in a close relationship with him, then we are living to the full. This is real living!

The genuine preparation for Christmas is to open our hearts and lives to receive the fullness of Truth, Jesus Christ.

Although it is not my normal custom to comment on day to day church matters in my article, I feel I have to say something about the recent Gift Day in Harbury.

At Christmas our thoughts naturally turn to the giving of gifts, but we actually asked for gifts to the Church at our Patronal Festival – and were overwhelmed with the response.

With the reclaimed tax from Gift Aid donations the total is in excess of £8,500, which will help considerably to keep the church in operation, for the benefit of the whole village.

We don't want the church to seem as always wanting money, but sadly we have to recognise the unavoidable costs.

At this Christmas-tide I just want to remind you that I am here and always available to anyone in the village, whether "church" or not.

My family and I wish you and your families the true joy of Christmas, when we celebrate God's gift to us of His Son to show love to the world.

Fr. Roy Brown

From the Registers

Holy Baptism, All Saints' Harbury

November 6th Amelia Alice Johnson

November 20th Charlie Badger Thompson

Bradley Paul Luke Powles

Funerals at Oakley Wood

November 29th Gerald Richard Overton (64)

Confirmation – The Cathedral

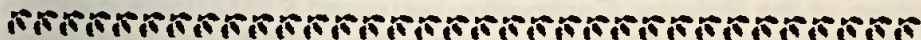
November 26th Quona Huntley

Phyl Southerland

Sophie Liverton

Eleanor Clarke

Thomas Kennedy



Thought for the Month

A thankful heart is not only the greatest virtue, but the parent of all other virtues.

Cicero.

From the Churchwardens

We celebrated All Saints' with the Eucharist, followed by a very enjoyable Faith Lunch in the Tom Hauley Room. A fortnight later came a more solemn occasion, Remembrance Sunday, when a large congregation gathered in church and at the War Memorial on a beautifully sunny, peaceful morning to remember the dead of two world wars and of all other conflicts past and, tragically, present.



A highlight of this month's worship was the Family Service when the school gave the presentation. They made our celebration of the feast of Christ the King very special, inviting us through their very thoughtful ideas to contrast Christ's Kingship with Kingship on earth. Fifty children took part, showing us their paintings and reading and playing beautifully. It was lovely to see so many parents, grandparents and friends packing the church. We look forward to welcoming you again very soon and we do thank the children, Mr Daly and everyone involved for contributing so much to our worship.

Thank you to everyone who gave to the church's appeal in aid of the victims of the Pakistan Earthquake, we raised £137. Congratulations to Lilly, her family and friends who ran a Bring and Buy stall and raised a goodly sum for Children in Need.

The Christmas Fayre is almost upon us. We look forward to seeing you there. Please do also remember the children's party on December 10th from 2 – 4pm in the Tom Hauley Room. Invitations will go out through school, but if you have children or grandchildren aged 5 – 11 at other schools, they're very welcome to come. Please phone 612395 for a form.

Tony and Fliss



Mothers' Union

Our afternoon speaker, Ann Lancaster, told us a great deal we didn't know about Mother Theresa.

An Albanian girl, Agnes, had little formal education, but with great courage, dedication and self sacrifice found herself in 1929 in Calcutta, teaching geography to Bengali girls. She took her vows as a nun at the age of 21; it was a time of great poverty and deprivation in India with a million people living on the streets and dying of curable diseases for which there was no available treatment. She started to take some girls from the school to help with a few basic medicines. She felt a calling to minister these, the poorest of the poor, and with the Pope's permission left the sisterhood. She started a street school in the slums and was given part of a house to use and so began the great work for which she is so well known.

With a vow of poverty, chastity, obedience and charity, she and her sisters in Faith developed homes for the dying and destitute, mobile dispensaries for lepers, homes for the sick, mentally ill and abandoned children. Truly one of God's very special people.

In the evening, Alison Abbott gave us some insights into the various aspects of her role as a Reader. Although the office originated in the early days of the Christian Church, it has developed to much more than reading the lessons. There is now a training structure in the Diocese to equip readers to assist the clergy by visiting the sick, pastoral and educational work and taking part in Church services. We are very grateful that Alison has undertaken this work as well as her demanding job and family commitments.

The overseas boxes yielded £266.79, well done and thank you.

December 7th at 2.30pm – Lorna will be talking about our Christmas mementos.

January 4th at 3pm (NB – No service first) New Year Party. Please bring a lucky dip gift value under £1.

We wish all our members and friends a happy and peaceful Christmas.

Gillian Hare

Toddlers' Service

At our November service, Mrs Pam Brown related to us the story Jesus told about two men building their new homes. The foolish man

built his house on the sand and the wise man built his house on the rock. The children were able to dip their hands into a box of sand to see how soft it was, and then felt the solidness of a piece of rock. Of course the house on the sand could not support itself when it rained heavily, whereas the house built on the rock was able to stand firm no matter how much it rained.

Jesus was illustrating to us that if we build our lives on him and his teaching, we shall have a firm foundation for our lives.

We sang an action song called, "The wise man built his house upon the rock", and the children accompanied the song, "Jesus loves me this I know" with their musical instruments.

We coloured in a picture of a house with rain falling all around it, and then we had refreshments and played with toys until it was time to go home.

Our next meeting is on Tuesday 13th December at 2pm in the children's corner of the Church. Young children and babies, accompanied by an adult, are very welcome to come and join us.

Lorna Bedford

Ladbroke News

DECEMBER

Thurs 8	W.I. Christmas Capers
Sun 11	ADVENT III Sung Communion 9am
Mon 12	Millennium Club Draw 7.30pm
Tues 13	W.I Group Carol Service at St Wulstan Church Southam 7.30pm
Wed 14	Holy Communion 12 noon Women's Fellowship, afterwards lunch at The Bell Inn
Sun 18	ADVENT IV Sung Communion 9am
Sat 24	CHRISTMAS EVE Dressing the Crib 3pm
Sun 25	CHRISTMAS DAY Sung Communion 9.30am
Thurs 29	Carol Service 7pm

JANUARY

Sun 1	FIRST OF CHRISTMAS Family Communion 10.30am
-------	--



Fri 6 THE EPIPHANY
Holy Communion 7.30pm
Sun 8 BAPTISM OF CHRIST
Sung Communion 9am



Ladbroke Church News

The Autumn Fayre on 19th November was as usual a jolly event. Even Father Christmas managed to find his way to the Village Hall in the freezing foggy weather. I have known it better supported but nevertheless we made £475. This will be divided between the Parish Church and Age Concern. Many thanks to Sue Halsall for opening the event for us. She does sterling work for Age Concern.

The Choir practices have begun for our Carol Service on 29th December. Michael Short is choir master again so he is sure to bring the best out of the choir as usual. Please make a note in your diary. I'm not sure of the time, look in the Church Christmas card when it's delivered.

Christmas Day Service is at 9.30am this year. The Crib Service is at 3pm on Christmas Eve and is mainly for the children.

Betty Winkfield

Women's Fellowship

We had great fun at Beryl Ross's trying to work out these obscure items – Bean slicer, head massagers, a very modern iron with a tiny little head, plus three items we still don't know what their uses are.

Our December meeting will be held on Wednesday 14th at midday following our Christmas Service in Church hopefully we will have lunch at The Bell Inn.

Betty Winkfield

Ladbroke and Deppers Bridge W.I.

I can't believe it is only a month to Christmas where does the time go? Our meeting on 24th November was very well attended despite the very cold evening, Eric Hibbs, a lovely character, entertained everyone with his memories of the 1930's and 40's music. It was amazing how many of the songs we all knew and could sing along to. Mulled Wine and Mince pies followed thanks to Julie, Pam and Leslie for providing.

Mary Entwistle, who has recently travelled on her own to Australia brought along some lovely photos and gave us a little insight into her adventures.

Four members had a super day out on Monday 21 November to the Oswaldtwistle Mills; I believe they shopped till they dropped.

The Quiz Night on the 28 October was a great success, several local W.I's attended, in fact it was a full house.

Congratulations to Beryl Ross for winning the Corunna News Yorkshire Tea Competition last month.

Other congratulations to Jenny Barrett and her family on the recent birth of a beautiful grandson.

Dates for Diaries

Xmas Meal - 4 December

Xmas Capers - 8 December

Group Carol Service - Tuesday 13 December at St Wulstan Church Southam 7.30pm

I would like to take this opportunity to wish everyone in W.I a very Happy Christmas, a Good New Year and a special thought for those members who are not well enough to attend at the moment, we are thinking of you.

Sue Halsall

Ladbroke Parish Council – November Meeting

Matters Arising – The rubbish has been removed from outside the Bell Inn, it wasn't a health hazard. (An update on The Bell in a separate item).

Eastern Area Planning Committee – (Southam Distribution Centre). E.A.P.C were given outline planning permission 3 years ago; this lapsed; there was no marketing uptake on their proposals. An extension of outline planning permission was initially refused, but on reflection the District Council has granted E.A.P.C a further 3 years Outline Planning permission. The plans are being revised for more economical units, with a better chance of a marketing uptake. The land is designated for commercial use, not residential use.

The Parish Council had no objection to the removal of branches overhanging the road at the Paddocks, School Lane.

Neighbourhood Watch – Consideration is being given to organise a meeting in the Village Hall for our community to view a DVD on ways to protect ourselves from opportunists wanting to gain access to our homes.

Parish Plan – The questionnaire is on the way to the printers prior to distribution throughout the Village.

Public footpaths – Michael Boden-Pritchett works very hard on maintaining the public footpaths in the area, for which there is financial backing. It is therefore very frustrating for him to find stiles being removed from hedges and footpaths – and bridle paths being ploughed up every year. Hopefully he will be getting some support from Warwickshire County Council in the future. The main area of concern is the bridle path SM92 and footpath SM92A which will pass through land by New House Farm and Hodnell Manor. The farmer, David Webster, has been approached about the matter.

District Councillor Chris Williams spoke about the regionalization plans. With regard to policing in Warwickshire; discussion is going on about urban and rural police presence. Regionalization should increase police presence in our area, discussions should be completed by August 2006.

Transport in the area – From April 2006 the over 60's can use buses free of charge, tokens are no longer being issued – they were very much abused – many were never used.

Planning applications – 80%+ completed within 8 weeks.

Precept requirements – Following a lengthy discussion about expenditure and precept requirements, it was agreed that for 2006/7 the increase request would be for 5%.

The dog waste box will be replaced.

The Millennium Green and Village Hall Committees have both applied for their requests for £500 grants to be considered.

Betty Winkfield

Ladbroke Millennium Green Annual General Meeting.

The AGM was held in Ladbroke Village Hall on Wednesday 26th October.

Eighteen villagers heard the chairman, Peter Loftus, summarise the workings of the year in terms of maintenance, safety, finance and fund raising, which he felt has led to the continuing achievement of ensuring that the Green remains available as a resource to all villagers, in line with the original aims.

There has been one disappointment over the 5 years since the Green has been in existence. Carole Loftus invited us to close our eyes and imagine the rustling of grasses, buzzing of insects, smell of wild flowers and waft of butterflies. There was agreement that the Ladbroke wild flower meadow is not yet fulfilling that vision!

The problem seems to be that Macklin, the site of the Millennium Green, was previously a well-manured pasture containing rye grass. In such conditions the original wild flower seeds and plugs did not have a chance to germinate. The proposal is to remove the sward and allow the soil to over winter. The soil will then be rotavated to a depth of approximately 10 centimetres and a seed mixture applied which is designed to thrive in the specific conditions at the site.

Carole asked for the backing of the village for the trustees to carry out this work.

Carole was thanked for her hard work and dedication to this project and all were in favour of the work proceeding as described.

Peter then reminded those present of the 2 fliers which had been distributed to every household in the



village, containing information regarding the possibility of increasing the play equipment on the Green, for use by older children. Kip Warr then gave an illustrated presentation to explain the perceived needs and options - with advantages and disadvantages.

Much discussion followed and the Trustees have many ideas to take back to consider in coming to a decision. Anyone who still has thoughts on the subject is encouraged to make these known to Peter at 11 Hedges Close. Details can be found on the website at www.warkcom.net/ladbrokegreen

Andy Bendzak had previously indicated his wish to resign from his position as Treasurer and Trustee. Peter thanked him for his enthusiasm and hard work. Paul Taylor was voted on to join the other Trustees: Peter Loftus, Carole Loftus, Derek Batty, Andy Pittaway, Kip Warr and Carol Lane.

Carol Lane

Ladbroke Village Hall Millennium Club

The results of the October draw are:

£70 Lois Workman

£25 Kim Benzak

£25 Chris Payne

£10 Sylvia West

£10 Richard Walker

£10 Wild Indians



Next month's draw will be held on 12th December at 7.30pm. Will members paying by cheque or cash please remember payment is due at year end for next year's play.

Catherine Spence

The Bell Inn

The pub is open again – really! The welcome evening on Friday 18th November saw the old Bell Inn come alive again. The car park almost full, windows cleaned, paintwork fresh and everything inviting. Nick and Gary have been working very hard and do seem to have our dear old pub at heart. They are both chefs too I hear!

Some of the Parish Councillors and myself went to meet the two new licensees on Thursday afternoon. The representative of Punch

Taverns was there too. He said that in the New Year they will be applying for planning permission to do some alterations and renovations. The outlook will be the same and he insisted that it will maintain its village pub look, no new pseudo images.



Nick and Gary will be fully operational as from November 25th; they are looking for our support. I have seen their menu and it is good, and reasonably priced.

Betty Winkfield

In Memory of Mary Coulan

Mary died on November 7th at Bromston Hall Nursing Home aged 90 years.

There must be some people who knew Mary when she was a teacher's assistant at Ladbroke School. She lived with Miss Hensman at Church Cottage as her companion for many years. I think she came into the village as a Land Army girl, (will someone put me right if not?). I do know that Mary was much loved by the children. A quiet gentle lady with a lovely soft Irish brogue.

Her ashes have been interred in Ladbroke churchyard.

Betty Winkfield

Harbury Parish Council - November 2005

Official minutes can be viewed in the Library or obtained from the Parish Clerk

A long and leisurely meeting of the Council in the Tom Hauley Room was abruptly terminated by the alarm system at the witching hour of 10pm!

We had heard from Colin Mercer of the Tennis and Netball Clubs' proposed improvements including plastic mesh windproofing of the courts, banners publicising their Mini Tennis Accreditation, repairs to the fencing and a plea to improve the surroundings of the Netball Court which caused an ankle injury.

Councillors Thornley and Biddle urged their colleagues to take urgent action to make these surroundings safer. Councillors also agonised about funding dropped curbs in Frances Road after the County Council said their budget would not stretch to this safety improvement. They decided to have one last try to get the County to pay. A wheelchair user was hurt and could have sued WCC.

Cllr Lockley had consulted the County Council's Lynn Harding about the PC's ideas for village centre improvements and found that most would contravene their rules and regulations. There was, however, the possibility of providing a School Crossing Warden if anyone wanted the task. Tim still persists with his idea of a bollard in Binswood End to prevent vehicles mounting the pavement to avoid one another. The County is sending him the regulations on installing bollards and Councillors pondered on the possibility of rubber bollards.

Tim wanted lighting installed in the Wight School Playground for the benefit of those using the Scout Hut. Cllrs remembered they had a bollard spare from their experiment in Binswood End, but no-one could remember where they had lodged it. So, it was suggested they ask the Library to install security lighting instead.

Tim was researching the types of bus shelters Harbury might install and would seek advice from County Transport Operations. Some Councillors tried to claim that there was little support for the erection of a bus shelter as no-one had brought it up at their last surgery. However, in the Parish Review 667 people expressed an opinion on where a shelter should be sited. A third wanted one outside the present Post Office. The Village Hall, Binswood End, The Pound, Deppers Bridge, South Parade and Manor Road were also mentioned. Cllr Biddle quipped they could use a bus shelter for their surgery.

Pc Hill reported several thefts from cars in Harbury and the surrounding villages. He said it was illegal to leave a vehicle on the roadway with its engine running even if it was to clear the windscreen of frost and people who parked on the double yellow lines outside the Co-op would be liable to prosecution. The Co-op hopes to raise the curbs there to discourage parking on the pavement and to allow disabled access through their new entrance.

There was confusion over whether cars parked in Ivy Lane had been damaged as Pc Hill insisted that no offences had been reported although several Councillors voiced residents' complaints. They also reported young people on the Village Hall roof and some riding in the village at night with no lights on their bikes.

The Parish Council agreed to write to the Village Hall urging the Management Committee to undertake a full disability audit (costs only £86) and make improvements for access for those with disabilities. It was reported there was trouble with the drains, again.

Cllr Hancock said Councillors were very impressed with the local needs housing scheme in Long Compton which they visited and that discussions were ongoing on a site for the housing Harbury needed.

Residents of Greenhill were unhappy with plans to make the Railway Bridge at Deppers single lane. The Parish thought it best to wait to see if problems arose there but will ask that the exit from Greenhill is safeguarded.

PLANNING

Stratford granted permission for an extension to the recently remodelled Harbury Croft on Chesterton Road; a Conservatory at 8 Park Lane; a conservatory and extension at Westfields Farm, Fosse Way and a replacement extension to 25 Francis Road.

Stratford refused permission to fell Sycamores at Sycamore house, Butt Lane, and the plans for a livestock building at Pineham Farm, Butt Lane, and barn conversions at Harbury Fields Farm were withdrawn.

The Parish made no representation on the improvements at the Co-op, the felling of two Spruce trees at Sheen Farm; work at 15 Leicester Close and a conservatory at 4 Pirie Close.

Mrs Dronfield was present to explain to Councillors her concerns about building work to 35 South Parade which abuts the garden of her property at 16 Vicarage Lane. Councillors were furious that no planning permission had been sought, although this is not illegal. Stratford took Enforcement Action and plans were subsequently sent in. The problem is that they bear little resemblance to what has been built. Cllrs were concerned that the bungalow should not be capable of being turned into two independent dwellings and that the much increased roof space should not have accommodation inserted. Mrs Dronfield was asking that Stratford impose conditions ensuring that dormers could not be inserted.

Some developers do work without permission, gambling that when

17
they are forced to submit plans, retrospectively, they will be passed. Although the legislation allows the Planning Authority to insist that a building is returned to its previous condition, removing all unauthorised work, such action is rare.

At the insistence of the Harbury Society the Councillors agreed to write in support of the District's modification to the Local Plan which provides a robust framework of regulation on any development at the Quarries. An initial meeting of Stakeholders will be organised by the District to begin work on a Masterplan for this site.

There was yet more clarification on the workings of the new Licensing Act with District Councillor Dally reiterating the Chairman's point that residents who suffered nuisance should log the details and report it to Stratford Council. It was unclear from the debate just who it should be reported to at Stratford.

There was concern at flooding at the Pound and Mr Wilkinson of Field House complained about the churned up state of the grass. He wanted the Parish Council to install post and chain fencing along that part of Dovehouse Lane but this was firmly rejected as suburban and unnecessary. Mr Hill will be instructed to re-turf the area in the spring. The Bye-laws prohibit parking there.

Against the sound of the siren, Cllr Mancell reported that to honour their commitments under their Quality Status the contact details of Councillors would be published and Cllr Lockley would write the quarterly report.

Linda Ridgley

Harbury Parish Council - Quarterly Report - October 2005

During the past three months the parish council has:

- Given a grant to the Village Hall towards the cost of new heating
- Held meetings with WCC about changes to the junction near the Great Western Pub
- Installed new swings at the playgrounds
- Held a meeting with the Safer Routes to School officer at WCC - there is now the possibility that Harbury will get a crossing-guard
- Obtained Quality Parish Status.

Harbury Society



Harbury Society

At our November meeting Mrs Beryl Ellerslie talked about Bonfire Night, the Gunpowder Plot and its local associations. (Bonfires of sheep and oxen bones (Bone Fires) had been used since 1558 to symbolically burn the Pope.)

We remember Guy Fawkes, but he was not the Plot's instigator. The real connections with our area are linked by the Chief Conspirator, Robert Catesby of Lapworth, born 1573 at Bushwood Hall. Catesby's plan was simply to re-establish Catholic worship by blowing up the House of Lords and the King at the Opening of Parliament!

In 1604 in Lambeth he met up with Thomas Winter and Christopher Wright. Thomas Winter's sister-in-law Gertrude Winter lived at Grafton Manor Warwickshire and her sister married John Grant of Norbrook, Snitterfield. In May the group met in the Strand with Thomas Percy who then rented a building adjacent to the House of Lords. Guy Fawkes passed as his servant, John Johnson, and began to collect gunpowder.

A "Hunting" party on Dunsmore Heath was arranged for other Catholic sympathisers including Ambrose Rookwood of Clopton Hall, Francis Tresham of Rushton Hall; and Stephen Littleton of Holbeach House in Staffordshire.

Warned by Cecil, the King ordered an initial search of the Parliament buildings which failed to find the gunpowder. A further search at midnight on 4th November discovered both the gunpowder and Fawkes with a lighted fuse. He was arrested and the London Conspirators galloped to Ashby St Leger and made their way to a meeting with the Dunsmore "Hunters" in the Lion Inn at Dunchurch. Some deserted there and then some went off towards Wales with Catesby.

They broke into stables in Warwick to obtain fresh horses and rode on to Norbrook for arms and more mounts; spending the night at Huddington and thence to Holbeech in Staffordshire where the leaders were eventually shot.

The Jesuit Priests too were betrayed. Fathers Garnet and Greenway fled from Coughton Court to Hindley at Abbington where they hid for a week but were eventually starved out and taken to Hope Castle in Worcestershire.

The surviving Plotters were tried and condemned to being hung, drawn and quartered. They were the misguided men of the Midlands who brought suffering to their families but made November 5th a memorable date with an enduring tradition.

Do try our Photo Quiz at the Christmas Fayre Sat 3rd December 2pm
Next event for members only – BURNS NIGHT DINNER 25TH JAN 2006.

Linda Ridgley



Harbury's Women's Institute

First of all, the support given to the W.I's Lunch recently must be mentioned. Thank you all so much for coming and we do hope that you enjoyed the lunch. Thanks must be given to all the cooks and helpers that made the day a success. A special thanks to Neville Ellis for donating six of his handmade wooden bowls for us to sell. Then the coffee morning at Pam's home was well attended and we thank Pam and all helpers for their effort. These two events have helped to boost funds towards the W.I Map Framing. When completed, the kind donors will be mentioned.

Don't forget that there will be another coffee morning at 17 South Parade on Friday 16th December 10am – 12noon, admittance £1 with a raffle and bring and buy. Hope all readers will come.

Don't forget the group Carol Service on Tuesday 13th December at Southam Catholic Church (7.30pm).

The last walk was in the Offchurch area with plenty of mud, mud, glorious mud.

Members attended the Autumn Council meeting and thoroughly enjoyed the light hearted approach to life of speaker Canon Roger Royle. There was plenty of laughter that afternoon. Gillian Hare gave an excellent account of the procedure.

Voting for a new President took place in November, with a welcome guest, Marie Coleman, the County Chairman, to officiate.

We were all sorry to hear of the sudden death of National Chairman Barbara Gill, she will be missed.

Dorothy Groves has been an excellent President for the past three years and we thank her for her loyal service and hard work. Pam Parton, a relatively new member, is now our new President and we are sure she will get support and help from her committee and members.

The programmes have been excellent this year which makes for an enjoyable meeting.

December speaker: Mr Martin Pleasance – Body language. There will be wine and mince pies.

A reminder to members not to forget their bran tub gift.

Seasons greetings to you all.

Jeanne Beaumont

Harbury Folk Club

The theme for the 252nd Harbury Folk Club was Royalty and most of the evening's performers managed to include a reference to the theme in their songs or introductions. The Harvesters opened with the Stanley Holloway classic, "With Her Head Tucked underneath her Arm" and a new song entitled "King of the Mild Frontier". Peter Mason followed with "Lancashire Lads" and "Benjamin Bowmaneer". Debbie read one of her poems and then Ron kept strictly to the theme singing "King John & The Abbot of Canterbury". Barbara gave a rendition of "The Battle of Hastings" and sang "Geordie", then Rick gave us "Good King Arthur's Days" and "A Begging I will Go". Harriet & Ruth made a rare appearance and played some tunes and Des closed the first half with the 5th of November Song and "Babylon is Fallen".

Band of Folk started the 2nd half with "The Princess Royal" and "Life in the Old Dog" and they left Peter McDonald to sing "The Massacre of Glencoe" and a new song for him entitled "Wandering Soul". Martin sang a very clever song about the year the old King died and an equally clever one about the royal families past and present! A new performer, Fran, delighted us with her fiddle playing and Graham followed with "The Little Ploughboy" and "Honest John". Mal Waite visiting from Chester closed the second half with "The Norman Castle".

Our old friend Mike Puttnam brought his choir, "The Prince Albert Consort" to perform the third half for us. It was a joy to listen to and I hope they will visit us again in the future.

The raffle raised £52.00 for Macmillan Nurses, thanks to all who contributed.

We'll do it all again next month, hope to see you there!

Sue Hartland



Harbury Theatre Group

TABLE MANNERS – comedy by Alan Ackybourn

It was with regret that we had to postpone the production of *Table Manners* at the end of November and we would apologise to any audience who were hoping to come and watch it. Hopefully all ticket monies have been refunded, if not please call Alison Hodge on 612029.

The good news is that we will be performing *Table Manners* on the 10th and 11th February 2006 in Harbury Village Hall. We very much hope that you will be able to support us on these dates. Tickets will go on sale from 9th January 2006, please call 612029 or 612150, or call in at The Salon in Chapel Street, and they will be available on the door. The cast are continuing to work hard on what promises to be an entertaining comedy.

Alison Hodge

Harbury Twinning Association

By the time you read this, the Association will have held its AGM and will, I hope have a new Chairman, as after 3 years I felt it was time to stand down. I hope also we will have some new committee members as Karen Ellis and Janet Thornley are retiring. Both have worked very hard for the success of twinning, Karen as Treasurer and Janet as Social Secretary.

We plan to follow the AGM with a wine tasting organised by Peter Rollason which should launch the festive season. Our annual Christmas Party will be on December 16th in the Tom Hauley Room and then we will celebrate Fete des Rois on January 6th. A big thank you to Peter and Moira Rollason for hosting the latter.

We will be holding a Quiz Night later in the winter, see next month's Harbury News for details. At the time of writing, the winter weather is grim, so thoughts of Samois-sur-Seine in early May when we will be visiting are enticing! If you would like to join us, please contact me at 32, Mill Street.

Sharon Hancock

Harbury Juniors

FOOTBALL CLUB

U10's

Harbury 3-1 Kinton

This proved to be a more difficult match than the boys expected. Kinton were determined not to be beaten and we had to work hard for the victory. Our ability to finish our chances was the difference between the two sides. Goals were scored by Adam Miles (1) and James Barker-Wall (2).

Harbury 10-2 Fenny Compton

All the boys performed very well. The strong tackling from Hallam Bullock, Elliot Tawney and Harry Morrice meant we regained possession well and went on to create many goal scoring chances. Goals were scored by Adam Miles (4), James Barker-Wall (5) and Angus Murray (1).

Harbury 8-3 Banbury Irish

This was the best performance I've seen from a team at this level. The tackling, passing and teamwork of the side was excellent. The goals were scored by Adam Miles (6) and James Barker-Wall (2). The defending by Harry Morrice, Elliot Tawney, Angus Murray and keeper Matty Hayward was particularly strong against this very good side. Well done to all the boys!

U9 Eagles

Harbury Eagles 7-1 Napton

This was a great team performance by the Eagles. They worked hard and passed the ball well. Adam Grey and William Rea were outstanding in defence. Goals were scored by Aaron Murray (3), Matthew (2) and Cullen MacCauley (2). There was a determination and confidence throughout the team and all the parents watched with pride.

Neil Murray

1st Harbury Cub Scouts

Matthew van Kesteren and Sam Cheesman received their silver award, (the highest award presented to a cub scout), congratulations to them both. They will be now be moving up to 1st Harbury Scouts.



Silver Award Presentation

Lesley van Kesteren

Harbury Tennis Club

November saw completion of the latest phase of improvements to the facilities with the switching on of the new floodlights on the second tennis court. This coincided with the very cold spell but as can be seen from the photo it didn't deter the junior members from making the most of them. The adults have also made good use of them and they have responded to the cold by bringing out some fairly bizarre headgear!



Banbury Floodlit League Team – Harbury thaw out!

The "A" team continued its winning streak with a 3-1 win at Charlbury. The first 2 rubbers were straight sets affairs with Gill Thorpe and Kate Young winning comfortably while Geoff Prince and Andrew Rendell lost comfortably! The win was assured when Gill paired up with Andrew and secured a 6-2, 6-1 success. Kate and Geoff also won their rubber but took a little longer and were taken to a tiebreak in the first set. The same four played in the next match, a very exciting 2-2 draw at Hook Norton who were also unbeaten. Harbury couldn't get used to their artificial grass courts that had some morning dew on the surface which meant the ball skidded through low and fast. Gill and Kate, however, won their ladies match comfortably 6-1, 6-2. Geoff and Andrew suffered a very rare 0-6 loss in the first set and looked on their way out at 2-5 and 2 set points down in the second set. However they staged a miraculous fight back winning that game after several deuces and then winning the next 4 games to take the set 7-5 and halve the rubber. Sadly the team couldn't maintain the momentum and Hook Norton got the upper hand in the mixed doubles. Andrew and Kate drew 1 set each 2-6, 6-1, whilst Gill and Geoff went down 3-6, 3-6.



Friday Junior Groups

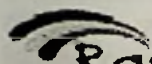
The "B" team gained its first points of the season with 2-2 draws at

Tysoe "C" and Charlbury "B". Angie Dean and Sue Mercer got Harbury off to a winning start at Tysoe winning both sets, 6-2, 7-5. Steve Stark and Keith Thompson lost their rubber but came very close to halving it, losing one of the sets on a tiebreak. In the mixed doubles Angie and Steve had a comfortable win, 6-2, 6-1 but Sue and Keith narrowly lost a close match 5-7, 3-6. At Charlbury Caroline Morland and Colin Mercer replaced Angie and Keith. The match was all-square after 2 rubbers. Steve and Colin won the first set easily but nearly relaxed too much in the second and had to win a tiebreak. Sue and Caroline had got off to a slow start and lost 0-6, 4-6. Caroline and Steve were in a hurry and won their mixed doubles 6-0, 6-1. Sue and Colin very nearly halved their match, which would have clinched an overall win for Harbury but were just edged out in a second set tiebreak.

The men's doubles team returned to winning ways with a 3-1 win at Littleton on a very wet and windswept Sunday morning. Jon Scothern and David Lauder opened proceedings with a 6-2, 6-1 win but Geoff Prince and Colin Mercer faced sterner opposition. They won the first set but lost the second. Things looked bleak at 1-3 in the final set but they battled back to win it 6-3. After the long wait for their second rubber Jon and David had lost their momentum and went down in straight sets but Geoff and Colin won theirs to complete the overall win.

In the floodlit league Harbury continued its unbeaten run winning its first ever home match 3-1 against Deddington. Caroline Morland and Angie Dean had finished an easy win before Colin Mercer and Keith Thompson had completed their first set. They eventually won it but lost the second leaving the match evenly poised. Angie then continued her winning ways with Colin and with Caroline and Keith halving their rubber Harbury completed the win.

Colin and Sue Mercer



Rainbows 1st Harbury Rainbows

In the scout hut on Tuesday 8th November. It was a lively and fun experience with a full complement of 12 Rainbows having a great time.

Rainbows is the youngest section of the Girlguiding movement aimed at girls between the ages of 5-7 years. The 1st Harbury Rainbows held a very successful first meeting. Rainbow meetings are full of games and activities that in turn provide challenging opportunities for each

Rainbow to think for themselves. More importantly, being a Rainbow is an opportunity to look, learn, laugh and love.

If anyone would like any further information on Rainbows please contact me on 614040.

Bobbie Sharpe



Harbury Toddler Group

Christmas Party

As you will probably know by now we are holding our annual Toddlers Christmas party on Wednesday 7th December at 12pm in the Village Hall. We are furiously planning a fun filled afternoon with party games, a prize for the best fancy dress outfit and of course a visit and gift from Santa.

The party is an event that we all look forward to but it does take a bit of preparation to make it a success so this is where we ask for your help.

You will see various lists appearing during sessions over the next couple of weeks, a food donation list, a party attendance list, a helpers list etc. If you feel you can help out with any or all of the requests then it would be most appreciated. The attendance list is particularly important as Santa's helpers are going out shopping for suitable gifts and we don't want to miss anyone out.

There is also a raffle for a Luxury basket for the adults, which even includes a massage! Tickets are £1 per strip and can be bought from any of the committee members, all profits to be ploughed back into Toddlers in the form of new up to date toys, so please tell your family and friends and get them buying raffle tickets too! But hurry as the raffle is drawn on **December 7th!!!**

New Toys

A couple of weeks ago the committee braved the depths of the toy shed and had a clear out. It was a nightmare! I think we were all surprised at how difficult it is to make ruthless decisions over which 'worn out, but much loved toys' should be stuffed into a black bin bag and which should be wiped and saved to play another day.

Well, we are happy to report that we have made space and are now circulating a 'Wish List' during Toddler Group sessions for your new toy suggestions.



Christmas Holidays

As a reminder to all Mums and carers, Toddler Group closes during School Half Term holidays throughout the year with the exception of the six week summer holiday. This means that we will be closed from Wednesday 21st December and will re-open Monday 9th January.

We wish you all a very merry Christmas and look forward to a fun filled 2006!

The Harbury Toddler Group Committee



Windmills

Nursery School

The theme in the nursery this term is celebrations and preparations for Christmas.

We began with the multi-

cultural celebration of Divali, the festival of light. The children produced some colourful symmetrical Rangoli patterns and enjoyed tasting a variety of Indian food. Discussing various bonfire celebrations followed and how the fireworks made the children feel.

Morgan: "I did go to Neil's house to see the fireworks, they were changing colours and they made glitter at the end. They go up in the sky".

Alexis: "I didn't go near them. I had a bonfire party at my house 10 people came. There were blue, orange and red ones. They went bang - I was frightened."

Adam: "I went to see the fireworks and I had my ear defenders on."

We made our usual visit to the church for the toddler's service when once again the children displayed their musical talents by enthusiastically playing

the musical instruments, while the adults sang the hymn. Then later in the week we visited the library for story time. One of the highlights of this month was a fancy dress party held on Tuesday, 8th November, to



celebrate the 1st anniversary of our moving into our newly refurbished room. There were party games, and then a party lunch. Mrs Kennedy brought in an anniversary cake that she had made and we all sang 'Happy Birthday to Windmills'.

Thank you to Emily's mum Annabel who visited the nursery with Emily's new kitten called Fudge. Annabel told us how they had got her from the RSPCA rescue centre. Another highlight this month was the visit from the Blue Watch firemen from Leamington fire station with the fire engine. The children excitedly watched the fire engine arrive and park in the school car park, and then eagerly climbed aboard, taking turns in the driver's seat. The children were especially excited when Dave one of the firemen turned on the blue lights and the 'very noisy' siren.



We have started our preparations for Christmas and the children have already created some fantastic hand made Christmas cards. The children have also been enthusiastically practicing the songs and poems for our Christmas concert, which is to be held on Friday 16th December in the school hall at 10.15am. Please come along and afterwards enjoy a coffee and mince pie. Continuing on the Christmas theme, the children's own design Christmas cards have now been printed and are available from the nursery; as well as some beautiful cards designed by Lindsey Dolphin, and the new Harbury calendar. All of these items will also be on sale at our Christmas coffee morning on Saturday 10th December 2005 in the Tom Hauley Room from 10am till 12 noon.

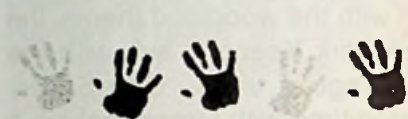
Thank you to Sharon Halstead for making and hanging some lovely curtains to cover our storage units. It has really brightened up our room and has made it look a lot neater! Thanks also to all those people who have generously donated some wonderful dressing up clothes and toys, the children love them and they are a great addition to our resources. A big thank you must also go to everyone who made

cakes and food or who helped at the craft fair held in the Village Hall. The hot lunches and afternoon tea's proved extremely popular and we managed to raise approximately £400.00, which will be shared between pre-school and ourselves. A huge thanks to Bobby Jones and her sisters who organised a sweet and teddy tombola and also a name the teddies stall in aid of Windmills nursery school. They managed to raise a fantastic £170.00 - thanks to all those who donated jam jars and sweets for their stall.

Finally, congratulations to two of our members of staff - Beryl Sheasby and Cassie Houghton who have just received their first aid certificates.

Windmills Nursery School is situated in the grounds of Harbury Primary School. If you would like to register a place for your child or require any information on Windmills Nursery you can email us at info@windmills-nursery.co.uk, call Nicola on 614564 or Tina and Marie on 07906 519148.

Nursery School Staff and Committee



Harbury Pre-School

Guy Fawkes Night: At the beginning of November the children produced

some lovely fireworks pictures to decorate our display boards and told us what they liked and disliked about Bonfire Night and fireworks. They made some wonderful fireworks using assorted cylinders, brightly coloured paper and other materials and, of course, large quantities of sticky tape, glue and imagination.

Autumn: With Bonfire Night behind us, the theme turned to autumn, starting with two exciting woodland walks. The children collected items of interest such as leaves, bark, moss, conkers etc along the route and had a marvellous time exploring in the spinney, trying out bark rubbings on the trees and running up and down the banks and hollows. Afterwards they used items from their collections to make collages and lovely leaf prints onto fabric. The sand tray was filled with soil compost containing assorted creatures that the children enjoyed digging out and reburying countless times during the sessions.

Woodland Area: This area was created in the Wight School using camouflage netting as an overhead canopy, very kindly loaned by Pete van Kesteren. A real tree stump provided a lovely solid seat, a

large cloth hand painted by the children in autumn colours was a floor covering and assorted leaves and photographs hung from the canopy as well as the walls to complete the scene. All that was necessary was to add some woodland animals



in the form of toy foxes, owls, rabbits, squirrels and hedgehogs and some topical books to make this a delightful space for play, reading and relaxation.

Percy the Park Keeper: In conjunction with the woodland theme, the role play area was turned into Percy the Park Keeper's hut, with the animals from the woodland area making regular visits. "One Snowy Night" was acted out by the children at storytime with Grace making a wonderful Percy!

Modelling: Inspired by the woodland animals, the modelling clay was very popular, with many variations of hedgehogs produced, adorned with several different materials, lollipop sticks, buttons, fir cones, pasta shapes and twigs. Butterflies, mice and rabbits also fitted into the woodland theme, while the rockets, boats and dinosaurs added variety!

Cooking: During the last week in November, the children made their own pizzas for snack time. The base was half a muffin and they chose from a variety of toppings including tomato, mushroom, red pepper, sweet corn and cheese. Some were very adventurous and



tried most of the toppings, while Nat had plenty of everything and ate the lot!

Christmas and the Nativity: We are now practising hard for our special Nativity which will be held in a real stable in Mill Lane. Words and actions for traditional and new Christmas songs are being learned and we are looking forward to sharing this with parents and friends on 8th December.

Staff training : This term has seen much training and personal development. Having achieved level 2, Lesley van Kesteren has enrolled for the NVQ level 3 course and congratulations go to Bud Jackson on obtaining her NVQ 3 – well done Bud and Lesley! Staff have also attended courses on 'developing a purposeful learning environment', 'story time with story boards', 'playing with sounds', 'producing training and development plans' and 'making maths real' all of which have seen aspects incorporated into the activities at pre-school.

If anyone would like further information about Harbury Pre-School, please contact Nicky Kirk, Chair of the Pre-School Committee, on Harbury 614316 or come and see us at our Open Morning on Saturday 5th November at the Wight School between 10am and 12noon.

Finally, may we take this opportunity to wish everyone a very Merry Christmas and a Happy and peaceful New Year.

Harbury Pre-School Staff and Committee



Harbury Primary School

Many thanks – To all the children (and their parents) who supported the Family Service at All Saints' Church last Sunday. The turn-out was excellent – over 25% of the school attended! Every child played some role in the Service, and everything appeared to go very well – we certainly got a lot of compliments from the congregation after the service. The orchestra in particular was excellent, and Fr. Roy has since asked me to invite interested children in Years 5 and 6 to join the Jubilate Group, which plays at church monthly – if your child is interested, please contact either Fr. Roy or myself for further details. Well done, everyone

Congratulations – It gives me great pleasure to inform parents that Mrs. Payne and her husband are expecting their first child in April. Mrs. Payne is planning to take maternity leave towards the end of the Spring Term – I shall inform parents about the arrangements for

covering her class nearer the time. On behalf of all at the school I offer the couple our warmest congratulations.

This month's poetic offering comes from Freya in Y6.

Autumn

*Skies are blue,
Wind is chill,
Sun is here,
But rain does form.*

*Say hello to hat and gloves,
Coat, scarves,
Warm boots,
And extra socks.*

*Leaves change colour,
Red, yellow and brown,
Conkers and
Chestnuts fall.*

*Wildlife starts to hibernate,
Hedgehogs and badgers
All of them*

Going to bed for two months straight.

*Keeping warm,
Most important,
Fires and heating,
All are on.*

*Children go to school,
Mums cook and clean,
Dads go to work,
And pets do their stuff.*

*So you see AUTUMN,
Is brilliant,
So...*

LOVE IT JUST LOVE IT!!!

Sport – The girls' cross country team continued its fine start to the season by finishing fourth in the second Central Warwickshire Cross Country League meeting of the year. This means that the school is now equal second in the league at the halfway point of the season. Unfortunately, we did not have a complete boys team, although the boys that did run competed well.

The boys' football team, somewhat handicapped by the fact that we only have nine boys in Year 6 (!) narrowly lost their first game of the season, against Lillington School, 2-4 in a game that either team could have won – we were actually leading 2-1 with ten minutes to go. Still, a promising start to the season.

Mrs Sykes – During the course of last year, Mrs. Sykes successfully applied for a Graduate Teacher Training placement. I was delighted when the school was accepted as her training base by her training centre – it is a real acknowledgement of the high standards of teaching and learning at the school that the school was able to satisfy the assessors of our ability to take part in such a programme. Over the past half term, Mrs. Sykes has been attached primarily to Year 6.

Common to all teacher trainees who spend time at Harbury School, Mrs. Sykes will be given the opportunity to teach across other year groups within the school. Therefore between now and Christmas, Mrs. Sykes will be teaching in a number of classes under the direct supervision of the usual class teacher or Mr. Daly.

Bad Weather – Can I remind parents of our arrangements in case of very bad snow. If there is snow in the area, the school will make every effort to stay open, and would therefore not expect to close unless the Local Education Authority announces a blanket closure for the whole of the area or there is an exceptional circumstance at this school (e.g. the heating breaks down). If the school is to close, an announcement will be made as early as possible on local radio – by the LEA if it is a blanket closure or by us (using Mercia and BBC Coventry and Warwickshire) if we have particular problems. Unless you hear otherwise, the school will remain open – it is a matter for parents as to whether they would still want to send their children in poor weather conditions.

PTA News – Congratulations to the winning team at the annual PTA Quiz night, they are our Parish Council team, 'The Peoples Choice'. Well done to Sharon Hancock, Tim Lockley, Linda Ridgley and Keith Thompson, it was nice to see Sharon beating husband John to the top this year!

Denis Daly

Harbury Bonfire 2005



Neighbourhood Watch News

Some seasonal advice

Road Safety

In winter, the extra hours of darkness make being out and about on the roads more dangerous. Even if the streets are well lit, it can sometimes be difficult for drivers to see pedestrians and other road users.

Adults and children are equally at risk but making yourself more visible needn't cost much:

1. Wear light coloured clothing.
2. Add fluorescent strips to bags and clothing.
3. Carry something white or light coloured - a shopping bag, for example.

Cyclists and motorcyclists should make themselves conspicuous from the side as well as the front and rear. Wearing a white or brightly coloured helmet, fluorescent clothing or reflective strips and using lights, even in daylight, will all help get you noticed.

Crime prevention - Internet

The internet is a convenient way to shop and with Christmas approaching it seems a good time to remind you of a few things you can do to protect yourself.

Your personal details are as important to safeguard as your credit card number when you are using the Internet. Allowing other people access to your personal details can have a range of consequences:

1. Spam - If your e-mail address falls into the wrong hands it could be sold off to individuals or organisations that send unsolicited e-mails. This could include junk mail, pornographic content or attempts to trick you using Internet scams. (See October's advice)
2. Cloning of personal details. If you divulge sufficient details about yourself, people can attempt to obtain goods or services by impersonating you.

Before you divulge any personal information on the Internet, check the following points:

1. Security - Is the website you are using secure?
Check for the locked padlock at the bottom of the screen or <https://> at the start of the web address.
2. Recipient. Do you trust the company that you are sending your details to? Are you sure that they are who they say they are? If you have any doubts, find a telephone number for the company and ring

them - but don't use the telephone number on their website, they may be impersonating another company.

Recommended safeguards to prevent fraud:

1. Make sure you know who you are dealing with before disclosing card details. If in any doubt, undertake additional checks before handing over the details.
2. Use a computer that you know is secure - which means one with up-to-date anti-virus software and a firewall installed. Be particularly wary of making a transaction using internet cafes or public computers.
3. Only shop at secure websites - ensure the security icon (the locked padlock or unbroken key symbol) is showing in your browser window before sending your card details.
4. The beginning of the retailer's internet address should change from http to https when a purchase is made using a secure connection.
5. Use the sites you can trust, for example a site that you know or one that has been recommended or one that carries the TrustUK logo.
6. Always be wary of e-mails asking you to disclose or confirm sensitive personal or security information, including your PIN. These are RARELY genuine.
7. Keep a record of any transactions you make and preferably print it out in case of problems in the future.
8. Regularly check your statement for unfamiliar transactions, and contact your Bank/credit card company if you notice anything odd.

Keep safe, and Happy Christmas.

Alison Abbott

Redevelopment of Harbury Estate – Preparation of a Masterplan

As you might already be aware, the District Council have accepted the Local Plan Inquiry Inspector's recommendation to include a policy in the Revised Local Plan to guide the redevelopment of the Harbury Estate. One of the requirements of the policy is to prepare a Masterplan, which will set the framework for any development on the site. It is a key objective of this exercise to ensure that the redevelopment of the site is sustainable and fully integrated socially and physically with the nearby communities.

The District Planning Authority is firmly of the opinion that a successful achievement of this aim can only come if people who have interest in the site and its redevelopment are given the opportunity to share their skills and ideas as early and as fully as possible. In this regard, a number of groups and organisations in the local communities surrounding the site are being invited to participate in this process.

The Council recognises that there might be many others who may wish to participate in the process and whose contribution might be invaluable. However, all of us will agree that for such a complex task to be completed efficiently and effectively and within a reasonable time limit, the management of the process as well as the numbers of people involved is critical. That is the reason why not everybody has been invited to this first workshop. That is not in anyway intended to underestimate the value of comments to be received from the general public. At appropriate stages of the process, everybody will be given the opportunity to comment on the outcome of the process and the Council will ensure that your comments are fully taken into account before the Masterplan is finalised. Any person who wishes to discuss this matter further can contact Ernest Amoako on 01789 260399.

Ernest Amoako

Shoebox Appeal

A huge thank you to everyone who contributed to the Operation Christmas Child Appeal for gifts for children in poverty and destitution in many countries. As a result of collections by W.I, Mothers Union, Thursday Club and individuals, the magnificent total of nearly 60 boxes were made up, and will bring joy to that many children.

It is hoped to repeat the project next year, so please bear in mind when buying shoes and be on the lookout for small gifts and toys.

Thank you again from all those who have no voice in their circumstances.

On behalf of Operation Christmas Child

Pre Christmas Coffee Morning

Saturday 17th December 10am – 12 noon.

It is now 18 years since the Saturday coffee mornings began, when the object was to raise funds for some sort of church room. However, due to a very generous legacy from our good friend Tom Hauley, this



aim was achieved in 1989 when it was decided to move the weekly coffee mornings into the Hauley Room and throw it open to organisations to raise funds for charities in which they were particularly involved and so it became what it is today. Over the years they have raised many thousands of pounds for a wide variety of causes. I have been responsible for the organisation of this event and have now decided to hand over to others and shall be doing so at the end of this current rota.

It has been customary that at the pre Christmas coffee morning the coffee and mince pies etc should be free and the money from the raffle should go elsewhere. As this is the last one for which I shall be responsible, I thought it relevant that the money this year should go to Church Funds which is where it all started. We warmly invite everyone to come along and see what is on offer. If you feel able to offer a raffle prize I shall be very pleased to receive it.

Joyce Windsor

Not Just For Christmas!

Wouldn't you like to know how to give someone the gift of life? You can! Come along to the Village Hall on Thursday 15th December and be a blood donor. Session times are: 1.30pm–3.15pm and 4.30pm - 7.15pm. Extra supplies are needed over Christmas when accidents and operations do not take a break. New donors aged 17 – 60 will be most welcome – existing donors can now continue to age 70. We still haven't reached 100 donations – could this be the day? Queries to Mrs G Hare on 614809.

Gillian Hare

WRVS Meals on Wheels

We deliver hot meals to about 12 elderly people in Harbury and Bishops Itchington on Tuesdays and Fridays. This human contact and hot food are very much needed and appreciated by the recipients.

Do you have about 2 hours free every month to help us heat and deliver the pre-prepared frozen meals from Harbury Village Hall in teams of two? Each team delivers either on a Tuesday or a Friday every four weeks. PLEASE HELP. For more information phone Gill Thorpe on 613801.

Gill Thorpe

Harbury Pre School Open Morning

Remember, remember the 5th of November when Harbury Pre School held its Open Morning!! We didn't need any fireworks - we were having a great time inside. Lots of new children came along to see what we do and to meet our lovely Pre School staff. We had great fun, drawing, playing with the farmyard, in the home corner and on the computer, as well as lots of other things!



We all had a really great time and would like to thank all the children and parents who came as well as Pre School staff and committee for making it a very successful morning.

If you would like to register your child to attend our lovely setting or just want some information then please call Nicky Kirk (Chairperson) on 01926 614316 or our Pre School Leaders on 07833 597973.

Harbury Pre School Committee



Co-op Change

Work carried out at Harbury Co-op helps make the store more inviting. Being a large shop for a village is an advantage to mothers to bring their buggies inside. There has been a Co-op building on the High Street site since the 1800's. During the war years and afterwards, three bakers were employed as well as the office and counter staff and those for the coal delivery. The Co-op manager ran the Home Guard and also took the Church service when Reverend Capps was sick. Most items could be bought over the counter; ironmongery, poultry food, even chicken wire, not forgetting grocery.



The Co-op delivered to local the villages; Chesterton, Moreton Morrell, Ashome and Lighthorne.

How times have since changed. Local shops ought to be supported. Events have shown when a village shop closes down nobody is willing to take them on. Harbury is lucky at the present time; many villages in Warwickshire and beyond have nothing.

Mike Bloxham

Chinese Take-away - On The Move To The Gamecock!

After two and a half years operating in the back room of the Dog Inn, the Fu Garden Chinese **Take-Away** has recently re-located to the Gamecock Inn. At present, regular customers will be able to place orders for their favourite **T-A** dishes, which can be collected from behind the bar in the pub. It is the intention of the Manager, however, to open an intimate restaurant seating approximately 20 people in the coming weeks, as soon as refurbishment has taken place.

The **Fu Garden** in the village is allied to the Leamington business, which is situated in Spencer Street and there is the same varied menu on offer. In total, over 160 dishes are listed on the menu, including hors d'oeuvres, soup, seafood and vegetarian dishes, as well as the main meat dishes (chicken, duck, beef and pork) and sweets. For

those who prefer traditional fare, 'English dishes' are listed, whilst a range of curry dishes is also available.

The Manager of the Fu Garden has spoken of his intention to offer the Cantonese specialities for which the restaurant is recognised, in addition to some Thai recipes. He also intends to prepare specialist dishes (according to taste) for those customers who request particular meals based on the 'local cuisine' they have enjoyed during trips to China.

He plans to offer a fish and chip take-away menu in the not too distant future, which will be advertised as soon as the facilities are available. In the meantime, the restaurant can be contacted on its existing number **01926 614589** to order take-away meals, which are usually available for collection approx. 20 minutes after ordering. For those who prefer restaurant service, (which can be complemented by drinks from the pub bar) it is advisable to make a booking.

The **Fu Garden** can provide a touch of the Orient without having to leave the village, since the Chinese staff can discuss individual requirements, which will provide a flavour of the Far East for those who wish to refresh holiday memories or those who enjoy a meal with a touch of spice.

The Fu Garden is open 7 days a week:

Monday	5.30-10.30
Tuesday – Saturday	5.00-11.00
Sunday and Bank Holidays	5.00-10.30

Enjoy the experience!



Chris Finch

Down Under

G'day!

Jo Doming here – I wrote a few months ago about how I was going to Australia as part of my gap year, and thought I'd update you on what's been happening on the other side of the world!

I'm having an amazing time working on the horse stud – handling foals and yearlings and learning loads from all the vet work. I've been doing a few stints of Nightwatch – staying up all night to check on pregnant mares every 20 minutes to see if they're foaling. And I've learned to ride a quad bike and a motorbike around the farm, which is great fun (haven't fallen off yet, touch wood)!



My placement hosts are really pleased with how I'm working and I've settled in well – I feel like part of the family now, and get on famously with everyone here, so they've invited me to stay for Christmas and help them at the Magic Millions horse sales on the Gold Coast in January. I'll be part of a team helping prepare the yearlings for sale from 3 different studs from the Upper Hunter area; it'll be an amazing experience!

Living with a family is definitely the best way to experience Australian culture – I'm trying the 'specialities' like 'vegemite' and 'Tim Tam Shooters', and picking up the lingo like 'fair dinkum' (for real?) and 'damn straight' (yeah!). The landscape here is amazing with hazy hills on all sides, beautiful sunsets, acres of forest, wild parrots and lizards everywhere – and the other night I saw about 50 red kangaroos, which believe it or not are a pest around here!

During my time off I've been to the local racecourse, shopping in Newcastle, hiking in national parks, whale and dolphin watching, to an Australian music concert and to a cattle horse sale. Last weekend our hosts took me and Tom to the annual Gundy Ball – a great opportunity to dress up and chat to the locals – most of whom work with horses in some way. They've also taken us to various BBQs and cricket games at neighbouring studs, and towed us around Lake Glenbawn at high speed, in a tube behind their motorboat (a painful but exhilarating experience)! I've also been to lunch with my World Challenge in-country agent, to discuss post-placement travel arrangements. There's so much I want to do, but part of me doesn't want to leave my placement – I'm having such a great time here!

Jo Dorning

Harbury Carnival

Following on from last month's article, I thought it might be a good idea to explain where the money to run the carnival comes from and where it goes.

Our main sources of income, in order of magnitude, are the raffle, programme sales, programme advertisements and the street collection during the procession. These accounted for nearly £2,500 this year out of a total of £2,990. The rest of the cash comes from the pitch rents for the stalls on the field, donations from the fairground ride operators and entry fees for the wheelbarrow race and pub games.

The main expenses are the hire of the band and PA system, programme and raffle ticket printing, insurance, raffle prizes and first aid facilities, which for this year were £1350 out of total expenses of £1,750. Other expenditure includes Punch and Judy show, organ grinder, rosettes, other prizes and the lottery licence fee.

A profit of £1,000 or so for such a big day may not seem much but this is just what we make as a committee and does not include all the profits made by the various organisations from the stalls on the field and the teas.

Our primary objective is to provide a great carnival day, which is at worst, self-funding and at best, makes a nice profit. With your help I am sure that we can continue to do so.

John Broomfield
On behalf of the Carnival Committee

Charity

I am in the process of setting up a Charity Website.

It will allow donators to go onto the website and look at people who are in need of assistance and donate money directly to their cause. This will enable the donator to see how the person is progressing in their bid to raise the money needed; and how it helps them once their target has been reached and paid out.

For example: A child in need of a life saving operation who needs to raise money as the only surgeon who can perform the operation is in the States.

A person who has lost a limb and needs an artificial one, or a special limb for sports etc.

Someone who has lost all of their hair and is in need of a specially designed wig.

It is all under way. Web designers are currently putting the site together, accountants are dealing with company and charity formation, solicitors are dealing with terms and conditions and it has sponsorship...

It just needs 20 people, who are in 'need' of something!!

So, I am wondering if you know anyone who might need any of the following sorts of things:

- A specialised wheelchair
- An operation
- A mobility vehicle
- A new limb... a specialised limb
- A surgical procedure
- A special machine to assist their needs
- A home adaptation to make their life easier

There are many things that people may need and I am looking for 20 people to get the website started.

If you know anyone, please ask them to get in touch with me by email.
dayleis@btinternet.com

There are always people needing help, I'm hoping to find some to come forward. Based in the UK only.

By helping me... they'll be helping themselves.

Many thanks.

Dayle Adams

A Mediaeval Day Out

We who live in Harbury are a lucky bunch, we live in a beautiful County in a thriving village and surrounded by plenty of interesting places to visit right on our doorstep.

When did you last go out for the day to explore? Do you say "I don't know where to go" May we through these pages make a few suggestions, places that should interest most people.

Warwick is the heart of mediaeval intrigue and machinations, which will all be revealed when you visit the magnificent Warwick Castle.

Warwick Castle is one of the Country's most impressive ancient fortresses. It began life over 1000 years ago as a simple wooden motte and bailey castle but rapidly developed into a mighty mediaeval stronghold.

From dungeon to gatehouse, murder holes to garderobes, Warwick has all the authentic ingredients of a mediaeval castle steeped in history.

The Gatehouse

As the weakest point in the castle's defences the castle entrance, or gatehouse, needed to be heavily fortified against attack. Warwick's gatehouse is in excellent condition and its fortifications are almost exactly as they were 650 years ago.



If attacking soldiers managed to get over the drawbridge and through the portcullis they would find themselves in a narrow passage with arrow slits to either side and murder holes high above from which boiling water or quicklime would come pouring.

Huge wooden doors were the next barriers and those that managed to get through to the gatehouse itself would be met by yet another portcullis and more murder holes.

The Moat

For added protection the moat would have been twice as deep as it is today. Although it wasn't filled with water it would have been strewn with sharp wooden spikes and would have had all the sewage in it as the garderobes drained into it, ugh!

The Wall

The wall that surrounded the castle was anything between eight and 20 feet thick to withstand bombardment and battering rams. Walkways run along them to enable crossbowmen and archers to move swiftly to any point around the perimeter.

The Garderobes

We will not dwell in great detail on the garderobes, latrine shaft, and cess pit, suffice to say you can, should you wish, see an original garderobe, complete with authentic smell, in the Kingmaker attraction and two others wonderfully preserved! in the Barbican. It was the job of the Gong Farmer to regularly clear the ditch, moat, and cesspit. This must qualify as one of the worst jobs ever.

The Great Hall

The liveliest area in the castle, the hall would have been the scene of feasts and entertainments. The Great Hall at Warwick is the largest room in the castle and with walls nine feet thick and slit windows would form the last line of defence for the inhabitants if the outer walls failed to repel the attackers.

The Dungeon and Torture Chamber



No classic castle is complete without a dungeon and Warwick's is suitably dank and dismal. It occupies the lowest chamber of Caesar's Tower and was built in the 14th century.

In a small chamber off the main dungeon is the "oubliette", a sunken pit where prisoners would have been lowered and left to rot.

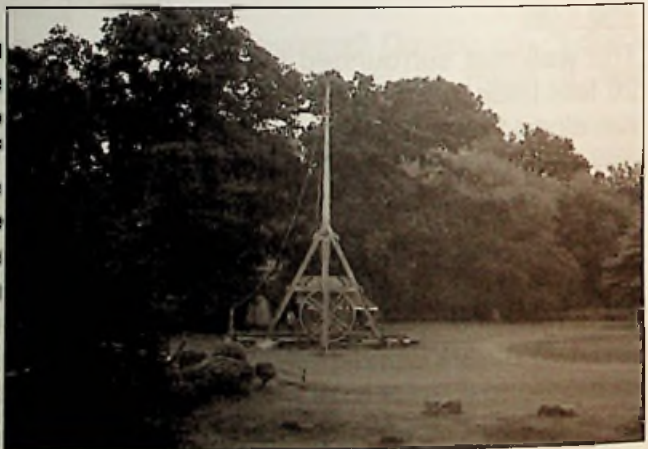
As the castle is owned by Madame Tussauds the

tableaux are extremely lifelike with suitable sounds and smells, in fact when we visited with a group we started to talk to a companion and found he was a dummy, need we say more!

To satisfy hunger there are two restaurants, which serve quite reasonable meals, long walks can be taken round the grounds if that is your thing.

You need to spend a whole day at the castle, there is so much to see and if you are fairly fit the towers can be climbed, but be warned, once you start up the spiral stairs there is no way back.

Warwick Castle is open every day except Christmas day and prices are: Adults from



£12.50, Children (4-16 years inclusive) from £7.95, and a family ticket, (two adults/ two children) from £34.00.

Tickets can be booked in advance on 0870 442 2375 or at www.warwick-castle.co.uk.

If we see people in the village with newly white hair we will know that you have been and seen the ghosts.

Adrian French

Harbury Support Group For Myton Hospice

We would like to thank everyone for their support this year, you have all been fantastic. The plant sales raised the wonderful amount of £3075.80. We hope you will support us next year.

Thanks to Chris and Leon for the use of The Dog car park and a very big thank you to Lancet Nurseries for supplying the plants and to Steve and Nigel for delivering them.

We would like to wish everyone a very Happy Christmas and New Year.

Harbury Support Group

The Village Ventures Competition 2005-2006

What is it?

A competition that aims to highlight voluntary effort that seeks to improve life in small towns and villages of Warwickshire. It runs annually and the closing date for entries for the current year is 1st April 2006.

There are small cash prizes; but, more importantly, the opportunity to showcase your project at the awards ceremony later in the year and even win a cash prize for that.

Who can take part?

Almost anyone. Entries must involve volunteers. The project may focus on any aspect of village or rural life. And there must be something significant for the judges to consider by summer 2006. There are special categories for community magazines, websites, conservation, local history, etc.

How to enter?

Please contact the Warwickshire Rural Community Council to discuss your project and request an application form. Tel. 02476 303232 or email enquiries@wrccrural.org.uk

Southam Christmas Lights

This year, Southam's Christmas Lights switch-on will take place on Monday 5th December. With the fun starting at 5.00pm, entertainment will include a fun fair; charity stalls and Christmas carol singers. The lights will be switched on by Southam Town Mayor Cllr Bill Pease, with the help of Father Christmas at 6.00pm.!



Southam Lights Committee

Take Time Out

Take Time Out started in 2001 and has held 42 events so far! The idea is to come along, have fun, learn a little and meet up and make new friends. Each event is suitable for beginners as well as for more experienced people. Should you have a burning desire to try out something new, please speak up, as the events are planned to be as varied as possible.

Most events are held in Ufton Village Hall and are publicised in the Ufton News, Harbury & Ladbroke News, Southam Advertiser and Leamington Courier (events page). Posters are placed around the village and in libraries.

Arts and crafts, gardening, local history and antique events are held each month. Tea, coffee and biscuits are included. It is entirely voluntary, is self sufficient, earning no profits and so far has managed to pay its own way.

Friday 14th October – 10.00am – 12.30pm – Ufton Village Hall

For The Love of Lace

Sally Herd has been a lace maker for 40 years and is coming to Ufton to talk about her love of lace. Her displays will include Buckinghamshire, Bedfordshire, antique and continental lace. You are very welcome to bring along any interesting pieces of lace that you own. She will also, with Janice Meacham, demonstrate pillow lace before we all have a go. This event should appeal to anyone, as no experience is necessary!

Cost £3.50 for talk, demonstration and mini workshop. Wednesday 16th November – 7.30 – 9.30pm – Ufton Village Hall

Plant Swap & Shrubs and Trees

Bring along a plant in a pot and swap it for another! Peter Toms, the

nurseryman and owner of Harefurlong Nurseries, Farnborough, will be with us to advise on how to care for our new plant, give a talk about shrubs and trees suitable for gardens and give topical hints for November. In addition he will be showing us plants, which can be purchased.

Cost £2.50 includes refreshments.

Thursday 8th December – 10.00am – 12.30pm – Ufton Village Hall

Decorating the Christmas Table

There will be a host of ideas to dress your Christmas Dinner Table to make it look festive. Come along and have a go at making Christmas crackers, floral table centres, napkin rings etc.

Cost £2.50 includes sherry and mince pies – materials extra

To secure a place at any event, please ring as soon as possible. Some events have limited places. So please book early! (613003)

Ribbon Flowers

Friday 20th January – 10.00am – 12.30pm – Ufton Village Hall

Ribboncraft is a fascinating subject and Diana Griffiths, embroideress, WI craft tutor and demonstrator will help you make beautiful flowers using shaded and wired ribbons. Diana is donating her workshop fee to Operation Shoebox, a Christmas Charity. This event is suitable for beginners – just bring scissors, needle, threads and a measure. Cost £3.50 plus £1.80 for materials.

To secure a place at any event, please ring as soon as possible. Some events have limited places. So please book early on 613003!

Karin Kirk



Horticultural Society

Some of us thought we didn't know any Latin names, but we did! Rachel Salisbury mostly managed a very complicated subject simply and clearly. Plant names

were, until the 17th Century, long and cumbersome often more than a line long, then John Ray set about putting them in groups by flower types and reproductory methods. Generic and specimen names etc. followed. Rachel showed us many slides illustrating various points; she certainly made us use our brains! She did mention orchids, but they are a subject on their own. "Anthus" in a name describes the flower, "Oidies"- similar to something, plants with names ending in

"Acae" describes habitat, "Fetidous" means stinking, and so on. All very interesting but she was way above my head more than once. She answered questions at the end of her talk, "What's in a name?"

After the talk came the AGM, Judy had suggested that it wouldn't take long, she was right, there were no new names, the committee remains unchanged. Come November next year, however, John Clifford will relinquish the post of Treasurer so the hunt is on to find a replacement. John has done the job very ably for the past 10 years – thank you John.

Keep an eye on the notice board for Garden Centres etc, who offer discounts on production of your 2005/6 Membership Card. If you want to take advantage of the discount please produce the card **BEFORE** the sale is entered on the till. Also bear in mind other local nurseries etc. who, although they don't offer discounts do have keen prices and friendly knowledgeable service. If by chance you have not yet paid your subs - £5 each, I'm sure John will be pleased to see you!

I am glad to say both Dobies and Marshalls catalogues are now available, in fact I understand John has delivered the Marshalls one to members who ordered from them last year. Please submit orders and monies to John as soon as possible.

A note for your diary, Mr John Clews will give a talk entitled, "RSPB Action for Birds" on Tuesday 7th February 2006.

Finally on behalf of the Committee, may I wish our members, the Editorial Staff and readers a very Happy Christmas and New Year.

Muriel Grey

Nature Notes

As I write (22nd November), we've had over a week of high barometric pressure with mornings of frost and fog mixed with clear blue skies. Last week, the full moon was bright enough to read by. Also in the night sky, high overhead gleamed a bright object, more yellow in colour than the red of repute. It was the planet Mars at its closest to us for years.

Back down on earth, most flowering plants have succumbed to the cold. Walking round Harbury Spoilbank, just to see how many flowering plants can be found at this time of year is instructive. I found a solitary Ragwort where dozens had bloomed and hosted caterpillars and moths back in the summer. A few Dandelions looked quite fresh.

This familiar but very beautiful flower gets its name from the shape of its leaves. It is a corruption of the French 'dent de lion' [lion's tooth.] A few specimens of the Carline Thistle, a reserve special were in evidence. Together with other thistles, this is part of the Compositae family, a large group which includes the daisies.

Fruits were far more in evidence and included Ivy and Privet (both black in colour), Hawthorn and Wild Rose, (both red), together with Old Man's Beard, our native Clematis. Several Crab Apple trees had dropped their fruit and all this bounty will be a rich source of food for Starlings and Thrushes as winter progresses. No Holly seems to grow in the reserve and indeed it is not a common tree in the locality (gardens excepted). Travel north-west out of Warwick on the old Birmingham road and Holly becomes quite dominant, proving it is a lover of acid soils. The Holly has become the major display of foliage at Christmas (apart from the Christmas tree itself). It was not always so as in years gone by: Ivy, Mistletoe, Box and Yew were popular. The use of evergreen plants to decorate houses at the Midwinter Solstice is a custom which predates Christianity. The evergreens flourish when other plant life seems dead, and so is a symbol of the continuity of life through the dark season. By the time you receive January's magazine, the daylight will be extending, imperceptibly at first and then with gathering speed.

Holly trees are used as markers and often left to grow in hedges when other potential trees are cut back. Stiles and gateways are easier to pick out in adverse weather if a Holly marks the way and ploughing too can be aided. Ivy was once used for rolling pins as pastry apparently does not stick to it as much as other wood. I'm telling you this in time for Christmas as someone with a lathe might like to turn out some Christmas gifts! In medieval times Ivy covered poles (or bushes) were used to advertise taverns. The higher the 'bush' the 'better' the inn: hence the expression, which I must say is new to me, 'Good wines need no bush'.

On one of the recent bright, cold mornings, my son Stephen and I set out to cycle a bit of his locality. He lives on the eastern edge of the Peak District, overlooking Sheffield. The cutlery industry which made the city a byword round the world is a remnant of its former self but by innovation and design it is still producing quality goods. We climbed away from the city, up to the heather clad acidic grit stone moors. In certain areas near Stanage can be found millstones in various stages of completion, some even looking totally finished. It seems that suddenly, sometime in the early 19th century, it became unprofitable

to transport these stones and they were left where they had been cut as a memorial to the first part of the Industrial Revolution.

Birch and Rowan stood out of the heather occasionally and in small copses by the roadside were stunted Oak and Willow. Gradually at first and then with a rush, we plunged into the valley of the Derwent near Chatsworth. The road was now a tunnel of Beech trees with some Lime, most still with a covering of gloriously coloured leaves. The valley was choked with mist, blotting out the sun and it was much colder. We were glad to buy hot chocolate at a market stall in Bakewell. We needed a bit of feet stamping before remounting and making our way out of the White Peak back to the grit stone. After recrossing the Derwent, the road climbed about 700 feet in the course of 3 miles alongside Froggat Edge. From the summit near the Fox House Inn, it was free wheeling back to Dore.

Locally, Warwickshire Wildlife Trust have produced an excellent leaflet describing the group of ancient woodlands near Princethorpe. Once a continuous canopy, it is now divided into eight separate blocks, but still, at a 1000 acres represents 10% of ancient woodland within the county. Ryton Wood is a Site of Special Scientific Interest. Wappenbury and Old Nun Wood are nature reserves. I will never forget my first sighting of a Silver Washed Fritillary butterfly in Ryton Wood last year. I had to go back for another 'fix' this July. Finally, another Christmas present suggestion is 'Warwickshire Butterflies-their habitats and where to find them' by Keith Warmington and Margaret Vickery, priced £12.50. It is available from Warwick Museum in the Market Square.

John Hancock

Gardening Notes

The first week in December is National Tree Week. Tree dressing was an ancient custom but we now only decorate the Christmas tree in the house. Look around for anything to use as Christmas decorations, before the final tidy up of the borders. Hydrangea heads and other seed heads can be sprayed gold. Collect cones and berries before the birds get to them. Cut holly, ivy and evergreens for decorations as late as possible. Stand them in deep water and keep them cool until arranging. Keep Christmas trees outside in a bucket of water until you intend to dress them. To prevent excessive needle drop, add a teaspoon of plant food to the water for the tree. Even ones without roots need watering. A 5ft. tree needs 1pt. per day. Firs and Pines

keep their needles better than Spruce, with the Nordmann fir reputedly the best for holding its needles.

Severe weather is generally much rarer this month than in Jan or Feb but if the wind begins to veer to the North be prepared for cold and even snow. Prepare the greenhouse for winter, clean and prepare heaters. Remove debris from gutters on the greenhouse, shed, and house. Clean cold frames to ensure maximum light. Move all pots to a sheltered spot. Imported china and terracotta pots can be frost damaged if wet compost freezes and expands. If you have not treated all pot grown plants with vine weevil killer do so now, to get rid of the larvae which may be munching away at the roots. Pot up a clump of emerging snowdrops to bring into the house. They can be planted out again after blooming.

Plant clay pots with tulips for Spring displays. Put wire mesh over tubs if squirrels are digging in them. Plant lilies in pots and keep in a sheltered place.

Evergreens are the mainstay of the garden now that they stand out from the surrounding bareness, and now is a good time to plant them. The residual heat in the soil encourages root growth and plants settle before any severe weather. Remember to water in dry weather. Shelter with windbreak netting securely fastened. Established evergreens can be pruned now if they are overgrown or misshapen, but if they are Spring flowering wait until May to do any pruning. Deciduous hedging can be planted as bare-rooted plants. Look for ones with colourful bark or berries to brighten the winter garden. Before we get any penetrating frost mulch around winter flowering shrubs to prevent root damage.

In the vegetable garden hoe any weeds, particularly nettles which go on growing through winter. Dig in organic matter on pea, onion and salad beds but not where root crops will be grown. If the ground is very wet throw the compost on the surface and leave the worms to work in quite a lot before next Spring. If you plan to sow seeds early, cover soil with clear polythene or cloches now to warm the soil. This will also encourage weeds to germinate and these can be cleared before seed sowing.

Move house-plants to the windowsills in the day time for maximum light but do not leave them there when you draw the curtains. Take care not to over water in winter time. Wait for the compost to dry out before re-watering and avoid leaving them standing in water. To compensate for water loss, mist spray them regularly. Only azaleas need plenty of water, and preferably rain water.

Plant of the month - Peperomia

Finding a house plant that tolerates our warm centrally heated rooms, with their daily temperature fluctuations and dry air conditions is not easy. The evergreen peperomia genus may fit the bill, their leathery foliage enabling them to deal with a modern living room in winter. Sometimes called Pepper Elders, these plants native to S. and Central American tropical forests, were introduced in 1815. A reservoir of water in the upper surface of the leaves



has adapted them to live for a time without water but the temperature must not drop below 50F. The dark green species will require only a modicum of light but the variegated forms will need good light but not direct sunlight. They have been marketed for many years but have never been as popular as more eye-catching introductions, although they are frequently included in a mixed bowl of house plants. Many of the varieties have rounded or egg-shaped thick leaves, often on red or purple stems. Look for *P. magnoliaefolia* or *P. glabella*. The watermelon peperomia, *P. argyreia*, has ridged leaves with prominent veins that look like fruit from a distance. Occasionally they put out a narrow spike of flower on a long stem, looking very like a mouse-tail.

Grow them in soil-less potting compost in a shallow pot and err on the side of dryness, letting the soil dry out between waterings. If you like house plants but sometimes forget to care for them peperomias could be just for you.

Pat Smith

Letters to the Editors

Dear Editors

We have received, via Mothers' Union an appeal to help Asylum Seekers in Coventry who are virtually destitute. In particular, we'd like to help the young mothers who are struggling to care for their babies. The Refugee Centre is looking for donations of nappies, toiletries, sleeping bags, supermarket vouchers, money etc., so we'd be grateful for any donations (however small) to be brought to 23 Mill Street before 15th December.

giving us time to deliver them to the Refugee Centre before Christmas. (Our porch is always open) Thank you.

Anne Moore

Dear Editors

I would like to take this opportunity to wish you all a very Happy Christmas and a very Happy New Year.

With kind regards

Alice Wilkins

Dear Editors

John, Rowena and I would like to take this opportunity, via the Harbury News, to wish all of our friends and acquaintances a truly Happy Christmas and New Year. We have deliberated over the years about ceasing to send cards (and boost Hallmark's profits) and instead donating to a charity. Well this year we have bitten the bullet and will be sending a donation to Myton Hospice, which we feel certain will be money better spent. Enjoy the holidays.

The Broomfields

Dear Editors

On behalf of all our members, I would like to say thank you to everybody who supported the Harbury W.I. Luncheon, held in the Tom Hauley Rooms on Saturday 29th October. We raised £218 towards the framing and hanging of "The W.I. Parish Map".

Thanks also go to all the people who helped and attended the Coffee Morning at 7 Hillside on Tuesday 8th November. There we raised £103 towards the same cause.

We hope that many of you will be able to come to our next coffee morning which will be held from 10am until 12pm on Friday 16th December at 17 South Parade.

We are very grateful for all the help and support we have received and look forward to displaying the map in the Village Hall in the New Year.

With many thanks

Pam Parton (President of Harbury W.I.)

Dear Editors

We should like to extend Christmas greetings to our growing circle of new friends in Harbury. In lieu of cards this year we have sent a donation to the Kashmiri Earthquake Appeal.

Michael & Gillian Hare

Dear Editors

Now I know that we have all probably been guilty at one time or other of parking slightly on the pavement but I am sure that you will have become increasingly aware that more and more drivers are encroaching further and further on to the pavement. However, even I could not believe this sight that greeted me recently in Manor Orchard! The only way that I could avoid walking on the road was to actually walk on the lawn and risk getting tangled up in the tree's branches. Can I please remind drivers that this is actually an offence and as we don't very often have 36 ton juggernauts on our roads not really necessary and certainly not to this extent.



Regards

Ted Coupe

Dear Editors

Thank you to all the people that contributed, helped and came to the Children in Need bring and buy sale. We raised £87.08 that will be going to those people who are in need in the world.

Thanks again

Lilly x



Dear Editors

Reference to the notice on the Church board exterior. Good to see a message with Anglican meaning.

Mike Bloxham

Dear Editors

We would like to thank everyone who supported our coffee morning on Friday 18th November, we raised £255, which was wonderful. We would also like to thank everyone who came and bought their Christmas cards.

Harbury Support Group for Myton Hospice

Dear Editors

Whitnash has a new florist - Bluebell Florist opened to the public on Monday 14th November 2005.

Having studied for 2 years with 3 young children I am as you can imagine very proud of this achievement. Phil (My husband) and I have worked very hard over the last 8 weeks to make this happen and even harder over the last week with the fantastic support of all our family without whom we would not have been able to open on time!!

We have a varied selection of bouquets and arrangements but also cater for weddings, corporate work and sympathy flowers.

Christmas Trees and Christmas Wreath orders are now being taken.

Phil and I both grew up in Harbury and look forward to new customers and friendly faces from the village.

Bluebell Florist

82 Heathcote Road

Whitnash

Leamington Spa

Tel: 01926 421237

www.bluebellflorist.com

info@bluebellflorist.com

We wish all in Harbury a Very Happy Christmas and New Year from all at Bluebell Florist.

Many thanks

Sarah Mancell



LOST: My son's 'micro-scooter'. Missing for a couple of weeks or so. Possibly left near the children's play area in the village. Please telephone 612780. Reward offered.

**DATES FOR INCLUSION IN THE HARBURY DIARY PLEASE TO:
LINDA RIDGLEY - TEL. 612792.**

Bookings for:

Scout Hut	Lesley van Kesteren	613411
Tom Hauley Room	Liz Bunting	612450
T. Hauley Room Coffee Morning	Mrs. J. Windsor	612504
Village Hall	Wendy Hawkes	613198
Wight School	Mrs. L. Hayes	613488

JANUARY EDITION - HARBURY & LADBROKE NEWS

Adverts to 31, Binswood End by 15th December

Articles to Harbury Chemist by 23rd December

THE BELL AT LADBROKE

Now under new management

Your hosts Gary and Nick invite you to come and sample their new menu of freshly prepared dishes.

Real Ale, Family Sunday Lunches, Children's Menu
Ample car parking

For more information and to reserve your table

Call: 01926 813562

10% discount on food with this advert

CHRISTMAS PARTY BOOKINGS NOW BEING TAKEN

'New Years Eve at The Bell'

Viva Las Vegas

Fun Casino Night

Hot Buffet & Disco Party Night

All inclusive at £14.95 per head

LIMITED AVAILABILITY SO BOOK NOW!

Open: 12 midday - 2.30pm lunchtimes

6.30 - 11.00pm evenings





FIXIT4U.CO.UK
PROPERTY MAINTENANCE

0 1 9 2 6 6 1 1 9 3 0
0 7 7 9 5 4 1 1 8 6 8

For all types of Internal & External Property
Maintenance

including Floor & Wall Tiling, Painting &
Decorating etc.

Most jobs considered, all work insured.

Call Chris now for a free quote



CHAMELEON

Karena EA Ellis MRICS BSc Hons

Mb: 07796 575716

Email: keee@chameleon-ellis.com

www.chameleon-ellis.com

- When your business is tight, contact Chameleon.
- With all the abilities to adapt and blend in with any surroundings. Like the Chameleon, I will adapt to suit your business requirements.
- Work includes: PA, reports, CV's & business organisation.
- All aspects of work will be considered.

Contact **Chameleon** to discuss what you will need to make your time more efficient.



Do you really know the value of that heirloom
in the attic?

Where do you find that special piece to add to
your collection?

- Bi-monthly sales of selected antique furniture and collectors' items
- Weekly sales of antique and later furniture and effects
- We provide valuations for auction, insurance and probate purposes
- We offer a collection service of items for sale carried out by our own team
- Our experienced valuers are on hand to answer your queries

Please telephone for more information or to
make an appointment

15 Gay Street, Leamington Spa
Warwickshire CV32 4RT

01926 881100 www.leauction.co.uk

FU GARDEN

NOW AT

The Gamecock

Chapel Street, Harbury, Leamington Spa



Authentic
chinese food
to eat in
or take away.
Booking
advisable.



Phone the **FU GARDEN** on
01926 614589

FREE POOL

Lunchtime rolls, baguettes and hot pies

The Gamecock

01926 611963

FRIENDLY ATMOSPHERE

Harbury Calendar 2006



ON SALE NOW - £6.50
(includes card envelope for postage)

Features paintings and photographs of Harbury
and the surrounding area produced by people who
live in and around the village.

Available from Windmills Nursery School, The Salon,
Harbury Library or call Nicola Perrett on 614564.



Windmills
Nursery School

Kiddies Parties !! with **LIZA THE DIVA!**



Kids Karaoke,
Flashing Lights and Groovy
Dance Routines!!
Dance Competitions



Party Games
Team Games

Prizes Galore
Tel:

07854 165007

M F M

FENCING SERVICES

AGRICULTURAL, EQUINE AND DOMESTIC FENCING

COMPLETE JOB

OR

TRACTOR & POST KNOCKER AND OPERATOR FOR HIRE

FOR A FREE NO OBLIGATION QUOTE CALL

MICHAEL MANN

ON

07759 863269 OR 01926 813162

JOHN DICKERSON, ACCOUNTANT

Having recently moved to Harbury after 30 years in practice in Birmingham, I would welcome enquiries from self-employed persons, partnerships and small businesses who would like a friendly, personal and economical service for their accounting, VAT and book-keeping needs.

☎ 01926 612220 (home office) or 01926 611913 after hours



SQUAB

STORAGE

Double walled
cardboard boxes,
bubble wrap and tape

Great value multipacks

Secure, humidity
controlled store

Offer valid until
31.12.2005



20% off

Boxes and accessories (excluding multipacks)

Freephone

0800 3890523

Unit 10, The Square, Leamington Spa, Warwickshire

Chris Birri Maintenance Services

All types of maintenance and
plumbing work undertaken
including:

Fitting of Bathrooms,
Showers, Kitchens inc.
Floor and Wall Tiling etc.

No job too small

For a free no obligation quote

Call Chris

Tel: 01926 883833

Mobile: 07974 326711

morgan

plumbing

Local, professional & reliable service.

Small inexpensive repair services
to full bathroom installations

- ♦ Leaks, burst pipes, faulty taps,
ball valves, toilets, sinks
- ♦ Cylinders, immersion heaters,
tanks, radiators, showers
- ♦ Outside garden taps
- ♦ Full bathroom installations

For a no obligation, free estimate call:

Lloyd Morgan

07789 622453 or 01788 567317

- LOCAL TURF -

Supplied & Laid

All Groundwork undertaken

Also Fencing, Hedges,
Pruning.

Garden Clearance,
Maintenance.

Patios, Decking etc.

Call Jack on:

01926 613134

07973 258653

Davenant of Harbury Ltd

for

Carpentry & Joinery

- All requirements for internal and external repair or replacement including doors, windows, frames, fitted units, timber or laminate flooring, stair spindles / rails, skirting / architrave, etc.,

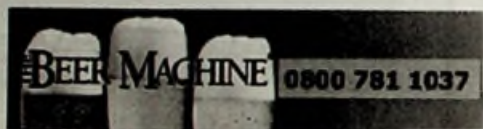
Kitchens

- Quality kitchens in a wide range of styles and budgets with built-in appliances and sinks by well-known manufacturers.
- Worktops in laminate, timber, Minerelle solid surface and granite.
- Expertly planned, supplied and fully fitted including plumbing, wiring, plastering and tiling to your requirements.
- Also worktop changes and kitchen facelifts.

All work carried out by established and experienced craftsmen offering a professional and personal service at fair prices.

HAVE YOUR WORK DONE FOR YOU (D F Y) instead of D I Y

Tel: 01926 614107



Beer for 65p a pint ?

no - you're not dreaming...



BREW FRESH BEER AS EASILY AS COFFEE

The Beer Machine is a self-contained, single-step micro-brewery that makes brewing your own fresh premium natural beer as easy as brewing coffee.

The idea is simple: once assembled, you can make many styles of beers and lagers in just seven to ten days.

Included with your Beer Machine, you'll get your first 20 pints of heavenly brew that you can tap direct and enjoy.

Introductory Price for the complete Beer Machine £99

Including one 20 pint beer mix Selection packs for Ale, Beer or Lager, each brewing 60 pints (3x20) are available at £38

Tel 0800 781 1037

email: beermachine@i12.com

www.beermachine.i12.com

Free local delivery



Deppers Bridge
Plumbing Services

**all types of plumbing
including:**

Bathrooms, Kitchens &

Central Heating

No job too small

**For a reliable,
local service call:**

Steve Norman

T 01926 613532

M 07921 259639

fully insured



82 Heathcote Road

Whitnash

Leamington Spa

CV31 2NF

Tel: 01926 421237

Website - Bluebellflorist.com

Email - info@bluebellflorist.com

Flowers for all occasions

Christmas Trees and Christmas

Wreath orders now being taken

Delivery service available to
Harbury

HARBURY LANDSCAPING & GROUND WORK'S

Specialists in Hard Landscaping,

Block Paving, Gravel Drives,

Patios & Walls

Internal Flooring, Slate, Tile & Wood

Fencing, Decking, Pergolas,

Stone Work Including Dry Stone Walls

Drainage Works & Concreting

Disabled Access

General Maintenance For

Both Home & Garden

For a Free

No Obligation Quote

From a Professional

& Reliable Tradesman

Contact:

Jeff Maule

Phone: 01926 614923

Mobile: 07952 864607

Advertising in the Harbury & Ladbroke News	
Monthly Prices (white pages)	Annual Prices (coloured pages) Printed in April for the year
<p>¼ page £9.00 (or 3 consecutive months for £24.00)</p> <p>½ page £16.00 (or 3 consecutive months for £43.00)</p> <p>Full page £30.00 (or 3 consecutive months for £80.00)</p>	<p>¼ page £ 83.00</p> <p>½ page £149.00</p> <p>Full page £280.00</p> <p>(Advertise 12 consecutive months and get 2 months FREE!)</p>
<p>Adverts with payment to: Gill Holden, 31, Binswood End, Harbury Tel: 01926 612155 by 15th day of the month</p>	

Do you need help with any of the following?

Harbury Helpline is for you!

EMERGENCY TRANSPORT: Charles Catt 612864 or
John Travis 613264

HELP WITH FORM FILLING:

- **Council Tax Forms, Post Office Pension Payments:**
Call David Cooke 614692
- **For University/Job Applications, interviews, CVs:**
Call Philip Bushill-Matthews 612476.

HOME VISITING: Caring for a sick or elderly relative and need a break for a few hours, or you would like someone to call on you.
Call Sue Dormer 613254.

HOUSEHOLD BUDGETING ADVICE: Call Tony Brunton 612191.

VISITING: Hospital. If you are unable to visit a parent or relative, or parents would like support with a child in Hospital: Call Fr. Roy Brown 612377 or Keith Dormer 613254.