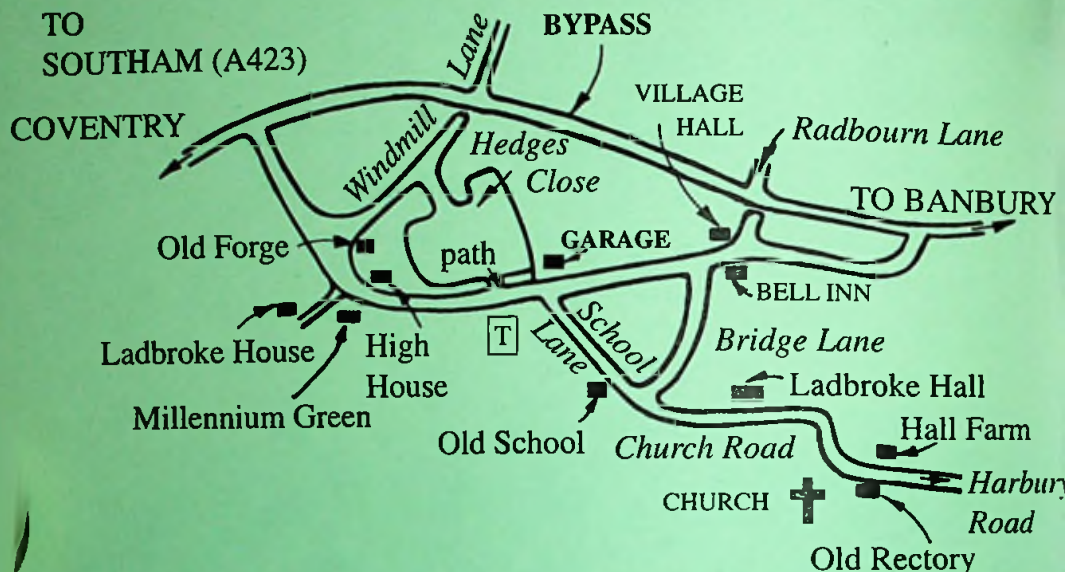


Ladbroke



THE FOSSE GARAGE

Accident Repair Specialists for all leading Insurance Companies

**24 hr. Recovery Service Servicing & MOT Repairs
Used Car Sales Self-Drive Car & Van Hire**

Low mileage cars always wanted for cash



Motor Agents
Association
Member

Fosse Way, Harbury, Nr. Leamington Spa.

01926 613260 24hr. 07850 613260

www.fossegarage.co.uk

Advertising in the Harbury & Ladbroke News

Monthly Prices (white pages)

¼ page	£8.00
(or 3 consecutive months for £22.00)	
½ page	£14.00
(or 3 consecutive months for £40.00)	
Full page	£27.00
(or 3 consecutive months for £75.00)	

Yearly Prices (coloured pages)

Printed in April for the year

(Advertise 12 consecutive months and
get 2 months FREE!)

¼ page	£ 75.00
½ page	£135.00
Full page	£255.00

Adverts with payment to: 31 Binswood End, Harbury Tel: 01926 612155 by 15th day of the month

This magazine is available by subscription delivered within Harbury,

and Ladbroke. Tel: 01926 612009 for details

Harbury & Ladbroke News

THE HARBURY AND LADBROKE NEWS, reflecting all aspects of local life, is published monthly and produced with the assistance of the All Saints' Parochial Church Council.

Editorial Office:

☎ 612155

Articles to:

Harbury Chemist, High Street.

Email address:

articles@harburynews.freemove.co.uk

Website:

http://www.harburynews.freemove.co.uk

Advertising Office:

31 Binswood End ☎ 612155

Distribution Manager

49, Mill Street ☎ 612009

Inserts by prior arrangement:

☎ 612009

Magazine Photographer:

☎ 614167

The views of contributors are not necessarily those of the Editorial Committee.

March 2004

No. 360

The focus this month is on public services. How big will the next Council Tax rise be? The wheelie bins have arrived and the collection of garden waste will be on the same day as the recycling collection.



An update on the Village Of The Year competition – the "Winner Of The Central Region" plaque has been fixed to the Village Hall: the Parish Council are encouraging village organisations to come forward with suggestions for a project on which to spend the prize money.

'The Spirit Of Harbury' award – in memory of John Hunt – nominations for the award should be left at Harbury Library or Muggleston's before the end of April.

Finally, the editors extend their sympathy to the families of Nigel Robert Elkins, Brain Lamont, Keith Anthony Rofe and Rene Newman Smith.

Harbury Diary

March

- Sat 6 Coffee Morning, 10.00am, Tom Hauley Room, in aid of Meningitis Research
Jean Champ Dance Group, show in the Village Hall.
- Sun 7 **LENT TWO**
Sung Eucharist, 9.00am. Evening Worship, 6.00pm.
- Tue 9 Bible Study Group, 2.00pm-3.30pm.
Toddlers' Service, 2.15pm in the children's corner of Church.
Holy Communion with talk on Prayers, 7.30pm.
- Wed 10 Prayer Meeting in Church, 8.00pm.
- Thu 11 Holy Communion, 9.45am.
Table Tennis, 10.30am-11.30am in the Village Hall.
Thursday Club, 2.30pm in the Village Hall.
Youth Club, 7.00pm-9.00pm in the Village Hall.
Women's Institute, 7.45pm in the Tom Hauley Room.
Parish Paths Partnership, 8.00pm in the Shakespeare Inn.
- Fri 12 Holy Communion, 12.00noon.
Lent Lunch, 12.30pm in the Tom Hauley Room.
- Sat 13 Coffee Morning, 10.00am, TH Room, in aid of Ladbroke & Deppers Bridge W.I.
- Sun 14 **LENT THREE**
Holy Communion, 8.00am. Sung Eucharist, 10.30am.
Harbury Twinning Association Quiz Night, 7.30pm in the Village Club.
- Mon 15 **Advertising for H&L News to 31 Binswood End, Harbury, by 5.30pm.**
- Tue 16 Holy Communion, 7.30pm.
Mothers' Union Evening Meeting, 8.00pm.
Bookworms, 7.30pm in the Tom Hauley Room.
Senior Citizens Committee, 8.00pm in the Village Hall.
- Wed 17 Afternoon Tea, 3.00pm-4.00pm in the Tom Hauley Room.
'Talk It Through' at 33 South Parade, 8.00pm.
- Thu 18 Holy Communion, 9.45am.
Harbury Art Group Tutorial, 10.00am-4.00pm in the Tom Hauley Room.
Table Tennis, 10.30am-11.30am in the Village Hall.
Bible Study Group, 2.00pm-3.30pm at Manor Stable, Park Lane.
Youth Club, 7.00pm-9.00pm in the Village Hall.
- Fri 19 **GREEN GARDEN WASTE & RECYCLING COLLECTION**
Holy Communion, 12.00noon.
Lent Lunch, 12.30pm in the Tom Hauley Room.
- Sat 20 Men's Prayer Breakfast, 7.30am in the Tom Hauley Room.
Coffee Morning, 10.00am, in aid of Great Ormond Street Children's Fund.
Harbury Pre-School Abba Tribute Night in the Village Hall.
- Sun 21 **LENT FOUR**

Mothering Sunday

Holy Communion, 8.00am.

Family Communion, 10.30am (presentation by Harbury Primary School).

Evensong, 6.00pm.

Tue 23 Bible Study Group, 2.00pm-3.30pm.

Holy Communion, 7.30pm.

Julian Group, 8.00pm.

Wed 24 Drop-In Tea, 2.30pm-4.30pm at 19 Farm Street, Harbury.

Prayer Meeting in Church, 8.00pm.

Thu 25 Holy Communion, 9.45am.

Table Tennis, 10.30am-11.30am in the Village Hall.

Thursday Club, 2.30pm in the Village Hall.

Youth Club, 7.00pm-9.00pm in the Village Hall.

Parish Council, 7.30pm in the Village Hall.

Fri 26 Holy Communion, 12.00noon.

Lent Lunch, 12.30pm in the Tom Hauley Room.

Articles for H&L News to the Chemist, Harbury, by 5.30pm.

Sat 27 Coffee Morning, 10.00am, Tom Hauley Room, in aid of the Cricket Club.

Sunday School Relaunch Party, 3.00pm-5.00pm, in the Tom Hauley Room.

Harbury Theatre Group, 17th Century Banquet in the Village Hall.

Sun 28 **LENT FIVE****British Summertime Begins (Clocks Go Forward)**

Holy Communion, 8.00am. Sung Eucharist, 10.30am.

Church Annual General Meeting, 5.00pm in the Tom Hauley Room.

Mon 29 Harbury Society AGM, 7.30pm for 7.45pm, in the Tom Hauley Room.

Tue 30 Holy Communion with talk on Prayers, 7.30pm.

Wed 31 Harbury Nursery School Easter coffee morning.

Drop-In Tea, 2.30pm-4.30pm at 19 Farm Street, Harbury.

'Talk It Through' at 33 South Parade, 8.00pm.

April

Thu 1 Holy Communion, 9.45am.

Harbury Art Group Tutorial, 10.00am-4.00pm, in the Tom Hauley Room.

Bible Study Group, 2.00pm-3.30pm at 4 The Beeches.

Men's Society Meeting, 7.45pm in the Tom Hauley Room.

Youth Club, 7.00pm-9.00pm in the Village Hall.

Harbury Folk Club, 8.30pm in the Shakespeare Inn.

Fri 2 **GREEN GARDEN WASTE & RECYCLING COLLECTION**

Holy Communion, 12.00noon.

Lent Lunch, 12.30pm in the Tom Hauley Room.

Sat 3 Coffee Morning, 10.00am, Tom Hauley Room, in aid of Southam Ladies Circle.

Sun 4 **PALM SUNDAY**

Sung Eucharist, 9.00am. Evening Worship, 6.00pm.

Mon 5 Holy Communion, 7.30pm. Stations of the Cross, 8.00pm.

Village Hall Annual General Meeting, 8.00pm in the Farley Room.

All Saints' Church Harbury Services

1st Sunday in the month:	9.00am	Sung Eucharist
	6.00pm	Evening Worship
2nd, 4th (and 5th) Sunday in the month:	8.00am	Holy Communion
	10.30am	Sung Eucharist
3rd Sunday in the month:	8.00am	Holy Communion
	10.30am	Family Communion
	6.00pm	Evensong
Every Sunday:	10.30am	Sunday School (in term time)
Every Tuesday:	7.30pm	Weekday Communion
Every Thursday:	9.45am	Weekday Communion

Rector: Father Roy Brown, The Rectory, Vicarage Lane, Harbury. ☎ 612377

www.harburychurch.fsnet.co.uk

From The Rector

Days of fast and abstinence are few and far between now; but the need to do penance is as real as ever. If we get out of the way of denying ourselves in some way, we can end up as flabby and spineless Christians. There are many good reasons for going without.

LEARN TO SAY NO. Diets have become very popular. The reason is that most of us eat too much of the wrong kind of food and it shows! It is more difficult to notice our spiritual flab but it is as real as the extra pounds we carry around with us. Learn to say no to some things that you do not really need. Count your blessings and value your spiritual health and strength.

LEARN TO BE GRATEFUL. We can live in the midst of plenty and never really appreciate anything. If we never give a second thought to how fortunate we are, we are taking things for granted. Learn to be grateful to God for his gifts and to others for their kindness.

LEARN ABOUT OTHERS. Penance and fasting are of little use if they do not keep us aware of the needs of others. Share what you have with those in need. Give generously to all who need your support, but also take the trouble to cultivate all those good things like love and friendship, care and laughter, which cannot be bought with money. By doing this, you will be helping yourself to see what you really need and enjoy and what you can do without.

Fr Roy Brown

We are the church in pilgrimage towards Easter,
 May the bishops have the hearts of fathers,
 May the priests be friends of God to the people,
 May the religious manifest the anticipated joy of the Kingdom of Heaven,
 May the laypeople give witness to the Risen Lord in the world,
 And may we all work together with all people sharing their sorrows and hopes.

Amen.

(Prayer to Our Lady of the Americas)

From The Registers

Holy Baptism, All Saints' Harbury

February 1st James Edgar Jennings

Holy Baptism, All Saints' Ladbroke

February 1st Jack Anthony Hewson

Funerals, Oakley Wood

February 3rd Brain Lamont (61)

February 13th Keith Anthony Rofe (50)

Funerals, All Saints' Harbury

February 6th Rene Newman Smith (92)

Funerals, All Saints' Ladbroke

February 6th Nigel Robert Elkins (85)



Thought For The Month

If we sense a pressure on us to undertake some beneficial service for others, may we never suppress or ignore it.

(From the Mothers' Union Link Up)

From The Churchwardens

Our photograph this month shows Robert Rollason receiving his prize for the Wordsearch competition. Well done! There will be an opportunity to enter the March website competitions very soon, so please do join in.

Jill and David Winter gave the presentation at the February Family Service, their theme "God's Special Gift". They reminded us that it is all right to pray for ourselves as well as for others, that we often have to persist and that the results of our prayers may sometimes be unexpected. We must continue

to pray, to talk to God so that, through the grace and power of his Holy Spirit, we may receive the nourishment that is as essential to our souls as bread is to our bodies.



Lent has begun and we were very pleased to welcome the pupils, staff and some parents from Harbury Primary School to their Ash Wednesday Service. The atmosphere in Church was calm and reverent, much enhanced by the children's singing, playing and reading.

We are very grateful indeed to everyone who has worked so hard, willingly and generously, to construct the new platform in Church. We are now looking forward to the first major occasion of its use when the Riding Lights Theatre Company presents "The Passion" on the first Sunday of Lent.

Lesley & Felicity

Mothers' Union

In January, we enjoyed our afternoon party when Ladbroke Women's Fellowship joined us for games and tea provided by the Committee.

Our evening meeting was a bring-and-share supper, preceded by a

quiz and followed by great entertainment from Mike Hare who played music from the shows.

At the afternoon meeting in February, members brought a favourite piece of jewellery to show and to talk about. The pieces all had precious memories attached, in spite of not being valuable in themselves; some fascinating stories were told.

Our February evening speaker was unable to come; the meeting took the form of a discussion on recycling, some useful suggestions were made.

NEXT MEETINGS

- ⊙ Wednesday 3rd March, 2.00pm - Service and Lenten address by Reverend Russen Thomas.
- ⊙ Tuesday 16th March, 8.00pm - "The Duties of a Parish Administrator" by Mary Heath.

C.Mary Catt

Toddlers' Service

We are still thinking about Jesus' friends. In February, Mrs Dorothy Travis led our service; we started with the song "Jesus is a friend of mine" and then Mrs Travis told us the story of Zaccheus who was an outcast until Jesus went to have a meal with him. After our prayers, we sang, "Jesus love is very wonderful", with actions. To finish the children each made a sandwich and gave half to a friend.

The next service will be on Tuesday 9th March at 2.15pm in the children's corner of Church. All babies and toddlers, with an adult, are very welcome.

C.Mary Catt



www.harburychurch.fsnet.co.uk

New Look In Harbury Church

Much activity has been taking place in Harbury Church over the last few weeks. A platform has been constructed to extend the chancel (where the organ and the choir are) out into the main body of the Church. This work has been timed to enable "The Passion" to be performed by the Riding Lights Theatre Company on Sunday 29th February.

The main purpose of the extension is to bring the altar much closer to the congregation, in order to create a sense of unity and involvement

in the central service (Communion). Father Roy has been anxious to enable this to happen for some time and it is very appropriate that it should come together as the festival of Easter approaches.

Another benefit of having a raised platform will be for the Family Service that takes place on the third Sunday of each month and for the periodic presentations to Sunday School members. Small children involved in presentations will be more visible, closer to the congregation and so the sense of occasion will be enhanced. Similarly in the Carol Service on Christmas Eve when, inevitably, many of the congregation have to be seated at the back of the church, visibility will be improved and so we shall all be brought closer together in this and other acts of worship.

The main reason though, is for the Communion Service to be inclusive of the congregation, as it should be, since so is God's love of us.

A new altar and rail are being made locally and these should be ready during March.



Bill Davies, Neville Ellis and
Ralph Swadling at work.

Ladbroke News

March

- Sun 7 LENT TWO**
Family Communion, 10.30am.
- Tue 9** Bible Study, 2.30pm at Bell Cottage.
- Wed 10** Women's Fellowship Lent Lunch, 12.30pm at the home of Betty Winkfield.
Holy Communion, 2.00pm.
- Sun 14 LENT THREE**
Sung Communion, 9.00am.
- Mon 15** Advertising for H&L News to 31 Binswood End, Harbury, by 5.30pm.
- Tue 16** Bible Study, 2.30pm at Bell Cottage.
- Wed 17** Women's Fellowship Lent Lunch, 12.30pm at the home of Jo Sowerby.
Annual General Meeting, 7.00pm in Church.
- Sun 21 LENT FOUR**
Mothering Sunday
Sung Communion, 9.00am.
Mothering Day Service, 3.30pm.
- Tue 23** Bible Study, 2.30pm at Bell Cottage.
- Wed 24** Women's Fellowship Lent Lunch, 12.30pm at the home of Susan Moore.
- Fri 26** Articles for H&L News to the Chemist, Harbury, by 5.30pm.
- Sun 28 LENT FIVE**
British Summertime Begins (Clocks Go Forward)
Sung Communion, 9.00am.
- Wed 31** Women's Fellowship Lent Lunch, 12.30pm at the home of Jenny Barrett.

April

- Sun 4 PALM SUNDAY**
Family Communion, 10.30am.



Ladbroke Church News

Choir rehearsals will begin on Monday 8th March at 7.00pm, for our Devotional Service of readings and music to be held at 7.00pm on Good Friday evening. If you enjoy singing and would like to join us you will be very welcome - soprano or tenor!

Betty Winkfield

Bible Study

Tony Stubbs has kindly agreed to take three study groups during Lent – on Tuesday 9th, 16th and 23rd March at 2.30pm at the home of Elsa Greenway.

We already have several people coming, so make this your Lent meditation and come and join us. (I hope there is nothing “stuffy” about us.) We would love to see you.

Betty Winkfield

Ladbroke & Deppers Bridge W.I.

Our meeting held on 26th February was a “crafty” evening. Sue Macauley showed us how to make our own cards and a good time was had by all! The raffle was won by Heather and Linda.

We are holding a Coffee Morning on Saturday 13th March in the Tom Hauley Room. This event is open to everyone and we hope you will come along and join us between 10.00am and 12.00noon.

Our next meeting will be on Thursday 25th March, when Jane Rutherford gives a talk entitled “My Work As A Magistrate”. We look forward to seeing everyone. (The tea hosts for the evening are Reidun and Jenny.)

Lynda Ridpath

Ladbroke Millennium Green Quiz

Compete for the Don Northorpe Trophy in Ladbroke Village Hall on Friday 23rd April from 7.30pm. The cost for a team of four is £10. Contact Peter or Christine Baker on 811606 for further details.

Carol Lane

BENCH TELEVISION SERVICE

22 OXFORD ST
SOUTHAM

PANASONIC DEALER



REPAIRS
+
SALES

SOUTHAM: 812304

Now selling Dyson & Panasonic vacuum cleaners.

Small Electrical Appliances:

**Kettles, Irons & Toasters,
cable, bulbs, telephone & aerial accessories**

**Think before you buy - call us - we may have
the appliance you want at the price you like.**

Larger appliance prices include delivery

THE SALON

Ladies & Gents Hairdressers

Tel: 612400 ~ Chapel Street, Harbury



EXTENSIONS

BUILDERS

ALTERATIONS

GREY GABELS, 46 BANBURY ROAD, SOUTHAM CV33 0HJ
TEL: SOUTHAM 01926 817744 MOBILE: 07885 495384





W. Goodwin & Sons **Funeral Directors**

38 COVENTRY STREET, SOUTHAM

All arrangements personally conducted
in any district

Telephone: Daytime 01926 812445

Night - time and weekends

Brian: 812656 John: 812657

FOR PROFESSIONAL HAIR CARE



Kathleen Ellis

CHAPEL STREET, HARBURY. ☎ (01926) 612326



Gino Buffone

Painter & Decorator



Telephone: 01926 612 486

Mobile: 077 3326 5694



D. F. J. HEWER

Builders Ltd.

**FOR ALL YOUR BUILDING
REQUIREMENTS
EXTENSIONS - ALTERATIONS
MAINTENANCE - REPAIRS
PLANNING AND BUILDING
REGULATION APPROVALS**



Registered House-Builder

Telephone:- SOUTHAM (01926) 813070 and 813627

Ladbroke Village Hall Committee

The Committee are seeking a representative with new ideas to help enable us to get other age groups in the community involved in the much-needed fundraising to update our Village Hall. Meetings are held monthly. If you are interested, please telephone me on 811606.

Christine Baker

Ladbroke Millennium Club

The January 2004 Draw of the Ladbroke Village Hall Millennium Club took place in The Bell Inn at Ladbroke on Monday 9th February.

The prize winners were:

1st	£70	Avril Court
2nd	£25	Nancy Stubbs
3rd	£25	Pete Edgar
4th	£10	Sue Ford
5th	£10	Brian Whitehouse
6th	£10	Richard Walker

The February draw will take place on Monday 8th March at 8.00pm in the Bell Inn, Ladbroke.

Mike Radburn

Whist Drives

We had a trial run on February 14th (what better way could you spend Valentine's Day) and it was quite successful – six tables!

Therefore, it has been decided to hold Whist Drives on alternate Saturday evenings commencing 6th March at 7.45pm. All profits will go to the maintenance of the Village Hall.

Many people in the village have said that it is ages since they had a game of Whist – now is your chance to start again – nobody bites, as far as I know.

Betty Winkfield

Harbury Parish Council

FIRST SOME GOOD NEWS: The commemorative sign from the Old New Inn Green is not lost. Mike Bloxham found it vandalised and removed it for safekeeping. The Parish Council will have it repaired and replaced.

FEBRUARY MEETING

Mike Bloxham was present to raise villagers' concerns about the Burial Grounds. He was worried that graves might be damaged as the excess spoil was removed but he was assured that all due care would be taken; Councillor Keith Thompson will liaise with him. Mike then asked why there were two road signs in the Burial Grounds; it was revealed they had been stolen and dumped there. Mike also claimed that the Parish Council Minutes could not be found in the Library; this will be investigated.

This all happened at the start of the meeting now that the Parish Council has provided a forum for villagers to air their concerns. It is part of their move to become a "Quality" Parish Council. To achieve this, Councillors have to be trained; the Clerk must pass examinations; the public has to be consulted (a newsletter is suggested) and at least four-fifths of the Councillors should be elected not just co-opted. Councillor Mancell is pressing ahead with preparing a Parish Website, which will cost £75 per year to run as part of the move to keep villagers better informed.

Councillor John Drinkwater complimented the Clerk, Nicola Thompson, on her professional work for the Council saying, "She was a Quality Parish Clerk".

In the absence of PC Hill, the Chairman reported that BMX bikes had been stolen from Chapel Street and cars in Butt Lane damaged by paint stripper. The County Council would position a Speed Vizer in Temple End from time-to-time to warn motorists exceeding the limit.

Councillor Janet Thornley reported that the Village Hall Annual General Meeting would take place on 5th April. Grant applications for the stage were successful and a new cooker had been purchased. The Committee approached the Parish Council for a financial contribution to this facility but more information was required before a decision could be made.

Councillor Kevin Biddle was making progress with finalising the Parish

Plan. Councillor Biddle had the offer of assistance from the Housing Enabler for a Full Housing Needs Survey; he was planning a Village Open Day to gauge villagers' views on potential sites for local needs development. The schoolchildren would undertake their own survey as part of the curriculum. Warwickshire Rural Community Council had provided examples of Youth Surveys for the Youth Club to use. Councillor Van Spall thought the villagers would not want another survey and needed action on provision of sheltered and supported accommodation for which a need had been proved. Linda Ridgley explained that nothing could be done without suitable land and to get District Council approval for local needs provision, an approved in-depth survey of all needs should be undertaken.

PLANNING

Stratford District Council granted:

- an extension at 5 Chapel Street
- tree work at 8 Farm Street
- a "leisure" building at Bishop Bowl
- change from agricultural use to a site for touring caravans at Harbury Fields Farm
- a new agricultural access to replace the existing one south of Sharmer Farm on the Fosse Way and barn conversion and accommodation
- internal alterations at the Coach House, Butt Lane.

The application to "reduce" a fir at Roallyn was withdrawn.

Stratford District Council refused:

- the application for a two-storey house next to the Old New Inn.

The District Council has placed a Tree Preservation Order on the remaining Silver Birch in Vicarage Lane. The Tree Preservation Orders at Bishops Bowl Lakes are being contested at the Dasset Area Committee where the Parish Council will be represented by Councillor Van Spall.

The Parish Council made no representation on:

- a conservatory at The Barns, Station Road
- an extension at 1 Deppers Bridge
- two signs for the Cement Works
- two signs for Bishops Bowl Lakes.

However, Councillor Hancock was scathing about Stratford District Council's refusal for an extension for a disabled relative at 18 Francis Road that the Parish Council had supported. A new application had been received and District Councillor Patrick agreed to determine why the previous one was refused.

The Appeal against refusal for twenty-one fishing lodges at Bishops Bowl was withdrawn and the twin-tracked application will go to an Appeal. The Inquiry on changing a barn at Square Close to warehousing will be dealt with by written representations.

The Parish Council agreed to renew the grounds maintenance contract with Mr Hill who provided "best value". A survey of the structural state of the Chapel and Shelter in the Burial Grounds had been commissioned now that Mr Sheasby had removed the ivy and pruned the overhanging trees. Mr Sheasby would be asked to thin out the trees alongside the Recreation Grounds Car Park.

AND LAST, THE BAD NEWS: There was concern about the use by vehicles on the footpath that runs between Pineham Avenue and the Recreation Ground. The surface was badly damaged and the County's "Rights of Way" team would be asked to investigate the ownership and status of the footpath.

Confusion and controversy raged over the proposed barrier for the Recreation Grounds Car Park. "Dragons' Teeth" had been recommended (when engaged, they let vehicles out one way but not in the other); quotes had been difficult to obtain and seemed very expensive. Some Councillors then suggested Closed-Circuit TV; Councillor Janet Thornley was to investigate costs. Councillor Hancock looked at the plans and discovered that the quotes were not for "Dragons' Teeth" at all, but electronic barriers which some contended would be vandalised. The Parish Council agreed to wait until Councillor Thornley had spoken to the Crime Reduction Officer.

Councillor Ann Winchester reported she had undertaken a survey of the street lighting and wanted to complete the ring of Windsor lights with an extra lamp in Mill Street and one on the corners of Pineham Avenue and South Parade. Prompted by Linda Ridgley, who pointed out the Parish Review identified Farm Street as the top choice for improvement, Councillor Winchester agreed there was a dark spot there but said nothing could be done about it.

Councillor Hancock urged the Parish Council to remove the fixings for the vandalised seat outside the Village Hall before someone injured

themselves, but there was no decision made on this item.

Only fifteen people turned up to the Chairman's 'Village Of The Year' Meeting to decide how the £2,000 prize money should be spent, so more views would be sought in the Harbury News.

Councillor Janet Thornley reported that the Junior Football Pitch had to be cleared of dog muck before play could begin. Councillor Jenny Patrick was appalled that loose dogs were allowed to roam the village and defecate on the Playing Fields.

Linda Ridgley

ELECTIONS – WOULD YOU BE INTERESTED IN BECOMING A PARISH COUNCILLOR?

The Parish Council meets monthly (except August and December) and deals with a wide range of issues that affect the local community, including planning, footpaths, speed bumps, streetlights, the children's play area, the skateboard park and much, much more.

Harbury has ten seats available, all of which are full at the present time. However, the whole Council will stand for re-election on 10th June 2004, to coincide with European and District elections.

If you would be interested in helping your local community and having a greater say in the way the village is run, becoming a Parish Councillor could be for you. Alternatively, do you know someone with the necessary "life skills" who would be interested?

Further details can be obtained from Nicola Thompson, the Parish Clerk, on 614646.

Harbury Parish Council

Harbury Review

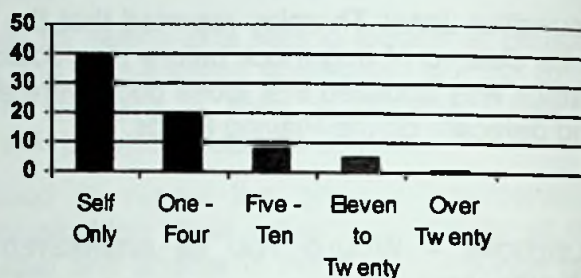


Business Survey

The final section of the review was for village businesses. It sought to quantify the types of employment in Harbury and the future business needs. Seventy people responded listing forty-six different occupations. We know we have not captured all the businesses (only one pub and two shops responded) but there are still far more jobs in the parish than most people would guess.

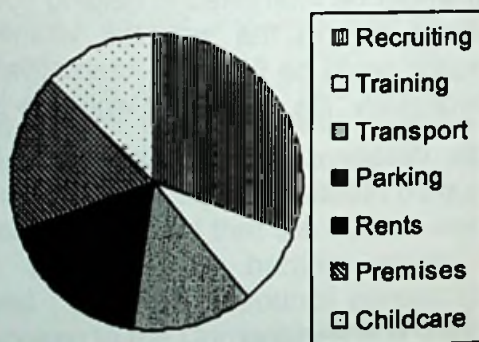
Building and Construction trades were to the fore (twenty-four) and professional services (seventeen), followed by engineering (eight), miscellaneous (six), personal services (five), agricultural and shops/retail (four) and transport related (two).

Thirty-nine people were self-employed with no employees; nineteen businesses employed between one to four workers; eight businesses had between five and ten employees; five businesses employed between eleven and twenty workers and one business had over twenty employees.



This means there is a minimum of 173 people working in or from the parish and there could be 315 or more. Most of the workers are full-time but over half are part-time and a few are only seasonally employed.

Seven businesses reported difficulties recruiting staff and four had trouble finding suitable premises. Rents (three), staff, transport and childcare (three each) were other concerns. Staff training was mentioned by two respondents and parking by another.



Seventeen businesses wanted purpose-built premises and only five thought conversions would be acceptable. Twenty-two would like the units on a small business development but ten did not see this as an option.

Five businesses had to be and six wanted to be, within the village. Only two were willing to locate within five miles and one within ten miles. The most commonly quoted area needed was five hundred to five thousand square feet (six businesses). Two businesses only

needed five hundred square feet and one business had unspecified requirements.

Parking was an essential prerequisite for forty businesses, access for large vehicles for two businesses and fibre optic connections for one business. Twenty-nine businesses had unmet training needs mostly work-based (twenty-three).

Linda Ridgley



Harbury Society

Harbury Society

We are looking forward to our Annual General Meeting on 29th March and the talk by Richard Chamberlain-Brothers on the newly refurbished County Records Office.

The Trip to Hook Norton Brewery on 20th April has attracted great interest (wonder why?). If you are interested in the trip, please contact Alan Lord on 613722.

Behind the scenes, Harbury Society work to protect and enhance our natural and built environment:

- ▣ The District has heeded our pleas and put a Tree Preservation Order on the Silver Birch on Vicarage Lane.
- ▣ We are continuing to work with the Parish Council to undertake further research and consultation for the Parish Plan.
- ▣ Nigel Chapman is drawing up the plans for our updated footpaths walks book "Cross The Stile".
- ▣ We took part in a workshop on improving Library provision.
- ▣ We are represented on the Local Strategic Partnership.
- ▣ We continue to monitor and comment on Planning Applications.

Did you know the list is now available on the Stratford District Website? www.stratford-dc.gov.uk then go to Planning, Development Control, Dasset Area Weekly Lists. The applications themselves are now at the District's Office in Southam. Parish Clerk, Nicola Thompson, has the current local copies too.

Linda Ridgley



Harbury Women's Institute

We are sorry to say that Mrs Turner and Mrs Merriman will not be attending our meetings this year; they have been active members since the 1940s and we will miss them, but we will always be pleased to see them.

The Darts Team won their recent match – keep up the good work ladies.

Celia and Peggie have entered the John Innes Indoor Bowls competition; and a team is entering the County Quiz.

Gillian Hare is busy with her Basic Flower Arrangement sessions. We hope to have more entries in the Produce Show.

Members are attending the Radford Semele "Fashion Show" and will go to see "Jesus Christ Superstar" in March.

Susie Tawney was the speaker in February and gave a talk on "Running – Life Begins At 40". Susie is a well-known villager who is regularly seen running through the village. She was an active child who always participated in school and district sports. Susie went to Loughborough University, where she was surrounded by first-class athletes like Sebastian Coe, Wendy Sly, Christine Boxer and David Bedford, to name but a few; then on to teacher training where she ran with the Exeter Harriers.

Susie first ran in the London Marathon in 1982 when there were 5,000 participants. What a difference when she ran again in 2002 with 40,000 people taking part. She remembers that it was more of a carnival atmosphere with the smell of 'Deep Heat', lack of urinals, the St John's Ambulance handing out 'Vaseline', water stations at every mile and the ground sticky from the glucose drinks.

Susie had a bad patch some years ago. Her hands were full with a toddler and twin babies, a business to run and her husband, Nick, suddenly going down with an illness that resulted in partial paralysis. She found being able to pop out for a twenty-minute run refreshed her and was a great help.

At forty, Susie completed in the Veterans World Championships – almost as big as the Commonwealth Games but without the coverage. She has competed in the European Championships and many more events and venues in numerous countries. As proof, the medals Susie has won were on display with photographs of her triumph and the

many people she met on the way. Susie says she have never found anything as fulfilling as running and, as long as she remains healthy, will continue to do so.

Our March meeting is Members Evening.

Jeanne Beaumont

Hereburgh Morris



Members of Hereburgh Morris at their annual workshop, which was held in the Village Hall on Saturday 21st February.

Photograph by Mike Bloxham

Harbury Theatre Group 17th Century Banquet, 27th March 2004

There is only one month to go before the Royalists and Parliamentarians arrive in Harbury; have you bought your ticket yet? So, what is on offer and will you get value for money? The answer is "Yes, most definitely".

Throughout the evening, you will be entertained by the members of The Sealed Knot Society; you will meet Master of Ceremonies, Octavius Jones and enjoy food lovingly cooked by Mistresses Alice and Lettice and be served by their troop of buxom girls. The evening

will start with Puritan Preacher Reeves; he will welcome you to God's house owned by Sir Richard Wagstaffe and who will give a long, long blessing. We hope that there will not be any interruptions by the Royalist troops, sighted at Southam.

The Oxford Waits will provide the music for the evening (a group of musicians specialising in 17th century music played on authentic instruments of the period). They will be joined by the fine voices of Mistress Caroline and her daughter, who will sing a variety of songs, some of which you will be able to join in with. The Bodlian Dancers will provide dancing, they will demonstrate their skills and later we will see if you were paying attention.

Various other scenarios have been planned, but we will not spoil all the fun.

Costumes for the evening are optional, but prizes will be given to the best dressed Royalist and Parliamentarian.

There will be a bar for you to purchase wine, beer and soft drinks (no spirits); a limited amount of wine will be included with your meal. The feast will run over four courses:

-
1. Parliament Soup with Bread
 2. Lombard Pie (chicken) with Berry Sauce
Grand Sallet
or Vegetarian Mushroom Pie
 3. Pork in Red Wine
Roast Game Birds
Golden Leeks and Onions
Green Pea Pottage
or Vegetarian Layered Cheese Lasagne
 4. Cherry Pottage
Applied Pie with Crème Sauce
Cheese Board with Bread
Hot Beverages (tea or coffee)
-

Except for the hot beverages, all the dishes are authentic to the period; yes, even the lasagne (first introduced to England in the 16th

MILES OF TILES

FROM AROUND THE WORLD

ONE OF THE LARGEST TILE WAREHOUSES IN THE COUNTRY!



20% OFF

ALL STOCKED

WALL AND FLOOR TILES

WITH THIS ADVERT

TEL: 0808 108 8742

Alveston Place . Oxford Street
Leamington Spa
Fax: 01926 451940



NIFTY NEEDLE

CURTAIN WORKROOM
SOUTHAM STREET, KINETON

FABRICS, WALLPAPERS
TRACKS, CARPETS etc.
CROWSON, SANDERSON
HARLEQUIN,
BLENDWORTH etc.

FREE HOME DESIGN AND
MEASURING CONSULTATION
FULL FITTING
SERVICE AVAILABLE

TEL: (01926) 641741

NEW
KINETON
SHOP



ADDITIONAL SOCKETS FOR PHONES
SOCKETS RELOCATED & NETWORK CABLING
INTERNAL & EXTERNAL WIRING RE-ROUTED

THE TELEPHONE MAN



KYLE BOYCE

01926 315238

Former B.T. Engineer

07761 077167

26 Years Experience

RESIDENTIAL & BUSINESS
APPOINTMENTS TO SUIT YOU
FREE QUOTATIONS & ADVICE

D.W.A.G.

O Builders **R**
U Tel: 01926 612460 **E**
G Mobile: 07860 849777 **N**

Local Tradesmen who take pride in their work.

We specialise in rebuilding half-timbered and period buildings, renovations, extensions, conservatories, patios - in fact any form of building work.

ESTABLISHED OVER 30 YEARS

Christina Sherman, BA, MAR

REFLEXOLOGY

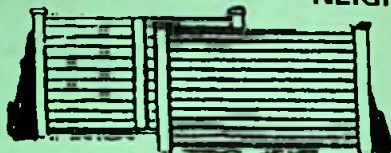
This safe, natural therapy can help a wide range of conditions while balancing the whole system. Deeply relaxing, it is especially beneficial for reducing stress.

Additional, very effective techniques can be used to suit individual needs.

Ring 01926 612277
for further information

8 Church Terrace, Harbury

**GOOD FENCING
MAKES GOOD
NEIGHBOURS**



**"You've seen the Rest
Now see the BEST"**



ROLLASON

**FENCING AND SHEDS
EST 1964**

*Professional erection service available
(01926) 613009 or (01926) 612066
Fosse Garage, Fosse Way, Harbury*

NEED A SKIP?



FORTRESS

(01926) 493414

century)! Unfortunately, due to health and safety and food hygiene regulations we are unable to serve your food in the authentic manner.

Keep a watchful eye around the village on Saturday 13th March, when Octavius Jones will be out and about the local shops and public houses, encouraging you villains to attend Sir Richard's Banquet, it being the Godly thing to do for Parliament and Country!

Monies raised at this event will go toward the new productions for this year: June - The Droitwich Discovery and Thermal Underwear and in November - the panto - Mother Goose.

Pat Taylor

Harbury Folk Club

Romance was in the air at the 231st Harbury Folk Club. The theme was "Hearts and Flowers" and the Harvesters matched the theme precisely with their opening song written especially for the evening. Peter Mason, who has become a regular at the Club, followed with two songs entitled "Rosie" and "Annie Munroe". Janny and Maureen got together and gave a beautiful version of "Let The Cold Wind Blow" and then Ian joined them for "Bye, Bye Love" (nothing like a bit of Rock and Roll to get the audience joining in!). Des sang "To The Maypole Haste" and then his fine version of "Will You Walk With Me". Brian played two tunes, "Peg O' My Heart" and "The Flowers Of Edinburgh". Pete and Liz ended the first half with Pete in fine form singing "The Bonnie Maid Of Fife" and then Liz joined him for the very apt "Valentine Song".

Martin opened the second half with "The Kiss" and "Reg, The Lonely Glow Worm", followed by newcomers to the Club, Linda and John, who gave us "Cobweb Of Dreams" and "Shift And Spin". Rick was truly romantic with "The Seeds Of Love" and "Time In A Bottle". Then those up and coming stars Danansooz sang "Nana's Song" and "Flesh And Blood". Peter McDonald, who always seems to pick some of my very favourite songs, sang "The Rose And The Briar" and "The Lover's Heart". Jane then sang "My Love Is Like A Red, Red Rose". Ron was on form with "Strawberry Fair" and "Soldier, Soldier", then the Barbershop quartet, Bianco, finished the second half with "Don't Blame Me" and "I'll be Seeing You".

Contributions then came from Brian, then Des, followed by Jonathan who sang "Heart Of Gold". Pete Grassby sang "The First Time Ever I Saw Your Face". As the evening was drawing to a close, it took on a

more light-hearted approach as Ron sang "Goodbye", Pete Bones sang "Blooming Heather" and then Martin closed the proceedings in fine style.

The raffle raised £38 for the Macmillan Nurses and I would like to thank everyone who contributed to the evening's entertainment, especially the audience who made it all worthwhile.

Sue Hartland

Harbury Twinning Association

We are holding a Quiz Night on Sunday 14th March, starting at 7.30pm in the Village Club. Entry for teams of four costs £12, which includes sandwiches and nibbles. If you would like to enter a team, please call 612860. Please note that no special knowledge of France is required but prizes will be of French origin!

Sharon Hancock

Harbury Village Club

After twelve years of loyal and valuable service, Rob and Kay Robinson have decided to leave the Club. On behalf of the members, the Committee would like to thank them both for all their hard work and wish them well for the future.

Due to their departure, the Harbury Village Club is now looking to appoint a new Steward/Stewardess (the most important position within the Club). If you are that special person we are looking for, please let the Committee know as soon as possible.

Any queries and/or applications for the position should be directed to the Club Secretary, Harbury Village Club, Crown Street, Harbury. Applications must be forwarded in writing before the end of March 2004. (Terms are negotiable.)

The Committee

Guide and Scout Support Group (GASS)

It is now just over two years since the new committee took over the reins and we thought it timely to report on progress to date.

We had a more successful financial year in 2003, partly because Bonfire Night was dry and well attended and partly because we added to our activities the provision of catering for the Beer Festival in

September. The GASS Christmas Post, now in its 8th year, also bought in much needed revenue. Generous donations from local societies and event organisers have also helped us greatly – a big “thank you” to all those concerned.

Apart from meeting the ongoing bills and running costs of the Scout Hut, GASS tries to look after the long-term interests of the building and its users. The many Guides, Scouts, Cubs, Beavers and Brownies who have used the hut over the last two years will be aware that the interior has been brightened up and essential building ventilation and fire regulation modifications carried out.

Our plans for vastly upgrading the kitchen have been frustrated by a roof leak that has persisted despite various attempts to overcome the problem. We are currently seeking professional advice concerning the best long-term solution to this problem but it will require a significant modification to the kitchen roof structure to cure it. At the same time, the roofing sheets on the main hall, which have done great service for some sixty years, are near the end of their effective life. The time has come to consider how to fund their replacement.

All this work will require an energetic team as well as the support of the village (which supported SHAK so well in the campaign to extend the Scout Hut in 1995-1997). This is where you come in, kind reader! If you would like to participate in a group of enthusiastic people, supporting the future of Scouting and Guiding in Harbury, please Alan Guy on 614242 or David Ashurst on 614575. We emphasise that you do *not* have to be a parent of a child who is in one of the Scouting and Brownie groups. *Fresh ideas and skills are always welcome, particularly roofing skills!*

Alan Guy



Harbury Brownies

This month we have welcomed two new Brownies, Rosie and Zoe, into the pack taking us to twenty-six Brownies in total.

We all celebrated the birthday of our founder Robert Baden Powell on 22nd February. 'World Thinking Day' marked this, when Brownies and Guides from all over the world think of each other and the different circumstances in which we live. The girls have also learnt a Brownie song from another country, which will count towards their 'World Guiding Badge.'

We have not just travelled in place but also in time this month. Mrs Entwistle came to tell us about her time as a Brownie seventy-one years ago! It was very interesting to learn what had changed and what had stayed the same. One big change was that Mrs Entwistle made her Brownie promise to 'Serve King and Country' not the Queen as we do today. Mums and Dads might be interested to know that before each girl could join Harbury Brownies she had to prove that she helped at home! We send a big "thank you" to Mrs Entwistle for taking the time to come and talk to us.

Most of the girls have now received their Hostess Badge, but those that still have to complete it will get the chance at our Coffee Morning on 15th May in the Tom Hauley Room.

This month we are working on the Creative Badge. The Brownies have made some lovely artwork; one piece forms our pride of place at meetings and is a fantastic Papier-Mâché Brown Owl. All their work will be on display at the Coffee Morning.

If anyone has any questions or would like more information regarding Harbury Brownies, please call Karyn Hunt (Snowy Owl) on 613598.

Karyn Hunt

Harbury Youth Club

Harbury Youth Club aims to provide safe and inclusive social activities for young people in the Village. We believe that it is important for young people to feel part of our community and that the provision of the Village Youth Club goes some way to achieving this.

We employ a fully qualified Youth Leader, who organises a variety of activities for the group, for example, sessions with sports workers and professional musicians, together with regular trips. This structured programming has proved extremely popular and we now have up to thirty members from the age of 12 to 17. The increase in numbers requires additional supervision and we are appealing for more helpers to come forward and assist us in this very worthwhile work.

The Club is open for two hours between 7.00pm and 9.00pm every Thursday during term time. If you feel that you are able to spare a couple of hours a month, we would be delighted to hear from you.

To find out more, please contact me on 612588.

Janet Thornley

Harbury Juniors Football

UNDER 16S:

The end of January and through February has been quiet for the under 16s. We lost terribly to Banbury Irish on a very boggy pitch with a very young referee. We then lost to Hillmorton in the Supplementary Cup on February 8th; the fixture was greatly affected by the strong wind that we had against us in the second half, making it very difficult for us to get into their half of the pitch. Still a great performance for "Man of the Match" Tom Hughes and a goal for Adam Johnson (his first of the season).

John Wilkins.

HARBURY HAWKS:

Harbury Hawks (2) v Central Ajax (0)

Goal scorers: Richard Thompson and Matthew Edwards.

Good performance for the quarterfinal of the Supplementary Cup since the Hawks had lost to Central Ajax twice in the League this season. The commitment and spirit shown by the players and supporters was excellent.

Harbury Hawks (2) v Kenilworth Wardens Juniors (5)

Goal scorers: Richard Thompson and Stephen Murphy.

At one goal each at half time, it was all to play for - but Kenilworth were too strong and ran away with the Match towards the end.

Despite losses, all the lads are enjoying the season and team spirit is growing.

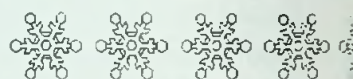
Keith Edwards

UNDER 11S:

The Under 11s had a mixed month, winning one match and losing another. We opened the month with a comprehensive victory at Byfield beating the home team by seven goals to four. On a larger than normal pitch, the Harbury team triumphed with four goals from Chris Wall, two from Jordan King and one from Mica Allen (on her debut). Two weeks later, the Under 11s lost their unbeaten record, going under by two goals to one at home to Fenny Colts. Having taken the lead, Harbury surrendered the game to Fenny, some careless finishing and defending costing us dearly.

Therefore, we approach our remaining three games of the season hoping to return to winning ways.

Jim Farrell



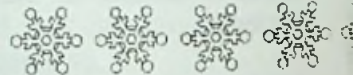
Winter Wonder



28th Jan



Photographs by

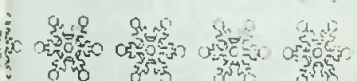




and In Harbury

ary 2004

Dave Broderick





Harbury Nursery School

This half term, the children will be learning about springtime and looking for signs of new life in and around the school grounds. The bulbs that the children planted in the autumn are now looking lovely outside the classroom.

Everyone recently took part in "friendship week" in association with the "Make A Wish" charity for children with life-threatening illness. The children talked about their friends, made a friendship card that has been entered into a competition and made a friendship doll using collage materials. As part of this event, each child received a rucksack full of goodies, which went down particularly well!

Our Nursery Supervisor, Mrs Kate Smart, has moved on to a new position within a Further Education College. We would like to thank her on behalf of parents and the Committee for her dedication to the Nursery over the last twelve years and wish her well in her new job. We are delighted that Mrs Tina Varriale has taken over as Nursery Supervisor and she is sharing this role with Mrs Marie Kennedy.

With our imminent move from the current Nursery classroom to the Kids' Club building in September, we will be holding various fundraising events over the coming months in order to make sure the move goes as smoothly as possible.

"KIDS KLOBBER" FASHION SHOW: This will be held on Tuesday 16th March at 7.00pm in the school hall. Children will be modelling a range of designer and ex-chain store clothing for children between the ages of 3 and 11 years. Tickets are free for children and £1.50 for adults (to include a glass of wine) and are available from the Nursery by phoning 614040, or on the door. The Nursery School will receive 20% commission on all purchases.

OPEN MORNING: This will be held in the Nursery on Saturday 27th March from 10.00am to 11.30am. This is an opportunity for interested parents to look around the Nursery and talk informally with staff. Please bring your children along too as there will be many activities for them to do and things to play with. Do not worry if your child is not due to start Nursery School for a while, we welcome anyone who thinks they may be interested in the future.

COFFEE MORNING: The Nursery is holding an Easter Coffee Morning on Wednesday 31st March in the Tom Hauley Room. Please come and admire the children in their Easter bonnets.

DAVE PERRY PHOTOGRAPHY: Due to popular demand, Dave Perry will be back in Harbury on Monday 5th April from 10.00am to 1.00pm in the Tom Hauley Room, to take more of his wonderful black and white photos. If you missed him in the past, just turn up at any time within those hours. He will take natural shots of individuals or groups, with no obligation to buy. The Nursery School will receive 20% commission on all purchases.

If anyone would like further information about the Nursery School, please drop into the Nursery or contact Jo Lockley (Chair) on 614532.

Nursery School Staff and Committee



Harbury Pre-School

During February, the children discussed the winter weather and the kind of clothes they should be wearing, as well as how the winter affects some animals and birds. A visit to the Library for Story Time was so popular that they were all clamouring for more! Some of the children made a train and went on a journey to "Sweetie Land". There was a bit of a problem when the "train" kept breaking down, but all was not lost with some handy workmen on board to mend the broken rails (except they did drink a lot of pretend coffee every time they repaired the track!). Eventually everyone arrived at Sweetie Land and had a great time.

The children returned to Pre-School after half term with great enthusiasm, especially when they were told about Shrove Tuesday and shown how to make and toss pancakes. Some became very

adept at tossing and catching the pancakes, but others made it their ambition to throw them as close to the ceiling as possible, with their catching skills being rather ineffective as a result! The pancakes that survived were eaten with great relish.



"Measuring out the ingredients for their pancakes."

NEW STARTERS: Anna and Finn started at Pre-School after half term and are settling in very well. We hope that they will have many happy days with all their new friends.

VALENTINE'S DAY COFFEE MORNING: The coffee morning was a great success, raising £223.55 for the Pre-School funds. All the delicious cakes and buns sold very quickly and there were many lovely prizes for the ever-popular raffle. Our grateful thanks go to all those who came along to support the Coffee Morning.

Our children enjoy high standards of care at Pre-School, with excellent facilities, caring staff, good quality toys and equipment and exciting outings and without the tremendous fundraising efforts of all those involved, it would be impossible to maintain these standards. A recent example of a new purchase is the furniture for the book corner, which is smart, practical and very popular with the children.

DAVE PERRY PHOTOGRAPHY SESSION: The black and white photography session by Dave Perry was a great success. Thank you to all who supported it. Dave made sure that all the children were relaxed and had them all laughing at his antics, so the resulting photographs are delightful.

ABBA TRIBUTE NIGHT: This is the last chance to get tickets for the Tribute Night on Saturday 20th March when "The Right Stuff" will be performing two sets of live music. The main set will be ABBA and the second will be covers dating from the 60s up to the present. There are only a few tickets left, so hurry; reserve yours now by ringing Lana on 613311. Tickets cost £12.50. A bar will be open, there will be a raffle and refreshments will be available during the interval.

If anyone would like further information about Harbury Pre-School, please contact Jane Kempton, Chair of the Pre-School Committee, on Harbury 613786.

Pre-School Staff & Committee

Harbury Primary School PTA

As 2003 came to a close, the teachers at school prepared their "wish list" of things that the PTA had agreed to fund. This included a construction kit, CD players, storage units and a digital camera with projector. These were ordered and most are in school and being put to good use.

At the Christmas Fair held in December, Santa's Grotto raised more money than ever before and it was been agreed that the PTA will decorate and staff it again next Christmas.

The school disco was held on 12th December and proved very popular with infants and juniors alike. The DJ was excellent and played a good selection of music; so good that several parents (who shall not be named) were seen tripping the light fantastic!

The PTA arranged to sell Christmas puddings from the Ultimate Plum Pudding Company in Kendal, Cumbria. A total of £215 was raised from the sale of these. Many people have commented on just how good they were and have requested that we do it again this year. Further information on the Plum Puddings will be available in the autumn.

The next Friday Market at school will be held on 26th March at 3.15pm. If anyone would like to have a stall at this event, please contact Lana on 613311.

We will be holding a Coffee Morning in the Tom Hauley Room on Saturday 1st May. Please come along to buy homemade cakes and raffle tickets.

The Committee are meeting again next month to discuss future fundraising events. There are several ideas in the pipeline and further details of these should be finalised shortly.

Nicola Perrett

Harbury Village Hall

The Village Hall has now functioned for over 40 years and has served our community well over the years, thanks to those villagers who "way back" had such vision, imagination and the will to see it through.

Obviously, over time, hirers have demanded improved facilities and realising this over the last year or so, we have sent out a short questionnaire to hirers asking for comments (good or bad) on their view of the facilities. We thought readers would like to have an update:

- ◆ In the main, comments have been most encouraging and supportive, but where there has been criticism, we have tried our best to address the situation. Some time ago now, we improved the heating by installing a booster facility in both main rooms but

not all hirers have realised this. We shall clarify this in future by individually advising each hirer.

- ◆ In response to other points raised, there has been increased provision of coat hooks, particularly for gents - these have been placed in the Wagstaffe Room "for security purposes", better signs to the toilets and other minor matters. We still have some way to go but it is high on our list of priorities.
- ◆ Regular hirers will have noticed that over the last few months, the flooring in the areas apart from the main hall has been renewed at considerable expense and likewise, a brand new cooker has been purchased.

The Annual General Meeting of the Village Hall is to be held on Monday 5th April in the Farley Room, commencing at 8.00pm. All villagers are entitled to attend and, in particular, those who hire the Village Hall. We are talking about your Village Hall, it is there for you, so please do come along and join us – you will be welcomed but *not* press-ganged.

Harbury Village Hall Committee

Village Of The Year

Many thanks to those who attended the Open Meeting in February and put forward their suggestions for a project on which to spend the Village Of The Year prize money. Just some of the excellent suggestions put forward were a new bus shelter, flower tubs for the village centre, extended Christmas lights, a public toilet, indoor bowls and a youth shelter.

If you were unable to attend the meeting, it is not too late to have your say; any further suggestions should be forwarded to Jenny Patrick (Chairman) on 614359 or Nicola Thompson (Clerk) on 614646.

Harbury Parish Council

The Spirit of Harbury

'The Spirit of Harbury' was established in 2003 in memory of John Hunt. It acknowledges those many individuals who make significant contributions to village life. Their contributions may be made in many ways but they all embody Harbury's pro-active, friendly and caring approach to life. Without them, Harbury would be a poorer place.

HEALTH FIRST

Daventry Street, Southam, Warwickshire CV47 1PH. 01926 811803

A warm welcome awaits you at our private Health Care Centre, Which has now been relocated next door to Cox's Dentists in Southam. We continue to offer the following services:

Chiropodist / Podiatrist

An established, innovative, caring, private service provided by Jonathan Small, experienced state registered & Senior 1 NHS clinician formerly at Warwick & Stratford Diabetic Foot Clinics. If you have recurrent foot problems ranging from simple problems such as corns or in-growing toe-nails to complex problems such as excessive pronation or plantar fasciitis or metatarsalgia, then make an appointment to see if your condition can be cured, or improved so much that you could look after it yourself.

Call 01926 811272 for an appointment to suit
- daytimes, evenings, Saturdays, or home visits

Routine chiropody care also available as well as many advanced treatments:
e.g. nail surgery performed under local anaesthetic, functional foot orthoses
sports orthotics, prescription insoles, a wide range of electrotherapies etc

Also introducing **Health First Foot Care Products**, a mail-order service delivering high-quality, cost-effective items to your door

Call 01926 811803 or visit www.firstaidforfeet.com

We also offer a private Physiotherapy Service provided by Paul Nicholls SRP, MCSP, - specialist in back and knee problems

Call Paul directly on 01926 815030

R & S DOMESTIC SERVICES

REPAIRS TO MOST
MAKES OF
Washing Machines
Tumble Dryers
Cookers
Dishwashers



PHONE -
ROB CENEY on
HARBURY 613707

INTRODUCING THE AWARD WINNING

NOAH'S ARK

PAINTING
COMPANY

Inspiring a generation to say NO to magnolia!

EVERY FORM OF

INTERIOR AND EXTERIOR
PAINTING AND DECORATING

.....
CLEAN, TIDY & EFFICIENT
.....

DELIGHTFUL DECORATION BY POLITE PAINTERS

01926 888303

LOCAL, SKILLED TRADESMEN

Michael Jerome



Carpets

A COMPLETE CARPET SERVICE

- Choose a new carpet from our extensive range
- Expert Fitting - Fully Guaranteed
- Professional On-Site Cleaning
- Vinyl Sheet Flooring

6 Meadow Road, Southam

Telephone: Southam 813325

Michael Jerome is a Master Fitter with the National Institute of Carpet Fitters with 30 years experience



Parkinson Jones

*Chartered Surveyors
&
Estate Agents*

Homes in England & France

Tel: 01926 612121

Bank Chambers, High Street, Harbury, Warwickshire CV33 9HW

Email: ralph.jones@btinternet.com



Hirers of

**all sizes of Children's & Adults'
Bouncy Castles, Obstacle Courses,
Inflatable Slides, Ball Ponds,
Sumo Suits, Bouncy Boxing,
Gladiator Duel and Giant Games.**

**Visit our website at
www.harburybouncycastleles.com**

5% DISCOUNT WITH THIS ADVERT

Tel: 01926 613740

Harbury



Marquee Hire

**MARQUEES FOR ALL OCCASIONS.
BIRTHDAY PARTIES, CHRISTENINGS,
WEDDINGS, CORPORATE EVENTS.**

Also hirers of
Chairs, Tables and Dance Floors.

For a brochure or free site survey

Tel: 01926 613740

This year's award will be made in May at one of the regular coffee mornings held in the Tom Hauley Room. The recipient will also receive a cheque for the benefit of their chosen organisation or charity.

Please leave your nominations at Harbury Library or Country Fayre before the end of April. Nominations will then be put before a panel chosen from the village groups.

Allison, Andrew & Stephen Hunt

NSPCC Quiz

A total of £322 was raised for the NSPCC on Sunday 1st February at our Quiz at the Village Hall.

Sue Ward and her team were the winners.

We would like to thank all who came and made it such an enjoyable evening.

NSPCC Committee

Dog Mess

A number of people have complained to the Parish Council about the quantity of dog mess particularly along Constance Drive and on the playing fields. This is a particular nuisance on the football pitch.

All dog owners are respectfully reminded that all mess should be picked up and not left for others to find. The council would also like to remind owners that all dogs (except guide dogs) are *strictly prohibited* from the children's play area.

Harbury Parish Council

Harbury Carnival, June 12th 2004

This time last year, I stressed the importance of our Carnival and pointed out that its continued success is a function of what we all put into it. Well, whether or not that was anything to do with it, last year's event was indeed well supported and a great success. Now, whilst I am not going to repeat all that I said, we must not drop the ball and should be looking to make this year even better. So, start thinking about participating in this year's procession and get together with your local organisation, pub, street or friends and see what ideas you can come up for either a float or a walking group. The more participants

we have, the more fun it is for everybody (apart from the judges perhaps!) and I promise that you will enjoy the experience. We have added some new categories this year, so for your reference, here is the full list:

◀	Trade Float	▶
◀	Independent Float	▶
◀	Children's Float	▶
◀	Decorated Bike/Pram/Car	▶
◀	Horse Drawn/Mounted/Lead	▶
◀	Walking Tableau Children, 2-8 persons (<i>New</i>)	▶
◀	Walking Tableau Children, more than 8 persons (<i>New</i>)	▶
◀	Walking Tableau Family (<i>New</i>)	▶
◀	Walking Tableau Adults	▶
◀	Walking Adult	▶
◀	Walking Child	▶

We are still looking for an organisation to do the teas in the Village Hall on the day. If you are interested or would like more information, please call John Broomfield on 614258.

If you would like to book a stall/pitch on the playing field, please call Mike McBride on 612421.

**John Broomfield,
on behalf of the Carnival Committee**

From Matthew's Mum

Some of you will already know Matthew from his days at Harbury School. Matthew left in 1999 when he started at a special school for Speech, Language and Communication Disorders in Derbyshire, where he is very happy and doing well. Since then I have managed to work fulltime by using Registered Childminders when he comes home during the holiday periods. Unfortunately, I am now in a very difficult situation of not being able to use Childminders, as they are not allowed to have children over the age of sixteen; they are classed as an adult.

I have examined various alternatives: contacted Warwickshire College, advertised for a holiday companion, contacted local schools, put notices in local shops and spoken to Social Services. Now, Matt and I seem to be in a care situation "loophole".

I am unable to leave Matt on his own, as he needs help in preparing meals, etc., and I am a single parent with no extended family able to offer back up, so find myself in an altogether very unusual situation.

Ideally, I desperately need to find a warm, caring family, who would be able to look after Matt during school holidays. Although he has an autistic related condition called Aspergers, Matt is very atypical in that he is caring, outgoing, chatty and friendly; currently his condition mostly manifests through his obsessive interest in mobile phones. Having said that, it is obviously a lot more subtle and complex, as his coordination is poor and he has a short attention span; although Matt will sit for hours stroking a cat or dog (he has always had an affinity with animals). Matt is also very good and gentle with young children and he has a wicked sense of humour, none of which is typical for this disability!

Is there someone who can offer me help? (Payment would be arranged.) My last Childminder is willing to provide references or answer any queries; I can provide her telephone number on request. I would be very grateful for any offers of help or support.

If you need more information, please contact me at home on 614115 or at work on 01926 314313. Thank you.

Chris Smith

Sheep With Different Coloured Numbers, Whatever Next?

Most of us are aware that spring is well and truly here as the fields around Harbury fill up with the delightful scene of frolicking young lambs with their mothers.

As you watch them, you can play the "numbers game" on some farms. Mothers and lambs have the same numbers on their sides to make identification simple should they become separated. However, the numbers can often be seen to be in different colours – one colour for a single lamb, another for twins and yet another for triplets.

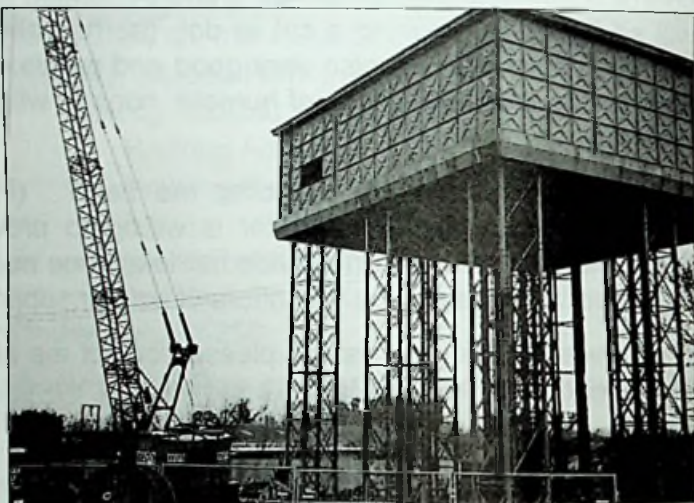
When walking anywhere near sheep and their offspring, please keep your dog on a short lead. Any unattached dog, however well behaved, will upset the sheep, may cause them to bunch up and possibly result in mothers and lambs becoming separated. As young lambs need a very frequent supply of milk for energy, a young lamb split up from

mum for just a few hours often means a dead lamb next morning. Similarly, be extra careful to keep gates shut – stock are in a separate field for a reason. Just yesterday, we came across a gate left open by walkers; lamb and mother had become separated, unable to find a way to get together again. Had the situation not been rectified, another casualty would have resulted.

Rosemary Eld

Harbury Landmark

Work has commenced to dismantle the old water tower on Churchlands at Ufton and Southam Road, Harbury.



The tower stored water pumped from Rugby. When Harbury's water supply was changed some

years ago, this rendered the water tower empty and redundant.

The photograph shows work commencing on 23rd February as the engineers remove the first panel and start work inside the tank.

The works were estimated to take two weeks to complete.

Mike Bloxham

The Windmill Singers of South Warwickshire

The Windmill Singers are holding a Jumble Sale on Saturday 13th March at Stockton Village Hall, commencing at 2.00pm. Everyone is welcome.

Pam Miller, Secretary

"Beat The Drums" Dragon Boat Challenge

My name is Will Randall and I am a sixth form pupil at Warwick School. I have volunteered to be part of a team of twenty rowers from Warwickshire who will attempt to row a Dragon Boat approximately 118 miles along the Grand Union Canal from Leamington Spa to Regents Park in London. This event is called "Beat The Drums" and is one of many that has been organised to help raise £1.2m towards improving facilities at Helen Ley House.

Helen Ley House is one of only four homes in the United Kingdom providing respite care for Multiple Sclerosis sufferers; it needs to raise funds to upgrade existing buildings and build a new wing. The organisers of the Dragon Boat challenge hope to raise at least £50,000 to help the Helen Ley Upgrade Appeal.

The first team of rowers will set off from Leamington Spa on Saturday 10th April 2004. Peter Boote of Coventry Dragons Boat Club will helm the boat. The team of twenty is comprised of ten local business people who will form the permanent crew and four teams of ten rowers (including myself) from Warwick School who will take turns to paddle the 40-foot boat along the canal. If all goes according to plan, the boat will reach its destination on Saturday 18th April 2004.

Multiple Sclerosis is a debilitating disease and this money is urgently needed to maintain the current level of respite care offered at Helen Ley House. My personal aim is to raise at least £200 through sponsorship. If you would like to sponsor me in this most worthwhile event, please contact me on 01926 613871 or by email at will_r87@hotmail.com. Thank you.

William Randall

Back And 4th Transport

Back and 4th Transport is a recently established transport provision set up by Warwickshire County Council and CSWP Connexions. We aim to offer transport to those community/social groups or individuals living within the Stratford district, who cannot access the transport that is already on offer. These people could be elderly, socially deprived, rurally isolated or disabled.

We currently have two 16-seater fully accessible minibuses that are available for hire with a driver. We are currently extending our fleet

and hope to have an 8-seater vehicle available for hire by early June. As we have been funded, we are able to offer transport at a greatly reduced cost to our users.

We are also currently trying desperately to recruit volunteer minibus drivers. The position comes with a great deal of responsibility, but is extremely rewarding for those who choose to take it up.

If you require any further information on hiring the minibuses or volunteering to drive, please contact me on 01789 266841 or 07736 112422, email enquiries to judith.hill@cswpconnexions.org.uk, or write to me at Transport Brokerage, Stratford Connections Office, The Willows, Alcester Road, Stratford Upon Avon, CV37 9QP.

Judith Hill, Coordinator

Dutch Elm Disease

One of many young elm trees, which have succumbed to Dutch Elm disease. Several trees often developed as off shoots from the original diseased main tree and many are now suffering the same fate.

Mike Bloxham's photograph shows a fallen tree on the footpath leading from Temple End.



Chris Finch



Horticultural Society

At the eleventh hour, our old friend Christine Dakin from Bridge Nurseries gave a talk instead of Mr Salt who had to go into hospital. Christine told us how she had been involved in her parents' market gardening family business from an early age. At the age of thirteen, she was in charge of a fair size greenhouse full to tomatoes in order to earn the money for a school trip. In her "jobbing" days, Christine has worked in France, in gardens large and small but on the whole mostly in Home Counties. She showed some slides and accompanied them with stories of her employers, some of them real characters! She has taught in a classroom and now, of course, she has her own Nursery at Napton with help from her partner.

To attempt to cut down on the snail population in the coming season, it is a good idea to hunt them now and destroy them before they breed. They congregate under ledges and over-winter in many dry places.

Ron enjoyed his trip to Ryton Gardens on the Saturday of Potato Weekend. He got there early but still did not manage to buy one of the varieties he wanted! However, he did talk to Alan Roman on the Thompson and Morgan stand and learned many interesting facts as well as coming away with some tubers of Hungarian origin that promise new high levels of immunity to late season blight.

It will soon be seed sowing time and bearing in mind the Walkabout Weekend arranged for Saturday 10th and Sunday 11th July, set out a few extra so that resulting plants can be sold at this event and you can reap the proceeds.

The talk on Tuesday 6th April will be "Troughs And Gravel Gardens" and will be given by John Trinder.

Muriel Grey

Nature Notes

February is closing, as did January, with snow showers and frost. Nevertheless, with the lengthening daylight there has been a slow warming and uncurling in the natural world. The leaf spears of wild arum (cuckoopint) are well through the soil; look particularly at the base of hedges and in woods. There you will also see wild bluebell leaves prominent and in wetter spots celandine, with occasional flowers in sheltered areas.

In last month's article, "alder" was transposed to "elder" when I was discussing catkins; I could hear the readers saying 'What a load of rubbish'.

I closed the article in January by saying to look out for coltsfoot (Compositae family) at the end of this month. On the 27th, I took a stroll round the railway cutting and along Bush Heath Road to Fiveways, before coming back into the village via the playing fields. The mound at Fiveways has always been a good spot for coltsfoot and there, sure enough, I found two small clumps. One at the apex of the mound was gaining shelter from the large chevron sign. The deep pink, almost purple, buds are just about to break open; on one, I could discern the yellow flower inside.

Stinging nettles are well up though not yet above the ankles, so now is the time to try out a recipe for nettle soup. I'm game, are you?

½ litre (1pt) water or milk and water or meat or vegetable stock

30g (1oz) butter

30g (1oz) rolled oats

¼ litre (½pt) chopped young nettles

1tsp chopped parsley

Salt and pepper

Bring the liquid and butter to boiling point and then stir in the oats. When the pan returns to the boil, add the nettles and seasoning. Cover and simmer for 30-45 minutes, stirring occasionally. Taste and correct the seasoning, add the parsley and leave for another 2 minutes. Serve!

(From Jane Grigson's Vegetable Book)

Bon appétit!

Before closing, I must mention that on Monday 23rd February I was privileged to see my first bittern. I was attending my weekly geology lecture at Brandon Marsh Nature Reserve; I decided to eat my lunch sitting in one of the bird hides, overlooking a large lake fringed with reeds. Suddenly, the bittern, a member of the heron family, flew across my line of sight. It was a golden colour, well reed coloured really, with bulkier feathers than a heron. Some in the know, say there may be a breeding pair soon.

John Hancock

Garden Notes For March

March 21st is the first day of spring. March is the month when gardeners begin to get itchy fingers; this can only be cured by a few hours of contact with the soil. It was in March 1804 that the Horticultural Society of London was founded; 200 years on, it has grown into the world's leading gardening charity. Our own Society is an associated member and we receive monthly magazines and other benefits from our membership.

Annual weeds are germinating so hoe these up before they flower and set seed. Dig up perennials taking care to remove all pieces of root from which they can regenerate. Bindweed may need treatment with a systemic herbicide so tackle it as soon as it appears. Feed beds with general fertiliser to provide the ready supply of nutrients that the new growth of the perennials will need. Soil analysis can be done to determine exactly what your soil needs.

I am never sure whether to mulch the borders whilst they are moist or to wait until they have received some warming from the sun before putting on about 3 inches of compost or bark. If we do get a cold spell, it helps to protect roots and newly emerging shoots, so it is probably one job to get out of the way now, although you must keep a watch for slugs, particularly around delphiniums and hostas. Cocoa shell is a good soil conditioner; it controls weeds well and can deter slugs, snails and cats, but it is expensive.

Prepare any new beds by weeding, enriching with compost and warm by covering with black plastic sheets. This is the best time to plant asters, perennial poppies, scabious and delphiniums. Complete the planting of bare rooted deciduous trees, shrubs including roses and fruit bushes. Container grown plants can be planted at any time but the start of the growing season is the best time.

Listen to weather forecasts and be ready to cover slightly tender shrubs, such as camellia and pieris, with horticultural fleece. As you work around the garden put supports in for those plants that will need them, it is easier before they grow too tall and is often one of the jobs that I leave too late. Clumps need a circle space of 15-18" and a criss-cross of string across it. If canes are used they must be long enough to have the top at the base of the flower spike. Put a rubber cap on top of the cane, or a wine bottle cork if you can push it on.

Start seed sowing in earnest this month. Many half-hardy annuals for bedding and containers must be sown in warmth during February or

March. Many need a long growing season so look at the instructions on the packet. Prick out seedlings regularly, when they have 2-4 leaves, as they are difficult to handle if they get spindly. Increase water to over-wintered tender plants and as new shoots appear, use these as cuttings. Put the seedlings into small individual pots to grow; they can then be planted out with minimal root disturbance. Improving light stimulates new growth on houseplants, so increase water and begin to feed plants fortnightly, continuing this through the growing season. Give liquid feed to daffodils, etc., and feed crocus with a liquid fertiliser when flowering finishes. Order summer bulbs and if buying summer flowering plants watch for them arriving in the shops but do not plant them out until mid May at the earliest.

Only about 25% of gardeners now grow vegetables, so this year, why not try just a few of the easy ones planted in a small block in a border and taste the difference! The soil needs to receive some warming from the sun before the seeds will germinate so do not waste the seed if we are in a very cold spell, use cloches to catch any sun warmth. Lettuce, rocket, radish and spring onions take up minimal space; tomatoes and beans can be grown in pots. Root crops are growing for months before they reach a useful size, but beetroot could provide a patch of colour whilst it grows in amongst the flowers.

Tidy away dead stems of water plants before tadpoles become active. Thin out the oxygenating plants and repeat this "a little and often" to keep the pond balance. Lawns have continued to grow through much of the winter and moss has thrived. It is hard work to rake this out, but think of it as useful exercise and do a little at a time. Moss that has been treated with a chemical is no good to birds for their nests. Many of the pesticides that cannot be stored by gardeners after 31st March are chemicals used on lawns. Check the container to see if it contains Dichlorprop or Ferrous Sulphate, both of which are now banned substances. A list can be obtained from Pesticides Safety Directorate, Mallard House, 3 Peasholme Park Green, York, YO1 7PX, or visit the website: www.pesticides.gov.uk

PLANT OF THE MONTH - ARUM

A clump of brightly variegated leaves makes this hardy perennial stand out in a winter border. Native to much of Southern Europe; the wild plants that flourish in the countryside here do not have the mottled leaves. It is known under the name of "lords and ladies", "cuckoopint" or "jack in the pulpit", with its rod-like flower called a spadix

HARVEY BUILDERS LIMITED

Registered Since 1979

**YOUR LOCAL BUILDER FOR ALL YOUR
HOME EXTENSIONS AND ALTERATIONS
FROM PLANS TO COMPLETION.**

Mob : 07976 357142

Email : harveybuildersltd@southam59.fslife.co.uk

FOR PROMPT, PERSONAL SERVICE PHONE 01926 817906



REGISTERED
HOUSE BUILDER

AVONVALE VETERINARY CENTRES



**88 COVENTRY STREET
SOUTHAM**

TEL 01926 812826

CONSULTATIONS BY APPOINTMENT
24 HOUR EMERGENCY SERVICE

www.avonvets.co.uk

Also at:
Wellesbourne
01789 841072

Kenilworth
01926 854181

Warwick
01926 400255

G S ELECTRICAL

**24 hr Emergency Service *Part or Full rewires
*Extra Lights & Sockets *Security Alarms & Lighting
*Testing & Inspections *Refs available*

Phone Gary on

Tel: 01926 817734 Mobile: 07930 345918

Creative Photography

Home Portraits

Children & Pets

Products

Corporate

Public Relations

Conferences

For a friendly and professional service, from one of the Midlands' best photographers. For photographs you will be proud of, call me now on:

01926 426278



Paul Thomas

Photography

email: paul@psthomas.co.uk
web: www.psthomas.co.uk

Beauty Treatments

Available to you in the comfort
of your own home

Also available at
Upstairs Downstairs,
Binswood Street, Leamington Spa,
if preferred.

- Facials
- Body Massage
- Eyebrow/
Lash Treatment
- Waxing
- Manicures
- Pedicures

*Gift Vouchers Available
for those special occasions*

For more details contact
Sarah Turner

Tel: (01926) 817657

Mobile: 07798 821686

FULLY QUALIFIED BEAUTY THERAPIST

PINEHAM FARM BUTT LANE, HARBURY

Logs £3.50 per bag; £50 per pickup load

Sticks £2.80 per bag

Potatoes (Reds & Whites) 55lb bags

Hay £2.50; Straw £2.00 (per bale)

Fresh Eggs £1.20 per dozen

Free Range Eggs £2.00 per dozen

GRAZING FOR HORSES

Hose Feeds, Shavings (25kg) bales

Hay & Straw (open till late)

FARM YARD and HORSE MANURE

PET FOODS & ACCESSORIES

Cat, dog, poultry and rabbit food

Call in or phone for details on

01926 612325

Custom & Bodywork Services at **The Garage** **Ladbroke**

ALL TYPES OF BODY WORK

FREE INSURANCE ESTIMATES

RESPRAYS

SERVICING

M.O.T. REPAIR WORK

WELDING

COLLECTION & DELIVERY

Personal Service from Steve Birch

01926 813590

www.customandbodywork.co.uk

surrounded by the curious hood, known as a spathe. There are two varieties to grow in the garden: *Arum italicum* Pictum with a green-white spathe and *Arum creticum* with a yellow spathe. Although this comes from the mountains of Crete, it will grow well here if in a sunny site on relatively poor soil. *Arum italicum* prefer moist soil and will grow in sun or shade. It is good value as it has bright foliage, flowers and berries, but beware, once planted, you have it for ever!



Pat Smith

Lost Property

A child's new grey fleece/sweater was left in a Parkinson's bag (complete with receipt) at the Tom Hauley Room some months ago.

Please collect via the Church.

Ufton News

THE LICENSING AND INSTALLATION BY THE BISHOP OF WARWICK OF THE REVEREND JOHN EDWIN ARMSTRONG AS PRIEST IN CHARGE AT ST. JAMES, SOUTHAM AND ST MICHAEL AND ALL ANGELS, UFTON

Sunday 4th April, 3.00pm, in Ufton Church

Due to limited space in church, admission will be by ticket only. If you wish your name to be included in a ballot for tickets, please write your name on the list in the church porch or tell Ann Ainscow on 613303 before Monday 8th March.

There will be a 'bring and share' reception at the Grange Hall in Southam after the service; everyone is welcome to join in this celebration irrespective of attending the service.

HOME GROUP LENT COURSE (THROUGHOUT MARCH)**'THE WEEK THAT CHANGED THE WORLD'**

Commencing March 4th, 7.45pm for 8.00pm until 9.30pm at Colbourne House

We will be looking at the familiar stories of the events of the last week of Jesus' life from new perspectives. There are different speakers arranged for each week and we warmly welcome you to join us for one, or more, of these evenings. Other people will be coming along from local villages, so feel free to bring a friend.

For further details, please telephone Sara Bennett on 612595

TAKE TIME OUT

A Leisure Time Project for the Community of Ufton

PATCHWORK WITH A JAPANESE TWIST

Monday 22nd March, 10.00am-12.30pm, Ufton Village Hall

Due to the current closure of the Village Hall, this event has been postponed until October.

FOLD IT!

Friday 23rd April, 10.00am-12.30pm, Ufton Village Hall

Audrey Bryan and Bobbie Kerton from Radford Semele will be showing us how to do "Iris Folding". This addictive and relatively new craft originated in Holland; it uses paper and recycled paper to great effect to create cards and pictures. Suitable for beginners, all materials are supplied. Please bring scissors, cutting board, craft knife, metal rule, cello tape, double-sided tape 10mm, pen, pencil and eraser. Cost £3.50 including materials.

Please book as early as possible, spaces are strictly limited for this event and we expect it to be very popular. Contact Tracey Watts on 614413 for full details.

Karin Kirk

Letters to the Editors

Dear Editors

We would like to thank all the friends and neighbours for the sympathy cards, letters, flowers, gifts and support given to us on the death of our Mum, Rene Newman Smith. Rene spent all her life in Chelmsford, apart from the last twelve years here in Harbury. She was made welcome by so many people and she really appreciated the friendships, visits, outings and all the support from the home carers, the village doctors and Father Roy.

Margaret McDonald, Anthony Newman Smith & families

Dear Editors

We would like to thank all friends and neighbours who sent cards of sympathy when Brian died. Our thanks to Frances Moscrop and her team of nurses who made it possible for Brian to stay at home. We also wish to thank Father Roy for a beautiful service. A very special thank you to Sallie and Colin Humphreys for their support during this difficult time.

Moira, Duncan and Seona Lamont

Dear Editors

We would like to thank friends and neighbours for the flowers, cards and messages of sympathy; also for the offers of help and support, we received on the sad loss of Fred. Many thanks to Father Roy Brown for a lovely service and to everyone that attended the church.

Betty Barker & family

Dear Editors

I would like to take this opportunity on behalf of Rene and myself to say "thank you" to everyone who assisted whilst Rene was in Warwick Hospital during December and January. The many "lifts" I was given to the hospital and assistance in getting to the wards from the car park was much appreciated.

The constant attention from all members of the staff at Harbury Surgery,

which is "on-going", is most helpful and reassuring to Rene.

I would also like to thank Father Roy for his visits both at home and in the hospital and in conclusion, our family, friends and neighbours for their continuing support.

Yours sincerely

John Drinkwater

Dear Editor

On behalf of Guide Dogs for the Blind Association (GDBA), may I thank Sheila Jackson and her friends for their hard work in making the coffee morning on 31st January such a success; also those who supported us with either their presence or donations to give us a total of £200.

May I also take this opportunity to thank the kind person who hung my lost lead on a branch in the playing fields – it must have slipped out of my hand when I was "picking up" after my dogs.

Mal Watson

Dear Editor

This is just a thank you to all those people who sent me cards and good wishes for a full recovery after my recent heart operation. I am now at home making a full recovery (I hope). My thanks go to my devoted wife Jo, for her hard work in looking after me over the past year; it has been a very trying time for us all.

Max Sowerby

Dear Editors

May we, through the Harbury and Ladbroke News, publicly thank Mark and Tricia Teverson for all their help and support during the time we have been moving house. Nothing has been too much trouble for them. The old saying "If you need help ask a busy person" is certainly true in this case.

Many thanks to you both.

Stephen Wall and Jane

ADVERTS TO	31 BINSWOOD END	BY	15TH MARCH 2004
ARTICLES TO	HARBURY CHEMIST	BY	26TH MARCH 2004

DATES FOR INCLUSION IN THE HARBURY DIARY PLEASE TO:

LINDA RIDGLEY - TELEPHONE 612792

Regular Diary Dates

ART TUTORIALS: Tom Hauley Room, 1st Thursday of the month.

BABY CLINIC: Surgery, 2nd and 4th Wednesday of the month, 2.00pm-4.00pm.

BADMINTON: Village Hall, (613174) Monday morning 10.00am-12.00noon;

(612627) Monday (Seniors) 7.00pm-9.00pm;

(613413) Tuesday (Club) 8.00pm-10.00pm (not in summer);

(612029) Friday (Juniors) 2.00pm-3.00pm;

(613340) Sunday 7.00pm-10.00pm (not in summer).

BELL RINGING PRACTICE: (613605) Church, Friday 7.30pm.

BIBLE STUDY GROUPS: (613207) various homes, 1st and 3rd Thursday of the month 2.00pm-3.30pm;

(612864) various homes, 2nd and 4th Tuesday of the month 10.30am-12.00noon.

BOOKWORMS: (614793) Tom Hauley Room, 2nd Tuesday of the month 7.30pm.

BROWNIES: Scout Hut, Monday 6.15pm-7.30pm.

CHILDRENS DANCE CLASSES: (01789-842242) Farley Room, Wednesday 4.00pm-8.00pm.

CHOIR PRACTICE: Church, Friday 6.30pm.

COFFEE MORNING: Tom Hauley Room, Saturday 10.00am-12.00noon.

CUBS: Scout Hut, Wednesday 6.30pm-8.00pm.

DROP-IN TEA: (612585) 19 Farm Street, 4th Wednesday of the month 2.30pm to 4.30pm.

GYMNASTICS: Harbury School, Monday 6.00pm-7.00pm.

HARBURY FOLK CLUB: Shakespeare Inn, 1st Thursday of the month 8.30pm.

HARBURY FRIENDS: Tom Hauley Room, 2nd Tuesday of the month 8.00pm.

HARBURY JUNIORS FOOTBALL CLUB TRAINING:

Under 9s: Coach: Steve Darby (613330), Saturday at Harbury School Pitch 9.00am.

Under 11s: Coach: Jim Farrell (612396), Saturday at Harbury School Pitch 9.00am.

Under 14s: Coach: Mick Pratt (817700), Saturday at Playing Fields 9.30am.

Under 16s: Coach: John Wilkins (612115), Saturday at Playing Fields (top pitch) 10.30am.

HARBURY NURSERY SCHOOL: Harbury School, Monday to Thursday 9.00am-3.15pm;

Friday 9.00am-1.00pm.

HARBURY PRE-SCHOOL: (613786) Wight School, Tuesday-Friday 9.00am-1.00pm.

HARBURY THEATRE GROUP: (612009) Shakespeare Inn, last Tuesday of the month 8.00pm.

HARBURY TODDLER GROUP: (613311) Wight School, Monday 10.00am-11.30am and Wednesday

1.30pm-3.00pm.

HARBURY VILLAGE CLUB: Contact 612498.

HEREBURGH MORRIS DANCERS: (613730) School Hall, Wednesday 8.00pm-10.00pm.

HORTICULTURAL SOCIETY: Tom Hauley Room, 1st Tuesday of the month (Oct-May) 8.00pm

KICK START APPALACHIAN STEP DANCERS: (612734) Scout Hut, Saturday 10.00am-12.00noon

LIBRARY: (613297) Monday 2.00pm-5.00pm and 5.30pm-7.00pm; Thursday 10.00am-1.00pm; 2.00pm-5.00pm and 5.30pm-7.00pm.

NETBALL CLUB: (613239) Village Hall Car Park, Training Thursday 6.30pm;
Matches Saturday Afternoon.

SCOUTS: Scout Hut, Thursday 7.00pm.

PARISH PATHS PARTNERSHIP: (614274) Shakespeare Inn, 2nd Thursday of the month 8.00pm.

TENNIS CLUB: April to September:

Adults (614532), Tuesday and Thursday 6.30pm onwards (6.00pm for April and September);
Wednesday 2.15pm onwards; Saturday 3.00pm-5.00pm.

Under 16s (613284), Sunday 10.00am-12.00pm, Wednesday 6.00pm-8.00pm, Thursday 4.15pm-6.00pm.

Non-Members may book courts at £2 per hour at Country Fayre on Chapel Street.

THURSDAY CLUB: (612273) Farley Room, 2nd and 4th Thursday of the month 2.30pm.

WOMEN'S INSTITUTE: Tom Hauley Room, 2nd Thursday of the month 7.45pm.

YOGA: Dianne Surgey (817904) Tom Hauley Room, Wednesday 7.30pm-9.30pm.

YOUTH CLUB: (612688) Village Hall, Thursday 7.00pm-9.00pm.

BOOKINGS FOR:

Scout Hut	Lesley Van Kesteren	613411
Tom Hauley Room	Liz Bunting	612450
Tom Hauley Room Coffee Morning	Mrs J. Windsor	612504
Village Hall	Wendy Hawkes	613198
Wight School	Mrs L. Hayes	613488

STRATFORD UPON AVON CONSERVATIVE ASSOCIATION HARBURY BRANCH



Spring Pâté & Drinks Party

At Flax Hill
(kind permission of
Mr & Mrs Brian Hill)

Sunday 4th April
12noon-2.00pm

*Tickets available from
Mr Ken Hughes on 612273*



Have vacancies
for part-time
delivery drivers

to work Saturdays, Sundays and
some weekday evenings. Own
van/family size car with tow bar
required. Mileage paid. Earning
potential £150-£200 per week.
Minimum age 21. No experience
needed, full training will be given.



Have a vacancy
for a Marquee
Erector / Labourer

to work four or five
days per week starting in April. No
experience needed, full training will
be given.

*For more details on the above
vacancies, please telephone 614577.*

THERAPEUTIC MASSAGE
REIKI HEALING
REFLEXOLOGY

Today's stresses and strains can deplete the immune system and disturb the delicate balance of the body and lead to illness.

Regular holistic treatments can help to correct this imbalance.



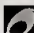

JUNE EAVES ITEC MAR
 Experienced qualified therapist
HARBURY (01926) 612006



LOCKE & ENGLAND
AUCTIONEERS & VALUERS

Do you really know the value of that heirloom in the attic?

Where do you find that special piece to add to your collection?

-  We hold weekly general household and monthly antique sales
-  We provide valuations for auction, insurance and probate purposes
-  We offer a collection service of items for sale carried out by our own team
-  Our experienced valuers are on hand to answer your queries

Please telephone for more information or to make an appointment

18 Guy Street, Leamington Spa
 Warwickshire CV32 4RT
 01926 889100 www.leauction.co.uk

WATER GEM

Under Sink Filter System

Do you drink lots of water at home?

Why not improve the quality of your drinking water?

You can improve taste, smell and reduce chlorine and other chemicals.

Easy DIY fit.

Saves the cost and inconvenience of bottled water.

THIS COULD BE YOURS FOR ONLY
£39.95 INCLUSIVE OF DELIVERY.

To find out more call our hotline on

01926 613906

or fax details to

01926 614215

FORTRESS

DOMESTIC SEPTIC TANKS

**TANKS EMPTIED • HELP & ADVICE
BEST RATES**



**WARWICK
(01926) 493414**

— DONGAN ROAD, WARWICK CV34 4JW

Marco's Dad's Wines

We are a Ladbroke based small business importing selected premium wines from small vineyards in Italy.

We have a selection of red and white wines and some different gift ideas for special occasions or corporate gifts.

For more information please contact us or visit our website.

email: info@mdwines.co.uk

01926 819040

www.mdwines.co.uk



Kiddies Parties !! with LIZA THE DIVA!



Kids Karaoke,
Flashing Lights and Groovy
Dance Routines!!

Dance Competitions

Party Games

Team Games

Forfeits!!

Tel: (01926) 612229

Herbury Theatre Group &
The Sealed Knot Living History Group
present

A 17th Century Banquet
Saturday 27th March 2004

In the year of our Lord 1644, Lord Richard Wagstaffe of Herberbury invites all villains to come forth and pay a £20.00 tax per person for the pleasure of attending a night of prayer, bible reading and modest food, in accordance with our puritan teachings at the village hall Herberbury at 8:00 of the clock.

Taxes can be rendered payable by contacting 612009, 612029 or 613120.

At this time it is fit to issue the following warning:
Royalist Soldiers have been sighted at Southam, and have entered and sequestrated various homes of loyal supporters to Parliament.

May the Lord protect us from their Bawdy Cavalier ways and Grant to us an Evening to reflect on pure deeds!

Be further advised that accommodation at the hall is limited and thy purpose to patronise the event should be decided swiftly. The finest contemporary robes are not essential but will surely add to the spectacle!

MICHAEL JEROME CARPETS

A COMPLETE CARPET CLEANING SERVICE

"HOST" Dry Extraction System

"Leaves Carpets Dry"

Ready for immediate Use

For Free Quotations



Telephone: Southam (01926) 813325

*Michael Jerome is a Master Fitter of the National
Institute of Carpet Fitters with over 30 years Experience*





MANOR

Property & Decorating Services

The ideal choice for all your property repair and decorating requirements

Call for a Free Quotation
01926 612887

Sunil domestic & commercial painting & decorating

for a no obligation quotation



Mehra

telephone → 01926 451012
or mobile → 07976 241949

E.F. SIMS & SON

PAINTING & DECORATING SERVICES

THE QUALIFIED

PAINTER & DECORATOR

INTERIOR AND EXTERIOR

EXPERIENCED TRADESMAN

RING FOR A FREE ESTIMATE

613732

1 THE POUND, HARBURY



Hedge cutting, conifers, small trees

Gardens cleared

Also lawn mowing service available

Domestic, commercial

No job too small

Tel: Gary Barnes 01926 614807

Mob. 07966 207369





CAR CONSULTANTS



UFTON GARAGE, SOUTHAM ROAD, UFTON, LEAMINGTON SPA CV33 9PF

- ◆ LOW MILEAGE CARS PURCHASED FOR CASH! OVER 40 TOP QUALITY CARS IN STOCK!
- ◆ MEMBERS OF THE TRADING STANDARDS 'COMMITMENT TO FAIR TRADING' SCHEME!

Contact us now on 01926 613795 or out of hours 07860 45222

for latest information, stock availability and colour photos visit:

www.uftongarage.co.uk

Southam Carpets & Curtains

- ☆ Carpets, Curtains, Vinyls, Rugs, Mats & Blinds
- ☆ FREE quotations, advice and pattern book loan.
- ☆ Family run since 1979
- ☆ For traditional quality & service, contact us.



01926 814944

Fax 01926 811855

www.southamcarpets.co.uk

A.J. BRUNT

Carpenter & Joiner

For all types of replacement windows, doors, porches, i.e. UPVC,
Aluminium & Timber, double or single glazed.

Fitted kitchens/wardrobes and all your carpentry needs.

Harbury 01926 612867 • 9 Ivy Lane, Harbury

13972

THE DOOR STORE

- ◆ QUALITY DOORS in HARDWOOD, HEMLOCK & SOFTWOOD
- ◆ HANDLES in BRASS, CHROME & SATIN CHROME
- ◆ JALI RADIATOR CABINETS, MADE TO MEASURE
- ◆ PURPOSE MADE JOINERY, FOR ODD BALL SIZES
- ◆ STAIRS & STAIR PARTS in WOOD, IRON & CHROME
- ◆ WINDOWS in UPVC, HARDWOOD & SOFTWOOD
- ◆ STAINED GLASS, DOUBLE GLAZED UNITS & SAFETY GLASS
- ◆ ALL AVAILABLE IN MANY DESIGNS & VARIOUS SIZES
- ◆ FULL FITTING SERVICE, FREE LOCAL DELIVERY & ADVICE

Inside MILES of TILES Alveston Place, Leamington Spa Tel: 01926 888888

Email: sales@the-door-store.co.uk Website: www.the-door-store.co.uk