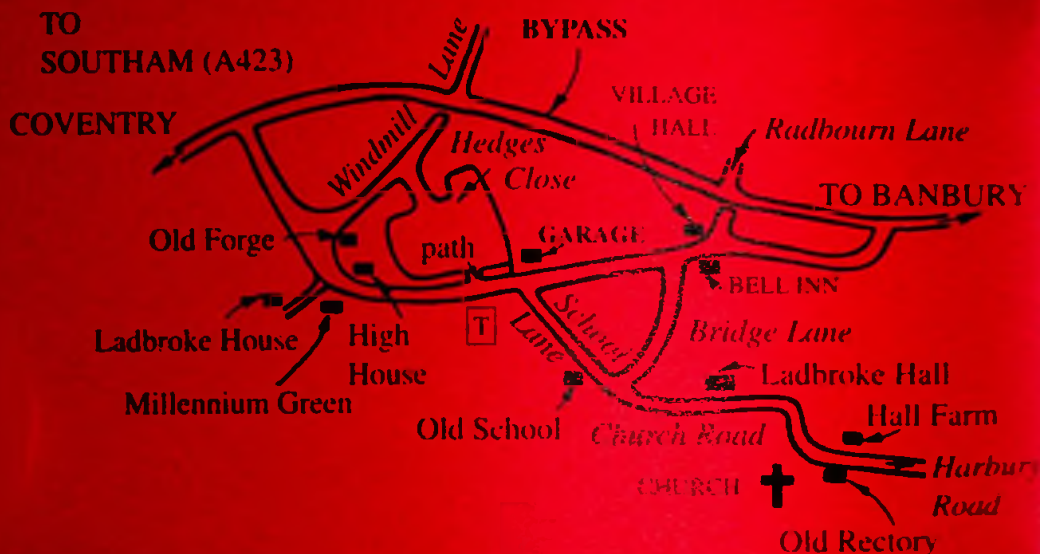


Ladbroke



THE FOSSE GARAGE

Accident Repair Specialists for all leading Insurance Companies

24 hr. Recovery Service Servicing & MOT Repairs

Used Car Sales Self-Drive Car & Van Hire

Low mileage cars always wanted for cash



Motor Agents
Association of Great Britain
Members

Fosse Way, Harbury, Nr. Leamington Spa.

01926 613260 24hr. 07850 613260

www.fossegarage.co.uk

Advertising in the Harbury & Ladbroke News

Monthly Prices (white pages)

1/4 page	£8.00
(or 3 consecutive months for £22.00)	
1/2 page	£14.00
(or 3 consecutive months for £40.00)	
Full page	£27.00
(or 3 consecutive months for £75.00)	

Yearly Prices (coloured pages)

Printed in April for the year

(Advertise 12 consecutive months and get 2 months FREE!)

1/4 page	£ 75.00
1/2 page	£135.00
Full page	£255.00

Adverts with payment to: 31 Blackwood End, Harbury Tel: 01926 612155 by 15th day of the month

*This magazine is available by subscription delivered within Harbury.
Dunbury Bridge and Ladbroke. Tel: 01926 612009 for details.*

Harbury & Ladbroke News

THE HARBURY AND LADBROKE NEWS, reflecting all aspects of local life is published monthly and produced with the assistance of the All Saints' Parochial Church Council.

Editorial Office:

☎ 612155

Articles to:

Harbury Chemist, High Street.

Email address:

articles@harburynews.freemove.co.uk

Website:

http://www.harburynews.freemove.co.uk

Advertising Office:

31 Binswood End ☎ 612155

Distribution Manager

49, Mill Street ☎ 612009

Inserts by prior arrangement:

☎ 612009

Magazine Photographer:

☎ 614167

The views of contributors are not necessarily those of the Editorial Committee.

August 2003

No. 353



July has been a successful month for both villages.

The Open Garden Weekend in Harbury enjoyed dry weather, too hot for some, and visitors

came from a distance to see the twenty gardens open for the weekend. The Art Exhibition held to coincide with the walkabout, in All Saints' Church, had a lot of visitors too. The money raised from both events will contribute to a variety of village organisations.

Congratulations to Ladbroke, the Village Fete had a very successful day and raised money for good causes and the Fete Fund.

The findings of the Harbury Review were presented at an exhibition in the Village Hall. Over eighty villagers attended, and favourable and

useful comments were made.

Congratulations to Deborah Ellis on the establishment of the Harbury First Responder Group; over the past two years her hard work has raised money and enlisted volunteers for this valuable service.

Harbury had been selected to represent the County in the national Village Of The Year competition. Further work needs to be done before the final round in October/November.

Finally, we extend our sympathy to the families of George Purdie and Tom Butler.

Harbury Diary

August

- | | | |
|------|----|---|
| Sat | 2 | Coffee Morning in the Tom Hauley Room in aid of Macmillan Nurses. |
| Sun | 3 | SEVENTH AFTER TRINITY
Sung Eucharist 9.00am; Evening Worship 6.00pm.
Harbury Cricket Club at home to Aynho. |
| Tues | 5 | Holy Communion 7.30pm. |
| Wed | 6 | 'Talk It Through' at 33 South Parade, 8.00pm. |
| Thu | 7 | Holy Communion 9.45am.
Bible Study Group, 2.00pm-3.30pm (Tel: 613207).
Women's Institute Garden Party.
Harbury Folk Club, 8.30pm in The Shakespeare Inn. |
| Fri | 8 | RECYCLING COLLECTION |
| Sat | 9 | Coffee Morning in the Tom Hauley Room in aid of Cystic Fibrosis Research.
Senior Citizens Lunch in the Village Hall. |
| Sun | 10 | EIGHTH AFTER TRINITY
Holy Communion 8.00am; Sung Eucharist 10.30am.
Harbury Cricket Club away to Henley and the Occasionals play Henley in Arden 2 ^{nds} at home. |
| Tues | 12 | Bookworms, 7.30pm in the Tom Hauley Room.
Holy Communion 7.30pm.
Harbury Friends, 8.00pm in the Tom Hauley Room. |
| Wed | 13 | Prayer Meeting in Church, 8.00pm. |
| Thu | 14 | Holy Communion 9.45am.
Bible Study Group, 10.30am-12.00noon (Tel: 612864).
Parish Paths Partnership, 8.00pm in The Shakespeare Inn. |
| Sat | 16 | Men's Prayer Breakfast, 7.30am in the Tom Hauley Room.
Coffee Morning in the Tom Hauley Room in aid of the Theatre Group. |

- Sun 17 NINTH AFTER TRINITY**
 Holy Communion 8.00am; Family Communion 10.30am; Evensong 6.00pm.
 Harbury Cricket Club at home to Yelvertoft.
 Footpath Walk, 2.30pm from the Village Hall.
- Tues 19** Adverts for H&L News to 31 Binswood End by 5.30pm.
 Holy Communion 7.30pm.
- Wed 20** Tea in the Tom Hauley Room, 3.00pm-4.00pm.
 'Talk It Through' at 33 South Parade, 8.00pm.
- Thu 21** Holy Communion 9.45am.
 Bible Study Group, 2.00pm-3.30pm (Tel: 613207).
- Fri 22 RECYCLING COLLECTION**
- Sat 23** Coffee Morning in the Tom Hauley Room in aid of Southam Guides.
- Sun 24 TENTH AFTER TRINITY**
 Holy Communion 8.00am; Sung Eucharist 10.30am.
 Harbury Cricket Club at home to Snitterfield.
- Mon 25 BANK HOLIDAY**
- Tues 26** Holy Communion 7.30pm.
 Harbury Theatre Group, 8.00pm in The Shakespeare Inn.
- Wed 27** Drop-In Tea for the Bereaved, 2.30pm-4.30pm at 19 Farm Street.
 Prayer Meeting in Church, 8.00pm.
- Thu 28** Holy Communion 9.45am.
 Bible Study Group, 10.30am-12.00noon (Tel: 612864).
 BLOOD DONORS, 1.30pm-3.30pm and 4.30pm-7.30pm in the Village Hall.
 Thursday Club, 2.30pm in the Farley Room of Village Hall.
- Fri 29** CAMRA Beer Festival in the Village Hall.
Articles for H&L News to Harbury Chemist, by 5.30pm.
- Sat 30** Harbury Society Fundraising Coffee Morning in the Tom Hauley Room.
 CAMRA Beer Festival in the Village Hall.
- Sun 31 ELEVENTH AFTER TRINITY**
 Holy Communion 8.00am; Sung Eucharist 10.30am.
 Harbury Cricket Club at home to Stratford Bards.

September

- Tues 2 BACK TO SCHOOL**
 Holy Communion 7.30pm.
- Wed 3** Holy Communion 2.00pm.
 Mother's Union, 2.00pm Service in Church.
 'Talk It Through' at 33 South Parade, 8.00pm.
- Thu 4** Holy Communion 9.45am.
 Youth Club, 7.00pm-9.00pm in the Village Hall.
- Fri 5 RECYCLING COLLECTION**
- Sat 6** Coffee Morning in the Tom Hauley Room in aid of R.N.L.I.
- Sun 7 TWELFTH AFTER TRINITY**
 Sung Eucharist 9.00am; Evening Worship 6.00pm.
 Harbury Cricket Club at home to OK Blockers.
 Harbury Hash, registration at 2.30pm for a start time of 3.00pm.

All Saints' Church Harbury Services

1st Sunday in the month:	9.00am	Sung Eucharist
	6.00pm	Evening Worship
2nd, 4th (and 5th) Sunday in the month:	8.00am	Holy Communion
	10.30am	Sung Eucharist
3rd Sunday in the month:	8.00am	Holy Communion
	10.30am	Family Communion
	6.00pm	Evensong
Every Sunday:	10.30am	Sunday School (in term time)
Every Tuesday:	7.30pm	Weekday Communion
Every Thursday:	9.45am	Weekday Communion

Rector: Father Roy Brown, The Rectory, Vicarage Lane, Harbury. ☎ 612377
www.harburychurch.fsnet.co.uk

From the Rector

The following was sent to me by a friend, so I thought I would share it with you.

'Everything I need about life from Noah's Ark

- One: Don't miss the boat.
- Two: Remember that we are all in the same boat.
- Three: Plan ahead. It was not raining when Noah built the Ark.
- Four: Stay Fit. When you are 600 years old, someone may ask you to do something really big.
- Five: Do not listen to critics; just get on with the job that needs to be done.
- Six: Build your future on high ground.
- Seven: For safety's sake, travel in pairs.
- Eight: Speed is not always an advantage. The snails were on board with the cheetahs.
- Nine: When you are stressed, float a while.
- Ten: Remember, the Ark was built by amateurs, the Titanic by professionals.
- Eleven: No matter the storm, when you are with God, there is always a rainbow waiting.'

Now, wasn't that nice?

Fr. Roy

From the Registers

Holy Matrimony, All Saints' Harbury

5th July Robert O'Meara to Louise Freeman
 11th July Michael Donovan to Emma Nash
 19th July Adam Blackwell to Helen Winter

Holy Baptism, All Saints' Harbury

6th July Joseph Dolphin
 25th July Amanda Johnstone
 27th July Harry Thistlethwaite

Holy Baptism, All Saints' Ladbroke

6th July Verity Sophia Whitehouse

Funerals, All Saints' Harbury

1st July George Purdie (73)

Funerals, Oakley Wood

21st July Tom (Butty) Butler (87)



From The Churchwardens

The Art Exhibition and Sale was highly successful, and it was good to see such a lively display of the children's work. We thank the artists who gave us such pleasure, Bill Davies and all who worked on the exhibition, the light lunches and the teas, to make it such a



happy weekend. So many people came into church and responded to its atmosphere. One of the high points was a comment from a visitor, "How good it is to come into a living church".

Congratulations to William Jones on his graduation, and on his election as joint captain of the Bell Tower with Harry Windsor.

Congratulations also to Ralph Swadling who is now Steeple Keeper. They, and we, well know how much they have benefited from Harry's faithful and knowledgeable service.

Future plans for Southam Deanery: the story goes on! At the last open meeting of the Deanery Synod, the presentation covered the opinions of parishes who had responded to the invitation to give their views. Some were entirely in favour of the proposals, some had serious reservations, and some important questions were left unanswered. It now seems that any plan agreed will be phased in over the next ten years, a time-span not apparent in the original documents. We now have three members (Tony, Lesley and Felicity) on the Deanery Pastoral Committee, so we shall be able to keep you in touch with discussions and plans.

July's Family Service was presented by Sue, Keith and Caroline Dormer. They powerfully reminded us of the need to always say "thank you" to our families, friends and especially to God. They also reminded us how thankful we should be to live in the community of Harbury, where so many answer the daily call to help one another. This month, we also thank Dorothy Travis and her team for recently providing us with some beautiful new kneelers, and Father Roy and John Algar who have together produced "The Eucharist – A Book For Children". With the help of illustrations this, we hope, will make the 10.30am Eucharist more accessible. Another booklet for children sharing in the Family Communion Service will follow.

Looking ahead, please keep in mind two future events: the Holiday Club which runs from August 12th to 18th and culminates in the Family Service on 17th August, when we hope the presentation will be largely in the hands of the children; and we have the launch of the All Saints' Alpha Course with a Murder Mystery Evening at The Shakespeare on the 15th September. Please watch out for information.

Finally, we wish you all a very happy, restful summer holiday.

Lesley and Felicity



Mothers' Union

Afternoon Meeting: The Garden Meeting and Annual General Meeting was held at the Rectory by kind invitation of Father Roy and Pam. Sheila Carr has retired from the committee at the end of her six years, and we thank her for her continued support.

The rest of the committee was re-elected en bloc to serve another year.

Luckily the weather was fine so we were able to have tea in the garden, followed by reports. Meetings through the year have been extremely varied, and fundraising efforts have enabled us to send £150 to be used for overseas relief and the "Away From It All" holiday scheme for needy families.

Two Harbury members attended the Diocesan Council Meeting in July and were encouraged to hear how Mothers' Union membership is increasing. With the recent addition of branches in North and South India, America and Peru, there are now three million members worldwide. Mothers' Union certainly has a global voice, influencing such issues as international debt and family welfare. Closer to home, we heard of outreach projects such as members from Southam and Dunchurch undertaking prison visiting (a most worthwhile service).

We are always happy to welcome new members to carry on the tradition of Mothers' Union, promoting well-being of families worldwide.

Anne Moore

Evening Meeting: We ended our year with a Bring-and-Share Supper in Shirley and Tony Brunton's beautiful garden. The weather cooperated and it was a very pleasant evening.

There are no Mothers' Union meetings in August.

Next Meetings:

- Wednesday 3rd September, 2.00pm, Service in church.
- Tuesday 16th September, 8.00pm, Reverend Marjorie Warnes on "Caring and Sharing".

C. Mary Catt

Toddlers' Service

Mrs Jennifer Ingram led our service in July. We started by singing "Jesus Bids Us Shine" then to continue our series on colour, Mrs Ingram talked about the colour yellow and especially about the sunshine. She told us the story of how God created the world with the sun, moon and stars. After a prayer we sang "All Things Bright And Beautiful". The children then coloured pictures of the sky, making a collage of the sun with yellow paper.

We finished with our end of term picnic outside, and each child going on to school was given a book as a leaving present.

There will be no Toddlers' Service in August. We resume on Tuesday 9th September at 2.15pm in the children's corner of the church. All babies and toddlers, with an adult, are very welcome.

C. Mary Catt



The Alpha Course In Harbury

The Alpha Course will be launched at The Shakespeare Inn on Monday 15th September with a cold buffet and a crime mystery presented by Harbury Theatre Group. The evening will start at 7.00pm for 7.30pm, and will end around 10.30pm. It will include a five-minute presentation on the aims of Alpha, and you will have the opportunity (but no pressure) to register. The price for food and entertainment is £6.50, and you will need to book in advance. Tickets are available from 30 Mill Street or by telephoning 613214. (Please make cheques payable to All Saints' Church Harbury.)

The course will take place in the Tom Hauley Room (the modern, warm and welcoming parish building you find if you follow the path round to the left of the church) every Monday from 22nd September to 1st December (except 27th October – the Monday of half term). The course will begin at 7.30pm and finish around 9.00pm. There will be no charge, but a voluntary contribution for refreshments would be welcome.

The Alpha Courses will be advertised nationally during September. Look out for the Alpha logo on posters and fliers around the village. You can register your interest with Tony Stubbs at 5 South Parade or telephone 612872 (even if you do not come to the launch night), or just come along to the course on any Monday. Nobody will be turned away!

John Stringer

Laugh Line

A vicar was having trouble with his microphone. The congregation could hardly hear him, but they followed the liturgy and dutifully gave their responses. Finally, the vicar sighed "There's something wrong with this microphone." "And also with you", came the response.

Ladbroke News

August

- Sun 3 SEVENTH AFTER TRINITY
Family Communion 10.30am.
- Sun 10 EIGHTH AFTER TRINITY
Sung Communion 9.00am.
- Wed 13 Ladbroke Village Hall Draw, 7.30pm in the Village Hall.
- Sun 17 NINTH AFTER TRINITY
Sung Communion 9.00am.
- Tues 19 Adverts for H&L News to 31 Binswood End by 5.30pm.
- Wed 20 Women's Institute, outing to Evesham.
- Sun 24 TENTH AFTER TRINITY
Sung Communion 9.00am.
- Fri 29 Articles for H&L News to Harbury Chemist by 5.30pm.
- Sun 31 ELEVENTH AFTER TRINITY
Sung Communion 9.00am.

September

- Sun 7 TWELFTH AFTER TRINITY
Family Communion 10.30am.

Ladbroke Flower Rota

- August 3rd - Catherine Todman
- August 10th - Pat Kennedy
- August 17th - Beryl Ross
- August 24th - Beryl Darkes
- August 31st - Pam Brown
- September 7th - Kate Pickin

Jane Rutherford

Ladbroke Church Development Fund

A big thank you to all those that gave their time and effort to help me on the "Smashing Time Stall" at the village fete. We made a profit of £45. Well done! Our thanks go to my son's friend Vincent Jones who gave up his whole day to help us, as my son Jamie was away with Southam School in Germany. Thank you Vincent, a true friend indeed.

As previously stated, I shall be giving up the 'Chairmanship' of the fund at the end of July, and no one has yet come forward to replace me.

I would like to thank all who have helped me over the past two years, in organising events to raise money for this worthy cause, and may it continue in the future to be as successful.

Thank you to Jenny Barrett for her support as our Secretary and her continued hard work.

Jo Sowerby

Ladbroke Women's Fellowship

Our meeting was held on Wednesday 9th July at the home of Stella Douglas. It was a most enjoyable meeting as Stella entertained us with a slide show of Hand Embroidery; some of it was well over a century old, which gave us a great deal of thought as to how such wonderful work was achieved in such poor lighting conditions. After the slide show, we were shown some of Stella's collection of hand embroidered work, several beautiful table cloths, a wonderful christening gown which had been given to a member of the staff of the Balmoral Estate. (Who knows, it might have been worn by a royal baby.) What a lovely thing to have! Our thanks go to Stella for her hospitality.

Our August meeting is our Annual Tea Party to be held on Wednesday 13th August at The Archers Rest, Southam Road from 3.00pm onwards. We will be having a Bring and Buy Stall and a Raffle. All members are welcome to being a friend.

We will be inviting the members of Harbury Afternoon Mother's Union to join us as usual. We look forward to seeing you.

Jo Sowerby

BENCH TELEVISION SERVICE

22 OXFORD ST
SOUTHAM

REPAIRS
+
SALES

PANASONIC DEALER



SOUTHAM: 812304

Now selling **Dyson & Panasonic** vacuum cleaners.

Small Electrical Appliances:

**Kettles, Irons & Toasters,
cable, bulbs, telephone & aerial accessories**

**Think before you buy - call us - we may have
the appliance you want at the price you like.**

Larger appliance prices include delivery

Trisha Winchester
Fully Qualified
Hair Stylist

HAIR by TRISHA

(01926) 612326

Or 614676 after hours

@ Kathleen's Chapel Street, Harbury

T.M. & J.M. GREY
BUILDERS

EXTENSIONS

ALTERATIONS

GREY GABELS, 46 BANBURY ROAD, SOUTHAM CV33 0HJ
TEL: SOUTHAM 01926 817744 MOBILE: 07885 495384





W. Goodwin & Sons **Funeral Directors**

38 COVENTRY STREET, SOUTHAM

All arrangements personally conducted
in any district

Telephone: Daytime 01926 812445

Night - time and weekends

Brian 812656 John 812657

FOR PROFESSIONAL HAIR CARE



Kathleen Ellis

CHAPEL STREET, HARBURY. ☎ (01926) 612326



Gino Buffone

Painter & Decorator



Telephone: 01926 612 486

Mobile: 077 3326 5694



D. F. J. HEWER

Builders Ltd.

**FOR ALL YOUR BUILDING
REQUIREMENTS
EXTENSIONS · ALTERATIONS
MAINTENANCE · REPAIRS
PLANNING AND BUILDING
REGULATION APPROVALS**



NHBC

Registered House Builder

Telephone:- SOUTHAM (01926) 813070 and 813627

Ladbroke and Deppers Bridge W.I.

The Women's Institute had a very successful afternoon at the Ladbroke Village Fete on Saturday 28th June, serving teas and selling delicious homemade cakes. The proceeds were sent to County House for the 'Grow Like Topsy' Fund. Thank you to all who made cakes and the hard-working rota of helpers.

At the meeting on 24th July, Anne welcomed the speakers Mr and Mrs Stubbs who gave us a delightful insight into their 'World of Miniatures'. Mrs Stubbs explained each of the beautifully furnished Dolls Houses with a difference, from a magnificent sweeping staircase, perfumery, cottage, conservatory, the list is endless. Some of the furnishings were handmade using household objects such as beads, empty containers and lids. It was a magical evening for everyone. Jo Sowerby gave the vote of thanks.

Anne also welcomed Lynda Ridpath on her return to Women's Institute after her recent hip operation; it was lovely to see her looking so well.

The raffle prizes were won by Julie, Reidon and Lesley. The tea hostesses were Pam and Julie.

Our next event is the outing to Evesham on 20th August; let's hope for a fine day for our boat trip and afternoon tea.

Sue Halsall

Ladbroke Village Hall

The draw for May took place in The Bell Inn, Ladbroke on Monday 14th July.

The prize-winners were:

£80 - Brian Whitehouse

£25 - Avril Court and Beryl Ross

£10 - Teresa Daly, Mary Coley, Richard Walker, Lorna Carleton and Janet Jay.

The next draw will take place in Ladbroke Village Hall at 7.30pm on Wednesday 13th August.

Mike Radburn

Ladbroke Neighbourhood Watch

Major Road Works:

Leamington Road at Long Itchington is closed for road reconstruction.

River Bridge/Stowe Drive in Southam will be closed to through traffic for approximately ten weeks from 14th July for bridge maintenance.

Beware The Holiday Club Trap:

An article from 'The Trading Standards News' advises: *"beware the promise of cheap luxury holidays for life from a holiday club representative – it is almost certainly not what it seems! Holiday clubs are marketed as an alternative to timeshare, promising a lifetime of discounted luxury holidays anywhere in the world. Some are reputable businesses, but many often only provide last minute, limited availability accommodation that is usually low-star rather than luxury. With the addition of expensive flights, supplements and taxes, it could end up costing far more than holidays booked through normal routes. Membership can cost a person several thousands of pounds, and unlike timeshare where customers have fourteen days to change their minds after signing a contract, holiday club customers do not have this right, which means there is no automatic cancellation right for those who change their minds. Bogus holiday club companies exploit consumers by employing high-pressure sales techniques to get customers to sign a binding contract. But with no cooling-off period, people should always take the contract away to consider it at their leisure before signing."*

Janice Berry

Ladbroke Village Annual Fete

Once again the sun shone on the Annual Fete held at the Millennium Green on 28th June. A record number of people attended, and the general consensus of opinion was that all had a great time and an opportunity to raise money for their various causes.

The Tug-O-War was again a very popular event with six teams competing. The winning teams were The Bell Ladies and The Farmers.

The cup for the best stall (determined by the Town Crier) was won by 'The White Elephant' who were raising money on behalf of the Church.

The races for both children and adults provided good traditional fun.

After all costs were paid, the Annual Fete raised £311.69 which has gone into the Ladbroke Fete Fund Account ready to support next year's fete. Any new ideas for this event are welcome and should be suggested to the Fete Organisers.

Christine Baker (Treasurer)

Ladbroke Young Persons Night Of Fame

On Saturday 28th June, three young people from Ladbroke put on their "best bib and tucker" to attend the 'Year 11 Prom 2003' at Southam College.

Each year there is an end of year disco at the college, and this is the chance for the Year 11 students to make their parents feel extremely proud of them, by making the effort in hiring or buying evening attire for the occasion.



Claire Murray, Roger Teverson
and Kelly Sowerby.

I told them that I was going to put these photographs in to the magazine, and this was the look on their faces!



Well, I think that they did us proud, and how grown up they all looked. It was a night to remember, and there was an 'After Proms Party' at the home of Roger, which I believe he is going to remember for some time to come.

We done to all who helped make their evening a great success.

Jo Sowerby

Ladbroke Table Tennis Club

After a successful trial period, Ladbroke Table Tennis Club is now up and running.

The new season starts on 8th September, with meetings held each Monday in Ladbroke Village Hall between 8.00pm and 10.00pm.

Why not come and join us for evenings full of fun and laughter? If you are interested please contact me on 01926 811838.

Sue Halsall

Harbury Parish Council Meeting

It was a short and somehow uninspiring meeting, despite the exciting news that Harbury has been chosen as Warwickshire's nomination to the 'Village Of The Year' Awards. We were Second to Napton in the "Best Kept Village" Competition.

Councillor Thompson was pleased to learn the parish had "the wherewithal to sort out" the resurfacing round the Sputnik and Rocking Horse on the Playing Fields (£12,000). Clerk to the Parish Council, Nicola Thompson, is being "chased" by Coventry City for payment for the Tennis Courts sign. The Village Hall gates are now being closed, and quotes are being obtained for 'Dragons Teeth' at the playing field entrance.

Approval was given for the Youth Football Club to move the goalposts to acquire a bigger pitch, but there was a suggestion that they would have to pay for new goalposts for the Six-A-Side pitch.

The Council is continuing with its installation of "Windsor" lights. The next two will go into Chapel Street and Park Lane. The gully problem has been dealt with, and the verge at Bendigo Mitchell was cut in time for the Royal Show, although Councillors pointed out there has been another serious accident there and questioned whether the work to the junction had solved the danger.

The Divisional Engineer has agreed to modest footpath improvements in Constance Drive and Church Street, but as Councillor Hancock pointed out, if these are of the same quality as the last lot they will be a waste of money.

The Parish Council received a plan for tree planting in Vicarage Lane,

but considered it unfeasible. They have agreed to place a lead cap on the Village Pump.

Using the results of the Parish Review, Councillor Mancell has been able to determine that the Parish will probably be able to afford to extend the travel subsidy to 60-65 year old men next year.

The content of the Parish Council website was approved.

Councillor Booth reported that, once again, Chesterton Windmill would not be open this year, but he was pleased that progress was being made towards forming a partnership with local people to make it accessible to the public more often.

Planning

Stratford County Council approved a conservatory at 18 South Parade, an extension at 1 Hall Lane, and pitched roofs and extensions at 38 Binswood End and 31 Manor Orchard. The application for an agricultural workers dwelling at Springfield Farm, Treens Hill, was withdrawn.

The Parish made no representations on amendments at 31 Binswood End, extensions at 34 Temple End, 39 Manor Road, 29 Manor Orchard and the Bungalow (known as "Flo's") in Mill Street. They did not object to the renewal for Fishing Lodges at the Quarries, although this was subsequently refused by the District Council.

The Area Planning Committee (District Council) approved plans for conversion to industrial use of existing buildings to the rear of houses in Hall Lane, and this provoked great controversy. The local member was obliged to take no part in the decision because his wife (as Chair of our Parish Council) had been party to objections to the scheme, and the Parish representatives were unable to persuade the Committee to visit the site. One of the neighbours affected by the plans has written to the MP and others in protest about the handling of the decision, but there is no third party right of appeal. The only consolation is that stringent conditions were attached to the approval.

Councillor Kevin Biddle seemed to see bogie men everywhere, and Councillor Hancock commented that the way the area had been 'manipulated' in the past did not inspire confidence.

A spade and fork have been given to Kevin Biddle for safe-keeping, and he is anxious to hear from anyone who believes they might be the rightful owner.

Linda Ridgley

Harbury Review Group

The Review Launch took place on 5th July. Sue Bridgewater gave the PowerPoint® presentation and answered questions about the survey. People were then able to see the displays showing the responses to the survey, and many added more comments. There were further suggestions for sites for business units, affordable homes and sheltered accommodation, and comments on other issues:

- We need Broadband.
- Keep trying to get a Bowling Green.
- Stop cars being parked on pavements.
- Trimming of overhanging trees on roads.
- We used to have our own Village Policeman.
- Reduction in the bin bags. Who suggested this?
- Ignoring double yellow lines is a big problem.
- Shops - much needed and appreciated!! Thank you!!
- Set up a full Parish Office so all Councillors can be brought in.
- Youth Shelter and Coffee/Milk Bar style facilities for young people.
- Street lights in some areas are dangerously poor, and some are unreliable.



The Review Team -
 Alan Lord,
 Linda Ridgley,
 Sue Bridgewater,
 Brian Ingram
 And
 John Holden.

Eighty-one people signed into the Review, and there were nine comments complimenting the team on their hard work and the clear presentation.

The Parish Council is now working to finalise the Action Plan, and will consult further on matters of importance.

Copies of the Review Results and the Report will be available at the Library, or you can collect a copy of the Report from me at 16 Farm Street.

Linda Ridgley, Secretary



Harbury Society

At the Carnival we had a display of some of the findings from the Parish Review as an advertisement for the Launch in July. We hope you noticed the cartoons too!

We had over eighty people come to see the PowerPoint® presentation put on by Sue Bridgewater and to view the displays. Comments were all very positive and will be added to the information the Parish Council uses to formulate the Action Plan and make improvements.

A Coffee Morning is planned for 30th August in the Tom Hauley Room from 10.00am until 12.00noon, and we need cakes, raffle prizes, goods for sale, volunteers and coffee drinkers! Do come and support us.

On 11th September, Nigel Bishop has agreed to take us round the Jephson Gardens to show the improvements that have been made. If enough people are interested, we could have a meal together in the restaurant afterwards. We will meet at The Lodges on the Parade at 6.30pm.

Linda Ridgley



Harbury Women's Institute

This month, nine members enjoyed a County trip to Oakham and then on to the late Geoff Hamilton's Barnsdale Gardens.

The speaker was Miss Fay Gibbs with 'Inspirations From Nature'. Fay spoke to us quite a number of years ago, when she used to be a poultry farmer. Now Fay demonstrates and makes flower arrangements, and she made three lovely arrangements using willow rings and flowers from her own garden, wheat with red carnations and white doves. In the third arrangement she covered a pot with laurel leaves, which was most effective. Fay specialises in bridal arrangements, and one of her customers requested a Victorian bridal bouquet; Fay knew just what was required as she had a floristry book of her grandmothers that was a hundred years old! The members were thrilled when the three arrangements were included in the raffle!

I look forward to seeing members at our Garden Party on Thursday 7th

August. Don't forget the raffle and bring and buy items (and to bring a chair). Let us hope for good weather!

September:

We wish Celia and Dorothy luck when they will be competing in the Outdoor Bowls 'Pairs' competition for the John Innis Salver.

The Produce Show will be held on Saturday 13th September. This is a traditional village event, and such a pleasant day. It would be great to see new faces participating as the Show Schedule will reveal there is something for everyone to enter - the longest runner bean or three tomatoes, the one rose bloom, a pot plant and a geranium; there are some good cooks in Harbury; not to mention the photography and arts and crafts sections too. It is always pleasurable to see the children's efforts too. So come on all of you, have a go!

At the Women's Institute Harvest Supper on 19th September, Janice Wade, who is a retired police inspector, will speak on her life in the police force.

Our speaker in September will be Mr Hector Sutherland 'Food For Thought'.

Jeanne Beaumont

Harbury Twinning Association

Our Baguette Stall proved very popular at the Carnival, and we hope to have another one at the Victorian Street Fayre in October.

Thirty six Twinning Association members gathered at The Shakespeare Inn on 14th July to celebrate Bastille Day. Andrew and Carole served a superb three-course French menu, and after we were all replete, we retired to the garden to enjoy some spectacular rockets and a rousing chorus of the "Marseillaise".

Our grateful thanks to Andrew and Carole for their hospitality.

Sharon Hancock

Harbury Folk Club

The arrival of the holiday season reduced the numbers attending the Folk Club, unless it was because I was running it! At least everyone could get in the room and sit down. Nevertheless, it was a successful and diverse mix of performances with power, passion and even progress from some fourteen singers including Rik, Ron, Pete B,

Pete G, another Pete, John B, John K, another John, Des, Janny, Stewart, Keith D, Ian and Sue. John Kemsley made a welcome return from Yelvertoft and introduced Stewart to us; a man with an obvious ear for a medley and audience participation. The raffle raised £24 and a 10 peseta coin for Cancer Research.

This will be my last article for Harbury Folk Club as I have decided to stand down from the Folk Club Hosting Rota.

Bob H will be the host 7th August and, if it is not too late, the theme will be "Summertime Blues".

John Black



Harbury Pre-School

The summer fun at Pre-School reached its peak during the last few weeks of term. The children loved sharing their seaside and aquarium experiences with each other as we continued with our theme of "Seaworld – Beneath the Waves". The colourful wall displays looked fabulous and had plenty of fishes with most unusual markings!

Towards the end of term we received a most generous grant from Dunbar Bank of £500. The money has been used to purchase some wonderful toys for the children, including a water canal system, a Noah's Ark, Brio and a Parachute. The children loved playing outside with these new acquisitions.

During the month, we held another very successful parents evening. Parents had the opportunity to discuss their child's continued progress with their key worker. We were able to display the new toys and plenty of photographs of the children's activities. Mrs Hunt from the library was available to talk to parents about the library, and had a lovely selection of books and other information to show us.

On 2nd July we went on our summer trip. The excitement was most definitely infectious as the coach pulled away from The Dog Inn car park and the children clapped and cheered. It was not too long before we arrived at St Nicholas Park in Warwick, and the children eagerly ran to the play equipment. The amount of climbing, spinning, running and jumping that they did was enough to wear anyone out (even the adults were joining in) and soon it was time to walk to St Johns Museum. After "refuelling" (juice and biscuits) we played with our new

parachute in the gardens before going to look at the museum. We all loved this time of discovery and were able to see how a kitchen from "olden times" looked, and even worked the water pump and grated soap to be used to wash clothes. The dressing up area was a big hit; Alisha and Indianna really looked the part in Victorian clothes. The room of wooden toys provided the opportunity to do puzzles and build towers in a quiet atmosphere before it was time to leave for lunch. During the afternoon, the children were thrilled to have a train ride and waved enthusiastically throughout the whole ride! Afterwards we returned to the play area for paddling and playing before wearily returning to our coach. We would all like to pass 'a big thank you' to Cassie Gibb for organising this lovely day out for us.

We would like to wish all our little graduates all the best for their future, and hope they have as much fun at "big school" as they have had with us.

If anyone would like further information about Harbury Pre-School, please contact Jane Kempton (Chair) on 01926 613786, or you can drop a note through her door at Helen Owen House, Mill Street.

Harbury Pre-School Staff and Committee

Harbury Primary School

4th Annual Beer Walk

This took place on Saturday 28th June in glorious weather. Many thanks to all the pubs and the Warwickshire Brewery Company, which allowed the walkers to seek liquid refreshment along the way. Thanks also to Jo Home and family at Christmas Hill Farm



"Heading to the bar!"

for providing the delicious hot sandwiches and children's meals. The walk raised approximately £200.00 for PTA funds.

MILES OF TILES

ONE OF THE LARGEST TILE WAREHOUSES IN THE COUNTRY!



20% OFF

ALL STOCKED

WALL AND FLOOR TILES

WITH THIS ADVERT

TEL: 0808 108 8742

Alveston Place . Oxford Street

Leamington Spa

Fax: 01926 451940



NIFTY NEEDLE

CURTAIN WORKROOM
SOUTHAM STREET, KINETON

FABRICS, WALLPAPERS
TRACKS, CARPETS etc.
CROWSON, SANDERSON
HARLEQUIN,
BLENDWORTH etc

FREE HOME DESIGN AND
MEASURING CONSULTATION
FULL FITTING
SERVICE AVAILABLE

TEL: (01926) 641741

NEW
KINETON
SHOP

VISA

ADDITIONAL SOCKETS FOR PHONES
SOCKETS RELOCATED & NETWORK CABLING
INTERNAL & EXTERNAL WIRING RE-ROUTED

THE TELEPHONE MAN



KYLE BOYCE

01926 315238

Former B.T. Engineer

07761 077167

26 Years Experience

RESIDENTIAL & BUSINESS
APPOINTMENTS TO SUIT YOU
FREE QUOTATIONS & ADVICE

D.W.A.G.

O
U
G

Builders

Tel: 01926 612460

Mobile: 07860 849777

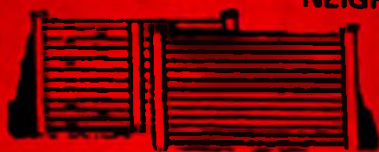
R
E
E
N

Local Tradesmen who take pride in their work.

We specialise in rebuilding half-timbered and period buildings, renovations, extensions, conservatories, patios - in fact any form of building work.

ESTABLISHED OVER 30 YEARS

**GOOD FENCING
MAKES GOOD
NEIGHBOURS**



**"You've seen the Rest
Now see the BEST"**



ROLLASON

FENCING AND SHEDS

EST 1964

*Professional erection service available
(01926) 613009 or (01926) 612066
Fosse Garage, Fosse Way, Harbury*

Christina Sherman, BA, MA

REFLEXOLOGY

This safe, natural therapy can help a wide range of conditions while balancing the whole system.

Deeply relaxing, it is especially beneficial for reducing stress.

Additional, very effective techniques can be used to suit individual needs.

Ring 01926 612277

for further information

Christina Sherman, Harbury

NEED A SKIP?



FORTRESS

(01926) 493414

Summer Art Concert

This event was a great success, with many of the children showing off their musical, and other, artistic talents.



Year 4 playing the Steel Pans.

The Orchestra



Sports Day

A beautiful summer's afternoon ensured the success of this event, which seemed to run smoothly with bags of excitement and enthusiasm. Congratulations to all the children who took their wins or defeats with good grace, and to those who finished in the Ladies' and Gentlemen's races.

Summer Fair

Many thanks to all those who worked so hard to make the Summer Fair such a resounding success. Approximately £1,300 was raised, which will help to swell the PTA coffers. It was probably one of the best-attended Summer Fairs for a long time.

"Face Painting"

..... and



"Coconut Shy"

At

The Summer Fair

Co-op Credit Card

A payment of £44.30 was paid into the school funds from the Co-operative Bank for purchases made by those parents/friends who hold a special Schools Visa Affinity Card. This particular payment covered the period January to April 2003.

If you would like to help the school by becoming a Co-op Visa Affinity Cardholder, please contact the school office on 612656.

End Of The Road

The children of Year 6 are leaving Harbury Primary School to move on to their respective Secondary schools. Most of these children will have been with us since they were four years old, so we wish them every success, wherever they may be going. It is always a major step moving on to a new school, but we are sure that they will continue to be a credit to Harbury and to their parents.

Classes For Next Term

In September, our class teachers remain with the year groups they have had this year. Mr Vincent, of course, moves on after his successful two terms with us. He has taken up a post at Wootton Wawen Primary School, where we are sure he will make an impact just as he did here. We all wish him well and thank him for his commitment and good humour.

In order to go some way towards meeting Government requirements over staff workloads, Mrs Liz Bones was recently appointed to cover classes on a rota basis from September, so the children will have the benefit of a *different* face every so often.

I would like to take this opportunity to thank the staff, Governors and parents for their support and generous help since I took over the role of Acting Head in January. What promised to be a sort of 'holding period' before someone took over the reins in a more permanent way, soon turned into something more interesting. Looking back through the pages of my diary – yes, I do have one – and my notebook, it is staggering to realise what has actually happened in such a short time, and it is all down to the efforts of the individuals and teams who have helped to make things run as smoothly as possible. Particular thanks must go to Carol Percival, who has 'slogged on undaunted' through all my elations and frustrations!

We wish everyone a restful and happy summer holiday and look forward to seeing the children return, refreshed and ready, for another year's hard work on Tuesday 2nd September.

Nigel Chapman

Ladbroke

2



Village Fete

03



Harbury First Responder Group

I am pleased to announce that as of 4th August 2003, Harbury will finally have its own Responder Group which will respond to calls within and surrounding the Harbury area.

I would like to thank everyone who has contributed to the scheme, in giving their time, donated funds and volunteering themselves as Responders.

It has taken me almost two years of planning and organising to get this scheme off the ground, but it would not have been possible if it were not for the generosity of the Harbury people. It has only recently been where everything has started to come together, but now I feel that I can finally say that "the light at the end of the tunnel" has been reached. I have designed a system of running the Responder Group where the mechanism should "run itself". Everything is in place and ready to go!

New developments within Warwickshire Ambulance Service have been created, where new volunteer Responders will be trained at ambulance stations in Warwickshire. After training, the Responder will be given a village induction and placed on the rota so that they can respond.

If you would like to become a First Responder, please put your name and address on a postcard and drop it into Kathleen Ellis hair salon in Chapel Street, and I will contact you with all the information you require.

Once again, I thank everyone for helping me to get the group "off the ground".

Deborah Ellis – Area Coordinator

Harbury Tennis Club

June and July were very busy months on the competitive side for both Seniors and Juniors. We tried a new format for the mixed doubles tournament, playing all matches on a Tuesday evening. This proved a huge success with 22 players, nearly half the Club's Senior membership, taking part. The knockout approach produced some very competitive matches despite the very windy conditions. The partnerships of Margaret Wilson/Graham Alder and Rosemary Harley/Geoff Prince battled through to the final, with Margaret and Graham taking the title.



From left to right -
Geoff Prince,
Margaret Wilson,
Rosemary Harley
and
Graham Alder.

The Banbury Summer League is now in full swing with the "A" and "B" Teams experiencing very mixed fortunes. The "A" Team look set for a quick return to Division 1 after winning their first six matches. They currently lead Division 2 by a long way with only one defeat, and that by the narrowest of margins 5-4. There is also a pattern of consistency with the "B" Team. Unfortunately it is in the opposite direction with six successive defeats, and we are already making room in the trophy cabinet for the Division 5 'wooden spoon'! We can't go any lower!

Sandwiched between all this highly competitive stuff was the Summer Barbecue Tournament. This was played with wooden rackets salvaged from members' attics and our last jumble sale, and was a very enjoyable event. It evoked memories of the Borg/McEnroe era but without the headbands, tight shorts or tantrums, although Keith Thompson got "a bit shirty" when his chicken took a long time to cook! However, there were no winners, as it was such a hot afternoon after the food there was no great appetite for running around!

The good weather has brought out players in large numbers at the midweek Club sessions, and it has been nice to welcome several new players to the Club.

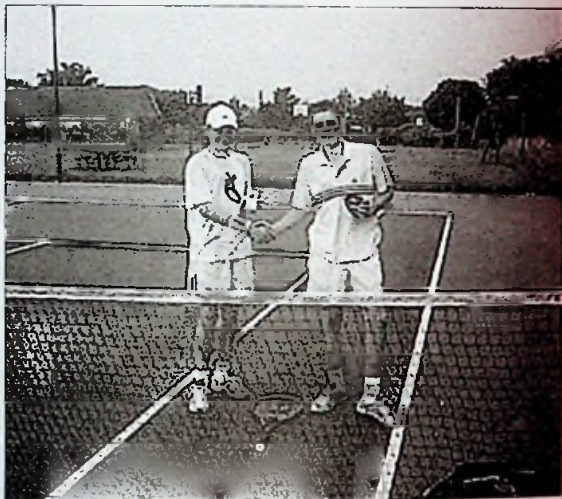
Under 16s

All the Under 16 sessions have been very busy and enjoyable with the Minis and Juniors enjoying the benefit of LTA coaches Pete Brinkley and Pat Langston. We actually doubled the coaching compared to last year, but unfortunately were unable to get a coach for the older

Juniors and Intermediates. We are trying to rectify this for next year, and have arranged for Pat Langston to run a four-day course (three one-hour sessions each day) between 4th and 7th August.

The lack of coaching and match play was apparent in the Under 11, 13 and 15 squads playing their first season in the National Club Junior League. Neither team managed a win, but everyone who played did their best and took the defeats in the right spirit. They learned an awful lot and hopefully will make progress next year.

The Intermediates Singles Tournament was, as ever, very keenly contested. Sam Wilkins, Tom Hughes, Benjamin Emms and Peter Smart reached the semi-finals. Benjamin's match against Peter was the most exciting of the Tournament, going to a tiebreak, with both players having several match points before Benjamin triumphed 14-12. Sam hit top form in the final and took the title.



Colin Mercer

Harbury Albion Football Club

We are looking to build on recent success in the Leamington Sunday League (two league titles in three years) by adding new players to our squad for 2003-2004.

If you are over 16 years old and interested in playing for an ambitious club, come along to training held every Wednesday at 6.30pm (at the top of the playing fields behind the Village Hall), or contact Steve Fitchett on 01926 614931.

Steve Fitchett

HEALTH FIRST

Thavertry Street, Southam, Warwickshire CV47 1PH 01926 811803

A warm welcome awaits you at our private Health Care Centre. Which has now been relocated next door to Cox's Dentists in Southam. We continue to offer the following services:

Chiropodist / Podiatrist

An established, innovative, caring, private service provided by Jonathan Small, experienced state registered & Senior 1 NHS clinician formerly at Warwick & Stratford Diabetic Foot Clinics. If you have recurrent foot problems ranging from simple problems, such as corns or in-growing toe nails to complex problems, such as excessive perspiration or plantar fasciitis or heel pain, then make an appointment to see if your condition can be cured, or improved so much that you need look after it yourself.

Call 01926 811272 for an appointment to suit!
- daytimes, evenings, Saturdays, or home visits

Private chiropody care also available as well as many advanced treatments, e.g. nail surgery performed under local anaesthetic, functional foot orthoses, sports injuries, pressure sore dressings, a wide range of electrotherapy etc.

Also introducing **Health First Foot Care Products**, a mail-order service delivering high-quality, cost-effective products to your door.

Call 01926 811803 or visit www.arkpodiatry.co.uk

We also offer a private **Physiotherapy Service** provided by Paul Nicholas, a specialist in back and knee problems.

Call Paul directly on 01926 815030

R & S DOMESTIC SERVICES

REPAIRS TO MOST
MAKES OF
Washing Machines
Tumble Dryers
Cookers
Dishwashers



PHONE -
ROB CENEY on
HARBURY 613707

NOAH'S ARK PAINTING COMPANY

Inspiring a generation to say **NO** to magnolia!

EVERY FORM OF

INTERIOR AND EXTERIOR
PAINTING AND DECORATING

.....
CLEAN, TIDY & EFFICIENT
.....

DELIGHTFUL DECORATION BY POLITE PAINTERS

01926 888303

LOCAL, SKILLED TRADESMEN

Michael Jerome



Carpets

A COMPLETE CARPET SERVICE

- Choose a new carpet from our extensive range
- Expert Fitting - Fully Guaranteed
- Professional On-Site Cleaning
- Vinyl Sheet Flooring

6 Meadow Road, Southam

Telephone: Southam 813325

Michael Jerome is a Master Fitter with the National Institute of Carpet Fitters with 30 years experience



Parkinson Jones

*Chartered Surveyors
&
Estate Agents*

Homes in England & France

Tel: 01926 612121

Bank Chambers, High Street, Harbury, Warwickshire CV33 9HW

Email: ralph.jones@btinternet.com



Hirers of

**all sizes of Children's & Adults'
Bouncy Castles, Obstacle Courses,
Inflatable Slides, Ball Ponds,
Sumo Suits, Bouncy Boxing,
Gladiator Duel and Giant Games.**

**Visit our website at
www.harburybouncycastles.com**

5% DISCOUNT WITH THIS ADVERT

Tel: 01926 613740



**MARQUEES FOR ALL OCCASIONS.
BIRTHDAY PARTIES, CHRISTENINGS,
WEDDINGS, CORPORATE EVENTS.**

*Also hirers of
Chairs, Tables and Dance Floors.*

For a brochure or free site survey

Tel: 01926 613740

Is Your Hedge Being Kept In Check?

It is the responsibility of householders to maintain their property boundary adequately without it obstructing the pavement or highway. Anyone requiring help should contact the Parish Clerk or the Chairman of the Parish Council and we will try to get a gang of helpers to assist.

Jez Remano from Warwickshire County Council is responsible for highways in Harbury. David Booth (your County Councillor), Andrew Patrick (one of your District Councillors) and the Chairman of the Parish Council, Jenny Patrick, together with Mr and Mrs Cleaver walked some of the pavements in Harbury on Wednesday 16th July, to review 'first hand' the state of them.

Whilst Jez Remano does not have a large budget at this time of year, he is now aware of the problems of slopes and unevenness, as well as overhanging foliage. He will do what he can to lower some of the kerbs, especially up to the Post Office crossing over towards The Dog Inn. Mill Street, Constance Drive and Ivy Lane were also considered for some small improvements.

We impressed upon Jez the need for action to aid people who depend on wheelchairs or disability buggies to get around and to be able to lead a safe independent life within our community.

When the Parish Council has been able to collect traffic and other related information, we hope that a senior member of the Highways Department will be able to come and talk through ideas for larger scale improvements to be actioned in the next financial year.

Jenny Patrick

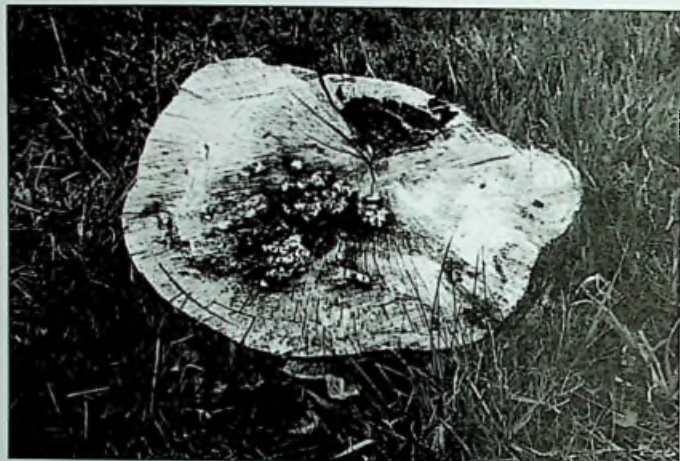
Stumped

"It Beggars Belief" that the churchyard horse chestnut tree has been killed off. This tree was planted as a replacement for the former tree removed some years ago.

There has been a chestnut tree on this site for generations. Indeed, people who attended the Wagstaffe School were 'brought up' on a previous tree. The school teachers' would point out it's features, the leaves, the pink flowers, the dark brown fruit, and it's gigantic size – the largest around. The teachers, along with local people, felt proud of this splendid tree.

Why was one of the main branches taken off the replacement tree? This action put the tree out of balance. Was the Council's approval sought, or parishioners asked to give their opinion?

It was a great pity that the tree was axed when it was twelve inches in diameter, and not given the chance to continue its growth. Could this tree have been considered to be an obstruction?



Photograph of the
'stump' taken July
2003

Mike Bloxham

13th Annual Harbury Hash

The Harbury Hash is an event for the whole family, and will be held on Sunday 7th September at the Thwaites Estate (in the vicinity of Itchington Holt). The exact details of the meeting place will be given in next month's Harbury and Ladbroke News and on posters around the village nearer to the date. The Hash is for walkers and runners and is 'loosely based' on a paper trail, but the trail is marked in flour. The Hash is for all ages, all levels of fitness (or lack of!) and 'short cutting' is actively encouraged.

Registration begins at 2.30pm for a start time of 3.00pm. Afterwards there will be a Barbecue so do bring your own meat, veggie, salad, drinks, etc. We will provide bread, plus some drinks for the 'down downs' (penalties). Dogs on a lead with well-behaved owners are most welcome.

The cost for this event is £2 per adult, £1 per child, or £6 for a family.

Doug Freeman

Harbury Friends

Ladies, come along to our open evening on Tuesday 9th September commencing 8.00pm in the Tom Hauley Room, where Hilary's Hat Hire will be modelling hats from 17th century up to the modern hats of today, including a talk on styles.

Admission will cost £2.50, which includes coffee and a raffle ticket.

Harbury Friends meet on the second Tuesday of every month, and new members are most welcome. For further details call me on 01926 612010.

Margaret Barnes

NSPCC News

Congratulations to Raymond Flanagan of Temple End who competed in the Paris Marathon on 6th April 2003. Raymond completed the course in 4 hours and 7 minutes, and raised £564 in sponsorship for the NSPCC. We are very grateful for his efforts – an excellent achievement!

Over the last financial year, the Harbury NSPCC Committee has raised £5,735.46 with their fundraising events. We are delighted with this amount, and we would like to thank all our supporters in Harbury and beyond, who attend our functions and contribute so generously towards our fundraising activities.

NSPCC House-To-House Collection 2003

We must express "a big thank you" once again to all our collectors who raised £652.64 – a valiant effort!

NSPCC Committee

The Windmill Singers

The Windmill Singers will be visiting Blackburn on Sunday 3rd August to sing in the Cathedral. The coach fare will be £10.00, and will leave Southam at 6.00am, returning at 6.00pm.

If anyone would like to take advantage of this reasonable charge to listen to the music (or just visit the city) and enjoy the cheerful company, please ring our Secretary on 01926 813477.

Roy Truslove

Offchurch Flower Festival 'September Song'

At St Gregory's Church on Friday 19th, Saturday 20th and Sunday 21st September we will be holding our Flower Festival, from 10.00am to 6.00pm. There will be live organ music on Saturday and until 5.00pm on Sunday. At 6.30pm on Sunday we will commence the 'Choral Evensong'.

Teas will be available in the Village Hall throughout the weekend, and everyone is welcome.

Mrs C Ainscow

Musings From A Country Garden (13)

There has been plenty to watch in the past month, and, of course, there still is a lot happening.

Ginger, The Feral Cat

He is still having bed, breakfast and evening meal on split sites. He has evening meals at my friend's house in Chapel Ascot. He comes quite often to Bell View to sleep under the fir tree. I get up at 5.00am and whisper Ginger - he looks up at the bedroom window (so there is nothing wrong with his hearing) then comes round to the kitchen door to sit and wait for his food and drink. He comes into the kitchen and consumes what he wants (sometimes two bowls of food) then performs a spectacular turn-around on his hind legs (just like a Lipizzaner horse) and goes off for a few days. Each time he returns absolutely ravenous. We have long conversations and his eyes gradually glaze over - I like to think that he is relaxing, but it may be boredom! Anyway, I do not want another cat - I have told him this quite plainly.

Birds And Squirrels

The kestrel has had another pigeon (and left the proof - a heap of feathers on the shale). The baby squirrels must think they have found a nut heaven, they are frequent visitors. They always turn round to face me when I am chatting to them, which is very friendly. The robin family are becoming gradually pink-fronted and they are not coming in families now, they arrive as individuals. The little blue tits are becoming more colourful each day. The baby magpies are very noisy and a bit of a nuisance. They are so boisterous and eat a lot, but I am quite close to them in my kitchen window and they are really very

beautiful birds; with a patch of iridescent blue feathers on their wings and the striking black and white makes them very handsome). We have lots of sparrows around too, no shortage here!

I have more male bullfinches this year than ever before. They mutilate plant shoots before my very eyes. I tap the window and say "Pack it in chaps - find yourself a nut!" but they just continue tearing off the shoots and buds looking at me as if to say "No way chum, these buds are delicious".

Plants

The cardoon I was getting excited about (which was about twelve inches tall) has been entirely eaten; the stake looked a great deal healthier than the plant. I blame the bullfinches. My knowledgeable friend Brenda says "Leave it; it could well shoot from the base next year". I think she is just trying to cheer me up, although the age of miracles has not passed!

Butterflies And Dragonflies

I have been doing a bit of 'just sitting' again, watching the common brown dragonfly and the tortoiseshell, comma, peacock, orange tip and holly blue butterflies. They are beautiful!

Elsa Greenway



Horticultural Society

If we thought that last year was good, well I wonder what is in store for us next year! The "Open Gardens" weekend weather was rather hot but the people came "like bees around a honey pot". It was a superb event, the garden owners 'turned up trumps' again. Our thanks to all those who worked hard to open their gardens, the shops and outlets which sold programmes, and our thanks to everybody else who helped to make the event run smoothly, those who made and gave cakes, the catering 'skivvies' and many others – we would not have managed without you.

As in previous years, visitors came from far and wide. One lady from Canada (staying with relatives in North Warwickshire) first heard of the event through the Women's Institute – news indeed travels! Pat Smith had a chat with her; the atmosphere was very friendly but on the other hand, it was at the popular garden serving tea and homemade cakes!

We made a healthy surplus of donations for various organisations in the village. Thank you again to everyone.

The trip to South Newington House seems a long time ago now. Ron and I did not go but I understand it was a very nice garden (beautiful and deep). Judy said Ron and I would have enjoyed the large vegetable plot, and apparently the refreshments were also excellent! Thank you Judy, for yet another successful trip.

The next big event is the Village Show on Saturday 13th September. The Schedules for both adults and children classes are available from Mugglestons and other village outlets, from Janice Siddle at 35 Percival Drive and Ron Grey at 23 Deppers Bridge. To help cover the running costs of the show, we intend to run a Tombola. All contributions will be very welcome, and may be left in the porch at 55 Mill Street or 23 Deppers Bridge before (if possible) Wednesday 10th September - you do not have to be a member to donate!

There will also be a Produce Stall and so jars of jam, chutney, baking (wrapped ready for sale), plants, vegetables, etc., will be welcomed before 10.40am on the morning of the show.

It is well worth entering 'The Society Tray' and 'The Society Vase' classes in the Schedule, as the first prize for each is £10. If you have nothing to enter from the garden or allotment (as it has been another awkward season) there will still be plenty of other classes to choose from.

Whatever you choose, please remember to read the Schedule: "On With The Show" is very helpful reference book (Janice Siddle and the Women's Institute have copies), or a telephone call could mean the difference between a prize and being marked N.A.S. (Not As Schedule)!



Budding Gardeners

Muriel Grey

Gardening Notes For August

Recently I found the following quotation and thought how true it is of our gardens this year, *"August is mid-life crisis month. The promise of youth has passed, things are beginning to run to seed, and you have to work hard to keep up appearances"* – Jim Buckland.

If the weather continues to be hot and dry we shall be spared the job of cutting the grass. However, watering is one of the thankless tasks necessary to keep plants looking fresh into autumn. Hanging baskets are difficult to re-wet if they dry out, and do not assume that if there has been rain they will be alright. Often the rain cannot get through to soak the compost because of the dense leaf cover. Water baskets and pots daily and feed weekly (tomato fertiliser is ideal). Continue pinching out tips of trailing plants to promote bushiness.

Dead-head annuals regularly and perennials will often flower again if they too are dead-headed. If border plants begin to flag, give them a really good soak. This is better than 'little and often' which revives them temporarily but encourages surface rooting which quickly dries out. Now is the time to take cuttings of silver leaved plants - use non-flowering stems for this, and then trim over the whole plant to tidy the shape. To save fuchsias and geraniums over winter, take tip cuttings with two or three leaves. Choose young shoots about three inches long; cut just below a leaf joint. They should root within a month and can be potted individually into three inches pots to winter indoors. The majority of container plants can be saved this way.

Finish cutting hedges and topiary by the end of this month, as new growth needs time to harden before the first frost. Roses do not need any more feeding but require spraying against pests and diseases. Mildew gets worse in hot, dry conditions; black spot multiplies in cool moist weather and spraying may be the only treatment. Prune rambler and climbing roses by cutting back to old growth on the main framework. Take out one or two of the old stems to twelve inches from the base to encourage new growth.

Buy and plant autumn flowering bulbs as soon as they come into the shops. Even daffodils, prepared hyacinths and some of the smaller bulbs will be on sale at the end of August. Sow hardy winter lettuce and radish, which will need some cloche protection later on. Sow red lettuce and radicchio which take on their best colour as the days get cooler.

Do not forget the house plants which were put outside; keep an eye

out for slug attack. If you are going away, it may be better to take them inside and stand them on moisture retaining mats. Re-pot winter flowering house plants such as azaleas and cyclamen, and begin to water and feed them at the end of the month.

Plant Of The Month - Rowan Tree

Among the first of the berries to colour up are the ones on the Rowan Tree. The name of this native tree belonging to the Sorbus family comes from the Old Norse name. It is also called Mountain Ash, because it will grow high up and the leaves resemble those of the ash, although they are not related. In the Scottish Highlands, crofters planted the tree near their homes to ward off witches. The berries can be made into a jelly to accompany game and venison, but the raw fruit is poisonous.

A favourite garden tree, it stays small, rarely reaching more than twenty feet, has lovely blossom, bright berries and autumn colour. Birds will quickly take the red berries but leave the ones on trees native to other countries. Sorbus trees are found throughout the northern temperate regions. Many have the ash-like leaves but some, such as the Whitebeam, have a lobed leaf and grow larger. All have the spring blossom and berries of colours ranging from white through pinks to bright red. If you want the display from the berries through the winter, choose plants which have white or yellow fruits.

Pat Smith

Ufton - Take Time Out

Stumpwork Embroidery

Thursday 18th September, 10.00am-12.30pm at Ufton Village Hall.

Here is an opportunity to create three dimensional and relief embroidery. The workshop will be run by Stephanie Burnham, who ran our Beadwork and Jewellery session earlier this year. This event is suitable for beginners and those with some experience. You will need to bring a basic sewing kit and (if you have one) small embroidery frame.

The cost of the workshop is £4.50 plus £3.00 for all the materials..

We expect this to be very popular, so please book as early as possible. Contact Tracey Watts on 614413 for full details and a copy of the 2003 programme.

Karin Kirk

Letters to the Editors

Dear Editors

Congratulations

.... upon being chosen for Warwickshire's "Village Of The Year 2003".

Eric Dally, Member, WRCC Works & Project Committee

Dear Editors

Blood Donors

The next session of blood donation will be held on Thursday 28th August in the Village Hall at 1.30pm-3.30pm and 4.30pm-7.30pm.

Holiday season means fewer donors are available, but the requirement of blood for surgery, therapy support, treatments of many kinds and following accidents, are just as many as ever. Please come if you can. Maybe you know a youngster that is home for the holidays who could start donating. The age limit is 18 to 60 years old for new donors, but existing and lapsed donors can now continue until they are 70 years old.

It does not hurt, it does not take long, and it does not cost you anything - but may mean life itself by someone you will never know, or by someone you love.

Gillian Hare

Dear Editors

I was surprised and upset to read a "joke" in the July edition of the magazine under the heading "Laugh Line". I found this to be offensive, as it was racist and anti-Semitic. No doubt this was not intentional, but I do feel the Editors should have realised it was not suitable for publication.

Sharon Hancock

Dear Editors

We found the "Laugh Line" in the July issue of the Harbury News offensive and in bad taste. There must be other people who feel the same.

It does not reflect the spirit of Harbury, where people are friendly, kind and considerate.

Yours faithfully,

Gunde and Beverley Walshe

Dear Editors

Village Fund Raiser

Thank you to everybody who was involved in the organisation of a very successful evening, and thank you to everybody who came and supported it.

We managed to raise a total of £1,600 and the money will be divided as follows:

<i>Harbury Pre-School</i>	<i>£400</i>
<i>Harbury Nursery School</i>	<i>£400</i>
<i>Harbury Primary School</i>	<i>£400</i>
<i>Harbury Senior Citizens</i>	<i>£400</i>

Once again, many thanks to you all

Paul Winchester

Dear Editors

The Coffee Morning held on 5th July in aid of the Motor Neurone Disease Association raised £115.

Our grateful thanks to all the helpers, those that donated cakes and prizes, and everyone who came to support us on the day

Thank you all very much.

Gill Gualford and Sue Wurr

HARVEY BUILDERS LIMITED

Registered Since 1979

**YOUR LOCAL BUILDER FOR ALL YOUR
HOME EXTENSIONS AND ALTERATIONS
FROM PLANS TO COMPLETION.**

Mob : 07976 357142

Email : harveybuildersltd@southam59.fsife.co.uk



REGISTERED
HOUSE BUILDER

FOR PROMPT, PERSONAL SERVICE PHONE 01926 817906

AVONVALE VETERINARY CENTRES



**88 COVENTRY STREET
SOUTHAM**

TEL 01926 812826

**CONSULTATIONS BY APPOINTMENT
24 HOUR EMERGENCY SERVICE**

www.avonvets.co.uk

Also at:
Wellesbourne
01789 841072

Kenilworth
01926 854181

Warwick
01926 400255

G S ELECTRICAL

**24 hr Emergency Service *Part or Full rewires*

**Extra Lights & Sockets *Security Alarms & Lighting*

**Testing & Inspections *Refs available*

Phone Gary on

Tel: 01926 817734 Mobile: 07930 345918

Creative Photography

Home Portraits

Children & Pets

Products

Corporate

Public Relations

Conferences

For a friendly and professional service, from one of the Midlands' best photographers. For photographs you will be proud of, call me now on:

01926 426278



Paul Thomas

Photography

email paul@psthomas.co.uk
web www.psthomas.co.uk

Beauty Treatments

Available to you in the comfort
of your own home

Also available at
Upstairs Downstairs,
Binswood Street, Leamington Spa,
if preferred.

- * Facials
- * Body Massage
- * Eyebrow/
Lash Treatment
- * Waxing
- * Manicures
- * Pedicures

*Gift Vouchers, available
for those special occasions*

For more details contact
Sarah Turner

Tel: (01926) 817657

Mobile: 07798 821686

FULLY QUALIFIED BEAUTY THERAPIST

PINEHAM FARM BUTT LANE, HARBURY

Logs £3.50 per bag; £50 per pickup load

Sticks £2.80 per bag

Potatoes (Reds & Whites) 55lb bags

Hay £2.50; Straw £2.00 (per bale)

Fresh Eggs £1.20 per dozen

Free Range Eggs £2.00 per dozen

.....

GRAZING FOR HORSES

Hose Feeds, Shavings (25kg) bales

Hay & Straw (open till late)

FARM YARD and HORSE MANURE

.....

PET FOODS & ACCESSORIES

Cat, dog, poultry and rabbit food

Call in or phone for details on

01926 612325

Custom & Bodywork Services at The Garage Ladbroke

ALL TYPES OF BODY WORK

FREE INSURANCE ESTIMATES

RESPRAYS

SERVICING

M.O.T. REPAIR WORK

WELDING

COLLECTION & DELIVERY

Personal Service from Steve Birch

01926 813590

www.customandbodywork.co.uk

Dear Editors

May I, through the Harbury and Ladbroke News, express my thanks to all those who sponsored me during my running of the London Marathon.

I managed to raise a total of £1,024 for my charity, Spinal Research.

Particular thanks must go to Andrew and Carole at The Shakespeare Inn, Brian and Sandra at The Old New Inn, and Paul and Mary at Country Fayre, for allowing me to display my sponsorship forms at their premises.

I managed to complete the marathon in 3 hours and 57 minutes, while enjoying a glorious day in London.

Thank you once again.

Dean Merrick

Dear Editors

Once again we were so lucky with the weather for the 'Garden Walkabout' this year. I have thanked everyone who kindly agreed to open their gardens, some brave souls for the first time. This does require a great commitment, which is very much appreciated.

I would also like to thank all the helpers who sold programmes on the day and a big thank you to Mugglestons and Kathleen Ellis.

Grateful thanks also to everyone who helped with refreshments and provided cakes.

We had a record number of visitors who came from far and wide, and all were very complimentary about the gardens and our lovely village.

I do hope everyone who participated had a most enjoyable weekend and that all local businesses also benefited.

Thank you all once again.

Judy Morrall



ST. AUGUSTINE'S CATHOLIC PRIMARY SCHOOL
 Heathcote Street,
 Coventry, CV4 9LJ
 Telephone : 024 7659 6958
 Fax : 024 7659 6175
 Headteacher : Miss Clare Walsh
 E-mail: head@staugustines.coventry.sch.uk

On Wednesday 25th
 June 03 we went on
 a visit to Harbury
 Village in Warwickshire.
 We would like to say a big **THANK**
YOU to all the Harbury Villagers
 for letting us find out
 about your community. A lot of
 people gave up their time to
 answer questions about Village
 life. We are comparing your
 Village with our City. We hope
 we didn't disturb you on our
 travels.

By Ian Farguhar
 Jack Ogle

St Augustine's Catholic Primary School, Coventry

Do you need help with any of the following?

EMERGENCY TRANSPORT:

Call Charles Catt 612864, or John Travis 613264.

HELP WITH FORM FILLING:

Job Applications, CV's, Council Tax Forms, etc.

Call Joanne Cooper 613859 or David Cooke 614692.

For University/Job Applications, Interviews, CVs:

Call Philip Bushill-Matthews 612476.

HOME VISITING: Caring for a sick or elderly relative and need a break for a few hours, or you would like someone to call on you. Call Sue Dormer 613254.

HOUSEHOLD BUDGETING ADVICE: Call Tony Brunton 612191.

VISITING: Hospital - if you are unable to visit a parent or relative, or parents would like support with a child in hospital, call Fr. Roy Brown 612377 or Keith Dormer 613254.

**DATES FOR INCLUSION IN THE HARBURY DIARY PLEASE TO
LINDA RIDGLEY - TELEPHONE 612792**

Bookings for:

Scout Hut	Lesley van Kesteren	613411
Tom Hauley Room	Liz Bunting	612450
Tom Hauley Room Coffee Morning	Mrs J. Windsor	612504
Village Hall	Wendy Hawkes	613198
Wight School	Mrs L. Hayes	613488

Regular Diary Dates

ART TUTORIALS: Tom Hauley Room, 1st Thursday of the month.

BABY CLINIC: Surgery, 2nd and 4th Wednesday of the month, 2.00pm-4.00pm.

BADMINTON: Village Hall, (613174) Monday morning 10.00am-12.00noon;
(612627) Monday (Seniors) 7.00pm-9.00pm;
(613413) Tuesday (Club) 8.00pm-10.00pm (not in summer);
(612029) Friday (Juniors) 2.00pm-3.00pm;
(613340) Sunday 7.00pm-10.00pm (not in summer).

BELL RINGING PRACTICE: (613605) Church, Friday 7.30pm.

BIBLE STUDY GROUPS: (613207) various homes, 1st and 3rd Thursday of the month
2.00pm-3.30pm; (612864) various homes, 2nd and 4th Tuesday of the month 10.30am-
12.00noon.

BOOKWORMS: (614793) Tom Hauley Room, 2nd Tuesday of the month 7.30pm.

BROWNIES: Scout Hut, Monday 6.15pm-7.30pm.

CHOIR PRACTICE: Church, Friday 6.30pm.

COFFEE MORNING: Tom Hauley Room, Saturday 10.00am-12.00noon.

CUBS: Scout Hut, Wednesday 6.30pm-8.00pm.

DANCING CLASSES: Children only (01789-842242) Farley Room of Village Hall,
Wednesday 4.00pm-8.00pm.

DROP-IN TEA: (612585) 19 Farm Street, 4th Wednesday of the month 2.30pm to 4.30pm.

GYMNASTICS: Harbury School, Monday 6.00pm-7.00pm.

HARBURY FOLK CLUB: Shakespeare Inn, 1st Thursday of the month 8.30pm.

HARBURY FRIENDS: Tom Hauley Room, 2nd Tuesday of the month 8.00pm.

HARBURY JUNIORS FOOTBALL CLUB TRAINING:

Under 9s: Coach: Steve Darby (613330), Saturday at Harbury School Pitch 9.00am;

Under 11s: Coach: Jim Farrell (612396), Saturday at Harbury School Pitch 9.00am;

Under 14s: Coach: Mick Pratt (817700), Saturday at Playing Fields 9.30am;

Under 16s: Coach: John Wilkins (612115), Saturday at Playing Fields (top pitch)
10.30am.

HARBURY NURSERY SCHOOL: Harbury School, Monday-Friday 9.00am-12.00noon;
Tuesday, Wednesday and Thursday 12.45pm-3.15pm.

HARBURY PRE-SCHOOL: (613786) Wight School, Tuesday-Friday 9.00am-1.00pm.

HARBURY THEATRE GROUP: (612009) Shakespeare Inn, last Tuesday of the month
8.00pm.

HARBURY TODDLER GROUP: (613311) Wight School, Monday 10.00am-11.30am and
Wednesday 1.30pm-3.00pm.

HARBURY VILLAGE CLUB: Contact 612498.

HEREBURGH MORRIS DANCERS: (613402) School Hall, Wednesday 8.00pm-10.00pm.

HORTICULTURAL SOCIETY: Tom Hauley Room, 1st Tuesday of the month (Oct-May)
8.00pm

KICK START APPALACHIAN STEP DANCERS: (612734) Scout Hut, Saturday 10.00am-
12.00noon

LIBRARY: (613297) Monday 2.00pm-5.00pm and 5.30pm-7.00pm; Thursday 10.00am-
1.00pm; 2.00pm-5.00pm and 5.30pm-7.00pm.

NETBALL CLUB: (613239) Village Hall Car Park, Training Thursday 6.30pm;
Matches Saturday Afternoon.

SCOUTS: Scout Hut, Thursday 7.00pm.

PARISH PATHS PART'SHIP: (614274) Shakespeare Inn, 2nd Thursday of the month 8.00pm.

TENNIS CLUB: April to September:

Adults (614532), Tuesday and Thursday 6.30pm onwards (6.00pm for April and
September); Wednesday 2.15pm onwards; Saturday 3.00pm-5.00pm.

Under 16s (613284), Sunday 10.00am-12.00noon, Wednesday 6.00pm-8.00pm; Thursday
4.15pm-6.00pm.

Non Members may book courts at £2 per hour at Country Fayre on Chapel Street.

E-Mail: sucol-ashcroft@tinyworld.co.uk

Club Website: www.harburytennisclub.homestead.com

THURSDAY CLUB: (612273) Farley Room, 2nd and 4th Thursday of the month 2.30pm.

WOMEN'S INSTITUTE: Tom Hauley Room, 2nd Thursday of the month 7.45pm.

YOGA: Dianne Surgey (817904) Tom Hauley Room, Wednesday 7.30pm-9.30pm.

YOUTH CLUB: (612688) Village Hall, Thursday 7.00pm-9.00pm.

Please note:

Adverts to 31 Binswood End by 15th August.

Articles to Harbury Chemist by 29th August.

Southam Community Education – Autumn 2003

Evening Courses at Southam College

Monday (commencing 8th September)

Learn To Play The Guitar	7.30pm-9.30pm	12 Weeks
Lip-Reading Group (will start on 22 nd September for all students)	7.30pm-9.30pm	10 Weeks
Art Classes Including Acrylic, Oil And Watercolour Painting	7.30pm-9.30pm	12 Weeks
Wood Turning For Beginners	7.30pm-9.30pm	12 Weeks
Spanish Language	7.30pm-9.30pm	12 Weeks
Cake Icing And Sugar Paste Flowers	7.30pm-9.30pm	12 Weeks
Computing And Keyboarding With Clait Plus	7.30pm-9.30pm	26 Weeks
Upholstery	7.30pm-9.30pm	12 Weeks
French Language	7.30pm-9.30pm	12 Weeks
Stress Management And Relaxation Techniques	7.30pm-9.30pm	12 Weeks
Learn English Like Your Children Do At School	7.30pm-9.30pm	12 Weeks
The Ultimate Back Massage	7.30pm-9.30pm	12 Weeks
Tai Chi For All	7.30pm-9.30pm	12 Weeks

Tuesday (commencing 9th September)

English Language GCSE	7.30pm-9.30pm	32 Weeks
Cake Icing And Sugar Paste Flowers	7.30pm-9.30pm	12 Weeks
Introducing AS Psychology	7.30pm-9.30pm	26 weeks
Learn How To Use The Internet With A Basic New Clait Course	7.30pm-9.30pm	26 Weeks
Understanding And Using Aromatherapy And Essential Oils	7.30pm-9.30pm	12 Weeks
Music Workshop, Learn To Play And Join Others In Making Music	7.30pm-9.30pm	12 Weeks
Upholstery	7.30pm-9.30pm	12 Weeks
Indian Head Massage	7.30pm-9.30pm	12 Weeks
Salsa Dance Course	7.30pm-8.30pm	6 Weeks
German Language For Beginners	7.30pm-9.30pm	12 Weeks

Wednesday (commencing 10th September)

Introduction To Learning Mathematics To GCSE Level	7.30pm-9.30pm	6 Weeks
Art Classes Including Acrylic, Oil And Watercolour Painting	7.30pm-9.30pm	12 Weeks
Basic Beginners Computing Course	7.30pm-9.30pm	12 Weeks
Web Page Designs For Village And Club Sites, Are You On The Net?	7.30pm-9.30pm	12 Weeks
Cake Icing And Sugar Paste Flowers	7.30pm-9.30pm	12 Weeks
Italian Conversation Level 1	7.30pm-9.30pm	12 Weeks
Healing, Crystals And Meditation (Learn About The Chakra's By A Reiki Master)	7.30pm-9.30pm	12 Weeks
Pillow Lace Making (Bobbin Lace)	7.30pm-9.30pm	12 Weeks
Flower Preparations For Autumn And Christmas	7.30pm-9.30pm	12 Weeks
Wood Turning For Beginners	7.30pm-9.30pm	12 Weeks
Calligraphy	7.30pm-9.30pm	12 Weeks
Keep Fit For Men	7.30pm-9.30pm	12 Weeks

Thursday (commencing 11th September)

Basic Computing New Clait Computer Course	7.30pm-9.30pm	12 Weeks
Cake Icing And Sugar Paste Flowers	7.30pm-9.30pm	12 Weeks
Italian For Beginners, Starting Conversation (Term 2)	7.30pm-9.30pm	12 Weeks
Watercolour Painting	7.30pm-9.30pm	12 Weeks
Reflexology	7.30pm-9.30pm	12 Weeks
Badminton Coaching for All	7.30pm-8.30pm	12 Weeks

Daytime Courses At Southam College, Community Lounge**Monday**

Beginners Computing To New Clait

10.00am-12.00pm 12 Weeks

Spanish Language

1.00pm-3.00pm 12 Weeks

Tuesday

Healing, Crystals And Meditation (Learn About The Chakra's By A Reiki Master)

1.00pm-3.00pm 12 weeks

Wednesday

Keep Fit To Music

9.30pm-10.30pm 12 Weeks

Water Colour Painting

1.00pm-3.00pm 12 Weeks

Thursday

Yoga For Relaxation

10.00am-12.00pm 12 Weeks

Water Colour Painting

1.00pm-3.00pm 12 Weeks

Friday

Flower Preparations For Autumn And Christmas

10.00am-12.00pm 12 Weeks

Water Colour Painting

1.00pm-3.00pm 12 Weeks

Courses At The Graham Adams Centre, Southam**Monday**

New Clait Computing For Beginners

1.00pm-3.00pm 12 Weeks

Thursday

New Clait Computing For Beginners

1.00pm-3.00pm 12 Weeks

Courses At Harbury Library**Thursday**

New Clait Computing For Beginners

10.00am-12.00pm 12 Weeks

Courses At Harbury CE Primary School**Monday**

New Clait Computing For Beginners

7.30pm-9.30pm 12 Weeks

ThursdayKeep Fit To Music (commencing 1st September)

7.00pm-8.00pm 12 Weeks

Courses At The Tom Hauley Room, Harbury**Wednesday**Yoga (commencing 30th September)

7.30pm-9.30pm 12 Weeks

Courses At Offchurch Village Hall**Tuesday**Upholstery And Soft Furnishing (commencing 9th September)

9.30am-11.30am 12 Weeks

ThursdayUpholstery And Soft Furnishing (commencing 11th September)

1.00pm-3.00pm 12 Weeks

Courses At Long Itchington Primary School**Friday**Computer Keyboard Skills (commencing 12th September)

1.00pm-3.00pm 12 Weeks

Courses At Stockton Village Hall**Tuesday**Upholstery and Soft Furnishing (commencing 29th September)

1.00pm-3.00pm 12 Weeks

Courses At Stockton School**Tuesday**

Basic Computing For The Total Beginner

7.30pm-9.30pm 12 Weeks

Courses At St Lawrence CE Primary School, Napton

Monday

Beginners Computing To New Clait

7.30pm-9.30pm 12 Weeks

Tuesday

Yoga

7.30pm-9.00pm 12 Weeks

Courses At Bishops Itchington Primary School

Monday

Basic Computing Leading To Clait

7.30pm-9.30pm 12 Weeks

Wednesday

Basic Computing Leading To Clait

7.30pm-9.30pm 12 Weeks

Course Term Dates:

	<u>Term Starts:</u>	<u>Half-Term Holiday:</u>	<u>Term Ends:</u>
Autumn	8 th September 2003	begins 27 th October 2003	around 1 st December 2003
Spring	12 th January 2004	begins 16 th February 2004	around 22 nd March 2004
			around 29 th March 2004 (daytime courses)
Summer	26 th April 2004	begins 31 st May 2004	around 28 th June 2004

Most evening courses start at 7.30pm and finish at 9.30pm, although these times may change.

Closures:

Other than term holiday dates shown, the following closures are also necessary for Southam College Centre:

- For some courses on Thursday 25th September and Friday 26th September for Open Evening;
- For daytime courses week beginning 22nd March 2004 for the Science Week Exhibition.

Fees:

- Fees are based on a charge of £2.45 per hour (unless otherwise stated). A class for 2 hours per evening over 5 weeks costs £24.50.
- A number of courses are free apart from the registration fee, discounts may be available and requests are considered on an individual basis.
- Cheques should be made payable to Southam College. Credit card enrolments are also available.
- If you feel that you should be entitled to a discount please apply to Gerry Young by Telephone 01926 810942 or 01926 812560, or through the Internet at gdyoung1@aol.com. Gerry is a full-time teacher so please leave a message on the answering service. Those reserving places on computer courses are advised to book themselves into the classes before the course starts to save any disappointments.
- These details may change due to circumstances beyond our control.

Advertising In The Harbury And Ladbroke News

Monthly Prices (white pages)

Quarter Page £8.00

(or 3 consecutive months for £22.00)

Half Page £14.00

(or 3 consecutive months for £40.00)

Full Page £27.00

(or 3 consecutive months for £75.00)

Yearly Prices (coloured pages)

Printed in April for the year.

(Advertise for 12 consecutive months and get 2 months FREE!)

Quarter Page £75.00

Half Page £135.00

Full page £255.00

Adverts with payment to: 31 Blinwood End, Harbury (☎ 612155) by the 15TH of the month.

FORTRESS

DOMESTIC SEPTIC TANKS

**TANKS EMPTIED • HELP & ADVICE
BEST RATES**



**WARWICK
(01926) 493414**

DONGAN ROAD, WARWICK CV34 4JW

Marco's Dad's Wines

We are a Ladbroke based small business importing selected premium wines from small vineyards in Italy.

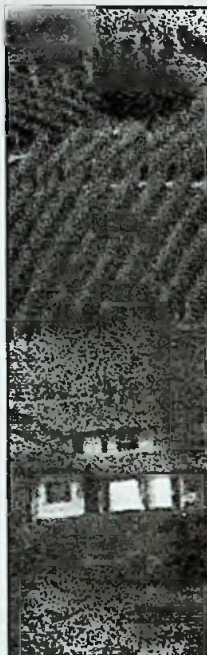
We have a selection of red and white wines and some different gift ideas for special occasions or corporate gifts.

For more information please contact us or visit our website.

email: info@mdwines.co.uk

01926 819040

www.mdwines.co.uk



Kiddies Parties !! with LIZA THE DIVA!



Kids Karaoke,
Flashing Lights and Groovy
Dance Routines!!

Dance Competitions

Party Games
Team Games
Forfeits!!

Tel: (01926) 612229



HAIR STATION



19 GAYDON ROAD, BISHOPS ITCHINGTON

FOR APPOINTMENTS OR FREE CONSULTATIONS

RING JULIE: 07966 431914

**DIPLOMAS IN ADVANCED HAIRDRESSING
FROM THE TONI & GUY ACADEMY**

**ALL ASPECTS OF HAIRDRESSING CATERED FOR
PERMS-COLOURING LADIES-GENTS & CHILDREN**

Harbury Church invite you to

ONCE UPON A TIME....

Stories for all

Come and hear them at our holiday club for children
aged 5 to 11 years

On August 12th, 13th, 14th and 15th
in The Tom Hauley Room
10.00 to 12.00

Cost 20p per session

There'll be lots of new activities, songs, stories, etc.

Please register beforehand at the Tom Hauley Room on Mon.
August 11th, 10 to 12 noon



Harbury Private Hire

46, FARLEY AVENUE, HARBURY
LEAMINGTON SPA, CV33 9LX

A reliable new service:

For Airports, Holidays, Weddings, Hospital etc..

Special Rates for Shopping Trips
Monday-Friday 9:30 a.m.- 3:00 p.m.

We accept Harbury Parish Transport Tickets
also National Travel Tokens

Destinations Unlimited,
all at Competitive Prices.

01926 612797



MANOR

Property & Decorating Services

The ideal choice for all your property repair and
decorating requirements

Call for a Free Quotation
01926 612887

Sunil

**domestic & commercial
painting & decorating**

for a no obligation quotation



Mehro

telephone → 01926 451012
or mobile → 07976 241949

E.F. SIMS & SON

PAINTING & DECORATING SERVICES

THE QUALIFIED

PAINTER & DECORATOR

**INTERIOR AND EXTERIOR
EXPERIENCED TRADESMAN**

RING FOR A FREE ESTIMATE

613732

1 THE POUND, HARBURY

Hedge cutting, conifers, small trees

Gardens cleared

Also lawn mowing service available

Domestic, commercial

No job too small

Tel: Gary Barnes 01926 614807

Mob. 07966 207369





CAR CONSULTANTS



UFTON GARAGE, SOUTHAM ROAD, UFTON, LEAMINGTON SPA CV33 9PF

- ♦ LOW MILEAGE CARS PURCHASED FOR CASH! OVER 40 TOP QUALITY CARS IN STOCK!
- ♦ MEMBERS OF THE TRADING STANDARDS 'COMMITMENT TO FAIR TRADING' SCHEME!

Contact us now on 01926 613795 or out of hours 07860 452222

for latest information, stock availability and colour photos visit:

www.uftongarage.co.uk

Soulham Carpets & Curtains

- ✧ Carpets, Curtains, Vinyls, Rugs, Mats & Blinds
- ✧ FREE quotations, advice and pattern book loan
- ✧ Family run since 1979
- ✧ For traditional quality & service, contact us.

☎ 01926 814944

Fax 01926 811855

www.soulhamcarpets.co.uk



A.J. BRUNT

Carpenter & Joiner

For all types of replacement windows, doors, porches, i.e. UPVC,
Aluminium & Timber, double or single glazed.

Fitted kitchens/wardrobes and all your carpentry needs.

Harbury 01926 612867 • 9 Ivy Lane, Harbury

THE DOOR STORE

- ❖ QUALITY DOORS in HARDWOOD, HEMLOCK & SOFTWOOD
 - ❖ HANDLES in BRASS, CHROME & SATIN CHROME
 - ❖ JALI RADIATOR CABINETS, MADE TO MEASURE
 - ❖ PURPOSE MADE JOINERY, FOR ODD BALL SIZES
 - ❖ STAIRS & STAIR PARTS in WOOD, IRON & CHROME
 - ❖ WINDOWS in UPVC, HARDWOOD & SOFTWOOD
 - ❖ STAINED GLASS, DOUBLE GLAZED UNITS & SAFETY GLASS
 - ❖ ALL AVAILABLE IN MANY DESIGNS & VARIOUS SIZES
 - ❖ FULL FITTING SERVICE, FREE LOCAL DELIVERY & ADVICE
- Inside MILES of TILES Alveston Place, Leamington Spa Tel: 01926 886888
Email: sales@the-door-store.co.uk Website: www.the-door-store.co.uk