

# Harbury & Ladbroke News



# Ladbroke

## THE FOSSE GARAGE

Accident Repair Specialist  
for all leading Insurance  
Companies

**24 hr. Recovery  
Service**

**AA and RAC  
Appointed**

**Servicing & MOT  
Repairs**

**Used Car Sales**



Motor  
Agents Association

Fosse Way, Harbury,  
Nr. Leamington Spa.

01926 613260

24hr. 0850 613260

**SELF-DRIVE  
CAR & VAN HIRE**



## Southam Carpets & Curtains

- ☆ Fitted Carpets, Vinyls, Curtains & accessories.
- ☆ FREE Measuring, Estimating. FREE Pattern loans.
- ☆ For Traditional Quality & Service, contact us.



**Southam (01926) 814944**

Coventry Street, Southam, Warwickshire. CV33 0EP



# Harbury & Ladbroke News

NOVEMBER 1997

No. 284

## WARWICKSHIRE



### VILLAGE VENTURES COMPETITION 1997

Second prize

Interpretation Group  
~ Newsletters ~

PRESENTED TO

Harbury & Ladbroke News

FOR ACTIVE INVOLVEMENT IN THE ENHANCEMENT OF  
COMMUNITY LIFE IN RURAL WARWICKSHIRE

*Marki Jones*

Warwickshire Rural Community Council

As you may have read in a recent edition of the Courier, the Harbury & Ladbroke News was awarded second prize in the Interpretation Group in the Warwickshire Village Ventures competition. This was the highest placed magazine submitted for this category, which included other community initiatives. This success is due to all those who contribute to the content and production of the magazine each month. Congratulations to all who are involved.

The H&L News could not exist without the rich social calendar which forms the backdrop to village life. This month sees the performance of "*Foxes have Holes*" written by Edyth Algar. This Advent play gives a new slant to the nativity story. Another local playwright, Anne Megeney, will have her latest work "*The Toy Cupboard*" performed in January '98.

Our friends from Samois-sur-Seine who visited this month commented on the diversity of cultural life in Harbury, which encompasses so many different events.

During October, work commenced on Harbury's latest housing development at Hillside, Binswood End. It is to be hoped that the design of the houses will be in keeping with the aspirations of the Village Design Statement. We would encourage all of you to complete and return the questionnaire included with this edition.

Can we request that all advertisements are sent direct to our Advertising Manager at the address shown below and not included with articles handed in to Nifty Needle?

**THE HARBURY AND LADBROKE NEWS**, reflecting all aspects of local life is published monthly and produced with the assistance of the All Saints' Parochial Church Council.

**Editorial Office:** (( 612155))

**Articles to:** *Nifty Needle, High Street*

**Advertising Office:** *6, Knightlow Way (( 614614))*

**Distribution Manager:** *49, Mill Street (( 612009))*

The views of contributors are not necessarily those of the Editorial Committee.

# Harbury Diary

## NOVEMBER

- Sun 9 REMEMBRANCE SUNDAY** - Holy Communion 8am  
Remembrance Service 10.15am (War Memorial at 11am);  
Sung Eucharist 4pm
- Tues 11** Toddlers' Service 2.15pm; Holy Communion 7.30pm  
Harbury Society *Apple Day* Talk in Tom Hauley Room 7.30pm  
Village Hall committee in Village Hall 8pm  
Prayer Group in Church 8.10pm
- Wed 12** Wight School Playgroup Coffee Morning, 1, Dickens Road 10am-12noon
- Thurs 13** Holy Communion 9.45am  
Harbury Nursery School *Sponsored Bike Ride* at Village Hall car park  
Thursday Club in Village Hall 2.30pm  
WI in Tom Hauley Room 7.45pm  
Line Dancing in Village Hall 8pm
- Sat 15** Men's Prayer Breakfast in Tom Hauley Room 7.30am  
Jumble Sale - Wight School Playgroup at Wight School 10am-12noon  
Craft Circle in Village Hall 10am-5pm  
**ADVERTS 6 Knightlow Way by 5.30pm**
- Sun 16 Sixth Sunday before Christmas** - Holy Communion 8am  
Family Communion 10.30am  
Sunday School 10.30am in Tom Hauley Room
- Tues 18** Holy Communion 7.30pm  
Mothers' Union in Tom Hauley Room 8pm  
Senior Citizens' Committee in Farley Room of Village Hall 8pm
- Wed 19** Annual Parent & Governor's meeting in School Hall 7.30pm
- Thurs 20** Holy Communion 9.45am  
Harbury Nursery School Coffee Morning in T.H. Room 9.30-11.30am  
Line Dancing (Myton Hospice) in Village Hall 8-10pm
- Fri 21** Newspaper collection  
Kalizarus - Ceilidh Dancing in Village Hall 7.30pm
- Sat 22** Theatre Group Medieval Banquet in Village Hall 8pm
- Sun 23 Fifth Sunday before Christmas** - Holy Communion 8am  
Sung Eucharist 10.30am; Sunday School 10.30am; Evensong 4pm  
Harbury Netball Club's Quiz Nigh at the Village Club 8pm start
- Tues 25** Holy Communion 7.30pm; Julian Group in Church 8.10pm
- Thurs 27** Holy Communion 9.45am  
Thursday Club in Village Hall 2.30pm  
Parish Council meeting in Village Hall 7.30pm  
Parochial Church Council in Tom Hauley Room 7.30pm
- Fri 28** Working from Home Club meeting in The Dog Inn 12noon  
**ARTICLES to NIFTY NEEDLE by 5.30pm**  
Play "*Foxes have Holes*" in Church 7.30pm  
Cricket Club Dinner in Village Hall
- Sat 29** Play "*Foxes have Holes*" in Church 7.30pm  
Village Design Statement Workshop in Village Hall 9.30pm

- Sun 30 St. Andrew's Day, Advent Sunday**  
 Holy Communion 8am; Sung Eucharist 10.30am  
 Sunday School in Tom Hauley Room 10.30am; Evensong 4pm

## DECEMBER

- Tues 2** Holy Communion 7.30pm  
 Horticultural Society in Village Hall 8pm
- Wed 3** Netball Fashion Show in Village Hall
- Thurs 4** Holy Communion 9.45am  
 Stories, Rhymes for U5s in Library 10am  
 Wight School Playgroup Cake Stall outside Library 9.30am  
 Folk Club in the Dog Inn 8.30pm
- Fri 5** Newspaper collection  
 WI Christmas Party in Village Hall
- Sat 6** Christmas Fair in Village Hall with Santa Claus
- Sun 7** Advent II - Sung Eucharist 9am  
 Sunday School in Tom Hauley Room 10.30am; Evensong 4pm

**Please note:** Adverts to 6, Knightlow Way by Sat. 15<sup>th</sup> November  
 Articles to Nifty Needle by Friday 28<sup>th</sup> November

**DATES FOR INCLUSION IN THE HARBURY DIARY PLEASE  
 TO: LINDA RIDGLEY - TEL. 612792.**

<b>For Tom Hauley Room Bookings</b>	<b>Mrs. Stubbs</b>	<b>612782</b>
<b>For Village Hall Bookings</b>	<b>Mrs. Hughes</b>	<b>612716</b>
<b>For Wight School Bookings</b>	<b>Mrs. Hayes</b>	<b>613488</b>

## REGULAR DIARY DATES

**BABY CLINIC:** Surgery, 2-4pm 2nd & 4th Wednesday

**BADMINTON:** Village Hall,  
 Mondays (Club) 7-9pm;  
 Tuesdays (League) 8-10pm;  
 Friday (Ladies) 2-3pm;  
 Sunday (Mixed) 7-10pm

**BEAVERS:** Scout Hut, 6-7pm Tuesdays

**BELLRINGING PRACTICE:** (613605) Church, 7.30pm Fridays

**BINGO:** Village Hall, 8pm Mondays

**BROWNIES:** Village Hall 6-7.30pm Tuesdays

**CHOIR PRACTICE:** Church, 6.30pm Fridays

**COFFEE MORNING:** Tom Hauley Room 10am-12noon Saturdays

**CUBS:** Scout Hut, Wednesdays

**DANCING CLASSES:** (613698) Farley Room Village Hall, Children & Adults  
 4-9pm Wednesdays.

**GUIDES:** Scout Hut, 7-8.30pm Mondays

**GYMNASTICS:** Harbury School, 6-7pm (U7-10yrs & Beginners 7-8pm;  
Over 10yrs 8-9pm) Mondays

**HARBURY FOLK CLUB:** Dog Inn 8.30pm 1st Thursday of Month

**HARBURY FRIENDS:** School, 8pm 2nd Tuesday of Month

**HARBURY JUNIORS FOOTBALL CLUB:** (613358) 10.30am-12.30pm  
Saturdays

**HEREBURGH MORRIS DANCERS:** (613402) School Hall, 8-10pm  
Wednesdays

**HARBURY NURSERY SCHOOL:** Harbury School, 9am-12noon Monday-  
Friday

**HORTICULTURAL SOCIETY:** Village Hall, 8pm 1st Tues (Oct. to May)

**KEEP FIT (Bodywise):** (495368) Harbury School 6.30-7.30pm Fridays

**LIBRARY:** (613297) Mondays 2 - 5pm and 5.30 - 7pm;

Thursdays 10am-1pm; 2 - 5pm and 5.30 - 7pm;

Stories, Rhymes for U5s, 10am 1st Thursday of the  
Month; Term Time only

**LINE DANCING:** (613478) Village Hall 8pm Thursdays (except 4<sup>th</sup> Thurs.)

**LINE DANCING:** (624454) Village Hall 8pm Wednesdays

**NETBALL CLUB:** (612841) Village Hall Car Park, Training 6.30pm  
Thursdays; Matches Saturday Afternoon

**PLAYGROUP:** Wight School, Tuesday to Friday mornings

**QUIZ EVENING:** The Old New Inn, 8.30pm Saturdays

**SCOUTS:** Scout Hut, 7.45pm Tuesdays & Thursdays

**TENNIS CLUB:** (614614) (Apr-Sept) Tues & Thurs 6.30pm onwards (6pm for  
April); Sat 2-5pm, Mon & Wed 1.45-3pm

**THEATRE GROUP:** Wight School, 8pm last Friday of Month

**THURSDAY CLUB:** Farley Room of V.Hall 2.30pm 2nd & 4th Thurs. of  
Month

**TODDLER GROUP:** Wight School, 10-11.30am Mondays & 2-3.30pm Wed.

**W.I.:** Tom Hauley Room, 7.45pm 2nd Thursday of Month

**YOGA:** Wight School, 7.30-9.30pm Wednesdays, Diane Surgy Tel.817904

# DOCTORS' SURGERY

Mill Street, Harbury

*To request a home visit*

please ring 612232

*To request a repeat prescription*

please ring 612232

*For an appointment*

please ring 613554

**DISTRICT NURSE**

Southam 815045

**HEALTH VISITOR**

Southam 815045

**POLICE**

Southam 812366

**SOCIAL SERVICES**

Southam 813110

Details of Surgery times are available from the Surgery

## **DO YOU NEED HELP WITH ANY OF THE FOLLOWING?**

*Harbury Helpline is for you!*

**CHILDRENS' CLOTHING:** for 0-6 Years old: Call Anne Woodward 613536, Maureen Darby 613330 or Mary Catt 612864.

**EMERGENCY TRANSPORT:** Call Tim Millington 612808 or Charles Catt 612864.

### **HELP WITH FORM FILLING:**

- **Job Applications, CV's, Council Tax Forms, etc.:** Call Joanne Cooper 613859 or Jeff Bedford 612753.
- **For University/Job Applications, interviews, CVs:** Call Philip Bushill-Matthews 612476.
- **For Personal Tax Claims, Rebates on Tax Paid to Building Societies or on Shares:** Call Jim Chapple 612044.

**HOME VISITING:** Caring for a sick or elderly relative and need a break for a few hours, or you would like someone to call on you. Call Sue Dormer 613254.

**HOUSEHOLD BUDGETING ADVICE:** Call Tony Brunton 612191.

**ODD JOBS ABOUT THE HOUSE:** Call Jeff Bedford 612753.

**VISITING:** Hospital. If you are unable to visit a parent or relative, or parents would like support with a child in Hospital: Call Fr. Roy Brown 612377 or Keith Dormer 613254.

## **ALL SAINTS' CHURCH HARBURY SUNDAY SERVICES**

Holy Communion, 8am

Sung Eucharist, 10.30am (Except 1st Sunday of Month:

Sung Eucharist 9am)

Family Service, 10.30am on 3rd Sunday of Month

Evensong, 6.30pm (Except 3rd Sunday)

*Please see notice board in Church for weekday services or revised times on special occasions.*

**Rector:** Father Roy Brown, The Rectory, Vicarage Lane, Harbury  
Tel.: 612377

## Laugh Line

A local preacher arriving to conduct the morning service was asked what he was going to preach about.

*"About Peter cutting the ear off the high priest's servant, he replied. He was then asked: "Could you not preach from a different text? It's our Harvest Festival today".*

The preacher thought about it for a few minutes and then said: *"I've thought of a different text: First the blade, then the ear".*

## FROM THE RECTOR

Most of us like looking in the mirror. It is not that we get a great thrill in doing so, nor are we greatly surprised by what we see. But there is still a fascination about mirrors and if there is one in the vicinity, it is a good bet that we will end up looking at ourselves in it. I wonder if we do this because it is a reassuring thing to do? We assure ourselves that we have not changed dramatically since we last looked. Mirrors tell us the truth, and contrary to what some people say, the truth is not always depressing or discouraging. It is good to know the truth about ourselves and if we accept it, we can begin to live.

Someone once described the gospels as a mirror; the church has to look into them to discover a true picture of what she should be and hopefully to find a true reflection of herself.

It is quite a good way of thinking because the church's life and the lives of all believers have to be founded on the gospel, have to be true to the gospel. Just as every human institution has to revise its rules and regulations every so often, so too the church must be continually looking at herself in the mirror - the gospels, to make sure that she is a true echo of the Word of God and a true reflection of Jesus Christ.

*"To listen to the word and not obey is like looking at your own features in a mirror and then, after a quick look, going off and immediately forgetting what you looked like. But the man who looks steadily at the perfect law of freedom and makes that his habit - not listening and then forgetting, but actively putting it into practice - will be happy in all that he does." (James I Vs 23-25)*

8

All this, of course, must be taken personally. Each one who claims to be a follower of Christ - a Christian, must look at themselves in the mirror of the gospels and must accept what they see there. They must accept the truth about themselves. And that will mean, no doubt, accepting the fact that the person they see there is not nearly as good, as noble or as dependable as they might be but there will be another, more reassuring side to the picture and that will be that the person they see there has been created by God, gifted and loved by God and in spite of all that may have happened, still dimly resembles the Christ in whose image they were made. To look at this two-sided truth is to be reminded of the way Saint John the Baptist summed it up: "*He must increase, but I must decrease*". And this sums up what is going on in our lives. Christ is helping us to become, our true selves, the people we were created to be.

The last Sunday in this month is Advent Sunday. It is the celebration of the beginning of the story of our salvation. But for God there are no beginnings and ends. he is always at work and always in us, helping us to grow.

Fr. Roy

## FROM THE REGISTERS

*Holy Matrimony - All Saints' Ladbroke*

11<sup>th</sup> October: Kevin Williams to Sarah Moore

*Holy Baptism*

11<sup>th</sup> October: Ryan James Megeney

## FROM THE CHURCHWARDENS

Our first task this month is to apologise for the lack of heating in Church for most of October. Although the statisticians have declared the month to be the sunniest for more than 40 years, it was no consolation, with the onset of autumn frosts, for the temperature quickly plummeted in Church. At the time of going to press, the boiler mechanism is fully working again.

The Church has in recent years presented several very good plays around the Christmas festival. This year an advent play will take place in Church

on the last weekend in November. The play is being fully supported by the Harbury Theatre Group, both on and off stage and rehearsals are fully under way. Full details are set out in a separate item following this article.

We are always delighted to be able to bring news of our excellent young choir. Last week, Father Roy was very happy to induct three additional full members - Nicola Guilford, Emmeline Smart and Catriona Rollason. We congratulate them and are sure they will enjoy this new venture.

The Christmas Fair will take place in the Village Hall on **Saturday 6<sup>th</sup> December**. The theme for this year will be "*Medieval*" and further details are given elsewhere in the magazine.

### **Ruth and Jeff**

#### **THE ADVENT PLAY: "*FOXES HAVE HOLES*"**

Did you know that the Archangel Gabriel brought a student angel to earth as his assistant? Or that Mary's first reaction to a stranger who promised her a baby was indignant suspicion?

*Foxes Have Holes* (see Matthew 8.20 for the full quotation) is an Advent play to be performed in Harbury towards the end of November which gives a new slant (or two) on the 2000-year-old story. The second half, departing from the Holy Land where Act I takes place, leaps to Eastern Europe in the 20<sup>th</sup> century. Here, Roman domination is replaced by totalitarian rule; Romania under Ceausescu provided the inspiration, plus a dash of Nazi and similar regimes. How do the three contemporary sages avoid returning via the sadistic frontier guard who here replaces Herod?

There is excitement, humour and yes, some violence (as in Jesus's day). At the end the angels present the audience with a challenge. What will your answer be?

"*Foxes have Hole*"s is a new work by Edyth Algar, a member of the congregation, whose passion play "*See you in the City*" was performed in the church 13 years ago.

The producer is Beryl Checkley. Sally Stringer is assistant producer. Members of the cast are: Robert Stringer, Iain Graydon, Sophie Eadon, Lauren Woodward, Keith Hayes, Gordon Robbins, Tony Brunton,

Robert Waterman, David Winter, Carol Percival, Sue Dormer, Isobel Grimes, Catriona Rollason, Caroline Dormer, Peter Clarke, Janet Thornley, Rosemary Harley, Lizzie Buck, Stephanie Buck, Richard Bloxham, George Bloxham.

The two performances in All Saints' Church Harbury are at 7.30pm on **Friday and Saturday 28<sup>th</sup> and 29th November.**

**Ruth and Jeff**

## **MOTHERS' UNION**

After a service of Holy Communion in Church, led by Father Roy, the October afternoon meeting continued in the Tom Hauley Room. After Notices, members shared their reminiscences about favourite Keepsakes they'd brought along.

The Evening Meeting followed the Tuesday Communion service and some members brought their favourite recipes with samples for everyone to try - ranging from savoury sausages to treacle tart and carrot cake. Recipes were exchanged and all samples were declared delicious!

Some of our members joined a trip to Westonbirt Arboretum, organised by Jeanne Clarke, of the Kineton Branch. It was a glorious sunny day and the trees were magnificent, dressed in their Autumn colours - a most enjoyable, refreshing day out.

Next meetings:     **5<sup>th</sup> November** 2.30pm - Bee Keeping  
                              **18<sup>th</sup> November** 8.00pm - Christmas Flower Arranging  
                              (Open meeting - all welcome)

**Audrey Tebaldi and Anne Moore**

## **TODDLERS' SERVICE**

At our Harvest Service we filled a supermarket basket with different kinds of food and Mrs. Bedford told us how God makes the plants grow which give us our food. We said our Thank You prayer and sang "*We plough the fields*".

Mrs. Bedford showed us pictures of farm machinery and all the children stuck wheels on to pictures of tractors and took them home.

**C. Mary Catt**

**NIFTY NEEDLE  
CURTAINS AND BLINDS**

High St. Harbury  
Leamington Spa  
Tel: 01926 612 927  
Fax: 01926 613049

**FREE ESTIMATES**

**PERSONAL SERVICE**

**HOME VISITS UP TO 7pm**

**MOST WELL KNOWN FABRICS  
AVAILABLE AT DISCOUNT**

OPEN: Mon/Tues/Thur 9-5  
Wed/Sat 9-1 Fri 9-6

**WASTE-AWAY**



**PROFESSIONAL  
SKIP HIRE**

- FULL RANGE OF SIZES 4-14 CU YARDS
- FAST, RELIABLE SERVICE
- DOMESTIC, COMMERCIAL - CONTRACT

**01926 888918**

RANELAGH TERRACE,  
LEAMINGTON SPA

*Custom  
& Bodywork  
Services at*

**The Garage**  
**Ladbroke**

**ALL TYPES OF BODY WORK**

**FREE INSURANCE ESTIMATES**

**RESPRAYS**

**MECHANICAL REPAIRS**

**SERVICING**

**M.O.T. REPAIR WORK**

**WELDING**

**COLLECTION & DELIVERY**

Personal Service from Steve Birch

**01926 813590**

**Mobile 0836 699489**



# W. Goodwin & Son

## Funeral Directors

38 COVENTRY STREET, SOUTHAM

All arrangements personally conducted  
in any district

Telephone: Daytime 01926 812445

Night - time and weekends

Brian: 812656 John: 812657

# Visiting Chiropodist

*Collette A. Green*

SEN MSSCh MBChA

1, NEWSTEAD DRIVE  
SOUTHAM

WARWICKSHIRE. CV33 0LT



TELEPHONE  
01926 817209

# BENCH

22 OXFORD ST  
SOUTHAM

# TELEVISION SERVICE

REPAIRS  
SALES  
RENTAL



mitsubishi dealer

# SOUTHAM: 812304

WHATEVER YOU DRIVE  
YOU ARE WELCOME AT

DOVEHOUSE  
AUTO  
SERVICE

TELEPHONE: HARBURY 612809

FOR ALL YOUR MOTORING  
MOT's, REPAIRS, SERVICING

# Ladbroke News

## NOVEMBER

- Sun 9 REMEMBRANCE SUNDAY** - Sung Communion 9am with Act of Remembrance
- Wed 12** Holy Communion 2pm; Women's Fellowship 2.45pm
- Sun 16 6<sup>th</sup> Sunday before Christmas** - Sung Communion 9am  
Children's Church 11am; Evensong 6pm
- Wed 19** Holy Communion 9.45am
- Fri 21** The Magic Lantern Show in Ladbroke Village Hall 7.30pm prompt
- Sun 23 5<sup>th</sup> Sunday before Christmas** - Sung Communion
- Wed 26** Holy Communion 9.45am  
Parochial Church Council meeting at the Old Rectory 7.30pm
- Thurs 27** Major Creese talks on Gardens
- Sat 29** Christmas Fayre 2.30pm
- Sun 30 Advent Sunday** - Holy Communion 9am

## DECEMBER

- Wed 3** Holy Communion 9.45am  
Christmas Dinner at Offchurch
- Sun 7 Advent II** - Family Communion 10.30am

## FLOWER ROTA FOR NOVEMBER

- 9<sup>th</sup> and 16<sup>th</sup>: Jo Sowerby
- 23<sup>rd</sup>: Mrs. Darby
- No Flowers in Advent

## LADBROKE CHURCH NEWS

Since I last sat down to write the Church News notes, the surrounding fields have changed. At the time they were full of ripe corn, but now a month later, due to the wonderful weather they are green again - after having been harvested, ploughed and re-sown.

Our church's calendar is very similar. Harvest Suppers, All Souls' and All Saints' Days, Remembrance Sunday - then rehearsals for the Christmas Carol Services and of course Christmas itself with all its joy and festivities.

Our Harvest Supper was a 'sell-out' and great fun. The raffle on the night made £65. Hazel will take this with her when she goes to Egypt in December for All Saints' Refuge in Cairo - a charity very dear to her heart.

The British Legion have promised to be with us for our *Remembrance Day Service* on **Sunday 9<sup>th</sup> November** when they will sound the Last Post and Reveille. Service as usual at 9am.

The *Christmas Fayre* will be on **Saturday 29<sup>th</sup> November** at 2.30pm. Jill Moore will be very grateful for bottles - not necessarily alcoholic - for the Tombola Stall and Hazel Sharples wants any Bric-a-Brac for her stall. I expect folks will be going around collecting as usual.

I have no doubt you have already seen the collapsed church wall. It has been threatening to fall for a long while. All being well, the two holly trees will have been removed before you read this. Two estimates have been received for rebuilding the wall, so hopefully all will be repaired before too long.

Last, but by no means least, a very big welcome to Ladbroke to the new residents of Hedges Close. We all wish you well and hope you will soon have settled in and all the nagging problems sorted out.

**Betty Winkfield**

### **WOMEN'S FELLOWSHIP**

Many thanks to Jo for having us at her place in October. A very relaxed afternoon, though we did give some thought to the words we were to discuss.

The Rector is coming to talk to us in November. The meeting will be at Catherine's home. For anyone else who would like to join us, the meeting begins about 2.45pm following the Communion service in Church at 2pm.

**Betty Winkfield**

### **LADBROKE AND DEPPERS BRIDGE W.I.**

#### 25th Anniversary of the restart of Ladbroke and Deppers Bridge W.I.

The meeting was held in Ladbroke Village Hall on 23<sup>rd</sup> October. The President, Mrs. Catherine Spence, welcomed members and visitors to the meeting. A welcome was also extended to the V.C.O. Mrs. Collins and to the two Harbury W.I. members who kindly acted as Tellers.

Present were three members from the restart: Mrs. Badman, Mrs. Norgate, and Mrs. Ross. They were presented with Warwickshire W.I. badges. Two other original members from Deppers Bridge, Mrs. Haynes and Mrs. Bartlett, joined us for the evening. Mrs. Dixon was unable to attend. Former Presidents, Mrs. M. Williamson from Ladbroke also attended, but Mrs. Wilson was unable to be with us.

After the business of electing a new President and a committee of seven members, wine and cake was served. Mrs. Spence had made the cake and decorated it with the W.I. Logo which was superb and an enjoyable evening was had by all.

Our new President is Mrs. Susan Moore and we wish her a very happy time in office. Thanks were extended to Mrs. Spence for her hard work as President and we hope her health will remain better. Committee members: Anne Edwards, Tina Gilbert, Sheena Healey, Marie Kennedy, Hazel Sharples, Jo Sowerby and Catherine Spence.

Arrangements were made for our *Christmas Dinner* on **Wednesday 3<sup>rd</sup> December**, which will be a visit to the Prince Regent Canal Boat at Offchurch. A visit to the Kenilworth Priory Theatre has been booked for **Monday 20<sup>th</sup> April 1998**.

On **Thursday 27<sup>th</sup> November**, Major Creese will be giving a talk on *Gardens*. Visitors will be welcome.

**Hazel Sharples**

## **LADBROKE PARISH COUNCIL REPORT - October**

There was another full turnout of councillors for the Parish Council meeting held in the Village Hall on 15<sup>th</sup> October. Chairman Peter Williamson and Councillors Geoff Timms, Marion Grainger, Peter West and Carol Northorpe were kept in line by our very able Parish Clerk, Elsa Greenway.

During the month, Peter Williamson had met with the County Council Surveyor for roads to look at some options for improving the parking access and footpaths at the north end of the Banbury Road, as recommended in the recent conservation survey report.

There had still been no reply from Mr. Jackson of Crosby Homes in

answer to the complaints which were raised last month. (Contact was made at a later date and Mr. Jackson will be meeting with councillors on Monday 27<sup>th</sup> October). Warwickshire County Council will be asked to instruct Crosby Homes to reinstate Windmill Lane to its former condition.

Mark Teverson and Tim Norgate have kindly volunteered to secure the grit bin at the north entrance of the village.

In response to the costed police plans/ area objectives for 1998/9, the comments to be sent from Ladbroke are a plea for extended opening hours at Southam Police Station and in view of the increasing numbers of residents in the village, more access to the Community Police Officer, if possible.

Elsa had prepared the financial predictions for the following year which were accepted.

Unfortunately the construction of the Housing Association homes has been delayed. However, Gloucester Housing Association have now short-listed contractors to build them and they are expected to be completed by Autumn 1998.

Geoff Timms submitted his resignation as footpath coordinator. Peter Williamson gave a sincere vote of thanks for all the work that Geoff has put in to giving the village a network of footpaths to be proud of. We were delighted that Michael Boden Pritchett of Ascote Cottage, Chapel Ascote has volunteered to be the new coordinator. He admitted he had a hard act to follow and will hope to carry on from the excellent groundwork which has already been done. Judging from the ideas Michael already has, the footpaths are again in good hands. The footpath on the other side of the bypass from the village has now been opened up.

In his report, Stratford District Councillor Bob Stevens informed councillors that the repair of the bridge at Deppers Bridge has been stopped - for this year at least.

Recommendations are being made regarding traffic calming in rural areas. Radar traps are now installed on the Dunchurch Road. The problem of motorcycles racing each other along the bypass at night was

aired. Stratford District Council will be asked to provide a road sign for Folly Lane leading to Bishops Itchington.

**Carol Northorpe**

## **LADBROKE VILLAGE HALL**

It is too soon to say how the Halloween Dance went. As I write, it is tomorrow evening!

The next event to look forward to is *The Magic Lantern Show* on **Friday 21<sup>st</sup> November** (see advert at the back of the magazine). See you there folks. I have tickets to sell as have all the Village Hall committee members.

**Carol Northorpe**

## **HARBURY PARISH COUNCIL MEETING - October**

Commenting upon planning matters is an important Parish Council function and one which Councillors discharge diligently.

This month, replacement windows at the Manor; amendments to plans at Mercia House, High Street; a pitched roof to the garage at 1 Mackley Way and an extension to 1 Hall Lane; were all considered with no objections, as was tree work at Stonewalls, Farm Street and Harbury Hall. Stratford District Council approved tree work at the Manor, but refused to allow the Churchyard Limes to be felled.

Councillors met Laing representatives to discuss the practicalities of the Binswood End development, which is to be called "*Hillside*". They are completely in the dark though about the allocation policy for the social housing.

At the Bryant's Estate, they are not happy with the lighting provision (too much) or the footpaths (too few) and want the direction signs to the development still left round Harbury to be removed "*now there is nothing to show it is a Bryant's Estate*", as Bill Middleton erroneously contended.

They get stuck into the nitty gritty, but when it comes to strategic

planning, where they can have a beneficial effect on the future, they are very hesitant.

Harbury is undertaking a Village Design Statement, led by Sharon Hancock, to identify important features and provide a building blueprint for the new Century. However, the Parish Council turned down Stratford District Council's offer of help to survey the parish's needs and desires with a Village Appraisal. They have also been lukewarm about the Structure Plan consultations and will struggle to put their representations in on time, leaving the collation of their responses to Councillor Bill Middleton.

Much time was spent agonising over the proposals to close Fenny Compton and Tysoe Fire Stations with claim and counter claim about the accuracy of the figures used in evidence.

District Councillor Cooley explained that it was not essentially a cost-cutting exercise by the county - the savings were modest, but was being forced on the authority by government insistence that there was over-provision. He worried that both threatened stations were staffed by 'retained' officers as was Kineton, the nearest alternative, as these part-time firemen could not be transferred to other stations to bulk up provision.

Councillor Drinkwater was frustrated by Police delay in taking up the Parish Council's offer of an office for Pc. Bosworth in the Wight School. Sharon Hancock thought it was important that the Village Pc had the time and space to get to know local people and especially the children.

Councillor Keith Thompson, the Parish Council representative on the School Governors, reported there were now 213 children on the role and the school accommodated the Kids Club and Nursery. The parents' meeting will be held on **Tuesday 18<sup>th</sup> November**.

Councillor Ron Grey will take on the planting of the Sentinel Oaks in Deppers Bridge and Councillors Bill Middleton, John Hunt and John Woodward will plant the remainder. The council will pay for the trees. John Woodward is also to plant the free crocuses, where he thinks fit. The Scouts will clear litter from the Spinney.

Work is still taking place on the job schedule for the Parish Caretaker and the Parish Council adjourned to discuss a replacement for Clerk, Alison Hodge.

**Linda Ridgley**

## **HARBURY SOCIETY**

Alan Griffin had some wonderful slides to illustrate his talk on the History of Firefighting - some of them were collector's items and very beautiful. He started with the Romans who employed 7,000 Firemen in Rome alone. The equipment used by the Romans: hooked poles, buckets, ladders and water siphons were not bettered until the Industrial Revolution.

By 1690 many different Insurance Companies had sprung up. Fire Engines became wheeled vehicles. Records of the Great Fire of Warwick in 1694 show the loss of the Town Water Engine, value £40.

At the end of the nineteenth century, the London Fire Brigade was well established and supported by the Prince of Wales who turned out to help at fires incognito. Girton College, Cambridge had its own Ladies Brigade in the 1890 and the Fireman's Magazine of the time had considerable correspondence on the pros and cons of stays for Lady Firefighters!

The next event is a talk on *Ilmington's Apple Day Celebrations* on **Tuesday 11<sup>th</sup> November** at 7.30pm for 8pm in the Tom Hauley Room. Everyone is welcome and we would be pleased to see examples of different varieties of apple that are grown in Harbury. So please bring them along - labelled!

On **Saturday 29<sup>th</sup> November** (9.30am to 4pm) in the Village Hall we are taking part in the *Village Design Workshop*. Everyone is encouraged to come along (there is a free lunch) and help to build up a village view on acceptable design. We will work in groups to distil the essence of each area of the village and your help is vital. See you!

Advanced Warning! Cecil Bloxham on the Quarry Workers - **Tuesday 27<sup>th</sup> January** in the Tom Hauley Room.

**Linda Ridgley**

## HARBURY WOMEN'S INSTITUTE

We are off once more with a new season of Scrabble, Darts and Short Mat Bowls. Teams have been chosen, so watch this space!

Then for anyone interested there are Crochet Classes, a Christmas Swag day and Camel-trekking in the Quantocks (don't ask!).

We have a stall at the *Christmas Fair* on **Saturday 6<sup>th</sup> December** and there will be cakes and goodies for sale. We hope for support from members please. The *Carol Service* will be at Priors Hardwick on **Sunday 7<sup>th</sup> December**, 3pm. Plans are being made for our 80<sup>th</sup> Anniversary in February 1998.

Mrs. Elsie Hastilow came to demonstrate Parchment Craft. Once one has the correct tools and materials very attractive cards can be made for all occasions. All designs are traced onto the parchment then can be outlined with ink, coloured and shaded with paints or crayons, embossed or cut in open work patterns which looks like lace. Providing one has a pretty steady hand, some amazing results can be produced by readers attempting this old craft. Members were able to purchase cards made by Mrs. Hastilow.

November hostesses: Gunder Walsh, Dorothy Travis and Lyn Edwards

**Jeanne Beaumont**

## HARBURY FOLK CLUB

The 155<sup>th</sup> Harbury Folk Club had no theme. In fact, it was a 'do what you like' night (within reason of course!).

The Harvesters kicked off with "It's Good to be Back Here", which of course it is, followed by "One Hit Wonder". During the first half we also had contributions from Rick, The Blues Fathers, Ron, Gilly, who sang a great version of "Who Knows Where the Time Goes". Peter McDonald ended this stint with some French Canadian waltzes on the melodeon and "Geordie Will Dance the Jig".

The second spasm included Des, Fill and Drill playing a Morris tune, Mike singing the song with the best opening line ever! and Rick begging us to "Have some Madeira".



# HARBURY LONDIS



Open seven days for your convenience

**GROCERIES • THE NATIONAL LOTTERY™**



**OFF LICENCE • FLOWERS & PLANTS**

**DESIGNER GREETING CARDS • VIDEO LIBRARY**

8.30 a.m. - 9.00 p.m.  
- Monday - Saturday -

10a.m. - 1p.m. and 6 p.m. - 9p.m.  
- Sunday -



All major Credit Cards now taken

**MILL STREET, HARBURY**  
**TEL: 01926 612645**



**THE DOG INN**  
**Harbury**  
**Tel: 01926 612599**

*Welcome - from Jay & Maureen*

OFFERING 3 COURSE SUNDAY CARVERY @ £7.95

2 COURSE CHILDREN'S MENU FOR ONLY £3.00



FULL RANGE OF BAR & RESTAURANT MEALS.  
AVAILABLE FROM TRADITIONAL TO THE UNUSUAL.  
TAKE AWAY MEALS MONDAY - SUNDAY  
FINE SELECTION OF HAND PULLED ALES,  
INTRODUCING GUEST ALES EVERY WEEK.

\*\*\*\*\*

*Room available for private parties*

# D.W.A.G.

**O** **B** **U** **G** **Builders** **R** **E** **E** **N**  
**Tel: 01926 612460**  
**Mobile: 0860 849777**

Local Tradesmen who take pride in their work.

We specialise in rebuilding half-timbered and period buildings, renovations, extensions, conservatories, patios - in fact any form of building work.

**ESTABLISHED OVER 30 YEARS**

**GOOD FENCING  
MAKES GOOD  
NEIGHBOURS**



**"You've seen the Rest  
Now see the BEST"**



**ROLLASON**  
**FENCING AND SHEDS**  
**EST 1964**

*Professional erection service available  
(01926) 613009 or (01926) 612066  
Fosse Garage, Fosse Way, Harbury*

**SOUTHAM**

*PhysioFirst*

**CENTRE**

**JACKIE SNELL**

**MCSP SRP**

**CHARTERED AND STATE  
REGISTERED PHYSIOTHERAPIST**

**Health insurance recognised**

**Reflexology & Aromatherapy  
also available**

**10 Daventry Street,  
Southam**

**Tel: 01926 614 614**

Member of the Organisation of Chartered Physiotherapists in Private Practice



*Traditional Acupuncture  
&  
Chinese Herbal Medicine*



**FRANCES  
FARRER**

**MBAcC, RCHM  
(Cert. Ac. Beijing)**

The combination of Chinese Herbs and Acupuncture, Laser Therapy now also available, offers help to a wide spectrum of illness covering stress, anxiety, P.M.T., headaches, back, shoulder or elbow pain, and more serious problems such as arthritis and M.E.

*For information ring  
01926 817583*

**WHITEHALL CLINIC OF  
NATURAL THERAPY,  
7 Warwick Road,  
Southam, CV33 0HN**

*Parking facilities*

The concluding half started with The Harvesters and Dougie playing harmonica followed by Fill and Drill and Dougie playing harmonica then Des (without Dougie!) followed by Peter McDonald, the Blues Fathers and Ron. Gilly closed the evening singing the sexiest song of the evening (this time with Steve on harmonica).

The raffle was in aid of the Mencap Bike Ride and raised £40.

The December Folk Club will be compered by Peter McDonald and the theme is "*Christmas*".

**Sue Hartland**

## **HARBURY THEATRE GROUP**

If you missed out on obtaining tickets for the Medieval Banquet, never fear the Theatre Group has further events planned for the coming season.

The Group is assisting with two forthcoming productions, "*Foxes Have Holes*" will be performed in the Church on the **28th and 29th November**. Details appear elsewhere in the magazine. On the **16th and 17th January** in conjunction with the Harbury Chronicles Committee we shall be putting on a Christmas story - "*The Toy Cupboard*" written by Anne Megeney in the Village Hall.

The Spring production on the **2nd, 3rd and 4th April** will be "*The Scottish Play*" and we shall again be hosting the A.C.T. Festival in June 1998. Further information will be available in the December edition of the Harbury & Ladbroke News.

**John Holden**

## **HARBURY BROWNIES**

On 14<sup>th</sup> October, Brownies past and present, gathered at the Village Hall to mark the retirement of Snowy Owl, otherwise known as Moya Waterman!

A large number of girls in the village have benefited from Snowy Owl's expertise and her kind, caring nature. After 6 years as Brownie leader, Moya has reluctantly had to give in to the pressures of work and her

normally keeps wicket for the League side, proved a very competent slow bowler. Seb Briggs (17) and John Wilkinson (18) - a welcome return for a former Club skipper - started slowly for Harbury, but Will Russell (20) and Ed Russell with a fine 56 not out, picked up the pace. Unfortunately, some of Harbury's more senior batsmen proved unable to cope with the pressure with 5 of the later batsmen scoring a total of 2 runs and 4 of them were run out. They will remain nameless in the best traditions of the club and of the Old New Inn where they drink regularly, but Will Russell will give out their names for a small fee. In spite of a very tense finish Harbury crumpled to 140 all out in the 36th over.

The League XI played a further friendly against old rivals Rugby Portland Cement at Long Itchington on 24<sup>th</sup> September. RPC recovered from 54 for 4 to 182 for 4 in their 40 overs. Gary Haynes was the only successful bowler with 2-33. After losing Paul Bennett for 10 Harbury rallied to 71 for 1 with talented teenager Greg Sherrington 37 and Will Russell 24, but then the innings folded and Harbury finished on 119 all out to lose by 63 runs.

In a super first season in the League, the side played 14 Division Four games, won 7, lost 2, drew 5 and 4 were cancelled. They also lost a cup game against mighty Offchurch, and lost two Friendlies.

**Sunday Friendly XI** - Matches at this time of the year are at the mercy of rain and cancellation. But in an exciting local derby on 7<sup>th</sup> September, Harbury put Barford into bat. Hostile bowling by Ed Russell 3-13, Rich Lowe 1-32 and Gary Haynes 2-11, was followed by 9 overs of entertainment by Gary 'Shane' Lowe with 4-34. Only D Morris 27 and S Taylor 26 coped with the Harbury attack and Barford were bowled out at tea for 109. Harbury struggled at first against very steady and accurate bowling by J Evans 2-35 and S Taylor 1-16 and after 30 overs were on 58 for 5. However, 'Major' Carr 30 and Will Russell 40\* then took control scoring 14 off the 31st over and Harbury cruised to victory on 110 for 6 in the 36th over.

In their final match of the season, the Harbury Sunday XI added another victory to the list by beating Badby by 98 runs in glorious autumn sunshine. Harbury started badly with both openers out for 0, but three superb innings saw Harbury move through 2 for 1 and 94 for 3 to 203 for 4 declared at tea. John Clifford laid an impressive foundation with 40, and Ian Lowe hit a rapid 52, but the star performance was Phil

Linnett with 103 not out. Phil Linnett - a former Warwick player - enjoyed his first century for Harbury, with some fine hitting as he danced down the line. Phil's footwork was particularly delightful in his second fifty, and his century included eleven fours and two sixes. Badby had no reply to this and some steady bowling by John Clifford with 5 for 18 and Ian Lowe with 3 for 16 reduced the home side to 107 all out.

In their first reorganised season under skipper Mike Daniels the Harbury Sunday side have won a creditable 7 games, drawn 4 and lost 6.

Average for Sunday Friendly Batting will be published next months.

**Ian Jackson**

### **Averages for 1997 Season, Batting - Qualification 7 Innings**

<b>Saturday League XI - Division 4 Matches</b>					
<b>NAME</b>	<b>RUNS</b>	<b>HIGHEST SCORE</b>	<b>INNINGS</b>	<b>NOT OUT</b>	<b>AVERAGE</b>
Zak Briggs	409	85*	11	3	51.1
Seb Briggs	269	44*	11	3	33.6
Will Russell	299	61	12	2	29.9
Ed Russell	264	100	12	2	26.4
Paul Bennett	250	41	15	1	17.9
Greg Sherrington	123	24	11	2	13.7
Ian Brearley	30	10*	7	5	15.0
Ian Barrett	48	37	5	0	9.6
Neil Maunder	42	18*	8	2	7.0
Gary Haynes	22	11	7	3	5.5

<b>Saturday League XI - All Matches</b>					
<b>NAME</b>	<b>RUNS</b>	<b>HIGHEST SCORE</b>	<b>INNINGS</b>	<b>NOT OUT</b>	<b>AVERAGE</b>
Zak Briggs	412	85*	12	3	45.8
Seb Briggs	286	44	12	3	31.8
Will Russell	380	61	15	2	29.2
Ed Russell	348	100	15	3	29.0
Paul Bennett	284	41	17	1	17.8
Greg Sherrington	162	24	13	2	14.7
Ian Brearley	33	10	8	5	11.0
John Clifford	66	19	8	0	8.3
Ian Barrett	48	37	7	0	6.9
Neil Maunder	47	18	9	2	6.7
Gary Haynes	32	11	9	4	6.4

**Averages for 1997 Season, Bowling - Qualification bowled in 7 matches****Saturday League XI - Division 4 Matches**

NAME	OVERS	MAIDENS	RUNS	WICKETS	AVERAGE
Gary Haynes	99	21	261	28	9.3
Ian Brearley	106	16	180	16	11.3
Ed Russell	179	50	449	30	15.0
Will Russell	108	23	292	15	19.5

**Saturday League XI - All Matches**

NAME	OVERS	MAIDENS	RUNS	WICKETS	AVERAGE
Gary Haynes	117	23	341	3	10.3
Ian Brearley	111	16	198	19	10.4
Ed Russell	202	52	568	31	18.3
Will Russell	131	27	399	19	21.0

**Sunday Friendly XI - All Matches**

NAME	OVERS	MAIDENS	RUNS	WICKETS	AVERAGE
Ian Lowe	130	37	323	35	9.2
John Clifford	105	20	401	22	18.2
Gary Lowe	102	14	470	21	22.4
Richard Lowe	78	9	319	13	24.5

**All Matches**

NAME	OVERS	MAIDENS	RUNS	WICKETS	AVERAGE
Ian Lowe	130	37	323	35	9.2
Gary Haynes	143	31	391	38	10.3
Ian Brearley	111	16	198	19	10.4
Ed Russell	228	64	612	39	15.7
Will Russell	166	31	522	30	17.4
John Clifford	117	24	439	23	19.1
Gary Lowe	102	14	470	21	22.4
Richard Lowe	78	9	319	13	24.5
Zak Briggs	31	6	107	3	35.7

**HARBURY NETBALL CLUB**

You may have noticed that we are trying to improve the areas around the netball court by laying slabs and bark. Benches have been purchased and will be placed upon the slabs in the near future. We would like to thank Marie and Brian, Jenny and Rick, Janet and John, and Pat and Brian for their help on the Saturday mornings before the season started. Thanks to Mick Kane for seeing that another pair of hands was needed and stopping to help us. Thanks also to Carl Wallington for being the

digger driver and to John Warner for the loan of that digger. We would like to commend Colin Sheasby for supplying us with bark, for which we are very grateful.

Teams for this season are as follows:

- 'A': Mal, Paula, Leah, Vanessa, Lucy, Hilary and Sue.
- 'B': Ellie, Gemma, Jean, Becci, Helen, Mandy, Janet and Leasal.
- 'C': Di, Vanessa, Hannah, Katie, Kim, Leone and Lisa.
- 'D': Alicia, Kelly, Marie, Jenny, Pat, Hallane, Nicky, Stephanie, Corinna, and Clare.

We wish the teams a successful season and are pleased to welcome back girls who have had a break from netball during the past year for one reason or another.

The first fund raising event was a children's disco in September which took place in the Village Hall. This was specifically for primary school children, and I'm told they all had a wonderful time. The disco was provided by Sound Machine and the children really appreciated the 'Harbury Spice Girls' who gave up their Saturday night drinking to entertain them. A profit of £67 was made.

The next event is a *Quiz Night* at the Harbury Village Club on **Sunday 23<sup>rd</sup> November**, teams of 4, £1.50 per person, 8pm start. Refreshments and a raffle. Entry can be on the night, or ring Becci on 613163.

This will be followed by a *Grand Fashion Show and Sale* in the Village Hall on **Wednesday 3<sup>rd</sup> December**. Tickets are £3 each and this includes a first drink. We have had a number of very successful fashion shows, and we have booked the Village Hall so that more people can attend and purchase the many bargains - just in time for Christmas. Don't miss it. There will be some admittance on the door, but obviously numbers are limited because of space. Tickets from Janet on 612841, Jenny on 612700, Paula on 613082, Becci on 613163, or myself. Any netball player should be able to supply you with tickets.

**Pat Summers 612059**

## **HARBURY TENNIS CLUB**

September came and went so quickly that I missed the deadline for last month's article!

We had a good year in the Banbury Summer League, finishing 4<sup>th</sup> (of 7)

with 5 wins and 7 defeats.

We have got off to a good start in the Winter Leagues, with the 'A' team beating Banbury West End and losing to Byfield 'A' and the 'B' team winning its first and only match so far, against Banbury 'D'.

Our Internal Leagues have been a great success, dominated by Geoff Prince, who seems to have managed to make **both** the Singles and Doubles competitions! Geoff and his partner Pauline Hayes are due to play Ed Wilson and Sue Panton shortly. The Singles will be against me.

The AGM was well attended, possibly helped by the fact that wine was provided in abundance. One of the more important decisions at the meeting was to appoint Ed Wilson as wine waiter.

Colin Mercer continues as our very able 'player manager'/Chairman. Our thanks go to him for all the effort and enthusiasm he has put into the club over the past year. I made the foolish mistake of asking what the post of Secretary entailed. The meeting was generally very buoyant, with some very upbeat suggestions on how we can expand next year. We adjourned to the pub, feeling very pleased with ourselves.

**David Snell**

## **7<sup>th</sup> HARBURY HASH**

Sunday 28<sup>th</sup> September, the weather was fine and the hares 'Easy Pickings', 'Womble' and 'Why Not' had set another fine trail for the annual Harbury Hash. At 3.15pm, 73 hashers set off from Stoneythorpe Hall with the new hashers blissfully unaware that they would soon have to negotiate the first of three water hazards.

The temporary bridge across the river ensured the pack was soon spread out, with the back markers looking for alternative routes, and the second water hazard catching out those trying to short cut. We had been warned to be careful when crossing fields with horses, but we were totally unprepared for the motor cycle cross circuit. We were then confronted with the final water hazard, but only 4 fine hashers waded through the river under the road bridge.

There were 2 new types of checks this year, the 1st being an FB check. 'Dun Inn' was most put out that he was the only hasher to check it out.

# 50% off BLINDS SALE

VERTICALS • ROLLERS • VENETIANS • ROMANS • PLEATEDS  
Phone now 9am-9pm 7 Days

**FREE  
FITTING**

**SELECT  
AT HOME**

**FAST LOCAL  
SERVICE**

## 01926 831348

If no reply call 0800 212532



## Albany

## P.D.Q. SECRETARIAT

For a professional and confidential  
word processing/typing service:

*Letters - Reports - CVs - Theses -  
Mail Shots, etc.  
Laser Quality Printing*

*Julie Killian*

*The Bungalow, Chapel Street,  
Harbury - Tel: 01926 612265  
(Answerphone out of office hours)*

*A service based on Professionalism,  
Discretion & Quality*

## R&S DOMESTIC SERVICES



REPAIRS TO MOST MAKES OF

Washing Machines

Tumble Dryers

Cookers

Dishwashers



PHONE - ROB CENEY on  
HARBURY 613707

## Michael Jerome



**Carpets**



A COMPLETE CARPET SERVICE

- Choose a new carpet from our extensive range
- Expert Fitting - Fully Guaranteed
- Existing Carpets re-fitted
- Professional On-Site Cleaning
- Vinyl Sheet Flooring

6 Meadow Road, Southam

**Telephone: Southam 813325**

Michael Jerome is a Master Fitter with the National  
Institute of Carpet Fitters with 30 years experience



FOR PROFESSIONAL HAIR CARE



# Kathleen Ellis

CHAPEL STREET, HARBURY. ☎ (01926) 612326

RETAILERS FOR WELLA HIGH HAIR PRODUCTS

TO ADVERTISE CONTACT:  
DAVID SNELL ON (01926) 614 614

# HARVEY BUILDERS

Registered Since 1979

**YOUR LOCAL BUILDER FOR ALL YOUR  
HOME EXTENSIONS AND ALTERATIONS  
FROM PLANS TO COMPLETION.**



**FOR PROMPT, PERSONAL SERVICE PHONE 01926 817906**

REGISTERED  
HOUSE BUILDER

## Westfield Cattery

Middle Road, Harbury, Warks. CV33 9JN  
Telephone: (01926) 613946 and (0374) 986077

*A safe and caring home away from home  
in the country*



## CHIROPODY PODIATRY

Mr. J.F. Small SRCh, DPodM, MChS - State Registered Chiropodist/Podiatrist and Senior I  
Chiropodist Diabetes Care for local NHS Trusts welcomes clients old and new to his clinic for  
private consultations now located opposite Bell's Fruit & Veg. Shop at

**HEALTH FIRST, Daventry Street, Southam**

All Chiropody/podiatry services available including routine and specialist treatments:  
biomechanics, gait analysis, sports orthoses, nail surgery, specialist footwear, insoles  
Also special service - intensive treatments to CURE most foot problems - including corns,  
callouses, ingrowing toe-nails, verrucae, fissures, metatarsalgia, plantar fasciitis

Remember, foot & gait problems can lead to knee, hip, back & neck pain.

So why not make an appointment to see what can be done for you

Please telephone 01926 811272 for an early appointment



## KANE'S NEWS

HIGH STREET, HARBURY  
TELEPHONE: (01926) 612156

***Much more than just newspapers and magazines!***

- TOYS
- STATIONERY
- GREETINGS CARDS
- WRAPPING PAPER
- PHOTOCOPYING
- DRY CLEANING
- SHOE REPAIRS
- PHOTOGRAPH DEVELOPING

***Why go elsewhere when we're on your doorstep?***

Where was 'Captain Sensible'? The pack was now spread out over a number of miles, and the front runners waited at the re-group before entering wildest Bascote. The woods soon echoed with the sound of "On On". The 2<sup>nd</sup> new check was found, and we were left wondering why there was only one hasher on this Ladies Only check?

The leading group returned at 4.20pm and started on the food and lemonade. In the spirit of no winners or losers, the final hashers returned an hour later to great applause, and some relief. There were the obligatory "Down Downs", when random penalties were awarded for being first hashers, short cutting, coming from New Zealand, bringing a portable table with 11 other offences taken into consideration, i.e. drinking wine, and wearing new trainers or clean tee shirts.

We are pleased to report that the Hash raised £120 for the Harbury Scouts and Guides, and £20 donated to Harbury School for the use of the BBQs. Our special thanks yet again to Jill and Barclay Reid for the run of the estate and the use of their outbuildings. To Dave Andrews who donated the charcoal, Andy Brunt ('Hash Fire'), Sue Hartland ('Hash Cash'), Ian Hartland ('Hash Flash'), Sharon Hancock ('Hash Drinks'), and all those who donated salads.

A final acknowledgement to our Mismanagement Committee; GM and Hare Mike Putnam, RA and Hare John Hancock, and Super Hare Ann Brunt. The date of next year's Harbury Hash is Sunday 6<sup>th</sup> September 1998.

**Doug Freeman**

## **HARBURY CHRISTMAS FAIR - Saturday 6<sup>th</sup> December**

We are once more approaching the festive season and it is Christmas Fair time again.

Santa will be in his Grotto as usual after a whistle stop tour around the village. There will be a varied selection of stalls not forgetting the ever popular home made cakes. This year's raffle and tombola stalls will give everyone an opportunity to go away with some tasty Christmas goodies.

Come and have fun with us on the 6<sup>th</sup>, the fair opens at 2.30pm.

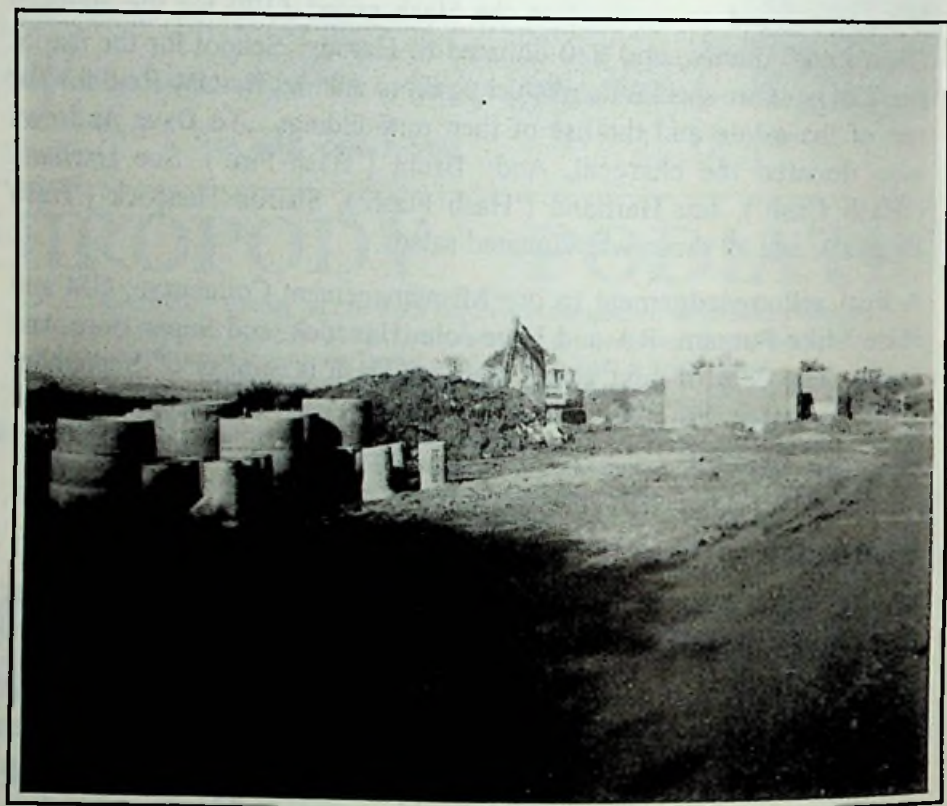
**Colin Ingram**

## WHAT's GOING ON? WHAT IS GOING ON!

What is happening along Harbury Lane? Well there's the Chicken Factory on the left under construction at the moment this side of the Waste Transfer Station. Further on still near Warwick is the start of the Home Farm, Heathcote Estate promised in the Warwick Local Plan. And more plans appear to be afoot for the Airfield. News as soon as we have it.

In Harbury, Costain are not building executive homes north of the railway, they are doing work to stabilise the Cutting, but Railtrack has not had the courtesy to tell anyone about it!

Work has started on the Hillside Farm estate for Laing and Warwickshire Rural Housing Association, but we do know about that!



Site clearance before the onset of the development at 'Hillside'

Linda Ridgley

## ON YER BIKE!

"ALL ABOARD! for stations to Stratford, Leamington, Rugby, Daventry and Points East

We hope that a key section of National Cycle Network route 52 will be created by conversion of a former railway between Rugby and Leamington. Local authorities that cover the route are supportive and a provisional extension of the route to Warwick and Stratford has been identified.

Latest thinking in this area suggests a brand new National Link. Eastbound from Leamington, this would join the Great Central Cycle Ride at Daventry, a town whose pro-cycling attitudes should be far better known nationally. Beyond Daventry the new link would probably travel via Kettering and Corby to join Peterborough's Green wheel at Chesterton.



**FEEDBACK WANTED**

Routing suggestions from supporters who know this area would be most welcome."

This article appeared in the latest bulletin issued by *SUSTRANS* (Sustainable Transport) to supporters in the South Midlands. As this development is within a few miles of Harbury, I thought readers might be interested. Soon we could be linked to the National Cycle Network.

At present this is rather fragmented; our nearest bit is the *Greenway* in Stratford which follows another disused railway south for about five miles. More ambitious projects, such as the *Sea to Sea* (C2C) have been completed (links Whitehaven on the Irish Sea with Newcastle and Sunderland on the North Sea coast).

There are high hopes that a work camp may be organised in the region for Summer 1998 on the Rugby - Leamington route. Watch this space!

Some time back, Peter Bones mooted the idea of improving and therefore opening to cyclists, the bridleway from the Fosse Way to

Whitnash. This would provide a superb cycling route for those going to Leamington and Warwick. It would in fact be shorter than the route by road and of course safer. The response to Peter's article was not impressive, but if you would like to be involved in this very worthwhile project, or receive more information, please contact Peter on 612832.

As a community we need to be thinking of energy conservation (i.e. fewer motor cars), more exercise and therefore better health. A millennium project perhaps?

**John Hancock**

## **HARBURY VILLAGE DESIGN STATEMENT GROUP**



**Crown Inn**

You will probably already have read in the magazine that Harbury has been awarded a grant by the Countryside Commission to produce a Design Statement which will be an important part of the planning process in the future. The objectives are to describe the distinctive character of the village and its surrounding countryside, and to draw up design principles based on the distinctive local character.

We want as many villagers as possible to participate in the project. This

is your village and we want to know what you think.

In this month's magazine you will find a questionnaire. Please take the time to fill it in and return it. We are also holding a workshop at the Village Hall on **Saturday 29<sup>th</sup> November**. There will be displays by the Harbury Society and by Y5 children at Harbury School. There will be an opportunity to join a group studying and photographing a section of the village. After a free lunch there will be time to discuss the response to the questionnaire and the results of group work. The fun starts at 9.30am and we aim to finish about 4pm. Hope to see you there!

**Sharon Hancock**

## **APPALACHIAN STEP DANCING**

Appalachian Step Dancing has a multi-ethnic origin. English, Irish and Scottish settlers took with them their own traditions of dancing and this merged with a wealth of dance forms brought from Africa by the slaves to produce Step Dancing that belonged neither to settlers nor slaves. Also some Native American ritual dance steps were incorporated, called Buck Dancing, Hoofing or Flat-footing. It survived mostly in isolated areas, principally in the southern Appalachian mountains.

We are planning to run a 10-week course on a Saturday morning (early next year) for people who are interested in having a go at 'tap dancing with a difference'. The course fee will be £20 per person, places are limited.

We have a suitable place in Harbury to practise, and musicians who will play for us.

We aim to teach you a dance routine in 10 weeks.

You need a pair of smooth-soled shoes or Tap shoes (NOT trainers), a good sense of rhythm, a reasonable level of fitness and a sense of humour.

You can be male or female, but the minimum age is 13.

You do NOT need a partner.

If you are interested, please contact:

**Janny (612002) or Sue (612734)**

## WARWICKSHIRE COUNTY COUNCIL NOTES

Deppers Bridge: £50,000 earmarked for repairing the bridge was considered by the Environment committee. After a lengthy debate it was decided that the money will be transferred to the Timothy Bridge Road development in Stratford for road improvements. I have received many calls, not all in favour of repairs to the bridge. It must be noted that the bridge now has a weight limit of 70T.

A4100: This road is undergoing a traffic survey and because of the impact this road has on the area, I have called a special meeting of the Harbury Panel on **Tuesday 25<sup>th</sup> November**.

Fenny Compton and Tysoe Fire Stations: Following the 5 open meetings which were all well attended, the County Council has decided that a special meeting of the emergency services sub-committee will be held on **Thursday 13<sup>th</sup> November** at Shire Hall, Warwick 10am.

This fight to keep open the two fire stations will, if successful, protect the rural area. You can help by attending the meetings or you may wish to write to the County Council with a copy to me.

Warwickshire County Council full council meeting is to be held on **Tuesday 2<sup>nd</sup> December** at Shire Hall, Warwick 10.30am.

**Michael Doody**

### HARBURY - SAMOIS TWINNING

During the first weekend in November many of you may have noticed an influx of French speakers wandering the streets of Harbury. Yes, by the time you read this, we shall have welcomed our first party of visitors from Samois-sur-Seine with ages ranging from eight years old to sixty-something and we hope they will have sampled and enjoyed some of the many things Harbury has to offer, including the Grand Halloween Dance and of course, the annual Village Bonfire, which is to be followed by an informal gathering - courtesy of David and Pam Clarke. We hope some of you will have had an opportunity to get to know them.

Many thanks to those people who have offered accommodation for future visits - if anyone else is able to help, please contact Betty Barr (612765) or Nora Ellis (613605).

Finally our next meeting will be **Tuesday 9<sup>th</sup> December** at 8pm in the Wight School.

**Sally Stringer**

## **HARBURY CHRONICLES**

Filming continued with a day spent looking at the various types of housing in the village. We also took advantage of interesting things we spotted, such as Danny Killian's vintage motor cycle collection, a Formula 2 racing car in Pirie Close, someone doing a spot of DIY and the children's football training session - real match of the day stuff!

Some lovely scenic shots were included, such as sunlight shafting through the pine trees in the graveyard where a squirrel was feeding on fallen apples and autumnal shots of blackberries and elderberries growing wild.

The winter session has been carefully planned to maximise camera time and will include traditional Christmas activities as well as a look at the influence of the railway and the cutting on the village.

People are still making suggestions for inclusion in the film, which we welcome but please remember we still have a year to go. We will eventually cover as much as is practical in a one hour film to capture the essence of Harbury, but nothing will be wasted. All off-cuts will be kept for future use.

Our next fund raiser is '*The Toy Cupboard*' on **Friday and Saturday 16<sup>th</sup> and 17<sup>th</sup> January 1998**, a Christmas Story by Anne Megeney.

**Anne Megeney**

## **HORTICULTURAL SOCIETY**

Although I wasn't present I understand Mr. Cook gave a very entertaining talk on *Plants for Shady Places* for the start of our new season. He has become quite a familiar face to the Society, including coming to our rescue to judge at the recent Village Show.

November is here which means the ~~Seed Catalogues~~ will be available at this meeting. As usual, to qualify for the discount the Society has to

spend a certain sum with each of them. In the past we have had problems, so please bear this in mind when ordering, try and spread your order between all three catalogues: Dobies, Suttons and Marshall's. Please could all orders be in by the December meeting at the very latest.

The November meeting starts with the AGM and anybody who would like to join the committee would be very welcome. Also anyone who has not already paid, subscriptions are due. The talk which follows will be given by Mr. Hardy entitled *Colour in the Winter Garden* - quite a challenge to have interest and colour all the year round. I am sure he will give us many ideas.

Once again the Society will be providing the food for the Craft Fair on **Saturday 15<sup>th</sup> November**, and if anybody would like to help in any way, please contact me on 612515. We would be pleased to see you on that day for coffee, a delicious hot lunch and for a cup of tea of course - I almost forgot the hot mince pies and pieces of cake - how could I!

The Society has renewed the Ryton Gardens ticket, this admits two people to the gardens FREE on any day of the year and is available from Mrs. Eleanor Zonik (612365).

Finally the meeting on **Tuesday 2<sup>nd</sup> December** will be held in the Tom Hauley Room 8pm. The talk will be *Down the Garden Path* followed by the social evening with a finger buffet and promises to be a very pleasant evening.

**Muriel Grey**

## **GARDENING NOTES**

This is the time to begin preparations for winter by tidying away the plants which, this year, have gone on putting out their blooms for so many months. When cutting down the stems and foliage of herbaceous perennials leave about 20cm to give protection to the plant crowns and to provide winter homes for insects. Semi-hardy plants such as hostas, penstemmons will need extra warmth from a 15cm layer of bark or straw, or try the old gardener's way, an upturned plant pot stuffed with fallen leaves. Red hot poker's can be protected by tying their leaves together. Top up the chipping around alpines, putting it well under the leaves to raise them from damp soil.



## THINKING OF LETTING YOUR HOME?

THEN CONTACT

## **CONNECT PROPERTY SERVICES**

We are specialist high quality letting and property management agents, locally based, with particular experience in letting village properties. Please do telephone to discuss your requirements.

**Telephone: 01926 - 815004**

### **- KINETON BASED - QUALITY CARPET, UPHOLSTERY AND CURTAIN CLEANING SERVICES Chem-Dry® Accord**

- Most carpets dry within the hour
- Safe and non-Toxic
- Removes most stubborn stains
- Leaves no sticky or dirt attracting residue
- Carpet & fabric protection service
- Professionally insured

Chem-Dry.®



**ROY & LINDA  
HARRIS**

TO ARRANGE A FREE  
ON-SITE NO OBLIGATION  
QUOTATION TELEPHONE

**01926 640029**

**INDEPENDENTLY OWNED AND OPERATED**

## *Jamieson's*

**SPECIALIST IN  
PERIOD JOINERY**

**WHETHER YOU LIVE IN  
A COTTAGE OR A CASTLE  
LET US QUOTE YOU FOR  
REPLACEMENT WINDOWS  
AND DOORS.**

**HARBURY FIELDS BARN  
HARBURY**

**TELEPHONE:  
01926 612921**



## Priory Tool Hire

THE COMPLETE TOOL HIRE CENTRE

WATTONS LANE,  
SOUTHAM,  
LEAMINGTON SPA

- MINI EXCAVATORS • MIXERS • ELECTRIC DRILLS •
- DISC SAWS • GARDENING EQUIPMENT •
- WALLPAPER STRIPPERS • CARPET CLEANERS •

AND MUCH MORE!

MON - FRI 7am - 6pm  
SAT 8.30 - 12.00

REPAIRS OF ALL KIND

# Southam 814770

AGENTS FOR CALOR GAS AND BLACK & DECKER PARTS



EXTENSIONS

**BUILDERS**

ALTERATIONS

GREY GABLES, 46 BANBURY ROAD, SOUTHAM CV33 0HJ  
TEL: SOUTHAM 01926 817744 MOBILE: 0585 495384



## THE BISHOP'S FRYER AND OFF LICENCE

LADBROKE ROAD • BISHOPS ITCHINGTON TEL: 01926 614093

**QUALITY FISH AND CHIPS, PIES, PASTIES etc.**

Now also serving Donner Kebabs

Open Mon. to Thurs. 5.00pm to 10.30pm • Fri. and Sat. 4.30pm to 11.30pm  
Fri. and Sat. lunch times • 11.45am to 2.00pm

Plant roses and deciduous shrubs and trees before the ground gets too cold. Prepare planting holes before buying the plants and then it's easy to finish off the job when you bring them home. The old maxim of spending more time on preparing the planting site than on the actual placing of the plant is a good one to follow. Put in tulips and lilies early in the month. Other Spring bulbs can still be planted but will flower later.

Cut back by about a third, tall roses and shrubs to prevent wind rock. Hardwood cuttings taken from trees and shrubs are worth a try. Cut the piece of stem just below a bud and trim off any soft top growth just above a bud, to leave a 6-8" stem. Put into pots in a cold frame or into a shallow sand-lined trench in the garden. LABEL. If there isn't any sign of life after about four months then all that has been lost is a little of your time. However, you could get plants for free which will be ready to plant out next autumn, along with a little glow of satisfaction at your achievement.

Dig vegetable plots and work in organic matter. It is particularly good to get beds ready for onions and brussels as they prefer firm soil, also plant garlic. Dress these areas with bone meal and then allow the soil to settle. Split rhubarb crowns if necessary, again working in plenty of compost. Pep up a used 'Grobag' with some general fertiliser and use it for winter lettuce in the greenhouse.

Clear dead leaves from ponds as decaying matter in the pool causes toxic conditions under a layer of ice. Feed fish early in the day. A bag of live daphnia will help to keep down algae and provide fish with a snack during their winter dormancy.

Plant amaryllis and feed indoor azaleas and cyclamen with liquid feed every fortnight. Check any bowls of bulbs, and water if necessary.

### **Plant of the month - Crab apple**

Thinking of the member of the Malus family only as small trees for spring flowers neglects their other virtues. They are small enough for almost any garden and take 20 or 30 years to gain their full size of 25 to 30 feet. Abundant flowers appear in Spring in shades of pink, red, purple or white. Through the Summer the fruits grow in bunches shaded from yellow through to deep purple. Now the leaves have their Autumn

tints, with *Malus tschonoskii* putting on the most brilliant show. John Downie is considered to be the best for jelly making. Amongst the 35 or so species there is sure to be one to suit your garden as a specimen tree or in a mixed border, and now until March is the time to plant it.

Pat Smith

## Letters to the Editors

*Dear Editors*

*We would like to thank all our friends and neighbours for their assistance, visits and cards. Also for the many telephone enquiries during Dennis' long stay in hospital.*

*All this was of great comfort to us and our family to know we were in so many people's thoughts. Many thanks once again.*

*Marion, Dennis Abbott*

*Dear Editors*

*An appeal for help from anyone who may have seen my cat 'Razz' who has been missing from Church Terrace since Saturday afternoon 25/10/97. He is 6 months old and black with a small white patch on his chest and white toetips. Any information would be gratefully received - even bad news would be better than not knowing what has happened to him.*

*May I thank everyone who has already helped in the search for your kindness and concern.*

*Carolyn Abberley 613512*

*Dear Editors*

*ref: Harbury Parish Council meeting - September '97*

*I can assure you that the residents of Harbury who live on or near the dangerous Station Road corner, are far from 'relaxed' about the switch*

*of £50,000 for the essential bridge strengthening at Deppers Bridge to a Stratford industrial development.*

*I also feel that everybody in the Harbury District should feel disappointed by the fact that the monies allocated to the rural infrastructure should be hijacked by an urban commercial venture with the blessing of Councillor Andrew Cooley - our District Councillor.*

*Yours faithfully*

**Mrs. Sheila Allan**

*Dear Editors*

*I require a lift to Warwick Hospital any morning of the week to enable me to do voluntary Red Cross work - anyone going there about 9-9.30am?*

**Betty Heaven, 613114**



### **Interior and Exterior Decoration**

- GENERAL PAINTING • SPONGING • RAGGING • RESIDENTIAL • COMMERCIAL • STENCILLING •
- WOODGRAINING • MURALS • SIGNWRITING • WINDOWS • COLOURWASHING • INTERIOR DESIGN •
- PAPER HANGING • MARBLING • VERDIGRIS • RESTAURANTS • SHOP FRONTS • STIPPLING •
- BAGGING • RAG ROLLING • MASONRY •

**FOR A PROFESSIONAL, FRIENDLY & EFFICIENT SERVICE**

**(01295) 267024**

*Approved By DULUX*



# CRAFT FAIR

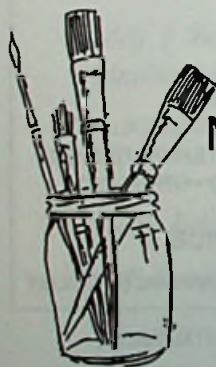
Harbury Village Hall

**SATURDAY**  
**15th NOVEMBER 1997**

Demonstrations and some new Crafts

10am - 5pm

Morning Coffees - Lunches - Teas



**ADMISSION FREE**

Organised by The Harbury Craft Circle



# **Magic Lantern Show**

*with*

**Sausage & Mash Supper**

by POPULAR REQUEST

**FRIDAY  
21st NOVEMBER**

at 7.30pm PROMPT

Tickets: Adults £3.50 Children £1

From: Stan Greenway Tel 814313 or  
any Village Hall Committee Member

## **PINEHAM FARM BUTT LANE HARBURY**

\*\*\*\*\*

LOGS £2.00 PER BAG £45.00 PER PICKUP LOAD  
STICKS £2.50 PER BAG

POTATOES (Reds & Whites) 55lb Bags

HAY £3.00 STRAW £1.00 (per bale)

FRESH EGGS £1.20 PER DOZ.

\*\*\*\*\*

**PET FOOD & ACCESSORIES NOW AVAILABLE**

\*\*\*\*\*

Dog, Cat, Rabbit and Poultry Food

Spillers, Heygates & Arrow Horse Feeds  
(Horse & Pony Nuts, Course Horse, Rolled Barley,  
Chaff, Bran, Rolled Oats & Sugar Beet Nuts etc.)

Prices for Rabbit Hutches, Chicken  
Arks, Bird Cages and other  
Pet Accessories available on request.

(CALL IN OR PHONE FOR DETAILS)

**TEL: 01926 612325**

*It's Ceilidh Time With:*

# **Kalizarus.**

(formerly: The Hereburgh Ceilidh Band.)

**Featuring Caller: Peter Bones.**

*A Fun Evening of Dancing In Harbury Village Hall.*

***Friday 21st November.***

**Admission: £3.00 (Children, Students & Unwaged £2.00)**

**From 8.00 until 11.30pm**

**Doors Open 7.30pm.**

**BAR PROVIDED IN AID OF S.H.A.K.**

*For more details and advance tickets:*

**Call: Lynne**

**01926 613564**

**or visit:**

**Nifty Needle**

# ALL SAINTS CHURCH HARBURY ***FOXES HAVE HOLES***

*An Advent Play by Edyth Algar*

Friday 28th & Saturday 29th November 1997  
at 7.30 pm

Tickets from:  
Nifty Needle,  
Party Paraphernalia,  
Beryl Checkley, Carol Percival,  
Sally Stringer, Jeff Bedford  
**Adults £2    Children £1**  
Refreshments available during the interval



For that special present come and visit the Fragrant Room  
(opposite Avon Vale Vets)

Beautiful Glassware, Candles, Table Napkins, Pot Pourris,  
Fragrance and Essential Oils  
*and much more...*

Open Monday - Saturday 9.00am - 5.30pm

**THE FRAGRANT ROOM**  
**37 Coventry Street, Southam, CV33 0EP**  
**Tel: (01926) 811933**

also  
12c Hatton Country World, Hatton, Nr. Warwick CV35 8XA  
Tel: (01926) 843506

# NEED A SKIP?



## FORTRESS

### (01926) 493414

## CD - ROMs...Special Deals!

The very best in educational titles for all ages from Dorling Kindersley, the award-winning British publisher

Phone now for a free catalogue

# 614614

- Try before you buy •
- Credit Card payment •
- Personal Service •
- Quality Products •
- Business Opportunities •

**DAVID SNELL**

Your local DK Family  
Learning Advisor

## EVERY

## FRIDAY

Bodywise

## BODY

## CONDITIONING

### 6.30pm - 7.30pm

### AT HARBURY SCHOOL

NO NEED TO BOOK

PLEASE BRING A MAT OR A TOWEL

ALL AGES AND LEVELS WELCOME

### keep fit the fun way!

FOR FURTHER DETAILS PLEASE CALL CLARE ON:  
(01926) 494388 or 8378 863881

RSA/YMCA CERT NIST QualMed

A MEMBER OF FITNESS PROFESSIONALS

*Christina Sherman, BA, AMAR*

## REFLEXOLOGY

This completely safe, natural therapy brings relief to a wide range of conditions, and is suitable for all ages.

- \* Special introductory offers
- \* Gift vouchers available
- \* Home visits by arrangement

For more information ring:

01926 612277

8 Church Terrace, Harbury



# The Shakespeare Inn Harbury

Telephone: 612357 Facsimile: 614411



## CHRISTMAS MENU

*Asparagus Soup*

*Prawn Cocktail*

*Egg Mayonnaise Salad*

*Peach & Cheese Salad*

*Sardines in Garlic Butter*



*Lemon Sorbet*



*Roast Turkey with Chipolata Sausage  
and Bacon & Stuffing Roll*



*Pan Fried Salmon in Prawn Sauce*



*Nut Roast with Vegetable Gravy*



*All served with Roast & Mashed Potatoes  
& Fresh Vegetables*



*Christmas Pudding with Rum Sauce*

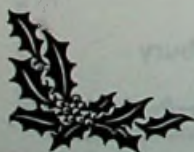
*Homemade Apple Pie*

*Assorted Ice Creams*



*Coffee & Mints*

**£12.95 Fully inclusive**



**THE SHAKESPEARE INN****STARTERS**

HOMEMADE SOUP £1.90 PRAWN COCKTAIL £3.50  
 PATE & TOAST £3.00 BUTTERFLY PRAWNS £4.20  
 SARDINES IN GARLIC BUTTER £3.20 SALMON MORNAY £4.00  
 GARLIC MUSHROOMS £3.50  
 MEDITERRANEAN PRAWNS IN GARLIC BUTTER £5.75

**MAIN COURSES**

STEAK & KIDNEY PIE £5.80 COTTAGE PIE £5.80  
 ASSORTED OMELETTES FROM £5.50  
 BREADED COD £5.50 RAINBOW TROUT £5.60  
 WHOLE TAIL SCAMPI £6.00 BUTTERFLY PRAWNS £7.00  
 SWORDFISH IN PRAWN SAUCE £7.50  
 SALMON IN PRAWN SAUCE £10.00  
 MEDITERRANEAN PRAWNS IN GARLIC BUTTER £9.75  
 GRILLED CHICKEN WITH BACON & STUFFING £5.80  
 PORK CHOP £5.90 GAMMON STEAK £5.90  
 LAMB CUTLETS £7.00 RACK OF LAMB £12.00  
 SIRLOIN STEAK £8.50 T-BONE STEAK £10.50  
 RUMP STEAK WITH STILTON SAUCE £9.00  
 FILLET STEAK £11.00 STEAK AU POIVRE £11.00  
 STEAK DIANE £11.50  
 CHICKEN TERIYAKI £9.00 PORK IN CIDER £9.00  
 VEGETABLE & PASTA BAKE £5.80  
 VEGETABLE CURRY £5.80

\*\*\*\*\*

VARIOUS SNACKS ARE ALSO AVAILABLE

\*\*\*\*\*

CHILDREN'S MENU ALSO AVAILABLE @ £2.25

\*\*\*\*\*

SELECTIONS OF SWEETS FROM £1.50

\*\*\*\*\*

TO BOOK PHONE THE SHAKESPEARE ON 612357  
 OR FAX US ON 614411

\*\*\*\*\*

- Free – Measuring and weighing
- Free – 1/2 Hour Treatment
- Free – Figure Analysis
- Free – Individual Dietary Advice

# HAWKINS

SLIMMING CENTRE  
(01926) 613524

**LOSING WEIGHT AND INCHES CAN BE MADE EASY  
THE HAWKINS WAY**

What exactly is the Hawkins method of inch and weight loss? Developed 30 years ago, it's the effortless way to lose inches whilst trimming and strengthening muscles without rigorous weeks of exhausting exercise.

The physiosymmetron body activating machine increases the body's metabolism, improving blood circulation and lymphatic drainage whilst exercising the muscles.

A series of 16 pads are applied to the body in all the appropriate places and go to work breaking down fat and cellulite, burning up to 400 calories per session and all you have to do is lie there and enjoy it. The system is completely safe and monitored by computer. No need to feel embarrassed – Hawkins is here to help – Give it a try.

## A FEW OF OUR RESULTS

Ellie (age 64) lost 48.3 inches and 30.4 lbs

Julie (age 31) lost 62.2 inches and 34 lbs

Brenda (age 53) lost 60.6 inches and 27.9 lbs

Gail (age 27) lost 53 inches 27.9 lbs

**ONLY  
7 WEEKS  
TO  
CHRISTMAS**

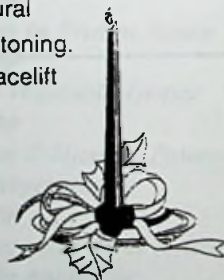


**THIS TREATMENT IS EXTREMELY BENEFICIAL FOR SUFFERERS  
OF MULTIPLE SCLEROSIS, SCIATICA AND M.E.**

Plus to complete your new look  
**NON-SURGICAL FACE-LIFT**

Non-surgical facial toning – The most natural non-invasive approach to facial lifting and toning. Some of the benefits of the non-surgical facelift

- immediate results
- relaxing treatment
- painless
- scar free
- stress free
- dual-channel system



**SPRING  
SUMMER  
AUTUMN  
WINTER**

Your appearance matters. For complimentary treatment phone  
**01926 613524**

**Also available: Aromatherapy, Reflexology and Body Waxing**

**OUT OF TOWN LOCATION – OUT OF TOWN PRICES**

# **MANOR PROPERTY AND DECORATING SERVICES**

**THE IDEAL CHOICE FOR ALL YOUR DECORATING AND  
PROPERTY REPAIR REQUIREMENTS**

**TELEPHONE  
01926 612887 OR 0976 375769**



## **S. MEHRA** **Fully Qualified** **PAINTER & DECORATOR**

**Interior & Exterior**

*Free Estimates*



9 Margaret Close, Harbury, Leamington Spa. Tel: 01926 612551 Mobile: 0976 241949

## **E.F. SIMS & SON**

**PAINTING & DECORATING SERVICES**

**THE QUALIFIED**

**PAINTER & DECORATOR**

**INTERIOR AND EXTERIOR  
EXPERIENCED TRADESMAN**

**RING FOR A FREE ESTIMATE**

**613732**

**1 THE POUND, HARBURY**



## **A1 SKIP SERVICES LTD.**

**Squab Hall Farm, Harbury Lane, Leamington Spa, Warwickshire CV33 9QB**  
**Tel: (01926) 833638 Fax: (01926) 887547**

**FAST, FRIENDLY AND RELIABLE SERVICE CALL  
THE COMPANY WITH 20 YEARS EXPERIENCE**



**2cu yds. - 20cu yds.**



# **CAR CONSULTANTS**



**HAVE MOVED!**

NOW AT **UFTON GARAGE**, SOUTHAM ROAD, UFTON  
IF YOU ARE BUYING OR SELLING ANYTHING WITH FOUR WHEELS  
CONTACT US NOW! TWO YEAR WARRANTIES AVAILABLE  
**FOR THE BEST DEALS ON WHEELS**  
TEL: 01926 613795



## **A. G. KNOWLES** **PLUMBING & HEATING**



**FOR ALL YOUR CENTRAL HEATING & PLUMBING INSTALLATIONS.**  
**ALL WORK GUARANTEED**  
**ESTABLISHED OVER 25 YEARS**

**69 MILL STREET, HARBURY, LEAMINGTON SPA**  
**RING 01926 612331 FOR INQUIRIES & ESTIMATES**

## **THE VILLAGE TAXI-BUS and A & M CARS**

Phone to reserve your seat for Bus or Taxi

**0831 135334 - 01926 612487**

**FREEPHONE 0500 21 22 25 Ext. 10**

*Your local service, Regular bus service to Asda, Sainsbury's, Tesco, etc. door to door.*

*Also Taxis for 1-8 people, local or long distance.*

*No collection fee - you only pay for the miles you travel*

**Please use your local services. WE NEED YOU!!**

## **A.J. BRUNT** **Carpenter & Joiner**

For all types of replacement windows, doors, porches, i.e UPVC,  
Aluminium & Timber, double or single glazed.

Fitted kitchens/wardrobes and all your carpentry needs

**Harbury 01926 612867 • 9 Ivy Lane, Harbury**