

Ladbroke

THE FOSSE GARAGE

Accident Repair Specialists
for all leading Insurance
Companies

**24 hr. Recovery
Service**

**AA and RAC
Appointed**

**Servicing & MOT
Repairs**

Used Car Sales



Motor
Agents Association

Fosse Way, Harbury,
Nr. Leamington Spa.

01926 613260

24hr. 0850 613260

**SELF-DRIVE
CAR & VAN HIRE**



Southam Carpets & Curtains

- ☆ *Fitted Carpets, Vinyls, Curtains & accessories.*
- ☆ *FREE Measuring, Estimating. FREE Pattern loans.*
- ☆ *For Traditional Quality & Service, contact us.*



Southam (01926) 814944

Coventry Street, Southam, Warwickshire. CV33 0EP



Harbury & Ladbroke News

THE HARBURY AND LADBROKE NEWS, reflecting all aspects of local life is published monthly and produced with the assistance of the All Saints' Parochial Church Council.

Editorial Office: (☎ 612155)

Articles to: *Nifty Needle, High Street*

Advertising Office: *c/o 31 Binswood End (☎ 614614)*

The views of contributors are not necessarily those of the Editorial Committee.

MAY 1997

No. 278



Beren Long and Rebecca Casement enjoy the sunshine and the daisies at the Playing Fields

Spring has arrived - and the warmer days and lighter nights encourage many villagers to take advantage of the recreational facilities at the Playing Fields.

Unfortunately, in recent weeks, a small minority of youngsters have focused their attention on destructive activities and this has resulted in damage

to the newly erected netball fence. Maybe these were the same 'local children' who were reprimanded by police for throwing stones at cars passing through the village? The latter incident was reported in the press and the Editors would support calls for vigilance by parents and request all villagers to be watchful, so that wanton damage to public and personal property is prevented.

We applaud the initiative launched at Harbury School which received press coverage recently. Each class has elected representatives onto a School Council to debate issues relating to the immediate community.

This will obviously encourage a sense of responsibility amongst all pupils as they are expected to offer contributions to their elected members for discussion at Council meetings..

Harbury has also hit the headlines with no less than three residents taking part in the London Marathon. The Editors acknowledge the success of the participants - Jane Hancock, Nicky Latham and Andy West-Latham in raising over £2,000 between them for charities. This edition of the magazine records the 'agony and the ecstasy' experienced by the runners in an article sent in from an interested by-stander. Congratulations to all concerned for their stamina!

Following previous requests for photographs, we have received an interesting selection for publication this month. There is always room for pictures of christenings, weddings, sports teams and village activities as they give added interest to an article and make the layout of the magazine more attractive. Many thanks to all who have recorded events during the last month.

Finally we extend our sympathy to the families of Joan Kelly and Jack Mann.

Harbury Diary

MAY

- | | |
|--------------|--|
| Sun | 4 Easter V - Rogation Sunday - Sung Eucharist 9am Evensong 6.30pm Cricket Home to Willoughby |
| Mon | 5 May Day Bank Holiday - Alpha Course in Tom Hauley Room 7.30pm |
| Tues | 6 Holy Communion 7.30pm |
| Wed | 7 Holy Communion 2pm Mothers' Union Communion in Church 2pm Mothers' Union meeting in Tom Hauley Room 2.30pm |
| Thurs | 8 Ascension Day - Holy Communion 9.45am Thursday Club in Village Hall 2.30pm WI in Tom Hauley Room 7.45pm |
| Fri | 9 Newspaper collection Family Ceilidh Dance in Village Hall 8pm |
| Sat | 10 20/80 Sale in Village Hall Cricket at Middle Road v Peugeot |
| Sun | 11 Sunday after Ascension - Holy Communion 8am Sung Eucharist 10.30am; Sunday School 10.30am; Evensong 6pm Cricket 2 nd XI away at Kineton |

- Mon 12 Alpha Course in Tom Hauley Room 7.30pm
- Tues 13 Toddlers' Service 2.15pm
Holy Communion 7.30pm
Prayer Group in Church 8.10pm
Village Hall Committee meeting 8pm
- Thurs 15 Holy Communion 9.45am
All ADVERTS c/o 31 Binswood End by 5.30pm
PCC in Tom Hauley Room 7.30pm
Line Dancing at Harbury Village Club 7.30pm
Annual Parish Meeting in Farley Room of Village Hall 7.30pm
- Sat 17 Men's Prayer Breakfast 7.30am
PTA Sponsored Event 9am-12noon
Alpha Day in Church and Tom Hauley Room
Cricket away at Attleborough Reserves
- Sun 18 **Whit Sunday** - Holy Communion 8am
Family Service 10.30am; Sunday School in Tom Hauley Room 10.30am
Cricket at Middle Road v Barford
- Mon 19 Alpha Course in Tom Hauley Room 7.30pm
Senior Citizens' Committee in Village Hall 8.30pm
- Wed 21 Hereburgh Morris dance at Newbold Comyn Arms 8pm
- Thurs 22 Holy Communion 9.45am
Thursday Club in Village Hall 2.30pm
Parish Council in Village Hall 7.30pm
- Fri 23 Newspaper Collection - School Ends
- Sat 24 Cricket at Middle Road v Pottertons
- Sun 25 **Trinity Sunday** - Holy Communion 8am; Sung Eucharist 10.30am
Sunday School 10.30am; Evensong 6.30pm
Cricket away to Stratford Bards
- Mon 26 Bank Holiday Monday - Cricket away to Warwickshire County Council
- Tues 27 Holy Communion 7.30pm
Julian Group 8.10pm
- Thurs 29 Holy Communion 9.45am
Line Dancing at Harbury Village Club 7.30pm
- Fri 30 Working from Home Club Lunch at The Dog 12noon
All ARTICLES for June's magazine to NIFTY NEEDLE by 5.30pm
- Sat 31 Cricket at Middle Road v Coventry College Reserves

JUNE

- Sun 1 **Pentecost II** - Sung Eucharist 9am
Sunday School in Tom Hauley Room 10.30am; Evensong 6.30pm
- Mon 2 School Begins - Alpha Course 7.30pm
- Tues 3 Holy Communion 7.30pm
- Wed 4 Holy Communion 2pm
Mothers' Union 2.30pm
Hereburgh Morris dance at The Folly at Napton 8pm
- Thurs 5 Holy Communion 9.45am
Storytelling in Library 10am
Men's Society in Tom Hauley Room 7.45pm
Folk Club in the Dog Inn 8.30pm

| | | |
|------------|----------|--|
| Fri | 6 | Newspaper Collection |
| Sat | 7 | Cricket away to Greenmore Road |
| Sun | 8 | Pentecost III - Holy Communion 8am; Sung Eucharist 10.30am Sunday School in Tom Hauley Room 10.30am; Evensong 6.30pm Cricket at home to Ettington |

Please note:

Adverts to c/o 31 Binswood End by Thurs. 15th May

Articles to Nifty Needle by Friday 30th May

**DATES FOR INCLUSION IN THE HARBURY DIARY PLEASE
TO: LINDA RIDGLEY - TEL. 612792.**

| | | |
|-------------------------------------|--------------------|---------------|
| For Tom Hauley Room Bookings | Mrs. Stubbs | 612782 |
| For Village Hall Bookings | Mrs. Hughes | 612716 |
| For Wight School Bookings | Mrs. Hayes | 613488 |

REGULAR DIARY DATES

BABY CLINIC: Surgery, 2-4pm 2nd & 4th Wednesday

BADMINTON: Village Hall Tuesdays

BEAVERS: Scout Hut, 6-7pm Tuesdays

BELLRINGING PRACTICE: Church, 7.30pm Fridays

BINGO: Village Hall, 8pm Mondays

BROWNIES: Village Hall 6-7.30pm Tuesdays

CHOIR PRACTICE: Church, 6.30pm Fridays

CITIZENS ADVICE BUREAU: Over Southam Magistrates Court, 10am-3pm
Tuesdays (Except Bank Holidays)

COFFEE MORNING: Tom Hauley Room 10am-12noon Saturdays

CUBS: Scout Hut, Wednesdays

DANCING CLASSES: Farley Room Village Hall, Children & Adults 4-9pm
Wednesdays.

GRAPEVINE: Tom Hauley Room, Coffee Morning 10-12noon Wednesdays

GUIDES: Scout Hut, 7-8.30pm Monday

GYMNASTICS: Harbury School, 6-7pm (U7-10yrs & Beginners 7-8pm;
Over 10yrs 8-9pm) Mondays

HARBURY FOLK CLUB: Dog Inn 8.30pm 1st Thursday of Month

HARBURY FRIENDS: School, 8pm 2nd Tues of Month

HEREBURGH MORRIS DANCERS: (613402) School Hall, 8-10pm
Wednesdays

HORTICULTURAL SOCIETY: Village Hall, 8pm 1st Tues (Oct. to May)

LIBRARY: Stories, Rhymes for U5s, 10am 1st Thursday of Month

LINE DANCING: (613478) Thursdays, fortnightly at Village Club 7.30pm

NETBALL CLUB: (612841) Village Hall Car Park, Training 6.30pm
Thursdays; Matches Saturday Afternoon
NURSERY SCHOOL: Village Hall, Tuesday to Friday mornings
PLAYGROUP: Wight School, Tuesday to Friday mornings
SCOUTS: Scout Hut, 7.45pm Tuesdays & Thursdays
TENNIS CLUB: (Apr-Sept) Tues & Thurs 6.30pm onwards (6pm for April);
Sat 2-5pm, Mon & Wed 1.45-3pm
THEATRE GROUP: Wight School, 8pm last Friday of Month
THURSDAY CLUB: Village Hall 2.30pm 2nd & 4th Thursday of Month
TODDLER GROUP: Wight School, 10-11.30am Mondays & 2-3.30pm Wed.
UPHOLSTERY CLASSES: Wight School, 2-4pm Mondays
W.I.: Tom Hauley Room, 7.45pm 2nd Thursday of Month
YOGA: Village Hall, 1-3pm Tuesday, Diane Surgey Tel.817904

DOCTORS' SURGERY

Mill Street, Harbury

| | |
|---|--------------------|
| <i>To request a home visit</i> | please ring 612232 |
| <i>To request a repeat prescription</i> | please ring 612232 |
| <i>For an appointment</i> | please ring 613554 |

| | |
|-----------------|----------------|
| DISTRICT NURSE | Southam 815045 |
| HEALTH VISITOR | Southam 815045 |
| POLICE | Southam 812366 |
| SOCIAL SERVICES | Southam 813110 |

Details of Surgery times are available from the Surgery

DO YOU NEED HELP WITH ANY OF THE FOLLOWING?

Harbury Helpline is for you!

CHILDRENS' CLOTHING: for 0-6 Years old: Call Anne Woodward 613536, Maureen Darby 613330 or Mary Catt 612864.

EMERGENCY TRANSPORT: Call Tim Millington 612808 or Charles Catt 612864.

HELP WITH FORM FILLING:

- **Job Applications, CV's, Council Tax Forms, etc.:** Call Joanne Cooper 613859 or Jeff Bedford 612753.
- **For University/Job Applications, interviews, CVs:** Call Philip Bushill-Matthews 612476.

- **For Personal Tax Claims, Rebates on Tax Paid to Building Societies or on Shares:** Call Jim Chapple 612044.

HOME VISITING: Caring for a sick or elderly relative and need a break for a few hours, or you would like someone to call on you. Call Sue Dormer 613254.

HOUSEHOLD BUDGETING ADVICE: Call Tony Brunton 612191.

ODD JOBS ABOUT THE HOUSE: Call Jeff Bedford 612753.

VISITING: Hospital. If you are unable to visit a parent or relative, or parents would like support with a child in Hospital: Call Fr. Roy Brown 612377 or Keith Dormer 613254.

ALL SAINTS' CHURCH HARBURY SUNDAY SERVICES

Holy Communion, 8am

Sung Eucharist, 10.30am (Except 1st Sunday of Month:

Sung Eucharist 9am)

Family Service, 10.30am on 3rd Sunday of Month

Evensong, 6.30pm (Except 3rd Sunday)

Please see notice board in Church for weekday services or revised times on special occasions.

Laugh Line

The new vicar was doing the rounds to meet his parishioners. At one house a woman's voice from inside asked: "*Is that you, Angel?*"

The vicar hesitated for a moment and then replied: "*No, but I'm from the same department*".

FROM THE RECTOR

As I write this article, we are still in the season of Easter - the main Church Festival of the year. This is the time that causes the truly committed Christian to step out from the rest of society and let it be known that above all other things they believe that they have in Christ a trust that their life will have a continuity and glory that even our oldest enemy 'death' cannot destroy.

A priest should not be afraid to keep firmly before his people the central

fact of Christ's religion i.e. that we are so precious to God our Father that He will not hand them over to destruction. Any priest who is too timid to keep that well to the forefront of his people's thoughts is no true priest. This is the basic thing that Jesus offers us. We can have 'with it' or exciting services; we can have magnificent building schemes; we can have well organised societies; but unless our lives are robbed of the fear of death and enriched with the certainty that those we love here we can love there for ever - unless we have that certainty, we are of all men most miserable - for how different are we from our neighbours as we come to the brink of that most thrilling journey - where neither riches, rank nor ability to talk fluently, helps us at all? Where we are known by our faith and by nothing else? Then it is that our giving to the hungry; our times spent in prayer; our frequent attendance at the Holy Communion, comes to our aid and calms our trembling hearts. Then it is that we can lift our eyes and look at places that terrify others; then it is that we can reach out confidently to take those hands from which we have been separated for long years - eyes that have grown sore with weeping, can shine again.

This is the promise, upon which rests our hope and our faith. We are risen with Christ, in this world and the next.

Fr. Roy

FROM THE REGISTERS

Holy Matrimony - All Saints' Harbury

5th April - Alex Hind to Kathy Percival

Welcomed into the Church by Holy Baptism - All Saints' Harbury

13th April - Megan Louise Cooper

27th April - William Joseph Winchester

Funerals - All Saints' Harbury

3rd April - Jack Mann

10th April - Joan Kelly

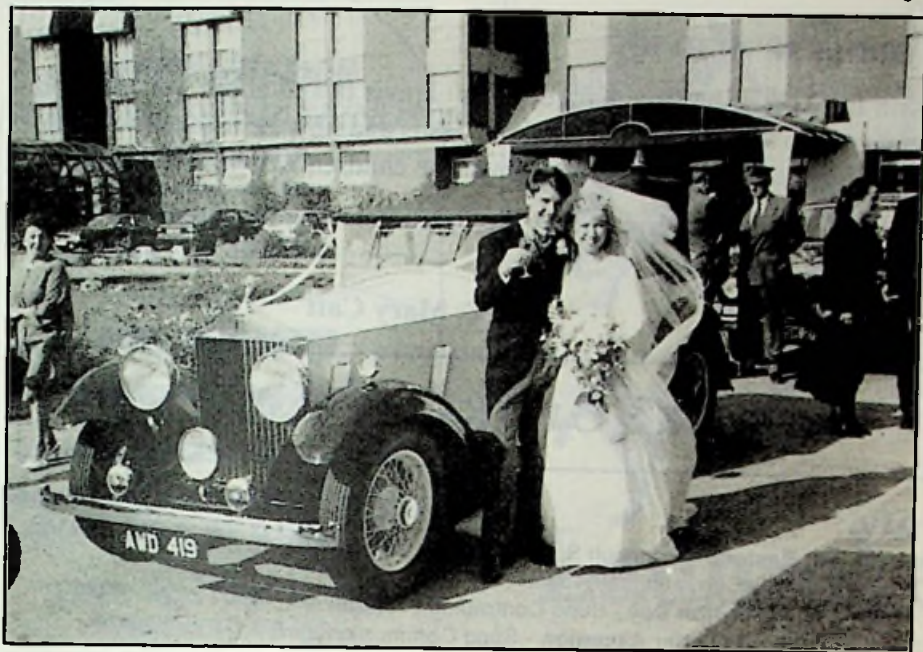
May they rest in peace and rise with glory



Sharon Andrews married Martin Duffy at Harbury Church on 1st March



Kathryn Percival married Alex Hind at Harbury All Saints' Church on 5th April



Dean Ingram married Kate Moore at Holy Trinity, Brompton on 5th April

MOTHERS' UNION

Most of us have seen a Gideon's Bible, perhaps in a hotel room or by a hospital bed and we were interested to hear how the Gideons started and about their work today giving Bibles to school children or putting them in places where they may be helpful. Sheila and Ian Jackson, members of the Gideons, told us about the work they do, illustrating their talk with slides and stories of some of the people who have been helped or brought to faith by one of these Bibles.

The Rev. Gillian Sanderson, our evening speaker, talked about *Women in Society and the Church* reminding us of some women who had great influence from Biblical times onwards. We finished with a lively discussion on our own experiences and those of women today.

In May, the afternoon speaker will be Mrs. Dorothy Myning on *Plants of the Bible*, and at the evening meeting John Eld will tell us about his experiences of *Delivering Aid*. Anyone interested is very welcome to join us.

Teddies are still coming in. We've sent over forty now.

C. Mary Catt

TODDLERS' SERVICE

With the help of her toy monkey, Mrs. Travis talked about our ears and how we use them. She told us about Jesus and how he listened when he was a boy and then how he welcomed the children who listened to him.

We sang two songs and played the instruments. Afterwards we made shakers to take home.

C. Mary Catt

Ladbroke News

MAY

| | | |
|-------|----|--|
| Sun | 4 | Easter 5 - Rogation Sunday; Family Communion 10.30am |
| Wed | 7 | Holy Communion 9.45am |
| Thurs | 8 | Ascension Day - Sung Communion 7.30pm |
| Sun | 11 | Sunday after Ascension - Sung Communion 9am |
| Wed | 14 | St. Matthias - Holy Communion 2pm Annual General Village meeting in Village Hall 8pm |
| Sat | 17 | Coffee Morning in Village Hall 10am-12noon |
| Sun | 18 | Whit Sunday - Sung Communion 9am |
| Wed | 21 | Holy Communion 9.45am |
| Sun | 25 | Trinity Sunday - Sung Communion 9am |
| Wed | 28 | Holy Communion 9.45am |

JUNE

| | | |
|-----|---|---|
| Sun | 1 | Family Communion 10.30am |
| Wed | 4 | Holy Communion 9.45am |
| Sun | 8 | Pentecost 3 - Sung Communion 9am |

LADBROKE CHURCH SERVICES

Can you give one hour a month to become a Server at Ladbroke Church, young, old, or in between? Full tuition will be given. It is a very rewarding job and no previous experience needed - only a willingness to serve the Lord. Please contact:

Jo Sowerby - 812143

LADBROKE CHURCH NEWS

Apologies to begin with for missing the deadline last month - good job I'm not writing a book.

**NIFTY NEEDLE
CURTAINS AND BLINDS**

High St. Harbury
Leamington Spa
Tel: 01926 612 927
Fax: 01926 613049

FREE ESTIMATES

PERSONAL SERVICE

HOME VISITS UP TO 7pm

**MOST WELL KNOWN FABRICS
AVAILABLE AT DISCOUNT**

OPEN: Mon/Tues/Thur 9-5
Wed/Sat 9-1 Fri 9-6

WASTE-AWAY



**PROFESSIONAL
SKIP HIRE**

- FULL RANGE OF SIZES 4-14 CU YARDS
- FAST, RELIABLE SERVICE
- DOMESTIC, COMMERCIAL - CONTRACT

01926 888918

RANELAGH TERRACE,
LEAMINGTON SPA

*Custom
& Bodywork
Services at*

The Garage

Ladbroke

ALL TYPES OF BODY WORK

FREE INSURANCE ESTIMATES

RESPRAYS

MECHANICAL REPAIRS

SERVICING

M.O.T. REPAIR WORK

WELDING

COLLECTION & DELIVERY

Personal Service from Steve Birch

01926 813590

Mobile 0836 699489



W. Goodwin & Sons Funeral Directors

38 COVENTRY STREET, SOUTHAM

All arrangements personally conducted
in any district

Telephone: Daytime 01926 812445
Night - time and weekends

Brian: 812656 John: 812657

Visiting Chiropodist

Collette A. Green

SEN MSSCh MBChA

1, NEWSTEAD DRIVE
SOUTHAM
WARWICKSHIRE. CV33 0LT



TELEPHONE
01926 817209

BENCH

TELEVISION SERVICE



22 OXFORD ST
SOUTHAM

mitsubishi dealer

REPAIRS
SALES
RENTAL

SOUTHAM: 812304

WHATEVER YOU DRIVE
YOU ARE WELCOME AT

DOVEHOUSE
AUTO
SERVICE

TELEPHONE: HARBURY 612809
FOR ALL YOUR MOTORING
MOT's, REPAIRS, SERVICING

News from last month was that Jenny Short and Catherine Spence are now on our PCC following our AGM in March. Otherwise the PCC is unchanged.

Jenny Knott has retired (at such a young age too!). She will be moving away from Ladbroke - see announcement later.

Please watch for the announcement about a special Children's Church Walk around the village on **Whit Sunday 18th May**. Details haven't been finalised yet, but we will be getting in touch.

Repairs and improvements to the church will begin sometime this year. The fabric committee are in 'feverish' communication with the architect getting everything worked out.

The yew tree nearest the Church door has to stay - we asked Stratford District Council for permission to remove it - this has been refused. We can, however, plant climbing plants (Clematis?) over it to make it look more interesting. The two holly trees that are pushing out the boundary wall can be removed.

Church Flower Rotas for May:

| | |
|-----------------------------------|-----------------------------------|
| 11 th - Mrs. Hanscombe | 25 th - Edwards |
| 18 th - Mrs. Edwards | 1 st June - Mrs. Short |

Betty Winkfield

WOMEN's FELLOWSHIP

We sent approximately £250 to the Renal Unit at Birmingham Children's Hospital in March. This money was raised at our Lent Lunches. A belated thank you to all who put on the lunches and those who attended.

We had a very interesting afternoon in April seeing John Trussler's slides, firstly of walks locally and in the Cotswold and secondly his holiday in Canada. We always enjoy John's afternoon, he is a very good photographer and it's also the way he tells the stories behind the pictures.

In May, Carol Tilley is coming to tell us more about F.L.A.M.E. The meeting will be at "Nancy's Place".

Betty Winkfield

LADBROKE AND DEPPERS BRIDGE W.I.

Unfortunately we have missed the last two 'deadlines', so we have news from February to report.

The February speaker was Mr. Philip Marr who came from Stratford-upon-Avon to tell us about the Royal National Lifeboat Institution. He also brought slides and literature. It was most enlightening to hear how our coastal areas are manned by these brave men.

The Short Mat Bowls matches have been enjoyed by players and supporters. The "A" team played Snitterfield at Harbury Club and the "B" team played Wishaw at the Kingsbury Youth Centre. Both of these matches we won. The next rounds were played against Harbury and we lost - best wishes to Harbury for your future games.

Our members were invited to the Princethorpe WI meeting where Mr. Cross, a retired policeman, gave an interesting talk about Victorian prisons and prisoners.

We celebrated the WI Centenary at our February meeting as there were no bellringers available to ring out our church bells. Two of our members, a mother and her daughter-in-law had birthdays which added up to a Century. Our president, Mrs. Spence made and iced a cake for the double occasion and we toasted them and the WI with wine. It was a happy evening.

A team was entered for the area WI Quiz - congratulations to the team in coming 1st equal and now go onto the next round.

At the March meeting, Jane and Fleur, from Clarin's Make-up, gave us an interesting talk and lots of tips. Jo looked ten years younger after treatment! It is our turn this year to be hosts at the group meeting at Napton's new school on 7th May.

The April meeting was well attended. Names were taken for various outings including Jodrell Bank and Waddeston Manor. Our speaker, Ruth Corpen, from Rugby gave us an entertaining talk on precious and semi-precious stones and their origins.

Our May meeting will be for the presentation and discussion of the Resolutions.

Hazel Sharples



Pat and Marie Kennedy with the Centenary / Birthday Cake

LADBROKE VILLAGE HALL

All sorts of exciting things are being planned for your enjoyment this year. Plans are also being made to celebrate the millennium in 3 years' time - watch this space!

Please mark 4th July in your diary now; the plans for an 'Independence Day Bar-B-Q' in the garden of Attwood Cottage - by kind invitation of Peter Derrick. For your entertainment, there will be music by Jeremiah Stone, Morris Dancing and Line Dancing. There will also be the usual Tombola, Raffle and side stalls.

We are also planning a Halloween Masked Hop in October and a Magic Lantern Show in November:

Betty Winkfield

LADBROKE VILLAGE HALL

Saturday 17th May, 10am-12noon - Coffee morning, Bring and Buy, Raffle, Gifts and Cake Stalls. Money raised will aid the Village Hall Extension Fund. We need your support

Hazel Sharples

LADBROKE PARISH COUNCIL REPORT

The April meeting of the Ladbroke Parish Council was held on Wednesday 16th April in the Village Hall with all Councillors present.

Gritting of Harbury Road: An answer had been received from Warwickshire County Council indicating that the road from Ladbroke to Deppers Bridge would remain as a secondary route for gritting in inclement weather, despite our request for it to have a higher priority.

New Housing Development: A reply had also been received from the appropriate section of Warwickshire County Council to the effect that every effort will be made to co-ordinate the digging of the holes for the necessary services to the new housing development to minimise disruption.

Police and Neighbourhood Watch: There had been no reported crime in the month of March. Francis Badman has expressed a wish to reduce the number of houses within his Neighbourhood Watch remit. Could anyone become a co-ordinator for the Bridge Lane area?

Planning Applications: There had been a planning site visit during the month and it was confirmed that the application to remove certain self set trees on the boundary between Woodlands and The Old School should be passed to Stratford District Council tree experts.

Footpaths: Geoff Timms was pleased to report the continued activity of the footpath rangers in the village, under the direction of Rachel Bodicote.

ANNUAL GENERAL VILLAGE MEETING - Wednesday 14th MAY

The meeting will be preceded by coffee and biscuits at 8pm in the Village Hall and newcomers to the village will be particularly welcomed. It is the opportunity to hear the reports of all organisations and groups within the village as well as the parish accounts for the year.

Carol Northorpe

ANNOUNCEMENTS

We are pleased to announce the safe arrival of *Hamish Thomas Sopworth* on 18th April at Church Cottage. Our good wishes go to Mum, Dad and baby.

We are happy also, to announce the engagement of *Jennifer Knott* to *James Daniels* of Bristol. Jennifer is moving to Bristol in May. She will be greatly missed, especially as she was a very keen bell ringer. We wish Jennifer and James all happiness in their future life together.

HARBURY PARISH COUNCIL MEETING - MARCH

Councillor John Hunt agreed to take on the surveying of the Centenary Way footpaths helped by John Hancock and John Smith.

Bryant's at last accepted the price they had to pay the Parish to take on the maintenance of open spaces on the new estate and were to install two concrete bollards at either end of the foot way to South Parade.

The Local Waste Plan proposals which would include a Materials Recycling Site at Ufton Tip worried Councillor Woodward. Extra traffic would be generated going to collect the recyclable materials and he did not want any extension of the site without improvements to the roads serving it.

The Parish Council had no comments to make on extensions at 7, Deppers Bridge and 49, Mill Street, but they were not happy with amendments to the plans for Hillside Farm where on-street car parking and the lack of a screening hedge on the escarpment caused concern.

Stratford granted permission for a conversion at Highfields Stables, a garage extension at Highcroft, Butt Lane and at Harbury Heath, and tree work at The Shakespeare.

Two storm damaged conifers at Temple Cottage are to be pruned and the diseased Hawthorn on the Old New Inn Green felled and replaced. The Council is to take expert advice on pollarding of mature trees in the burial ground.

The Harbury Society has sent out a survey to residents round Manor

Road Green to judge the enthusiasm for enhancing the area. It asked the Parish Council to ensure that responsibility for the maintenance was agreed. The Parish Council has been in negotiation with the District Council for permission to cut the grass in public areas transferred to the South Warwickshire Housing Association.

Stratford's "Good Dog" campaign is to be advertised. It designates areas such as playing fields, verges, etc. where it is an offence to allow dogs to defaecate.

Biffa's lorry servicing the Mini Recycling centre was thought to be causing the damage to the curbing, but the company's response was not very helpful and the Parish Council was concerned that the Club would not renew its agreement.

Councillor Mrs. Shelley reported on the progress of the fund raising for the Millennium Video. Donations of £200 from the Horticultural Society and Craft Fair had been received so that almost £1,000 had been raised.

The Council is still investigating the possibility of employing its own Village Caretaker and the Clerk was to be supplied with an answering machine.

Linda Ridgley

HARBURY PARISH COUNCIL - APRIL

The Councillors talked a lot about bollards this meeting. They did not approve of the concrete ones installed at their request by Bryant's to stop cars using the new footpath to the estate. They spent ages choosing lighting ones to put up there and John Woodward tried to get all the street lights at the Hillside Farm development low-level bollards too!

They discovered wall mounted street lamps weren't for Ivy Lane. The contractor's insurance prohibits them installing them. Instead the antique style standards they have chosen for the conservation areas will be put up.

Harbury has been short listed to be one of two pilot studies in Stratford District Council to produce a 'Village Design Statement'. The Parish Council agreed that a VDS would be a useful tool and a defence against poor design in future developments.

They decided Landscape Architect, Jerry Birkbeck should meet those living round Manor Road Green and other interested parties to look at ways of enhancement. The initial survey results were completed by Mr. Dormer's effort which resulted in a 50/50 tie of YES and NO responses!

The Harbury Preservation Society (all six of them) were out in force to give views on Willie Carroll's latest plans for Brethren's Farm. They argued that the development would not enhance the conservation area, was an intensification of the use of a sub-standard access; the design and scale were inappropriate and it was too close to Chesterton House Farm. Mrs. Trice was very concerned that their livelihood would be threatened, although Mr. Carroll claimed he would not object to the farmyard noises and smells.

John Hunt thought the proposal well designed and better for the 'street scene'. Councillors were pleased that stone was to be used for the front elevation and the Harbury Society Secretary agreed the designs were an improvement. In the end, the Parish Council decided not to object to the plans.

Stratford passed plans for an extension at Mansfield Barn, Fosse Way and a conservatory at 49, Mill Street. They rejected an application for Bull Ring Farm, but were content with subsequent amendments for Hillside Farm.

The Parish Council had no comment on plans for minor amendments to Lower Westfield's Farm, Saddlers in Chapel St. or 17, Farm Street. The Appeal at Harbury House was deferred.

Ken Stephenson and John Woodward have been seen out on their bikes looking at likely places to put the free cycle racks the District Council offered. The Playing Field, Village Hall, Wight School, and outside the Chemist and Supermarket seem the best spots. Sharon Hancock was all in favour of anything that encouraged people to stop using their cars.

The School's newsletter has had some success encouraging parents not to drop children off from their cars in Wagstaffe Close, but to go to Park Lane instead. The Weight Limit has been placed on Deppers Bridge. Warwickshire County Council will not extend the speed limit in the hamlet to include the railway bridge and junction with the Bishops Road.

Mary Shelley passed on Mill Lane residents' concerns that the owners of

Northfields were storing an old Fire Engine, army vehicles and a World War II Tank at their property. Stratford District Council had explained that this was perfectly legitimate as a hobby, but commercial use would require planning permission.

A letter is being sent to those living near the railway asking whether they wish the path along the embankment to remain fenced off or if they want access to be restored.

The upshot of the meeting with BT was that a few minor changes to the siting of poles was promised; the most important of which would be on Manor Road Green and in Mill Lane where Mary Shelley expressed herself willing to "*give up my shilling a year*" (wayleave) if the pole was moved from her property.

Praise for Councillor Woodward's 'organisational efforts' came from the new owners of Hessle Cottage where he solved problems with the boundary, hedges and trees. He negotiated the mowing contract for grass now in the ownership of South Warwickshire Housing Association.

Stratford District Council announced it was upping the OAP's transport tokens from £12 to £18 this year. A&M Cars carried 1,109 passengers in the taxibus in the last financial year.

Annual Parish meeting will be on **Thursday 15th May** and the Parish Council meeting on **Thursday 22nd May** - both at 7.30pm.

Linda Ridgley

HARBURY SOCIETY

Celia and Mary flew the flag for the Society at the Local History Day in Coventry in April and we have a treat for members in May - one of John & Ed's Pub Walks!

It starts at 6.30pm from the Red Lion in Hunningham and anyone wanting to take part should let John Lapraik know beforehand.

Last year for the Carnival we recycled 'Silvery' things - this year is 'Golden' - well 'Brassy and Bronzy' anyway. So, if you have any knick-knacks to donate, let Linda know 612792, leave them in her garage at 16, Farm Street or wait for the collectors to call.

For the Autumn, the Society is entertaining members of the Coleshill Civic Society and showing them the beauties of Harbury and the surrounding countryside. They are being treated to two guided walks on Saturday 13th September, one round the village and the other out to the Chesterton Valley.

We are having an 'Apple Day' talk in October and 'Bonzo' has promised us an exposition on the Quarries and Quarry workers for the Spring.

Linda Ridgley

HARBURY WOMEN's INSTITUTE

In June there is a visit to watch the Warwickshire/Derbyshire Cricket match and also to play Golf/Croquet at Loxley.

At Short Mat Bowls our A and B teams enjoyed a pleasant evening with Ladbroke ladies, winning their matches and getting into the semi finals. Not so lucky in the County Quiz, but certainly not last.

Peggie Middleton recently visited her daughter in Canada and thought she would like to visit Stoney Creek where WI was founded. She phoned and was told that the house was closed from November to April, but if she would like to go a member of staff would be there.

Off she went, expecting a sleepy little town, not a busy, built up area. However, she was made welcome and given a tour of the house and asked to sign the visitors' book, finding that hers was the first name with a Harbury address in the Centenary year. There are photos to prove it!

The speaker was Lady Elisabeth Hamilton on the history of Walton Hall. Lady Hamilton was first introduced to Walton Hall as a young woman when her husband took her to see his grandmother's empty house. Ten years later she went to live there when her husband inherited the property. Walton Hall is well documented from papers and documents stacked in a locked cupboard; some dating back to mediaeval times. The ancient charter for Wellesbourne market was also there. Later, Lady Hamilton concentrated on talking about life in the Victorian era onwards.

We saw slides of the estate, the owners, John Mordaunt and his son Charles and some staff of the times. Walton was obviously a well run estate and the village was built and maintained by the family for its workers.

The river ran through the grounds to Wellesbourne and Charlecote, thus providing water to service needs. There was an ice house where ice from the frozen lake was housed. A chapel was built in 1827 on the site of a bigger mediaeval church. Bridges, tracks, tree planting and felling were all part of the work done on the estate. A school was built, children being excused lessons if they were needed to work on the estate. There is a folly which was filmed in a commercial some years ago.

It was very much a hunting, shooting, fishing life. In fact, John was accidentally shot by his cousin in 1845. His son, Charles was only 9 years old so his mother ran the estate until he was 21.

It was surprising to learn that, because the house was in such a poor state, Charles had a new one built in 1858-62, so it is not as old as one would think. He also rebuilt the cottages in the village.

A traumatic first marriage in which Edward VII's name was mentioned ended and Charles later married the present Lord Hamilton's mother.

Both father and son were on many committees which were responsible for sanctioning services for the area. One was the workhouse in Stratford-upon-Avon, which later became the hospital. John also had a chapel built within the grounds of the workhouse and the Wellesbourne Conservative Working Men's Club. Nowadays, Walton Hall is well known for its time share business. Members can dine and enjoy the gym facilities or hunt, fish and shoot. Once only for the privileged few, but now enjoyed by many.

May hostesses: Sue Lapraik, Diane Buck and Barbara Ayres.

Jeanne Beaumont

HARBURY YOUTH CLUB

Thanks to Project Endeavour the Youth Club has had three months of events and activities, for which the committee and members are very grateful.

WELL DONE PROJECT ENDEAVOUR!

However we are now back in what has sadly become a familiar situation. Without 'leaders' we are unable to open on Wednesday evenings. During the summer months there tends to be less of a need for the Club,



HARBURY LONDIS



Open seven days for your convenience

GROCERIES • THE NATIONAL LOTTERY



OFF LICENCE • FLOWERS & PLANTS

DESIGNER GREETING CARDS • VIDEO LIBRARY

8.30 a.m. - 9.00 p.m.
- Monday - Saturday -

10a.m. - 1p.m. and 6 p.m. - 9p.m.
- Sunday -



All major Credit Cards now taken

MILL STREET, HARBURY

TEL: 01926 612645



THE DOG INN *Harbury*

Tel: 01926 612599

Welcome - from Jay & Maureen

OFFERING 3 COURSE SUNDAY CARVERY @ £7.95

2 COURSE CHILDREN'S MENU FOR ONLY £3.00



**FULL RANGE OF BAR & RESTAURANT MEALS.
AVAILABLE FROM TRADITIONAL TO THE UNUSUAL.**

**TAKE AWAY MEALS MONDAY - SUNDAY
FINE SELECTION OF HAND PULLED ALES,
INTRODUCING GUEST ALES EVERY WEEK.**



Room available for private parties

D.W.A.G.

O
U
G

Builders

Tel: 01926 612460

Mobile: 0860 849777

R
E
E
N

Local Tradesmen who take pride in their work.

We specialise in rebuilding half-timbered and period buildings, renovations, extensions, conservatories, patios - in fact any form of building work.

ESTABLISHED OVER 30 YEARS

**GOOD FENCING
MAKES GOOD
NEIGHBOURS**



**"You've seen the Rest
Now see the BEST"**



**ROLLASON
FENCING AND SHEDS
EST 1964**

*Professional erection service available
(01926) 613009 or (01926) 612066
Fosse Garage, Fosse Way, Harbury*

SOUTHAM

PhysioFirst

CENTRE

JACKIE SNELL

MCSP SRP

**CHARTERED AND STATE
REGISTERED PHYSIOTHERAPIST**

Health insurance recognised

**Reflexology & Aromatherapy
also available**

**10 Daventry Street,
Southam**

Tel: 01926 614 614

Member of the Organisation of Chartered Physiotherapists in Private Practice



*Traditional Acupuncture
&
Chinese Herbal Medicine*



**FRANCES
FARRER**

**MBAcC, RCHM
(Cert. Ac. Beijing)**

The combination of Chinese Herbs and Acupuncture, Laser Therapy now also available, offers help to a wide spectrum of illness covering stress, anxiety, P.M.T., headaches, back, shoulder or elbow pain, and more serious problems such as arthritis and M.E.

*For information ring
01926 817583*

**WHITEHALL CLINIC OF
NATURAL THERAPY,
7 Warwick Road,
Southam, CV33 0HN**

Parking facilities

as members spend more time outside. We hope that by September we will be in a position to re-open and we will keep people updated through the Harbury & Ladbroke News.

To end on a happier note; at a Club disco on Wednesday 23rd, Jemma Phipps and Robert Biddle were elected Carnival Queen and King.



Another Phipps to wear a crown!

Vikki Holroyd

HARBURY THEATRE GROUP

If you were not one of the 170 or so villagers who came and saw our production of Holiday Haunts, you missed a great play. Thank you to all who supported us over the three nights. We shall as usual be organising the Carnival Dance on the **Saturday 14th June**. Tickets at £6 each will be available soon from Carol Percival.

We are holding a play reading evening on **Friday 16th May**, to which any new members are most welcome to attend. Details of this event are available from Chris Barber, 613542.

John Holden

HARBURY FOLK CLUB

April's Folk Club could best be described as 'quality not quantity'. A total of thirteen performers had plenty of opportunity to show their talents, with songs, music, poetry and recitations.

Rick provided some sea songs and concertina tunes. The Harvesters were on top form with *The Country Set* and *One Hit Wonder*. Peter McDonald performed several songs and played a medley of tunes on his new melodeon. Pam gave us one of her own poems and recited that old favourite *Albert and the Lion*. Yet another super group combination 'Drill the Jug Phill' gave us *Just Seventeen* and the foolish *Earwig O*.

The relatively few entertainers meant that many performances were off the cuff, none more so than Bob's hilarious recitation of *Cardew the Cad* and Steve's *The Twicer* - a Black Country gem. Phill and Drill provided some topical mayhem with *Major Tom*. The group that completed the evening consisted of Matthew, Eleanor and Trevor, who had been together for all of twenty minutes before their debut. Once again, it was a fun evening. The raffle raised £45 for the Macmillan Nurses' Fund.

Mike Putnam

CALLING ALL WHO LIKE A CHALLENGE!

Are you aged 0 -101? Do you enjoy mental and physical challenges?
Are you keen to raise money for our school?

If the answer to any one of the above is yes, then the Harbury PTA have an unmissable opportunity for you coming up on **Saturday 17th May**:

THE SPONSORED EVENT!

After nearly two decades of Sponsored Walk Events which, thanks to tremendous support, have raised thousands of pounds for the school, it was felt that the well established course was a little worn. So a new style challenge has been designed with a view to making it more attractive for young and old alike (we'd like parents involved too!).

The cunning plan is to have a younger children's course in the form of a **hunt** (for treasure allegedly!) organised on the Recreation Ground, and for the older ones there will be an **explorer's route** from a different

village location. Time will be the only constraint on individuals (or families!?) doing both!

As before, the event will run from **9am till 12noon** and this year the money raised will be specifically for much needed technology equipment in the school.

So now is the time to get in touch with your auntie from Wales, friend in Penrith etc. and if they can't actually come on the day, then surely they can do some sponsoring for your efforts.

Details of sponsor forms etc. will be available from the school and we hope that this new format will revitalise this event, resulting in lots of support and thereby raising as much money as possible for an excellent cause.

Harbury PTA Committee

HARBURY SCOUT & GUIDE SHOW

Saturday 22nd March 2pm: After a scramble, a group of Beavers, Cubs, Brownies, Guides and Scouts plus leaders and helpers gathered together in the School Hall for a dress rehearsal for the Scout & Guide Show to be held that evening. A dress rehearsal usually means final rehearsal - this, however, was the first time the group had managed to perform the acts in the correct order for the evening. A short rehearsal had been managed on the Tuesday before, but because of school next day, events were rehearsed - Beavers - Brownies, etc.

A lot of time was spent trying to get them on and off stage so that the majority could be seen. At 5pm a very tired group of children (and adults) were very relieved to leave the School Hall!

At about 6.30pm, after another scramble, a fresh group of exited children started to arrive at the School again. Were they the same children? A rehearsal in the music room for the violins: stands to move etc. Just after 7pm acting group Scout leader Sasha Byrne introduced the 1st Harbury Scout and Guide Special show and the children got to their places at the front of the hall and sang with gusto. Then followed an extravaganza of talent from all members of the group ranging from violins to steel drums, a piano recital from one of the youngest group and an excerpt from Grease. We had our own version of Blind Date

with a very cute Lady (alias Stephen), copious sketches and jokes, Morris Dancers and audience participation. If I've left anything out I do apologise but it was surprising to see the very varied talents of the children and there just isn't the room to write about each of the 'acts'. Everyone who attended said how much they had enjoyed it... I know that's what you're supposed to say, but I had it from someone who doesn't usually like 'that sort of thing'. Whether they were really good or extremely enthusiastic, I'm not really sure, but it was a truly magnificent evening and after one rehearsal all the children knew where they had to be and when.



Violinists playing at the show

A big thank you to all the children who performed so well. We must also thank: Keith Burford for playing the piano; Peter Bones for training the boys Morris Dancing and Celia Neill for providing the music for the dance. Also thanks to Mr. Sudlow for getting the violinists together and

writing the harmony; the ladies for providing refreshments and Harbury School for the loan of their hall and various equipment. Thank you.

Muriel Coupe

HARBURY CUBS

Thank you very much Mr. Bones and Mrs. Neill for all your help teaching the Cubs Morris dancing, for the talent show and playing the music.



from Harbury Cubs Morris Dancers

SOMETHING TO DO ON SUNDAY NIGHTS

What does Sunday night mean to you - getting things ready for work the next day after a not very exhilarating weekend?

How about doing something different. Why not come along to Harbury Village Hall and join in a few games of mixed doubles Badminton? It

doesn't matter what standard you are, from complete beginner (no, we won't laugh!), to one of those sickening people who seem to be everywhere on the court at once (but we don't encourage many of those!). The aim of the evening is to enjoy a little unpressurised exercise, have a chat, and forget about the week ahead. If all this sounds like the thing for you, please give me a ring on 612009, and I'll give you a few more details.

Gordon Robbins

BOWLS

Although we haven't yet got a bowls' green in the village, it hasn't stopped us having a bowls team thanks to Colin Such. He organised a few friendlies against Avon Valley and Welford who have just opened a new indoor green. We enjoyed ourselves and that is what it is all about. Next indoor season no doubt we shall play a few more.

What about the outdoor season? Well, you can still play, if not in the village, then nearby at Southam. We play at the back of the football club down the Banbury Road. They are a good crowd, quite a few of the village already play, so why not come and join us. It's not entirely played by the old and decrepit, as they even let me play! Young or old, you will be very welcome at our **Open Day on Sunday 18th May at 10am.**

Give it a try - it takes a bit of skill and a great sense of humour to play. It's a great leveller, on your day you could beat David Bryant; on the other hand I might beat you. As they say: "*It's only a game*".

We cater for all abilities, playing in leagues as well as friendlies, some men only, some ladies only, but in the main, mixed. Somewhere in the region of 90 matches between the beginning of May and the end of September. If you are interested, give me a ring on 612563.

Barry Latham

(Hon Secretary, Southam United Bowls Club)

HARBURY CRICKET CLUB

Harbury CC have recently restructured and now have a Saturday League Team and a Sunday Friendly XI. In their opening match on 20th April, the Sunday XI played a forty overs a side match at Darlingscott, down

the Fosse Way. Darlingscott batted first and struggled on a pitch with very variable bounce, against some accurate Harbury bowling, eventually reaching 113 for 8. The combination of a very dry surface and patches of moss, made for difficult batting. Ed Russell (5 for 31) and John Clifford (2 for 26) were the pick of Harbury's bowling. Ed Russell bowled particularly well and was ably supported from the boundary by his baby son and a flock of geese. Wicket keeper Richard (The Major) Carr took three good catches but the rest of the side managed to drop several others, in near Arctic conditions. It is some indication of the problem that even Fielding Coach (and Parish Councillor) Phil Holtom dropped a sharp pull to square leg. Les Sollis and skipper Mike Daniels opened for Harbury and found the pitch very awkward, but two good innings by John Clifford (38) and Richard Carr (29) steered Harbury towards victory. A sensible knock of 13 by Neil Maunder took Harbury to 114 for the loss of only five wickets, with some overs to spare.

New players are welcome, young or old, competent or not so competent. Please contact Will Russell (Saturday XI Captain) on 612078, Ian Holroyd (Club Secretary) on 612527 or Ian Jackson (Sunday XI Vice-captain) or 612615. Spectators are always welcome at the Middle Road Ground shared with Harbury Rugby Club. Fixtures for the next few weeks are:

| Saturday XI (League) | Sunday XI (Friendly) |
|------------------------|------------------------------|
| MAY | |
| 3 Leamington H | 4 Willoughby H |
| 10 Peugeot H | 11 Kineton 2 nd A |
| 17 Attleborough Res. A | 18 Barford H |
| 24 Potterton H | 25 Stratford Bards A |
| | 26(M) Warks. C.Council A |
| JUNE | |
| 7 Greenmore Rd A | 1 T.B.A. |
| | 8 Ettington H |

HARBURY UNDER 8'S FOOTBALL TEAM RECRUITMENT DRIVE

Is your child enthusiastic about football? Is he keen to improve his fitness, ball skills and play in friendly matches? Did you know there is a well organised coaching session for children who are currently aged 6-7 years old (born after 31/08/89) on most Saturday mornings between 9am and 10.30am. at the school playing field?

Make a note in your diary for **Saturday 31st May** when you can send him along to a practice session to see if he likes it, in preparation for joining on a regular basis for next season commencing early September.

All children are given equal opportunity to join in games irrelevant of current ability, you will see a visible improvement in their skills after 6 months. Interested? If you can't make the 31st May, then call Steve Darby on 613330 to register your child for next season. Places are limited, so come along on the 31st to avoid disappointment.

Steve Darby

A VILLAGE DESIGN STATEMENT - CAN YOU HELP?

The Countryside Commission has set up an initiative to promote Village Design Statements. These can enable villages to set a standard against which the design of new developments can be measured. Harbury has been short listed to be one of the two exemplar villages in Warwickshire. We have been given an extremely short time in which to make our initial submission. We need to have in place a prospective core team, and some of these will need to offer particular skills. Harbury Parish Council would like to hear from anyone who feels they could make a contribution and particularly from anyone with skills in drawing, photography, or archival research. Please contact the Clerk, Alison Hodge on 612029 as soon as possible.

Sharon Hancock

BLINDS 1/2* PRICE SALE

VERTICALS • VENETIANS • ROLLERS • ROMANS • PLEATEDS

SELECT AT HOME
FAST LOCAL SERVICE

Phone now 9am-9pm 7 Days

**FREE
FITTING**

01926 421679

Albany 

*off current prices on selected ranges

If no answer 0800 212532

P.D.Q. SECRETARIAL

For a professional and confidential
word processing/typing service:

*Letters - Reports - CVs - Theses -
Mail Shots, etc.
Laser Quality Printing*

Julie Killian

*The Bungalow, Chapel Street,
Harbury - Tel: 01926 612265
(Answerphone out of office hours)*

*A service based on Professionalism,
Discretion & Quality*

R&S DOMESTIC SERVICES



REPAIRS TO MOST MAKES OF

Washing Machines

Tumble Dryers

Cookers

Dishwashers



PHONE - ROB CENEY on
HARBURY 613707

Michael Jerome



Carpets



A COMPLETE CARPET SERVICE

- Choose a new carpet from our extensive range
- Expert Fitting - Fully Guaranteed
- Existing Carpets re-fitted
- Professional On-Site Cleaning
- Vinyl Sheet Flooring

6 Meadow Road, Southam

Telephone: Southam 813325

Michael Jerome is a Master Fitter with the National
Institute of Carpet Fitters with 30 years experience



FOR PROFESSIONAL HAIR CARE



Kathleen Ellis

CHAPEL STREET, HARBURY. ☎ (01926) 612326

RETAILERS FOR WELLA HIGH HAIR PRODUCTS

**TO ADVERTISE CONTACT:
DAVID SNELL ON (01926) 614 614**

HARVEY BUILDERS

Registered Since 1979

**YOUR LOCAL BUILDER FOR ALL YOUR
HOME EXTENSIONS AND ALTERATIONS
FROM PLANS TO COMPLETION.**



FOR PROMPT, PERSONAL SERVICE PHONE 01926 817906

REGISTERED
HOUSE BUILDERS

Westfield Cattery

Middle Road, Harbury, Warks. CV33 9JN
Telephone: (01926) 613946 and (0374) 986077

*A safe and caring home away from home
in the country*



CHIROPODY PODIATRY

Mr. J.F. Small SRCh, DPodM, MChS - State Registered Chiropodist/Podiatrist and Senior I
Chiropodist Diabetes Care for local NHS Trusts welcomes clients old and new to his clinic for
private consultations now located opposite Bell's Fruit & Veg. Shop at

HEALTH FIRST, Daventry Street, Southam

All Chiropody/podiatry services available including routine and specialist treatments:
biomechanics, gait analysis, sports orthoses, nail surgery, specialist footwear, insoles
Also special service - intensive treatments to CURE most foot problems - including corns,
callouses, ingrowing toe-nails, verrucae, fissures, metatarsalgia, plantar fasciitis

Remember, foot & gait problems can lead to knee, hip, back & neck pain.

So why not make an appointment to see what can be done for you

Please telephone 01926 811272 for an early appointment



KANE'S NEWS

HIGH STREET, HARBURY
TELEPHONE: (01926) 612156

Much more than just newspapers and magazines!

- TOYS
- STATIONERY
- GREETINGS CARDS
- WRAPPING PAPER
- PHOTOCOPYING
- DRY CLEANING
- SHOE REPAIRS
- PHOTOGRAPH DEVELOPING

Why go elsewhere when we're on your doorstep?

HARBURY LADIES NETBALL CLUB

May is a busy month for us considering that our last league matches are played on 26th April. On **Saturday 17th May** all the teams are taking part in the Handicap Tournaments in Coventry and on **Saturday 24th May** it is our turn for the Tom Hauley Room Coffee Morning. We shall have a 'white elephant' table there as well as cakes, a raffle and the usual coffee and biscuits.

Practices will continue throughout the summer on Thursday evenings 6.45pm onwards and anyone wanting to play is welcome to join us. The Netball court is a village facility and we want to get full use out of it.

Earlier this month we held a Fashion Show and raised £180 for club funds. Thanks to everyone for attending. It really was a good night. The profit will go towards buying benches to be situated near the side of the court - within the fencing - so that team substitutes and spectators can sit and watch the games on Saturday afternoons.

In June we are planning one of our infamous Safari Nights, but are checking a clash of bookings at the moment. A definite date will be given in next month's H&L News. Watch this space!

If you want to know anything about the Netball Club, the events, or how to join us, telephone the club chairman, Janet on 612841 or myself on 612059. You can also see the teams in action on Carnival Day.

Pat Summers

FLORA LONDON MARATHON

Many thanks to everyone who sent me best wishes and sponsor money to run the London Marathon. I was overwhelmed by your generosity and I am happy to say that, to date, the sum raised for Back-Up is over £1,000. This is far more than I ever expected and it's mainly due to the people of Harbury.

I completed the distance in 3 hours 52 minutes which I was very happy with. The atmosphere in the capital was unique and the crowd spurred all the runners on with relentless enthusiasm. My friend Karen who was the inspiration for my run also completed the course in her wheelchair in 2 hours 45 minutes. Once again, thank you Harbury for your support.

Jane Hancock

TADPOLES AND THE FLORA LONDON MARATHON 1997

On Sunday 13th April, a glorious spring day, the many thousands of runners were certainly wishing the weather was not so glorious! But nonetheless a wonderful day was enjoyed by runners, spectators and supporters alike.

Nicky and I set out with the intention of starting and finishing together, but that was not to be (see BML's account!). Alas, Nicky cruised the 26 miles 385 yards in 3 hours 45 minutes and I crawled around in 4 hours 8 minutes, but our fund raising has been truly successful.

Thanks to a huge effort of the West and Latham families and to all those who sponsored us, we believe that our aim of raising £1,000 for the British Diabetic Association Tadpoles, has nearly been reached. We will confirm the total funds raised in next month's magazine.

Congratulations to Jane Hancock on her success in completing the London Marathon and also thank you to the Hancock and Thompson families for their surprise support on the day. Again many, many thanks to all those who gave monies to a charity, as most of you know, that is close to my heart.

Thank you also to Kane's Newsagent, Londis and Party Paraphernalia for their assistance and the final thank you to the Latham and West families for their help and support on another memorable day.

P.S. We would appreciate any outstanding sponsorship monies to be forwarded at your earliest convenience!

Andy West-Latham

THE BACK UP TEAM

4.30am the alarm went off. Hardly been to sleep so it seemed. Get dressed, pack the rucksack - sandwiches, drinks, carbohydrate for Andrew, bananas for Nicky. Granddaughter, Bronte on the phone: "*Are you dressed yet, Grampi?*" Why is she so cheerful at this time in the morning? Nicky is up and about, stretching legs, arms, already preparing. 5.30am doorbell, rest of the team arrive. Board the team bus - two moms, two dads, one wife, a granddaughter and the two runners, Andrew and Nicky, ready to tackle the London Marathon in support of the British Diabetics Tadpole Section.

M1, mist across the fields, beautiful sunrise, Scratchwood Services - the loos (a marathon must), A41, Finchley Road, 7.15am park at Swiss Cottage. Hugs, best wishes, Andrew and Nicky leave to do battle. The team follow, rucksacks on back. Tube station - Jubilee Line - Baker Street, roaring winds, escalators, up, down, down, up, winding passages - Circle Line - Tower Hill - back to sunlight and the sky. Team needs refuelling, 8.15am down to St. Catherine's Docks, quayside café, wonderful breakfast, huge sailing boats, expensive cruisers, little dinghies, all in the centre of the capital.

The team set up camp on the north side of Tower Bridge, 9.25am, road not closed yet, have to get a good view, but so do a few hundred other people - road closed, race on. Meet people, Exeter, Germany: *"I've done 48 marathons, Boston next", "Here they come"*. Cheer, wave flags, clap, yell. Helicopter chattering overhead: *"Are we on the TV, Grampi?" "GO ON, LIZ!" "Don't they run fast?"* 12 miles gone, only another 14.2 to endure. Again the cries, the cheers, the clapping but this time in sheer admiration as the first of the wheelchair contestants speed past, how do they do it, what courage and determination. More jubilation as the elite men seem to sprint past, hardly a chance to recognise anyone, how can they run so fast for so long.

The thin trickle of elite becomes a steady stream of club runners and ends as a torrent of heroes and heroines. Teddy bears, clowns, Superman, jugglers - all run past everyone getting a well deserved clap or cheer. The team supports anyone and everyone and in a genuine union of the spectators, no apathy, no division, no self, we must as one make sure they all finish.

"Come on, Tadpoles!" "You can do it, Fred." "Keep going, Jane" Where are our two in this multitude of enthusiasm, 11.00am they should be here, 11.10am, still no sign - how can you spot two in 29,000. But we did, big smiles, pink hat, yellow T-shirts adorned with orange tadpoles, Andrew and Nicky had made it so far. Look great, what a relief, words of encouragement and reassurance pass between us all, see you at 22 miles. Congratulations come from all the crowd round and about us. Then, weren't their loved one just as brilliant as ours. Time for the team to move.

Rucksacks lifted on to shoulders, goodbyes to new-found friends. The walk to the next camp would stretch cramped legs, stiff with standing still. The sun warms our backs but dries the runners out. A different scene awaits at 22 miles, jubilation of the crowd is unabated but the gladiators are struggling more now, you see it in their faces, hear it in their breathing, watch it in their legs. No longer the repartee between crowd and runner, just the willing on by sometimes fretful supporters. A cry of pain, hand to thigh, grimace of contracted muscle, welcoming hand of one of the crowd to stretch and ease an aching leg. "*Come on the Tadpoles.*" Now a rallying cry - a brief smile, a nod of appreciation in return, not the banter of ten miles ago.

"*When's Daddy and Auntie Nicky coming, Grampi?*" "*Soon*"... we hope. Ensconced on a kerb in some London backstreet, eating our sandwiches, waiting, encouraging, hoping our own two will appear soon and on time. "*Come on Tadpole*". Nicky strides into view but no Andrew. Cramp at 15 miles is the answer, going to pack up, wants Nicky to carry on. Nicky has seen John and Sharon Hancock as well as Mary and Keith Thompson round the course urging them on with smiles and encouragement. Weary but resolute she carries on towards that every nearing finish. What now, do we pack up and go to the finish or do we wait and hope? Is his diabetes all right? Many thoughts pass through our minds. "*Where's Daddy, Grampi?*" A phone call (forget all I've said about mobile phones) says he's been seen at the 18 mile mark. Wait or go, a dilemma. Solved! Andrew appears looking worse for wear but determined to finish. Assuring us his diabetes is not the problem, he disappears down the road with Bronte trying to run alongside him. "*Daddy looks so tired, Grampi*".

The team packed up once again and start off for the Meeting Point knowing we couldn't get to the end in time to see either of them finish. More walking, Tower Tube, Station, had to queue to get in the place, like rush hour, packed shoulder to shoulder: "*Did you see your son, daughter, friend, neighbour, Superman, clown, teddy bear?*" "*Weren't they great, aren't they brilliant!*" - Circle Line - Westminster. Surface to roars of the crowd, fight our way down Birdcage Walk, "*Come on the Tadpoles!*" Overtaken on the road by hundreds of now overjoyed heroes who sense the finish is in their power to achieve. Turn right into St. James Park, find the letter L high on the tree, the family meeting

place, willing them both to appear. Yells, cheers greet loved ones who have survived, medals to the fore, cloaks of silver trailing in the breeze, packages of triumph clutched in their hands.

Nicky appears to the joy of everyone to tell of her race, the highs, the lows, the tears, the leaving of Andrew, the elation that he is determined to finish. Other members of the team arrived with tales of the Marathon, Angie, Rhys and Julia with her roller blades. The minutes tick by, no Andrew, team members go scouting round, still no Andrew. Did he finish, was he somewhere along the course waiting for transport back? No, all of a sudden he appeared out of the crowd looking like death warmed up, but a kiss and cuddle with wife and daughter soon bucked his spirits up. Drinks and more drinks had them both ready to set off home.

For the last time the team packed up, strapped on rucksacks and headed for the Tube, thankful they were both all right and had finished. We were all quiet on the back - Charing Cross - Jubilee Line - Swiss Cottage - thoughts of pride in the victors, the teamwork, all the people who had readily sponsored them, the true community spirit of hundreds and thousands of total strangers. "*Are you proud of Daddy and Auntie Nicky, Grampi?*" I couldn't answer; there seemed to be this lump in my throat.

Barry Latham

SOUTHAM & DISTRICT LION'S CLUB

In last month's edition the telephone exchange code for Peter Pemberton was incorrect. For those senior citizens who are interested in the mystery coach tours on the 9th or 16th September, Peter Pemberton can be contacted on 01295 770433.

Apologies for any inconvenience.

The Editors

BRITISH THEATRE DANCE ASSOCIATION

The Jean Champ School of Dancing held an *Examination and Medal Test* afternoon on Thursday 27th March. Everyone who had entered worked very hard to look and dance their best. A special Thank You to Kath Anderson who helped many a dancer with 'spray-pasting' their hair

to stay in that much needed perfect bun. The results are as follows:!

Key: HC=Highly Commended; H=Honours; D=Dinction;
B=Beginners; J=Junior; I=Intermediate; S=Senior

Preparatory Ballet

| | |
|-----------------------|-----------------------|
| Daisy Harrold (B) H | Lillian Clarke (B) H |
| Bethany Conway (B) HC | Zoë Williams (B) H |
| Sophie Brough (B) H | Eloise Blaxall (B) HC |
| Gemma Harrold (B) H | Rachel Lloyd (B) HC |

Grade One Tap

| | |
|--------------------------|-----------------------|
| Jessica Farrell (I) H | Adam Flanagan (I) H |
| Aimee Bradford (J) H | William Randall (J) H |
| Hannah Oliver-Byrne(I) D | Kathy Freeman (I) H |

Primary Lyrical

| | |
|--------------------------|-----------------------|
| Aimee Bradford (J) D | Keelie MacMahon (J) H |
| Bronte West-Latham (J) H | Freya Brash (J) H |
| Emma Flanagan (J) H | Sarah Roe (J) H |
| Alice Clarke (J) H | Katie Dudley (J) HC |
| Sopie Ramsay (J) D | Elodie Markwell (J) H |
| Emily Montague (J) H | Harriet Randall (J) D |
| Jessica Farrell (I) D | Olivia Cook (B) H |
| Melanie Heathcote (S) D | Rachel Anderson (I) D |

Grade II Modern

| | |
|---------------------------|--------------------------|
| Kathy Freeman (I) H | Melanie Heathcote (S) HC |
| Hannah Oliver-Byrne (I) H | Julie Greenwell (I) H |
| Krysten Hall (I) H | |

Grade Three Lyrical

| | |
|--------------------|----------------------|
| Louise Champ (S) D | Michelle Court (S) D |
| Susan Stone (S) D | Anne Griffiths (S) D |

Congratulations to all the children and thank you Jean for doing a sterling job.

Janny Freeman



Standing at the back: Adam Flanagan, Kathy Freeman and William Randall
 Middle row: Jessica Farrell and Rachel Anderson
 Front row: Freya Brash, Elodie Markwell, Keelie MacMahon and Sarah Roe

SOUTH WARWICKSHIRE CARERS' SUPPORT SERVICE

A Carer is: *"Someone who provides care or assistance at home for a relative, friend or neighbour, who is frail, or has a disability or long term illness".*

Looking after someone can be very demanding. If you feel you would like some help:

- Someone to talk to in confidence;
- Practical information on benefits, services, disabilities, etc.;
- The support of other in similar circumstances;

then call us on 01926 493207.

New . . . Southam Area Voluntary Sitting Service

What is a sitting service? It is a service providing short term respite care for carers, designed to give both the carer and their relatives a

break. A volunteer looks after the relative while the carer takes time off to go shopping, see friends, pursue a hobby or simply relax.

Why is it needed? Caring for someone who is dependent can be stressful and tiring. It is essential for carers' well-being that they are able to take a break from time to time.

To operate a sitting service for carers in Southam and surrounding villages we require caring people to volunteer as sitters. Also an organised person, ideally with nursing/caring experience to become a co-ordinator. Core training will begin soon. Please telephone for further information.

Mary Upton 493207

HARBURY CARNIVAL 14th JUNE

Arrangements for the Carnival Day are now well and truly on their way. If you still need to organise a stall, Dan Killian will be pleased to hear from you on 612265.

Last month we promised more details about the activities to be organised during the week leading up to Carnival Day. The intention is to start with the Wheelbarrow Race on **Sunday the 8th June** which will be hosted this year by the Crown (don't forget to register with Dan Killian without delay, as places are limited). The week will continue with a team competition over a series of pub games:

Monday - Test of Strength at The Gamecock

Tuesday - Aunt Sally at The Old New Inn

Wednesday - Boule at The Dog

Thursday - Quiz at The Shakespeare

This will be organised on a "grand prix" basis with points awarded for 1st, 2nd 3rd etc. The team which accumulates the most points overall will be the winner. Look out for more details, available shortly, in each of the pubs.

And finally, congratulations, on their accession to the Carnival throne, to our new King and Queen, Robert Biddle and Jemma Phipps.

John Broomfield
on behalf of the Carnival Committee

HARBURY PARISH COUNCIL

I live in Harbury or Deppers Bridge
"What is my community tax spent on?"

The demand for your community tax has recently arrived, have you ever wondered what benefits locally you gain out of paying this, if so why not come to the **Annual Meeting for all residents of Harbury and Deppers Bridge**. This is organised by the Parish Council and you will hear how your community tax has been spent on your behalf by your Parish Council. It will be held on **Thursday 15th May** at 7.30pm in the Village Hall. The press will be present.

Parish Councillor Mary Shelley will also give an up-to-date report on the 'Harbury Chronicles'. This is a video being made by local people to record and celebrate the community life of Harbury Parish for the millennium. The project was enthusiastically launched earlier this year and is now going from strength to strength.

By the 15th May, not only will there have been the General Election but also, a **new County Councillor for this area** will have been chosen. The Parish Council will invite the new Councillor to the Annual Meeting and this will be your opportunity to meet this person and ask questions. The previous County Councillor, Mrs. Pat Collett has retired.

This is your opportunity to question your Parish Councillors on what they are doing for you as a resident in Harbury and Deppers Bridge.

Please try to attend the: Annual Parish Meeting - Thursday 15th May 7.30pm in the Village Hall.

Alison Hodge

FENCED OFF PATH BETWEEN THE RAILWAY LINE AND THE SPINNEY, HALL LANE, HARBURY

The Parish Council have been in correspondence with Railtrack regarding the installation of the fence within the Spinney in 1996, which effectively closed off a path often used by Parishioners. Railtrack indicated that the fence was ordered for safety purposes to prevent unauthorised access to the railway line. However, concern has been expressed by the Parish Council and local residents because it has

imposed unnecessary restrictions on a popular footpath, particularly since easy access to the railway line is available elsewhere in the area.

At the request of Railtrack, the Parish Council is seeking the views of anyone with an interest in the area, as to whether the path should be re-opened or remain fenced. Could you, therefore please express your views either personally to the chairman Councillor Ken Stephenson on 612537, any other member of the Parish Council, or in writing to the following address:

**Rowan House
36 Binswood End
Harbury
Leamington Spa CV33 9LN**

A response by **Monday 19th May** would be appreciated.

Thank you in anticipation for your assistance.

Mrs. A.D. Hodge

TO ALL GARDENERS

A MOST IMPORTANT WARNING!

Flatworms are already in this locality

Flatworms, the appalling invaders from Australia and New Zealand, have been found recently in Warwickshire, in Radford Semele, Leamington Spa. It is essential that we should be on the lookout for them in our own gardens and that if we find them we report it to the authorities.

The Danger: The flatworm's favourite food is the earthworm. Earthworms are vital for healthy soil because they make tunnels underground which improve the texture of the soil and allow oxygen to reach the roots of the plants. Without earthworms the land can become dense, hard to work and waterlogged.

Description: There are two kinds of flatworm. The New Zealand one is 4" to 6" long, dark brown coloured with pale edges. Its eggs are like oval black currants. The Australian flatworm is 1½" to 3½" long and



THINKING OF LETTING YOUR HOME?

THEN CONTACT

CONNECT PROPERTY SERVICES

We are specialist high quality letting and property management agents, locally based, with particular experience in letting village properties. Please do telephone to discuss your requirements.

Telephone: 01926 - 815004

**- KINETON BASED -
QUALITY CARPET, UPHOLSTERY
AND CURTAIN CLEANING SERVICES
Chem-Dry® Accord**

Chem-Dry®



- Most carpets dry within the hour
- Safe and non-Toxic
- Removes most stubborn stains
- Leaves no sticky or dirt attracting residue
- Carpet & fabric protection service
- Professionally insured

**ROY & LINDA
HARRIS**

TO ARRANGE A FREE
ON-SITE NO OBLIGATION
QUOTATION TELEPHONE

01926 640029

INDEPENDENTLY OWNED AND OPERATED

Jamieson's

**SPECIALIST IN
PERIOD JOINERY**

**WHETHER YOU LIVE IN
A COTTAGE OR A CASTLE
LET US QUOTE YOU FOR
REPLACEMENT WINDOWS
AND DOORS.**

**HARBURY FIELDS BARN
HARBURY**

**TELEPHONE:
01926 612921**



Priory Tool Hire

THE COMPLETE TOOL HIRE CENTRE

**WATTONS LANE,
SOUTHAM,
LEAMINGTON SPA**

- MINI EXCAVATORS • MIXERS • ELECTRIC DRILLS •
 - DISC SAWS • GARDENING EQUIPMENT •
 - WALLPAPER STRIPPERS • CARPET CLEANERS •
- AND MUCH MORE!

**MON - FRI 7am - 6pm
SAT 8.30 - 12.00**

REPAIRS OF ALL KIND

Southam 814770

AGENTS FOR CALOR GAS AND BLACK & DECKER PARTS



EXTENSIONS

BUILDERS

ALTERATIONS

**GREY GABLES, 46 BANBURY ROAD, SOUTHAM CV33 0HJ
TEL: SOUTHAM 01926 817744 MOBILE: 0585 495384**



THE BISHOP'S FRYER AND OFF LICENCE

LADBROKE ROAD • BISHOPS ITCHINGTON TEL: 01926 614093

QUALITY FISH AND CHIPS, PIES, PASTIES etc.

Now also serving Donner Kebabs

**Open Mon. to Thurs. 5.00pm to 10.30pm • Fri. and Sat. 4.30pm to 11.30pm
Fri. and Sat. lunch times • 11.45am to 2.00pm**

pink in colour. When under stress, the creatures turn into a 'squishy mush'.

What to do if you find them:

1. Catch them. If you lay black plastic flat on the garden, the flatworms will collect underneath.
2. Send a specimen to the Government Researchers c/o:

Mike Sole
Agricultural Development Advisory Service
Woodthorpe, Wergs Road
Wolverhampton WV6 8TQ

3. Kill the rest, either by squashing them (which is not easy to do thoroughly) or by drowning them in strong, salty water.

May we escape the scourge!

Arthur Measures

HORTICULTURAL SOCIETY

It was nice to welcome guests from Moreton Morrell to the talk *A Plantsman's Garden* given by Mr. Bob Brown, which was very interesting and instructive. The Farley Room was well filled as usual and the evening ended with refreshments. Many thanks to those who helped.

Will anybody who is going on the Broughton Castle and Barnsby House outing on Tuesday 3rd June and has not yet paid, please bring the monies to the next meeting, which is the last one before our summer break. We desperately need the rain, but would rather like it fine for that day please!

The Society has donated £200 to the Harbury Chronicles Millennium Fund to help towards the costs of their proposed video. We know it will be fascinating to watch when it is ready to view, but there will be much hard work and effort beforehand!

The programme for the Open Gardens has been finalised with many new ones again this year and the majority of them open on the Sunday

afternoon. Please make a note of the dates: **12th and 13th July**, as this will be our main fund raising event.

The National Trust will be holding the 'Grand National Plant Sale' on **Sunday 18th May**, at Packwood House in Warwickshire, Berrington Hall in Herefordshire and Hanbury Hall in Worcestershire. They would like help from National Trust members with the plants to grow and sell. For more information phone 0181 315 1111.

It seems the flatworm has been found at Radford Semele (see separate article in this issue). As a safeguard, when buying plants, please look carefully through the rootball and compost/soil.

The next talk on **Tuesday 6th May**, given by Mr. Trinder, will be *Plants for Small Gardens*, and I am sure we will be well entertained. Once again it is the day after Bank Holiday Monday. Tickets for the Malvern Show will be available at this meeting.

P.S. Please remember when sowing seeds or taking cuttings, there will be a Produce Stall at the Village Show in September.

Muriel Grey

GARDENING NOTES

This should be the time when the plants begin to put on rapid growth, but the lack of rain may hold them back. Daffodil 'blindness' usually occurs the year after a hot dry summer, which of course we can't predict, so water them now with a fertiliser which is high in potash (K). A rose or tomato fertiliser will feed the bulb now whilst the leaves are still growing well and next year's flowers are forming. Do not tie up the leaves for at least 6 weeks after flowering finishes, or better still, have plants such as peonies, day lilies and hostas to mask the straggly leaves.

Trim rock plants that have flowered. Prune early flowering shrubs and clip privet and lonicera hedges. Remove any suckers from roses, lilacs and apple trees, scraping back the soil and pulling out the shoot if possible. Check variegated shrubs and take out any stems which have reverted to plain green.

Plant up hanging baskets and containers but keep them inside until at least mid month. A lining of black polythene and a saucer in the base of a basket helps to retain moisture. House plants may need potting on -

i.e. moving into a larger pot, or repotting, which means taking off some of the compost from around the root ball. It is easier to do this when the soil is dry so that it can be scraped or cut away. Replace the plant into the same pot and fill the gaps with fresh compost.

May is a good month for taking soft wood cuttings because the plants are naturally making new growth. Anything is worth a try and if you have phenomenal success you can supply all your friends or put them on the sales table at the Village Show! Select a leafy non-flowering shoot from the centre of the plant. If the top growth is very soft, trim this off as it will wilt anyway and leave a piece 6" long with 4 leaves. Dip the whole cutting in a fungicide solution and then place the stem end into hormone rooting powder. Put 5 cuttings into a 10cm. pot filled with potting compost and water well. Cover the pot with a polythene bag or make a mini cloche to fit the pot from a lemonade bottle, and stand it in a warm but not sunny place. Remember to label them, one little twig can look very much like the next!

Sow sweetcorn in pots for planting out later, even into the flower border. Mangetout can go in at 2 week intervals and French and runner beans towards the end of the month. Try planting sage and thyme around brassicas as the aromatic scents are supposed to put insects off egg laying.

Plant of the month - Rhododendron

"Rhodon" is Greek for rose and "dendron" means tree and whilst most of the popular varieties are shrubs, some do grow to 60ft. "Azaleos" is Greek for dry because the first species came from arid areas although the majority are naturally woodland plants and so prefer light shade in the garden. The plants were first seen in Europe in 1656 with *Rhododendron ponticum*, the parent of many we grow, coming to Britain in 1756. *Rhododendron indica* the Indian azalea came in 1808 but the early part of this century was the boom time, with the plant finder Ernest Wilson bringing in 65 varieties. In the garden of Ruth and Tony Dodds is *Rhododendron Davidsonianum* named after Ruth's grandfather who was a missionary doctor in China. Wilson was brought to him after a rock fall and Dr. Davidson saved his leg from amputation so that plant bears his name. This accident could have been the end of Wilson's plant hunting, so the plant world may owe Dr. Henry Davidson a very great debt of gratitude. Ruth tells me her plant is in a large pot because all

rhododendrons and azaleas need acid soil and here we have alkaline. To see the largest collection in the country visit Exbury, Hampshire, the Rothschild's garden which is open from April to June.

Pat Smith

Letters to the Editors

Dear Editors

On behalf of my husband and family I would like to thank all the friends, neighbours and well wishers in Harbury for the sympathy and condolences expressed on the death of my father James (Jim) Davis. After a good life of 90 years, he suffered a short illness involving a stay in Warwick Hospital, where he received very good care and died peacefully during the night of 10th March.

I would also like to thank Father Roy Brown for conducting the Requiem in the Parish Church and the ceremonies afterwards at the Crematorium and at the Interment of Ashes, with appropriate dignity and sympathy.

The support, friendship and concern shown by neighbours and by the community to my parents, Ruby and Jim, over the thirteen years they have lived in Harbury has been marvellous. In particular the support and friendship extended to my father since the death of my mother Ruby last August has been so generous. It was so comforting to know that should there be illness or any other difficulty someone would quickly let me know.

With heartfelt thanks and best wishes to the community in Harbury.

Your sincerely

Mrs. Jill R. Spurrell

Dear Editors

I wish to express my sincere thanks to all who supported the John Terry coffee morning on 29th March. The total raised was £153.50 and John, who enjoyed his visit to Harbury, was overwhelmed by the amount.

Special thanks go to Jeanne, Celia, Mary, Dorothy and Norah whose help was very much appreciated.

Peggie Middleton

Dear Editors

I have, as always, enjoyed reading the current issue, and I would also like to congratulate you on the clarity of the new cover map.

I am also pleased to see that we can now tell our friends we live in the attractively named "Bull Ring Lane", rather than the mouthful of "Bull Ring Farm Road".

Sincerely

Heather Turner

Dear Editors

Did you all spot the deliberate mistake on the front cover of last month's Harbury & Ladbroke News?

When walking around the village, a compass is more likely to point you in the right direction than the map! Whoops! - Sorry.

Celia Barrett

From the Editors

Congratulations to those who spotted the deliberate errors! We have corrected this month's cover, so you won't need a compass in future, but unfortunately, it is still officially Bull Ring Farm Road!

Dear Editors

I would hate my friends in Southam to think that I view it as being unworthy of being our postal town. Contrary to your Parish Council report, I would be quite happy with such a suggestion. What I did say was that I could not understand why, after several years of street specific postal codes, we need a postal town at all!

Many congratulations on the new cover which will provide a useful guide round our ever enlarging village.

Yours sincerely

Sharon Hancock

Bed and Breakfast available at
43, Mill Street. Tel. Rosemary on 613402 for further details.

LINE DANCING

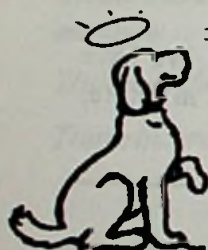
at

HARBURY VILLAGE CLUB

15th May and 29th May

from 7.30pm - 10.00pm

£2.50 on the door
Proceeds to Myton Hospice



PET DOG TRAINING & BEHAVIOUR

Using modern, reward-based methods
All breeds, all ages, classes or one-to-one

ELAINE TUBBS ☎ 01926 612363

Member of the Association of Pet Dog Trainers (00200)

Member of the Federation of Dog Trainers & Canine Behaviourists

Affiliated Member of the British Institute of Professional Dog Trainers

Live in peace with your dog, don't you BOTH deserve it!

HARBURY VILLAGE CLUB

would welcome new members

Families Welcome

Cheaper Bar Prices

Short-mat Bowls

Two Snooker Tables

Satellite TV Room

Darts

LOUNGE & SEPARATE CONCERT ROOM

INTERESTED? ?-THEN CONTACT THE SECRETARY ON 613164



SNOWFORD DOG GROOMING SERVICES

SNOWFORD, near LONG ITCHINGTON

*** CLIPPING**

*** BATHING/SHAMPOOING**

*** HAND STRIPPING**

*** EAR AND NAIL CARE**

*For a caring, friendly service, providing individual,
professional attention in all aspects of dog grooming.*

COLLECTION SERVICE AVAILABLE

Telephone 01926 633277



ANYONE FOR TENNIS?

Players of all standards and ages are welcome to join
our friendly club for competitive / social / fun tennis.

Contact: Colin Mercer 613284

Angela Woodruff 612004

HAWKINS

**01926
613524**



LOSING WEIGHT AND INCHES CAN BE MADE EASY THE HAWKINS WAY

What exactly is the Hawkins method of inch and weight loss?

Developed 30 years ago, it's the effortless way to lose inches whilst trimming and strengthening muscles without rigorous weeks of exhausting exercise.

The physiosymmetron body activating machine increases the body's metabolism, improving blood circulation and lymphatic drainage whilst exercising the muscles. A series of 16 pads are applied to the body in all the appropriate places and go to work breaking down fat and cellulite, burning up to 400 calories per session and all you have to do is lie there and enjoy it. The system is completely safe and monitored by computer, all you feel is a pleasant tingling sensation as a series of wave like contractions work on the muscles. A 45 minute session is the equivalent to several hours hard work-out in the gym (without the effort) and leaves you with a wonderful feeling of health and well-being.

A course of twelve 45 minute sessions over 4-6 weeks is recommended and you can try the system FREE with a 20-30 minute complimentary treatment. The treatment is suitable for people of all ages and dieting advice is given too where necessary. All clients (female) are made to feel welcome and comfortable in their own private room – no need to feel embarrassed HAWKINS IS HERE TO HELP! – Give us a try.

Summers Round
The Corner

**PHONE NOW FOR
YOUR
COMPLIMENTARY
CONSULTATION
AND TREATMENT
01926 613524**

PLUS To complete your new look we offer the much talked about

NON-SURGICAL FACE-LIFT

SAFE, PAINLESS, RELAXING

the most natural, non-invasive approach to facial toning and lifting.

OUT OF TOWN LOCATION – OUT OF TOWN PRICES

Also available: Aromatherapy, Reflexology and Body Waxing

**THIS TREATMENT IS EXTREMELY BENEFICIAL FOR SUFFERERS
OF MULTIPLE SCLEROSIS, SCIATICA AND CELLULITE**



Get Reel...

The Hereburgh Ceilidh Band

in conjunction with

S.H.A.K.

presents

Hoofing in Harbury

A ***FUN*** evening of dancing in Harbury Village Hall

A Terpsichorean treat for ***ALL*** the family

Friday 9th May

From 8pm until 11.30pm Doors open 7.30pm

Admission: £3.00 (Children, Students & Unwaged: £2.00)

For more details and advance tickets call:

Lynne 01926 613564

Pete & Liz 01926 612832

PINEHAM FARM BUTT LANE HARBURY

LOGS £2.00 PER BAG £45.00 PER PICKUP LOAD
STICKS £2.50 PER BAG

POTATOES (Reds & Whites) 55lb Bags

HAY £3.00 STRAW £1.00 (per bale)

FRESH EGGS £1.20 PER DOZ.

PET FOOD & ACCESSORIES NOW AVAILABLE

Dog, Cat, Rabbit and Poultry Food

Spillers, Heygates & Arrow Horse Feeds
(Horse & Pony Nuts, Course Horse, Rolled Barley,
Chaff, Bran, Rolled Oats & Sugar Beet Nuts etc.)

Prices for Rabbit Hutches, Chicken
Arks, Bird Cages and other
Pet Accessories available on request.

(CALL IN OR PHONE FOR DETAILS)

TEL: 01926 612325

Christina Sherman, BA, AMAR

REFLEXOLOGY

This completely safe, natural therapy brings relief to a wide range of conditions, and is suitable for all ages.

- * *Special introductory offers*
- * *Gift vouchers available*
- * *Home visits by arrangement*

For more information ring:

01926 612277

8 Church Terrace, Harbury

ADVERTISING in the Harbury & Ladbroke News

The opportunity to cost-effectively reach over 900 households and support your local community at the same time!

For as little as **£7.50 a month**, or **£55.00 a year**, you can get your message to an estimated 3,000 people, which represents **excellent value for money**

Monthly Prices

| | |
|-----------------------------------|--------|
| 1/4 page | £7.50 |
| (or 3 consecutive months for £20) | |
| 1/2 page | £13.00 |
| (or 3 consecutive months for £36) | |
| Full page | £25.00 |
| (or 3 consecutive months for £70) | |

Yearly Prices (Advertise 12 consecutive months and get 2 months FREE!)

| | |
|-----------|---------|
| 1/4 page | £70.00 |
| 1/2 page | £130.00 |
| Full page | £250.00 |

Classified Advertising: 12 pence per word (min. £1 per advert).

INSERTS:** £15.00 per 1,000 copies. Advertiser to supply and insert the advert on A5 paper or smaller. Price includes distribution.

** Charities may qualify for this service free of charge.

DEADLINE: 15th day of the month.

TERMS and CONDITIONS

- ⇒ Advert must be clearly laid out as you wish it to appear in the magazine. The printer will set to fit.
- ⇒ Cheque with advert made payable to: 'Harbury & Ladbroke News' and sent to:
c/o 31 Binswood End Harbury (tel. 01926 - 614614).
- ⇒ The H&L News reserve the right to refuse an advert.

MANOR PROPERTY AND DECORATING SERVICES

**THE IDEAL CHOICE FOR ALL YOUR DECORATING AND
PROPERTY REPAIR REQUIREMENTS**

**TELEPHONE
01926 612887 OR 0976 375769**



S. MEHRA Fully Qualified **PAINTER & DECORATOR**

Interior & Exterior

Free Estimates



9 Margaret Close, Harbury, Leamington Spa. Tel: 01926 612551 Mobile: 0976 241949

E.F. SIMS & SON

PAINTING & DECORATING SERVICES

THE QUALIFIED

PAINTER & DECORATOR

INTERIOR AND EXTERIOR

EXPERIENCED TRADESMAN

RING FOR A FREE ESTIMATE

613732

1 THE POUND, HARBURY



A1 SKIP SERVICES LTD.

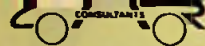
Squab Hall Farm, Harbury Lane, Leamington Spa, Warwickshire CV33 9QB

Tel: (01926) 833638 Fax: (01926) 887547

**FAST, FRIENDLY AND RELIABLE SERVICE CALL
THE COMPANY WITH 20 YEARS EXPERIENCE**



2cu yds. - 20cu yds.

**CAR**

CONSULTANTS

HAVE MOVED!

NOW AT **UFTON GARAGE**, SOUTHAM ROAD, UFTON
IF YOU ARE BUYING OR SELLING ANYTHING WITH FOUR WHEELS
CONTACT US NOW! TWO YEAR WARRANTIES AVAILABLE
FOR THE BEST DEALS ON WHEELS
TEL: 01926 613795



A. G. KNOWLES **PLUMBING & HEATING**



FOR ALL YOUR CENTRAL HEATING & PLUMBING INSTALLATIONS.
ALL WORK GUARANTEED
ESTABLISHED OVER 25 YEARS

69 MILL STREET, HARBURY, LEAMINGTON SPA
RING 01926 612331 FOR INQUIRIES & ESTIMATES

THE VILLAGE TAXI-BUS and A & M CARS

Phone to reserve your seat for Bus or Taxi
0831 135334 - 01926 612487
FREEPHONE 0500 21 22 25 Ext. 10

Your local service, Regular bus service to Asda, Sainsbury's, Tesco, etc. door to door.

Also Taxis for 1-8 people, local or long distance.

No collection fee - you only pay for the miles you travel

Please use your local services. WE NEED YOU!!

A.J. BRUNT **Carpenter & Joiner**

For all types of replacement windows, doors, porches, i.e UPVC,
Aluminium & Timber, double or single glazed.
Fitted kitchens/wardrobes and all your carpentry needs
Harbury 01926 612867 • 9 Ivy Lane, Harbury