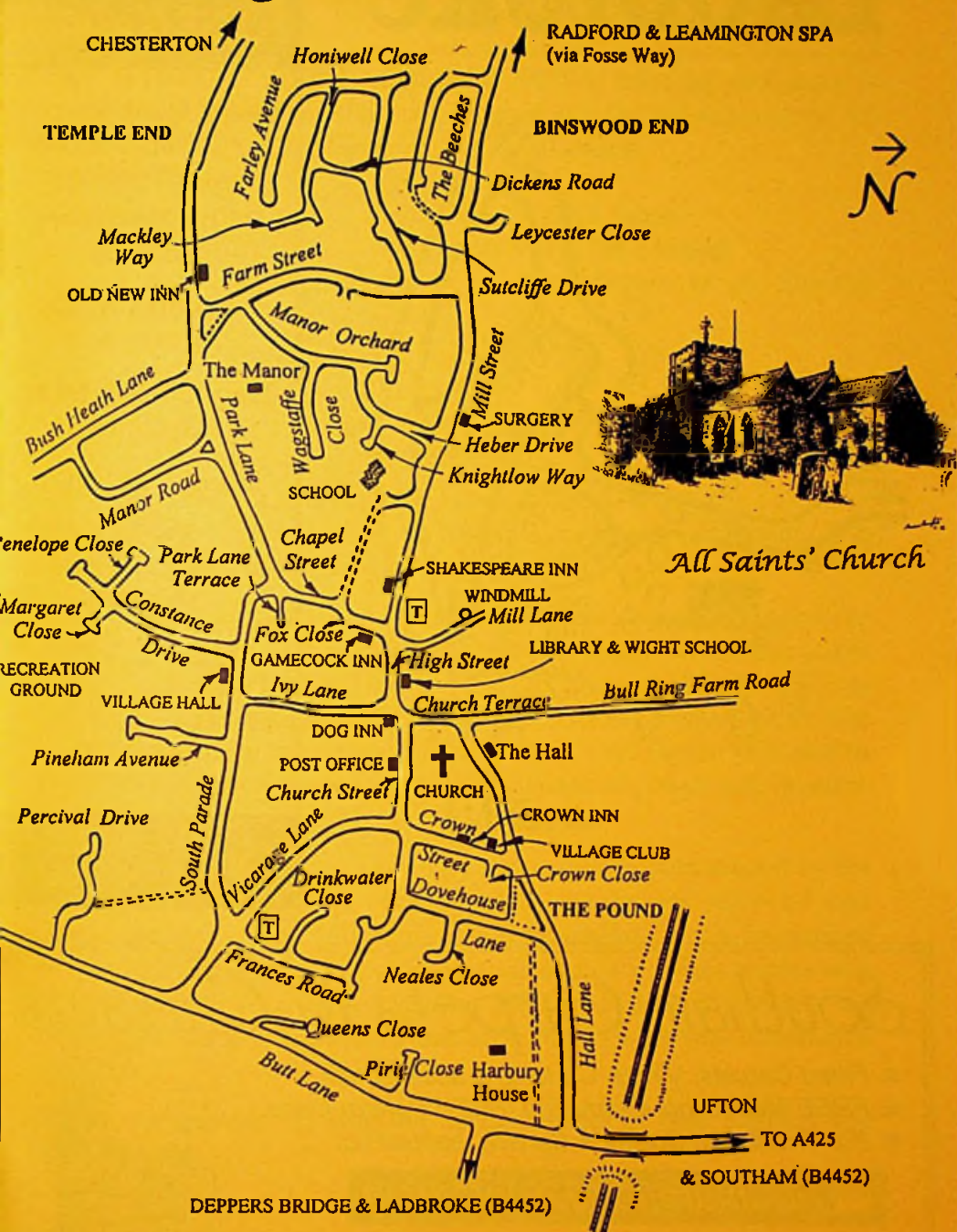


Harbury & Ladbroke News



All Saints' Church

Ladbroke



THE FOSSE GARAGE

*Accident Repair Specialists
for all leading Insurance
Companies*

**24 hr. Recovery
Service**

**AA and RAC
Appointed**

**Servicing & MOT
Repairs**

Used Car Sales



Motor
Agents Association

*Fosse Way, Harbury,
Nr. Leamington Spa.*

01926 613260

24hr. 0850 613260

**SELF-DRIVE
CAR & VAN HIRE**

Southam Carpets & Curtains

- ☆ *Fitted Carpets, Vinyls, Curtains & accessories.*
- ☆ *FREE Measuring, Estimating. FREE Pattern loans.*
- ☆ *For Traditional Quality & Service, contact us.*



Southam (01926) 814944

Coventry Street, Southam, Warwickshire. CV33 0EP



Harbury & Ladbroke News

THE HARBURY AND LADBROKE NEWS, reflecting all aspects of local life is published monthly and produced with the assistance of the All Saints' Parochial Church Council.

Editorial Office: (☎ 612155)

Articles to: *Nifty Needle, High Street*

Advertising Office: *6 Knightlow Way (☎ 614614)*

The views of contributors are not necessarily those of the Editorial Committee.

JULY 1997

No. 280

The Editors feel it is a pity that the Harbury and Ladbroke News has to be reproduced in black and white this month as our photographs do not fully capture the exuberant colours of Carnival day.

Congratulations once again to all those who made a superb effort to keep Harbury's annual event alive at a time when many surrounding towns have abandoned their processions due to lack of interest. It was especially heartening to welcome Chesterton's aptly chosen entry: 'The Romans'. Much of the success of the Carnival week can be attributed to the hard work and commitment of the committee who meet year round to plan the activities.

The colour of the month's pageantry may not have been echoed by the weather, but the patchwork of red poppies, blue flax and yellow oil seed rape in the surrounding fields more than compensated. Not to be outdone by Nature's display, Harbury gardeners will no doubt delight visitors with their horticultural prowess - despite the recent deluge! Maybe the Nursery School knew something that others didn't when they constructed their float?

Finally, we express our sympathy to the families of Fred Manners and Tom Rankin.

Harbury Diary

JULY

- Sun 6 Pentecost 7** - Sung Eucharist 9am; Evensong 6.30pm
Training for Harbury's Village Design Statement in Village Hall
- Tues 8** Village Hall committee in Village Hall 8pm
Toddlers' Service 2.15pm; Holy Communion 7.30pm
Prayer Group in Church 8.10pm
- Thurs 10** Rotary Club of Southam Bridge Afternoon & Cream Tea in T.H.R 1.30pm
Thursday Club in Village Hall 2.30pm
WI in Village Hall 7.45pm
Holy Communion 9.45pm
- Sat 12** Craft Circle in Village Hall and Garden Walkabout
Hereburgh 10th Anniversary Ceilidh/BBQ in School Hall 7.30pm
NSPCC Dance in Village Hall
Cricket away to Newdigate Reserves
- Sun 13 Pentecost 8** - Holy Communion 8am; Sung Eucharist 10.30am
Sunday School 10.30am in Tom Hauley Room; Evenson 6.30pm
Garden Walkabout
Hereburgh Morris dance at Church 11.30am and at The Dog Inn 12noon
Cricket at home to Lighthorne
- Tues 15 ADVERTS 6 Knightlow Way by 5.30pm**
Mothers' Union Evening Walk and Supper at Napton 6.45pm
Holy Communion 7.30pm
Senior Citizens' Committee in Village Hall 8pm
- Wed 16** PCC meeting in Tom Hauley Room 7.30pm
'Smois sur Seine' meeting in Wight School 7.30pm
- Thurs 17** Holy Communion 9.45am
- Fri 18** SCHOOL ENDS; Newspaper collection
- Sat 19** Cricket at home to Ambleside Reserves
Decorating of Village Hall until 16th August
- Sun 20 Pentecost 9** - Holy Communion 8am
Family Communion 10.30am; Sunday School 10.30am
Cricket away to Hockley Heath
- Mon 21** Travel Tokens dispensed in V.H. 2-4pm for those who previously applied
Stratford District Council Mobile Sports Unit on Playing Fields for 8-14 year olds 1.30-3.30pm
- Tues 22** St. Mary Magdalen - Holy Communion 7.30pm
Travel Tokens dispensed in Village Hall 2-4pm for those who previously applied
Julian Group in Church 8.10pm
- Thurs 24** Holy Communion 9.45am
Thursday Club outing
Parish Council meeting in Village Hall 7.30pm

Please note: Adverts to 6 Knightlow Way by Tuesday 15th July

Articles to Nifty Needle by Friday 25th July

- Fri 25 Working from Home Club meeting in The Dog Inn 12noon
ARTICLES to NIFTY NEEDLE by 5.30pm
- Sat 26 Cricket away at Potterton's
 Hereburgh Morris dance at Warwick Folk Festival
- Sun 27 **Pentecost 10** - Holy Communion 8am
 Sung Eucharist 10.30am; Sunday School in Tom Hauley Room 10.30am
 Evensong 6.30pm
 Cricket at home to Shilton
- Mon 28 Playscheme, Wizardry Woo Magic Man 10.30am-2.30pm
- Tues 29 Holy Communion 7.30pm
- Wed 30 Hereburgh Morris dance at The Bell in Ladbroke 8pm
- Thurs 31 Holy Communion 9.45am

AUGUST

- Fri 1 Newspaper collection
 Playscheme, Visit from Lady Godiva 10.30am-2.30pm
- Sat 2 Cricket away to Coventry Colliery Reserves
- Sun 3 **Pentecost 11** - Sung Eucharist 9am
 Sunday School in Tom Hauley Room 10.30am; Evensong 6.30pm
 Cricket at home to Aynho

**DATES FOR INCLUSION IN THE HARBURY DIARY PLEASE
 TO: LINDA RIDGLEY - TEL. 612792.**

For Tom Hauley Room Bookings	Mrs. Stubbs	612782
For Village Hall Bookings	Mrs. Hughes	612716
For Wight School Bookings	Mrs. Hayes	613488

REGULAR DIARY DATES

BABY CLINIC: Surgery, 2-4pm 2nd & 4th Wednesday

BADMINTON: Village Hall Tuesdays

BEAVERS: Scout Hut, 6-7pm Tuesdays

BELLRINGING PRACTICE: (613605) Church, 7.30pm Fridays

BINGO: Village Hall, 8pm Mondays

BROWNIES: Village Hall 6-7.30pm Tuesdays

CHOIR PRACTICE: Church, 6.30pm Fridays

COFFEE MORNING: Tom Hauley Room 10am-12noon Saturdays

CUBS: Scout Hut, Wednesdays

DANCING CLASSES: (613698) Farley Room Village Hall, Children & Adults
 4-9pm Wednesdays.

GUIDES: Scout Hut, 7-8.30pm Monday

GYMNASTICS: Harbury School, 6-7pm (U7-10yrs & Beginners 7-8pm;
 Over 10yrs 8-9pm) Mondays

HARBURY FOLK CLUB: Dog Inn 8.30pm 1st Thursday of Month

HARBURY FRIENDS: School, 8pm 2nd Tues of Month

HEREBURGH MORRIS DANCERS: (613402) School Hall, 8-10pm

Wednesdays

HORTICULTURAL SOCIETY: Village Hall, 8pm 1st Tues (Oct. to May)

KEEP FIT (Bodywise): (495368) Tuesdays 2-3pm at Village Hall; Fridays 6.30-7.30pm in School

LIBRARY: (613297) Stories, Rhymes for U5s, 10am 1st Thursday of Month; Term Time only

LINE DANCING: (613478) Thursdays, fortnightly at Village Club 7.30pm

LINE DANCING: (624454) Wednesdays, at the Village Hall 8pm

NETBALL CLUB: (612841) Village Hall Car Park, Training 6.30pm Thursdays; Matches Saturday Afternoon

NURSERY SCHOOL: Village Hall, Tuesday to Friday mornings

PLAYGROUP: Wight School, Tuesday to Friday mornings

SCOUTS: Scout Hut, 7.45pm Tuesdays & Thursdays

TENNIS CLUB: (614614) (Apr-Sept) Tues & Thurs 6.30pm onwards (6pm for April); Sat 2-5pm, Mon & Wed 1.45-3pm

THEATRE GROUP: Wight School, 8pm last Friday of Month

THURSDAY CLUB: Farley Room of V.Hall 2.30pm 2nd & 4th Thurs. of Month

TODDLER GROUP: Wight School, 10-11.30am Mondays & 2-3.30pm Wed.

W.I.: Tom Hauley Room, 7.45pm 2nd Thursday of Month

YOGA: Wight School, 7.30-9.30pm Wednesdays, Diane Surgey Tel.817904

Laugh Line

From a speech in the House of Commons:

"Hands off the Church of England. It's the only thing that stands between us and Christianity".

DOCTORS' SURGERY

Mill Street, Harbury

To request a home visit

please ring 612232

To request a repeat prescription

please ring 612232

For an appointment

please ring 613554

DISTRICT NURSE

Southam 815045

HEALTH VISITOR

Southam 815045

POLICE

Southam 812366

SOCIAL SERVICES

Southam 813110

Details of Surgery times are available from the Surgery

FROM THE CHURCHWARDENS

It was a great pleasure to welcome Bishop Simon during his visit to the Southam Deanery as part of his missionary journey. He attended the Men's Breakfast and within the Sunday morning Eucharist he confirmed eight candidates including the following from Harbury and Ladbroke: Nicola Guilford, Polly Liverton, Catriona Rollason, Emmeline Smart and Charlotte Todman. We congratulate them and give them our prayers and best wishes for their Christian lives.

We have had a few changes to the Church fabric. Firstly we have purchased a replacement piano. It is a replacement in as much as the previous piano had been left behind on a loan basis by Canon Anthony Rowe until such time as it was required by his family. Canon Rowe's granddaughter is now having piano tuition and the instrument has moved on to a new home. We thank Canon Rowe for the use of the piano over several years and our thanks also to Mavis Young for her invaluable assistance in the selection of the new piano.

At the rear of the Church a set of oak bookshelves has been fitted, adjacent to the Children's corner. These replace a moveable bookstand which had been of valuable use but did need replacing. The new bookshelves are well stocked and we hope you take the opportunity to browse and find suitable reading for yourselves.

Ruth and Jeff

FROM THE RECTOR

"The greatest proof that it is God's church is that it survives at all. Any human institution would have collapsed years ago with all that has gone on within it". That remark was made by a lady who was feeling frustrated and disheartened by the human weakness she experienced at a parish meeting. It is easy to see her point. Every parish has its crises. From the disagreements at the parochial church council, clashes of personalities and principles, to the problems about cleaning the church or who should do this or that job.

Painful as these traumas are, they have nothing to do with the essence of the Church. She is simply the dwelling-place of God among mankind. God is present in this family of the Church. The Trinity has been described by St. Thomas Aquinas as the *Family of God*. This family life overflows and is extended in the family of the Church.

The family of God, which is the Church, already has the love of God within each individual. Its very presence is what encourages them to become more closely united with God. The deep inner yearning for eternal peace and fulfilment which mankind experiences is prompted by that existing love.

Sometimes people regard the Church simply as a form of spiritual social service - dispensing grace in accordance with the way certain formulae are followed. This is not entirely true. Within the Church, Christ sanctifies each member and is to be united with each member through life. But how can He be united with so many different people, races and age groups? How can they become one?

Our greatest difficulty in understanding this mystery is that we do not understand God. We don't know how He works. At least we don't until we become one with Him, so that His ways become our ways, His thoughts ours. Deepening unity with God is possible because he "has sent the spirit of His Son into our hearts", to make us His children. We simply have to let the Spirit do His work.

The important and only ways that we can draw near to our Heavenly Father is through regular private and public prayer and through our joining together with fellow members of the Body of Christ, the Church, Sunday by Sunday.

Fr. Roy

FROM THE REGISTERS

Holy Matrimony - All Saints' Harbury

14th June - Matthew Willing to Wendy Coetzee
 21st June - Jeremy Hughes to Debra Phillips
 28th June - Claudio Risi to Melanie Ceney

Welcomed into the Church by Holy Baptism - All Saints' Ladbroke

1st June, - William John Arthur Batty

Funerals

All Saints' Harbury
 Oakley Wood

5th June, Fred Manners
 12th June, Tom Rankin

Confirmation in All Saints' Harbury on 22nd June

*Nicola Guilford; Polly Liverton; Catriona Rollason;
Emmeline Smart and Charlotte Todman*

MOTHERS' UNION

Much good advice was floating around at our meetings in June. The afternoon meeting took the form of a discussion on *Advice to those about to Marry*, assuming that they would take it (which we thought unlikely). Ignoring "Punch's" famous advice, we enjoyed sharing the wisdom gained from experience. Advice ranged from "Agree to share all the Work" to "Always be first to say sorry".

At the evening meeting the members were the ones to receive advice - this time on gardening problems - from a team consisting of Vivien Neill, Pat Smith and Shirley Brunton. The three very knowledgeable gardeners advised us on a wide range of problems, including dealing with ground elder, wilt in clematis, and ideas for plants to grow in dry conditions (perhaps rather unnecessary now).

On 23rd June we attended the Diocesan Festival at Coventry Cathedral where we heard an inspiring address from the World-wide President, Lady Christine Eames. The theme of the service was *Family Matters*.

On Tuesday 15th July we have our Walk and Supper. There are no meetings in August.

C. Mary Catt

TODDLERS' SERVICE

The story for our June meeting was *The Lost Sheep*. Mrs. Catt showed us pictures of sheep and lambs and we had to find and cut out pictures of lambs in and around the Children's Corner in Church.

We sang *Yes, Jesus Loves Me*, accompanied by Charles Catt on the clarinet and the toddlers on various musical instruments.

Lorna Bedford

CHURCH MEN's SOCIETY

Members of Harbury and Ladbroke Church Men's Society have

travelled widely (*by proxy*) in the past twelve months. At their June meeting they touched down in the Antipodes with the Rev. Michael Greig of Hunningham before finally accompanying him to Africa.

Michael's journey to the priesthood did not begin until he had acquired considerable experience of the challenges people face in other parts of the world and he readily concedes that the laity had a greater impact on that spiritual journey than members of the ordained ministry, and were "more important".

After Agricultural College a job on a New Zealand Dairy Farm beckoned and it was out there that he began to experience the stirrings of real Christian faith. After that a spell in Australia preceded his return to the UK.

In 1970 he felt the call to serve mankind in the Third World and was given the opportunity to go to Africa by the overseas aid charity known as 'Tear Fund'. Before returning home to enter theological college, he served on assignments in Liberia and Rwanda.

David Clarke, who since retirement as a civil engineer has undertaken valuable voluntary work for refugees in Zaire, thanked Michael for his talk and presented him with the customary bookmark.

The annual meeting, when Chairman Tony Stubbs will hand over to Ken Hughes, is on 3rd July.

John Algar

Stop Press! Stop Press! Stop Press! Stop Press! Stop Press

WREN (Warwickshire Rural Enterprise Network) will be running a **FREE** part-time business start-up course with computer training starting, this September. The course will lead to a National Vocational Qualification (NVQ).

Phone **01203 696986** for further details.

Stop Press! Stop Press! Stop Press! Stop Press! Stop Press

Ladbroke News

JULY

Sun	6	Pentecost 7 - Rogation Sunday; Family Communion 10.30am
Wed	9	Holy Communion 2pm Women's Fellowship 2.45pm
Thurs	10	Strawberry Fayre at Village Hall 7.30pm
Sun	13	Pentecost 8 - Sung Communion 9am
Wed	16	Holy Communion 9.45pm
Sun	20	Pentecost 9 - Sung Communion 9am Children's Church 11am; Evensong 6pm Friends of Ladbroke Church Barbeque at The Bungalow 12.30pm
Wed	23	Holy Communion 9.45am
Thurs	24	WI meeting
Fri	25	St. James - Holy Communion 7.30pm
Sun	27	Pentecost 10 - Sung Communion 9am
Wed	30	Holy Communion 9.45am

AUGUST

Sun	3	Pentecost 11 - Family Communion 10.30am
-----	---	------------------------------------------------

Church Flower Rota for July

13th - Mrs. Sopwith

27th - Mrs. Symonds

20th - Mrs. Ross

3rd - August Mrs. Darkes

LADBROKE CHURCH NEWS

Once again our Open Air Service in Deppers Bridge was blessed by good weather - (you thought it had rained the whole of June didn't you?) There was a good congregation from both parishes and we all sang lustily to the music provided this year by Lynne Cooke and Michael Short - both playing accordions. Canon Phillips told us that this was the true church - we didn't need four walls. (Considering our situation in Ladbroke at the moment I won't expound on that!) We could all hear him clearly in spite of the traffic going by. Many thanks to everyone who provided refreshments and to the folks in the house next to the playing field who let us use their electricity to boil the water for our cup of tea afterwards.

We give a **BIG WELCOME** to Charlotte Todman and Polly Liverton who were confirmed by Bishop Simon on 22nd June and are fully fledged members of the Church now.

Sunday 20th July - Songs of Praise at 6pm. The Rector will be wanting requests for hymns you want to sing at the service any minute now.

Betty Winkfield

FRIENDS OF LADBROKE CHURCH

The AGM of the Friends was held at the home of Jill and Malcolm Norgate on 30th May.

The following were elected: Mr. Robert Moore (Chairman), Mrs. Gill Moore (Secretary), Mr. David Rutherford (Treasurer) and the committee is: Mrs. B. Ross, Mrs. N. Todd, Mrs. G. Badman and Mrs. M. Williamson. On 10th June we held a meeting to discuss future functions.

We are going to hold a Barbeque on Sunday 20th July at 12.30pm at The Bungalow, Windmill Lane and our future programme will be Cream Tea at Carole Northorpe's sometime late August/early September. An evening at Jim and Jean Clews' in February and a Treasure Hunt in the Spring of 1998.

Gill Moore

LADBROKE AND DEPPERS BRIDGE W.I.

Our speaker this month was Brian Windmill - retired policeman and author of crime novels. He gave an extremely interesting talk on his life and how he became a writer.

We welcomed a new member and made final arrangements for our Strawberry Fayre on Thursday 10th July to be held at Ladbroke Village Hall at 7.30pm - all are welcome.

Unfortunately our Quiz Team failed to get into the top 3 at Myton School, but represented us ably against stiff opposition.

Our trip to Waddesdon Manor is now set for Friday 1st August, time and transport to be arranged.

Next month's meeting on Thursday 24th July will be about Nuclear Energy.

Susan Moore

**NIFTY NEEDLE
CURTAINS AND BLINDS**

High St. Harbury
Leamington Spa
Tel: 01926 612 927
Fax: 01926 613049

FREE ESTIMATES

PERSONAL SERVICE

HOME VISITS UP TO 7pm

**MOST WELL KNOWN FABRICS
AVAILABLE AT DISCOUNT**

OPEN: Mon/Tues/Thur 9-5
Wed/Sat 9-1 Fri 9-6

WASTE-AWAY



**PROFESSIONAL
SKIP HIRE**

- FULL RANGE OF SIZES 4-14 CU YARDS
- FAST, RELIABLE SERVICE
- DOMESTIC, COMMERCIAL - CONTRACT

01926 888918

RANELAGH TERRACE,
LEAMINGTON SPA

*Custom
& Bodywork
Services at*

The Garage

Ladbroke

ALL TYPES OF BODY WORK

FREE INSURANCE ESTIMATES

RESPRAYS

MECHANICAL REPAIRS

SERVICING

M.O.T. REPAIR WORK

WELDING

COLLECTION & DELIVERY

Personal Service from Steve Birch

01926 813590

Mobile 0836 699489



W. Goodwin & Sons Funeral Directors

38 COVENTRY STREET, SOUTHAM

All arrangements personally conducted
in any district

Telephone: Daytime 01926 812445

Night - time and weekends

Brian: 812656 John: 812657

Visiting Chiropodist

Collette A. Green

SEN MSSCh MBChA

1, NEWSTEAD DRIVE
SOUTHAM
WARWICKSHIRE. CV33 0LT



TELEPHONE
01926 817209

BENCH TELEVISION SERVICE

22 OXFORD ST
SOUTHAM

REPAIRS
SALES
RENTAL



mitsubishi dealer

SOUTHAM: 812304

WHATEVER YOU DRIVE
YOU ARE WELCOME AT

DOVEHOUSE
AUTO
SERVICE

TELEPHONE: HARBURY 612809
FOR ALL YOUR MOTORING
MOT's, REPAIRS, SERVICING

WOMEN's FELLOWSHIP

We thoroughly enjoyed our Annual Outing and would you believe in absolutely beautiful weather! We went to Studeley Castle at Winchcomb (18 of us), and had a really relaxing day, especially enjoying the beautiful gardens and the surrounding countryside.

Our next meeting will be here at Hall Farm, when I hope to have persuaded my son, Douglas, to tell us about his very interesting trip to the Burren in Ireland.

Betty Winkfield

LADBROKE PARISH COUNCIL REPORT

All Councillors were again present for the meeting on 18th June.

When we first purchased the salt/grit bins we asked the County Council to advise us on securing them to the ground, but were chided for being so suspicious. So - having had the one at the North entrance to the village stolen - we will be securing its replacement more carefully!

A special meeting had been held to discuss the conservation review, as a result of which a letter had been sent to the Conservation Surveyor. The main thrust of our thoughts is that Ladbroke is a working farm village and some of the buildings denigrated are, in fact, in proper use.

The Windmill Hill footpath had been cleared by the volunteers, but at the rate the vegetation is growing with all this rain, it will need to be well walked to keep it down.

District Councillor Jim Taylor, informed the meeting of an initiative being considered by Southam Area office to have an electronic conferencing facility available during office hours. An Annual report by the Refuse Collection Service was notable for the small number of complaints which had been received.

County Councillor Bob Stevens was warmly welcomed by the Council. He spoke at some length of the forthcoming structure plan. A questionnaire concerning rural transport would be in the hands of the Parish Council very soon.

Carol Northorpe

HARBURY PARISH COUNCIL MEETING - MAY

The evening began on a note of dissent when Councillor Ken Stephenson commented that Parish Council business should always come first before EVERYTHING else. Needless to say, he was in a minority of ONE. Despite holding this view he was still re-elected Chairman for the coming year with Councillor John Hunt as Vice-Chairman. A by-election will have to be held as Steve Norman has resigned after giving sterling service for Deppers Bridge over the last few years.

School Governor's Report - Councillor Keith Thompson commented briefly on the OFSTED report and developments at the School including a revised class structure and an additional teacher being needed. A bid is to be made for additional funding towards the costs of security measures that are required.

Deppers Bridge - There was general concern that little action had been taken by Stratford District Council at the illicit tip, but as their enforcement officers are apparently satisfied with the situation, there is (unfortunately) little that can be done.

Planning - It was reported that Warwickshire County Council had objected to the Hillside Farm application on highway grounds and the planning inspector had (unfortunately) upheld the appeal to allow the conversion of the stable block at Harbury Hall. There were no objections to new applications at 32, Mill Street and Yew Tree Cottage, Mill Street.

The results of the Housing Needs Survey were now known and (surprise, surprise!) there is no demand for 4-bedroom detached houses! Stratford District Council is to be invited to a meeting with the Parish Council to discuss the findings. Congratulations to the Parish Council for its success in being 1 of only 2 villages to be chosen to produce a Village Design Statement.

Properties - Stratford District Council is to be asked to look at the tree in the Cemetery and the Chairman thinks that the front of the Village Hall can be tidied up by "doing something" with the railings.

Environment - A substantial number of responses (mainly from the Hall Lane area) had been received to the vexed question of the fence between

the Spinney and the railway embankment. The overwhelming majority was in favour of removing the fence.

There was a negative response from the Parish Council about a bid for funds for Millennium Greens and a threat to remove the flower tubs from the entrances to the village if they are not better maintained. Various footpaths have been weed-sprayed prior to resurfacing "this year".

The Parish Council wants a liaison meeting with Sheraton Leet about their development in Farm Street, which it was suggested should keep the name Farm Street.

Finance and General Purposes - Following a review of fees and charges, allotment rents remain unchanged, but cemetery charges increase and the charge to the Football Club for use of the playing field will increase by £5 to £170. On concessionary fares, the Parish Council has increased the value of the concession it gives from £12 to £15.

The question of a village caretaker has been discussed a number of times in recent months, and was referred to at least 3 times during this particular meeting. Councillor John Hunt thought it was about time that the Parish Council got on with drawing up a job specification and appointing someone. Hear, hear!

John Lapraik

HARBURY PARISH COUNCIL - JUNE

Clerk Alison Hodge had a difficult time at the June Parish Council meeting. Although the Chairman was away in France, his influence was still felt. He left a request for Harbury to commission a Coat of Arms (cost £2,000 from the College of Arms). An incensed Sharon Hancock declared he could make do with the emblem on the Chairman's Badge!

No one was nominated for the Deppers Bridge vacancy so that a co-optee has to be found. Only three villagers could make the Village Design Guide Training Day (Sunday 6th July).

Sheraton Leet revealed they had sold on the Hillside Farm development to Laings with the distinct possibility of further protracted planning battles. Bryant Homes were dragging their feet over the provision of a light for the affordable homes and to cap it all some Councillors failed to bring lighting design documents to the meeting and so could not choose which lamps to order.

Mary Shelley, sensing silent disapproval stressed *"I came! That's what's important!"*

But the Clerk did have good news. Work had begun on resurfacing priority footpaths and road surfacing at Temple End, Fosse Way, Sutcliffe Pastures, Farm Street and South Parade was planned. The Village Hall railings would be welded back together.

Pc Steve Bosworth had reported the Carnival to be a big success. There had been no crime this month and he would deal with the "One Way" cyclists.

BT would remove the poles from Manor Road Green and Mill Lane at their own expense but the Parish Council would have to pay over £2,000 for similar treatment of Mill Street and Temple End. They settled for the improvements at nil cost only.

Stratford District Council will be sending its Mobile Sports Unit to Harbury for the children on Monday 21st July, 1.30pm-3.30pm and on Thursday 7th August from 10am-12noon.

Harbury came third in the Southam area of the Best Kept Village competition beaten by Fenny Compton and Long Itchington. Bill Middleton volunteered to be a Parish Council representative on the Village Design Statement Team. And there were NO Planning Applications!

Best of all Mike Thompson gave news of the improved Village Bus service to include a flat fare (£3) 'Night Owl' service on Friday and Saturday nights (7.45pm at the Supermarket) to and from Leamington (11.45pm Warwick Street). A boon to parents! There will be two Mercedes buses running on extended routes including Farnborough, Fenny Compton, Northend, Lighthorne Heath, Avon Dassett, Deppers Bridge, Bishops Itchington and Ladbroke, so that, as well as a service for Harbury on Wednesdays and Fridays, there will be buses on Tuesdays and Thursdays.

There was also news of Stratford District Council's Dog Dirt initiative, but given the passions this raises it was difficult to determine whether this was good or bad news! The legislation enables them to give fixed penalties to offenders and prosecute those who do not pay and those who persistently offend.

They need to know where, when and who flouts the law and asked that the local community pinpoint problem areas, name and identify individuals and their dogs and the times they regularly perform!

Linda Ridgley

HARBURY SOCIETY

Things are looking up! Our stall at the Carnival made about £40 thanks to the generous donation of “goldish” things and the hard work of the members. And the very wet conditions have revived the Sentinel Oaks that I prematurely wrote off.

Jerry Birkbeck has produced three options for the enhancement of Manor Road Green and these were displayed in the Village Hall on Carnival day and have been distributed to the residents’ group for their comments. The Parish Council has confirmed that it is maintaining Manor Road Green and in principle would continue to do so if planting took place, subject to the agreement of the Housing Association.

Harbury’s Village Design Statement team gets trained up by the Countryside Commission in the Village Hall on Sunday 6th July. Councillor Sharon Hancock is still looking for people to join the group and has persuaded Stratford District Council that September would be the most appropriate time to launch the initiative on the general public.

John and Ed are planning another of their famous “Pub Walks” for the second week in August - more details next month.

Linda Ridgley

HARBURY WOMEN’S INSTITUTE

There is another visit to see Warwickshire play Gloucestershire in September; also a trip to Harveys Wine Cellar in Bristol in September.

The latest on the Short Mat Bowls news is that our A and B teams played each other in the semi finals. Then the A team went on to play Ettington ladies in the final, but were just pipped at the post. Well done everyone to get so far.

What can one say about the Carnival, but that it was a great day and the rain kept at bay for most of the parade. We came 2nd with our float *Last of the Summer Wine*, designed by Celia Barrett and assisted by her merry

"maids". The Triumph Herald was a work of art, as was Edie and Glenda sitting in front and the "live" characters instantly recognisable. Mary Entwistle won the individual award for her Compo and even Marina and Howard's bikes got awards.

Helen Johnson's barn is almost our second home so thanks to Helen. Many thanks to Doug Green for the use of his truck and being our driver, accompanied by Alan and young John, all the way from America. Mustn't forget Marion and Dennis for their assistance.

The Cake Stall was a sell out as usual. A big thank you to Nora Ellis for organising and setting up the stall with Sandra Leigh and to all helpers and cake makers. Hope I have remembered everyone.

The speaker was Mrs. Ellen Brown on *Millinery*. Yes, big ones, small ones, elegant ones, saucy ones, she brought them all and didn't the members enjoy trying them on.

Mrs. Brown started a laborious 4 year apprenticeship in the millinery trade at the age of 14 in 1930. During her lifetime as a milliner she has worked for stage, screen and in retail. Over the years she is still picking out her creations in the old films on TV. She mentioned names like Ivor Novello, Edna Best, Merle Oberon, Valerie Hobson and Joan Collins to name but a few! But of course the most famous are the Royals and she has made for them all; showing us cuttings with the Queen Mother, the Queen and Diana at various functions. Mrs. Brown spoke of techniques, materials and trimmings both of earlier and present times. Thinking she was retiring to the Midlands eleven years ago proved wrong, as her London boss collects work from her home. Her light-hearted talk held her audience - with not a note in sight. Not bad for a lady of 81.

July hostesses: Jeanne Beaumont, Celia Barrett and Eileen Picken

Jeanne Beaumont

HARBURY THEATRE GROUP

The Carnival Dance was very well attended, a great success and was enjoyed by all. The Theatre Group has handed over the £110 raised by the dance to the Carnival Committee.

John Holden

HARBURY FOLK CLUB

The theme for the June edition was "*Moons and Junes*", an idea conjured up out of desperation the previous month. There was a time when themed evenings were special, once-in-a-blue-moon events. Now, they are the norm and finding original ideas becomes ever more challenging. As it turned out, the theme worked extremely well, and most artists found a song or two that mentioned one or even both of the words. Sue and I in our alter ego, The Harvesters, commenced battle with two new songs written for the occasion. Peter McDonald followed with "The Moon's a Hard Mistress" which could have given the tabloids a field day, but didn't. Pete and Liz delighted us with "The Rosebud in June" and "Nana's Song". Some strange cosmic force must have affected Rick because he decided to tackle the previous month's theme instead. Jean brought the first half to a balmy end with "An Evening in Summer".

Fill and Drill were as delightfully unpredictable as ever and kicked off the second half with "The Moon over Bourbon Street". Des longed for his "Carnival Girl" before proclaiming that "Babylon is Fallen", also a reference to the previous month! Janny's M.I.J. Band (Moons in June) performed two skillful instrumentals which set the scene nicely for Ron to perform a witty ditty of his own and "Where the Praties Grow". Gilly was on top form with "Summertime" and a beautiful unaccompanied song that left the audience cheering for more. Steve followed boldly with the unusual "Recreation Song" and had us close to tears with Eric Bogle's song for Claire Campbell.

At Harbury Folk Club, we do things by halves. Three to be precise. Mike drove us into the final round of proceedings with "Send in the Cones" and "Martin Said", a firm favourite. Proving that she really should sing more often, Margaret gave us "Both Sides Now" and "The Moon and St. Christopher", ably accompanied by Peter on piano. Jean returned waltzing with bears (great title) and Gilly simply had to return for one more. With time running short, a tray full of performers' names was offered to a member of the audience to pick two, and Peter McDonald and The Harvesters were drawn to finish an excellent evening.

The raffle was for the Macmillan Nurses and we raised a creditable £35. If you ever find yourself at a loose end on the first Thursday of the

month, you really have no excuse for not visiting The Dog and hearing some of the best acts around. And The Price Is Right!

Ian Hartland

HEREBURGH MORRIS

Hereburgh Morris have invited other groups of Morris dancers to join them for a Weekend of Music and Dance on Fri. 11th and Sat. 12th July.

On Saturday 12th we will be dancing in Stratford and Warwick:

10am - 12noon	- Warwick Castle and Lord Leycester Hospital
2pm - 3pm	- Stratford - Bancroft Gardens and Henley Street
3.15pm - 5pm	- Charlecote Park

On Sunday 13th we will be in the village, outside the Church at approx. 11.30am and then at the Bull Ring (outside The Dog) at 12noon.

In the evening of Saturday 12th we are holding a Ceilidh and Barbeque in the School Hall. There are a few spare tickets (£5 including food). Please contact Celia Neill on 612819 or any other member of the side if you would like to come.

Celia Neill

SUMMER 1997

As Harbury Primary School's first year draws to a close, I thought it might be nice to give everyone in our community a brief outline of our progress to date.

September saw us with seven more pupils than we had expected at this time last year, and we are still growing! Presently there are 207 pupils in school and the teachers have been magnificent in managing six classes ranging in size from 32 to 37, as well as dealing with all the new children in what are mostly quite small classrooms.

The Governors have been very supportive in planning the budget to allow seven classes next year. As planned, our new intake of 26 will become a pure Reception class and the key stages will be separate; key stage one having two classes of 28 while the juniors will be in four classes of 30.

Naturally, these numbers are far better for all concerned especially the children, who can obtain a greater share of our most valuable resource

i.e. teacher time and expertise. The seventh class will be shared by myself and Mrs. Annalley Carter who is new to Warwickshire. Mrs. Carter is an Art and P.E. specialist as well as an experienced primary class teacher. She will be a key figure in our plans to give all children richer experiences.

Mixed age classes look as if they will be with us for the foreseeable future as our predicted numbers, based on birth statistics, are forecast to fall after a couple of years and there is every chance that we will be back to six classes. However, mixed year groups is not detrimental to children's education. Our Equal Opportunities' policy ensures that all pupils are taught according to their needs and abilities with no opportunities being denied due to race, sex, creed or age.

The core of our teaching will be more and more focused over the years on developing the key skills of language, literacy and number. Science will continue to play a key role in our curriculum and much of its core is based on language development. The National Curriculum will not be neglected, but it will also be used as a vehicle for achieving the above aims.

French is taught to all Year 6 pupils while we have staff expertise; recently a "German" club has been started at lunch times for some of the older children. This is being done voluntarily by one of our parents.

An easing of the numbers burden is provided by a large cohort of voluntary helpers in school and I would like to publicly pass on our sincere thanks for their wonderful work with the children and support for the staff.

With this voluntary group I would like to show our appreciation of the hard work and tireless enthusiasm of our PTA who have been so innovative and full of drive on the school's behalf. If you would like to join any of these groups we would love to hear from you.

Many thanks also to all of you who took up the chance of joining the "School's VISA" card scheme; this venture netted £140 in the Spring term for the School Fund. If you haven't already enrolled we do have a few forms left.

Music still plays a large part in Harbury School and our orchestra has grown to over 40 pupils this year. They have performed on a number of occasions under the guidance of Mrs. Sharpe and we are very proud of

them. This is no easy task when one remembers that we are guaranteed to lose a few at the end of every year and last year lost TWO year groups.

Sport has continued to grow and we have fielded representative teams at soccer, Netball, cross-country, cricket and athletics with some of our pupils being selected to run, throw and jump for Southam District against others in the Central Warwickshire Area at Edmonscote in June. One of our nine-year-old pupils has been selected for trials with Warwickshire County Cricket Club to play for their Under 11s! He wasn't successful this year, but has got two more seasons to have another go and naturally we wish him luck.

A big thank you also to Mrs. Moffitt who raised over £300 with a hog roast at Harbury Carnival which, together with an anonymous donation of a further £300 will pay for the new alarm system in the pool and the insurance excess on our claim for a new pump and filter. As I write, these arrangements are in hand.

If anyone knows of any companies or individuals that may be willing to sponsor a soccer and/or Netball strip for school teams, please let me know. Borrowing a kit to fit our older children isn't the ideal solution for their matches.

The number wearing school uniform has been growing steadily over the year as children have grown out of their "old school clothes". The pupils really do look a treat and more to the point, look like they are coming to school with the right attitude, that of taking the business of learning seriously.

Plans for improvements to school security are in place and when funds are available there will be extra restrictions for access to the site and building. I apologise if these manoeuvres cause any inconvenience, but I'm sure you will agree they are for the best reasons.

Arrangements for Harbury Nursery School to move into our premises are progressing well and we hope they will be able to make a start to proceedings at the end of this term ready to begin in September. The Nursery School will be based in the classroom presently occupied by Mrs. Crutchlow's class near to the playground.

We say goodbye to 31 Year 6 pupils in July and wish them well in their future schools. Although the majority, as usual, are moving on to

HARBURY LONDIS

Open seven days for your convenience

GROCERIES • THE NATIONAL LOTTERY™



OFF LICENCE • FLOWERS & PLANTS

DESIGNER GREETING CARDS • VIDEO LIBRARY

8.30 a.m. - 9.00 p.m.
- Monday - Saturday -

10a.m. - 1p.m. and 6 p.m. - 9p.m.
- Sunday -



All major Credit Cards now taken

MILL STREET, HARBURY

TEL: 01926 612645



THE DOG INN
Harbury
Tel: 01926 612599

Welcome - from Jay & Maureen

OFFERING 3 COURSE SUNDAY CARVERY @ £7.95

2 COURSE CHILDREN'S MENU FOR ONLY £3.00



FULL RANGE OF BAR & RESTAURANT MEALS.
AVAILABLE FROM TRADITIONAL TO THE UNUSUAL.

TAKE AWAY MEALS MONDAY - SUNDAY
FINE SELECTION OF HAND PULLED ALES,
INTRODUCING GUEST ALES EVERY WEEK.



Room available for private parties

D.W.A.G.

O
U
G

Builders

Tel: 01926 612460

Mobile: 0860 849777

R
E
E
N

Local Tradesmen who take pride in their work.

We specialise in rebuilding half-timbered and period buildings, renovations, extensions, conservatories, patios - in fact any form of building work.

ESTABLISHED OVER 30 YEARS

**GOOD FENCING
MAKES GOOD
NEIGHBOURS**



**"You've seen the Rest
Now see the BEST"**



**ROLLASON
FENCING AND SHEDS
EST 1964**

*Professional erection service available
(01926) 613009 or (01926) 612066
Fosse Garage, Fosse Way, Harbury*

SOUTHAM
PhysioFirst
CENTRE

JACKIE SNELL

MCSP SRP

**CHARTERED AND STATE
REGISTERED PHYSIOTHERAPIST**

Health insurance recognised
Reflexology & Aromatherapy
also available

**10 Daventry Street,
Southam**

Tel: 01926 614 614

Member of the Organisation of Chartered Physiotherapists in Private Practice



*Traditional Acupuncture
&
Chinese Herbal Medicine*



**FRANCES
FARRER**

**MBACc, RCHM
(Cert. Ac. Beijing)**

The combination of Chinese Herbs and Acupuncture, Laser Therapy now also available, offers help to a wide spectrum of illness covering stress, anxiety, P.M.T., headaches, back, shoulder or elbow pain, and more serious problems such as arthritis and M.E.

*For information ring
01926 817583*

**WHITEHALL CLINIC OF
NATURAL THERAPY,
7 Warwick Road,
Southam, CV33 0HN**

Parking facilities

Southam School we are sure that wherever they go, they will all be a credit to themselves, their families, their primary school and the Harbury community. We maintain excellent communications with most secondary schools and regularly receive reports about our ex-pupils, which have all been extremely favourable over this past year.

Next September and beyond holds tremendous possibilities and excitement for all of us and I hope that everyone is looking forward to it with the same enthusiasm as me at Harbury Primary school.

Paul Milner, Headteacher

HARBURY NURSERY SCHOOL



We are proud to announce the results of our recent OFSTED inspection. The overall outcome was that the Nursery School is *"likely to promote the desirable outcomes for children's learning in all of the areas of the inspection; personal and social development, language and literacy, mathematics, understanding of the world and physical and creative development"*.

In particular the inspection noted the quality of the teaching: *"The staff have established excellent relationships with the children and these form the basis of successful teaching and learning"*. Language and

literacy were praised as a "*strength of the Nursery*". The report commended the individual learning plans based on assessment of children's progress and the effective teaching methods "*enabling the children to build on their successes*".

On behalf of the committee and parents, I would like to congratulate Kate and her staff for their time and hard work in making the Nursery School such a warm, welcoming and successful place.

As from September we will be relocating into Harbury School which will further benefit the children. If anyone is interested in further information or a place at the Nursery School, please contact Kate Smart on 612609.

Denise Vincent

HARBURY DIRECTORY

The Harbury Directory is now being updated and should be issued with the September edition of the H&L News. All clubs and organisations who are currently listed in the Directory have been contacted to check their entry. If there are any new organisations who wish to be listed in the revised Directory, please telephone 612155, or send details of the contact person, address and tel. nbr. to: 31, Binswood End, Harbury.

John Holden

THE THURSDAY CLUB

We meet on the 2nd and 4th Thursdays of each month in the Farley Room of the Village Hall at 2.30pm

Anyone is welcome - we have a speaker, tea and biscuits and a chat in a very friendly atmosphere and we'd be delighted to see you.

We are in need of a Secretary, mainly for the booking of speakers. We have plenty of lists of possible speakers, so if there is anyone out there who could help, please contact Beryl Checkley on 612519.

Incidentally, for the benefit of those who missed our most entertaining speaker on 12th June - a professional actor who, before our very eyes, transformed himself into a Pantomime Dame, complete with hilarious patter - I understand he's been booked to entertain us at the Harvest Supper on Saturday 4th October, so **make a note in your diary!**

Beryl Checkley

HARBURY WHEELBARROW RACE



HARBURY CARNIVAL 1997





Carnival Queen Gemma Phipps



Pirie Close Float

Harbury Beavers





Above: Victorian Street Fayre Committee

Below: Brownies



Chesterton's Romans

HARBURY CARNIVAL

Undaunted by the occasional showers the usual Carnival spirit prevailed and a great time was had by all. The playing field was crowded well into the late afternoon and it took a complete downpour to send the last people home.

The procession was as spectacular as ever and the judges had a very difficult task. Thank you Dr. and Mrs. Wilne and Ken Stevenson for selecting the winners. Whilst we no longer judge the overall success of the day by money raised, as it is individual village organisations that benefit, we do know that the street collection broke previous records and the Carnival Committee raised £1,000. The winners in the procession were :-

Decorated Float

Pirie Close
WI
Chesterton Village

Decorated Float (Trade)

Dog
Gamecock

Childrens Float

Guides
Nursery School
Brownies

Decorated Bike/Car

Charlie
WI (Marina and Howard)

Horsedrawn etc.

Chesterton
Bill and Ben
Robin Hood and Maid Marion

Walking Tableau Children

Beavers
Cubs
Dracula and friends

Walking Tableau Adult

Victorian Street Fair
Spice Girls!

In addition the Tim Percival Cup went to Nikki Brunt with the Dragon on the Guides float and the Sue Andrews Cup went to Mary Entwistle as 'Compo' on the WI float.

Congratulations to all those who took part in the fancy dress (as inventive and amusing as ever) and to those involved in the dog show. Thank you to our judges Colin Siddle and the King and Queen, Robert Biddle and Gemma Phipps plus Martin the Dalmation!!

The Theatre Group's Carnival Dance kept the atmosphere going and the band, 'Porridge', played all the right music in tune and time. A great

time was had by all those who came along and a good profit made. But wouldn't it be great to pack out the Village Hall for what is one of the few dances we now have each year? Make a note in your diary now!!!

John Kemsley

HARBURY CARNIVAL - PUB GAMES

This year it was suggested that the week prior to the Carnival should be designated 'Carnival Week' and a series of events was organised round the local pubs with teams from each pub competing against one another. The week commenced with the Wheelbarrow Race (see separate article) and the results of the other 4 events were as follows:

Monday 9th June - Test of Strength at The Gamecock

1st Shakespeare, 2nd Old New Inn, 3rd Gamecock

Tuesday 10th June - Boules at The Dog

1st Dog Inn, 2nd Shakespeare, 3rd Gamecock

Wednesday 11th June - Skittles at The Old New Inn

1st Gamecock, 2nd Shakespeare, 3rd Dog Inn/Old New Inn

Even the torrential rain and thunder and lightning didn't put the teams off, but the competition had to finish earlier than planned.

Thursday 12th June - Quiz at The Shakespeare

1st Dog Inn, 2nd Old New Inn, 3rd Gamecock

The overall winner of the four events with the most number of points was The Shakespeare - many congratulations, with The Gamecock second and a tie for third place between The Dog and The Old New Inn.

This year being the first time this competition has taken place was "testing the water time", but we're pleased to report that the events proved to be very popular, with all teams being well supported and our thanks go to the Licensees for their hospitality. The overall winners will be presented with a shield and next year it is hoped to open up the competition to more teams.

Many thanks again to all those who took part.

Dan Killian

50% off BLINDS SALE

VERTICALS • ROLLERS • VENETIANS • ROMANS • PLEATEDS
Phone now 9am-9pm 7 Days

**FREE
FITTING**
SELECT
AT HOME
•
FAST LOCAL
SERVICE

01926 831348

If no reply call 0800 212532



*off current price
on selected ranges

Albany

P.D.Q. SECRETARIAL

For a professional and confidential
word processing/typing service:

*Letters - Reports - CVs - Theses -
Mail Shots, etc.
Laser Quality Printing*

Julie Killian

*The Bungalow, Chapel Street,
Harbury - Tel: 01926 612265
(Answerphone out of office hours)*

*A service based on Professionalism,
Discretion & Quality*

R&S DOMESTIC SERVICES

REPAIRS TO MOST MAKES OF

Washing Machines
Tumble Dryers
Cookers
Dishwashers



PHONE - ROB CENEY on
HARBURY 613707

Michael Jerome



Carpets



A COMPLETE CARPET SERVICE

- Choose a new carpet from our extensive range
- Expert Fitting - Fully Guaranteed
- Existing Carpets re-fitted
- Professional On-Site Cleaning
- Vinyl Sheet Flooring

6 Meadow Road, Southam

Telephone: Southam 813325

Michael Jerome is a Master Fitter with the National
Institute of Carpet Fitters with 30 years experience



FOR PROFESSIONAL HAIR CARE



Kathleen Ellis

CHAPEL STREET, HARBURY. ☎ (01926) 612326

RETAILERS FOR WELLA HIGH HAIR PRODUCTS

TO ADVERTISE CONTACT:
DAVID SNELL ON (01926) 614 614

HARVEY BUILDERS

Registered Since 1979

**YOUR LOCAL BUILDER FOR ALL YOUR
HOME EXTENSIONS AND ALTERATIONS
FROM PLANS TO COMPLETION.**



FOR PROMPT, PERSONAL SERVICE PHONE 01926 817906

REGISTERED
HOUSE BUILDER

Westfield Cattery

Middle Road, Harbury, Warks. CV33 9JN
Telephone: (01926) 613946 and (0374) 986077

*A safe and caring home away from home
in the country*



CHIROPODY PODIATRY

Mr. J.F. Small SRCh, DPodM, MChS - State Registered Chiroprapist/Podiatrist and Senior I Chiroprapist Diabetes Care for local NHS Trusts welcomes clients old and new to his clinic for private consultations now located opposite Bell's Fruit & Veg. Shop at
HEALTH FIRST, Daventry Street, Southam



All Chiroprapist/podiatry services available including routine and specialist treatments: biomechanics, gait analysis, sports orthoses, nail surgery, specialist footwear, insoles
Also special service - intensive treatments to CURE most foot problems - including corns, callouses, ingrowing toe-nails, verrucae, fissures, metatarsalgia, plantar fasciitis
Remember, foot & gait problems can lead to knee, hip, back & neck pain.

So why not make an appointment to see what can be done for you
Please telephone **01926 811272** for an early appointment



KANE'S NEWS

HIGH STREET, HARBURY
TELEPHONE: (01926) 612156

Much more than just newspapers and magazines!

- TOYS
- STATIONERY
- GREETINGS CARDS
- WRAPPING PAPER
- PHOTOCOPYING
- DRY CLEANING
- SHOE REPAIRS
- PHOTOGRAPH DEVELOPING

Why go elsewhere when we're on your doorstep?

HARBURY CARNIVAL - WHEELBARROW RACE



Carl Wallington and Steve Evans after being presented with the Scandrett Shield by Margaret Scandrett, accompanied by her son Jonathan and grandson Matthew

There were 18 entries for this year's race (16 actually showing on the day) which was held in mainly brilliant sunshine, but with a couple of showers organised to keep the competitors cool. An assortment of wheelbarrows lined up for the start - some with humorous posters and accessories and others in full racing trim - perhaps we should have an extra prize for the best decorated/most original barrow!

The question everyone was asking, particularly Bonzo, was could last year's winners do it again? The answer was: yes, they could and congratulations go to Carl Wallington and Steve Evans who completed the course in 9 minutes and 1 second, beating their last year's time of 9 minutes and 30 seconds.

We were delighted that Mrs. Margaret Scandrett could be with us to present the Scandrett shield and £25 to the winners. Mrs. Scandrett's late husband, Brian, inaugurated the first series of Wheelbarrow Races back in 1972.

Very many thanks to all those who took part in the race; to the very supportive crowds at each pub; to the landlords of each pub for

providing the beer and facilities; the time keepers and scrutineers and to 'Bonzo' for once again running the tote. The atmosphere was simply tremendous and this was a great start to Carnival Week.

We hope that the Wheelbarrow Race will now become an established part of the Carnival activities, therefore, it is not too soon for teams to get into training for next year's race!

Dan Killian

HARBURY SCHOOL - SWIMMING POOL PUMP FUND

The Old New Inn has raised a total of £670 towards the Swimming Pool Fund so that the pump can be replaced and a security system installed to prevent future loss of equipment. The landlady at the pub, Sandra Moffitt would like to acknowledge the receipt of £320 which was received as an anonymous donation towards the fund from a generous Harbury resident. She would also like to record her thanks to a number of people who worked throughout Carnival day to boost the fund total - some of whom were literally up at the "crack of dawn" preparing the fire for the pig roast!

Thanks to Brian (Wally) and Carl who started the early shift, Keith who was in charge of the roast throughout most of the day with assistance from Alan, Bob and Jean who served the succulent batches to all the customers. Thanks also to Clare and Michelle who sold raffle tickets to swell the coffers and Genna and James who collected £38 in their buckets on the Carnival procession route!

Many thanks to everyone for their involvement - all efforts will be rewarded when the school pupils can begin their swimming lessons again.

Sandra Moffitt

Editors note: *Where's the point? Many readers probably spotted the decimal point was in the wrong place in last month's magazine. The Old New Inn raised £146.6; not £14.6 as stated! Apologies to all the village hostelryes.*

HARBURY LADIES NETBALL CLUB



BEST bibs for next season, courtesy of Leamington Vauxhall dealers Cowie, which were formally handed over by company general manager Wally Green (left) and general service manager Bob Sandford, who are pictured with club chairman Janet Rawlings

Standing from left to right: Leasal Chapple-Hyam, Sue White, Helen Wilson, Lisa Tebaldi, Jo Hancock, Hilary Wilson, Lucy Lewitt and Pat Summers.

Front: Gemma Cooper, Katie Payne, Leah Wallington, Cowie General Manager Wally Green, Chairman Janet Rawlings, Cowie General Service Manager Bob Sandford, Jenny Evans, Amanda White and Leone Keyte.

The AGM was held at the beginning of June and the Chairman, Janet Rawlings, referred to the grants from Stratford District Council and Harbury Parish Council and thanked all the members of the club for their fund raising efforts throughout the year. It was decided that the subscriptions for next season will be increased to £30 for adults, and £20 for juniors, with match fees being £3 per game. Practices will continue throughout the Summer months (weather permitting!), starting at 7pm each Thursday, with 7th August being the date set for team selection to begin in earnest.

The General Committee is beginning its second year of office and so no changes were made. The Fund Raising Committee now consist of Paula Wallington, Becci McDaid, Vanessa Smith, Lisa Tebaldi as well as the Chairman, Secretary and Treasurer. The Selection Committee is made up of 4 club members - as yet unknown.

The presentation of trophies was made:

"A" Team player of the year - Sue Leng and Vanessa Smith

"B" Team player of the year - Katie Payne

"C" Team player of the year - Hannah Burnham

"D" Team player of the year - Lisa Tebaldi

Harbury Ladies Player of the Year - Gemma Cooper

The Club Member of the Year - Becci McDaid

Congratulations to them all.

We hope that you got the chance to watch a little of the Netball tournament at the Carnival. The winners were Leamington Ladies for the second year running. Thanks must go to Leah for organising it so efficiently and to Jenny and Rick for cutting the grass around the court before the event.

Pat Summers

HARBURY CRICKET CLUB

In the Glynwed Coventry League, Harbury won by 6 wickets against newly promoted Potterton who were dismissed for 91. Ed Russell took 2-16, Gary Haynes 4-33 and Ian Brearley 4-10. Harbury reached 92 for 4 with no difficulty and Will Russell scored 45.

On 31st May the league side demolished Coventry Colliery 2nds. After a weak start, Zak Briggs took charge of the recovery, scoring an unbeaten 85 out of 206 for 6. He was supported by brother Seb (21), Greg Sherrington (21) and Ed Russell (29). Colliery's batsmen never settled and crumbled to 90 all out off 35.3 overs. Harbury's bowling successes were spearheaded by Gary Haynes 4-11, with Ed Russell 2-17, Will Russell 3-33 and a first ever Club wicket for Greg Sherrington. Harbury won by 116 runs.

In the Bank Holiday all-day game against Warwickshire County Council Staff, Harbury scored 112 for 5 in reply to Staff's first innings total of 135 for 2, with only Will Russell (51) Zak Briggs (18) and Seb Briggs (18) in touch. In the second innings Staff scored 178 for 7 declared, setting Harbury a target of 202. Harbury went for the draw from the beginning with a steady start from Paul Bennett (33) and Ian Jackson (22). Disaster struck when five middle order wickets crashed, but Zak Briggs and Gary Haynes held out for Harbury to reach safety with 95-9.

Harbury Sunday XI's good run ended with a vengeance on Sunday 1st June. St. Benedict's, Alcester posted 235 for 5 off 38 overs at Middle Road on an exciting pitch. Pete Rollason (2-60) and Ian Lowe (2-66) were Harbury's best bowlers. Harbury's batsmen struggled from the start and found it easy to get out. Only Ian Jackson (27), new player, Giles Atkinson (29) and the well known Extras (34) managed to resist the St. Benedict's attack. The Harbury innings finally collapsed at 112 all out with three overs left to play.

Harbury Sunday XI had Ettington reeling on 32 for 4 on Sunday 8th June, but failed to capitalise and allowed R.Fisher (80) and K.Price (56*) to take the visitors to 180 for 5 declared off 41 overs at tea. Harbury's bowlers had little luck with Ian Lowe 2 for 51 off 18 overs and Gary Lowe 3 for 59 off 15. Harbury started steadily with Les Sollis back into form with 45 and Gary Lowe posting 32. Ian Lowe looked likely to win the game until he was caught on 30. A late flurry from Giles Atkinson (33*) gave some hope, but in a thrilling finish Harbury didn't quite make it. Harbury ended six runs short of victory on 175 for 5 and the match was drawn.

Harbury lost their first league game of the season against Greenmore Road. Harbury reached 168 with solid batting. They captured some early Greenmore wickets, but the middle order held firm and Greenmore Road won by 5 wickets.

The league game against Ansley 2nds was again rain ruined. Harbury staggered to 22 for 6 before Ian Barrett and Greg Sherrington rescued Harbury and took them to 105. On a difficult wicket this looked a respectable score especially when Ansley lost a wicket in their first one. At 3 for 1 Ansley locked in for a struggle but the rain came and the match was abandoned.

The Sunday fixture against Hockley Heath was switched to Harbury thanks to the Major prepared strip. Harbury struggled to 103 thanks to Gary Lowe (28), Phil Linnet (21) and Mike Daniels (11). Hockley Heath hit out, rode their luck and passed Harbury's total with over 60 spare. The Mid-Summer weekend resulted in both the Saturday and Sunday games being abandoned without a ball being bowled - where is the Summer or did we have it in April?

(*not out)

Ian Jackson

HARBURY TENNIS CLUB

The Dave Brown Shield took place in early June. Colin Mercer and Angela Woodruff won this tournament after some keenly contested matches throughout the afternoon.

In the Banbury League, our team continues to do well, winning two and losing two matches, but we do have considerable strength in depth this year, which should stand us in good stead during the holiday season!

The coaching sessions have been well attended (and hopefully beneficial to members!). The last session was held on 24th June, so both courts are available again every Tuesday evening for Club Night.

There is still room for new members of all standards who enjoy the game to join. We play during the week on Tuesday and Thursday evenings from 6.30pm and at weekends on Saturday afternoons from 2-5pm. The courts are Council-owned so anyone can play on them, but please check availability by booking at Kane's Newsagent beforehand to avoid disappointment. We also play friendlies against other Clubs, have Singles and Doubles Competitions running throughout the summer and organise regular Closed Tournaments and Social events.

David Snell

S.H.A.K.

Good News! - The plans for the extensions to, and refurbishment of the Scout Hut have been drawn and it is hoped we have enough money in the kitty to be able to make a start in the near future.

The Works will be carried out in several contracts owing to the somewhat specialist nature of some of the work. If there are any builders in the village or surrounding area who would be interested in pricing for the building work above the damp proof course of the extension, and/or the refurbishment of the existing hut, please contact Pete Woodward on 613536 or me on 612832.

Peter Bones

SAMOIS SUR SEINE VISIT

During the School half-term we were fortunate to be able to visit Samois and to experience some of its hospitality. We travelled from Paris by car

through the beautiful forest of Fontainebleau and Samois, arriving after a picnic in the forest about mid-afternoon. The day was very hot and it was the day that they had the first round of the French election.

We took pictures of the tiny narrow streets and the river walks, together with some of the stone terraced houses and the shops. These were on display at the Carnival and are now in the Library, if anyone would like to see them.

Our impression was of an attractive village with lots to do and see and with a number of activities available like riding in the forest, boating, camping close to the river, several boules teams and all very near the town of Fontainebleau (about 6 miles).

We met up with Sylvain and his family who were anxious to show us more of the village and to introduce us to other people who are keen to visit Harbury and to receive visitors from here as well. Many are keen that their children should have first-hand experience of English and are pleased that Harbury School has started to make contact with letters and hope they will be able to come in person next year.

Sylvain took us into the Town Hall to view the voting taking place which, unlike here, has much more ceremony attached to it. The Ballot box is also different: instead of black it is transparent and you put your voting paper in an envelope before putting it in the box. Candidates' names are on separate pieces of paper and in this case there were some 11 or 12 of these on the clerk's desk. The idea is to pick up several, go into the booth and put only one in the envelope supplied. The rest you put in the rubbish bin in the booth. Polls closed at 6pm in Samois and by 7pm Nellie (who visited here in November and who is their Chairperson) had a good idea that she had enough votes to go into the next round.

Realising that we were about to go to a local hotel for the night (having left our camping things behind for this trip), Sylvain kindly offered us a bed and wonderful meal! We were woken in the morning by a loud cuckoo just like Harbury and after saying goodbye with a promise to return, we went into the square. Andrew read all about the election results over cups of coffee as we ate our croissants bought from the local baker.

It is a wonderful spot - just out from Paris off the main road, but close to the amenities of a large town. We wish the twinning well and can

heartily recommend a visit. If you want to hear more about Samois and the annual Django Reinhardt Festival, then come to the Wight School on Wednesday 16th July at 7.30pm when Ken Stevenson and Friends will tell us about their June 28-29 Jazz Festival trip.

Andrew and Jenny Patrick

HARBURY KIDS CLUB

Many thanks to all who supported our stall at the Carnival, we made £101.46. The money will be put towards a playstation for the Club. Thank you also to Sue and John Grove, Tina and Julie for all your hard work on the day.

Lynn Jackson

HANNAH HEADS FOR THE

Royal Pageant Of The Horse



The Queen and Prince Philip are this year celebrating their golden wedding anniversary. To mark this occasion, various events are being

organised including the Royal Pageant of the Horse, which is to be held at Windsor Great Park on Saturday 5th July from 9.30pm until 11pm (televised on BBC1).

This historic spectacle is to tell the story of the horse from birth through training and will go on to describe the ways it has been used by man through the centuries. It is to be a continuous drama using readings, music and songs.

A large number of horses and riders are required to create this unique spectacular and ten year old Hannah Oliver Byrne from Harbury School and her pony, Willow, have been chosen to represent the North Warwickshire Pony Club.

Hannah has been riding since the age of 2 and this is a great honour and wonderful achievement and will be the highlight of a most successful career. Her pony Willow, was bought by her mother Gill, just a year ago and is only 6, so they are certain to be one of the youngest combinations there. Over the past few months they have been taking part in the Prince Phillip Cup and their performance and behaviour at those games are the reasons for selection. Together they will have to cope with loud and sudden noises; music and lights; not to mention the odd carriage or two; flapping flags; costumes and hysterical artistic directors! As if all this was not enough, there will be a terrific amount of time spent standing around and waiting. They have been told to go with a highly developed sense of humour and the patience of a saint!

Hannah, Gill and Willow will have to spend 4 days at Windsor for rehearsals and the event and once they are at Windsor Great Park, they are not allowed to leave because of tight security arrangements. Willow will be comfortably installed in temporary stables - meanwhile, Gill and Hannah are sleeping in the ...horsebox!

Rosemary Eld

FREE MULTI-SPORTS SESSIONS

Harbury Playing Fields on Monday 21st July 1.30pm-3.30pm and
Thursday 7th August 10am-12noon

Once more Stratford District Council is organising these sessions for youngsters aged 8 to 14 years. Activities will include fun athletics, unihoc, football, rounders, etc. Other sessions are organised on different

days in the school Summer holidays in over 20 other villages in the district. For further details contact Sharon Jones on 01789 260636.

Alison Hodge, Clerk to the Council

HARBURY PLAYScheme

Harbury Playscheme will run Mondays and Fridays 10.30am-2.30pm from Monday 28th July until Friday 29th August, excluding Monday 25th August (Bank Holiday).

The cost is £5 (incl. lunch) per child per session and is for children aged 4-12 years. All children must be booked before Friday 18th July and a deposit of £2.50 per child per session is required.

As well as Bingo, Painting, Sports, Clay, Cooking, etc. we will be having special events as shown:

Monday 28 th July	- Wizardry Woo Magic Man
Friday 1 st August	- Visit from Lady Godiva
Monday 4 th August	- Pony Rides
Friday 8 th August	- Visit to the Park and BBQ
Monday 11 th August	- Visit from Guide Dogs for the Blind
Friday 15 th August	- Bouncy Castle
Monday 18 th August	- Visit to Pineham Farm
Friday 22 nd August	- Pony Rides
Friday 29 th August	- Punch and Judy

If you would like your child/children to attend, please book early as we will only take 24 children at any one session. To book, phone 613740 or mobile 0402 898171.

Lynn Jackson

HARBURY NURSERY SCHOOL

Despite the weather, another year of wonderful floats. The Harbury Nursery School came second in their category with their Noah's Ark theme.

The rain did not dampen the children's enthusiasm, at least we had umbrellas, but Noah did not. Yet again we need to thank Phil Harrold for bringing along his veteran tractor to pull the trailer kindly loaned by Mr. and Mrs. Butler.



THINKING OF LETTING YOUR HOME?

THEN CONTACT

CONNECT PROPERTY SERVICES

We are specialist high quality letting and property management agents, locally based, with particular experience in letting village properties. Please do telephone to discuss your requirements.

Telephone: 01926 - 815004

**- KINETON BASED -
QUALITY CARPET, UPHOLSTERY
AND CURTAIN CLEANING SERVICES
Chem-Dry® Accord**

- Most carpets dry within the hour
- Safe and non-Toxic
- Removes most stubborn stains
- Leaves no sticky or dirt attracting residue
- Carpet & fabric protection service
- Professionally insured

Chem-Dry®



**ROY & LINDA
HARRIS**

TO ARRANGE A FREE
ON-SITE NO OBLIGATION
QUOTATION TELEPHONE

01926 640029

INDEPENDENTLY OWNED AND OPERATED

Jamieson's

**SPECIALIST IN
PERIOD JOINERY**

**WHETHER YOU LIVE IN
A COTTAGE OR A CASTLE
LET US QUOTE YOU FOR
REPLACEMENT WINDOWS
AND DOORS.**

**HARBURY FIELDS BARN
HARBURY**

**TELEPHONE:
01926 612921**



Priory Tool Hire

THE COMPLETE TOOL HIRE CENTRE

**WATTONS LANE,
SOUTHAM,
LEAMINGTON SPA**

- MINI EXCAVATORS • MIXERS • ELECTRIC DRILLS •
 - DISC SAWS • GARDENING EQUIPMENT •
 - WALLPAPER STRIPPERS • CARPET CLEANERS •
- AND MUCH MORE!

**MON - FRI 7am - 6pm
SAT 8.30 - 12.00**

REPAIRS OF ALL KIND

Southam 814770

AGENTS FOR CALOR GAS AND BLACK & DECKER PARTS



EXTENSIONS

BUILDERS

ALTERATIONS

**GREY GABLES, 46 BANBURY ROAD, SOUTHAM CV33 0HJ
TEL: SOUTHAM 01926 817744 MOBILE: 0585 495384**



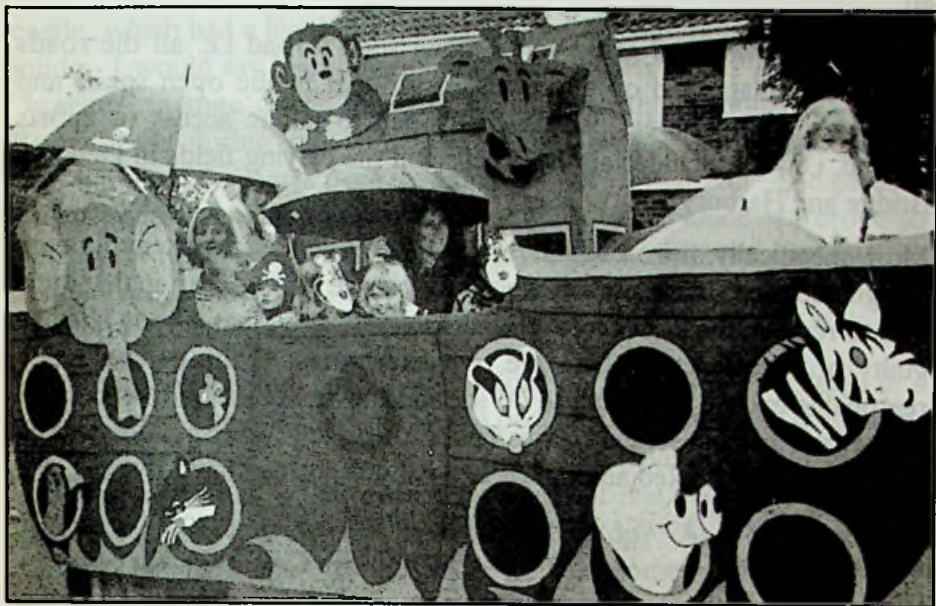
THE BISHOP'S FRYER AND OFF LICENCE

LADBROKE ROAD • BISHOPS ITCHINGTON TEL: 01926 614093

QUALITY FISH AND CHIPS, PIES, PASTIES etc.

Now also serving Donner Kebabs

**Open Mon. to Thurs. 5.00pm to 10.30pm • Fri. and Sat. 4.30pm to 11.30pm
Fri. and Sat. lunch times • 11.45am to 2.00pm**



Our Tombola stall raised the considerable sum of £172 towards our funds. Many thanks to all concerned.

Denise Vincent

HARBURY and DEPPERS BRIDGE PARISH COUNCIL

Stratford District Council's Initiative on Dog Fouling

In response to new legislation on the offences for Dog Fouling, Stratford District Council has introduced their own Order which came into effect from 12th June 1997 and covers the whole of Stratford District.

Stratford District Council are asking for help to enforce this order from members of the public and Local Councils to pinpoint problem areas; identify individuals that flout the law and identify regular times and locations where these people commit offences so that the Dog Warden can be present. If you have any information, please telephone the Environmental Health and Housing Department at Stratford District Council on 01789 260814.

Harbury Parish Council strongly supports this legislation and asks parishioners to help.

It is an offence within the Stratford area for a person to let a dog foul and not clear up afterwards on a road with a speed limit of 40 mph or

less; any footway and grass verge along such a road i.e. all the roads within the village and on any pleasure ground; public open space and public recreational area; playing field open to public access or sports ground, i.e. this includes all the greens and the playing fields in Deppers Bridge and Harbury.

More specifically, the order states that if a dog defaecates at any time on designated land and a person who is in charge of the dog at that time fails to remove the faeces from the land immediately, that person shall be guilty of an offence. There are two exceptions: if the person has a reasonable excuse for failing to do so, and the person or body in control of the land has consented to this failing to do so. An offender will be expected to pay a fixed amount of £25 within fourteen days.

Alison Hodge
Clerk to the Council

HARBURY and BISHOPS ITCHINGTON - MEALS on WHEELS

15 to 20 people in the two villages enjoy a hot meal 4 times a week, delivered to their homes by volunteer drivers. Bishops Itchington deliver on Monday and Thursday and Harbury on Tuesday and Friday. Here we have a rota of 16 stalwarts who deliver the meals once a month, working in pairs. But we need a new ORGANISER. Here's the job description:

1. Every 6 weeks send in the order for frozen meals supplies and check on delivery;
2. Assemble correct number of meals in the box in the Village Hall freezer, according to current client list;
3. Pay the money collected by the drivers into the Post Office;
4. Send weekly returns to the W.R.V.S.

Please ring Mary Snow (612410) for more details. Training will be given!

Mary Snow

HORTICULTURAL SOCIETY

Although we have no monthly meetings during the Summer, there is still a lot of activity, one of them the outing to Broughton Castle. The weather was kind, the sun came out nicely. Those who went round the

castle, which had a lived in atmosphere, had a delightful and informative guide. I would say living there in the cooler parts of the year would be "bracing" in spite of the heating! It had been the headquarters of the Roundheads during the battle of Edgehill with a very commanding position - and the views from the ramparts were wonderful. The gardens and grounds were impressive and tranquil. After lunch we drove to Barnsly House where we found a completely different garden - or collection of gardens. As suspected the large boot in the coach was used for all the plants bought, including a tree!

The outing to "Woodpeckers" at Bidford on Avon was completed in a cloudy but dry evening. Island mixed beds, many cranesbills, roses, etc., interesting planting, a fascinating garden. We have certainly had some useful rainfall, it is a long time since our fruit and vegetable patch has looked so nice, but does it know when to stop? A "*Dribbling June Keeping things in Tune*" indeed, now we need some sunshine!

The Garden Walkabout Weekend, Saturday 12th and Sunday 13th July is next on our calendar. We can only keep our fingers crossed for reasonable weather. Anybody who isn't involved, but would like to be, please phone 612515. Please support us in any case, the village benefits.

The outing to Severn Trent at Campion Hills will be on Wednesday 6th August, more information next month.

Show schedules are ready and will be available from the Post Office ('Top Shop') Co-Op, Kane's Newsagent, Party Paraphernalia, Nifty Needle, Muggleston's, 32 South Parade and 23 Deppers Bridge, so there is plenty of time to plan entries!

Muriel Grey

GARDENING NOTES for JULY

The rain throughout June has dashed many plants, but there is plenty of growing and flowering time to come and we are pleased that the water butts are full. However, remember that containers and baskets need regular watering and feeding because the rain does not penetrate the dense plant growth. Cut off stems of spent flowers such as lupins and delphiniums to encourage more flowers. Feed michaelmas daisies, roses and dahlias for a good late show and plant autumn flowering bulbs. Towards the end of the month feed chrysanthemums. After trimming

back any of the early flowering plants give them a feed to encourage strong growth.

Trim hedges and any shrubs which have finished flowering. A basic pruning rule is that if a shrub flowers before midsummer's day it should be trimmed or pruned as soon as flowering is over. Summer prune apples and pears. The beginning of July is the best time of the year to get strong plants from cuttings from perennials or shrubs, so use some of the trimmings to produce new plants. If you don't need them, sell them at the Show in September, or at one of our meetings. Sow wallflowers and sweet williams, swedes and turnips. Plant leeks, Brussels sprouts, winter cabbage and spring broccoli.

Before going on holiday, hoe around plants and stake any tall, lax plants. Pick vegetables and sweet peas and ask a neighbour to keep them picked or they will stop producing. Mow the lawn and use the clippings as a mulch. Group containers together in a shady spot. House plants left standing on trays lined with capillary matting and placed in a cool position should be all right for a fortnight. The majority of houseplants, except ones with hairy leaves enjoy being outside during the summer, although this year you will have to watch that they don't get too wet.

Plant of the Month - Lily

After the rose, the lily has received most praise in literature and painting. Early Italian painters portrayed the Virgin Mary with lilies or being greeted by angels bearing lilies and Virgil named the *lilium candidum* as the Madonna lily. By the 16th Century, lilies were widely cultivated and Shakespeare certainly knew of them. The martagon lily, or Turk's cap, may be indigenous and could have grown in Warwickshire. However, it was during the heyday of the plant hunters in the last century that new varieties of these spectacular flowers were brought here from around the Northern Hemisphere. Today Oregon is known as the Lily State because it is the premier lily breeding area of the world. There are three requirements for growing lilies. The scales of the lily bulb must not be allowed to dry out. The majority of lilies are stem rooting so must be planted at least 6 inches deep in well drained rich soil. Thirdly they like their roots in the shade and their heads in the sun. Grown this way they will surely be "the flower of flowers", that even in dying "puts the rose to shame".

Pat Smith

Letters to the Editors

Dear Editors

We wish to thank all our friends and neighbours for the many cards and donations we received on the sudden death of a dear husband and father, Fred.

Also special thanks to Father Roy for a lovely service.

Ethel Manners and Julia

Dear Friends

I would like to thank my relations, friends and neighbours who made my 90th birthday so memorable by coming to the lunch, which was given by Pat, John, David and Heather, who all worked tirelessly on the day to make it such a success.

Many thanks for all the cards and presents I received.

Dorothy Turner

Church Bellringing
at All Saints, Harbury.

TOWER TEACH-IN

Monday August 4th to Friday August 8th
10am to 12 noon, each day.

An intensive course with no strings attached. Aimed particularly at young people, anyone aged 12 or more is welcome to come and try. Just turn up at 10am on Monday Aug. 4th.

For adults not on holiday, evening sessions can be arranged. Contact Harry Windsor (612504)

HARBURY

Garden

Walkabout

SAT 12th JULY SUN 13th

11am - 6pm

2pm - 6pm

ADMISSION £2. AVAILABLE AT
THE VILLAGE HALL

REFRESHMENTS & ICE CREAMS

Craft Fair

SAT. 12th JULY only 11am - 6pm

ADMISSION FREE

TRADITIONAL & UNUSUAL CRAFTS ON SALE

COFFEE, LUNCHES & TEAS
IN VILLAGE HALL
AND GARDENS

CAR PARKING behind VILLAGE HALL



PIANO LESSONS

Practical grades 1 to 8

Theory/grades 1 to 5

Freestyle and/or Topline Reading

Keyboard

(A few spaces available in September)

For details phone John Harwood on 01926 651109



Christine Smith

L.T.E.C. L.I.I.I.I.T. Cert Ed

Aromatherapy & Reflexology

- Please ask for leaflet/price list
- Free initial consultation
- Gift Vouchers available

6, Sutcliffe Drive, Harbury ☎ 614115

TIME: 10AM - 12NOON

PLACE: TOM HAULEY ROOM

SECRET AGENT 2

DATE: 12TH - 15TH AUGUST

A HOLIDAY CLUB FOR AGES 5 - 11
RUN BY ALL SAINTS' CHURCH

NOAH'S ARK

PAINTING
COMPANY

- GENERAL PAINTING • SPONGING • RAGGING • RESIDENTIAL • COMMERCIAL •
- STENCILLING • WOODGRAINING • MURALS • SIGNWRITING • WINDOWS •
- COLOURWASHING • INTERIOR DESIGN • RESTAURANTS • SHOP FRONTS •
- WINDOW LETTERING • STIPLING • BAGGING • MASONRY • PAPER HANGING •

(01295) 267024

APPROVED BY  Dulux

VALFRAN BOARDING KENNELS

NEW

in Deppers Bridge, Nr. Harbury

Let us Care for your Dog

- Modern Spacious Kennels
- Covered Runs
- Individually Heated
- Daily Walks

Love & Cuddles Guaranteed

Enquiries Tel: 01926 613472

PINEHAM FARM BUTT LANE HARBURY

LOGS £2.00 PER BAG £45.00 PER PICKUP LOAD
STICKS £2.50 PER BAG

POTATOES (Reds & Whites) 55lb Bags

HAY £3.00 STRAW £1.00 (per bale)

FRESH EGGS £1.20 PER DOZ.

PET FOOD & ACCESSORIES NOW AVAILABLE

Dog, Cat, Rabbit and Poultry Food

Spillers, Heygates & Arrow Horse Feeds
(Horse & Pony Nuts, Course Horse, Rolled Barley,
Chaff, Bran, Rolled Oats & Sugar Beet Nuts etc.)

Prices for Rabbit Hutches, Chicken
Arks, Bird Cages and other
Pet Accessories available on request.

(CALL IN OR PHONE FOR DETAILS)

TEL: 01926 612325

Christina Sherman, BA, AMAR

REFLEXOLOGY

This completely safe, natural
therapy brings relief to a wide
range of conditions, and is
suitable for all ages.

- * *Special introductory offers*
- * *Gift vouchers available*
- * *Home visits by arrangement*

For more Information ring:

01926 612277

8 Church Terrace, Harbury

MICHELE KING PORTRAITS

Pencil Sketches & Oil Paintings from photographs

Specializing in animals and children

Individual character captured

Full refund guarantee

TEL: 01926 812200

*** Taking orders now for Christmas ***

HARBURY VILLAGE CLUB

would welcome new members

Families Welcome

Cheaper Bar Prices

Short-mat Bowls

Two Snooker Tables

Satellite TV Room

Darts

LOUNGE & SEPARATE CONCERT ROOM

INTERESTED? ?-THEN CONTACT THE SECRETARY ON 613164



TAX PROBLEMS?

BUSINESS ACCOUNTS AND TAX ADVICE

Preparation of Business Accounts, Self Assessment Returns
and general tax advice for businesses and individuals alike.

Ex Assistant District Inspector with 23 yrs in the Inland Revenue.

Fees agreed in advance. Work to be completed within an agreed
time-scale



or the fee will be progressively reduced.

No surprise bill after the work is done



Tel. 01926 614294 if you would like further information.

ALEXANDER BYRNE & CO

SNOWFORD DOG GROOMING SERVICES

SNOWFORD, near LONG ITCHINGTON

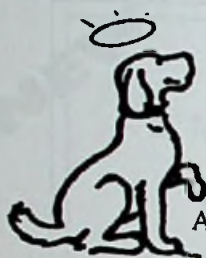
- ◆ CLIPPING ◆ BATHING/SHAMPOOING
- ◆ HAND STRIPPING ◆ EAR AND NAIL CARE

For a caring, friendly service, providing individual, professional attention in all aspects of dog grooming.

COLLECTION SERVICE AVAILABLE

Telephone 01926 633277

PET DOG TRAINING & BEHAVIOUR



Using modern, reward-based methods

All breeds, all ages, classes or one-to-one

Telephone ELAINE TUBBS on 01926 612363

Member of the Association of Pet Trainers (00200)

Member of the Federation of Dog Trainers & Canine Behaviourists
Affiliated Member of the British Institute of Professional Dog Trainers

Live in peace with your dog, don't you BOTH deserve it!

EVERY

TUESDAY

Bodywise

AEROBICS

2.00pm - 3.00pm

**AT
HARBURY
VILLAGE HALL**

NO NEED TO BOOK

PLEASE BRING A MAT OR A TOWEL

ALL AGES AND LEVELS WELCOME

keep fit the fun way!

FOR FURTHER DETAILS PLEASE CALL CLARE ON:
(01926) 496368 or 6378 863881

NSA/YMCA Qualified

A MEMBER OF FITNESS PROFESSIONALS

EVERY

FRIDAY

Bodywise

BODY CONDITIONING

6.30pm - 7.30pm

**AT
HARBURY
SCHOOL**

NO NEED TO BOOK

PLEASE BRING A MAT OR A TOWEL

ALL AGES AND LEVELS WELCOME

keep fit the fun way!

FOR FURTHER DETAILS PLEASE CALL CLARE ON:
(01926) 496368 or 6378 863881

NSA/YMCA CERT IFST Qualified

A MEMBER OF FITNESS PROFESSIONALS

MANOR PROPERTY AND DECORATING SERVICES

**THE IDEAL CHOICE FOR ALL YOUR DECORATING AND
PROPERTY REPAIR REQUIREMENTS**

TELEPHONE

01926 612887 OR 0976 375769



S. MEHRA **Fully Qualified** **PAINTER & DECORATOR**

Interior & Exterior

Free Estimates



9 Margaret Close, Harbury, Leamington Spa. Tel: 01926 612551 Mobile: 0976 241949

E.F. SIMS & SON

PAINTING & DECORATING SERVICES

THE QUALIFIED

PAINTER & DECORATOR

INTERIOR AND EXTERIOR

EXPERIENCED TRADESMAN

RING FOR A FREE ESTIMATE

613732

1 THE POUND, HARBURY



A1 SKIP SERVICES LTD.

Squab Hall Farm, Harbury Lane, Leamington Spa, Warwickshire CV33 9QB

Tel: (01926) 833638 Fax: (01926) 887547

**FAST, FRIENDLY AND RELIABLE SERVICE CALL
THE COMPANY WITH 20 YEARS EXPERIENCE**



2cu yds. - 20cu yds.



CAR CONSULTANTS

HAVE MOVED!

NOW AT **UFTON GARAGE**, SOUTHAM ROAD, UFTON
IF YOU ARE BUYING OR SELLING ANYTHING WITH FOUR WHEELS
CONTACT US NOW! TWO YEAR WARRANTIES AVAILABLE
FOR THE BEST DEALS ON WHEELS
TEL: 01926 613795



A. G. KNOWLES **PLUMBING & HEATING**



FOR ALL YOUR CENTRAL HEATING & PLUMBING INSTALLATIONS.
ALL WORK GUARANTEED
ESTABLISHED OVER 25 YEARS

69 MILL STREET, HARBURY, LEAMINGTON SPA
RING 01926 612331 FOR INQUIRIES & ESTIMATES

THE VILLAGE TAXI-BUS and A & M CARS

Phone to reserve your seat for Bus or Taxi

0831 135334 - 01926 612487

FREEPHONE 0500 21 22 25 Ext. 10

Your local service, Regular bus service to Asda, Sainsbury's, Tesco, etc. door to door.

Also Taxis for 1-8 people, local or long distance.

No collection fee - you only pay for the miles you travel

Please use your local services. WE NEED YOU!!

A.J. BRUNT **Carpenter & Joiner**

For all types of replacement windows, doors, porches, i.e UPVC,
Aluminium & Timber, double or single glazed.

Fitted kitchens/wardrobes and all your carpentry needs

Harbury 01926 612867 • 9 Ivy Lane, Harbury