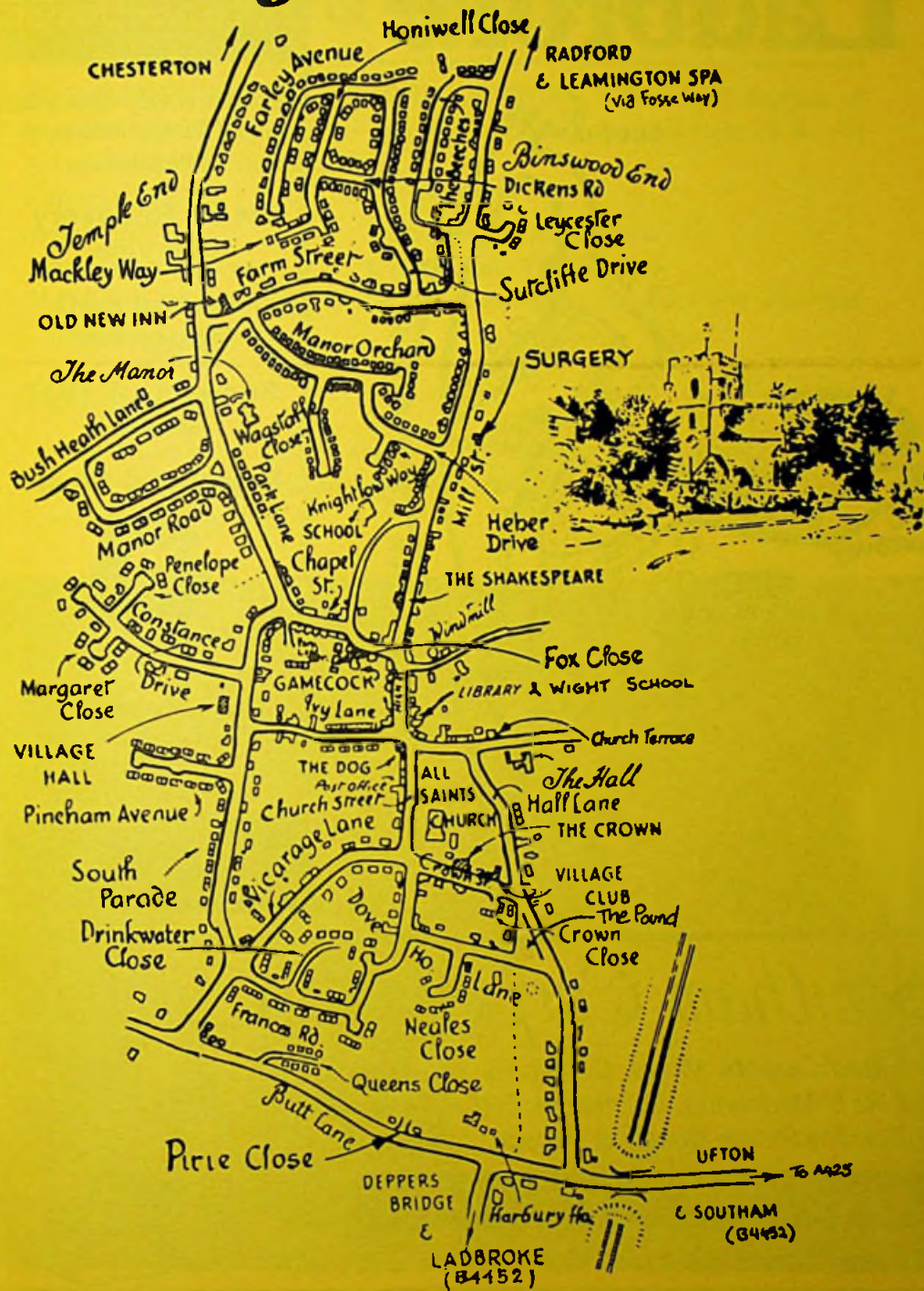


Harbury & Ladbroke News



Ladbroke



THE FOSSE GARAGE

*Accident Repair Specialists
for all leading Insurance
Companies*

**24 hr. Recovery
Service**

**AA and RAC
Appointed**

**Servicing & MOT
Repairs**

Petrol and Diesel



Motor
Agents Association

Fosse Way, Harbury,
Nr. Leamington Spa.
01926 613260
24hr. 0850 613260

**SELF-DRIVE
CAR & VAN HIRE
USED CAR SALES**

Southam Carpets & Curtains

- ☆ *Fitted Carpets, Vinyls, Curtains & accessories.*
- ☆ *FREE Measuring, Estimating. FREE Pattern loans.*
- ☆ *For Traditional Quality & Service, contact us.*



Southam (01926) 814944

Coventry Street, Southam, Warwickshire. CV33 0EP



Harbury & Ladbroke News

THE HARBURY AND LADBROKE NEWS, reflecting all aspects of local life is published monthly and produced with the assistance of the All Saints' Parochial Church Council.

Editorial Office: (☎ 612155)

Articles to: *Nifty Needle, High Street*

Advertising Office: *1 Hall Lane (☎ 612756)*

The views of contributors are not necessarily those of the Editorial Committee.

JANUARY 1997

No. 274

Our picture below shows Senior Citizens Committee member Neville Merrick and his wife Ruth enjoying themselves at the Christmas Party held in the Village Hall.



Happy New Year to all our readers.

Welcome to 1997, just three more years to go to the millennium! Already several people in the village have made plans to celebrate the turn of the century in style. Two examples are described in this edition of the magazine.



Mr. & Mrs. Denny at the Christmas Party

The coming year will see many changes in the village with three separate developments already in progress, which will bring new people to join our community. Assuming the promised starter homes are provided we should see some young people making their home in Harbury.

In the closing months of last year, a questionnaire about the use of the Village Hall was enclosed with the H&L News, the results of which still have to be published. Our editorial photographs show that the Village Hall is used to advantage by young and old alike.

The Editors would like to thank all the contributors who provided articles by the required date, which reduced the pressure on our hardworking typist during the Christmas week. We are also grateful for the photographs included in this edition.

We would like to encourage entries from any keen photographer so that a pictorial record of current changes can be included in the magazine. The Harbury Society managed to find 20 different forms of the word "Harbury" for their annual quiz at the Christmas Fair and this may inspire further challenges. Can you recognise the examples we have included this time? Answers are at the back of the magazine.

Finally our sympathy is extended to the family of Dulcie Buck.



Christopher Thompson receiving his present from Father Christmas at the Toddler Group party

Harbury Diary

JANUARY 1997

- | | | |
|-------|----|---|
| Sun | 5 | CHRISTMAS II - Sung Eucharist 9am; Evensong 4pm
Rugby Home Match 7 - 12s v Rugby St. Andrews |
| Mon | 6 | The Epiphany of our Lord - Holy Communion 9.45am |
| Tues | 7 | Horticultural Society in Village Hall 8pm
Holy Communion 7.30pm |
| Wed | 8 | SCHOOL BEGINS
Mothers' Union Party in Tom Hauley Room 3pm |
| Thurs | 9 | Holy Communion 9.45am
Thursday Club in Village Hall 2.30pm
WI in Village Hall 7.45pm |
| Sat | 11 | Rugby 1 st Home to Shotton |
| Sun | 12 | EPIPHANY I - Holy Communion 8am; Sung Eucharist 10.30am
Sunday School in Tom Hauley Room 10.30am; Evensong 4pm
Harbury Under 15s Rugby Home to Nuneaton |
| Tues | 14 | Toddlers' Service 2.15pm
Holy Communion 7.30pm
Village Hall Committee meeting 8pm |

- Wed 15 Mothers' Union Evening Theatre Trip
 Thurs 16 Holy Communion 9.45am
 Grapevine Coffee Morning in Tom Hauley Room 10am-12noon
 Fri 17 Newspaper Collection
 Sat 18 Scout Support Committee Jumble Sale in Village Hall 10am-12noon
 Julian Group Quiet Day at Offa House
 Rugby Firsts Home to Bourneville
 Sun 19 **EPIPHANY II** - Holy Communion 8am; Family Communion 10.30am
 Tues 21 Senior Citizens Committee in Village Hall
 Holy Communion 7.30pm
 Wed 22 PCC in Tom Hauley Room 7.30pm
 Thurs 23 Holy Communion 9.45am
 Grapevine Coffee Morning in Tom Hauley Room 10am-12noon
 Thursday Club in Village Hall 2.30pm
 Parish Council in Village Hall 7.30pm
 Fri 24 Harbury & Ladbroke News Articles to NIFTY NEEDLE by 5.30pm
 Race Night in Village Hall (Winchester Support Group)
 25 Millennium Coffee Morning in Tom Hauley Room 10am-12noon
 Sun 26 **9th Sunday before Easter** - Holy Communion 8am
 Sung Eucharist 10.30am; Sunday School in Tom Hauley Room 10.30am
 Evensong 4pm
 Harbury Rugby Under 16s, U14s & U13s Home to Barker Butts
 Tues 28 Holy Communion 7.30pm
 Wed 29 Harbury Society Social at The Dog Inn 8pm
 Thurs 30 Holy Communion 9.45am
 Grapevine Coffee Morning in Tom Hauley Room 10am-12noon
 Fri 31 Newspaper Collection
 Working from Home inaugural get together at The Dog Inn, from 12noon

FEBRUARY 1997

- Sun 2 **8th Sunday before Easter** - Sung Eucharist 9am
 Sunday School in Tom Hauley Room 10.30am; Evensong 4pm

Please note: Adverts to: **1 Hall Lane**
 Articles for H&L News to **NIFTY NEEDLE**
Deadline: Friday 24 January, before 5.30pm

**DATES FOR INCLUSION IN THE HARBURY DIARY PLEASE
 TO: LINDA RIDGLEY - TEL. 612792.**

For Tom Hauley Room Bookings	Mrs. Stubbs	612782
For Village Hall Bookings	Mrs. Hughes	612716
For Wight School Bookings	Mrs. Hayes	613488

REGULAR DIARY DATES

BABY CLINIC: Surgery, 2-4pm 2nd & 4th Wednesday

BADMINTON: Village Hall Tuesdays

BEAVERS: Scout Hut, 6-7pm Tuesdays

BELLRINGING PRACTICE: Church, 7.30pm Fridays

BINGO: Village Hall, 8pm Mondays

BROWNIES: Village Hall 6-7.30pm Tuesdays

CHOIR PRACTICE: Church, 6.30pm Fridays

CITIZENS ADVICE BUREAU: Over Southam Magistrates Court, 10am-3pm
Tuesdays (Except Bank Holidays)

COFFEE MORNING: Tom Hauley Room 10am-12noon Saturdays

CUBS: Scout Hut, Wednesdays

DANCING CLASSES: Farley Room Village Hall, Children & Adults 4-9pm
Wednesdays.

GRAPEVINE: Tom Hauley Room, Coffee Morning 10-12noon Thursdays

GUIDES: Scout Hut, 7-8.30pm Monday

GYMNASTICS: Harbury School, 6-7pm (U7-10yrs & Beginners 7-8pm;
Over 10yrs 8-9pm) Mondays

HARBURY FOLK CLUB: The Dog Inn 8.30pm, 1st Thursday of Month

HARBURY FRIENDS: School, 8pm 2nd Tues of Month

HARBURY NURSERY SCHOOL: Village Hall, Tuesday to Friday mornings

HEREBURGH MORRIS DANCERS: School Hall, 8-10pm Wednesdays

HORTICULTURAL SOCIETY: Village Hall, 8pm 1st Tues (Oct. to May)

LIBRARY: Stories, Rhymes for U5s, 10am 1st Thursday of Month

NETBALL CLUB: Village Hall Car Park, Training 6.30pm Thursdays;
Matches Saturday Afternoon

PLAYGROUP: Wight School, Tuesday to Friday mornings

SCOUTS: Scout Hut, 7.45pm Tuesdays & Thursdays

TENNIS CLUB: (Apr-Sept) Tue & Thur 6.30pm onwards (6pm for April);
Sat 2-5pm, Mon & Wed 1.45-3pm

THEATRE GROUP: Wight School, 8pm last Friday of Month

THURSDAY CLUB: Village Hall 2.30pm 2nd & 4th Thursday of Month

TODDLER GROUP: Wight School, 10-11.30am Mondays & 2-3.30pm Wed.

UPHOLSTERY CLASSES: Wight School, 2-4pm Mondays

W.I.: Village Hall, 7.45pm 2nd Thursday of Month

YOGA: Village Hall, 1-3pm Tuesday, Diane Surgey Tel.817904

DOCTORS' SURGERY

Mill Street, Harbury

To request a home visit

please ring 612232

To request a repeat prescription

please ring 612232

For an appointment

please ring 613554

DISTRICT NURSE

Southam 815045

HEALTH VISITOR

Southam 815045

POLICE

Southam 812366

SOCIAL SERVICES

Southam 813110

Details of Surgery times are available from the Surgery

DO YOU NEED HELP WITH ANY OF THE FOLLOWING?

Harbury Helpline is for you!

CHILDRENS' CLOTHING: for 0-6 Years old: Call Anne Woodward 613536, Maureen Darby 613330 or Mary Catt 612864.

EMERGENCY TRANSPORT: Call Vivien Neill 613461 or Charles Catt 612864.

HELP WITH FORM FILLING:

- **Job Applications, CV's, Council Tax Forms, etc.:** Call Joanne Cooper 613859 or Jeff Bedford 612753.
- **For University/Job Applications, interviews, CVs:** Call Philip Bushill-Matthews 612476.
- **For Personal Tax Claims, Rebates on Tax Paid to Building Societies or on Shares:** Call Jim Chapple 612044.

HOME VISITING: Caring for a sick or elderly relative and need a break for a few hours, or you would like someone to call on you. Call Sue Dormer 613254.

HOUSEHOLD BUDGETING ADVICE: Call Tony Brunton 612191.

ODD JOBS ABOUT THE HOUSE: Call Jeff Bedford 612753.

VISITING: Hospital. If you are unable to visit a parent or relative, or parents would like support with a child in Hospital: Call Fr. Roy Brown 612377 or Keith Dormer 613254.

Laugh Line

You must have seen the dual purpose notice boards with a section for a wayside pulpit text and another section for service details, etc. Sometimes they make interesting reading.

One read: "The Lord Bishop will preach here next Sunday at 6.30pm".

On the other side were the words: "Don't worry it may never happen".

ALL SAINTS' CHURCH HARBURY SUNDAY SERVICES

Holy Communion, 8am

Sung Eucharist, 10.30am (Except 1st Sunday of Month:
Sung Eucharist 9am)

Family Service, 10.30am on 3rd Sunday of Month

Evensong, 4pm in Winter (Except 3rd Sunday)

Please see notice board in Church for weekday services or revised times on special occasions.

FROM THE CHURCHWARDENS

The repairs to the churchyard wall in Church Street were successfully completed prior to Christmas. The boundary wall had been pushed forward by the roots growing immediately at the rear of the wall. It is anticipated that further sections of the wall will need to be repaired in a similar way within the foreseeable future.

The Church choir is growing steadily, not only in height but also in numbers. The Rector recently awarded Blue Medals to Nicola Brunt, Nicola Wilby and Jenny Norman, upon becoming full members of the choir. Catriona Rollason and Emmeline Smart were admitted as probationary members. We congratulate them and give them our best wishes.

We understand the whole of the choir will shortly be embarking upon a well-earned Pantomime visit to Coventry.

Our neighbours at St. Michael and All Angels, Ufton, who have been in a period of interregnum for some months have recently gained a Rector. The Revd Justin Wilby who is also Rector of St. James', Southam, has

been licensed and installed.

As we slide into the New Year a thank you to all who provided an extra helping hand at Church over the Christmas period. There are always so many additional tasks and your efforts were very much appreciated.

RUTH & JEFF

FROM THE RECTOR

Happy New Year! Well, I hope it will be happy for you, but in many areas of our national life it is difficult to be very optimistic.

It seems that the social fabric of our society is being threatened in a number of ways. The problems of unemployment, despite the statistics, show little likelihood of receding in this new year or in the longer term for that matter, and this is of concern not only to those without a job, but to others as well. For we are surely in danger of becoming a two-class nation - split between those who work and those who don't, and as long as our society places such a value on work and productivity then we are condemning large sections of society to a second class existence. Was it for this that God became man?

There is also distressing evidence that our society is becoming more callous and violent. The number of attacks on the elderly and other weaker members of society seems to be increasing. Lack of respect for our fellow human beings is commonplace. Was it for this that God became man?

Now that Christmas is over and the decorations have been put away for another year, many people will also have put any thought of Jesus Christ away with them. But the child whom we worship in the manger grew to be the man who died to be our Saviour, the Saviour of all humankind. That God sent his Son to live the same life that we live is the greatest single event in the history of the human race, yet it is the event most ignored by us. By becoming a human being Jesus shows that human life is to be respected, even revered. How much respect or reverence for human life do we see in our nation, in our world?

Because God became man it is our duty to do all we can to enhance the quality of life of each one of our brothers and sisters, be they unemployed, a mugger, or starving in the third world. Failure to do this

**NIFTY NEEDLE
CURTAINS AND BLINDS**

High St. Harbury
Leamington Spa
Tel: 01926 612 927
Fax: 01926 613049

FREE ESTIMATES

PERSONAL SERVICE

HOME VISITS UP TO 7pm

**MOST WELL KNOWN FABRICS
AVAILABLE AT DISCOUNT**

OPEN: Mon/Tues/Thur 9-5
Wed/Sat 9-1 Fri 9-6

**A1 SKIP
SERVICES LTD.**

Squab Hall Farm, Harbury Lane,
Leamington Spa, Warwickshire CV33 9QB
Tel: (01926) 833638 Fax: (01926) 887547

**FAST, FRIENDLY AND
RELIABLE SERVICE
CALL THE COMAPNY WITH
20 YEARS EXPERIENCE**



2cu yds. - 20cu yds.

*Custom
& Bodywork
Services at*
The Garage
Ladbroke

ALL TYPES OF BODY WORK

FREE INSURANCE ESTIMATES

RESPRAYS

MECHANICAL REPAIRS

SERVICING

M.O.T. REPAIR WORK

WELDING

COLLECTION & DELIVERY

Personal Service from Steve Birch

01926 813590

Mobile 0836 699489



W. Goodwin & Sons Funeral Directors

38 COVENTRY STREET, SOUTHAM

All arrangements personally conducted
in any district

Telephone: Daytime 01926 812445

Night - time and weekends

John: 812657 Brian: 812656 Cyril: 817718

Visiting Chiropodist

Collette A. Green

SEN MSSCh MBChA

1, NEWSTEAD DRIVE

SOUTHAM

WARWICKSHIRE. CV33 0LT



TELEPHONE

01926 817209

BENCH

22 OXFORD ST
SOUTHAM

TELEVISION

SERVICE

REPAIRS
SALES
RENTAL



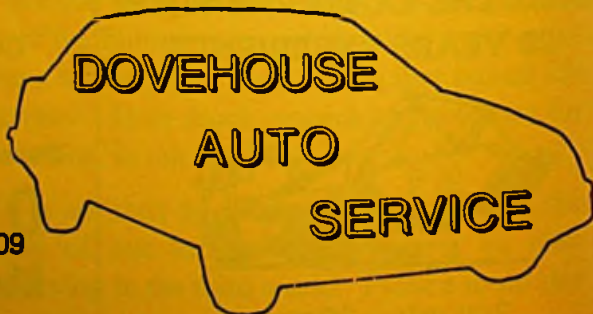
mitsubishi dealer

SOUTHAM: 812304

WHATEVER YOU DRIVE
YOU ARE WELCOME AT

TELEPHONE: HARBURY 612809

FOR ALL YOUR MOTORING
MOT's, REPAIRS, SERVICING



means that we have failed to understand the meaning of Christmas. Please continue in your efforts, and have a Happy New Year.

Fr. Roy

From the Registers

Funerals

Oakley Wood 16th December Dulcie Buck of Constance Drive

MOTHERS' UNION

The Rector and the Rev. Peter Snow answered our questions at our "Any Questions" session in December. The subjects ranged from Holy Communion services to the reason for yew trees in churchyards and stimulated some lively discussions. The panel were not defeated by any of the questions, but we have some left for another day.

Many thanks to all who contributed to our stall at the Christmas Fair, which raised £91.73 for the church.

Some members attended an inspiring Diocesan M.U. service at Coventry Cathedral, and also enjoyed the Deanery Advent service at Southam.

In January, instead of our normal meetings, we have the party at 3pm on **Wednesday, 8th January** and our evening theatre outing on **Wednesday, 15th January**.

C. Mary Catt

TODDLERS' SERVICE

Mrs. Catt told us the story of St. Nicholas. We said a prayer and by candlelight sang "Jesus bids us shine".

After refreshments, we were given a chocolate decoration from the miniature Christmas tree and took home a picture to remind us of the story of St. Nicholas.

Lorna Bedford

CHURCH MEN's SOCIETY

To a group containing many from the generations of schoolboys who wanted to be engine drivers when they grew up, Michael Jerome's illustrated talk on "Railways large and small" at the December meeting was absorbing stuff. And we learned a lot from this extremely knowledgeable steam buff; for instance, that the Midlands can boast eight working steam railways, with the fully-restored Severn Valley a perfect example.

We now know where most of the 213 working locomotives came from and why so many were readily available for restoration when steam railway preservation became necessary, the main source being the Barry scrapyard in South Wales run by Guy Woodham.

Fortuitously, when coal gave way to diesel and his yard began to fill up, he found trucks easier to cut up than locomotives, which the lucky preservationists were able to obtain from him.

We learned that restoration of a locomotive can take up to ten years, that today's steam railways are operated entirely by unpaid enthusiasts, with doctors, lawyers and even airline pilots among the volunteer drivers; also that filming for screen and television is lucrative for some societies. But Michael fears that swingeing post-privatisation Railtrack charges will reduce the number of special steam excursions on main lines.

The "small railways" part of Michael's talk referred to double-o-gauge models of which he brought along a selection from his own collection.

John Algar

Ladbroke News

JANUARY 1997

Sun	5	Christmas 2 - Holy Communion 10.30am
Wed	8	Holy Communion 2pm Harbury Mothers' Union New Year Party 3pm
Sun	12	EPIPHANY I - Sung Communion 9am
Wed	15	Holy Communion 9.45am
Sun	19	EPIPHANY II - Sung Communion 9am; Children's Church 11am Evensong 6pm

Wed 22 Holy Communion 9.45am
 Sun 26 9th Sunday before Easter - Sung Communion 9am
 Wed 29 Holy Communion 9.45am

FEBRUARY 1997

Sun 2 8th Sunday before Easter - Family Communion 10.30am

LADBROKE CHURCH NEWS

I am writing this on the Saturday before Christmas, therefore it is very difficult to find something to write which will be news-worthy at the new year.

I am sure though that you will be interested to know that we made nearly £600 at our Christmas Fayre - way back on 30th November. Half the proceeds have already gone to Steph & Geoff's Christian mission in Leamington.

Our new Bishop of Warwick, the Right Reverend Anthony Priddis will be preaching at our service tomorrow morning. I am really looking forward to that.

I hope everyone had a really Happy and Joyous Christmas and that the birthday of Jesus has spiritually lifted you to face 1997 with a light heart and Christian endeavour.

Betty Winkfield

WOMEN's FELLOWSHIP

Our Christmas Party-cum-AGM was a very select meeting, with just six of us present. Nevertheless we had a very happy time. We arranged that any money collected at our Lent Lunches would be sent to the Renal Centre at Birmingham Children's Hospital. We also counted the money in our Acorn's Children's Hospice collecting box. It came to nearly £30, so that will duly be sent to them.

Our January meeting is with Harbury Mothers' Union. We have been kindly invited to their New Year Party on **Wednesday 8th January** at 3pm. If members wish to receive a present from the lucky dip they need to buy a present to put in; value no more than 50p!

Happy New Year to everyone.

Betty Winkfield

LADBROKE AND DEPPERS BRIDGE W.I.

The AGM was well attended and the new committee elected - not new really - as almost all last year's members agreed to work for another year! Mrs. Catherine Spence remains as President, Mrs. Jo Sowerby continues as Treasurer and Mrs Anne Edwards as Secretary.

The programmes for next year are ready for collection. We hope you enjoy the speakers we have arranged for you. If you have any ideas for new speakers or disagree with any choices on the programme that we have arranged for you - please tell one of the committee.

The Annual Carol Service was held at Ladbroke All Saints' Church on 9th December. It was a joyous occasion.

We continue to meet fortnightly at Harbury Club to play Short Mat Bowls. We have good fun, but our bowling does not seem to improve much!

At our November meeting Mrs. M. Williamson made some mouth watering sweets. She made it look so easy everyone is bound to have home-made sweets for Christmas.

We had a marvellous meal at "The Huntsman" in Dunchurch on 4th December; our Annual Christmas outing.

The committee hope everyone of the WI members had a very Happy Christmas and look forward to seeing you all at the January meeting for a slide show on "My Germany" by Nurse Kholer. Happy New Year.

pp Jill Norgate

VILLAGE HALL NEWS

Your Village Hall Committee are putting on a "Tramps Ball" on 14th February - see advertisement at the back of this magazine. The more the merrier, so please get your tickets early.

Betty Winkfield

Norman & Mary Coley would like to thank everyone, on behalf of Cancer Research, who supported them so generously at their coffee morning on 23rd November, when the grand sum of £400 was realised.

Mary Coley

HARBURY PARISH COUNCIL MEETING - NOVEMBER 1996

The dead trees along Darkie Lane had been removed. Councillors agreed that Mr. Rowe of Hessel Cottage could look after the cemetery hedge along his boundary and they insisted that any tree-work contractor must have adequate public liability insurance. The Parochial Church Council warned councillors that they were applying to remove and replant Churchyard Limes which were damaging the Church wall.

Members of the Parish Council had helped school children and the Harbury Society plant the first Sentinel Oaks for the Millennium. Steve Norman reported that Deppers Bridge had decided where its Millennium Oaks were to go and they would be planted for Arbor Day in the Spring.

Councillor Mary Shelley wrote to thank the Parish Council for its pledge of £1,000 in support of the proposed Millennium Video. Sharon Hancock suggested that as part of the Millennium celebrations the village should re-photograph residents outside their homes to match the Victorian pictures in the School archive.

Councillors complained of the bureaucracy and waste involved in some of the lottery schemes. They had applied for free Basketball equipment but discovered that the charge for installation was greater than it had cost them to buy and fix their nets!

The County reported that the work required to impose the 7.5 tonne limit for Deppers Bridge was progressing. There will be a similar limit on the Ladbroke Road and this will remain if and when the bridge is strengthened and the limit on the bridge removed.

The Harbury traffic survey revealed that a peak periods half the vehicles are travelling through the village and 30% of them are HGVs. The Council thanked the volunteers who undertook the survey and will now investigate the possibility of having "pinch points" installed.

Pc Boulstridge reported that Harbury had been "remarkably quiet", compared to the rest of his area, where there had been a number of daytime burglaries and Bogus Officials bothering OAPs. He had spoken to the roller bladers who congregate in the centre of the village and reported that they were not causing any trouble. No-one has been found to run the Youth Club next term and Councillor Hancock explained that it was not a lack of money that was the problem - there was "No-one to employ!"

For the School Governors, Keith Thompson reported that the rise in Class sizes was causing them concern. An Action Plan had been drawn up to address the areas criticised after the recent Ofsted Inspection.

Residents of Ivy Lane want an extra lamp and it was agreed that lighting needs in the village will be reassessed. John Hunt thought Harbury deserved better designed lamp standards than had been used recently and he especially wanted energy-efficient down-lighting to cut out glare and "sky glow". Everyone thought that the 17 standards planned for the Bryant estate was excessive.

Bryant had only offered the Parish Council about half the sum recommended (by Stratford) for the upkeep of the grass areas on the new development. The Parish refused to take less than the prescribed amount.

Councillors agreed to arrange a meeting with the consultant for the Harbury Lane Scrapyard who wanted to discuss with them plans for "environmental improvements".

Stratford granted planning permission for an extension at Eastgates Farm; amendments to plans at 9 Vicarage Lane; a pitched roof for part of 38 South Parade; changes to the cottage at Sharmer Farm; work on a Cypress and dead trees at Old Timbers; a variation on conditions at the Ufton Tip; permission to reduce a Sycamore to the rear of 1 Pirie Close, but not to reduce the one at the front; permission to fell larches at Roundhill, Binswood End, but not the Sycamore or Ashes; permission for a new house at Summerfield Lodge (the Ranch house) was refused.

An appeal has been lodged against refusal for conversion of the Stable Block at the Hall and another application has been made for the same development. The Parish Council made no comment on this or an extension to 4 Queens Close and a dormer at Meadow Farm. Sheraton Leet sent details of drainage and landscaping level on the "Orchard" site in Farm Street.

The Parish Council did not object to a new application for a "hobby block" at Summerfield Lodge but insisted that permission must restrict the use of the building to this purpose.

Councillors objected to the extension of the Holiday Lets permission at Tresco in Vicarage Lane. The previous permission had run out and

HARBURY LONDIS

Open seven days for your convenience

GROCERIES • THE NATIONAL LOTTERY™

OFF LICENCE • FLOWERS & PLANTS

DESIGNER GREETING CARDS • NEW VIDEO LIBRARY



8.30 a.m. - 8.30 p.m.
- Monday - Saturday -

10.00 a.m. - 8.30 p.m.
Sunday -



All major Credit Cards now taken

MILL STREET, HARBURY

TEL: 01926 612645



THE DOG INN Harbury Tel: 01926 612599

Welcome - from the New Owners, Jay & Maureen

OFFERING 3 COURSE SUNDAY CARVERY @ £7.95

2 COURSE CHILDREN'S MENU FOR ONLY £3.00



FULL RANGE OF BAR & RESTAURANT MEALS.
AVAILABLE FROM TRADITIONAL TO THE UNUSUAL.
TAKE AWAY MEALS TUESDAY - SATURDAY
FINE SELECTION OF HAND PULLED ALES,
INTRODUCING GUEST ALES EVERY OTHER WEEK.



Room available for private parties

D. W. A. G.

O
U
G

Builders

Tel: 01926 612460

Mobile: 0860 849777

R
E
E
N

Local Tradesmen who take pride in their work.

We specialise in rebuilding half-timbered and period buildings, renovations, extensions, conservatories, patios - in fact any form of building work.

ESTABLISHED OVER 30 YEARS



DOG GROOMING

All breeds -

- Clipped ■ Stripped
- Shampooed ■ Nails Cut ■ Ears Cleaned
- Glands Emptied

Whether you just need a bath or you want the full works

Call anytime

Collections available

Tel: 01926 811 171 (Shop)

0374 252 966 (Mobile)

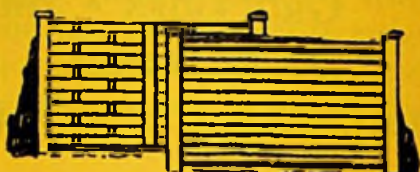
7 Craven Lane, Southam, Warwickshire CV33 0UU



ROLLASON FENCING AND SHEDS

MASTER FENCING MANUFACTURERS

Est. 1964



Fosse Garage
Fosse Way
Harbury



LEAMINGTON SPA
(01926) 613009

*Traditional Acupuncture
&
Chinese Herbal Medicine*



**FRANCES
FARRER**

BACC. MTAS. RCHM
(Cert. Ac. Beijing)

The combination of Chinese Herbs and Acupuncture, Laser Therapy now also available, offers help to a wide spectrum of illness covering stress, anxiety, P.M.T., headaches, back, shoulder or elbow pain, and more serious problems such as arthritis and M.E.

For information ring
01926 817583

**WHITEHALL CLINIC OF
NATURAL THERAPY,**
7 Warwick Road,
Southam, CV33 0HN
Parking facilities

Councillor Woodward reminded his colleagues that the Inspector at the Appeal had insisted that the caravan should be removed by 19th February 1997. Councillors wanted the District Council to take Enforcement Action.

They would also ask for news of the progress on removing the material tipped without permission in Deppers Bridge as the time for this to be completed had now expired.

The District Council was providing a collection point for compostable refuse at the Wood Street Car Park in Southam on the 3rd Saturday in the month.

Linda Ridgley

HARBURY SOCIETY

Our November talk became a video and photographic display due to the illness of Christine Wright our intended speaker. She will now tell us about "Apple Day at Ilmington" in the Spring and give news of the progress of the Apple Map.



Left to Right: Ken Stephenson, Phil Holtom, preparing the ground for the Sentinel Oaks

Sentinel Oaks for the Millennium was a much more satisfactory event. A

hardy team turned out on the Sunday to dig the holes. The County Forester who had been working with the school children helped them put the trees in on the Monday, with lots of encouragement from mums, dog walkers and men of leisure.

We have to thank particularly Mr. Dowdeswell for his offer of a digger. This will be invaluable to Deppers Bridge who will be planting their trees for Arbor Day in the Spring.

At Binswood End and Butt Lane the Parish Council is negotiating with the developers for them to plant Sentinel Oaks. There are still several places we have to work on where sites for trees are not easy to find. We will also be co-operating with the Parish Council and the South Warwickshire Housing Association to make improvements at Manor Road Green.

Our Stall at the Christmas Fayre recycled silver and golden items and together with the Quiz made almost £40. Our thanks to everyone who participated, especially Celia Barratt, who dressed the Stall beautifully.

The Quiz winners were Mark Hayes and Robert Stringer who got the location of all the twenty signs correct. It always seems such a worthwhile exercise because people enjoy the challenge and certainly look more closely at their village afterwards. Many people went outside to check the Harbury Village Hall sign!

The next event will be the Social which is still on **29th January** at The Dog Inn starting at 8pm, but has changed from an Hungarian Evening to a Gypsy/Folk theme with singers Romany Pie. There will be a supper and tickets (subsidised at £9.50) are available for the first 55 applicants. Book now!

On **Tuesday 25th February** in the Tom Hauley Room (7.30pm for 8pm) Linda Doyle will tell us about her research into the "Deserted Villages" beyond Ladbroke.

Linda Ridgley

HARBURY WOMEN's INSTITUTE

As usual we all enjoyed the Christmas Party. Food scrumptious with friendly company in festive surroundings. Entertainment was by the Gala Girls and we all joined in the sing song.

Thank you to all who helped on the day and to Sue Buck for setting up the Christmas tree for us.

We helped with the Cake and Preserve stall at the Church Christmas Fair. There was a marvellous response for produce and the stall looked very decorative. Again thanks to everyone who donated, who decorated and to Jack and Jill, who served on the stall, which was awarded 3rd prize.

The speaker at December's meeting was Mr. Peter Arculas - "Once upon a Time, a story of Pantomime". We started off with Mr. George Jackley singing "Up, up, up the mountain", with the words shown up on the screen, so we all joined in. The history of Pantomime dates back to the ancient Greeks. The word translated means "I portray all" and was performed by one person. This was continued through Roman times when they had the feast of Saturnalia, when men exchanged roles with women and vice versa, also with lesser folk. Just think of the reversed roles in modern pantomimes!

In fact the subject has partly been covered before with the talk we had on Punch and Judy which all became interwoven with Pantomime, Columbine, Harlequin, Punchinello and clowns all being related in some way.

Birmingham, Glasgow and London were the hub of pantomime in the first part of the century with all the well known performers of the day participating. David Garrick, Marie Lloyd, Dan Leno, George Roby, Hetty King, Vesta Tilley and Evelyn Laye were a few of the originals, but all the well known have taken part over the years.

We felt rather like pupils when Mr. Arculas asked us questions on the subject, almost expecting detention if we did not know the answer. Must say June was quite knowledgeable. We ended up with "You simply wave to me" sung by Nat Jackley, the son of the performer of the first song we sang.

We enjoyed sherry and mince pies to round off the evening.

A Happy New Year to all readers.

January Hostesses: B.Kettle, S.Burdett and A.Atkins.

Please note: The January meeting will be in the **Tom Hauley Room.**

Jeanne Beaumont

YOUTH CLUB

At our AGM on 9th December we had to make the final decision about the immediate future of the Club. With regret we made the decision not to reopen in January.

As has been mentioned in previous articles; we have everything in place, with the exception of a trained youth worker to lead the Club. This problem was discussed at the AGM. It was suggested that the Parish Council take up the issue of the county wide lack of youth workers, with the County Council. Peter Lovelock, Area Community Officer is also taking measures to redress the situation.

At a local level all is not lost and the Youth Club management committee meet in January with Peter Lovelock, to explore possible paths which may lead to the reopening of the Club before too long.

Vikki Holroyd

HARBURY THEATRE GROUP DO IT AGAIN - ALMOST!

Harbury Theatre Group have literally done it again! Their production of "Plaza Suite" - by the American playwright Neil Simon - was first performed in 1977 and with some of the same cast. The play is a comedy in three very separate and independent acts, based in Suite 719 of the Plaza Hotel and each is a biting satire on the problem of communication in relationships. The lines are sharp and funny but the stories are essentially sad. The cast attacked the play with considerable confidence and plenty of energy. The play is very demanding because in each act the stage is occupied by two principal actors for long periods. It is to the credit of the Harbury cast that they managed to hold the audiences attention at all times. In the first Act, which revolves round a marriage that is failing, Anne Megeney and Robert Waterman brought out the essential sadness of a couple who do not understand each other. They both expressed the characters well, their timing was always good and their American accents never faltered. The cast and Director, Keith Hayes, who has appeared in many Harbury products, deserve congratulation for a difficult act carried through with some flair.

Throughout the production the backstage crew again achieved miracles with a temporary stage and very limited resources and it is to the credit of all concerned and to the power of live theatre, that problems are

overcome so well and the slickness that we associate with television and film drama is not missed. The play was made into a film starring the great Walter Matthau, and that gives some idea of the demands that the story lines make on actors.

The second act was a good deal jollier and the outstanding performance of the evening came from Janet Thornley, playing the same part that she had played in 1977. Her timing was particularly good in the part of a star-struck small town housewife, who probably knows exactly what she is doing. She was ably supported by Gordon Robbins, playing the part of a Hollywood Producer meeting an old flame. Again, they both acted with energy and confidence, but added more movement and expression and managed to show the essential differences of gesture that identify Americans. They managed to turn a sad baseline into something of a romp, which produced considerable response from the audience. This act was directed by John Stringer, another experienced member of the Group.

Unfortunately a few days before the production John fell, was injured and taken to Hospital. Since he was the lead in the third Act, it was not presented and it is good that he is making a recovery. However the quality of the plays and the talents and enthusiasm of the entire cast, with good supporting appearances from Robert Stringer, Brian Thurogood and Michelle Grant meant that this was still a very enjoyable evening. It allowed Harbury Theatre Group to repeat their 1977 production, or at least two thirds of it, in some style. Harbury is lucky to have theatre of this quality and the Harbury Theatre Group certainly deserve support.

Ian Jackson

HARBURY FOLK CLUB

December's Folk Club had been given the theme of "Absent Friends", but I confounded everyone by actually being there. Others took the theme to heart and it was a small but select group of performers who gathered in the Dog Inn that evening. It did, however, allow us to hear more songs from the regulars and as usual a few surprises.

Highlights for me were an impromptu recitation from Bob and a trio called "The Abstemious Three", (a mis-nomer if ever there was one) relating a story about Brian Ingram's sister. The Folk Club choir gave

us a preview of their carol service contribution. This included a world premier of a new carol penned by Ian.

Regular contributors Alan (of Jug Band fame), The Harvesters, Peter McDonald, Peter Bones, and Phill and Drill kept the evening going with a full compliment of songs. The surprise for me was the sudden appearance of a birthday cake, organised in great secrecy by my wife Molly.

The raffle generated a fulsome £50 for the homeless at Christmas. Thanks to everyone who came.

Mike Putnam

SCOUT SUPPORT COMMITTEE JUMBLE SALE

The Village Hall doors will open at 10am on Saturday 18th January 1997. We need your help!

This is the perfect opportunity for you to clear out all those unwanted or now obsolete Christmas presents. It would be very helpful if those, who are able, could bring any jumble to the Village Hall on Friday 17th January 6pm onwards. Alternatively, collections can be arranged by phoning any of the following: John Hunt 612931, Gill Guilford 614206 or Joe Van Hoorebeek 613419. Many thanks.

Julie Linforth - 612696

HARBURY SCHOOL

Support your local school (this applies to EVERYONE!)

Parents of children at Harbury Primary School are constantly digging deep into their pockets to supplement our inadequate funding. This shortage of finance will be even more acute as we move towards my intention of providing seven classes from September 1997.

Classes at the moment are far too large in Harbury (we're not alone) and I want them all below 30 for the next academic year.

I have registered Harbury School with the Co-Operative Bank to become part of their new scheme which provides funds for schools at NO COST TO YOU. The arrangement is that for every new VISA card account opened with the Co-Op Bank the School will receive £5.00 and

thereafter 0.25% of all transactions. My arithmetic says that for every £400 spent the school receives £1. Average monthly bills are around £600 and if all the families in Harbury, Ladbroke and surrounding villages join the scheme we would get an initial income of about £2,000 with a monthly income of £750 giving a first year total of £14,000!

The beauty of the scheme is that it is FREE to transfer your existing credit card account to the new one; it is FREE to open a new account, (subject to status); the Co-Op Bank guarantees ZERO annual fees; the monthly costs to card users is NOTHING (except for paying your bills and any interest); I am not asking anyone to dip any deeper into their pockets; the scheme is NOT limited to parents of children at Harbury so anyone can support us.

If you would like to help us all you have to do is fill in the necessary forms (I can arrange help if needed) and send them off. They're available by calling in to school or telephoning us and we will arrange to get them to you.

I hope we can look forward to a great start and years of tremendous support.

Paul Milner

HARBURY NURSERY PLAYGROUP

From April 1997, Harbury Nursery Playgroup will be registered to accept Nursery Vouchers for all four year olds in its care. It is our intention to provide an extra session for the children, extending our sessions from four to five per week. To reflect this change in status and responsibility we will be changing our name to Harbury Nursery School from January 1997.

Kate Smart - Supervisor

HARBURY C. of E. PRIMARY SCHOOL KIDS CLUB

Harbury School Kids Club opens on **8th January** at 8am. The Club is opened twice daily: 8-8.55am and 3.15-6pm Mondays to Fridays. There will be lots of activities going on in the Club daily from cooking, sweet making, face painting, Arts & Crafts and in and out door sports to mention just a few!

The Club is not only for working parents but a social club for all the children who attend Harbury School. As this is a new club we still need good quality games and toys, especially board games for children aged 5-10 years. If you have any you would like to donate to the Club, we would be very grateful.

If you would like any more details or to book your child/children into the Club, please phone me on 613740.

N.B. Staff are required for both a.m. and p.m. sessions. If you have school age children you would be welcome to bring them with you.

Thank you for supporting the Kids Club.

Lynn Jackson - Manager

BLUE PETER BRING AND BUY

On Thursday 19th December, some of Avon class and a few others organised a Bring and Buy Sale for Blue Peter. It was in aid of people with Leprosy and it was a great success. We raised £100.80. We nearly sold everything and we thank you for all the support you have given us.

We hope you had a Merry Christmas and we wish you a Happy New Year.

Emmeline Smart and Laura Kerr

PAUL WINCHESTER WHEELCHAIR APPEAL

The second fund raising event was a cabaret evening held at the Harbury Club. Many thanks to Paul Gladden who did a splendid job organising a very successful evening. We are delighted that the fund now stands at £3,000 and are again very grateful for the private fund raising efforts and donations passed on by individuals.

There are two more events:

Friday 24th January - Race Night at the Village Hall. Tickets: Margaret Sherrington 613704 and George Mann 614296

Thursday 20th February - Sportsman's Dinner at Regent Hotel, Leamington. Tickets: Ian Holroyd 612527

I am sure everyone joins us in wishing Paul continued improvement in

COOKERBILITY

Graded and Refurbished Gas & Electric
Cookers Delivered, fitted & inc warranties

Microwave ovens

Fair Trades Approved

Service & Repair



10 Gloucester Street, Leamington Spa,
Telephone: 01926 431164

P D Q

SECRETARIAL SERVICES

For professional and fast
word processing:
Letters, Reports, Theses, CVs, etc.
« Disk Storage - Mailing »

Julie Killian
The Bungalow, Chapel Street,
Harbury, CV33 9HT
Tel: 01926 612265

*A serviced based on Professionalism,
Discretion & Quality*

R&S DOMESTIC SERVICES



REPAIRS TO MOST MAKES OF
Washing Machines
Tumble Dryers
Cookers
Dishwashers



PHONE - ROB CENEY on
HARBURY 613707

Michael Jerome



Carpets



A COMPLETE CARPET SERVICE

- Choose a new carpet from our extensive range
- Expert Fitting - Fully Guaranteed
- Existing Carpets re-fitted
- Professional On-Site Cleaning
- Vinyl Sheet Flooring

6 Meadow Road, Southam

Telephone: Southam 813325

Michael Jerome is a Master Fitter with the National
Institute of Carpet Fitters with 30 years experience



FOR PROFESSIONAL HAIR CARE



Kathleen Ellis

CHAPEL STREET, HARBURY. ☎ (01926) 612326

RETAILERS FOR WELLA HIGH HAIR PRODUCTS

TO ADVERTISE CONTACT:

26 FARLEY AVENUE, HARBURY. TEL: 01926 612033

HARVEY BUILDERS

Registered Since 1979

**YOUR LOCAL BUILDER FOR ALL YOUR
HOME EXTENSIONS AND ALTERATIONS
FROM PLANS TO COMPLETION.**



FOR PROMPT, PERSONAL SERVICE PHONE 01926 817906

REGISTERED
HOUSE BUILDER

WESTFIELD CATTERY

Middle Road, Harbury

(opposite Rugby Club)

Tel: 01926 613946

***A pleasant, Safe home away from home
for your cat.***

Escape to discover the tranquil beauty
of the Lake District for a weekend break
or full holiday

WHICHAM OLD RECTORY

continues to offer an especially warm
welcome to Harbury folk.



Home grown food : home baked bread :
home-spun hospitality

Unspoilt beaches, mountains and moor-
land, golf, riding and fishing nearby
Daily and weekly terms on request.

Whicham Old Rectory
Silecroft,
Millom, Cumbria
LA18 5LS

Proprietors:
Dave & Judy Kitchener
Tel: 01229 772954

GREENLEAF FARM SHOP AND NURSERY

Fresh Vegetables, Fruit, Cut Flowers,
Pot Plants, Seasonal Bedding Plants,
Shrubs, Compost, Logs etc.

STOCKISTS OF
Old Mill Preserves
Ornamental Pots
Bowls & Baskets

OPEN 7 DAYS A WEEK

01926 812116
P. HEALEY ND (Hort)



"Between Southam & Ladbroke"

1997 and we look forward to seeing him living back in Harbury before too long.

Again many thanks to everyone for their support.

Ian Holroyd

THE CHILDREN'S SOCIETY, HARBURY

Thank you to all box-holders for your recent contributions which totalled £151.37 for this year.

I have been the local secretary for the Society since 1986 and now feel it is time someone else took over. A person with children of their own still living at home would be most suitable, should such a person be interested, or indeed anyone else, would they please get in touch with me on Harbury 612661 and I will be glad to answer any questions they may have. I shall just add that the position is not time consuming consisting mainly of collecting the boxes once a year and remitting the sum total to the Society in London.

Nancy Davies

HARBURY SURGERY

LADIES: you are invited to an informal evening on **The Menopause** on **Wednesday 15th January** at 7.30pm at Harbury Surgery. Our Practice Nurse Nesta Commander and Health Visitor Sylvia Thacker will be available with advice and support; why not come along for a chat and share some light refreshments?

Barbara Andrews

HARBURY LADIES NETBALL REPORT

The Netball Club certainly benefited from the "season of goodwill" and we go into 1997 in a more positive frame of mind and certainly better off than last year.

COWIE of Leamington sponsored us for 4 sets of reversible netball bibs - worth around £250 and we would like to thank them very much for their generosity.

HARBURY HORTICULTURAL SOCIETY surprised us with a cheque

for £100 towards the new perimeter fencing around the court and this donation is much appreciated.

Another way of raising finance for the new fencing (which is to be erected soon) is to ask many netball players for a *loan* of £50 until the end of the season. If ten players respond then it is £500 that we won't have to pay interest charges on and we will have had a chance to fund raise before the loans are repaid.

Thinking of fund raising, the Fashion Show held at the Village Club at the beginning of December was reasonably successful considering the time of year and the many commitments of people. We made £168 profit. Leah and Nicola were the only 'netballers' to volunteer, but to the rescue came two stars: LOUISA and KATIE. Thank you very much. I hear they are looking forward to the next one, showing Spring Fashions!

Congratulations to Donna Smith and Helen Wilson as they both passed their Umpire Tests in December. It is encouraging to see younger players so enthusiastic.

The Christmas Dinner and Social was held at the Stratford Manor Hotel and a good night was had by all. Thanks must go to Kim Lowe, who organised it once again on our behalf. Also working hard to raise funds for the Netball Club are Julie Farrington, Nicola Beecroft and Mandy White, who will be attending their third table-top sale in January and selling any donated items to raise money for the Club.

Pat Summers

HARBURY TENNIS CLUB

The Club mixed doubles ladder has proved very popular with sixteen members taking part. Group 'A' was headed by Angela Woodruff and Keith Thompson whilst Pauline Hayes and Steve Chaplin are unbeaten in Group 'B'. No decision has been taken about a final but a new round of matches will begin in the New Year with the draw being held at the Muffler Tournament lunch.

The last league fixture of 1996 was played at Byfield and resulted in a welcome win for Harbury 'A'. Gill Thorpe and Anne Tasker are unbeaten in the winter league this season and were again in top form,

losing only one game at Byfield. Brian Thurogood was playing his first match and could well be asked again!

The 'B' team are yet to record a victory in Division 3, but the games are close and hard fought and they say it's character building!

Steve Chaplin

THE HARBURY CHRONICLES

A Film for the Millennium

When the Parish Council asked for ideas to celebrate the millennium, one suggestion put forward was, to make a film about Harbury. The scheme was debated and approved. Not only did it receive the blessing of the Parish Council, but also a generous donation of £1,000 to get it off the ground.

In December, the steering committee met for the first time. Members had the pleasant task of naming the film. They decided to call it "The Harbury Chronicles", because it will record, on tape, in documentary form, the life of the village over the period of one year.

Cameras will scan the landscape, picking out physical and historical features and showing the Warwickshire countryside in the passing seasons. When there are visible links with the past (the Wight School, the Windmill, Harbury Railway cutting, come to mind) there are opportunities to delve briefly into history.

However, the main theme will be portraying Harbury and its people at the end of this century.

There are characters to interview, stories to be told and events to record before they slip away. This is not a money making venture, if it were, we should not be eligible for the grants we seek. Should any profit be made from sales of the film, it will be handed back to the village.

We have been fortunate in finding a young enthusiastic professional cameraman. He will direct, shoot and edit "The Chronicles". He comes to us with excellent credentials having worked for BBC Television and ITV. He can, and will, make a high quality film, but it is up to us to say what we want in it and to write the scripts. This is where we all come in.

If you have ideas as to how best to capture the spirit of Harbury, do let

the committee know.

If you think of events and happenings without which a picture about Harbury would not be complete, tell us. What role do you see your particular organisation, society, club, playing? If we have not already contacted you, please appoint a representative to speak for you. (More about that next month.)

Perhaps you, as an individual, would like to get involved in the project - welcome! Who are you? Harbury people are rich in talents and skills, there are jobs for all in the making of our film.

Early in the New Year, a box will be placed in "Party Paraphernalia". Just pop in and post your brainwaves, suggestions and offers of help.

Finally, in this first article, we should like to announce our first "Fund Raiser". Jenny Ingram starts the ball rolling with a Grand Coffee Morning, masses of raffle prizes and a Bring and Buy stall, on **Saturday 25th January** in the Tom Hauley Room from 10am - 12noon.

We cannot obtain grants unless we show we are raising money ourselves, so please support all the events that come up during 1997.

The making of "The Harbury Chronicles" is an ambitious project, but we shall have lots of fun doing it. It will be a splendid contribution to our celebrations and a lasting delight to us all.

Mary Shelley

Harbury Chronicles Steering Cttee

WORKING FROM HOME

Are you at the cutting edge of a rising modern phenomenon? Is your "Helpline" a supportive partner with a cup of coffee who plays a vital role ranging from acting managing director to office cleaner? Does your "popping to the office/workplace" involve a stressful manoeuvre from one part of the house to another?!

If all of the above are familiar then you are obviously one of a growing band of people who "work from home". This manner of working may have arisen out of a variety of circumstances and will undoubtedly include a wide range of occupations.

The more the merrier in fact, because it would certainly lend weight to

an idea that's being bounced around at the moment, that maybe people who work from home might like to meet up once a month for an informal lunch. It would give people a chance to exchange views and ideas on a purely informal/social basis, 'something that one has to sacrifice when opting for the home based work place.

It is proposed to have the first inaugural get together at The Dog Inn on **Friday 31st January 1997** from 12noon onwards, in the restaurant, where lunch and drinks will be available.

We need an idea of numbers, so if you'd like to join us please contact:

David Thistlethwaite	613555	(Phone/Fax)
Jim Ward	612401	(Fax 612576)
Pete Woodward	613536	(Phone/Fax)

Alias W.F.H. "P.O.E.T.S. Society"

HARBURY LANDSCAPE & ENVIRONMENTAL PROJECT TRAFFIC CENSUS

Judging by the large number of inquisitive sideways glances - a very dangerous practice - from vehicle drivers moving around the village, it had not escaped your notice that you were being watched during September and October.

Fear not, there was nothing sinister afoot - get it, a'foot - Oh please yourselves, but a benign study by a highly motivated group of residents carrying out the arduous task of the long promised Harbury Traffic Census.

You will recall through various articles in this magazine, that the principle concern of the public meeting in the Village Hall on 17th February 1996 was one of traffic; traffic volume, speed and type. This census was the first phase of a programme designed to address this problem.

On the basis of "If you can't measure it you can't manage it", 25 volunteers conducted 5 daily counts - between 7am and 7pm - at 5 locations in the village from 23rd September to 9th October. The count absorbed 300 hours and resulted in over 52,000 counts.

The principal findings were:

- Busiest point is Station Road Junction - 2374 movements on an

average day. 290 at peak hour which equals 1 vehicle every 12 seconds!

- At peak periods 54% of all traffic on the Butt Lane/Vicarage Lane/South Parade/Park Lane/Temple End route is "passing through".
- 30-35% of all HGV traffic is "passing through".
- Similarly 30-40% of all LGVs do not stop in Harbury.
- On average there is 1 commercial vehicle for every 4 private vehicles.
- Binswood End traffic is largely village generated.
- Traffic speed was a concern of all census staff.

A full report outlining our aims, objectives, conclusions and recommendations is available for examination in the Library.

Completed reports have also been sent to Warwick County Council and Stratford District Council, who have the power to meet our recommendations, with a request for them to study our findings and respond with their solutions.

Hopefully with your continued support and a fair hearing we can look forward to a quieter and safer village.

Finally, it is clear that none of this would have been possible without the willingness of all the counters who gave so freely of their limited free time on what turned out to be a very demanding task. We thank you all - those who marshalled the troops on the eastern front; took long stints at counting; spent many hours in laborious computer number crunching which enabled this report to come to fruition, and especially those who consistently took the long hours of the dawn patrol - often lasting until noon.

John Woodward

HORTICULTURAL SOCIETY

I trust the Editors and all our members had a wonderful Christmas and may I take this opportunity to wish you all a Happy, Healthy New Year.

The meeting in December was well attended. The talk on rockeries was very interesting and informative. Mr. White showed us slides of examples how not to construct them and of course much sound advice on building more natural looking rockeries. Then of course we had our Christmas Social, the food was excellent, many thanks to everybody



THINKING OF LETTING YOUR HOME?

THEN CONTACT

CONNECT PROPERTY SERVICES

We are specialist high quality letting and property management agents, locally based, with particular experience in letting village properties. Please do telephone to discuss your requirements.

Telephone: 01926 - 815004

**- KINETON BASED -
QUALITY CARPET, UPHOLSTERY
AND CURTAIN CLEANING SERVICES
Chem-Dry® Accord**

- Most carpets dry within the hour
- Safe and non-Toxic
- Removes most stubborn stains
- Leaves no sticky or dirt attracting residue
- Carpet & fabric protection service
- Professionally insured

Chem-Dry.®



**ROY & LINDA
HARRIS**

TO ARRANGE A FREE
ON-SITE NO OBLIGATION
QUOTATION TELEPHONE

01926 640029

INDEPENDENTLY OWNED AND OPERATED

Jamieson's

**SPECIALIST IN
PERIOD JOINERY**

**WHETHER YOU LIVE IN
A COTTAGE OR A CASTLE
LET US QUOTE YOU FOR
REPLACEMENT WINDOWS
AND DOORS.**

**HARBURY FIELDS BARN
HARBURY**

**TELEPHONE:
01926 612921**



Prlory Tool Hire

Opening Times

7.30 - 5.30 Monday to Friday
8.30 to 12.00pm Saturday



Now Available Access
Platform With
13M Working Height



Access Platform From
Only £80.00 per Day (ex VAT)

We stock a full range of
Drill Bits/Wood Augers for
DIY and industrial Tools

Cutting and Grinding discs
also available

For all your Building, Gardening and DIY
Equipment needs and much more



Norman House
Watsons Lane
Southam
Leamington Spa
CV33 0HX

Tel: (01926) 814770 or 812213



We are Agents for
Calor Gas and
Black & Decker

BIRMINGHAM
Dollman Street
Nechells
Birmingham
B7 4RP

Tel: (0121) 333 4050

Opening Times
7.30am - 6pm Monday to Friday



PRICE LIST

Air Tools	Day	2dy	Wk
Heavy Chisel	8.00	12.00	16.00
Medium Breaker	11.50	17.25	23.00
Light Breaker Drill	11.50	17.25	23.00
Four Saw	18.00	27.00	36.00
Road Bit	14.00	21.00	28.00
Grinder Saw	12.00	18.00	24.00
Hose	1 Week Min	8.00	
Vibrating Power	14.00	21.00	28.00

Breakers & Hammer Drills	Day	2dy	Wk
Heavy Breaker 110v	22.00	33.00	44.00
Medium Breaker Drill 110v	15.00	22.50	30.00
Light Breaker Drill 110v	13.00	19.50	26.00
Hammer Drill Set Chisel	8.00	13.50	18.00
Hammer Drill 1.2 Inch Chuck	8.00	9.00	12.00
Hydraulic Breaker Pack	30.00	45.00	60.00
Reinforced & Hammer Drill	10.00	15.00	20.00
Diamond Core Drill			
Core Drill 8 In	5.00	7.50	10.00
Pipe Auger Drill	9.00	13.50	18.00

Decorating Equipment	Day	2dy	Wk
Steam Air Sander Sander 240v	5.00	12.50	18.00
1/2 In Sander			
Paint Sprayer 240v	8.00	12.00	16.00
8 In Torch Gas Extra	6.00	9.00	12.00
Top Gun Rough Coat Gun	6.00	9.00	12.00
Tie Curing	7.00	10.50	14.00

Carpentry Tools	Day	2dy	Wk
21mm Plate 240v 110	12.00	15.50	20.00
Rafter 110v	8.00	12.00	16.00

Cleaning Equipment	Day	2dy	Wk
Carpet Cleaner 240v	14.00	21.00	28.00
Pressure Washer 240v	13.00	19.50	26.00
Pressure Washer Pump	34.00	51.00	68.00

Ladders	Day	2dy	Wk
26 Ft Ladder	8.00	12.00	16.00
Red Ladder	8.00	12.00	16.00
31 Ft Ladder	10.00	15.00	20.00

Concrete & Paving	Day	2dy	Wk
3/2 Mixer Diesel	12.50	18.75	25.00
3/2 Mixer 110/240v Petrol	11.00	16.50	22.00
Vibrating Pallet 110v	14.00	21.00	28.00
Vibrating Pallet - unit (Petrol)	24.00	36.00	48.00
Slab Cutter Manual	12.00	18.00	24.00
Slab Cutter Large	15.00	22.50	30.00

Saws Sanders & Grinders	Day	2dy	Wk
Grinder 4.5 Inch 110/240v	8.00	12.50	18.00
Grinder 8 Inch 110v	9.00	13.50	18.00
Triangle Sander 240v	10.00	15.00	20.00
Patm Sander 240v	7.00	10.50	14.00
Orbital Sander 240v	9.00	13.50	18.00
Belt Sander 240v	9.00	13.50	18.00
Floor Sander 240v	23.00	34.50	46.00
Angle Saw 240v	12.00	18.00	24.00
Angle Saw 110/240v	8.00	12.50	18.00
Circular Saw 110/240v	10.00	15.00	20.00
Sabre Saw 240v	10.00	15.00	20.00
Quick Cut 110v	13.00	19.50	26.00
Quick Cut 2 Stroke	13.00	19.50	26.00
Floor Saw 14 Inch Petrol	28.00	42.75	57.00
Floor Saw 18 Inch Petrol	32.00	48.00	64.00

Miscellaneous	Day	2dy	Wk
Acrow Price	One week min	2.00	
Drum Road	One week min	3.00	
Warning Lights	One week min	5.00	
1 Tonne 4 Wheel Trolley	10.00	15.00	20.00
Burrows Wheel Barrow			
Engine Crane	8.00	12.00	16.00
Demolition	22.00	33.00	44.00

Power & Lighting	Day	2dy	Wk
Power Generator	12.00	22.50	30.00
3/2 Generator	18.00	27.00	36.00
4/4 Generator Diesel	22.00	33.00	44.00
4/4 Generator Petrol	22.00	33.00	44.00
Transformer 1 Tonne	2.00	4.50	8.00
Transformer 2 Tonne	3.50	5.25	7.00
Transformer 4 Kva	5.00	7.50	10.00
2 Way Junction Box 110v	One week min	5.00	
4 Way Junction Box 110v	One week min	8.00	
Stand-Off Light 110v	3.00	5.50	10.00
Lighting 5 in 110v bulb extra	8.00	9.00	12.00
Stand Light	7.00	10.50	14.00
4 Standard Leads 110/240v	3.00	4.50	6.00
Red Oil Circuit Breaker			

Pumps	Day	2dy	Wk
2" Centrifugal Diaphragm Pump	19.00	28.50	38.00
3" Diaphragm CAV 20 x 20 hose	25.75	38.63	51.30
3" Centrifugal CAV 20 x 20 hose	31.50	47.25	63.00
Extra Hose	POA		

Compaction Equipment	Day	2dy	Wk
Trench Rammer	12.00	18.00	24.00
Compaction Plate Petrol	18.00	24.00	32.00
FIR Compact Plate Petrol	30.00	45.00	60.00
FIR Compact Plate Diesel	30.00	45.00	60.00
"28" Pedestrian Roller	20.00	30.00	40.00

Bowers Oil	Day	2dy	Wk
250 Gallon Water	One Week Min	20.00	
500 Gallon Water	One Week Min	25.00	
250 Gallon Fuel	One Week Min	25.00	
500 Gallon Fuel	One Week Min	30.00	
800 Gallon Fuel	One Week Min	35.00	

Small Earth Movers	Day	2dy	Wk
Skid Steer Loader	100.00	150.00	200.00
1 2 Ton Mini Digger	100.00	150.00	200.00
750 Kg Skip Loader Dumper	65.00	97.50	130.00

Garden Tools	Day	2dy	Wk
Garden Roller	8.00	9.00	12.00
Rotavator 8 Hp Petrol	22.00	33.00	44.00
Rotavator 8 Hp Petrol	45.00	67.50	90.00
Hedge Cutter 18/21 Inch 240v	12.50	18.75	25.00
Strimmer 2 Stroke	16.50	24.75	33.00
Rotary Mower Petrol	12.00	18.00	24.00
Leaf Sander Petrol	22.00	33.75	45.00
Leaf Sander 240v	9.50	14.25	19.00
Leaf Feeder Spreader	4.00	6.00	8.00
Leaf Vacuum Petrol	12.00	18.00	24.00
Leaf Vacuum 240v	1.50	2.75	3.00
Garden Refuse Bag/Sheet	35.00	52.50	70.00
Chopper/Shearer Petrol	15.00	22.50	30.00
Chopper/Shearer 240v	15.00	22.50	30.00

Access Platform	Day	2dy	Wk
13m Access Platform	80.00	140.00	220.00

who helped in any way. The two gentlemen in the kitchen dealing with the liquid refreshment were quite busy too! Thank you everyone.

Would anybody who has not paid their subs for the current year (£2 per person) please see our new treasurer John Clifford as they are overdue. Visitors are very welcome; 30p per session.

The next talk will be on Tuesday 7th January on Pruning and Mr. Brian Cook will be giving us many valuable tips I am sure. What to do and when to do it, which bits to remove, etc. The only three things I can be left to prune are blackberry, loganberry and raspberry, so I shall be watching closely.

Muriel Grey

GARDENING NOTES

*Withering and keen the winter comes
While comfort flies to close shut rooms*

So wrote John Clare in The Shepherds Calendar and gardeners too are more likely to be viewing their plants from the comfort of a warm room during this month. After the wet weather we have had it is better to keep off both grass and soil, although compost can be spread on to ornamental and vegetable beds. However, if we do get a bright day or two check stakes and ties on trees and shrubs and firm in any autumn planted ones. Repair and treat fences whilst plants are dormant. If paths have become slippery with algae clear this off with Jeyes fluid or a path clean. Have lawn mowers serviced and shears sharpened.

Roses can be pruned at any time between now and March. Recent trials have shown that cutting all the stems straight across with secateurs works just as well as the more time consuming traditional method. Trim raspberry canes to leave them 6 inches above the top wire. Cut out weak and crossing branches on gooseberry bushes. Winter prune cordon apple trees. Houseplants need careful watering and it is often better to stand the plant pot on gravel inside another pot and to water this rather than the compost. They also need plenty of light, but remember to remove them from the windowsill before pulling the curtains.

Plant of the month - Winter Aconite

These bright yellow blooms with a ruff of foliage below begin to emerge early in the year. Native to Europe and Asia Minor these hardy little flowers which grow from a tuber can brighten our winter gardens. Plant them in autumn in groups in rockeries or border fronts in any soil except waterlogged and they will continue to pop out of the earth at the start of each year. Look for them in pots now in garden centres where they may be labelled with their common name or the botanical one - *Eranthis hyemalis*. If you do plant them out in the ground, mark where they are because they die down completely in Spring.

Pat Smith

Letters to the Editors

Dear Editors

We would like to thank everyone who has sent cards and messages of sympathy and support following the sudden loss of John's mother, Dulcie. The warmth and friendliness is much appreciated at these sad times. Special thanks to Father Roy Brown.

John and Diana Buck

Dear Editors

My family and I would like to pass on our thanks to all those who gave so generously to asthma research in memory of my mother.

I have received a letter from Mrs. Elizabeth Starkings of the local branch of the National Asthma Campaign thanking us for the donation of over £500. She says the committee have decided to divide this between much needed research funds (to be sent to Head Office) and the provision of a place on a course at the National Asthma

Training Centre. This will be offered to a staff nurse on Whittaker Ward, Warwick Hospital. Once again thanks for being so generous.

John Hancock

Dear Editors

I'd like to thank everyone who has written or enquired after me following my accident, while rehearsing on the Village Hall stage. I'm mending well and enjoying some unexpected peace.

Harbury Theatre Group hope that you will get a chance to see Act Three of "Plaza Suite" before too long. Some of the lines - "He'll fall, he'll fall" and "Get a Doctor!" will have an extra edge.

I look forward to the day when children, school, youth and adult groups can perform on a secure and permanent Village Hall stage.

Sincerely

John Stringer

Dear Editors

We were saddened to hear of the death of Sheila Lawton at her home in Leicestershire on 11th December. Mr. and Mrs. Lawton lived in Harbury at the Co-Op House in High Street for many years. Mr. Lawton was the Co-Op butcher at the time and was supported by his wife Sheila. We extend our sympathy to the family.

Joyce Windsor

Dear Editors

We held our pre-Christmas coffee and mince pie morning on 21st December. It was very well attended and hopefully, was enjoyed by all those who came. We had a very busy and satisfying couple of hours.

As a result the proceeds from the raffle were £142. This was magnificent and we say a big thank you to all those who provided the prizes and to Pino for supplying the mince pies. The money will be sent to the Get a Head Charity to further the work of treating head and facial cancers. Thank you for supporting us so well.

Joyce Windsor

Dear Editors

The other morning I decided to vary the cereal for breakfast and indulge in a plate of bacon, sausage and egg. When I sat down to eat this meal, I had not bargained for the unexpected visitor to the feast! I was in the process of slicing through the sausage when there was the most terrific bang near my elbow on the patio window. I not only heard it, but felt the shock waves as they flowed through the room. Jumping to my feet and looking down at the paving slabs below the cill, I immediately saw the cause of the noise; a large bird was lying on its front, wings outstretched, its head to one side with blood trickling from its beak. It was a bird that I did not immediately recognise, apart from placing it as a bird of prey. The bird was still alive from signs of movement in its breast, but I placed these as the death throes.

My wife looked it up in a book and pronounced it a female sparrowhawk. After a few minutes it was obviously still alive, although not moving any of its main parts. Phoning around for help as to what we might do to assist the bird, my wife was advised by the police that vets provide a free service for wild animals. Avonvale at Southam responded to our call for help, saying: "Bring it in and the vet will have a look at it".

On examination, the vet pronounced it as undamaged apart from around the beak and that given fluids and warmth it should survive. By the afternoon it was showing signs of recovery and on the following

afternoon when we phoned, the receptionist told us that the vet had just taken the cage to their back door, opened it and the hawk had taken off into the sunset.

In 25 years in Harbury I have seen kestrels over my garden, but not sparrowhawks, although one evening last summer a bird dived down on the black and white cat a few feet from me; this was all over so quickly that I had no chance of recognition as to who the intruder might be.

Knowing that sparrowhawks are in the neighbourhood, I shall be putting a roof over the bird table to give the small birds some protection from this beautiful, but deadly bird of prey. Did the bird spot my breakfast and decide to join me?

M.H. Bristow

Dear Editors

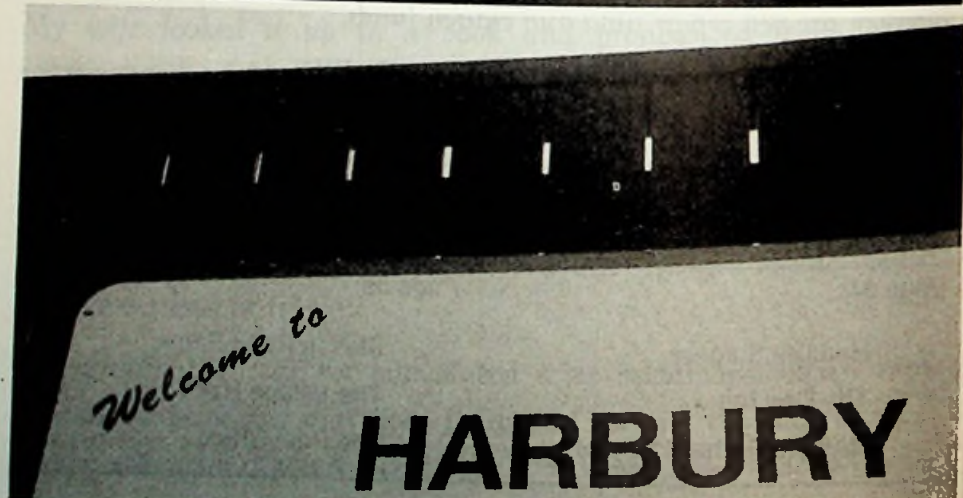
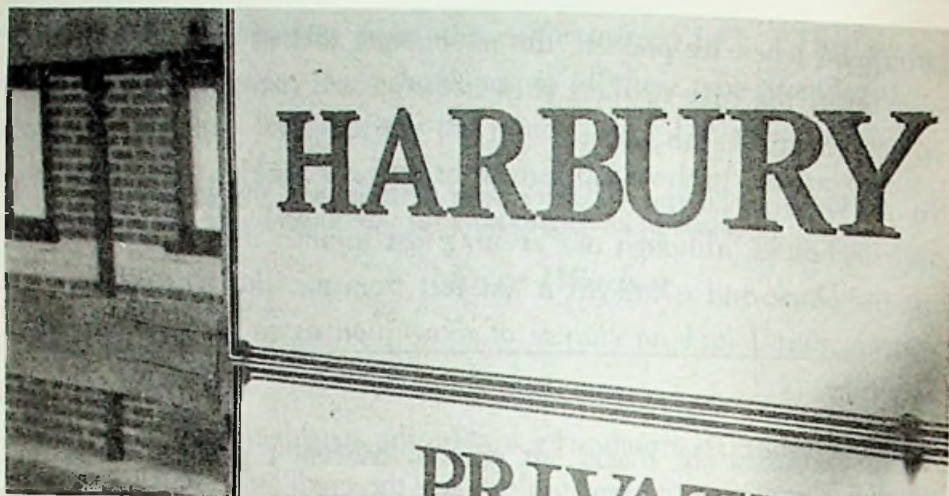
Harbury Bellringers would like to thank everyone who supported the coffee morning and lunch on 16th November.

Many thanks to all who helped in any way to make both events so successful and enjoyable. Over £200 was raised and was divided between the bell repair fund and church funds.

Nora B. Ellis
Tower correspondent

Answers to the Harbury pictorial quiz:

Page 34:	Page 35:
Harbury Surgery	Station Road Farm
The Dog Inn	The Village Hall
Harbury Primary School	The Post Office



ATION NO. 17
HARBURY



THE BISHOP'S FRYER AND OFF LICENCE

LADBROKE ROAD • BISHOPS ITCHINGTON • TEL: 01926 614093

QUALITY FISH AND CHIPS,

PIES, PASTIES etc.

Now also serving Donner Kebabs

Open Monday to Thursday 4.30p.m. to 11 p.m.

Friday and Saturday 4.30 p.m. to 11.30 p.m.

Thursday, Friday and Saturday lunch times 11.45 a.m. to 2.00 p.m.

TRAMPS BALL

14th February 1997

at

LADBROKE VILLAGE HALL

8pm - 12midnight

dancing to:

BOB CARDALLS BAND

Licensed Bar - Refreshments

Prize for the best Gentleman Tramp and Lady Tramp

Tickets £3 from any committee member or ☎ 814313

Christine Smith (I.T.E.C. I.I.H.H.T. Cert. Ed.)

Aromatherapy & Reflexology

- Home visits by arrangement.
- Special rates for disabled, O.A.P.s & Carers.
- Introductory Offer: 6 treatments for the price of 5
- Gift Vouchers available.

6 Sutcliffe Drive - Harbury - Tel.: 01926 - 614115

MANOR PROPERTY & DECORATING SERVICES

THE IDEAL CHOICE FOR ALL YOUR DECORATING
AND PROPERTY REPAIR REQUIREMENTS

TELEPHONE: 01926 612887



S. MEHRA Fully Qualified **PAINTER & DECORATOR**

Interior & Exterior

Free Estimates



9 Margaret Close, Harbury, Leamington Spa. Tel: 01926 612551 Mobile: 0976 241949

E.F. SIMS & SON

PAINTING & DECORATING SERVICES

THE QUALIFIED

PAINTER & DECORATOR

INTERIOR AND EXTERIOR

EXPERIENCED TRADESMAN

RING FOR A FREE ESTIMATE

613732

1 THE POUND, HARBURY



A1 SKIP SERVICES LTD.

Squab Hall Farm, Harbury Lane, Leamington Spa, Warwickshire CV33 9QB

Tel: (01926) 833638 Fax: (01926) 887547

**FAST, FRIENDLY AND RELIABLE SERVICE CALL
THE COMPANY WITH 20 YEARS EXPERIENCE**



2cu yds. - 20cu yds.



CAR



CONSULTANTS

**CARS FOUND, H.P.I'D. VALUED AND BOUGHT FOR CASH
QUALITY SELECTION ON DISPLAY AT 'FOSSE GARAGE'**

FOR THE BEST DEALS ON WHEELS

TEL: 01926 613795 or 0860 452222



A.G. KNOWLES PLUMBING & HEATING



NEW CENTRAL HEATING SYSTEMS INSTALLED.

BOILER CHANGES & RADIATOR REPLACEMENT.

NEW BATHROOMS & SHOWERS SUPPLIED & FITTED. ALL DOMESTIC PLUMBING UNDERTAKEN.

PLUMBING & HEATING TO NEW HOUSES AND EXTENSIONS

ESTABLISHED OVER 25 YEARS • ALL WORK IS GUARANTEED.

69 MILL STREET, HARBURY, LEAMINGTON SPA

TEL: 01926 612331 • MOBILE: 0374 691635

THE VILLAGE TAXI-BUS and A & M CARS

Phone to reserve your seat for Bus or Taxi

0831 135334 - 01926 612487

FREEPHONE 0500 21 22 25 Ext. 10

Your local service, Regular bus service to Asda, Sainsbury's, Tesco, etc. door to door.

Also Taxis for 1-8 people, local or long distance.

No collection fee - you only pay for the miles you travel

Please use your local services. WE NEED YOU!!

A.J. BRUNT

Carpenter & Joiner

For all types of replacement windows, doors, porches, i.e UPVC,

Aluminium & Timber, double or single glazed.

Fitted kitchens/wardrobes and all your carpentry needs

Harbury 01926 612867 • 9 Ivy Lane, Harbury