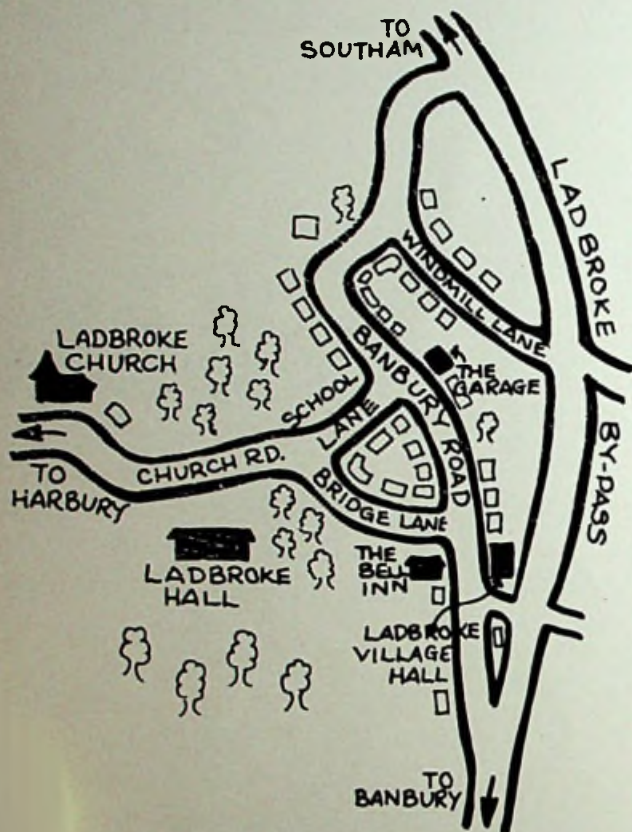




# Ladbroke



## THE FOSSE GARAGE

*Accident Repair Specialists*  
for all leading Insurance  
Companies

**24 hr. Recovery  
Service**

**AA and RAC  
Appointed**

**Servicing & MOT  
Repairs**

**Used Car Sales**



Motor  
Agents Association

Fosse Way, Harbury,  
Nr. Leamington Spa.

01926 613260

24hr. 0850 613260

**SELF-DRIVE  
CAR & VAN HIRE**

## Southam Carpets & Curtains

- ☆ Fitted Carpets, Vinyls, Curtains & accessories.
- ☆ FREE Measuring, Estimating. FREE Pattern loans.
- ☆ For Traditional Quality & Service, contact us.



**Southam (01926) 814944**

Coventry Street, Southam, Warwickshire. CV33 0EP





# Harbury & Ladbroke News

**THE HARBURY AND LADBROKE NEWS**, reflecting all aspects of local life is published monthly and produced with the assistance of the All Saints' Parochial Church Council.

**Editorial Office:** (☎ 612155)

**Articles to:** *Nifty Needle, High Street*

**Advertising Office:** *c/o 31 Binswood End (☎ 614614)*

The views of contributors are not necessarily those of the Editorial Committee.

**APRIL 1997**

**No. 277**

This month's editorial revolves around the theme of time and 'what goes round, comes around'.

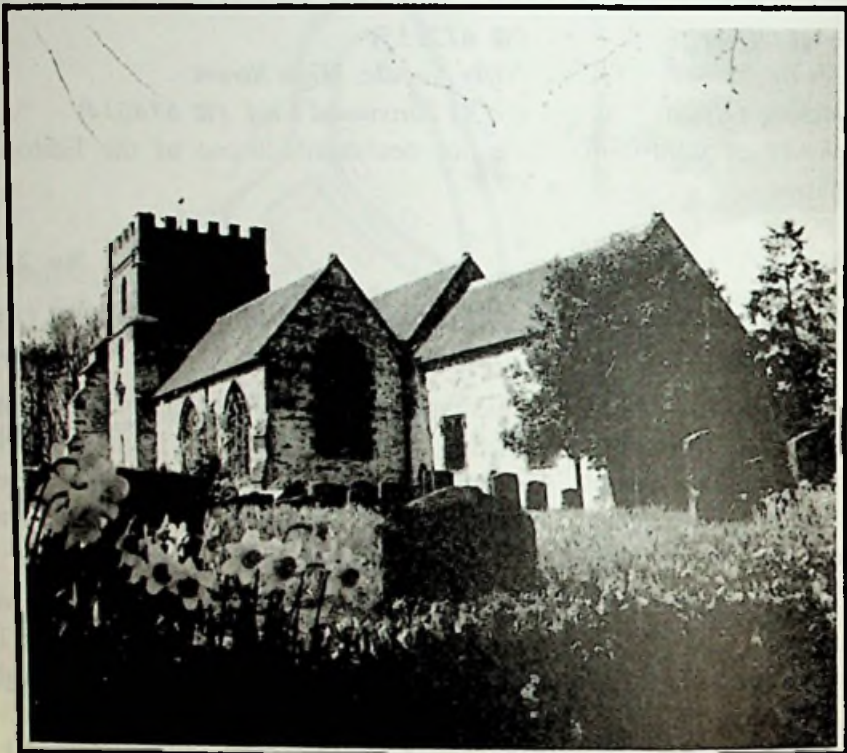
The Hale - Bopp comet which has fascinated many villagers over the past few weeks completes its circuit this month and does not become visible for another 4,000 years! A dramatic picture of the comet taken over Chesterton Windmill has reportedly been featured in both local and national papers.

The Editors keep hoping to make the acquaintance of a local photographer, who has the time to record 'everyday life' for the H & L News. A possible first assignment could be to capture the Hereburgh Morris as they dance at the Windmill on May Day when dawn breaks. Last year the TV cameras recorded the performance of our 'own' dancers who are celebrating the 10th anniversary of their formation this year. Congratulations to the team who have taken the name of Harbury far and wide.

After only 23 years of existence, the cover of the magazine has been re-drawn to include details of the current village layout. Thanks are due to Celia Barrett for her efforts on our behalf, as the updated version will doubtless continue to be used to guide visitors around the paths and streets of Harbury.

Thanks also to Joan Lodge, a stalwart supporter of the magazine, who retired from the Committee at the recent AGM after 14 years of continued service, during which time she contributed articles and profiles for publication.

Another event of a cyclical nature which comes round at 5 year intervals (or thereabouts) will have taken place before the appearance of our next edition. Candidates representing the 3 main parties have submitted articles for inclusion this month and voters are encouraged to read the addresses prepared for the General Election.



Springtime in Harbury Churchyard

The arrival of Spring is traditionally recognised by the appearance of daffodils and hedges and trees bursting into life. However, in Harbury a harbinger of the season of re-awakened life is the return of the Robbins' skip to its seasonal habitat in Mill Street. Our efficient distribution manager obviously 'springs forward' on the home front, as the hour 'goes on'!

Finally we extend our sympathy to the families of Jack Bloxham, John Kendall, Jim Davis and Thomas Whyte (Jock) Stobo.

# Harbury Diary

## APRIL

- Sun 6 Easter 1** - Sung Eucharist 9am  
 Sunday School in Tom Hauley Room 10.30am; Evensong 6.30pm  
 Tennis Club: Opening Social Tournament 2pm  
 Rugby Under 14s and Under 13s home to Long Buckby  
 Ante-natal reunion in Village Hall
- Mon 7** Harbury Kids Club Playscheme 10am-12.15pm
- Tues 8** Harbury Kids Club Playscheme 10am-12.15pm  
 Toddlers' service 2.15pm; Holy Communion 7.30pm  
 Prayer Group in Church 8.10pm
- Wed 9** Youth Club in Village Hall 8pm
- Thurs 10** School begins  
 Thursday Club in Village Hall 2.30pm  
 WI in Tom Hauley Room 7.45pm  
 Village Hall AGM 8pm
- Fri 11** Newspaper Collection
- Sat 12** Rugby 2<sup>nd</sup> XVs Home to Birmingham Wyvern  
 Third XVs Home to Bourneville  
 Southam Lion's Annual Spring Party at Southam School
- Sun 13 EASTER 2** - Holy Communion 8am; Sung Eucharist 10.30am  
 Evensong 6.30pm followed by Vestry & Annual Church Meeting  
 London Marathon
- Mon 14** ALPHA Course in Tom Hauley Room 7.30pm
- Tues 15 H&L ADVERTS TO 31 Binswood End** please  
 Holy Communion 7.30pm  
 Netball Club: Sale and Fashion Show at the Village Club 7.30pm  
 Mothers' Union in Tom Hauley Room 8pm  
 Senior Citizens in Village Hall 8pm
- Wed 16** Youth Club in Village Hall 8pm  
 Horticultural Society talk on Roses  
 Bible Study Group at 19 Farm Street 8pm
- Thurs 17** Holy Communion 9.45am  
 Holiday Haunts in Village Hall 8pm
- Fri 18** Holiday Haunts in Village Hall 8pm
- Sat 19** Men's Prayer Breakfast in Tom Hauley Room 7.30am  
 Rugby First & Third teams Home to OWs  
 PTA Home Made Afternoon in School 2pm-4pm  
 Southam School PTA: 60s & 70s evening at Southam School 7.30pm  
 Holiday Haunts in Village Hall 8pm
- Sun 20 EASTER 3** - Holy Communion 8am; Family Communion 10.30am  
 Benediction 5pm  
 Rugby Under 13s Home to Coventry Saracens
- Mon 21** ALPHA Course in Tom Hauley Room 7.30pm
- Tues 22** Holy Communion 7.30pm
- Wed 23** Youth Club in Village Hall 8pm



- Thurs 24 Holy Communion 9.45am  
 Thursday Club in Village Hall 2.30pm  
 Parish Council in Farley Room of Village Hall 7.30pm  
 NSPCC's *Hanging Basket* demonstration in Village Hall 7.30pm
- Fri 25 Newspaper collection  
 Working From Home Lunch Club in The Dog 12noon  
 Harbury & Ladbroke News **ARTICLES to NIFTY NEEDLE by 5.30pm**  
 Harbury Chronicles: Wine Tasting Evening in Tom Hauley Room 7.30pm
- Sat 26 Tennis Club: Jumble Sale at Village Hall  
 Harbury Nursery School Coffee Morning in Tom Hauley Room  
 Lunch in the Tom Hauley Room 12noon - 2pm  
 Rugby Second XV Home to Rugby Welsh  
 Windmill Singers: H.M.S. Pinafore concert at The Grange Hall, Southam 7.30pm
- Sun 27 **EASTER 4** - Holy Communion 8am; Sung Eucharist 10.30am  
 Evensong 6.30pm  
 Rugby Under 16s Home to Chipping Norton  
 Under 13s Home to Bedworth
- Mon 28 ALPHA Course in Tom Hauley Room 7.30pm
- Tues 29 Holy Communion 7.30pm
- Wed 30 Youth Club in Village Hall 8pm

## MAY

- Thurs 1 Hereburgh Morris dances at Chesterton Windmill 5am  
 ELECTIONS - Local & Parliamentary at Village Hall 7am-10pm  
 Holy Communion 9.45am  
 Storytelling in Library 10am  
 Folk Club in The Dog Inn 8.30pm
- Sat 3 Spanish Ceramics Sale in Wight School 10am  
 Netball Club: Dance at the Village Club 8pm till late  
 Harbury Chronicles: Springtime Music and Verse in Church 7.30pm
- Sun 4 **EASTER V - Rogation Sunday** - Sung Eucharist 9am  
 Evensong 6.30pm

**Adverts to c/o 31 Binswood End by Tuesday 15<sup>th</sup> April**  
**Articles to Nifty Needle by Friday 25<sup>th</sup> April**

**DATES FOR INCLUSION IN THE HARBURY DIARY PLEASE  
 TO: LINDA RIDGLEY - TEL. 612792.**

<b>For Tom Hauley Room Bookings</b>	<b>Mrs. Stubbs</b>	<b>612782</b>
<b>For Village Hall Bookings</b>	<b>Mrs. Hughes</b>	<b>612716</b>
<b>For Wight School Bookings</b>	<b>Mrs. Hayes</b>	<b>613488</b>

# DOCTORS' SURGERY

Mill Street, Harbury

*To request a home visit*

please ring 612232

*To request a repeat prescription*

please ring 612232

*For an appointment*

please ring 613554

DISTRICT NURSE

Southam 815045

HEALTH VISITOR

Southam 815045

POLICE

Southam 812366

SOCIAL SERVICES

Southam 813110

Details of Surgery times are available from the Surgery

## REGULAR DIARY DATES

BABY CLINIC: Surgery, 2-4pm 2nd & 4th Wednesday

BADMINTON: Village Hall Tuesdays

BEAVERS: Scout Hut, 6-7pm Tuesdays

BELLRINGING PRACTICE: Church, 7.30pm Fridays

BINGO: Village Hall, 8pm Mondays

BROWNIES: Village Hall 6-7.30pm Tuesdays

CHOIR PRACTICE: Church, 6.30pm Fridays

CITIZENS ADVICE BUREAU: Over Southam Magistrates Court, 10am-3pm  
Tuesdays (Except Bank Holidays)

COFFEE MORNING: Tom Hauley Room 10am-12noon Saturdays

CUBS: Scout Hut, Wednesdays

DANCING CLASSES: Farley Room Village Hall, Children & Adults 4-9pm  
Wednesdays.

GRAPEVINE: Tom Hauley Room, Coffee Morning 10-12noon Wednesdays

GUIDES: Scout Hut, 7-8.30pm Monday

GYMNASTICS: Harbury School, 6-7pm (U7-10yrs & Beginners 7-8pm;  
Over 10yrs 8-9pm) Mondays

HARBURY FOLK CLUB: Dog Inn 8.30pm 1st Thursday of Month

HARBURY FRIENDS: School, 8pm 2nd Tues of Month

HEREBURGH MORRIS DANCERS: (613402) School Hall, 8-10pm  
Wednesdays

HORTICULTURAL SOCIETY: Village Hall, 8pm 1st Tues (Oct. to May)

LIBRARY: Stories, Rhymes for U5s, 10am 1st Thursday of Month

NETBALL CLUB: Village Hall Car Park, Training 6.30pm Thursdays;  
Matches Saturday Afternoon

NURSERY SCHOOL: Village Hall, Tuesday to Friday mornings

PLAYGROUP: Wight School, Tuesday to Friday mornings

SCOUTS: Scout Hut, 7.45pm Tuesdays & Thursdays

**TENNIS CLUB:** (Apr-Sept) Tues & Thur 6.30pm onwards (6pm for April);

Sat 2-5pm, Mon & Wed 1.45-3pm

**THEATRE GROUP:** Wight School, 8pm last Friday of Month

**THURSDAY CLUB:** Village Hall 2.30pm 2nd & 4th Thursday of Month

**TODDLER GROUP:** Wight School, 10-11.30am Mondays & 2-3.30pm Wed.

**UPHOLSTERY CLASSES:** Wight School, 2-4pm Mondays

W.I.: Tom Hauley Room, 7.45pm 2nd Thursday of Month

**YOGA:** Village Hall, 1-3pm Tuesday, Diane Surgey Tel.817904

**YOUTH CLUB:** Village Hall, 7.30-9.30pm Wednesdays



## **DO YOU NEED HELP WITH ANY OF THE FOLLOWING?**

*Harbury Helpline is for you!*

**CHILDRENS' CLOTHING:** for 0-6 Years old: Call Anne Woodward 613536, Maureen Darby 613330 or Mary Catt 612864.

**EMERGENCY TRANSPORT:** Call Vivien Neill 613461 or Charles Catt 612864.

### **HELP WITH FORM FILLING:**

- **Job Applications, CV's, Council Tax Forms, etc.:** Call Joanne Cooper 613859 or Jeff Bedford 612753.
- **For University/Job Applications, interviews, CVs:** Call Philip Bushill-Matthews 612476.
- **For Personal Tax Claims, Rebates on Tax Paid to Building Societies or on Shares:** Call Jim Chapple 612044.

**HOME VISITING:** Caring for a sick or elderly relative and need a break for a few hours, or you would like someone to call on you. Call Sue Dormer 613254.

**HOUSEHOLD BUDGETING ADVICE:** Call Tony Brunton 612191.

**ODD JOBS ABOUT THE HOUSE:** Call Jeff Bedford 612753.

**VISITING:** Hospital. If you are unable to visit a parent or relative, or parents would like support with a child in Hospital: Call Fr. Roy Brown 612377 or Keith Dormer 613254.



## ALL SAINTS' CHURCH HARBURY SUNDAY SERVICES

Holy Communion, 8am

Sung Eucharist, 10.30am (Except 1st Sunday of Month:

Sung Eucharist 9am)

Family Service, 10.30am on 3rd Sunday of Month

Evensong, 6.30pm (Except 3rd Sunday)

*Please see notice board in Church for weekday services or revised times on special occasions.*

### Laugh Line

"I don't want to go to church this morning!" said the son to his mother. "The people don't like me, they talk behind my back and the service is too long".

"But you have to go", came the reply. "You're the rector!"

### FROM THE CHURCHWARDENS

The period of Lent and the Easter Festival are now concluded, although within the Church calendar, Easter continues through the whole of April. The services were well attended and it always gives me pleasure to be able to wish others a happy Easter in Church.

**Monday 14<sup>th</sup> April** sees the commencement of the second Alpha course which will be held on Monday evenings. Full details are elsewhere within the magazine.

The Vestry and Annual General Meeting will take place on **Sunday 13<sup>th</sup> April**, immediately after the Evensong service.

**Ruth and Jeff**

### FROM THE RECTOR

At Easter, Christians throughout the world celebrate the greatest event of the Church's year, when we remember and take part in the death and resurrection of our Lord Jesus Christ. But if Easter is to mean anything at all, it cannot just be a looking back to that first Easter. The reality of Easter is that we can experience resurrection in our own lives now. Our first experience of resurrection is that we can know Jesus, the risen Lord, in our lives.

In the Sacraments of the Church, in our prayer life, in those whom we meet, we encounter Jesus. He comes to us in those ways, and it is up to us to be open enough to receive Him. Our Lord is with us daily if only we are aware of it. He knocks on the door, but we have to open it. Opening that door is the most liberating and exhilarating thing in our lives. We also experience Easter in the small and large ordinary events of our life. Each Spring heralds new life after the apparent death of Winter. That is resurrection, and each day there are countless examples of new life in personal relationships where we thought there was stagnation and death.

New life is all around us.

Jesus Christ is risen! Alleluia!

**Fr. Roy**

## FROM THE REGISTERS

### *Holy Matrimony*

*Harbury - 1<sup>st</sup> March. Martin Duffy to Sharon Andrews*

### *Welcomed in the Church by Holy Baptism*

*Ladbroke - 2<sup>nd</sup> March. Isabelle Nicole Darby*

*Harbury - 23<sup>rd</sup> March. Katie Beatrice Knowles*

*Ladbroke - 30<sup>th</sup> March. Bethany Grace Weller*

### *Funerals*

*All Saints' Harbury 28<sup>th</sup> February: Jack Bloxham*

*Oakley Wood 20<sup>th</sup> March: John Kendall*

*All Saints' Harbury 21<sup>st</sup> March: Jim Davis*

*All Saints' Harbury 24<sup>th</sup> March: Thomas Whyte Stobo*

## MOTHERS' UNION

The Day of Prayer for the nation at Warwick on 1<sup>st</sup> March was attended by over 170 members from the diocese. Seven of us went from Harbury and found it an inspiring event. It is hoped that members will continue to pray about whatever concerns them most in our country today.

Our Lent Service in Harbury was led by the Rector with an address by the Rev. Justin Welby from Southam. He said that Lent is a time for us to recognise our need of God's love and forgiveness. We should not feel that it is a time to be miserable, but look at it as a gradual build-up towards the joy of Easter.

Having heard John Stringer's talk at our evening meeting, we shall be glued to our television sets every Tuesday and Friday at 10am to watch "Fourways Farm". John is the scientific adviser to the programme, which has won many awards - British schools programmes being among the best in the world. We were fascinated to hear how the programme is made, with illustrations from a video and were able to handle one of the "stars". It was an enjoyable evening.

So far members and friends have knitted 24 "Teddies for Tragedies" and they are still coming in. The teddies go to children in all parts of the world who are in hospital because of some tragedy. There are some simple patterns on the table in church, or ask me for one, if you would like to help.

The Rev. Gillian Sanderson will speak on "Woman in Society and the Church" on **Tuesday 15<sup>th</sup>** at 8pm, in the Tom Hauley Room. Non-members are always welcome.

**C. Mary Catt**

## **THE ISRAEL EXPERIENCE**

In the field of overseas Christian mission there are evidently opportunities galore for retired civil engineers like Harbury's David Clarke. In recent years he has answered calls to oversee the construction of a refugee camp in Zaire, and a school in Bihar State, Northern India. And at their March meeting, Harbury and Ladbroke Church Men's Society members learned of yet another of David's overseas voluntary projects, this one in Israel.

Drawing on impressions and experiences from four visits he and Pam have made to Israel since 1982, David's talk was especially enlightening about living conditions and relationships in a country which is home to Jews of Orthodox, Progressive and Messianic persuasions, and to Arabs both Christian and Muslim.



Early on the name of Sir Peter Ustinov, the actor, claimed a mention because the house of his late father, Count Ustinov, at Jaffa is where David and Pam now stay. Today Immanuel House is a hostel run by the Christian Mission to the Jews. However, because evangelising the Jews is not allowed in Israel - anyone even seen carrying a New Testament in the street is at risk - CMJ has to be known there as the Israel Trust of the Anglican Church.

CMJ has existed since the 1920's and has guest houses and conference centres at Jaffa, Jerusalem and Haifa. Another on Mount Carmel is a regular meeting place for Messianic Jews, those Jews who believe in Christ and whose numbers have grown tremendously since the former Soviet Union and the Baltic States eased restrictions on Jewish emigration.

The Director of Immanuel House at Jaffa, Trevor Marzetti, will be remembered by all who in the mid-80's attended Christian Fellowship meetings in Harbury at which he spoke. David and Pam met Trevor and wife Jean on their first tour of Israel in 1982 and became close friends. So, when Immanuel House needed a car park and Trevor blanched at what tarmac would cost, David led a volunteer labour force, including an American yachtsman, which laid a paved-block surface in just five days at considerably less cost than the estimate for tarmac.

In a land of surprises, one that fascinated him, David was to discover that Israeli goats wear bras; at least the goat he saw in a field alongside the Ammaus Road was wearing one to protect its udder from the prolific thorns where it grazed. Then came surprise number two. An American woman evangelist emerged to greet him from her nearby cottage which she had opened as a Christian house of prayer, and which, amazingly, was accepted by her neighbours in an otherwise exclusively Muslim Arab area.

*David's Israel travel tip: As you wait longingly for the hotel dinner gong on arrival, tired and hungry, don't be lured into the crowded street by the enticing sounds of a passing religious procession. You could find yourself, as David did, inescapably swept along by the throng for a very long service behind locked doors before emerging absolutely ravenous, and very, very late for dinner.*

**John Algar**

## TODDLERS' SERVICE



L to R: Mary Catt, Lorna Bedford and Denise Vincent at the service



Attentive toddlers at the service in Church



At our March meeting we thanked God for our eyes. After a prayer, we played a game where we had to seek out little pictures that Mrs. Catt had hidden in Church.

We then heard the story of how Jesus restored the sight of a man called Bartimaeus.

**Lorna Bedford**

### **NEW BIBLE STUDY GROUP**

A fortnightly, house-based Bible Study Group is starting on **Wednesday 16<sup>th</sup> April** at 8.00pm at 19 Farm Street, Harbury - the home of Gill and David Winter - followed by meetings in other homes in the village. It will follow the pattern of a previous successful series of meetings, with free discussion around the reading. All are welcome, whatever their beliefs. Just bring a Bible!

**Gill Winter and Sally Stringer**

## **Ladbroke News**

### **APRIL**

<b>Mon</b>	<b>7</b>	The Annunciation; Holy Communion 7.30pm; PCC in Old Rectory 8pm
<b>Wed</b>	<b>9</b>	Holy Communion 2pm
<b>Sun</b>	<b>13</b>	<b>Easter 2</b> - Sung Communion 9am
<b>Wed</b>	<b>16</b>	Holy Communion 9.45am
<b>Sun</b>	<b>20</b>	<b>Easter 3</b> - Sung Communion 9am; Evensong 6pm
<b>Wed</b>	<b>23</b>	Holy Communion 9.45am
<b>Fri</b>	<b>25</b>	St. Mark; Holy Communion 7am
<b>Sun</b>	<b>27</b>	<b>Easter 4</b> - Sung Communion 9am
<b>Wed</b>	<b>30</b>	Holy Communion 9.45am

### **MAY**

<b>Sun</b>	<b>4</b>	<b>Easter 5</b> - Rogation Sunday; Family Communion 10.30am
------------	----------	---

### **LADBROKE PARISH COUNCIL REPORT**

County Councillor Bransby Thomas joined the Parish Councillors on Wednesday 19<sup>th</sup> March in the Village Hall.

The use, by the developers, of the title "Miller's Gate" for the new housing development has received much comment but it was confirmed



**NIFTY NEEDLE  
CURTAINS AND BLINDS**

High St. Harbury  
Leamington Spa  
Tel: 01926 612 927  
Fax: 01926 613049

**FREE ESTIMATES**

**PERSONAL SERVICE**

**HOME VISITS UP TO 7pm**

**MOST WELL KNOWN FABRICS  
AVAILABLE AT DISCOUNT**

OPEN: Mon/Tues/Thur 9-5  
Wed/Sat 9-1 Fri 9-6

**WASTE-AWAY**



**PROFESSIONAL  
SKIP HIRE**

- FULL RANGE OF SIZES 4-14 CU YARDS
- FAST, RELIABLE SERVICE
- DOMESTIC, COMMERCIAL - CONTRACT

**01926 888918**

**RANELAGH TERRACE,  
LEAMINGTON SPA**

*Custom  
& Bodywork  
Services at*

**The Garage**  
**Ladbroke**

**ALL TYPES OF BODY WORK**

**FREE INSURANCE ESTIMATES**

**RESPRAYS**

**MECHANICAL REPAIRS**

**SERVICING**

**M.O.T. REPAIR WORK**

**WELDING**

**COLLECTION & DELIVERY**

Personal Service from Steve Birch

**01926 813590**

**Mobile 0836 699489**



## W. Goodwin & Sons Funeral Directors

38 COVENTRY STREET, SOUTHAM

All arrangements personally conducted  
in any district

Telephone: Daytime 01926 812445

Night - time and weekends

Brian: 812656 John: 812657

## Visiting Chiropodist

*Collette A. Green*

SEN MSSCh MBChA

1, NEWSTEAD DRIVE

SOUTHAM

WARWICKSHIRE. CV33 0LT



TELEPHONE

01926 817209

## BENCH

22 OXFORD ST  
SOUTHAM

REPAIRS  
SALES  
RENTAL

## TELEVISION SERVICE

mitsubishi dealer



# SOUTHAM: 812304

WHATEVER YOU DRIVE  
YOU ARE WELCOME AT

DOVEHOUSE

AUTO

SERVICE

TELEPHONE: HARBURY 612809

FOR ALL YOUR MOTORING  
MOT's, REPAIRS, SERVICING



that this was during the development phase only. It was proposed that the 2 new roads leading to the houses should be called Hedges Close and Chebsy Court, both relating to previous owners of the piece of land on which the houses will stand (The Chebsy families owned much of the land in Ladbroke in the 17<sup>th</sup> Century).

Details of the structure of the noise barrier which will divide the houses from The Garage had been received.

The letter sent to Warwickshire County Council regarding the gritting of Harbury Lane has not yet been acknowledged.

The District Council had approved the removal of two self-sewn holly trees from the churchyard but the yew tree immediately outside the church door is still growing in places and will receive professional care.

There were no objections to a planning application for a double garage at Tew Cottage, Windmill Lane.

The result of the questionnaire which was given to the residents of Windmill Lane produced a stalemate - with 2 no change responses, 5 to amend the name on the top part and 5 on the bottom part. Elsa Greenway, Parish Clerk advised the councillors that the District Council do not encourage the changing of existing names and will only consider it if there is unanimous acceptance of the change. The name Windmill Lane will therefore remain on both sides of the bypass.

Bransby Thomas apprised the Council of the budget set for the coming financial year. There is to be a major review of museum, library and information services which will include an assessment of the ways in which new technology can be used to allow access to services.

Vandalism of the water pumping station in Bridge Lane has forced Severn Trent to board up the windows giving the derelict appearance. This will be discussed further at the next meeting.

Please note that copies of 'Ladbroke the Village Book' are on sale at £2 each in The Bell, Libraries of Harbury & Southam and The Mart, Newsagent in Southam.

**Carol Northorpe**



## **HARBURY PARISH COUNCIL REPORT for FEBRUARY**

Planning, problems and applications dominated the February Parish Council meeting. The Parish Council did not like the revised plans for Hillside Farm, which put all the affordable homes in one corner and placed more houses and car parking on the internal roads.

John Woodward was particularly worried about the depth of screening at the hill crest and thought the species indicated would be too small and suburban to hide the view of the development from the Fosse Way. Also feelingly and with the experience of the Bryant site in mind he insisted that there should be a condition of no Sunday working imposed.

Bryant Homes had written to the Parish Council again to try to convince them that the amount of money proposed to take on the maintenance of the public areas was too onerous. However, the District Council supports the Parish Council and if Bryant Homes wants the land maintained they have only two options say the Parish Council: pay the price or do it themselves!

John Woodward reported that the Bryant hedge had been replanted but that District Councillor Jean Holder had argued that Stratford District Council could not go against the County's Highways recommendations for fear of being held liable for any subsequent accidents.

The District Council granted planning permission for: tree work at Fairview, Vicarage Lane and Walnut Tree Cottage, Hall Lane; a gas flare at the Biffa Tip and a fence round the Netball Court. They were satisfied that Mr. Heath had complied with the Enforcement Notice at Deppers Bridge. The application for a holiday caravan at Tresco had been dismissed as invalid.

The Parish Council had made no representations on a double garage at Harbury Heath; conversion of a storage area (which had formerly been accommodation) into a house at Bull Ring Farm; the conversion of a listed barn at Lower Westfields Farm; extensions to Saddlers in Chapel Street and Highcroft on Butt Lane; and enlargement of the house at Highfield Stud.

The Parish Council had indicated to Stratford that it was interested in undertaking a Village Design Statement.

Councillor Woodward revealed unforeseen problems that had resulted from the transfer of council housing to the South Warwickshire Housing Association. Previously either the District Council maintained the verges on the estates or the Parish did it and was reimbursed. Now that the District no longer owns the land it will not maintain it and neither will the South Warwickshire Housing Association. The Councillors are anxious that these areas are cut and will attempt to negotiate with the District Council for payment for the Parish contractor to do the job.

The Parish Council started negotiations with the SWHA over the Landscape Audit plans to plant up Manor Road Green but now wants to withdraw from active support in favour of handing the task on to another body. They asked the Harbury Society if it would distribute a questionnaire to residents around the Green and organise the practicalities.

John Woodward who organised the Traffic Census recently pointed out to his colleagues the implications of the latest Transport Panel report on the B4451 & 2. The accident rate for Harbury District has doubled he said and when the weight limit is imposed on the Bridge at Deppers all high sided vehicles which can not get under the Railway Bridge will be routed through the village (Butt Lane, Bush Heath Road, Beggars Lane and on the Fosse Way).

Footpath wardens were needed to report to the County Council on problems on the Centenary Way which runs through our parish. Peter Gatenby, the local Ramblers representative advertised his protest walks round Chesterton.

Sharon Hancock was unhappy with the Post Office suggestion that Harbury's Postal Town be changed to SOUTHAM.

The police were reported to be attempting to deal with traffic problems associated with the development in Farm Street. Last month a car and two staddle stones were stolen, allotment sheds broken into and a building in the Beeches damaged.

**Linda Ridgley**

## HARBURY SOCIETY

**What does it think it is?** It is an amenity society, concerned with Harbury's unique character and dedicated to helping everyone appreciate it more. It holds a series of talks and events with the aim of helping the members learn more about the village, its history and how it can be conserved and enhanced in every way.

At the AGM, speaker Martin Green, the secretary of the Warwickshire Industrial Archaeology Society, opened members' eyes to the history all around them and asked for help recording it. He showed slides of unexpected and unappreciated local sites such as an old brick kiln at Fenny Compton together with nationally renowned ones like the Stratford upon Avon Canal's barrel-roofed cottages, unique split bridges and cast iron aqueducts. Martin was keen to know what remained of the Harbury cement industry and made a plea for help in identifying sites and recording them.

Chairman Tim Millington reported the Society's interests were primarily parochial commenting on local planning applications. Members had been involved in helping at Chesterton Windmill and enjoyed two of John & Ed's Pub Walks. There had been talks on Canals, Trees, Bio-diversity, Susan Rhodes on the re-creation of the Lord Leycester Hospital Garden and Linda Doyle's excellent presentation on the Deserted Villages.

Secretary Linda Ridgley stressed the social events, the possibility of a Village Design Statement, enhancing Manor Road Green and planting Sentinel Oaks. She reminded the members the Structure Plan deliberations were about to begin again. Treasurer John Lapraik reported finances were healthy, but most of the reserves would be consumed if Hungry Harbury were reprinted.

**Future Events:** A survey is being undertaken to see if the residents around Manor Road Green like the idea of planting it with native trees and shrubs. Subject to their approval meetings will be arranged with the County's Landscape Architect in April where everyone can give their views.

Membership of the Society is only £2 with a £3 family subscription.



Meetings are open to all and there is half an hour for socialising at the start with free coffee and biscuits. Every member receives a free newsletter following an event.

### **Linda Ridgley**

#### **HARBURY WOMEN'S INSTITUTE**

It was the turn of our 'A' team to win their short mat bowls match against Nuneaton ladies.

The Darts team were knocked out but did not disgrace themselves, by any means.

A party of us visited Rugby theatre to see "Pride and Prejudice". Many thanks to the drivers.

Our speaker was Sue Westmacott on Iceland - land of fire and ice. She had always had a fascination of the island. So, in 1981, accompanied by her 18 year old daughter and a colleague to share expenses, they set off in her car.

Iceland is the size of England and Scotland and is one of the most volcanic countries in the world. It is inhabited by a very cultured race dating back to the Norsemen who landed a thousand years earlier. Their mentor was Leif Ericson, a pagan priest who eventually turned to Christianity.

They have one of the oldest parliaments and their youth all go to boarding school. Sue toured on the main road that runs round the island. Not a road as we know it, but a glorified track, solely because it can get demolished by volcanic eruptions at any time.

The landscape is of ice caps and volcanic deserts with no trees but bleak lava rock, having a beauty of its own where rock plants grow. The ice caps melt to form huge waterfalls. There are geysers and boiling mud containing sulphur and a supply of hot water that bubbles from the ground to serve the electricity system.

Sue described the Viking houses and modern houses of concrete with corrugated iron roofing. The constant fight to keep on top of the ever erupting volcanoes and the damage they cause is tremendous. Sue really got carried away with her collection of lava rock and had to relinquish quite a lot at customs.

Amazingly her car stood up to all the awful roads with only a few problems cropping up but she certainly had the use of a free test track in Iceland. A very interesting talk and definitely to be recommended.

**April hostesses:** Nita Waddell, Kath Mancell and Win Elliot

**Jeanne Beaumont**

## **HARBURY THEATRE GROUP**

### ***Holiday Haunts*** ***April 17<sup>th</sup>, 18<sup>th</sup> and 19<sup>th</sup>***

When two sisters and their cook rent a holiday cottage for a month they get more than they bargained for. They find that there is no furniture, gas or electricity and the phone doesn't work. To make matters worse they find out that the cottage is supposedly haunted.

Visitors come and go, but each one causes more confusion and then - **strange** things start happening!

The nine strong cast has three newcomers to the Harbury Theatre Group: Pat Whorton, playing the vicar's wife; Nina Wilde, playing a Girl Guide who is more sensible than she appears and Sally Harris, who finally takes charge of events, as the police woman.

The play should appeal to all the family, so come along on 17, 18 or 19 April at 8pm for an enjoyable evening.

**Alan Barr**

## **HARBURY FOLK CLUB**

"Roots" was the theme for the 148<sup>th</sup> Folk Club. Just an excuse for me to find out where all the artistes came from.

Ian and I are Brummies, so we opened the evening with "A Cut Above". Ron is a Derby man so he gave us a rendition of "The Derby Ram" followed by "The Manchester Rambler". I think the Blues Fathers had misunderstood my theme when they sang "Route 66" and "Diggin' My Potatoes". Pete & Liz sang an old favourite, "Wild Geese" and "The 30-foot Trailer". Nick Lines from Warwick Folk Club gave us two of

his own songs "As The Crow Flies" and "Heavy Horses" (didn't catch where he came from, though!). Ian had written "Your Roots Are Showing" specially for the evening so we finished the first half with it.

The DTP Group (Work it out for yourself) performed two instrumentals "The Seven Stars" and "Fourpence Halfpenny Farthing", which had absolutely nothing to do with the theme! Jean, a Coventry lass, sang a Warwickshire "Greensleeves" and "The Fireman's Song", and Fill And Drill sang "Take This Waltz", followed by a far too believable Ramblin' Sid Rumpo. What a treat to see a rare appearance of Steve and Maureen Darby (from Brummie-land or near enough) as "John And Mary" followed by The Brummies singing "I Can't Find Brummegum".

Peter, being a McDonald, just had to sing "The Massacre Of Glencoe" and my favourite song at the moment, "Everything Is Possible". He was joined by Margaret who sang "The Water Is Wide" which incidentally was the first song she ever sang in a Folk Club. Mike Putnam managed to run a Hash and still have enough energy to sing "Rattlin' Bog" and "Cushy Butterfield". Pam from Warwick Folk Club recited two of her poems. Dougie from Jeremiah Stone Band joined the Blues Fathers for duelling harmonicas in "White Boys Lost In The Blues". Ian and I, with Peter McDonald on keyboards, finished the evening with "The Parting Of The Ways".

The raffle was for "Back Up" and I was delighted that we raised £50 to get the ball rolling for Jane Hancock's London Marathon run. Next month's Folk Club will be on **Thursday 1<sup>st</sup> May**, hosted by Peter McDonald, who has provided the theme of "Swing" for the evening. It promises to be another memorable evening.

**Sue Hartland**

## **HEREBURGH MORRIS**

*Do you fancy leaping around, waving handkerchiefs or sticks and wearing bells?* Exactly ten years ago, this statement was part of a short article by Peter McDonald in the Harbury & Ladbroke News. A number of people turned up for that first practice and since then Hereburgh Morris has grown and flourished. Most of our members are from the village but we also have members from Leamington and Kenilworth.



We have practised and performed enthusiastically over the past ten years. We have danced in many different places for a variety of audiences. These were not confined to the UK, but included two visits to Germany and one to France. We often dance to raise money for charity and will have raised a total of £2,000 in ten years.

We have gained and lost members for a variety of reasons but no one has 'defected' to another local side. When circumstances have meant a move from the area, many of the friendships formed through Hereburgh have remained and their interest in Morris dancing has been a way to make friends in new localities.

What has made the group flourish? A love and enjoyment of music and dance, commitment, and shared interests through professions and hobbies. Our families have become involved, and we have never had any doubts about being a mixed side, which may have helped maintain a balanced viewpoint.

What about the next ten-twenty years? How many more pairs of spectacles will be put on or off to read? Will the average age continue to rise or can we persuade some younger blood to join us? We have had a great deal of fun, laughter and friendship through Hereburgh Morris. Long may it continue to flourish!

We will be dancing on 1<sup>st</sup> May at 5.00am! at Chesterton Windmill.

**Celia Neill**

## **HARBURY'S FOLK TRADITION - A NEW GENERATION**

Harbury Folk Club has a lot to answer for. From its modest beginnings in 1984, its fame and popularity have spread country wide. It was responsible for the birth of the Hereburgh Morris dancers, this month celebrating their 10th birthday and who have been seen internationally, with links in Germany and Brittany.

From Hereburgh Morris' introduction to the wider Morris Dancing and Folk Festival scene, came an increasing awareness that Morris musicians eventually form folk dance bands. And so, in recent years, a new link has been formed in Harbury's Folk chain - The Hereburgh Ceilidh\* (*see note*) Band. Named (somewhat unimaginatively) after Hereburgh

# HARBURY LONDIS

Open seven days for your convenience

GROCERIES • THE NATIONAL LOTTERY™



OFF LICENCE • FLOWERS & PLANTS

DESIGNER GREETING CARDS • VIDEO LIBRARY

8.30 a.m. - 9.00 p.m.

- Monday - Saturday -

10a.m. - 1p.m. and 6 p.m. - 9p.m.

- Sunday -



All major Credit Cards now taken

MILL STREET, HARBURY

TEL: 01926 612645



## THE DOG INN Harbury Tel: 01926 612599

*Welcome - from Jay & Maureen*

OFFERING 3 COURSE SUNDAY CARVERY @ £7.95

2 COURSE CHILDREN'S MENU FOR ONLY £3.00



FULL RANGE OF BAR & RESTAURANT MEALS.  
AVAILABLE FROM TRADITIONAL TO THE UNUSUAL.

TAKE AWAY MEALS MONDAY - SUNDAY  
FINE SELECTION OF HAND PULLED ALES,  
INTRODUCING GUEST ALES EVERY WEEK.

\*\*\*\*\*

*Room available for private parties*

# D.W.A.G.

O  
U  
G

**Builders**

**Tel: 01926 612460**

**Mobile: 0860 849777**

R  
E  
E  
N

Local Tradesmen who take pride in their work.

We specialise in rebuilding half-timbered and period buildings, renovations, extensions, conservatories, patios - in fact any form of building work.

**ESTABLISHED OVER 30 YEARS**

**GOOD FENCING  
MAKES GOOD  
NEIGHBOURS**



**"You've seen the Rest  
Now see the BEST"**



**ROLLASON  
FENCING AND SHEDS  
EST 1964**

*Professional erection service available  
(01926) 613009 or (01926) 612066  
Fosse Garage, Fosse Way, Harbury*

**SOUTHAM**

*physio first*

**CENTRE**

**JACKIE SNELL**

**MCSP SRP**

**CHARTERED AND STATE  
REGISTERED PHYSIOTHERAPIST**

**Health insurance  
recognised**

**10 Daventry Road,  
Southam**

**Tel: 01926 614614**

Member of the Organisation of Chartered Physiotherapists in Private Practice



*Traditional Acupuncture  
&  
Chinese Herbal Medicine*



**FRANCES  
FARRER**

**MBAcC. RCHM  
(Cert. Ac. Beijing)**

The combination of Chinese Herbs and Acupuncture. Laser Therapy now also available, offers help to a wide spectrum of illness covering stress, anxiety, P.M.T., headaches, back, shoulder or elbow pain. and more serious problems such as arthritis and M.E.

*For information ring  
01926 817583*

**WHITEHALL CLINIC OF  
NATURAL THERAPY,  
7 Warwick Road,  
Southam, CV33 0HN  
*Parking facilities***



Morris, it first formed to provide a barn dance band to entertain some recently-made German friends from Warwick's twin town of Verden. That evening, organised by Hereburgh Morris, was open to the public, and was an enormous success. As a result, in the ensuing years, The Hereburgh Ceilidh Band have played for a variety of events, both charitable and private.

*\*Note: The Gaelic word ceilidh - pronounced 'kayley' - literally means 'a gathering', typically a family or community gathering where there might be an informal mixture of social dancing, singing, reciting - anything, in other words, that anyone would like to contribute or lead. Latterly, on the folk scene it simply means what most of us would think of as a barn dance - an evening of dance where a caller describes the dances by explaining the moves, and then calls the instructions out while the band play the music.*

Increasingly, at the end of an evening, we have been thanked with the words: "We've really enjoyed ourselves tonight. If you're doing any other public ones locally, please let us know!" So we are.

The Hereburgh Ceilidh Band (suggestions for an alternative name with local connections gratefully received!) would like to put on a public ceilidh 'just for fun'. We've booked the Village Hall for **Friday 9<sup>th</sup> May** and have asked the *S.H.A.K.* committee to help us out by running a bar (and raffle, if they would like to maximise the fund-raising opportunity!). Our aim is that it should be a social evening, welcoming to young, old, experienced dancers and beginners alike. We'll do our best to make the music good enough for listening, so don't be put off if you're curious but don't want to dance. Look out for details in next month's magazine and posters around the village.

**Lynne Cooke**

## **SOUTHAM SCHOOL PTA**

Do you remember the songs and tunes of the 60s and 70s? If you do and fancy a good night out, Southam School PTA invite you to their Spring Fever Dance with the Roddis Bros on **19<sup>th</sup> April 7.30pm**. Tickets are £5 and available from school or Sue Lord 613722. Proceeds from the evening are going towards new crash mats for the gym, so please come along, especially if you have a child at school.

**Southam School PTA**

## HARBURY NURSERY SCHOOL

Monte-Carlo came to Harbury! Saturday 8<sup>th</sup> March saw the largest gathering of hopeful gamblers seen in Harbury this year. The setting, the Village Hall, stake money - courtesy of Monopoly.



Monte Carlo Night - Don Vincent deals the cards

The hopefuls were first encouraged to sample the beer and wine and then invited to the tables. Roulette and Black Jack ruled their lives for the next hour. A break was then taken for hunger to be satisfied, and then the gambling re-commenced in earnest.

When *place your bets* was called for the last time and the last cards dealt and the last wheel spun, not only was the Nursery School £430.61 better off, but so were the top female and male winners (all be it, by only a toiletry gift pack and a bottle of whisky).

The evening was deemed to be a great success by all who attended and we look forward to the next spin of a wheel.





Trevor Jay acting as a croupier

Don't forget our Tom Hauley Room coffee morning on **Saturday 26<sup>th</sup> April** and our 80/20 Sale on **Saturday 10<sup>th</sup> May** at the Village Hall. Telephone Sue Graydon on 612479 to book a table to sell all those unwanted clothes, toys and equipment. Also our next cake stall outside the Library is on **Thursday 8<sup>th</sup> May**.

Denise Vincent



## HARBURY PTA

We gave you the answers - we forgot to name the winners - OOPS! There were no word perfect entries and so the two closest shared the total prize money. They were:

Mr. & Mrs. G.T. Goodman, "Montgomery House", Harbury  
Mr. S. Mitchell, Odingsel Drive, Long Itchington

**Well done!** Special thanks to the Goodmans who, on receipt of their prize, promptly donated an equivalent amount to PTA funds.

Thanks too, to Chris and Leslie for masterminding the Quiz and sifting through the entries. Rumours are they're already compiling next year's!

The children of Harbury School are holding a Home-Made Afternoon on **19<sup>th</sup> April** at the School. They are going to provide cakes, biscuits and a variety of savouries. Portions of these will be available for a small charge. Tea, coffee and home-made drinks will also be on sale.

If you have a favourite recipe or dish please bring it along! Everyone will be made very welcome. We would like anybody from the village or further afield to come along and enjoy themselves.

A bucket will be strategically placed for you to show your appreciation as you leave!

**Advance Notice:** PTA Summer Metro Disco, Saturday 28<sup>th</sup> June at Harbury Primary School!

**Note:** *The School PTA would be very grateful if residents who are not parents of children at the School could collect their school vouchers from Sainsbury's and ASDA, and tokens from Weetabix, and hand these to a current parent - or drop them in the pouches in the School lobby. These vouchers are already being collected by parents and help us to equip our school with computers and other useful equipment. Thank you!*

**Sue Buck**

## HARBURY CRICKET CLUB

Harbury Cricket Club opens the 1997 Season shortly. There have been some major changes in the organisation of the Club over the winter. A Saturday XI will now participate in the Coventry and District League.

This should ensure some lively and competitive games on Saturday afternoons on the Middle Road ground shared with Harbury Rugby Club. It has been clear for some time that many of our traditional - and stronger - opponents prefer to play league cricket, and many younger members of the Club are looking forward to the challenge, under the Captaincy of Will ('Century') Russell, with Zach Briggs as Vice-Captain. There are some good quick bowlers and fast scoring batsmen available. The League side does not start its main fixtures until May, but will play some warm-up friendlies before that.

A Sunday XI will continue to play Friendlies against other traditional opponents. Many of these games are village matches and promise to be pleasant but vigorous contests. With some change of players this could be a strong team, and Les Sollis will be challenged to stay at the top of the batting averages. The team could also include all three Lowe brothers Gary, Richard and Ian, playing in the same team. The Sunday XI will be captained by Mike Daniels with Ian Jackson as Vice-Captain. The first match is likely to be on **20<sup>th</sup> April** and will be played away at Darlingscott.

The square promises to be as good as ever under the care of Richard Carr. The sight screens will shortly be returned to the vertical and new players will be very welcome for both sides, when nets begin on **1<sup>st</sup> April** at Middle Road starting at 6pm. The Club has plenty to offer both the leisure cricketer and the athletic sportsman. There are no prizes for guessing which category some of the present players fall into, though since there is a chance of the Club Secretary, Ian Holroyd, playing this season, there will be a representative of at least one of these groups present. We look forward to seeing old players, new players and spectators at the ground from the end of April onwards.

**Ian Jackson**

## **HARBURY UNDER 16/15/14 FOOTBALL**

On Thursday 6<sup>th</sup> March I was approached by a number of lads who asked me to referee a match for them. They had arranged a game on the Saturday between a Harbury Under 16 with lads from 12 years onwards from Harbury versus a team which included representatives from Myton and Southam Schools. Not only was I impressed with the way these lads performed as team units, but also with their attitude and commitment in

arranging the fixture by themselves. Since this fixture, Peter Evans and Oliver Grimes have deputised for Harbury 1<sup>st</sup> team and I'm sure more will follow.

Training: As from **Wednesday 2<sup>nd</sup> April** there will be training and games at the Village Playing Fields. So if you are 15+ and interested, then come up, as I'm only too glad to see you there.

**Paul Gladden**

## **HARBURY LADIES NETBALL CLUB**

The season ends soon and we still haven't seen any league tables to establish just how well the teams are faring in their respective divisions. We know that the 'A' team is winning matches and that the 'C' and 'D' teams are holding their own, but problems have beset the 'B' team and caused many games to be lost by only 1 or 2 goals. Last Saturday they played really well and won their match at Warwick University, which perhaps means a winning streak at last.

As from the **Thursday after Easter** we will be practising outside on our own court and this will continue throughout the Summer, at 6.45pm for an hour or two, depending on the light. If you think you'd like to try your hand at netball do come along and join us. New players are always welcome at practices as we need "new blood" for next season.

The perimeter fencing around the court has been erected and we are pleased with it. Thanks must go to Janet Rawlings for the work involved in organising it. Also John Woodward deserves a special vote of thanks because he gave up a lot of time initially to encourage and advise us and also organised the planning application. We hope it meets with his approval! He is nurturing some trees for us which, along with benches, should complete the landscaping.

Thank you to all the teams who supported the quiz at Harbury Club on Sunday when we raised £154 for our funds. Roger Eaton supplied the questions once again and we are really grateful for his continued support and commitment.

As we have to pay back a loan for our contribution towards the fencing, there are two further fund raising activities planned during the next six weeks:



A spectacular Sale and Fashion Show will be held at the Village Club on **Tuesday 15<sup>th</sup> April**. £2 per ticket. There will be some excellent bargains for ladies, so do come along. There will be a Dance on **Saturday 3<sup>rd</sup> May**. Once again at the Club, dancing to Blind Date. Tickets £5 which includes light refreshments, 8pm till late.

### **Pat Summers**

## **HARBURY TENNIS CLUB**

The Tennis Club is starting its new season on **1<sup>st</sup> April** and until the end of September, club sessions will be held on Tuesday and Thursday evenings, Saturday afternoons from 3-5pm and Sunday mornings from 11am until 1pm. The subscription of £23 offers excellent value as there are monthly social tournaments, friendly fixtures with other local clubs, adult coaching sessions and league matches for the competitive players.

There is an opening social tournament on **Sunday 6<sup>th</sup> April** at 2pm and anyone considering playing this year will be most welcome to join us. Further information about the club can be obtained by phoning:

**Angela Woodruff 612004**  
**Colin Mercer 613284**

## **HARBURY N.S.P.C.C.**

The Harbury NSPCC would like to thank Divertimento for a magical evening of music and also Father Brown for the loan of the Church! The evening raised £300 for NSPCC funds.

Our next event will be a Summer Hanging Basket Demonstration on **24<sup>th</sup> April** at 7.30pm in the Village Hall. The evening will be hosted by the Head Gardener from Wappenbury Hall who gave such an enjoyable demonstration of winter baskets in the Tom Hauley Room last autumn.

### **NSPCC**

## **1<sup>st</sup> HARBURY CUBS**

Winners of Leamington and District Cross Country age group 8-10½ years. Five members of the team are 8 years old.



**Back LtoR:** Richard Looney, Matthew Farrell, Mathew Whorton  
**Front LtoR:** James Armitage, Adam Gumbell, Charlie Gladden,  
 Flynn Murphy and Tom Hughes

1<sup>st</sup> Harbury Cubs have been entering for 15 years. Best ever position before was third from bottom. Course distance 2.5 miles. 202 runners from all over the Leamington and District area and Harbury came out on top.

**Malcolm Murphy**

## **NATIONAL MENINGITIS TRUST**

Thank you to everyone who supported my coffee morning; making cakes; buying raffle tickets; raffle prizes; donations for the sales table; all the helpers and to those who came along on the day.

We sent a cheque for £166 to the Trust Fund.

**Celia Barrett**

# BLINDS 1/2\* PRICE SALE

VERTICALS • VENETIANS • ROLLERS • ROMANS • PLEATEDS

SELECT AT HOME  
FAST LOCAL SERVICE

Phone now 9am-9pm 7 Days

**FREE  
FITTING**

**Albany** 

\*off current prices on selected ranges

## 01926 421679

If no answer 0800 212532

## P.D.Q. SECRETARIAL

For a professional and confidential  
word processing/typing service:

Letters - Reports - CVs - Theses -  
Mail Shots, etc.  
Laser Quality Printing

*Julie Killian*

*The Bungalow, Chapel Street,  
Harbury - Tel: 01926 612265*

*(Answerphone out of office hours)*

*A service based on Professionalism,  
Discretion & Quality*

## R&S DOMESTIC SERVICES



REPAIRS TO MOST MAKES OF

Washing Machines

Tumble Dryers

Cookers

Dishwashers



PHONE - ROB CENEY on  
HARBURY 613707

## Michael Jerome



**Carpets**



A COMPLETE CARPET SERVICE

- Choose a new carpet from our extensive range
- Expert Fitting - Fully Guaranteed
- Existing Carpets re-fitted
- Professional On-Site Cleaning
- Vinyl Sheet Flooring

6 Meadow Road, Southam

**Telephone: Southam 813325**

Michael Jerome is a Master Fitter with the National  
Institute of Carpet Fitters with 30 years experience.



## FOR PROFESSIONAL HAIR CARE



# Kathleen Ellis

**CHAPEL STREET, HARBURY. ☎ (01926) 612326**

RETAILERS FOR WELLA HIGH HAIR PRODUCTS

TO ADVERTISE CONTACT:  
DAVID SNELL ON (01926) 614 614



# HARVEY BUILDERS

Registered Since 1979

**YOUR LOCAL BUILDER FOR ALL YOUR  
HOME EXTENSIONS AND ALTERATIONS  
FROM PLANS TO COMPLETION.**



**FOR PROMPT, PERSONAL SERVICE PHONE 01926 817906**

REGISTERED  
HOUSE BUILDER

## Westfield Cattery

Middle Road, Harbury, Warks. CV33 9JN

Phone: (01926) 613946 and (0374) 986077

*caring home away from home  
in the country*



## ed **CHIROPODIST / PODIATRIST**

Senior NHS Specialist in Diabetic Foot Care & Podiatric Wound Care

- Intensive treatment plans ● Nail surgery ● Thorough assessments
- Special footwear service ● Verruca clinic ● Insoles and foot orthoses
- Biomechanics & gait analysis ● Evening & weekend appointments
- Town centre clinic with ample free parking opposite ● Also home visits

Mr. J.F. Small  
DPodM, MChS, SRCh  
5, School St.,  
Southam.

Please telephone **01926 811272**

## KANE'S NEWS

HIGH STREET, HARBURY  
TELEPHONE: (01926) 612156

***Much more than just newspapers and magazines!***

- TOYS
- STATIONERY
- GREETINGS CARDS
- WRAPPING PAPER
- PHOTOCOPYING
- DRY CLEANING
- SHOE REPAIRS
- PHOTOGRAPH DEVELOPING

***Why go elsewhere when we're on your doorstep?***

## PAUL WINCHESTER WHEELCHAIR APPEAL

The Sportsman Dinner in February saw the completion of events for Paul's wheelchair appeal. With some pledges still to come in, the appeal has passed the £8,000 figure. This is a tremendous effort and it is a credit to everybody both from Harbury village and elsewhere, who have contributed so generously to the appeal. The support for the 4 events which were organised and the individual efforts - sponsored swims, sponsored pool and various raffles - as well as private donations have enabled the appeal to bring well over double the original target.

Well done and many thanks to everybody, your generosity and support is very much appreciated.

Paul is now home and settling into village life. The wheelchair has been ordered and should be with Paul in a month or so. Again many thanks.

**Ian Holroyd, Margaret Sherrington,  
Paul Gladden and George Mann**

## HARBURY KIDS CLUB

The Kids Club Playscheme will be opening its doors on **Thursday 3<sup>rd</sup>, Friday 4<sup>th</sup>, Monday 7<sup>th</sup> and Tuesday 8<sup>th</sup> April** 10am - 12.15pm. The cost is £2 per child per session.

**April's Special Offer:** Have you been thinking of using the Kids Club? Well now you can. Free. When you pay your £5 membership you will be given 4 free vouchers; 2 of which must be used on Thursdays and your child/children can stay free of charge until 4.30. Offer is only available to new members only. For more details phone 0402 898 171.

**Lynne Jackson**

## HARBURY & LADBROKE NEWS - ACCOUNTS 31-1-97

The annual accounts were presented at the AGM and your committee are pleased to confirm a small profit for the year of £664.42.

Advertising income for the year was slightly down from 1996 at £3,337. Subscription income stood at £3,600.27, an increase of £1,101.12, without this another loss of £436.70 would have been seen.

Costs were tightly contained during the year at £6,385.06, slightly down on 1996 by £94.64. The cost of producing each edition presently stands at £532.

We would like to thank all advertisers and subscribers for their ongoing support.

**Brian Thurogood, Treasurer**

## **HARBURY VILLAGE HALL**

Why not make a note to come along to the Annual General Meeting to be held in the Village Hall on **Thursday 10<sup>th</sup> April** at 8.00pm. Everyone is welcome.

**Bill Middleton**

## **HARBURY CARNIVAL**

Arrangements are now well underway for this year's Carnival, Carnival Dance and a week of activities leading up to the event!! The first of these activities will be the Wheelbarrow Race on **Sunday 8th June** at lunch time, starting this year from The Crown.

A new trophy for the winners of the Wheelbarrow Race has been donated by Margaret Scandrett whose late husband, Brian Scandrett, was involved when this gruelling event was first held in the village. We are very pleased to announce that Margaret has kindly agreed to present the trophy on the day. Entry forms for the Wheelbarrow Race are available from Dan Killian (612265) and local hostelrys.

We are now finalising the plans for the other events during carnival week and so a full programme of events will be published in next month's Harbury & Ladbroke News.

Plans for the Carnival Day are well underway with many surprises!! There are even rumours that the Spice Girls, who are in the area, will be making an appearance on the day.

As we draw to the end of Queen Helen and King Keith we would like to thank them for a job well done. Watch out for the **23<sup>rd</sup> April** when the Youth Club are choosing their successors.



Remember, the success of the carnival is in the hands of participants from the village so how are your carnival float or fancy dress arrangements coming along? Why not form a group and do something!

**John Kemsley**  
**Carnival Committee**

## **WORKING FROM HOME**

We have now enjoyed two excellent lunches at The Dog and hope that everyone has enjoyed the informal atmosphere which gives those working from home a chance to chat to other people in a similar situation.

If you haven't already been to one of the lunches then please come along as we are sure you will benefit from the opportunity to meet up with other home-based people and exchange experiences and ideas.

Although the lunches are very informal, it will be necessary in the future to ascertain the number of people attending prior to the date, in order to assist Jay with the catering arrangements. Therefore, it would be very much appreciated if you could let one of the following people know if you will be attending by the Wednesday prior to the lunch at the latest:

David Thistlethwaite	613555 (phone/fax)
Jim Ward	612401 (fax 612576)
Pete Woodward	613536 (phone/fax)

The dates of the lunches are listed in the Harbury Diary at the front of the magazine and will normally be on the last Friday of each month.

**W.F.H. "P.O.E.T.S. Society"**

## **PLAYSCHEME**

The prospects of a Summer Playscheme in the Village Hall are not looking good. In truth, there are no plans to run one this year. The reason being that too few people have come forward offering to help organise the event. The remaining assets, such as they are, will be distributed within the village.

Thank you to all who have helped over the past few years. It was fun and gave us invaluable experience! We hope there is a group of people

out there willing to take over at some stage. When they do we will gladly give any help and advice (don't do it!) we can.

**From ex-playscheme committee**

## **HARBURY CHRONICLES**

Plans for the Millennium video are on track and fund raising is progressing well. We are grateful to the 'Butterflies' group for their contribution of £31.22 and the Mini Market raised a total of £153.

You may like to make a note in your diaries of some super events still to come:

Wine Tasting Evening: Friday 25<sup>th</sup> April, 7.30pm in the Tom Hauley Room. A range of wines will be offered with nibbles. Wine will be available to order at 15% discount. Tickets from Party Paraphernalia at £3.50 each.

Springtime Music and Verse: Saturday 3<sup>rd</sup> May, 7.30pm in Church. We present, in partnership with the Church, a celebration of the season in music and poetry. Refreshments included. Tickets £3.50 (Senior Citizens £2 and children under 12 years £1) on sale at Party Paraphernalia, or Beryl Checkley and Mary Shelley.

At the Carnival we will be running a Nearly New Clothing Stall, so if you have anything suitable, please save it for the stall. Check your wardrobes for those impulse buys that didn't work, or the item you could not fit into - despite the diet! Don't forget Hubby's wardrobe too, most men horde clothes they never wear - remember aunty's Christmas tie? Look it out, someone may love it. Please bear in mind that this is not a jumble sale, we are looking for good quality, wearable clothes. We are also taking over the sale of teas and cakes at the Carnival, so if you can help in this respect, please let Mary Shelley (612539) or myself know.

I hope that next month I shall have news of our application to the Arts for Everyone Fund - please keep your fingers crossed!

**Anne Megeney (612745)**

## HALLELUJAH HERE WE GO AGAIN!

**A L P H A** - so what's Alpha? Yes, we know it is the first letter of the Greek alphabet - but it is something else. It is the name of a course about Christianity which is making a great impact in this country and across the world. Harbury, never to be left behind, has already staged its first course. Now the curtain is about to go up for the second one beginning on **Monday 14<sup>th</sup> April** at 7.30pm in the Tom Hauley Room.

Why is it so successful? What are folk getting out of it? Here's what a few of the people on the last course said:

*Being able to discuss topics with others made understanding easy.*

*Listening to lay speakers was so helpful to me.*

*I was able to get to know people much better.*

*Since I went on the course I've found it easier to read the Bible.*

*My understanding of the basics of Christianity has improved.*



So just as Alpha is that first letter of the Greek alphabet, don't "beta about the bush", just make sure you are one of the first to sign up. Ring Father Roy Brown on 612377 or Tony Stubbs on 612782 or Rosemary Eld on 613340. Alternatively, sign the list at the back of the Church or just come along on the first evening and see what's it all about - Alpha? It could be it will help you as well!

**Rosemary Eld**

## THAT HEDGE

Harbury Society and the Parish Council wrote to the County and District Councils in protest at the removal of the Bush Heath Road hedge by the new Bryant Homes' estate.

Since then both authorities have sought to prove they were concerned about the environment.

Now Stratford District Council has written to explain how they are



co-operating with the highways' authority to bring some common sense to the problem. They quote a recent case at Upton House where access requirements were reduced to prevent the loss of a wall and mature trees. Up at Hillside Farm all have agreed the hedge must come out on safety grounds, but it has to be replanted with indigenous native species.

Let us hope this co-operation and good sense continues so that we can retain as much as possible of our distinctive landscape and improve road safety.

As Colin Beeby says: *The crux of alternative solutions is quite innovative methods which achieve safety without slavish application of textbook engineering standards.*

**Linda Ridgley**

## **MANOR ROAD GREEN**

Those who live near The Green have been asked their views on possible improvements. So far there have been 8 responses, all but one positive and five families have offered to help with designing and planting.

If you have not yet returned your form please do so as soon as possible!

Provided that most people continue to show support for enhancement a meeting will be held to discuss what should be done.

**Linda Ridgley**



*Windmill Singers of South Warwickshire* present *H.M.S. Pinafore* (Concert version) by Gilbert & Sullivan at The Grange Hall, Southam on **Saturday 26<sup>th</sup> April** at 7.30pm. Tickets: Adults £3 and children £1 from Southam Video, Jacqueline's The Florist or from any member or on the door. Licensed bar available.

Also at St. Michael and All Angels' Church, Newnham on **Saturday 10<sup>th</sup> May** at 7.30pm. Tickets: Adults £3.50 and children £1 including refreshments from Peter 01327 702804, Paul 01327 703303 or Pam Miller 01926 813477 or on the door.

**Pam Miller**

## SOUTHAM & DISTRICT LION'S CLUB

### East Raffle Draw Result:

- 1<sup>st</sup> prize: Mr. P. Pemberton of Knightcote  
 2<sup>nd</sup> prize: Mrs. C. Howard of Southam  
 3<sup>rd</sup> prize: Mr. B. Howard of Southam



Easter Eggs were also won by: Adrian from Daventry, Mr. B. Millichip from Napton, Mr. B. Robson from Gaydon, Mr. T. Lee from Stockton, Mrs. V. Olds from Southam and Mr. K. Brailsford from Southam.

We have two events coming up to which ALL Senior Citizens in this area are invited:

Annual Spring Party - 12<sup>th</sup> April, Southam School Hall. Contact Lion Ken Graham on 01926 813652.

Mystery Coach Tours - 9<sup>th</sup> & 16<sup>th</sup> September. Contact Lion Peter Pemberton on 01926 770433.

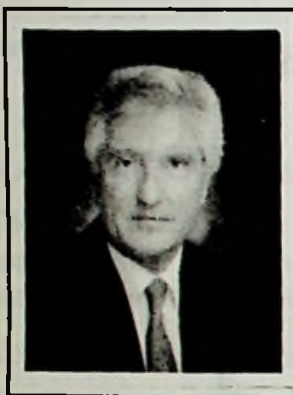
**Jeff Biddle**



**The Crown Imperial and Snakes Head Fritillaries**  
 (see *Gardening Notes* later in the magazine)

# GENERAL ELECTION 1997

**Editors' Note:** *The three main national parties were invited to submit an article each for this edition. Nominations for candidates to stand for the constituency close in mid April and it may be that there will be more parties represented on polling day.*



*Why take a risk, stick with the Conservatives.*

One of life's uncomfortable realities is that our ability to raise our living standards and the standards of our great public services depends crucially on economic growth. Without rising prosperity, all the goodwill in the world cannot improve our Health and Education services, caring for the old and sick and improving our environment.

The Conservatives are delivering a growing economy; we probably have the best economic prospects for over 30 years with low inflation, low interest rates, falling unemployment and rising incomes. This is not an accident, it is the result of Conservative policies, policies which our Labour and Liberal opponents have fought for 18 years. They favour policies which I believe will damage our living standards and public services.

The Social Chapter and minimum wage will cost jobs, the higher spending they plan will lead to higher taxes, higher inflation and higher interest rates. Prosperity will continue to grow under the Conservatives, but a Labour/Liberal Government will threaten that growth. Can your family afford the risk of a Labour Government? People say it's time for a change, but why change when things are going well? No one would say that 18 years of successful marriage meant it was time for a change of partner would they?

**John Mapels**





## THINKING OF LETTING YOUR HOME?

THEN CONTACT

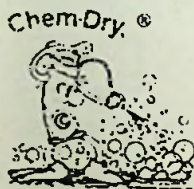
## CONNECT PROPERTY SERVICES

We are specialist high quality letting and property management agents, locally based, with particular experience in letting village properties. Please do telephone to discuss your requirements.

**Telephone: 01926 - 815004**

**- KINETON BASED -  
QUALITY CARPET, UPHOLSTERY  
AND CURTAIN CLEANING SERVICES  
Chem-Dry® Accord**

- Most carpets dry within the hour
- Safe and non-Toxic
- Removes most stubborn stains
- Leaves no sticky or dirt attracting residue
- Carpet & fabric protection service
- Professionally insured



**ROY & LINDA  
HARRIS**

TO ARRANGE A FREE  
ON-SITE NO OBLIGATION  
QUOTATION TELEPHONE

**01926 640029**

INDEPENDENTLY OWNED AND OPERATED

*Jamieson's*

**SPECIALIST IN  
PERIOD JOINERY**

**WHETHER YOU LIVE IN  
A COTTAGE OR A CASTLE  
LET US QUOTE YOU FOR  
REPLACEMENT WINDOWS  
AND DOORS.**

**HARBURY FIELDS BARN  
HARBURY**

**TELEPHONE:  
01926 612921**



## **Priory Tool Hire**

**THE COMPLETE TOOL HIRE CENTRE**

**WATTONS LANE,  
SOUTHAM,  
LEAMINGTON SPA**

- MINI EXCAVATORS • MIXERS • ELECTRIC DRILLS •
- DISC SAWS • GARDENING EQUIPMENT •
- WALLPAPER STRIPPERS • CARPET CLEANERS •

**AND MUCH MORE!**

**MON - FRI 7am - 6pm  
SAT 8.30 - 12.00**

**REPAIRS OF ALL KIND**

# **southam 814770**

**AGENTS FOR CALOR GAS AND BLACK & DECKER PARTS**



## **T.M. & J.M. GREY**

### **BUILDERS**

**EXTENSIONS** **ALTERATIONS**

**GREY GABLES, 46 BANBURY ROAD, SOUTHAM CV33 0HJ  
TEL: SOUTHAM 01926 817744 MOBILE: 0585 495384**



## **THE BISHOP'S FRYER AND OFF LICENCE**

**LADBROKE ROAD • BISHOPS ITCHINGTON TEL: 01926 614093**

**QUALITY FISH AND CHIPS, PIES, PASTIES etc.**

**Now also serving Donner Kebabs**

**Open Mon. to Thurs. 5.00pm to 10.30pm • Fri. and Sat. 4.30pm to 11.30pm  
Fri. and Sat. lunch times • 11.45am to 2.00pm**

## Labour Party Candidate

The General Election is about choosing the next Government of this country. It is crying out for leadership, to replace the drift under the Tories. They are backward-looking with no hope or vision for the future. Under the Tories we have the first generation of parents who do not expect their children to be better educated and have better lives than themselves.

That is why Labour has made Education its number one priority. This includes higher standards in schools, guaranteed nursery places for all 4-year olds, class sizes of 30 or less for all 5, 6 and 7 year-olds, improved teacher training and support and better accountability to parents and the local community. Most importantly we are committed to changing the funding system that has so disadvantaged Warwickshire schools to one that is both fair and open to scrutiny.

I believe my experience, both as a parent and with a proven record of public service, will enable me to represent you, collectively and individually, with the highest degree of integrity and effectiveness.

On 1<sup>st</sup> May you can also vote to continue Labour's effective leadership of Warwickshire, for Jack Heath in Harbury or Bransby Thomas in Ladbroke and complete Tony Blair's winning team.

Finally, for the sake of all those round the world who don't have the opportunity, USE YOUR VOTES.

**Stewart Stacey**



## Liberal Democrats

This General Election is historic. It is the 25<sup>th</sup> and probably the last election of this century. Most people are saying it is time for a change. The question is - what kind of change?

We need to face up to the challenges before us, recognising that things cannot stay the same, but that some values are timeless.



Nothing is more important to our future than our children's education. It is also important that there is a stable and sustainable economy, a clean environment and a safe world.

In facing the future there are good values worth keeping including a National Health system that looks after us when we are sick or injured, a society that looks after our older citizens and communities where people help and respect each other.

Liberal Democrats have clear distinctive plans for the future. We say what is needed and how it will be paid for.

We also believe in the importance of involving local people in decisions about their own lives. The Liberal Democrat administered District Council have taken notice of concerns raised in Harbury about landscape, traffic and planning issues. We will continue to support local initiatives.

**Susan Juned**

**Parliamentary Candidate Liberal Democrats**

---

## **HORTICULTURAL SOCIETY**

Our last talk on Hellebores by Mr. Michael Leach was very informative indeed. He mentioned many plants in the same family, what a surprise some of them were - clematis, buttercup etc. to name just two, a large and complex family.

A reminder to everybody who would like to visit the Malvern Show in May, Mrs. Pat Smith wants definite names and the money please by 5<sup>th</sup> April.

As most people are aware, I think the planned Social Evening has been cancelled this year as we have so much else happening! However, any plants and cuttings intended for that event will be very welcome at the next two meetings, same rule as last year, sell them yourselves.

The Society has been invited by Leamington Garden Club to their meeting and talk on *Roses* on **Wednesday 16<sup>th</sup> April**, admission £1.50. See Mrs. Pat Smith for more information.

Yet another invitation this time from Moreton Morrell Hort. Soc. on

**Tuesday 13<sup>th</sup> May.** There will be a tour of the grounds and glass houses, then the talk on Hellebores and Gentians. Again for more information see Mrs. Pat Smith.

It is not too soon to think about the village show in September. The better weather will entice people out with their cameras, so get clicking - the subjects will be: On the beach (colour); Study of flowers (colour); Rural Warwickshire (colour) - state location - A Winter's Day (monochrome).

Next year's schedule will include a class Autumn Glory (colour).

**Muriel Grey**

### **GARDENING NOTES for APRIL**

Now that the days are lengthening plants benefit from the extra daylight, and growth really begins to be seen. Hopefully there will also be gentle rain, so the purchase of a water butt could be the best buy you make this year. Renewed talk of global warming should also make us think of planning the garden to need less water. One easy step is to mulch borders once they are clear of weeds. Another is to use bedding and container plants which have greater drought tolerance. Those with small fleshy leaves or thick felted or hairy ones will cope well with a dry summer. Fine feathery foliage and grey leafed plants are also good. Amongst the flowering plants dianthus, gazania, geranium, pelargonium, petunia and all the marigolds are useful. It's too late to sow these but the 'tots' on sale now are good value if you can keep them warm until the middle of next month when this area should have had the last frosts.

Sow hardy annuals in pots or directly into the borders, but be sure to mark the sown areas. Deadhead daffodils to prevent them making seed but leave the leaves for at least 6 weeks to carry on feeding the bulb for next year's flowers. Spray roses against blackspot and watch out for aphids. If using sprays throughout the coming months, choose ones which do not harm the beneficial insects, and spray in the evening after they have left the plants.

Evergreen shrubs are best planted now in this area, so that they can develop a good root system through the warmer months. Protect them with a windbreak of netting to help reduce the water loss from the leaves until new roots can adequately supply the plant's needs.

Sow salad crops at 2 week intervals. Sow outdoor tomatoes and sweet corn. Start beans in pots. Cabbages, cauliflowers, kohlrabi and spinach can all be sown now. Cloche a few strawberry plants for an early crop. Feed and water houseplants. When Easter cacti finish flowering they can be reduced in size if need be twisting off individual leaf segments rather than cutting them. Remove flower heads from amaryllis as they fade, but leave the stem. Continue to water and feed the plant throughout the summer to build up the bulb for next year. Indoor azaleas can be repotted and given a light trim if necessary.

### **Plant of the month: Fritillaries**

The native snake's head fritillary with its dainty bowed head is quite different to the bold showy crown imperial which hails from the Caucasus. The legend of this plant is that it stared boldly at Christ on His way to His crucifixion, and ever since has had to hang its head, weeping. It was certainly a favourite of the early Dutch painters of the 16<sup>th</sup> Century, in spite of its shame.

Buy the crown imperial now as a plant to make an instant show in any well drained border, and especially one with alkaline soil. The snake's head however needs a moist soil in a cool semi-shaded position, or naturalised in grass. In this site the grass must be left uncut until June. Dry bulbs of both plants can be bought in later summer and the snake's head will self seed.

**Pat Smith**

## **Letters to the Editors**

*Dear Editors*

*The amount raised at the coffee morning for the Leamington, Warwick and Kenilworth Branch of the Multiple Sclerosis Society was £351. We thank everyone who helped and those whose generosity made it such a success.*

**Brenda Turner & Doreen Bloxham**



*Dear Editors*

*We would like to thank everyone for their kind messages after Jack died. All the cards have been a great comfort. Thank you to those who also attended the service at church and to the rector Roy Brown.*

*Win Bloxham and Family*

*Dear Editors*

*I would like to convey through your magazine a Big Thank you to all our friends and relatives for the help they gave to John and myself while I was in hospital, and my appreciation to everyone who enquired about my progress and sent flowers, cards, and get well wishes.*

*Also I would like to send my grateful thanks to the doctors, nurses and staff who cared for me at Warwick Hospital, and at Heathcote Rehabilitation centre. I am now at home and am managing to get about quite well, so I hope to see you all during the summer months ahead. Many thanks again,*

*Polly Parker*



## **ANYONE FOR TENNIS?**

Players of all standards and ages are welcome to join our friendly club for competitive / social / fun tennis.

Contact: Colin Mercer 613284  
Angela Woodruff 612004

## **Thinking of selling your house in Harbury?**

We've just sold ours, but we want to stay in the village.

We have approx. £90,000 to spend.

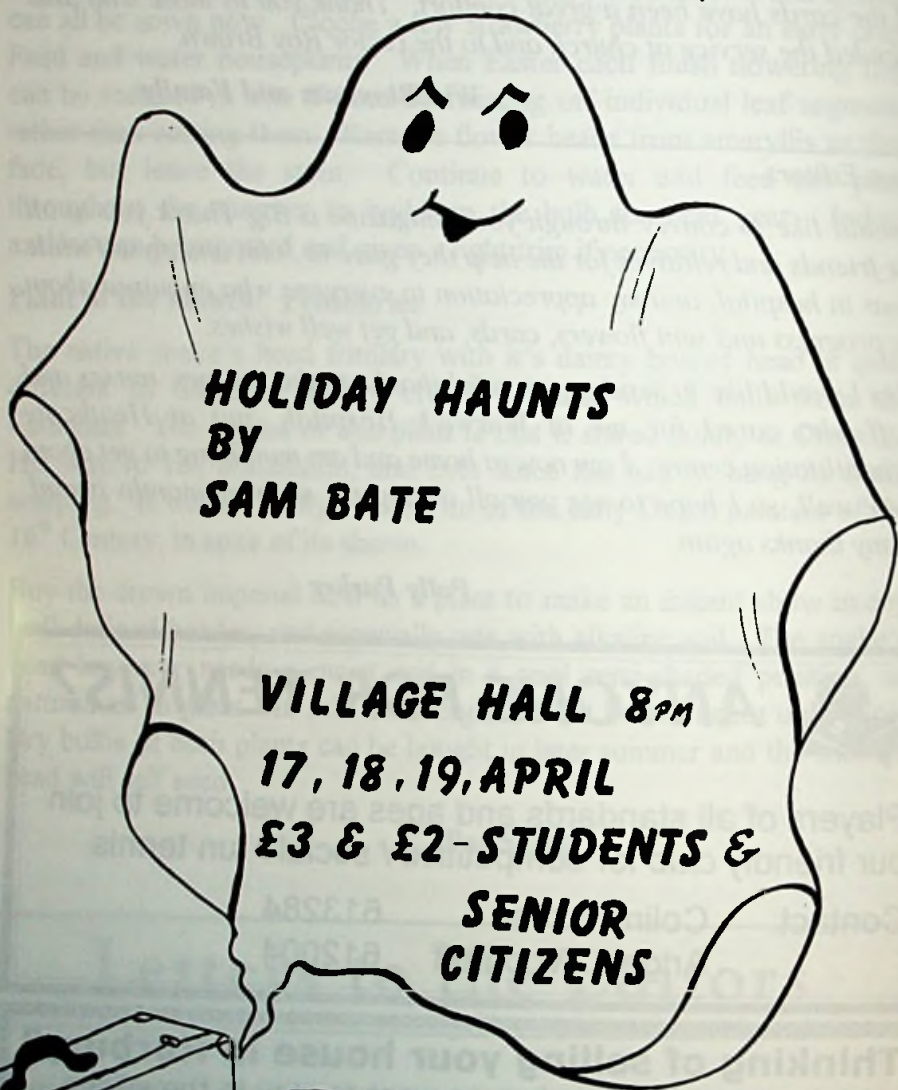
**❖ NO Agency fees ❖**

**❖ NO Hassle ❖**

**❖ NO Chain ❖**

**Call: David Snell on (01926) 614614**

# **HARBURY THEATRE GROUP PRESENTS**



**TICKETS FROM:  
NIFTY NEEDLE  
PARTY PARAPHERNALIA  
OR AT DOOR**

## PLANNING PROBLEMS?

### ARLINGTON PLANNING SERVICES

Chartered Town Planners

have unrivalled local planning knowledge and experience.

Contact Geoff Wilson for a

Free Initial Consultation

**01926 - 430867**

## Harbury Ladies Netball Club



Dancing to

# BLIND DATE

Saturday 3rd May  
at Harbury Village Club  
8pm till late

Tickets £5 (incl. light refreshments)  
Phone Janet on 612841 or Pat on  
612059 for tickets or contact a member  
of the Harbury Ladies Netball Club.

# Westfield Cattery

Middle Road, Harbury, Warks. CV33 9JN  
Telephone: (01926) 613946 and (0374) 986077



# OPEN NOW!

*"Your cat's home away from home in the country"*

**UNDER NEW MANAGEMENT. Prop. LIZ HENRY**  
**FAMILY RUN**

**SAFE, CARING ENVIRONMENT**  
**HEATED BEDS**

**PUT YOUR MIND AT REST WHEN YOU GO AWAY.**  
**CALL NOW FOR DETAILS**





## **PET DOG TRAINING CLASSES**

using modern, reward-based methods

**STARTING ON 7TH APRIL**

**AT THE MEMORIAL HALL,  
BISHOPS ITCHINGTON**

**CLASSES:**

**PUPPIES (up to six months old) (2.30 - 3 p.m.)**

Build up the bond from an early age and teach your puppy the rules in a safe, fun, non-confrontational way

**BEGINNERS - SIX WEEK COURSE (1.30 - 2.30 p.m.)**

Training based on reward and mutual understanding. Dogs must be over six months old, all breeds welcome

**CHILDRENS CLASSES (time to be arranged)**

Where children can learn how to treat and respect the dog and the dog can learn how to react to children. Classes for children aged between 6 and 12 years of age. All children must be under parental supervision

**FOR FURTHER DETAILS CONTACT**

**ELAINE TUBBS**

**01926 612363**

**Member of the Association of Pet Dog Trainers (00200)**

**Member of the Federation of Dog Trainers & Canine Behaviourists**

**Affiliate member of the British Institute of Professional Dog Trainers**

**INDIVIDUAL TRAINING SESSIONS AND/OR  
BEHAVIOUR CONSULTATIONS ALSO AVAILABLE**

**LIVE IN PEACE WITH YOUR DOG - DON'T YOU BOTH DESERVE IT**

# HAWKINS

01926

613524



## LOSING WEIGHT AND INCHES CAN BE MADE EASY THE HAWKINS WAY

What exactly is the Hawkins method of inch and weight loss?

Developed 30 years ago, it's the effortless way to lose inches whilst trimming and strengthening muscles without rigorous weeks of exhausting exercise.

The physiosymmetron body activating machine increases the body's metabolism, improving blood circulation and lymphatic drainage whilst exercising the muscles.

A series of 16 pads are applied to the body in all the appropriate places and go to work breaking down fat and cellulite, burning up to 400 calories per session and all you have to do is lie there and enjoy it. The system is completely safe and monitored by computer, all you feel is a pleasant tingling sensation as a series of wave like contractions work on the muscles. A 45 minute session is the equivalent to several hours hard work-out in the gym (without the effort) and leaves you with a wonderful feeling of health and well-being.

A course of twelve 45 minute sessions over 4-6 weeks is recommended and you can try the system FREE with a 20-30 minute complimentary treatment. The treatment is suitable for people of all ages and dieting advice is given too where necessary. All clients (female) are made to feel welcome and comfortable in their own private room – no need to feel embarrassed HAWKINS IS HERE TO HELP! – Give us a try.

Summers Round  
The Corner

PHONE NOW FOR  
YOUR  
COMPLIMENTARY  
CONSULTATION  
AND TREATMENT  
01926 613524

**PLUS** To complete your new look we offer the much talked about

### NON-SURGICAL FACE-LIFT

SAFE, PAINLESS, RELAXING

the most natural, non-invasive approach to facial toning and lifting.

OUT OF TOWN LOCATION – OUT OF TOWN PRICES

Also available: Aromatherapy, Reflexology and Body Waxing

**THIS TREATMENT IS EXTREMELY BENEFICIAL FOR SUFFERERS  
OF MULTIPLE SCLEROSIS, SCIATICA AND CELLULITE**

## HARBURY PARISH COUNCIL

Harbury Parish Council spends over £23,000 of council tax payers' money on goods and services every year. Throughout each year various contracts are awarded ranging from a few pounds to four figure sums. The Council has a policy of paying fair rates and settles promptly for satisfactory work.

**WOULD YOU LIKE TO WORK FOR THE COUNCIL?** If so, Please send your name and address together with the types of job undertaken to:

**Clerk to the Council,  
Mrs. A. Hodge,  
36 Binswood End,  
Harbury CV33 9LN**

It should be noted that all individuals or contractors carrying out hazardous operations will be required to provide appropriate equipment, protective clothing and to be covered by suitable insurance.

If, you have undertaken work for the Council in the past, there is no need to write to the Clerk.



### **SNOWFORD DOG GROOMING SERVICES**

*SNOWFORD, near LONG ITCHINGTON*

- \* CLIPPING
- \* BATHING/SHAMPOOING
- \* HAND STRIPPING
- \* EAR AND NAIL CARE

*For a caring, friendly service, providing individual, professional attention in all aspects of dog grooming.*

**COLLECTION SERVICE AVAILABLE**

*Telephone 01926 633277*



# **HARBURY CRICKET CLUB**

**Home ground - Middle Road (Harbury RFC)**

**Invites new players - young and old**

**1997 SEASON**

**Saturday afternoons - Coventry &  
District League XI**

**Sunday afternoons - Friendlies**

There is a widely held and  
quite erroneous belief that  
cricket is just another game  
HRH Prince Philip

**Contact:**

***Will Russell (Saturday Captain) - 612078***

***Mike Daniels (Sunday Captain) - 612600***

***Ian Holroyd (Club secretary) - 612527***

**Come and join the Club**



# PINEHAM FARM BUTT LANE HARBURY

LOGS £2.00 PER BAG £45.00 PER PICKUP LOAD  
STICKS £2.50 PER BAG

POTATOES (Reds & Whites) 55lb Bags

HAY £3.00 STRAW £1.00 (per bale)

FRESH EGGS £1.20 PER DOZ.

PET FOOD & ACCESSORIES NOW AVAILABLE

Dog, Cat, Rabbit and Poultry Food

Spillers, Heygates & Arrow Horse Feeds  
(Horse & Pony Nuts, Course Horse, Rolled Barley,  
Chaff, Bran, Rolled Oats & Sugar Beet Nuts etc.)

Prices for Rabbit Hutches, Chicken  
Arks, Bird Cages and other  
Pet Accessories available on request.

(CALL IN OR PHONE FOR DETAILS)

TEL: 01926 612325

Christina Sherman, BA, AMAR

# REFLEXOLOGY

This completely safe, natural therapy brings relief to a wide range of conditions, and is suitable for all ages.

- \* *Special introductory offers*
- \* *Gift vouchers available*
- \* *Home visits by arrangement*

For more Information ring:

01926 612277  
8 Church Terrace, Harbury

## ADVERTISING in the Harbury & Ladbroke News

The opportunity to cost-effectively reach over 900 households and support your local community at the same time!

For as little as **£7.50 a month**, or **£55.00 a year**, you can get your message to an estimated 3,000 people, which represents **excellent value for money**.

### Monthly Prices

1/4 page	£7.50
(or 3 consecutive months for £20)	
1/2 page	£13.00
(or 3 consecutive months for £36)	
Full page	£25.00
(or 3 consecutive months for £70)	

### Yearly Prices (Advertise 12 consecutive months and get 2 months FREE!)

1/4 page	£70.00
1/2 page	£130.00
Full page	£250.00

**Classified Advertising:** 12 pence per word (min. £1 per advert).

**INSERTS\*\*:** £15.00 per 1,000 copies. Advertiser to supply and insert the advert on A5 paper or smaller. Price includes distribution.

\*\* Charities may qualify for this service free of charge.

**DEADLINE:** 15th day of the month.

## TERMS and CONDITIONS

- ⇒ Advert must be clearly laid out as you wish it to appear in the magazine. The printer will set to fit.
- ⇒ Cheque with advert made payable to: 'Harbury & Ladbroke News' and sent to:  
David Snell, 1 Hall Lane, Harbury (tel. 01926 - 612756).
- ⇒ The H&L News reserve the right to refuse an advert.

## **MANOR PROPERTY AND DECORATING SERVICES**

THE IDEAL CHOICE FOR ALL YOUR DECORATING AND  
PROPERTY REPAIR REQUIREMENTS

TELEPHONE

01926 612887 OR 0976 375769



### **S. MEHRA**

Fully Qualified  
**PAINTER & DECORATOR**

Interior & Exterior

*Free Estimates*



9 Margaret Close, Harbury, Leamington Spa. Tel: 01926 612551 Mobile: 0976 24194

## **E.F. SIMS & SON**

PAINTING & DECORATING SERVICES

THE QUALIFIED

PAINTER & DECORATOR

INTERIOR AND EXTERIOR  
EXPERIENCED TRADESMAN

RING FOR A FREE ESTIMATE

**613732**

1 THE POUND, HARBURY



## **A1 SKIP SERVICES LTD.**

Squab Hall Farm, Harbury Lane, Leamington Spa, Warwickshire CV33 9QB

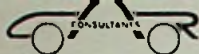
Tel: (01926) 833638 Fax: (01926) 887547

**FAST, FRIENDLY AND RELIABLE SERVICE CALL  
THE COMPANY WITH 20 YEARS EXPERIENCE**



2cu yds. - 20cu yds.





# **CAR CONSULTANTS**

**HAVE MOVED!**

NOW ONLY AT **UFTON GARAGE**, SOUTHAM ROAD, UFTON  
IF YOU ARE BUYING OR SELLING ANYTHING WITH FOUR WHEELS  
CONTACT US NOW! TWO YEAR WARRANTIES AVAILABLE  
**FOR THE BEST DEALS ON WHEELS**

TEL: 01926 613795



## **A. G. KNOWLES** **PLUMBING & HEATING**



**FOR ALL YOUR CENTRAL HEATING & PLUMBING INSTALLATIONS.**  
**ALL WORK GUARANTEED**  
**ESTABLISHED OVER 25 YEARS**

**69 MILL STREET, HARBURY, LEAMINGTON SPA**  
**RING 01926 612331 FOR INQUIRIES & ESTIMATES**

## **THE VILLAGE TAXI-BUS and A & M CARS**

Phone to reserve your seat for Bus or Taxi

**0831 135334 - 01926 612487**

**FREEPHONE 0500 21 22 25 Ext. 10**

*Your local service, Regular bus service to Asda, Sainsbury's, Tesco, etc. door to door.*

*Also Taxis for 1-8 people, local or long distance.*

*No collection fee - you only pay for the miles you travel*

**Please use your local services. WE NEED YOU!!**

## **A.J. BRUNT** **Carpenter & Joiner**

For all types of replacement windows, doors, porches, i.e UPVC,  
Aluminium & Timber, double or single glazed.

Fitted kitchens/wardrobes and all your carpentry needs

**Harbury 01926 612867 • 9 Ivy Lane, Harbury**