

Harbury & Ladbroke News



Ladbroke



THE FOSSE GARAGE

*Accident Repair Specialists
for all leading Insurance
Companies*

**24 hr. Recovery
Service**

**AA and RAC
Appointed**

**Servicing & MOT
Repairs**

Petrol and Diesel



Motor
Agents Association

*Fosse Way, Harbury,
Nr. Leamington Spa.*

01926 613260

24hr. 0850 613260

**SELF-DRIVE
CAR & VAN HIRE
USED CAR SALES**

Southam Carpets & Curtains

- ☆ *Fitted Carpets, Vinyls, Curtains & accessories.*
- ☆ *FREE Measuring, Estimating. FREE Pattern loans.*
- ☆ *For Traditional Quality & Service, contact us.*



Southam (01926) 814944

Coventry Street, Southam, Warwickshire. CV33 0EP



Harbury & Ladbroke News

THE HARBURY AND LADBROKE NEWS, reflecting all aspects of local life is published monthly and produced with the assistance of the All Saints' Parochial Church Council.

Editorial Office: ☎ 612155

Articles to: *Nifty Needle, High Street*

Advertising Office: *1 Hall Lane (☎ 612033)*

The views of contributors are not necessarily those of the Editorial Committee.

OCTOBER 1996

No. 271



Chesterton Windmill Open Days

The Open Days at the windmill were extremely successful, especially on the Sunday when some visitors queued for up to 2 hours to gain access

to the interior. The glorious weather which had brought out the crowds, also proved a boon to the local farmers, who were able to complete the harvest.



**Louise Trice brings in the bales to Chesterton House Farm,
home of the Leamington herd of British Friesians**

We were pleased for the organisers of the Victorian Street Fayre that the rain held off for the early part of the evening, which allowed a good turnout for the event. It is to be hoped that all the people who contributed towards the success of the evening feel that their efforts were rewarded. We would appreciate photographs for inclusion in next month's magazine.

For a night out with a difference in October, why not support the PTA and *S.H.A.K.*'s Auction of Promises on **12 October**. Already some unusual promises have been made which might offer some exciting opportunities to successful bidders!

This month we are pleased to welcome three new members who have joined the team:

- | | |
|----------------|------------------------|
| Samantha Frost | - Youth editor |
| Gordon Robbins | - Distribution Manager |
| David Snell | - Advertising Manager |

Our thanks go to Chris Upton and Tony Brunton for all their hard work over the past few years. Congratulations also to our Treasurer, Brian Thurogood and his wife Ruth, on the birth of Oliver.

Finally can we remind you that our distributors will be calling for subscriptions of £4.50 for the forthcoming year. We are sure you will agree that this represents exceptional value for our comprehensive record of village life.

Harbury Diary

OCTOBER

- | | | |
|-------|----|---|
| Sun | 6 | PENTECOST XIX - Sung Eucharist 9.00am; Evensong 6.30pm
Golf at the Windmill, 10.30am
Home Rugby Match Under 16s v Nuneaton, Under 5s v Chipping Norton, Under 13s v Old Coventrians |
| Tues | 8 | Yoga in Village Hall 1.00-3.00pm
Holy Communion 7.30pm
Village Hall Committee meeting 8.00pm |
| Wed | 9 | Grapevine Coffee Morning in Tom Hauley Room 10.00am-12.00noon
Quiz Evening for 11-15 age group in Harbury Library, 7.30pm
Alpha Course in Tom Hauley Room 7.30pm
Youth Club in Village Hall 8.00pm |
| Thurs | 10 | Holy Communion 9.45am
Thursday Club in Village Hall 2.30pm
NSPCC Winter Hanging Basket Demo. in Tom Hauley Room 7.30pm
(£2 incl. refreshments, see advert) |
| Fri | 11 | Newspaper Collection
Bridge Evening in Village Hall |
| Sat | 12 | Nursery Playgroup 80/20 Sale in Village Hall
Ladies Netball season starts with 'B' and 'D' teams playing at home
Rugby Home Match Firsts & Thirds v Northampton Heath
Plant Sale for Myton Hospice at Wight School 2.00-4.00pm
PTA & S.H.A.K. Promises Auction in Village Hall 7.30pm |
| Sun | 13 | PENTECOST XX - Holy Communion 8.00am;
Sung Eucharist 10.30am;
Evensong 6.30pm
Rugby Home Match under 16s v Old Coventrians, Under 14s v Market Bosworth |
| Mon | 14 | Warwickshire Inter Faith meeting at 43 Mill Street, 7.30pm
Wight School Playgroup AGM in Wight School 8.00pm |
| Tues | 15 | Yoga in Village Hall 1.00-3.00pm
Holy Communion 7.30pm
Harbury & Ladbroke News Committee meeting in Tom H. Room 8pm |

- Tues 15 Mothers' Union in Tom Hauley Room 8.00pm
Harbury School PTA AGM in School Hall 8.00pm
Senior Citizens Committee in Village Hall
- Wed 16 Grapevine Coffee Morning in Tom Hauley Room 10am-12noon
Alpha Course in Tom Hauley Room 7.30pm
Youth Club in Village Hall 8.00pm
- Thurs 17 Holy Communion 9.45am
- Fri 18 School Ends
- Sat 19 Men's Prayer Breakfast in Tom Hauley Room 7.30am
Warwickshire Inter Faith Peace Walk from Coventry Cathedral, 10am
Wight School Playgroup Jumble Sale in Wight School 10am-12noon
Rugby Home Match Seconds v Kenilworth IV, Thirds v Kenilworth V
- Sun 20 **LAST SUNDAY AFTER PENTECOST - Holy Communion 8.00am;**
Family Communion 10.30am
Rugby Home Match Under 15s, Under 14s & Under 13s v Stratford
- Tues 21 Holy Communion 7.30pm; Julian Prayer Group 8.10pm
- Wed 23 Grapevine Coffee Morning in Tom Hauley Room 10am-12noon
Alpha Course in Tom Hauley Room 7.30pm
- Thurs 24 Holy Communion 9.45am
Thursday Club in Village Hall 2.30pm
Parish Council in Village Hall 7.30pm
- Fri 25 Newspaper collection
Harbury & Ladbroke News Articles Deadline Day
- Sat 26 Rugby Home Match Firsts v Warwick
- Sun 27 **9th Before Christmas - Holy Communion 8.00am**
Sung Eucharist 10.30am; Evensong 4.00pm
CLOCKS GO BACK!
- Mon 28 Back to School
Harbury Society Talk *Trees in the Warwickshire Landscape* by Nick Brown in Tom Hauley Room 7.30pm for 8.00pm
- Tues 29 Yoga in Village Hall 1.00-3.00pm
Holy Communion 7.30pm
- Wed 30 Grapevine Coffee Morning in Tom Hauley Room 10am-12noon
Alpha Course in Tom Hauley Room 7.30pm
Youth Club in Village Hall 8.00pm
- Thurs 31 Holy Communion 9.45am
ALL HALLOW's EVE

NOVEMBER

- Fri 1 **ALL SAINTS'** Sung Eucharist 7.30pm followed by *Faith Supper*
- Sat 2 **AL SOULS'** - Holy Communion 9.45am
Rugby Home Match Firsts & Thirds v Burbage
VILLAGE BONFIRE PARTY on RECREATION GROUNDS, 6.00pm
- Sun 3 **8th Before Christmas - Sung Eucharist 9.00am; Evensong 4.00pm**
Rugby Home Match 7-12s v Old Sils
Fun Quiz in Rugby Club 8.00pm in aid of Paul Winchester wheelchair fund

Please note: Adverts to: **1 Hall Lane**
 Adverts presented at least a week before the deadline will
 be set professionally at the printers.

Articles to: NIFTY NEEDLE

Deadline: FRIDAY 25 October, before 5.30pm

**DATES FOR INCLUSION IN THE HARBURY DIARY PLEASE
 TO: LINDA RIDGLEY - TEL. 612792.**

For Tom Hauley Room Bookings	Mrs. Stubbs	612782
For Village Hall Bookings	Mrs. Hughes	612716
For Wight School Bookings	Mrs. Hayes	613488

REGULAR DIARY DATES

BABY CLINIC: Surgery, 2-4pm 2nd & 4th Wednesday
BADMINTON: Village Hall Tuesdays
BEAVERS: Scout Hut, 6-7pm Tuesdays
BELLRINGING PRACTICE: Church, 7.30pm Fridays
BINGO: Village Hall, 8pm Mondays
BROWNIES: Village Hall 6-7.30pm Tuesdays
CHOIR PRACTICE: Church, 6.30pm Fridays
CITIZENS ADVICE BUREAU: Over Southam Magistrates Court, 10am-3pm
 Tuesdays (Except Bank Holidays)
COFFEE MORNING: Tom Hauley Room 10am-12noon Saturdays
CUBS: Scout Hut, Wednesdays
DANCING CLASSES: Farley Room Village Hall, Children & Adults 4-9pm
 Wednesdays.
GRAPEVINE: Tom Hauley Room, Coffee Morning 10-12noon Wednesdays
GUIDES: Scout Hut, 7-8.30pm Monday
GYMNASTICS: Harbury School, 6-7pm (U7-10yrs & Beginners 7-8pm;
 Over 10yrs 8-9pm) Mondays
HARBURY FOLK CLUB: Dog Inn 8.30pm 1st Thursday of Month
HARBURY FRIENDS: School, 8pm 2nd Tues of Month
HEREBURGH MORRIS DANCERS: School Hall, 8-10pm Wednesdays
HORTICULTURAL SOCIETY: Village Hall, 8pm 1st Tues (Oct. to May)
LIBRARY: Stories, Rhymes for U5s, 10am 1st Thursday of Month
NETBALL CLUB: Village Hall Car Park, Training 6.30pm Thursdays;
 Matches Saturday Afternoon
NURSERY SCHOOL: Village Hall, Tuesday to Friday mornings
PLAYGROUP: Wight School, Tuesday to Friday mornings
SCOUTS: Scout Hut, 7.45pm Tuesdays & Thursdays

TENNIS CLUB: (Apr-Sept) Tue & Thur 6.30pm onwards (6pm for April);
Sat 2-5pm, Mon & Wed 1.45-3pm

THEATRE GROUP: Wight School, 8pm last Friday of Month

THURSDAY CLUB: Village Hall 2.30pm 2nd & 4th Thursday of Month

TODDLER GROUP: Wight School, 10-11.30am Mondays & 2-3.30pm Wed.

UPHOLSTERY CLASSES: Wight School, 2-4pm Mondays

W.I.: Village Hall, 7.45pm 2nd Thursday of Month

YOGA: Village Hall, 1.00-3.00pm Tuesday, Diane Surgey Tel.817904

YOUTH CLUB: Village Hall, 7.30-9.30pm Wednesdays

DOCTORS' SURGERY

Mill Street, Harbury

To request a home visit

please ring 612232

*To request a repeat
prescription*

please ring 612232

For an appointment

please ring 613554

DISTRICT NURSE

Southam 815045

HEALTH VISITOR

Southam 815045

POLICE

Southam 812366

SOCIAL SERVICES

Southam 813110

Details of Surgery times are available from the Surgery

DO YOU NEED HELP WITH ANY OF THE FOLLOWING?

Harbury Helpline is for you!

CHILDRENS' CLOTHING: for 0-6 Years old: Call Anne Woodward 613536, Maureen Darby 613330 or Mary Catt 612864.

EMERGENCY TRANSPORT: Call Vivien Neill 613461 or Charles Catt 612864.

HELP WITH FORM FILLING:

- **Job Applications, CV's, Council Tax Forms, etc.**
Call Joanne Cooper 613859 or Jeff Bedford 612753.
- **For University/Job Applications, interviews, CVs:**
Call Philip Bushill-Matthews 612476.
- **For Personal Tax Claims, Rebates on Tax Paid to Building Societies or on Shares:** Call Jim Chapple 612044.

HOME VISITING: Caring for a sick or elderly relative and need a break for a few hours, or you would like someone to call on you. Call Sue Dormer 613254.

HOUSEHOLD BUDGETING ADVICE: Call Tony Brunton 612191.

ODD JOBS ABOUT THE HOUSE: Call Jeff Bedford 612753.

VISITING: Hospital. If you are unable to visit a parent or relative, or parents would like support with a child in Hospital: Call Fr. Roy Brown 612377 or Keith Dormer 613254.

ALL SAINTS' CHURCH HARBURY SUNDAY SERVICES

Holy Communion, 8.00am

Sung Eucharist, 10.30am (Except 1st Sunday of Month:
Sung Eucharist 9.00am)

Family Service, 10.30am on 3rd Sunday of Month

Evensong, 6.30pm (Except 3rd Sunday)

Please see notice board in Church for weekday services or revised times on special occasions.

FROM THE CHURCHWARDENS

Most of us who assume the role of tourists during our holidays, usually make a point of visiting the local church or even a large cathedral. You may wish to admire the architecture and fabric, to find a quiet time or perhaps just to be out of the heat of the day for a while.

We often do not realise that our own church in Harbury has a surprising number of visitors throughout the year. Apart from many from our own country, we regularly meet visitors from Europe, both in and around the churchyard. A few weeks ago we welcomed to a service four Americans from Long Island, New York, who happened to be staying on a longboat at Napton. We are quietly grateful that others do not have to make a 15-mile round trip by taxi each Sunday.

Travelling is of course a two-way business and David Clarke has set off on his travels once more, undertaking a short term project for the Christian Outreach organisation. You will recall his previous trips have been to India. However, on this occasion he will be working in Burundi, which our atlas confirms is tucked in the north-west corner of

Tanzania and south of Rwanda. We wish him well and shall keep him in our prayers.

The Alpha course started in the Tom Hauley Room on Wednesday 2 October. It is a 10 week course, but one in which you can join at any stage. Further details in church or from Tony Stubbs (612712).

Ruth and Jeff

FROM THE RECTOR

At the Family Communion Service in September we welcomed into the Christian family of All Saints, Elliot and Alexander. It was a wonderful experience. It seems appropriate to reflect on how we should encourage our children to become full and active members of the Church.

As I stand at the Altar, Sunday by Sunday it gladdens my heart to offer the Eucharist for us all, from the very young to - well, should I say "more mature". This surely is how it should be.

Those of us who are parents know and those who are not must imagine, how difficult it can be to get a young family ready for Church. (Dads do you help - or stand there fuming whilst Mum struggles?) Then when we get there how hard it is to concentrate, trying to cope with noise and fidgeting; worrying about disturbing others and wondering if we shall ever get a few minutes for our own prayers. Do we always remember how much effort it takes? Or are we irritated by the occasional crying or shouting or wandering round during the service and show it by turning round, etc. God forbid that any child or parent should be put off or made uncomfortable by a sharp look, a loud 'Tut', or an unkind word. In the same way I hope no older person is ignored or treated with disrespect; for each has their place and worth.

It is frequently said and often much to their annoyance, that children and young people are the Church of tomorrow. Far from it, they are the Church of today and tomorrow and we do well to remember it. As a congregation we must make parents and children welcome, encourage them by our example and support them with our prayers.

Parents too must take their part in helping children to grow into the worship of the Church. Bring them to the Altar from their earliest days; as they grow up encourage them to put their hands together, hold their heads up and say Amen after the blessing. Even before they can read

properly, show them the place in the books. Bring a picture book or colouring book for the sermon, or use the children's corner, but don't let it take over the whole service, when they could be learning to take part. Sit where they can see what's going on. Children only learn by our example and encouragement - notice encouragement, not force. Don't worry if we hear 'Hello Daddy', or one goes walk-about and if the crying gets too much, do have a walk round the back of the church. Above all persevere! Find time if you can for an occasional weekday Communion on your own, to give you an opportunity for quiet worship, but if that's not possible - hold in there.

When the time comes, as it frequently does, at teenage or young adulthood, when church going is abandoned or infrequent, again we have to welcome, support and encourage. For we must make it as easy as possible for young people to return to the worshipping life of the Church.

Let us then wonder at the innocence and freshness of childhood and all take our part in fostering these little ones in the love of our Lord, for He said: "Suffer the little children to come unto Me".

Fr. Roy

FROM THE REGISTERS

Holy Matrimony

Harbury, 2 September: Andrew Cleaver to Carole Moore

Harbury, 6 September: Adrian Mann to Julie Glascoe

Harbury, 14 September: Ian Bembridge to Maxine Adams

Ladbroke 21 September: Christopher Hatfield to Wendy Davies

Holy Baptism

Harbury, 15 September: Elliot and Alexander Tawney

Laugh Line

"Sorry Vicar"

The vicar visited a patient in hospital who was recovering from a very serious operation. He was met with the words: "I vaguely remember you coming yesterday and thinking I can't be in heaven, because there is the vicar".

MOTHERS' UNION

Our new programme opened with a communion service in church. We sang some well-loved hymns and heard an address by the Rector on the theme of Love - human love and especially God's love, which we can depend on completely and always.

The evening speaker was Helen Robertson who is a Diocesan Representative for Prayer and Spirituality. She told us about the emergency prayer chains which people can ring for immediate prayers when they are in any kind of trouble. Helen also edits the quarterly prayer letter where people with a long-term need for prayer are mentioned. M.U. members pray for different people each day of the week, using this letter.

We have been asked to collect tins and dried food for the Young Homeless Project. Would anyone wishing to donate food please give it to me or put it in the box in church.

Next month our speaker at the evening meeting is Mrs. Margaret Backhouse on *Famous Women*. As this talk is of general interest and Mrs. Backhouse is a very good speaker, we should be very pleased to welcome non-members to this meeting, which is on **15 October** in the Tom Hauley Room at 8.00pm. Please come.

C. Mary Catt

TODDLERS' SERVICE

At our Harvest Service we said a nursery rhyme about corn and Mrs. Keir showed us corn and corn seeds, flour and cakes made with flour. Mrs. Keir told us how God sends the rain and sunshine to make the corn grow. We said our thank you prayer and sang: *I have seen the Golden Sunshine*. Later we ate the cakes with our drinks.

C. Mary Catt

POP

SPORT

ENTERTAINMENT

GENERAL KNOWLEDGE

and lots more

between 11 & 15?

you are invited to a
QUIZ EVENING

at **HARBURY LIBRARY**
on **WED. 9 OCT., 7.30pm**

This event is being organised by Warwickshire County Library in association with Harbury Youth Club, but you do not have to be a member of the library or the Youth Club to attend.

NIFTY NEEDLE CURTAINS AND BLINDS

*High St. Harbury
Leamington Spa
Tel: 01926 612 927
Fax: 01926 613049*

FREE ESTIMATES

PERSONAL SERVICE

HOME VISITS UP TO 7pm

**MOST WELL KNOWN FABRICS
AVAILABLE AT DISCOUNT**

**OPEN: Mon/Tues/Thur 9-5
Wed/Sat 9-1 Fri 9-6**

*Custom
& Bodywork
Services at*

The Garage

Ladbroke

ALL TYPES OF BODY WORK

FREE INSURANCE ESTIMATES

RESPRAYS

MECHANICAL REPAIRS

SERVICING

M.O.T. REPAIR WORK

WELDING

COLLECTION & DELIVERY

Personal Service from Steve Birch

01926 813590

Mobile 0836 699489

A1 SKIP SERVICES LTD.

**Squab Hall Farm, Harbury Lane,
Leamington Spa, Warwickshire CV33 9QB
Tel: (01926) 833638 Fax: (01926) 887547**

**FAST, FRIENDLY AND
RELIABLE SERVICE
CALL THE COMAPNY WITH
20 YEARS EXPERIENCE**



2cu yds. - 20cu yds.



W. Goodwin & Sons Funeral Directors

38 COVENTRY STREET, SOUTHAM

All arrangements personally conducted
in any district

Telephone: Daytime 01926 812445
Night - time and weekends

John: 812657 Brian: 812656 Cyril: 817718

Visiting Chiropodist

Collette A. Green

SEN MSSCh MBChA

1, NEWSTEAD DRIVE
SOUTHAM
WARWICKSHIRE. CV33 0LT



TELEPHONE
01926 817209

BENCH

TELEVISION

22 OXFORD ST
SOUTHAM

SERVICE

MITSUBISHI DEALER

REPAIRS
SALES
RENTAL



SOUTHAM: 812304

WHATEVER YOU DRIVE
YOU ARE WELCOME AT

DOVEHOUSE
AUTO

SERVICE

TELEPHONE: HARBURY 612809

FOR ALL YOUR MOTORING
MOT's, REPAIRS, SERVICING

Ladbroke News

OCTOBER

Wed	9	Holy Communion 2.00pm
Fri	11	Harvest Supper in Village Hall 7.30pm
Sat	12	Friends of Ladbroke Church Coffee Morning in Tom Hauley Room 10.30am; lunches from 12noon-2.00pm
Sun	13	Pentecost XX - Sung Communion 9.00am
Wed	16	Holy Communion 9.45am
Fri	18	St. Luke Holy Communion 7.30pm
Sun	20	Last Sunday after Pentecost - Sung Communion 9.00am Evensong 6.00pm
Wed	23	Holy Communion 9.45am
Thurs	24	Ladbroke & Deppers Bridge W.I. AGM with Cheese and Wine
Sun	27	9th Before Christmas - Sung Communion 9.00am
Wed	30	Holy Communion 9.45am

NOVEMBER

Fri	1	All Saints' Holy Communion 9.45am
Sun	3	8th Before Christmas - Family Communion 10.30am

LADBROKE CHURCH NEWS

The highlight of September for me was the sponsored cycle ride on the 14 September. Three of us cycled for Ladbroke: Christian Land, Melanie Teverson (my grand-daughter) and myself. Melanie had me pedalling up hill and down dale. It was the most glorious day, especially cycling along the gated roads from Warmington to Fenny Compton. How much we raised will have to wait until next month, not all the money is in yet.

All donations of fruit and vegetables will be very welcome for our **Harvest Thanksgiving Service on 6 October** at the 10.30am service. The children will be leading the readings and prayers. All produce will be taken to Castel Froma, home for the disabled on the following Monday morning.

Tickets for the **Harvest Supper on Friday 11 October** are on sale now from PCC members.

Betty Winkfield

Parkinson Cowan Gas Cooker white stand alone double oven, timer. 2yrs old £800 new, sell £350. Pine wardrobes vgc. £100 each Tel. 614187

FRIENDS OF LADBROKE CHURCH

Please support our Coffee Morning and Lunch in the Tom Hauley Room, Harbury, on **Saturday 12 October**. Coffee from 10.30am, lunches from 12.00noon to 2.00pm. Proceeds to Church Funds. You may be pleased to know that our chairman, Francis Badman is recovering from his hip replacement operation, which took place on 25 September.

pp Gwynne Badman

WOMEN's FELLOWSHIP

Our September meeting was held at Carol Northorpe's home; not only did she provide our meeting venue and the refreshments, she also gave us a most interesting talk on all forms of medical scans and X-rays. Those of us who are very wary of going in a body scanner were much relieved to find that what we thought was a tube (something like the iron lung Poliomyelitis victims had to suffer) is only a square frame about 8" in depth.

Next month Rev. Peter Snow is going to answer members' questions about our Christian worship. We always enjoy his afternoons. The meeting is at Hazel's home, following our Holy Communion service at 2.00pm.

Betty Winkfield

LADBROKE AND DEPPERS BRIDGE W.I.

The Ten Pin Bowling evening in August was really enjoyed by all. Only one member tried bowling herself down the aisle with her bowl!

On 16 September we visited Marton Museum. It was fascinating. Some of the items we could remember our mothers or ourselves using, but not the 1860 washing machine! From there we went to the Church where the Church Warden gave us a brief history of the church and of the days of the resident nuns who are said to haunt the village today. After our delve into the past, we went to the Village Hall where some members of Marton W.I. very ably provided us with supper.

The September cookery demonstration and talk had to be postponed as

the speaker was unable to be with us. Fortunately, our talented treasurer, Jo, stepped into the breach and gave us a talk and demonstration of making our own crackers. It was very informative and we should be making our own crackers this Christmas.

Some of our members are interested in Hand Bell ringing. We have access to some hand bells and would like to involve non-W.I. members, young or old, to join a team. It could be good fun and you do not need to read music to play - just be a bit tuneful! If you are interested, please contact our president, Mrs. Catherine Spence, or me so that we can arrange a meeting.

The **October meeting on the 24th** is our AGM. We will lighten the evening with a Cheese and Wine party. All members should attend or they may find themselves involuntarily on the committee!

Hazel Sharples

LADBROKE PARISH COUNCIL REPORT - Wed. 18 Sept.

The meeting was attended by all Parish Councillors, District Councillor Geraint Morgan, County Councillor Bransby Thomas, P.C. Went and one member of the public.

Firstly the Council noted the addition of the salt/grit bins strategically positioned around the village for use on the roads in icy weather. Villagers are asked to take their own shovels.

P.C. Andy Went recommended Ladbroke as "The place to live" in reporting the third month free of reported crime. Even so, more neighbourhood watch co-ordinators are still needed to help to keep it this way.

Planning consent had been given by Stratford District Council for a sun room onto The Garage, a kitchen extension at Whiteways and an extension to The Sycamores.

A letter had been received from Gloucester Housing Association, who own the 4 plots for affordable housing. The Council is keen that any villager who has an interest in possibly acquiring one of these houses after completion is given the best opportunity. To this end a communication with simple questionnaire will be distributed shortly.

County Councillor Bransby Thomas apprised the Parish Council of

various issues currently being tackled by the County Council: a road safety campaign; trading standards; the organisation of local schools; vouchers to the value of £1,100 to be sent automatically to the parents of all 4 year olds for the purchase of nursery education and the establishment of a community forum, comprising 15 Warwickshire residents for an in depth review of museums and libraries.

District Councillor Geraint Morgan explained that plans are in progress for extensions to the facilities of Southam Swimming Pool in the form of squash courts, etc. He further explained that whilst Biffa collect both general waste and paper waste, this is a contract with Stratford District Council for general waste which can be collected from your door. The paper collection, being a private contract is not covered by insurance on personal property and therefore the paper has to be taken to the road.

Ladbroke will be represented at the next Area Council meeting in Warmington on **3 October**.

Carol Northorpe

HARBURY PARISH COUNCIL MEETING - SEPTEMBER

Listeners outnumbered speakers three to two, but that didn't inhibit Councillors who discussed traffic, waste disposal, planning, crime, environment and the Millennium with vigour.

Mary Shelley wants to produce a Village Video and canvassed PC support. She has to come up with a Working Plan and costing before they will commit themselves.

Councillors had many other ideas (see article later in this issue) including parties whilst the Harbury Society had suggested buying the Paddock by the Church with the help of a Millennium Green Grant. The PC endorsed the Society's Sentinel Oaks proposals and will help negotiate with developers and Biffa for sponsorship.

John Woodward reassured Councillors that the Tip was being well managed. Methane would soon be flared off, but it was hoped eventually to use the gas to generate electricity. They had abandoned plans for a recycling site for the moment as a nearby Waste Transfer Station was already removing anything valuable.

It was possible that 20% of Landfill tax could be available to local

environmental groups and the PC and Harbury Society were keen to make use of this money. Concern was expressed at the likelihood of increased Fly Tipping once the Tax came in.

Stratford District Council is investigating complaints of dumping and unauthorised storage of machinery beyond the railway near the Water Tower and District Councillors assured the PC that enforcement action would be taken at Deppers Bridge if the tipped material there was not removed.

Stratford had granted permission for: a porch at Ladywell Cottage, Binswood End, four detached houses in Farm Street (an old application), had agreed a site meeting at Home Farm Cottage Barn and refused plans for another house in the grounds of Harbury Hall.

John Woodward criticised the Stratford officers for recommending the Hall plans were approved, but District Councillor Cooley explained they feared the DoE might grant them on appeal (where costs could be awarded against Stratford District Council) and indeed an appeal had been lodged.

The Parish Council made no representations on the conversion of the Hall Stables (there was existing permission); a barn conversion at Orchard House, Hall Lane (which had been inhabited), a satellite dish for the supermarket and a new application for houses in Farm Street. They objected to an extra dwelling at Summerfield Lodge (The Ranch House) because it was in open countryside and on the skyline.

The Council had met Bryant to discuss problems with the development of Sonas Mor. There was still confusion over how many homes would be for rent and how many for part-sale, but registration of need with Stratford Housing Department was essential.

The Parish Council would advise Bryant where to direct their lorries to cause the least inconvenience and they were consulting the village on an appropriate name for the estate road. Sharon Hancock wanted it to commemorate Tim Percival.

John Woodward blamed the development for a spate of minor thefts from gardens in South Parade and demanded a high fence.

Success for the Chairman who persuaded Stratford District Council to consider selling the land alongside Dovehouse Autos to the Parish

Council. He has also brow-beaten insurers into covering the Barbecues on the Playing Fields as long as they are inspected weekly, warning notices are erected and ash bins provided.

The Finance Committee will discuss with the Netball Club fencing off their court to prevent it being damaged by children who are using it as a skid patch.

Keith Thompson will survey the block drains round the village - **WHEN IT RAINS**. Phil Holtom and John Woodward are to be sent to the Campion Hills Water Treatment works as a treat.

The Harbury Traffic Census is underway and the County is conducting one on the impact of vehicles going to and from the M40.

The Parish Council met the Director of Planning and Transport and his Chairman Mrs. Tandy, to discuss traffic calming and will press the director to implement the suggestions agreed.

Amanda Randall wants gaps below stiles to let her dog into local fields and Mary Shelley asked what the height of stiles should be for although a "spry young oldie", she found some difficult.

Cars parked on village verges were still causing concern and Phil Holtom reported complaints from Darkie Lane of litter and foul-mouthed kids. His suggestion of a street lamp - (for Darkie Lane!) was unanimously rejected. Sharon Hancock declared that the children were "not doing anything we didn't do!"

Linda Ridgley

HARBURY SOCIETY

The sun shone on the Windmill Opening and for our delightful walk round Ashorne and Newbold Pacey led by Ed Wilson and John Lapraik. It was hardly taxing, but very sociable and they have agreed to plan more walks for next summer.

Our big project for the autumn will be the planting of the Sentinel Oaks. We have taken advice from a variety of experts and hope to begin by putting two small oaks at Temple End and a larger one at Bush Heath Lane to match the existing tree.

The County Forester has agreed to assist and would like to involve as many people, including children as possible. Tell the Secretary if you would like to help in any way.

In the meantime Nick Brown of the County's Landscape Team is

coming to talk to us in the **Tom Hauley Room on Monday 28 October** on Trees in the Warwickshire Landscape. Coffee at 7.30pm - talk begins at 8pm. Everyone is welcome and it is free.

Linda Ridgley

HARBURY WOMEN's INSTITUTE

September's meeting was well attended with lots of activities to keep us going. The speaker was Mr. John Terry - *Ducks in detention*. As a child he spent his weekends helping his aunt and uncle on their farm. He also learnt a lot about W.I. as his aunt was an active member. He speaks to many associations, including prisons, but quickly added that W.I.s are great audiences.

Because of his love of farming, he trained as a Rural Studies' teacher and has taught for 22 years at the same school he attended as a child in Nuneaton. He had some difficult children when he first worked there.

Then he got to looking at the neglected school grounds and had the fantastic idea for a school farm, which after much negotiation and effort, eventually materialised with the Council donating £100 for their first two calves.

With slides he showed us how, over the years, the farm has developed with the help of pupils, parents and friends who could give their time. Cattle sheds, pens, greenhouses, duck and fish ponds were built and flower and vegetable gardens took shape.

The children wrote to the Queen about their farm and Mr. Terry was invited to the farm at Windsor and met the Queen, who was very informative about the animals. She gave them a pedigree calf who duly produced her own offspring. Unfortunately she broke a leg and had to be destroyed and the children wrote to inform the Queen.

The Queen requested that she visited the farm and that was quite an occasion. She showed much interest in everything and seemed to enjoy her day. She later replaced the calf they had lost. The farm has bred cattle, sheep, geese, ducks, rabbits, to name a few. They have a wall full of rosettes for their cattle and sheep, having shown at all the big shows.

Then some years ago Rural Studies was removed from the curriculum and Mr. Terry had to retrain for teaching Science. The farm can only now be worked out of school hours and weekends. One wonders where

the logic is to stop children from learning about caring for and respecting animals; keeping them occupied in helping in something they obviously love.

Mr. Terry has recently been informed that the grant may be cut and could mean closure for the farm. He is such a dedicated person that he is determined that the farm will continue. He has written three books, illustrated by a well known cartoonist, which provide very entertaining reading. As has been said, he gives talks, which we fully recommend and sells whatever the farm produces. We wish him good luck and long may the farm continue.

The Produce Show was a success although there could have been more entries. One person remarked afterwards that she had some lovely roses that she should have entered. So that was one item that could have boosted numbers. A visit in the afternoon would have allowed anyone to realise how interesting and friendly the show was. Delighted to say that Jean Hadley won the Daniels and the Novice Veg. Exhibitor cup. Pat Smith (see photo below) won the W.I. trophy. Well done! Thank you for the gifts for the Produce Stall and to the helpers.



HARBURY LONDIS

Open seven days for your convenience

GROCERIES • THE NATIONAL LOTTERY™



OFF LICENCE • FLOWERS & PLANTS

DESIGNER GREETING CARDS • NEW VIDEO LIBRARY

8.30 a.m. - 8.30 p.m.

- Monday - Saturday -

10.00 a.m. - 8.30 p.m.

Sunday -



All major Credit Cards now taken

MILL STREET, HARBURY

TEL: 01926 612645



THE DOG INN Harbury Tel: 01926 612599

Welcome - from the New Owners, Jay & Maureen

OFFERING 3 COURSE SUNDAY CARVERY @ £7.95

2 COURSE CHILDREN'S MENU FOR ONLY £3.00



FULL RANGE OF BAR & RESTAURANT MEALS.
AVAILABLE FROM TRADITIONAL TO THE UNUSUAL.

TAKE AWAY MEALS TUESDAY - SATURDAY
FINE SELECTION OF HAND PULLED ALES,
INTRODUCING GUEST ALES EVERY OTHER WEEK.

Room available for private parties

D. W. A. G.

O
U
G

Builders

Tel: 01926 612460

Mobile: 0860 849777

R
E
E
N

Local Tradesmen who take pride in their work.

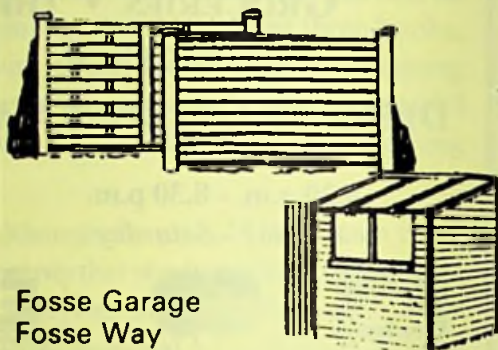
We specialise in rebuilding half-timbered and period buildings, renovations, extensions, conservatories, patios - in fact any form of building work.

ESTABLISHED OVER 30 YEARS

ROLLASON FENCING AND SHEDS

MASTER FENCING MANUFACTURERS

Est. 1964



Fosse Garage
Fosse Way
Harbury

LEAMINGTON SPA
(01926) 613009



All breeds -

- Clipped ■ Stripped
- Shampooed ■ Nails Cut ■ Ears Cleaned
- Glands Emptied

Whether you just need a bath
or you want the full works

Call anytime

Collections available

Tel: 01926 811 171 (Shop)

0374 252 966 (Mobile)

7 Graven Lane, Southam, Warwickshire CV33 0UU

*Traditional Acupuncture
&
Chinese Herbal Medicine*



**FRANCES
FARRER**

BACC. MTAS. RCHM

(Cert. Ac. Beijing)

The combination of Chinese Herbs and Acupuncture, Laser Therapy now also available, offers help to a wide spectrum of illness covering stress, anxiety, P.M.T., headaches, back, shoulder or elbow pain, and more serious problems such as arthritis and M.E.

For information ring
01926 817583

**WHITEHALL CLINIC OF
NATURAL THERAPY,**
7 Warwick Road,
Southam, CV33 0HN

Parking facilities

Our Harvest Supper was a superb evening. The food was excellent, cooked and served by a grand team of ladies. We thank you all for your hard work.

Great entertainment by Romany Pie, the Kenilworth folk group, providing varied songs and saucy yarns. With friendly company that joined in the songs; what more could we need for a great time!

W.F.W.I. County News

Saturday 5 October, 10am: A 5 mile walk starting at Welford-on-Avon.

Monday 7 October, 7.30pm: Darts semi-finals and finals will be played at Snitterfield Bowling Club. Again good luck to our team.

Tuesday 29 October, 7.30-10pm: Autumn Council meeting at the Spa Centre.

Photos for the N.F.W.I. 1998 Calendar to be sent to County House by 31st May 1997, the theme being *Warwickshire Gardens*.

Jeanne Beaumont

HARBURY FOLK CLUB

On September 5th, the Folk Club celebrated its 12th birthday in a very relaxed atmosphere. Was it the absence of a theme that had taken off the pressure?

Most of our regular performers were represented, together with 'nearly-regulars', Mike Houston and Gilly, but with the regrettable absence of Ron and Jean. The mood of the evening was typified by the debut performance of 'Sleepy John' Kemsley and 'Bo' Dudley, taking the weight off their feet to bring us some authentic-sounding blues (unlike my tongue-in-cheek 'Pillowcase Blues'). Pete and Liz included the delightful 'Loch Tay Boat Song', Rick sang 'London River', the Jug Band juggled with 'Sweet Georgia Brown' while Des bravely challenged any Morris musicians to join him on 'Nutting Girl' (we all resisted!). No one complained when Gilly sang 'Apple Blossom Time', slightly out of season, nor did any one mind singing 'Lazing on a sunny afternoon' (again) with John Black.

It was good to see the younger Black generation, the talented Matthew and Eleanor, back at the Club, helping to keep the average age down a bit. They included Paul Simon's 'Fifty ways to leave your lover' which unfortunately always reminds me of Les Barker's spoof 'Fifty ways to lose your loofah!'. The Harvesters sang three of their own songs, including a firm favourite, 'Ships that pass in the night', and Mike finished the evening with the rousing 'Fog on the Tyne'.

By the time you read this, Mike Putnam will have hosted an evening of "Euphemisms" on October 3rd (but was it really as good as it sounded?) and the next Folk Club will be on **November 7th, at 8:30pm** in the Dog Inn, hosted by Ian.

Peter McDonald

6th HARBURY HASH

Easy Pickings decided that we should all have handles this year, so the post Hash quiz is spot the names behind the handles.

Sunday 22 September the hares arrived at Stoneythorpe Hall, including one *Womble*. The weather was fine, the trail devious and the river to be negotiated. By 2.30pm, 71 hashers had signed in with *Hash Cash* (Sue Hartland) and the GM (Mike Putnam) led the pack off in a Southerly direction. Some 10 minutes and 1 mile later, the pack returned to the start, much to the amazement of *Hash Cash* and *Hash Fire* (Janny Freeman). Having got this FT out of the way they set off to the North and the river.

It was necessary to cross the river twice. On the way out using a permanent bridge and on the way back either by a rickety ladder or, for the more intrepid, by rope swing. Some 15 hashers braved the rope with various degrees of success. *Captain Sensible* was the most spectacular, with the new sport of synchronised swimming and swinging, and a handle'less Hunt demonstrated the absorbent quality of jeans.

Next to wildest Bascote where we were met by *Hash Flash* (Alisa Chapman) and *Hash Traffic* (Nigel Chapman). An RG was planned in the deepest outback of Ufton Wood before the long last leg home, but short cuts and lost hashers had depleted the main pack. So On In.

The Hash barbecues were waiting for the hungry hashers, and Anglesey

had organised a supply of lemonade. The obligatory down downs were set by the RA (John Hancock) who randomly penalised hashers for being; Australian, first hashers, taking short cuts, not knowing their car park code, having a mobile phone, but most valid of all, for coming from Milton Keynes.

Special thanks yet again to Jill and Barclay Reid for the run of the estate and the use of their outbuildings. Now the quiz if you can handle it. First person to identify the handles of Pete Bones, John Hancock, Sharon Hancock and Mike Putnam can claim a great prize from *Dug Inn*.

The proceeds of the hash will go to the Scout group, that is when *Easy Pickings* can be found. Well I won't go On On, see you next year if you can handle it.

Doug Freeman

HARBURY THEATRE GROUP

Three dramas take place in one hotel room. "Plaza Suite" by Neil Simon, was written for Walter Matthau, who played the male role in each of these three "Two-handlers". Lacking the versatility of Matthau, Harbury Theatre group have three different casts for their production of this popular play.

A wife whose husband is leaving her or is he? a faded star with seduction on his mind; and a family wedding without a bride - all provide contexts for humour and pathos.

"Plaza Suite" will be at the Village Hall on **28, 29 and 30 November**. Harbury Theatre Group are looking for an American voice coach. If you can help us with a New York accent, please call me on 613214 - soon!

John Stringer

S.H.A.K./PTA NEWS

The summer holidays seem a far distant memory, the suntan's fading fast and it's a long time to Christmas. No need to despair - the fun-raising, fund raising season is gathering steam! S.H.A.K. are well along the road to realising their goal (a refurbished Scout Hut), but have not quite reached their target, whilst the PTA is always on the lookout

for extra funds.

So what is this article about? Well - something **unique** is about to happen. *S.H.A.K.* and the PTA have pooled resources, they have had to endure many long hours ensconced in local hostelrys discussing detail after detail, over pint after pint. But their heads have now cleared, a format has taken shape. And the outcome of these spirited deliberations?

**The PTA and *S.H.A.K.* proudly present
AN AUCTION OF PROMISES
on Saturday 12 October, 7.30pm in the Village Hall.**

Never before in the known history of man have two such forces united to bring to the people of Harbury an evening of sublime entertainment and enjoyment. Not since the dawning of the universe, in the swirling mists of time, has so much energy combined to lay before you an event of such stupendous exhilaration.

Marvel: as the promises unfold as jewels before your very eyes;
Be astonished: at the secret talents and interests of Harbury folk;
Gasp: with relief when you have secured your heart's desire;
Feast: on the delicious supper - a gourmet's delight;
Be astounded: that you only paid £3 for your ticket!

What more is there to say? Only that tickets and catalogues for this amazing event can be obtained from Muggleston's or any *S.H.A.K.* or PTA committee member. For those of you who are curious to know more but can't wait for the evening, here is a random selection of the fantastic promises on offer:

A day with a traction engine: flat cap provided - eat your heart out Fred Debnah;
A 4-wheel drive experience: big boys (or big girls) at play;
Beauty treatment: if your husband needs an overhaul;
Ironing: yes, someone out there likes doing it;
Tour of Parliament: see the inner sanctum of the sanctimonious;

And many, many more....

We extend unreserved thanks to all those offering promises (more welcome) and also to the auctioneer, Terry Lewins, who has the onerous task of keeping things in order! The bar opens at 7.30pm and the bidding soon after. Don't be late!

S.H.A.K./PTA Joint Venture

HARBURY SCHOOL



Harbury School's new Headteacher Paul Milner

September 1996 saw the beginning of my 25th year in the teaching profession. I have worked in a primary school in Kent, a comprehensive school in Coventry and three middle schools in Warwickshire viz.: Nuneaton, Warwick and Rugby.

On the way through this "maze" I have got involved in the normal activities of marriage, children, mortgages and a dog! When these pleasures are not demanding my attention, I like to go mountaineering and watching Coventry RFU Club in the winter while in the Summer I try to get out rock-climbing and playing cricket for a team in the minor Coventry leagues!

After leaving school I decided that I ought to try teaching as it was a

career I had fancied having a "go" at. Since then there has been no looking back. I have found the job an extremely rewarding one in terms of seeing children develop in a range of areas as well as the constant personal and professional challenges being thrown at us on a daily basis. The most interesting of these challenges come from the children themselves.

I am very excited about steering Harbury Primary School through its next years of development, working with the staff, Governors and parents for the benefit of the children, their community and the wider society which we all hope they will go out to support as well-adjusted adults.

Paul Milner

THE WIGHT SCHOOL PLAYGROUP

Things are well underway at the playgroup in what is already turning out to be a busy year.

A big welcome back to all those rejoining us from last year - and an extra big welcome to all the new faces - and their Mums.

On **Thursday 3 October** we shall be having a cake sale outside the Library at 9.30am. Your support in any way is, as ever, much appreciated.

On **Monday 14 October** at 8pm, we shall be having our AGM in the Wight School. After a brief look at business matters this is very much a social evening with cheese and wine being provided. It gives old and new Playgroup Mums (you know what I mean!) a great opportunity to get together; so do try and support the evening.

On **Saturday 19 October** we are holding a Jumble Sale in the Wight School from 10am - 12noon. We'll look forward to seeing you there!

Alison Atkinson

HARBURY NURSERY PLAYGROUP

Playgroup is back in full swing after the long summer break and is delighted to welcome back the "old" faces alongside the next generation of 3 year olds.

As ever we rely on fund raising to continue the valuable work of the playgroup and many events are planned for the coming year - so watch this space!

Saturday 12 October sees our Annual 80/20 sale at the Village Hall, promising many quality bargains of second-hand children's toys, clothes and equipment - doors open at 10.30am. Prospective sellers should contact Sue Graydon (612479) or Denise Vincent (613285) for details. As usual there will be a sellers fee of £1 to cover costs.

A new nursery committee was voted in at the AGM on 25 September. We would like to wish them luck for the forthcoming year and also to thank last year's committee, especially Linda, Denise and Gill, for all their hard work and support.

Emma Evans

HARBURY SCHOOL PTA - AGM

Tuesday 15 October at 8.00pm in the School Hall

Yes, it's that time of year again. The Harbury School PTA Annual General Meeting. Doesn't sound so dreadful does it? Rolls quite nicely off the tongue. Why then, aren't you going to attend and maybe volunteer to help in the future? You haven't the time, can't commit yourself, washing your hair.... Anyway, someone else will be there and get roped in. Plenty of people, no need for you to worry. **Wrong!** A number of dedicated committee members are now standing down after sterling service, so we need fresh faces and new ideas.

It's a myth that parents are "press ganged" into volunteering and that the doors at the AGM are locked behind you until you have uttered the immortal words *Yes please, put me down for the PTA*. We don't employ strong arm tactics, **but we do need more people to get involved**, both at the committee level and as willing helpers.

Why bother? Let's look at what the PTA have provided for the School, this year alone. Perhaps this will persuade you to lend a hand. **To date we have given, or pledged, in excess of £4,500.** this has bought a new computer, a telephone line for the swimming pool, subsidised the leaver's party, purchased numerous other smaller items (too long to list) and, of course, will provide funding for the new

playground equipment.

We organise events large, small and "in between". From the Summer Dance (which raised £1,905 - well done Amanda McKenzie & team, and thanks to all sponsors and contributors), to the Carnival Bouncy Castle (which made the grand sum of £17.11 - where **did** that 11p come from?) "In between" events included Sunday swimming - organising the rota gave Ursula Bowyer quite a headache! We still have a **major event** to come in '96 - **The Auction of Promises** - but read about that elsewhere in the magazine.

It can be hard work but it's always fun and generally in good company!(?) Moreover it's for such a good cause. With these extra contributions the School Fund can afford the "luxuries" it would otherwise have to forego. **Don't assume that someone else will do your bit, be there and do it yourself!**

Stephen Kelly 613175

Jim Ward 612401

SUNDAY BADMINTON

Do you want to play Badminton for fun? We play every Sunday in the Village Hall between 7.00pm and 10.00pm. Standards and experience vary, if you want to join us please give me a call.

Brian Thurogood - 613415

HARBURY CRICKET CLUB - End of Season Report

Another successful season for the Cricket Club ended late September with a comprehensive win over Rugby Cement with yet another century for captain Will Russell.

the Summer weather enabled games to be completed on most Sundays during the season. Two teams were again fielded although on one or two Sundays 9 or 10 players battled hard. The usual blend of youth and age represented the Cricket Club, but it was good to see the younger generation taking the honours.

The 1st XI led by Will Russell had some excellent wins - Will led by example with most runs and most wickets. Will took part in a club record stand - 151 against Ashorne - Will Russell 96 and Gary Lowe (all

COOKERBILITY

Graded and Refurbished Gas & Electric
Cookers Delivered, fitted & inc warranties

Microwave ovens

Fair Trades Approved

Service & Repair



10 Gloucester Street, Leamington Spa,
Telephone: 01926 431164

P D Q

SECRETARIAL SERVICES

For professional and fast
word processing:
Letters, Reports, Theses, CVs, etc.
« Disk Storage • Mailing »

Julie Killian
The Bungalow, Chapel Street,
Harbury, CV33 9HT
Tel: 01926 612265

*A serviced based on Professionalism,
Discretion & Quality*

R&S DOMESTIC SERVICES



REPAIRS TO MOST MAKES OF

Washing Machines
Tumble Dryers
Cookers
Dishwashers



PHONE - ROB CENEY on
HARBURY 613707

Michael Jerome



Carpets



A COMPLETE CARPET SERVICE

- Choose a new carpet from our extensive range
- Expert Fitting -- Fully Guaranteed
- Existing Carpets re-fined
- Professional On-Site Cleaning
- Vinyl Sheet Flooring

6 Meadow Road, Southam

Telephone: Southam 615325

Michael Jerome is a Master Fitter with the National
Institute of Carpet Fitters with 30 years experience



FOR PROFESSIONAL HAIR CARE



Kathleen Ellis

CHAPEL STREET, HARBURY. ☎ (01926) 612326

RETAILERS FOR WELLA HIGH HAIR PRODUCTS

TO ADVERTISE CONTACT:

26 FARLEY AVENUE, HARBURY. TEL: 01926 612033

HARVEY BUILDERS

Registered Since 1979



**YOUR LOCAL BUILDER FOR ALL YOUR
HOME EXTENSIONS AND ALTERATIONS
FROM PLANS TO COMPLETION.**



FOR PROMPT, PERSONAL SERVICE PHONE 01926 817906

REGISTERED
HOUSE BUILDER

WESTFIELD CATTERY

Middle Road, Harbury

(opposite Rugby Club)

Tel: 01926 613946

**A pleasant, Safe home away from home
for your cat.**

Escape to discover the tranquil beauty
of the Lake District for a weekend break
or full holiday

WHICHAM OLD RECTORY

continues to offer an especially warm
welcome to Harbury folk.



Home grown food : home baked bread :
home-spun hospitality
Unspoilt beaches, mountains and moor-
land, golf, riding and fishing nearby
Daily and weekly terms on request.

*Whicham Old Rectory
Silecroft,
Millom, Cumbria
LA18 5LS*

*Proprietors:
Dave & Judy Kitchener
Tel: 01229 772954*

GREENLEAF FARM SHOP AND NURSERY

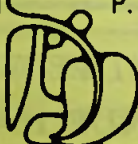
Fresh Vegetables, Fruit, Cut Flowers,
Pot Plants, Seasonal Bedding Plants,
Shrubs, Compost, Logs etc.

STOCKISTS OF
Old Mill Preserves
Ornamental Pots
Bowls & Baskets

OPEN 7 DAYS A WEEK

01926 812116

P. HEALEY ND (Hort)



"Between Southam & Ladbroke"

even) 40. The 1st XI also scored the highest innings - 289 - against Barford.

1st XI results: Wins 11; Draws 7; Lost 4

AVERAGE BATTING

	Innings	Runs	Average
Zack Briggs	10	410	51.25
Will Russell	21	712	39.56
John Clifford	19	355	20.88
Seb Briggs	12	212	19.27
John Wilkinson	15	228	15.2

AVERAGE BOWLING

	Overs	Runs	Wkts	Average
N. Maunder	14	55	8	6.88
Zack Briggs	38	119	10	11.9
John Clifford	133	416	29	14.34
Gary Lowe	31	112	7	16
Will Russell	203	708	43	16.5

2nd XI - The main feature the season has been the maturity of the youth and return to youth by the more mature members of the team.

Younger generation

Greg Sherrington - 49 not out and 56 plus some good catches continued to progress;

Andrew Daniels - agility in the field (like his Dad) and a useful batting display against Barford;

James Tancock and Richard Lowe bowled well against some strong sides.

Senior Generation

Les Sollis in his 66 46 26th season for Harbury made his highest score (so far!) a fine 80 against Kineton. His fielding continued to amaze us all - ask the Chairman and the President.

Special mention must go to Paul Bennett who despite being elected 'Vice Captain of the 2nds', represented the 1st XI more often than not and when deputising for skipper, Mike Daniels scored a splendid 107 against Bishops Tachbrook.

Richard Carr helped strengthened the batting as well as taking over behind the timbers.

Councillor Holtom proved himself an all rounder (!?) taking wickets (usually peaking with the first ball) and always ready to congratulate a fielder wringing his hands in agony taking a catch or saying well done to youngsters several years his senior.

As for results: The main result has been the wonderful team spirit displayed by all the team members. We played hard to win within the spirit of the game and made many friends along the way. We almost won several and actually lost quite a few; our saving grace being one or two draws which we tend to count as victories.

All the team thank Mike Daniels for being the ever enthusiastic captain, what would the team do without him - and a special thanks to Sheila Carr for the splendid teas (made the result seem less of a priority).

Club Dinner: **Friday 6 December.**

Ian Holroyd

HARBURY U11 FOOTBALL - Nine. Nein, nein - Ja! Nine.



Nine Men's Morris, or rather Eleven boys and two subs - Alex, Chris, Chris, Danny, David, Jack, Jamie, Michael, Oliver, Peter, Richard, Sam, Thomas - definitely, definitely, delightfully, defeated Daventry.

The season has started well for the Harbury Under 11 Football team -

unbeaten to date and a 9-0 win with hat-tricks for Christopher Harris, Peter Gray and Jamie Norman.

The difference this year is the team effort. The players are looking to control and pass the ball and so we are witnessing some excellent attacking moves with Richard Montague and Oliver Cook setting up the strikers. Defence is also stronger with the solid phalanx of Michael Armitage, Jack Fitzgerald, Chris Jenkins and Thomas Walshe presenting a formidable wall against any opposition. Danny Lloyd, Sam Jones and David Coleman have all had excellent moments too. Then there is Alex Biddle in goal who has had his quietest season yet because of the strength of the rest of the team!

The patience and encouragement of the three fine coaches, Steve Fitzgerald, Bob Jenkins and Trevor Montague is finally seeing just reward - a noticeably numerous nine to nil negotiated niftily. Nice!

Peter Walshe

THE NEW GENERATION



Steve Darby, Jim Farrell and Jim Ward are creating a new generation of soccer superstars on the school playing fields (see photo).

Such is the popularity of football that two dozen have registered to take part.

The first match was played against Wellesbourne on Saturday 21 September with the older squad members who won by a whopping 9-0.

The parents of Harbury have much to be grateful for to the coaches for inspiring and instilling sporting skills and a healthy team spirit in so many of our children.

So if you are passing when a game is in progress, give a cheer for the Under 10s and the Blooming Generation. Thanks Steve, Jim and Jim.

Peter Walshe

HARBURY RUGBY CLUB REPORT

After two years of hard struggle and disappointing results, Harbury Rugby Club enters the new season with plenty of optimism. The coach appointed at the start of 1996, Clive Hunt, has worked hard during the summer months recruiting some new players and the club has managed to lure back some players who left the club during recent seasons. Clive has brought in some experienced players whose talent will be an asset to the club as well as helping the younger players who stuck by the club during the last couple of difficult years.

It's all about results, but 2 leagues win out of 2 and a good Pilkington Shield win gives us plenty of hope for the winter months. These three wins were achieved with some excellent rugby and the club is delighted to see a complete set of backs under the age of 25! Unfortunately, some of these have to be away at college, but hopefully the lure of a successful rugby team will bring them back to play as much as possible.

With the influx of some new players, the club hopes that this season 3 teams will appear, certainly on many Saturdays during the season. The seconds captained by Richard Wood will include experienced players as well as some of last years Colts. Harbury's "own" Peter Rollason has sportingly offered to run the thirds - always the good "hard core" of any rugby club. He is "press ganging" any able or not so able player to turn out for him so, villagers, do feel free to contact Peter!

The Mini and Junior section, as always, continue to be an active and ever vital part of the club, the Junior/Mini committee work extremely hard organising this section of the club - training and arranging matches every Sunday throughout the season.

With all this optimism the club hopes that villagers will come down to support the team on a Saturday afternoon / Sunday morning, with hopefully some good rugby to watch and a drink or two afterwards. We look forward to meeting you.

P.S. Forever the optimist! - anybody wanting a game contact:

Graham Lewis 815196

Peter Rollason 613422

Ian Holroyd 612527

HARBURY U11 and U12 RUGBY - No deal with Sky TV



The Harbury Under 11s and Under 12s rugby teams have failed to secure a lucrative TV deal to be shown at peak time on Saturday evenings (mainly because no one thought of ringing up Sky TV).

BUT the teams have started training anyway (see photo taken at their secret location HQ) and host the beginning of the season Festival as we are going to print.

Anyone interested in joining the teams will be welcome. Training or matches are usually on Sunday mornings at 10.30am. Please contact Paul Harris on 613148 (U11s) and Mike Houston on 812209 (U12s) - you can see what they look like in the photograph, back row left and

middle respectively, accompanied by Sid Gray.

Eat your heart out Sky - we'll probably not talk to the BBC now.

Peter Walshe

HARBURY GOLF SOCIETY

The Harbury Golf Society got off to a good start at the Windmill Golf and Leisure Club on Sunday 8 September. Since its recent formation, the society has over 20 members and 9 of these, including 3 ladies, played in this first event. The winners were for the men Brian Moffat and for the ladies, Dorothy Astill. The society is very much a fun and social group for all standards and ages. Some of the members have already arranged extra games between themselves, so everyone can use the society as a meeting place with other golfers.

Our next event is to be held at the Windmill again, with a limited number of places, on **6 October, starting at 10.30am**. If you are interested in taking up the game, or have played before and would like to join, please get in touch with either Chris Rigby on 612403, or Ralph Jones on 612007.

A small group usually goes to the driving range on a Monday night, meeting at the Old New Inn at about 6pm. If you would like to come along on those evenings, please contact Brian Moffat at the Old New Inn for details.

We look forward to seeing you in the future.

Chris Rigby (Secretary)

HARBURY LADIES NETBALL CLUB

"Do you know that it cost £2,600?" "What did?" "The skid track for cycles at the playing field." "That's not a skid track, it's the **NEW LOOK NETBALL COURT**." "Oh, well, it looks like it's being used as a skid track!"

Yes it does - and what a shame after all the fund raising and appeals so that we could afford it. The green painted surface is covered in black tyre marks. The abuse means that we are having to re-think our improvement plans. We have written to the Parish Council asking for permission to fence it off - on similar lines to the Tennis Court.

Looking on the bright side, we have been really pleased with the influx of new young players into the club and we are looking forward to the new season which begins on **Saturday 12 October**, with the 'B' and 'D' teams at home. Do feel free to come and support us!

The Fashion Show that we held at the Village Club raised a very welcome £266 and there was a lot of interest in another one. We are negotiating with another firm to visit Harbury during the last week in November. This will ensure a wider selection of styles and prices. We'll confirm the date next month, along with other future fund raising events.

Pat Summers

PAUL WINCHESTER WHEELCHAIR FUND

Many of you will know, or know of Paul. After his accident six months ago, Paul is now making a good recovery and can start planning for his return to Warwickshire.

Paul will be living in the Village with his girlfriend Polly in the newly built extension to his parents' house on South Parade. We will all be delighted to see him home.

Shortly Paul will be selecting a wheelchair and through this article we would like to draw your attention to a number of events being organised to help him purchase one which will give him maximum mobility.

Forthcoming events:

Sunday 3 November - Fun quiz at 8pm in Rugby Club, to include a light supper £12 for a team of four. entries to Margaret Sherrington by **25 October**.

Saturday 14 December - Cabaret Night at the Village Club

Friday 24 January 1997 - Race Night at the Village Hall

February 1997 - Sportsman's Dinner, date and venue to be arranged.

We will keep you updated on all these events and look forward to your support.

If you have any enquiries or wish to help in any way, please contact Ian Holroyd (612527) or Margaret Sherrington (613704).

Ian Holroyd

NSPCC

Firstly, we would like to express our sincere appreciation to the Harbury Folk Club, who recently donated the proceeds of a raffle in the sum of £29.40 to our cause again. Thank you from all on the committee.

Secondly, a grand sum of £230 was raised at the jumble sale held on Saturday 4 September. Our thanks goes to all who generously donated items of clothing etc. and to all who helped and supported this worthwhile cause.

Joan Broomfield

GRAPEVINE - A CHANGE OF DAY

As mentioned in last month's Harbury & Ladbroke News, we have been considering changing the day "Grapevine" opens to Thursday mornings.

We will continue to open on Wednesdays only during October, but in November will switch to **Thursday mornings, 10am-12noon** as usual in the Tom Hauley Room.

Numbering seven strong, we in the Grapevine team are looking for at least two more people to join us. We would then help out only once a month, in pairs. If you are interested in being on the rota to help, or would like to know more, please contact me on 613207.

Lesley Jones

HARBURY BONFIRE AND FIREWORKS '96

Unfortunately Jane Thomas is unable to help with the organisation of this event due to other commitments. If there is anyone out there who would like to help, please contact me on **612696** and I will be eternally grateful.

I will be contacting anyone who has helped in the past with vehicles and trailers in the hope that you can help again this year. If you are new to the village and your car has a tow bar, do come and help. It is a great opportunity to meet many people and have lots of fun!

This year the Bonfire will be on **Saturday 2 November** starting at 6pm on the Playing Fields.

Julie Linforth



THINKING OF LETTING YOUR HOME?

THEN CONTACT

CONNECT PROPERTY SERVICES

We are specialist high quality letting and property management agents, locally based, with particular experience in letting village properties. Please do telephone to discuss your requirements.

Telephone: 01926 - 815004

- KINETON BASED - QUALITY CARPET, UPHOLSTERY AND CURTAIN CLEANING SERVICES Chem-Dry® Accord

Chem-Dry®



- Most carpets dry within the hour
- Safe and non-Toxic
- Removes most stubborn stains
- Leaves no sticky or dirt attracting residue
- Carpet & fabric protection service
- Professionally insured

**ROY & LINDA
HARRIS**

TO ARRANGE A FREE
ON-SITE NO OBLIGATION
QUOTATION TELEPHONE

01926 640029

INDEPENDENTLY OWNED AND OPERATED

Jamieson's

**SPECIALIST IN
PERIOD JOINERY**

**WHETHER YOU LIVE IN
A COTTAGE OR A CASTLE
LET US QUOTE YOU FOR
REPLACEMENT WINDOWS
AND DOORS.**

**HARBURY FIELDS BARN
HARBURY**

**TELEPHONE:
01926 612921**



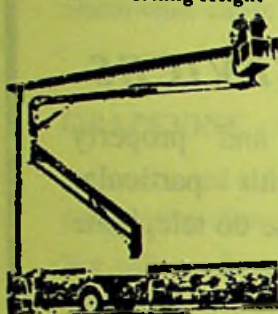
Priority Tool Hire

Opening Times

7.30 - 5.30 Monday to Friday
8.30 to 12.00pm Saturday



Now Available Access
Platform With
13M Working Height



Access Platform From
Only £80.00 per Day (ex VAT)

We stock a full range of
Drill Bits/Wood Augers for
DIY and industrial Tools

Cutting and Grinding discs
also available

For all your Building, Gardening and DIY
Equipment needs and much more



Norman House
Wattons Lane
Southam
Leamington Spa
CV33 0HX

Tel: (01926) 814770 or 812213



We are Agents for
Calor Gas and
Black & Decker

BIRMINGHAM
Dollman Street
Nechells
Birmingham
B17 4RP

Tel: (0121) 333 4050

Opening Times
7.30am - 6pm Monday to Friday



PRICE LIST

Air Tools	Day	2dy	Wk
Impact Driver	8.00	12.00	16.00
Medium Blower	11.50	17.25	23.00
Light Blower One	11.50	17.25	23.00
Floor Saw	18.00	27.00	36.00
Rock Drill	14.00	21.00	28.00
Grinder Saw	12.00	18.00	24.00
Recip Saw	14.00	21.00	28.00

Breakers & Hammer Drills	Day	2dy	Wk
Breaker 110v	22.00	33.00	44.00
Medium Breaker One 110v	15.00	22.50	30.00
Light Breaker One 110v	13.00	19.50	26.00
Hammer Drill Set Chuck	9.00	13.50	18.00
Hammer Drill 1/2 inch Chuck	8.00	12.00	16.00
Hydraulic Breaker Plug	30.00	45.00	60.00
Reciprocating Hammer Drill	10.00	15.00	20.00
Diamond Core Drill	5.00	7.50	10.00
Core Drill Bit	9.00	13.50	18.00

Decorating Equipment	Day	2dy	Wk
Steam Roller 240v	5.00	15.00	18.00
Roller 240v	8.00	12.00	16.00
Paint Roller 240v	6.00	9.00	12.00
8 in Torch Gas Burner	6.00	9.00	12.00
Torch Gun Rough Cast Gun	7.00	10.50	14.00
Torch Gun	7.00	10.50	14.00

Carpentry Tools	Day	2dy	Wk
Planer 240v	10.00	15.00	20.00
Router 240v	12.00	18.00	24.00
Pressure Washer 240v	34.00	51.00	68.00

Ladders	Day	2dy	Wk
25 FT Ladder	8.00	12.00	16.00
Roof Ladder	8.00	12.00	16.00
31 FT Ladder	10.00	15.00	20.00

Concrete & Paving	Day	2dy	Wk
5/8 Mixer Gavel	12.50	18.75	25.00
3/2 Mixer 115240v/Petrol	11.00	16.50	22.00
Vibrating Poker 110v	14.00	21.00	28.00
Vibrating Paver - unit (Petrol)	24.00	36.00	48.00
Slab Cutter Manual	12.00	18.00	24.00
Slab Cutter Large	15.00	22.50	30.00

Saws Sanders & Grinders	Day	2dy	Wk
Grinder 4 inch 110/240v	8.00	13.50	18.00
Grinder 6 inch 110v	9.00	13.50	18.00
Triangle Sander 240v	10.00	15.00	20.00
Panel Sander 240v	7.00	10.50	14.00
Orbital Sander 240v	8.00	13.50	18.00
Belt Sander 240v	9.00	13.50	18.00
Floor Sander 240v	23.00	34.50	46.00
Angle Saw 240v	12.00	18.00	24.00
Jigsaw 115/240v	9.00	13.50	18.00
Circular Saw 110/240v	10.00	15.00	20.00
Sabre Saw 240v	10.00	15.00	20.00
Quick Cut 110v	13.00	19.50	26.00
Quick Cut 2 Stroke	13.00	19.50	26.00
Floor Saw - 4 inch Petrol	28.00	42.00	56.00
Floor Saw - 18 inch Petrol	32.00	48.00	64.00

Miscellaneous	Day	2dy	Wk
Acrow Poles	One week min	2.00	
Dism Poles	One week min	5.00	
Viewing Lights	One week min	5.00	
1 Ton 4 Wheel Trailer	10.00	15.00	20.00
Burders 4 Wheel Barrow	One week min	10.00	
Engine Crane	8.00	12.00	16.00
Dism 24v	22.00	33.00	44.00

Power & Lighting	Day	2dy	Wk
1500W Generator	15.00	22.50	30.00
240v Generator	18.00	27.00	36.00
4 Way Generator Diesel	22.00	33.00	44.00
Transformer 1.5kw	22.00	33.00	44.00
Transformer 3kw	4.00	6.00	8.00
Transformer 4kw	5.00	7.50	10.00
Transformer 6kw	7.00	10.50	14.00
2 Way Junction Box 110v	One week min	5.00	
4 Way Junction Box 110v	One week min	8.00	
Stand Alone Light 110v	8.00	12.00	16.00
Lighting String 110v bulb extra	8.00	12.00	16.00
Flood Light	7.00	10.50	14.00
Extension Leads 110/240v	2.00	3.00	4.00
Red 10 Circuit Breaker	7.00	10.50	14.00

Pumps	Day	2dy	Wk
2" Centrifugal Diaphragm Pump	19.00	28.50	38.00
3" Diaphragm CW 20 x 20 hose	25.75	38.63	51.50
3" Centrifugal CW 20 x 20 hose	31.50	47.25	63.00
Extra Hose	POA		

Compaction Equipment	Day	2dy	Wk
Trench Rammer	17.00	25.50	34.00
Compaction Plate Petrol	18.00	24.00	32.00
FIR Compact Plate Petrol	30.00	45.00	60.00
FIR Compact Plate Diesel	30.00	45.00	60.00
26" Pedestrian Roller	20.00	30.00	40.00

Bowers	Day	2dy	Wk
250 Gallon Water	One Week Min	20.00	
500 Gallon Water	One Week Min	25.00	
250 Gallon Fuel	One Week Min	20.00	
500 Gallon Fuel	One Week Min	25.00	
800 Gallon Fuel	One Week Min	35.00	

Small Earth Movers	Day	2dy	Wk
Skid Steer Loader	100.00	150.00	200.00
1.2 Ton Mini Digger	100.00	150.00	200.00
750 kg Skip Loader Dumper	65.00	97.50	130.00

Garden Tools	Day	2dy	Wk
Garden Roller	8.00	12.00	16.00
Rotavator 5hp Petrol	22.00	33.00	44.00
Rotavator 8hp Petrol	45.00	67.50	90.00
Hedge Cutter 18/21 inch 240v	12.50	18.75	25.00
Strimmer 2 Stroke	18.50	24.75	33.00
Rotary Mower Petrol	12.00	18.00	24.00
Levin Scarifier Petrol	22.50	33.75	45.00
Levin Rake 240v	9.50	14.25	19.00
Levin Fertiliser Spreader	4.00	6.00	8.00
Leaf Vacuum 240v	12.00	18.00	24.00
Leaf Vacuum 240v	10.00	15.00	20.00
Garden Refuse Bag/Sheet	1.50	2.25	3.00
Chopper/Shredder Petrol	35.00	52.50	70.00
Chopper/Shredder 240v	15.00	22.50	30.00

Access Platform	Day	2dy	Wk
13m Access Platform	80.00	140.00	220.00

HARBURY CRAFT CIRCLE

As evenings grow dark earlier, you may find yourself picking up your craft activities again after a summer break. The Harbury Craft Circle would like to remind you that our final Craft Fair for this year, is rapidly approaching. This will be held on **Saturday 16 November** 10am-5pm in the Village Hall.

We continue to provide an outlet for locally made, good quality craft items and strive to offer variety and originality to our customers.

We would be delighted to hear from any crafters new to the locality, who may wish to have a stall and of course, from "old faithfuls". Please contact Mavis on **612983** for any information.

Moya Waterman

TOO MANY HEAVY GOODS VEHICLES PASS THROUGH HARBURY

The Parish Councillors are aware of the dangers of heavy lorries and waste disposal trucks using the village as a route to Ufton Tip.

This, of course, is not only dangerous to villagers, but can also cause damage to roads and buildings, especially the older dwellings. We have examined the problem and have concluded that certain delivery vehicles will always cause some difficulty in any village environment. There is little which can be done in this case.

However, levels of through-traffic can be reduced if we want to tackle the problem for the benefit of everyone.

Firstly, we have asked the County Council, whose responsibility includes highways, to improve those signs on routes which avoid the village centre and to make signs more prominent.

Secondly, for those vehicles going to Ufton tip via the village, a more direct action is required by those concerned enough to want to do something about it!

Users of the tip have been told not to come through the village by the tip operators, the County Council. The Tip Manager also wants to know which vehicles are offending the rules and we should tell him.

To do this, if you see a heavy lorry or waste disposal vehicle passing

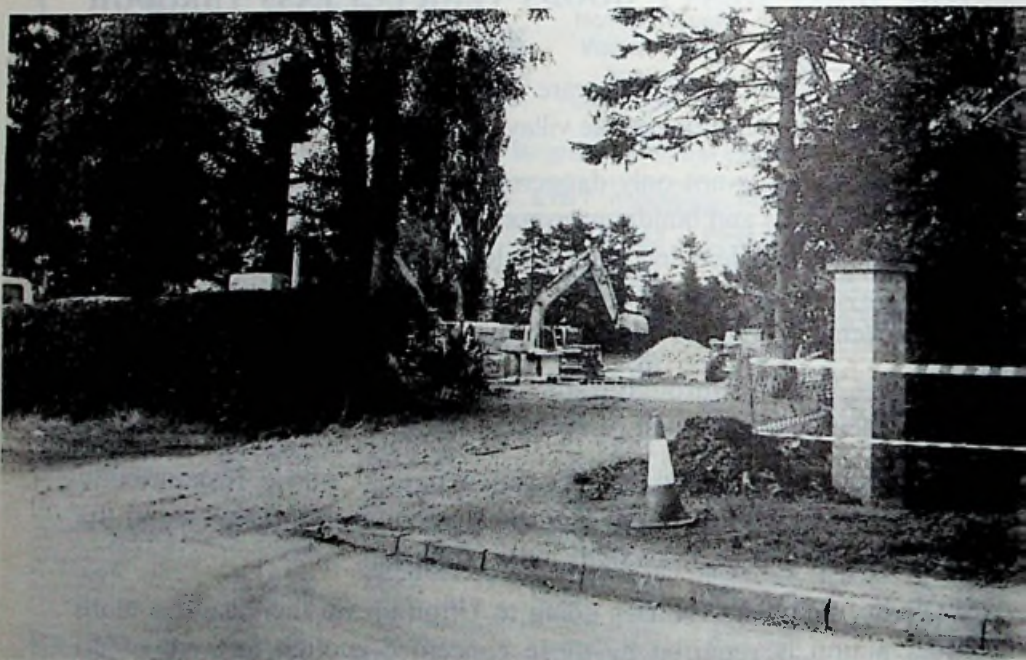
through the village, then you should:

1. Take its Registration Number;
2. Note the business name of the operator on the vehicle;
3. Describe the vehicle, i.e. skip, waste container, waste disposal, etc.;
4. Note the time and date;
5. To be effective: telephone the Tip Manager as soon as possible on 614248 and ask for Mr. Andrew Ives;
6. Let the Tip Manager know how you feel and give him information to enable him to put things right. We need everyone to take action. Then let the Parish Council know how you get on.

Ken Stephenson

PARISHIONERS' VIEWS AND IDEAS WANTED

New Street Name for Bryant Homes Development on Butt Lane



The Parish Council have been asked for their ideas for any new streets in the parish and Councillors are sure parishioners would like to make suggestions. Just to give you a start, the following have been put forward by Councillors: *Hereburgh Drive*, *Sonas Mor* (after the house which has been demolished to make way for the development), *Percival*

Close, or Tim Percival Close. If you would like to show your preference for one of these, we'd like to hear from you. Please write to Mrs. A. Hodge, the Clerk at 36 Binswood End, Harbury, before **Thursday 24 October** (date of next Parish Council meeting).

How to Celebrate the Millennium in Style

Various ideas and suggestions have been discussed at Parish Council meetings, but once more Councillors would very much like to hear parishioners' views on how to celebrate this 'once in a thousand years' event. Ideas already floated have been: a Bowls Green and Cricket Pitch within the village - a possible site maybe a field off Bush Heath Lane; establish the Paddock as a *Millennium Green*, or erect a flagpole or a Maypole. The Parish Council could set up awards for the Best Kept Garden and Best Kept Commercial Property; set up a Community Police Post, possibly using the Wight School, or hold a Community New Millennium Celebration on 31 December 1999 (marquees are already being booked for this date). All these ideas will require considerable organisation and negotiation, so it really is not too early to start. Once more, please put in writing your views on these suggestions and any others you might have to the Clerk **before Thursday 24 October**.

Mrs. A.D. Hodge

WARWICKSHIRE's INTER FAITH

(A revival of the Leamington Group.)

Monday 14 October: Meeting at 43 Mill Street, Harbury 7.30pm.

Saturday 19 October Peace Walk, 10am from Coventry Cathedral.

Further details from:

Rosemary Harley - 613402

LOCAL GIRL WEDS

Former Mill Street resident Analie Hoare, daughter of Ray and Maggie Hoare married local athlete Andy Hart at St. Marks Church, Leamington on August 10 last. Their honeymoon in Tenerife had to be delayed as the day after the wedding, Andy was representing Great Britain in the Grand Prix meeting at the Crystal Palace stadium.

After leaving school Analie went to Cheltenham teacher's training college and is now teaching the reception class at an infants school in Gloucester. Andy also went to Cheltenham and qualified this Summer as a P.E. teacher. Until he went to Cheltenham, I had coached Andy for a number of years. This Summer I did some pre-season fitness training with the Old Leamingtonians RFC; where Sean Geary of Heber Drive is the Captain.

John Wright

'FLU VACCINATIONS

It is once again the time of year to think about protecting yourself against influenza, particularly if you suffer from one of the following conditions:

- A chronic heart or chest complaint (including asthma);
- Chronic Kidney disease;
- Diabetes;
- Lowered immunity due to disease or treatment, such as steroid medication or cancer treatment;
- Any other serious medical condition

Please check with your doctor if you are unsure.

OR If you are frail or elderly.

Please ring **613554** to make your appointment.

NEW NIGHTCALL ROTA - to include weekends

From Saturday 12 October, the Harbury Practice will be using this service to cover emergencies. Our Saturday morning emergency surgery will take place as usual but from 12noon calls will be fielded via a receptionist at Machen Unit, Warwick Hospital. The usual number **612232** should still be dialled.

The unit will be staffed from Noon to 10pm on Saturday and 7.00am to 10.00pm on Sunday.

Patients will be passed, on the telephone, to a Doctor, who will discuss their problem and

- a. give telephone advice
- b. arrange from them to attend Machen Unit for examination and treatment
- c. arrange a home visit.

The practice Doctors will be part of the rota of South Warwickshire G.P.'s manning this emergency service. As you are no doubt aware, they are already taking part in the *Nightcall* service which runs 10pm to 7am every night.

If you would like to know more, please ask our Practice Manager, Mrs. Barbara Andrews.

John Hancock

HORTICULTURAL SOCIETY



Ryan Overton and his giant marrow, which won him 1st prize

All over for another year, the Village Show yet again turned out reasonably well, some new competitors and a wonderful effort from the children. One person remarked to me that the vegetable monsters transported her back to her own childhood in New Zealand! Our thanks to everybody who worked hard to make it all run well and the shop keepers and other outlets for having the schedules.

As the cut-off for entries was earlier this year, Ron found it helped considerably all round. However, the number of entries was down on last year, it was very noticeable in the handicraft, cooking and preserves

and the flower arranging sections. These were all judged by the W.I. and all in all they did not have much work to do, also judging by their comments, the standard was not as good as usual. I think some people were on holiday, and Chesterton Windmill was also open.

Tuesday 1 October is the start of our new season. Mr. Ben Huggans will talk on *Garden Design*. This also means subs are due, £2.00 for the next 12 months of interesting talks and events. We shall also need at least one new committee member as Shirley will soon be moving out of the area. Just in case the magazine for November is not out in time: the AGM will be **Tuesday 5 November**.

Left at the Hall on Show Day: one cake box and one plate. The saga of the tea towels continues - we now have 3!

Finally, below is the list of Cup winners:

CHILDREN

The Buck Trophy	Both age groups	Tara Wilkes
Jean Dunn Cup	7 years and under	Sara Sherman
Fred Lines Cup	8-12 years	Emmeline Smart

ADULTS

The Allotment Cup		Mr. A. Pratt
Top Tray		Mr. P. Clarke
Horticultural Society	Handicrafts	Mrs. J. Taylor
Rigden Cup	Photography	Mr. D. Killian
Daniel Trophy	Cookery & Preserves	Mrs. V. Hadley
Zonik Trophy	Wines	Mrs. S. Batty
Brunton Cup	Flower Arranging	Mrs. E. Zonik
Grey Cup	Novice Vegetable	Mrs. V. Hadley
All Saints' Cup	Fruit	Mrs. M. McDonald
Courier Cup	Flowers	Mr. P. Clarke
Farley Cup	Vegetables	Mr. P. Clarke
Barnes Cup	For best performance by a Society member, winning no other cup	Mr. H. Taylor
W.I. Trophy	For best performance by a W.I. member	Mrs. P. Smith
Wilkins Cup	For most points in the show	Mr. P. Clarke

Muriel Grey

GARDENING NOTES

The nip in the air reminds us that it is time to begin bringing in the tender plants which have bloomed through the summer. Before putting them into the greenhouse give it a thorough clean and think about arranging the plants so that they can be given extra protection should we have a very hard winter. Geraniums etc. can be overwintered in the house on a cool window sill, but do move them when you close the curtains once the nights get cold.

Sow sweetpeas in pots in a coldframe, sow hardy annuals e.g. antirrhinums, in trays now instead of the Spring for earlier flowers. Plant up containers for Winter and Spring colour. Plant tulips and hyacinths.

After we get enough rain to wet the soil again, plant herbaceous perennials. Fork in a high phosphate fertiliser such as bonemeal, to encourage strong root growth. Deciduous shrubs and trees can be left until the leaves fall before you plant them. Put up windbreak netting around any newly planted evergreen shrubs, to reduce evaporation from the leaves.

Shorten long shoots of roses and tall late flowering shrubs to prevent wind rock. Cut out fruited stems of blackberries and hybrid berries. Tie in new shoots. Spring cabbage can still be planted. If you can buy a few plants why not put them in the flower border and harvest them in the Spring before you plant flowers.

Plant of the Month: Acer

Native to most of the Northern Hemisphere, this group of trees and shrubs are grown in gardens for their ornamental bark and foliage, but commercially for their timber. The species from China and Japan are amongst the most decorative of all trees often with the bonus of stunning Autumn colour before the leaves fall. The flowers are usually inconspicuous, but the seeds are like the winged keys of the Sycamore tree which belongs to this Maple family. Most of the 200 species prefer well drained, but not dry soil which is lime free, although the Asian species are more lime tolerant. To see Acers in their full glory of Autumn colours a visit to Westonbirt Arboretum during October is unforgettable.

Letters to the Editors

Dear Editors

My family and I extend to our friends and well-wishers in Harbury our grateful thanks for their sympathies on the death of my wife Ruby - mercifully she is now at peace.

The prayers and condolences have been of great support to us in our bereavement.

Our thanks are also extended to Father Roy Brown, who conducted the service at the church and afterwards at the cemetery.

James Davis

Dear Editors

My husband and myself would like to express our thanks to Fr. Brown and Mrs. Brown and all my friends, for their kindness to Walter, on his last illness. The offers of lifts to Hospital were very much appreciated.

Joyce Waddell

Dear Editors

Jamie Gwen Watts wishes to thank her relations and friends for their care, visits, cards and good wishes.

She has been overwhelmed by their kindness. She is now "almost as good as new".

Gwen Watts

Dear Editors

Can I correct the statement in your editorial of last month's magazine, regarding the housing development at Sonas Mor?

Bryant, the developers, submitted plans for approval to Stratford District Council, which were as usual sent to the Parish Council for comment. Approval was subsequently given for 36 houses of which six were to be for "social housing".

The Parish Council's problem, discussed at the August meeting, was a lack of information as to the allocation and type of the social housing and difficulties in getting a response from Bryant, regarding details of the development.

Since the meeting, the Council have met with a senior representative of Bryant's and discussed such issues as the avoidance of traffic nuisance in the village, reparation of damage to verges, etc. the provision of lighting and the maintenance of landscaped areas on the development.

The Council has also been informed by Stratford District Council that an agreement has been signed with Bromford Carrthus Housing Association to provide the social housing on the site. There will be 6 2-bedroom dwellings; 3 to rent and 3 for shared ownership. I would urge anyone in the village, or with a strong connection with the village, who is in housing need, to register at once with the Housing Department at Stratford District Council.

Yours sincerely

Sharon Hancock
Harbury Parish Council

THE BISHOP'S FRYER AND OFF LICENCE

LADBROKE ROAD • BISHOPS ITCHINGTON • TEL: 01926 614093

**QUALITY FISH AND CHIPS,
PIES, PASTIES etc.**

Now also serving Donner Kebabs

Open Monday to Thursday 4.30p.m. to 11 p.m.

Friday and Saturday 4.30 p.m. to 11.30 p.m.

Thursday, Friday and Saturday lunch times 11.45 a.m. to 2.00 p.m.

• THE CHESTERTON GALLERY •

(MEMBER OF THE FINE ART GUILD)

Regency Arcade • The Parade • Leamington Spa

Tel: 01926 889 669 or 01926 614 253 • Fax: 01926 450548

Specialists in Animal, Sporting Prints & Engravings.

Limited editions by David Shepherd, Diane Howarth, Michael Clark,

Anthony Gibbs, Elizabeth Halstead & other well known artists.

Bespoke Framing Service.

We buy, sell & search for prints for clients.

**PINEHAM FARM
BUTT LANE, HARBURY**

LOGS - £2.00 per bag, £43.00 per pick-up load

STICKS - £2.00 per bag

POTATOES - (from £3.50 per bag)

HAY - £3.00

STRAW - £1.00 (per bale)

BEST QUALITY SHAVINGS - £5.99

FRESH EGGS - £1.20 per dozen

**PET FOOD & ACCESSORIES
NOW AVAILABLE**

Dog, Cat, Rabbit and Poultry Food

Horse feeds - Horse and Pony nuts

(Course Horse, Rolled Barley, Bran, Rolled Oats,
Sugar Beet Nuts).

Prices for Rabbit Hutches, Chicken Arks,

Bird Cages and other Pet Accessories
available on request

(CALL IN OR PHONE FOR DETAILS)

Tel: 01926 612325

REMEMBER

All advertisements should
go to:

DAVID SNELL

1 Hall Lane

☎ 612756

It costs as little as £5.50 to
reach over 90% of households
in Harbury, Ladbroke & Dep-
pers Bridge

NSPCC

invites you to a

WINTER HANGING BASKET DEMONSTRATION

by the Head Gardener of Wappenbury Hall

Time: 7.30pm Thursday 10th October

Venue: Tom Hauley Room

Cost: £2.50 to include tea/coffee

*A wonderful opportunity to learn how to enhance
our homes / village during the dull winter months.*

Please call on the following to order tickets or arrange
FREE TRANSPORT FOR HARBURY SENIOR CITIZENS.

Pauline Hayes - 612179
Carole Bastin - 612708

Jo Stevens - 614186
Joan Bloomfield - 614258

**MANOR
PROPERTY & DECORATING SERVICES**

THE IDEAL CHOICE FOR ALL YOUR DECORATING
AND PROPERTY REPAIR REQUIREMENTS

TELEPHONE: 01926 612887



S. MEHRA
Fully Qualified
PAINTER & DECORATOR

Interior & Exterior

Free Estimates



9 Margaret Close, Harbury, Leamington Spa. Tel: 01926 612551 Mobile: 0976 24194

E.F. SIMS & SON

PAINTING & DECORATING SERVICES

THE QUALIFIED

PAINTER & DECORATOR

INTERIOR AND EXTERIOR

EXPERIENCED TRADESMAN

RING FOR A FREE ESTIMATE

613732

1 THE POUND, HARBURY



A1 SKIP SERVICES LTD.

Squab Hall Farm, Harbury Lane, Leamington Spa, Warwickshire CV33 9QB

Tel: (01926) 833638 Fax: (01926) 887547

**FAST, FRIENDLY AND RELIABLE SERVICE CALL
THE COMPANY WITH 20 YEARS EXPERIENCE**



2cu yds. - 20cu yds.



CAR



CONSULTANTS

**CARS FOUND, H.P.I'D. VALUED AND BOUGHT FOR CASH
QUALITY SELECTION ON DISPLAY AT 'FOSSE GARAGE'
FOR THE BEST DEALS ON WHEELS**

TEL: 01926 613795 or 0860 452222



A.G. KNOWLES PLUMBING & HEATING



**NEW CENTRAL HEATING SYSTEMS INSTALLED.
BOILER CHANGES & RADIATOR REPLACEMENT.**

**NEW BATHROOMS & SHOWERS SUPPLIED & FITTED. ALL DOMESTIC PLUMBING UNDERTAKEN.
PLUMBING & HEATING TO NEW HOUSES AND EXTENSIONS
ESTABLISHED OVER 25 YEARS • ALL WORK IS GUARANTEED.**

**69 MILL STREET, HARBURY, LEAMINGTON SPA
TEL: 01926 612331 • MOBILE: 0374 691635**

THE VILLAGE TAXI-BUS and A & M CARS

Phone to reserve your seat for Bus or Taxi

0831 135334 - 01926 612487

FREEPHONE 0500 21 22 25 Ext. 10

Your local service, Regular bus service to Asda, Sainsbury's, Tesco, etc. door to door.

Also Taxis for 1-8 people, local or long distance.

No collection fee - you only pay for the miles you travel

Please use your local services. WE NEED YOU!!

A.J. BRUNT Carpenter & Joiner

**For all types of replacement windows, doors, porches, i.e UPVC,
Aluminium & Timber, double or single glazed.**

Fitted kitchens/wardrobes and all your carpentry needs

Harbury 01926 612867 • 9 Ivy Lane, Harbury