

Harbury & Ladbroke News ²⁶⁸



Ladbroke



THE FOSSE GARAGE

*Accident Repair Specialists
for all leading Insurance
Companies*

**24 hr. Recovery
Service**

**AA and RAC
Appointed**

**Servicing & MOT
Repairs**

Petrol and Diesel



Motor
Agents Association

Fosse Way, Harbury,
Nr. Leamington Spa.
01926 613260
24hr. 0850 613260

**SELF-DRIVE
CAR & VAN HIRE
USED CAR SALES**

Southam Carpets & Curtains

- ☆ *Fitted Carpets, Vinyls, Curtains & accessories.*
- ☆ *FREE Measuring, Estimating. FREE Pattern loans.*
- ☆ *For Traditional Quality & Service, contact us.*



Southam (01926) 814944

Coventry Street, Southam, Warwickshire. CV33 0EP



Harbury & Ladbroke News

THE HARBURY AND LADBROKE NEWS, reflecting all aspects of local life is published monthly and produced with the assistance of the All Saints' Parochial Church Council.

Editorial Office: ☎ 612155

Articles to: *Nifty Needle, High Street*

Advertising Office: 26 Farley Avenue ☎ 612033

The views of contributors are not necessarily those of the Editorial Committee.

JULY 1996

No. 268

As might be expected, this issue relates to some of Harbury's outdoor activities in the Summer months. Fortunately all the events staged so far, have taken place in glorious weather and we hope the **Garden Walkabout this month**, which has been extended to 2 days, enjoys a pleasant weekend.



Entrants lined up for the Wheelbarrow Race

Our Editorial photo shows the Wheelbarrow Race which made a spectacular comeback - with 13 teams entered for the frenetic dash around the village, visiting local hostleries en route.



Cecil Bloxham taking bets on the wheelbarrow race with bookmaker, Mike Clifton.

At a time when many towns and villages struggle to stage a successful carnival, Harbury continues to produce an amazing diversity of floats. This year there was an incredible number of highly imaginative and creative 'walking entries'.

As you will read in the magazine, a Golf

Society has been formed to encourage an interest in this sport. After Euro '96, Wimbledon and the forthcoming Olympics, this could be your chance to excel in the sporting field!

We hope that readers have noticed a new service offered by the Harbury and Ladbroke News - as **Classified Advertisements** for small items will be accepted at a very low cost (see details on the advertising pages).

Harbury Diary

JULY

- Sun 7** Pentecost VI - Sung Eucharist 9am; Evensong 6.30pm
Ufton & Beyond Evening stroll stopping at White Hart.
 Meet 6.30pm at Ufton Reserve **
- Tues 9** Yoga in Village Hall 1-3pm
 Village Hall Committee 8pm
 Wight School Playground Open morning 10-11.30am
 Toddlers' Service 2.15pm
 Holy Communion 7.30pm
- Wed 10** Grapevine Coffee Morning in Tom Hauley Room 10am-12noon
 Youth Club in Village Hall 8pm

- Thur 11 Thursday Club in Village Hall 2.30pm
 WI in Village Hall 7.45pm
 Harbury Society Visit to Lord Leycester Hospital garden 7pm
 Holy Communion 9.45am
- Sat 13 CRAFT CIRCLE and GARDEN WALKABOUT
- Sun 14 Pentecost VII - Holy Communion 8am; Sung Eucharist
 10.30am; Evensong 6.30pm
 GARDEN WALKABOUT
 Cricket Seconds - home to Ettington
- Mon 15 Travel Vouchers Distributed
- Tues 16 Travel Vouchers Distributed
 Yoga in Village Hall 1-3pm
 Mothers' Union Walk and Supper 7pm (from Church)
 Senior Citizens Committee in Village Hall 8pm
 Holy Communion 7.30pm
- Wed 17 Grapevine Coffee Morning in T.Hauley Room 10am-12noon
 Youth Club in Village Hall 8pm
- Thur 18 Holy Communion 9.45am
- Fri 19 SCHOOL ENDS - NEWSPAPER COLLECTION
- Sat 20 Mens' Prayer Breakfast in Tom Hauley Room 7.30am
 Cricket First - home to Rugby Parish Council
- Sun 21 Pentecost VIII - Holy Communion 8am
 Family Communion 10.30am
Rocks & Fossils 2-4pm from Burton Dassett Beacon **
- Tues 23 Holy Communion 7.30pm; Julian Group 8.10pm
- Wed 24 Playscheme in Village Hall
 Grapevine Coffee Morning in T.Hauley Room 10am-12noon
- Thur 25 Playscheme in Village Hall
 St. James - Holy Communion 9.45am
 Parish Council in Village Hall 7.30pm
- Fri 26 Playscheme in Village Hall
- Sun 28 Pentecost IX - Holy Communion 8am
 Sung Eucharist 10.30am;
 Evensong 6.30pm
 Cricket Seconds - home to Bishops Itchington
Every Landscape Tells a Story Walk from Castle Inn at
 Edge Hill 6.30pm **
- Tues 30 Holy Communion 7.30pm
- Wed 31 Playscheme in Village Hall
 Grapevine Coffee Morning in T.Hauley Room 10am-12noon

AUGUST

- Thur 1 Playscheme in Village Hall
Grand Sale of handpainted Spanish Ceramics at
 Wight School 10-12noon
 Holy Communion 9.45am
 Storytelling in Library 10am
 Folk Club in the Dog Inn 8.30pm

- 4
- Fri 2 Playscheme in Village Hall
Fly your kite at Burton Dasset Church 2-4pm (£2 per kite, under 8 to be accompanied)
- Sun 4 **Pentecost X** - Sung Eucharist 9am; Evensong 6.30pm
 Cricket Seconds - home to Willoughby
Butterflies, Flowers and Sunday lunch, walk along 4 miles of old railways from Stag at Offchurch 10am - 12.30pm **

**£1 for adults; 50p for children and Senior Citizens

Please note: Adverts to: 26 Farley Avenue

Adverts presented at least a week before deadline will be set professionally at the printers.

All Articles for H&L News to **NIFTY NEEDLE** by
FRIDAY 26th JULY, before 5.30pm

DATES FOR INCLUSION IN THE HARBURY DIARY PLEASE TO: LINDA RIDGLEY - TEL. 612792.

For Tom Hauley Room Bookings	Mrs. Smith	613680
For Village Hall Bookings	Mrs. Hughes	612716
For Wight School Bookings	Mrs. Hayes	613488

REGULAR DIARY DATES

BABY CLINIC: Surgery, 2-4pm 2nd & 4th Wednesday

BADMINTON: Village Hall Tuesdays

BEAVERS: Scout Hut, 6-7pm Tuesdays

BELLRINGING PRACTICE: Church, 7.30pm Fridays

BINGO: Village Hall, 8pm Mondays

BROWNIES: Village Hall 6-7.30pm Tuesdays

CHOIR PRACTICE: Church, 6.30pm Fridays

CITIZENS ADVICE BUREAU: Over Southam Magistrates Court, 10am-3pm
 Tuesdays (Except Bank Holidays)

COFFEE MORNING: Tom Hauley Room 10am-12noon Saturdays

CUBS: Scout Hut, Wednesdays

DANCING CLASSES: Farley Room Village Hall, Children & Adults 4-9pm
 Wednesdays.

GRAPEVINE: Tom Hauley Room, Coffee Morning 10-12noon Wednesdays

GUIDES: Scout Hut, 7-8.30pm Monday

GYMNASTICS: Harbury School, 6-7pm (U7-10yrs & Beginners 7-8pm;
 Over 10yrs 8-9pm) Mondays

HARBURY FOLK CLUB: Dog Inn 8.30pm 1st Thursday of Month
HARBURY FRIENDS: School, 8pm 2nd Tues. of Month
HEREBURGH MORRIS DANCERS: School Hall, 8-10pm Wednesdays
HORTICULTURAL SOCIETY: Village Hall, 8pm 1st Tues. (Oct. to May)
LIBRARY: Stories, Rhymes for U5s, 10am 1st Thursday of Month
NETBALL CLUB: Village Hall Car Park, Training 8.30pm Thursdays;
 Matches Saturday Afternoon
NURSERY SCHOOL: Village Hall, Tuesday to Friday mornings
PLAYGROUP: Wight School, Tuesday to Friday mornings
SCOUTS: Scout Hut, 7.45pm Tuesdays & Thursdays
TENNIS CLUB: (Apr-Sept) Tues. & Thur. 8.30pm onwards (6pm
 for April); Sat 2-5pm, Mon. & Wed 1.45-3pm
THEATRE GROUP: Wight School, 8pm last Friday of Month
THURSDAY CLUB: Village Hall 2.30pm 2nd & 4th Thursday of Month
TODDLER GROUP: Wight School, 10-11.30am Mon. & 2-3.30pm Wed.
UPHOLSTERY CLASSES: Wight School, 2-4pm Mondays
W.I.: Village Hall, 7.45pm 2nd Thursday of Month
YOGA: Village Hall, 1-3pm Tuesday, Diane Surgey Tel.817904
YOUTH CLUB: Village Hall, 7.30-9.30pm Wednesdays

DO YOU NEED HELP WITH ANY OF THE FOLLOWING?

Harbury Helpline is for you!

CHILDRENS' CLOTHING: for 0-6 Years old: Call Anne Woodward 613536, Maureen Darby 613330 or Mary Catt 612864.

EMERGENCY TRANSPORT: Call Vivien Neill 613461 or John Algar 613864.

HELP WITH COOKING, SHOPPING, READING: If you live alone and need help with cooking or shopping, or you need help with reading, or you are partially sighted and would like someone to read to you: Call Mary Catt 612864.

HELP WITH FORM FILLING: Job Applications, CV's, Council Tax Forms, etc.: Call Joanne Cooper 613859 or Jeff Bedford 612753.

For Personal Tax Claims, Rebates on Tax Paid to Building Societies or on Shares: Call Jim Chapple 612044.

HOME VISITING: Caring for a sick or elderly relative and need a break for a few hours, or you would like someone to call on you: Call Betty Knappe 612679 or Sue Dormer 613254.

HOUSEHOLD BUDGETING ADVICE: Call Tony Brunton 612191.

ODD JOBS ABOUT THE HOUSE: Call Jeff Bedford 612753.

VISITING: Hospital. If you are unable to visit a parent or relative, or parents would like support with a child in Hospital: Call Fr. Roy Brown 612377 or Keith Dormer 613254.

DOCTORS' SURGERY

Mill Street, Harbury

To request a home visit

please ring 612232

To request a repeat prescription

please ring 612232

For an appointment

please ring 613554

DISTRICT NURSE

Southam 815045

HEALTH VISITOR

Southam 815045

POLICE

Southam 812366

SOCIAL SERVICES

Southam 813110

ALL SAINTS' CHURCH HARBURY SUNDAY SERVICES

Holy Communion, 8am

Sung Eucharist, 10.30am (Except 1st Sunday of Month:

Sung Eucharist 9am)

Family Service, 10.30am on 3rd Sunday of Month

Evensong, 6.30pm (Except 3rd Sunday)

Please see notice board in Church for weekday services or revised times on special occasions.

FROM THE CHURCHWARDENS

Those who embarked upon the Parish holiday to Sillian in the South Tyrol region of Austria have returned duly refreshed. A total of 25 from Harbury and Ladbroke undertook the holiday which was the fourth since the initial holiday to the Oberammergau Passion Play in 1990. It will be interesting to see if these holidays will continue until at least the Millennium.



HARBURY LONDIS



Open seven days for your convenience

GROCERIES • THE NATIONAL LOTTERY™



OFF LICENCE • FLOWERS & PLANTS

DESIGNER GREETING CARDS • NEW VIDEO LIBRARY

8.30 a.m. - 8.30 p.m.

- Monday - Saturday -

10.00 a.m. - 8.30 p.m.

Sunday -



All major Credit Cards now taken

MILL STREET, HARBURY

TEL: 01926 612645



THE DOG INN

Harbury

Tel: 01926 612599

Welcome - from the New Owners, Jay & Maureen

OFFERING 3 COURSE SUNDAY CARVERY @ £7.95

2 COURSE CHILDREN'S MENU FOR ONLY £3.00



**FULL RANGE OF BAR & RESTAURANT MEALS.
AVAILABLE FROM TRADITIONAL TO THE UNUSUAL.
TAKE AWAY MEALS TUESDAY - SATURDAY
FINE SELECTION OF HAND PULLED ALES,
INTRODUCING GUEST ALES EVERY OTHER WEEK.**



Room available for private parties

D. W. A. G.

O
U
G

Builders

Tel: 01926 612460

Mobile: 0860 849777

R
E
E
N

Local Tradesmen who take pride in their work.

We specialise in rebuilding half-timbered and period buildings, renovations, extensions, conservatories, patios - in fact any form of building work.

ESTABLISHED OVER 30 YEARS



All breeds -

- Clipped ■ Stripped
- Shampooed ■ Nails Cut ■ Ears Cleaned
- Glands Emptied

Whether you just need a bath
or you want the full works

Call anytime

Collections available

Tel: 01926 811 171 (Shop)

0374 252 966 (Mobile)

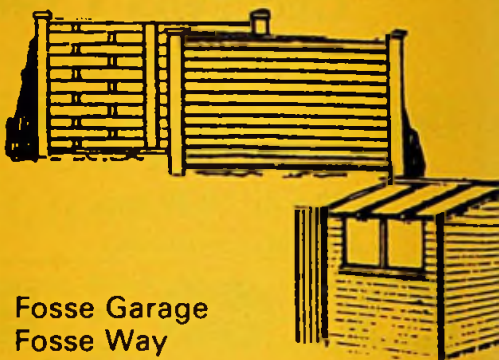
7 Craven Lane, Southam, Warwickshire CV33 0QU



ROLLASON FENCING AND SHEDS

MASTER FENCING MANUFACTURERS

Est. 1964



Fosse Garage
Fosse Way
Harbury

LEAMINGTON SPA
(01926) 613009

*Traditional Acupuncture
&
Chinese Herbal Medicine*



**FRANCES
FARRER**

BACC. MTAS. RCHM
(Cert. Ac. Beijing)

The combination of Chinese Herbs and Acupuncture, Laser Therapy now also available, offers help to a wide spectrum of illness covering stress, anxiety, P.M.T., headaches, back, shoulder or elbow pain, and more serious problems such as arthritis and M.E.

For information ring
01926 817583

**WHITEHALL CLINIC OF
NATURAL THERAPY,**

**7 Warwick Road,
Southam, CV33 0HN**

Parking facilities

We were very happy to have the young organisations in Church during June. It is only when they all parade together that you realise the number who take advantage of the facilities which the Scout & Guide organisations have to offer. The village has been very grateful to those who give their time to lead, help and administer these groups.

As we move into the Summer holiday period there are no major events to announce, however please do continue to check your magazine and the notice boards around the villages.

Ruth & Jeff

FROM THE RECTOR

Many people want proof that God exists. Vicar, what line do I take when discussing this with an unbeliever? There are many lines of approach - God made each person unique and the reasons for unbelief and atheism are as numerous as the unbelievers. But I think there are one or two general principles. Unbelievers seem always to suppose that they themselves are hard-headed, rational people who 'face the facts' and see no need for God. Christians, they imagine, are sentimental, ignorant and emotional people, self-deceivers, who want to believe and in consequence do believe. The truth is, however, that unbelief and atheism is no more rational than a whole-hearted acceptance of religious faith. So in discussing your faith with an unbeliever, I would say:

1. Be factual and humble. Do not approach any question with the article 'I know' nor allow them to suppose that they 'know' more than you do, for unbelievers and believers alike 'walk by faith not by sight'. The problem is that their faith is different from ours.
2. Remember too that they are individuals, quite unique. Their fears and hopes, their disappointments and ambitions, their regrets and achievements are not the same as yours. And what seems important to you may be completely irrelevant to them. Try to look for the emotional basis of their un-belief for the thing that hardened them and made them unbelievers. For I am convinced that no person is an unbeliever by nature, just as I am convinced that not everybody is a deep-down believer.

3. Never be disappointed if you achieve nothing. Conversion is the work of the grace of God and so long as you are willing to be a channel of grace, you have done all that you can.

Above all remember that the real enemy is not militant unbelief, but cold indifference. And God alone knows the answer to that.

Fr. Roy

Laugh Line

Said Mum to the little boy pestering her for a baby brother or sister:
Maybe someday, but we cannot afford one yet.

One day the lad rushes home from school to say: *Mummy hurry up and get your coat on. They are having a sale at our church. It says on the notice board: 'Children Free'.*

FROM THE REGISTERS

Holy Matrimony - Ladbroke - Saturday 1st June

Jonathan Spencer Mullis to Victoria Todd

Holy Baptism - Harbury - Sunday 30th June

Hamish Roy Alexander Falconer

Confirmation - Sunday 9th June

Samantha & Nicola Brunt

Jennifer Hodge

Alexander & Rhiannon Buck

Jennie Norman

Charlotte & Chesney Coleman

Jackie Snell

Clare Concannon

Beth Whalley

Sophie Eadon

Nicola Wilby

Julie Farrington

Luke Woodward

Amanda Hiatt

MOTHERS' UNION

The June afternoon meeting of the Mothers' union commenced with a communion service in church, after which the members were delighted to hear Mrs. Violet Smith talk very knowledgeably on Jewish Family Life.

Some of the church flower arrangers joined us for the evening meeting

when Mrs. Isobel Mold talked about Flower Arranging through the Church Seasons. She explained how the Church's message can be interpreted through flowers and with her humorous asides, made this a most enjoyable evening.

In July the afternoon meeting will be our AGM and garden meeting at the Rectory. Please note that we shall start at 3pm.

Husbands & friends are invited to join us for our evening walk to Ufton and pub supper, leaving Church at 7pm. Please give names to Shirley or Mary.

Lorna Bedford & C. Mary Catt

TODDLERS' SERVICE

We heard the story of St. Francis of Assissi and how he gave away all his money and roamed the countryside preaching about God. We each made a bird out of paper and coloured the wings. While the Mums sang: *He's got the whole wide world in his hands*, the children played the instruments.

Shirley Keir

HARBURY & LADBROKE CHURCH MEN'S SOCIETY

Obliged to find a substitute twice because of another temporary Thursday commitment, chairman Tony Stubbs chose well. Not only does Jeff Bedford bring to this task his experience as a past-chairman, but as a civil engineer he also competently stepped into the breach at the 6th June meeting when the civil engineer we were expecting as speaker, was unable to come. From the original speaker we were to hear about the construction of motorways and bridges. From Jeff, an expert in his field, we learned about the different techniques used in providing foundations for the whole gamut of major building projects using the method known in the industry as 'piling'. It is testimony to skill and enthusiasm when a speaker can sustain audience interest even when the subject embraces 'bored' piles.

Thanks were expressed to Brian Jones for taking over the local organisation of the Christian Aid Week collection, which at £479.68 was £50 up on the previous year.

John Algar

CREAM TEAS - Tom Hauley Room

We shall once again be serving Cream Teas in the Tom Hauley Room on Saturday afternoons during August, with the exception of 10th August, when the room is unavailable. Please come along and enjoy the home-made fare and good company between 2.30 and 4.30pm. Everyone very welcome. Proceeds to Church Funds.

Ladbroke News

JULY

Wed 10 Holy Communion 2pm; Women's Fellowship 2.45pm

Sun 14 Pentecost VII - Sung Communion 9am

Wed 17 Holy Communion 9.45am

Sun 21 Pentecost VIII - Sung Communion 9am

Songs of Praise 6pm followed by refreshments

Wed 24 Holy Communion 9.45am

Thur 25 St. James - Holy Communion 7.30pm

Sun 28 Pentecost IX - Sung Communion 9am

Wed 31 Holy Communion 9.45am

AUGUST

Sun 4 Pentecost X - Family Communion 10.30am

LADBROKE CHURCH NEWS

Looking back on the month of June - I wonder where it went. Having a holiday in the middle of it must have helped it along more quickly than usual.

We've had our quinquennial inspection and a meeting with our new architect Dr. Charles Broom. What more can I say - we knew the problems were there in our lovely church, didn't we? So folks, any minute now it will be: *Here we go again* - looking for ways of raising money.

21st July, 6pm - We have our 'Songs of Praise', so please think of those old favourite hymns, or even new favourites. The Rector will be asking for them very soon now. The service will be followed by refreshments in the Village Hall. We hope our friends from Harbury will come and join us.

Red Cross week - way back at the beginning of May. We collected £52.47, which is very good; especially when it seemed as though it was the season for charity collecting weeks just then. I received a very nice 'Thank You' letter from the Red Cross, which I now pass on to you all.

Betty Winkfield

WOMEN's FELLOWSHIP

Just seven members met at Gwladys Gould's house in June, when they watched the Samaritan's video *The Last Straw*, about loneliness in the countryside. In July, Kiff Warr is going to talk to us about the work that she and Kipp have done abroad. We will meet at Jo Sowerby's after our Communion Service at 2pm. Please come and join us.

Betty Winkfield

LADBROKE AND DEPPERS BRIDGE W.I.

After the business part of the meeting, Mr Court gave us a very interesting talk on Hypnotherapy, which he practices on a part time basis as he also lectures on the subject at two colleges. He explained about the conscious and sub-conscious parts of the brain and how we could help ourselves to relax and put positive thoughts into our sub-conscious brain.

We are continuing our Short Mat Bowls practices on alternate Tuesday evenings and have bought our own bowls with the proceeds of Tina's coffee morning.

The next date for our/your diaries is 12th July, when we will be holding a Strawberry Fair at 7.30pm in Ladbroke Village Hall. There will also be a cake stall and White Elephant and Tombola stalls.

The next monthly meeting is on 25th July when Mr. John Illingworth will be talking to us on Bell Ringing. He will bring slides and bells, so do come and try your hand at making a tune.

Finally, sorry to Harbury WI for holding our Strawberry Fair on your meeting night - maybe you can all come and join us?

Hazel Sharples

LADBROKE PARISH COUNCIL REPORT - Wednesday 19th June

The meeting opened at 7.45pm under the Chairmanship of Mr. Peter Williamson.

Progress on the proposed gate from Lower Windmill Lane onto the bypass is slow, due to the details being sorted out in the legal department. The gate is going to come, even though we may have to wait a while.

The bollards at the entrance to the village have been delayed in their replacement due to an unfortunate mix up. New ones ordered for the job were fitted at another site, so that we will now have our re-ordered bollards erected within a fortnight.

Transport Tokens. So far 11 people have applied for and will receive their tokens for travel. If anybody else would like to apply for these, would you please contact Elsa Greenway who will be happy to supply you with the application forms.

The Village Notice Board. It has been suggested that the board is not in the ideal location for the village, especially with the new buildings in Hedges field in mind. It was felt that a more central position would benefit everyone. Does anybody have any suggestions as to where to site it? Elsa Greenway will be pleased to receive all comments and ideas.

There is still a certain amount of worry about any damage that may be caused to the road and verges in Windmill Lane during the construction of the new houses in Hedges field by the lorries and associated vehicles. What the Parish Council want to clarify is who will pay for the repair and to what standard will this be carried out? Photographs are to be taken of the present condition of the road and verges. Your Parish Council are going to write again to the Highway Authority to see if this problem can be agreed before the work commences.

Jeff Timms reported that the footpath volunteers have now completed the work on the path between Chapel Ascot and Bishops Itchington. Well done Jeff and helpers!

The black box collectors. At the time of writing, the black plastic containers used for the collection of newspapers etc. have to be placed at the boundary fence of a property. This is because the collectors have no insurance to enter any private land, unlike the refuse men who collect

your rubbish in the plastic bag. I suppose it would be too much to ask the refuse men to deal with it!

Your usual scribe Carol should be back from Russia to report on the next meeting on **Wednesday 17th July at 7.45pm.**

Anthony Izon

CORRECTION TO LADBROKE VILLAGE MEETING REPORT

Please note that the hedge laying programme on the land in Radbourne Lane, owned by the Allibone Trust, has already been completed. Also anyone who made a special trip up Radbourne Lane to see the sheep 'raising' to find them only 'grazing', must blame me for their disappointment!

Carol Northorpe

HARBURY PARISH COUNCIL MEETING - JUNE

Sergeant Tew reported an assault and two vehicle offences in the village during the month. Speed checks had been carried out in Temple End and Deppers Bridge. Undeterred by Linda Snell's difficulties, John Woodward is calling for volunteers to undertake a traffic census.

The Council supported the Friends of the Earth's amendment to the Road Transport Bill to require Traffic Reduction Plans to be made.

Cllr. Hunt attended the newly formed Harbury Area Panel (a forum of Parish, District and County Councillors) which is looking into Highways issues. On 18th July the Planning & Highways Chief Officer and W.C. Cllr Mrs. Tandy will visit the village to hear from the Parish Councillors their traffic concerns.

Sharon Hancock brought up the perennial complaint about the lack of grass cutting at the Junction of Harbury Lane and Tachbrook Road. The Council is also miffed that the gullies are not cleaned frequently enough causing flooding when it rains, especially at the Cemetery Corner.

A working party is to look into the role of the Village Caretaker who will be appointed to undertake a number of jobs around the Parish.

14
BT had removed the redundant telegraph pole at Pineham Avenue and explained their policy on undergrounding services, which happened only where new equipment was being installed or if the local authority contributed to the costs.

Cllr. Hancock rejected SDC's offer to join in Beautiful Britain in Bloom partly because of its urban ethos. A suggestion that the area round the War Memorial should be paved was speedily rejected as over-the-top urbanisation too.

Stratford sent details of the problems in bringing dog fouling prosecutions and Sharon Hancock told her colleagues that they had to 'grasp the nettle' and complain to the owner at the time of the offence.

Prompted by District Cllr. Turner, the Parish Council has been agitating for Gas Central heating for the Vicarage Lane maisonettes, but Stratford has explained that in their stock (soon to be handed over to the South Warwickshire Housing Association), there are still 50 properties without central heating at all and these have to be improved first.

Stratford District Council granted an extension at 10 Heber Drive, the pollarding of Dave Mann's Willow, a conservatory at 19/21 Binswood End and a replacement garage at 32 Vicarage Lane. Biffa wastes got permission to extract 7,000m³ of clay from the Ufton Tip.

The Parish made no comment on an extension at Greenhill, but pointed out that the planned conservatory at 8 Constance Drive would impinge on the next door's property and detract from the street scene. They decided to make no comment on Dave Andrew's plans for a large detached house to the rear of Harbury House, on condition that the permission for a courtyard development was waived and an agreement signed preventing any further development of the garden.

Enforcement action was to be taken at Mansfield Barn on the Fosse over a change of use to offices. Terry Adams had withdrawn plans for land raising at Fenny Compton.

The Council received assurances from the District that social housing had been secured on the Bryant development at Sonas Mor and that Warwick County Council would consider the matter of the provision of street lighting.

The Parish Council decided that it must remove the Playing Field Barbecues because it had failed to secure insurance cover for them.

**NIFTY NEEDLE
CURTAINS AND BLINDS**

High St. Harbury
Leamington Spa
Tel: 01926 612 927
Fax: 01926 613049

FREE ESTIMATES

PERSONAL SERVICE

HOME VISITS UP TO 7pm

**MOST WELL KNOWN FABRICS
AVAILABLE AT DISCOUNT**

OPEN: Mon/Tues/Thur 9-5
Wed/Sat 9-1 Fri 9-6

**A1 SKIP
SERVICES LTD.**

Squab Hall Farm, Harbury Lane,
Leamington Spa, Warwickshire CV33 9QB
Tel: (01926) 833638 Fax: (01926) 887547

**FAST, FRIENDLY AND
RELIABLE SERVICE
CALL THE COMAPNY WITH
20 YEARS EXPERIENCE**



2cu yds. - 20cu yds.

*Custom
& Bodywork
Services at*
The Garage
Ladbroke

ALL TYPES OF BODY WORK

FREE INSURANCE ESTIMATES

RESPRAYS

MECHANICAL REPAIRS

SERVICING

M.O.T. REPAIR WORK

WELDING

COLLECTION & DELIVERY

Personal Service from Steve Birch

01926 813590

Mobile 0836 689489



W. Goodwin & Sons **Funeral Directors**

38 COVENTRY STREET, SOUTHAM

All arrangements personally conducted
in any district

Telephone: Daytime 01926 812445

Night - time and weekends

John: 812657 Brian: 812656 Cyril: 817718

Visiting Chiropodist

Collette A. Green

SEN MSSCh MBChA

1, NEWSTEAD DRIVE

SOUTHAM

WARWICKSHIRE. CV33 0LT



TELEPHONE

01926 817209

BENCH

TELEVISION

22 OXFORD ST
SOUTHAM

SERVICE

mitsubishi dealer

REPAIRS
SALES
RENTAL



SOUTHAM: 812304

WHATEVER YOU DRIVE
YOU ARE WELCOME AT

TELEPHONE: HARBURY 612809

FOR ALL YOUR MOTORING
MOT's, REPAIRS, SERVICING

DOVEHOUSE

AUTO

SERVICE

District Councillor Cooley wrote encouraging the council to undertake a Parish Appraisal and Sharon Hancock urged everyone to begin thinking about how Harbury can celebrate the Millennium.

Linda Ridgley

HARBURY LANDSCAPE AND ENVIRONMENTAL PROJECT

Readers of this magazine and participants in the Landscape and Environmental Project meeting, 17th February 1996, will recall the Parish Council's and Harbury Society's pledge to take the lead and encourage efforts to make the Parish a cleaner, safer and more pleasant place in which to live.

You may recall that one of the greatest concerns expressed at the meeting was traffic. There was strong resentment at the volume and speed of vehicles passing through the village, but especially the increasing use of our roads by heavy commercial trucks.

In response to these concerns, the Council has made strong representations to Warwickshire County Council calling for assurances on truck routing away from the village, prior to granting planning permission for extensive clay extraction from the landfill site at Ufton. The County Council has now recognised that perhaps Harbury does have a case for a weight restriction on our roads and has recently conducted a traffic census near Chesterton Windmill.

BUT THAT'S NOT ENOUGH! We need to conduct our own research in order to reinforce our case for a weight restriction for the village. To do this the Parish Council are proposing a series of traffic counts at various points around the village which should provide information and data to substantiate our claim.

We cannot do it alone, **your help is needed**. If you can spare a few hours of your time to try to improve your environment we would like to hear from you.

Please telephone one of the following **before 21st JULY**.

Alison Hodge:	612029
John Woodward:	612908
Keith Thompson:	612050

Harbury Parish Council

HARBURY SOCIETY

Thanks to everyone who collected and donated silvery things; our stall made £70.

Our 'Sustainability Quiz' generated quite a lot of interest and those who took part spent a considerable time assimilating all the useful information on the displays. Did you know that installing a modern condensing boiler can save you hundreds of pounds? Or that over its working life an energy saving light bulb reduces your electricity bill by £50! And that lighting an empty office overnight wastes enough energy to heat the water for 1,000 cups of coffee!

Anyway, guess who knew all that and more? Bill Middleton and Peggy! They got all the questions right and win a super 'Green' saver of 'Larry' cartoons for the computer I hope they have. Alison Hodge and her children were runners-up with just one wrong answer.

Our pub Walk from the Tom 'o the Wood pub in Rowington lead by John Lapraik and Ed Wilson was a great success. The weather was superb. We walked the canal towpath, skirted Baddesley Clinton Hall, rested at the church and ended up back at the pub in time for lunch.

There are still a few places left for the visit to the Lord Leycester Hospital and Garden (Warwick) on **Thursday 11th July 7pm**. Susan Rhodes would like a donation of at least £1 each. Please let me know if you want to be included. I may be able to arrange lifts.

Linda Ridgley 612792

HARBURY WOMEN's INSTITUTE

I forgot to mention last month that Bertha Kettle came 2nd with her lovely decorated hat at the group meeting.

The Short Mat Bowls team got to the finals but were pipped at the post by Mollington WI. The Darts team won their recent match so are still in the running.

Carnival. Well, what can one say, but that it was a lovely day with everybody enjoying themselves. The floats and costumes were excellent and must have been very difficult to judge. We came first in our class with our float *Sink to the depths with WI* (and we do sometimes), consisting of a wreck and strange sea creatures. Jan Hamlin won the cup for the best individual costume as a crab, then on the playing fields we

won the group fancy dress. Many thanks to Celia for designing the float, assisted by her team of helpers. A lot of people helped to make many of the costumes. Thanks to Helen for the use of her barn and to Doug Green for the use of his truck. This year he was our driver assisted by Alan Knowles. Mustn't forget Marion Abbot for the use of her 'you know what'.

The Cake stall, looking very appetising, was its usual success and soon sold out. Again many, many thanks to Nora and her team and to those who donated cakes.

Fay Gibbs came to talk on *Hardwork and Hobbies* and certainly that hobby has helped maintain her business! She farms cattle and poultry in the Coventry area, subsidising the business by running floristry courses; making displays and arrangements for weddings. She creates lovely arrangements from anything available such as leaves, moss, berries, nuts, catmint, keck and just a few flowers. Then she adds a moss bear, a figure made of paper and material or a bird of twigs to finish off. One arrangement had a background of an embroidered farm scene. She also gave us ideas other than just flower arrangements.

Whilst she worked, she entertained us with her cheerful chat about life and experiences, including stories of her geese. As she said, her ganders are better guards than any dog and how she felt secure with them around.

The schedules are now out for the produce Show in September, giving members plenty of time to decide on their entries.

July hostesses: Pam Merchant, Sue Lapraik and Diane Buck

Jeanne Beaumont

HARBURY FOLK CLUB

The 'Inn' place to be on the first Thursday of each month is without doubt the DOG at Harbury, for those of us who are regulars, it is sometimes easy to forget how lucky we are to see so much talent for free.

As is becoming more common, there was a theme for the evening with the theme for June being *Songs of Protest* - the choice of our host for the evening, Steve Dudley.

It always amuses me to see at five past eight that there may not be enough singers, but by 8.30 the '3 halves' entertainment is filling up rapidly and the anxious look on the face of the host gradually disappears. Steve started off the evening with 'Brother can you spare a dime' (was that a hint about the raffle that we always have?). Highlight for me in the first half was Des singing 'And the Band Played Waltzing Matilda'.

Anyone who has been to the club will know that audience participation is usually very good, but when Steve opened the 2nd half with 'Sing if you're glad to be Gay' you could sense the hesitation. Hereburgh Morris Ensemble followed (they will soon outnumber the audience) and then Mike Putnam gave us the Irish entry for next year's Eurovision Song Contest (I can't see it being as successful myself!).

The Harvesters finished off the 2nd half with a couple of their own songs - all I can say is hurry up with that long awaited CD of yours!

To start the 3rd half, we had the first solo performance by Margaret McDonald. Having taken the plunge, I hope she will now appear more regularly, as we would all like to hear more. Next up was Rick who gave us a Les Barker recitation about a Jew and a Scotsman, which was very well delivered and received. Gill Derby was her usual professional self and was followed by John Black and Brendan. A good time was had by all and Steve sent us all 'Rolling Home'!

Other performers included Peter McDónald, Pete & Liz Bones, Ron & Jean Shuttleworth and The Jug Band. When you put all this talent together you are bound to get a great evening's entertainment. Next meeting is 1st August. Be early to guarantee a seat, but don't sit at the front on the right, because that's my spot!

Bob Hodgkiss

SCOUTS/GUIDES/CUB FAMILIES

HELP! Does anyone know the whereabouts of a large, thick, canvas-backed groundsheet?

This essential piece of camp equipment has been missing for some time and is needed for this year's camp. Is it in your garage? Please ring:

Ann Brunt 612867 for collection

S.H.A.K. TEAMS UP WITH BARCLAYS



In last month's Village News, I previewed the Charity Barbecue held at the Dog Inn in aid of **S.H.A.K.** on Father's Day. The event raised in excess of £320 and the Kommittee would like to extend their thanks firstly to everybody who came along to play, eat, bounce and sunbathe and secondly, to Jay Daniels at the Dog Inn for providing the location, the food and his support on the day.

Since last month, we are also able to confirm an exciting new development. **S.H.A.K.** has been able to secure a '£ for £' sponsorship deal with the Community Enterprise department of Barclays Bank which means that for selective fund-raising events, Barclays are prepared to match '£ for £' the monies raise by **S.H.A.K.** The first event that this applied to was the Entertainment Evenings in May which raised over £440.

This has given our efforts a superb boost and we look forward to working with Barclays on future events.

Looking forward to your support for your children's efforts on the Canal Walk on **Sunday 7th July.**

Pete Woodward

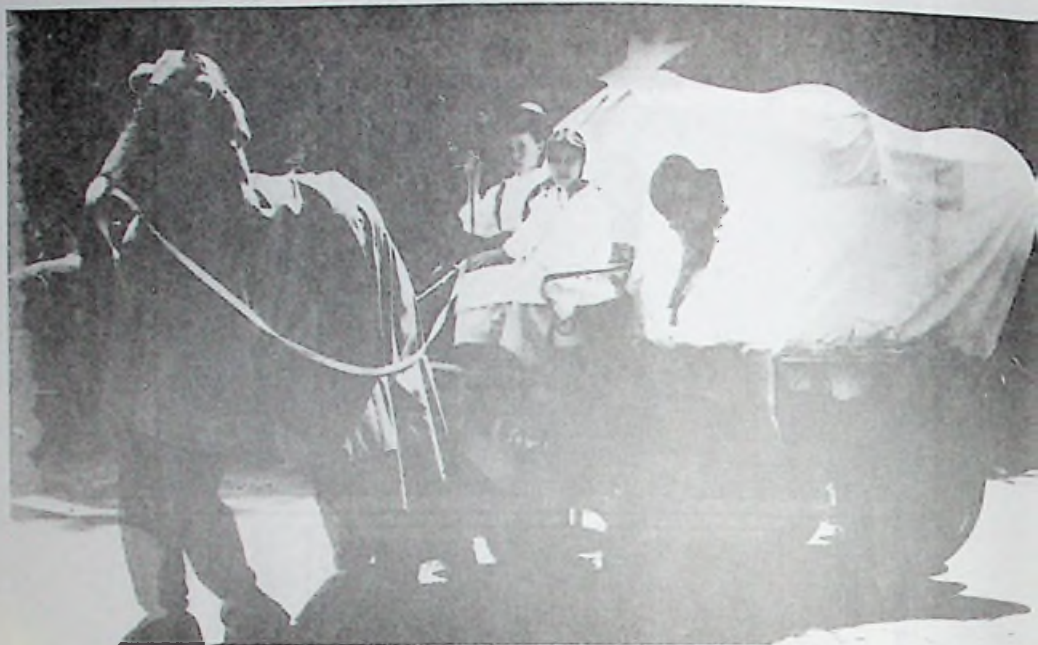
Harbury Carnival 1996



Keith Phipps and Helen Gray







Wand'rin' Star - The Wilkins Family



Pirie Close - Red Barrows



Old MacDonald's Farm - Village Hall Playgroup



Paul Gladden with Charlie & Mollie





S.H.A.K. CANAL WALK

As announced in last month's H&L News, on **Sunday 7th July** the 1st Harbury Scouts and Guides Group have arranged a 7 mile sponsored hike, the first in 10 years, along the Grand Union Canal.

We start at 10am from the canal bridge just outside Radford Semele (Leamington side) and finish at 2pm at the Boat public house on the A426 just outside Stockton. If their little legs cannot cope with the full 7 miles, then transport will be available from points along the route to transport the walkers home. As a seasoned walker the route looks quite straight forward, in fact, I think I'll walk it myself.

Sponsorship to participants would be greatly appreciated and if anyone is good at foot massage please give me a ring after the event.

Deborah Ellis

Hon. Secretary **S.H.A.K.**

WIGHT SCHOOL PLAYGROUP

This is proving to be a very busy term for all involved with the playgroup. We are still wallowing in our success at the Carnival, where we were awarded 2nd prize in the Children's Float Category. A lot of time, energy and thought had gone into our 'Sing a Song of Sixpence' theme and it certainly made it all worthwhile to see the finished product with all our little blackbirds on the day.

A very big 'thank-you' to John and Lesley Wilkins who not only granted us the use of their lorry, but also helped out tremendously with all the preparations. We couldn't have done it without them.

Thank-you also to Mick White who drove for us on the day. He had a very precious load to ferry around the village - so thank you Mick for driving so carefully!

We've just had our Annual Sport's Day in the School field, where all the playgroup children participated in and thoroughly enjoyed, various races. Thankfully the rain stayed away for the entirety. Thank you to the school for the use of the field and we do hope we didn't inconvenience anyone, particularly as the OFSTED inspection was underway.

On **Tuesday 9th July** we shall be having our open morning at the playgroup. Anyone is welcome to come along between 10am-12noon and observe the children at work and play. You will be guaranteed a warm welcome.

On **Thursday 1st August** from 10am-12noon we will be hosting a grand sale of handpainted Spanish ceramics in the Wight School. This is definitely an event not to be missed, with beautiful pieces of Spanish pottery being sold at very reasonable prices (bowls from £2). Coffee, tea and cakes will also be on sale.

We break up for the Summer holidays on **Friday 19th July**. We wish everyone a safe and happy holiday.

Alison Atkinson

HARBURY LADIES NETBALL CLUB

We have received notification from Stratford District Council that we have been awarded a grant of £2,000 so that we can make the necessary improvements to the Netball court. I would like to thank all those people who gave the Netball club advice and support over the past few months. We can now look forward to a new season with confidence, as alterations to the court's surface will be made during the Summer months.

On the day of the Carnival we celebrated our 20th Anniversary and ran a tournament all afternoon. Leamington Ladies won it and were awarded a shield, with individual key-rings as mementoes of the event. I would like to thank Beccy and Sue for all their hard work organising the tournament, the Harbury team players who helped other clubs and the umpires - for without them there couldn't have been a tournament.

In the evening we held an 'Anniversary Party' at the Village Club and it was a lovely way to finish off the day. The Club was decorated, mainly because Lisa put so much time and effort into it. Janet's choice of group, 'Blind Date', was good, much to her relief and our surprise! The barstaff were their usual helpful and supportive selves.

Thanks must go to Paula and her helpers for organising the food and the Netball players for contributing a variety of salads.

The raffle had 15 prizes. The main ones being donated by The

Shakespeare, The Three Choices at Southam, the Crown and Kenny at Londis. Their generosity was much appreciated. It was meant to be a 'celebration' rather than a profit making venture, but overall we came out with £250 and a day to remember.

I'd set my heart on this party a year ago and was thrilled that it worked out so well. That was due to all members of the Netball club - so **THANKYOU**. Netballers from the past were few and far between, so if you missed it because of other commitments, the 25th will be in the year 2001!

Pat Summers

HARBURY GOLF SOCIETY

Some of the unfit (and larger) members of the village have decided to re-live their past on the golf course. Sufficient interest in forming a society was expressed and the first meeting was held at the Old New Inn on 20th June.

A steering committee was elected and the first event date, **Sunday 8th September**, was decided upon; venue to be arranged. The group is open to beginners as well as accomplished players and evening tutorials for starters are to be held at local driving ranges. Membership is open to anyone in or outside Harbury who wants to play occasional golf and costs £5 to cover postage and administration.

If you would like to join, please ring Ralph Jones (treasurer) on 612766 or Chris Rigby (secretary) on 612287 or see Brian Moffitt (Captain & President) at the Old New Inn. Minutes of the first meeting and application forms are at several of the pubs in Harbury.

Chris Rigby

ROBERT APPEAL

The date to remember is **Saturday 31st August**, the venue is Harbury Village Club at 8pm for a great evening of entertainment by live band *Ready Steady Go!* This is a night not to be missed!

Please book your tickets now by telephoning 613140 or 614290; we look forward to hearing from you. Tickets only £2.50 Adults, £1 children. Bring all the family, everyone is welcome at this great fund

raising event. You may be a lucky raffle prize-winner. Hope to see you there. Many thanks.

Mary Revitt

NSPCC - House to House Collection

Our best total yet: £956.65. Many, many thanks to the brave collectors and to all of you who gave so generously.

Pauline Hayes

NSPCC

A good time was had by all at the NSPCC Quiz Night held at the Village Club. We raised the magnificent total of £480 and brought to the attention of many - how little they know of the highway code!

The Goldwing Motor Bikes came to the carnival again and raised £123 for our funds, so many thanks to them.

We are holding a **Family Treasure Hunt on Sunday 14th July at 2.30pm**; tickets are £3 per adult, £2 per child and include a BBQ available by telephoning 614186, 612179 or 612413.

NSPCC Committee

THURSDAY CLUB

We should like to thank everyone who supported our Carnival stall and our recent coffee morning. Profits from these events will go towards the running costs of the club.

Our members enjoy the wide range of talks, film shows and demonstrations at our twice monthly meetings. If you are free on the second and fourth Thursday of the month, do come along to the Farley Room for 2.30pm. You do not have to be retired to be welcome and we should particularly like to have more men coming along to the meetings.

The next meeting will be on **Thursday 11th July** when we shall have a talk on Herbs.

Pat Smith

BREAKTHROUGH BREAST CANCER

We are pleased to say that the tea-set raffle made £220 for Breakthrough. The new owner of this lovely set of China is Julie Wilson of Wagstaffe Close. Well done Julie!

Thanks to everyone who bought a ticket and sorry you were disappointed not to have won. The National 'Holiday' draw takes place in September, so good luck with that.

Chris Carter

HARBURY CARNIVAL WHEELBARROW RACE 1996

Having decided to resurrect the Carnival wheelbarrow Race this year we were uncertain of the response it would receive. However, we were delighted when a total of 13 teams took part! The weather and atmosphere couldn't have been better and we would like to thank local Publicans who provided the liquid refreshment, the Scrutineers, 'honest' Cecil Bloxham for running the tote, everyone who turned out to support the event and especially, the competitors.

Below L to R: Maureen Daniels, wife of the Dog Inn's Landlord Jay; Daughter Lesley Ann pushing Cathy Daley



Below: Liz Bones pushing Janny Freeman





THINKING OF LETTING YOUR HOME?

THEN CONTACT

CONNECT PROPERTY SERVICES

We are specialist high quality letting and property management agents, locally based, with particular experience in letting village properties. Please do telephone to discuss your requirements.

Telephone: 01926 - 815004

**- KINETON BASED -
QUALITY CARPET, UPHOLSTERY
AND CURTAIN CLEANING SERVICES
Chem-Dry® Accord**

Chem-Dry®



- Most carpets dry within the hour
- Safe and non-Toxic
- Removes most stubborn stains
- Leaves no sticky or dirt attracting residue
- Carpet & fabric protection service
- Professionally insured

**ROY & LINDA
HARRIS**

TO ARRANGE A FREE
ON-SITE NO OBLIGATION
QUOTATION TELEPHONE

01926 640029

INDEPENDENTLY OWNED AND OPERATED

Jamieson's

**SPECIALIST IN
PERIOD JOINERY**

**WHETHER YOU LIVE IN
A COTTAGE OR A CASTLE
LET US QUOTE YOU FOR
REPLACEMENT WINDOWS
AND DOORS.**

**HARBURY FIELDS BARN
HARBURY**

**TELEPHONE:
01926 612921**



Prior Tool Hire

Opening Times

7.30 - 5.30 Monday to Friday
8.30 to 12.00pm Saturday



Now Available Access
Platform With
13M Working Height



Access Platform From
Only £80.00 per Day (ex VAT)

**We stock a full range of
Drill Bits/Wood Augers for
DIY and industrial Tools**

**Cutting and Grinding discs
also available**

**For all your Building, Gardening and DIY
Equipment needs and much more**



Norman House
Watsons Lane
Southam
Leamington Spa
CV33 0HX

Tel: (01926) 814770 or 812213



**We are Agents for
Calor Gas and
Black & Decker**

**BIRMINGHAM
Dollman Street
Nechells
Birmingham
B7 4RP**

Tel: (0121) 333 4050

Opening Times

7.30am - 6pm Monday to Friday



PRICE LIST

Air Tools	Day	2dy	Wk
Medium Blower	8.00	12.00	16.00
Medium Blower	11.50	17.25	23.00
Light Blower Dn 110v	11.50	17.25	23.00
Floor Saw	18.00	27.00	36.00
Road Dn	14.00	21.00	28.00
Grinder Saw	12.00	18.00	24.00
Hole	1 Week Min	8.00	
Vibrating Power	14.00	21.00	28.00

Breakers & Hammer Drills	Day	2dy	Wk
Heavy Breaker 110v	22.00	33.00	44.00
Medium Breaker Dn 110v	15.00	22.50	30.00
Light Breaker Dn 110v	13.00	19.50	26.00
Hammer Drill 5/8 Chuck	9.00	13.50	18.00
Hammer Drill 1/2 Inch Chuck	8.00	9.00	12.00
Hydraulic Breaker Pack	30.00	45.00	60.00
Rechargeable Hammer Drill	10.00	15.00	20.00
Diamond Core Drill	See		
Core Drill - 8 1/2	5.00	7.50	10.00
8 1/2 Inch Angle Drill	9.00	13.50	18.00

Decorating Equipment	Day	2dy	Wk
Green - One Roller 24v	8.00	13.50	18.00
Wall Paper Remover			
Paint Striper 24v	8.00	12.00	16.00
8 1/2 Inch Touch-Gas Extra	6.00	9.00	12.00
First Cut-Brush Cast Gun	8.00	9.00	12.00
Tie Cutter	7.00	10.50	14.00

Carpentry Tools	Day	2dy	Wk
Power Plane 24v - 112	12.00	18.00	24.00
Rough 112	8.00	12.00	16.00

Cleaning Equipment	Day	2dy	Wk
Carpet Cleaner 24v	14.00	21.00	28.00
Pressure Washer 24v	13.00	19.50	26.00
Pressure Washer Petrol	34.00	51.00	68.00

Ladders	Day	2dy	Wk
26 Ft Ladder	8.00	12.00	16.00
Roof Ladder	8.00	12.00	16.00
31 Ft Ladder	10.00	15.00	20.00

Concrete & Paving	Day	2dy	Wk
5/8 Mixer Diesel	17.50	18.75	25.00
3/2 Mixer 115 240v/Petrol	11.00	16.50	22.00
Vibrating Paver 110v	14.00	21.00	28.00
Vibrating Paver - unit (Petrol)	24.00	36.00	48.00
Slab Cutter Manual	12.00	18.00	24.00
Slab Cutter Large	15.00	22.50	30.00

Saws Sanders & Grinders	Day	2dy	Wk
Grinder 4 5/8 110/240v	9.00	13.50	18.00
Grinder 3 1/2 110v	9.00	13.50	18.00
Triangle Sander 240v	10.00	15.00	20.00
Palm Sander 240v	7.00	10.50	14.00
Oxial Sander 240v	8.00	13.50	18.00
Bel Sander 240v	9.00	13.50	18.00
Floor Sander 240v	23.00	34.50	46.00
Aligator Saw 240v	12.00	18.00	24.00
Sabre Saw 240v	9.00	13.50	18.00
Grinder Saw 110/240v	10.00	15.00	20.00
Sabre Saw 240v	10.00	15.00	20.00
Quick Cut 110v	13.00	19.50	26.00
Quick Cut 2 Stroke	13.00	19.50	26.00
Floor Saw - 4 inch Petrol	28.00	42.75	57.00
Floor Saw - 18 inch Petrol	32.00	48.00	64.00

Miscellaneous	Day	2dy	Wk
Arrow Poles	One week min	2.00	
Drum Rock	One week min	5.00	
Warning Lights	One week min	5.00	
1 Tonne 4 Wheel Trailer	10.00	15.00	20.00
Burder 12 inch Barrow	One week min	10.00	
Engine Crane	8.00	12.00	16.00
Dumpster	22.00	33.00	44.00

Power & Lighting	Day	2dy	Wk
3 Phase Generator	17.50	26.25	35.00
3 Phase Generator	18.00	27.00	36.00
4 Way Generator Diesel	22.00	33.00	44.00
4 Way Generator Diesel	23.00	34.50	46.00
Transformer 1 kva	1.00	4.50	6.00
2 kva Transformer	3.50	5.25	7.00
Transformer 3 kva	5.00	7.50	10.00
Transformer 4 kva	7.00	10.50	14.00
2 Way Junction Box 110v	One week min	5.00	
4 Way Junction Box 110v	One week min	8.00	
Stand-Off Light 110v	1.00	7.50	10.00
Lighting String 110v/240v extra	6.00	9.00	12.00
Flood Light	3.00	10.50	14.00
Extension Leads 110/240v	4.00	4.50	6.00
Rec Or Circuit Breaker	7.00		

Pumps & Compressors	Day	2dy	Wk
2" Centrifugal/Diaphragm Pump	18.00	28.50	38.00
3" Diaphragm C/W 20 x 20 hose	25.75	38.63	51.50
3" Centrifugal C/W 20 x 20 hose	31.50	47.25	63.00
Extra Hose	POA		

Compaction Equipment	Day	2dy	Wk
Trench Rammer	17.00	25.50	34.00
Compaction Plate Petrol	16.00	24.00	32.00
F/R Compact Plate Petrol	30.00	45.00	60.00
F/R Compact Plate Diesel	30.00	45.00	60.00
"28" Pedestrian Roller	20.00	30.00	40.00

Bowers	Day	2dy	Wk
250 Gallon Water	One Week Min	20.00	
500 Gallon Water	One Week Min	25.00	
250 Gallon Fuel	One Week Min	20.00	
500 Gallon Fuel	One Week Min	25.00	
500 Gallon Fuel	One Week Min	35.00	

Small Earth Movers	Day	2dy	Wk
Skid Steer Loader	100.00	150.00	200.00
1 1/2 Ton Min Digger	100.00	150.00	200.00
750 Kg Skid Loader Dumper	65.00	97.50	130.00

Garden Tools	Day	2dy	Wk
Garden Roller	6.00	9.00	12.00
Rotavator 8 Hp Petrol	22.00	33.00	44.00
Rotavator 8 Hp Petrol	45.00	67.50	90.00
Hedge Cutter 18/21 inch 240v	12.50	18.75	25.00
Strimmer 2 Stroke	18.50	27.75	36.00
Rotary Mower Petrol	12.00	18.00	24.00
Lawn Scarifier Petrol	22.50	33.75	45.00
Lawn Mower 240v	9.50	14.25	19.00
Lawn Feeder/Spread	4.00	6.00	8.00
Leaf Vacuum Petrol	12.00	18.00	24.00
Leaf Vacuum 240v	10.00	15.00	20.00
Garden Refuse Bag/Sheet	1.50	2.25	3.00
Chipper/Shredder Petrol	35.00	52.50	70.00
Chipper/Shredder 240v	15.00	22.50	30.00

Access Platform	Day	2dy	Wk
13m Access Platform	80.00	140.00	220.00



Steve Evans being pushed in style by Carl Wallington

Congratulations to the winners: Carl Wallington and Steve Evans, who completed the course in record time and who were presented with the £20 prize by Dick Picken who, together with his partner Tom Rankin, had held the record up to this year.

Overall, a total of £76 was raised towards the Carnival funds from the race entries, the 'Test of Strength' competition and the tote proceeds. Following the success of this year's race, we are hoping to make this an annual event so it is not too soon to oil those 'barrows and start training, although for some of the competitors the intake of liquid refreshment seemed to be the hardest part!

Once again, many thanks to everyone who helped to make the event an overwhelming success.

Dan Killian on behalf of the
Harbury Carnival Committee

HARBURY CARNIVAL

The sun shone on another typical Harbury Carnival full of all the usual colour and enthusiasm. The committee extend sincere thanks to all for their contributions to the success of the day! Financially, we

know that the committee made more than £400 and those village organisations and charities, who have so far let us know, report a profit of over £1,200 - a very successful day!

On the day rosettes and prizes went to:

Trade Float	1. Dog Inn 2. Gamecock	Adult Float	1. WI 2. Theatre Group
Children's Float	1. Playgroup - Wight School 2. Guides	Adults Walking Tableau	1. Pirie Close 2. Chapel Street 3. Playscheme
Children's Walking Tableau	1. Cubs 2. Brownies 3. Beavers	Decorated pram, etc.	1. Jacob Hunt 2. Ryan in a box 3. Silk girl & Charlie
Horsedrawn etc.	1. Wilkin's Family		
Tim Percival Cup: The Photographer			
Sue Andrews Cup: The Crab			

Fancy dress:

Under 5	Buzzy Bee (Michael McVeigh); Blackbird; Chick (Ben Tawney)
5 - 7yrs	Jack in the Box (Christian McVeigh); Witch (Freya Brash); Fairy (Sarah Roe)
8 - 10yrs	Football supporter (Edward Fleming); Family (Laura Kerr, Elizabeth Kelly, Ellie Bristow); Chinaman (Ricky McMarn)
11 - 17yrs	Dracula; Photographer; The 'Lady'
Adult Group	WI; 60's
Adult Individual	Donald Duck (Jo van Hoorebeek); Madonna (Doug Megeney); Strong man & Linda (John & Linda Ridgley)

Thank you to our Carnival King and Queen Keith Phipps and Helen Gray and well done to all.

P.S. Certificates of rosette winners, in the fancy dress, not yet collected can be obtained from Nifty Needle.

John Kemsley

CARNIVAL BALLOON RACE

The first fund raising effort for Party Paraphernalia and a first for the Harbury Carnival. The glorious weather and the plentiful crowds enabled us to get our effort at supporting local causes off to a flying start!

We are very pleased to be able to donate all our profits to the Harbury School PTA to help towards their new play area. The furthest balloon returned to us by 22nd June 1996, was from Sarah Sherman, who will receive a cheque for £25. Thank you for your support on the day.

Ann & Denise
Party Paraphernalia

HARBURY SENIOR CITIZENS' SUMMER OUTING

On a bright sunny morning on 12th June, two coaches left Harbury carrying Senior Citizens on their annual summer outing. The destination this year was to be Llandudno.

After a smooth journey and a brief stop at Keele Service Station, we arrived in Llandudno at about lunch time.



From Left to Right:

**Mrs. Russel, Mrs
Holder and Mrs. Sollis**

First impressions of Llandudno are of tall, white painted sea front hotels, overlooking a wide sandy beach and a promenade that offered plenty of seating for everyone. There was a pier with small shops and the inevitable café at the end and a cable car to take you to the top of the Great Orme. The view from the cable

car was tremendous, giving an all round view of beautiful beaches and gently rolling hills. The top of the Great Orme was somewhat of a disappointment, a little on the tacky side, with a gift shop, a bar and a café.

Mrs. Sollis and friends went straight up to the benches overlooking the beach as soon as they had eaten their meal. The chairman was spotted nonchalantly taking the cable car up to the summit. Derek Lowe was delighted with his roast lamb lunch at one of the sea front hotels and Margaret Taylor was pleased with her many purchases, whilst others in the party were full of cream cakes and ice cream.

Llandudno town centre was very clean, with attractively laid out gardens and all the old cast ironwork restored where possible. Large stores were mixed with the smaller ones, small shopping malls leading off the main street. Llandudno seemed to have something for everyone and as we left just after 6pm many were asking if we could visit Llandudno again.

After a short break in Whitchurch for drinks and food, the coaches arrived in Harbury just after 10pm with everyone voting the day a resounding success.

Jenny Evans

HEREBURGH MORRIS

Hereburgh Morris are now in the middle of their busiest season. We are not going abroad this year, but we still have a very hectic schedule during the Summer. Our traditional start on 1st May was very wet, but if **you** missed us at 5am at Chesterton Windmill, the television cameras did not. I think we made every Central news bulletin between 10am and 10pm on that day. We do know how to put Harbury on the map!

Since then we have been to Upton Folk Festival, Chipping Campden Open Gardens, Southam District WI, to name but a few. We often raise funds for charity and our donations last year amounted to £256.

If you are interested in joining us, start thinking now; September is the best time to come when we return to regular Wednesday night practices.

Celia Neill, Squire 612819

HARBURY VICTORIAN STREET FAYRE - 28th September

Further to the article in the January issue of the magazine, this is a reminder for anyone who wishes to book a stall to contact Dan Killian on 612265, if you have not already done so. Booking forms will be sent out in the near future. The stalls will be similar to those used at previous Fayres, i.e. covered, table-top size 10'x5' and you can book either a full or half stall.

There is always a great demand for stalls at this event and as they have to be limited, early booking is recommended. Don't miss this unique opportunity to raise funds for your organisation or charity. Electricity will be available, if required, to light the stalls (lights to be provided by stallholders).

There will be entertainment for all ages, including a Victorian Fancy Dress Competition for adults and children, but if anyone would like to provide additional entertainment we would be very pleased to hear from them. Contact Brian Ingram or Dan Killian on the numbers below.

We would like to see as many people as possible in period costume so now is the time to raid the attic! Remember, **ALL MONEY RAISED** at the Fayre is for the benefit of local organisations or charities, some of which would be unable to carry out vital work for the community without fund raising events such as this, therefore, please help us to help others.

Dan Killian 612265

Brian Ingram 612418

THE BUCK PASSES ON!

Local Authorities are obliged to put out to tender much of the work that was previously done by their own labour force. Poor Mr. Tiley of Stratford District was frantically trying to stop the spread of the striped verge syndrome last month, but the lines of communication are overstretched!

Now **his contractors**, Ecovert, write apologising for **their subcontractors**, who 'inadvertently damaged their spraying equipment causing it to spray a greater width than intended' and promising that the affected areas will be seeded or turfed in June and

July. (Mr Edwards on 01789 841663 is the Ecovert Contract Manager.)

This is good news for the finches and the sparrows and an excellent opportunity for dandelions and daisies, but not much joy for lawn lovers. As it happens, our chances in the Best Kept Village Competition have not been compromised as we only came Second in the District to Fenny Compton and they now go forward to the finals with their greens blighted with brown borders. What a shame!

Linda Ridgley

GRAPEVINE

The Grapevine Coffee Shop will be closed for the Summer holidays on the 24th and 31st July and for the whole of August. Thank you to all helpers and customers; we look forward to opening again in the Tom Hauley Room on 4th September.

Lesley Jones

CORRECTION

I am reliably informed that I was unreliably informed of the whereabouts of the forge of Charles Field.

In fact, it was at Binswood End, not Park Lane corner as stated.

Celia Barrett

PALACE TRIP FOR HARBURY WOMAN

On 22nd May I had the honour and the privilege of being invited to St. James's Palace to be presented with my Duke of Edinburgh Gold Award. It took two years of very hard work, effort and organisation to achieve this goal before my 25th birthday. The Award Scheme has opened my eyes to many delightful things, especially mountain climbing and has put me into contact with many wonderful people.

I never saw myself as an outdoor type, but now I enjoy facing the elements. Whilst on the Award Scheme I went on a 'residential' with the National Trust. It was from this experience that I was nominated for Acorn leadership. I completed my training during 21-23rd June and look forward to leading my first group this year or next year at the latest. I will still be helping Harbury D of E group as I will have great pleasure in assisting other participants achieve their Golds.

I would like to thank Caroline, Matt, Ruth, Chris and Richard for their support and guidance during my time with them. More thanks go to Kate, Julia, Duncan, Rich and Sam plus, Jim, Chris Dom and Jim for helping me through my 'painful' expeditions. I would also like to thank all those kind Harbury people who helped me in my Service and Skill sections of the award.

Above all the Duke of Edinburgh scheme has been one aspect of my life I will never forget. Thank you to all.



Deborah with parents Roger & Kath Ellis

HORTICULTURAL SOCIETY

Weren't we lucky with the weather for our coach outing? In fact, it was a bit too warm at times! Our first stop was Cotswold Nurseries with a very wide selection of plants on show and for sale. The next one was Red Gables, a delightful garden - once a plum orchard. Much hard work and dedication over 38 years was evident, they also sold plants!

Our last visit was Hilliers, another garden and nursery, where we had our lunch. Here there was also a farm shop with wonderful bargains in cauliflowers. The coach had a large boot which was just as well!

The outing to Ilmington Manor was also blessed with good weather. A most beautiful house and garden, roses, honeysuckle, clematis, cranesbills, geraniums all at their best. The ladybirds seem to have done their job properly this year so far, there do not seem to be many

aphids about, our broad beans, roses and honeysuckle are normally smothered.

The walkabout Weekend will soon be upon us, some decent rainfall would be very useful, then good weather for that weekend, we will keep our fingers crossed.

The show schedules are available at the Post Office, Co-Op, Muggleston, Nifty Needle, 23 Deppers Bridge and 32 South Parade, so there is plenty of time to plan your entries!

Finally, the Marshalls Autumn catalogue is available from Pat Smith for anyone wanting to order (with discount) for early Autumn sowing and planting. Orders by the end of July.

Muriel Grey

GARDENING NOTES

Gather ye rosebuds while ye may, Old time is still a-flying, was the advice given by Robert Herrick to young maidens. To have plenty of rosebuds to pick be sure to feed rose bushes and spray against their pests and diseases. Many plants go on flowering for longer if their flowers are regularly picked or deadheaded. Cut lupins and delphiniums to the ground when the flowers fade, to encourage further flowers whilst cutting off the whole flowering stem from carnations and pinks will promote new bud development. If you intend to dry flowers for winter arrangements, now is a good time to harvest flowers. Apart from the purpose grown helichrysums and statice, it is worth trying for use in arrangements. Pick flowers just after they open, hang them upside down in loose bunches in an airy place. Many seed heads are also worth keeping.

Changes in plant growth now make cuttings, taken from border plants and shrubs, root more readily than at other times. Keep the air around them as moist as possible and avoid direct sun. Clip aubretia and rock roses to keep them neat. Stake gladioli, but cover the top of canes with some sort of cap. I have found the fingers cut from worn out gardening gloves make a capping if tied around the top of a stake. Feed lawns this month or next, but no later.

Watch for caterpillars on vegetables. Blight on potatoes shows itself as brown leaves with white mould underneath. The tubers will rot if this is left untreated, so spray with a fungicide. Finish planting leeks, winter

COOKERBILITY

Graded and Refurbished Gas & Electric
Cookers Delivered, fitted & inc warranties

Microwave ovens

Fair Trades Approved

Service & Repair



10 Gloucester Street, Leamington Spa,
Telephone: 01926 431164

R&S DOMESTIC SERVICES



REPAIRS TO MOST MAKES OF

Washing Machines

Tumble Dryers

Cookers

Dishwashers



PHONE - ROB CENEY on
HARBURY 613707

P D Q

SECRETARIAL SERVICES

For professional and fast
word processing:
Letters, Reports, Theses, CVs, etc.
« Disk Storage - Mailing »

Julie Killian
The Bungalow, Chapel Street,
Harbury, CV33 9HT
Tel: 01926 612265

*A serviced based on Professionalism
Discretion & Quality*

Michael Jerome



Carpets



A COMPLETE CARPET SERVICE

- Choose a new carpet from our extensive range
- Expert Fitting - Fully Guaranteed
- Existing Carpets re-fitted
- Professional On-Site Cleaning
- Vinyl Sheet Flooring

6 Meadow Road, Southam

Telephone: Southam 813325

Michael Jerome is a Master Fitter with the National
Institute of Carpet Fitters with 30 years experience



FOR PROFESSIONAL HAIR CARE



Kathleen Ellis

CHAPEL STREET, HARBURY. ☎ (01926) 612326

RETAILERS FOR WELLA HIGH HAIR PRODUCTS

TO ADVERTISE CONTACT:

26 FARLEY AVENUE, HARBURY. TEL: 01926 612033

HARVEY BUILDERS

Registered Since 1979

**YOUR LOCAL BUILDER FOR ALL YOUR
HOME EXTENSIONS AND ALTERATIONS
FROM PLANS TO COMPLETION.**



FOR PROMPT, PERSONAL SERVICE PHONE 01926 817906

REGISTERED
HOUSE BUILDERS

WESTFIELD CATTERY

Middle Road, Harbury

(opposite Rugby Club)

Tel: 01926 613946

**A pleasant, Safe home away from home
for your cat.**

Escape to discover the tranquil beauty
of the Lake District for a weekend break
or full holiday

WHICHAM OLD RECTORY

continues to offer an especially warm
welcome to Harbury folk.



Home grown food : home baked bread :
home-spun hospitality

Unspoilt beaches, mountains and moor-
land, golf, riding and fishing nearby
Daily and weekly terms on request.

Whicham Old Rectory
Silecroft,
Millom, Cumbria
LA18 5LS

Proprietors:
Dave & Judy Kitchener
Tel: 01229 772954

GREENLEAF FARM SHOP AND NURSERY

Fresh Vegetables, Fruit, Cut Flowers,
Pot Plants, Seasonal Bedding Plants,
Shrubs, Compost, Logs etc.

STOCKISTS OF
Old Mill Preserves
Ornamental Pots
Bowls & Baskets

OPEN 7 DAYS A WEEK

01926 812116
P. HEALEY ND (Hort)



"Between Southam & Ladbroke"

cabbage and spring broccoli. Summer prune apples and pears; net ripening soft fruit. I am trying out the idea that marigolds, curry plant and basil deter whitefly in the greenhouse.

Plant of the month: Phlox

In about 1725 one of the early American plant hunters, John Tradescant sent specimens of this species to England. The alpine types which flower in Spring thrived here and the tall, later flowering ones along with the annuals quickly became popular with the street flower sellers. Phlox paniculata has brightly coloured flowers massed at the top of tall stems which grow up to 4' tall. Phlox is the Greek word for flame, but colours range from white through pinks to purple, as well as the reds. The annual Phlox drummondii, a native of Texas, comes in a variety of colours and will bloom from late June through to September.

Plant them in rich gritty soil in full sun or part shade. They do appreciate a liquid feed and do not like very dry conditions, so this may not be the summer to be recommending them!

Pat Smith

Letters to the Editors

Dear Editors

My family and I would like to express our thanks to our neighbours and friends for their cards and kind words of sympathy and support on the recent loss of my dear mum and nannie. Thank you.

Gill, John, Alan, Nicola Guilford

Dear Editors

Acknowledgements

Carter, Elma Frances: Ann, Ken and Bert would like to thank family, friends and neighbours for their love, support and kindness during mum's illness and following her death. Aged 93, Mum's dearest wish was that she should live out her days in the comfort of her own home.

Special thanks therefore go to Gladys Hutchins, the ladies of the Home Care Service, the District Nurse and Harbury Surgery for enabling her to stay at home almost to the very end. Many thanks also to Rev. Peter Snow for a lovely service and for his words of comfort to the family.

Dear Editors

I did not know whether to be amused or irritated by Angela Heath's assumption that James Turner needs Lib. Dem. Help in managing his district. He has a perfectly good voice which he regularly employs to effect during Council meetings; his telephone number is a local one and I am not alone in feeling that he has little "to prove". Outside aid or should I say interference ?! is unnecessary.

Eleanor D. Zonik

Dear Editors

Our congratulations go to Sarah Bennett of Vicarage Lane, Harbury for her success in obtaining a Second Class Honours (Division One) Degree in Geography and Business Management studies from S. Martins College, Lancaster.

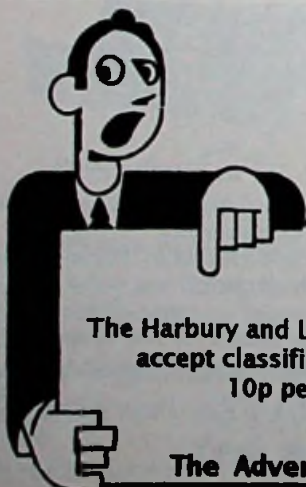
Sarah was a pupil at Harbury before going to Southam High School, staying on at the Sixth Form to do her "A" levels. In October she will be taking a year out - travelling and working around Australia. We wish Sarah good luck and best wishes for her future.

G.R. / C.A. Bennett

Dear Editors

I would like to thank Ruth Coleman and the Beavers for a lovely flower arrangement which they presented to me on my last night at Beavers.

Gill Guilford



Classified Advertising

The Harbury and Ladbroke News is pleased to announce that it can accept classified adverts for any item you may wish to sell.

10p per word, minimum of £1.00 per advert

Cash strictly with advert to:

The Advertising Office, 26 Farley Avenue

HARBURY

Garden

Walkabout

SAT 13th **JULY** SUN 14th
11am - 6pm 2pm - 6 pm

ADMISSION £2. AVAILABLE AT
THE VILLAGE HALL

REFRESHMENTS & ICE CREAMS

Craft Fair

SAT. 13th JULY only11am - 6pm

ADMISSION FREE

TRADITIONAL & UNUSUAL CRAFTS ON DISPLAY

COFFEE, LUNCHES & TEAS
IN VILLAGE HALL

CAR PARKING behind VILLAGE HALL





PEPPERCOMBE STABLES



Tomlow Road, Tomlow, Napton, Warwickshire

IS YOUR CHILD NOT LEARNING ANYTHING NEW? TRY US

Small Group Lessons

Children learn about all aspects of riding, including dressage and cross country.

Liveries available

Please Tel: 01926 817008 (24 hours)

THE BISHOP'S FRYER AND OFF LICENCE

LADBROKE ROAD • BISHOPS ITCHINGTON • TEL: 01926 614093

**QUALITY FISH AND CHIPS,
PIES, PASTIES etc.**

Now also serving Donna Kebabs

Open Monday to Thursday 4.30p.m. to 11 p.m.

Friday and Saturday 4.30 p.m. to 11.30 p.m.

Thursday, Friday and Saturday lunch times 11.45 a.m. to 2.00 p.m.

YOUR LOCAL PAINTER & DECORATOR

Domestic and Commercial Work Undertaken

also

Plastering • Carpentry • Tiling
House Maintenance • Odd Jobs

Call Gino Buffone NOW! on

Harbury (01926) 612486



Pauline Laidler

Personalised Porcelain & China

Commemorate those special occasions in life with a truly unique gift of porcelain or china, personalised with your own choice of wording.

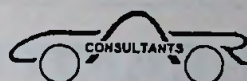
Wide choice of articles and decoration available. Prices from £10.

The Old Well House, Ladbroke.

Tel: (01926) 813458 for more information



CAR



CONSULTANTS

are Moving!

*From the 6th July 1996 our Quality Selection of used cars
will be on display at:*

Ufton Garage, Southam Road, Ufton

CARS FOUND, H.I.P.'D. VALUED AND BOUGHT FOR CASH!

FOR THE BEST DEALS ON WHEELS

Telephone:

01926 613795 or 0860 452222

J & M EUROPAVING

**MULTI-COLOURED ASPHALT &
QUALITY BLOCK PAVING**

Special Rates for Senior Citizens

Free Estimates Given • All Work Guaranteed for 10 years

Tel: 01926 885233 Mobile: 0374 468517

**Upper Grove Street, Leamington Spa
Warwickshire. CV32 3AN**

GRAND SALE
of
**Handpainted
Spanish Ceramics**

on
Thursday 1st August
10a.m. to 12 noon
in

The Wight School

Coffee, tea and cakes available

Proceeds to
Harbury Wight School Playgroup

PINEHAM FARM
BUTT LANE, HARBURY

LOGS - £2.00 per bag £35.00 per load

POTATOES - (Varies according to season)

HAY - £3.00 per bale

FRESH EGGS - £1.20 per dozen

PET FOOD & ACCESSORIES
NOW AVAILABLE

Dog, Cat, Rabbit, Horse and Poultry Food

Prices for Rabbit Hutches, Chicken Arks,
Bird Cages and other Pet Accessories
available on request

(CALL IN OR PHONE FOR DETAILS)

TEL: 01926 612325

become a
**SECRET
AGENT!**

August 20th, 21st, 22nd

10am - 12 Wight School

All children 5-11yrs welcome

Run by All Saints' Church

come to
our
holiday club!



**MANOR
PROPERTY & DECORATING SERVICES**

THE IDEAL CHOICE FOR ALL YOUR DECORATING
AND PROPERTY REPAIR REQUIREMENTS

TELEPHONE: 01926 612887



S. MEHRA

Fully Qualified
PAINTER & DECORATOR

Interior & Exterior

Free Estimates



9 Margaret Close, Harbury, Leamington Spa. Tel: 01926 612551 Mobile: 0976 241946

E.F. SIMS & SON

PAINTING & DECORATING SERVICES
THE QUALIFIED

PAINTER & DECORATOR

INTERIOR AND EXTERIOR
EXPERIENCED TRADESMAN

RING FOR A FREE ESTIMATE

613732

1 THE POUND, HARBURY



A1 SKIP SERVICES LTD.

Squab Hall Farm, Harbury Lane, Leamington Spa, Warwickshire CV33 9QB
Tel: (01926) 833638 Fax: (01926) 887547

**FAST, FRIENDLY AND RELIABLE SERVICE CALL
THE COMPANY WITH 20 YEARS EXPERIENCE**



2cu yds. - 20cu yds.



CAR



CONSULTANTS

CARS FOUND, H.P.I'D. VALUED AND BOUGHT FOR CASH-
QUALITY SELECTION ON DISPLAY AT 'FOSSE GARAGE'

FOR THE BEST DEALS ON WHEELS

TEL: 01926 613795 or 0860 452222



A.G. KNOWLES PLUMBING & HEATING



NEW CENTRAL HEATING SYSTEMS INSTALLED.
BOILER CHANGES & RADIATOR REPLACEMENT.

NEW BATHROOMS & SHOWERS SUPPLIED & FITTED. ALL DOMESTIC PLUMBING UNDERTAKEN

PLUMBING & HEATING TO NEW HOUSES AND EXTENSIONS

ESTABLISHED OVER 25 YEARS • ALL WORK IS GUARANTEED.

69 MILL STREET, HARBURY, LEAMINGTON SPA

TEL: 01926 612331 • MOBILE: 0374 691635

THE VILLAGE TAXI-BUS and A & M CARS

Phone to reserve your seat for Bus or Taxi

0831 135334 - 01926 612487

FREEPHONE 0500 21 22 25 Ext. 10

Your local service, Regular bus service to Asda, Sainsbury's, Tesco, etc. door to door.

Also Taxis for 1-8 people, local or long distance.

No collection fee - you only pay for the miles you travel

Please use your local services. WE NEED YOU!!

A.J. BRUNT Carpenter & Joiner

For all types of replacement windows, doors, porches, i.e UPVC,
Aluminium & Timber, double or single glazed.

Fitted kitchens/wardrobes and all your carpentry needs

Harbury 01926 612867 • 9 Ivy Lane, Harbury