

# Harbury & Ladbroke News



# Ladbroke



## THE FOSSE GARAGE

*Accident Repair Specialists*  
for all leading Insurance  
Companies

**24 hr. Recovery  
Service**

**AA and RAC  
Appointed**

**Servicing & MOT  
Repairs**

**Petrol and Diesel**



Motor  
Agents Association

*Fosse Way, Harbury,  
Nr. Leamington Spa.  
0926 613260  
24hr. 0850 613260*

**SELF-DRIVE  
CAR & VAN HIRE  
USED CAR SALES**

## Southam Carpets & Curtains

- \* Fitted Carpets, Vinyls, Curtains, Loose Covers & accessories
- \* Free Measuring, Estimating. FREE Pattern loans.
- \* Traditional Quality & Service.

**☎ Southam (0926) 814944**

*Coventry Street, Southam, Warwickshire.CV33 0EP*





# Harbury & Ladbroke News

**THE HARBURY AND LADBROKE NEWS**, reflecting all aspects of local life is published monthly and produced with the assistance of the All Saints' Parochial Church Council.

*Editorial Office:* Pete's Place (formerly Lindop)

*Advertising Office:* 26 Farley Avenue Tel: 612033

The views of contributors are not necessarily those of the Editorial Committee.

JULY 1994

No. 244



This month's edition focusses on the vintage carnival of 1994, which was hailed as a tremendous success. The number and variety of well prepared floats and individual fancy dress entrants drew praise from all the onlookers. Unfortunately several of the key committee members were unable to see the fruits of their hard work, but those who enjoyed the day's activities, appreciated all their efforts.

It was evident that the community spirit in Harbury was alive and well - as can be seen from our Editorial photo. The residents of Pirie Close boarded together to publicly voice their pleasure on their welcome into the village.

with a recent edition of the News has been processed by the Community Education Development Centre in Coventry. The results will be featured in a future edition.

The summer months bring problems for some villagers and we remind parents to be vigilant about road safety as the holidays approach. It is also important for householders to be on their guard and take care with property and cars. There has been a spate of petty theft from unlocked cars and property where windows have been left open overnight.

Can we remind our contributors that all advertising has to be charged for, as we rely on this source of income to support the magazine.

Finally, we extend our sympathies to the families of Evelyn Lane, Beatrice Miller and Ethel Thomas on their recent bereavements.

## *Harbury Diary*

### JULY

- |       |    |   |
|-------|----|---|
| Fri   | 1  | Play in Village Hall  |
| Sat   | 2  | Play in Village Hall  |
| Sun   | 3  | PENTECOST VI Sung Eucharist 9am, Evensong 6.30pm<br>Crusaders 10.30am Tom Hauley Room<br>Cycle Race from Village Hall, morning<br>Cricket Firsts home to Coventry Willows, Seconds Away<br>to Barford                     |
| Mon   | 4  | Yoga in Village Hall 1.30 - 3pm   |
| Tues  | 5  | Step Aerobics in Village Hall 6.30 to 7.30pm<br>Holy Communion 7.30pm   |
| Wed   | 6  | GRAPEVINE Coffee Morning 10am to 12 noon, T.H.Room<br>M.U. Garden Meeting, 2.15pm at 25 South Parade<br>Youth Club in Village Hall 8pm  |
| Thurs | 7  | Storytelling in Library 10am<br>Folk Club in Lounge of Old New Inn at 8.30pm  |
| Sat   | 9  | Craft Circle and Garden Walkabout   |
| Sun   | 10 | PENTECOST VII Holy Communion 8am, Sung Eucharist<br>10.30am, Evensong 6.30pm. Crusaders 10.30am in THR.<br>Cricket Firsts away to Radway, 2nds away to Bishops<br>Tachbrook.<br>PTA Quiz Around the Village and Barbeque. |

- Mon 11 Yoga in Village Hall 1.30 to 3pm  
Bible Study in Church at 8pm.
- Tues 12 Toddlers Service at 2.15pm  
Step Aerobics in Village Hall 6.30 to 7.30pm  
Holy Communion at 7.30pm  
Village Hall Committee at 8pm in Village Hall.
- Wed 13 GRAPEVINE Coffee Morning 10am to 12 noon in T.H. Room  
Youth Club in Village Hall at 8pm.
- Thurs 14 Holy Communion at 9.45am  
School Leavers Service 11am in Church  
Thursday Club 2.30pm in Village Hall  
WI 7.45pm in Village Hall
- Fri 15 St SWITHINS
- Sat 16 Men's Prayer Breakfast 7.30am in Tom Hauley Room
- Sun 17 PENTECOST VIII Holy Communion 8am, Family Communion  
10.30am, Benediction 6pm. Crusaders in Church for  
Family Service at 10.30am  
Conservatives Summer Drinks at Field House Noon-2.30pm  
Trip Found Ufton Fields 2pm from Car Park, £1 & 50p  
Children  
Cricket Firsts Home to Lighthorne, 2nds away to  
Dunchurch
- Mon 18 DEADLINE FOR RETURN OF FORMS FOR SUBSIDISED TRANSPORT  
FOR SENIOR CITIZENS  
Yoga in Village Hall 1.30 to 3pm
- Tues 19 Step Aerobics in Village Hall 6.30 to 7.30pm  
Mothers Union Outing to Severn Trent at 7pm  
Holy Communion at 7.30pm  
Senior Citizens Benefit Cttee Mtg 8.30pm V. Hall
- Wed 20 GRAPEVINE Coffee Morning 10am to 12 noon T.H. Room  
Harbury Society Tour of Ufton Landfill Site - 6.30pm  
Youth Club 8pm in Village Hall
- Thurs 21 Holy Communion at 9.45am
- Fri 22 St. MARY MAGDALEN. Holy Communion at 7.30pm  
ALL ARTICLES FOR AUGUST HARBURY NEWS TO  
PETE'S PLACE BY 6pm TODAY!
- Sun 24 PENTECOST IX Holy Communion 8am, Sung Eucharist  
10.30am, Evensong 6.30pm  
Cricket Firsts home to Shilton, 2nds away to Hockley  
Heath  
Ramble on Burton Dassett Hills, History & Wildflowers  
2pm at the Beacon, £1 & 50p children
- Mon 25 Bible Study at 8pm in Tom Hauley Room  
Visit by Horticultural Society to Offchurch
- Tues 26 Holy Communion at 7.30pm
- Wed 27 GRAPEVINE Coffee Morning 10am to 12 noon T.H. Room  
PLAYSCHEME IN VILLAGE HALL



- Thurs 28 Holy Communion at 9.45am  
 Parish Council, 7.30pm in Village Hall
- Fri 29 Holy Communion at Noon
- Sat 30 Map Reading is Fun on Burton Dassett (Tel 0827 872600  
 to book =
- Sun 31 PENTECOST X Holy Communion 8am, Sung Eucharist 10.30am  
 Evensong 6.30pm  
 Cricket Firsts Home to Rugby PC, 2nds away to Bishops  
 Itchington

## AUGUST

- Mon 1 Prayer & Praise 8pm in Church
- Tues 2 Issue of Travel Vouchers 2-4.30pm V Hall for those who  
 completed forms =  
 7.30pm Holy Communion at 7.30pm
- Weds 3 GRAPEVINE Coffee Morning 10am - 12 noon T.H. Room  
 Issue of Travel Vouchers 2-4.30pm V Hall for those who  
 completed forms =
- PLAYSCHEME  
 Mothers Union Outing to Gloucester
- Thurs 4 Holy Communion at 9.45am  
 Storytelling 10am at Library  
 Cricket Home Friendly to Elmdon Airport  
 Folk Club in Lounge of Old New Inn at 8.30pm
- Sat 6 THE TRANSFIGURATION Holy Communion at 9.30am  
**Remember! Linda keeps the ADVANCE DIARY. Tel 612792**  
 Use it to check for potential clashes and to bag your date!

## REGULAR DIARY DATES

**HARBURY CRUSADERS:** Tom Hauley Room, 10.30am Sundays

**UPHOLSTERY CLASSES:** Wight School, 2-4pm Mondays

**GYMNASTICS:** Harbury Sch, 6-7pm (under 7 & Beginners 7-8pm (7-10yrs). 8-9pm (over 10yrs) Mondays

**GUIDES:** Scout Hut, 7pm Mondays

**BINGO:** Village Hall, 8pm Mondays

**TODDLER GROUP:** Wight School, 10-11.30am Mondays & 2-3.30pm Wednesdays

**PLAYGROUP:** Wight School, Tuesday to Friday mornings

**NURSERY SCHOOL:** Village hall, Tues to Fri mornings

**BROWNIES:** Village Hall every Tues 6pm - 7.30pm

**BEAVERS:** Scout Hut, Tuesday 6 - 7pm

**SCOUTS:** Scout Hut, 7.45pm every Tues & Thurs

**BADMINTON:** Village Hall every Tuesday

**HARBURY FRIENDS:** School, 8pm 2nd Tues of Month

**BABY CLINIC:** New Surgery, 2-4pm, 2nd & 4th Wednesday

**YOUTH CLUB:** Village Hall, 7.30 - 9.30pm Wednesdays

**DANCING CLASSES:** Children & Adults, Farley Room, Village Hall, 4-9pm Wednesday

**GRAPEVINE:** Coffee Mornings Weds 10am-12 noon Tom Hauley Ro

5  
**HEREBURGH MORRIS DANCERS:** School Hall, 8pm Wednesday

**NETBALL CLUB:** Village Hall Car Park - Training Thurs 6.30pm -

Matches Saturday afternoon

**HARBURY FOLK CLUB:** Old New Inn 8.30pm 1st Thur of month

**LIBRARY:** STORIES, RHYMES for Under 5s, 1st Thur of Month 10am

**THURSDAY CLUB:** Village Hall, 2.30pm 2nd & 4th Thurs

**CUBS:** Scout hut, every Wednesday

**W.I.:** Village Hall, 7.45pm 2nd Thursday of month

**CHOIR PRACTICE:** Church, 6.30pm every Friday

**BELLRINGING PRACTICE:** Church, 7.30pm every Friday

**THEATRE GROUP:** Wight School, 8pm last Fri of month

**COFFEE MORNING:** Saturdays Tom Hauley Room 10am-12pm

**CITIZENS ADVICE BUREAU:** Over Southam Magistrates Ct

every Tuesday (except Bank Holidays) 10am-3pm

**TENNIS CLUB:** (Apr-Sep) Tue & Thu 6.30pm onwards (6pm for April)

Sat 2-5pm, Mon & Wed 1.45-3pm

**YOGA:** Village Hall, 1.30-3pm Monday, Diane Surgey Tel 817904

**DATES FOR INCLUSION IN THE HARBURY DIARY PLEASE TO:-**

**LINDA RIDGLEY - TELEPHONE 612792**

For Village Hall Bookings

ring Mrs Hughes 612716

For Wight School Bookings

ring Mrs Hayes 613488

For Tom Hauley Room Bookings

ring Mrs Smith 613680

### **DO YOU NEED HELP WITH ANY OF THE FOLLOWING?**

*Harbury Helpline is for you!*

**VISITING:** Hospital. If you are unable to visit a parent or relative,  
or parents would like support with a child in hospital.

*Call Fr. Roy Brown 612377 or Keith Dormer 613254*

**HOME VISITING:** Caring for a sick or elderly relative and need a  
break for a few hours, or you would like someone to call on you.

*Call Betty Knappe 612679 or Sue Dormer 613254*

**CHILDRENS CLOTHING:** For 0 - 6 Years Old.

*Call Anne Woodward 613536 or Maureen Darby 613330  
or Mary Catt 612864*

**EMERGENCY TRANSPORT:**

*Call Vivien Neill 613461 or John Algar 613864*

**HELP WITH FORM FILLING:**

**Job Applications, CV's, Council Tax Forms etc.**

*Call Joanne Cooper 613859 or Jeff Bedford 612753*



Personal tax claims, for rebates on tax paid to Building Societies or on shares. *Call Jim Chapple 612044*

**HOUSEHOLD BUDGETING ADVICE:**

*Call Tony Brunton 612191*

**ODD JOBS ABOUT THE HOUSE:**

*Call Jeff Bedford 612753*

**HELP WITH COOKING, SHOPPING, READING:**

If you live alone and need help with cooking or shopping, or you need help with reading, or you are partially sighted and would like someone to read to you.

*Call Mary Catt 612864*

**ALL SAINTS' CHURCH HARBURY SUNDAY SERVICES**

Holy Communion 8am

Sung Eucharist 10.30am

(Except 1st Sunday of Month: Sung Eucharist 9am)

3rd Sunday of Month: Family Service 10.30am

Evensong 6.30pm (except 3rd Sunday)

Please see notice board in Church for weekday services or revised times on special occasions.

**FROM THE CHURCHWARDENS**

As we move into the second half of the year we are commencing to put the ROC Fund to its intended use. You may have already noticed that the organ is being dismantled and it will not be back in use until September. Meantime the music in Church will continue thanks to Clive Watts and Mavis Young. A start will also be made on the refurbishment of the clock face and some modernisation to the workings. We also intend to clean and repaint the sundial; however if you cannot recall ever seeing the sundial, have a careful look at the face of the tower the next time you are passing or entering Church. We shall be carrying out other sundry repairs and maintenance which may require some scaffolding.

We were delighted to David Clarke back in the village from his most recent trip to India. He has been involved in voluntary work with Christian Outreach, an



international aid organisation whose headquarters are in Leamington Spa. Following John Eld's recent journey with aid and supplies to the Hungarian-Romanian border we rejoice in having people of both our Church and our village who are prepared to volunteer to carry out such tasks in their own time to assist other communities.

Following on the success of the regular Saturday coffee mornings in the Tom Hauley Room, Lesley Jones is starting a similar event each Wednesday morning between 10am and 12 noon. We are sure that many in the village will be able to take advantage from time to time of this additional social facility for a chat over tea or coffee and home-made cakes. Should you be able to offer assistance on a regular or occasional basis please contact Lesley.

The Men's Prayer Breakfast group will be having a 24 hour stay at the Retreat House, Offchurch, on Friday/Saturday 22nd-23rd July. This is now an annual event organised and led by Tony Stubbs. It is a time of quietness, meditation and prayer. It commences at 6.30pm on the Friday, further details from Tony Stubbs.

At a recent Deanery Synod meeting Father Roy Brown was elected as a Diocesan Clergy representative for Southam Deanery. We are sure he will comment humorously that it is yet another committee, but we are very pleased that he is able to represent both Harbury and Ladbroke.

Finally, all our young people should now have completed their examinations and are nervously awaiting the results. Let us wish them all success and reward for their efforts.

BERYL and JEFF

### PARISH HOLIDAY 1994

LAKE GARDA, ITALY - 19th August - 1st September

There are still places on the Parish Holiday if you would like to avail yourself of the opportunity to visit this lovely place at the competitive cost of £565 for a shared room. Details available from Beryl Checkley (612519)

## FROM THE RECTOR

To a non-gardener like myself, things grow in the garden at an alarming rate. What is more surprising to me is the fact that what appeared to be three sticks we planted last year are now alive with greenery. We tend to take these miracles of nature for granted, and certainly in my case, it is all down to nature. Yet those sticks serve as a living example of the re-creative powers of Almighty God. Now I cannot but reflect that such power cannot be limited to the inanimate parts of nature. What God can do for sticks, He can do for human beings. I am not of course, referring to the physical aspects of man's personality but the spiritual. We have to accept that the majority of our population shows about as much sign of spiritual life as those wooden sticks showed when planted last year. That might present a very depressing picture for the Church, which after all is in the business of encouraging spiritual growth in the population. Of course, if the Church were dependent upon its own efforts and strength, it would indeed be a very depressing prospect. However, the Church is in partnership with God, and that in much the same way as the gardener is. It matters little how skilled the gardener is, if the natural laws are put into suspension. In the same way, it matters little how vigorous or skilled the Church is, if God was to withdraw His presence. Sometimes, as in my case, the human agent contributes little to gardening projects and yet things still grow. In the same way, the Church frequently fails to fulfil her mission and yet God brings men to a spiritual awakening. Yet observation tells me that the best results are obtained in gardening when man and God co-operate with one another, and that is also true when the Church and God work together.

Like all human parallels, the point I am making cannot be pushed too far. Plants will die if left in the wrong conditions for too long. There comes a time when it is too late. As far as the spiritual aspect of man is concerned, it is never too late; no matter how long we have suppressed our spirituality, it can be brought to life by the power of God either with or without the co-operation of the Church, and that is why the Church is never discouraged.

Fr. Roy



# D. W. A. G.

**U G** *Builders* **R E N**  
**Tel: 0926 612460**  
**Mobile: 0860 849777**

Local Tradesmen who take pride in their work.

We specialise in rebuilding half-timbered and period buildings, renovations, extensions, conservatories, patios - in fact any form of building work.

**ESTABLISHED OVER 30 YEARS**

## **MANOR PROPERTY & DECORATING SERVICES**

**THE IDEAL CHOICE  
FOR ALL  
YOUR DECORATING  
AND PROPERTY REPAIR  
REQUIREMENTS**

**TELEPHONE:  
0926 612887**

*Custom  
& Bodywork  
Services at*  
**The Garage**

# Ladbroke

**SERVICES from £29**

**MECHANICAL REPAIRS**

**M.O.T's ARRANGED**

**M.O.T. REPAIR WORK**

**ALL TYPES BODYWORK**

**WELDING**

**RESPRAYS from £79**

**FREE INSURANCE ESTIMATES**

**COLLECTION & DELIVERY**

**LOAN CAR**

**SUNROOF FITTING**

**CARS FOR SALE**

**Personal Service from Steve Birch**

**0926: 813590**

**MOBILE: 0836 699489**

**\* WEDDING PHOTOGRAPHY**  
**\* PORTRAITS** (*Free Studio Sitzings*)  
*by Terence Sullivan LBIPP. LMPA.*

**A PROFESSIONAL AND  
FRIENDLY SERVICE  
AT REALISTIC PRICES**

**TEL: (0926) 813776**

**PASSPORT PHOTOGRAPHS WHILE - U - WAIT**



*Photography*

**54 Coventry Street, Southam  
(next to the Post Office)**

# FORTRESS



**SEPTIC TANKS**



**WHEELY BINS**



**SKIPS**

**FAST, FRIENDLY AND EFFICIENT SERVICE  
WARWICK 493414**



## **W. Goodwin & Sons** **Funeral Directors**

**38 COVENTRY STREET, SOUTHAM**

*All arrangements personally conducted  
in any district*

**Telephone: Daytime 812445  
Night - time and weekends**

**John: 812657 Brian: 812656 Cyril: 817718**



## LAUGH LINE

A headstone in a churchyard has this verse:

'Remember man, as you pass by, as you are now, so once was I. As I am now, so must you be, prepare, therefore to follow me.'

To which a passer-by once added in chalk:

'To follow thee I'm not content, unless I know which way you went!'

## FROM THE REGISTERS

Baptisms: At All Saints' Harbury

ANDREW NEIL COLLINS on Sunday 29th May

HENRY KANE ATKINSON on Sunday 26th June

WILLIAM JOHN BARRETT on Sunday 26th June

Confirmation: at St. Laurence, Shotteswell

Rebecca Jane Oldham, of Harbury, on Sunday 19th June

Holy Matrimony: at All Saints Harbury on Sat 4th June

MARK JAMES COOPER to CAROLYN BOWDEN

JAMIE MARK BLAKE to CLARE ELIZABETH FREEMAN

Funerals:

at All Saints Harbury, Mon 6 June: Ethel Thomas, 22 Frances Road

at All Saints Harbury, Tues 7 June: Ivor Priest, 16 Sutcliffe Drive.

at All Saints Harbury, Sat 18 June: Brian Ash-Memorial Service.

at Oakley Wood, Mon 20th June: Beatrice Miller, 35 Vicarage Lane

at All Saints Harbury, Tues 21st June: Evelyn Lane, 17 South Parade.

## MOTHER'S UNION

Following our A.G.M. in June, we relaxed with a Garden Forum. The team of three, consisting of Shirley Keir, Vivien Neill and Pat Smith, answered members' questions on a variety of gardening topics. We were impressed by their expertise and the afternoon was much enjoyed. At our Evening meeting we were transported to faraway places by three of our members giving talks on their recent holidays abroad.

Our meeting on July 6th is a garden meeting at Shirley Keir's (in her garden if weather permits). The evening meeting on July 19th will take the form of a visit to the Severn Trent water treatment works in Leamington, meeting there at 7.00 pm.

C. Mary Catt & Wendy Stubbs

## TODDLERS' SERVICE

We started our service by singing "Jesus loves me" and saying our thank you prayer. Mrs. Catt told the story of the shepherd who had 100 sheep but when he counted them found only 99. He set out to find the lost sheep and Mrs. Catt was the shepherd and Thomas was the lost sheep. We played it again and Alice was the shepherd and George the lost sheep.

Shirley Keir

## R.O.C.

The fund now stands at £15,674.08 another big increase on the previous month. Our two cyclists both achieved what they set out to do. Jean Rowe cycled from Ladbroke to Winchester calling at Harbury, Mickleton and Reading on the way, in the process raising funds for four churches, our share being £280.40. This was no mean feat and we offer Jean our congratulations and grateful thanks. Charles Catt visited all the Churches in the Fosse Deanery in one day - another marvellous effort. Money is still coming in for this and is expected to be about £140. Again our thanks to Charles.

Shirley Keir organised a Ramble and Lunch which was much enjoyed by those who walked and those who partook of the lunch. The result of this effort was £168, and the lunch organised by Nora Ellis on June 18th raised £140. Thank you to all involved. The next lunch on July 23rd is in the hands of the Mothers Union; order forms now available. For some months now a group of ladies have been working on "The Hereburgh Quilt". This will be a beautiful piece of work and is now nearing completion. On Saturday July 16th between 12 noon and 5pm in the Tom Hauley Room, they will be sewing all the pieces together. You are cordially invited to come and watch and we urge you to take advantage of this opportunity. When finished the quilt will be the main prize in a Grand Draw and it is hoped that tickets will be sold widely including a spell in the Royal Priors.

Nora and Neville Ellis gave us an unfinished Victorian patchwork Quilt which we were advised should go to auction. It was duly taken to Locke & Englands Sale Rooms and produced £83.65.

Events for the future:

On August 20th there will be a Safari Supper. This is



being organised by Lin Hayes and if you would be prepared to be hostess for part of the meal Lin would be delighted to hear from you. Tel 613488.

On Sunday Sept 11th there will be a lunchtime Drinks Party in the garden at Temple House - in the Barn if wet. More details next month.

On Friday September 30th in Church we are running an Antiques Road Show. More details later.

We have nearly achieved our target and are overwhelmed by all the goodwill and support we have received since we started last September.

Joyce and Harry Windsor

### THE HARBURY & LADBROKE CHURCH MEN'S SOCIETY

The Society met on 2nd June to hear a talk given by David Mann who is the Information Officer of Christian Outreach (CO) whose headquarters are here in Leamington Spa. CO was, he said, initially formed in 1967 as a response to the needs of destitute children who had been orphaned in Vietnam as a result of the war. David's secretary, now a young lady of 19 years waiting to go to university, was herself rescued from Saigon as an orphan child. Due to this initial operation in 1967, sponsored by readers of the Daily Mail, CO was started. Since then, CO has worked together with other aid agencies under the UN in many relief programmes in places such as Eritrea, Mozambique, Cambodia, Thailand and most recently Rwanda. Here in one day 200,000 people had fled across the border into Tanzania, plus thousands more each day. The impact on the Tanzanian community trying to deal with these numbers of refugees was colossal since their own population of 180,000 had more than doubled. With other agencies CO set up a refugee response unit to provide emergency relief by way of food aid, high energy biscuits, blankets and shelter for these traumatised people.

Another situation David Mann described to us was Cambodia when in 1975 the Communist rule there had turned this country into a forced labour camp at gun point where families were split up throughout the country and people worked for a few grains of rice per day. CO has been involved helping these people in fertilising their land again, providing simple, cheap, reliable treadle pump technology in order to irrigate their land for rice growing and in immunisation, food

and Medical Schemes. For their excellent work CO has been awarded a grant from the ODA who received a report of the very good work done by CO. The talk was supported with literature, slides and a video film. It was a commendable talk.

The next meeting will be the AGM on July 7th.

Peter Edwards (Secretary)

### DOES GOD EXIST OR WHAT IS LIFE ALL ABOUT??

Do you suspect that there must be more to it than eating, drinking, working, having a good time, (or maybe not such a good time), and then dying?

You could always contact Roy Brown where you would be warmly welcomed or Peter Snow or Roy Churchill who are both retired priests living in the village.

But if you feel that's going a bit far, there is a group of Christian folk always ready to talk about these things. Just call 612414 if you would like an informal chat with any of the following:

Tony Brunton	Mary Snow
Shirley Brunton	Keith Dormer
Colin Ingram	Vanda Ball
Jennifer Ingram	Jill Winter

We look forward to hearing from you.

Vanda Ball

## **Ladbroke News**

### JULY

Sun	3	PENTECOST 6 Family Communion 10.30am
Sun	10	PENTECOST 7 Sung Communion 9.00am OPEN GARDENS (2pm-6pm)
Wed	13	Holy Communion 10.30am Women's Fellowship, 2.30pm at Betty Malcolm's home
Sun	17	PENTECOST 8 Sung Communion 9.00am, Children's Church 10.30am, Evensong 3.30pm
Wed	20	Holy Communion 10.30am Parish Council Meeting
Sun	24	PENTECOST 9 Sung Communion 9.00am
Mon	25	St JAMES Holy Communion 7.30pm
Wed	27	Holy Communion 10.30am
Sun	31	PENTECOST 10 Holy Communion 9.00am

### AUGUST

Wed 3 Holy Communion 10.30am



## All Saints' Church, Ladbroke Sunday Services

9am Holy Communion with Hymns

(Except 1st Sunday of Month: 10.30am Family Communion)

3rd Sunday of month: 10.30am Children's Church

3.30pm Evensong (3rd Sunday)

## CHURCH NEWS - LADBROKE

The Open Air Service at Deppers Bridge on June 19th was, as usual great fun, with the Salvation Army giving us their usual musical support.

As news is rather 'thin' this month I would like to put forward some ideas that came out of two meetings I attended in June.

Firstly the Church of England is not in decline, that especially in towns and cities the numbers in churches are growing. Although some churches are being made redundant, new ones are being built. Many redundant churches are being put to good use as community centres.

So then, how do we see our church attendance in Ladbroke? 10% of our population regularly attend church, which is probably the envy of many rural parishes. However if our church and its worship is to be maintained - hopefully grow - we really do need new input, new ideas, and what is more, real dedication. There are residents in the parish who are members of other denominations, but how many of you write C of E on hospital documents when asked your religion? Please give it some thought - it has been said that we are a clique in Ladbroke church - I hope we are a friendly clique; we most certainly would welcome you joining it.

Betty Winkfield

## Women's Fellowship

Our outing to Baddesley Clinton was a great success. Everyone seemed to enjoy themselves. We had to dodge the cloud bursts once or twice, but we managed to look round the beautiful gardens in sunshine.

Our next meeting is at Betty Malcolm's home on July 13th, 2.30pm. The speaker then will be from the Stratford

branch of the Samaritans. We are having our Communion service at the usual 10.30am Wednesday time until we have sorted our 'referendum' as to which is the preferred time to have our Corporate Communion.

Betty Winkfield

### LADBROKE PARISH COUNCIL NEWS

I wasn't able to attend the last Parish Council Meeting on 15th June, but have gleaned some of the main 'happenings' from my fellow councillors.

The position of the new road signs for Harbury Road and Church Lane had been decided and should be erected in the next few months. A new finger post sign to Ladbroke at the junction with Deppers Bridge had already been erected and was receiving much local praise. The New School proposals, which change the status of St. James First School, to an all through school, taking pupils until the age of eleven, were noted with interest, as this change will affect a large proportion of the village children.

We do have a new village Policeman. He is Sgt Keith Brushette; the council welcomed him to his first meeting.

The plans for a major housing development in village farm field had been altered slightly, but not enough to make the Parish Council change their minds; they are still firmly opposed to the current proposals.

Mr. Loman of 'Hill Rise', Windmill Lane has applied for Planning Permission to extend his property. Mr. Moore has not been granted planning permission to convert several derelict barns on his farm.

The new book about Ladbroke is now in its final stages of completion, and the Parish Councillors were looking forward to getting their hands on a copy.

The Footpath group would benefit greatly from somewhere to keep an assortment of tools. Grants are available to purchase a good strimmer etc, if somewhere could be found to store them - any ideas?

There has been concern in the local area, about difficulty in obtaining dental care on the National Health. There is an N.H.S. Dentist at the new Southam Clinic; if you would like to use this service, please contact the clinic.

The next meeting will take place on Wednesday 20th July - I shall endeavour to be there.

Kate Liverton



The Ladbroke Social group has decided to change its day from a Wednesday to a Monday, to see if this would enable more villagers to participate. The group has established an impressive selection of toys for those with young families and there is a warm welcome and refreshments for anyone who is at home on a Monday morning and would like some company. Do try and come along, we'd love to see you!

Kate Liverton

p.s. Hot off the press, Nelly the goat has moved on! -it is now safe to walk up Windmill Lane, without being met by a couple of menacing horns. She hasn't left the village, but is now settled comfortably in a neighbouring field, with what looks like a friend for company. I'm sure that Nelly is happier in her new luxury surroundings, and it's nice to have Windmill Lane restored as a public highway; long may it last!

Kate Liverton

## ***VILLAGE HALL NEWS***

### ***BAR-B-QUE***

The Village Hall's social highlight of the year was once again our Midsummer Madness Bar-b-que, when entertainment by Harbury's very own Morris Dancers and the Draught Guinness Band proved thoroughly entertaining

Tickets were completely sold out and more, and over £500 raised to support the Hall for another year.

Financially this is very good, however, the committee are desperate for further help with these events, otherwise there is going to have to be serious consideration in reducing the Village Hall diary next year!

### ***PHOTOGRAPHY & FLOWER ARRANGING COMPETITIONS***

I hope everyone has had their camera out to enter the photography competition and that thoughts have turned to Country Gardens for flower arranging.

Entry forms must be returned to Mif War, "Whiteways", Bridge Lane, before July 8th so that we can allocate space for you. If you've lost your form then ring Linda Doyle (814214) for another one.

The Village Hall will be open to receive and arrange entries on July 10th, between 11am and 1pm. Judging will be between 1pm and 2pm, when the Hall will be shut and will open at 2pm in time for public display with the open gardens.

OPEN GARDENS

It is 4 years since Ladbroke last opened its gardens to the public, so sunday afternoon (2pm - 6pm) on July 10th is a rare opportunity to see behind our garden walls!!

Car parking and Tickets will be at the Village Hall. Cream Teas and Icecream at "The Old Well House", under cover if the weather is inclement and dried flowers, herbs, shrubs, perennials and other unusual hardy plants on sale.

With the repairs on the church tower completed, take the rare chance to climb the steps and see the bells under the supervision of Ladbroke's bellringers.

Pony rides will be available for the children.

Sponsorship is gratefully acknowledged from RYTON ORGANIC GARDENS, CHAPEL NURSERY, TOLLGATE COTTAGE NURSERY and FOSSEWAY HONEY.

Linda Doyle

HARBURY PARISH COUNCIL MEETING FOR MAY/JUNE

This was the Annual Meeting that every Parish Council is obliged by law to hold during the month of May and at which it is customary to elect a Chairman. So Ed Wilson was re-elected and Ken Stephenson made his Vice-Chairman. John Hunt agreed with Ken's "sensible suggestion" that a General Purposes Committee should be formed to progress projects that had stagnated and Highways and Lighting Sub-Committees should be integrated, with Cllr Keen remaining the "leading light".

Finance Sub-Committee recommended: a voucher system for concessionary travel with £12 per pensioner in 50p units and the taxi-bus subsidy withdrawn; £150 for Cricket Nets; £120 to cover the Summer Playscheme deficit; and nothing for Hereburgh Morris or the NSPCC Centenary Appeal, but Keith Thompson and Sharon Hancock argued for an exception for the Morris Dancers' twinning visit. The Sub-Committee reasoned that "the people who would principally benefit would be the Germans" but agreed to the Chairman's compromise suggestion of a £50 grant.

Cllr Hunt congratulated Mrs Robinson on her excellent, readable report on the educational needs survey which revealed a strong contentment with life in Harbury. There were a few gaps: more development of the Recreation Grounds for the under fives with trees, shrubs and a path round the perimeter; better use of the School Swimming Pool; cycling area and football clubs for the primary children with activities for



**GOOD NEWS!  
HARBURY SUPERMARKET  
IS NOW OPEN FOR YOUR  
CONVIENIENCE**

**MON - SAT 8.00am - 9.00pm**

**SUN 10.00am - 1.00pm**

**6.00pm - 9.00pm**

**HARBURY SUPERMARKET  
NOW IN THE 15th YEAR OF  
SERVING THE LOCAL  
COMMUNITY**

**MILL STREET, HARBURY  
TEL: 612645**

Make your appointment  
at



**Kathleen Ellis**

for

Professional Hair Care

2-3 Chapel Street, Harbury Tel: 612326

# DOCTORS' SURGERY

Mill Street, Harbury

*To request a home visit*

please ring 612232

*To request a repeat prescription*

please ring 612232

*For an appointment*

please ring 613554

Details of Surgery times

available from the surgery

*DISTRICT NURSE*

Southam 814318

*HEALTH VISITOR*

Southam 817377

*POLICE*

Southam 812366

*SOCIAL SERVICES*

Southam 813110



## **Priory Tool Hire**

THE COMPLETE TOOL HIRE CENTRE

WATTONS LANE,  
SOUTHAM,  
LEAMINGTON SPA

- MINI EXCAVATORS • MIXERS • ELECTRIC DRILLS •
- DISC SAWS • GARDENING EQUIPMENT •
- WALLPAPER STRIPPERS • CARPET CLEANERS •

AND MUCH MORE!

REPAIRS OF ALL KIND

**MON-FRI 7am - 6pm**  
**SAT 8.30am - 12.00**

# **Southam 814770**

**AGENTS FOR CALOR GAS AND BLACK & DECKER PARTS**



the non-sporting ones too and a very strong desire for something for the older children to do.

Amongst the adults there was a strong lobby for a Bowls Club and a perception that Harbury was an ageing village that might become a retirement ghetto. People thought there should be low-cost homes to attract young families.

Rambling Club; Conversational French; longer opening for the Library; First Aid training; Womens Returners Courses; a Telecottage; Keep Fit for the Elderly and more emphasis on Recycling were other suggestions.

Planning permission would not be required for the siting of a Mini-recycling centre to be provided by Stratford District. John Hunt thought it an offer Harbury could not refuse, the only problem would be where to put it.

Stratford refused two detached houses behind Harbury House as Backland development in the Conservation Area. The Enforcement Officer was investigating the access and hardstanding was being created by Poplar Farm in Deppers Bridge.

A two storey extension to 32 Vicarage Lane, extensions at 18 Park Lane, 2 Highfield Cottages and for Mr Reeves at Deppers Bridge elicited no Parish Council objection but the precedent of a "Security Lodge" at Harbury Heath House caused concern.

The Parish Council and Village Hall agreed to exchange land east of the Hall for a similar piece to the south, enabling the Council to provide a proper access to the Play Area. The Play Equipment Donation would be put towards the eventual replacement of the old slide, though Ed Wilson wanted an area for the older children to congregate.

Stratford District could not consider changes to the Vicarage Lane flats' heating until their two year improvement programme was completed.

The County Council was allocating "a substantial amount" towards the improvement of roads and footways in the village this financial year and hoped to begin work this winter.

New Speed Limits of 40 m.p.h. were to be imposed on Butt Lane and the B4452 with extensions of the 30 m.p.h. limit at, Hall Lane and Vicarage Lane junctions, Temple End and Bush Heath

Lane. The Clerk reminded Cllrs to ask for existing signs be upgraded.

A count of lorries travelling through Harbury was to be undertaken with a view to imposing Weight Limits.

Ufton Parish Council took a poor view of the re-routing of the tip traffic through their village, but Alison Hodge had written to their Clerk Mr Trussler.

Linda Ridgley

### HARBURY PARISH COUNCIL JUNE

School governors decided to change to mixed age teaching in all but the Reception and Year Seven Classes. Steve Norman registered his dissent but Sharon Hancock pointed out many village schools worked on this system.

Steve reported ructions at Deppers where complaints of unlicensed tipping, had involved the Police, District Council and County Waste Disposal. Heavy fines could be imposed.

Stratford District had granted permission for extensions at 9 Deppers Bridge, 3 Church St, 33 Mill St and amendments at Old Well Cottage Farm St, and Sussex Cottages where a bungalow was to be substituted for a house.

John Drinkwater complained the parish had not received plans for the Barn at Model Farm and insisted that no decision be taken until they had commented.

Royal Mail, said the Church Street Letterbox had deteriorated and would be too expensive to repair. Everyone was adamant it MUST be refurbished. It was in a Conservation Area and Royal Mail had a duty to see that it was properly kept.

New ADVISORY signs to Ufton Tip would be put up directing lorries along the Fosse but as they were not obligatory the County intended to keep the existing ones in place too, to prevent traffic coming through the village.

Harbury Society asked the Parish to strim off the nettles making Lovers Lane impassable. Steve Norman offered to help the



1 =

Chairman install the footpath finger posts to save any further delay.

Mr Pryke said Pirie Close residents wanted to remove the conifers at the entrance. Councillors had been expended much effort in ensuring that the site was adequately screened.

Pc Boulstridge discussed Traffic Calming with the Clerk and would undertake speed checks round the village. The Council complained about Police houses standing empty whilst there were families without homes.

Ray Carters weekly inspection of the Play Equipment revealed two nuts removed from the Swings. He had immediately replaced them. A variety of repairs was outstanding on Council property. "Ken is the Key" John Drinkwater commented.

Ken Stephenson had not "quite sorted out recycling yet" the Chairman announced.

The Netball Ladies paid into the repairs fund for their Court and complained poor drainage caused the area to be unplayable and could result in the League taking action.

Southam Town Council asked whether Harbury villagers were suffering because Dentists in Southam and Leamington had stopped taking on new National Health patients. Sharon Hancock explained it was a National problem!

John Hunt reported that Midland Red was taking a positive attitude to the issue of travel vouchers for OAPs and for this year only the Council would continue its subsidy of the Village Taxibus.

Linda Ridgley

## **HARBURY SOCIETY**

Alan Savery covered environmental issues at the May Meeting. Threats to the environment were brought home by spectacular events like the London Smog of 1952 when pollution killed 4,000 animals at the Smithfield Show. The resulting Clean Air Act of 1956 was the beginning of pollution control. Millions of people had chronic conditions like bronchitis and one child in six was asthmatic, but pollution was also a waste of resources.

Sustainability was the key; a way to satisfy everyone's aspirations and continue to progress without degrading the environment and we should always "Think Globally and Act Locally".

Chris Dobson talked about the practicalities of recycling waste. In Stratford District 94.7% went to landfill but 50% was recyclable and they had to achieve the Government target of 25%. So they were offering the Parish Council one of fifty Mini-recycling Centres.

But recycling was not enough. Germany was good at it but not RECLAIMING. It exported waste to Italy, Holland, Argentina, Indonesia and other countries, in the process damaging our waste paper industry.

Glass was suitable for recycling again and again but it was also possible to REUSE bottles, although supermarkets claimed that people did not want to do this. Steel Cans - a quarter of all can-making steel came from scrap. Aluminium cans had a high value (£700/ton). Plastics were a major problem with fifty different polymers. Tetra paks (for fruit juices) were worse being a sandwich of aluminium foil, paper and plastic. Textiles were good for recycling as only 4% of every ton was wasted.

\*\*\*

The Next Event is the **Tour of the Tip at Ufton Hill Farm**, when Andrew Ives will show us round. Meet at the **top of the driveway at 6.30pm on Wednesday 20th July**.

Our grateful thanks to everyone who contributed to our Carnival Stall. Those of you who called in on Carnival Day will have seen the huge range of crockery that we had on sale. It was a magnificent effort and we made over £100 with enough left over for our Victorian Street Fayre stall too.

Linda Ridgley

### HARBURY W.I.

Due to the voting in the Village Hall, our June meeting was held in the Tom Hauley Room, members liking the change and hoping it might be repeated in the future. We are looking forward to the outing to Bourton-on-the-Water on July 28th.

The popular annual Bowls match, at Leamington was played



on a pleasant sunny evening and won by Doug Green's team by one point.

Well, the Carnival, and what can one say but that it was such an enjoyable day with perfect weather for the occasion. Great to see more entries this year and the effort from competitors and organisers was fantastic. A special mention to Celia for all the work she put in, resulting in a super Float. Thanks to all her helpers too, especially Doug Green for the loan of his truck. The theme was DIZZIE KNEES, the gang all dressed as colourful Disney characters and, as always, our costumes home-made. We came 2nd in our class with our Float, 1st in the Fancy Dress, and Jan & Mary 2nd & 3rd in the individual class. Must say we do enter into the spirit of things (in more ways than one!)

The cake stall did very well and again thanks to the ladies who helped and baked.

A change in July's speaker: it will be Mrs. Morley on Quilling.

Tea Rota for July: J. Hamlin, L. Hayes, J. House.

Jeanne Beaumont

### THEATRE GROUP

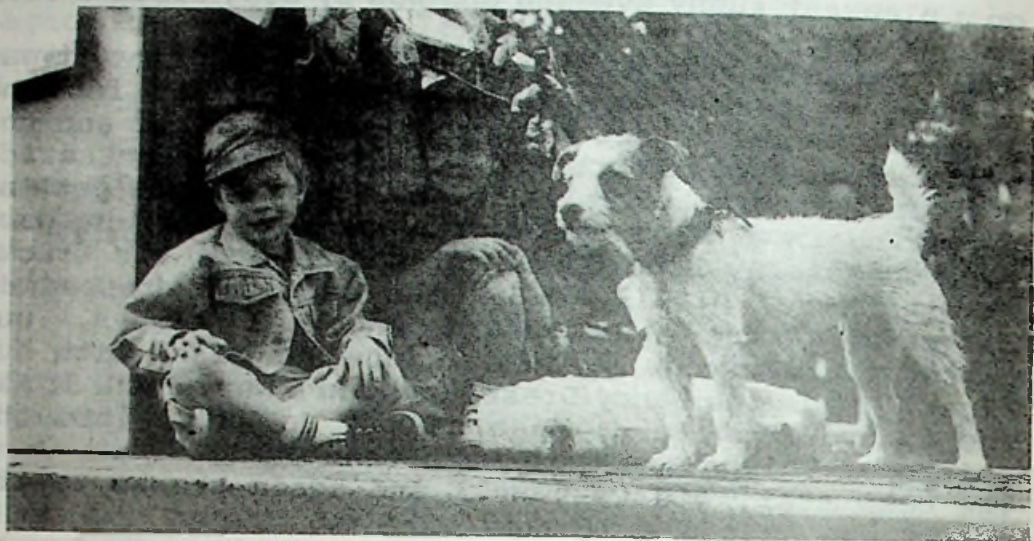
The Theatre Group again organised the Carnival Dance and it was one of the most successful in recent years. The A.C.T festival will have been held by the time most of you receive the Harbury News, so details of how we got on in next months issue.

The Theatre Group will again be holding a French Restaurant evening on Saturday 15th October with tickets being sold on Saturday 17th September.

John Holden

---

At a recent Jumble Sale, the Tennis Club received some jewellery which may have sentimental value to the owner. If anyone feels that this may belong to them please contact 613591.



C  
A  
R  
N  
I  
V  
A  
L  
F  
U  
N









## HARBURY CARNIVAL NEWS No. 6

What a brilliant day!! Thanks to the weather, we were owed a good day. Thanks for a marvellous procession, what a really good turnout. I know for a fact that at least two of the floats were only got together at very short notice, you really excelled yourselves this year so congratulations to all of you for a first rate effort. Thanks to all the people who turned up on the field to support the stalls and attractions, I do hope that all the stallholders made lots of money for their respective charities and worthy causes. Finally thanks to anyone and everyone who contributed before, during and afterwards. It seems to me that it was a very successful day, rounded off by yet another great Carnival dance. Once again it goes to prove how lucky we are to live in a place where there is so much enthusiasm and selfless effort to create such a fun-filled occasion.

Carnival results are as follows:

DECORATED FLOAT: 1. Pirie Close; 2. WI; 3. Netball Club.

DECORATED FLOAT TRADE: 1. Gamecock; 2. Shakespeare;  
3. Dog.

DECORATED FLOAT CHILDREN: 1. Nursery Group; 2. EQUAL:  
Playgroup & Guides;  
3. Brownies.

DECORATED BIKE/PRAM CAR; 1. Carnival Queen 2004;  
2. Army truck; 3. Motor Racer.

WALKING TABLEAU CHILDREN: 1. Beavers; 2. Cubs.

WALKING TABLEAU ADULTS: 1. Victorian Street Fayre Cttee.

HORSE DRAWN, MOUNTED OR LED: 1. Torville & Dean;  
2. Donkey Rides.

#### FANCY DRESS:

UNDER 5: 1. Hovis Boy; 2. Butterfly; 3. Beauty Queen.

5 to 7 yrs: 1. British Weather; 2. Gazza.

8 to 10 yrs: 1. Channel Tunnel; 2. Torville;  
3. Ali Baba Robber.

11 to 17 yrs: 1. Asterix; 2. Camel; 3. Two Maidens.

ADULT GROUP: 1. WI Disney Characters; 2. Dracula and  
friend; 3. Romans.

ADULT INDIVIDUAL; 1. Friar Tuck; 2. Elephant;  
3. Jiminy Cricket.

TIM PERCIVAL SHIELD: Octopus (Gamecock Float).

If the winners amongst you would like your

certificates completing with your name, please contact me and I'll be happy to do it.  
 Thank you and well done once again. Lets make it at least as successful next year, if not better.

Paul Watkin (Carnival Committee).

### SCOUTS & GUIDES PAPER COLLECTION

For some 20 years the Scouts & Guides Support Committee has been collecting newspapers from around the village on a monthly basis. Over that time many adults and children have been involved in what was an environmental pursuit as well as a valuable fund raising event. For the last 4 years the task of the committee has been greatly eased by the siting for a weekend a month, of the collecting skip on the Club carpark. Previous to this arrangement, papers were collected and stored in a central location then loaded into a skip about every 2 months.

From time to time we have realised that the skip provides a play and hiding place for some of the children of the village. This has been due to either seeing children in the skip or being called to the club to replace in the skip papers which have been mysteriously thrown out. However, sometime after the May collection the fire brigade had to be called to the skip to extinguish a fire which had been started amongst the papers. The committee, recognising the danger of our arsonist striking again, maybe when children were hiding or playing in the skip, decided very reluctantly that the collections, which latterly were being run more as a public service than a fund raiser, must cease.

We would like to record our thanks to all the collectors (some of whom have been involved for many years), the Village Club for its generosity in providing parking for the skip and all the people who month after month have saved the papers which we have collected.

John Travis

**PLEASE NOTE: CAROUSEL telephone number has changed to  
 ^0926 815957**



## HARBURY FOLK CLUB

With the quieter half of the Folk Club audience away in Germany (although by all accounts they were not exactly quiet out there when fortified by vodka!) a noisy evening could have been expected. Not so....the audience was stunned to silence time and again by the quality of the performers. An evening with no particular theme adopted its own theme as performers related anecdotes more or less concerning Longleat and ended up christening a band, formerly nameless, 'The Longleat Monkees'!

The first half was opened by The Jug Band (in their own indescribable way); continued with Bren (some Dylan) and Pete Gratsby with various combinations of voice and that superb hammer dulcimer; a debut for Chris (more of him later) and was finished by an electrifying and electrified Phil and Drill moving through the fair in the directions of the fields of barley.

The second half was opened by a multi-musically talented Steve Dudley, included two debut performances from Dave and from Bobby, that debut band name 'The Longleat Monkees' (Rupe, Alan and Chris) and was concluded in typically stunning style by Gilly.

The evening was particularly memorable for its three debut performances. Chris playing a set of driving guitar blues, Dave playing tunes from around the world on accordion and the powerful voice of Bobby singing Loving Arms and Crazyman Michael.

The third half finished with encores from performers in various combinations and finally a rendering of 'We'll Meet Again' (from the Jug Band Tape!) dedicated to D Day and all who play at Harbury Folk Club.

The raffle raised £25 for Breakthrough and that was how I (and my filofax) remember the evening! Next Folk Club is on Thursday 7 July with Pete Bones in the chair.

John Kemsley

Congratulations to Adrian Taylor for achieving a first class honours degree in Industrial Design and Good Luck with the Masters Degree course in Furniture Design he starts in Sept.

Mrs. Taylor

## HARBURY NURSERY PLAYGROUP - VILLAGE HALL

The Summer Term is coming to an end and there have been two main events which could not have taken place as successfully as they did without the support of various parents and villagers.

The first was a Fashion Show at the beginning of term. £416 was raised and has been spent on large pieces of equipment including a new water play bath and a wooden Wendy house. There were many people who kindly helped us by selling tickets, donating time, money and effort or turning up on the night, in particular Julie Wilson, Graeme McKenzie and Angela Jobling.

The second was our winning "Rain Forest" float in the Carnival. The children worked with Amanda Kelly, Tina Variale and Kate Smart on the art work. Mr. Timson made a frame for the float and Kim Orfeur housed it. A very big thank you to all those mentioned above and everyone else who has supported us.

The term ends with a visit to Hatton Farm, Sports Day and a picnic for the children, some of whom will be leaving us to go on to school in September, and we would like to wish them all well in their futures.

Amanda McKenzie

### OPERATION PATCHWORK

A reminder to all quilters that our final workshops take place on Friday 15th July at Mary Shelley's house and Saturday 16th July in the Tom Hauley Room. This is when we put the quilt together. It will be a hardworking time for us, so come along, needles poised!

Those of you who still have panels, please let me have them soon.

We shall be happy for visitors to pop in to our work-shop on the Saturday (12 noon to 5pm) and watch the "Hereburgh Quilt" happen - raffle tickets will also be on sale.

Mary Shelley

*Quilters please note: due to a bereavement in her family, Betty the quilt mistress will not be available on July 17th so plans are as above - PLEASE CHECK FRIDAY TIMES WITH MARY)*



## Michael Jerome



**Carpets**



### A COMPLETE CARPET SERVICE

- Choose a new carpet from our extensive range
- Expert Fitting -- Fully Guaranteed
- Existing Carpets re-fitted
- Professional On-Site Cleaning
- Vinyl Sheet Flooring

Cherry Trees', School Lane, Ladbroke

**Telephone: Southam 813325**

Michael Jerome is a Master Fitter with the National Institute of Carpet Fitters with 25 years experience



## R&S DOMESTIC SERVICES



### REPAIRS TO MOST MAKES OF

Washing Machines  
Tumble Dryers  
Cookers  
Dishwashers etc.



**PHONE - ROB CENEY on  
HARBURY 613707**

## Grattan O'Brien

### FURNITURE RESTORER FRENCH POLISHER

**53 BANBURY ROAD  
SOUTHAM  
Telephone (0926) 814766**

## P D Q SECRETARIAL

For a professional and fast word processing/typing service:  
Letters, Reports, Theses, CVs, etc.  
Assistance with compilation of documents prior to typing if required.

Mailing Service - Disk Storage

Julie Killian, The Bungalow,  
Chapel Street, Harbury, CV33 9HT  
Telephone: 0926 612265 (Anytime)

*A service based on Professionalism,  
Discretion & Quality*

## Carousel

10 Daventry Street, Southam  
0926 613811 - 814444

*New and Second Time around Ladies  
Fashion and Accessories*

**Mondl - Frank Usher - Alexon  
Jacques Vert - Windsmoor  
Tricoville - Escada - Eastex  
Condict - Berkertex  
and many more**

Designer Label & Good Quality  
Clothes and Accessories

*Turn your unwanted items into Cash!!*

New stock always available  
good range of Quality Jewellery  
and Hair Accessories

**HAT HIRE AVAILABLE**

# **BENCH TELEVISION SERVICE**

22 OXFORD ST  
SOUTHAM

REPAIRS  
SALES  
RENTAL

'SATELLITE' SYSTEM DEMONSTRATION



## **SOUTHAM: 812304**

## **Visiting Chiropodist**

*Collette A. Green*

SEN MSSCh MBChA

1. NEWSTEAD DRIVE  
SOUTHAM  
WARWICKSHIRE. CV33 0LT



TELEPHONE  
0926 817209

## *Harbury & Ladbroke News*

**TO ADVERTISE  
CONTACT:  
26 FARLEY AVENUE  
TEL: 612033**

**MONTHLY WHITE PAGE RATES  
APRIL 1994 TO MARCH 1995**

<b>WHOLE PAGE</b>	<b>£21.00 PER ISSUE</b>
<b>HALF PAGE</b>	<b>£10.50 PER ISSUE</b>
<b>QUARTER PAGE</b>	<b>£5.25 PER ISSUE</b>



## HEALTH MATTERS - WEIGHT

What problems can weight cause?

In a "nutshell" overweight people do not live as long as people of "normal" weight. Many people are two stones overweight - try to imagine carrying 14 bags of sugar around with you all day! As your weight increases, your blood pressure creeps up because the heart has to work harder and this increases the risk of strokes and heart attacks.

Overweight people have more fat in their blood which can affect the heart and blood vessels and cause circulatory diseases. Joints can also suffer. Correct your weight and your joints will reward you with increased mobility.

Remember if you can keep nearer your ideal weight you will look trimmer and feel better, have confidence and plenty of energy.

Jeanne M. Newel

## CONCESSIONARY BUS VOUCHERS

This year concessionary bus vouchers instead of tokens will be made available to all Senior Citizens residing within the parish of Harbury & Deppers Bridge who want them. The total value of vouchers per person is £12 and each voucher is worth 50p. They may be used to pay for part or the whole fare on all Village Taxi Bus services and on Midland Red routes 63,64,65,66,67. All Senior Citizens, i.e. men 65 and above and women 60 and above, as at March 31st 1994, are eligible and those who want the vouchers must register their interest by July 18th.

Registration forms are available from Mrs. A. Hodge (Clerk to the Council), 36 Binswood End: Post Office, Church St: Pete's Place, Chapel St; the Library, the Co-op & the Newsagents, all in High St, Harbury: Councillor Steve Norman, 39 Deppers Bridge. The completed form should be returned to one of the above by 9.00am MONDAY 18th JULY. Vouchers will be issued from the Farley Room, Village Hall on Tues 2nd & Weds 3rd August between 2.00pm

30  
& 4.30pm. At the time of collection pension books should be produced to support eligibility and a signature will be required from the recipient.

John Hunt

### SOUTHAM SCHOOL NEWS

OPEN EVENING - WEDNESDAY 13th JULY 1994, 6.30 - 9.30p

The open evening provides an opportunity for all parents and friends to visit the school to talk to students and staff.

### SOUTHAM AREA SCHOOLS CONCERT

The perfect antidote to reorganisation blues and SATs pressure delighted parents and staff of eleven schools in the Southam Area on Wednesday, 4th May. Staff in the schools and members of the County Music Service worked with groups of pupils from Year 1 to the Sixth Form to rehearse a variety of musical performances, choral and instrumental.

The 200+ pupils had a brief rehearsal together on the afternoon of the concert, before performing to an audience of parents and staff. Limits of space restricted pupils to one parent each, but the Hall of Southam School was full to capacity.

Each school presented a short programme, ranging from First School songs, violins and recorders to ambitious orchestral items from the older pupils. The pupils behaved beautifully on stage and staff did a splendid job of ensuring that the hordes back stage, awaiting their turn or recovering from the excitement of their performance, were kept (reasonably) calm.

The finale brought together all the performers in a joint choral item.

### 16-19 EDUCATION REVIEW

In a recent review commissioned by Warwickshire L.E.A. the Sixth Form at Southam School received a glowing report. The report focused on the effectiveness of 16-19 education and drew attention to the following indicators of good practice at Southam and the rigorous approach adopted by the school to the



monitoring of progress: e.g.

- the identification of target A-level grades for each student early in Year 12 based on GCSE attainment;
- regular monitoring of expected grades for each student each term;
- establishment of a quality forum for teachers to discuss specific and general problems regarding 16-19 Education.

This report follows the highest ever pass rate at A-level achieved by students last year with results amongst the best in the County. 87% of all entries were graded A-E and an average of 3 A-E grades were achieved per student. The school is proud of the contribution that it continues to make to 16-19 Education in the area.

D.J. Knapp

#### HARBURY SENIOR CITIZENS BENEFIT ASSOCIATION

The Harbury Senior Citizens Benefit Committee arranged 2 coaches to take approx. 80 members of the village on a days outing to York.

Everyone agreed that they had enjoyed a marvellous day and the raffles on board were extremely well supported.

GROCERIES - won by Mrs. Hogbein; Mrs. Davis, L/Spa.

WINE - won by Mrs. Tebaldi; Mrs. Taylor, B/Itchington.

SHERRY - won by Mr. Rutkauskys, Deppers Bridge.

The secretary for the Association, Mrs. M. Taylor of 16 Pineham Avenue now has a photocopier, which could be used by any villager. Cost 15p/copy, with any revenue used for the Association Funds.

C.F.

---

**THE NEW ADDRESS FOR YOUR COUNTY COUNCIL REPRESENTATIVE,  
Mrs. Patricia Collett (formerly Bidwell) is:-**

**20 Northampton Lane,**

**Dunchurch, Nr. Rugby CV22 6QA.**

**Tel: 0788 810960**

## HEREBURGH MORRIS - TRIP TO VERDEN

Between June 2nd and 5th Hereburgh Morris revisited Verden in Germany to take part in the Domweih, which is their annual carnival.

We were at once made to feel at home, as upon our arrival we were treated to an unrelenting downpour of rain. That did not dampen the enthusiasm of our host, who had timetabled a walking tour of Verden to see the sights, although they were somewhat masked by vertical water. We had a marked resemblance to drowned rats when we finished the walking tour and attended the mayor's reception in the Town Hall.

The following day, we visited the fairytale like city of Bremen, where we soon found that if one of the numerous bicycles didn't knock us down, a tram would! Bremen is an old port on the bank of the Weser and has picturesque areas of old town resembling the shambles in York (areas of parkland dominated by a windmill, and areas where the architecture is like something out of Chitty Chitty Bang Bang).

On the Saturday we started to earn our keep by taking part in the Domweih procession, where we danced to the largest and most appreciative audience we have ever experienced. An estimated 8 to 10 thousand people lined the streets for the procession, which comprised some 70 floats.

This procession marked the start of the Domweih, which is a bit like Alton Towers only not as small, being set up in the town centre of Verden. It was to remain there for a week.

On the Sunday morning we attended the Domweih Church service, which was held in the dodgem arena. After the service, the chairs were quickly removed and we danced on the same area, again to a large and appreciative audience.

The hospitality was generously provided by members of an adult English speaking class and numerous new friendships were forged.

We are now looking forward to Oct. 20th-24th, when we will be entertaining our German friends in Harbury.

Peter Bones



## N.S.P.C.C. FASHION SHOW

Thanks once again to Hammells Fashions, Nu Vogue Hair Design and Hush Puppies Shoes for making our Fashion Show on Thursday May 19th such a success.

Our models were superb and paraded before a capacity audience in the village hall; we even had to start later than planned as people were queuing to come in!

A grand total of £388 was raised for the NSPCC of which £40 was donated to The Spinal Injuries Association (the charity Hammells normally support)

The committee would like to thank you all for your generosity and support.

Pauline Hayes

The photo shows our glamorous 'models for the evening



## PLAYSCHEME '94

A big thank you to all who supported us at this year's carnival and especially to those who have given us offers of help during Playscheme. We have also had a good

response from our requests for margarine tubs, cereal boxes, greetings cards etc.etc., this is greatly appreciated.

Just a reminder that Playscheme will operate on the mornings of 27,28,29 July and 3,4,5, August. There will be a 75p registration fee plus 50p per day per child. If you are able to spare some time during these sessions please let me know as more help is needed.

We are still in need of the following items:-

Comics (toddlers & teens), tights, wallpaper, plastic squash bottles, ribbon, fabrics, washing up bottles, cereal boxes, old greetings cards, margarine tubs & lids, yoghurt pots.

Items can be left at 20 Mill Street or ring me and I can collect. Many thanks again.

Amanda Kelly (613175)

### COME & HAVE FUN!

#### MOBILE ACTIVITY SCHEME FOR 8-16 YEAR OLDS

Wednesday 10th August 10am - 12 noon

in Harbury Village Hall

Volley ball, badminton, centresport, team games, rounders and much, much more.

#### ABSOLUTELY FREE

organised & sponsored by Stratford/Fosse Community Council and The Arden Community Education Council.

Further information Tel: 413603, 0789 260632, 0789 764042

You are also invited to swim at Kineton High School Swimming Pool Monday to Friday, 25 July to 12 August. The pool is open for both children & adults from 10am to 12.30pm, children 50p, adults £1. (Under 8s must be accompanied by an adult) Further info on 0926 413603



4th HARBURY HASH

Sunday September 25th. A date for your diary. This popular, late summer event run (or walked) over the Thwaites Estate starts at 3pm and finishes with a barbeque. Come along and join in the fun. Distinctive T-shirts on sale - now becoming collector's items. Look out for further details.

John Hancock

HARBURY HELPLINE

At our meeting on 7th June it was agreed that the money we won for the Rural Church Community Care Scheme Competition should go to the R.O.C. fund. Our Annual General Meeting will be held on Tuesday 6th Sept at 8.05pm in the Tom Hauley Room.

VANDA BALL



Congratulations to Harbury Cricketer Gary Lowe who married Julie Hawtin at Cubbington Parish Church on May 28th.

**GRAPEVINE** is a new mid-week coffee morning held every **WEDNESDAY** in the Tom Hauley Room from 10am-12 noon, starting 6th July. Everyone is welcome - if you are in the village during the day - retired, unemployed or working at home, why not call in for a drink and a bit of company. We serve tea, coffee, home-made cakes, biscuits and squash. Children are welcome and a few toys are available for their use. Prices are reasonable, our main aim being to provide refreshments and a pleasant place to enjoy the company of others. See you there.

LESLEY JONES

### A VET's TALE

Many people know "Jock" Stobo in his later years as an authority on Staffordshire Figures, but his autobiography, "A Vet's Tale", reveals an adventurous and ambitious younger man.

His story moves from a hard-working but happy childhood on a Scottish farm, through academic life in Glasgow and London to the vastnesses of the Sudan; back to private practice in Surrey, local government and finally work for the MAFF where he played a pivotal role in controlling the 1967 Foot & Mouth outbreak.

The style is readable and humourous, evoking a lost world where a self-confident Britain sent its professionals out to bring order to a chaotic world. Jock is donating the profits of his book (priced £8) to the Veterinary Benevolent Fund, a charity of which he was Honorary Secretary for many years.

Already he has sold many hundreds of copies to friends and colleagues from Dingwall to Devon and the book is now available for Harburians at Kane's Newsagents, High Street, Harbury.

Linda Ridgley

### DOGS FOR THE DISABLED

We would like to say a very big thank you to the people of Harbury for coming up trumps once again and making our coffee morning in the Tom Hauley Room such a success.



WHATEVER YOU DRIVE  
YOU ARE WELCOME AT

DOVEHOUSE  
AUTO  
SERVICE

TELEPHONE: HARBURY 612809

FOR ALL YOUR MOTORING  
MOT's, REPAIRS, SERVICING

Andrew  
welcomes you to the

# Shakespeare Inn

*Large selection of traditional beers*

*Wide choice of home cooking 12 - 2.00 & 7.00 - 10.00*

*Seven days a week*

*Garden Room Restaurant  
with a full "À la carte" menu*

*Also available for  
private functions*



**Telephone: Harbury 612357**

## HARVEY BUILDERS

Registered Since 1979

**YOUR LOCAL BUILDER FOR ALL YOUR  
HOME EXTENSIONS AND ALTERATIONS  
FROM PLANS TO COMPLETION.**



**FOR PROMPT, PERSONAL SERVICE PHONE 817906**

REGISTERED  
HOUSE BUILDER

## GREENLEAF FARM SHOP AND NURSERY

Fresh Vegetables, Fruit,  
Cut Flowers, Pot Plants,  
Seasonal Bedding Plants,  
Shrubs, Compost, Logs etc.

OPEN 7 DAYS A WEEK

0926-812116

P. HEALEY ND (Hort)



"Between Southam & Ladbroke"

Escape to discover the tranquil beauty  
of the Lake District for a weekend break  
or full holiday

## WHICHAM OLD RECTORY

continues to offer an especially warm  
welcome to Harbury folk.



Home grown food : home baked bread :  
home-spun hospitality  
Unspoilt beaches, mountains and moor-  
land, golf, riding and fishing nearby  
Daily and weekly terms on request.

*Whicham Old Rectory*  
*Silecroft,*  
*Millom, Cumbria*  
*LA18 5LS*

*Proprietors:*  
*Dave & Judy Kitchener*  
*Tel: 0229 772954*

# MERCIA METALS

SKIP HIRE



## ALL SIZES OF SKIPS

19-21 Wise Street  
Leamington Spa CV31 3AP  
Tel: (0926) 832470 & (0926) 831023

## WREN Telecottage



WREN is Warwickshire's first  
telecottage. It provides high quality  
flexible **computer training** for  
businesses, community groups and  
individuals. WREN is a drop-in  
centre with **computers** available for  
all to use and there is always **help on  
hand**. We also have **fax**, **photo-  
copying** and **E-mail** facilities. We  
provide **computer and secretarial  
support** to rural businesses and free,  
quality **business advice** is also  
available at WREN.

For more information please contact  
Nancy Power on 0203 696986



This enabled us to send a cheque for £95 to our local branch, in Hampton Magna, Warwick.

Thank you once again for so generously baking, giving raffle prizes etc. and of course, buying that special cake and enjoying a cup of coffee with friends.

Pat, Sylvia, Helen & Wendy

### THE RED CROSS

The Red Cross would like to thank everybody in Harbury and Deppers Bridge very much for being so generous during Red Cross Week. Our collection was a record £494. Also a very special thanks to the hard working collectors.

Anne Lambert

### HORTICULTURAL SOCIETY

June is the month when many gardens are full of colour. We can thoroughly recommend Hazelby House, nr Newbury and Home Farm, Balscote, nr Banbury, after visiting both. Details of them can be found in the yellow book, Gardens of England & Wales - Open to the Public.

The plant sales area at Moreton Morrell College is now open every day offering very good value plants.

The Garden Walkabout on Saturday 9th July 11am to 6pm has become an established part of the village calendar. Eighteen gardens will be open by kind permission of their owners. The proceeds from this event, have, in the past, provided the village and various groups with equipment and funds. Please support the day by bringing along family and friends to view the gardens and have tea and cakes as well.

If you would like to bake a cake or scones for the garden teas we shall be most grateful. Please contact Pat Smith - 612650 or Julie Clarke - 612066.

Schedules for the Village Produce Show will be available at the end of July.

The Society has been invited by Offchurch to view 3 gardens and then have cheese & wine with the members of their Horticultural Society. If you would like to go to this on Monday 25th July, please give your name to Eleanor Zonik if you haven't already done so.

P. Smith

JULY IN THE GARDEN

Watering, deadheading, hoeing and weeding are continuous jobs for this month.

Pick herbs for drying just before they come into flower. Cut down chives after flowering to promote new shoots.

See that flowering plants are well supported against the wind and thunderstorms we are apt to get this month. Cut mature delphiniums right down after flowering and they should flower again in September.

Take cuttings of geraniums, border carnations and pinks, also fuchsias late in the month.

In the vegetable garden turnip, carrots, Kohl Rabi and salad crops should be sown for autumn use. Try some endive or chicory for a change of flavour. Turnips are best sown near peas or beans as they like light shade and need to be kept watered to ensure quick growth. Watch for flea beetle.

Continue to plant out leeks and winter brassica.

Garlic and shallots can be lifted towards the end of the month when the leaves begin to yellow.

Spray potatoes every two to three weeks against blight and keep earthed up.

Begin to earth up celery and dust with old soot against leaf miner.

Prune espalier, fan or cordon trained apples and pears. Watch apples and gooseberries for mildew and spray. Shorten new growth on gooseberries and watch for sawfly maggots.

As strawberries finish fruiting tidy up the bed, cut down foliage and remove all runners, unless you wish to layer some to increase your stock.

Remove all side shoots from tomato plants and stop the plant when five trusses have set.

V.A. Neill

## Letters to the Editors

Dear Editors,

May I through the Harbury News say thankyou to all who supported the coffee morning on June 4th in aid of the British Heart Foundation. We were able to



send them a cheque for £62.

My thanks also go to Doris, Pat, Joyce, Edna, and Dorothy without whose help it would not have been possible.

Gladys Hutchins

Dear Editors,

I would like to take this opportunity to express my gratitude to the many friends and neighbours who sent get well wishes to me during my recent spell in hospital.

Your cards, letters, beautiful flowers and other kindnesses have been overwhelming and much appreciated. It is nice to know so many people are willing me to overcome the difficulties and once again return to active life in the Harbury community.

I am now out of hospital and learning to cope temporarily with the use of one arm and leg aided by Bob who is now the head factotum. We are getting quite expert transferring from and to the wheelchair.

Once again my heartfelt thanks to you all.

Midge Keen

Dear Editors,

I was interested to read the letter written by Mrs. Enefer and agree with her sentiments entirely. I no longer live in Harbury but have family connections with the village dating a long way back.

I arrived recently on holiday from Australia, just in time to witness the destruction of yet another old landmark, the old forge.

I remember as a child watching the late Sid Enefer at work. He was a craftsman. Not only a farrier but a producer of fine gates and railings which formed only a part of his ancient skills.

What a pity that this old and interesting building, part of Harbury's history, could not have been preserved and

40  
utilised in some way for the benefit of the village. Say  
a small museum or similar.

Frances Poupard

As an afterthought, it is not so long ago that the blacksmith along  
with the miller, the schoolteacher and the baker were the  
cornerstones of village life. It would be splendid if somewhere  
could be provided to commemorate these people by old photographs  
and other memorabilia.

---

### PROPERTY WANTED

Are you thinking of selling?

We are looking for a home in this area.

We are private cash buyers and need:

4 bedrooms, a large garden, self contained  
accommodation for an elderly relative/extendable.

Can you help?

0926 424239 after 6pm

---

## **S. MEHRA**

Fully Qualified

### **PAINTER & DECORATOR**

Interior & Exterior

*Free Estimates*

9 Margaret Close, Harbury, Leamington Spa. Tel: 0926 612551

---

## **The Samaritans**

Always there - at the end of  
the line

**Telephone: 0789 298866**  
**any time, all the time**

Sadness, hurt, despair, fear, anxiety, isolation,  
distress - normal feelings and emotions. It helps  
to talk things over.

Phone, visit, or write: Samaritans

1 Shakespeare Street

Open 8.00am to 10.00pm



# HARBURY R.F.C.

JUNIOR & MINI SECTION

1994-95 SEASON

REGISTRATION DAYS AT CLUBHOUSE

SEPTEMBER 4TH, 11TH, 18TH

FESTIVAL SEPT. 25TH

NEW PLAYERS WELCOME

UNDER 7'S UPWARDS

*For more information:*

RICK EVANS (Secretary) 612700

TONY HERSEY (Coach) 832464

## WAXING

Wendy Knowles  
612331

Fully Qualified  
Waxing Technician

# SLIMMING WORLD

Local ladies lost 44 stone in 1993

Why not join us this year and  
lose weight with our unique diet at:

Tom Hauley Rooms - Thurs. 10.30am

Other classes are held at:

Woodloes Community Centre, Warwick  
Tuesday - 8.00pm

St. Marks Church, Leamington Spa  
Wednesday - 7.30pm

Further details from Margaret  
0789 730369



**'NIFTY NEEDLE'**

HIGH STREET, HARBURY  
TEL: 0926-612927

SOFT FURNISHINGS, WALLPAPER,  
BEDDING, TRACKS, BLINDS

MOST WELL KNOWN FABRICS AT  
DISCOUNT PRICES

FREE HOME VISITS DAYTIME OR  
EARLY EVENING  
TAKENOME SAMPLE SERVICE

SHOP OPEN  
MONDAY - FRIDAY 9-5  
WEDNESDAY AND SATURDAY 9-1

PRESENT THIS ADVERT FOR 10% OFF  
MADE TO MEASURE CURTAINS

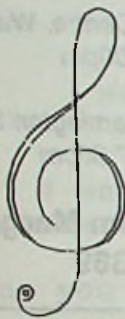
HARBURY R.F.C.

BAR-B-QUE 94

SATURDAY 9TH JULY

AT THE CLUBHOUSE, HARBURY

7:30 START, BAR-B-Q 8:30 TILL 10:30



STARRING...



FOOD TICKETS £10.50, NON FOOD £7.50

PHONE; I.HOLROYD 612527 OR G.LEWIS 815196

CARL WALLINGTON 613205



# HARBURY

## Garden Walkabout & Craft Fair

Saturday 9th July  
11am-6pm

### GARDEN WALKABOUT

18 gardens open to the public

Admission by programme

£2...available from the

Village Hall.

AFTERNOON TEAS IN GARDENS

### CRAFT FAIR

Over 24 traditional and  
unusual crafts on display  
Admission Free

MORNING COFFEE 3

LUNCHES in village hall

Car Parking behind Village Hall





### **PROPERTY SERVICES**

**PROPERTY MANAGEMENT:** We are a small company based in this parish, specialising in the management of property to rent. We give a personal service to all our clients and if you are looking to let your house or flat why not give us a call and see if we can be of assistance to you? We always have a number of potential Tenants on our register - one of them could be the right one for you.

**LOOKING FOR A HOUSE OR FLAT TO RENT?** We have a selection of houses and flats both furnished and unfurnished in the Warwickshire area. Maybe we can help you find what you are looking for.

**CALL CONNECT ON 0926 - 815004**



# *Jamieson's*



## **INDIVIDUAL CONSERVATORIES**

**(Open 7 Days)**

*Quality workmanship at an affordable price.*

Each of our conservatories is unique, being hand made to your own requirements.

***Please telephone for free site visit and quotation on all your joinery needs, replacement windows, doors, etc.***

We manufacture in all types of softwoods and hardwoods. For the quality offered we think you'll find our prices are unbeatable.

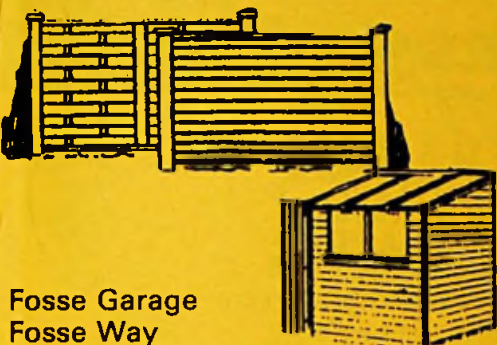
**Jamieson's Harbury Fields Barn,  
Middle Road, Harbury, Nr. Leamington  
0926 612921**



# ROLLASON FENCING AND SHEDS

MASTER FENCING MANUFACTURERS

Est. 1964



Fosse Garage  
Fosse Way  
Harbury

**LEAMINGTON SPA**  
(0926) 613009

## Jamieson's

**QUALITY STABLES  
FIELD SHELTERS  
TACK ROOMS  
INTERNAL STABLES etc.**

New Windows/Doors  
for Existing Stables.  
Suppliers of Onduline Roof Sheeting.

*Telephone today for no-obligation  
quotations*

# 0926 612921

Harbury Fields Barn,  
Harbury



## WINDSCREEN REPAIRS

THE CHEAPER ALTERNATIVE TO REPLACEMENT

FOR A PROMPT PROFESSIONAL SERVICE CALL

# CRACKATTACK

## Tel: 0926 613322



- Stone chips & cracks
- Wiper Scratches
- Headlights

Repairs only £25 + vat

- MOT and insurance approved
- Windscreens supplied and fitted

If left the damage will only deteriorate beyond repair.



## E.J. TEBALDI

*Painting & Decorating*

**PRIVATE AND INDUSTRIAL**



*"The Professional decorator with over 25 years experience"*

"Tibrogargan", 49 Farm Street, Harbury, Leamington Spa.

Tel: Harbury (0926) 613811

**SYDENHAM DRIVE  
LEAMINGTON SPA  
0926 314466**



**Soans**  
*Leamington Spa*



**KINETON ROAD  
IND. EST. SOUTHAM  
0926 814540**



# A.G. KNOWLES PLUMBING & HEATING



NEW CENTRAL HEATING SYSTEMS INSTALLED ALL FUELS

BOILER CHANGES & RADIATOR REPLACEMENT

NEW BATHROOMS & SHOWERS SUPPLIED & FITTED COMPLETE WITH TILING  
ESTABLISHED OVER 20 YEARS

69 MILL STREET, HARBURY, TEL: 0926 612331  
MOBILE: 0374 691635

ALL WORK IS GUARANTEED

**CARS DISPLAYED AT  
'THE FOSSE GARAGE'**

**EXAMINATIONS  
AND VALUATIONS**

**CONSULTANTS**  
IF YOU ARE  
BUYING OR SELLING



**0926 613795  
or 0860 452222**

**CARS  
BOUGHT  
FOR  
CASH**

**CARS  
FOUND**

**A. J. BRUNT  
Carpenter & Joiner**

For replacement windows & doors, porches, fitted  
kitchens/wardrobes and all your carpentry needs

Please contact  
**Harbury 612867  
9 Ivy Lane, Harbury**