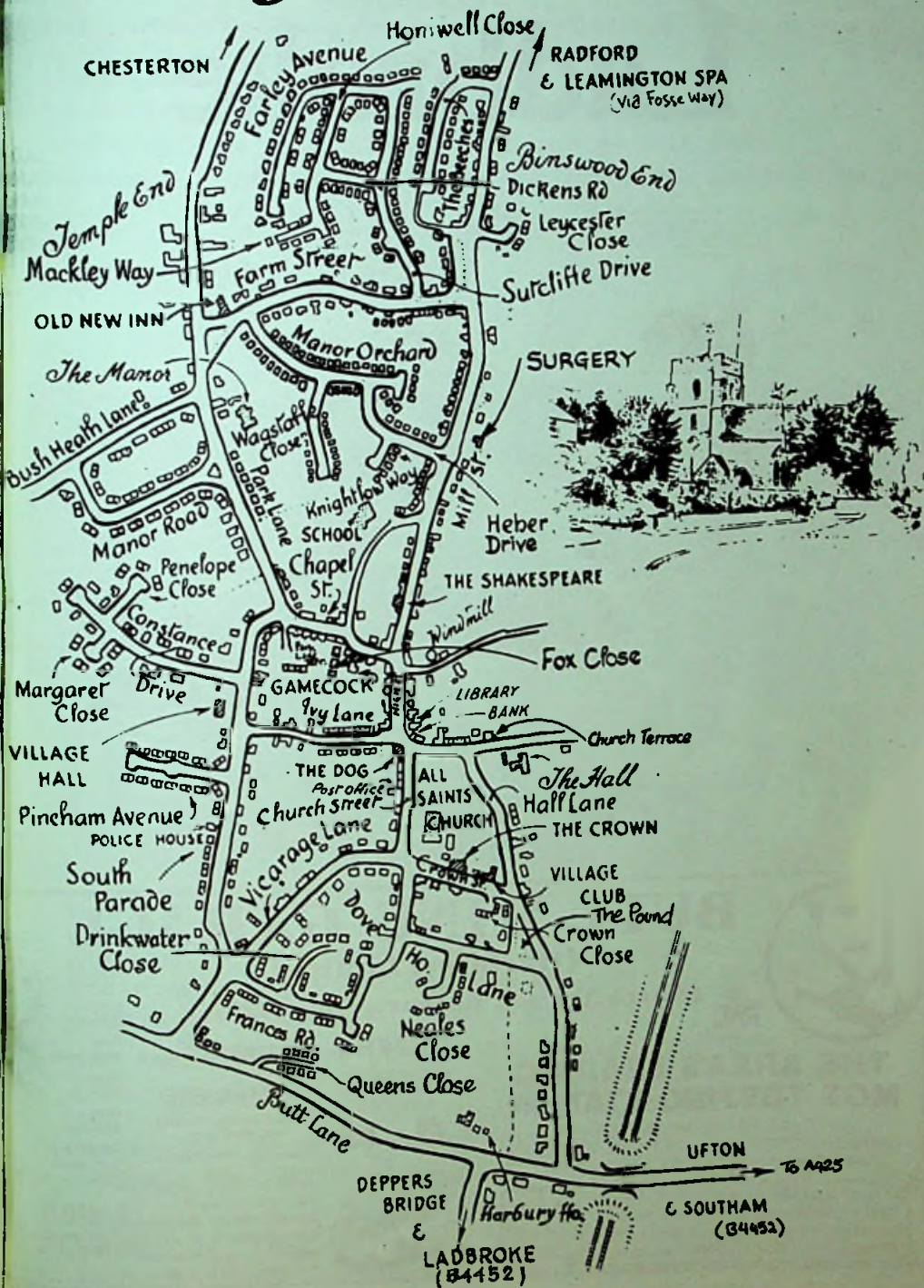


# Harbury & Ladbroke News



# Ladbroke

To Coventry



## BULL RING GARAGE

(Harbury) Limited

Church Terrace, Harbury, Tel: 612275



### THE AREA'S LEADING MOT TESTING STATION

FAST AND EFFICIENT SERVICE FOR CARS, MOTORCYCLES AND THREE-WHEELERS WHILE-YOU-WAIT, OR BY APPOINTMENT

ALSO

CAR SLUGGISH OR HEAVY ON PETROL?

Then we have the latest in engine analysing equipment and our fully qualified technicians are ready to diagnose any problem you have



**24 HR BREAKDOWN & RECOVERY SERVICE**



**SEALED PROPSHAFT**

**REPAIR SERVICE**

Specialist welding services incl. aluminium

Guaranteed Used Cars



Using modern equipment and materials our body shop sets the highest standards of workmanship for all your body repairs - Free estimates Insurance work undertaken

PLUS

- Lowbake Re-Sprays
- Roller Brake Checks
- Wheel Alignment
- Wheel Balancing
- Full Range of D.I.Y. Spares

**HAD A BUMP?**



# Harbury & Ladbroke News

THE HARBURY AND LADBROKE NEWS, reflecting all aspects of local life is published monthly and produced with the assistance of the All Saints' Parochial Church Council.

Editorial Office : 63 Mill Street, Harbury

Advertising Office : 17 Manor Orchard, Harbury Tel. 612938

The views of contributors are not necessarily those of the Editorial Committee.

FEBRUARY 1992

No. 215



Our feature photograph shows Harbury Albion 1st XI in their new strip which has been sponsored by the Village Club - surely a case of clubs are trumps - or something.

The familiar figure of P.C. Tim Percival has been absent from our streets for several months. Tim has been in and out of hospital, and has undergone several operations. We send him our good wishes for a speedy and complete recovery.

There is a real prospect of an 'affordable' housing scheme in the village - our near neighbours Long Itchington have a scheme underway. The Parish Council

with the help of the Rural Housing Trust is carrying out a housing need survey - see an article in the magazine.

The appalling state of Harbury footpaths continues to be a problem. The Parish Council is planning to provide a bin for the disposal of dog excrement at the playing field - perhaps this will help to encourage a more responsible attitude.

The rear of the Village Hall has taken a battering from vandals, and this edition contains an article calling on parents to exercise control over irresponsible youngsters. It seems a pertinent time to mention that the County Council is considering proposals to virtually abolish the Youth Service in order to meet spending restrictions imposed by the Government. The service at present supports the Youth Club (now firmly established) and the Duke of Edinburgh Award Scheme. The young people and their leaders are all involved in a campaign to maintain this vital service.

The untimely death of Angela Whatcote - she was only 37 - has saddened the village. Angela was a village girl - born in Manor Rd. She went to the village school, and then to Southam School. When she married Dick, they lived in Ivy Lane, then moved to Manor Rd. She worked hard to help Dick with his building business, while bringing up their two children. She was full of life and her loss is a tragedy for her family especially her parents, husband Dick, and her children Stefan and Julie. We extend them our deepest sympathy.

# Harbury Diary

## FEBRUARY

- |      |   |  |
|------|---|--|
| Sun  | 2 | THE PRESENTATION OF CHRIST IN THE TEMPLE<br>(CANDLEMAS): 9am Sung Eucharist, 10.30am<br>Family Service, 4pm Evensong, 7pm Devotions<br>and Benediction |
| Mon  | 3 | Yoga 1.30 to 3pm in Village Hall<br>Harbury Society Committee 8pm<br>Prayer & Praise in Church 8pm<br>Word of God 8pm 26 Manor Orchard                 |
| Tues | 4 | Holy Communion at 7.30pm<br>Horticultural Society 8pm in Village Hall talk b<br>Mr Davies "Summer in the Rockies"                                      |



- Wed 5 Mothers' Union  
Youth Club in Village Hall 8pm
- Thurs 6 THE QUEEN'S ACCESSION & 40TH ANNIVERSARY  
9.45am Holy Communion, 7.30pm Open Evening Bolton  
King Diocesan House Centre at Kineton  
Folk Club in Lounge of Old New Inn at 8.30pm
- Fri 7 Holy Communion at 7am
- Sat 8 Coffee Morning, Tom Hauley Room 10-12 in aid of TOFS  
(babies born unable to swallow)  
Netball Jumble Sale in Village Hall 10am
- Sun 9 EPIPHANY V: 8am Holy Communion, 10.30am Sung  
Eucharist, 4pm Evensong. Crusaders in Tom  
Hauley Room at 10.30am
- Mon 10 Yoga 1.30 to 3pm in Village Hall  
Bible Study Meeting 8pm
- Tues 11 Mothers & Toddlers Service at 2.15pm  
Holy Communion at 7.30pm  
Village Hall Committee Meeting at 8pm in V. Hall
- Wed 12 Youth Club in Village Hall at 8pm  
Harbury Society Social - Jazz & Supper £5.50
- Thurs 13 Thursday Club in Village Hall at 2.30pm  
Holy Communion at 9.45am  
W.I. in Village Hall at 7.45pm
- Fri 14 ST VALENTINE BM: Holy Communion at 7am  
Flower Festival Coffee Morning 17 South Parade  
10am-12
- Sat 15 Men's Prayer Breakfast at 7.30am  
Coffee from 10-12 in aid of Myton Hospice in THR
- Sun 16 NINTH SUNDAY BEFORE EASTER: 8am Holy Communion  
(Book of Common Prayer Septuagesima), 10.30am  
Sung Eucharist, (Evensong at Ladbroke 3.30pm)  
Crusaders in THR at 10.30am  
SCOUTS NEWSPAPER COLLECTION TODAY
- Mon 17 Yoga 1.30 to 3pm in Village Hall  
Harbury News A.G.M. in Shakespeare at 8pm all welcome  
Prayer & Praise at Hesle Cottage, South Parade  
Word of God at 46 Farley Ave 8pm
- Tues 18 Mothers' Union  
Servers Meeting 6.45pm  
Holy Communion at 7.30pm
- Wed 19 BLOOD DONORS IN VILLAGE HALL  
SEWERAGE SCHEME PUBLIC MEETING 8.30pm in Village  
Hall with Severn Trent to discuss implications  
(see article)
- Thurs 20 Holy Communion at 9.45am  
Flower Festival Meeting at 7.30pm in THR  
Whist at 7.45pm in Village Hall

4.

- Fri 21 Holy Communion at 7am  
 Sat 22 PCC Coffee Morning 10-12 in THR  
 Sun 23 EIGHTH SUNDAY BEFORE EASTER: 8am Holy Communion,  
 10.30am Sung Eucharist, 4pm Scouts, Guides,  
 Brownes, Cubs & Beavers Special Service.  
 Crusaders 10.30am in THR  
 ALL ARTICLES FOR INCLUSION IN MARCH HARBURY NEWS  
 TO EDITORS TODAY
- Mon 24 Yoga 1.30 to 3pm in Village Hall  
 Bible Study Meeting at 8pm
- Tues 25 Holy Communion 7.30pm  
 Julian Group 8.10pm in Church
- Wed 26 Youth Club in Village Hall 8pm
- Thurs 27 Holy Communion 9.45am  
 Thursday Club in Village Hall at 2.30pm  
 Parish Council 7.30pm in Village Hall  
 Flower Festival Committee Social Evening 8pm THR
- Fri 28 Holy Communion at 7am
- Sat 29 Ladies Bellringers Guild (N'hants District) Annua  
 Meeting. Service at 4.30pm in Church  
 PTA Children's Disco at School 6.30 to 8pm

### MARCH

- Sun 1 ST DAVID'S DAY SEVENTH SUNDAY BEFORE EASTER:  
 9am Sung Eucharist, 10.30am Family Service, 4pm  
 Evensong
- Mon 2 ST CHAD B  
 Yoga 1.30 to 3pm in Village Hall  
 Prayer & Praise in Church 8pm  
 Word of God, 8pm at The Spiers, Chesterton Rd
- Tues 3 PANCAKE DAY - SHROVE TUESDAY: Holy Communion 7.30  
 Horticultural Society 8pm in Village Hall, Neil  
 Bragg on "Soil & Peat Alternatives"
- Wed 4 ASH WEDNESDAY: Harbury School Service at 9.30am  
 Holy Communion 10.30am, Sung Eucharist 8pm  
 Youth Club in Village Hall 8pm
- Thurs 5 Holy Communion at 9.45am  
 Bridge Evening for the Tories in Village Hall  
 Folk Club in Lounge of Old New Inn at 8.30pm
- Fri 6 Holy Communion at Noon followed by Lenten Lunch
- Sat 7 NSPCC Casino Evening at Village Hall 8 - 12  
 Day Conference on Decade of Evangelism. Main  
 Speakers Archbishop Derek Worlock, Bishop David  
 Shepherd (details on Church Noticeboard in Church)



## REGULAR DIARY DATES

HARBURY CRUSADERS, Tom Hauley Room, 10.30am Sundays  
UPHOLSTERY CLASSES, Wight School, 2-4pm Mondays  
GYMNASTICS, Harbury School, 6-7pm (under 7s & beginners)  
7-8pm (7-10yrs), 8-9pm (over 10yrs) Mondays  
GUIDES, Scout Hut, 7pm Mondays  
BINGO, Village Hall, 8pm Mondays  
TODDLER GROUP, Wight School, 10-11.30am Mondays &  
2-3.30pm Wednesdays  
PLAYGROUP, Wight School, Tuesday to Friday mornings  
NURSERY SCHOOL, Village Hall, Tues to Fri mornings  
LUNCHEON CLUB, Village Hall, 12.30pm Tuesday & Friday  
DANCING CLASSES, Wight School, 4-7.45pm Tues, Wed, Thurs  
BROWNIES, Village Hall, every Tuesday evening at 6.15  
SCOUTS, Scout Hut, 7.45pm every Tuesday & Thursday  
BADMINTON, Village Hall every Tuesday  
HARBURY FRIENDS, School, 8pm 2nd Tuesday of month  
BABY CLINIC, New Surgery, 2-4pm, 2nd & 4th Wednesdays  
YOUTH CLUB, Village Hall, 7.30-9.30pm Wednesdays  
DANCING CLASSES for Children & Adults, Farley Room, Village  
Hall, 4-9pm Wednesdays  
NETBALL CLUB, Village Hall Car Park - Training Thursday 6.30pm

HARBURY FOLK CLUB, Old New Inn, 8.30pm 1st Thurs of month  
HEREBURGH MORRIS DANCERS, School Hall, 8pm Wednesdays  
ROSARY & PRAYERS for Persecuted Christians,

4 Sutcliffe Drive, 10am, 3rd Thursday of month  
THURSDAY CLUB, Village Hall, 2.30pm, 2nd & 4th Thursday  
CUBS, Scout Hut, every Thursday

W.I., Village Hall, 7.45pm 2nd Thursday of month  
CHOIR PRACTICE, Church, 6.30pm every Friday  
BELLRINGING PRACTICE, Church, 7.30pm every Friday

THEATRE GROUP, Wight School, 8pm last Friday of month  
COFFEE MORNING, every Saturday, in the Tom Hauley Room,  
10am-12noon

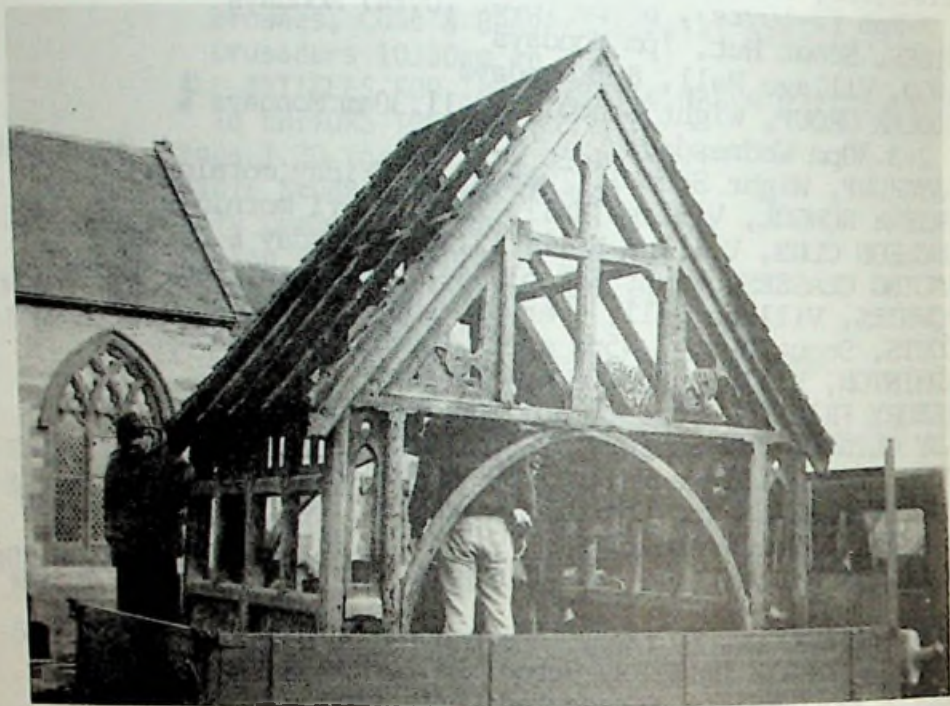
CITIZENS ADVICE BUREAU, over Southam Magistrates Court,  
every Tuesday (except Bank Holidays) 10am - 3pm

TENNIS CLUB (April-September) Tues & Thurs 6.30pm onwards  
(6pm for April) Sats 2-5pm, Mon & Weds 1.45-3pm

DATES FOR INCLUSION IN THE HARBURY DIARY PLEASE TO:  
LINDA RIDGLEY - Telephone 612792

For Village Hall Bookings  
For Wight School Bookings  
For Tom Hauley Room Bookings

ring Mrs Hughes 612716  
ring Mrs Hayes 613488  
ring Mrs Smith 613680

FROM HARBURY CHURCHWARDENS

The Lych Gate has now gone to the specialist woodworking company for its refurbishment. The first report on their findings is to the effect that its condition is worse than anticipated but nonetheless we hope to have it back in position by the end of February. We still need to find some £700 to pay for the work but the promise of grant aid from Stratford and from our own Parish Council has made the restoration a possibility; without it we might have been looking at a bare churchyard entrance - permanently!

We are indebted to Maurice Bristow for the gift of his water colour painting of All Saints. This will be on display in the near future.

Confirmation classes will be commencing in February, there are already a number of candidates both young people and those of more mature years - if you would like to consider the important step of confirmation, please contact the Rector in the near future.



Offertory envelopes for 1992 are available and have been distributed to most of the regular givers. However, we have encountered a slight clerical problem which has resulted in some people not receiving their envelopes - if you are amongst them, or would like to join the regular givers, please contact Beryl, John or Liz McBride and it will be dealt with (confidentially).

We wish Joanna Watson well as she returns to Romania to continue her work there - a brave lady.

**Beryl and John**

For confidential assistance of various kinds, telephone the following people:-

**VISITING HOSPITAL PATIENTS**

Keith Dormer - 613254

Canon Rowe - 612377

If you would like someone to call on you if you are caring for the elderly or sick:

Betty Knappe - 612679

Sue Dormer - 613254

**CHILDRENS CLOTHING**

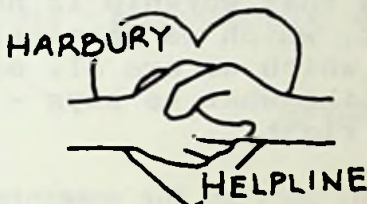
**COLLECTION:** Spare Clothing for 0-6 year olds gratefully received. See below.

**DISTRIBUTION:** If you have or know of any need:

Anne Woodward - 613536

Maureen Derby - 613330

Mary Catt - 612864



**EMERGENCY TRANSPORT**

Vivien Neill - 613461

Marie Allen - 612958

**HELP WITH FORM FILLING**

Joanne Cooper - 613859

Jeff Bedford - 613219

**ODD JOBS ABOUT THE HOUSE**

Jeff Bedford - 613219

**HELP WITH DOING YOUR SHOPPING  
READING DIFFICULTIES, HOBBIES  
COOKING.**

Mary Catt - 612864

Lesley Jones - 613207

\*\*\*\*\*

"Congratulations to Flt Lt Carole Couchman for her award of the M.B.E."

**Yours faithfully  
J G Watts**

\*\*\*\*\*

FROM THE RECTOR

This month I want to commend to you a little meditation written by Bishop Ian Shevill. Bishop Shevill is an Australian. He was General Secretary of the United Society for the Propagation of the Gospel for a time and later Bishop of Newcastle. When he retired he returned to Australia. His method of meditation is very straightforward and down-to-earth, and always challenging whether you are a churchgoer or not.

It teaches us that worship is not some sort of entertainment, which we passively receive but something in which we are all actively involved together. I like what he says - he helps me to get my attitudes right.

I went to church, looking for something; I didn't find it, and felt disappointed. I shall not be going again. Yes, the pews were comfortable and the music adequate, the decor was seemly - a bit unimaginative, but you can't have everything.

The choir was a worthy bunch, doing their humble best, and the sermon was sincere. It started in the Bible and finished nowhere in particular, and when it was over I shook the smiling parson's hand at the door. He seemed to me a professional friend viewing a potential subscriber. I don't mean to be critical, but I didn't feel terribly at home in your house, Lord. You just didn't seem to be around.

*My son, I was there, but you were not looking for me. You were seeking a sense of affection, a feeling of belonging, a desire to be wanted, because you are lonely. You sought a place where you had some significance, where people looked you in the eye, where people really listened to you, where you were accepted as a person, not because you were influential or affluent, and you did not find it, because you didn't know what you were looking for.*

Those folk you wrote off cheaply were there to do a job. They were there to worship their father, and it's only when you work with people that you come to know them and love them, whether it is playing football, working in a factory, or fencing a field.

Instant love is like most instant things, rather synthetic.



*Try it again, son, and go to give rather than get.  
Go to give thanks and praise to your father, to offer  
yourself, your work, your hope for his purpose and his glory  
in the world.*

*And that's when you will start getting love, from the people  
whose God is love, the significance, of being part of God's  
secret service, the security, of having an eternal destiny.*

*You see, the church is not a grandstand - it is an arena.  
Its door is for players only and if a spectator does get in  
he feels just like you did - uncomfortable, disappointed and  
in the wrong place.*

AMEN

ANTONY ROWE

### CANCER RESEARCH CAMPAIGN

At Angela's funeral on Thursday 9th January, the family suggested that donations could be given to the Cancer Research Campaign. The plate at the Crematorium was placed in a rather inconspicuous position and might not have been noticed. Already a good sum has been raised, but if there are still people who would like to give, donations may be sent directly to Dick or to me.

ANTONY ROWE.

### FUNERALS

At Oakley Wood, Thursday 9th January:

ANGELA ANN WHATCOTT, 13 Manor Road, Harbury, 37yrs.

At All Saints, Ladbroke, Thursday 23rd January:

KENNETH MALCOLM, 1 Ladbroke Hall, Ladbroke, 78yrs.

### CONFIRMATION

The date of the Confirmation this year is Sunday 7th June, PENTECOST (WHIT SUNDAY). Meetings for young people and also for adults are about to begin in February. Anyone wishing to consider Confirmation please get in touch with the Rector.

## MOTHERS' UNION

We were very pleased to welcome our friends from Ladbroke Women's Fellowship to our party on January 8th. The afternoon started with a game of "What's My Line". The mystery celebrity baffled the team completely, before returning to his charity work at the North Pole. Tea was provided by the committee.

The evening meeting in January took the form of a Bible Study, using the first session of the M.U. course "I Believe and Trust". The session made us all explore our own experiences of God, share these with others if we felt able to, reflect on a Bible passage, and decide on future action. This was an open meeting. It was agreed that we should carry on with the course and we hope to follow up with the second session in April.

We were saddened just before Christmas by the death of Peggy Winchester. She had borne her illness with such courage and cheerfulness. She had been a member for just over a year but will be much missed.

On February 5th our afternoon speaker will be Mrs Joan Evans on the Social Concern Department. "Holidays" are the subject of the evening meeting on February 18th. All members are asked to give a 2-3 minute talk on a recent holiday and to bring any photographs and souvenirs they may have, to be displayed. Please Don't Forget.

C Mary Catt

## TOM HAULEY ROOM LUNCH

Those of you who came to lunch in the Tom Hauley Room on Saturday 18th January may be interested to know that we raised over £150 for the funds to help in the running of the Tom Hauley Room. This was due in part to the generosity of Tim (the Co-op Butcher) and Margaret (our Milk Lady) and of course to all of you who came. Others donated their time. A big thank you to all. We hope you enjoyed the lunch and felt you had value for money.

There will be other lunches in future, advertised in the Harbury News, so do come along; they are open to anyone.

Liz Bunting & Wendy Stubbs



*Custom  
& Bodywork  
Services at*

# *The Garage*

## Ladbroke

SERVICES from £29

MECHANICAL REPAIRS

M.O.T's ARRANGED

M.O.T. REPAIR WORK

ALL TYPES BODYWORK

WELDING

RESPRAYS from £79

FREE INSURANCE ESTIMATES

COLLECTION & DELIVERY

LOAN CAR

SUNROOF FITTING

CARS FOR SALE

Personal Service from Steve Birch

**0926: 813590**

**MOBILE: 0836 699489**

# TRIPOD

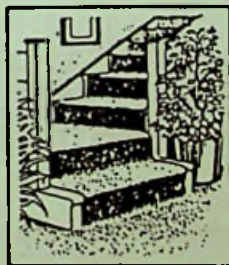
Press. Stationery. Graphics



7 WISE STREET · LEAMINGTON SPA · CV31 1JAP  
TEL: 0926 450123 · FAX No. 0926 451464

## SOUTHAM CARPETS

...and Curtains

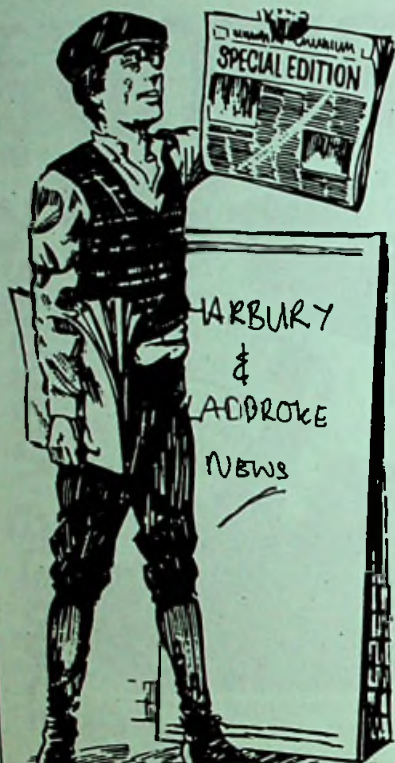


Fitted carpets, vinyls & floor coverings

Also Curtains, poles & accessories.

Carpet Cleaner Hire.

Coventry Street, Southam. Tel. **814944**



ADVERTISE IN

# Harbury & Ladbroke News

TEL: 612938

Escape to discover the tranquil beauty of the Lake District for a weekend break or full holiday

## WHICHAM OLD RECTORY

continues to offer an especially warm welcome to Harbury folk.



Home grown food : home baked bread :  
home-spun hospitality  
Unspoilt beaches, mountains and moor-  
land, golf, riding and fishing nearby  
Daily and weekly terms on request.

*Whicham Old Rectory*  
Silecroft,  
Millom, Cumbria  
LA18 5LS

*Proprietors:*  
Dave & Judy Kitchener  
Charles & Nita Shields  
Tel: 0229 772954

# TRIPOD



7 WISE STREET · LEAMINGTON SPA · CV31 3AP  
TEL: 0926 450123 · FAX No. 0926 451464

Press. Stationery. Graphics



## FLOWER FESTIVAL 11TH JULY

The Flower Festival Committ. of All Saints Church are holding a Social Evening with a flower arranging demonstration in the Tom Hauley Room at 8pm on 27th February. Refreshments will be available. Tickets are £1.50 and are available from Sue Ingram, Kingston House, Vivien Neill, Dove Cottage and Sylvia Burdett, 36 Sutcliffe Drive. We look forward to seeing all friends of Harbury Church.

We are holding a Coffee Morning on 14th February at 17 South Parade 10 - 12. If anyone would like to contribute a cake or something for the bring and buy table we would be very grateful.

Sue Ingram

## RESTORED LYCHGATE BACK SOON

Harbury Parochial Church Council on January 21 congratulated Beryl Checkley, the producer of 'Joe Carpenter and Son', and all who took part in the nativity play. The production raised £219, leaving £151, after expenses, to be shared equally between the Nehemiah Trust and the church roof repairs project.

Tom Smith, who is heading the Friends of Harbury Church exploratory group, reported that the formation of a steering committee to receive the results of Michael Lambert's research into other parishes' Friends organisations, was the next step.

Members were told that the architect is pleased with the roof repair work carried out so far at a cost of £3800. He is to be asked to arrange for work to proceed on the second half of the first stage. Reinstatement of the restored Lychgate is expected by early February. It is costing £5707. The Lychgate Appeal Fund still has a shortfall of £700.

Thanks were expressed to Ken Hughes for his work as organiser at the Christmas Fayre ... in cash terms £1050. Ken kindly agreed to serve again as supremo of the 1992 Christmas Fayre on Saturday December 5.

Keith Dormer reported that the Crusaders now have a membership of 60 in five groups, more than the Tom Hauley Room can accommodate. Consequently two groups are continuing to use the Village Hall. They have 15 helpers, but the great need is for more than their existing 4 leaders.

Tribute was paid to Joyce Windsor's outstanding work as co-ordinator of the Saturday coffee mornings in the Tom Hauley Room since their inception, and before that in the Wight School. Joyce wrote that she intended to give up but was anxious that the coffee mornings should continue and would be glad to initiate her successor. The appeal went out for one or more volunteers to undertake the work.

### Diary entries:

February 6 - opening of the Bolton King Christian Resource Centre, King John's Rd, Kineton, 7.30pm;  
 April 4 - Concert by Diatonic Choir, Harbury Church, time to be announced;  
 April 5 - Harbury Parish Church AGM and Vestry Meeting, after Evensong at 6.30pm.

John Algar

# Ladbroke News

## LADBROKE DIARY DATES

### FEBRUARY 1992

Sun	2	The Presentation of Christ in the Temple (Candlemas) 10.30am Family Service & Communion
Wed	5	Holy Communion 10.30am
Thurs	6	40th Anniversary of the Queen's Accession (1952) 7.30pm Holy Communion and Accession Service (BCP)
Sun	9	EPIPHANY 5: 9am Holy Communion with Hymns
Mon	10	Parochial Church Council Meeting 7.30pm (Cotswold Windmill Lane)
Wed	12	No Service at 10.30am today Women's Fellowship 2.30pm
Sat	15	Footpath Volunteers
Sun	16	SEPTUAGESIMA: 9am Holy Communion with Hymns (Book of Common Prayer) 10.30am Children's Church, 3.30pm Evensong
Wed	19	Holy Communion 10.30am Parish Council Meeting
Sun	23	8th Sunday before Easter: 9am Holy Communion with Hymns
Wed	26	Holy Communion 10.30am



MARCH

Sun 1 7th Sunday before Easter: 10.30am Family Service  
& Communion

Wed 4 ASH WEDNESDAY: 10.30am Holy Communion, 12.30pm  
Lent Lunch, 7.30pm Holy Communion with Hymns

Sat 7 Day Conference on Decade of Evangelism: Main  
Speakers - Archbishop Derek Warlock & Bishop  
David Shepherd

CHURCH FLOWERS

Feb 2nd & 9th Mrs Short  
Feb 16th & 23rd Mrs Sherriff

ALL SAINTS' CHURCH, LADBROKECHURCH RESTORATION FUND

	£
Total Contributions and Grants to date (24/1/92)	84,808
Total Payments: Contractor, Fees, V.A.T. etc.	81,424
	<hr/>
Amount available to meet continuing expenditure	3,384
	<hr/> <hr/>

A desperate position - Temporary we hope!

Alan Stubbs

HELP WITH THE HARBURY FLOWER FESTIVAL

Bertha Kettle and the Harbury Flower Arrangers would welcome help arranging flowers when they have their festival on July 11th (staging day July 10th). Would those who would like to be included kindly contact me as soon as possible? There will be a meeting in the Tom Hauley Room at 7.30pm on Thursday 20th February to discuss the project.

BERYL DARKES.

THE CHURCHYARD AT LADBROKE

When you walk round to the back of the church, to the right, you will have a very pleasant surprise. The rubbish heap of many years has been removed. Many, many thanks to Steve Boyle, Brian Handscambe and Roger Peel who worked very hard and gave a whole day last Friday to clearing, old tree stumps, Elderberry trees, Brambles

along with the rubbish. The next job will be to put up new fencing, and then deciding how to landscape the area. I'm afraid there is now one big snag. No more rubbish tip. In future we will have to take our grass cuttings, old flowerpots and oasis away with us.

**Betty Winkfield**

### WOMEN'S FELLOWSHIP

On January the 8th eleven of us joined Harbury Mothers' Union for their New Year Party. After an amusing game of "What's My Line" we had a delicious tea. Many thanks to them all for an enjoyable time.

We were very sorry to hear of the death of Ken Malcolm, the husband of Betty, one of our members, and offer her our sympathy and love.

Our next meeting is on February the 12th at 2.30pm at the Olde Rectory, the home of Gwladys Gould, who will tell us about her visit to Hong Kong at Christmas to see her daughter and her family. There will also be a short Annual Meeting.

**Nancy Stubbs**

### FRIENDS OF LADBROKE CHURCH

Our next social occasion is on 14th February at the home of Jim and Jean Clewes, when we shall have a Casserole and Curry Evening. Tickets at £5 each can be obtained from me on 812187 or Gill Moore on 612207. It was with great regret that we learned of the death of one of our Friends, Ken Malcolm, on 17th January and our thoughts and love go to Betty.

**Gwynne Badman**

### LADBROKE & DEPPERS BRIDGE W.I.

Our Monthly Meeting was most enjoyable, when Miss Rita Sheridan spoke on and demonstrated the art of Paper Craft. What a talented lady and such patience to produce those lovely cards and pictures. Raffle prizes were won by Helen Dowdeswell and Ann Edwards and the Quiz by Gabie Norgate. Next month we shall welcome Mr John Cain, who will advise us on Making the Most of your Camera.

**Gwynne Badman**



## LADBROKE PARISH COUNCIL REPORT

The meeting took place on Wednesday 15th January. Enquiries had been made as to the current state of affairs at the Poultry Farm and regretfully there was still a surplus of scrap vehicles on the site, and the working hours stipulated by law, had not been strictly adhered to.

As usual there was no news on the progress of a gate over the Bypass at Windmill Lane, this matter is to be kept on the Agenda. The essential road repairs in Upper Windmill Lane had not yet been done and it was decided to chase this matter up. Cllrs had attended the meeting in Southam about alleged inadequate Police cover in this area, but did not feel that any concrete improvements would come out of the meeting. Mrs Norgate had offered the services of a Photocopier for use by the Parish Clerk. This kind offer was gratefully received.

The Parish Council had received a copy of the Stratford on Avon District Local Plan, which shows Ladbroke as having a potential building site, on the land behind Village Farm, with a capacity for up to twenty new dwellings. This obviously is a matter of great importance to the village and the Parish Council feel that they need to be aware of everyone's views. Councillors plan to attend a workshop on this subject on the 6th February, but comments must be received by Stratford by 13th March 1992. Please send your comments to: The Chief Planning Officer, Stratford on Avon District Council, Elizabeth House, Church Street, Stratford upon Avon CV37 6HX. In order to fairly represent your views the Parish Council would like a copy of your letter, please send copies to: Mrs E Greenway, Parish Clerk, "Bell View Cottage", Ladbroke.

Mr & Mrs Craggero's Planning Appeal for a New House next to "The Garage" had been refused.

There was considerable flooding in the road outside the "Old Rectory" following heavy rainfall, and it was felt that this was due to the Gas Board cutting through a land drain. The clerk was asked to contact the Gas Board and ask for the drain to be re-instated.

Parishioners are asked to take immediate action if they spot any unsightly litter cluttering the village. The Council has agreed to remove such objects within 24 hours of call out. The number to ring is:- 0789 414066.

Severn Trent are currently surveying Public Sewers and may be knocking on your door to check location of sewers. Always ask to see identification.

Next Meeting - Wednesday 19th February at 7.45pm in the Village Hall.

Kate Liverton

### LADBROKE PARISH PATH VOLUNTEERS

Our first objective for 1992 is to waymark and repair the footpath over Windmill Hill and down to the Welsh Road (SM 90). With the full co-operation of the landowners concerned, work started on Saturday 18th January. The hardworking group of volunteers managed to replace two stiles, cut back undergrowth and put in a new step. Work on this project is set to continue on Saturday 15th February. Meet Uppper Windmill Lane at 9.30am. Many thanks to all our valiant volunteers, if anyone would like to join in, please contact either John Liverton or Kip Warr.

Kate Liverton

### POWER - WHO NEEDS IT?

I've been feeling a bit neglected by the Gas Board. All around me my neighbours have been enjoying the sound of pneumatic drills, signifying the historic beginnings of British Gas coming to Ladbroke. So far they've decided to miss out "Bridge Cottage" and I didn't really mind too much, until I discovered a terse note on my doormat, from the Electricity Board declaring that Ladbroke will be without electricity for two days next week. This must be at least the fourth occasion that we've had a long spell without power, since the heavy snowfall of December 1990. I thought that they must have finished repairing snow damage by now; what on earth were they up to now? I decided to phone the Electricity Board up to find out what was going on, after all I should think that residents of the Outer Hebrides stand less chance of needing torches than us sorely tried Ladbroke residents.



The Electricity Board said indignantly that half of Ladbroke had been on the phone to him that morning, why were we such a Militant lot. I said we had got fed up with wearing six cardigans and dining by candlelight. Whereupon he gave me a very lengthy technical description of what needed doing to ensure that next time it snows, the village would not be cut off. Personally I'd rather take my chances, it may not even snow this year, but one thing is for certain - we are going to be very cold and miserable in Ladbroke next week!

Kate Liverton

### LADBROKE VILLAGE HALL NEWS

The New Year's Eve dinner and dance enhanced by new caterers saw in the New Year in the usual festive manner. Although perhaps the recession diminished the attendance, those who did come made one of the most enjoyable evenings in our social calendar.

To kick start the new season we shall be holding a St Valentine's disco on Friday 14th February in the village hall. Once again, to reflect the economic climate, admission has been kept to the minimum. Just £1.50 at the door will enable you to groove. Come early, only the first eighty will be admitted.

Don Northorpe

### HARBURY PARISH COUNCIL REPORT

Your Parish Council is non-political and proud of it! So it is a measure of its anger at the consequences of the Government's heavy-handed curb on local spending that it has written to Prime Minister Major, demanding that he lets local government govern locally.

John Drinkwater reported the great public disquiet exhibited at the Southam meeting on policing levels. MP Alan Howarth was criticised by Chairman Bill Middleton for claiming government funding to the Police had increased when they were cash limiting the County. Ken Stephenson was amazed that our elected representative admitted he did not understand how the Standard Spending Assessment, on which the County budget depends, was calculated. Crime increased 25% yet Warwickshire was 39 PCs short, could not afford overtime and was reducing civilian staff. Mr Howarth had explained that he as a

member of the Government had to vote to limit the County's spending or resign. To which Parish Councillors made the obvious response.

Keith Thompson reported that Mr Oliver retired at the end of the summer term, and that if the age of transfer was changed to 11, 30 pupils, their funding and a teacher would be lost, but 92% of the country did transfer at 11. Sharon Hancock thought the change would benefit the children's education and the County's finances but would severely threaten Warwickshire's many small village schools.

Sharon is now on the Youth Club Committee and was most concerned about the effect on it of cutting 80% of the Youth Service. Ken Stephenson said everyone must 'get POLITICAL' about the threats to services and write to WCC and their MP.

After an initial misunderstanding in May when the Youth Club asked for financial assistance, relations are now good and the Club thanked the Parish Council for their generous grant of £150.

John Drinkwater was disturbed to hear that the Lychgate Fund was receiving £500 from the Parish Council when there had been no discussion in Council about it, and Sharon Hancock agreed that a donation of that size MUST be agreed by all the Committee. Bill Middleton explained that he had been in the process of consulting his colleagues and promised it would not happen again. Cllrs agreed to spend just over £1000 trimming, treating and making safe trees on the Pound and in the Burial Grounds where the Copper Beech especially needs attention.

The dog fouling sign in Church St that was vandalised is being replaced. A "Fido" bin for dog faeces can be installed on the Fields for £114 by the District, who will empty it once a week. Ken Stephenson hoped it would remove any excuse for people to let their dogs foul the area. Ed Wilson thought an SDC Byelaw update on fouling was Ken's pigeon until the Clerk delicately explained it related to humans not Dogs!

The PC is to undertake a Housing Needs survey (see article).

Stratford allowed: extensions at 14 Wagstaffe Close and 30 South Parade and a feed store at Model Farm. The



ADVERTISE IN THE  
HARBURY & LADBROKE NEWS

TELEPHONE:

612938



## FORTRESS



SEPTIC TANKS



SKIPS

FAST, FRIENDLY AND EFFICIENT SERVICE

WARWICK 493414

## NEW SHOP\*

CURTAIN FABRICS  
HABERDASHERY  
CURTAIN TRACKS  
WALLPAPER

Whether you want a  
house full of curtains  
or just a zip we shall  
be pleased to serve you.



## 'NIFTY NEEDLE'

Curtains and Blinds

\*\*\*\*\*

High Street  
Harbury  
Nr. Leamington Spa

Tel: 0926 612927

# THE FOSSE GARAGE



Accident Repair Specialists  
for all leading Insurance Companies

- \* 24 hour Recovery Service
- \* AA and RAC Appointed
- \* Servicing & MOT Repairs
- \* Petrol and Diesel



Motor  
Agents Association

SELF-DRIVE CAR & VAN HIRE

FOSSE WAY, HARBURY, NR. LEAMINGTON SPA, TEL: 613260

# MOBILE HAIRDRESSER

Ladies & Children  
Harbury only

Please contact Sandra Cenev  
HARBURY 613707

Childrens  
Video  
Hire

Childrens  
Clothes  
0-12  
Years

Footwear  
for all  
ages



High Street  
Harbury

(above the Co-Op)  
Party Plan Available

Tel: Paula Wallington 613082

Childrens  
Play  
Area

Bed  
Linen  
Blankets  
Duvet  
Covers

## MERCIA METALS

SKIP HIRE



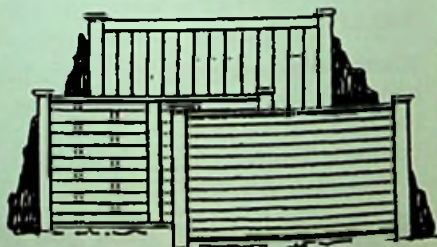
### ALL SIZES OF SKIPS

19-21 Wise Street  
Leamington Spa CV31 3AP  
Tel: (0926) 832470 & (0926) 831023

## ROLLASON FENCING

MASTER FENCING MANUFACTURERS

(EST. 23 YEARS)



FOSSE GARAGE  
FOSSE WAY  
HARBURY

### LEAMINGTON SPA (0926) 613009



Parish had no representation on modifications to the Mill Lane site but objected to the Ivy Lane development on access, backland and Conservation grounds, demanding a site visit. The Chairman worried that an unsigned letter displayed might be thought to be from the Parish Council. The Parish did not object to detailed plans for a bungalow at Station Rd and supported Mr Frost's attempts to house his nephew at Bull Ring Farm. They will ask SDC to take enforcement action over the Old Bakery in Chapel St and were concerned at the continued storage of tyres at the property. They had agreed to take on three lights at the new Butt Lane development.

Next meeting 22nd February and Annual Parish Meeting on 30th April in Village Hall.

**Linda Ridgley**

### **AFFORDABLE HOMES**

Harbury Parish Council has been advised to undertake a survey of current housing need in the village because, subject to final land negotiations and the availability of Government finance, there is now the distinct possibility of progressing a scheme of low-cost homes for locals.

The Harbury Society has been asked to help in this survey which must be completed before the end of February. We are arranging for survey forms to be distributed to everyone in the Parish within the next fortnight.

If YOU need a home in Harbury, please complete the form, and have it ready for collection. You are strongly advised to register your housing need with the District Council in Stratford as well.

**Linda Ridgley**

### **HARBURY SOCIETY**

Margaret Rylatt, Senior Keeper of Archeology at Coventry Museum, began excavating at the Lunt Fort in the early 1960s. The Romans had used the natural building materials of the Arden Forest area (turf, timber and earth) to make this temporary fort which had only existed for twenty years. It was constructed at the time of the Boadicaen rebellion, and one of the spoils of victory would have been the war horses of the Icenii which had to be retrained from chariot horses to cavalry mounts.

Margaret Rylatt believes that they were taken to the Lunt and that the unique Gyrus feature that was excavated there was built for this purpose. The Gyrus was found in 1970 and archeologists expected that others would be discovered around the Roman world, but the Lunt remains unique. Once they began to realise just what they had found they wanted to reconstruct parts of the Fort so that visitors would get a better idea of what it looked like but also to enable them to experiment and discover how things were built and why.

The archeologists used the labour of prisoners from Gartree gaol to reconstruct part of a turf rampart in 1965. Then they used MSC teams to build all of the Eastern side and then the wooden superstructure was built.

Turf defenses are very strong. They are immune to fire and they absorb the impact of the battering ram and other percussive weapons that were used against stone forts. Margaret is proud of the fact that her ramparts have lasted longer than the Roman one's!

The next rebuilding was of one of the Gateways which the Royal Engineers from Long Marston Camp were invited to prefabricate and erect in only one weekend. After the Gateway, the Granary was researched and rebuilt, again by the Army. Construction took only 15 days and the Granary is now used as an Interpretive Centre.

The reconstructed Gyrus has an incredible echo. Ten horses cantering made a noise like thunder so it would have been an ideal place to train them for battle. Yet surprisingly the noise is contained in the Gyrus. Margaret wants to build another Granary to show off her exhibits and would like one of every type of building reconstructed. Indeed she wants to reconstruct all of the Lunt Fort. For the future, Margaret is writing a book about the Lunt and her discoveries there. Its provisional title is "Longer than the Romans"! She promised to give the Society a guided tour of the Fort in the summer.

Planning and development in Harbury continue to give cause for concern. We have recently lost two important trees within the Conservation Area and there have been unauthorised alterations to a Listed Building. Two important planning applications are being considered: one for land in Mill Steet beside Tom Hauley's Cottage and



one to the rear of Ivy Lane. Both sites have access and highway problems and both involve building on open space which make a contribution to the essentially rural nature of the village. Unfortunately details of these schemes were omitted from last month's magazine, but anyone who wishes to object should do so at once to: the Chief Planning Officer, Stratford District Council, Elizabeth House, Church St, Stratford.

The Local Plan has been made public and it designates two areas on the edge of the village for development. One runs from Bush Heath ROAD behind the houses on Vicarage Lane/South Parade and the other, on which there is the categorical promise of 25% affordable houses is at Hill Farm, Binswood End. Development on sites other than these will be limited to infilling, and even then the Local Plan does offer some protection to green and open spaces within settlements, and especially to Conservation Areas where any changes or additions must be a positive enhancement.

Our next event is the Social on Wednesday 12th February. This year it is a Jazz Evening with Supper. Tickets are £5.50 from the Secretary on a first come etc basis.

The AGM is on Monday 30th March at the Wight School when Christine Hodgetts will explain how to interpret features in the landscape for a better understanding of local history. On Tuesday 28th April in the School Hall, we are holding a Local History Forum with a panel of local experts who will give presentations or displays and be on hand to answer questions.

The **GOOD NEWS** is that the Rural Housing Trust is making progress on affordable homes for Harbury and has requested an urgent meeting with the Parish Council, so if you need a home in the village make sure they know about it! The Society has been asked to help with the Housing Needs Survey and members will receive more details soon.

The winners of our 'Barns' Quiz at the Christmas Fayre were:- Dick Picken, Sue Ward, Martin Taylor and Matthew Knight who received copies of our 1992 Calendar (which are still available from 16 Farm Street). Members will receive their calendar of society events in the New Year.

**Linda Ridgley 612792**

## HARBURY W.I.

Harbury W.I. was host to 101 members from the area at the Group Carol Service on 16th Dec. We were so lucky to have Canon Rowe to officiate and Clive Watts to play the organ. The readings were read by various members of the W.I.'s and Napton ladies sang delightfully. Refreshments were served in the Tom Hauley Room. Thank you to everyone who helped to make the evening so enjoyable.

Various outings have been suggested. We go to the theatre on February 4th.

Mrs Pink came to speak on "A Woman's work is never done", mainly talking about the chores of washing and ironing clothes at the beginning of the century. The poor servants had a long list of instructions for the household laundry which lasted all week. Mrs Pink brought examples of children's clothes, adult underwear (that caused a smile!) and clothes that had to be dry cleaned.

Then there were the tools of the trade which looked as though they should be in a torture chamber and the many different names the members had for them. The selection of flat irons and some heated by charcoal and spirit. Would not like to store them. Soap adverts, not unlike today's, stating how clean and white the product makes the clothes.

A lighthearted and enjoyable talk.

**Jeanne Beaumont**

## HARBURY THEATRE GROUP - "Wanted One Body" by Charles Dyer

You would normally expect to have a body for a funeral. But the Barraclough household is far from normal!! Dogs howl, doors creak, bodies disappear and confusion reigns. These are some of the ingredients in "Wanted One Body", the next H.T.G. production due to be presented on 26th, 27th and 28th March.

This comedy/mystery will appeal to all ages, so come along and find out how the hilarious events unfold.

**Alan Barr**



## HARBURY FOLK CLUB

"The personification of pulchritude.....", "a triplicity or time-worn troubadours....." The Folk Club hadn't heard anything quite like this before but our Old Time Music Hall evening on January 2nd was a great success. Predictably, everyone (performers and audience alike) responded wonderfully to the challenge and turned up with some magnificent outfits and hairstyles. The three halves of the evening were packed with a veritable variety of vintage vaudeville from 22 performers, each half being introduced by a different master of ceremonies. Ably assisting me in these altogether alliterative antics were John Hancock with his eloquent introductions and incredible shirt, and also ace ventriloquist

John Kemsley with his dummy Willy (alias Brian Ingram) who came close to stealing the show.

There were far too many fine performances to list them all but I must mention Steve & Maureen's debut as a duo with their Flanagan & Allan medley with wonderful choreography (we liked the "train" bit best!) and Celia Barrett's first appearance at the Club with a convincing performance of "Did your first wife ever do that?" Then there was the alternative entertainment by the Russian "Geri-acro-burgers" with some amazing acrobatic feats, culminating in Celia Neillski taking a death-defying tightrope walk along the length of the Old New Inn Lounge, without even a hairnet, while Doug and Janny looked worried. The full cast also included Pete & Liz, the Harvesters, the Jug Band, Bob, Kevin, Sally, Alan, Kate, Raven, Pete Grasby and me. The evening finished appropriately with a mighty singalong session of several Music Hall favourites, lead by the Company.

The raffle on this extraordinary evening raised £33 for the South Warwickshire Scanner Appeal. Now that I have my 1992 diary, I can tell you that the next Folk Club session is on February 6th on the 5th as I told you last month.

**Peter McDonald**

## 24. HARBURY SCOUTS & GUIDES SUPPORT COMMITTEE

The Jumble Sale held in January was a great success and raised over £200 for our funds to help the various groups finance their activities. We would like to thank the many people who helped - in collecting, in sorting, in donating jumble and in helping to sell it on the day - and to the people who came to buy as well.

Our other regular source of funds is the Newspaper collection with which we receive a lot of help from many people in the village who are not directly connected with scouting. However, we do need more collectors in certain areas. As most are aware, the collections are monthly on a Sunday and with help from scouts, guides, cubs etc. it would take about an hour of your time. If you feel that you can help us please get in touch with Rick Evans (Tel: 612700) who is the co-ordinator.

**Jo Tancock**

### DO YOU KNOW OF ANY OLD BOOTS?!

Or have you any old boots in your House? Year Seven at the Village School will be spending a week at Devil's Bridge, Mid-Wales from 22-29 May 1992.

Some of the children would like to buy or borrow walking boots. As we have organised probably ten or a dozen of these visits, I guess there must be 150-200 pairs out there in the village, hidden in cupboards, buried in garages, lurking in lofts. We are particularly looking for sizes 4 to 8.

Please dig them out for us and send them in with any of the children, with name, price or rental, or come in to school at any time. You will be greeted with open arms!!

**Nigel Chapman**

### HARBURY VILLAGE HALL NURSERY/PLAYGROUP

It is my intention, as owner/supervisor of this group to relinquish this position at the end of this July.

If anyone is interested in taking over the reins, please contact me for information.

**Moya Waterman - 612285**



**BREAKTHROUGH - BREAST CANCER RESEARCH**

Over the next 12 months we aim to raise £1,000 for Breast Cancer research. We would like you to help.

1 in 12 women will develop Breast Cancer at some time in their lifetime. 15,000 women will die from Breast Cancer this year in Britain alone. 15 years ago 1 in 10 children with the most common form of leukaemia survived. Today, 7 out of 10 are being cured. We can achieve the same for Breast Cancer by bringing together under one roof, the leading scientists specialising in the disease.

**BREAKTHROUGH** Breast Cancer has been set up specially to build and fund a Breast Cancer Research Centre - the first of its kind in the world. The centre's research will focus on healthy breast cell development and what causes it to go wrong. Such basic knowledge is vital. It will provide doctors with better information about prevention and enable them to develop new forms of treatment.

It will be built alongside the Royal Marsden Hospital and the Institute of Cancer Research. It has the full backing of the Cancer Research Campaign. And once it's built the institute will support the running costs.

£15 million is needed to build it.

15,000 groups of people across the country are being challenged to raise £1,000 each, and this we have accepted.

Our first date is **A GRAND AUCTION** to be held on **MARCH 14th** at 10.30 in the Village Hall. On **APRIL 4th** we shall be holding a **RACENITE** - not a video but with wooden horses, it really is great fun, **NOT TO BE MISSED**. For our last event we shall hold a **THEME DANCE** on **OCTOBER 3rd**.

Our fundraising will be based at Nifty Needle High Street and tickets for events will be available there. We are also making and selling **PINNIES** at £3 each to help - you must know someone who would like one. For further information please ring any of the following telephone numbers:-

NIFTY NEEDLE	612927	KATH MANCELL	613313
NITA WADDELL	613850	DIANA BOWEN	814893
MARGARET BONNINGTON	651471		

Thank you for taking the time to read this and we look

forward very much to seeing you at our gatherings.

Chris Carter

### MYTON HOSPICE SUPPORT GROUP



Harbury Myton Hospice Support Group presented a cheque for for £3,000 to Mrs Pauline Little, hospice administrator, and Karen Thorne, fund raising secretary. This staggering amount was raised through many events held in 1991, but it couldn't have been possible without the support of the village.

### HARBURY TENNIS CLUB

The weather proved kinder than the New Year festivities for the traditional Muffler Tournament on January 1st as fewer than usual participants turned out for this enjoyable event. However, winners Angela Woodruff and Keith Thompson, certainly attributed much of their success to the ample supply of "fruit" punch.

Although the season proper runs from April-Sept, tennis in Harbury is an all year round sport for many, with the club entering 2 teams in the Banbury Winter League. Results, to date, have been mixed as shown by the games on January 25th.



## Michael Jerome



**Carpets**



### A COMPLETE CARPET SERVICE

- Choose a new carpet from our extensive range
- Expert Fitting - Fully Guaranteed
- Existing Carpets re-fitted
- Professional On-Site Cleaning
- Vinyl Sheet Flooring

'Cherry Trees', School Lane, Ladbroke

**Telephone: Southam 813325**

Michael Jerome is a Master Fitter with the National Institute of Carpet Fitters with 25 years experience



## A. J. BRUNT

**Carpenter & Joiner**

*For replacement windows & doors,  
porches, fitted kitchens/wardrobes,  
and all your Carpentry needs*

*please contact*

**Harbury 612867**

**9 Ivy Lane, Harbury**



## E.E.BRADY

**WINDOW CLEANING**

**CONTRACTOR**

(also gutterings cleaned out)

**FOR AN EFFICIENT AND RELIABLE  
SERVICE, TELEPHONE**

**LEAMINGTON SPA 332400**

## R&S DOMESTIC SERVICES



**REPAIRS TO MOST MAKES OF**

Washing Machines

Tumble Dryers

Cookers

Microwave Ovens

Dishwashers etc.



**PHONE - ROB CENEY on  
HARBURY 613707**

**Harbury & <sup>11</sup>ADVERTISE IN <sup>11</sup>roke News**  
**Harbury & Ladbroke News**  
**Harbury & Ladbroke News**  
**Harbury & Ladbroke News**

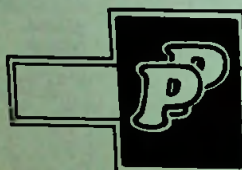
# *Harbury & Ladbroke News Mugs*

## THE IDEAL GIFT

Attractive earthenware mugs with  
the infamous map of Harbury  
beautifully printed on each one

· ONLY £1.50 EACH

Tel: Chris Macgowan 612938



## **Priory Tool Hire**

THE COMPLETE TOOL HIRE CENTRE

WATTONS LANE,  
SOUTHAM,  
LEAMINGTON SPA

MON-FRI 7am - 6pm  
SAT 8.30am - 12.00

- MICRO MINI EXCAVATORS · MIXERS ·
- SCAFFOLD TOWERS · ELECTRIC DRILLS ·
- DISC SAWS · GARDENING EQUIPMENT ·
- WALLPAPER STRIPPERS · CARPET CLEANERS ·
- ACCESSORIES FOR CAR REPAIRS ·
- AND MUCH MORE !

# **Southam 814770**



27.  
The "A" team consisting of Ann Tasker, Gill Thorpe, Vince Crosson and Phil Shaw-Hamilton were convincing 7-1 winners over Banbury. While the "B" team of Nicky Knight, Pauline Hayes, Jarek Scholtz and Keith Thompson were narrowly beaten 3-5 by Tysoe.

1992 promises to be an energetic year for the Tennis Club with plans for court re-surfacing and open sessions to encourage new recruits, who are always welcome.

### Gill Thorpe

#### HARBURY LADIES NETBALL CLUB

So far, so good half way through the 1991/92 season. The "A" team now playing in division 1 are keeping their heads above water. Having lost Emma Finch at WA to University, the "A" team welcomed Leah Wallington into an attacking position to compliment the partnership of Mal Eaton GS and Paula Wallington GA.

The "B" team have brought the word 'successful' back to the Club at long last. At the top of division 7 this team have won every match, nothing stands in their path. Julie Knowles having moved up from Harbury "D" rarely misses a goal and is backed well by Norma Taylor and Julie Farrington who is playing well in her first full season. Mandy White keeps the rhythm going at her newly appointed 'centre' position and the defence is working well with Lucy Thompson, in her first season, Teresa Wallington and 'Mum' of the team Janet Rawlings.

The "C" team have a mixture of experience and youth as do the "D". New to Harbury we welcome Lucy Lewitt at centre and Kay West-Latham at WD both proving to be promising players. Jean Johns (Captain & Chairperson) at GA is plagued by old injuries but fights on with Joan Smith GS and Marie Wallington at WA. Two previous players of the "D" team now make a tough defence for the "C", Katie Brown GD and Ellie Playdon GK. Over the Christmas period further experience was sort from Emma Finch and Dayle Summers, this proved to be a winning formula with 2 wins out of 3.

Currently lying about half way in division 8 the "D" team have proved to be a stronger team than was envisaged at the beginning of the season. The main aim is of course to get one of our teams out of division 8 into 7.

The "D" team playing a squad each week do their best to bring in the results. Another new player this season is Lisa Tebaldi GS who shows great potential as a shooter, backed by Donna Smith who is an outstanding member of the team - when her eye is in!! Welcome also to Sue Merriman at WA who has had some great matches. Daughter of "A" team player Hilary Wilson - our new recruit Helen Wilson who shares the position of WD with Vicky Hayes. Vicky also stands in with WA/GA and anything else that goes - and not just for the "D" team. Woman of the moment has to be Jenny Evans whose experience holds fast. Emma Rawlings is holding her own at GK proving her worth to the team. Ann Badger helped to win our latest match with 'The Lunchbox' with an 11-8 victory. It goes without saying that Pat Summers experience and verbal contribution to any game helps enormously.

Many thanks to all Umpires - without whom these matches could not take place.

On the 8th February, the Club is holding our annual Jumble Sale at the Village Hall at 10am. Tea/Coffee and biscuits will be served, together with a 'Nearly New' stall and Cake stall. If you have any Jumble to be collected please contact Marie Wallington 613205 Jenny Evans 612700 or Shirley Wright 613795.

**Shirley Wright**  
**Secretary**

#### JOANNA'S TRUST FOR ROMANIA

The people of Harbury rose to the challenge to provide further funds for Joanna's work in Romania and December and early January saw several fund-raising events. Half the proceeds of the Christmas Fayre - a magnificent £529.18 - was donated. The Church Nativity play raised a further £75.92. The children of Harbury School generously gave £55, raised at their Christmas concerts. The New Year got off to a splendid start when Hereburgh Morris danced their traditional hangover tour for Joanna and collected another £116. A supper was held at Wissett Lodge on January 11th with Joanna as guest of honour and realised a profit of £163.65.

Since Joanna and her parents began the Nehemiah Trust in September to fund her work in Romania, over £12,000 in donations has been received, some £2,160 being raised by groups and individuals in Harbury.



Our heartfelt thanks on behalf of Joanna to everyone who has played a part in this magnificent effort.

Joanna has now returned to Romania to continue her vital work in Brasov. She hopes to be able to renew her six month visa which expires at the end of March. If you read her article in last month's news, you will no doubt remember the overwhelming number of tasks she has in hand, all of them long term. The fund raising will need to continue if we are to support Joanna's selfless work. The members of Joanna's trust would welcome any ideas, contributions or offers of help. For further information please contact:-

Tony Stubbs	612782
Annette Hughes	612273
Maureen Darby	613330

### HARBURY PARENTS ACTION GROUP

This group was formed last May to protest against budget cuts in education. The group lobbied our local MP and on May 14th parents and children visited Downing Street to hand in letters of concern to the Prime Minister.

In June, Harbury arranged the inaugural meeting of the Warwickshire Parents Action Group (WPAG) in the Village Hall. Steve Fitzgerald joined the main committee and Doug Freeman the Southam area group. WPAG now has parent contacts in schools throughout Warwickshire.

WPAG is now contacting other groups who are concerned about local services: Police, Firefighters, Youth Services, Old Peoples Homes, etc. It is proposing a mass lobby at the House of Parliament in March to express Warwickshire's concerns to the Government and opposition parties.

We welcome any help from parents to organise and support a coach to London. Please contact 612002.

Steve Fitzgerald and  
Doug Freeman

\*\*\*\*\*

What is happening in Harbury on June 13th 1992?

The **CARNIVAL** so watch this space for further news.

\*\*\*\*\*

### WANTED URGENTLY - TWO OR MORE PEOPLE

The Beaver Scout group in Harbury has now been running for almost 5 years and has proved very popular, filling the need for something that boys aged 6-8 years old can join. Liz and I both feel that the time has come to step down as leaders as with our own families getting older it is becoming increasingly difficult to fit it in with all their commitments, and our own families must obviously come first. So, we desperately need two or more people, male or female to take over. You don't need to have any experience (we didn't) - only a liking for noisy little boys and an ability to shout! - and it isn't too time consuming, an hour a week and some preparation. Also we do have excellent and reliable teenage helpers. At present Beavers meet from 5.30 to 6.30 on a Monday evening though this could be changed to another time or day depending on when the Scout Hut is free.

Please don't wait to see if anyone else volunteers - they probably won't and if no-one does then, sadly, Harbury Beavers will be no more after July. If you start coming to help now you will be more than ready to take over in September. If you feel in any way even faintly interested please contact one of us now.

Sally Stringer 613214 &

Liz Bones 612832

### HARBURY BRITISH LEGION BRANCH

Superb! Yet again another wonderful effort on behalf of the collectors and contributors from Harbury, Ufton, Chesterton, Deppers Bridge and Bascote Heath. The grand total of £1117.77 was raised for the Royal British Legion Poppy Appeal.

The Harbury Branch sincerely thank all those who helped in any way.

**M G Bishop**



## PROFILE ON JOHN & ALISON HUNT



On December 31st last John Hunt retired after 23 years service with Warwickshire County Council, for the last 12 years of which he had been County Treasurer. John is a native of Warwickshire and he and his wife Alison together with their two sons Andrew and Stephen came to Harbury in 1969. They had previously lived in Bury St Edmonds, where John was employed for 8 years in Suffolk County Council's Treasurer's department.

Alison is a qualified nursery nurse and infant teacher, and for a number of years taught in Harbury school. Until recently she has been a supply teacher, going whenever her help was requested.

Both Alison and John are community people. Alison is group tutor for the Adult Basic Education Centre in Southam; and John has accepted the job of Honorary Treasurer for the Warwickshire Rural Community Council - together with Jeanne Clarke (a former resident of Harbury). Alison was instrumental in starting the Harbury Friends, and also the small social group 'Butterflies'. John served on the former recreation ground committee and was one of the first organisers of the carnival. He was also one of the first to 'light the blue touch paper' at the village bonfire night.

52.  
Now that they have retired they look forward to taking full advantage of their National Trust memberships, and are hoping to travel. Having been to the Far East on business several years ago, John would like to take Alison there to show her some of the exotic sights and experience a different culture. Alison would also like to tour Europe in depth. So between them they look like covering most of the world.

Both John and Alison enjoy swimming and gardening. With Alison providing the creative input, pleading a back condition as an excuse for John to do all of the 'spade' work. Alison is a member of a musical appreciation society, but John says he is an inveterate dabbler and likes to interest himself in a variety of things.

They have a two year old grandson, Thomas, who they look after one day a week and upon whom they both dote.

We wish them well in their retirement and may all of their journeys have happy memories.

G. C. H.

#### HARBURY VILLAGE HALL



Last summer a large number of volunteers helped to paint the outside of the Village Hall. Everyone concerned was



delighted with the results. You can therefore imagine my disappointment that I now have to report to you that a considerable amount of pointless damage has taken place at the rear of the hall.

The fire doors have been badly scratched, the new window sill end-stops have been prised out, attempts have been made to set fire to the plastic rainwater pipes and finally these pipes have been totally broken off.

It is well known that a number of young people congregate in this area, at the rear of the Village Hall, almost every night of the week and the Village Hall Committee has, in the past, taken a tolerant view of this situation. Unfortunately it would appear that at least some of these youngsters seem to find it necessary to cause damage to the Village Hall.

I would like to remind parents that the Village Hall is private property and that if this damage continues, it would well be necessary to take firm action to stop youngsters congregating around this area.

However, with everyone's co-operation, both parents and youngsters alike, it is hoped that such measures will not be necessary.

I hope I can count on your support to help preserve the fabric of the Village Hall.

**Alan Barr (Chairman)**

**Harbury Village Hall Management  
Committee**

### **HARBURY SEWERAGE SCHEME**

Severn Trent Water plan to carry out a major sewerage renewal scheme in Harbury between May and December 1992. Improvements are needed because sections of the existing sewers cannot always cope with the flow, and substantial lengths of the pipework are structurally unsound.

Areas that will be affected by the proposals are: Vicarage Lane, Church Street, High Street, Chapel Street, Mill Lane, Church Terrace, Hall Lane, the A425 from Hall Lane to Station Road and Station Road to its junction with the B4451.

The majority of the replacement will be made by excavating trenches to remove the old sewer and laying the new pipe. The trenches will then be infilled and

compacted, and the surface reinstated. In all some three kilometres in length is to be replaced.

The railway is to be crossed adjacent to the Great Western Hotel and this will be done by constructing a tunnel. Some roads will have to be closed and traffic diverted along other roads. However, High Street and Station Road will remain open as work proceeds but subject to traffic signal control.

The first sections of sewer to be replaced will be those along Station Road. Only when these are complete will work commence in Hall Lane and the centre of Harbury.

Severn Trent aims to minimise disturbance to villagers who are invited to discuss the proposal and its implications with representatives of Severn Trent and their consultant engineers at a public meeting in the Village Hall on February 19th at 8.30pm.

#### STATEMENT re RECREATION GROUND

Over the last few months Harbury Parish Council has compiled a "definitive statement" concerning the Recreation Ground and the Play Equipment in particular, and this document has been incorporated into the Minutes of the January 1992 Council Meeting. Briefly it gives the background leading up to the present situation and it is too lengthy to repeat here in full, but concludes with a welcome to the recently-formed "Hopscotch" Group with which it will liaise in future.

"Hopscotch" intends to provide a source of much needed additional funding. The Parish Council currently retains the balance of the previous Recreation Ground Committee Fund. This money is available to be spent on improvements in the Recreation Ground.

The Parish Council will also consider the provision of additional funds which it anticipates, in conjunction with "Hopscotch", will enable the Recreation Ground to be improved substantially for safe and stimulating children's play.

The Parish Council will seek to obtain proposals from Suppliers/Manufacturers of playground equipment and will include suggestions researched by "Hopscotch" of those they recommend. During 1992 designs and budgeting estimates will be arrived at, for implementation during 1992/93 depending on availability of sufficient funding.

Harbury Parish Council (Jan 1992)





ANDREW & KAREN  
WELCOME YOU TO THE  
**SHAKESPEARE INN**

LARGE SELECTION OF BEERS  
WIDE CHOICE OF HOME COOKING

12.00 - 2.00 and 7.30 - 10.00

SEVEN DAYS A WEEK

(Except Sunday and Weds Evenings)

Sunday 12.00 - 1.45

HARBURY 612357

**BENCH  
TELEVISION SERVICE**

22 OXFORD ST  
SOUTHAM

'SATELLITE' SYSTEM DEMONSTRATION



**SOUTHAM: 812304**

REPAIRS  
SALES  
RENTAL

WHATEVER YOU DRIVE  
YOU ARE WELCOME AT

DOVEHOUSE  
AUTO  
SERVICE

TELEPHONE: HARBURY 612809

FOR ALL YOUR MOTORING  
MOT's, REPAIRS, SERVICING



**W. Goodwin & Sons  
Funeral Directors**

38 COVENTRY STREET SOUTHAM

All arrangements personally conducted  
in any district

Telephone : Daytime 812445

Night - time and Weekends

Cyril 817718 John 812657 Brian 812656

# Little Fryer.

YOUR LOCAL MOBILE CHIPPIE

*A wide selection of dishes to suit every taste,  
from English Cod to Chinese Curry Sauce and Springrolls.  
We constantly upgrade our products to achieve a higher  
standard than any of our competitors.  
Could this be why we are one of the largest fish retailers  
for miles around?*

With the kind permission of John & Mary  
we're at the Old New Inn every  
Friday from 4.30—7.00 p.m.  
Also at Park Lane on Saturdays  
9.30p.m. till 10.30. Just phone  
your order through and collect

**0860 680442**



---

**ATWAL**  
**HARBURY SUPERMARKET**  
**OPEN SEVEN DAYS      FREE DELIVERY**

**OPENING HOURS**

**MON — SAT 9.00am — 7.00pm**

**SUN 10.00am — 1.00pm**

**MILL STREET**

**HARBURY**

**TEL: 612645**

**“THE PEOPLE WHO CARE”**



## THE PATIENT'S CHARTER

I feel that you are all familiar with this but I thought it would be a good idea to reiterate Citizen's Rights. In addition to seven well established rights the Government is introducing three important new rights for you from 1 April 1992.

### Seven Existing Rights

- \* to receive health care on the basis of clinical need, regardless of ability to pay;
- \* to be registered with a G.P.
- \* to receive emergency medical care at any time, through your G.P. or the emergency ambulance service and hospital accident and emergency departments;
- \* to be referred to a consultant, acceptable to you, when your G.P. thinks it necessary and to be referred for a second opinion if you and your G.P. agree this is desirable;
- \* to be given a clear explanation of any treatment proposed, including any risks and any alternatives, before you decide whether you will agree to the treatment;
- \* to have access to your health records, and to know that those working for the N.H.S. will, by law, keep their contents confidential;
- \* to choose whether or not you wish to take part in medical research or medical student training.

### From 1 April 1992

- \* to be given detailed information on local health services, including quality standards and maximum waiting times. You will be able to get this information from your health authority, G.P. or Community Health Council;
- \* to be guaranteed admission for virtually all treatments by a specific date no later than two years from the day when your consultant places you on a waiting list. Most patients will be admitted before this date. Currently, 90% are admitted within a year.
- \* to have any complaint about N.H.S. services, whoever provides them - investigated, and to receive a full and prompt written reply from the chief executive of

your health authority or general manager of your hospital. If you are still unhappy, you will be able to take the case up with the Health Service Commissioner.

Mrs J M Newell  
Health Care Manager  
Southam Clinic

### ANTIQUES COME TO HARBURY

An Antiques business has recently been launched in Harbury by London University graduate, Philip Riman who has returned to his native village upon completion of his History degree. Phil was born in Harbury and lived here until he went to study at University College, London University having obtained three straight A grade 'A' levels.

The business will trade as "Philip Riman Antiques" from 4 Honiwell Close, Harbury, 0926 612788 and viewing is by appointment only or alternatively, goods can be delivered for inspection in the comfort of your own home. All enquiries are welcome whether for Chippendale style dining chairs or just solid second-hand furniture. The business incorporates a unique "search and obtain service" which enables customers to request a particular item which Mr Riman can then search for, leaving you under no obligation to buy.

Phil is one of the local finalists in the nationwide search for Livewire young entrepreneur of the year, sponsored by Shell U.K. He is also participating in the Enterprise Allowance Scheme, as supervised by Coventry and Warwickshire Training and Enterprise Council.

In addition, the business offers a restoration service at highly competitive rates and free consultation and valuation facilities. The business will try to cater for all requirements but deals principally in furniture, porcelain and collectors items. Harbury and Ladbroke residents are entitled to a 10% discount until 29th February 1992. Anyone interested in buying or selling antiques can contact Phil on 0926 612788.



## HARBURY HORTICULTURAL SOCIETY

The December meeting of the Society always takes the form of a social evening, with the opportunity for longer talks with members, as well as enjoying the party fare and wine provided by the committee. This time the evening was a tremendous success with more than thirty members enjoying an excellent Gardeners Question Time, with one of the panel being one of our own very knowledgeable gardeners, Vivienne Neal.

Our January speaker, Mr Porter, was introduced by our Chairman, Ron Grey, as a hardy perennial, as he is a regular speaker. True to type, he gave an excellent performance. On the subject of biennials we were advised about the sowing, cultivation and positioning of plants. Wallflowers, to give of their best, really need to be in place by August, and this often causes a problem, as the summer flowering plants are not yet over. We were told that we have to make a choice between growing the majority of biennials to their best and sacrificing some of our favourite late summer bedding plants, or accepting a poorer showing from flowers like lupins, foxgloves etc.

During the second part of his talk Mr Porter spoke about shrubs for winter colour. He always brings along plants, which he uses to illustrate the points which he is making. As usual many of these were eagerly purchased by members. Another bonus which members of the Society enjoy.

Our Secretary has received a letter from Hopscotch - the Harbury Recreation Ground Improvements Group - telling us that they will be holding a plant sale in May. When members are potting up seedlings or cuttings during the coming months could they please include a few which can be given to the group for their fund raising event.

Our meeting on February 4th is less garden orientated but of interest to anyone who loves plants and travel. Mr Davies will give an illustrated talk on Summer in the Rockies. Come along and join us for the evening or better still for the year.

Members are reminded that it is time to pay the annual £1 subscription. This has got to be amongst the best value you will find anywhere.

## **FEBRUARY IN THE GARDEN**

Clean away any remaining stems from all herbaceous plants and feed the soil, preferably with manure or compost. Roses and shrubs should also be fed. When the soil is workable perennials may be lifted and divided if the clumps are over grown.

Before the month is out cut back buddleias - hard!. They will grow up 6 ft in a season. Deciduous hedges should also be well trimmed and that can include any late flowering clematis growing through them. I also cut back types such as Hagley Hybrid which grow up arches and walls. This encourages them to flower lower down on the stem. Do not, of course, cut back the early bloomers such as macropetala. The end of the month is also the time to mulch soft fruit bushes.

Set up seed potatoes to chit in egg boxes for convenience. Keep them frost free and when they begin to shoot watch carefully for signs of aphids.

House cyclamen should be kept cool and reduce watering to prolong their flowering period. Try planting the new red shallot Pikant which keeps well - but don't plant onion sets until next month.

**E D Zonik**



**Horses in their Winter Coats**



# Letters to the Editors

Dear Editors,

Dick, Stefan, Julie, Nowell and Vera would like to thank everyone for all their help and kindness over the past twelve months of Angela's illness especially since our loss of Angela.

Thank you to all those who sent donations and flowers.

Thank you again.

Dick Stefan and Julie Whatcott  
Nowell and Vera Card

Dear Editors,

May I through the Harbury News, thank everyone for their support at the coffee morning in aid of the Walsgrave Heart Appeal. Also to the folk who were so generous in the raffle prizes which they donated.

We raised £155.05. The large Teddy Bear raised £43, a large proportion of which was raised by Kath Ellis and her customers. His name was Herbert and was won by Mrs Drinkwater. The balance came from the efforts of Edna Chapple, Pat Smith, Byrne, Fred and Joyce Windsor, without whose help selling the cakes, coffee and raffle I could never manage. After expenses, we finally handed over £128.35 to the Appeal.

Gladys Hutchins

Dear Mr Sporting Editor,

One is truly heartened to know that Harbury RFC has the support of such a highly acclaimed sporting gentleman as yourself. After Southam's fortunate day against Harbury in December I must report to you, in case it is overlooked in this months issue of Harbury News that New Years Day saw a glorious win for Harbury. The Harbury Village XV played its usual fixture against a Boddington Village XV - as usual largely consisting of Southam Club players (obviously Harburians can cope with New Years Eve celebrations in better state than Southam!)

I am sure you will appreciate my concern that readers of your excellent magazine are given full details of all events - not ones likely to give the club chairman more stress than he can cope with this season!

Anyone wishing to add their support on Saturday afternoons would be more than welcome at Harbury's ground on Middle Road.

Yours sportingly,  
Ian Holroyd  
(Chairman)

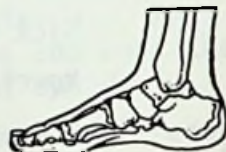
## Chiropodist

*Collette A. Green*

SEN MSSCh MBChA

1. NEWSTEAD DRIVE  
SOUTHAM  
WARWICKSHIRE, CV33 0LT

TELEPHONE  
0926 817209



## LOOK OUT ON

Michael Smith  
5 Old Road  
Bishops Itchington

**'SPARKLES'**  
window cleaning

- REGULAR      ● RELIABLE
- REPUTABLE    ● REASONABLE

also grass mowing etc.

0926 613784



\*\*\*\*\*

BREAKTHROUGH  
BREAST CANCER RESEARCH

GRAND AUCTION

SATURDAY MARCH 14TH

10.30 VIEWING FOR 11.00 START

TEA AND COFFEE AVAILABLE

HARBURY VILLAGE HALL

**WANTED:** All saleable items of bric-a-brac and smaller pieces of furniture - so turn out your attics and give us a call if you would like us to collect:

Tony Mancell - 613313

Dave Waddell - 613850

NIFTY NEEDLE - 612927

Smaller items can be delivered to NIFTY NEEDLE in the High St.

50/50 profit available of more valuable items if required.

See you there.

\*\*\*\*\*

\*\*\*\*\*

THE CROWN INN

CROWN STREET

HARBURY

612283

Sandra and Ivan Hunt invite you to try their menu of home cooked dishes served from Mon - Sat lunch times and evenings.

Sunday Lunch: Traditional Roast £4.95 including choice of sweet. Sunday Evening: Cold snacks only.

Mondays and Tuesdays 'Over 60's' specials. Main courses £2.25, Sweets £1 - Fridays Fish Chips & Mushy Peas £2.25 Vegetarian Menu! Indian Cuisine! Real Fires!

Traditional I.P.A.

£1.10 per pint

\*\*\*\*\*

\*\*\*\*\*



# N. S. P. C. C. Casino Evening

Saturday 7<sup>th</sup> March, 8PM  
Harbury Village Hall



Tickets £5 including supper  
from Lynne Watkin, 613553

\*\*\*\*\*

## HOLIDAY ON FRANCE'S WEST COAST

With 30km of Golden Sand only 3 minutes away

2 BEDROOM MODERN HOME FOR LET - Sleeps 4 Self Catering  
Fully Fitted Kitchen (Fridge, Cooker etc) Lounge  
Dining Area, Bathroom with Shower, Large Patio (B.B.Q. etc)  
2 minutes from shops.

In lovely village of BRETIGNOLLES SUR MER nr La Rochelle

For more details phone: 612487

\*\*\*\*\*

LOCALLY GROWN

## POTATOES RED/WHITE

£3.50 per 56lb bag

£1.75 per ½ bag

Free delivery to Harbury on Saturday

Phone 612325 or call in to:

PINEHAM FARM, Butt Lane, Harbury

\*\*\*\*\*

## WHIST DRIVE

Village Hall

7.45pm Thurs 20th February

50p

Proceeds to: THE SCANNER APPEAL



\*\*\*\*\*



# PHILIP RIMAN ANTIQUES

TEL: 0926 612788

10% Discount to Harbury Residents until 29.2.92

♦ *ANTIQUE FURNITURE*

♦ *SECOND-HAND FURNITURE*

\*\*\*\*\*

## FLEA MARKET

A chance to empty those bulging cupboards, and make money.

**Saturday 7th March 10am - 2pm**

The Village Hall

£5 a stall

Book a stall now

Ring:

Mary Revitt 613140

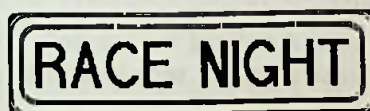
- Vikki Holroyd 612527

Refreshments available.

In aid of **HARBURY YOUTH CLUB**

\*\*\*\*\*

*Southam School Parent Teacher Association*



**Saturday 8 February 1992**

**7.30 pm**

**at**

**Southam School**

**Licensed Bar**

**Snacks available**

**Entry by Programme  
price 50 pence**

**Contact:  
KEITH THOMPSON**

**LUCKY PROGRAMME DRAW**

**Tel: 612050**



# GILMAN LAKE & PARTNERS

Independent Financial Advisers

## HAS THE FALL IN INTEREST RATES REDUCED YOUR INCOME?

If you had £30,000 in a building society or bank account during October 1989 then you could have expected a monthly income of about £280 (net of basic rate tax). Today you would be fortunate to receive any more than £190. Added to which, inflation had reduced the buying power of the income and capital by almost 14%.

If you have £10,000 or more it is still possible, however, to receive a **guaranteed** monthly income equal to over 10% per annum (net of basic rate tax) on your capital, plus the possibility of capital growth.

As Independent Financial Advisers we are able to survey the whole investment scene to make suitable recommendations according to your needs.

If YOU would like free advice, without obligation, on how to increase your income then please write to: Gilman Lake & Partners, FREEPOST CV1258, Ettington, Stratford on Avon, CV37 7ST.

Alternatively you may telephone us on 0789 740461

Appointed representative of







P.O. Box 150, Harbury, Leamington Spa, Warwickshire CV33 9UJ  
Tel: 0926 613795 Mobile: 0860 452222

## **CAR CONSULTANTS ARE NOW HERE TO OFFER YOU A COMPLETE UNIQUE PERSONAL SERVICE.**

- We will:- Find any make or model of vehicle to your specification.
- New or used sports, saloons, estates, classic cars or light commercials supplied.
- Finance, leasing and contract hire arranged.
- TWO YEAR WARRANTY on all cars sold over £1500
- Professional inspections and valuations carried out.
- Warranties arranged on private sales.
- Advise you if the vehicle you are buying has been a "write off" or is on hire purchase.

**Please telephone  
RICHARD WRIGHT  
with your requirements**

**Telephone : 0926 613795**

**Mobile : 0860 452222**

**Soans**   
*Leamington Spa*



**SYDENHAM DRIVE**  
**LEAMINGTON SPA**  
**WARWICKSHIRE. Tel: 314466.**

**KINETON ROAD**  
**IND. EST. SOUTHAM**  
**WARWICKSHIRE. Tel: 814540**

**EXTENSIONS AND CONVERSIONS**

RENOVATIONS AND MODERNISATION  
ALL ROOFING WORK  
GRANT WORK UNDERTAKEN  
PLANNING AND DESIGN SERVICE AVAILABLE

**R K WHATCOTT**

**HARBURY 613109**

ESTABLISHED 17 YEARS



**BUILDING CONTRACTORS**

Make your appointment  
at



**Kathleen Ellis**

for

Professional Hair Care

2-3 Chapel Street, Harbury Tel: 612326



**A.G. KNOWLES**  
**PLUMBING & HEATING**



NEW CENTRAL HEATING SYSTEMS INSTALLED ALL FUELS  
BOILER CHANGES & RADIATOR REPLACEMENT

NEW BATHROOMS & SHOWERS SUPPLIED & FITTED COMPLETE WITH TILING  
ESTABLISHED OVER 20 yrs

**69 MILL STREET HARBURY TEL: 612331**  
**ALL WORK IS GUARANTEED**