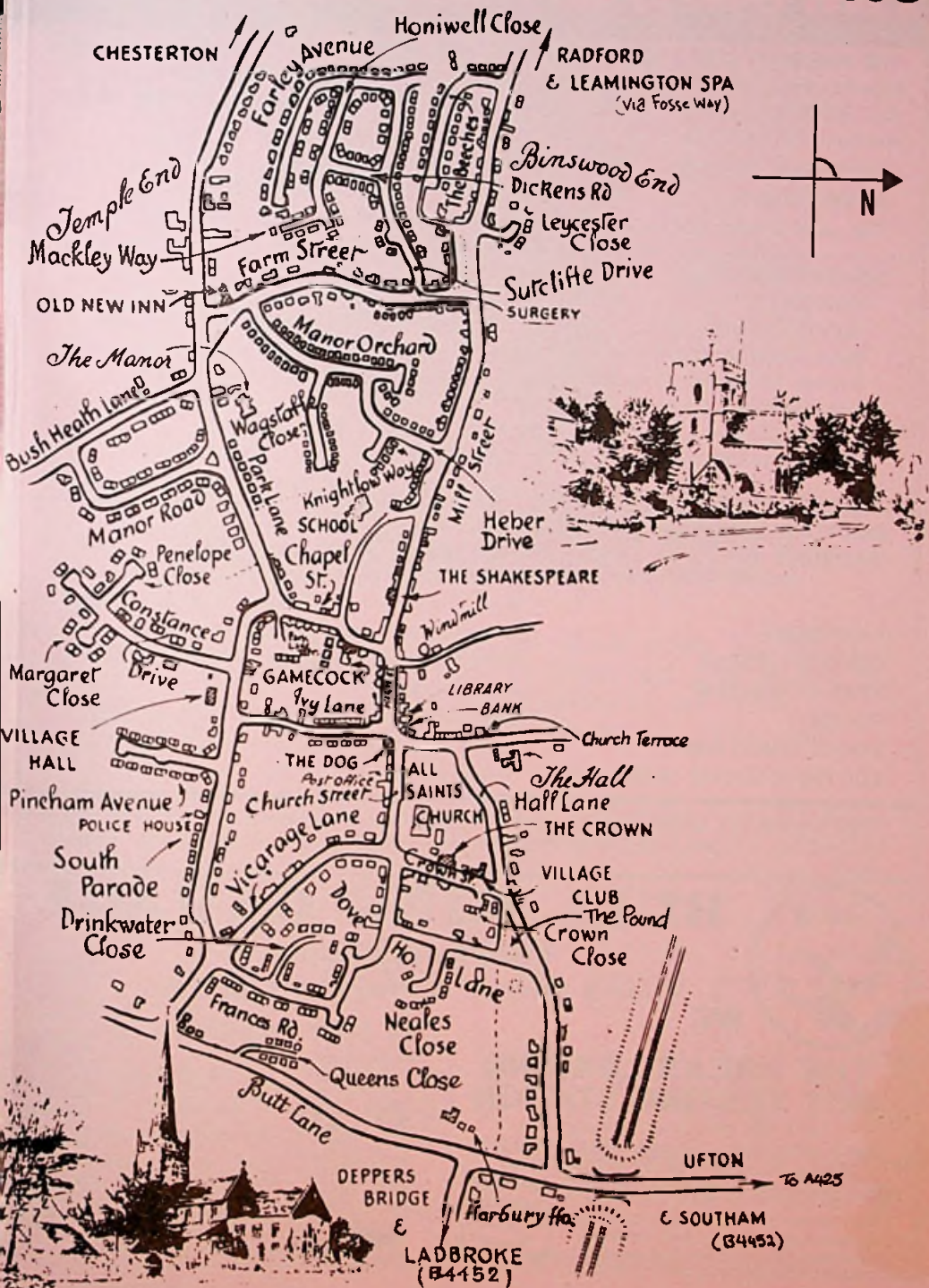


Harbury & Ladbroke News



Harbury & Ladbroke News

THE HARBURY AND LADBROKE NEWS reflecting all aspects of local life is published monthly and produced with assistance from the Parochial Church Council of **ALL SAINTS' CHURCH** - Rector: Canon Antony Rowe, The Rectory, Vicarage Lane, Harbury. Tel: 612377

EDITORIAL OFFICE 23 Mill Street, Harbury. Tel: 612427

ADVERTISING 17 Manor Orchard, Harbury. Tel: 612938

The views of contributors are not necessarily those of the Editorial Committee.

SUNDAY SERVICES

HARBURY

Holy Communion 8 a.m.

Sung Eucharist 10.30 a.m.

(except 1st Sunday of month:

Sung Eucharist 9 a.m.

Family Service 11.30 a.m.)

Evensong 6.30 p.m. (except 3rd Sunday)

LADBROKE

Holy Communion with Hymns 9 a.m.

(except 1st Sunday of month:

Family Communion 10.30 a.m.)

3rd Sunday of month:

Childrens Church 10.30 a.m.

Evensong 3.30 p.m. (3rd Sunday)

Please see notice board in Church for weekday services or revised times on special occasions.

DOCTORS' SURGERY

HARBURY

Farm Street, Telephone: 612232

Monday - Saturday : 9.00 am - 10.00am

Mon, Tues, Thurs and Friday: 6.00pm - 7.00pm

Craven Lane. Telephone: Southam 2577

Pendyke Street, Telephone: Southam 4319

Tel: Southam 7377

Southam Station, Telephone: Southam 2366

P.C. T. Percival Telephone : Harbury 612175

Telephone: Southam 3110

LADBROKE

DISTRICT NURSE

HEALTH VISITOR

POLICE

LOCAL CONSTABLE

SOUTHAM SOCIAL SERVICES

'THE HARBURY DIRECTORY' containing details of Village organisations and essential information is freely available on request from - Mrs A Moore, 23 Mill Street, Harbury.



RAC
APPROVED

BULL RING GARAGE

(Harbury) Limited

Church Terrace, Harbury, Tel: 612275

THE AREA'S LEADING MOT TESTING STATION

FAST AND EFFICIENT SERVICE FOR
CARS, MOTORCYCLES AND THREE-WHEELERS
WHILE-YOU-WAIT, OR BY APPOINTMENT

ALSO

CAR SLUGGISH OR HEAVY ON PETROL?
Then we have the latest in engine analysing
equipment and our fully qualified technicians
are ready to diagnose any problem you have



24 HR

**BREAKDOWN
& RECOVERY
SERVICE**



SEALED PROPSHAFT



REPAIR SERVICE

Specialist welding services
incl. aluminium

Guaranteed Used Cars

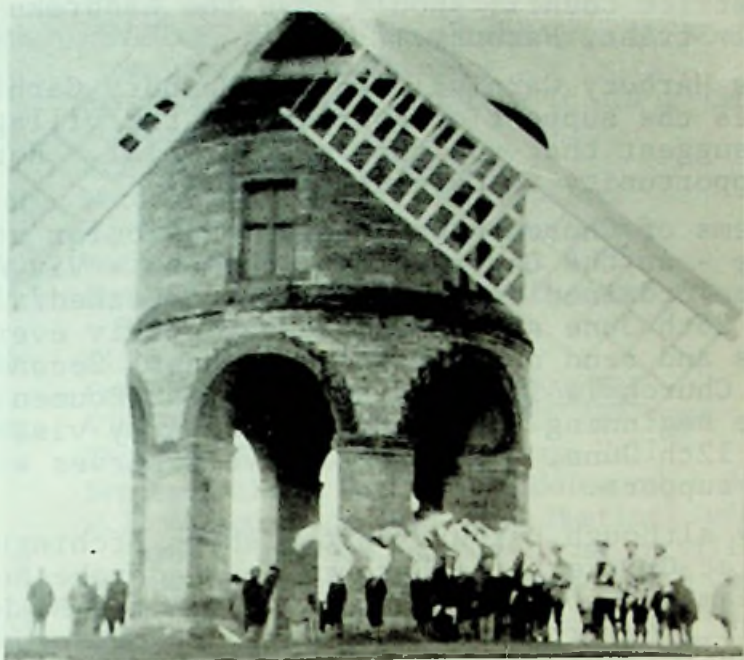
PLUS

- Lowbake Re-Sprays
- Roller Brake Che
- Wheel Alignment
- Wheel Balancing
- Full Range D.I.Y. Spar



Using modern equipment
and materials our body shop
sets the highest standards of
workmanship for all your body
repairs - Free estimates -
Insurance work undertaken.

**HAD
BUM**

JUNE 1988

May has been an exciting month with some delightful weather. The Hereburgh Morris started the month by dancing round the Chesterton Windmill at dawn. Mike Bloxham showed rare dedication to take the photograph above.

Unfortunately Mike missed the other two striking events. The first was when a balloon crash landed in Mill Street, causing a great deal of flurry and a good deal of hard work for the ladies of Mill Street. We are reliably informed that this incident has nothing at all to do with the Severn Trent Water Board! If this is true they are losing their grip on Mill Street at last.

The other major event took place at the Cricket Club ground in Middle Road. Brian Wallington took ten wickets during the innings of Bishop Itchington (the old enemy). This is a very unusual occurrence indeed. Even Ian Holroyd and Les Sollis have never achieved ten wickets - between them.

Harbury is not alone in having excitement. Our

Ladbroke correspondent once again reports an incident involving the bridge. It could be that the District Council should move the Ladbroke Bridge to Mill Street, Harbury.

June is Harbury Carnival month. Harbury Carnival deserves the support of everyone in the village. We often suggest that you should shop local. Here is your opportunity to Carnival local.

Two items of Church news deserve particular attention. Firstly - as the Churchwardens comment - Viv Aggett is to be ordained deacon in Coventry Cathedral on Sunday 26th June at 10.30am. We wish Viv every success and send our very best wishes. Secondly All Saints Church is introducing a regular Ecumenical Service beginning during the Church Army visit on Sunday 12th June. This initiative deserves wide-spread support.

Finally although Harbury beat Bishops Itchington very easily at Cricket, the Harbury and Ladbroke News quiz team did not do quite so well in the Bishops' PTA quiz. Nevertheless they were 7th out of 40 team. Well done Gladys, Vicky, Linda and Graham.

HARBURY DIARY

MAY 1988

Sat	28th	Coffee & Biscuits in the Wight School in Aid of the Church
Sun	29th	TRINITY SUNDAY 8am Holy Communion, 10.30am Sung Eucharist, 6.30pm Evensong Warnact Walk. 2.30pm Harbury Spoil Bank
Mon	30th	Vice-Presidents Cricket & Barbecue NO BINGO in Village Hall Youth Club Disco in Village Hall Praise & Prayer at Hessele Cottage

JUNE 1988

Wed	1st	Mothers Union AGM at the Village Hall 2.15pm
Thurs	2nd	CORPUS CHRISTI 9.45am Holy Communion Whist Drive at Village Hall 7.45pm Mid-teenagers Group 7.30pm at 9 Church Tce Men's Society 7.45pm Folk Club 8.30pm in Lounge of Old New Inn

- Sat 4th Coffee & Biscuits at Wight School in aid of Church Special Fund
Youth Club Disco in Village Hall
- Sun 5th PENTECOST II 9am Sung Eucharist, 11.30am Family Service, 6.30pm Evensong
Afternoon Tea at 5 Park Lane in aid of Church Special Fund
Cricket at Home to Newbold
- Mon 6th Word of God 8pm at 23 Neales Close
Praise & Prayer at 15 Pineham Avenue
- Tues 7th Mothers & Toddlers Service at 2.15pm
Book Group 'White Mischief' by James Fox at 26 Farm Street at 8pm
- Wed 8th Clinic 2 - 4 in Village Hall
Cricket at home to SOUTHAM TEACHERS
- Thurs 9th VISIT OF THE CHURCH ARMY QUEST '87 TEAM
Thursday Club 2.30pm in Village Hall
Senior Citizens Outing to Saddleworth & Holmfirth
W.I. Antiques Roadshow (Open Meeting) with Mr Barby of Locke & England 7.45pm in Village Hall
Prayer for Persecuted Christians 8pm, 5 Church St.
- Fri 10th VISIT OF THE CHURCH ARMY QUEST '87 TEAM
NWR Barbecue at Bridge Cottage Ladbroke
- Sat 11th Maintenance Day at the Village Hall morning and afternoon
NSPCC Safari Supper
ALL SAINTS GIFT DAY 9am - 6pm followed by Faith Supper 7.30pm at 23 Mill Street
Junior Disco 6.30 - 8.30 at Village Hall (Under 12's only) 50p at Door
VISIT OF THE CHURCH ARMY QUEST '87 TEAM
- Sun 12th PENTECOST III 8am Holy Communion, 10.30am Sung Eucharist, 6.30pm Ecumenical Service
Cricket at home to Kenilworth Thirds
- Mon 13th NWR Summer Walk from Newbold Comyn
Praise & Prayer 12 Park Lane
- Tues 14th Harbury Friends 8pm at the School
Village Hall Committee 8pm in Village Hall
Cricket at home to Flavels.
M.U. Outing to Chester 8.30am Village Hall (seats ring 612794)
- Wed 15th Horticultural Society's visit to Waterperry House
Village Hall 9.30am
- Thurs 16th Whist in Village Hall at 7.45pm
- Fri 17th Intermediate Tennis Tournament 5.30pm

4.

Sat 18th GRAND CARNIVAL AND FETE

Procession to the Recreation Grounds followed by
Fancy Dress Judging, Stalls, Sideshows and
Entertainments

Carnival Dance to the Likely Lads 8 - 12 at the
Village Hall (tickets from the Committee and at
Mr. Lindops)

The Windmill Singers perform in All Saints Church
Harbury Rossini's "Petite Messe Solenelle" 8pm

Sun 19th PENTECOST IV 8am Holy Communion (BCP) 10.30am Sung
Eucharist (preacher VIV AGGETT)

Cricket away to Weedon

NEWSPAPER COLLECTION

Mon 20th Word of God 8pm at The Spiers Chesterton Rd
Praise & Prayer 4 Leycester Close

Tues 21st 3 - 4.30pm Afternoon Tea at 24 Farley Ave (proceeds
to Celebration of Flowers)

Horticultural Society visit to Moreton Morrell-
Village Hall 6.45pm

Wed 22nd Clinic at Village Hall 2 - 4pm
Celebration of Flowers meeting in Church 8pm

Thurs 23rd Thursday Club 2.30pm in Village Hall
Parish Council 7.30pm in Village Hall

Fri 24th THE NATIVITY OF ST JOHN THE BAPTIST 7am Holy Communion

Sat 25th Midsummer Melodies Supper at 11 Constance Drive 7.30

Sun 26th PENTECOST V 8am Holy Communion, 10.30am Sung
Eucharist, 6.30pm Evensong

ALL ARTICLES FOR INCLUSION IN JULY'S HARBURY NEWS TO
EDITORS BY TODAY PLEASE

Cricket away to Flecknoe

Mon 27th Praise & Prayer Hessele Cottage

Tues 28th Senior Citizens Committee 8.30pm in Village Hall

Wed 29th Warnact Walk. Stockton Spoil Bank 2.30

Thurs 30th ST PETER THE APOSTLE (transferred from 29th June)
9.45am Holy Communion

Whist 7.45pm in Village Hall

W.I. 70th Birthday 'Strawberry Fayre' 7pm 27 South
Parade

JULY 1988

Fri 1st Conservative Association Barbecue at Temple House
7 - 11pm

Southam School PTA Barbecue Dance with the Likely
Lads (see Ad)

Sat 2nd Theatre Group's Mediaeval Banquet in the Village
Hall

Sun	3rd	PENTECOST VI 9am Sung Eucharist, 11.30am Family Service, 6.30pm Evensong Cricket at home to Warwickshire County Council Cricket Club
Mon	4th	Word of God 8pm at 8 The Beeches Praise & Prayer Lullington Lodge
Tues	5th	Mothers & Toddlers Service 2.30pm Book Group 'Blessings in Disguise' Alec Guinness at 47 St Mary's Close, Southam at 8pm
Wed	6th	NSPCC Wimbledon Coffee Morning and Al Fresco Luncheon
Thurs	7th	Men's Society 7.45pm Harbury Rectory AGM Folk Club in Lounge of Old New Inn at 8.30pm
Sat	9th	CRAFT CIRCLE at Village Hall all day (refreshments available) Celebration of Flowers in the Church Garden Walkabout Rugby Club Barbecue with MUD!

REGULAR DIARY DATES

HARBURY ADVENTURERS, Village Hall, 11.30am Sundays.
 UPHOLSTERY CLASSES, Wight School, 2-4pm, Mondays.
 GYMNASTICS, Harbury School, 6-7pm (under 7s & beginners)
 7-8pm (7-10yrs) 8-9pm (over 10yrs) Mondays.
 SLIMMING & KEEP FIT, Village Club, 7-8.30, 8.30-10pm,
 Mondays.
 GUIDES, Scout Hut, 7.30pm, Mondays.
 BINGO, Village Hall, 8pm every Monday.
 TODDLER GROUP, Wight School, 10-11.30am Mondays,
 & 2.00-3.30pm Wednesdays.
 PLAYGROUP, Wight School, Tuesday to Friday mornings.
 NURSERY SCHOOL, Village Hall, Tuesday to Friday a.m.
 LUNCHEON CLUB, Village Hall every Tuesday & Friday
 DANCING CLASSES, Wight School, 4-7.45pm Tuesday, 12.30pm
 Wednesday & Thursday.
 BROWNIES, Village Hall, every Tuesday evening.
 SCOUTS, Scout Hut, 7.45pm every Tuesday & Thursday
 BADMINTON, Village Hall every Tuesday.
 HARBURY FRIENDS, School, 8pm, 2nd Tuesday of month.
 BABY CLINIC, Village Hall, 2-4pm, 2nd & 4th Wednesdays.
 YOUTH CLUB, Village Hall, 7.30-9.30pm Wednesdays.
 DANCING CLASSES for Children & Adults, Farley Room,
 Village Hall, 4-9pm Wednesdays.
 HEREBURGH MORRIS DANCERS, Wight School, 8pm Wednesdays
 ROSARY & PRAYERS for Persecuted Christians,
 4 Sutcliffe Drive, 10am, 3rd Thursday of month.
 THURSDAY CLUB, Village Hall, 2.30pm, 2nd & 4th Thursda

U.
CUBS, Scout Hut, every Thursday.
W.I., Village Hall, 7.45pm, 2nd Thursdays.
POP-IN, Village Hall, 1.20pm - 3.30pm every Friday.
CHOIR PRACTICE, Church, 6.30pm every Friday.
KARATE CLASSES, Village Hall, 7pm every Friday.
BELLRINGING PRACTICE in Church 7.30pm every Friday.

DATES FOR INCLUSION IN THE HARBURY DIARY PLEASE TO
LINDA RIDGLEY - Telephone 612792

For Village Hall Bookings, ring Mrs. Hughes 612716
For Wight School Bookings, ring Mrs. Hayes 613488

REGULAR WEEKDAY SERVICES IN HARBURY & LADBROKE

Tuesday: 7.30 p.m. Holy Communion in Harbury
Wednesday: 10.30 a.m. Holy Communion in Ladbroke
Thursday: 9.45 a.m. Holy Communion in Harbury
Friday: 7.00 a.m. Holy Communion in Harbury

FROM HARBURY CHURCHWARDENS

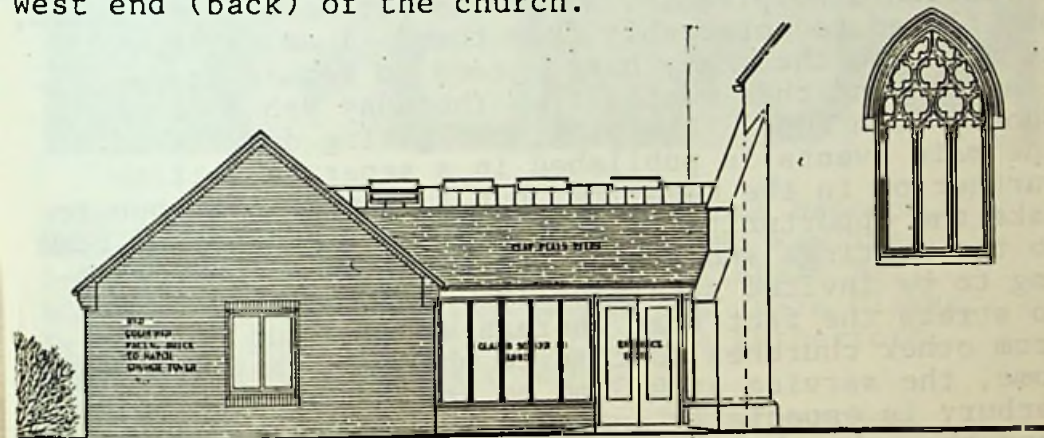
Last Sunday, the 22nd May, we were invited to Ladbroke for tea followed by Songs of Praise. This was an experimental alternative to the usual Parish Breakfasts, which have not been too well supported on recent occasions. The tea-party was the result of a great deal of work and was most enjoyable. The following Service was well attended and was an enjoyable act of worship.

As you will have read elsewhere, the Church Army team will be in the parishes for a return visit from 9th to 12th June, and on Saturday 11th June we are to hold a Faith Supper at the home of John and Anne Moore, 23 Mill Street from 7.30pm onwards. The price of admission is a plate of food - please write your name under the appropriate list on the table in Church.

The evening service on Sunday 12th June will be an ecumenical one and we would like all our friends from other denominations to join with us in this service of praise and thanksgiving. We hope that this will be the first of many such services, as we are very conscious of the need to fill the gap left by the termination of the regular Free Church services.

We are getting very excited at the prospect of starting to build the new Church Meeting Room in the Autumn. A very special event has been arranged to launch this project officially - a Midsummer Melodies Supper on 25th June at the home of Pam & David Clarke with entertainment by a Palm Court Ensemble. This promises to be a splendid and enjoyable occasion, so get your tickets early!

Gift Day Saturday 11th June - (see also Rector's letter) - in order to start the fund raising for the Church room in earnest, the Rector will be at Harbury Church all day to receive donations for this great project. It is hoped that everyone in the village will support this effort which although primarily for Church use, will be an addition to the village facilities. The drawing below gives an impression of how the new room will look as viewed from the West end (back) of the church.



WEST ELEVATION

Viv Aggett will be ordained deacon in Coventry Cathedral on Sunday June 26th at 10.30am. There will be a fair sized contingent attending this special day for Viv and a list is on the table at the back of the Church - if there are sufficient people interested we will hire a coach.

Viv put a great deal of effort into enlivening All Saints Harbury and we have reason to be thankful to her. We wish her every fulfilment in her first parish - St Bartholemew, Binley, Coventry and ask for your prayers and support for her.

B.C. & J.B.M.

U. CHURCH FLOWERS

After a longish stint at organising the flowers I am standing down and joining the ranks of the arrangers. Many thanks to all who have supported our efforts and a reminder that a number of Flower Friends give their subscriptions twice yearly!

Mrs Liz Bunting will be taking over this month and will be glad to receive any contributions!

M.W.R.

FROM THE RECTOR

Many people in Harbury and Ladbroke will have happy memories of the twelve days the Church Army Team spent among us during Quest '87. Apart from the fact that their visit coincided with last year's short summer, we remember the brightness and the warmth they engendered in that time and the quality of their Christian discipleship, which was not merely projected but flowed so noticeably from them. I am delighted to tell you that they have agreed to return for a long weekend this month, from Thursday 9th June until Sunday 12th June. The programme giving details of the main events is published in a separate section further on in the magazine, but I do urge everyone to take the opportunity to meet again our guests and come to the meetings and attend the services without waiting to be invited specifically. Particularly I want to stress the fact that whereas we want our friends from other churches to come to whatever they wish to come, the service at 6.30pm on the Sunday evening at Harbury is especially an ecumenical service and I hope the church will be filled to capacity.

Although regretably I was unable to be there myself, I am told by many that the Confirmation was a most splendid occasion with the large congregation I had hoped for (and I had asked for). The Bishop of Warwick always manages to make everyone feel so much at ease and yet bring home to everyone, especially the candidates, the importance and significance of their important day. Here are the names of the candidates and I ask you to remember them constantly in your prayers and if you are able, make a point of getting to know them. We rejoice to see these young people and adults making their vows and confirming their baptismal promises, but it is vital that they

be made to feel a part of the Church's fellowship and as important members of the Church as anyone.



From Harbury:- Victoria Butler, Fiona Hancock, Kathryn McDonald, Ellen Playdon, Emma Rawlings, Lucy Thompson, Elizabeth Travis, Alistair Ball, William Stringer, Audrey Lawson and Julie Clarke.
From Ladbroke:- Wendy Batty, Louise Rutherford, Enid Sherriff and Ronald Sherriff.

Finally by strange coincidence, both churches, Harbury and Ladbroke are facing dramatic financial commitments. The task of Ladbroke is quite staggering and will probably compel our energies and attention for some years to come. Already efforts are being made to raise money and abstract interest in the work to be done and already generous donations and promises have been made. Harbury is confronted with a lesser undertaking, which will, we hope, be probably more short term, but nonetheless, demanding considerable effort. At Harbury we are trying to make more adequate provision for the life and development of the Church by building a meeting room and at the same time ensuring that the Church building itself is in sound order. We shall be enormously helped by

10.

Tom Hauley's bequest, but we shall still need to raise a substantial amount to complete all we have to do. It is intended to hold a Gift Day in both Harbury and Ladbroke. The date for that at Ladbroke is yet to be decided, but the date for Harbury is Saturday 11th June. In recent years, neither Church has engaged upon constant appeals to their villages for money, but I hope these Gift Days will be sympathetically received. At Harbury I shall sit at the Lych gate throughout the day, and I shall be glad to see you and receive your gifts.

ANTONY ROWE

GIFT

We acknowledge with many thanks a gift of £500 from Alice Wilkins given to the Special Fund.

CHURCH ARMY TEAM WEEKEND

Thursday 9th June: 7.30pm 'Any Questions' and Meet the Team Harbury Combined School.

Friday 10th June: 9am School Assembly at Harbury Combined School
10am School Assembly at St James 1st School
2pm Afternoon Tea at Harbury (venue to be announced)
2pm Afternoon Tea at Ladbroke (venue Woodlands House Farm Radbourne Lane)

7.30pm Fellowship Evening (venue to be announced)

7.30pm Young Teenage & Mid Teenage Groups (BBQ at Corner Cottage)

Saturday 11th June: 10 - 11am Coffee at Wight School
11am - 2pm Parish Walk (meet at Harbury Church)

7.30pm Faith Supper at 23 Mill St.

Sunday 12th June: 8am Holy Communion at Harbury
9am Holy Communion with Hymns at Ladbroke

10.30am Childrens Church at Ladbroke

10.30am Sung Eucharist

6.30pm Ecumenical Mission Service at Harbury

HOLY BAPTISM

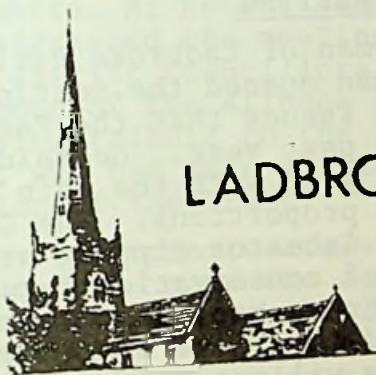
Sunday 22nd May: HARRIET LOUISE, daughter of
Leigh William & Christine Susan
Franklin, 19 Ivy Lane.

HOLY MATRIMONY

Saturday 30th April: MICHAEL JOHN REYNOLDS, 16
at Harbury Moorlands, Whitnash and LOUISE
ANN AYRES 21 Farley Avenue
Harbury.

Saturday 28th May: RICHARD NEAL STEPHENSON and
at Harbury SALLY ELIZABETH SPENCER, The
Brindles, Chapel St, Harbury.

Saturday 28th May: ANDREW DAVID MILES LATHAM,
at Ladbroke 38 Manor Orchard, Harbury and
KAY ELIZABETH WEST, The Croft,
Banbury Rd, Ladbroke.



LADBROKE NEWS

JUNE DIARY

Wed	1st	10.30am Holy Communion
Thurs	2nd	7.30pm Holy Communion
Sun	5th	Pentecost II 10.30am Family Communion, 2pm Young People's Picnic with young people from St. Oswald's, New Bilton.
Wed	8th	10.30am Holy Communion 2.30pm Women's Fellowship
Thurs	9th - 12th	June Visit of Church Army Team
Sun	12th	Pentecost III (St Barnabas the Apostle) 9am Holy Communion with Hymns, 10.30am Children's Church 6.30pm (at Harbury) Ecumenical Service
Wed	15th	10.30am Holy Communion
Sun	19th	Pentecost IV 9am Holy Communion with Hymns, 3.30pm Evensong

Wed 22nd 10.30am Holy Communion
 Fri 24th The Nativity of St John the Baptist 7.30pm Holy Communion
 Sun 26th Pentecost V 8am Holy Communion, 10.30am Sung Eucharist, 6.30pm Evensong
 Wed 29th St Peter the Apostle 10.30am Holy Communion
 Parish Council 7.45pm Village Hall
 Thurs 30th Ladbroke & Deppers Bridge W.I.

JULY

Sun 3rd Pentecost VI 10.30am Family Communion
 Wed 6th 10.30am Holy Communion
 Thurs 7th 7.45pm Men's Society AGM at Harbury Rectory

CHURCH FLOWER ROTA

June 5th Mrs J Moore & Mrs Kennedy: June 12th Mrs Stubbs:
 June 19th Mrs Doyle: June 26th Mrs Greenway: July 3rd Mrs Chaplin

LADBROKE ANNUAL PARISH MEETING

The newly elected chairman of Ladbroke Parish Council Mr Francis Badman opened the meeting with a review of all the major issues that the Parish Council had dealt with over the past year. He said that it had been a fairly quiet year with the main events being of minor domestic proportions. The Council had supported objections to Asbestos tipping at Ufton and had pursued the breach of conservation regulations in Bridge Lane, until new trees had been planted. The Post Box was to be moved to a less dangerous site, outside the proposed new village shop. Efforts were being made to retain the traditional red village telephone box and a lack of trees screening the Bypass had been investigated and a few more are to be planted but the village can expect at least 8 years before the screening will be effective, especially where the new road rises to cross the stream.

The new footpath to the church was far in excess of the Parish Council's request, it had looked very strange and out of place at first, but it was definitely mellowing. The Council was applying for a weight restriction on the lane to Deppers Bridge, particularly in view of the proposed industrial development at Bishops Itchington, a traffic census was in place and the Council were awaiting the outcome. The story about the lack of a gate in the Bypass fence at Windmill

Lane had to be heard to be believed. The position was currently that a landowner in Windmill Lane was refusing permission for walkers to cross a tiny strip of land, which has prevented the footpath from being diverted - this aroused some very heated questions from the floor, from the many villagers who object to this access being blocked to one of the village's most pleasant walks. Mr Badman said that Warwickshire County Council were acting on behalf of the Parish Council and he hoped to report more favourably in the near future. He ended his report with the observation that the source of income to the parish remains static due to no permitted development, yet costs and expenses rise annually. This meant that the Parish Rate had had to increase by 1p this year and the Parish Council were quite confident that they could meet their expenses from that.

Mr Spencer-White, Mr Robert Reading and Mr Ken Graham all addressed the meeting in their roles as County and District Councillors. Mr David Rutherford gave the report of the Alibone Trust and he made a point of paying tribute to the Trusts' clerk, Mr Alan Stubbs, who had made all the difference to the administration of the Trust.

As the Rector was unfortunately unable to attend, Miss Violaine Junod gave the account of the Church affairs, concentrating on the large amount of money needed to save the church, the church hoped and looked for the villages support over its difficult next decade.

Mrs Gould then gave a whistle stop account of all the W.I. activities over the last year which were far too numerous to mention individually but she did end by urging everyone to enter all sections of the Village Show and to give it their support.

Mr Don Northorpe said that the Village Hall had had excellent attendance at all its events and were on a sound financial basis. He thanked Mr M Jerome, Mr G Gould and Mrs I Bennett for their help and welcomed Mrs M Biscoe, Mr Peter Derrick and Mr S Doyle onto the new committee. He also took the opportunity to wish Mr Eric Hagard and his wife a happy retirement.

Mr Nagai was leaving the village there was no-one
report on the affairs of the Youth Club and the need
for someone to take over the thriving junior club
was urgently commented upon.

The Women's Fellowship was obviously going from strength
to strength, Mrs Nancy Stubbs reported that they had
8 members who met once a month in members homes, and
they would warmly welcome new members to their
interesting meetings.

The Friends of Ladbroke Church has lots of pleasant
events and activities planned and the group had had
a very successful year raising funds for the kneeler
benches.

Mr Steve Doyle reported that there were now five
bells being rung, more bell ringers were needed and
if anyone was interested to contact him.

P.C. Tim Percival assured the audience that Neighbour-
hood Watch schemes do work. An increasing problem
now was burglary by distraction especially in hot
weather, when residents are in their gardens leaving
their windows open. He thought that an increase in
burglary would be the inevitable result of the new
M40 which would give opportunist thieves a quick
getaway.

The questions at the end of the meeting were mainly
concerned with the disappointment over the lack of a
gate in Windmill Lane, why was the Dangerous Bend
sign to come down when the bend was still dangerous?
- why did chevron signs come and go? Could the
village seat be raised to the level of the footpath?
No doubt these matters will all be discussed more
fully at the new Parish Council Meeting on June 29th
when interested parties are always welcome to come
along!

KATE LIVERTON

On behalf of those who were present I would like to
express thanks to the Chairman Francis Badman for his
excellent conduct of a most interesting and inform-
ative Annual Parish Meeting. We are indebted to our
Councillors and the Clerk for their hard work and
concern for Ladbroke village all through the year,
which attendance at the ordinary meetings reveals.

MARION GRAINGER

The current craze for Golf in the village is certainly in full swing - Mr Ron Abbott is proudly displaying his first trophy at the Bell Inn and Mr Tony Jenkin recently won a much coveted champagne prize. I don't watch out for traffic any more, but keep a close eye out for flying golf balls!

At last I've found out why we needed a new bridge built in the style of Fort Knox. On a quiet sunny afternoon this week a large removal lorry attempted to go down Bridge Lane - finding the lane did not accommodate its size he backed out straight into the railings of the bridge - which shook but remained in place and the lorry then headed north leaving a section of the railings scraped down to base metal and revealing traces of its old green paint. I'm quite sure that when the County Agent next inspects it, he will blame me!

KATE LIVERTON

LADBROKE & DEPPERS BRIDGE W.I.

April and May are busy months for members starting with April 19th when we joined with others in Southam's Diamond Jubilee Celebrations at Stoneythorpe with a Fashion Show put on by Rackhams. A cake was cut by Southam's 2 oldest members. Another Fashion Show on the 27th at Chesford Grange by the Burton Group with Hairstyling, Cosmetic and other Demonstrations was enjoyed by 800 with proceeds going to County Funds.

Retired Parks Supt. Mr Ashworth gave a talk on showing produce which should help us put on a successful show in September, when he came to our meeting.

May 4th saw the joint meeting at Long Itchington with speaker Mr John Terry entitled 'Pigs in the Playground' and 'Calves in the Classroom' (titles of his 2 books) on his career as a rural studies teacher at a school in N Warwicks. He was both amusing and modest but his hard work and dedication to the children and his animals was clear to see as his years at the school were shown via slides.

May 12th saw the 'Resolutions' voted on at Harbury, Mrs Gwynne Badman going to London as our joint delegate at the A.G.M. in June.

The Jumble Sale Sat 14th in the Youth Centre was very successful with sacks of clothing brought along, with a white elephant, cake stall & refreshments also; a clear profit of £140.35 being made. Thanks to everyone who helped in any way.

The Trip to Bodnant Gardens on 23rd, the Hatton Patient's Party and our Evening Meeting on 26th will be reported on next month as the 'News' goes to print before these have taken place.

GLENYS HALLAM

WOMEN'S FELLOWSHIP

A very happy time was had by the members when they met at the home of Mrs Pearl Edwards, to hear a very interesting account of the history of Amateur Radio, given by Mr Francis Badman. We were all very excited when he was able to call up fellow 'Hams' from Leicester and Coventry.

The meeting next month will take place at the home of Mrs Jennifer Elkins, and will be a talk on berammergau given by Mrs Pam Clarke.

GWLADYS GOULD

WALES '88' - Class 9's trip to Wales

On the week of the 16th to the 22nd of April Class 9 from Harbury School went to Wales. We had a 4 hour journey to our destination, Fairbourne which is in Gwynedd in the North of Wales. We stayed at a place called Panteiniôn Hall, the hall is situated among lots of mountains and plenty of streams and waterfalls.

On the first day we just explored the place, unpacked and generally settled in. I think the second day, Sunday, was the worst because it was supposed to be a 12 mile walk except Mr Crawshaw got us lost and it turned out to be a 15 mile walk. We all got back safe and sound though. The next day, Monday, was a good relaxing day. We got up at 7 am for a train at 9 am then we travelled to Harlech Castle, Mr Crawshaw made us all trek up a massive hill only to find the entrance was "closed for repairs". We walked down the hill again then up about 100 steps then we looked round the castle. In the afternoon we had a tour



ANDREW & KAREN
WELCOME YOU TO THE
SHAKESPEARE INN

LARGE SELECTION OF BEERS
WIDE CHOICE OF HOME COOKING

12.00 - 2.00 and 7.30 - 10.00

SEVEN DAYS A WEEK

(Except Sunday and Weds Evenings)

Sunday 12.00 - 1.45

HARBURY 612357

**BENCH
TELEVISION SERVICE**

22 OXFORD ST
SOUTHAM

REPAIRS
SALES
RENTAL



SOUTHAM 2304

SHOP LOCALLY - SAVE PETROL

HARBURY SUPERMARKET

FANTASTIC SPECIAL OFFERS

VIDEO LIBRARY
(with the latest releases)

OPENING HOURS
MON - SAT 9.00 - 7.00
SUN 10.00 - 1.00

FREE LOCAL DELIVERIES

IS IT DIFFICULT FOR YOU TO GET OUT?
GIVE US A RING AND WE WILL DELIVER
TO YOUR DOOR.

OPEN SEVEN DAYS A WEEK
(no lunchtime closing)

"THE PEOPLE WHO PUT THE CUSTOMER FIRST" MILL STREET · HARBURY Tel: 612645



**W. Goodwin
and Sons**

COVENTRY STREET, SOUTHAM
FUNERAL DIRECTORS

All arrangements personally conducted
in any district

Private Chapels of Rest

HEARSE & MATCHING FOLLOWING CARS

Tel.: (day) SOUTHAM 2445
(night) 2657 or 2445

CARPET & UPHOLSTERY CLEANING

In your home by high class
old established company that cares
QUICK DRY - STEAM VACUUM MACHINES

FREE QUOTATIONS

Tel: Derek Ratty - Kineton 640508

MIDLAND CARPET CLEANING SERVICES
Banbury Road, Gaydon.



- * Home Extensions
- * Plans Drawn
- * Applications Submitted
- * Painting & Decorating
- * Free Estimates

ROAD/DRIVE

- * Driveway and Path Construction
- * Tarmac, Concrete or Paving Slabs
- * Free Estimates

QUEENSWAY TRADING ESTATE Telephone: L/Spa 24236

MERCIA METALS

SKIP HIRE

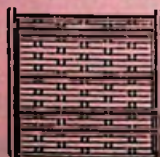


**ALL SIZES
OF SKIPS**

Deppers Bridge, Harbury, Leamington Spa
Tel: Harbury (Std. 0826) **613504**



ROLLASON FENCING
FOSSE GARAGE FOSSE WAY
HARBURY 613009/612066



weavemaster



pinemaster



weathermaster



trellismaster

**ALL TYPES OF EASY-TO-ERECT PANELS
BY MASTER FENCING**

around some slate mines. On Tuesday we walked along a disused railway line to Barmouth. We had a shop around then went to see the R.N.L.I. The next day we went to the Alternative Technology Centre. This is where they tried to find a substitute for non-renewable power sources. On Thursday we went on a steam train to the Dolgach Falls, we also did a beach study, but the tide was coming in fast. On Friday we set off for home. It was a long week but a lot of fun. I wish we could go again!

DAWN CARTER



Mike Bloxham's photo shows that there was excellent canine support for the Annual School Sponsored Walk - the kids turned out in force too!

MISSION AND DEVELOPMENT

(This is one of a series of articles written jointly by the Area Secretaries of CMS, USPG and Christian Aid.)

There is considerable confusion in the minds of many people about the differences between "Mission" and "Development". Have you ever heard people say:

"What people need is development, not just preaching"

"The aid agencies meet people's physical needs; missionary societies are only concerned with their souls!" or

"Poor people want justice, not just charity or conversion!"

s Christians we are committed to:

sharing in the spreading of the gospel,
sharing in the renewal (transformation) of the church, and
sharing in creating a society based on gospel principles.

Taken together these ARE Mission and Development.

Mission and Devolopment are two-way processes. In them we give and receive the gospel, which includes both personal and social development. It is through the fellowship of the church that we experience this sharing. The church is renewed as mission and development are shared through it. This is the way in which the church can become a sign of God's presence and love in the world.

What do you think? Write to us and let us know!

Doug Anderson (CMS), Richard Bowley (USPG), Richard Spencer (C. Aid) c/o 6 Belvedere Rd, Coventry CV5 6PF

HARBURY MOTHERS' UNION

Our meeting this month on Wed 1st June is the Annual General Meeting. This is the year of our Triennial elections when a new Branch leader and other officers will be elected.

On Tuesday 14th June we have a branch outing to Chester and we shall be joined by ladies from Ladbroke Women's Fellowship and members of Ufton Mothers' Union. There are still some seats available at £3.75 and we leave at 8.30am from the Village Hall. If anyone (we have got some gentelemen joining us) is interested please contact Shirley Keir on 612794.



HARBURY W.I.

The business side of our May meeting was the reading discussion and finally the voting on the four resolutions to be heard at the Albert Hall. Mrs Daphne Bradley explained the resolutions to us very thoroughly and after voting told our delegate - from Ladbroke W.I. this year - which way to vote. We had a very good attendance at this meeting and were very pleased to be able to welcome several visitors from Ladbroke W.I.

After the business was over members enjoyed a 'social' end to the evening playing whist or darts. The raffle was won by Mrs Dunbar.

Our meeting on June 9th will be an open meeting as it is an 'Antiques Roadshow' when Mr Barby of Locke & England will talk to us. For this month only our W.I. meeting will start at 7.15 prompt enabling us to get our business finished before 7.45 when the meeting will be open to visitors. At this meeting we will be having a "pink" table, please would members bring something pink to sell.

Also in June our W.I. will be having its 70th Birthday celebrations with a "Strawberry Fayre" Garden Party at 7pm on Thursday 30th June in Mrs Peggy Middleton's garden. All members attending are asked to wear a "Garden Party" hat. Fingers crossed for a dry evening! S.G.

SCOUTS & GUIDES SUPPORT COMMITTEE

The Annual General Meeting was held last week and the Chairman reported a generally successful year of fund raising. Proceeds from fund raising activities amounted to £2480. The Treasurer reported that the surplus for the year amounted to £17 and the balance of funds at 31st March was £1662.

The leaders reported a full year of activities but Sue Lapraik, Mary Entwistle, John Small and Liz Robbins gave notice of their intention of retiring at the end of the year. We therefore urgently require leaders for the guides, cubs and beavers as soon as possible and anyone interested in any way please contact the Group Scout Leader - Ken Hughes (612273).

The new support committee comprises:-

Brian Ingram	-	Chairman
John Travis	-	Vice Chairman
Pauline Smith	-	Secretary
John Hunt	-	Treasurer

Felicity Dugan: Anne Glaze: Muriel Grey: Jo House:
Ken Hughes: John Kemsley: Moira Lamont: Ken Stephenson:
Jo Tancock: Geoff Youngman:

The next Newspaper Collection is on Sunday 19th June.

BRIAN INGRAM

BEAVERS

On Saturday 21st May the Harbury Beavers went on a Fun Day and joined Beavers from other local groups. In the morning we played Touch Rugby, Football and a Tug of War which Harbury won against Southam and Leamington. We then had a Barbecue Lunch. In the afternoon we made water bombs - we all loved it.

TOM WATERMAN (7 years)

Harbury's Beaver Colony is now one year old. We started last June with three leaders and 12 boys and now have 18 boys and a waiting-list. "Beavers" is for boys aged 6 to 8 years old and is part of the Scout Movement so if your son is the right age and would like to join do let us know. Unfortunately we are losing one of our leaders and although we have a regular Venture Scout helper we could do with another leader. So, if anyone - male or female - is prepared to devote an hour a week (Monday 5.30 to 6.30) to a group of noisy but enthusiastic boys, please contact one of us.

SALLY STRINGER (613214) and LIZ BONES (612832)

HARBURY CRICKET CLUB

Harbury have made a successful start to the season with three wins. Further details next month. Fixtures for remainder of May and June are:-

May 29th	Leamington Lemmings	A
May 30th	Vice Presidents XI	H
June 5th	Newbold	H
June 8th	Southam Teachers	H
June 12th	Kenilworth 3rd	H
June 14th	Flavels	H

June 19th	Weedon	A
June 26th	Flecknoe	A

Home matches are played on the Rugby Club ground in Middle Road. Supporters are always welcome, though it is doubtful if they will have the pleasure of seeing Les Sollis bowl Ian Holroyd, and then Ian Holroyd bowl Les Sollis. This happened at Frankton earlier this month, and caused great excitement. Gary Lowe was very amused.

JOHN ARLOTT

INTERMEDIATE TENNIS

Congratulations to Sarah Burnham who won the beginning of season tournament and well done to the runners up:- Paul Turner, Ian McDonald, Fiona Crossan, Julia Brown and Fiona Szolnoki.

The next tournament will be on Friday 17th June, starting at 5.30pm and once again it will be free to members (£2.50 for the year). Apologies to those who can't make a Friday evening, I'll try and make the July tournament a Sunday afternoon.

Hope you're all enjoying your Tuesday sessions 5.00 - 6.30pm.

R.O.

HARBURY FOLK CLUB

May 5th is, of course, the anniversary of Mexican Independence Day, so you might have expected the last Folk Club to have had a strong Mexican flavour. However, it was not to be and it was left to Gerda (who can always be relied upon on these special occasions) to sing the only Mexican song of the evening - though, to be honest, no one had the slightest idea what she was singing about!

Out guest for the evening was Pete Grassby from Coventry, the man responsible for teaching the dancers of Hereburgh Morris. In addition to his Morris skills, he is also a very accomplished singer and musician and the capacity audience obviously enjoyed his final set. He included several tunes on the hammer dulcimer, an interesting instrument related to the zither but played with small wooden hammers. It was the first time such an instrument has been seen at the club and Pete

made a glorious sound with it.

Another full evening of music was completed by contributions from the Harvesters, the Jug Band, the Fire Brigade, John, Mike and me. The raffle raised £14.21 which has been donated to Leukaemia Research.

The next two Folk Club Meetings are June 2nd (a national holiday in Austria!), when Gerda will be featured in the guest spot, and July 7th. We meet in the Lounge bar of the Old New Inn and start at 8.30pm

PETER McDONALD

VILLAGE HALL NEWS

At the recent A.G.M. the following Officers of the Committee were elected:-

Chairman:	Alan Barr	(612765)
Vice-Chairman:	Brian Ingram	(612418)
Secretary:	Sally Townsend	(613420)
Treasurer:	Bill Middleton	(612877)

Olga Hughes (612716) continues as Booking Secretary.

Financially, it is clear that the income from letting fees is not adequate to cover all our commitments and so it will be necessary to increase the hiring charges for the coming year. Another obvious way of increasing the income is to try to make certain that the Hall is as fully used as possible. However we know of at least one instance where a function was not booked at the Hall because it was felt by the organisers that the noise etc. from the youngsters who congregate there would spoil the event. The Committee feel strongly that anyone wishing to use the Hall should not have to put up with excessive noise from youngsters around the Hall. If your son or daughter is in the habit of meeting at the Village Hall, please would you stress to them the need for responsible behaviour.

ALAN BARR



CELEBRATION OF FLOWERS 9TH JULY

Are you tired of your Mother-in-Law's tongue, and would like to give it a rest? We are in need of a large sansevieria to use in church for the Celebration, and would be grateful if someone could lend us one. Also, please don't forget to restrain from pruning your garden foliage until the week beginning July 3rd - again, many thanks in anticipation.

Please help us in the final effort. On TUESDAY 20TH JUNE Miss Jean Humphries will be holding open house and garden for a tea, bring & buy from 3pm to 4.30pm at 24 Farley Avenue.

We will be meeting in church on Wed 22nd June at 8pm to finalise arrangements. Would all of you who have promised your help please come along so that we can sort out any last minute queries.
We are looking forward to a lovely event.

S. BURDETT (613497) B. KETTLE (613878)

THE HARBURY DIRECTORY is now once again out of date and we plan to revise it in the near future. It would help us greatly if organisation secretaries could send in their name, address and telephone number to the Editorial Office (23 Mill Street).

THE EDITORS

CARNIVAL NEWS '88

The Committee have finalised the details of this year's Carnival on 18th June and with your support we are confident we can maintain the reputation our Carnival enjoys.

Full details of the attractions are in the programme available in both shops and pubs. Committee members will also be selling programmes door to door. This year's programme features a new colouring competition for children, prizes will be awarded to three age groups.

Following the success of last Year's Carnival Draw we are again running this raffle with a first prize of £100, as well as many other prizes.



Carnival Queen, Claire Critchley, pictured above - Queen's Close and so is the Carnival!

The Carnival Dance concludes the day's events, dance to the Likely Lads and enjoy a supper, all for £3.50 (Tickets from Peggy Middleton, 27 South Parade or Carol Percival and Anne Megeney).

Don't forget the Carnival Day pigeon shoot will be once again held at Hill Farm, Ufton.

Whatever the weather (it's about time we had a good day!) come and support your Carnival. If you cannot make it on the day, invest in the Carnival Draw.

BRIAN WADE

DANCING EXAMINATION RESULTS

On the 30th April the Jean Champ Stage Dance School held their first British Theatre Dance Association exam session for this year, with a 100% pass rate. All girls had a mark of over 85%. Congratulations to the following girls:-

Primary Ballet

Helen Davis
Jennifer Ricketts
Gillian Robbins
Kathryn Tye
Rebecca Tayler
Sally Van Hoorebeek

Laura Lawther
Sarah Masson

Baby Medal

Sarah Talbot
Melany Heathcote

Escape to discover the tranquil beauty of the Lake District for a weekend break or full holiday

WHICHAM OLD RECTORY

continues to offer an especially warm welcome to Harbury folk.



Home grown food : home baked bread :
home-spun hospitality

Unspoilt beaches, mountains and moorland, golf, riding and fishing nearby
Daily and weekly terms on request.

*Whicham Old Rectory
Silecroft,
Millom, Cumbria
LA18 5LS*

*Proprietors:
Dave & Judy Kitchener
Charles & Nita Shields
Tel: (0657) 2954*

MWCFE EDUCATION AND TRAINING

For local people of all ages we have a range of courses for YOU

- FULL-TIME OR DAY RELEASE/ BLOCK COURSES FOR SCHOOL LEAVERS AGED 16+
- LINK COURSES FOR THOSE STILL AT SCHOOL
- FULL-TIME (OR NEARLY FULL-TIME) FOR MATURE STUDENTS
- SHORT COURSES: LEISURE, RECREATIONAL, VOCATIONAL, - FOR THOSE IN WORK AND OUT OF WORK
- A RANGE OF COURSES AT YOUR LOCAL CENTRE

For further information please contact

Mrs P. Cavendish on extension 220

Mid-Warwickshire College of F.E.

Warwick New Road, Leamington Spa,
CV32 5JE. Telephone 311711.



SOUTHAM CARPETS

TEL: SOUTHAM

4944

- * A family firm. 30 years experience.
- * Free, no-obligation estimates.
- * Select-at-home service.
- * Carpet cleaner hire. Reasonable rates.
- * Credit facilities available.

THE FOSSE GARAGE



*Accident Repair Specialists
for all leading Insurance Companies*

- * 24 hour Recovery Service
- * AA and RAC Appointed
- * Servicing & MOT Repairs
- * Petrol and Diesel



Motor
Agents Association

SELF-DRIVE CAR & VAN HIRE

FOSSE WAY, HARBURY, NR. LEAMINGTON SPA. TEL: 613260

Kathleen Ellis

OF CHAPEL STREET, HARBURY

BARBER IN ATTENDANCE MONDAY 2 — 6 pm

37 COVENTRY STREET, SOUTHAM
WARWICKSHIRE CV33 0EP
SOUTHAM 3987

Estate Agents Valuers Auctioneers
Surveyors and Mortgage Consultants

Oyston Shipways

- * ESTATE AGENTS TO HARBURY & LADBROKE
- * FOR LOCAL PERSONAL SERVICE WITH THE BACKING OF A MULTI OFFICE NETWORK
- * OPEN SEVEN DAYS A WEEK
- * FREE VALUATIONS FOR INTENDING VENDORS

DOVEHOUSE AUTO SERVICE

In DOVEHOUSE LANE · HARBURY

TELEPHONE: 612809

For ALL your Motoring Requirements
To the very highest standard.

Specialists in electronic tuning, servicing,
welding, body repairs and refinishing.

Car M.O.T. preparation and Motorcycle
M.O.T. Testing.

There is also our useful photocopying service.



A.G. KNOWLES PLUMBING & HEATING



CENTRAL HEATING — ALL FUELS
NEW INSTALLATIONS AND ALTERATIONS
BATHROOM SHOWER AND PLUMBING INSTALLATIONS

Boiler changes and central heating up-date

ESTABLISHED OVER 20 YEARS

69 MILL STREET · HARBURY 612331

Bronze Medal Modern

Leah Wallington
 Lisa Tebaldi
 Sally Barrett
 Vanessa Smith
 Claire Critchley

Introduction to Grade 1 Ballet

Leah Wallington
 Helen Robbins
 Sarah Turner

Grade 1 Modern

Leah Wallington
 Helen Robbins
 Sarah Turner

Bronze Medal Character

Helen Davis
 Jennifer Ricketts
 Gillian Robbins
 Kathryn Tye
 Sally Van Hoorebeek
 Laura Lawther
 Rebecca Tayler

Thank you to all girls for their continued hard work.

JEAN CHAMP

HARBURY THEATRE GROUP

The time - 10.31am May 21st
 The scene - Wight School, Harbury

Enter Prospective Mediaeval Banqueter.

P.M.B: Can I have two tickets for the Mediaeval Banquet please?

Harbury Theatre
Group Member:

I'm very sorry, but they have all been sold

P.M.B: But I heard that there were a hundred tickets for sale.

H.T.G.M: Yes, that's correct.

P.M.B: (becoming agitated) And it said in the Harbury News that tickets would be on sale from 10.00am.

H.T.G.M: (calmly) Yes, that's quite right.

P.M.B: (even more agitated) Do you mean to tell me that you've sold ONE HUNDRED tickets in half an hour?

T.G.M: I'm afraid so.

M.B: Well !!**!!

T.G.M: (soothingly) Don't despair, if you can wait till October 15th, The Theatre Group are holding another of their famous French Restaurant Evenings.

M.B: (cheering up) That's fantastic, can I buy tickets now?

H.T.G.M: I'm afraid not, you will have to read your Harbury News carefully, nearer the time to find out when and where the tickets will be on sale, but if your social calendar looks bleak up till then, don't forget that the Theatre Group are organising this year's Carnival Dance, featuring the Likely Lads.

P.M.B: I'll certainly make sure I buy my tickets in plenty of time in future. Good morning
(exit P.M.B. writing feverishly in diary).

G.R.

HOME HELP

The Role of the Home Help has changed dramatically over recent years and we are no longer 'cleaning ladies'.

Warwickshire County Council Home Care Service exists primarily to help elderly people to remain living in their own homes when they can no longer do all the necessary jobs themselves. Home Helps might therefore find themselves doing housework, shopping or cooking but more and more it is personal care which takes up their time - helping people to get up, washed and dressed, laying fires, preparing meals - whilst at the same time providing company and support. We are particularly looking for Home Helps in Harbury area at present. If you are fit, caring and conscientious and would be interested in considering employment as a Home Help, please contact:

Jenny Vincent - Home Care Manager
Social Services, The Grange, Coventry Rd
Southam, L/Spa
Tel: Southam (981) 3110

BRITISH LEGION

The annual parade service of the British Legion was held in Harbury Church on Sunday May 8th. Mike Bloxham's photo shows the parade in High Street.

APNOEA ALARM FUND

Tina Yardley & Kate Smith have applied to the Charity Commission, through a Solicitor, for registration of a charity to be known as Sarah & Duane Apnoea Alarm Fund. Money raised will be used to buy the Apnoea Alarms plus Sensors and with these they hope to be able to try to help prevent cot deaths. They aim to supply as many as they can so that supply may eventually meet demand.

They are organising a sponsored pram push from Harbury to Redditch via Stratford. Sponsor forms will be available in certain shops and pubs in the village, and they ask that you the reader and any

member of your family, your friends and your colleagues at work will support and sponsor this worthwhile cause.

TIME OUT WITH WARNACT

Why not find out something about the natural history havens on our doorstep. An experienced guide will lead walks to enable visitors to discover local fauna and flora. These walks are open to anyone and a small charge is made which will help with Warnact's activities and perhaps persuade some people to become more involved.

Walks start at reserve entrances at 2.30pm

29th May Harbury Spoilbank on left of B4451 to Deppers Bridge on left at bottom of the slope from Harbury.
19th June Ufton Fields - on the back road to Ufton.
26th June Stockton Spoilbank on Cutting - off A426 just before the Grand Union Hotel.

There is also a nature trail at Bishop Bowl Lakes on the B4451 to Bishops Itchington combined parking and entrance fee.

M.W.R.

ANNUAL PARISH MEETING

The Annual Parish Meeting was a lively affair with parishioners vigorously quizzing the Councillors on a variety of matters of great concern. Mrs Waddell had had been persuaded by District Cllr Turner that Harbury Parish Council was the correct body to provide free bus passes for OAPs, indeed he told the meeting that Harbury could raise as much as was necessary on the Parish Rate for this, although he argued that it would not be right or proper for Stratford District to do this.. Chairman KeithThompson reiterated the Parish's support for the need for concessionary fares for the elderly but explained that Harbury would NOT have the resources to fund the scheme, and had therefore through the National Association of Parish Councils sought support for moves to demand that the higher tiers of government took the initiative. The Parish Council agreed to put all the figures forward at its next meeting.

Counity Councillor Mrs Patricia Bidwell explained that colleagues had not yet had the opportunity to

debate the POLL TAX because they did not have all the details. She assured Mary Thompson that the scheme to integrate children 'with special Educational Needs' into ordinary schools was proceeding, but Mrs Thompson would not accept this and declared that staff needed reassurances that there would be extra funding. Mrs Bidwell agreed with Cllr Davies that the unchaining of the County Council's Bear from the Ragged Staff on the excuse that it had been a cruel symbol was farcical. She did make it plain that all Councillors and officers were aware of the pressing need for low-cost starter homes in the villages and said that they were making the solution to the problem 'top priority'.

There were recriminations about the Parish Council's refusal to consider the first plans submitted by Dave Andrews for an estate off Butt Lane which had included six starter homes. Andy Hunt asked why they had not supported the plans and Keith Thompson replied that they had been hampered by their recent decision on the limits of the village for development purposes. They had excluded that land as being outside the village. Andy Cowan pointed out their line cut through the existing houses in Queens Close! and that density of the proposed houses was half that of most other estates in Harbury! Mrs Ridgley informed the Cllrs that the revised scheme to which they had finally given their support included just three starter homes. The Chairman assured her it was four!

In his Plans report John Drinkwater stressed the incomprehensibility of Stratford District Council's planning decisions. One plan for a dwelling in Vicarage Lane was turned down whilst a similar one next door was approved. In his Highways report he assured the villagers he was aware of the bad state of Mill Street; the road passing Peter Mann's TIP; and the shocking footpaths. John Moore of Deppers Bridge was pleased to announce the hamlet was to have a 40 mph limit and the surface water problem was to be resolved (men had been seen taking levels). He joked that residents had become adept at avoiding the puddles at 60 mph!

Bob Wilkins who as well as being a super scout, is

Warwickshire's Highways Design Manager, gave an illustrated talk on transport developments in the County and the role of the WCC. Warwickshire looked after the 'County' roads (1960 miles of them), was involved in much of the work on 'Trunk' roads but only dealt with feeder roads for the Motorways. The Department of Transport had agreed that work could start on the Southam By-Pass in 1990, a Wellesbourne By-Pass was being designed, and a Stratford Southern Relief road was planned.

At a local level it was hoped to include a footpath for Butt Lane in the 1990 estimates and Bob had advised the Divisional Engineer to think again about his plans for Mill Street. No-one believed it would be sufficient just to tar and chip the road after the village's experiences last summer. Andy Hunt requested that any more chippings should be rolled in!

Bob's slides of the line of the M40 showed where it would go, how the junctions would work and he explained that Barn Hill Service Station was shown in the M40 plans because it was the Department of Transport's preferred site. The professionals had stated that the Bishops Itchington to Gaydon road would not suffer any great increased volume of traffic, but if it did they would have to solve the problem.

Alan Barr reported on the Village Hall's year of successful fund raising and efforts to improve the maintenance of the building. Letting fees would have to be reviewed and invoicing improved to give adequate income more regularly spaced throughout the year. He was gratified by the level of support the community gave the Hall and the only minor problems, those of children playing loud radios and youths riding motor cycles round the Hall had improved since he had talked to the youngsters and explained that people were deterred from booking the Hall because of the disturbance and that the Committee feared someone would be knocked down by the bikes.

In answer to Andy Cowan and Ken Stephenson's questions he assured everyone that the priority was to ensure that the building was kept in a sound condition, that the letting fees were fair and covered running costs and that a Sinking Fund was wished to set aside money for future repairs and

replacements.

REMEMBER The Village Hall is A CHARITY and is not supported by the Rates. All village organisations have a right to send a representative to the Management Committee Meetings.

LINDA RIDGLEY

HARBURY HELP LINE

For confidential assistance of various kinds, either drop in a note or telephone the following people:-

FOR EMERGENCY TRANSPORT

Vivien Neill, 7 Dovehouse Lane - 613461

Marie Allen, 21 Sutcliffe Drive - 612958

FOR HELP WITH FORM FILLING (e.g. job applications or official forms)

John Algar, 8 The Beeches - 612354

Jeff Bedford, 26 Manor Orchard - 613219

ODD JOBS ABOUT THE HOUSE

Jeff Bedford, 26 Manor Orchard - 613219

HELP WITH READING DIFFICULTIES, HOBBIES, COOKING, KNITTING

Mary Catt, 16 Dovehouse Lane - 612864

Lesley Jones, 15 Pineham Avenue - 613207

VISITING HOSPITAL PATIENTS

Keith Dormer, 12 Park Lane - 613254

Canon Rowe, The Rectory, Vicarage Lane - 612377

And if you would like someone to call and visit you or you are caring for an elderly or sick person and would like a little time off, contact:-

Betty Knappe, 4 Leycester Close - 612679

or Sue Dormer, 12 Park Lane - 613254

CHILDREN'S CLOTHING

Any spare children's clothing (for age 0-6 years approx) in good condition gratefully received and put to good use.

Please contact:

Anne Woodward Flecknoe House, Chapel St. 613536

Maureen Derby 20 Manor Orchard 613330

Mary Catt 16 Dovehouse Lane 612864

HARBURY SOCIETY

Pieces of old china for our Secondhand Crockery Stall at the Carnival on June 18th are beginning to accumulate. Someone should be calling on you in a few days time to take away anything you can spare. You can if you wish leave items at my house, 16 Farm Street or ring 612792 and I will collect them. I would like crocks as soon as possible so that I can sort and price them. If you have nothing to spare all the more reason for coming to our stall to buy!

Tim Millington needs volunteers to help with the tea and biscuits at the Wight School on July 9th, when the Society is running the drop-in to aid Church funds. Please ring 612808 if you can help.

The Mystery Tour is set for July 5th beginning from the Old New Inn Green at 7.30pm. The Entry fee is 75p for adults and 40p for each child. In case you have missed this amazing entertainment before, it is an ambling crossword puzzle of a quiz round the streets of Harbury ending somewhere where refreshments are laid on, and the answers can be consulted. There are prizes for the most correct answers. You do not need any special knowledge, just an observant eye, a devious mind, and the willingness to accept that you will probably be beaten by the kids. They are mustard!

There will be more details next month about the Picnic for members, and do not forget we are helping to open the Windmill at Chesterton in September.

LINDA RIDGLEY

WINDMILL SINGERS CONCERT - HARBURY CHURCH

On Saturday 18th June 1988 at 8pm, the Windmill Singers will be performing La Petite Messe Solennelle by Rossini, best known perhaps for his comic operas. This mass, despite its title is far from little, lasting nearly two hours in performance and containing some very exciting music for chorus, four soloists and piano/harmonium accompaniment. A magnificent recording of the work has been made by the choir of Kings College, Cambridge and whilst the musical standards of that recording are unlikely to be achieved, it is hoped that the audience, dare looking for an alternative to a rave up at the

Carnival Dance, will experience an evening of beautiful singing and accomplished playing of the grand piano being especially hired for the occasion. Tickets are available from members of the Windmill Singers, or at the door, costing £2.50 per head.

B.B.H.

JUNE IN THE GARDEN

It should be safe now to plant out the summer bedding, provided plants have been hardened off. Semi-hardy fuchsias too can go outside. If they are being grown in pots or containers give them a sprinkling of growmore to encourage them.

Spray the roses regularly to control blackspot and greenfly. Remember every aphid born on Sunday is a grandparent by Thursday!

Stake and tie herbaceous plants in good time, also border carnations. Cut off dead lilac heads and trim back brooms. Clear ground between roses can be mulched with clean lawn mowings, not too deeply or too near the stems of the roses.

Plant out and stake outdoor tomatoes, also marrows and courgettes, retain as much soil ball as you can and water immediately. Remember they are gross feeders. Plant Brussels sprouts, winter cabbage, purple sprouters, spring broccoli and leeks. Continue to sow salad crops also spinach beet.

Sunlight causes quick evaporation in shallow garden ponds. Re-oxygenate with a burst from the hose pipe, using a spray nozzle.

E.D.Z.

HARBURY HORTICULTURAL SOCIETY

Many thanks to Stan Finch for concluding the year's programme of talks with a most interesting and entertaining account of pests and diseases. Although he dealt with the baddies, he devoted a good deal of the time sharing with us his wide knowledge of, and affection for, all types of wee beasties. Many of us will now look at them with a new interest and respect.

The Society again owes a great debt to Mrs Zonic who put together such a varied and successful programme as she has for a good many years now.

Members going to the Waterperry Centre on 15th June please leave from Village Hall at 9.30am. Those going to Moreton Morrell on 21st June likewise at 6.45pm. Transport will be shared to suit people's convenience but please do not depart without reporting to Village Hall first, otherwise someone will have a frustrating time looking for you. At Waterperry, we all have to go in together but thereafter members will be on their own. Any snags or problems arising please contact Mrs Zonic.

Finally, don't forget the Walkabout on July 9th. Tell your friends, colleagues and relatives - your publicity is the best publicity and with many villages now organising open gardens in this way we need to ensure that people know about us in good time.

B.A.R.

We were very sad to hear of the sudden death of Estelle Picken.

To Dick, Gary, Jill and the whole family go our deepest sympathy, together we are sure, with that of their many friends in the village.

.....

Mrs Joan Kelly would like to thank all relations, friends and neighbours for cards, messages and lovely flowers sent in her sudden sad loss.

Special thanks to Dr Wilne for all his care and attention.

.....

I would like to thank everyone on behalf of myself also Tom & Rachel for all the beautiful flowers, cards and concern shown to us during our difficult time; it was truly appreciated.

I am now well on the way to recovery and hope to be out and about before too long!

ing everyone once again.

EILEEN LOWE
42 Francis Rd
Harbury.

Dear Editors,

Please may we thank all our marvellous friends and neighbours for looking after our home in our absence and for the wonderful 'welcome back' we received after our recent trip.

May I also thank and congratulate Pat Taylor and her team of leaders, youth forum, club members and management committee for all their successes to date and the diverse programme planned up to Sept 88. It is with absolute confidence in the skills and abilities, enthusiasm and commitment of all concerned that I am able to resign and look forward to spending more time with my family.

Thank you to all the many kind folk who helped in so many ways over the last 2½ years. Please continue to give your support to Pat and all in the Harbury Youth Club. Helpers are always needed for transport, discos and special events. Please contact leaders if you can help in any way, it really is appreciated.

Yours truly,
KAY PALLOT

Dear Editors,

I am concerned about traffic speeding down Mill Street and through Binswood End. It is particularly dangerous for children on their way to and from school. It is also dangerous for older people. It is far better to drive carefully and avoid accidents.

Yours faithfully
Mr A C OVER

CLEANER WANTED

- cleaning & ironing one morning a week
£2.50 per hour. Anyone interested
Phone 613343 (Chapel St. Harbury)

PLEASE!!

Can anyone spare a little time to help with the mowing of the Churchyard? If so please contact Jeff Bedford, 26 Manor Orchard (613219)

#####

ALL SAINTS CHURCH HARBURY

WINDMILL SINGERS

PETITE MESSE SOLENNELLE

by
ROSSINI

Saturday 18th June 8pm

Rosalind Roberts	(Soprano)
Brenda Beck	(Contralto)
Ron Binnie	(Tenor)
Peter Koch	(Bass)

Conducted by

KEN NORDON

Tickets £2.50 available from:-

Brian Harrison	(612533)
Sheila Scott	(612637)
Tim Knight	(612522)

COFFEE & BISCUITS

EVERY SATURDAY

10am - 12 noon Wight School

IN AID OF CHURCH ROOM PROJECT

AFTERNOON TEAS

Sunday 5th June 3pm - 6pm

5 PARK LANE

IN AID OF CHURCH ROOM PROJECT

SOUTHAM SCHOOL P.T.A.

S U M M E R B A R B E Q U E D A N C E

with 'THE LIKELY LADS'

Friday July 1st

8.30 - 12.30

LICENCED BAR

RAFFLE

TICKETS £3.50 - Includes Salad & Roll
Bring your own meat

Available NOW from School OR

32 Mill Street
Bramley, Queens Close
4 Manor Orchard

ALL SAINTS' CHURCH

You are invited to a

MIDSUMMER MELODIES SUPPER

on Saturday 25th June 1988

at 11 Constance Drive (the home of Pam &
David Clarke)

to launch the Meeting Room Project

Entertainment by:

THE BROADWAY PALM COURT ENSEMBLE

7.30pm - 10.30pm

Tickets £6.50

from: Tony Stubbs (612782)
Lorna Bedford (613219)
Ruth Dodds (612529)
Sue Buffone (612486)
Beryl Checkley (612519)

HARBURY RUGBY CLUB

ANNUAL SUMMER BARBECUE

at the Club House, Middle Road, Harbury

on

SATURDAY 9TH JULY

Dancing to Chart Toppers with "Everlasting Love"

LOVE AFFAIR

and Mr Boogie Disco

Start 7.30pm

Tickets £7.50

Food 8.30 - 10.30

Bumper Steak Meal

Large Marquee

Tickets from:

Ian Holroyd (Tel. 612527)
The Old Chapel House

or any Club member



★ RAFFLE ★ ★ SPECIAL ★
★ BAR ★ CARNIVAL
★ SUPPER

TICKETS £3.50 from PHIL LINDOP

SPECIAL ★ TICKET ★ PRIZE ★ £20 ★

Michael Jerome



Carpets



A COMPLETE CARPET SERVICE

- * Choose a new carpet from our extensive range
- * Expert fitting-Fully Guaranteed
- * Existing Carpets re-fitted
- * Professional On-Site Cleaning
- * Vinyl Sheet Flooring

'Cherry Trees' School Lane Ladbroke
Tel: Southam 3325

Michael Jerome is a Master Fitter with the National Institute of Carpet Fitters with 25 years Experience

HIGHFIELD STABLES

RIDING SCHOOL
DEPPERS BRIDGE

Lessons, Schooling,
Liveries, Riding Weekends,
New indoor school available
for hire



HARBURY 613895
and ask for Selina

THE MALT SHOVEL

Bishops Itchington
Tel Harbury 612454

Succulent steak, traditional home cooking and our speciality shark and swordfish are always available at this country inn, even on Sundays.

Ruddles beers and fine wines are also available at this warm and friendly village inn.

R&S DOMESTIC SERVICES



REPAIRS TO MOST MAKES OF

Washing Machines
Tumble Dryers
Cookers
Microwave Ovens
Dishwashers etc.



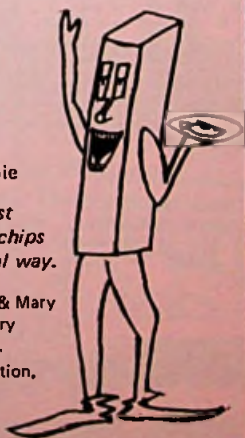
PHONE - ROB CENEY on
HARBURY 613707

Little Fryer.

Your local mobile chippie

Assuring you of the best quality possible in fish & chips cooked in the old traditional way.

With the kind permission of John & Mary we're at the Old New Inn every Friday from 4.30-7.00 p.m.
Small in size, but huge in reputation.



Talbot & Company

Solicitors

Residential Conveyancing
and all other aspects of
legal work undertaken

Open 9-1, 2-5.30 Mon - Fri

LLOYDS BANK CHAMBERS
6 HIGH STREET
SOUTHAM

Telephone: SOUTHAM 2218



SOANS
Ford

SYDENHAM DRIVE
LEAMINGTON SPA
WARWICKSHIRE.
Tel: 314466.

Your friend in the trade

KINETON ROAD
IND. EST. SOUTH
WARWICKSHIRE
Tel: 454

Ford Ford

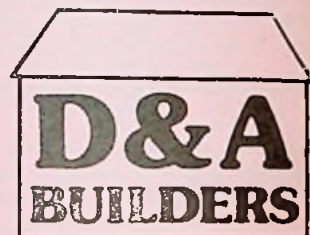
EXTENSIONS AND CONVERSIONS

RENOVATIONS AND MODERNISATION
ALL ROOFING WORK
GRANT WORK UNDERTAKEN
PLANNING AND DESIGN SERVICE AVAILABLE

R K WHATCOTT

HARBURY 613109

ESTABLISHED 14 YEARS



BUILDING CONTRACTORS



**VAUXHALL
• OPEL •
BEDFORD**

Spa

Sales, Service & Parts

Princes Drive, Old Warwick Road, Leamington Spa. Tel: 2086