



# HARBURY AND LADBROKE NEWS

**THE HARBURY & LADBROKE NEWS** reflecting all aspects of Local Life is published monthly, and produced with assistance from the Parochial Church Council of ALL SAINTS' CHURCH - Vicar: The Rev'd. F.R. MACKLEY, B.A.  
Telephone: Harbury 612377.

**HARBURY** Holy Communion : 8.00 a.m., 10.00 a.m. (Sung)  
**SUNDAY SERVICES:** Evensong : 6.30 p.m. (4.00 p.m. in Winter)

See Church Notice Board for details of other services.  
For Ladbroke Services see inside.

## DOCTORS' SURGERY HARBURY:

Farm Street. Telephone: 612232  
Monday - Saturday : 9.00 a.m. - 10.00 a.m.  
Monday, Tuesday, Friday : 6.00 p.m. - 7.00 p.m.  
Craven Lane. Telephone: Southam (931) 2577

## LADBROKE:

**DISTRICT NURSE** Southam (981) 2688  
**HEALTH VISITOR** Southam (981) 4319

**POLICE:** Telephone: SOUTHAM (981) 2366

**LOCAL CONSTABLE:** P.C. T. PERCIVAL. Telephone: Harbury 612175

**SOUTHAM SOCIAL SERVICES** Tel Southam (981) 2881

'THE HARBURY DIRECTORY' containing details of Village Organisations and essential information is freely available on request from  
Mrs. D. Holt, 15, Wagstaffe Close, Harbury.

Editorial Office : 23, Mill Street, Harbury. Telephone: 612427

Advertising : 15, Wagstaffe Close, Harbury Telephone 612790

## BULL RING GARAGE (Harbury) Limited (Inc. Southam Auto Service)

Church Terrace, Harbury,

Tel: Harbury 612275 Southam (981) 3646



## THE AREA'S LEADING MOT TESTING STATION

FAST AND EFFICIENT SERVICE FOR  
CARS, MOTORCYCLES AND THREE-WHEELERS  
WHILE-YOU-WAIT, OR BY APPOINTMENT

ALSO

CAR SLUGGISH OR HEAVY ON PETROL?

Then we have the latest in engine analysing equipment and our fully qualified technicians are ready to diagnose any problem you have.



**24 HR**  
**BREAKDOWN & RECOVERY SERVICE**



### ■ It's the tops!

Treat your car to something special from our large range of sunroofs or vinyl tops - fitted by experts - no deposit credit - competitive interest rates - free life insurance.

- Roller Brake Checks **PLUS**
- Wheel Alignment
- Wheel Balancing
- Full Range of D.I.Y. Spares



Using modern equipment and materials our body shop sets the highest standards of workmanship for all your body repairs - Free estimates - Insurance work undertaken.

**HAD A BUMP?**



**HARBURY & LADBROKE NEWS DOES IT AGAIN!!**

For the second time, your magazine was chosen as the best in its category in the Coventry Diocese, in the magazine competition organised to choose Coventry's entries in the forthcoming National Competition. We are, of course, delighted, and very grateful to the many people who work so hard to produce and distribute the magazine each month. In other categories, winners were Wootton Wawen and Round the Revel, and Berkswell was the runner-up in Harbury's category.

The picture shows Mr. John Algar (Editor-in-Chief and Director of Heart of England Newspapers) who judged the competition, and the Bishop of Coventry studying the winning issue at the prize-giving ceremony in Coventry, together with editors Diana Holt and John Moore.



Of course, all the many activities in and around Harbury make it easy for us to fill our pages with interesting news, and one such activity which has now become an Annual Event is the Pony Show, on Sunday 3rd May. At the time of writing, with thick snow outside the window, it's hard to imagine May is nearly here, but let's hope more seasonal weather will make the event successful for riders and spectators.

Also coming up shortly is Christian Aid Week, from 10th May. Enclosed is an envelope - do please give generously to help this Charity's work among the poor of many countries. Please take your envelope to the Church any time before May 16th.

The referendum in Southam to determine whether or not residents would prefer to break away from Stratford District Council resulted in a turn-out of just over 40% and a vote of 866 to 606 in favour of staying with Stratford. On Thursday 7th May we shall all have a chance to vote - this time for our representative to the Warwickshire County Council. We include this month messages from the three candidates for your consideration, and we would add a message of our own - DO PLEASE VOTE. Your vote is important - You have a right to choose your representative, and it's no good complaining afterwards if you didn't bother! Voting is from 8am to 9pm in the Village Hall, Harbury

### HARBURY DIARY

#### MAY 1981

Fri 1st Playgroup Dance at Village Hall.

Labour Party Election Meeting, 8pm, Wight School

Sat 2nd Catholic Instruction for Children, 10-10.45am,  
Wight School

Junior Theatre 2 - 5pm, Wight School.

Sun 3rd Second Sunday after Easter, 8am Holy Eucharist,  
10am Sung Eucharist, 6.30pm Evensong.

PONY SHOW at Harbury Playing Fields.

Mon 4th May Day Bank Holiday.

Tues 5th Prayer Group, 8pm, 15 Wagstaffe Close.  
Horticultural Society, 8pm, Wight School.

Wed 6th A.C.S. Festival Service, 7.30pm at St. Mary  
Magdalen's, Coventry, followed by Cheese & Wine  
tickets from Anne Moore (612427).

Thurs 7th Elections for County Council: voting from 8am to  
9pm at Village Hall.

W.I. Resolutions with VCO, 7.45pm, V. Hall.

Sat 9th Race Night at Village Hall.

Catholic Instruction for Children, 10-10.45am,  
Wight School.



Sat 9th NO JUNIOR THEATRE.

Adventurers' outing to Burton Dassett, 10.30am  
from 1 Vicarage Lane.

Sun 10th THIRD SUNDAY AFTER EASTER. 8am Holy  
Eucharist, 10am Sung Eucharist, 6.30pm Evensong.  
Adventurers' 1st Birthday Service, Village Hall, 3pm,  
(Speaker Rev. Tyrrell).

Mon 11th CHRISTIAN AID WEEK.

Tues 12th 8pm, Wight School, Meeting of members of Harbury  
Church to discuss the Bishop's Four Questions  
(see article).

Wed 13th M.U. Coffee Morning in aid of Action Research for  
the Crippled Child and Southam Council for the  
the Disabled, 10.30am, 25 South Parade.

Thurs 14th Holy Eucharist 9.45am.

Golden Age, 2.30pm, V. Hall.

Whist Drive at V. Hall in aid of Sen. Cits. Ben. Assoc.

Nursery School Parents' Evening, 8pm, V. Hall.

W.I. Meeting at Bishops Tachbrook.

Fri 15th Scouts Barn Dance at Village Hall.

Sat 16th Liberals Jumble Sale at V. Hall, 10.15am.

Junior Theatre, 2-5pm at Wight School.

Catholic Instruction for Children, 10-10.45am at  
Wight School.

FORESTERS FAYRE at Rugby Club.

Sun 17th FOURTH SUNDAY AFTER EASTER. 8am Holy  
Eucharist, 10am Sung Eucharist, 6.30pm Evensong.

Mon 18th Harbury Society talk by Harry Windsor on Church  
Bells, 8pm at Shakespeare Inn.

Tues 19th Senior Citizens Cttee at V. Hall.

Tufty Club, 2.15 - 3pm at Wight School.

P.C.C. Meeting, 8pm, Wight School.

Wed 20th PTA: French in the Middle School, 8pm at School.

Thurs 21st ANNUAL PARISH MEETING, 7.30pm, V. Hall.

Fri 22nd School FETE, 1.45pm.

School breaks up.

Sat 23rd Catholic Instruction for Children, 10-10.45am,  
Wight School.

Junior Theatre, 2-5pm, Wight School.

Sun 24th ROGATION SUNDAY. Fifth Sunday after Easter.

8am Holy Eucharist, 10am Sung Eucharist, 6.30pm  
Evensong.

Mon 25th BANK HOLIDAY.

No Playgroup or Toddlers this week.

National Pilgrimage to the Shrine of Our Lady of  
Walsingham.

Tues 26th Young Wives, 2pm, Village Hall.

Village Hall Cttee at V. Hall.

Thurs 28th ASCENSION DAY. Holy Eucharist 7am, 10.15am  
and 7.30pm Sung with Procession.

Golden Age, 2.30pm, V. Hall.

Parish Council, 7.30pm, V. Hall.

Fri 29th Football PRESENTATION DANCE at Village Hall  
(Presentations by Carnival Queen).

Sat 30th Junior Theatre 2-5pm, Wight School.

Sun 31st SUNDAY AFTER ASCENSION. 8am Holy Eucharist  
10am Procession and Sung Eucharist, 6.30pm  
Evensong preceded by Parade of British Legion.  
ALL ARTICLES FOR JUNE HARBURY & LADBROKE  
NEWS TO EDITORS BY TODAY.

## JUNE

Mon 1st School begins.

Tues 2nd Middle School Sports, 1.45pm at Playing Fields.  
8pm, Bible Study, 26 Binswood End.

Thurs 4th W.I., 7.45pm, V. Hall.  
Girls Club at Village Hall.

Fri 5th Scouts A. G. M.

Sat 6th PCC 50/50 AUCTION - Viewing from 11, Sale from  
11.30, Auction from 2pm, in the Village Hall.  
Junior Theatre, 2-5pm, Wight School.

Sun 7th WHIT SUNDAY (Pentecost), Family Communion  
9am followed by Parish Breakfast in Village Hall.

ROMAN CATHOLIC SERVICE, Harbury Hall Chapel, 10 a.m.  
every Sunday.

HARBURY ADVENTURERS, V. Hall, 11.30am every Sunday.

ALL SORTS, 7.45pm, 11 Constance Drive, alternate Sundays.

GUIDES, Scout Hut, 7.30pm every Monday.

GYMNASTICS, Harbury School, 5.30(5-8yrs), 6.45(over 9yrs)  
every Monday.

JOGGING from Foodmart, 8pm every Monday.

BINGO, Village Hall, 8pm every Monday.





Parish Eucharist, and our Dutch friends said how impressed and moved they were by the service. Their Chairman read the Epistle. We thank Mr. Nordon for all that he did.

Easter Day was marked by joyous services in a beautifully decorated Church and we are most grateful to Mrs. Solli and her helpers for the lovely flower arrangements they worked so hard to delight us with. There was a record number of Communicants. I would like to thank you very much for your very generous Easter offering, which was also a record.

Christian Aid Week this year is from May 10th - 16th. You will find a collecting envelope in this magazine and I hope that you will find it possible to make a generous donation to this Christian Charity which helps those so much less fortunate than ourselves. Would you be so kind as to drop the envelope in the box in Church - if you cannot do that, a call to myself or any P. C. C. member will get it collected.

Among future dates may I draw your attention especially to:-

1) Ascension Day (Thursday May 28th) when I hope that everyone will try to be present at one of the three Eucharists (the evening one will be sung with a procession).

2) Sunday May 31st when members of the Royal British Legion will parade to Church led by Leamington Spa Silver Band for the 6.30 p.m. service.

3) Saturday June 6th when there will be the Auction.

4) Whit Sunday or Pentecost June 7th when we shall have a Family Communion at 9.0 a.m. followed by Parish Breakfast in the Village Hall.

I would also like to mention that Monday May 25th (Spring Bank Holiday) is the day of the National Pilgrimage to the Shrine of Our Lady of Walsingham in Norfolk. I understand that a coach is to be organised picking up at various places in this district, and if any Harbury people would like to go and will let me know, it could probably be arranged for it to pick up in Harbury.

With every blessing,

Your sincere friend and Vicar,

F. R. Mackley.



## HOLY BAPTISM

April 5th, Laura Jane Watkin, 10 Penelope Close.

April 12th, Craig Philip Holtom, 15 Binswood End.

### From the Churchwardens

What a month it's been! It started with the news that Harbury & Ladbroke News had won the Diocesan Competition and goes on to the national parish magazines competition. The month continued with the wonderful Palm Sunday Service at which it was a great joy to welcome members of the Heemstede Chamber Orchestra whose chairman read the Epistle. We have been delighted to have messages since from our Dutch visitors to say how moved they were by the Service and how thrilled they were with the warm and friendly welcome they received in Harbury. We are deeply grateful to the Orchestra and to the Windmill Singers for the musical treat which they gave us in the performance of the Vivaldi "Gloria" after the Palm Sunday 10 o'clock Service.

Following this special day came Holy Week and special thanks should be expressed to the Vicar for setting daily Communion times according to the time at which it is convenient for members of the congregation to attend. No one in our parish can say that they are unable to attend Services because the times are inconvenient. The Vicar makes sure there is a Service at a convenient time. It is a pity that more members of our congregation do not take advantage of mid week services.

The Three Hours at the Cross which is always a thoughtful spell of singing, praying, listening to God's word and meditation was again an inspiring and helpful time apart. It inspired the thought that it would be of great value if the Vicar would lead a workshop on Meditation. It is hoped that this might be held during the next couple of months.

Among the future events, it has been suggested that a family cycle ride with a picnic would be enjoyed after the 10 o'clock Service on occasions during the summer. It is suggested that the first should be held on Sunday, 17th May (weather permitting). This will be a reasonable easy ride of approximately 5 miles to the picnic destination. At least one car will be going and will be willing to carry picnic lunches etc. We are hoping that there will be a visit of interest or

organised games at the picnic spot before the cycle ride home. We expect to be back in the village by about 4.30 p.m. Assemble outside Church at 11.15 a.m. complete with picnic lunch. We hope, of course, that those coming on the cycle ride will share in the 10 o'clock Service first. You will be welcome to come to Church in your cycling gear, track suit or whatever.

It is also hoped that there will be a Harbury visit to the Holy Land in the Spring of next year, 1982. Anyone who would be interested in receiving details of this is invited to get in touch with Vivienne Aggett (Harbury 612711).

### The Bishop asks-----

In preparation for his visit to the Southam Deanery in 1982, the Bishop of the Diocese has asked members of our Church to consider four questions and report back to him by the end of May. The four questions will be considered at a meeting at 8 p.m. on Tuesday, 12th May in the Wight School to which all those who share in our worship are invited. We invite those who are able to attend the meeting (and indeed those who are concerned but unable to attend the meeting) to consider the following and make their views known:-

1. What is happening in your parish which you see as carrying out the Church's mission in your locality (as distinct from maintaining the Church community)?
2. How would you say the life of your Church community is designed to support its members in their Christian tasks?
3. What is your Church community not doing which you think it ought to be doing?
4. In what ways do you consider the resources of the Diocese could be used to help your Parish in its task?

Although we have referred above to "all those who share in our worship" we should, in fact, welcome comments from all readers as it may well be that those who do not often join us at Church Services could help us to answer these questions, especially the third one. Come along to the meeting or have a word with the Vicar, one of the Churchwardens (Harry Windsor and Viv Aggett) or the PCC Secretary (Diana Holt).

-----  
Congratulations to Harbury School's Deputy Head, Nigel Chapman and his wife, on the birth of their son Stephen Paul on April 10th.



## LADBROKE NEWS

### Services etc. for May & early June

Sunday, 3rd May. EASTER II. 8.30am Holy Communion,  
11am Matins.

Thursday, 7th May. 7.45pm Men's Group at Harbury.

Sunday, 10th May. EASTER III. 11am Holy Communion with  
Hymns & Sermon, 6.30pm Evensong.

Wednesday, 13th May. 3.0pm Women's Fellowship at the Old  
Rectory House.

Sunday, 17th May. EASTER IV. 8.30am Holy Communion,  
11am Matins.

Sunday, 24th May. EASTER V. 11am Holy Communion with  
Hymns & Sermon, 6.30pm Evensong.

Thursday, 28th May. ASCENSION DAY. 7.30pm Holy Commu-  
nion.

Sunday, 31st May. SUNDAY AFTER ASCENSION. 8.30am  
Holy Communion.

Thursday, 4th June. 7.45pm, Men's Group at Harbury.

Sunday, June 7th. WHITSUNDAY. 8.30am Holy Communion,  
11am Holy Communion with Hymns.

Wednesday, 10th June. 3.0pm Women's Fellowship at Church  
Cottage.

Thursday, 11th June. 7.30pm, Deanery Synod at Southam.

Sunday, 14th June. TRINITY SUNDAY. 11am Holy Communion  
with Hymns, 6.30pm Evensong.

Altar Flowers - May 3rd Mrs. Frost: May 10th Miss Junod:  
May 17th Mrs. Timms: May 24th Mrs. Handscombe: May 31st  
Mrs. Sheasby: June 7th & 14th Mrs. Emus.

Women's Fellowship - We were sorry that owing to the funeral  
of Mrs. D. White our April meeting had to be cancelled.

We shall miss the cheerful presence of Mrs. White at  
our future meetings and offer our condolences to Mr. White  
and the family in their loss.

By kind invitation of Mrs. Emus our next meeting on May  
13th will be at the Old Rectory House, Ladbroke. C.H.

### From the Registers.

Funeral Service followed by Cremation

8th April - Dorothea White.

Our very sincere sympathies go out to Charlie White and his daughter in their great loss; Mrs. White has been a happy member of our village community ever since she and Mr. White came to live among us and will be much missed. May she rest in peace.

G. R. F.

**EASTER.** The Church received two gifts - a new large Alms Dish (to replace the one which was stolen some two years ago) from Lady Watherston in memory of Sir David. We are grateful, and glad to have this permanent memorial of one who so long worshipped with us. The second gift was a pair of small decanters to serve as containers for the water and wine for the Holy Communion from Mr. Rutherford; our thanks for these and for his many services to the Church.

G. R. F.

**MORE THANKS** - to Mr. Sheasby for cutting the Churchyard grass, and to Mr. and Mrs. Garner for their care of the Churchyard flower-beds.

G. R. F.

#### Parochial Church Council

At the meeting on April 6th Mr. Hedge was re-elected Vice-Chairman, Miss Junod, Hon. Secretary and Mr. J. V. Comfort Hon. Treasurer. Mr. G. Clarke was re-appointed Electoral Roll Officer and Mr. Rutherford Covenants Officer.

Discussion of various Fund Raising methods ensued, and it was agreed to establish a Church Fabric Fund for which contributions could be ear-marked by donors who wished so to do.

Advance notice of the Bishop's Visitation in 1982 was given and members received copies of the preliminary Questions. Miss Junod offered to give a reception for newcomers to the village to meet the P. C. C. on 24th June.

**LENT SAVINGS BOXES.** Please bring these to Church by 11 a.m. Service on Sunday, May 10th when they will be offered.

G. R. F.

#### LADBROKE DIARY

May 6th - Ladbroke and Deppers Bridge W.I. Group Meeting.

May 12th - Annual Parish Council Meeting 7 p.m.

Annual Parish Meeting 8 p.m.

May 28th - W.I. meeting on "Resolutions".



## Ladbroke Village Hall News.

The "Chicken and Chips" disco held on Saturday 11th April, was well attended; and the food supplied by the Southam fish and chip shop was excellent value - another successful Village Event.

The next Event will be the 1st Birthday Dance on Saturday June 6th - not in May as previously advertised.

Hardcore is required for the Village Hall Site; if anyone has any to spare please contact Dave Wilson Telephone Southam 2131.

Don't forget to come to the Annual Village Meeting on May 12th; it will be your chance to air your views on Village affairs and to hear what's been going on!

-----  
I was unable to attend the March Parish Council meeting and so cannot give any details this month. In case this should happen again, would anyone in the village be prepared to help by attending a Parish Council meeting occasionally?

KATE LIVERTON (Tel. Southam 3341)

## Ladbroke & Deppers Bridge W.I.

Mr. Barby of Locke & England was the speaker at our March meeting which was described by one member as 'Ladbroke's Antique Road Show'. I'm sure Arthur Negus could not have given a better talk or more information than Mr. Barby.

A reminder that Ladbroke & Deppers Bridge WI is host to the Group Meeting to be held at the Middle School, Southam on May 6th.

Mrs. Hodge, The Sidelands, Windmill Lane, will be holding a Bring & Buy Coffee Evening on 26th June at 7.30pm in aid of the International Year of Disabled People.

May 20th is the date when we shall be entertaining our friends from Hatton hospital at the Village Hall, Mrs. Ashby has agreed to provide the musical accompaniment.

An outing to Worcester Pottery Works has been arranged for September 30th

At the beginning of the year we invited ladies to 'Come and Join in the Fun' and continuing on this theme the April meeting took the form of a Folk Dance. We were joined by

members of Stockton WI and Mr. Mason and the Rugby Folk Dance Group. Refreshments were provided by the members. Mrs. Tredgold won the competition for a decorated egg.

The next meeting 'Resolutions' will be held on Thursday 28th May, when a choir from Ryton will join us.

J. F.

### VILLAGE HALL NURSERY SCHOOL

On Thursday May 14th at 8.0 p.m. there will be a Parents' Evening, in the Farley Room at the Village Hall. This will be an opportunity for parents to meet over a cup of coffee; to see some slides showing the children at their various activities; and to hear Mrs. Brown, head of Harbury First School, who will talk to us about helping children to start school happily. All parents and anyone else interested will be very welcome.

C.M. CATT

### TODDLER GROUP

Toddler Group mothers and children would like to express their thanks to Sue Armstrong, Sally Stringer and Vicky Tanner for the hard work they have put into running the Group over the past few terms.

Toddler Group will continue to meet at the Wight School on Monday mornings and Wednesday afternoons during term-time, and new members will be most welcome at either of these noisy but enjoyable sessions. Do come along, or if you have any queries, phone Liz Crute (613326) or Yvonne Hancock (612724).

### YOUTH CLUB

Are you between 12 and 17?

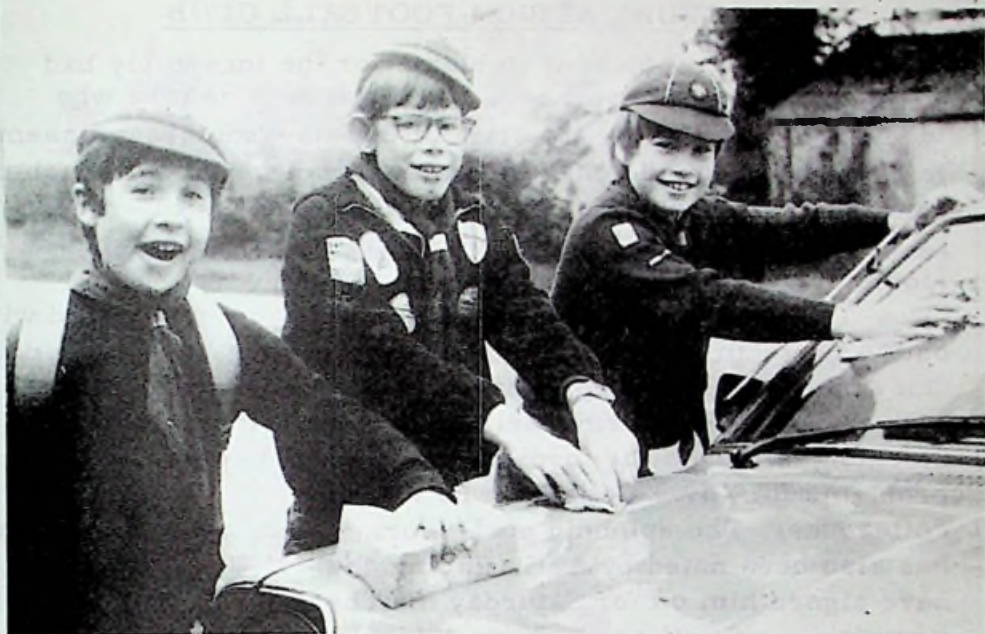
The Village Youth Club operates at the Village Hall on Tuesdays, 7.30 - 10 p.m. and Wednesdays 8 - 10 p.m.

New members in the above age group would be very welcome on either night.

In the hope of better weather, we have some outdoor activities and adventures planned, so why not come along and see what we're up to? If you have any good ideas for club activities, we'll be pleased to hear them.

J. T. T.





"Have car, we'll clean!" Christopher Riman, Simon Clifford and Philip Riman earning their 'bob' in job week.

### MUSIC SUCCESSES

At the Easter session of exams the following students were successful:

Piano: Grade I - Carole Moore  
           "      I - Penelope Ottewill  
           "      2 - Karen Hoare (Merit)

Theory:(Max 99 marks)

Grade 1 - Wendy Bloxham - 97 marks  
           "      1 - Claire Turner - 86 "  
           "      2 - Launa Rolf - 73 "  
           "      4 - Caron Lucas - 97 "

They are all pupils of Mrs. M. J. Coope.

-----  
Congratulations from Deppers Bridge residents to Mr. & Mrs. Batchelor of 5 Deppers Bridge who celebrated their Golden Wedding recently.

## HARBURY ALBION FOOTBALL CLUB

If you want someone to blame for the incredibly bad weather of the past two weeks - try blaming the men who 'wield the willow' - as the start of their season always seems to be heralded by the onset of wintry conditions (- although not generally this bad!) Apologies to all cricketers(!) - but at least the football season always starts in a blaze of sunshine (something is wrong somewhere!)

The season for Harbury Albion is nearly completed with only 4 1st team and 2 Res. matches remaining to be played.

The games for April have resulted in 3 wins out of 4, with the 1st team scoring well against Warwick Police and Stockton, although the former result might have provided problems for Clive Coleman who was playing against his colleagues. The splendid goal-scoring form of P. C. Coleman has also been noted by A. C. Racing Club of Warwick, who have signed him on for Saturday matches - to their decided advantage, as well as Harbury Albion's.

It has been agreed to hold the end of season Presentation Disco earlier this year on May 29th (please note) and a number of awards additional to Footballer of the Year and Young Footballer will be given; in recognition of the services of several individuals to the Club during the year. The price of £1.50 will include a Hot Supper and it is hoped that all footballers will attend and bring as many friends as possible to make it a good night on which to close the Season.

### RESULTS

1st team 4.4.81 Warwick Police v Harbury Won 5-4

C. Coleman 4, J. Sheasby 1, MOM M. Pratt.

1st team 12.4.81. Stockton v Harbury Won 4-0

C. Sheasby 3, J. Sheasby 1, MOM T. Sheasby

Reserves 5.4.81 St. Peters Celtic v Harbury Lost 5-2

K. Bloxham 1, G. Lowe 1, MOM M. Hyde.

Reserves 12.4.81 G.S. Sports v Harbury Won 3-2

I. Lowe 1, T. Chimes 1, L. Sollis 1, MOM I. Lowe.

C.F.

### RUGBY CLUB

continued from last issue:-

The Social Side - The Club's major event this summer will be the Barbeque in the first weekend of Carnival Week.





*For your holidays enjoy the friendly hospitality  
of former Harbury folk at*

**WHICHAM OLD RECTORY,  
SILECROFT, MILLOM, S.W. CUMBRIA  
TEL: 0657 2954**

English Lakeland  
but away from the madding crowd.  
Sea, sand, fell and beck nearby.  
Home cooking and every comfort.  
Daily and weekly rates on request.

**Proprietors: Dave and Judy Kitchener, Charles  
and Nita Shields**

# SOUTHAM CARPETS

**Your Local Carpet Retailer**

We can offer you prompt and reliable  
service on the selection and installation  
of carpets and flooring.

\*\*\*\*\*

We carry a comprehensive selection of  
carpets, rugs, vinyls and carpet tiles all  
at competitive prices. Also carpet and  
upholstery cleaning machine hire.

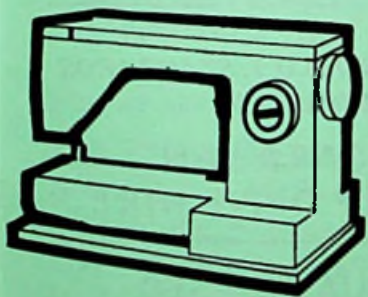
**39, Coventry Street,  
Southam. Tel: Southam 4944**

**Proprietors:**  
Mike Jerome  
Jim Steele



*Members of the National  
Institute of Carpet Fitters*

## **SPON STREET SEWING & KNITTING MACHINES** **188 SPON ST. COVENTRY. TEL 57266**



**SALES  
SERVICE  
&  
REPAIRS  
TO ALL  
MAKES  
INCLUDING -**

**VIKING, BERNINA,  
ELNA, PFAFF,  
RICCAR,  
FRISTER AND ROSSMAN  
SEWING MACHINES**

**KNITMASTER KNITTING MACHINES**  
**Stockist of CONED YARNS**

**PHONE JOHN SAUNDERS - HARBURY 613407**  
**for LOCAL COLLECTION & DELIVERY**

# ROGERS KNIGHT

"THE MENS OUTFITTERS"

- SUITS by 'Magee' and the best Continental makes.
- JACKETS in famous Bliss Tweeds by 'Bladen' etc.
- TROUSERS for all occasions at reasonable prices.

And so much more besides!

— All at —

158 The Parade, Leamington Spa.

Tel: 21501

Ask about our budget accounts.

# TRIPOD PRESS LIMITED

for all your printing  
and stationery  
requirements

7 Wise Street  
Leamington Spa  
Telephone 39735

## HARBURY SUPERMARKET

**OPEN 7 DAYS A WEEK**

**LOOK OUT FOR OUR  
SPECIAL OFFERS**

**FREE DELIVERY  
AVAILABLE**

**FOR YOUR DAILY GROCERIES  
AND FREEZER REQUIREMENTS**

**NEW LOW PRICES  
AND  
FRIENDLY SERVICE**

(FOODMART)  
MILL STREET, HARBURY PHONE 612645



**FOSSE**  
FOSSE WAY Harbury 613260  
**GARAGE**

*WELDING, BODY & CHASSIS  
REPAIRS TO M.O.T. STANDARDS  
VEHICLE SERVICING*

**CAR & VAN  
SELF DRIVE HIRE**

**QUALITY USED  
CAR SALES**

**24HR BREAKDOWN SERVICE**



**RESCUE SERVICE**



We have learnt from last year, and opportunities for self-catering as well as prepared meals by our 'staff' will be available. There will be covered facilities (Marquee), music from "Marmalade", and an all female Discotheque. Tickets - £5 (see ad.)

Anyone who has had experience of coaching would be welcome as we are looking for somebody for next season. If you are interested or know anyone who may be interested, please contact Graham Shurvinton.

We are also searching for a general handy person to help with the meals on a Saturday afternoon, pitch marking and other associated jobs. Anyone interested in such a post should discuss this and the level of remuneration with Graham Shurvinton (L/Spa 23392)

JERRY BIRKBECK (Hon. Sec.)

### MINI RUGBY

Harbury's 'Mini-Rugby' section rounded off the season in fine style with 8 out of 10 wins.

#### Results:

##### Versus Broad Street RFC

Under 8's won 12-0  
Under 9's won 28-4  
Under 10's won 16-0  
Under 11's drew 12-12  
Under 12's won 20-4

##### Versus Banbury RFC

Under 8's won 4-0  
Under 10's won 8-0  
Under 12's won 40-8

##### Versus Southam RFC

Under 9's won 26-0  
Under 11's lost 0-16

End of season medals/trophies were presented to the following:-

<u>Top Points Scorers</u>	<u>'Outstanding' Players</u>	<u>'Most Improved'</u>
U 8's Craig McDaid	Steven Thompson	Roger Dufresne
U 9's John Winchester	Dylan Adams	Vincent Crossan
U 10's Stephen Vaughan	Colin Dupree	Richard Hockley
U 11's Guy Pattinson	Mark Ridgeway	Sean Geary
U 12/13's Chris Warden	Henry Rivera	Craig Simpson

Registration and first training session next season takes place on Sunday, Sept. 13th. Any enquiries to Dave Andrews (612528).

## TENNIS CLUB

The Tennis Club started the season with a successful American Tournament on Sunday 12th April organised by Sid Newman. The eventual winners were Tom Smith and Philippa Dufresne.

The Club has already attracted several new members and as numbers are limited, existing members are reminded that 1981 subscriptions are due now.

## JUNIOR COACHING

We would like to set up an Intermediate section of the Club for teenagers under 18 who play a reasonable standard of tennis. Membership £3 to include use of balls.

Times of play to be negotiated depending on numbers interested.

Please let us know - Rosemary Ottewill (613402)

Philippa Dufresne (612286)

Junior coaching is under way and afterwards a Junior section will be started. Membership £2 to include balls and supervised sessions twice weekly in June & July.

## LADIES NETBALL

Harbury Ladies Netball Club wish to thank all the children who attended their Disco on 21st March and made it such an enjoyable evening.

As you can appreciate, fund raising during this economic climate is difficult therefore any help we receive is more than welcome. This particular event was very well attended by well behaved youngsters so we hope to be able to hold another Disco sometime in the future for little children say up to 12 years.

Many thanks to all concerned especially the D. J. and to all the parents for (once again) providing the pocket money!

## VILLAGE HALL COMMITTEE

The Village Hall Committee have held one or two fund raising events in recent weeks which have been moderately successful we are pleased to say.

Thank you to everyone who has helped in any way, those who have donated prizes, those who have helped behind the scenes and those who have attended.



The money raised is to form a fund to help towards the constant maintenance and improvement bills which the Committee has to meet.

Thank you once again.

SUE ANDREWS.

### HARBURY CARNIVAL, JUNE 20th

The Carnival Queen Competition was held on Wednesday 29th April, during the Youth Club Disco. The results, together with a photograph, will be published in the June issue.

Arrangements for the Carnival are progressing well - our main attraction at the recreation ground will be the Mercia Sound Roadshow, which we hope will provide plenty of entertainment. Mercia Sound are very enthusiastic about coming to the village for the afternoon as they haven't been to a village carnival before, so we are hoping for a good turnout on the afternoon to welcome them.

Other attractions booked so far include a Highland dancing display, a Morris Dancing troupe from Oxfordshire, a Girls Morris Dancing team from the village, a demonstration by the Midland Gun Dogs, and a static display of cars by the Midland Vehicle Preservation Society. Old favourites include Tug of War, Punch & Judy, swingboats, tombolas, stalls and side-shows. Music will be provided by the Banbury Caledonian Pipe Band and the Coventry 2nd Boys Brigade Band.

Volunteers are still needed to man stalls and sideshows, or to assist with refreshments in the afternoon. If you can spare an hour in the morning to help prepare, or a short while in the afternoon, please contact Dennis Andrews, The Burgabw, Hall Lane, or Peggy Middleton, 11 Neales Close<sup>61269</sup>, for stalls; or Jean Cox, 26 Sutcliffe Drive, 612693, for catering.

Various organisations have offered to hold events in the previous week to celebrate the Carnival - please support them. Saturday 13th - Harbury RFC Barbecue, featuring "Marmalade"

(the Group, not the food!) A good evening promised, with no queues for food this year.

Sunday 14th - Children's Sports, including a "Fun Run".

Monday 15th - Bingo

Tuesday 16th - Harbury Society Walkabout

Wednesday 17th - Youth Club Disco

Thursday 18th - W.I. - Hair and Make-Up Demonstration.

Saturday 20th - Carnival Procession and Fete.

Dance at the Village Hall, featuring

"The Likely Lads".

CARNIVAL COMMITTEE.

### 1981 COUNTY COUNCIL ELECTIONS, MAY 7th

Our County Council spends the money raised by its rate demand on the following services:- Education, Highways, Social Services, Police, Fire, Libraries, Planning, Trading Standards, Central Services etc. Other services are covered by our District and Parish Councils. Details of District and County Council expenditure are set out in the leaflet sent with the recent rate demand. The Area of the HARBURY Electoral area has changed and now includes Harbury, Ufton, Chesterton & Kingston, Lighthorne, Bishops Itchington, Gaydon, Chadshunt, Burton Dassett and Radway.

Three candidates are standing in the election for the Harbury area. We feature their messages as follows:-



Lena Dominelli, Labour County Council Candidate, has been living in Gaydon and working in this area for the past five years. Hence, she understands your hopes for a better future and your frustrations at seeing it swept from under your feet. She also shares your concern about the remoteness of the County Council from our area and would work not only to make the Harbury District's voice heard on the Council, but also by being accessible to you. She is committed to keeping in touch with you, your problems and aspirations through regular monthly surgeries.

Aged 34 yrs, Lena Dominelli has been a hard working and dedicated member of every community in which she has lived. She is currently employed as a Lecturer in Applied Social Studies and is involved in voluntary work, working with the elderly, youth, women and





ESTATE AGENTS  
VALUERS



**Philip Blair** (assoc.)

19 OLD SQUARE, WARWICK, CV34 4RU  
Tel. (0926) 45317/8 (24 hour service)

AGENTS FOR ABBEY NATIONAL  
BUILDING SOCIETY

**A NEW HOME**

THINKING OF MOVING HOME — USE A FAMILY FIRM  
WHOSE AIM IS TO GIVE A GOOD SERVICE IN  
THE SALE OF YOUR PROPERTY

- FREE VALUATION
- FREE ADVERTISING
- MORTGAGE ADVICE GIVEN
- FREE COLOUR PHOTOGRAPHS
- 24 HOUR TELEPHONE  
ANSWERING SERVICE

**NO SALE — NO FEE**

If you wish to discuss the pros and cons of  
moving house, call in to our Warwick office  
any time or telephone. This puts you under  
no obligation and we would like to help in  
what may be one of your most important  
decisions.

**Jeanne**

MARKET HILL, SOUTHAM, TEL: 2808  
YOUR LOCAL



**Ladybird**

CHARTER STOCKIST

**FOR BOYS & GIRLS TO 14 YRS.**

MANY ITEMS IN OUR RANGE  
WILL FIT THE SMALLER WOMAN  
LARGEST STOCK IN AREA  
LOOK AROUND WITHOUT OBLIGATION  
& COMPARE OUR PRICES

**SOUTHAM SCHOOL UNIFORM  
ALWAYS IN STOCK**

FREE PARKING

FITTING ROOM

FOR BEER AT ITS BEST

**THE DOG INN**

THE BULL RING

GOOD RESTAURANT GOOD  
FOOD WINE

DOUG & MAVIS POWEL

Phone Harbury 612599



**W. Goodwin  
and Sons**

COVENTRY STREET, SOUTHAM  
**FUNERAL DIRECTORS**

All arrangements personally conducted  
in any district

Private Chapels of Rest

HEARSE & MATCHING FOLLOWING CARS

Tel.: (day) SOUTHAM 2445  
(night) 2657 or 2445



RON, ANDREA & CLIVE  
WELCOME YOU TO THE

## SHAKESPEARE INN

MILL ST. HARBURY. TEL 612357

### RESTAURANT

A GOOD SELECTION OF LUNCH  
TIME HOT & COLD BAR SNACKS

LARGE GARDEN — CAR PARK



**SOUTHAM 2304**

REPAIRS  
SALES  
RENTAL

22 OXFORD ST  
SOUTHAM



## COWLEY BROS.

### FAMILY BUTCHERS

SPECIALISTS IN DEEP FREEZE SUPPLIES & GREENGROCERY

MONDAY — SATURDAY : DELIVERIES TO HARBURY & LADBROKE

CHAPEL ST. BISHOPS ITCHINGTON. HARBURY 612090.

## *Wyse Fashions*

LADIES & GENTS WEAR  
"OWN" LINE IN JUMPERS & SKIRTS

JEANS — CORDS  
JUMPERS — CARDIGANS  
PYJAMAS — UNDERWEAR  
LINGERIE — OVERALLS

HABERDASHERY — WOOLS  
PATTERNS

HOUSEHOLD & FANCY GOODS  
PICTURES — MIRRORS  
TABLE LAMPS  
SKETCHLEY DRY CLEANING

52, COVENTRY STREET, SOUTHAM. Tel: 4629



the unemployed. She is, therefore, quite experienced in and very aware of the problems encountered by the poor and the disadvantaged in society.

In addition, she is using her sabbatical term to do voluntary work in the probation service, penal residential establishments and social services. This work is giving her valuable insights into the questions of 'law and order' and statutory welfare provisions from both the agencies' and the clients' points of view.

Besides her long teaching experience she has been an active trade unionist, having held executive positions at branch level for many years. She is currently a member of the Warwick/Leamington Trades Council. She has also worked in industrial relations and in community development projects both in this country and overseas.

Living in a rural area and being a frequent user of public transport she is committed to the creation of employment opportunities and amenities as well as the development of cheap public transport for rural areas.

-----

A message from Ann Robinson, Liberal County Council Candidate.....

This is not the place for empty abuse of other parties (a waste of time) or for a detailed account of Liberal policy for Warwickshire (a brief account is coming through your letterbox anyway.

But perhaps it is the place to explain who I am and why I have decided to stand for the County Council. I am married and live at Shotteswell. I am aged 23, I was educated at Somerville College, Oxford, and I am now working in medical research.

I do feel very strongly that local politics should be conducted in a way that involves ordinary people as much as possible. Power should be shared as widely as possible, and those who are affected by decisions should take some part in them.



Local politics should not just be a matter of electing someone every four years, but a close and constant contact between Councillor and community.

As far as I can see, only the Liberals really speak for ordinary people, care about and value the individual and make local politics interesting.

If you believe in a thing, you should fight for it. That's why I'm standing as the Liberal Candidate. Over the last year, the Liberals have been the main gainers in local by-elections all over the country. We have been winning seats from both the other parties.

I think that this is probably because the Liberals are the only people the public now trusts - not to perform miracles, but to work as ordinary, representative, approachable people for ordinary people, the individuals who make up our society.

-----

A message from Rupert Kettle, your Conservative County Councillor.....

Your County Council is alive to the present economic situation industries face in the current recession, which is showing signs of ending. It is aware that high levels or rates cannot be borned by local industries and individuals. I believe the Council should aim at providing an efficient, caring and quality service at the lowest cost, providing stimulus for new jobs in Warwickshire. This year's budget shows a rise of only 5%, achieved by the control of expenses, reductions in staff where



possible, and by concentrating on the essential services. We have improved the Fire and Police services, and there will be no further diminution of present staff ratios in schools, and there will even be improvements to meet the special needs of individual schools. Previous cuts in money for school equipment will be restored and improved to match



inflation.

Our industrial site developments, such as Heathcote, will lead to an extra 7,000 jobs in Warwickshire. These site developments produce a profit to the Council, and are in high demand.

Further details of our achievements and future plans are in my leaflet being distributed to you now, and in the Council's leaflet sent out with rates demands. I will be happy to answer your queries, or call and see you - just 'phone me on Harbury 612177. No other party has a programme that does not involve substantial increases in the rates. The example of Coventry's Labour Council, with a rate rise of 38% should warn you what a Labour and/or Liberal Council would do. So I would ask you to vote for me on 7th May.

RUPERT KETTLE.

### HARBURY THEATRE GROUP

What uneasy emotions stir within the walls of "The House on the Cliff"?

Who is the pale, unhappy girl staring out across the sea?

Come along to the Village Hall on 9th, 10th or 11th July, for our production of this exciting mystery play, and discover the answers to these questions!

Tickets will be on sale soon.

A. M.

### HARBURY SOCIETY

We recently enjoyed a magical tour of Chesterton Woods where we saw wild flowers in profusion.

The next meeting will be on Monday 18 May at 8 p.m. in the Lounge of the Shakespeare Inn when Mr. Harry Windsor will give a talk on Church Bells and will demonstrate with the aid of hand bells some of the mysteries of the craft.

The film 'Whatever Happened to the Countryside?' will now be shown on Thursday 17 September in the Village Hall.

The Mystery Tour will take place as usual in Carnival Week.

I must remind you that the judging for the Best Kept Village Competition will take place in the next few weeks. The Competition is sponsored by the Warwickshire Rural Community Council, a non profit making body which tries in ways

such as this to encourage us to help ourselves to make our surroundings more pleasant. L. R.

### 50/50 BARGAINS

Be sure to come along to the Village Hall on Saturday, 6th June - Harbury Church is holding a 50/50 Auction, when there are sure to be lots of super bargains.

The enclosed leaflet gives all the details, and as you will see we shall be very grateful for anything you can offer for sale, either on a 50/50 basis or as a donation to the Church.

Please look out all those unwanted items which are cluttering up the attic or the garage. We don't want clothes or jumble, but any other articles will be very welcome. You can turn those items into cash, and help your Parish Church too.

### HARBURY WOMEN'S INSTITUTE

Have you a Pagan symbol in your home? That is what corn dollies were many years ago. It was not until 1850 that they were accepted by the Church. This among many other interesting facts was told to us by Mrs. Renfrew of Fenny Compton. She brought along a variety of very beautiful objects made from straw including a bird, a maypole and a small tea chest. Did you know that the earliest farmers were women? Men did not take over until the advent of the plough.

Mrs. Davies reported on the Spring Council Meeting and Mrs. Zonik on the Literary Luncheon at Hampton on the Hill. Mrs. Cowan of 11a Sutcliffe Drive is organising the Float for the Carnival Procession.

There is a 'Skittles' evening at the Lygon Arms, Chipping Campden on May 2nd.

Members are reminded that the May meeting is at Bishops Tachbrook on MAY 14th and they must be outside Harbury Village Hall by 7.15 p.m.

DAPHNE BRADLEY.

### SENIOR CITIZENS' BENEFIT ASSOCIATION

I would like to thank all of those who gave so generously to the Whist Drive held on April 9th in aid of the association.



Also many thanks to all who helped to make it such a success. A grand profit of £32.50 was made, and another Whist Drive will be held on Thursday May 14th at Harbury Village Hall for the same funds.

E. SOLLIS (5 Farm St.)

### WINDMILL SINGERS & HEEMSTEDDE CHAMBER ORCHESTRA

The concerts performed on April 11th/12th by the Windmill Singers and their guests for the weekend, the Heemstede Chamber Orchestra from Holland, were a resounding success. The first took place in a full Holy Trinity Church, Leamington. The first half, comprising orchestral pieces by Mozart, Salieri and Haydn, was a very professional performance, the flute and oboe solos in Salieri's Concerto in C Minor played by Hetty and Ellen Mertz, being quite remarkable. In the second half the Windmill Singers were accompanied by the orchestra and organ in an excellent rendering of Vivaldi's 'Gloria', filling the large church with a magnificent sound.

The following morning (Palm Sunday) the orchestra and singers joined in the 10 a.m. Eucharist in Harbury Church and then gave a repeat performance of the Gloria. This was preceded by an orchestral piece "Adagio for Strings" by Samuel Barber. Both were received most enthusiastically by the congregation.

Well done to Ken Nordon and Bryan Harrison (and all the others who helped) for organising a most worthwhile venture.

J. B. M.

Dr. John Hancock displays the medal he won for his success in completing the 1st London Marathon.



## LOVE OR MONEY?

"Professional magazine editors do it for money - amateurs do it for love." A quote from the adjudicator, Mr. John Algar, speaking at the Magazine Competition prize-giving ceremony. That set us thinking - for love of what? Do we really love chasing round prompting people into writing bits for us? Are we really ecstatic about counting the words, altering here and there, making it all fit? Surely we don't really enjoy being chained to the typewriter for several hours, banging in 950 staples or trapping our fingers in 950 letter boxes?

So where does the love come in?

Now, if we said it's because we love YOU, you'd say 'What a load of rubbish', and turn to the next page. And yet YOU - the community of Harbury - the people who make up this marvellous village of ours - are very important to us. The feeling of belonging to the family of Harbury is something we, along with many others, treasure. And just as it's important for members of a family to discuss things together, so we believe it's important for members of a community to communicate - to share thoughts, ideas and experiences. With this exchange of information comes more understanding of each others' points of view, pleasure in each others' joys, and compassion for each others' problems. And isn't that the sort of society we all want - understanding, joyful, compassion-ate - Christian?

Yes - now we see - that's where the love comes in.

## HARBURY LIBRARY

May I remind children using the library that if you keep a book beyond the 28 days loan period you will be liable to a fine. It seems such a waste of hard-earned pocket money paying a library fine and if you cannot return the book on the date shown it can be renewed for a further 28 days.

I have recently had some delightful drawings displayed in the Junior section. I would like to thank Mrs. Janie Watts for her drawings of Beatrix Potter and Alison Uttley characters and more recently the Spring drawings now on display. Also I would thank Helen Keir for her drawings of the Mr. Men and Barbapapa characters. I think you will agree that



these displays do enliven the children's corner.

S. K.

### HARBURY PARISH COUNCIL MEETING

Maybe I wasn't concentrating when it was explained why 'ace reporter' Bruce Hannay is producing plans to re-organise the PC's Sub-Cttees, because after sitting through yet another discussion I still don't understand the necessity. Keith Thompson asked the pertinent question 'Is there dissatisfaction with the present system and what other Councils do?' The answers were "No" and "Not much". Mike Ellis claimed to want the changes if they were for the better but refused to be associated with 'anything TRENDY'!

Still the Council accepted 'Plan B' which divides Sub-Cttees into those with items over which the PC has direct control; 'Properties' (Greens, Allotments, the Cemetery); Finance and Lighting (although as Sharon Hancock said 'The lights are there and spend money irrespective of the Sub-Cttees'). The other Cttees - Planning and Highways - involve problems which the PC discusses, is consulted upon and appealed to, but over which they have no direct responsibility. Having chosen four Cttees, the Chairman then set about peopling them with Cllrs. David Winter diffidently and Sharon Hancock more robustly resisted his attempts to move them to the 'Properties' Cttee and stuck out for their previous positions on the Planning Cttee.

Bruce Hannay also produced a dossier on the state of the village on the eve of the Best Kept Village Competition. He commended the new Church notice board; recommended the PC suggest to Rugby HQ that the Co-op premises be painted; and condemned dilatory utilities and authorities for failing to reinstate roads, remove weeds and repair property etc.

Bruce's final report was on the play equipment at the Recreation Grounds. Daily safety inspections began on April 1st. These are necessary to ensure the Public Liability Insurance remains valid. They also help prevent injury to children occurring because equipment has been vandalised. The Small Children's Igloo which was broken by vandals has been removed to a place of safety until it is discovered if it is worth repairing.

Less intentional damage has been caused by - guess what - the Goalposts! Firmly held down at last, they still exert an evil influence. Boys now position coats opposite to form a second goal and wayward footballs are damaging the trees.

Less obvious still is the danger caused by posered Hang Gliders and Hot Air Balloons taking off from the Fields. They provide a spectacle for the children but as Sharon Hancock pointed out, also considerable hazards. Children were encouraged to help in the launch of the latest Balloon to use the Fields, and could easily have been injured or even dragged up into the air with fatal results.

The new Bus Routes and Services have begun, but despite valiant efforts by the Harbury News to make them comprehensible, it still seems Midland Red is 'conspiring to make it impossible to catch a bus' (SH). They will review their services in mid-summer and Mike Ellis said that people 'could not take joy rides to keep the numbers up, BUT -' The future of Harbury's buses will depend upon their patronage.

Keith Thompson has arranged for Community Industries to undertake the repairs to bridges and stiles on the Field Footpaths. Neville Ellis will organise the materials and Mike Ellis in an unusually generous moment suggested the PC could add to the £75 WCC is paying towards the work. David Winter has begun Way-marking the footpaths but suffered a reverse at Middle Road Farm when he 'nearly had his equipment eaten by one of lory's beasts'!

It was agreed to highlight at the Area Meeting of Parish Councils the errors in Harbury's Electoral Roll and the system adopted by the Electoral Officer, condemned as 'totally illogical' by Sharon Hancock, whereby the previous electors were listed if no reply was received from a householder.

Reporting on the School Governors' Meeting Sharon Hancock said the problems with leaking roofs seemed to have been resolved; the School would lose one member of staff next year because of falling rolls but most fortunately no-one would be made redundant as a teacher was leaving, and she was concerned that no moves had yet been made to provide a replacement French teacher whilst Madame Williams was on Maternity Leave.



Harbury is bursting at the seams! Your PC is having to comment on an ever increasing number of Planning Applications. Many are for extensions to existing properties but there are also applications for extra housing in odd corners of the village; one or two houses in a garden; a small estate on a field or orchard. There is little they can do to stop this growth only in some cases mitigate against the most obvious intrusions.

This month's applications included:- vehicular access at 1 Harbury Fields; a bungalow at the Water Tower; an extension to the Rugby Club; an amendment to plans for Holland House in Ivy Lane; a bow window for 27 South Parade; a bungalow in the garden of Haze Brook; 2 separate applications for the Spinney, Hall Lane ( one for 6 detached houses, the other for a total of 12 terraced and detached houses); an indoor rifle range at Highfield Terrace, Deppers; and detailed permission for two detached houses in Church Street opposite the Church. This last was strenuously objected to by the PC as being out of keeping with what is architecturally the best remaining area of the village.

Mike Ellis says I misled you last month! I insinuated that since he has amassed so much capital by fighting every item of expenditure there must be cash available for worthy village projects next year, but he assures me he won't be giving anything away. I still can't see any harm in asking for some of our money at the Annual Parish Meeting at 7.30 p.m. on Thursday 21st May.

A victory for the Festival of Light? The Sub-cttee reports that the BENT LAMP STANDARD in Vicarage Lane has been straightened!\*

LINDA RIDGLEY.

### HARBURY PARISH COUNCIL CEMETERY

The cemetery Sub-Committee of the Parish Council would like to respectfully draw the attention of relatives to the following extract from the Rules and Regulations of the Parish Council Cemetery:-

"It is the responsibility of the relatives to see that the space inside the kerbstones is kept neat and tidy and also to see that the grass close to the kerbing is kept short and neat".

MY FIRST SKI-ING TRIP

On 3rd April, 1981, I left home for Leysin in Switzerland on my first ever ski-ing trip. I was very excited because we had to leave home at 4 a.m. I met the rest of the party at my school in Leamington Spa and we boarded a coach for Luton Airport at 5 a.m. The journey went well and the 'plane - a Boeing 727 - was on time. On board we were given "brunch" and we touched down at Geneva Airport at 10 a.m. From there we went by coach to our hotel in Leysin passing through magnificent scenery. The road was up hill all the way and at times the gradient was 70% and very frightening! I had hoped to see snow straight away but that was not the case. Even when we reached the hotel there was no snow and we realised that to get to the snowy slopes we would have to do some walking! With heavy skis and boots the walk would be really tiring!

Our first afternoon was spent getting kitted out with skis and boots and also unpacking. The next day we went up to the slopes for our first lesson with a French ski instructress, called Michelle - she was very bad tempered every lesson! The first two days of skiing were spoilt a little by bad snow but on the third day we were able to have our lesson on a higher slope which we reached by a T-bar lift. This was very treacherous because if you sat down on it you would fall off and many did! I thoroughly enjoyed skiing, even though we were out on the slopes for six hours every day. On the last day, we had a test and we had to do snow plough turns, side-stepping and slalom. I passed the 'mini-test' and we were all presented with badges and certificates.

In the evening, we did many activities including tobogganing, swimming, disco dancing, ice skating and we had a superb hot chocolate evening where we could drink as much hot chocolate as we could in the time given. For entertainment between our return from the slopes and dinner, there was a games room in the hotel which had Space Invaders, Pin Ball machines, and two Billiard Tables in it - this is the place where most of my pocket money was spent, unfortunately!

In all, it was a great holiday. I even came back with a couple of inches lost from round my waist.

TIMOTHY HARRISON (age 10 years)



## PROFILE - PAT TAYLOR

It seemed appropriate in this International Year of Disabled People that we should profile Pat Taylor, who despite a painful disability not only runs a home but contributes in many ways to the life of the community.

Pat had a roving childhood as her father was a Captain Quartermaster in the Army. She was born in Oxford but didn't stay there long as the family travelled widely at home and abroad.

When she left school the family were in Kenya and she went to work in an office but her interests were more on the scientific side and she returned to Oxford to train as a laboratory technician at the Radcliffe Infirmary. While in Oxford she took up ballroom dancing, and her regular partner was Brian Taylor. She says they always denied any romance between them, until they got engaged!

They began their married life in Essex, and their children, Helen & Mark, were born there. In 1968, Brian, who is a car body designer, went to work for Chrysler (as it then was) in



Coventry and the family moved to Heber Drive, then just built.

Pat was soon busy, helping at the Village Hall Nursery, where she worked for  $3\frac{1}{2}$  years. Then, she developed problems with her spine, which now mean that she can only walk very short distances, and has little strength in her arms.

When Brian went to work in Germany for two years, Pat coped at home with the help of the children and friends. "I've always known" she said, "that if I needed help, there was someone in the village I could call on." She and the children travelled three times to Germany alone. Pat cheerfully faced the prospect of being loaded onto a plane by forklift truck!

Recently she obtained a hand-controlled car (V.A.T.

was charged on the conversion!) and this has been a great joy to her. She still needs help with her wheelchair as she is not strong enough to get the chair out of the car or to propel it. However she can drive the children on outings and shopping expeditions, and manage alone for visits to the village shops and library.

Shopping with a wheelchair presents many problems; for instance, most supermarket checkouts are too narrow. At Sainsbury's, the one checkout wide enough to take a wheelchair is at the front entrance, the car park is at the back. At Rackhams the only means of getting to the upper floor is in the goods lift - if there's no furniture in it. The only toilet for the disabled is at the South end of the Parade - most of the large shops are at the North end. Not one library in the area can admit a wheelchair and it's practically impossible to get in a bank.

Pat is now secretary of the Stratford Council for the Disabled, a pressure group formed  $3\frac{1}{2}$  years ago to inform the public and to try and improve public facilities. At the moment Pat is very involved in the organisation of Southam International Year of the Disabled Week, from 6th - 13th June. There will be a variety of activities both to publicise IYDP and to raise funds for a Mini-Bus with a tail-lift.

Pat still finds time to be an active member of the Scout support committee (Helen is a Venture Scout and Mark, a patrol leader in scouts), a Harbury Society Committee member and to do 'O'level Computer Studies at the Mid-Warwickshire College. The latter is the first step she hopes towards a job.

Pat finds the public attitude to disablement infuriating. It seems that once in a wheelchair it is assumed that your brain has ceased to function. The B.B.C. programme for the disabled is aptly named "Does he take sugar?". Equally irritating she finds is always being told she can't do something - her attitude is that she can, and she does!

M. S. H.

### IN THE GARDEN

My wife and I have now returned from a wonderful three months' holiday in New Zealand and a short stay in Hong Kong and I must say that even in these countries they have a considerable number of gardening difficulties to overcome but now I must get down to the local needs.



When I went away in early December, every garden was waterlogged and when I returned on March 16th my garden was still under water so I had to turn my attention to the greenhouse and try to sow seeds to be ready when the ground dries out and gets warmer.

The Japanese onions have survived except those sown in Sept. also a few All the Year Round Lettuce - these should have a dressing of Growmore or Nitro Chalk, as the ground is still cold. It is not too late to plant Broad Beans and if you have got your ground down to a fine tilth, sow Early Peas, Parsnips, Spring Onions, Shallots, Onion Sets, main crop potatoes and early potatoes in a sheltered position. Radish and Lettuce should be sown in small quantities. Beetroot and Summer Cabbage can also be sown. Dig and manure a trench for Celery, also Runner Beans and Sweet Peas. Sweet Corn seed and Tomatoes (if only a few are required) can be started on the window sill as can Marrow plants.

W.F. LINES.

### ANNUAL PARISH MEETING

This is your chance to question your Parish Councillors on the running of your village.

Village Hall - 7.30 p.m.

Thursday, 21st May.

### WANTED:

Cleaner for Harbury Village Hall

Apply to:-

Secretary, Sue Andrews, Harbury House.

### FOR SALE:-

Child's Bike (suit 7-11 yr old) excellent condition  
£20. Ridgley, 7 Wagstaffe Close (612792)

### WEIGHTAWAY SLIMMING ADVICE

Our Group holds regular meetings every Wednesday  
at the Wight School, High Street, Harbury, at 8 pm.

Membership Fee £1.80

Class Fee £1.00

For further details contact:

Mrs. A. Green, 213 Broadgate House, Coventry.

Telephone 97/26260.

## Harbury Carnival Week

\*\*\*\*\*  
\* B A R B E C U E \*  
\*\*\*\*\*

Saturday, 13th June \*

## at the Clubhouse

with Chart Topping Group

"MARMALADE"

plus DOLLY ROCK DISCO

Tickets: £5 - inc. food                      8.30pm onwards

from Sue Andrews, Harbury House (Harbury 612528)  
or Ian Holroyd - Southam 4234

N.B. If you wish, you may 'Cook your own' food which \*  
will be provided, or bring your own food and have \*  
it cooked for you. (This will cut down waiting time)\*

※ Don't forget the FIFTY-FIFTY AUCTION!

Saturday June 6th, 1981,,  
-at Harbury Village Hall.



RAY AND JAN WELCOME  
YOU TO THE

**CROWN**

CROWN STREET  
HARBURY

WHITBREAD ALES

TRADITIONAL DRAUGHT BITTER  
RESTAURANT AND BAR MEALS

12-2 and 7-10

TUES-SAT

Tel: HARBURY  
612283



**A.G. KNOWLES**

FOR ALL YOUR -

**PLUMBING &  
HEATING  
INSTALLATIONS**

\* NO JOB TO SMALL \*

**HARBURY 612331**

CARPET AND UPHOLSTERY CLEANING  
IN YOUR HOME WITH  
QUICK DRY STEAM VAC MACHINES  
HIGH CLASS OLD ESTABLISHED  
COMPANY THAT CARES

PHONE DEREK RATTY;  
ANYTIME

**MIDLAND CARPET  
CLEANING SERVICES**

BANBURY ROAD,  
GAYDON, TEL: KINETON 640508



SPECIALISTS IN FUR RE-STYLING & RENOVATIONS

**BRIAN'S FURS**

Comprehensive range of quality coats,  
jackets & hats always in stock.

Including: CONEY, SWEDISH LAMB,  
MUSQUASH, MINK MARMOT, RED FOX,  
KIDSKIN AND MINK.



122, REGENT STREET LEAMINGTON SPA TEL. 21049  
*(Opposite Angus Hotel)*

**WINDOW CLEANING  
SERVICE**

A regular monthly  
window  
cleaning service  
in your area

**Please Phone or Call  
G.C. Bryers**

**16 Manor Road,  
Harbury  
612024**

**MARY & JOHN McLAUGHLIN**

Welcome you to a  
Cosy and Traditional  
Atmosphere  
at the

**Old  
New Inn**

Farm Street, Harbury. Tel: 612388

# SOANS OF SYDENHAM and SOUTHAM



SYDENHAM DRIVE,  
LEAMINGTON SPA.  
TEL: 29411.



also at Kinton Road, Southam TEL. SOUTHAM 4540

## DOVEHOUSE AUTO SERVICE

\* MECHANICAL AND  
BODY REPAIRS

\* MOT  
TESTING

\* RESPRAYS

\* WELDING AND  
CHASSIS REPAIRS

\* SERVICING

\* SPARES AND  
ACCESSORIES

Free collection and delivery service

NOW DEALER FOR BATAVUS AND BETA MOPEDS

8 DOVEHOUSE LANE HARBURY TEL: 612809



**WOULD YOU LIKE AN ESTATE IN HARBURY?**  
Alternatively you might prefer a SALOON,  
HATCHBACK, OR COUPE.

Whatever your preference, we would be  
pleased to demonstrate without any obligation,  
one of the latest VAUXHALLS.

Cars for the 80's with full SALES SERVICE PARTS  
back up.

**YOUR LOCAL VAUXHALL MAIN DEALERS.**

**Motors (Leamington Spa) Ltd.**

Old Warwick Road Leamington Spa CV31 3NX

Telephone: Leamington Spa 20861/2/3



## LEISURE LIFE

Casual Wear Specialists

**JEANS and ANORAKS**

The best selection in town for  
Ladies, Gents and Children

117 Warwick Street, Leamington Spa.  
Tel: 28326

## GODFREYS

for

**TRICKS, JOKES and  
PARTY NOVELTIES**

Masks, Hats. Streamers,  
Party Poppers, Etc. Etc.

113 Warwick Street, Leamington Spa.  
Tel: 28326