

CHESTERTON

Honiwell Close

RADFORD  
& LEAMINGTON SPA

Temple End

OLD NEW INN

The Manor

Bush Heath Lane

Manor Road

Penelope Close

Constance

Margaret Close

VILLAGE  
HALL

Pineham Avenue

POLICE HOUSE

South  
Parade

Forley Avenue

Dickens Rd

Farm Street

Manor Orchard

Wagstaff Close

Port Lane

Knightlow Way

SCHOOL

Chapel St

GAMECOCK

Ivy Lane

THE DOG

Post Office

Church Street

Vicarage Lane

Dove

Frances Rd.

Neales Close

Harbury House

DEPPERS  
BRIDGE  
&  
LADBROKE

UFTON

& SOUTHAM

Surcliffe Drive

SURGERY

Heber

Windmill

LIBRARY  
BANK

ALL SAINTS  
CHURCH

THE HALL

Hall Lane

THE CROWN

VILLAGE  
CLUB

Crown Close

The Pound

Neales Close

Harbury House

DEPPERS  
BRIDGE  
&  
LADBROKE

UFTON

& SOUTHAM

HARBURY  
& LADBROKE  
NEWS

THE SHAKESPEARE

Windmill

LIBRARY  
BANK

ALL SAINTS  
CHURCH

THE HALL

Hall Lane

THE CROWN

VILLAGE  
CLUB

Crown Close

The Pound

Neales Close

Harbury House

DEPPERS  
BRIDGE  
&  
LADBROKE

UFTON

& SOUTHAM

# HARBURY AND LADBROKE NEWS

**THE HARBURY & LADBROKE NEWS** reflecting all aspects of Local Life is published monthly, and produced with assistance from the Parochial Church Council of ALL SAINTS' CHURCH — Vicar: The Rev'd. F.R. MACKLEY. B.A.  
Telephone: Harbury 612377.

<b>HARBURY</b>	Holy Communion	: 8.00 a.m., 10.00 a.m. (Sung)
<b>SUNDAY SERVICES:</b>	Evensong	: 6.30 p.m. (4.00 p.m. in Winter)
	Family Service	: 11.15 a.m. — First Sunday

See Church Notice Board for details of other services.  
For Ladbroke Services see inside.

## **DOCTORS' SURGERY HARBURY:**

Farm Street. Telephone: 612232  
Monday — Saturday : 9.00 a.m. — 10.00 a.m.  
Monday, Tuesday, Friday : 6.00 p.m. — 7.00 p.m.

**LADBROKE:** Craven Lane. Telephone: Southam 2577

**POLICE:** Telephone: SOUTHAM (981) 2366

**LOCAL CONSTABLE:** P.C. T.PERCIVAL. Telephone: Harbury 612175

**EMERGENCY SERVICES:** Telephone 999

**'THE HARBURY DIRECTORY'** containing details of Village Organisations and essential information is freely available on request from  
Mrs. D. Holt, 15, Wagstaffe Close, Harbury.

Editorial Office : 23, Mill Street, Harbury. Telephone: 612427

Advertising : 15, Wagstaffe Close, Harbury Telephone 612790



## **BULL RING GARAGE (HARBURY) LTD**

CHURCH TERRACE HARBURY

**DIY SPARES AND ACCESSORIES  
HIRE CAR AVAILABLE  
COLLECTION AND DELIVERY SERVICE**

**LATEST EQUIPMENT FOR FAST  
AND EFFICIENT SERVICE**

**RING: — HARBURY 612275 FOR: —**  
**FIRST CLASS SERVICING, REPAIRS, AND BODYWORK.**  
**MOT'S BY APPOINTMENT OR WHILE U-WAIT**

It was a good start to Christmas to see a packed Church for the Nine Lessons and Carols Service on Christmas Eve. We hope that all our readers had a happy and enjoyable time, and we wish you all happiness for 1979.

May we draw your attention to the Harbury and Ladbroke News Annual Meeting, which will take place on Tuesday, 30th January, at the Village Club, at 8 p.m. This is your yearly opportunity to cast brickbats (or what-have-you) at the Committee, and to tell us, or better still show us, how it should be done! Please do come along - we really do welcome new blood on to our Committee. We shall be needing a new distribution manager for 1979 as Graham Faulkner, who has so efficiently carried out this duty for almost 3 years, is having to resign due to commitments at work; we thank Graham for his much appreciated efforts.

If you feel that you could help with distribution, please let us know and/or come along on 30th January.

We have quite a few photographs in this issue, showing many of the Christmas festivities in the village. Almost all the pictures we use in the News are taken by Mike Bloxham, and we thank him for his continuing help.

### HARBURY DIARY

#### JANUARY

- Sat. 6th EPIPHANY. Holy Eucharist 7.30a.m. & 9.45a.m.  
 Sun. 7th 8a.m. Holy Eucharist, 10a.m. Procession & Sung Eucharist. (.B. NO Children's and Family Service). 4p.m. Evensong and Procession.  
 Mon. 8th School and Toddler Group re-start; also Upholstery classes at the Wight School.  
 Tues. 9th Dancing classes and Scouts re-start.  
 Harbury Friends, 8p.m. at the School.  
 Confirmation Class, 6.30p.m. at the Vicarage.  
 PCC meeting, 8p.m. at the Wight School.  
 Wed. 10th MU, 2.30p.m., Old Timbers, Ivy Lane; speaker Mrs. Standing on 'Grace, Gratitude, Grouse & Greed'  
 Thurs. 11th Golden Age, 2.30p.m. in the Village Hall.  
 Sat. 13th WI dance at Village Hall (Likely Lads); tickets £1.30  
 - telephone 612345.

- Sun. 14th 8a.m. Holy Eucharist, 10a.m. Sung Eucharist,  
4p.m. Evensong.
- Tues. 16th Tufty Club, 2.30p.m. in the Village Hall.  
Confirmation Class, 6.30p.m. at the Vicarage.  
Motor Cycle Club, 8p.m. in the Wight School.
- Wed. 17th Bible Study, 8p.m. at the Vicarage.
- Fri. 19th Motor Cycle Club film show, 7.30p.m., V. Hall  
Deanery Eucharist, 7.30p.m., Long Itchington.
- Sat. 20th 11.45a.m., Bishop of Coventry and Mrs. Gibbs  
visit the housebound in Harbury.  
7.30p.m., Bishop and Archdeacon meet PCC  
members at Southam Community Centre.  
Rugby Club Disco at Village Hall.
- Sun. 21st 8a.m. Holy Eucharist, 10a.m. Sung Eucharist,  
4p.m. Evensong (preacher the Archdeacon).
- Tues. 23rd Young Wives, 2p.m., Village Hall.  
Confirmation Class, 6.30p.m. at the Vicarage.
- Thurs. 25th Golden Age, 2.30p.m., Village Hall.  
Eucharist to mark Conversion of St. Paul, 9.45a.m.  
Parish Council meeting, 7.30p.m., Village Hall.
- Sat. 27th Village Hall Committee Cheese & Wine Disco &  
Cabaret, in the Village Hall.
- Sun. 28th 8a.m. Holy Eucharist, 10a.m. Sung Eucharist,  
4p.m. Evensong.  
Bike Ride, 10a.m. from Club Car Park.  
Footpath Walk, 2.30p.m. from Village Hall.
- Tues. 30th Confirmation Class, 6.30p.m. at the Vicarage.  
Scouts' film night, 7p.m. in the Scout Hut.  
Motor Cycle Club, 8p.m. at the Wight School.  
HARBURY & LADBROKE NEWS AGM, 8p.m. at  
the Village Club - all welcome.

## FEBRUARY

- Tues. 6th Horticultural Society Meeting.
- Wed. 7th MU; discussion meeting, 2.30p.m.
- ROMAN CATHOLIC SERVICE, Harbury Hall Chapel, 10a.m.  
every Sunday.

CRUSADERS, Village Hall, 2.30p.m. every Sunday.

TENNIS, Recreation Ground, 10a.m. every Sunday.

GUIDES, Scout Hut, 7p.m. every Monday.

BINGO, Village Hall, 8p.m. every Monday.

BROWNIES, Village Hall, 6.15 p.m. every Tuesday.

SCOUTS, Scout Hut, 7.30p.m. every Tuesday.  
JOGGING CLUB, outside Foodmart, 8p.m. every Tuesday.  
BABY CLINIC, Village Hall, 2p.m., 2nd & 4th Wednesdays.  
YOUTH CLUB, Village Hall, 8p.m. every Wednesday.  
PARISH COUNCIL, Village Hall, 7.30p.m., 4th Thursday.  
CHOIR PRACTICE, Church, 6.30p.m. every Friday.

ALL DATES CORRECT AT TIME OF GOING TO PRESS.  
DATES FOR INCLUSION PLEASE TO LINDA RIDGLEY,  
tel. HARBURY 612792.

### THE VICAR'S LETTER

My dear friends,

As I write this we are still in Christmastide. We look back to some wonderful Christmas parties, including the Golden Age one, the Senior Citizens' and the Bell Ringers', and to some wonderful Carol Services, including the School's, the Young Wives', and the great Nine Lessons and Carols Service on Christmas Eve (this year for the first time by candle-light). Above all, we look back to our Christmas Communion, and we rejoice at the large number of worshippers and communicants at the three traditional Christmas Eucharists. This year, for the first time, the exterior of the Church has been floodlit, and there have been fairy lights on the tree in the Churchyard. I would like to thank all those who sent me Christmas cards and presents. I have had letters from former Harbury parishioners in different parts of the country, saying how delighted they were to see photographs of some of our ringers in operation, and an account of our bells and of campanology in a magazine called 'My Weekly'.

The Bishop of Coventry (with his Archdeacons) has been visiting various Deaneries in the Diocese, and his weekend visit to our Deanery of Southam will be January 19th - 22nd. As far as Harbury is concerned, the following arrangements have been made:

Friday, 19th: 7.30p.m., Deanery Eucharist at Long Itchington  
to mark the Feast of St. Wulfstan (who was born at Long Itchington).

Saturday, 20th: 11.45 a.m., the Bishop and Mrs. Gibbs come  
to Harbury to visit housebound people.

## CRUSADERS

On 17th December, we held our Family Carol Service, led by Shirley Keir. A good number of parents and friends joined in singing the well-known carols, accompanied by recorders and flutes, Rose Clarke on the guitar, and Jeanne Clarke on two pianos (one recorded owing to the unreliability of the hall piano's F sharp). The Minis charmed everyone with their tableau and singing, and readings were given by Minis, two Juniors and an Inter. Two lesser-known carols were sung very sweetly by the choir.

A number of children were presented with awards, including Colin Hughes who received a Bible for 100 weeks' attendance. Photographs were taken by the Communications Group, and copies of the latest edition of our news sheet, Crus News, were given out.

## BAR LINES

Christmas has come and gone, and the Choir has completed one of their very busiest times. They have sung at the Senior Citizens' Party, in the Village Pubs and, of course, at the Christmas services, plus the normal services and practices. My thanks to the children for their hard work in learning new music, and also to the members of the Royal Leamington Spa Bach Choir and of the old Harbury Singers, who joined us for the Festival of Nine Lessons with Carols on Christmas Eve.

Congratulations to Katie Tanner and Dean Ingram, who have passed their Light Blue Ribbon Tests, and welcome to Paula Dufrayne who was admitted to the Choir on Christmas Eve. It is also good to have Darren Butler back in the Choir. This is the last time that I shall write as Organist and Choirmaster. Much has happened since I agreed to stand in three years ago as Temporary Organist. Then there were only four choristers - now we have 20. There have been some memorable services, possibly the most outstanding was the Jubilee Service in 1977. There have been visits to the Royal Show and to Royal School of Church Music Festivals, but what I shall remember most is the enthusiasm and discipline of the children and also the regular attendance and support of Tom Hauley.

1002  
A big 'thank you' to Mrs. Mavis Young, our accompanist, and to the PCC for its support. Also to the Choir parents who have sacrificed their spare time to see that their children are in the village for practices and services. Finally, to my family who have also given up their weekends.

I now look forward to being able to put my feet up on Friday evenings, and also to making some excursions with Judith, Clare and Emma at the weekends. However, whilst we are living in the village I shall always be available to help in any way with Music in Harbury. Please let me know when I can be of assistance.

MICHAEL BARNES.

---

### LADBROKE NEWS

Services etc. for January and early February, 1979

Sat. 6th January, Epiphany.

Sunday, 7th January, 8.30a.m. Holy Communion, 11a.m. Matins.

Wednesday, 10th January, Women's Fellowship in Ladbroke School at 3.30p.m.

Sunday, 14th January, 11a.m. Holy Communion with Hymns & Sermon. 3.30p.m. Evensong.

Monday, 15th January, 7.30p.m., Ladbroke PCC at the Old Well House, Ladbroke.

Saturday, 20th January, 7.30p.m., Gathering of Deanery PCC members to meet the Bishop at Southam for a Buffet Supper.

Sunday, 21st January, 8.30a.m. Holy Communion, 11a.m. Matins.

Monday, 22nd January, 11a.m. the Bishop visits Ladbroke School.

Thursday, 25th January, Conversion of St. Paul.

Sunday, 28th January, 11a.m. Holy Communion with Hymns & Sermon. 3.30p.m. Evensong.

Thursday 1st February, Men's Group at Harbury, 7.45p.m.

Friday, 2nd February, Purification of the Blessed Virgin Mary (Candlemass).

Sunday, 4th February, 8.30a.m. Holy Communion, 11a.m. Family Service (Procession of Light).

Sunday, 11th February, Education Sunday. 11a.m. Holy Communion with Hymns and Sermon.  
3.30p.m. Evensong.

Altar Flowers: Jan. 7th and 14th, Mrs. Badman and Mrs. Wilson. Jan. 21st and 28th, Mrs. Garman. Feb. 4th, Mrs. Hudson. Feb. 11th, Mrs. Veel.

Women's Fellowship: At our meeting in January, we hope to arrange a programme for the year. Any suggestions will be welcome. I look forward to seeing you, and any new members you can introduce, then. Meanwhile, a happy New Year to you all. C.H.

Our oldest inhabitant, Alfie Summerton, has not been well for some time; remember him in your prayers. The Church too wishes to express thanks to him for a gift of £100 towards its funds.

School Carol Service ..... and the Carol Singers were rewarded with generous collections for the Charities they supported. Thank you all very much. G.R.F.

---

### HARBURY SCHOOL

A number of deserving charities were helped by our Christmas activities. They were:

- a) National Children's Homes (£20 from the Infant concert).
- b) Harbury Church (£8) and Help the Aged - Major Gardiner's Calcutta Appeal (£20), both from the Top Junior Carol Concert in Church.
- c) NSPCC (£15 from Carols around the Village).

At the last assembly of the term, held on Wednesday afternoon, Mr. David Richards was presented with cut glass whisky tumblers and claret glasses, bought by governors, staff and children. Mr. Richards expressed his sincere thanks to everyone who had contributed. NCO.

### JUST BEFORE CHRISTMAS.....

Before Christmas time, school is very exciting. About a week before the holidays, a postbox is put outside Mr. Oliver's office. This is for posting cards to our friends. The cards

**bps**  
MERCHANTS IN BUILDING

building & plumbing supplies limited

42, HOLLY WALK, LEAMINGTON SPA CV32 4HZ

THE COMPLETE SERVICE FOR  
THE BUILDER AND D.I.Y.  
HOME IMPROVER

"HEAVY" MATERIALS AND HOME  
IMPROVEMENT CENTRE AT  
8 RADFORD RD. TEL. 26088

PLANT & POWER TOOL HIRE  
AT WOOD STREET HIRE SHOP  
TEL. 29898

OR TELEPHONE 21301  
for either service

**Lph**

Leamington plant hire limited

42, HOLLY WALK, LEAMINGTON SPA CV32 4HZ



**FOSSE**  
**FOSSE WAY** Harbury 613260  
**GARAGE**

SERVICING & BODY REPAIRS  
WELDING & CHASSIS REPAIRS  
TO M.O.T. SPECIFICATION

NATIONWIDE RECOVERY  
& TRANSPORTATION  
OF CARS, CARAVANS & BOATS

24 HOUR PETROL  
COMPETITIVE PRICES

R.A.C RESCUE SERVICE

# WRIGHTONS DECORATORS



HIGH CLASS DECORATORS

PAINTING CONTRACTORS  
4, DICKENS RD., HARBURY 612564



**W. Goodwin  
and Sons**

COVENTRY STREET, SOUTHAM  
**FUNERAL DIRECTORS**

All arrangements personally conducted  
in any district

**Private Chapels of Rest**

HEARSE & MATCHING FOLLOWING CARS

Tel.: (day) SOUTHAM 2445  
(night) 2657 or 2445

**BUYING OR SELLING PROPERTY IN HARBURY  
and the surrounding villages?**

**BUYING?**  
Please consult  
Christopher Ling A.R.I.C.S.

**SELLING?**  
Please consult  
Keith Hall A.R.I.C.S.



Chartered Surveyors. Est. 1900  
89 Regent Street,  
Leamington Spa.  
Tel. 311431  
Also at Coventry, Kenilworth and Nuneaton

# **COWLEY BROS.**

## **FAMILY BUTCHERS**

SPECIALISTS IN DEEP FREEZE SUPPLIES & GREENGROCERY  
TUESDAY — SATURDAY : DELIVERIES TO HARBURY & LADBROKE  
CHAPEL ST. BISHOPS ITCHINGTON. HARBURY 612090.

*DOUG & MAVIS POWELL WELCOME YOU TO THE*

# **DOG INN**

and

## **NICOLAS RESTAURANT**

**GOOD FOOD & PLEASANT SURROUNDINGS**

Harbury : Telephone 612599

## ***Wyse Fashions***

**39 COVENTRY ST., SOUTHAM.**

**HABERDASHERY**  
**MATERIALS**  
**BUTTONS**  
**GIRLS & BOYS SOX**  
**TIGHTS STOCKINGS**  
**UNDERWEAR**  
**"SKETCHLEY" DRY CLEANING**

**NIGHT DRESSES**  
**BRIEFS, BRAS**  
**OVERALLS**  
**HOUSE COATS**  
**WOOLS**

**52 COVENTRY ST., SOUTHAM**

**LADIES/GENTS/JEANS**  
**TABARDS OVER-JUMPERS**  
**CARDIGANS PULLOVERS**  
**MENS SOX UNDERWEAR**  
**SLAX SKIRTS**  
**BOOT AND SHOE REPAIRS**

**TOWELS SHEETS BLANKETS**  
**READY MADE CURTAINS**  
**TIES HATS**  
**HOUSEHOLD GOODS**  
**PICTURES TABLE LAMPS**  
**BEDSPREADS QUILTS**

# FOODMART

WIDE RANGE OF

GROCERIES

HOME FREEZER PRODUCTS

AT  
KEENEST PRICES

PLUS  
GREEN SHIELD STAMPS

**Mill Street Harbury**  
**PHONE 612645**

**plumbing,  
painting  
& general  
repairs**

**D.J. JACKSON**  
**harbury 613155**

**BENCH**  
**TELEVISION SERVICES**  
**Harbury 612728**

REPAIRS  
SALES  
RENTAL

CHAPEL STREET  
BISHOPS ITCHINGTON

FOR YOUR NEXT HAIR APPOINTMENT COME AND RELAX  
IN THE PLEASANT OLD WORLD CHARM OF

**CATHRYN CRAIG**

Where all aspects of Hair  
Styling are carried out by  
our fully qualified staff.

Phone: 612326  
2/3 Chapel Street  
Harbury.

for all your printing  
and stationery  
requirements

5, REGENT STREET,  
LEAMINGTON SPA  
Telephone: 39735



# TRIPOLI PRESS

FOR THE BEST IN  
TRADITIONAL & FASHIONABLE CLOTHES  
for  
MEN AND LADIES  
COME TO

## ROGERS KNIGHT

FIRST

THE PARADE, LEAMINGTON SPA (21501)  
ALSO STRATFORD, BANBURY & LYMINGTON, HANTS.



### WIGGINS, RUSSELL & DUFFY

#### ESTATE AGENTS

FRIENDLY, PROFESSIONAL  
AND SUCCESSFUL SERVICE

FOR PROPERTIES IN SOUTHAM  
AND ALL SURROUNDING VILLAGES

37, COVENTRY ST  
SOUTHAM  
Tel. 2285

## Jeanne

MARKET HILL, SOUTHAM, TEL: 2808  
YOUR LOCAL

  
*Ladybird*  
CHARTER STOCKISTS

FOR BOYS & GIRLS TO 14 YRS.  
MANY ITEMS IN OUR RANGE  
WILL FIT THE SMALLER WOMAN  
LARGEST STOCK IN AREA  
LOOK AROUND WITHOUT OBLIGATION  
& COMPARE OUR PRICES

SOUTHAM SCHOOL UNIFORM  
ALWAYS IN STOCK  
FREE PARKING      FITTING ROOM

are delivered to our classroom and then given out. A few days before the holiday we make calendars and Christmas cards. This year we have also made 'stained glass window' patterns and Father Christmas and snowmen out of egg boxes. We made an angel out of paper and doyleys which we took home to put on our tree.

We have an enormous Christmas tree in the hall which is decorated with tinsel and glass balls and fircones sprayed gold.

Every year we do a concert. This year classes 8, 9 and 10 sang carols from all round the world. Everyone dressed up for this and looked very exciting.

We watched the Infants' concert and the lower Juniors singing Torun and the Star Kings. In class 9 we did a Christmas Mummies' play about St. George coming to Harbury to fight a Turkish knight and a dragon. We enjoyed doing that very much.

On the Friday before Christmas we had a film. It lasted all afternoon, and was called 'Greyfriars Bobby'. It was very sad because the dog's master died and it would not leave the graveside.

We sing carols round the village as well, and collect money for charity. Nearly at the end of term we have a party. We all bring something towards this and we play games in our classrooms before having a lovely tea.

On the last day we have to tidy our desks and clean the classroom. The ladies in the kitchen cook us a special dinner which we all enjoy. Then we have prayers in the hall, and shout 3 cheers for our teachers, and then we go home, taking all the things we have made and looking forward to our holiday.

By CLASS 9.

### The Infant Concert

Harbury School Infant Department performed their Annual Christmas Concert to two packed houses on 7th December. Each of the four classes performed a different item. Mrs. Goldsborough's class acted and sang the story of the Owl and the Pussycat. Mrs. Hunt's class gave us a delightful anthology of teddy bears, from The Teddy Bears' Picnic to Goldilocks. Miss Nurser's class brought the house down

with a modern version of The Twelve Days of Christmas - the biggest laugh going to Damian Macdonald's superb 'Five Bionic Men'. The concert was rounded off by Mrs. Brown's class performing a charming Welsh folk tale 'Robin Ddu'.

The teachers and children had obviously worked very hard to give parents and friends a splendid show. Proceeds from the collection were devoted to the National Children's Homes.

S. H.

### A World of Carols



As the Vicar said in his vote of thanks at the end of the evening, Mr. Richards really excelled himself with this, his last concert at Harbury School. The pupils in classes 8, 9 and 10 dressed up in costumes from many countries, and sang carols from Spain, Scotland, France, Wales, Brazil, Mexico, Germany, China and the West Indies, as well as England.

The Church was full to hear the beautiful singing, and the long and loud applause at the end was truly well deserved. Harbury will greatly miss Mr. Richards, but it is to be hoped that the fine musical tradition he has established at the school will long continue.

DMH.

### P. T. A. CAROLS

Dozens of parents and children took part in the Schools 'Carols round the Village' despite the truly miserable weather. One group, containing most of the men and led by Mr. Oliver, sang in the eastern part of the village, returning to the School by 8.30 p.m. for hot soup. The other group, led by Mrs. Buck and sadly lacking many male voices, 'did' the west end, making up by quality what it lacked in volume. By special request Manor Road was given its full measure of carols before this group straggled back to the School at 9.15p.m. to still warm soup (the ladies of the PTA committee having wisely equipped themselves with insulated containers!) £15 was raised for the NSPCC. L.R.

### 1st HARBURY SCOUT TROOP

A good number of scouts have been attending Rugby Baths for instruction in life-saving and canoeing. The latter gave extra fun for the lads with the sight of their leaders getting a ducking each time they ventured into one of the rather unstable snub-nosed training canoes. Outdoor canoeing took 8 boys and 2 scouters to the River Evenlode in Oxfordshire on a sunny but cold December Sunday. It wasn't quite a question of breaking the ice but a spill into those cold waters was certainly no joke. It provided an excellent lesson in survival, a topic which will fill our January programme. After only 200 yards, 'Aztec' and 'Owl' rolled, and the process of drying out and warming up with sleeping bag and hot drinks was begun. Luckily the day wasn't marred by these incidents and the boys seemed to enjoy it! Thanks to 2nd Warwick Scouts for the loan of two canoes, and to Mick Chick for ferrying canoes, wet scouts and equipment round those narrow Oxfordshire lanes.

Scouts re-starts on Tuesday, 9th January, and a film evening beginning at 7p.m. should prove popular on 30th January. J. L. H.

### HARBURY VENTURE UNIT

Venture Scout Units are for young people (yes - both sexes) aged from 16 to 20. Membership is definitely not restricted to those who have already been scouts or guides, and it is

very common for youngsters to get involved in the Scout Movement for the first time through Venture Scouting. A unit runs its own activities to a programme prepared by its elected committee. The activities chosen depend on the interests, imagination and ingenuity of the Unit's members, and usually have strong elements of ADVENTURE, FUN and SERVICE to others, very often in combination.

All Venture Scouts can work to gain the Queen Scout Award often at the same time as the similar Duke of Edinburgh Gold Award. The list of things to do is endless, but could include Canoeing, Sailing, Mountain Walking, Rock Climbing, Caving, Gliding, Publishing a newsletter, Running a group, First Aid, Car maintenance, Voluntary work with old or young people, Travelling abroad. And - GIRLS, before you're put off, take it from me, you're often better at these things than the BOYS!

If you think you might be interested, please 'phone me and we'll get the Harbury Venture Unit on the move - and let it be a MIXED UNIT. BOB WILKINS, 612583.

### JUNIOR DISCO

The first Junior Disco got underway on Friday 8th December. For this to be arranged in such a short time after the open meeting speaks highly of the committee, and they are to be congratulated.

The Disco was attended by just over 110 youngsters from 13 to 18 years, and the majority said they enjoyed themselves. The next Disco is anticipated for sometime in January, and we think that, with slightly more time to arrange things, ticket sales will be more in line with the numbers which we need - about 150/160 - in order to generate some funds for expanding the youth activities. IT'S UP TO YOU, BOYS & GIRLS, AND YOU CAN ENJOY YOURSELVES AT THE SAME TIME. T. B.

### RECREATION GROUND COMMITTEE

The recent Christmas Fair raised approx. £170 for committee funds. Particular thanks are due to Ken Hughes for his organisation of the Fair, to Father Christmas for coming to Harbury, and to the many helpers, supporters,

and donors to the Fair.

The next project to be undertaken by the Committee is the construction of a children's fort near the tarzan swing. This should be built by the Community Industry Organisation, starting in the spring.

The repayment of the tennis bonds is now almost complete, except for 2 former Harbury residents. Can anybody please help with the present whereabouts of Brian Chivers, formerly of 18 Park Lane, or of M. G. Rayworth, formerly of 'Garnetts', Park Lane. If so, please contact Alan Youd, tel. 612496.

#### LEYCESTER CLOSE COMMUNITY OF FRIENDS

On Saturday, 9th December, we held our annual Christmas party for the children and senior citizens of Leycester Close. After a delicious tea, the children entertained us by singing carols surrounded by a Nativity scene. Afterwards came the moment all the children had been waiting for - the arrival of Father Christmas, who distributed presents for everyone - even a few senior citizens were seen sitting on Santa's knee!



After a massive clear up and a quick wash and change, we all congregated again for a drop of Christmas cheer! Gareth Adams kindly played the organ accompaniment to the hearty rendering of our favourite carols, and 'Mad Merv's Disco' provided the music for the more energetic revellers.

I would like to thank everyone who has supported our efforts to raise funds for this event, and all those who helped on the day to make it such an enjoyable party.

B. D. K.

## GOLDEN AGE

Our Christmas Party was a tremendous success, due to a great deal of hard work by many people, to whom we are grateful. After a delicious meal, we were treated to a musical entertainment by Moira and Jean, who sang many favourites both old and new.

May we say a special thank you to the Brownies, and to the Football Club, who gave us lovely Christmas gifts which we have shared out amongst our members. L. KNIGHTON.

## CHRISTMAS FAMILY QUIZ

Thank you to those who entered our competition in last month's issue. The winner was Shirley Keir, 25 South Parade, and here are the correct answers:

1. Prince Albert. 2. 1970. Seven. 3. Charles Dickens.
4. 1871. 5. Christmas Rose. 6. 'Not a creature was stirring, not even a mouse.....' 7. 40,000.
8. Epiphany. 9. Shakespeare. 10. All of them.
11. In the Middle Ages priests opened poor boxes in Church and distributed contents to the poor. Hence also Christmas boxes for tradespeople today. 12. A competition amongst school children. 13. St. Nicholas. 14. Was shortest day of year then, and already a feast day. 15. Pantomime.

## CYSTIC FIBROSIS RESEARCH TRUST

I would like, through the News, to thank everyone who worked so hard to make our recent jumble sale a success. Those who helped sort the mountain of jumble, helped at the sale, and the clearing up afterwards. Also, thanks to everyone who gave so generously for the sale - we have enough good jumble for another one! The total profit, after expenses, was £98, which was a wonderful result. May I also thank Rowena Mettrick and Kathleen Baynes, who collected £3.29½ by carol singing. Well done, girls, and thank you.

BARBARA ANDREWS. Secretary.

## Good Samaritan Ralph

On behalf of all users of Treen's Hill, we say a sincere thank you to Ralph Gurden for his unselfish and public-spirited action in salting this vital part of the village road network. We're sure that, without your recent efforts, Ralph, many people would have missed their Christmas dinners.

EDITORS.

## HARBURY SOCIETY

Our film show at the Crown, though rather poorly attended, was well worth seeing, and my thanks to Chris Finch and Tim Millington who did battle with the projector!

We are still negotiating for a suitable Folk Group for the New Year social, but we hope that, with Mrs. Fennell's permission, it will be in the Crown in the 4th week in January. Members will receive more details in due course.

In February, provisionally the 12th, Mr. Dunkley will speak in the Crown on the history of transport systems in this area, and in March we hope to have a return visit from Mr. William Tyler, the folklore expert, whose previous talk was so well received. Again more details soon.

The Guide proceeds slowly, I'm afraid, but Mrs. Noden of Chesterton hopes to have her history of Chesterton in print by the New Year. Those who gave to the Warwick Castle Archives appeal will be heartened to hear that the campaign reached its target of £120,000 at the beginning of December, so the archives will be preserved for posterity in Warwick where they belong.

LINDA RIDGLEY.

## IN THE GARDEN

January is a month when you have to consider what you are going to grow, and which will be of the most use in the kitchen. If you have not sent in your discount seed list to the Society, there will be another chance in January.

The most important job is to inspect the vegetables in store. If you can obtain farmyard manure, now is the time to spread some on your garden - it is not important to dig it in at this time of the year. Start forcing rhubarb by covering it and keeping the light out. If you have a heated greenhouse, and are thinking of showing in September, now is the time to sow early varieties of onions, leeks and Alpine strawberries; also a few early potatoes and french beans in pots.

W.F. LINES.

## HORTICULTURAL SOCIETY

The meeting on 5th December heard a very interesting talk by members of the Chrysanthemum Society - it is a pity that it wasn't better supported. Our next meeting will be on 6th Feb., when Martin Ford from Moreton Morrell College will talk on the care of the fruit garden.

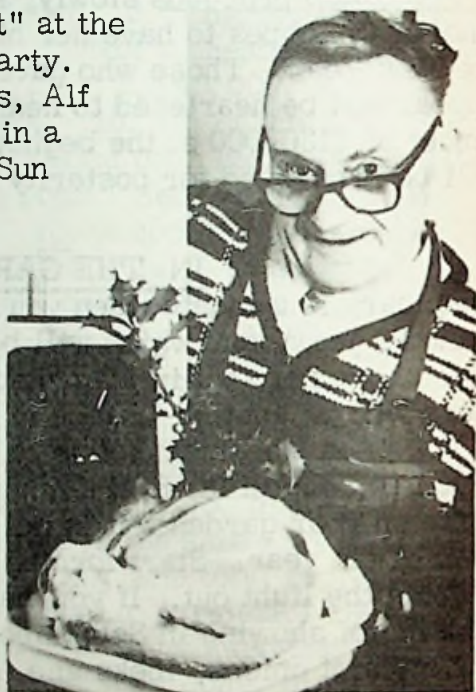
T. BRUNTON. 612191.



(Above). "Live entertainment" at the Senior Citizens' Christmas Party.  
 (Right) One of our distributors, Alf Over, with the turkey he won in a competition organised by the Sun Newspaper.

HARBURY JUBILEE  
 MOTOR CYCLE CLUB  
 FILM SHOW and  
 PRESENTATION OF  
 AWARDS.

Friday, 19th January,  
 7.30p.m., Village Hall.  
 Refreshments : Raffle  
 Entry 30p.



LORNE COTTAGE "Home Playgroup" opening in January 1979. For details please contact Brenda Turner, telephone Harbury 612738.

We are sorry that pressure of space has forced us to omit some correspondence this time, and we hope to include it next month. Do please keep writing to us!!

# **Coach Excursions & Tours from Harbury**

DETAILS & BOOKINGS FROM  
PHILIP LINDOP, CHAPEL STREET

## **SAPPHIRE COACHES**

(I.E. LAINCHBURY)  
BISHOPS ITCHINGTON  
QUOTES FOR PRIVATE PARTIES  
PHONE HARBURY 612344

## **SHAKESPEARE INN**

### **WHITBREAD ALES**

GOOD SELECTION OF  
HOT & COLD BAR SNACKS

LARGE GARDEN & CAR PARK  
MILL STREET HARBURY 612357

## **Carpet Fitting Specialists**

MICHAEL JEROME

"CHERRY TREES" SCHOOL LANE  
LADBROKE

SUPPLYING, PLANNING & FITTING OF  
ALL TYPES OF CARPET AND  
CUSHIONED VINYLs.

EXISTING CARPETS REFITTED

FOR PROMPT ATTENTION  
TEL. SOUTHAM 3325

**FOR ALL YOUR  
PLUMBING  
&  
HEATING  
REQUIREMENTS  
A.G. KNOWLES  
HARBURY 612331**



**FAMILY  
BUTCHERS**

## **T&B SUMMERS**

7 CAMPION TERRACE  
LEAMINGTON SPA

**QUALITY MEAT FOR  
DEEP FREEZE**

PHONE: LEAMINGTON - 25699  
HARBURY - 612059

**SPECIALISTS IN FUR RE-STYLING & RENOVATIONS**

## **BRIANS FURS**

Comprehensive range of quality coats,  
jackets & hats always in stock.

Including: CONEY, SWEDISH LAMB,  
MUSQUASH, MINK MARMOT, RED FOX,  
KIDSKIN AND MINK.



122, REGENT STREET LEAMINGTON SPA TEL. 21049  
(Opposite Angel Hotel)

# SOANS OF SYDENHAM and SOUTHAM



SYDENHAM DRIVE,  
LEAMINGTON SPA.  
TEL: 29411.



Your  
**Ford**  
Distributor



also at Kineton Road, Southam TEL. SOUTHAM 4540

## DOVEHOUSE AUTO SERVICES

**E.G. BUCKLE**  
8 DOVEHOUSE LANE  
HARBURY  
Tel. 612809

FOR ALL YOUR MOTOR REPAIRS  
VEHICLES RESPRAYED : MOT REPAIRS  
GENERAL WELDING : TYRE REPAIRS  
WINDSCREENS REPLACED  
AUTOMATIC TRANSMISSION : WIDE RANGE  
OF SPARES FOR THE D.I.Y. MAN.



**Motors (Leamington Spa) Ltd.**

Old Warwick Road Leamington Spa  
CV31 3NX Telephone 0926 20061/2/3

Also at Coventry

Your

# Vauxhall Bedford

**Main  
Dealers**



## Leisure Life

*Specialists in Casual Wear*

**JEANS**

We stock the best selection in Town

**WRANGLER LEVI SLOOPY BRUTUS**

Flares and Straights

New

**INSTANT PRINT BAR**

T Shirts and Sweat Shirts

Printed While - U - Wait

Motifs or Lettering

You Name It We'll Print It

**117, WARWICK STREET, LEAMINGTON SPA Tel: 28326**

The views of contributors to the Harbury News are not necessarily those of the Editorial Committee