



CHESTERTON

Honiwell Close

RADFORD  
& LEAMINGTON SPA

Temple End

OLD NEW INN

The Manor

Bush Heath Lane

Manor Road

Penelope Close

Constance Drive

Margaret Close

VILLAGE HALL

Pineham Avenue

POLICE HOUSE

South Parade

Dickens Rd

Farm Street

Manor Orchard

Wagstaff Close

Park Lane

Knightslow Way

SCHOOL

Chapel St.

GAMECOCK

Ivy Lane

THE DOG

Post Office

Church Street

Vicarage Lane

Dover

Ho. Lane

Frances Rd.

Queens Drive

Built Lane

Harbury House

DEPPERS BRIDGE

LADBROKE

Sutcliffe Drive  
SURGERY

Heber Drive

THE SHAKESPEARE

Windmill

LIBRARY  
BANK

Binswood End

Leicester Close

Church Terrace

The Hall

Hall Lane

THE CROWN

VILLAGE CLUB

Crown Close

The Spind

Neales Close

Harbury House

DEPPERS BRIDGE

LADBROKE

UFTON

E SOUTHAM

THE SHAKESPEARE

LIBRARY BANK

Church Terrace

The Hall

Hall Lane

THE CROWN

VILLAGE CLUB

Crown Close

The Spind

Neales Close

Harbury House

DEPPERS BRIDGE

LADBROKE

UFTON

E SOUTHAM

THE SHAKESPEARE

LIBRARY BANK

Church Terrace

The Hall

Hall Lane

THE CROWN

VILLAGE CLUB

Crown Close

The Spind

Neales Close

Harbury House

DEPPERS BRIDGE

LADBROKE

UFTON

E SOUTHAM

THE SHAKESPEARE

LIBRARY BANK

Church Terrace

The Hall

Hall Lane

THE CROWN

VILLAGE CLUB

Crown Close

The Spind

Neales Close

Harbury House

DEPPERS BRIDGE

LADBROKE

UFTON

E SOUTHAM

THE SHAKESPEARE

LIBRARY BANK

Church Terrace

The Hall

Hall Lane

THE CROWN

VILLAGE CLUB

Crown Close

The Spind

Neales Close

Harbury House

DEPPERS BRIDGE

LADBROKE

UFTON

E SOUTHAM

THE SHAKESPEARE

LIBRARY BANK

Church Terrace

The Hall

Hall Lane

THE CROWN

VILLAGE CLUB

Crown Close

The Spind

Neales Close

Harbury House

DEPPERS BRIDGE

LADBROKE

UFTON

E SOUTHAM

THE SHAKESPEARE

LIBRARY BANK

Church Terrace

The Hall

Hall Lane

THE CROWN

VILLAGE CLUB

Crown Close

The Spind

Neales Close

Harbury House

DEPPERS BRIDGE

LADBROKE

UFTON

E SOUTHAM

THE SHAKESPEARE

LIBRARY BANK

Church Terrace

The Hall

Hall Lane

THE CROWN

VILLAGE CLUB

Crown Close

The Spind

Neales Close

Harbury House

DEPPERS BRIDGE

LADBROKE

UFTON

E SOUTHAM

THE SHAKESPEARE

LIBRARY BANK

Church Terrace

The Hall

Hall Lane

THE CROWN

VILLAGE CLUB

Crown Close

The Spind

Neales Close

Harbury House

DEPPERS BRIDGE

LADBROKE

UFTON

E SOUTHAM

THE SHAKESPEARE

LIBRARY BANK

Church Terrace

The Hall

Hall Lane

THE CROWN

VILLAGE CLUB

Crown Close

The Spind

Neales Close

Harbury House

DEPPERS BRIDGE

LADBROKE

UFTON

E SOUTHAM

THE SHAKESPEARE

LIBRARY BANK

Church Terrace

The Hall

Hall Lane

THE CROWN

VILLAGE CLUB

Crown Close

The Spind

Neales Close

Harbury House

DEPPERS BRIDGE

LADBROKE

UFTON

E SOUTHAM

THE SHAKESPEARE

LIBRARY BANK

Church Terrace

The Hall

Hall Lane

THE CROWN

VILLAGE CLUB

Crown Close

The Spind

Neales Close

Harbury House

DEPPERS BRIDGE

LADBROKE

UFTON

E SOUTHAM

THE SHAKESPEARE

LIBRARY BANK

Church Terrace

The Hall

Hall Lane

THE CROWN

VILLAGE CLUB

Crown Close

The Spind

Neales Close

Harbury House

DEPPERS BRIDGE

LADBROKE

UFTON

E SOUTHAM

THE SHAKESPEARE

LIBRARY BANK

Church Terrace

The Hall

Hall Lane

THE CROWN

VILLAGE CLUB

Crown Close

The Spind

Neales Close

Harbury House

DEPPERS BRIDGE

LADBROKE

UFTON

E SOUTHAM

THE SHAKESPEARE

LIBRARY BANK

Church Terrace

The Hall

Hall Lane

THE CROWN

VILLAGE CLUB

Crown Close

The Spind

Neales Close

Harbury House

DEPPERS BRIDGE

LADBROKE

UFTON

E SOUTHAM

THE SHAKESPEARE

LIBRARY BANK

Church Terrace

The Hall

Hall Lane

THE CROWN

VILLAGE CLUB

Crown Close

The Spind

Neales Close

Harbury House

DEPPERS BRIDGE

LADBROKE

UFTON

E SOUTHAM

THE SHAKESPEARE

LIBRARY BANK

Church Terrace

The Hall

Hall Lane

THE CROWN

VILLAGE CLUB

Crown Close

The Spind

Neales Close

Harbury House

DEPPERS BRIDGE

LADBROKE

UFTON

E SOUTHAM

THE SHAKESPEARE

LIBRARY BANK

Church Terrace

The Hall

Hall Lane

THE CROWN

VILLAGE CLUB

Crown Close

The Spind

Neales Close

Harbury House

DEPPERS BRIDGE

LADBROKE

UFTON

E SOUTHAM

THE SHAKESPEARE

LIBRARY BANK

Church Terrace

The Hall

Hall Lane

THE CROWN

VILLAGE CLUB

Crown Close

The Spind

Neales Close

Harbury House

DEPPERS BRIDGE

LADBROKE

UFTON

E SOUTHAM

THE SHAKESPEARE

# HARBURY AND LADBROKE NEWS

**THE HARBURY & LADBROKE NEWS** reflecting all aspects of Local Life is published monthly, and produced with assistance from the Parochial Church Council of **ALL SAINTS' CHURCH** – Vicar: The Rev'd. F.R. MACKLEY. B.A.  
Telephone: Harbury 612377.

<b>HARBURY</b>	Holy Communion	: 8.00 a.m., 10.00 a.m. (Sung)
<b>SUNDAY SERVICES:</b>	Evensong	: 6.30 p.m. (4.00 p.m. in Winter)
	Family Service	: 11.30am. – First Sunday

See Church Notice Board for details of other services.  
For Ladbroke Services see inside.

## **DOCTORS' SURGERY**

<b>HARBURY:</b>	Farm Street. Telephone: 612232
	Monday – Saturday : 9.00 a.m. – 10.00 a.m.
	Monday, Tuesday, Friday : 6.00 p.m. – 7.00 p.m.
<b>LADBROKE:</b>	Craven Lane. Telephone: Southam 2577

**POLICE:** Telephone: SOUTHAM (981) 2366

**LOCAL CONSTABLE:** P.C. T.PERCIVAL. Telephone: Harbury 612175

**SOUTHAM SOCIAL SERVICES Tel Southam(981) 2881**

**'THE HARBURY DIRECTORY'** containing details of Village Organisations and essential information is freely available on request from  
Mrs. D. Holt, 15, Wagstaffe Close, Harbury.

Editorial Office : 23, Mill Street, Harbury. Telephone: 612427

Advertising : 15, Wagstaffe Close, Harbury Telephone 612790

## **BULL RING GARAGE (Harbury) Limited**

First class servicing and repairs, latest  
equipment for fast efficient service

+ M.O.T.'s +

By appointment or while-u-wait

+ LOW BAKED RESPRAYS +

Touch-up paint mixed while-u-wait

+ SEALED PROP-SHAFT REPAIR +

+ SERVICE +

+ D.I.Y. SPARES +

Church Terrace, Harbury,  
Leamington Spa, Warwickshire

Open 8.00am to 7.00pm six days a week  
**RING HARBURY 612275 NOW**

MEMBERS OF THE M.A.A.



It is very difficult to believe that twelve months have gone by since the last Christmas issue of the magazine. By the time your copy has reached you, even the most reluctant Christmas shopper amongst you will have been bullied or cajoled into joining battle for buying presents or the wide range of food - much of which invariably is not required in the end. This is all part and parcel of Christmas but let us not lose sight of the reason for all the festivities - the birth of the baby Jesus.

As usual, a wide variety of Christmas activities is planned in the village. The diary shows all the details but we would make special mention of the Christmas Eve carol service in the Church. We know that many of our readers will have family or friends visiting them and they will be especially welcome at the service.

Remember too the Christmas Fayre on Saturday 8th December. Despite considerable competition, the organisers have managed to arrange for Father Christmas to be present so please make sure your children know.

On a change of subject, we extend a warm welcome to Janet and Ray Playdon and their family who have taken over the Crown. We hope they settle happily in the village and that their new venture is a success.

The AGM of the magazine will be held in January - the date and venue will be included in the next issue.

Finally, we wish all our readers and advertisers a happy Christmas and peaceful new year; thank you sincerely for the support you have given to the magazine throughout the year.

### HARBURY DIARY

#### DECEMBER

- |      |     |   |
|------|-----|---|
| Sun  | 2nd | First Sunday in Advent. 9am Parish Family Communion, followed by Breakfast in the Village Hall. (No 8am or 10am Services on this Sunday only) 4pm Evensong.<br>Youth Group, 7.45pm at Phoenix House, High St.             |
| Tues | 4th | Harbury Society talk on Restoration of Chesterton Windmill, 8pm, School. Non-members welcome. Confirmation Class in Vicarage, 6.30pm. Horticultural Society, 8pm, Wight School. Senior Citizens cttee, 8pm, Village Hall. |

- Tues 4th Youth Club Coffee Bar, 7-10, V. Hall  
Prayer Group, 8pm, 15 Wagstaffe Close
- Wed 5th Conservative Coffee (& mince pies) morning -  
Old Timbers, Ivy Lane, from 10.30am.  
Mother's Union, Old Timbers, Ivy Lane, 2.30pm.  
Confirmation Class in Vicarage, 6.30pm  
Lower Middle School Concert, 7pm.  
PCC, 8pm in Wight School
- Thurs 6th Lower Middle School Concert, 7pm.  
Golden Age Christmas Party, V. Hall.  
Church Men's Group, 7.45pm, 19 The Beeches.  
W.I., 7.45pm, Village Hall.
- Fri 7th School Occasional Day Holiday.
- Sat 8th Immaculate Conception of the Blessed Virgin Mary.  
Holy Eucharist 9.45 am.  
Recreation Grounds Cttee - CHRISTMAS FAYRE  
at Village Hall.
- Sun 9th Harbury Jubilee Motor Cycle Club, 2 pm.  
Second Sunday in Advent. 8am Holy Eucharist,  
10am Sung Eucharist (Toddler Group), 4pm Evensong
- Tues 11th Confirmation Class in Vicarage, 6.30pm.  
Playing Fields Cttee, V. Hall.  
Harbury Friends, 8pm, School.  
Bible Study, 8pm, The Flat, Harbury House.  
British Legion Whist Drive at V. Hall.
- Wed 12th First School Concert in Hall, 1.45pm & 6.45pm.  
Confirmation Class in Vicarage, 6.30pm.
- Thurs 13th First School Concert in Hall at 6.45pm.  
Golden Age, 2.30pm, Village Hall.  
Warwickshire Hunt Christmas Revue - Dress  
Rehearsal in V. Hall free to OAPs.
- Fri 14th Scouts Swimming Gala at Leamington.  
Nursery School Christmas Party, V. Hall.  
Warwickshire Hunt Revue at Village Hall.  
NSPCC & League of Pity Carol singing from  
17 Manor Orchard at 6pm (Soup & Spuds afterward)
- Sat 15th Warwickshire Hunt Revue at Village Hall.  
SENIOR CITIZENS CHRISTMAS PARTY - School.
- Sun 16th Third Sunday in Advent. 8am Holy Eucharist,  
10am Sung Eucharist (Badminton Club), 4pm Evensong  
Crusaders Carol Service, Village Hall.



Sun	16th	Rugby Club's Children's Christmas Party. Youth Group, 7.45pm, The Cottage, Windmill Hill Farm, Chesterton.
Mon	17th	Middle School Party. Toddler Group Party at Wight School.
Tues	18th	First School Party Young Wives Carol Service, 2.30pm in Church. Confirmation Class in Vicarage at 6.30pm. School Carol Service, 7.30pm in Church.
Wed	19th	PTA Carols Round the Village Confirmation Class in Vicarage, 6.30pm. Southam School carols, 7.30pm, Southam Church. Youth Club Disco, Village Hall.
Fri	21st	Schools end. Playgroup Party at Wight School. Scouts Camp Fire & Carols at Scout Hut, 6.45pm - £1 per family including soup and cocoa.
Sun	23rd	Fourth Sunday in Advent. 8am Holy Eucharist, 10am Sung Eucharist (Congregation), 4pm Evensong.
Mon	24th	Christmas Eve. 4pm Nine Lesson Carol Service, 11.15pm Midnight Mass (sung) and Holy Communion.
Tues	25th	<u>CHRISTMAS DAY.</u> 8am Mass of the Dawn (said) and Holy Communion, 10am Procession and Sung Mass of the Day and Holy Communion (a family).
Wed	26th	<u>St. Stephen.</u> 9.45am Holy Eucharist. Harbury Albion Boxing Day Football Match at Playing Fields.
Thurs	27th	<u>St. John, Apostle and Evangelist.</u> 9.45am Holy Eucharist. <u>No Weightwatchers</u> at Wight School.
Fri	28th	<u>Holy Innocents.</u> 9.45am Holy Eucharist.
Sat	29th	<u>St. Thomas of Canterbury.</u> 9.45am Holy Eucharist
Sun	30th	<u>Sunday after Christmas Day.</u> 8am Holy Eucharist, 10am Procession & Sung Eucharist (Congregation) 4pm Evensong, Carols & Procession. Bike Ride, 10am, Club Car Park. Footpath Walk, 2.30pm, Village Hall.

## JANUARY 1980

Tues	1st	<u>New Years Day.</u> <u>Naming of Jesus.</u> 9.45am Holy Eucharist. Confirmation Class in Vicarage, 6.30pm.
Wed	2nd	Confirmation Class in Vicarage, 6.30pm.

Tues 1st Senior Citizens Cttee, V. Hall.  
Wed 2nd Confirmation Class in Vicarage, 6.30pm.  
Sun 6th EPIPHANY. 8am Holy Eucharist, 10am Procession  
and Sung Eucharist, 4pm Evensong & Procession.  
Youth Group, 7.45pm, 17 Farm Street.

ROMAN CATHOLIC SERVICE, Harbury Hall Chapel, 10am  
every Sunday.  
CRUSADERS Village Hall, 2.30pm every Sunday.  
GUIDES Scout Hut, 7.30pm every Monday  
UPHOLSTERY CLASSES, 2-4pm, Wight School, every Monday.  
BINGO Village Hall, 8pm every Monday.  
PLAYGROUP, Wight School, Tuesday to Friday (a.m.)  
TODDLER GROUP, Wight School, Monday a.m. & Weds p.m.  
BROWNIES, Village Hall, 6.15pm every Tuesday.  
YOUTH CLUB COFFEE EVENING, V. Hall, 7-10pm, Tuesdays.  
DANCING CLASSES, Wight School, 7-7.45pm Tuesdays,  
4-7.10pm Wednesdays, 4.30-7.45pm Thursdays.  
SCOUTS, Scout Hut, 7.30pm Tues (1st Troop), Weds (2nd Troop).  
JOGGING CLUB meet outside Foodmart, 8pm Tuesdays.  
BABY CLINIC, V. Hall, 2pm, 2nd & 4th Wednesdays.  
YOUTH CLUB, V. Hall, 8pm every Wednesday  
GOLDEN AGE, V. Hall, 2.30pm, 2nd & 4th Thursdays.  
CHOIR PRACTICE, Church, 6.30pm every Friday.  
ALL DATES CORRECT AT TIME OF GOING TO PRESS. Dates  
FOR INCLUSION PLEASE TO LINDA RIDGLEY, Tel. 612792.  
For VILLAGE HALL bookings, ring Mr. Andrews, 612301.  
For WIGHT SCHOOL bookings, ring Mrs. Windsor, 612504.

### THE VICAR'S LETTER

My dear friends,

The congregation attending the Remembrance Sunday service this year seemed greater than ever, and was notable for the very large number of young people. The collection for Earl Haig's Fund taken at this service amounted to £58.62. We were again fortunate in the weather for going out to the War Memorial in Crown Street afterwards and we are grateful once more to David Goodfellow for sounding the Last Post and the Reveille.

By the time that this is in your hands we shall probably be in the season of Advent and preparing for Christmas. The Nine-Lesson Carol Service this year will be at 4 p.m. on



Christmas Eve (Monday, December 24th). The heart of our Christmas joy will, of course, be our worship at the Lord's Own Service and, if we have been Confirmed, our receiving of our Lord in Holy Communion. We should try to prepare well for our Christmas Communion, and a list of times when Absolution may be received before Christmas will be found on the notice board inside the Church.

There will, as usual be the three traditional celebrations of the Holy Eucharist, viz. the Midnight Mass (sung) beginning at 11.15pm on Christmas Eve, the Mass of the Dawn (said) at 8 a.m. on Christmas Morning, and the Mass of the Day (sung, with Procession) at 10 a.m. on Christmas Day. I hope that everyone will be able to come to at least one of these services, and that all the children will be present at 10 o'clock on Christmas morning. According to the present-day regulations those who have made their Communions at the Midnight Mass may, if they wish, receive Communion again at one of the Celebrations on Christmas Day. I shall be very pleased to bring the Blessed Sacrament during Christmas tide to any who are housebound.

We thank those who brought money, clothing, blankets etc. to Church for the "Help the Aged" appeal, those who received and sorted out the gifts into their appropriate sacks, and Mr. Krayem for sending round the appeal leaflets with newspapers.

This time we have a record number of candidates preparing for the Sacraments, including several adults. The classes are on Tuesday evenings (mainly for the younger ones) and on Wednesday evenings (mainly for the older ones). The Confirmation and First Communions will be on February 17th at 10 a.m. Please remember the candidates in your prayers.

The village has suffered a loss in the death of Miss Hiron at the age of 88. We commend her to the loving care of Almighty God.

Wishing you a holy and blessed Christmas,  
Your sincere friend and Vicar,  
F.R. Mackley.

#### HOLY MATRIMONY

November 10th - Timothy Simon Reeves to Christine Ann Clarke.

#### FUNERAL SERVICE

November 16th - Eleanor Julia Hickman Hiron, of "Yew Trees",  
Mill Street, aged 88 years.

MISS ELEANOR HIRON

It is with great regret that we record the death of Miss Eleanor Hiron, who will be sadly missed by her many friends both in Harbury and elsewhere.

Miss Hiron was the daughter of a Studley doctor, and she had connections in Chipping Campden where some beautiful stained glass window in the church are dedicated to members of her family. Educated in Leamington, she was an excellent tennis and badminton player in her younger days. She was a Land Girl in Shropshire in the First World War, and a Land Army Supervisor in Warwickshire during the Second War.

She shared a home with her life-long friend, Miss Gadsden, for some 60 years, the last 30 in Harbury.

Within the village, very many people will remember Miss Hiron for her kindness and the lively interest she showed in what was going on in the community. She took a particular delight in the setting up of the Harbury magazine as this had been, she said, a long-time dream of hers. She was a founder member and one-time President of the Golden Age Club in which she continued to play a part despite poor health.

We mourn the passing of this remarkable lady, and we extend our sympathy to Miss Gadsden.

From the Churchwardens

It is good that the Youth Group for young Christians has now got off the ground. It is to be particularly commended to those preparing for Confirmation or who have been confirmed during the past few years.

We do wish Ian and Lynne Clarke every happiness in their new home. We shall miss them so much in the village but are delighted that we shall be seeing them from time to time as they will not be far away in Whitnash. We are sure that they will very soon be involved in the life of their new parish and that God will use them there as he has used them among us.

We shall shortly have our amplification system permanently installed in church. The experimental system was much appreciated and the increasing number attending our Services, particularly the 10 o'clock Eucharist, look forward to the permanent system.

As we approach Christmas with all its happiness, fun and family gatherings, we trust that all families may remember



that we are, at this time, celebrating the birth of the Christ child. At the time when Jesus was born, there were so many people who had no room for him. Can we try to make sure that there are no homes in Harbury in which there is no room for the Christ child this Christmas.

### YOUTH GROUP

David Beardshaw, Diocesan Youth Officer, introduced some highly entertaining games and ways of starting discussions to the group of teenagers who met at Chiara Rustici's home.

It was decided at this meeting that the group should meet on alternate Sunday evenings at 7.45 p.m. for games, discussions, food, craft and many other activities. The December meetings are on 2nd at Phoenix House when Rob Hughes will organise Moonshot or another similar game and there will be a discussion and planning session. Priority number one will be to choose a name for this new Christian youth group. The second December meeting will be on 16th at The Cottage, Windmill Hill Farm, Chesterton when members of the group will cook and eat a meal together. There will also be a competition for new words to a well-known carol tune. Shirley Keir has agreed to judge the competition.

Any young people between the ages of 13 and 19 (give or take a year!) are welcome to the group. If they would like more details the Vicar can supply these.

V.C.A.

### CRUSADERS

On Dec. 16th we shall be holding our Carol Service in the Village Hall at 2.30pm. The music group have been busy practising carols and likewise the mini's. Do come along to find out what they will be doing and join in your favourite carols.

M.C.

---

### LADBROKE NEWS

Services etc. for December 1979 and early January, 1980.

Sunday 2nd December, ADVENT I. 9am at Harbury, Parish Communion followed by Parish Breakfast. There will be no early celebration at Ladbroke. 11.0am at Ladbroke - Short Matins followed by Holy Communion.

Thursday, 6th December, 7.45pm, Men's Group at Harbury.

Sunday, 9th December, Advent II, 11am Holy Communion with Hymns & Sermon, 3.30pm Evensong.

Thursday, 13th Dec., 7.45pm Deanery Synod at Southam.

Sunday, 16th Dec., ADVENT III

8.30 am Holy Communion, 11.0 am Matins.

Friday, 21st Dec. S. Thomas A.M.

Sunday, 23rd Dec. ADVENT IV, 11.0am Holy Communion with  
Hymns & Sermon.

Tuesday, 25th Dec. CHRISTMAS DAY. 8.30am Holy Communion  
10.30am Holy Communion with Hymns and Carols.

Wednesday, 26th Dec. S. Stephen M.

Thursday, 27th Dec. S. John A.E.

Friday, 28th Dec. Holy Innocents

Sunday, 30th Dec. Sunday after Christmas. One Service only -  
11.0am Short Matins followed by Holy Communion.

Tuesday, 1st January. Circumcision of our Lord.

Thursday, 3rd Jan., 7.45pm, Men's Group at Harbury.

Sunday, 6th Jan. EPIPHANY

8.30am Holy Communion, 11.0 am Matins.

Altar Flowers - Dec. 25th & 30th Mrs. Rutherford;

Jan. 6th & 13th Mrs. Badman & Mrs. Wilson.

WOMEN'S FELLOWSHIP. I was pleased that most of our members were able to attend our last meeting at which items of interest were discussed. We were sorry that owing to another engagement the Rector was unable to be with us.

By kind invitation of Mrs. J. Barnett, our next meeting will be held at Woodlands Farm, Ladbroke at 3pm on Wednesday Jan. 16th when we hope to discuss further the venue of future meetings and our programme for the year.

C. H.

IVAN PAUL GRIFFITH

We were shocked and saddened to hear of the sudden death of Mr. Griffith in a car accident on 28th October. Just a week before he had been with us at the 8.30 am Holy Communion. He had a long connection with our Church begun when he farmed at Deppers Bridge; in the 1950s he was a member of the P. C. C. and also served on the R. D. Conference and the Diocesan Board of Finance. Even after he moved to Knightcote in the parish of All Saints Burton Dassett, he continued to make his Communion regularly at Ladbroke. His service to Church and neighbourhood brought many to thank God for him at the funeral at Burton Dassett on November 2nd. We extend our sympathy to his wife and son and pray that he may rest in peace.

G. R. F.



The Parochial Church Council acknowledges with deep gratitude the donation of £100 from 'A cheerful giver' G.R.F.

CAROL SINGING. The Carol singers will be out on the evening of Wednesday, 19th Dec. and this year ask your support for a new charity "Riding for the Disabled". I know you will receive them as kindly as ever. G.R.F.

STOP PRESS. The Autumn Fair on Saturday, 24th November returned to the Village Hall and was well patronised. We are all grateful to the people who worked hard to organise it, to those who gave to the stalls and the raffle prizes and refreshments, and to those who came and bought and, I believe, enjoyed it all. The total, clear of all expenses amounted to £258. Well done! G.R.F.

CHRISTMAS DECORATION OF THE CHURCH.

If more convenient, this can be done on Saturday, 22nd Dec. in the afternoon. G.R.F.

W.I. NEWS. On 22nd November, 25 members of our W.I. visited Thornley-Kelsey Ltd. at Radford Semele. A slide show of various stages in wine production was shown with commentary from the host and later the ladies tasted six wines of France and Germany to their great delight. Pizza, fruit conde, cheese, biscuits and coffee was served. All agreed it was a most enjoyable evening.

Next meeting - on Thursday 13th December, a Beetle Drive will be held at the Hall, wine will be supplied by the committee and delicacies by other members. All this frivolity will take place after the minutes and any other business.

Hatton Hospital Visit W.I. Members are visiting a ward at the hospital in order to give a little party for the patients. Will members please meet at the hospital by 7.30pm on Tuesday 18th Dec. If anyone would like to donate cigarettes, beer or food for these rarely visited men, please give them to any W.I. committee member - many thanks. I.B.

HALLOWE'EN NIGHT proved to be a fascinating time at The Bell Inn. A coven of witches gathered in the bar. The dowager chief of witches was superb and carried top prize - Mrs. Pearl Edwards. Merlin, the magician, came a close second - Marcus Warner, he had great presence too. Macbeth's witches, a glamorous mini-skirted trio, Marg. Bull, Jean Timms & Pat Warner, were mingling with the Count Dracula twins - Ken Bull and Colin Faulkner - while Dr. Jeckyll & Mr. Hyde (in the person of Geoff Timms) nodded with approval. Mrs. Faulkner was a

charming witch accompanied by the black cat - Yvonne the barmaid. David Monk - attired in modern (!) dress with Romily Monk as a witch hovering nearby. Last but not least came the friendly white Spooks - Louise Wiggins and her friend. All ate a hearty supper of sausage and mash in the attractive cave restaurant with turnip lamps glowing. £59 was raised, being the profit on the supper, for the Village Hall fund - our thanks to Eric and Heather Wiggins. P.S.F.

BONFIRE CELEBRATIONS in true Ladbroke style were held in Farmyard Field. The event was organised by the Village Hall Committee and raised about £65 for the Village Hall fund.

Splendid eats, a good firework display (yes, we did miss you Ian Holroyd) and bonfire were the ingredients for a very happy village gathering which was well supported. Our thanks to Tom Sheasby for the use of his field, a fine setting for the evening.

P.S.F.

#### LADBROKE CONSERVATIVES

The Christmas Party is to take place at Mr. & Mrs. Rutherford's home, The Old Rectory, on Wednesday 12th December between 8.0 pm and 10.0 pm. It is in the form of a Plate Party (small plate of savouries to be taken along). Tickets 50p from the Secretary or Treasurer. P.S.F.

---

#### HARBURY SCHOOL

This has been a most interesting start to a new year, our first term as a Combined School.

Children have been actively engaged in a whole variety of pursuits, both in and out of school time.

It has been fascinating to see groups of boys and girls engrossed in Home Economics, Woodwork, Science Topics and French, as well as more active interests like Netball, indoor Hockey, Cross Country running, Mini Rugby and Soccer. Thanks to a hardworking staff, we have been able to widen the horizons of the children considerably, and long may this continue.

We do hope that the many people who came to our 'Open Evening' on November 7th found it to be of interest to them, and were able to see the progression, the variety and purpose of the work which we do in the school.

As is usual at this time, the school is preparing for a whole series of Christmas activities which you will see in the



Diary. In the difficult days ahead we know that the school can depend on the support and goodwill of Harbury Community. Financial cuts are already with us, and staffing cuts will come into operation as from next September, so life at the moment is not at its rosiest. However, the staff and children of the school send warm Christmas greetings to you all. N.C.O.  
Christmas Concerts.

The First School Concert this year tells the story of a journey back through time, to the first Christmas.

The Lower Middle School children offer you entertainment on a scale even Sir Bernard Delfont would shudder at - two for the price of one!

In addition to the World Stage Premiere of the B.B.C. Radio "Music Workshop" adaptation of Hans Andersen's "The Tinder Box", we offer a potted biography of the famous Danish author which includes the famous songs "Thumbelina", "The Ugly Duckling" and "The King's New Clothes", all brought together under the title of "HANS CHRISTIAN ANDERSEN".

Remember when you were young? Relive that long forgotten childhood in the School Hall from 7 pm on Wednesday and Thursday, 5th and 6th December, 1979. No need to book in advance. No need to pay. Just come along to be rejuvenated. (The poor box will be passed among the audience to help raise funds for the poverty stricken School of Copenhagen).  
School Wildlife Club.

Despite its rather ambiguous title, this club was formed with the serious objective of fostering children's interest in wildlife and conservation in general. It is open to all Middle School children, who become Panda Club members up to age 10½ or Wildlife Observers beyond that age. Each child receives a card and a badge, or will do, when I receive them from Wildlife Youth Service in London.

The club meets after school every Tuesday, and activities include quizzes, word-games, film-strips and slideshows, talks, members' nights when children bring in pets etc. During the summer term we hope to have walks and longer visits. If anybody locally has a particular interest in connection with conservation, and would like to come and talk to the children, I would be very pleased to consider this.

NIGEL CHAPMAN.

## Sports News

The children of Harbury School have shown a keenness and exuberance towards sport this term, regularly braving the elements to stay behind after school to support Football, Rugby, Netball and Cross Country Clubs.

The football team after coming second rather easily in the first two games, bounced back to defeat Bishops Itchington by the handsome margin of 3-2 and following that, wearing an eye dazzling new strip provided by the PTA, avenged an earlier defeat by Radford Semele 4-1.

Three boys, David Andrews, Stephen Padbury and Stephen Evans, displayed their footballing talents before the Mid-Warwickshire selectors on Nov. 17th with the result being that David Andrews was selected for the Mid-Warwickshire U 12 team and Stephen Padbury invited to join the Mid-Warwickshire squad. My congratulations to both of them.

During lunch-times the boys have started a 5-a-side football competition for the Dave Williams House Cup (presented to Harbury School by his family). This is run on a league basis involving House Teams from all 4 years of the Middle School. Vocal support, as partisan as any First Division "Kop" roar encouragement for their respective "House". A grand final involving the top two houses in the league will be played just before Christmas. At the time of going to press Dickens House are the league leaders.

The girls have been in serious training for a Netball Tournament which has unfortunately been delayed due to the weather, but it is hoped that it will be held before Christmas. Only one fixture has so far been held this term in which the girls (again wearing a dazzling new kit) narrowly lost to Bishops Itchington.

Mini-Rugby has not yet graduated to the competitive stage but fixtures have been arranged for January and the team has also been entered for the Mid-Warwickshire Mini-Rugby Festival where it has high hopes for success.

Success has been achieved by members of both the boys and girls cross-country teams. Certificates of Merit have been awarded to Adrian Thomas (twice), Mark Lee (twice) and Sharon Andrews for places in the top twenty in races of the Mid-Warwickshire Cross Country League. As eighteen schools take part and up to 150 competitors per race, these are performances worthy of praise.

IAN STUART.



## PLAYGROUP

To Doreen Bloxham on her recent retirement from Playgroup, the committee and many parents would like to express their gratitude and heartfelt thanks for the eight years of dedicated and loyal commitment to the young children of Harbury.

To a much respected and recognised village personality, we wish every happiness for the future.

## TUFTY CLUB CHRISTMAS PARTY

The Tufty Club Christmas Party will be held in the Village Hall on Tuesday 11th December from 2pm to 3pm - not as previously arranged on 18th December.

If you have a child between 2½ and 5 years who hasn't been to Tufty Club before, why not start him or her off by coming to the Christmas Party? We make a charge of 5 pence and ask mothers to make a small donation of crisps or biscuits or small cakes.

Anyone wanting further details should contact Mary Thompson or Dorothy Groves..

## HARBURY YOUTH CLUB

The disco held in the Village Hall on Nov. 16th was a great success with around 165 young people attending.

With the funds in hand from the previous disco and other sources, some new equipment has been purchased - notably a cassette player, new darts, billiard balls, table tennis bats, badminton racquets etc.

This year, the Youth Club are hoping to make up grocery parcels to give as raffle prizes at the Senior Citizens Christmas party. Club members, accompanied by members of the Y.C. staff, will be making a house collection on Tues. & Wed. 11th & 12th Dec. They would be most grateful for contributions of groceries etc. for the old people.

Note: Christmas Wednesday evening disco on Dec. 19th.

## 1st HARBURY SCOUTS & GUIDES

Our bazaar on 10th November raised just over £200. This money will go towards the extension of the Scout Hut, work on which should commence in the New Year. Thanks to all those who worked so hard to make the event a success.

On Friday 21st December, we invite you, as families, to join us in 'Carols Round the Camp Fire' (See Diary). Camp fire

leaders, Bob Small and Gary Picken, have promised us something really special. We look forward to welcoming you.

J. L. H.

### HARBURY JUBILEE MOTOR CYCLE CLUB

The second of our events specifically for the younger age group was held in Mr. Davies' field on Nov. 10th when 15 lads turned up to ride the Club Honda and other machines belonging to the youngsters themselves. The aim of these events is to introduce the younger ones to riding motor cycles in a controlled and safe environment.

The next event will be on Saturday December 8th - weather permitting. Check with John Buck (612786) or John Moore (612427) on the Friday evening. JBM.

### HARBURY SOCIETY

On Tuesday 4th December at 8pm in the School Hall, there will be a talk by Geoffrey Fuller ARIBA, Assistant County Architect, on the work done by the County Council to restore the Windmill at Chesterton.

There will be slide illustrations and Mr. Fuller will give details of other works undertaken by the County. Refreshments will be available and non-members are welcome, so do bring your friends along.

As you may know, the Society is at present involved in attempts to save the Village Pump and its Well. The Parish Council has allowed us time to investigate the possibility of capping the well rather than filling it in, and we hope that a replica of the Pump can be placed on the Green when the work is completed.

In the New Year we shall have speakers from the Leamington Society and/or the Council for the Preservation of Rural England and we also hope to invite an expert on the use of aerial photography in discovering the past to address the Society in the Spring.

Details of the proposed New Year Social will be sent to members as soon as they are finalised.

LINDA RIDGLEY  
(Hon Secretary)

### YOUNG WIVES

Our December meeting will be on 18th Dec. and by tradition we ask members of the Mothers Union to join us for a short Carol Service in church at 2.0 pm. During the service we ask the children to donate a small gift for children less



fortunate than themselves. After the service we will adjourn to Mrs. Clarke's house at 1, Vicarage Lane, for a cup of tea and a mince pie. Everyone is welcome, so please come. M.C.

### HARBURY RUGBY FOOTBALL CLUB

With the season a third of the way through, a check on the club's performance would not go amiss. The 1st XV began really well - undefeated during September on Saturday matches - but since then somewhat Jekyll and Hyde performances have characterised their playing, winning well one week and then losing matches with rather limp displays the following week.

The 2nd XV have gradually improved with the benefit of settled teams whilst the 3rd XV have hit a poor patch over the last month. The 4th XV have been somewhat unfortunate with games cancelled due to late cry offs and injuries - so their appearances have been limited to only 5 matches this season.

The bright side of the season has been the Mini-Rugby section which has been excellently organised by Dave Andrews, Neville Lee and Dave Davies. The vast improvement of all the age groups has been splendid. The under 12's and under 11's are the most successful in matches against other clubs - but recent performances by all the other age groups (under 10s, 9s & 8s) has been marked by a rapid improvement.

Congratulations to Dave Davies, Darryl Hunter and Steve Byford on their selection for the South Warwickshire U 23 side (drawn from the 13 clubs in the district) and to Steve Byford for his selection in the full South Warwickshire side against Derbyshire last week.

An advance notice - on Friday February 29th, 1980, The Sommerville Gentleman's Dance Band with caller will be appearing at the Village Hall. Remember 'Sparky' during the Jubilee Week celebrations? JERRY BIRKBECK.

### HARBURY FOOTBALL CLUB

This year a total of 32 footballers (almost all of them village residents) have signed on to play for the Club and there have been 2 volunteer members of the committee who have made themselves available for fund-raising. Drew Bloxham has volunteered to assist Bill Stevens in collecting the Tote Money in the Old New Inn each Sunday lunch time (where the payout is £17/week) and Rick Evans has offered to help organise future dances.

The first 'Social' of this season was the Presentation Dance on Nov. 30th when the following awards were made:- Best Footballer - Rodney Taylor; Highest Goal Scorer - Kevin Bloxham; Best Young Footballer - John Sheasby.

There has been a welcome response to the call for younger members to bring 'fresh blood' to the teams and the Club can now avail themselves of the services of several teenagers including:- D. Bishop, S. Bell, I. Lowe, M. Hyde, I. Hanson, G. Humphreys, N. Humphreys, A. Nockalls, D. Smith, A. Young.

At the moment, success on the field appears to elude the teams who nevertheless turn out each week in the hope that THIS TIME they will 'thrash the opposition' !!! There have been some high scores in recent weeks, so the forwards are beginning to find their scoring form, but unfortunately the opposition usually manage to put the extra goal, which makes the difference, into the back of Harbury's net. The teams are far from dispirited and as the recent analyses from the Leamington Courier show, the only direction in which they can move is UP!!

<u>DIVISION 2</u>	Played 7.	Won 1	Drawn 1	Lost 5	POINTS
	Goals for 13	-	Goals against 25	(3)	

<u>DIVISION 4</u>	Played 8.	Won 1	Drawn 2	Lost 5	
	Goals for 11	-	Goals against 24	(4)	
					C.F.

#### HARBURY & DISTRICT N.S.P.C.C.

At our Christmas Card Sale on Nov. 9th we made £190 and cannot thank all our customers enough for helping us reach such a splendid sum, especially as in 1978 we thought we'd done well with £115 at the Card Sale! Our Raffle winners were 1st Mrs. J. Watts - Hamper; 2nd Mrs. A. Tyler - £2 ice-cream voucher; 3rd Mrs. H. Ceney - £1 grocery voucher; 4th Miss T. Winniffrith - 50p grocery voucher.

On Nov. 16th we held a Jumble Sale which raised £56, and again we do thank everyone who donated jumble and who came to buy it!

Our last event this year will be Carol Singing on Friday 14th December, and we'd love anyone to join us - especially Dads and musical instruments! We start from 17 Manor Orchard at 6.00 pm and return for soup and potatoes at approx. 7.00 pm. Any children under 8 must be accompanied



**bps**  
MERCHANTS IN BUILDING

building & plumbing supplies limited

42, HOLLY WALK, LEAMINGTON SPA CV32 4HZ

THE COMPLETE SERVICE FOR  
THE BUILDER AND D.I.Y.  
HOME IMPROVER

"HEAVY" MATERIALS AND HOME  
IMPROVEMENT CENTRE AT  
8 RADFORD RD. TEL. 26088

PLANT & POWER TOOL HIRE  
AT WOOD STREET HIRE SHOP  
TEL. 29898

OR TELEPHONE 21301  
for either service

**Lph**

Leamington plant hire limited

42, HOLLY WALK, LEAMINGTON SPA CV32 4HZ



SERVICING & BODY REPAIRS  
WELDING & CHASSIS REPAIRS  
TO M.O.T. SPECIFICATION

24 HOUR RECOVERY  
and BREAKDOWN  
SERVICE

R.A.C RESCUE SERVICE

CAR & VAN  
SELF DRIVE HIRE

QUALITY USED  
CAR SALES



THINKING OF MOVING HOME? 19 OLD SQUARE,

**Philip Blair** (assoc.)

WARWICK,

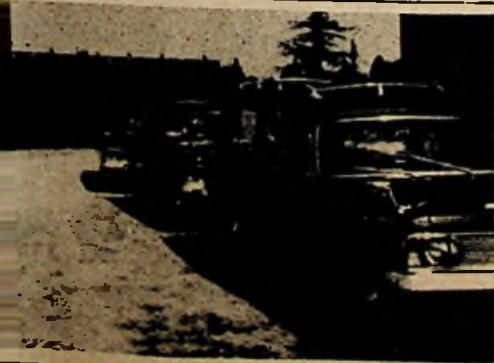
ESTATE AGENTS, VALUERS, LAND AGENTS

Agents for Anglia Hastings & Thanet Building Society

- ★ FREE VALUATION
- ★ FREE ADVERTISING
- ★ FREE SALES BOARDS
- NO SALE - NO CHARGE
- A PERSONAL FRIENDLY SERVICE
- Tel. (0926) 45317/8
- ★ ACCOMPANIED VISITS IF REQUIRED
- ★ OPEN SATURDAY TILL 4.00 pm
- ★ MORTGAGE ADVICE GIVEN
- ★ FREE PHOTOGRAPHS

or

42441 (24 hour service)



**W. Goodwin  
and Sons**

COVENTRY STREET, SOUTHAM  
FUNERAL DIRECTORS

All arrangements personally conducted  
in any district

Private Chapels of Rest

HEARSE & MATCHING FOLLOWING CARS

Tel.: (day) SOUTHAM 2445  
(night) 2657 or 2445

If you are thinking of buying or selling property in Warwickshire or Coventry, or have a problem connected with property, we may be able to help.



Chartered Valuation Surveyors  
and Estate Agents  
89 Regent Street  
Leamington Spa  
Tel. 311431

Also at Coventry, Kenilworth  
and Nuneaton

## **COWLEY BROS.**

### **FAMILY BUTCHERS**

SPECIALISTS IN DEEP FREEZE SUPPLIES & GREENGROCERY  
MONDAY - SATURDAY : DELIVERIES TO HARBURY & LADBROKE  
CHAPEL ST. BISHOPS ITCHINGTON. HARBURY 612090.

*DOUG & MAVIS POWELL WELCOME YOU TO THE*

## **DOG INN**

and

### **NICOLAS RESTAURANT**

GOOD FOOD & PLEASANT SURROUNDINGS

Harbury : Telephone 612599

## *Wyse Fashions*

39 COVENTRY ST., SOUTHAM.

52 COVENTRY ST., SOUTHAM

HABERDASHERY

MATERIALS

BUTTONS

GIRLS & BOYS SOX

TIGHTS STOCKINGS

UNDERWEAR

"SKETCHLEY" DRY CLEANING

NIGHT DRESSES

BRIEFS, BRAS

OVERALLS

HOUSE COATS

LADIES/GENTS/JEANS

TABARDS OVER-JUMPERS

CARDIGANS PULLOVERS

MENS SOX UNDERWEAR

SLAX SKIRTS

BOOT AND SHOE REPAIRS

TOWELS SHEETS BLANKETS

READY MADE CURTAINS

TIES HATS

HOUSEHOLD GOODS

PICTURES TABLE LAMPS

BEDSPREADS QUILTS



**F  
O  
O  
D  
M  
A  
R  
T**

**KEEN PRICES  
FRIENDLY SERVICE  
FOR  
YOUR GROCERIES  
AND  
FREEZER REQUIREMENTS  
PLUS  
NATIONWIDE  
CASH VOUCHERS  
DELIVERIES MADE  
TO SUIT YOU**

**Mill Street  
Harbury  
PHONE 612645**

**plumbing,  
painting  
& general  
repairs**

**D.J. JACKSON  
harbury 613155**

**BENCH  
TELEVISION SERVICES  
Harbury 612728**

**REPAIRS  
SALES  
RENTAL**

**CHAPEL STREET  
BISHOPS ITCHINGTON**

**CATHRYN CRAIG**

**For Expert Cutting and Styling**

**Relax in the pleasant atmosphere of this**

**Olde Worlde village salon**

**Chapel St. Harbury 612326**

# TRIPOD PRESS LIMITED

for all your printing  
and stationery  
requirements

7 Wise Street  
Leamington Spa  
Telephone 39735

## ROGERS KNIGHT

UNCOMMONLY GOOD CLOTHES

CLOTHES OF DISTINCTION  
FOR

THE MAN WHO PUTS QUALITY FIRST



158 Parade Leamington Spa Tel. 21501  
44 Wood Street Stratford-upon-Avon Tel. 2685  
19 Parsons Street Banbury Tel. 53430  
& Lymington Hants.

## WIGGINS, RUSSELL & DUFFY

### ESTATE AGENTS


FRIENDLY, PROFESSIONAL  
AND SUCCESSFUL SERVICE

FOR PROPERTIES IN SOUTHAM  
AND ALL SURROUNDING VILLAGES

**37, COVENTRY ST  
SOUTHAM  
Tel. 2285**

## Jeanne

MARKET HILL, SOUTHAM, TEL: 2808  
YOUR LOCAL

  
*Ladybird*

CHARTER STOCKIST

FOR BOYS & GIRLS TO 14 YRS.  
MANY ITEMS IN OUR RANGE  
WILL FIT THE SMALLER WOMAN  
LARGEST STOCK IN AREA  
LOOK AROUND WITHOUT OBLIGATION  
& COMPARE OUR PRICES

SOUTHAM SCHOOL UNIFORM  
ALWAYS IN STOCK

FREE PARKING

FITTING ROOM



by an adult please. Do join us for a real good sing and then the food and fun afterwards! We go regardless of all but downpours, so if in doubt ring me at 612938 on the night to check. We'll look forward to seeing you!

Harbury NSPCC Committee is sad to lose our Treasurer Mrs. Sally Merryweather, who is moving with her family from the village. We wish her every happiness and thank her so much for all her work with us in the past. We do welcome two new Committee members though, Mrs. Ann Allan and Mrs. Nicola Knight, and who have already done a great deal at our recent events.

VICTORIA MACGOWAN.

Hon. Sec. Harbury & District NSPCC.

### HARBURY W.I.

The voting of new officers took place at the November meeting, our V.C.O. for the evening being Mrs. Watson. Mrs. Davies reported on the Autumn Council Meeting and, as retiring secretary, gave a resumé of the past year's varied and interesting activities.

Mrs. Atkins read the Treasurer's report, and Mrs. Thompson thanked all her officers and committee for their support during her term of office, and added special thanks to Mr. R. Keen, Mr. G. Harridence and Mr. S. Checkley for their assistance.

New officers: President - Mrs. M. Thompson; Secretary - Mrs. M. Davies; Vice President - Mrs. D. Bradley; Treasurer - Mrs. A. Atkins.

Our play was performed in the Scene '80 Festival and, as we hoped, "wasn't too bad on the night". We appreciated the support of friends who came and enjoyed the evening's entertainment. Thanks too to Mrs. Zonik and Mrs. Hailey for their invaluable help in the dressing room. Here's hoping we make it to the second stage in March.

A very enjoyable Harvest Supper - good food - great entertainment by Mrs. Zonik entitled "Nought as queer as folk" and saucy period songs sung by Miss Christine Bradley and accompanied by Mr. Keith Burford (what would we do without that man?!).

We look forward to the Christmas Party and a date for your diary - 2nd February, 1980 - W.I. Dance to the "Likely Lads". Remember what a success last year's dance was?

To round off a pleasant evening, Mr. & Mrs. M. Ellis showed and narrated the movie of their holiday in Singapore and

Bali showing lovely scenery, exotic flowers and most of all - lovely warm sunshine.

JEANNE BEAUMONT.

### GOLDEN AGE

Our Christmas Dinner (which is for members only) will be on 6th December. Lady Watherston is kindly travelling from London to be with us, and we shall be entertained after the meal by two lady singers.

There are still a few seats left for our day trip to Coventry. The coach will leave the Village Hall at 10 am on 12th December. Please contact me if you are interested.

All members were very sad to hear of the death of Miss Hiron who played such an important part in founding the Golden Age Club.

L. KNIGHTON (612707)

### M. U.

At the November meeting we had a lively discussion about that "one-eyed monster in our livingrooms" - the television. We talked about programmes we'd enjoyed, and others we'd prefer to have missed! On the whole we agreed that standards are satisfactory, but we felt it a shame that so many interesting topics are confined to adult programmes like 'Horizon', 'Man Alive' etc.

There was some divergence of opinion about films of violence on early evening news bulletins, some members feeling that these are unsuitable for the children likely to be watching, but others arguing that children should be prepared for - not shielded from - life as it really is.

Shirley Keir prepared a report on our discussion, to go forward to the Diocesan T.V. representative, as part of a nationwide M.U. study on television and its effect on our lives.

At our meeting on 5th December - to which we would be delighted to welcome new friends - Mrs. Braithwaite will speak about Drugs.

DMH.

### PROFILE - MRS. ETHEL SOLLIS

With Christmas almost with us, it is very appropriate that the subject of our profile for this month's issue is Mrs. Ethel Sollis, one of the village post ladies.

Mrs. Sollis moved to Harbury from Deppers Bridge some 56 years ago. She was one of five children but only she and her sister, who also lives in the village, are still alive. She went to the Wagstaffe School (near the Church) and trans-



ferred to the Wight School at the age of 7+ and remained there until she finished school at the age of 14.

At that time jobs were difficult to find, particularly with only very limited public transport, and Mrs. Sollis went into service with a family in Willes Road, Leamington. She was allowed an hour off each afternoon, plus a half day every week and every other Sunday. She was very homesick at first and took every opportunity to come back to Harbury to see her mother. Her pay whilst in service was the princely sum of 7/6d a week. Mrs. Sollis stayed in full time service until the outbreak of the war when, in addition to her work in service, she spent part of her time working for Courts, the Leamington building firm. After the war she had to give up work completely in order to look after her mother who died in 1947.



When Mrs. Sollis first moved to the village there was no electricity and no mains sewerage facilities. She recalls that as a little girl of 8 or 9 she was taken into Staverton Isolation Hospital when there was an outbreak of scarlet fever in Harbury. She had to stay in hospital for eight weeks and can remember at the time that electricity was just being brought into the village.

For the past 12 years Mrs. Sollis, who has three grown up children, has been one of the five postmen/women who serve the village. She obviously enjoys her job which is reflected in the fact that although she could have retired last year, she clearly has no intention of hanging up her cycle clips yet. She gets up at about 5.30 a.m. each day and starts her post round at about 7.30 a.m.

The expansion of the village has brought a corresponding increase in the volume of post but unlike bigger postal centres who have the luxury of postal vans, Mrs. Sollis and her colleagues have to cope with parcels as well as letters on their bicycles. This can sometimes be a precarious operation!

Mrs. Sollis takes a very active interest in village affairs. She is a bingo enthusiast, attending the village club sessions and,

with some keen helpers, runs the Monday evening bingo sessions in the Village Hall. She also runs a whist drive every other Thursday afternoon. On two days a month she and a friend clean the Church - she also acts as a Sidesman at the Church. She is a member of the Senior Citizens Benefit Association Committee, the village hall Committee, and in fact was a member of the original committee which was set up to raise funds to build the hall.

According to Mrs. Sollis, the celebration of Christmas is not a great deal different today from her early childhood. She can remember going carol singing and to parties which were arranged by the British Legion at 'Mole's Hut' in Ivy Lane which was owned by Mr. Mole who used to run the top shop, now the Post Office.

Mrs. Sollis is one of the cheerful breed of people who are synonymous with Harbury. As with all those who provide services for the community, we should all be grateful to her and her colleagues who deliver our post. Perhaps though, we could express the quiet hope that those large telephone bills which are starting to appear could be marked 'gone away' or 'not known at this address' - after all, it is the season of goodwill!!

RAY HOARE.

### BONFIRE PARTY

I understand that there have been complaints about the charges made for this year's event. In particular people who were asked to buy a ticket when they did not want to have any food felt grieved. In view of this I think it necessary to publish a balance sheet to show how the charges are arrived at.

A total of 750 tickets are issued at 60p and 30p and no charge for the under 5s. The proportion of children to adults is approx 1 adult to 1 child (not taking account of free tickets for under 5's) - this makes an average charge of 45p and could produce £337.50p. As can be seen from the Balance Sheet this almost exactly matches the expenses, therefore it is vital that all the tickets are sold in order to break even.

It has been said that the Church 'must be making a bomb', but as this proves, this is not so. Over the 10 years since the event started the Church has underwritten the function and stood to lose a fairly large amount if the event failed - all expenses have to be paid whether there is a downpour or not. For 45p you can have a firework display, a hot dog, a cup of soup, a packet of crisps and a drink, to say nothing of getting



your rubbish collected and burned. Surely this is value for money even without the food.

I wonder whether the time has come for the Church to stop organising the event and either to handover to another group or even stop altogether. It involves a considerable amount of voluntary time and effort by a lot of people. Perhaps if those people who insisted that they should be admitted free of charge (on the grounds that it was a public field) had paid, the accounts would look healthier.

J.M.W.

<u>Expenditure</u>		<u>Income</u>	
Fireworks	185.15		
Sparklers	14.40	Sale of Tickets	
Food	123.29	& Gate Money	£336.75½
Hire of Hall (Reduced by cttee)	15.00	Donations	9.50
Tickets (printing etc.)	3.90		
Paper for publicity	2.90		
2 gallons of oil for fire	1.20		
	<u>£345.84</u>		<u>£346.25½</u>

Net Profit - 41½p

An important footnote: If it were not for the generosity of Mrs. Pat Hunt in searching out bargains and selling to the PCC at cost price, the food would have cost a great deal more.

### HARBURY LIBRARY

Did you know that in the recent Local Government cutbacks Harbury Library was within a whisper of being reduced to opening one day a week? Over the past weeks the use of the library has declined considerably and we could very well lose it completely in any future cutbacks.

We are open Monday and Thursday from 10.30am - 1 pm, 2 pm - 5pm, 5.30pm - 7pm. There is a good junior section, also a selection of paperbacks, a large stock of books in large print, a good local history collection, biographies, a small reference library, etc.

So come on readers, either use it or lose it.

SHIRLEY KEIR.

Librarian.

N.B. There is a display of drawings from Harbury School on show in the Library at present - do come along and see them.

## HAVE YOU A CRADLE FIT FOR A PRINCESS?

Harbury Theatre Group is in need of one for its Christmas extravaganza - SLEEPING BEAUTY - to be presented in the Village Hall on Thursday, Friday & Saturday, 17th, 18th and 19th January (with a matinee on the Saturday).

Dance, drama, song and slapstick (not to mention a cow!) will combine to provide fantastic fun for all the family.

The cast which ranges in age from 7 to 70) numbers about 50, so buy your tickets early before all their families fill up all the seats!! The "Box Office" is at Philip Lindop's Drug Store, and tickets are also available from Tony Knight at the Co-op Butchers, or tel. Carol Percival on Harbury 612175.

This is our first Pantomime, and all we need to make it a success is YOU (and a cradle!)

p.s. Our lighting man would also be grateful for any 2 or 3 core electric cable. Please ring 612790. DMH.

## HEALTH IN THE COMMUNITY

As a member of the Harbury Prayer Group I would like to say how helpful we have found joint prayer in giving comfort and strength to people who are suffering ill-health either physically or spiritually.

We would like to be able to share with the whole community the wonderful gifts of answered prayer and if anyone would like to be included in our prayers for the sick, or visited at home by any member of the Prayer Group, could they please contact the Vicar (612377) or any member of the Group, so that we can be aware of their needs and act upon them. L. C.

## CHRISTMAS RECIPES

### Iced Christmas Pudding:

This pudding is a pleasant alternative for those who do not like the traditional kind. It is very easy to make but you need access to a freezer.

1 tbsp. chopped glacé cherries; 1 tbsp. Chopped sultanas; 1tbsp. currants; 2tbsps. brandy; 1 pint vanilla ice cream. Place fruit in a bowl with the brandy and leave for 2 hours. Beat the ice cream. Add the fruit and its marinade. Place in a 1½ pint foil basin. Seal and freeze. To serve, unmould on to a dish, and thaw at room temperature for 15 minutes. Decorate with whipped cream and glacé cherries.



### Mincemeat Slices:

These keep very well in a tin.

4oz. shortcrust pastry; 2oz margarine; 2oz granulated sugar; 1 egg; 3oz plain flour; pinch of salt; grated rind of a lemon; 1 tsp baking powder; mincemeat.

Roll out pastry to line a 7" by 10" tin. Spread the mincemeat over the pastry. Cream the margarine and sugar. Beat in the egg. Fold in the flour, lemon rind, salt and baking powder. Spread over mincemeat. Bake for 30 mins. at 350 deg F. When cool, ice with glacé icing. When set, cut into slices.

### POPPY DAY APPEAL

Our thanks are again due to the many helpers who give their time and effort each year to the Poppy Day Appeal house-to-house collection.

The collections are made by the following: - Mrs. Bunting, Mrs. Cooper, Mrs. Farley, Mrs. Finch, Mrs. Goodman, Mrs. Hancock, Mrs. Haynes, Mrs. Keeling, Mrs. Macgowan, Mrs. Sperling, Mrs. Suttie, Mrs. Towell, Mrs. Tucker and Mrs. Wilson.

Other areas were covered by: Mrs. Cooper (Ufton), Mrs. Bartlett (Deppers Bridge) & Miss Hillier (Bascote Heath).

In addition we had donations from Harbury Church, Ufton Church, Bascote Heath Chapel and Ufton Bingo Evening, together with collections at shops and pubs and the School achieving a total of £343.87, an increase on last year's total of over £35.

JOHN BARNES.

### DANCING EXAMINATION SUCCESSES

In the recent examinations held at Harbury for the Dance and Drama Academy, all 41 candidates were successful. Results are as follows: -

P pass, PP Pass Plus, H Honours, HP Honours Plus, C Commend

Preliminary Ballet: Joanna Reid PP, Karen Mancell, Michelle Coupe HP, Sonia Taylor HP, Eloise Joyce H, Clare Macaulay HP.

Grade One Ballet: Andrea Burford C, Penny Simcock C, Rachel Hingley H, Kathrine Jackson H, Hayley Green H.

Grade One Tap: Sarah Jackson H, Julie Gosling H, Michelle King H, Julie Forgan HP.

Grade Two Tap: Joanna Reid H, Karen Mancell HP, Lynn Jackson PP, Louisa Newbold HP, Gail Davis C, Joanne Hall HP, Tina Collins HP, Zoe Smith C, Michelle Cox C,

Lucy Jessup H, Jeanette Robson PP, Kathrine Jackson H, Louise Wright PP, Fiona Clarke H, Rachel Hingley C, Charlotte Hibberd H, Alexandra Joyce H, Eloise Joyce H, Mandy Millar C, Tracey Cox HP.

Grade Three Tap: Andrea Burford C, Penny Simcock HP, Caroline Kennedy C, Tracey Gulliver PP, Hayley Green H, Deborah Simcock HP, Sacha Lee C, Lana Marsh H, Claire Turner C.

Grade One Elocution: Joanna Reid H, Sacha Lee HP, Karen Mancell H, Lynn Jackson H, Tracey Gulliver HP.

Grade Two Elocution: Andrea Burford H, Christina Sutton PP, Louise Healey P, Hayley Green P, Caroline Kennedy P, Jill Humphreys H, Shelagh Crampton PP.

Preliminary Theatre: Tracey Gulliver PP, Joanna Reid H, Karen Mancell H, Lynn Jackson PP, Andrea Burford HP, Caroline Kennedy HP, Christina Sutton H, Louise Healey H, Sacha Lee C, Claire Turner HP, Kim Davis PP, Hayley Green H, Tina Collins H, Tracey Cox H, Rachel Hingley C, Nicola O'Toole HP.

Grade One Acrobatic: Joanne Hall C, Leonie Carter C.

Grade Three Acrobatic: Penny Simcock C, Christina Sutton C, Deborah Simcock C.

All are students of the Bayard Academy, Harbury.

### THE CAROL SINGER

The old lady was almost asleep when the carol singers came. She was sitting in her chair, her hands in their grey wool gloves clasping a blanket round her. Her grey head had dropped forward as she dozed, and her feet, in wrinkled stockings and old slippers, rested on the iron fender - it's hard to break a life-time habit of sitting by the fire, even when the coal is all used up. She slept a lot nowadays. You don't feel so cold or so hungry when you're asleep, and it made the time pass quicker too, now that people didn't pop in so often.

She raised her head to the singing, and stiffly struggled out of the chair. She always gave the carol singers something every year - it couldn't be much this time, she thought, but a shame to let them go with nothing. They were moving away down the street by the time she'd opened the door, but a boy turned back and came towards her. "Shall I sing a bit more for you?" he asked. She nodded, and he listened, her eyes filling with tears as his pure young voice filled the evening air.



with a favourite carol. "Would you like a biscuit?" she asked softly, when he'd ended the song, and he nodded eagerly, and followed her inside.

The food parcel she got each Christmas from the Pensioners' Club stood on the table, and she found some biscuits and handed the packet to the boy. To her surprise he ate the whole packet in next to no time! "Would you like something else?" she said, amused, but then her smile faded as she realised this was not just boyish greed - this was real hunger. By gentle questioning she learned that the boy was an orphan. Everyone at the orphanage, he told her, went to friends or relatives at Christmas - no-one got left behind. He'd told them his Aunt May would have him, so they'd let him out, and he'd be sure to find somewhere to go - after all, everyone went somewhere for Christmas - no-one got left behind.

She took the blanket from her shoulders and tucked it round his knees as he sat, then looked to see what else was in the food parcel. Plenty for two, she thought. The excitement of cooking for more than just one spurred her on, and soon she carried in two plates of food from the kitchen and handed one to the boy. They ate in a warm silence, and afterwards talked in the special way different generations can, until her head nodded forward again, and she slept.

It was some hours before she woke. Early dawn was breaking above the rooftops, and she saw in its pale light that the boy had gone. The pots were washed and tidied away - all she found was a little note on the table which said "Thank you".

She pulled her blanket round her again, and with a peaceful smile, settled back to sleep till morning.

Later came a knock at the door - her neighbour come to see if all was well. "Hello, May", the neighbour said cheerfully, "Have a good Christmas? Not quite the same was it, with no carol singers?"

The old lady looked puzzled for a moment, then smiled, and said nothing.

DMH.

### PRESENTATION IN LEICESTER

Miss Tina Sheasby, a Harburian who is at present a second-year fashion and textiles student at Leicester Polytechnic, was recently chosen to make a presentation to the Bishop of Leicester when he visited the College. She gave him a roll of knitted fabric bearing the Diocesan Coat of Arms, which had been

made on a computerised double-jersey knitting machine.

Tina, whose parents, Maurice and Beryl, live in Temple End, was born in Harbury and went to Harbury School. She was pictured in the Leicester Mercury with the Bishop.

### HARBURY HORTICULTURAL SOCIETY

The November question night at the Wight School proved very interesting and it is hoped that this may be repeated in the future.

All future meetings will be held at the Wight School now starting at 8.00pm. The December meeting will be a talk by Mr. D.J. Watkins of Watkins Roses of Hampton in Arden on the subject of.....roses!

Catalogues for the bulk seed order from Dobies Seeds are now available, the discount mainly being 30%. Completed orders should be with me by December 15th at the latest.

TONY BRUNTON.

### VILLAGE HALL COMMITTEE

The Village Hall is not a healthy place, atleast not if you are a piano! Children scratch your veneer, strongmen push you about and those with a musical bent hammer you to death.

Jill Gurden says that the Village Hall has had at least six pianos, but the last one only survived a year or so. Its demise came at an unfortunate because Mr. Andrews had hired the Hall to the Warwickshire Hunt for its revue and they needed the use of a good piano. At considerable expense (£25) the Village Hall Committee bought another only to find that Sir Adrian Beecham (Of the W'shire Hunt) did not consider its tone good enough. He is bringing his own instrument now. As Mrs. Gurden says, the Village Hall cannot go on buying pianos only to have them ruined. From now on the inadequacies of the resident piano will have to be accepted or it can be re-tuned at the hirer's expense.

The Electricity Board is to be invited to survey the Hall and give advice on how best heating costs can be minimised. Repairs will be undertaken to the lights in the Main Hall and Refreshment Room and to the wash basin in the Changing Rooms.

In an attempt to deter youths from causing mischief around the Hall (last month they began a fire outside one of the Hall Doors) lights are to be installed at the entrances and kept on all night. The Committee refused the Recreation Grounds'



request to be allowed to erect an old Railway Goods Wagon alongside the Hall for the youth of the village to use as an unofficial meeting place. Pc Percival reminded the Committee that at the Open Meeting last year, the Diocesan Youth Leader had warned that such an unsupervised shelter would rapidly become a 'den of iniquity'.

LINDA RIDGLEY.

### CORRESPONDENCE

Dear Sir,

My wife and I are two more Harbury dwellers who would rather have British planes flying low over the village than those of an alien force.

Yours faithfully,  
R. F. Picken.

Dear Editors,

We would like to thank the many people in Harbury who provided so much kindness and support to us all during John's illness. Happily he is well on the road to recovery.

Elizabeth and John Knight and family.

Dear Editors,

#### Aeroplane noise

In the 'Harbury News' of November 1979, Victoria Macgowan wonders whether it is only the Parish Council that is complaining about the 'minor irritation and small disturbance' of low flying aeroplanes.

The people most affected by these planes are the ones who have the least voice in the Community, namely the very young and the elderly. The sudden deafening noise is a most frightening experience for toddlers and old people living alone but these are hardly the people who are in a position to complain.

The aeroplane noise is on a par with the shattering noise made by a small minority of inconsiderate motorcyclists. The former we have to accept in the interests of national defence though I am none too sure that we have to accept their flying directly over the village. The latter is beyond the law at present and must rely entirely on the consideration and goodwill of the offenders.

We are indeed lucky to have such 'abundant peace and quiet' as Victoria Macgowan rightly tells us but I cannot agree with her that just because we have it so good we should not strive to make it even better. The elimination of some of the major

noise nuisances would go a very long way towards such an improvement.

Yours sincerely,  
Gordon Avery.

Dear Editors,

Parish Trees

My wife and I have made a strong protest to the Parish Council concerning "pollarding" of the trees in the cemetery.

We have in the past raised this issue with the Council but obviously to no avail, and we seek the help of the Harbury and Ladbroke News to draw attention of the parishioners to the issue.

Pollarding, certainly of lime trees, should leave a proportion of main branches. It also means giving regular, certainly annual attention to the trees to properly contain growth - this means considerable annual cost. Stripping everything off the main stem every five - ten years is not pollarding, or proper husbandry.

Pollarding considerably lessens the life of trees. The proliferation of growth around sawn off branch scars creates many points for disease and decay to attack the main stem. Look at any pollarded willow, and as a specific example, the lime trees in St. Mary's churchyard, Warwick.

Whilst accepting there are certain legal obligations the Council must take heed of. (shading and leaf fall are very dubious nuisances), these obligations cannot possibly justify the extent of the operation.

The duty of the Parish Council surely is not to take action in respect of the interests or opinions of a few but of the whole community. Only a few individuals not all in the immediate vicinity were consulted. There are many occasions when the benefit of a whole Parish must take precedence, and this must be one such occasion.

We would like to draw attention to the lime trees on part of the school playing field boundary (the same vintage as the cemetery). These trees are regularly inspected to ensure safety (much less expensive than pollarding) to retain shape, and to take account of adjoining owners interests. They are now, not only a visual asset to Harbury, but when in bloom in early July provide distinctive and pleasant perfume to a wide area. Alas the twelve trees in the cemetery will now not flower for many years and they will also assume the visual



aspect of up-turned lavatory brushes.

We hope the Parish Council will prevent any further £80 massacres and will try to rectify the severe damage. Professional help is available, perhaps free of charge, from the County Architect or the County Land Agent, Shire Hall, Warwick, who have respectively a Landscape Architect and Forester on their staffs.

My wife and I would finally like to thank Councillor Bruce Hannay for patiently listening to our protests and trying, alas only partially, to lessen the impact of the work in hand on the sad Saturday afternoon of 27th October.

Yours faithfully,  
Geoffrey Fuller.

Dear Sir,

I have received several letters from anxious parents in Harbury about the consequences of the reductions in spending on Education this year and next and would be grateful if you could publish this letter to give a wider circulation to the replies I am sending individually.

I hope you will understand that as the recent Chairman of the Education I know better than most what the reductions in expenditure mean. Up till now, broadly speaking, the schools have been quite rightly protected with the reductions falling on many other national services such as the Health Service and the Armed Forces. Indeed the state of affairs in these two services had reached a stage where no further reductions can be contemplated and indeed it has been necessary to put more money into Defence. On a more local level in Warwickshire the Education service has up till now had to bear a smaller proportion of earlier economies but as the biggest spender it cannot now escape. The size of the economies in Education if applied to the other County services would virtually eliminate them.

Even so, it is only as a last resort that the Committee has felt obliged to look at the size of the teacher force and in fact we are only going back to the staffing position of two or three years ago. The matter is made more difficult by the falling numbers of primary children.

Even so the additional needs of the Combined Middle Schools have been recognised and the specialist teaching which at the time looked in danger, is being retained. No final decision on all these economies will take place until January or

February and even then the full impact of next year's salary bill for the teaching staff will be totally unknown. It has all got to be paid for by us.

In Harbury the provisional staffing for next year is known to Mr. Oliver. This year with 344 pupils in September and a likely 355 in January we have a total of 14.3. Provisionally next year with an estimated 331 pupils in September, the figure is 13.3. This is broken down as Mr. Oliver plus 11 classes plus 1.3 teachers specially allocated for middle school work. The numbers of children aged 10 and 11 will reduce from 105 to 92.

Mr. Oliver hopes that his existing policy for rising fives will continue and the decision will be for the Governors and Mr. Oliver to make.

The reduction in provision for books is serious and I cannot help but express my congratulations and thanks to the PTA for the very valuable contribution they are making to help Mr. Oliver in this field. This sense of the value of Harbury school to the village is enormously important and is I believe a way in which we can all, in our own villages, make a contribution to help. Many people have interpreted the publication of a list of all the possible ways to reduce expenditure as an indication that they are all going to be made. This is not the case and the Committee is examining each in turn to determine which will cause the least problems for parents, staff and more importantly, the children.

Of course I will do all I can to reduce the severity of the reductions and my successor as Chairman takes exactly the same view.

Yours faithfully,

Rupert Kettle. (Major R. B. Kettle)

### VARIETY SHOW

Members of the Warwickshire Hunt and Supporters Club will be producing a new original musical variety show called 'A Foxhunter's Dream'. This will be staged on 13th - 15th December at 7.45pm in the Village Hall.

On Thursday 13th seats are free for O.A.P.s and £1 for others. Other nights from £1.50.

Tickets available from Julie Mugleston,

Country Fayre, Chapel Street.



WELCOME TO THE 1980's  
with



# SLEEPING BEAUTY

PANTO

A TRADITIONAL

By HARBURY THEATRE GROUP  
and the BAYARD DANCING ACADEMY

JAN 17, 18, 19, HARBURY VILLAGE HALL

\*MATINEE 3PM SAT JAN 19<sup>TH</sup> \*

TICKETS FROM:- Philip LINDOP, Chapel St

Thurs 60p (Sen Cit & Child 30p) HARBURY

Fri & Sat 75p (Sen Cit & Child 35p)

Phone Bookings-

Carol Percival 612175

ALL SAINTS CHURCH, HARBURY

MONDAY DECEMBER 24th

(CHRISTMAS EVE)

SERVICE of NINE LESSONS & CAROLS

4 p.m. in HARBURY CHURCH

COMPUTER HIRE. At over 1,000 calculations per second, the PET microcomputer can solve most problems (involving numbers and letters!) Use the home accounts, mini- ledger, mortgage, education programs, play the games or program it yourself. Still £1 per evening, introductory offer. Phone Mike Meditzky (612886).

CONSERVATIVE COFFEE (& MINCE PIES) MORNING

Wednesday 5th December, 10.30 am.

Old Timbers, Ivy Lane.

Christmas Raffle; Bring & Buy.

Stratford-on-Avon District Council Meeting at the Council Chambers, Kinwarton Road, Alcester on Wednesday 10th Dec.

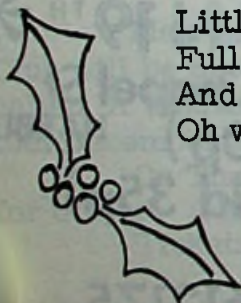
It is very rarely more than one member of the public attends these meetings. If you feel your area is not getting its fair share of the cake, then it is only just that you go to a meeting and see for yourself how your Council works. I.B.

CHRISTMAS STOCKINGS

Red and white stockings,  
Bumpy as can be,  
I wonder what's inside them,  
Let's wait and see.

Little plastic walking sticks,  
Full of sweets inside,  
And if your mother buys one,  
Oh what a big surprise!

by Sarah Burnham (age 8)





# Deville Design

## ARCHITECTURAL PLANS

Drawn for any Home Extension  
or Alteration. etc

### PEN & INK SKETCHES

of your home or favourite buildings

Contact: **JULIE LINDON**

Ladywell Cottage, Binswood End,  
HARBURY. Phone: 613361.



**A.G. KNOWLES**  
**FOR ALL YOUR**  
**PLUMBING**  
**&**  
**HEATING**  
**REQUIREMENTS**  
**HARBURY 612331**

## SHAKESPEARE INN

### WHITBREAD ALES

GOOD SELECTION OF  
HOT & COLD BAR SNACKS

LARGE GARDEN & CAR PARK  
MILL STREET HARBURY 612357



FAMILY  
BUTCHERS

## T & B SUMMERS

7 CAMPION TERRACE  
LEAMINGTON SPA

QUALITY MEAT FOR  
DEEP FREEZE

PHONE: LEAMINGTON - 25699  
HARBURY - 612059

## Carpet Fitting Specialists

MICHAEL JEROME

"CHERRY TREES" SCHOOL LANE  
LADBROKE  
SUPPLYING, PLANNING & FITTING OF  
ALL TYPES OF CARPET AND  
CUSHIONED VINYLs.

EXISTING CARPETS REFITTED

FOR PROMPT ATTENTION  
TEL. SOUTHAM 3325



NATIONAL INSTITUTE OF  
CARPET FITTERS

SPECIALISTS IN FUR RE-STYLING & RENOVATIONS

## BRIANS FURS

Comprehensive range of quality coats,  
jackets & hats always in stock.

Including: CONEY, SWEDISH LAMB,  
MUSQUASH, MINK MARMOT, RED FOX,  
KIDSKIN AND MINK.



122, REGENT STREET LEAMINGTON SPA TEL. 21049

# SOANS OF SYDENHAM and SOUTHAM



SYDENHAM DRIVE,  
LEAMINGTON SPA.  
TEL: 29411.



also at Kineton Road, Southam TEL. SOUTHAM 4540

## DOVEHOUSE AUTO SERVICES

E.G. BUCKLE  
8 DOVEHOUSE LANE  
HARBURY  
Tel. 612809

FOR ALL YOUR MOTOR REPAIRS  
VEHICLES RESPRAYED : MOT REPAIRS  
GENERAL WELDING : TYRE REPAIRS  
WINDSCREENS REPLACED  
AUTOMATIC TRANSMISSION : WIDE RANGE  
OF SPARES FOR THE D.I.Y. MAN.



Your  
**Vauxhall  
Bedford**

**Motors (Leamington Spa) Ltd.**

Old Warwick Road Leamington Spa  
CV31 3NX Telephone 0926 20861/2/3

Also at Coventry

**Main  
Dealers**



## Leisure Life

*Specialists in Casual Wear*

## JEANS

We stock the best selection in Town  
Flares and Straights

**WRANGLER LEVI SLOOPY BRUTUS**

## INSTANT PRINT BAR

T Shirts and Sweat Shirts  
Printed While - U - Wait

Motifs or Lettering

You Name It We'll Print It

117, WARWICK STREET, LEAMINGTON SPA Tel: 28326