



CHESTERTON

Honiwell Close

RADFORD
& LEAMINGTON SPA

Temple End

OLD NEW INN

The Manor

Bush Heath Lane

Manor Road

Penelope Close

Margaret Close

VILLAGE HALL

Pineham Avenue
POLICE HOUSE

South Parade

Manor Orchard

SCHOOL

Chapel St.

GAMECOCK
Try Lane

THE DOG
Post office

Church Street

Vicarage Lane

Francis Rd.

Harbury House

Neales Close

Surcliffe Drive
SURGERY

**HARBURY
NEWS**

Heber Drive

THE SHAKESPEARE

Windmill

LIBRARY
BANK

ALL SAINTS
CHURCH

The Hall
Hall Lane

THE CROWN

VILLAGE CLUB

Crown Close

The Pond

UFTON

DEPPERS
BRIDGE
& SOUTHAM

& SOUTHAM

HARBURY NEWS

THE HARBURY NEWS reflecting all aspects of Local Life is published monthly, and produced with assistance from the Parochial Church Council of **ALL SAINTS' CHURCH** – Vicar: The Rev'd. F.R. MACKLEY. B.A.
Telephone: Harbury 612377.

SUNDAY SERVICES: Holy Communion : 8.00 a.m., 10.00 a.m. (Sung)
Evensong : 6.30 p.m. (4.00 p.m. in Winter)
Family Service : 11.15 a.m. – First Sunday

See Church Notice Board for details of other services.

DOCTORS' SURGERY: Farm Street. Telephone: 612232.
Monday – Saturday : 9.00 a.m. – 10.00 a.m.
Monday, Tuesday, Friday : 6.00 p.m. – 7.00 p.m.

POLICE: Telephone SOUTHAM (981) 2366

LOCAL CONSTABLE: P.C. T.PERCIVAL. Telephone: Harbury 612175

EMERGENCY SERVICES: Telephone 999

'THE HARBURY DIRECTORY' containing details of Village Organisations and essential information is freely available on request from Mrs. D. Holt, 15, Wagstaffe Close, Harbury.

Editorial Office : 23, Mill Street, Harbury. Telephone: 612427
Small Advertisements: Telephone 612790 by 25th of Month.



MORRIS

BULL RING GARAGE

LEYCARE



RETAIL DEALERS FOR MORRIS, PRINCESS, M.G. CARS
FULL SERVICING FACILITIES
CAR HIRE – SHORT & LONG TERM
ELECTRONIC TUNING. EXTENSIVE RANGE OF PARTS
QUALITY USED CARS
M.O.T. TESTING

BULL RING GARAGE
HARBURY

TEL: HARBURY 612275

We would like to make special mention this month of our advertisers, and to thank them for their valuable support. We would be unable to continue the magazine in its present form without their generosity, and we urge all our readers to use their services whenever possible.

You will see in this issue the views of the members of the Women's Institute on the Jubilee Tree proposed by the Parish Council and being organised by the Harbury Society. Opposition to the idea of a Jubilee Tree seems to centre mainly around the possible vandalism it could be subject to, but the Harbury Society assures us that the tree will be sufficiently mature and large to be as "vandal proof" as they can reasonably make it. Plans for the tree may be too far advanced now to be changed, but no doubt the Parish Council would still be interested to hear your views - in fact, that's why they've held 2 public meetings, to ascertain the feelings of the village.

We regret to record the sudden death of Sir David Watherston, a well known and respected member of our community, and we extend our sympathy to his family.

We would like to thank Linda Ridgley for editing the Diary so efficiently for the past few months, and to welcome back Sara Bennett as our "Mrs. Dale" once again.

DIARY

FEBRUARY

Tues.	8th	Harbury Friends, talk by Mrs. Zonik, School, 8pm
Thurs.	10th	Golden Age, V. Hall, 2.30 p.m.
Sat.	12th	Harbury Club, Dance to Paula & The Sunrise
Sun.	13th	Bellringers' Sunday - Sung Communion, 10.00am
Tues	15th	Tufty Club, V. Hall, 2.30 p.m.
Wed.	16th	PTA, The Role of the Combined Schools, Talk by Mr. Wilmer, School, 8 pm Crusader Upper Junior Evening, 1 Vicarage Lane.
Thurs.	17th	Theatre Group meeting, Club, 8 pm.
Fri.	18th	Football Club Dance, V. Hall
Sat.	19th	Harbury Club, Dancing to Tudor Lodge.
Sun.	20th	Confirmation by the Rt. Rev. J. D. McKie, 10.00am Coffee & Sticky buns for all in V. Hall afterwards.
Mon.	21st	Guides Jumble Sale, Scout Hut, 6.30 p.m.
Tues.	22nd	Shrove Tuesday Lent Study Group, the Vicarage, 8.00 p.m.

- Weds. 23rd Ash Wednesday, 7.30am & 10.15am, Holy Communion
 Ash Weds. Service, 7.30pm, Evening Communion
 at Ladbroke, 7.00 p.m.
- Thurs. 24th Golden Age, V. Hall, 2.30 p.m.
 Children's Lent Service, Church, 6.30pm.
- Sat. 26th Harbury Club, Dancing to 'Travellin' Light.
- Sun. 27th Guides' Sunday - Sung Communion, 10.00 a.m.
 Footpath Assoc. ramble from V. Hall, 2.30pm.
- Mon. 28th Harbury Society, Civic Trust Slide Show 'Local
 Amenity Societies', V. Club, 8.30pm.

MARCH

- Tues. 1st Young Wives, V. Hall, 2.00pm for 2.15pm.
 Lent Study Group, the Vicarage, 8.00pm.
- Weds. 2nd M.U., speaker Mrs. Banks Price, Old Timbers,
 Ivy Lane, 2.30pm.
 Crusaders swimming: meet at 1, Vicarage Lane.
- Thurs. 3rd Children's Lent Service, Church, 6.30pm.
 W.I., Wallace Arnold Travel Film, V. Hall, 7.45pm.
- Sat. 5th Playgroup Nearly New Sale, Wight School, 10.00am.
 Harbury Club, Dancing to Penumbra.
- Sun. 6th Sung Communion - Newly Confirmed - 10.00 a.m.
 Family Service, 11.15 a.m.
- Mon. 7th P.C.C., Wight School, 8.00 p.m.
- Tues. 8th Harbury Friends, Film & Talk by Mr. Lines on
 New Zealand, School, 8.00pm.
- Wed. 9th Lent Study Group, The Vicarage, 8.00pm.
 PTA Square Dance, School Hall
- Thurs. 10th Golden Age, V. Hall, 2.30 p.m.
 Children's Lent Service, Church, 6.30 p.m.
- Sun. 13th Crusaders' Sunday, Sung Communion, 10.00am
- Tues. 15th Tufty Club, V. Hall, 2.30 p.m.

ROMAN CATHOLIC SERVICE, Harbury Hall Chapel, 10am every
 Sunday

CRUSADERS, V. Hall, 2.30 p.m. every Sunday

BINGO " " 8.00 p.m. " Monday

GUIDES Scout Hut, 7.00 - 8.30pm every Monday

YOUTH CLUB V. Hall 8.00 p.m. every Wednesday

BABY CLINIC " " , 2nd & 4th Wednesdays, 2 p.m.
 Special appointments every 3rd Monday

SCOUTS Scout Hut, 7.00 - 9.00pm every Friday

CHOIR PRACTICE, Church, 6.30pm every Friday

THEATRE GROUP, Village Club, 8.00pm, Last Friday each month.

ALL DATES CORRECT AT TIME OF GOING TO PRESS.

DATES FOR INCLUSION TO SARA BENNETT, 612618.

THE VICAR'S LETTER

My dear friends,

The great event of this February will, of course, be the Confirmation (and First Communion) of fifteen of our young people at the Parish Eucharist at 10 a. m. on Sunday February 20th by the Assistant Bishop. Everyone is cordially invited to attend, and I hope that many, especially of those confirmed in recent years, will, for their own good, for the encouragement of the newly-confirmed, and above all for the glory of God, make it an occasion for their own re-dedication. After the service all are invited to the Village Hall for refreshments and for the opportunity of meeting the Bishop socially.

Lent begins on Ash Wednesday (February 23rd). Before undertaking any special Lenten devotions the Churchman should make sure that he is fulfilling those religious duties which apply all the year round. Someone has written: "You do not begin to keep Lent properly unless you recognise that your first and foremost duty is to be present at the Holy Eucharist, whether you receive or not, every Sunday morning." This is true. We rejoice at the recent increase in the numbers attending this Service on Sunday mornings, but we must insist on the "duty" of it - unless reasonably hindered or prevented. There are normally in our Church two times to choose from - 8.0 a. m. and 10.0 a. m.

The day before Ash Wednesday is known as Shrove Tuesday, and "being shriven" is another name for going to confession and receiving absolution. It is certainly a good thing to make one's confession before Lent begins and to start the holy season with the assurance of forgiveness.

The list of Ash Wednesday services will be found elsewhere in the "Harbury News". I am again having the "Children's Special" Lent Services which have proved so popular in recent years on Thursday evenings at 6.30 beginning on February 24th. We are also again having, jointly with Ladbroke, Lenten prayer, study and discussion meetings. The first one will be on Tuesday March 1st at 8.0 p. m. in the Vicarage, and further details about the others will be found elsewhere in the "Harbury

News".

May this Lent be to us all a time of real spiritual growth.

Your sincere friend and Vicar,
F.R. Mackley.

HOLY BAPTISM

January 2nd - Peter Lewis Roberts
Lynn Marie Roberts
Simon Peter Roberts
Jason Roberts.

Funeral Services in Harbury Church followed by Christian Burial in Harbury Cemetry

January 3rd - Emily Gertrude Biddle, aged 86 years.
January 14th - Alice Kate Newport Frost, aged 84 years.

The "Help the Aged" appeal and the Cystic Fibrosis fund both acknowledge the receipt of £6.50 from the Theatre Group (being the collections amounting to £13 taken at the presentations of "The Coming of the Kings and other Christmas Things" in Harbury Church).

FROM THE CHURCHWARDENS

Eight members of the congregation represented the Parish at the service at Southam on 27th January at which presentations were made to Canon Fishley on his retirement from the office of Rural Dean. The Vicar, as the longest-serving incumbent in the Deanery made the presentation on behalf of the clergy.

We look forward to welcoming Bishop McKie for the Confirmation on Sunday, 20th February and we hope that many of our own members will be at the service to share in welcoming the young people into full membership of the Church. We warmly invite all who attend the Service, especially, of course, the candidates, their families and friends, to join us afterwards in the Village Hall for coffee and sticky buns.

Details of Lent Services will be found in The Diary, but we would particularly commend the weekly study group which we share with our friends from Ladbroke. By holding the meetings on different nights of the week, we hope that all of our members will be able to attend some of the studies. Those who took part last year found the studies and discussions most stimulating and informative.

We are delighted that after the splendid recovery Joyce Windsor made after her hip operation, she has gone into hospital for the other hip to be done. It was a great surprise that it is to be done so soon and we do wish Joyce as good and complete a recovery this time.

CRUSADERS

We were delighted to welcome the Rev. Tony Upton on his last Sunday in the parish before taking up his new appointment on H.M.S. Tiger. He spoke about his life as a Naval Chaplain and showed photos of many aspects of life at sea.

Members of the drama group prepared three short scenes on the conversion and ministry of St. Paul and presented them on the Sunday following 25th January, the day on which we remember Saul's conversion. The art and craft group is working on an Easter garden and the music group is learning and enjoying some of the lovely old hymns which one so rarely hears these days.

Some of the older Crusaders, as part of a study of the Ten Commandments, wrote some "commandments" which deal with the relationship of people with their own village community in Harbury and we thought it would be of interest to reproduce them here. Perhaps some readers may like to add some of their own.

1. Don't throw waste paper round the village
2. Don't vandalise
3. Don't burgle other people
4. Be a good neighbour
5. It's good to be in a family. Do everything you can to help that family.
6. Love one another.
7. Accept people for themselves - for what they are - not for where they live or what they look like.
8. Don't let money become the most important thing in your life.

L A D B R O K E N E W S

CHURCH SERVICES FOR FEBRUARY & EARLY MARCH

Sun. 6th Feb. 8.30am Holy Communion, 11am Family Service.
Sun. 13th Feb. 11am Holy Communion with Hymns, 3.30pm Evensong
Sun. 20th Feb. 8.30am Holy Communion, 11am Matins

Sun. Feb 27th 11am Holy Communion with Hymns, 3.30pm Evensong.
Ash Wednesday, Feb. 23rd 7.30pm Holy Communion.
Weds. Mar. 2nd, 9.0am Children's Eucharist
Sun. Mar. 6th, 8.30am Holy Communion, 11am, Matins.

Sir David Watherston

We have suffered a great loss by the sudden death of Sir David Watherston who had been a member of our congregation since he first came to live in the neighborhood. He was one of our representatives on the Deanery Synod of which he became co-Chairman, on the Diocesan Synod and several of its Committees. He combined this with great service to the community in general in many organisations. We knew him as a regular worshipper and a helpful and generous friend. We extend our deepest sympathy to Lady Watherston and the family. May he rest in peace.

G. R. F.

Women's Fellowship

The numbers at our January meeting were depleted by illness and by hard weather; however we agreed on the dates of our meetings through the year: for reasons of school holidays and other problems, we agreed on the Second Wednesday in February, (9th), March (9th), October (12th) and November (9th) and the FIRST Wednesday in April (6th), May (4th) and June (1st). The speaker at our February meeting will be the Rev. F. R. Mackley, Vicar of Harbury.

C. H.

Women's Institute

The speaker at our February meeting at Ladbroke School at 7.30pm on Thursday 17th February (PLEASE NOTE CHANGE OF DATE) will be Mr. Day on Guide Dogs for the Blind.

F. B.

LADBROKE PARISH COUNCIL

All Councillors were present with the Clerk at the meeting on 12th January. The matter of the loss of tree and bush cover for Mr. Badman's property since the Davenport Brewery extended the car park at the Bell Inn was discussed. It was agreed that when approving the extensions the Council had stipulated that there should be no loss of privacy to Sarah's Cottage. Plans agreed ought to state exact requirements.

The precept for the year is 0.9p (NOT 7.9 as stated in error last month) the reporter apologised.

It was agreed that street names should be approved throughout the village: School Lane, Harbury Road, Bridge Lane, Radbourne Lane, Windmill Lane.

All householders are invited to a Parish Meeting in the School at 8.0 p.m. on 9th March 1977 to decide upon a parish 'event' to celebrate the Queen's Silver Jubilee.

The next Parish Council Meeting will be at 7.0 p.m. on Wednesday 9th March in the School.

LENTEN ARRANGEMENTS

We hope to take part in any discussion groups at Harbury and to arrange that our services on week-days are complementary e.g. there will be Holy Communion on Maundy Thursday evening at Ladbroke but not at Harbury: on Good Friday evening there will be evening services at Harbury but not at Ladbroke.

WANTED. Volunteer Church Cleaners to take a monthly turn.....PLEASE!

G.R.F.

Service for Canon Fishley

On Thursday January 27th in Southam Parish Church, a farewell Evensong Service was held for Canon G.R. Fishley to mark his retirement from being Rural Dean of Southam for 10 years. A full Church joined in Evensong. Peter Jackson and David Broadbent read the lessons, and Canon Denney led the prayers. The choir sang the anthem "Great and Marvellous are Thy Works", and the Archdeacon, the Ven Edward Taylor, preached. He spoke of the vocation of Amos called to priesthood, and following the succession of prophets comes Fishley. He praised Canon Fishley's career and his vocation of caring, marked by his abounding love and interest in children.

Rev. F.R. Mackley and Mr. Trevor Rogers presented railway books and a cheque on behalf of the clergy and laity. "Ben" Fishley thanked everyone and said how grateful he was for the help, love and support he had received from everyone. P.F.

P.T.A.

On 26th Jan. an Any Questions Evening with the School Staff was attended by a large number of parents. Questions about the day to day running of the school and the work carried out were answered competently by the Staff. Eventually the

discussion came round to the proposed cuts in education spending and it was obvious that the majority of the parents present were eager to do whatever they could to offset the effects of the cuts on Harbury School. Various methods were suggested, ranging from actual cash donations to voluntary work and the P.T.A. Committee were asked to discuss the situation to see if we could liaise with other PTAs in the search for a solution. Mr. Oliver said that little could be done until April when the actual extent of the cuts would be known. He asked if parents would like a special meeting at that time and this suggestion met with unanimous support..

On 16th Feb. Mr. Willmer, Senior Inspector of Schools will give a talk on the Role of the Combined School. Further details of this will be circulated via the children.

All the Cheese and Wine tickets have been sold, but we do occasionally get a few returned. These will be distributed on a first come first served basis, so if anyone has been disappointed, I will gladly add their name to my reserve list.

Contact me on 612745 or Mr. Geoff Healey 612146 for PTA membership

ANNE MEGENEY (Secretary)

HARBURY SCOUTS

For the past three weeks Brian Taylor, the Scout Leader, has been taking five of the best canoeists in the Troop to Rugby Baths for expert tuition by Ken Tulley, to learn how to do the Eskimo roll. It is hoped that this will enable them to take their canoeing proficiency badge in March.

The Troop as a whole has expanded a great deal by the inclusion of six boys coming up from the cubs, and two newcomers. This has made it necessary to form a fourth patrol and brings the total of scouts now in the Troop up to 26. Several months ago the two chief scouts, Bob Small and Gary Picken, having reached the required age, left the troop and joined the Midland Venture Unit - so becoming Venture Scouts.

P. H.

Any information on Scouting in Harbury 1947-1966 would be much appreciated. Please contact John Knight, "Rowan House", Binswood End, Tel: 612029.

Also, please continue to save your newspapers. They will be collected

LIZ COOKE.

PARISH MEETING - JUBILEE CELEBRATIONS - Jan 27th

When I arrived at 8pm the forty or so people attending this lively meeting had been waiting 30 minutes - I had put the wrong time in the Harbury Diary.

Jubilee Trust Fund: Chairman Geoff Wright explained that the Parish Council considered this poorly organised and contributing £320 to it would bring little benefit to the Parish. Answering Mr. Holt he said half the money raised in the District (£8,000), was drawn away to the National Fund. The remainder was available for projects connected with 'Youth', but money must be claimed within the next few weeks. Brian Wade thought the Parish should use the money it raised for its own purposes and the rates should finance other projects.

Mike Ellis agreed Charity began at home and thought the whole concept of the Fund poor.

It was proposed and carried that Harbury opt out of the County Jubilee Fund.

Celebrations: John Smith explained that the Carnival Committee was co-ordinating events for the week 28May - 4 June and asked organisers to contact his committee which would publicise these events in the Carnival Programme. Jubilee Celebrations are:-

Saturday 28 May	Children's Sports (Carnival Cttee)
Sunday 29 May	Gymkhana on Recreation Grounds
Monday 30 May	Bingo in Village Hall
Tuesday 31 May	Wheelbarrow Race Spectacular (Carnival Cttee)
Wednesday 1 June	Youth Club Disco. Mystery Tour of Village (Harbury Society)
Thursday 2 June	Golden Age Fashion Show in Village Hall (WI)
Friday 3 June	NO EVENT YET ORGANISED.
Saturday 4 June	**Carnival & Fete** Bigger & Better yet. Folk Evening with Lady Clog Dancers in Village Hall (Rugby Club)
Sunday 5 June	Comic Tennis Tournament
Monday 6 June	**Carnival Dance** Village Hall (Carnival Cttee)

Mike Ellis congratulated the Cttee on being so advanced in its planning. The Carnival Cttee hoped other organisations would plan events for the Jubilee Day (7 June). Mr. Wilkins wanted the day reserved for the children. Street Parties were discussed. It was thought people would organise their own, but Mrs. Hayes complained no-one would arrange one for her and insisted on a

Village Party. However, nobody was willing to take on this mammoth task or the catering for 2,000, and several people suggested small parties were easier and those unprovided for could attach themselves to the parties of friends. Mr. Wade volunteered to form a committee to stimulate the planning of parties in different area of the village. (Contact him at 9 Wagstaffe Close, 612831). A motion that street parties be organised on a none central basis was passed. Further suggestions for the evening of Jubilee Day were: a bonfire, Bar-B-Q, Bar and Dance and fireworks.

Children's Gift: The Parish Council will spend 1/5 of a penny rate (£500) on a gift for children, probably a Jubilee Crown. Defining children proved difficult but it was finally agreed that "All children in Harbury Parish who are still at school up to the end of the Summer Term 1977 will receive the gift even if by then they are 17." (I think) Lower limit was midnight on Jubilee Day.

Permanent Feature: The Chairman explained that the PC asked Harbury Society to raise funds in the Parish for a large Commemorative Tree. Linda Ridgley reported that a Plane had been chosen after all organisations had been consulted. £100 was needed by the end of February to pay for the tree. Donations had been received from individuals and some societies had promised money but more would be needed.

AOB: The Chairman announced that the village would win the Best Kept Village Award for 1977. It is not a PRETTY village award but an award for a tidy village and with just a little more effort Harbury could win.

Mrs. Watts suggested the PC might sponsor a Best Decorated House or Street Competition for the Jubilee.

Chris Macgowan proposed the PC send a message of goodwill to the Queen.

LINDA RIDGLEY.

DANGER!

The police inform us that during the icy weather children have been skating at the Quarries. All parents will realise the dangers but children may not. The quarries are remote, deep and very cold, and anyone falling through the ice would stand little chance of survival, but the quarries are very tempting so please make sure that your children are aware of the dangers!

L.R.

HARBURY SOCIETY

The Harbury Society held its annual Social at the Crown Inn on January 25th with the Folk Group, Sneak's Noise, whose performance included a variety of drinking songs, jokes, cabaret and instrumentals, with the virtuosity of George's mandoline playing being especially appreciated.

The Society's role in organising the Jubilee Tree planting and fund raising on the Parish Council's behalf was explained. All local societies have been consulted and an eighteen foot Plane tree has been ordered. The cost of this tree will be approximately £100 and it is hoped that village societies and individuals will contribute to the cost of this, Harbury's only PERMANENT commemoration of the Queen's Silver Jubilee.

The Society will organise another Mystery Tour of the village on the lines of last year's successful event. This will probably take place (weather permitting) on Wednesday 1 June as part of the Jubilee Celebrations.

The next Harbury Society meeting is at the Village Club on Monday 28 February at 8 pm when there will be a Civic Trust Slide Lecture on 'Local Amenity Societies'.

LINDA RIDGLEY.

HARBURY WOMENS INSTITUTE

Silver Jubilee Celebrations - Tree Planting Scheme:

When this item on the W.I. agenda was discussed, many varied points of view were put forward, but after much discussion it was decided by the majority of members that planting a tree was not the best way of spending such a large amount of money. After making contributions to past such schemes which had been a failure due to vandalism, it was felt a more positive scheme was desired - such as an item to be used and kept in the Church or Village Hall. This would be a permanent memorial for future generations to admire more than just a tree. Members were not against making a donation but would like to have had the opportunity of giving our views before a final decision was made.

MONICA DAVIES (President)

HARBURY FRIENDS

Ladies, are you bored, lonely, looking for an evening away from the household? - if so, why not come along to the school on the second Tuesday of the month and listen to some interesting

topics being discussed, and later debated in lively question and answer sessions. Harbury Friends also arrange evenings out e.g. Treasure Hunts, beer & skittles. Details of speakers can be found in the Harbury News, or further details can be received by calling 613131. New members are always welcome.

JEAN HALLIDAY.

VILLAGE HALL

Apparently many people are unaware of the cost of using the Hall. Charges to local groups are as follows (in each case the higher amount refers to profit-making groups: Main hall, including kitchen & Wagstaffe Room, for a morning, an afternoon or an evening: £5 or £7. Windmill Room: 50p or £1. Fosse Room: 50p or £1.

Weddings, Socials, Parties: £3 per hour, £12 minimum.

Dances: up to midnight, £24; up to lam (not Saturdays) £30

Childrens Parties (afternoons) £2.

Charges for non-local groups are approx. 25% more.

N.B. The Farley Room is the large room in the extension, the Windmill & Fosse are the other extension rooms. The Wagstaffe Room is the old refreshment room.

HARBURY RUGBY FOOTBALL CLUB

Harbury Rugby Club's First Team is enjoying an excellent season with only two defeats in fourteen games and those against Atherstone, who are unbeaten this season, and Nuneaton Extras. The Seconds and Thirds are doing less well but the enjoyment of the game is very evident - though a few more wins would be welcome! The Club were greatly honoured on January 8th when Club Vice Captain Ted Mazurek played for Coventry Firsts against Birkenhead Park at Coundon Road. Any player young or old who wants to get his boots is welcome to come along to a training session and if interested to join the club. Training under coach Kier MacDonald, of Heber Drive, commences at 7.30 pm every Wednesday evening.

A Plea: The Club requires a couple of agile ball boys for home games. Fee: 10p - 15p a game. Any willing helpers report to any home game each Saturday!

SH!! MEN AT WORK

Scene: Past one o'clock on a cold winter's morning. Noise, Headlights, ribald comments, torches flashing, rods, coffee, hoses, picks, shovels and buckets. Friends and neighbours;

solid in adversity.

To a ragged cheer, a figure emerges from a hole in the centre of the road. The crowd parts - withdraws further than is polite. A man emerges from the bowels of the earth, his face flushed with achievement. The rods are withdrawn.

Gentlemen! Wagstaffe Close has been relieved!

LINDA RIDGELEY.

PARISH COUNCIL REPORT, 20 JANUARY 1977.

It being the Pantomime Season, I had thought to cast the Parish Council suitably, and Lo! there were Little Red Riding Hood, Long John Silver and Peter Pan (the boy who never grew up). (Mrs. Catteral in a red coat, the Clerk following his operation, on crutches, and I missed the Chairman's ceremony with his Badge.) However, the meeting began with a moment of farce (SOMEONE had removed the handle of the Farley Room door), but the meeting was in too serious a vein to sustain the mood.

All Cllrs were present except Mrs. Watts; plus the Clerk, three ladies and me.

Jubilee Meeting was discussed. The Carnival Cttee will be asked to keep the PC informed of the progress of celebration plans. The Harbury Society reported that it had ordered a Plane Tree for the Old New Inn Green, and asked for plans of the green to facilitate planting. The Society was assured that it is only acting as agent for the PC and would not be liable for any damage to the Green or the services there.

The PC resolved not to supply bunting but would consider giving Jubilee Crowns to the children.

The Jubilee Appeal was criticised as the money appears to be being used for projects which should be funded by Local Authorities and applications to use the fund have to be made in the next few weeks. It was decided that unless there was to be some benefit to the Parish the PC would not contribute to the Fund. The Chairman was not in favour of a Gymkhana taking place on Sunday 29 May as part of the Jubilee Celebrations. He felt there were religious objections, but the weight of Council opinion was in favour of this 'Special occasion' for the 'enjoyment of the majority'.

Correspondence: Midland Red announced the 563 would run from Southam to Bishop's, Deppers, Harbury, Ufton and Leamington. Geoff Wright demanded precise details of the route through Harbury. Cllr Mrs. Buckle reported the new Southam

BUS was not being used and claimed that it had been wrongly reported as a Shopping Bus, but that it was not its purpose to encourage people to shop in Southam! She wanted the PC to subsidise OAP fares to Southam but was told that this service could not be singled out.

Highways: ***The Parish Council thanked Cllr Gurden, who salted Treen's Hill in the bad weather so that even when Chesterton Hill was blocked this route was passable. The residents of Crown Close were marooned there in the snow and a 'Gang' has been formed to dig them out in future.

Lighting: Mr. Atkins Questionnaire to WCC was very effective as it elicited that if the PC relinquishes its lighting function the service will be paid for in the County Rate with a 20% saving on maintenance cost (the County will do this work). The County would also ensure future developments are provided with street lighting by the developer. On the debit side there was the possibility that further Local Government cuts would lead to a reduction in the service.

Planning: The Binswood End Development which the PC approved last month is to be ammended and the Landscaped Play Area, which was praised, deleted. District Cllrs Buckle and Drinkwater are to express the PC's concern at the late change and its disapproval of the plan as it will then stand. Cllr Hancock was concerned that other houses could be demolished to allow development in their gardens.

Playing Fields: Persons are still allowing their dogs to defecate on the Playing Fields. The PC promised a 'More EXPLICIT (?) and prominent notice'.

The letter the Clerk wrote to Maxims to determine the ownership of the fence in Manor Orchard Close was returned marked 'Gone Away', but Cllr Ellis agreed to take up the hunt and run them to earth.

Geoff Wright and the PC were blessed and he reported on the process. It was so cold in Church that day that the Vicar announced that as an ACT OF MERCY he would NOT preach a sermon!

Reports from other bodies: Geoff Wright reported that cuts in Adult Education funds will be 40%. This term, Centres were not allowed to advertise courses and SURPRISE, SURPRISE, many were undersubscribed and so closed down.

Next meeting: Thurs. 17 Feb. 7.30pm, V. Hall (with warm clothes

LINDA RIDGLEY.

MY FAVOURITE RECIPE.....

We were pleased that the Plum Pudding recipe was tried and enjoyed by Sue Hett and (we hope) by other readers. If you have a favourite recipe that you'd like to share, please let us know. Here's one that all my family enjoy:

Pineapple Cheesecake: Dissolve $\frac{1}{4}$ oz. gelatine in 4 tablespoons water, over a pan of hot water. In a large saucepan, beat together 3 egg yolks, the drained contents of a 16 oz. can of crushed pineapple, the juice and grated rind of 1 lemon, and 2 oz. sugar. Cook, stirring, until thick. Blend in the dissolved gelatine, and 8 oz. cream cheese. Beat 3 egg whites until stiff with 4 oz. sugar, and fold into the pineapple mixture. Pour into a 9" pastry case and chill thoroughly.

D. H.

FEBRUARY VEGETABLE GARDEN

During the early part of this month any ground becoming available in the established vegetable garden should be dug; and those gardeners with new vegetable plots should complete any digging not done during January.

This year's cropping programme should have been planned in readiness for purchasing seed and seed potatoes early this month, either locally or by post from a reputable seed merchant.

Dress the ground to be used for early crops with a general fertilizer and hoe in about two weeks before sowing. Broad beans, round seeded spinach, first hardy peas, early spring onions and radishes can be sown towards the end of the month. Plant Jerusalem artichokes and shallots during mid to end of February depending on the condition of the ground. If you possess frames or cloches then early summer cabbage, lettuce and carrots can be sown in these during February.

Harvest late sprouts, kale, spinach beet and savoys from established gardens; also lift root crops as required, and remove any remaining parsnips for storage before they start any regrowth in the ground.

Arrange good seed of first early potatoes; as soon as they become available for purchase; in shallow boxes with the eyes upwards in a cool, light, frost free place.

Finally, if you have established strawberry plants then for an early crop; to be harvested whilst shop prices are still high; the plants should be covered with cloches at the end of this month.

SUE HETT.

'£10,000 FOR A BIRD?'

Should you ever walk along South Parade and see the King family peering nervously into the distant sky, and anxiously consulting their time-clock, then you'll know they're looking out for one of their pigeons coming home at the end of a race. The whole family is totally dedicated to the birds (they have 36 at present), and to the sport of racing, which Tom King describes as 'time-consuming, expensive and often disappointing' - but which he would obviously never dream of giving up. He talks about it with passionate enthusiasm, and it is hard to believe that he and his son, Adrian, have only been racing since 1973, since it is obviously such an important part of their lives.

Mr. King told me that there are several other fanciers in Harbury (including Mr. Bowles in Chapel Street who really started the King's interest) and, in common with fanciers all over the country, there is a great spirit of friendship and co-operation between them all. They belong to the Southam and District Club (there was a Harbury Club before the war), and enter birds in races organised by the Warwickshire Federation, competing against about 30 other clubs.

He explained to me how he breeds and trains young birds, and then keeps them in peak condition for racing. They need regular training flights, good food and immaculate cleanliness, all of which Mr. King's birds obviously get. He and his son have had some considerable success, notably when one of their birds came first out of over 800 birds racing from Nantes in France in June, 1976. The bird flew the 346 miles 1458 yards at a speed of 974.54 yards per minute. I also saw the cup which was presented to Adrian to mark the first win of his career, in June 1974.

All birds have a number, and are registered, and there is an efficient system by which the owner of a bird can be traced, and the bird returned, should it be found by another fancier. The whole sport seems to be run efficiently - Mr. King showed me a mountain of books and leaflets with rules, regulations, information, facts and figures issued by the National Association.

Birds normally live to about 8 or 9 years, but there are many diseases, parasites etc. which can affect them, and of course accidents can happen during a race, or a bird can

simply prove to be no good - disappointments seem all too common. But, though a bird has been known to change hands for as much as £10,000, there is just one thing which makes it all worth while to Tom King. "When you see it come circling in, and drop down, folding its wings, and you know it's come home - well there's nothing like it!"

His enthusiasm certainly rubbed off on me. If you'd like to know more I'm sure he would be glad to talk to you. But be warned - it's all so fascinating, and he has so much to tell you, you'll need to call when you've at least an hour or two to spare!

D. H.

A WINTER'S TALE

Now that the warm, hazy days of last summer are just a memory, and the cold winter evenings are with us once again, we are reminded by one of our readers of some of the severe winters that Harbury has suffered in the past. Nationally, 1947 was one of the worst the country has ever known. The snows came in March, and drifts of well over six feet were common. However, although Harbury was snow-bound in 1947, the winter of 1940 was considerably worse. That year, the snow fell in January. As the second World War was in progress, there were few men or machines on hand to clear the roads and the village was cut off from Leamington for over a week. The Fosse Way was impassable.

In the village itself, drifts blocked doors and covered ground floor windows. Many people could not get out of their houses and food had to be thrown to them through upstairs windows. One of the few consolations was that children were able to skate on the frozen Mill Pond at Chesterton.

1932 also saw a bad winter, although the problem was heavy rain rather than snow. Spring showers in May brought flooding to Leamington and fields between Leamington and Harbury were water-logged. The village escaped, being on high ground, but the Regal Cinema in Leamington which had only been opened the previous year, was flooded. Farmers around Eathorpe were forced to take their animals into the upper stories of their houses to save them from drowning.

We hope that 1977 won't bring a repeat of 1947, 1940 or 1932!

G. F.

PROFILE: P.C. PERCIVAL

'I've never felt more settled and happy anywhere than here - I love Harbury and the cosmopolitan cross-section of people I meet.' Perhaps it's not hard to guess that these are the words of Tim Percival, our local policeman, for even a short conversation with him reveals his love for his work and for this village. Not that he has any lack of experience of other places.



He was born and educated in Liverpool, and, before joining the Police Force at the age of 25, he had been round the world five times in his job as a purser with Palm Line - the shipping line of the Unilever Co.

His compulsory two years 'on the beat' were served at Hazel Grove, near Stockport, where he got to know footballer George Best quite well. He also delivered a baby during his time there, and has delivered three more since! He went to Bollington, near Macclesfield, for a further three years before coming to Harbury in 1971. He has experience of many types of policework - Panda cars, drugs squad, crime squad, C.I.D. etc. - and has been involved with several murder cases including the famous Brady and Hindley 'Moors Murders', when Brady was in fact handcuffed to him in the dock at Hyde Magistrates' Court. In 1966 he was on the scene of a tragic air crash in the centre of Stockport, when 80 people were killed, but his working life seems to have taken on a calmer aspect since he and his wife Carol moved to Warwickshire.

He holds the Police Advanced Driving Certificate, and plays the piano, and used to play no mean game of football (he supports Manchester United). He is involved with several

village organisations, notably the Senior Citizens' Benefit Association and the Village Hall and Carnival Committees, but says (not surprisingly) that he has no time for any other hobbies - except, of course, his two children, Ian and Kathryn.

A man who likes his job generally does it well, so, as long as the immaculate figure of P. C. Percival is seen around the village, we can gratefully rest assured that the interests of law and order are being upheld in Harbury.

D. H.

CRUMBS!

To open a packet of biscuits, simply cut through the centre with a sharp knife.

E. P.

CORRESPONDENCE

Dear Readers,

Is anyone interested in an informal French class? The intended method is that currently broadcast by the BBC 'Sur le Vif'. This is a most interesting way to learn easily and Mrs. M. Peake would guide us through the method. A coffee evening will be arranged at 6 Farley Avenue to discuss the idea. A number of people have indicated their interest. Will you please phone 612965 at least, and come and have some coffee.

FRED HUTCHINS.

Dear Editors,

I would very much like to thank the kind person who found and posted four letters I lost in the snow-storm earlier this month. I wonder who it was and where they retrieved them from?!

SARA BENNETT.

FOR SALE: 24" X 18" porcelain sink with taps and wall supports - £5.

Copper canopy 19" high, width tapers from 13" to 24" - £5.

Scott, 25 Binswood End, or phone 612637.

I'VE HEARD OF FISH FINGERS, BUT.....

On the BBC programme 'Nationwide' during a discussion about economies in school dinners, I heard the following rather strange statement:

"They are using cheaper cuts of meat; for example, where they used to use leg they are now using shoulder. They are doing the same with fish".

DH.

ALL SAINTS CHURCH HARBURY

COME ALONG on a JOURNEY OF ADVENTURE
to

"THE HOUSE ON THE RIGHT SIDE OF THE ROAD"

6 Special Children's Services for LENT

Starting on Thursday February 24th at 6.30 p.m.

STOP PRESS:

The Harbury News AGM was held at Harbury Club on January 31st. The Vicar and 17 villagers were present.

Michael Barnes has regretfully decided he must resign from the editorial committee, but we are delighted to say he will be staying on the main committee.

We are also very sorry to lose Alan Barr and Pat Beaumont from the committee but very pleased that they have offered to continue collecting and helping with the stapling.

We say welcome back to Victoria Macgowan, who will be rejoining the committee and once again making a valuable contribution to our efforts, and we welcome two new members - Sara Bennett who works so hard compiling the Diary; and Pat Flower who will be keeping us up to date with all the news from Ladbroke. The rest of the committee is as follows:-
The Vicar - Rev. F.R. Mackley; Miss V.C. Aggett - Churchwarden; Mrs. S. Hancock, Mrs. D. Holt & Mr. J. B. Moore - Editors; Mr. P. Holt - Advertising; Mr. G. Faulkner - Distribution; Mrs. A. Moore - Treasurer; Mrs. G. Hutchins, Mrs. L. Ridgley and Mr. C.J. Moore.

A. M.

Coach Excursions & Tours from Harbury

*DETAILS & BOOKINGS FROM
PHILIP LINDOP, CHAPEL STREET*

SAPPHIRE COACHES

(I.E. LAINCHBURY)
BISHOPS ITCHINGTON
QUOTES FOR PRIVATE PARTIES
PHONE HARBURY 612344

FILMS

TOYS

PHILIP LINDOP.

DRUG STORE

**CHAPEL STREET
HARBURY**

*DRY
CLEANING*

*TOILETRIES
BATTERIES*

GREEN SHIELD STAMPS

AW & AJ HEAL newsagents

**STATIONARY
GREETING CARDS
SWEETS — TOBACCO — ICES
SOFT DRINKS**

**HIGH STREET, HARBURY
PHONE HARBURY 612156**

WHY DIG THE GARDEN?

HIRE A ROTOVATOR

**MODERATE CHARGES — NO VAT
LAWN MOWER &
GARDEN MACHINERY
REPAIRS OVERHAULS SERVICING**

M.L.WILLIAMS

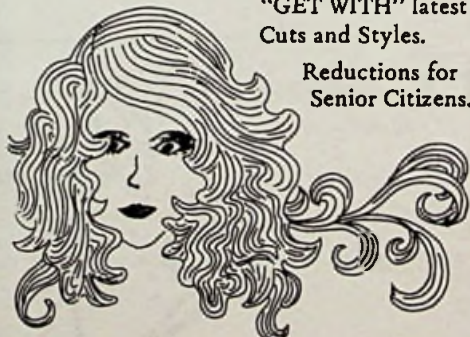
**Agricultural & Horticultural Engineer
FOSSE WAY, HARBURY
Phone Leamington Spa 23925**

Margaret Joyce.

HIGH STREET

**"GET WITH" latest
Cuts and Styles.**

**Reductions for
Senior Citizens.**



Phone HARBURY 613128

BRIAN'S FURS SPECIALIST FURRIERS

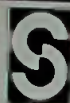
**Comprehensive range of quality coats,
jackets & hats always in stock.**

**Including: CONEY, SWEDISH LAMB,
MUSQUASH, MINK MARMOT, RED FOX,
KIDSKIN AND MINK.**

**SPECIALISTS IN FUR RE-STYLING
RENOVATIONS ON THE PREMISES.**

**122 Regent St.,
Leamington Spa Tel 21049**

SOANS OF SYDENHAM FOR FORD



SYDENHAM DRIVE,
LEAMINGTON SPA. TEL: 29411



FOR YOUR NEXT HAIR APPOINTMENT COME AND RELAX
IN THE PLEASANT OLD WORLD CHARM OF

CATHRYN CRAIG

Where all aspects of Hair
Styling are carried out by
our fully qualified staff.

Phone: 612326
2/3 Chapel Street
Harbury.



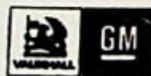
Motors (Leamington Spa) Ltd.

Old Warwick Road Leamington Spa
CV31 3NX Telephone 0926 20861/2/3

Also at Coventry and Swansea

Your
**Vauxhall
Bedford**

**Main
Dealers**



ENJOY LEISURE LIFE PROTECTION

WHEN · HIKING · GOLFING · ANGLING · SAILING · CLIMBING · CAMPING

'POP IN YOUR POCKET'

PETER STORM

100% Waterproof

Ultra lightweight nylon

In Navy, Orange, Royal, Olive, Fawn.

ANORAK

JACKET

OVERTROUSERS



LEISURE LIFE

117, WARWICK STREET, LEAMINGTON SPA. Tel: 28326.

The views of contributors to the Harbury News are not necessarily those of the Editorial Committee.