



HARBURY NEWS

THE HARBURY NEWS reflecting all aspects of Local Life is published monthly, and produced with assistance from the Parochial Church Council of **ALL SAINTS' CHURCH** — Vicar: The Rev'd. F.R. MACKLEY. B.A.
Telephone: Harbury 612377.

SUNDAY SERVICES: Holy Communion : 8.00 a.m., 10.00 a.m. (Sung)
Evensong : 6.30 p.m. (4.00 p.m. in Winter)
Family Service : 11.15 a.m. — First Sunday
See Church Notice Board for details of other services.

DOCTORS' SURGERY: Farm Street. Telephone: 612232.
Monday — Saturday : 9.00 a.m. — 10.00 a.m.
Monday, Tuesday, Friday : 6.00 p.m. — 7.00 p.m.

POLICE: Telephone SOUTHAM (981) 2366

LOCAL CONSTABLE: P.C. T.PERCIVAL. Telephone: Harbury 612175

EMERGENCY SERVICES: Telephone 999

'THE HARBURY DIRECTORY' containing details of Village Organisations and essential information is freely available on request from Mrs. D. Holt, 15, Wagstaffe Close, Harbury.

Editorial Office : 23, Mill Street, Harbury. Telephone: 612427
Small Advertisements: Telephone 612790 by 25th of Month.



MORRIS

BULL RING GARAGE

LEYCARE

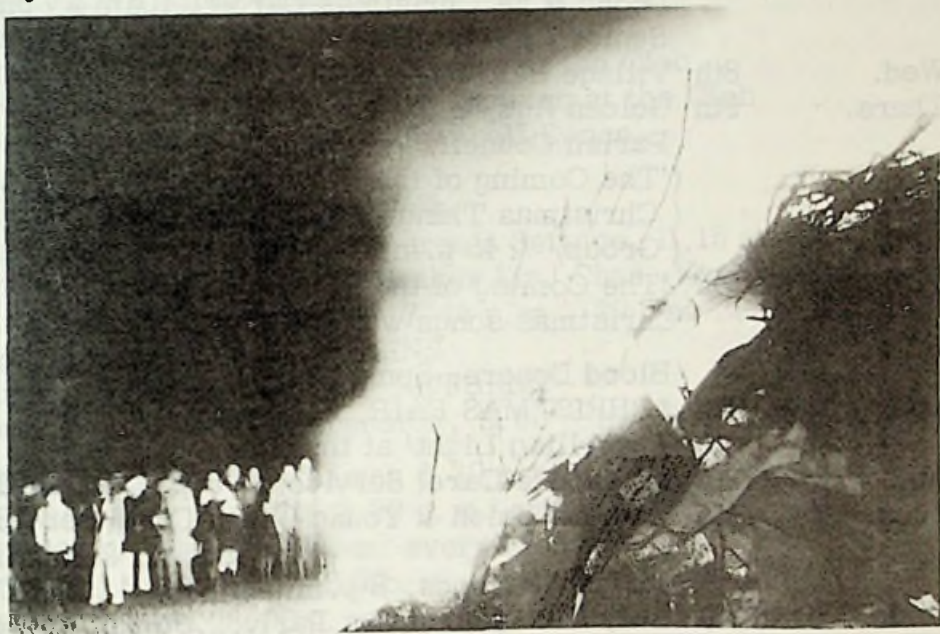


RETAIL DEALERS FOR MORRIS, PRINCESS , M.G. CARS
FULL SERVICING FACILITIES
CAR HIRE — SHORT & LONG TERM
ELECTRONIC TUNING. EXTENSIVE RANGE OF PARTS
QUALITY USED CARS
M.O.T. TESTING

BULL RING GARAGE
HARBURY

TEL: HARBURY 612275

After a very wet day, which soaked the many brave souls who collected fuel for the bonfire, a fine night brought around 900 spectators to the rather soggy playing fields to see the P.C.C.'s bonfire and firework display and enjoy the hot-dogs etc. in the Village Hall.



As usual, Christmas will be celebrated in Harbury in many different ways. Most organisations are holding parties, some for children and some for adults. The Drama Group are doing a special production for Christmas in Church on 9th & 10th Dec. There will be the CHRISTMAS FAIR on 11th December, (come along and buy your gifts - there are always lots of bargains!) and, of course, the various plays and concerts by the schoolchildren. The culmination of our village Christmas will be the Midnight Mass (beginning at 11.15 p.m. on Christmas Eve) and the Christmas Day services. How lucky we are to live in this caring community.

But we must not forget those who may, in fact, be lonely or in need, especially at Christmas. Do you know someone like that? Perhaps you could do something to help them - remember, many people are especially at risk if the weather turns cold. Let's make sure our caring community really does

care for everyone. A Happy Christmas to all our readers.

HARBURY DIARY

DECEMBER 1976

- Sun. 5th Family & Children's Service 11.15 a.m.
Mon. 6th Carnival Committee Meeting 8 p.m.
Tues. 7th Lower Juniors, "Happy Birthday Winnie the Pooh" & "A Christmas Carol", 10am & 7 pm.
Senior Citizens Cttee., 8pm, Village Hall.
Wed. 8th Village Hall Cttee Meeting, 8 p.m.
Thurs. 9th Golden Age, 2.30 p.m., Village Hall
Parish Council, 7.30 p.m., Village Hall
('The Coming of the Kings and other
(Christmas Things' at Church by Theatre
(Group, 7.45 p.m.
Fri. 10th 'The Coming of the Kings', as above.
Christmas songs with the Infants, School, 2.30
& 6pm.
Blood Donors, 3pm, V. Hall
Sat. 11th *CHRISTMAS FAIR, 2.30 p.m., V. Hall
'Travelling Light' at the Club.
Sun. 12th Crusaders Carol Service, 2.30pm, V. Hall
Tues. 14th Mothers Union & Young Wives Carol Service
in Church, 2.15pm.
Harbury Friends, 8 p.m., School.
Wed. 15th Tufty Club Christmas Party, 2.30pm, V. Hall.
Top Juniors "Lord of the Dance", afternoon &
7pm.
Senior Citizens Party at Club.
Music by Solo at the Club, also Bingo.
Thurs. 16th Infants Party at School.
Golden Age Christmas Party, 2.30.
Fri. 17th Juniors Party at School.
Playgroup breaks up.
Christmas Bingo at the Club.
Football Dance, Village Hall
Sat. 18th Senior Citizens Party at School.
Sun. 19th Village Carol Service in Church, 2.30 p.m.
Christmas Bingo at the Club.
Mon. 20th Parents & Children, Carols round Village
begins 7 p.m. at School, hot soup after.

- Tues. 21st Last Day of Term.
N.S.P.C.C., Carols round the Village.
- Wed. 22nd British Legion Whist Drive, Village Hall.
- Fri. 24th 'Anywhere & When' at Club, & Bingo.
11.15 p.m. Christmas Service.
- Sat. 25th Christmas Day. Services at 8am & 10 am.
Club Closed.
- Sun. 26th Normal Service Times (said).
- Mon. 27th Boxing Day. Dancing at the Club.
- Fri. 31st New Year's Eve. Dancing at the Club
Village Hall - Football Dance.

JANUARY 1977

- Sat. 1st Group at the Club.
- Sun. 2nd Family & Children's Service, 11.15 a.m.
- Thurs. 6th W.I. Talk, speaker Mr. Chas. Keeling.
Men's Group, 7.45 p.m., 29 The Beeches.
- Mon. 10th SCHOOL BEGINS
- Tues. 11th PLAYGROUP RETURNS
- Wed. 12th M.U. Discussion, 2.30 p.m., 1 Vicarage Lane.

CHOIR PRACTICE, Church 6.30 p.m. every Friday.

CRUSADERS, V. Hall, 2.30 p.m. every Sunday.

BINGO, V. Hall 8.00 p.m. every Monday.

GUIDES, Scout Hut, 7-8.30p.m. every Monday.

YOUTH CLUB, 8.00 p.m., Village Hall, every Wednesday.

SCOUTS, Scout Hut, 7-9 every Friday.

BABY CLINIC, V. Hall, 2nd & 4th Weds. at 2.00 p.m.
Special appointments every 3rd Monday.

ALL DATES CORRECT AT TIME OF GOING TO PRESS.
DATES FOR INCLUSION TO LINDA RIDGLEY, 612792.

THE VICAR'S LETTER

My dear friends,

By the time that this is in your hands we shall be in the season of Advent and very near to Christmas. The Nine-Lesson Carol Service will be on Sunday, December 19th, at 2.30 p.m. The heart of our Christmas joy will, of course, be our worship at the Altar and, if we have been confirmed, our receiving of our Lord in Holy Communion. We should try to prepare well for our Christmas Communion, and a list of times when Absolution may be received before Christmas will be found on the notice board inside the Church.

There will, as usual, be the three traditional celebrations of the Eucharist - the Blessing of the Crib and the Midnight Mass (sung) at 11.15 on Christmas Eve, the Mass of the Dawn said at 8.00 a.m. and the Mass of the Day sung with Procession at 10.00 a.m. on Christmas Day. It is hoped that the 10.00 a.m. one will be a great family service, for it would be sad indeed if any of the children were not at the Lord's Own Service on His birthday. According to modern regulations those who have made their Communion at the Midnight Mass, may, if they wish, receive Communion again at one of the Celebrations on Christmas Day.

I end this letter by quoting to you four stanzas from Mr. John Betjeman's poem "Christmas":-

"And girls in slacks remember Dad,
And oafish louts remember Mum,
And sleepless children's hearts are glad,
And Christmas-morning bells say "Come!"
Even to shining ones who dwell
Safe in the Dorchester Hotel.

And is it true? And is it true,
This most tremendous tale of all,
Seen in a stained-glass window's hue,
A Baby in an ox's stall?
The Maker of the stars and sea
Become a Child on earth for me?

And is it true? For if it is,
No loving fingers tying strings
Around those tissued fripperies,
The sweet and silly Christmas things,
Bath salts and inexpensive scent
And hideous tie so kindly meant,

No love that in a family dwells,
No carolling in frosty air,
Nor all the steeple-shaking bells
Can with this single truth compare -
That God was Man in Palestine
And lives today in Bread and Wine".

Wishing you a holy and blessed Christmas,
Your sincere friend and Vicar,
F.R. Mackley.

HOLY BAPTISM.

October 31st, John Peter Ian Russell, Middle Road Farm.
November 14th, Emma Veronica Bloxham, 22 Ivy Lane.

FUNERAL SERVICES

We mourn the loss of four old residents of Harbury -
Mrs. Reader, Mrs. Mann, Mr. Fletcher and Mr. Davison.
May God grant them rest in His nearer Presence, and may
He comfort those who mourn.

From the Churchwardens

Although it is early in December when you will read this,
may we wish you all the joy of Christmas. As we prepare for
all the food, fun and festivities, let us take the opportunity which
Advent offers to prepare our hearts and minds for the great
Christian Festival.

Starting with Advent Sunday - and what better time than
the Church's New Year's Day to start something new - we shall
have a regular rota of lay people to read the Epistle and
Intercessions and to represent the Village Community and the
organisations by carrying the Bread and Wine to the Altar at
the 10 o'clock Sung Eucharist. All organisations will be invited
to take part, and on the day on which a particular group provides
the representatives, special prayers will be offered for it.
We also hope that members will come to the Service. The rota
will be published each month in the Harbury News (organisations
having been previously invited, of course.) The four represen-
tatives are asked to be at church by 9.30 a.m. to run through
their part in the Service.

The suggested rota for the next few weeks is:

Sunday, 5th Dec: Harbury Society - Sun., 12th Dec: Church Choir -
Sun., 19th Dec: Young Wives - Fri., 24th Dec: (Midnight) PCC -
Sat., 25th Dec: A family - Sun., 26th Dec: Clergy & Congregation
Sun., 2nd Jan: Parish Council

We look forward to great fellowship with members of
village organisations. We are very fortunate in living in a
village where there are so many activities and we hope that
this new venture will strengthen further the links between the

Church and the Community. If any organisation would like a particular Sunday as "their" day, please do let the Vicar or one of the Churchwardens know.

We are delighted that Joyce Windsor is making very good progress after her hip operation and we all send her our good wishes for a speedy and complete recovery.

P.T.A.

Mr. D. Johnston and Miss J. Haywood from the Stratford Welfare Dept. visited the school on 17th Nov. and gave a very interesting talk, illustrated by a film, on the subject of Foster Care. They explained the general organisation of this service and the measures taken to ensure the well-being of their charges.

Parents and children are invited to join us on the 20th Dec. when we shall be singing carols around the Village. Proceeds will be donated to Christian Aid.

The Committee is planning the programme for 1977 and we are anxious to include any items which you feel would be of general interest or of benefit to the School. The PTA exists for you and your children and your ideas or criticisms are necessary if we are to function effectively. Membership can be renewed in January at a cost of 20p per family. However, non-members are welcome to attend any of the monthly meetings in School. The first meeting of the new year will be on 19th Jan. when Mr. Oliver and his Staff will hold an 'Any Questions' evening. The Staff will form a panel to whom you may put questions about the school or education in general. It would be appreciated, however, if questions of a complex nature could be sent to Mr. Oliver in advance in case research is necessary to provide adequate answers.

Mrs. Pauline Baldwin and Mrs. Pat Woodward raised over £20 for PTA funds at a Jewellery Party held at Pauline's house last month. Thank you ladies.

On behalf of the Committee, I wish you all a very happy Christmas.

ANNE MEGENEY (Secretary)

"THE GLORIOUS SOUND OF CHRISTMAS"

On Friday December 10th some children from Harbury School will be taking part in a Carol Concert to be held in the Spa Centre, Leamington Spa at 7.30 p.m. in aid of Action

Research for the Crippled Child.

The children will provide the tableaux while the choir of St. Mary's Church, Warwick and the Coventry Salvation Army Band provide the music, and there will be ample opportunity for audience participation.

Tickets are available from the Spa Centre, Newbold Terr., Action Research, 6a New Street, Warwick or 23 Mill Street, Harbury. Price: Adults 60p, Children 40p.

1st HARBURY SCOUT GROUP

The Committee would like to thank all those who assisted in any way with their 'Guy Fawkes Bazaar'. A magnificent sum of £140 was raised for scout funds.

Recent activities have included a 'link day' with 2nd Southam Scouts involving various outdoor activities at Ufton, and a trip to see 'The Gang Show' in Leamington.

WERE YOU A SCOUT WHEN YOUNG? The present scout group are interested in obtaining information regarding scouting in Harbury before 1966. If you can help, please contact the Group Scout Leader, Mr. Knight, at Rowan House, Binswood End, Tel: Harbury 612029.

LIZ COOKE.

NEW LEADERS FOR GUIDES

We are very pleased to report that the Vicar has been able to persuade Mrs. Lupton to take charge of the Guides and Mrs. Mettrick to assist her. The Guides were in danger of folding up as Mrs. Murphy, from Leamington, who had been leading them on a temporary basis, is no longer able to continue.

Meetings now take place at 7pm - 8.30pm on Monday evenings in the Scout Hut behind the Wight School. There are currently 16 Guides, and in the New Year there may be one or two vacancies (ex Brownies get preference).

A five mile ramble is planned for Sunday Dec. 5th and on Wednesday Dec. 8th there will be a coffee evening for parents at Mrs. Mettrick's home, Ivy Cottage, Ivy Lane, starting at 8 p.m. Anyone who is able to give some assistance or help with badge testing should contact Mrs. Lupton on 612340.

J. B. M.

MOTHER AND TODDLER GROUP

This group has been formed to provide the opportunity for small children to play together whilst their mother is still within easy reach. It also provides an opportunity for Mums to meet others with children of the same age. This has been made possible with the kind co-operation of the Playgroup who lend us most of the equipment we use.

Children are given the chance to indulge in painting, water and sand play and many other activities which might not be possible at home. So far this has proved to be a great success and we hope that this will continue in the future.

Anyone wanting to know more about the group should contact either Mrs. J. Powell (612246) or Mrs. Neill (612819).

A few thoughts when pulling the wishbone this Christmas.

I wish we could have lots of snow this winter so that the under 10's could experience it while it's still fun and not a nuisance.

I wish someone would sell biscuits in packets that weren't designed to break the biscuits when opening them.

I wish shops still had counters with people behind them so that I didn't have to wander round, clutching their merchandise hoping to locate the 'cash & wrap' before being accused of shoplifting.

I wish that people who have designed 'high-rise' flats for other people to live in should have to live in them themselves.

I wish that people who talk about 'meaningful dialogues' and other such meaningless things could all go to the U.S.A. where everyone talks like that.

I wish Harbury dogs would all develop constipation or an aversion to my front lawn.

Most of all I wish that we could all stop moaning and remember that compared with at least one third of the world we are rich beyond dreams.

S. H.

CHRISTMAS QUIZ

1. Who is the patron saint of children?
2. When is St. Stephen's Day?
3. Who is Christmas Humphreys?
4. When is Twelfth Night?
5. How many gifts did my true love give to me?

bps
MERCHANTS IN BUILDING

building & plumbing supplies limited

42, HOLLY WALK, LEAMINGTON SPA

For all your building materials

D.I.Y., paving slabs, sand,
cement and other

"heavy" materials at our premises at
8, Radford Road, Leamington Spa.

Bathrooms & Kitchen Units, at our

Showrooms on Wood Street,

(off Holly Walk).

Tel: 21301

or Tel: 26088 (Radford Road only)



FOSSE

FOSSE WAY Harbury 613260

GARAGE

*SERVICING & BODY REPAIRS
WELDING & CHASSIS REPAIRS
TO M.O.T. SPECIFICATION*

**NATIONWIDE RECOVERY
& TRANSPORTATION
OF CARS, CARAVANS & BOATS**

**24 HOUR PETROL
COMPETITIVE PRICES**

WRIGHTONS DECORATORS



**PLUMBING, TILING,
GENERAL REPAIRS, ALTERATIONS ETC.**

PAINTING CONTRACTORS

4, DICKENS RD., HARBURY 612564

THE COTTAGE BANBURY RD., GAYDON

A.W. BASTIN

WHOLESALE BUTCHER.

HIGH STREET, BISHOPS ITCHINGTON

Top quality meat supplied for your Deep Freeze
All meat cut and packed to your own special requirements.

FOR PRICE LIST

Phone: Harbury 612708 or 612683

CALCUTT BOATS



4 — 6 BERTH MODERN NARROW
BOATS FOR YOUR HOLIDAY HIRE
HULLS AND SUPERSTRUCTURES - ENGINES -
CHANDLERY - CANALSIDE SHOP -

Calcutt Top Lock
Stockton, Rugby
Tel. 092-681 3757

AGENTS for
BARNES Marine
Diesels.

COWLEY BROS. QUALITY BUTCHERS

Specialists in deep freeze supplies

GREENGROCERY ALSO AVAILABLE AT CHAPEL ST.
BISHOPS ITCHINGTON.

HIGH STREET HARBURY PHONE: HARBURY 612277 or 612090

DOUG & MAVIS POWELL WELCOME YOU TO THE

DOG INN

HARBURY PHONE: 612599

Saturday night is our music night

Weddings — Buffets — Parties — Catered for

Ansells — Skol Lager — Double Diamond

HARBURY HANDICRAFTS

Pen drawings,
Calligraphy,
Polymer
Paintings
Model making.



Macramé,
Needlecraft,
Soft toys —
Crochet,
Etc.

J.W.H. & M. BAMFORD, TEMPLE END.

FOODMART

WIDE RANGE OF
GROCERIES
HOME FREEZER PRODUCTS
AT
KEENEST PRICES
PLUS
GREEN SHIELD STAMPS

Mill Street Harbury
PHONE 612645

plumbing, painting & general repairs

D.J. JACKSON
harbury 613155

BENCH
TELEVISION SERVICES
Harbury 612728

REPAIRS
SALES
RENTAL

CHAPEL STREET
BISHOPS ITCHINGTON



TRAILERS

a division of

C. & E. Motors (Leamington Spa) Ltd. Old Warwick Road

Leamington Spa CV31 3NX

Specialists in all types of Trailer and Chassis built to customers' requirements.
Caravan running gear and trailers repaired and serviced.
Limited number of trailers for hire daily or weekly, subject to availability.
For further details contact **Mr Tony Street** or **Mr Bob Sandford**
Telephone 20861/2/3

for all your printing
and stationery
requirements

5, REGENT STREET,
LEAMINGTON SPA
Telephone: 39735



Tripod Press

a good knight
to you all

Occasionally somebody says to us
"We can't afford to shop with you, and
anyway you take yourselves too seriously!"

And we think - "That's funny"
because our customers are account-
ants, gamekeepers, farmers and
engineers, architects and salesmen,
doctors and drivers, teachers and
builders, photographers, bank
staff and printers; and a host of
quite sane and sensible men,
with not a millionaire among
them!

They do have one thing in common -
they expect us to be good.
Good service, good manners, good quality,
good fashions, good value, good clothes.
And we do take that seriously.
And while goodness is our aim,
can anyone afford not to shop with us?



ROGERS KNIGHT
good clothes
114 The Parade
Leamington Spa tel 21501
and at Banbury and
Stratford Upon Avon

W. BOURNE INSURANCE

ALL CLASSES OF INSURANCE
WITH FREE QUOTES

SOUTHAM ESTATES

TERMS BY ARRANGEMENT
AND

ABBEY NATIONAL BUILDING
SOCIETY

LOCAL OFFICE

See W. BOURNE for a Complete,

Confidential, Cordial and Prompt Service

PARK LANE,
OFF MARKET HILL
SOUTHAM.

TEL.
SOUTHAM
2530.

Jeanne

MARKET HILL, SOUTHAM, TEL: 2808
YOUR LOCAL

Ladybird
CHARTER STOCKIST

FOR BOYS & GIRLS TO 14 YRS.
MANY ITEMS IN OUR RANGE
WILL FIT THE SMALLER WOMAN
LARGEST STOCK IN AREA
LOOK AROUND WITHOUT OBLIGATION
& COMPARE OUR PRICES

SOUTHAM HIGH SCHOOL UNIFORM
ALWAYS IN STOCK
FREE PARKING FITTING ROOM

What began around Boxing Day 1962 and went on for months?

What happened to Santa Claus in 1964?

Who wrote 'The Adventures of the Christmas Pudding'?

Rudolph was one, who were the other eight?

Phineas Fogg left London on Boxing Day 1974 and flew West.

He force-landed on a Pacific island and was surprised to find it was Christmas. Explain. (He could have flown East with the same result!)

1

Who wrote: "This is the Month; and this the happy morn
Wherein the Son of Heav'ns eternal King,
Of wedded Maid, and Virgin Mother born,
Our great redemption from above did bring.. " ?

Who wrote: "It was Christmas Eve on a Friday

The shops was full of cheer,

With tinsel in the windows,

And presents twice as dear.

Out in the frozen countryside

Men crept round on their own,

Hacking off the holly,

What other folks had grown,

Mistletoe in willow trees,

Was by a man wrenched clear,

So he could kiss his neighbour's wife,

He'd fancied all the year.

3

3-

And out upon the hillside,

Where the Christmas trees had stood,

All was completely barren,

But for little stumps of wood, " ?

5

3

(Must be read with rural intonation)

DA RIDGLEY _____ Answers on back page.

?! SILENT NIGHT! ?***

The Official Opening of the Rugby Club Bar took place in Village Hall on Wednesday 24th November.

As you will know the Harbury Rugby Club has an exper-
al one year lease on the Windmill and Fosse Rooms (the
maller rooms of the Extension) which they use on Wednesday
ngs and Saturday afternoons. They have decorated the
s as their own expense and also improved the channing

rooms, installing a bath and an efficient water-heating system.

The Rugby Club was out in force for the opening along with various village notables from the Parish Council and Village Hall Committee.

Glen Hales, unexpectedly called upon to perform the opening ceremony, having severed the ritual ribbon with a pair of garden shears, read an impromptu speech.

Chairman of the Parish Council, Geoff Wright (sans badge), on behalf of the village, congratulated the Rugby Club on its enterprise in providing itself with a Club House and on its improving fixtures list. It was, he said, good to see Harbury's name mentioned each week on the Courier's Sporting Page.

The evening continued decorously (? a Rugby Club that doesn't sing?) and most pleasantly (visitors being plied with free drinks by members of the Committee) and broke up just after 10.30 p.m.

LINDA RIDGLEY.

HARBURY SOCIETY

There will be a Church Service blessing the Harbury Society on Sunday 5th December when two members of the Society will read the Epistle and Intercessions.

The Society is to be responsible for collecting funds for the planting of a large commemorative tree (for the Queen's Silver Jubilee). Anyone wishing to contribute to the fund should contact the Secretary at 7 Wagstaffe Close, Tel. 612792.

LINDA RIDGLEY.

HARBURY SURGERY CHRISTMAS ARRANGEMENTS

Christmas Eve surgeries will be as usual on Friday (9-10 am and 6-7 pm).

The surgery will be closed on Sat. Dec. 25th, Sunday Dec. 26th and Monday Dec. 27th.

In emergency telephone 612232.

There will be a surgery for urgent cases only on Tuesday December 28th 9-10 am.

Normal surgeries resume Wednesday December 29th.

BUS SERVICE TO SOUTHAM

Mr. Lainchbury of Sapphire Coaches is proposing to provide a bus to Southam on Tuesdays and Thursdays - starting on Tuesday November 30th. The bus will leave Bishop's

Itchington at 9.30 a.m. and proceed via Bush Heath Lane, Park Lane, Chapel Street, High Street, Church Street and Deppers Bridge - picking up on request. It is anticipated that a return bus will leave Southam at about 11.30 a.m. to enable mothers with school children to be back in the village for lunch time.

For those people who would like to stay in Southam for more than a couple of hours, there is an early evening bus which comes back from Coventry via Southam which they would be welcome to use. Further details from Mr. Lainchbury (612344)

REMEMBRANCE SUNDAY

A large congregation was present in church and later around the war memorial on Nov. 14th to remember with thanks those who gave their lives in the two world wars. For the first time for some years there was a live trumpeter, David Goodfellow, to play Last Post and Reveille.

HARBURY BRANCH ROYAL BRITISH LEGION

The 1976 Poppy Day Collection has again made its demands on many busy people in the village for which our very real appreciation cannot be overstated. To this commendation I must add my special credits to Mrs. Cooper of Ufton who also organises a Bingo Evening for the cause, to Mrs. Bartlett of Deppers Bridge and to Miss Hillier of Bascote Heath who have been my very able "branch organisers" for many years.

In addition to the house-to-house collection, sincere thanks are due to the village pubs and shops who annually allow valuable counter space for the collection boxes and to Harbury Church, Ufton Church, and Bascote Heath Chapel who very nobly donate all or much of their collections following the Service of Remembrance, and this year we have Harbury School to thank for organising a collection.

For those who are perhaps uncertain of the purpose of this annual Poppy Day Collection, it is to enable the Legion to pursue its Historic role of supporting and nurturing the Ex-Service community who still, surprisingly, number 6,500,000 survivors from the two world wars, 1,600,000 National Servicemen, and 1,800,000 regulars, both men and women who have left the services since the last war.

I can now announce that our total collection for this year is £235.16p. as against the total for 1975, which was £210.10p., and for this total we are also indebted to Mrs. Barnes,

Judy Broom, Mrs. Bunting, Mrs. Cooper, Mrs. Farley,
Mrs. Goodman, Mrs. Hancock, Mrs. Haynes, Mrs. Macgowa
Mrs. Suttie, Mrs. Williams and Mrs. Wilson.

JOHN BARNES (Hon Organiser)

W.I.

At the recent AGM the following officers were elected for the coming year. President: Mrs. M. Davies, Vice-President: Mrs. B. Tyler, Secretary: Mrs. J. Ellis, Treasurer: Mrs. M. Thompson.

The Christmas party will be held on Tuesday Dec. 2nd. The group Carol Service will be held at Ladbroke church on Wednesday Dec. 1st. A 'Sherry & Mince Pie' evening will be held in December for husbands and friends. Date to be announced later.

MONICA DAVIES.

RECIPE FOR PLUM PUDDING

This is a recipe for Plum Pudding taken from the Minute Book of the 'Committee for the Harbury Jubilee Celebrations' which took place in May 1887 to celebrate Queen Victoria's Diamond Jubilee:-

1 lb. flour, 1 lb. plums, 1 lb. currants, 1 lb suet
1/4 lb. sugar

Teaspoonful mixed spice, stirred with water, when mixed it must be stiff enough for the spoon to stand upright. Boil for Five Hours".

HARBURY THEATRE GROUP

The preparations for our Christmas Production in Church are going very well so come December 9th & 10th we will try our hardest to kindle the Christmas Spirit in the rest of the village. The show will be made up of a short, modern Nativity Play, 'The Coming of the Kings' and readings, and music sung by the Church Choir and the Cub Scouts. See you there at 7.45 I hope - if the snow isn't too deep!!

While on the subject of Christmas, a call to all our members past and present. Don't forget our Christmas Social at 'The Dog' on December 17th. Good company, a few drinks and some of Mavis's delicious food and it's bound to be an enjoyable evening. So please try to give your names to Carol Percival in good time so we can work out the numbers for food.

KEITH HAYES.

CHRISTMAS CLOSING IN HARBURY

<u>Taylor's:</u> Close at 5.30 on Friday 24th Re-open 8 a.m. Weds. 29th Closed all day Sat. 1st Jan. Closed all day Mon 3rd Jan.	<u>Post Office:</u> Close at 12.30, Fri. 24th Dec. Re-open, 9am Weds. 29th Dec. Closed all day Sat. 1st Jan. Closed all day Mon. 3rd Jan.
<u>Margaret Joyce:</u> Close 5.30, Fri. 24th Dec. Re-open 9am, Thurs. 30th Closed all day Sat 1st Jan	<u>Launderette:</u> Close 5.00pm, Fri 24th Dec. Re-open 8 a.m. Thurs 30th Dec. Closed all day Sat 1st Jan.
<u>Butcher:</u> Close 4.30, Fri 24th Dec. Re-open 8.30-12, Weds 29th Closed all day Mon 3rd Jan.	<u>Newsagent:</u> Closed 25th, 28th & 27th Dec. 28th: open 8.30-12 & 4.30-6 1st: open 8.30-12 & 4.30-6
<u>Library:</u> Closed Mon. 27th Dec. Closed Mon. 3rd Jan.	<u>Foodmart:</u> Close 5.30, Fri. 24th Dec. Re-open 9 am, Wed 29th Dec.
<u>Lindop's:</u> Close 3 pm, Fri 24th Dec. Re-open 9am, Wed. 29th Closed all day Sat 1st Jan.	<u>Bloxham's:</u> Close 5.30, Fri. 24th Dec. Re-open 9 am, Wed 29th Dec. Closed all day Sat 1st Jan.
<u>Co-op:</u> Close 4.30, Fri 24th Dec. Re-open 5.30, Wed. 29th Closed all day Mon. 3rd Jan.	<u>Bank:</u> Close 12 noon, Fri. 24th Dec. Closed Tues. 28th Dec. Re-open as usual Fri. 31st Dec.
<u>Cathy Craig:</u> Close 4 pm Fri 24th Dec. Re-open 9 am Thurs 30th Closed all day Sat 1st Jan. Closed all day Mon 3rd Jan.	

Christmas comes but ONCE a year thank God

Does this thought pass through your mind at this time of year? It does through mine. Christmas cards in the shops in August, Father Christmas arriving at the beginning of November, "Mummy, Daddy, I want.....", TV Commercials imploring us to buy, buy, BUY. Toys that cause bitter disappointment when they break as soon as they are unwrapped. The cost of the Christmas Storecupboard rising day by day. The whole commercial world saying SPEND. The Bank Manager's letter saying DON'T! Thank God, Christmas comes only once a year.

Christmas come but....., but what? Isn't there more to Christmas than just spending?

On Advent Sunday we go to the Carol Service in the Cathedral. At the beginning of December the building is cold, dark, and almost sinister. There is a huge tree standing naked at the back of the Nave. The choir sings and we hear the Advent Message telling us that Christmas is coming very soon, only four short weeks away. At the end we turn to leave. The children's eyes open wide when they see the tree illuminated with a thousand tiny lights, but there are empty baskets at its foot awaiting gifts for the city's less privileged families. For me this is the beginning of the real Christmas. Now the message is GIVE not buy.

On each of the Sundays in Advent we light a candle on our Advent Wreath. Emma lights the first, Clare the second and

so on until the last is lit on Christmas Day. Excitement builds up. Christmas, Christ's Mass is coming, getting nearer now.

I go to Leamington on a Saturday. The Salvation Army is playing Carols. Give not buy. I go Carol-singing and, I hope give pleasure to someone. Give not buy. Children sing at my door and rattle their tins. Give not buy.

Christmas Eve arrives. Midnight Mass in Harbury Church. The Village Family comes together to celebrate Christ's Birth. We see the Baby placed in the Crib and we sing.

"What can I give Him, poor as I am?

If I were a Shepherd I would bring a lamb,

If I were a Wise man, I would do my part.

But what I can I give Him,

Give my heart. "

Now I really can say "Christmas comes but once a year.

THANK GOD. "

MICHAEL BARNES.

NEVER HAD IT SO GOOD?

"We have finished the story of Bleak House, and we are sitting down this afternoon to enjoy the first chapter of Great Expectations." Well done the workers, well done the tax-payers. Everybody has rushed to pay his income-tax and although the export market is still slightly behind, the home market is booming. We have a real surplus of £39,000,000, and even with the cost of posting a letter at 1d, the Post Office has made a profit of £1,400,000.

Now, before you all start thinking that Mr. Healey has had a change of heart, I must tell you that I'm talking about 1933 and the above quotes were from a budget speech made by Mr. Neville Chamberlain as Chancellor of the Exchequer in that year. He also went on to say that unemployment had fallen, and, amid loud cheers, that the strength of beer had been increased and the price dropped by a 1d a pint.

In these halcyon days one was able to buy a four bedroomed house complete with an acre of landscaped garden and a trout stream for £1,650. Too expensive? Well, why not rent a semi-detached with 3 bedrooms etc. for £40 per annum. Your house-parlourmaid will cost you another £40 per year and your housemaid £36.

A solid silver Half-Hunter watch complete with chain of

hall-marked solid gold sold for the handsome sum of five shillings. Whilst your new gas cooker would cook your six-coursedinner for a penny-halfpenny, and for less than £100 it was possible to comfortably furnish a fair sized house.

One advertisement in this fascinating newspaper (kindly loaned to me by Mrs. Rolfe), did however, leave me speculating as to just how we came by that £39, 000, 000 surplus. It read:-

Counterfeit coin tester. Price post paid 5/-. Guaranteed for five years. Base coins are in circulation all over the country in greater numbers than ever before. Instal one of these detectors now and be on your guard!!

G. H.

RECREATION GROUND ADVISORY COMMITTEE

Football Trebles Competition Results. Winning Numbers:-

Oct. 30th 02.03.04, 02.03.06, 02.04.06. Nov 6th 24.23.13

Nov 13th Matches cancelled.

CORRESPONDENCE

Dear Editors,

BIG BIN RUBBISH

May I refer to the unwarranted outburst from your correspondent Pam Middleton, on the 'big bin rubbish' bulky refuse collection.

As one who has spent twenty years in the Environmental Health function within Local Govt. I would support Stratford D.C. by stating that it is one of only a few who perform this service. Might I also remind Pam that to cart away her bulky items of refuse by hiring a private contractor would possibly cost £15-£20. A 3p phone call is surely not too much to ask. If she, as a ratepayer, would like to know what her rates are spent on, then a cursory glance at the rear of her rate demand note may be quite revealing. Pam would note the high proportion spent on Housing, Education and Highways etc., 'the lions share' taken by the County Authority and the very low proportion for Public Health.

In my opinion our refuse collection service is first class, and is a credit to the men who cheerfully perform this task on what no one would call high wages. I will certainly not join Pam in making a fuss lest we lose the bulky refuse collection service.

DAVID BEAUMONT. M. E. H. A.

RECREATION GROUND ADVISORY COMMITTEE

CHRISTMAS FAIR - DECEMBER 11th

VISIT FATHER CHRISTMAS in his GROTTO!!

See him journey round the Village and arrive at
the VILLAGE HALL at 2.30 p.m.

*-STALLS - GIFTS - SIDESHOWS - WHITE ELEPHANT -
TEAS etc.

WANTED: Fur Jacket or Fur Cape. Please telephone 613273
evenings or weekends.

CHRISTMAS QUIZ ANSWERS

1. St. Nicholas
2. 26th December
3. A famous QC and Judge
4. 6th January
5. 364 or 376 depending on whether one counts the Partridge in the Pear Tree as one gift or two, each time!
6. The Big Freeze. The worst snow-storms in Britain since 1881 began.
7. He won the Epsom Derby, with the help of Scobie Breasley.
8. Agatha Christie.
9. Dasher & Dancer, Prancer & Vixen, Comet & Cupid and Donner & Blitzen. From the poem The Night Before Christmas.
10. He landed on Christmas Island in the Pacific Ocean. He did NOT cross the International Date Line, he was not THE Phineas Fogg! If he flew East he might have landed on Christmas Island in the Indian Ocean.
11. John Milton in 'On the Morning of Christ's Nativity'.
' Pam Ayres in 'Goodwill to Men - give us your money.'

H A P P Y C H R I S T M A S

Coach Excursions & Tours from Harbury

DETAILS & BOOKINGS FROM
PHILIP LINDOP, CHAPEL STREET

SAPPHIRE COACHES

(I.E. LAINCHBURY)
BISHOPS ITCHINGTON
QUOTES FOR PRIVATE PARTIES
PHONE HARBURY 612344

FILMS

TOYS

PHILIP LINDOP.

DRUG STORE

CHAPEL STREET
HARBURY

DRY
CLEANING

TOILETRIES
BATTERIES

GREEN SHIELD STAMPS

AW&AJ HEAL newsagents

STATIONARY
GREETING CARDS
SWEETS — TOBACCO — ICES
SOFT DRINKS
HIGH STREET, HARBURY
PHONE HARBURY 612156

WHY DIG THE GARDEN?

HIRE A ROTOVATOR

MODERATE CHARGES — NO VAT
LAWN MOWER &
GARDEN MACHINERY
REPAIRS OVERHAULS SERVICING

M. L. WILLIAMS

Agricultural & Horticultural Engineer
FOSSE WAY, HARBURY
Phone Leamington Spa 23925

Margaret Joyce.

HIGH STREET

"GET WITH" latest
Cuts and Styles.

Reductions for
Senior Citizens.



Phone HARBURY 613128

BRIAN'S FURS SPECIALIST FURRIERS

Comprehensive range of quality coats,
jackets & hats always in stock.

Including: CONEY, SWEDISH LAMB,
MUSQUASH, MINK MARMOT, RED FOX,
KIDSKIN AND MINK.

SPECIALISTS IN FUR RE-STYLING
RENOVATIONS ON THE PREMISES.

122 Regent St.,
Leamington Spa Tel 21049

SOANS OF SYDENHAM FOR FORD



SYDENHAM DRIVE,
LEAMINGTON SPA. TEL: 29411



FOR YOUR NEXT HAIR APPOINTMENT COME AND RELAX
IN THE PLEASANT OLD WORLD CHARM OF

CATHRYN CRAIG

Where all aspects of Hair
Styling are carried out by
our fully qualified staff.

Phone: 612326
2/3 Chapel Street
Harbury.



Your Vauxhall Bedford

Motors (Leamington Spa) Ltd.

Old Warwick Road Leamington Spa
CV31 3NX Telephone 0826 20861/2/3

Also at Coventry and Swansea

Main
Dealers



ENJOY LEISURE LIFE PROTECTION

WHEN · HIKING · GOLFING · ANGLING · SAILING · CLIMBING · CAMPING

'POP IN YOUR POCKET'

PETER STORM

100% Waterproof

Ultra lightweight nylon

In Navy, Orange, Royal, Olive, Fawn.

ANORAK

JACKET

OVERTROUSERS



LEISURE LIFE

117, WARWICK STREET, LEAMINGTON SPA. Tel: 28326.

The views of contributors to the Harbury News are not necessarily those of the Editorial Committee.