



HARBURY NEWS.

A MONTHLY PUBLICATION

COVERING ALL ASPECTS OF LOCAL LIFE

MAGAZINE ADDRESS 23 MILL STREET HARBURY TEL: 612427

**THIS MAGAZINE IS PRODUCED WITH THE
HELP OF ALL SAINTS PAROCHIAL CHURCH COUNCIL
HARBURY — VICAR. Rev. F.R. MACKLEY**

NORMAL SUNDAY SERVICES

8.00 am. 10.00 am. 6.30 pm. (4.00 pm. in Winter)

TIMES MAY VARY CHECK CHURCH NOTICE BOARD FOR ALL SERVICES.

DOCTORS' SURGERY — FARM STREET. TEL: 612232

MON. — SAT. 9.00 am. — 10.00 am.

MON., TUES. & FRI. 6.00 pm. — 7.00 pm.

POLICE: SOUTHAM (981) 2366

LOCAL OFFICER P.C. PERCIVAL, HARBURY 612175 EMERGENCY — 999

**A DIRECTORY OF VILLAGE ORGANISATIONS AND
ESSENTIAL INFORMATION IS AVAILABLE ON REQUEST
FROM MRS. D. HOLT, 15 WAGSTAFFE CLOSE.**

FOR SMALL ADVERTISEMENTS RING 612790 by 25th MONTH



MORRIS

BULL RING GARAGE

LEYCARE



**RETAIL DEALERS FOR MORRIS, WOLSELEY, M.G. CARS
FULL SERVICING FACILITIES
CAR HIRE — SHORT & LONG TERM
ELECTRONIC TUNING. EXTENSIVE RANGE OF PARTS
QUALITY USED CARS
M.O.T. TESTING**

**BULL RING GARAGE
HARBURY**

TEL: HARBURY 612275

Dear Father Christmas,

We know how busy you are at this time of year, but we wonder if, on your way from Leamington to Southam this Christmas Eve, you might stop off in Harbury and deliver the following:

1. Softer water (so we don't get lumps of limescale in our tea).
2. A cover over the School swimming pool.
3. Everything necessary to finish the Village Hall extension.
4. A cheaper way of heating the Church.
5. An 8th day each week, to be used exclusively for committee meetings, so we can all spend some evenings at home.
6. An inexhaustible supply of small change for meeting the children's dinner money/milk money/pantomime money/scone money/bread money requests.
7. An equally inexhaustible supply of egg boxes, 1942 threepenny bits, pictures of dinosaurs, facts about Peru, toilet-roll inners, angel costumes etc. etc., to be drawn from in response to the children's desperate pleas made regularly at 8.53 a.m.
8. A supply of copies of the following saying of Confucious (to be displayed in every house): "To put the world in order we must first put the nation in order; to put the nation in order we must first put the family in order; to put the family in order we must first cultivate our personal life; and to cultivate our personal life we must first set our hearts right."

Yours sincerely,
HARBURY.

HARBURY DIARY

DECEMBER 1975

- | | |
|-------------|--|
| Tues. 9th | Tuffy Club Christmas Party (members only),
V. Hall 2.15 p.m.
Harbury Friends Christmas Party, Crown, 8p.m. |
| Wed. 10th | Junior School Carol Concert, Church, 7.30p.m. |
| Thurs. 11th | Golden Age, Village Hall, 2.30p.m. |
| Fri. 12th | P.T.A. Carol Party, School, 7.30. All welcome.
(Correction from P.T.A. booklet date) |

- Fri. 12th Southam High School P.T.A. Barn Dance, Southam School Hall.
Harbury Theatre Group Christmas Party, Dog Inn, members only.
- Sat. 13th Senior Citizens' Christmas Dinner, School, 5.30
- Mon. 15th Playgroup Christmas Party, Wight School, 2-3.30
- Tues. 16th Young Wives' Carol Service, Church, 2 p.m.
Lower Junior School Concert, School, 10a.m. & 7.
Harbury Sen. Cit. Ben. Assoc., V. Hall, 8 p.m.
- Wed. 17th Ballet School, end of term.
Parish Council Meeting.
- Thurs. 18th British Legion Whist Drive, evening, V. Hall.
Labour Party Christmas Party, Crown, 8 p.m.
- Fri. 19th Football Club Dance. End of School Term.
- Sat. 20th Rugby Club Dance, Village Hall.
- Sun. 21st Service of Nine Lessons & Carols, Church, 2.30.
- Tues. 23rd Golden Age, Village Hall, 2.30 p.m.
British Legion Whist Drive, V. Hall, 7.30 p.m.
- CHRISTMAS EVE Sung Midnight Mass, 11.15 p.m., Church
- CHRISTMAS DAY Holy Communion, 8 a.m.
Procession & Family Sung Eucharist, 10a.m.
- Sun. 28th Footpath Assoc. ramble from V. Hall, 2.30 p.m.
- Wed. 31st Football Club Dance.

JANUARY 1976

- Tues. 6th The Epiphany of our Lord.
- Thurs. 8th W.I. Make-up demonstration by Boots' rep.
- Tues. 13th Harbury Friends visit Gas Show Rooms, Warwick for cookery demonstration.
- Thurs. 15th Golden Age, V. Hall, 2.30 p.m.
- Fri. 16th Playgroup Jumble Sale, V. Hall, 6.30 p.m.
- CRUSADERS, V. Hall, 2.30 p.m. every Sunday
- BINGO, V. Hall, 8 p.m. every Monday
- YOUTH CLUB, V. Hall, 8 p.m. every Wednesday
- BABY CLINIC, V. Hall, 2 p.m. 2nd & 4th Wednesdays
(special appointments every 3rd Monday)
- HARBURY SINGERS, 8 Penelope Close, 8 p.m. Tuesdays
- ALL DATES CORRECT AT TIME OF GOING TO PRESS.
- DATES FOR INCLUSION TO MRS. S. BENNETT, 612618.

THE VICAR'S LETTER

My dear Friends,

Remembrance Sunday was well observed in Harbury. Members of the Royal British Legion diminish in numbers as those who served in the 1914/18 war die off, but the general public came to the Remembrance Service in greater numbers than ever before. We still remember those who laid down their lives.

After the joyous Christmas Festival will come Epiphany-tide. The actual date of the great Feast of the Epiphany is Tuesday, 6th January. Those Wise Men from the hidden East did but 'follow the gleam' which broke in upon their patient studies. They rose and followed the Star. The poet Tennyson at the end of his long life had this farewell message to give: "Follow the gleam!" There is a light which flashes and is gone, and yet survives. There is a light which eludes but never deceives. There is a light which guides as it flies. There is a light which is for ever in motion, and can be retained only by moving with it. There is a light which is always just ahead of where you stand. You must follow if you would arrive; and the following must never cease.

"After it, follow it - Follow the Gleam".

How blessed if, in His strength, not your own, you can say at the end: "I have seen His star, and by His great mercy I am come to worship Him".

With every blessing,

Your sincere Friend and Vicar,

F. R. Mackley.

HOLY BAPTISM

November 16th - Samantha Michelle Ellis, 11 The Beeches.

FUNERAL SERVICE

November 24th - Eluned Farrow, aged 71 years.

A native of Aberystwyth, Mrs. Farrow lived almost all of her married and widowed life in Harbury, where she was greatly respected and loved. She was a regular worshipper in Church, usually at least twice every Sunday, and was a keen and helpful member of the Mothers' Union. For some years she was our deputy organist, and it was fitting that her son Trefor played the organ at her funeral service. She used

to play the piano for the Christmas Carol Service in her husband's school, the Wight School, and she has given music lessons to many Harbury children in the past. We thank God for her, and commend her to His loving care, and we express our sympathy to those who are bereaved, especially her daughter Eirlys and her husband and family, and her son Trefor and his wife and family. F. R. M.

FROM THE CHURCHWARDENS

First of all, may we take this opportunity of wishing all our readers a very happy and blessed Christmas. You will find details of the Christmas services in the Diary, and we look forward to seeing many of you in Church at the Carol Service on the Sunday before Christmas and at one or more of the celebrations of Holy Communion at Christmas.

As heating costs have increased so much recently, the PCC has had to consider very carefully ways in which the cost to the Church can be minimized as at the moment the proportion of our income which is being spent on heating is far greater than it should be. Although we have in the past few months seen an encouraging increase in the Church's income, the amount spent on heating is still too high, and it was therefore necessary to look at various ways of cutting this down. Many alternatives were discussed, and it has become clear that one possibility is to separate the south aisle which would reduce very considerably the area to be heated, and the smaller services could then be held in ~~warmth~~ ~~and comfort~~, with the well-attended festival services being held in the main body of the Church. It is not possible to know whether this will work satisfactorily without trying it, and the PCC therefore decided that a temporary screening should be erected between the south aisle and the main body of the Church to find out whether this is the answer for us. We do quite appreciate that the temporary screening is unsightly but we do assure you that this is a temporary, experimental measure which has been taken to ensure that all our members can continue to worship together in reasonable warmth. We do not believe it is right for any members of our congregation, particularly the older ones, to come

into a Church which is cold. If it is found that screening off the south aisle is the answer to our heating problem, then an attractive and suitable permanent screen will be erected and suitable heating installed, and this will result in a very considerable saving on fuel costs.

Please do talk to us and to the Church Treasurer about this, as it is something which does very much concern every one of us.

HARBURY SCHOOL

Preparations are well in hand for the various Christmas activities. These will be as follows:

1. Friday, 5th Dec., Infant Nativity, 2 p.m. and 6.30 p.m.
2. Wed. 10th Dec., Upper Junior Carol Concert, Church, 7.30.
3. Tues. 16th Dec., Lower Junior Christmas Musicals, at 10 a.m. and 7 p.m. This year these will take the form of individual class musicals. Classes 6 and 7 will perform 'The Amazing Adventures of Baron Munchausen', and Class 8 will perform 'La Campanella'.

N.B. Judging by previous experience, the evening shows will be packed out. Could we therefore urge that anyone who can possibly come to the morning performance does so. 'Leave the dishes in the sink, Ma!' We can allow no children to the evening performance.

The Infants' party will be held on the afternoon of Wed. 17th Dec., and the Juniors' party on the afternoon on Thurs. 18th Dec. On the last day of term, Fri. 19th, the whole school will see the film 'The Amazing Mr. Blunden'. Also, weather permitting, on the evening of Wed. 17th, two groups of children (from top 3 classes) plus staff and any parents who would like to come along, will embark on Carol Singing tours of the village.

Collections taken from various performances will be equally shared between the NSPCC, the Pool Fund and the School fund.

On the evening of Fri. 28th November, Mr. John Turner, chairman of Southam & District Road Safety Committee, presented Cycling Proficiency Certificates and Cycle Plaques to 46 children from the school who have passed cycling proficiency tests this year. This has been a mammoth task, and our thanks are due to all those who have helped in any way. Those who passed were: Susannah Gascoyne, Helen Forrester,

Mark Davies, Sarah Morrall, Sara Guy, Sandra Tuffrey, Teresa Wallington, Joanne Callow, Stephen Bell, William Suttie, Benita Laphorn, David Grey, Stephen Home, Jennie Scott, Gary Andrews, Simon Timperley, Colin Hughes, Edward Walker, Mark Taylor, Sarah Wright, Britt Ingram, Keith Barr, Jackie Upton, Simon Megeney, Richard Woodward, Ian Cartwright, Simon Roberts, Katie Jackson, Adrian Mann, Ian Thompson, Andrew Winter, Matthew Shelley, Russell Cooke, Mark Smith, Helen Taylor, Sylvie Peake, Diane Home, Caroline Parker, Sara-Jane Baily, Alison Wood, Adrian Wilkins, Ann Middleton, John Jackson, Neil Andrews, Stephen Hunt and Sarah Walters.

P.T.A.

The Carol Party will now take place on Fri. 12th December at 7.30p. m. in the School hall. This will be an informal party so please bring the family along. There will be carols sung by the Harbury Singers and lots of community singing, followed by hot mincepies and coffee.

The Carol Party will be the last event in the PTA's 1975 calendar, and brings to an end a very full and successful year, highlighted by the opening of the school swimming pool. This would seem to be an appropriate time to say thank you to all who helped and supported us in our various enterprises during the year. There is still much to be done and, of course, money is still needed to pay for the pool, so we hope we can look forward to your continued support in 1976.

The Committee would like to wish everyone a Merry Christmas and a Happy New Year. ANNE MEGENEY.

CHRISTMAS STORY COMPETITION

There were altogether 48 entries, and to choose one winner was an almost impossible task. Many stories were quite frighteningly badly spelt, written and grammatically constructed, but others were quite excellent in that respect. Some seemed original and very clever, but on further inquiry turned out to be taken from well-known stories. There was only one entry under 8 unfortunately, so no separate category could be formed. I have given reasons for my four choices. It was very difficult, and reached only after great thought!

FIRST: Diane Home (10yrs.10mths) - "A Christmas Story". Chosen because it was closest to the brief in the editorial of 'an original story related to the meaning of Christmas'. It is imaginative and well written.

SPECIAL MENTIONS: Claire Morris (9) - "A Christmas Story". A very original idea - of how Father Christmas started his career! Well thought out and some marvellous unconscious humour.

Jill Humphreys(9) - "A Story about Christmas". Not so original - a straight interpretation of the nativity - but beautifully written.

Edward Walker (9) - "The Christmas Adventure". This is so dramatic and contains almost every element for a good thriller!! The fact that Christmas is secondary in significance shouldn't be allowed to stand in the way of encouraging such promising talent!

A CHRISTMAS STORY BY DIANE HOME

On Christmas Day I had a small present, it was a purple stone. When we had our breakfast I asked mum what it was, but she thought that it was a replica of a stone in the Crown Jewels.

On Boxing Day we travelled down to our grandparents' house to stay for a week. I was alone in the bedroom when the stone started shining. I went up to it and then I felt myself being dragged down. A few minutes later I found myself lying next to an ox and some donkeys. I was lying in a type of stable then the door started to open. I quickly hid behind a rock. Now the door was fully open and three people plus a donkey came in. Then suddenly I realised that it was Mary, Joseph and the Inn Keeper. I stayed behind the rock until Mary and Joseph were asleep then I crept out and went to where the animals were kept. I fell asleep. The next thing I knew was that there was somebody knocking at the door. It was about five shepherds carrying sheep and other presents to give to the baby Jesus (who was born while I was asleep). The shepherds stayed until another knock came. It was the Wise men. There was not three of them but four, the fourth one had a bunch of pretty flowers and grasses. Jesus seemed to smile at that wise man. When he smiled I was transported back to the room once more.

PARISH COUNCIL MEETING, 4th NOVEMBER

Present were the Clerk and Cllrs. Drinkwater, Gurden, Wright, Atkins, Wilkins, Davies and Mrs. Watts, with apologies from Mr. Daniels and Mrs. Cattrell. Those present endured the chill of the Farley Room, not because, as was suggested, Cllr. Wright was still saving up to pay the Parish Electricity bill all by himself, but because, as an economy measure, there is no heating in the Farley Room. Minutes of last meeting were amended and signed. Arising from these, Cllrs. Wright and Drinkwater reported that they had been disappointed with the speaker at the meeting for Parish Councillors.

Correspondence included a copy of the County Structure Plan which Cllr. Wright perused and a questionnaire from London University about facilities in Harbury past and present. At first the Council thought to hand this over to the Harbury Society, but discussion elicited so much detail and argument that it was decided that Mrs. Watts and the Chairman could complete the forms. Notification of the date for Parish Council Elections (6th May 1976) caused some consternation when it was discovered that the Annual Parish Meeting would have to be put forward so as to take place before 6th May.

Allotments Six months ago the County gave notice that it was to raise the rent for the allotments, but no details were given. The County Land Agent has now informed the Parish that the rise will be from £25 per year to £55 and this back-dated to Sept. 1975! Cllr. Wright was incensed at this. It was, he said, an increase of over 100%, and retrospective at that. The Parish had not been given sufficient notice of the increase and should write pointing this out, and should tell the C.L.A. to suggest another figure. If this was not a reasonable amount then the Parish Council must take up the option of going to arbitration! The Clerk stressed that at present there are NO ALLOTMENTS AVAILABLE.

Highways had been discussed that day during a site meeting with the Police and Highway Authorities, and the County had decided to give consideration to the imposition of waiting restrictions to both sides of Crown Street for the weekend and evening periods, but to do nothing about Church Street at present. The Farm Street/Binswood End corner is to be

bps
MERCHANTS IN BUILDING

building & plumbing supplies limited

42, HOLLY WALK, LEAMINGTON SPA

for all your building materials,

D.I.Y., paving slabs, sand, cement and other "heavy" materials at our premises at 8 Radford Road, Leamington Spa.

Bathrooms & Kitchen Units at our Showrooms on Wood Street, (Off Holly Walk).

TEL. 21301.



FOSSE

FOSSE WAY Harbury 613260

GARAGE

*SERVICING & BODY REPAIRS
WELDING & CHASSIS REPAIRS
TO M.O.T. SPECIFICATION*

PETROL — OIL
QUADRUPLE GREEN SHIELD STAMPS

PHONE: HARBURY 613260

WRIGHTONS

DECORATORS



PLUMBING, TILING,
GENERAL REPAIRS, ALTERATIONS ETC.

PAINTING CONTRACTORS
4, DICKENS RD., HARBURY 612564
THE COTTAGE BANBURY RD., GAYDON

A. M. BASTIN.
WHOLESALE & RETAIL BUTCHER.
HIGH STREET, BISHOPS ITCHINGTON

Top Quality Meat supplied for your Home Freezer

Cut and Packed to your own requirements
At Competitive Prices

Tel. HARBURY 612683 or 612708 for Price Lists.

*To avoid the worry of the Breathalyser
Why not eat and drink in your own Village.*

PHONE 612357

The Shakespeare Inn.

Very Comprehensive Selection of Meals.

Parties Catered for

Also Lunches in the Bars Weekdays and Bar Snacks morning and evening.

COWLEY BROS.

QUALITY BUTCHERS

Specialists in deep freeze supplies

GREENGROCERY ALSO AVAILABLE AT CHAPEL ST.
BISHOPS ITCHINGTON.

HIGH STREET HARBURY PHONE: HARBURY 612277 or 612090

DOUG & MAVIS POWELL WELCOME YOU TO THE

DOG INN

HARBURY PHONE: 612599

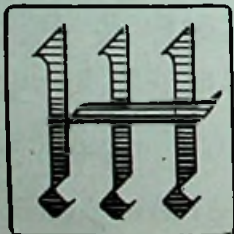
Saturday night is our music night

Weddings — Buffets — Parties — Catered for

Ansells — Skol Lager — Double Diamond

HARBURY HANDICRAFTS

Pen drawings,
Calligraphy,
Polymer
Paintings
Model making.



Macramé,
Needlecraft,
Soft toys —
Crochet,
Etc.

J.W.H. & M.BAMFORD, TEMPLE END.

SAPPHIRE COACHES

(I.E. LAINCHBURY)

BISHOPS ITCHINGTON

Phone HARBURY 612344

EXCURSIONS

AND

TOURS

PRIVATE PARTIES

LET US QUOTE YOU

plumbing, painting & general repairs

D.J. JACKSON
harbury 613155

COSY FOAM

CAVITY WALL INSULATION

- * INSURED GUARANTEE
- * SIX MONTHS INTEREST-FREE LOANS
- * 10% - 15% LESS THAN MOST
OTHER LEADING COMPANIES
- * PRICE FOR THE AVERAGE
HOUSE LESS THAN £100.00
- * QUOTATIONS WITHOUT OBLIGATION

Write or phone anytime, Harbury 612866 or
Warwick 44479.
29, FRANCES ROAD, HARBURY, LEAMINGTON SPA.

E. G. BUCKLE. MOTOR REPAIRS.

FINA FILLING STATION
MILL STREET
ALL TYPES OF
SERVICING & REPAIRS
AUTOMATIC GEARBOXES A SPECIALITY
ELECTRONIC TUNING
GENERAL WELDING
AND BODYWORK

Phone 612809

ROGERS KNIGHT



Your clothes say a lot about you

Let Rogers Knight say a little more
for you

A wide range of distinctive styles
in superbly tailored traditional
and modern dress for today's man.
Account Facilities available.

at

Leamington Spa The Parade.	Tel. 21501.
Stratford High Street.	2685.
Banbury Parsons Street.	53430.
Lymington Hants High Street.	3324.

FUNERAL AND MONUMENTAL SERVICE BY RUGBY COOPERATIVE SOCIETY LTD.

Office and Private Chapel of Rest

Russell Street, Rugby.

Telephone — Rugby 2041.

Personal attention at all times...

Mr. D. Grimes, M.B.I.E.,

67 Bridget St., Rugby.

After Business Hours,

Rugby 6099 or 71569

W. BOURNE INSURANCE

ALL CLASSES OF INSURANCE
WITH FREE QUOTES

SOUTHAM ESTATES

TERMS BY ARRANGEMENT
AND

ABBAY NATIONAL BUILDING
SOCIETY

LOCAL OFFICE

See W. BOURNE for a Complete,

Confidential, Cordial and Prompt Service

PARK LANE,
OFF MARKET HILL
SOUTHAM.

TEL.
SOUTHAM
2530.

Jeanne

MARKET HILL, SOUTHAM, TEL: 2808

YOUR LOCAL



Ladybird

CHARTER STOCKISTS

FOR BOYS & GIRLS TO 14 YRS.

MANY ITEMS IN OUR RANGE

WILL FIT THE SMALLER WOMAN

LARGEST STOCK IN AREA

LOOK AROUND WITHOUT OBLIGATION

& COMPARE OUR PRICES

SOUTHAM HIGH SCHOOL UNIFORM
ALWAYS IN STOCK

FREE PARKING

FITTING ROOM

improved and drainage work is to take place at the Francis Road corner.

At the Burial Grounds the hedge by the beech tree has been broken down by children swinging on the tree, and Cllr. Wilkins suggested that barbed wire might deter them.

Village Greens. Cllr. Drinkwater reported that, since he had spoken to those concerned, there had been no parking on Pump Green and that action was pending at Binswood End Green.

Cllr. Wright suggested that something should also be done about the disgraceful condition of the Green at the Bull Ring.

Cllr. Wilkins complained that he could not mow the grass there because of a parked car. The County is to be asked for advice on ways of tidying up this area and discouraging parking there.

Cllr. Atkins suggested tank traps.

Lighting. The planned extra lighting for Binswood End for which the Parish has been setting aside money for the past 2 years was discussed. Cllr. Gurden raised the point that there was a fresh planning application for the land at Binswood End and it was agreed that the Parish Council inform the District that it wanted the provision of street lighting by the developer to be a condition of Planning Permission.

Development and Planning Applications were discussed and Cllr. Wright who all this time had been methodically reading through the Structure Plan quoted the County's intention to limit development to certain villages and to restrict increase to the provision of housing for the natural population increase. This was not happening in Harbury, he said, housing was in the luxury class and for commuters not local people. Cllr. Gurden said that as all new Council housing for the area was to be restricted to Southam, many people would be forced to move from the village of their birth. Cllr. Wright explained that because the Environmental Health Officer was adhering strictly to the health regulations the new owner of 17 Mill St. might be forced to change the exterior of his house substantially by the addition of dormers to the roof. Mrs. Watts thought this would be a great pity. There were, she said, so few old buildings remaining unspoiled in the village. It was agreed that the Parish Council suggest the regulations be relaxed in this case.

The playing fields are to be graced by a set of semi-permanent floodlights protected by steel mesh and barbed wire, for the use of Rugby and Soccer Clubs' training sessions. The joint application brought forth some reservations from the Parish Council who were concerned lest the field be damaged by the continual use of one area and the fear that someone might be injured trying to climb the pole. They were assured that there would be plenty of barbed wire to protect the lights, and it was agreed to permit the erection for a trial period of one year.

Southam Area Parish Councils Assoc. are to be guests of Harbury Parish Council on 17th December.

Next meeting, Thursday, 27th November. L. RIDGLEY

W.I.

Harbury W.I. were pleased to welcome V.C.O. Mrs. Cuthbert to their AGM in November. Mrs. M. Davies, secretary, reported on a highly successful year with a wide range of speakers, social events and visits. Mrs. Thompson, treasurer, said that the last 12 months had been financially successful, thanks largely to the efforts of the Drama and Handicraft sections; money had been donated to Vietnamese orphans and the Village Hall extension fund. For the 2nd year running, the Institute had a membership of 55. The following officers and committee were elected: President, Mrs. P. Middleton, Vice-President, Mrs. A. Atkins, Secretary, Mrs. M. Davies, Treasurer, Mrs. Bingham, Committee, Mesdames Hannay, Knappe, Moseley, Palmer, Robinson, Walker, Tyler and Thompson.

On 22nd November the Drama Group presented a Twenties Evening which proved to be a great success. Most people were dressed in 20's costume which added to the atmosphere. Suitable food and entertainment was provided by the Drama Group. Clive Watts and the New Group provided the music.

M. THOMPSON

THEATRE GROUP

I write this after a thoroughly enjoyable evening provided by the Theatre Group with their production of the Victorian melodrama 'East Lynne'. The whole cast did a very good job, and the audience responded in traditional manner,

hissing the villain and 'aahing' as appropriate. Amongst all the very good performances, special mention should be made of Janet Thornley's portrayal of the domineering, middle-aged spinster.

J. B. M.

HELP, PLEASE.....

The Governor of Albany Prison, Isle of Wight, has asked for broken toys which prisoners will repair for NSPCC children for Christmas and for future requirements. Any broken toy would be most gratefully welcomed - please contact Mrs. Victoria Macgowan, 17 Manor Orchard, 612938, and help us make it a happy Christmas for these deprived babies and children. Thank you.

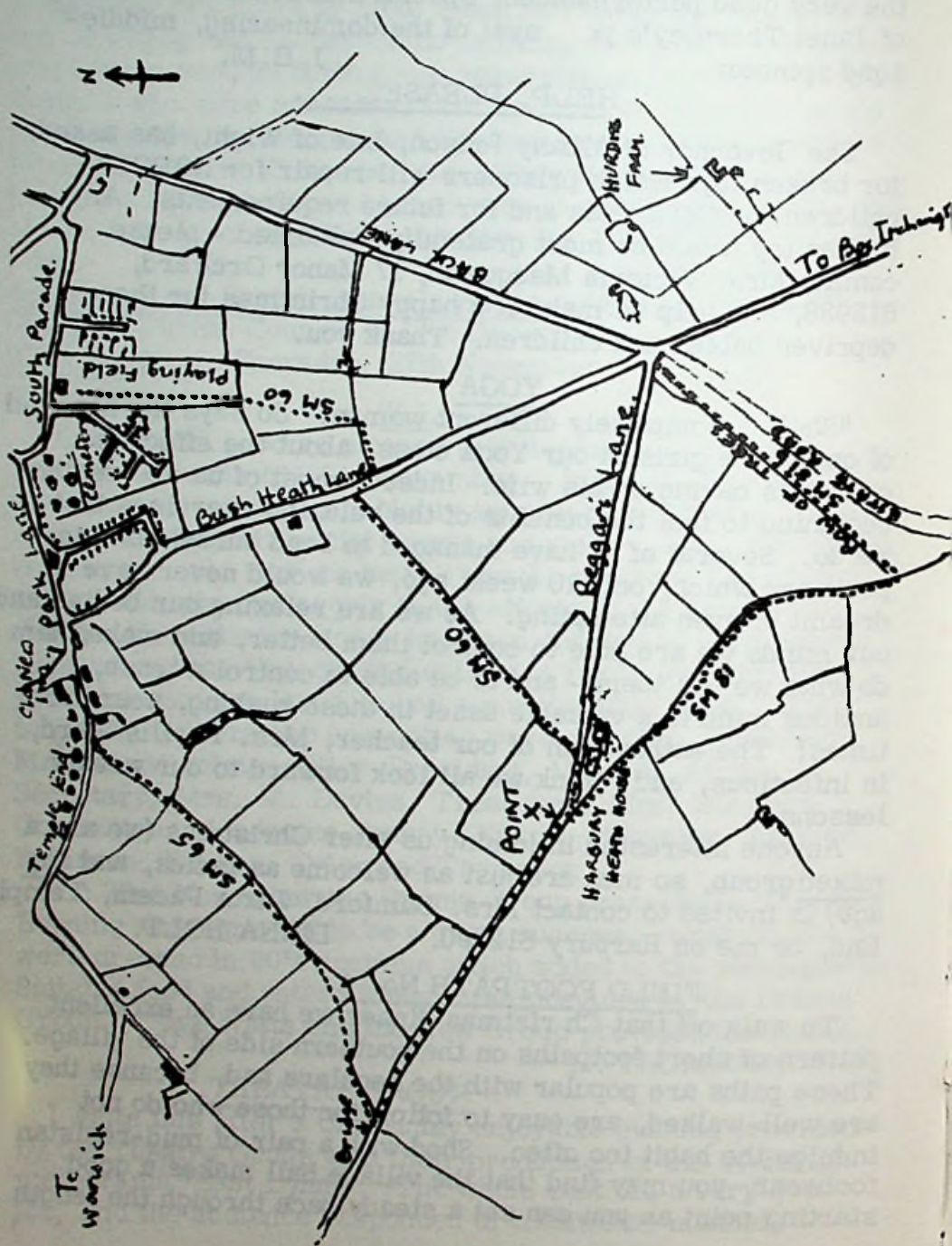
YOGA

"She's a completely different woman!" So says the husband of one of the girls in our Yoga class, about the effect the course is having on his wife. Indeed, most of us are really beginning to feel the benefits of the relaxing exercises that we do. Several of us have managed to bend ourselves into positions which, only 10 weeks ago, we would never have dreamt of even attempting. As we are relaxing our bodies and our minds we are able to control them better, and make them do what we tell them - and to be able to control a tense, anxious mind is a valuable asset in these rushing, neurotic times! The enthusiasm of our teacher, Mrs. Phyllis Ward, is infectious, and I think we all look forward to our weekly lessons.

Anyone interested in joining us after Christmas (we are a mixed group, so men are just as welcome as ladies, and any age) is invited to contact Mrs. Bamford, Juxta Pacem, Temple End, or me on Harbury 612790. DIANA HOLT.

FIELD FOOTPATH No. 4

To walk off that Christmas dinner we have an excellent pattern of short footpaths on the southern side of the village. These paths are popular with the regulars and, because they are well-walked, are easy to follow for those who do not indulge the habit too often. Shod with a pair of mud-resistant footwear, you may find that the village hall makes a good starting point as you can set a steady pace through the length



of both playing fields to a prominent stile at the far end right-hand corner. From here the well-trodden path turns sharply right on to Bush Heath Lane and after a slight right-handed diversion turns into a field track along the west side of the hedgerow. After 2 fields, the stile puts you on the east side of the hedge and brings you on to Beggar's Lane road, opposite Harbury Heath stables.

From this point, the walker has a choice of either returning via Temple End or via Back Lane. In the first case, you use the road towards Warwick for $\frac{1}{2}$ a mile until the fine new footbridge is reached in the dip, and on the right hand side of the road. From here the footpath follows the line of the brook (willow trees!) and passes behind the turkey farm before it finally emerges on to the road very close to the Old New Inn.

If you wish to go the other way, enter the Bridle Path gate at point X and follow SM81 on the south side of the hedge. This SM81 is a very long and valuable path as it goes ultimately right round to Itchington Holt and Gaydon; but for this walk, keep going until the hedgerow ceases where the new estate road crosses it. The true definitive footpath then follows the line of trees remaining from the grubbed-up hedge on your left, and brings you out to the road junction at Hurdiss Cross Roads. Pleasant walking! Please keep dogs on their leads.

HARBURY SOCIETY

For members and their guests there will be a Social at the Crown with the folk group Humstrum on 27th January. There will be an extension until midnight and a Ploughman's Supper. Members will be notified when tickets are available.

The next public meeting will be a film show at the Dog Inn at 8 p.m. on Tuesday 24th February, when two films will be shown about the renovation of historic buildings.

The Society was asked to provide a Quiz for inclusion in the magazine, and this is printed below. However, we are sure that there are far trickier questions that could be asked. If you have a question, why not send it in (with the answer) and perhaps the News will be able to compile a Readers' Quiz on Harbury for a future issue.

1. What is the number of the Midland Red bus that serves us?
2. Where is Mrs. Spurling's old dog immortalised?

3. What is 'married' to Ty Gwyn?
 4. There are several *Juglans Nigra* living in the village. Identify one.
 5. There is a British Legion Roll of Honour in the Church; where is there another?
 6. What is the name that artist Henson Bamford has given his cottage?
 7. When was Chesterton Windmill built?
 8. Who lives at No. 2 Vicarage Lane?
 9. What is the date above the Bull Ring Stores?
 10. Whose name is associated with the boast 'Erected 1856'?
- Answers on page 16.

SOME CHRISTMAS READING.....

There are dozens of new books making good presents or to buy with your book tokens, including: 'Bring on the Empty Horses', David Niven's even funnier follow-up to 'The Moon's a Balloon'; Michael Bentine's autobiography 'The Long Banana Skin' is also a best-seller, and so is Alistair Cooke's 'America' adapted from his popular TV series and superbly illustrated. My personal favourite is Spike Milligan's 'The Milligan Book of Records', a spoof on the Guinness one but much funnier! For teenagers there's 'The Jersey Shore' by William Mayne; 'The Iron Lily' and 'Harrow and Harvest' by Barbara Willard, and 'Watership Down' by Richard Adams - all enjoyed by as many adults as younger readers. The variety of children's books is endless, and there are so many good ones, but I love the Pop-up series by Roger Schlesinger with 'Pinocchio' as my favourite, and also Richard Scarry's 'Best Rainy Day Book Ever' - I can promise it is too! It has over 500 fascinating and practical things to colour and make, for ages roughly 4 to 84. All these books are available from Rackhams and other good book shops. VICTORIA MACGOWAN.

HARBURY'S 'PREHISTORIC MONSTERS'

Between 140 and 190 million years ago, during the Jurassic period, Warks. and most of the Midlands were covered by sea. The bed of this ancient sea has been compacted and hardened deep in the Earth's crust and forms today the rocks which underlie most of southern Warks. The lowest beds stretch from Rugby through Harbury to Wilmcote, and are known as

the Lias. They consist largely of limestones and have long been exploited at Harbury and elsewhere as a source of lime. The huge quarries have yielded not only limestone but also the fossil remains of animals which lived 180 million years ago, for the Lias sea supported a rich animal life. The most common reptiles were the plesiosaurs and the shark-like ichthyosaurs. They were truly monsters - up to 40ft. long. The working of Harbury Quarry uncovered the remains of many of these animals. In 1927 workmen excavated the almost complete skeleton of an 18ft. plesiosaur. Its limbs resembled the paddles of a turtle, and its long neck enabled it to catch fish and other prey with ease. It is now on display at the British Museum(Natural History) in London.

In 1928 another near-complete reptile skeleton was found. This time it was a 30ft. ichthyosaur or fish-lizard. Though unrelated to the shark, it must have resembled it for it had the same streamlined swimming shape, and swam by powerful beats of its well-developed tail. This too is now in the Natural History Museum.

Nowadays, Harbury Quarry is closed and will yield no more of its 'prehistoric monsters'. In working quarries today, finds like these are even rarer than they were since modern quarrying techniques have replaced the pick and shovel methods of the past. Examples of Warwickshire prehistoric reptiles are on show at the County Museum, Warwick.

BILL ALLAN

KALEIDOSCOPE

Our Christmas issue again already! It's my favourite time of year, and I'd like to start by wishing all Kaleidoscope readers a very Happy Christmas and peaceful year in 1976. . . . Mrs. Grey has kindly supplied me with the Christmas surgery times which are: closed 25th and 26th December and 1st January; normal surgery Sat. 27th December, so I hope that will be useful. My suggestion for a village Christmas tree has now been abandoned. You will remember that in last month's Kaleidoscope I asked readers to let us know whether or not you like the idea, and since only dozen people out of a population of over 2,000 bothered, I have come to the very disappointing conclusion that even a project requiring nothing more than a 'phone call, a note or a word in the street, is apparently not

worth the trouble. It's a pity because Mr. Oliver kindly suggested that the school would sing carols around the tree, and that would have been so nice. I would however like to thank the few who did ring me, Mr. Oliver for his warm and enthusiastic support, and especially Mr. and Mrs. Bloxham who so generously offered to donate the tree. Perhaps we could try again next year, but earlier so that people have more time to think about it.....So, from a rather sadder but wiser me, a Happy Christmas to everyone!

VICTORIA MACGOWAN.

QUIZ ANSWERS (see page 13)

1. 554.
2. Outside the Dog Inn. Its portrait is on the Inn sign.
3. Ty Ni. It is the adjoining cottage in Hall Lane.
4. The grounds of the Manor House, the Old New Inn, Denys Close and Walnut Tree Cottage. They are walnut trees.
5. In the Village Club.
6. Juxta Pacem.
7. 1632.
8. The Vicar.
9. 1577.
10. The Rev. William Wight. Above the Library door at the Wight School.

CORRESPONDENCE

Dear Editors,

Did you read about the recent case of the treasurer of a sports club having his furniture seized in payment for a debt which the club had incurred? Apparently, writs were also served on the chairman and secretary. This made me wonder - many people in Harbury take on these voluntary jobs - if the crunch comes, what are their responsibilities in law? Presumably it depends on the type of club concerned? If anyone can give any information on this subject, perhaps the News would print it.

PETER HOLT.

WANTED Choirmaster and Organist for Harbury Church.
Apply; The Vicar.

HOLIDAY Escape from English winter gloom. Four tickets available (2 doubles) for Thompson's Winter Holiday in Majorca, 22-29th February. Further details from, and urgent applications to:
HARBURY 612410 or 612415 (evenings).

LES JONES.

HARBURY CATERERS

Cold Buffets — Carveries
House Parties Etc.

DISCO'S -- BAR'S

Table Flower Arrangements

Phone Harbury 613128

J. A. & E. HOWARD.

NEWSAGENTS

SWEETS

TOBACCO

MILL STREET HARBURY
Phone HARBURY 612156

FILMS

TOYS

PHILIP LINDOP.

DRUG STORE

CHAPEL STREET
HARBURY

DRY
CLEANING

TOILETRIES
BATTERIES

GREEN SHIELD STAMPS



for

COLOUR TV

& H I F I

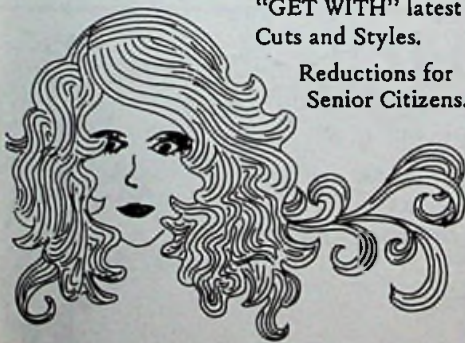
FOR HOME DEMONSTRATION
Telephone - Meriden (9794)22377

Margaret Joyce.

HIGH STREET

"GET WITH" latest
Cuts and Styles.

Reductions for
Senior Citizens.



Phone HARBURY 613128

BRIAN'S FURS SPECIALIST FURRIERS

Comprehensive range of quality coats,
jackets & hats always in stock.

Including: CONEY, SWEDISH LAMB,
MUSQUASH, MINK MARMOT, RED FOX,
KIDSKIN AND MINK.

SPECIALISTS IN FUR RE-STYLING
RENOVATIONS ON THE PREMISES.

122 Regent St.,
Leamington Spa Tel 21049

SOANS OF SYDENHAM FOR FORD



SYDENHAM DRIVE,
LEAMINGTON SPA. TEL: 29411



FOR YOUR NEXT HAIR APPOINTMENT COME AND RELAX
IN THE PLEASANT OLD WORLD CHARM OF

CATHRYN CRAIG.

Where all aspects of Hair
Styling are carried out by
our fully qualified staff.

Phone: 612326
2/3 Chapel Street
Harbury.



Your
**Vauxhall
Bedford**

Motors (Leamington Spa) Ltd.

Old Warwick Road Leamington Spa
CV31 3NX Telephone 0926 20861/2/3

Also at Coventry and Swansea

**Main
Dealers**



ENJOY LEISURE LIFE PROTECTION

WHEN · HIKING · GOLFING · ANGLING · SAILING · CLIMBING · CAMPING

'POP IN YOUR POCKET'

PETER STORM

100% Waterproof

Ultra lightweight nylon

In Navy, Orange, Royal, Olive, Fawn.

ANORAK

JACKET

OVERTROUSERS



LEISURE LIFE

117, WARWICK STREET, LEAMINGTON SPA. Tel: 28326.

TRIPOD PRESS LIMITED, 5, REGENT STREET, LEAMINGTON SPA.