

HARBURY NEWS

HARBURY NEWS.

A MONTHLY PUBLICATION

COVERING ALL ASPECTS OF LOCAL LIFE

MAGAZINE ADDRESS 23 MILL STREET HARBURY.

THIS MAGAZINE IS PRODUCED WITH THE
HELP OF ALL SAINTS PAROCHIAL CHURCH COUNCIL
HARBURY — VICAR. Rev. F.R. MACKLEY

A DIRECTORY OF VILLAGE ORGANISATIONS AND
ESSENTIAL INFORMATION IS AVAILABLE ON REQUEST
FROM MRS. D. HOLT, 15 WAGSTAFFE CLOSE.

FOR SMALL ADVERTISEMENTS RING 612790 by 25th MONTH



MORRIS

BULL RING GARAGE

LEYCARE



Retail Dealers for Morris, Wolseley, M.G. Cars

Full Servicing Facilities

Car Hire Short & Long Term

Electronic Tuning

Extensive Range of Parts

Quality Used Cars

MOT Testing

**BULL RING GARAGE,
CHURCH TERRACE.
Tel. 612275.**

MAY 1974

Welcome to the first issue of Harbury News, a monthly publication covering all aspects of village life.

Harbury News is backed by the Parochial Church Council, and is financed by the generous support of the advertisers, (whom we hope you will patronise), and also by individual donations. It is produced by a team comprising Diana Holt, Marian Millington, Alan Lord and John Moore - part of a larger committee - and with the assistance of members of the village organisations, who contribute articles and reports on their activities. We aim to circulate all households in Harbury Parish, free of charge, for the next six months. After that it may be necessary to ask for a small subscription, by which time we hope that you will consider it to be good value and that you will have come to depend on it as a major source of information and entertainment!

Amongst the items appearing will be notes on village activities and societies, the Diary of Events, the Vicar's Letter, articles on village history, sales and wants, and a correspondence page - we hope you will write to us on both serious and humorous matters.

We are fortunate to belong to a village which has a strong community spirit and in which a host of activities provide interest and enjoyment to many. It is our hope that Harbury News will help more people to learn about and take part in village life.

Because of its central position, 23 Mill Street has been chosen as the official Harbury News Address, and all communications should go there - with three exceptions:

Diary of Events: Information to Vicky MacGowan,
17 Manor Orchard, Tel: 612938. Enquiries
about events to the various activity organisers.

Sales and Wants: Charges will be 5p for up to 20 words per month. Insertions should be addressed to Peter Holt, 15 Wagstaffe Close, to reach him by 25th of the month prior to issue.

Harbury Directory: Additions and changes to be addressed to Diana Holt, 15 Wagstaffe Close, Spare copies also available.

The general tone may seem rather heavy this time. We don't plan always to be so serious. Let us have your ideas please for articles and lighter items for the future. For June we plan an issue concentrating on children's activities and schools.

HARBURY DIARY

MAY 1974

- Wed. 1st. Scouts A.G.M. Village Hall 6.00 pm
M.U. 2.30 pm. Vicarage, Speaker Mrs. Assheton
- Thur. 2nd W.I. Village Hall 7.45 pm.
Crusaders, games on Playing Field 6.30 pm.
(weather permitting)
- Sat. 4th League of Pity Party, members only, Village Hall 3.00 pm.
- Sun. 5th Crusaders Union Sunday, Mr. Gerry Edwards (Coventry) 2.30 pm. Village Hall.
- Mon. 6th Bingo, Village Hall 8.00 pm.
- Thur. 9th Golden Age Club, Village Hall, 2.00 pm.
Crusaders, games on Playing Field 6.30 pm.
(weather permitting)
- Sat. 11th Dance, Village Hall 8.00 pm. - midnight.
- Mon. 13th Bingo, Village Hall 8.00 pm.
- Tues. 14th Harbury Friends, Speaker Susan Sellers, Southam Hairdresser. Harbury School 8.00 pm.
- Wed. 15th P.T.A. Fashion Show, Harbury School.
- Thur. 16th Crusaders, games on Playing Field 6.30 pm.
(weather permitting)
Dramatic Society "Sound of Murder" Village Hall
- Fri. 17th C.E.M.S. Vicarage, 7.45 pm.
Dramatic Society "Sound of Murder" Village Hall
- Sat. 18th Dramatic Society "Sound of Murder" Village Hall
- Mon. 20th Bingo, Village Hall 8.00 pm.
- Tues. 21st Senior Citizens Benefit Association Committee Meeting, Village Hall 8.30 pm.

Wed. 22nd Blood Doning Session, Village Hall 2.00 pm.
 Thur. 23rd Golden Age Club, Village Hall 2.00 pm.
 Crusaders, games on Playing Field 6.30 pm.
 (weather permitting)
 Fri. 24th Dance in aid of Senior Citizens Benefit
 Association, Village Hall.
 Mon. 27th Bingo, Village Hall 8.00 pm.
 Football Club Dance, Village Hall, 9.00 pm.
 Tues. 28th Young Wives, Village Hall. Talk on Royal
 National Institute for the Blind. 2.00 pm.
 Wed. 29th Crusaders - until June 2nd. Class Visit to
 Snowdonia.
 Fri. 31st Harbury Dominoes League Dance. Village Hall
 8.00 pm. - 1.00 am.

JUNE 1974

Mon. 3rd Bingo, Village Hall. 8.00 pm.
 Wed. 5th M.U. 2.30 pm. at Vicarage. Speaker Rev.
 A. Gardner of Kenilworth.
 Thur. 6th W.I. Monthly Meeting, Village Hall - see next
 issue for details.
 Sun. 9th Six-a-Side Football Competition, Village Hall,
 2.00 pm.

Please send items for inclusion in this Diary to
 Mrs. V. MacGowan, 17 Manor Orchard, Harbury 612938.

PARISH COUNCIL ANNUAL MEETING, 21.3.74.

The meeting opened with a short talk by Major Kettle, our County Councillor, and Chairman of the W.C.C. Transportation and Roads Committee, about improvements in and around the village. Traffic problems were discussed and a request was made for close contact to be maintained between the County and Parish Councils over the new transportation policy programme.

The effects of Local Government reorganisation, whereby contact with Southam R.D.C. ceases and the Village comes under the jurisdiction of Stratford-on-Avon D.C., were also outlined. Direct contact with the latter body would be maintained through Councillor R. Gurden, Harbury's elected member.

Major Kettle detailed the new County rate increases, which amounted to 18.8p/£.

done by the present Parish Council, and plans for the future. Mr. DuBuisson pointed out that 'Harbury News' would now be a means of informing the public of Parish Council matters.

The outstanding need for more allotments was mentioned, and it was suggested that, when a vacancy existed, special consideration should be given to people with little or no garden.

The Council expressed their gratitude for the efforts made in maintaining the cemetery. These included the planting of new trees and numerous attractive flowers.

A financial report was presented by Councillor Wright, and the Council was congratulated on being able to maintain the Parish rate at 1p/£ rateable value.

Parish Council support, and possible finance, was discussed for such schemes as the Village Hall extension and it was stated that under the new District Council there should be provision for the maintenance of village recreation facilities generally.

With reference to responsibility of providing street lighting, Mr. Ellis proposed that this should be a developer's responsibility and not that of the Parish. It was reported that there was an increasing and costly amount of damage to street lamps through vandalism.

The Plans Committee reported that, under the new Warwickshire structure plan, Harbury would have no large developments in the near future, and as from 1st April the Parish Council would be asked to comment on planning applications. Interest was expressed in the possibility of a Southam office for public access to copies of plans and proposals held by Stratford D.C.

A vote of thanks was given to the Recreation Ground Advisory Committee for their work, which included many successful fund raising events. A resolution was passed to increase the number of elected members from six to nine, and the new members were subsequently elected.

Footpath Association walks were well supported this year, and all local routes had been walked. Concern was expressed over the possible closure of a footpath off Mill Street, and it was hoped to have Parish Council and legal representation at the proposed enquiry.

TENNIS COURTS

As you may remember, the Tennis Courts were completed and ready for use in November last year. With the approach of summer, now is the time for everyone to begin to make full use of them.

Bookings can be made at J.A. & E. Howard and the charge for the booking is 20p an hour - under 16's free of charge between 4.00 p.m. and 6.00 p.m. Monday to Friday.

We are hoping to set aside one evening a week for an informal get-together, when anyone can turn up and get a game. The committee would also be interested in hearing from any organisation in the village wishing to use the courts.

Please remember that plimsolls must always be worn, otherwise the court surface will be damaged.

HARBURY SOCIETY

Harbury Society was formed as a direct result of the Parish Meeting held in the village in October to protest against the proposed demolition of the Manor House. Shortly after this meeting, a group of interested people met to discuss the possibility of forming a society which would be properly organised to deal with any future threat to historic buildings in the village. It was agreed that the aims of the society would be to promote an interest in the history of the village through research and the collection of pictorial and documentary material, to carry out regular surveillance of matters relating to the environment of the village and the surrounding countryside, and to study community amenities. It was also felt to be important that members should be fully informed about the legal aspects of environmental affairs, particularly in relation to planning and conservation.

Support for the new society has been most encouraging. Already we have had a talk from a member of the County Council's planning department on the legal aspects of listed buildings (of which the village has twenty). Groups of members have been meeting regularly to make a survey of all the buildings in the village with the intention of trying to get some parts designated as Conservation Areas. Photographs of Harbury as it was at the turn of the century have been shown at meetings, and it is hoped to establish a.

collection of these for exhibition at some future date. Members have also been keeping an eye on future building developments in the village by regularly inspecting planning applications at the Rural District Council's offices.

A full programme of monthly meetings and activities is being planned. New members of the society would be most welcome. The Secretary is Linda Ridgley, 7 Wagstaffe Close (Telephone 612792).

YOUNG WIVES GROUP

Three years ago a group of young housewives met in Harbury with the idea of forming a Club, mainly as a 'daughter' to the Mothers' Union, and also, because they felt there was a need for some daytime activities, especially for young mothers. From this informal meeting came the Harbury Young Wives Group. The first leader was Edna Chapple and then Jeanne Clarke, who is still the Group Leader but Trisha Harrison, of Walnut Tree Cottage, has become Chairman. The Chairman is backed up by a strong Committee: Diana Holt, Secretary, Eunice McCracken, Treasurer, Frances Moore, Social Secretary, Shirley Keir, Distribution Secretary and Vicki Tanner our Sports Organiser!

The Group has monthly meetings, usually with a speaker. Topics range widely, from child psychology and potty training to fashion and Pippa-Dee, from flower arranging to life on the beat as a Policewoman, from how our telephones work to how to be a better driver! Meetings are of an informal nature and are occasionally rendered even more so when Junior enters unceremoniously from the next-door creche (expertly and patiently arranged for us by Mr. and Mrs. Bastin) to find Mum! We commence our meetings (at 2.15 p.m. every fourth Tuesday in the month at the Village Hall) with a short prayer to unite us all, notices follow, then our speaker and we finish with material needs of tea, coffee and biscuits! We sometimes have discussions amongst ourselves instead of a speaker, although no one is forced to air their views! Even so, we soon find we become less inhibited and speak our thoughts and this in itself creates a much greater fellowship. We have visits to the local theatre with our husbands and arranged recently a Fancy Dress Party for our children and we hope more and more to enter into the various village events, we are

bps
MERCHANTS IN BUILDING

building & plumbing supplies limited

42, HOLLY WALK, LEAMINGTON SPA



FOSSE

FOSSE WAY HARBURY 612295

GARAGE

for all your building materials,

D.I.Y., paving slabs, sand, cement and other "heavy" materials at our premises at 8 Radford Road, Leamington Spa.

Bathrooms & Kitchen Units at our Showrooms on Wood Street, (Off Holly Walk).

TEL. 21301.

For your

CAR REPAIRS

BODYWORK - SPRAYING

SERVICING

PETROL - OIL

PHONE 612295

Be sure you get the **WRIGHTON^ES**

DECORATIVE AND COLOUR CONSULTANTS

for your Decorating, Plumbing, Alterations and Repairs.

Personal Attention 4 DICKENS ROAD, HARBURY - Phone HARBURY 612564.
THE COTTAGE, BANBURY ROAD, GAYDON.

HIGH CLASS WORK — ESTIMATES FREE — DISTANCE NO OBJECT

LEAMINGTON, HARBURY, SOUTHAM AND DISTRICT.

A. M. BASTIN.
WHOLESALE & RETAIL BUTCHER.

HIGH STREET, BISHOPS ITCHINGTON

Top Quality Meat supplied for your Home Freezer

Cut and Packed to your own requirements

At Competitive Prices

Tel. HARBURY 612683 or 612708 for Price Lists.

*To avoid the worry of the Breathalyser
Why not eat and drink in your own Village.*

PHONE 612357

The Shakespeare Inn.

Restaurant with full A La Carte Menu

Speciality Fondue Bourguignon

Parties Catered for

Also Lunches in the Bars Weekdays and Bar Snacks morning and evening.

COWLEY BROS. family butchers.

Your Local Deep Freeze Suppliers.

HARBURY & BISHOPS ITCHINGTON. Phone Harbury 612277 &
612090.

The Crown Inn Harbury.

ROY AND MARY FENNELL

Extend a Warm Welcome to Old and New friends.

HOT AND COLD SNACKS, GAMMON
AND STEAKS

Parties Catered for by Arrangement

Car Park at Rear

Phone Harbury 612283.

HARBURY HANDICRAFTS

Pen drawings,
Calligraphy,
Polymer
Paintings
Model making.



Macramé,
Needlecraft,
Soft toys -
Crochet,
Etc.

J.W.H. & M.BAMFORD, TEMPLE END.

SAPPHIRE COACHES

(I.E. LAINCHBURY)

BISHOPS ITCHINGTON

Phone HARBURY 612344

EXCURSIONS

AND

TOURS

PRIVATE PARTIES

LET US QUOTE YOU

D. J. JACKSON.

for all

PLUMBING PAINTING

PROPERTY REPAIRS

Phone HARBURY 613155

22 IVY LANE, HARBURY

You will be welcome at

The DOG INN.

Harbury

Phone 612599.

DON'T MISS OUR

SATURDAY SINGALONG

Weddings

Parties

Buffets

Your Hosts

MAVIS & DOUG POWELL

ANSELLS

SKOL LAGER

DOUBLE DIAMOND

E. G. BUCKLE. MOTOR REPAIRS.

FINA FILLING STATION

MILL STREET

ALL TYPES OF

SERVICING & REPAIRS

AUTOMATIC GEARBOXES A SPECIALITY

ELECTRONIC TUNING

GENERAL WELDING

AND BODYWORK

Phone 612809

ROGERS KNIGHT



Your clothes say a lot about you

Let Rogers Knight say a little more
for you

A wide range of distinctive styles
in superbly tailored traditional
and modern dress for today's man.
Account Facilities available.

Leamington Spa The Parade.	Tel. 21501.
Stratford High Street.	2685.
Banbury Parsons Street.	53430.
Lymington Hants High Street.	3324.

FUNERAL and MONUMENTAL SERVICE

by

RUGBY CO-OPERATIVE SOCIETY LTD.

Office and Private Chapel of Rest

Russell Street, Rugby.

Telephone — Rugby 2041.

Personal attention at all times....

Mr. D. Grimes, M.B.I.E.,

67 Bridget St., Rugby.

After Business Hours,

Rugby 6099 or 72392.

W. BOURNE.

(BROKERS)

ALL CLASSES OF INSURANCE
WITH FREE QUOTES

SOUTHAM ESTATES

TERMS BY ARRANGEMENT
AND

**ABBEY NATIONAL BUILDING
SOCIETY**

LOCAL OFFICE

See W. BOURNE for a Complete,

Confidential, Cordial and Prompt Service

PARK LANE,
OFF MARKET HILL
SOUTHAM.

TEL.
SOUTHAM
2530.

Jeanne.

FOR BABIES'
CHILDREN'S AND
TEENAGE WEAR.

Full range
LADYBIRD ROB ROY
GEOFFREY SAVIL
BABYCHIC BANNERS etc.

MARKET HILL,
SOUTHAM,
Telephone 2808.



**SOUTHAM HIGH SCHOOL UNIFORM
STOCKISTS**

Full range always in stock.

struggling to keep our netball team alive and may even see the emergence of a Tennis Section if the support is there. We attend the magnificent annual service of the Mothers' Union at Coventry Cathedral, an uplifting experience in itself and also a very interesting research study into the vast variety of ladies' hats that sport such occasions! Members also help with the Church Cleaning and we have visited many old people in the Village, in conjunction with the Harbury Senior Citizens' Association, to see if any were in special need. We join Mothers' Union at some of their meetings and this helps to give us a sense of belonging to a larger organisation. Every December we combine with them in a Carol Service in our Church and this is where Junior, yet again, can display his acting ability as we encourage our under-fives to actively take part in a Christmas tableau, and how they love the dressing up!

We are only a young Group yet and we have far to go and a lot to learn but with God's help and a great deal of humility and good humour and fellowship which develops over the years we shall be able to combine activities of relaxation and pleasure with those of helping others locally. We warmly welcome new faces and stress that your under-five is not a liability but is an asset in bringing the young mothers of Harbury together!

HARBURY ALBION FOOTBALL CLUB

For over 40 years, Harbury has enjoyed a soccer team. During most of those years, the Club stalwart was the late headmaster, Mr. Farrow. Firstly, he excelled as a player, and later as an official - often the only official and managing the Club on a 'shoestring'.

During the first 10 years, the Club has become a lot more stable financially but regrettably not many trophies have been forthcoming. The Club now has two teams in the Leamington Sunday League, with a kick-off most Sunday mornings in the 'Top' playing field at 10.30 a.m. A £100 set of floodlights, enable training to take place on the playing field every Tuesday at 7.30 p.m.

The League consists of five Divisions, with Harbury's first team coloured yellow and blue, in the bottom half of Division One. The Second team in all maroon are more successful in Division Three, positioned around fourth in the table.

The next major event to take note of is the Six-a-Side Competition held during the Carnival on 15th June. A handsome trophy is there to be won by any team. Entry forms are available from the Club Secretary.

Don't forget - Soccer Sunday Mornings! Next month, more about the Club, including the Club Tote and the 'under 15' team.

Club Membership - 25p

Chairman - W. Stevens, Manor Road, Harbury.

Treasurer - P. Bench, Leamington Spa 37302.

Match Secretary - L. Sollis, Farm Street, Harbury 612412.

Club Secretary - M.G. Bishop, 4 Margaret Close, Harbury 612759.

THE FOOTPATH PETITION

Last Autumn a petition was circulated and signed protesting at the proposed closure of S.M. 62 A.

Perhaps you are wondering what became of it; or even where and what the disputed path is. It runs from Mill Street opposite the bottom of Heber Drive, across Mr. Trice's fields and joins the Harbury to Ufton path, thus giving walkers easy access to the footpaths on the North side of the village.

Mr. TRICE states that the path is an anomaly. The 190 metre spur in dispute, he says, is not really a footpath but a farm track. It originated at the end of the last century; it provided quick access to villagers' allotments which lay in a 12 acre field called Limekiln. These allotments fell into disuse, a tenant farmer ploughed the land and the gate was closed before the Great War. The public footpath legend was perpetuated when transcribed onto a map by the "error of a Parish Clerk". This path has been marked on Ordnance Survey Maps for many years.

Letters supporting and objecting to the closure were sent to the R.D.C. and in view of the controversy the case was referred to the Department of the Environment. A Public Enquiry will be held locally at a date to be announced.

THE AMATEUR DRAMATIC SOCIETY

Many of you with young children will have seen our latest production "The Tale of the Red Dragon" at the beginning of March. This was a most interesting and successful effort for everyone. It was the Company's first production "in the round" - using the whole length of the Village Hall. The magical and fantastic journey by Lee Nyiang and her companions Monkey & Nightingale gave the effects and lighting team scope for ingenuity. Many of the beautiful costumes were hired from Leamington's Loft Theatre wardrobe dept. where they were made for The Wizard of Oz. JEAN SHAWCROSS made the Monkey's and Nightingale's costumes and the Dragon's headpiece. The young audiences were enthralled by the story and seemed suitably frightened when the Dragon roared amongst them.

A play specifically for children was a new departure for the society and because it was so enthusiastically received they hope to make a children's entertainment an annual event.

The Dramatic Society are currently rehearsing a splendid thriller "Sound of Murder", produced by Trevor Davis. Performances will be May 17th, 18th & 19th in the Village Hall. Posters will advertise ticket prices and performance times.

VILLAGE LIBRARY

Wight School, High Street, Harbury. Hours of Opening: Mondays and Thursdays, 10.30 am. to 1 pm., 2 pm. to 5 pm., 5.30 pm. to 7 pm.

From 1st April, Harbury comes under Leamington's central clearing library and this will involve several changes in policy. The lending time for books for everyone will go up from 3 to 4 weeks. The charge for overdue books will be 3p for each week or part of a week, except for children and O.A.P.'s, who will be exempt from all fines. There will be a 3p charge for reservations to cover postage.

Books today can cost anything from £2 upwards for an average hardback, but you can read all the current best sellers or old favourites FREE by joining the Library. The Harbury Library has a comprehensive rar

of books in most of the popular categories, but any books you cannot find on the shelves can be ordered. There is also an adequate reference section, but any information that cannot be found can be obtained for you.

Please use your local library, and encourage your children to as well. There is an excellent children's section, and even pre-school toddlers may take out two books on special tickets issued to a parent on their behalf.

BADMINTON CLUB

The Badminton Club has been very active this season with three teams playing in the Leamington Badminton League. There are about 25 members in all, with an average attendance of 12 - 16 on a club night.

The first mixed doubles team did quite well in the second division of the league, managing to win all but one of their matches before Christmas. The second mixed team entering the fifth division of the league for the first time did not fare so well but hope to do better next season. The other team playing men's and ladies' doubles were very successful in the 2nd division.

We hope to continue playing badminton throughout the summer and to play both tennis and badminton on club nights. The summer club will be open to anyone, including beginners, at a cost of 20p per evening. Coaching will be available to anyone requiring it.

Newcomers will be very welcome during the summer months at club night which takes place at the Village Hall each Tuesday.

THE VILLAGE HALL

Many of the older inhabitants of Harbury will of course know the history of our Village Hall, but for some of the newer arrivals it is a fascinating story and the Hall itself is an excellent example of village life as it used to be all over England - it really is the centre of the community and is used by almost every organisation for various functions and regular meetings.

In the true tradition of Harbury, the money to build the Hall was raised by the villagers themselves, and it was in 1953 that the need for a new, bigger hall was first realised. At the time of the Coronation, a party was held for the children of Harbury and it was obvious then that the old premises were nowhere near adequate. That evening, a group got together in a local pub and discussed the possibility of building a new Hall, and at the end of that meeting, everyone put 6d in the middle of the table and the fund for the new building was begun!

Ten years later, in 1963, the new Hall was opened by Mr. John Profumo, but at that time the Village Hall committee was still £2,000 in debt, and this took five years to clear. In fact, when it was first opened, the Hall was very poorly booked and it was not until the influx of new people to the village with their fresh ideas and new societies being formed, that the Hall began to be used regularly. Now there are at least 23 regular bookings from organisations ranging from Guides, Brownies, Badminton, Youth Club, Golden Age, Crusaders and many more, to the occasional wedding reception, dance and 21st birthday party.

Five years ago an extension was planned and the plans were approved but after much disheartening effort, neither the Warwicks. County Council nor the Department of Education would agree to help with costs, and so now a more modest plan is in progress; the money to be raised once more by the people of Harbury themselves. Some money of course is made by the booking charges for the Hall, but another method of raising funds for its upkeep is by the 200 Club. For those of you who do not know about this, it has replaced the old sixpenny tote and the idea is that a number of people give 50p a month to a central fund, and each month a draw is made with three prizes - one of £20 and two of £10. In addition to this, all those who have paid in for six months become eligible for a second, half-yearly draw with a prize of £100 for the winner. Anyone wishing to join this scheme should contact a member of the Village Hall committee.

The Hall is very much in demand now and it is wise to book well in advance. The person to contact about bookings and charges is Mr. P. Shawcross, 35 South Parade (Harbury 612436).

LEAGUE OF PITY

We are starting up a new branch of the League of Pity in Harbury. This is the junior section of the N.S.P.C.C., and is open to all under the age of 18. Every member has a savings box for anything they are able to save or earn, and the income from these boxes is the mainstay of the whole League organisation. The idea is that the League consists of CHILDREN raising money for other, less fortunate, children. Members receive a membership badge and a free club magazine twice a year. There is an annual party for members only (this year's will be on 4th May) at which they are presented with badges according to the amount they have saved. Each year's total is added to that of the previous year, so that it is possible for a member to eventually collect the full set of 8 badges. Ribbons are presented to members who enrol 5 recruits to the League and for every additional 5 recruits a star is given. We badly need more recruits, and if anyone would like to know more about it, please contact Mrs. V. MacGowan, 17 Manor Orchard (Harbury 612938).

THE VICAR'S LETTER

My Dear Friends,

When this first issue of the Harbury News appears, the Church will have already celebrated her glorious festival of Easter Day, but we shall still be in what are known as the "Great Forty Days" of Easter. At this time we recall Jesus' victory on the cross and resurrection, triumphant from the Sepulchre.

Easter is the "Queen of Festivals" and each Sunday is a kind of weekly Easter Day.

Forty days later on Thursday May 23rd the Church celebrates Ascension Day, the coronation of the King of Kings. Ten days after that comes Whit Sunday, or Pentecost, the Festival of the descent of the Holy Spirit and the birthday of the Church.

Please note Evensong returns to 6.30 pm. on Easter Day.

With all good wishes from

F.R. Mackley.

LES JONES.

HARBURY CATERERS

Cold Buffets — Carveries
House Parties Etc.

DISCO'S — BAR'S

Table Flower Arrangements

Phone Harbury 613128

FILMS

TOYS

PHILIP LINDOP.

DRUG STORE

CHAPEL STREET
HARBURY

DRY
CLEANING

TOILETRIES
BATTERIES

GREEN SHIELD STAMPS

J. A. & E. HOWARD.

NEWSAGENTS

SWEETS

TOBACCO

MILL STREET HARBURY
Phone HARBURY 612156

Electrical Work.

All types and sizes
contact

J. Worrall.

15 Central Drive
Bishop's Itchington

Phone HARBURY 613208

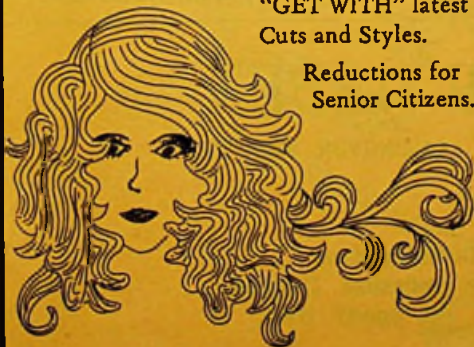
ESTIMATES FREE

Margaret Joyce.

HIGH STREET

"GET WITH" latest
Cuts and Styles.

Reductions for
Senior Citizens.



Phone HARBURY 613128

A. W. TAYLOR & SON.

HARBURY POST OFFICE
AND FOODSTORE

Quality
Freshness
Keenest Prices

Church Street
Harbury 612221



COME AND RELAX IN THE PLEASANT OLD WORLD CHARM OF

CATHRYN CRAIG.

FOR YOUR NEXT HAIR APPOINTMENT.

Where all aspects of Hair
Styling are carried out by
our fully Qualified Staff.

Phone 612326
2/3 Chapel Street
Harbury.

FIRST AND FOREMOST

BLOXHAMS.

*Fresh
Produce*

Florist

Bookmaker

612011 CHAPEL STREET, HARBURY 612489

SOANS FORD

F.F.F...

Soans of Leamington
Sydenham Drive Leamington Spa

LEAMINGTON 29411

LEISURE LIFE.

WARWICK STREET, LEAMINGTON SPA

for

Camping & Climbing Gear
Sub-Aqua Equipment. Inflatable Dinghies
Anoraks, Jeans & All Sports Wear.
Phone 28326